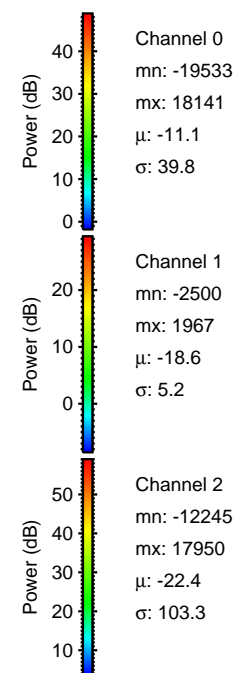
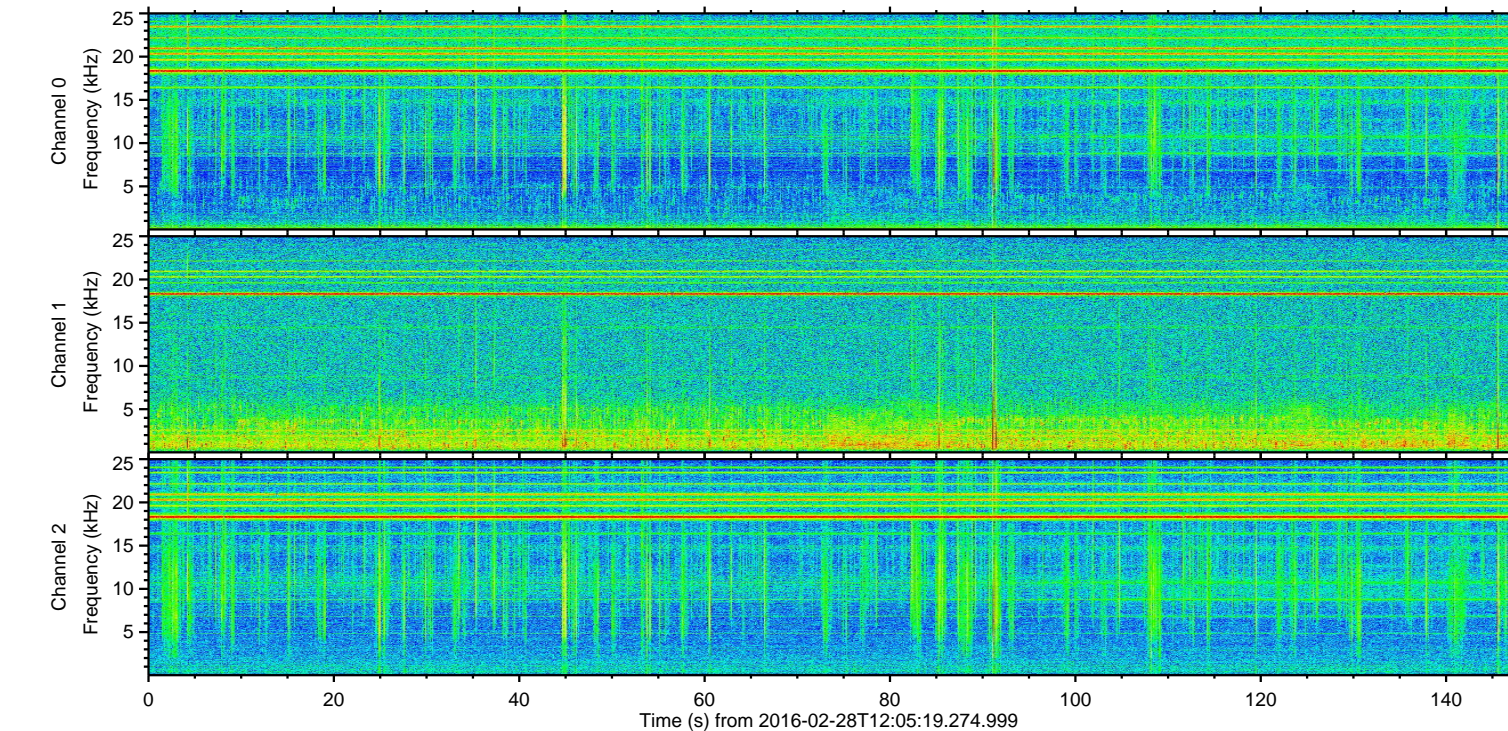
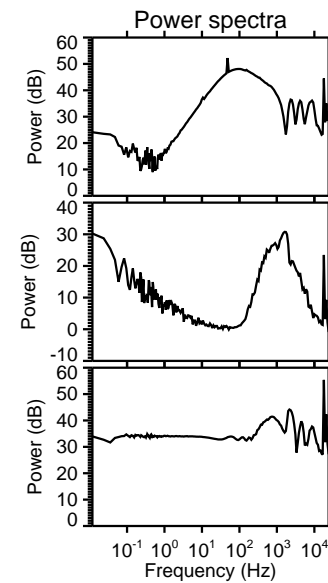
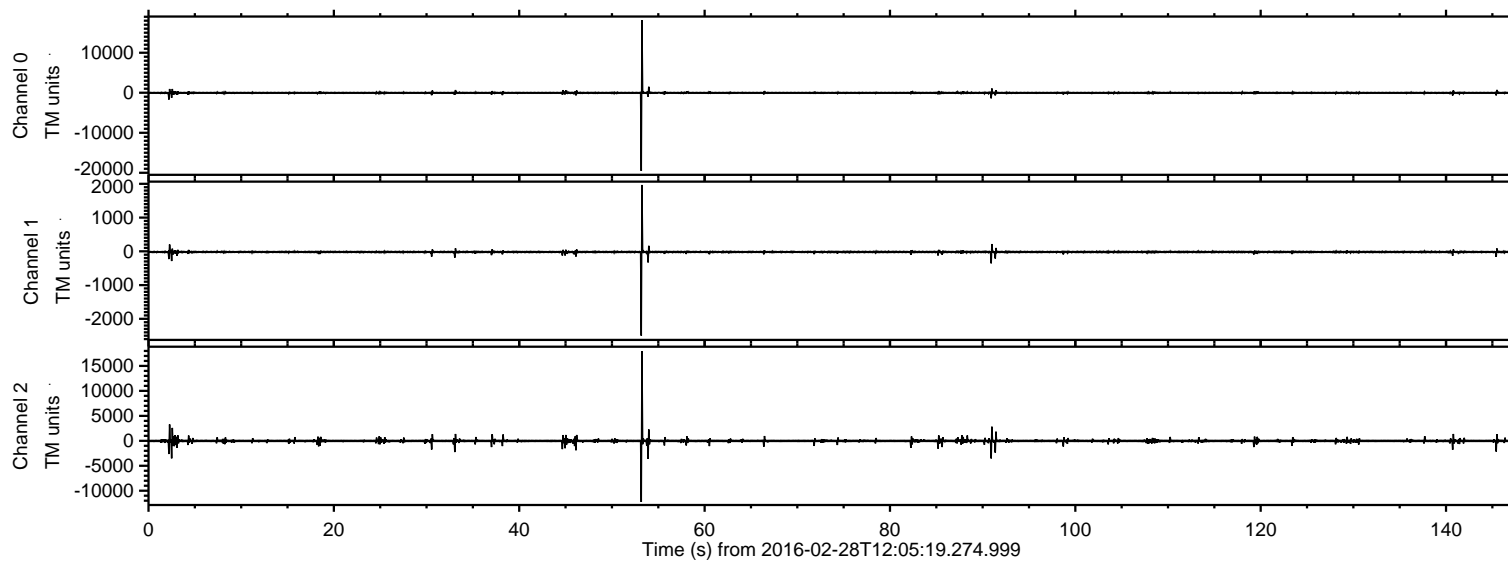


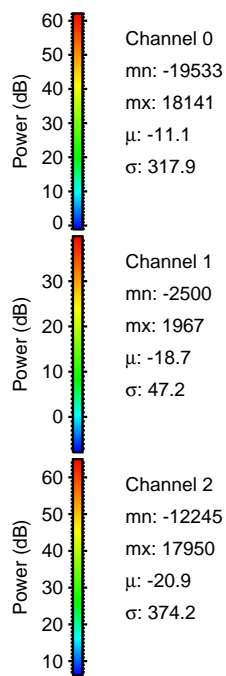
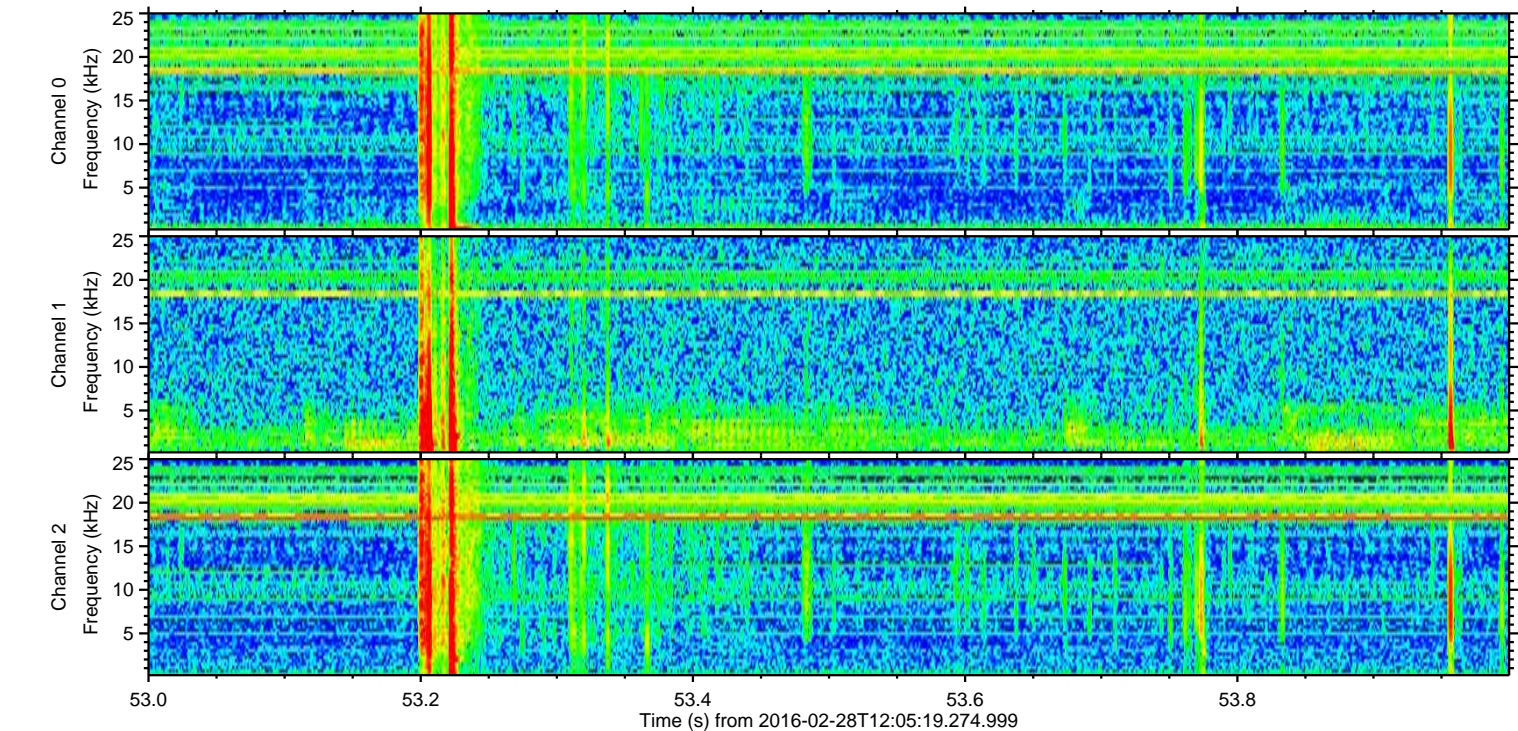
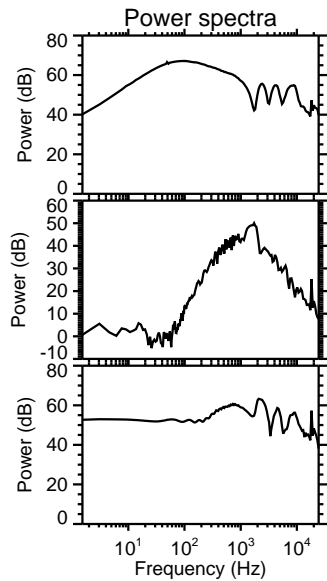
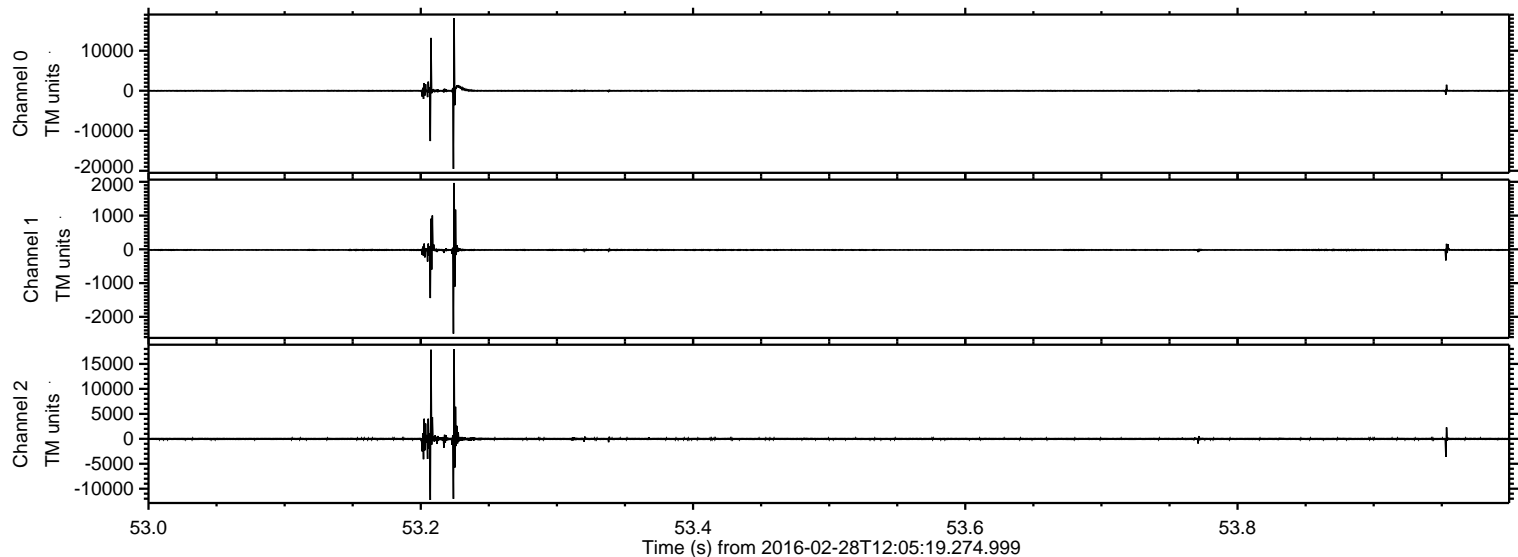
# ELMAVAN 3D WAVEFORMS (Measured data sampled at 50 kHz) 51000 packets of 144 samples from 2016-02-28T12:05:19.274.999.

Processed Sun Apr 17 06:33:11 2016 by ELM ver.2012-10-06 from 001\_\_elm20160228\_120518\_\_dat00.bin



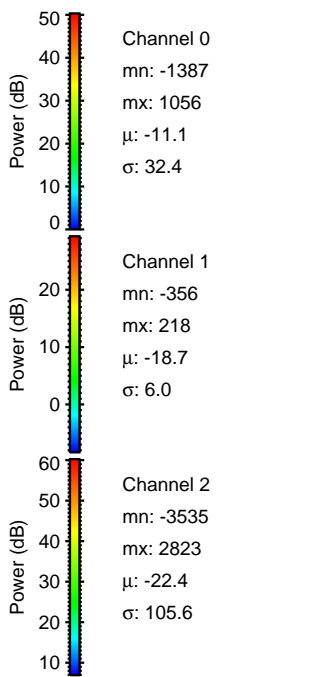
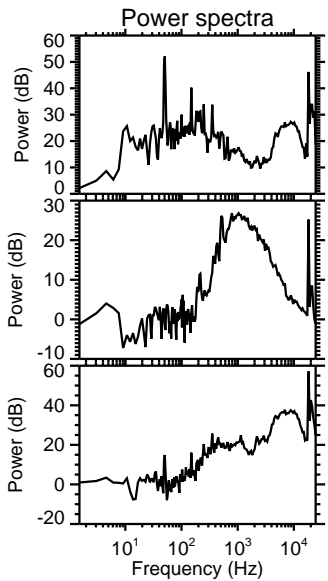
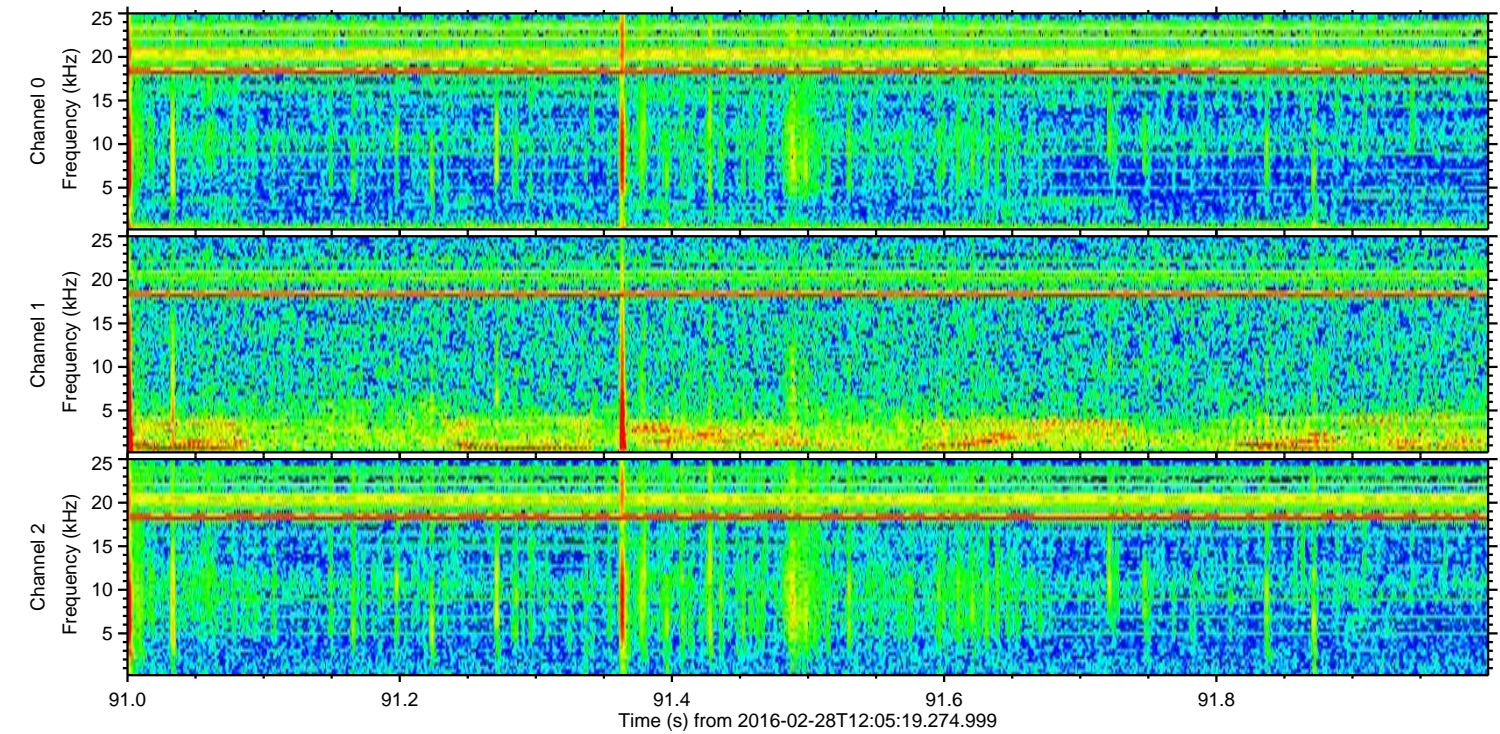
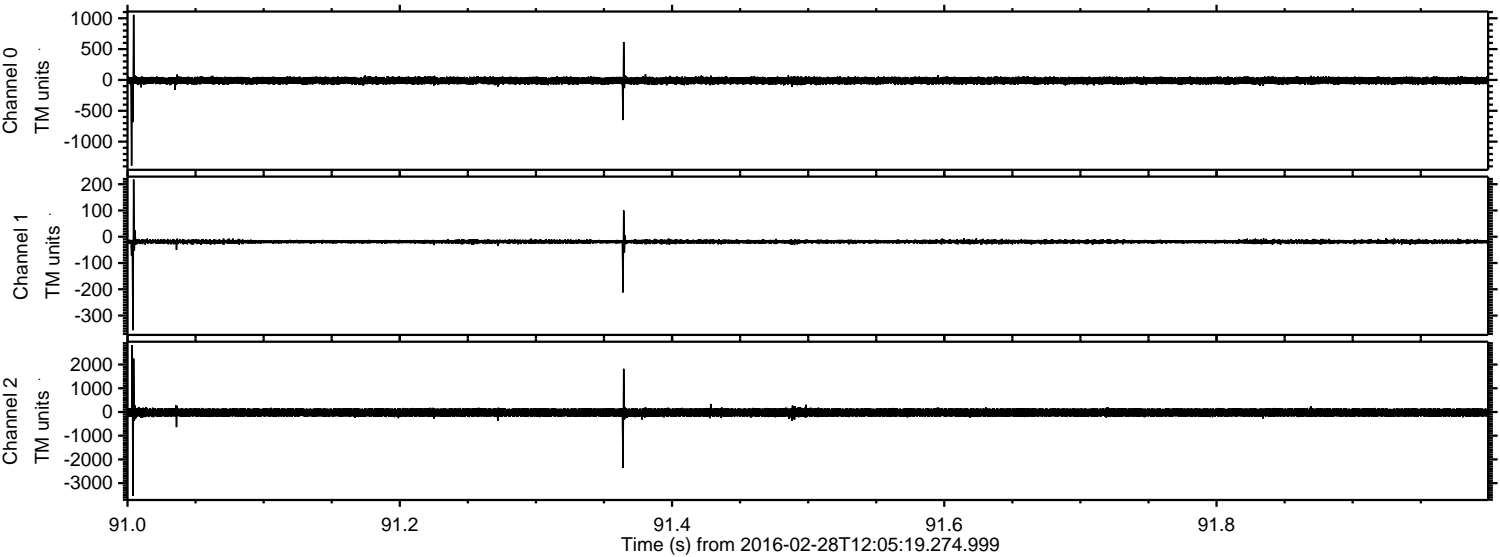


Processed Sun Apr 17 06:33:22 2016 by ELM ver.2012-10-06 from 001\_\_elm20160228\_120518\_\_dat00.bin



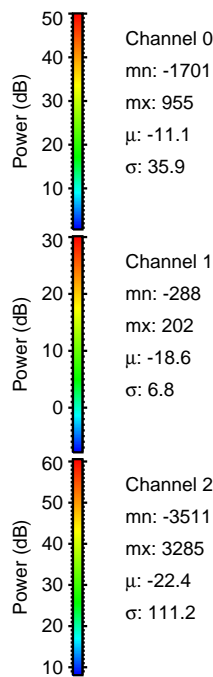
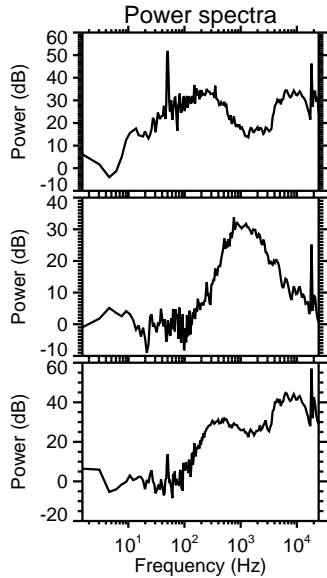
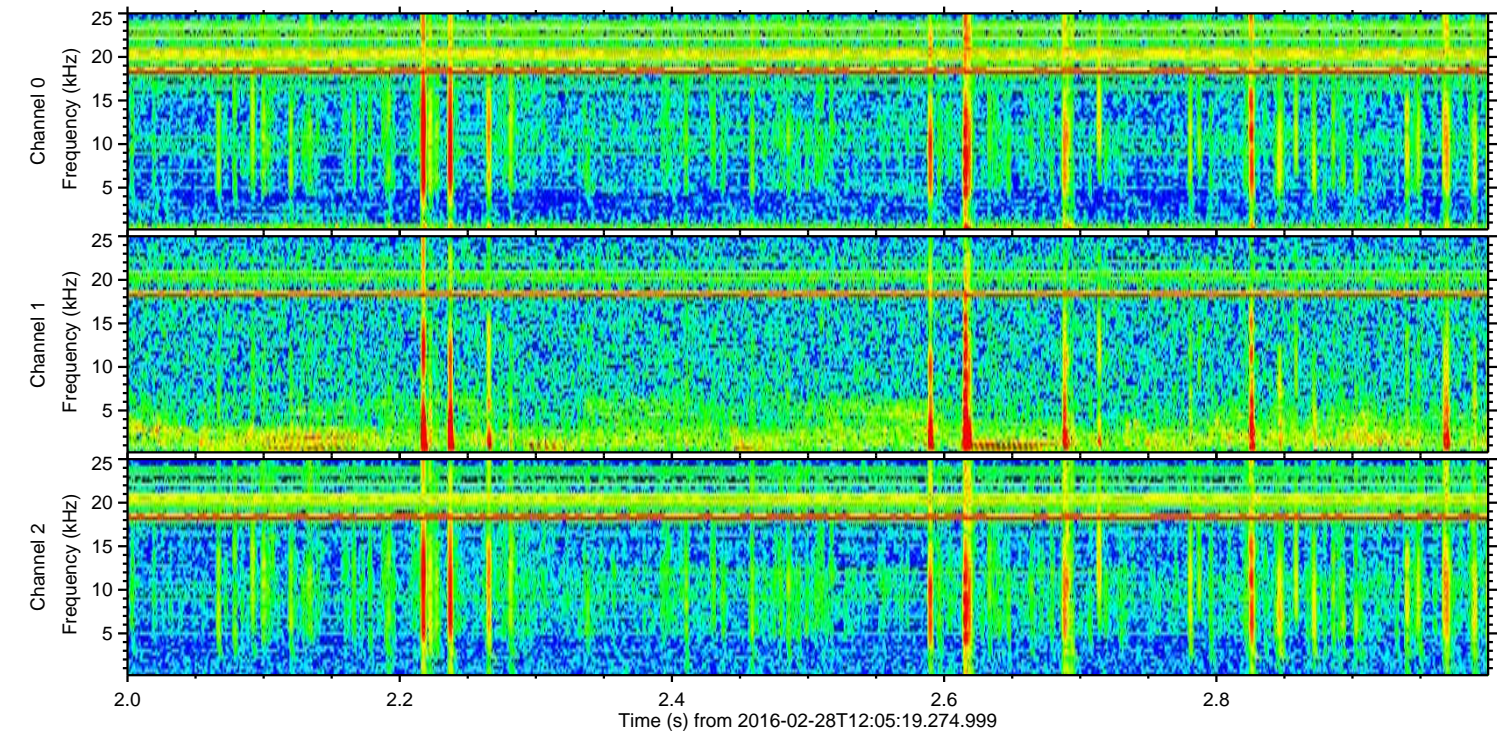
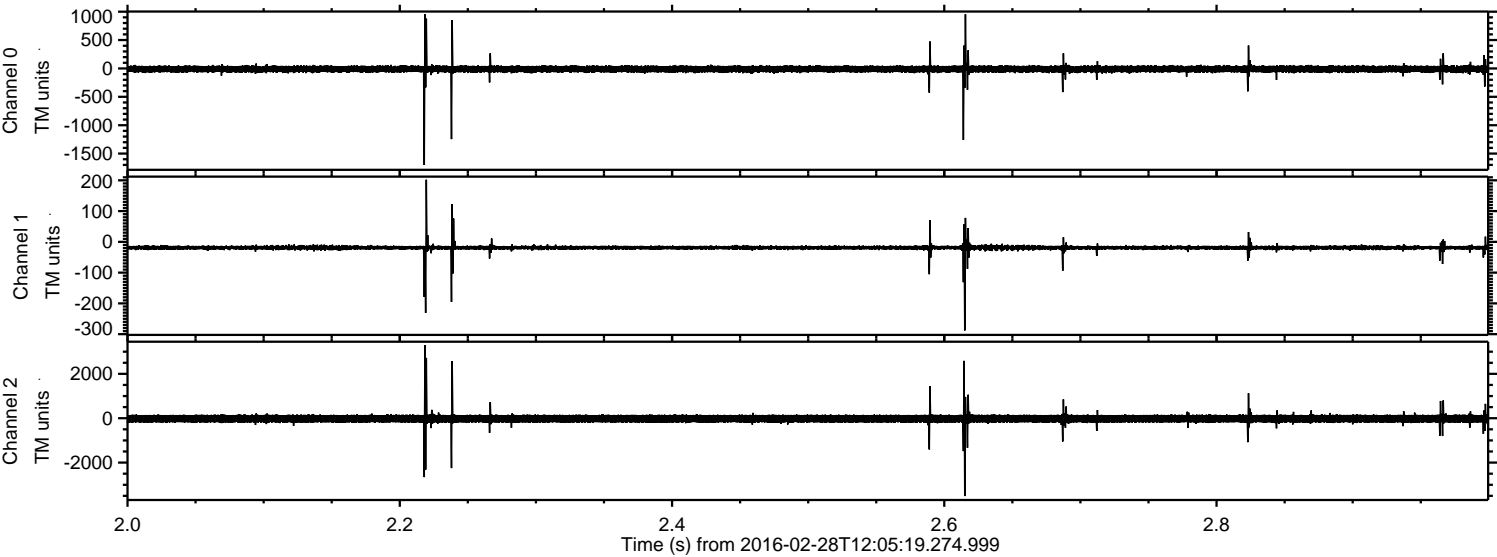


Processed Sun Apr 17 06:33:23 2016 by ELM ver.2012-10-06 from 001\_\_elm20160228\_120518\_\_dat00.bin



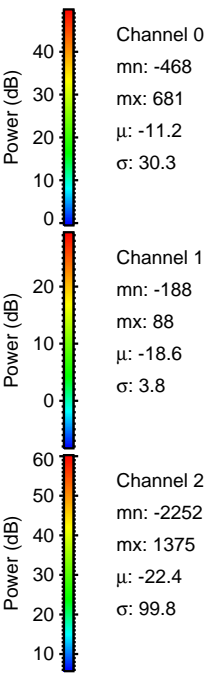
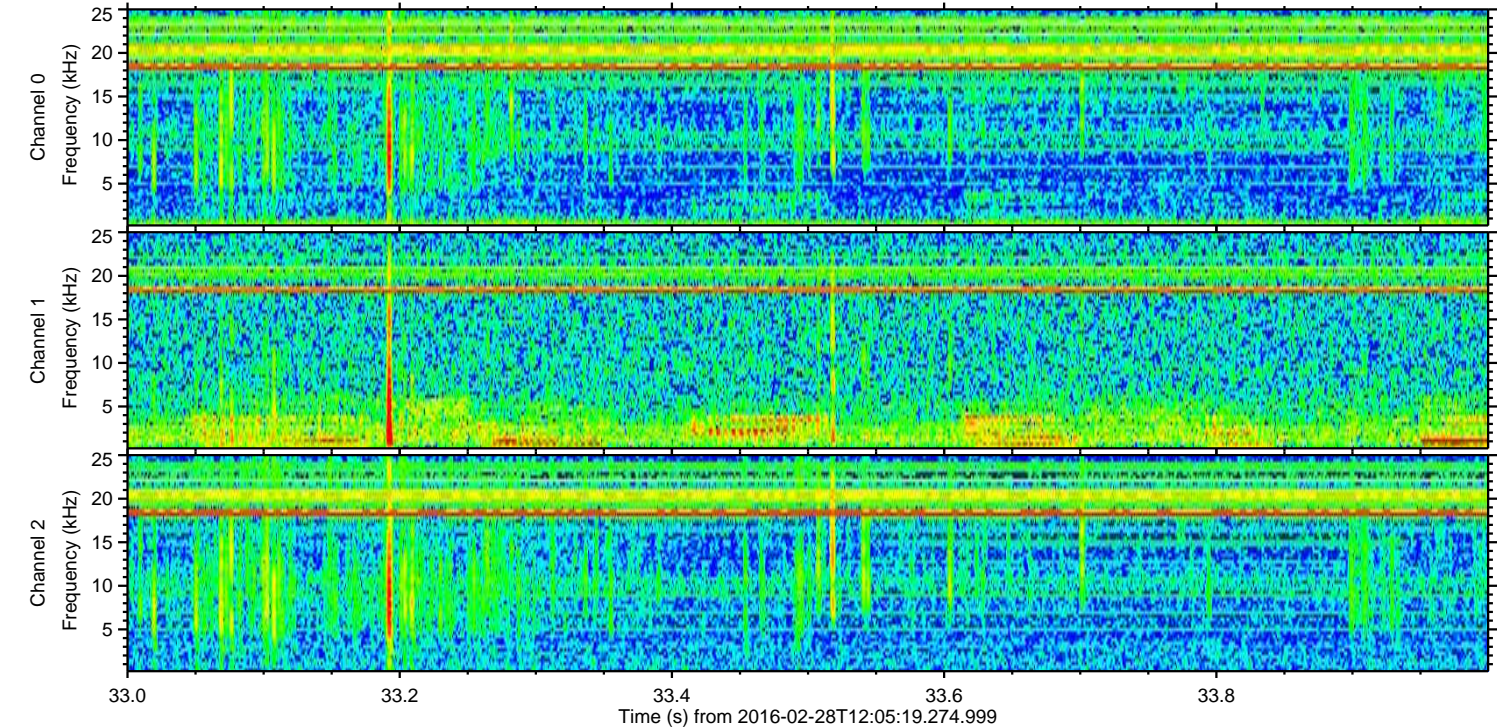
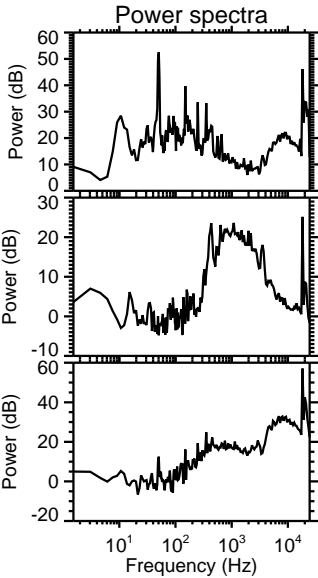
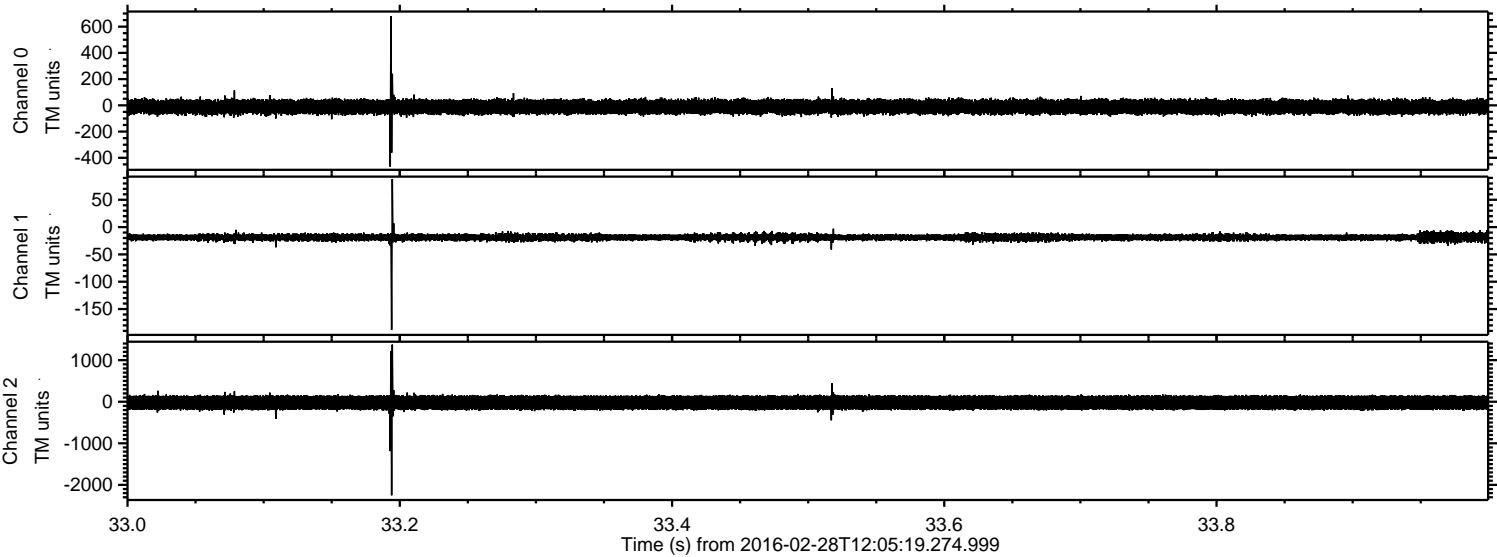


Processed Sun Apr 17 06:33:24 2016 by ELM ver.2012-10-06 from 001\_\_elm20160228\_120518\_\_dat00.bin





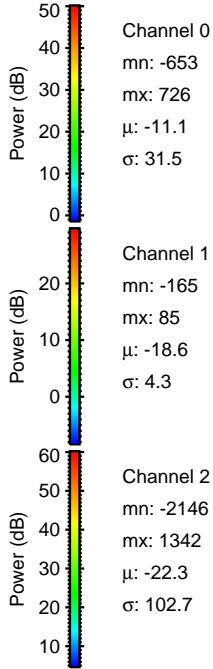
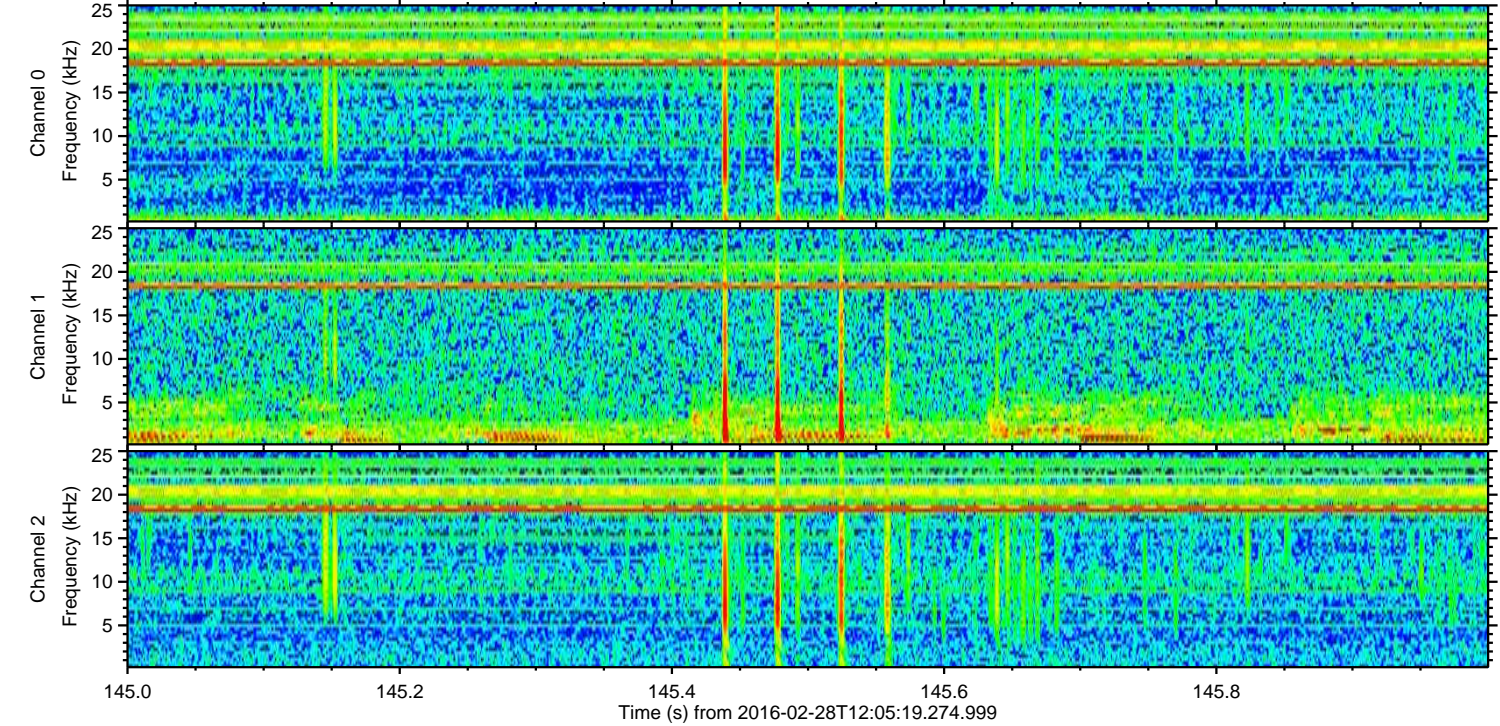
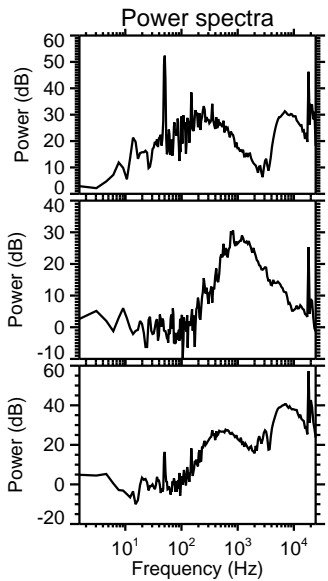
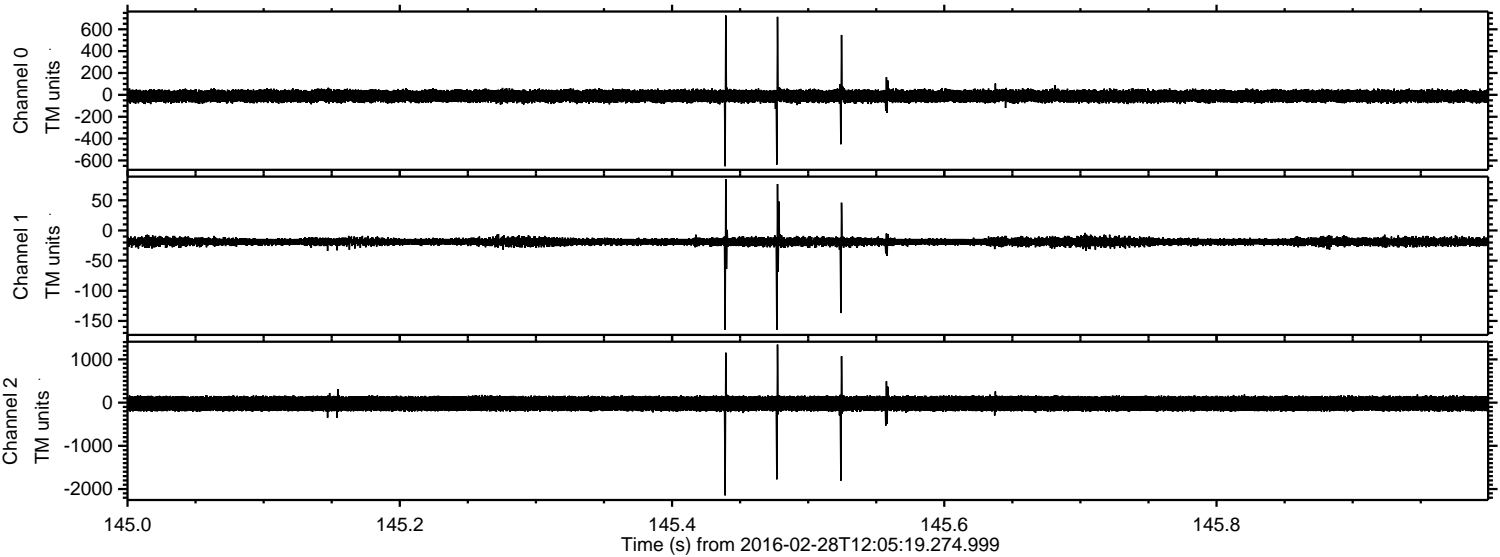
Processed Sun Apr 17 06:33:25 2016 by ELM ver.2012-10-06 from 001\_\_elm20160228\_120518\_\_dat00.bin





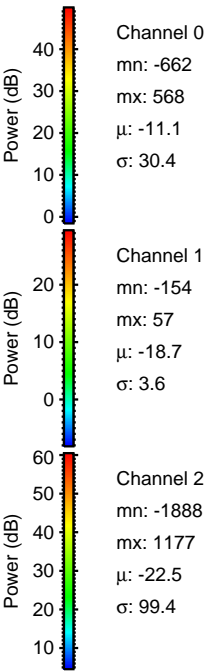
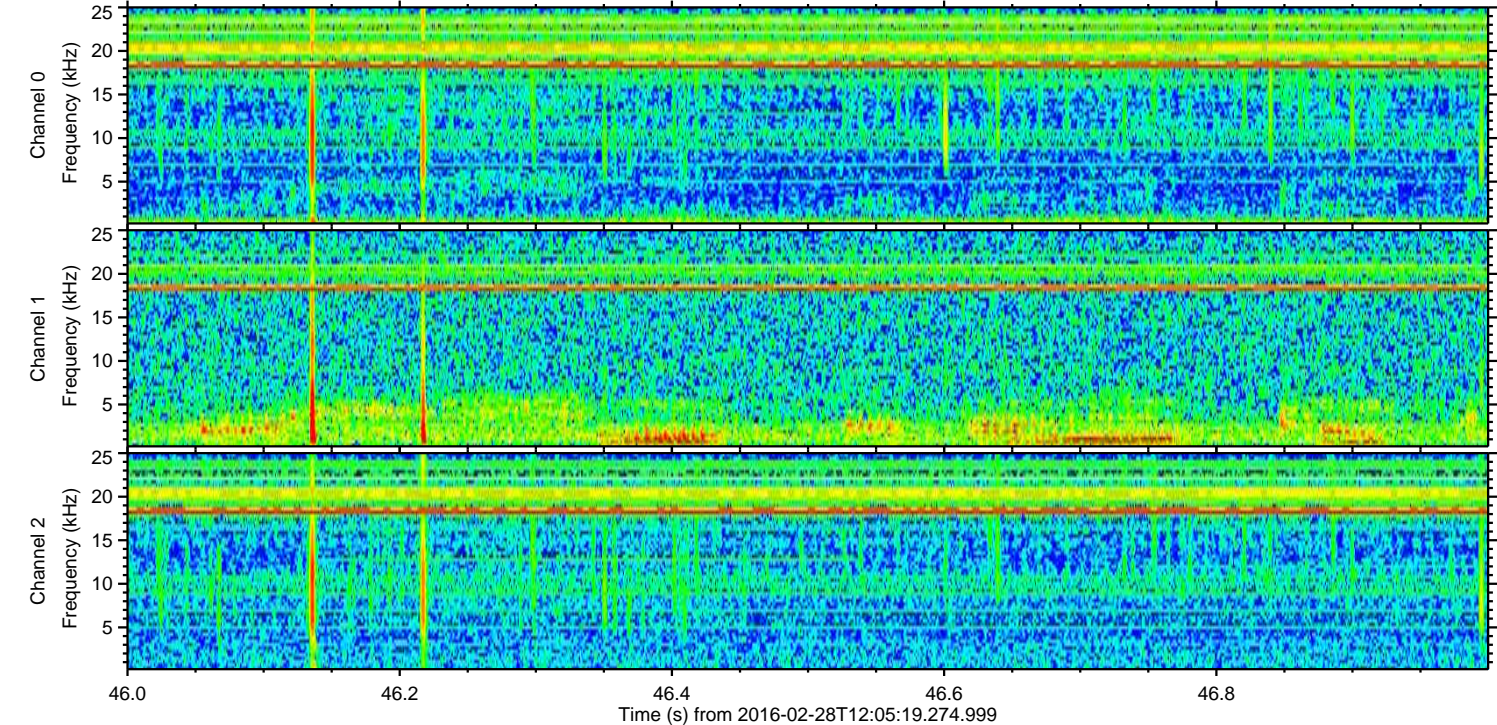
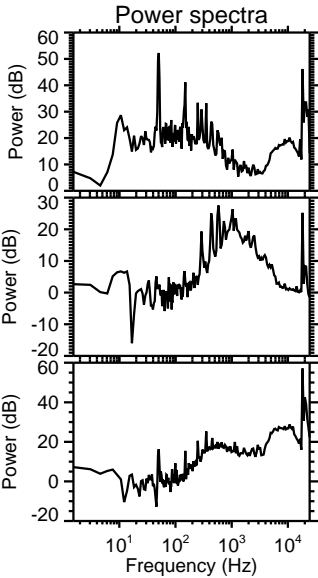
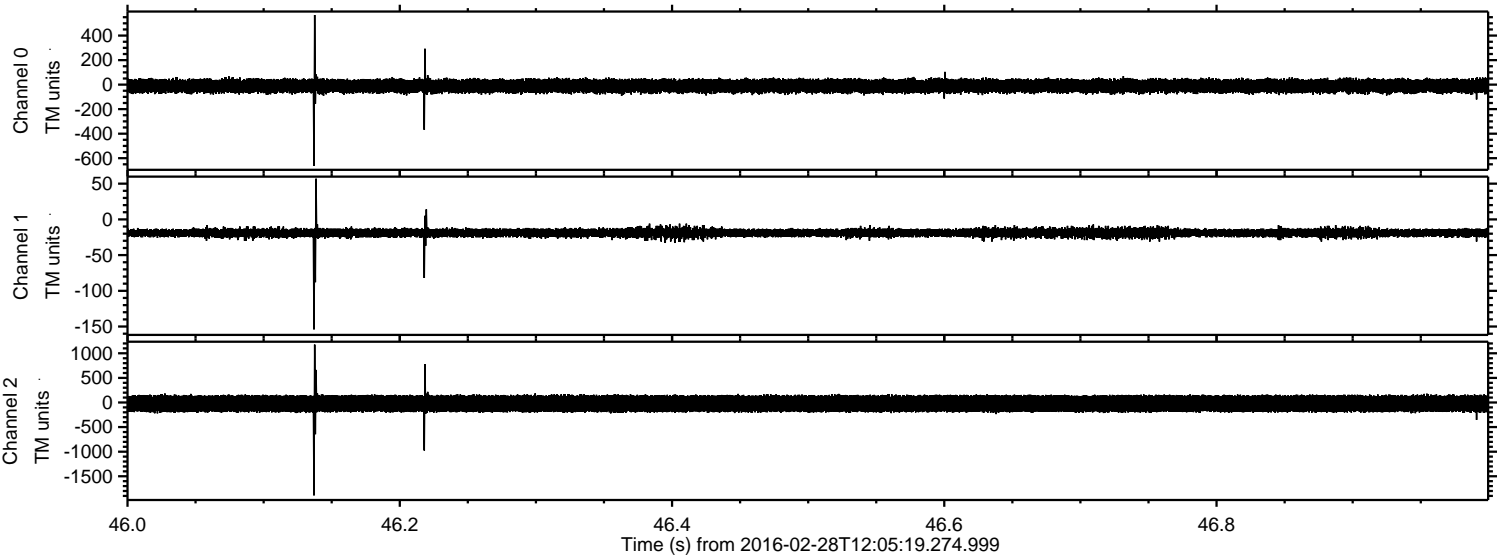
ELMAVAN 3D WAVEFORMS (Measured data sampled at 50 kHz) 51000 packets of 144 samples from 2016-02-28T12:05:19.274.999. Part 146/147

Processed Sun Apr 17 06:33:26 2016 by ELM ver.2012-10-06 from 001\_\_elm20160228\_120518\_\_dat00.bin





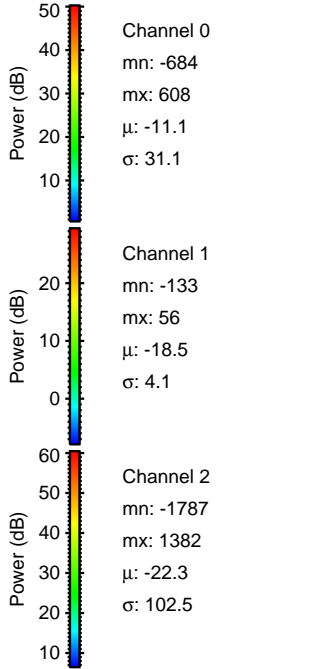
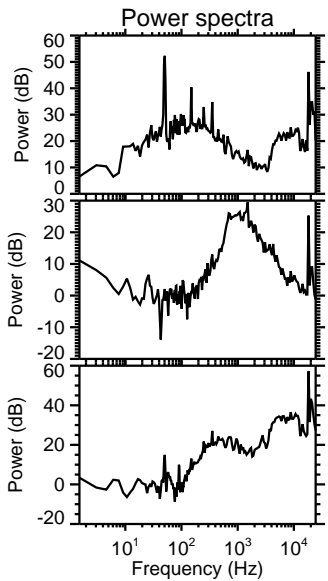
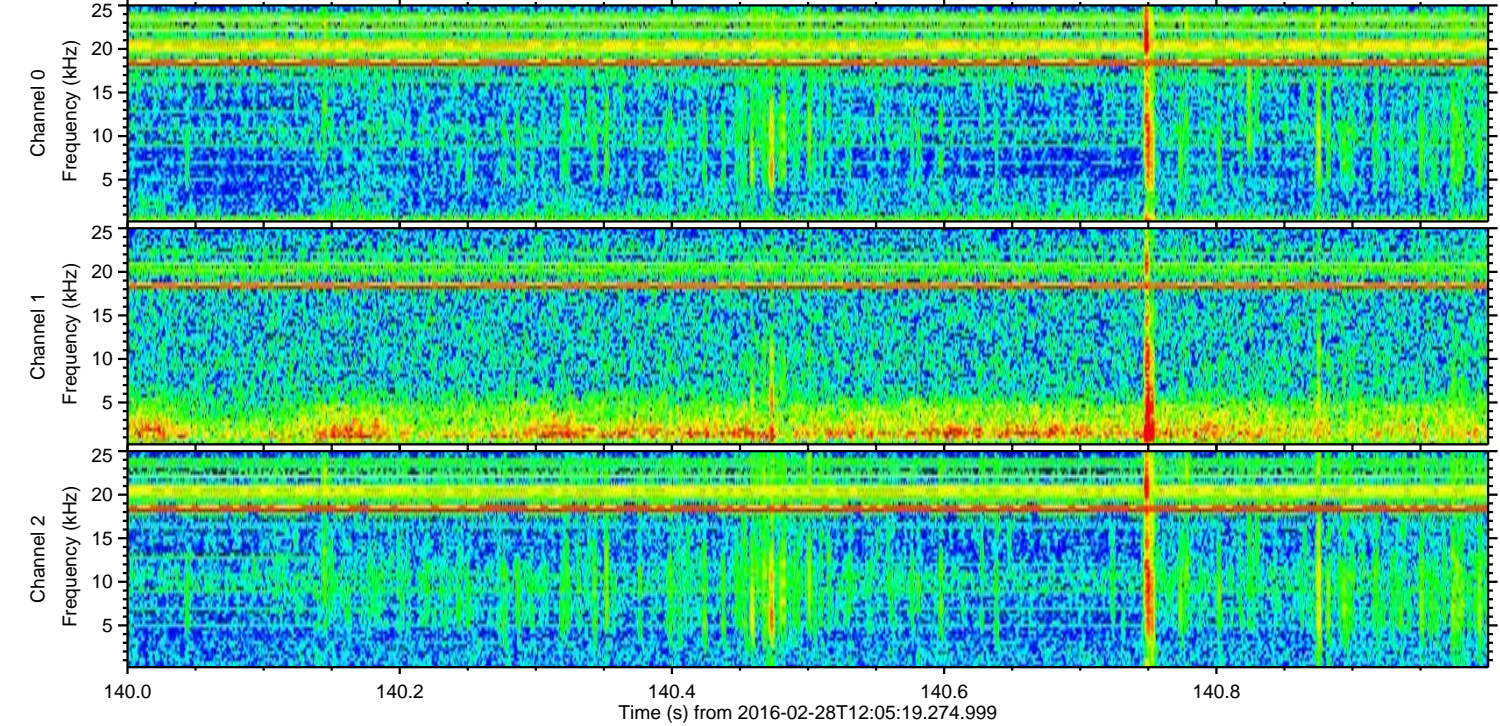
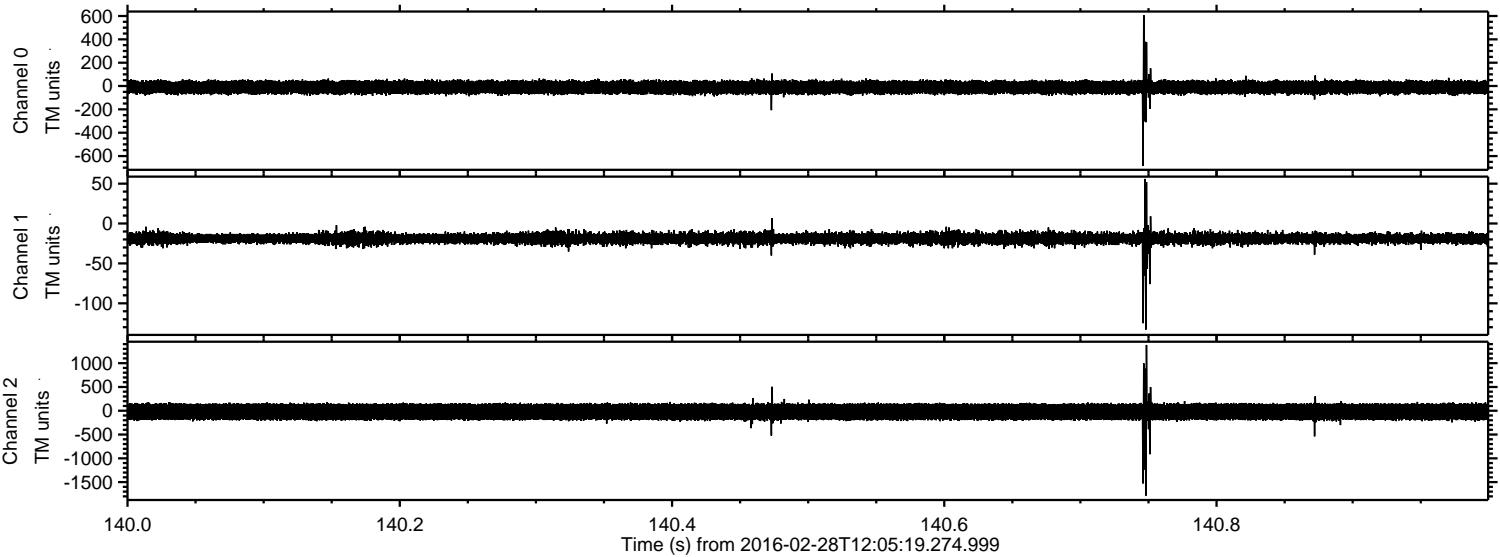
Processed Sun Apr 17 06:33:27 2016 by ELM ver.2012-10-06 from 001\_\_elm20160228\_120518\_\_dat00.bin





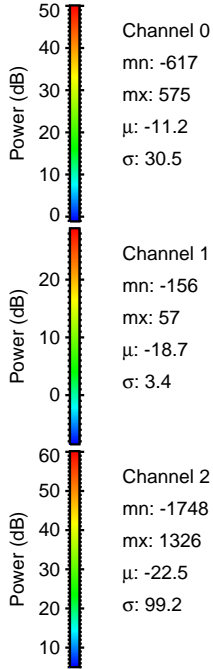
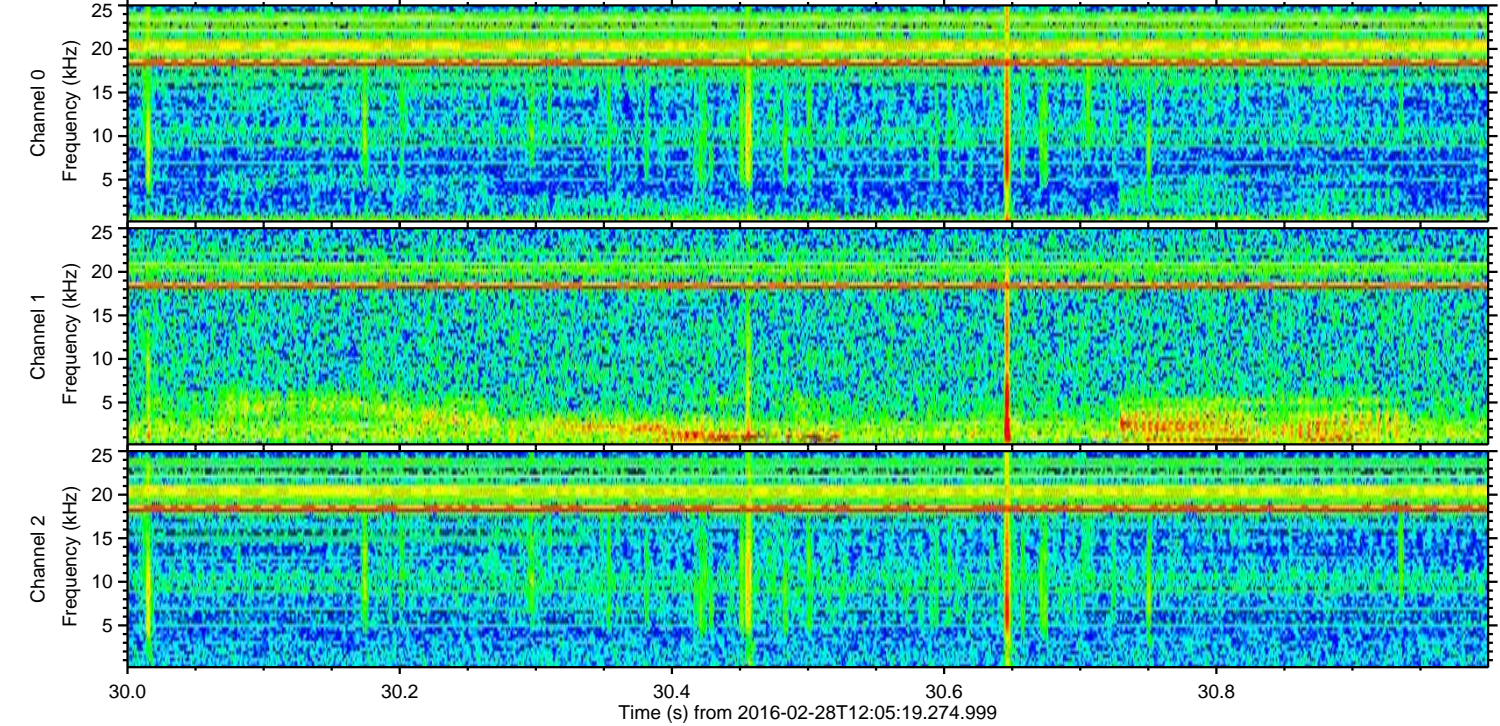
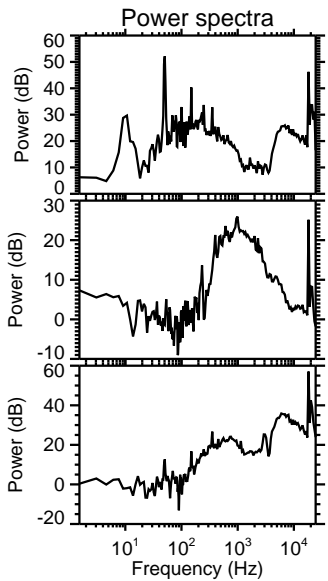
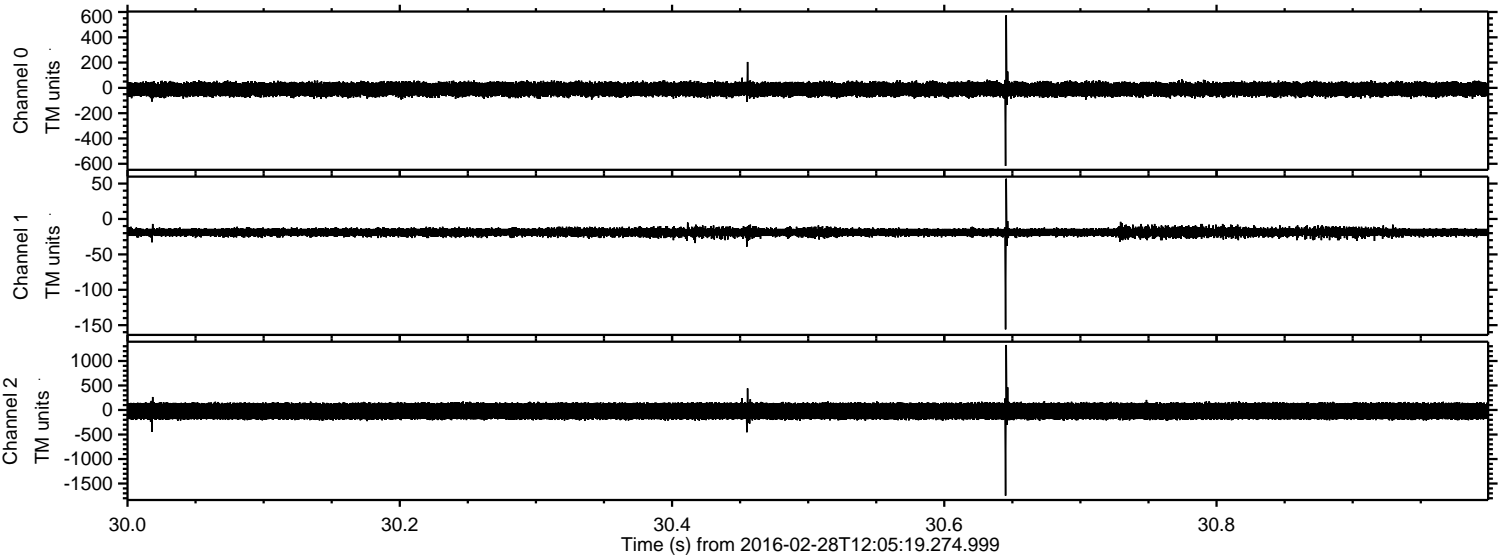
ELMAVAN 3D WAVEFORMS (Measured data sampled at 50 kHz) 51000 packets of 144 samples from 2016-02-28T12:05:19.274.999. Part 141/147

Processed Sun Apr 17 06:33:28 2016 by ELM ver.2012-10-06 from 001\_\_elm20160228\_120518\_\_dat00.bin





Processed Sun Apr 17 06:33:29 2016 by ELM ver.2012-10-06 from 001\_\_elm20160228\_120518\_\_dat00.bin



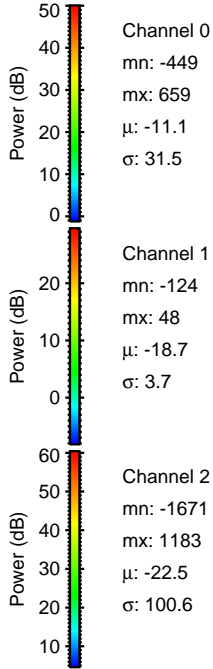
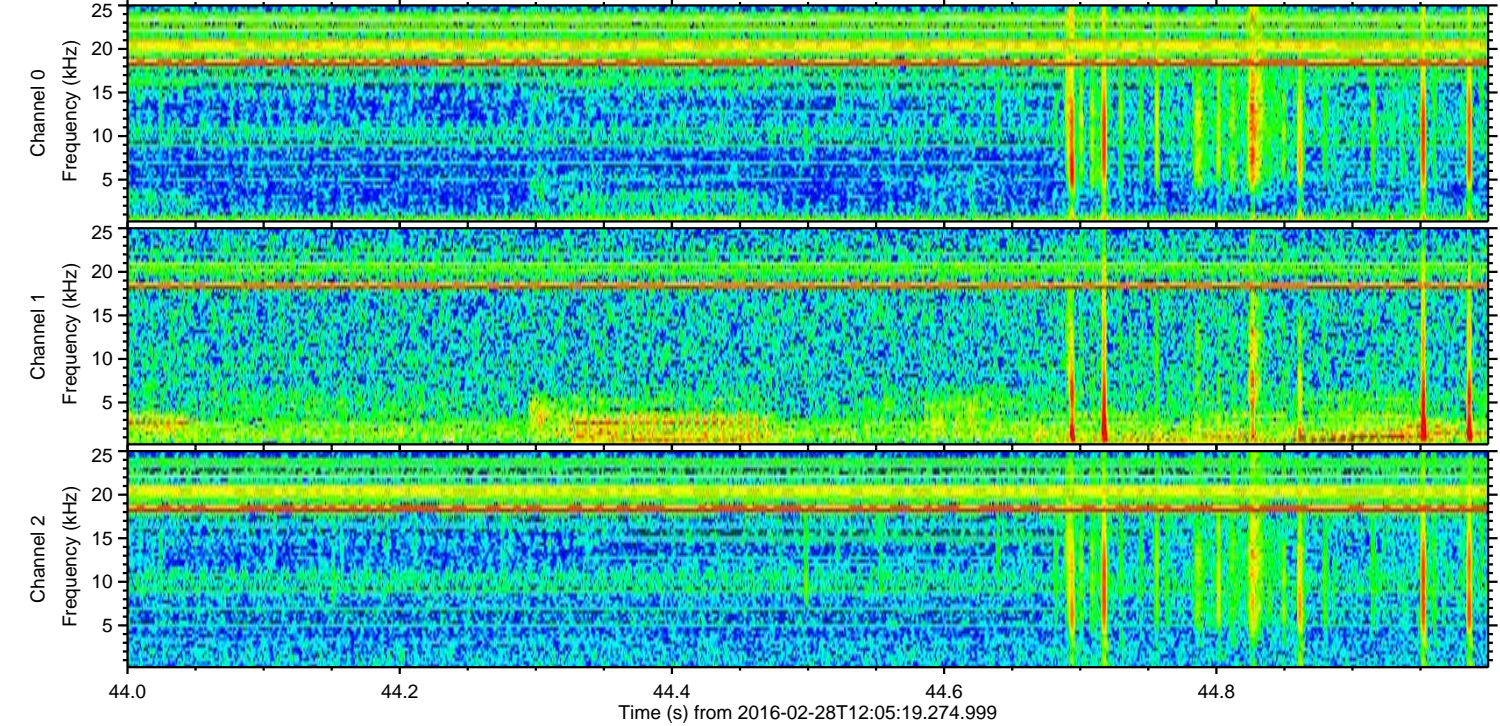
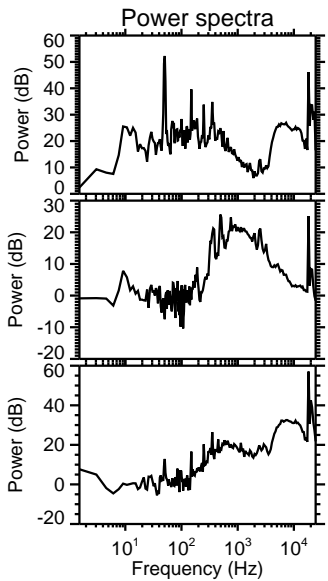
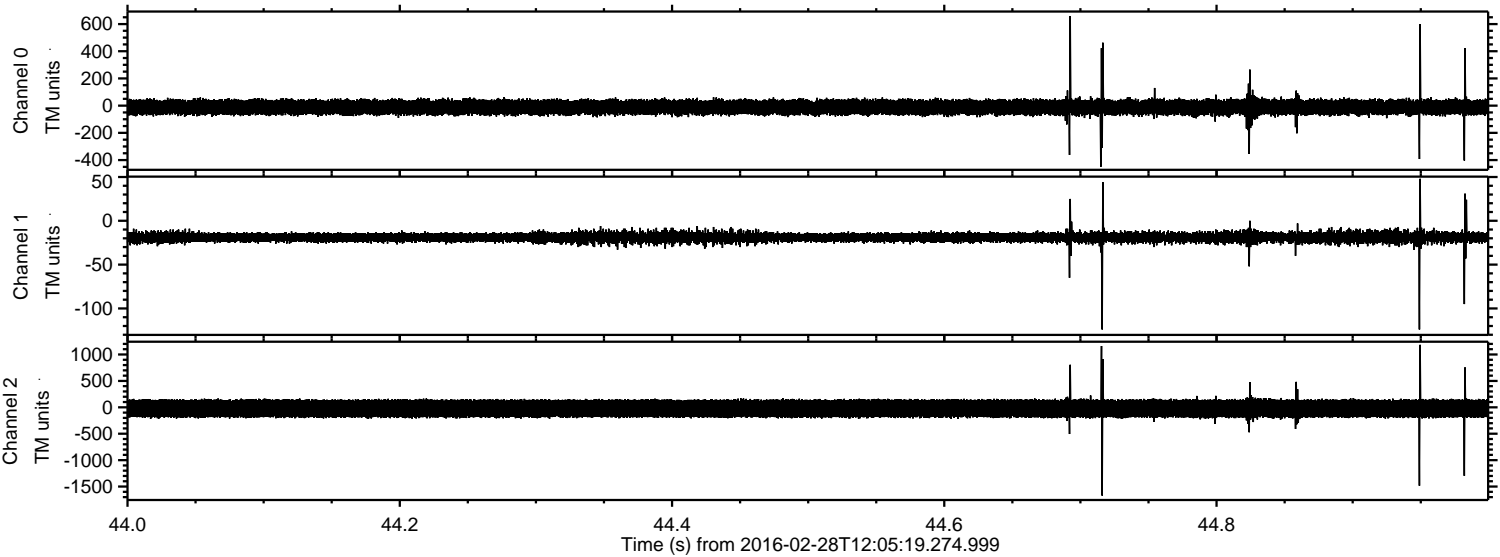
Channel 0  
mn: -617  
mx: 575  
 $\mu$ : -11.2  
 $\sigma$ : 30.5

Channel 1  
mn: -156  
mx: 57  
 $\mu$ : -18.7  
 $\sigma$ : 3.4

Channel 2  
mn: -1748  
mx: 1326  
 $\mu$ : -22.5  
 $\sigma$ : 99.2



Processed Sun Apr 17 06:33:30 2016 by ELM ver.2012-10-06 from 001\_\_elm20160228\_120518\_\_dat00.bin





Processed Sun Apr 17 06:33:31 2016 by ELM ver.2012-10-06 from 001\_\_elm20160228\_120518\_\_dat00.bin

