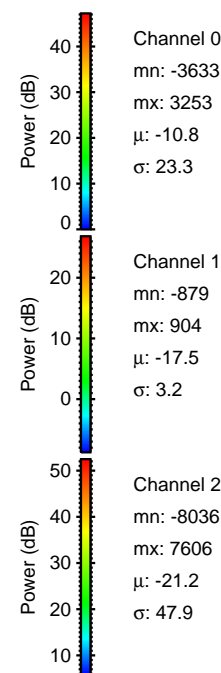
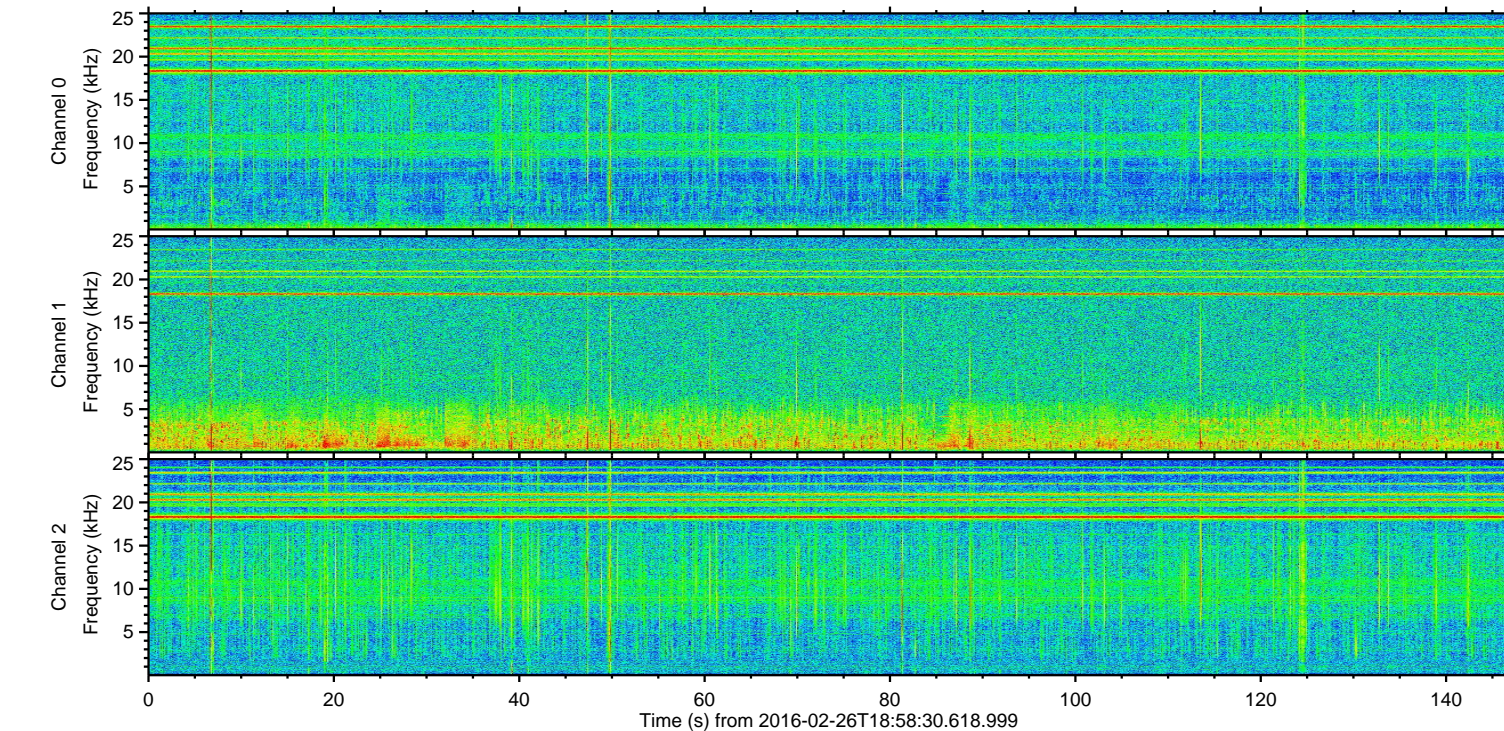
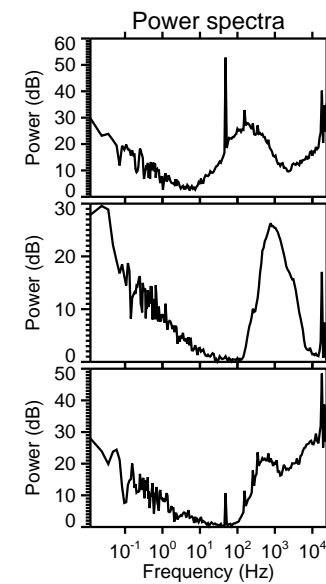
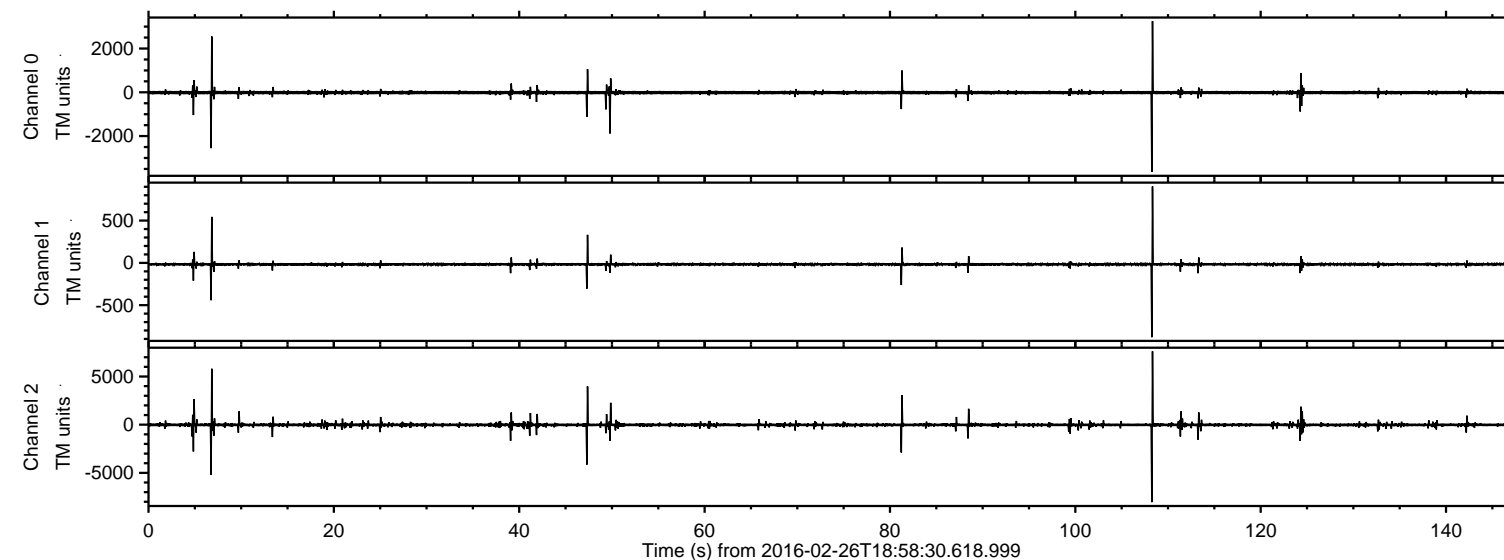


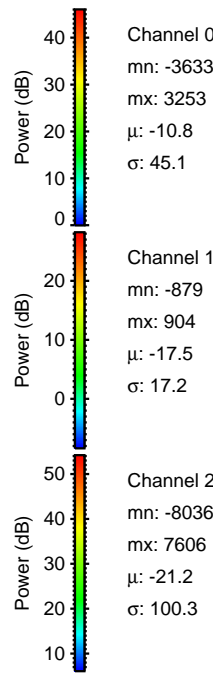
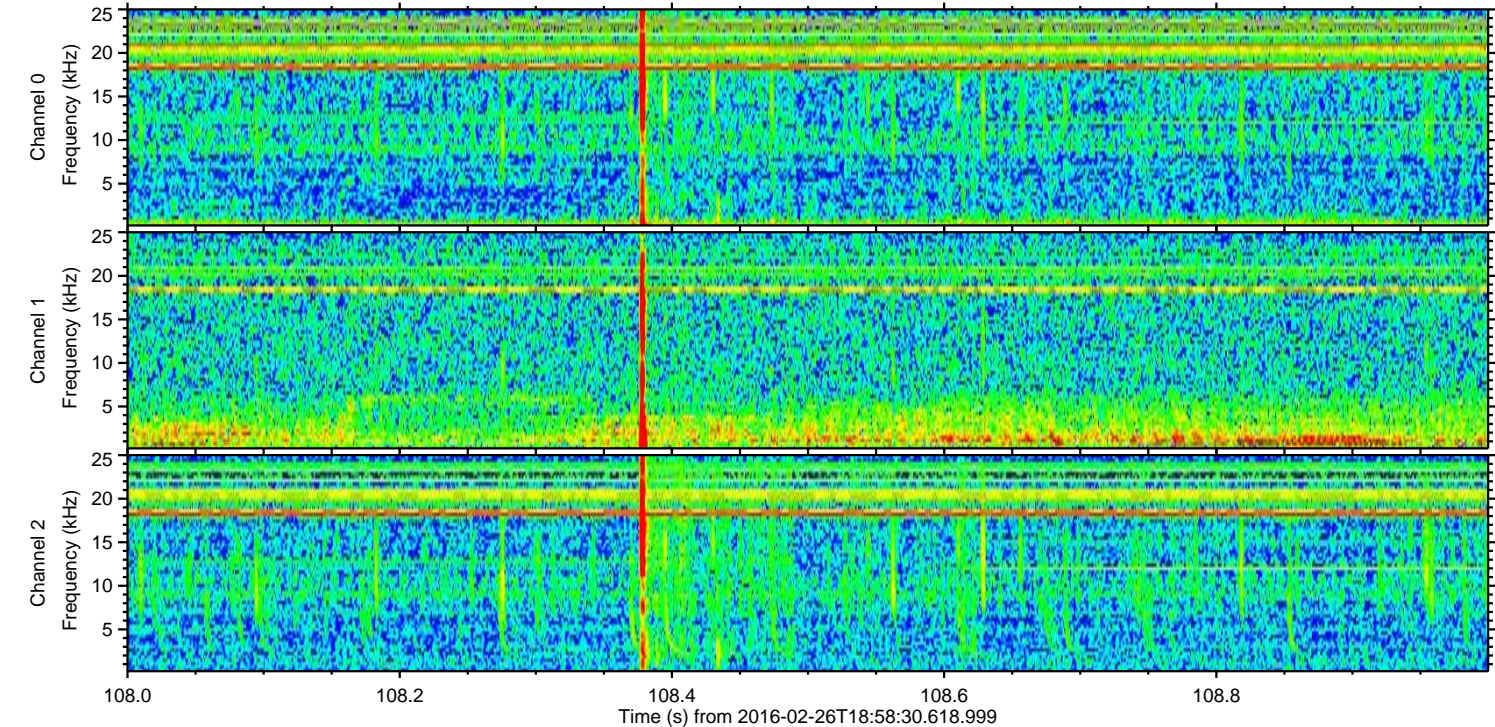
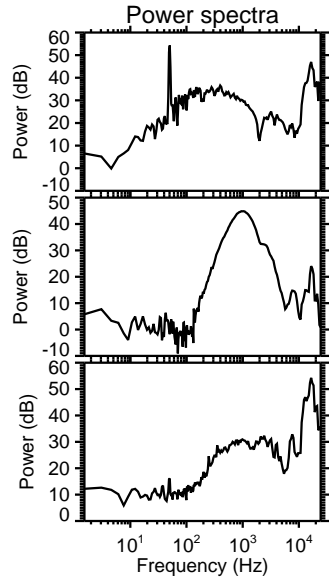
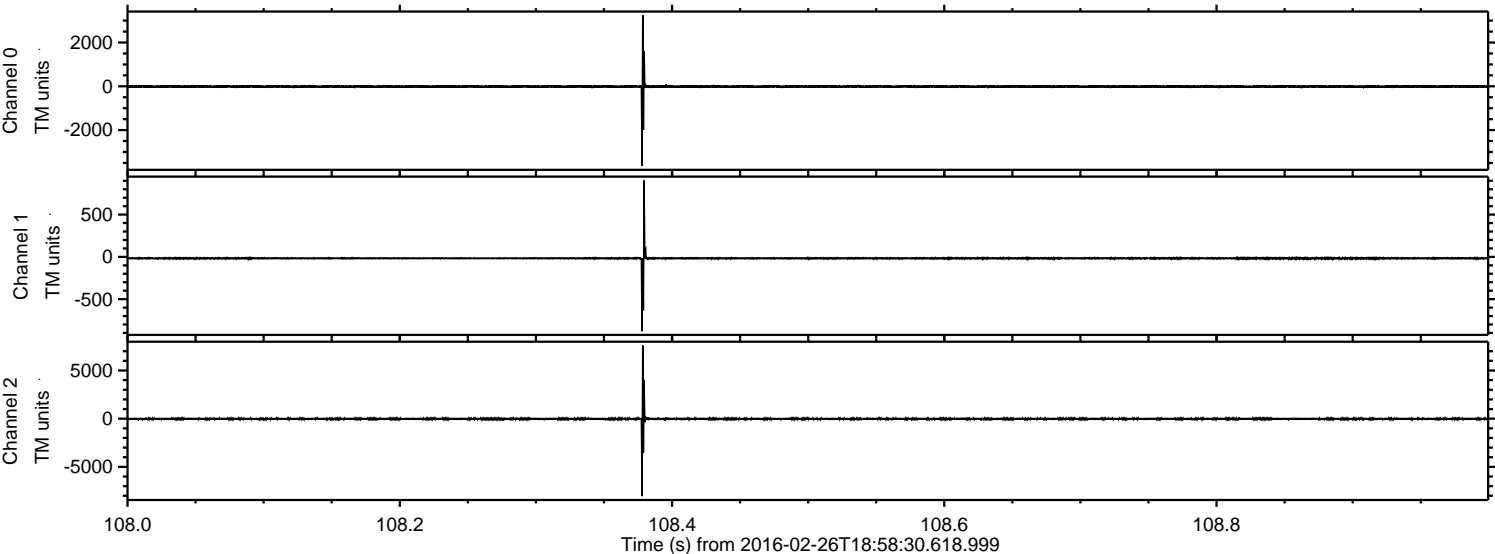
ELMAVAN 3D WAVEFORMS (Measured data sampled at 50 kHz) 51000 packets of 144 samples from 2016-02-26T18:58:30.618.999.

Processed Sat Apr 16 22:11:03 2016 by ELM ver.2012-10-06 from 001__elm20160226_185829__dat00.bin



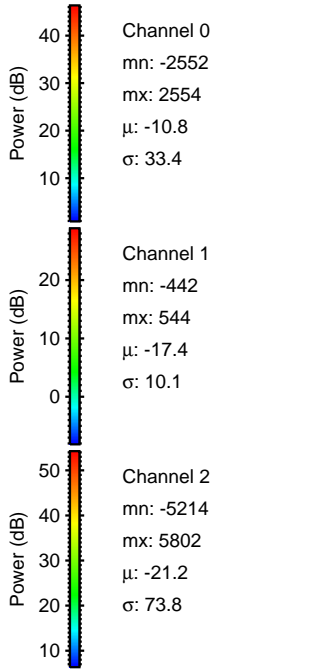
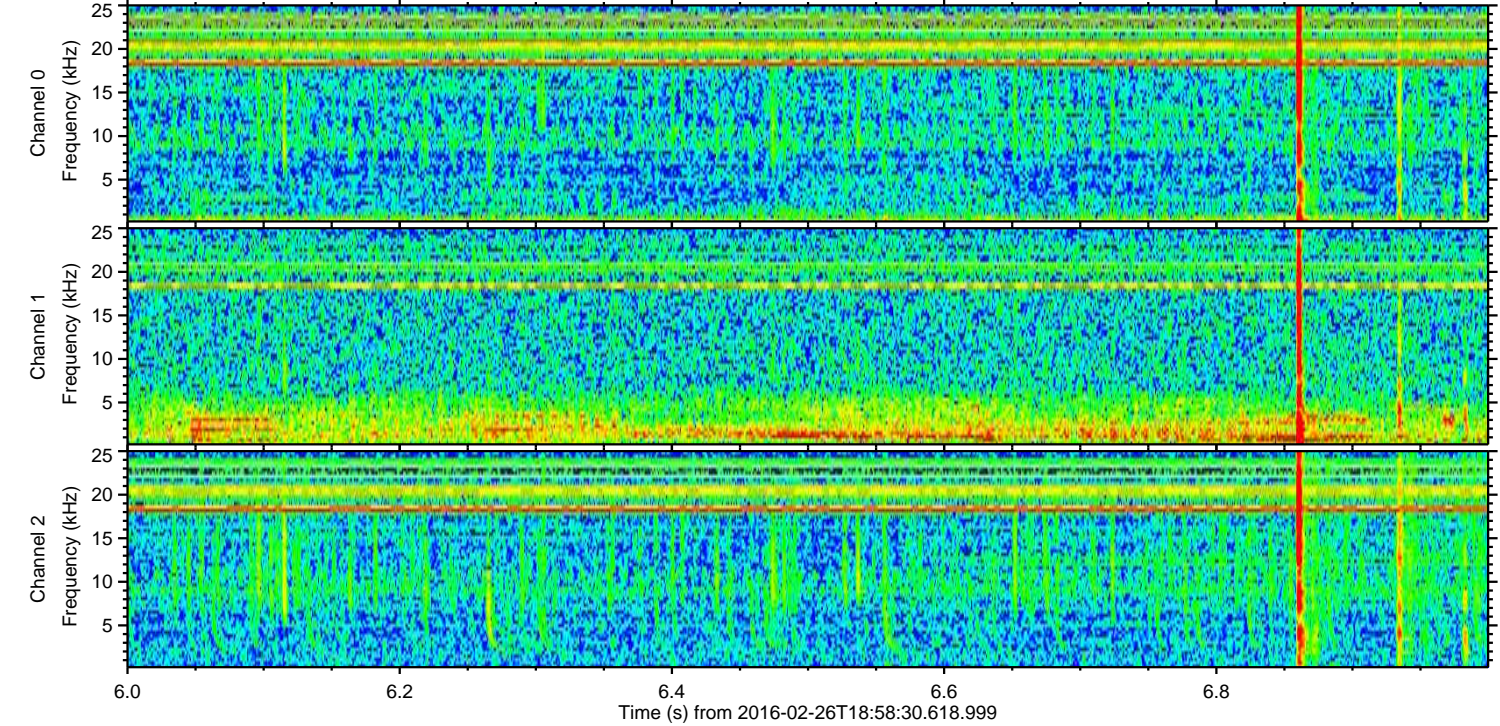
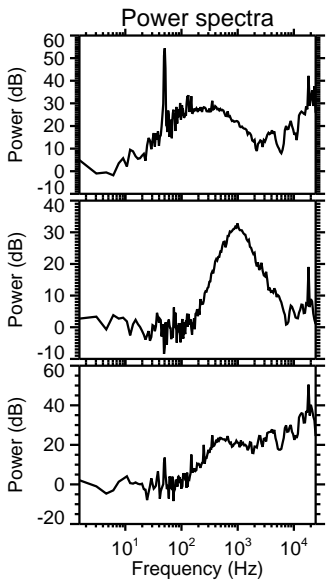
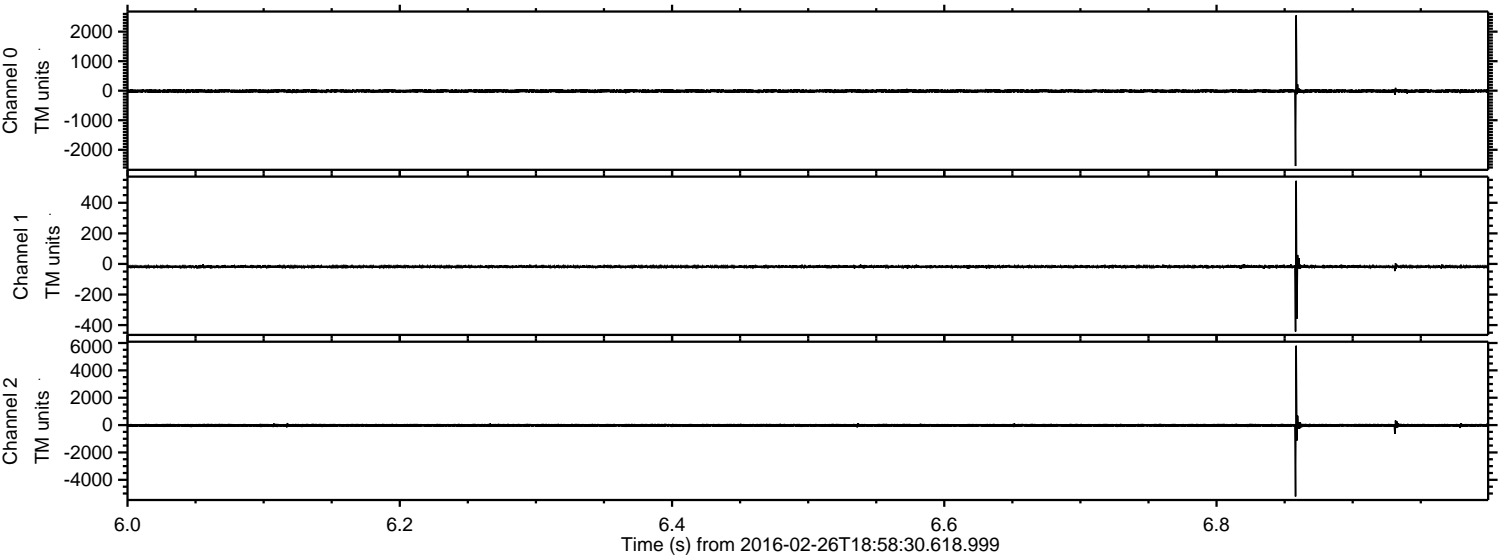
ELMAVAN 3D WAVEFORMS (Measured data sampled at 50 kHz) 51000 packets of 144 samples from 2016-02-26T18:58:30.618.999. Part 109/147

Processed Sat Apr 16 22:11:14 2016 by ELM ver.2012-10-06 from 001__elm20160226_185829__dat00.bin

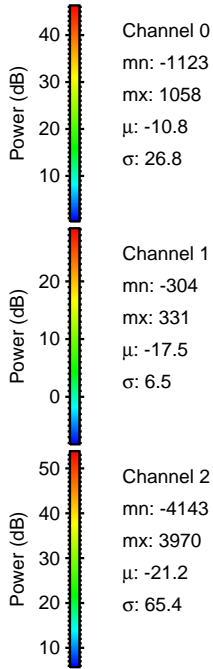
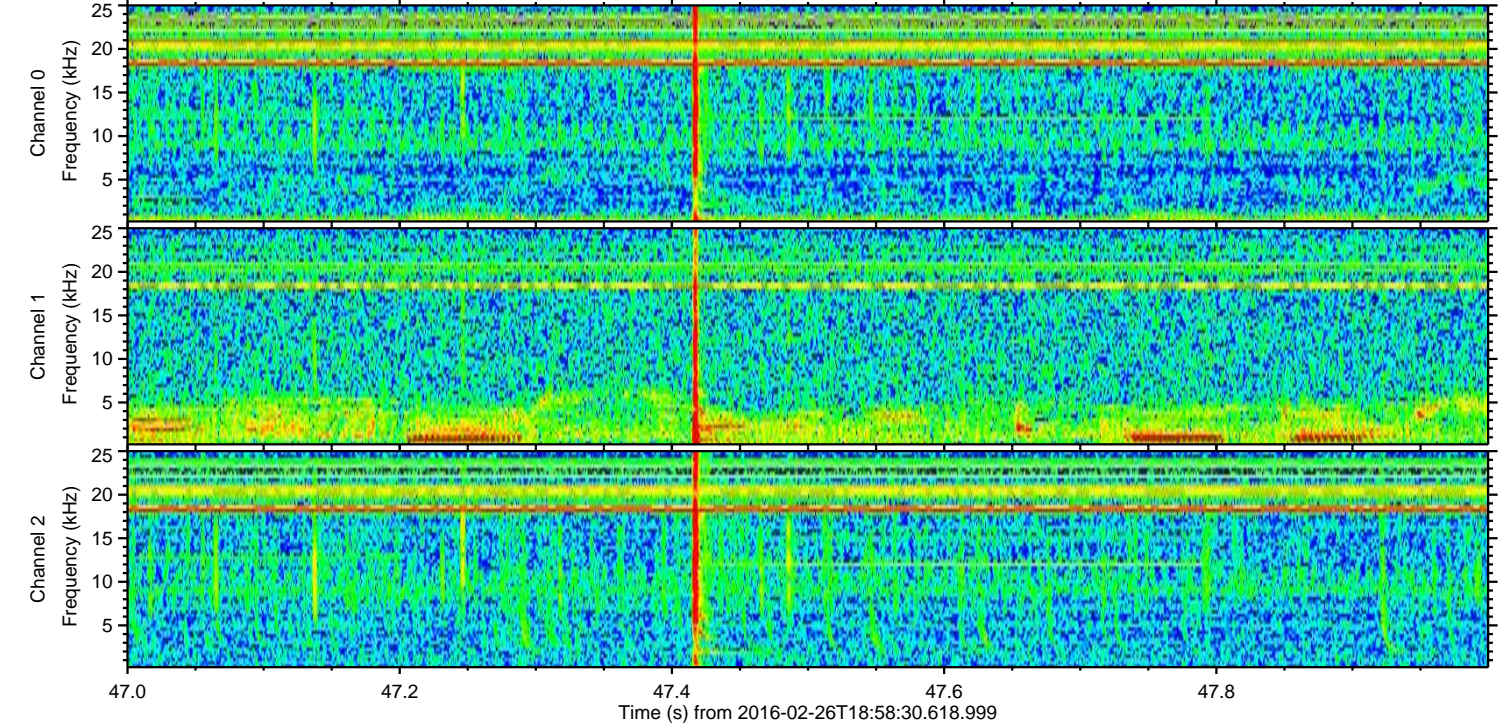
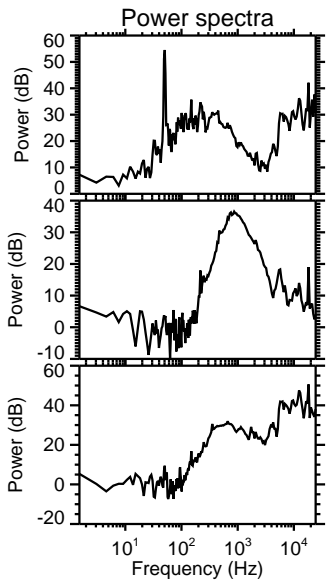
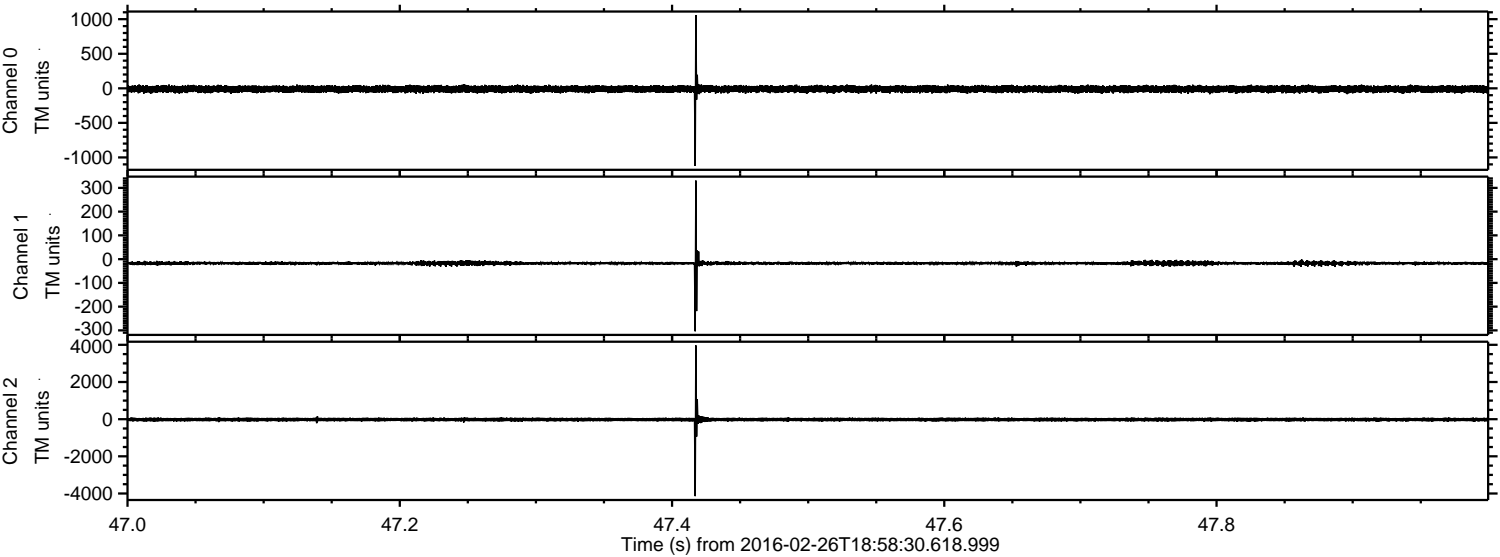


ELMAVAN 3D WAVEFORMS (Measured data sampled at 50 kHz) 51000 packets of 144 samples from 2016-02-26T18:58:30.618.999. Part 7/147

Processed Sat Apr 16 22:11:15 2016 by ELM ver.2012-10-06 from 001__elm20160226_185829__dat00.bin

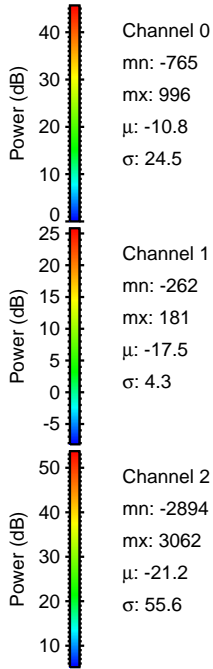
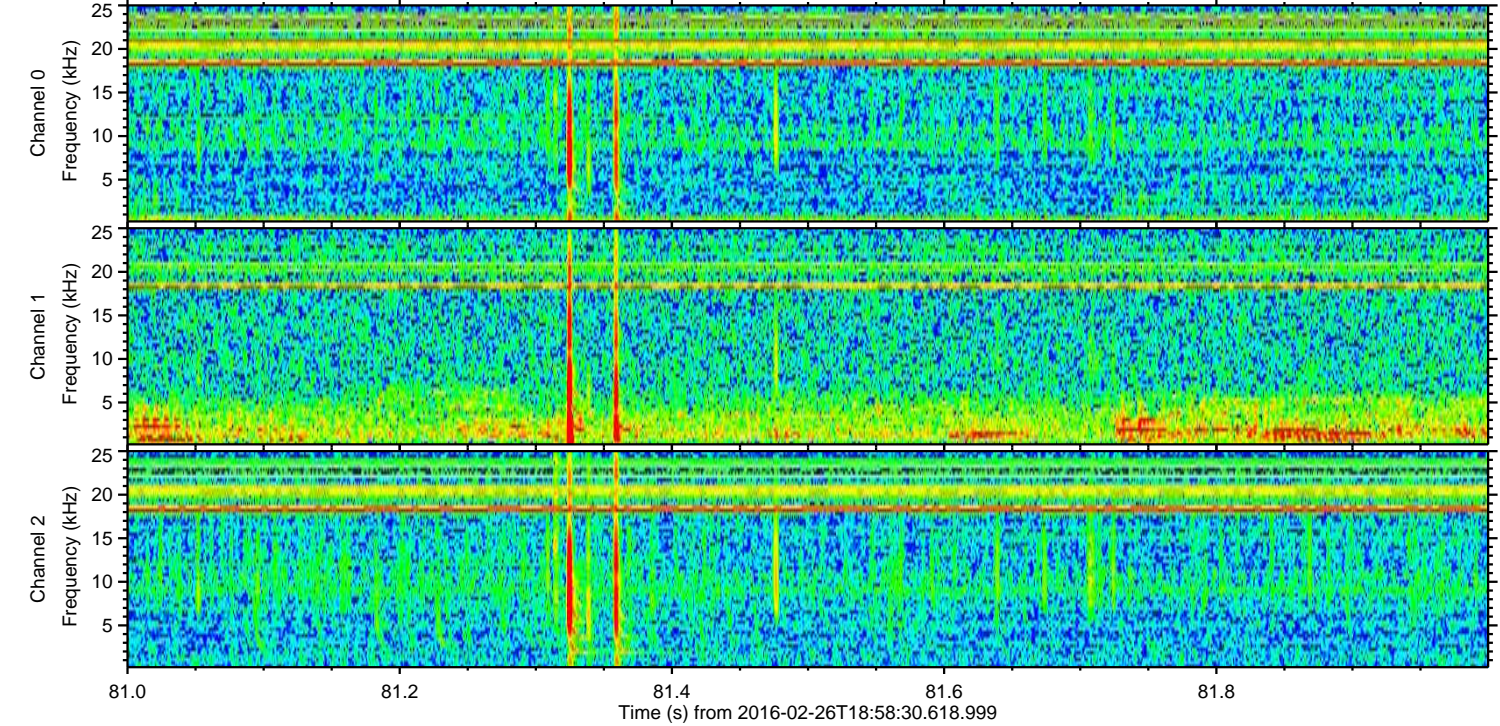
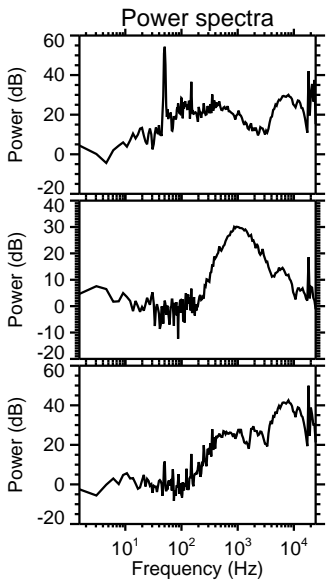
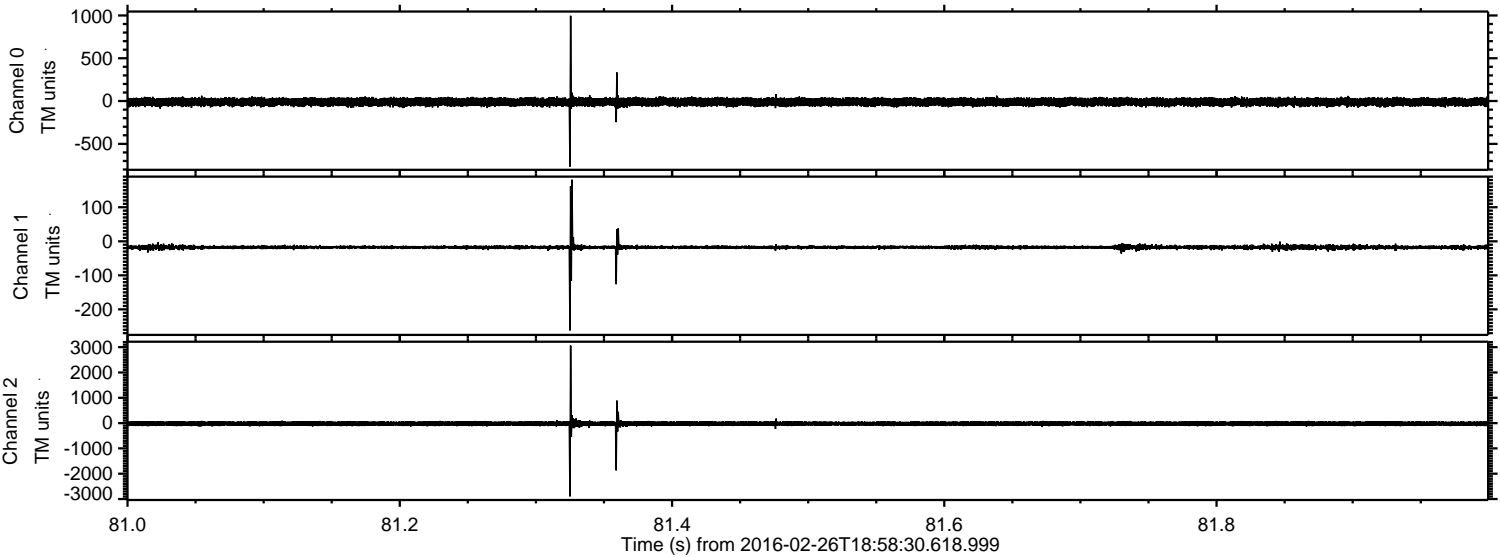


Processed Sat Apr 16 22:11:16 2016 by ELM ver.2012-10-06 from 001__elm20160226_185829__dat00.bin



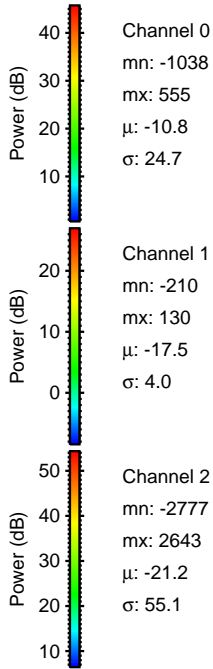
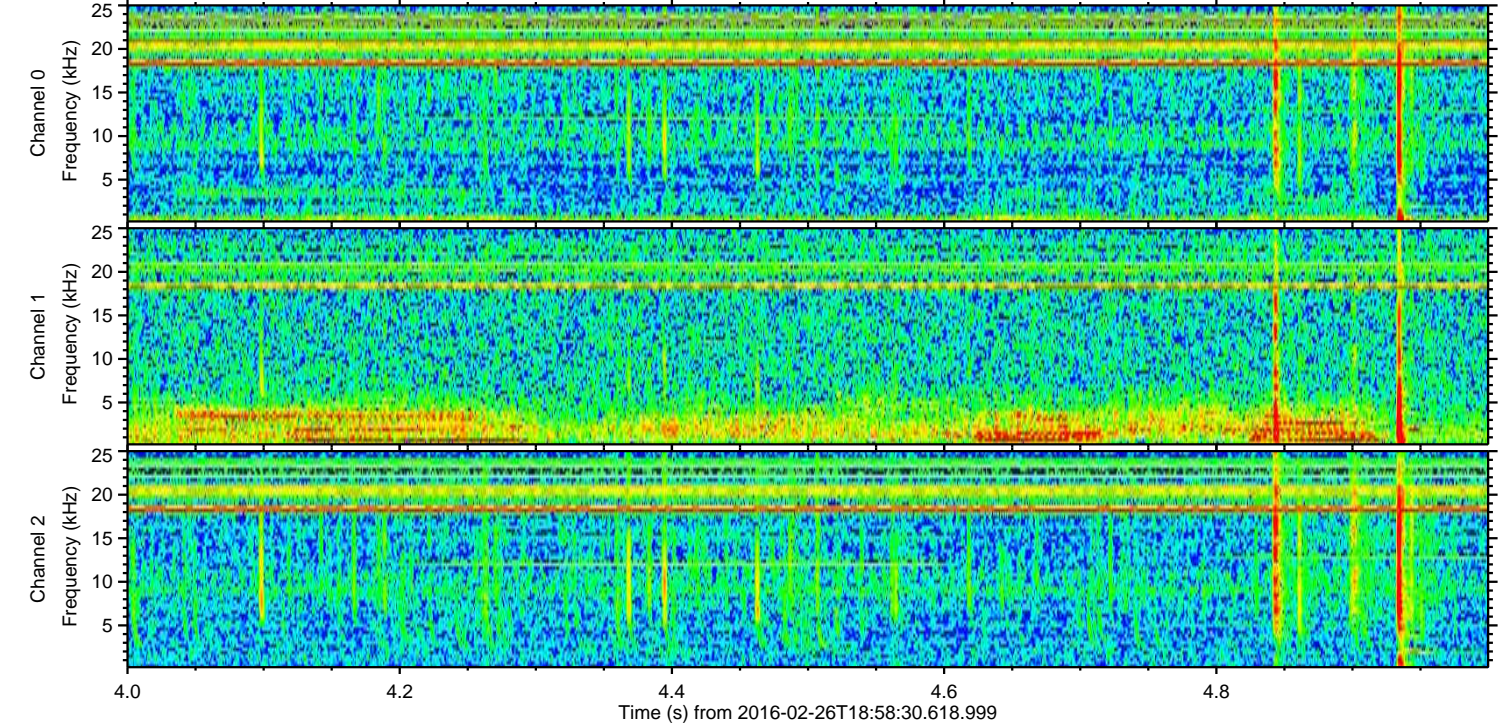
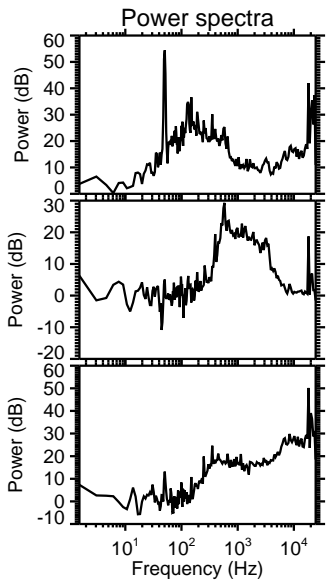
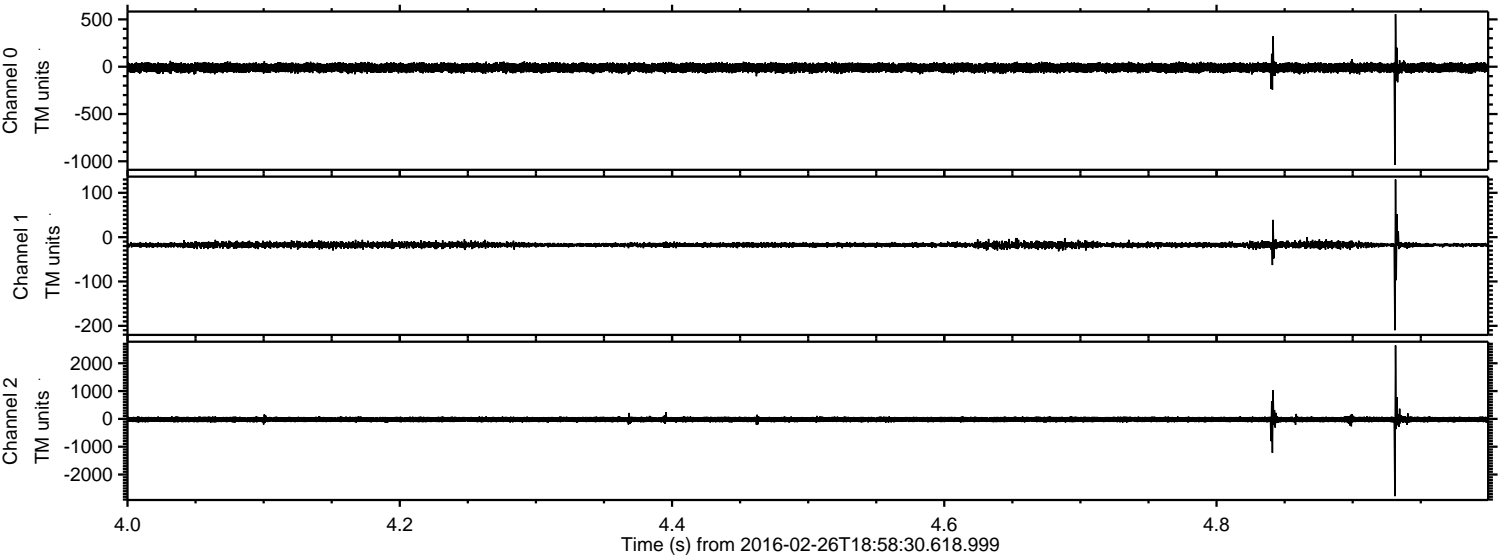
ELMAVAN 3D WAVEFORMS (Measured data sampled at 50 kHz) 51000 packets of 144 samples from 2016-02-26T18:58:30.618.999. Part 82/147

Processed Sat Apr 16 22:11:17 2016 by ELM ver.2012-10-06 from 001__elm20160226_185829__dat00.bin

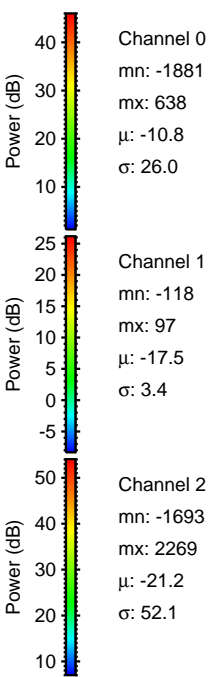
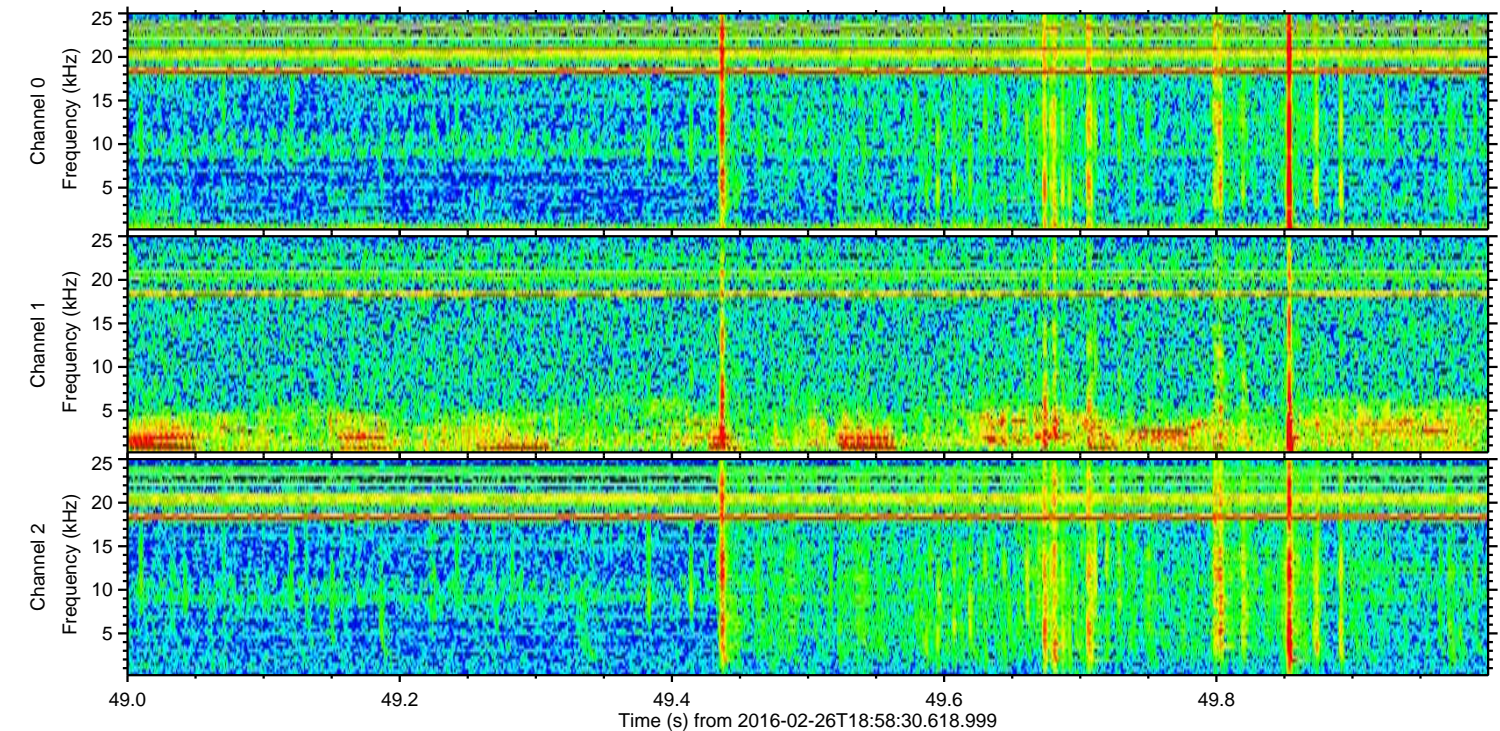
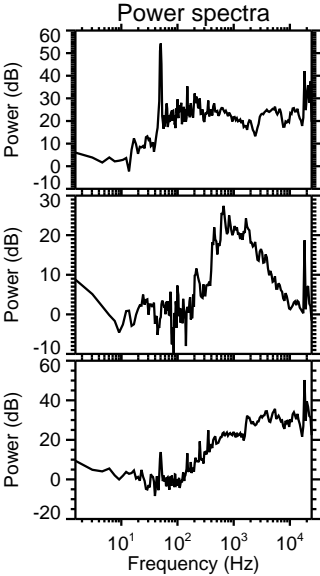
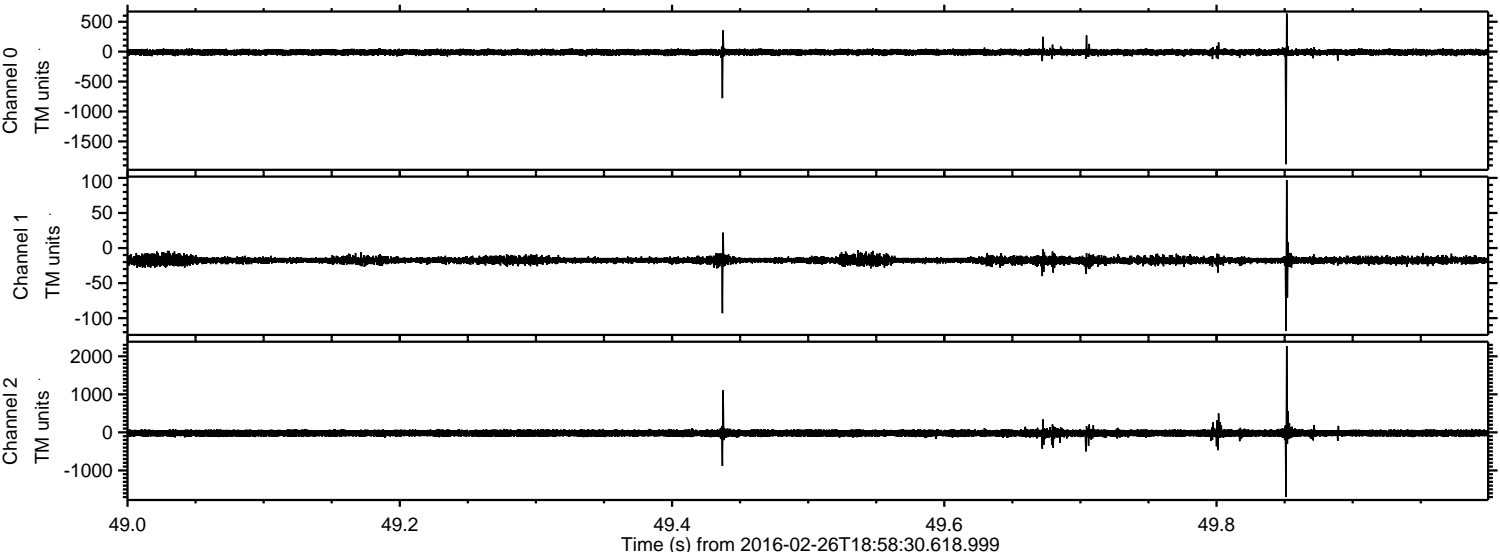


ELMAVAN 3D WAVEFORMS (Measured data sampled at 50 kHz) 51000 packets of 144 samples from 2016-02-26T18:58:30.618.999. Part 5/147

Processed Sat Apr 16 22:11:18 2016 by ELM ver.2012-10-06 from 001__elm20160226_185829__dat00.bin

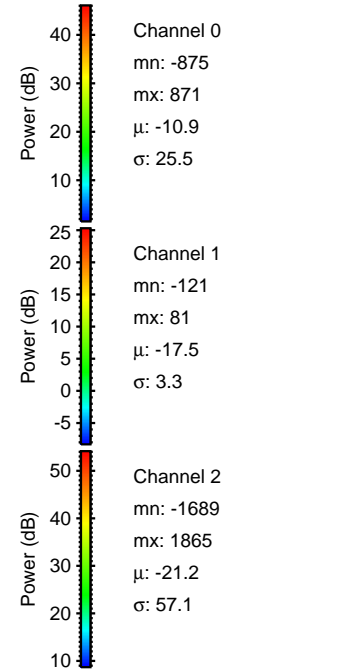
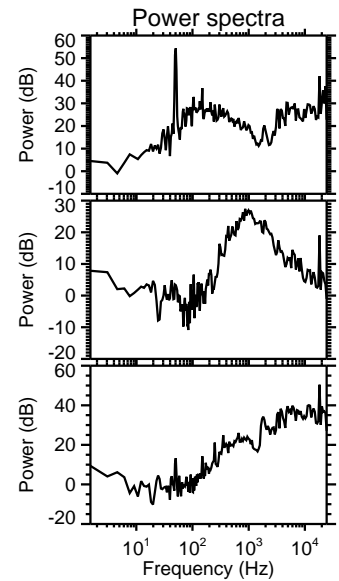
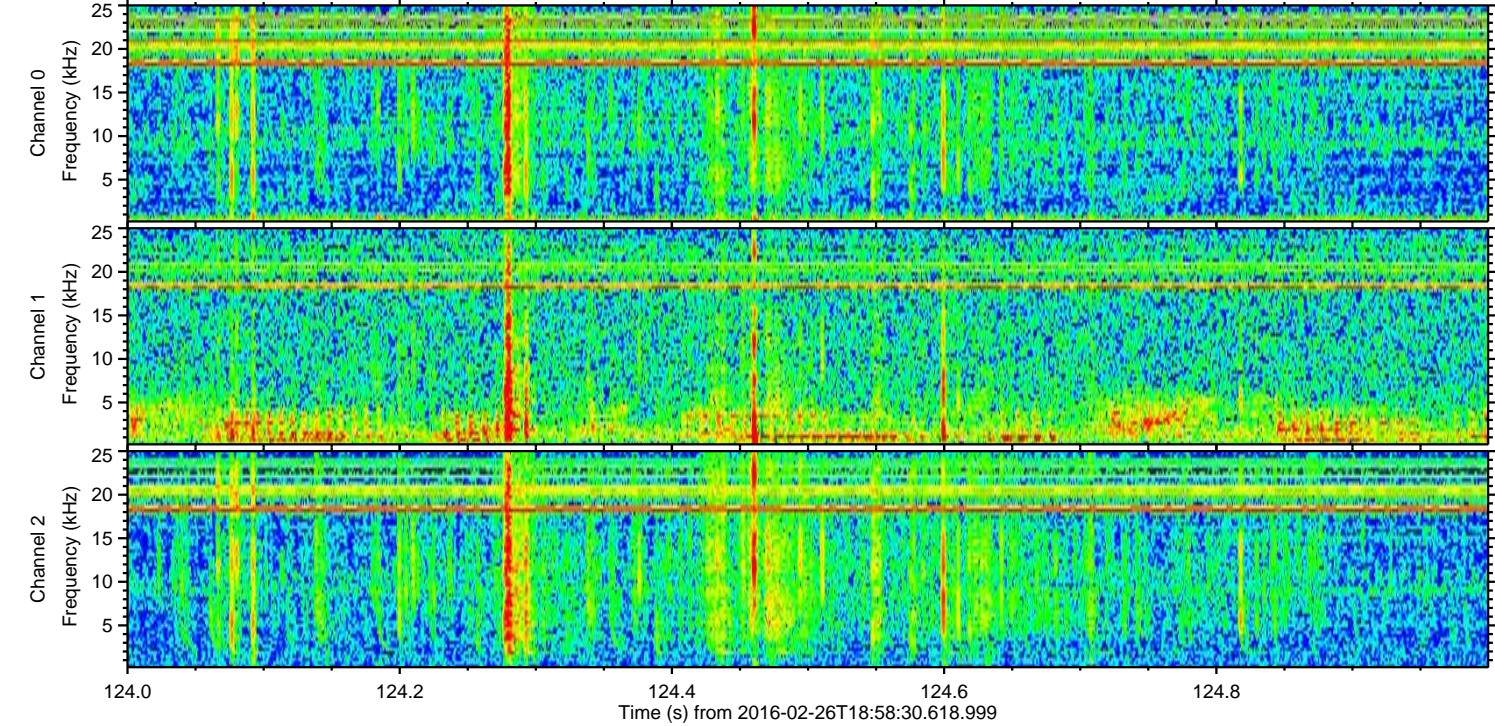
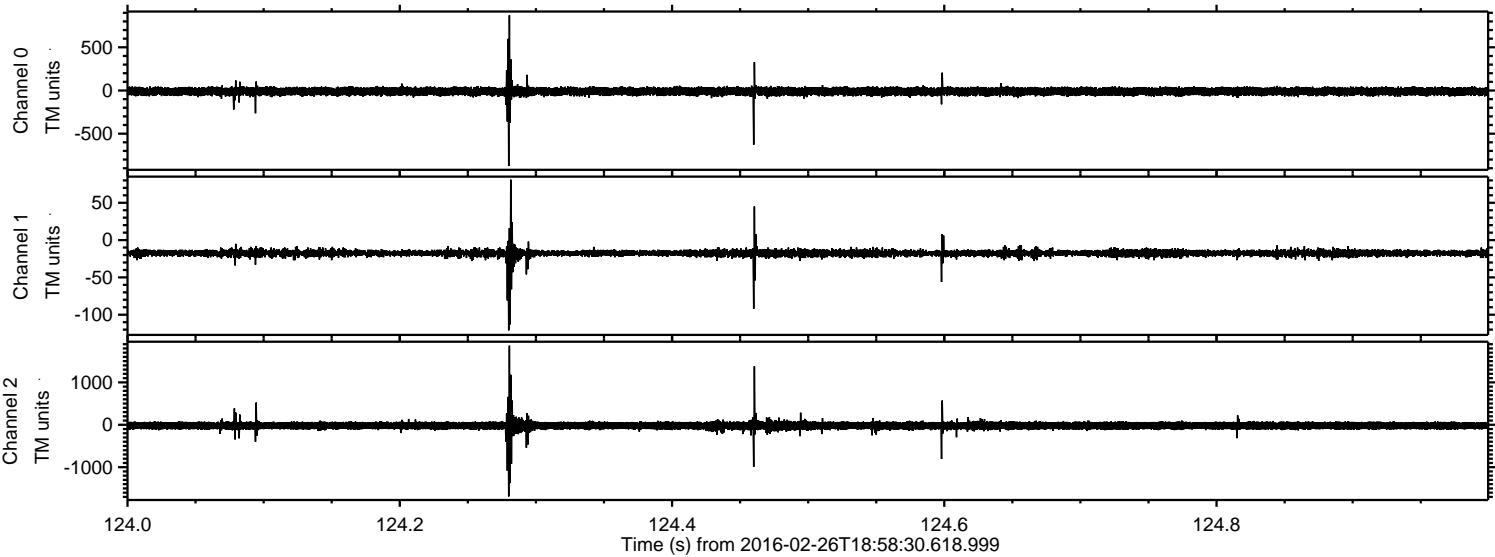


Processed Sat Apr 16 22:11:19 2016 by ELM ver.2012-10-06 from 001__elm20160226_185829__dat00.bin

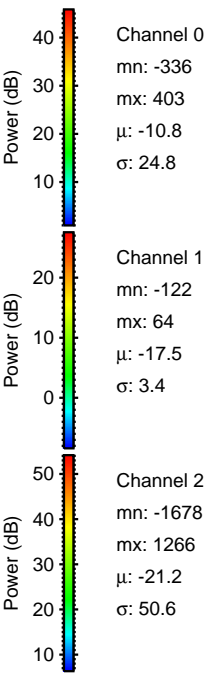
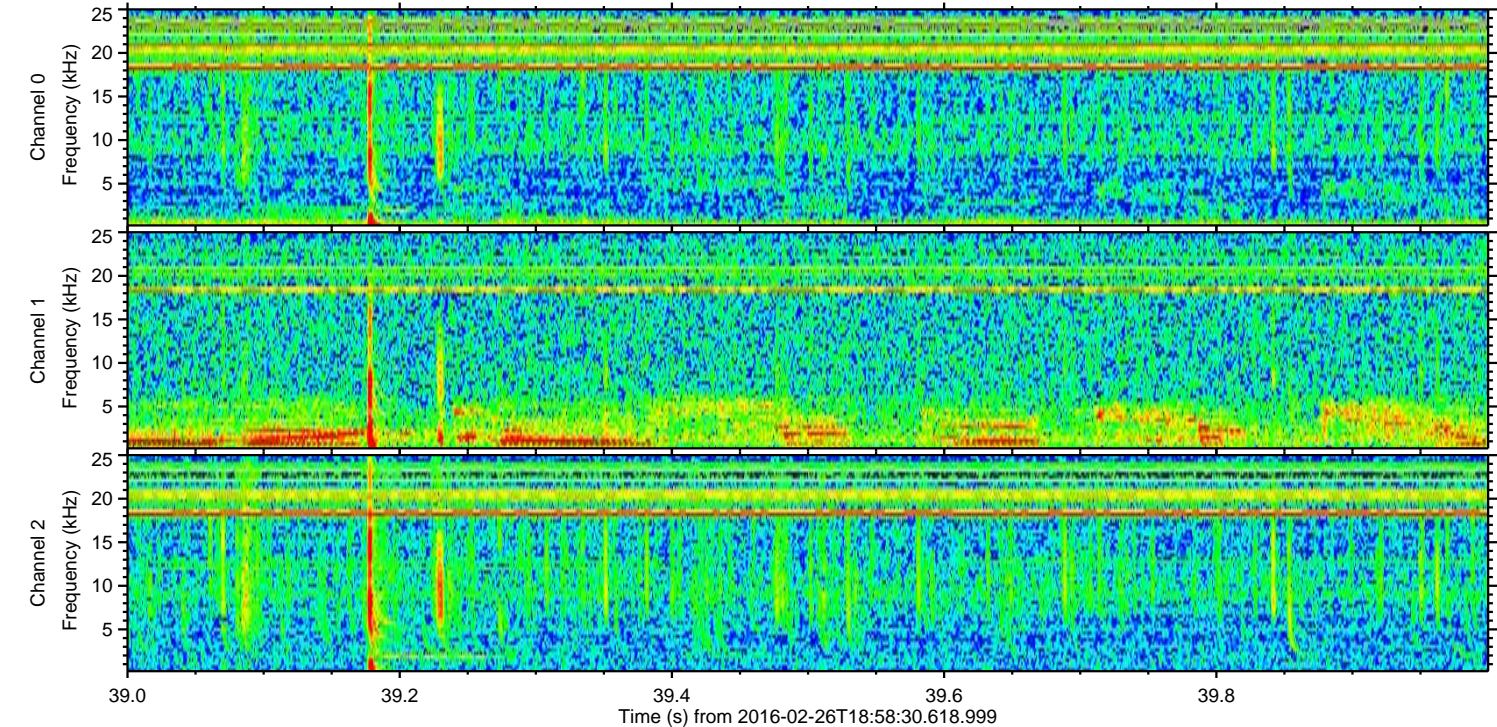
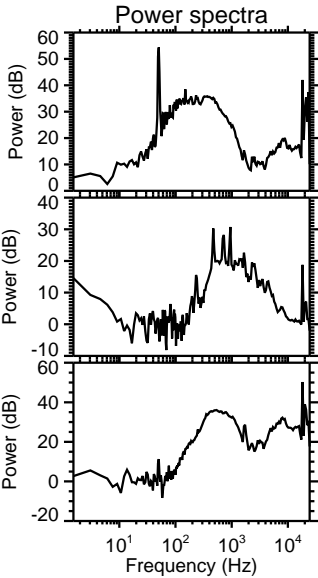
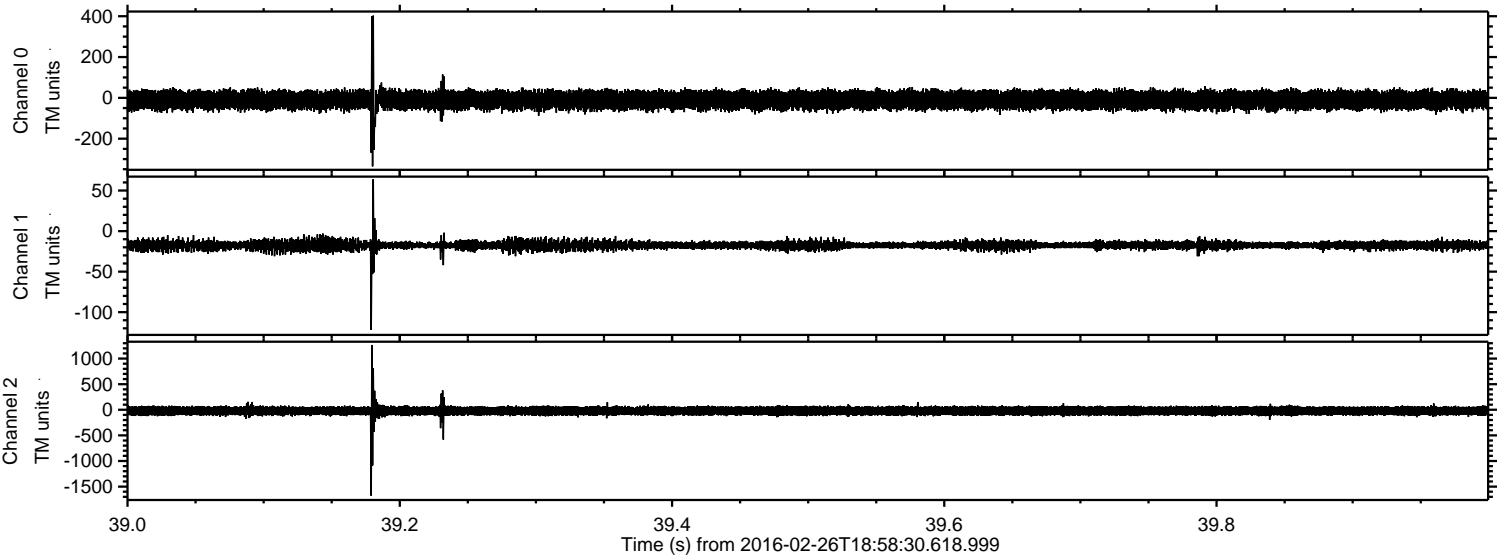


ELMAVAN 3D WAVEFORMS (Measured data sampled at 50 kHz) 51000 packets of 144 samples from 2016-02-26T18:58:30.618.999. Part 125/147

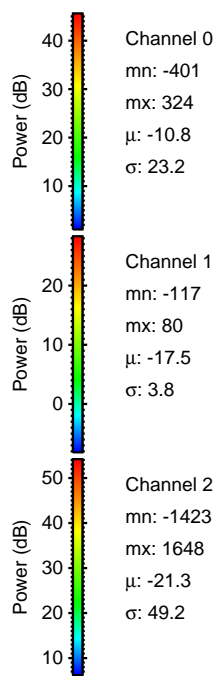
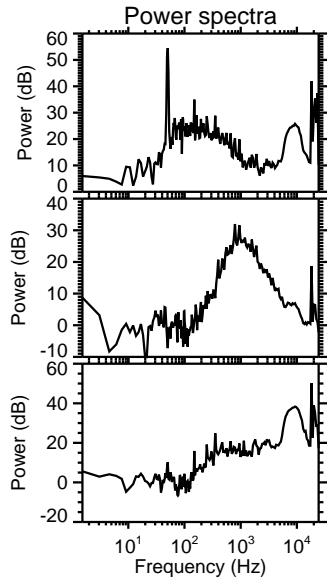
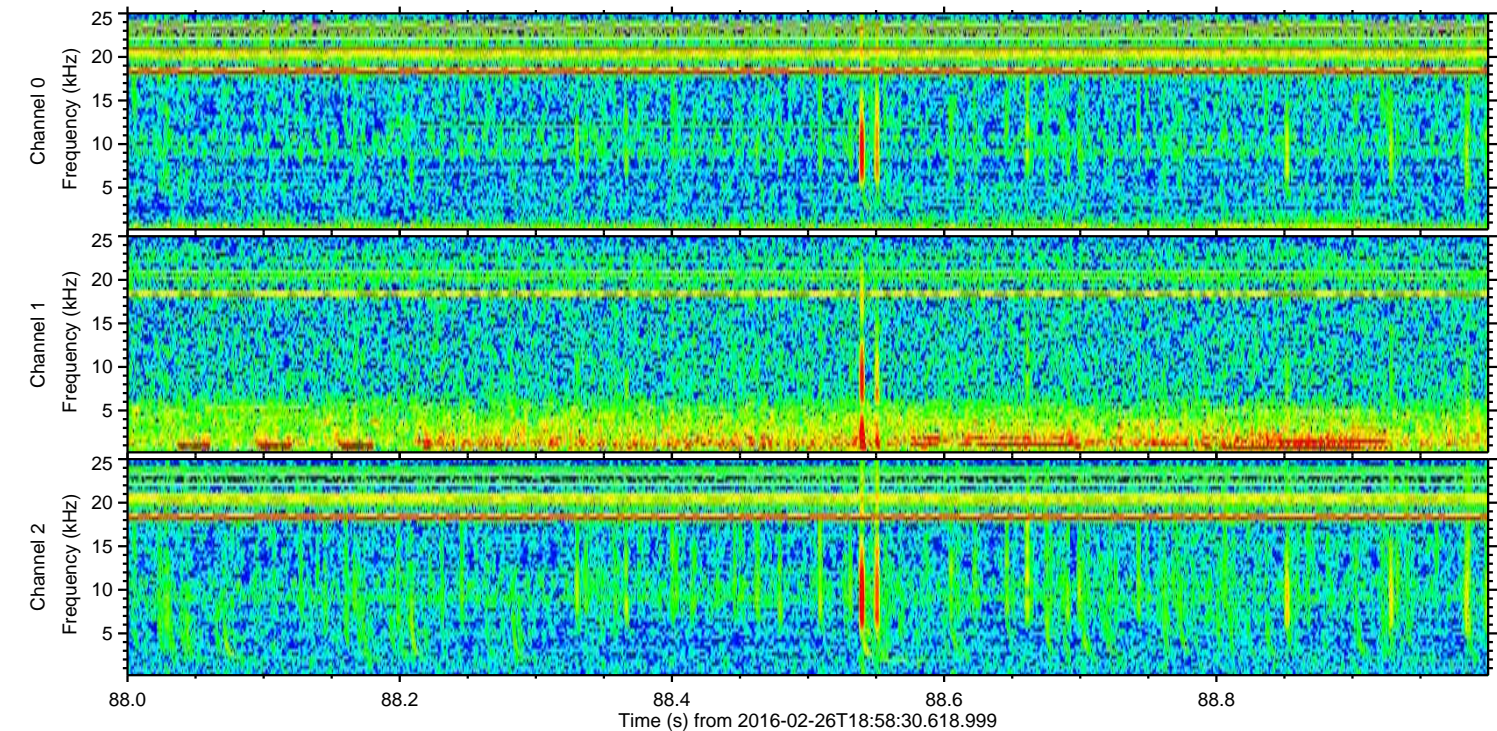
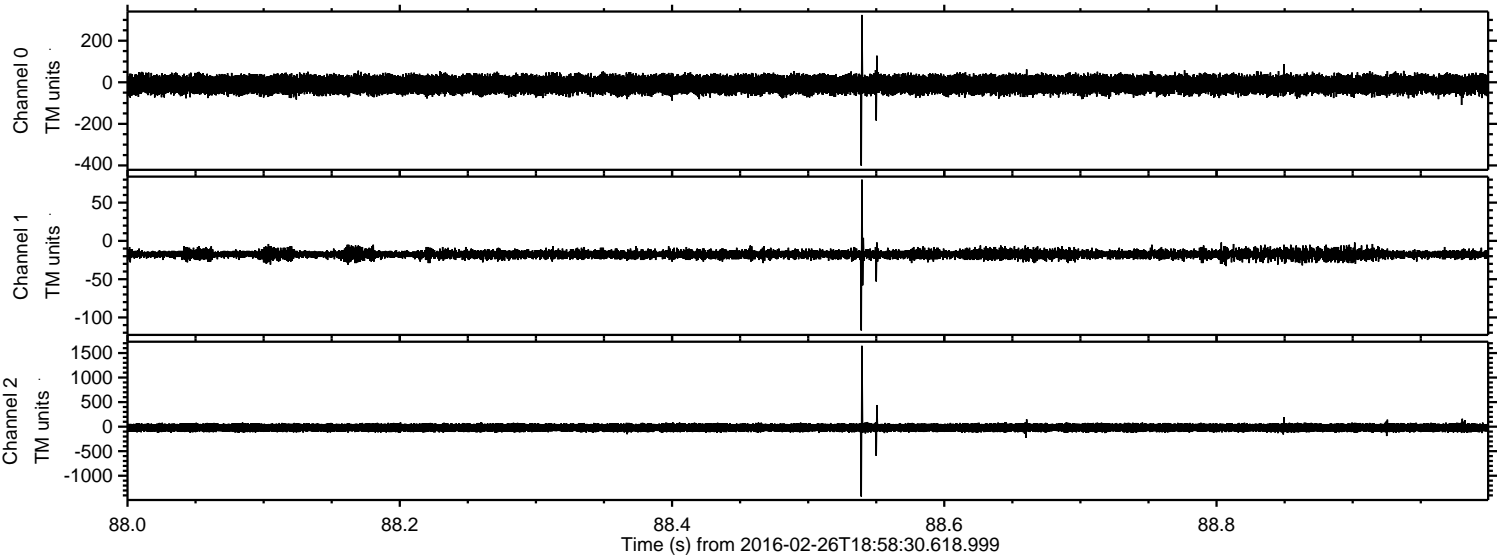
Processed Sat Apr 16 22:11:20 2016 by ELM ver.2012-10-06 from 001__elm20160226_185829__dat00.bin



Processed Sat Apr 16 22:11:21 2016 by ELM ver.2012-10-06 from 001__elm20160226_185829__dat00.bin



Processed Sat Apr 16 22:11:22 2016 by ELM ver.2012-10-06 from 001__elm20160226_185829__dat00.bin



Channel 0
mn: -401
mx: 324
 μ : -10.8
 σ : 23.2

Channel 1
mn: -117
mx: 80
 μ : -17.5
 σ : 3.8

Channel 2
mn: -1423
mx: 1648
 μ : -21.3
 σ : 49.2

Processed Sat Apr 16 22:11:23 2016 by ELM ver.2012-10-06 from 001__elm20160226_185829__dat00.bin

