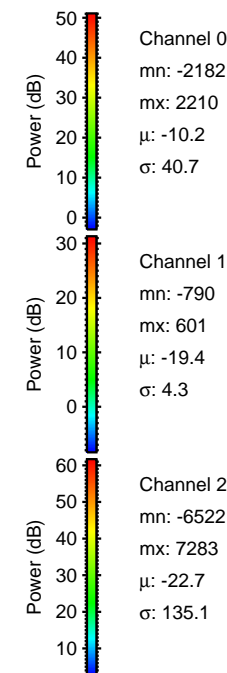
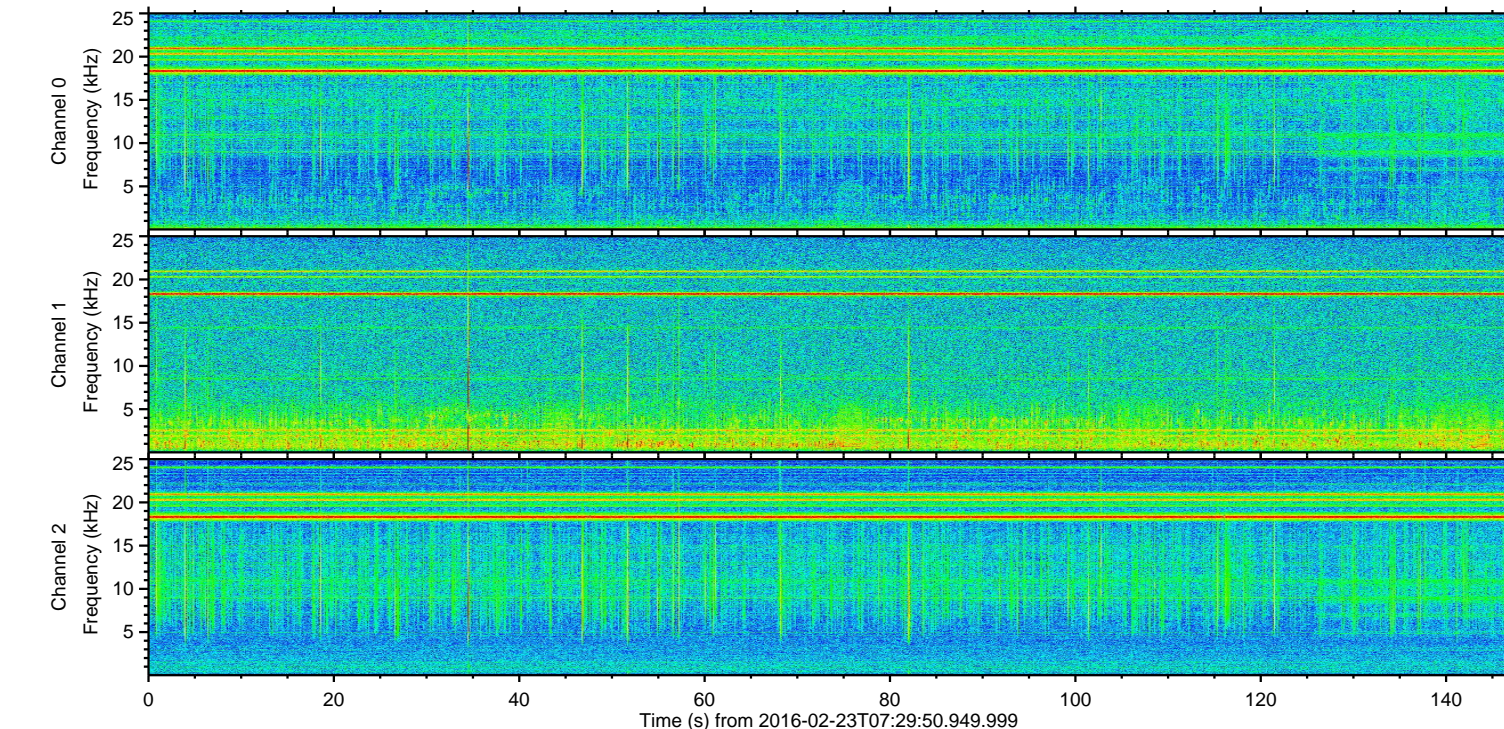
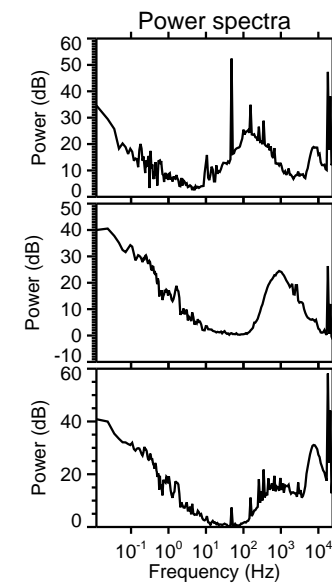
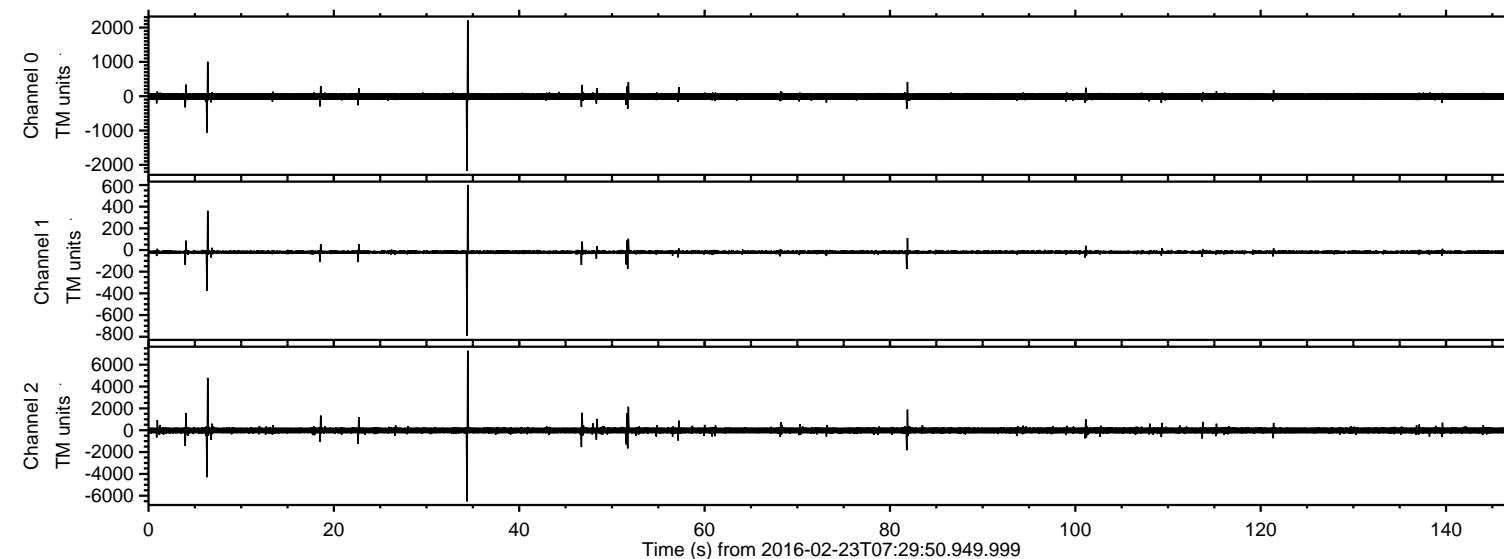


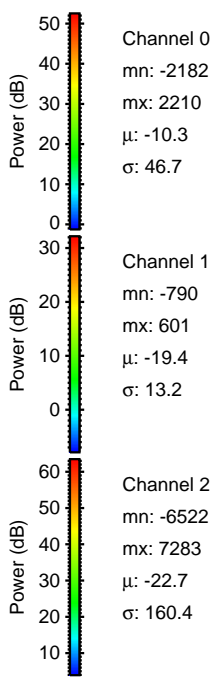
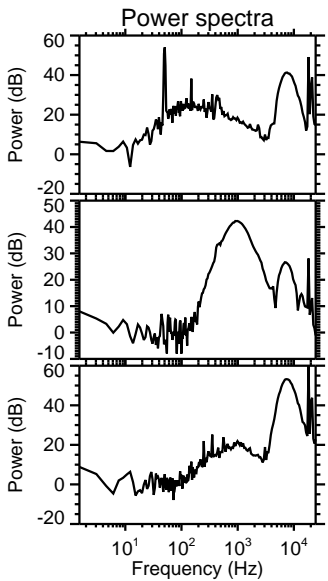
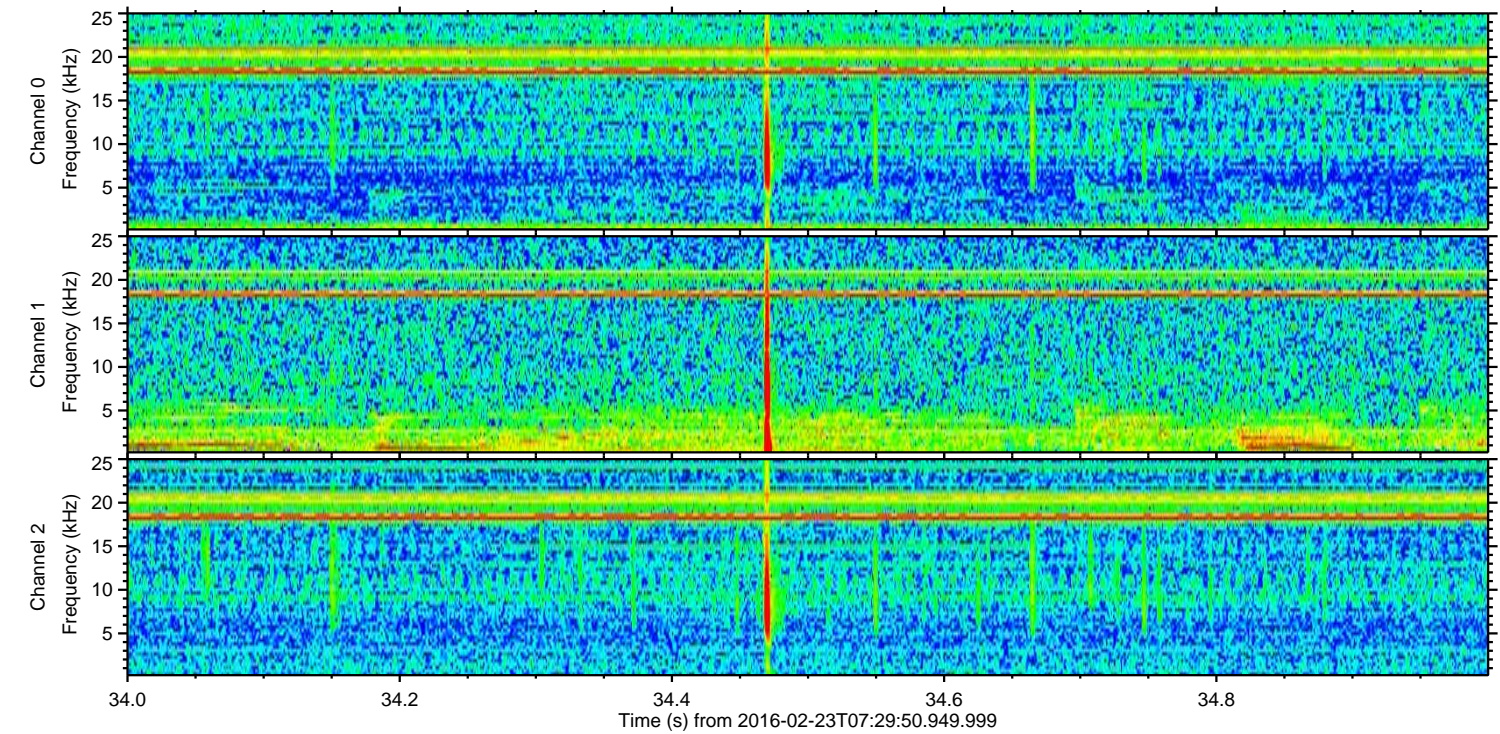
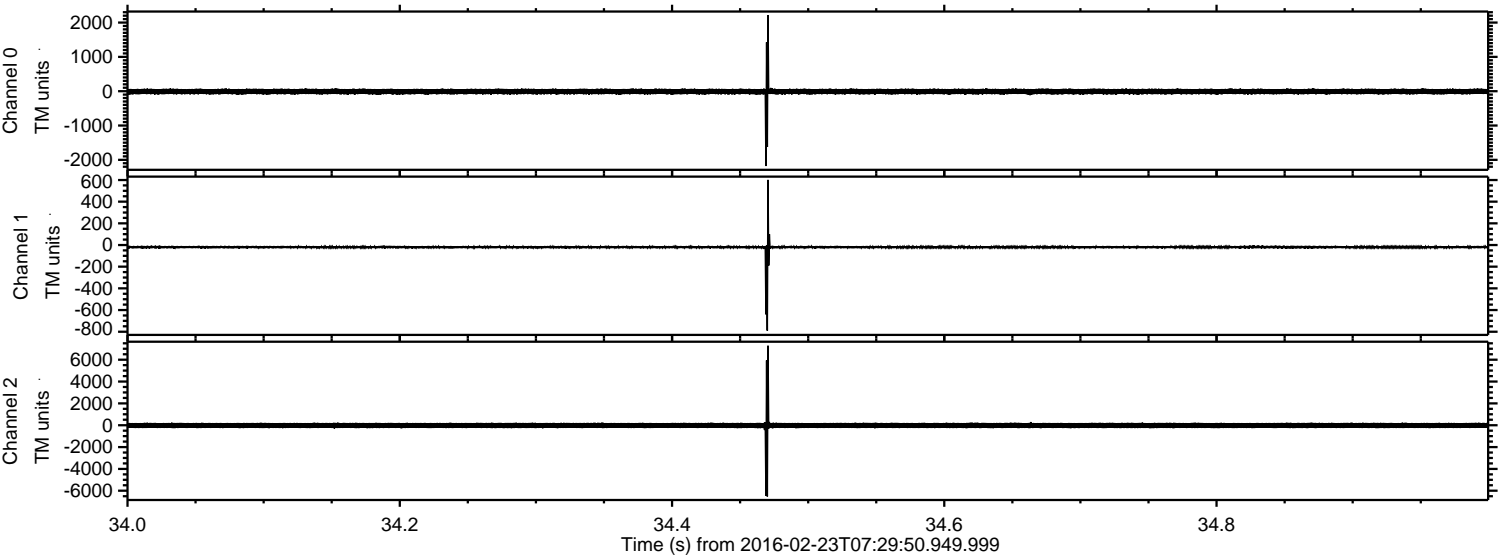
ELMAVAN 3D WAVEFORMS (Measured data sampled at 50 kHz) 51000 packets of 144 samples from 2016-02-23T07:29:50.949.999.

Processed Sat Apr 16 05:12:13 2016 by ELM ver.2012-10-06 from 001__elm20160223_072949__dat00.bin

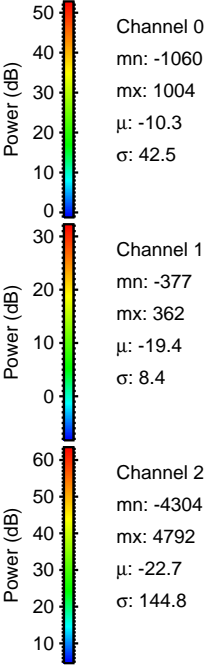
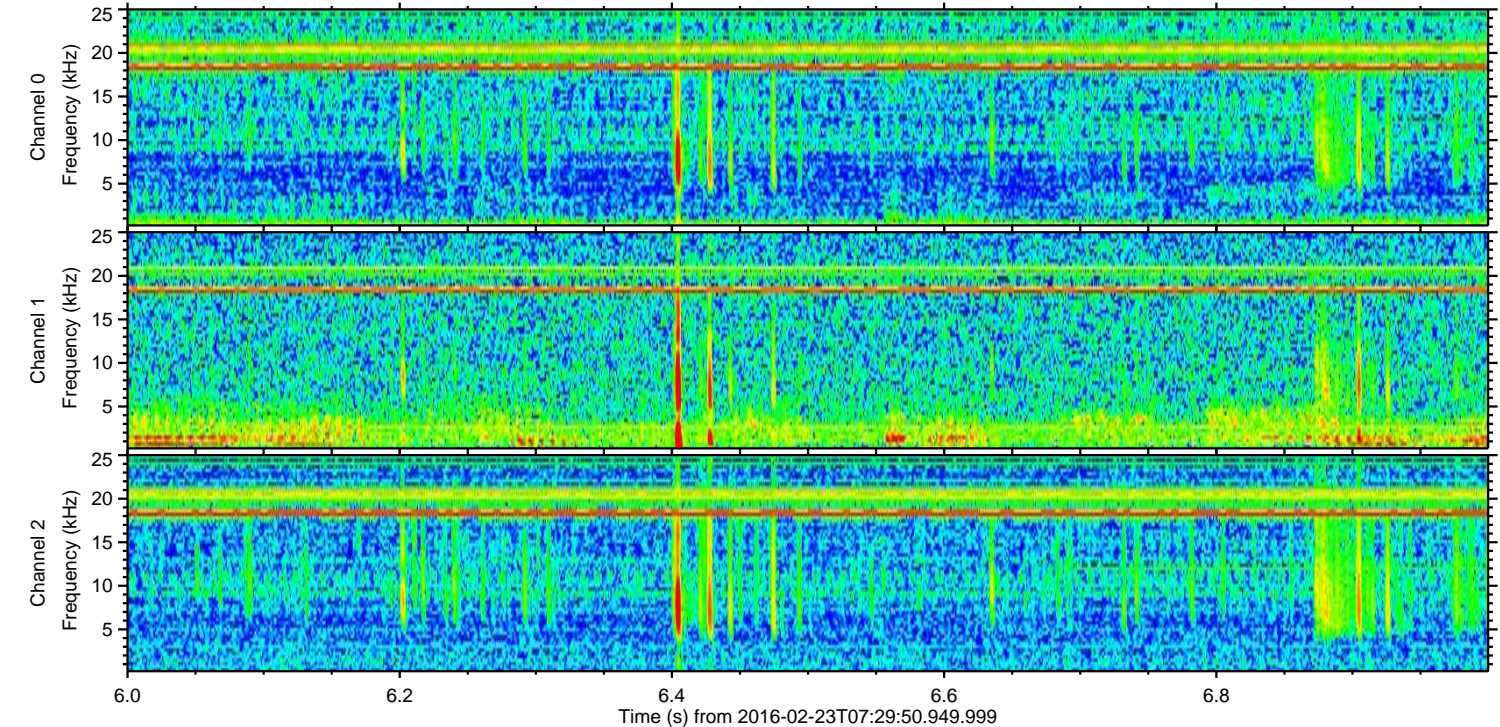
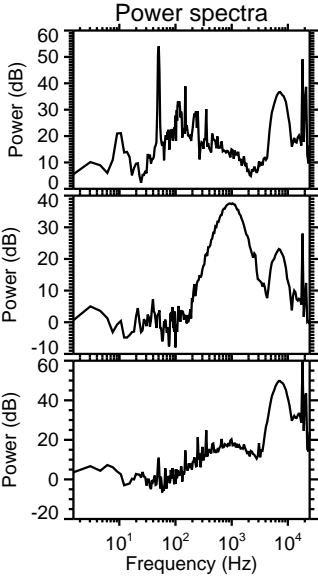
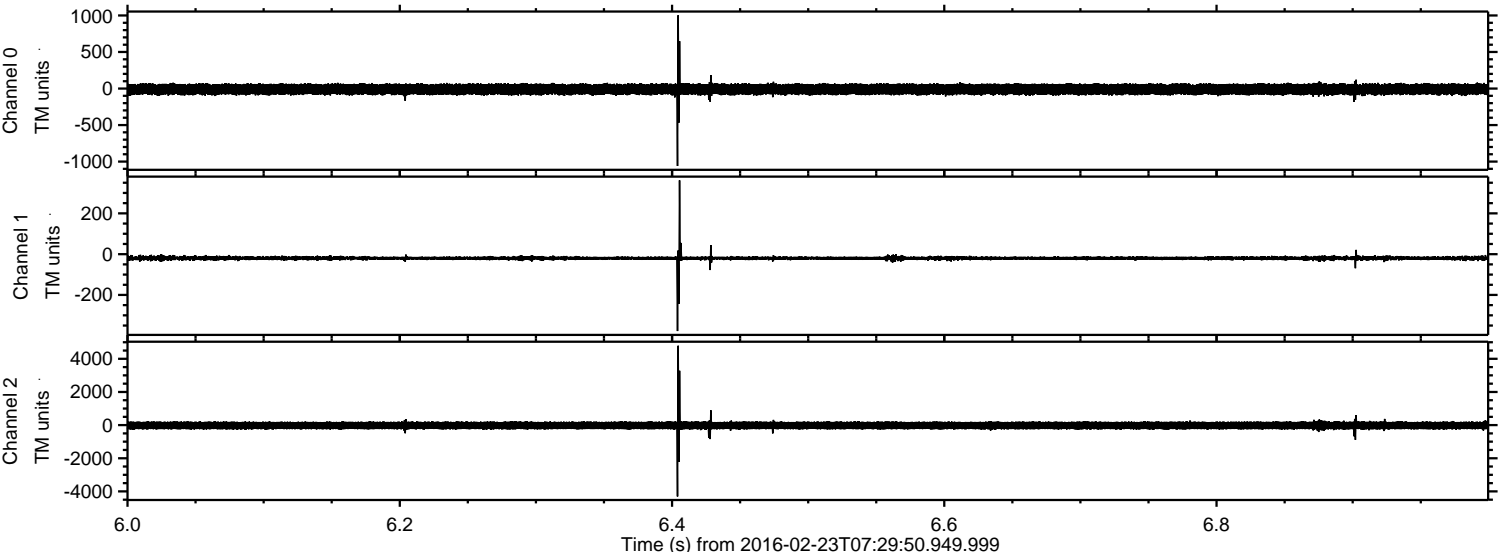


ELMAVAN 3D WAVEFORMS (Measured data sampled at 50 kHz) 51000 packets of 144 samples from 2016-02-23T07:29:50.949.999. Part 35/147

Processed Sat Apr 16 05:12:25 2016 by ELM ver.2012-10-06 from 001__elm20160223_072949__dat00.bin

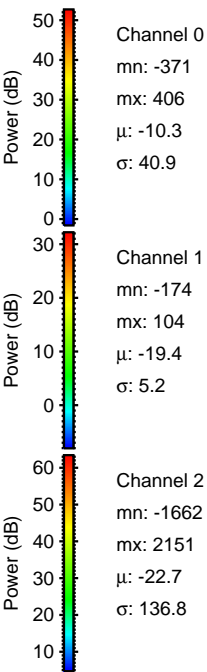
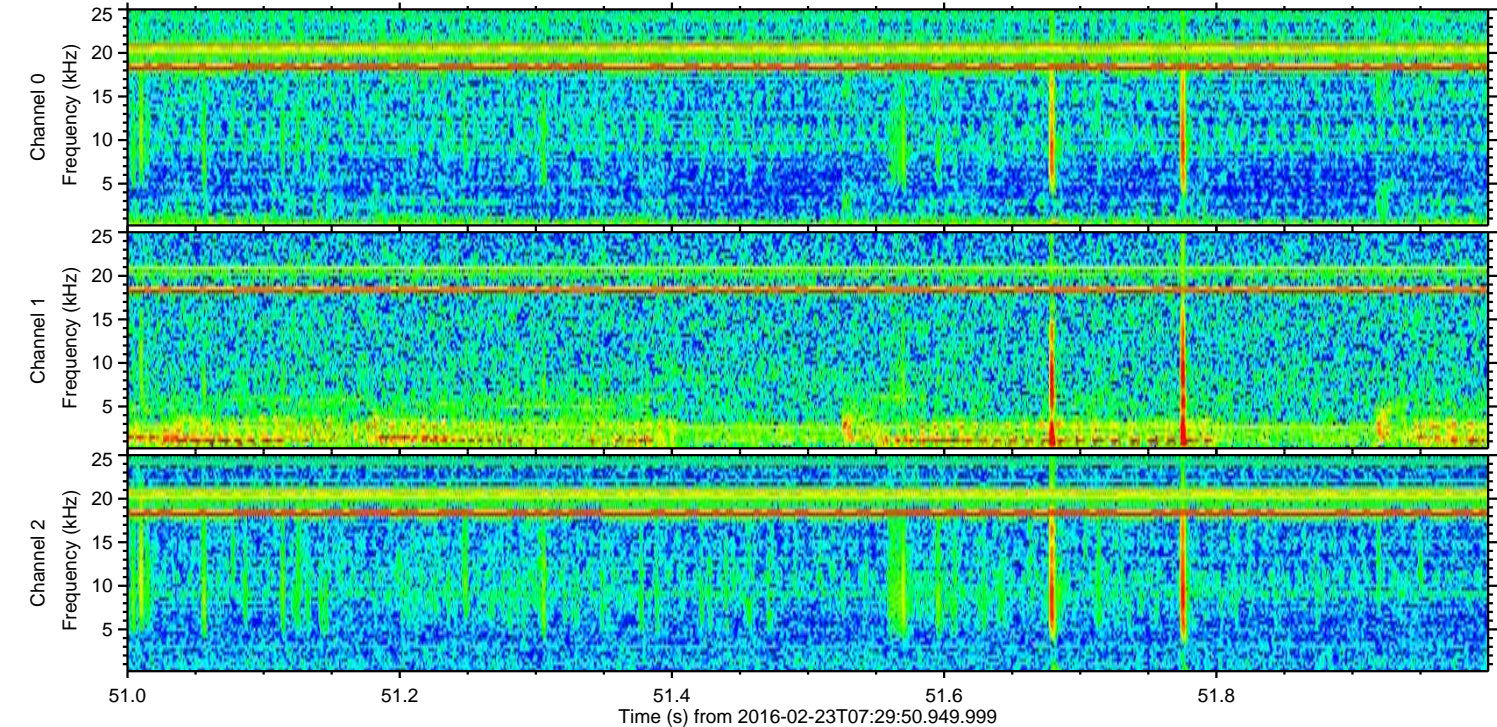
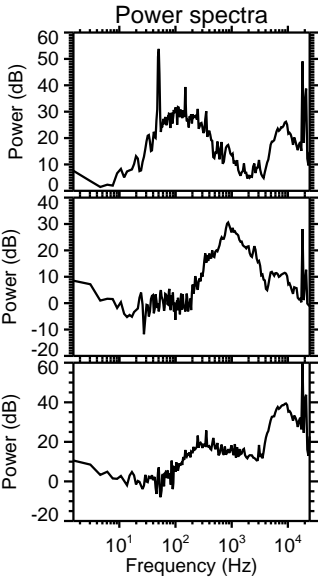
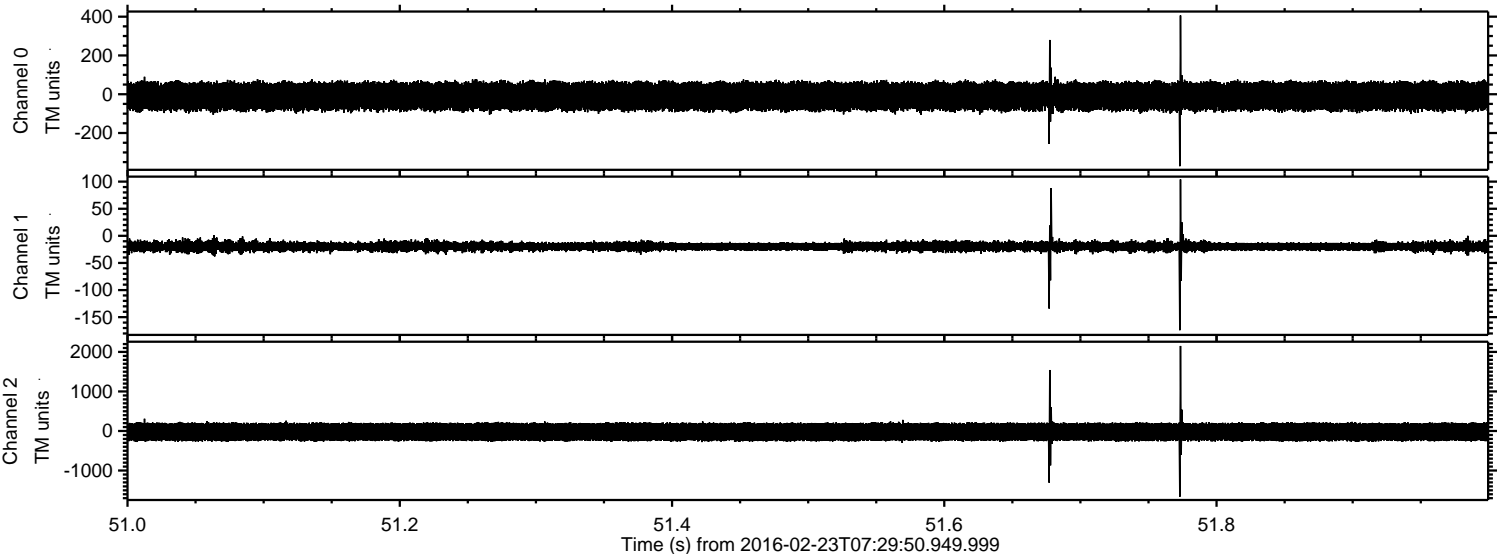


Processed Sat Apr 16 05:12:26 2016 by ELM ver.2012-10-06 from 001__elm20160223_072949__dat00.bin

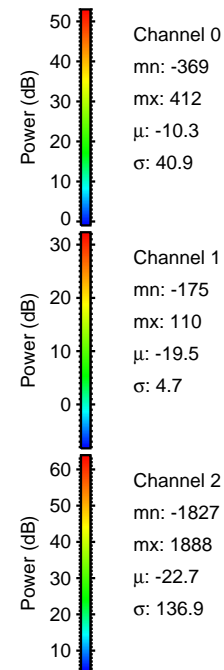
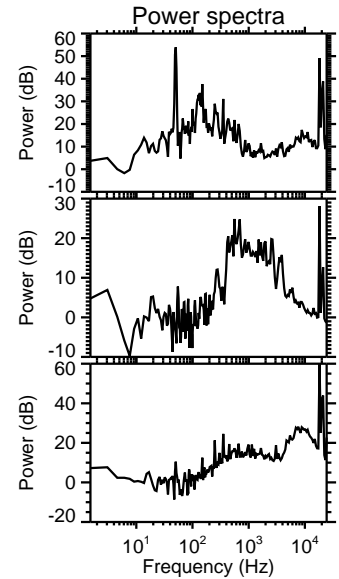
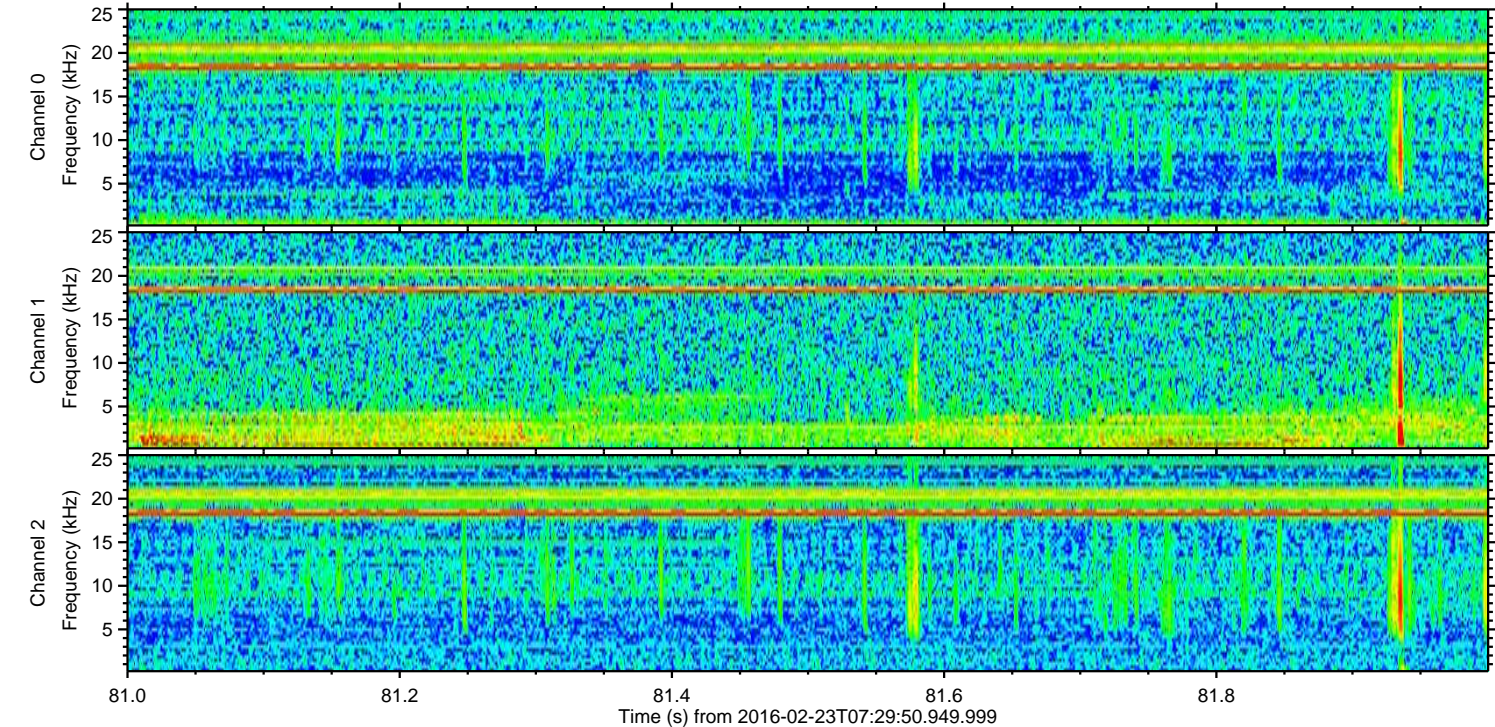
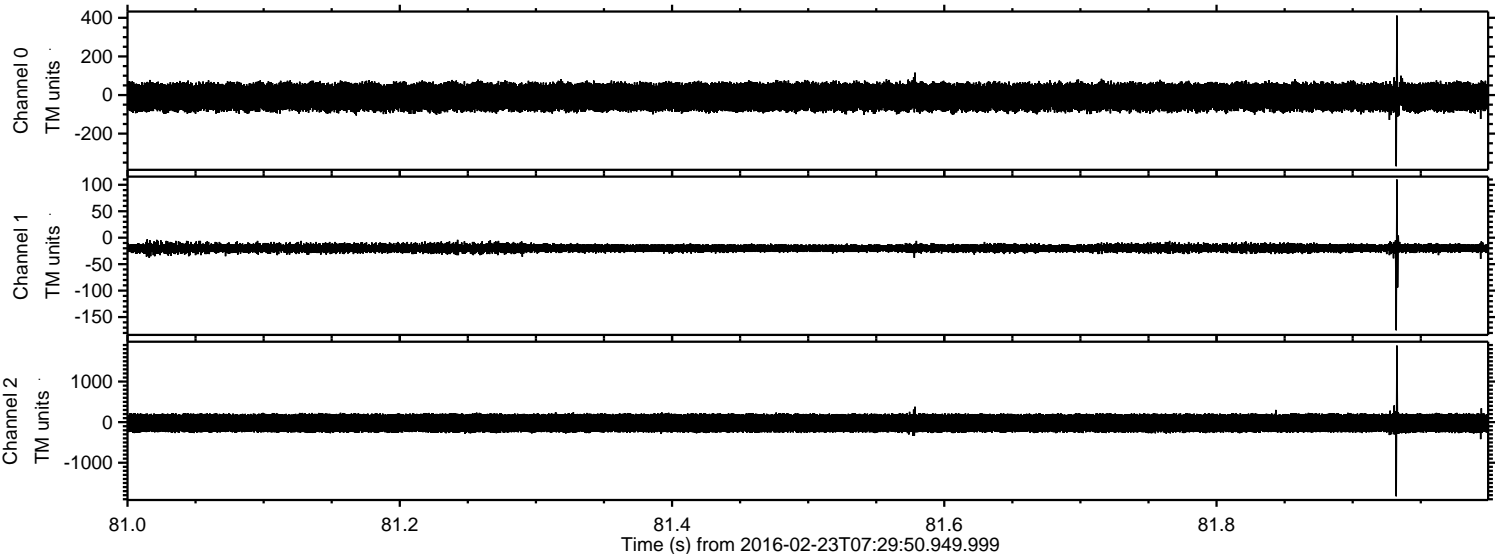


ELMAVAN 3D WAVEFORMS (Measured data sampled at 50 kHz) 51000 packets of 144 samples from 2016-02-23T07:29:50.949.999. Part 52/147

Processed Sat Apr 16 05:12:27 2016 by ELM ver.2012-10-06 from 001__elm20160223_072949__dat00.bin

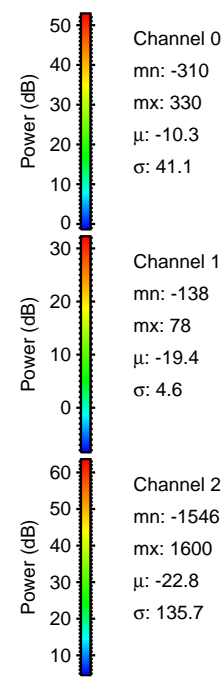
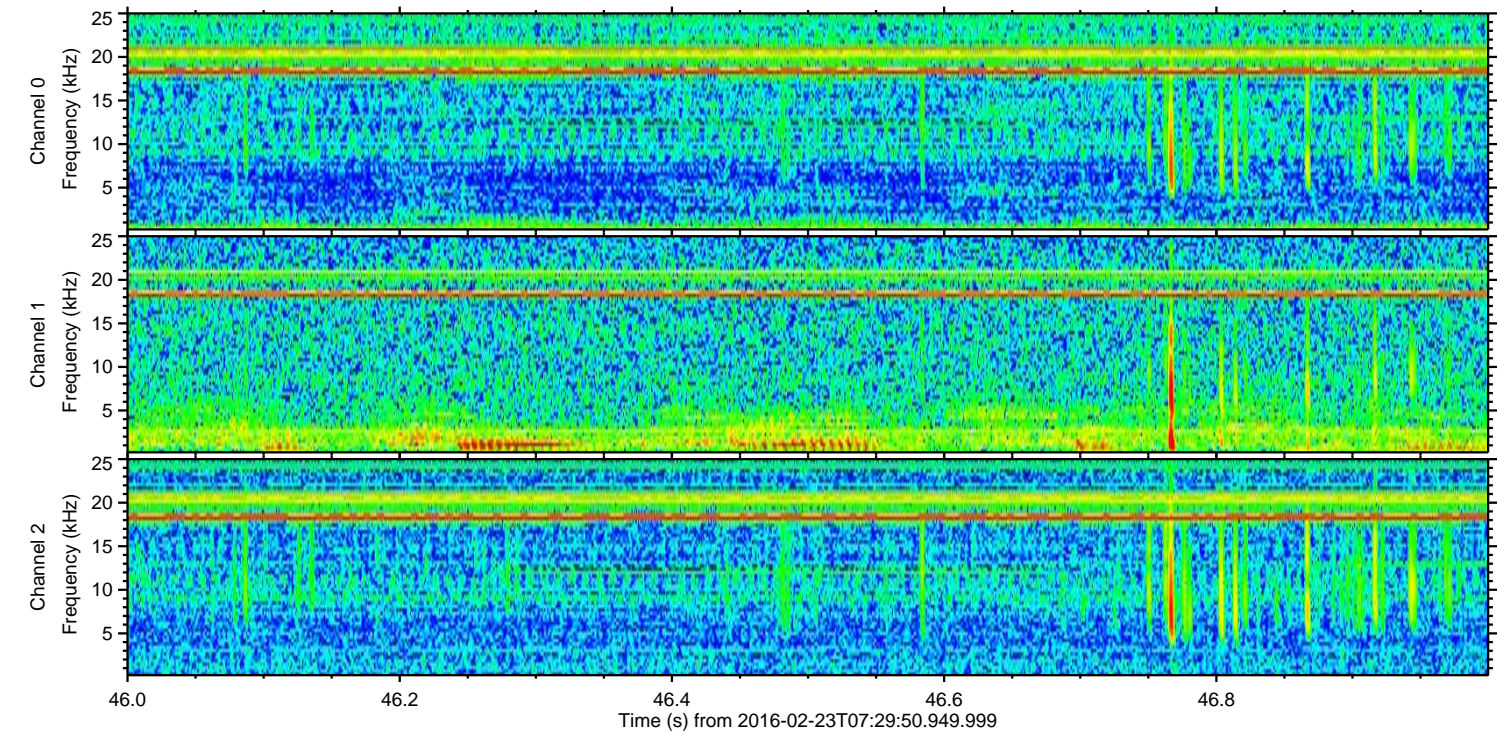
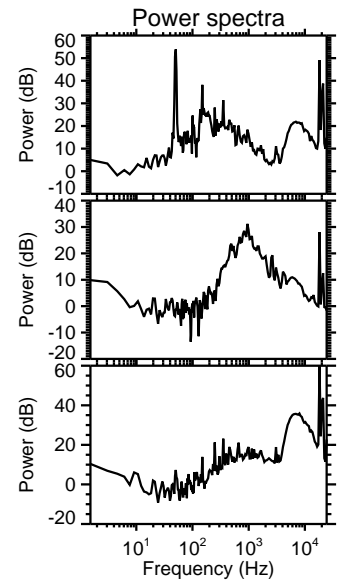
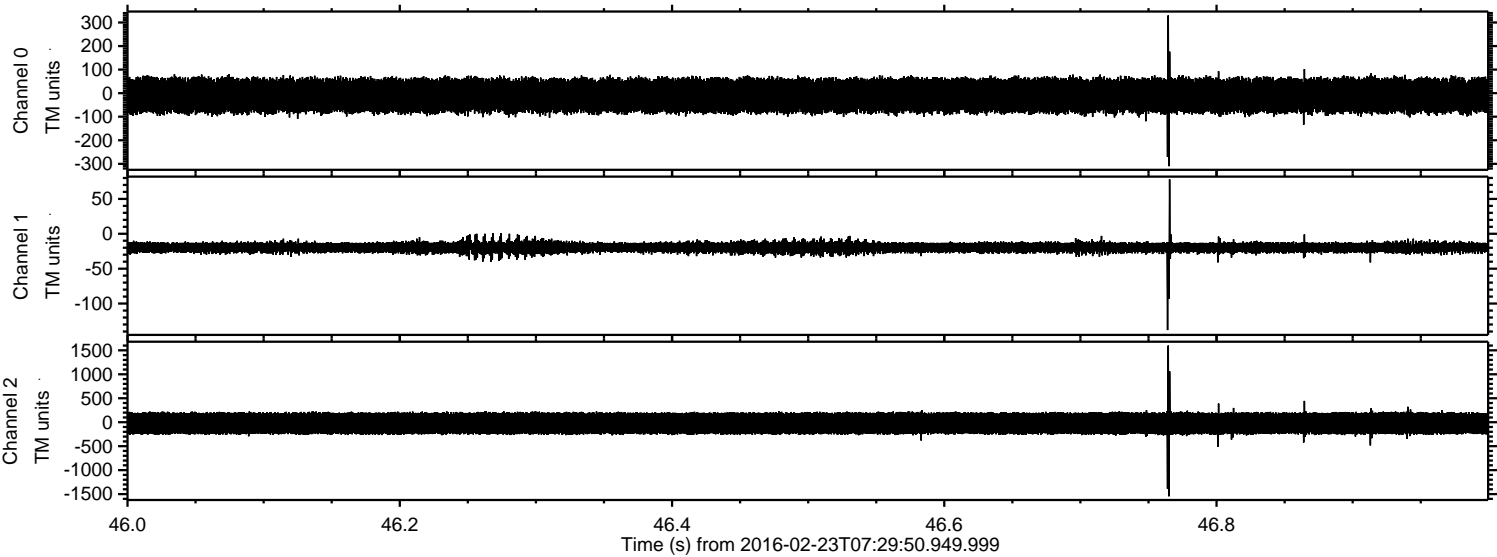


Processed Sat Apr 16 05:12:28 2016 by ELM ver.2012-10-06 from 001__elm20160223_072949__dat00.bin

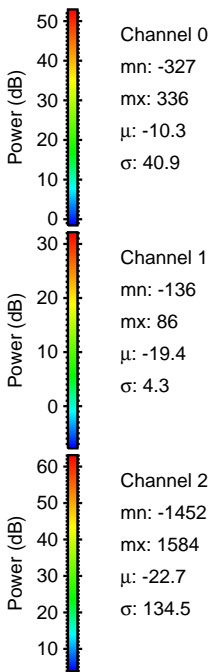
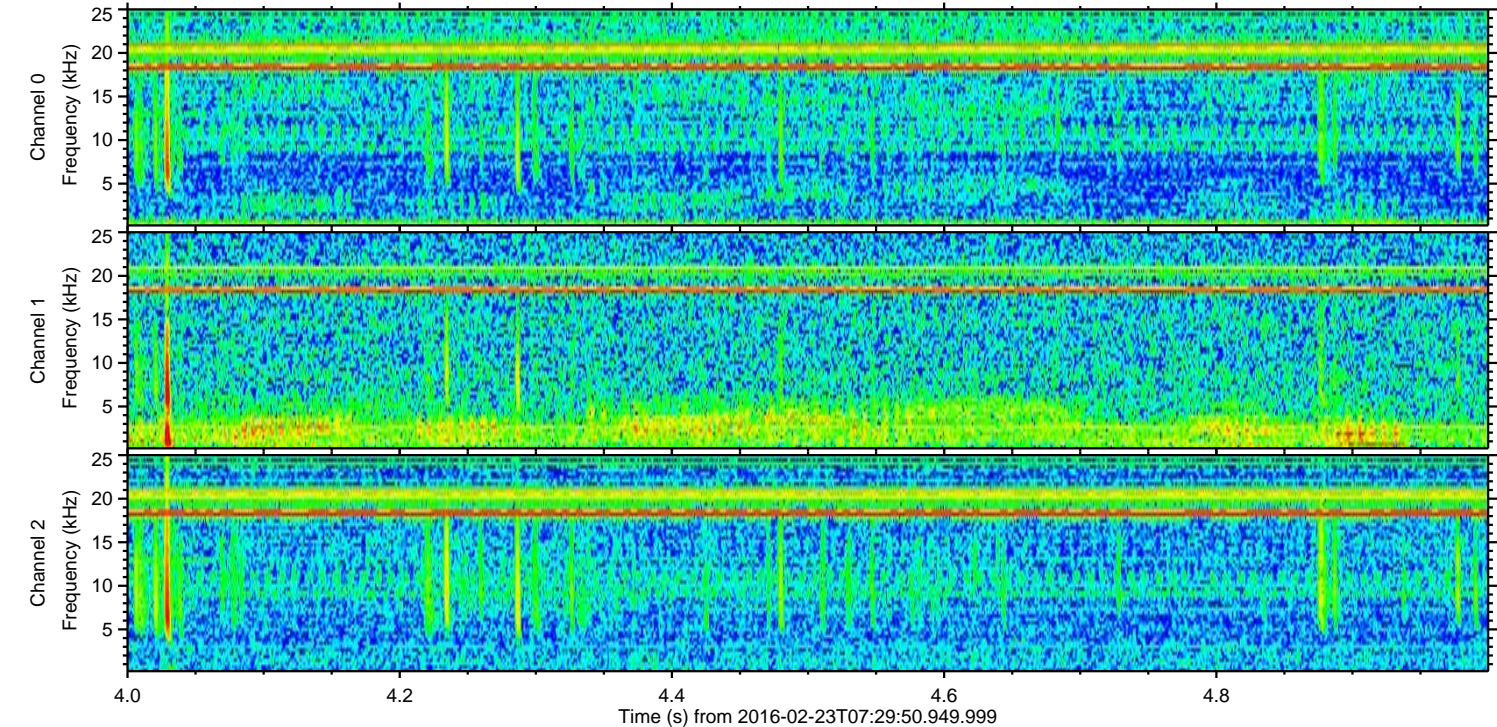
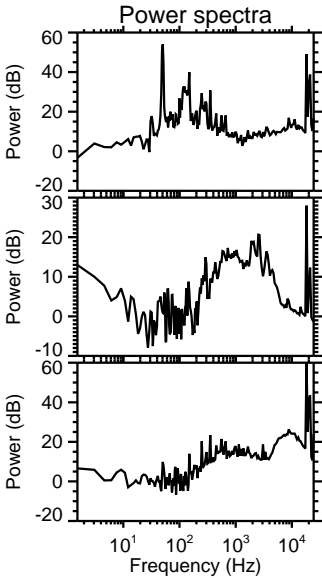
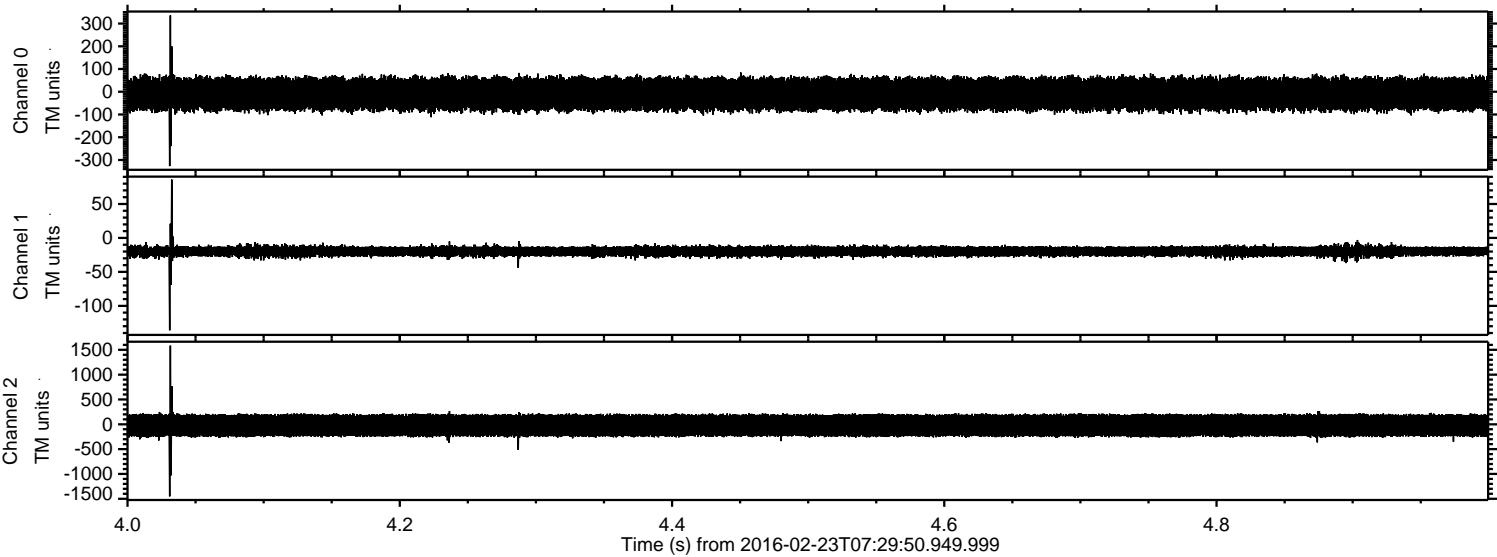


ELMAVAN 3D WAVEFORMS (Measured data sampled at 50 kHz) 51000 packets of 144 samples from 2016-02-23T07:29:50.949.999. Part 47/147

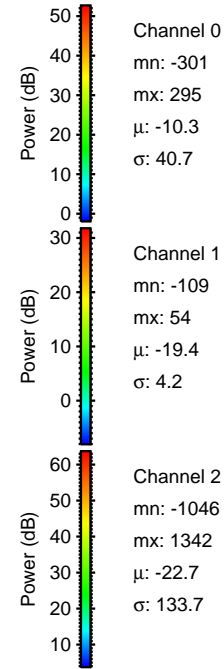
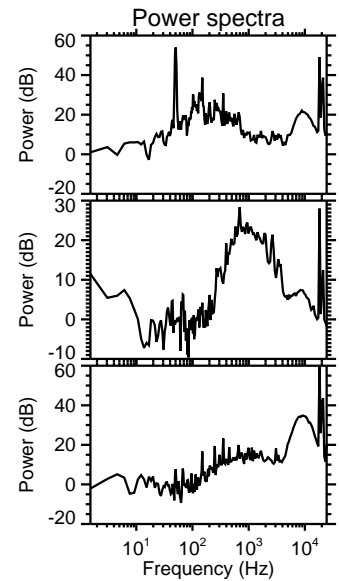
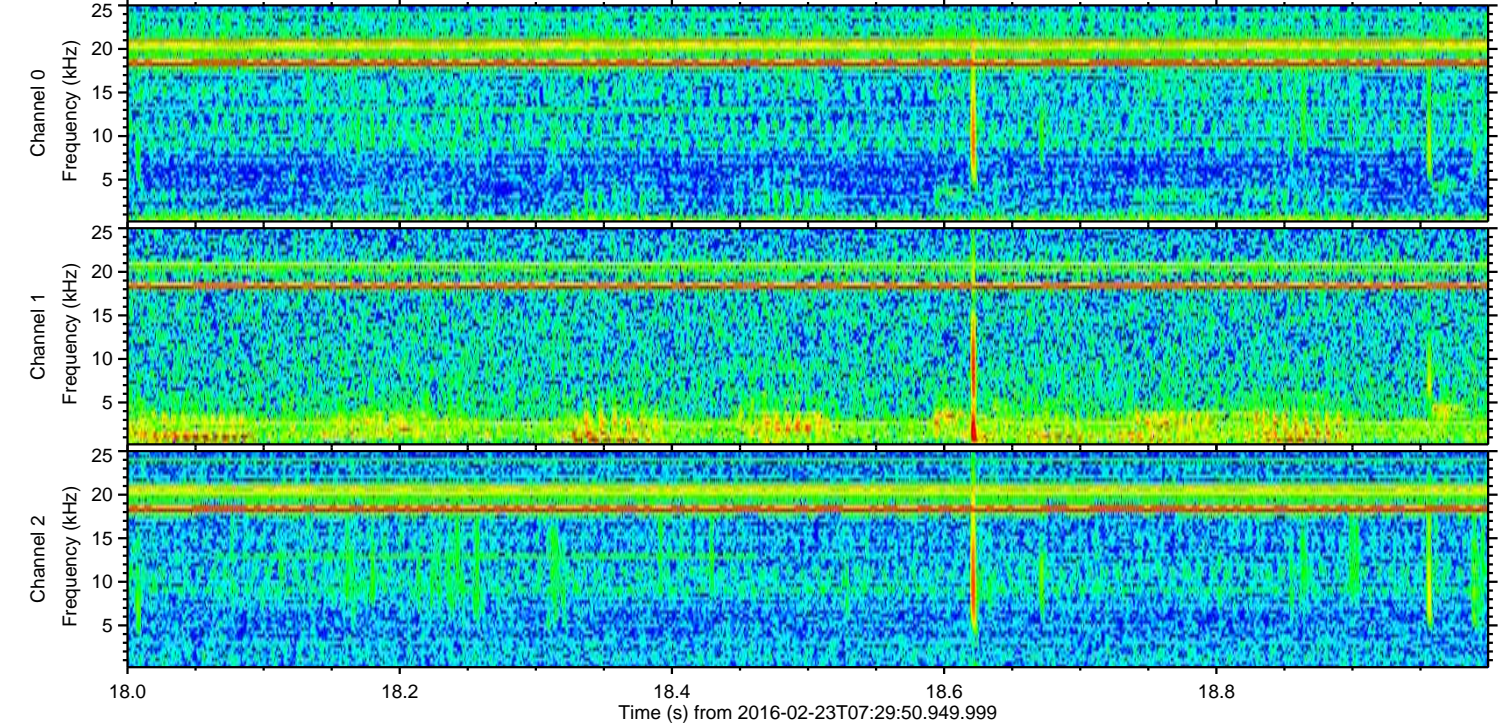
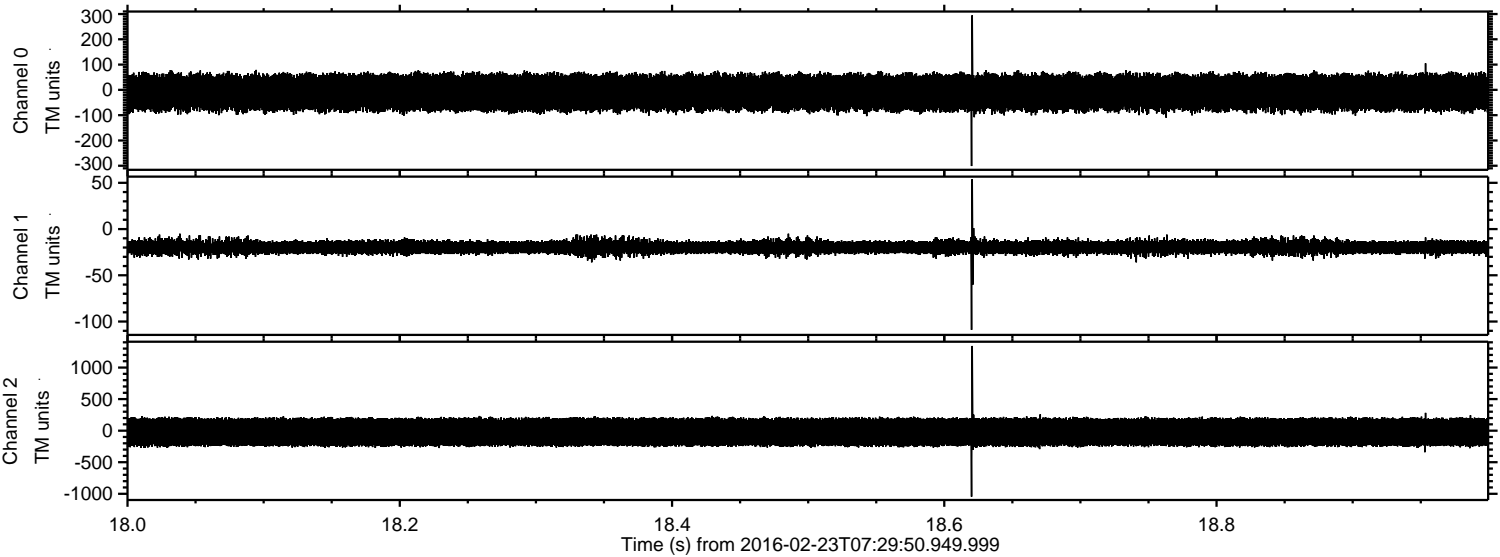
Processed Sat Apr 16 05:12:29 2016 by ELM ver.2012-10-06 from 001__elm20160223_072949__dat00.bin



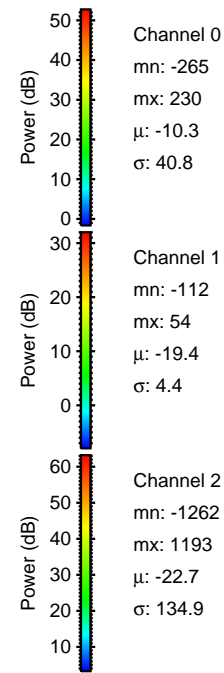
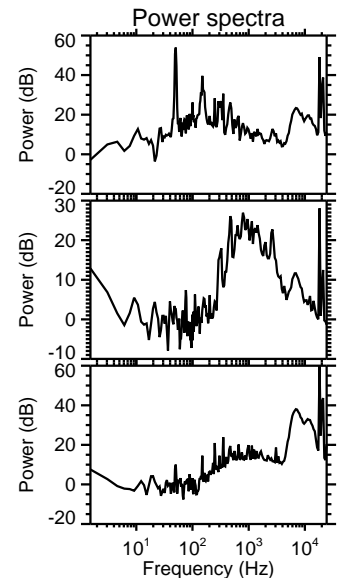
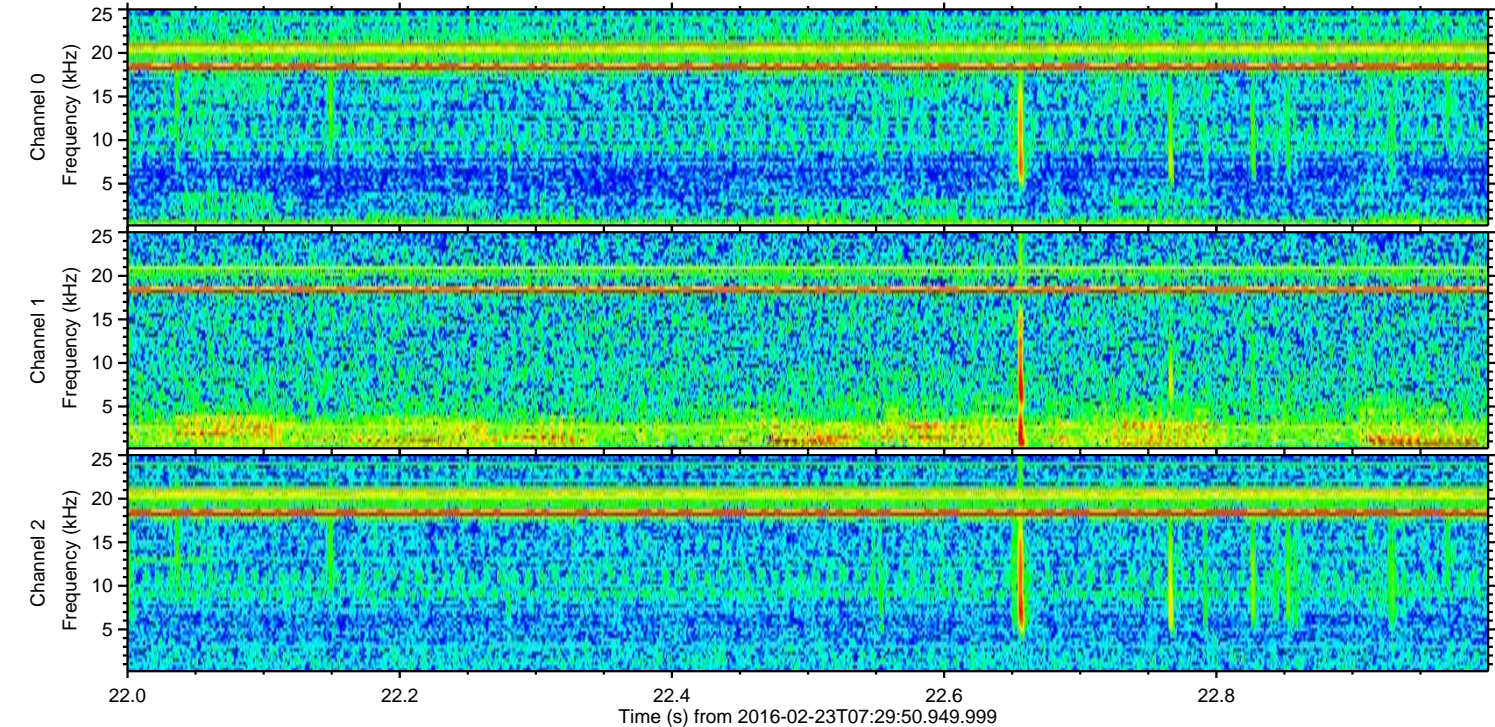
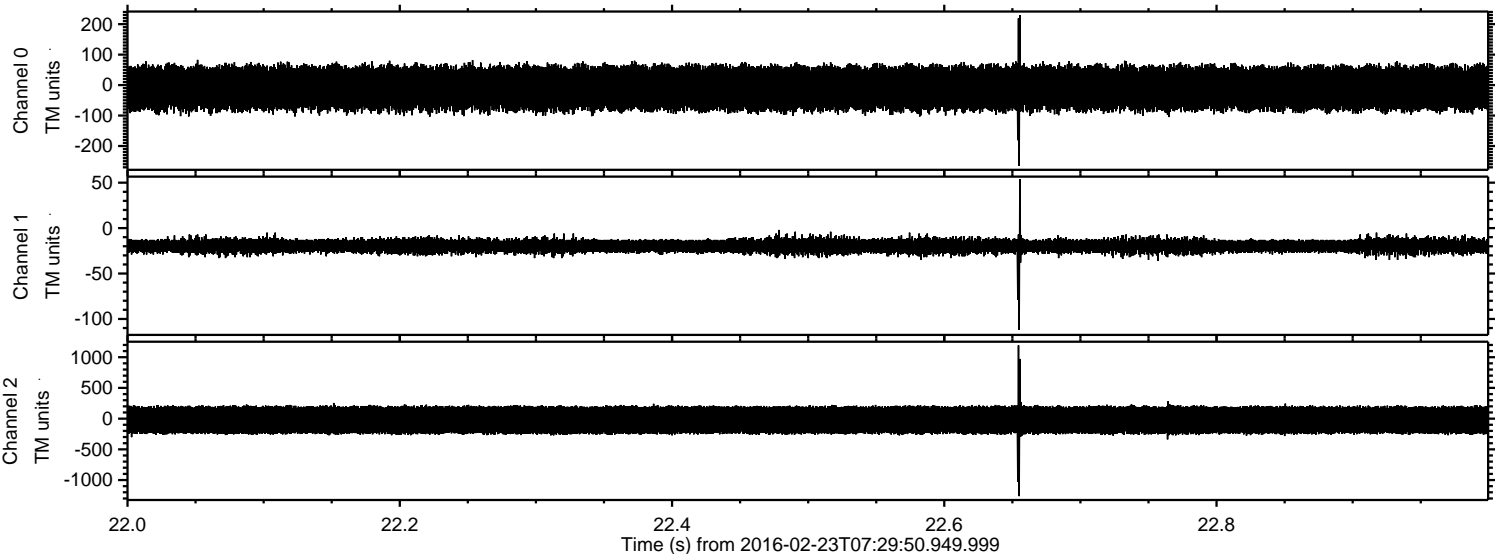
Processed Sat Apr 16 05:12:30 2016 by ELM ver.2012-10-06 from 001__elm20160223_072949__dat00.bin



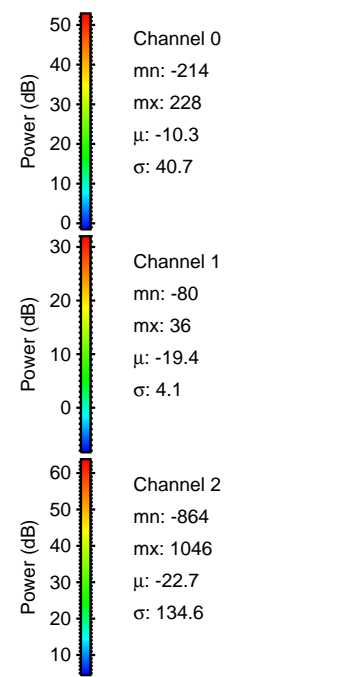
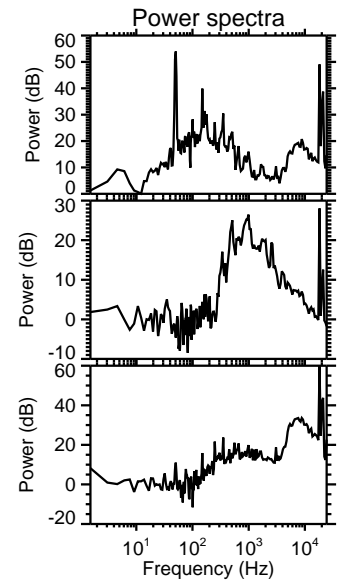
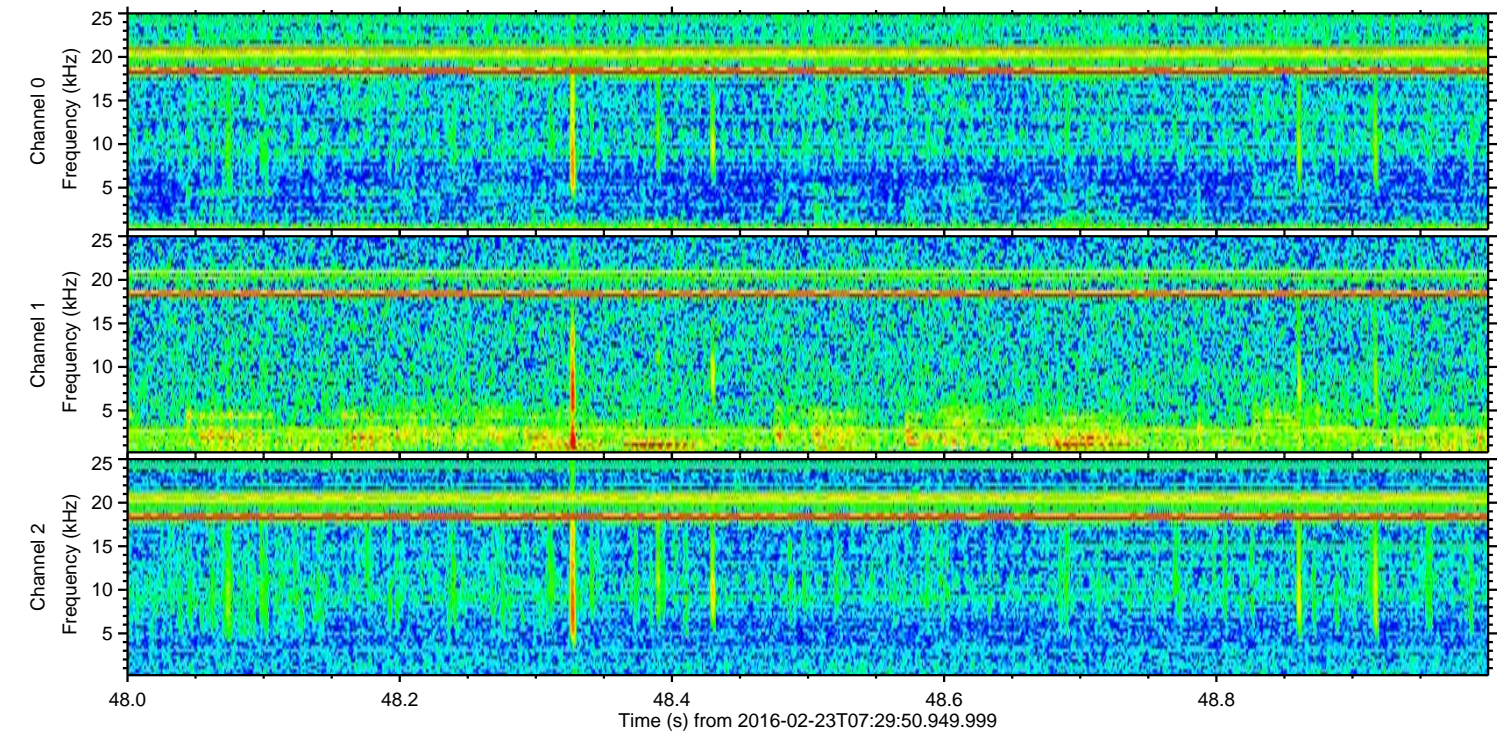
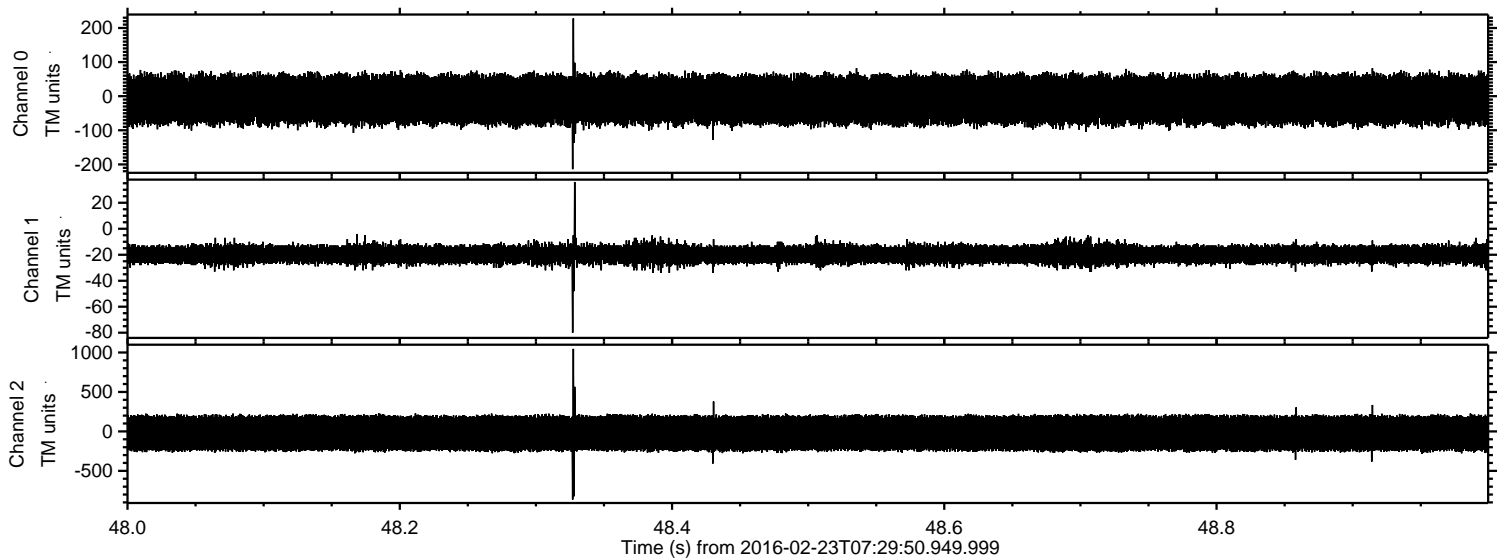
Processed Sat Apr 16 05:12:30 2016 by ELM ver.2012-10-06 from 001__elm20160223_072949__dat00.bin



Processed Sat Apr 16 05:12:31 2016 by ELM ver.2012-10-06 from 001__elm20160223_072949__dat00.bin



Processed Sat Apr 16 05:12:32 2016 by ELM ver.2012-10-06 from 001__elm20160223_072949__dat00.bin



Channel 0
mn: -214
mx: 228
 μ : -10.3
 σ : 40.7

Channel 1
mn: -80
mx: 36
 μ : -19.4
 σ : 4.1

Channel 2
mn: -864
mx: 1046
 μ : -22.7
 σ : 134.6

Processed Sat Apr 16 05:12:33 2016 by ELM ver.2012-10-06 from 001__elm20160223_072949__dat00.bin

