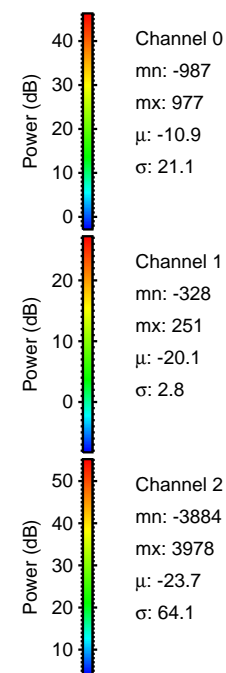
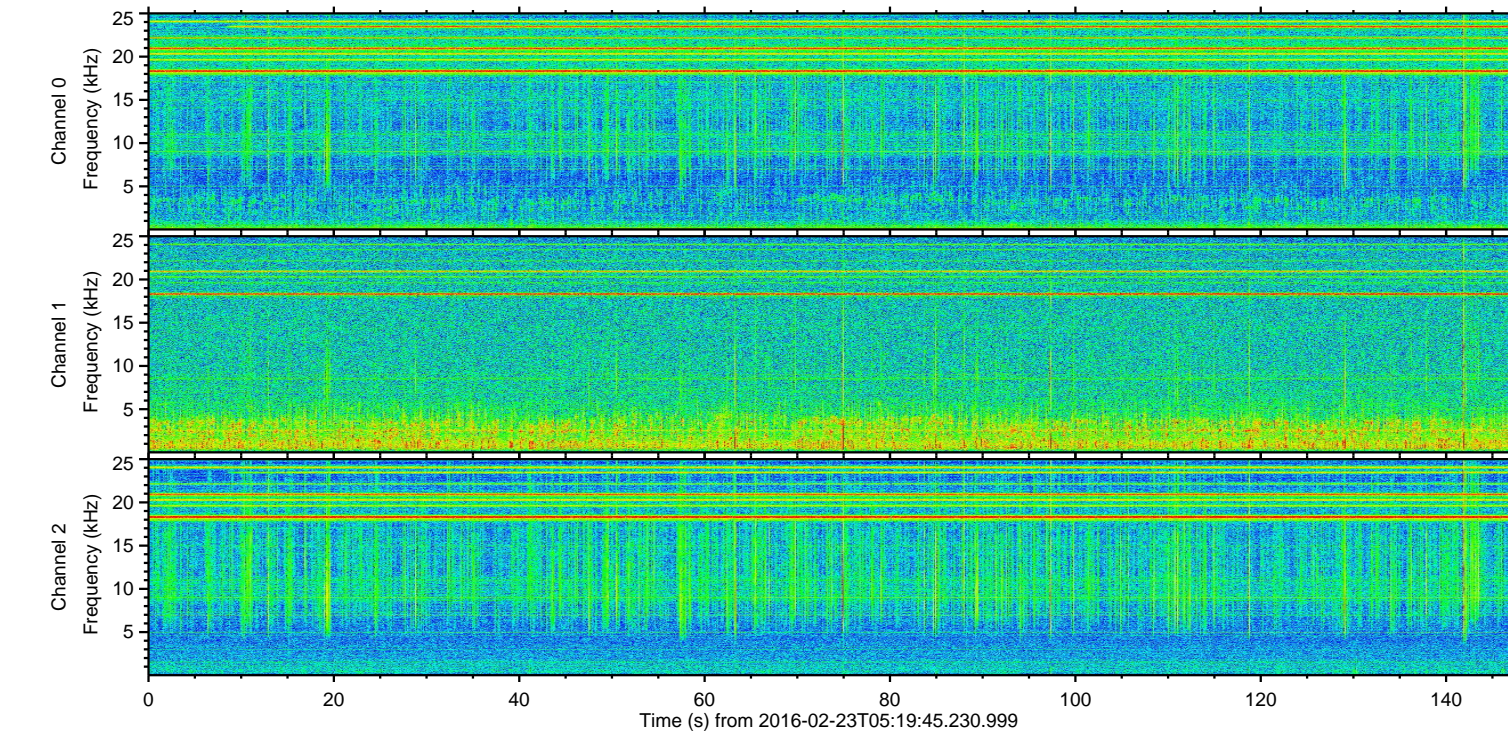
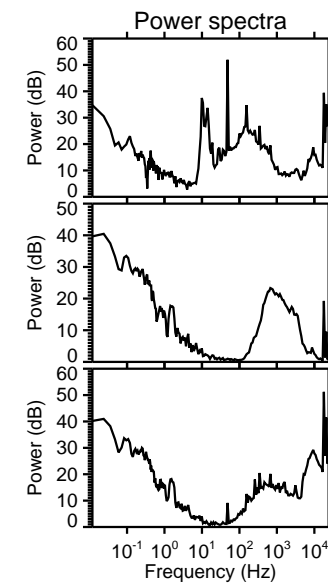
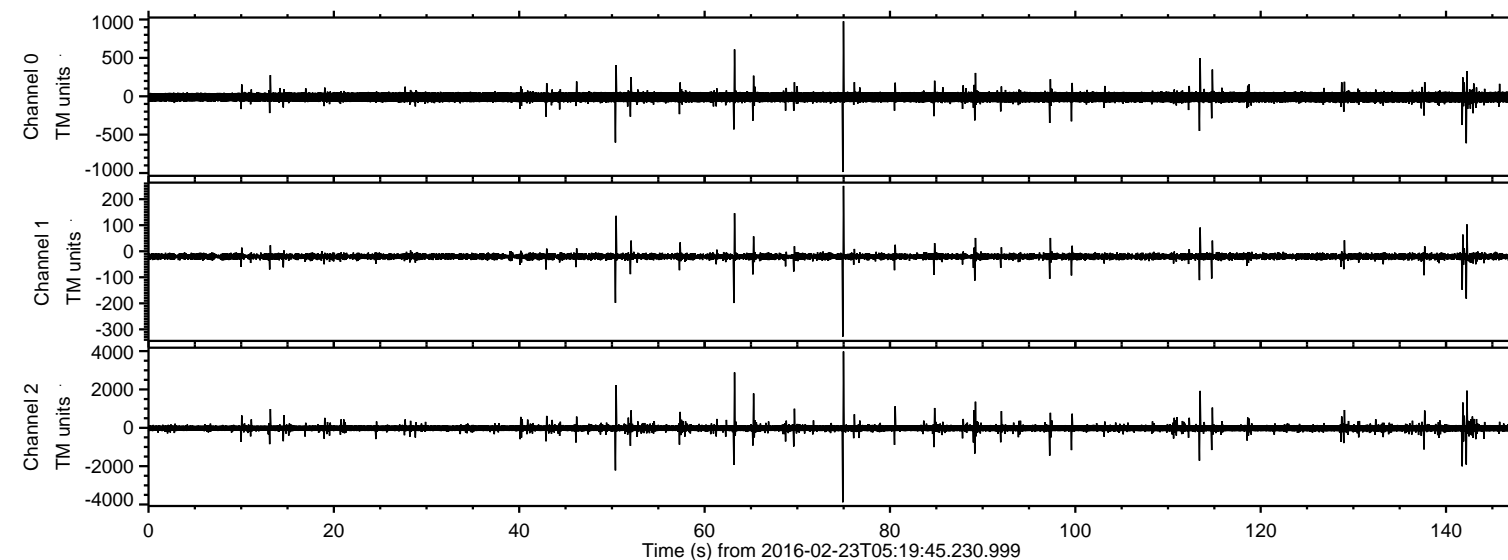


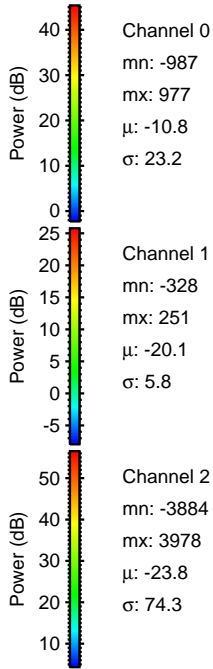
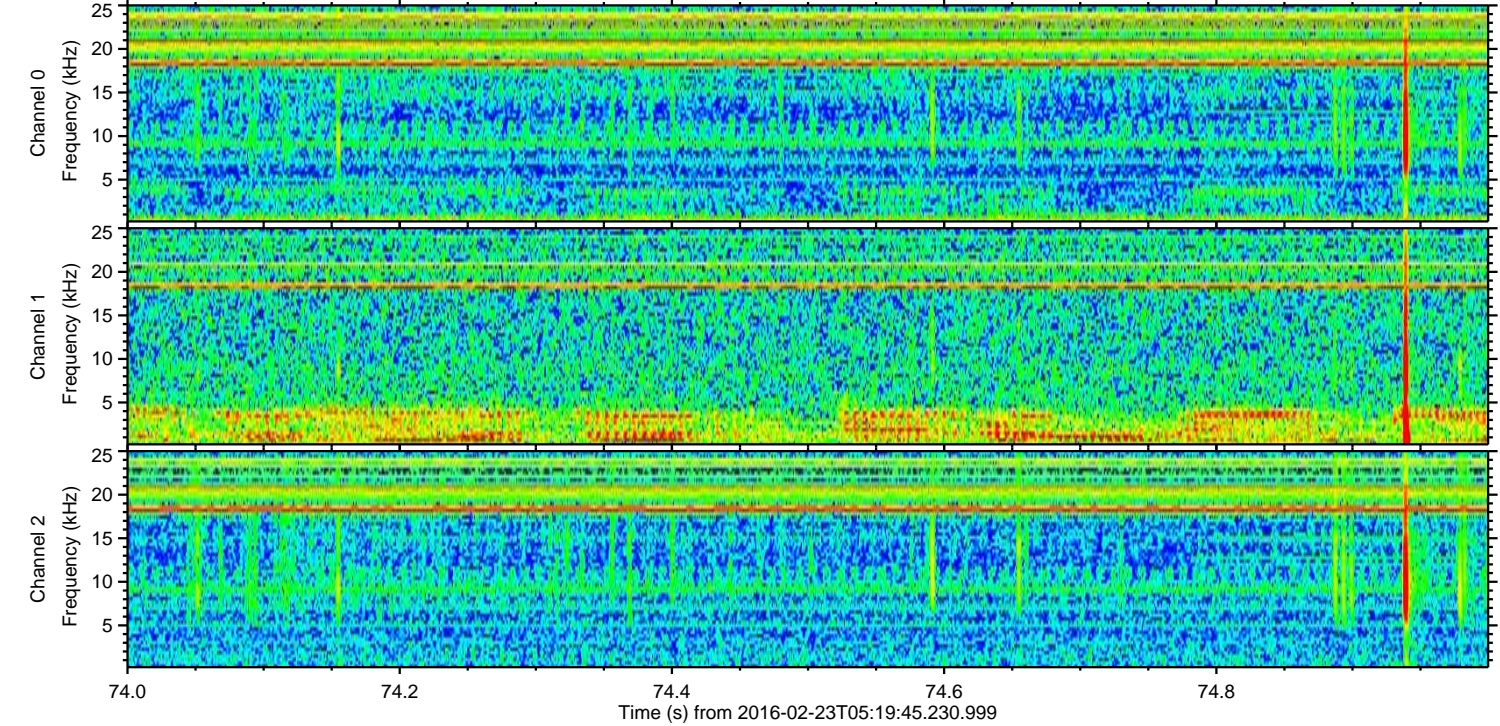
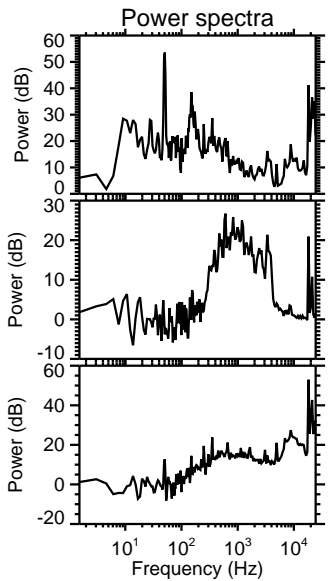
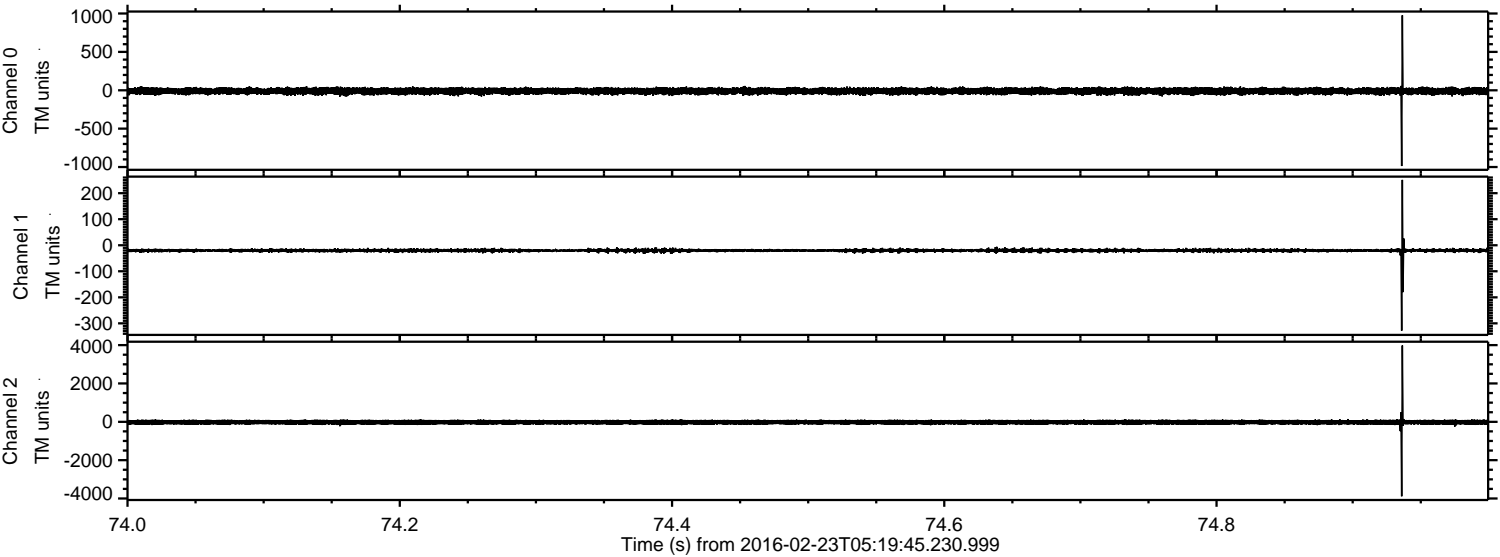
# ELMAVAN 3D WAVEFORMS (Measured data sampled at 50 kHz) 51000 packets of 144 samples from 2016-02-23T05:19:45.230.999.

Processed Sat Apr 16 04:46:43 2016 by ELM ver.2012-10-06 from 001\_\_elm20160223\_051944\_\_dat00.bin



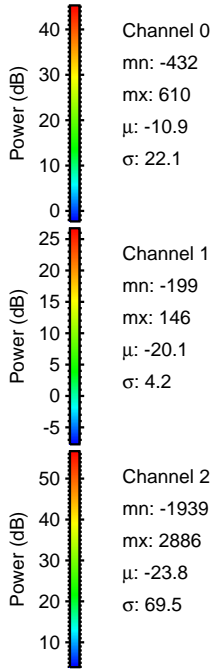
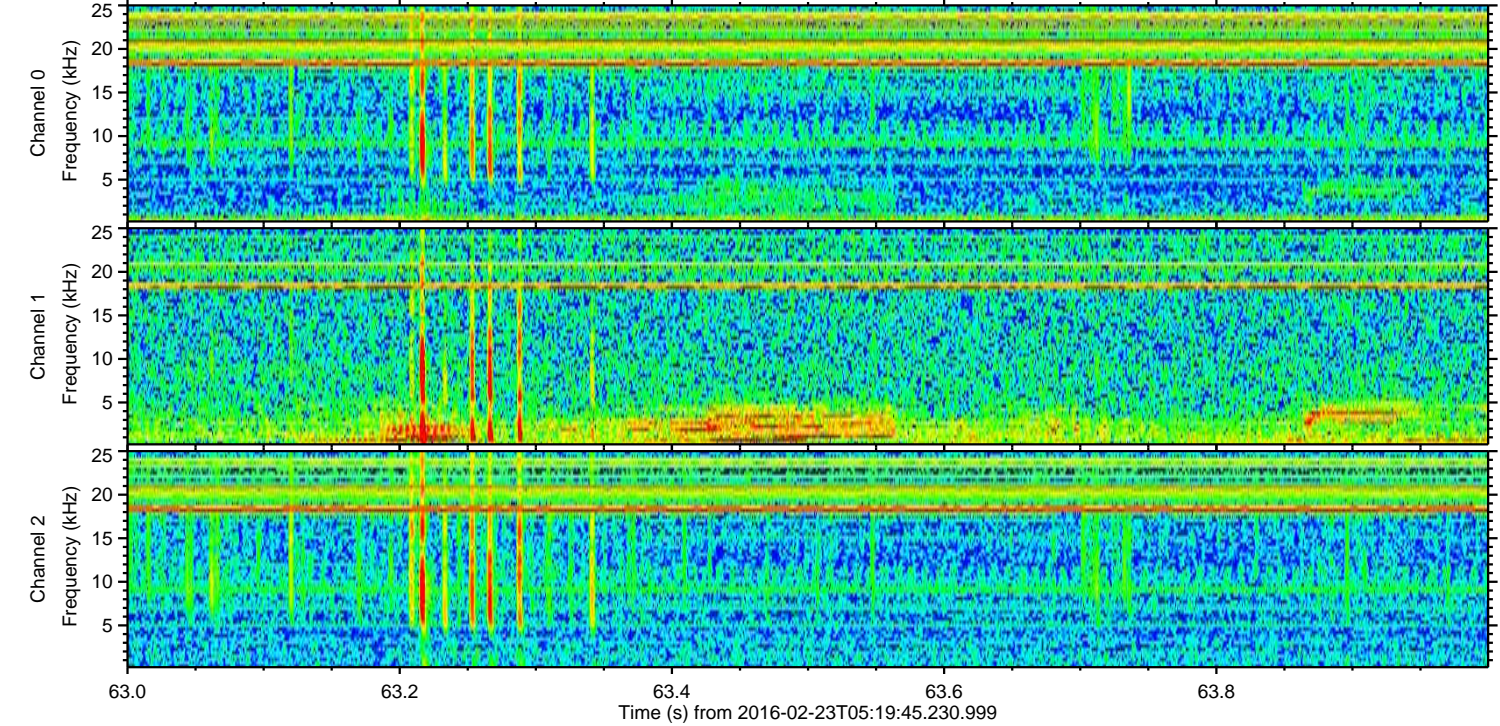
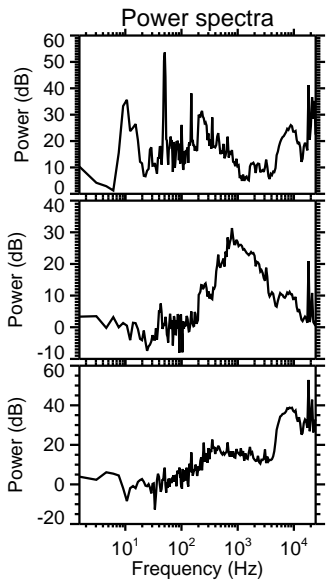
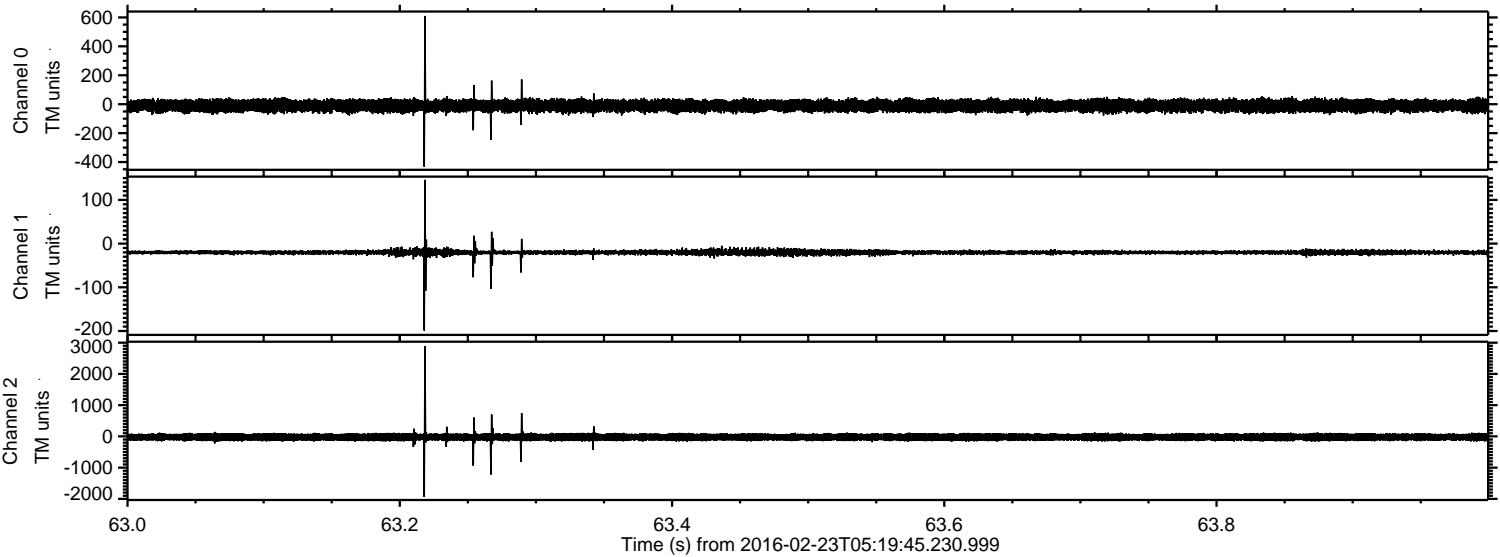


Processed Sat Apr 16 04:46:55 2016 by ELM ver.2012-10-06 from 001\_\_elm20160223\_051944\_\_dat00.bin



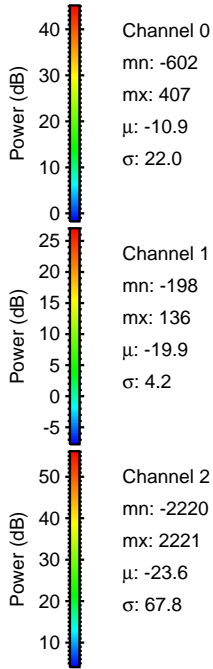
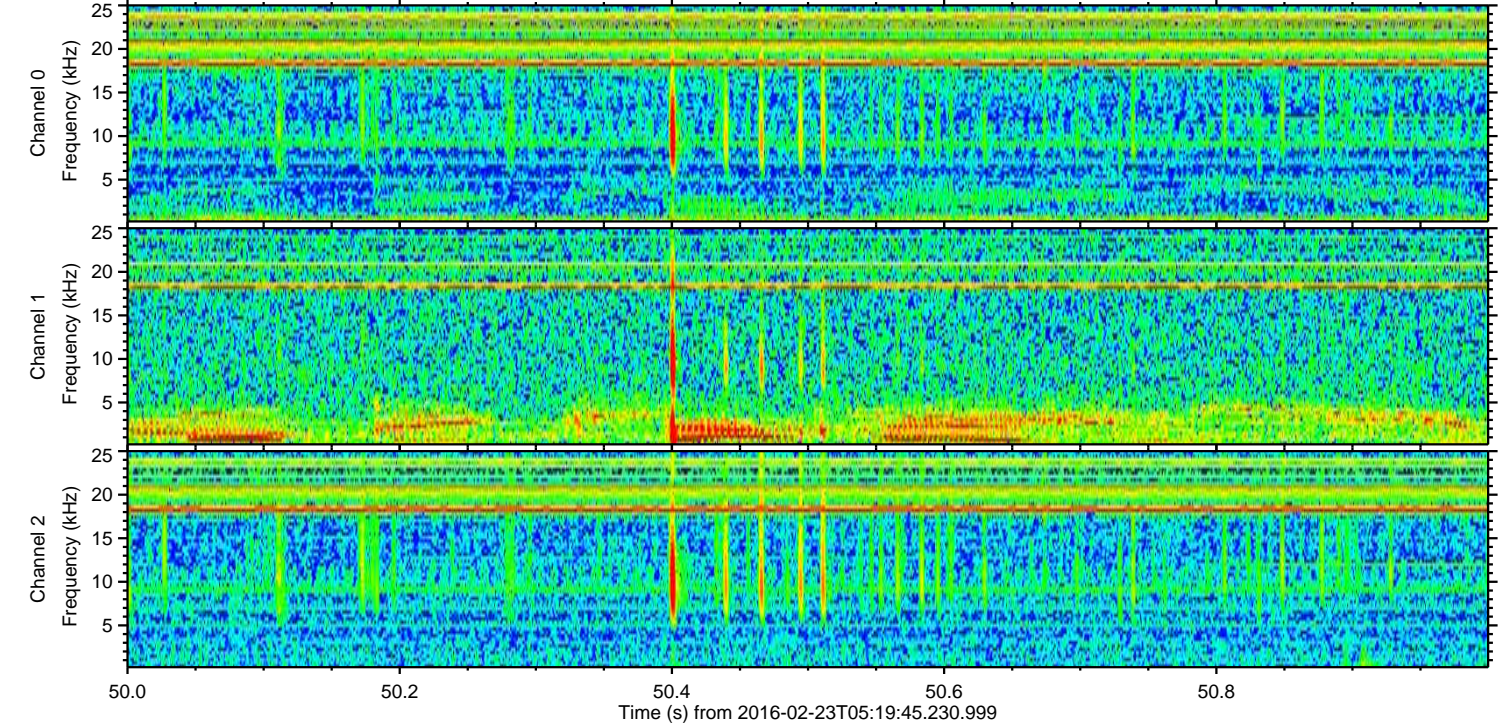
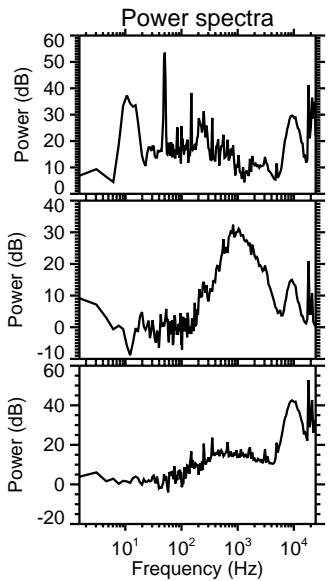
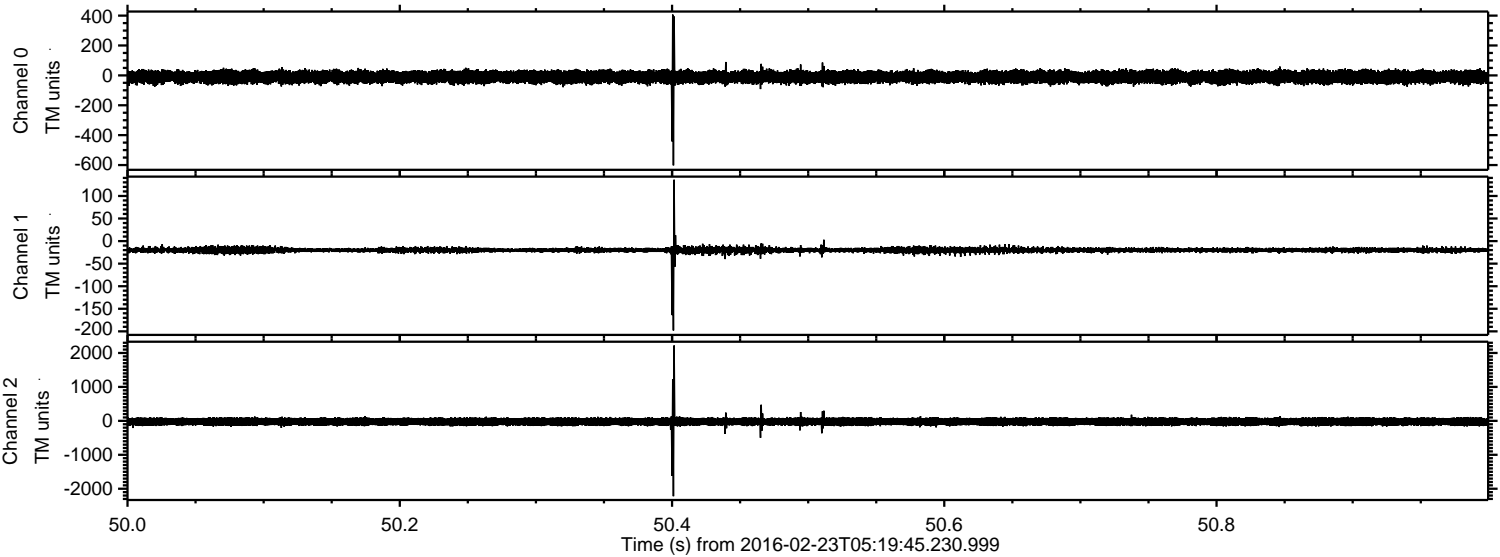


Processed Sat Apr 16 04:46:56 2016 by ELM ver.2012-10-06 from 001\_\_elm20160223\_051944\_\_dat00.bin





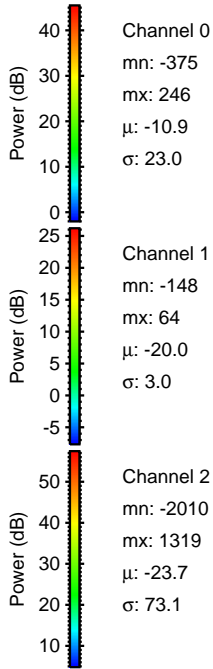
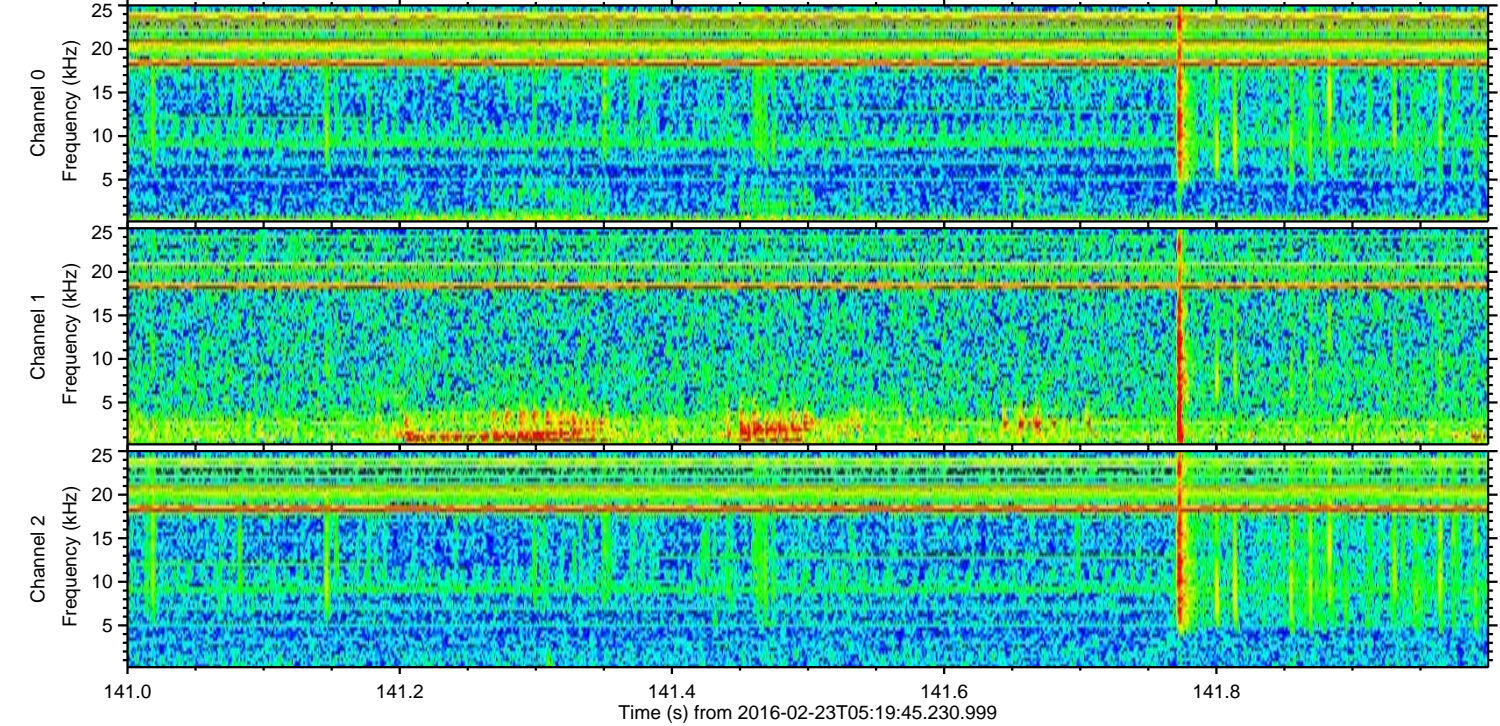
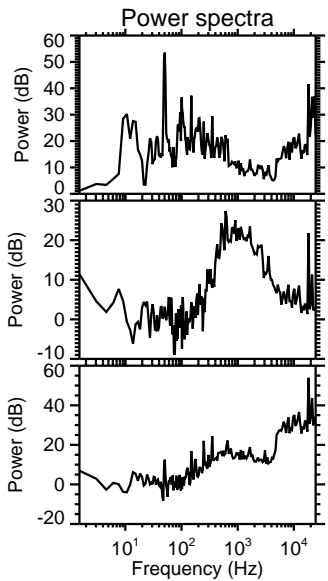
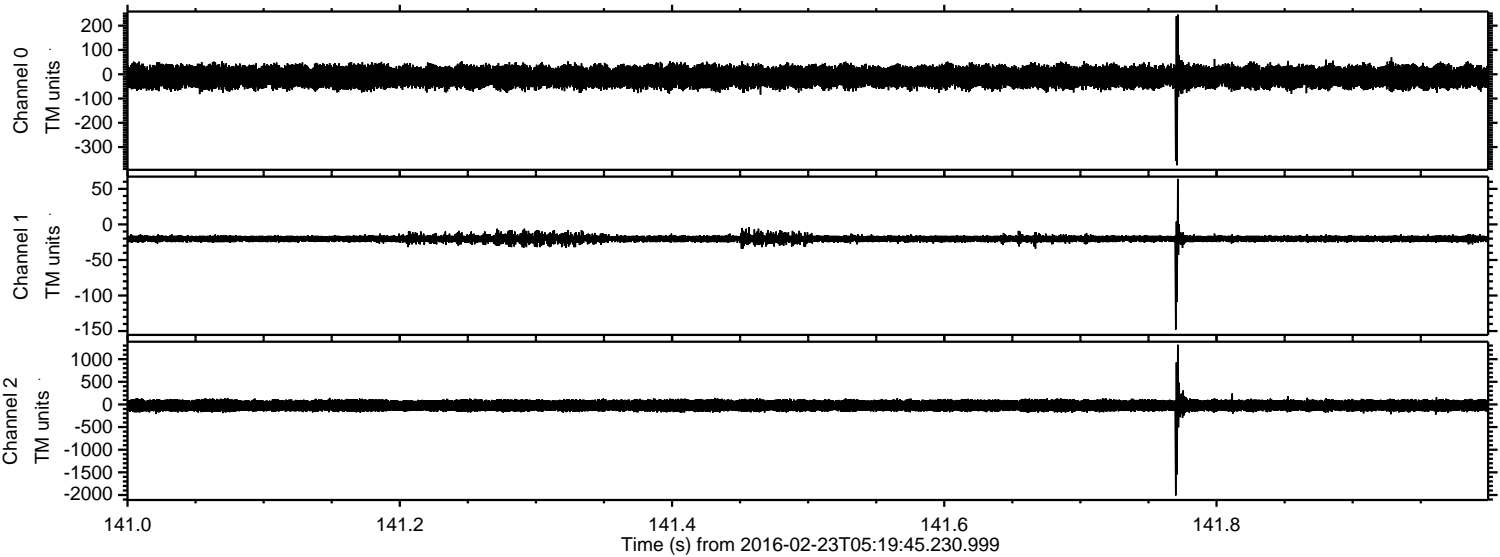
Processed Sat Apr 16 04:46:57 2016 by ELM ver.2012-10-06 from 001\_\_elm20160223\_051944\_\_dat00.bin





ELMAVAN 3D WAVEFORMS (Measured data sampled at 50 kHz) 51000 packets of 144 samples from 2016-02-23T05:19:45.230.999. Part 142/147

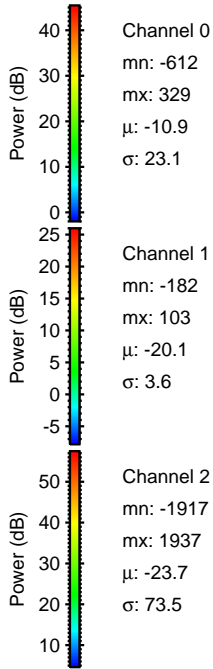
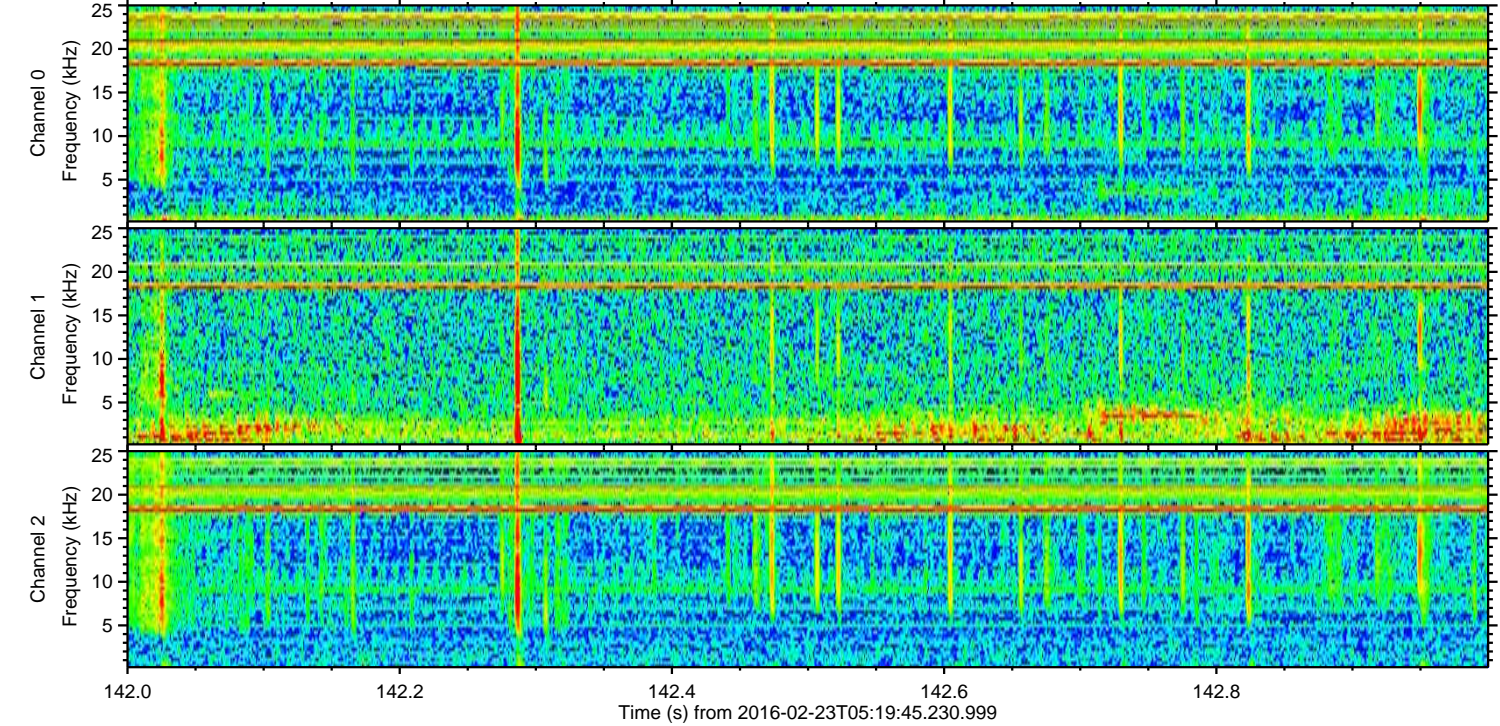
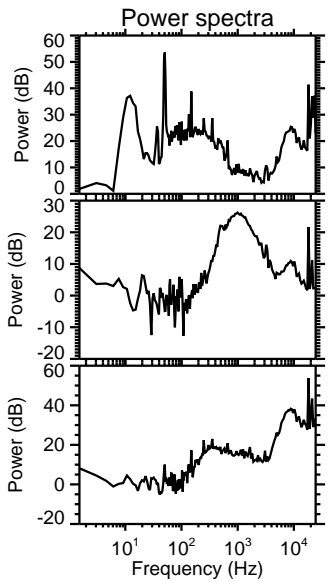
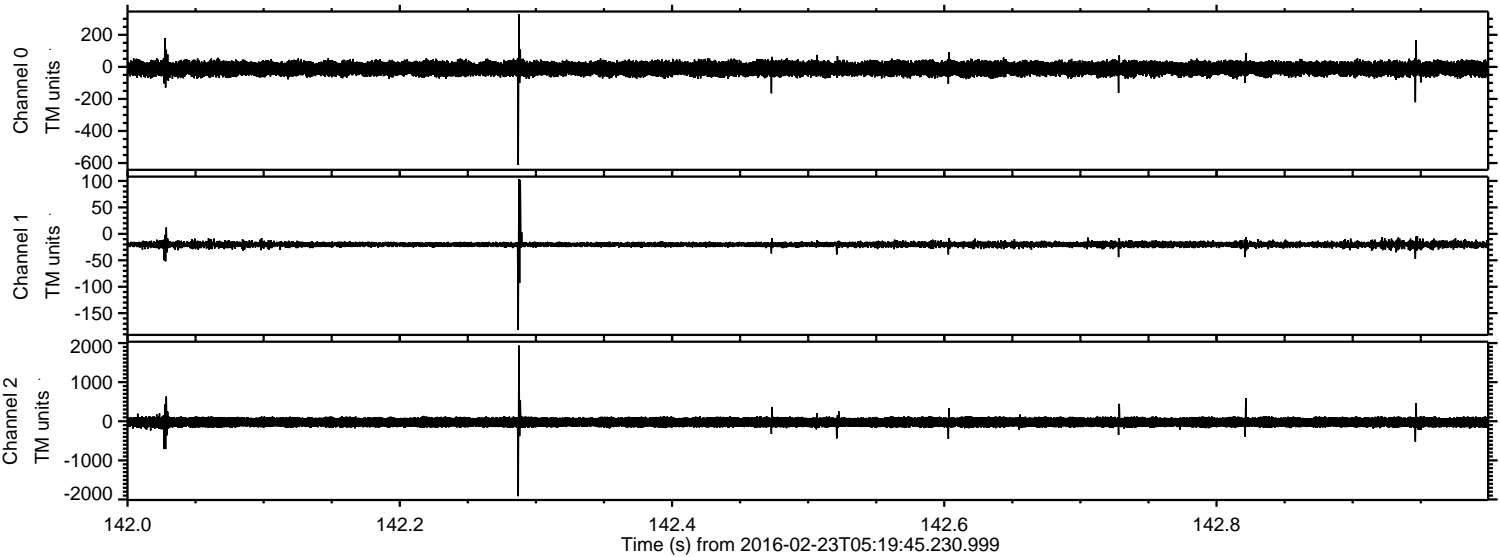
Processed Sat Apr 16 04:46:57 2016 by ELM ver.2012-10-06 from 001\_\_elm20160223\_051944\_\_dat00.bin





ELMAVAN 3D WAVEFORMS (Measured data sampled at 50 kHz) 51000 packets of 144 samples from 2016-02-23T05:19:45.230.999. Part 143/147

Processed Sat Apr 16 04:46:58 2016 by ELM ver.2012-10-06 from 001\_\_elm20160223\_051944\_\_dat00.bin



Channel 0  
mn: -612  
mx: 329  
 $\mu$ : -10.9  
 $\sigma$ : 23.1

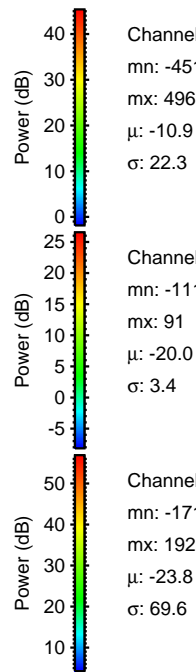
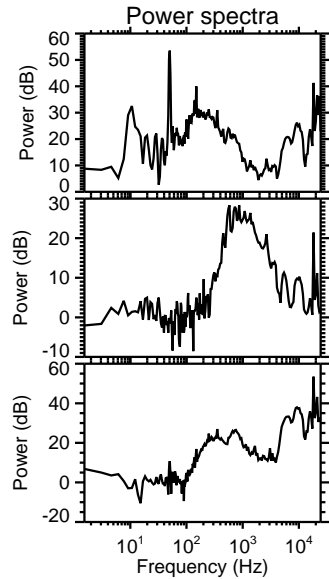
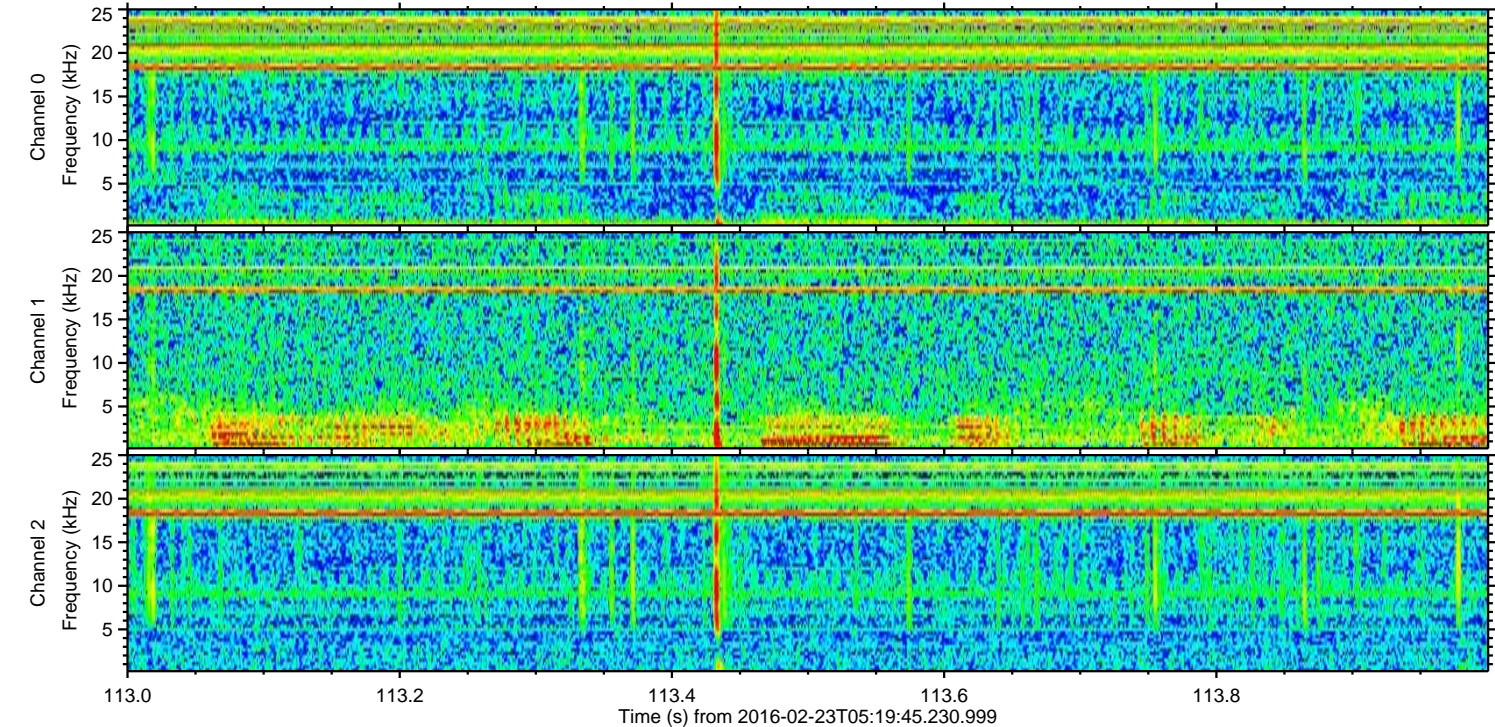
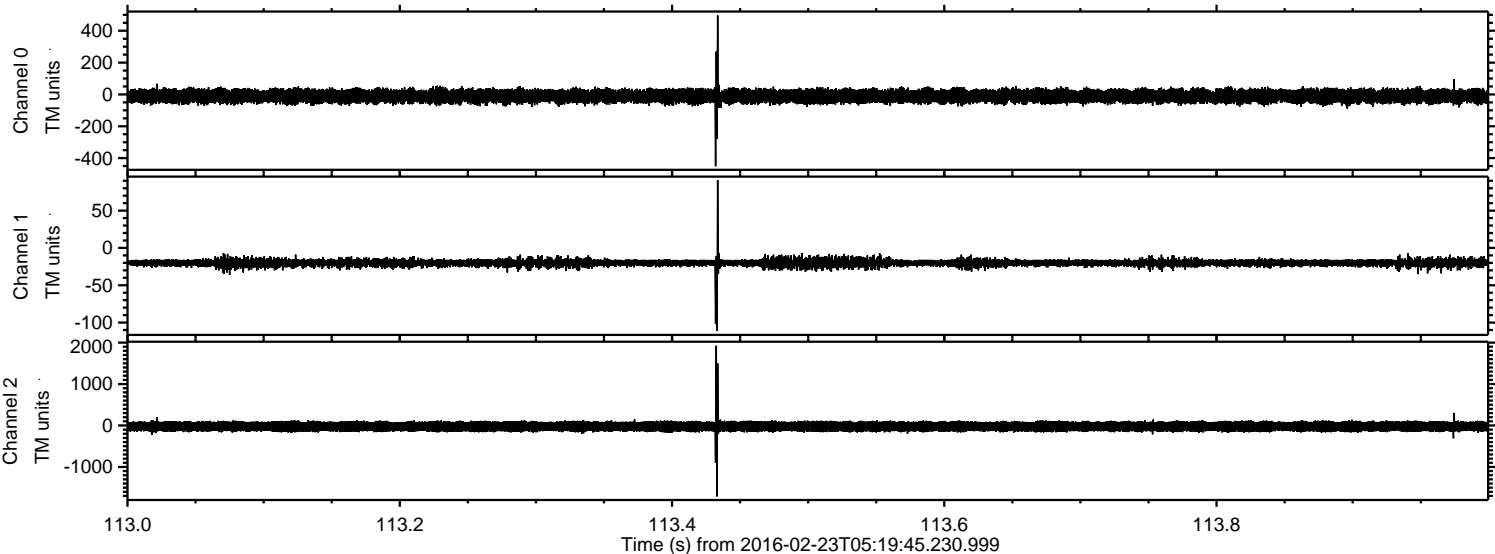
Channel 1  
mn: -182  
mx: 103  
 $\mu$ : -20.1  
 $\sigma$ : 3.6

Channel 2  
mn: -1917  
mx: 1937  
 $\mu$ : -23.7  
 $\sigma$ : 73.5



ELMAVAN 3D WAVEFORMS (Measured data sampled at 50 kHz) 51000 packets of 144 samples from 2016-02-23T05:19:45.230.999. Part 114/147

Processed Sat Apr 16 04:46:59 2016 by ELM ver.2012-10-06 from 001\_\_elm20160223\_051944\_\_dat00.bin



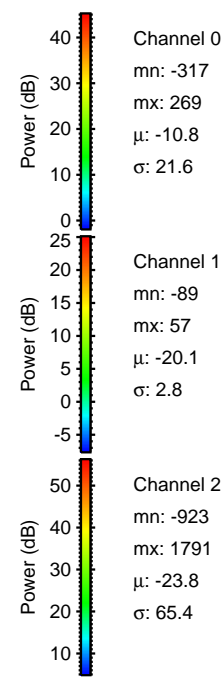
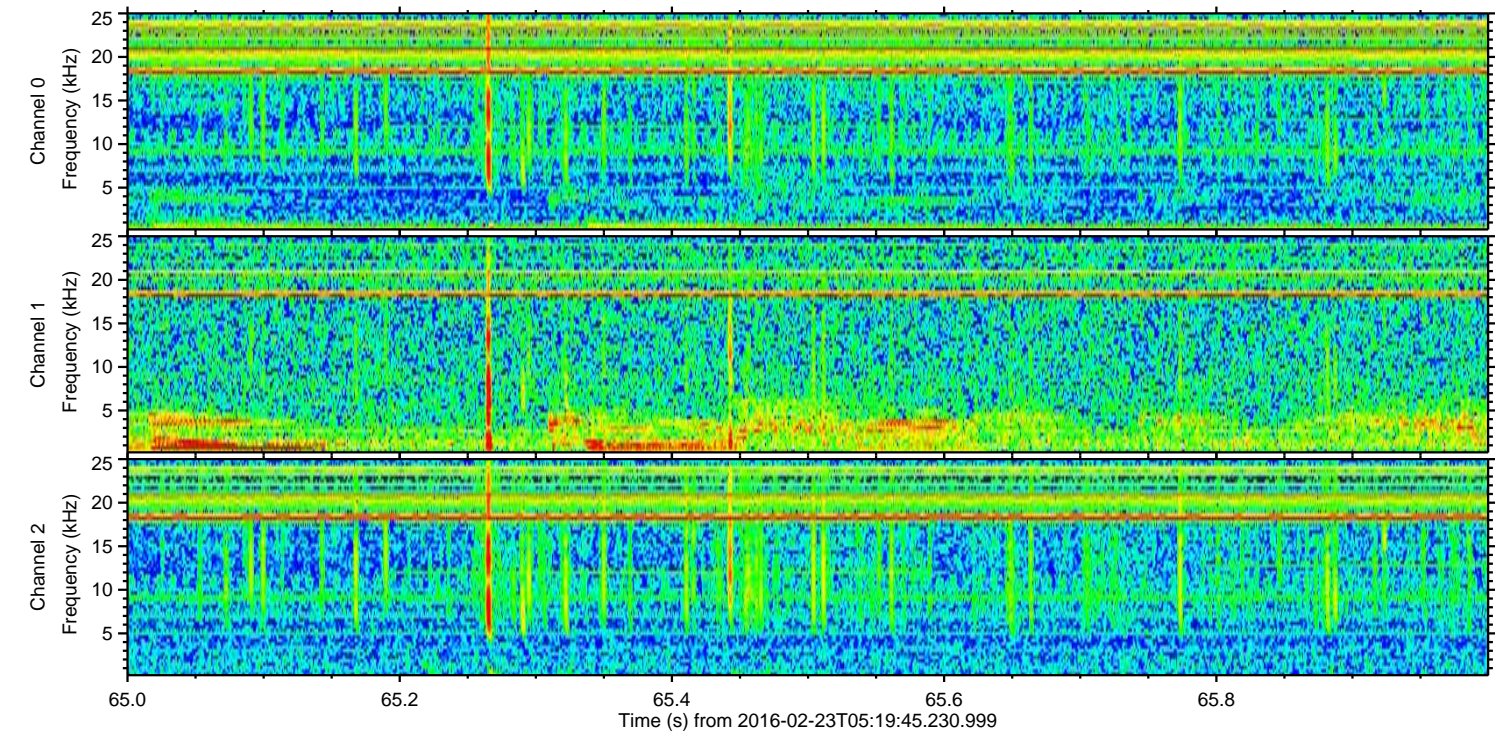
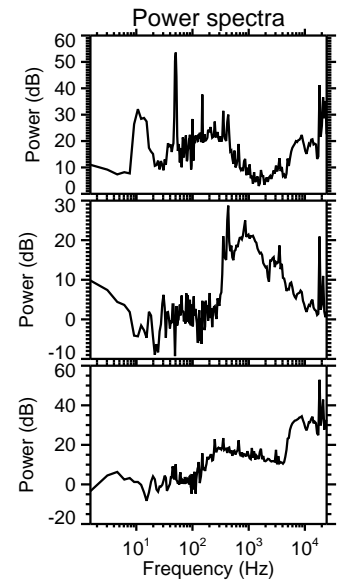
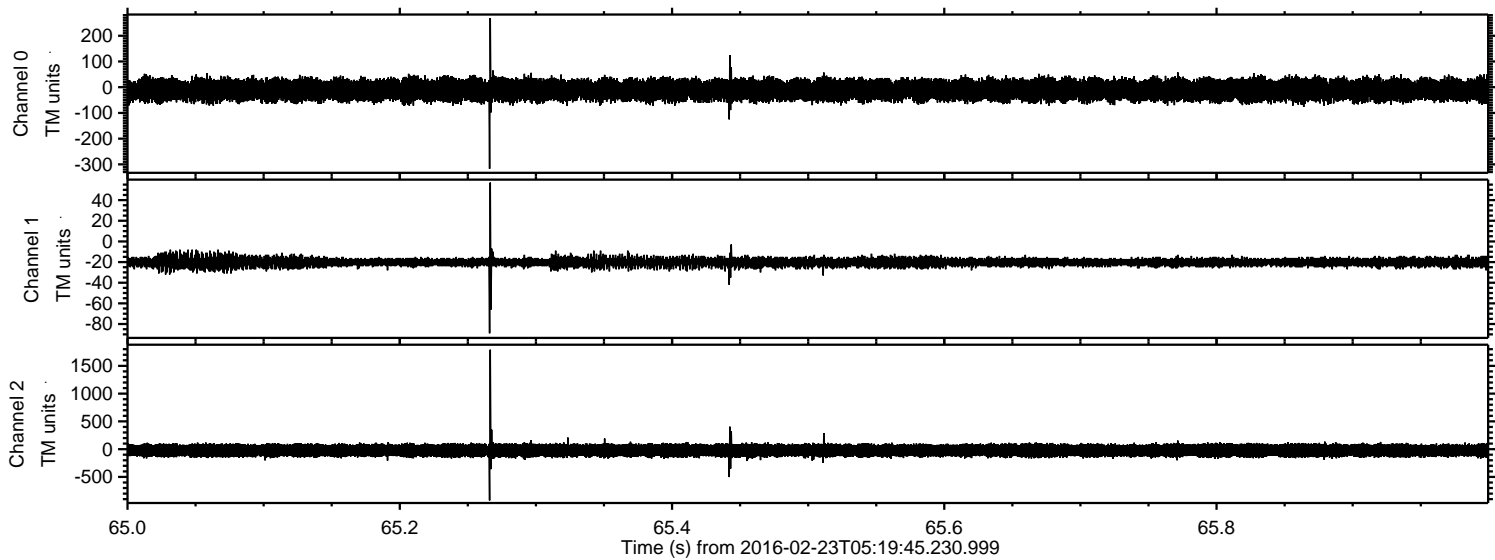
Channel 0  
mn: -451  
mx: 496  
 $\mu$ : -10.9  
 $\sigma$ : 22.3

Channel 1  
mn: -111  
mx: 91  
 $\mu$ : -20.0  
 $\sigma$ : 3.4

Channel 2  
mn: -1712  
mx: 1925  
 $\mu$ : -23.8  
 $\sigma$ : 69.6

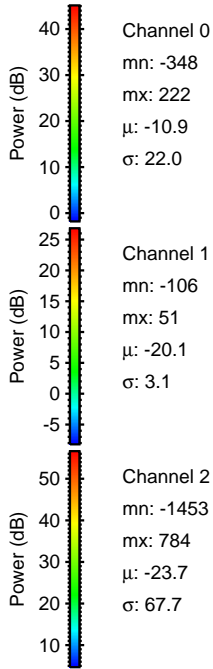
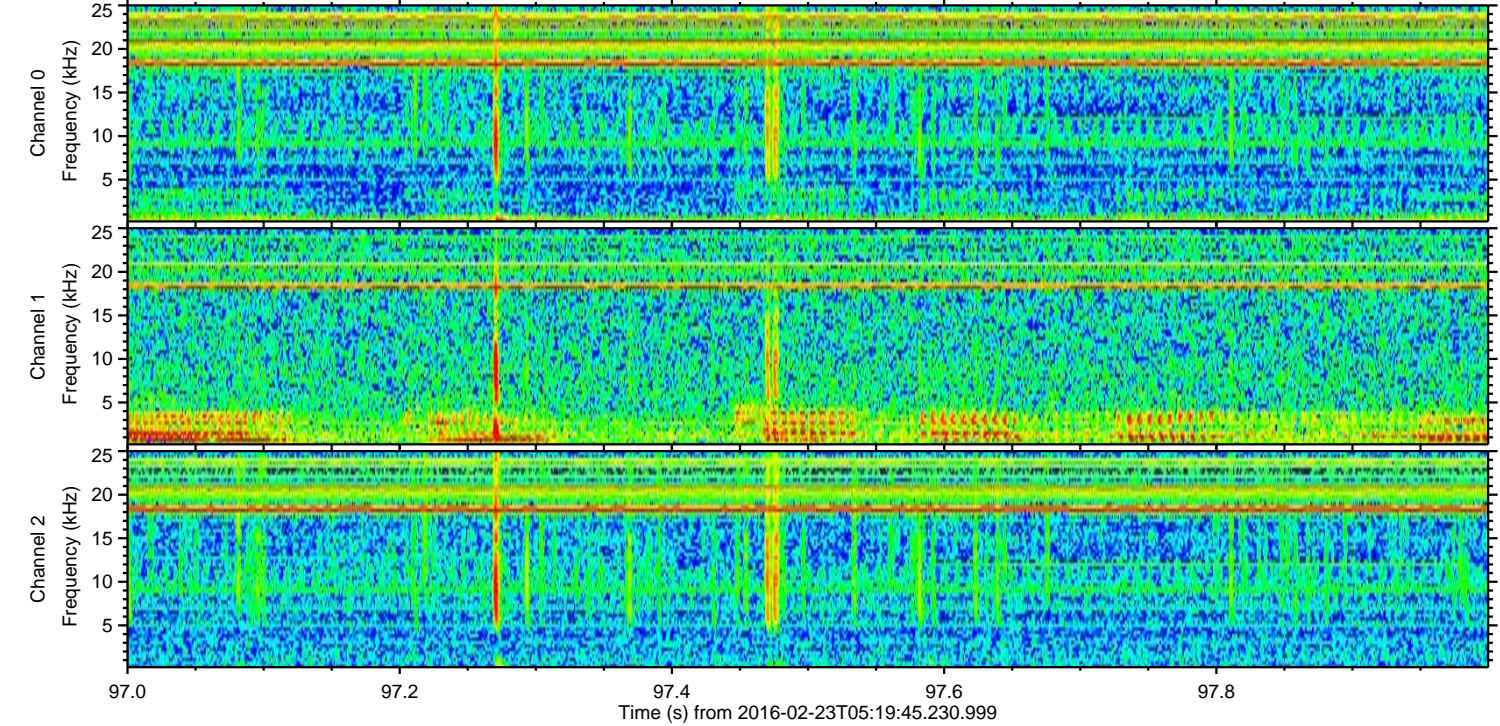
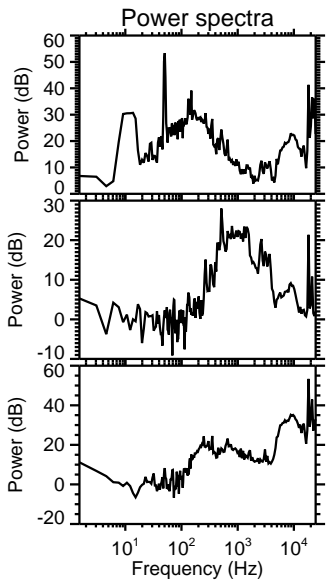
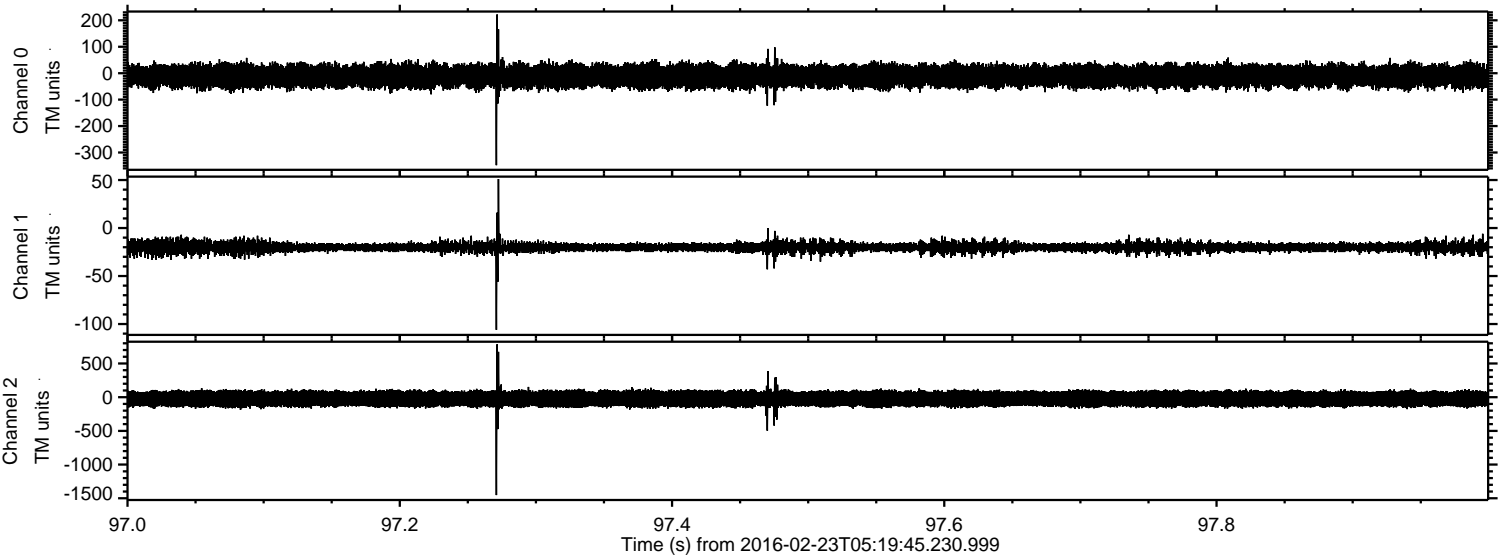


Processed Sat Apr 16 04:47:00 2016 by ELM ver.2012-10-06 from 001\_\_elm20160223\_051944\_\_dat00.bin





Processed Sat Apr 16 04:47:01 2016 by ELM ver.2012-10-06 from 001\_\_elm20160223\_051944\_\_dat00.bin



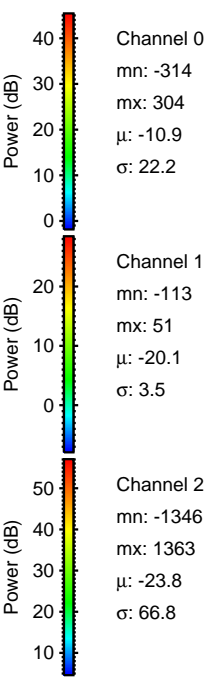
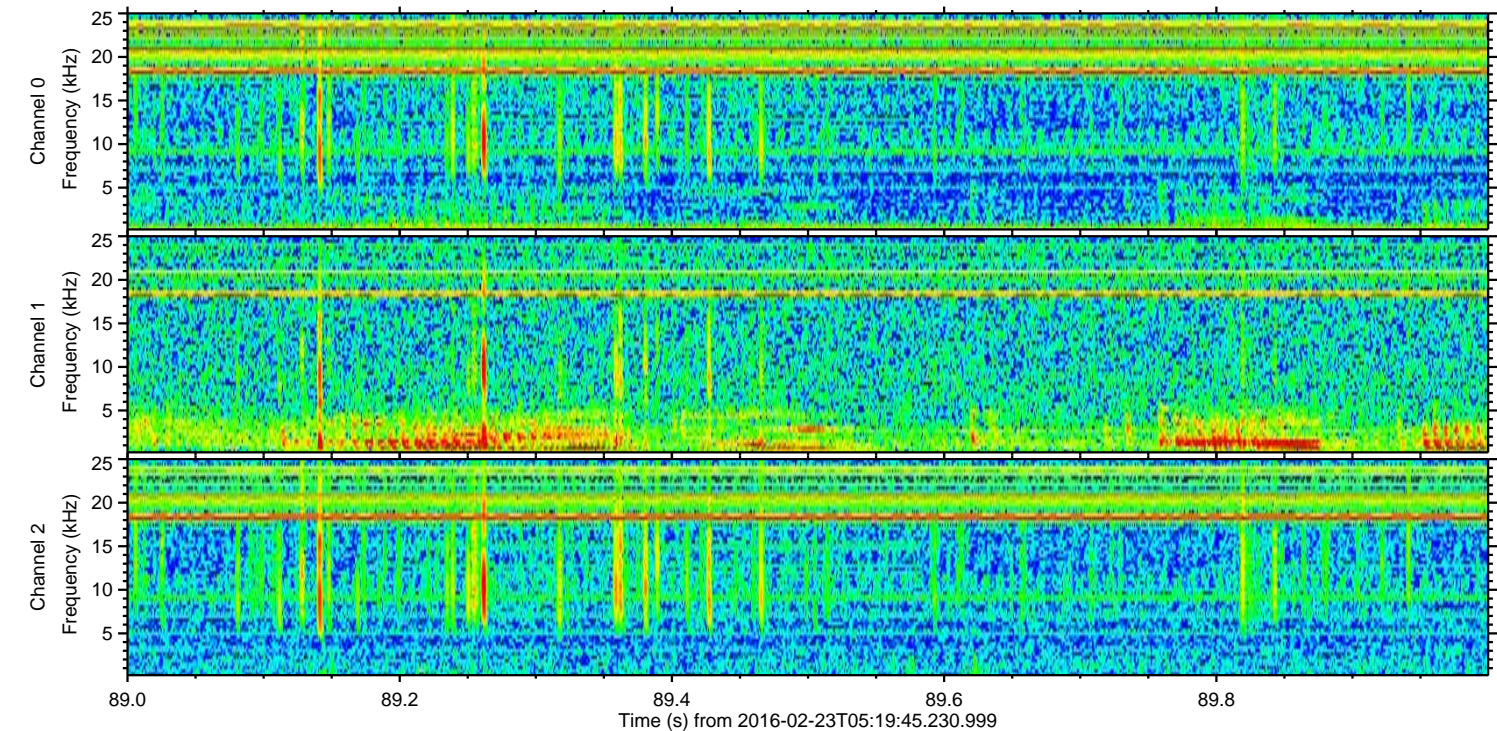
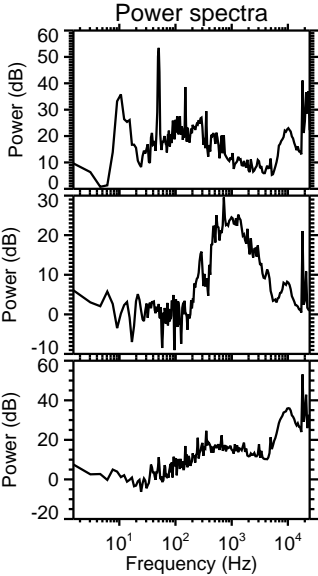
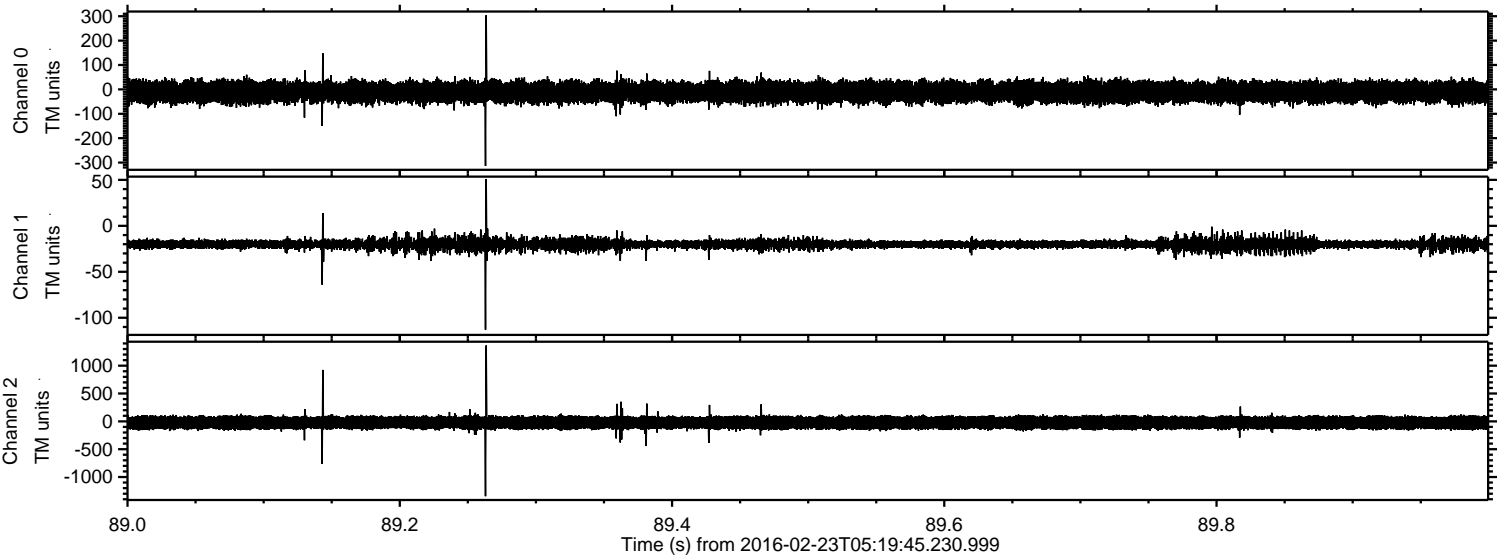
Channel 0  
mn: -348  
mx: 222  
 $\mu$ : -10.9  
 $\sigma$ : 22.0

Channel 1  
mn: -106  
mx: 51  
 $\mu$ : -20.1  
 $\sigma$ : 3.1

Channel 2  
mn: -1453  
mx: 784  
 $\mu$ : -23.7  
 $\sigma$ : 67.7



Processed Sat Apr 16 04:47:02 2016 by ELM ver.2012-10-06 from 001\_\_elm20160223\_051944\_\_dat00.bin





Processed Sat Apr 16 04:47:03 2016 by ELM ver.2012-10-06 from 001\_\_elm20160223\_051944\_\_dat00.bin

