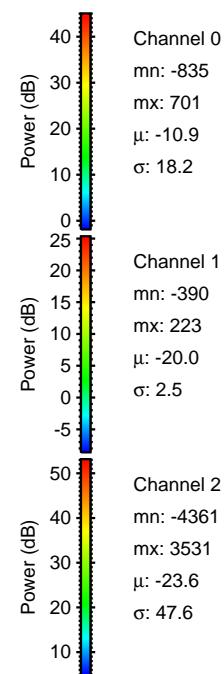
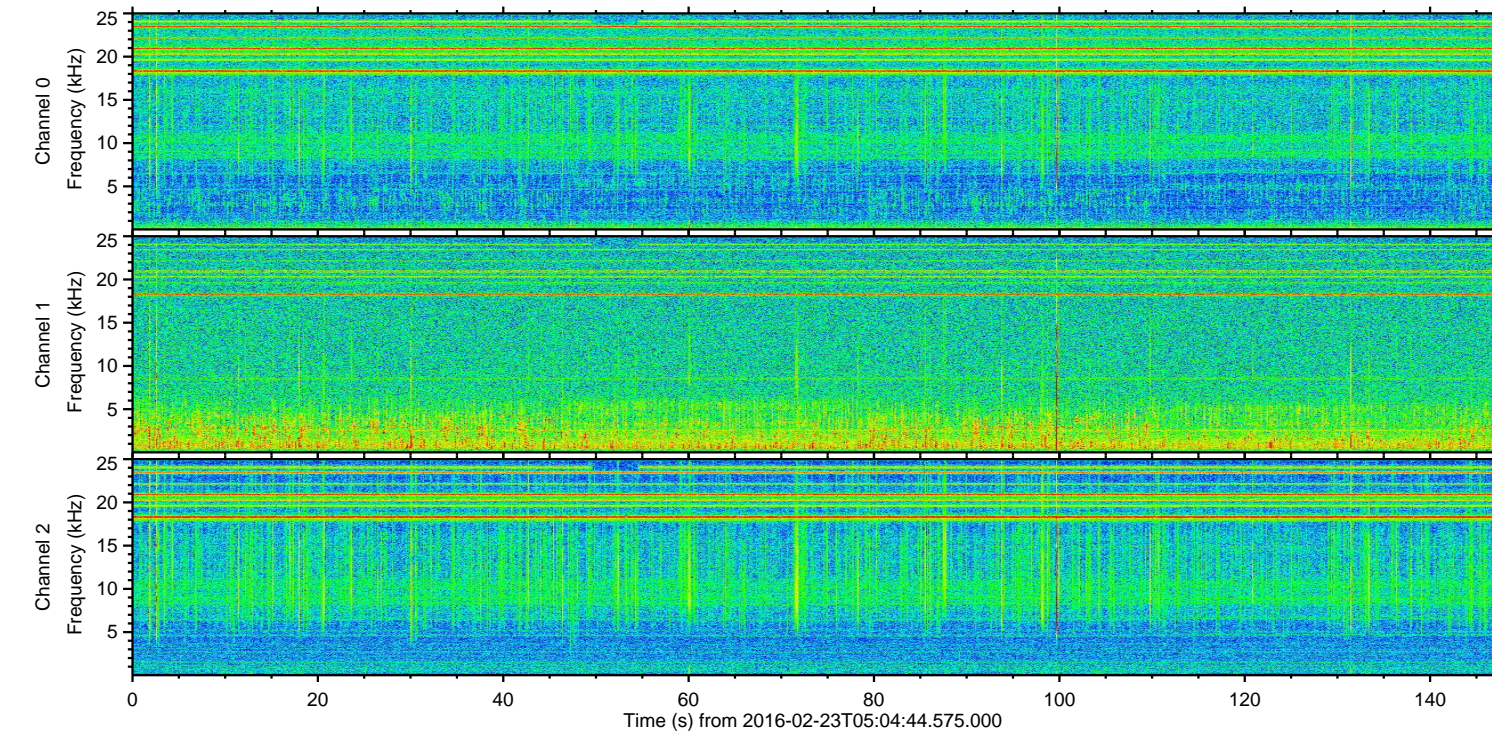
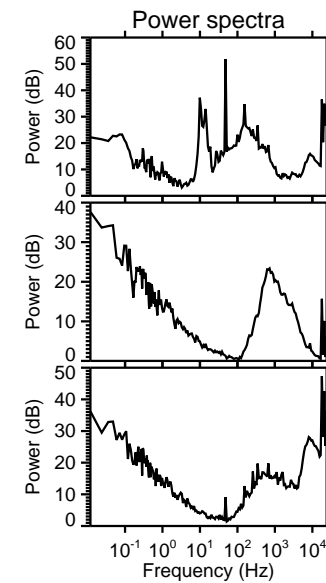
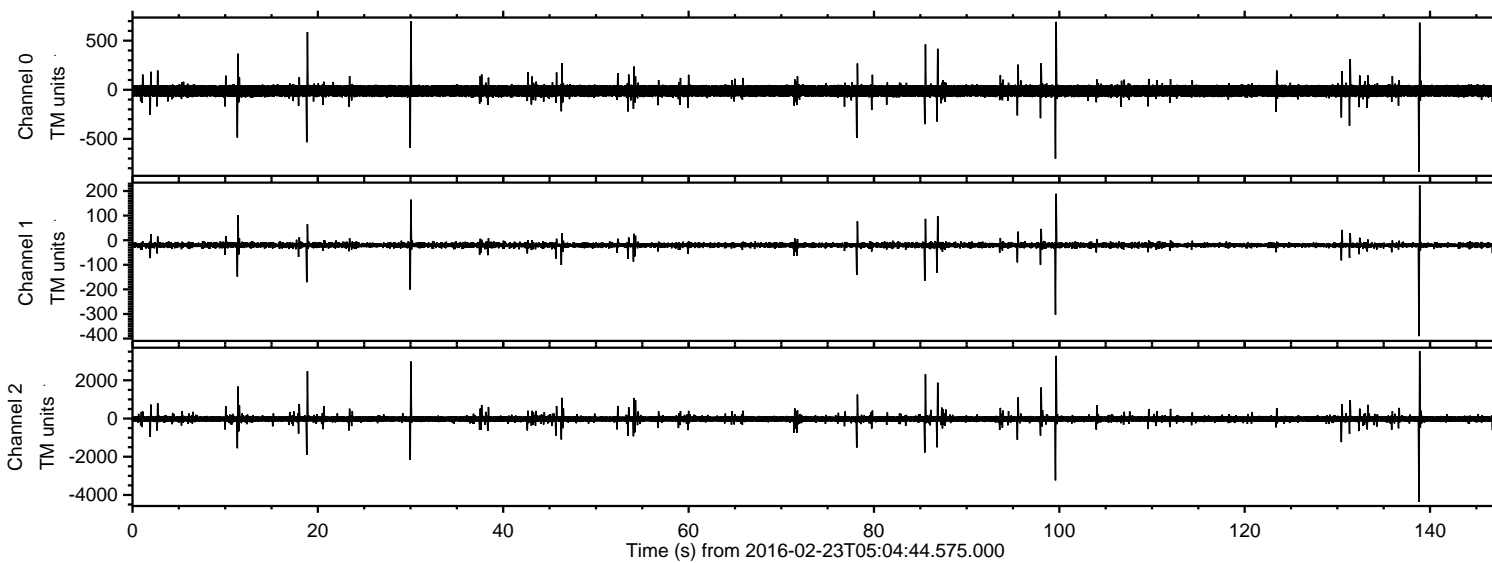


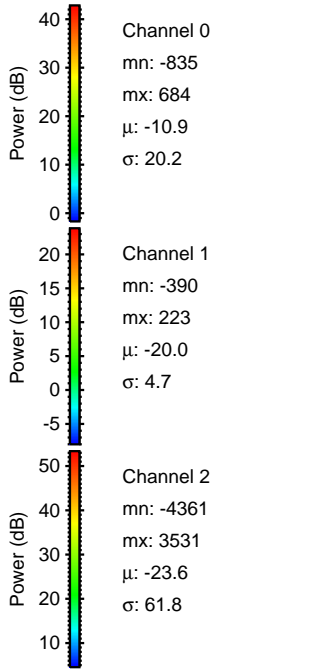
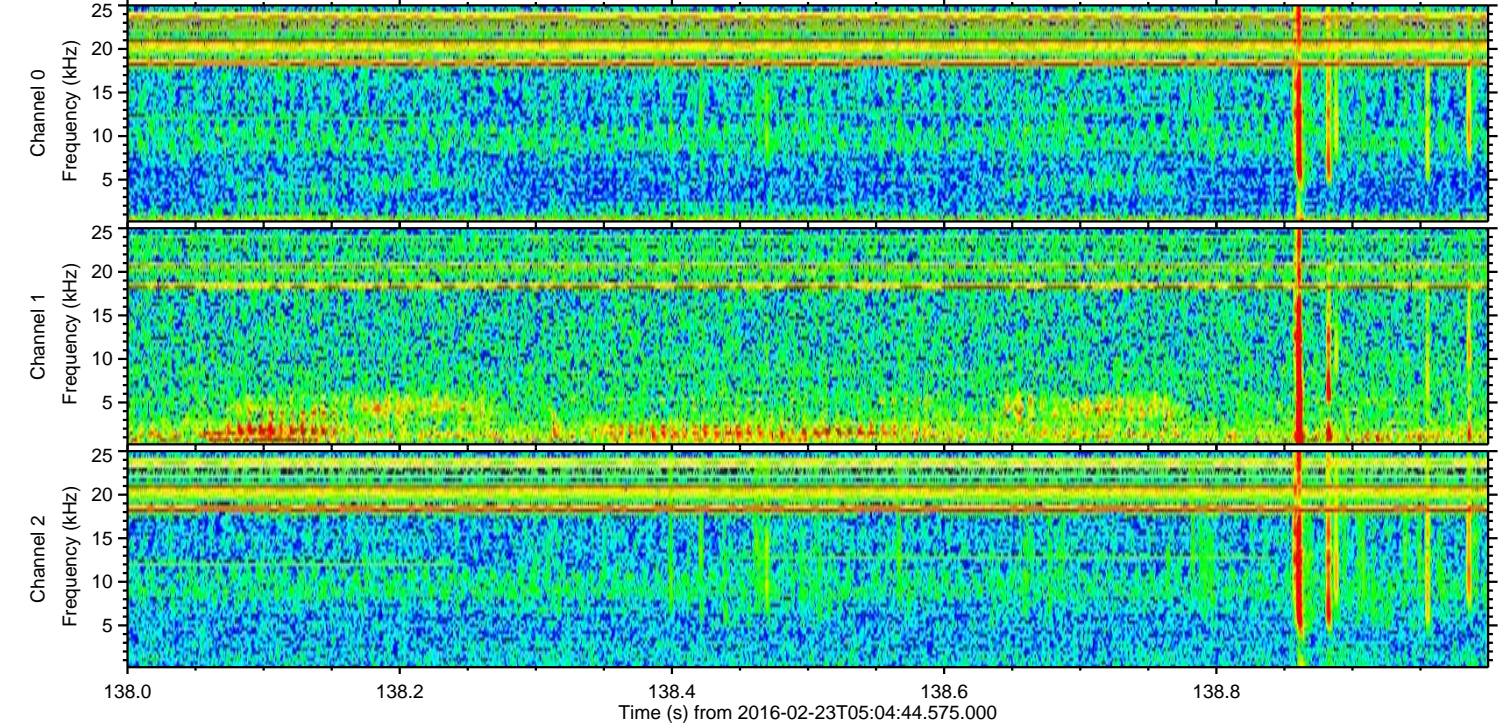
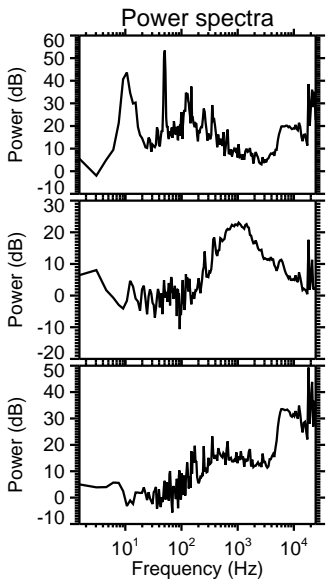
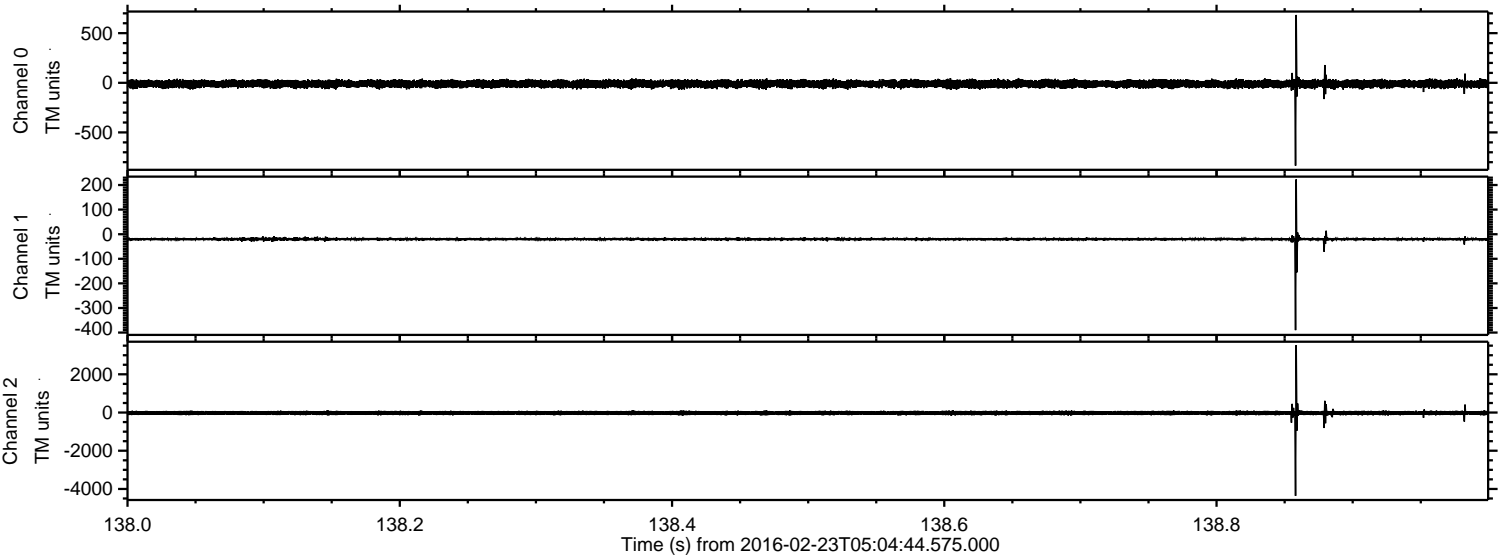
ELMAVAN 3D WAVEFORMS (Measured data sampled at 50 kHz) 51000 packets of 144 samples from 2016-02-23T05:04:44.575.000.

Processed Sat Apr 16 04:43:46 2016 by ELM ver.2012-10-06 from 001__elm20160223_050443__dat00.bin



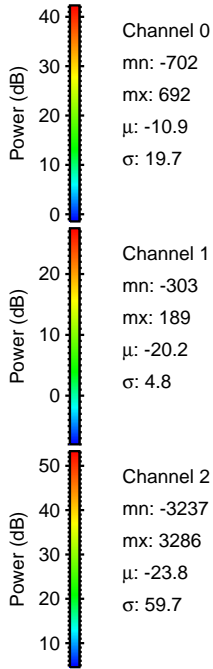
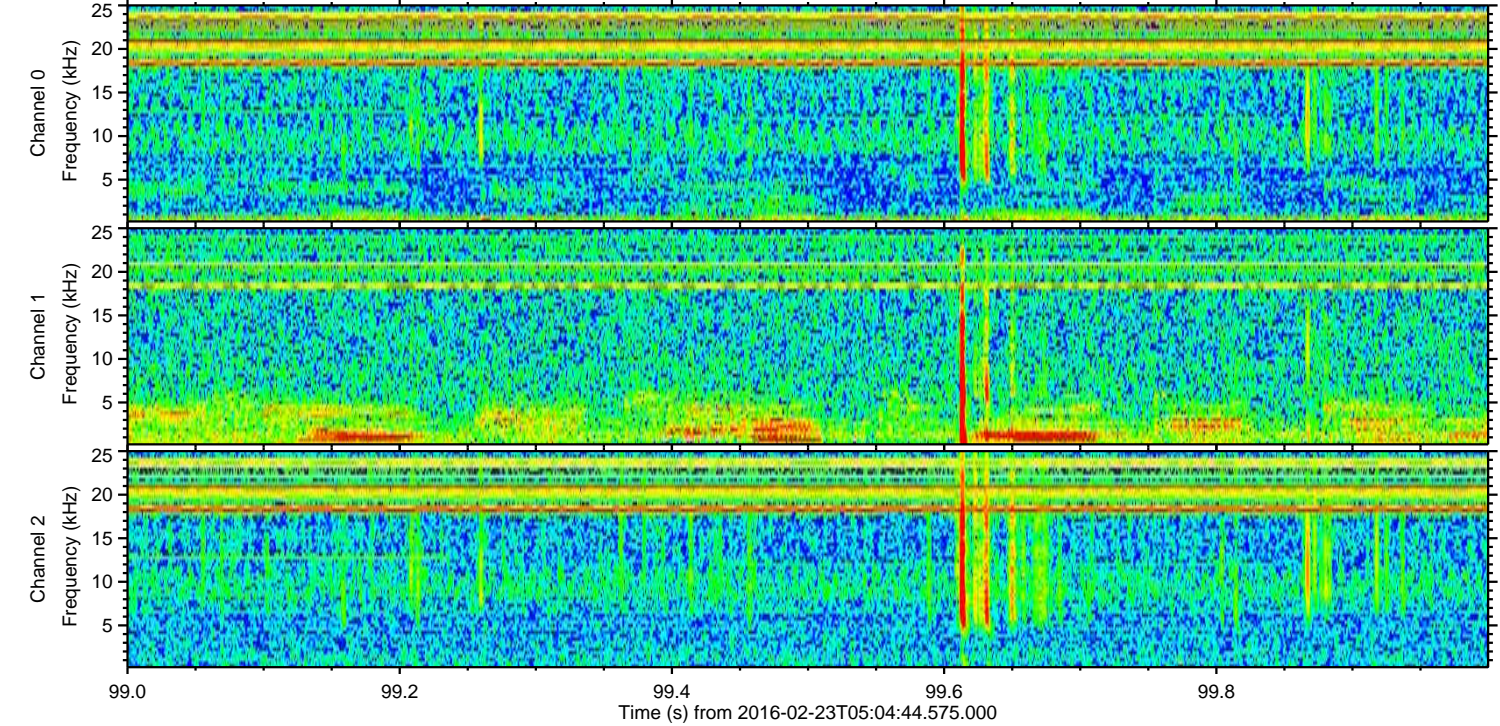
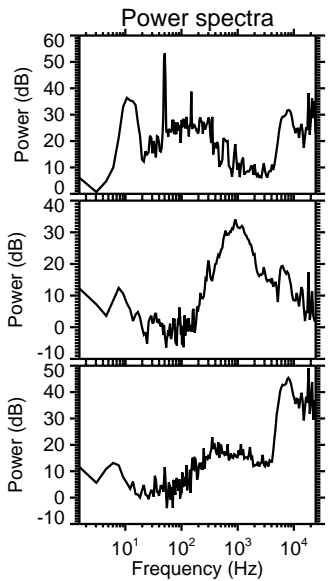
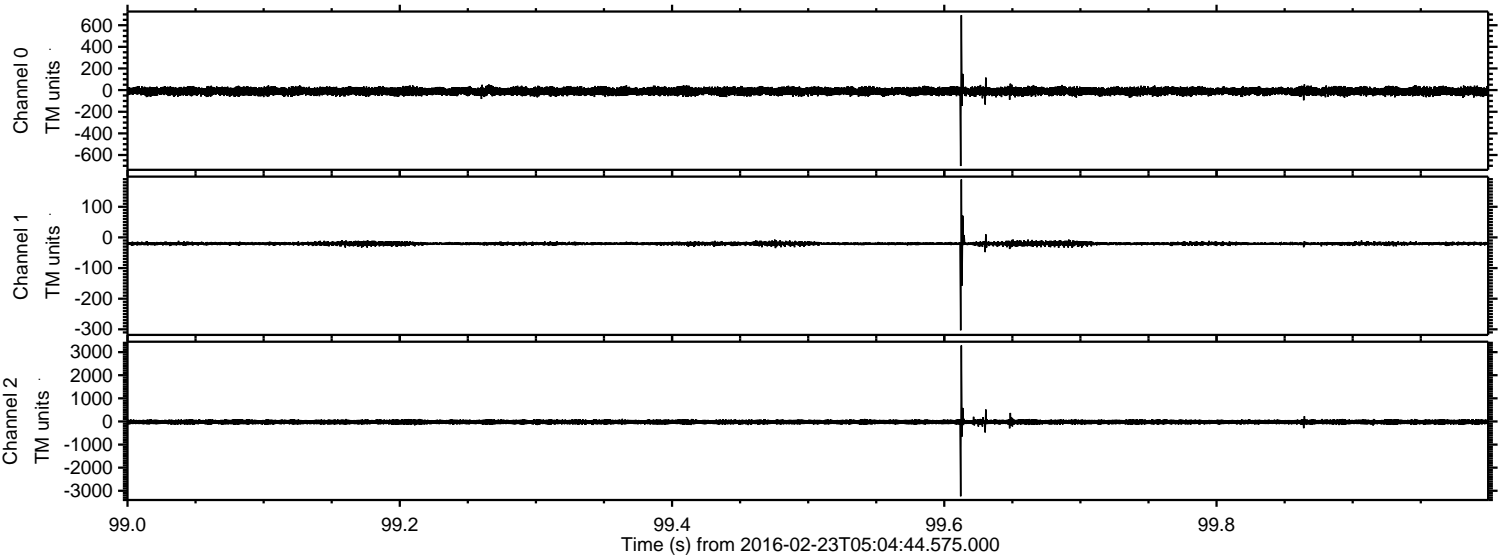
ELMAVAN 3D WAVEFORMS (Measured data sampled at 50 kHz) 51000 packets of 144 samples from 2016-02-23T05:04:44.575.000. Part 139/147

Processed Sat Apr 16 04:43:58 2016 by ELM ver.2012-10-06 from 001__elm20160223_050443__dat00.bin

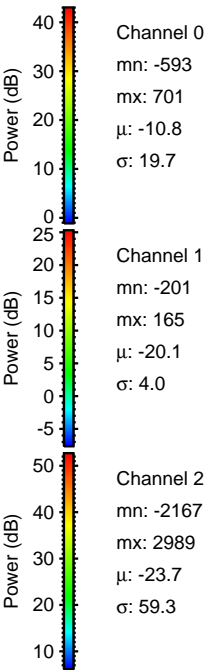
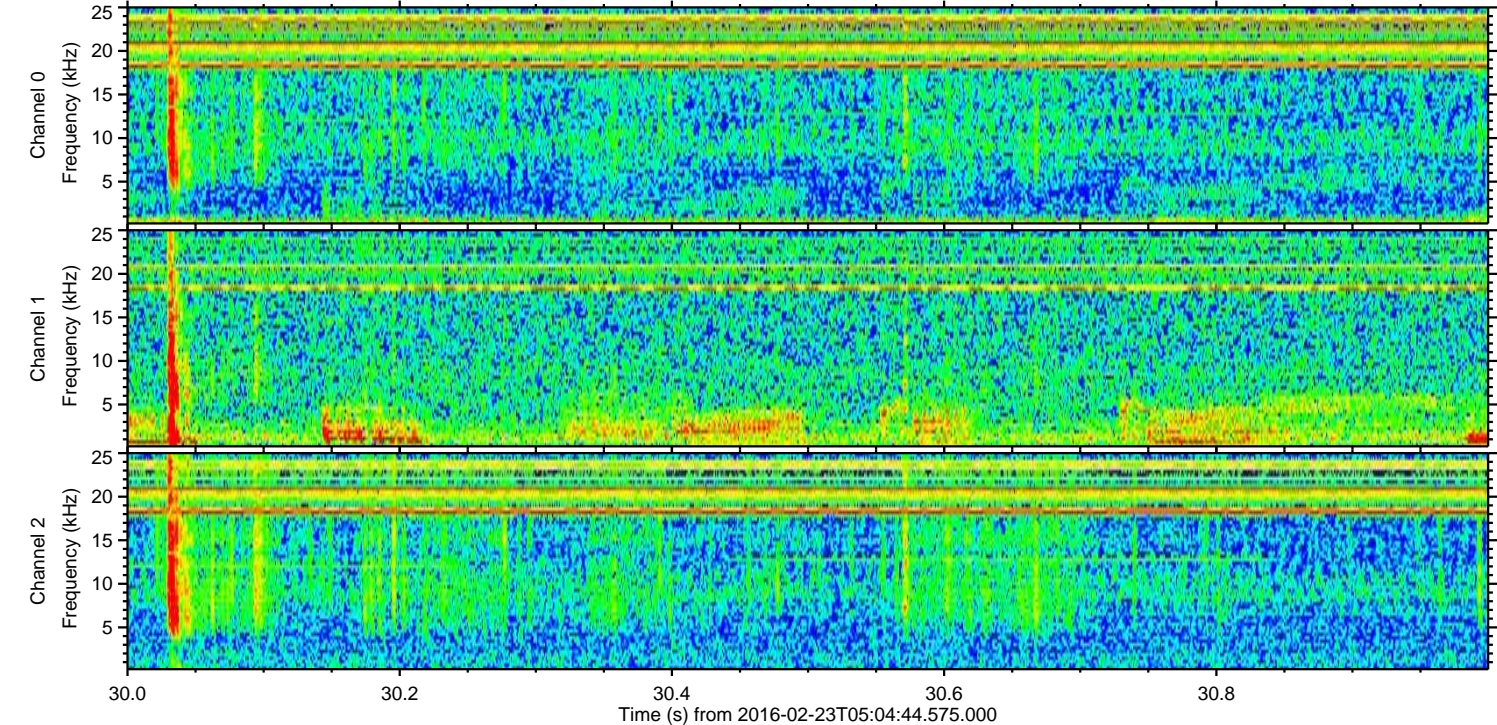
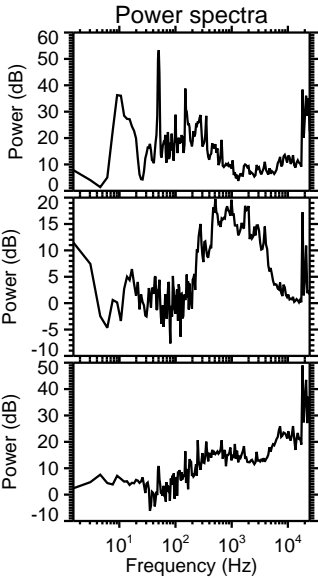
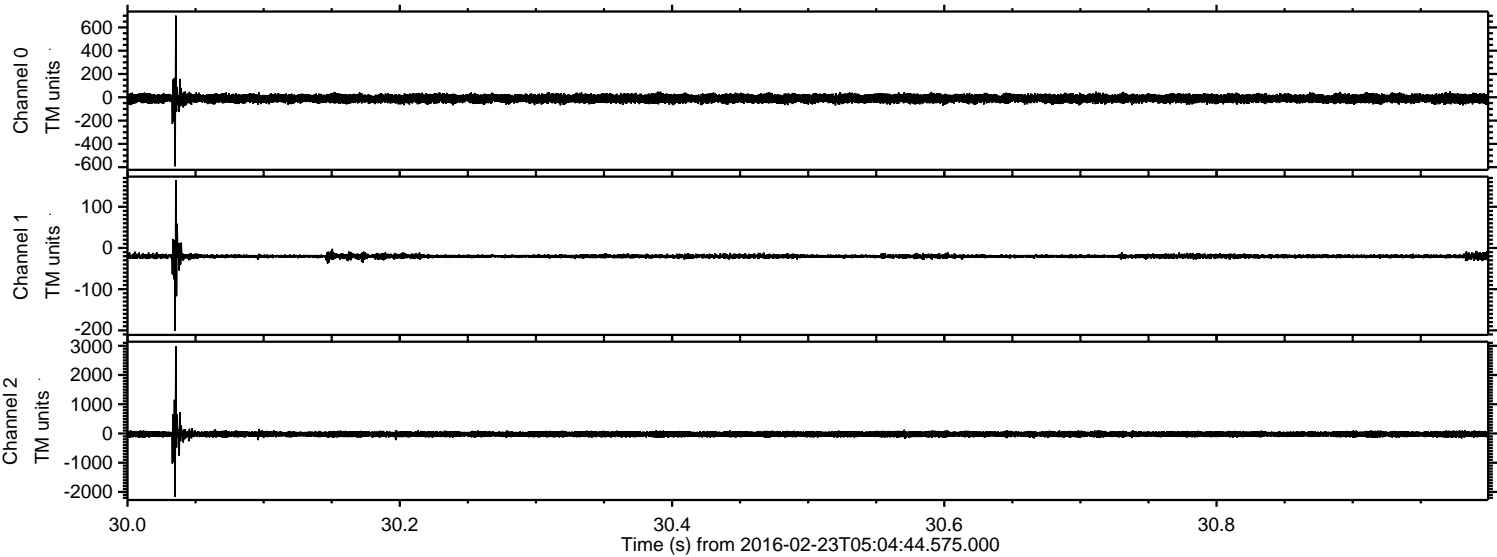


ELMAVAN 3D WAVEFORMS (Measured data sampled at 50 kHz) 51000 packets of 144 samples from 2016-02-23T05:04:44.575.000. Part 100/147

Processed Sat Apr 16 04:43:59 2016 by ELM ver.2012-10-06 from 001__elm20160223_050443__dat00.bin

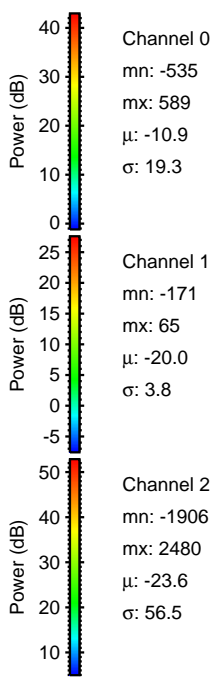
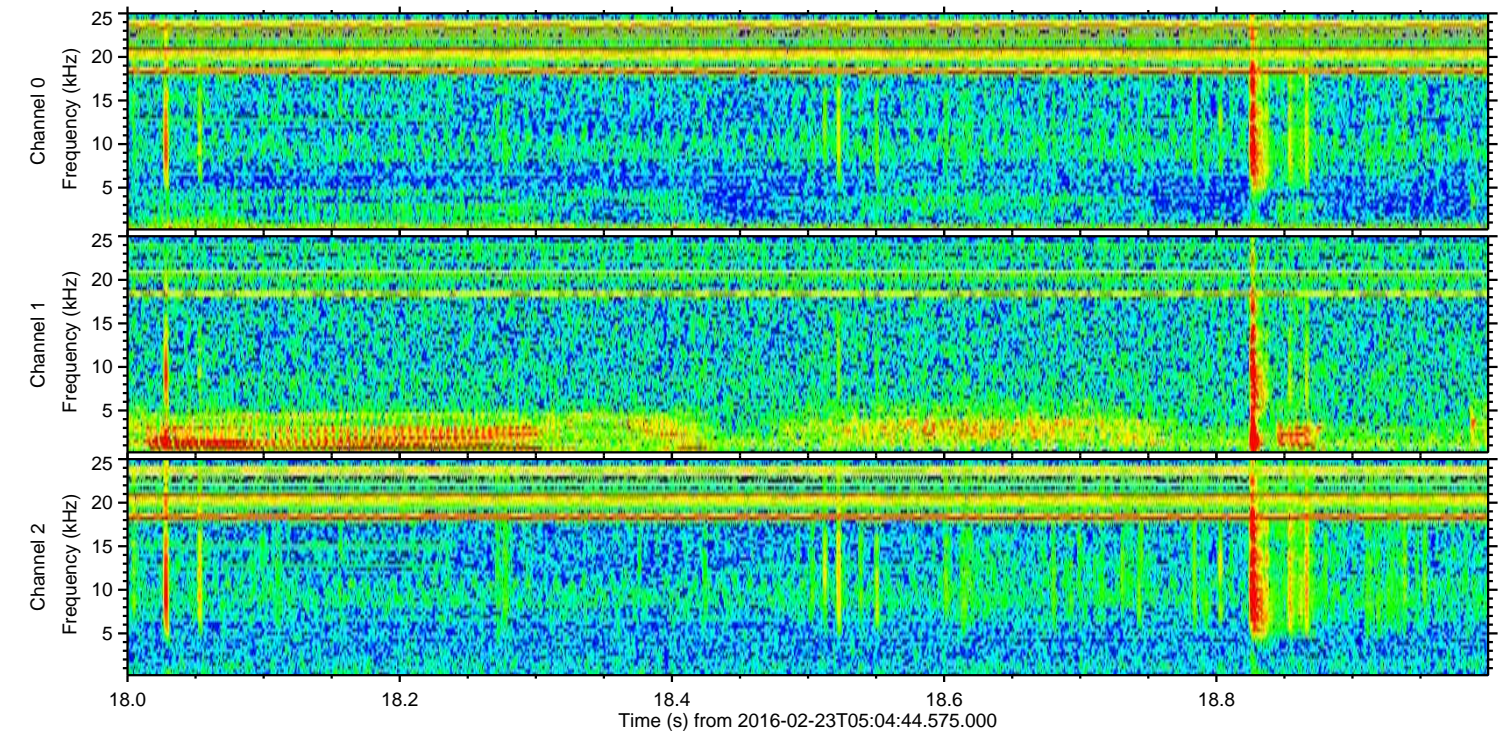
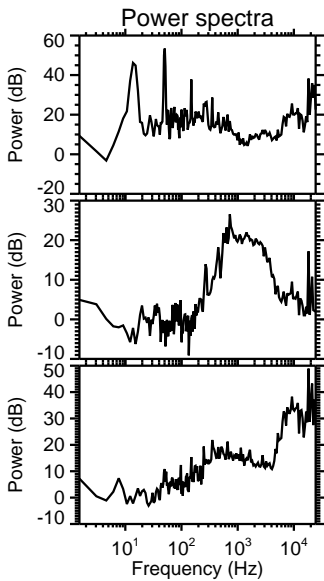
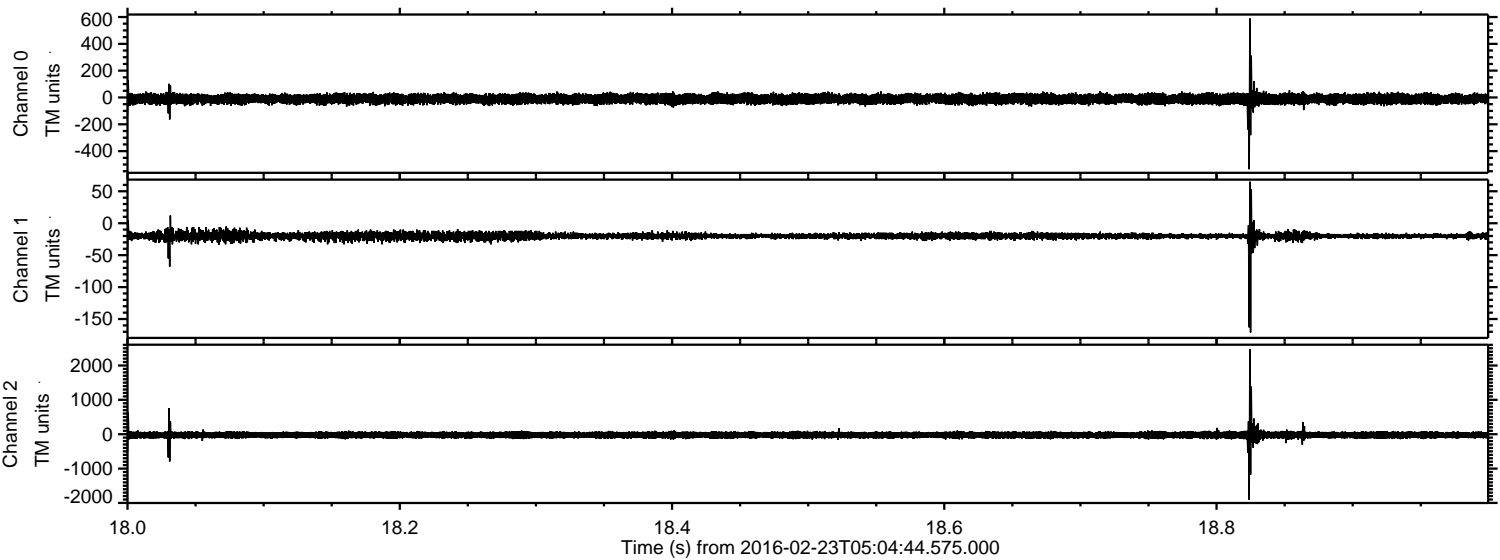


Processed Sat Apr 16 04:44:00 2016 by ELM ver.2012-10-06 from 001__elm20160223_050443__dat00.bin

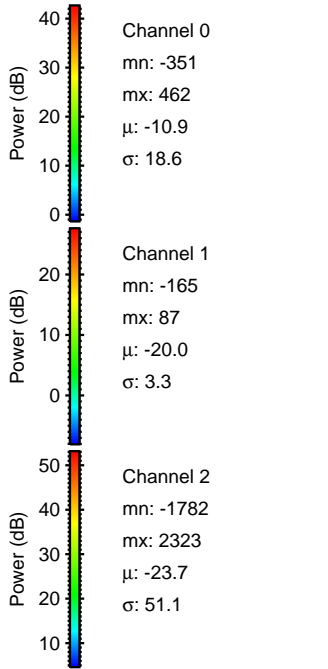
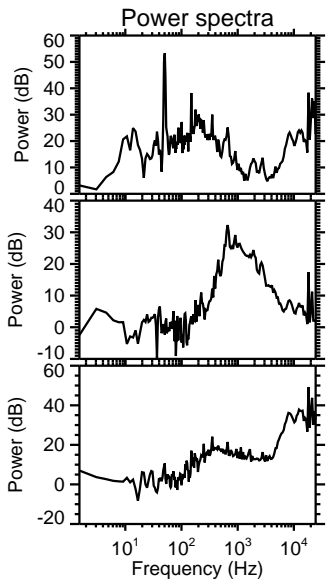
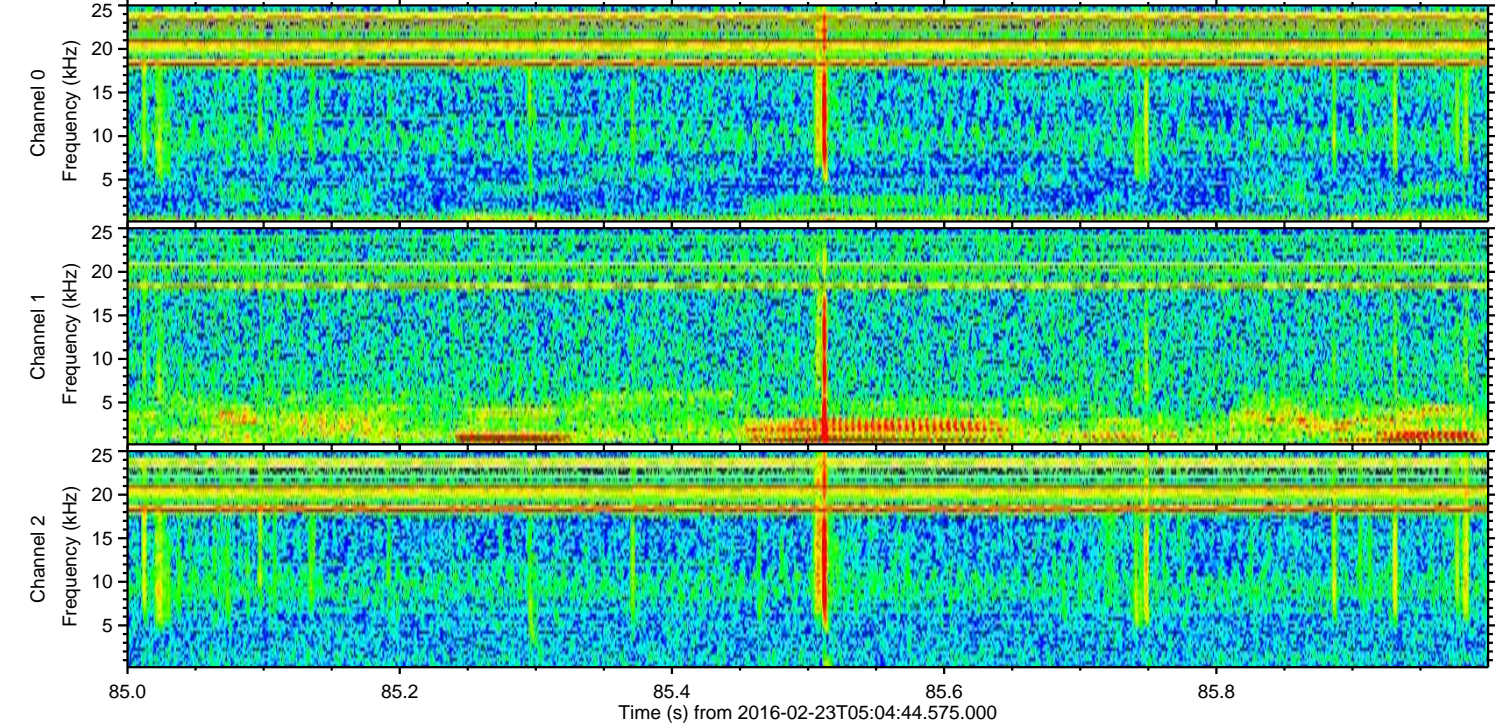
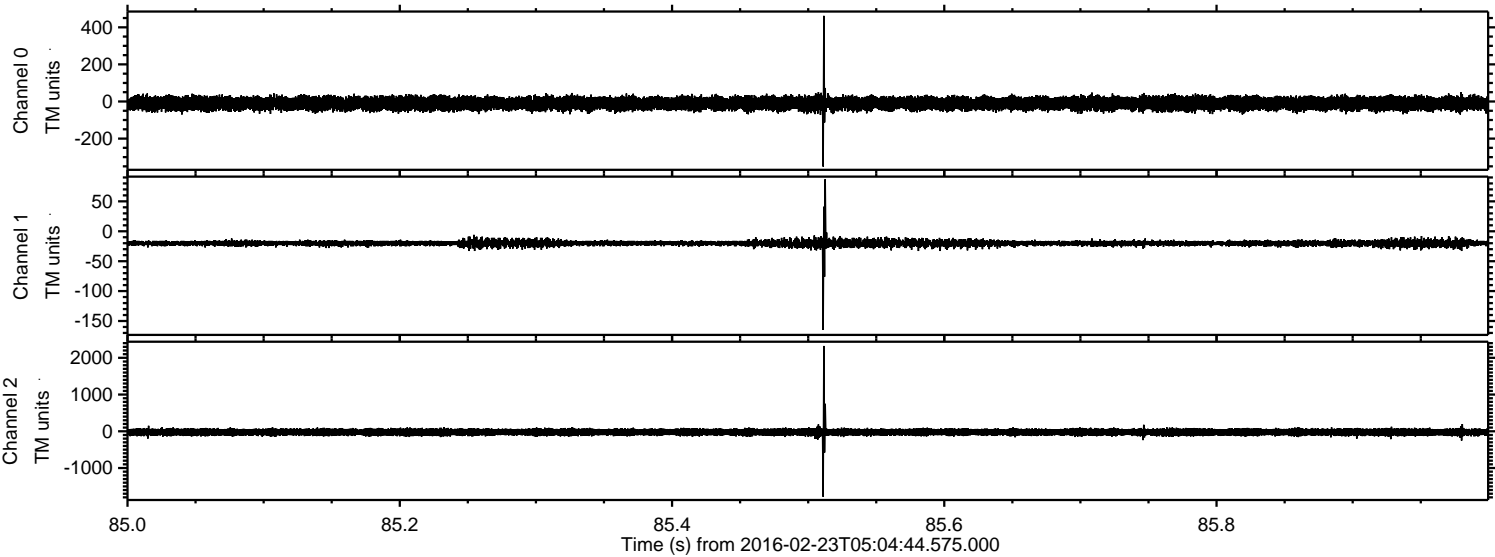


ELMAVAN 3D WAVEFORMS (Measured data sampled at 50 kHz) 51000 packets of 144 samples from 2016-02-23T05:04:44.575.000. Part 19/147

Processed Sat Apr 16 04:44:01 2016 by ELM ver.2012-10-06 from 001__elm20160223_050443__dat00.bin



Processed Sat Apr 16 04:44:02 2016 by ELM ver.2012-10-06 from 001__elm20160223_050443__dat00.bin



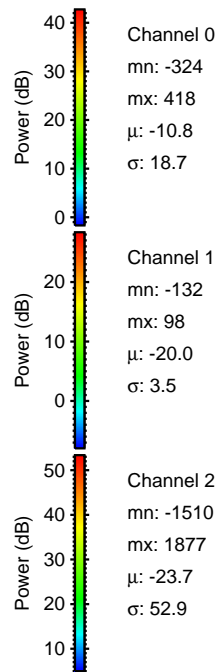
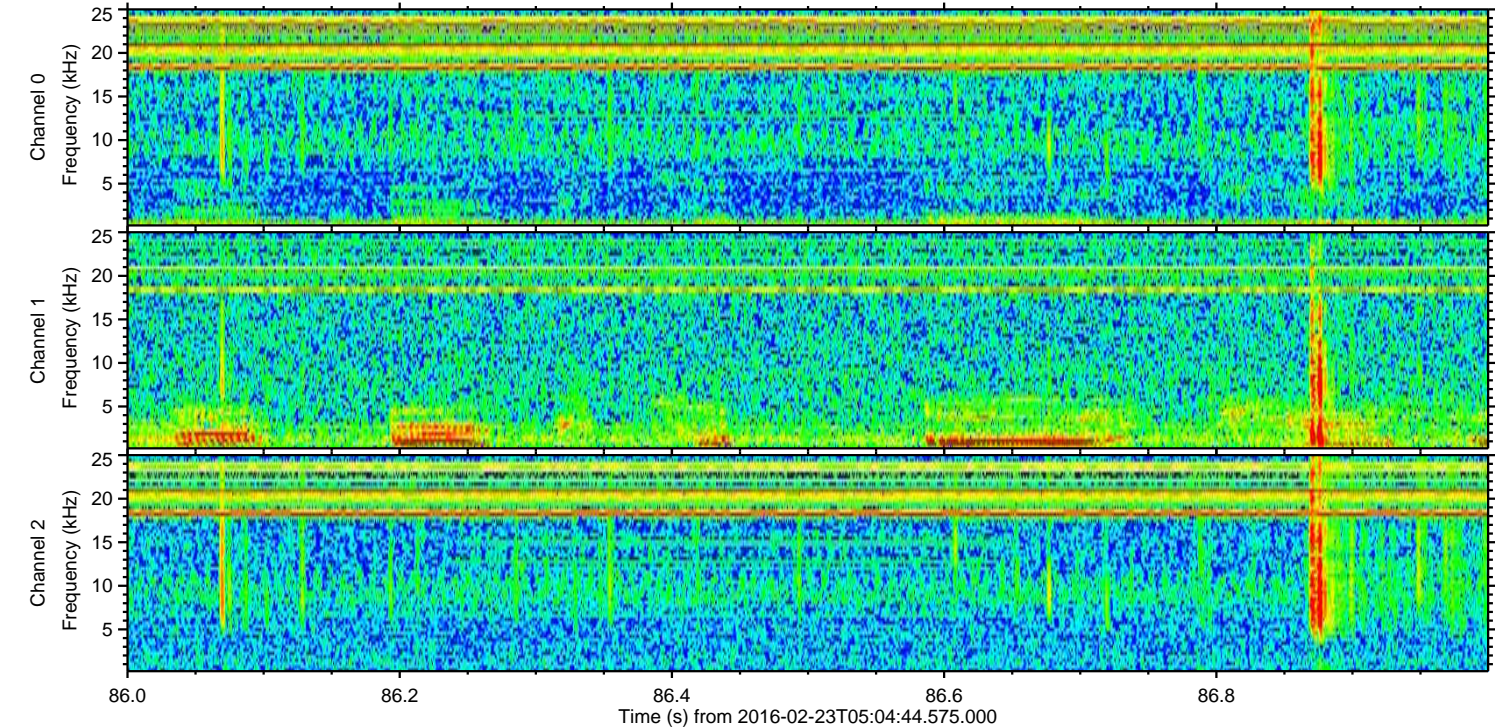
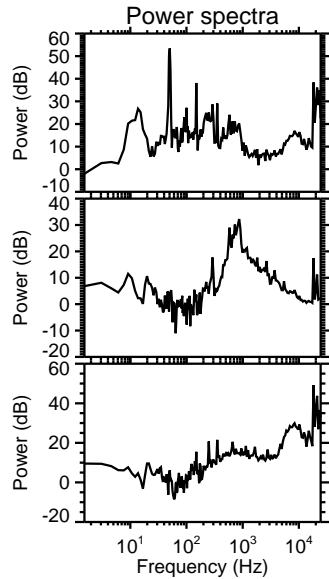
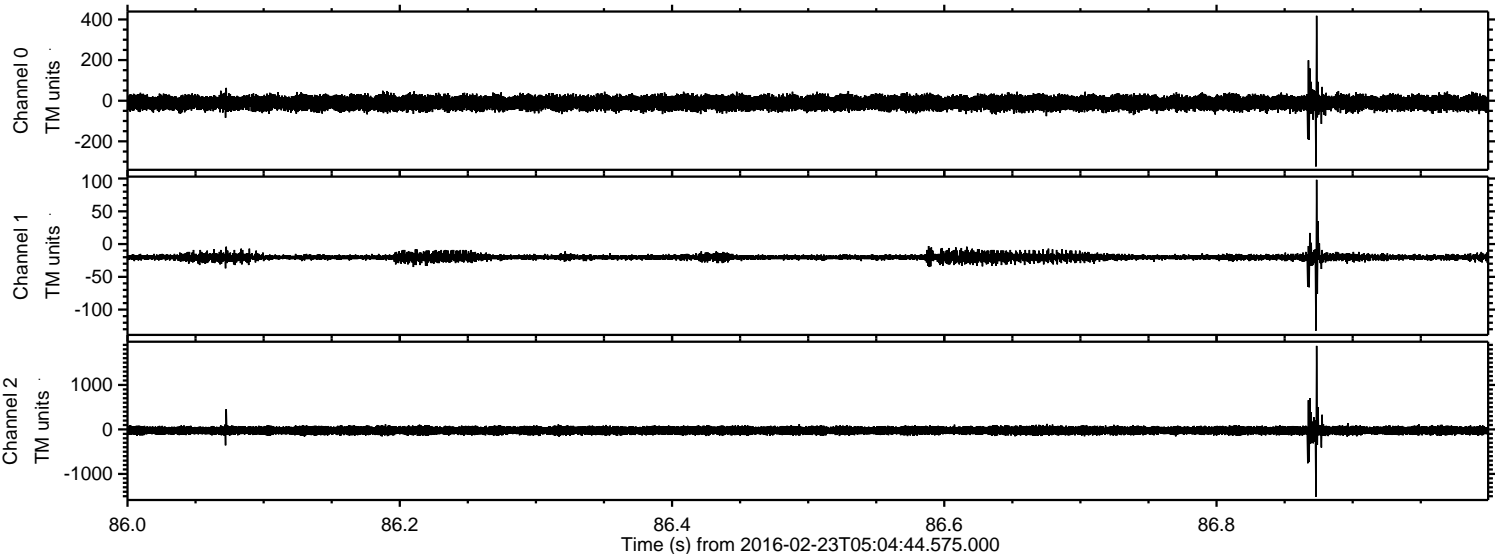
Channel 0
mn: -351
mx: 462
 μ : -10.9
 σ : 18.6

Channel 1
mn: -165
mx: 87
 μ : -20.0
 σ : 3.3

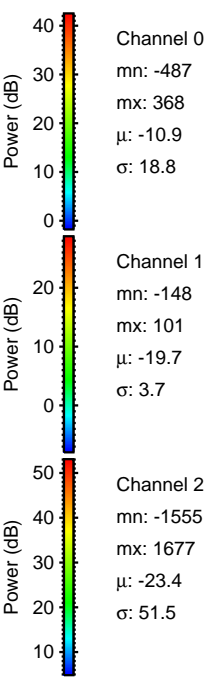
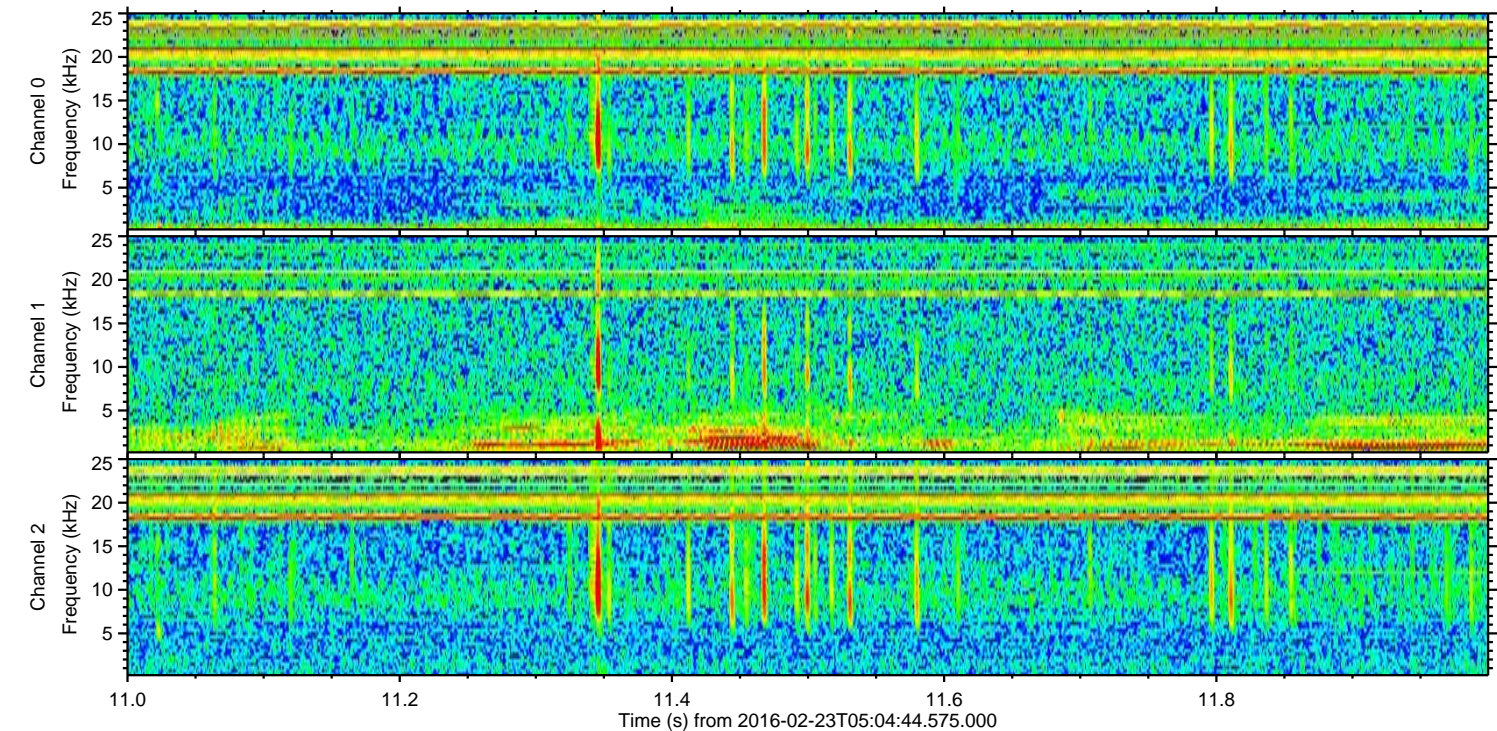
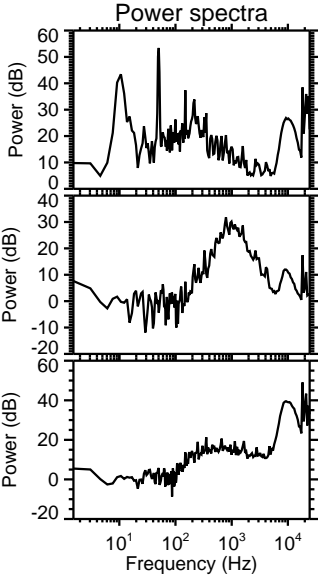
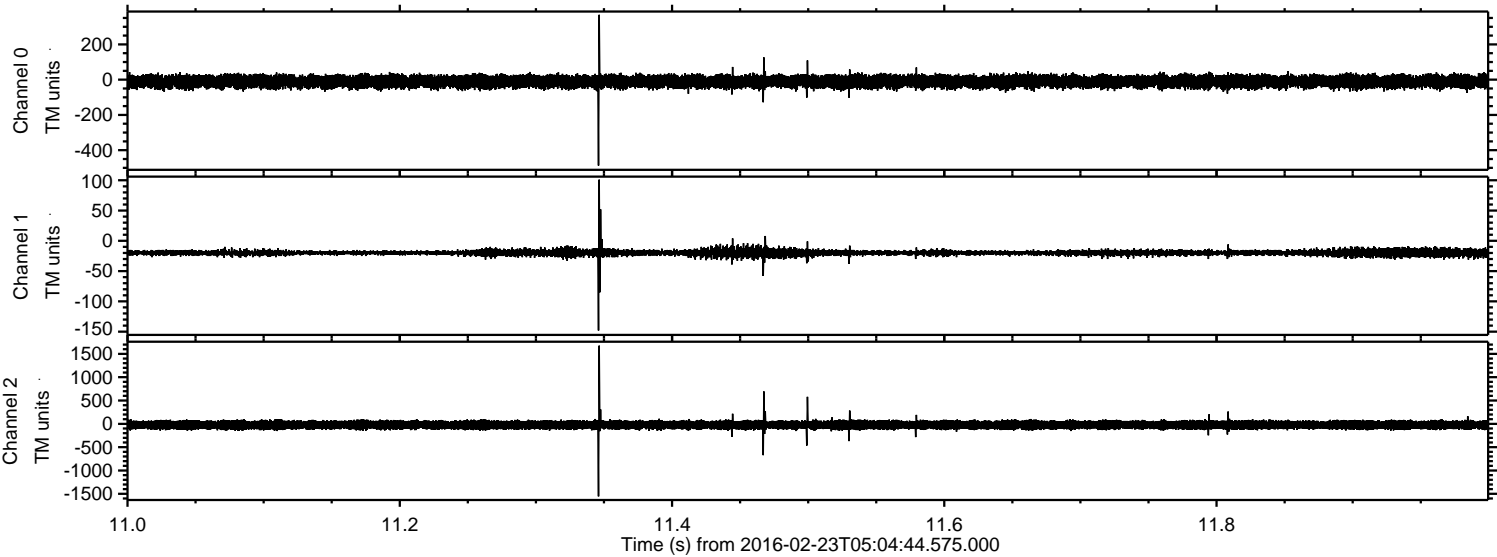
Channel 2
mn: -1782
mx: 2323
 μ : -23.7
 σ : 51.1

ELMAVAN 3D WAVEFORMS (Measured data sampled at 50 kHz) 51000 packets of 144 samples from 2016-02-23T05:04:44.575.000. Part 87/147

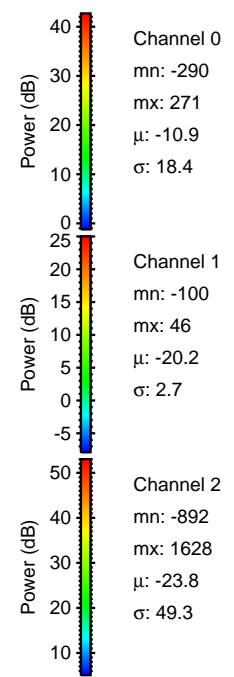
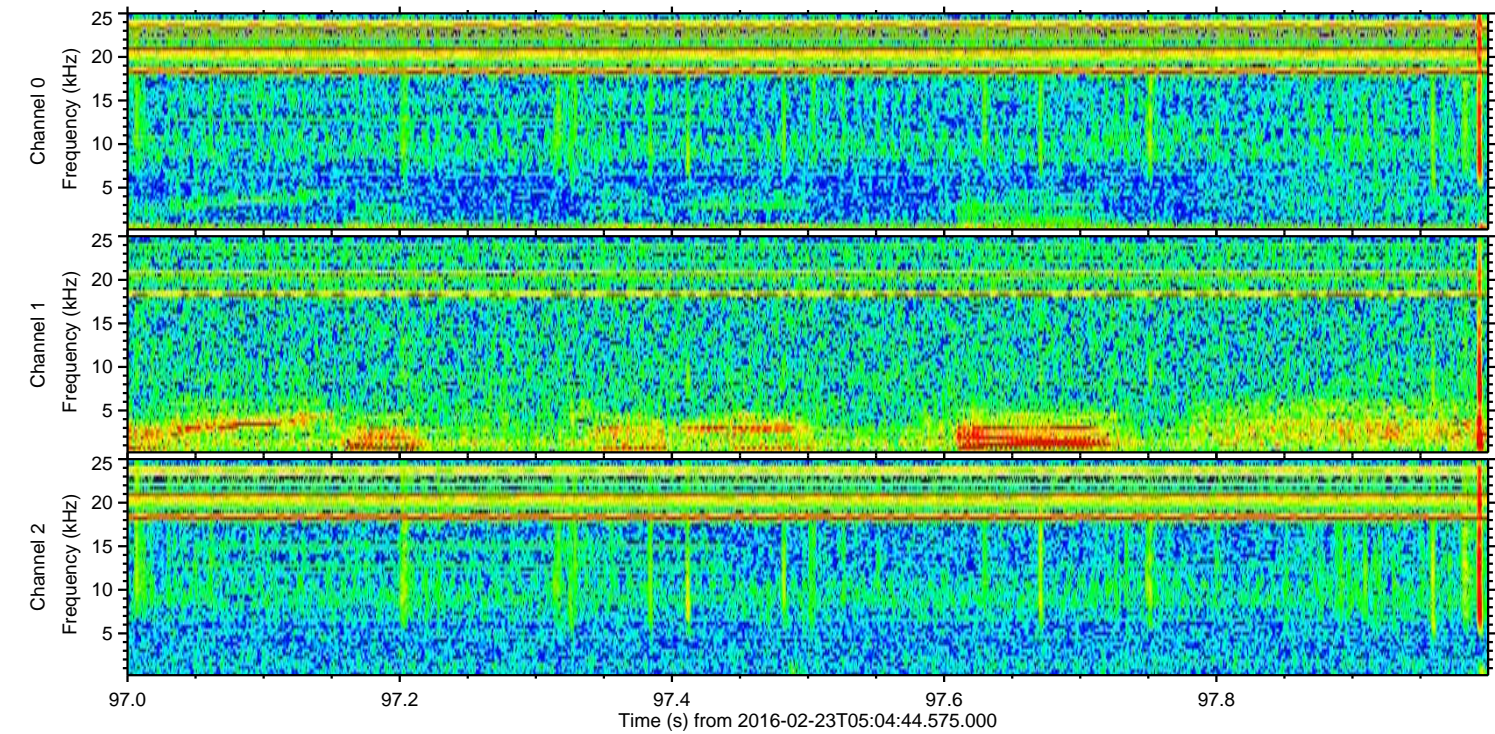
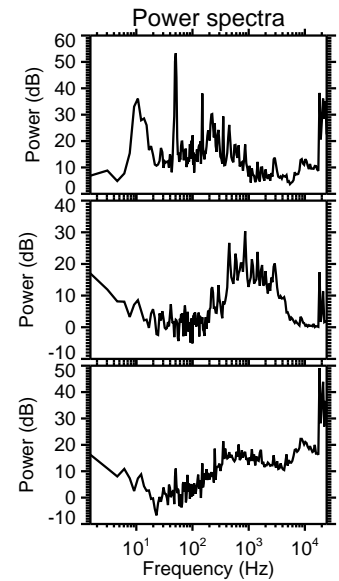
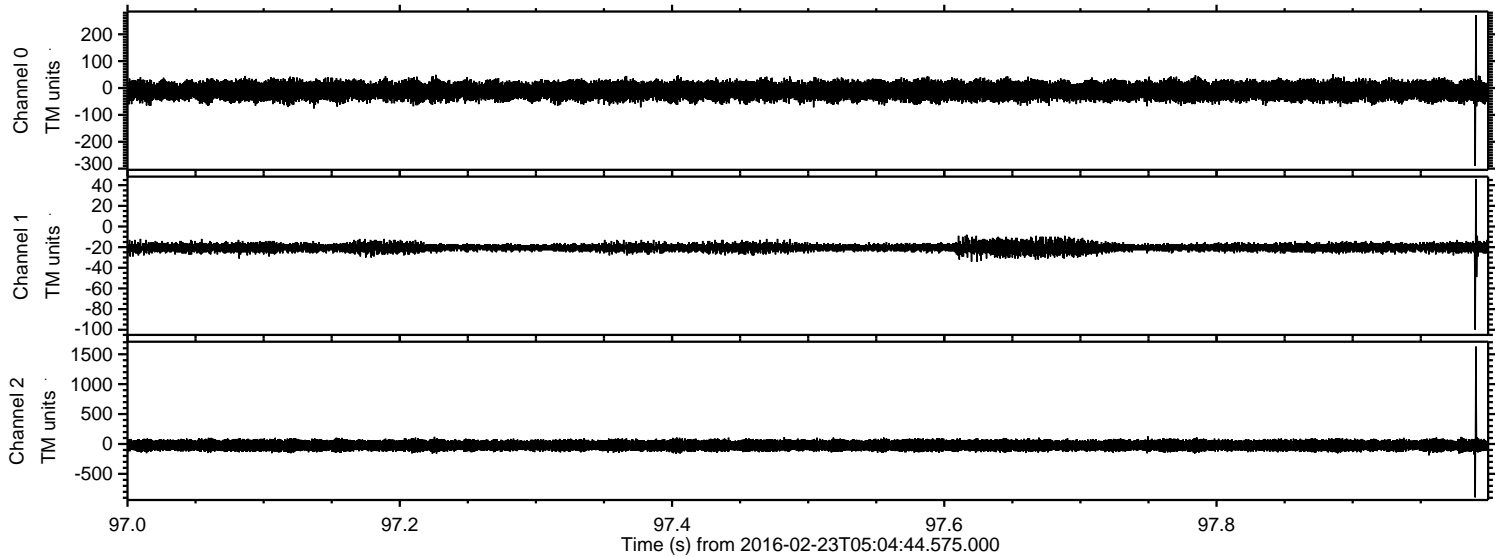
Processed Sat Apr 16 04:44:03 2016 by ELM ver.2012-10-06 from 001__elm20160223_050443__dat00.bin



Processed Sat Apr 16 04:44:03 2016 by ELM ver.2012-10-06 from 001__elm20160223_050443__dat00.bin



Processed Sat Apr 16 04:44:04 2016 by ELM ver.2012-10-06 from 001__elm20160223_050443__dat00.bin



Processed Sat Apr 16 04:44:05 2016 by ELM ver.2012-10-06 from 001__elm20160223_050443__dat00.bin

