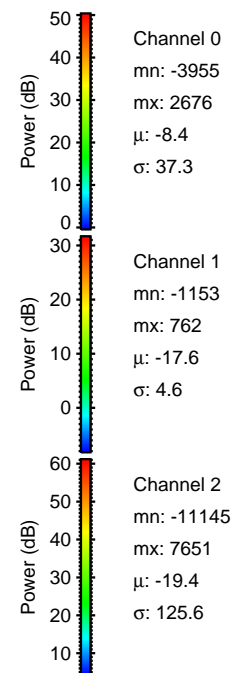
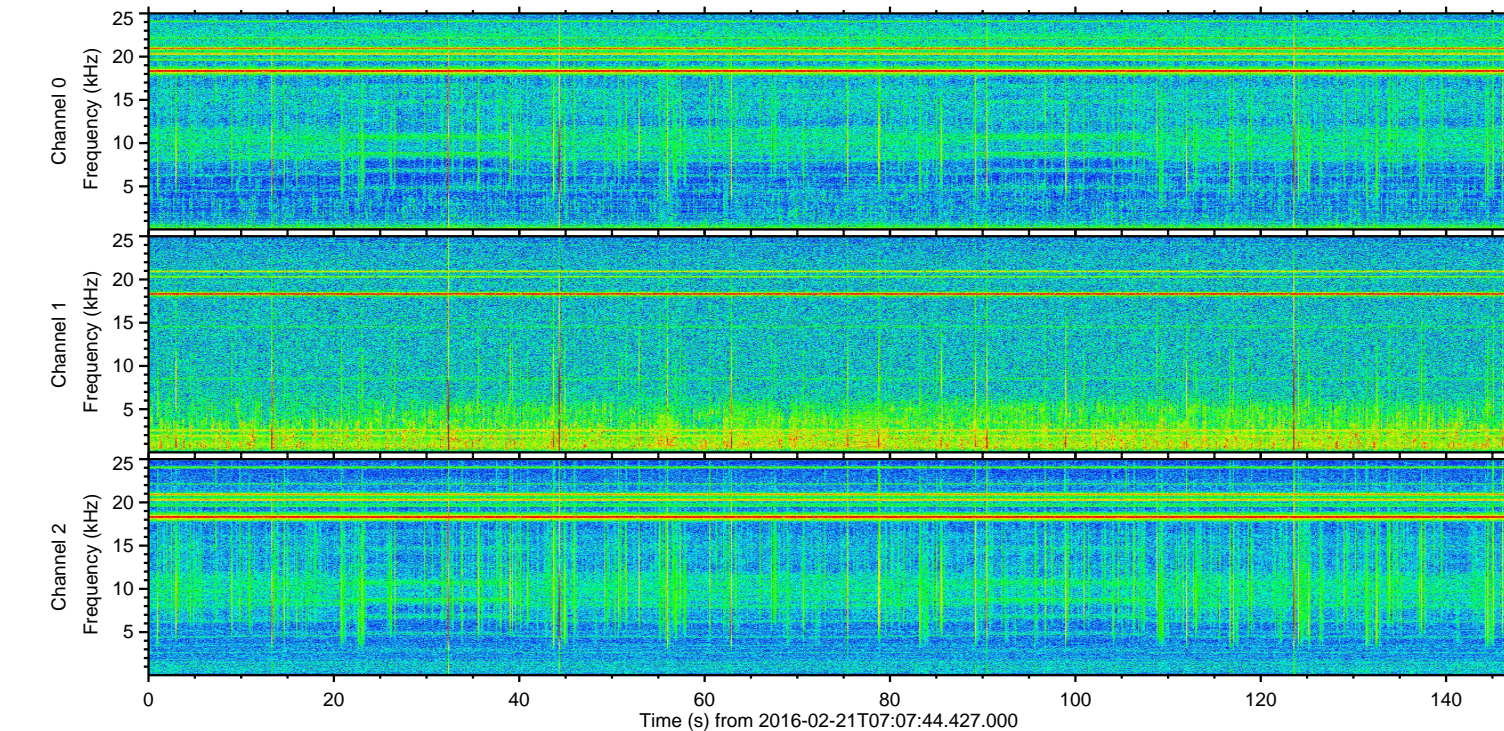
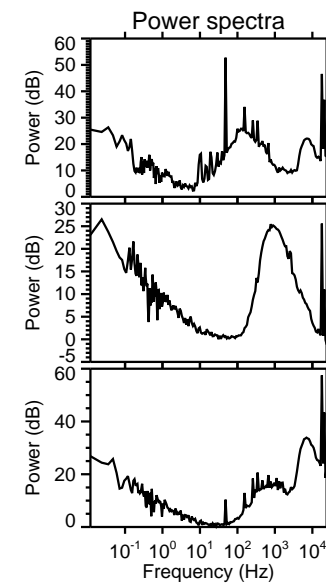
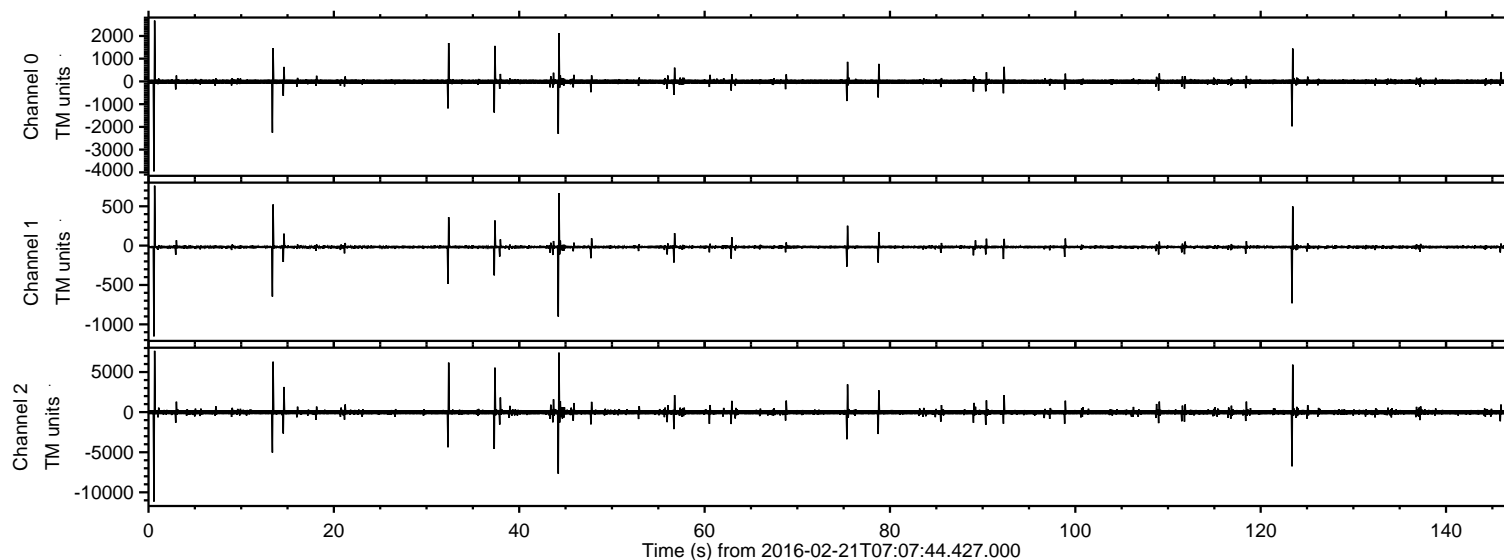


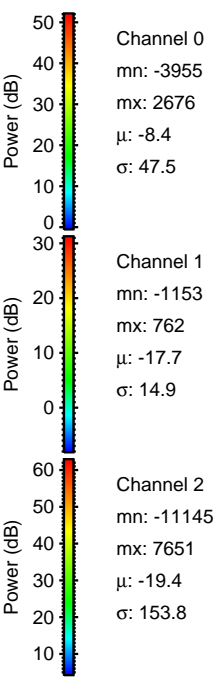
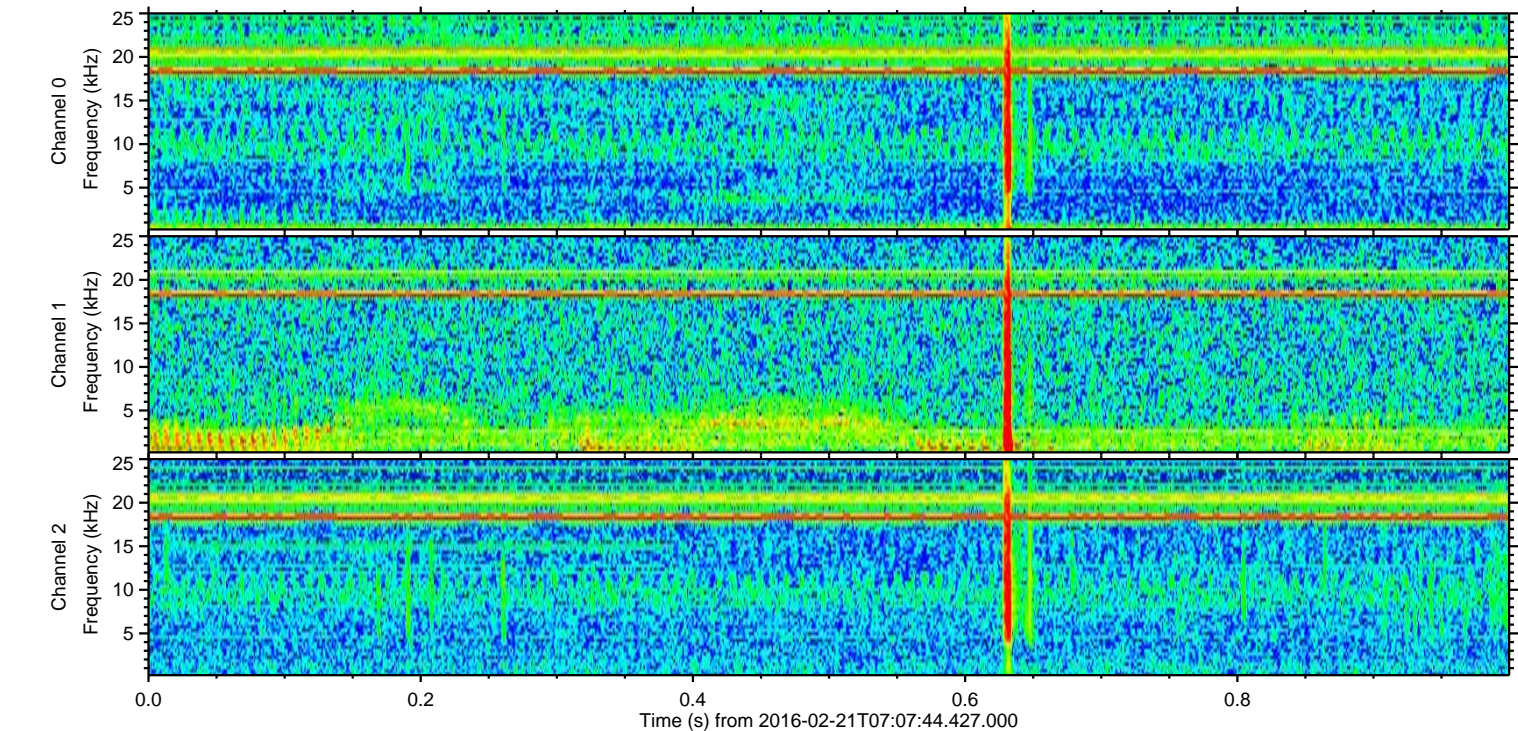
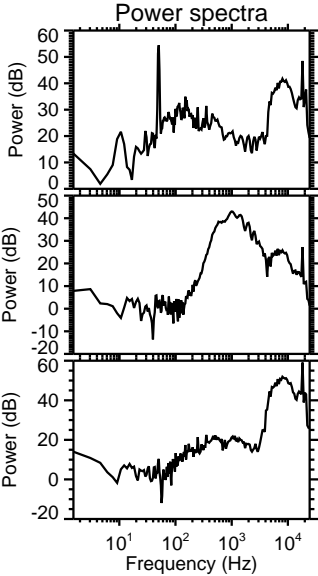
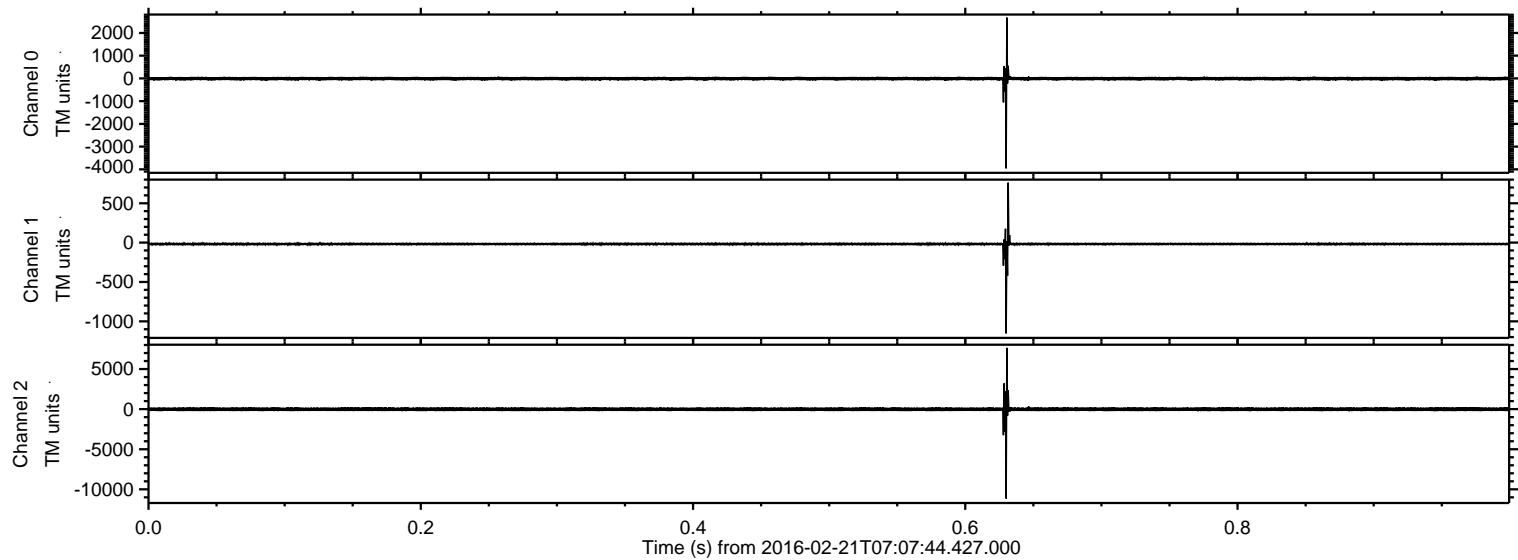
ELMAVAN 3D WAVEFORMS (Measured data sampled at 50 kHz) 51000 packets of 144 samples from 2016-02-21T07:07:44.427.000.

Processed Tue Apr 12 03:47:26 2016 by ELM ver.2012-10-06 from 001__elm20160221_070743__dat00.bin

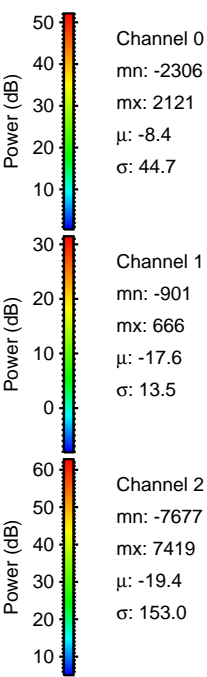
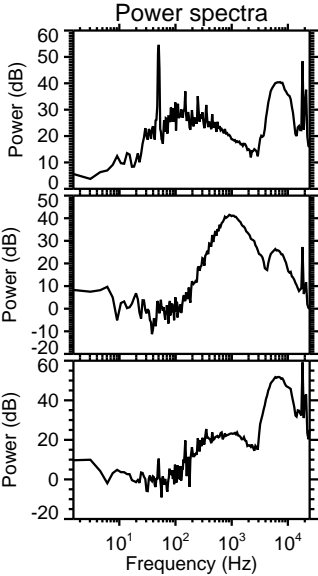
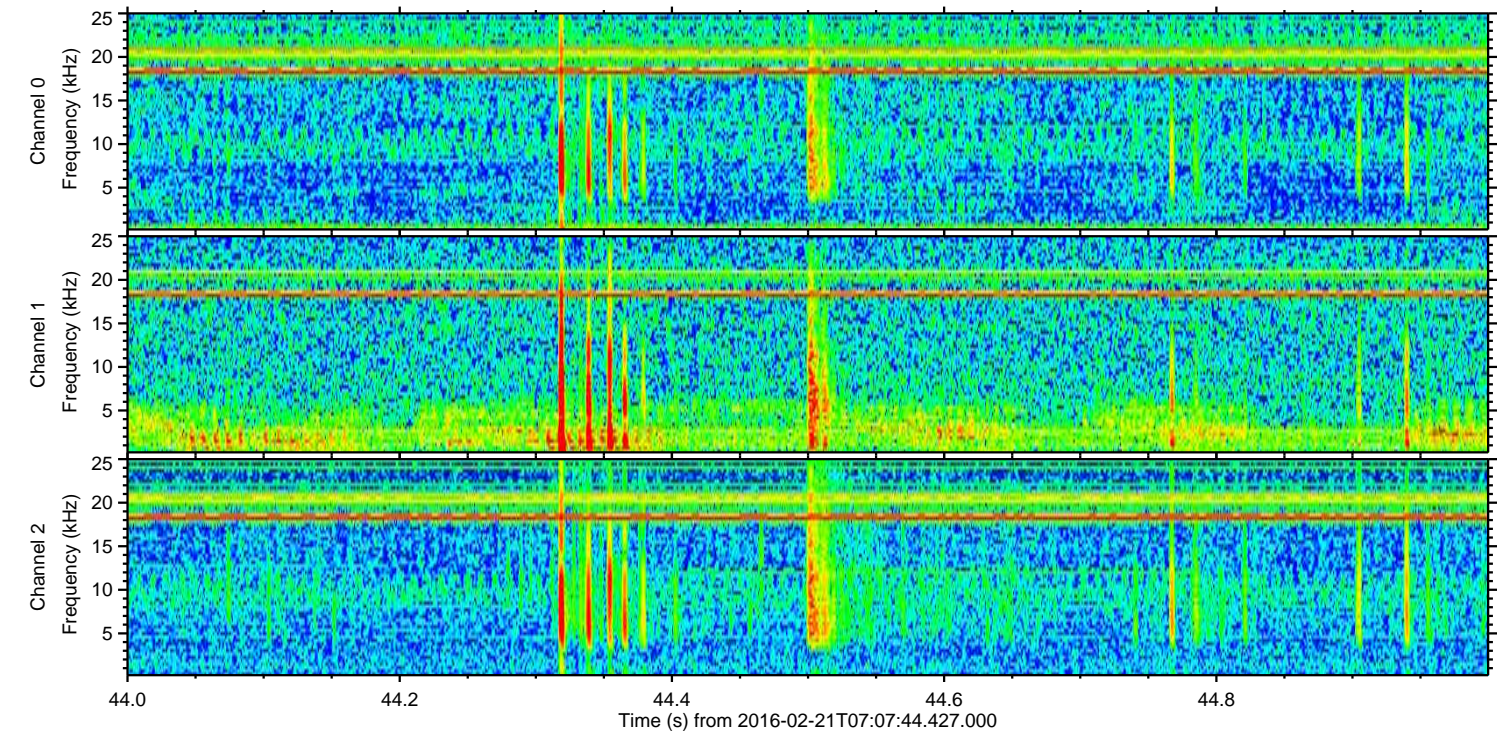
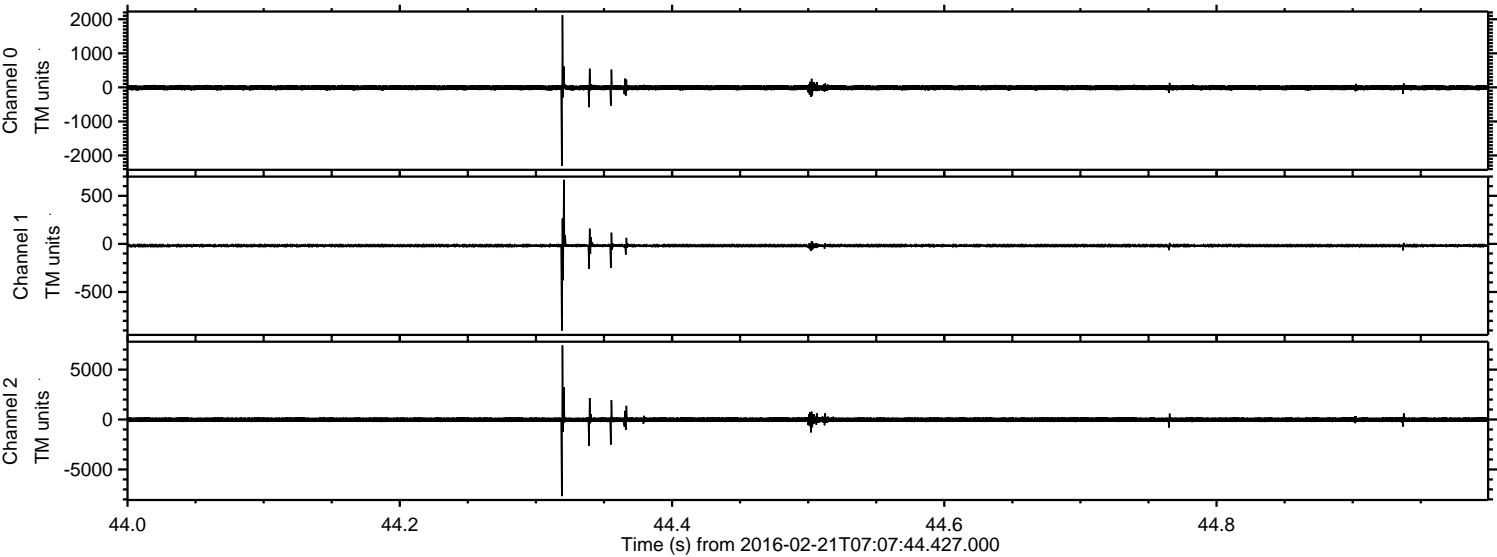


ELMAVAN 3D WAVEFORMS (Measured data sampled at 50 kHz) 51000 packets of 144 samples from 2016-02-21T07:07:44.427.000. Part 1/147

Processed Tue Apr 12 03:47:38 2016 by ELM ver.2012-10-06 from 001__elm20160221_070743__dat00.bin

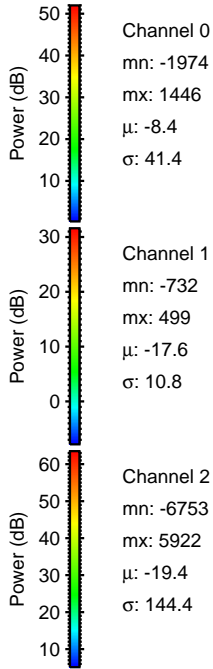
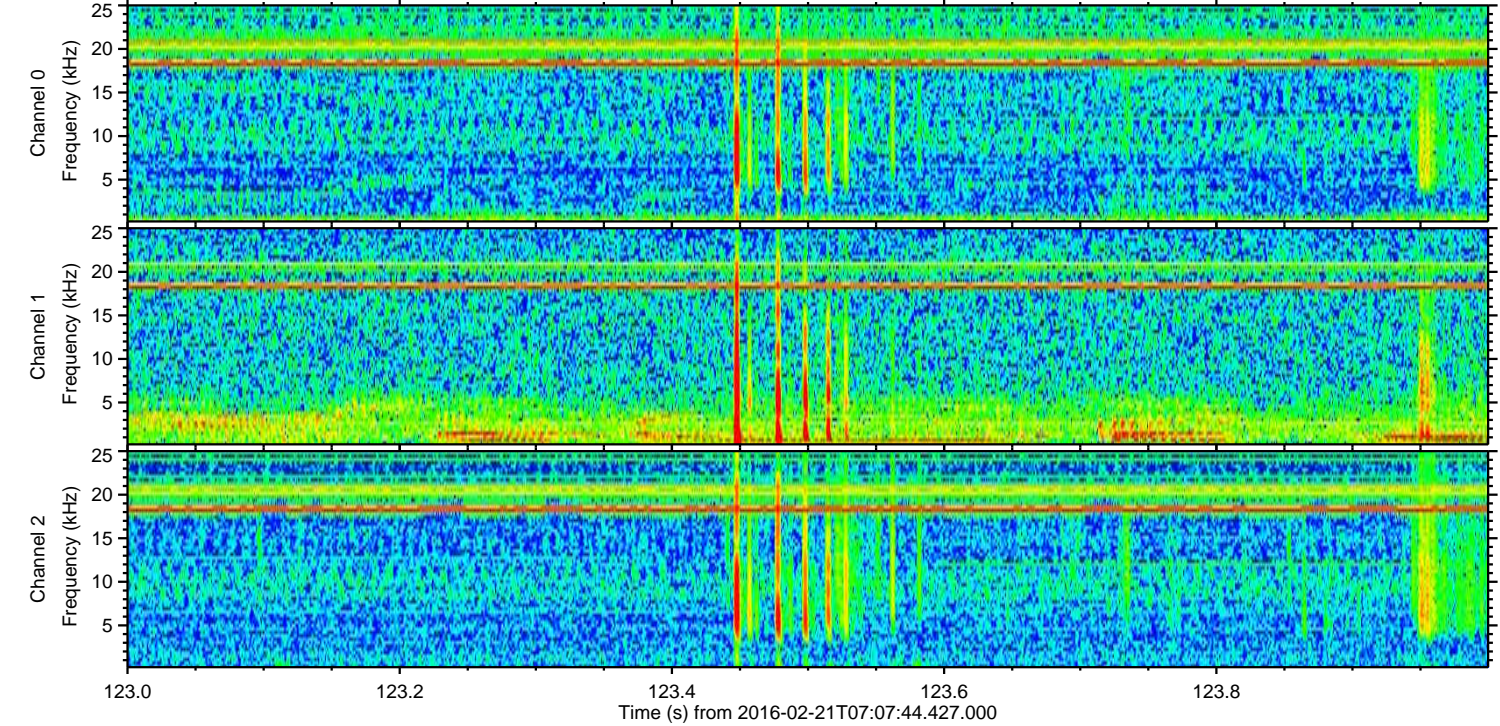
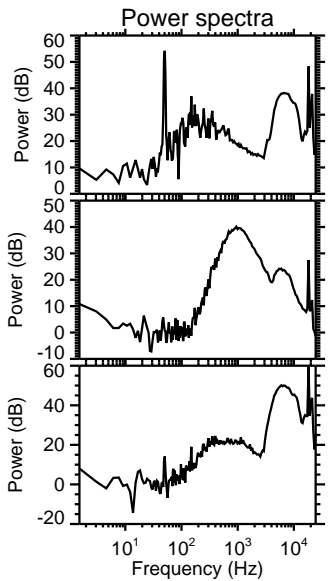
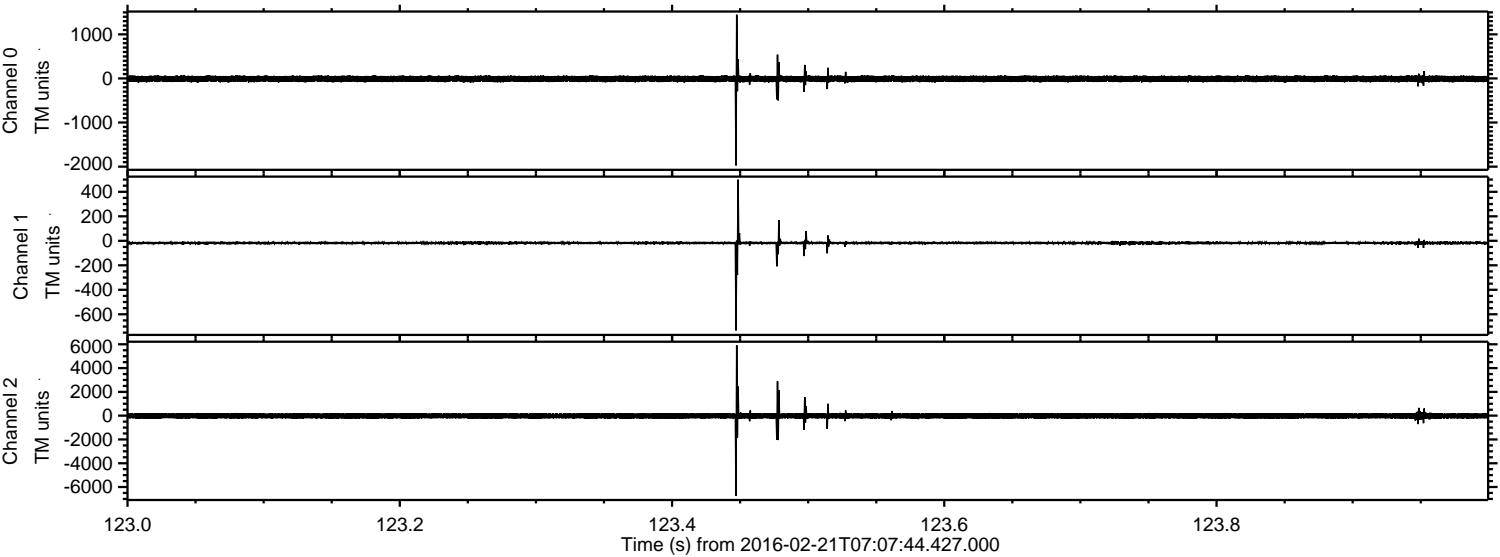


Processed Tue Apr 12 03:47:39 2016 by ELM ver.2012-10-06 from 001__elm20160221_070743__dat00.bin

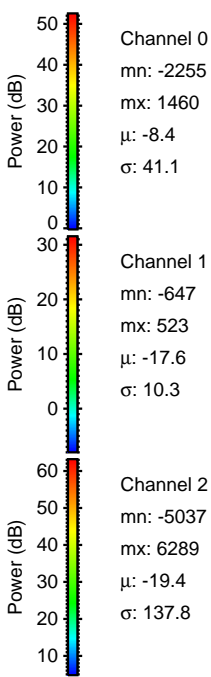
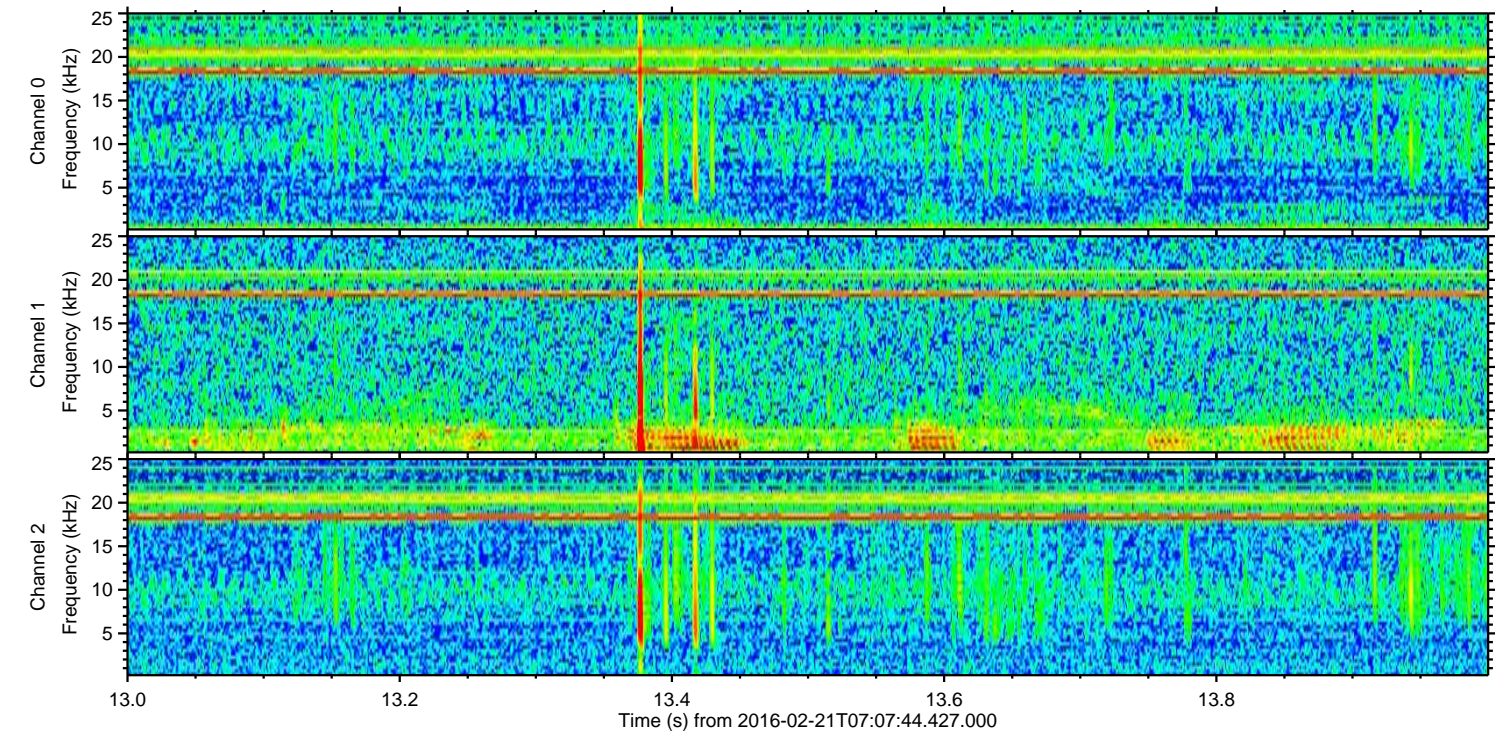
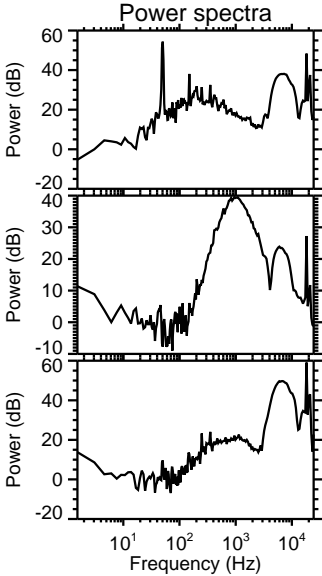
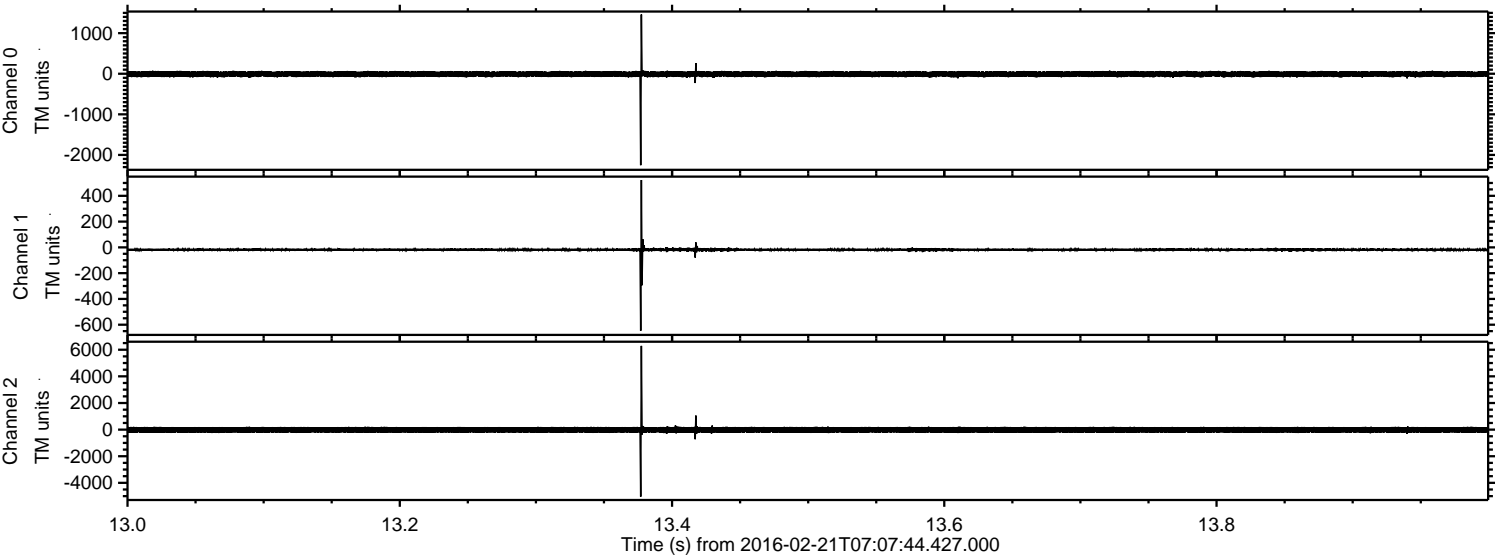


ELMAVAN 3D WAVEFORMS (Measured data sampled at 50 kHz) 51000 packets of 144 samples from 2016-02-21T07:07:44.427.000. Part 124/147

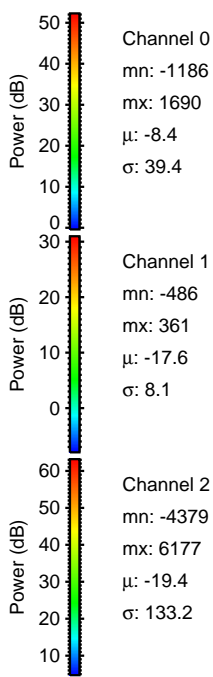
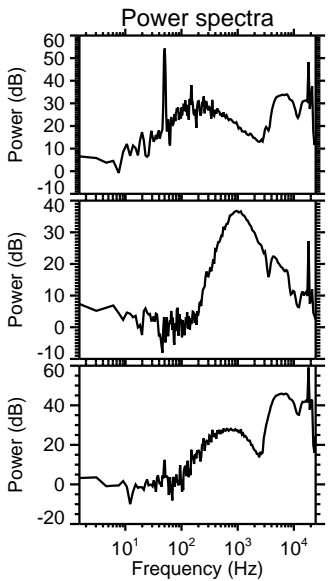
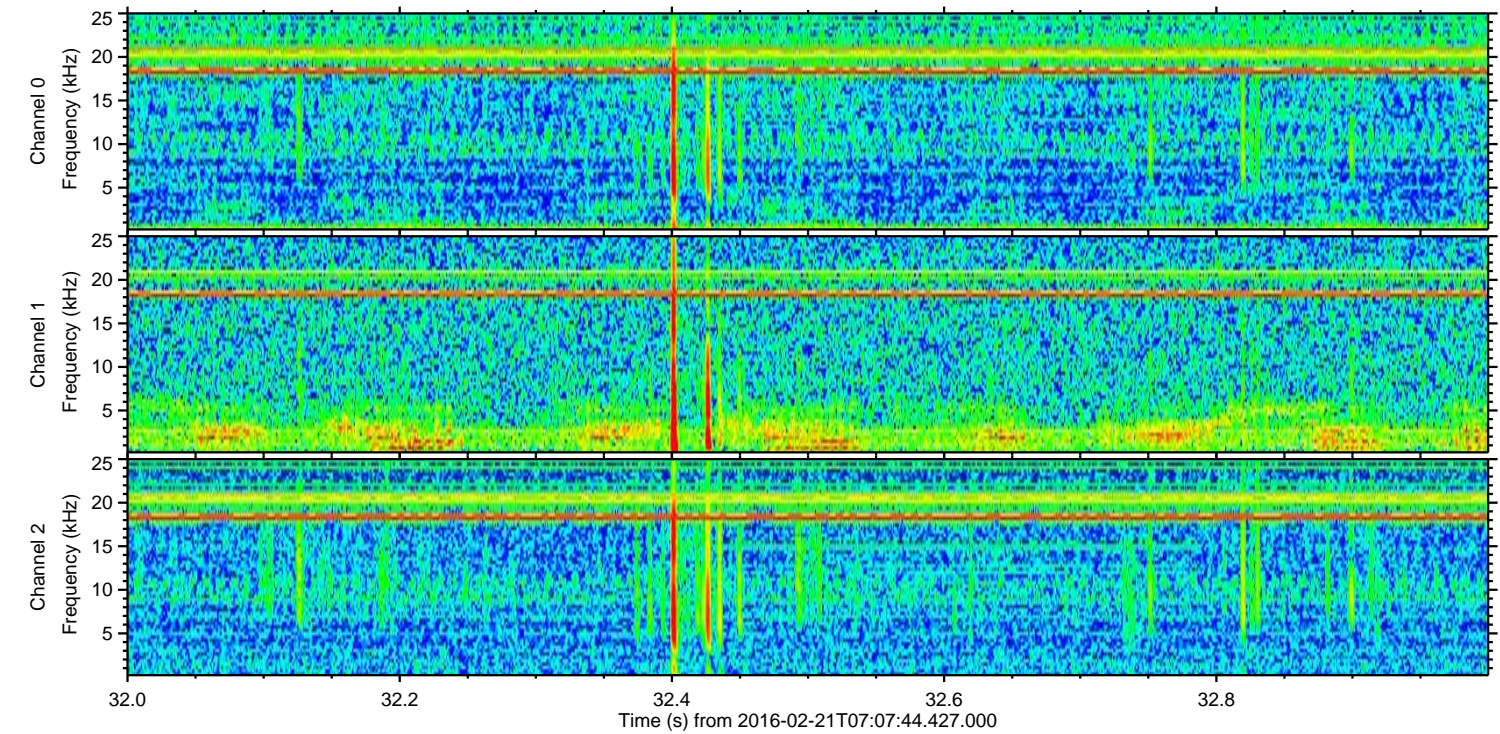
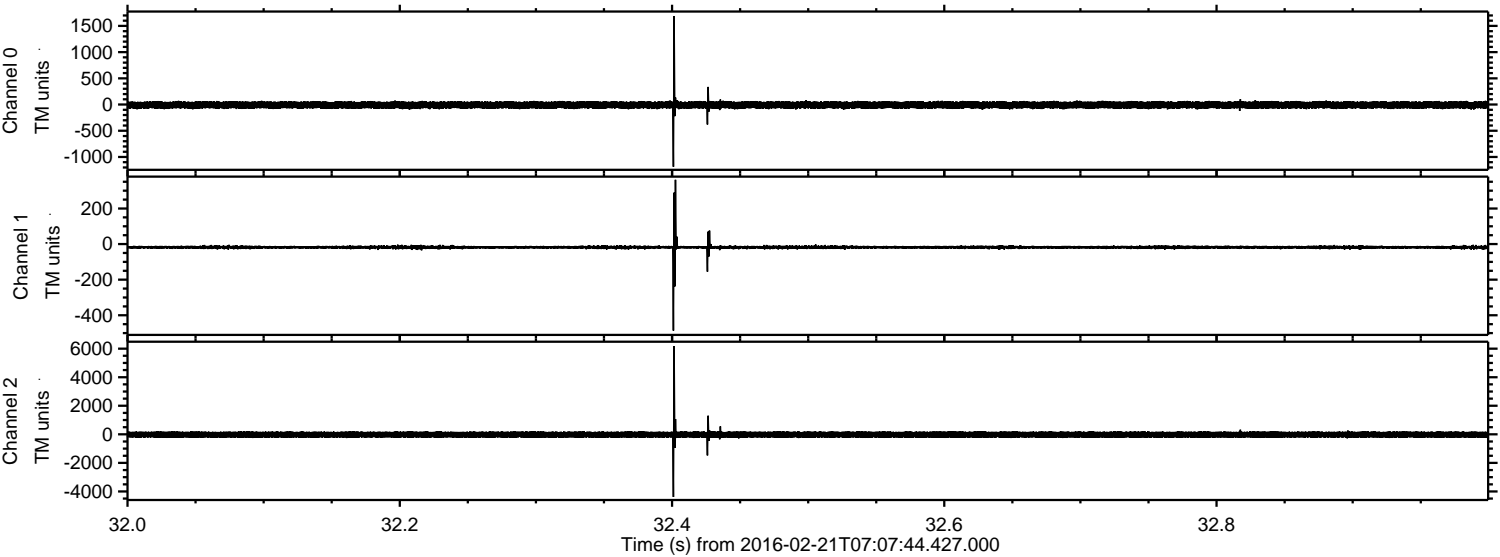
Processed Tue Apr 12 03:47:40 2016 by ELM ver.2012-10-06 from 001__elm20160221_070743__dat00.bin



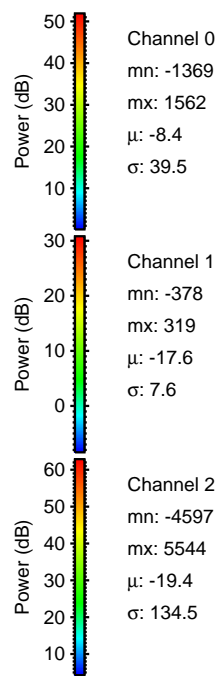
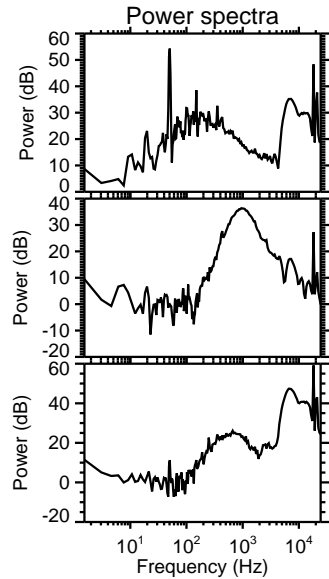
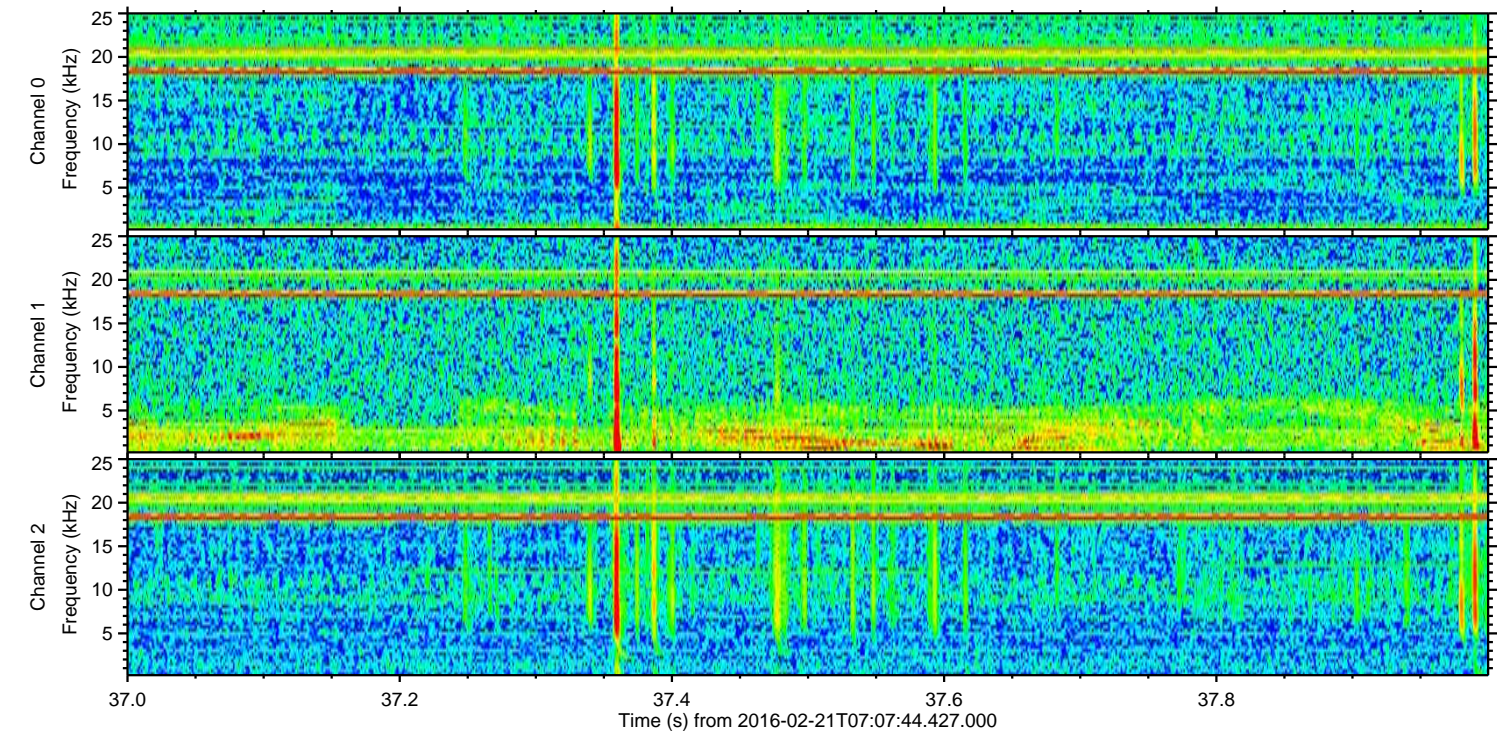
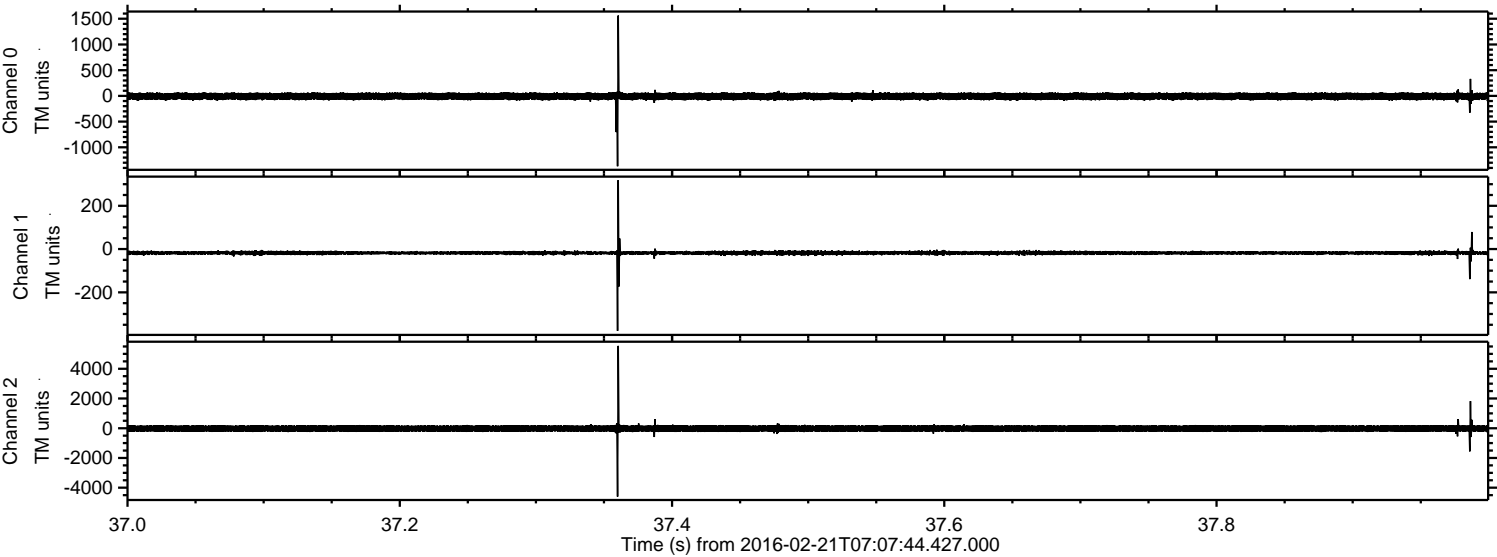
Processed Tue Apr 12 03:47:41 2016 by ELM ver.2012-10-06 from 001__elm20160221_070743__dat00.bin



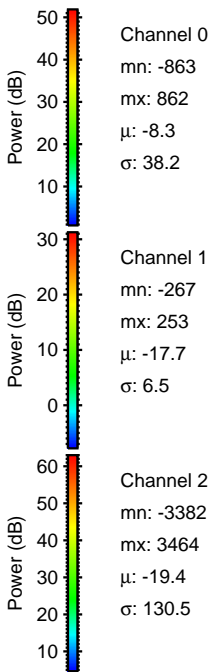
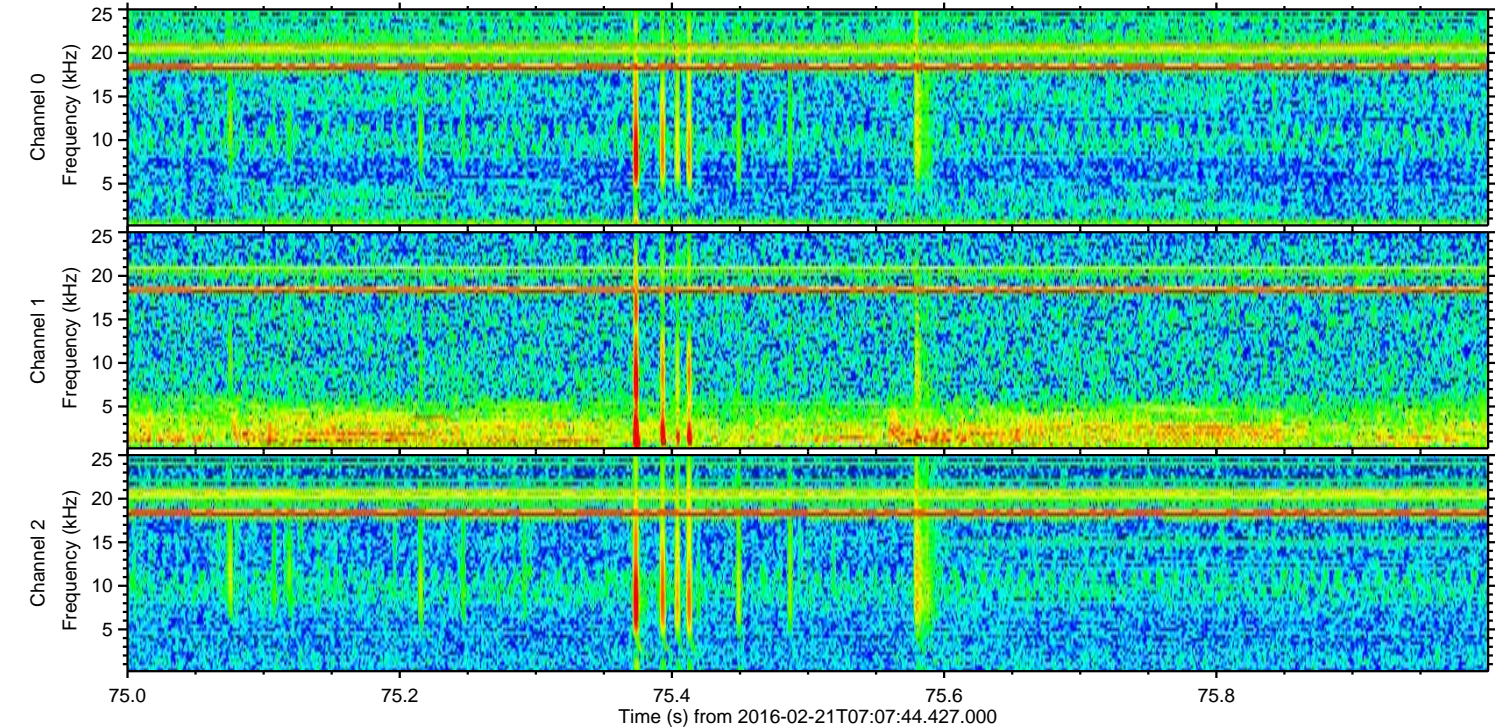
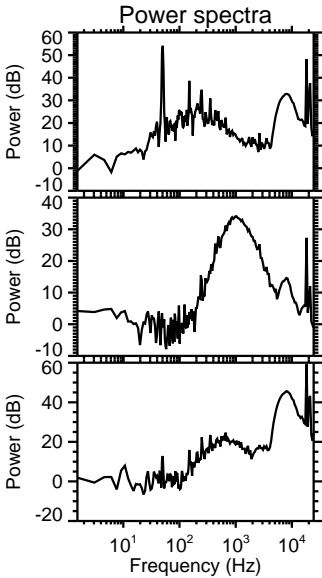
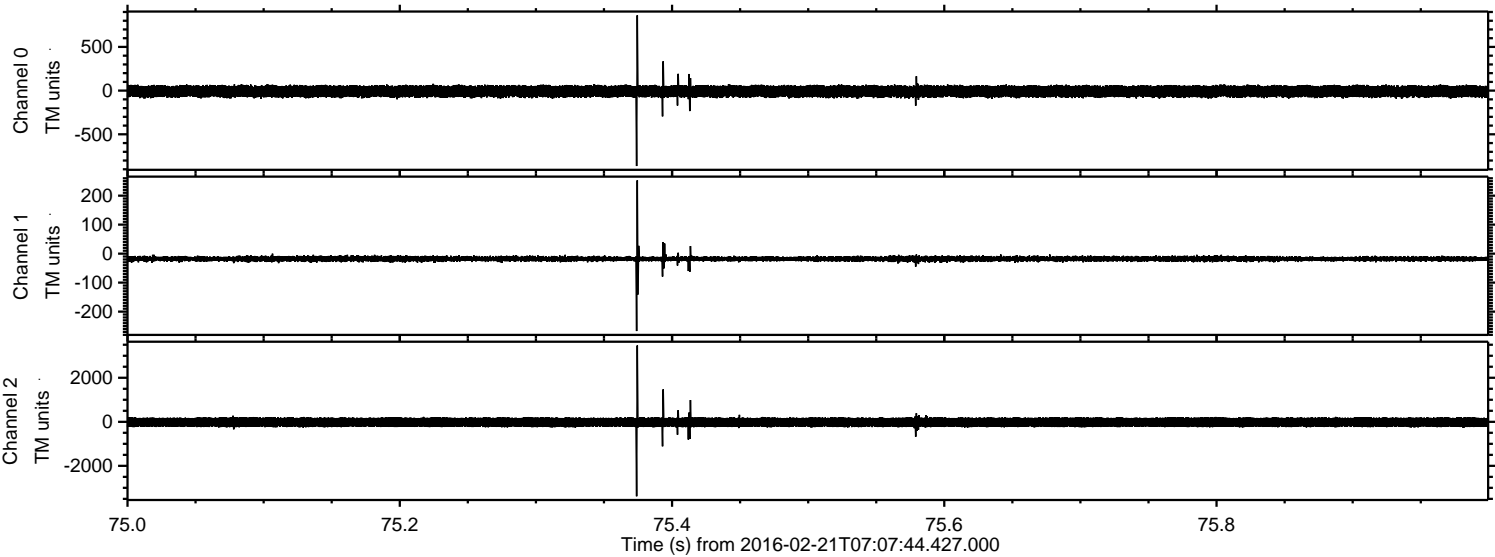
Processed Tue Apr 12 03:47:41 2016 by ELM ver.2012-10-06 from 001__elm20160221_070743__dat00.bin



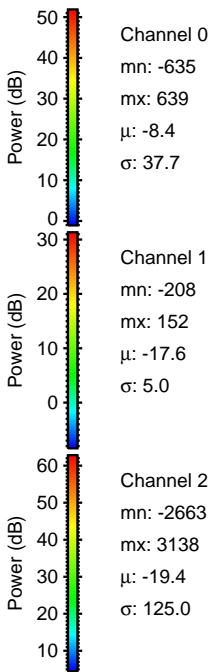
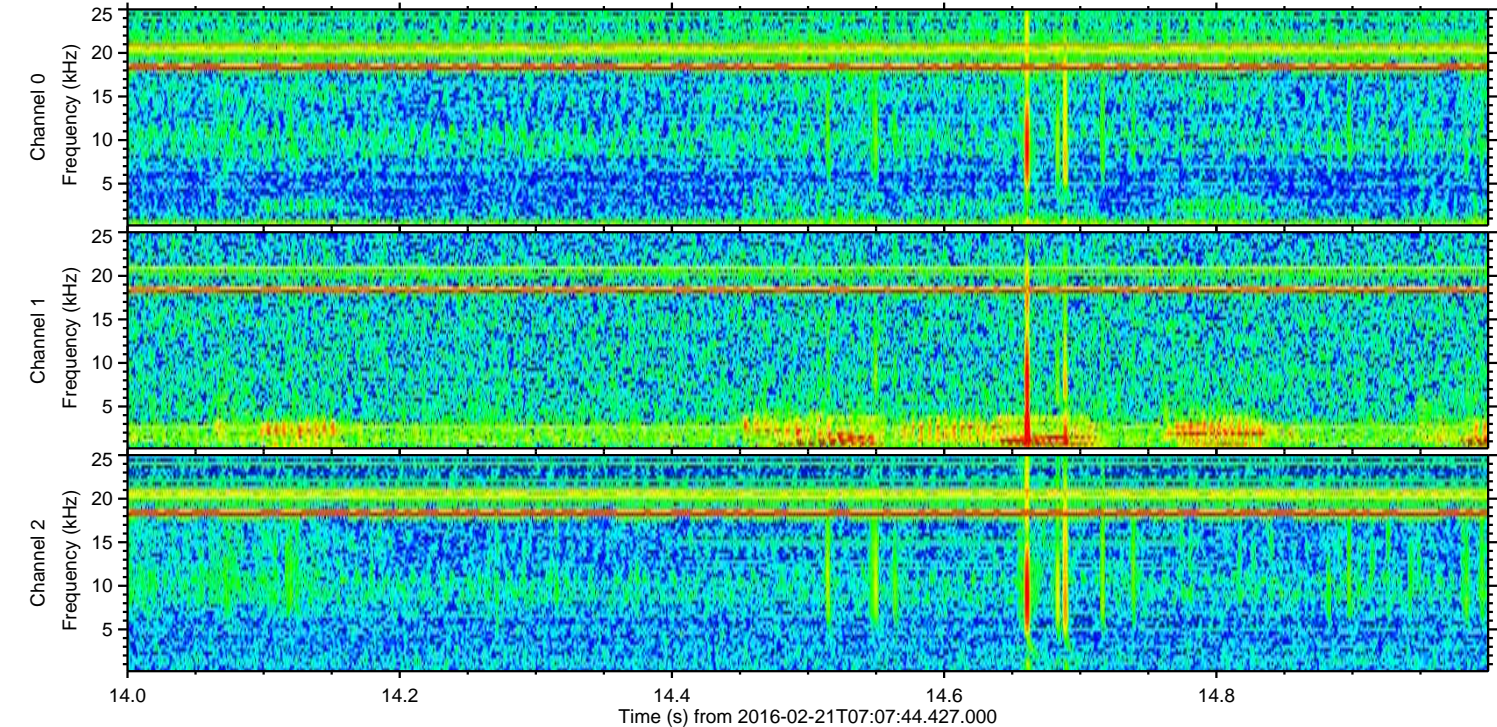
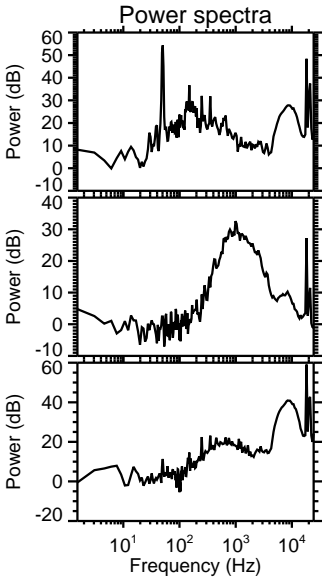
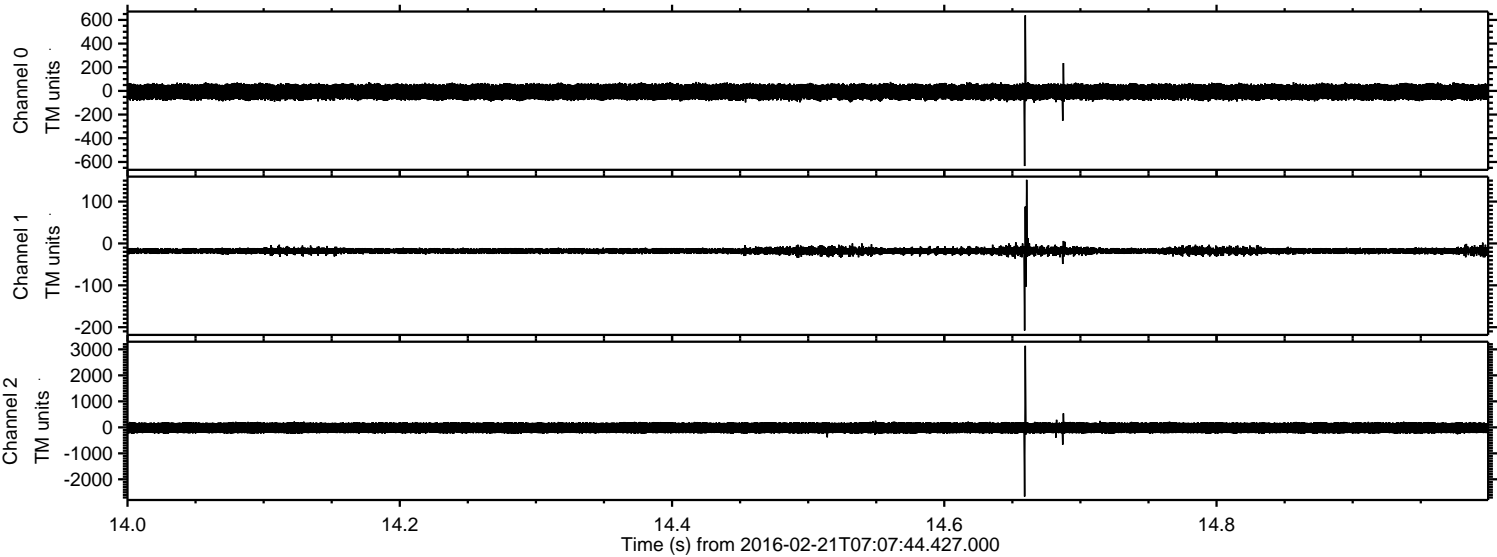
Processed Tue Apr 12 03:47:42 2016 by ELM ver.2012-10-06 from 001__elm20160221_070743__dat00.bin



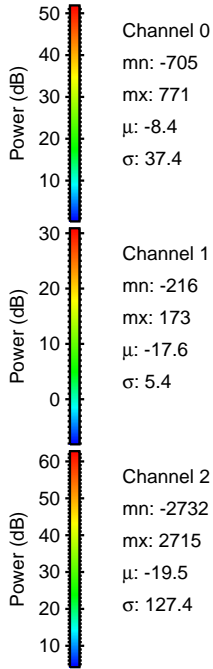
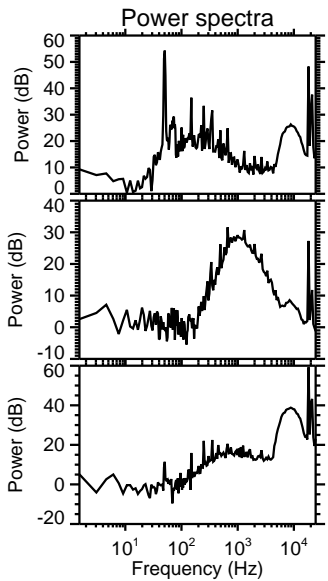
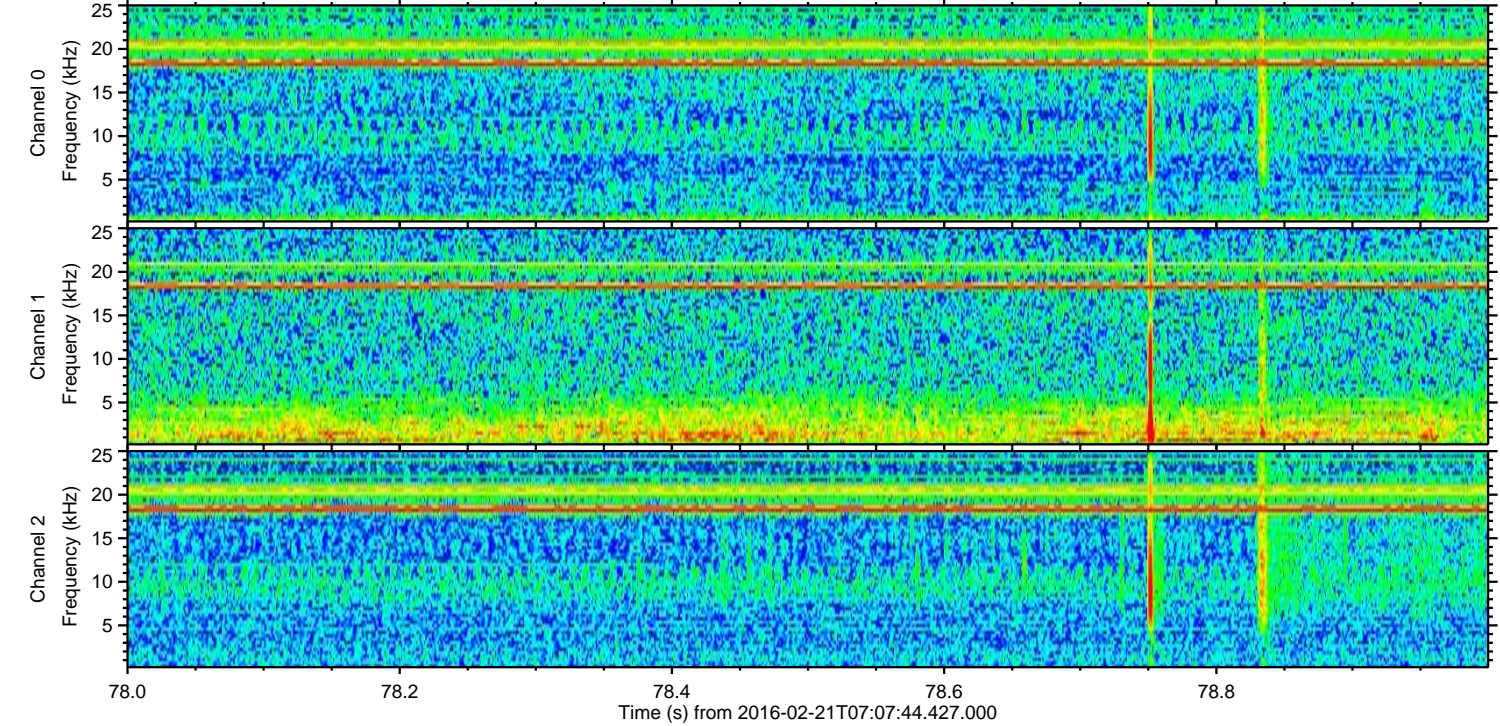
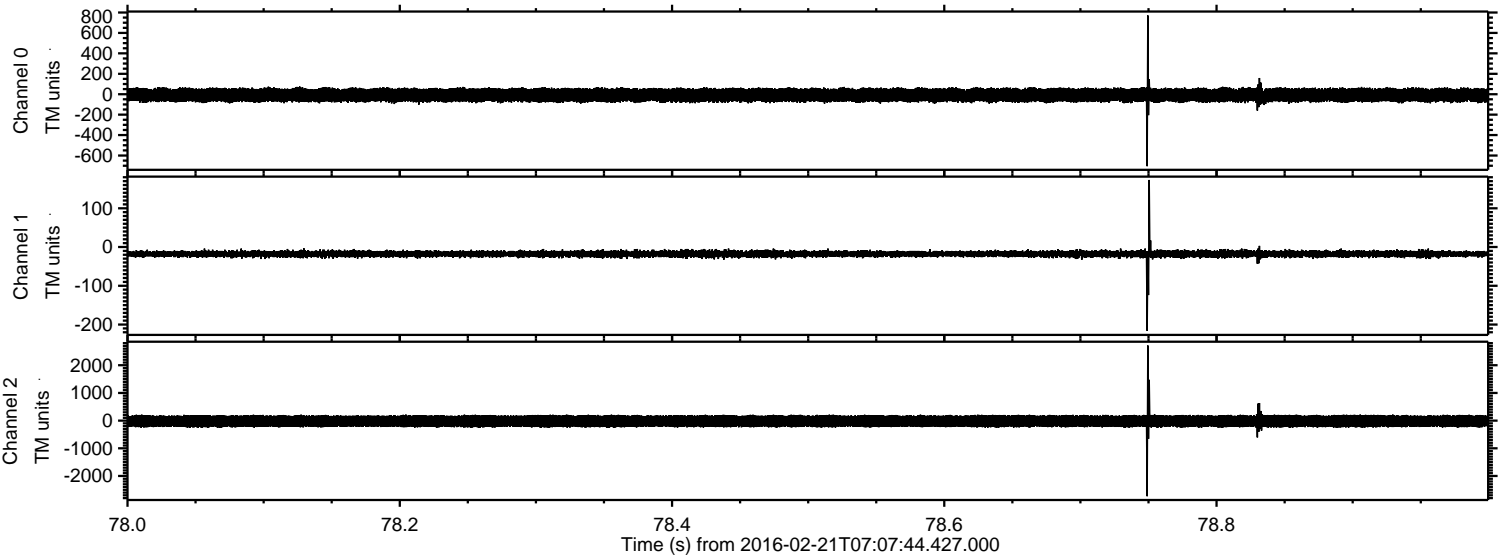
Processed Tue Apr 12 03:47:43 2016 by ELM ver.2012-10-06 from 001__elm20160221_070743__dat00.bin



Processed Tue Apr 12 03:47:44 2016 by ELM ver.2012-10-06 from 001__elm20160221_070743__dat00.bin



Processed Tue Apr 12 03:47:45 2016 by ELM ver.2012-10-06 from 001__elm20160221_070743__dat00.bin



Channel 0
mn: -705
mx: 771
 μ : -8.4
 σ : 37.4

Channel 1
mn: -216
mx: 173
 μ : -17.6
 σ : 5.4

Channel 2
mn: -2732
mx: 2715
 μ : -19.5
 σ : 127.4

Processed Tue Apr 12 03:47:46 2016 by ELM ver.2012-10-06 from 001__elm20160221_070743__dat00.bin

