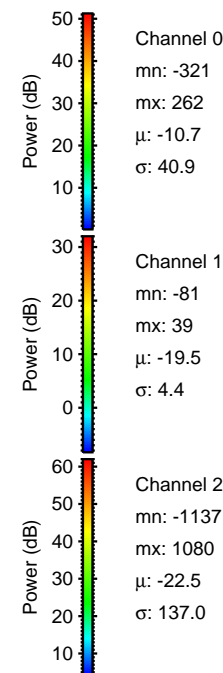
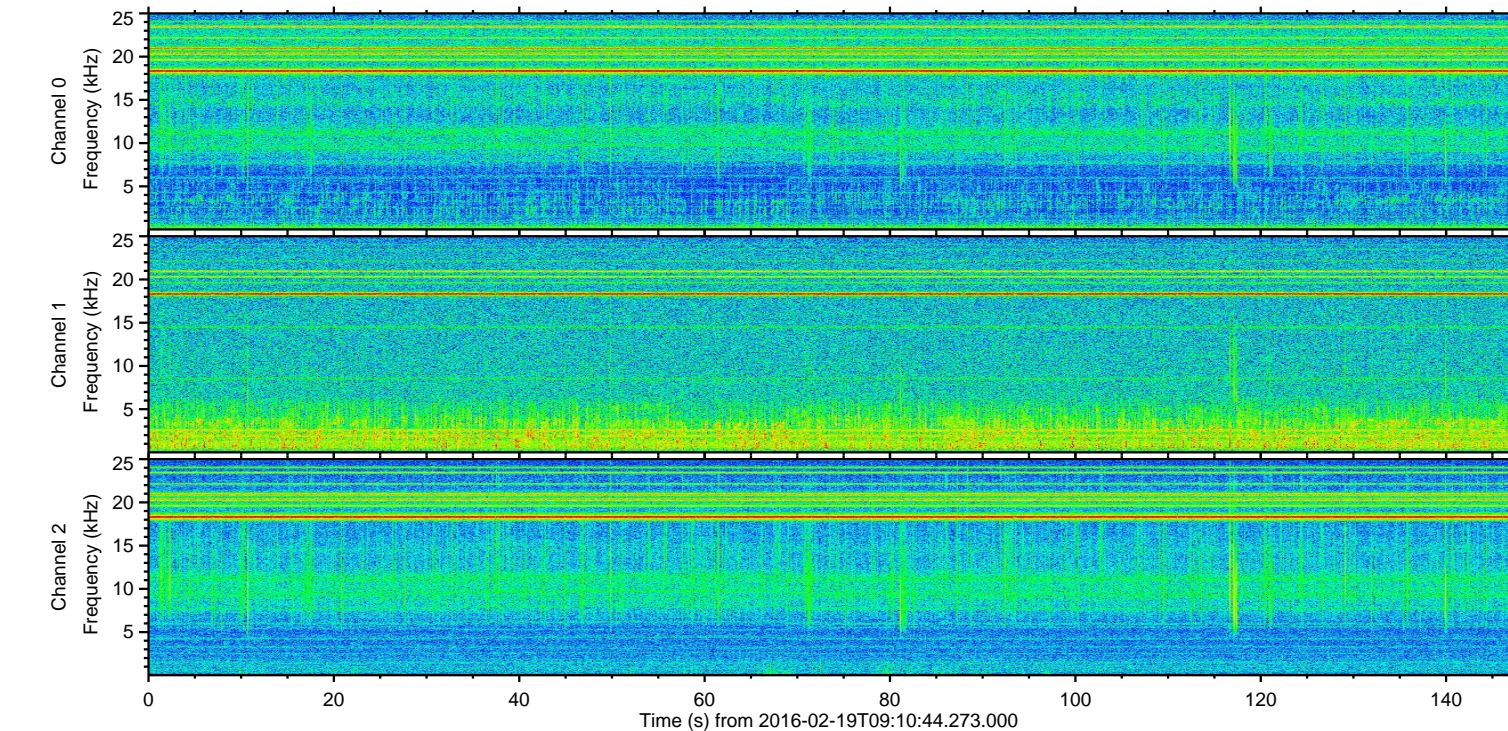
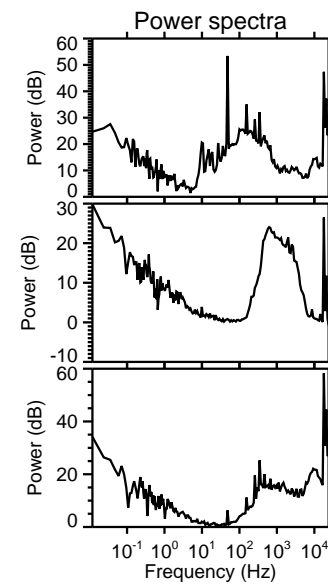
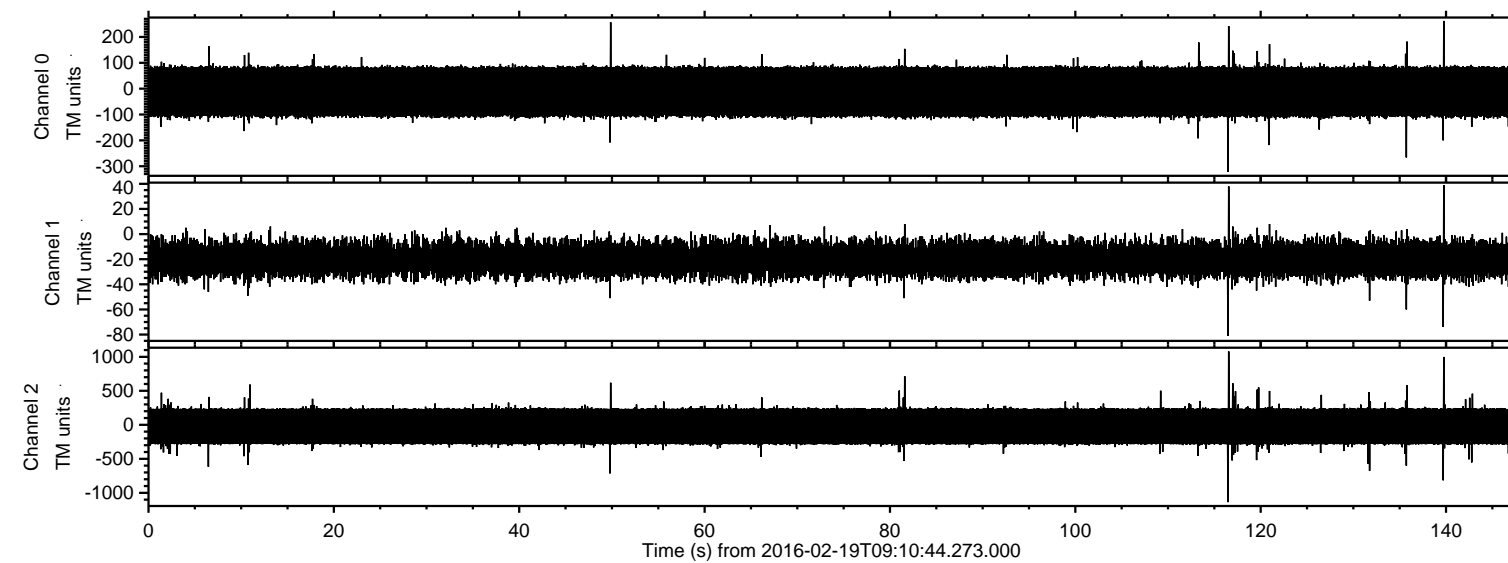


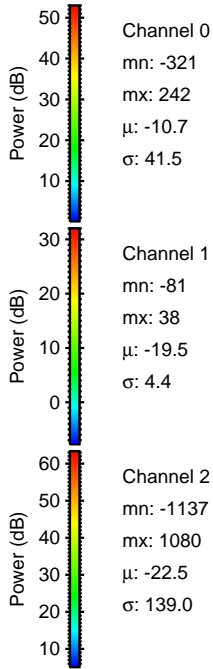
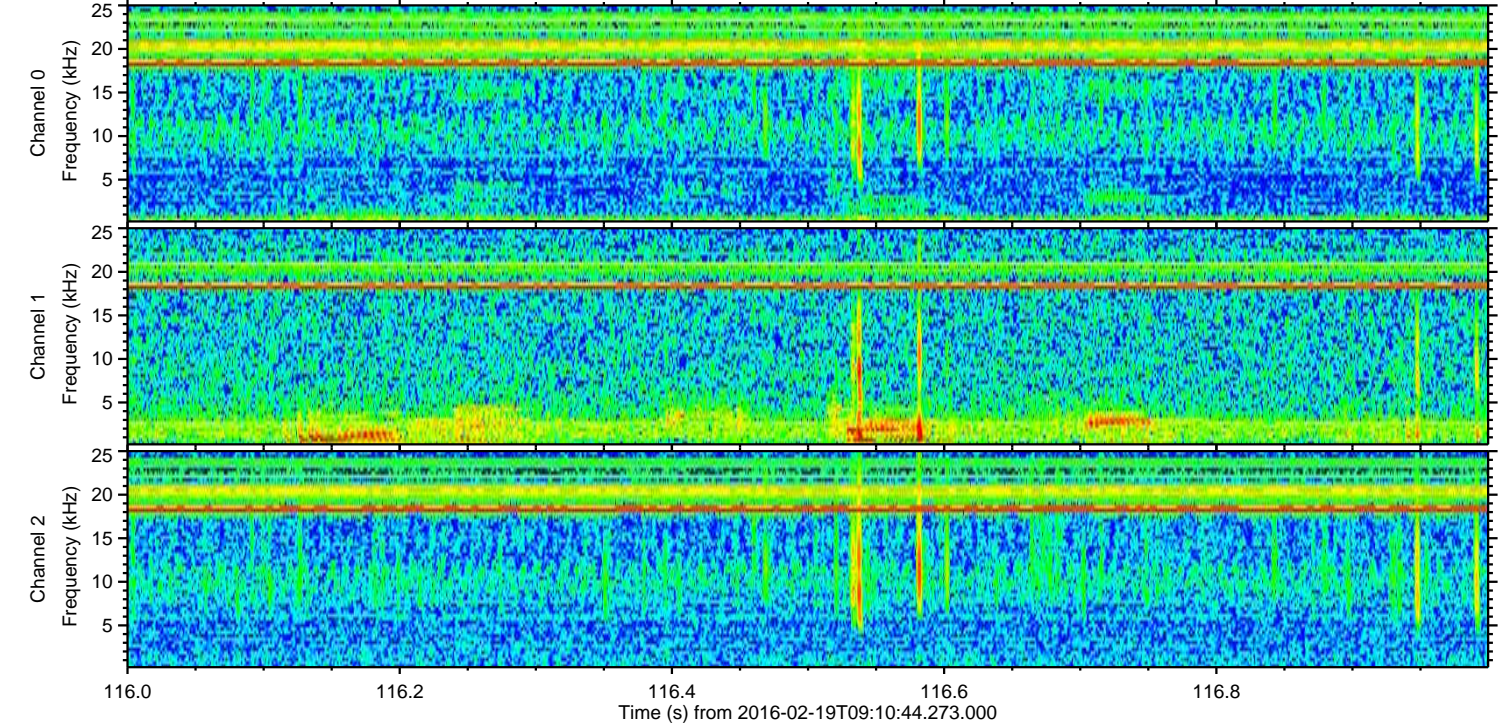
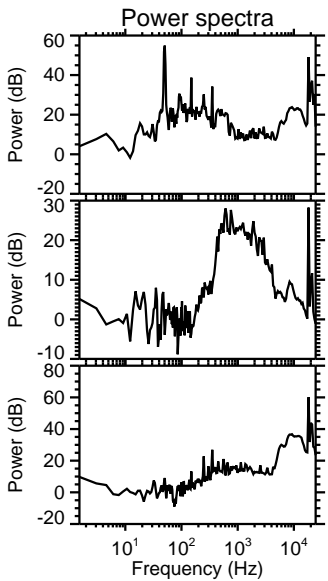
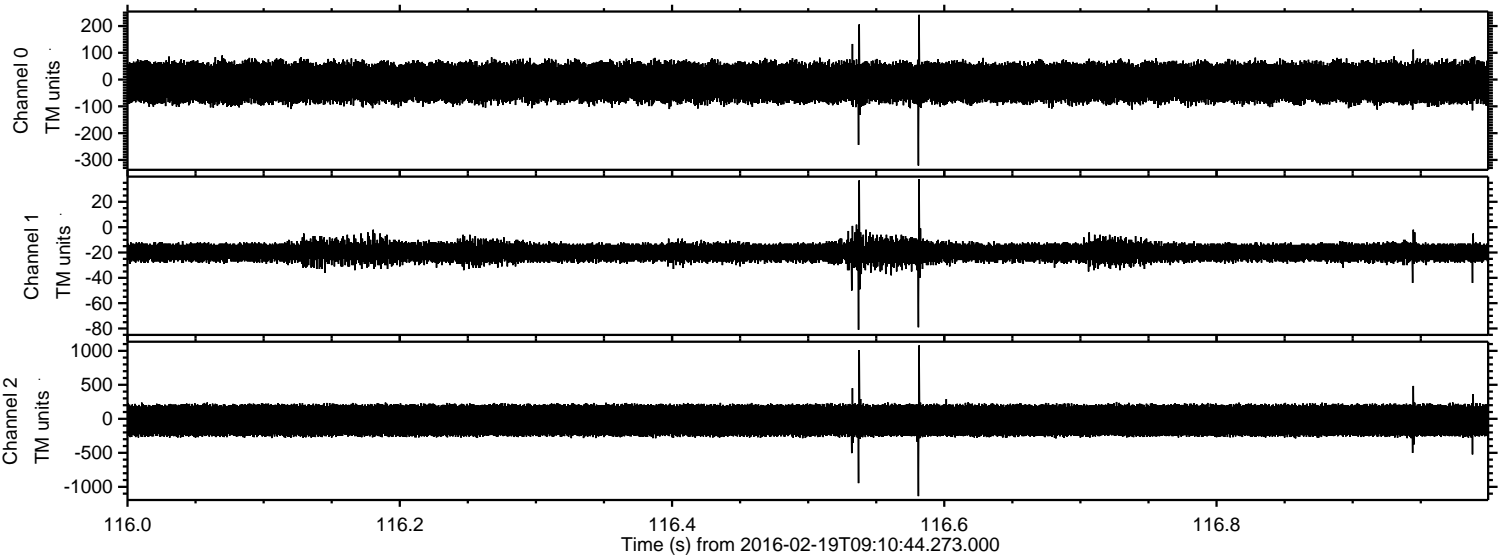
ELMAVAN 3D WAVEFORMS (Measured data sampled at 50 kHz) 51000 packets of 144 samples from 2016-02-19T09:10:44.273.000.

Processed Mon Apr 11 18:24:18 2016 by ELM ver.2012-10-06 from 001__elm20160219_091043__dat00.bin



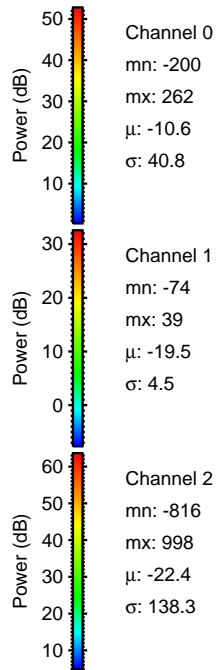
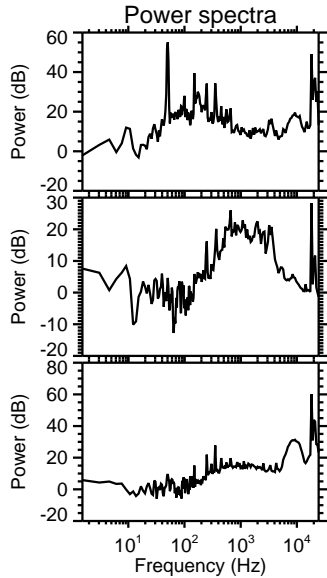
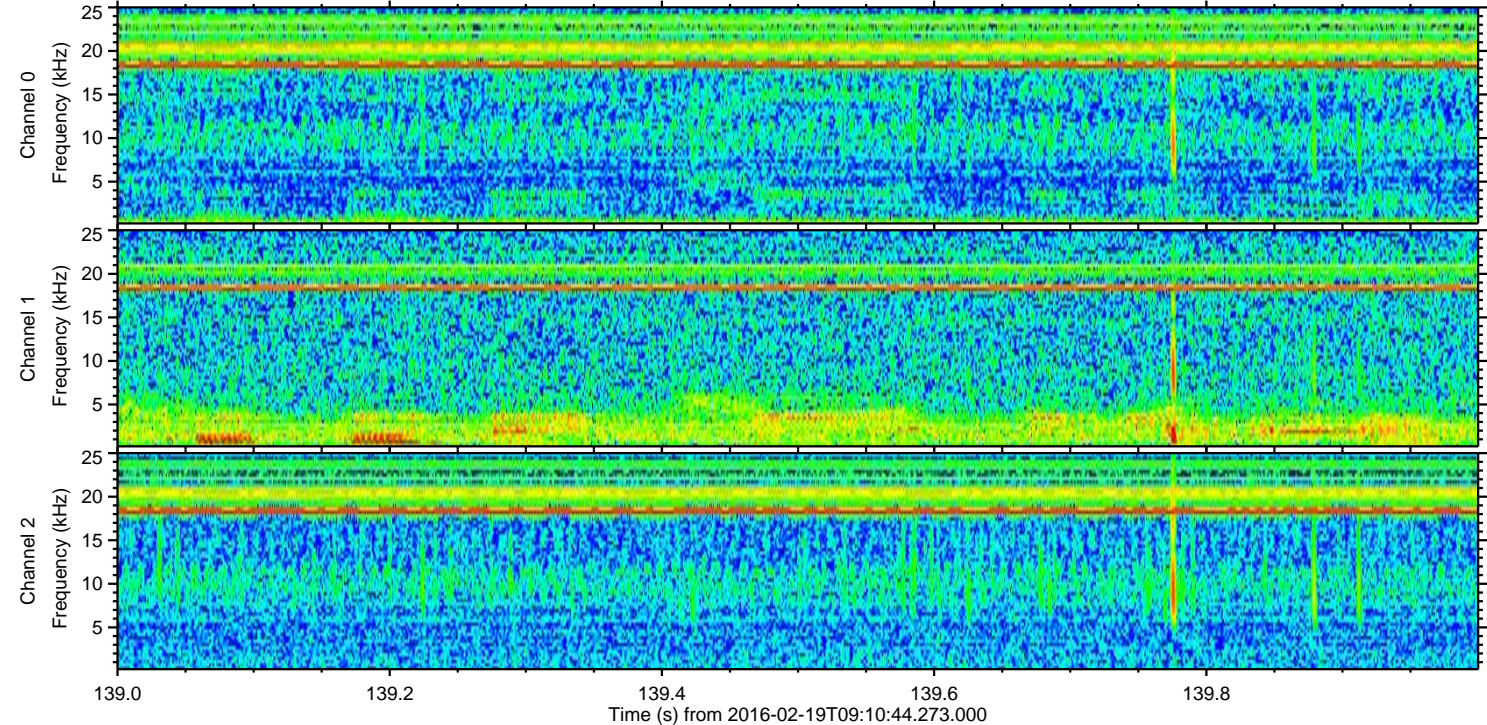
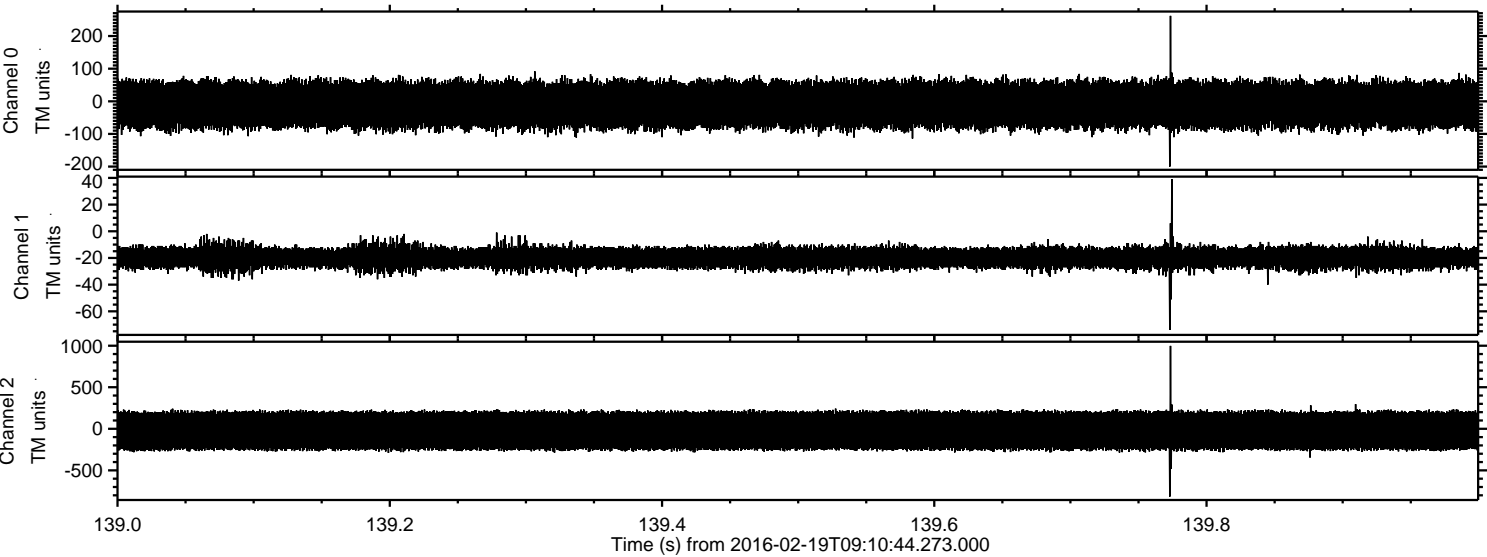
ELMAVAN 3D WAVEFORMS (Measured data sampled at 50 kHz) 51000 packets of 144 samples from 2016-02-19T09:10:44.273.000. Part 117/147

Processed Mon Apr 11 18:24:30 2016 by ELM ver.2012-10-06 from 001__elm20160219_091043__dat00.bin

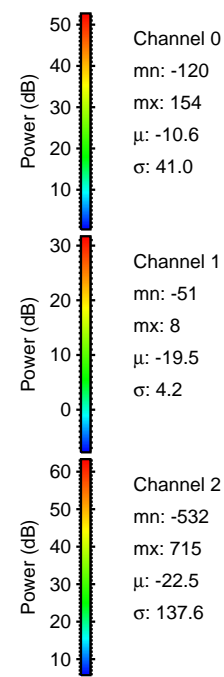
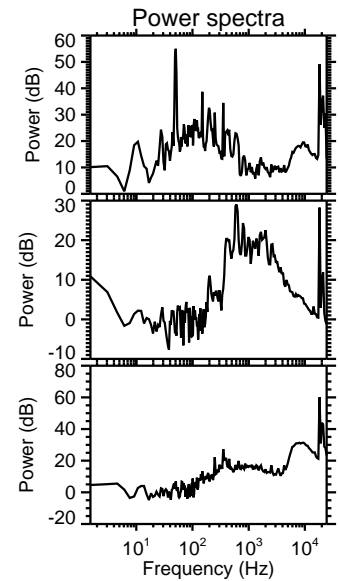
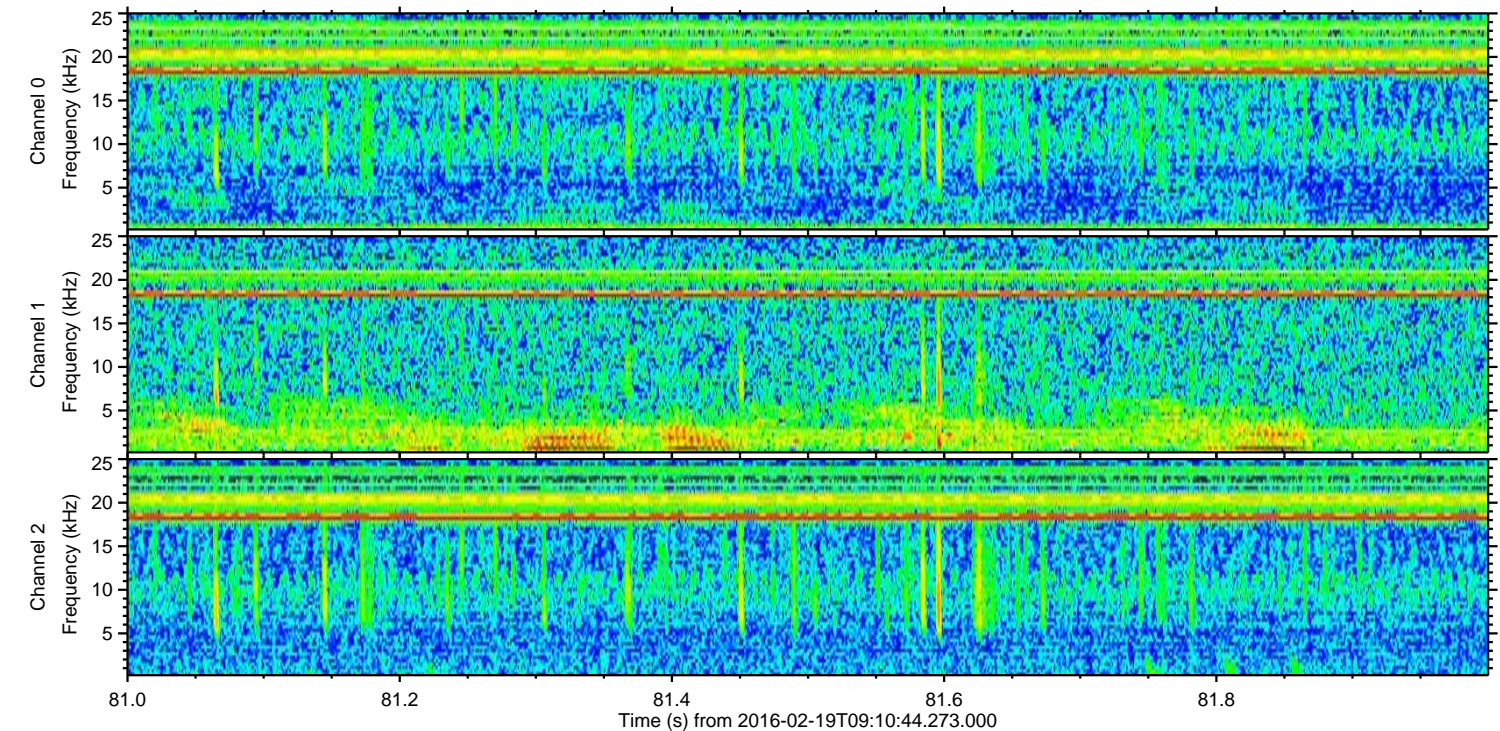
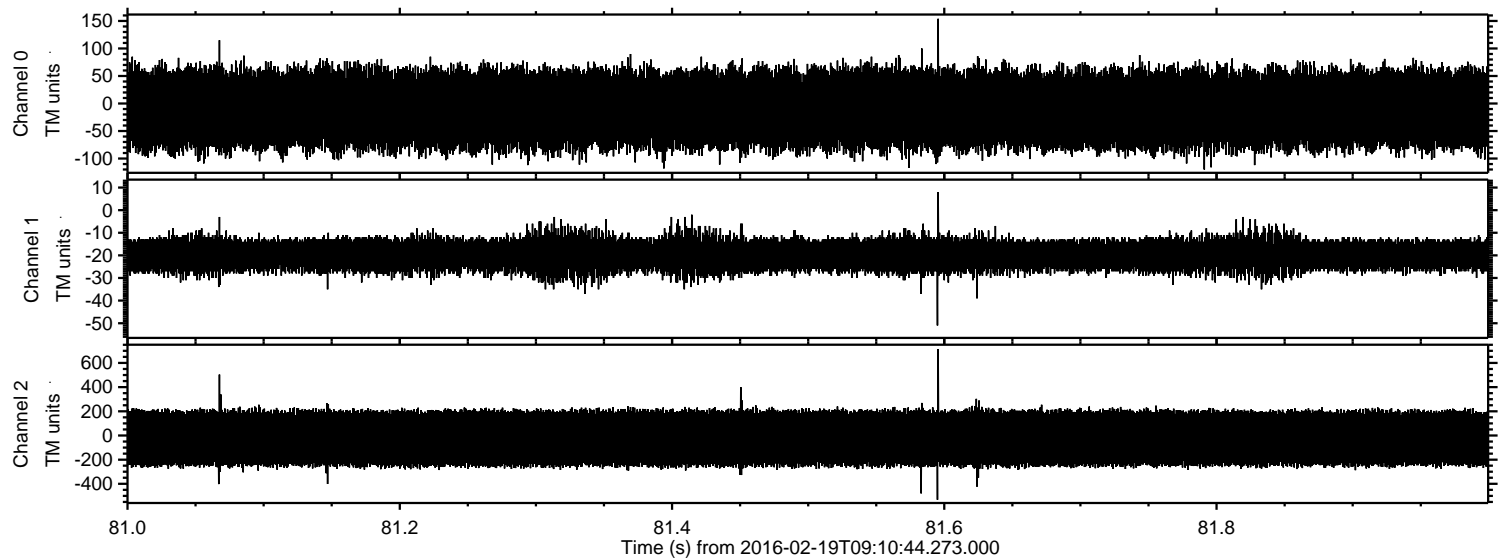


ELMAVAN 3D WAVEFORMS (Measured data sampled at 50 kHz) 51000 packets of 144 samples from 2016-02-19T09:10:44.273.000. Part 140/147

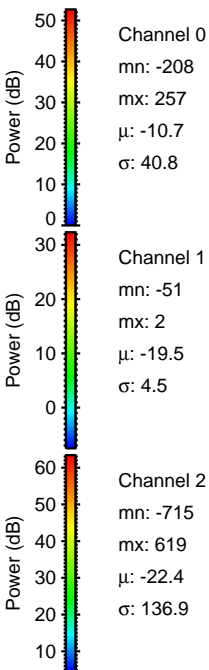
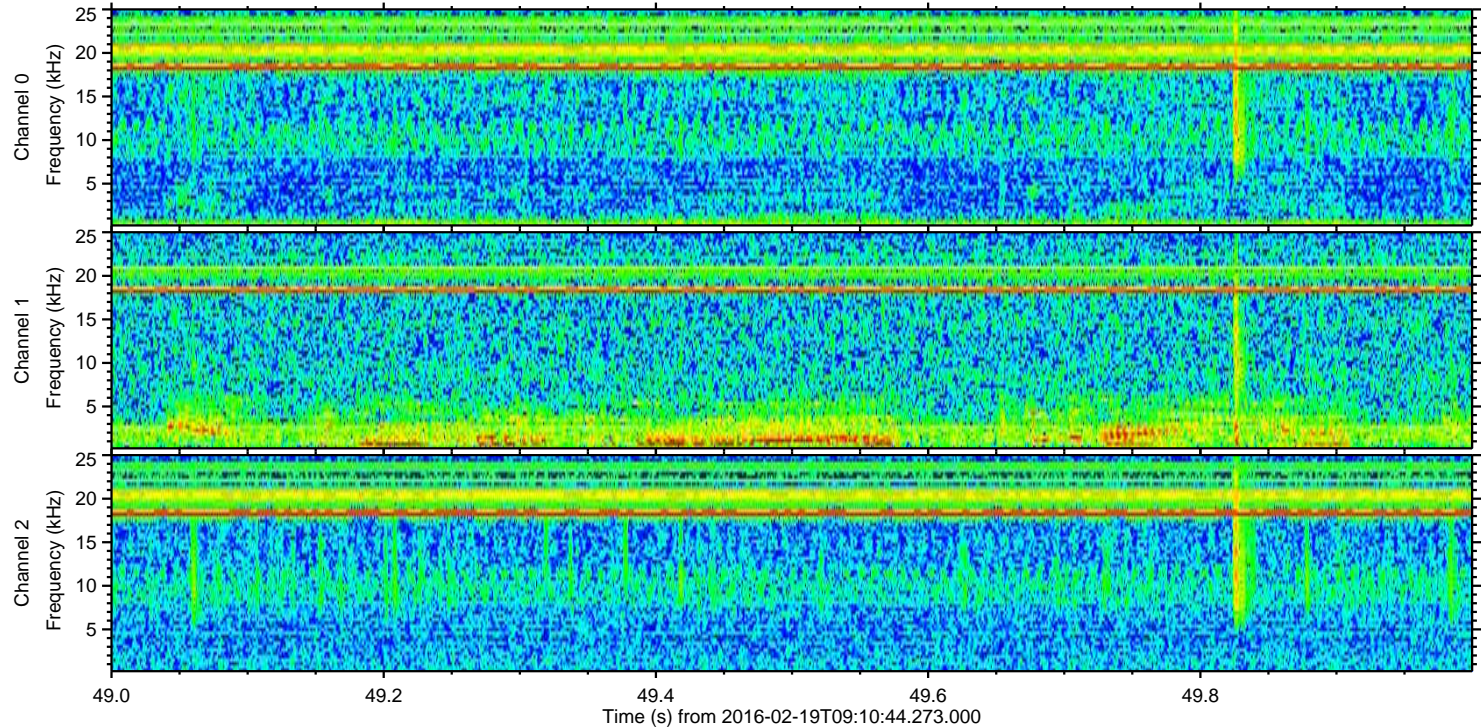
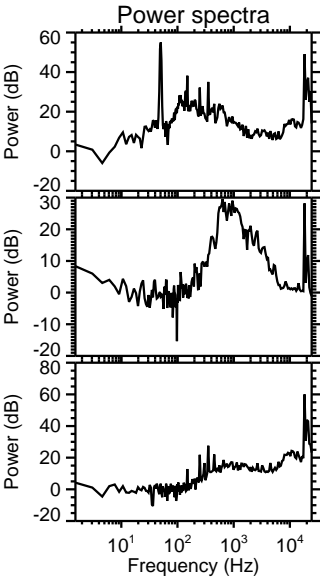
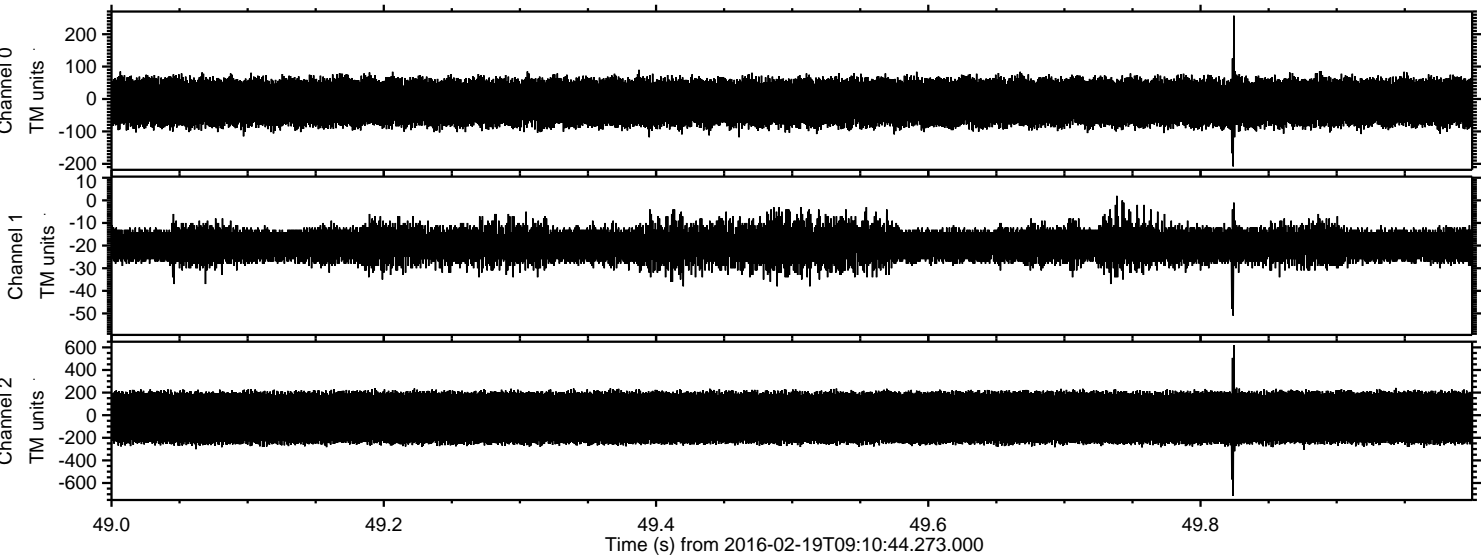
Processed Mon Apr 11 18:24:31 2016 by ELM ver.2012-10-06 from 001__elm20160219_091043__dat00.bin



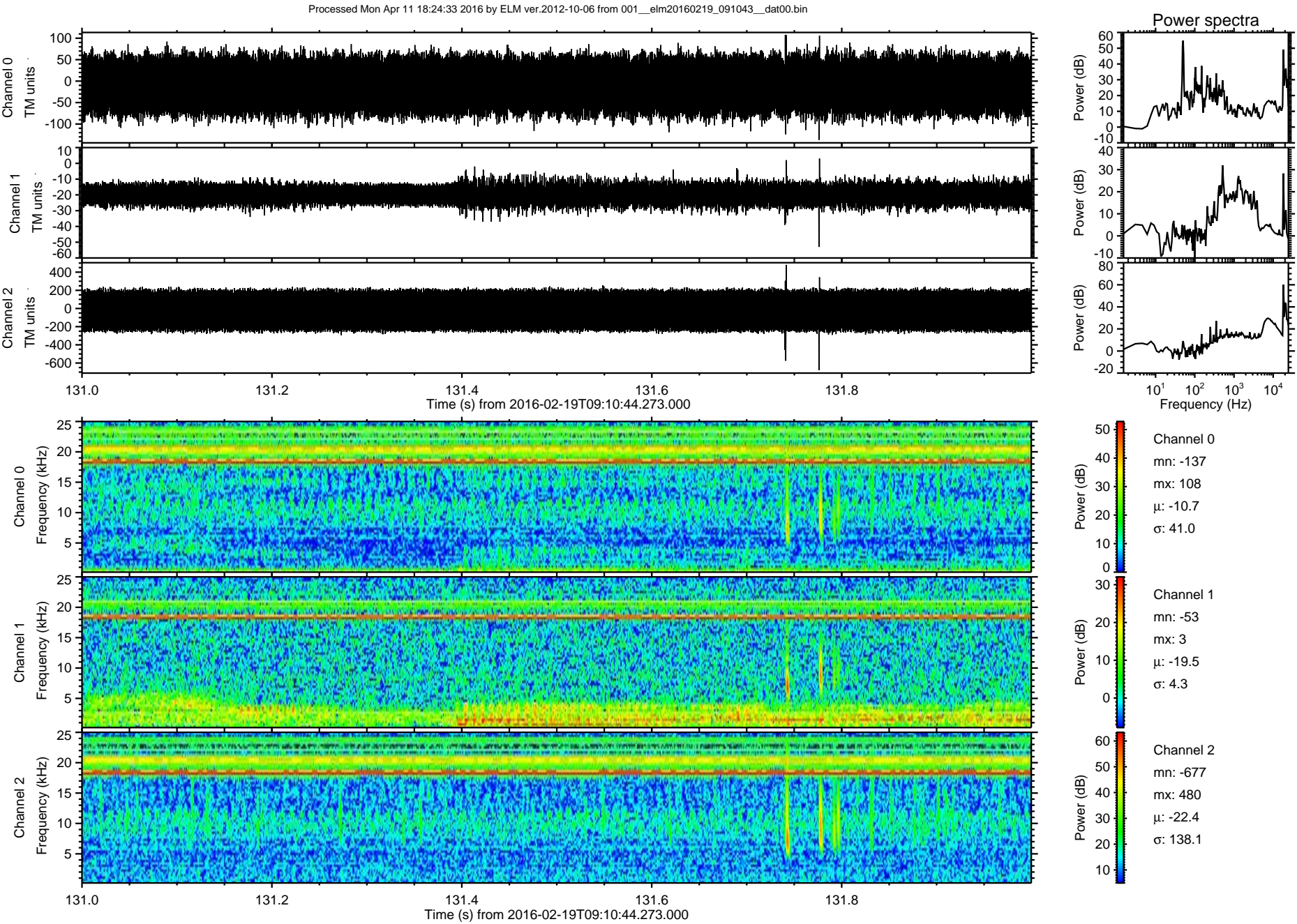
Processed Mon Apr 11 18:24:32 2016 by ELM ver.2012-10-06 from 001__elm20160219_091043__dat00.bin



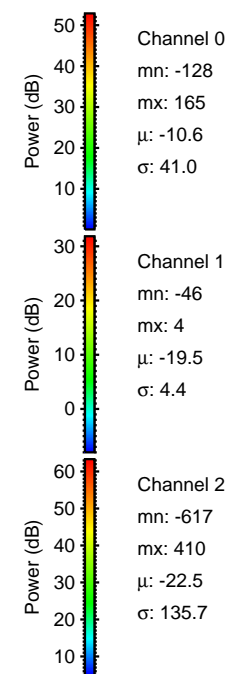
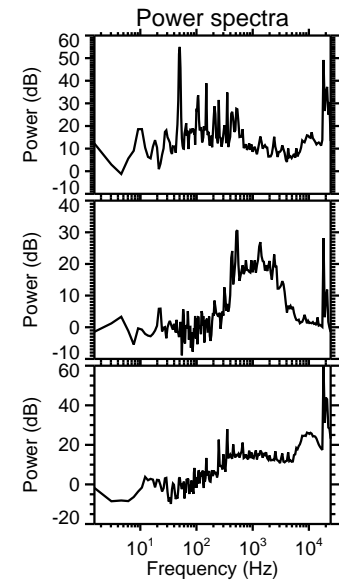
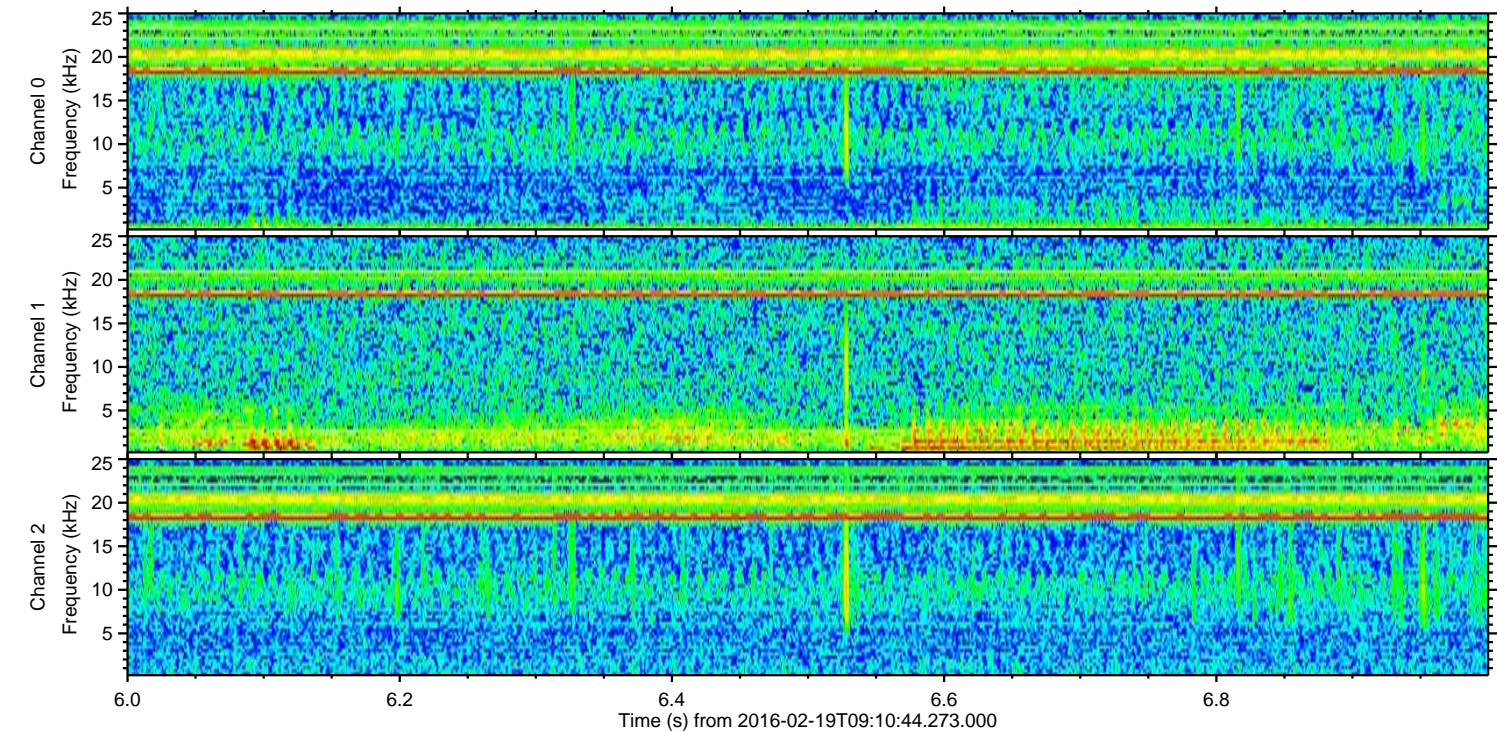
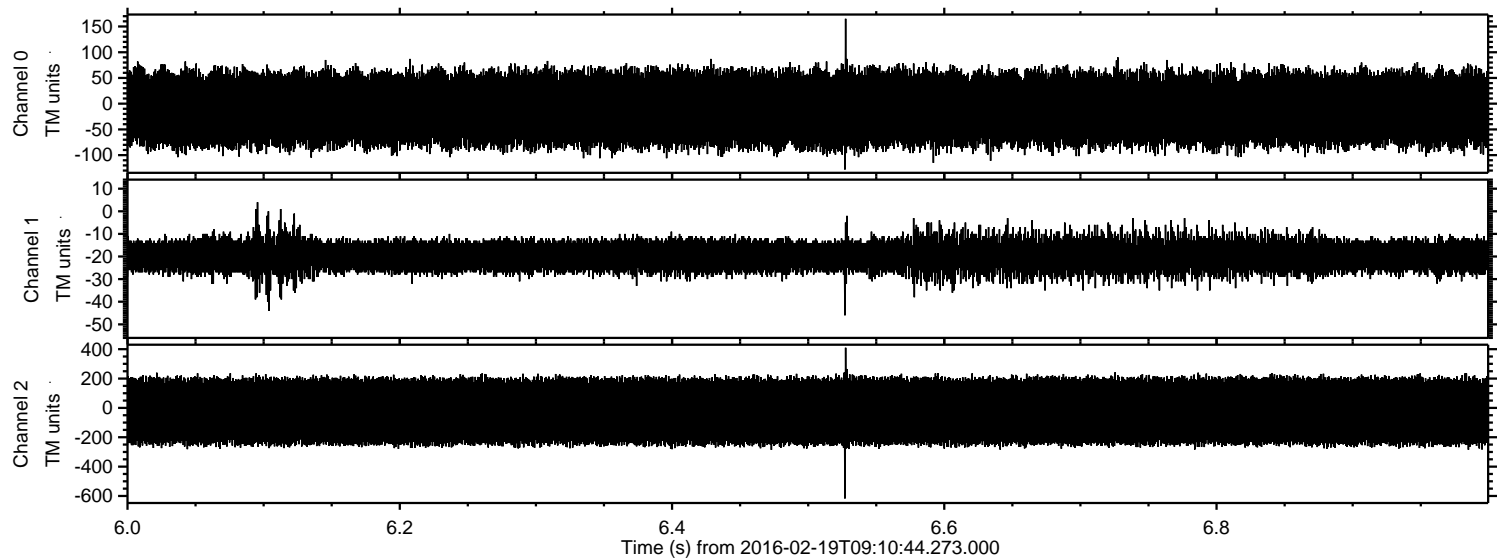
Processed Mon Apr 11 18:24:32 2016 by ELM ver.2012-10-06 from 001__elm20160219_091043__dat00.bin



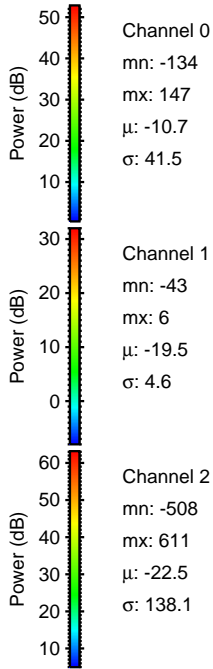
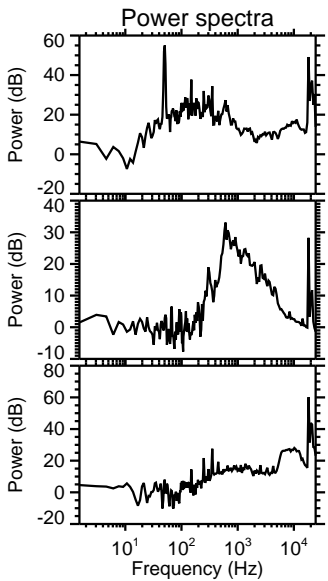
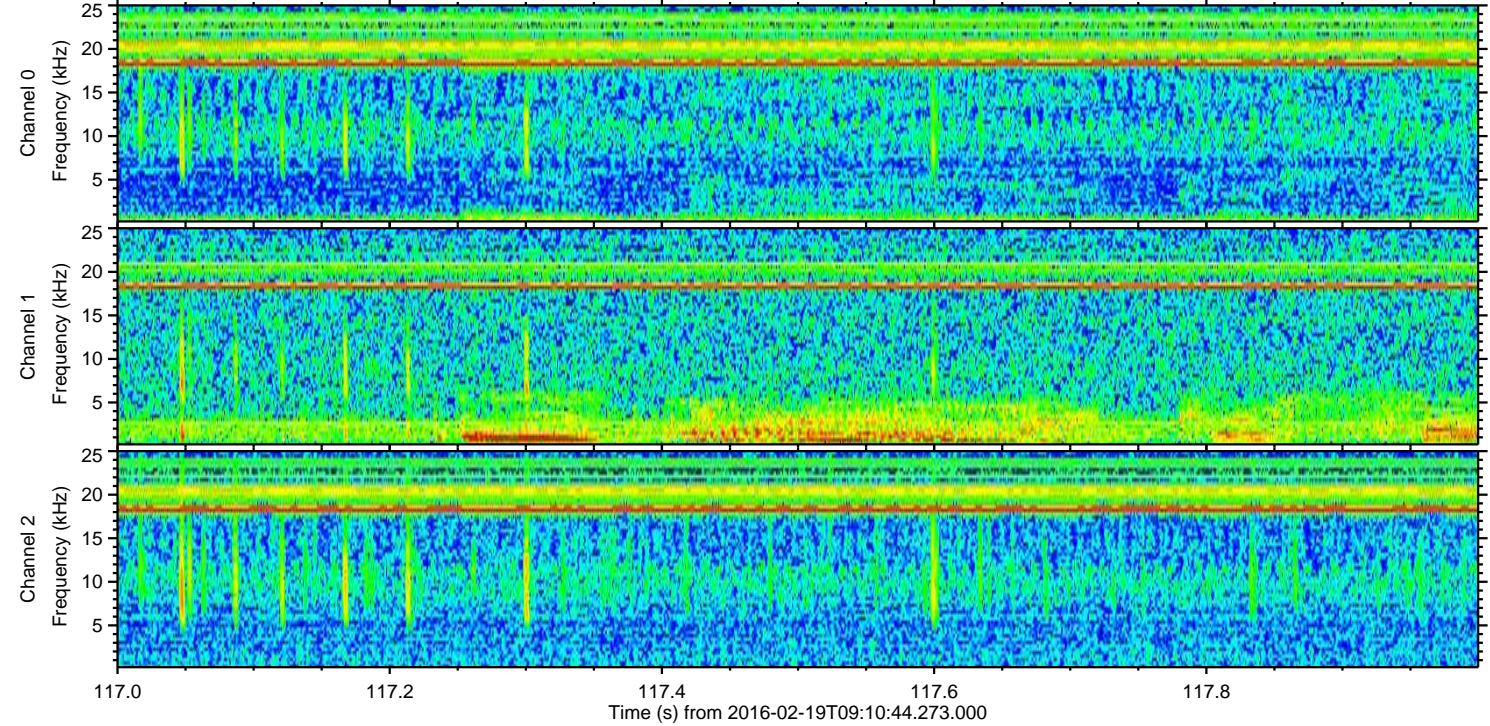
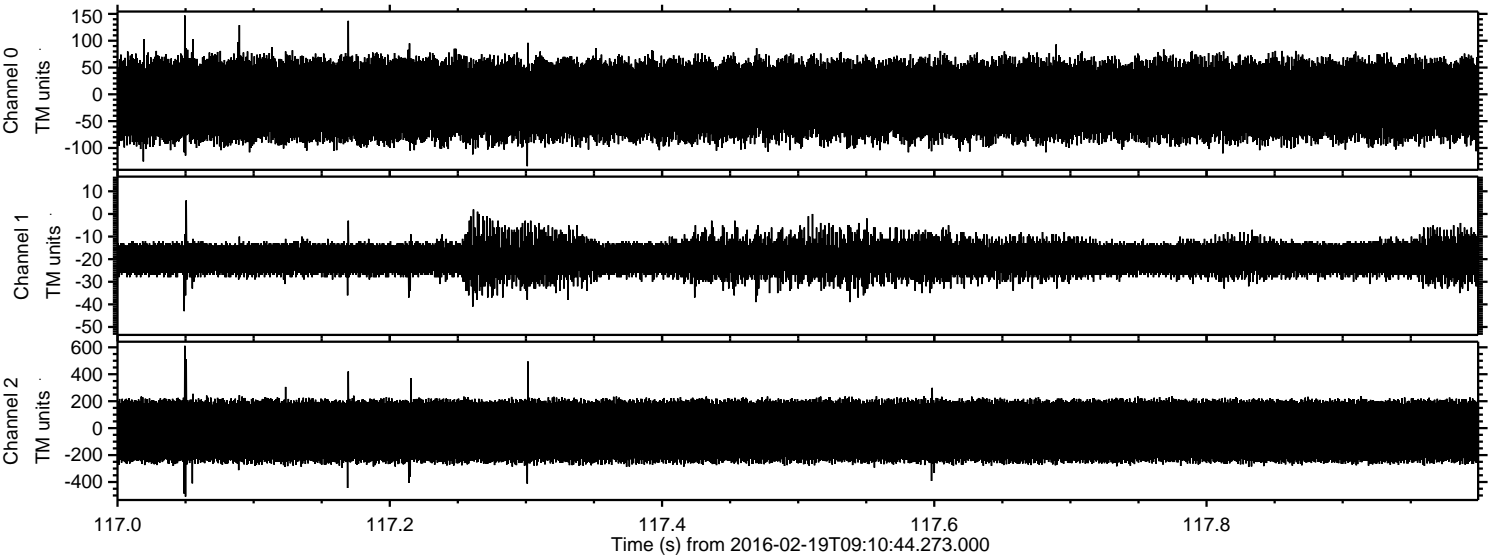
ELMAVAN 3D WAVEFORMS (Measured data sampled at 50 kHz) 51000 packets of 144 samples from 2016-02-19T09:10:44.273.000. Part 132/147



Processed Mon Apr 11 18:24:34 2016 by ELM ver.2012-10-06 from 001__elm20160219_091043__dat00.bin

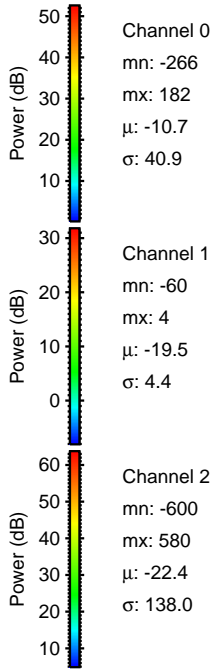
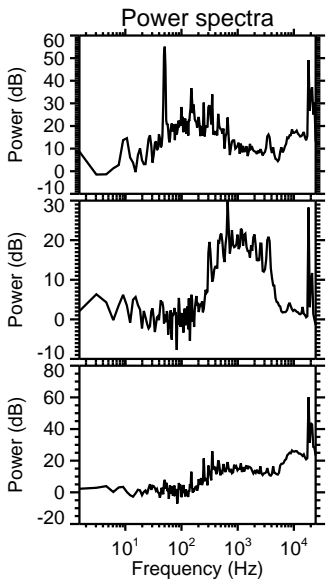
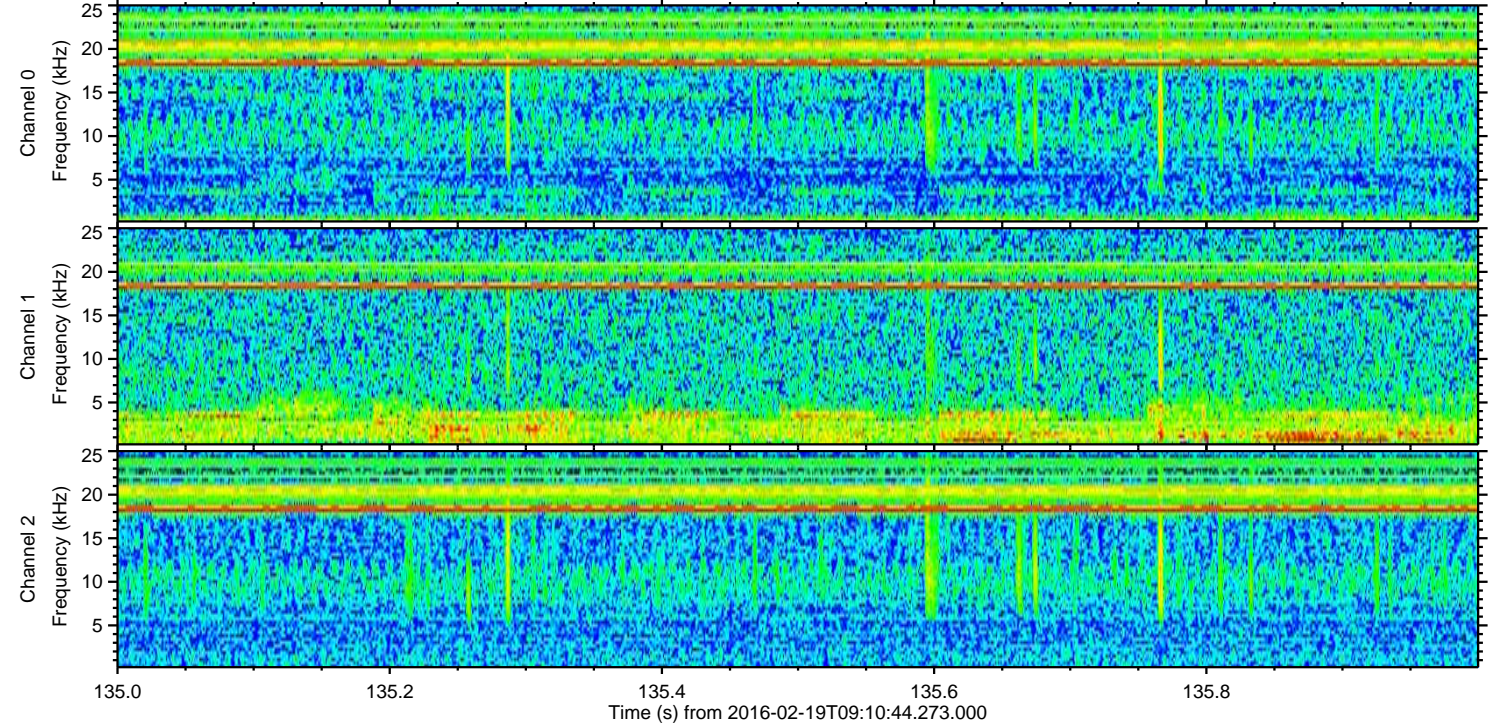
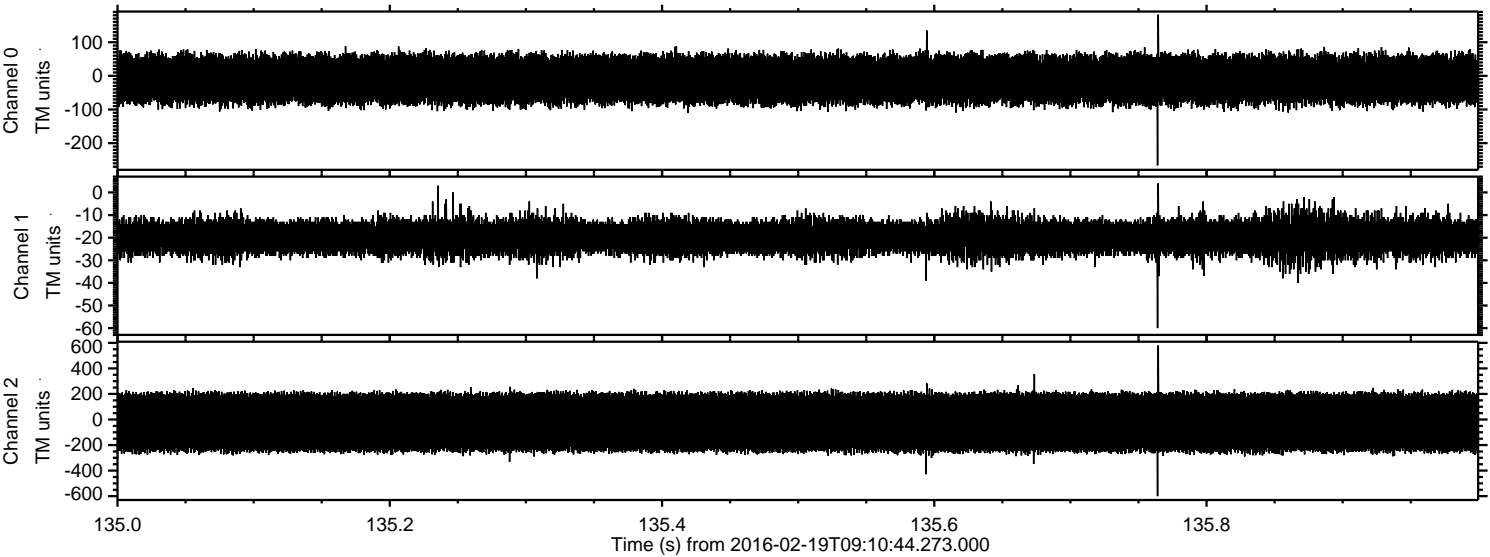


Processed Mon Apr 11 18:24:35 2016 by ELM ver.2012-10-06 from 001__elm20160219_091043__dat00.bin

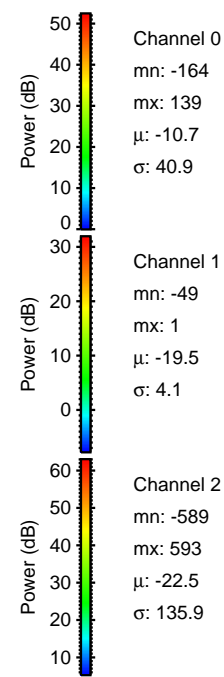
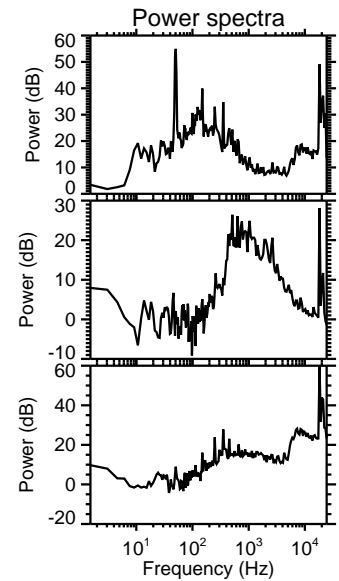
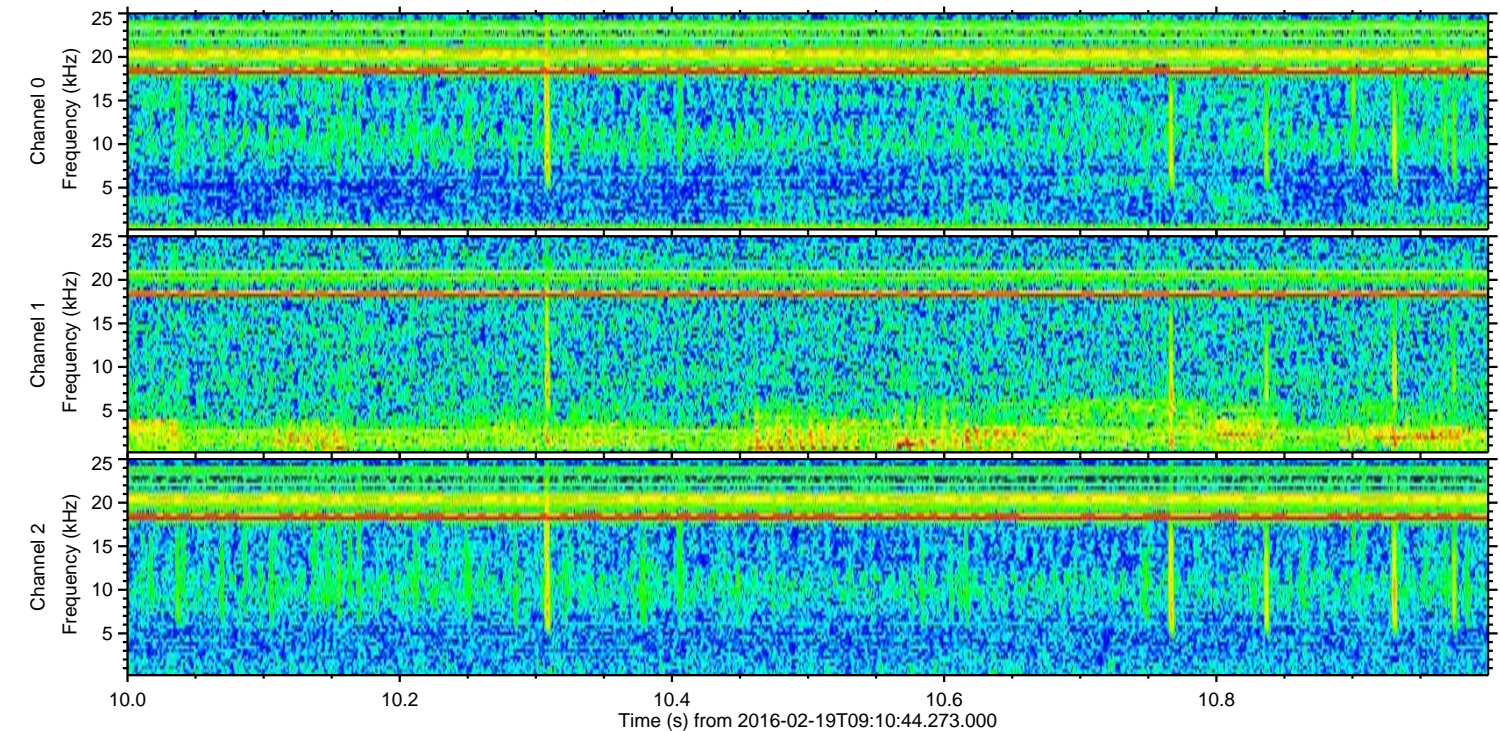
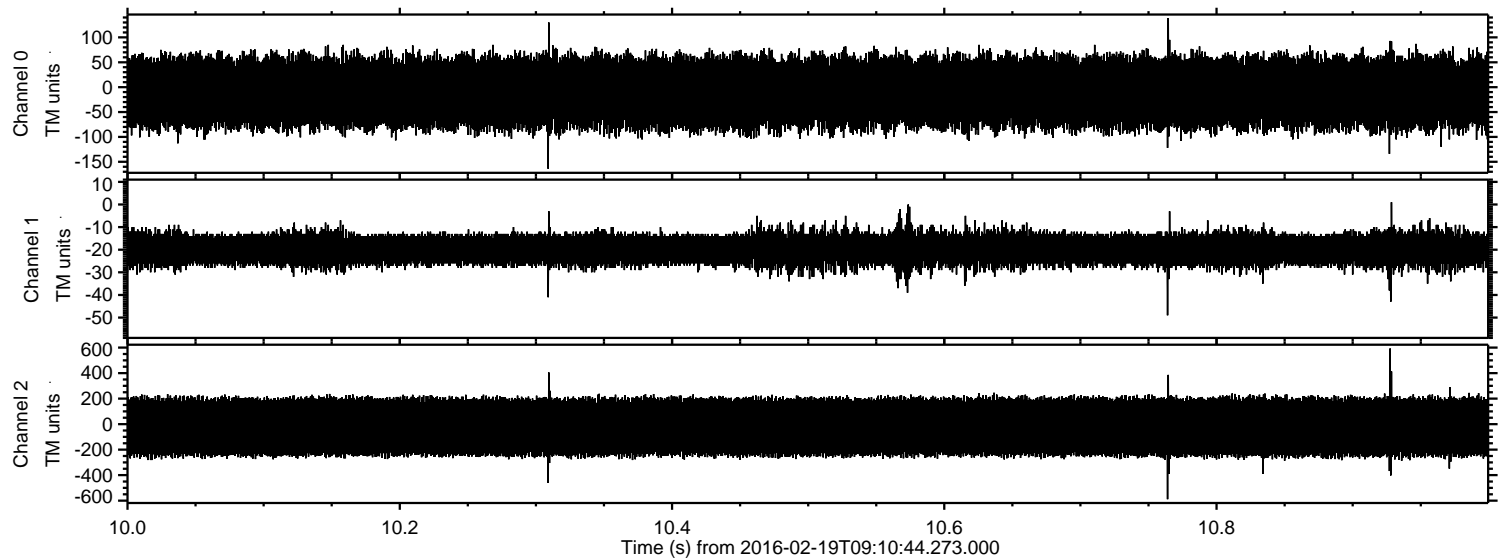


ELMAVAN 3D WAVEFORMS (Measured data sampled at 50 kHz) 51000 packets of 144 samples from 2016-02-19T09:10:44.273.000. Part 136/147

Processed Mon Apr 11 18:24:36 2016 by ELM ver.2012-10-06 from 001__elm20160219_091043__dat00.bin



Processed Mon Apr 11 18:24:37 2016 by ELM ver.2012-10-06 from 001__elm20160219_091043__dat00.bin



Channel 0
mn: -164
mx: 139
 μ : -10.7
 σ : 40.9

Channel 1
mn: -49
mx: 1
 μ : -19.5
 σ : 4.1

Channel 2
mn: -589
mx: 593
 μ : -22.5
 σ : 135.9

Processed Mon Apr 11 18:24:38 2016 by ELM ver.2012-10-06 from 001__elm20160219_091043__dat00.bin

