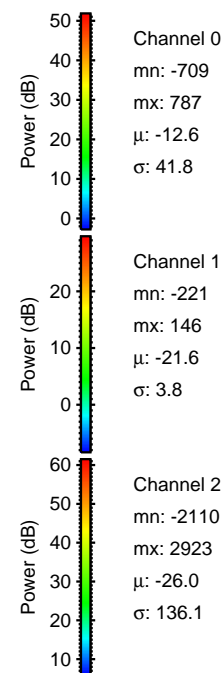
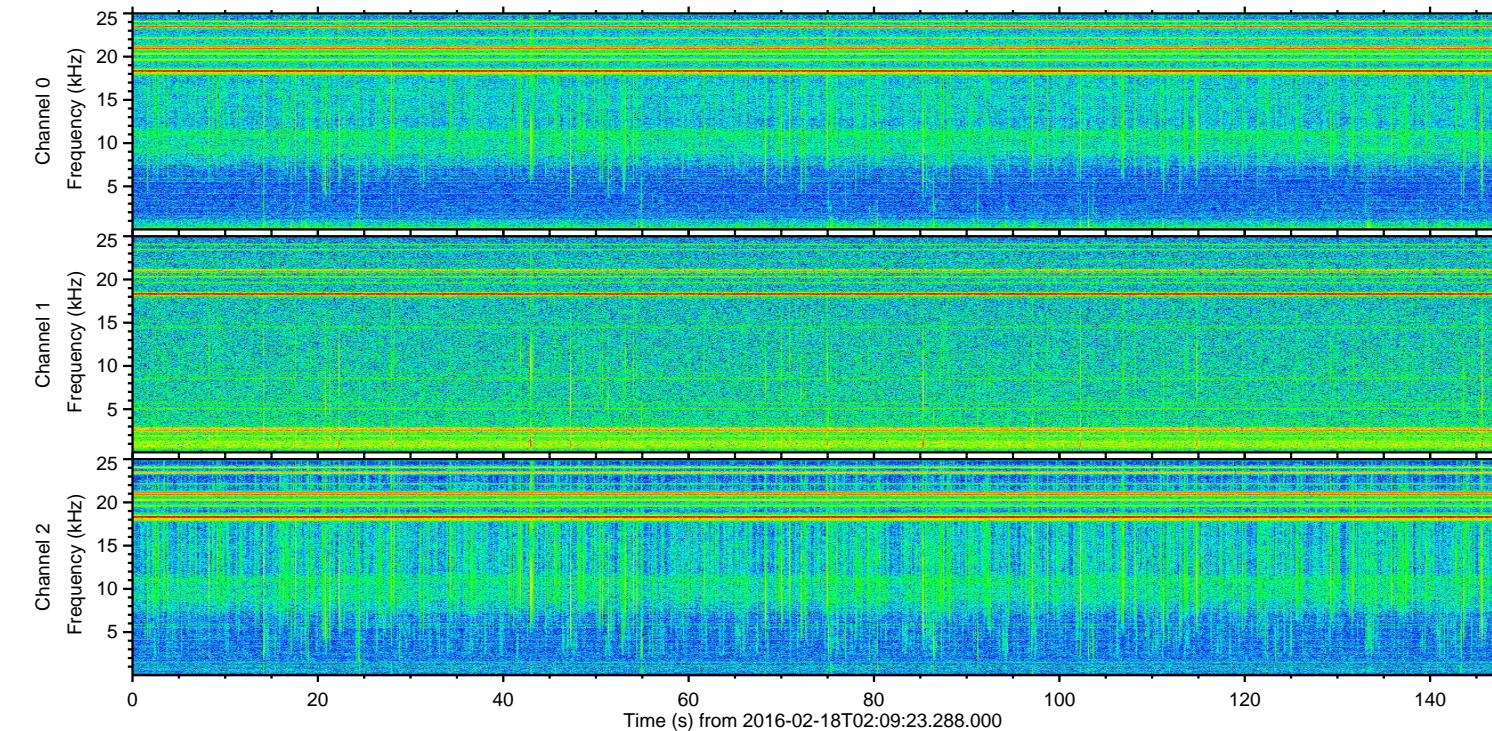
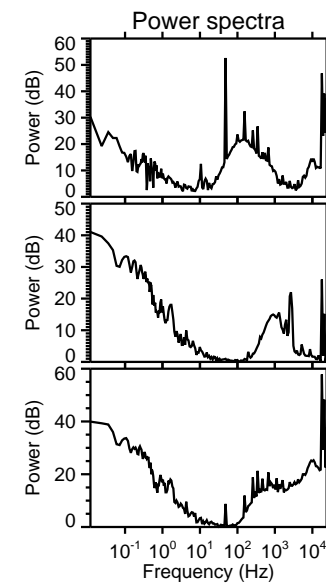
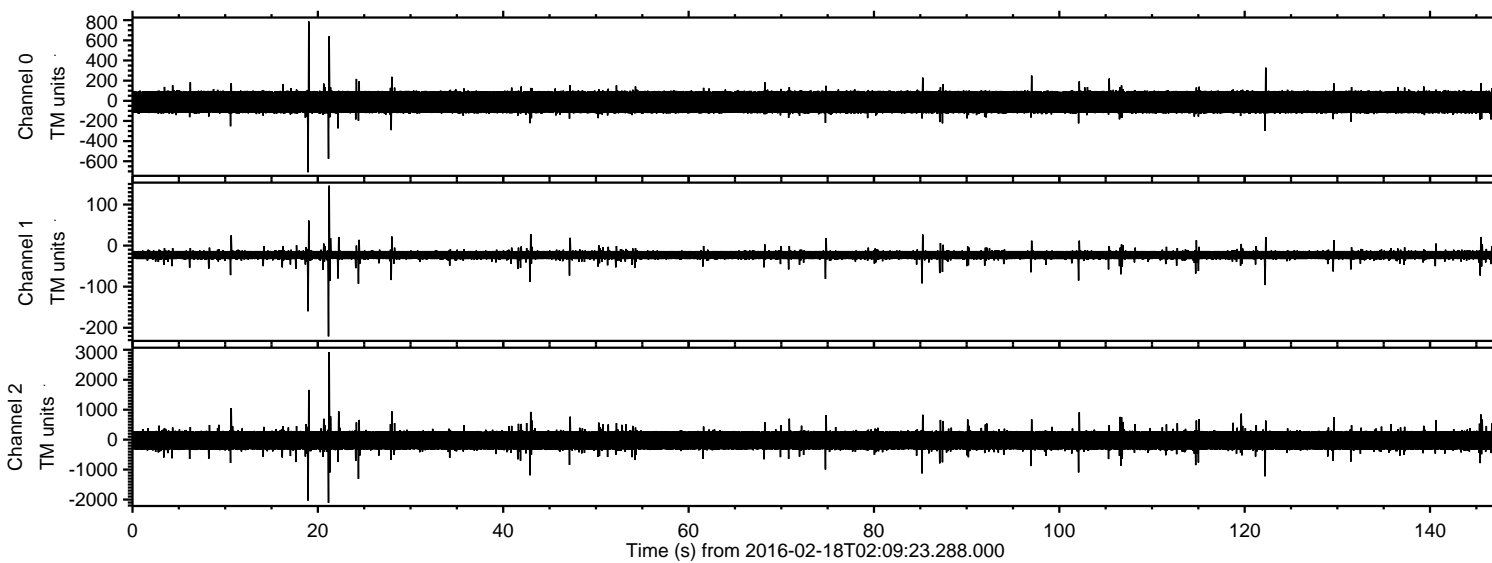
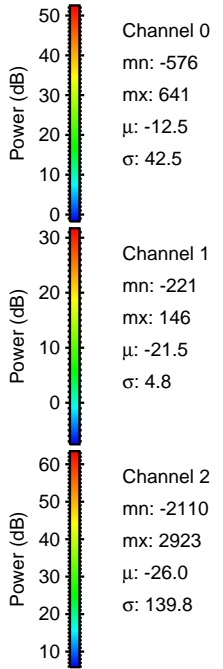
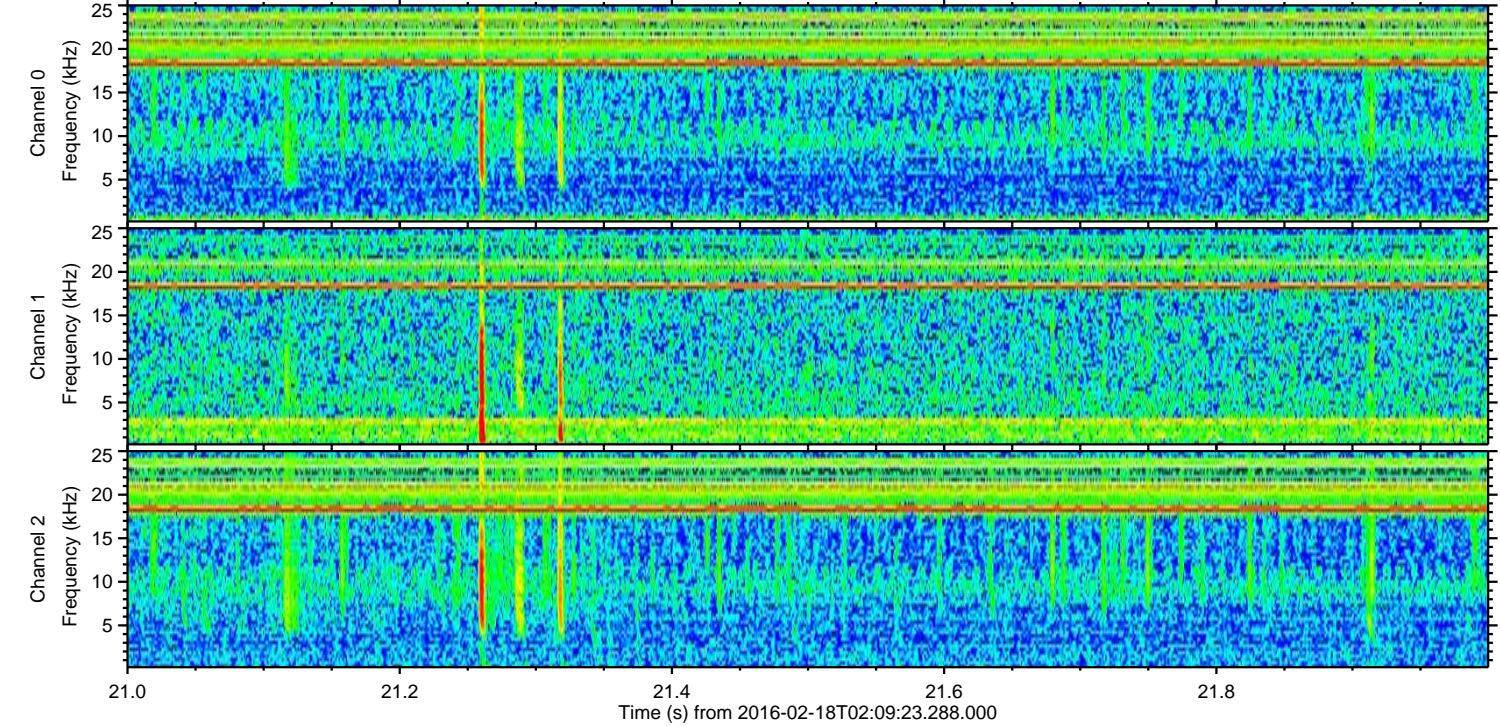
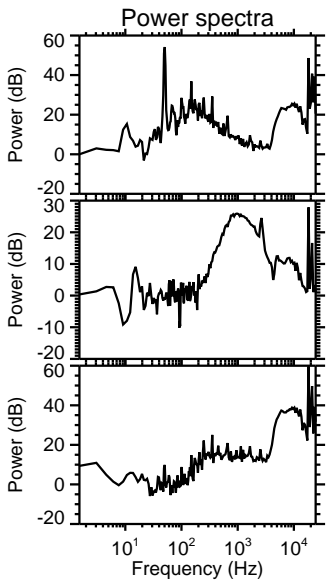
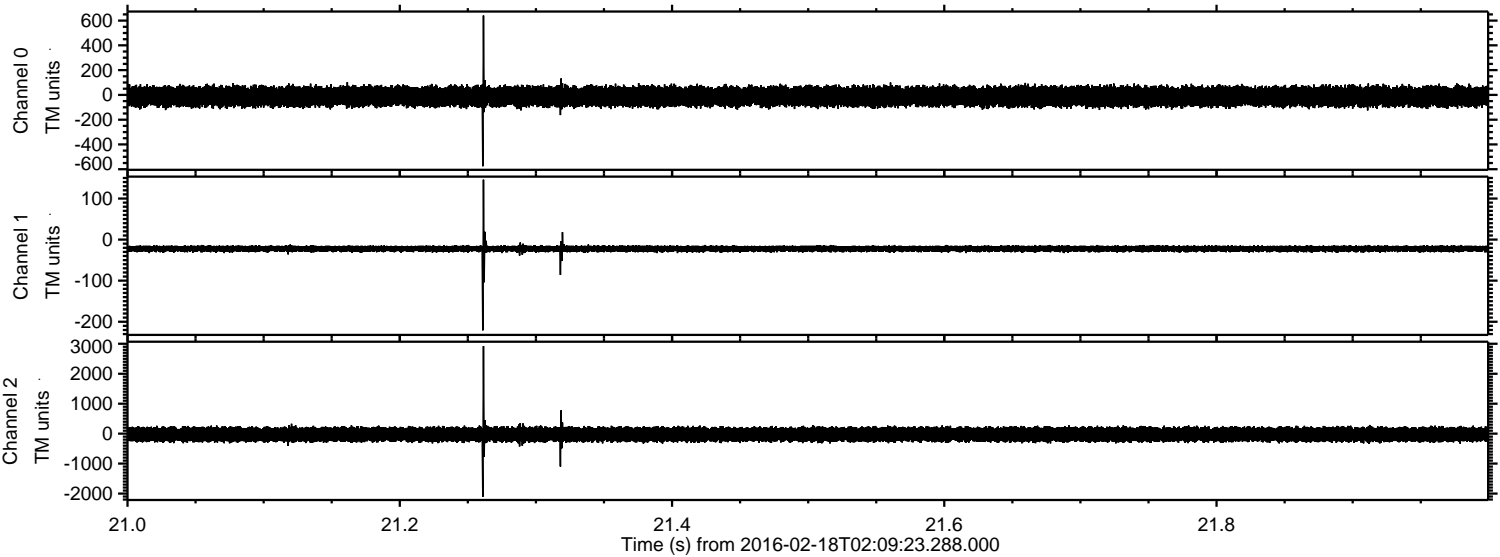


ELMAVAN 3D WAVEFORMS (Measured data sampled at 50 kHz) 51000 packets of 144 samples from 2016-02-18T02:09:23.288.000.

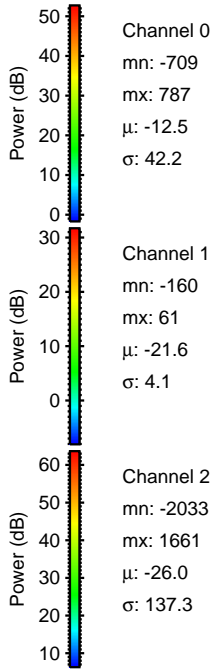
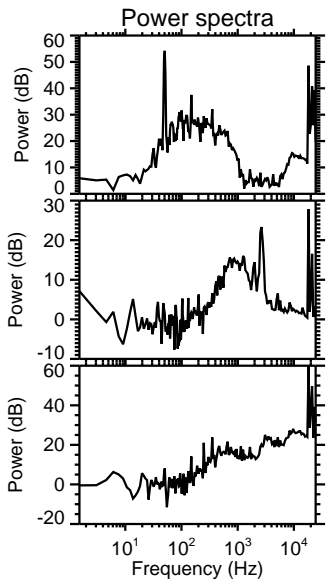
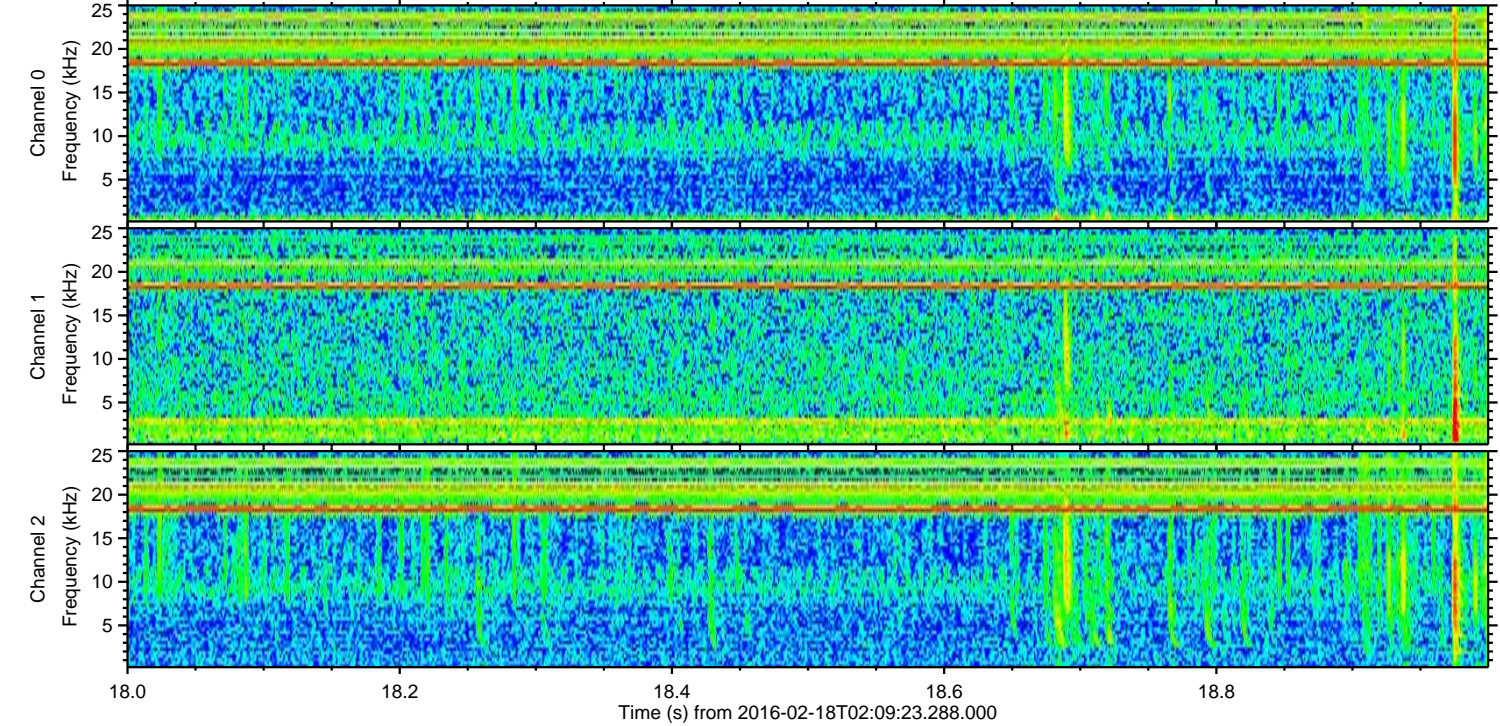
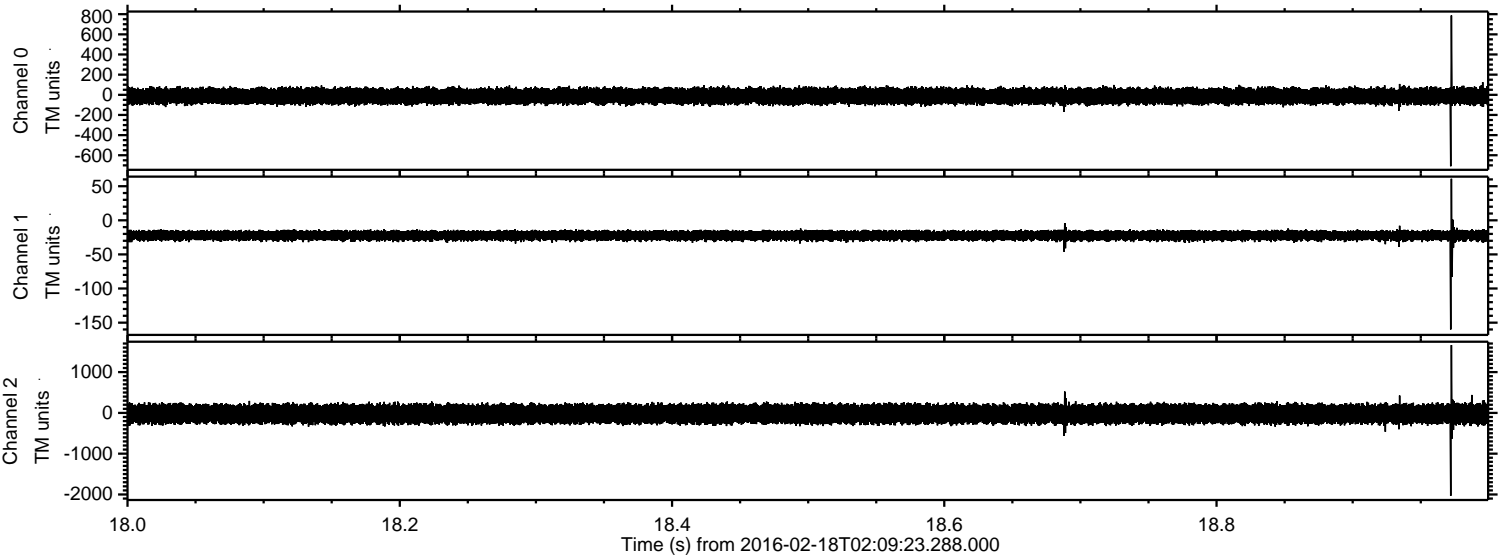
Processed Mon Apr 11 12:02:21 2016 by ELM ver.2012-10-06 from 001__elm20160218_020922__dat00.bin



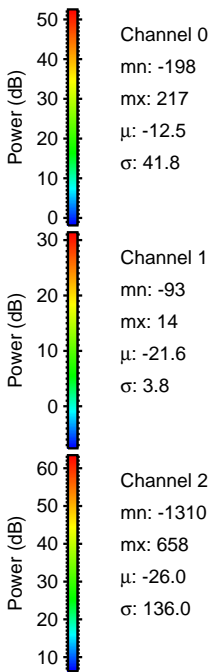
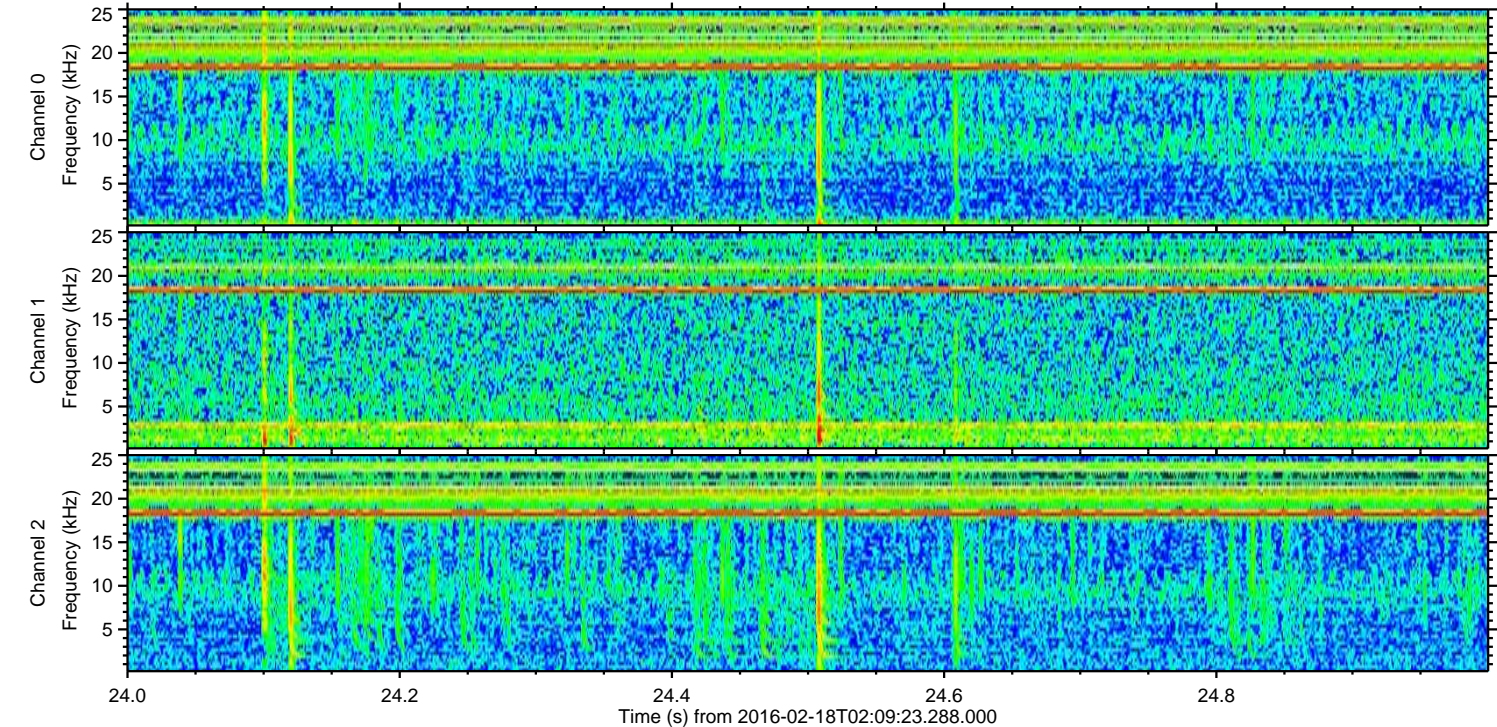
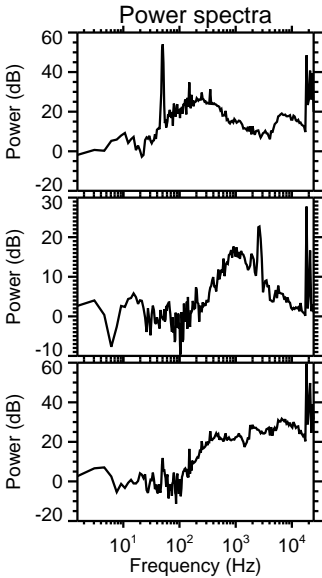
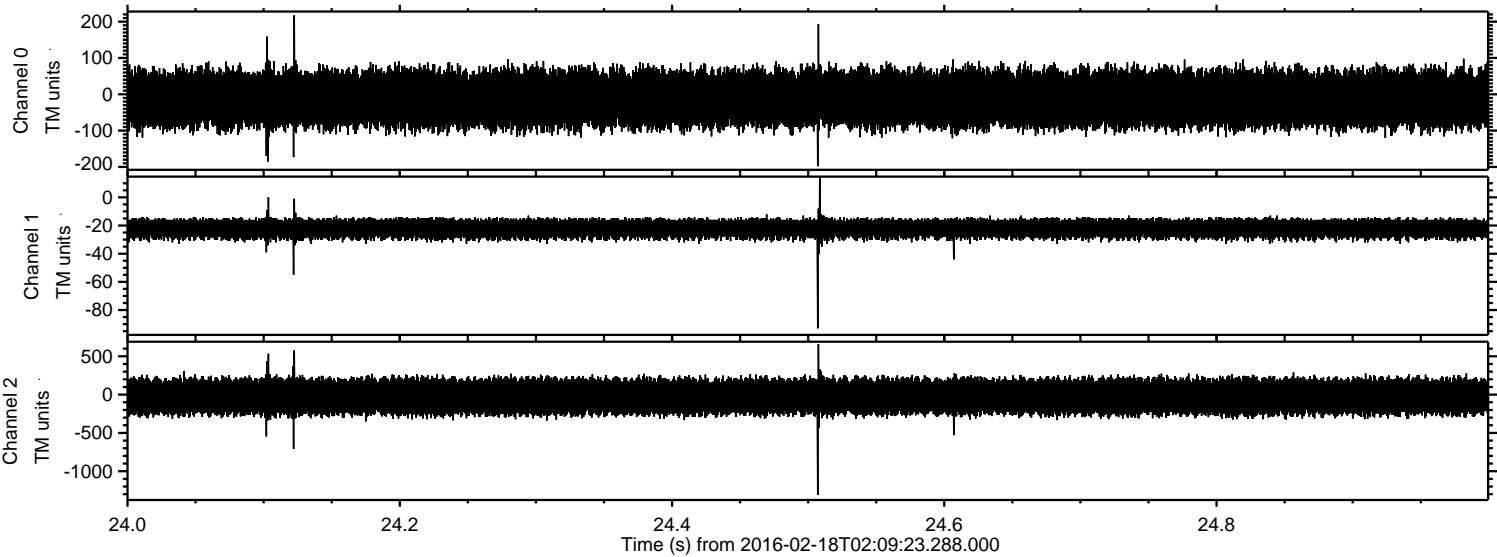
Processed Mon Apr 11 12:02:33 2016 by ELM ver.2012-10-06 from 001__elm20160218_020922__dat00.bin



Processed Mon Apr 11 12:02:34 2016 by ELM ver.2012-10-06 from 001__elm20160218_020922__dat00.bin

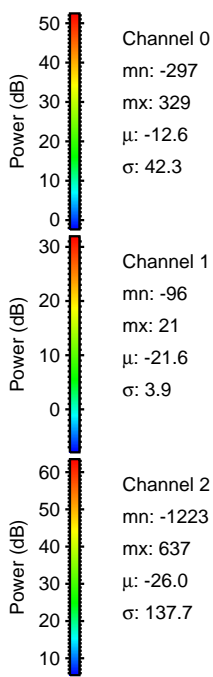
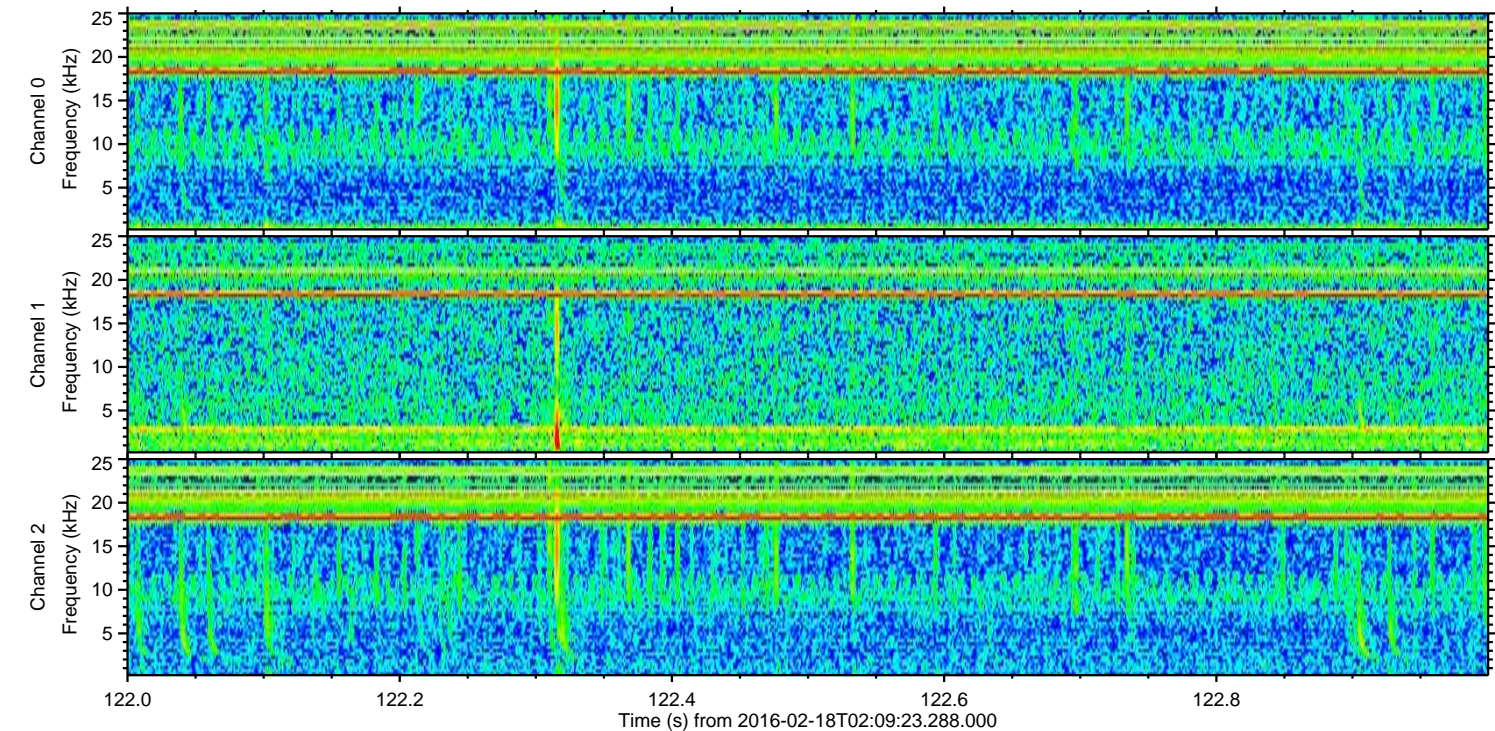
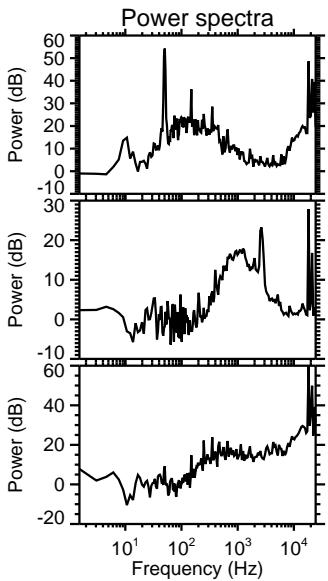
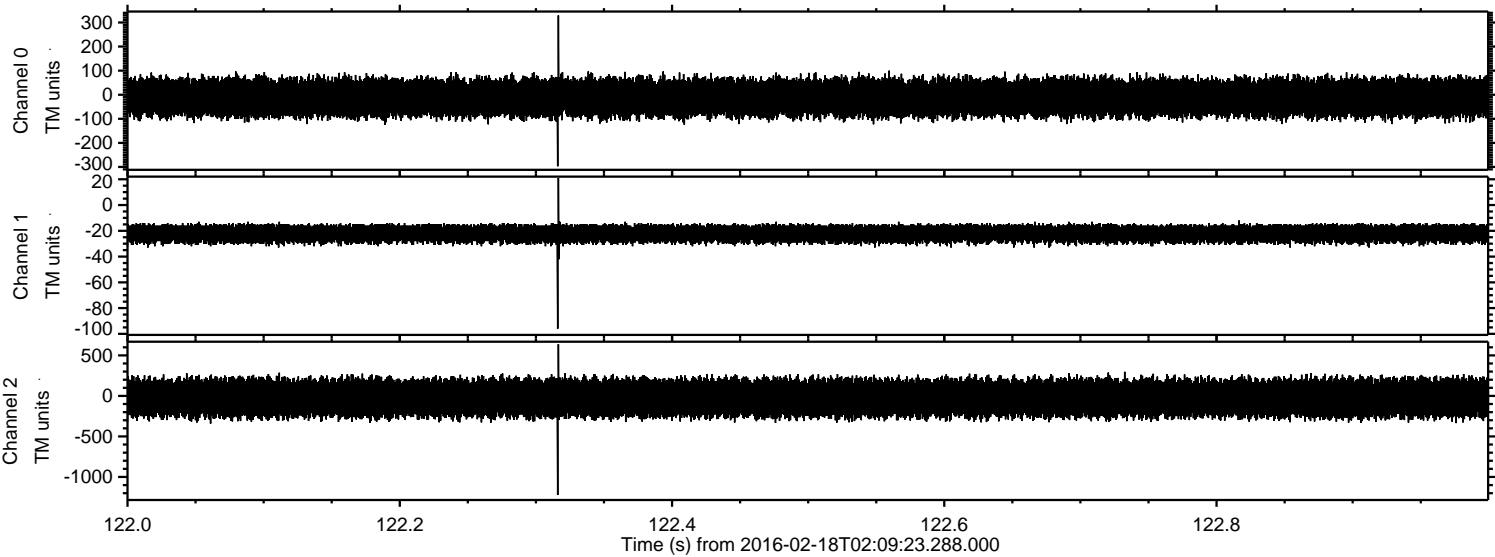


Processed Mon Apr 11 12:02:34 2016 by ELM ver.2012-10-06 from 001__elm20160218_020922__dat00.bin

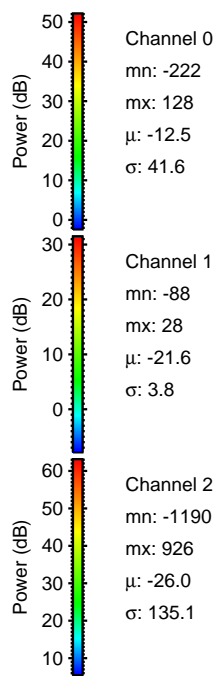
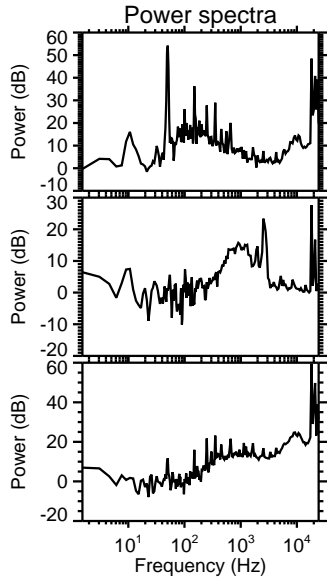
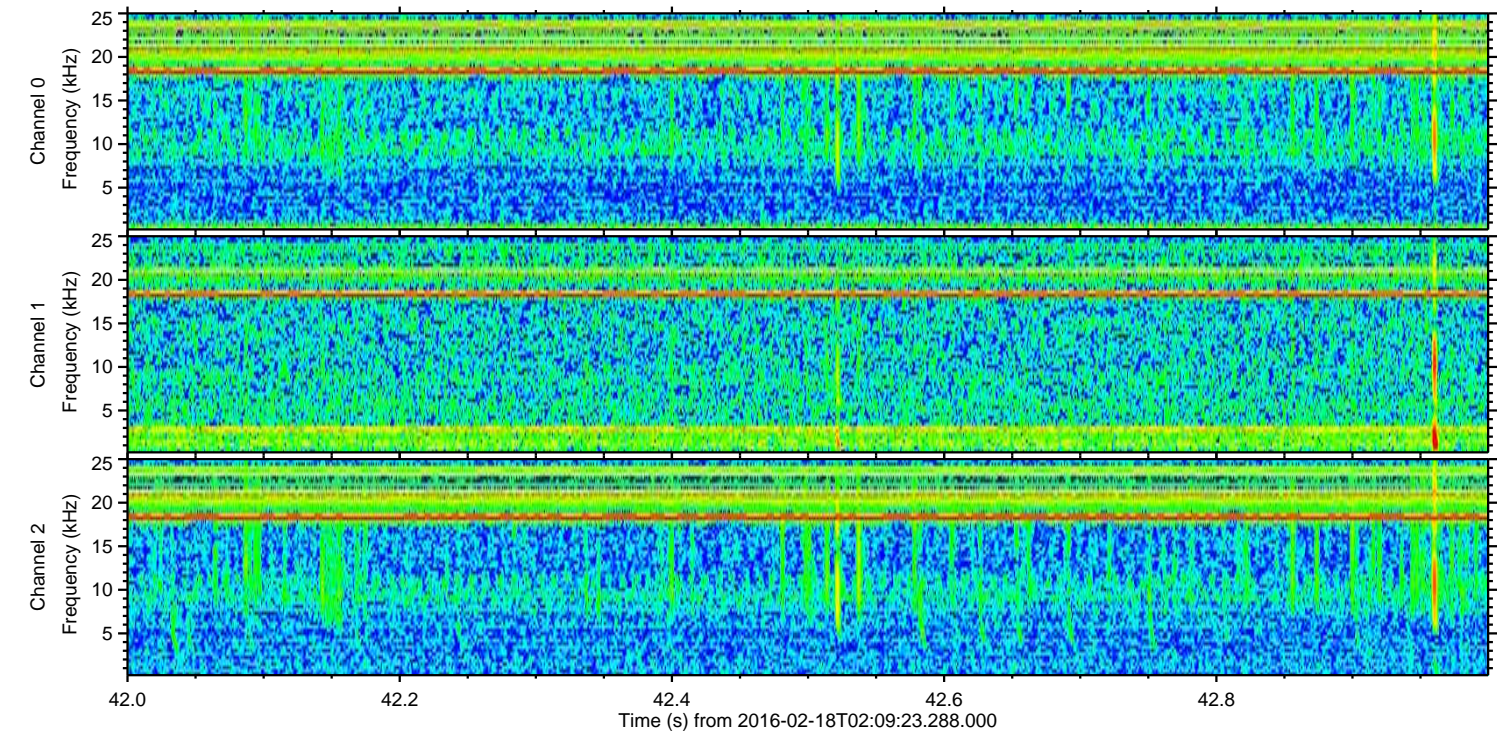
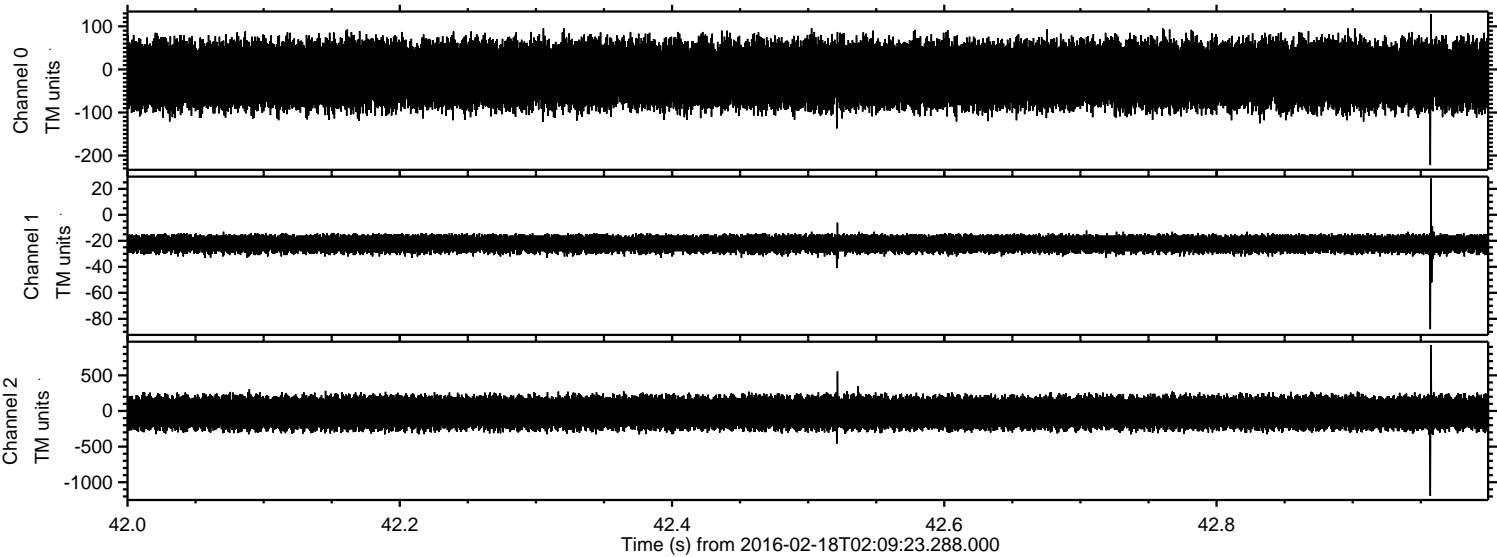


ELMAVAN 3D WAVEFORMS (Measured data sampled at 50 kHz) 51000 packets of 144 samples from 2016-02-18T02:09:23.288.000. Part 123/147

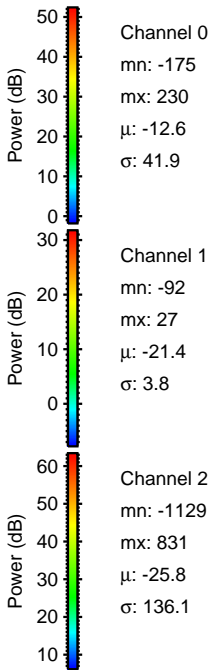
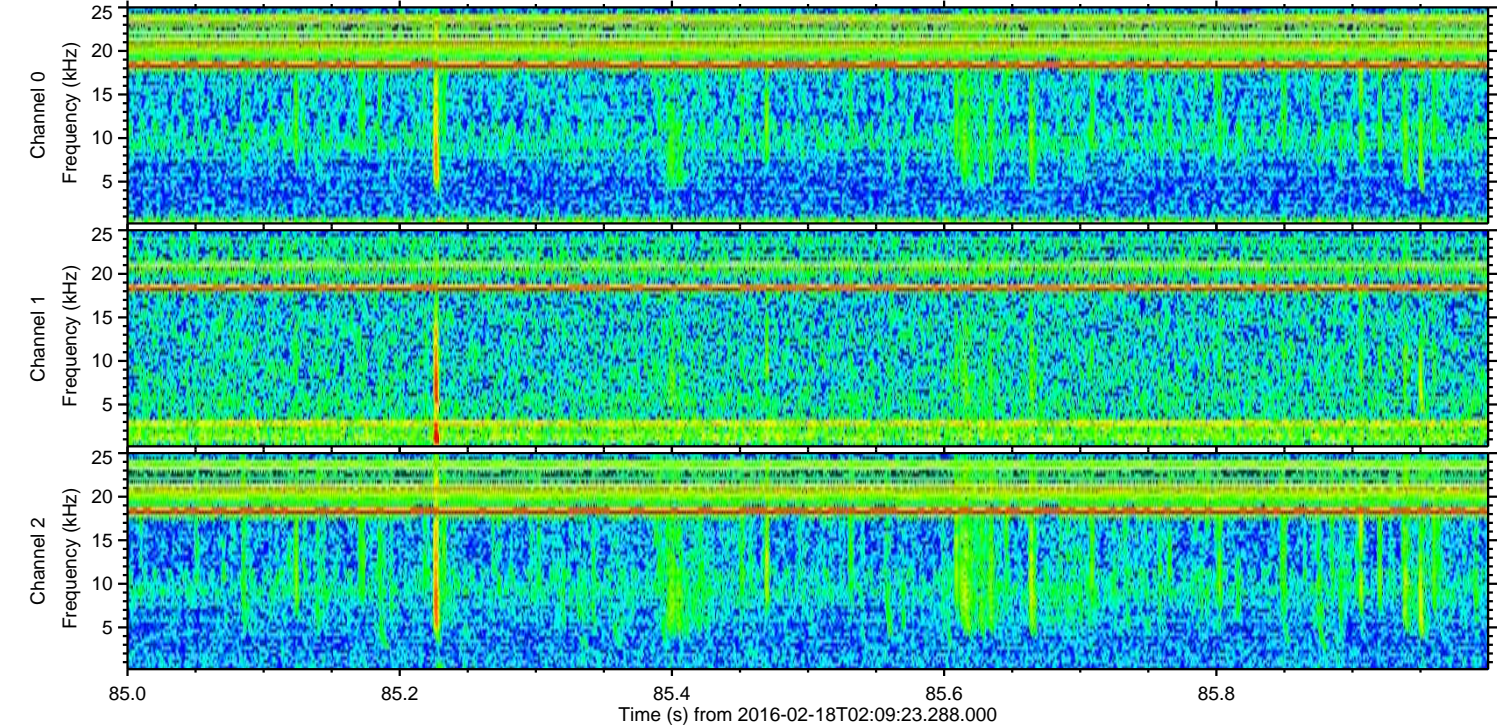
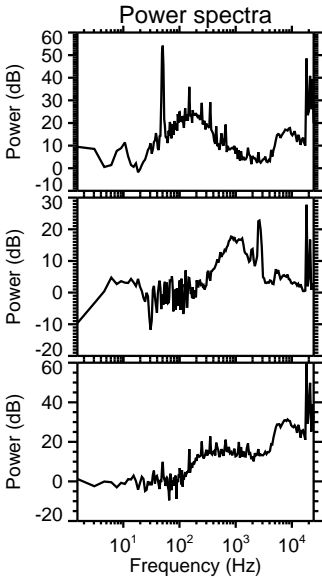
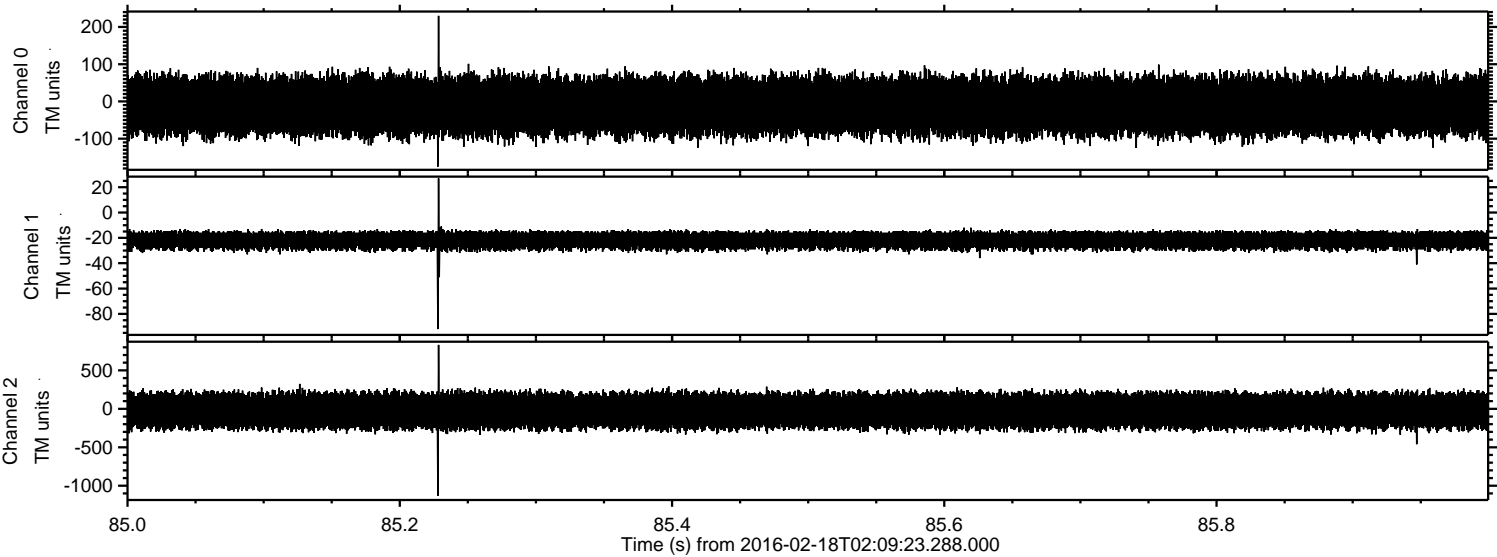
Processed Mon Apr 11 12:02:35 2016 by ELM ver.2012-10-06 from 001__elm20160218_020922__dat00.bin



Processed Mon Apr 11 12:02:36 2016 by ELM ver.2012-10-06 from 001__elm20160218_020922__dat00.bin

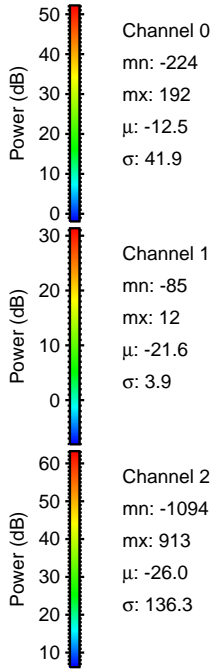
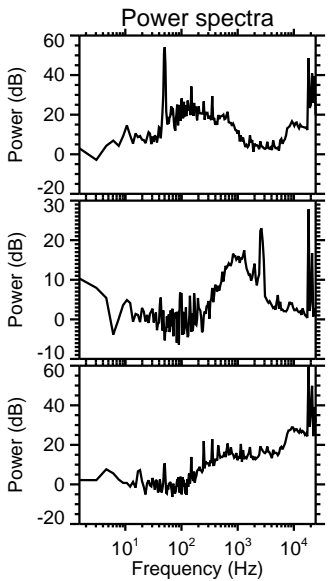
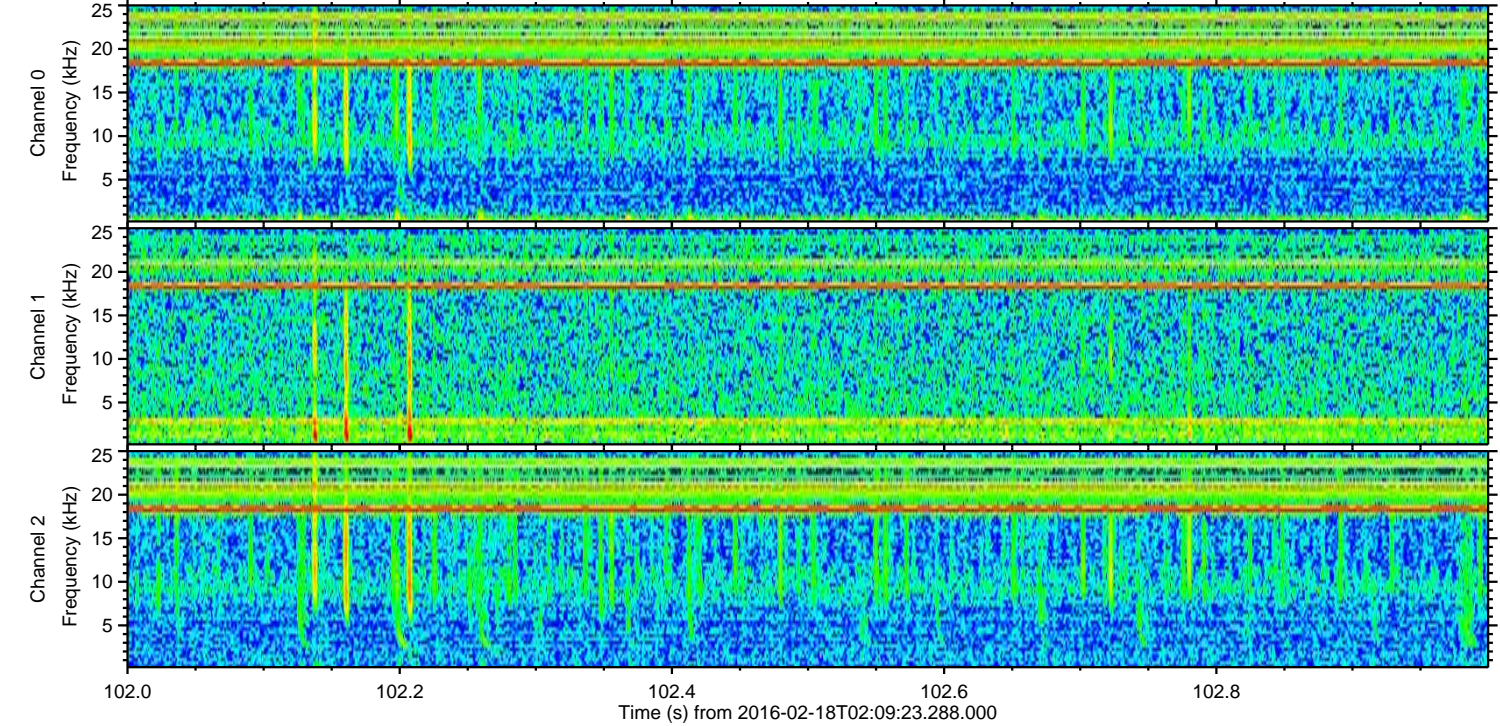
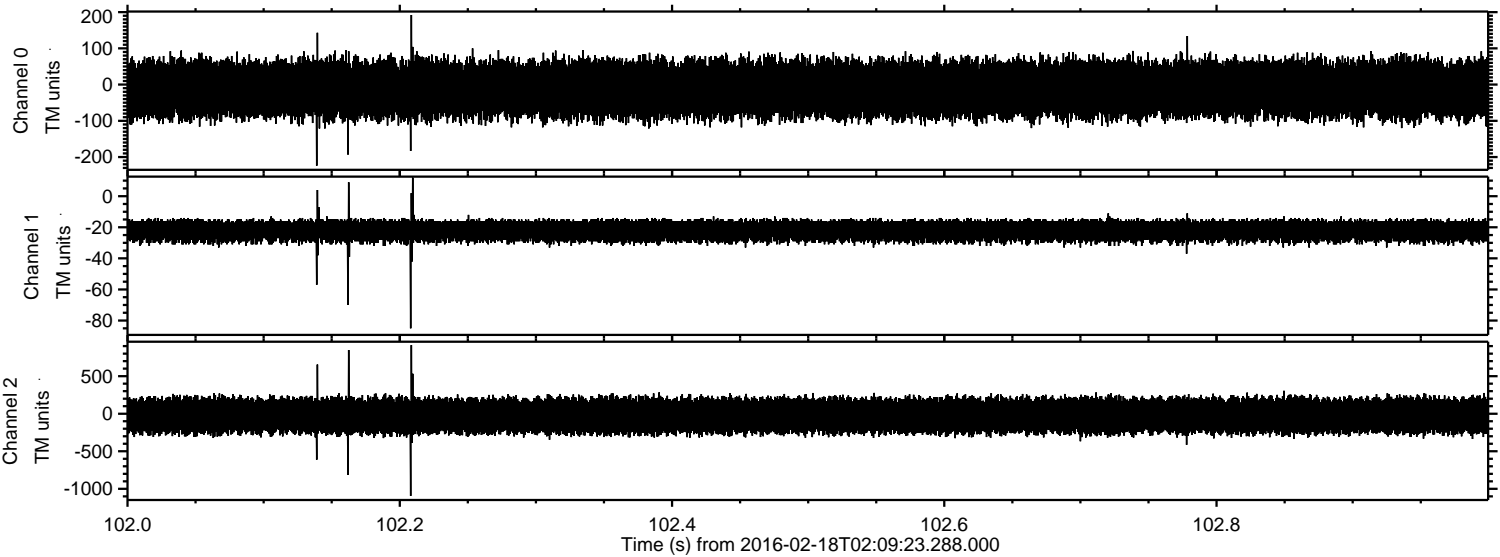


Processed Mon Apr 11 12:02:37 2016 by ELM ver.2012-10-06 from 001__elm20160218_020922__dat00.bin

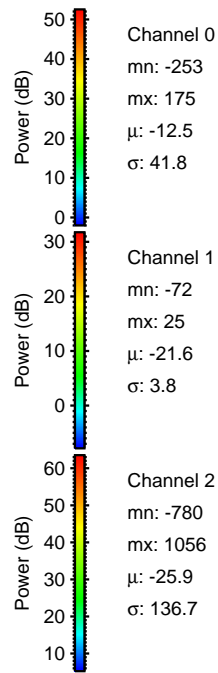
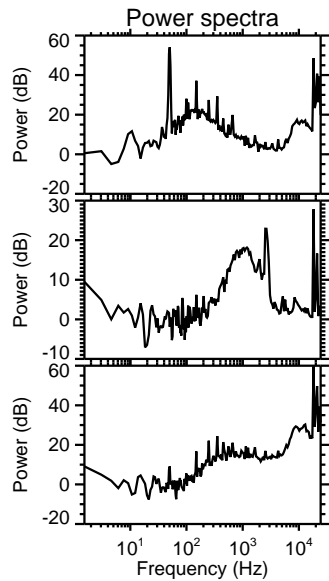
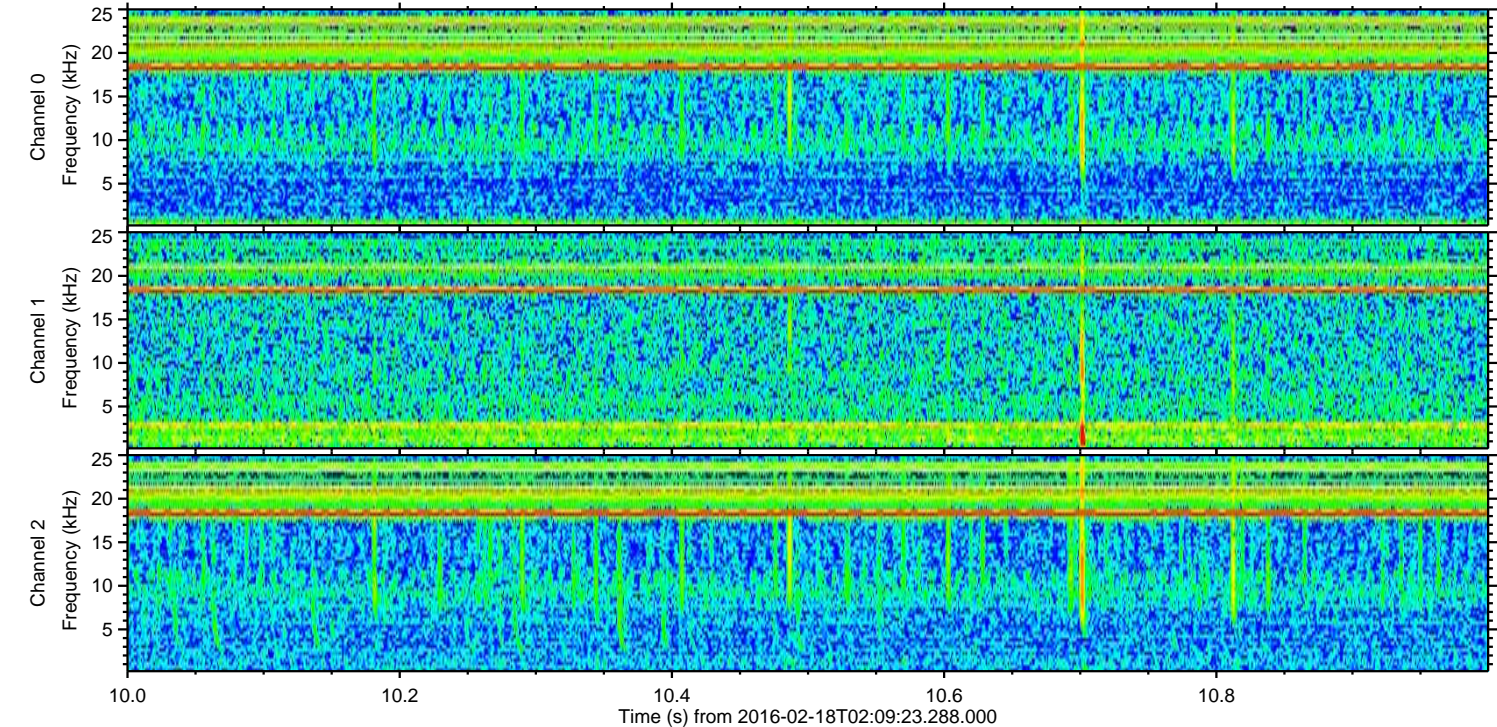
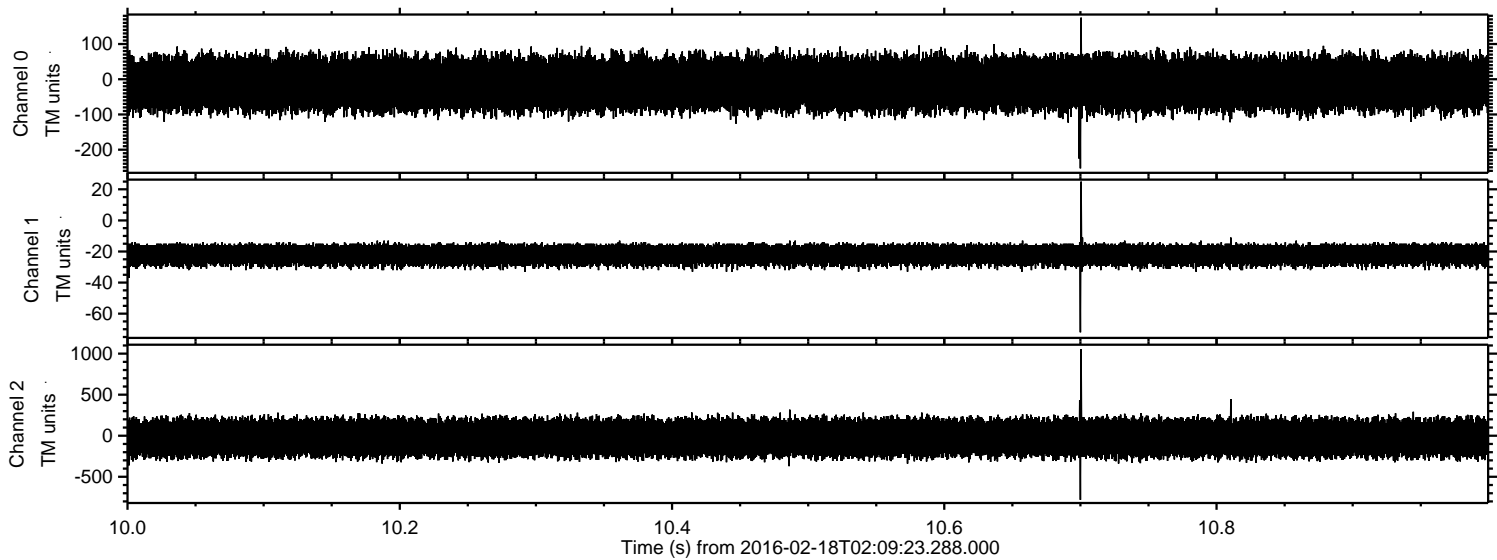


ELMAVAN 3D WAVEFORMS (Measured data sampled at 50 kHz) 51000 packets of 144 samples from 2016-02-18T02:09:23.288.000. Part 103/147

Processed Mon Apr 11 12:02:38 2016 by ELM ver.2012-10-06 from 001__elm20160218_020922__dat00.bin



Processed Mon Apr 11 12:02:39 2016 by ELM ver.2012-10-06 from 001__elm20160218_020922__dat00.bin

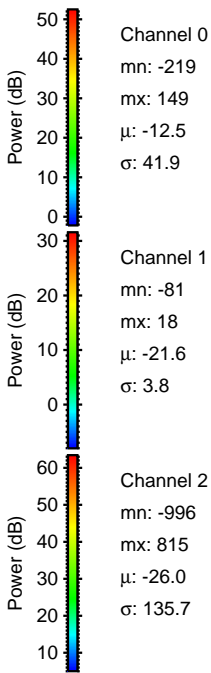
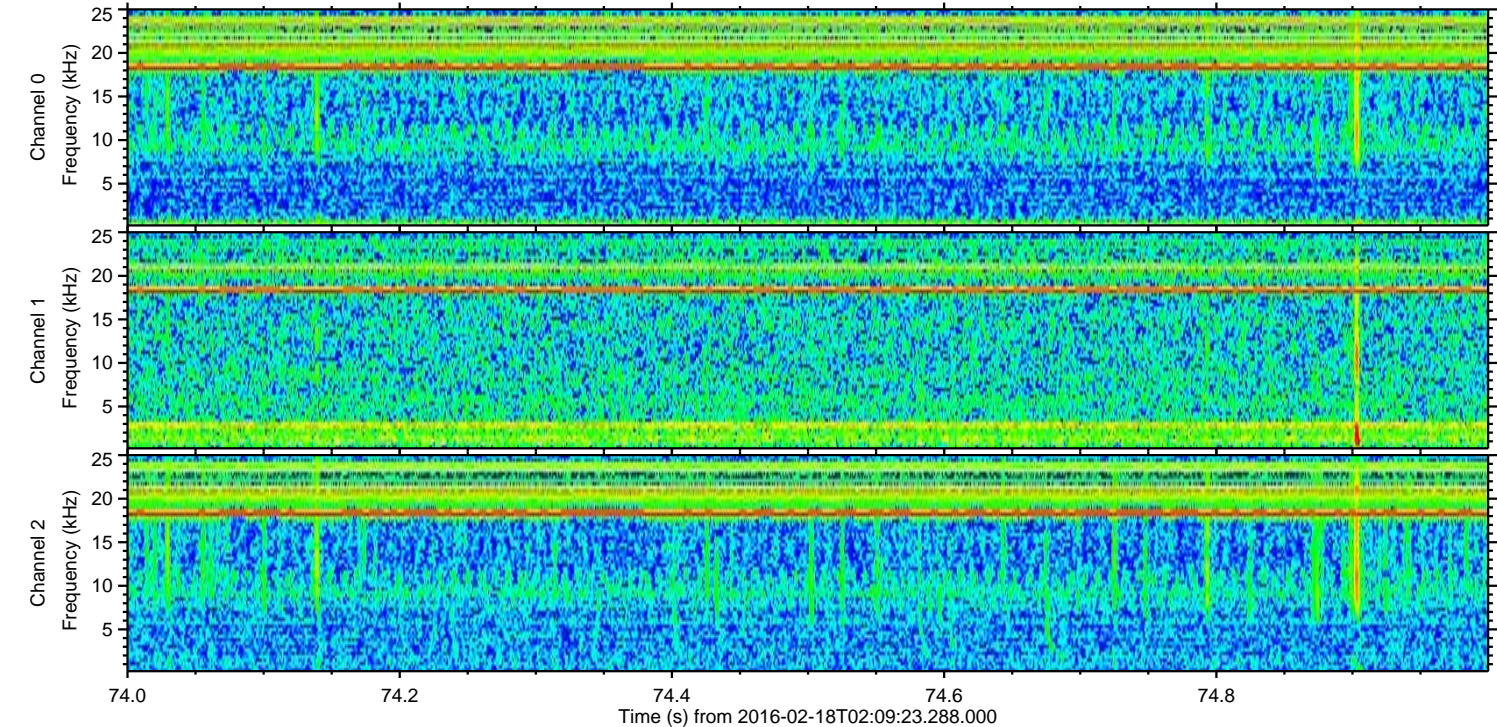
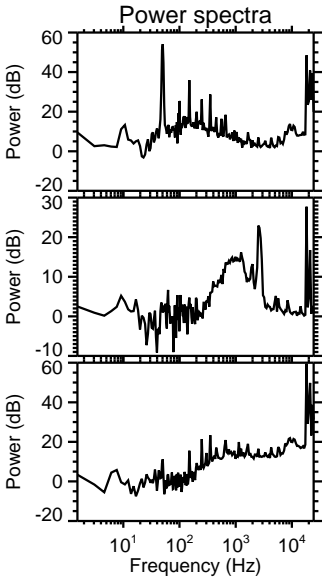
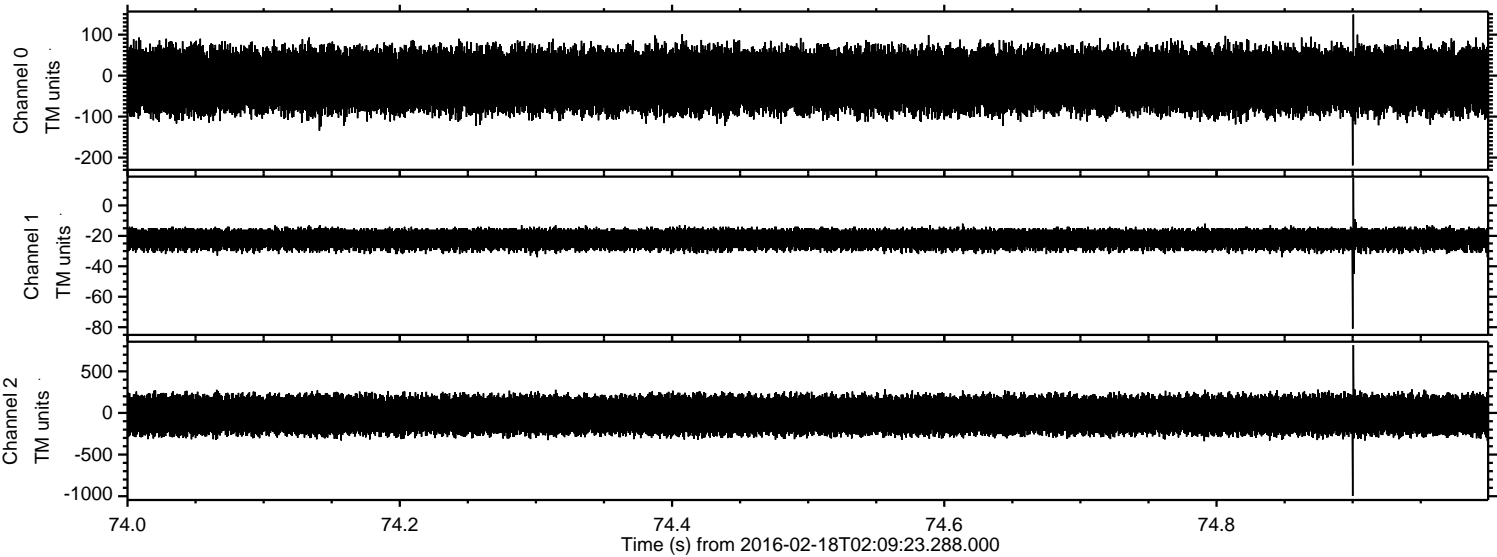


Channel 0
mn: -253
mx: 175
 μ : -12.5
 σ : 41.8

Channel 1
mn: -72
mx: 25
 μ : -21.6
 σ : 3.8

Channel 2
mn: -780
mx: 1056
 μ : -25.9
 σ : 136.7

Processed Mon Apr 11 12:02:40 2016 by ELM ver.2012-10-06 from 001__elm20160218_020922__dat00.bin



Processed Mon Apr 11 12:02:41 2016 by ELM ver.2012-10-06 from 001__elm20160218_020922__dat00.bin

