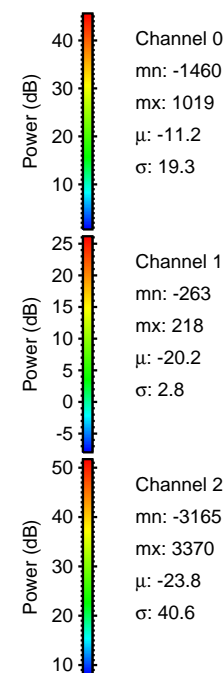
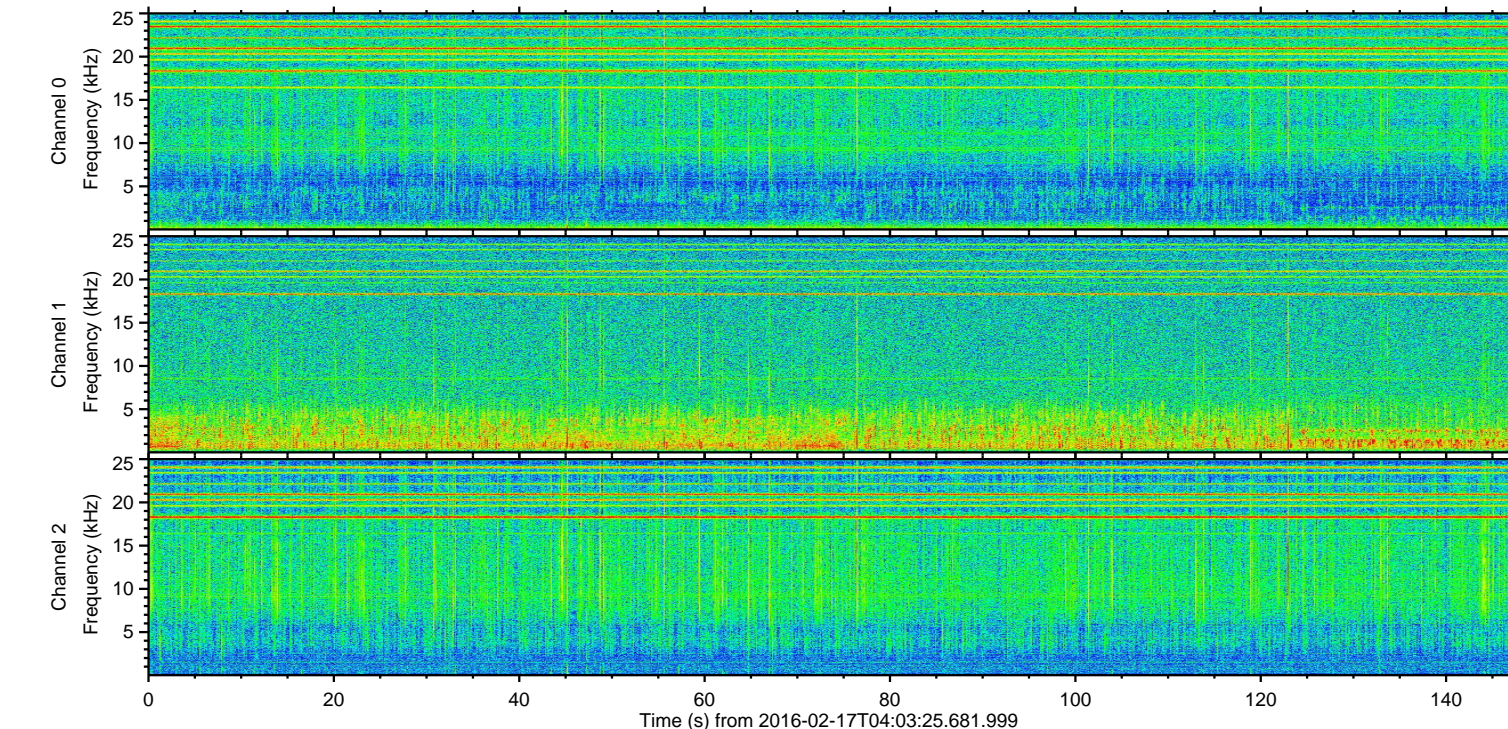
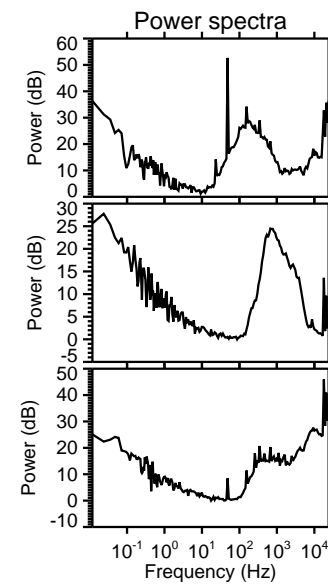
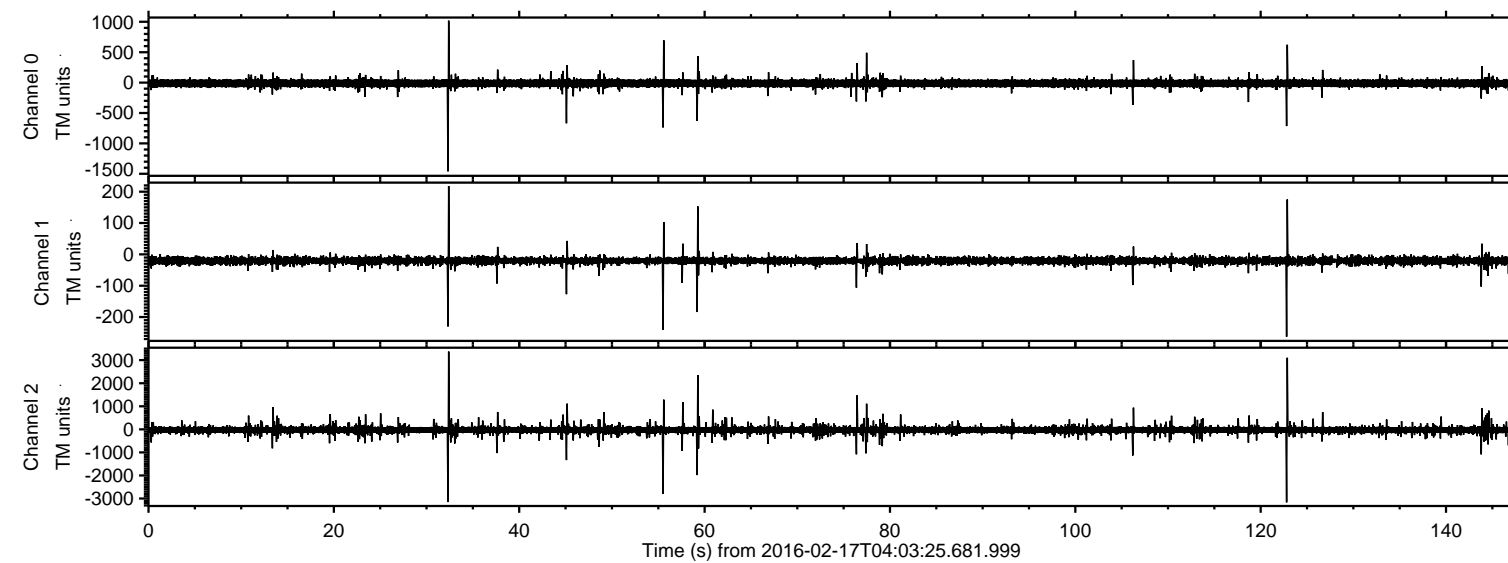


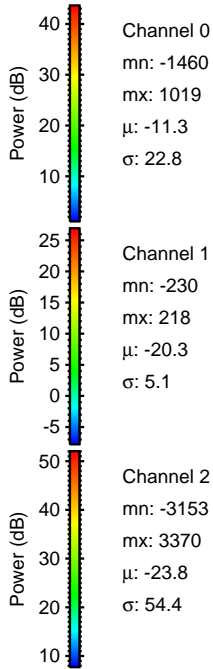
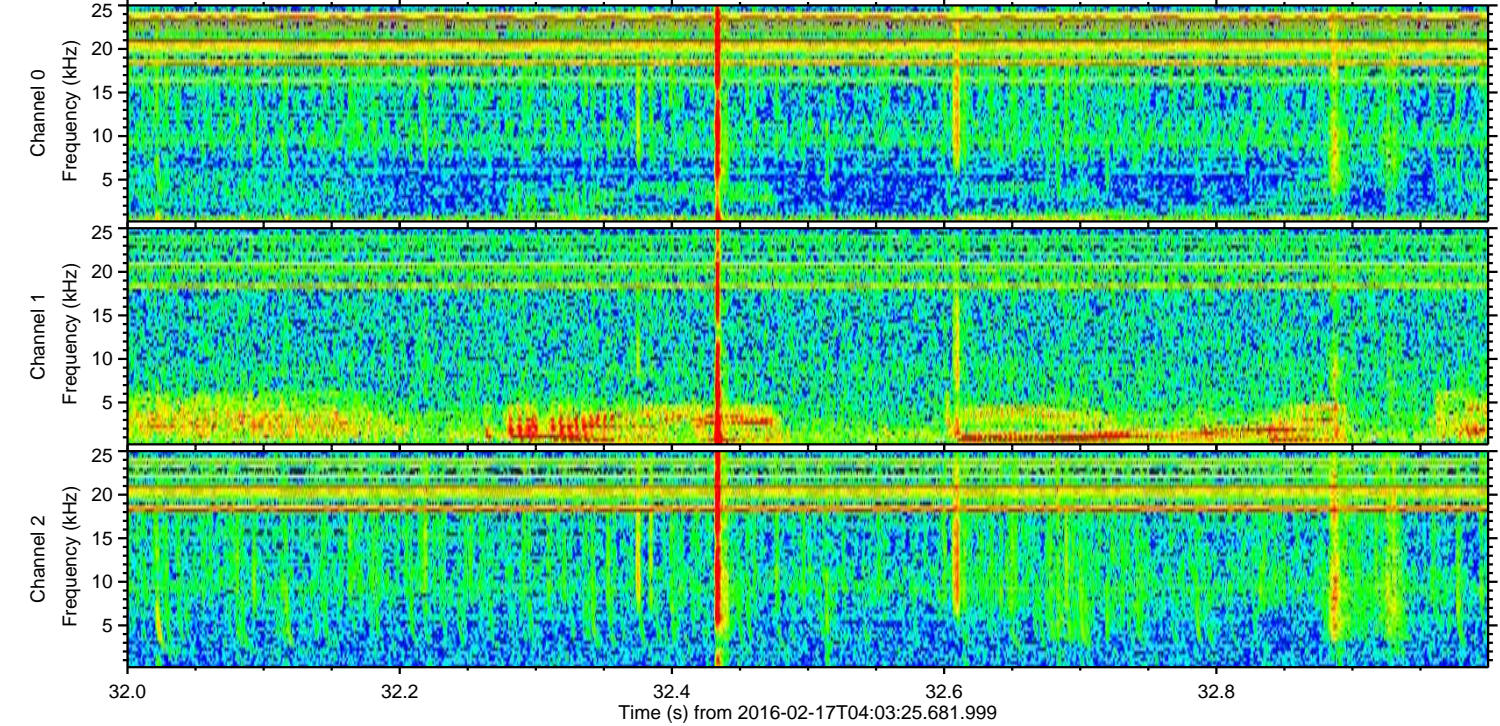
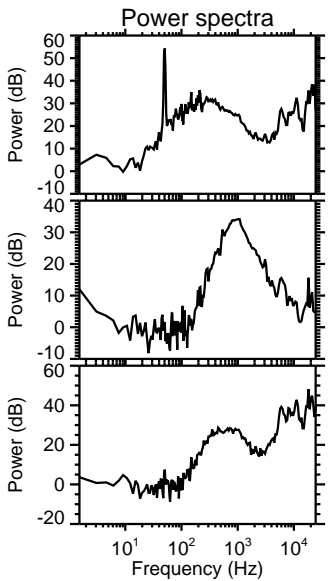
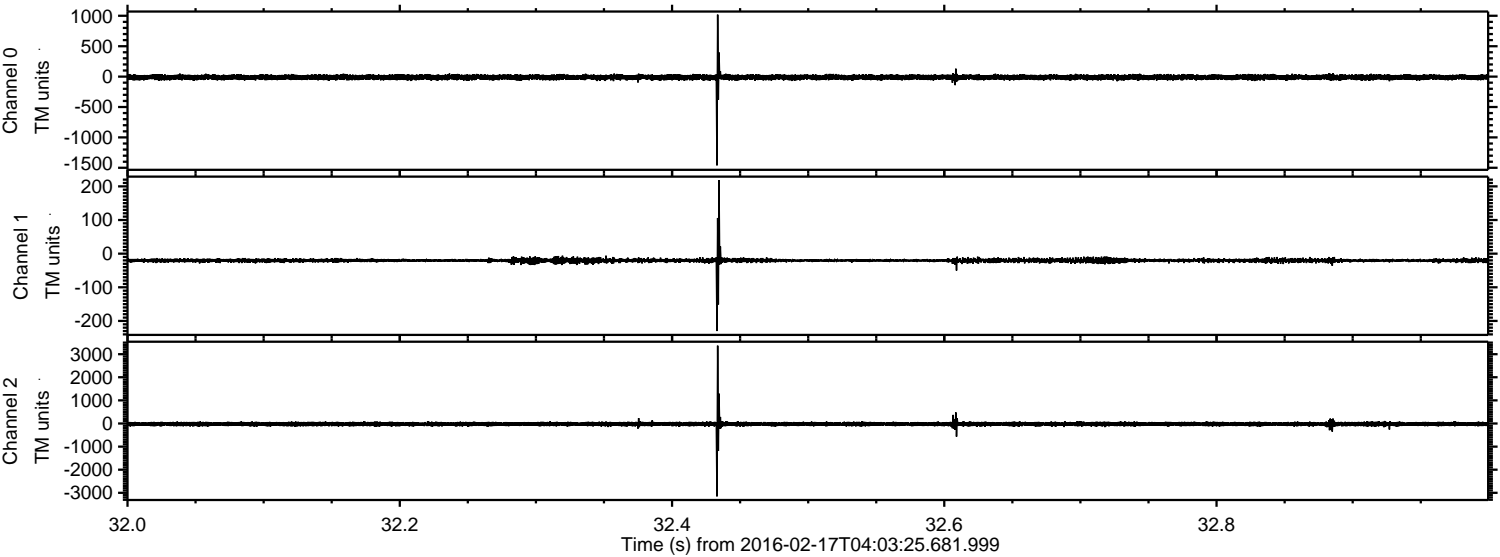
# ELMAVAN 3D WAVEFORMS (Measured data sampled at 50 kHz) 51000 packets of 144 samples from 2016-02-17T04:03:25.681.999.

Processed Mon Apr 11 07:31:51 2016 by ELM ver.2012-10-06 from 001\_\_elm20160217\_040324\_\_dat00.bin





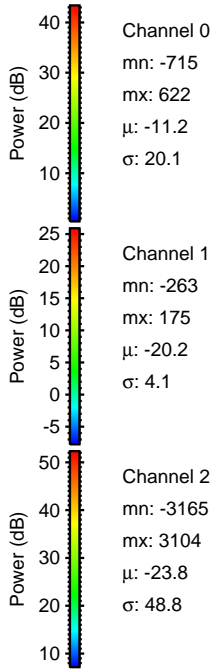
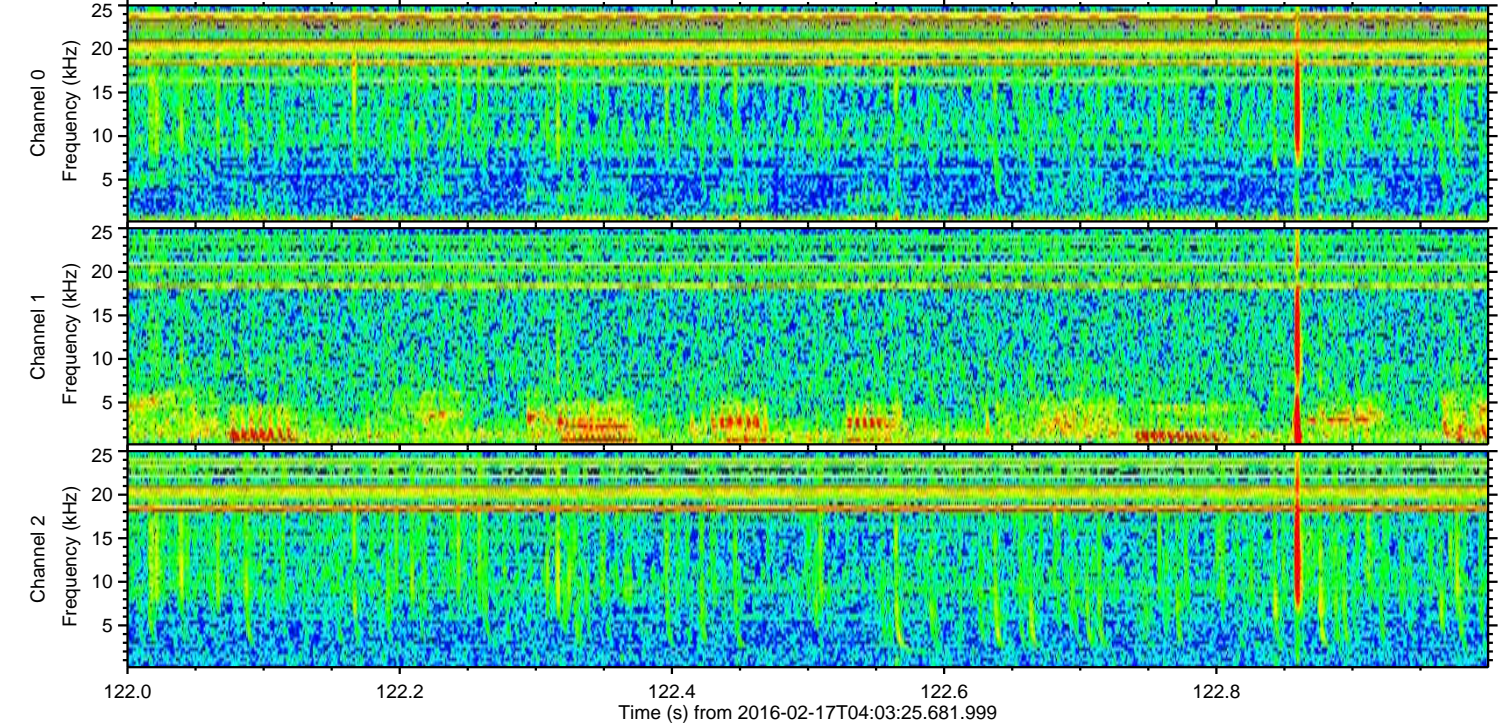
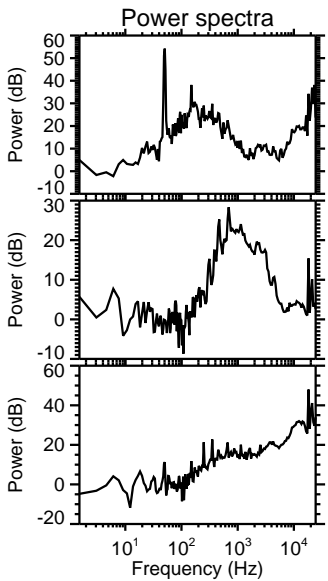
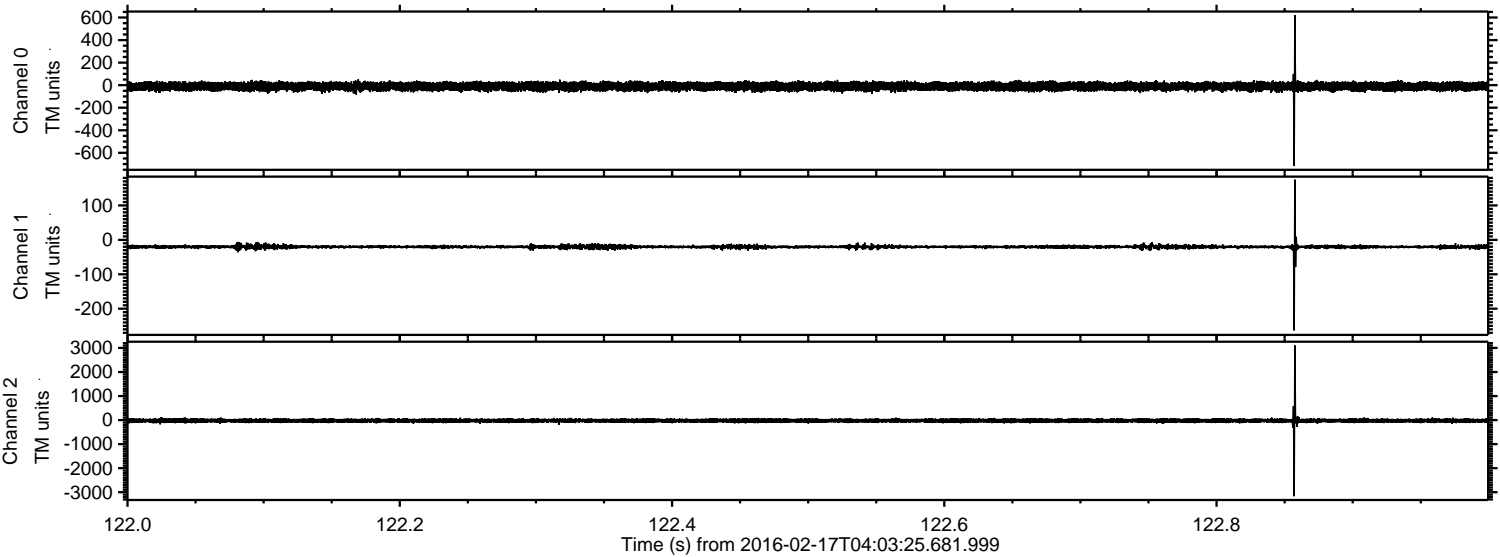
Processed Mon Apr 11 07:32:03 2016 by ELM ver.2012-10-06 from 001\_\_elm20160217\_040324\_\_dat00.bin





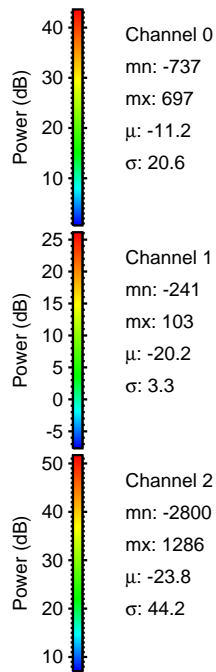
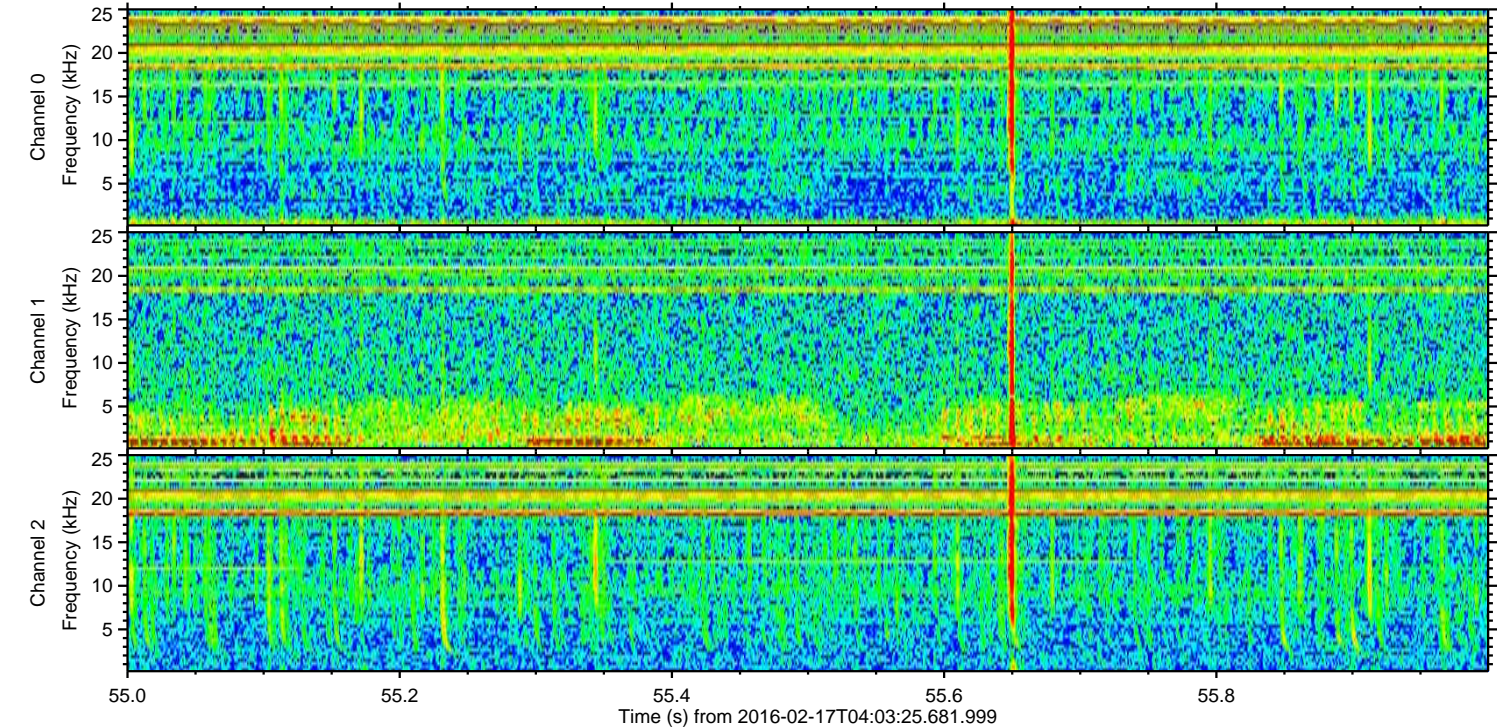
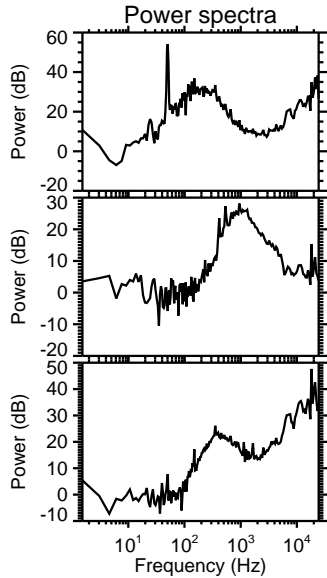
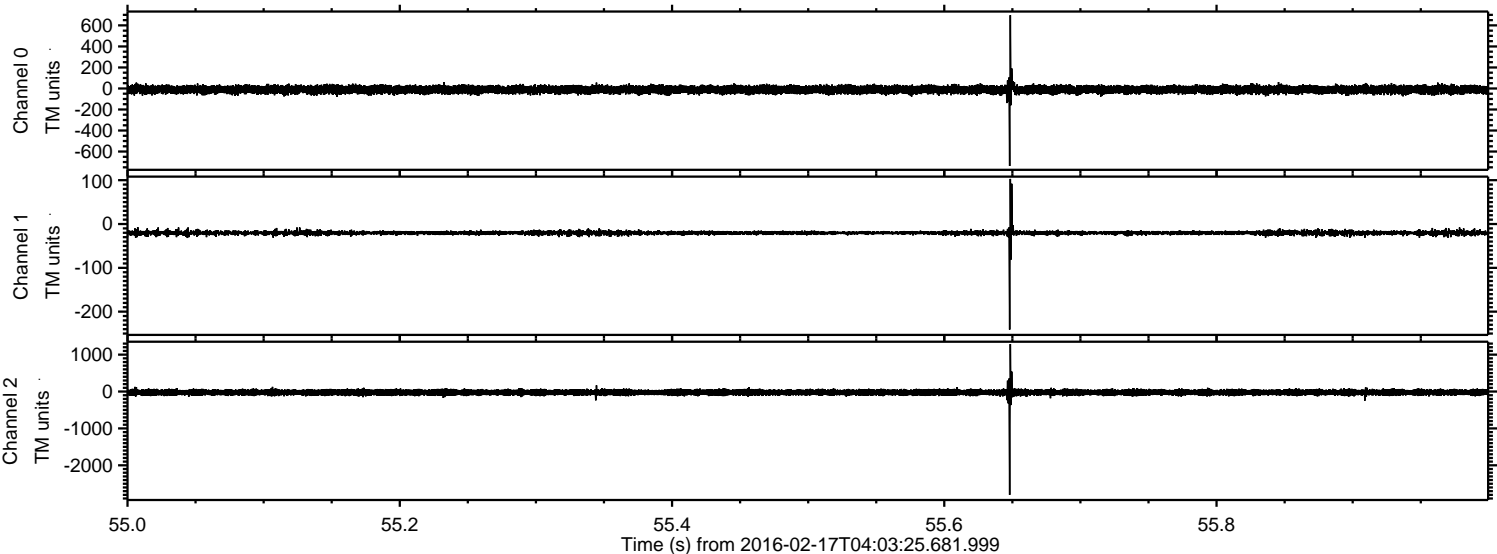
ELMAVAN 3D WAVEFORMS (Measured data sampled at 50 kHz) 51000 packets of 144 samples from 2016-02-17T04:03:25.681.999. Part 123/147

Processed Mon Apr 11 07:32:04 2016 by ELM ver.2012-10-06 from 001\_\_elm20160217\_040324\_\_dat00.bin



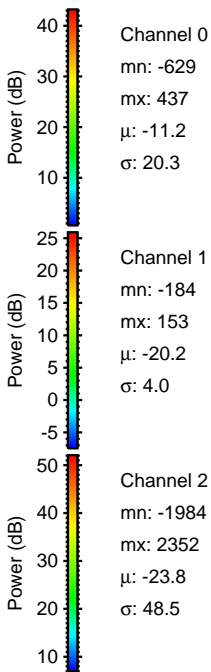
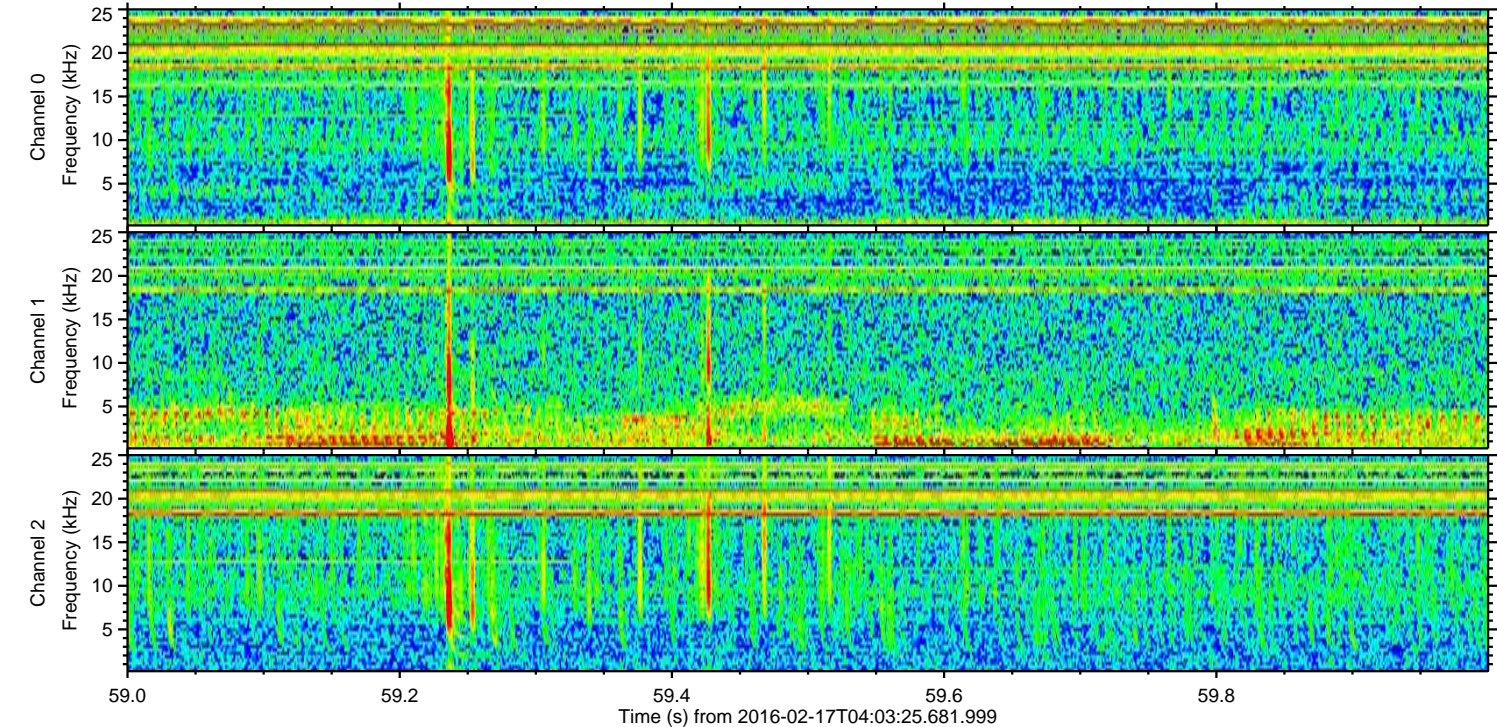
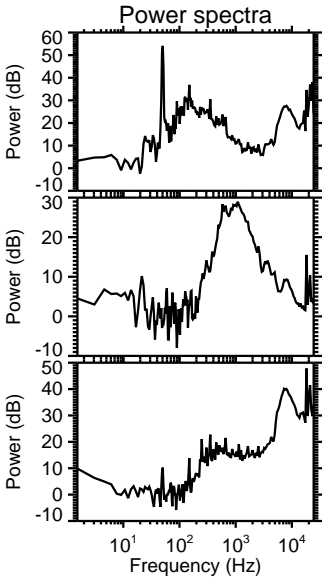
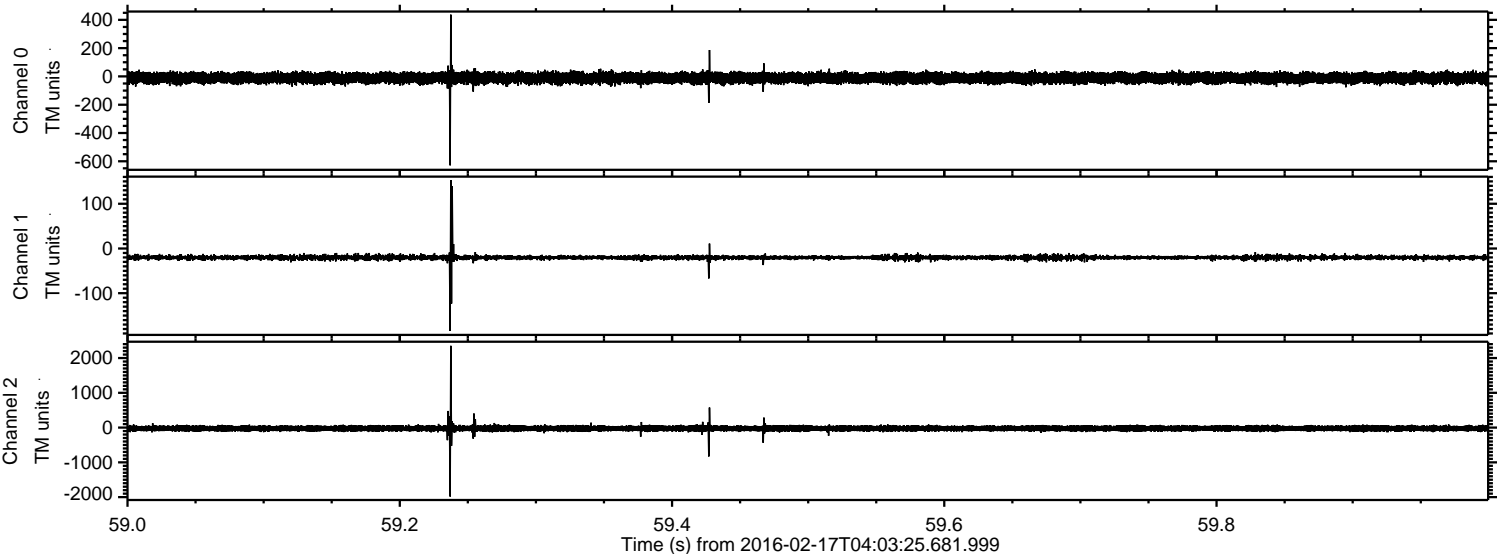


Processed Mon Apr 11 07:32:04 2016 by ELM ver.2012-10-06 from 001\_\_elm20160217\_040324\_\_dat00.bin



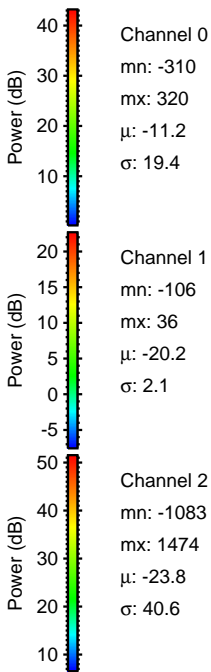
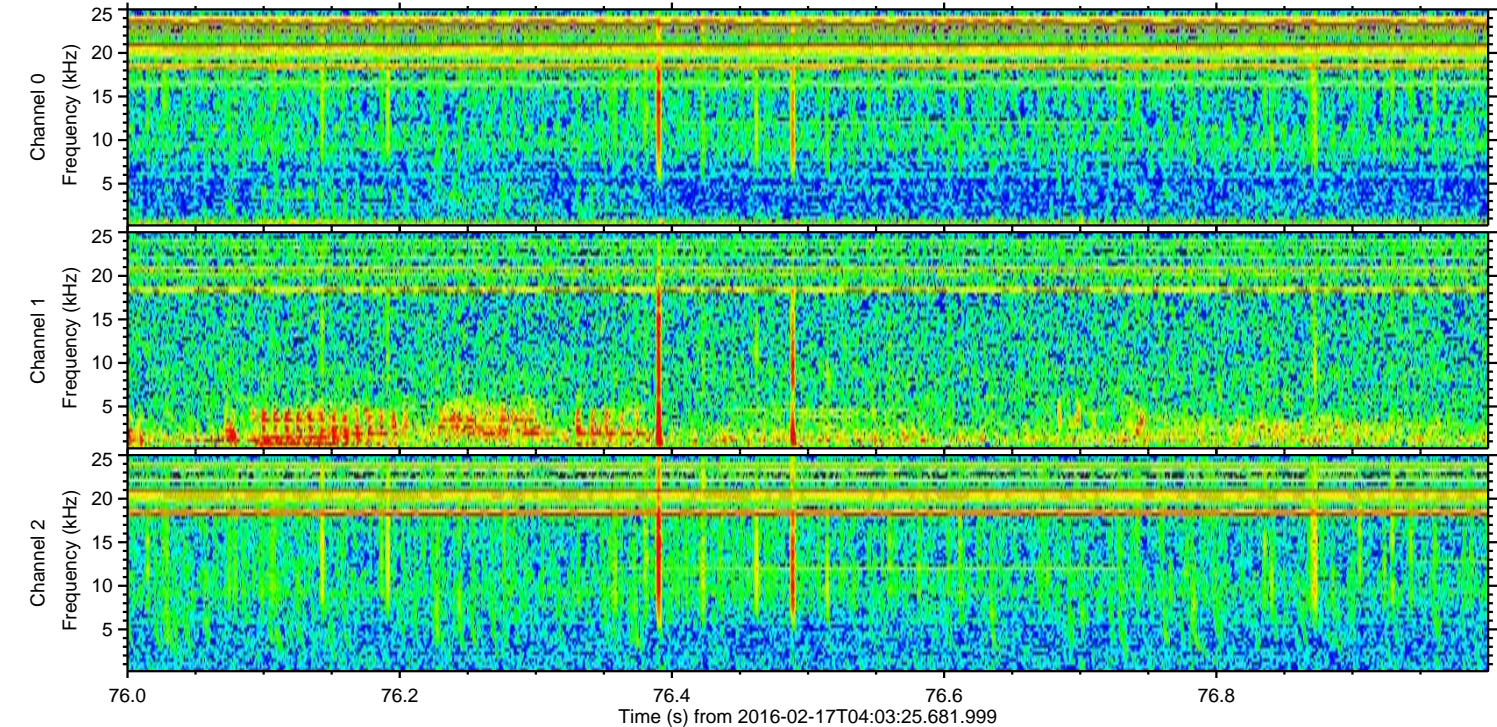
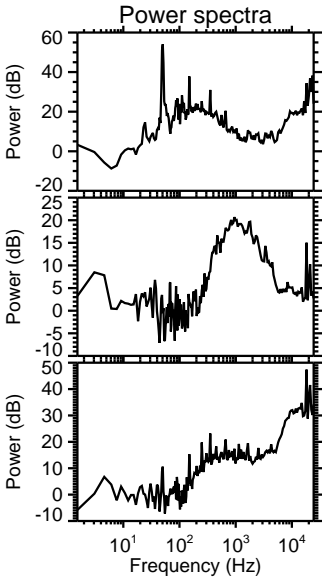
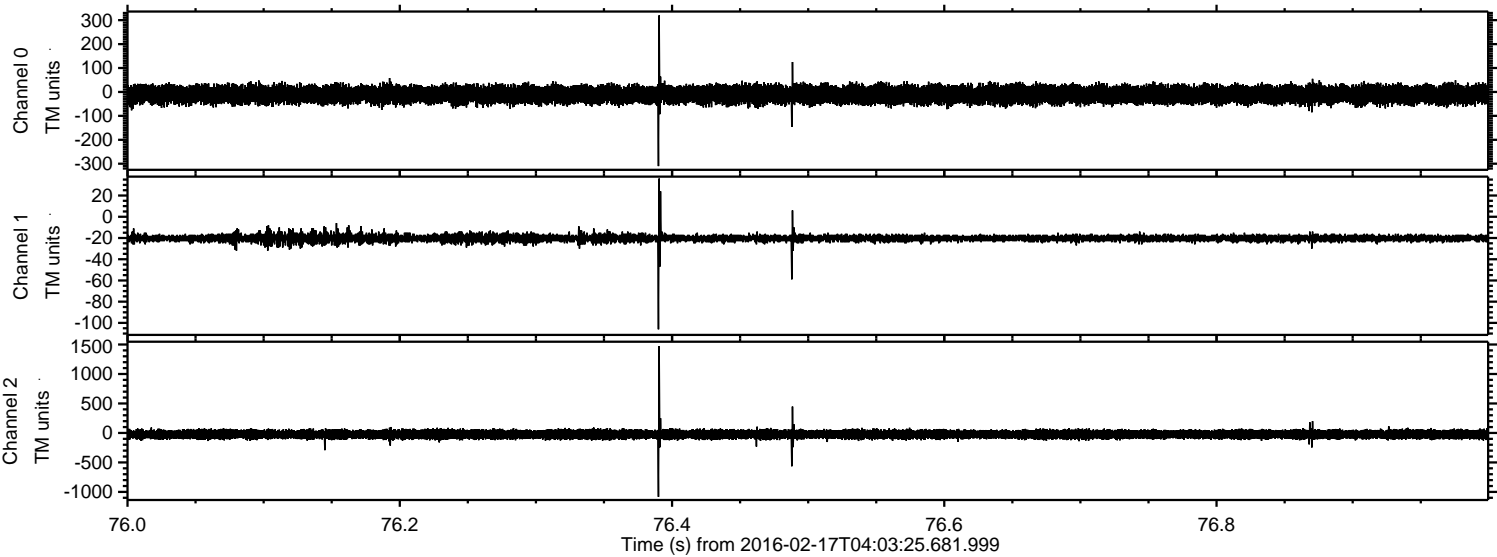


Processed Mon Apr 11 07:32:05 2016 by ELM ver.2012-10-06 from 001\_\_elm20160217\_040324\_\_dat00.bin





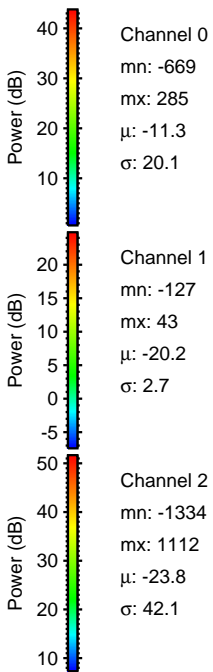
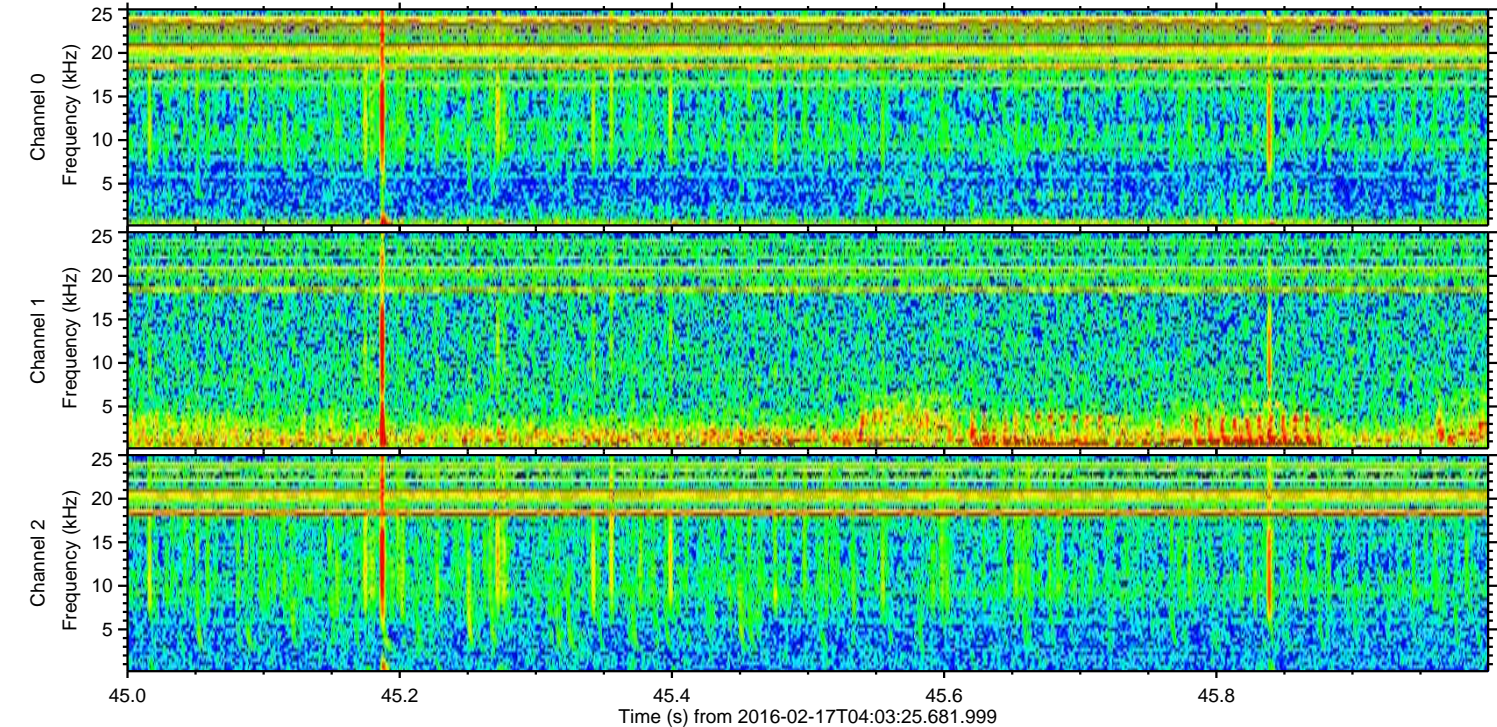
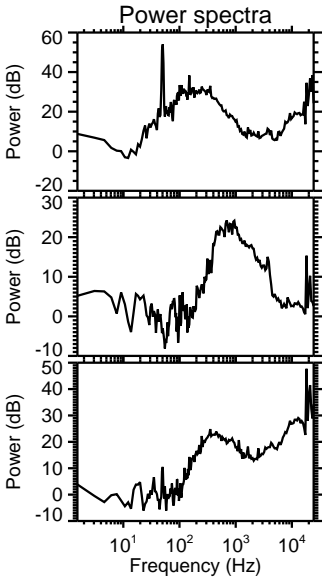
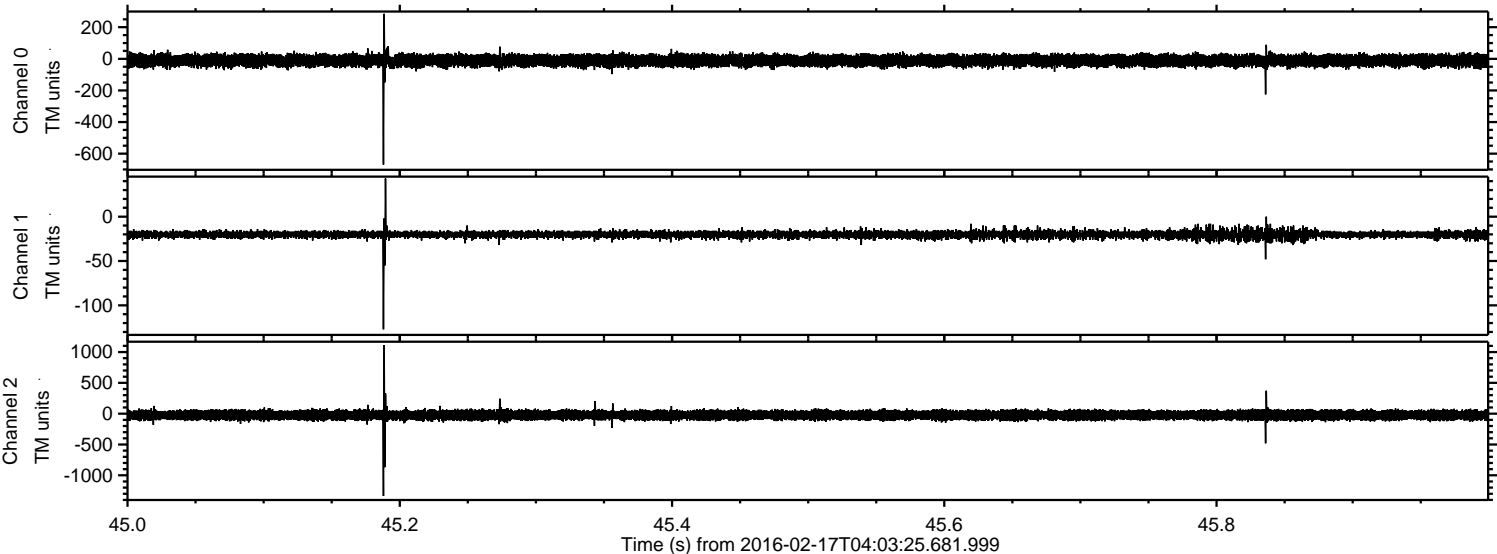
Processed Mon Apr 11 07:32:06 2016 by ELM ver.2012-10-06 from 001\_\_elm20160217\_040324\_\_dat00.bin





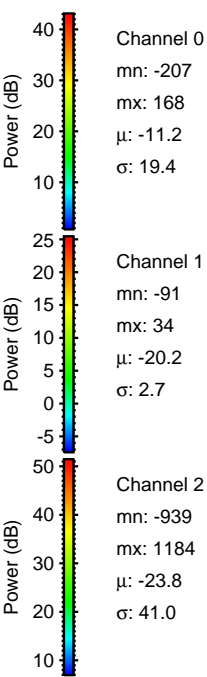
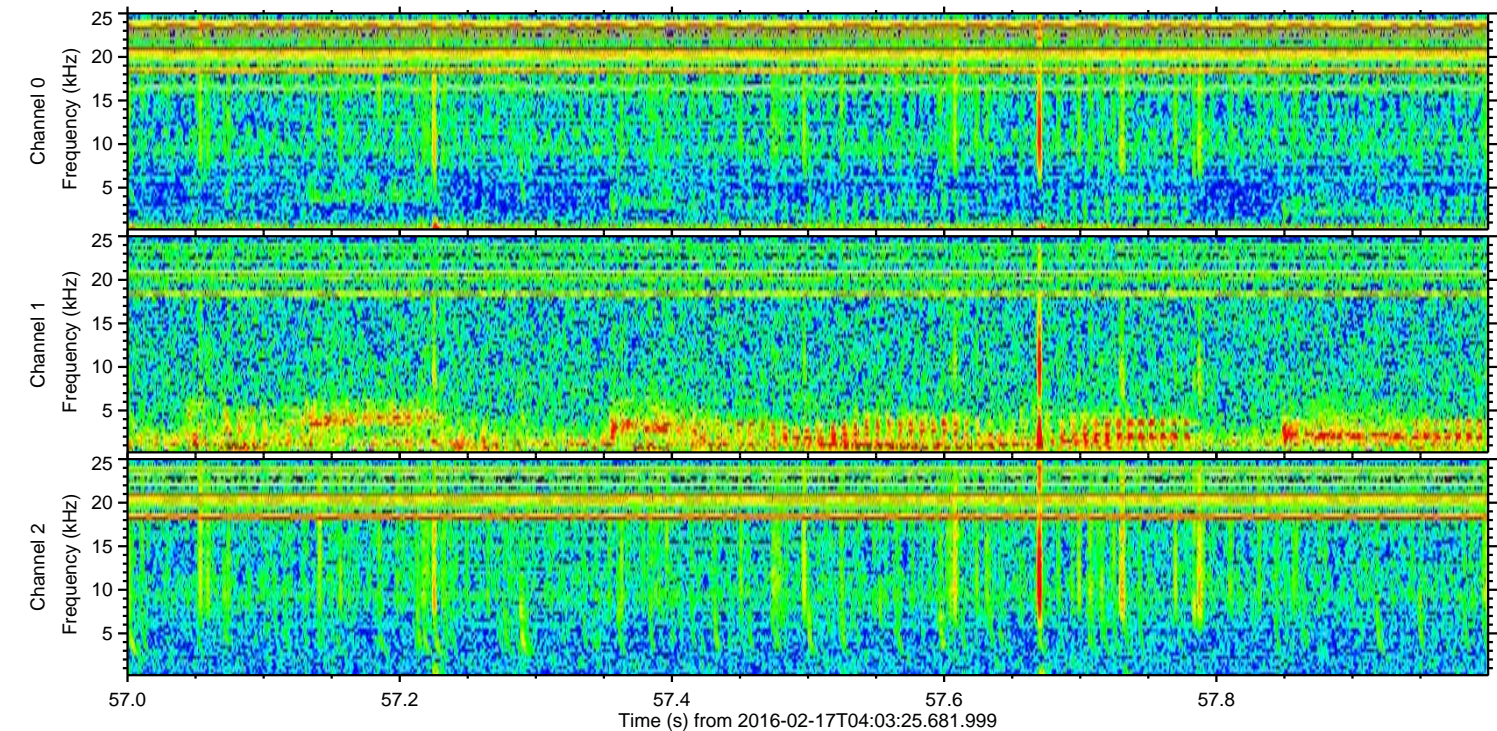
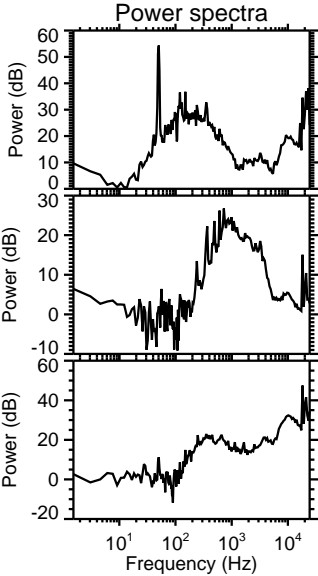
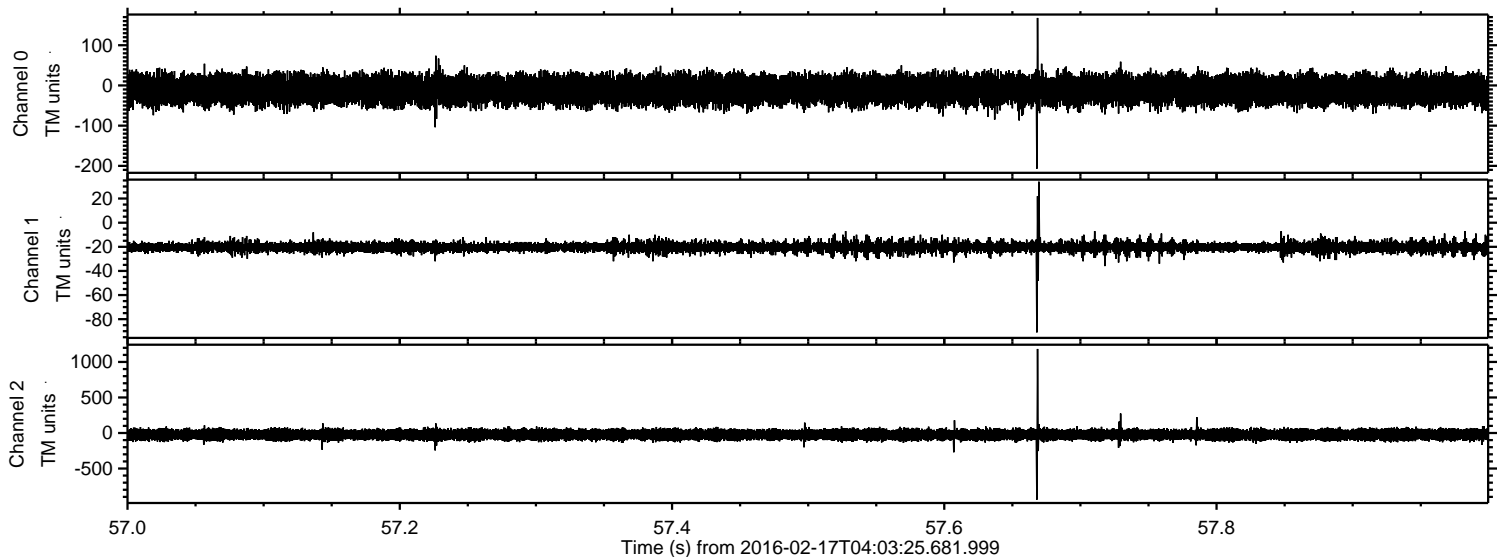
ELMAVAN 3D WAVEFORMS (Measured data sampled at 50 kHz) 51000 packets of 144 samples from 2016-02-17T04:03:25.681.999. Part 46/147

Processed Mon Apr 11 07:32:07 2016 by ELM ver.2012-10-06 from 001\_\_elm20160217\_040324\_\_dat00.bin





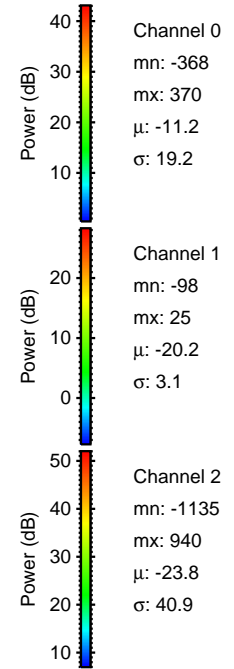
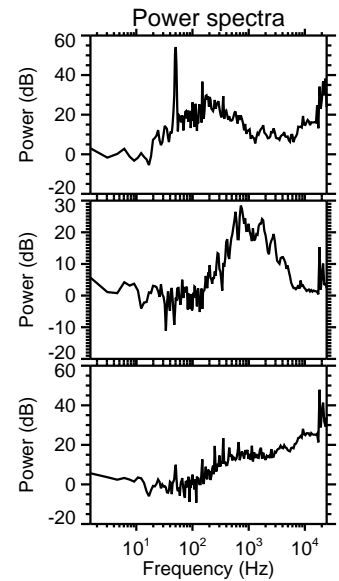
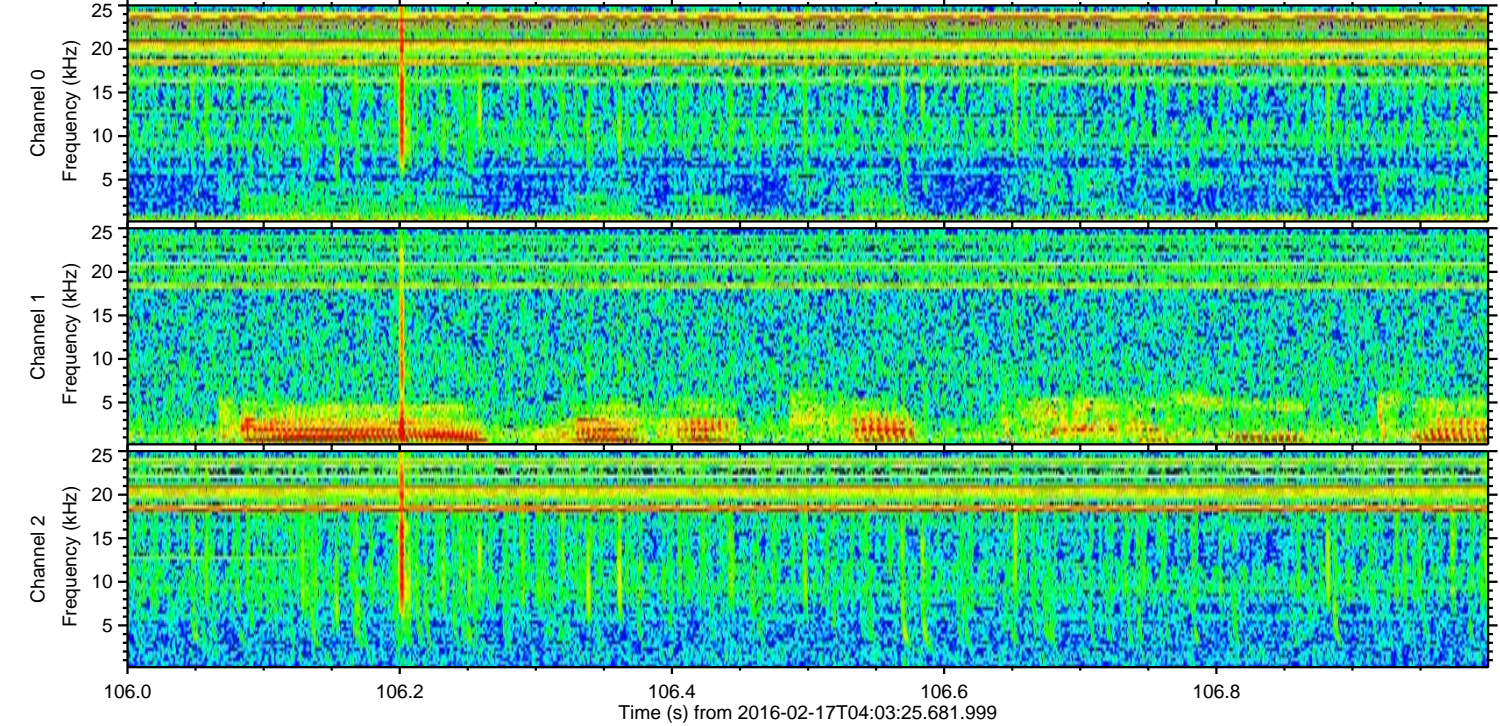
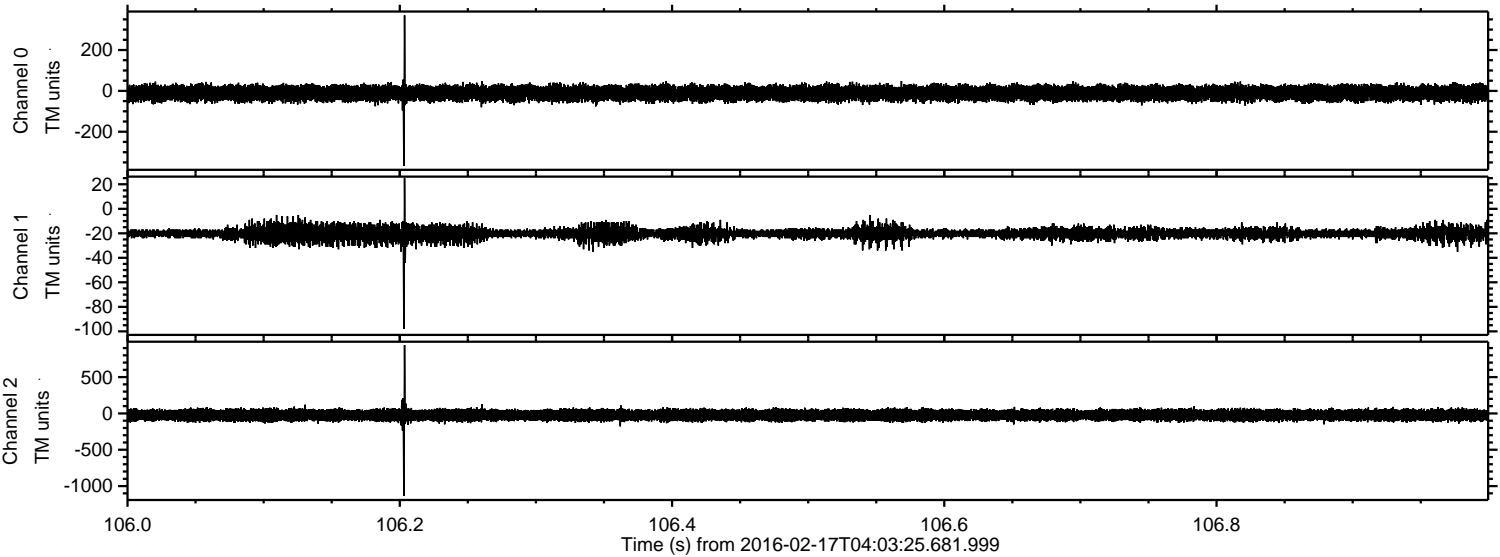
Processed Mon Apr 11 07:32:08 2016 by ELM ver.2012-10-06 from 001\_\_elm20160217\_040324\_\_dat00.bin





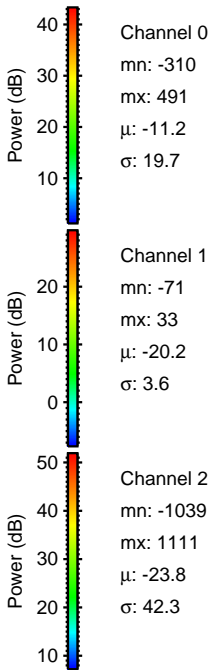
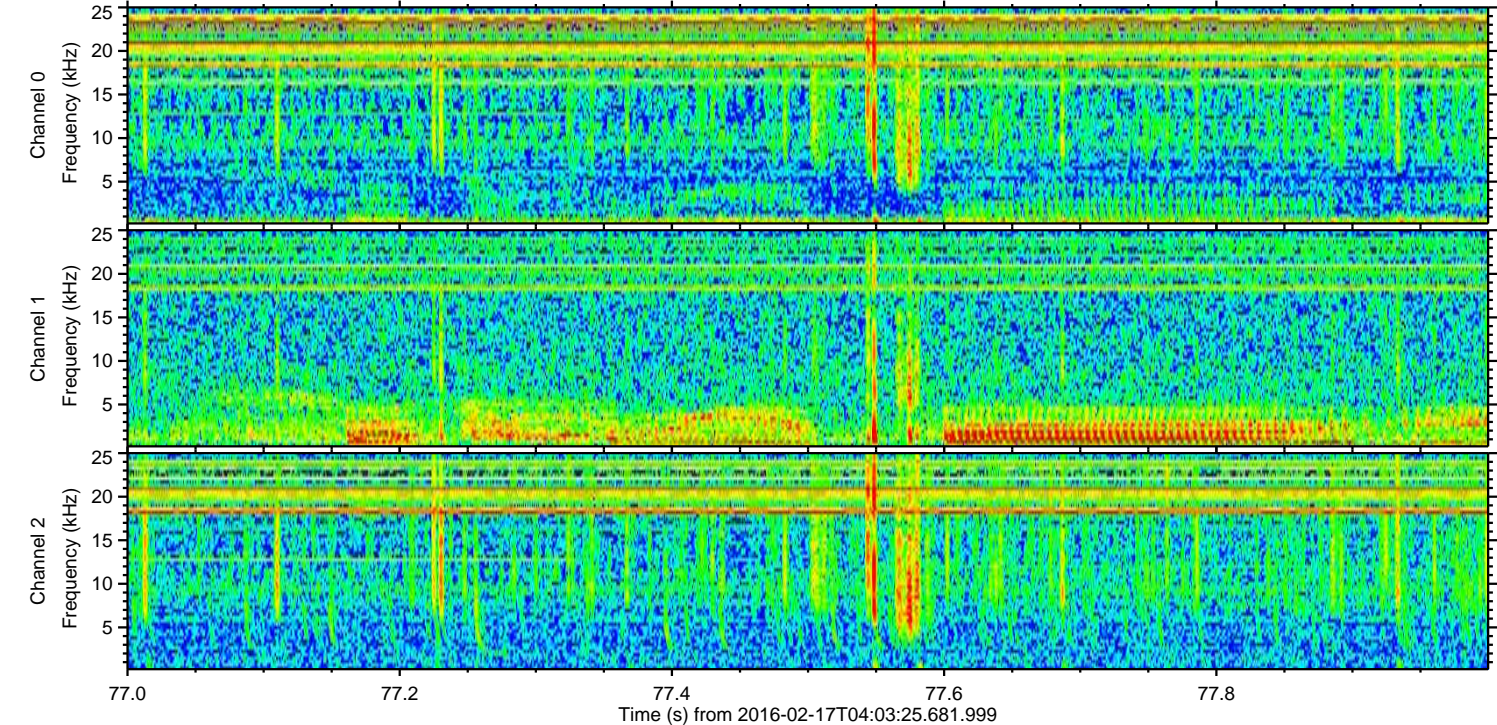
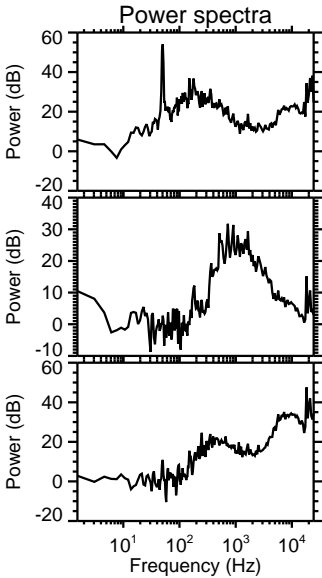
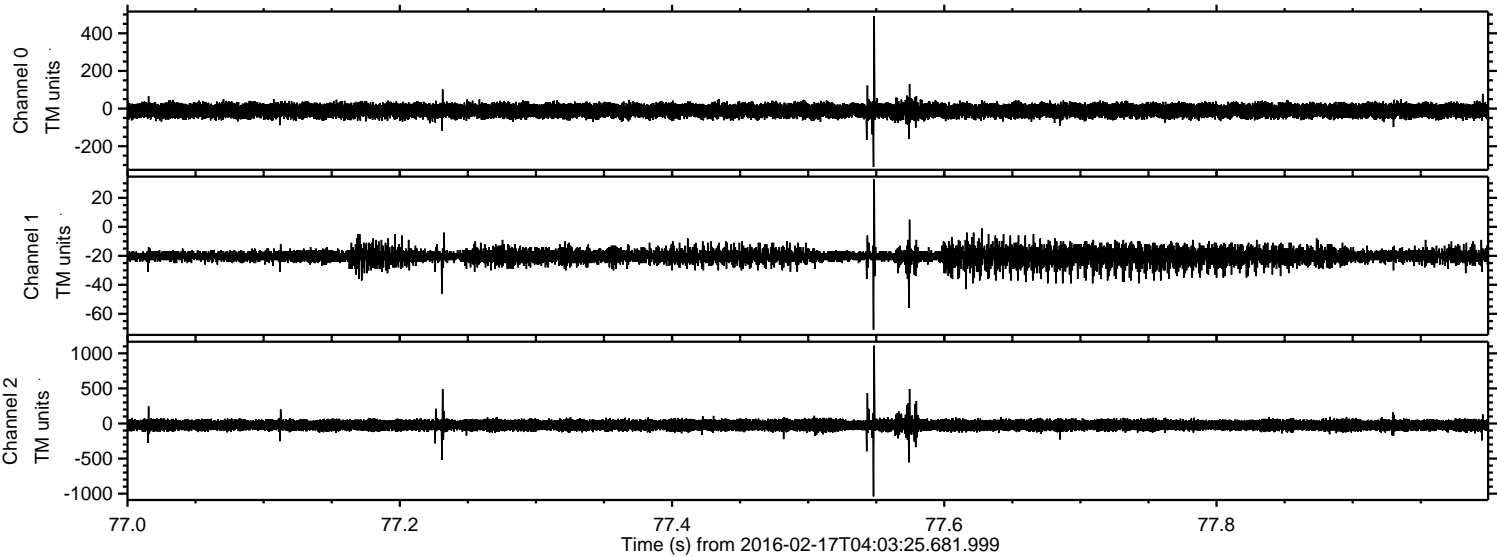
ELMAVAN 3D WAVEFORMS (Measured data sampled at 50 kHz) 51000 packets of 144 samples from 2016-02-17T04:03:25.681.999. Part 107/147

Processed Mon Apr 11 07:32:09 2016 by ELM ver.2012-10-06 from 001\_\_elm20160217\_040324\_\_dat00.bin





Processed Mon Apr 11 07:32:10 2016 by ELM ver.2012-10-06 from 001\_\_elm20160217\_040324\_\_dat00.bin



Power spectra

Channel 0  
mn: -310  
mx: 491  
 $\mu$ : -11.2  
 $\sigma$ : 19.7

Channel 1  
mn: -71  
mx: 33  
 $\mu$ : -20.2  
 $\sigma$ : 3.6

Channel 2  
mn: -1039  
mx: 1111  
 $\mu$ : -23.8  
 $\sigma$ : 42.3



Processed Mon Apr 11 07:32:11 2016 by ELM ver.2012-10-06 from 001\_\_elm20160217\_040324\_\_dat00.bin

