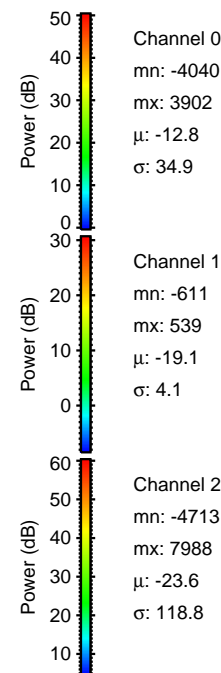
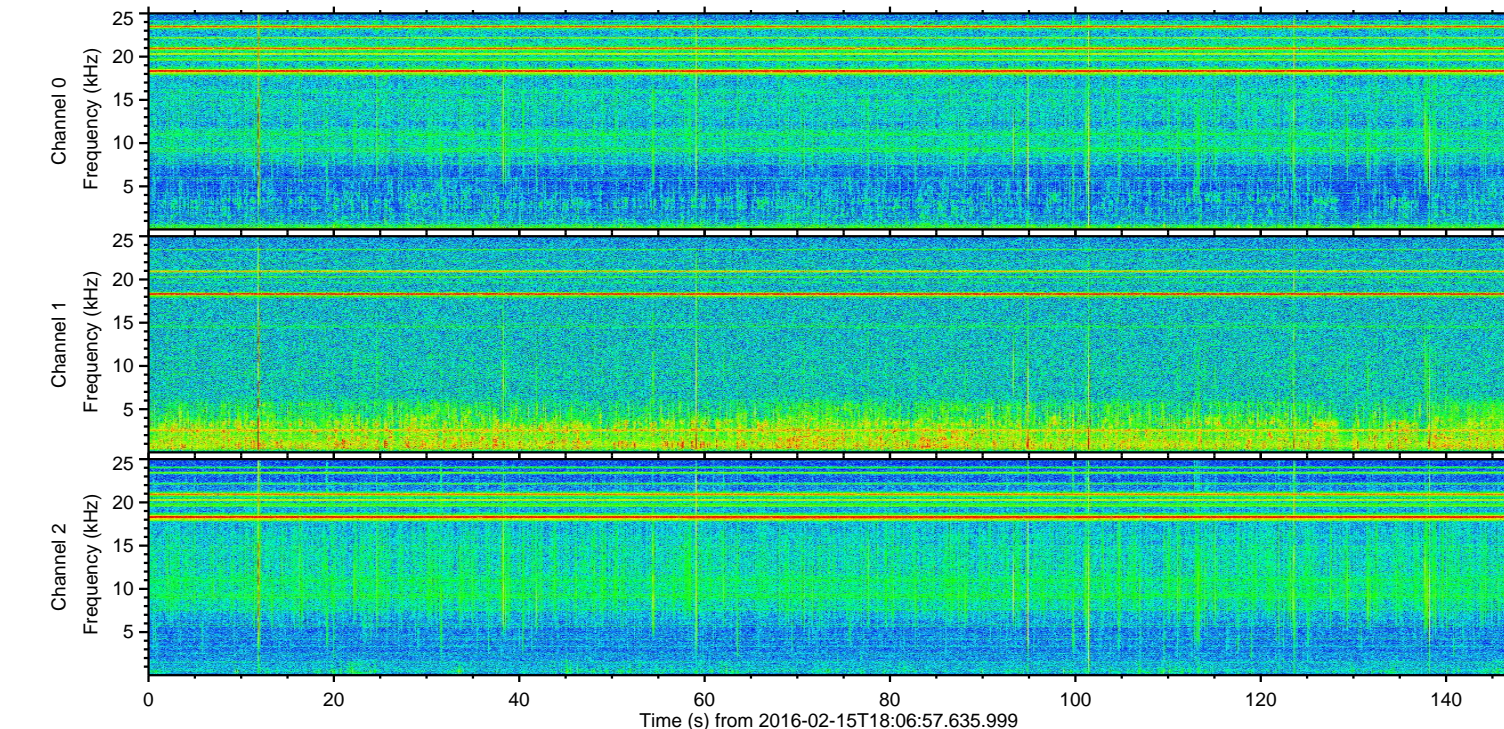
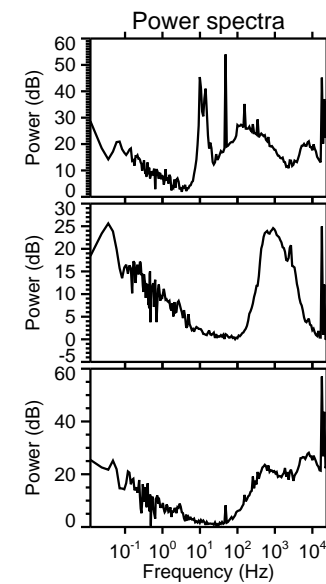
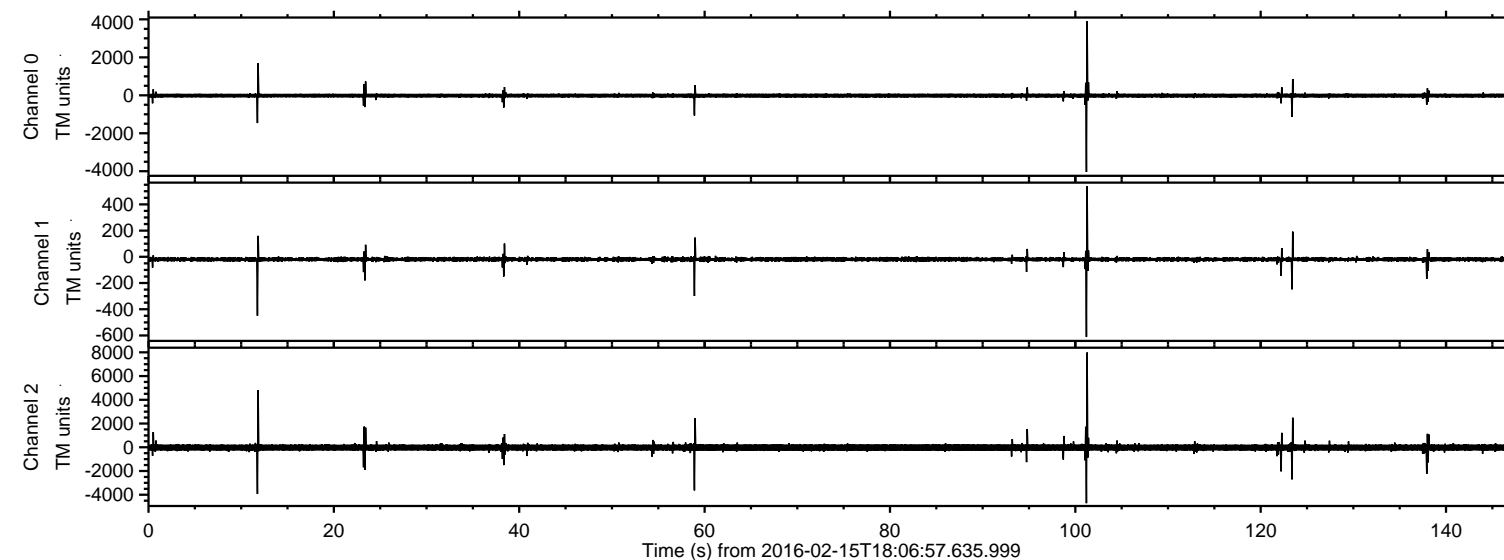


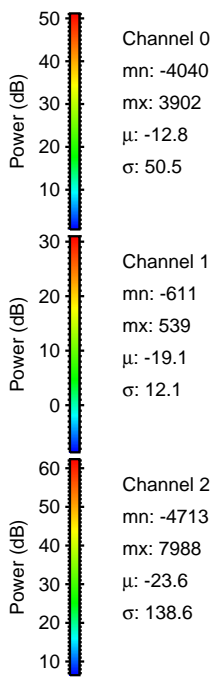
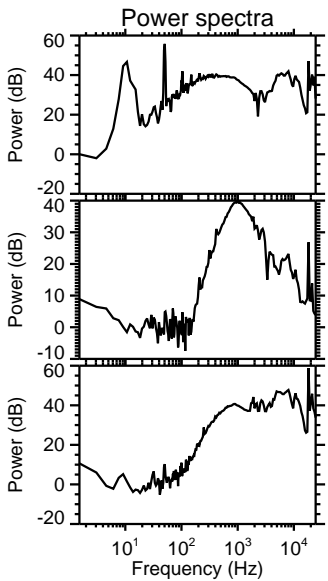
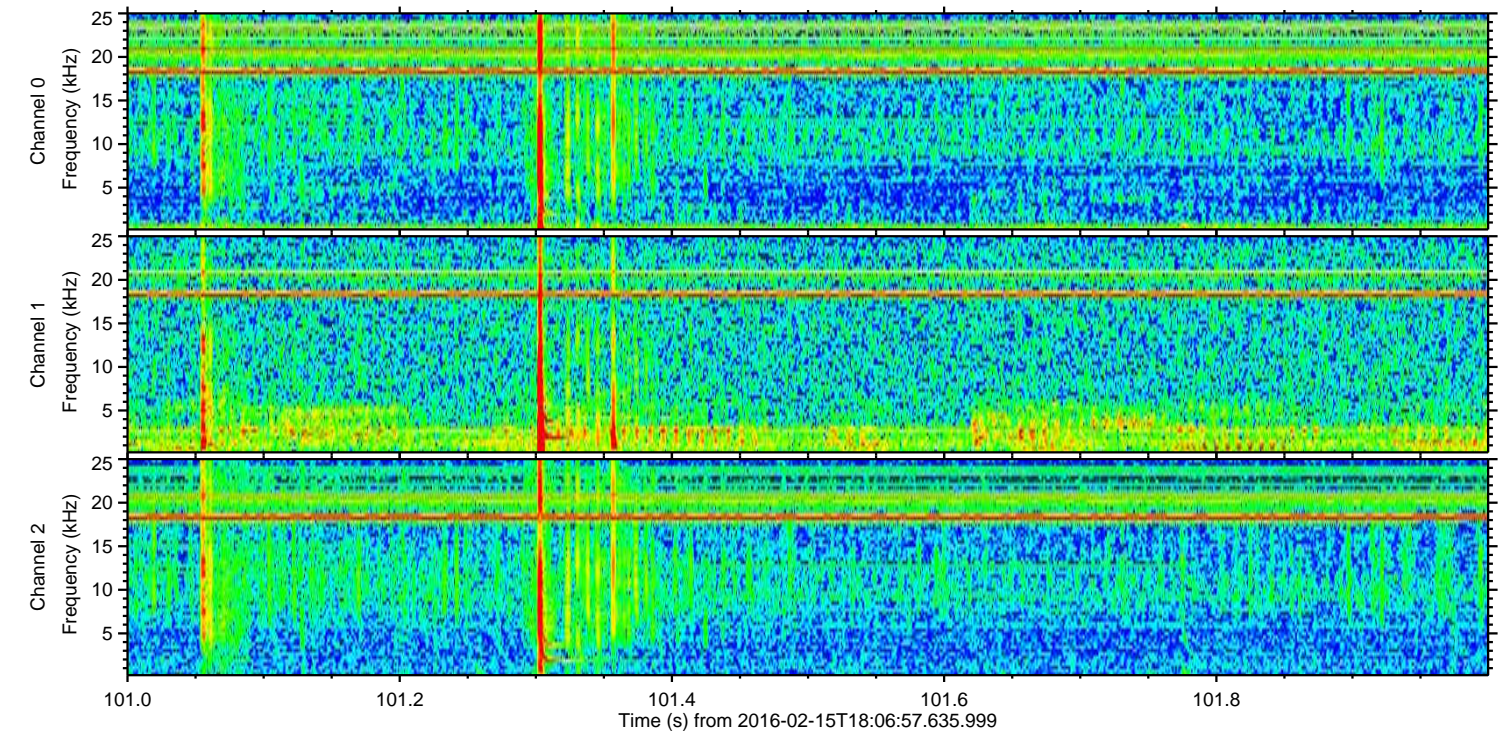
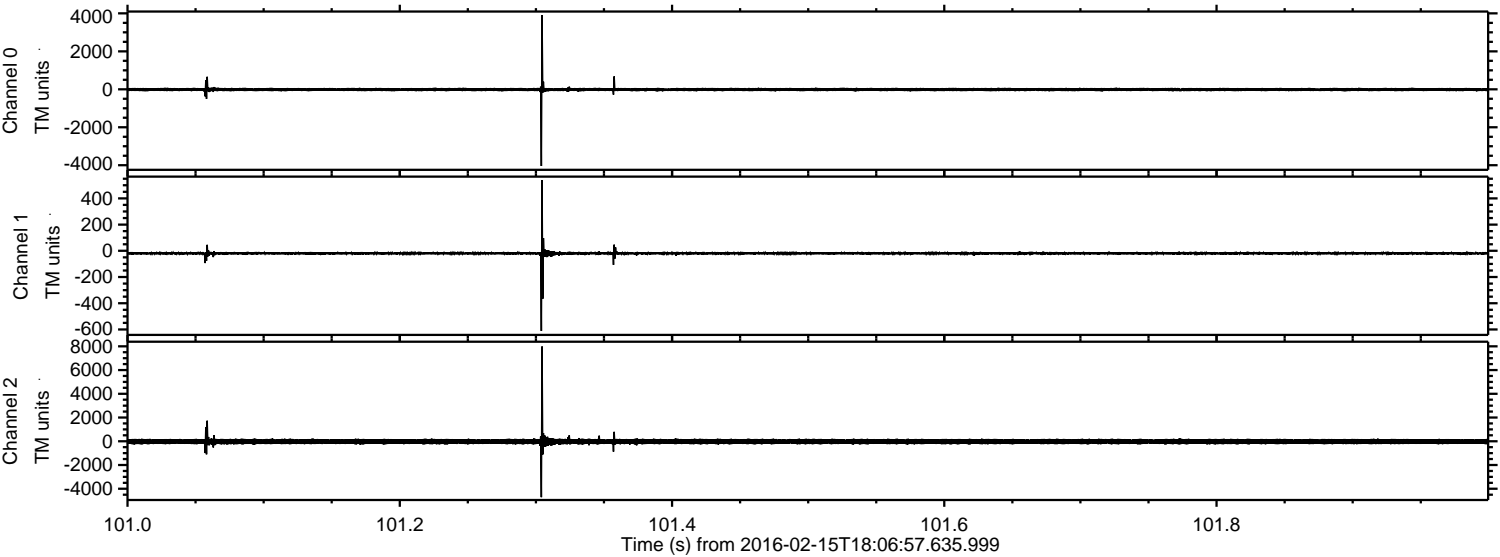
ELMAVAN 3D WAVEFORMS (Measured data sampled at 50 kHz) 51000 packets of 144 samples from 2016-02-15T18:06:57.635.999.

Processed Mon Apr 11 00:39:38 2016 by ELM ver.2012-10-06 from 001__elm20160215_180656__dat00.bin

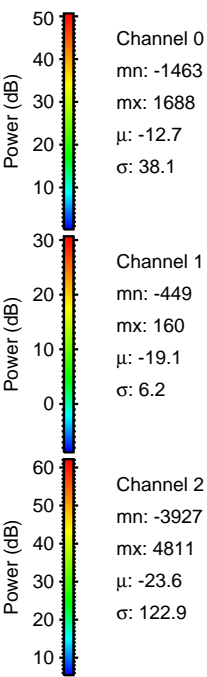
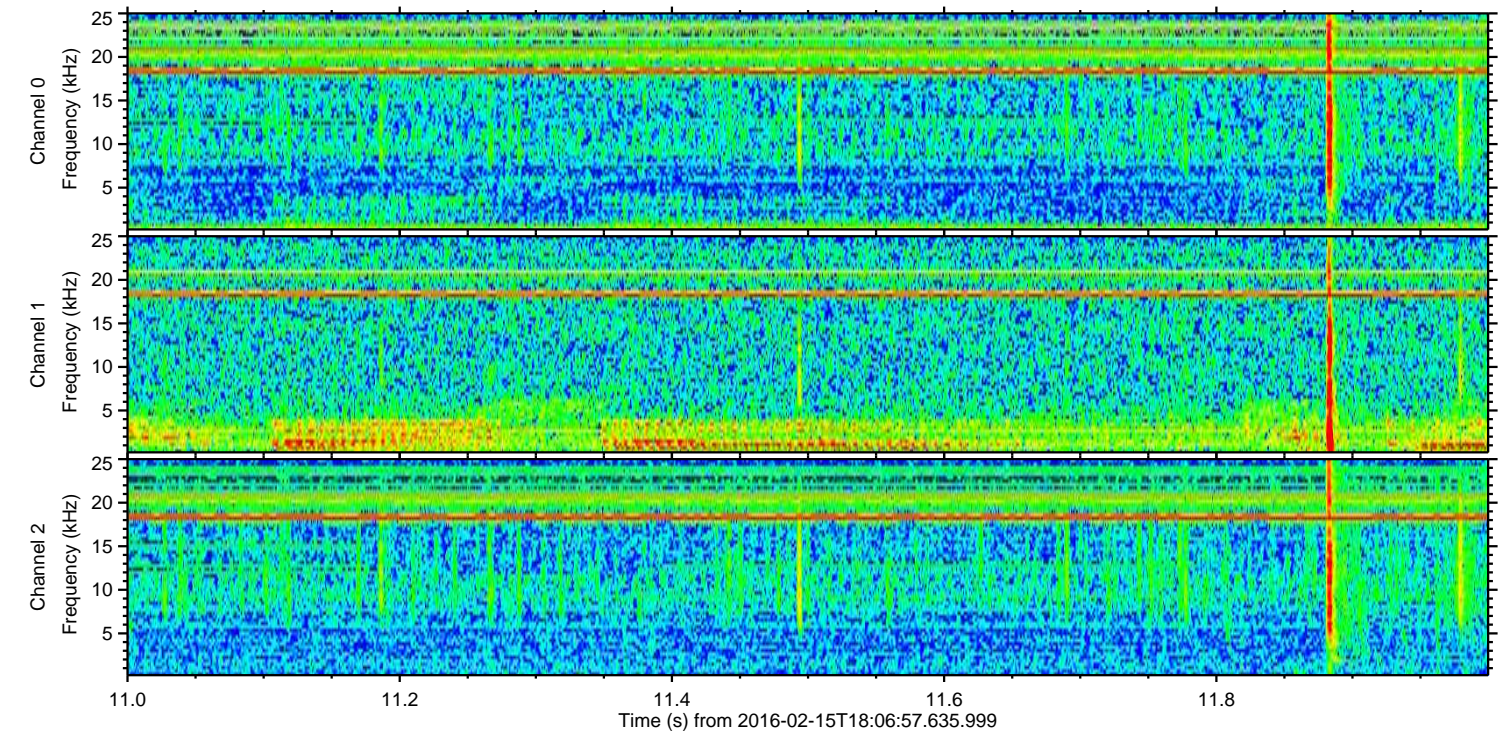
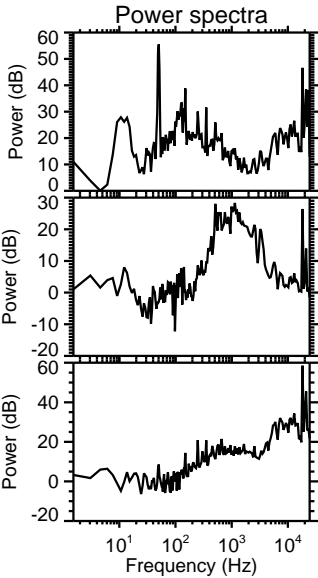
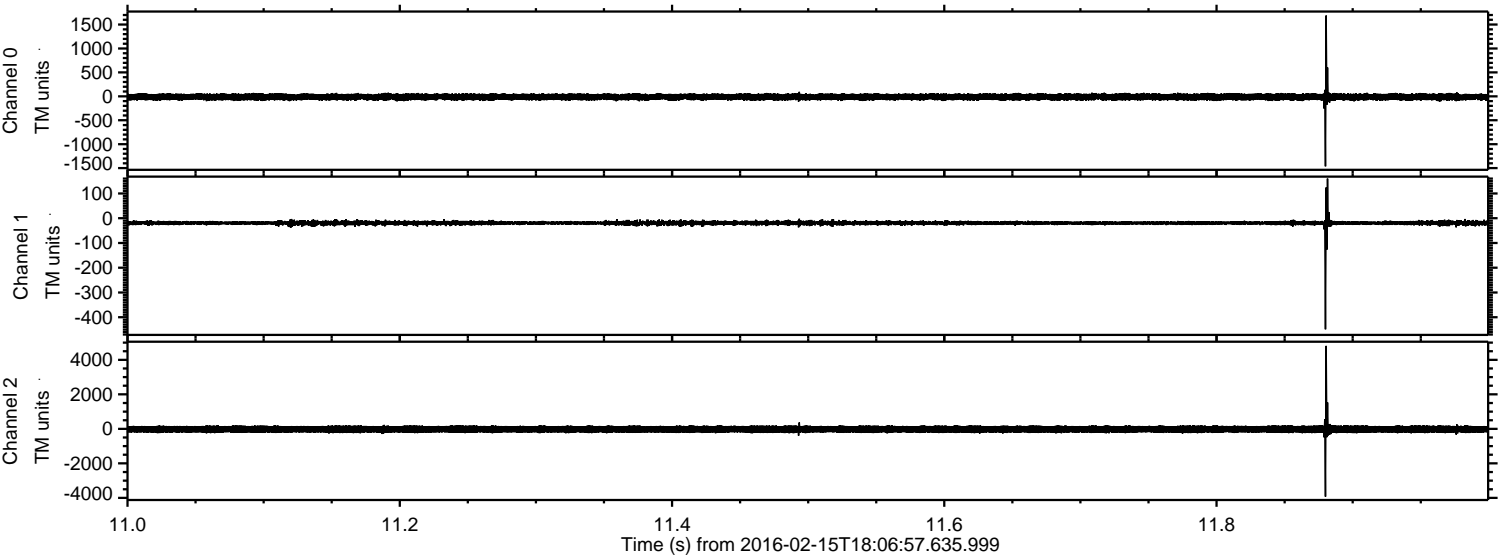


ELMAVAN 3D WAVEFORMS (Measured data sampled at 50 kHz) 51000 packets of 144 samples from 2016-02-15T18:06:57.635.999. Part 102/147

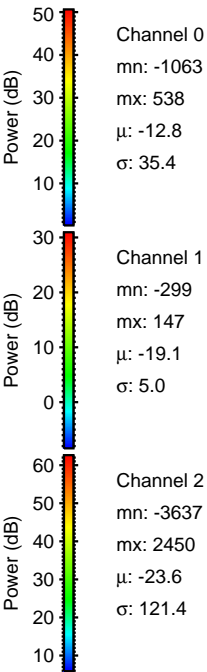
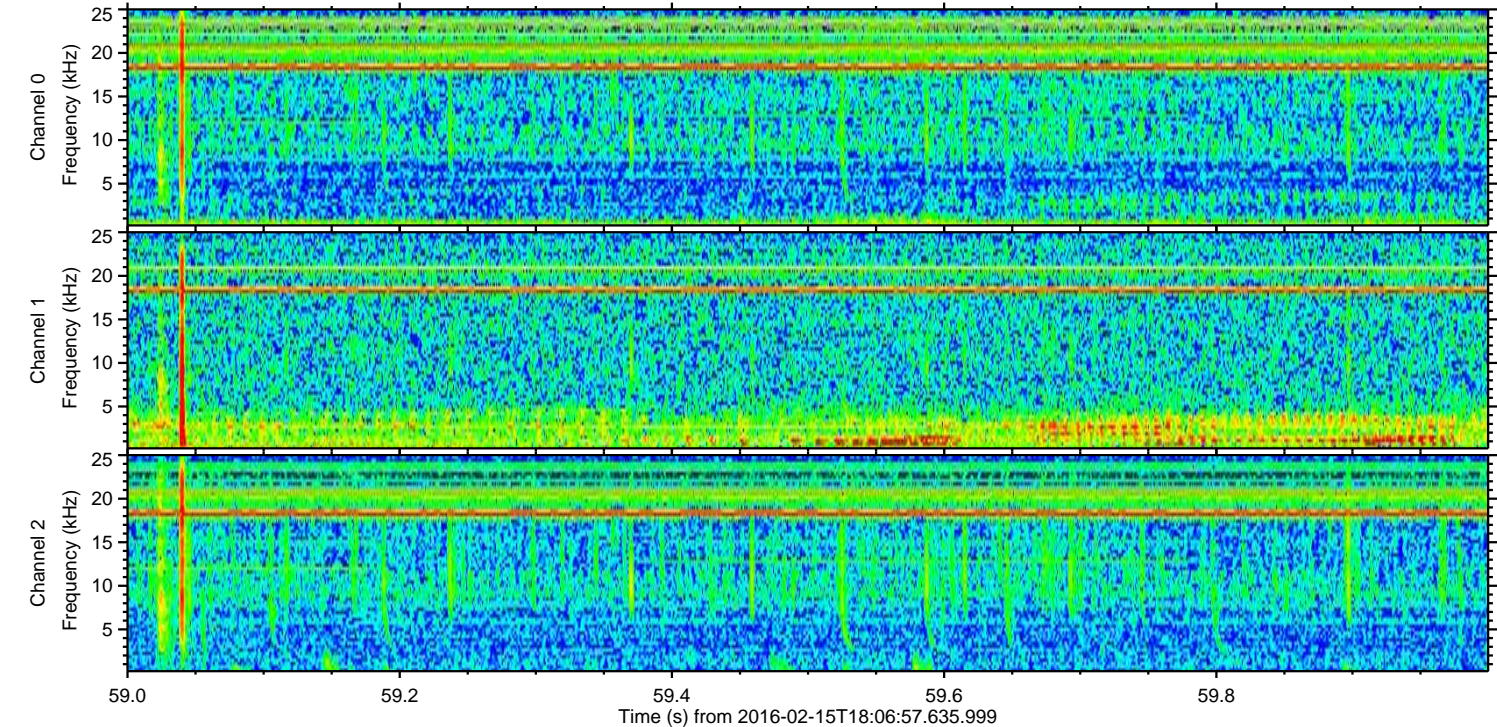
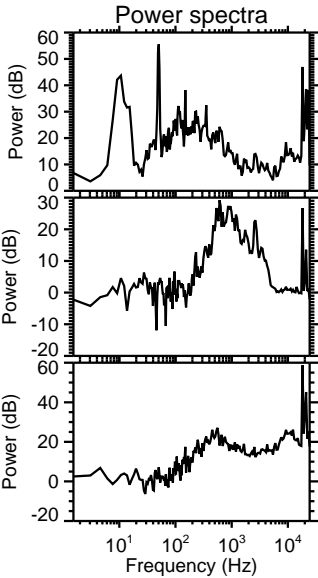
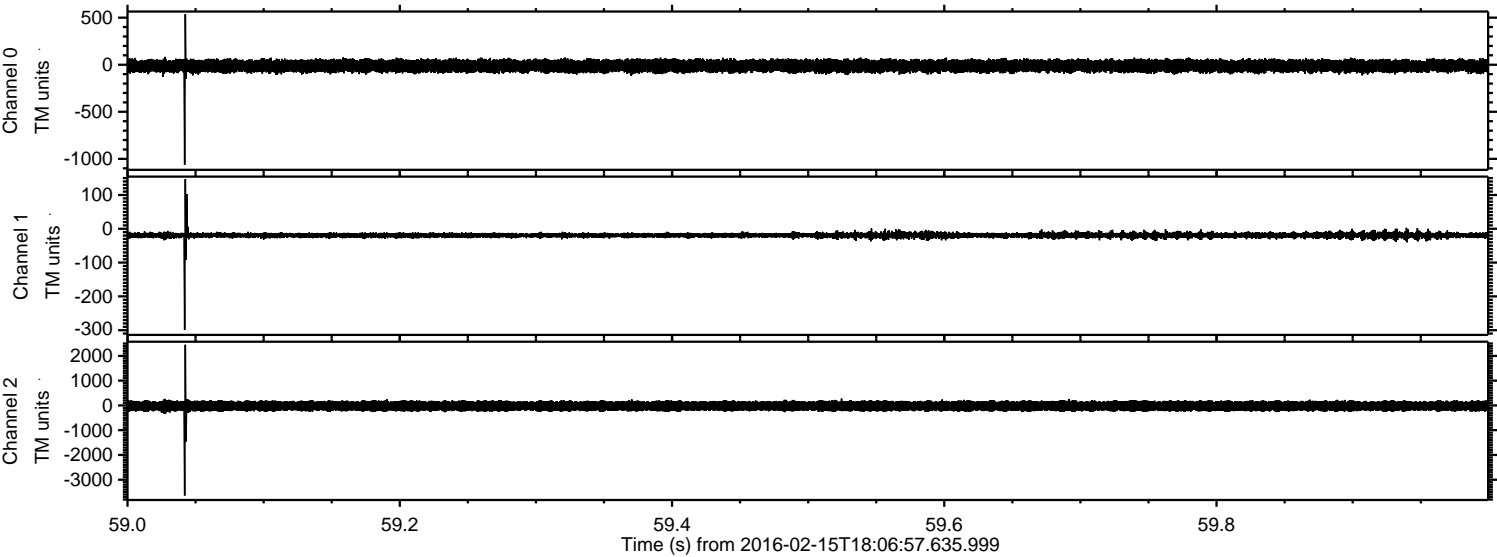
Processed Mon Apr 11 00:39:50 2016 by ELM ver.2012-10-06 from 001__elm20160215_180656__dat00.bin



Processed Mon Apr 11 00:39:51 2016 by ELM ver.2012-10-06 from 001__elm20160215_180656__dat00.bin

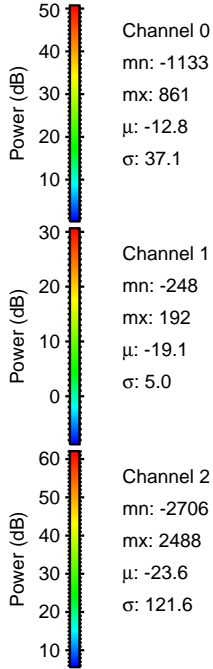
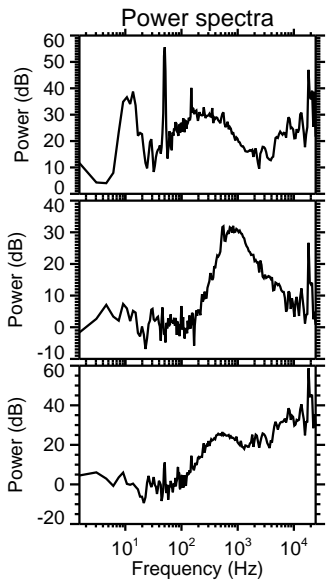
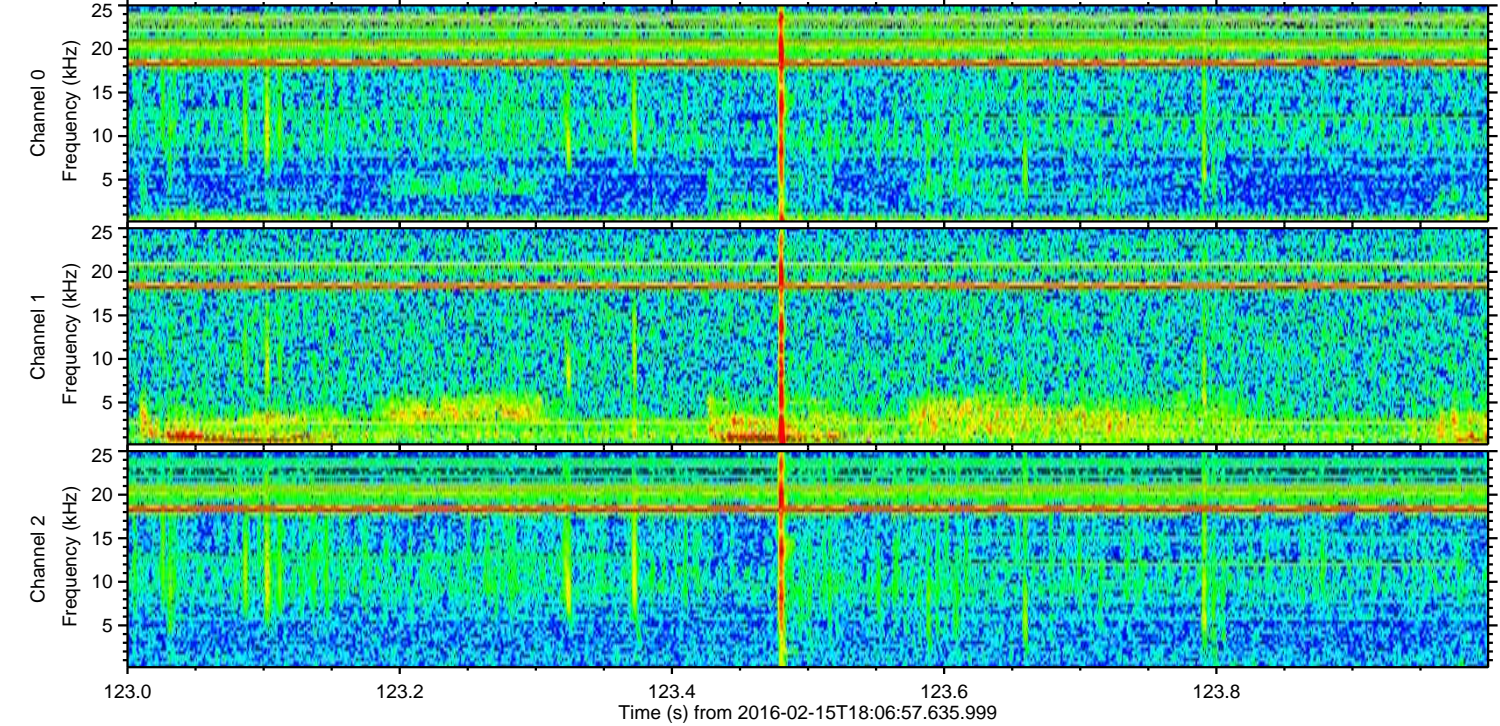
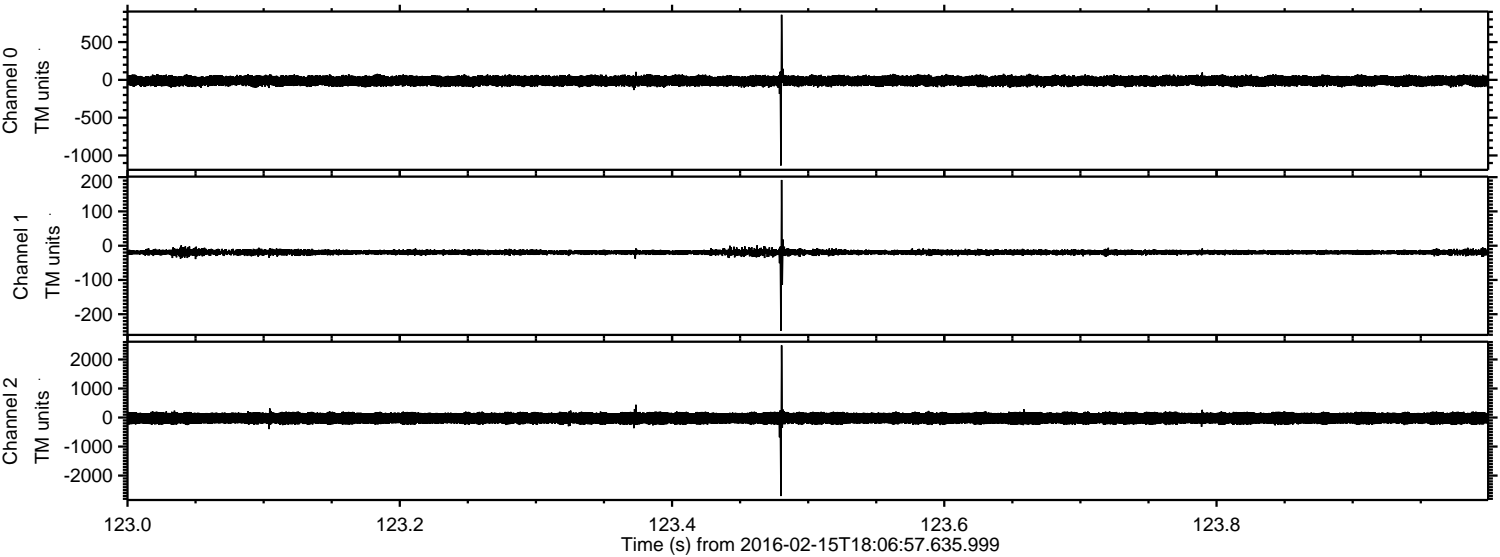


Processed Mon Apr 11 00:39:52 2016 by ELM ver.2012-10-06 from 001__elm20160215_180656__dat00.bin



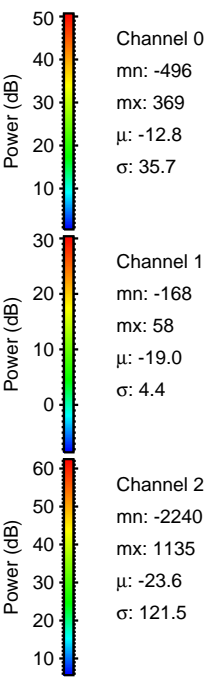
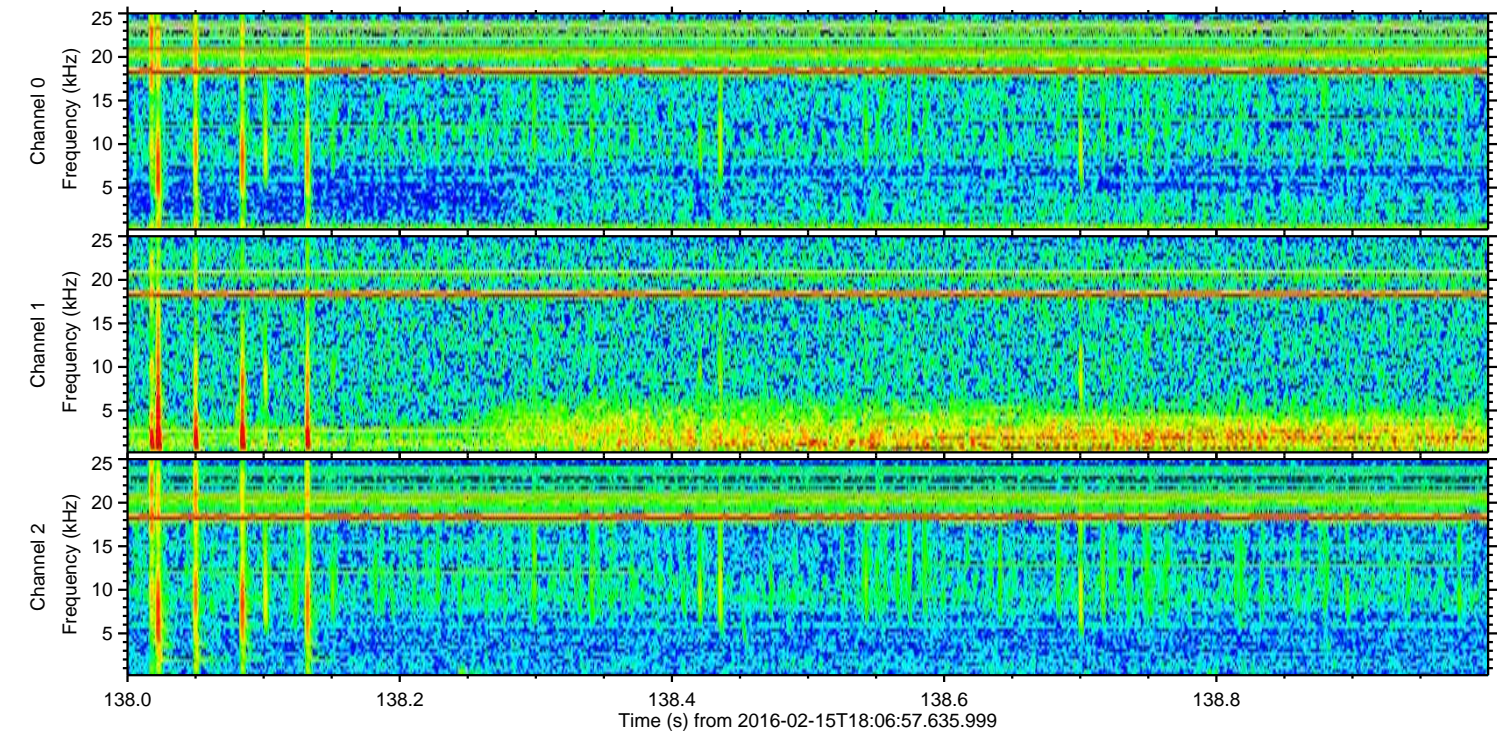
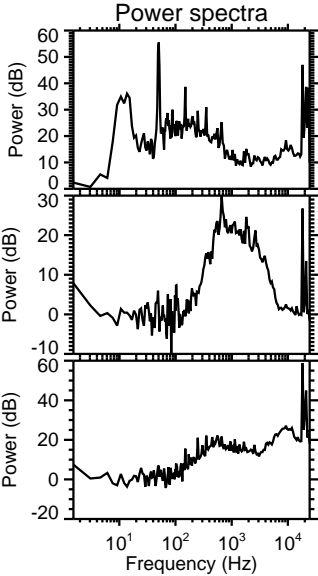
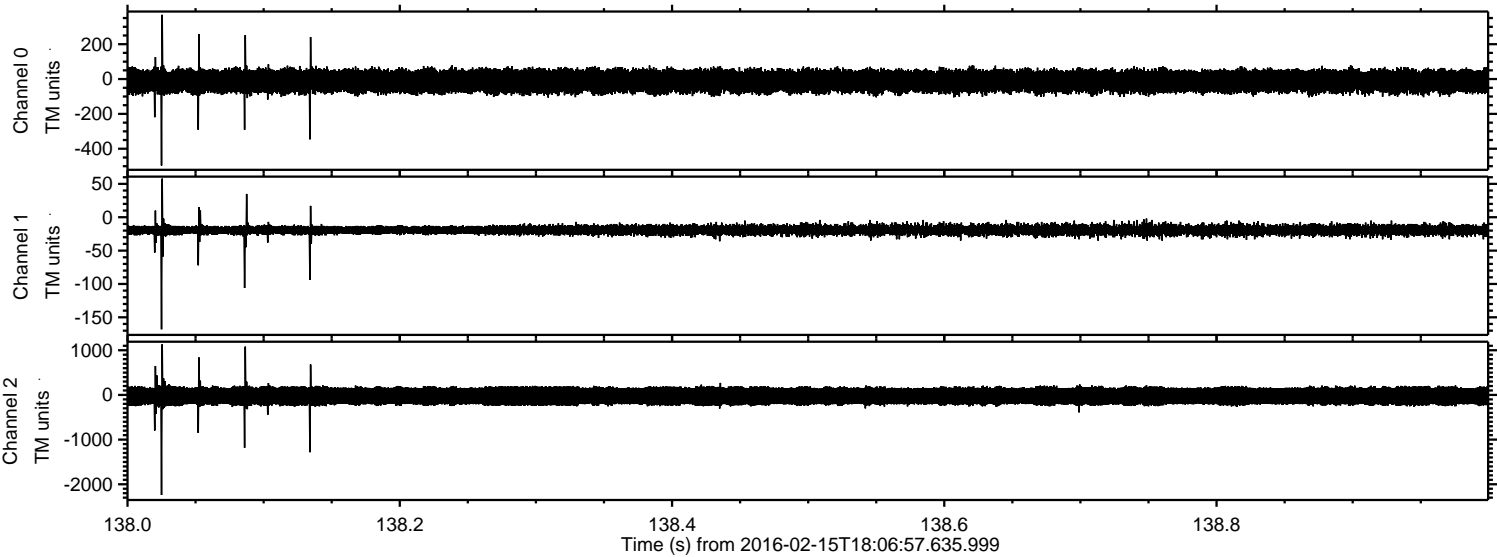
ELMAVAN 3D WAVEFORMS (Measured data sampled at 50 kHz) 51000 packets of 144 samples from 2016-02-15T18:06:57.635.999. Part 124/147

Processed Mon Apr 11 00:39:53 2016 by ELM ver.2012-10-06 from 001__elm20160215_180656__dat00.bin



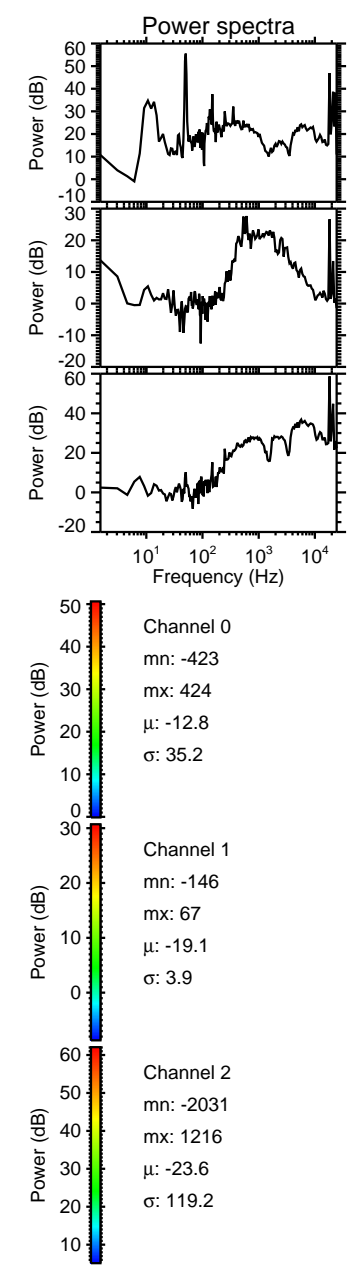
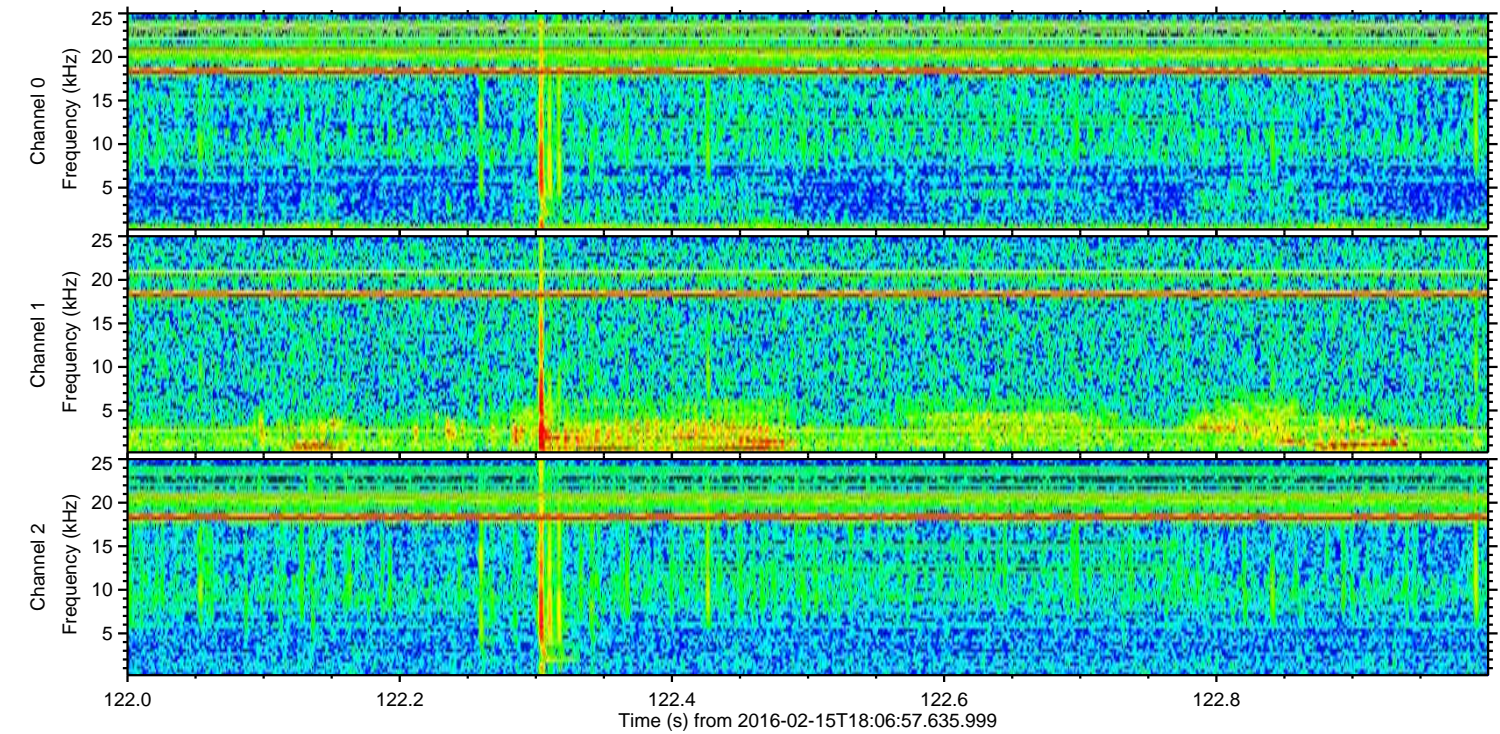
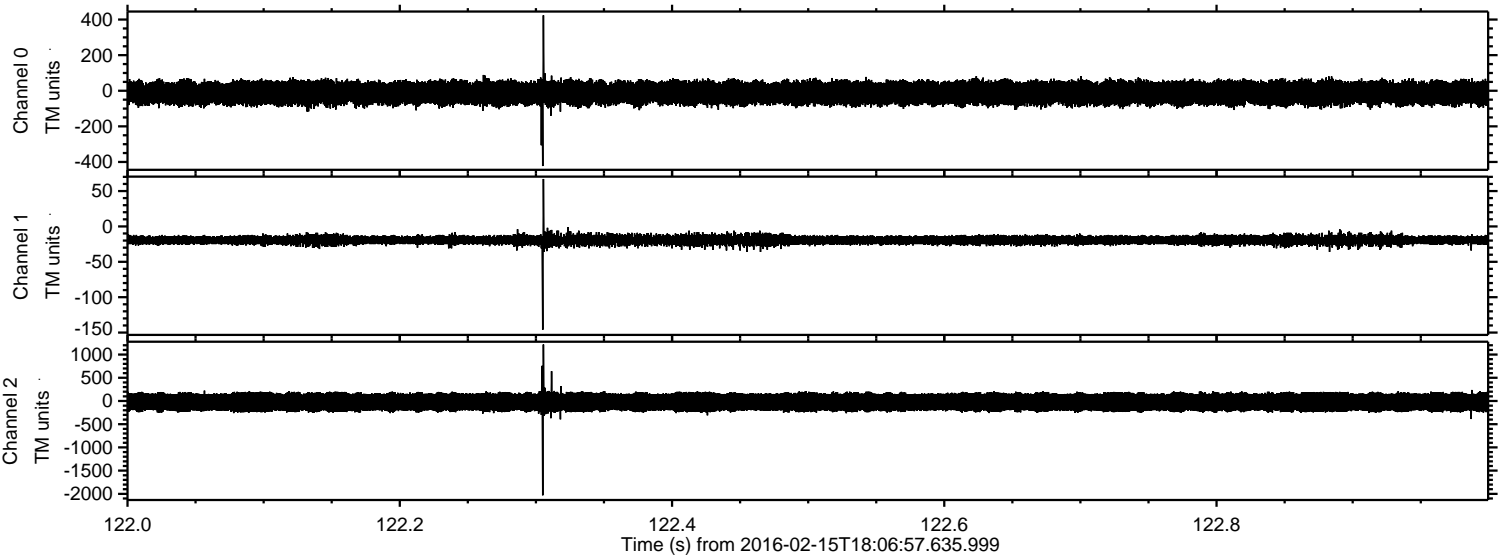
ELMAVAN 3D WAVEFORMS (Measured data sampled at 50 kHz) 51000 packets of 144 samples from 2016-02-15T18:06:57.635.999. Part 139/147

Processed Mon Apr 11 00:39:54 2016 by ELM ver.2012-10-06 from 001__elm20160215_180656__dat00.bin

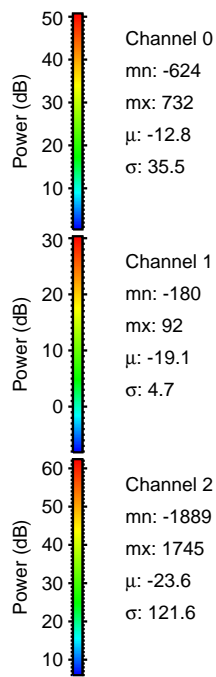
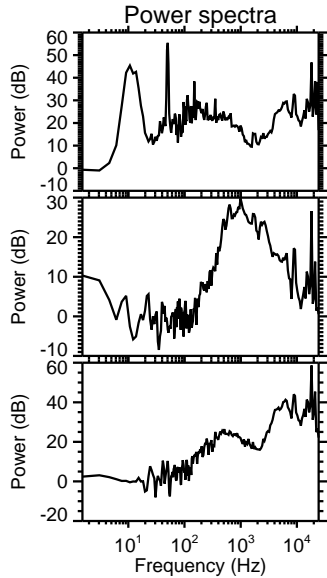
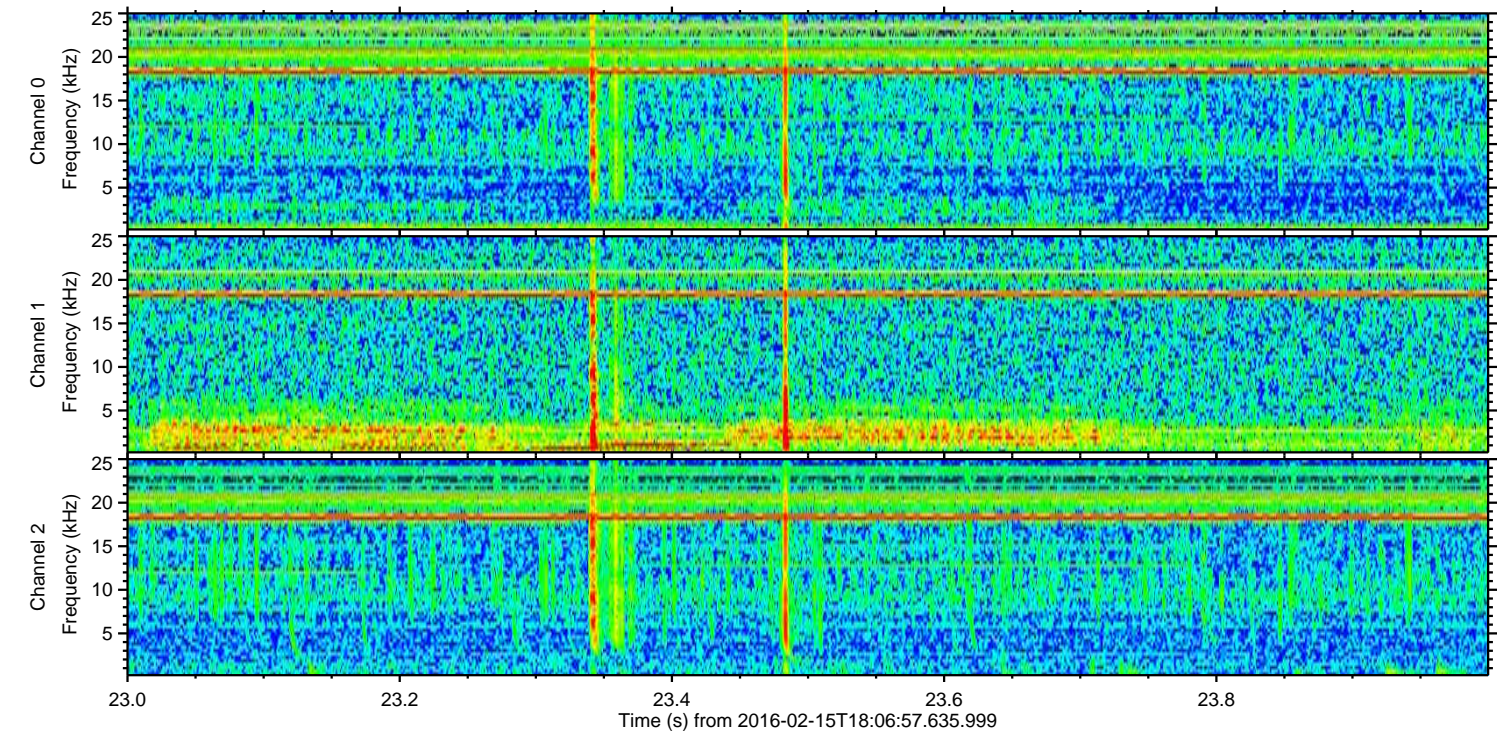
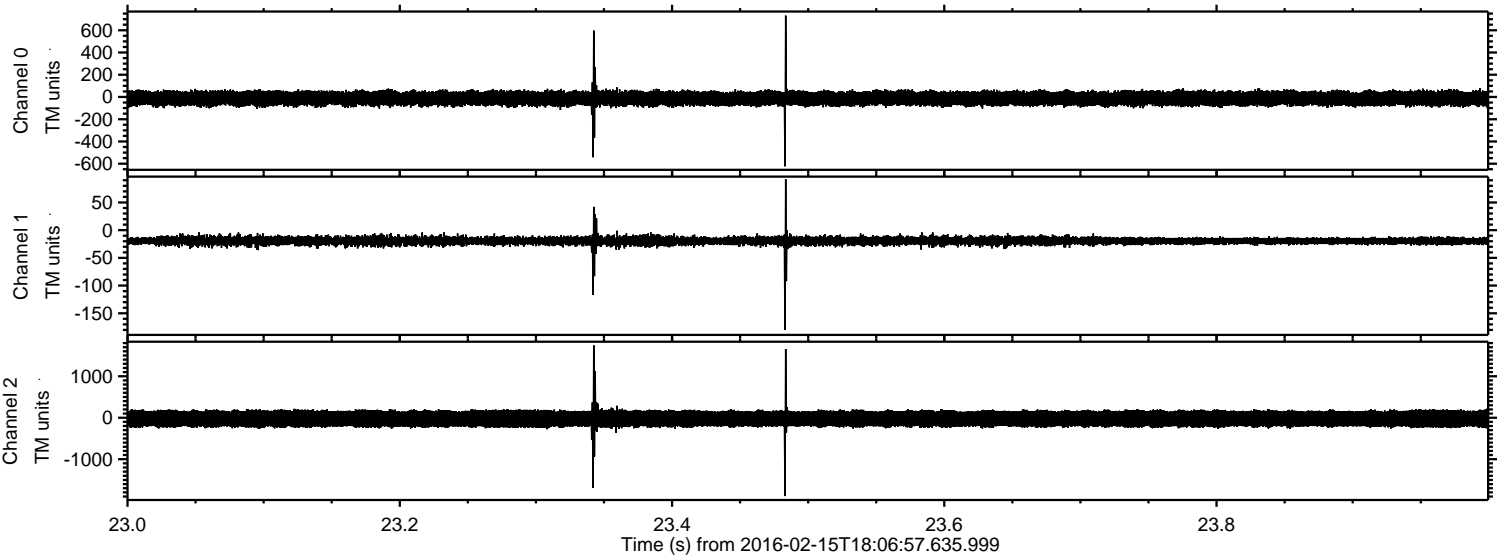


ELMAVAN 3D WAVEFORMS (Measured data sampled at 50 kHz) 51000 packets of 144 samples from 2016-02-15T18:06:57.635.999. Part 123/147

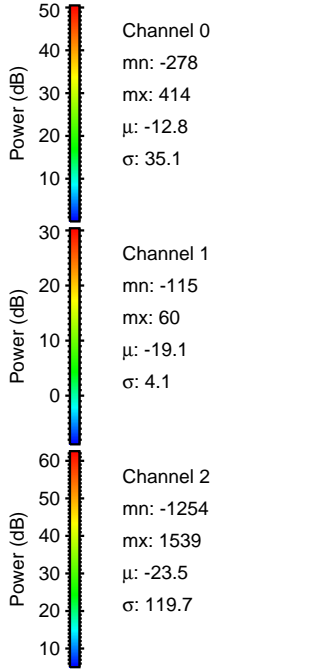
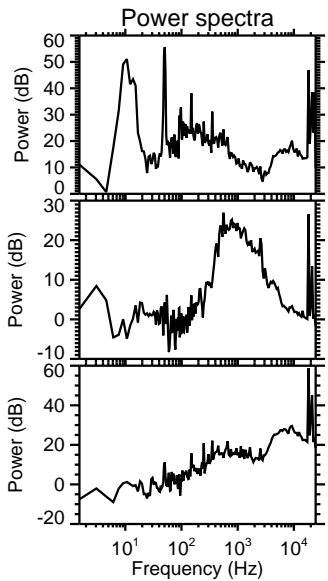
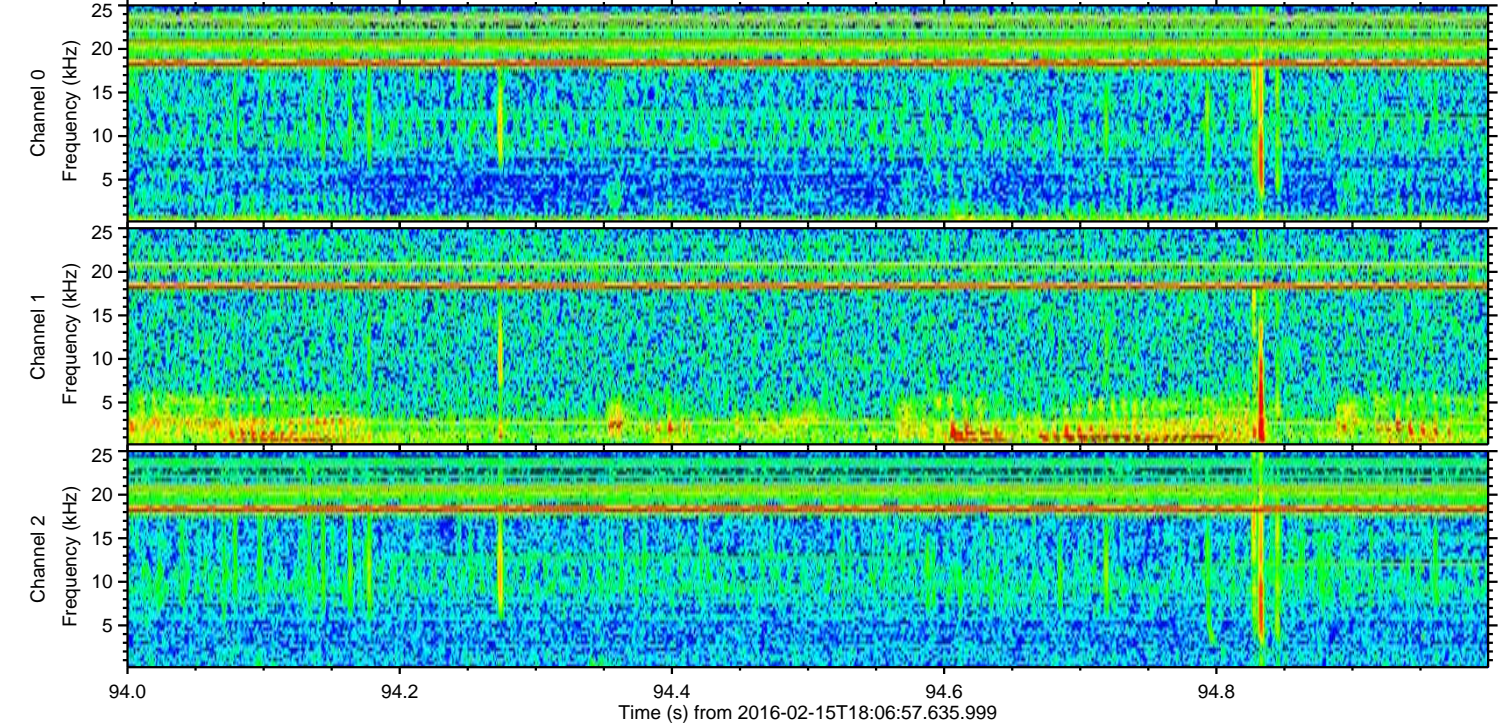
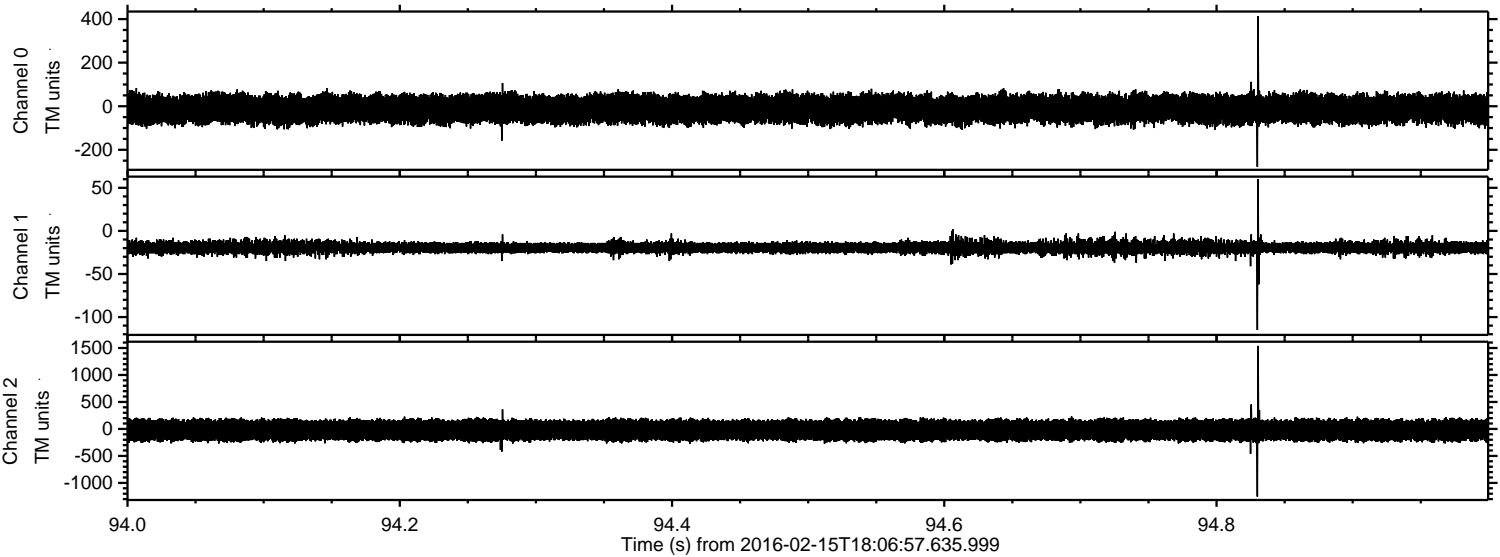
Processed Mon Apr 11 00:39:55 2016 by ELM ver.2012-10-06 from 001__elm20160215_180656__dat00.bin



Processed Mon Apr 11 00:39:56 2016 by ELM ver.2012-10-06 from 001__elm20160215_180656__dat00.bin



Processed Mon Apr 11 00:39:57 2016 by ELM ver.2012-10-06 from 001__elm20160215_180656__dat00.bin



Power spectra

Channel 0

mn: -278
mx: 414
 μ : -12.8
 σ : 35.1

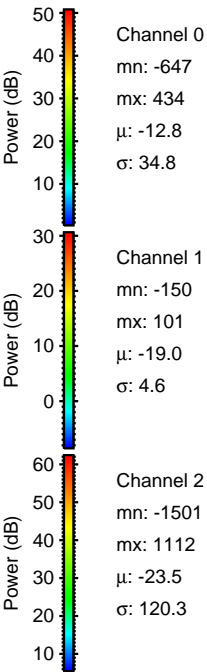
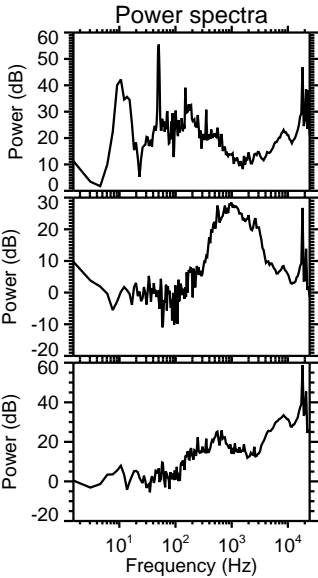
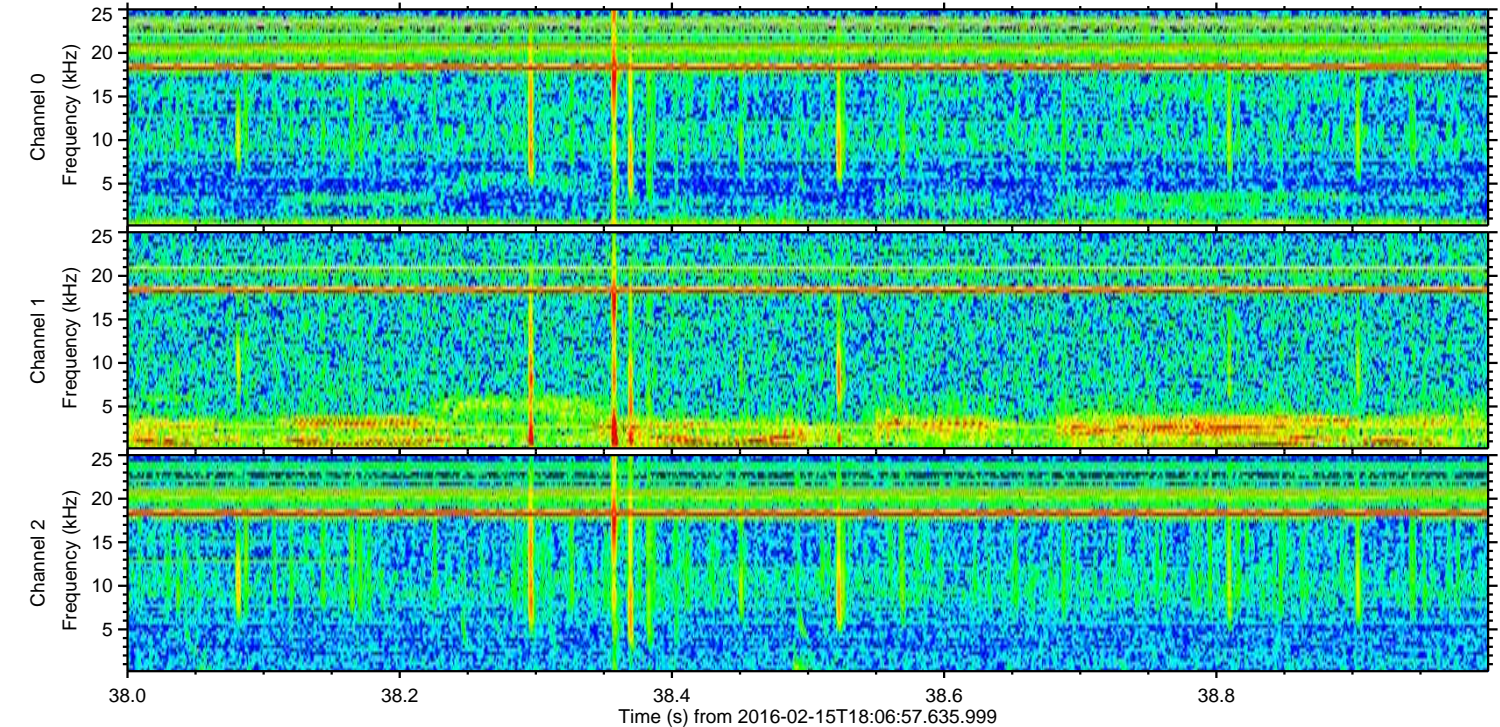
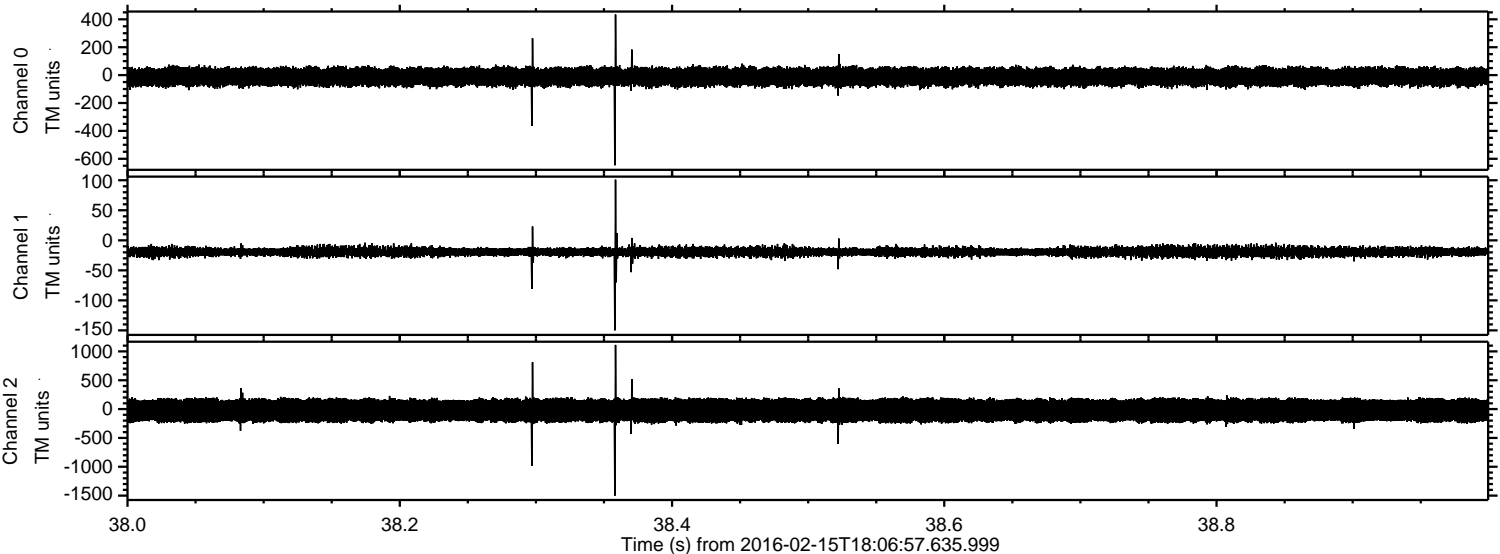
Channel 1

mn: -115
mx: 60
 μ : -19.1
 σ : 4.1

Channel 2

mn: -1254
mx: 1539
 μ : -23.5
 σ : 119.7

Processed Mon Apr 11 00:39:58 2016 by ELM ver.2012-10-06 from 001__elm20160215_180656__dat00.bin



Channel 0
mn: -647
mx: 434
 μ : -12.8
 σ : 34.8

Channel 1
mn: -150
mx: 101
 μ : -19.0
 σ : 4.6

Channel 2
mn: -1501
mx: 1112
 μ : -23.5
 σ : 120.3

Processed Mon Apr 11 00:39:59 2016 by ELM ver.2012-10-06 from 001__elm20160215_180656__dat00.bin

