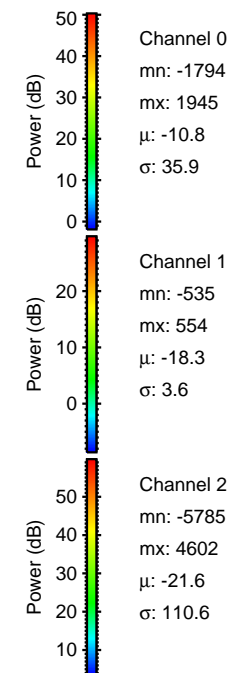
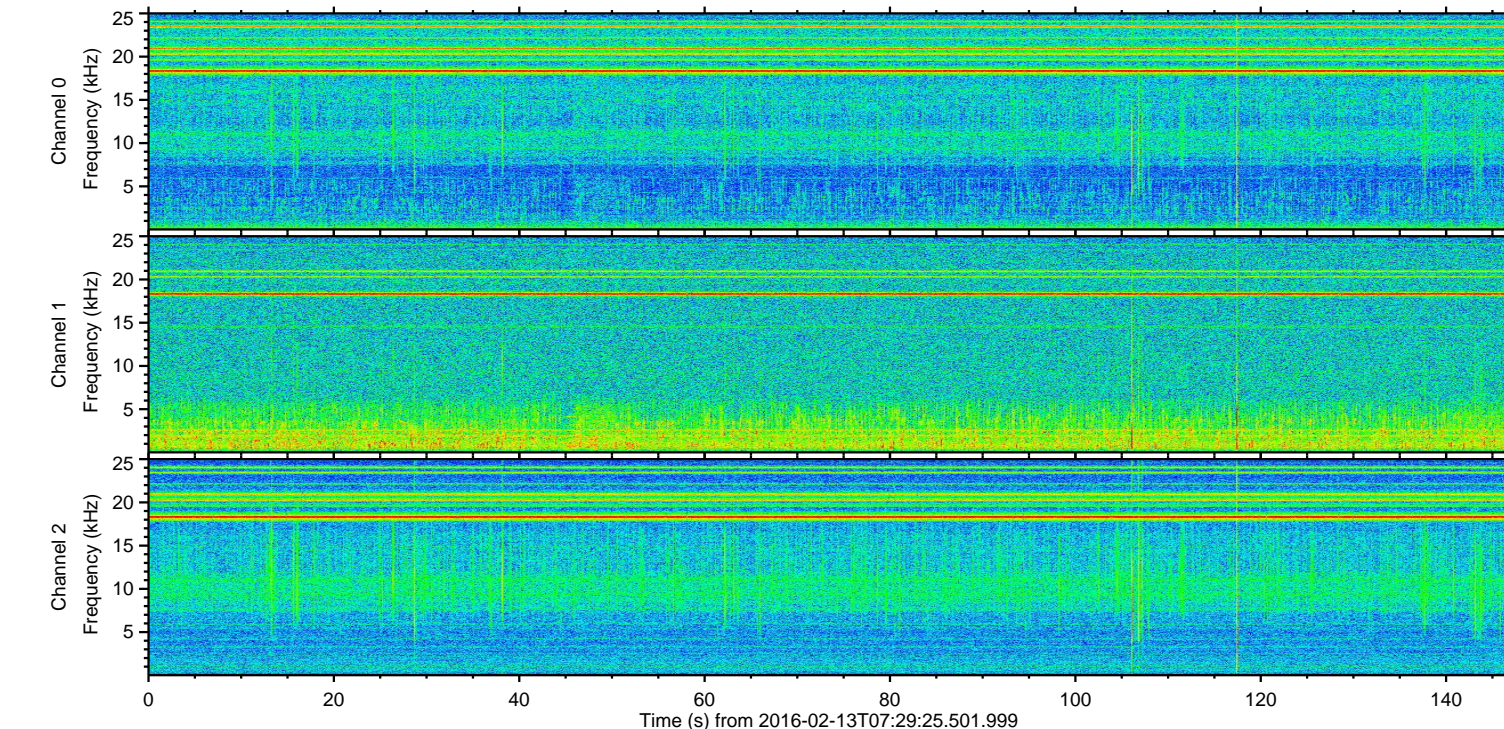
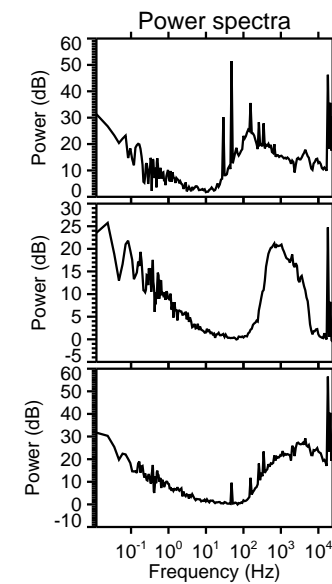
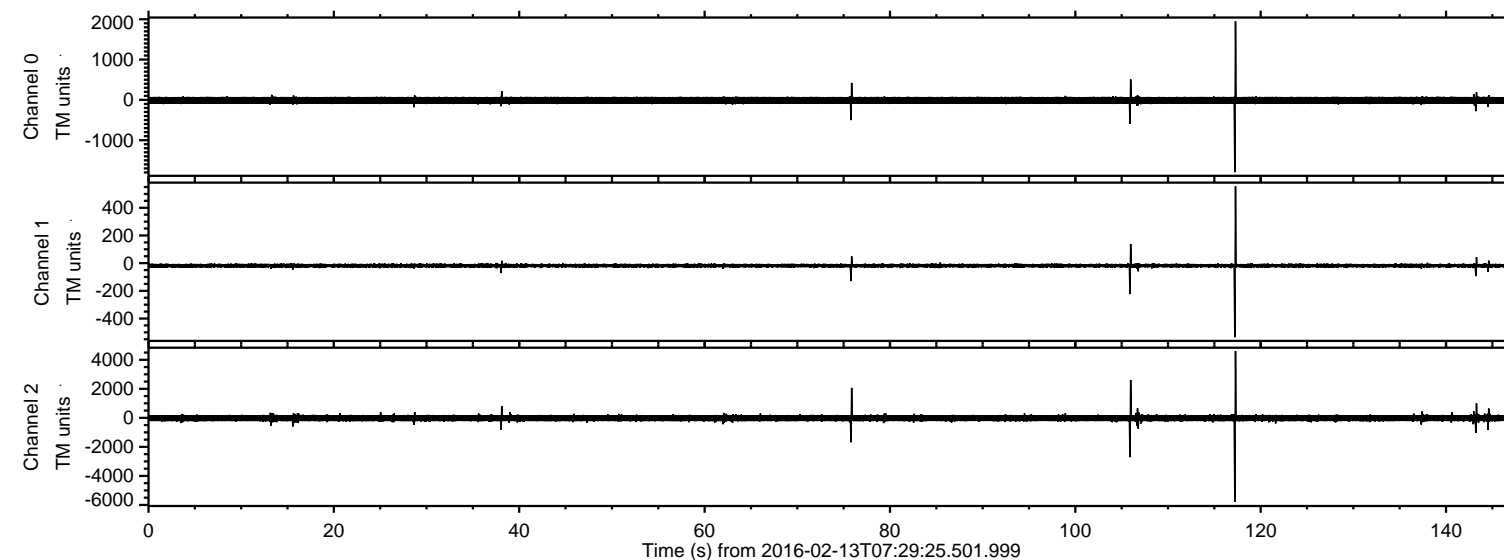


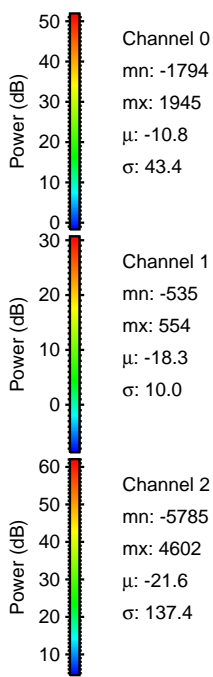
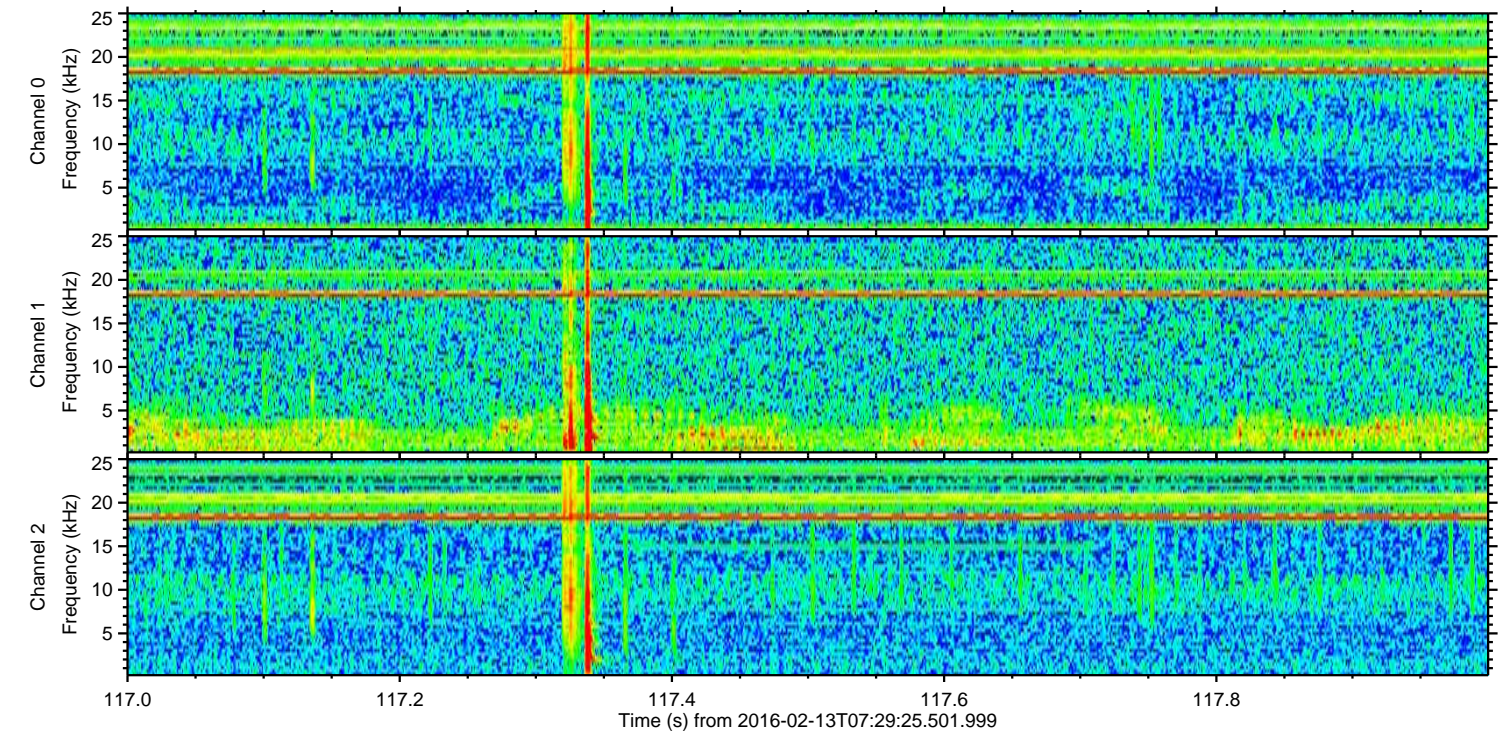
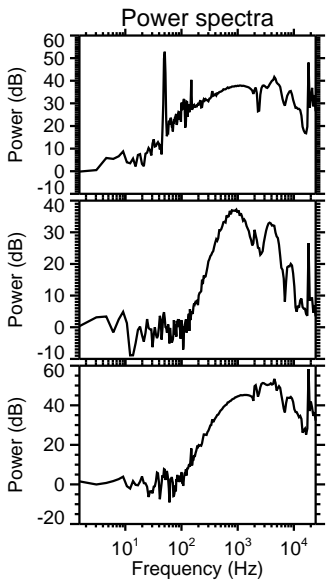
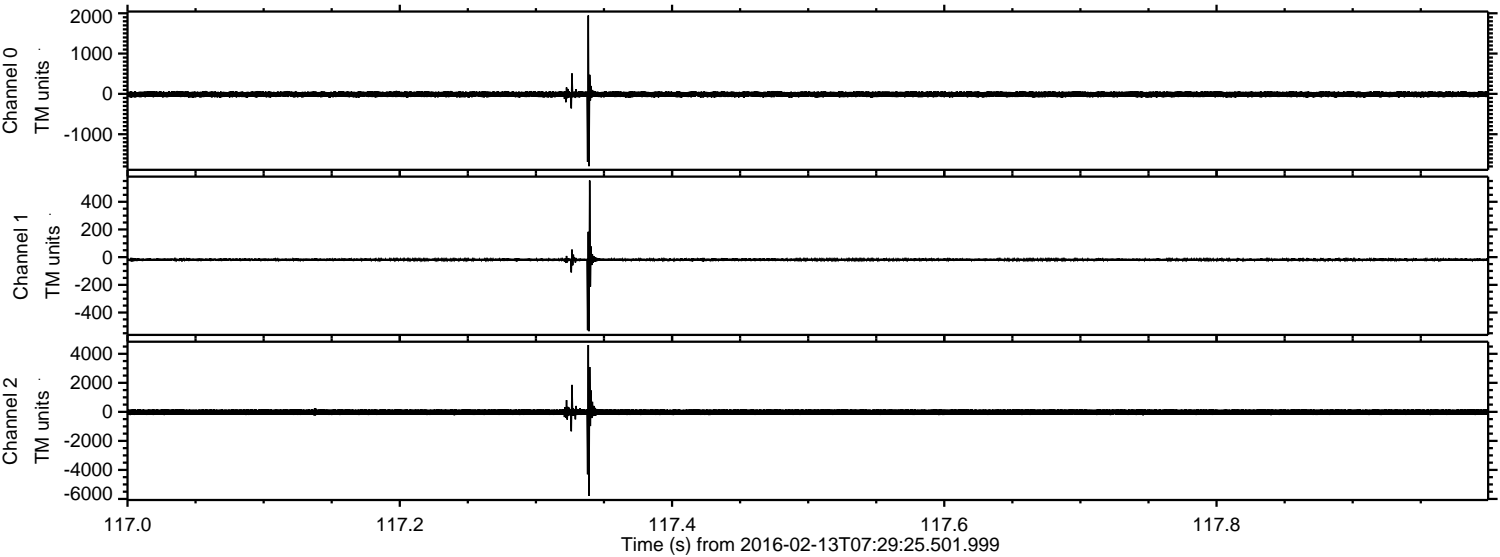
ELMAVAN 3D WAVEFORMS (Measured data sampled at 50 kHz) 51000 packets of 144 samples from 2016-02-13T07:29:25.501.999.

Processed Sun Apr 10 12:41:55 2016 by ELM ver.2012-10-06 from 001__elm20160213_072924__dat00.bin



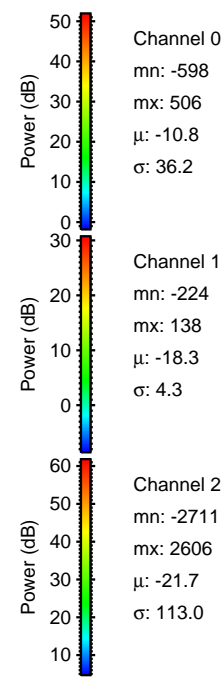
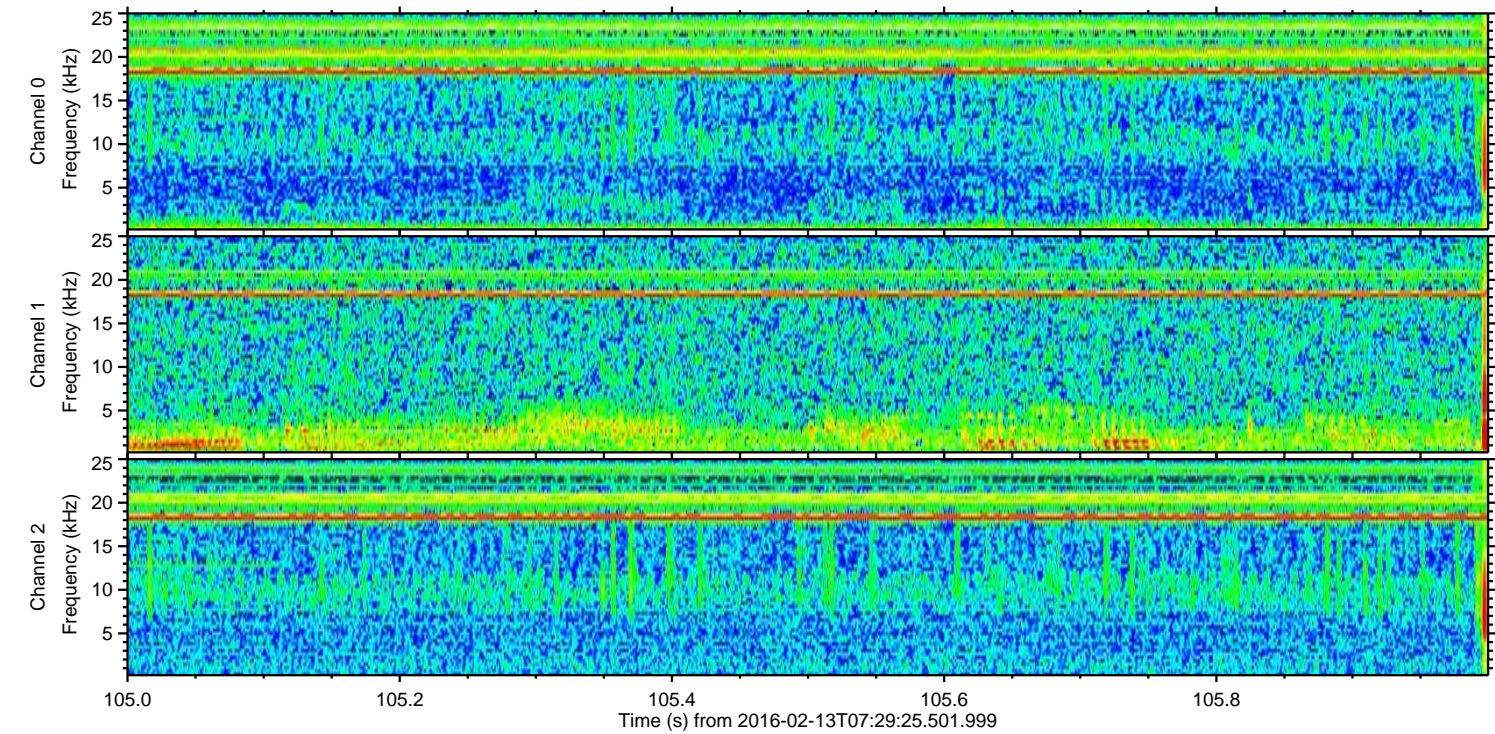
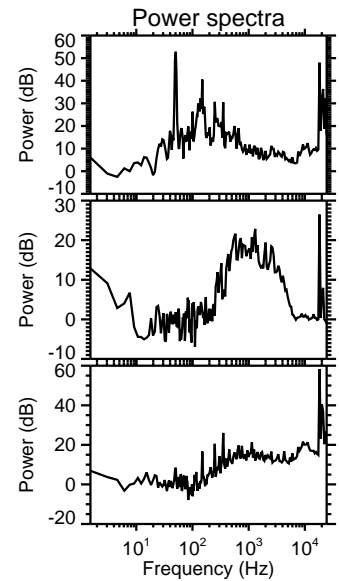
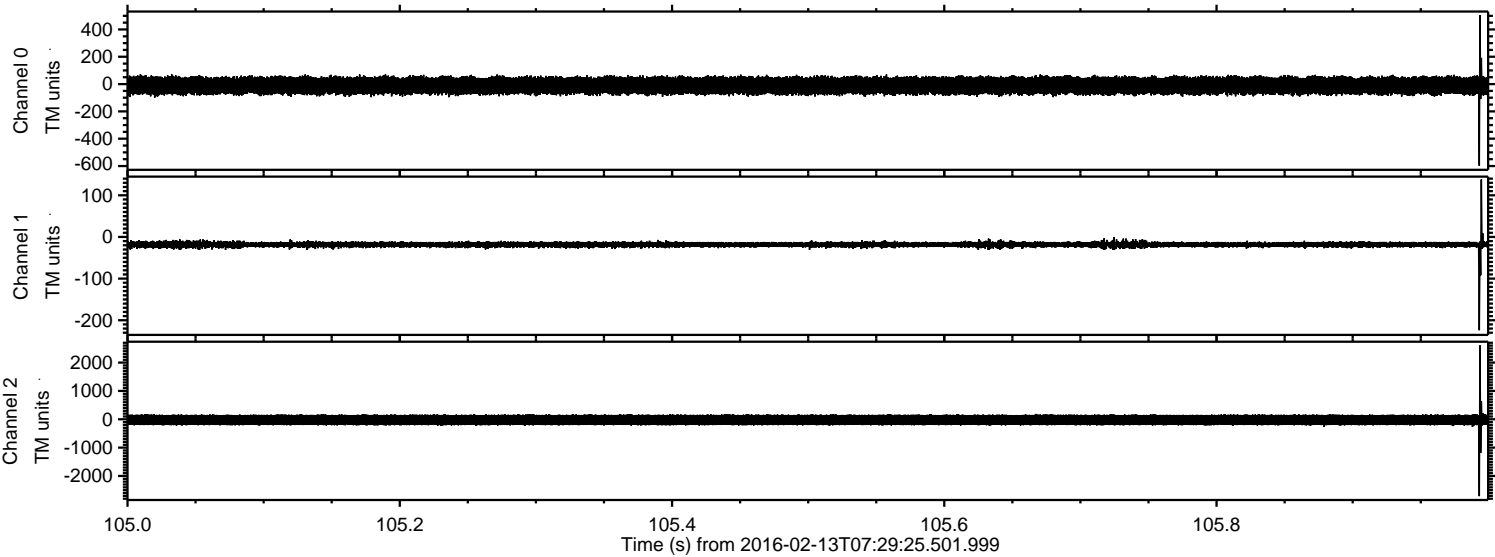
ELMAVAN 3D WAVEFORMS (Measured data sampled at 50 kHz) 51000 packets of 144 samples from 2016-02-13T07:29:25.501.999. Part 118/147

Processed Sun Apr 10 12:42:07 2016 by ELM ver.2012-10-06 from 001__elm20160213_072924__dat00.bin

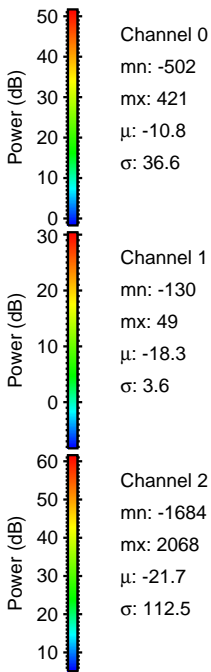
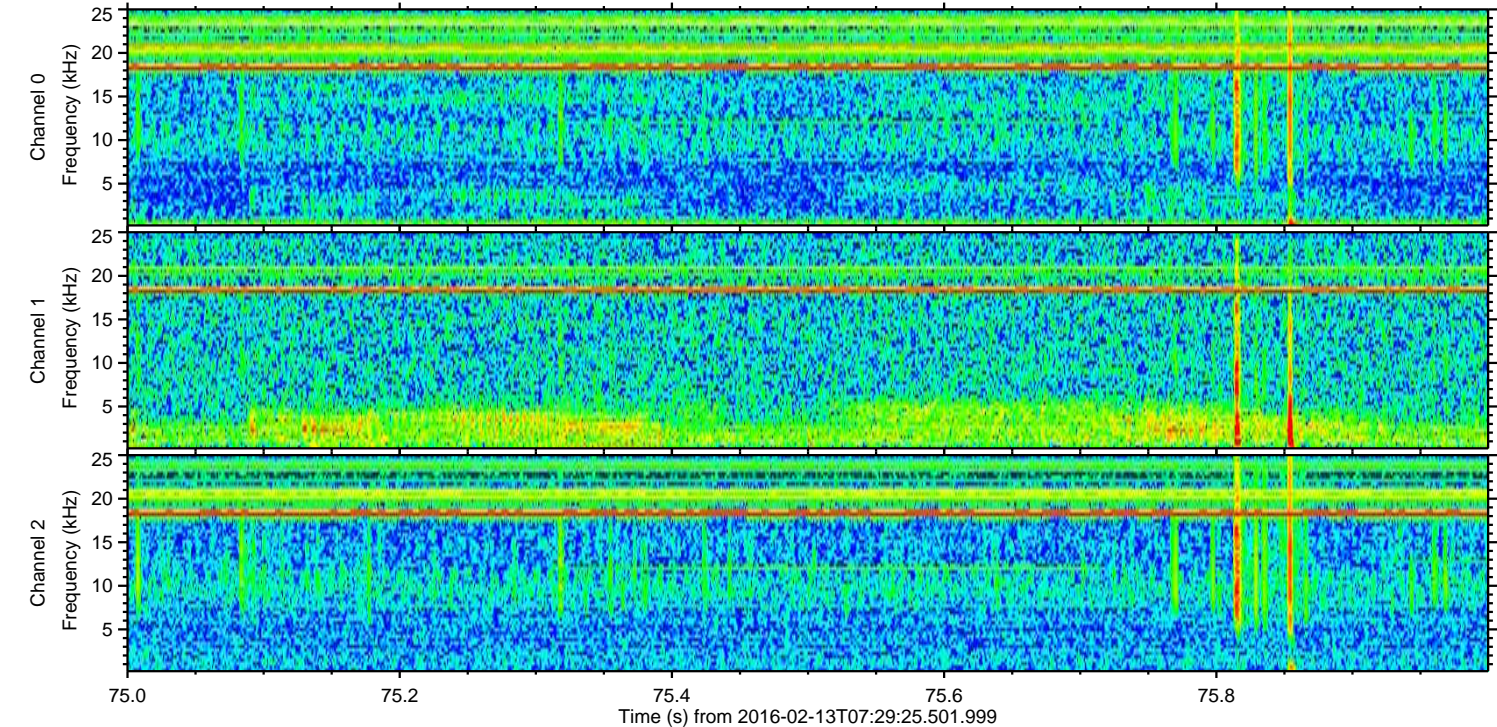
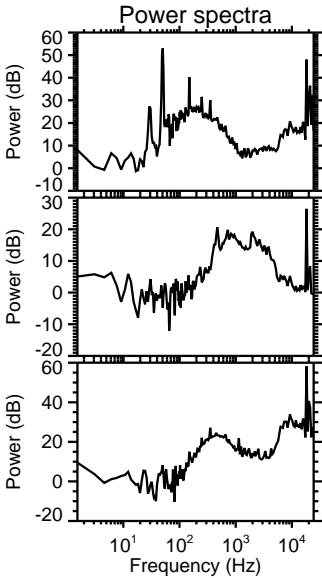
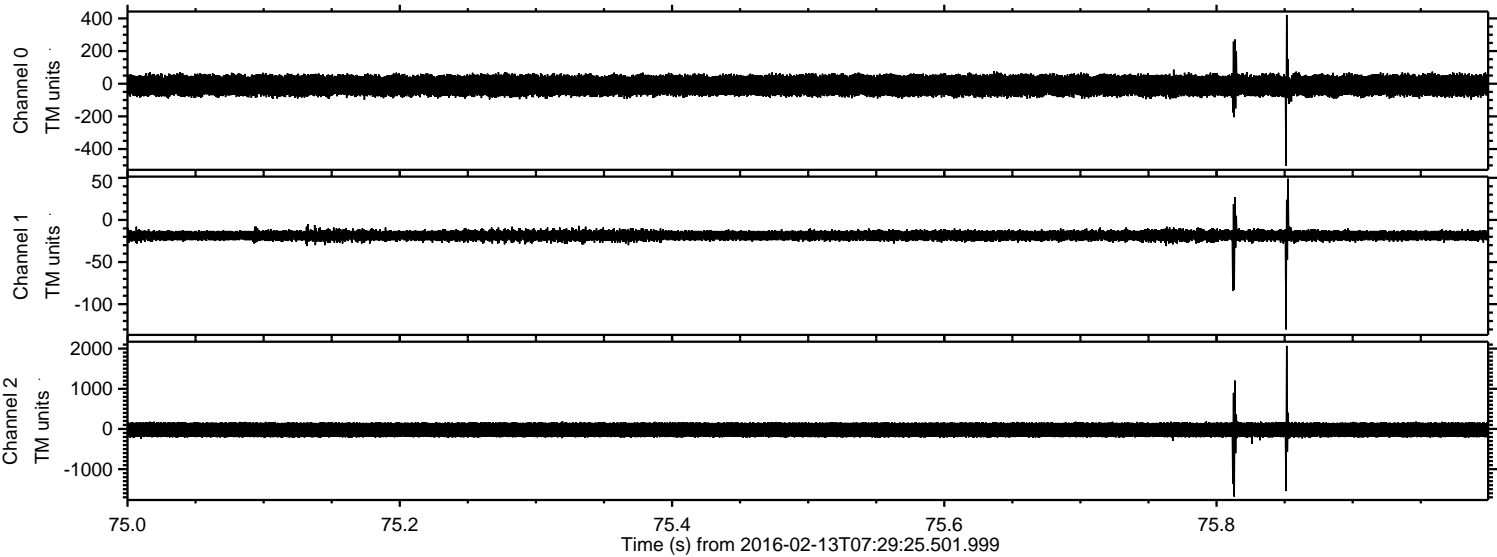


ELMAVAN 3D WAVEFORMS (Measured data sampled at 50 kHz) 51000 packets of 144 samples from 2016-02-13T07:29:25.501.999. Part 106/147

Processed Sun Apr 10 12:42:08 2016 by ELM ver.2012-10-06 from 001__elm20160213_072924__dat00.bin

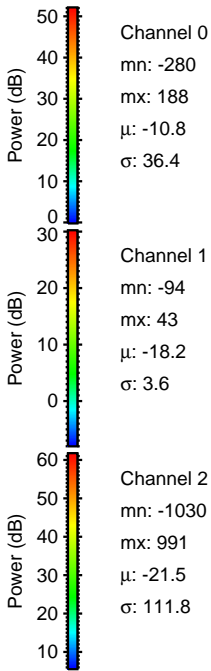
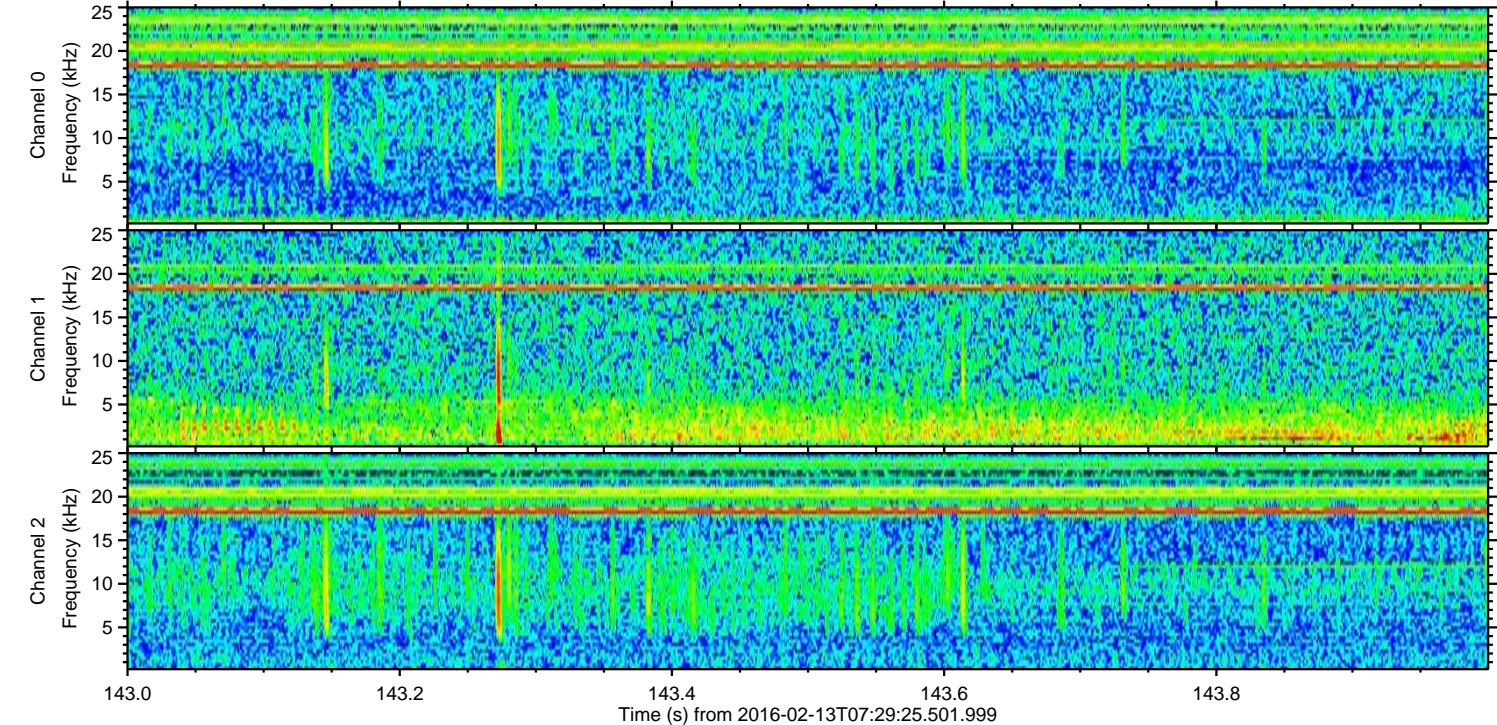
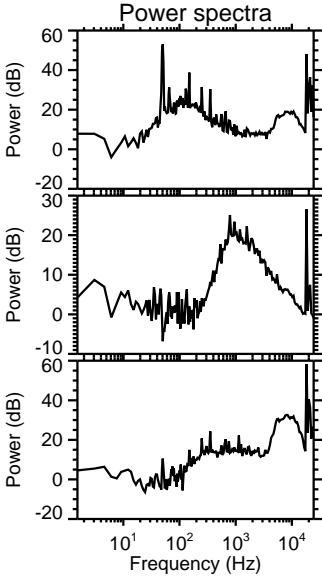
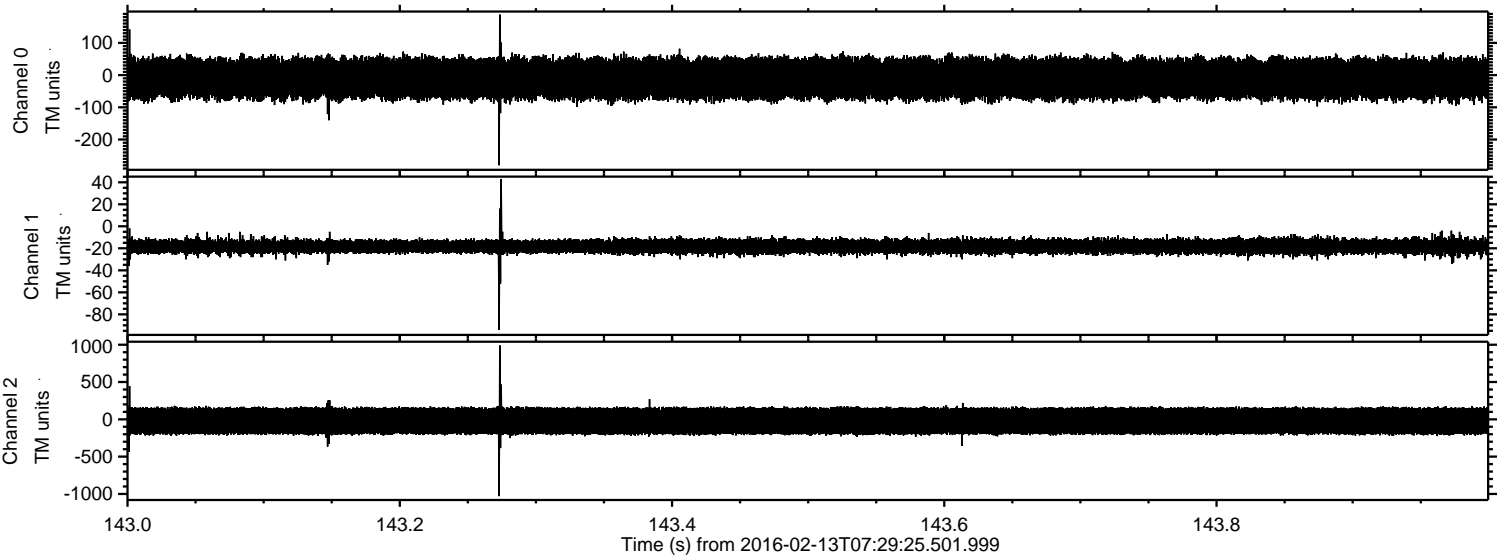


Processed Sun Apr 10 12:42:09 2016 by ELM ver.2012-10-06 from 001__elm20160213_072924__dat00.bin

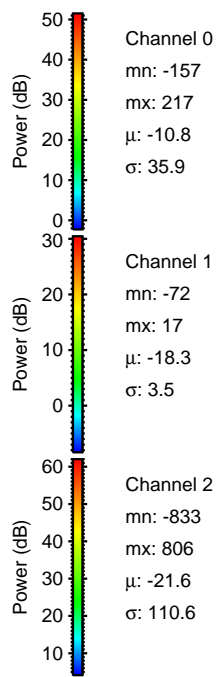
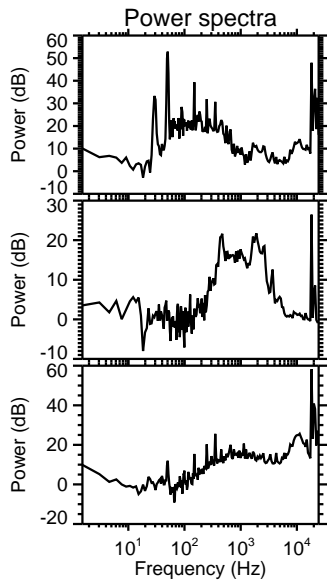
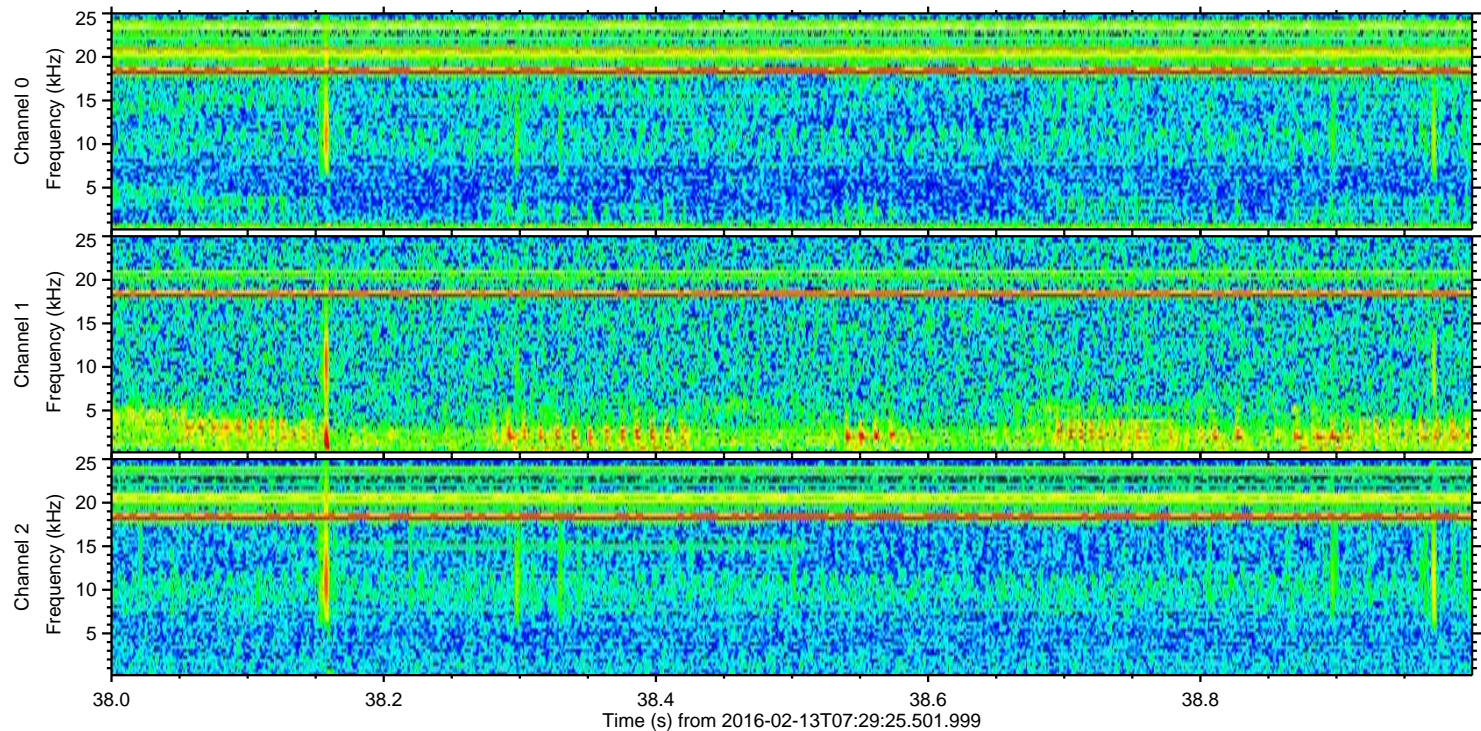
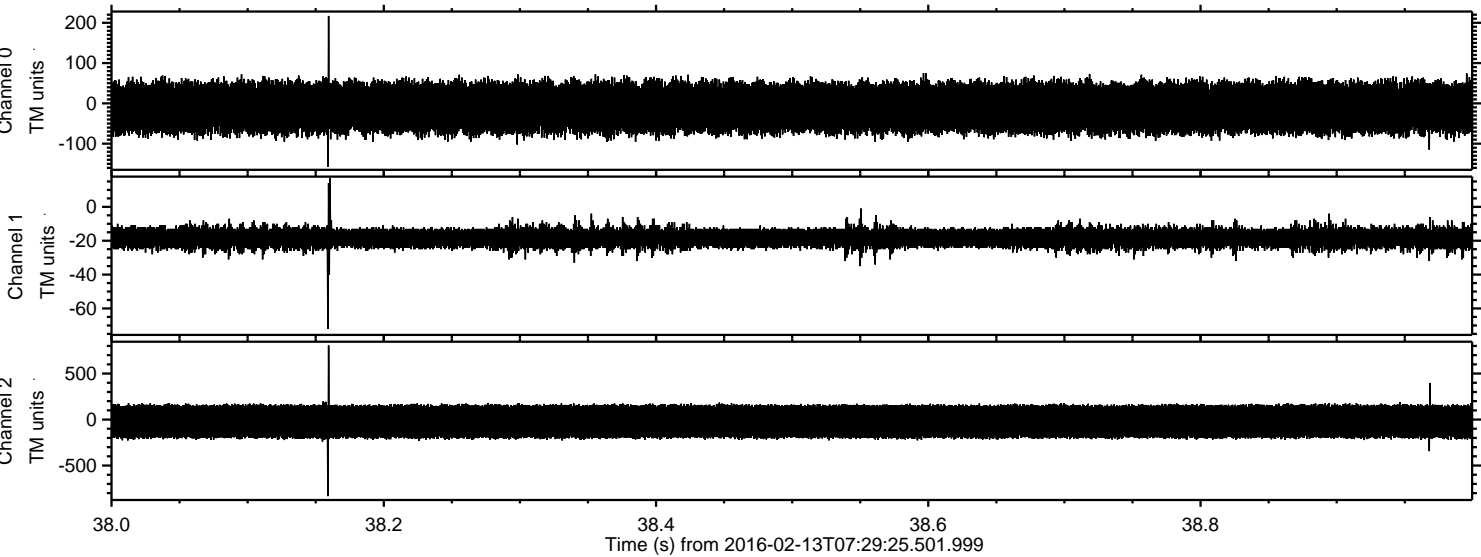


ELMAVAN 3D WAVEFORMS (Measured data sampled at 50 kHz) 51000 packets of 144 samples from 2016-02-13T07:29:25.501.999. Part 144/147

Processed Sun Apr 10 12:42:10 2016 by ELM ver.2012-10-06 from 001__elm20160213_072924__dat00.bin



Processed Sun Apr 10 12:42:11 2016 by ELM ver.2012-10-06 from 001__elm20160213_072924__dat00.bin

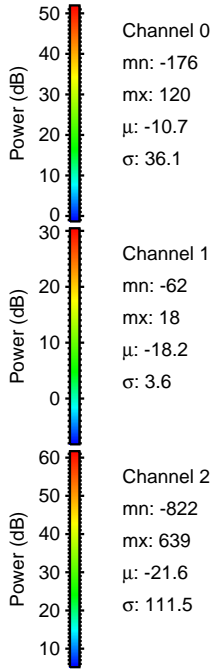
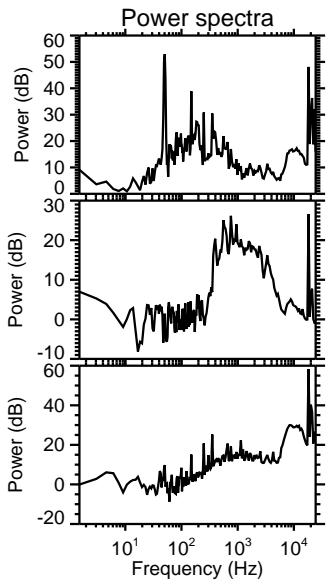
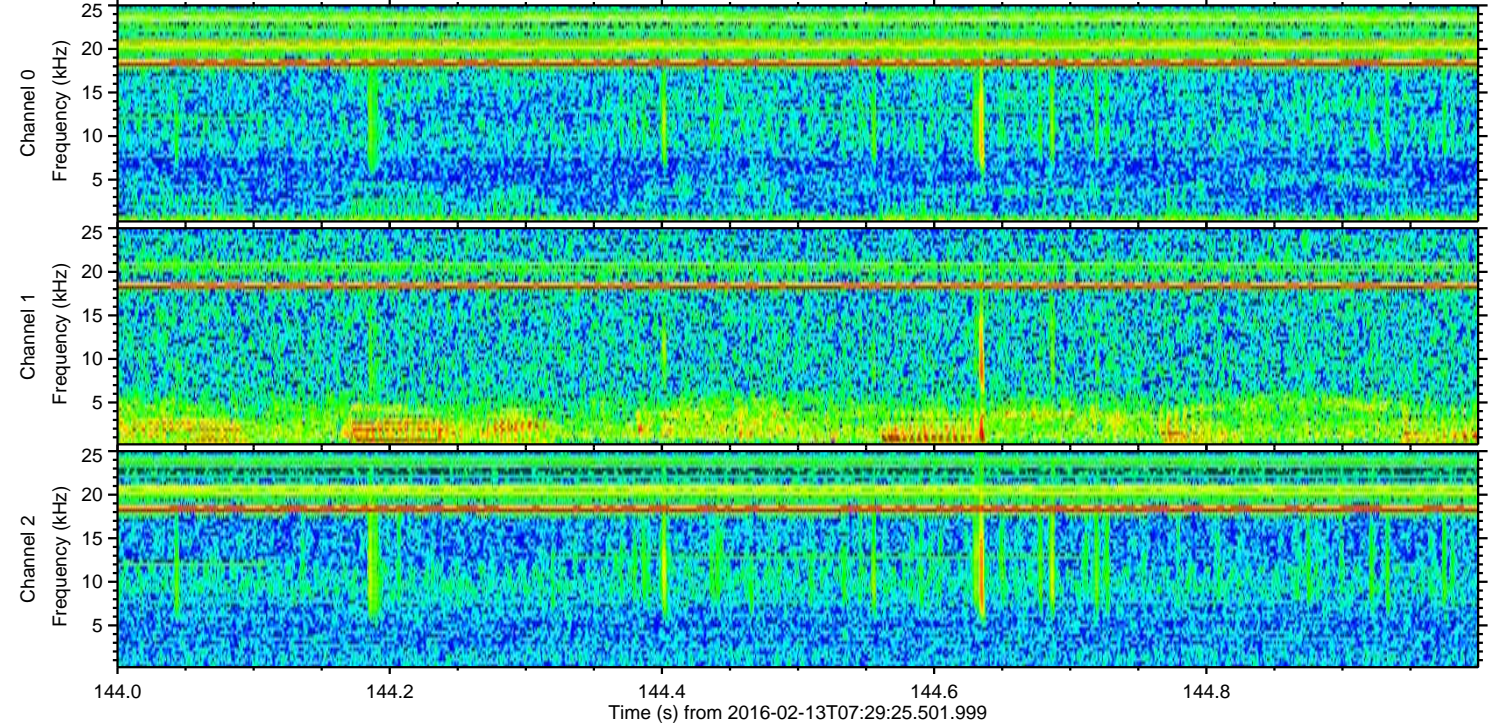
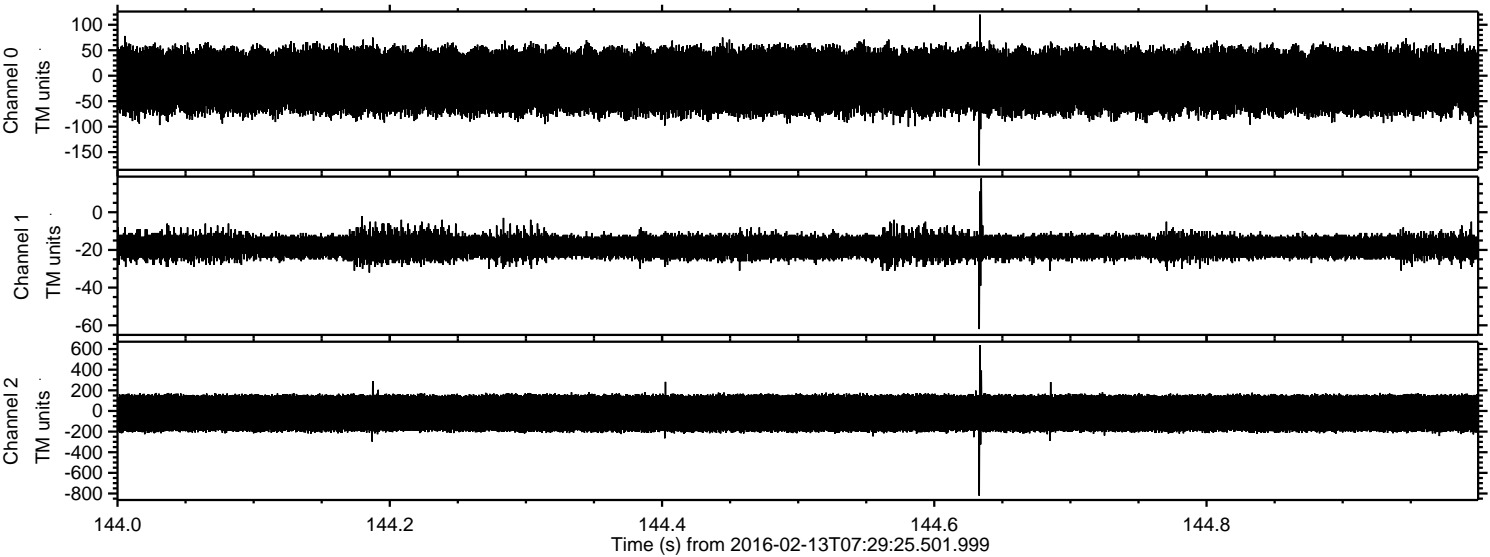


Channel 0
mn: -157
mx: 217
 μ : -10.8
 σ : 35.9

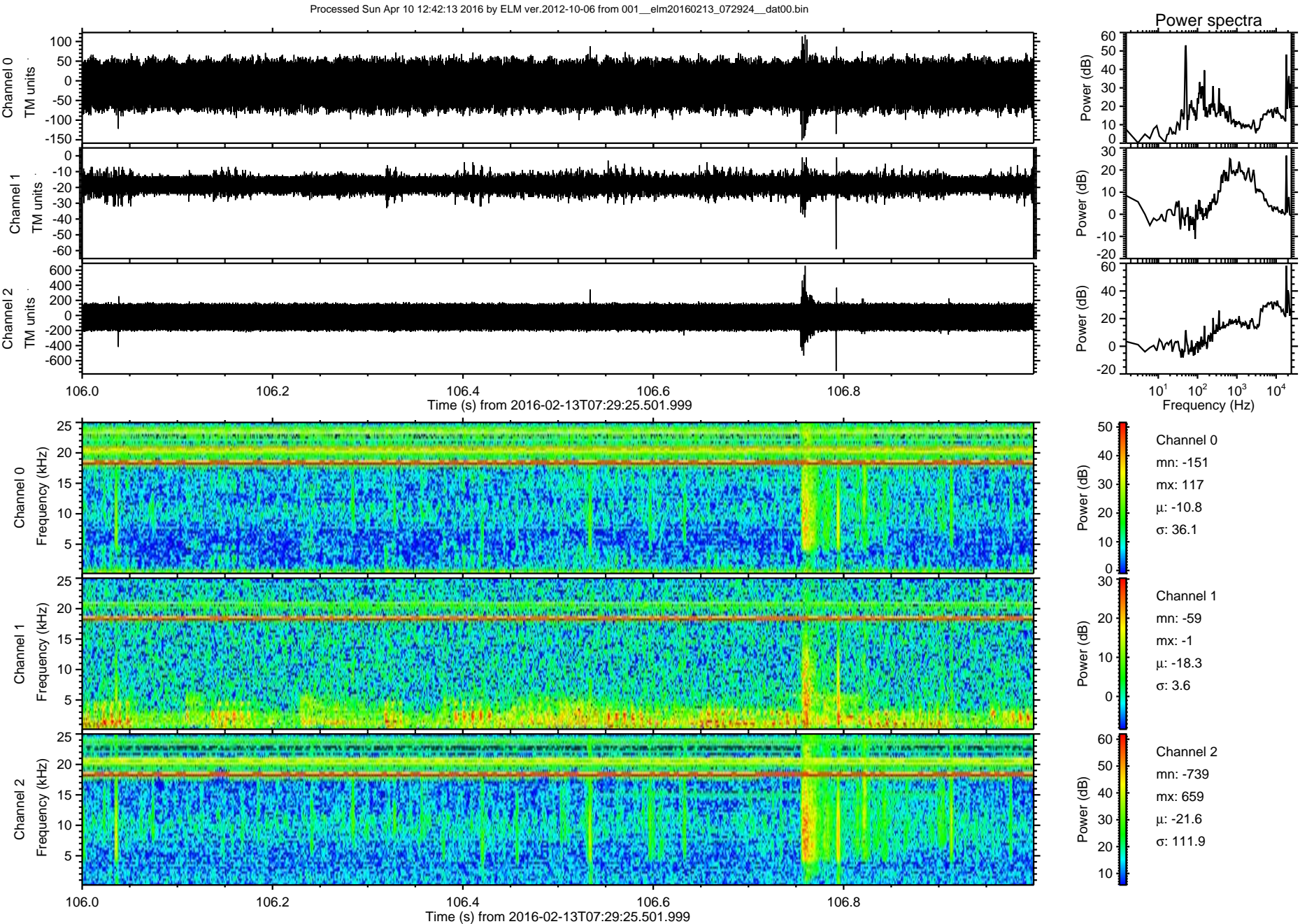
Channel 1
mn: -72
mx: 17
 μ : -18.3
 σ : 3.5

Channel 2
mn: -833
mx: 806
 μ : -21.6
 σ : 110.6

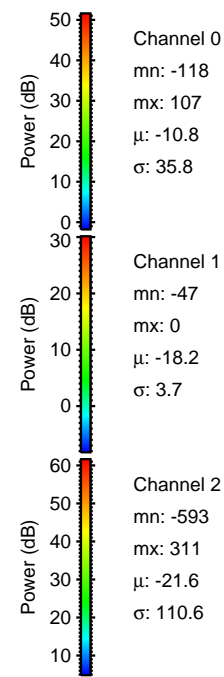
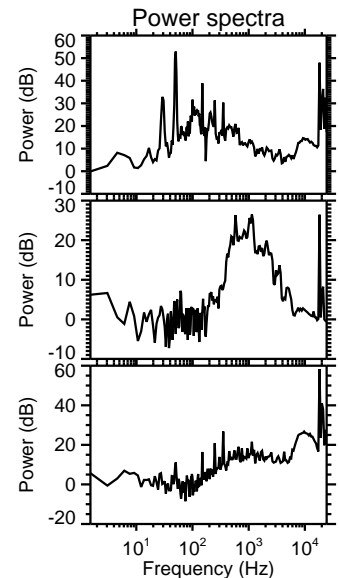
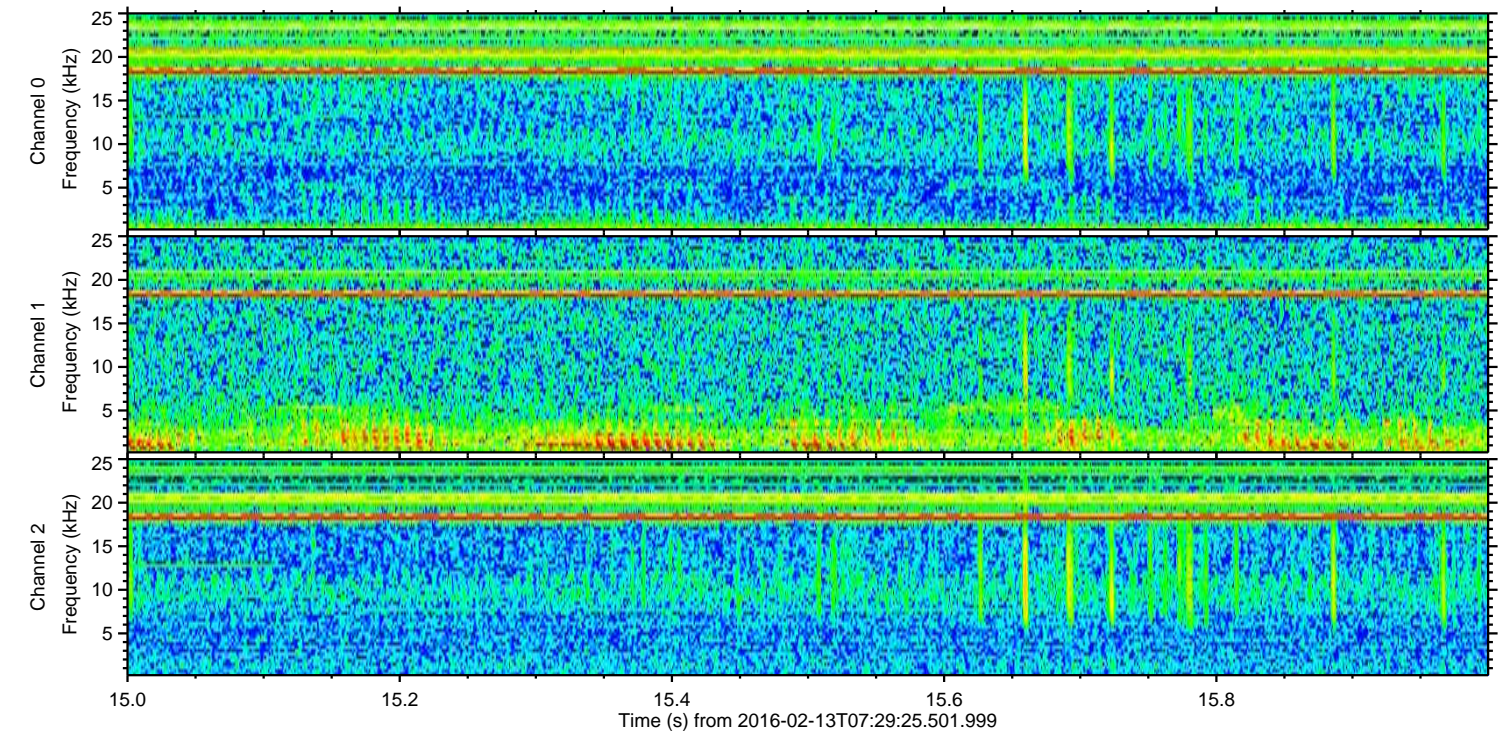
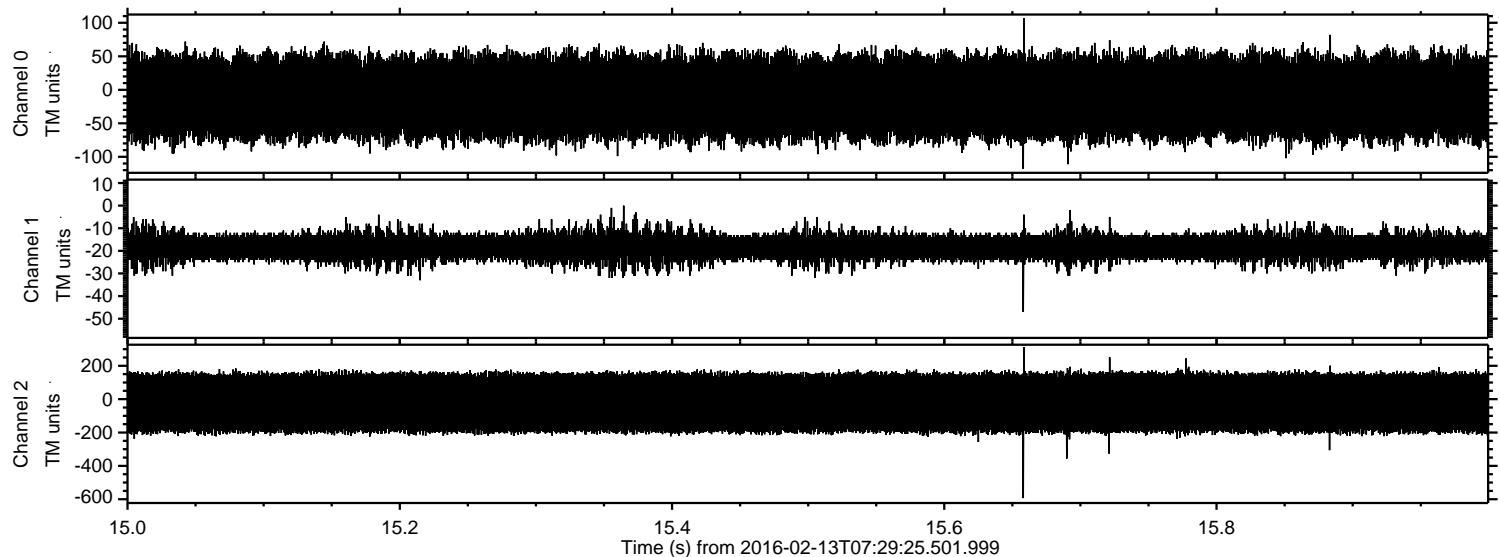
Processed Sun Apr 10 12:42:12 2016 by ELM ver.2012-10-06 from 001__elm20160213_072924__dat00.bin



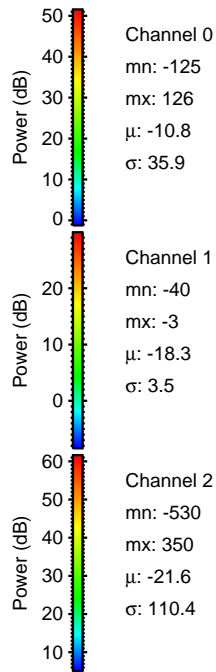
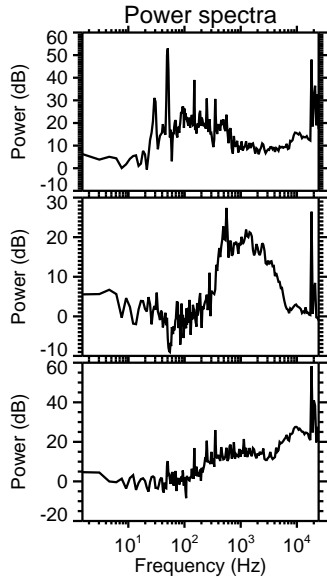
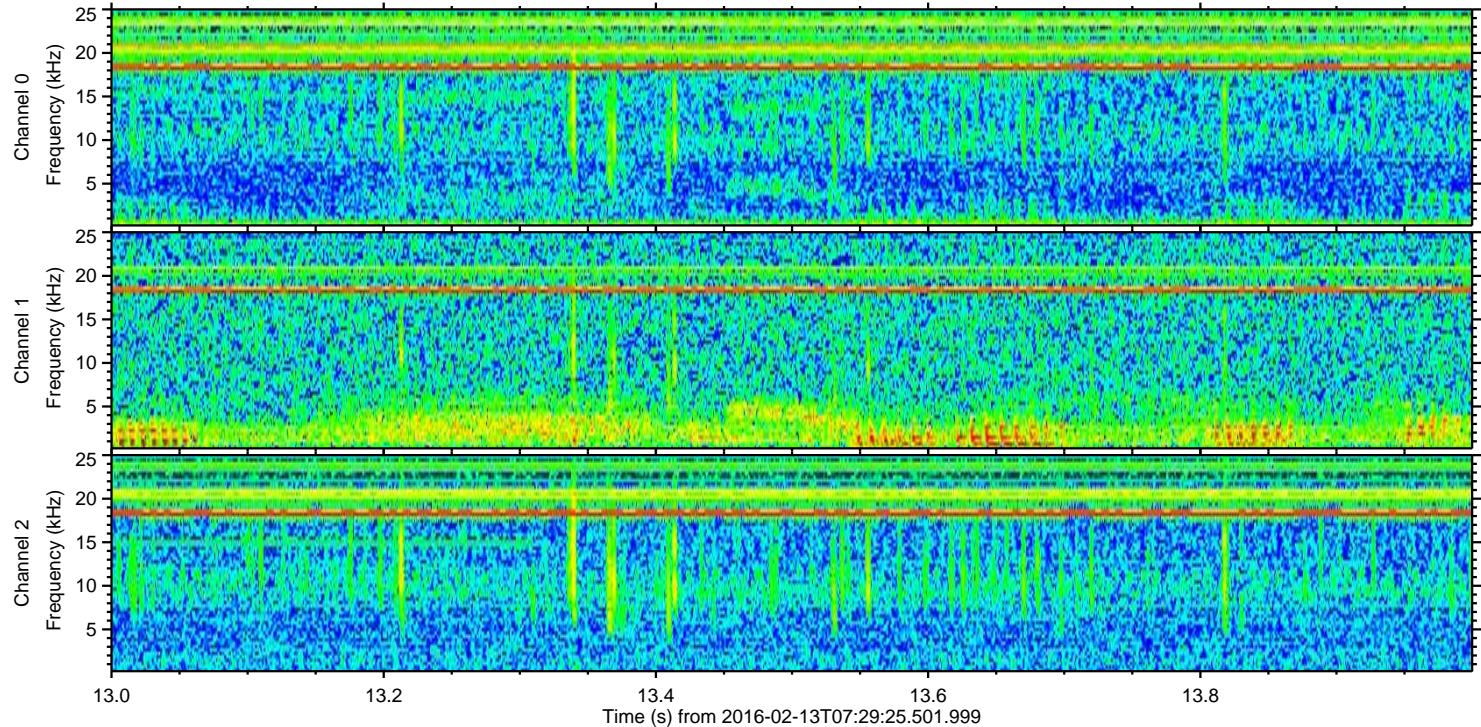
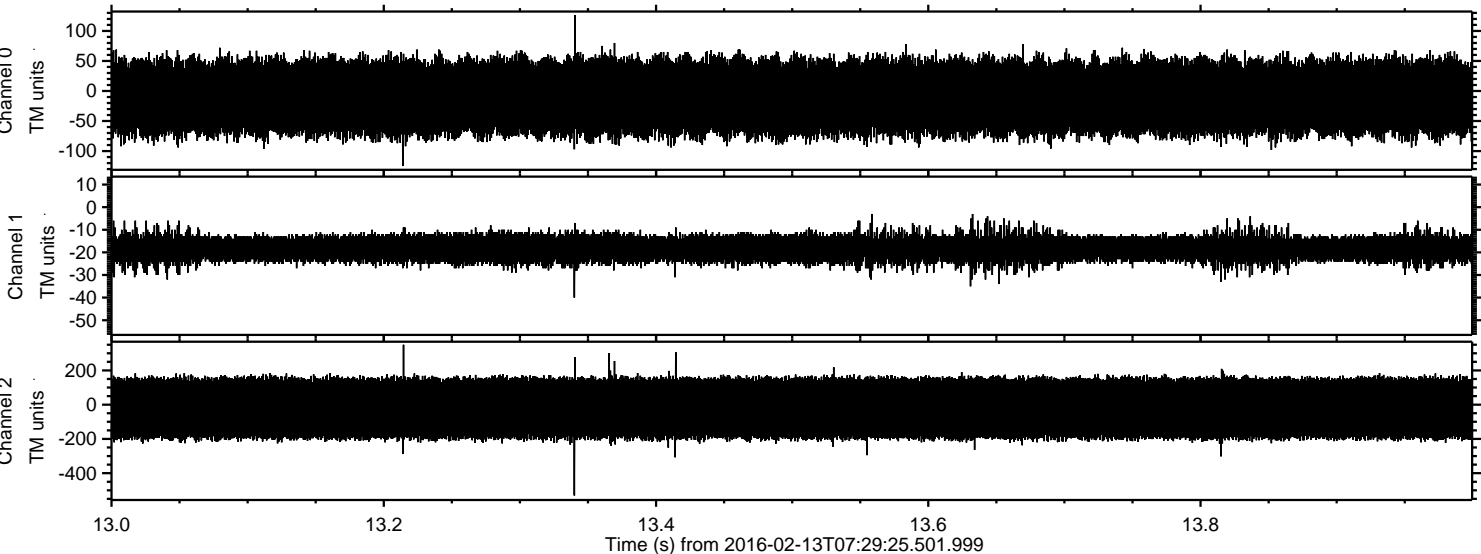
ELMAVAN 3D WAVEFORMS (Measured data sampled at 50 kHz) 51000 packets of 144 samples from 2016-02-13T07:29:25.501.999. Part 107/147



Processed Sun Apr 10 12:42:14 2016 by ELM ver.2012-10-06 from 001__elm20160213_072924__dat00.bin



Processed Sun Apr 10 12:42:15 2016 by ELM ver.2012-10-06 from 001__elm20160213_072924__dat00.bin



Channel 0
mn: -125
mx: 126
 μ : -10.8
 σ : 35.9

Channel 1
mn: -40
mx: -3
 μ : -18.3
 σ : 3.5

Channel 2
mn: -530
mx: 350
 μ : -21.6
 σ : 110.4

Processed Sun Apr 10 12:42:16 2016 by ELM ver.2012-10-06 from 001__elm20160213_072924__dat00.bin

