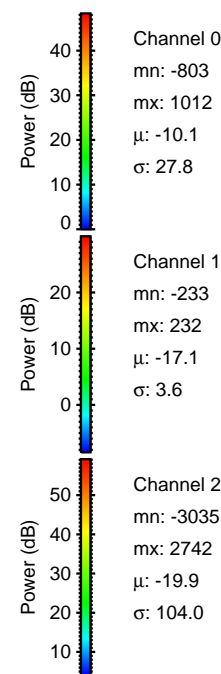
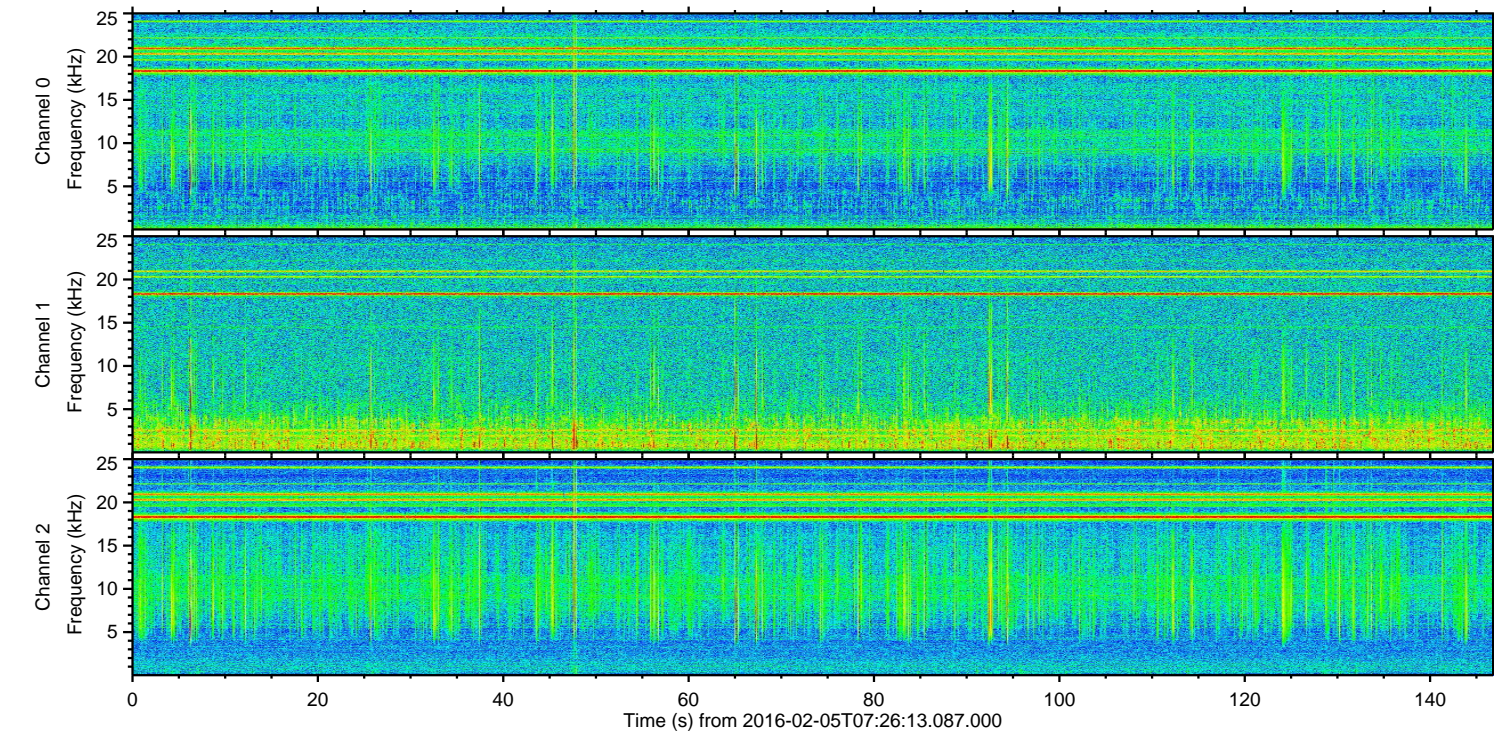
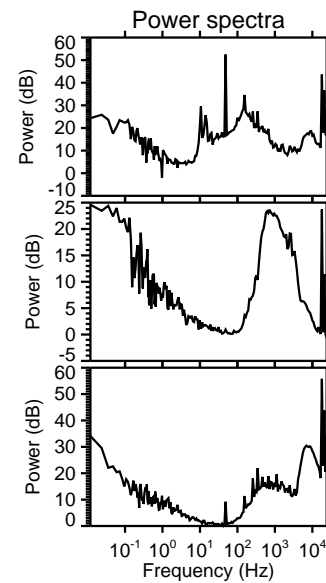
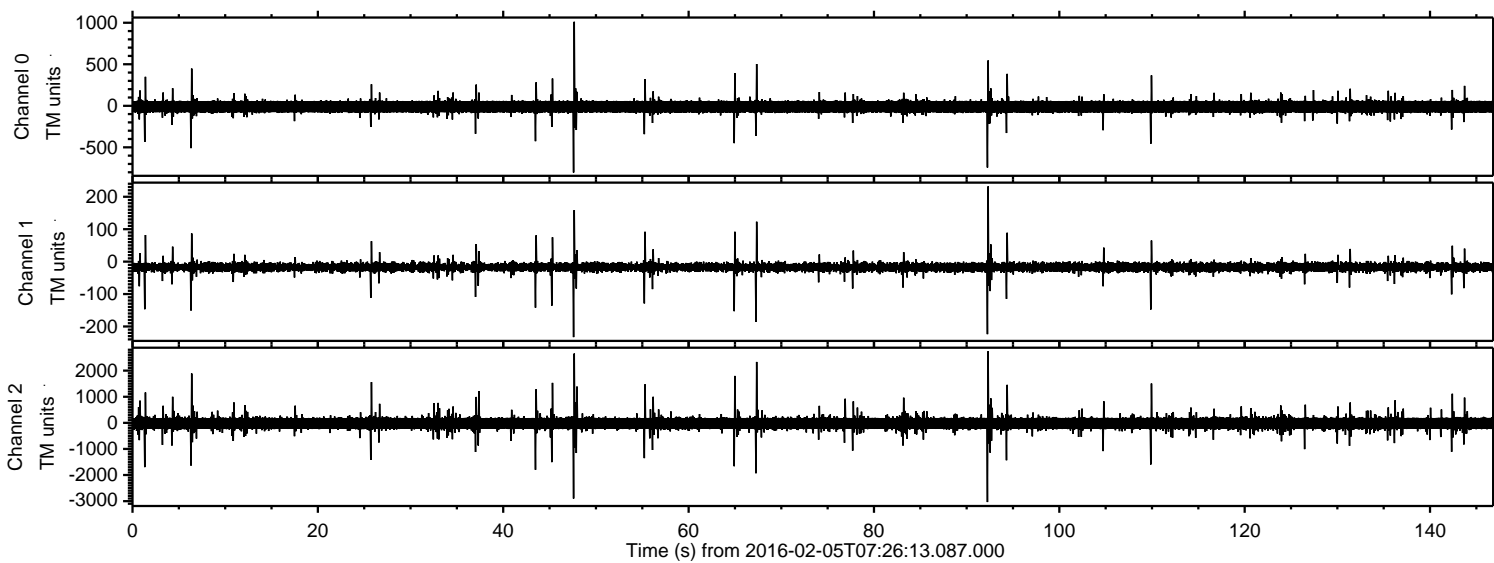
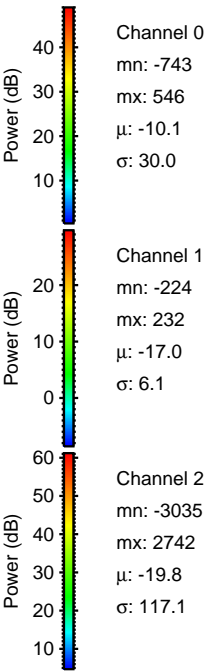
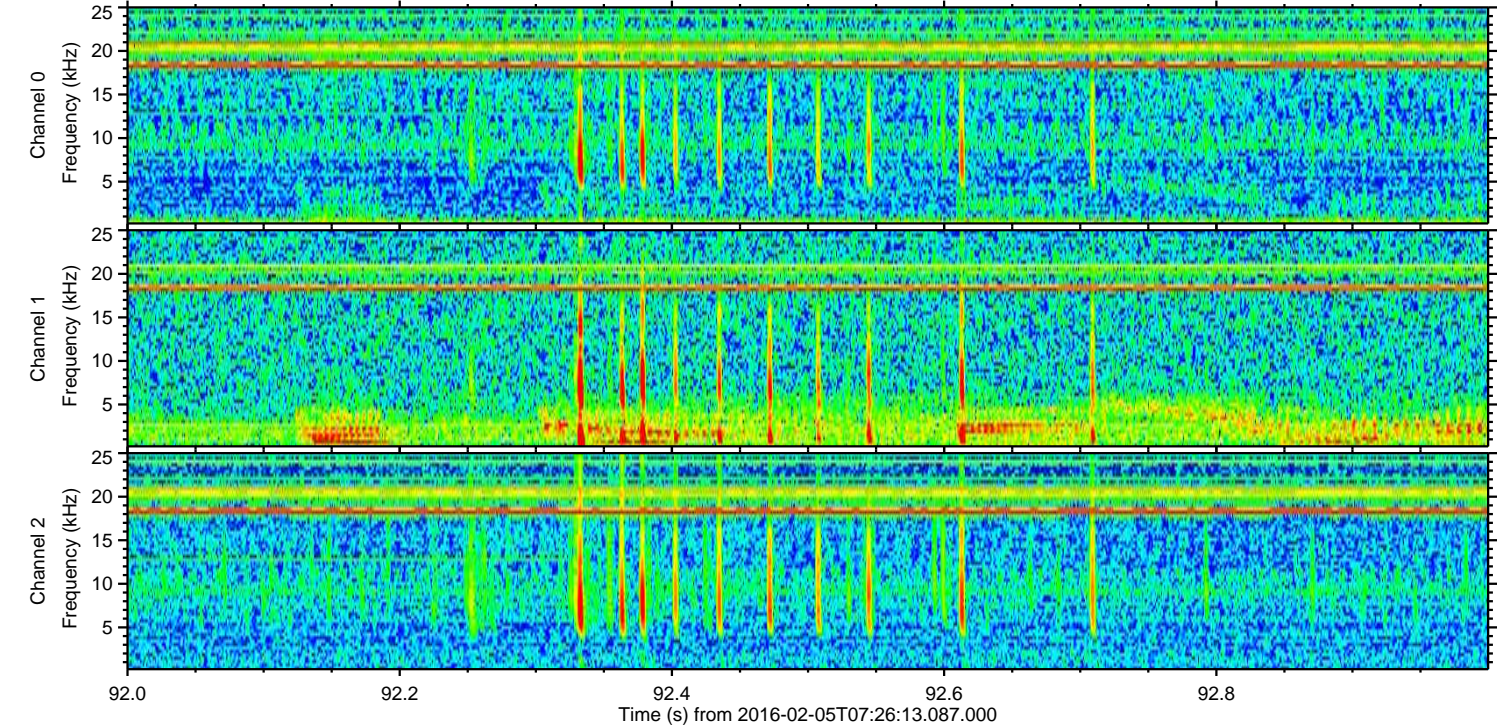
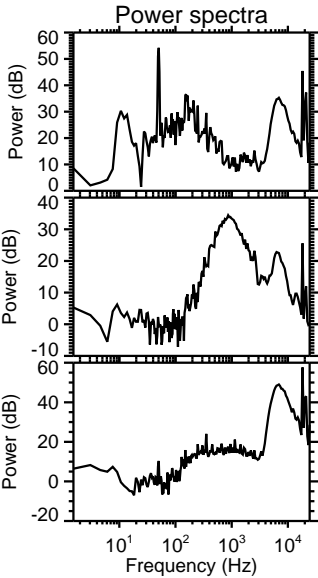
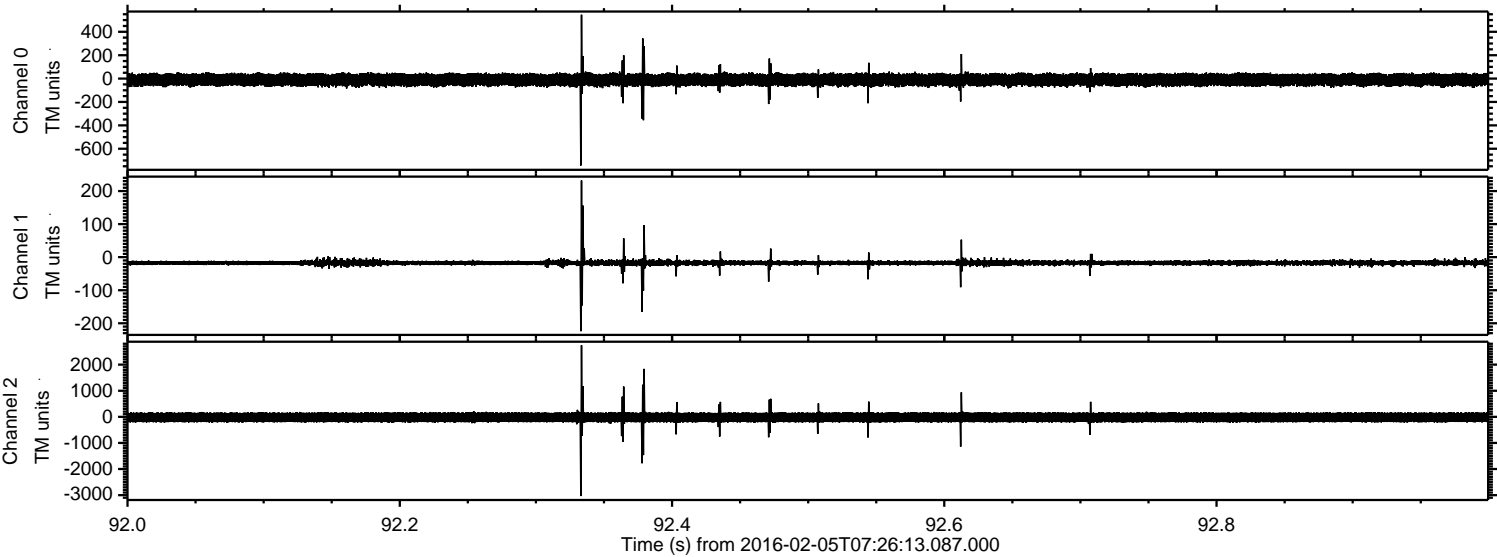


ELMAVAN 3D WAVEFORMS (Measured data sampled at 50 kHz) 51000 packets of 144 samples from 2016-02-05T07:26:13.087.000.

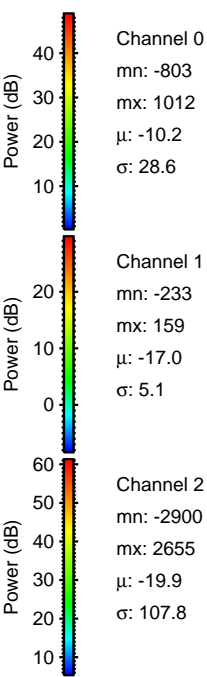
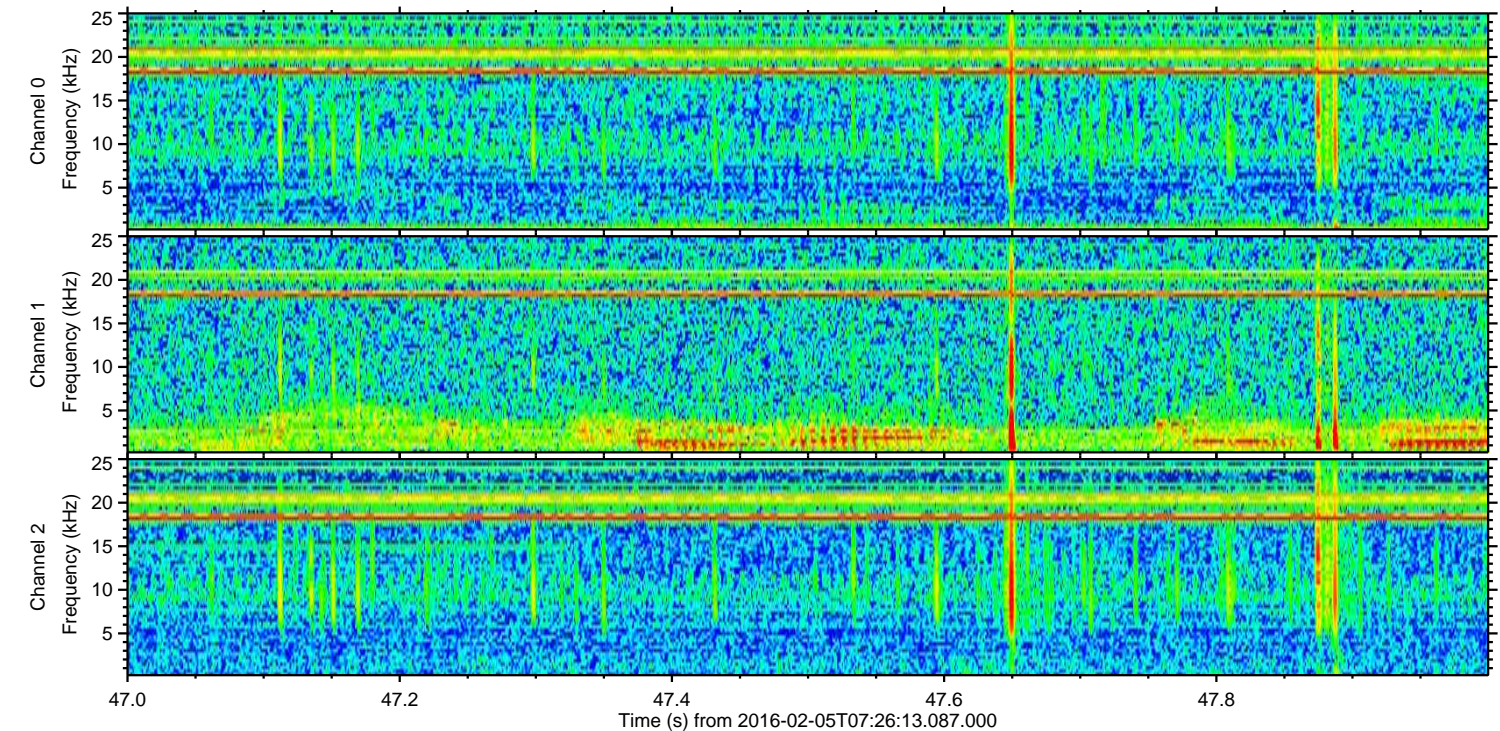
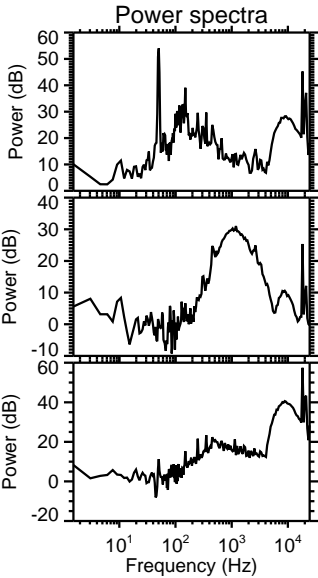
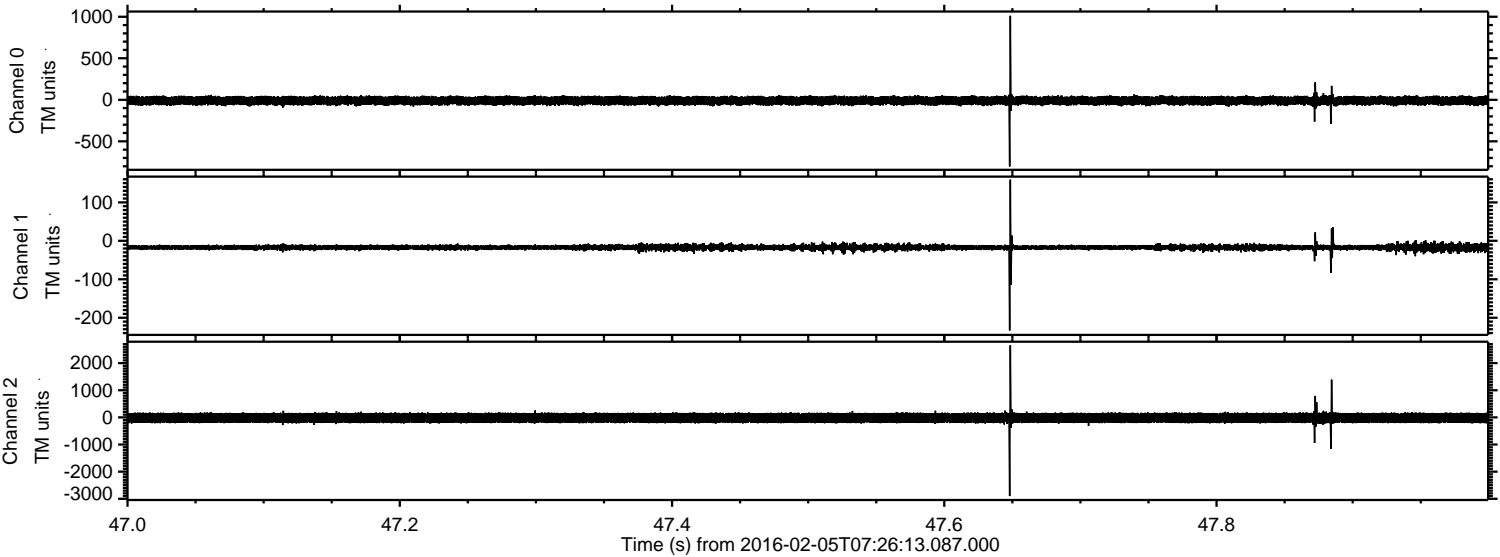
Processed Fri Apr 8 21:51:37 2016 by ELM ver.2012-10-06 from 001__elm20160205_072612__dat00.bin



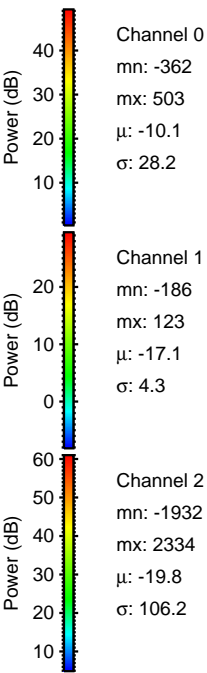
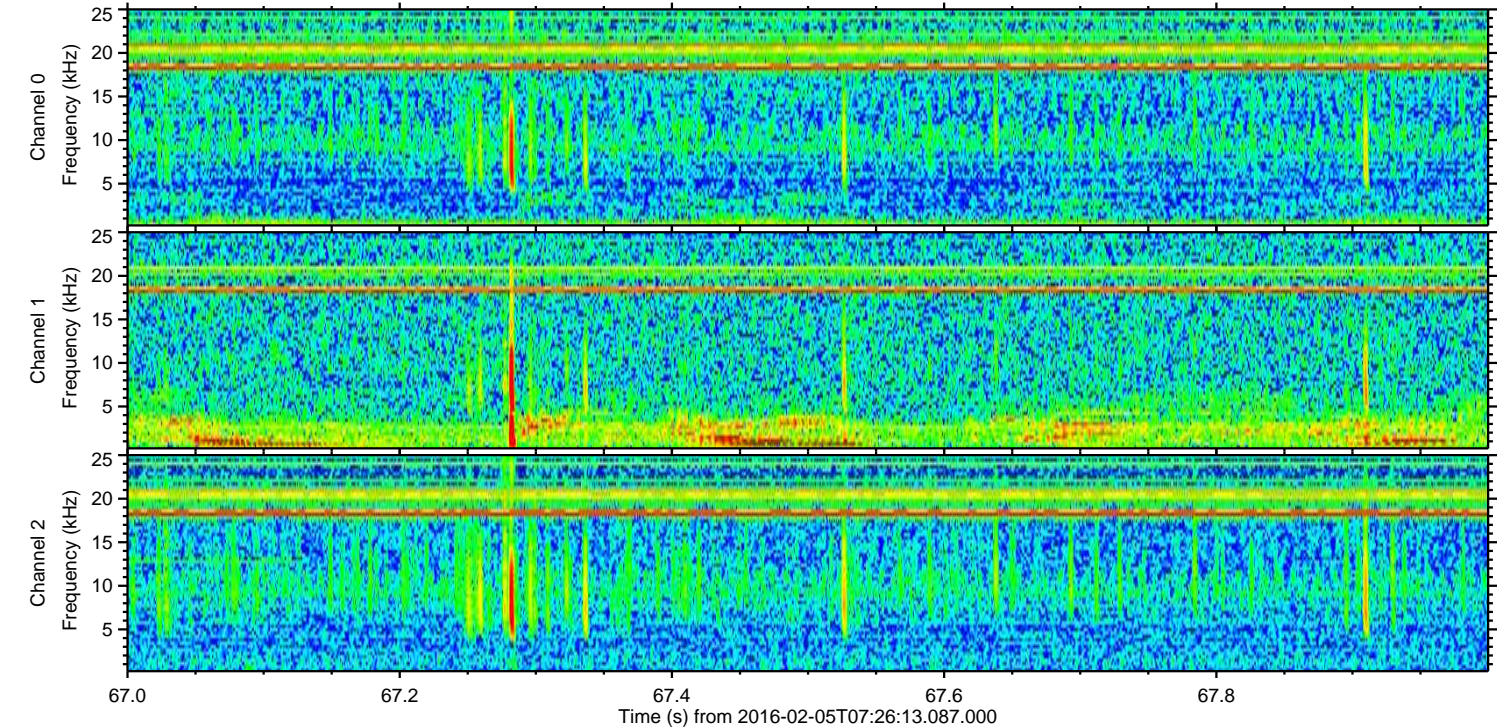
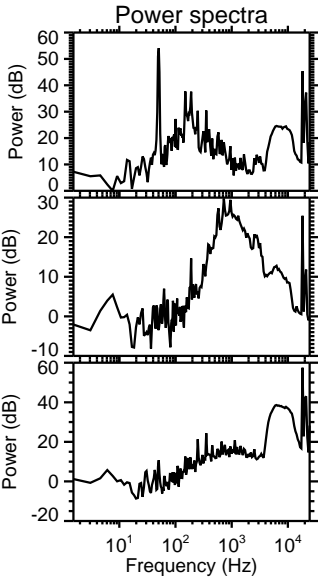
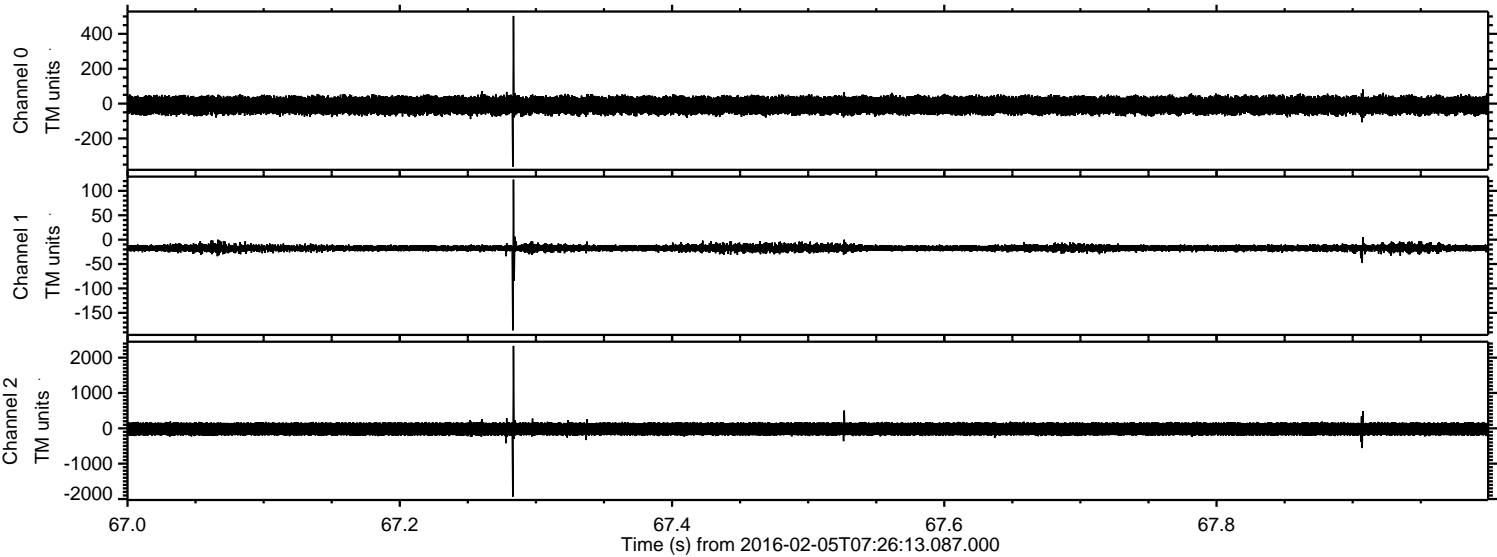
Processed Fri Apr 8 21:51:49 2016 by ELM ver.2012-10-06 from 001__elm20160205_072612__dat00.bin



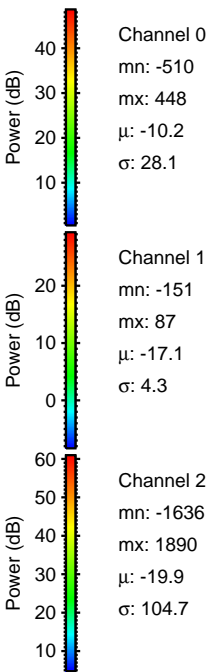
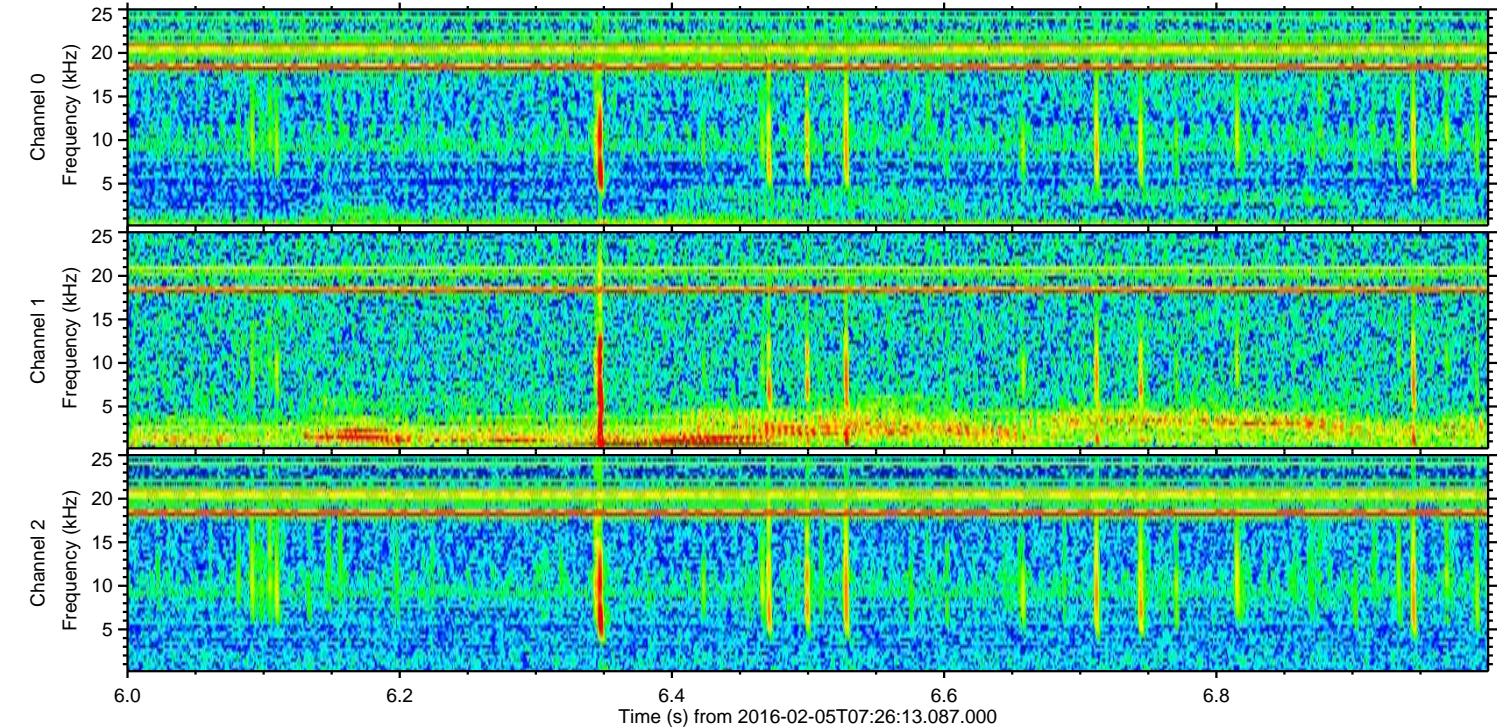
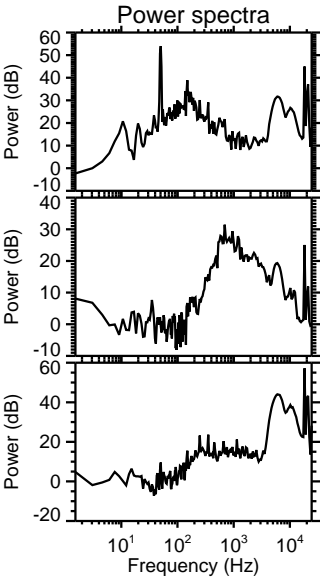
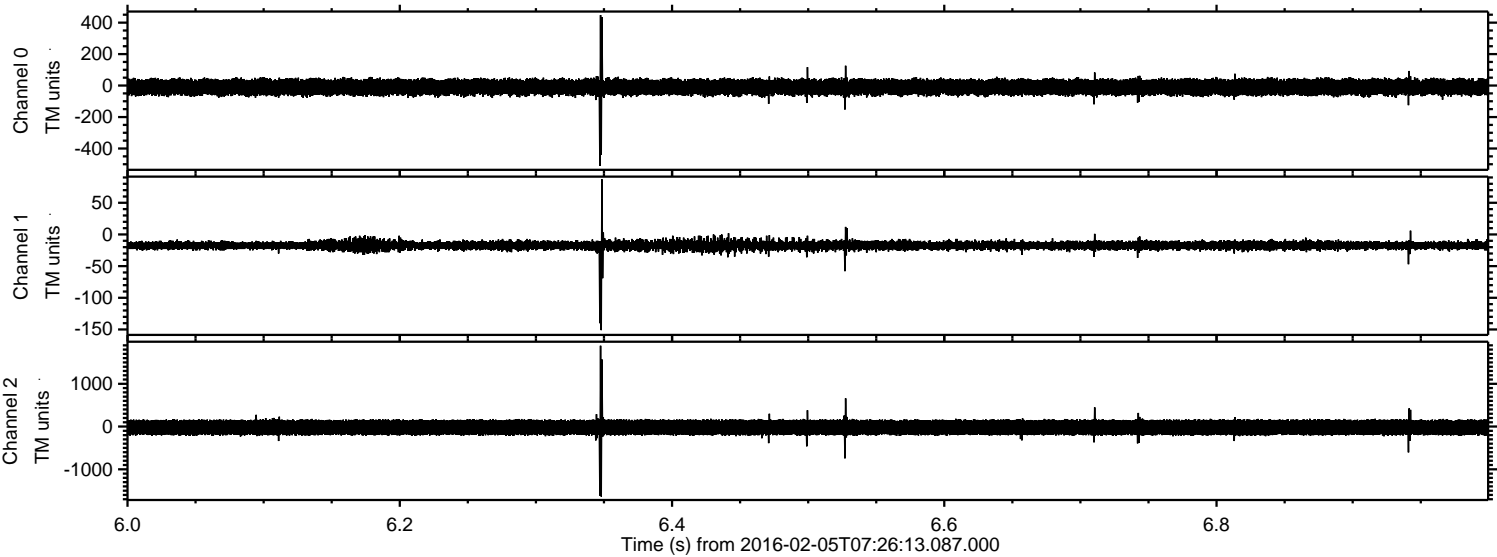
Processed Fri Apr 8 21:51:50 2016 by ELM ver.2012-10-06 from 001__elm20160205_072612__dat00.bin



Processed Fri Apr 8 21:51:51 2016 by ELM ver.2012-10-06 from 001__elm20160205_072612__dat00.bin



Processed Fri Apr 8 21:51:52 2016 by ELM ver.2012-10-06 from 001__elm20160205_072612__dat00.bin



Channel 0

mn: -510
mx: 448
 μ : -10.2
 σ : 28.1

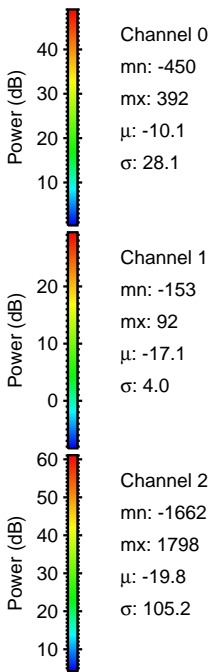
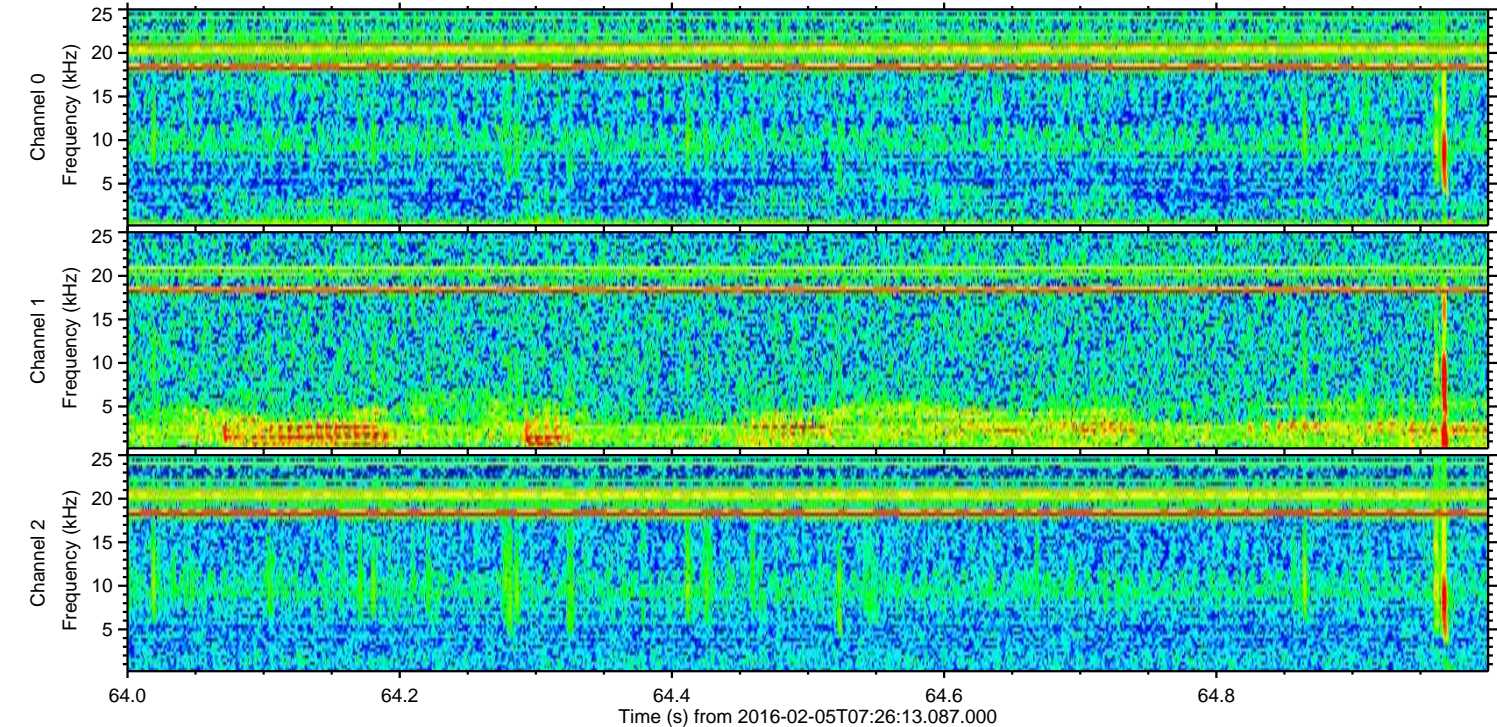
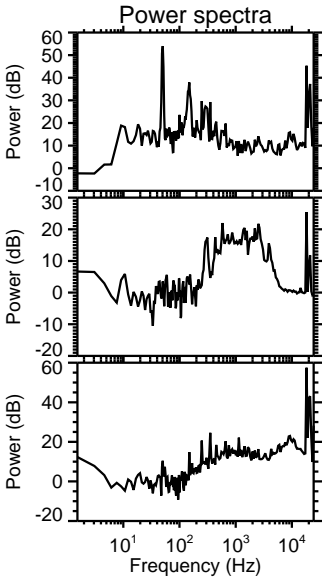
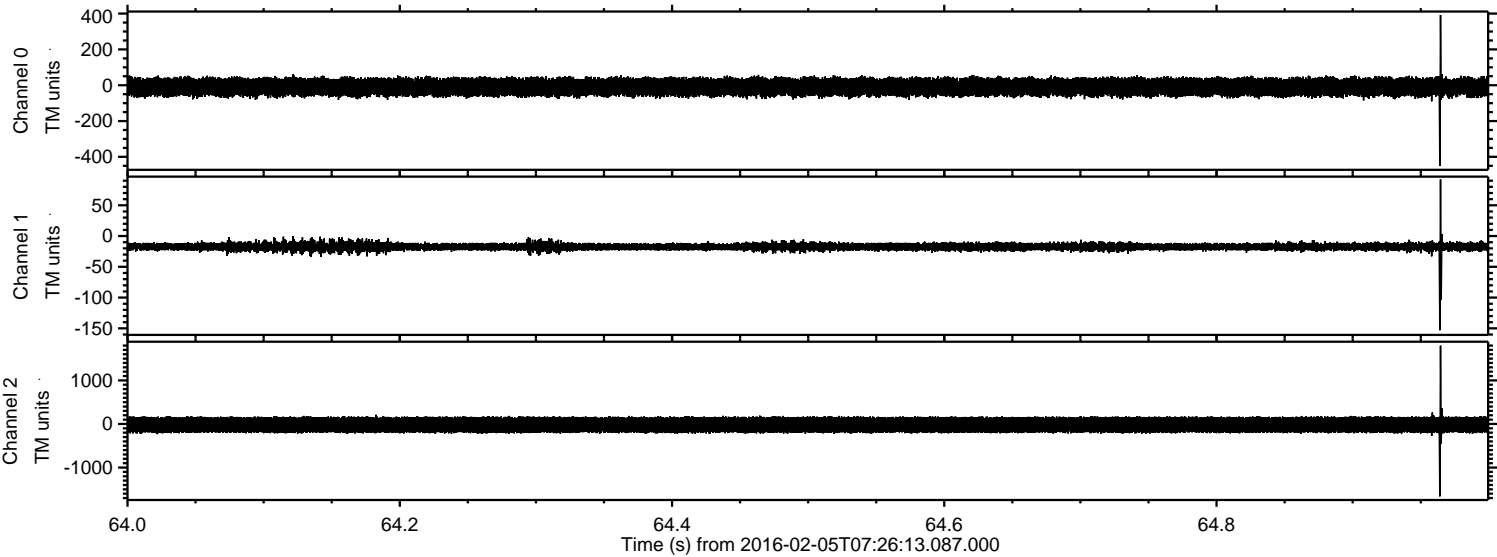
Channel 1

mn: -151
mx: 87
 μ : -17.1
 σ : 4.3

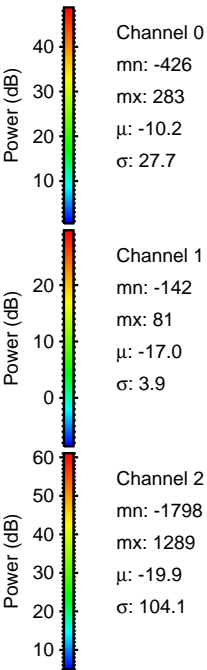
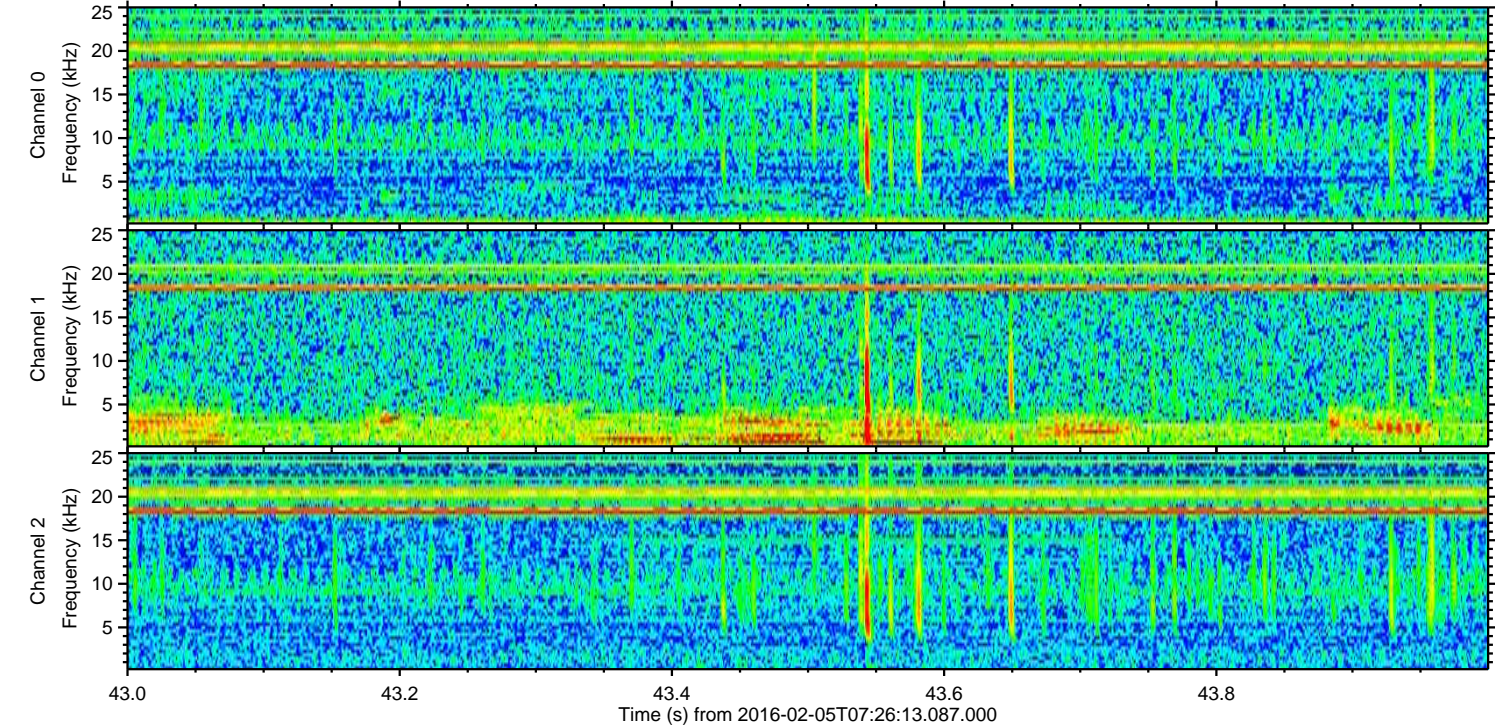
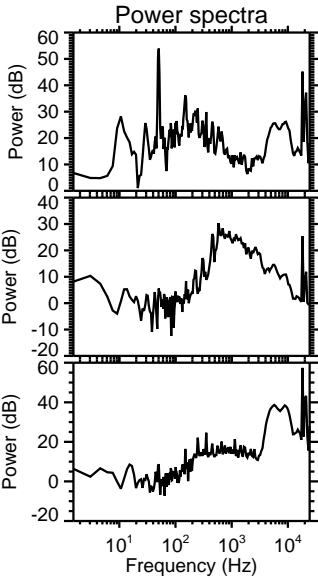
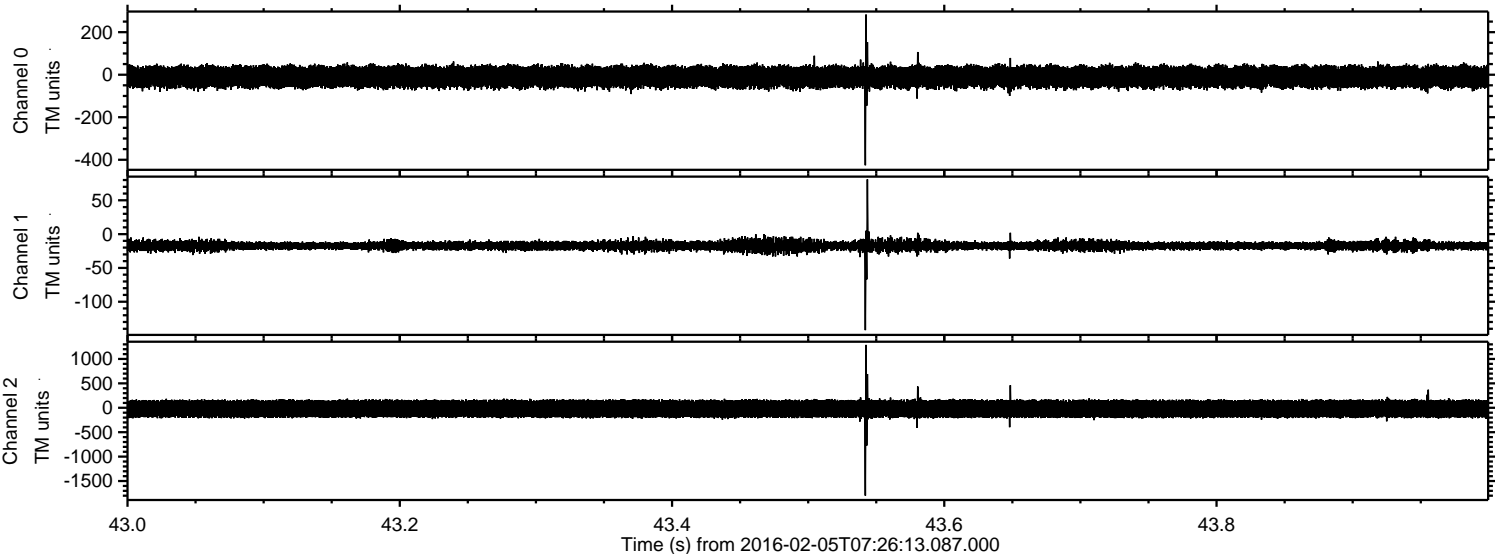
Channel 2

mn: -1636
mx: 1890
 μ : -19.9
 σ : 104.7

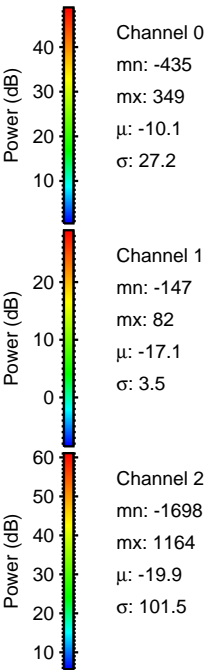
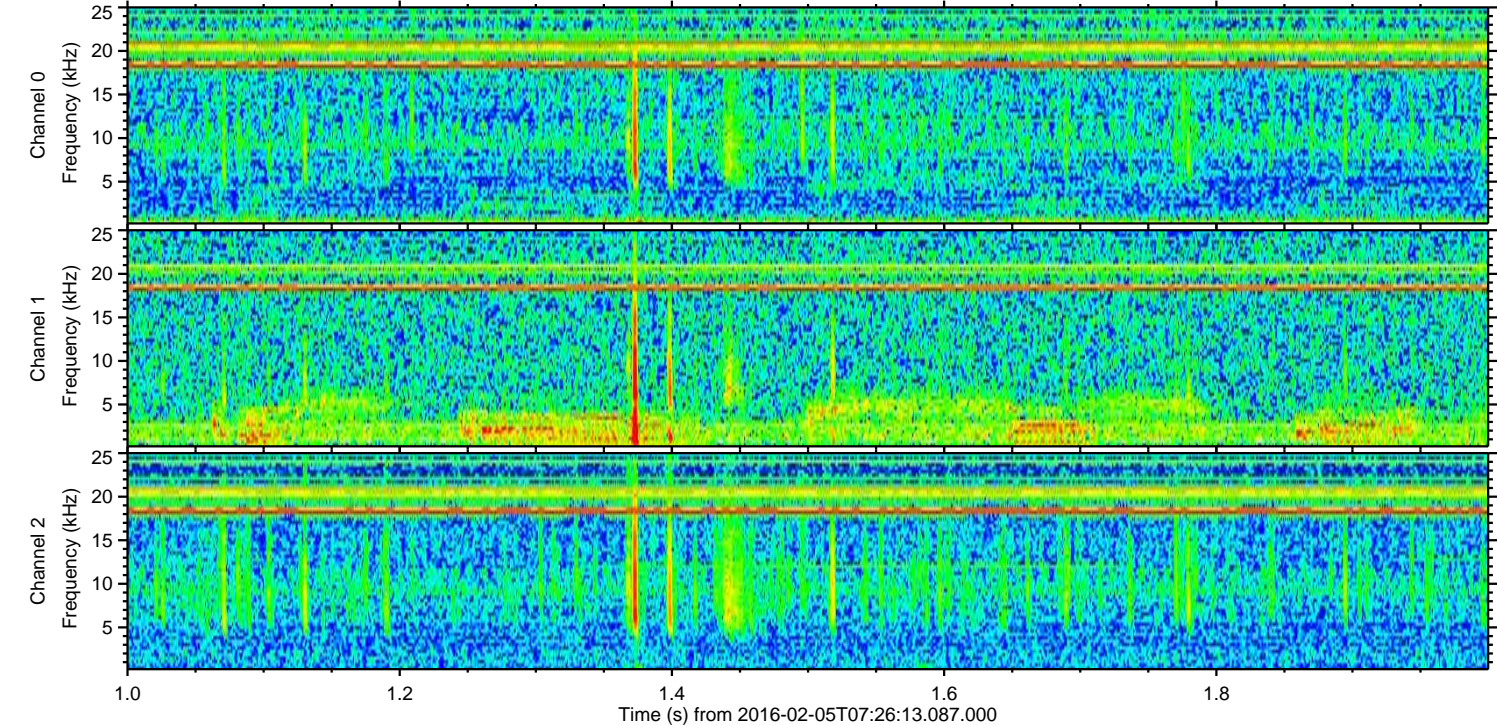
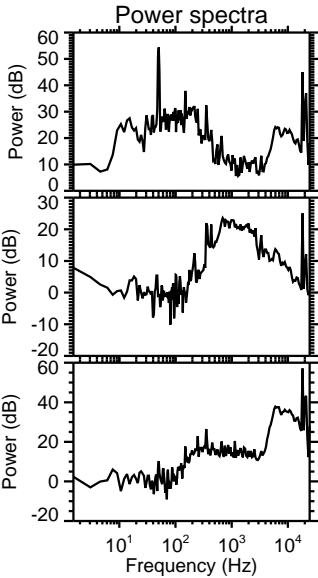
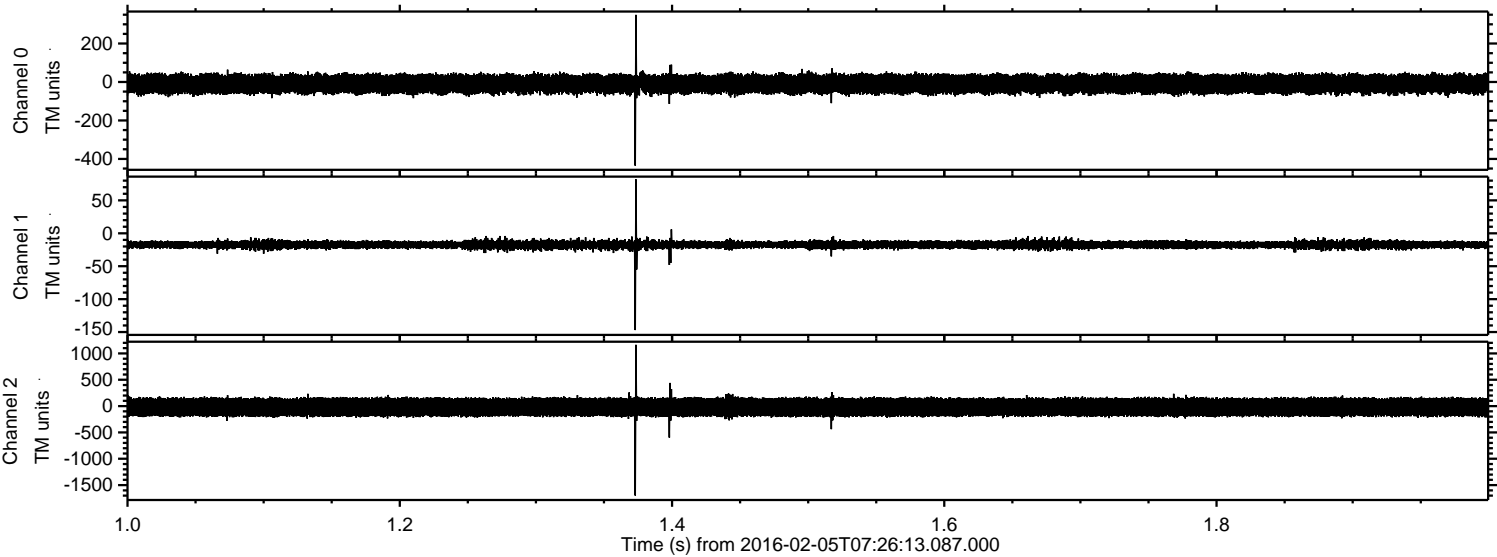
Processed Fri Apr 8 21:51:53 2016 by ELM ver.2012-10-06 from 001__elm20160205_072612__dat00.bin



Processed Fri Apr 8 21:51:54 2016 by ELM ver.2012-10-06 from 001__elm20160205_072612__dat00.bin

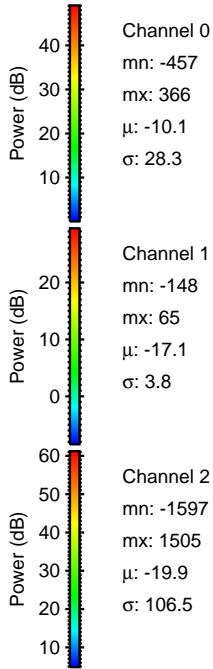
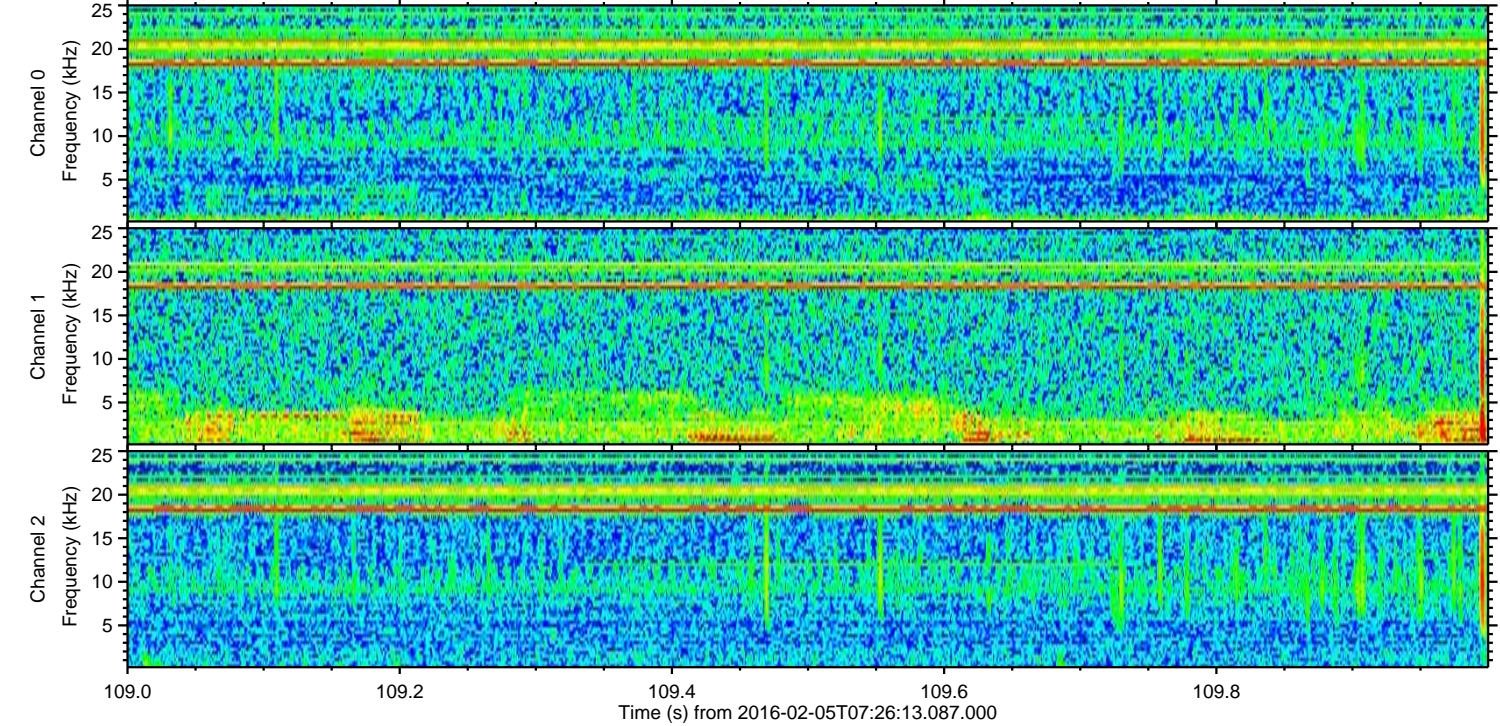
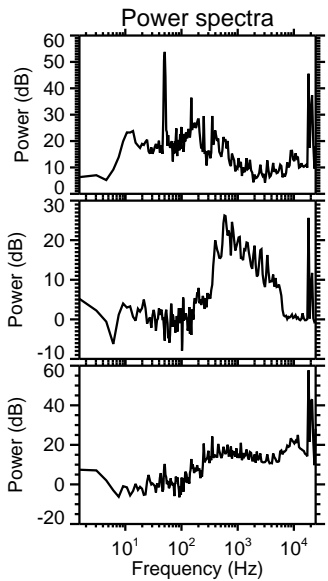
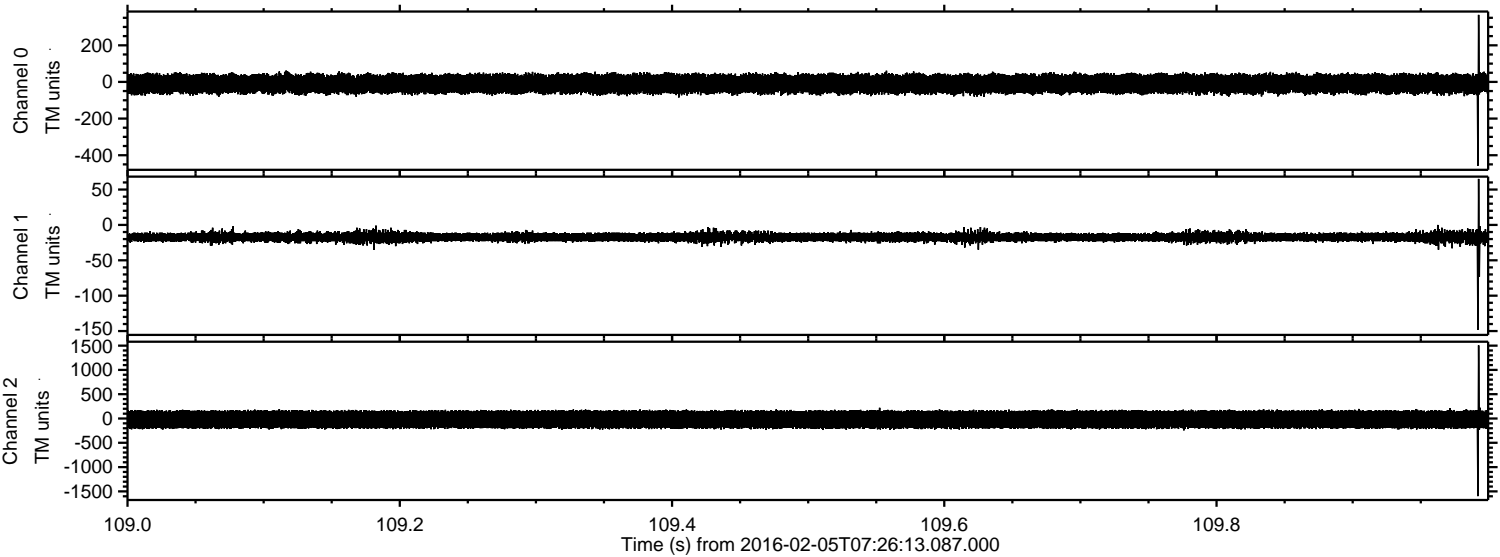


Processed Fri Apr 8 21:51:55 2016 by ELM ver.2012-10-06 from 001__elm20160205_072612__dat00.bin



ELMAVAN 3D WAVEFORMS (Measured data sampled at 50 kHz) 51000 packets of 144 samples from 2016-02-05T07:26:13.087.000. Part 110/147

Processed Fri Apr 8 21:51:55 2016 by ELM ver.2012-10-06 from 001__elm20160205_072612__dat00.bin



Processed Fri Apr 8 21:51:56 2016 by ELM ver.2012-10-06 from 001__elm20160205_072612__dat00.bin

