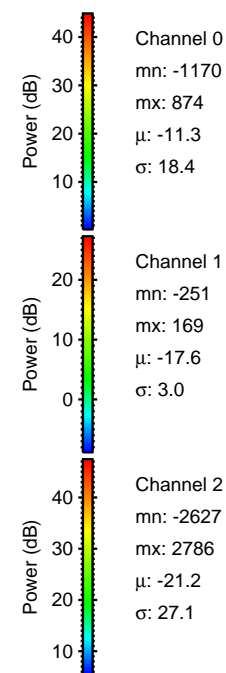
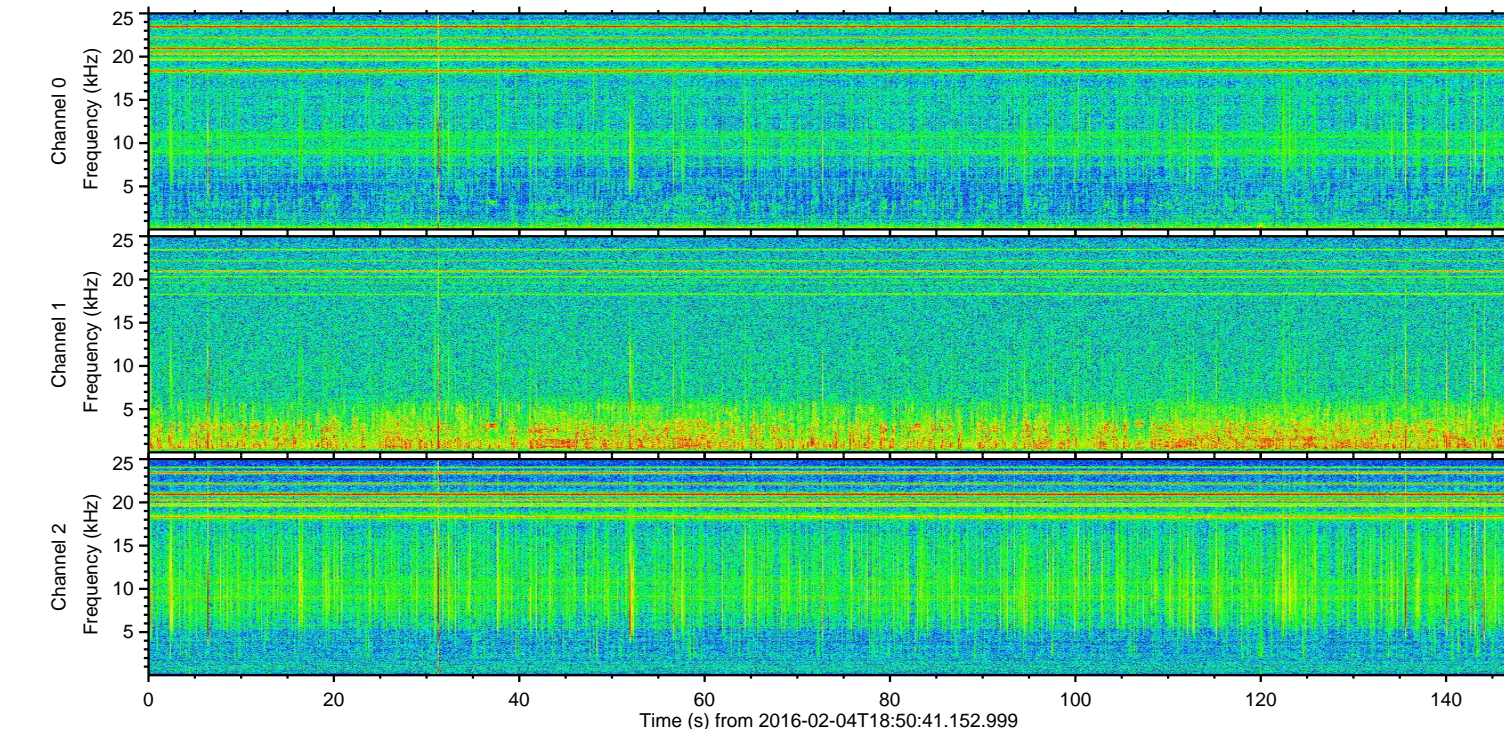
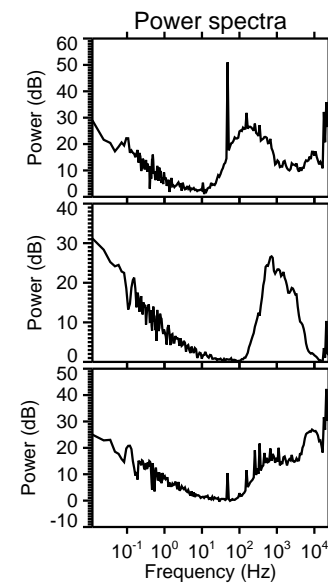
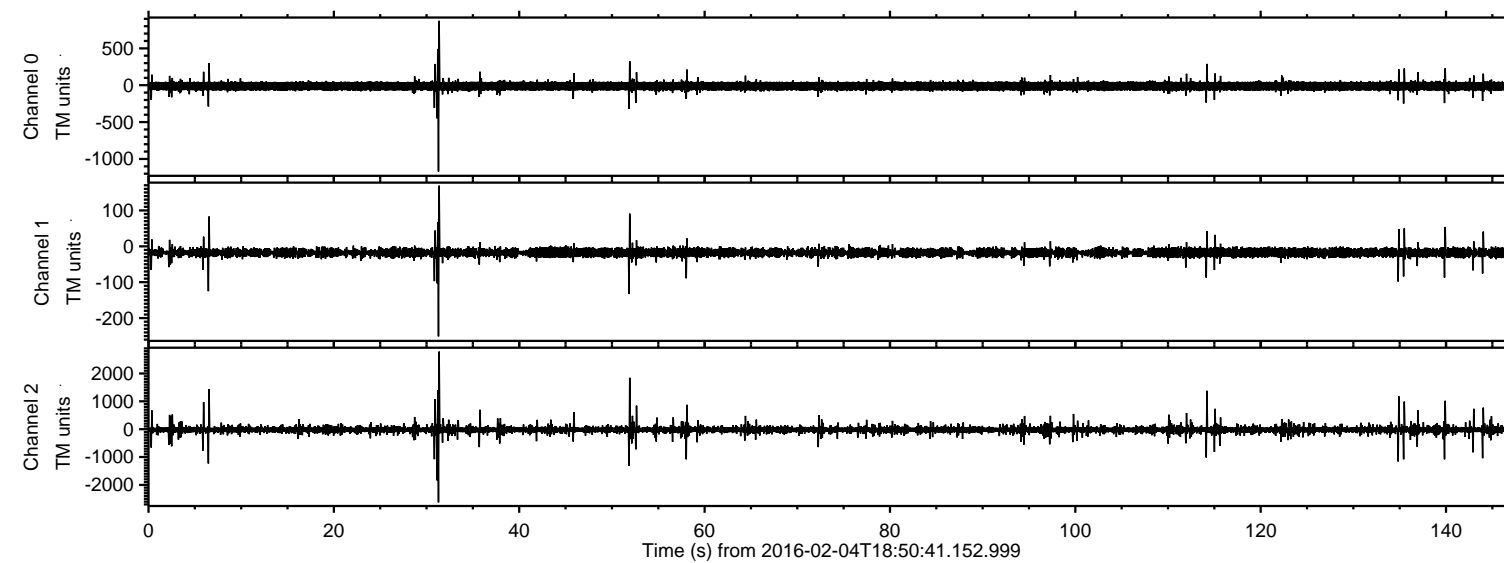
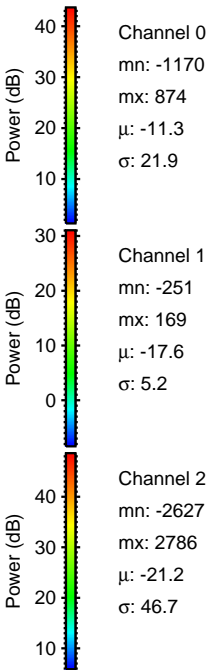
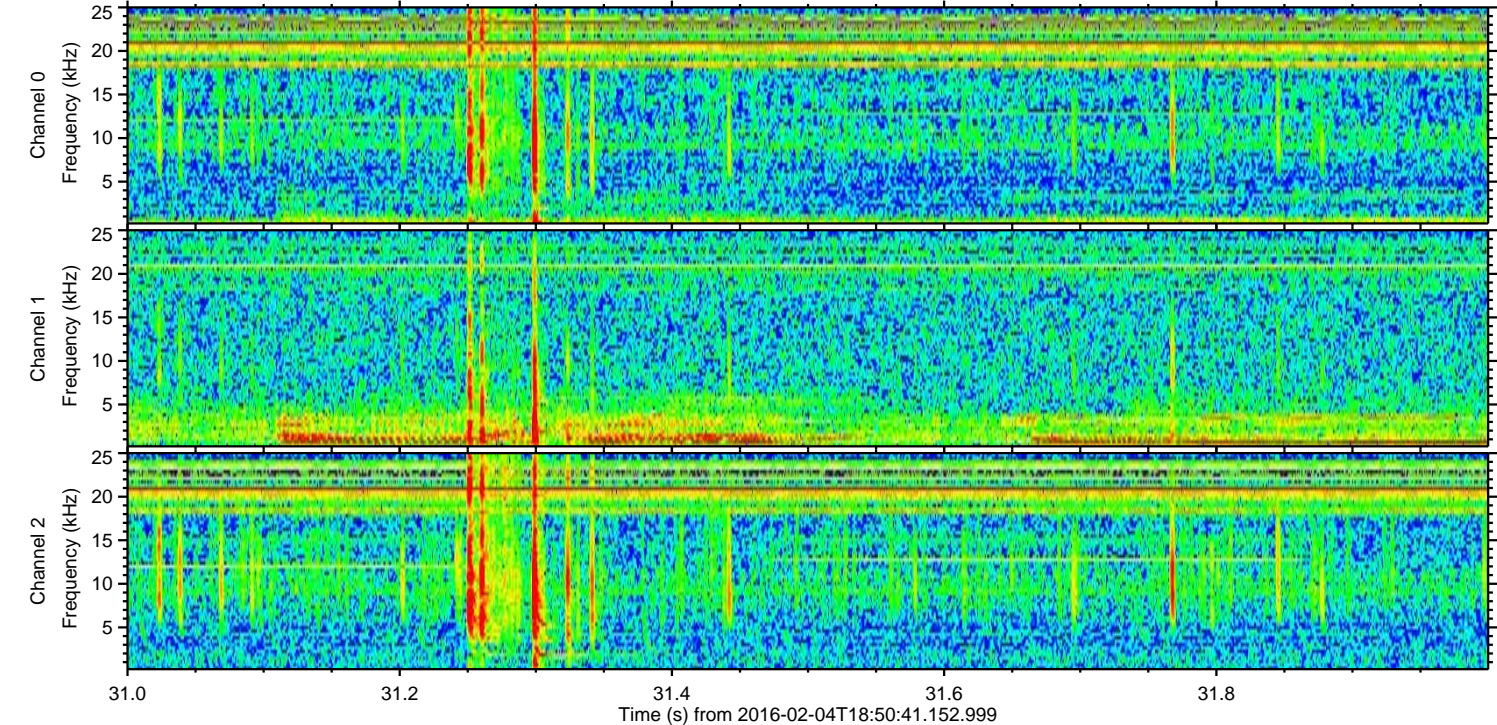
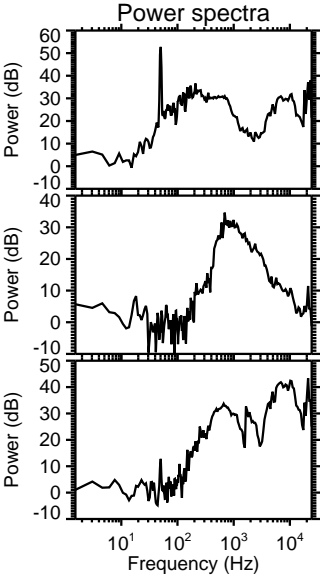
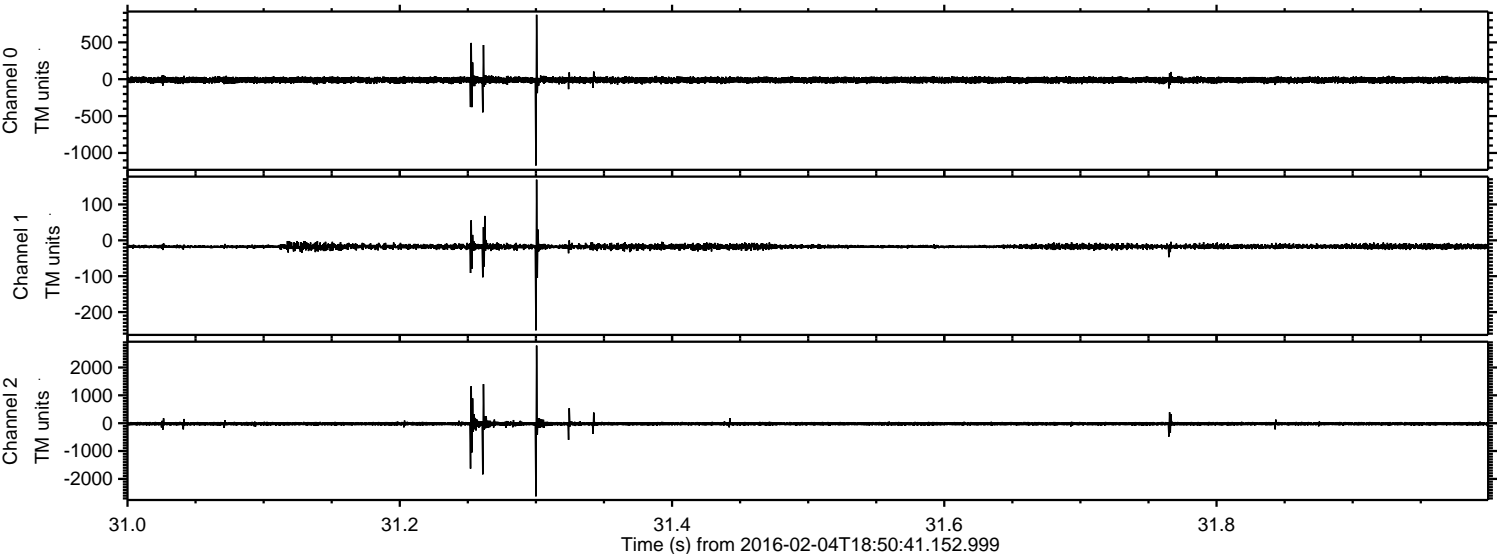


ELMAVAN 3D WAVEFORMS (Measured data sampled at 50 kHz) 51000 packets of 144 samples from 2016-02-04T18:50:41.152.999.

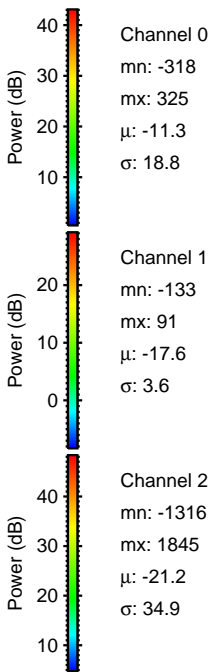
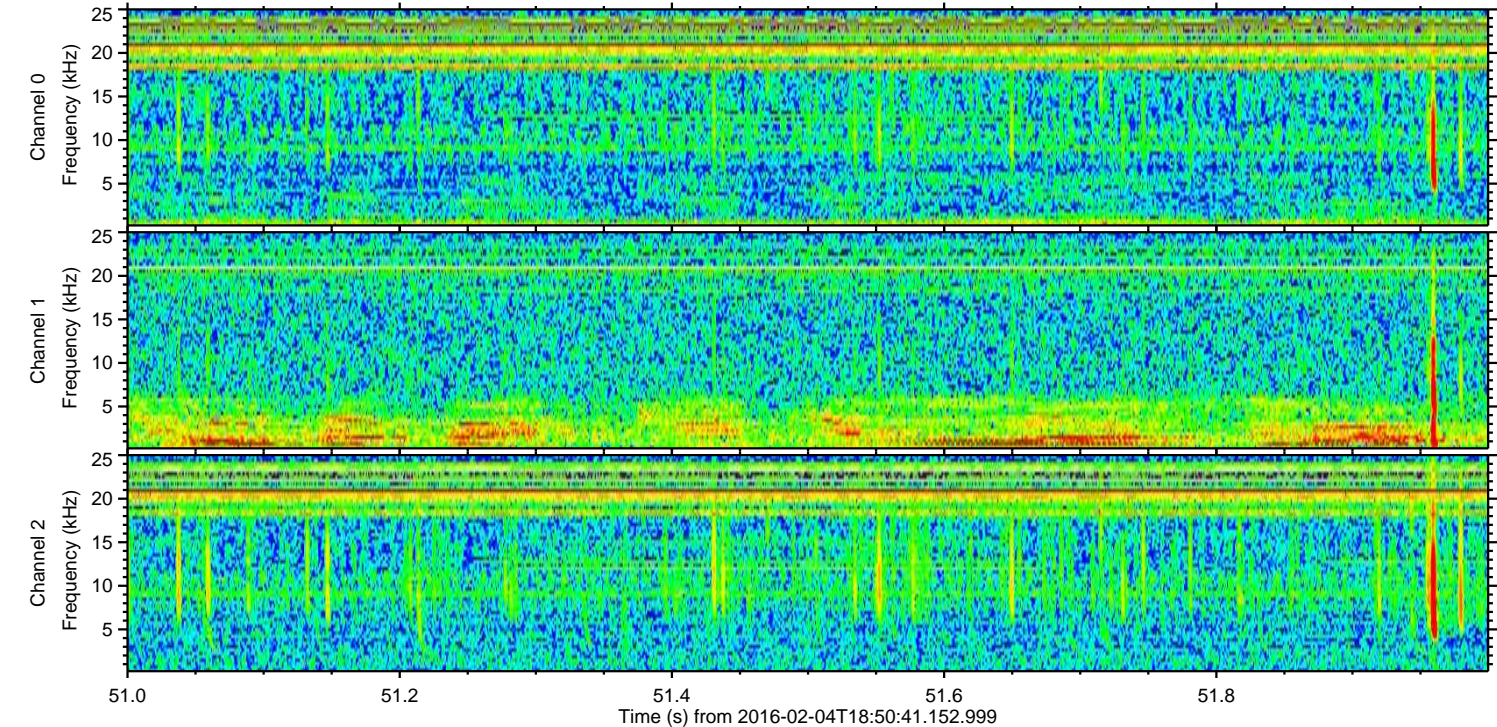
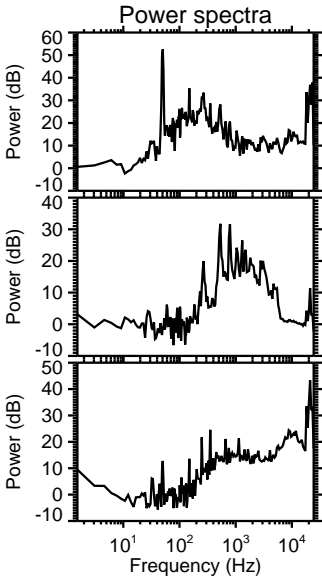
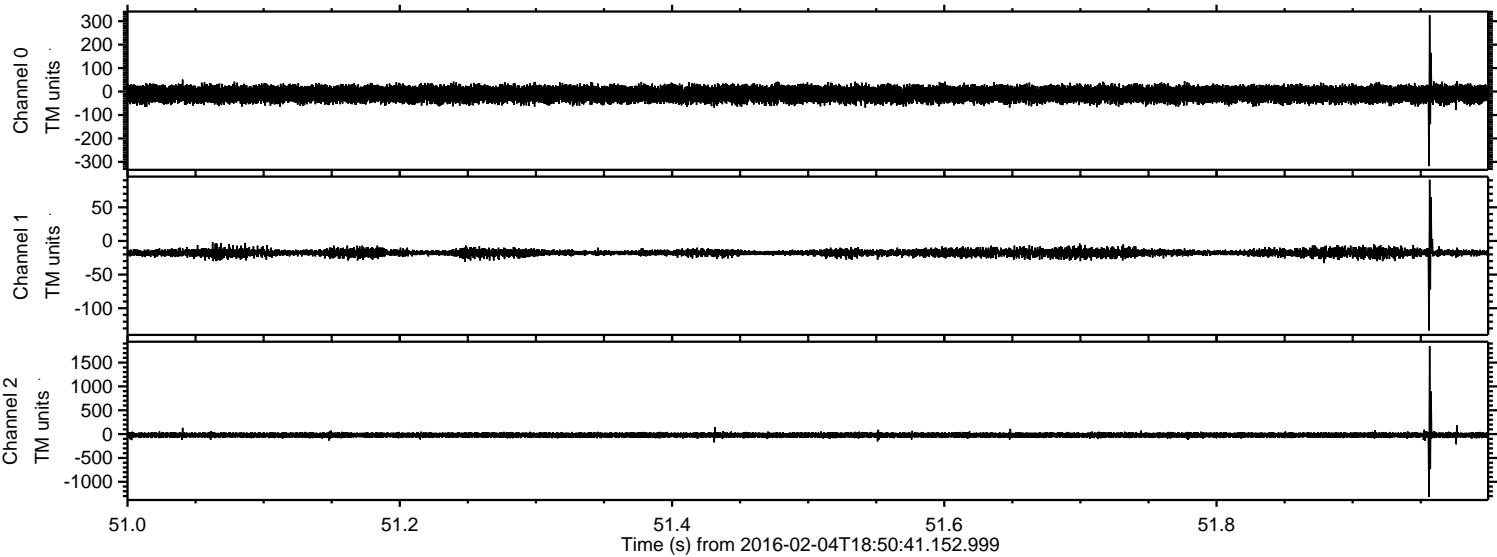
Processed Fri Apr 8 19:18:11 2016 by ELM ver.2012-10-06 from 001__elm20160204_185040__dat00.bin



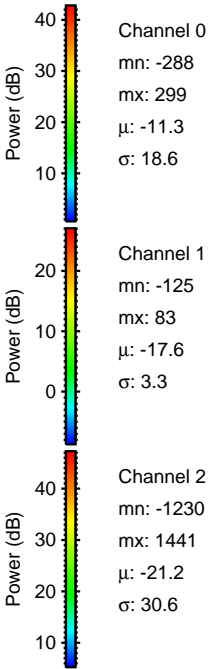
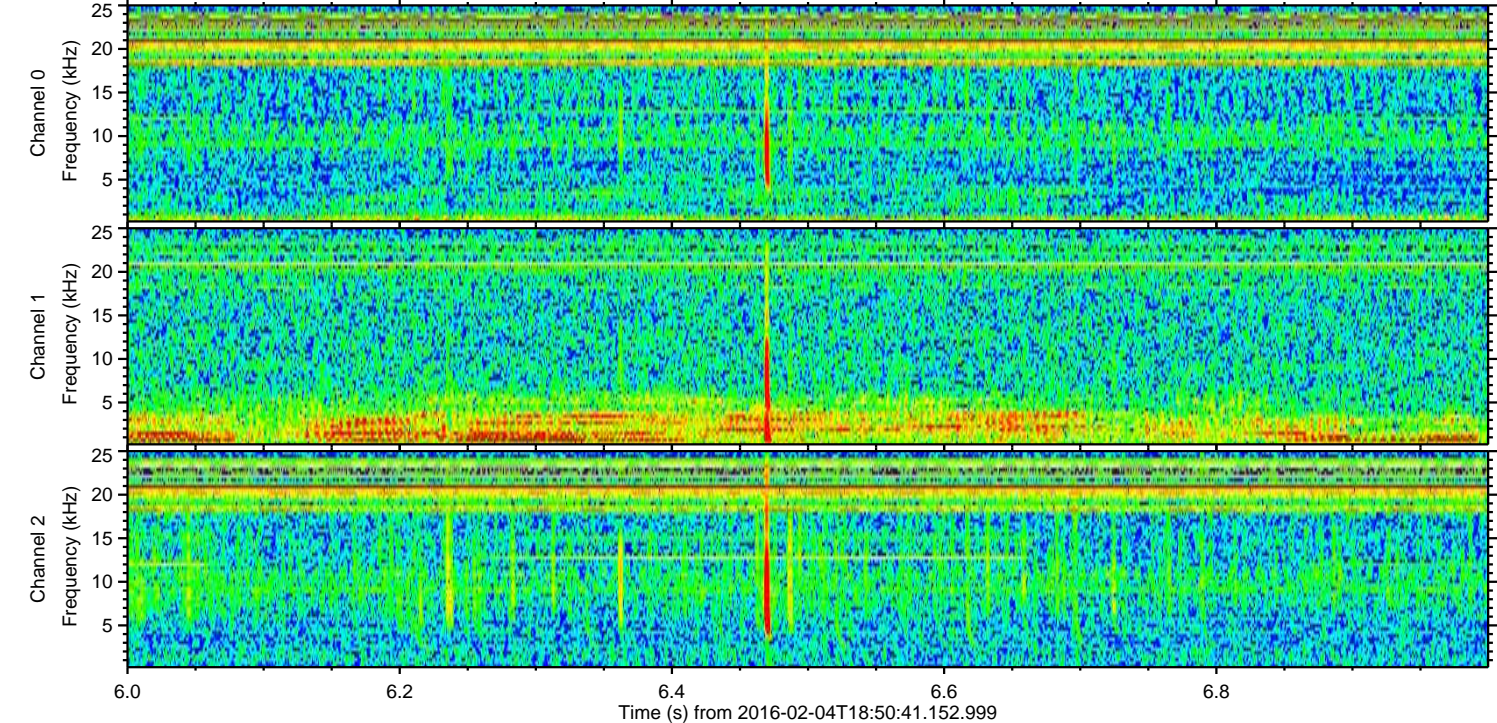
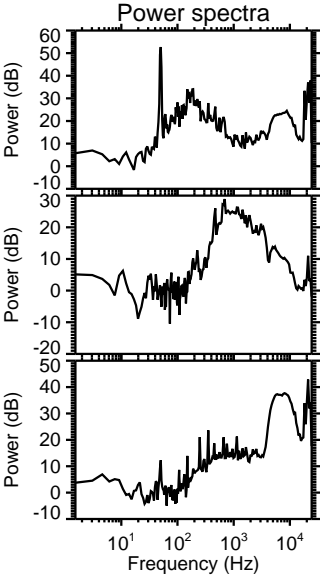
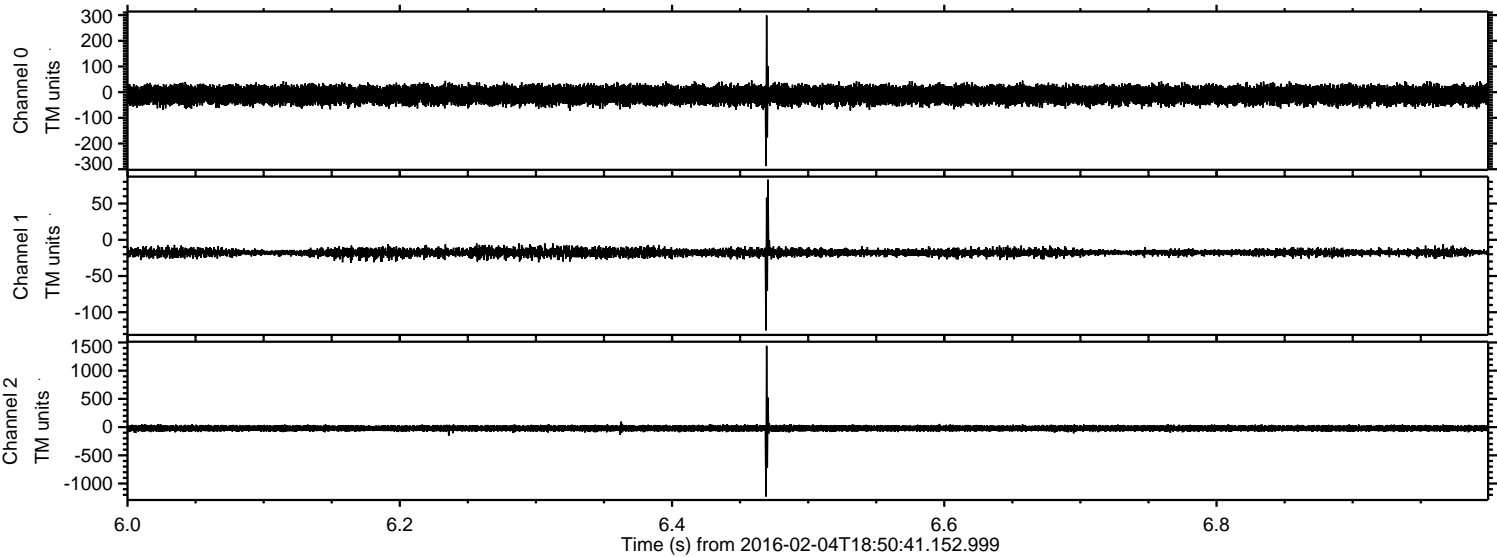
Processed Fri Apr 8 19:18:23 2016 by ELM ver.2012-10-06 from 001__elm20160204_185040__dat00.bin



Processed Fri Apr 8 19:18:23 2016 by ELM ver.2012-10-06 from 001__elm20160204_185040__dat00.bin

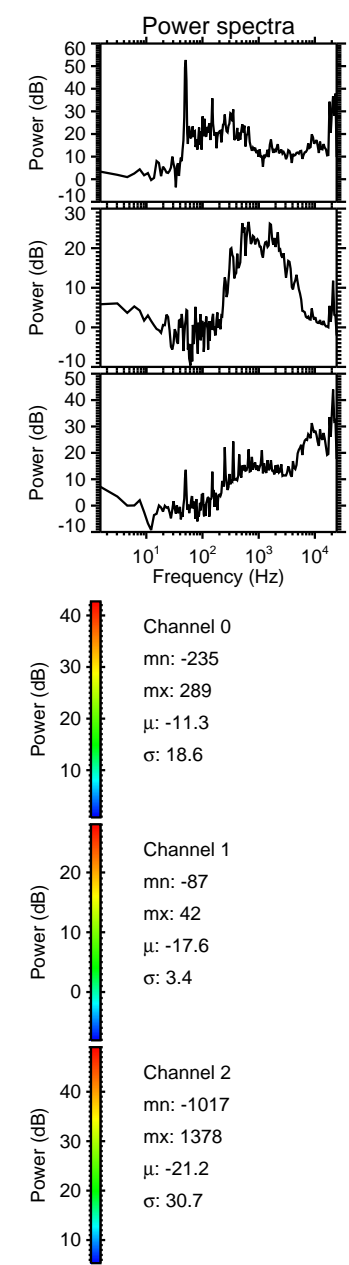
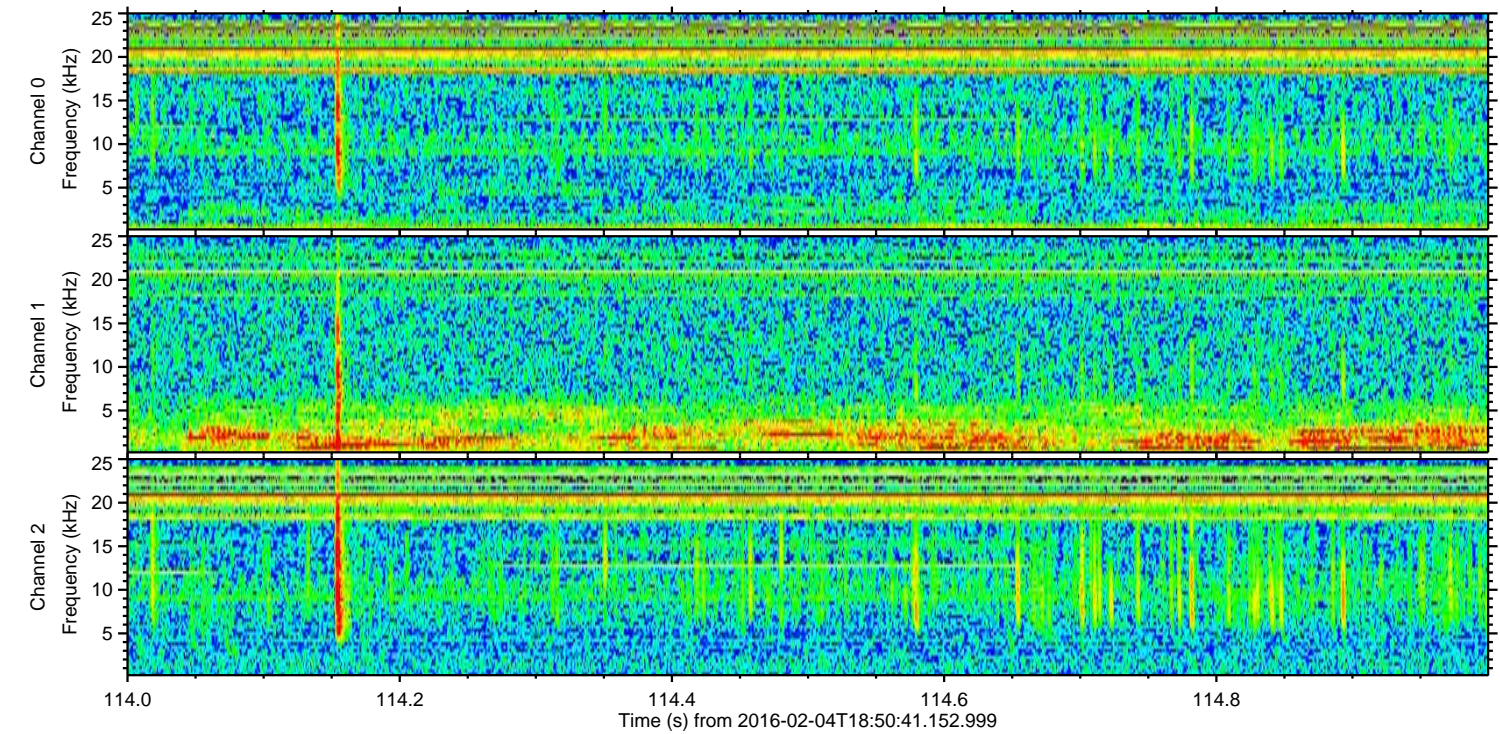
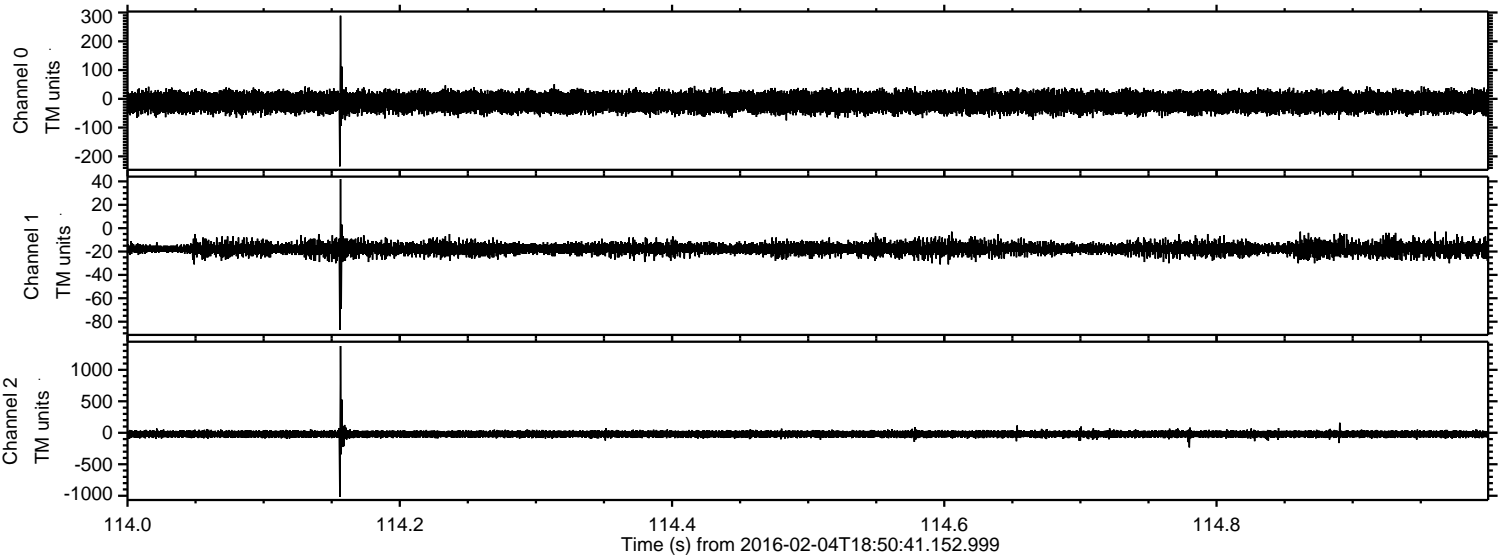


Processed Fri Apr 8 19:18:24 2016 by ELM ver.2012-10-06 from 001__elm20160204_185040__dat00.bin

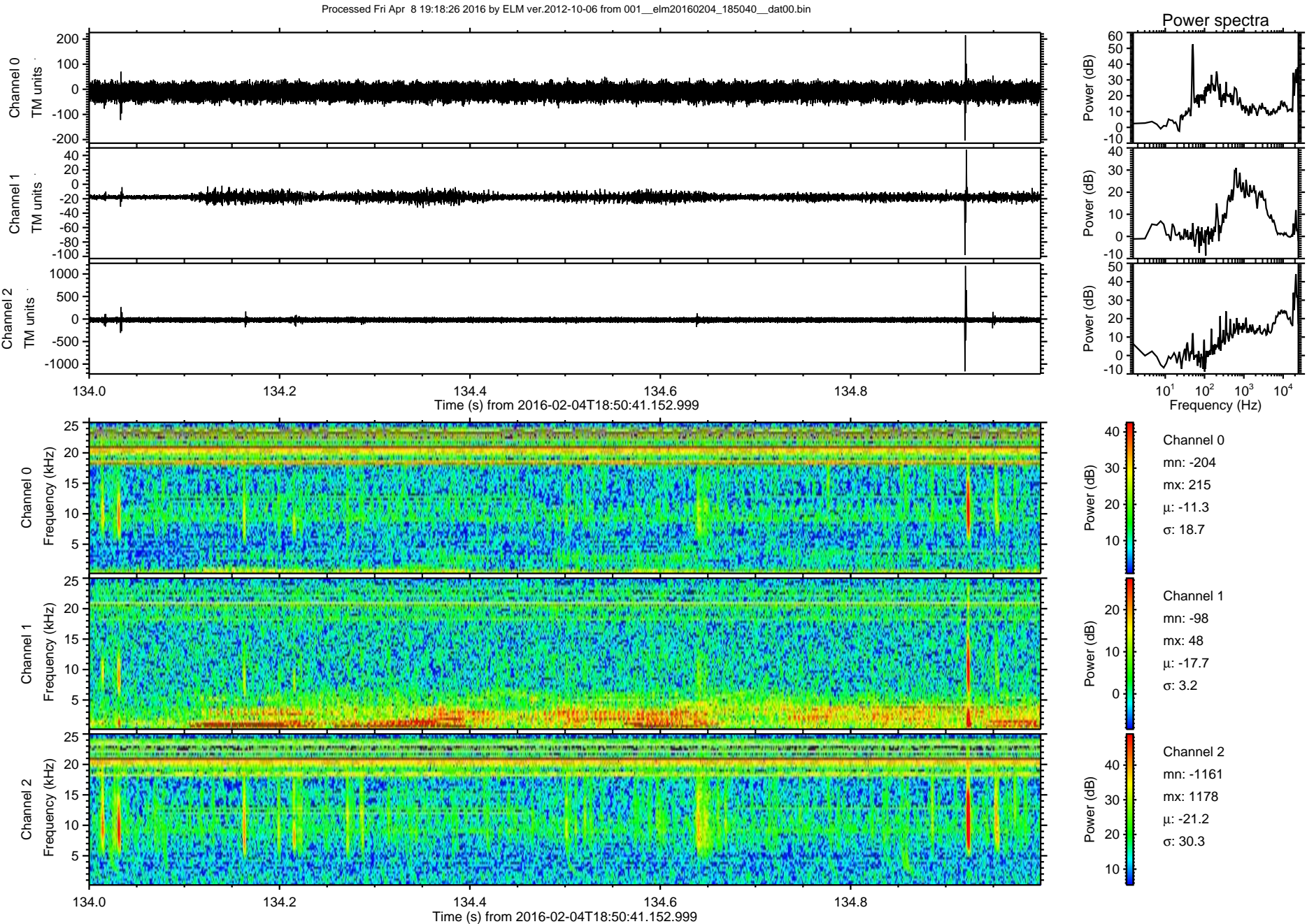


ELMAVAN 3D WAVEFORMS (Measured data sampled at 50 kHz) 51000 packets of 144 samples from 2016-02-04T18:50:41.152.999. Part 115/147

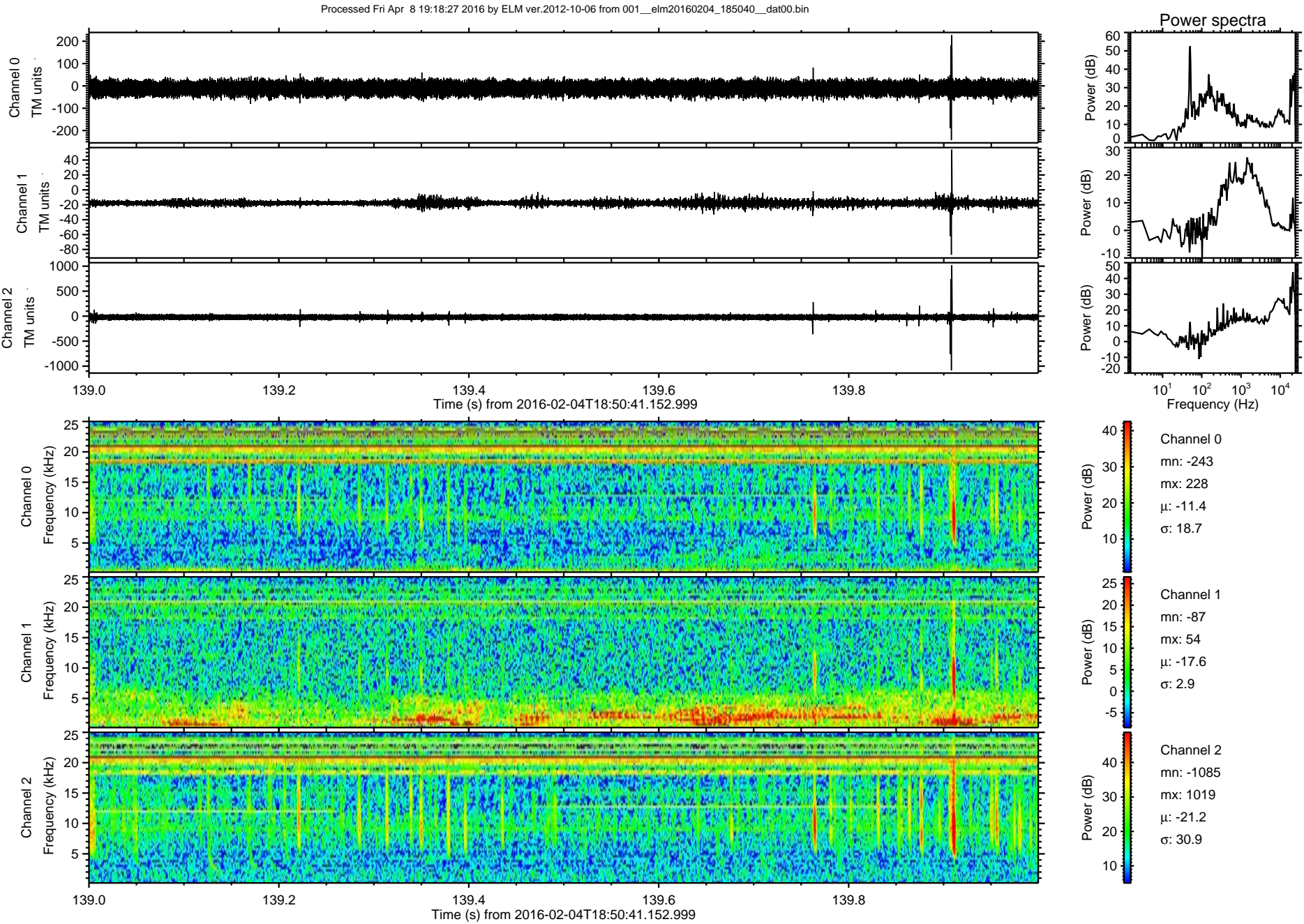
Processed Fri Apr 8 19:18:25 2016 by ELM ver.2012-10-06 from 001__elm20160204_185040__dat00.bin



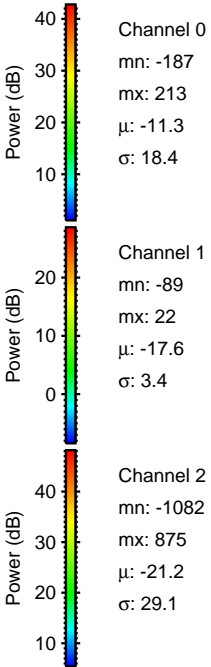
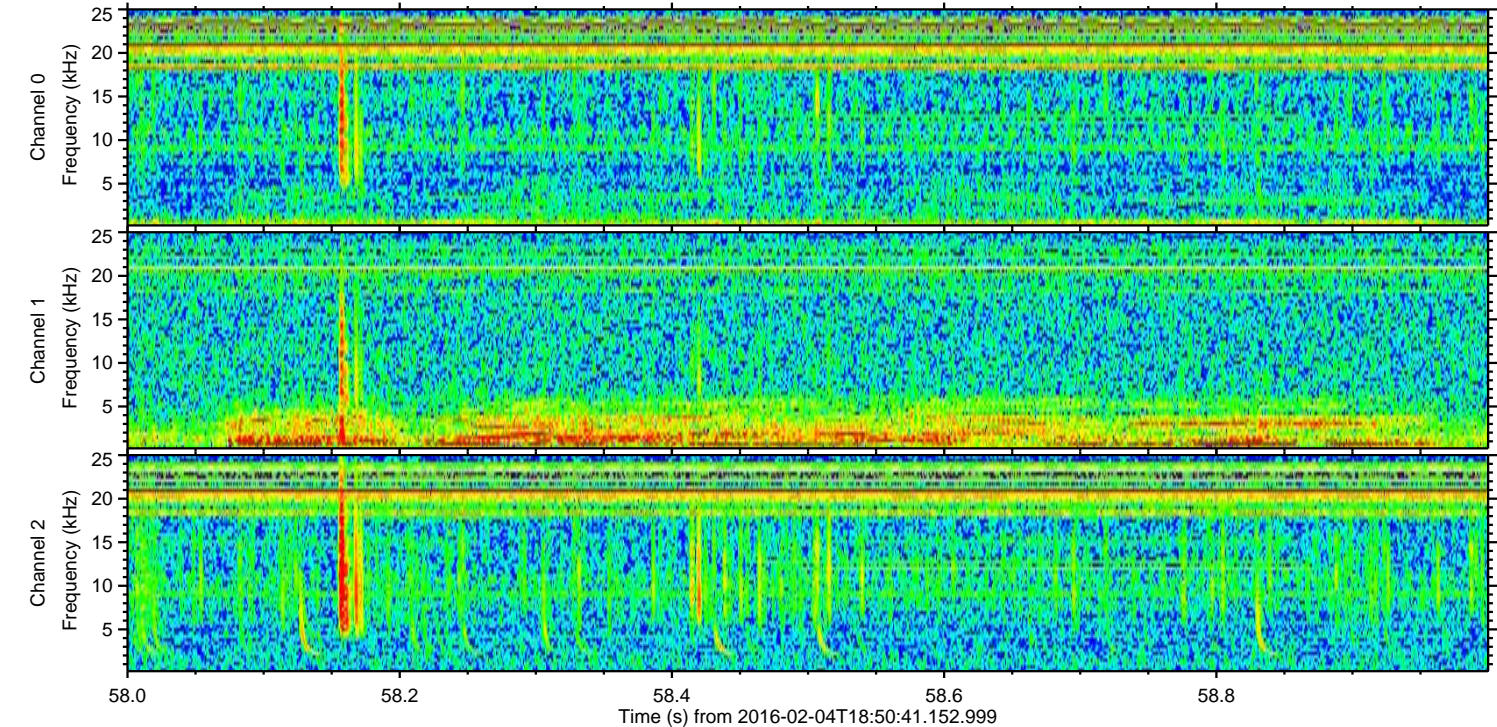
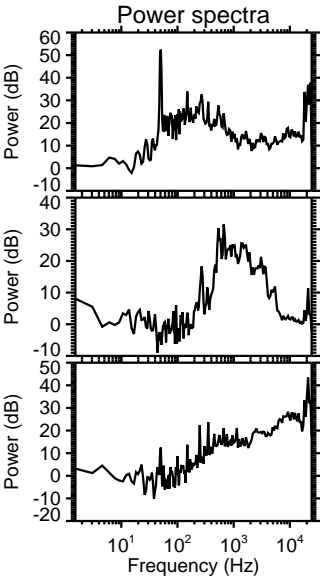
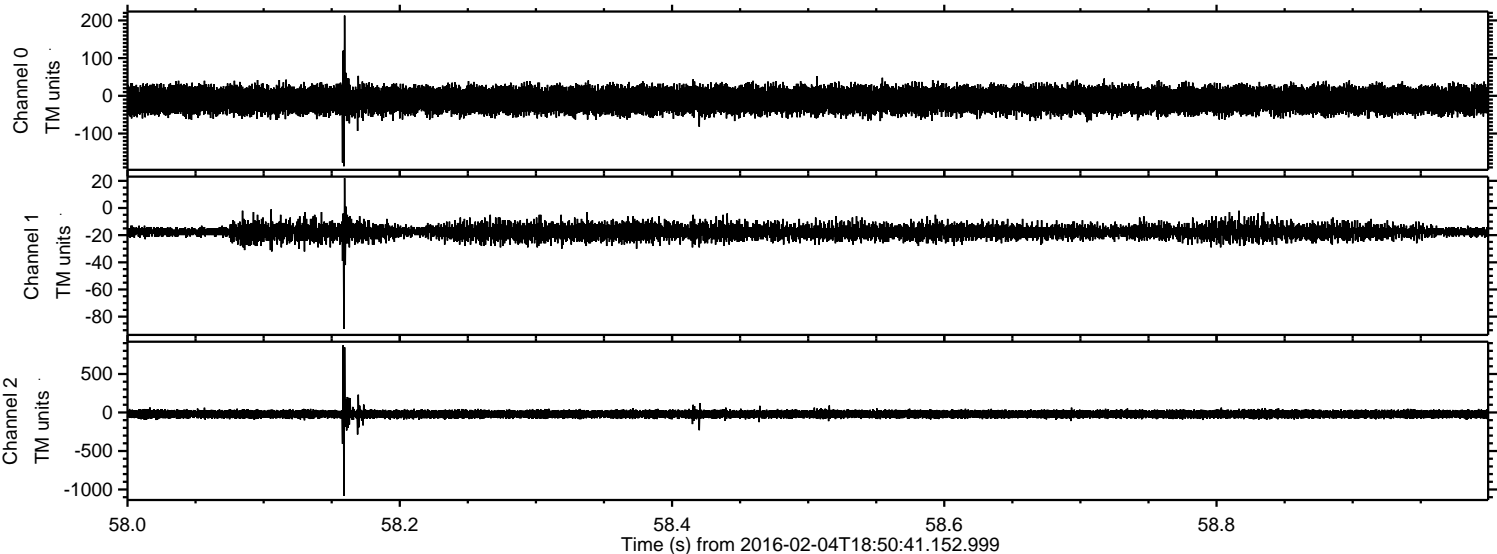
ELMAVAN 3D WAVEFORMS (Measured data sampled at 50 kHz) 51000 packets of 144 samples from 2016-02-04T18:50:41.152.999. Part 135/147



ELMAVAN 3D WAVEFORMS (Measured data sampled at 50 kHz) 51000 packets of 144 samples from 2016-02-04T18:50:41.152.999. Part 140/147

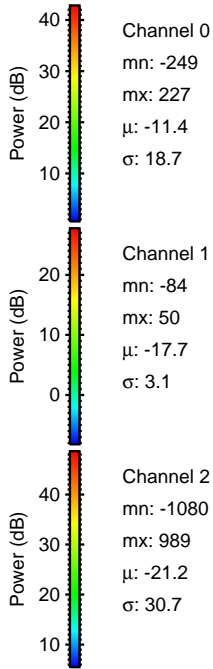
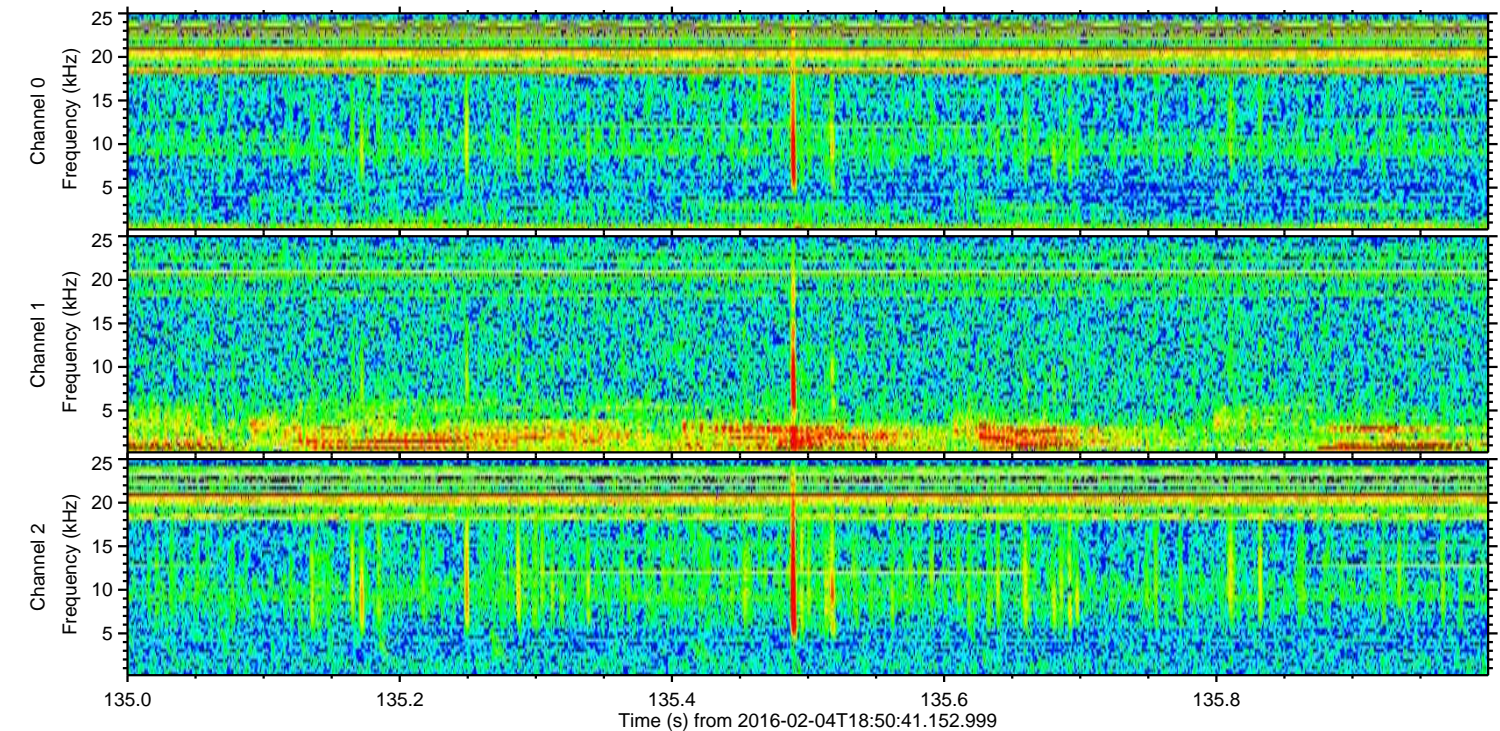
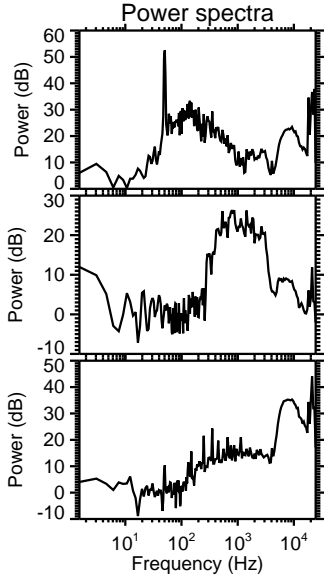
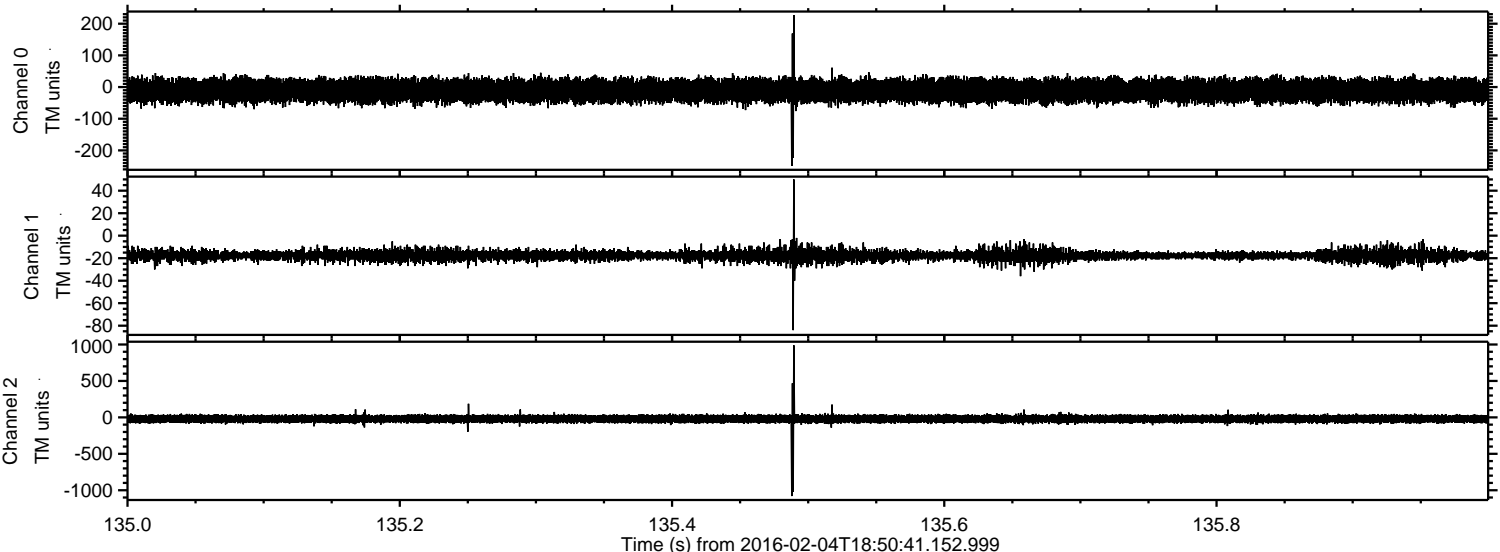


Processed Fri Apr 8 19:18:28 2016 by ELM ver.2012-10-06 from 001__elm20160204_185040__dat00.bin

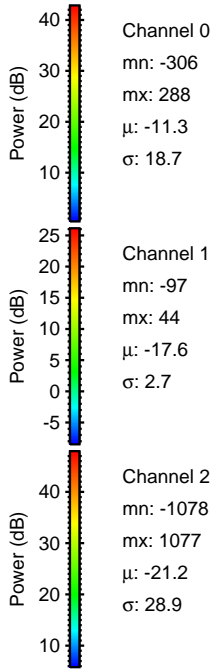
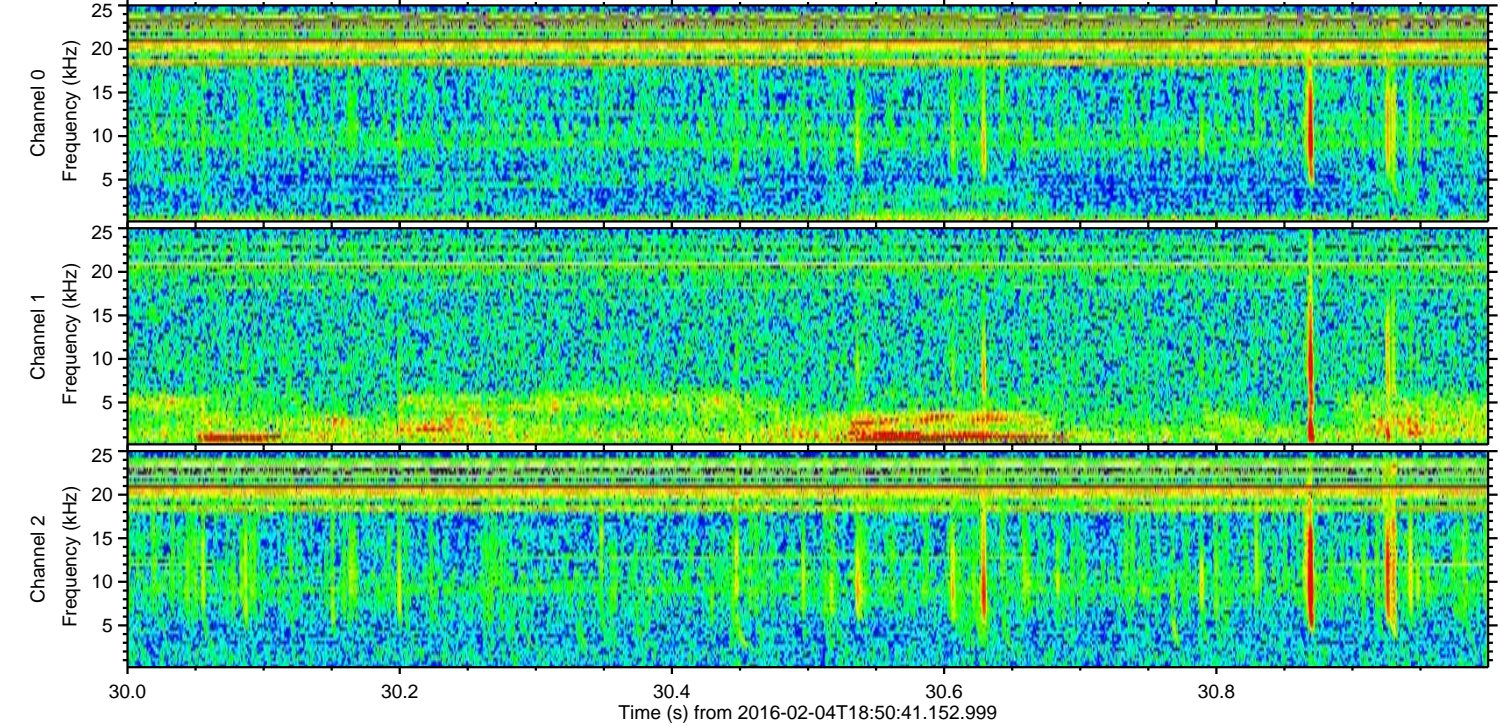
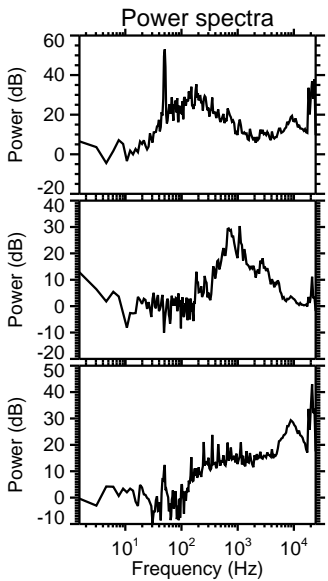
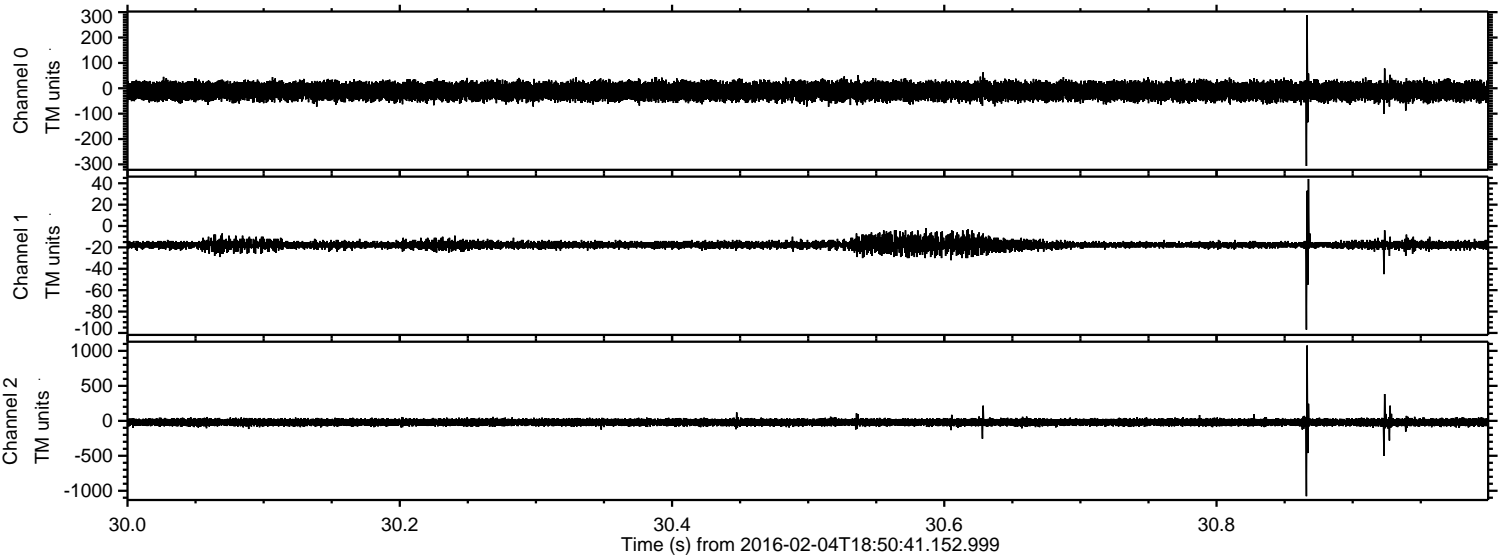


ELMAVAN 3D WAVEFORMS (Measured data sampled at 50 kHz) 51000 packets of 144 samples from 2016-02-04T18:50:41.152.999. Part 136/147

Processed Fri Apr 8 19:18:29 2016 by ELM ver.2012-10-06 from 001__elm20160204_185040__dat00.bin



Processed Fri Apr 8 19:18:30 2016 by ELM ver.2012-10-06 from 001__elm20160204_185040__dat00.bin



Power spectra

Channel 0
mn: -306
mx: 288
 μ : -11.3
 σ : 18.7

Channel 1
mn: -97
mx: 44
 μ : -17.6
 σ : 2.7

Channel 2
mn: -1078
mx: 1077
 μ : -21.2
 σ : 28.9

