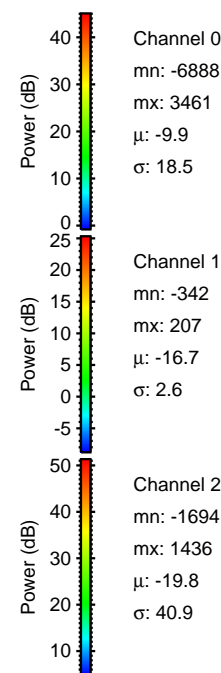
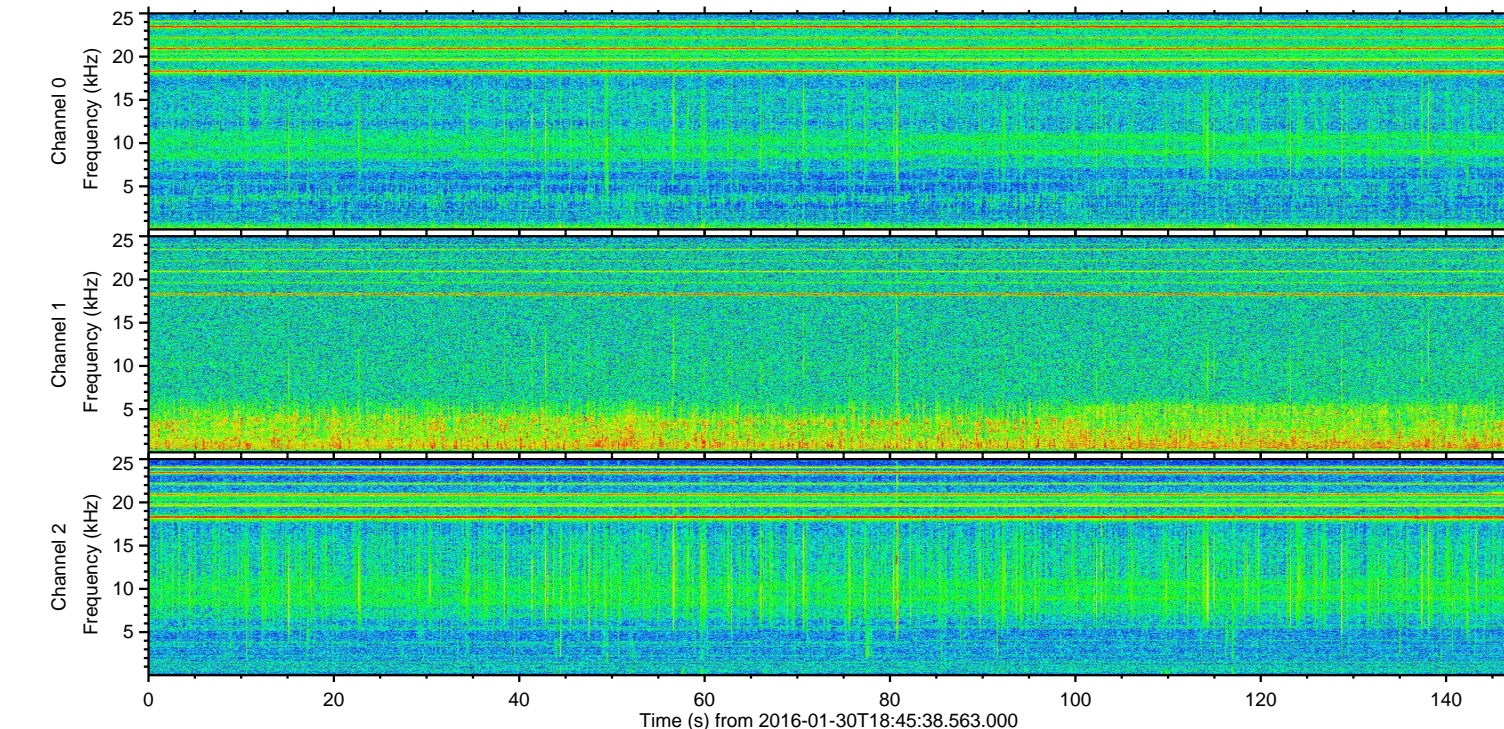
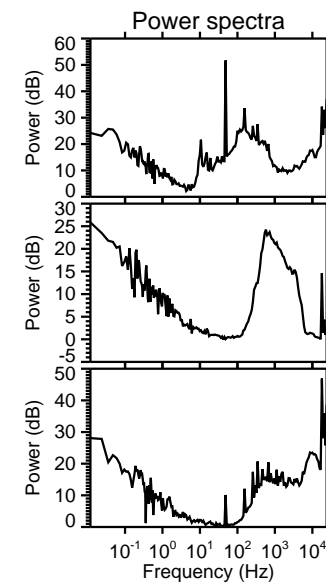
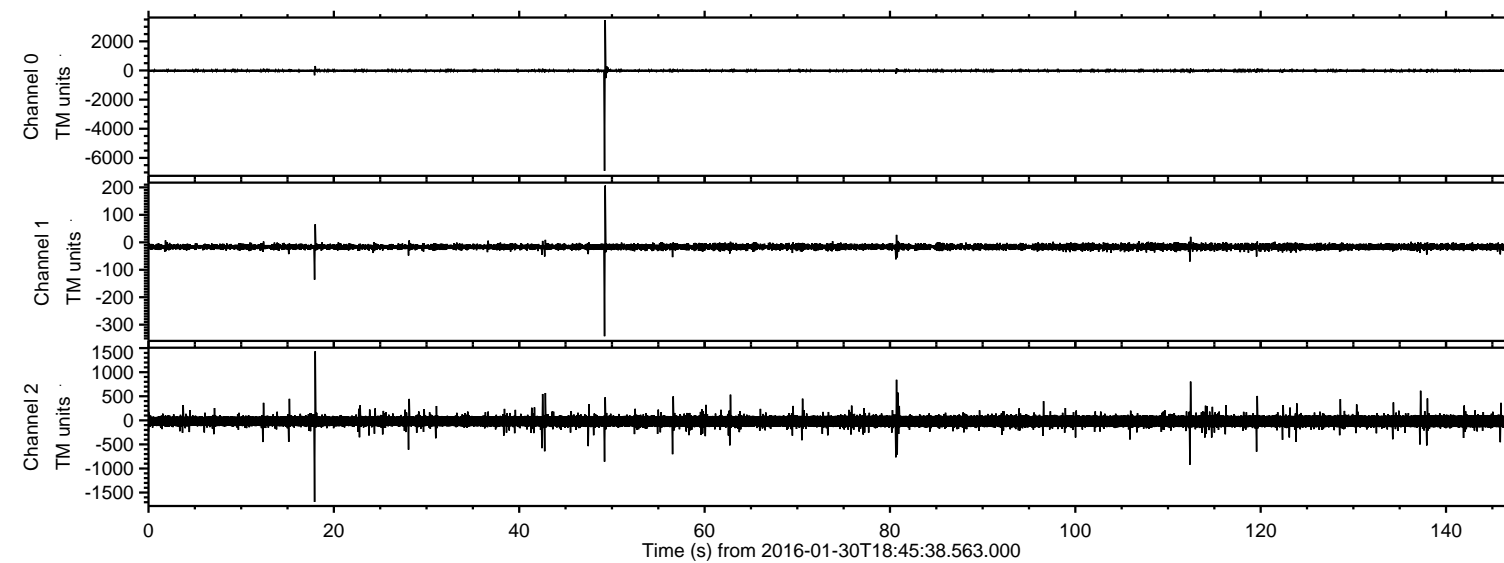


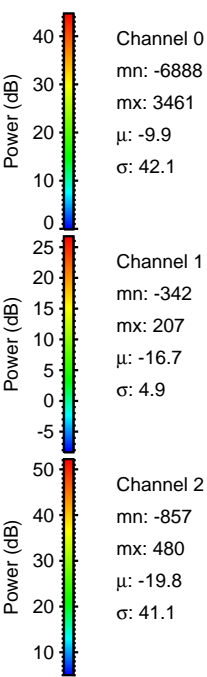
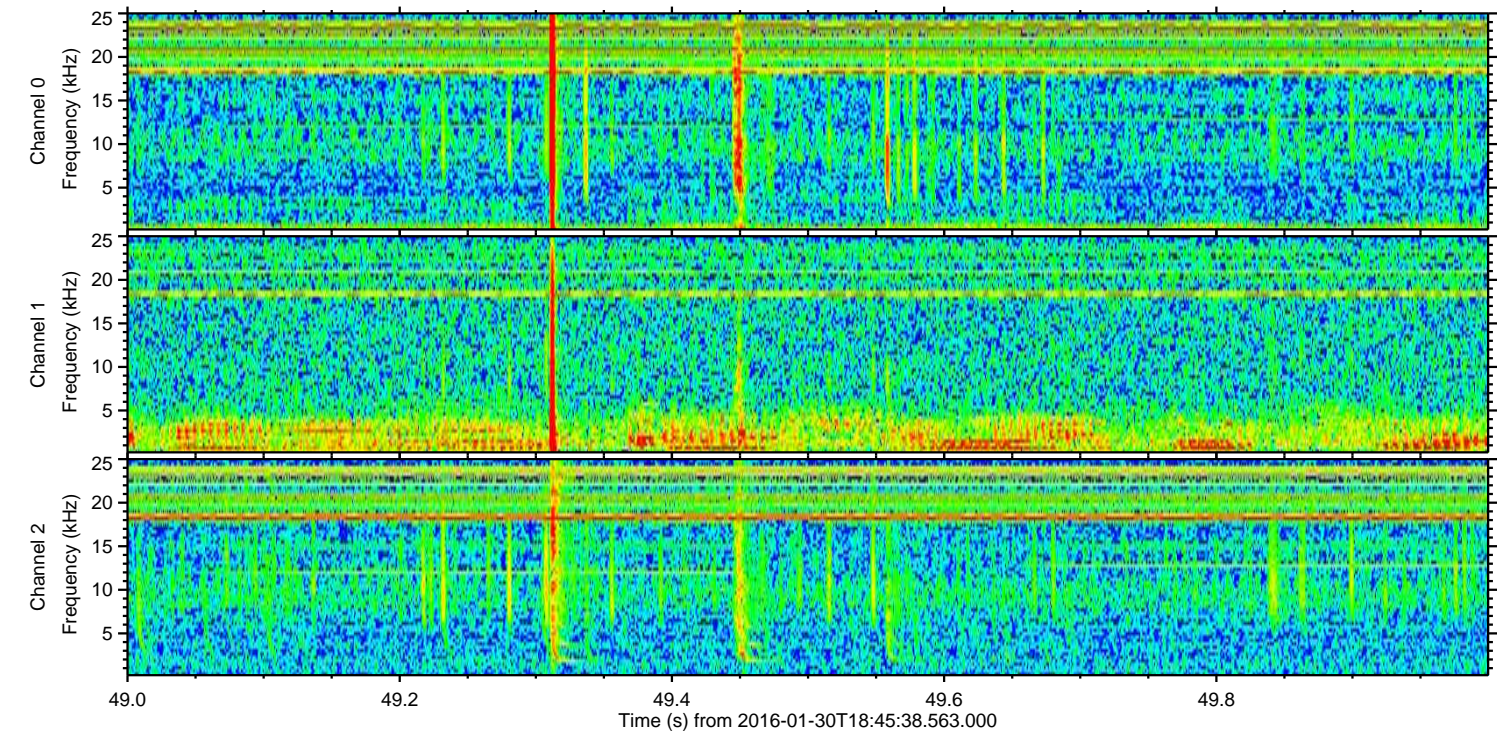
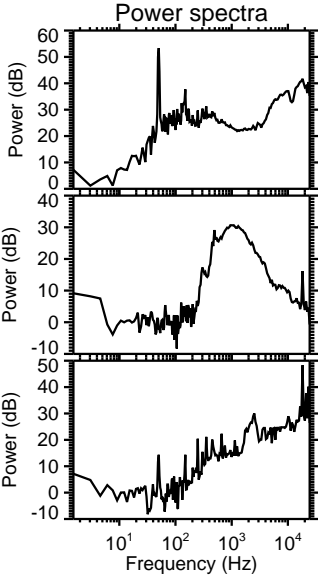
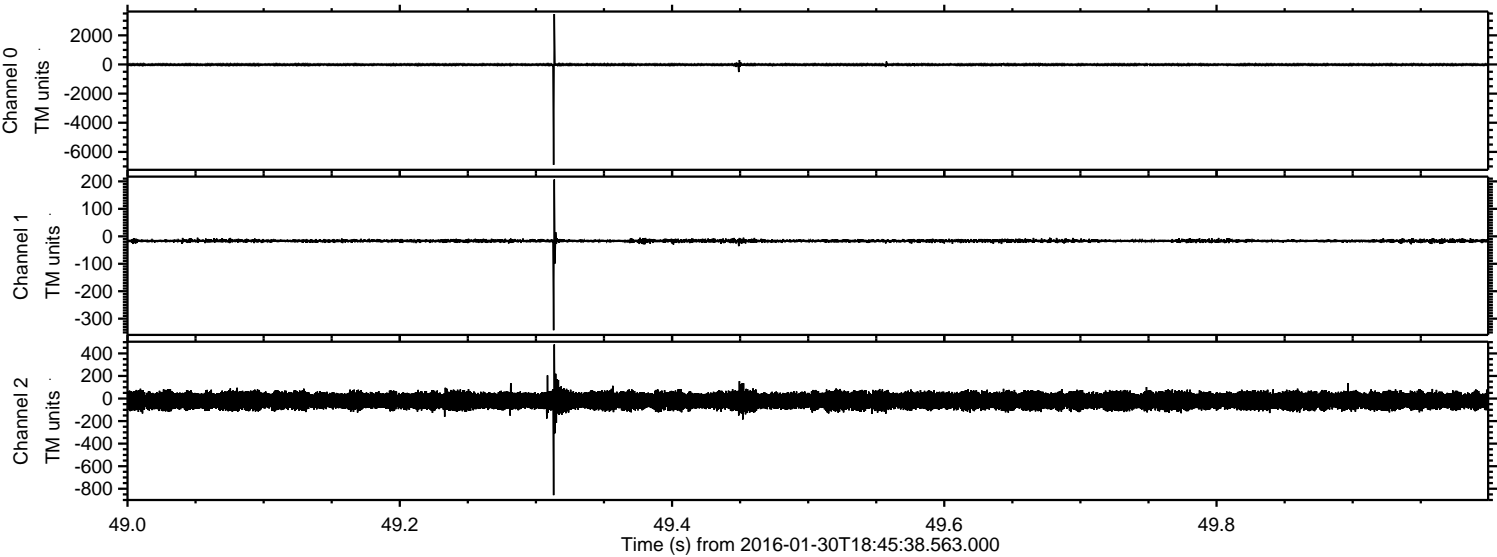
# ELMAVAN 3D WAVEFORMS (Measured data sampled at 50 kHz) 51000 packets of 144 samples from 2016-01-30T18:45:38.563.000.

Processed Thu Apr 7 18:54:20 2016 by ELM ver.2012-10-06 from 001\_\_elm20160130\_184537\_\_dat00.bin





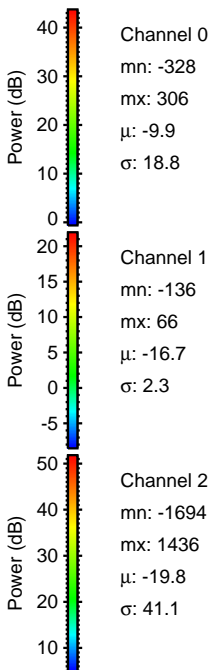
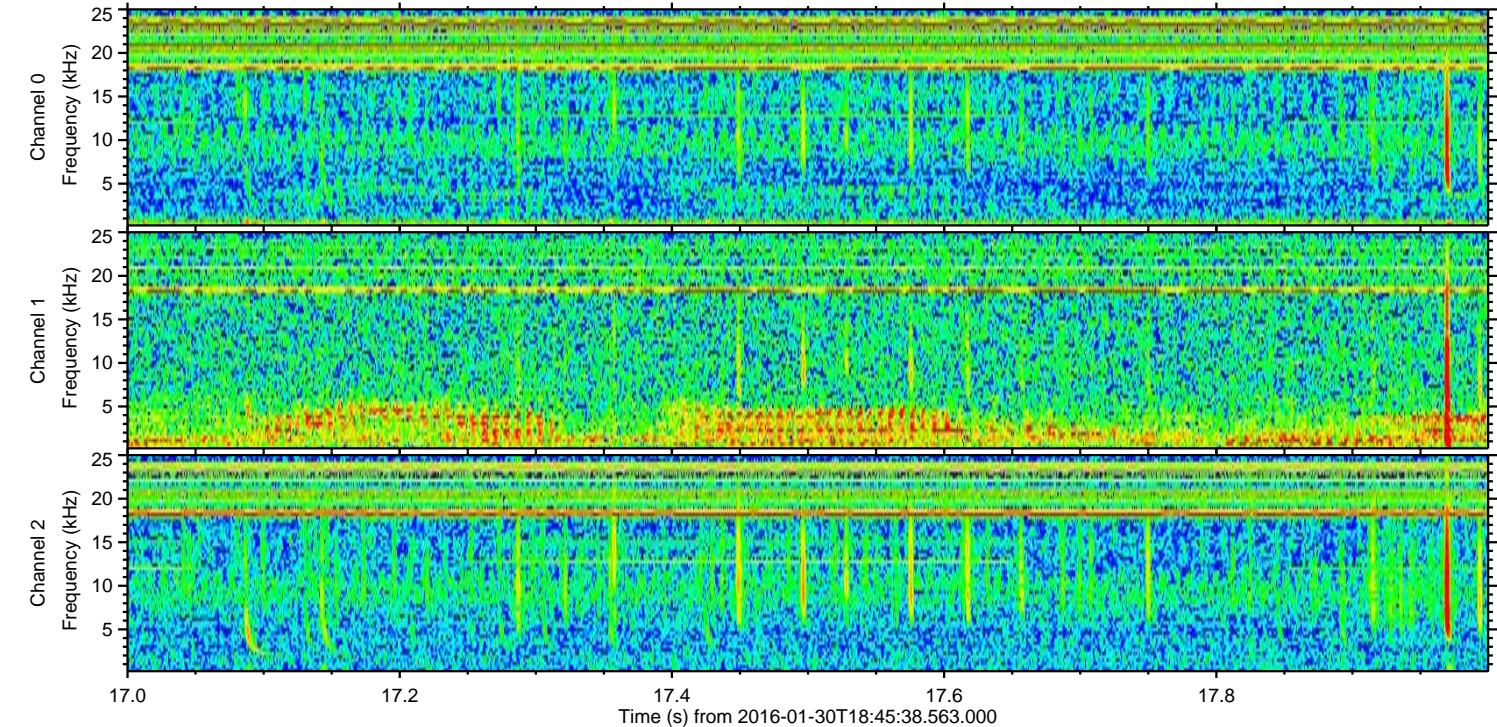
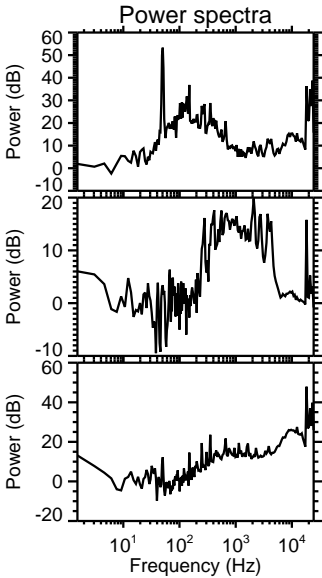
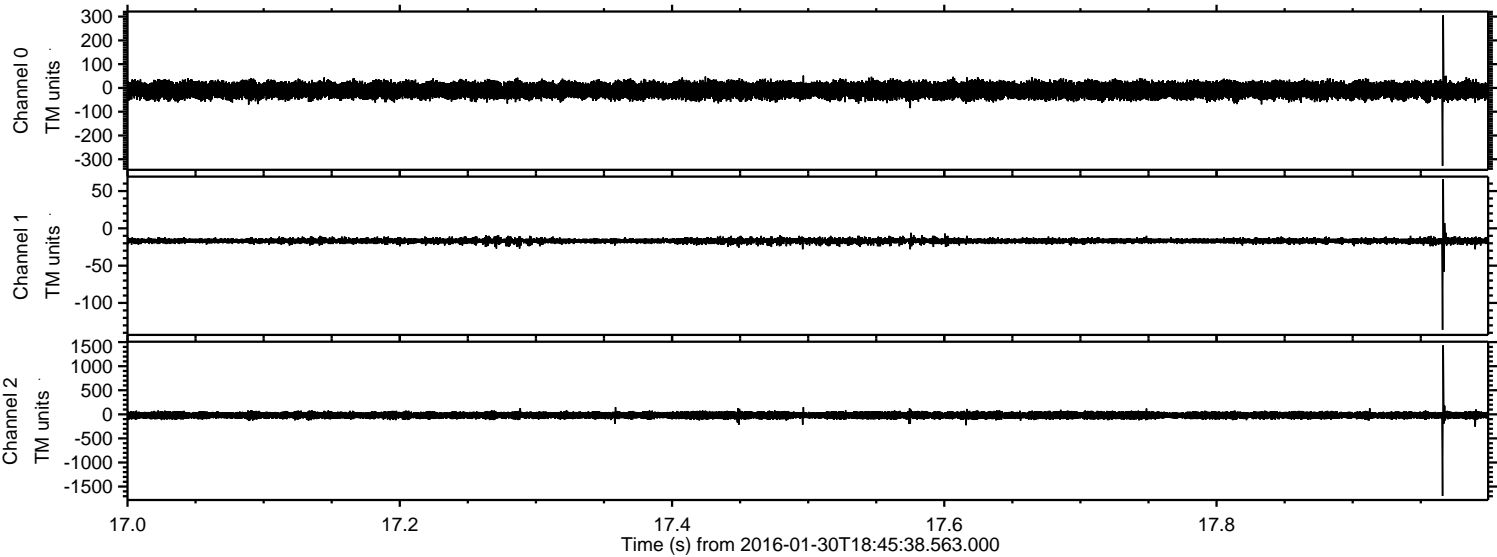
Processed Thu Apr 7 18:54:32 2016 by ELM ver.2012-10-06 from 001\_\_elm20160130\_184537\_\_dat00.bin





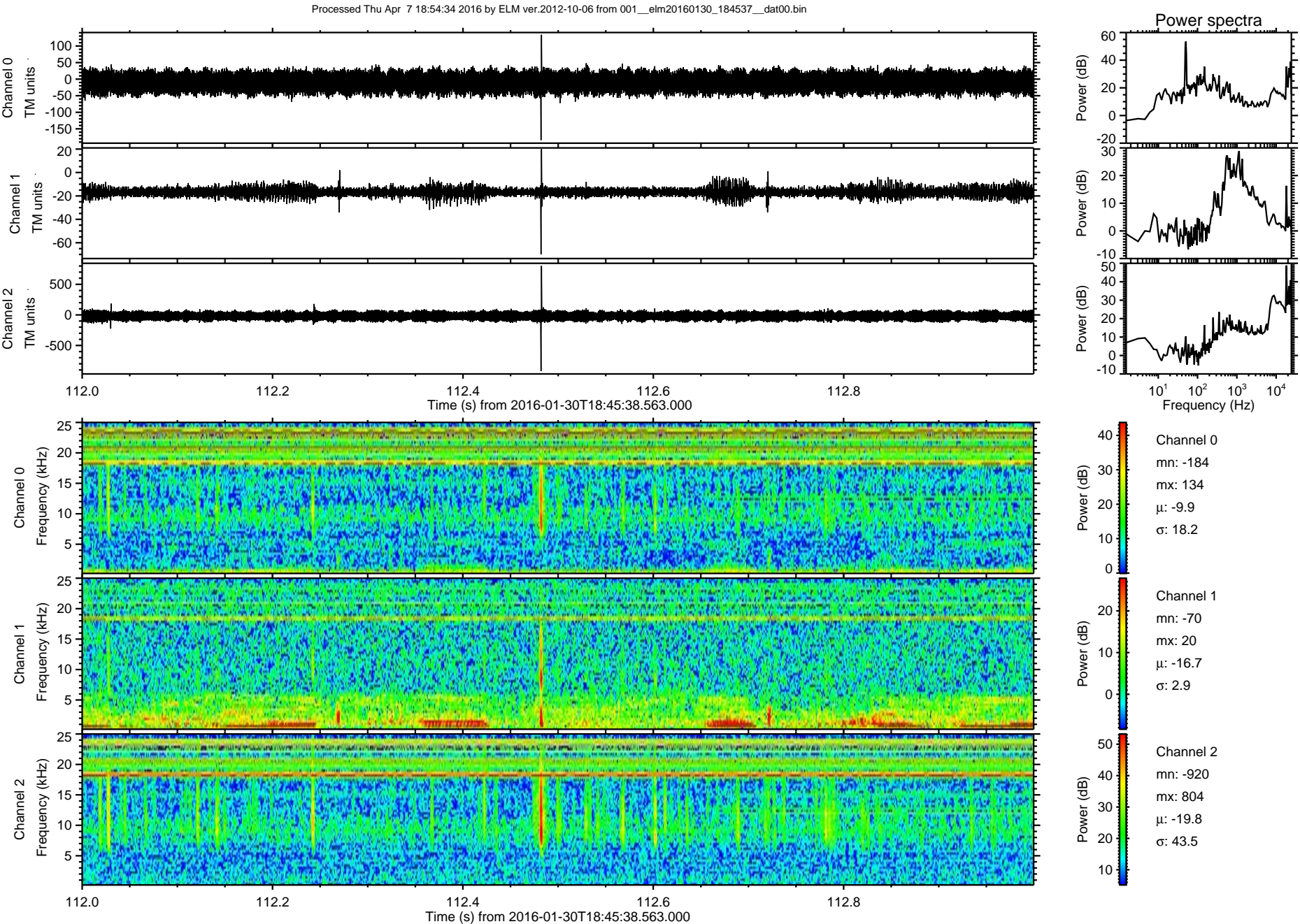
ELMAVAN 3D WAVEFORMS (Measured data sampled at 50 kHz) 51000 packets of 144 samples from 2016-01-30T18:45:38.563.000. Part 18/147

Processed Thu Apr 7 18:54:33 2016 by ELM ver.2012-10-06 from 001\_\_elm20160130\_184537\_\_dat00.bin



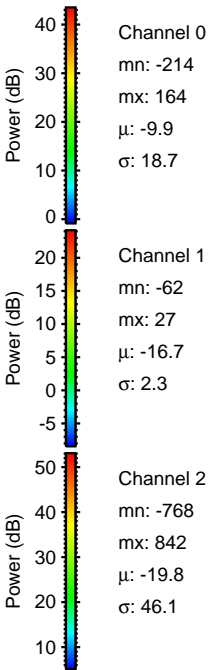
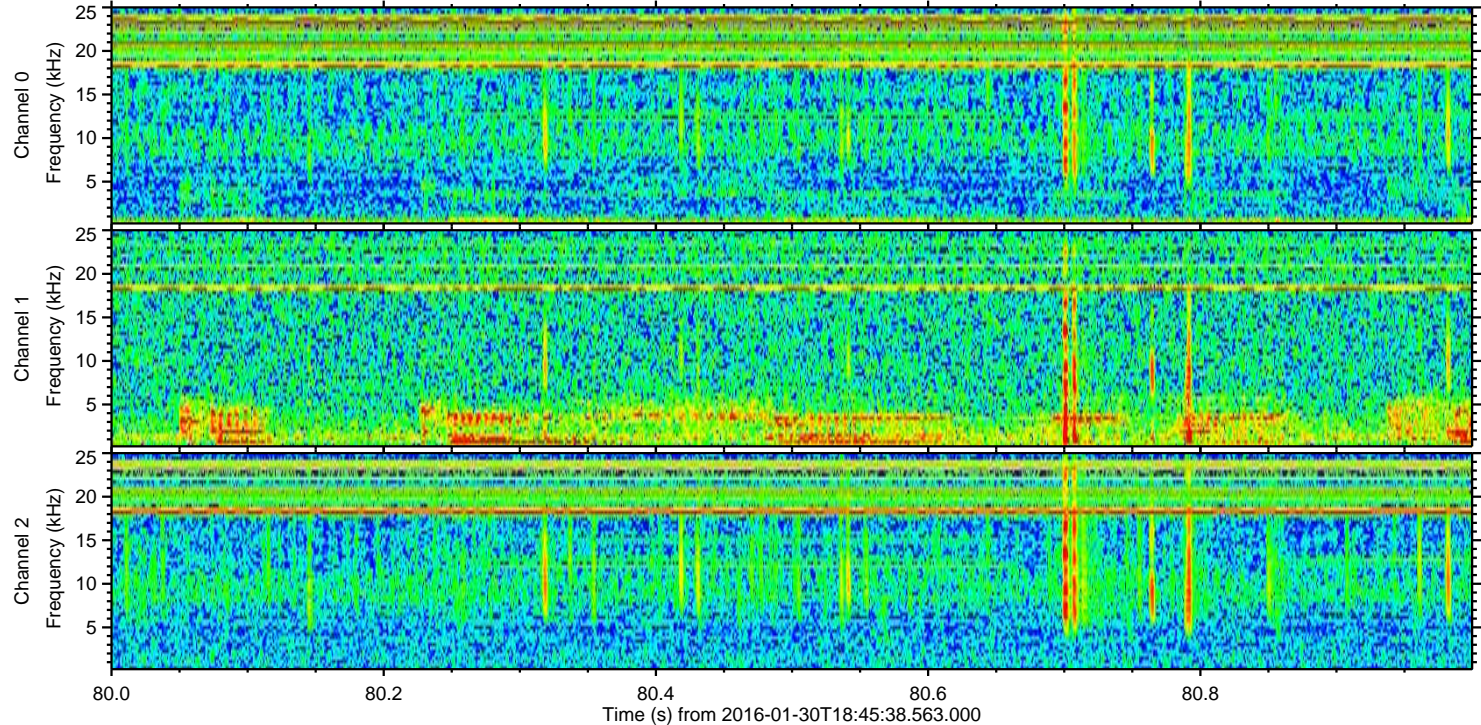
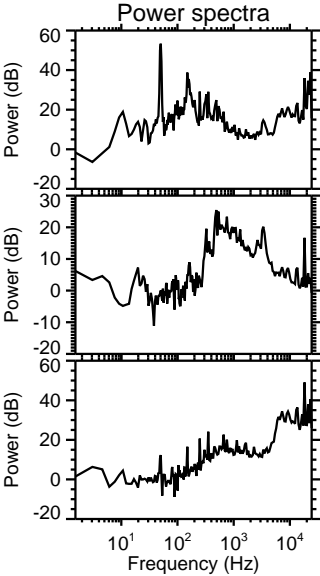
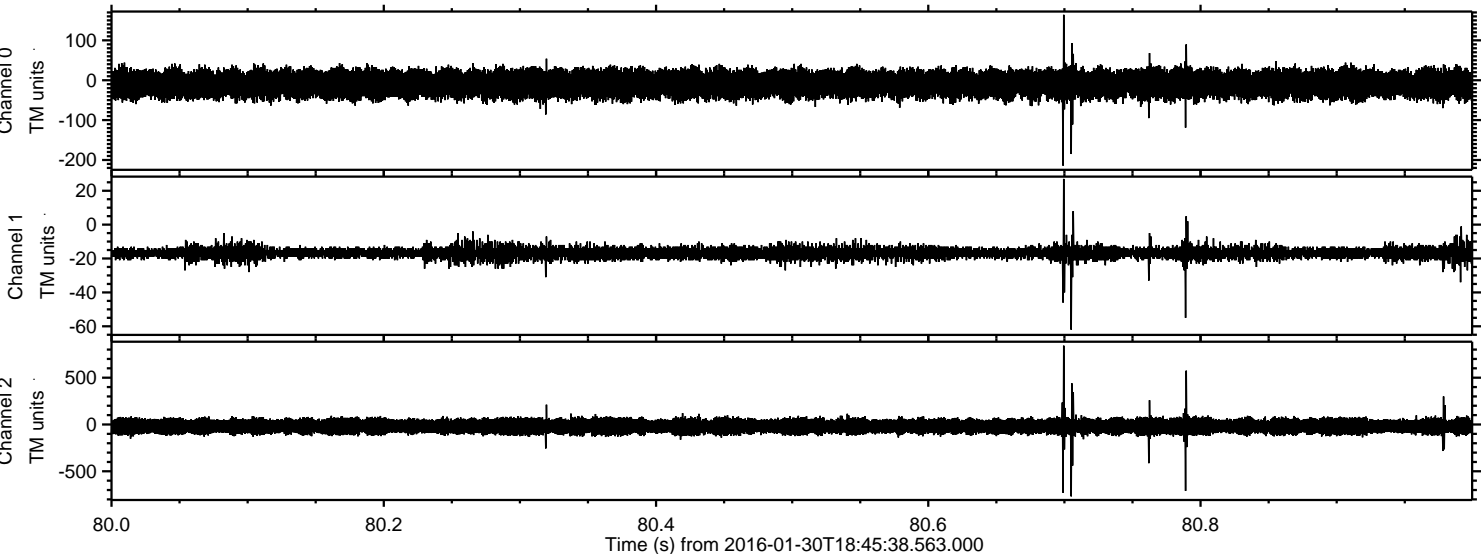


ELMAVAN 3D WAVEFORMS (Measured data sampled at 50 kHz) 51000 packets of 144 samples from 2016-01-30T18:45:38.563.000. Part 113/147



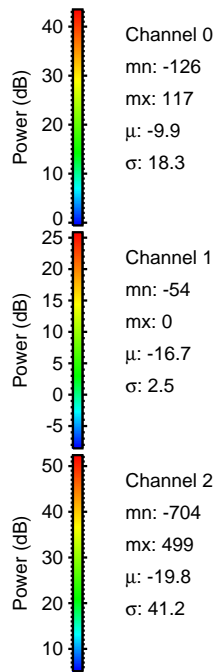
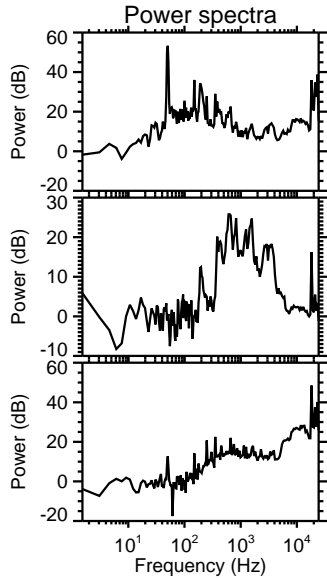
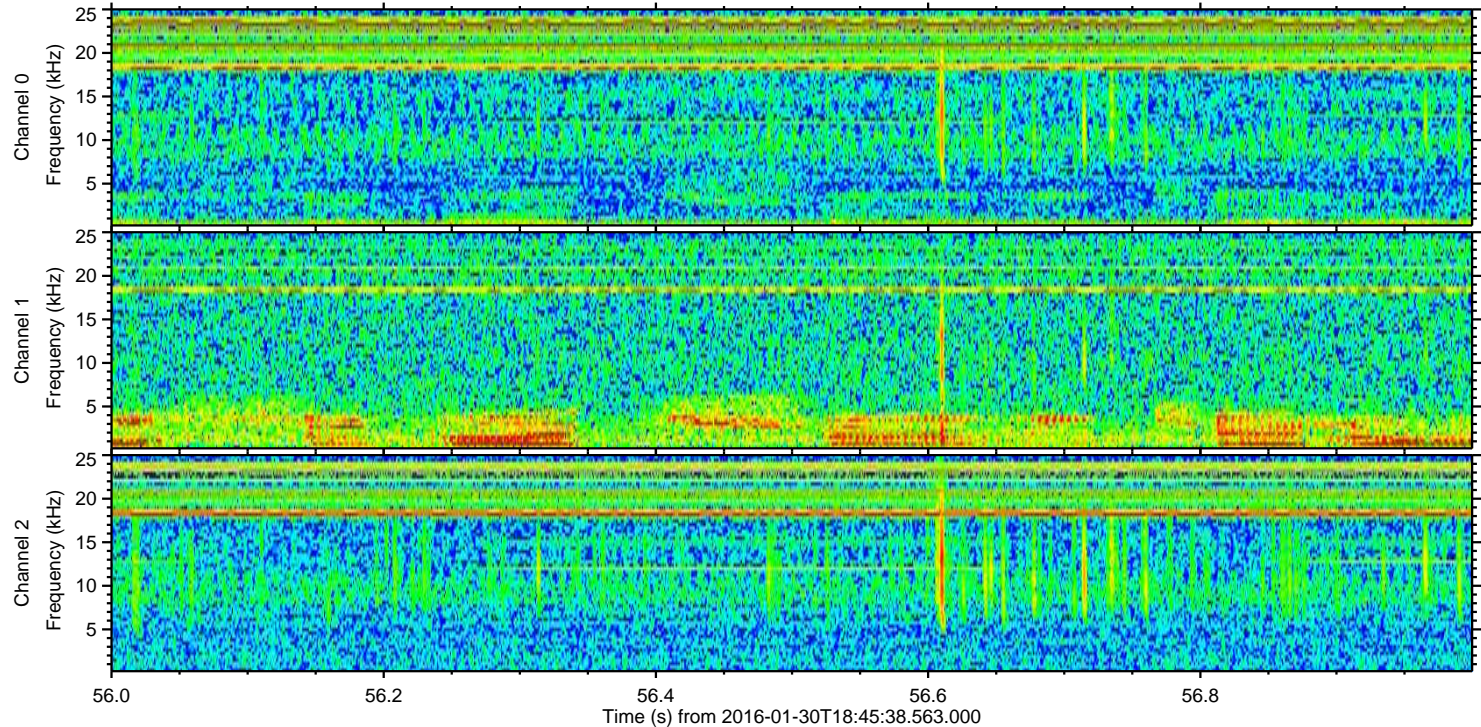
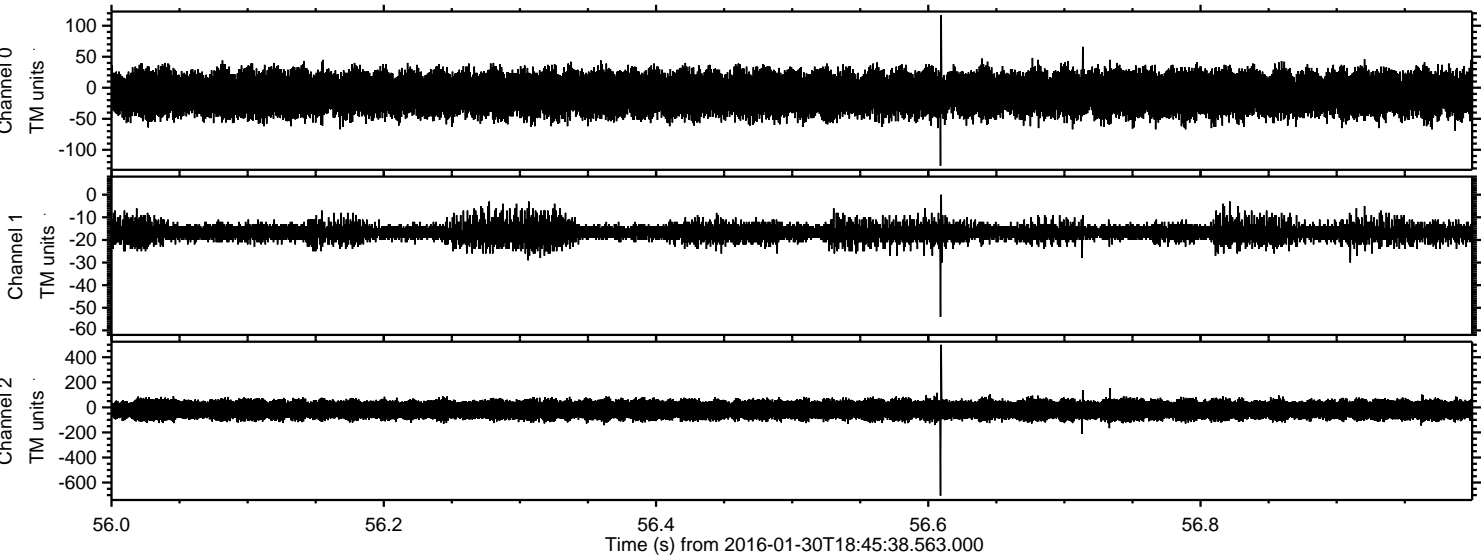


Processed Thu Apr 7 18:54:35 2016 by ELM ver.2012-10-06 from 001\_\_elm20160130\_184537\_\_dat00.bin





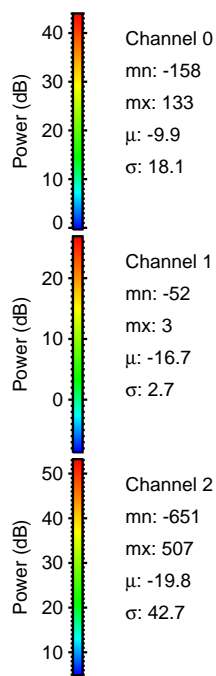
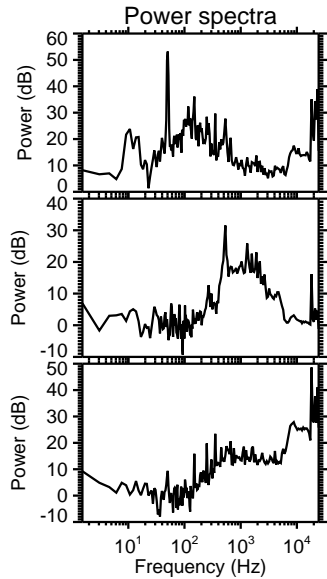
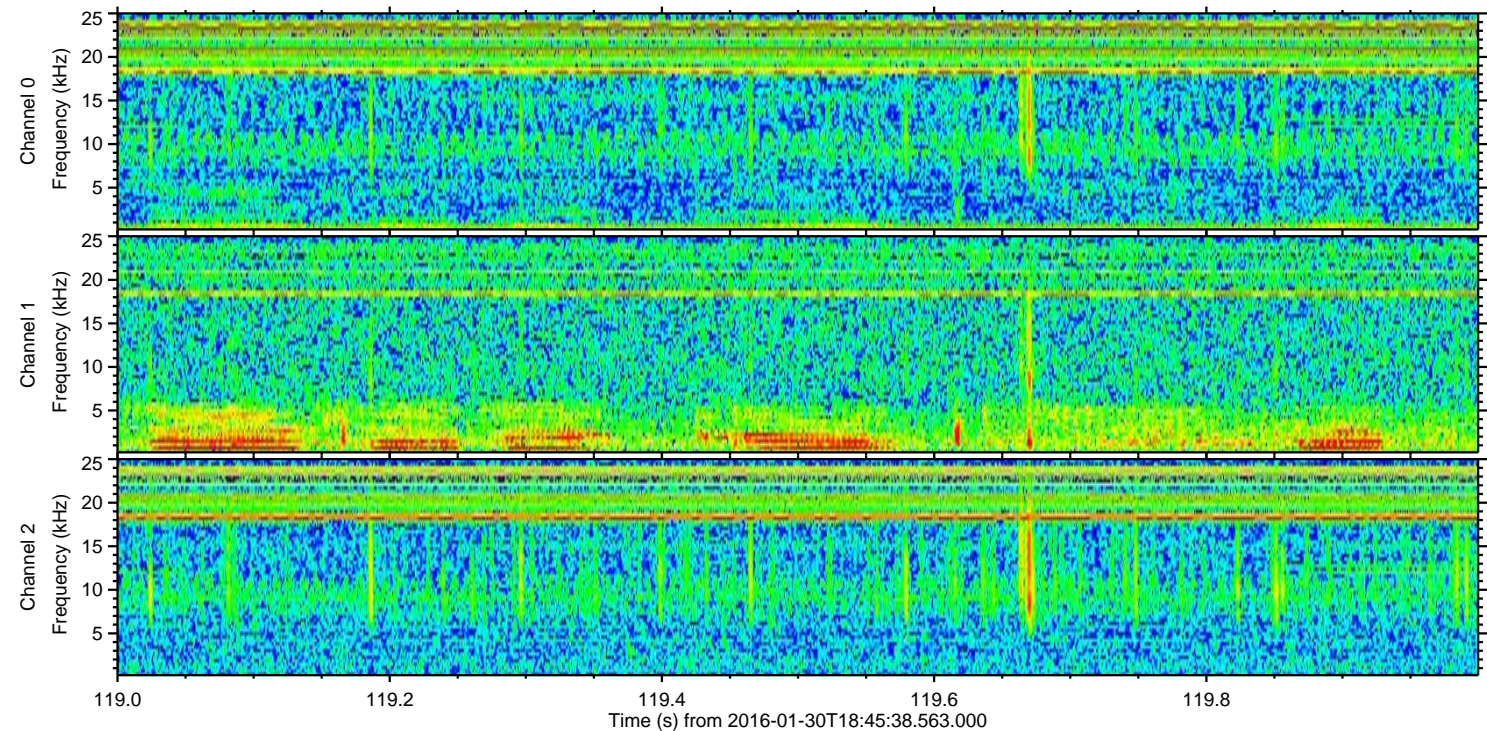
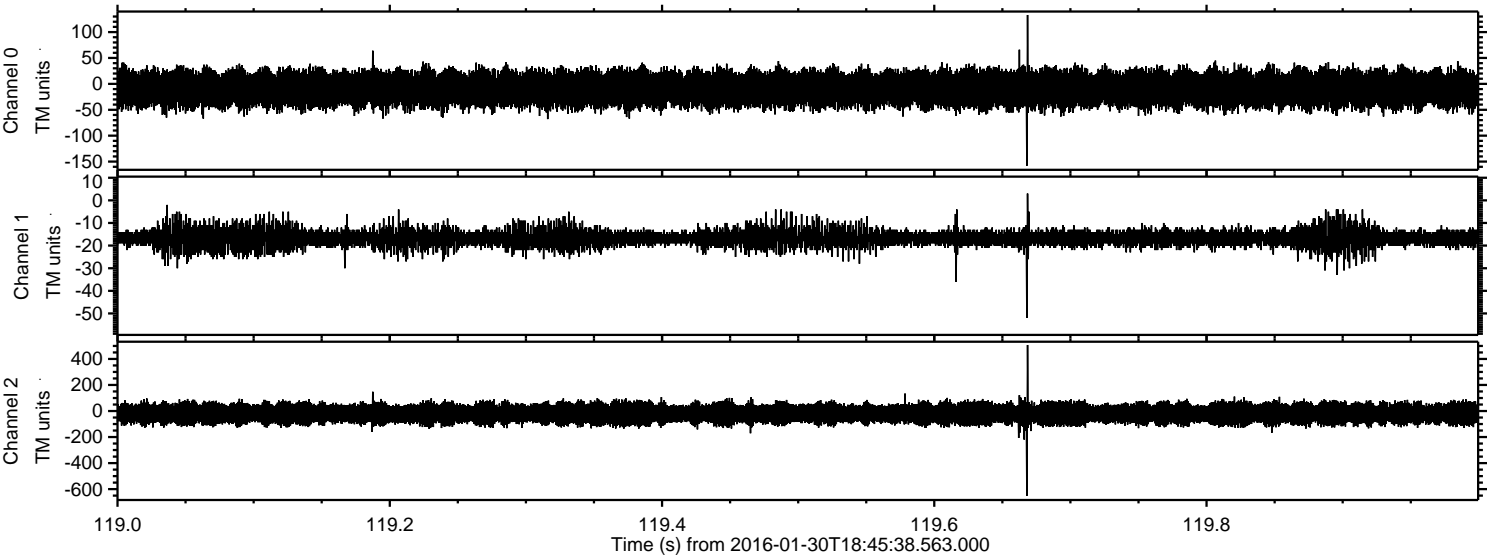
Processed Thu Apr 7 18:54:36 2016 by ELM ver.2012-10-06 from 001\_\_elm20160130\_184537\_\_dat00.bin





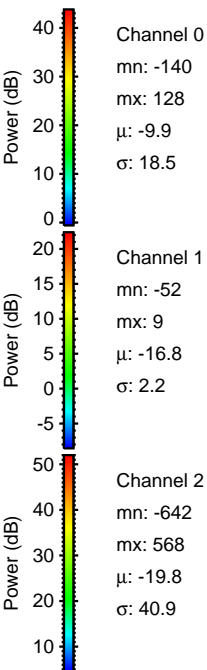
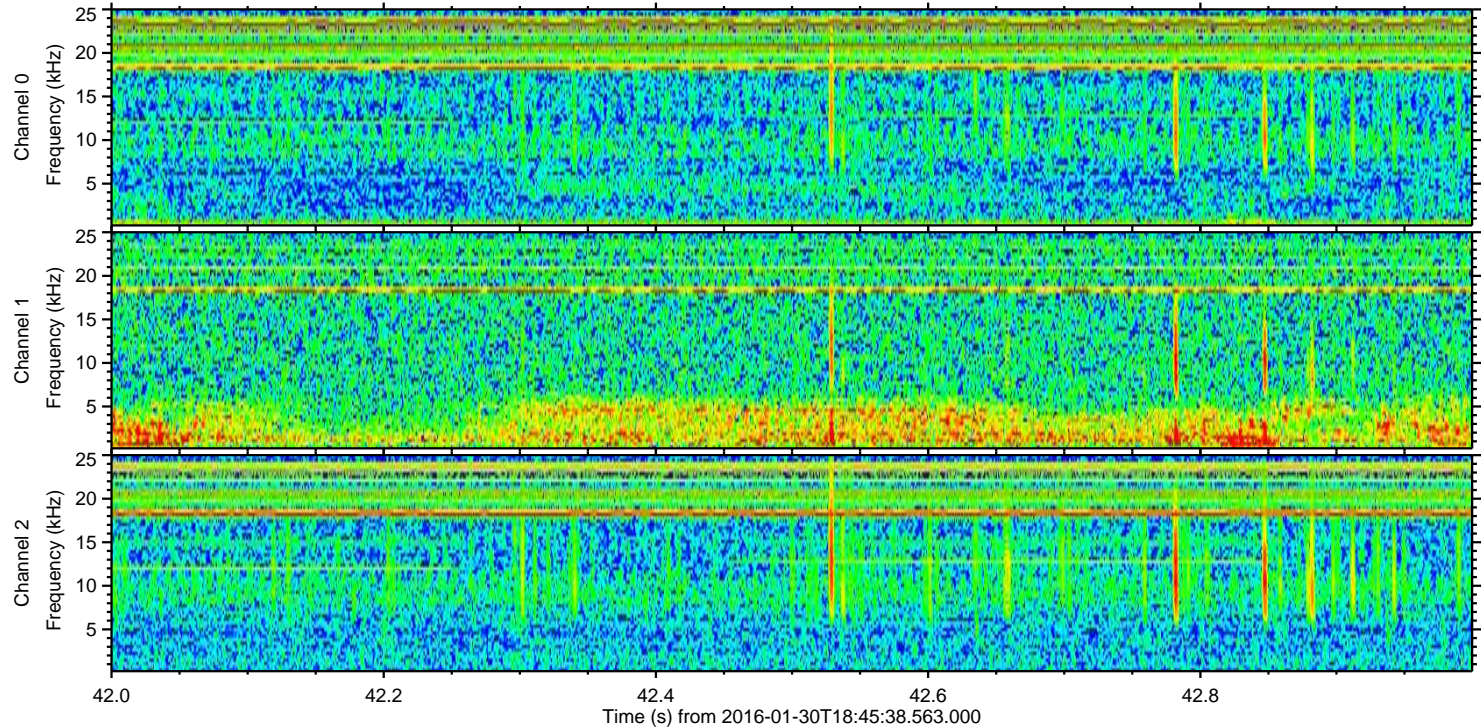
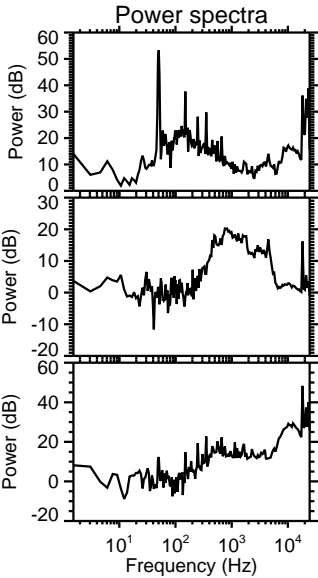
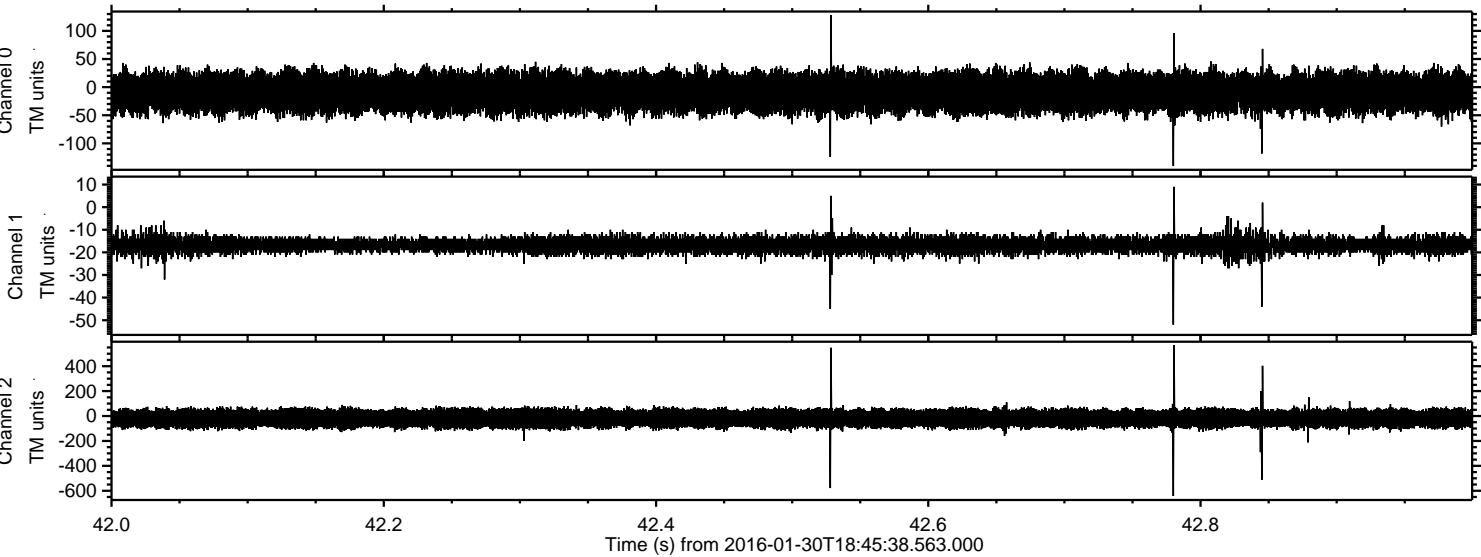
ELMAVAN 3D WAVEFORMS (Measured data sampled at 50 kHz) 51000 packets of 144 samples from 2016-01-30T18:45:38.563.000. Part 120/147

Processed Thu Apr 7 18:54:37 2016 by ELM ver.2012-10-06 from 001\_\_elm20160130\_184537\_\_dat00.bin

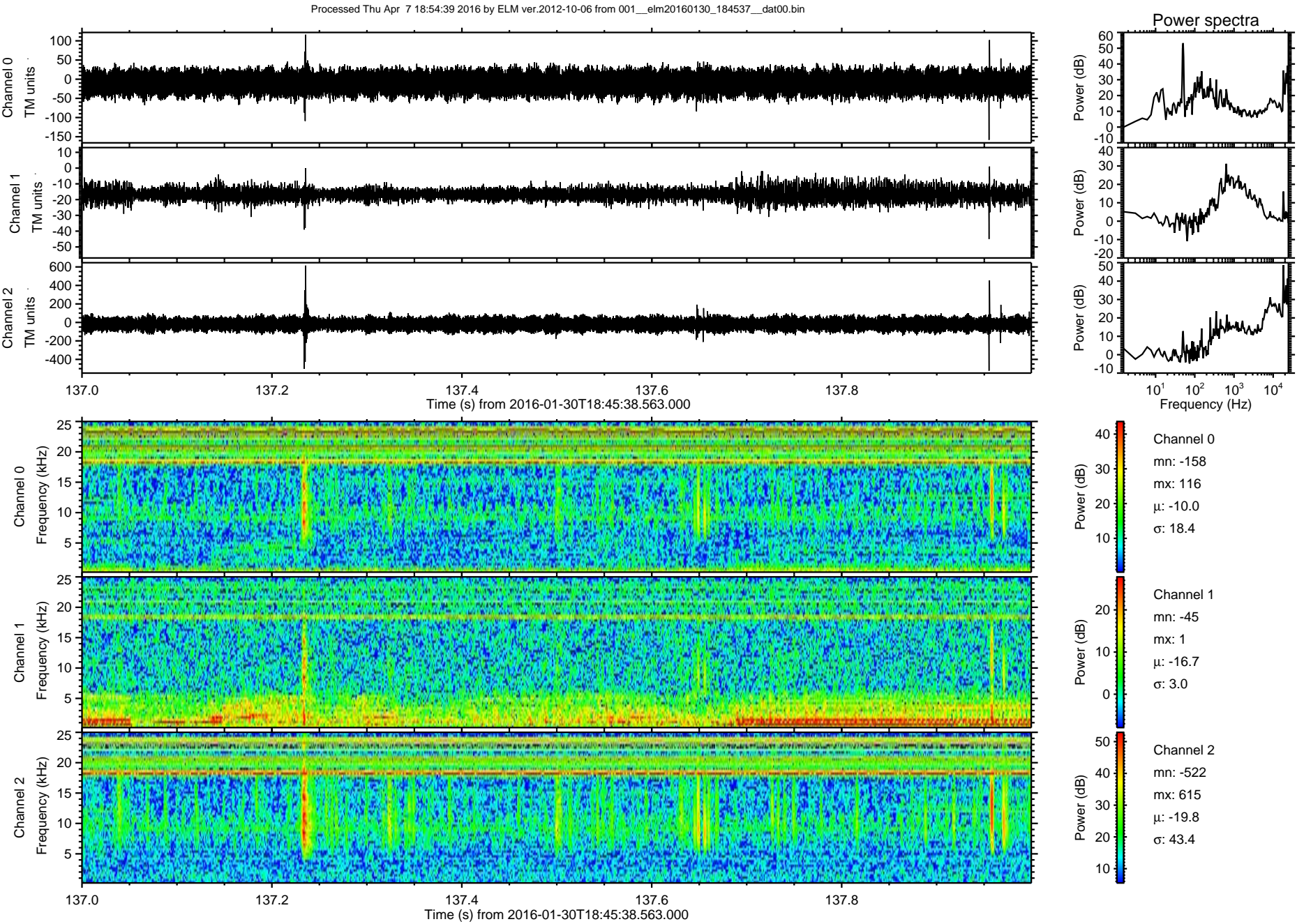




Processed Thu Apr 7 18:54:38 2016 by ELM ver.2012-10-06 from 001\_\_elm20160130\_184537\_\_dat00.bin

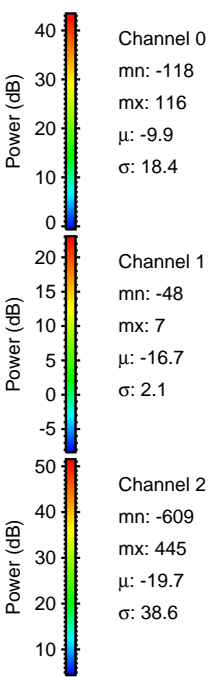
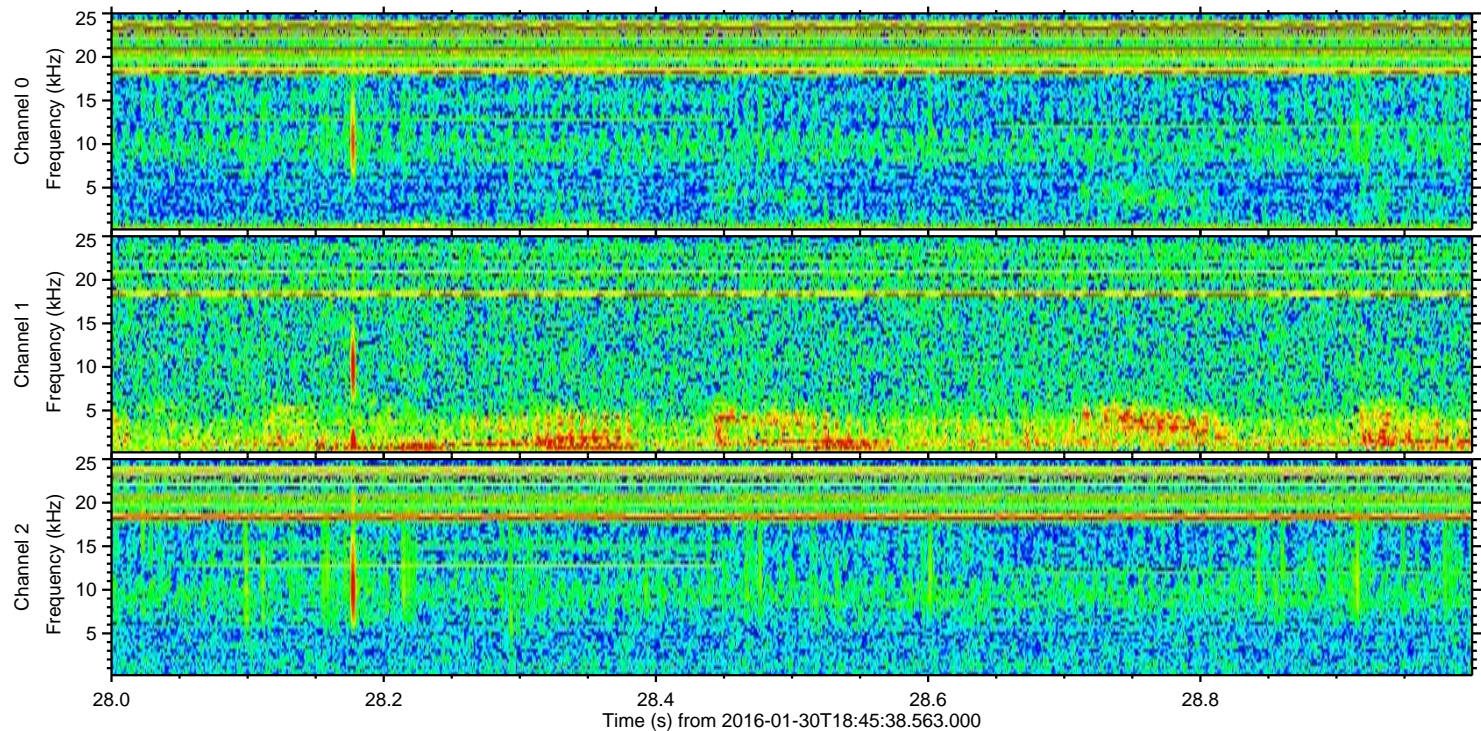
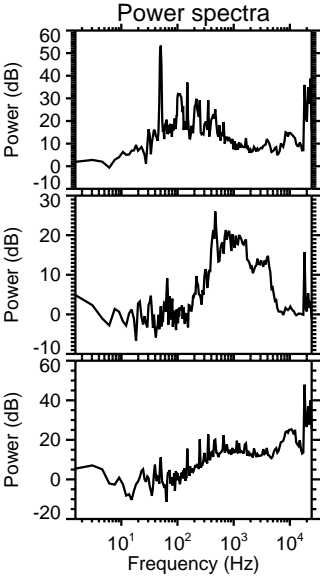
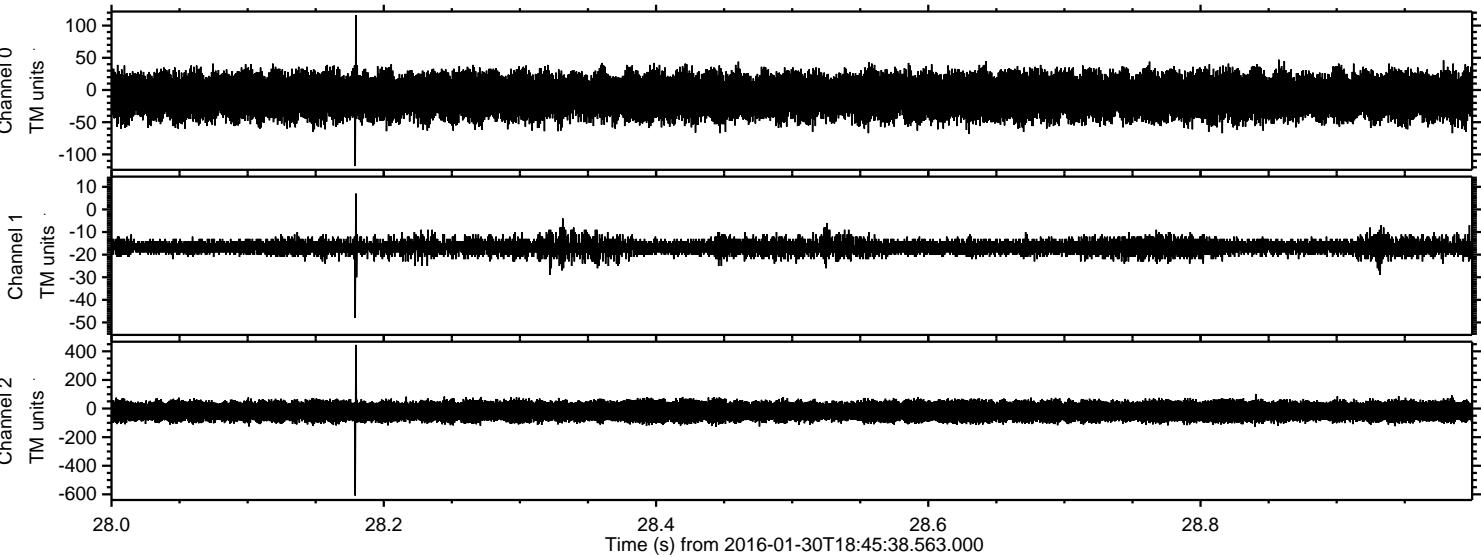








Processed Thu Apr 7 18:54:40 2016 by ELM ver.2012-10-06 from 001\_\_elm20160130\_184537\_\_dat00.bin





Processed Thu Apr 7 18:54:41 2016 by ELM ver.2012-10-06 from 001\_\_elm20160130\_184537\_\_dat00.bin

