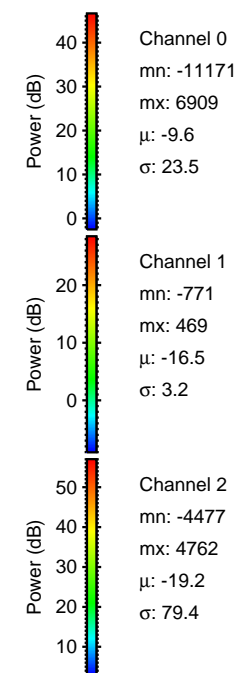
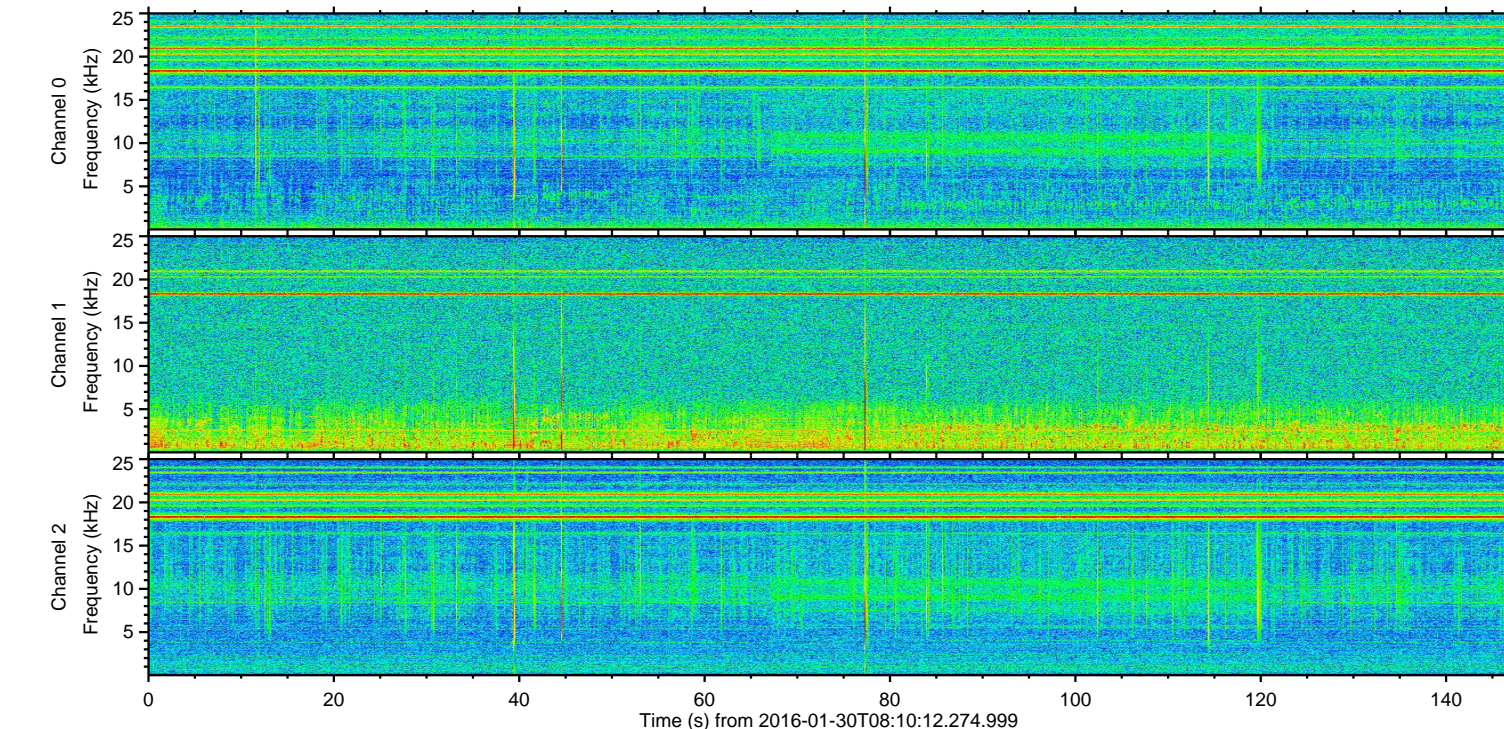
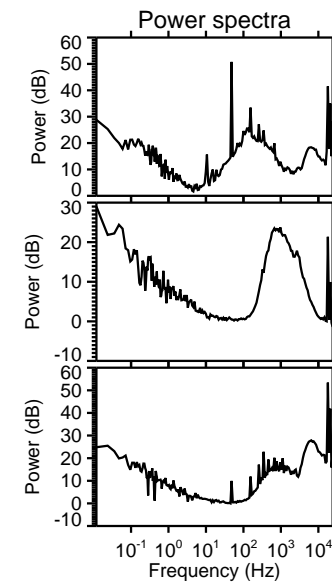
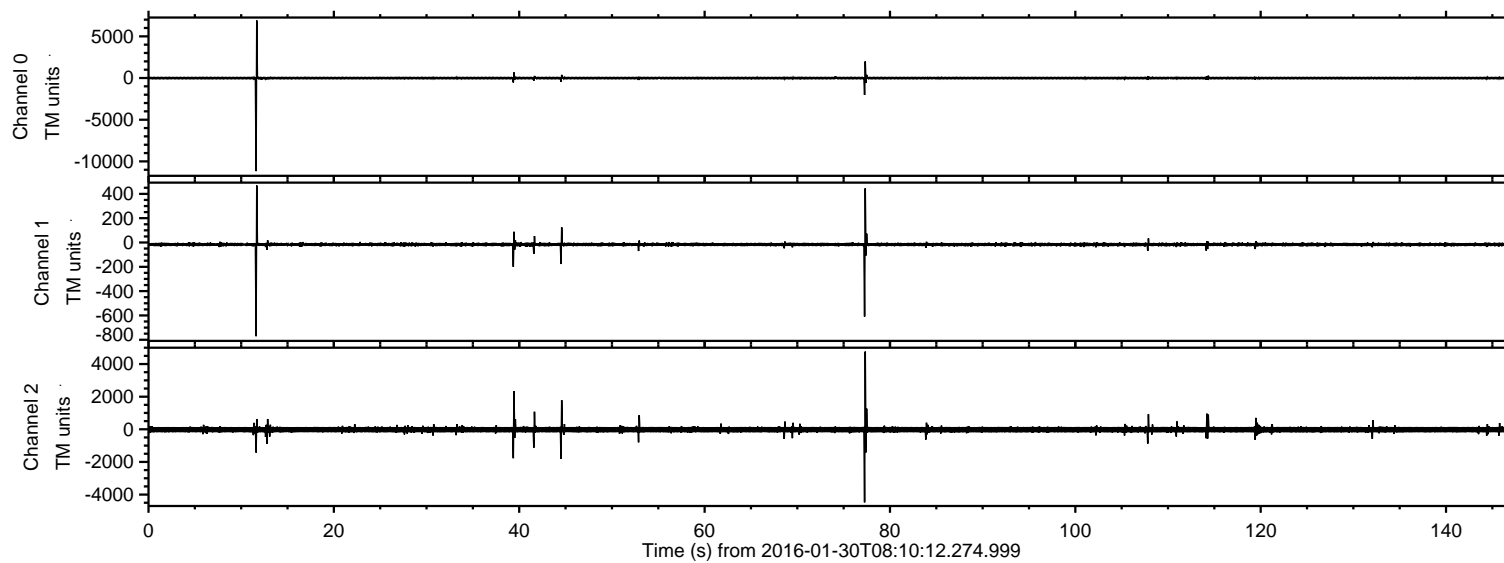


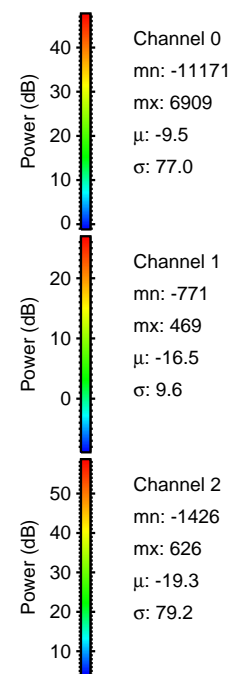
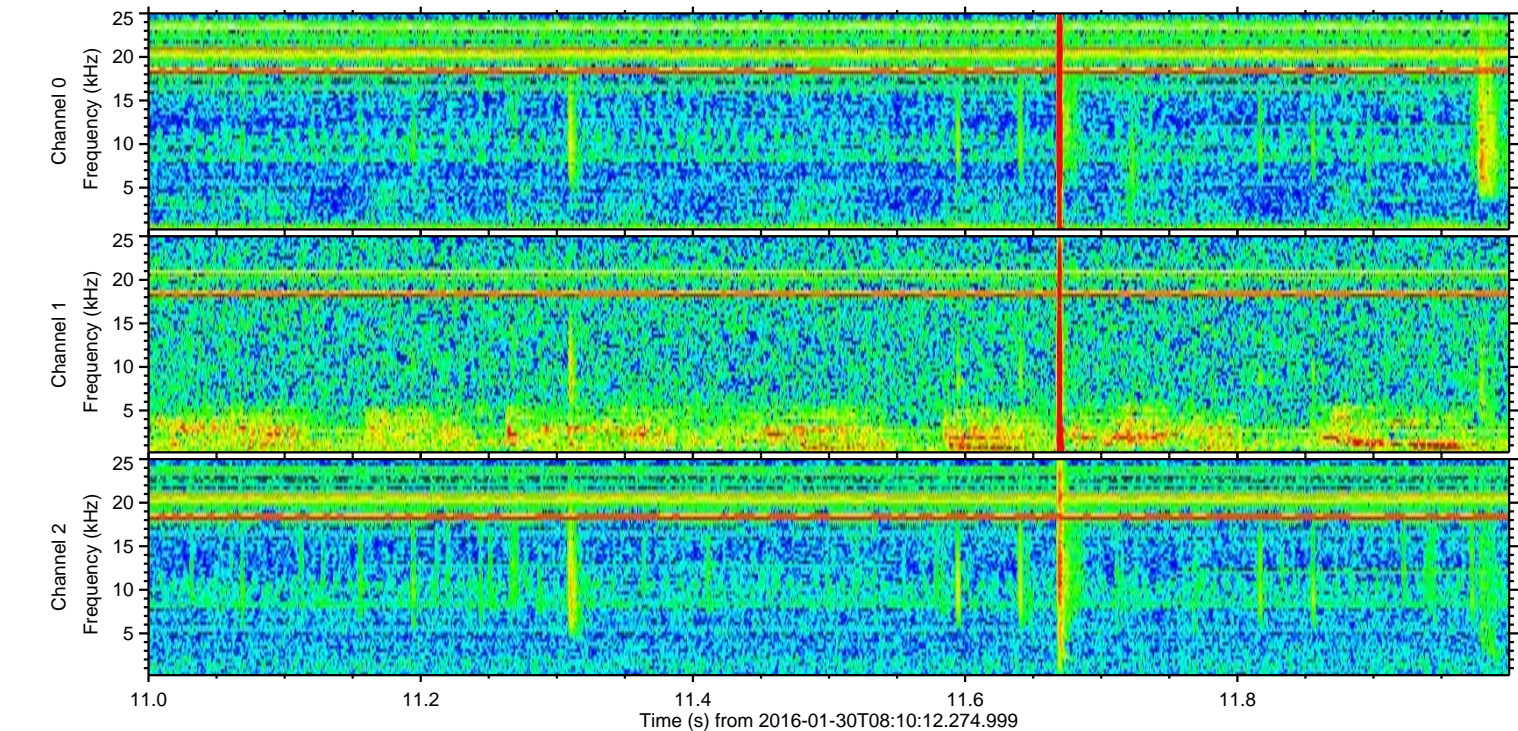
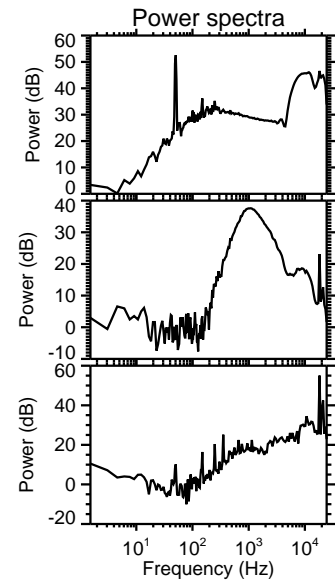
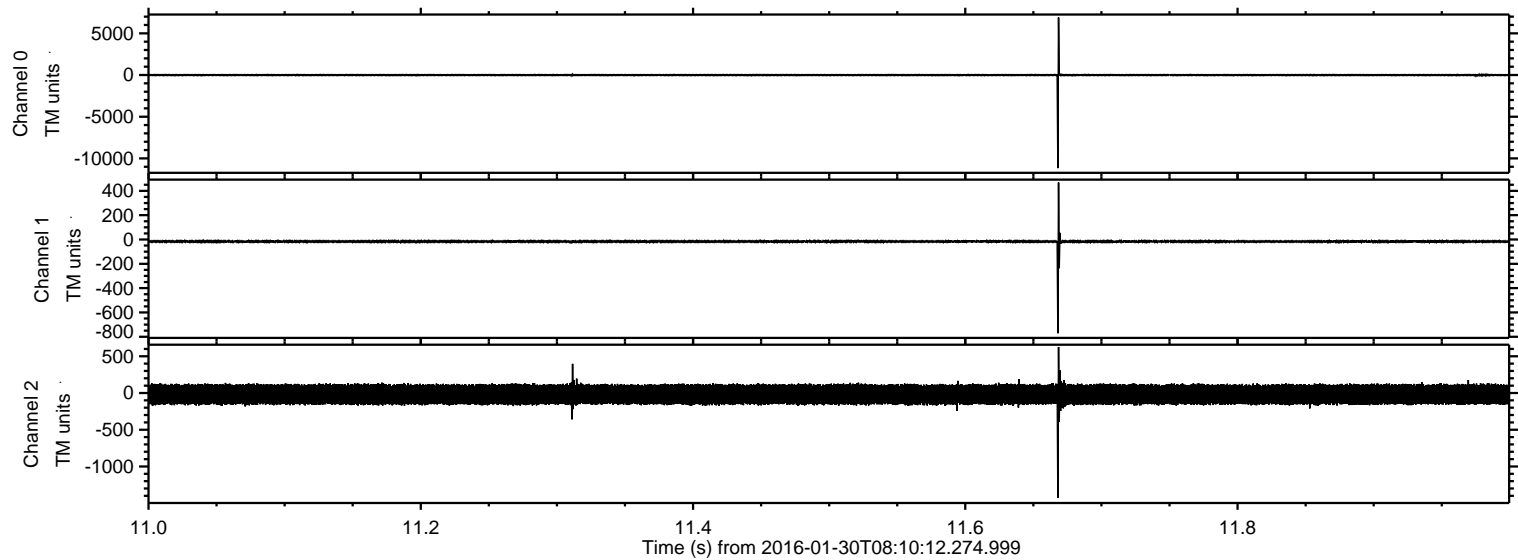
ELMAVAN 3D WAVEFORMS (Measured data sampled at 50 kHz) 51000 packets of 144 samples from 2016-01-30T08:10:12.274.999.

Processed Thu Apr 7 16:43:53 2016 by ELM ver.2012-10-06 from 001__elm20160130_081011__dat00.bin

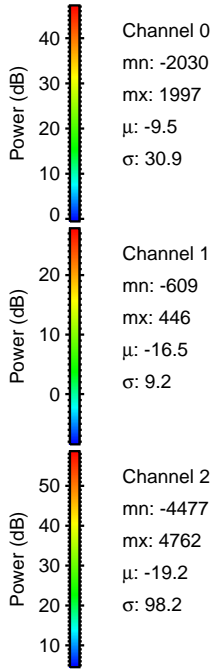
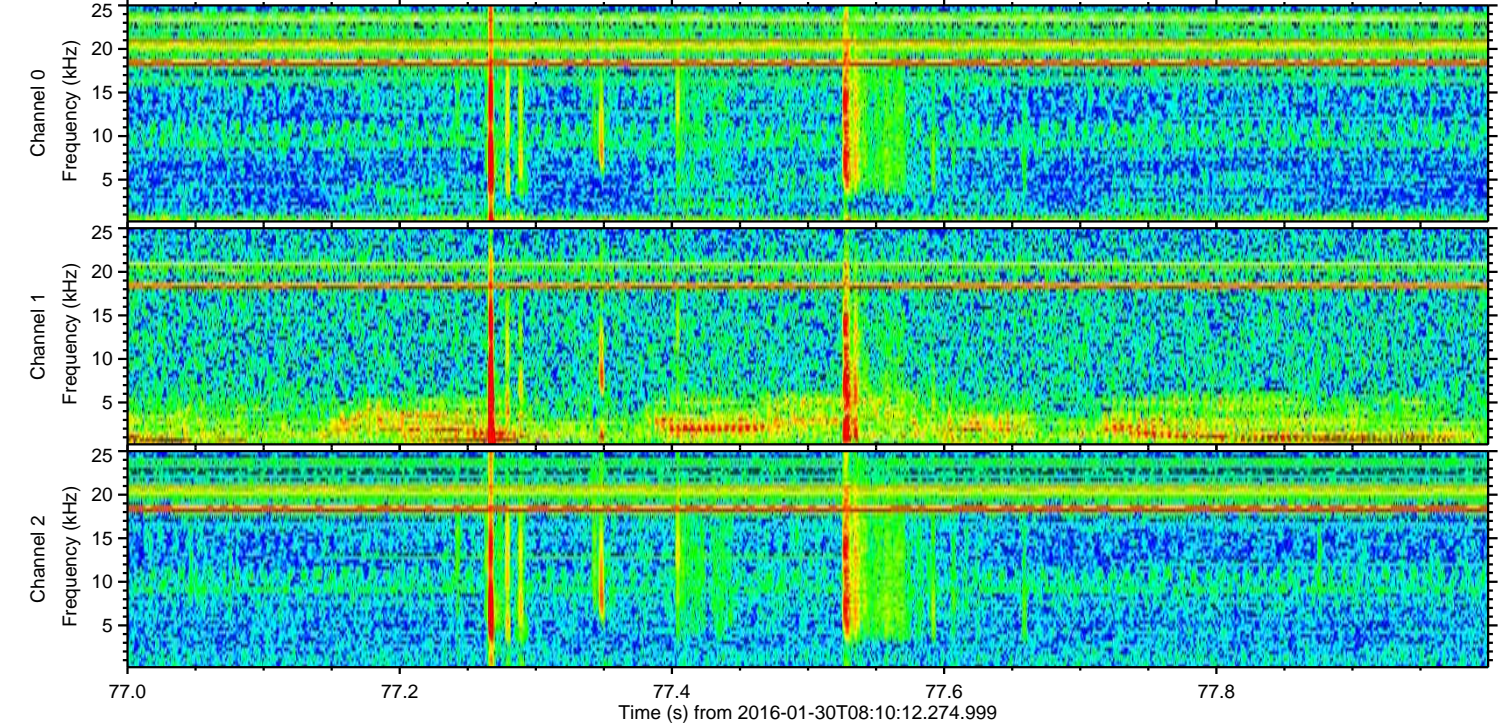
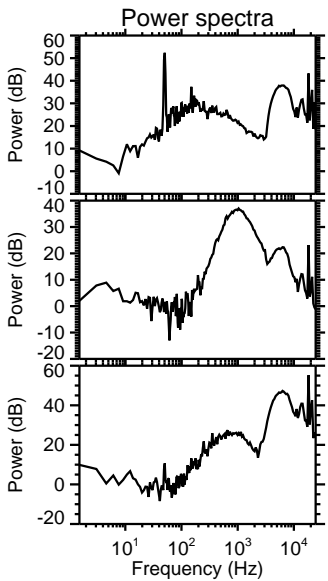
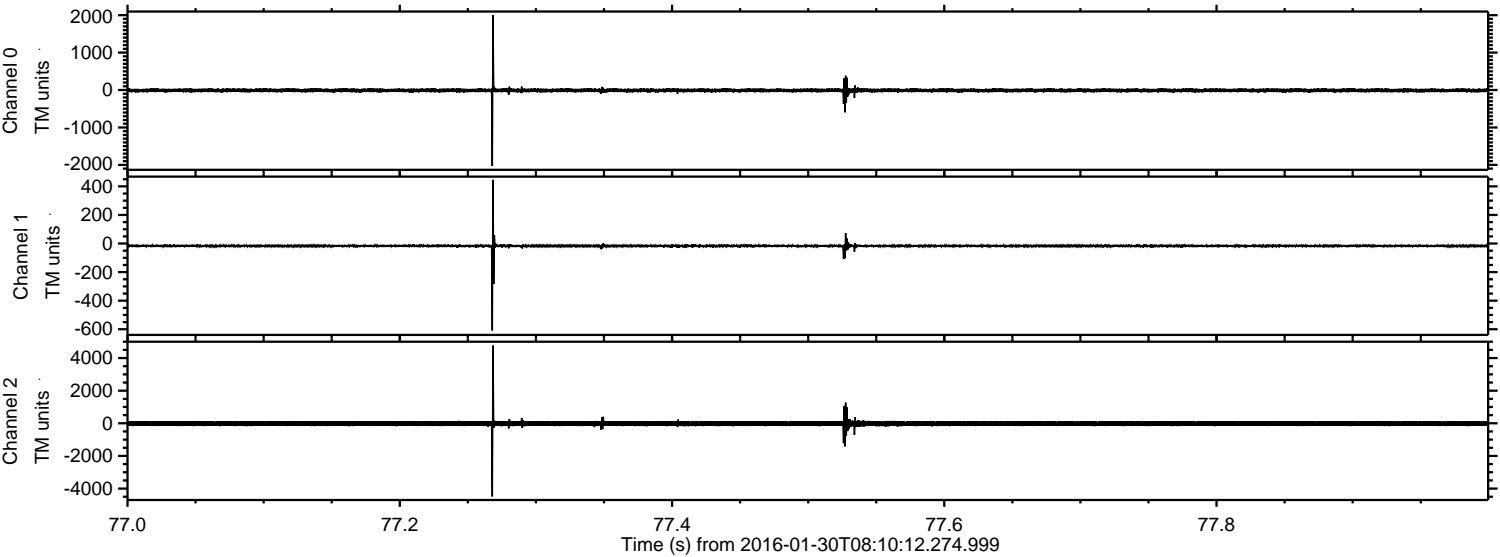


ELMAVAN 3D WAVEFORMS (Measured data sampled at 50 kHz) 51000 packets of 144 samples from 2016-01-30T08:10:12.274.999. Part 12/147

Processed Thu Apr 7 16:44:05 2016 by ELM ver.2012-10-06 from 001__elm20160130_081011__dat00.bin



Processed Thu Apr 7 16:44:06 2016 by ELM ver.2012-10-06 from 001__elm20160130_081011__dat00.bin

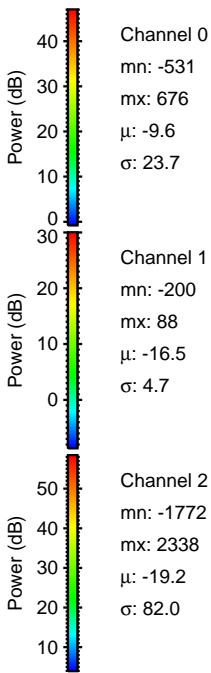
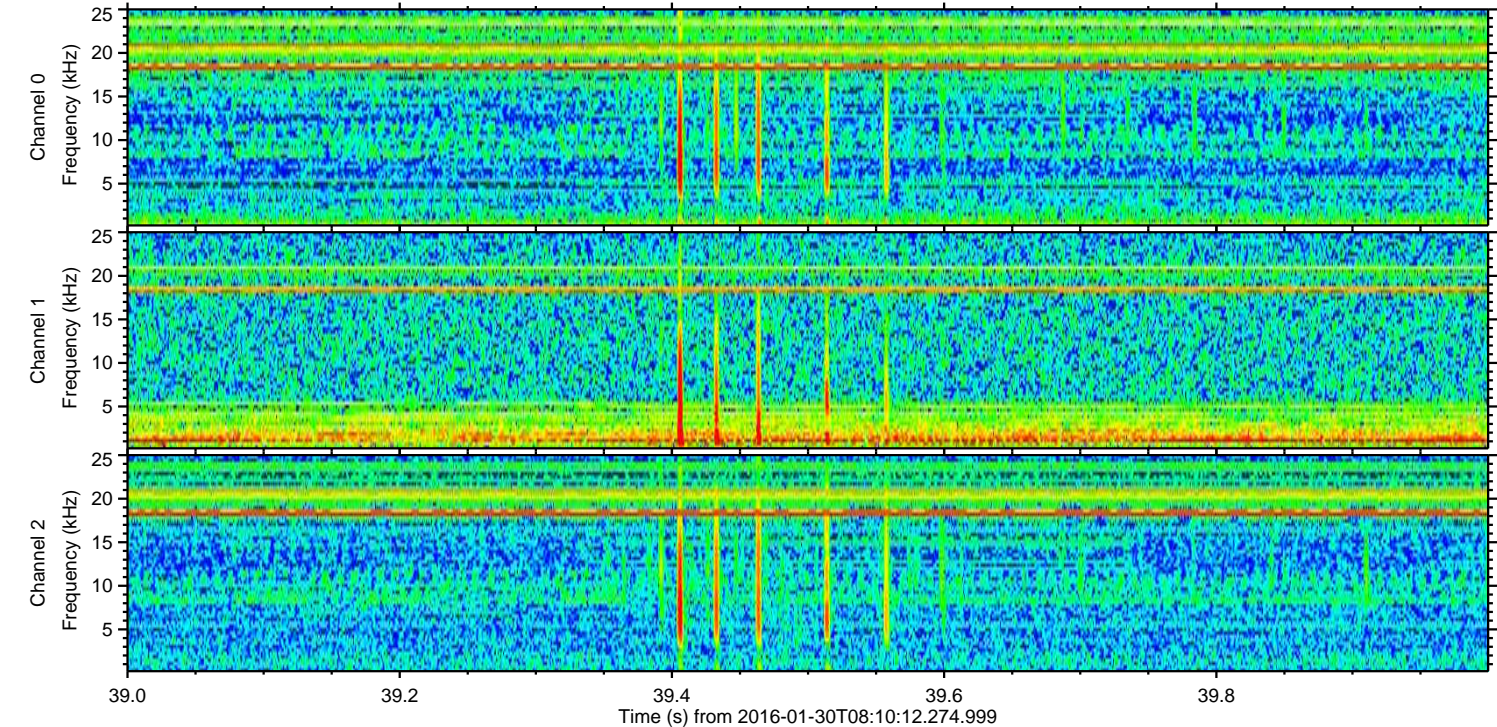
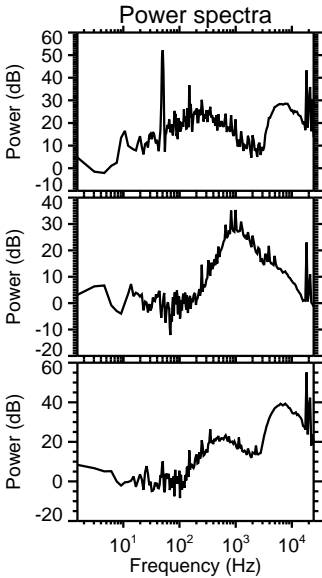
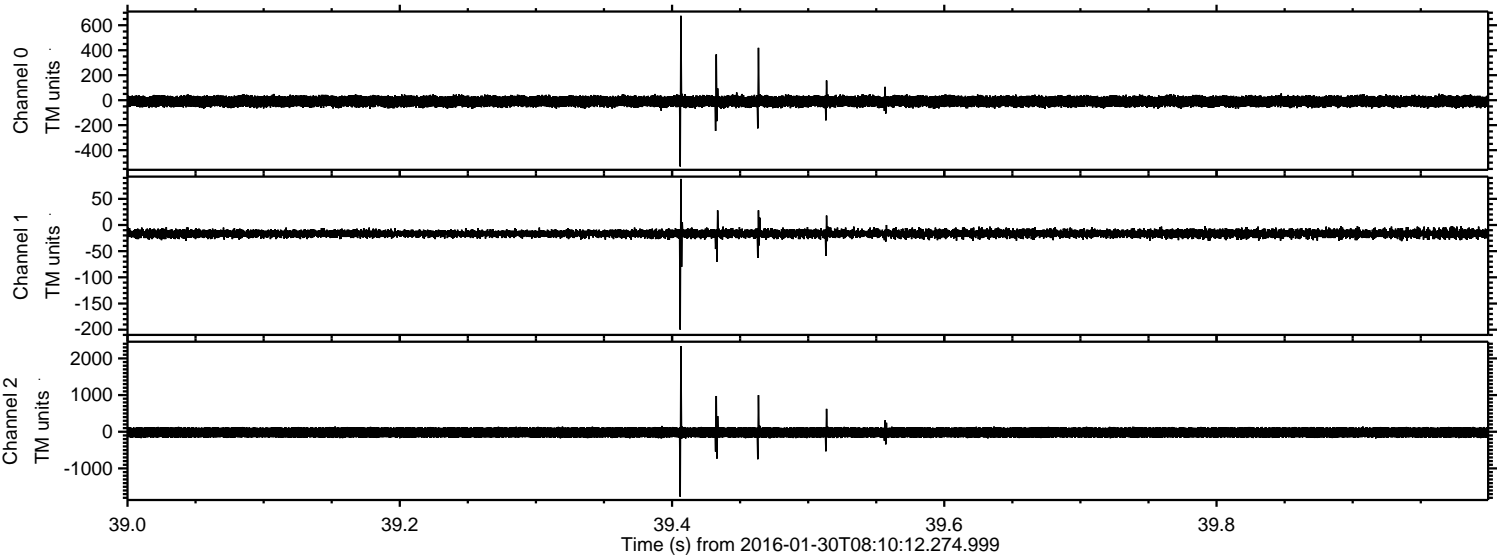


Channel 0
mn: -2030
mx: 1997
 μ : -9.5
 σ : 30.9

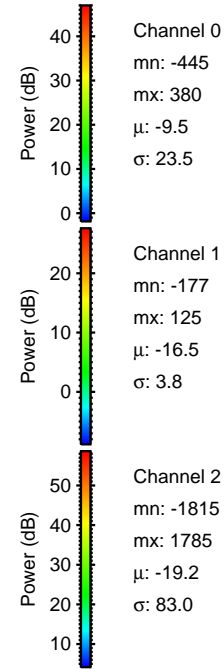
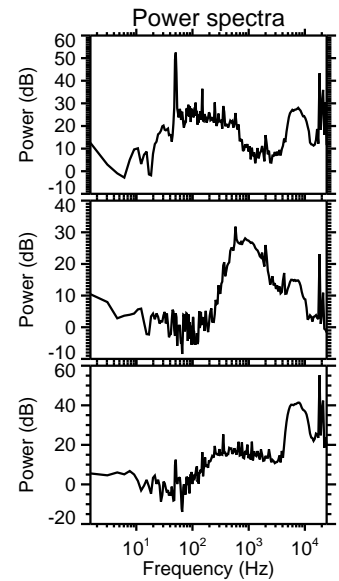
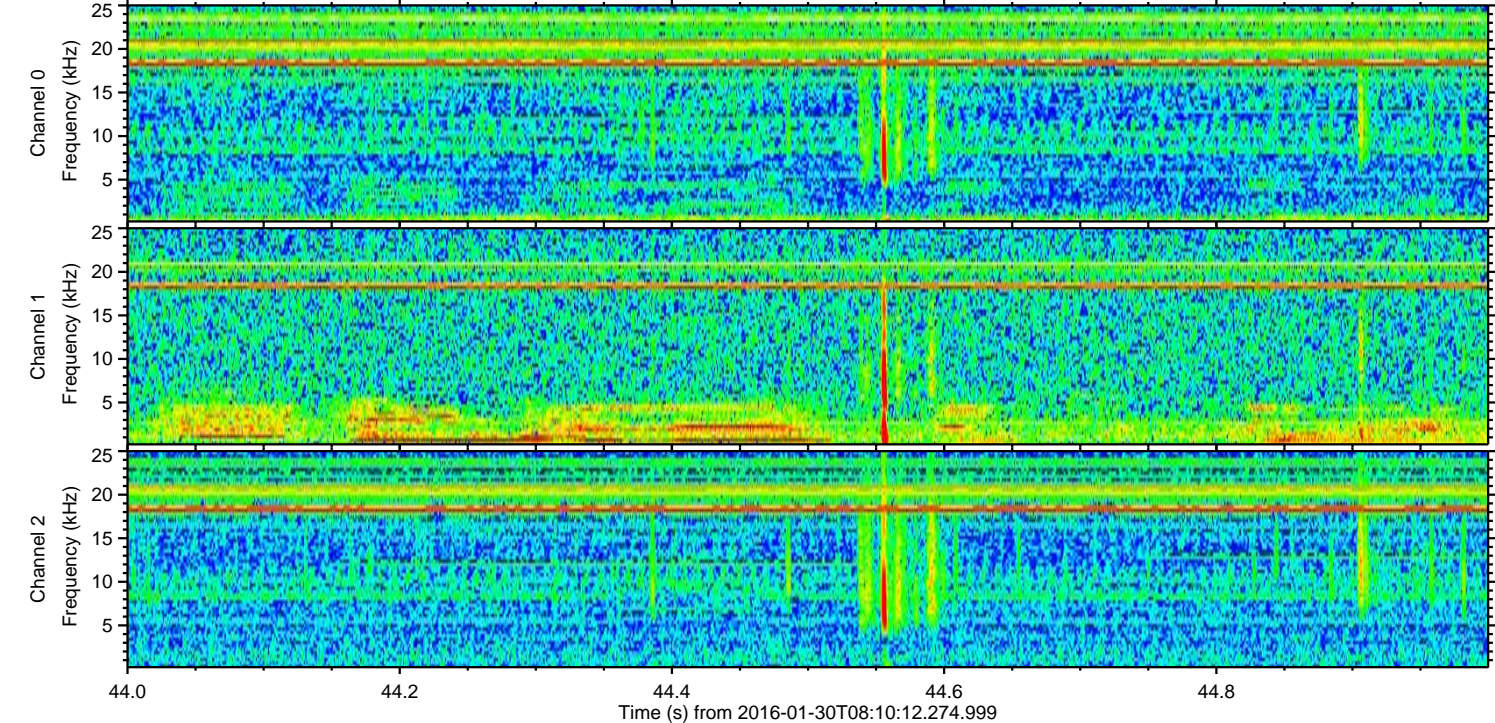
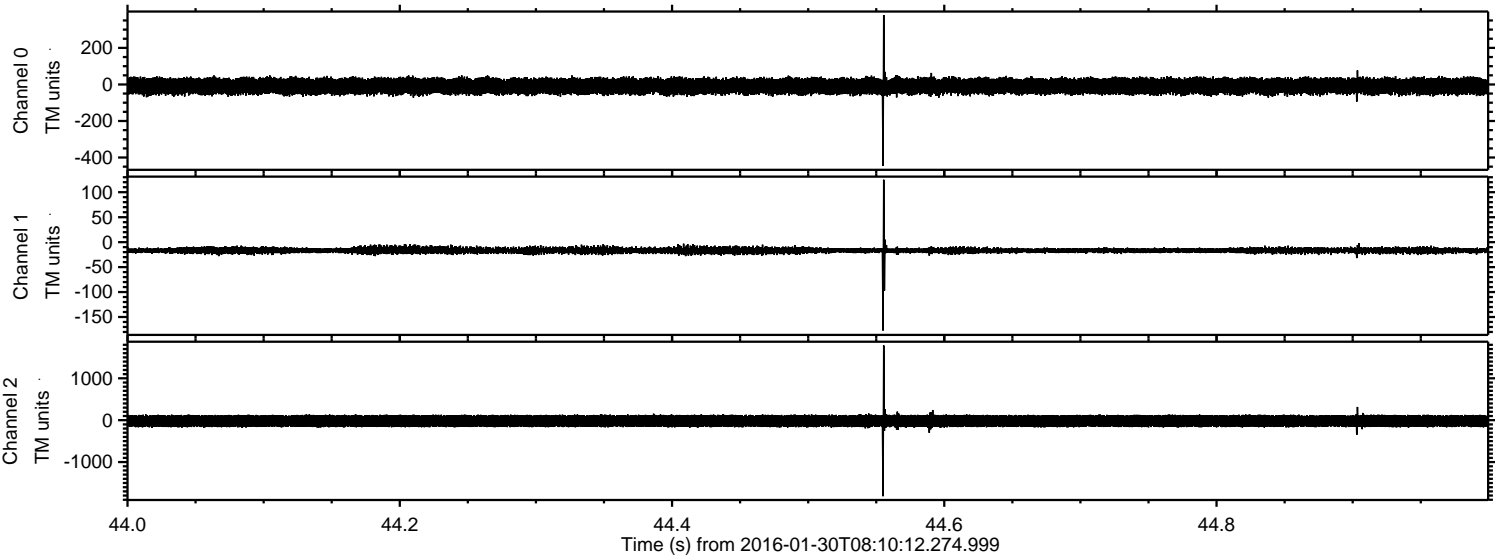
Channel 1
mn: -609
mx: 446
 μ : -16.5
 σ : 9.2

Channel 2
mn: -4477
mx: 4762
 μ : -19.2
 σ : 98.2

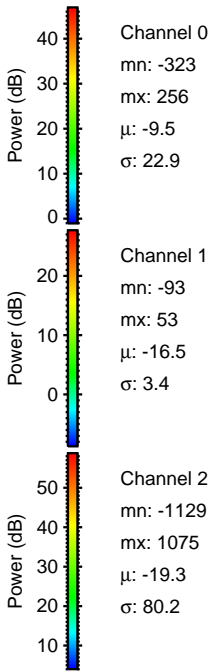
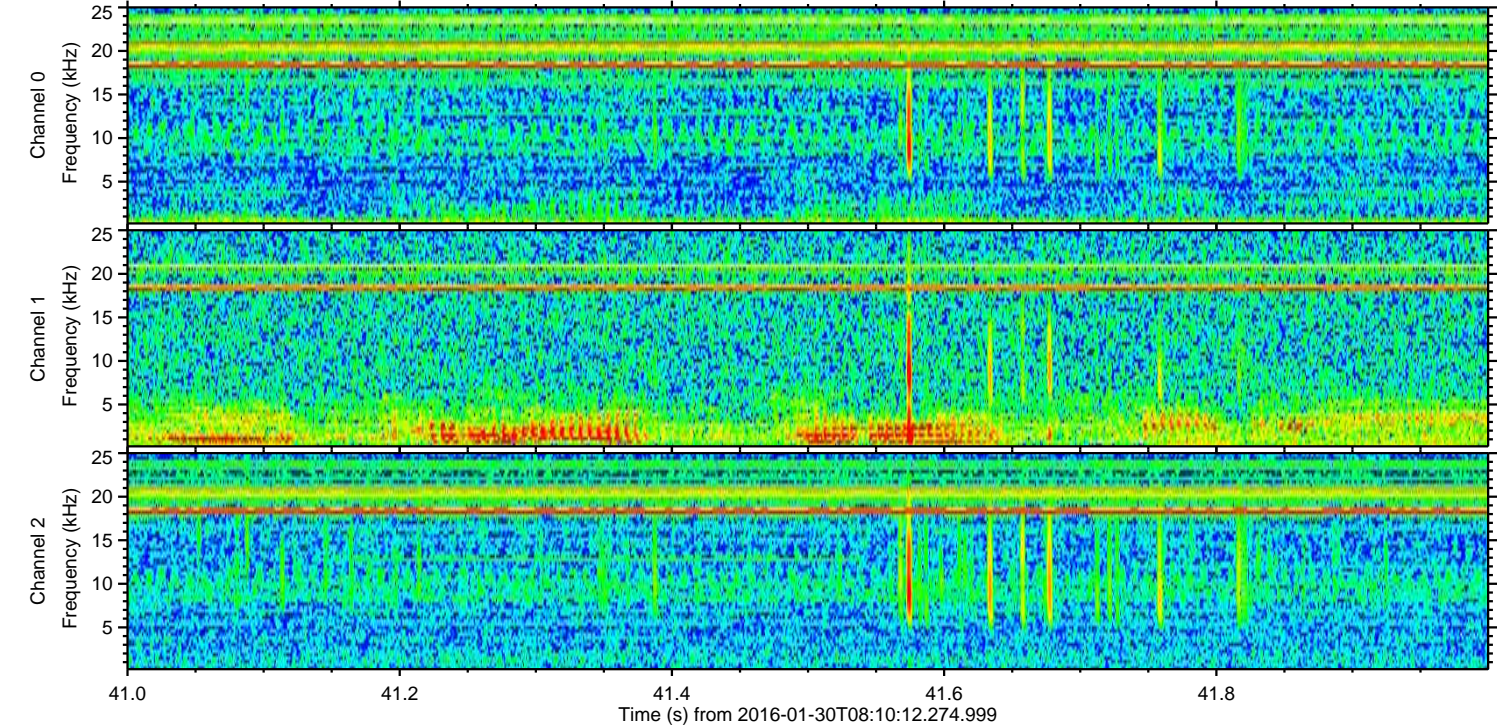
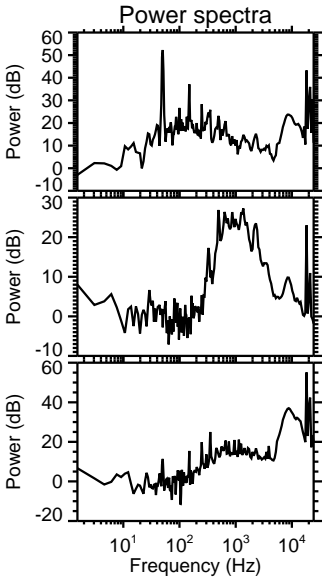
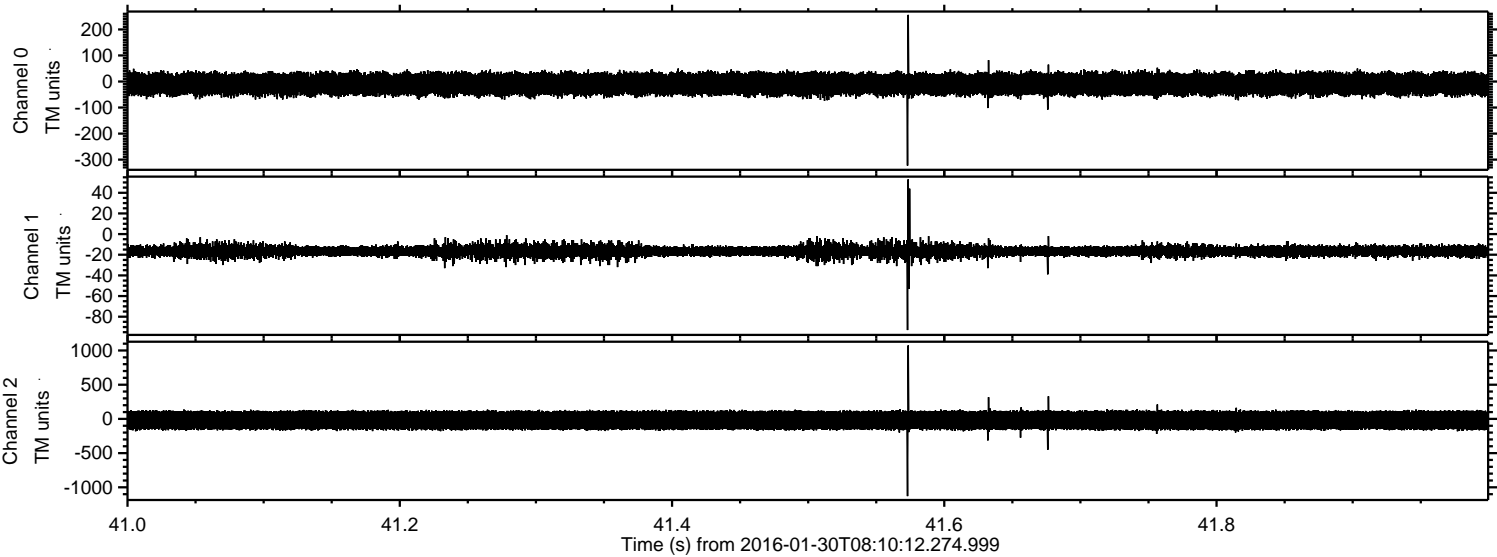
Processed Thu Apr 7 16:44:07 2016 by ELM ver.2012-10-06 from 001__elm20160130_081011__dat00.bin

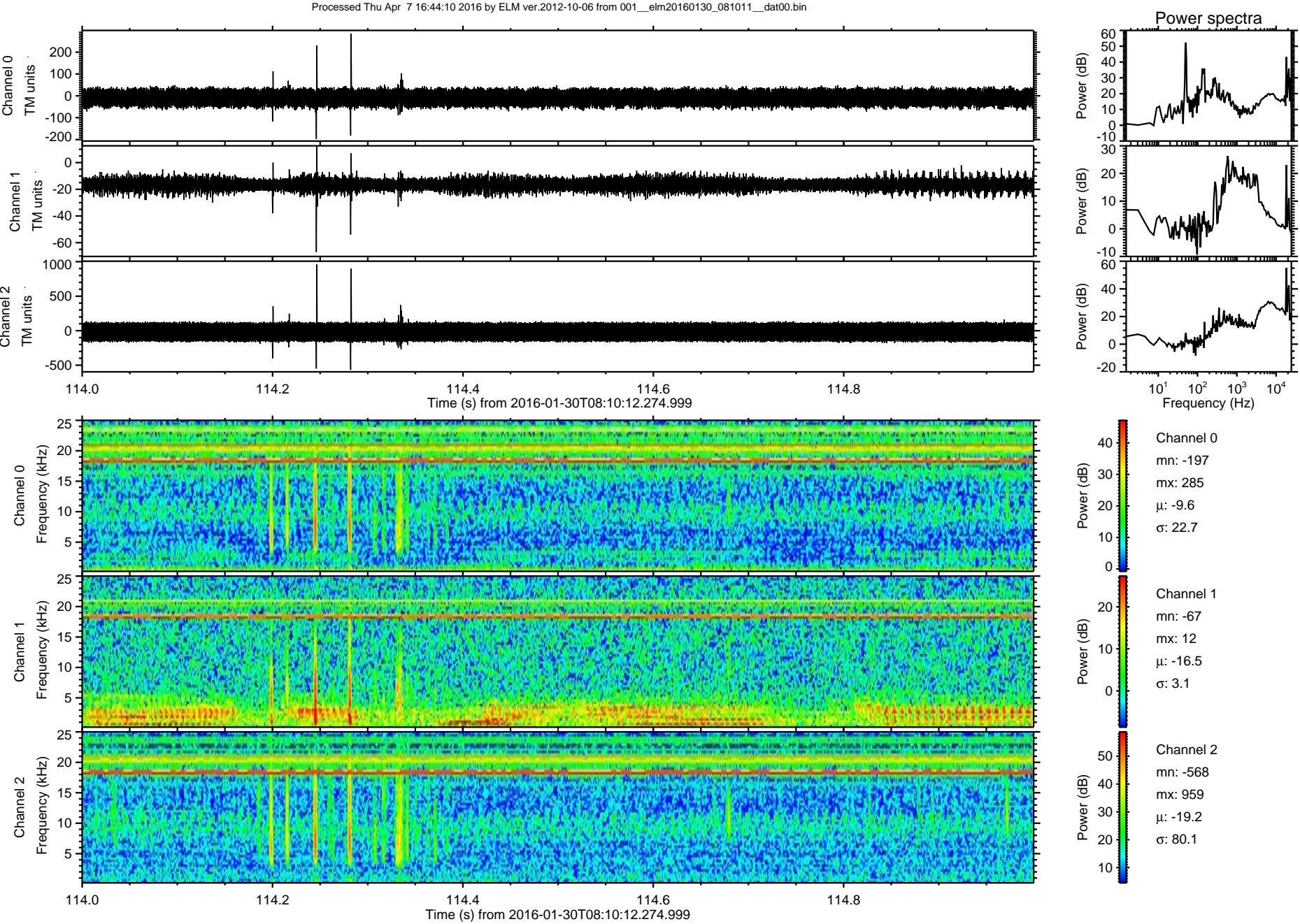


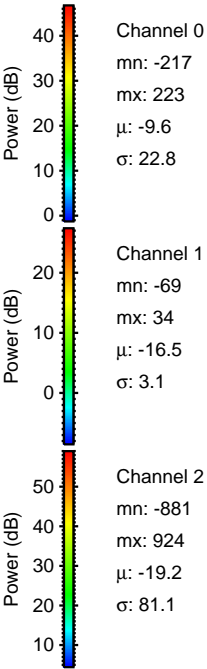
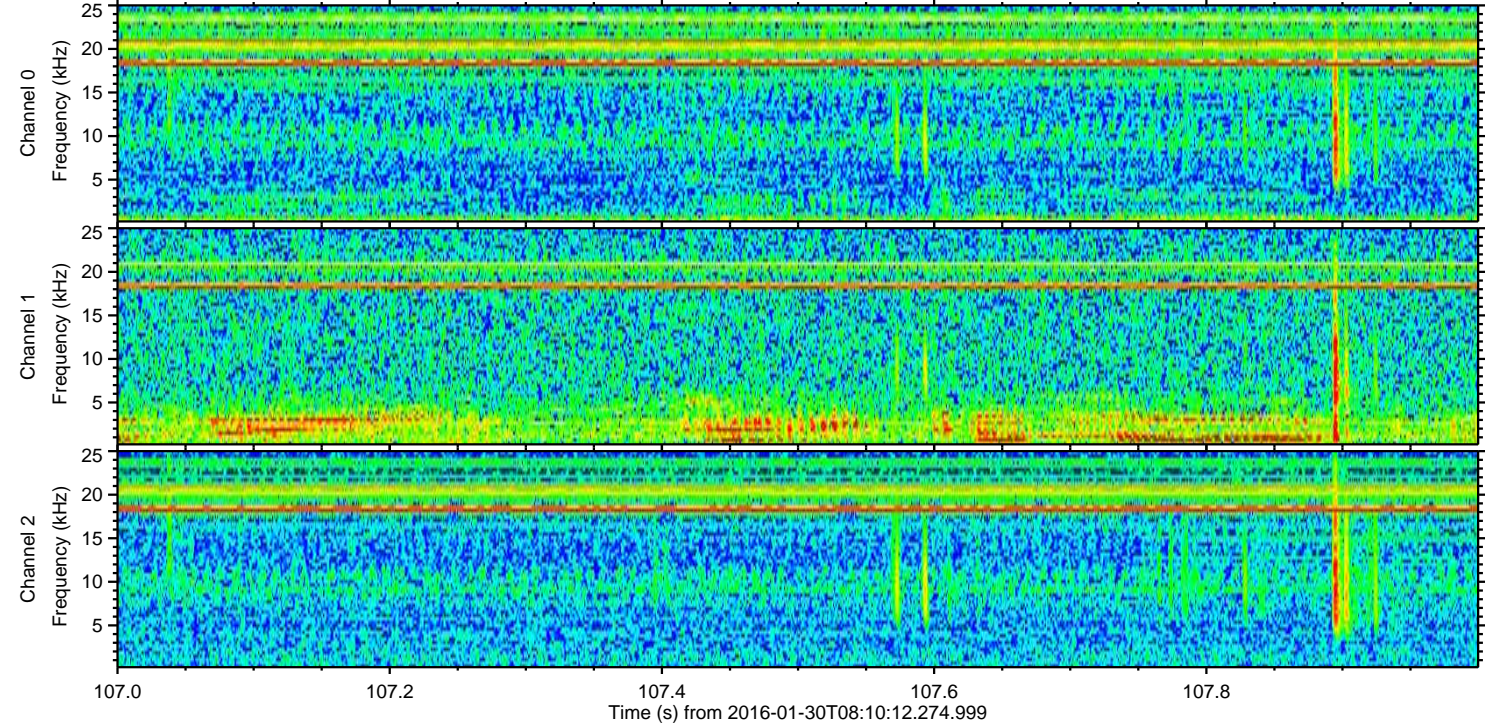
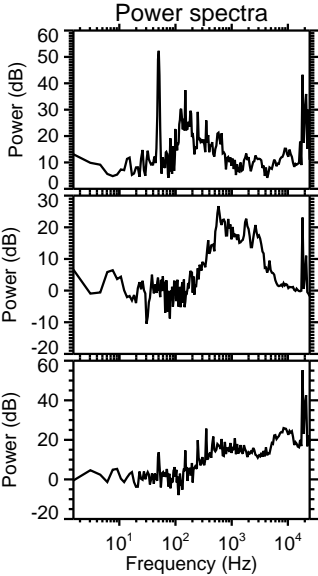
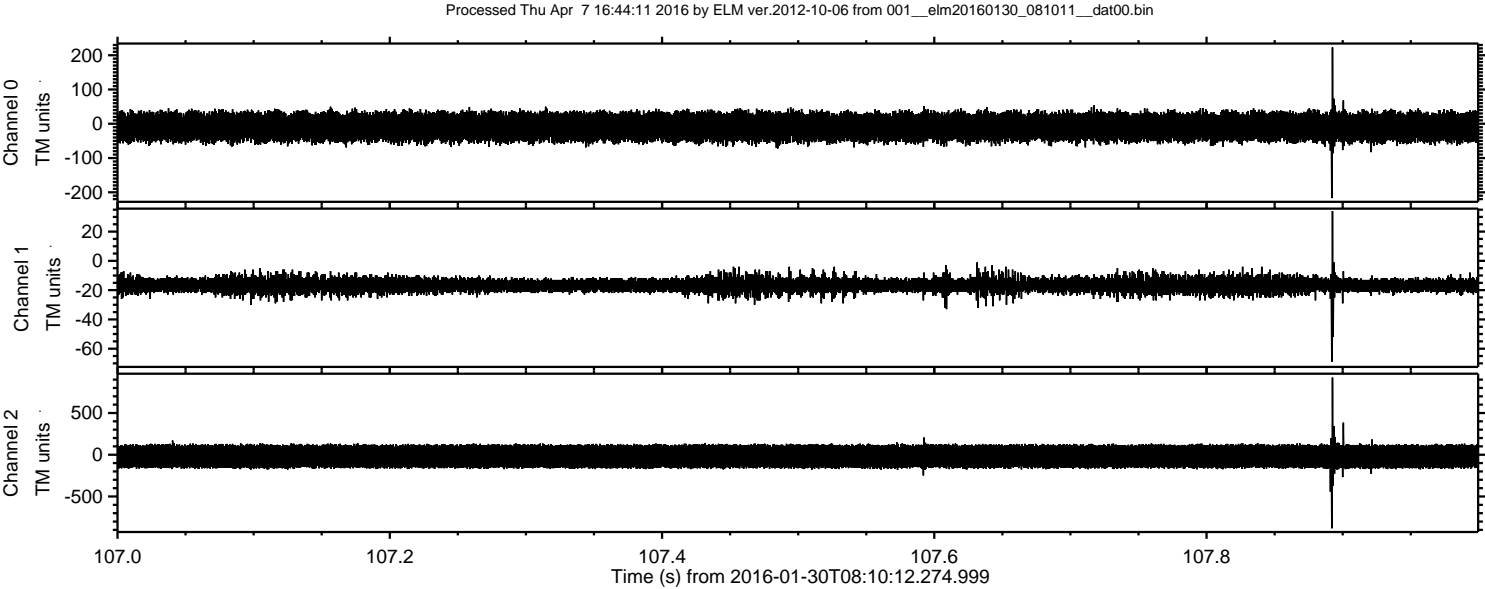
Processed Thu Apr 7 16:44:08 2016 by ELM ver.2012-10-06 from 001__elm20160130_081011__dat00.bin



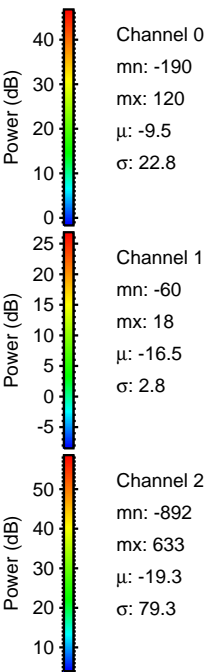
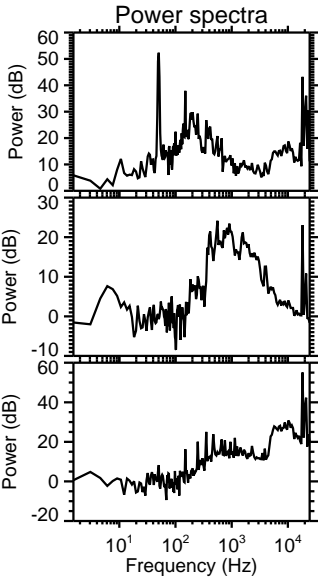
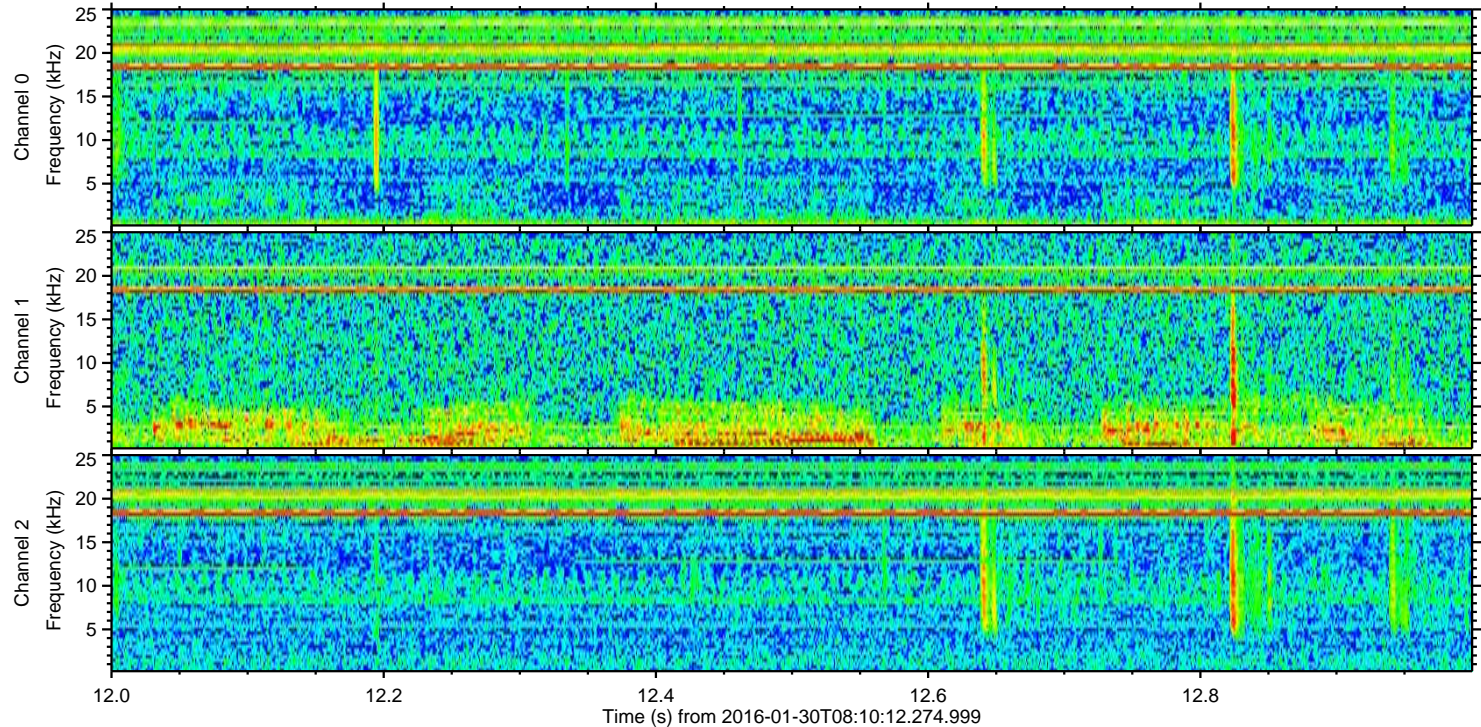
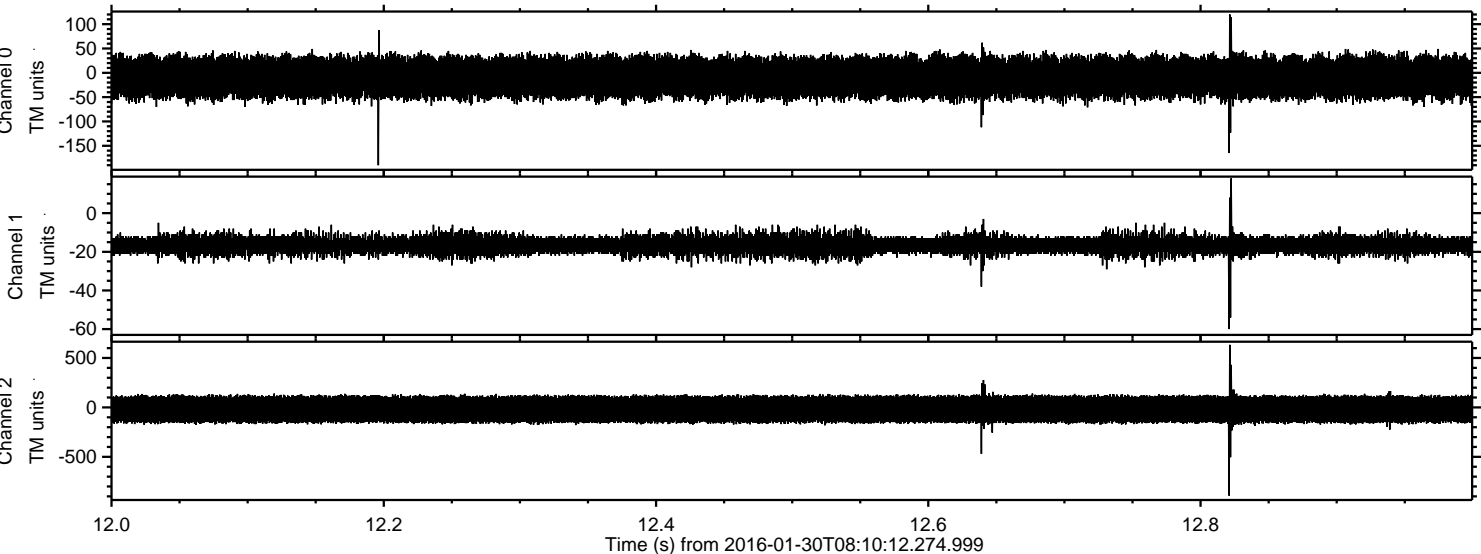
Processed Thu Apr 7 16:44:09 2016 by ELM ver.2012-10-06 from 001__elm20160130_081011__dat00.bin



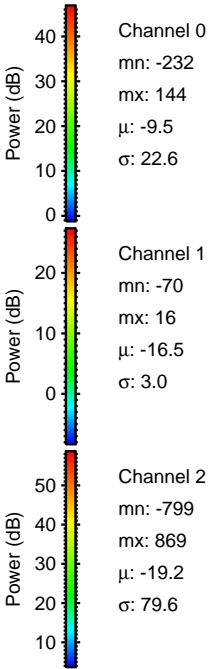
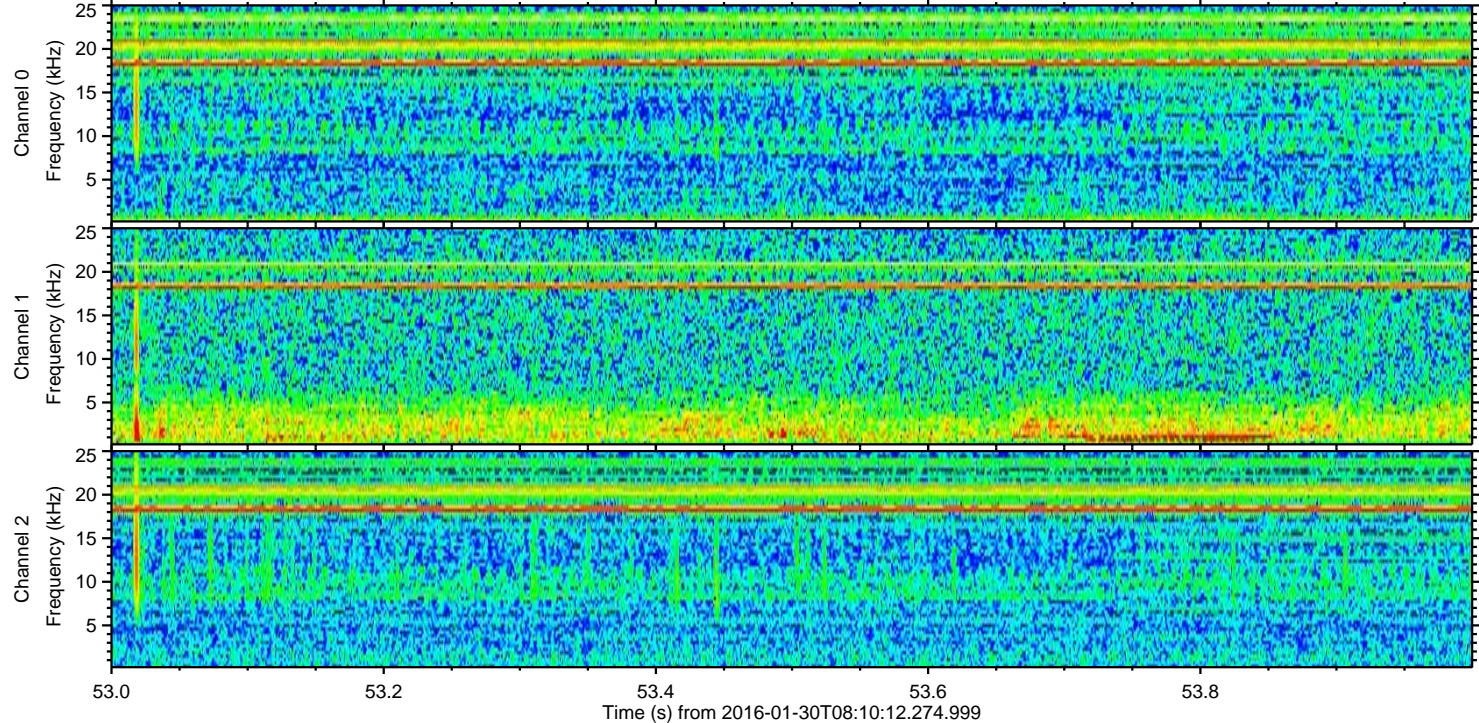
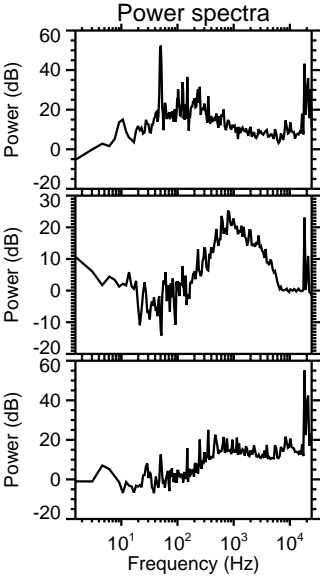
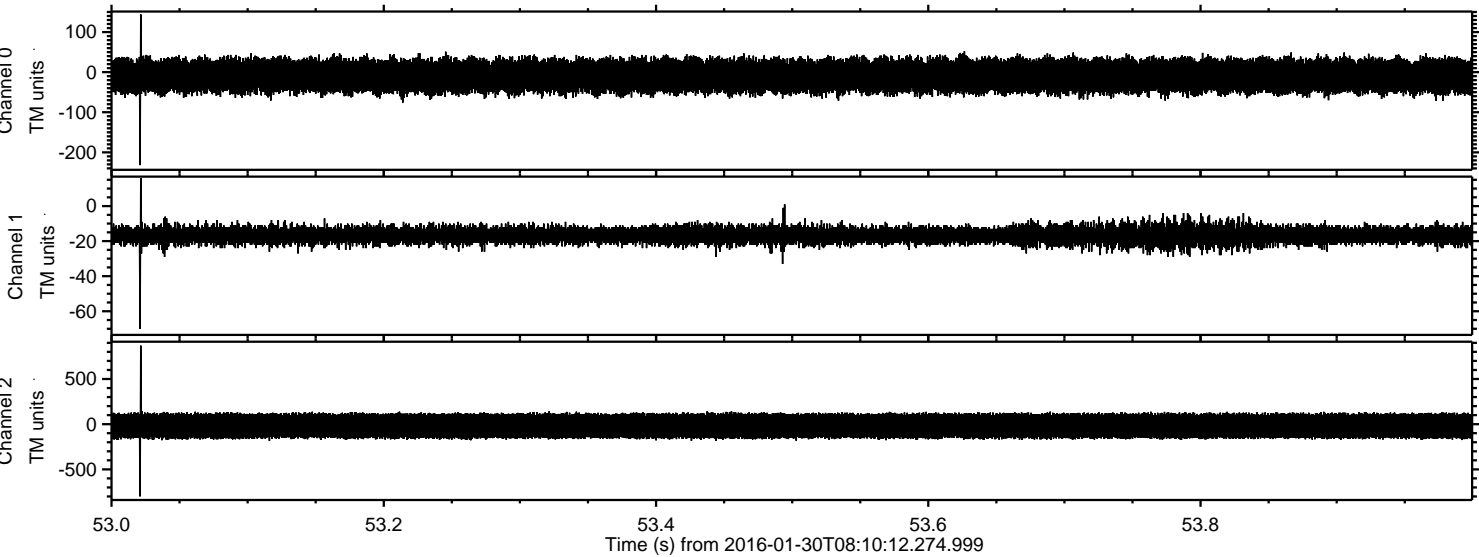




Processed Thu Apr 7 16:44:12 2016 by ELM ver.2012-10-06 from 001__elm20160130_081011__dat00.bin



Processed Thu Apr 7 16:44:13 2016 by ELM ver.2012-10-06 from 001__elm20160130_081011__dat00.bin



ELMAVAN 3D WAVEFORMS (Measured data sampled at 50 kHz) 51000 packets of 144 samples from 2016-01-30T08:10:12.274.999. Part 17/147

Processed Thu Apr 7 16:44:14 2016 by ELM ver.2012-10-06 from 001__elm20160130_081011__dat00.bin

