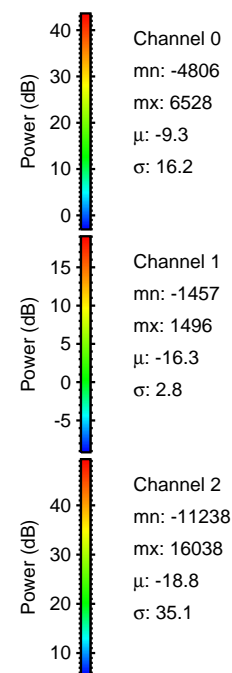
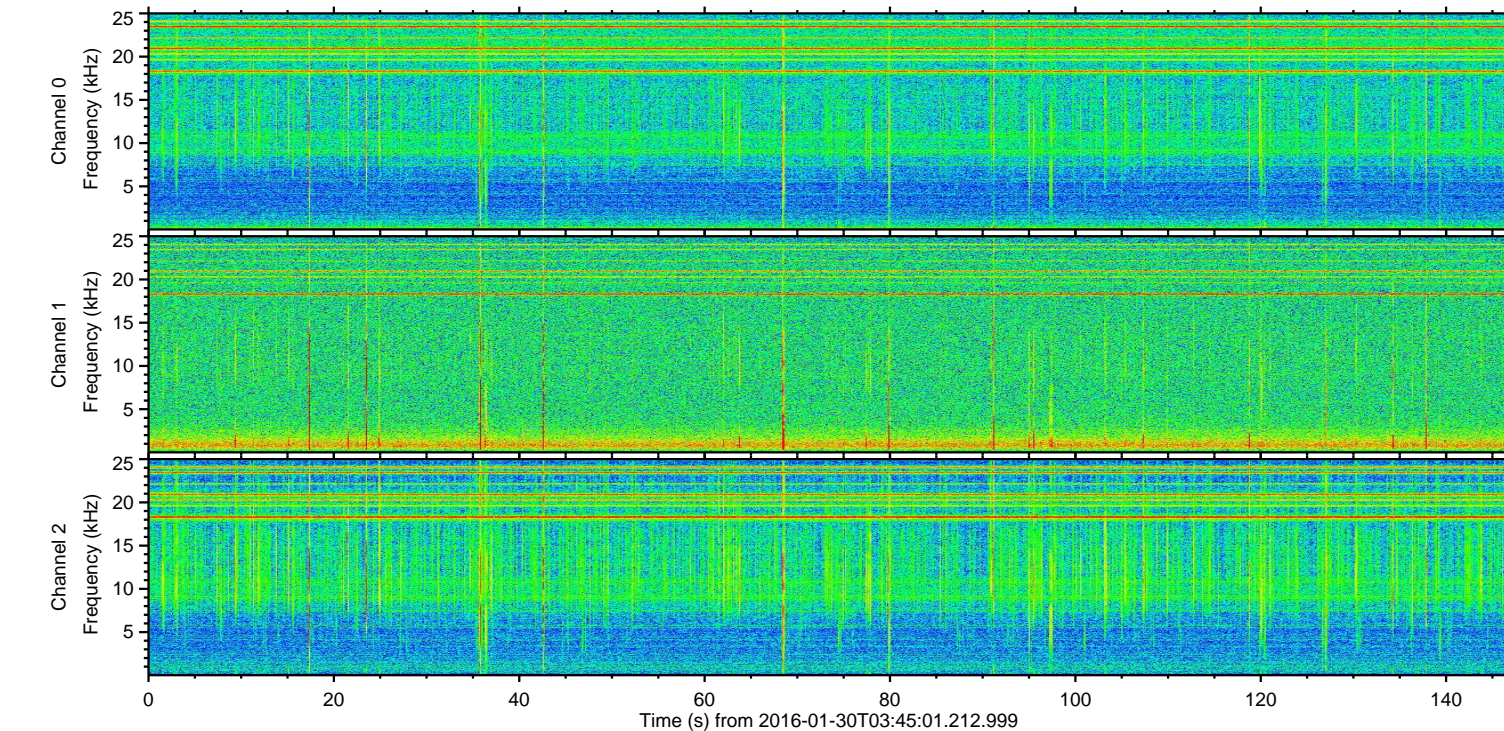
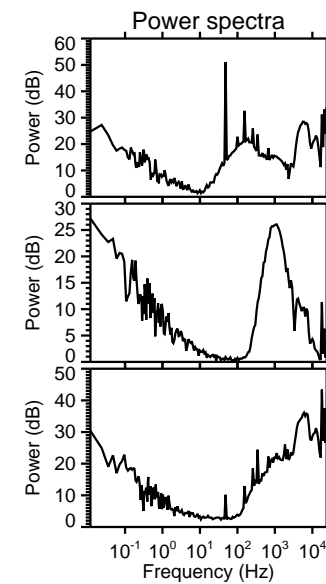
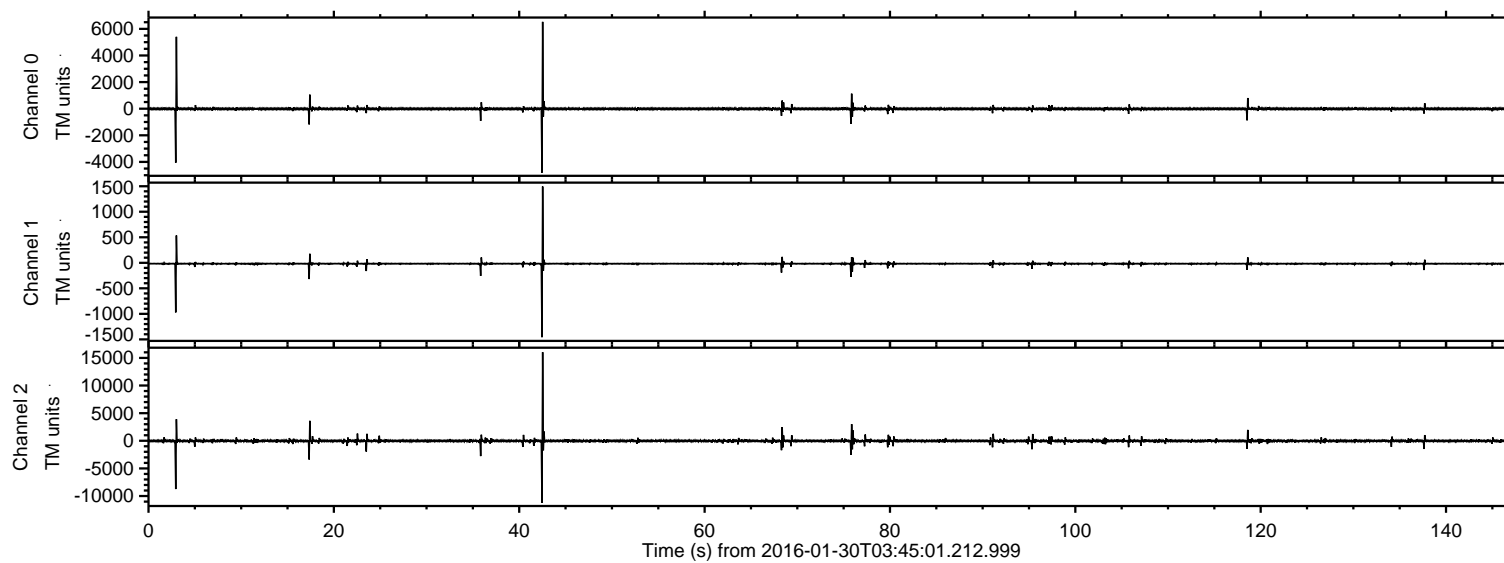


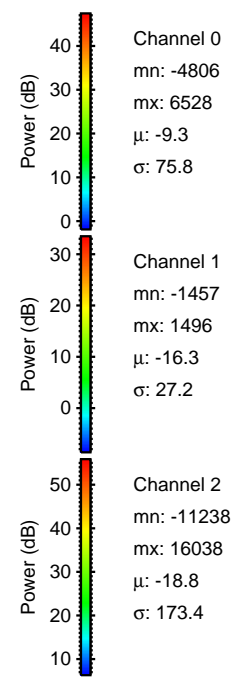
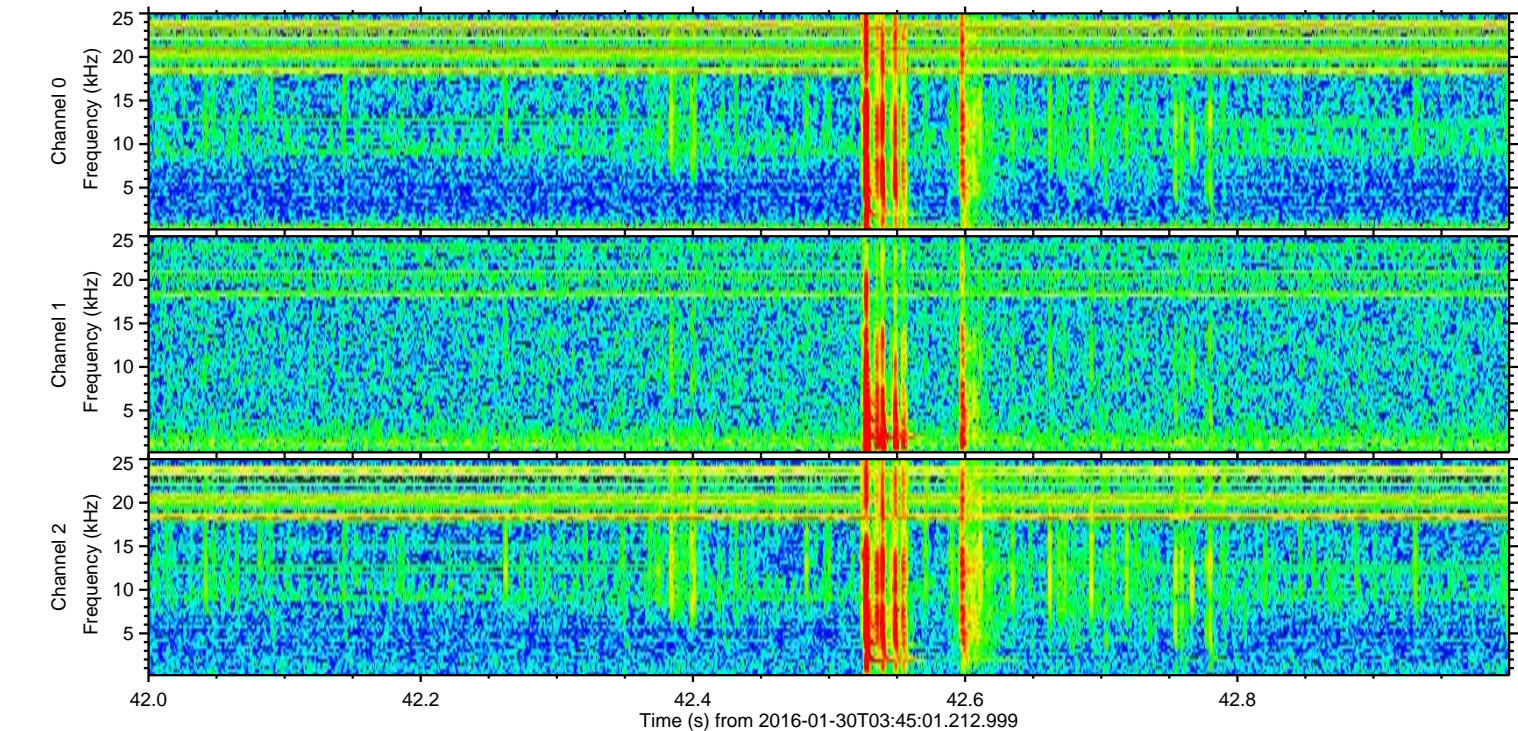
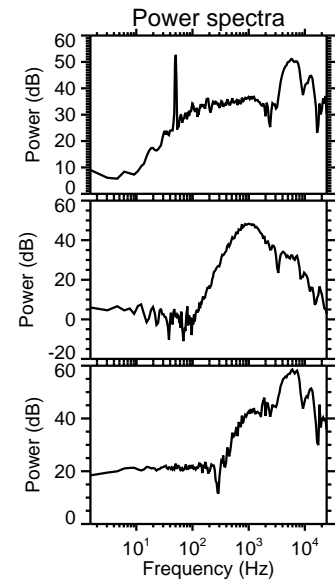
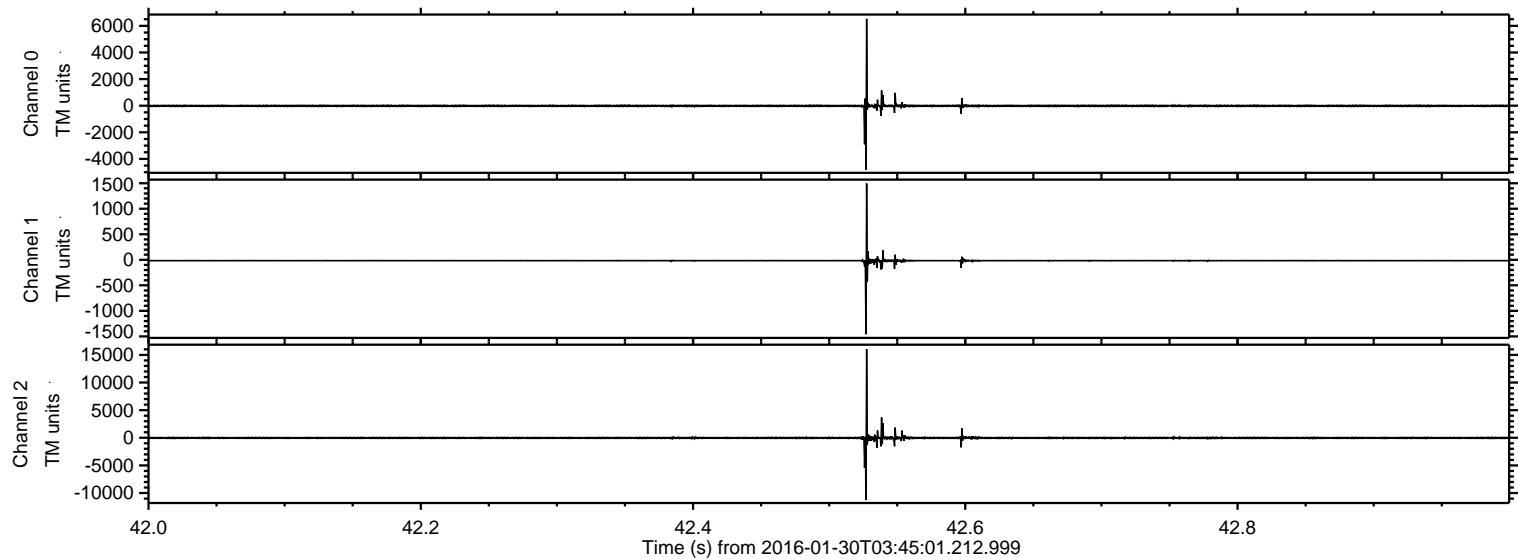
ELMAVAN 3D WAVEFORMS (Measured data sampled at 50 kHz) 51000 packets of 144 samples from 2016-01-30T03:45:01.212.999.

Processed Thu Apr 7 15:48:26 2016 by ELM ver.2012-10-06 from 001__elm20160130_034500__dat00.bin

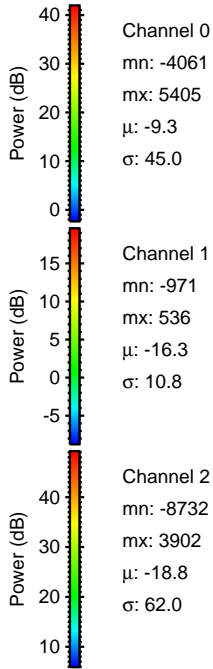
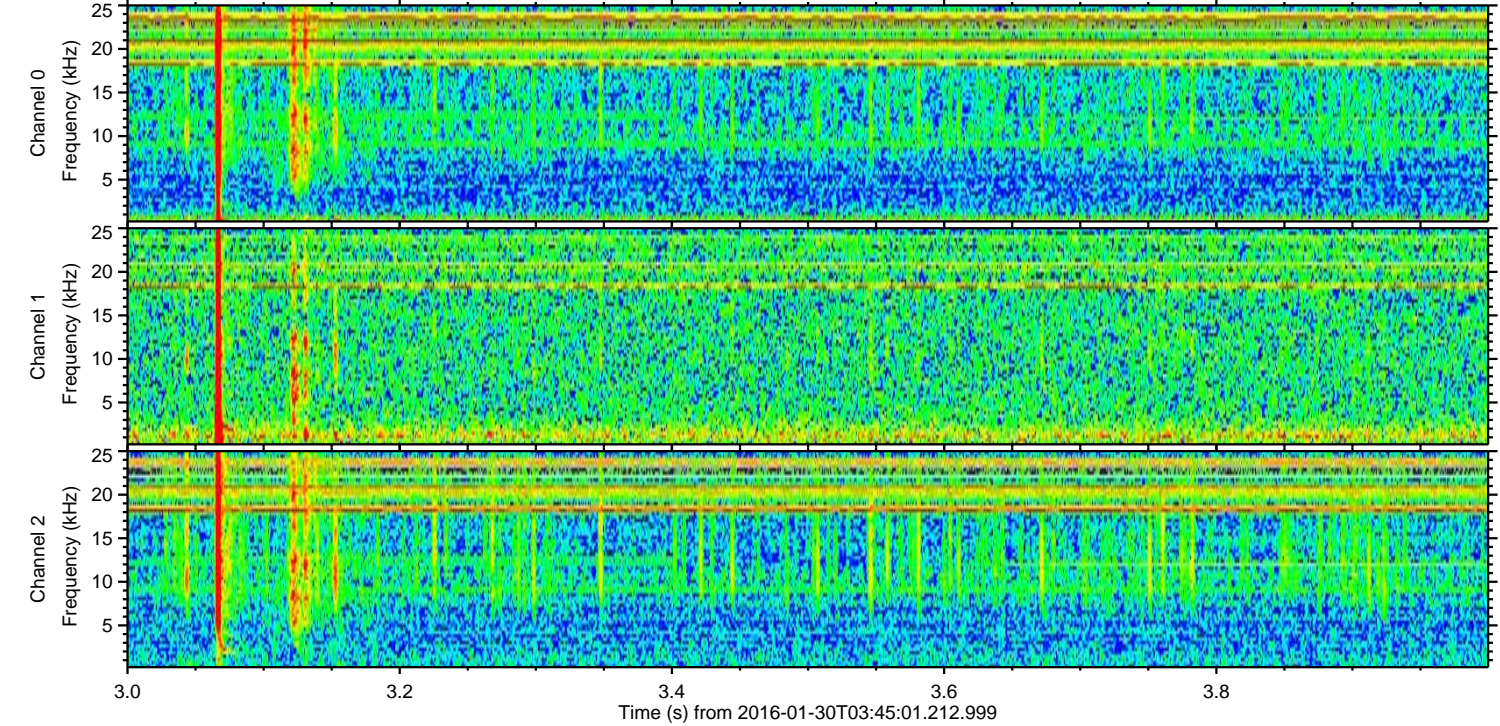
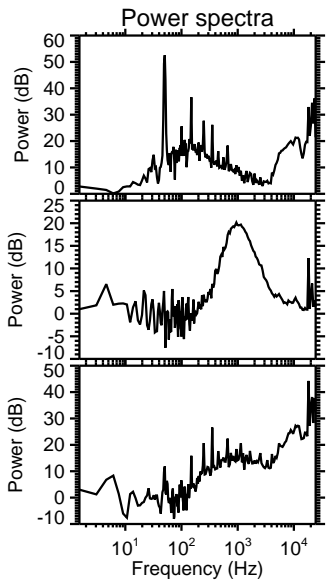
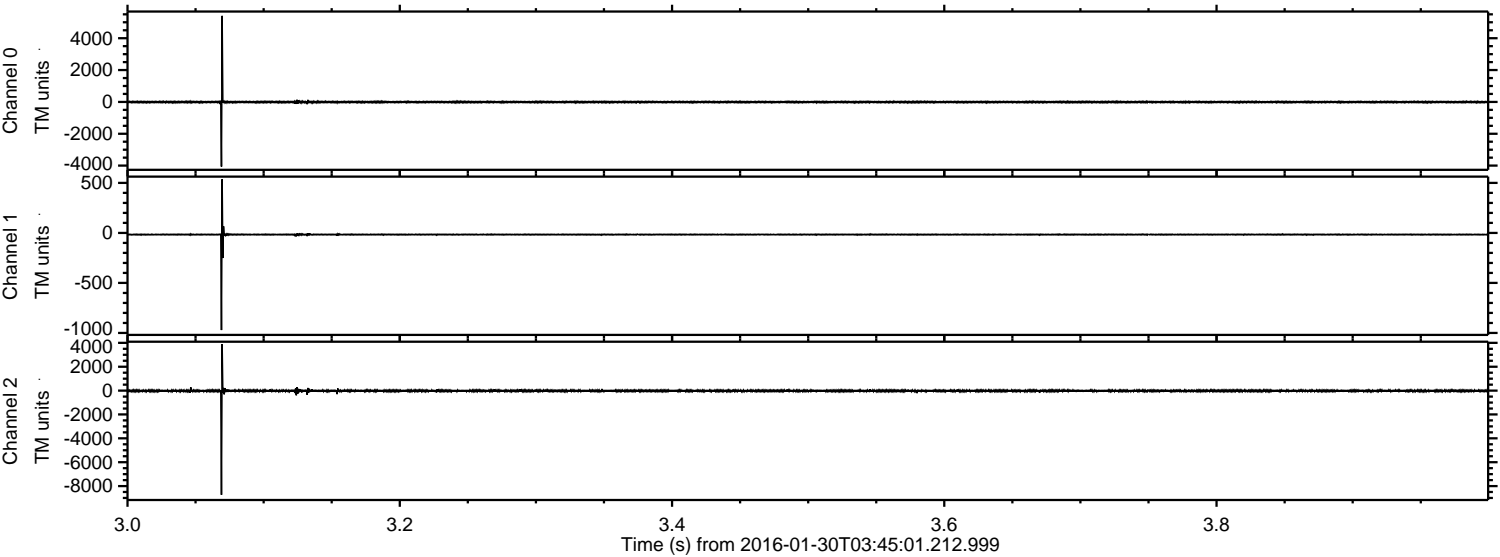


ELMAVAN 3D WAVEFORMS (Measured data sampled at 50 kHz) 51000 packets of 144 samples from 2016-01-30T03:45:01.212.999. Part 43/147

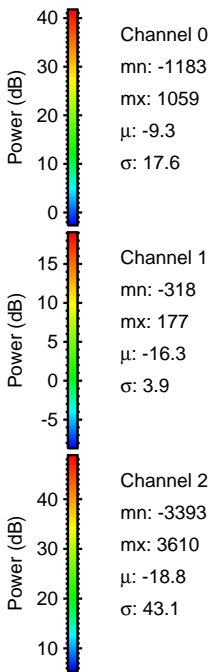
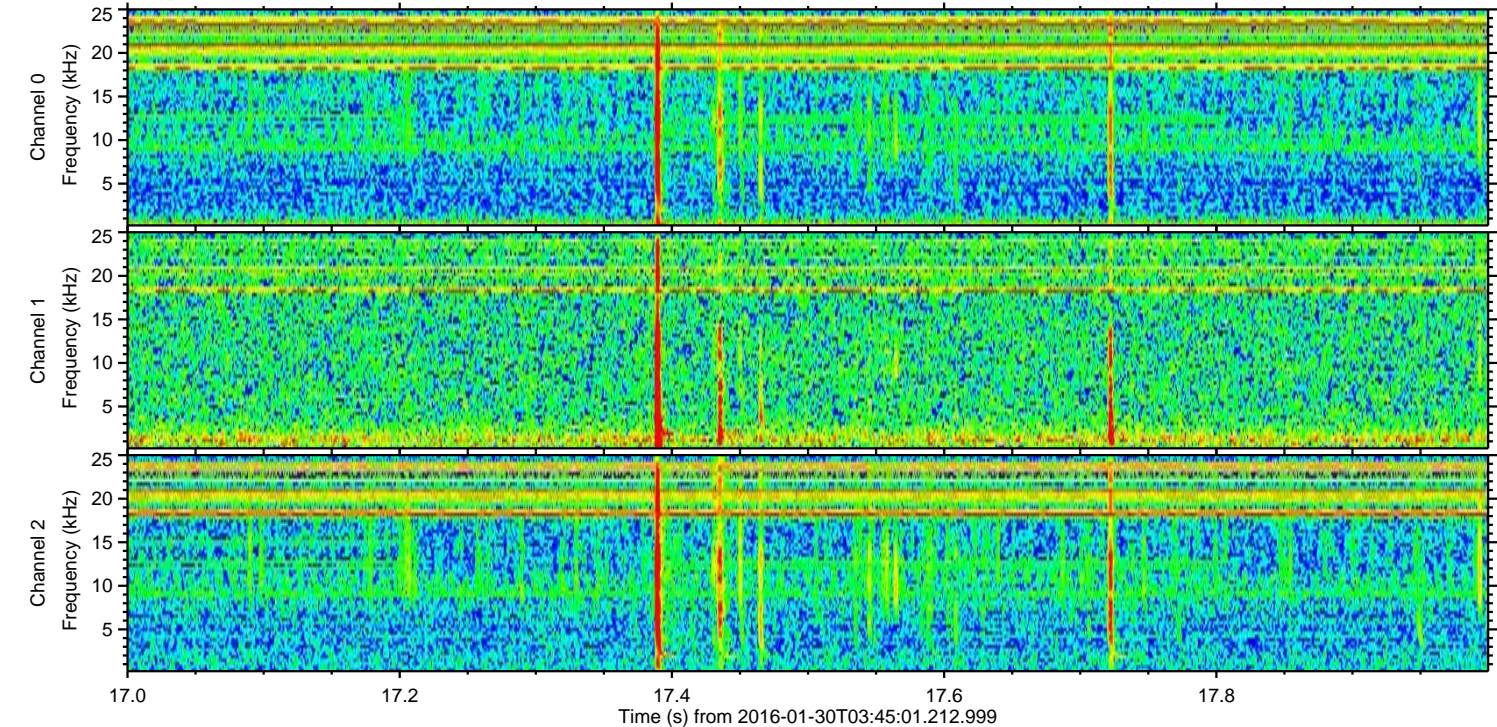
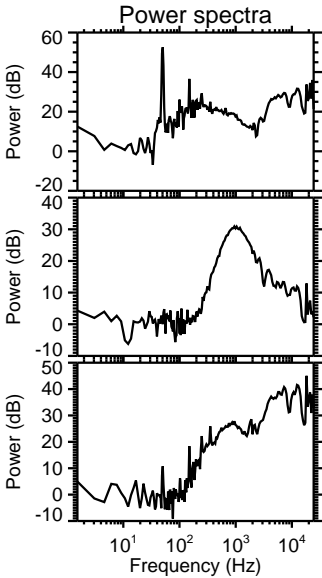
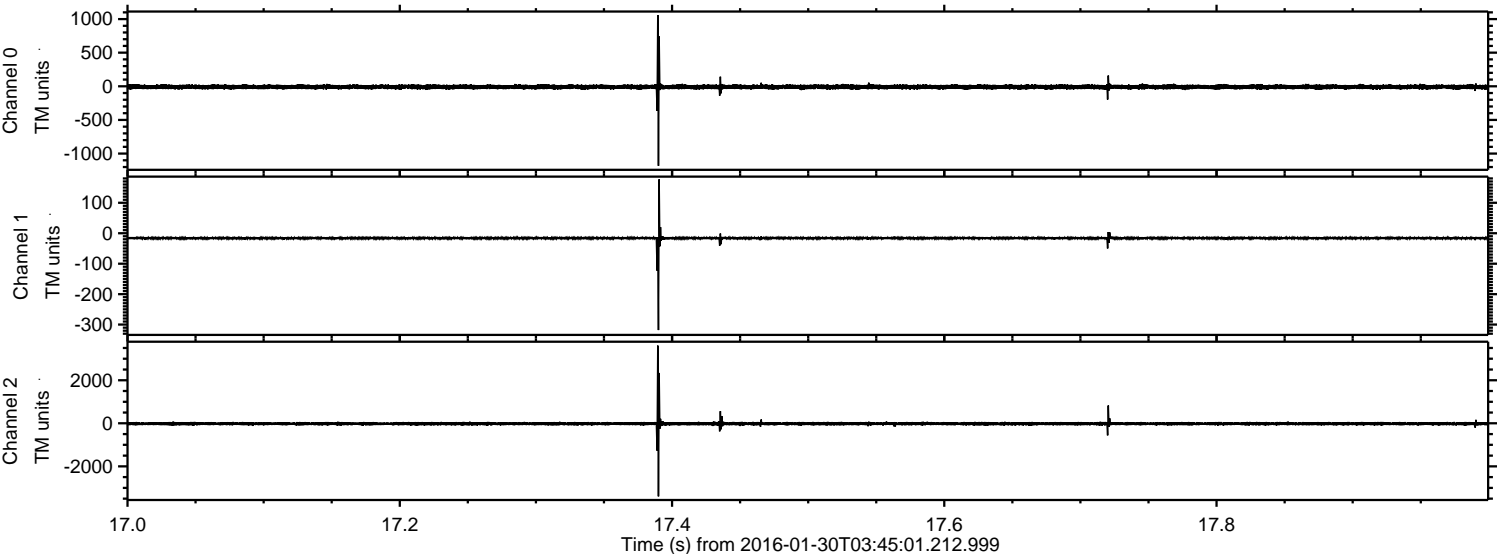
Processed Thu Apr 7 15:48:38 2016 by ELM ver.2012-10-06 from 001__elm20160130_034500__dat00.bin



Processed Thu Apr 7 15:48:39 2016 by ELM ver.2012-10-06 from 001__elm20160130_034500__dat00.bin

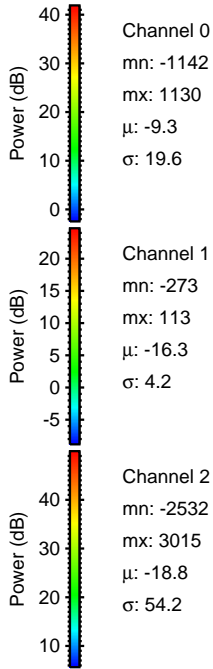
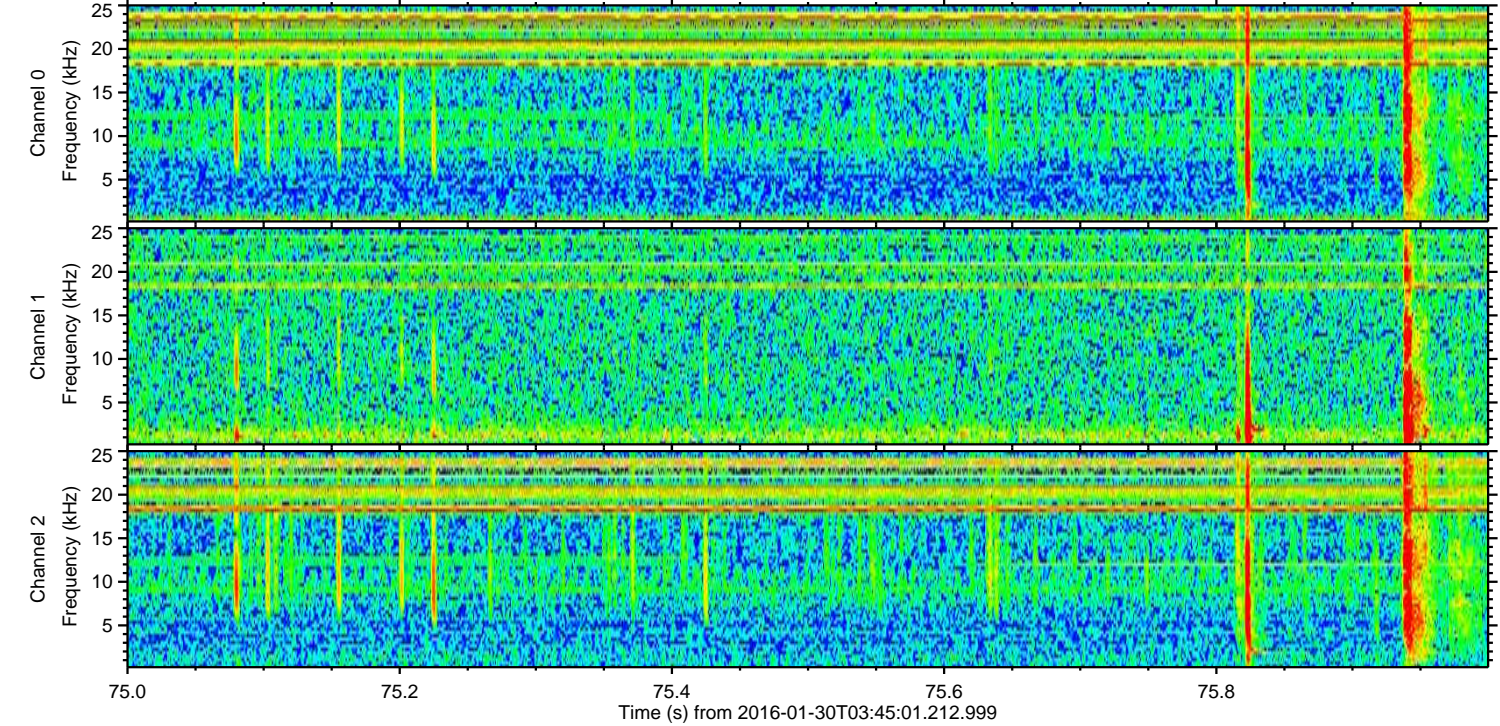
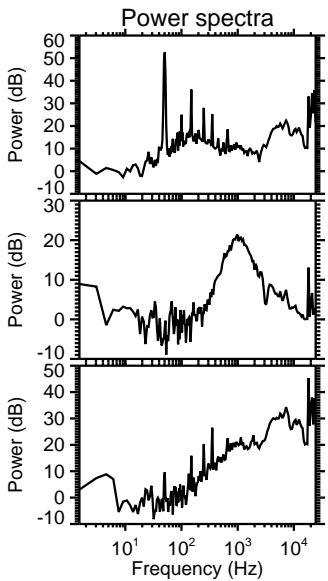
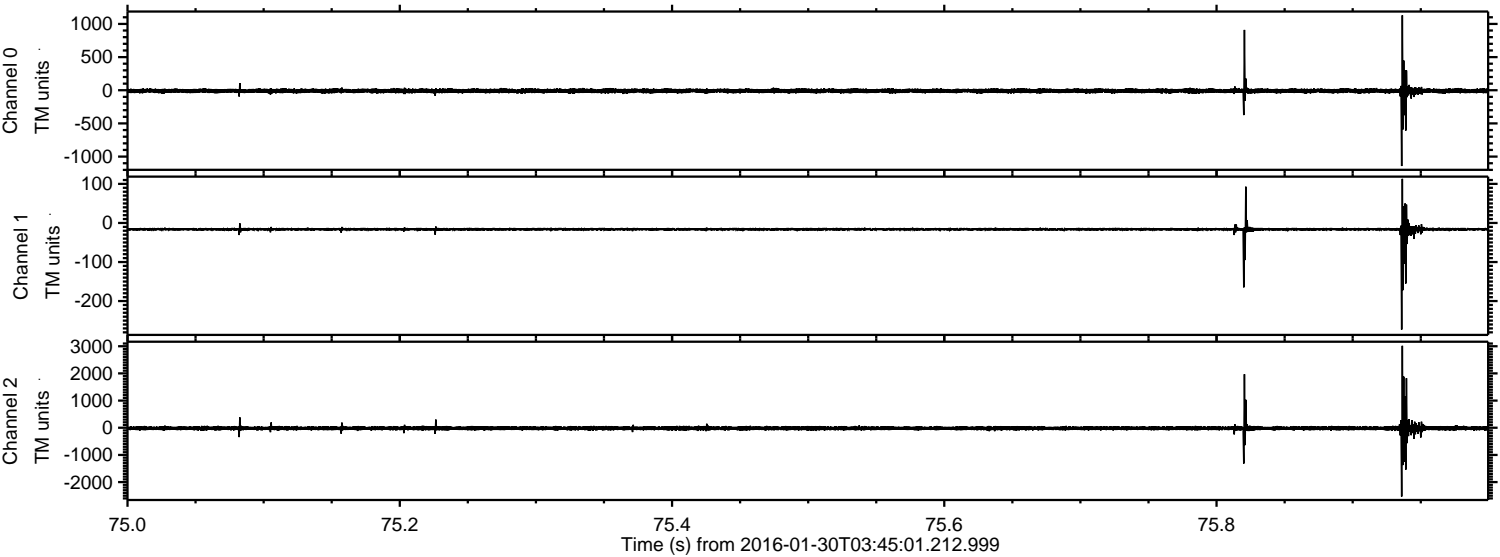


Processed Thu Apr 7 15:48:40 2016 by ELM ver.2012-10-06 from 001__elm20160130_034500__dat00.bin

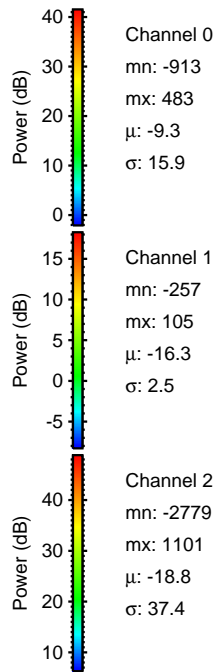
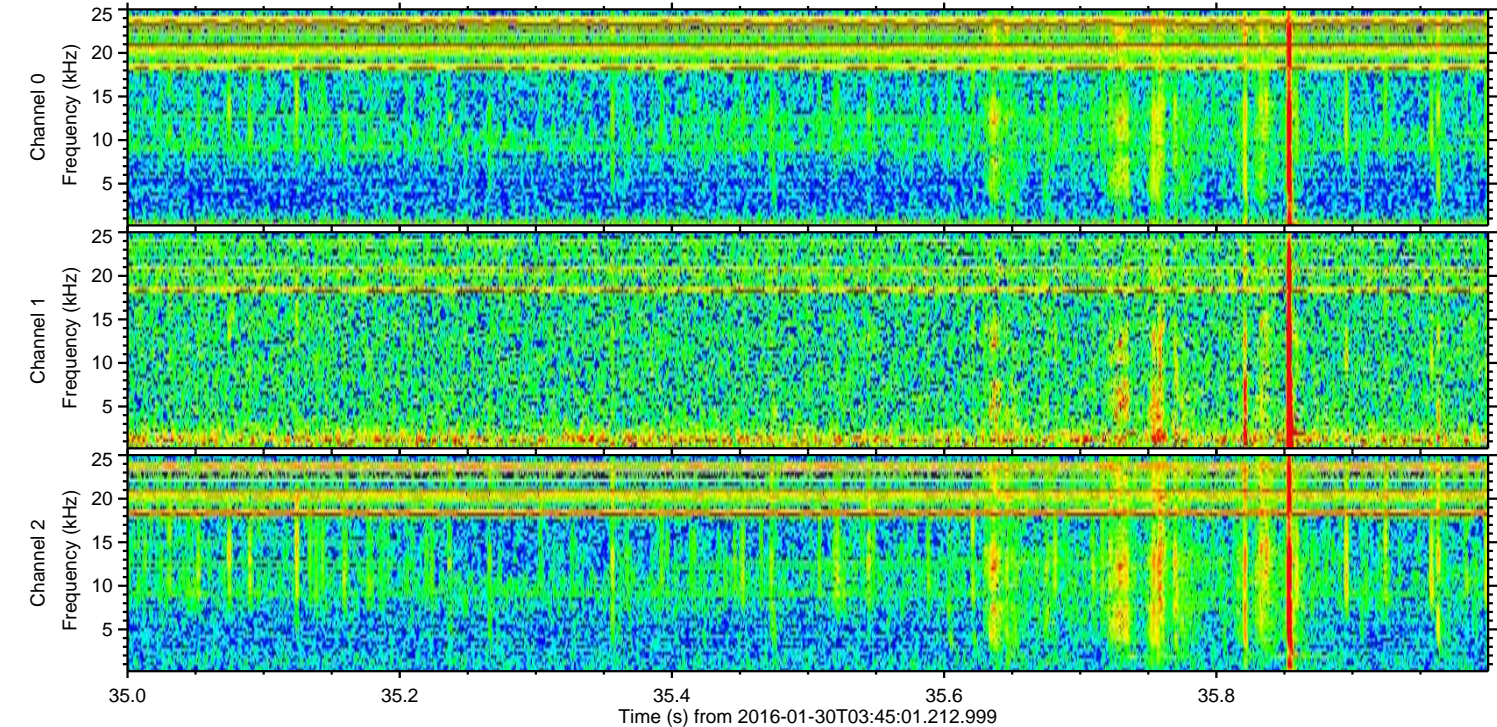
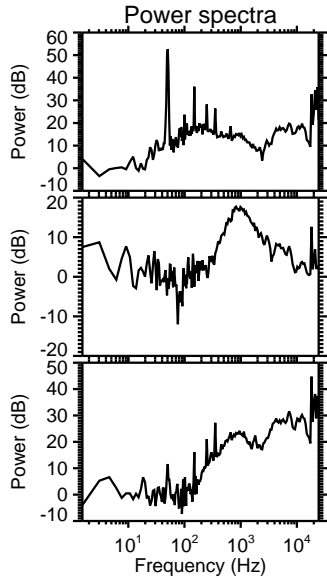
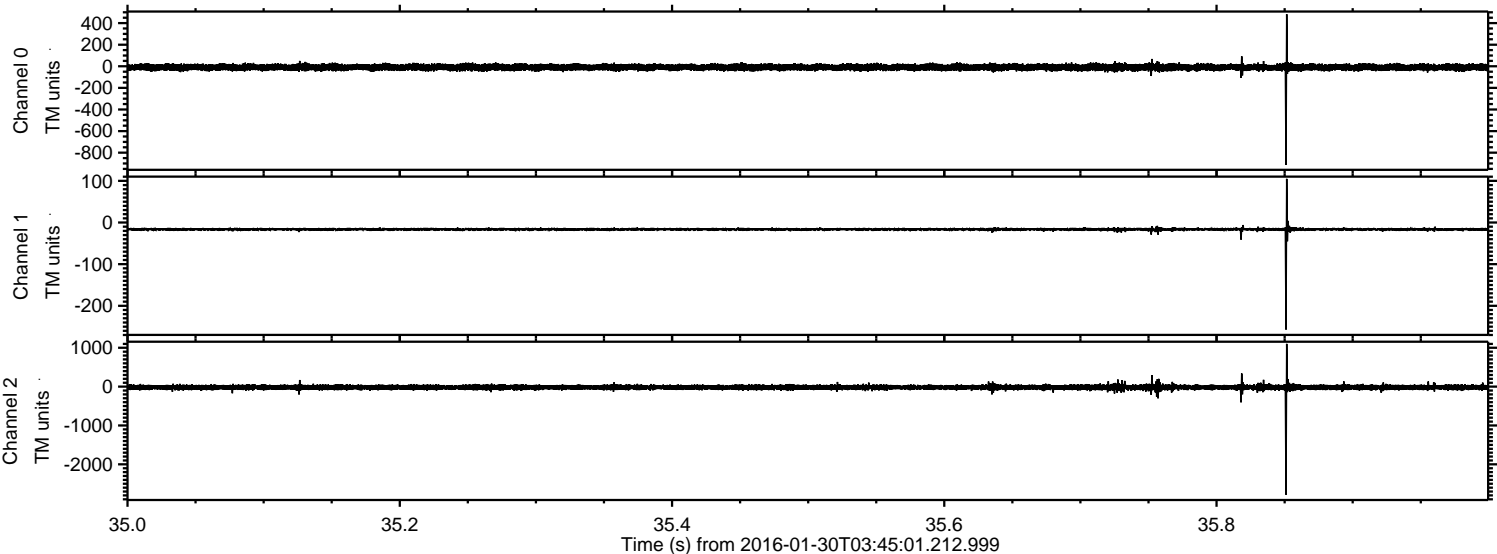


ELMAVAN 3D WAVEFORMS (Measured data sampled at 50 kHz) 51000 packets of 144 samples from 2016-01-30T03:45:01.212.999. Part 76/147

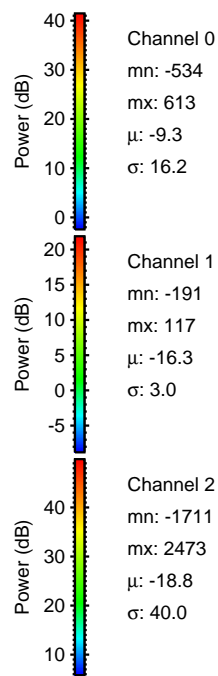
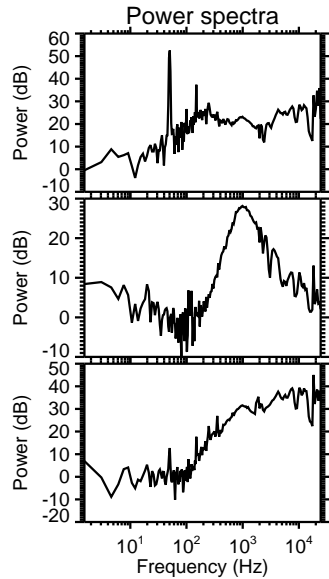
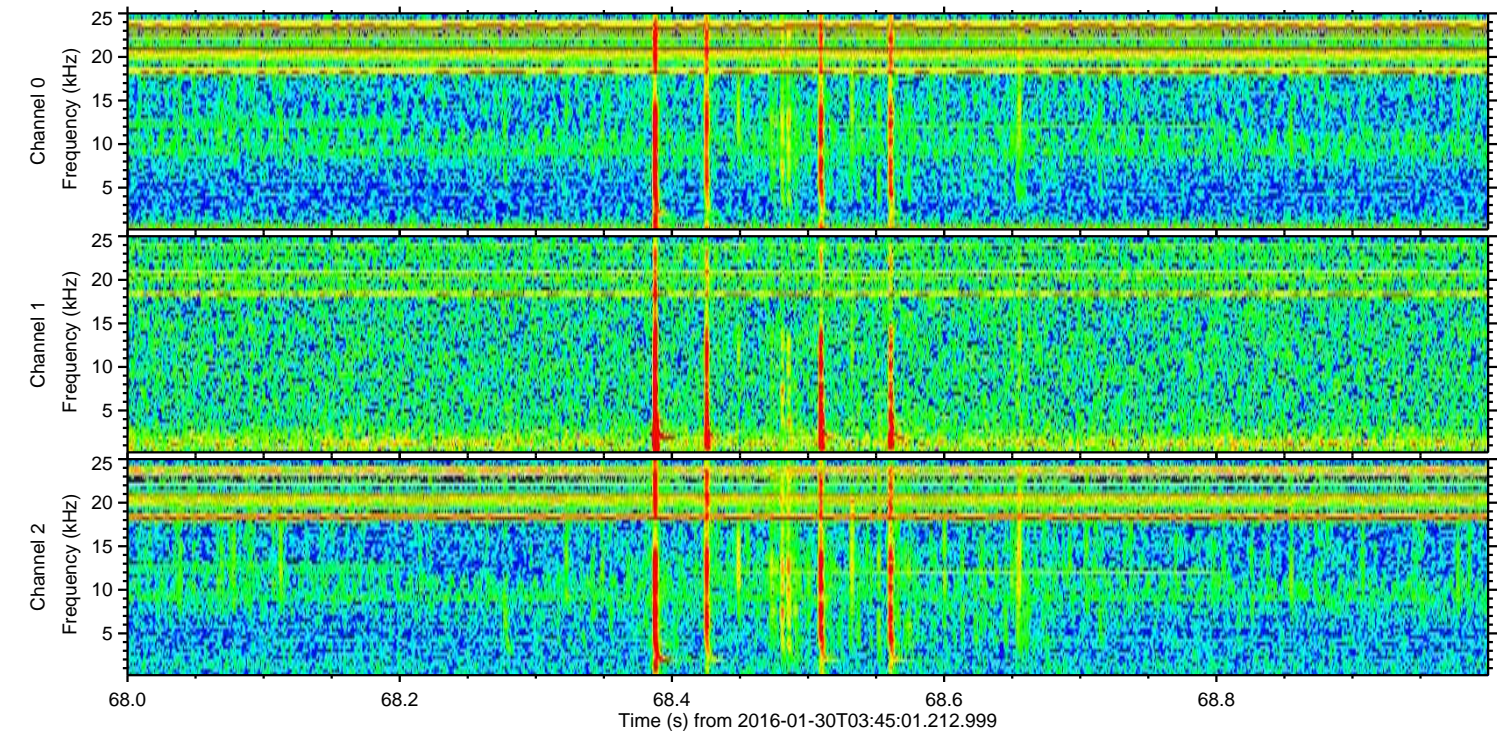
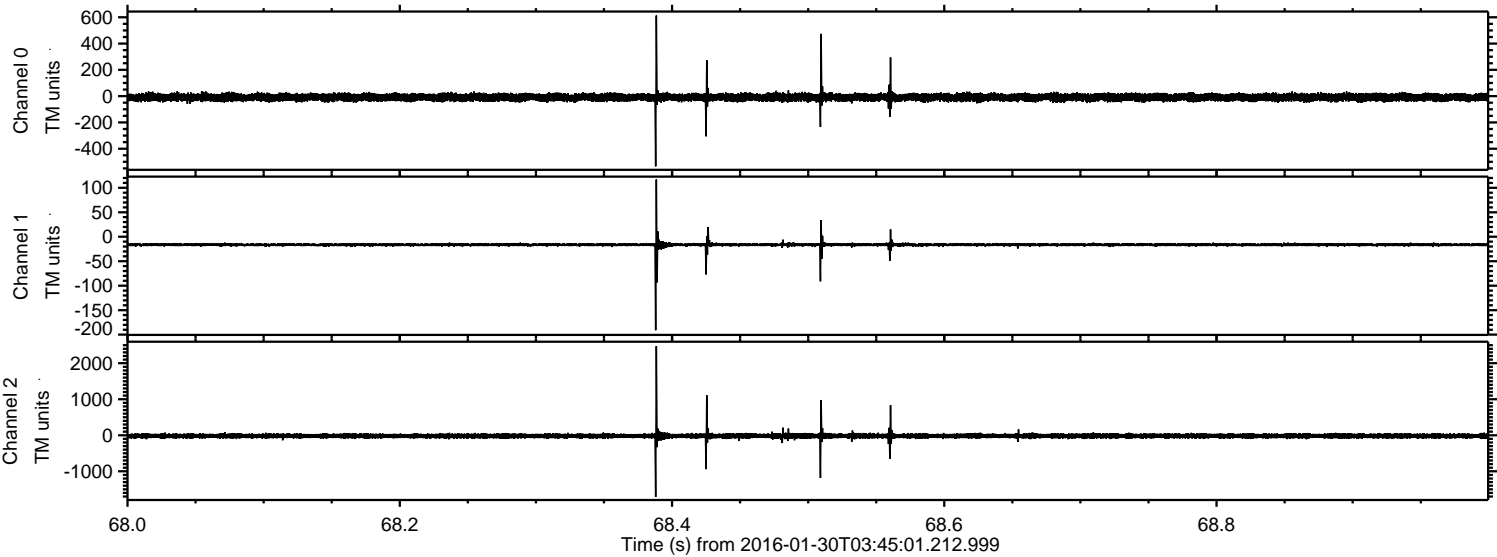
Processed Thu Apr 7 15:48:41 2016 by ELM ver.2012-10-06 from 001__elm20160130_034500__dat00.bin



Processed Thu Apr 7 15:48:42 2016 by ELM ver.2012-10-06 from 001__elm20160130_034500__dat00.bin

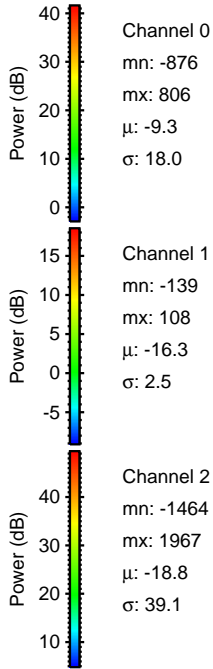
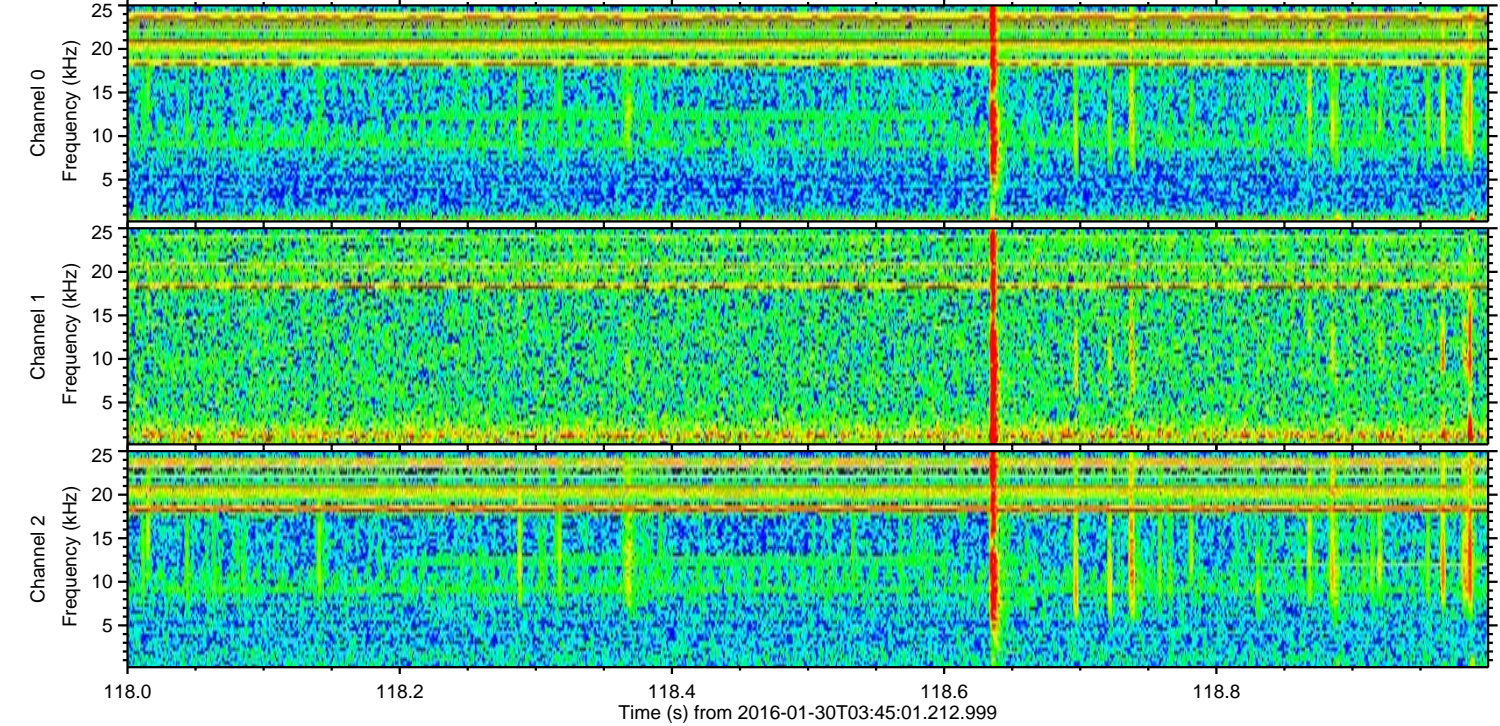
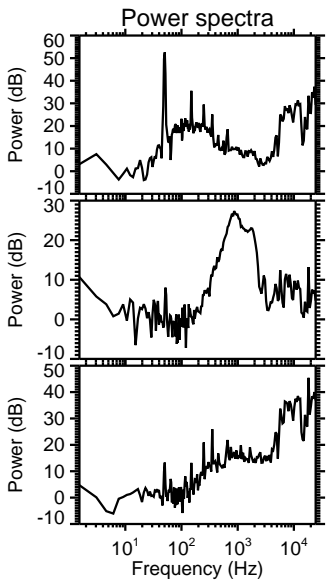
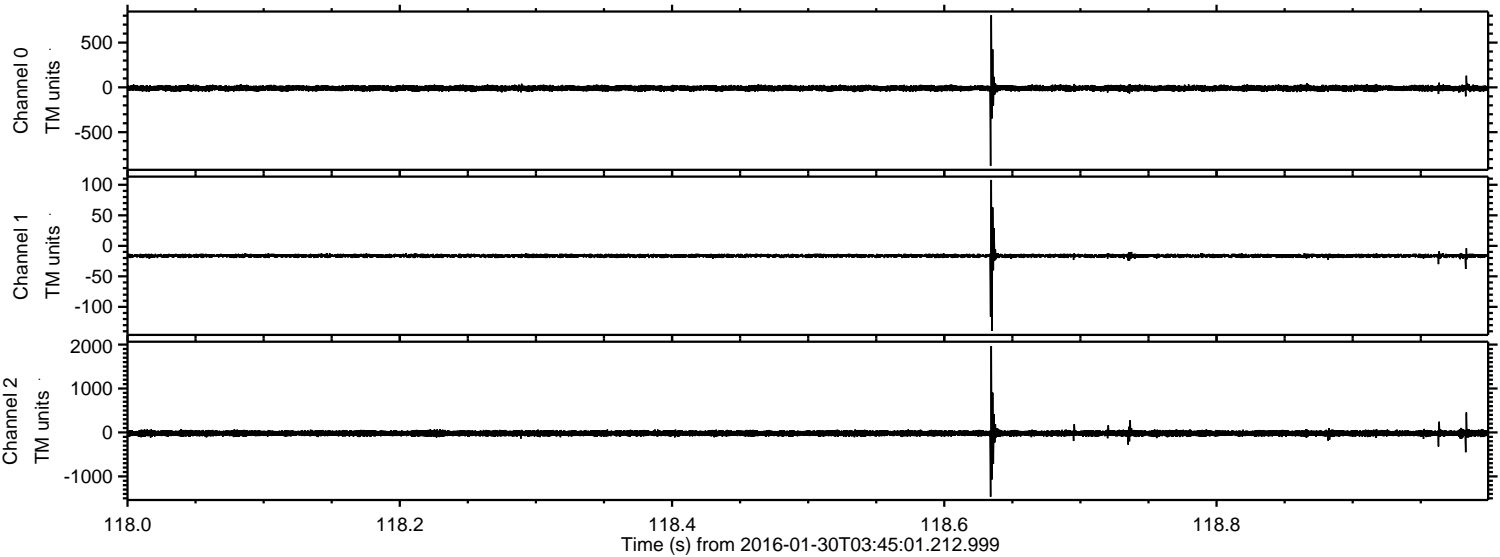


Processed Thu Apr 7 15:48:43 2016 by ELM ver.2012-10-06 from 001__elm20160130_034500__dat00.bin

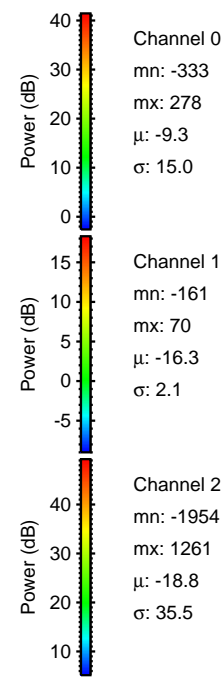
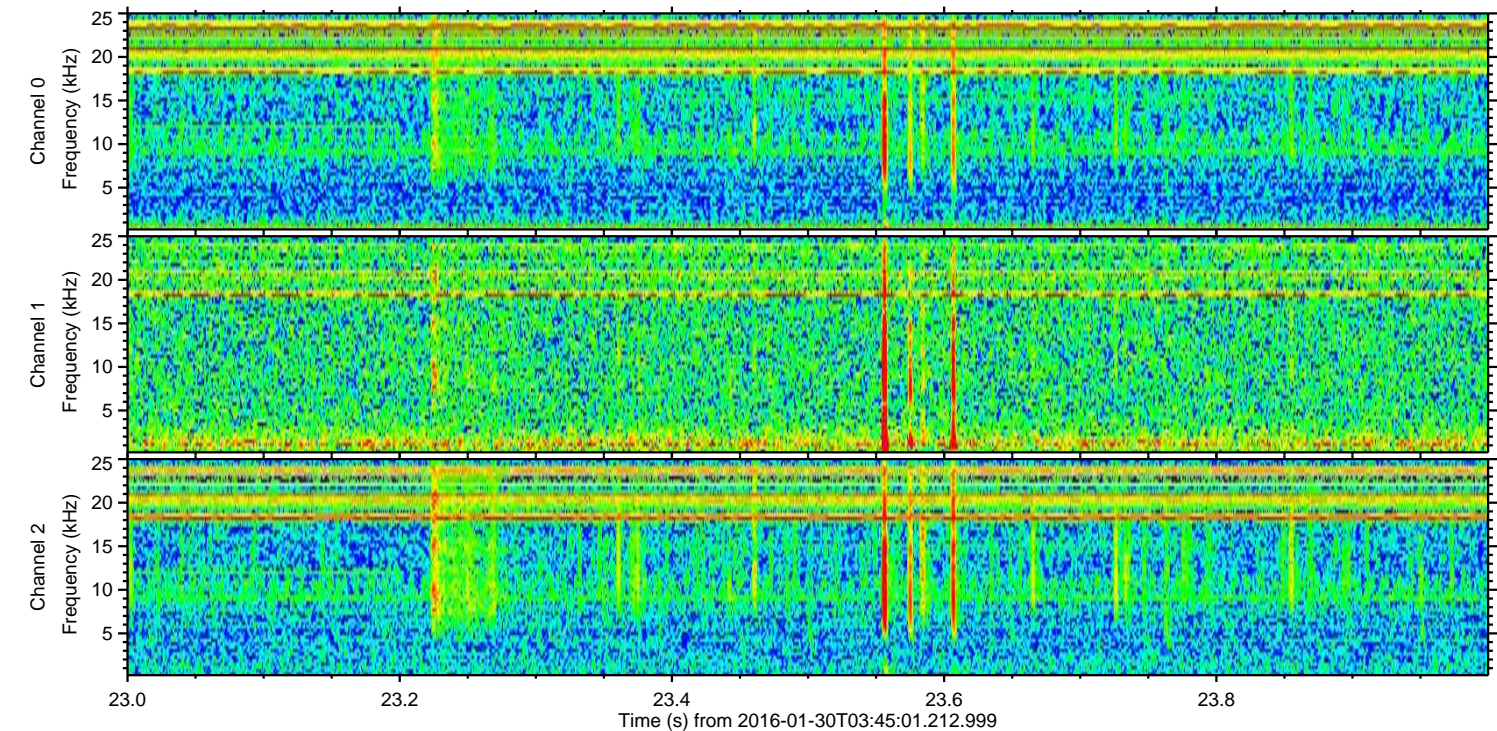
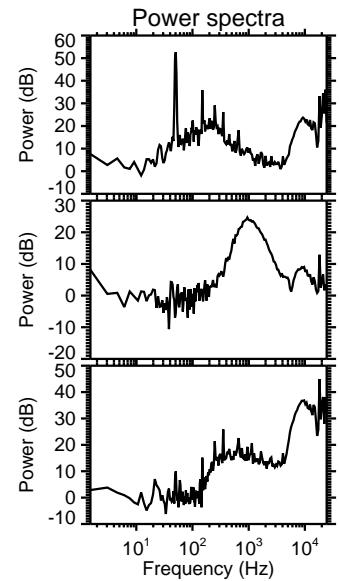
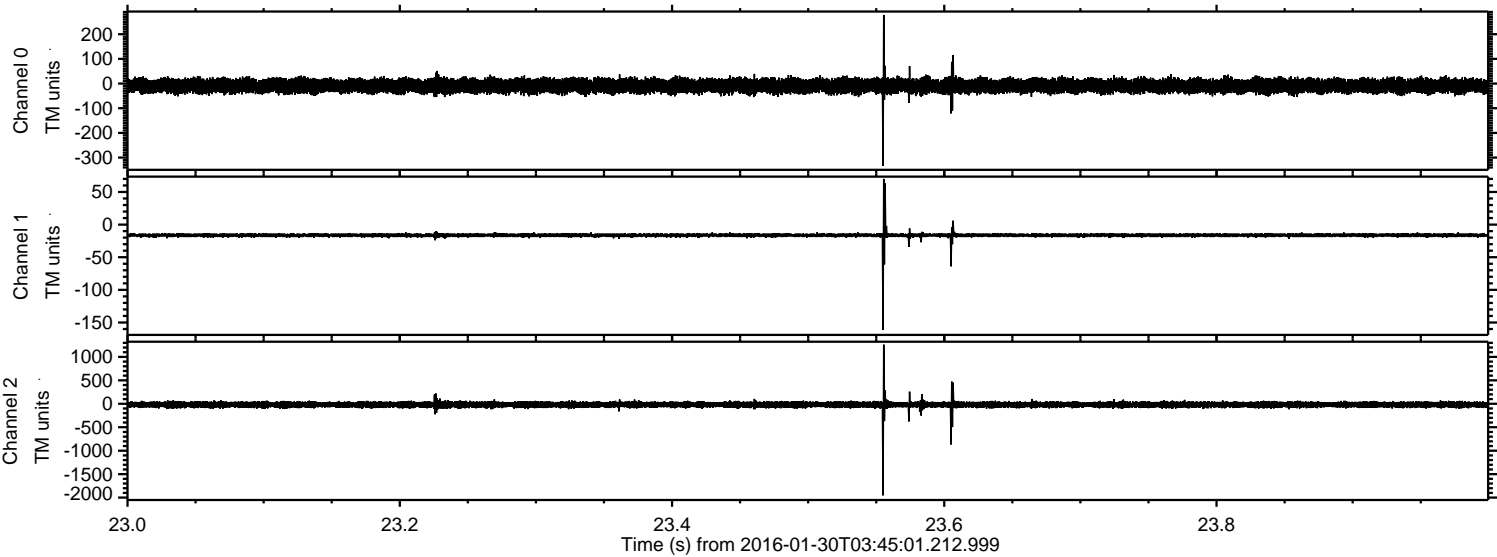


ELMAVAN 3D WAVEFORMS (Measured data sampled at 50 kHz) 51000 packets of 144 samples from 2016-01-30T03:45:01.212.999. Part 119/147

Processed Thu Apr 7 15:48:44 2016 by ELM ver.2012-10-06 from 001__elm20160130_034500__dat00.bin



Processed Thu Apr 7 15:48:45 2016 by ELM ver.2012-10-06 from 001__elm20160130_034500__dat00.bin

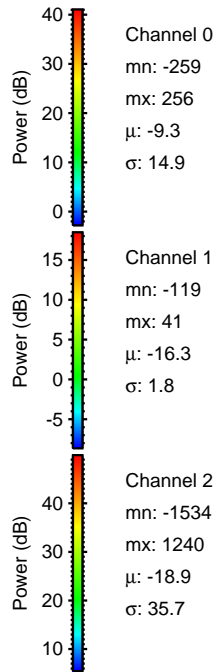
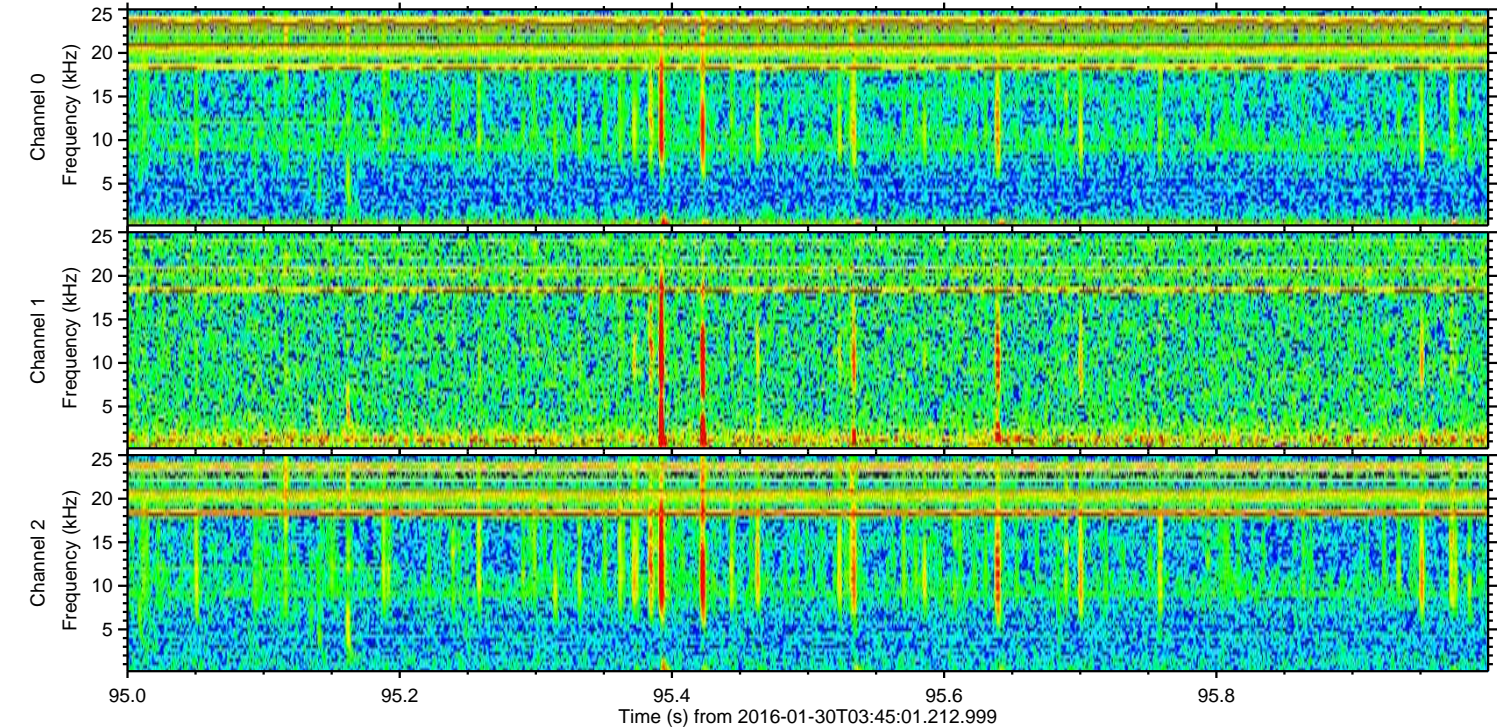
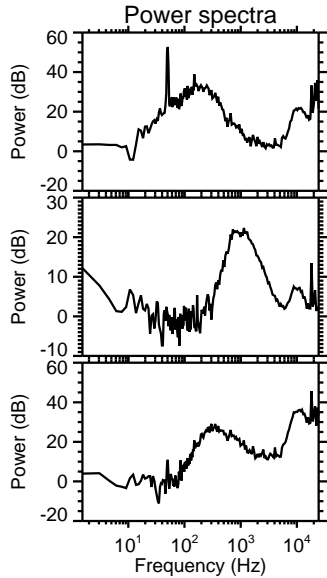
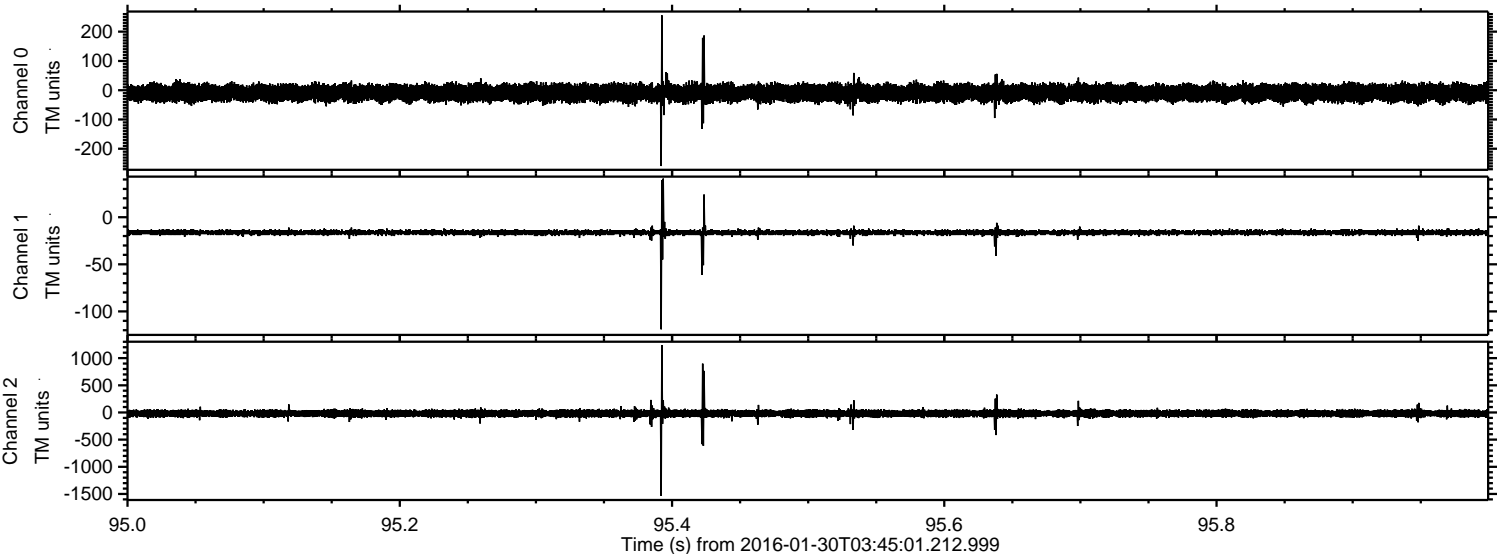


Channel 0
mn: -333
mx: 278
 μ : -9.3
 σ : 15.0

Channel 1
mn: -161
mx: 70
 μ : -16.3
 σ : 2.1

Channel 2
mn: -1954
mx: 1261
 μ : -18.8
 σ : 35.5

Processed Thu Apr 7 15:48:46 2016 by ELM ver.2012-10-06 from 001__elm20160130_034500__dat00.bin



Processed Thu Apr 7 15:48:47 2016 by ELM ver.2012-10-06 from 001__elm20160130_034500__dat00.bin

