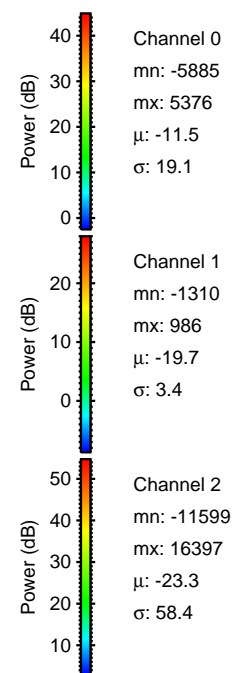
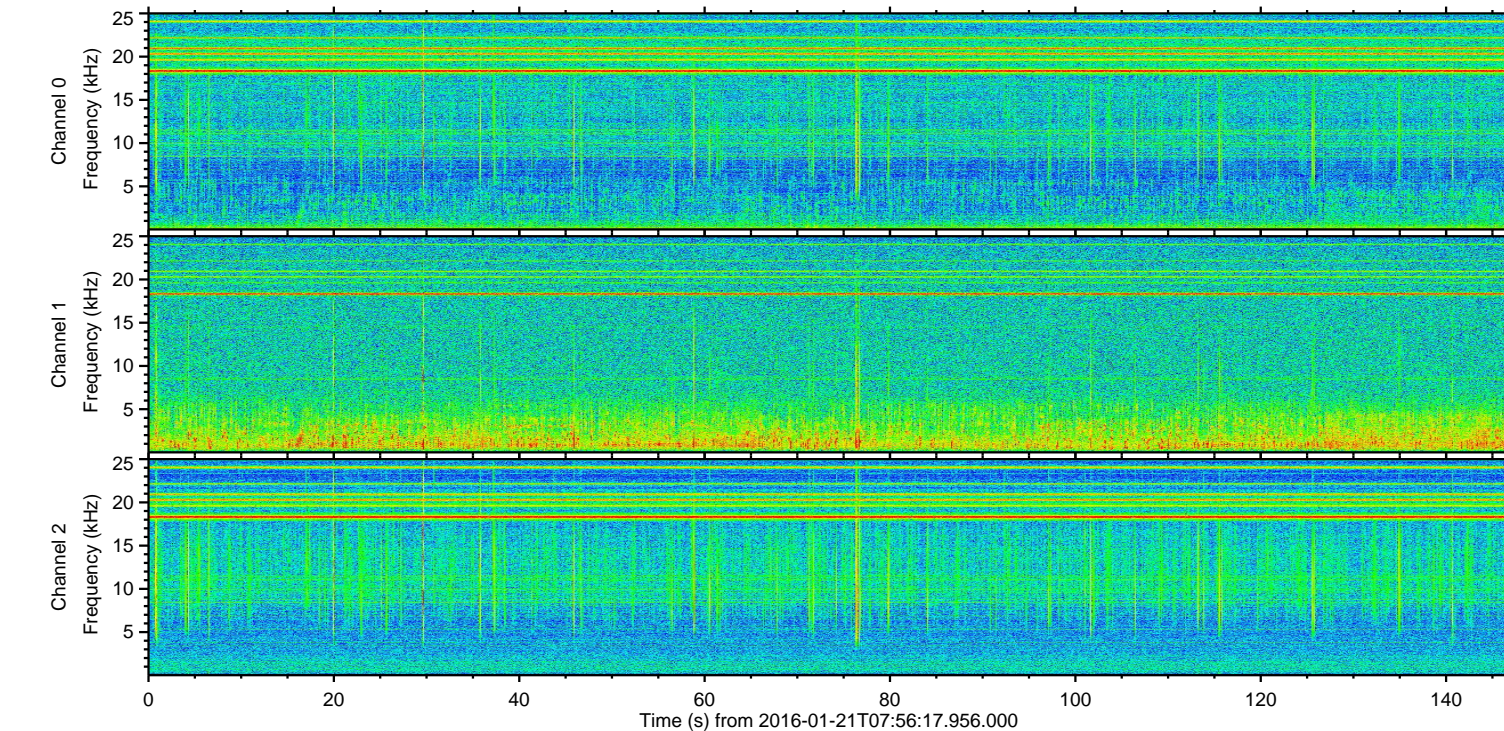
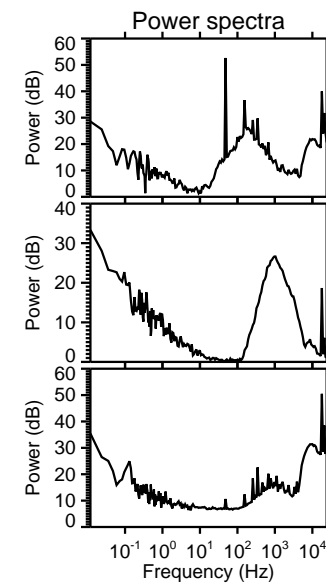
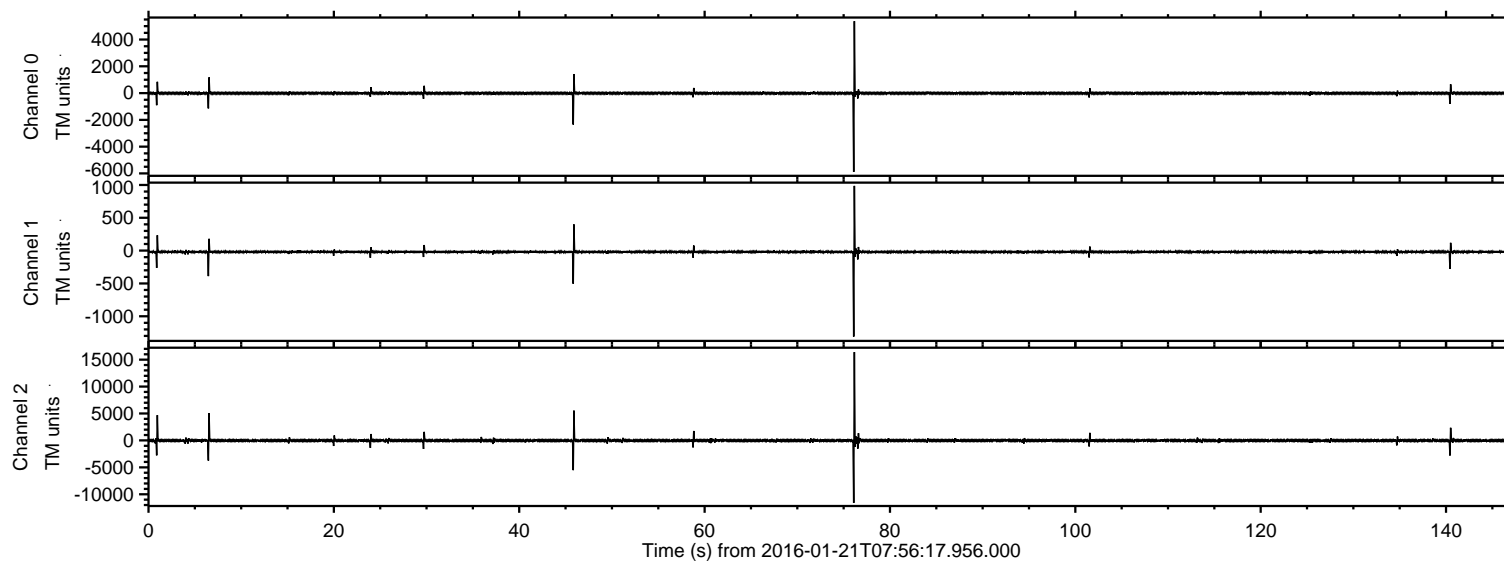


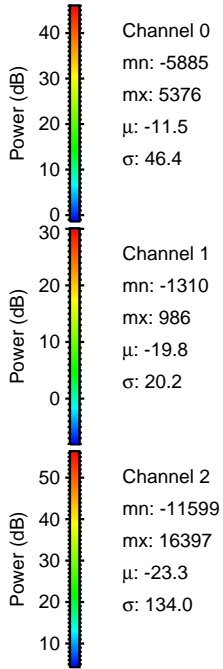
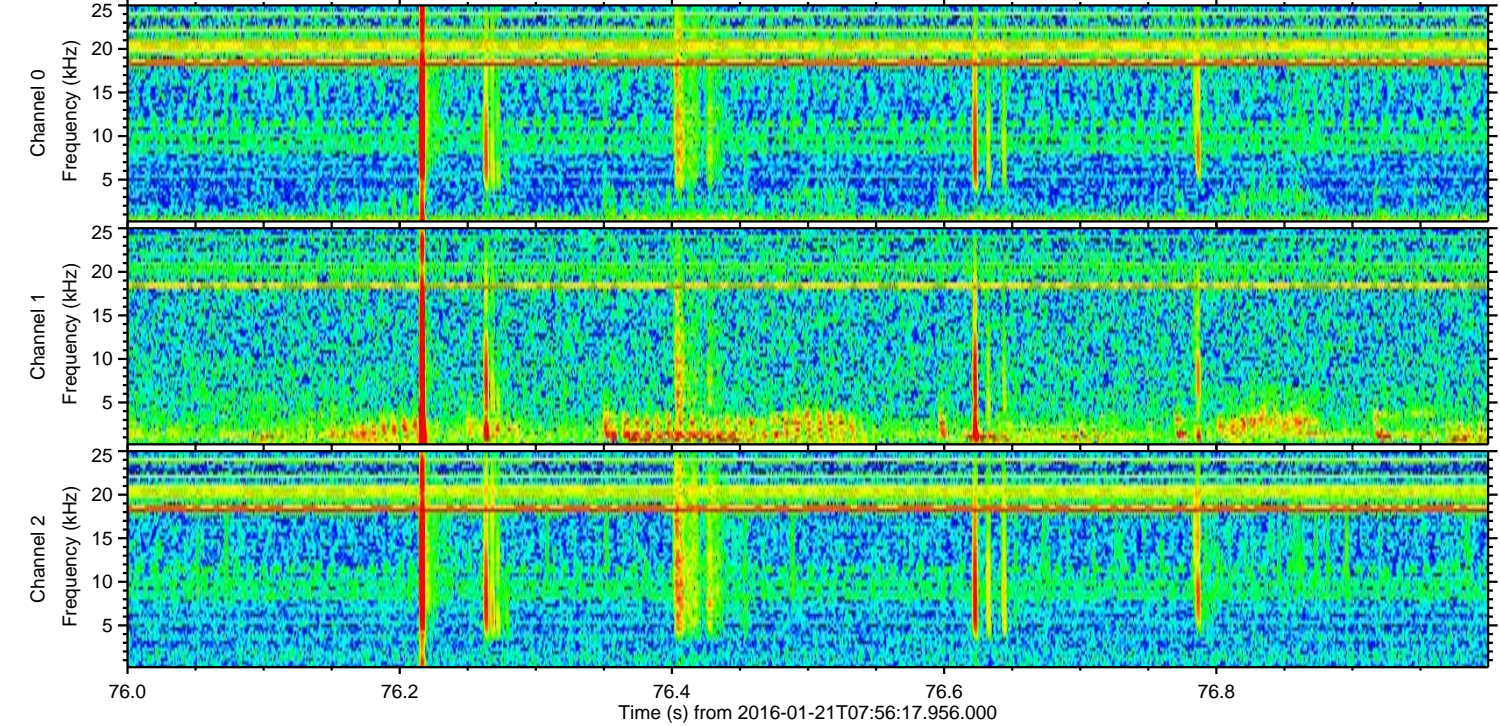
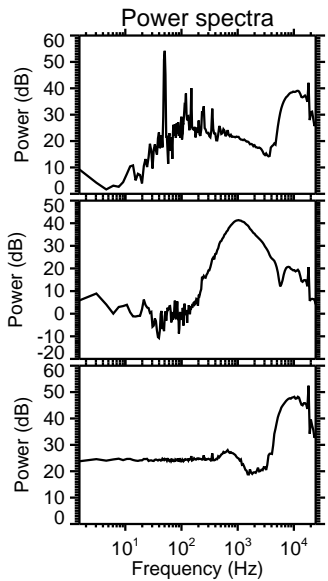
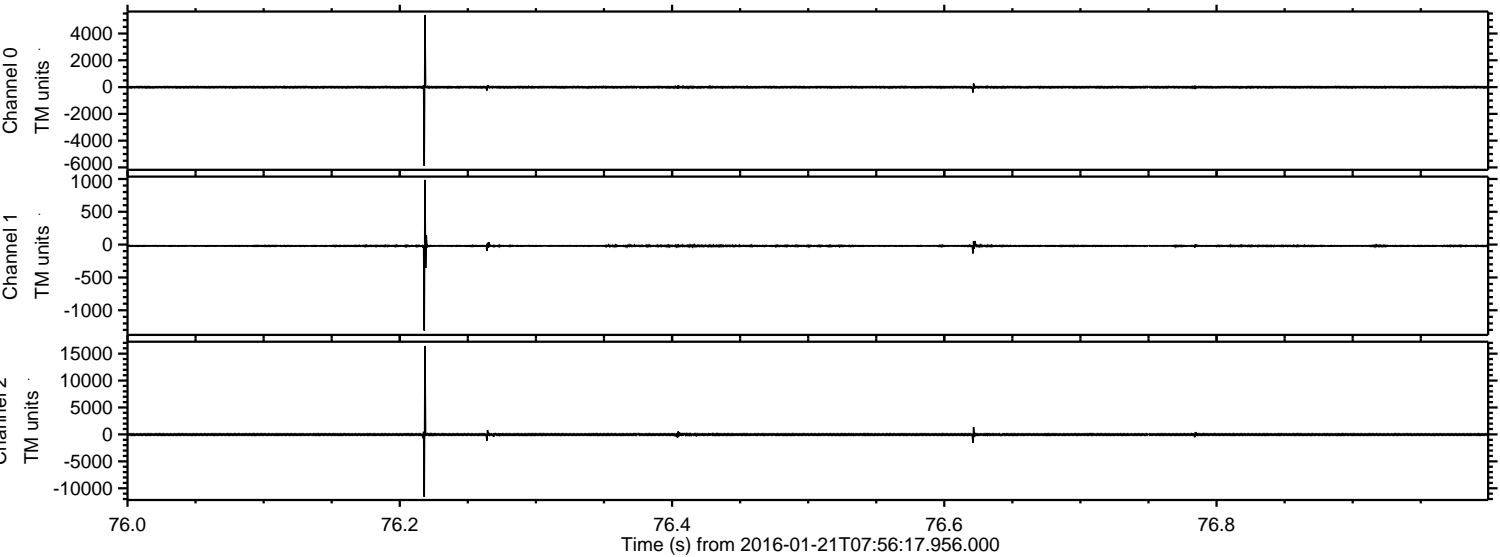
# ELMAVAN 3D WAVEFORMS (Measured data sampled at 50 kHz) 51000 packets of 144 samples from 2016-01-21T07:56:17.956.000.

Processed Mon Apr 4 04:22:44 2016 by ELM ver.2012-10-06 from 001\_\_elm20160121\_075616\_\_dat00.bin



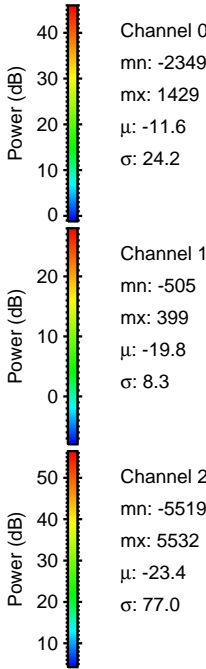
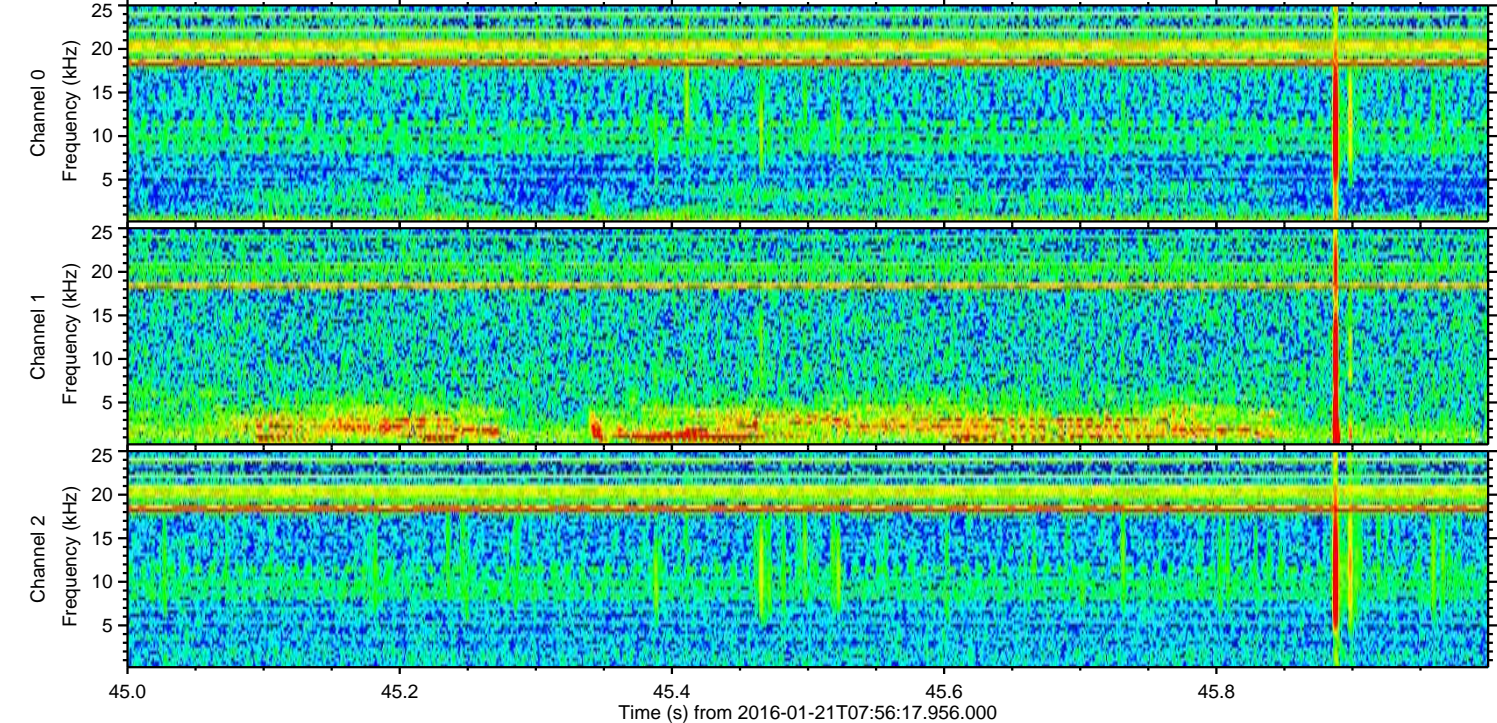
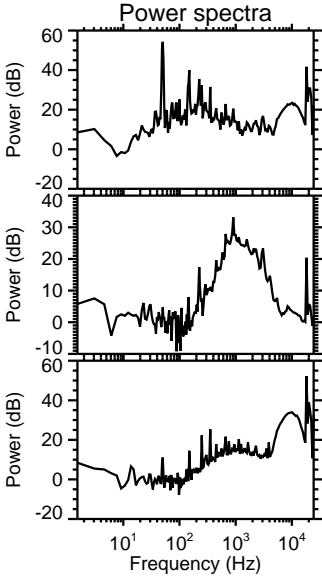
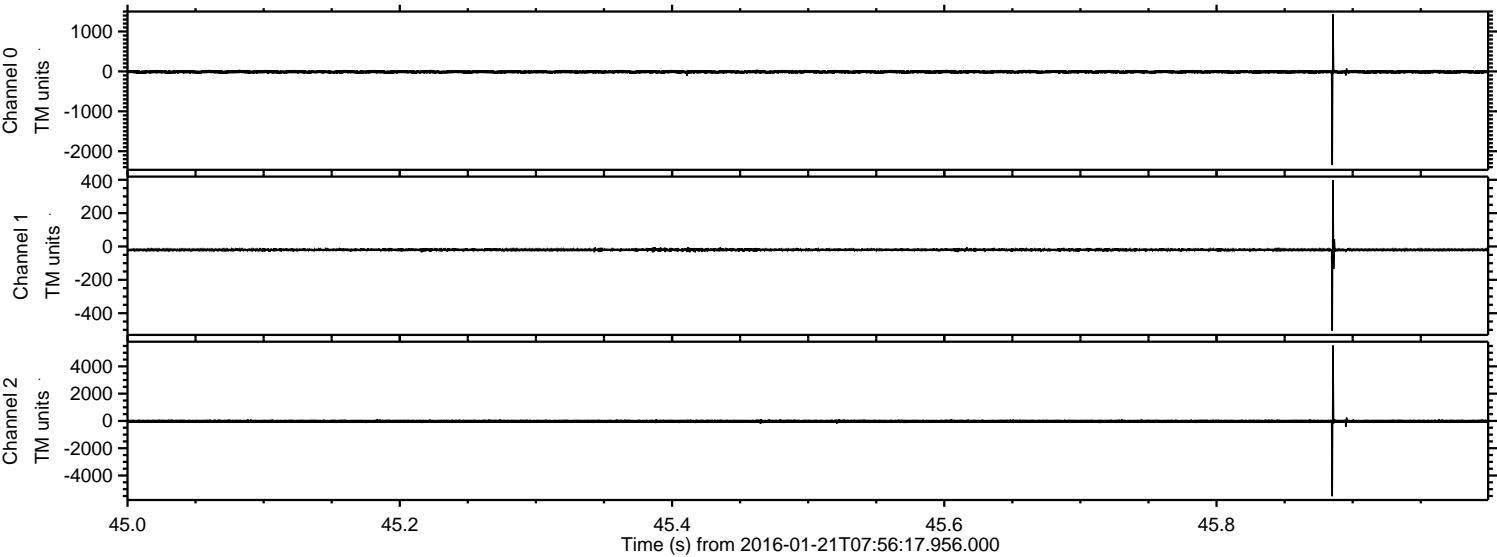


Processed Mon Apr 4 04:22:56 2016 by ELM ver.2012-10-06 from 001\_\_elm20160121\_075616\_\_dat00.bin



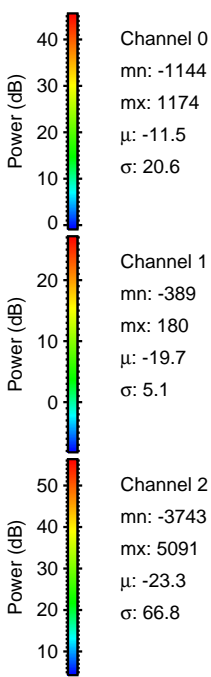
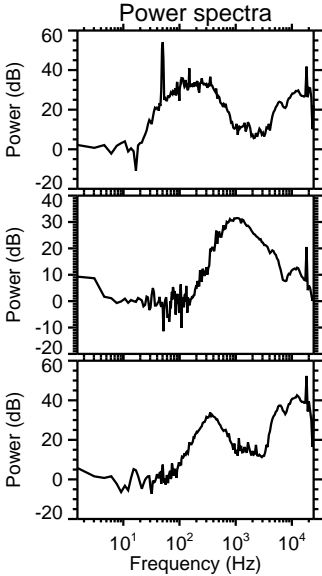
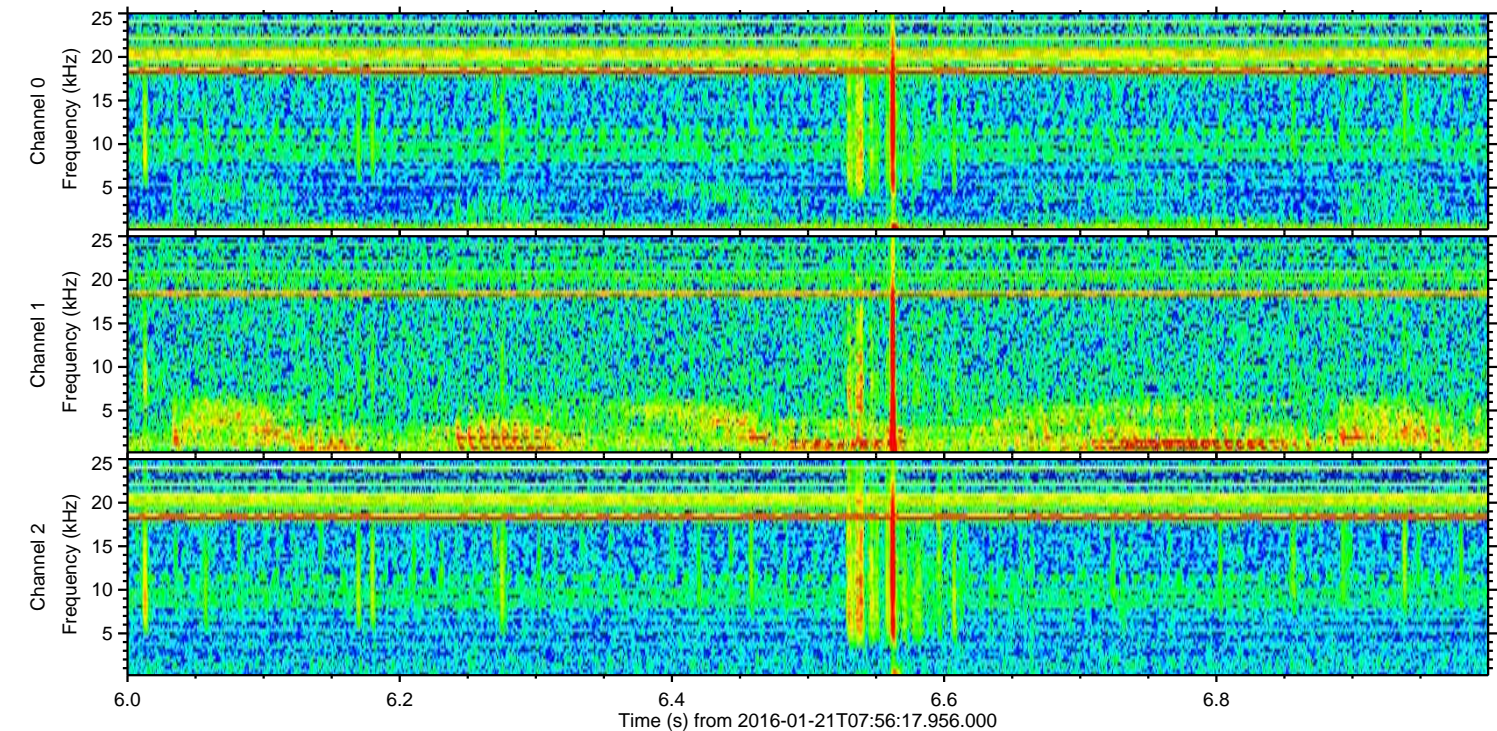
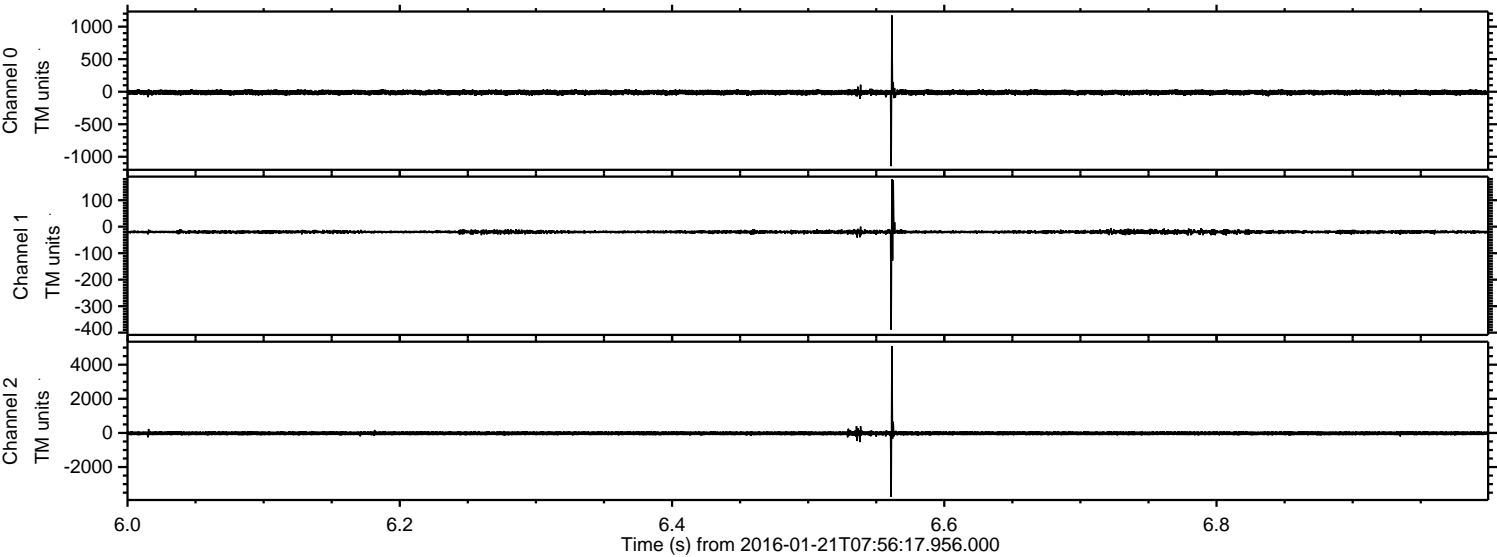


Processed Mon Apr 4 04:22:57 2016 by ELM ver.2012-10-06 from 001\_\_elm20160121\_075616\_\_dat00.bin



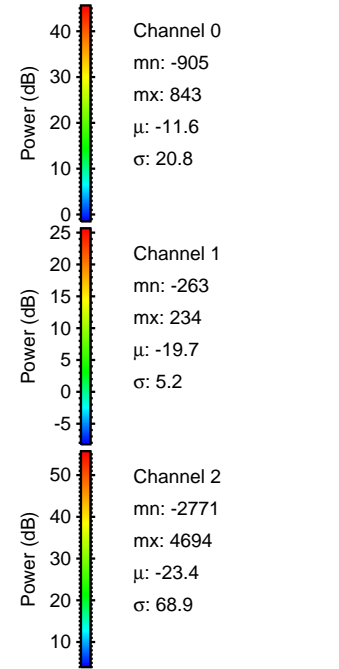
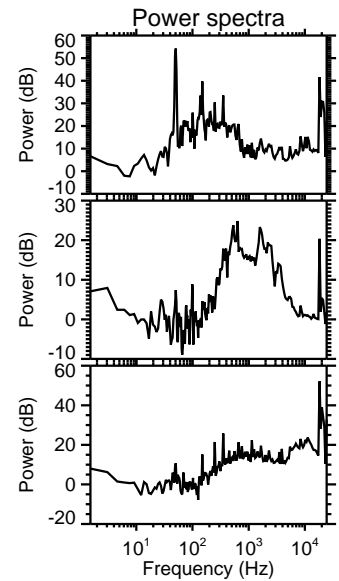
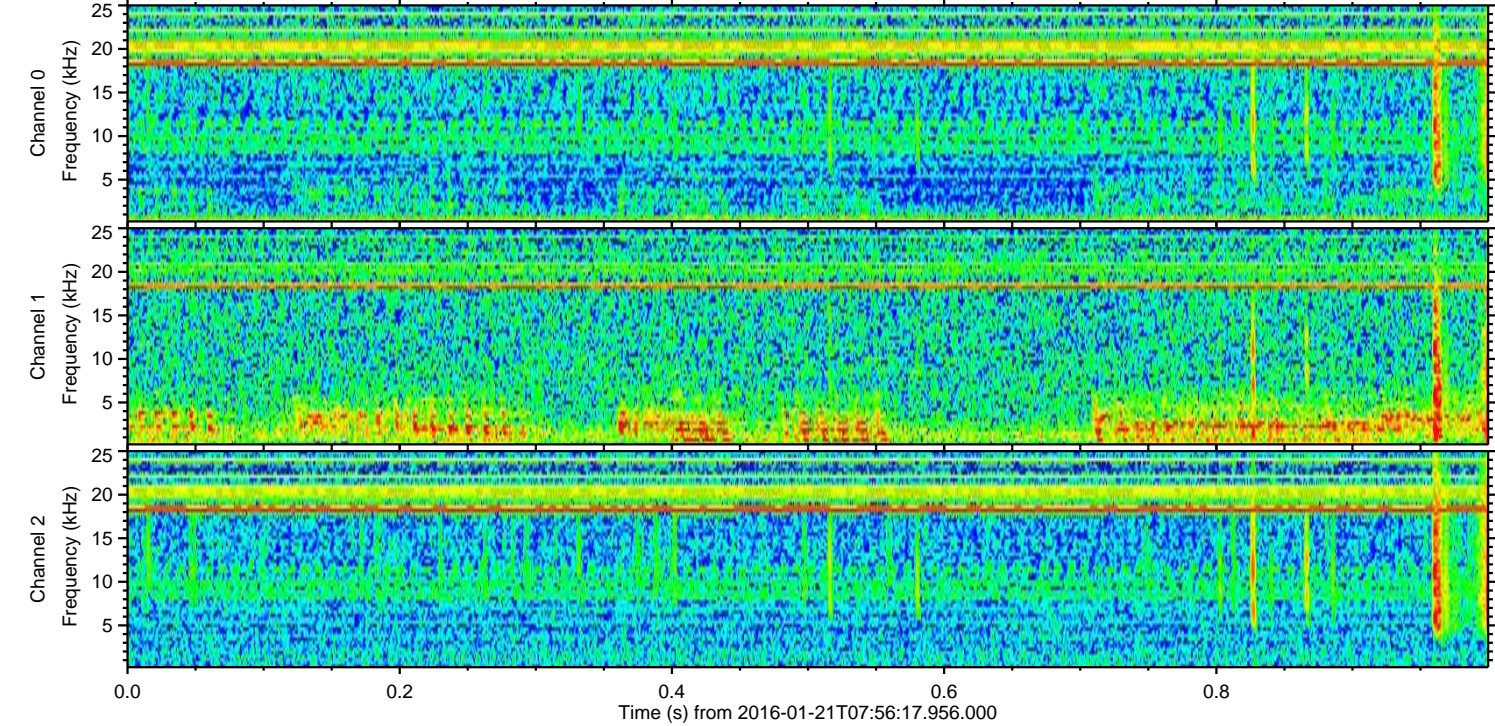
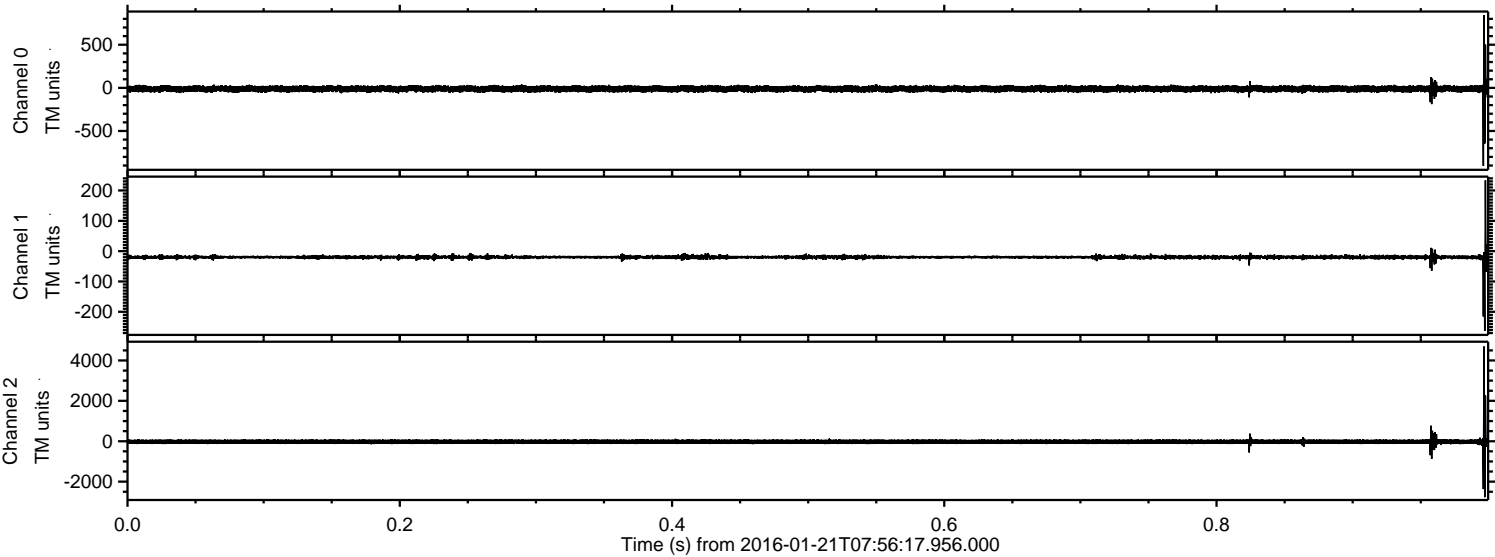


Processed Mon Apr 4 04:22:58 2016 by ELM ver.2012-10-06 from 001\_\_elm20160121\_075616\_\_dat00.bin





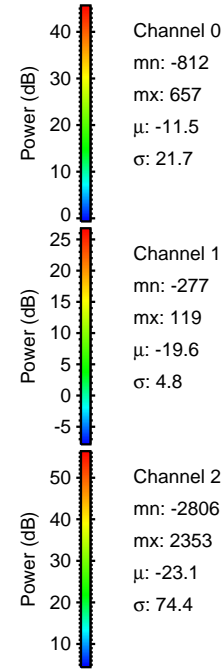
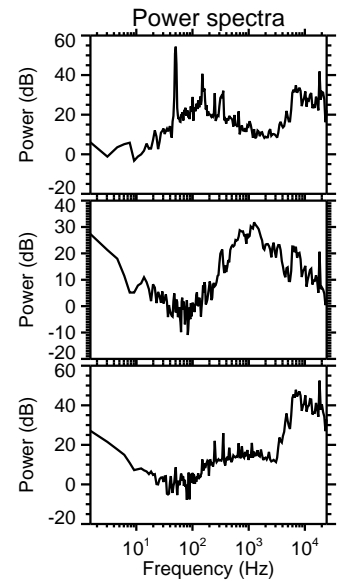
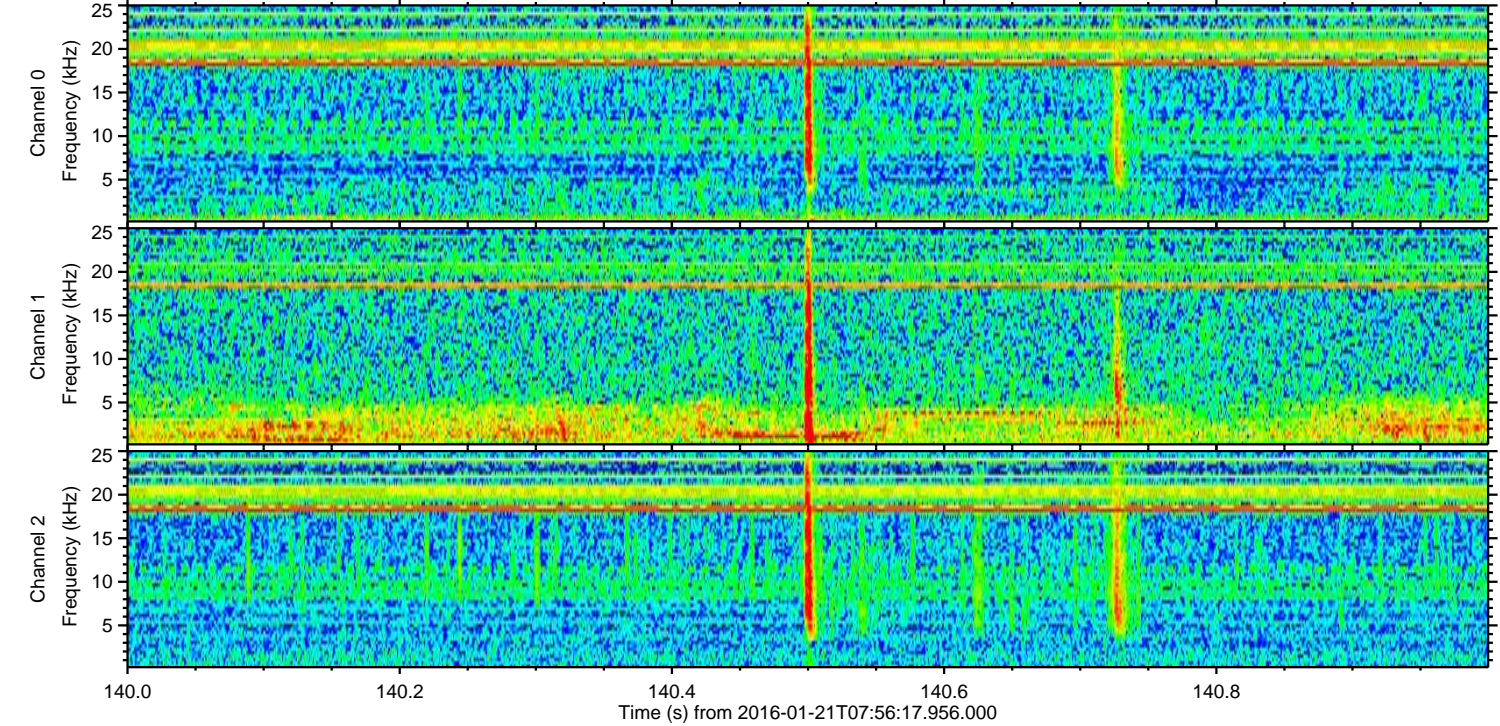
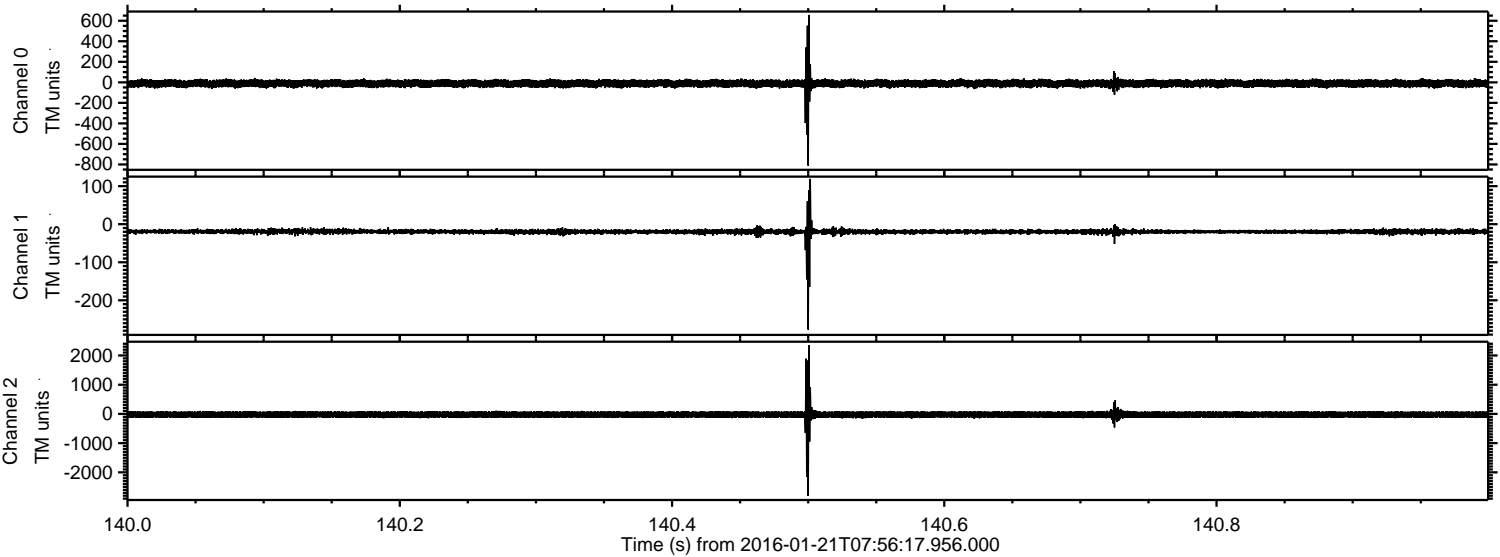
Processed Mon Apr 4 04:22:59 2016 by ELM ver.2012-10-06 from 001\_\_elm20160121\_075616\_\_dat00.bin





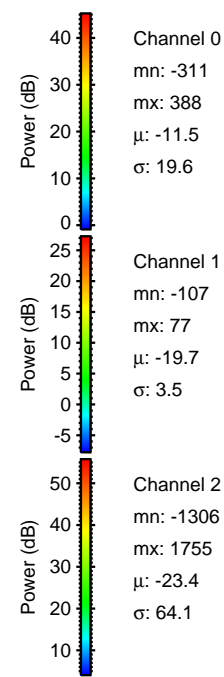
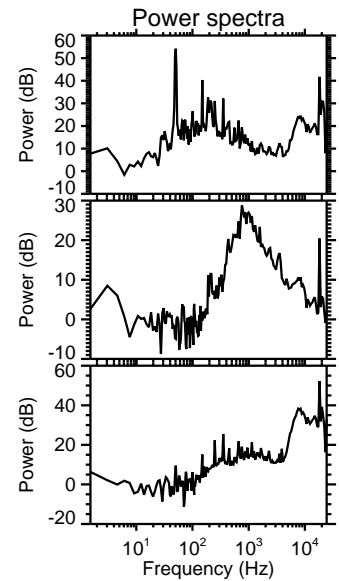
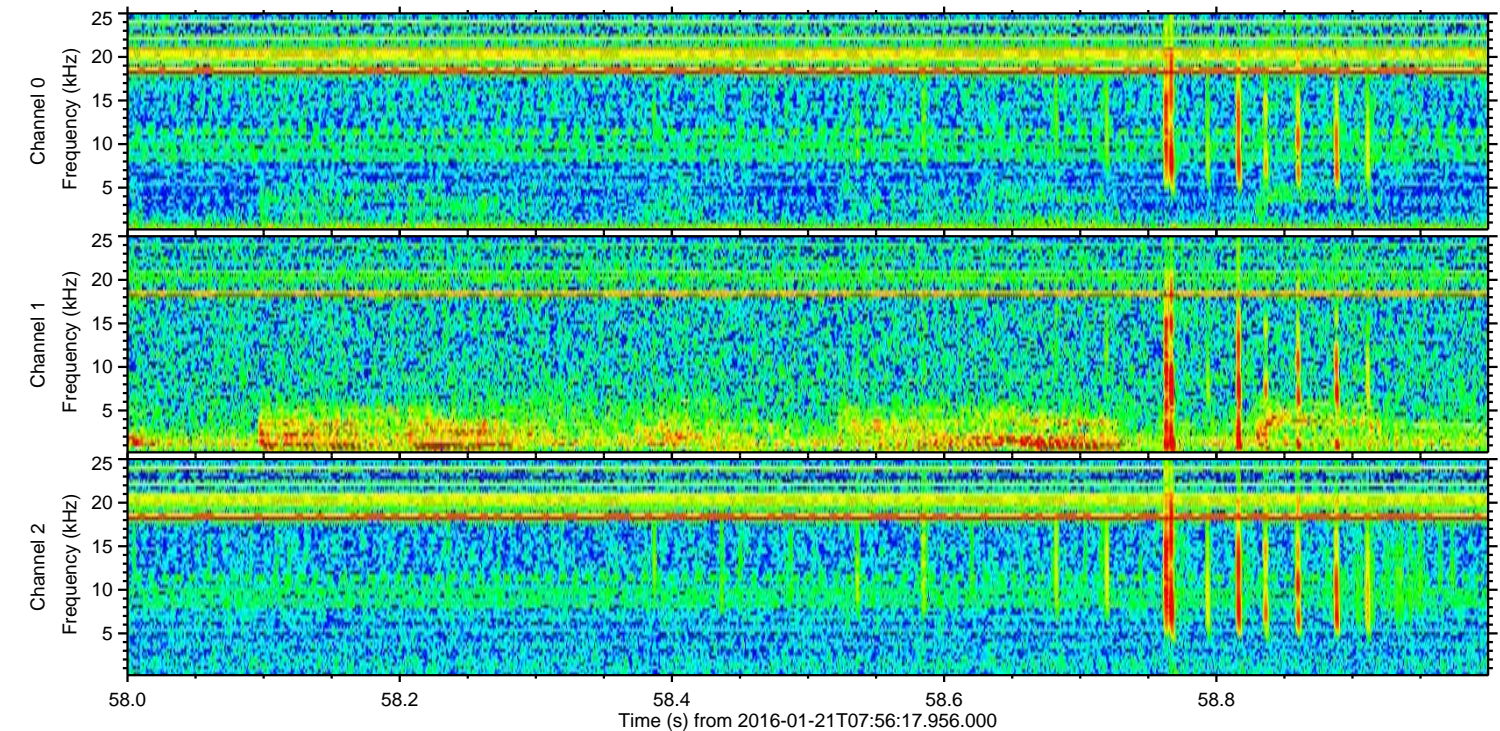
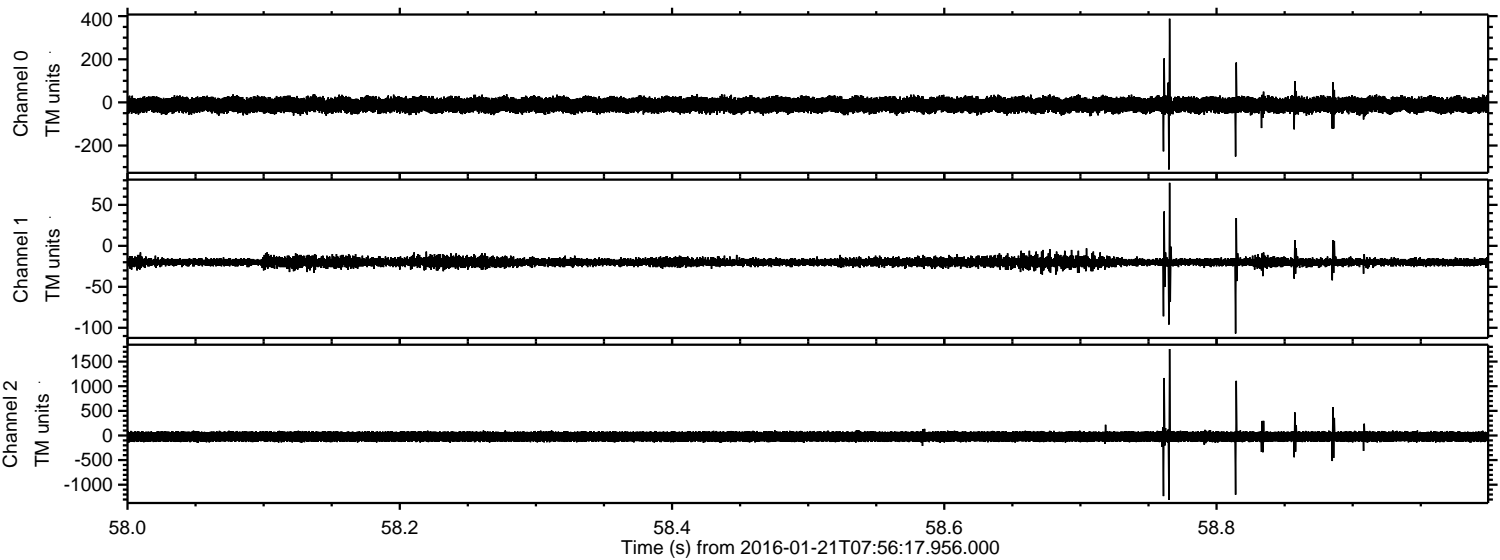
ELMAVAN 3D WAVEFORMS (Measured data sampled at 50 kHz) 51000 packets of 144 samples from 2016-01-21T07:56:17.956.000. Part 141/147

Processed Mon Apr 4 04:23:00 2016 by ELM ver.2012-10-06 from 001\_\_elm20160121\_075616\_\_dat00.bin



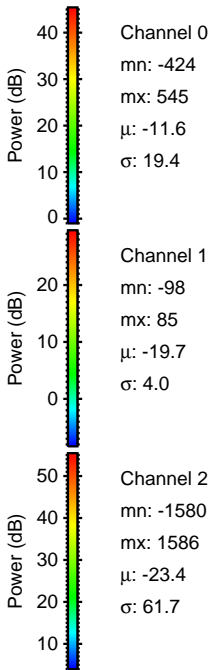
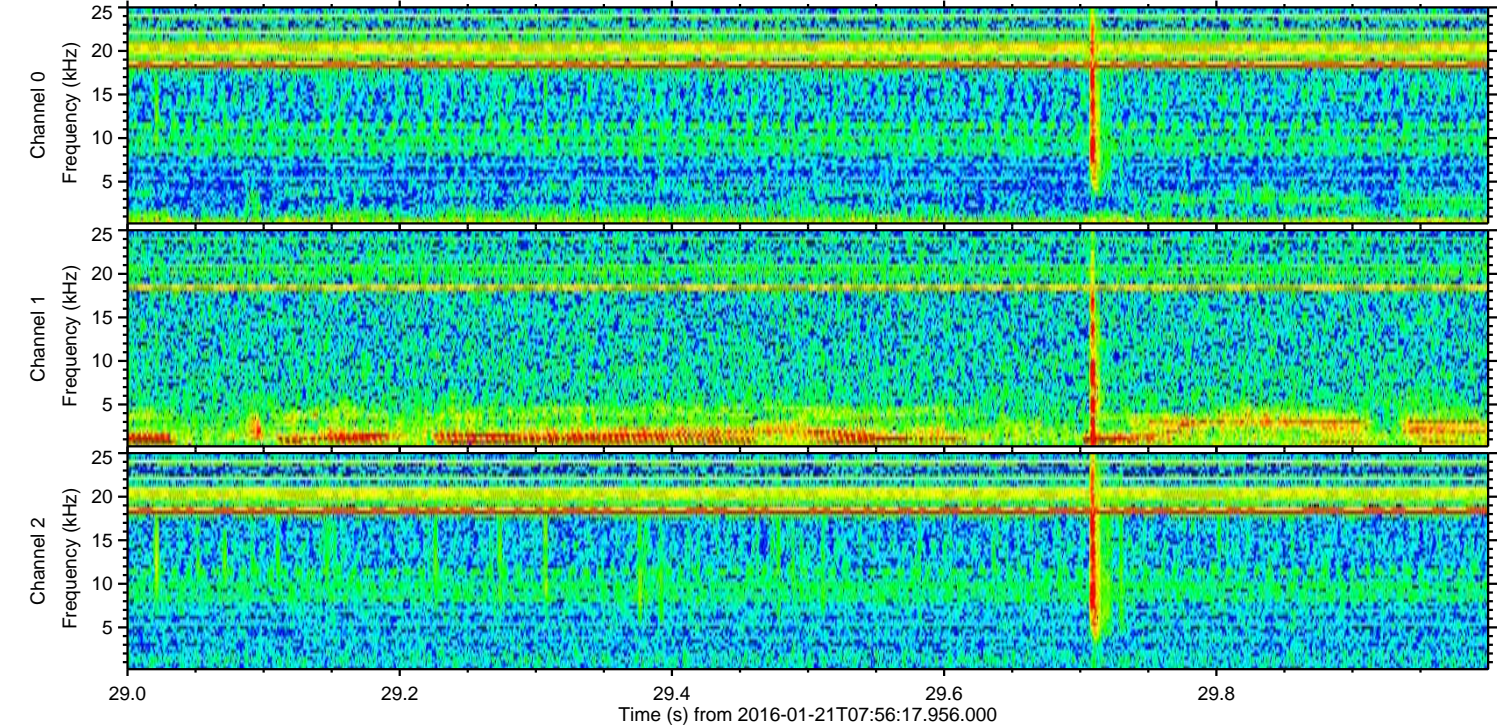
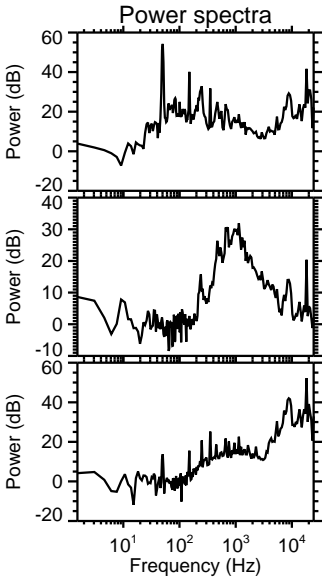
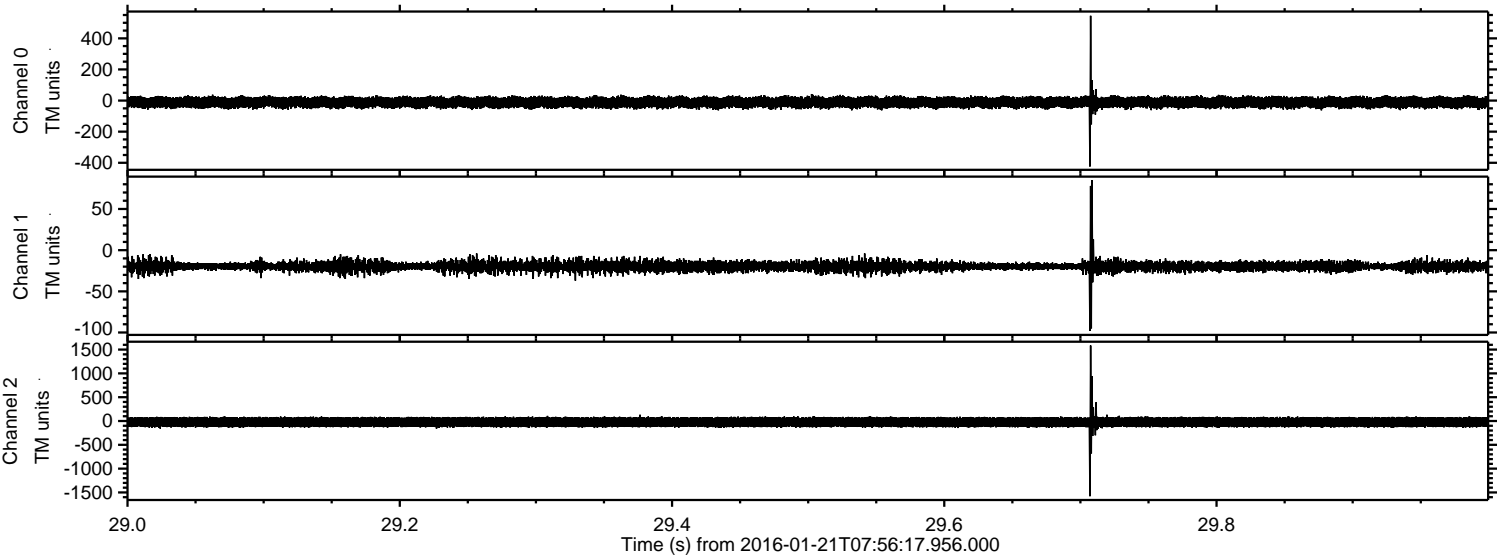


Processed Mon Apr 4 04:23:00 2016 by ELM ver.2012-10-06 from 001\_\_elm20160121\_075616\_\_dat00.bin





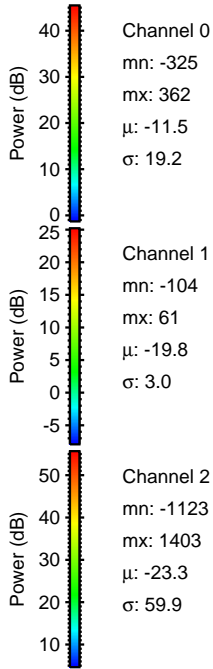
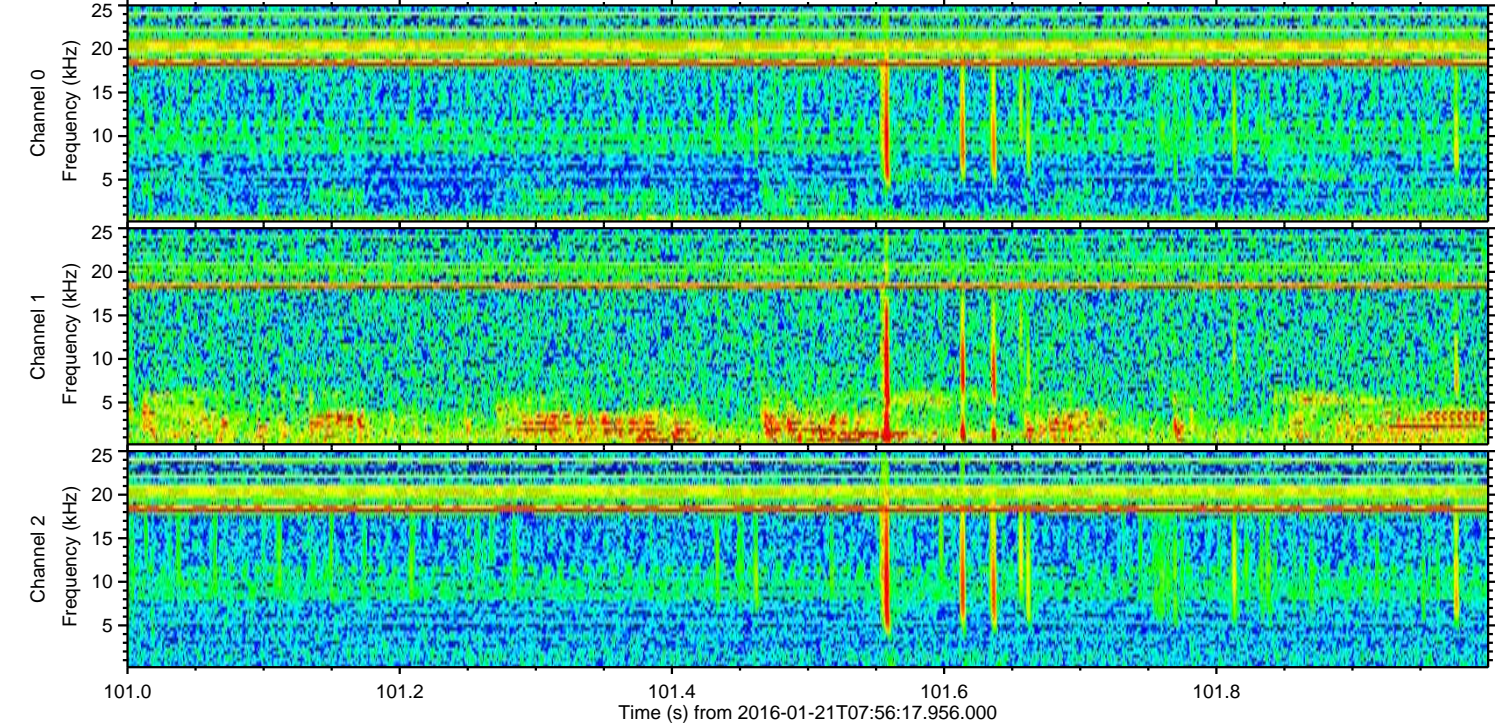
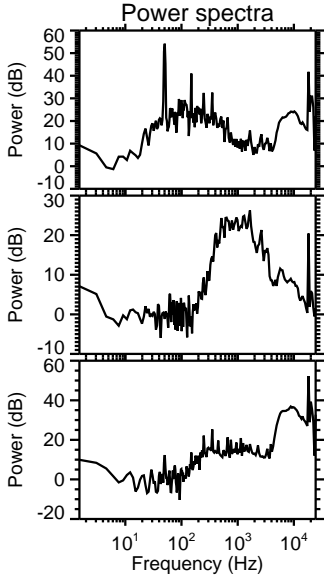
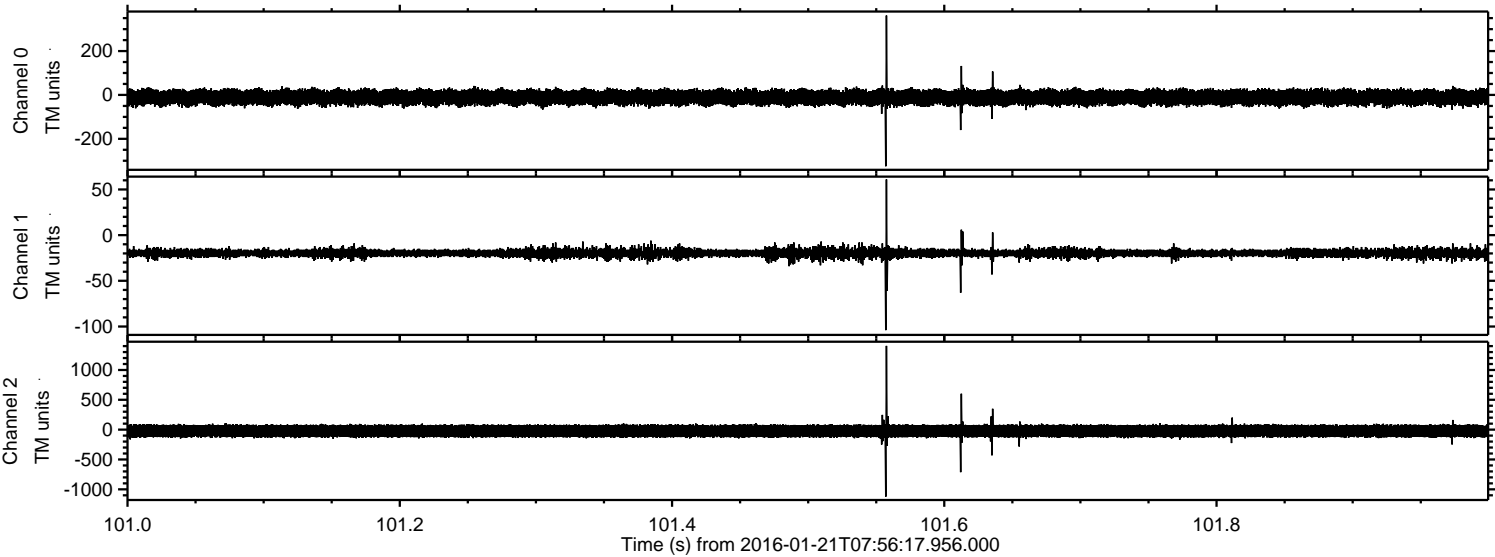
Processed Mon Apr 4 04:23:01 2016 by ELM ver.2012-10-06 from 001\_\_elm20160121\_075616\_\_dat00.bin





ELMAVAN 3D WAVEFORMS (Measured data sampled at 50 kHz) 51000 packets of 144 samples from 2016-01-21T07:56:17.956.000. Part 102/147

Processed Mon Apr 4 04:23:02 2016 by ELM ver.2012-10-06 from 001\_\_elm20160121\_075616\_\_dat00.bin



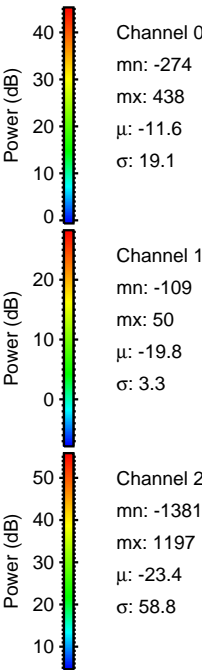
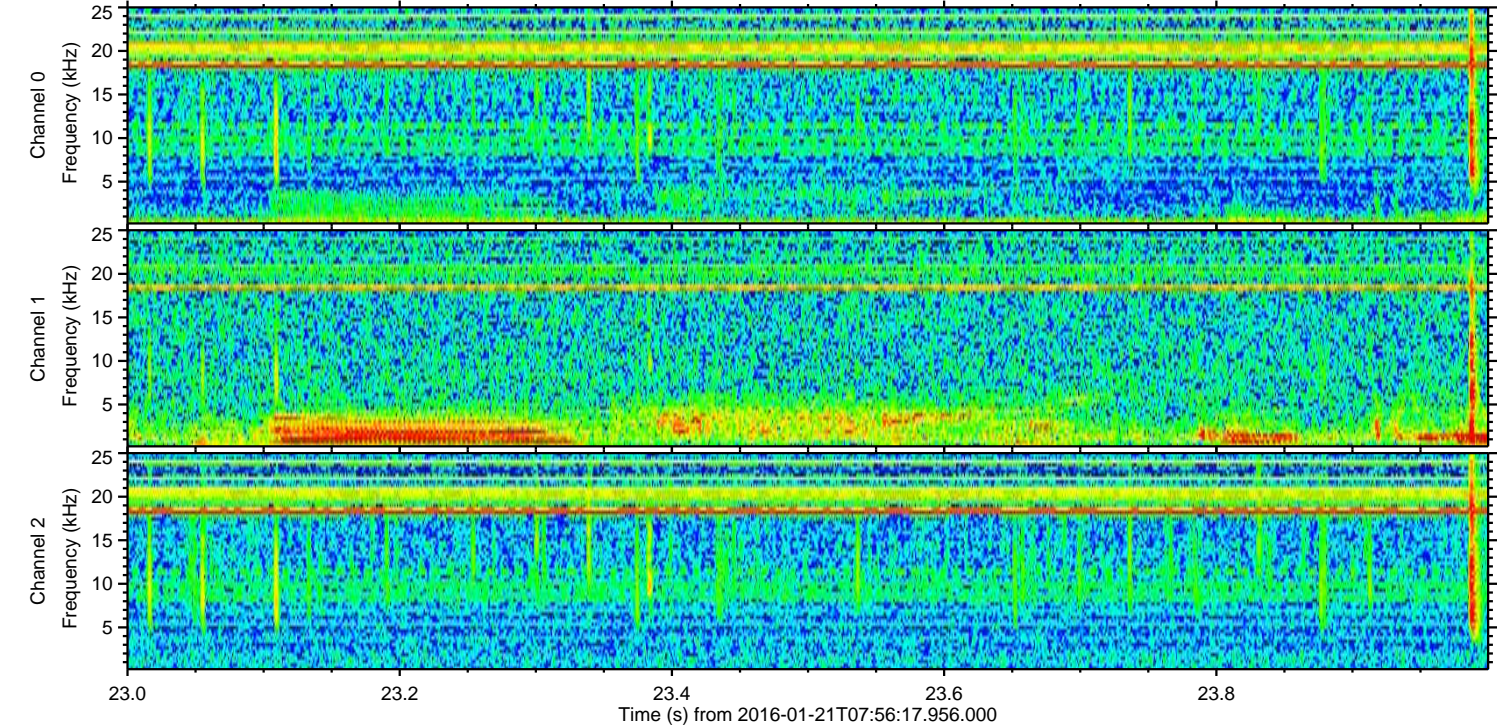
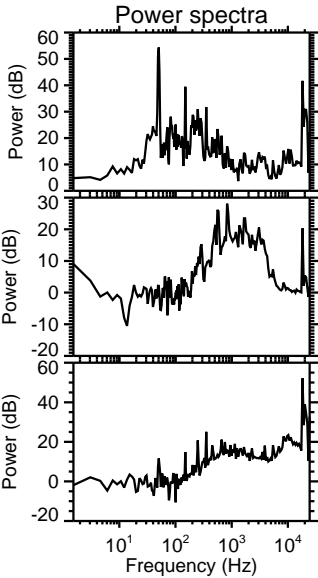
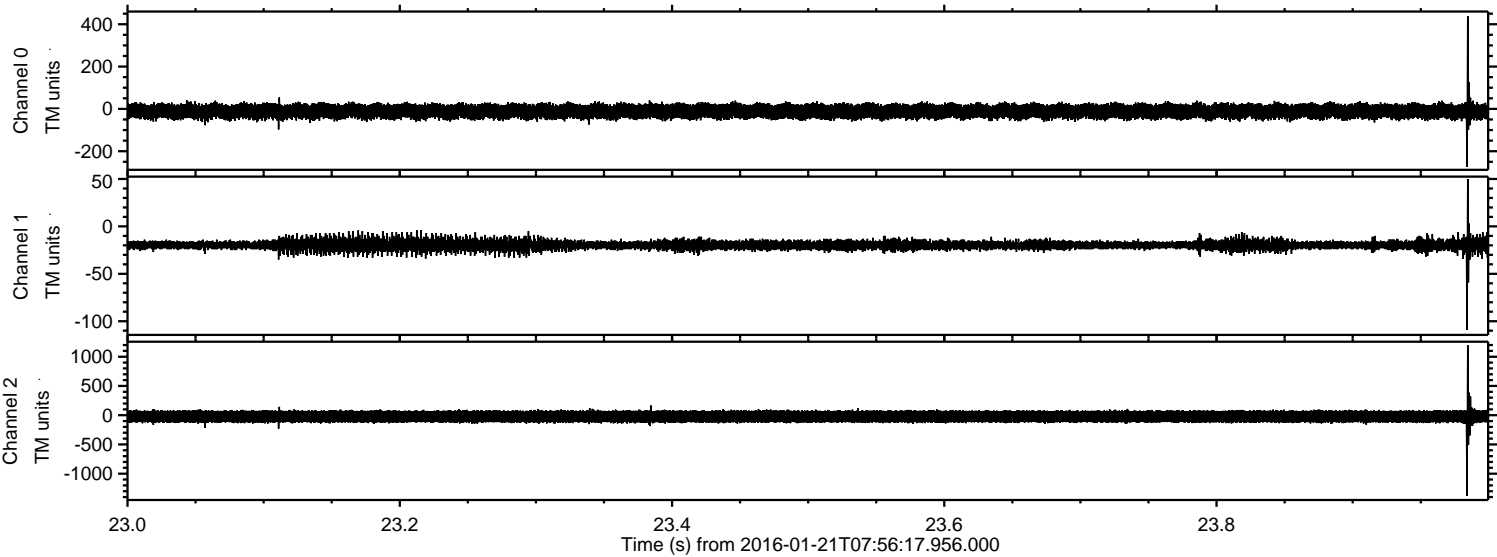
Channel 0  
mn: -325  
mx: 362  
 $\mu$ : -11.5  
 $\sigma$ : 19.2

Channel 1  
mn: -104  
mx: 61  
 $\mu$ : -19.8  
 $\sigma$ : 3.0

Channel 2  
mn: -1123  
mx: 1403  
 $\mu$ : -23.3  
 $\sigma$ : 59.9



Processed Mon Apr 4 04:23:03 2016 by ELM ver.2012-10-06 from 001\_\_elm20160121\_075616\_\_dat00.bin





Processed Mon Apr 4 04:23:04 2016 by ELM ver.2012-10-06 from 001\_\_elm20160121\_075616\_\_dat00.bin

