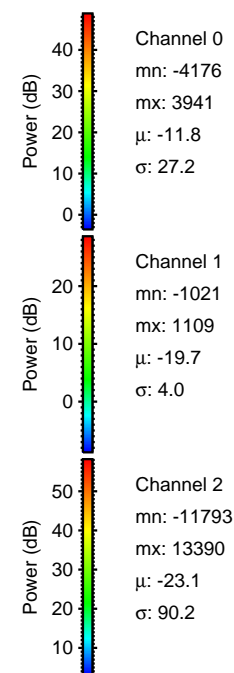
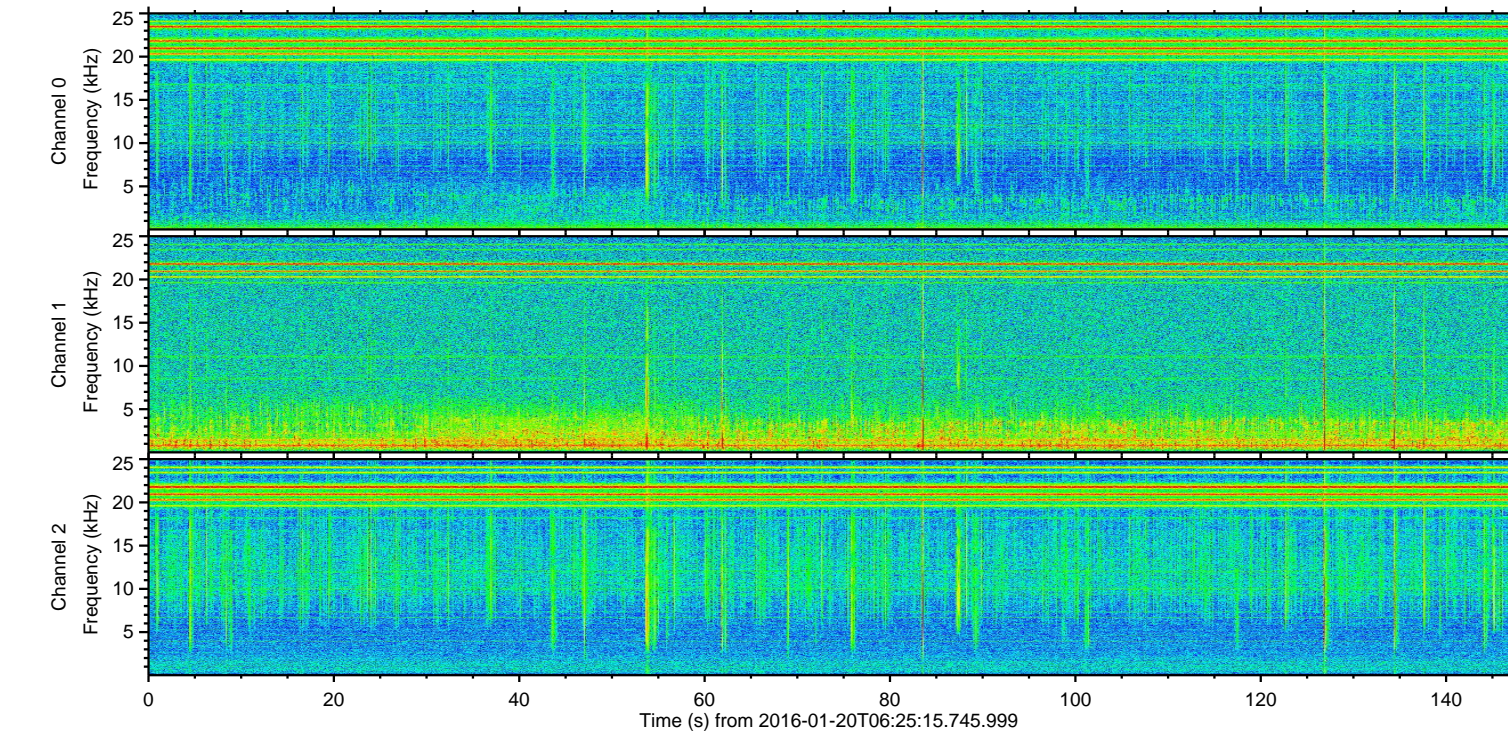
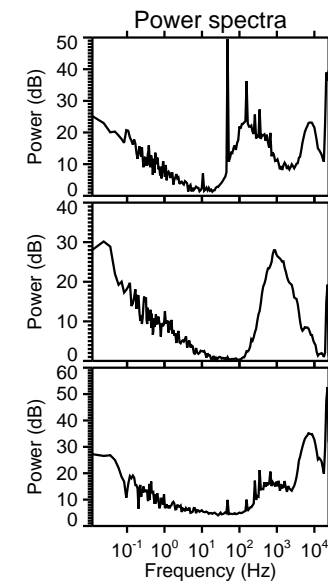
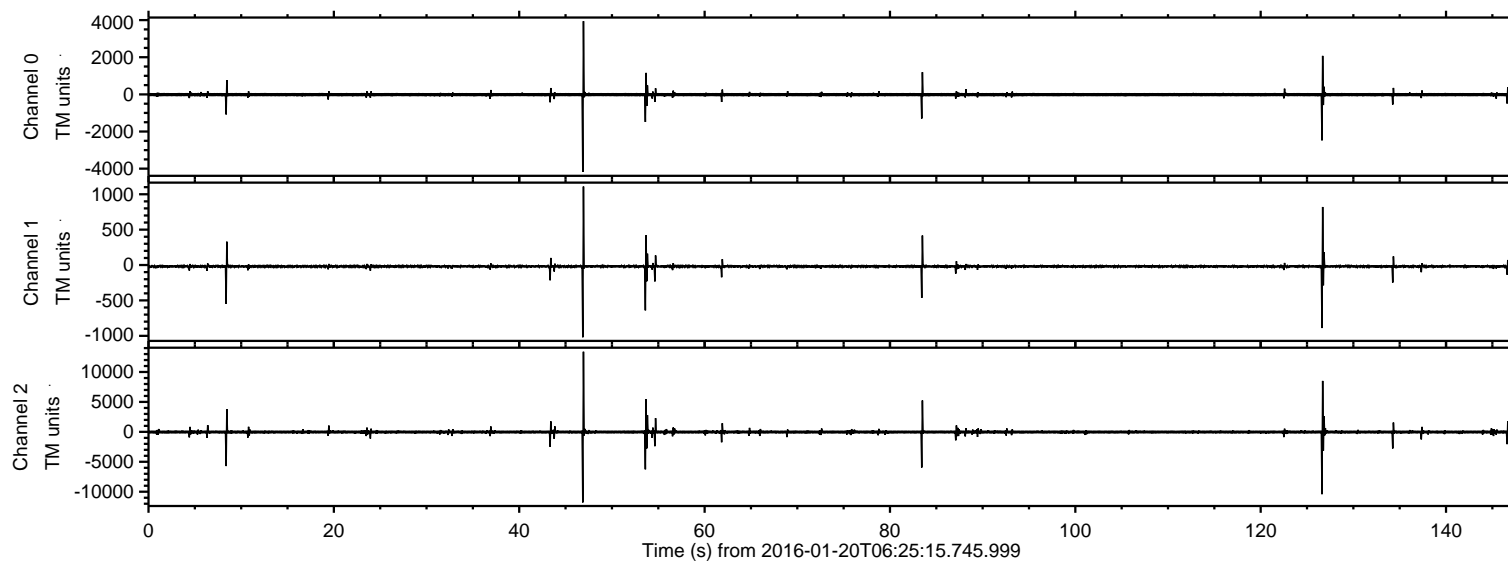


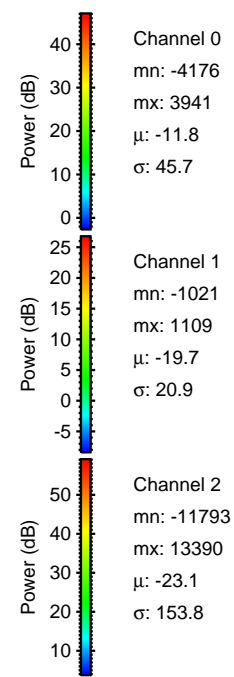
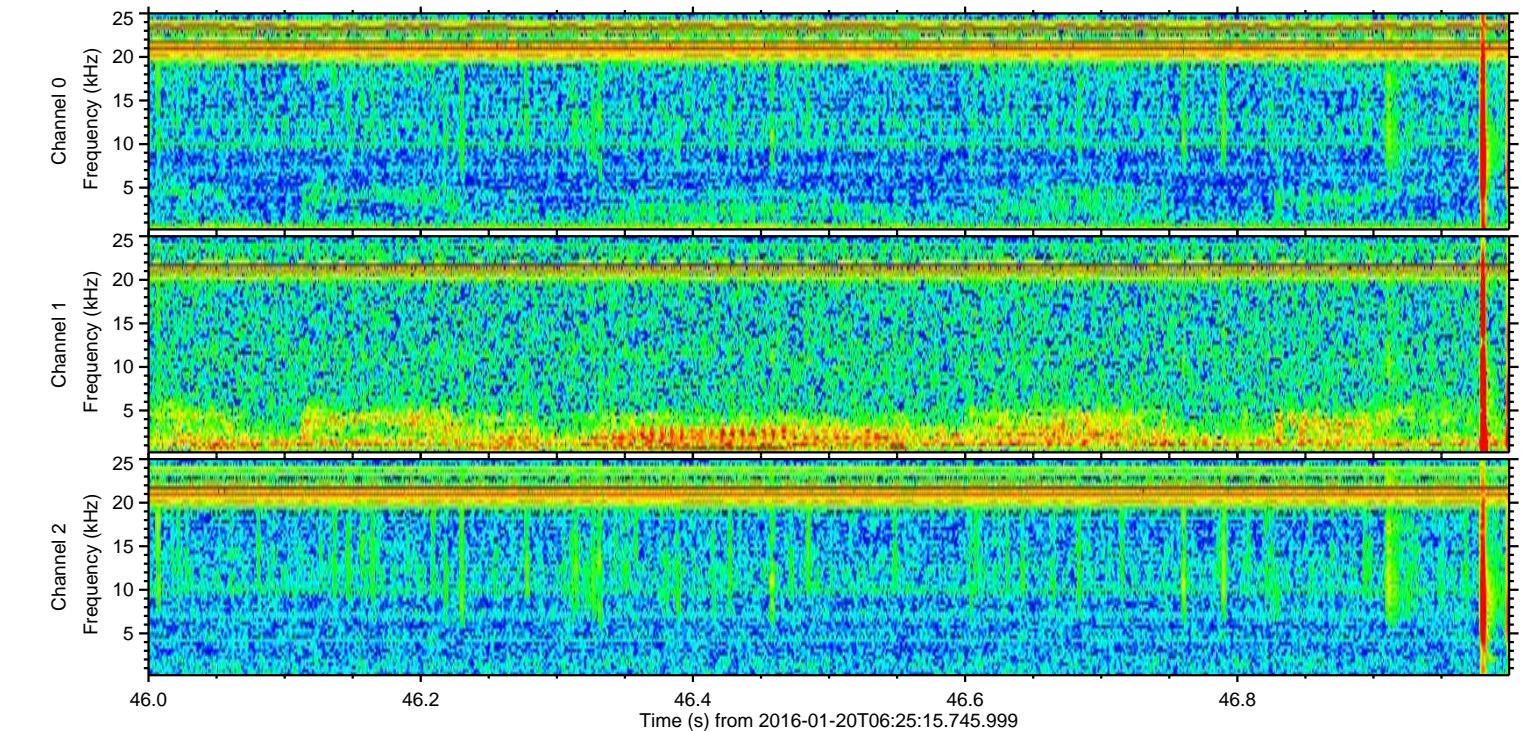
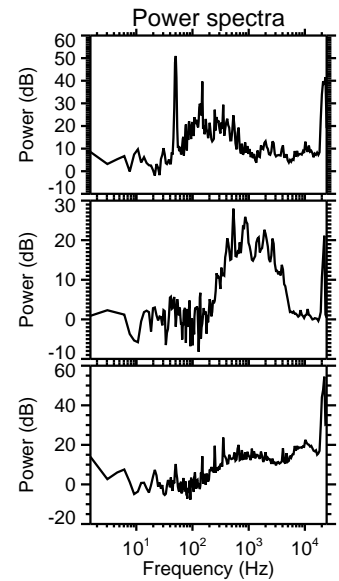
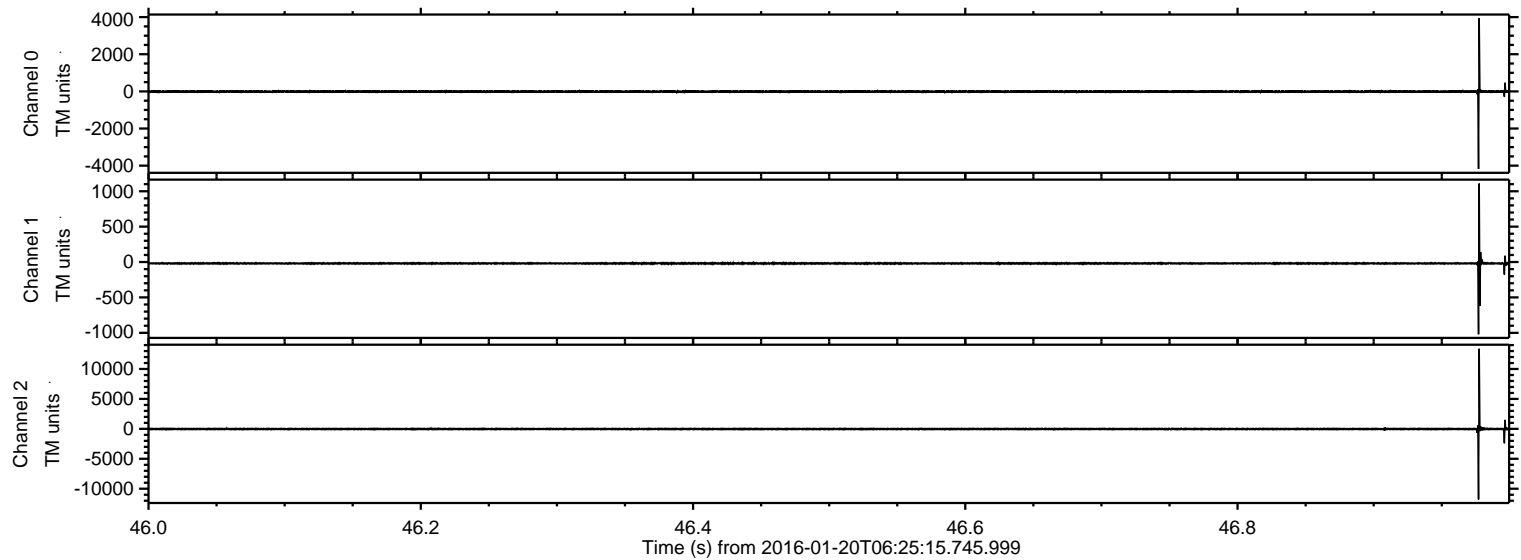
# ELMAVAN 3D WAVEFORMS (Measured data sampled at 50 kHz) 51000 packets of 144 samples from 2016-01-20T06:25:15.745.999.

Processed Sun Apr 3 23:21:25 2016 by ELM ver.2012-10-06 from 001\_\_elm20160120\_062514\_\_dat00.bin





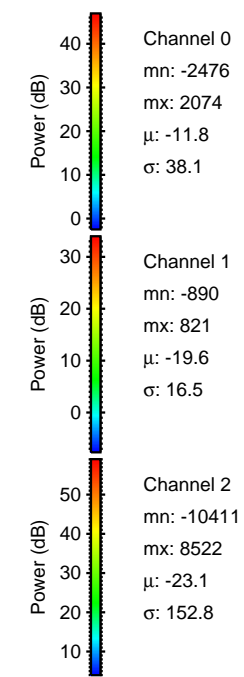
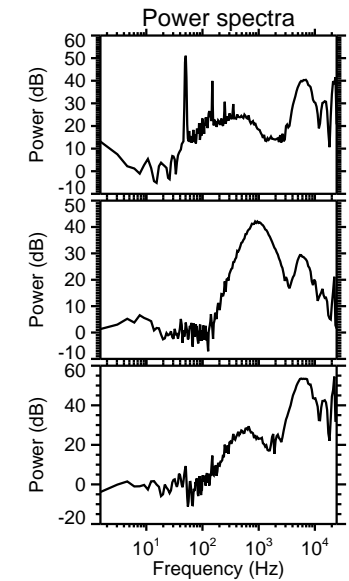
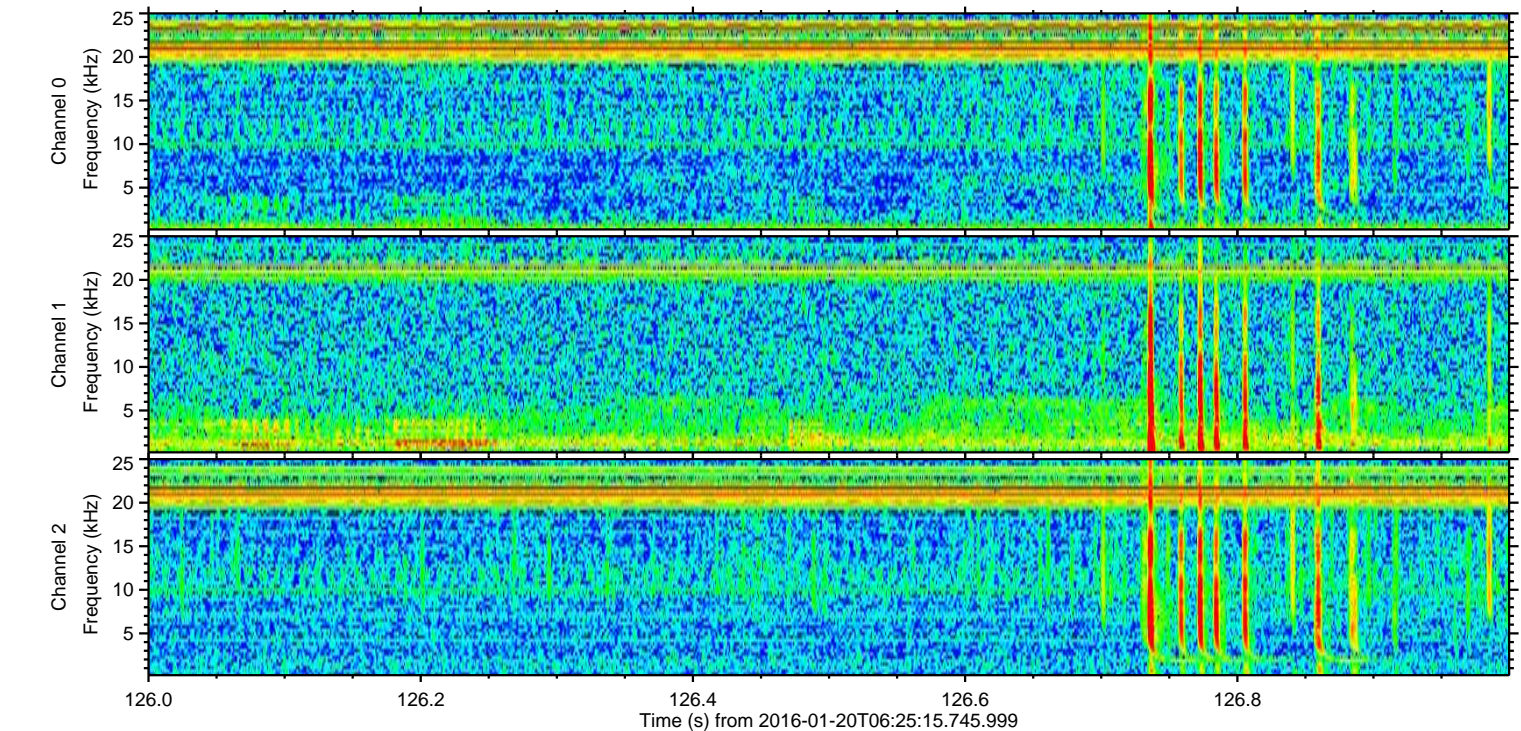
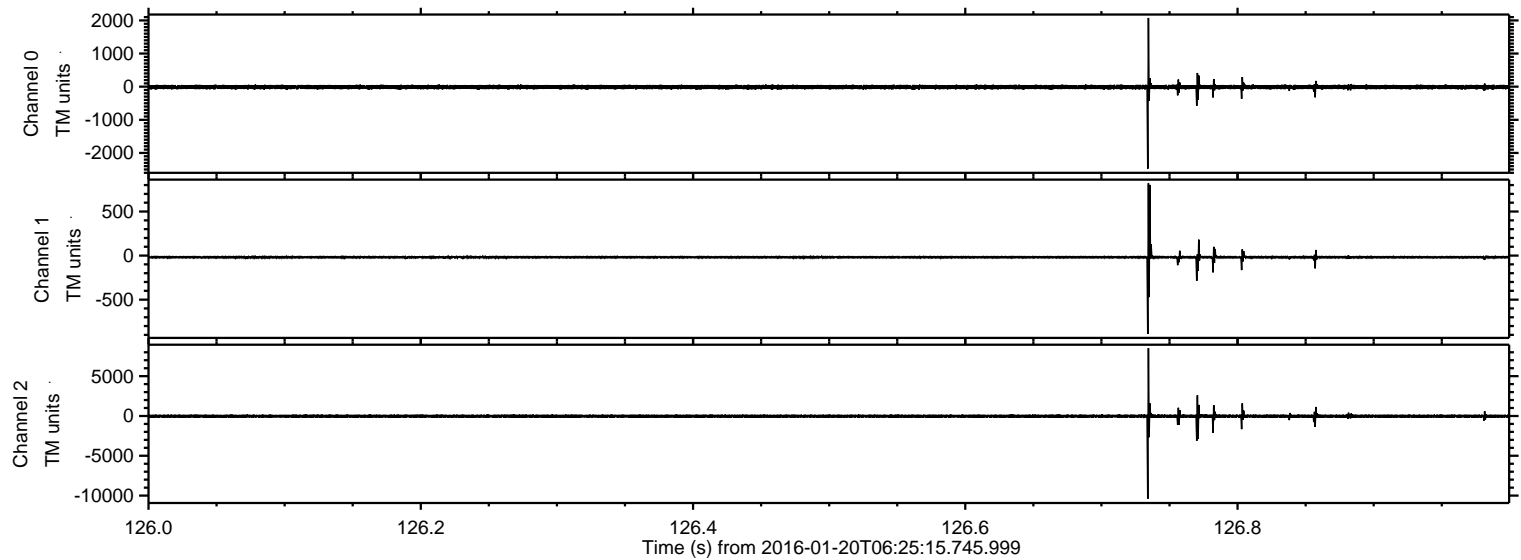
Processed Sun Apr 3 23:21:36 2016 by ELM ver.2012-10-06 from 001\_\_elm20160120\_062514\_\_dat00.bin





ELMAVAN 3D WAVEFORMS (Measured data sampled at 50 kHz) 51000 packets of 144 samples from 2016-01-20T06:25:15.745.999. Part 127/147

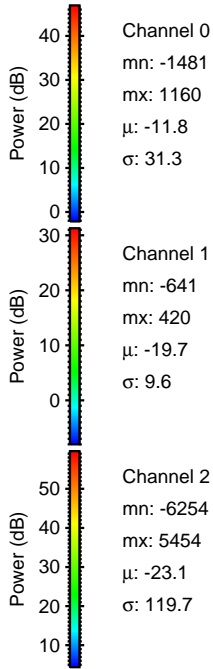
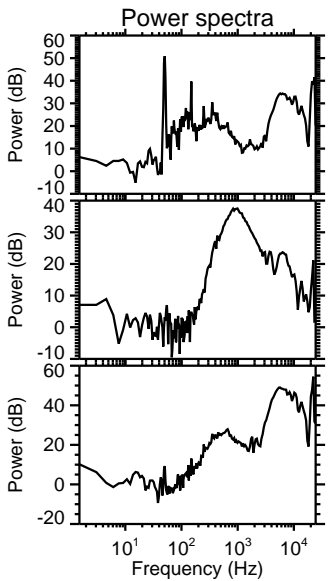
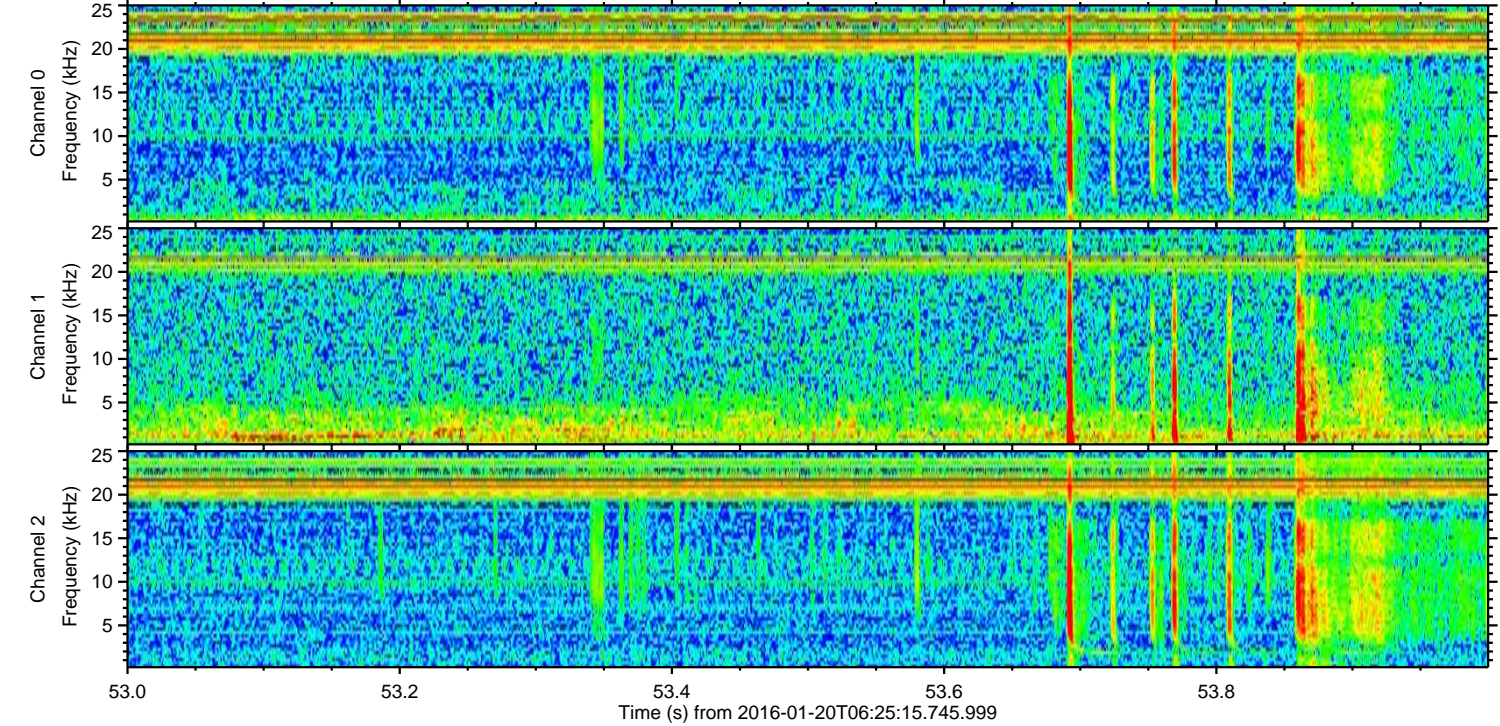
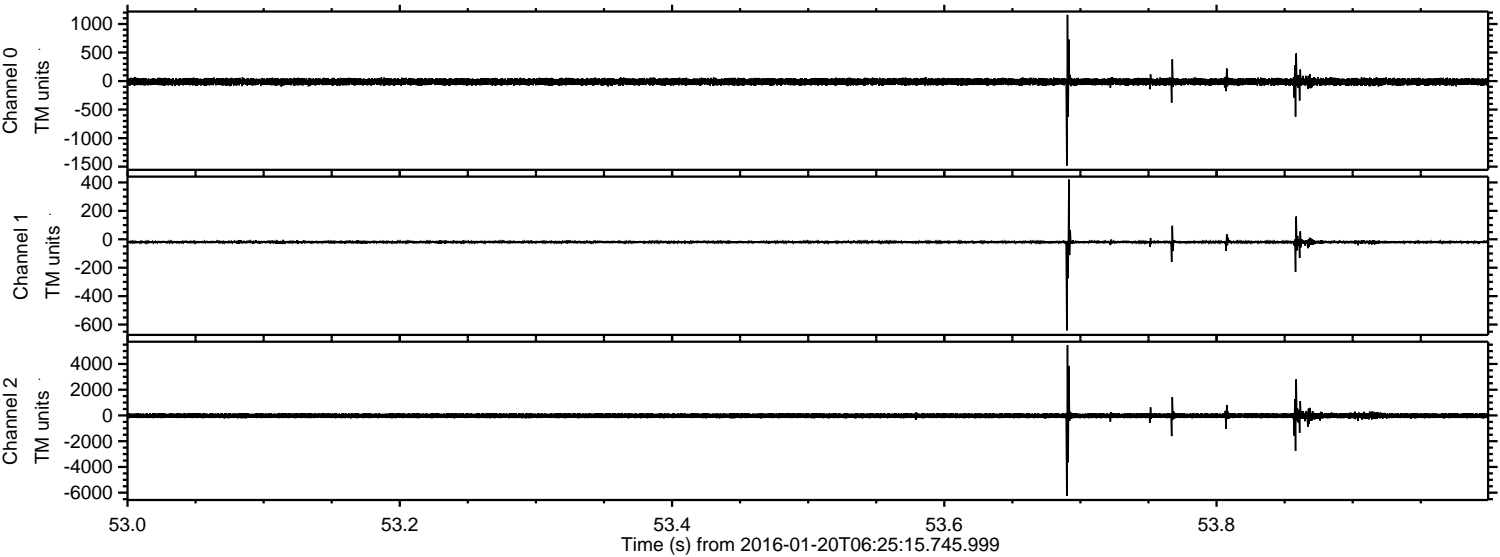
Processed Sun Apr 3 23:21:37 2016 by ELM ver.2012-10-06 from 001\_\_elm20160120\_062514\_\_dat00.bin





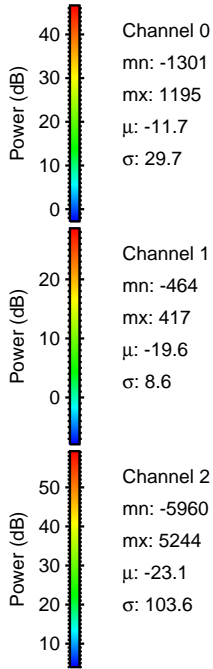
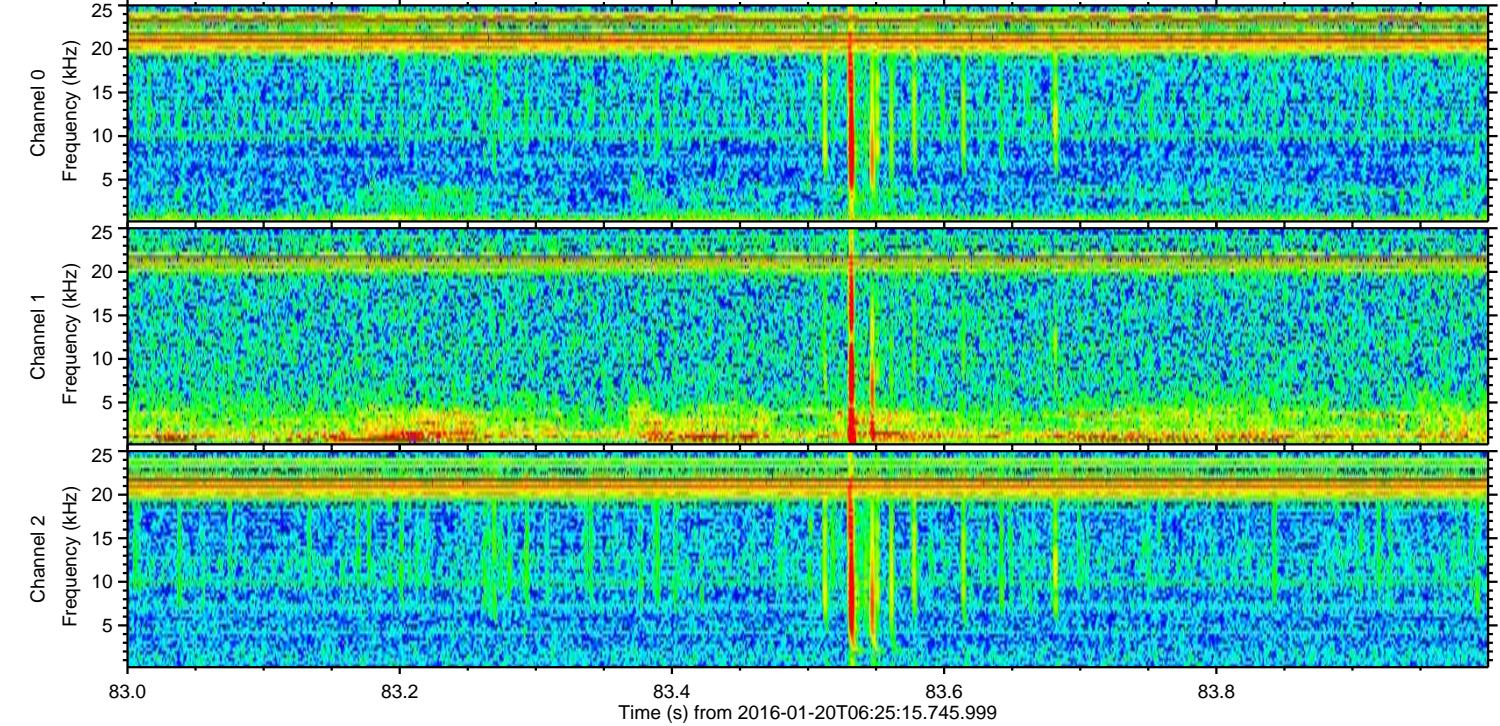
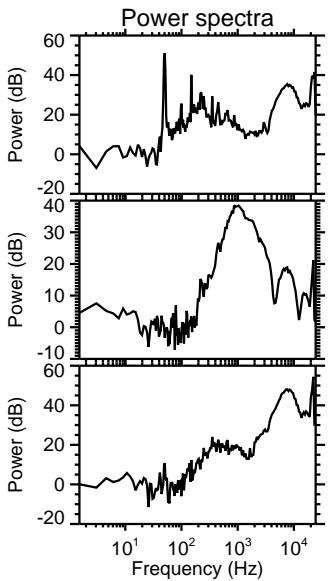
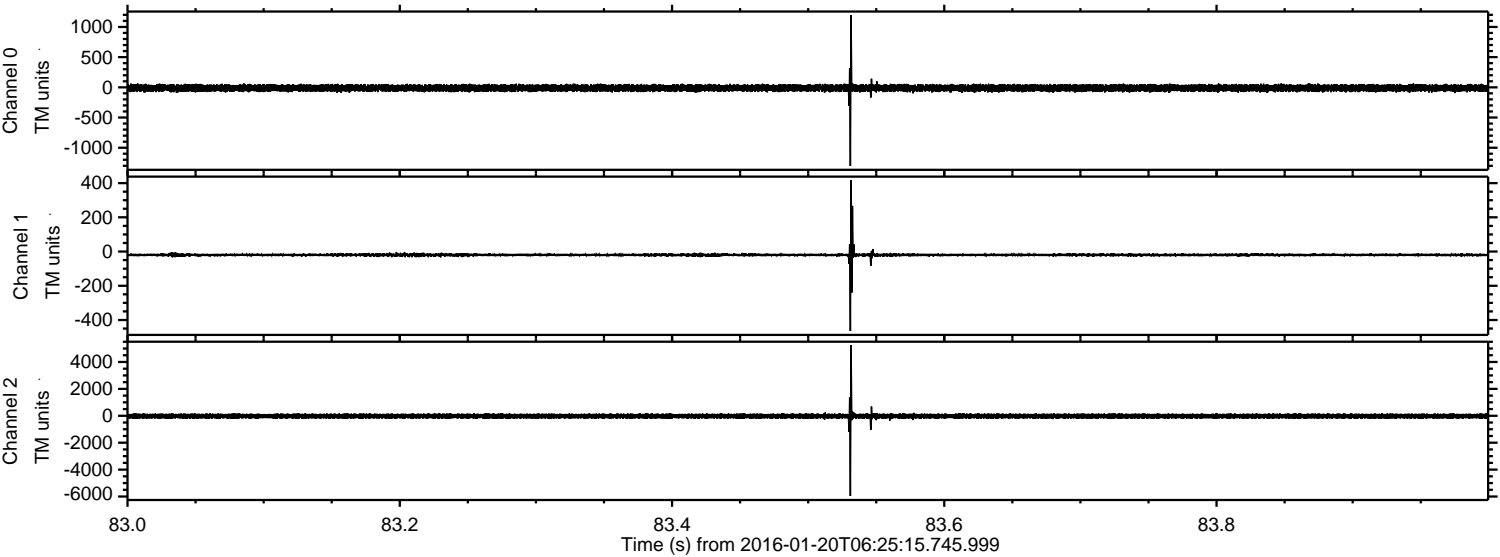
ELMAVAN 3D WAVEFORMS (Measured data sampled at 50 kHz) 51000 packets of 144 samples from 2016-01-20T06:25:15.745.999. Part 54/147

Processed Sun Apr 3 23:21:38 2016 by ELM ver.2012-10-06 from 001\_\_elm20160120\_062514\_\_dat00.bin



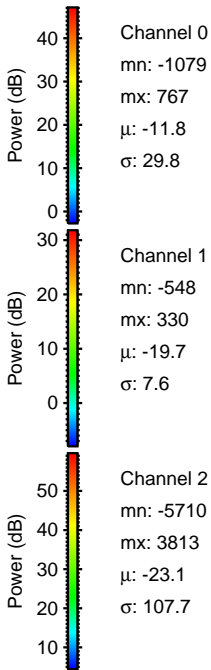
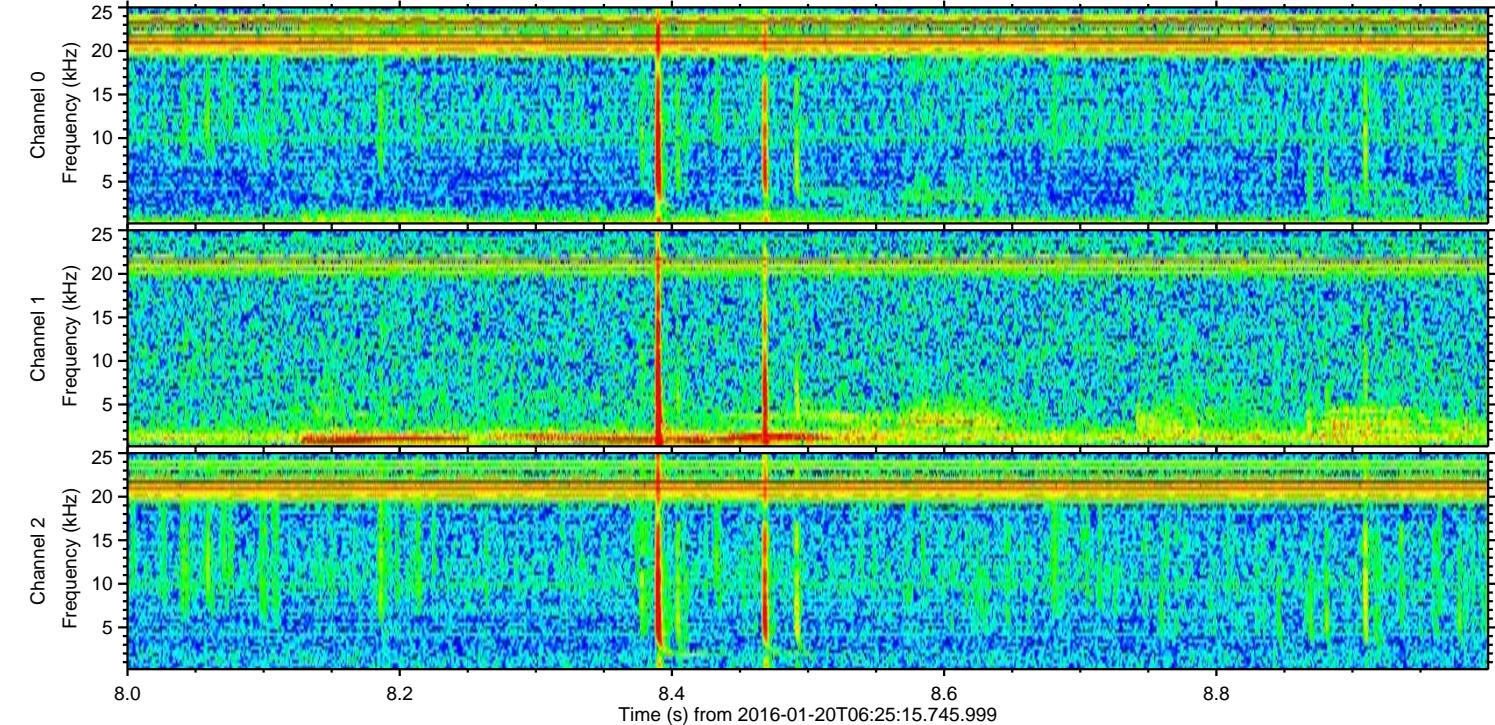
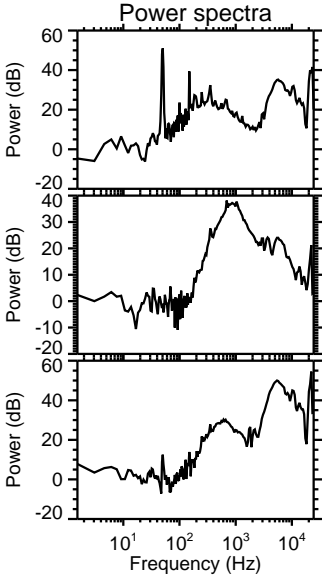
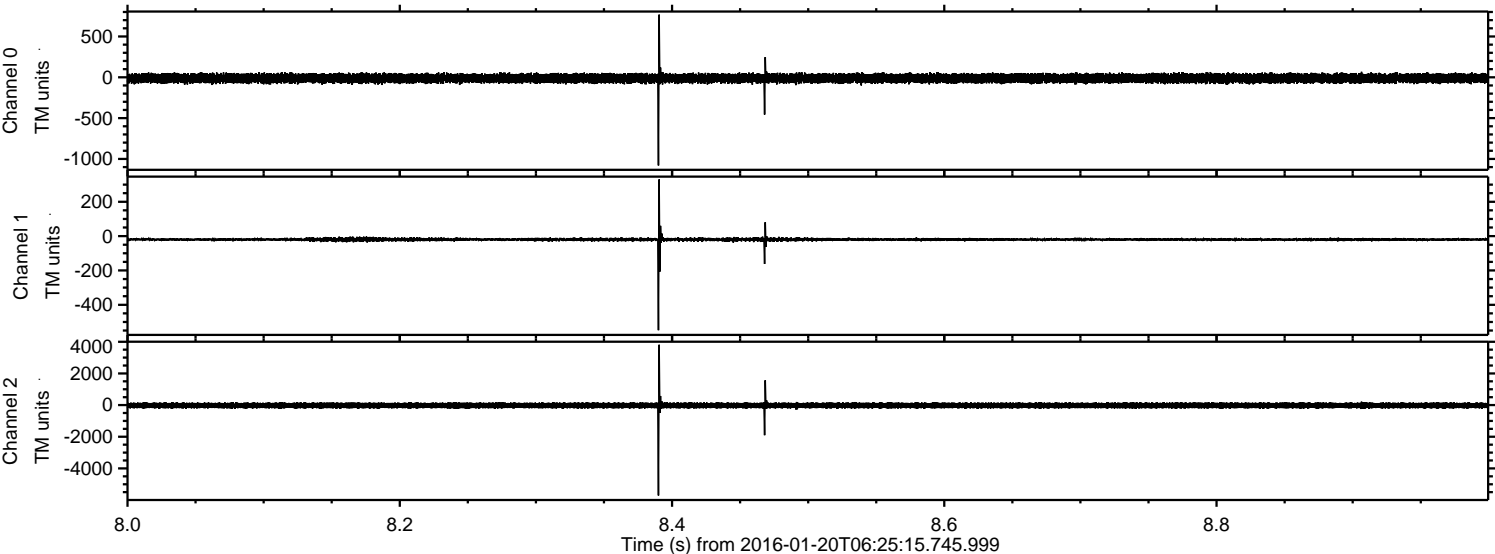


Processed Sun Apr 3 23:21:39 2016 by ELM ver.2012-10-06 from 001\_\_elm20160120\_062514\_\_dat00.bin





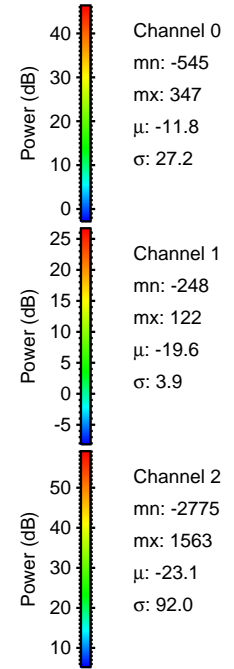
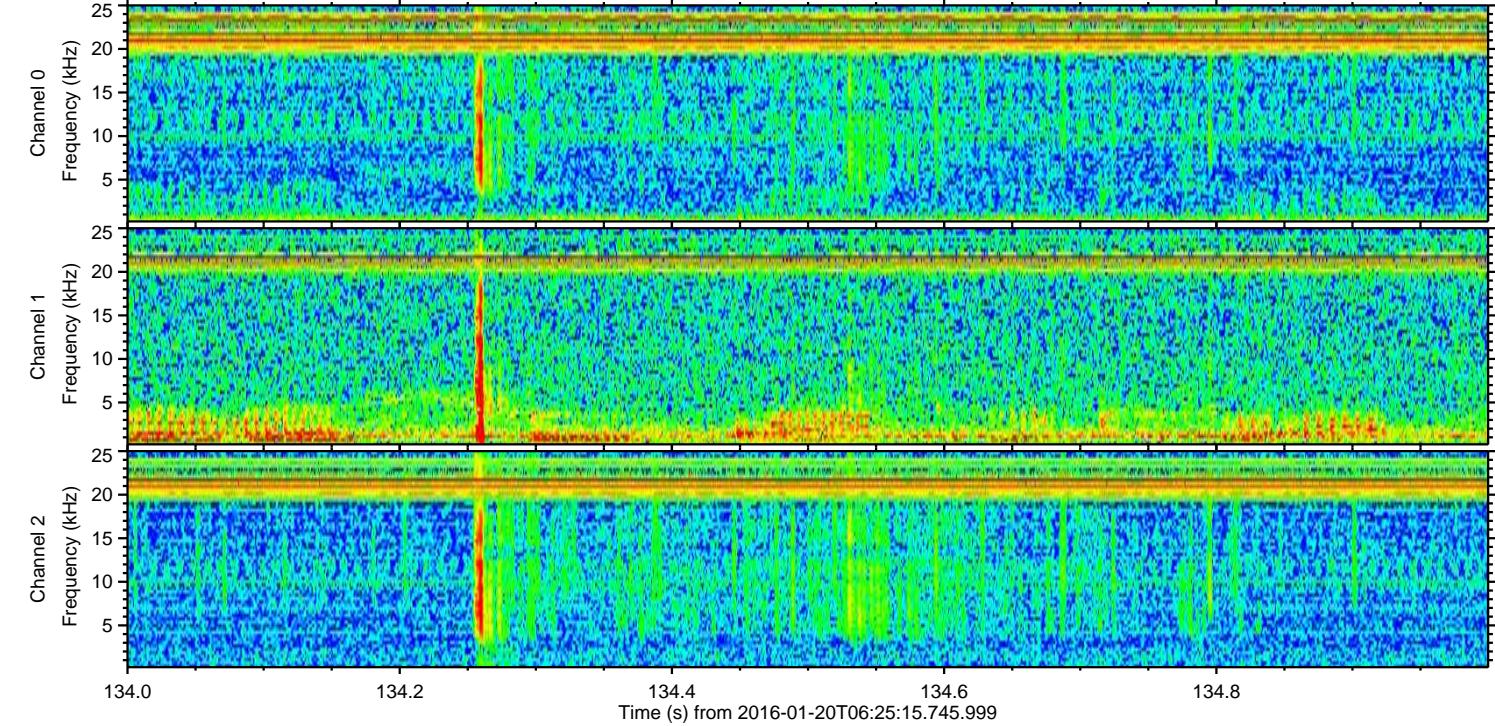
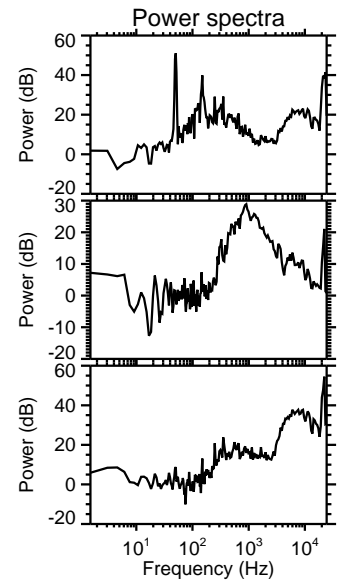
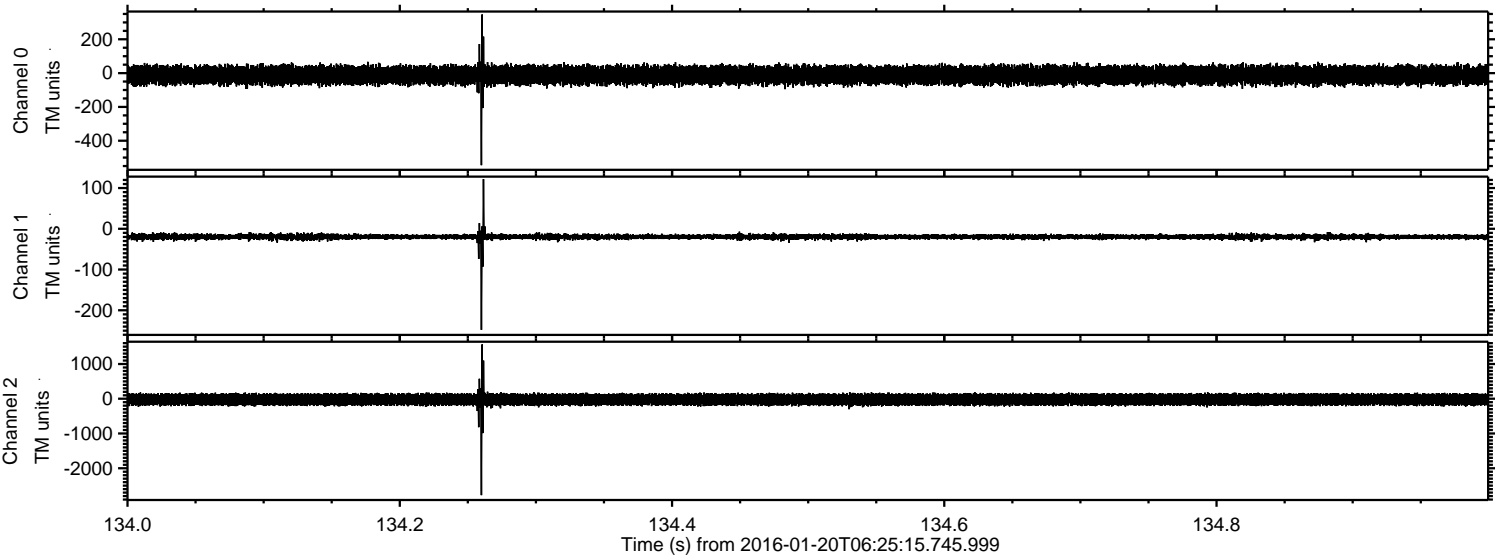
Processed Sun Apr 3 23:21:40 2016 by ELM ver.2012-10-06 from 001\_\_elm20160120\_062514\_\_dat00.bin





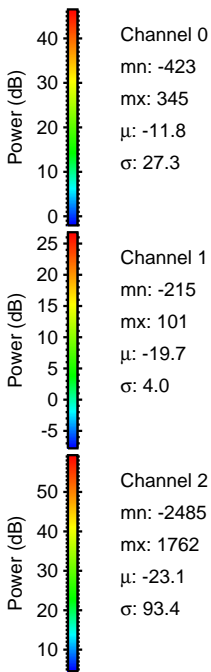
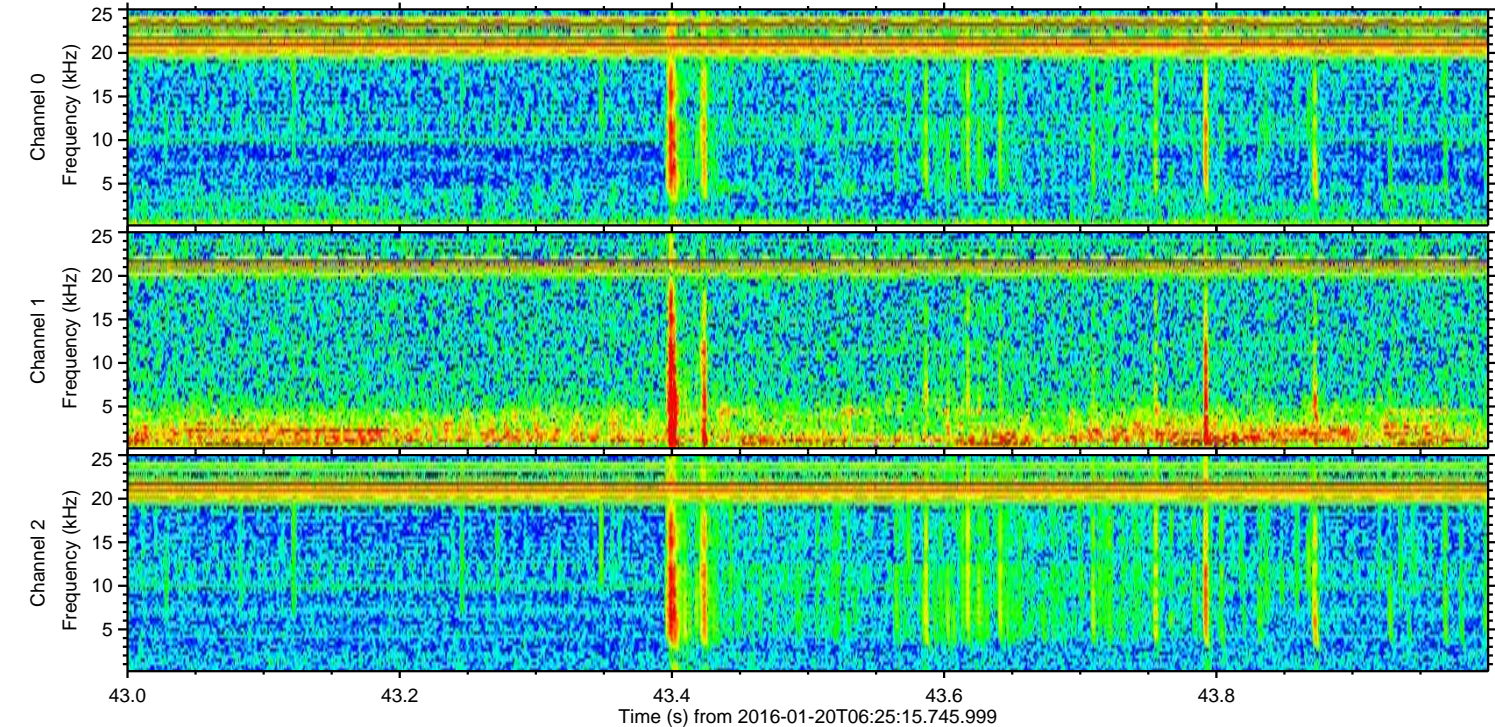
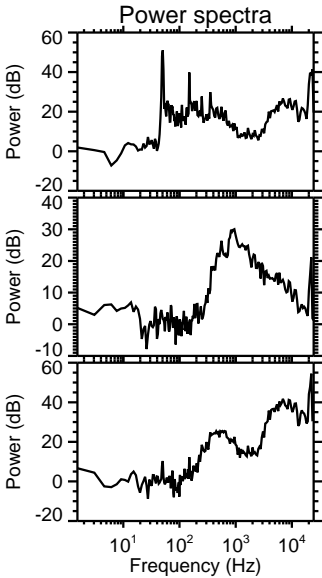
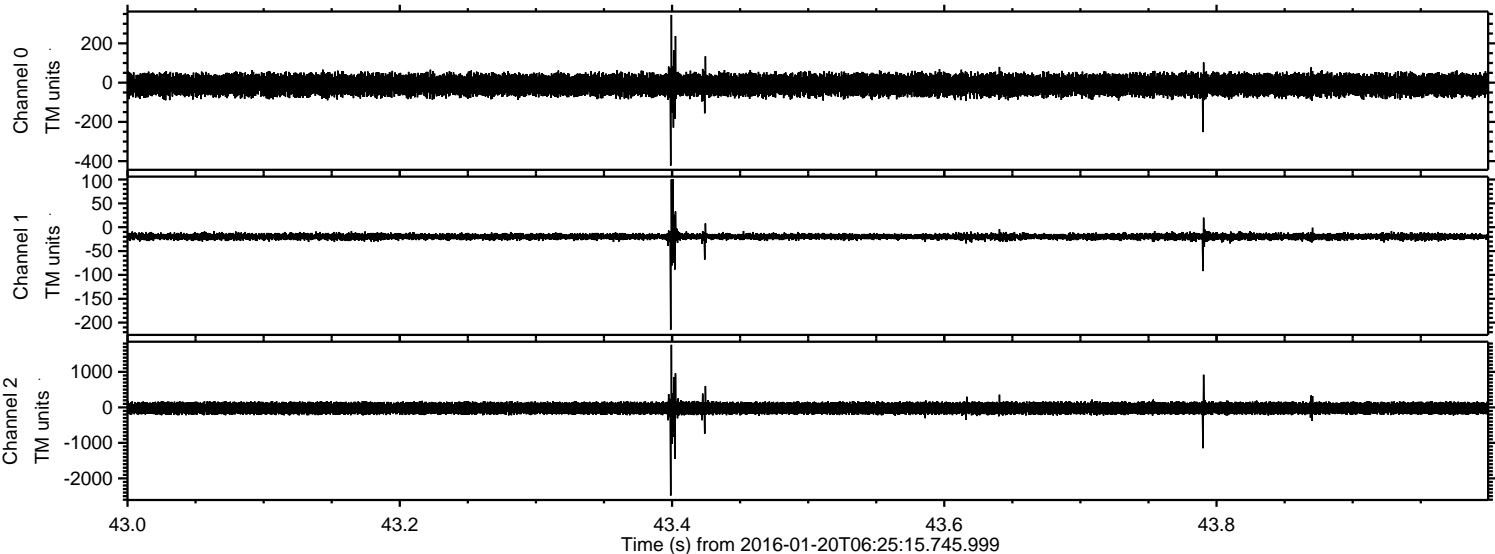
ELMAVAN 3D WAVEFORMS (Measured data sampled at 50 kHz) 51000 packets of 144 samples from 2016-01-20T06:25:15.745.999. Part 135/147

Processed Sun Apr 3 23:21:41 2016 by ELM ver.2012-10-06 from 001\_\_elm20160120\_062514\_\_dat00.bin



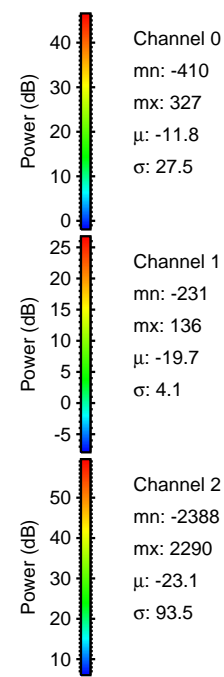
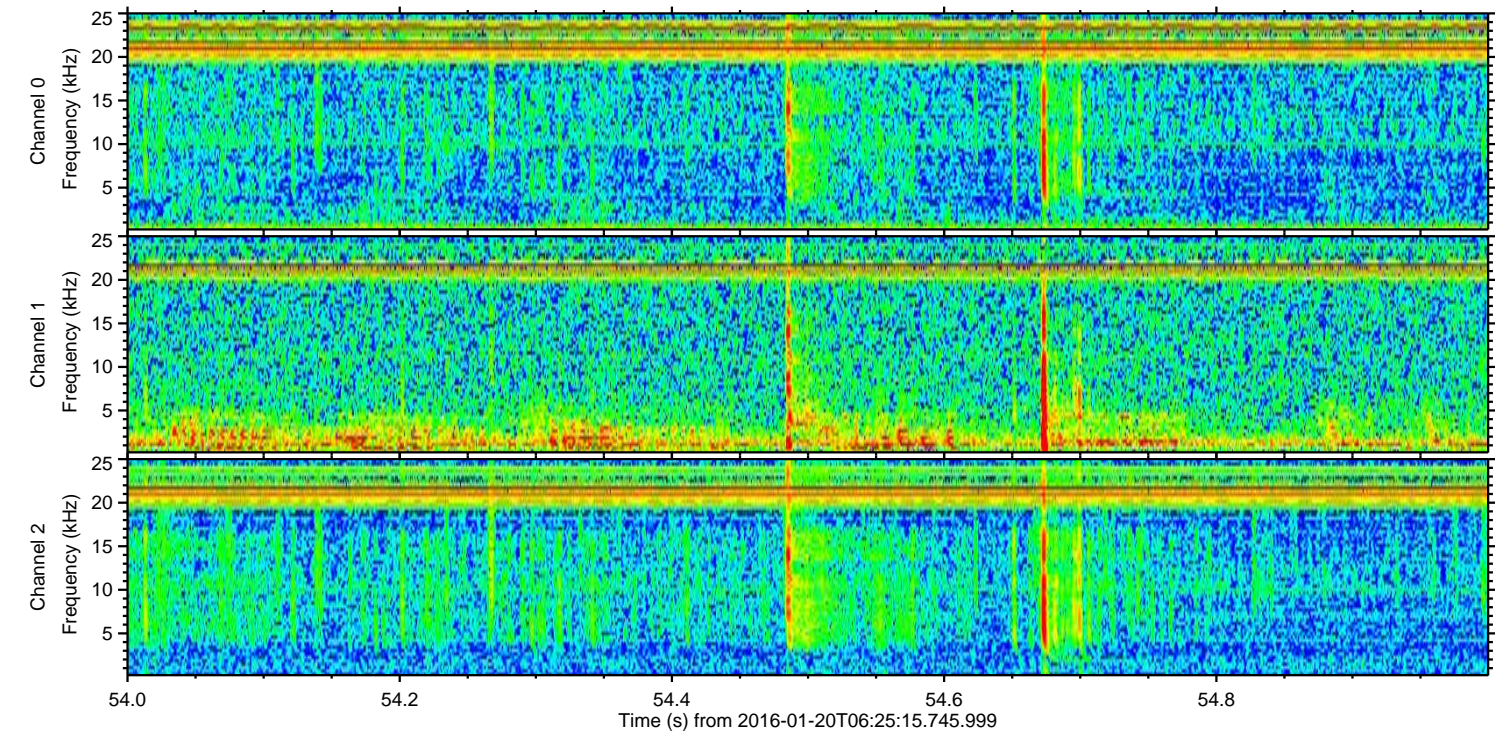
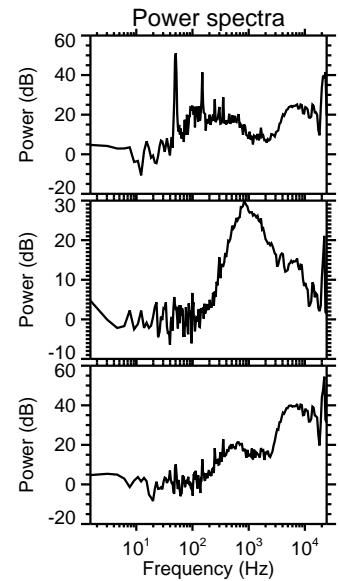
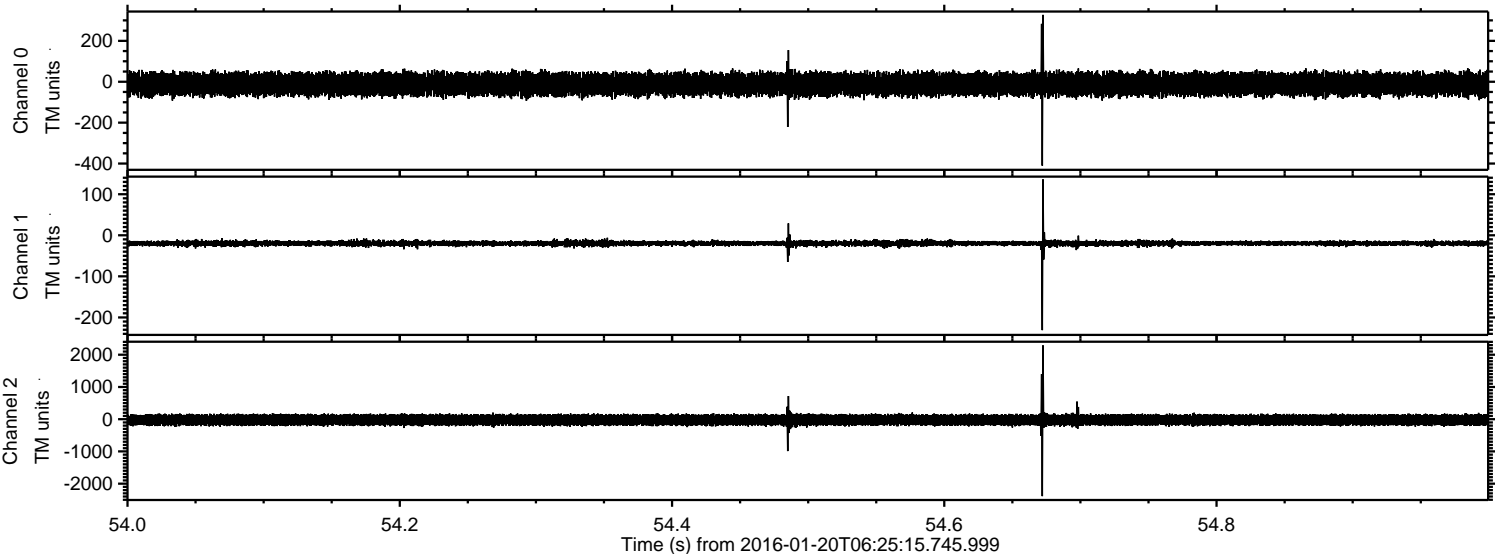


Processed Sun Apr 3 23:21:42 2016 by ELM ver.2012-10-06 from 001\_\_elm20160120\_062514\_\_dat00.bin



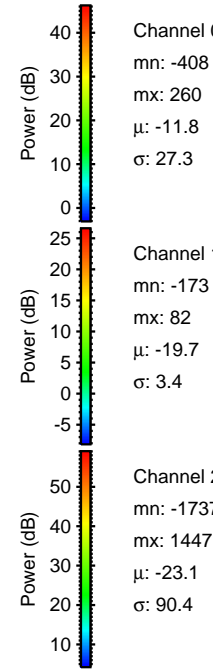
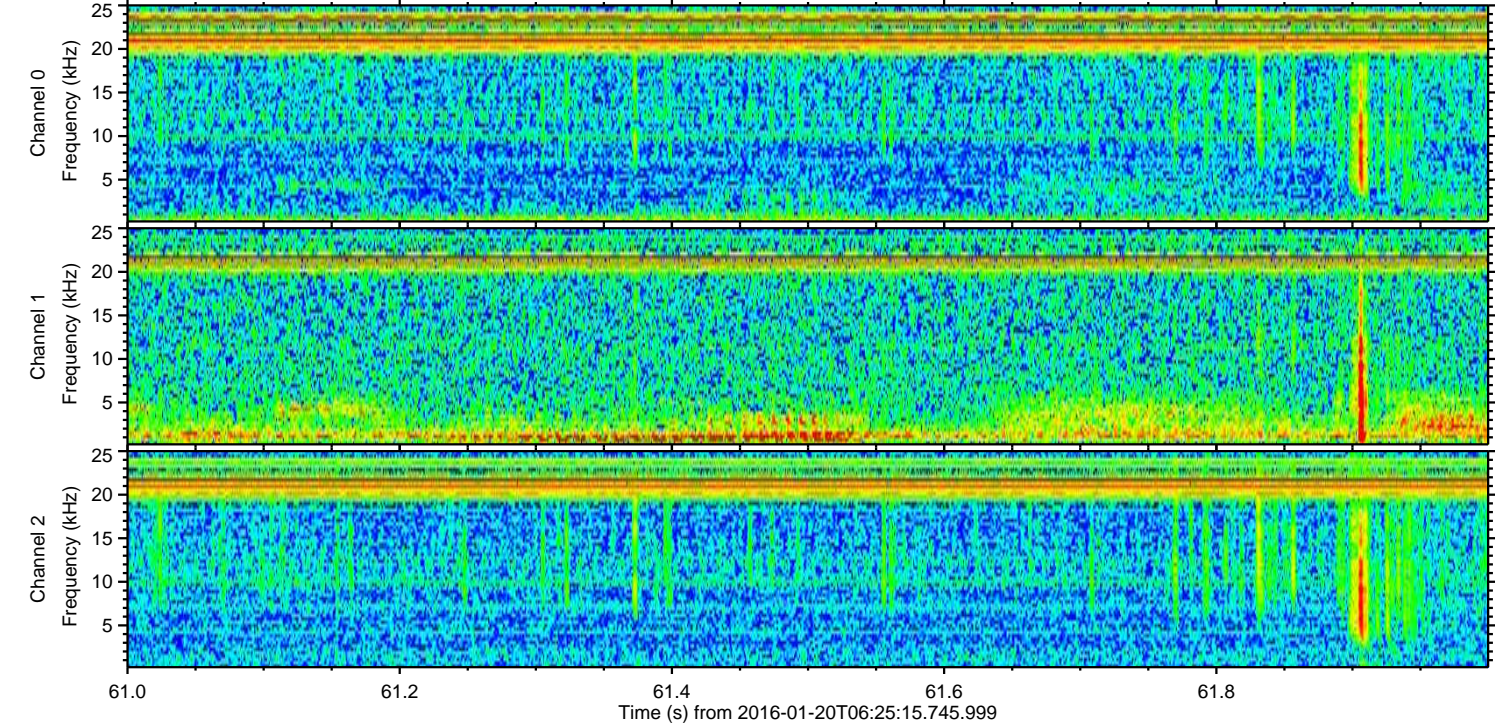
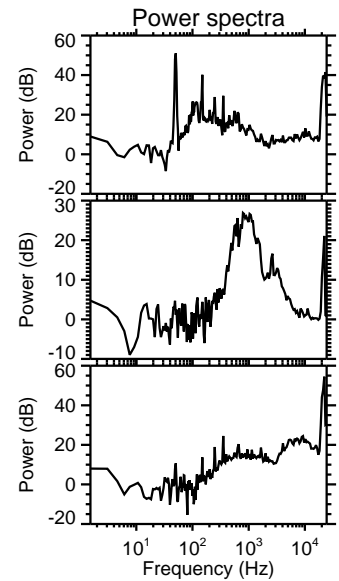
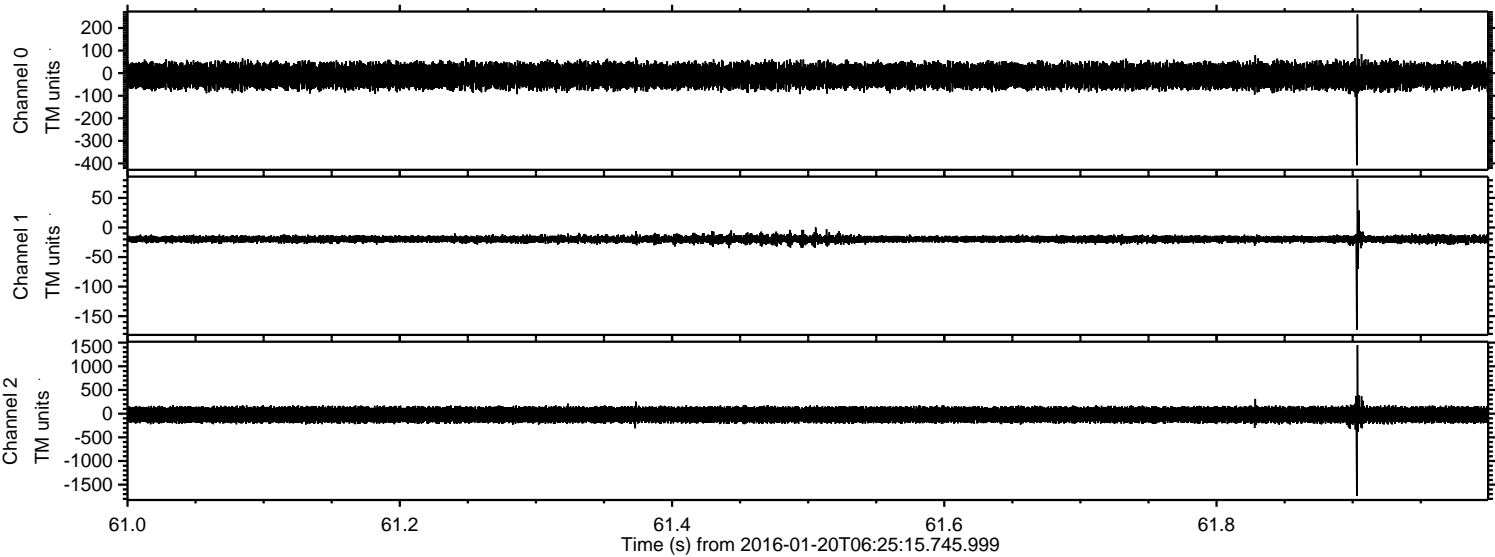


Processed Sun Apr 3 23:21:43 2016 by ELM ver.2012-10-06 from 001\_\_elm20160120\_062514\_\_dat00.bin





Processed Sun Apr 3 23:21:44 2016 by ELM ver.2012-10-06 from 001\_\_elm20160120\_062514\_\_dat00.bin



Channel 0  
mn: -408  
mx: 260  
 $\mu$ : -11.8  
 $\sigma$ : 27.3

Channel 1  
mn: -173  
mx: 82  
 $\mu$ : -19.7  
 $\sigma$ : 3.4

Channel 2  
mn: -1737  
mx: 1447  
 $\mu$ : -23.1  
 $\sigma$ : 90.4



Processed Sun Apr 3 23:21:45 2016 by ELM ver.2012-10-06 from 001\_\_elm20160120\_062514\_\_dat00.bin

