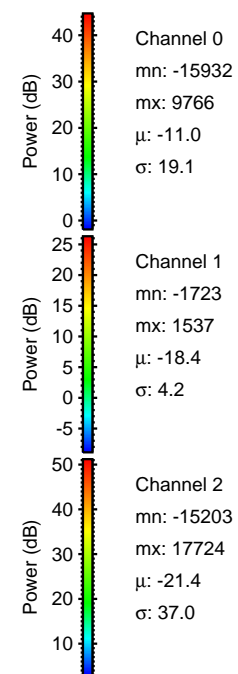
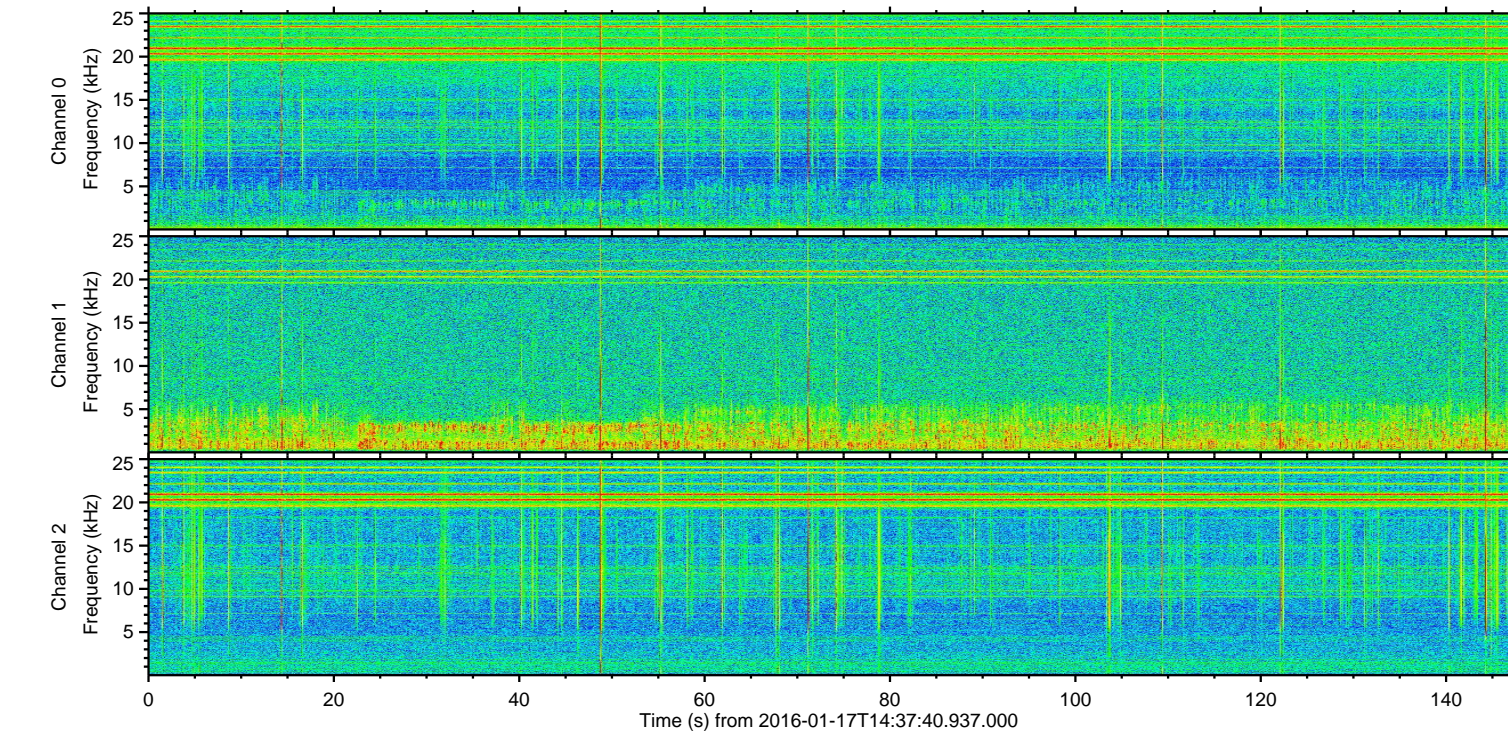
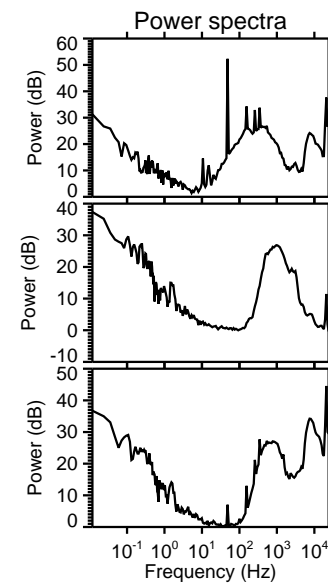
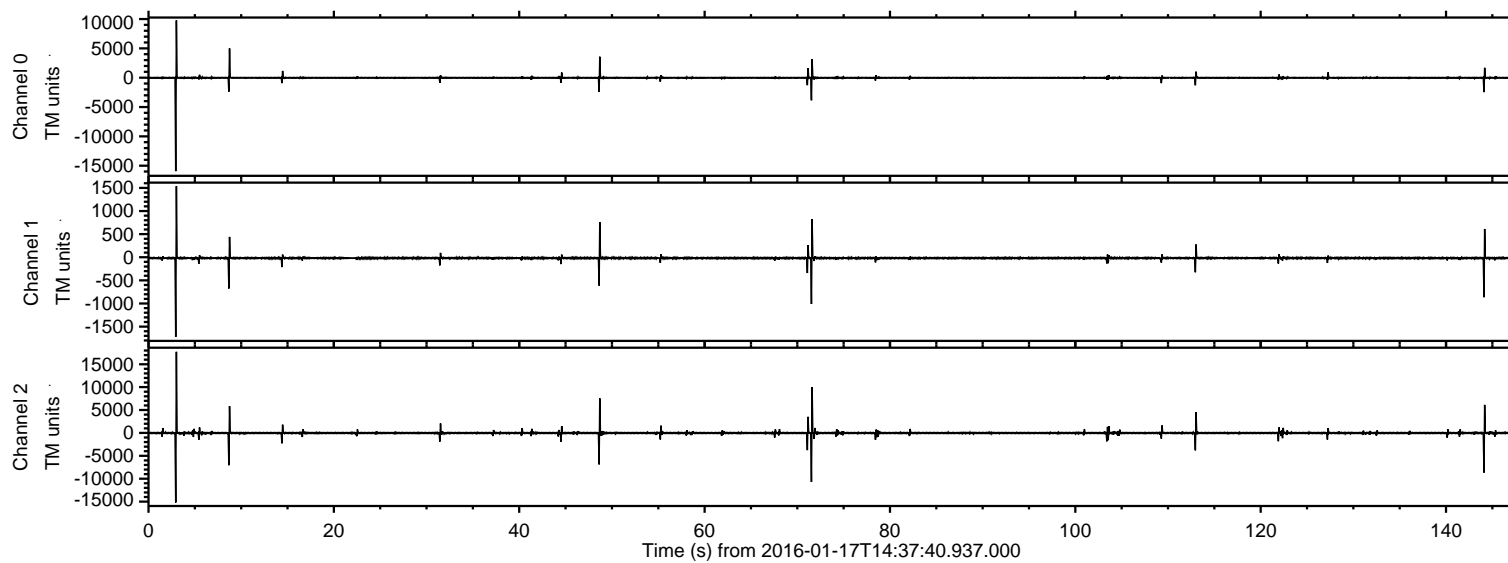


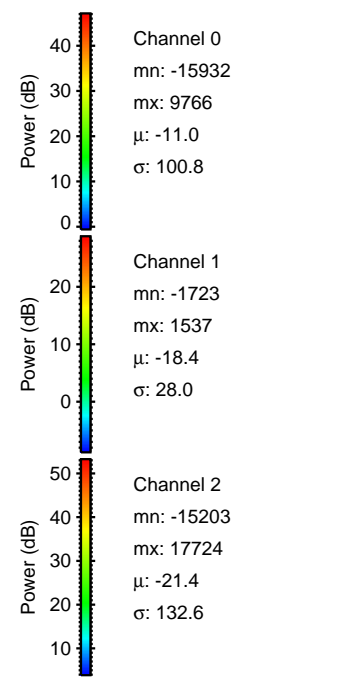
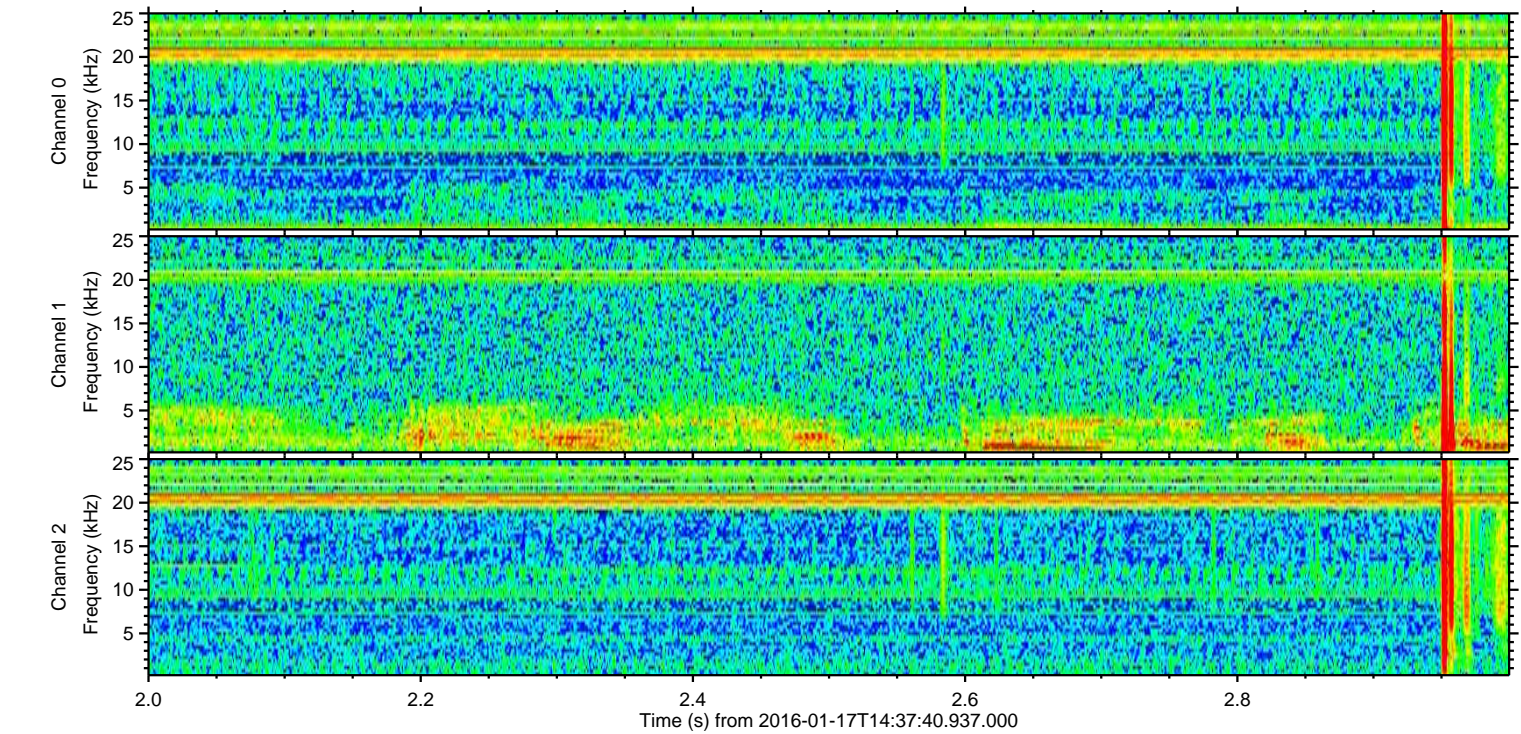
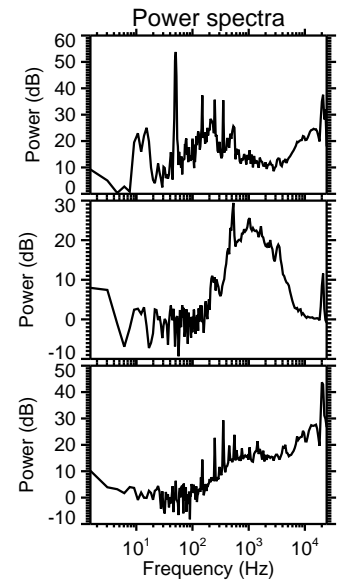
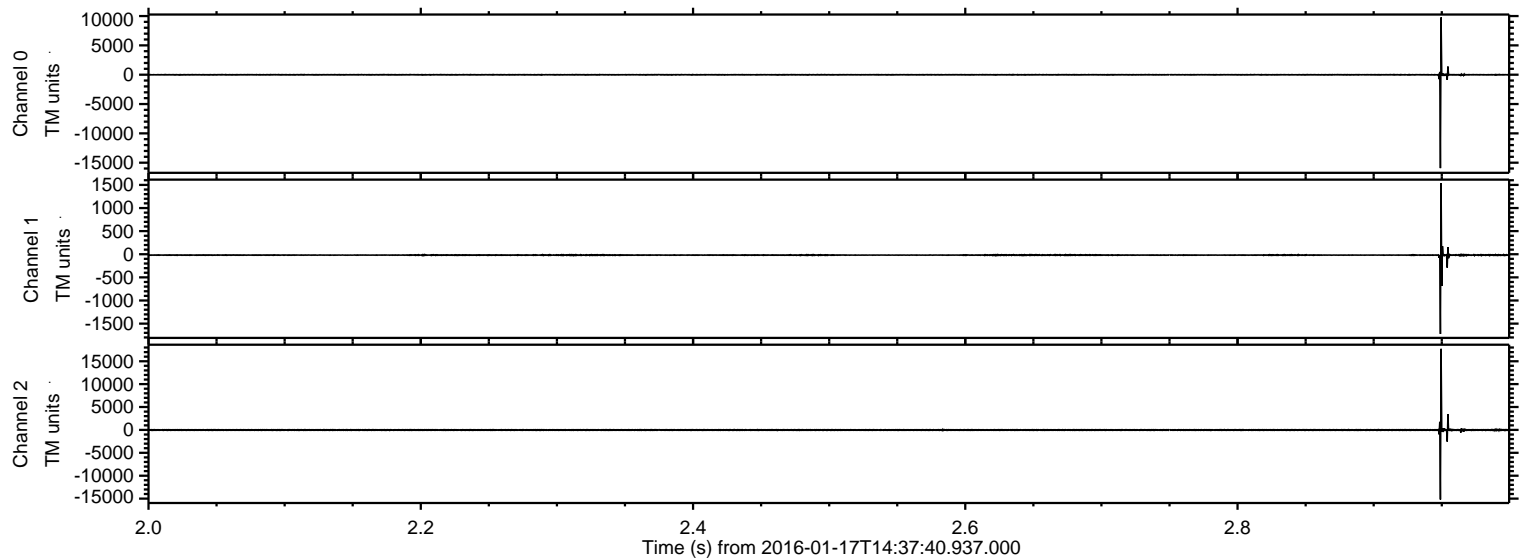
ELMAVAN 3D WAVEFORMS (Measured data sampled at 50 kHz) 51000 packets of 144 samples from 2016-01-17T14:37:40.937.000.

Processed Thu Mar 31 12:16:13 2016 by ELM ver.2012-10-06 from 001__elm20160117_143739__dat00.bin

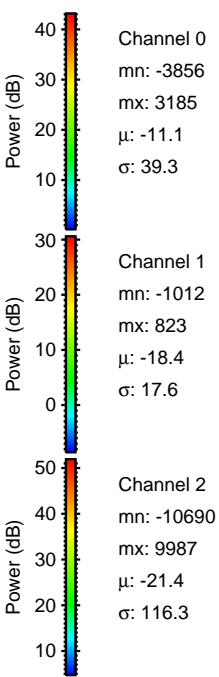
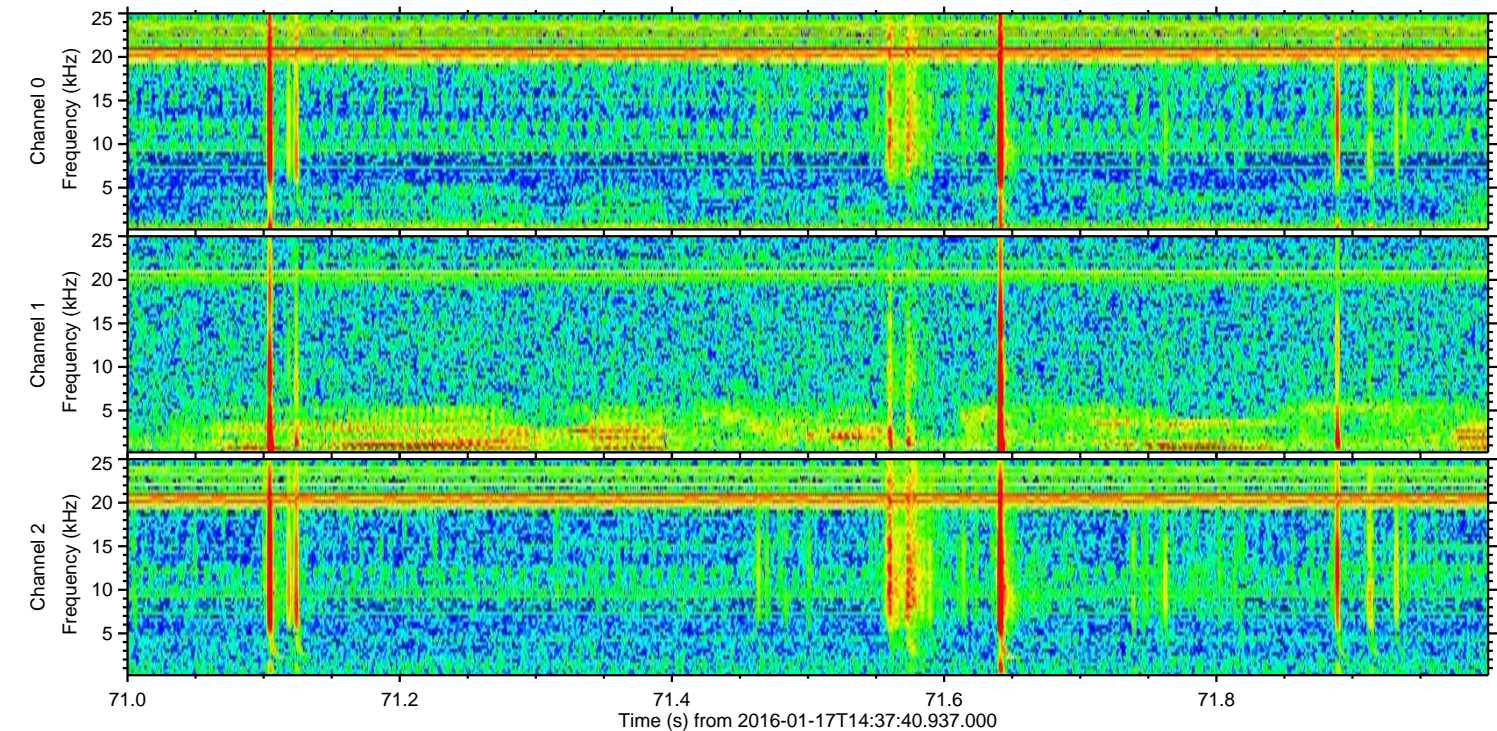
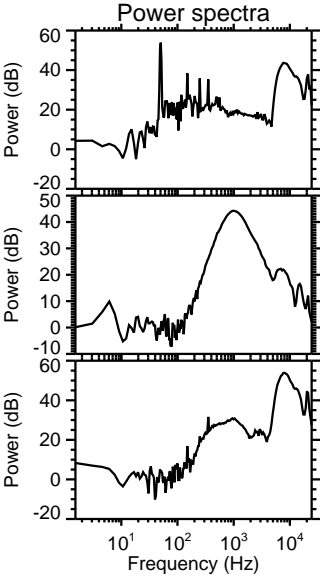
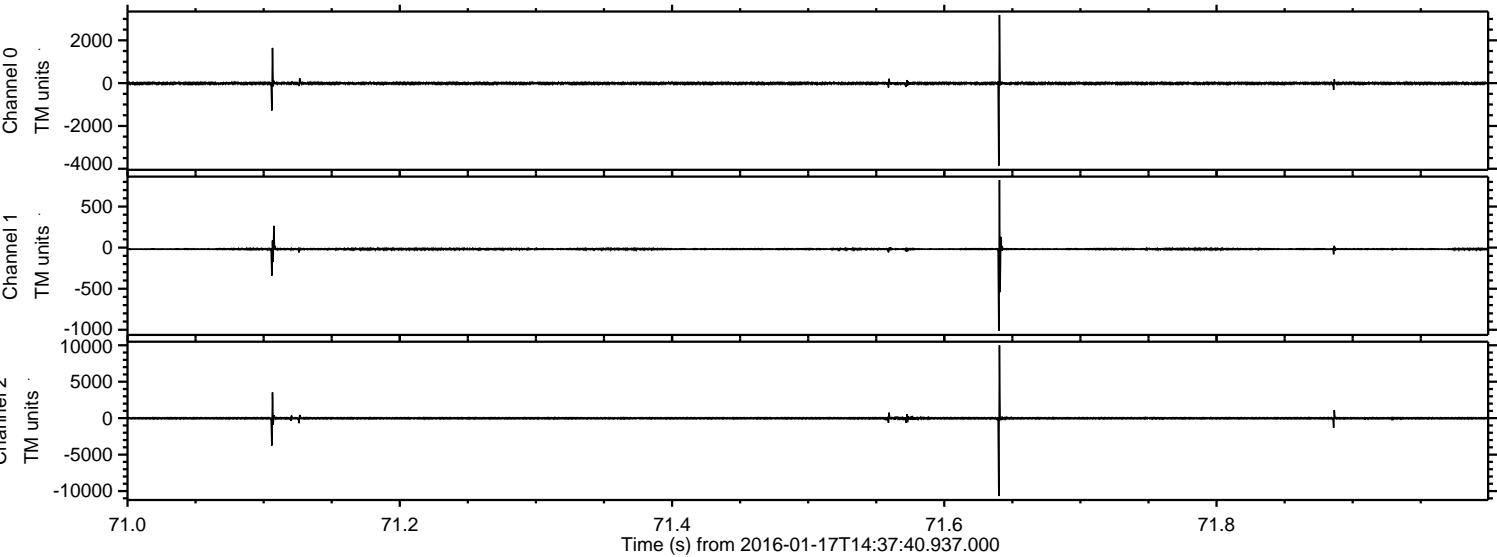


ELMAVAN 3D WAVEFORMS (Measured data sampled at 50 kHz) 51000 packets of 144 samples from 2016-01-17T14:37:40.937.000. Part 3/147

Processed Thu Mar 31 12:16:25 2016 by ELM ver.2012-10-06 from 001__elm20160117_143739__dat00.bin

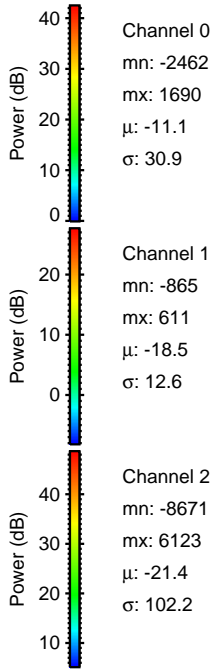
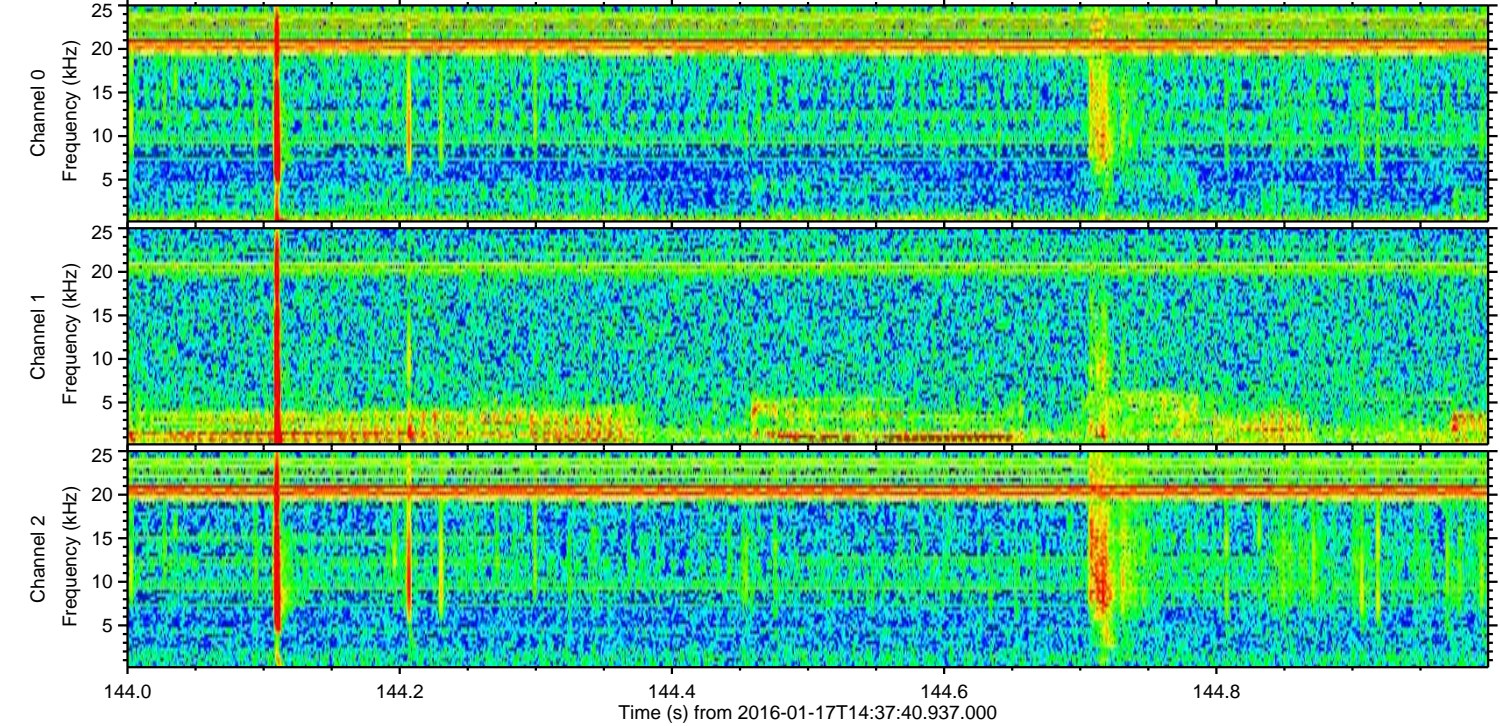
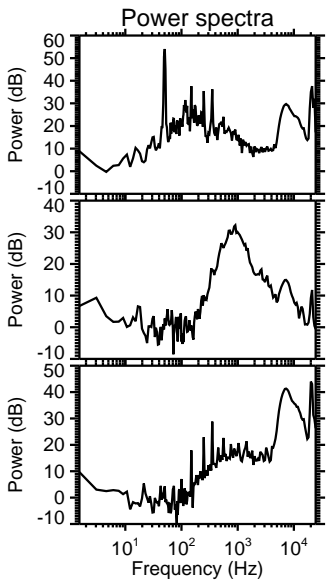
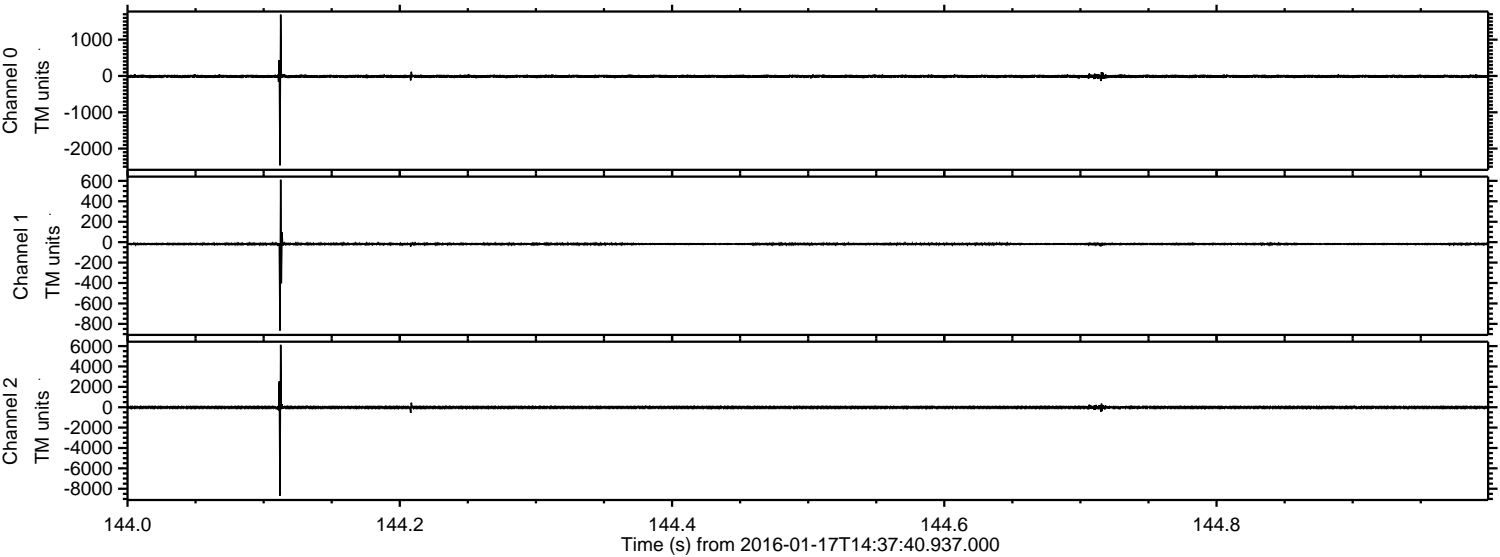


Processed Thu Mar 31 12:16:25 2016 by ELM ver.2012-10-06 from 001__elm20160117_143739__dat00.bin

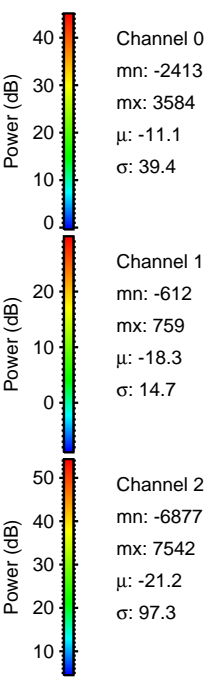
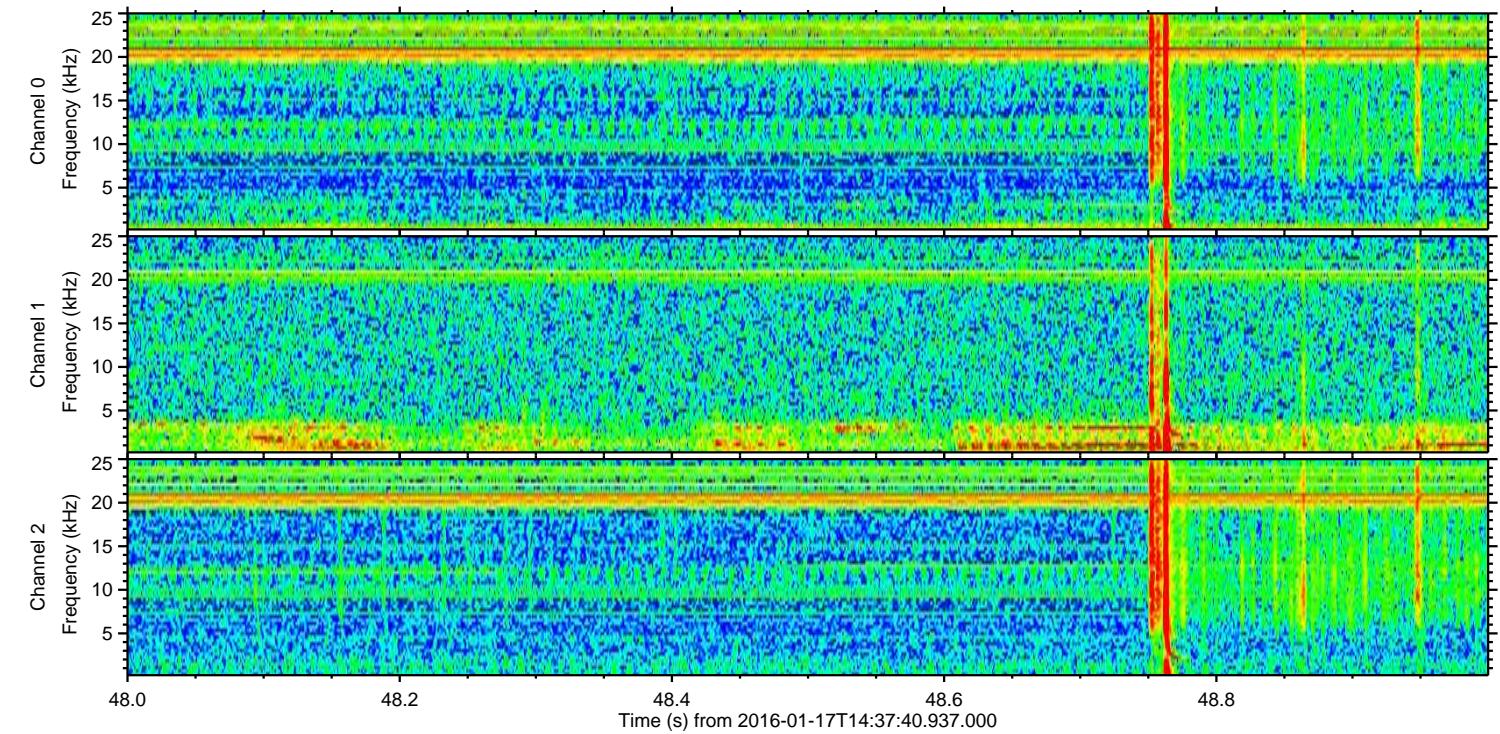
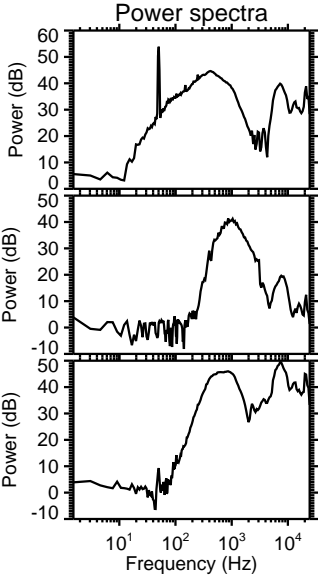
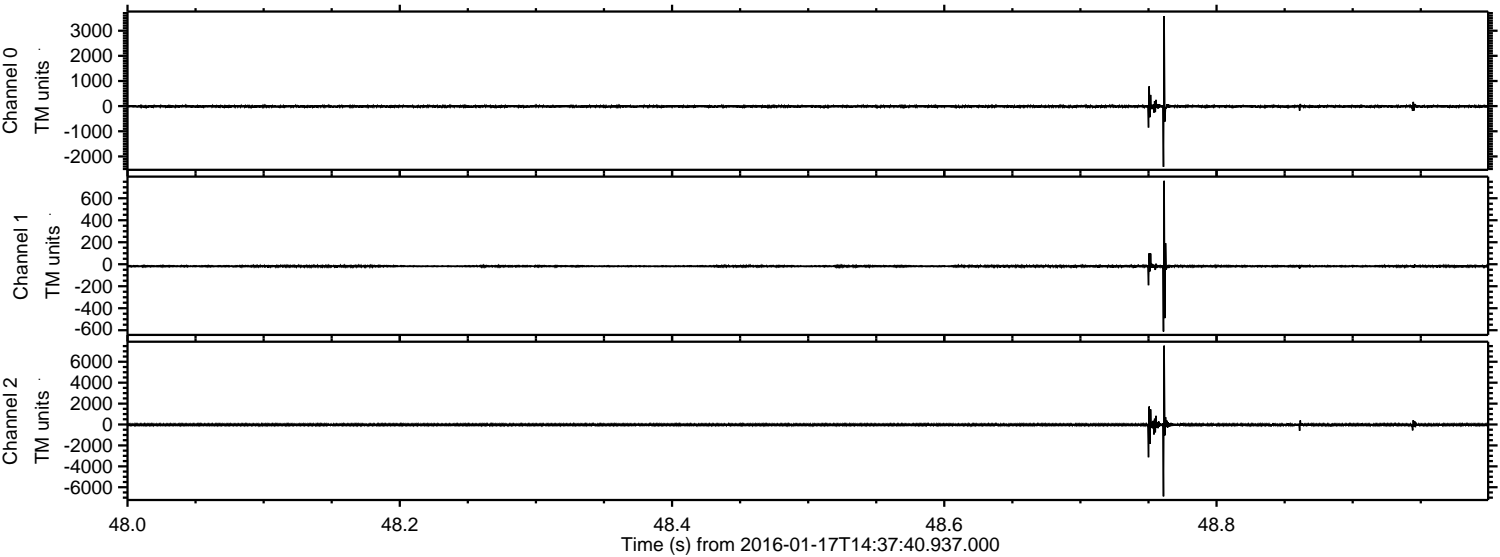


ELMAVAN 3D WAVEFORMS (Measured data sampled at 50 kHz) 51000 packets of 144 samples from 2016-01-17T14:37:40.937.000. Part 145/147

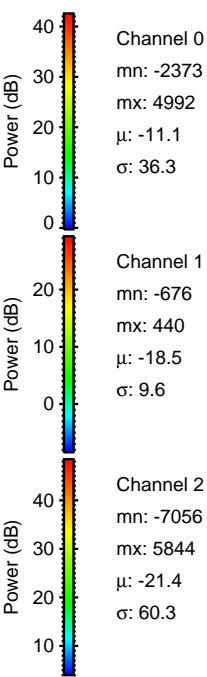
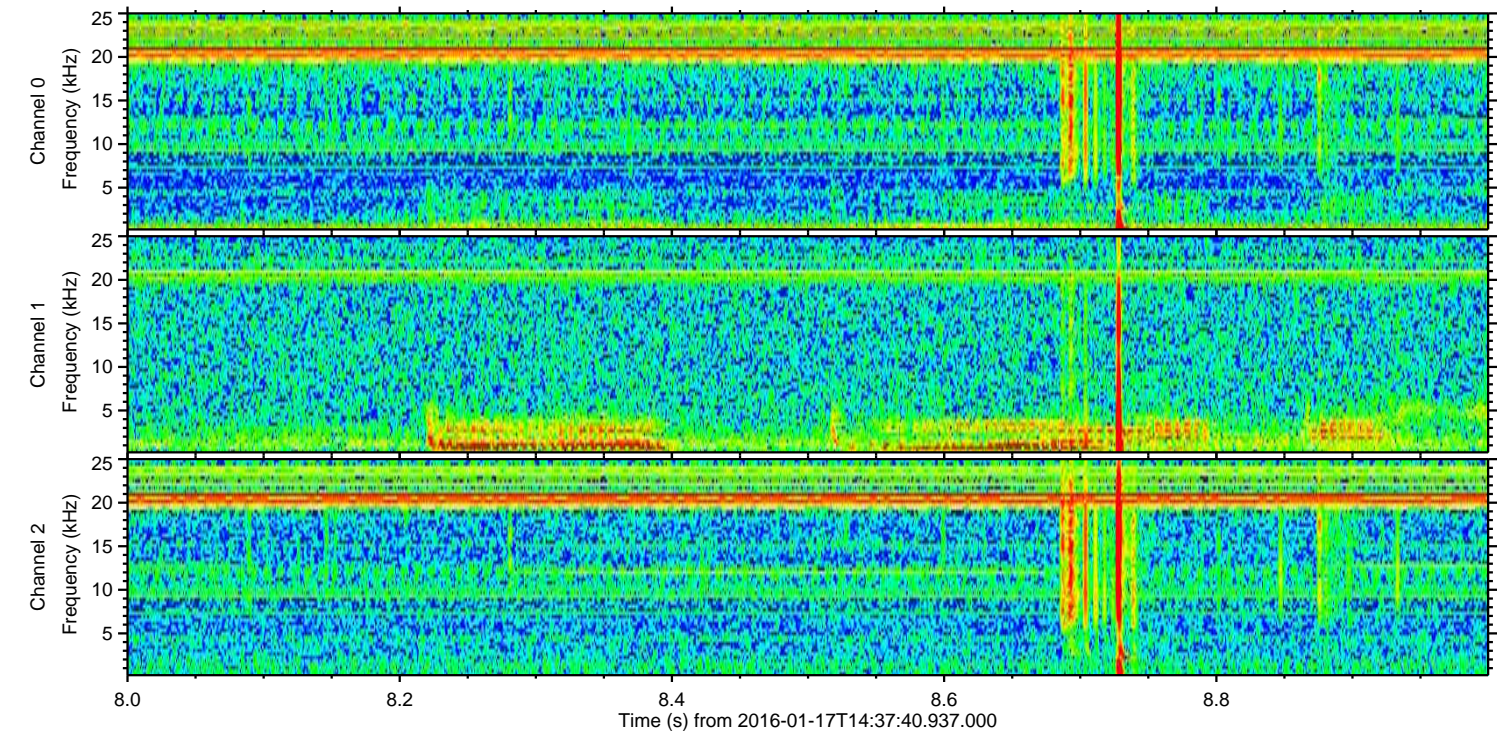
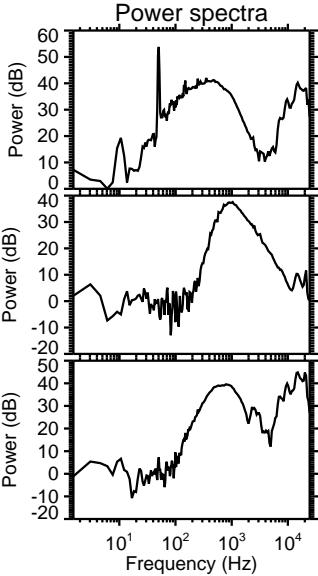
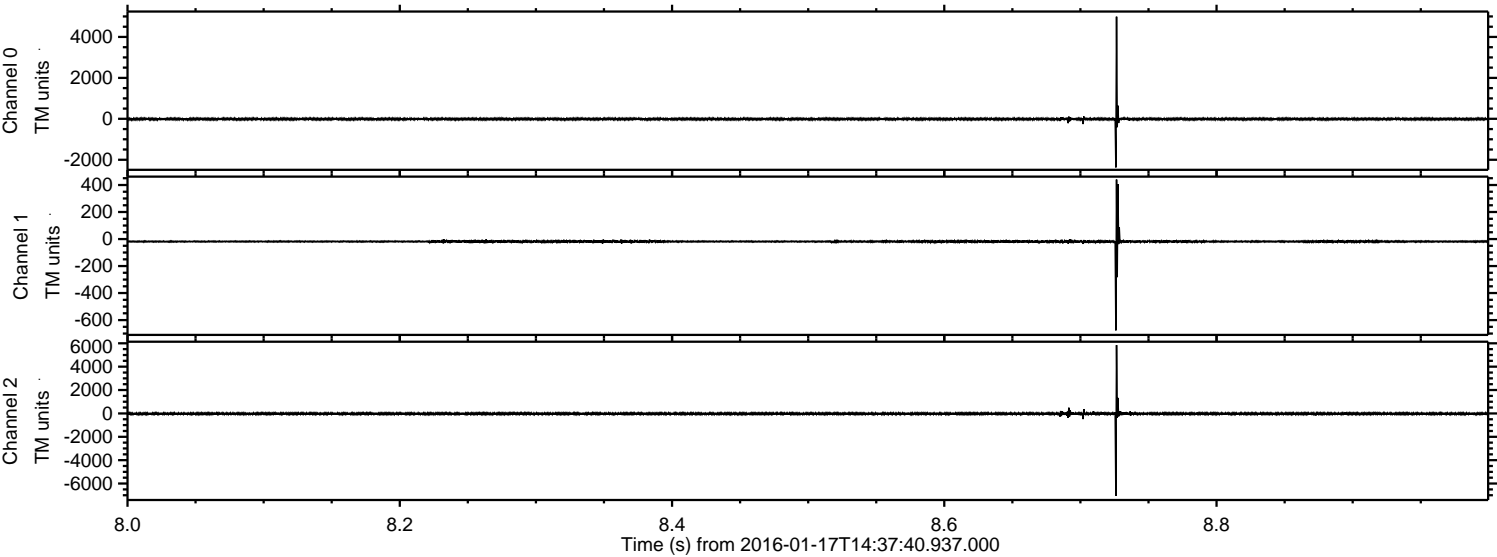
Processed Thu Mar 31 12:16:26 2016 by ELM ver.2012-10-06 from 001__elm20160117_143739__dat00.bin



Processed Thu Mar 31 12:16:27 2016 by ELM ver.2012-10-06 from 001__elm20160117_143739__dat00.bin

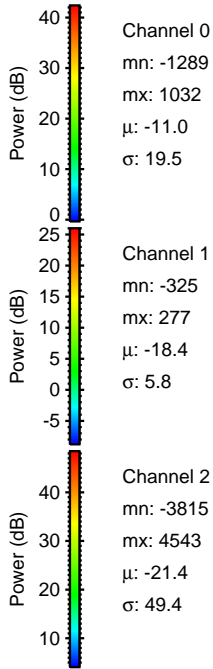
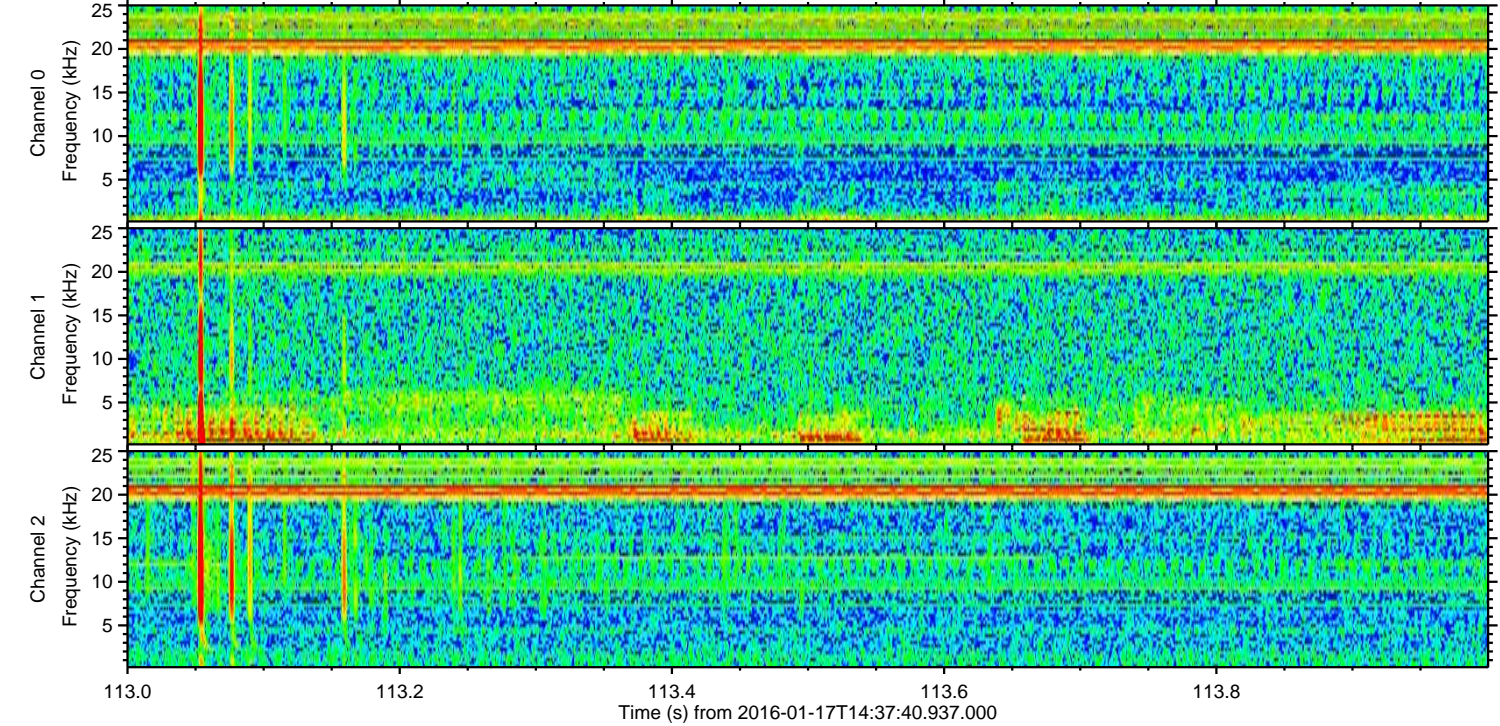
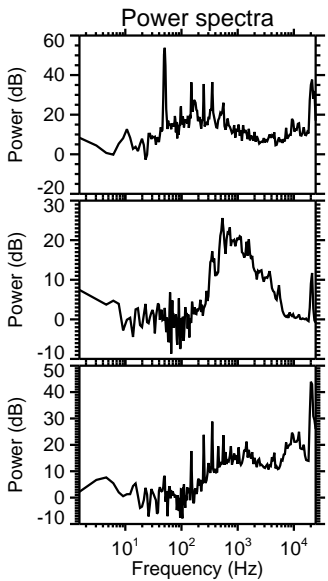
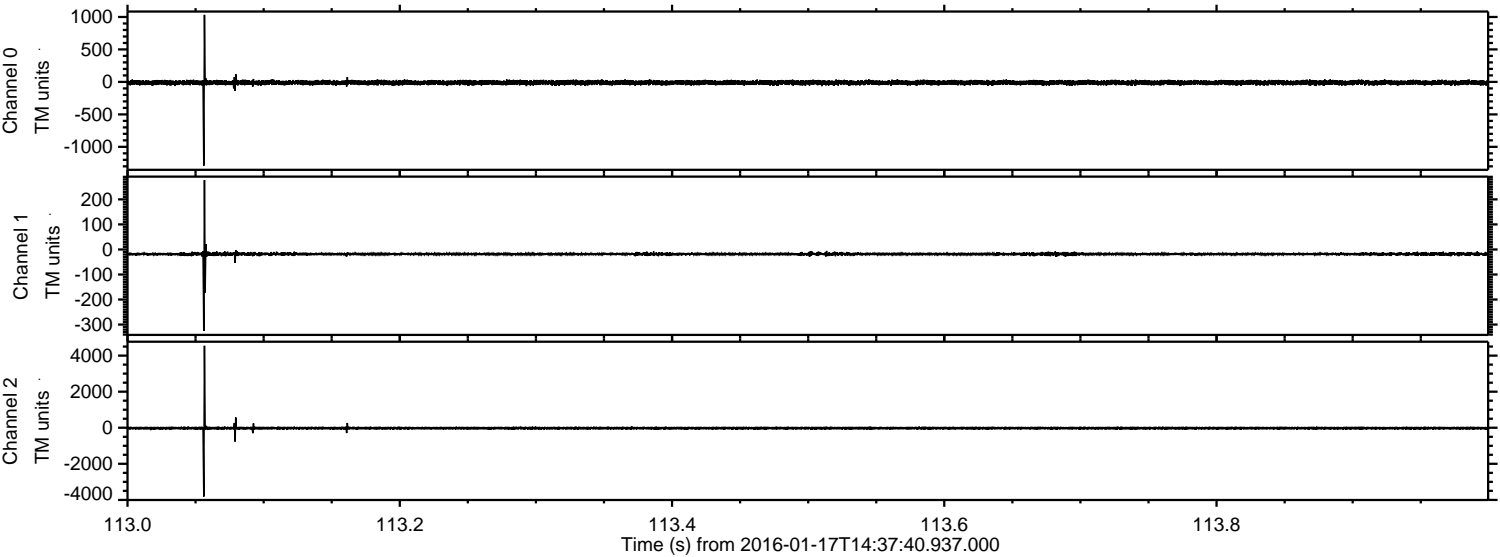


Processed Thu Mar 31 12:16:28 2016 by ELM ver.2012-10-06 from 001__elm20160117_143739__dat00.bin



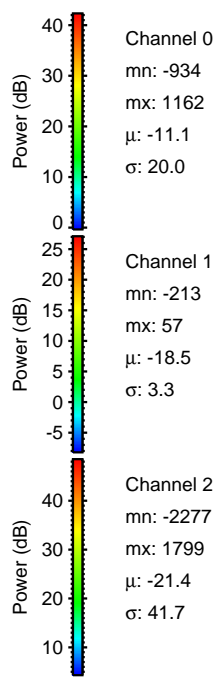
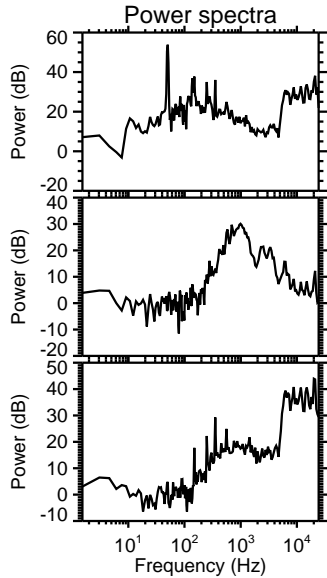
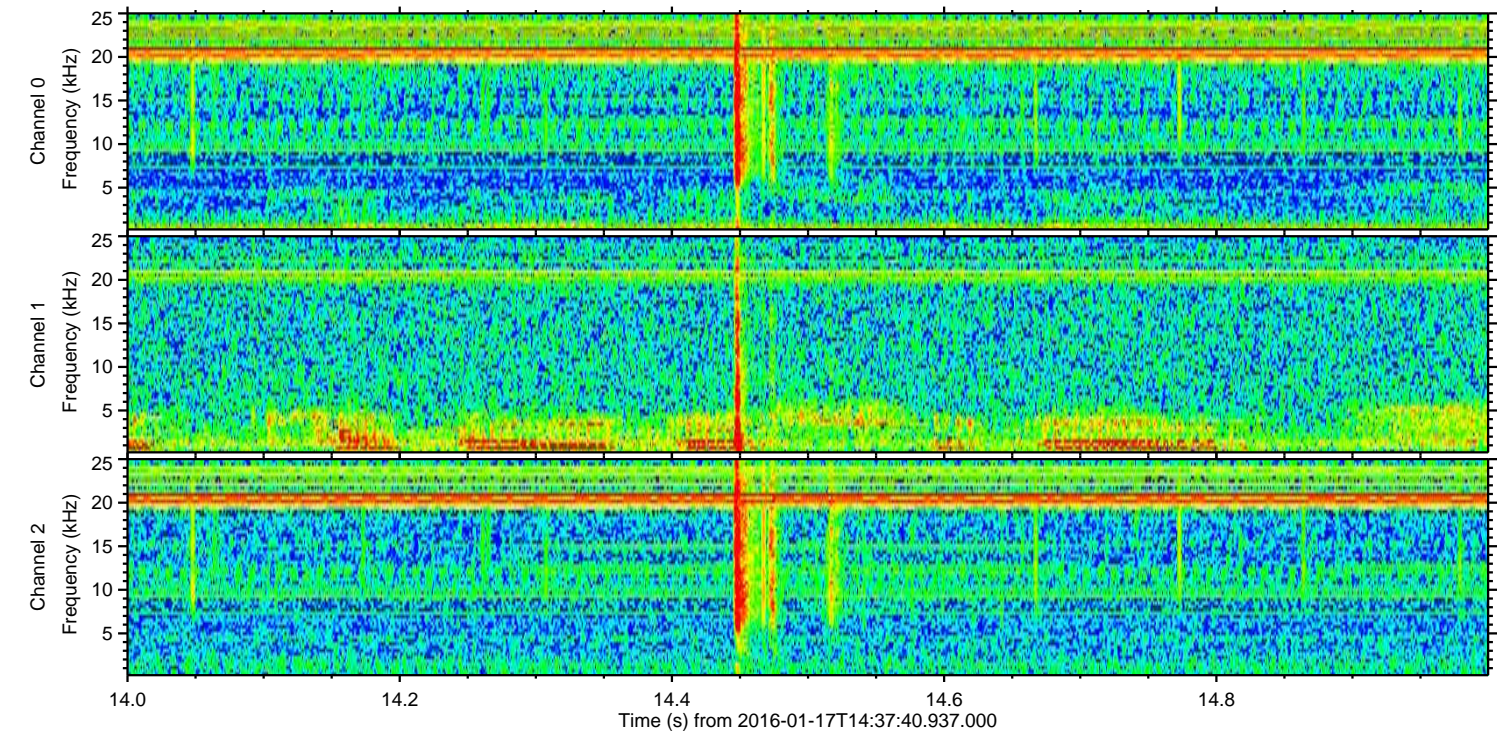
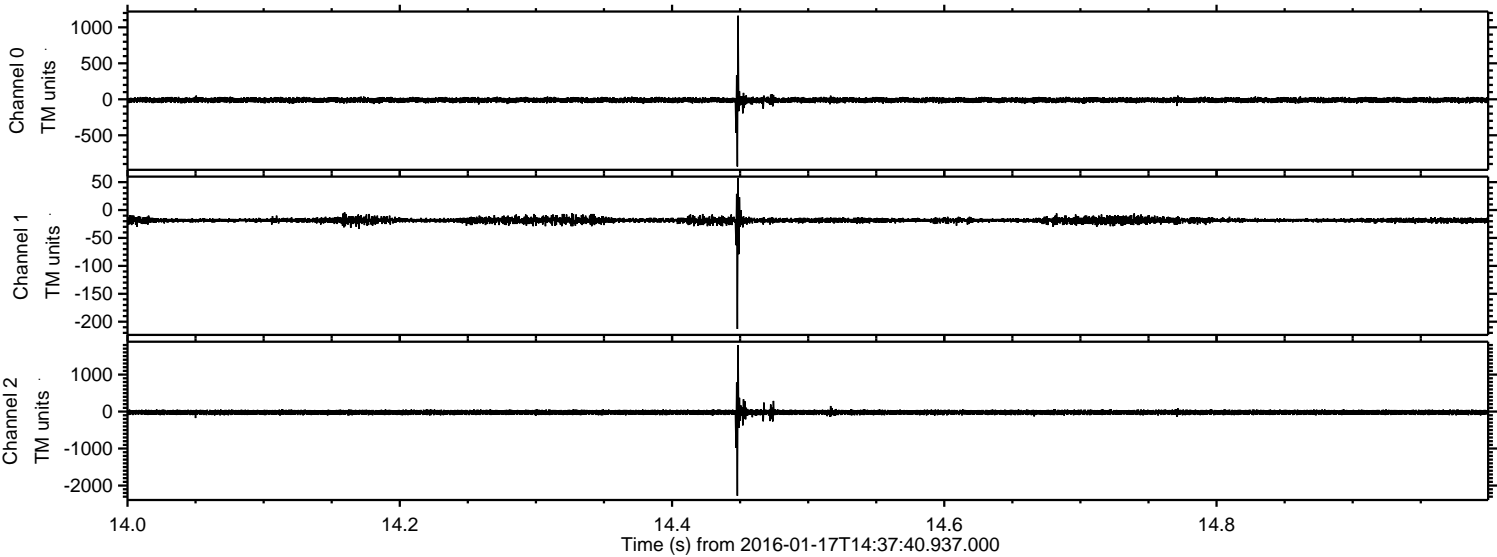
ELMAVAN 3D WAVEFORMS (Measured data sampled at 50 kHz) 51000 packets of 144 samples from 2016-01-17T14:37:40.937.000. Part 114/147

Processed Thu Mar 31 12:16:29 2016 by ELM ver.2012-10-06 from 001__elm20160117_143739__dat00.bin

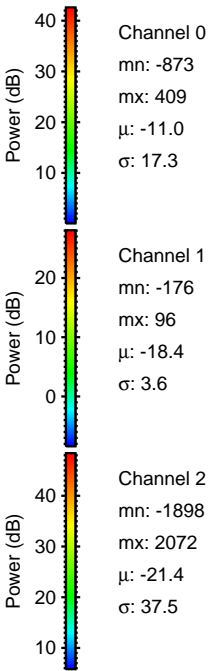
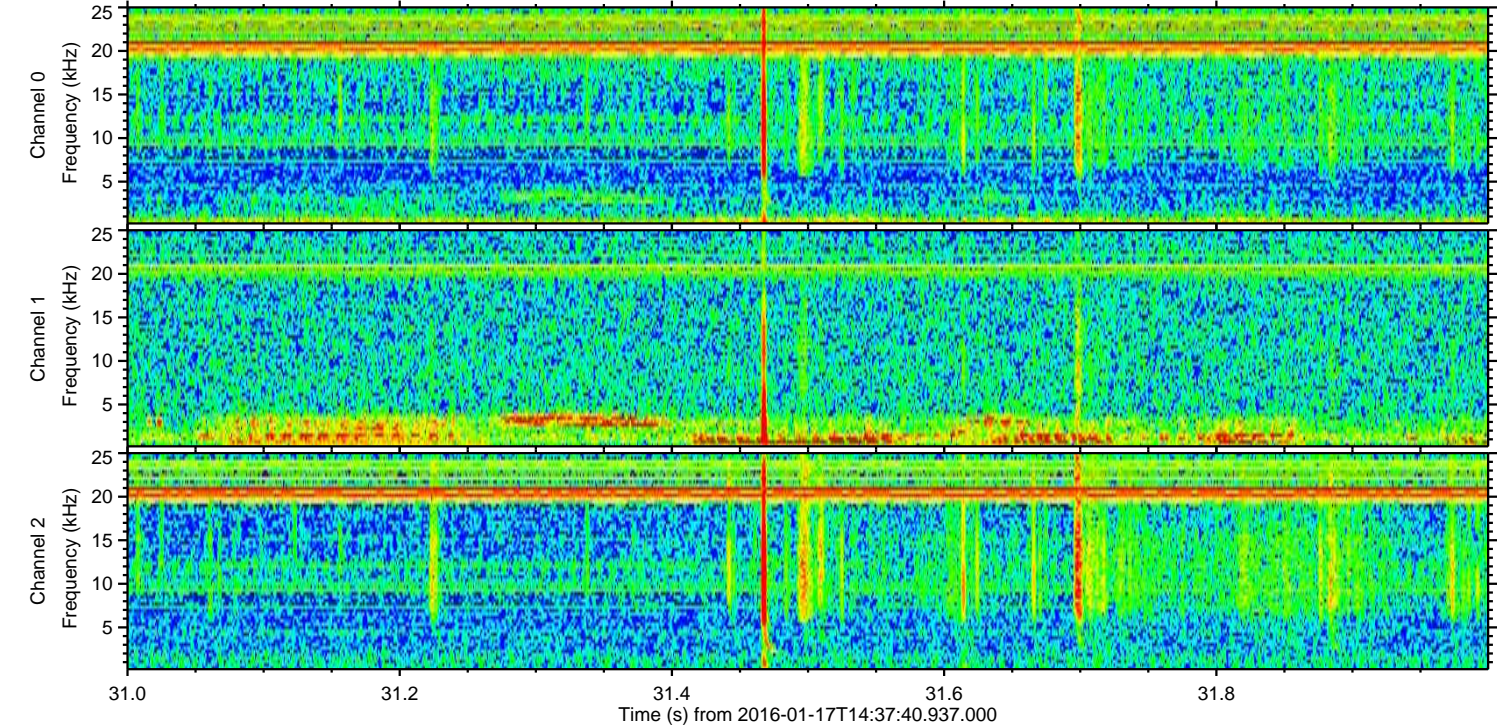
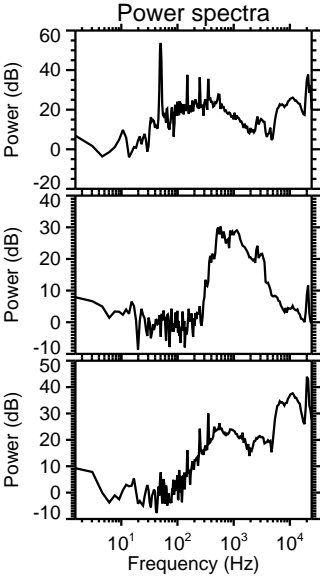
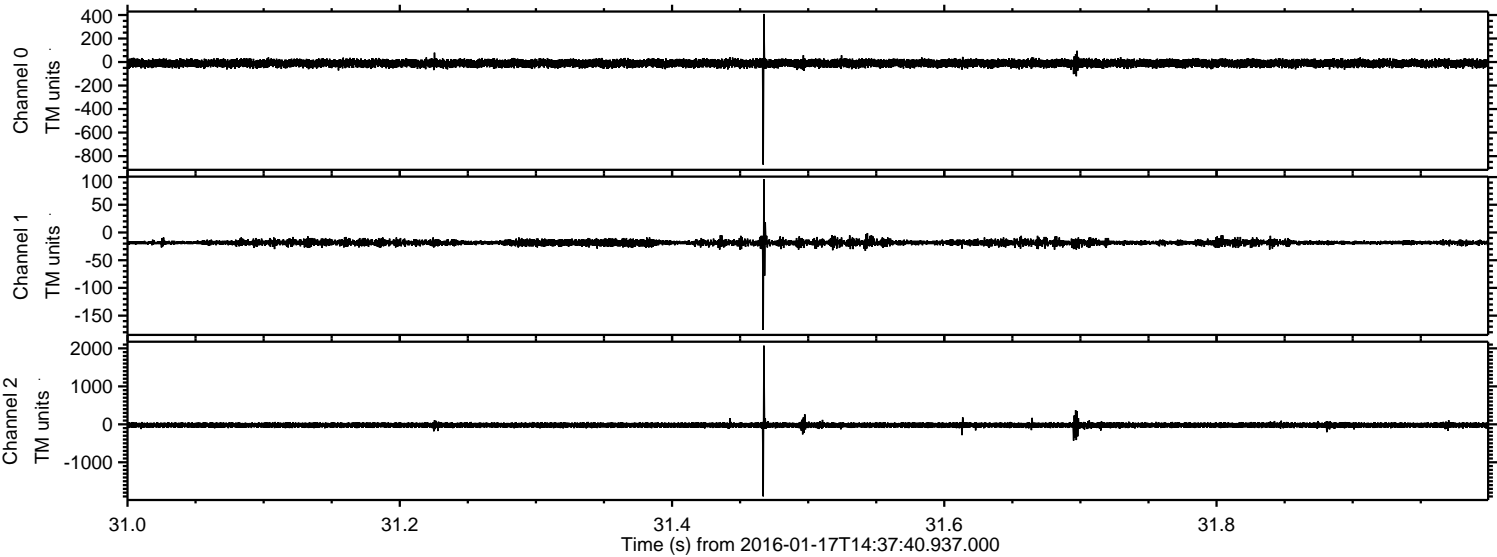


ELMAVAN 3D WAVEFORMS (Measured data sampled at 50 kHz) 51000 packets of 144 samples from 2016-01-17T14:37:40.937.000. Part 15/147

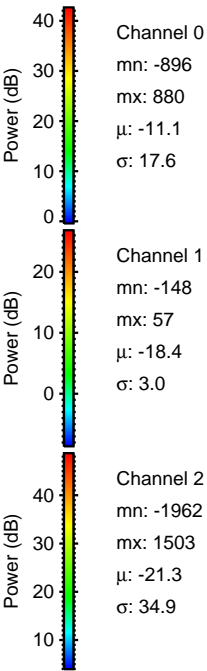
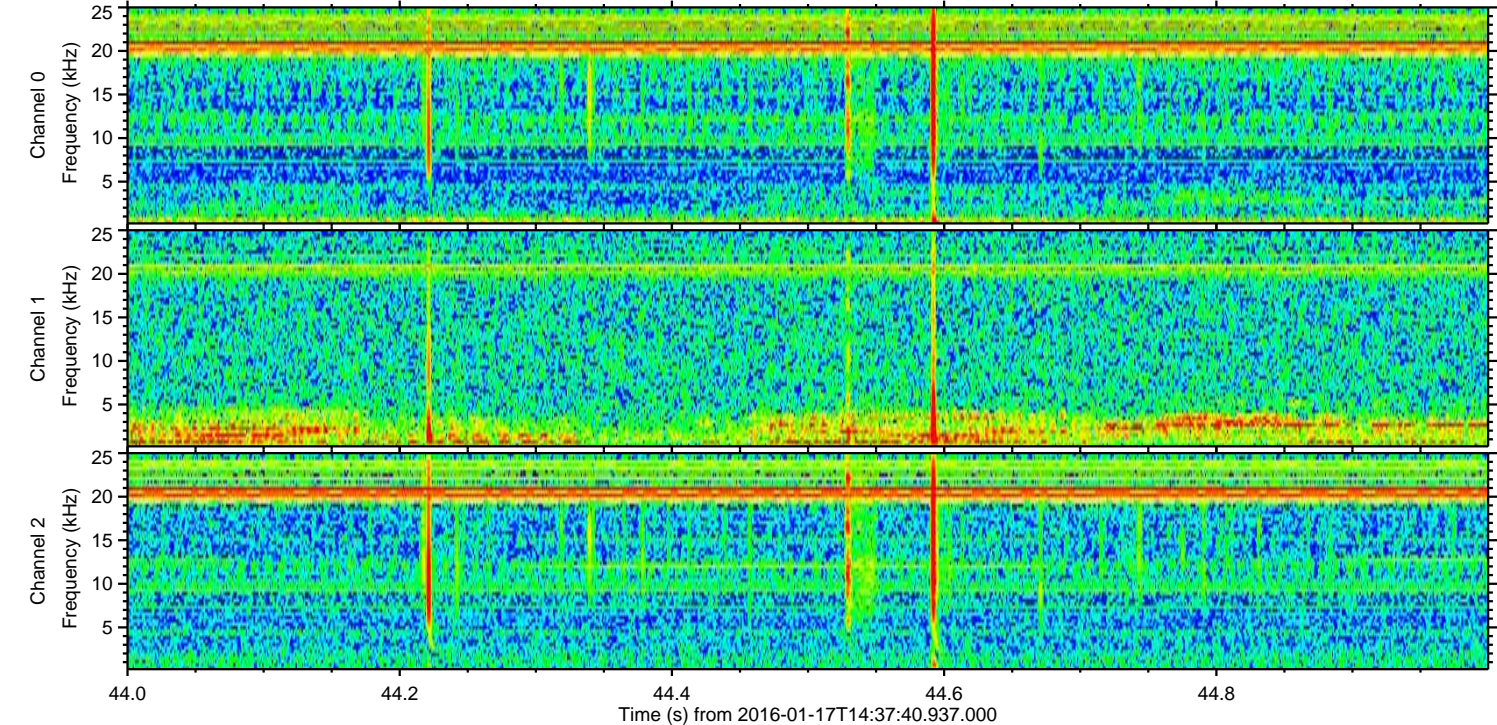
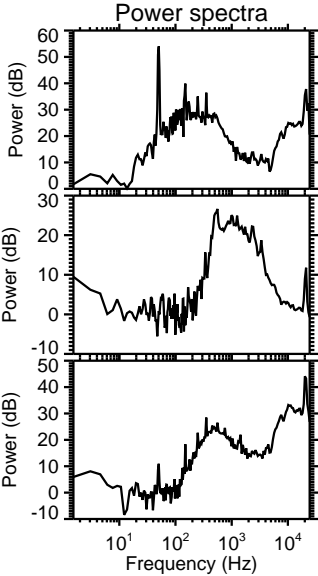
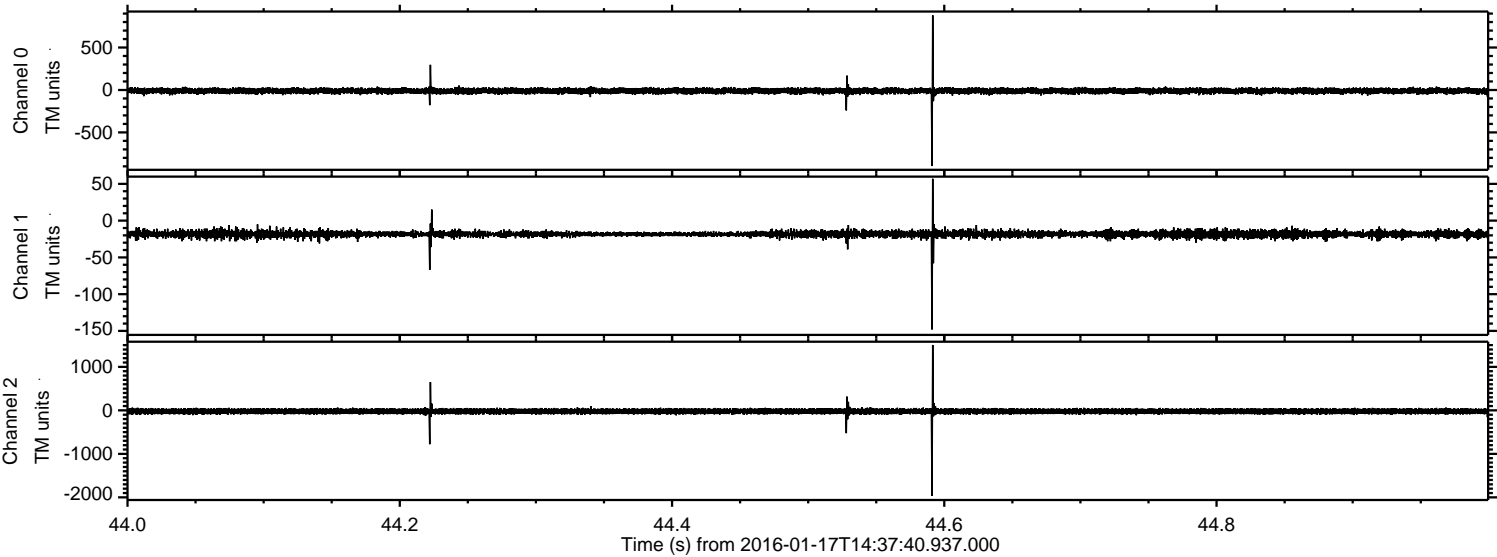
Processed Thu Mar 31 12:16:30 2016 by ELM ver.2012-10-06 from 001__elm20160117_143739__dat00.bin



Processed Thu Mar 31 12:16:31 2016 by ELM ver.2012-10-06 from 001__elm20160117_143739__dat00.bin



Processed Thu Mar 31 12:16:32 2016 by ELM ver.2012-10-06 from 001__elm20160117_143739__dat00.bin



Power spectra

Channel 0
mn: -896
mx: 880
 μ : -11.1
 σ : 17.6

Channel 1
mn: -148
mx: 57
 μ : -18.4
 σ : 3.0

Channel 2
mn: -1962
mx: 1503
 μ : -21.3
 σ : 34.9

Processed Thu Mar 31 12:16:33 2016 by ELM ver.2012-10-06 from 001__elm20160117_143739__dat00.bin

