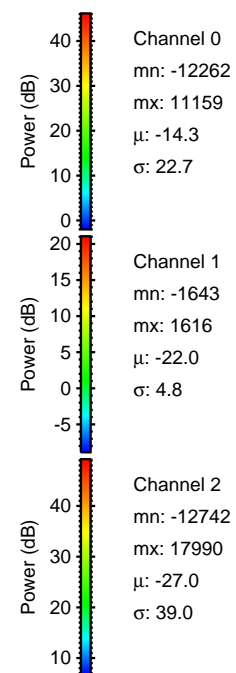
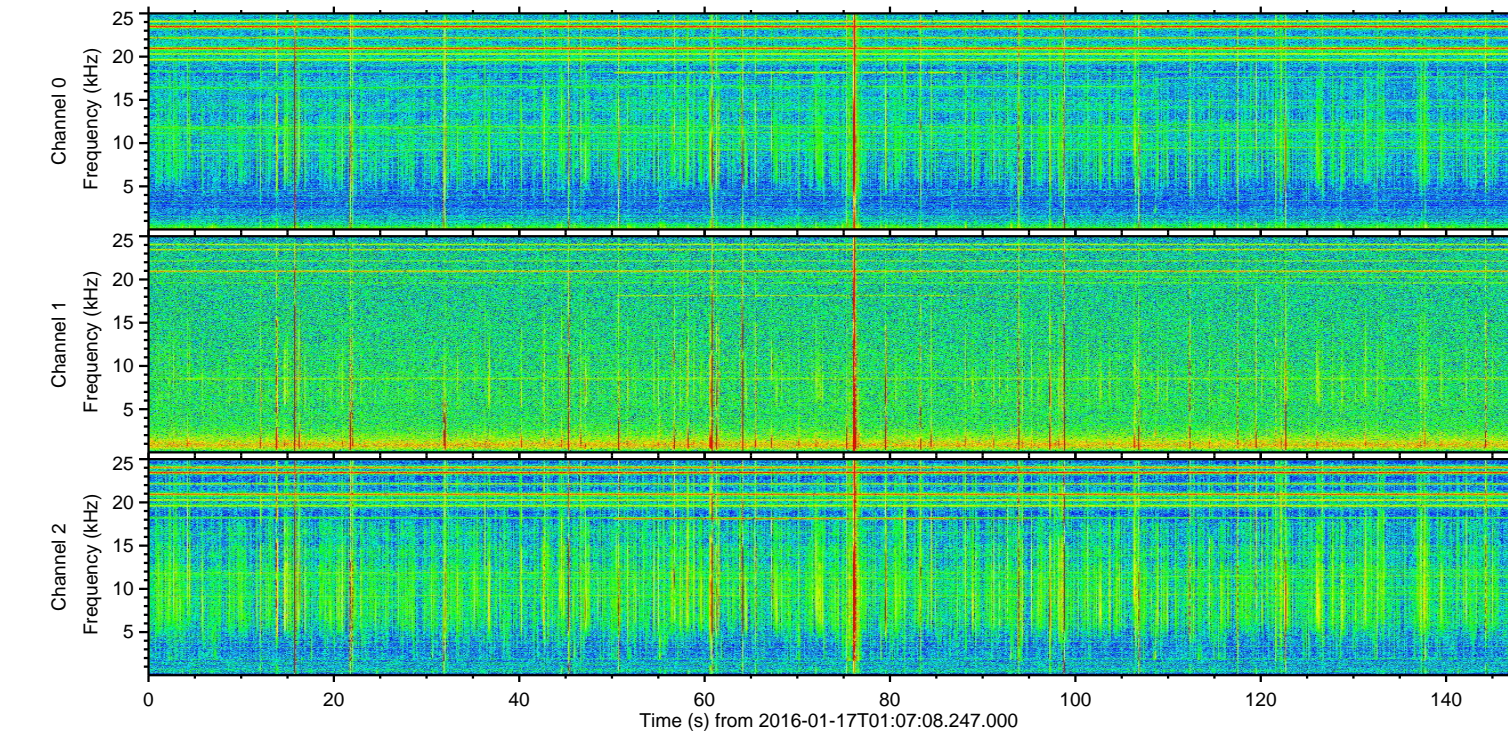
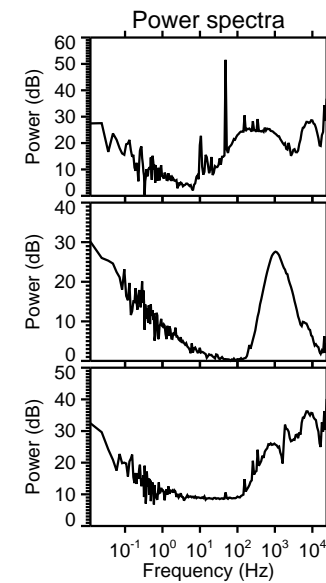
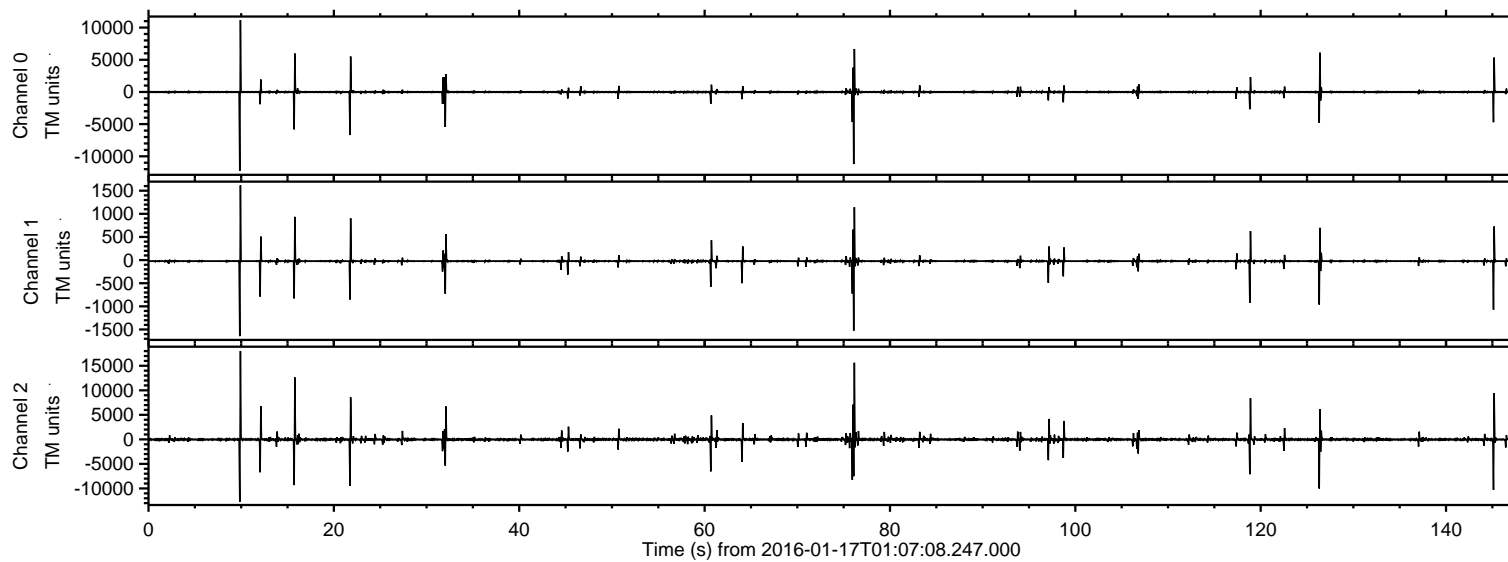
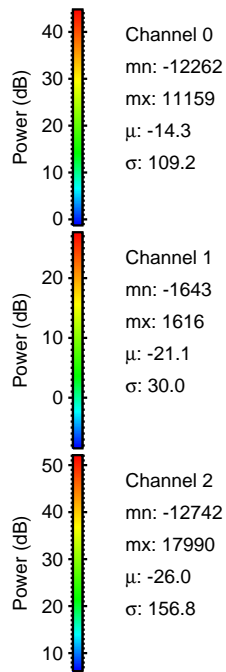
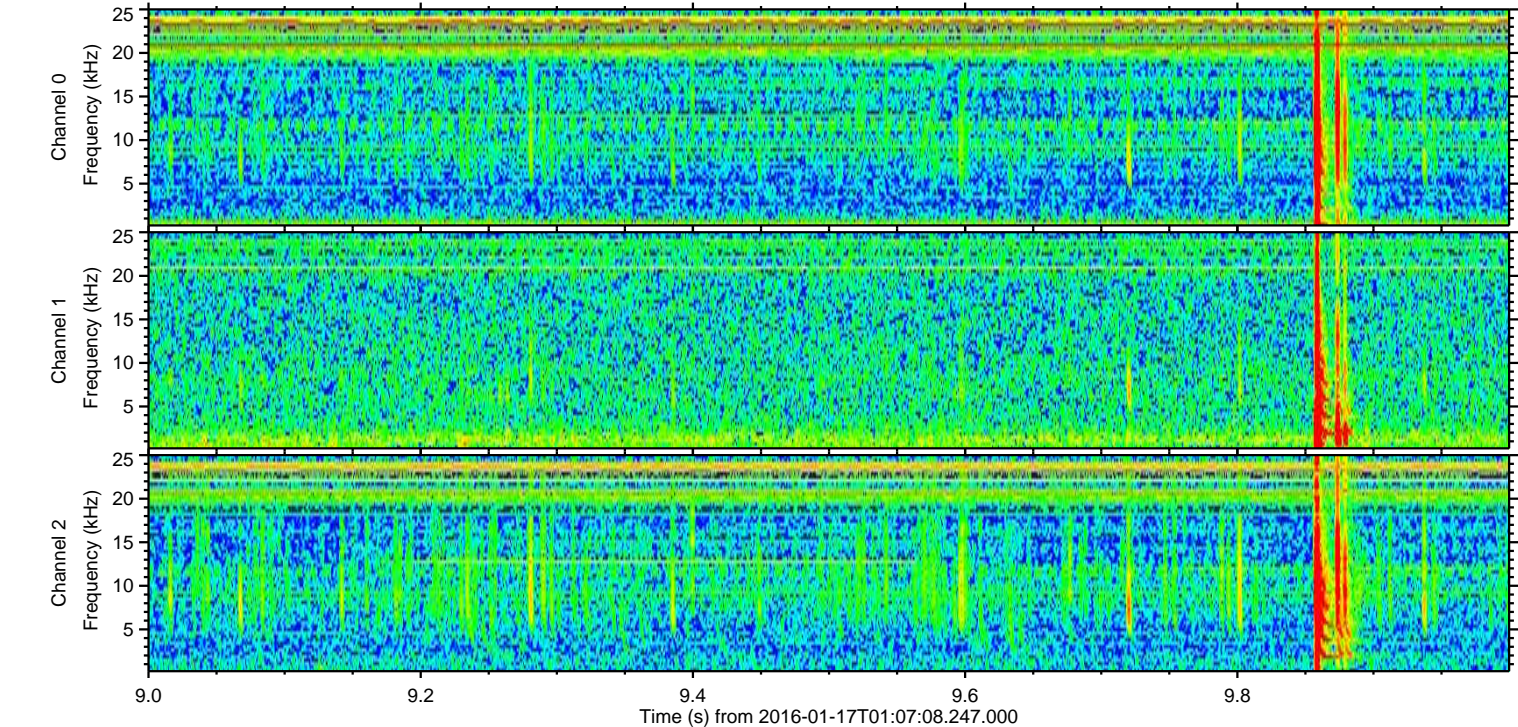
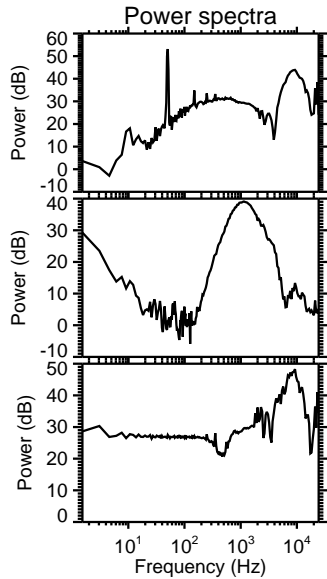
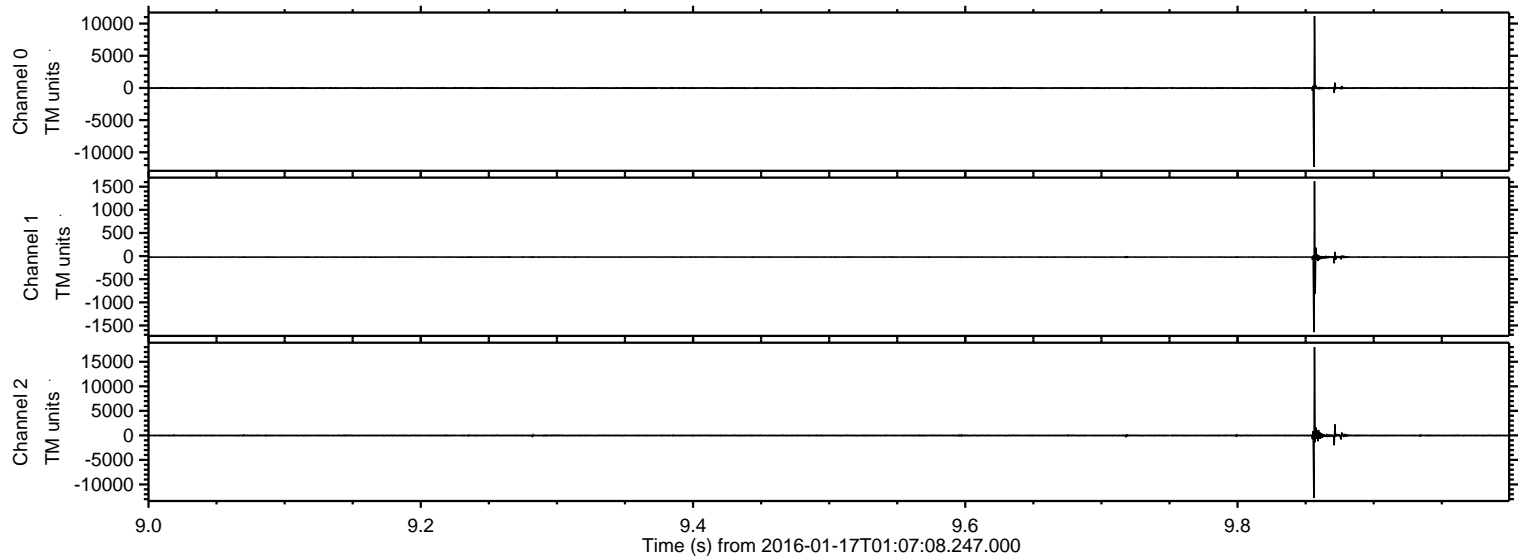


ELMAVAN 3D WAVEFORMS (Measured data sampled at 50 kHz) 51000 packets of 144 samples from 2016-01-17T01:07:08.247.000.

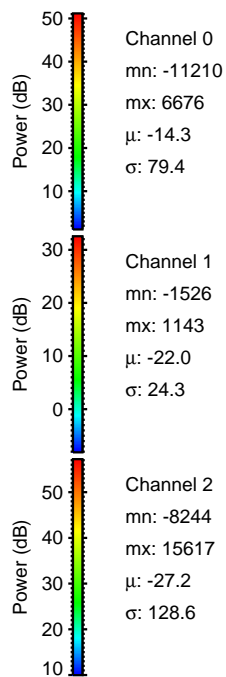
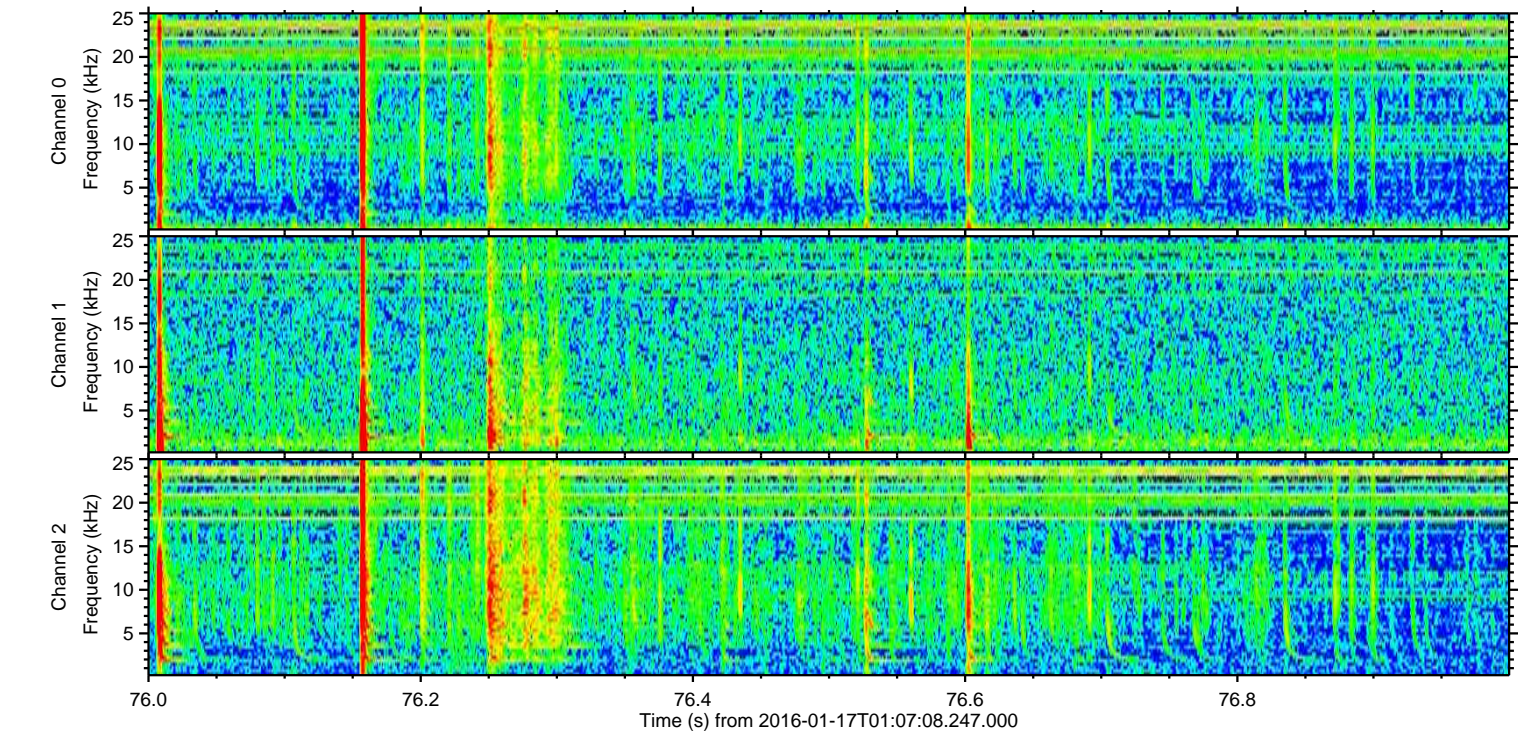
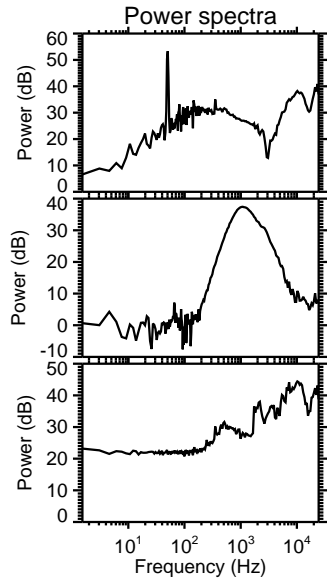
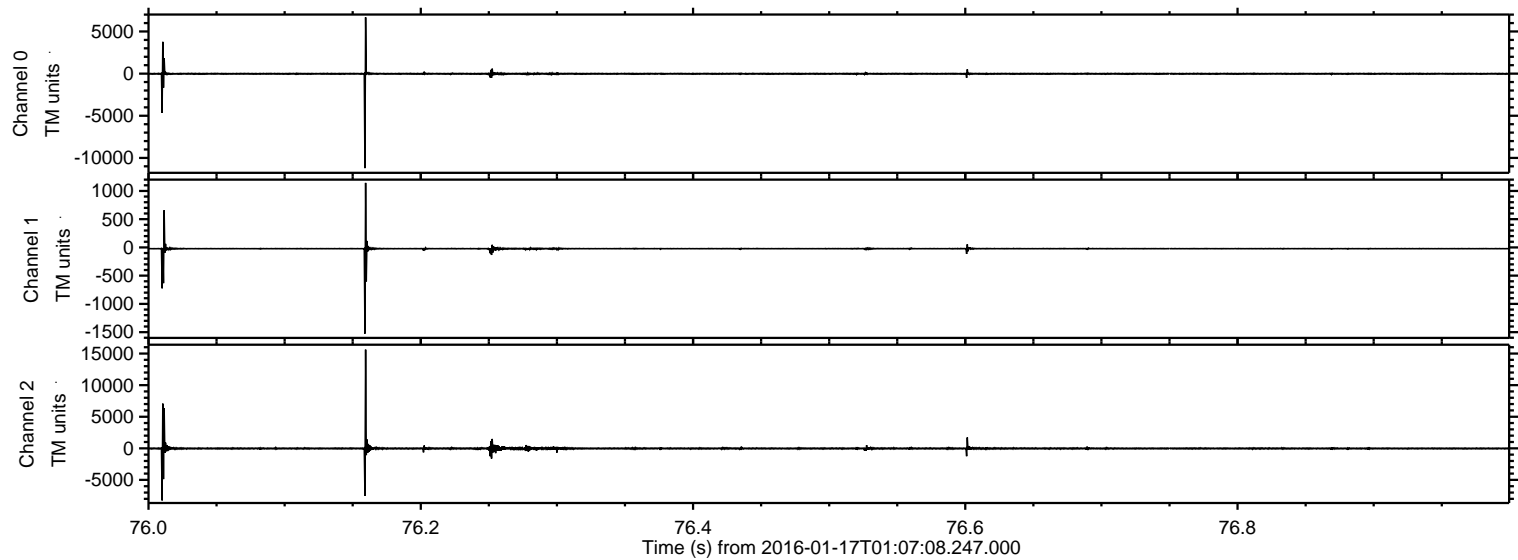
Processed Thu Mar 31 03:32:32 2016 by ELM ver.2012-10-06 from 001__elm20160117_010707__dat00.bin



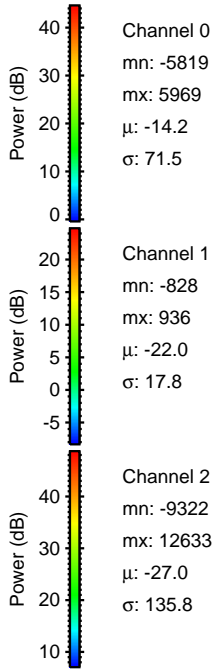
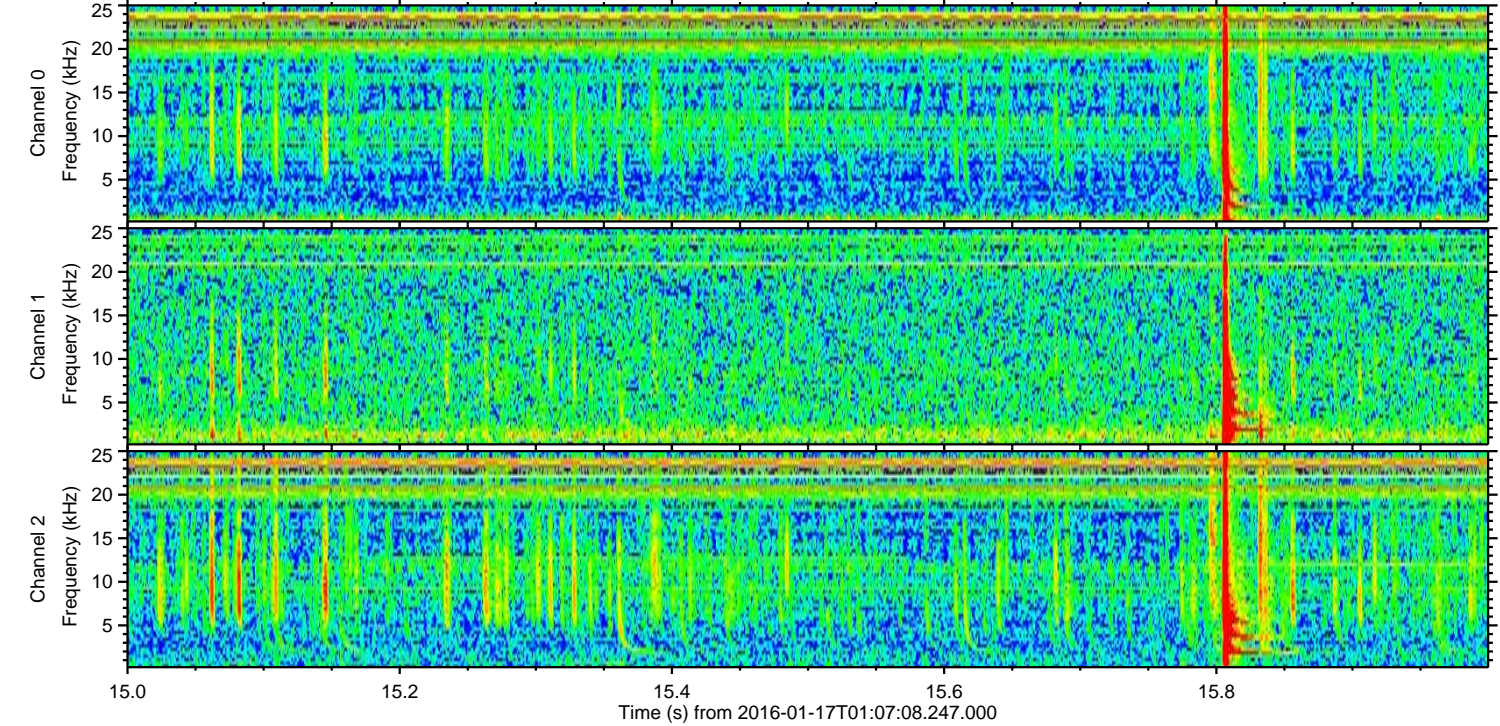
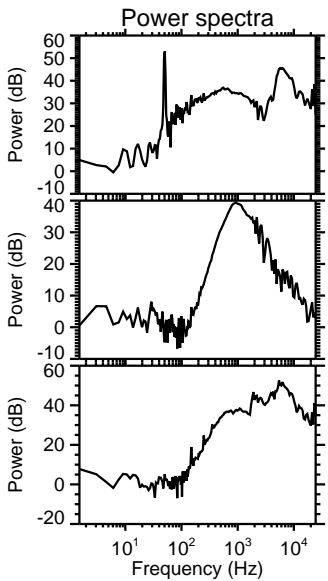
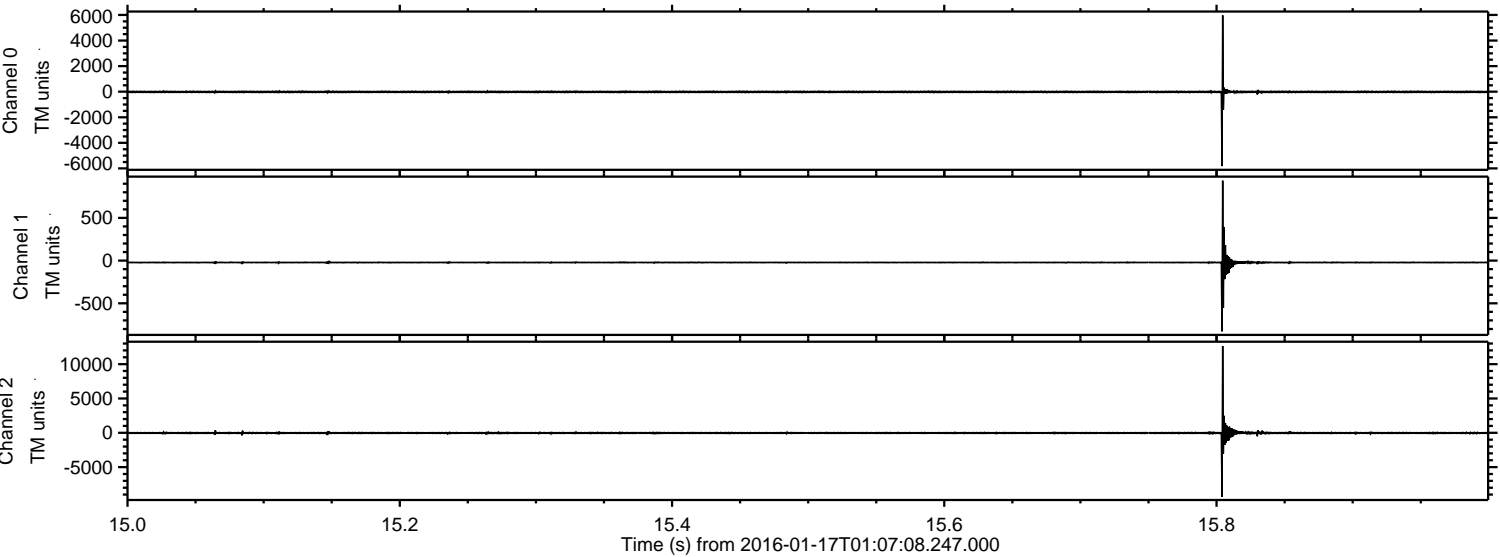
Processed Thu Mar 31 03:32:44 2016 by ELM ver.2012-10-06 from 001__elm20160117_010707__dat00.bin



Processed Thu Mar 31 03:32:45 2016 by ELM ver.2012-10-06 from 001__elm20160117_010707__dat00.bin

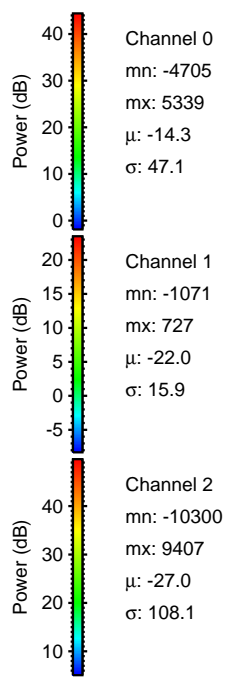
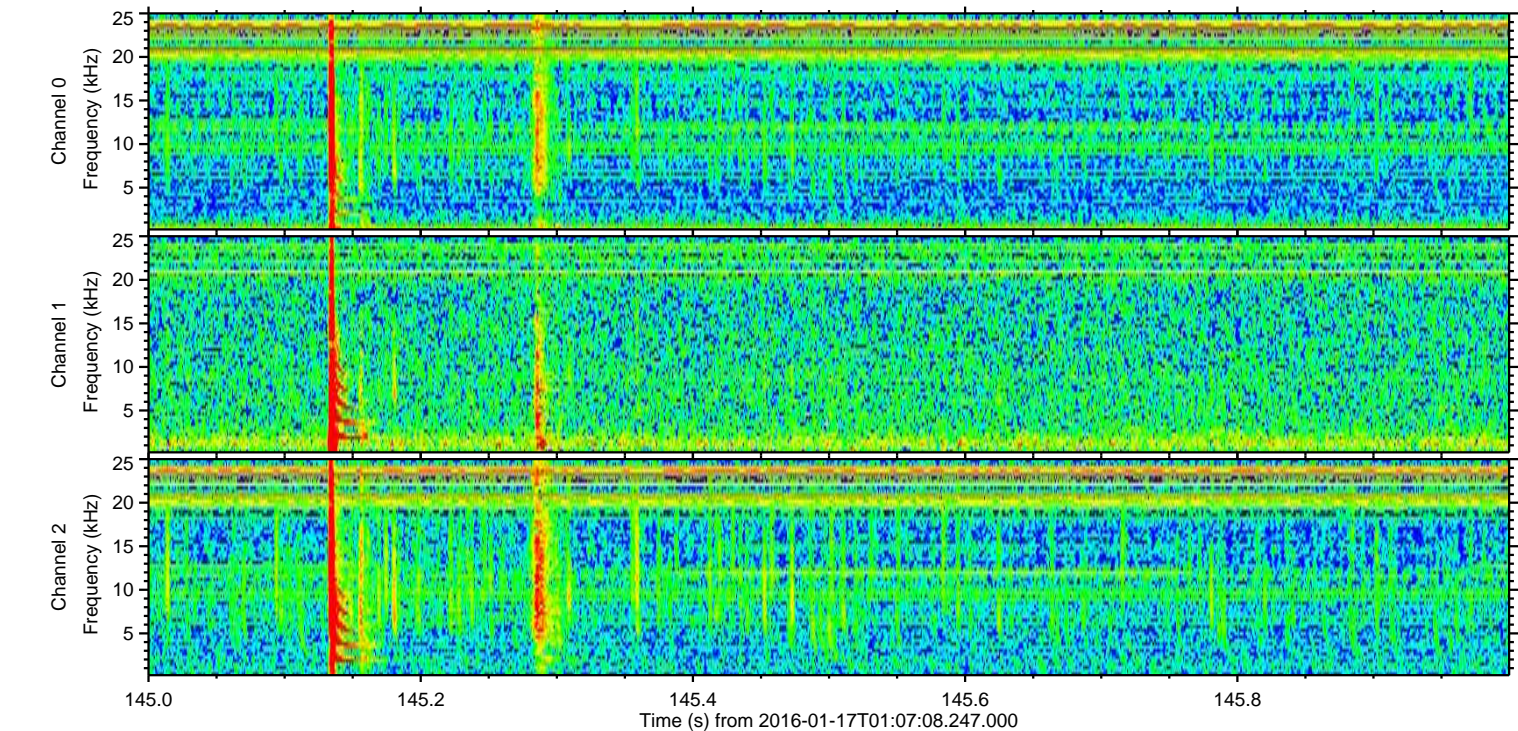
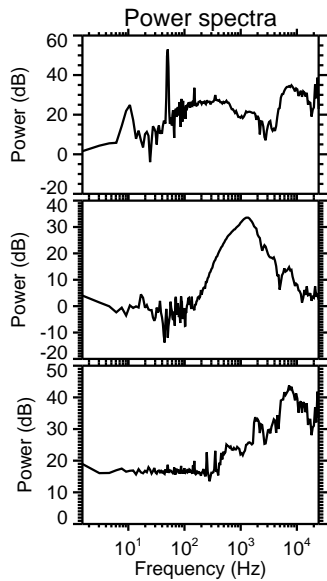
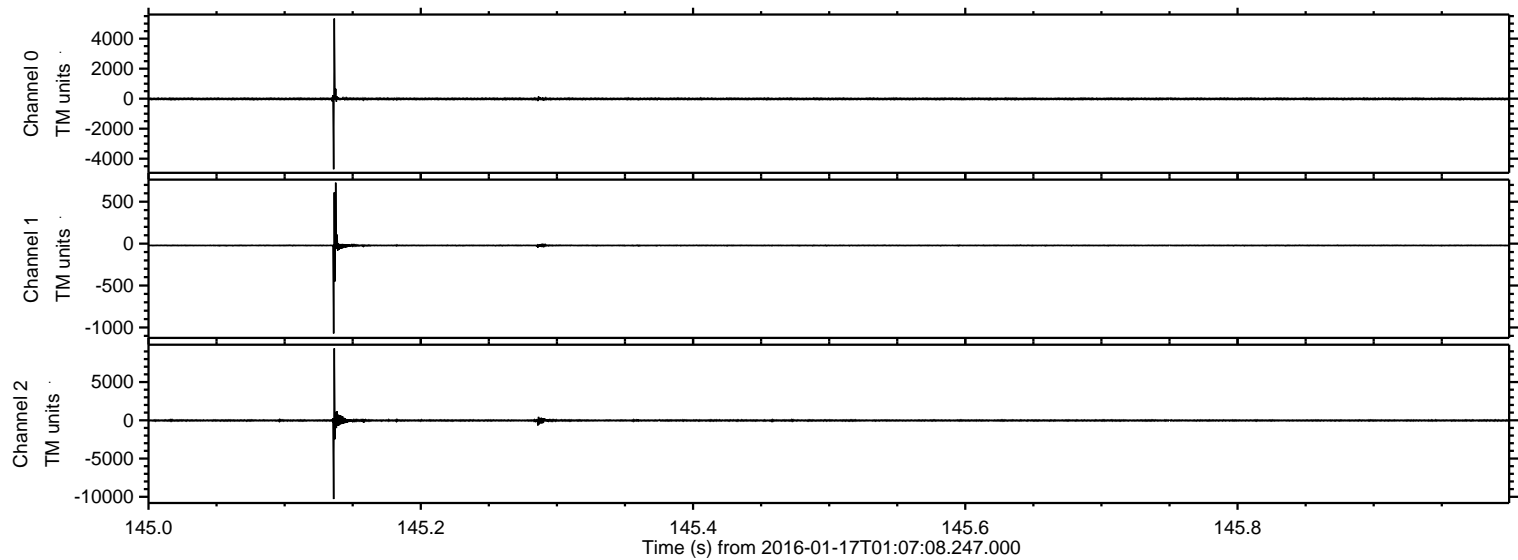


Processed Thu Mar 31 03:32:46 2016 by ELM ver.2012-10-06 from 001__elm20160117_010707__dat00.bin



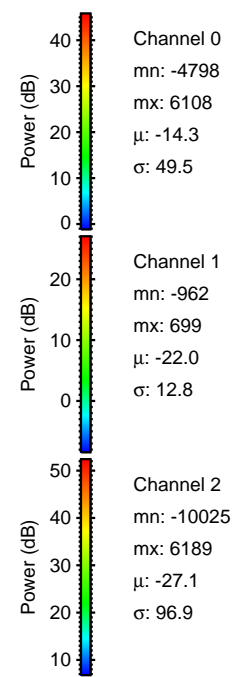
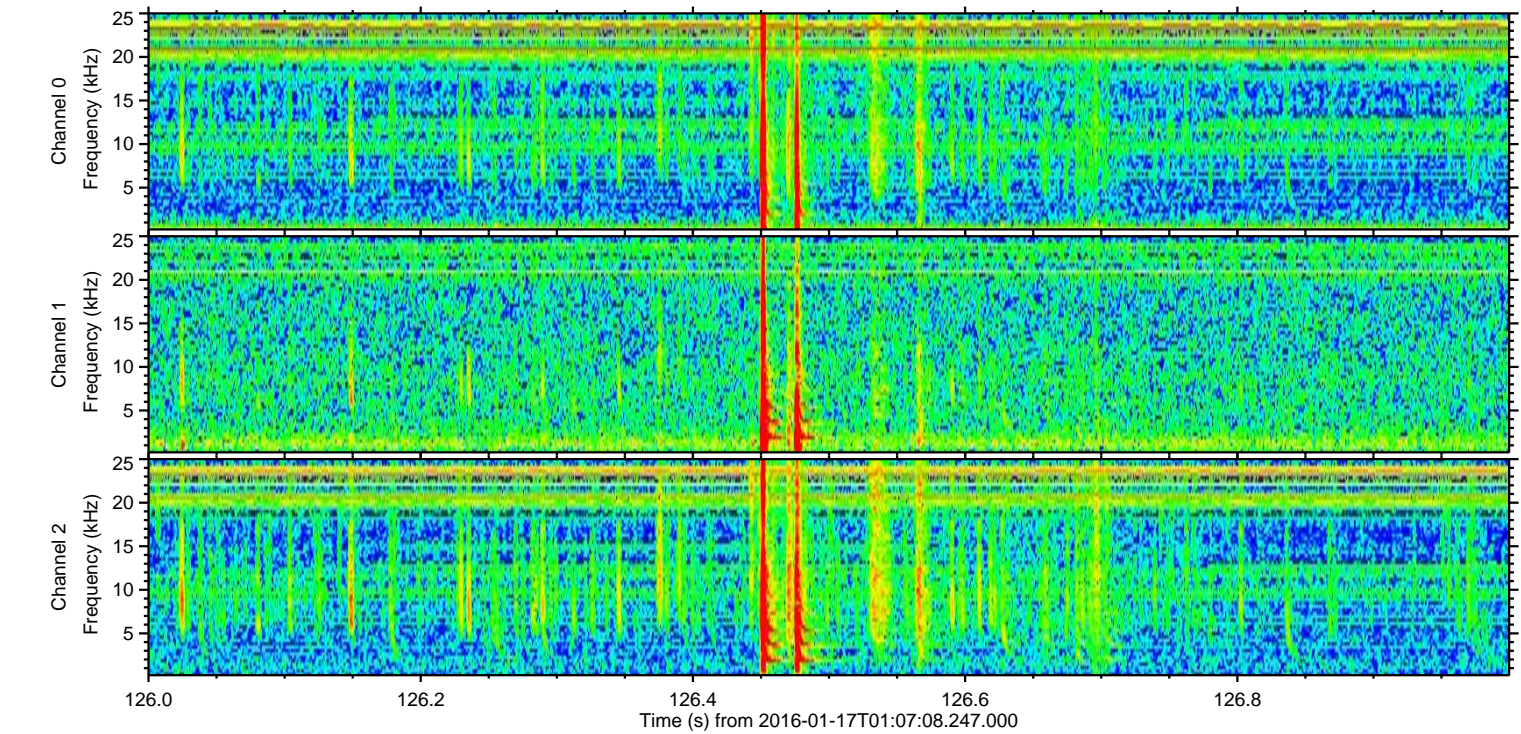
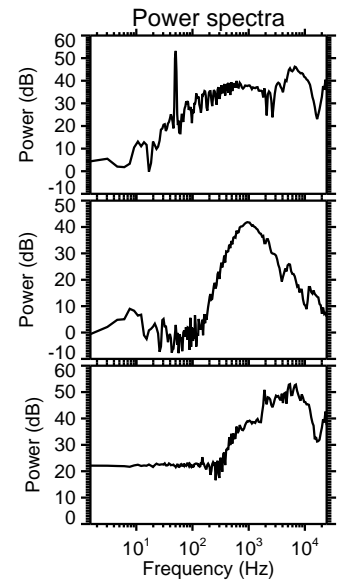
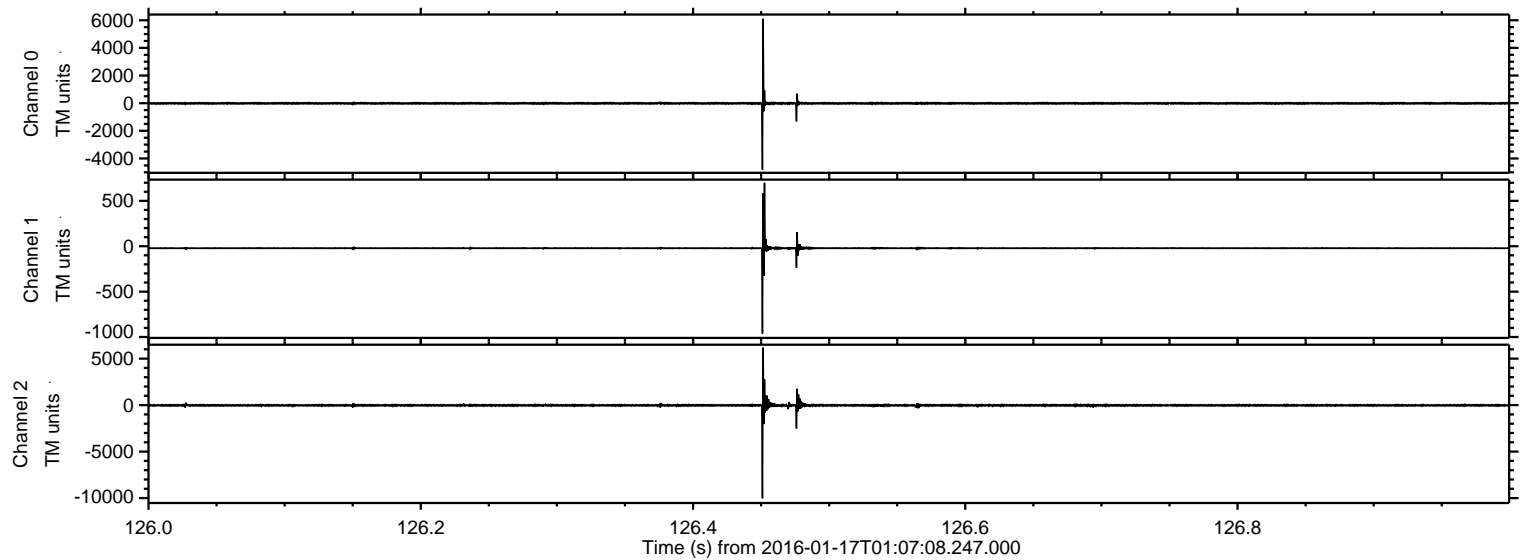
ELMAVAN 3D WAVEFORMS (Measured data sampled at 50 kHz) 51000 packets of 144 samples from 2016-01-17T01:07:08.247.000. Part 146/147

Processed Thu Mar 31 03:32:46 2016 by ELM ver.2012-10-06 from 001__elm20160117_010707__dat00.bin

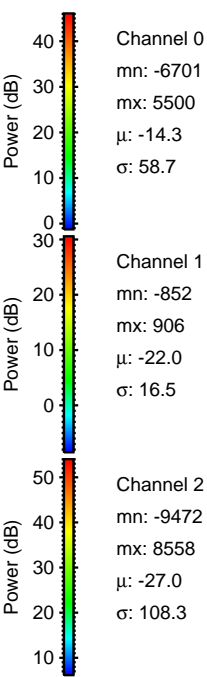
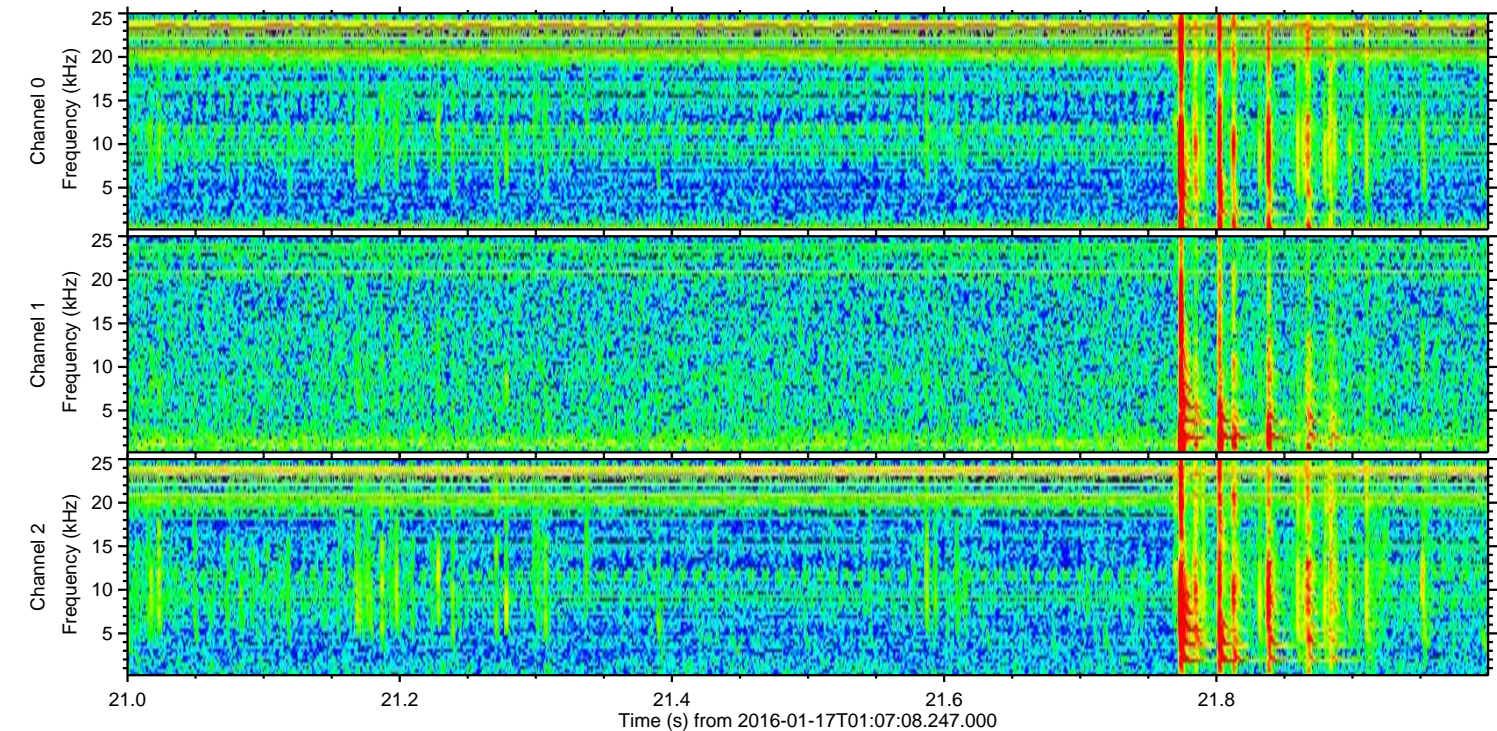
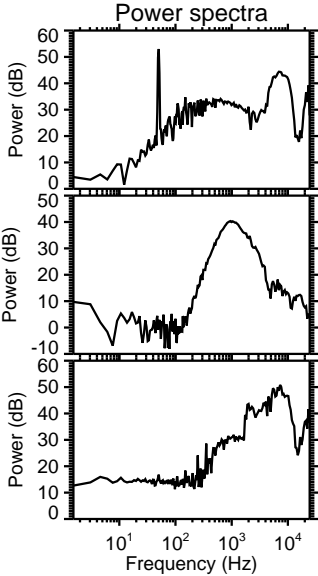
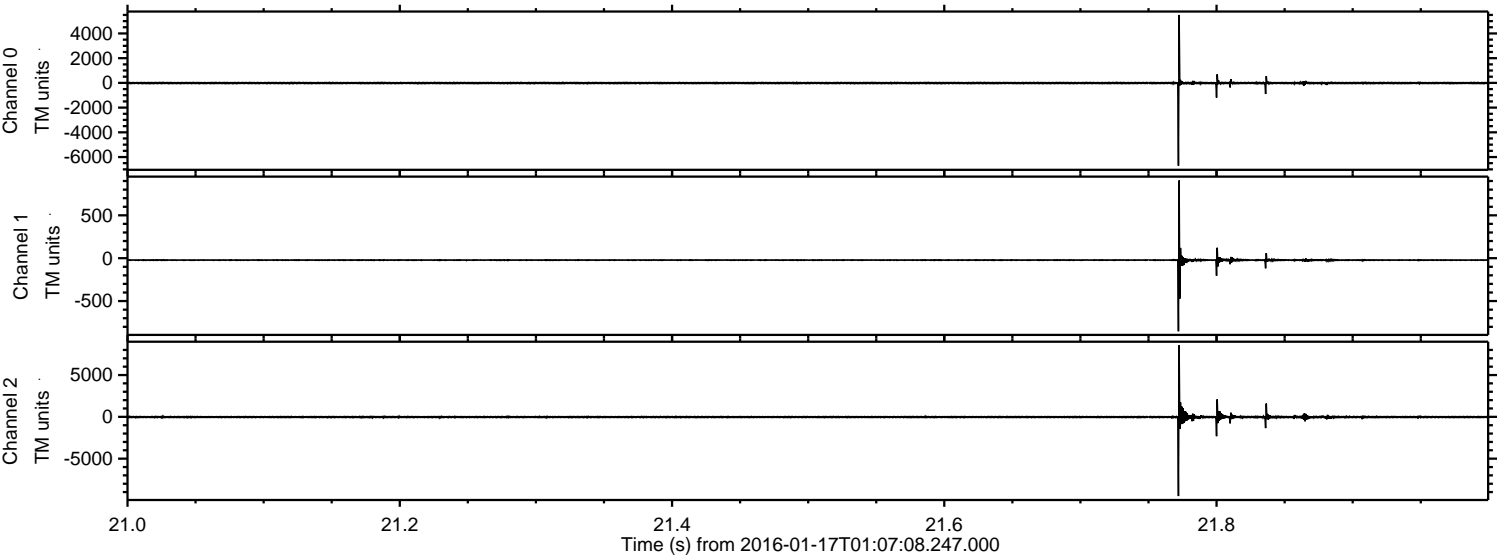


ELMAVAN 3D WAVEFORMS (Measured data sampled at 50 kHz) 51000 packets of 144 samples from 2016-01-17T01:07:08.247.000. Part 127/147

Processed Thu Mar 31 03:32:47 2016 by ELM ver.2012-10-06 from 001__elm20160117_010707__dat00.bin

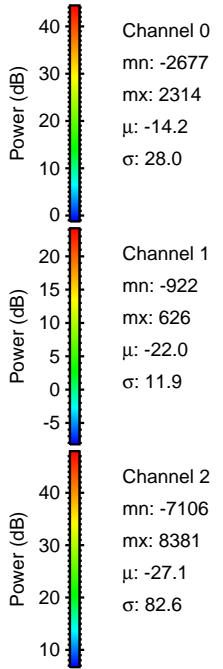
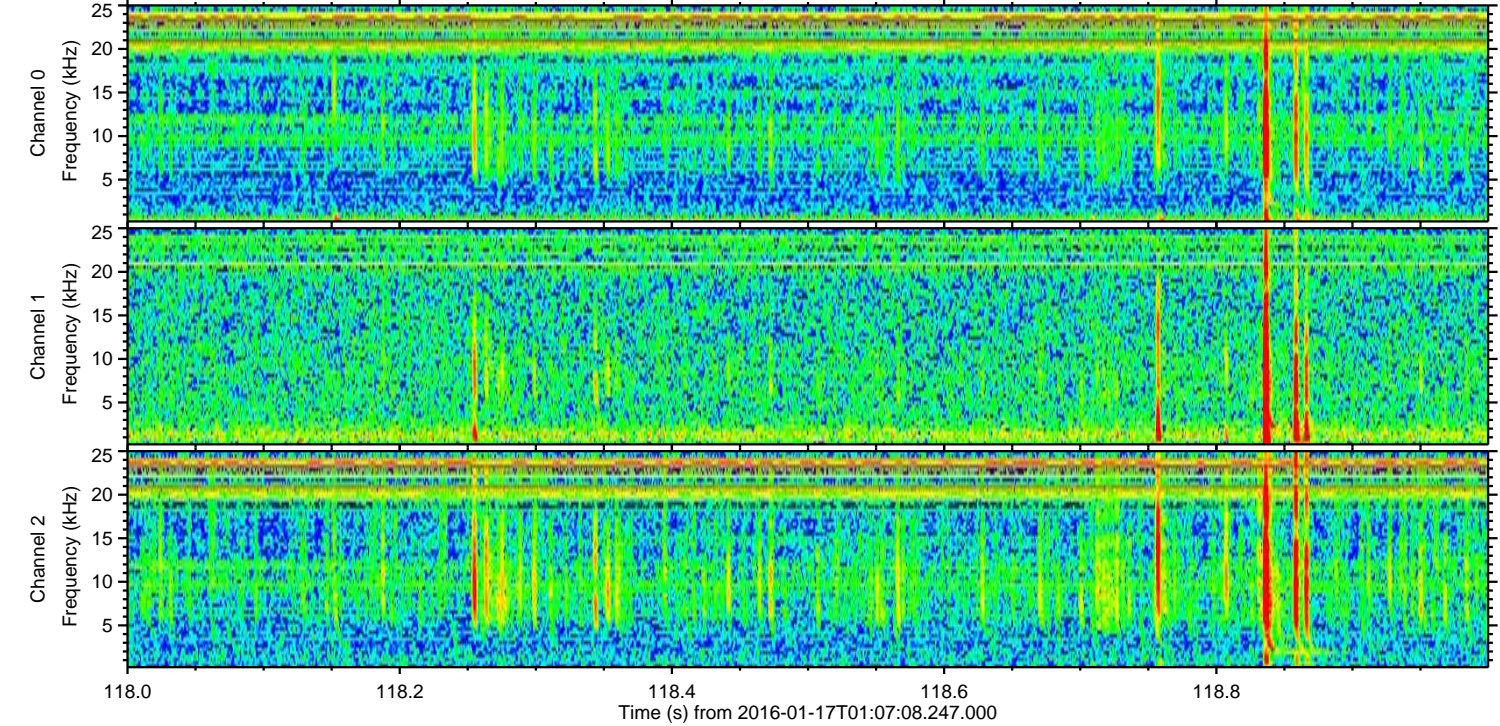
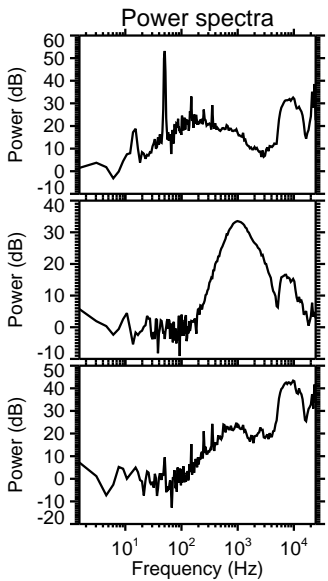
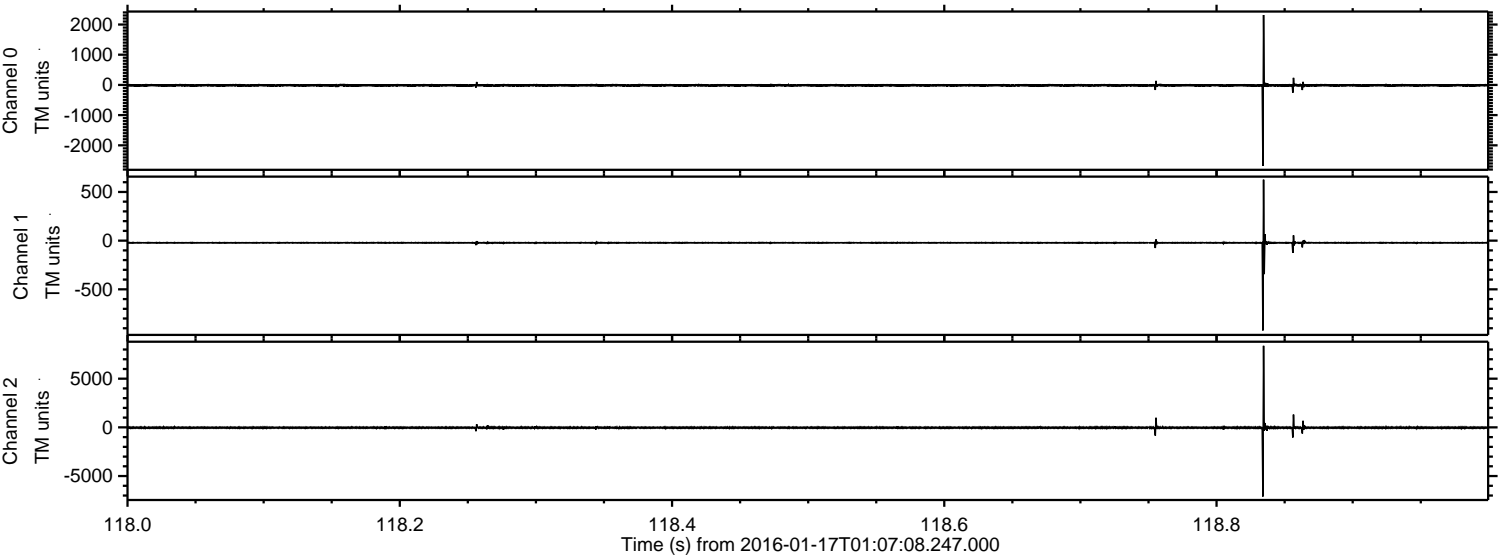


Processed Thu Mar 31 03:32:48 2016 by ELM ver.2012-10-06 from 001__elm20160117_010707__dat00.bin

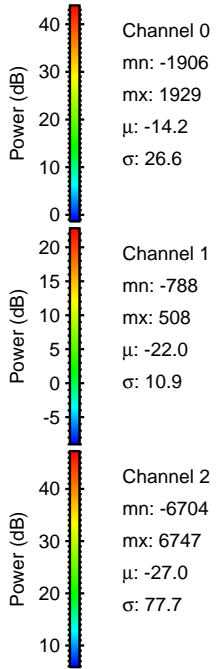
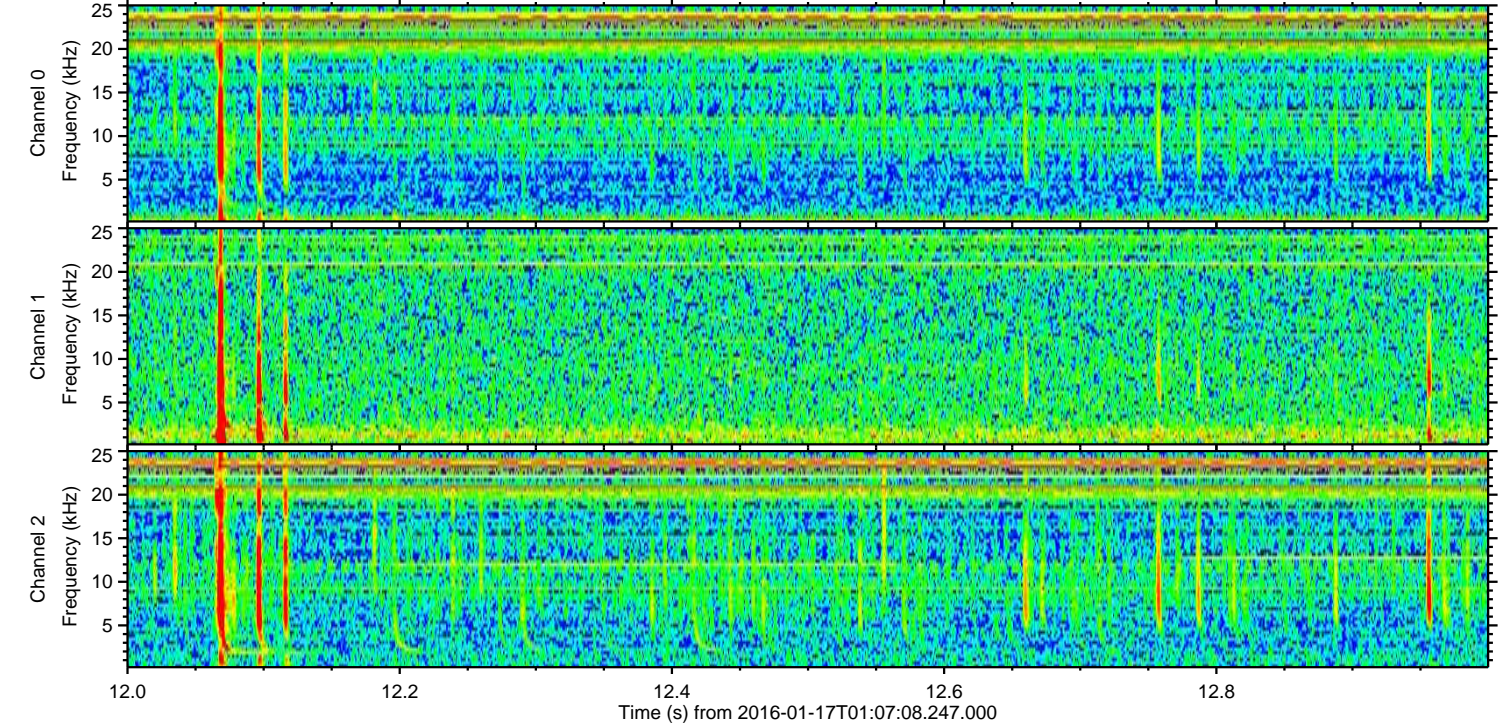
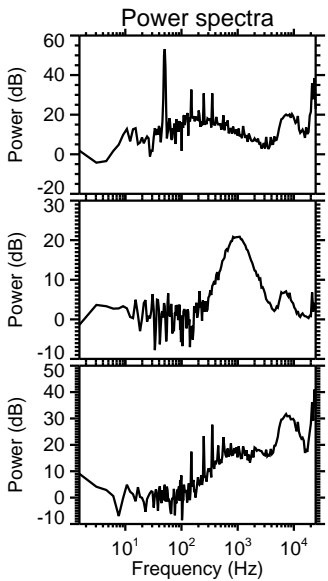
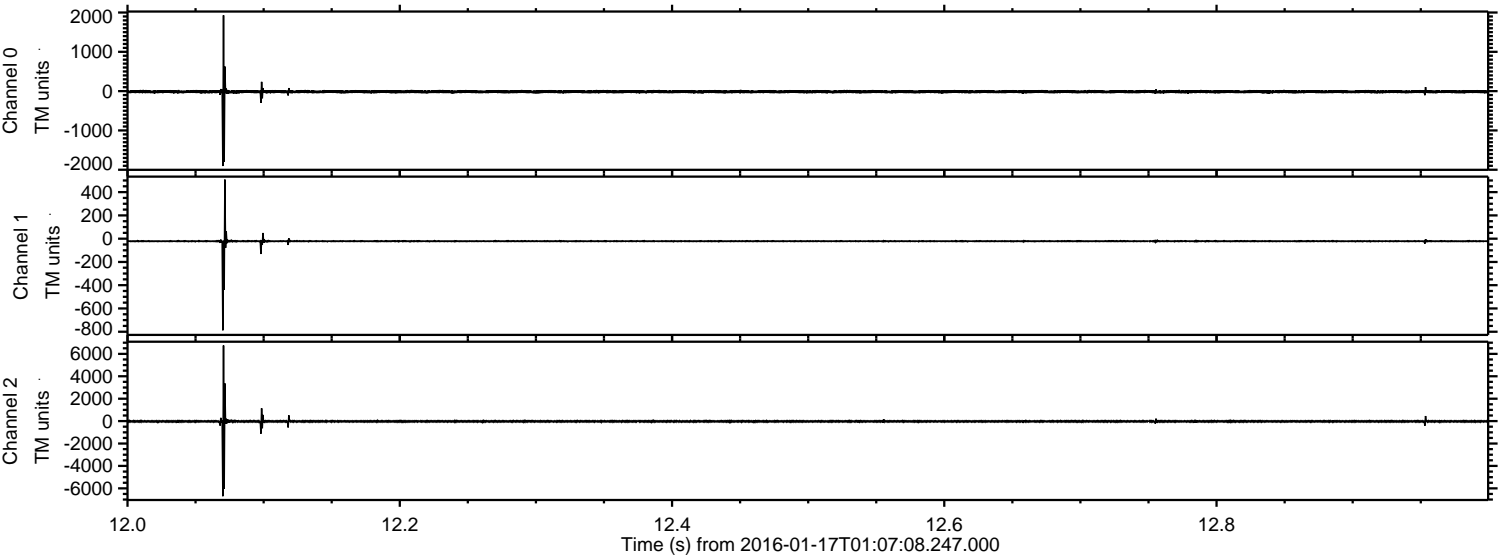


ELMAVAN 3D WAVEFORMS (Measured data sampled at 50 kHz) 51000 packets of 144 samples from 2016-01-17T01:07:08.247.000. Part 119/147

Processed Thu Mar 31 03:32:49 2016 by ELM ver.2012-10-06 from 001__elm20160117_010707__dat00.bin



Processed Thu Mar 31 03:32:50 2016 by ELM ver.2012-10-06 from 001__elm20160117_010707__dat00.bin

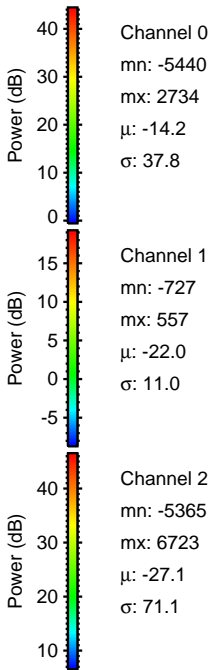
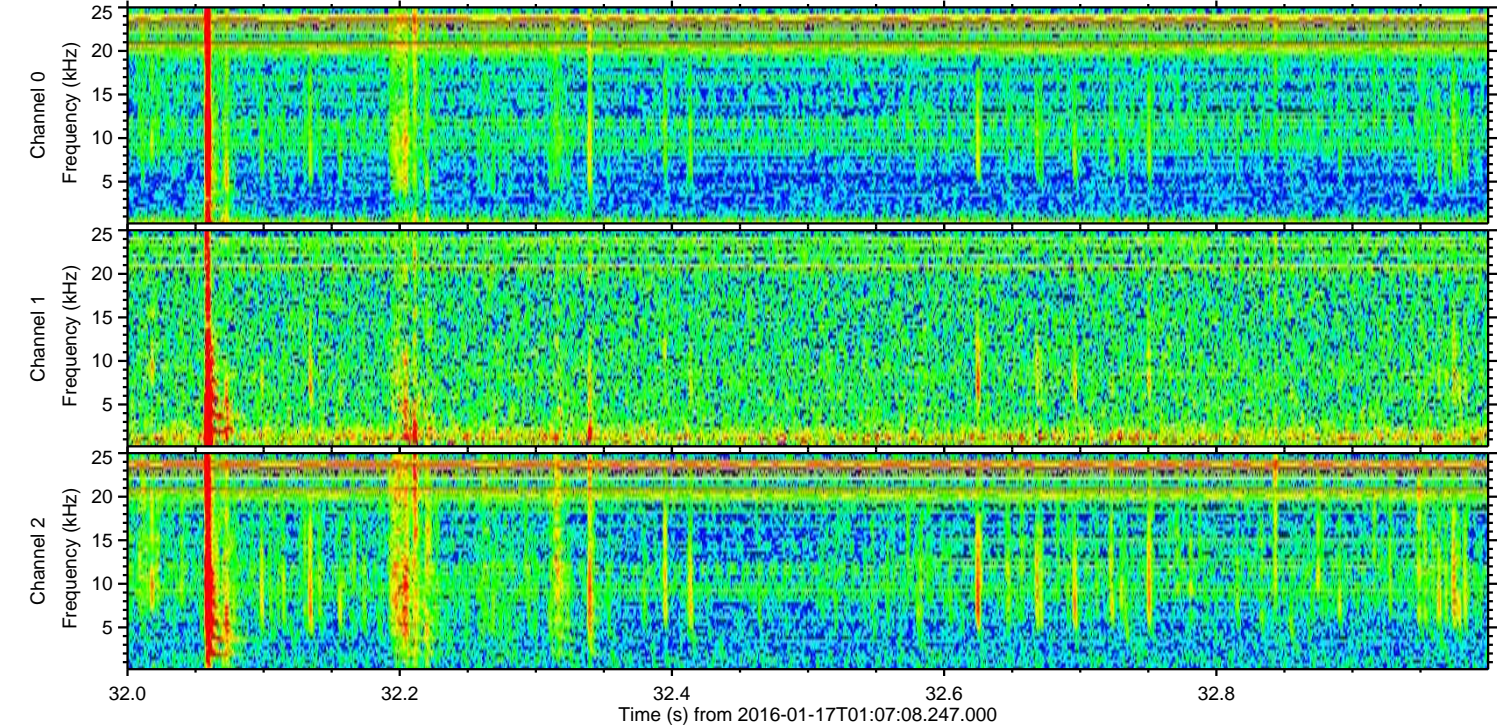
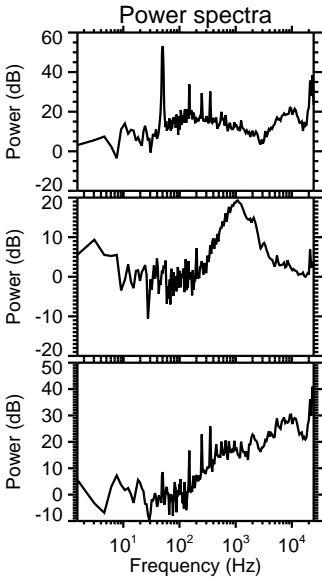
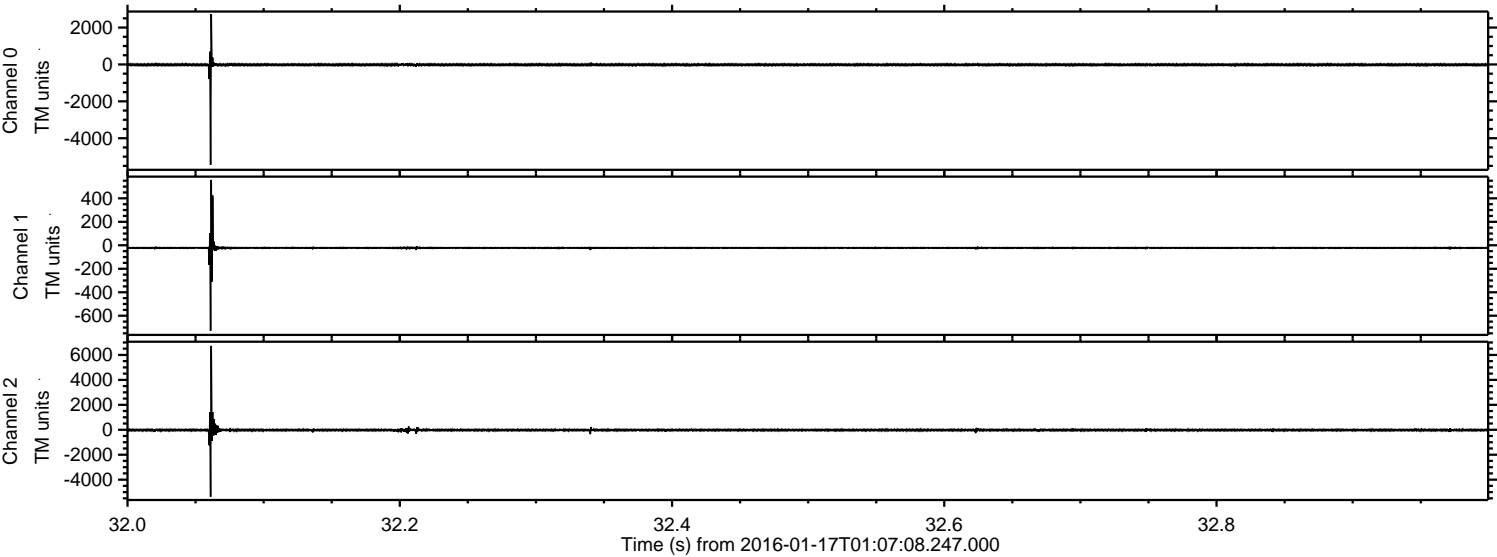


Channel 0
mn: -1906
mx: 1929
 μ : -14.2
 σ : 26.6

Channel 1
mn: -788
mx: 508
 μ : -22.0
 σ : 10.9

Channel 2
mn: -6704
mx: 6747
 μ : -27.0
 σ : 77.7

Processed Thu Mar 31 03:32:51 2016 by ELM ver.2012-10-06 from 001__elm20160117_010707__dat00.bin



Processed Thu Mar 31 03:32:52 2016 by ELM ver.2012-10-06 from 001__elm20160117_010707__dat00.bin

