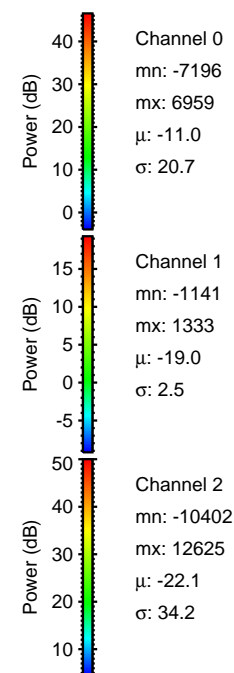
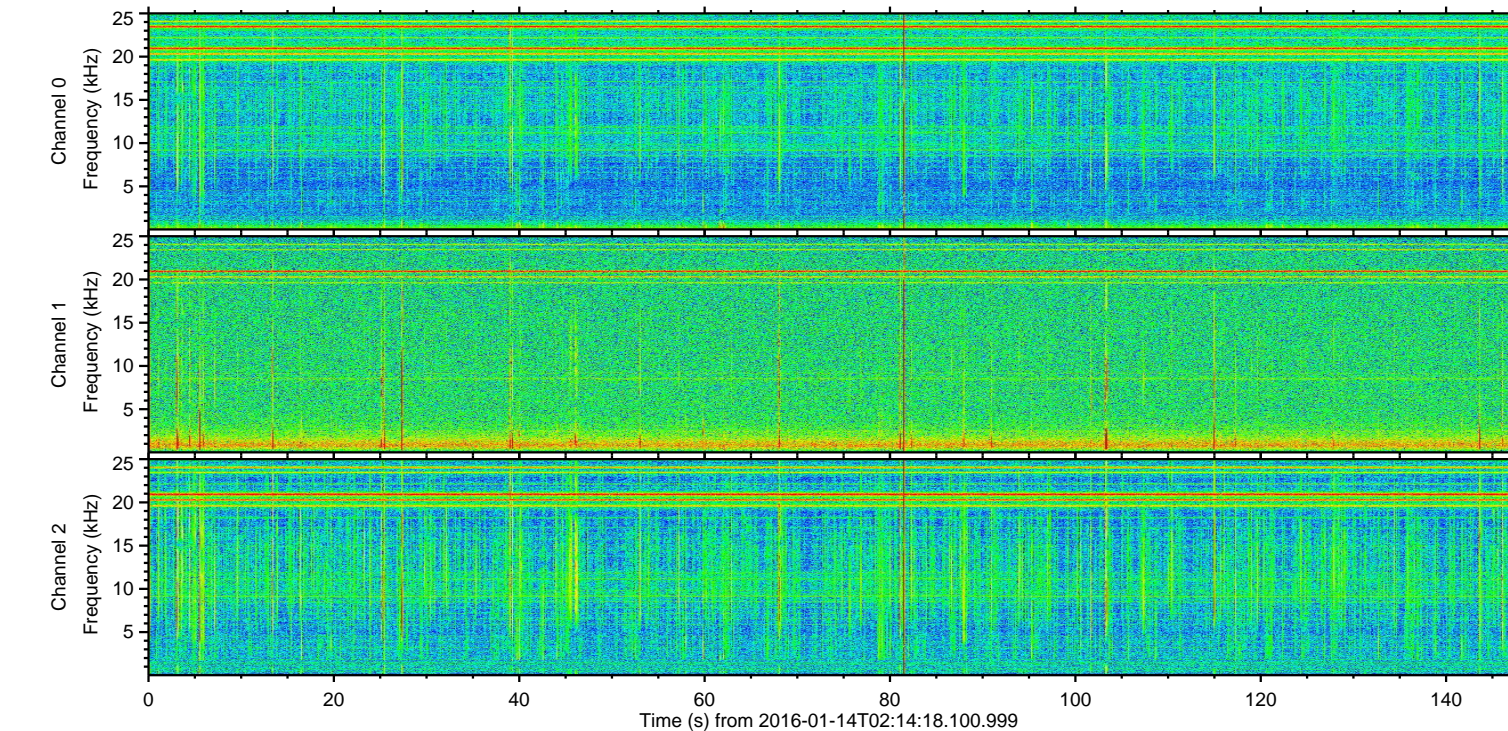
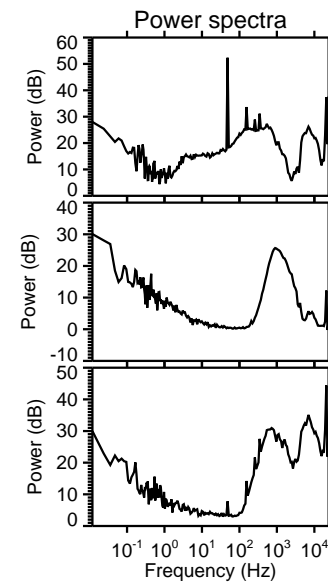
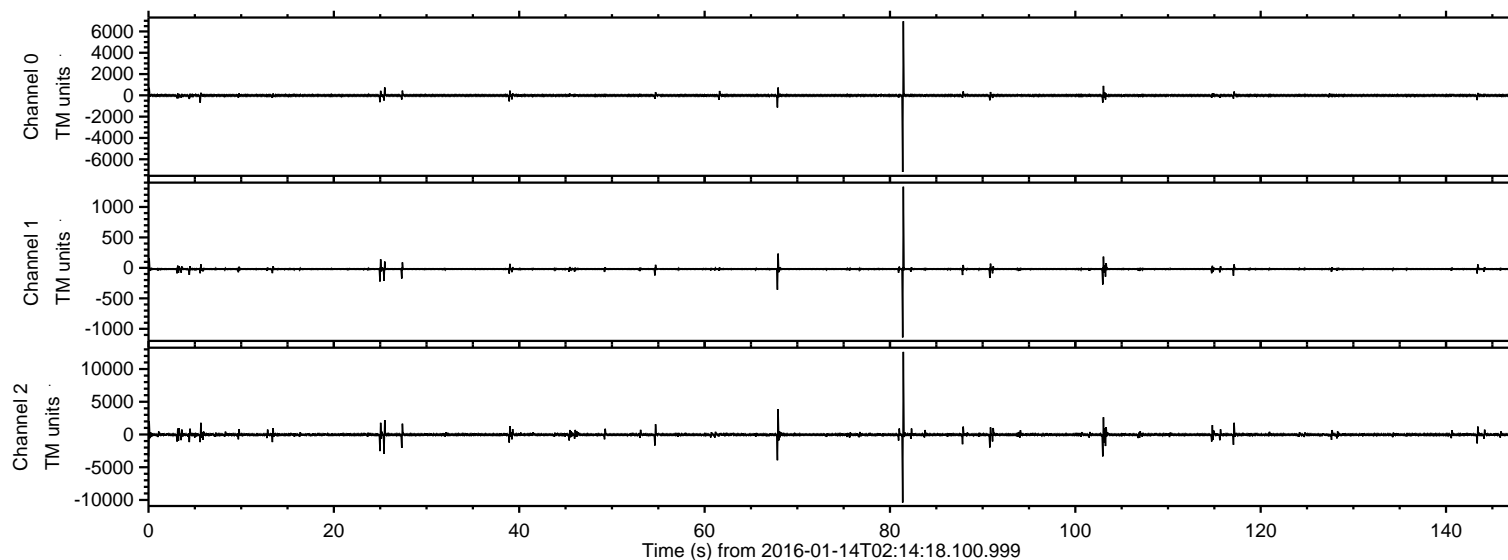


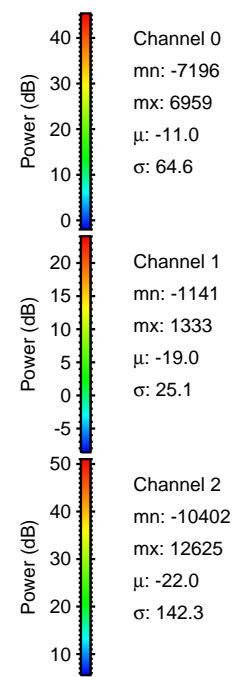
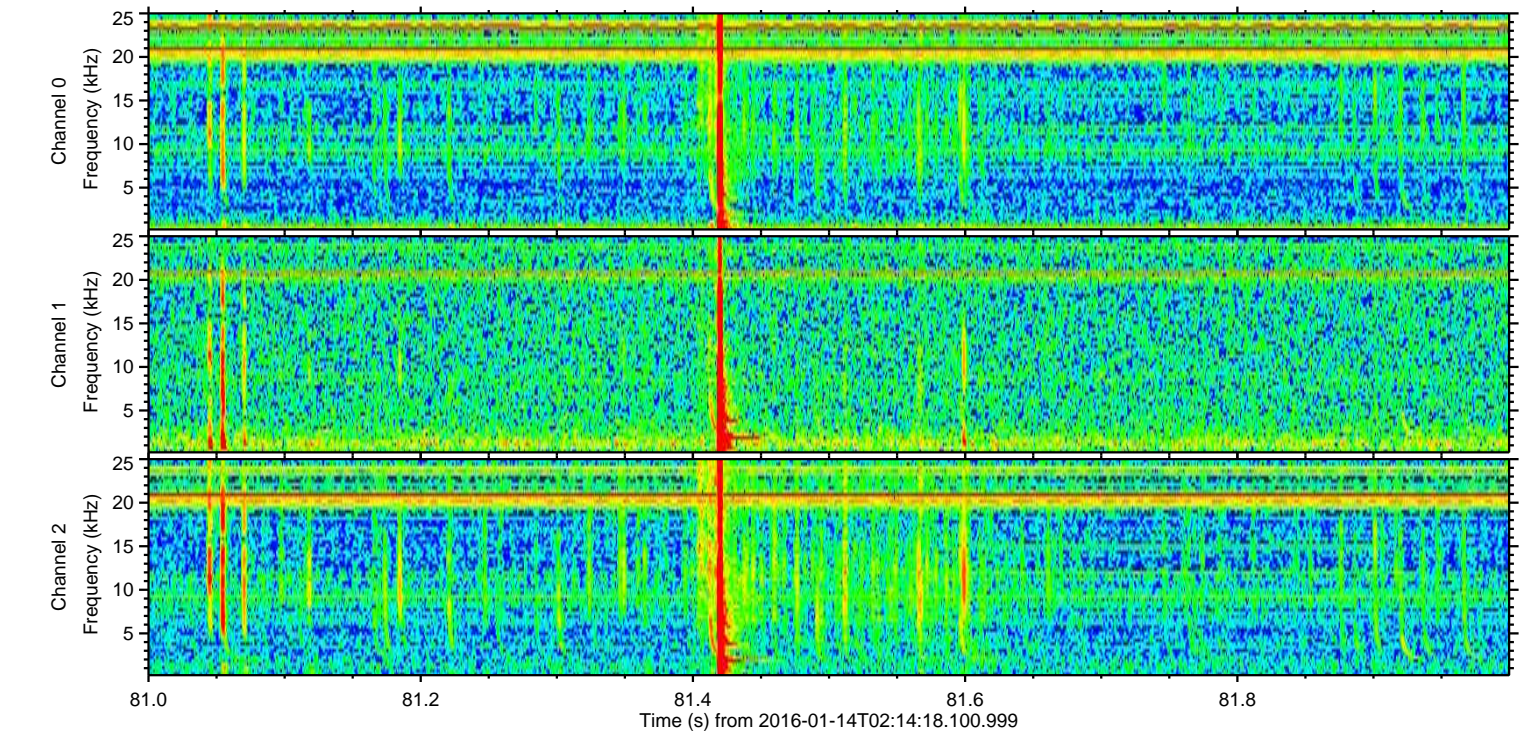
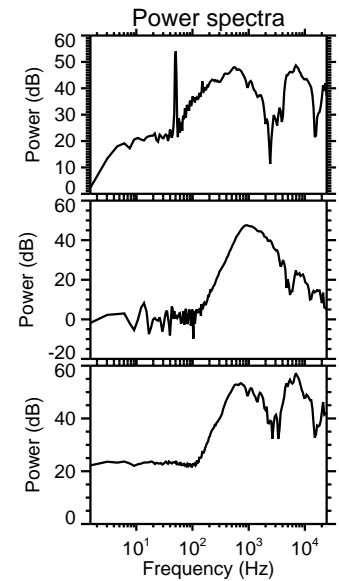
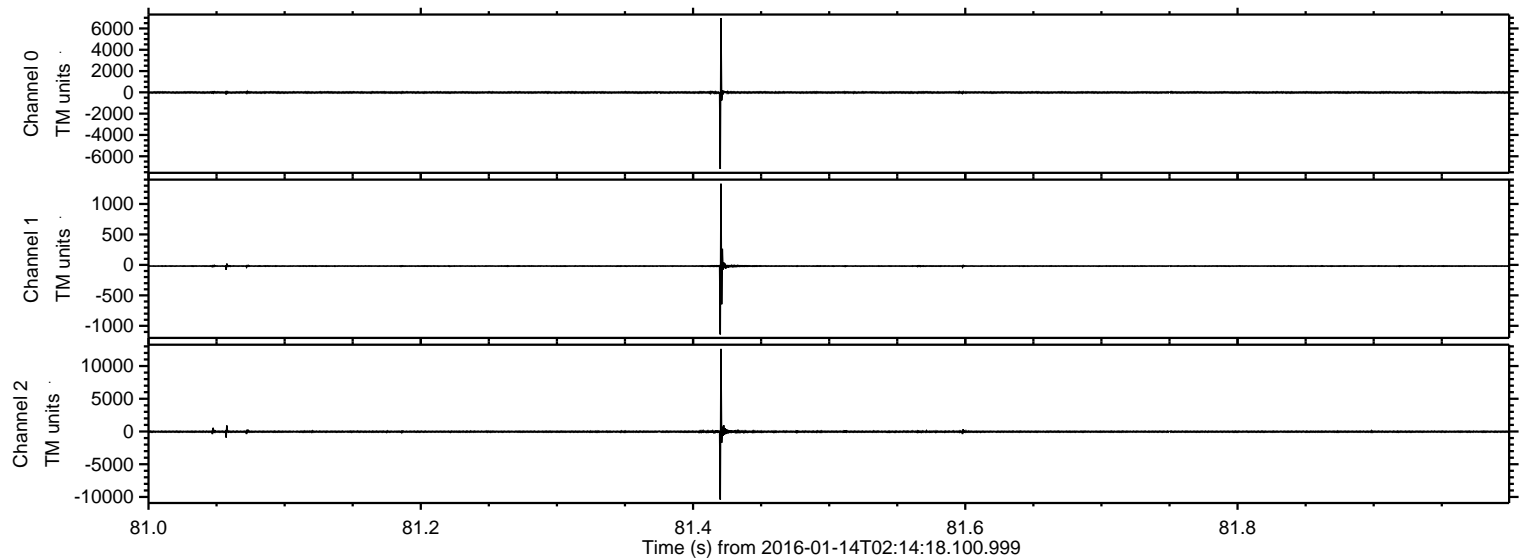
# ELMAVAN 3D WAVEFORMS (Measured data sampled at 50 kHz) 51000 packets of 144 samples from 2016-01-14T02:14:18.100.999.

Processed Wed Mar 30 12:32:18 2016 by ELM ver.2012-10-06 from 001\_\_elm20160114\_021417\_\_dat00.bin



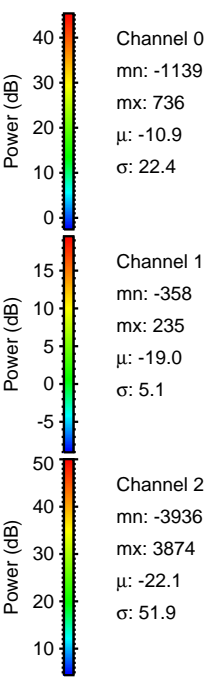
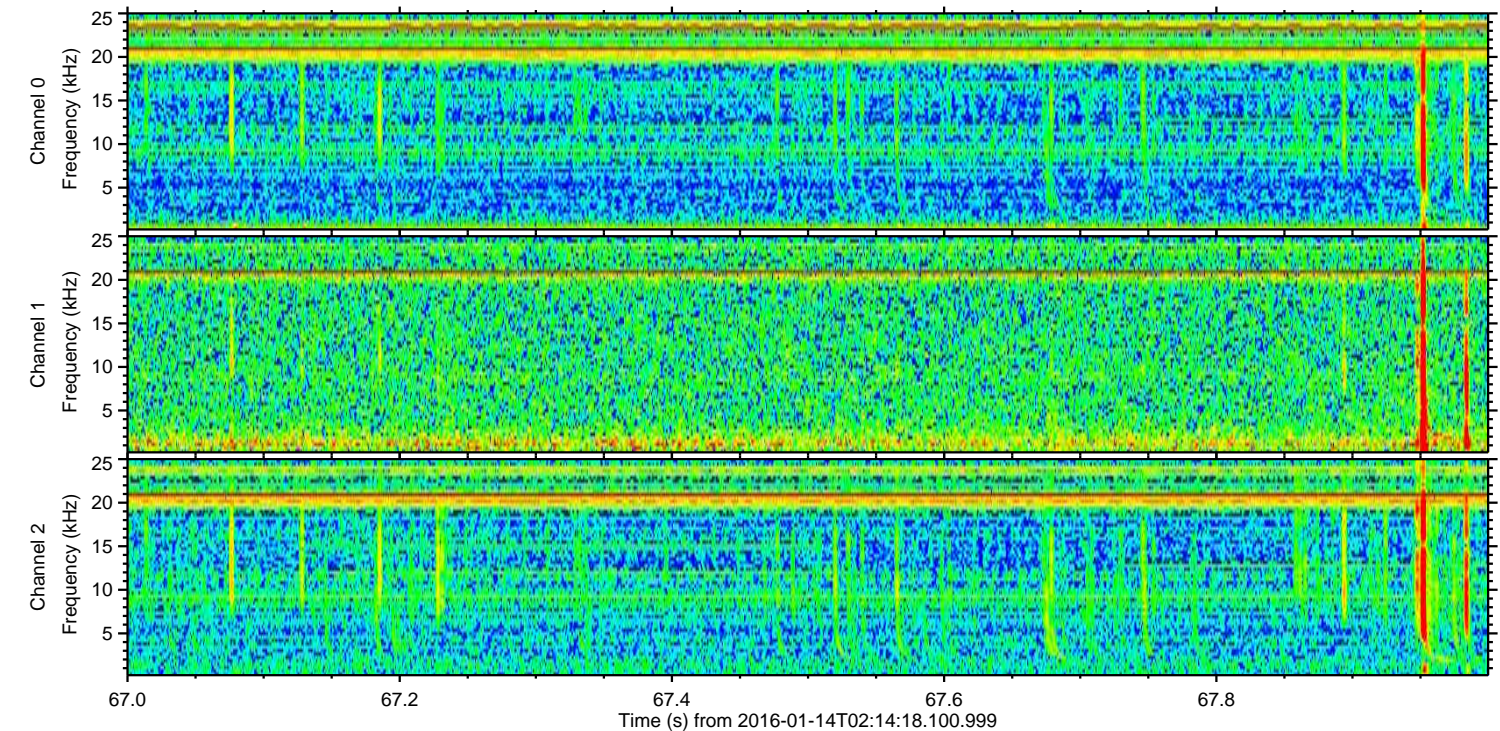
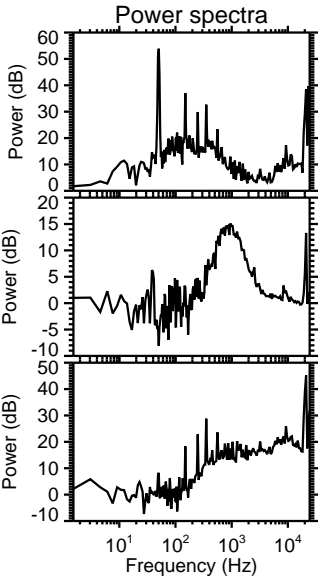
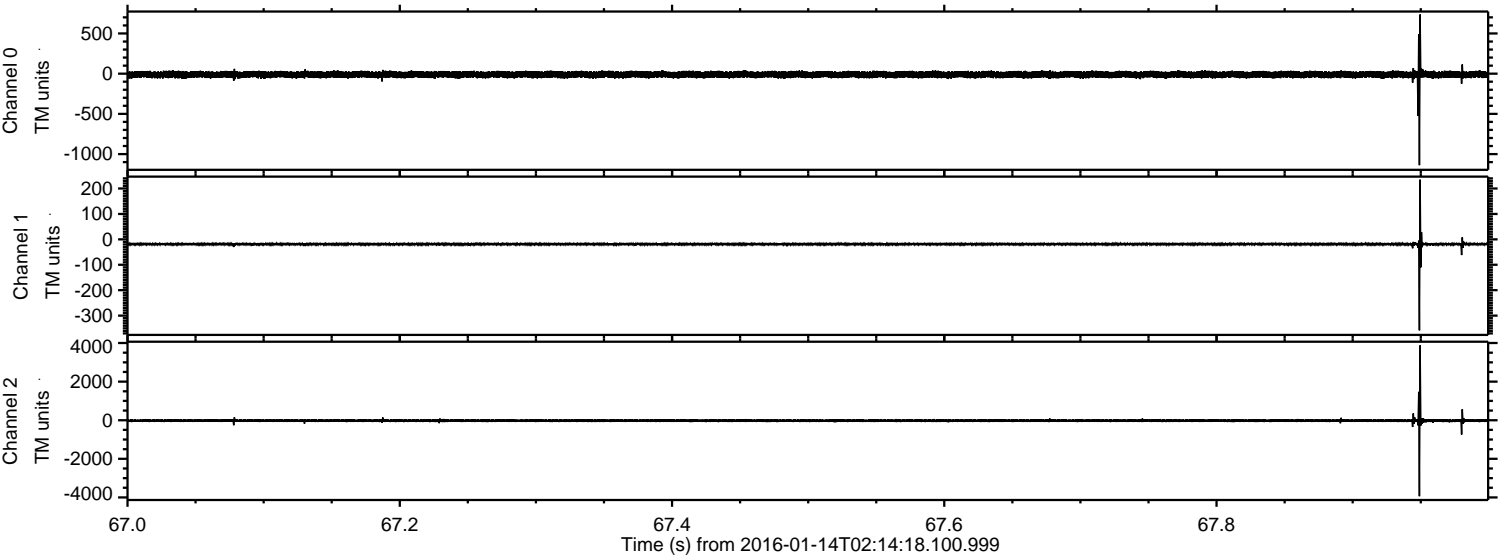


Processed Wed Mar 30 12:32:30 2016 by ELM ver.2012-10-06 from 001\_\_elm20160114\_021417\_\_dat00.bin



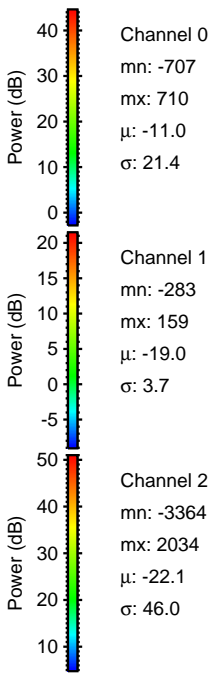
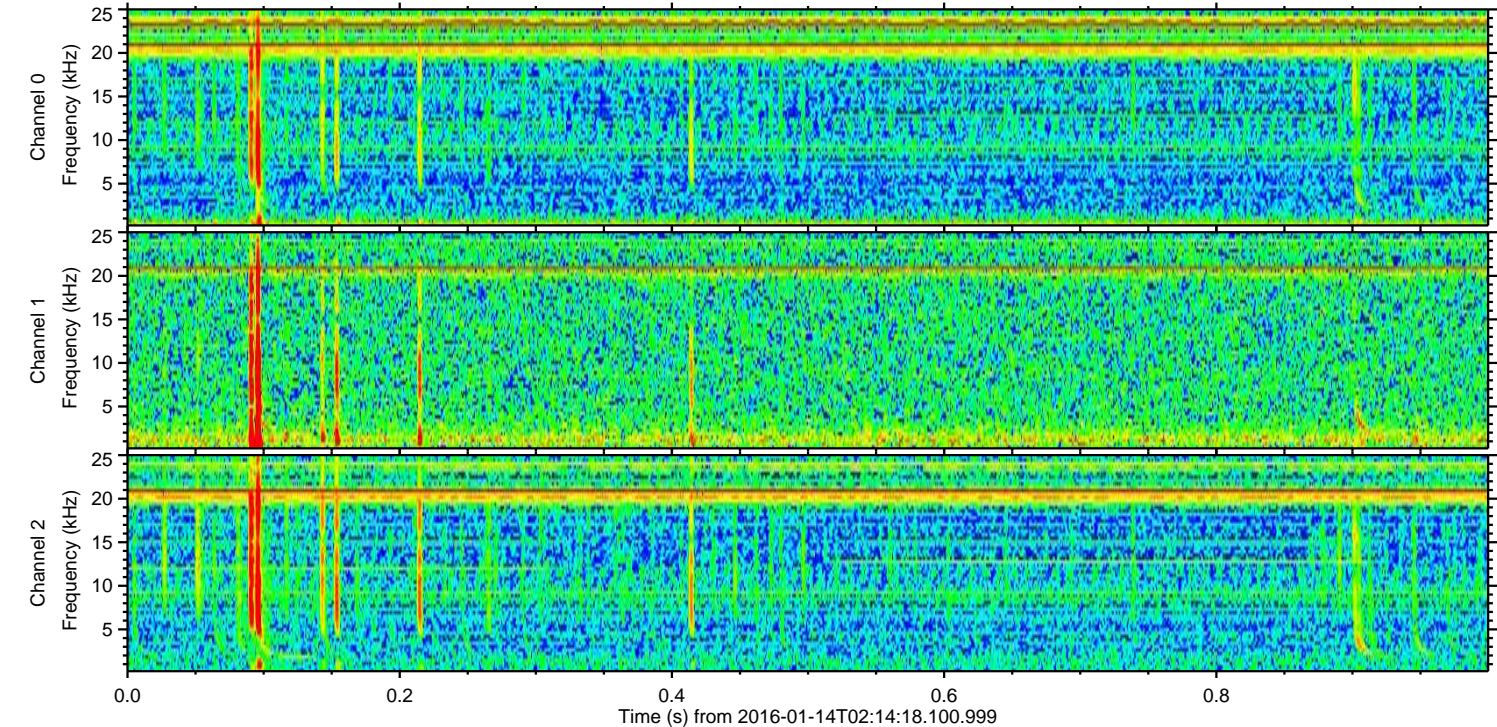
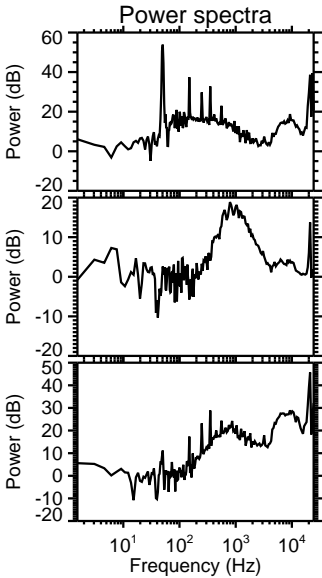
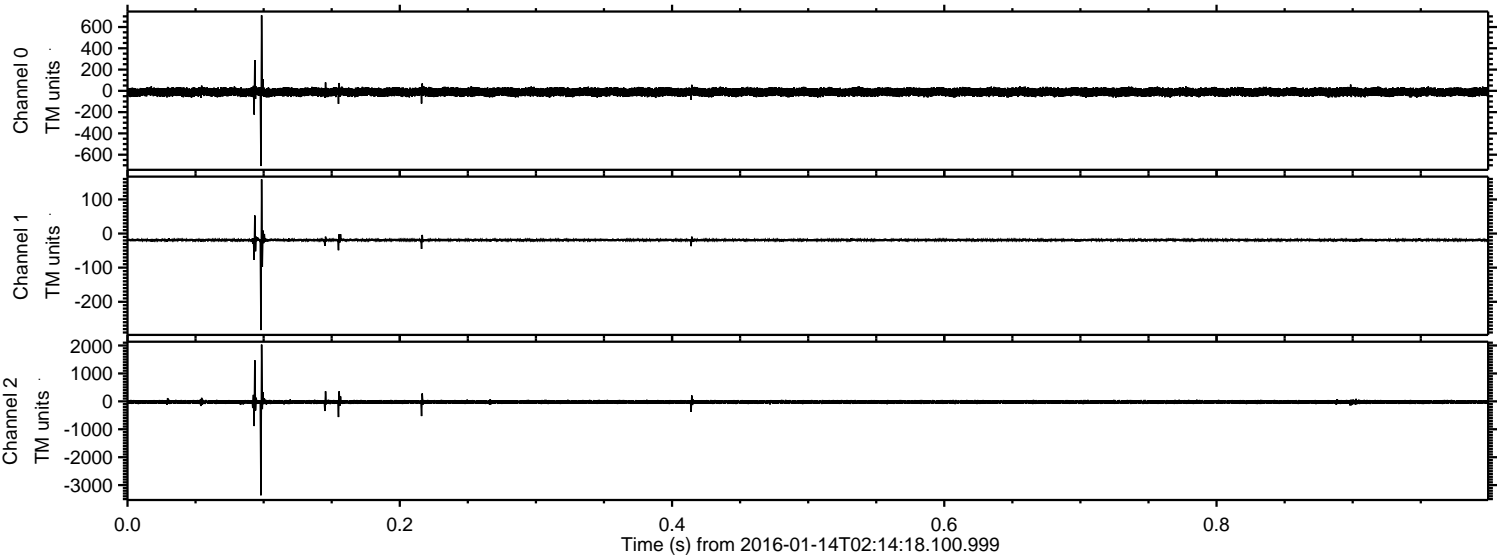


Processed Wed Mar 30 12:32:31 2016 by ELM ver.2012-10-06 from 001\_\_elm20160114\_021417\_\_dat00.bin





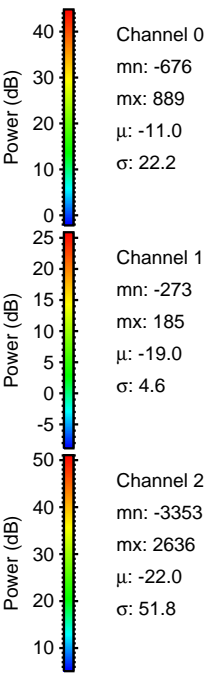
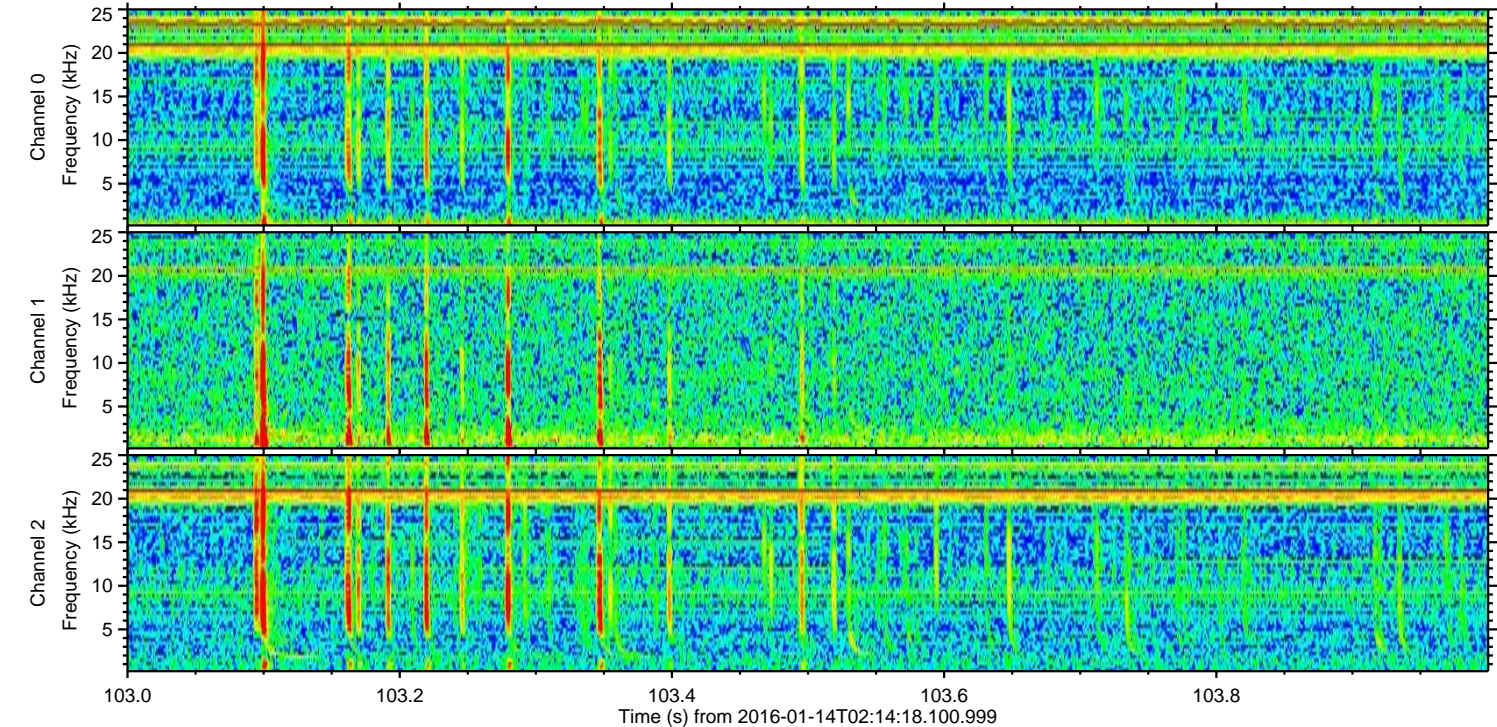
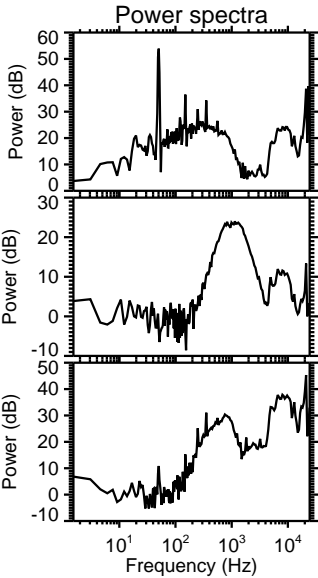
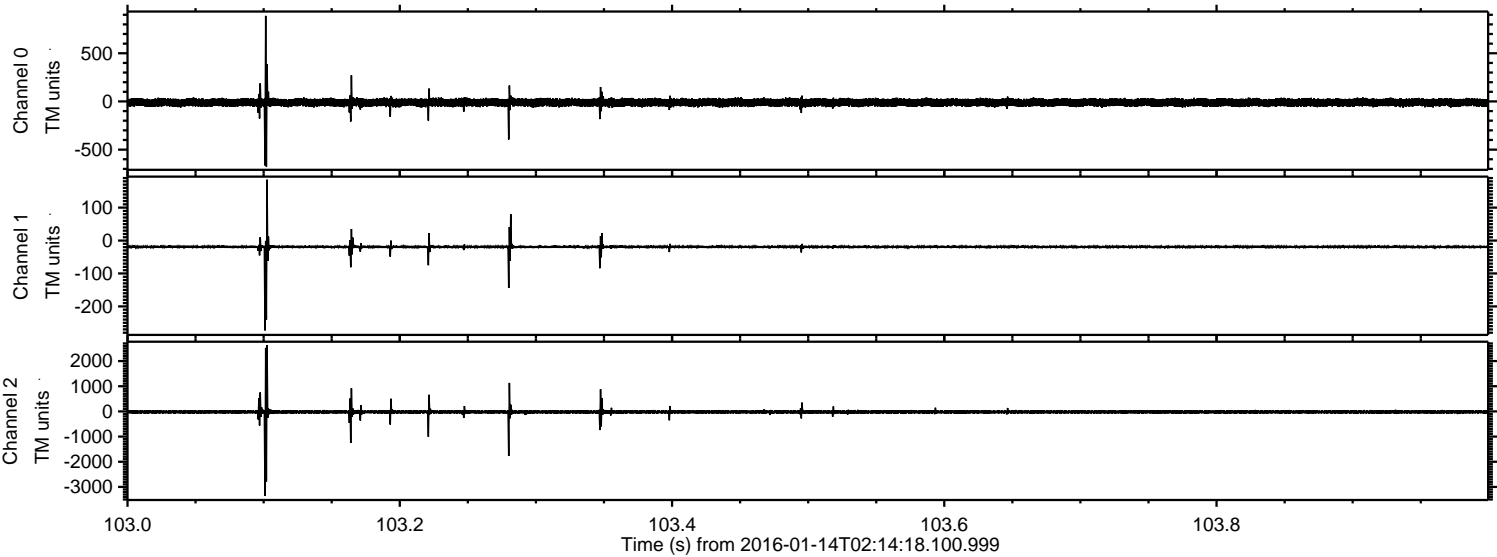
Processed Wed Mar 30 12:32:32 2016 by ELM ver.2012-10-06 from 001\_\_elm20160114\_021417\_\_dat00.bin





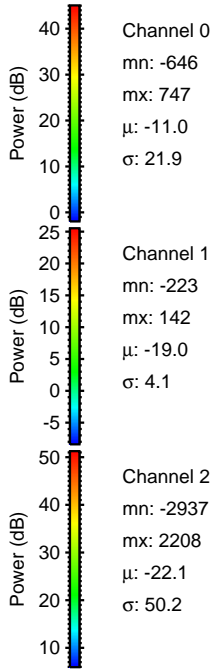
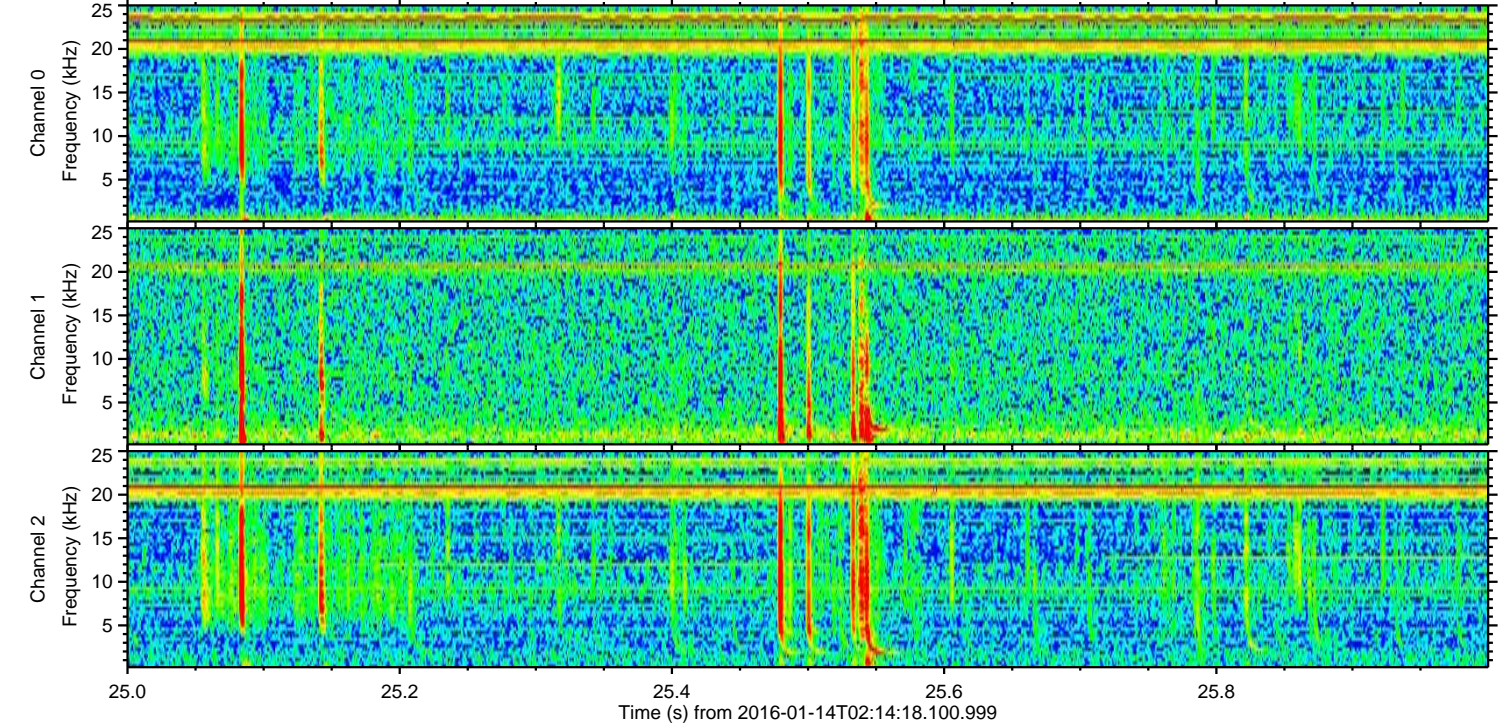
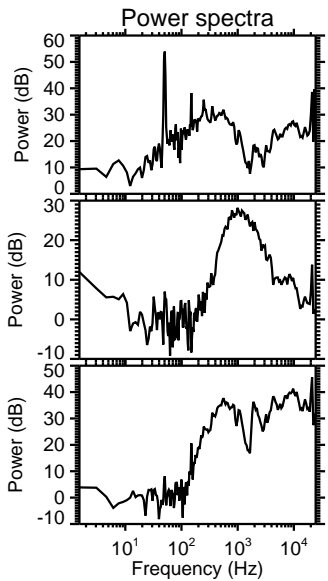
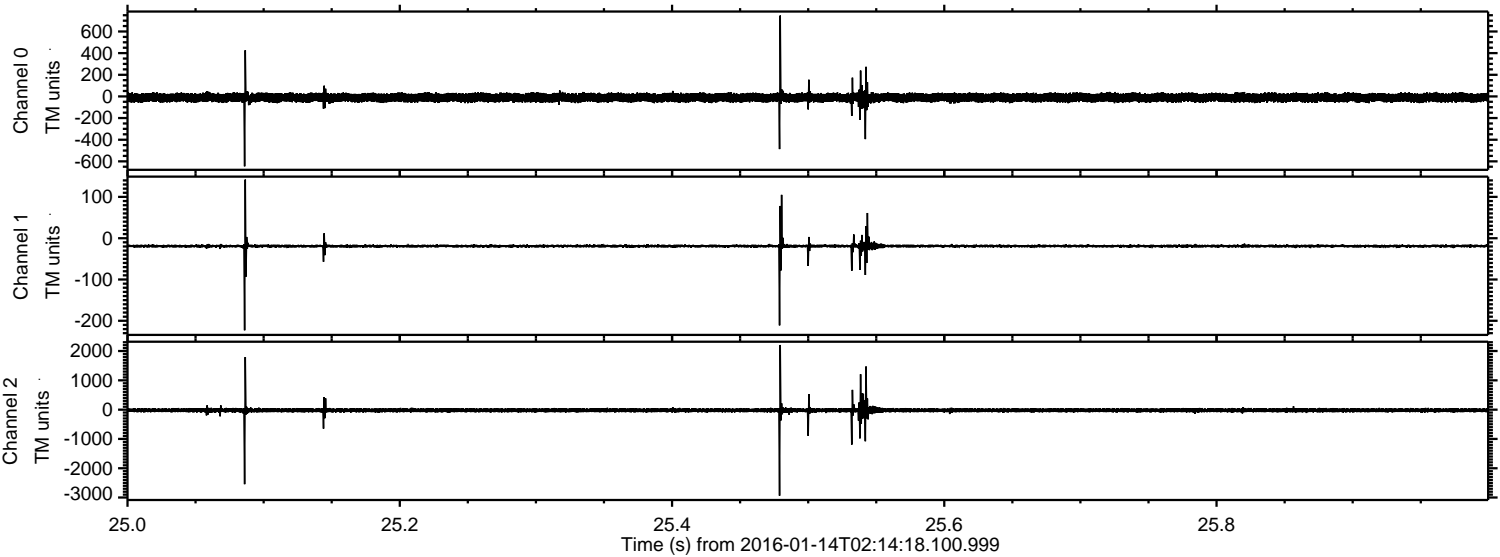
ELMAVAN 3D WAVEFORMS (Measured data sampled at 50 kHz) 51000 packets of 144 samples from 2016-01-14T02:14:18.100.999. Part 104/147

Processed Wed Mar 30 12:32:33 2016 by ELM ver.2012-10-06 from 001\_\_elm20160114\_021417\_\_dat00.bin



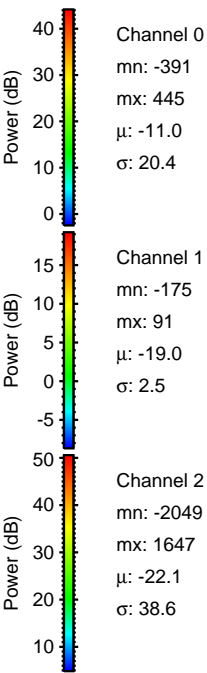
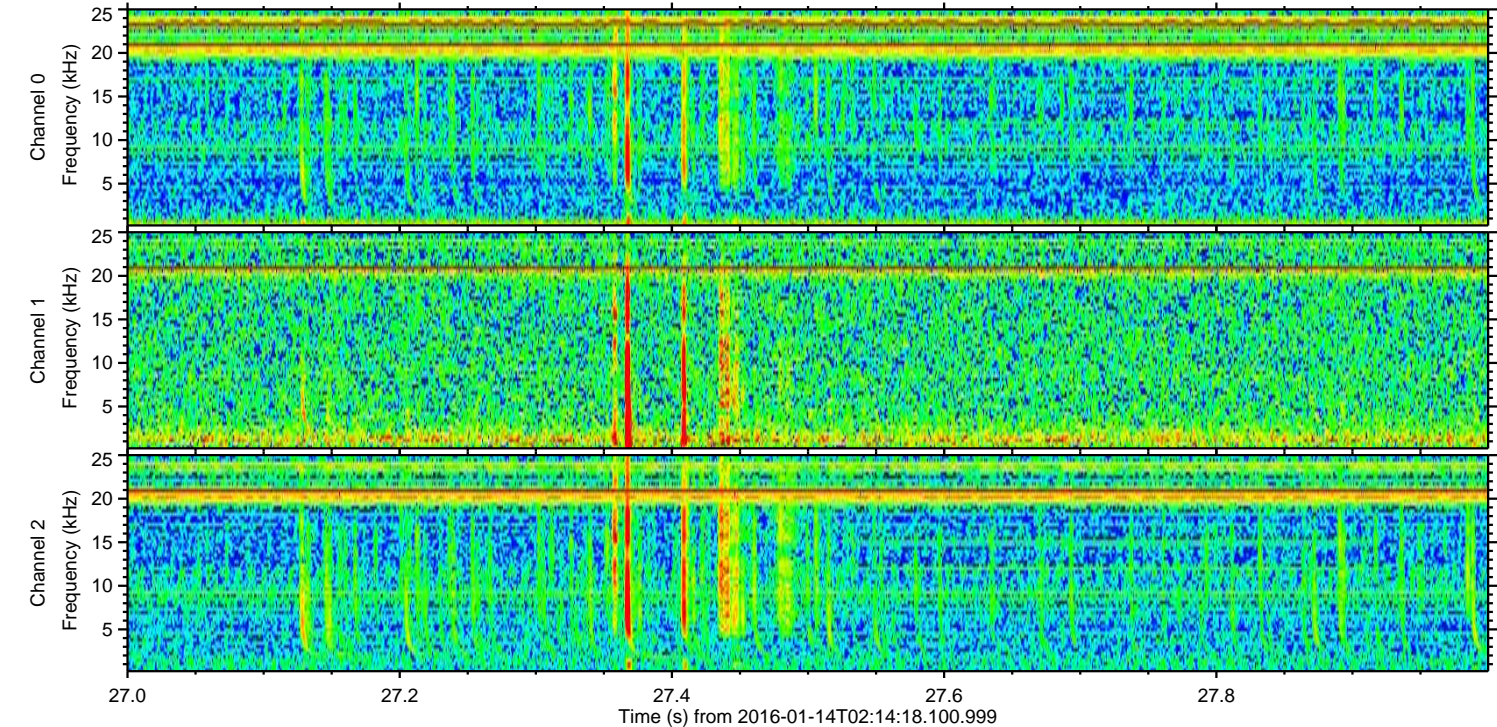
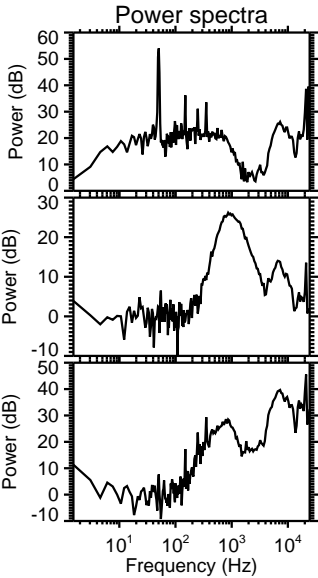
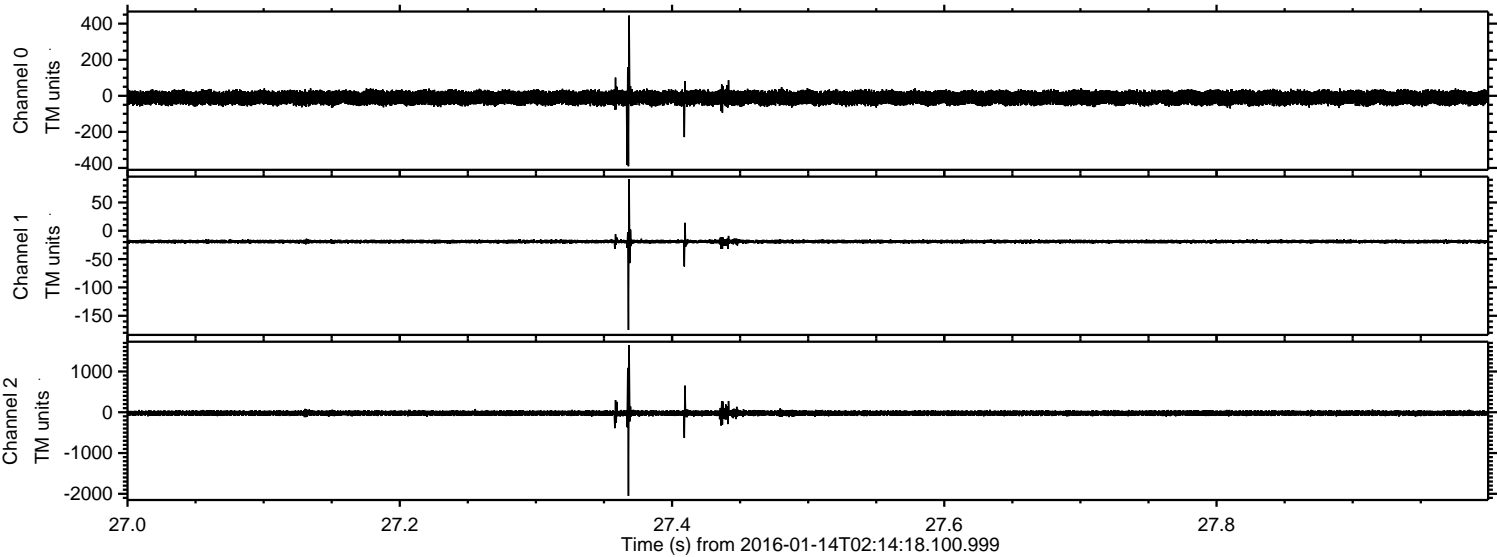


Processed Wed Mar 30 12:32:34 2016 by ELM ver.2012-10-06 from 001\_\_elm20160114\_021417\_\_dat00.bin



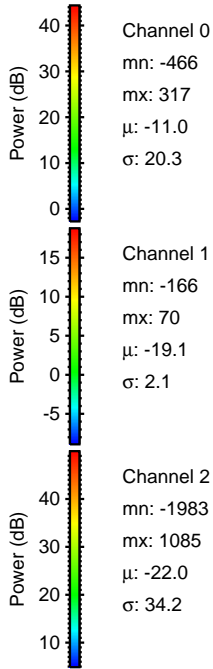
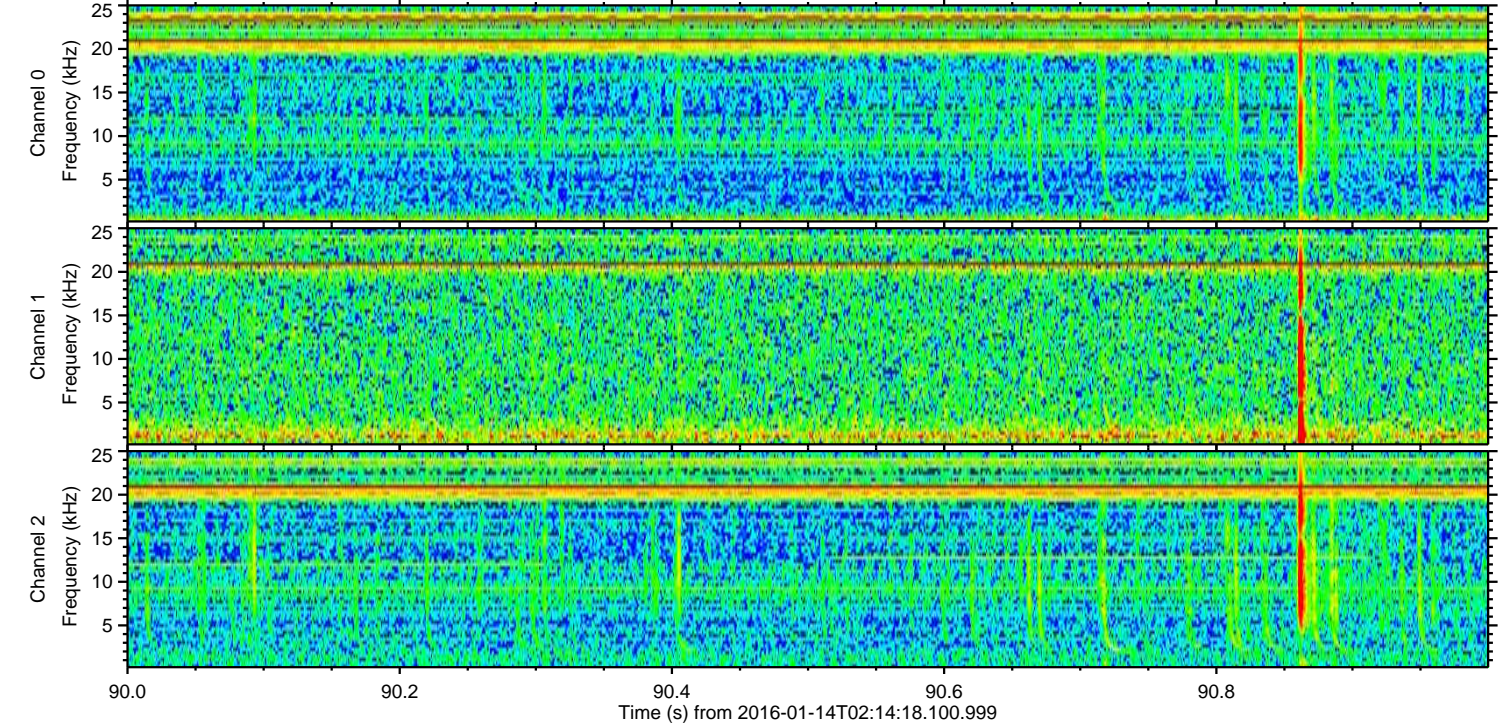
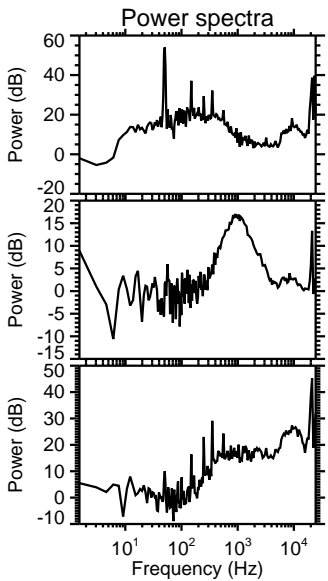
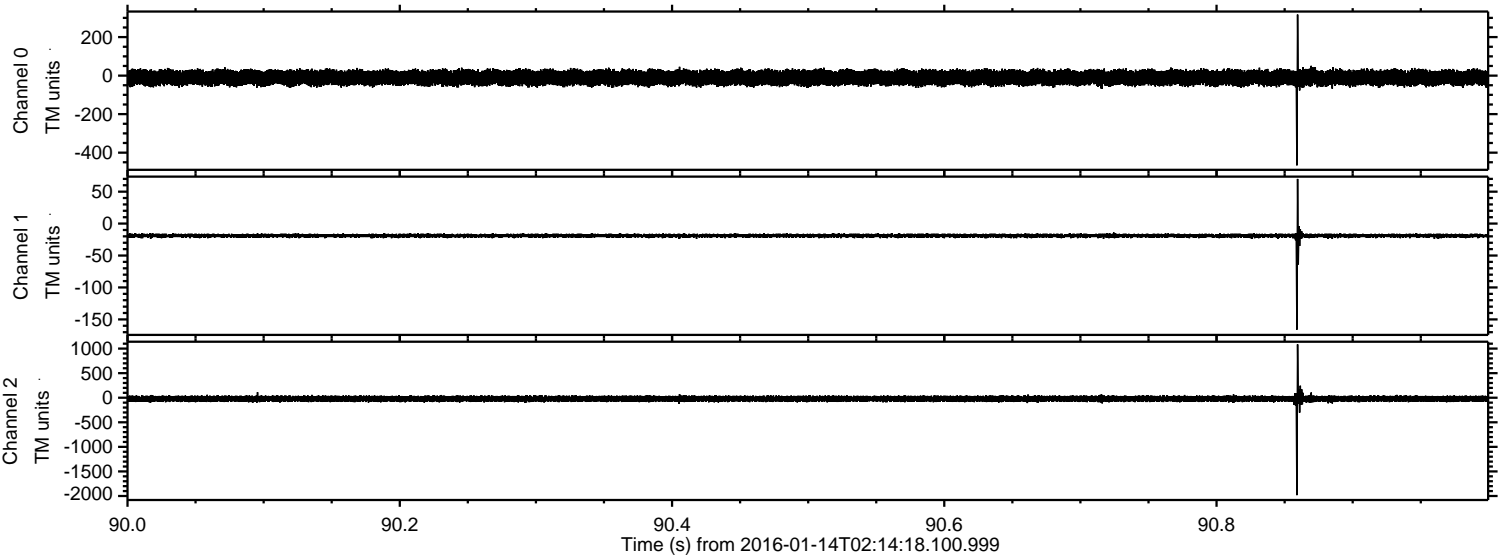


Processed Wed Mar 30 12:32:35 2016 by ELM ver.2012-10-06 from 001\_\_elm20160114\_021417\_\_dat00.bin



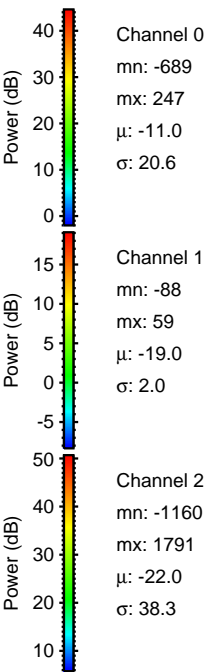
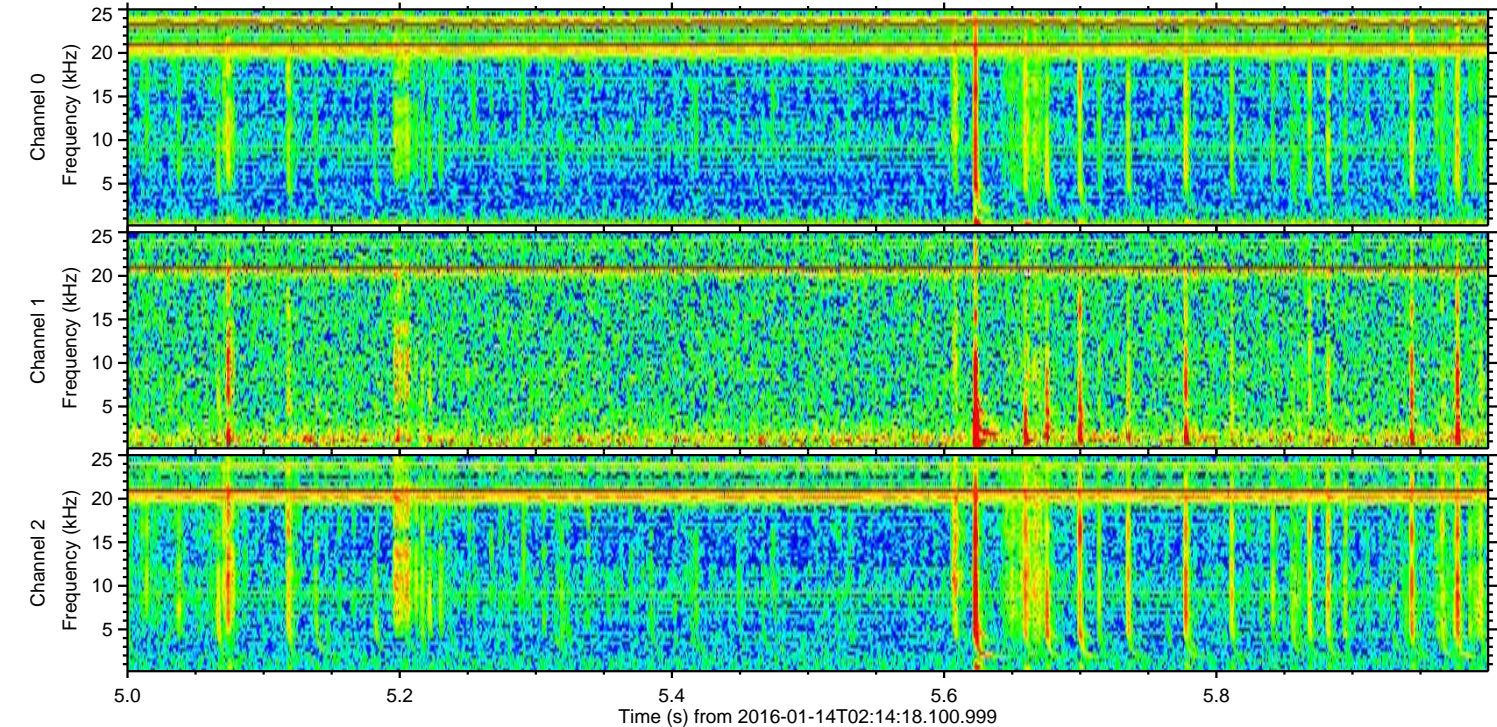
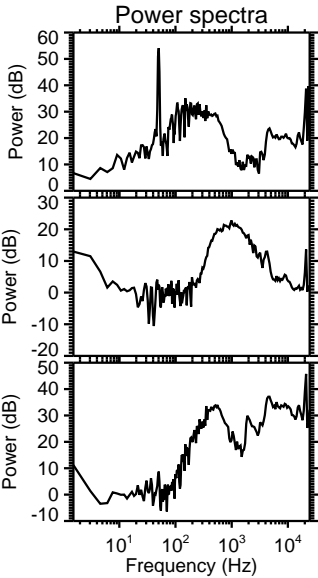
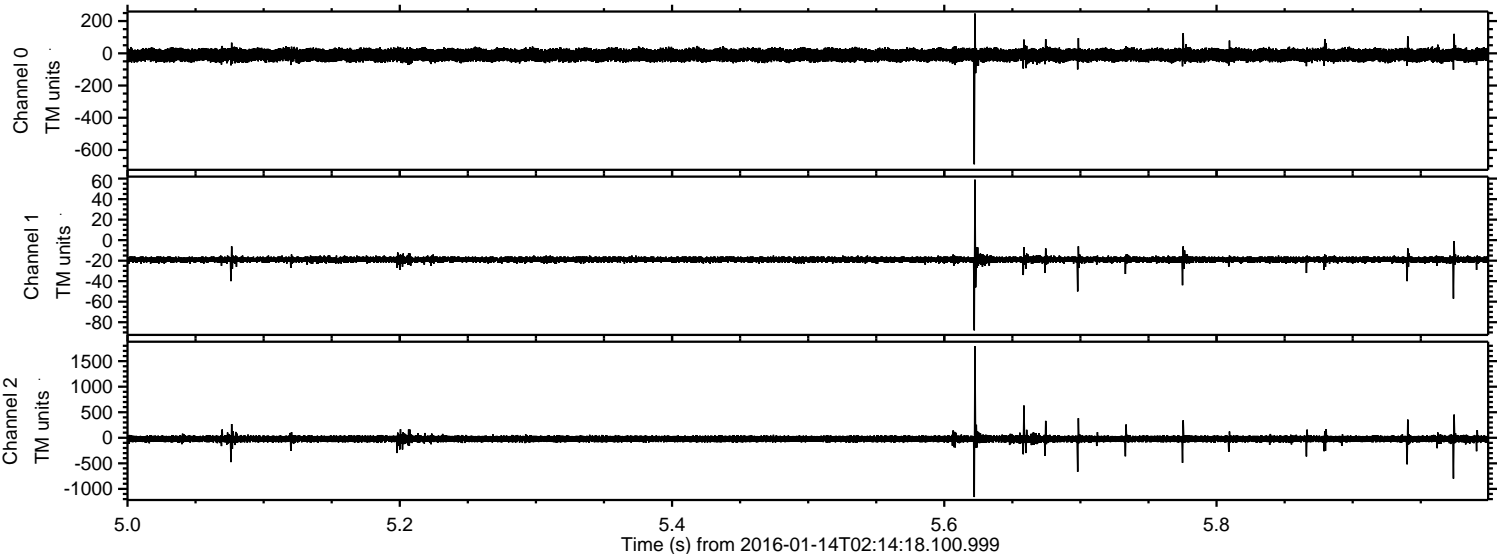


Processed Wed Mar 30 12:32:35 2016 by ELM ver.2012-10-06 from 001\_\_elm20160114\_021417\_\_dat00.bin





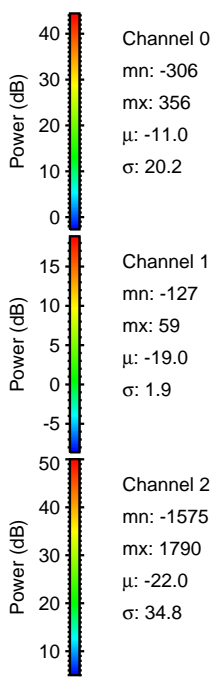
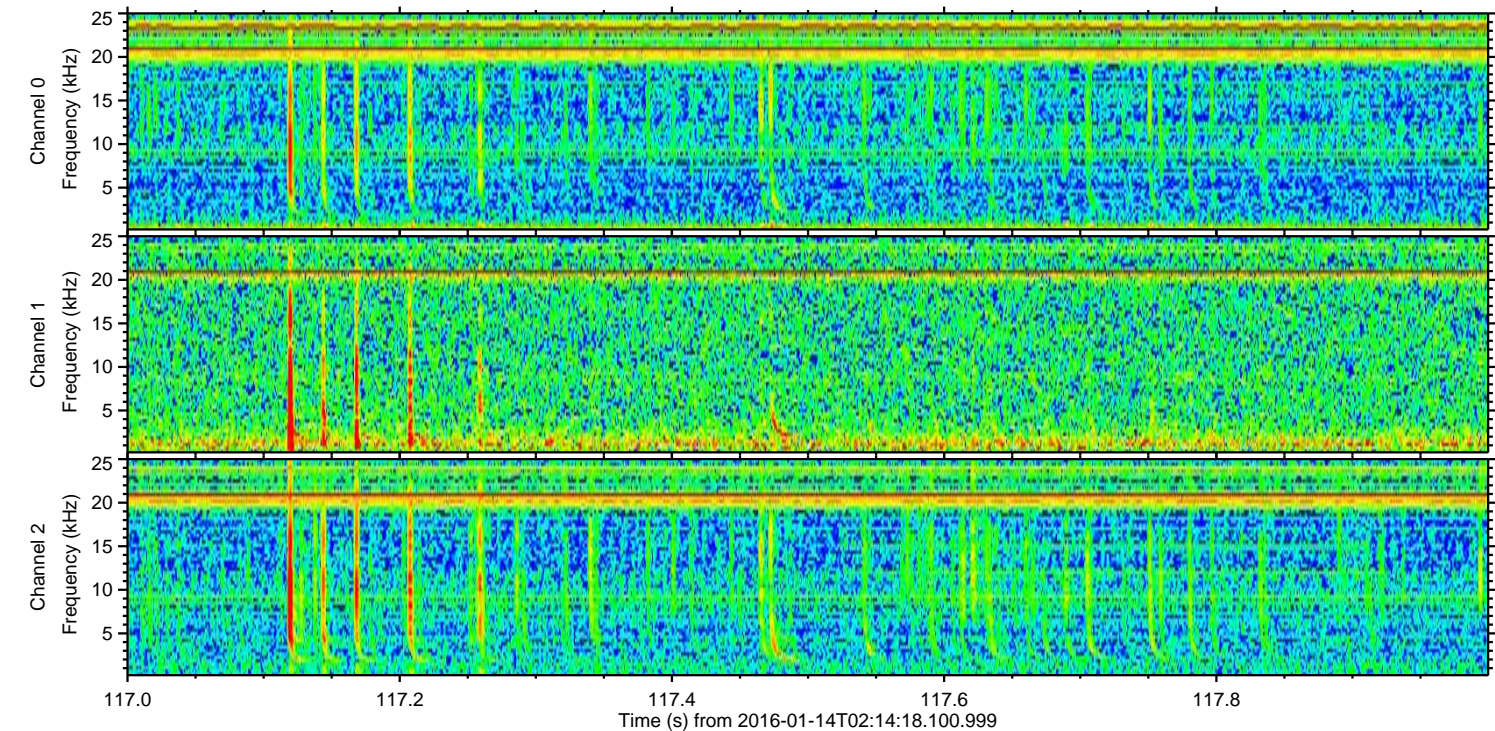
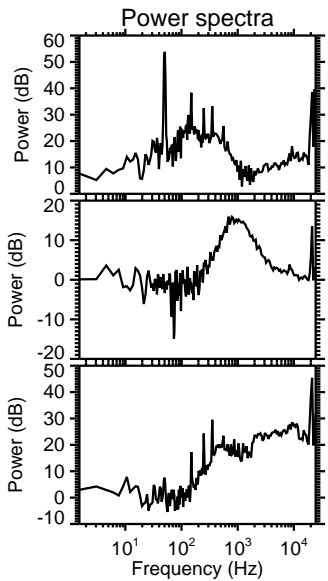
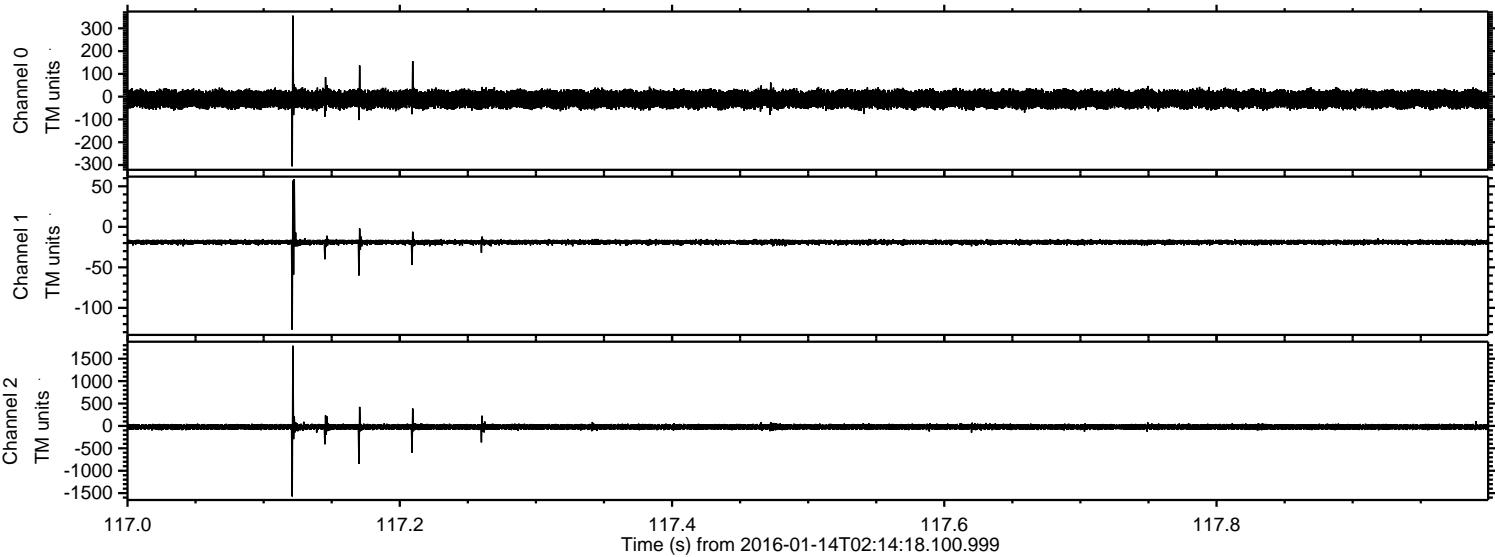
Processed Wed Mar 30 12:32:36 2016 by ELM ver.2012-10-06 from 001\_\_elm20160114\_021417\_\_dat00.bin





ELMAVAN 3D WAVEFORMS (Measured data sampled at 50 kHz) 51000 packets of 144 samples from 2016-01-14T02:14:18.100.999. Part 118/147

Processed Wed Mar 30 12:32:37 2016 by ELM ver.2012-10-06 from 001\_\_elm20160114\_021417\_\_dat00.bin



Channel 0  
mn: -306  
mx: 356  
 $\mu$ : -11.0  
 $\sigma$ : 20.2

Channel 1  
mn: -127  
mx: 59  
 $\mu$ : -19.0  
 $\sigma$ : 1.9

Channel 2  
mn: -1575  
mx: 1790  
 $\mu$ : -22.0  
 $\sigma$ : 34.8



Processed Wed Mar 30 12:32:38 2016 by ELM ver.2012-10-06 from 001\_\_elm20160114\_021417\_\_dat00.bin

