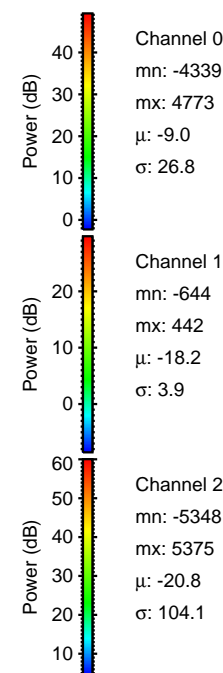
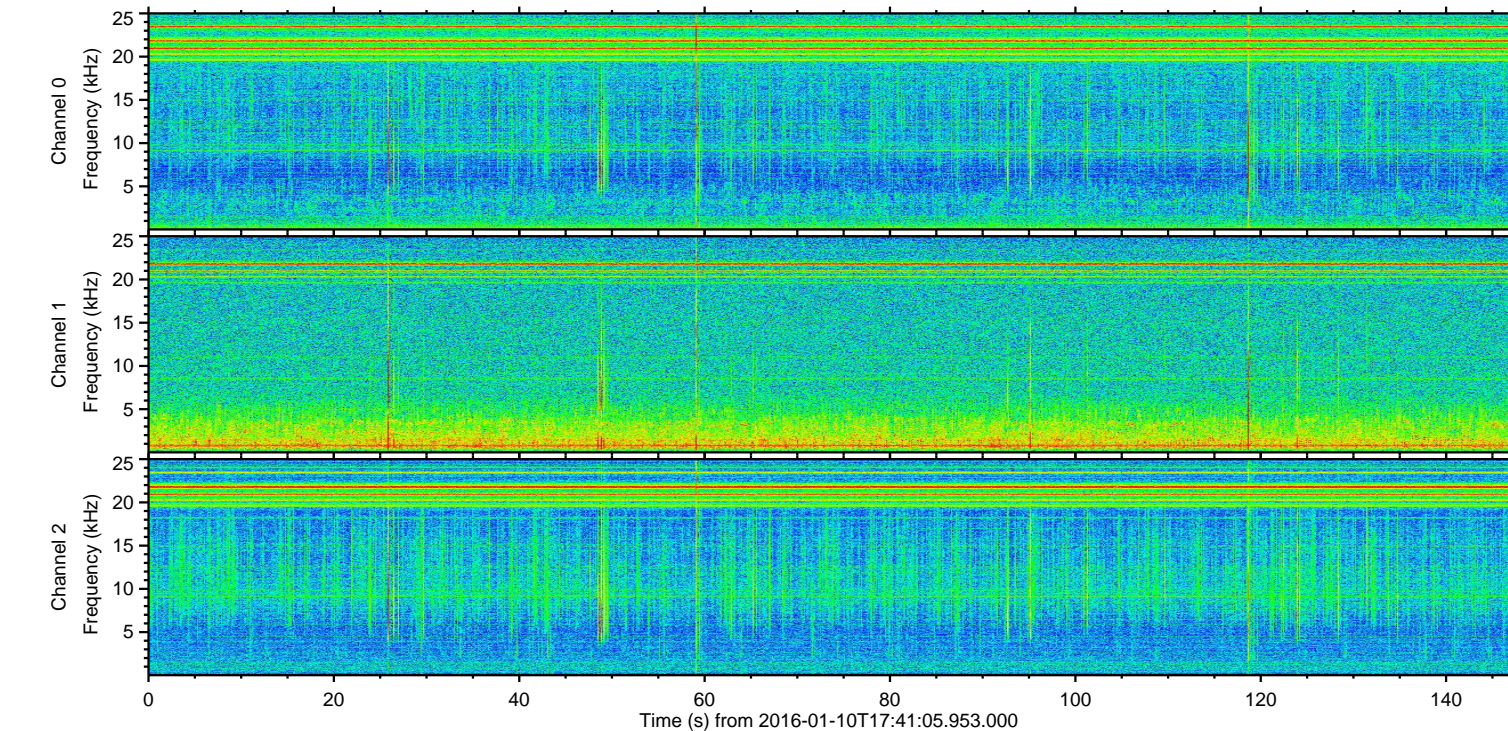
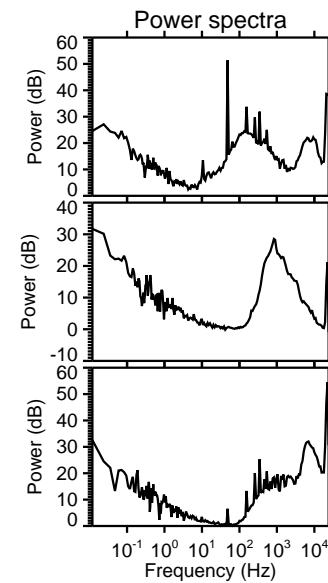
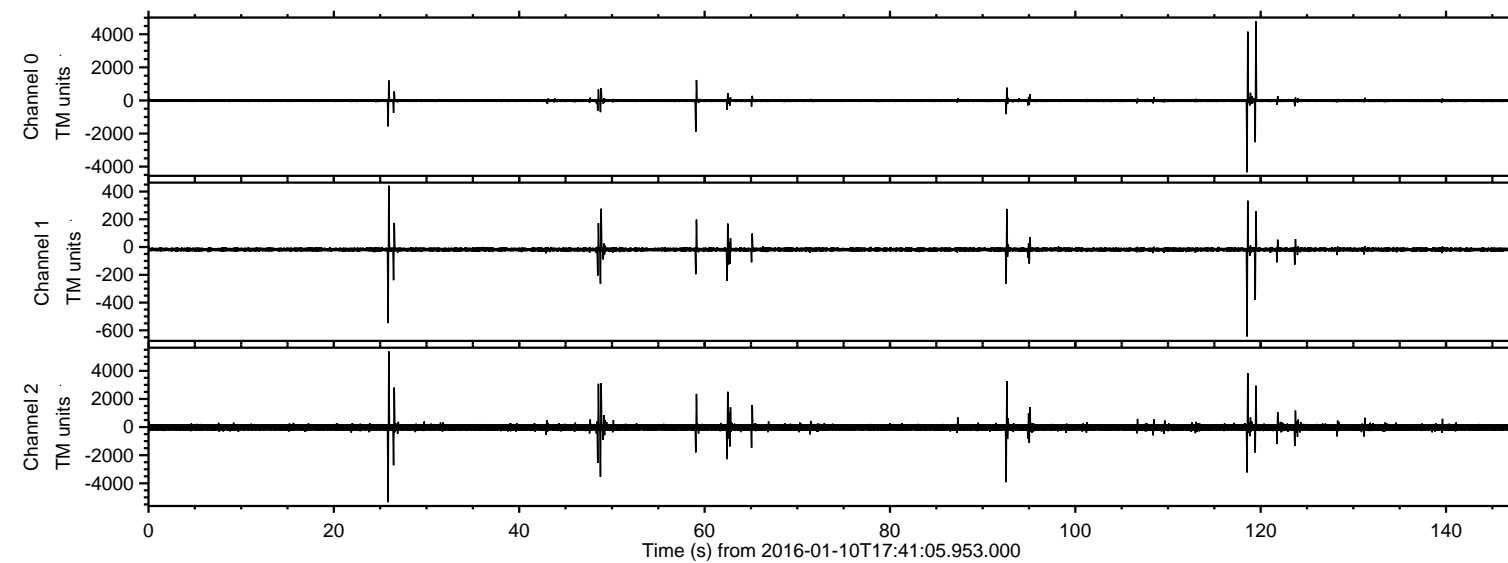
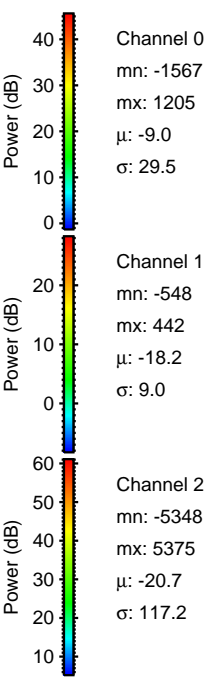
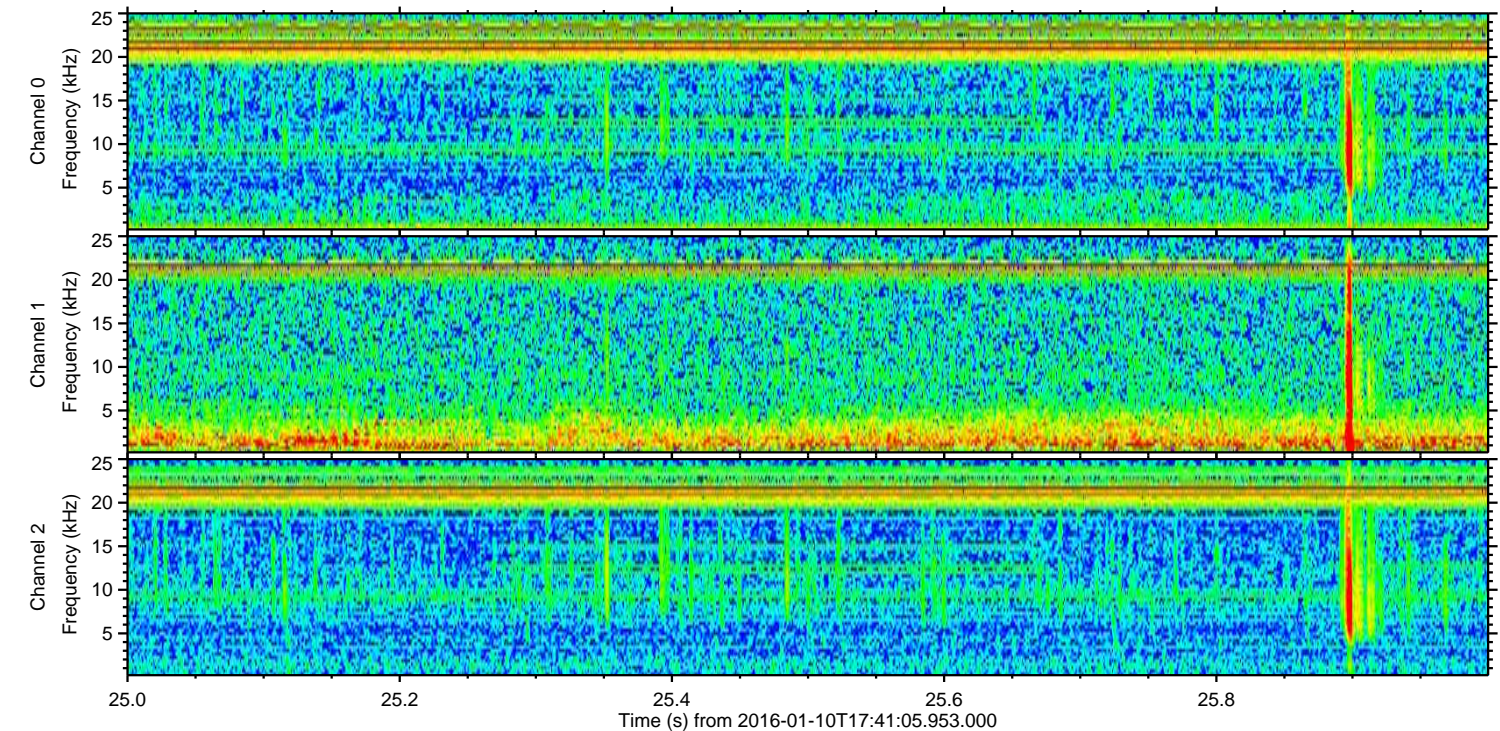
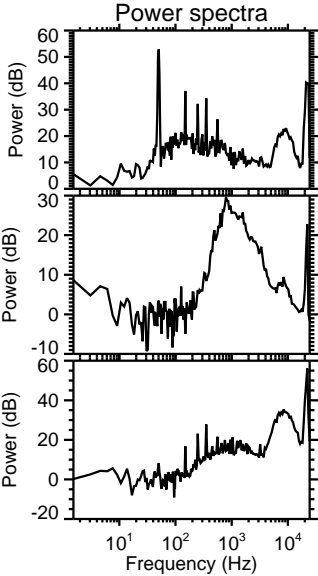
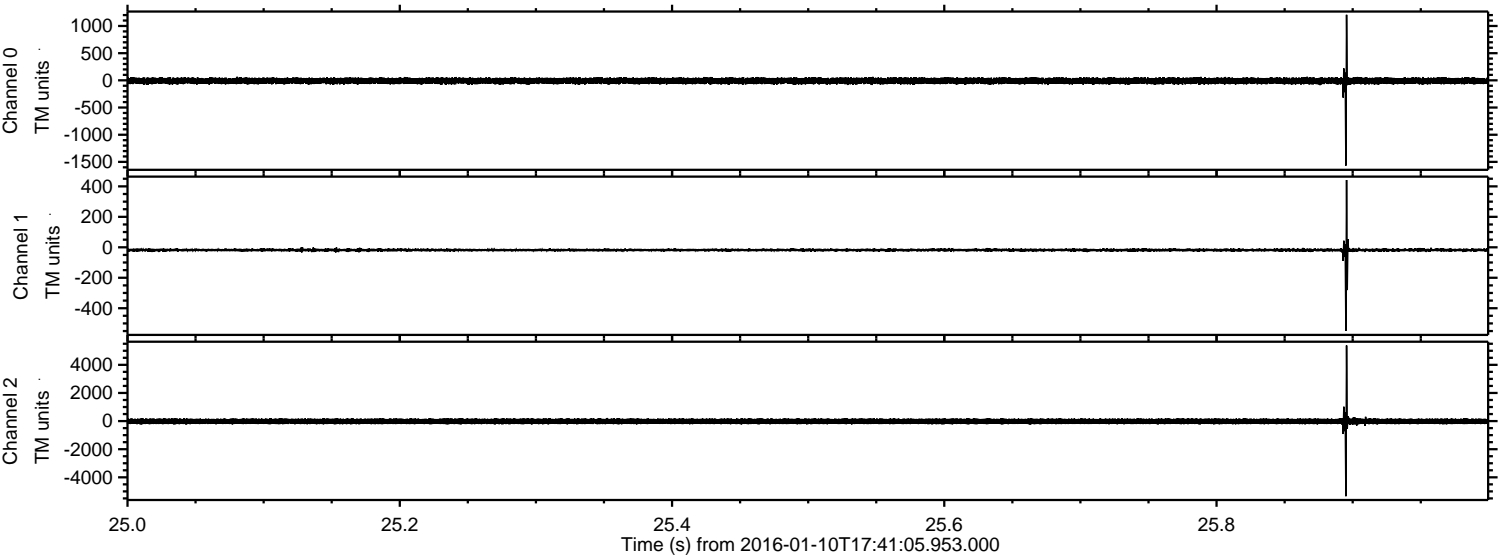


ELMAVAN 3D WAVEFORMS (Measured data sampled at 50 kHz) 51000 packets of 144 samples from 2016-01-10T17:41:05.953.000.

Processed Tue Mar 29 20:58:07 2016 by ELM ver.2012-10-06 from 001__elm20160110_174104__dat00.bin

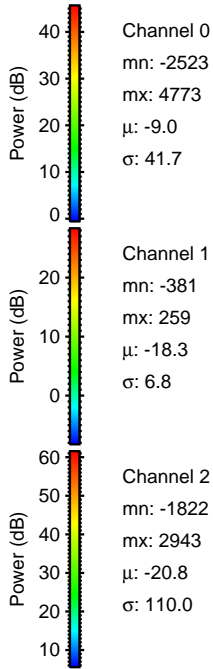
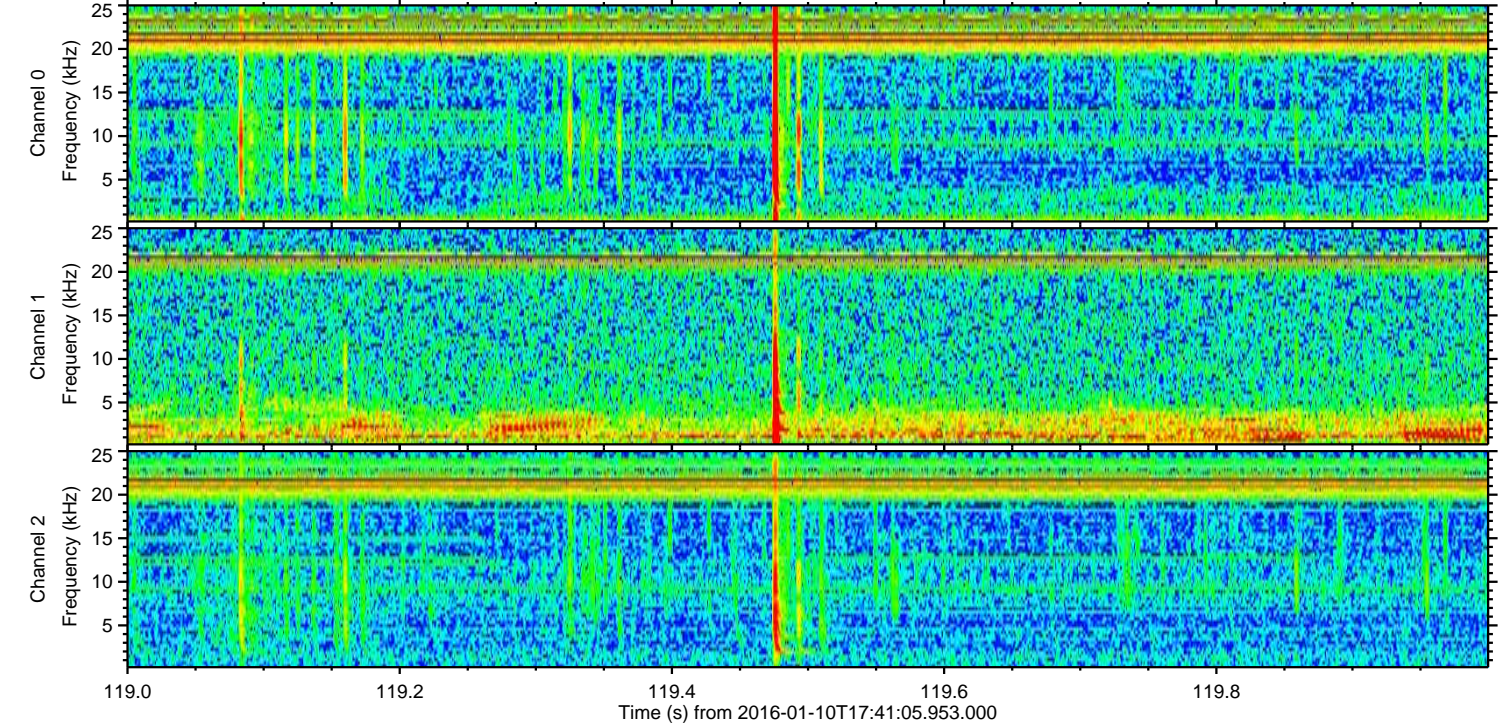
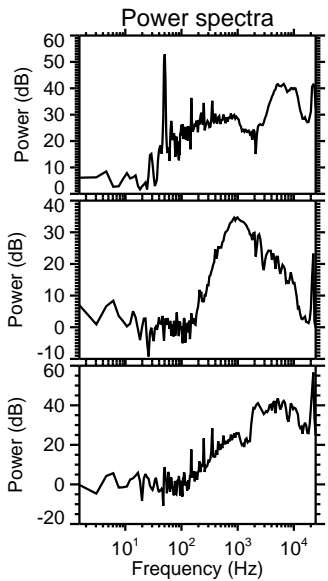
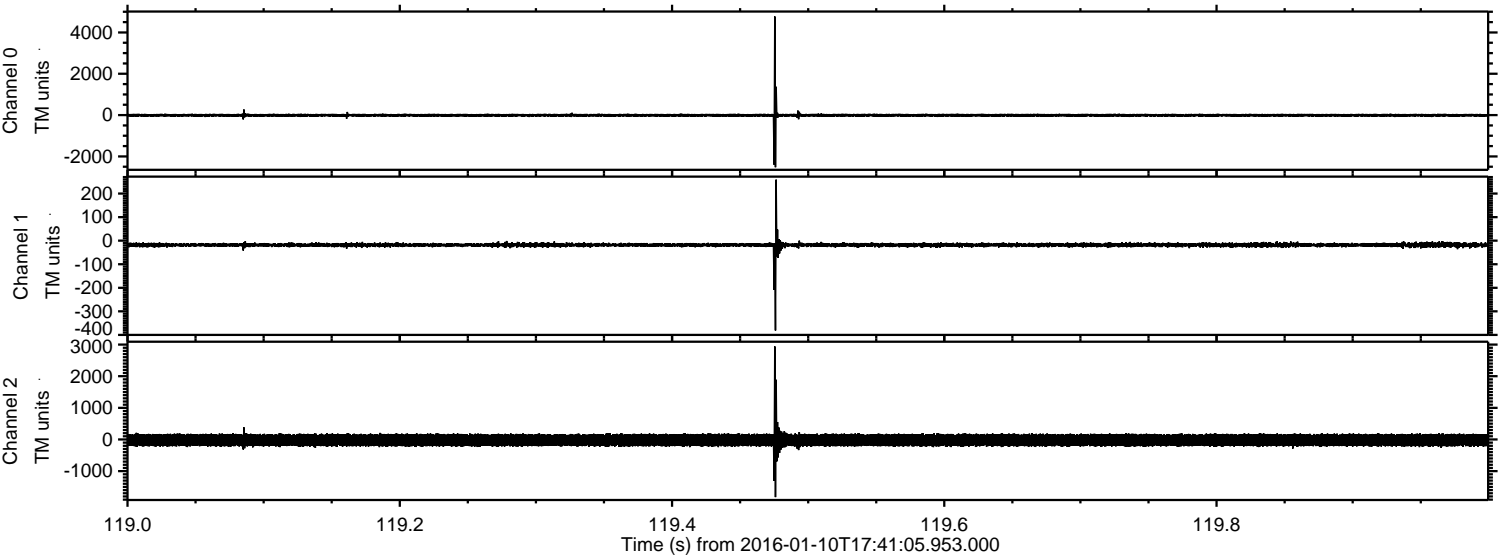


Processed Tue Mar 29 20:58:19 2016 by ELM ver.2012-10-06 from 001__elm20160110_174104__dat00.bin



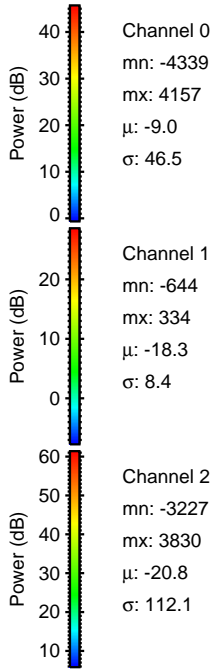
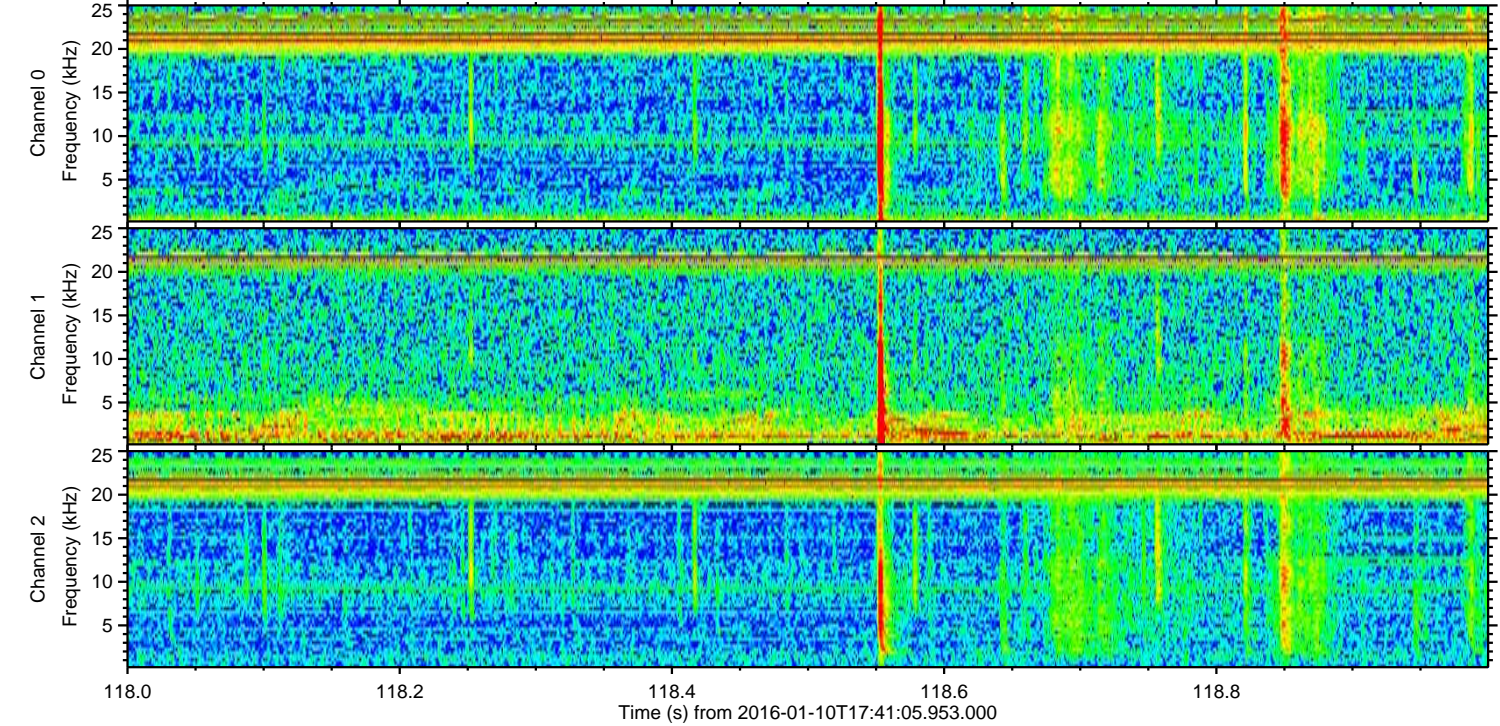
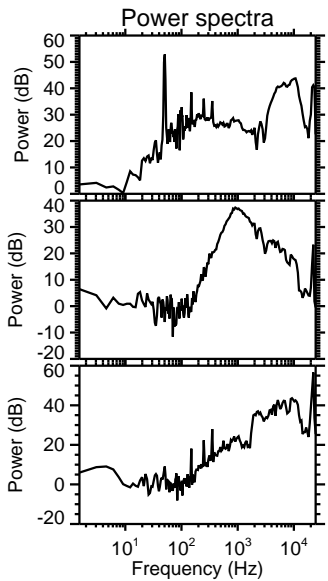
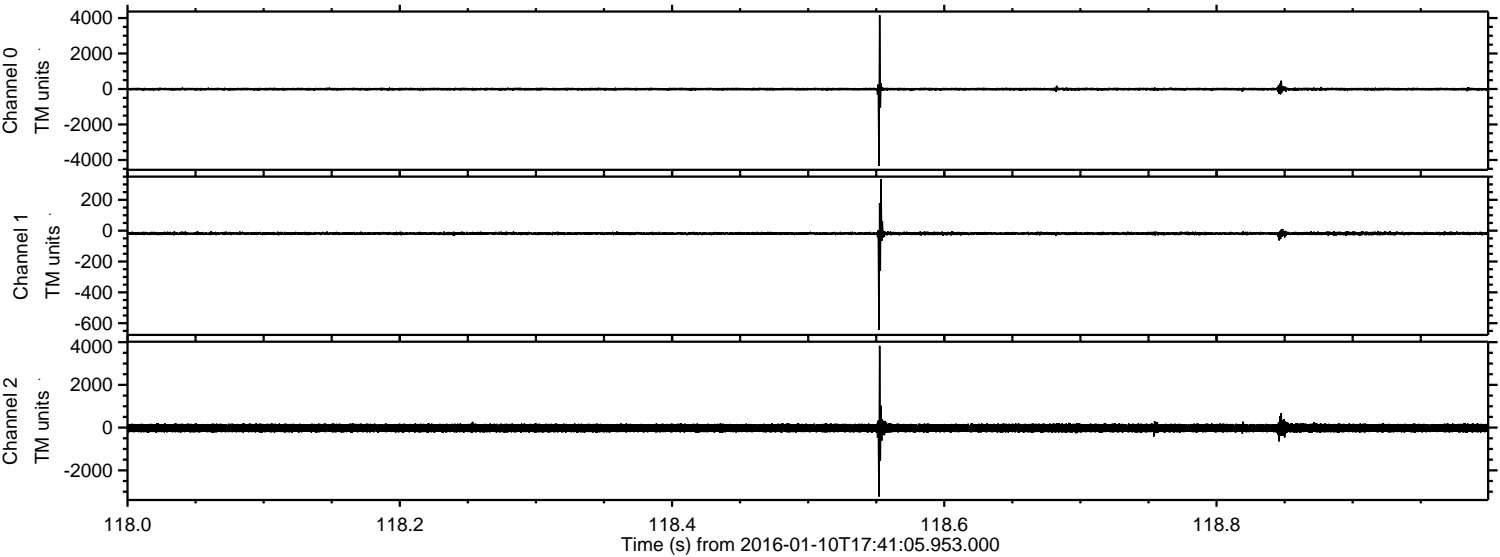
ELMAVAN 3D WAVEFORMS (Measured data sampled at 50 kHz) 51000 packets of 144 samples from 2016-01-10T17:41:05.953.000. Part 120/147

Processed Tue Mar 29 20:58:20 2016 by ELM ver.2012-10-06 from 001__elm20160110_174104__dat00.bin



ELMAVAN 3D WAVEFORMS (Measured data sampled at 50 kHz) 51000 packets of 144 samples from 2016-01-10T17:41:05.953.000. Part 119/147

Processed Tue Mar 29 20:58:21 2016 by ELM ver.2012-10-06 from 001__elm20160110_174104__dat00.bin

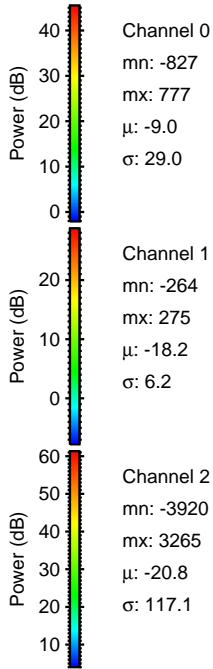
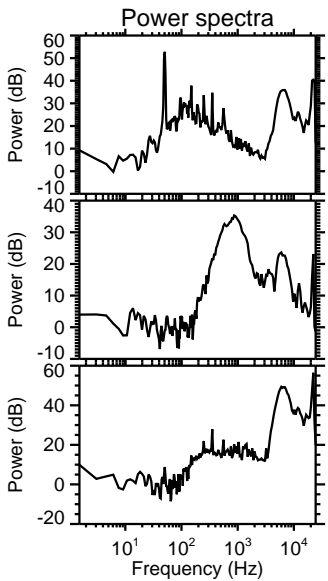
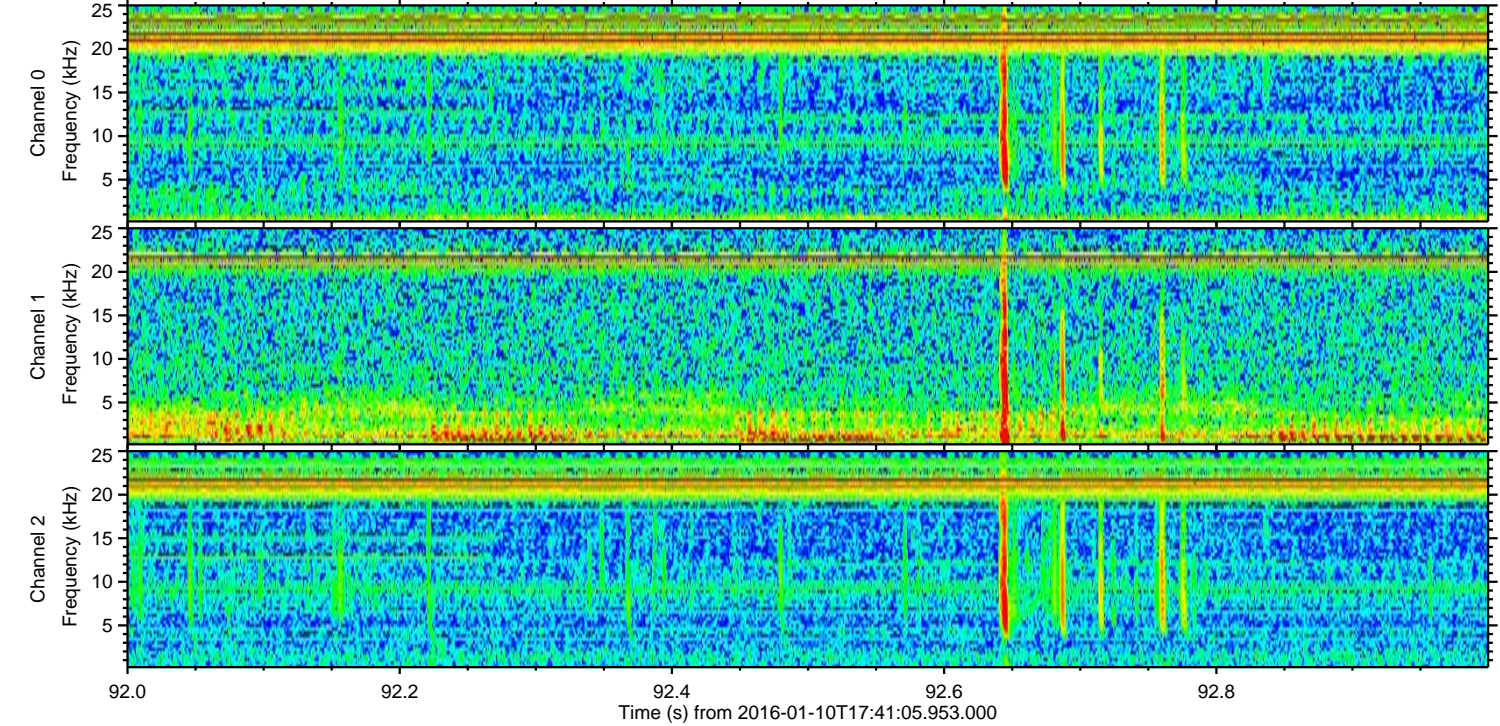
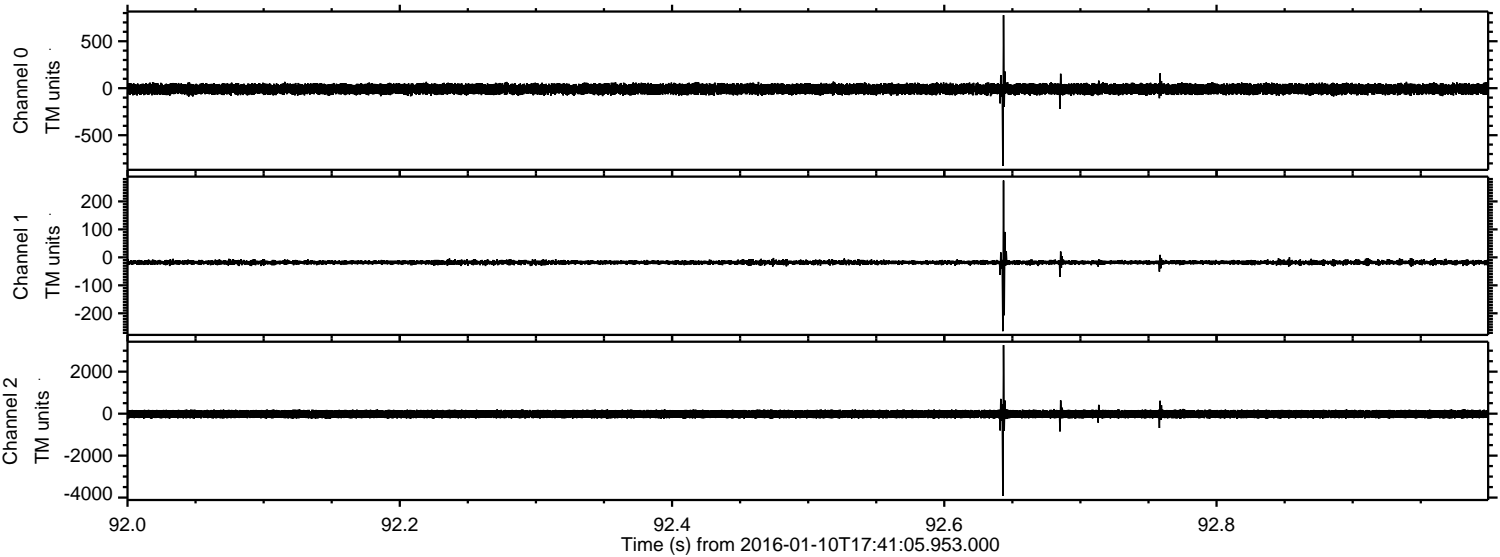


Channel 0
mn: -4339
mx: 4157
 μ : -9.0
 σ : 46.5

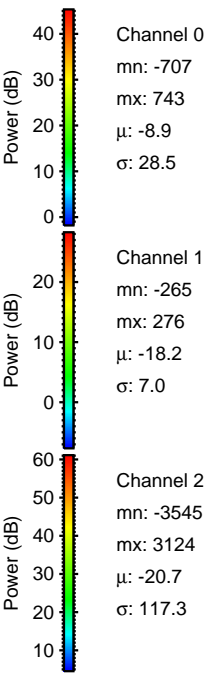
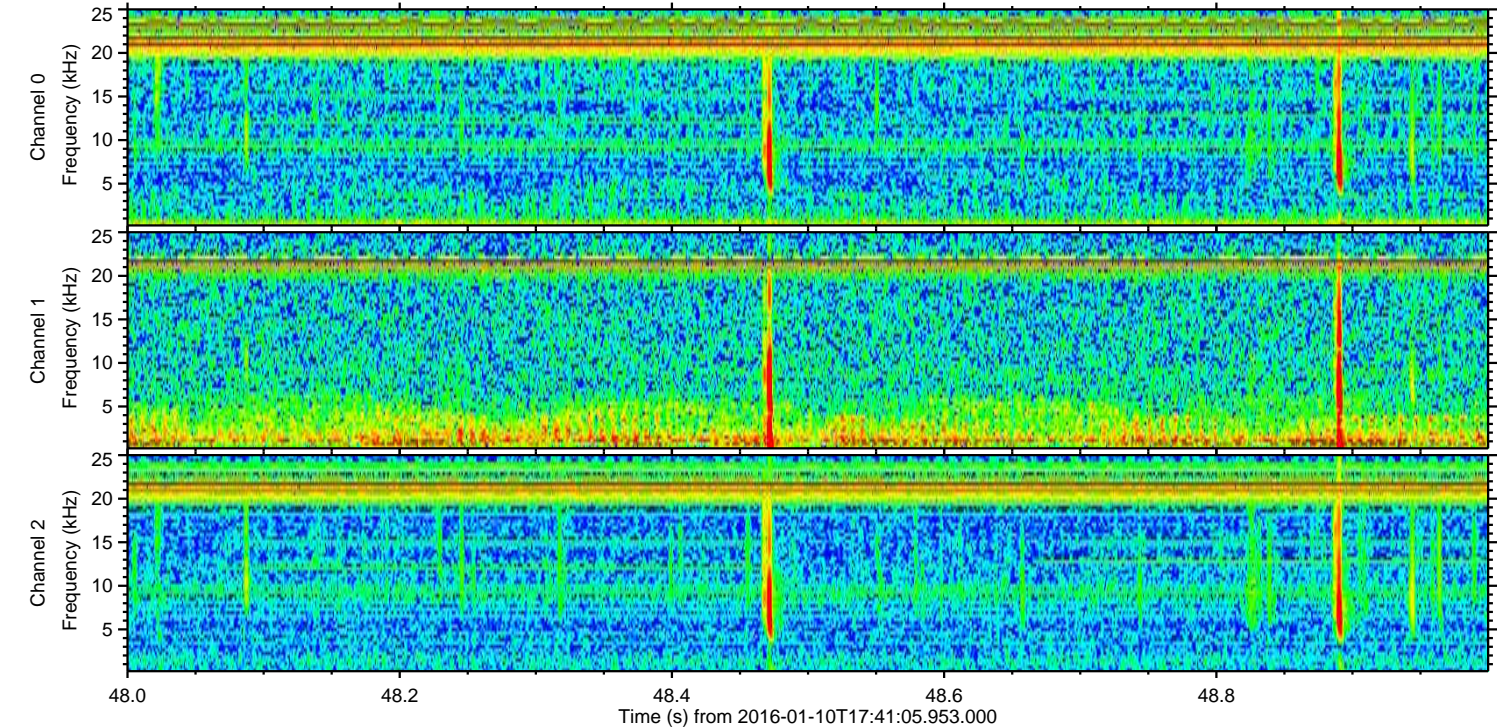
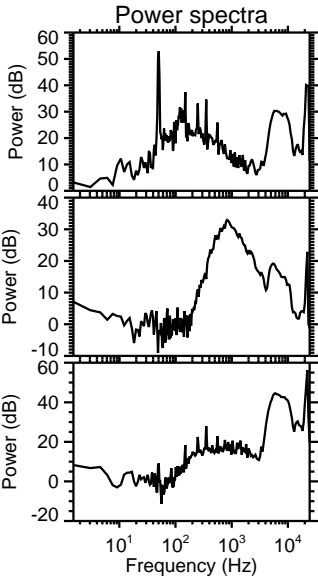
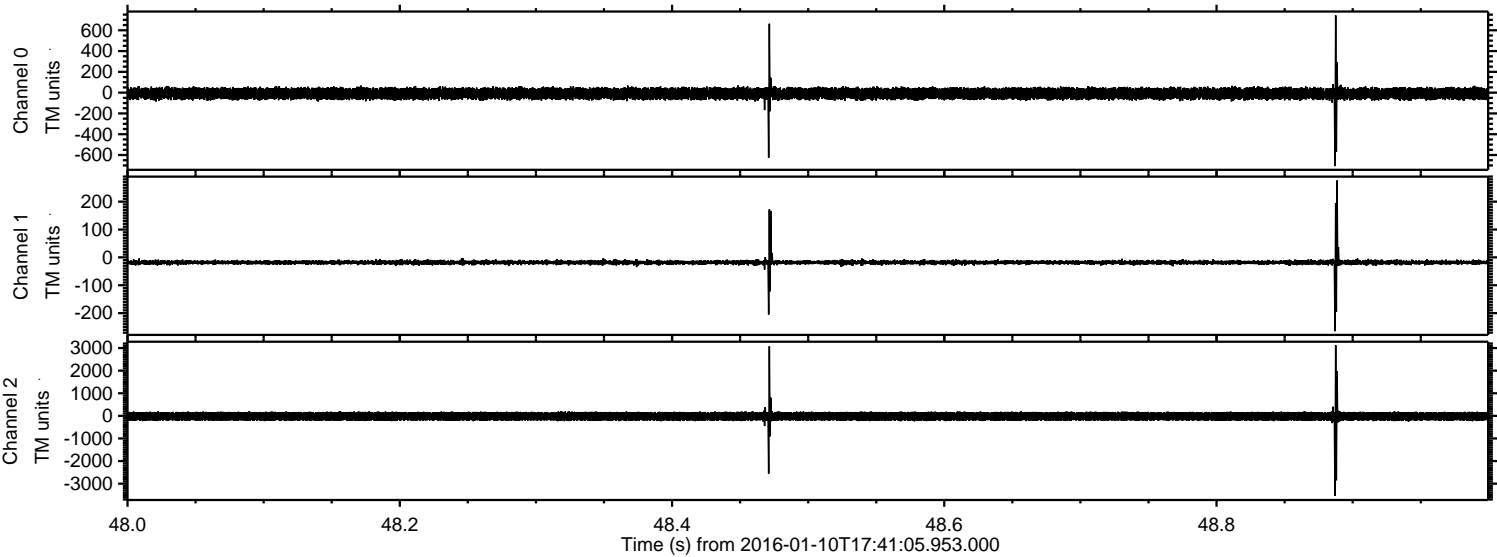
Channel 1
mn: -644
mx: 334
 μ : -18.3
 σ : 8.4

Channel 2
mn: -3227
mx: 3830
 μ : -20.8
 σ : 112.1

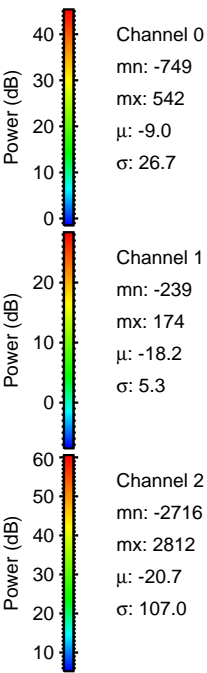
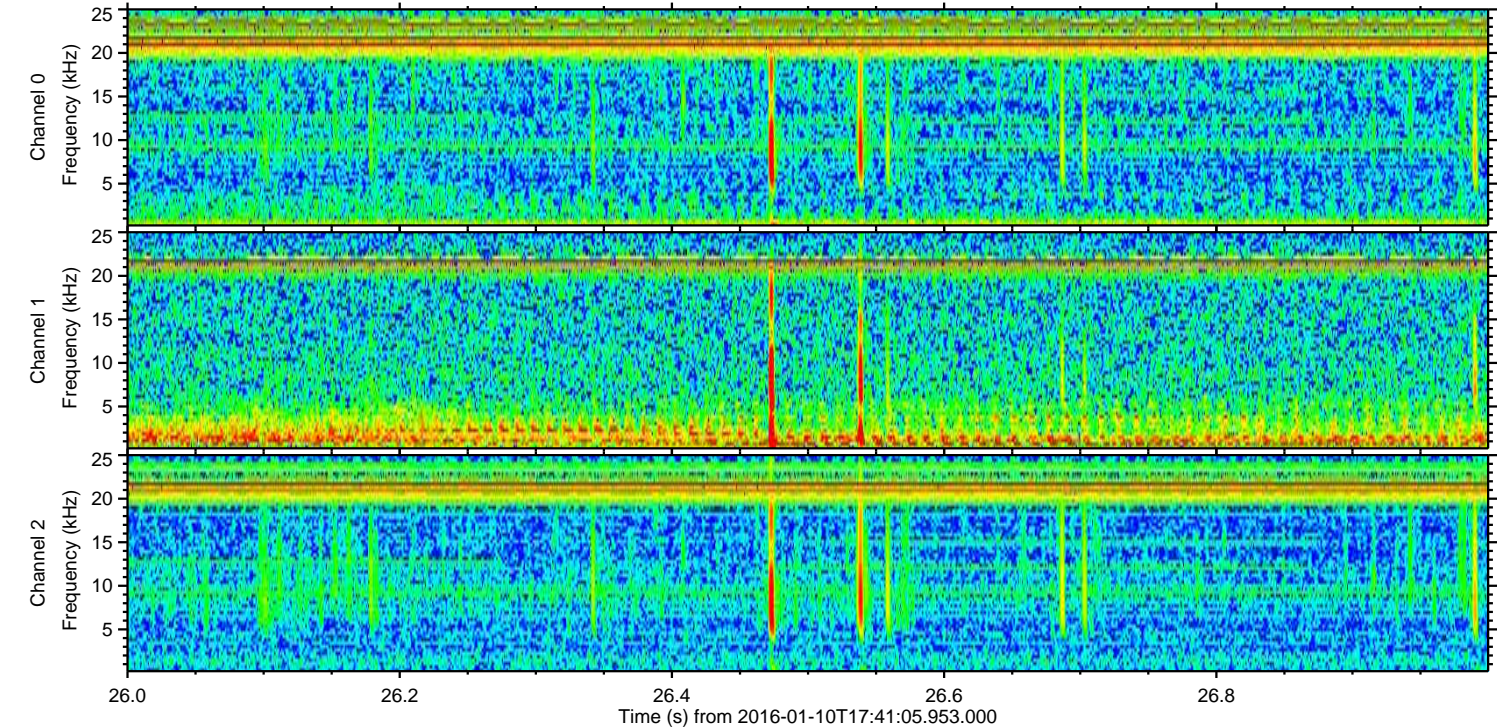
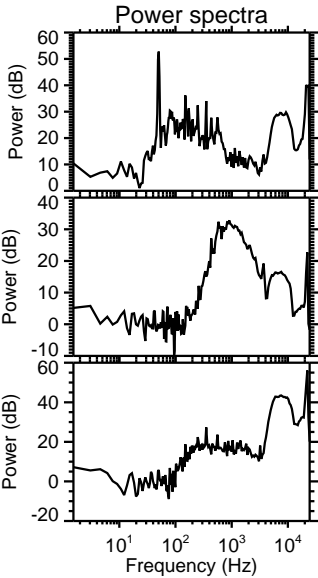
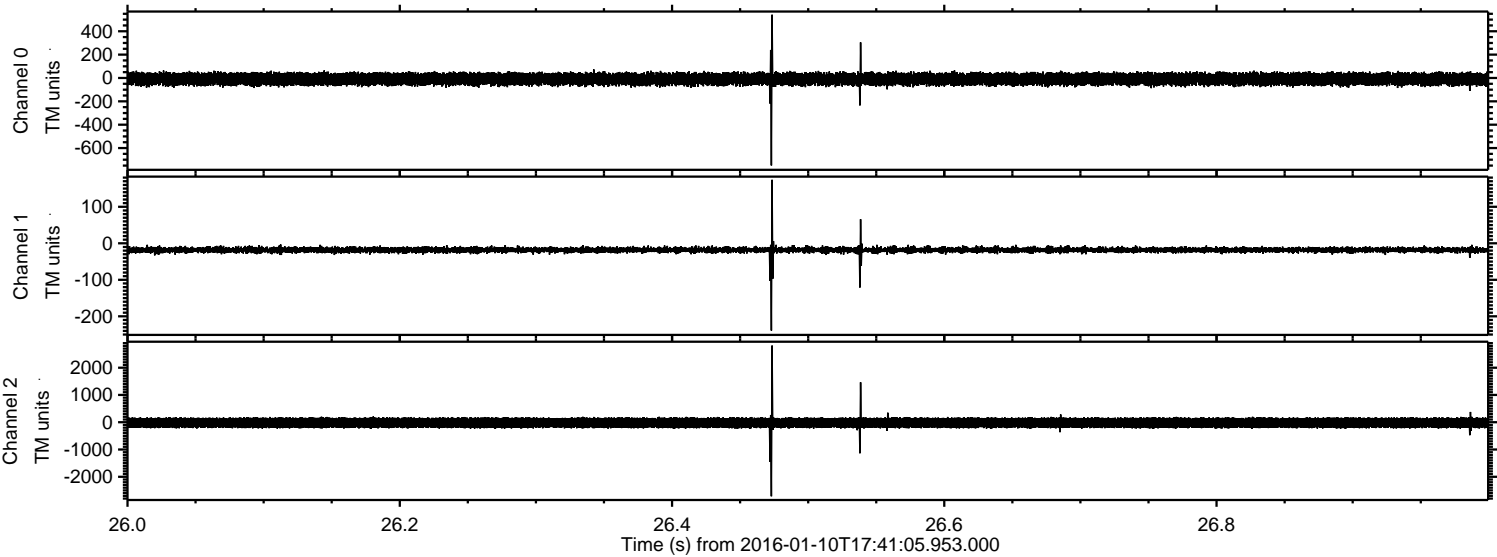
Processed Tue Mar 29 20:58:22 2016 by ELM ver.2012-10-06 from 001__elm20160110_174104__dat00.bin



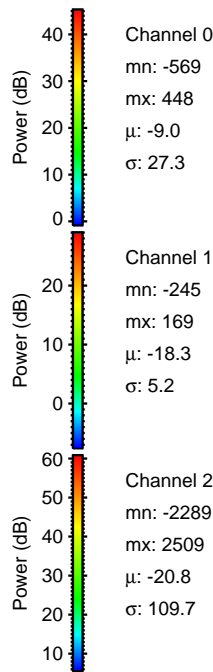
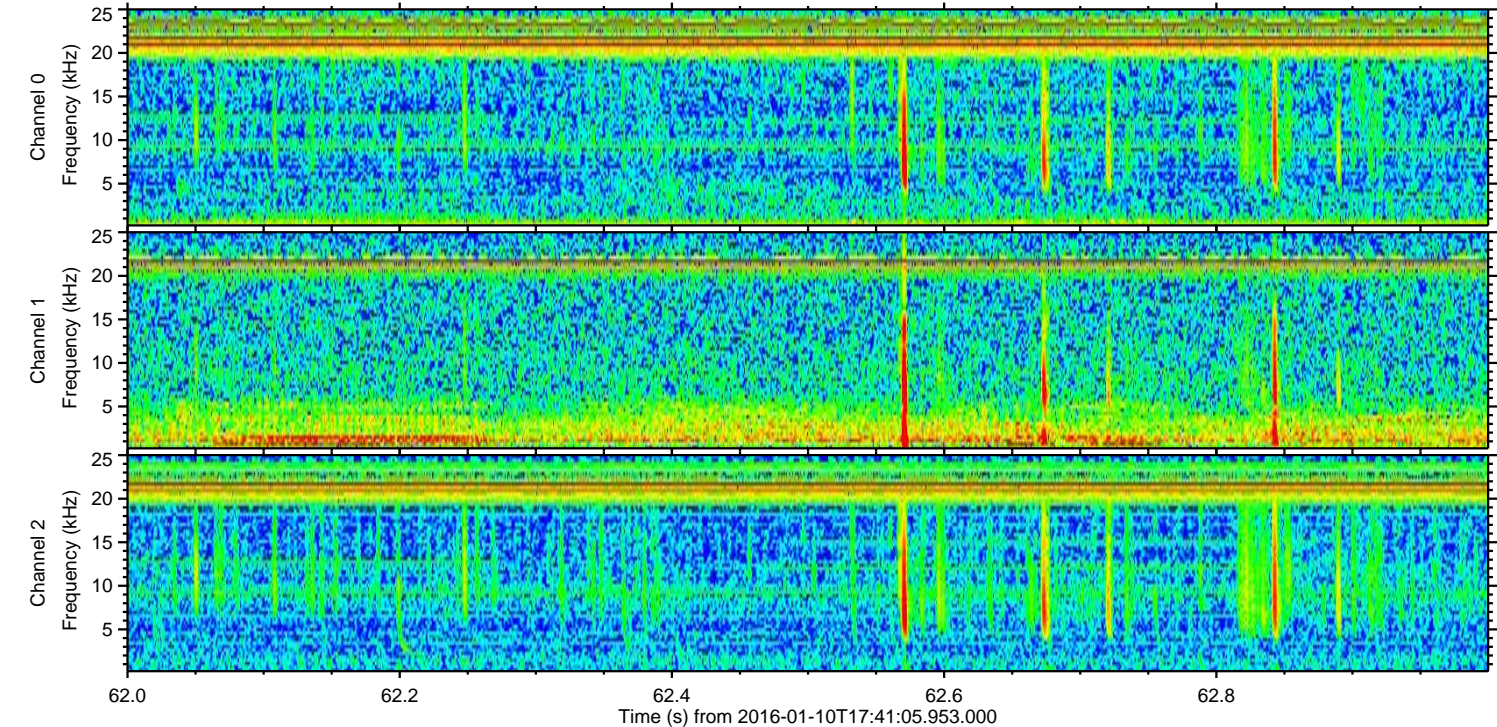
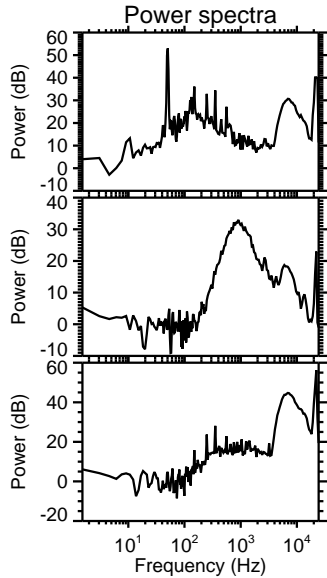
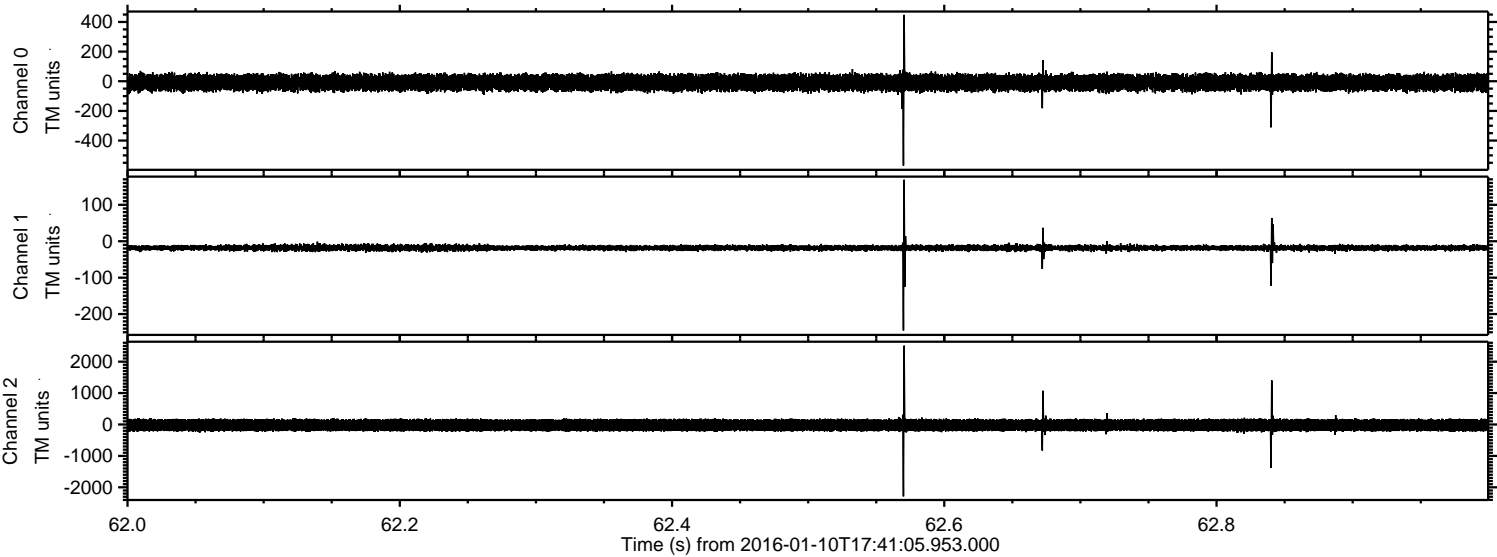
Processed Tue Mar 29 20:58:23 2016 by ELM ver.2012-10-06 from 001__elm20160110_174104__dat00.bin



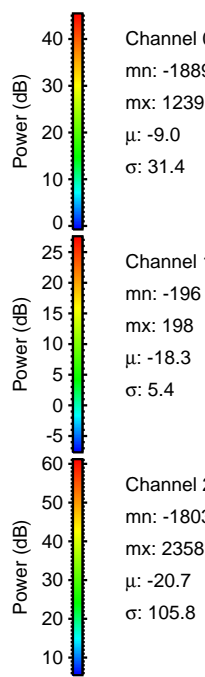
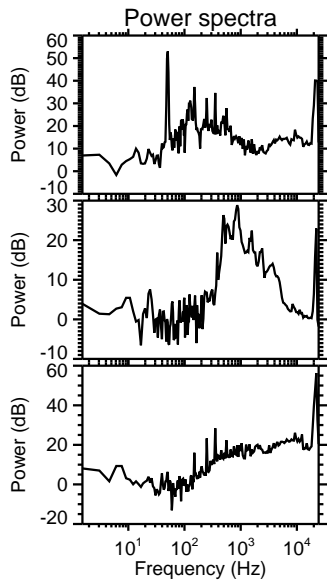
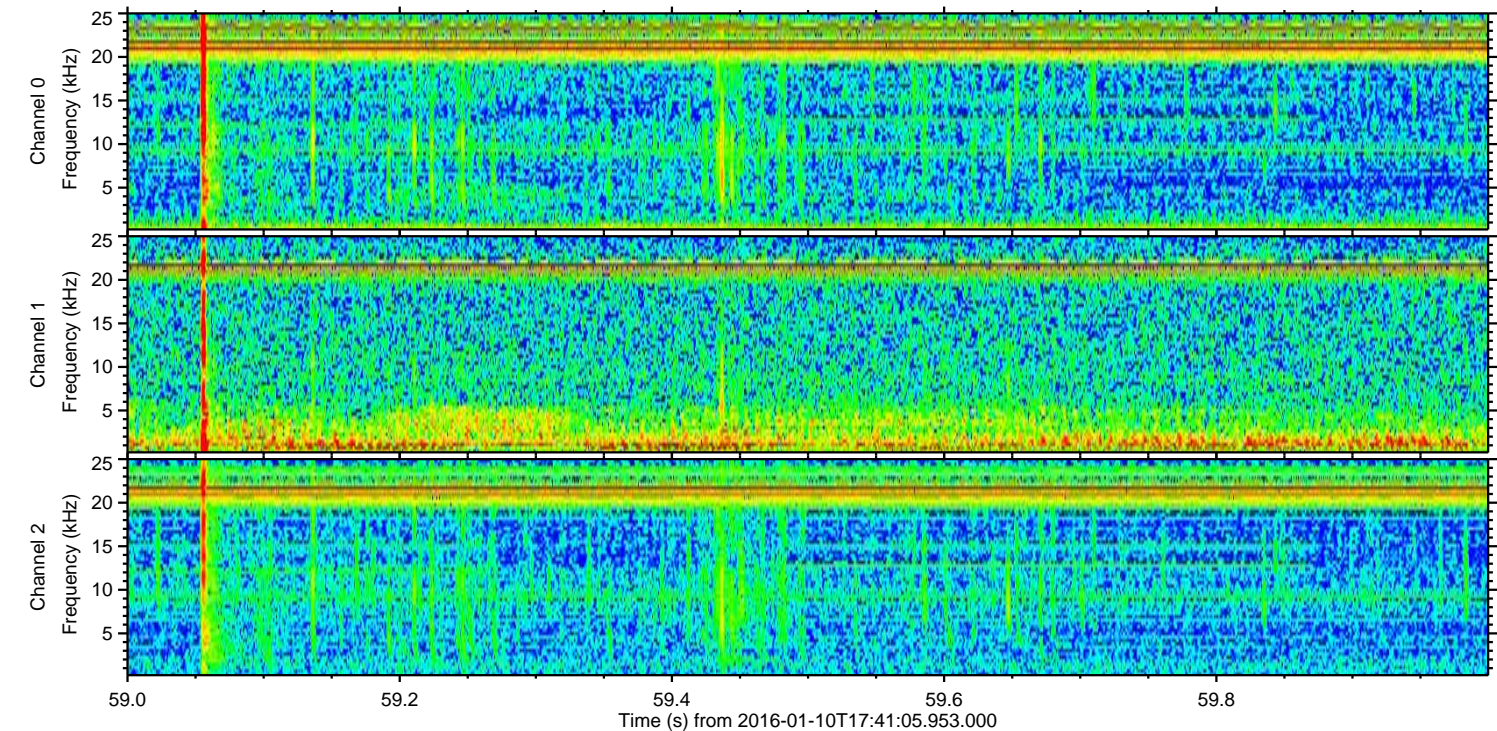
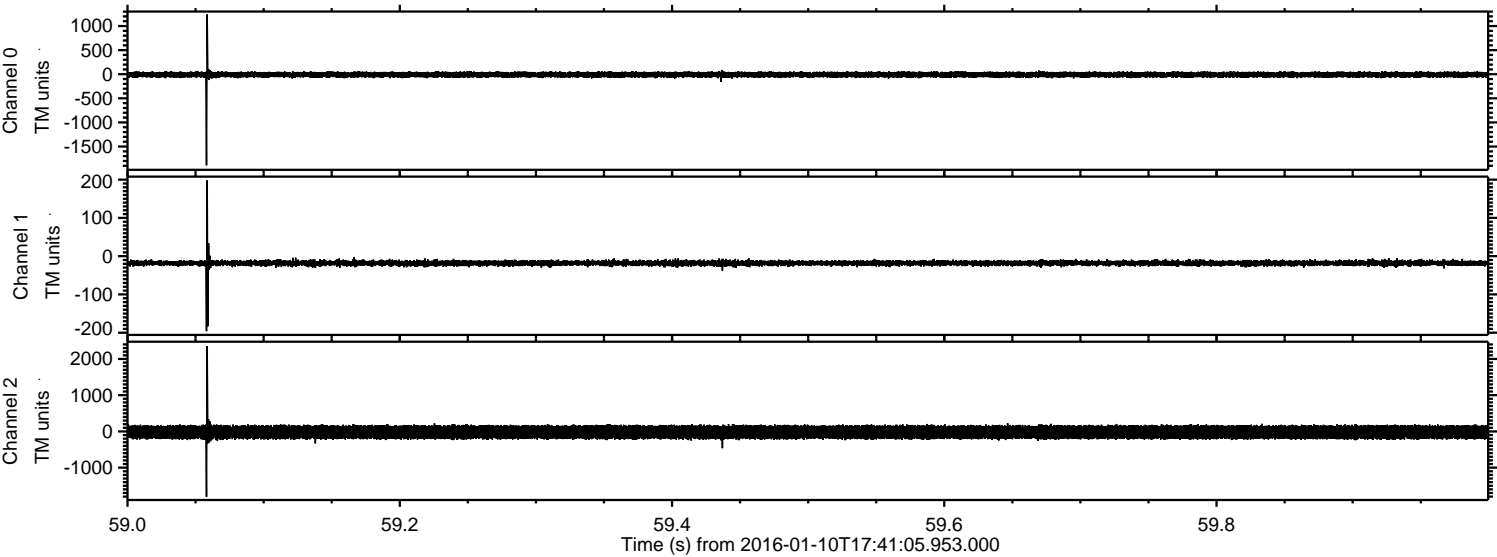
Processed Tue Mar 29 20:58:24 2016 by ELM ver.2012-10-06 from 001__elm20160110_174104__dat00.bin



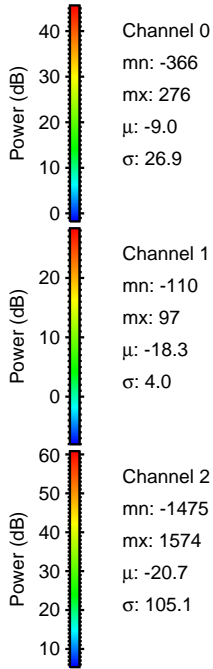
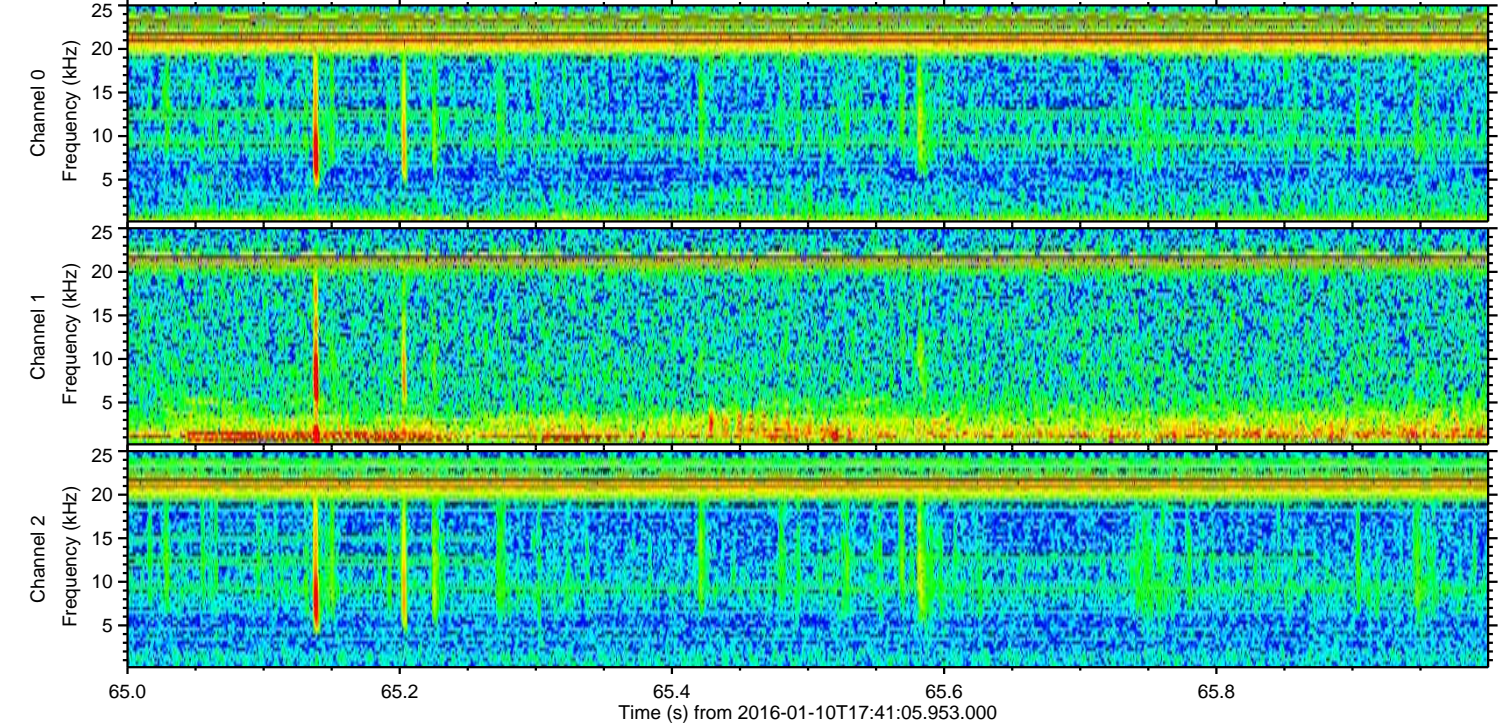
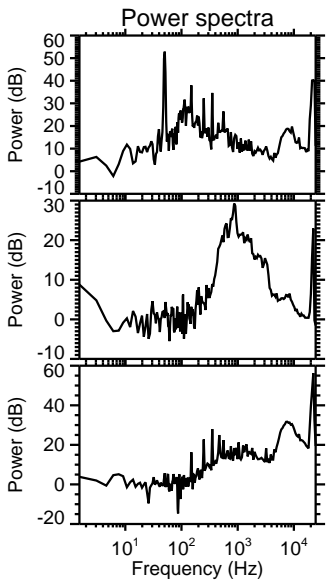
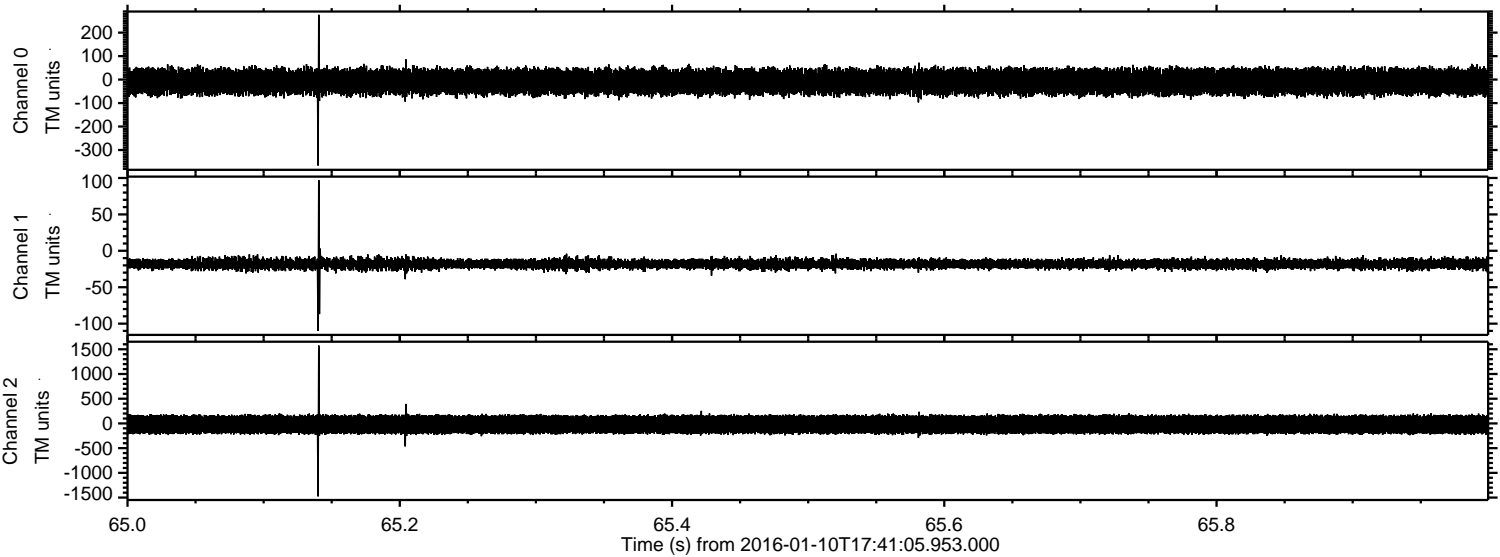
Processed Tue Mar 29 20:58:25 2016 by ELM ver.2012-10-06 from 001__elm20160110_174104__dat00.bin



Processed Tue Mar 29 20:58:26 2016 by ELM ver.2012-10-06 from 001__elm20160110_174104__dat00.bin



Processed Tue Mar 29 20:58:27 2016 by ELM ver.2012-10-06 from 001__elm20160110_174104__dat00.bin



Power spectra

Processed Tue Mar 29 20:58:28 2016 by ELM ver.2012-10-06 from 001__elm20160110_174104__dat00.bin

