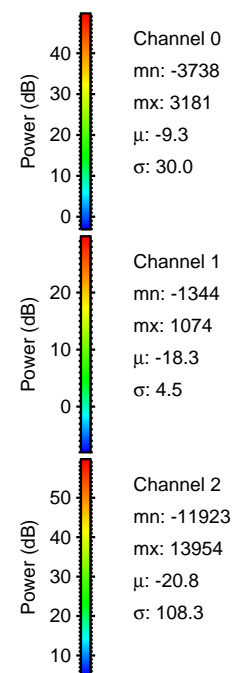
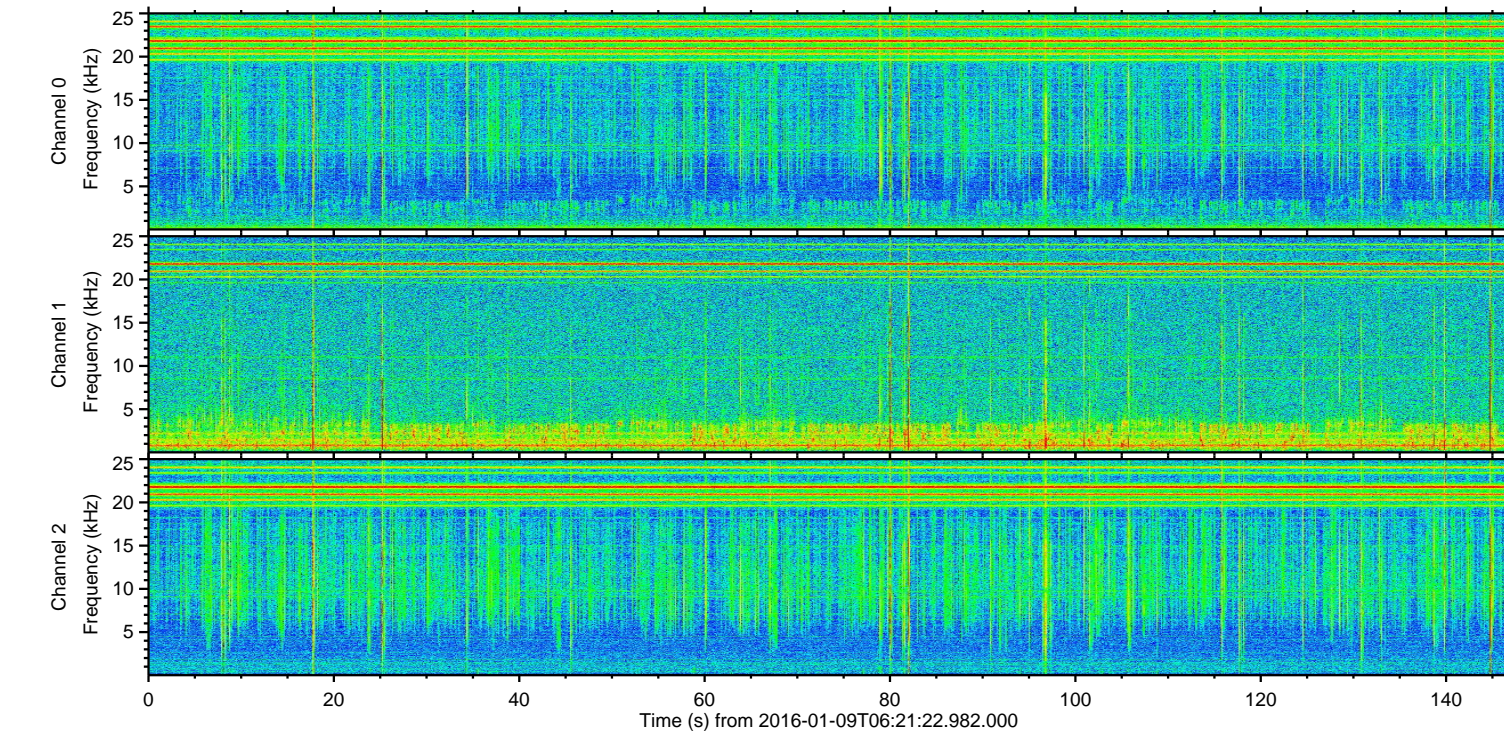
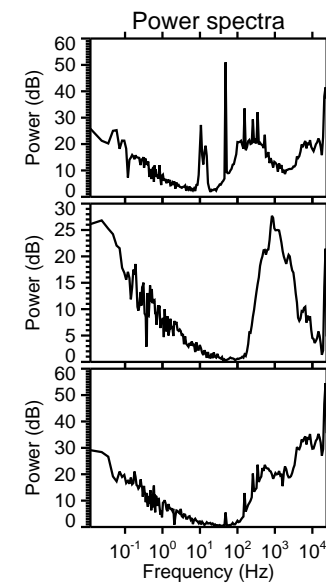
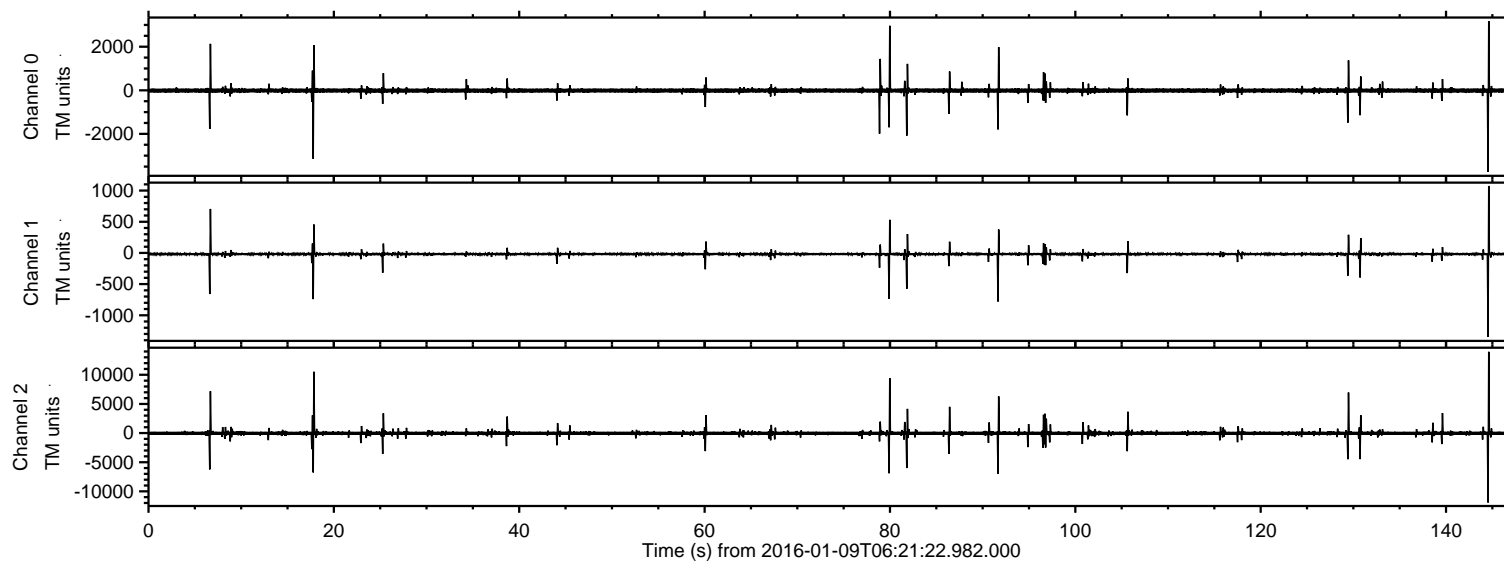


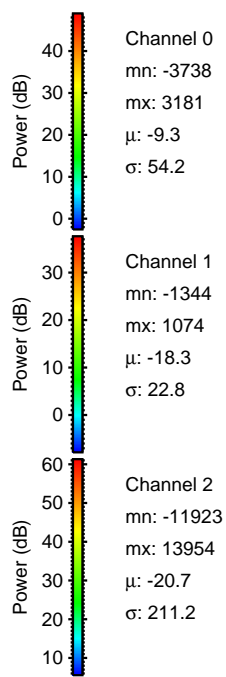
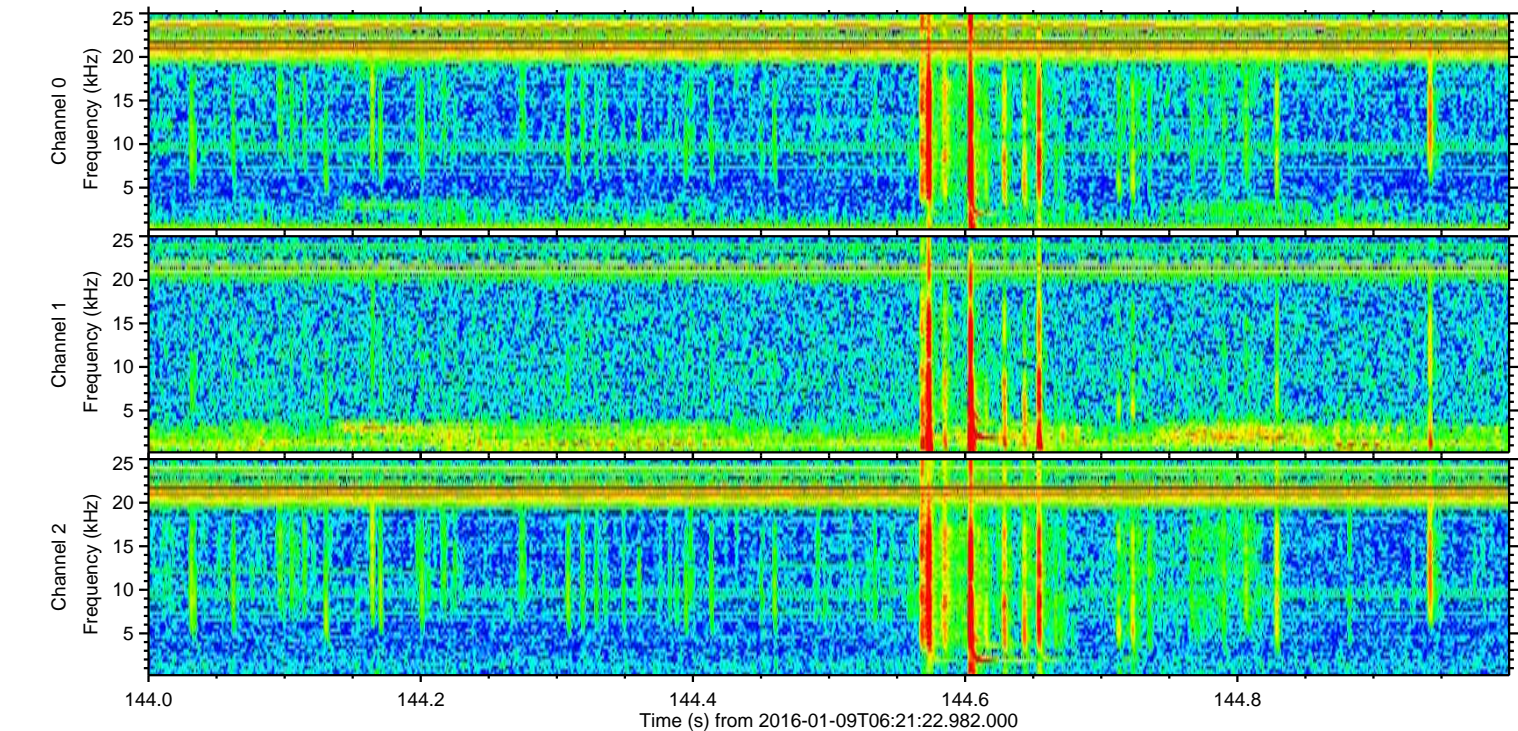
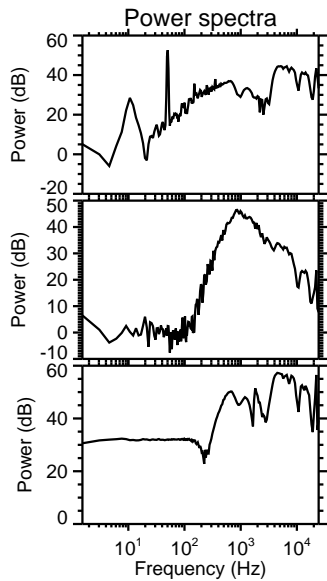
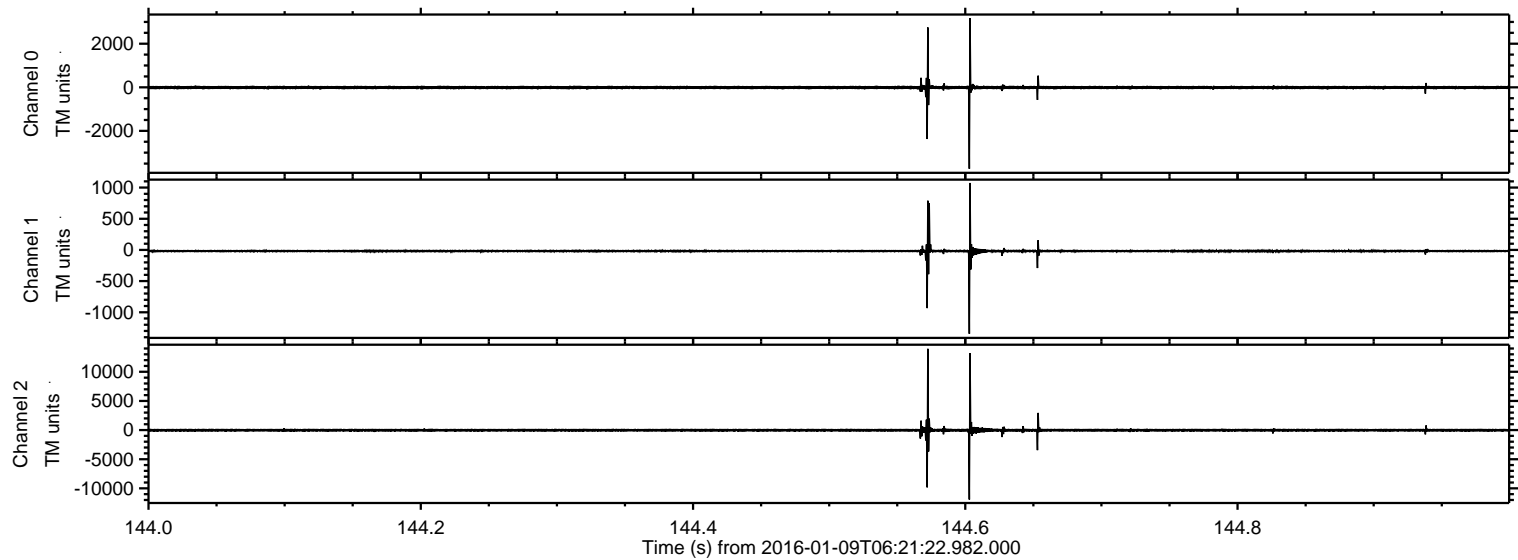
ELMAVAN 3D WAVEFORMS (Measured data sampled at 50 kHz) 51000 packets of 144 samples from 2016-01-09T06:21:22.982.000.

Processed Thu Mar 24 14:01:16 2016 by ELM ver.2012-10-06 from 001__elm20160109_062121__dat00.bin



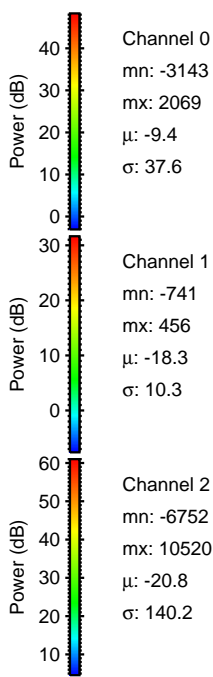
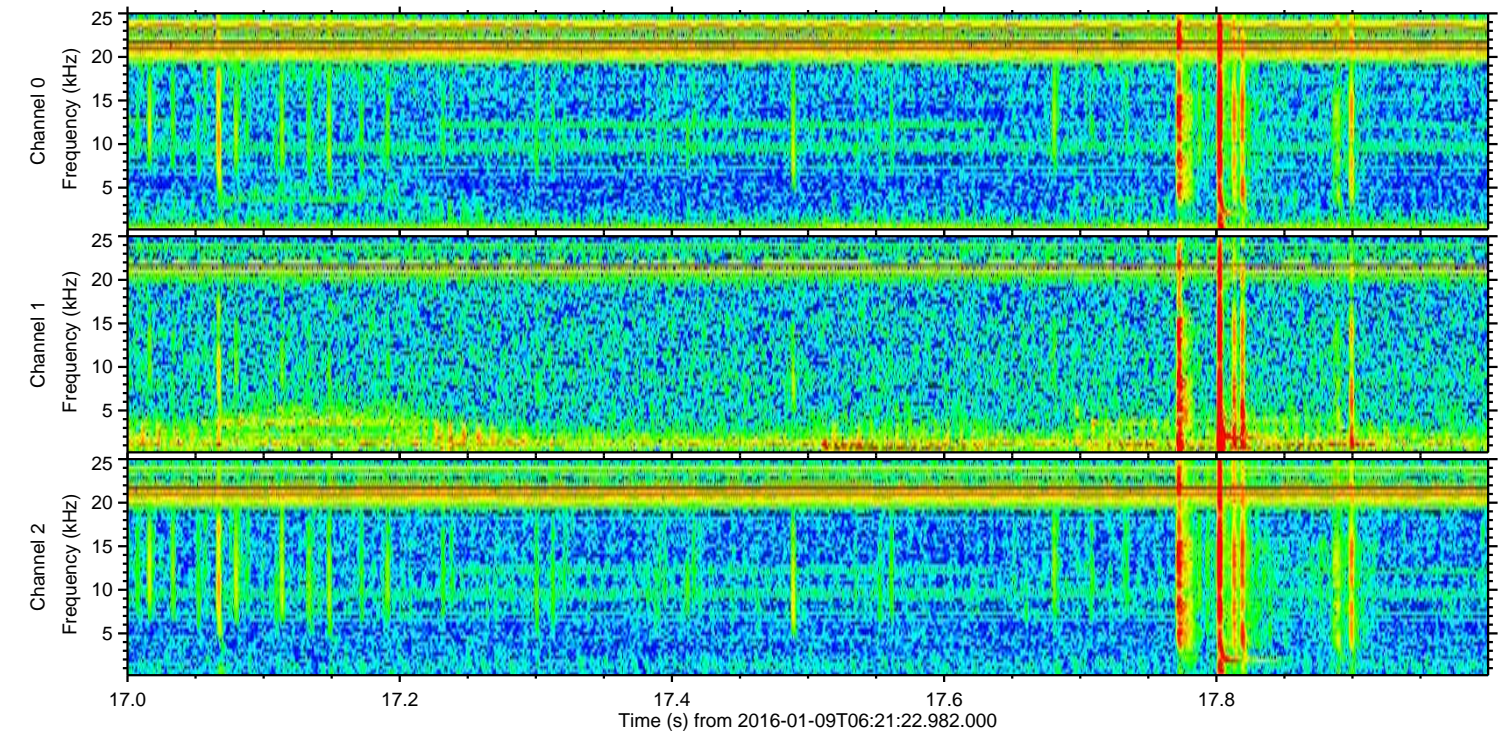
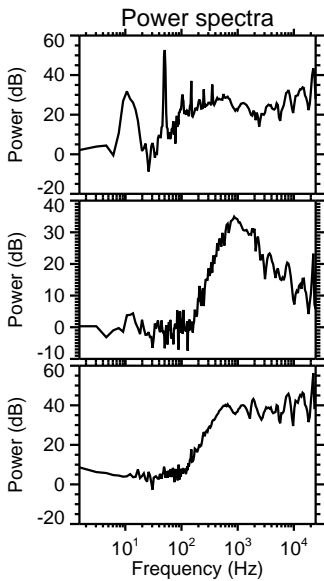
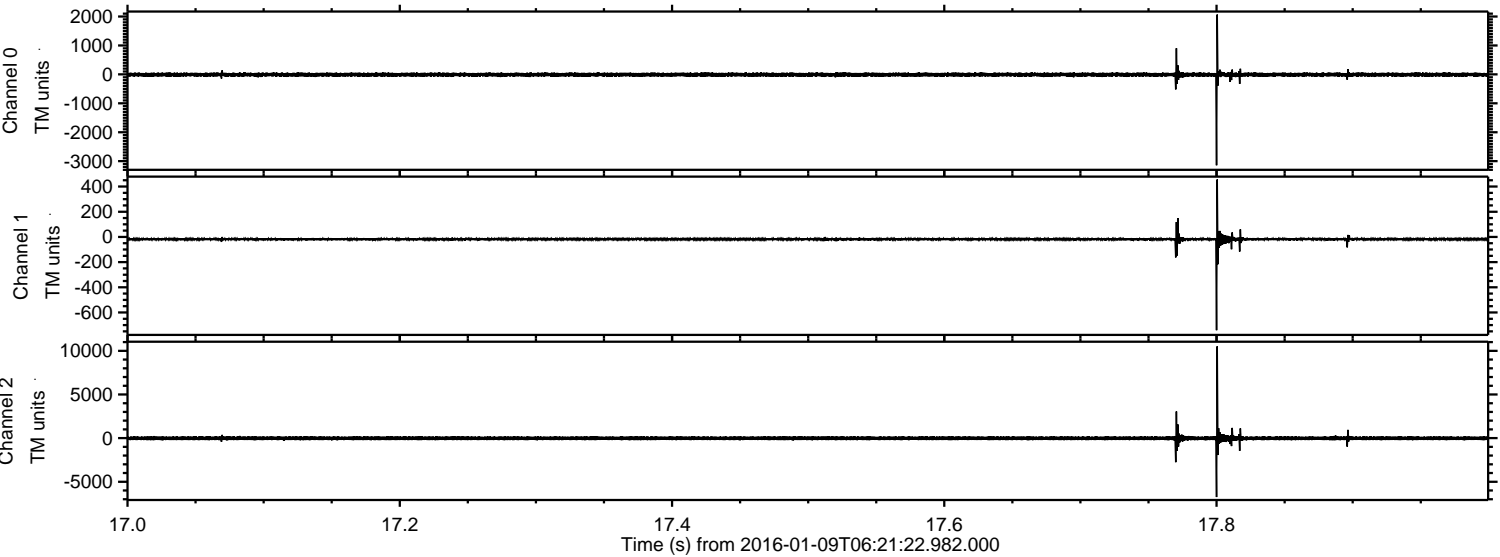
ELMAVAN 3D WAVEFORMS (Measured data sampled at 50 kHz) 51000 packets of 144 samples from 2016-01-09T06:21:22.982.000. Part 145/147

Processed Thu Mar 24 14:01:28 2016 by ELM ver.2012-10-06 from 001__elm20160109_062121__dat00.bin



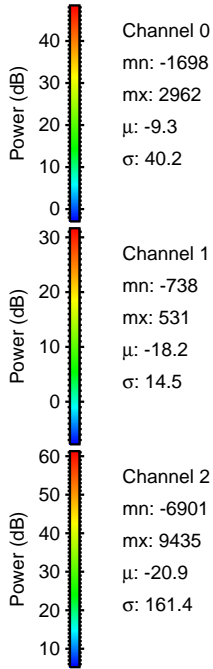
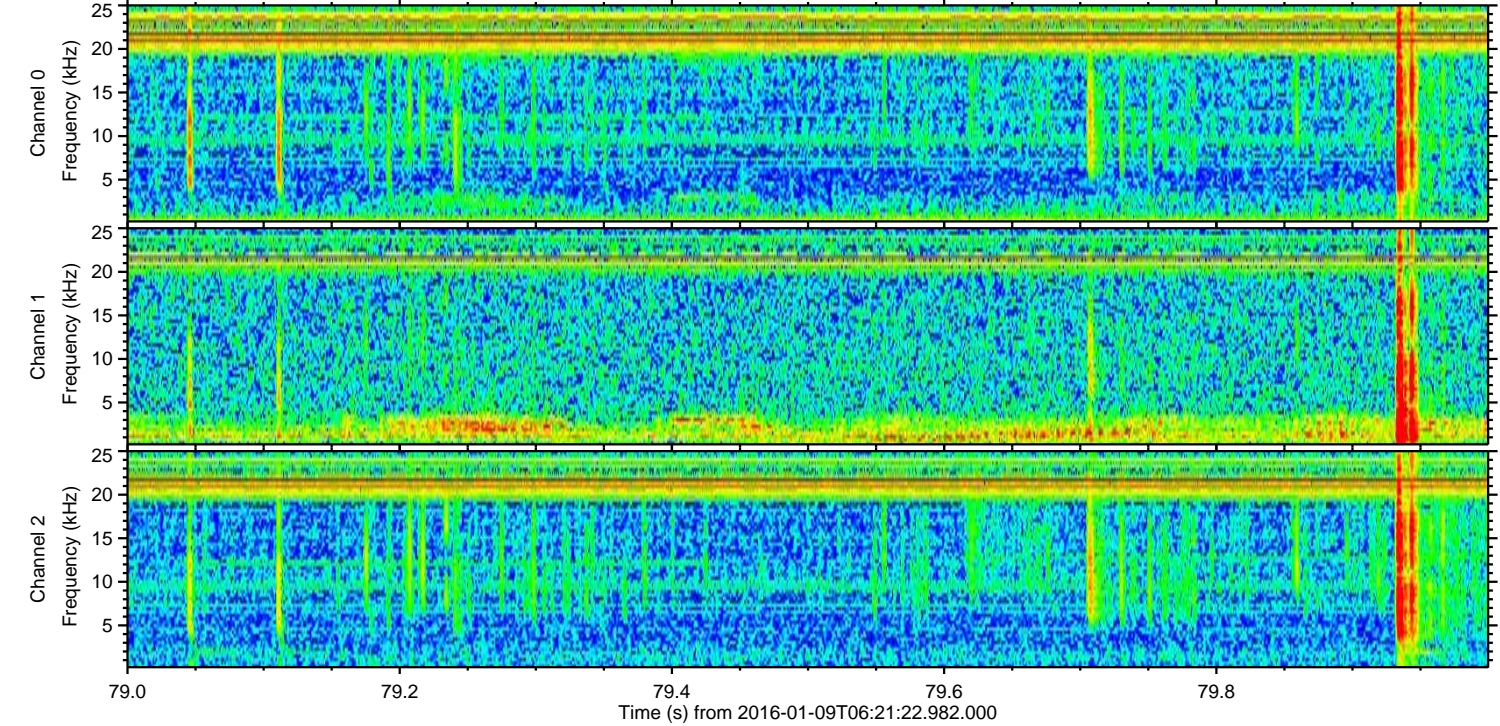
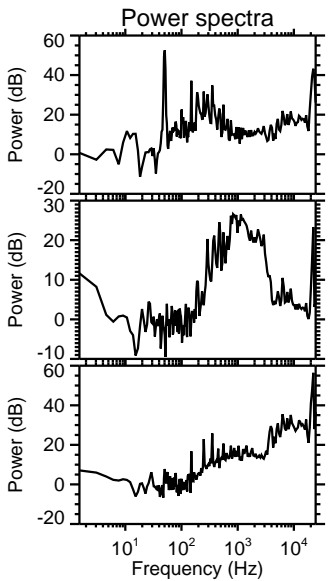
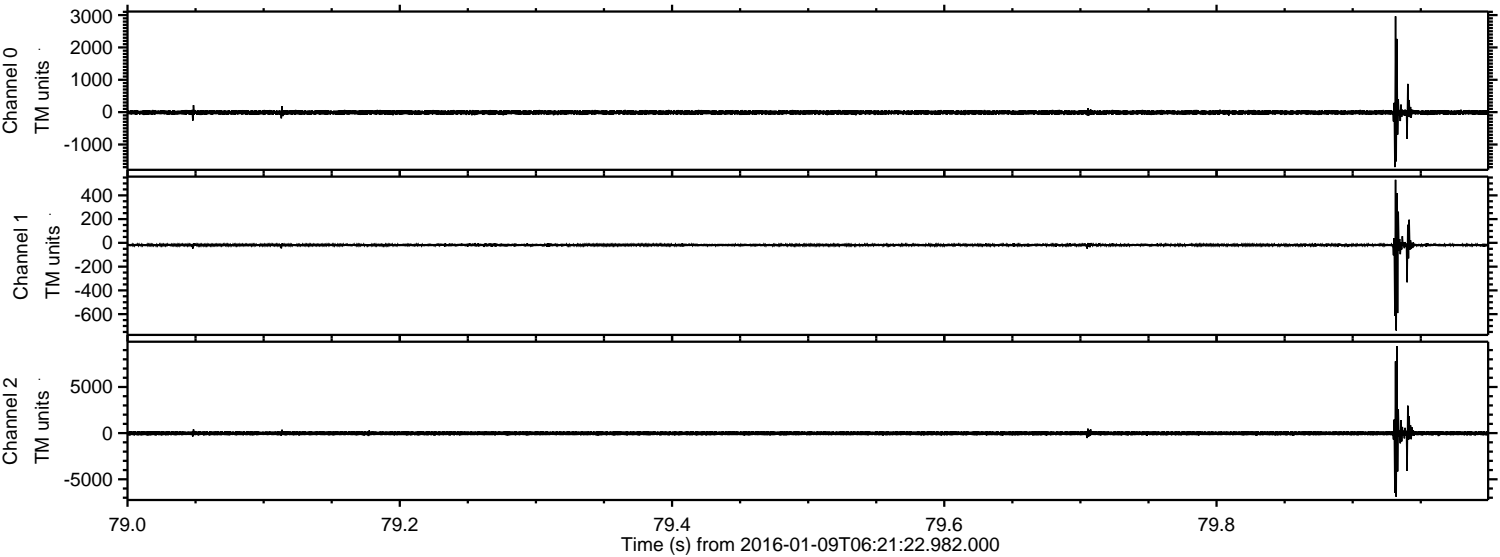
ELMAVAN 3D WAVEFORMS (Measured data sampled at 50 kHz) 51000 packets of 144 samples from 2016-01-09T06:21:22.982.000. Part 18/147

Processed Thu Mar 24 14:01:29 2016 by ELM ver.2012-10-06 from 001__elm20160109_062121__dat00.bin

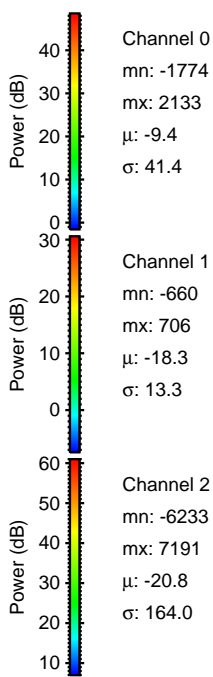
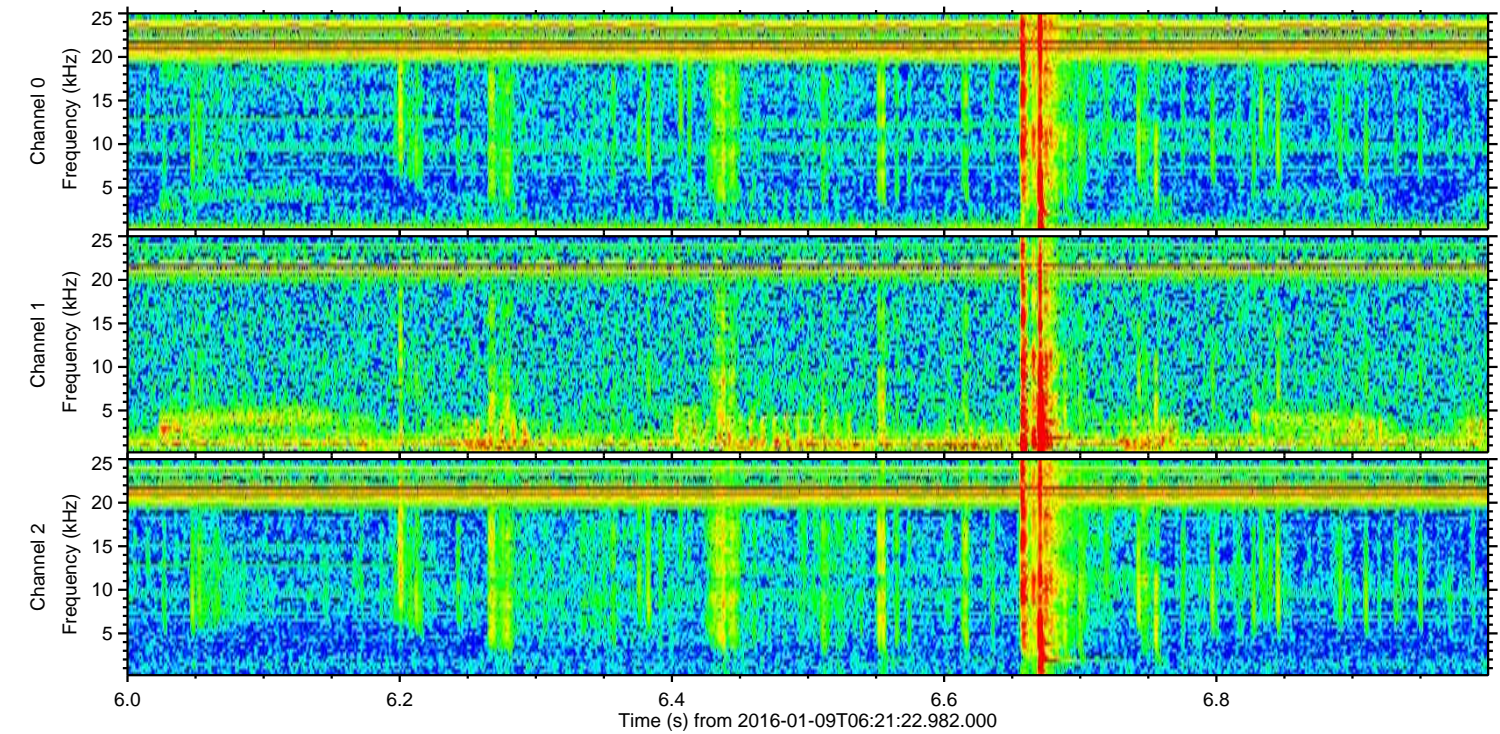
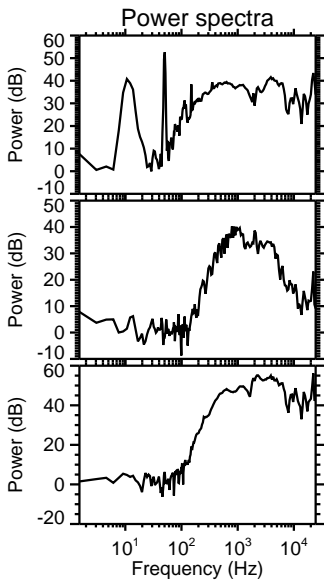
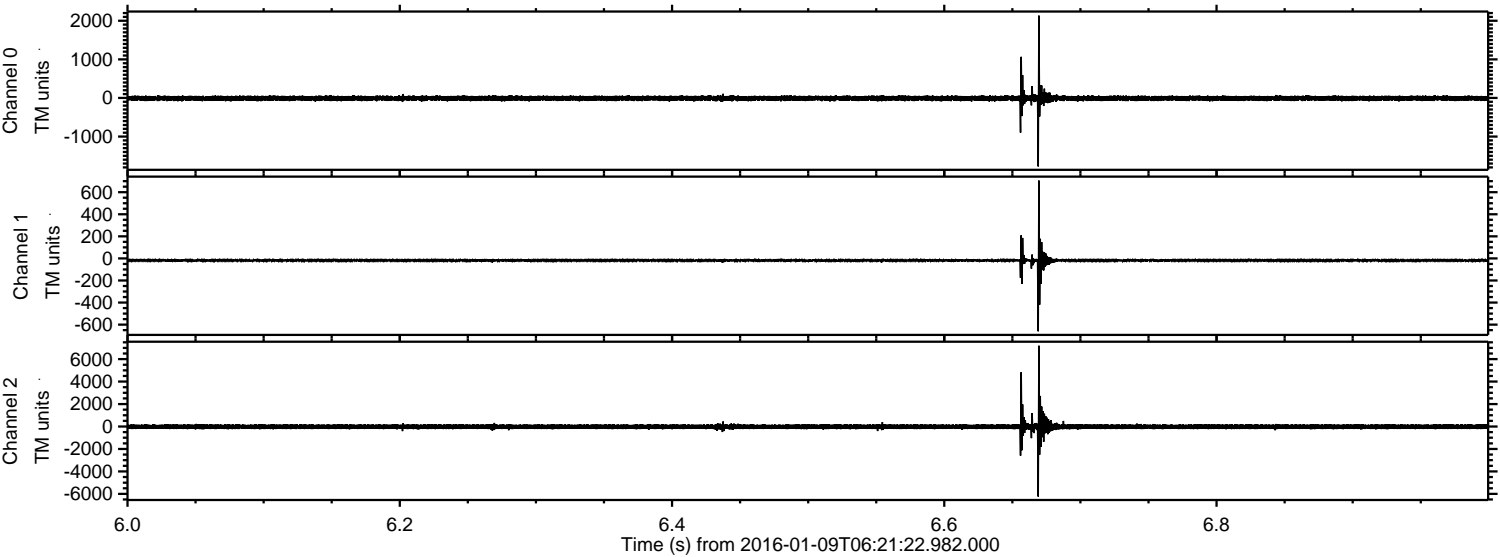


ELMAVAN 3D WAVEFORMS (Measured data sampled at 50 kHz) 51000 packets of 144 samples from 2016-01-09T06:21:22.982.000. Part 80/147

Processed Thu Mar 24 14:01:30 2016 by ELM ver.2012-10-06 from 001__elm20160109_062121__dat00.bin

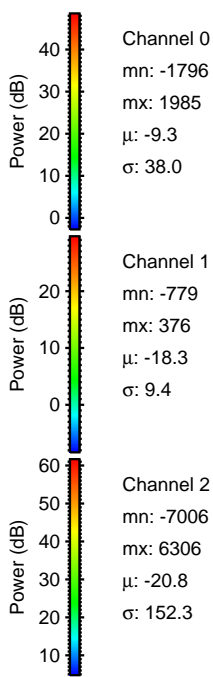
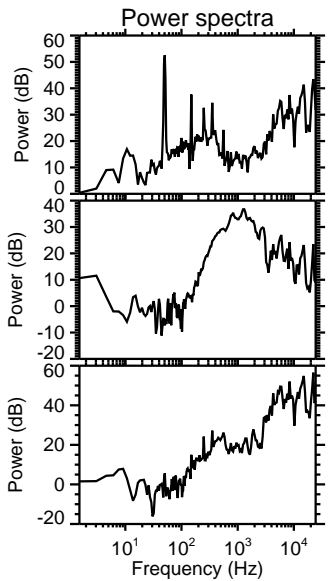
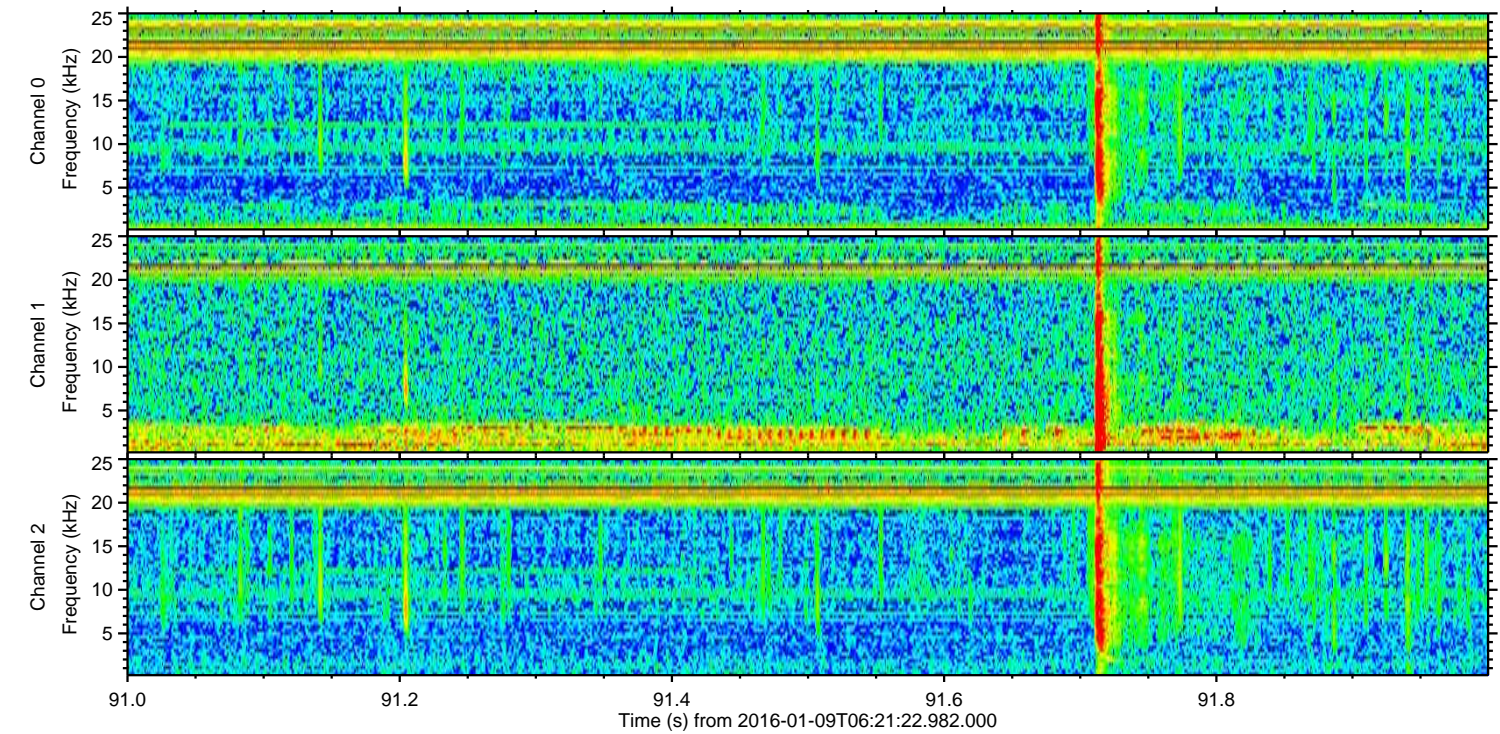
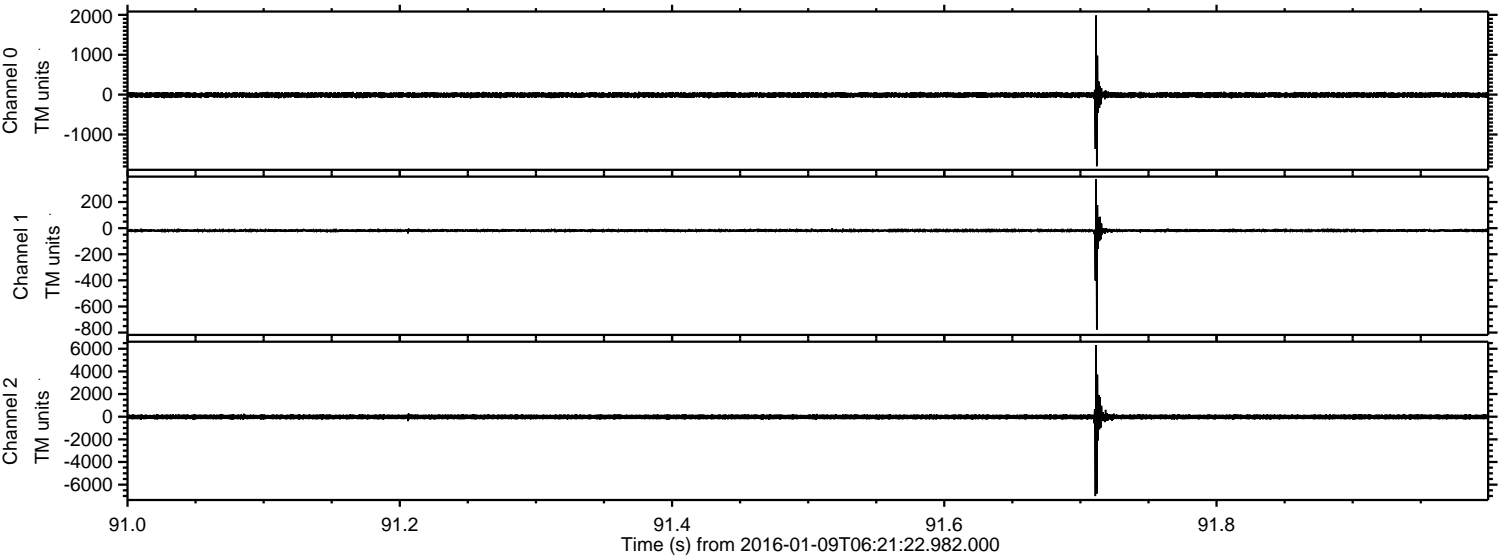


Processed Thu Mar 24 14:01:30 2016 by ELM ver.2012-10-06 from 001__elm20160109_062121__dat00.bin



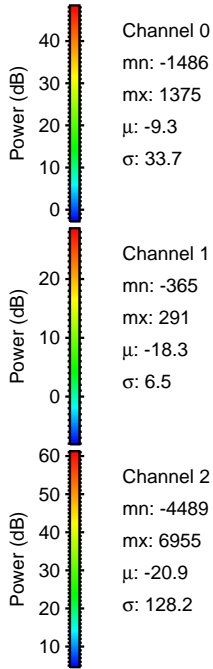
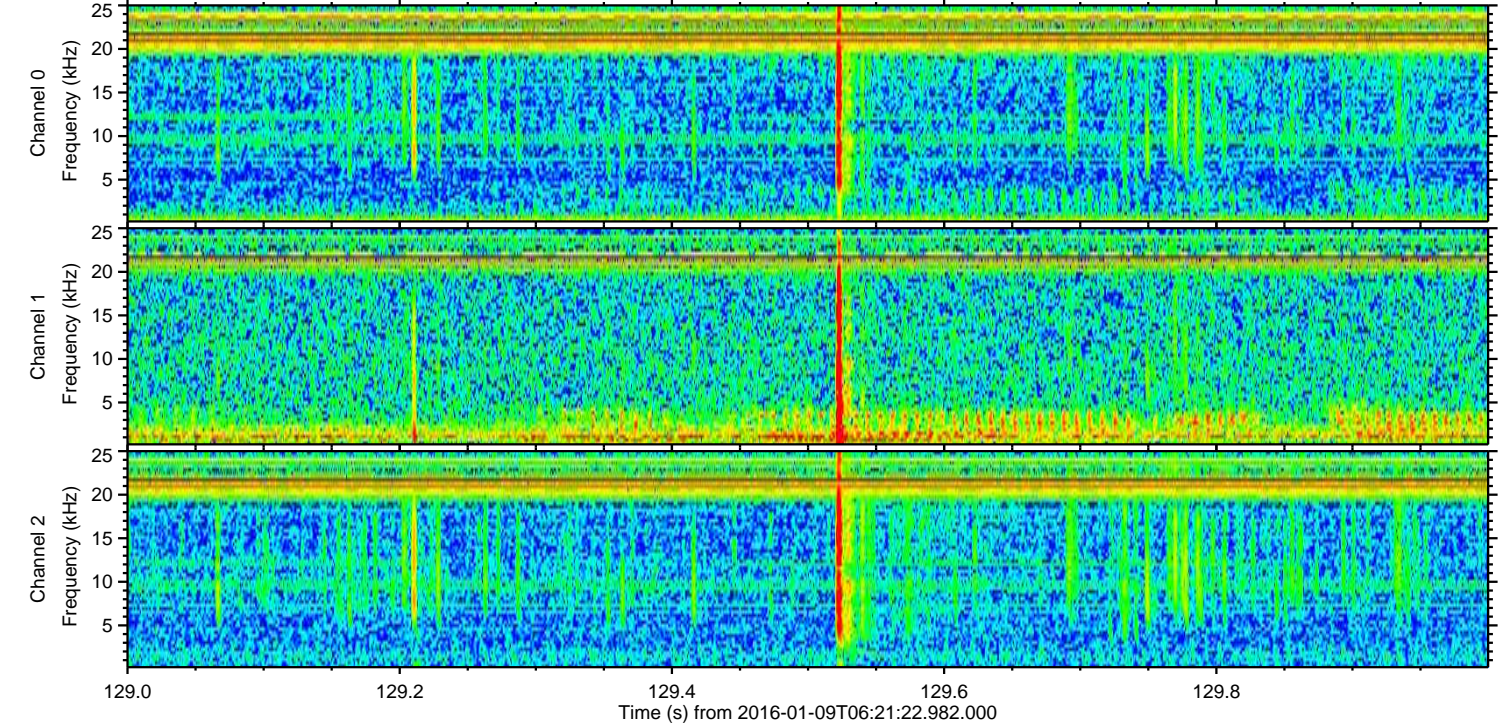
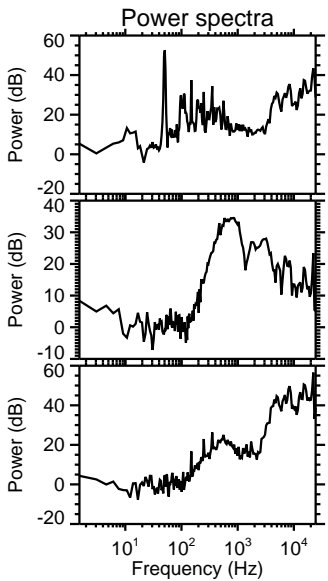
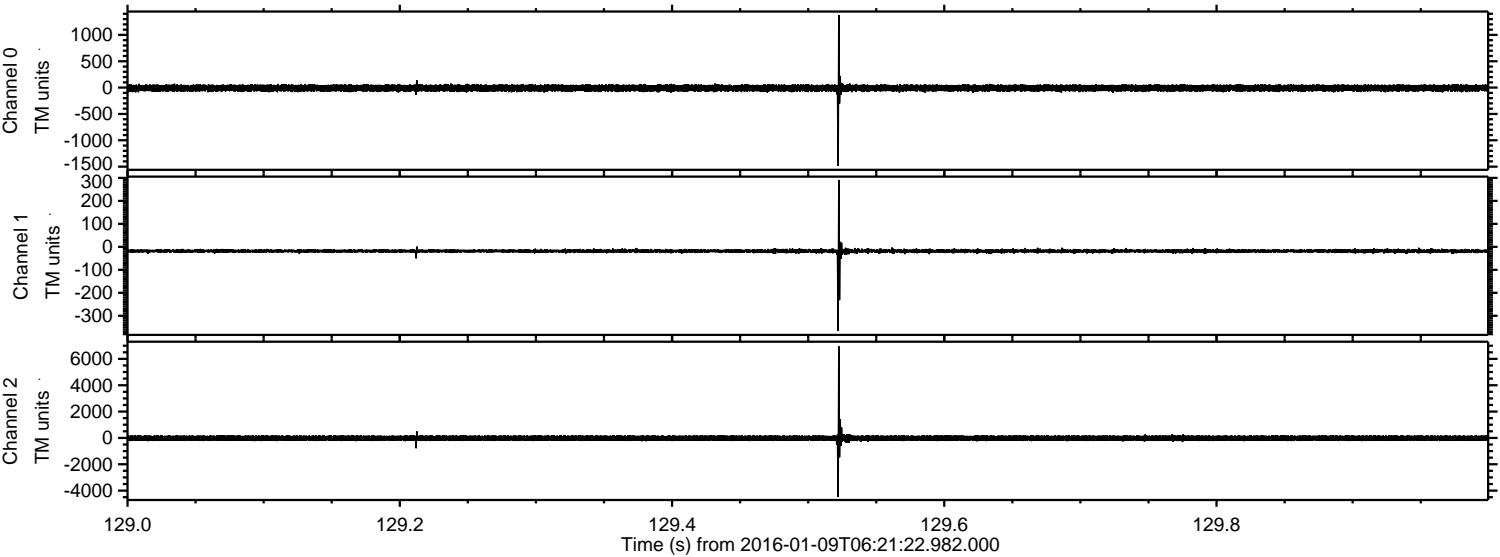
ELMAVAN 3D WAVEFORMS (Measured data sampled at 50 kHz) 51000 packets of 144 samples from 2016-01-09T06:21:22.982.000. Part 92/147

Processed Thu Mar 24 14:01:31 2016 by ELM ver.2012-10-06 from 001__elm20160109_062121__dat00.bin

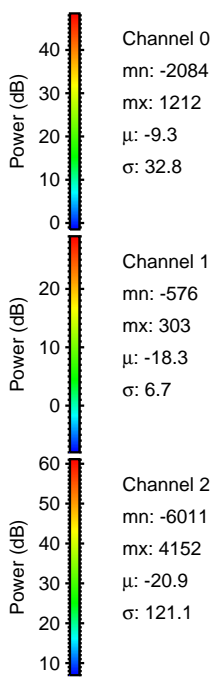
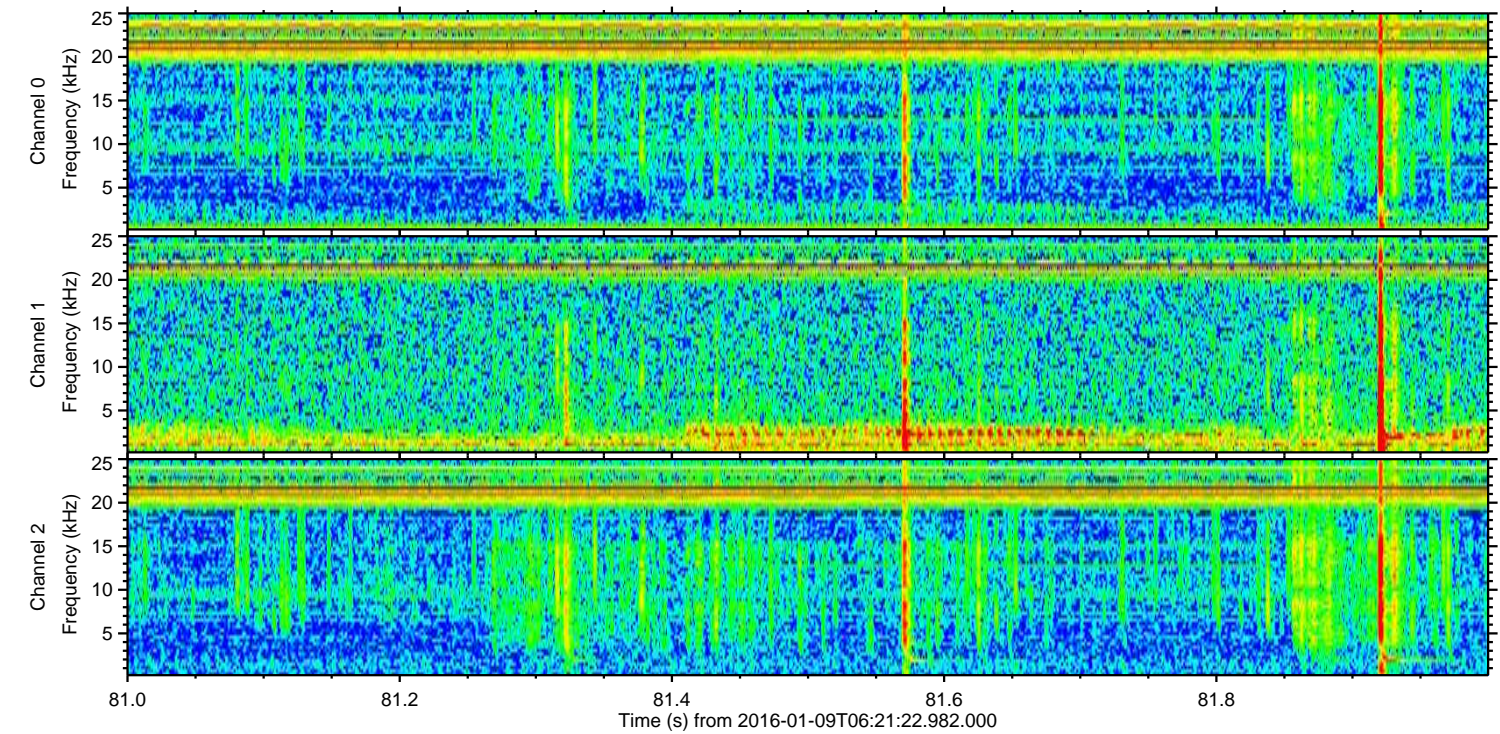
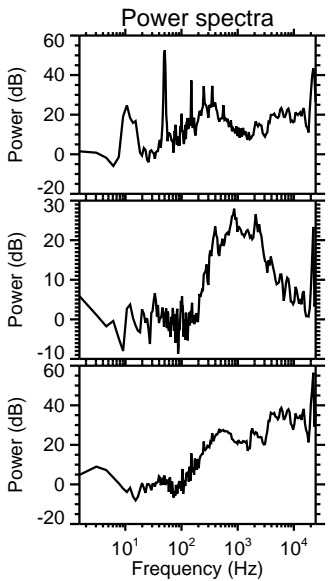
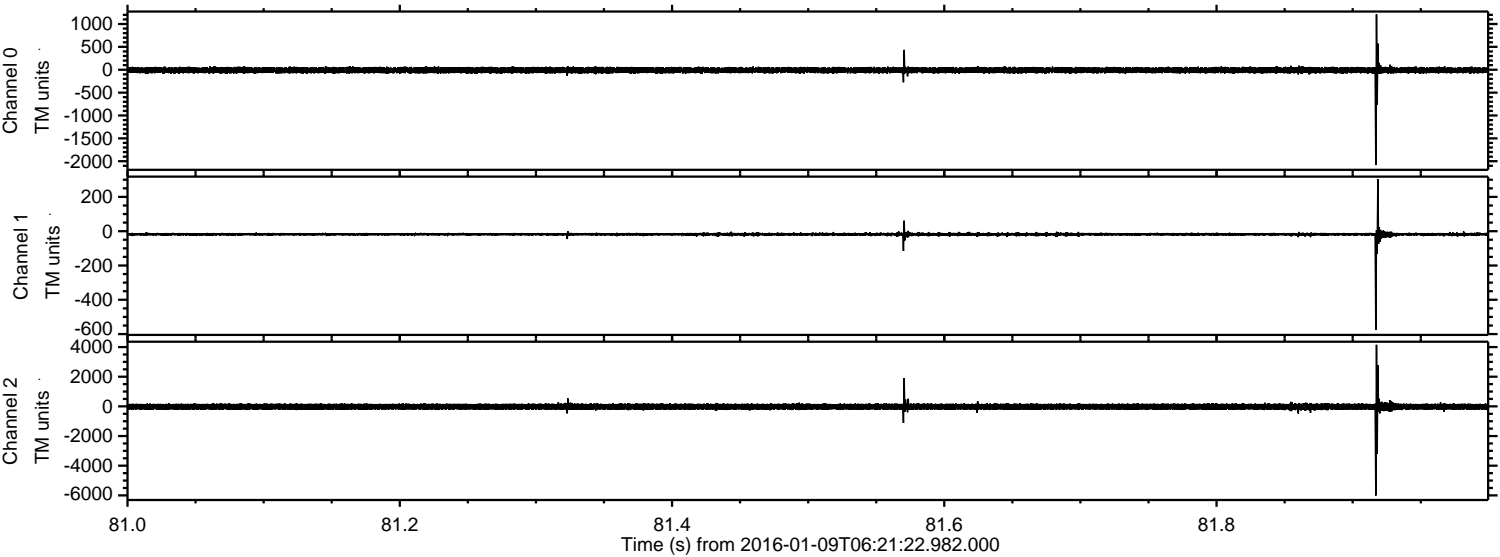


ELMAVAN 3D WAVEFORMS (Measured data sampled at 50 kHz) 51000 packets of 144 samples from 2016-01-09T06:21:22.982.000. Part 130/147

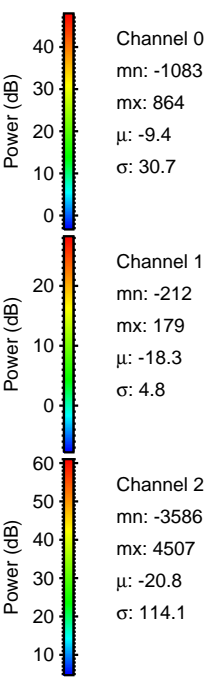
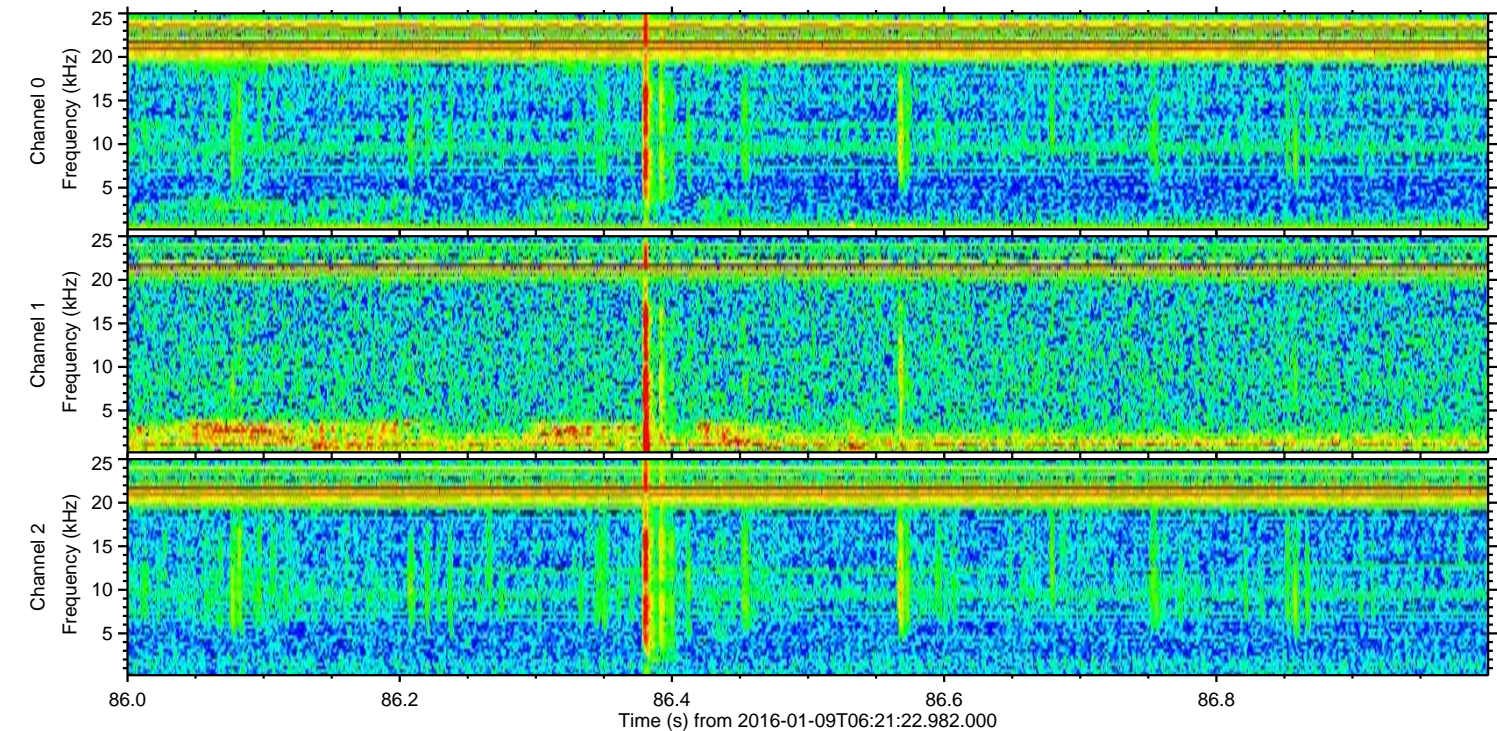
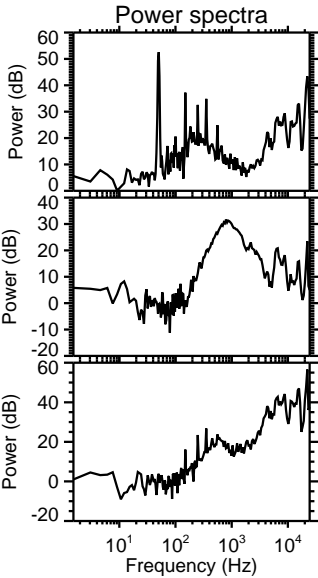
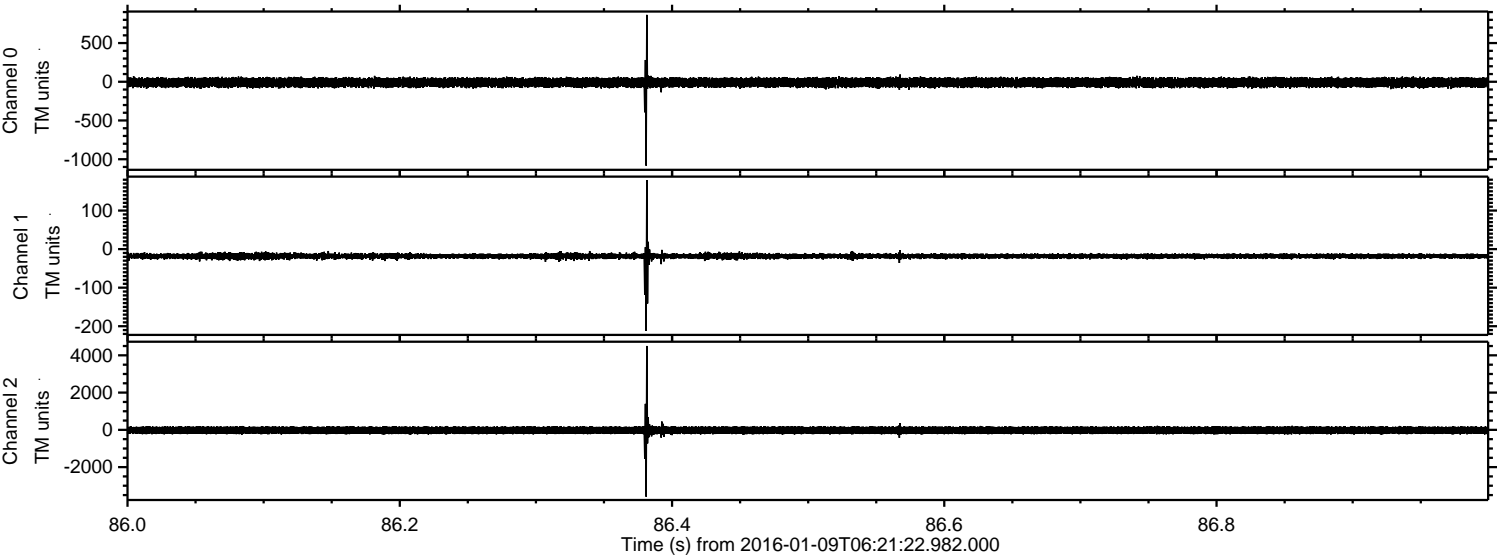
Processed Thu Mar 24 14:01:32 2016 by ELM ver.2012-10-06 from 001__elm20160109_062121__dat00.bin



Processed Thu Mar 24 14:01:33 2016 by ELM ver.2012-10-06 from 001__elm20160109_062121__dat00.bin



Processed Thu Mar 24 14:01:34 2016 by ELM ver.2012-10-06 from 001__elm20160109_062121__dat00.bin

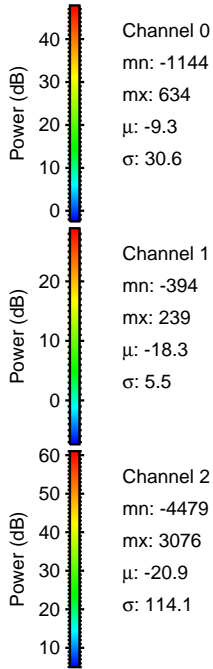
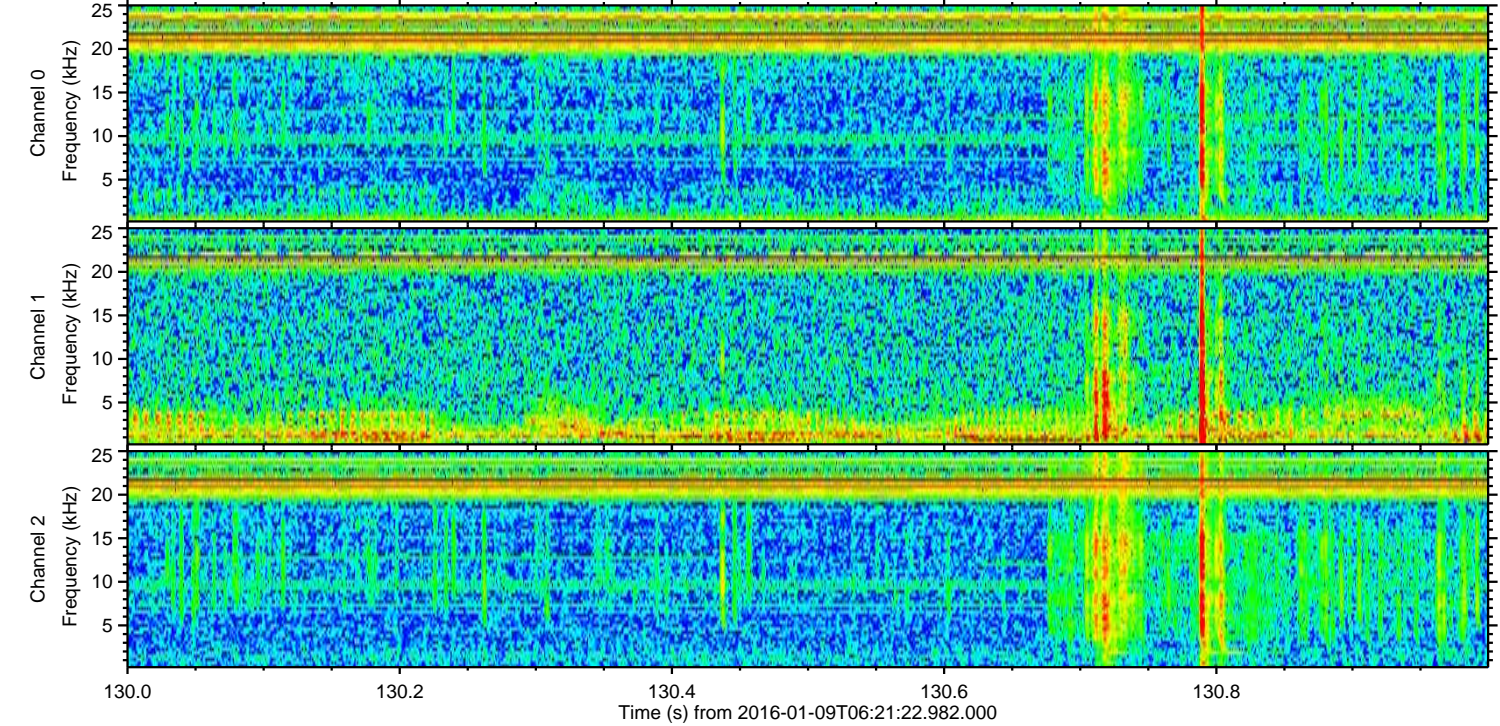
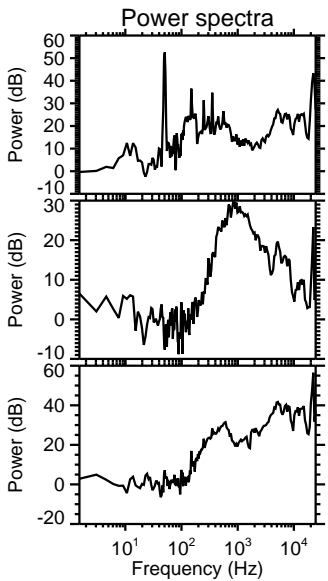
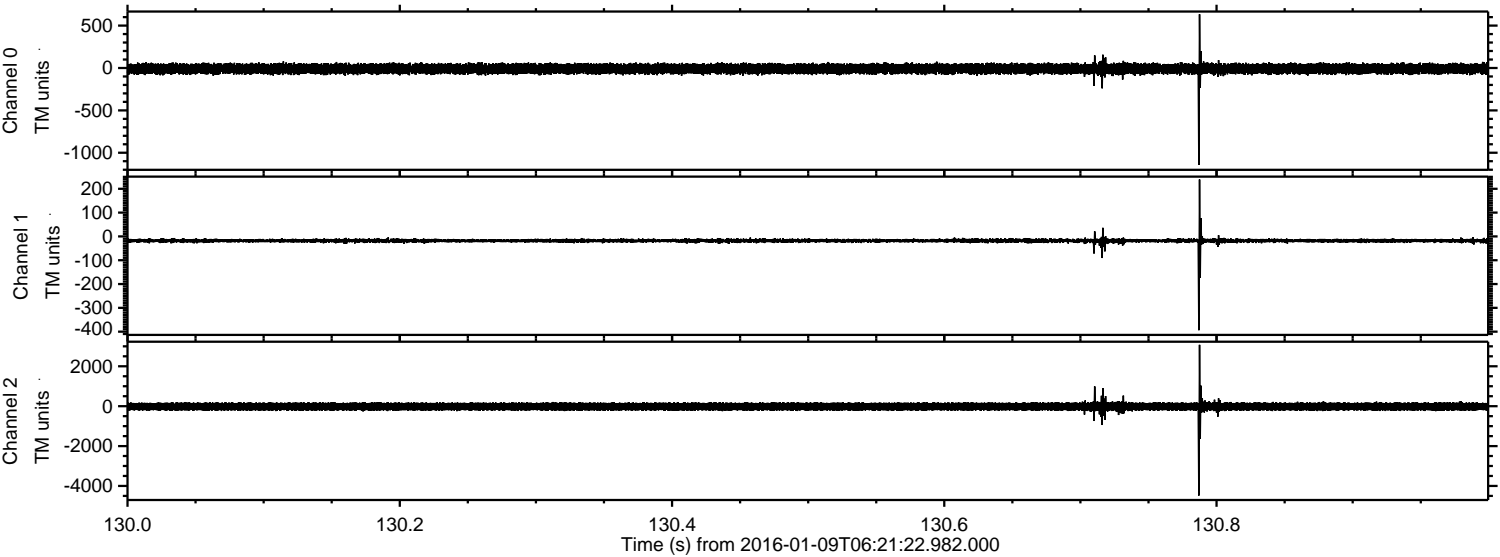


Channel 0
mn: -1083
mx: 864
 μ : -9.4
 σ : 30.7

Channel 1
mn: -212
mx: 179
 μ : -18.3
 σ : 4.8

Channel 2
mn: -3586
mx: 4507
 μ : -20.8
 σ : 114.1

Processed Thu Mar 24 14:01:35 2016 by ELM ver.2012-10-06 from 001__elm20160109_062121__dat00.bin



Processed Thu Mar 24 14:01:36 2016 by ELM ver.2012-10-06 from 001__elm20160109_062121__dat00.bin

