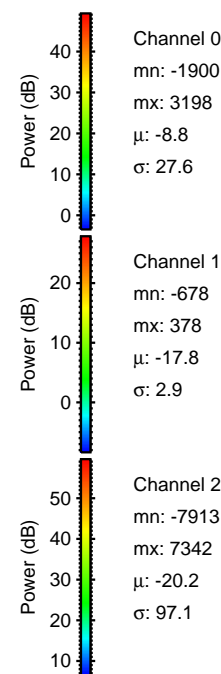
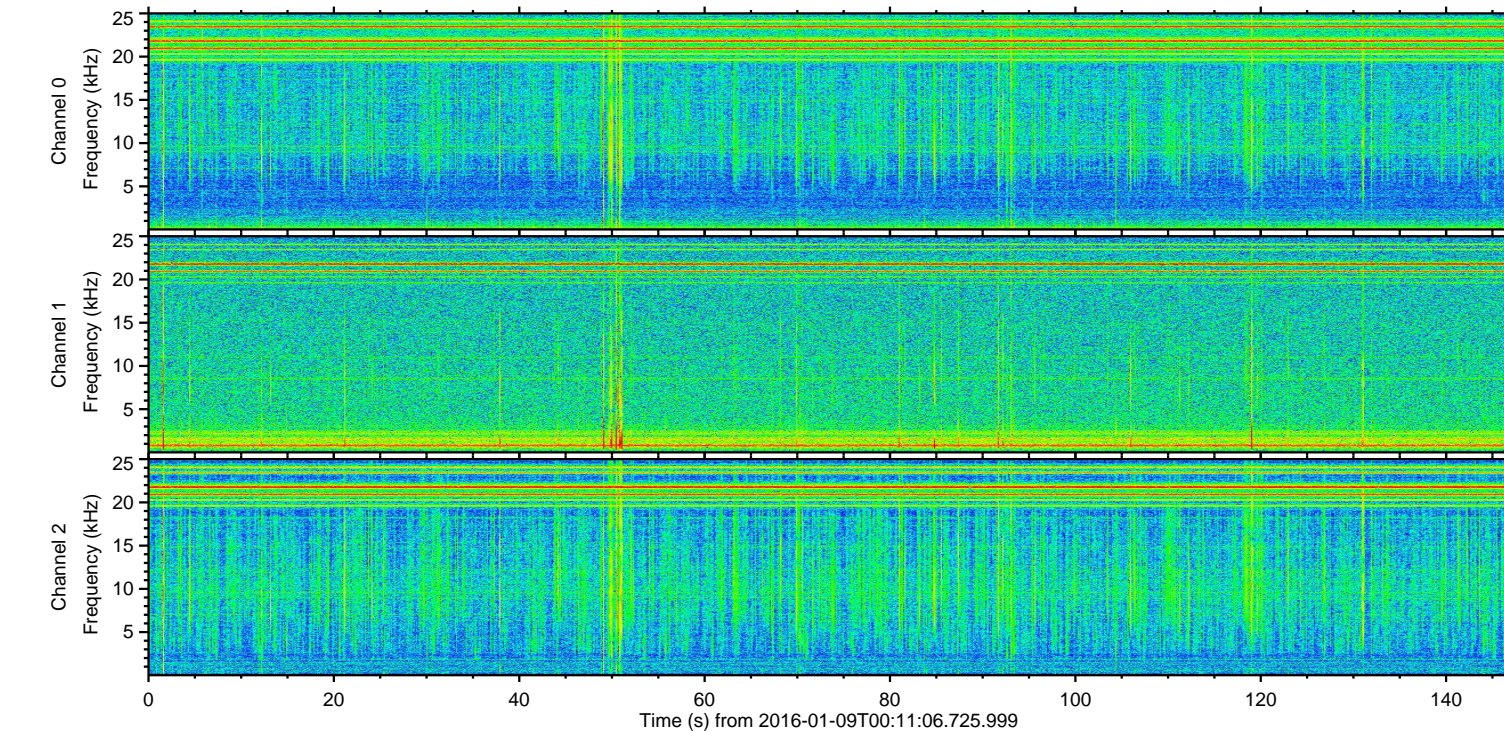
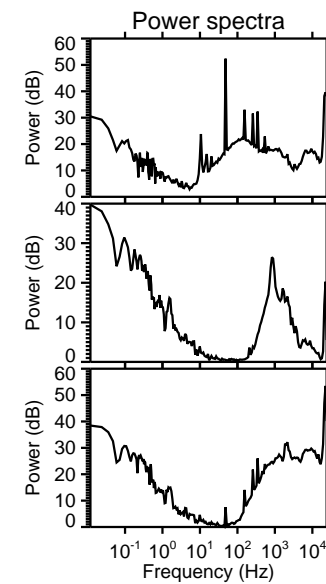
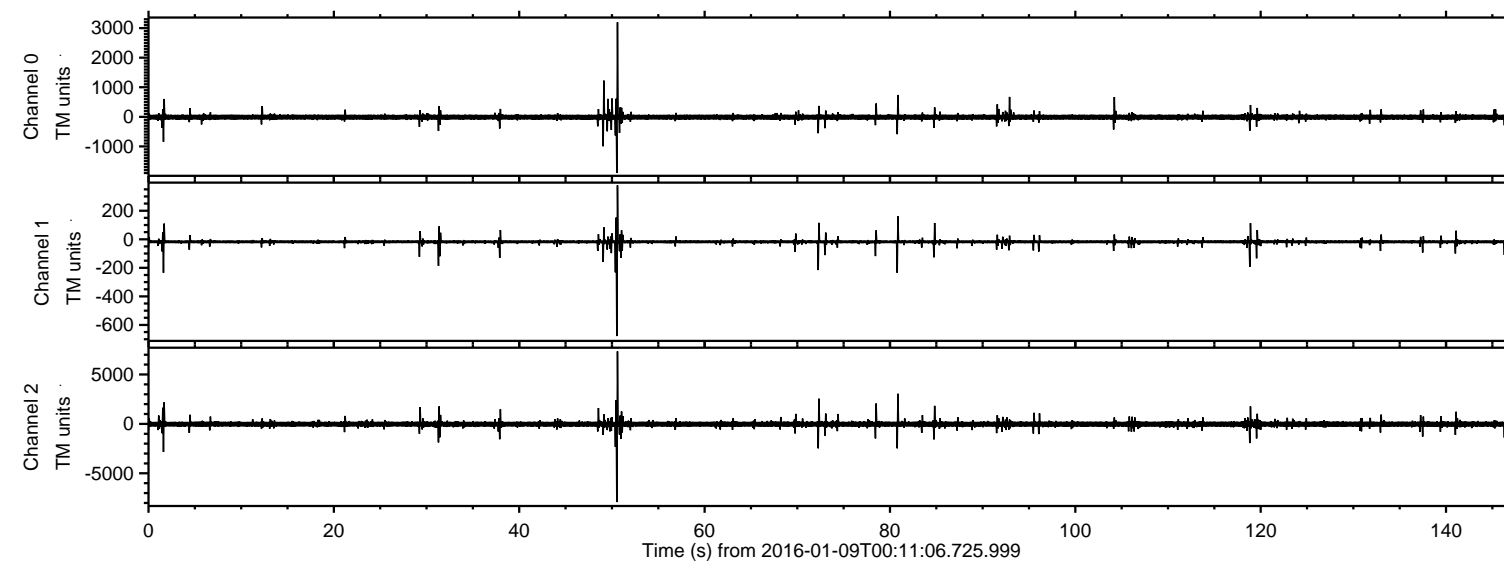


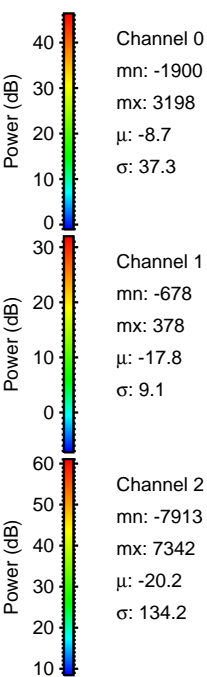
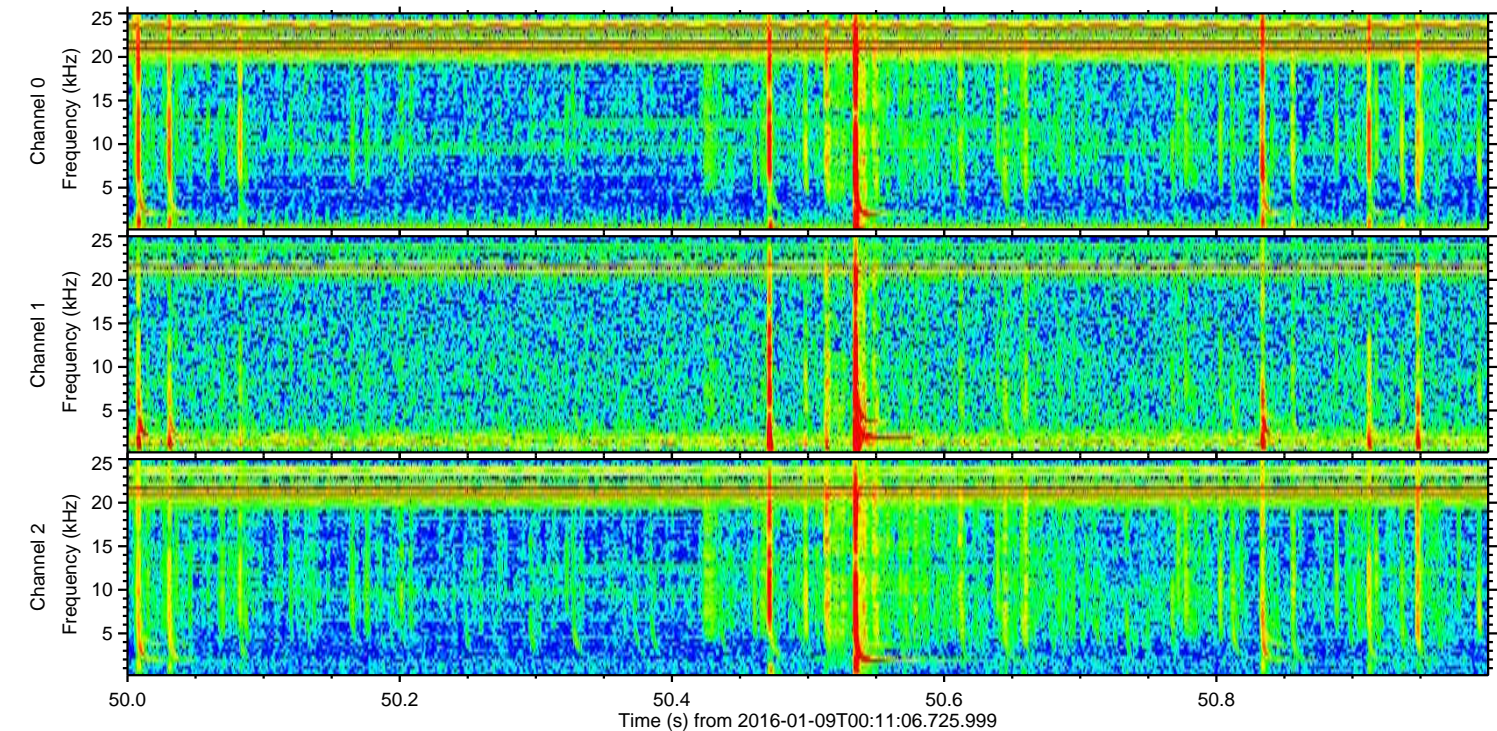
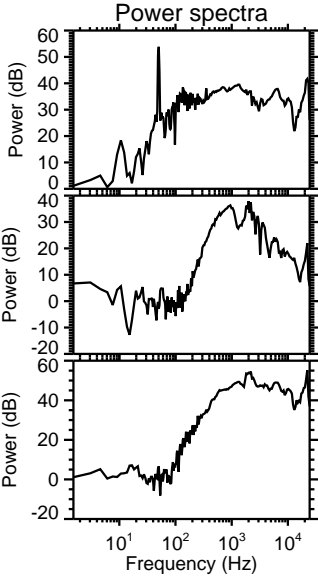
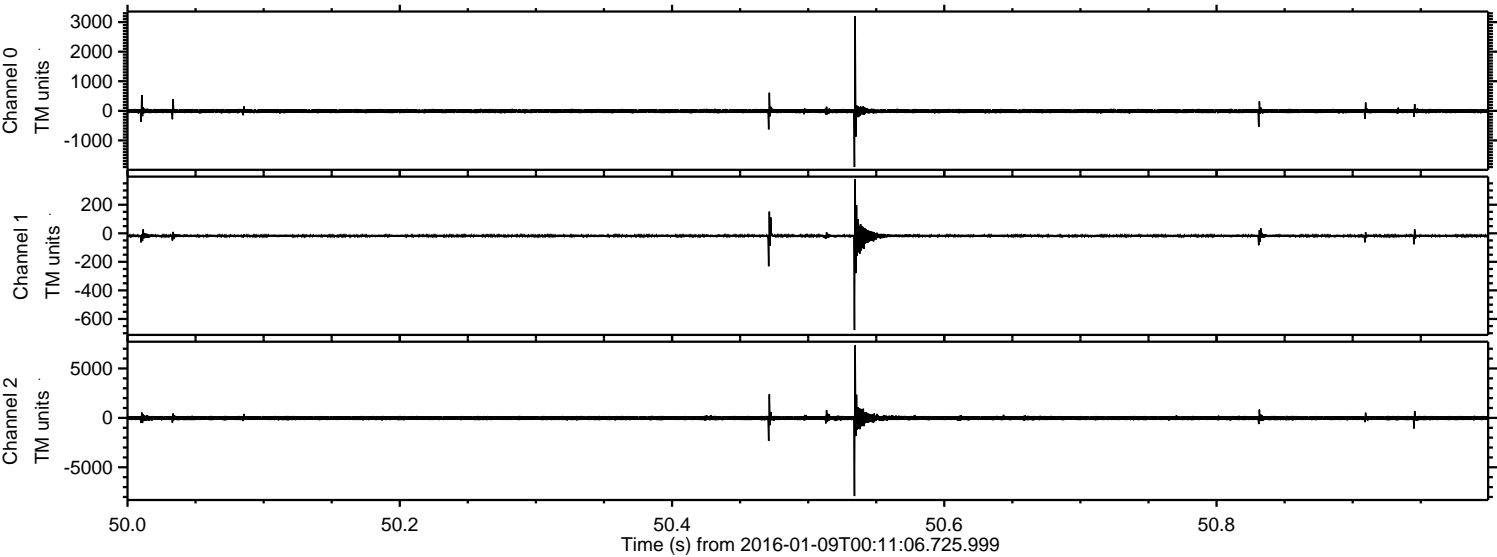
# ELMAVAN 3D WAVEFORMS (Measured data sampled at 50 kHz) 51000 packets of 144 samples from 2016-01-09T00:11:06.725.999.

Processed Thu Mar 24 00:45:42 2016 by ELM ver.2012-10-06 from 001\_\_elm20160109\_001105\_\_dat00.bin



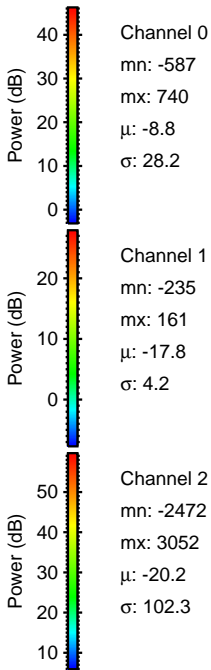
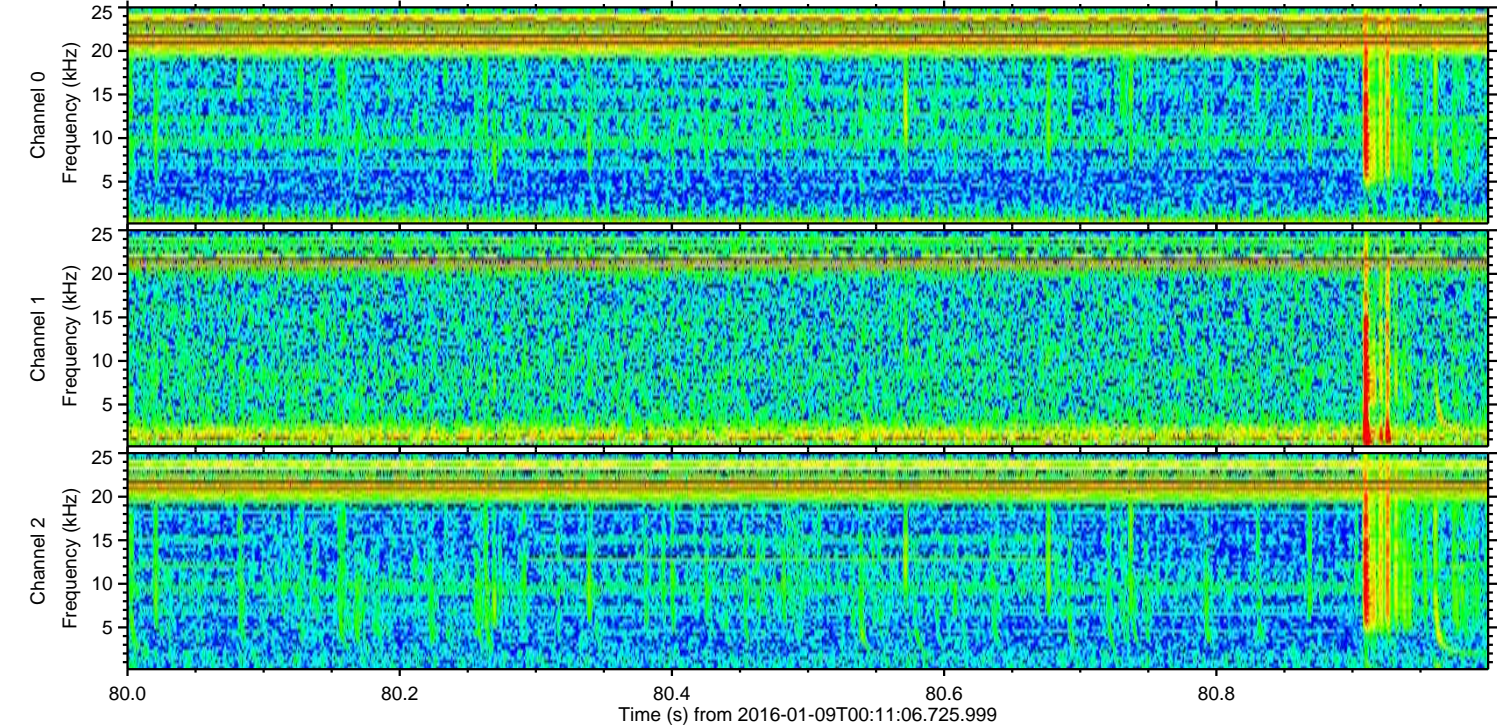
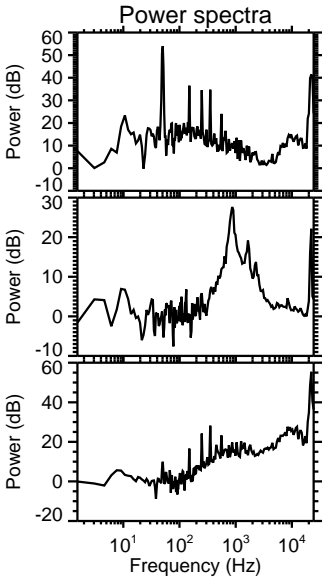
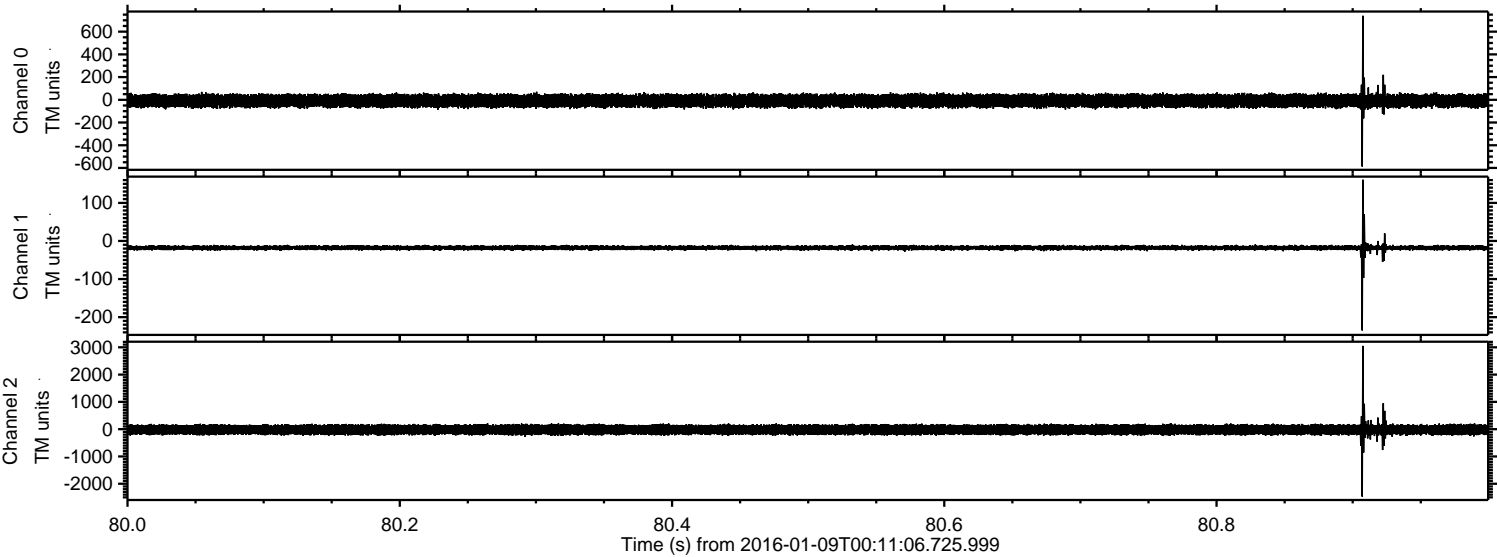


Processed Thu Mar 24 00:45:53 2016 by ELM ver.2012-10-06 from 001\_\_elm20160109\_001105\_\_dat00.bin





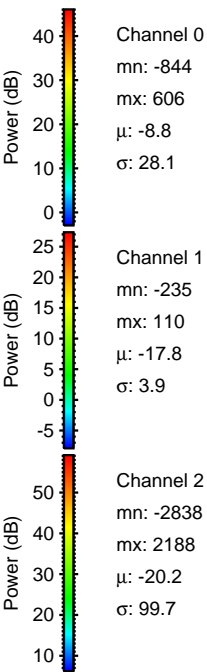
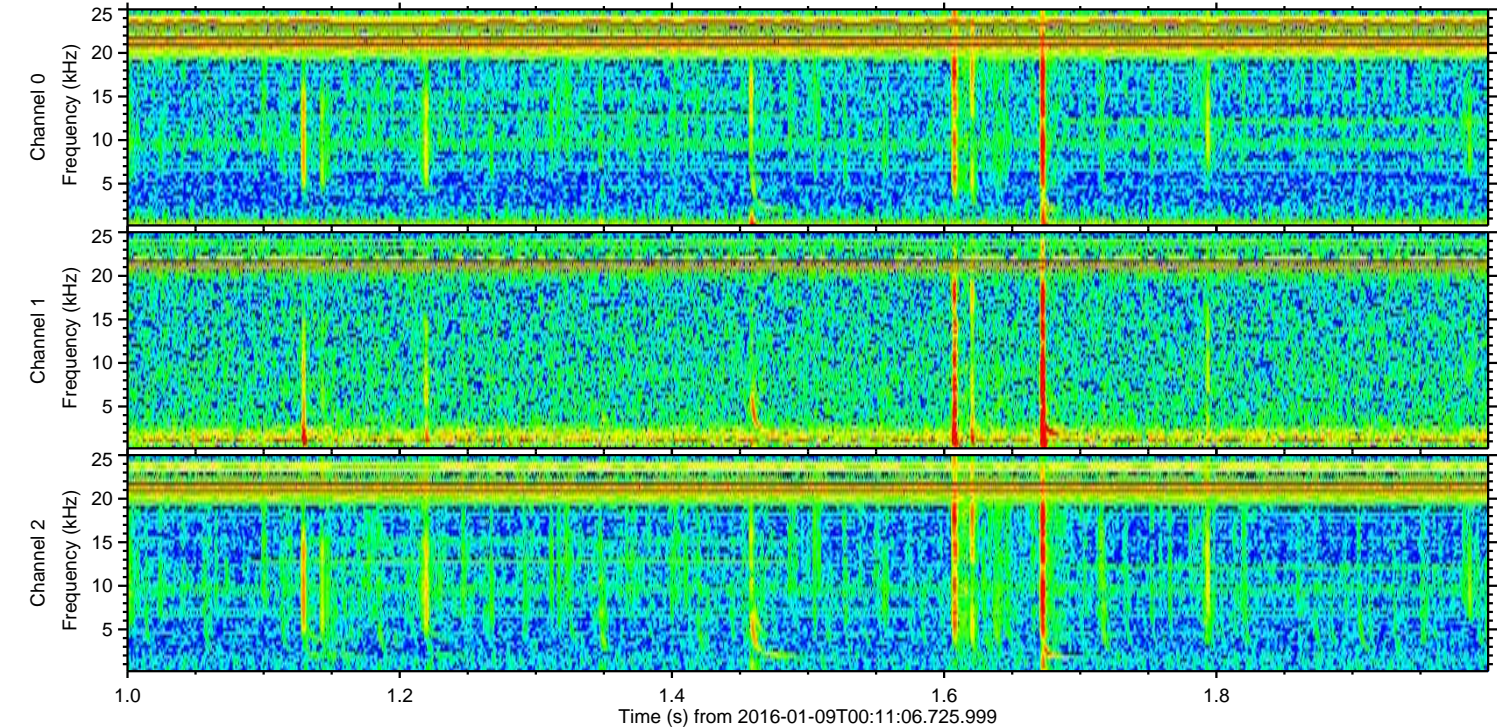
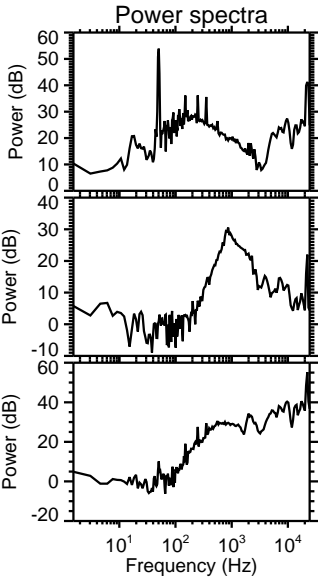
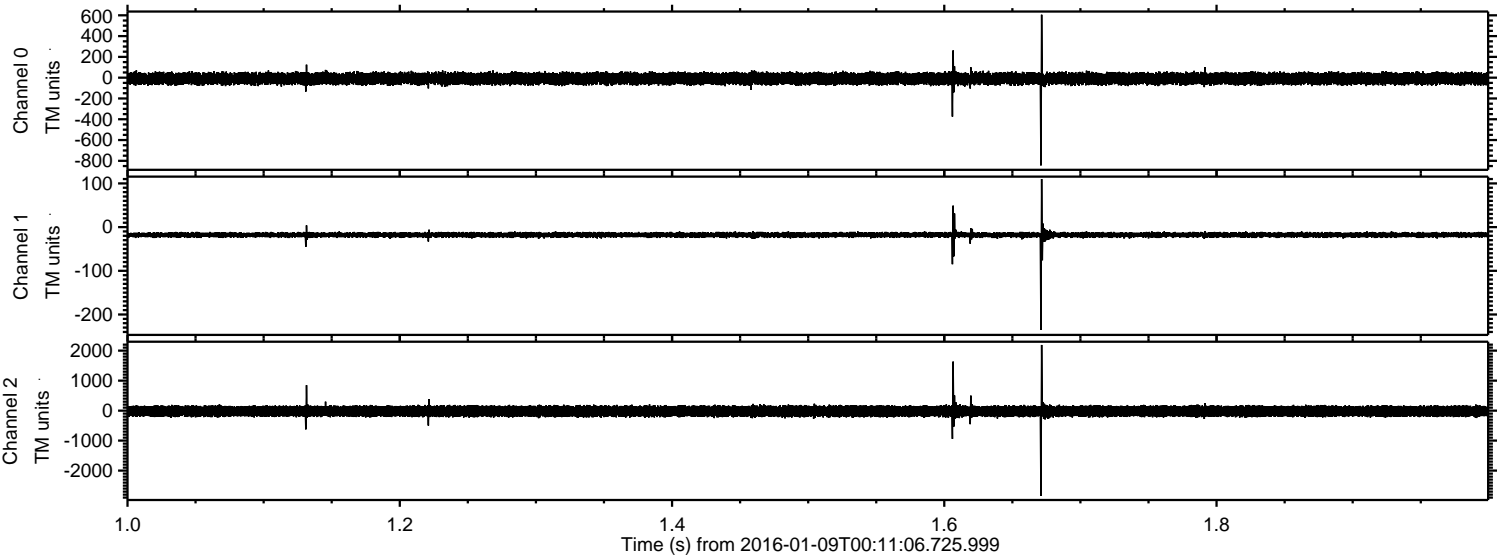
Processed Thu Mar 24 00:45:54 2016 by ELM ver.2012-10-06 from 001\_\_elm20160109\_001105\_\_dat00.bin





ELMAVAN 3D WAVEFORMS (Measured data sampled at 50 kHz) 51000 packets of 144 samples from 2016-01-09T00:11:06.725.999. Part 2/147

Processed Thu Mar 24 00:45:55 2016 by ELM ver.2012-10-06 from 001\_\_elm20160109\_001105\_\_dat00.bin



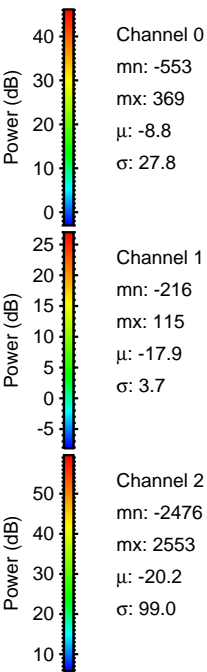
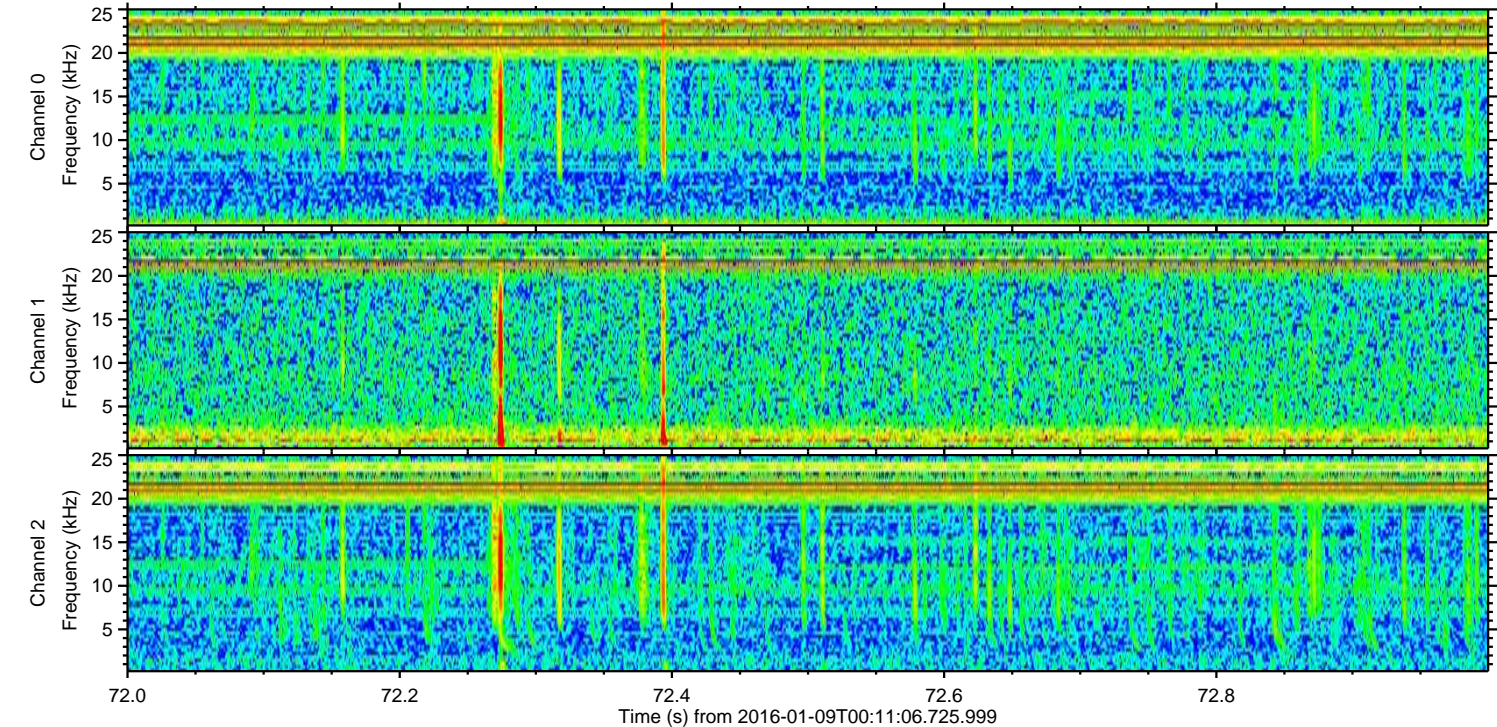
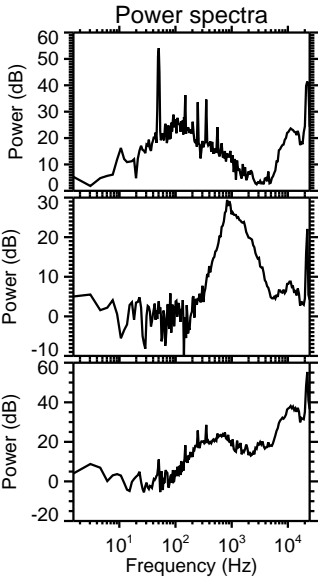
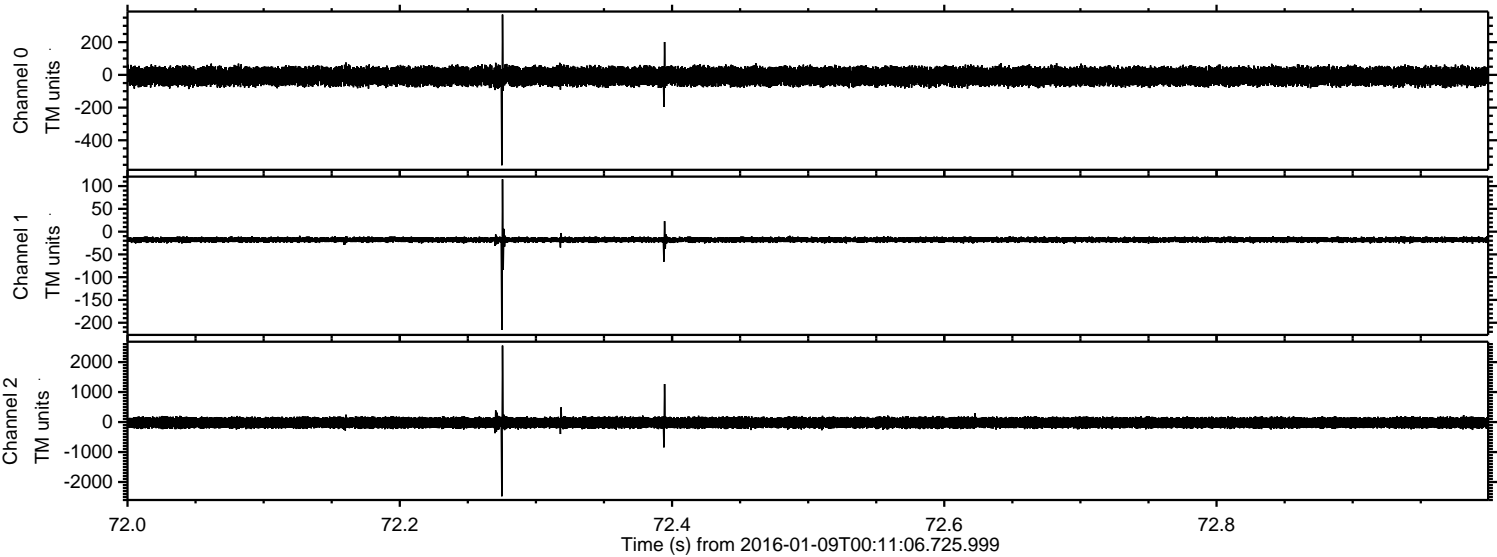
Channel 0  
mn: -844  
mx: 606  
 $\mu$ : -8.8  
 $\sigma$ : 28.1

Channel 1  
mn: -235  
mx: 110  
 $\mu$ : -17.8  
 $\sigma$ : 3.9

Channel 2  
mn: -2838  
mx: 2188  
 $\mu$ : -20.2  
 $\sigma$ : 99.7

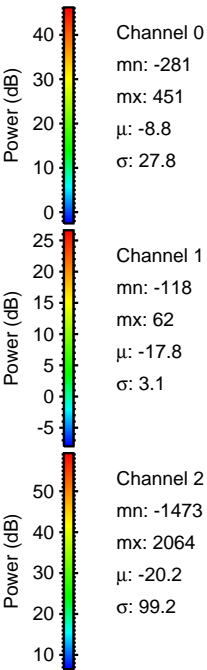
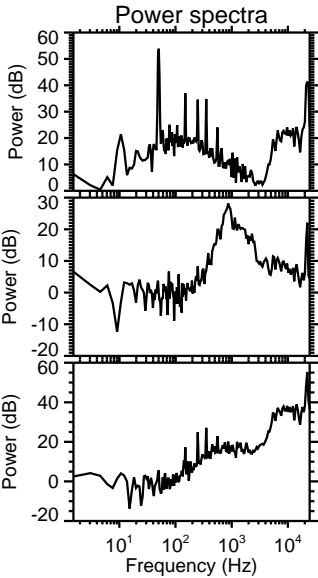
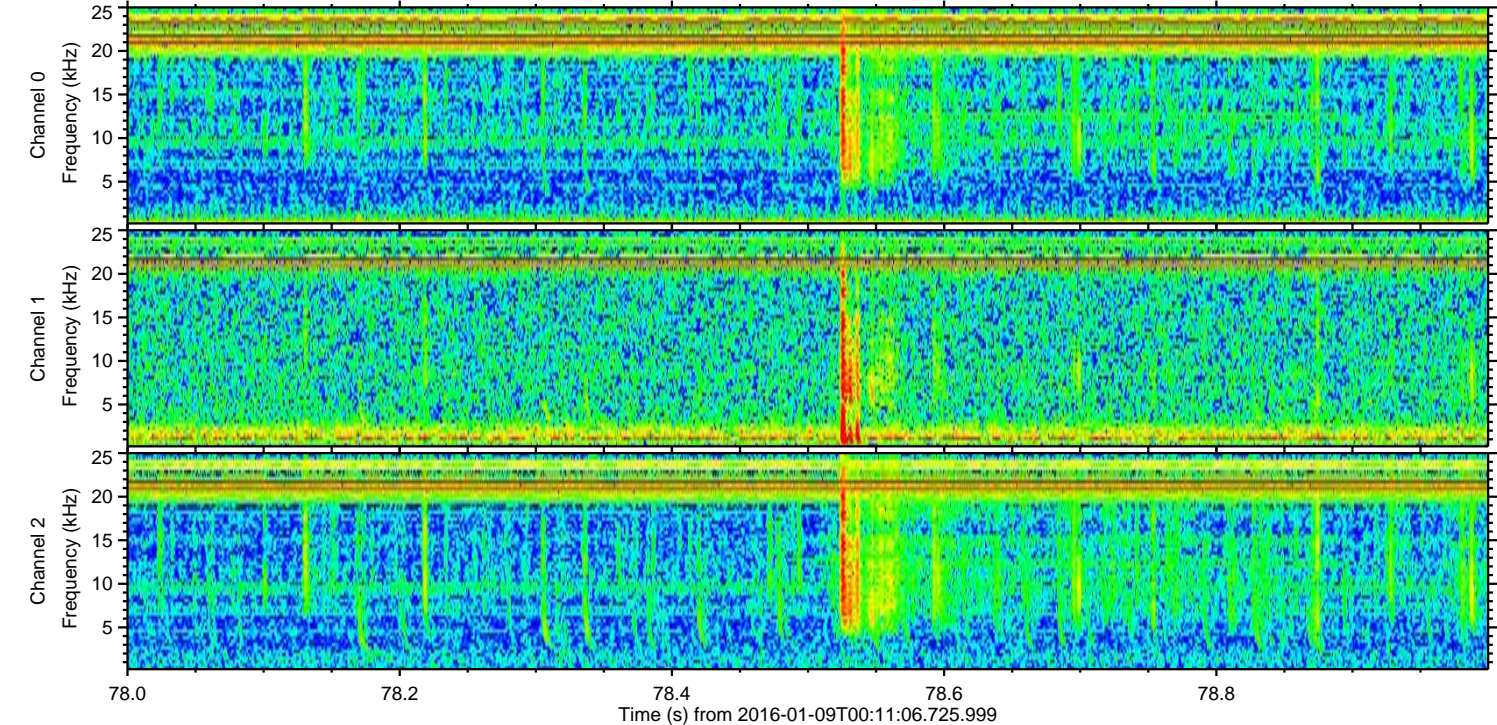
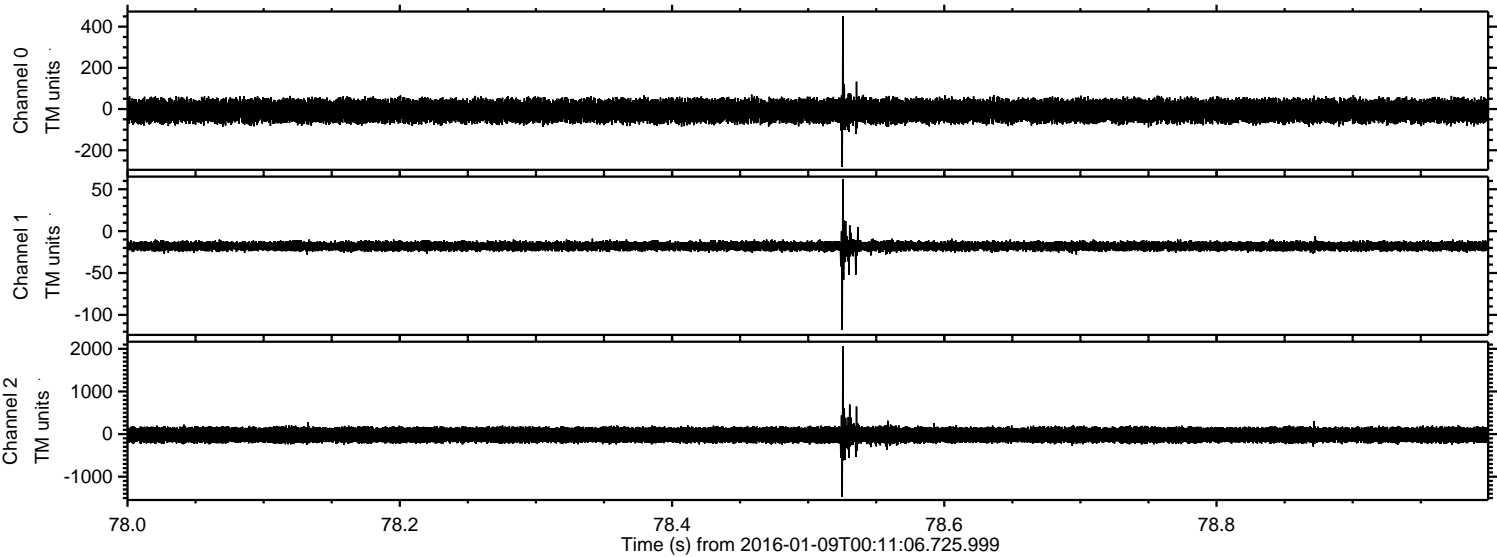


Processed Thu Mar 24 00:45:56 2016 by ELM ver.2012-10-06 from 001\_\_elm20160109\_001105\_\_dat00.bin





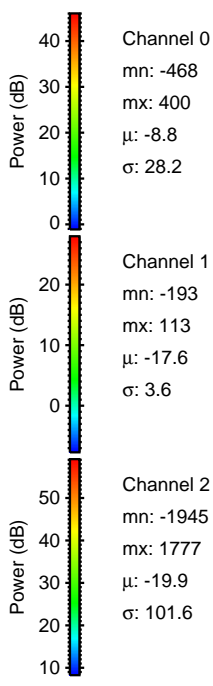
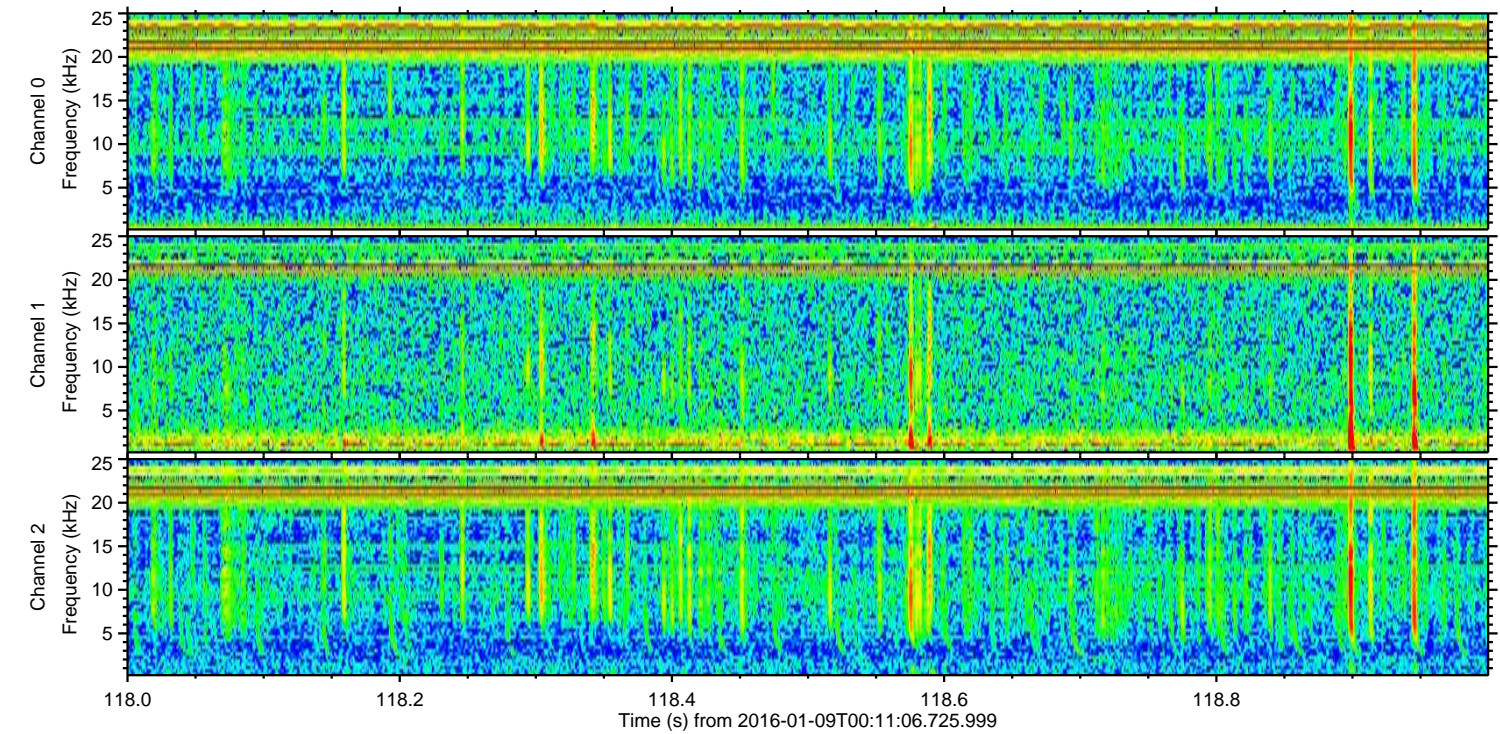
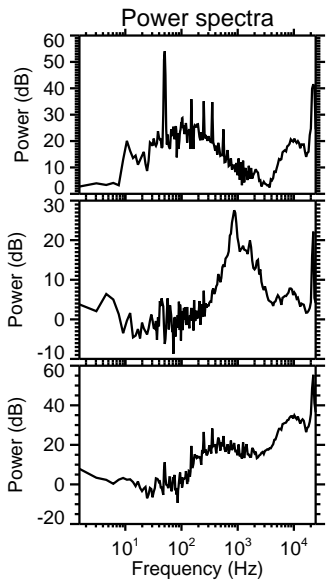
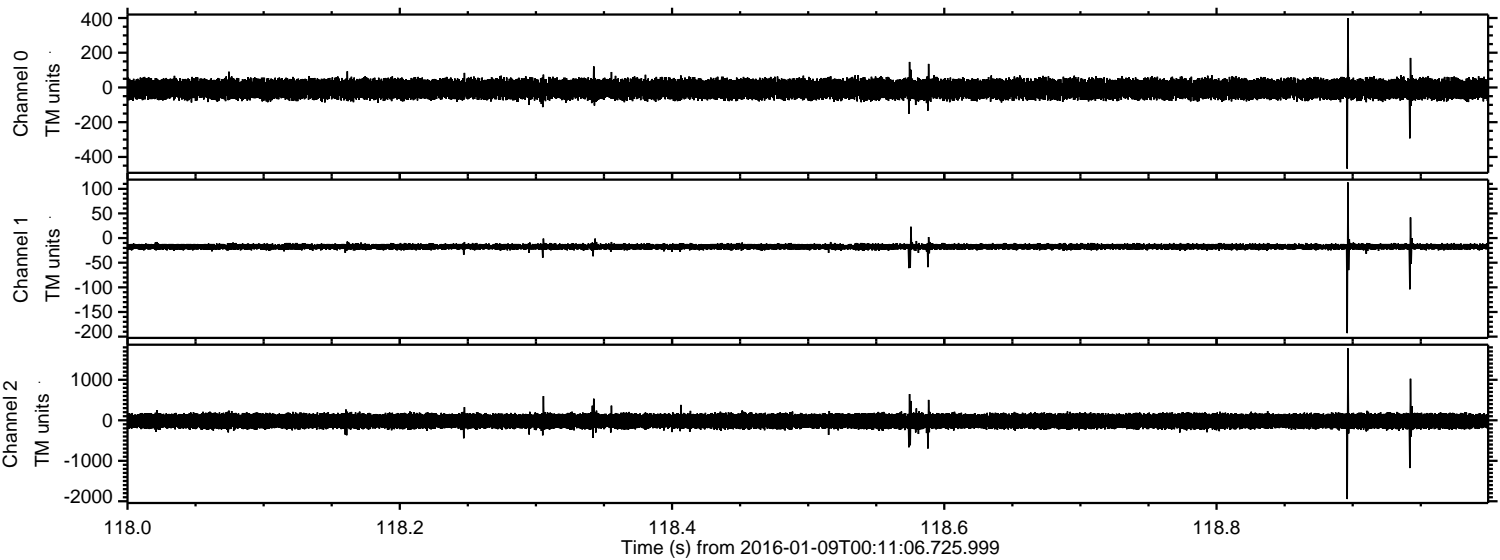
Processed Thu Mar 24 00:45:57 2016 by ELM ver.2012-10-06 from 001\_\_elm20160109\_001105\_\_dat00.bin





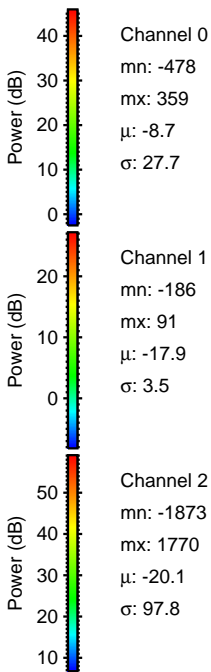
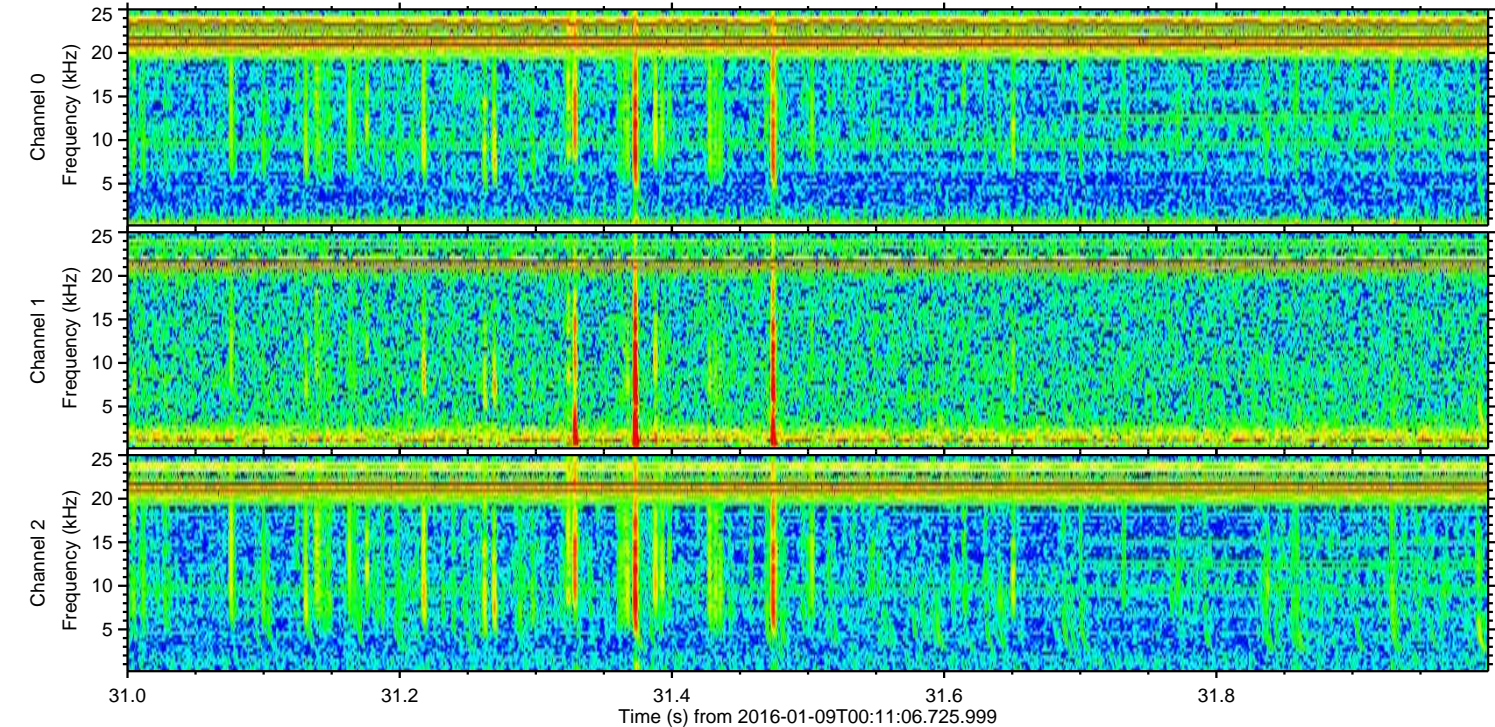
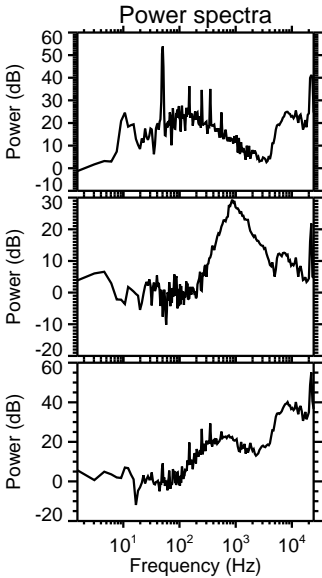
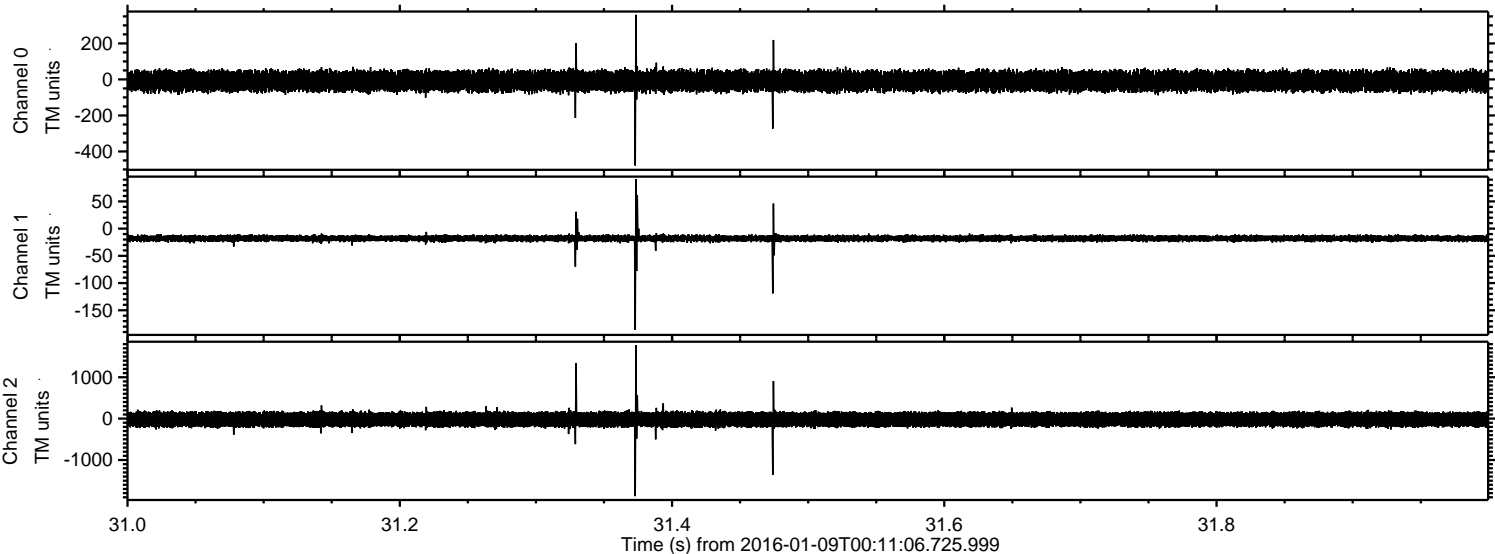
ELMAVAN 3D WAVEFORMS (Measured data sampled at 50 kHz) 51000 packets of 144 samples from 2016-01-09T00:11:06.725.999. Part 119/147

Processed Thu Mar 24 00:45:58 2016 by ELM ver.2012-10-06 from 001\_\_elm20160109\_001105\_\_dat00.bin



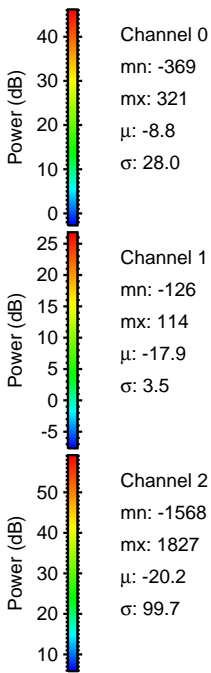
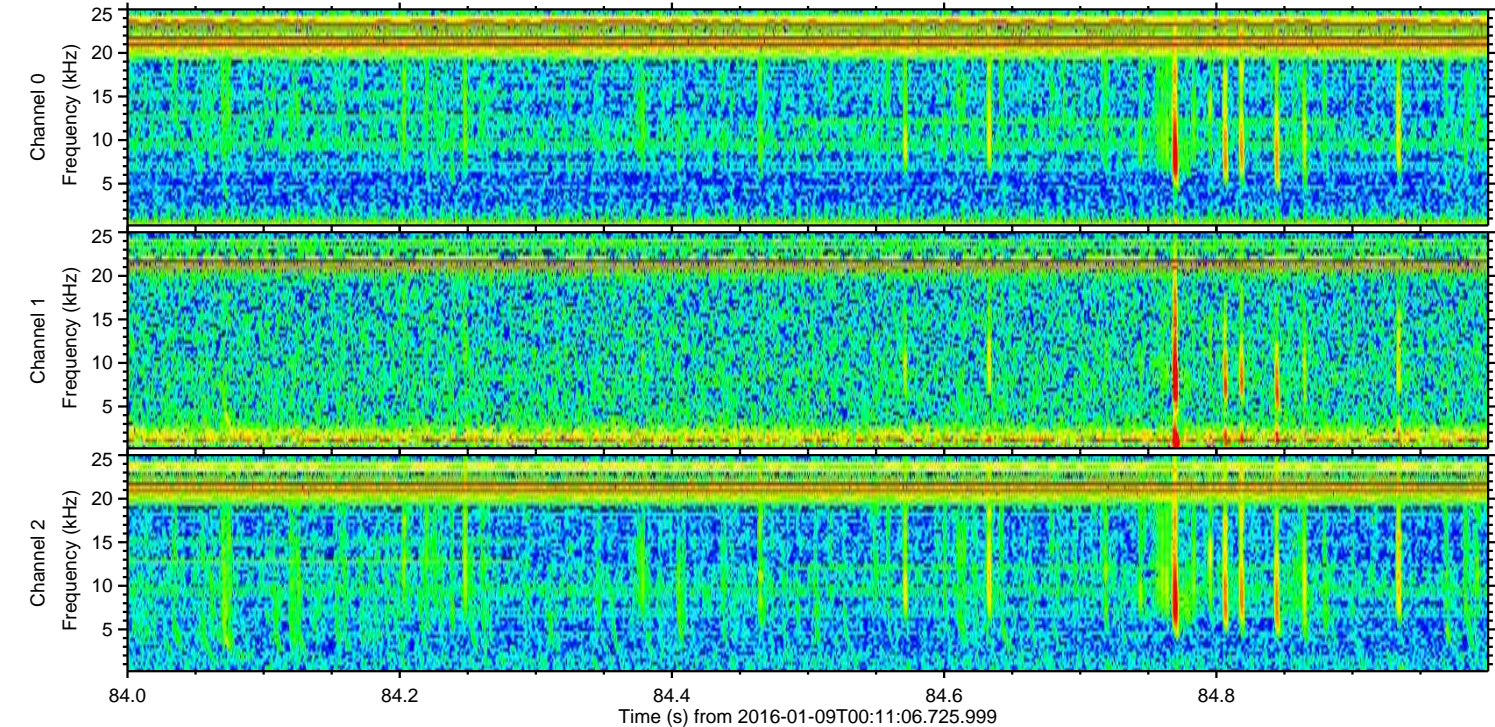
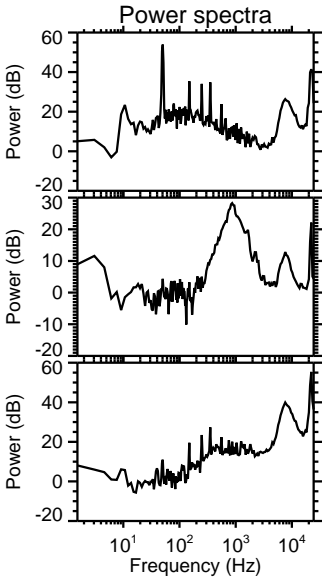
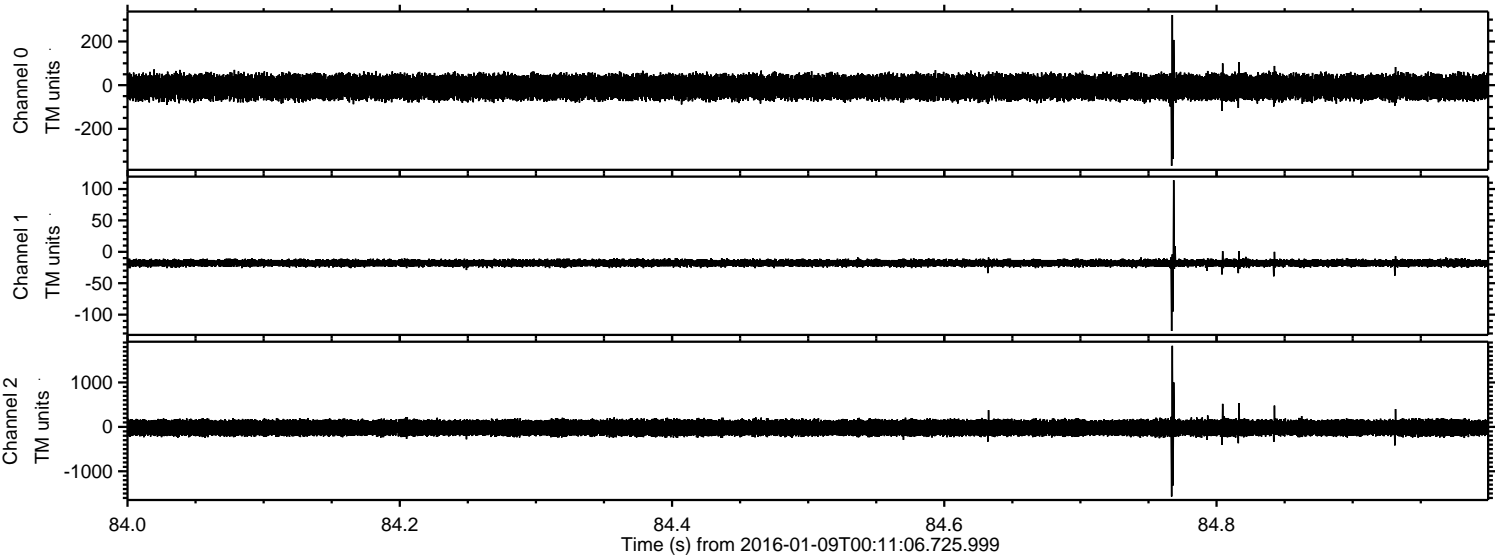


Processed Thu Mar 24 00:45:59 2016 by ELM ver.2012-10-06 from 001\_\_elm20160109\_001105\_\_dat00.bin



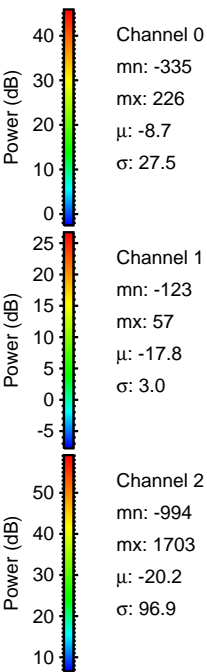
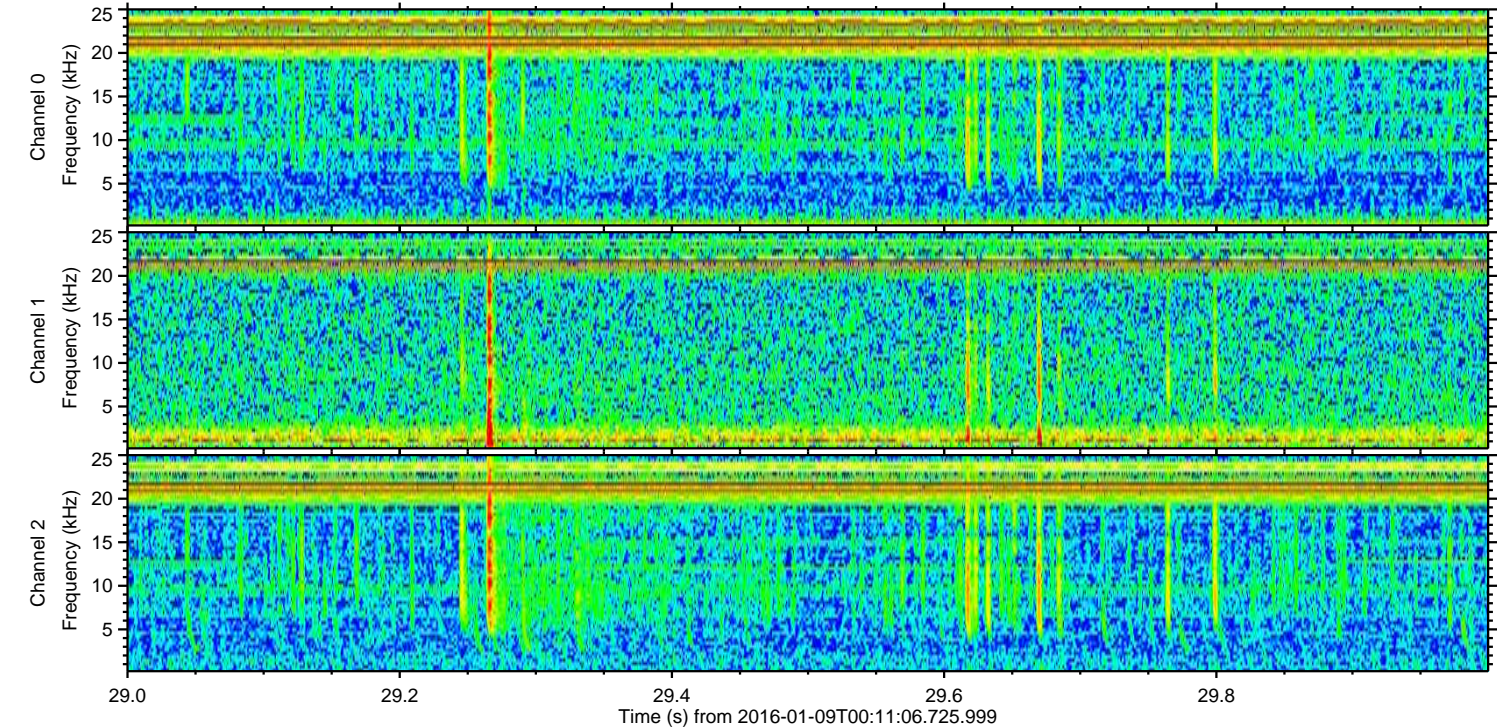
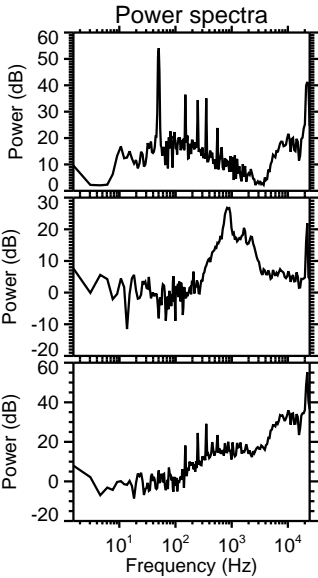
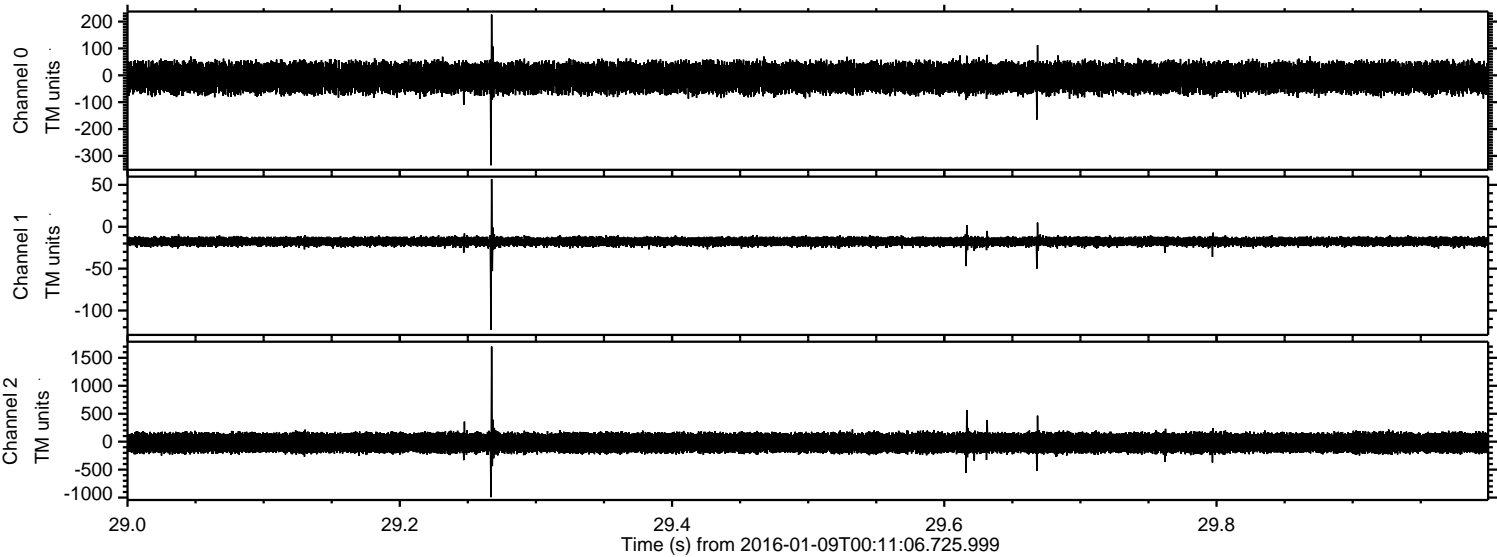


Processed Thu Mar 24 00:46:00 2016 by ELM ver.2012-10-06 from 001\_\_elm20160109\_001105\_\_dat00.bin





Processed Thu Mar 24 00:46:01 2016 by ELM ver.2012-10-06 from 001\_\_elm20160109\_001105\_\_dat00.bin





Processed Thu Mar 24 00:46:02 2016 by ELM ver.2012-10-06 from 001\_\_elm20160109\_001105\_\_dat00.bin

