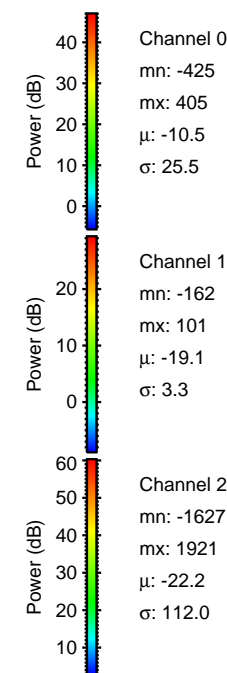
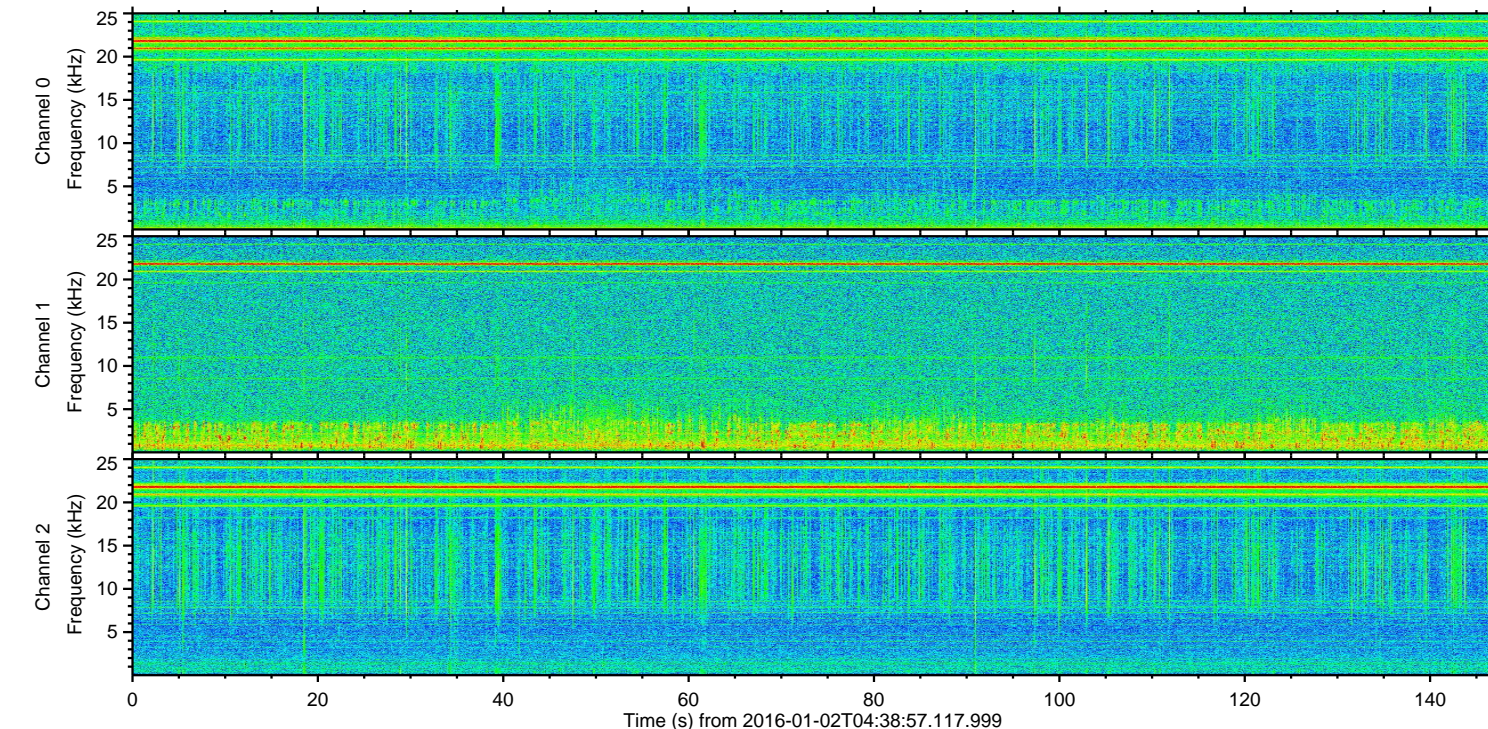
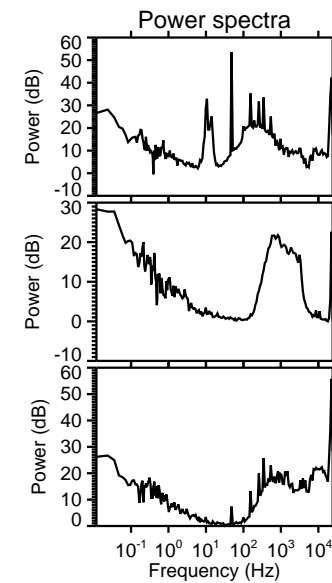
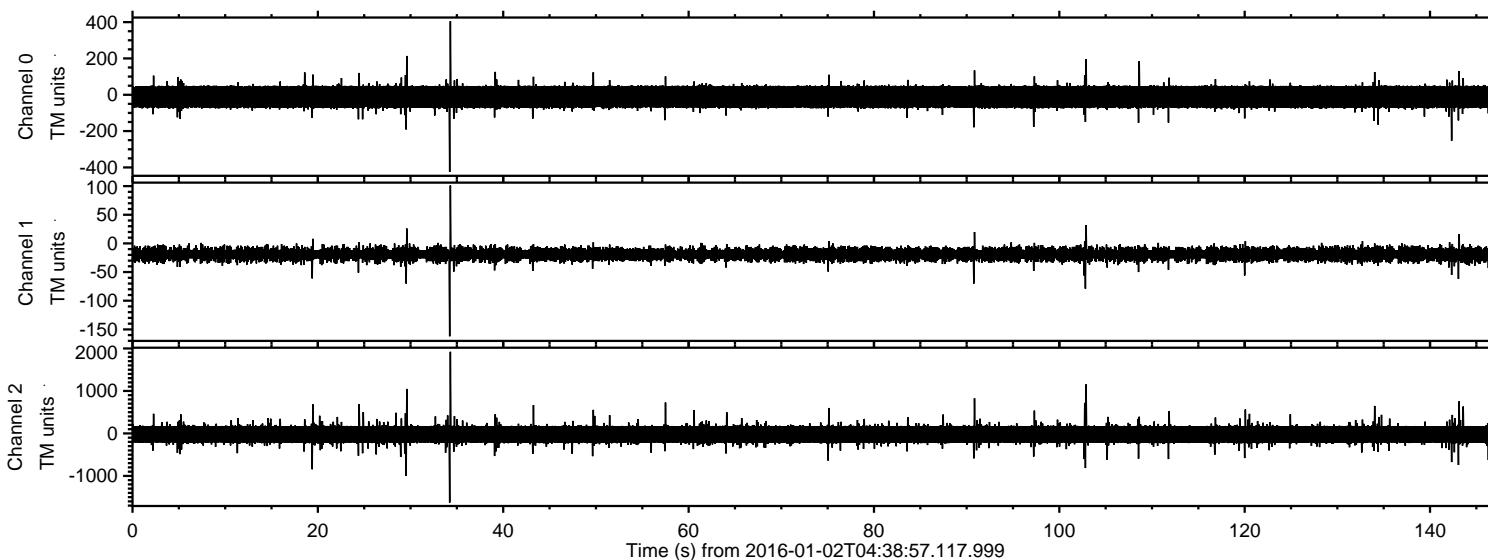


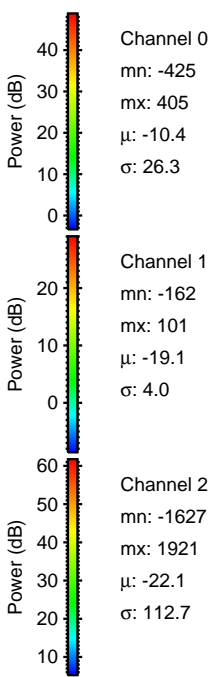
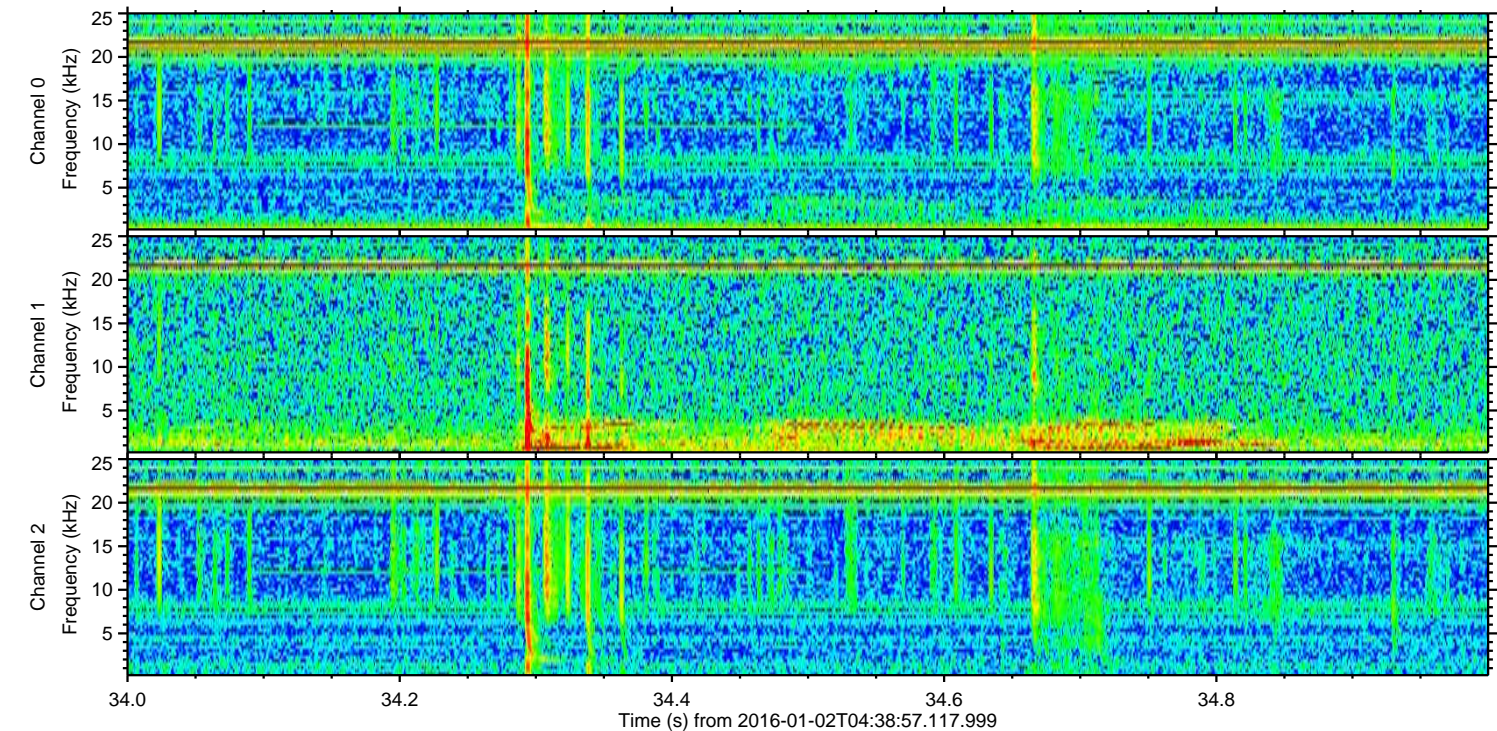
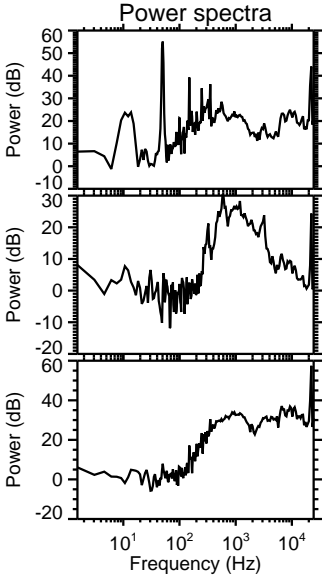
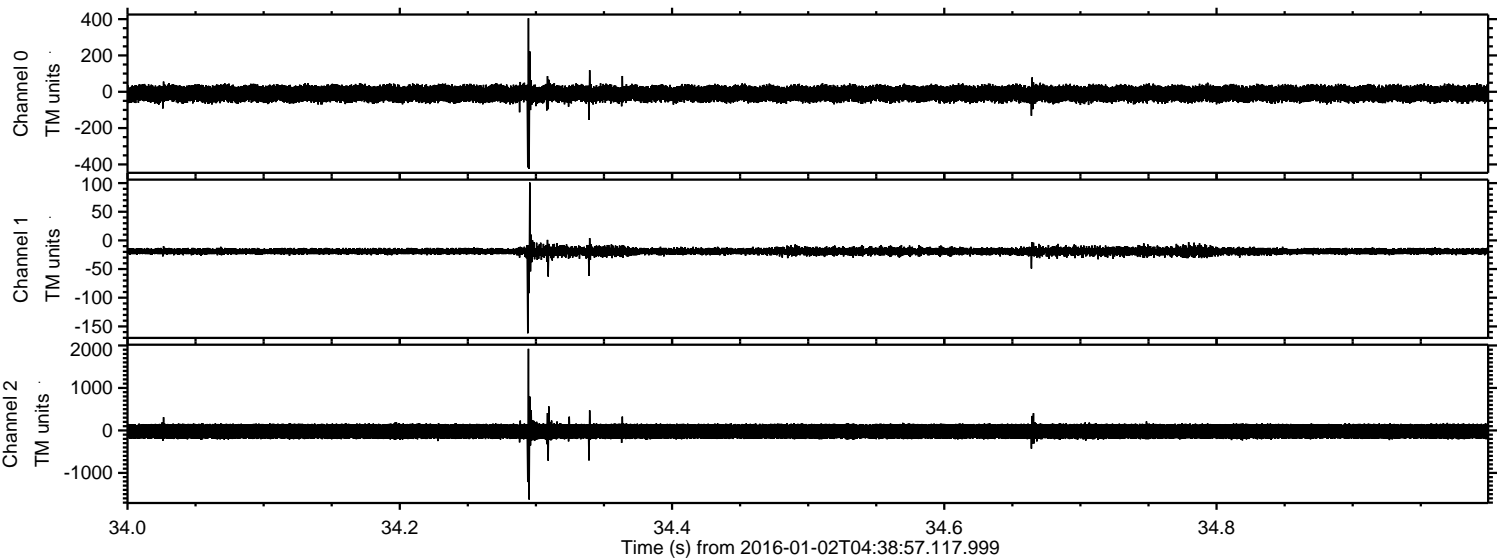
# ELMAVAN 3D WAVEFORMS (Measured data sampled at 50 kHz) 51000 packets of 144 samples from 2016-01-02T04:38:57.117.999.

Processed Mon Mar 21 10:18:20 2016 by ELM ver.2012-10-06 from 001\_\_elm20160102\_043856\_\_dat00.bin



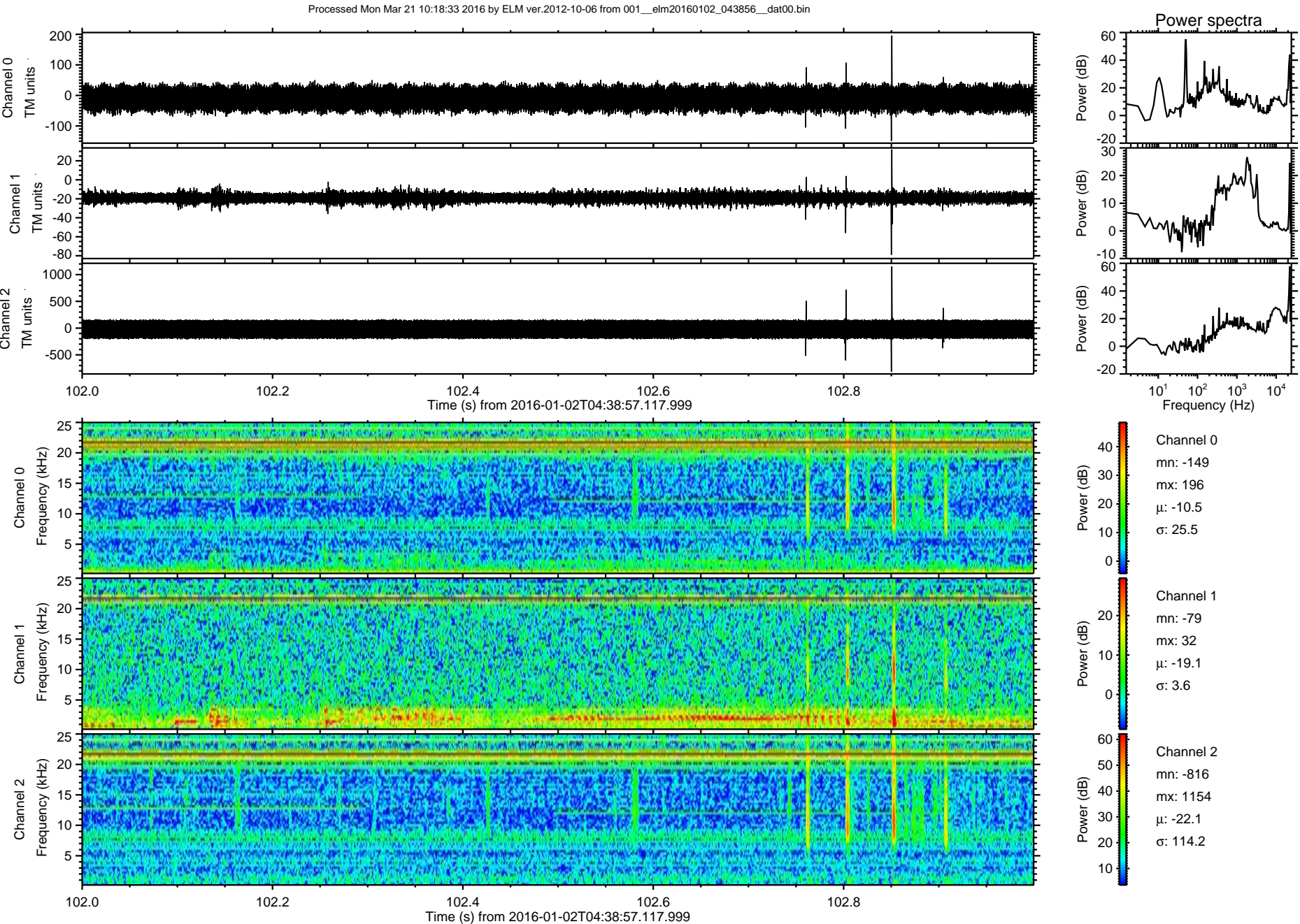


Processed Mon Mar 21 10:18:32 2016 by ELM ver.2012-10-06 from 001\_\_elm20160102\_043856\_\_dat00.bin



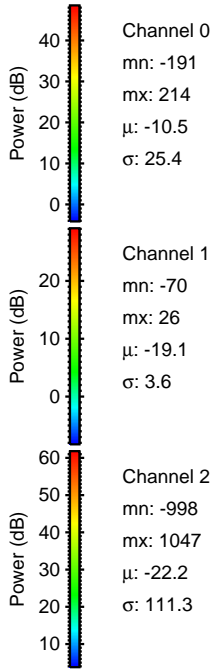
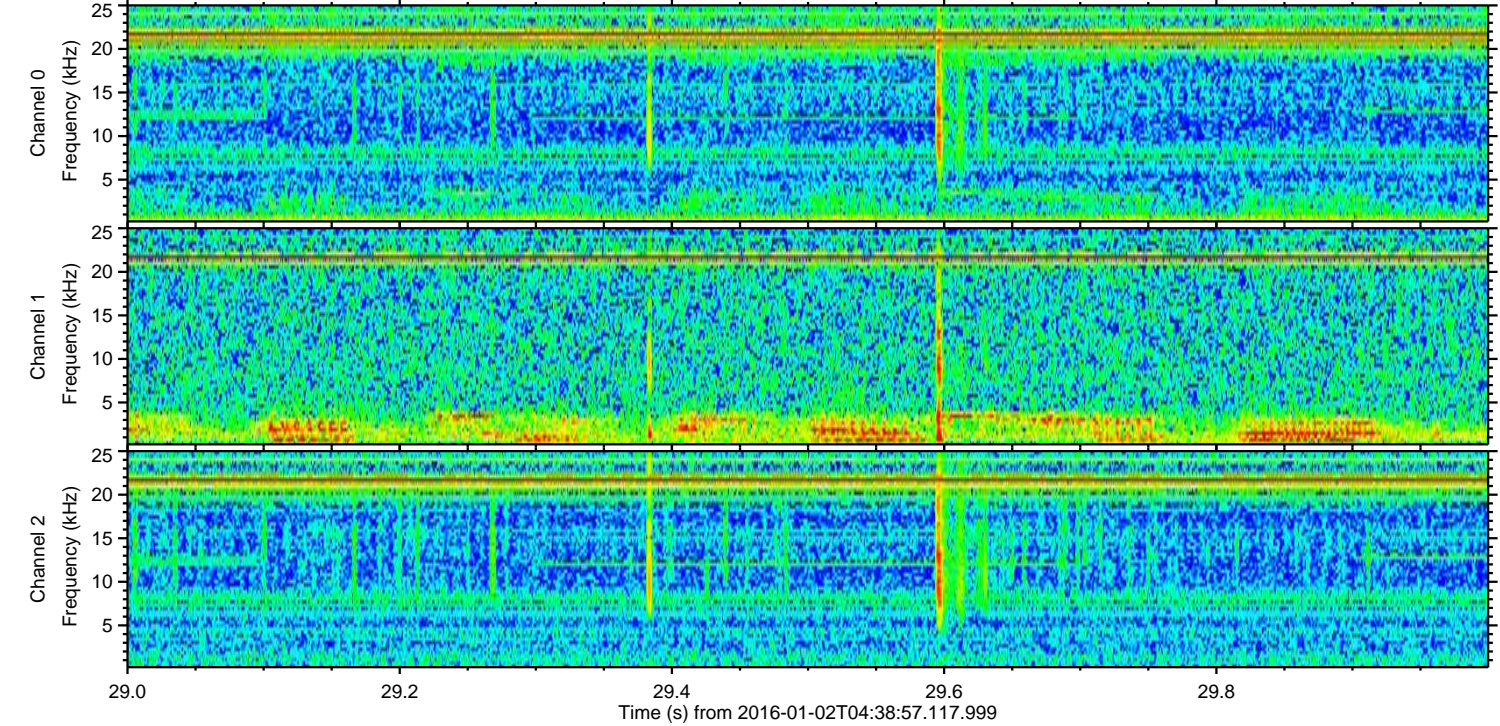
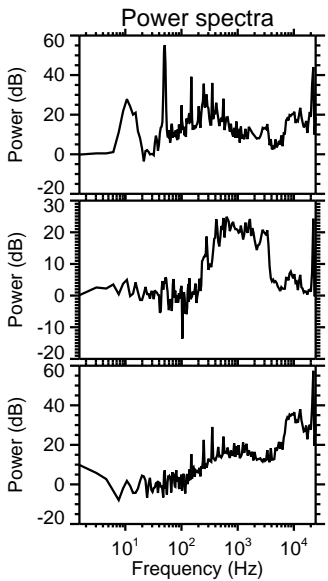
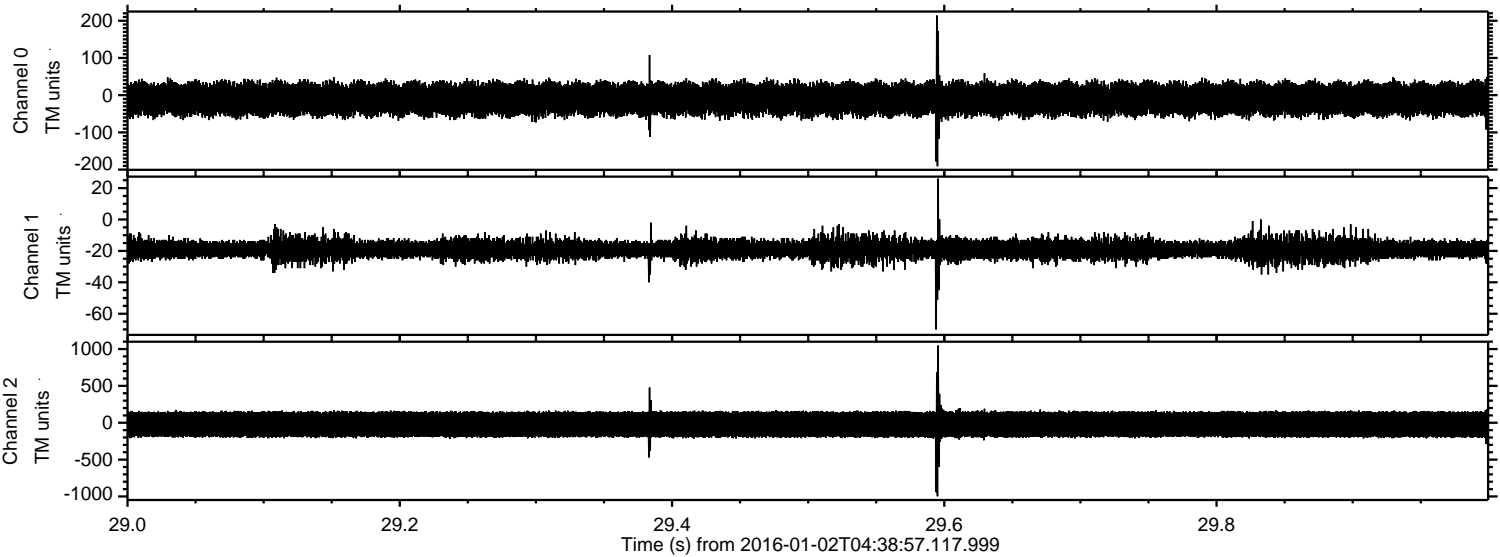


ELMAVAN 3D WAVEFORMS (Measured data sampled at 50 kHz) 51000 packets of 144 samples from 2016-01-02T04:38:57.117.999. Part 103/147



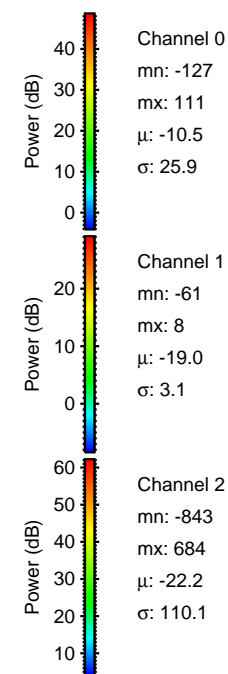
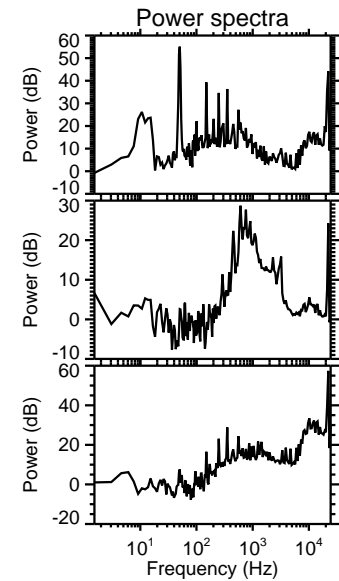
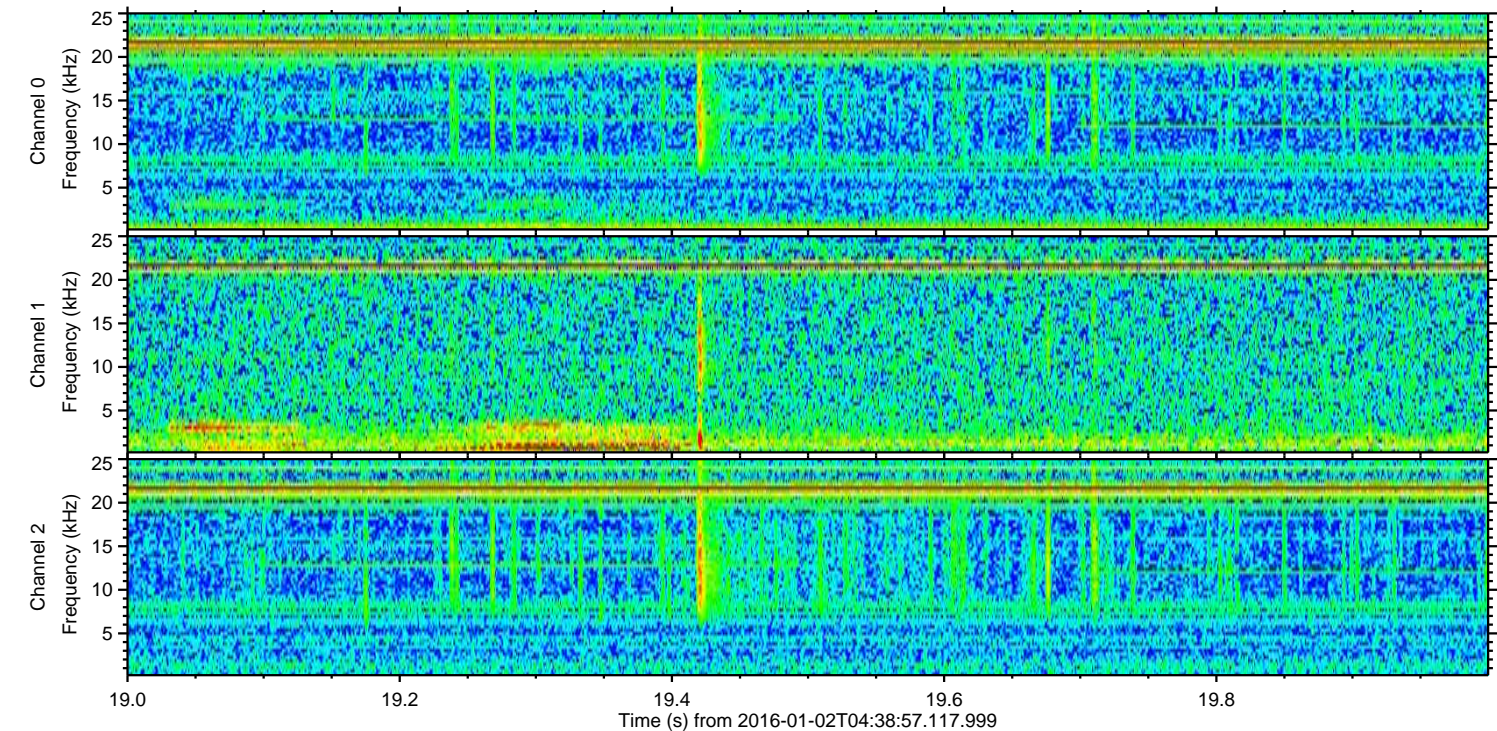
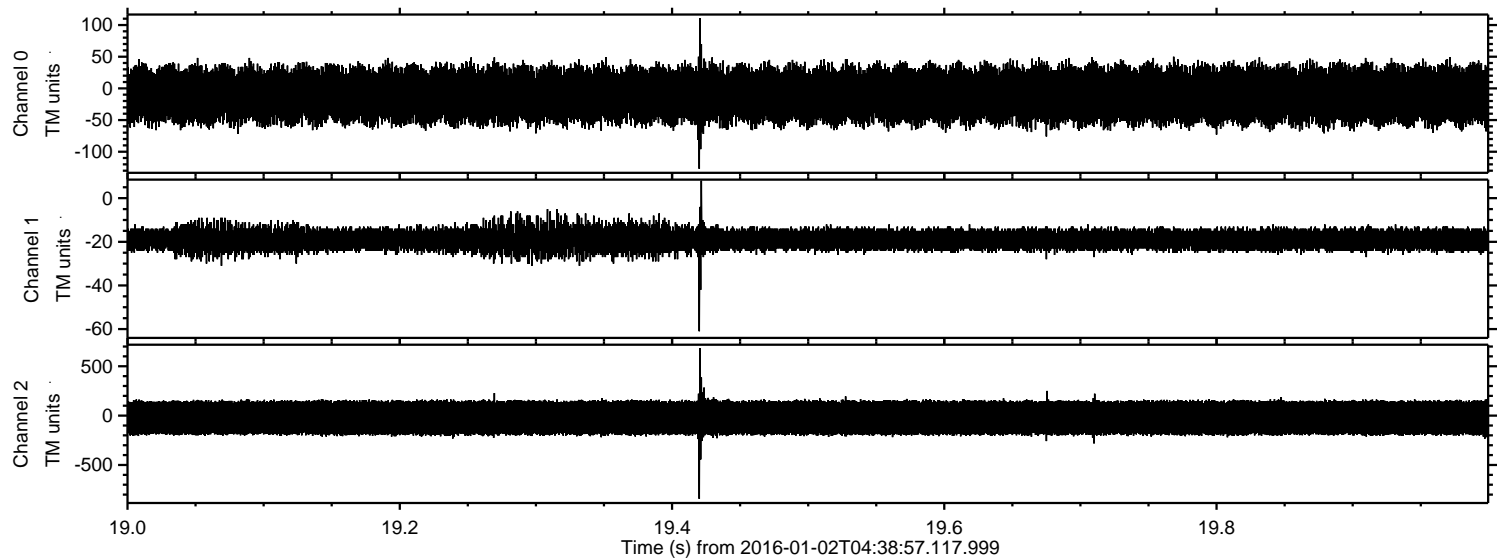


Processed Mon Mar 21 10:18:33 2016 by ELM ver.2012-10-06 from 001\_\_elm20160102\_043856\_\_dat00.bin





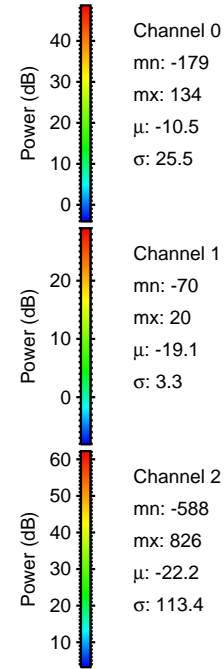
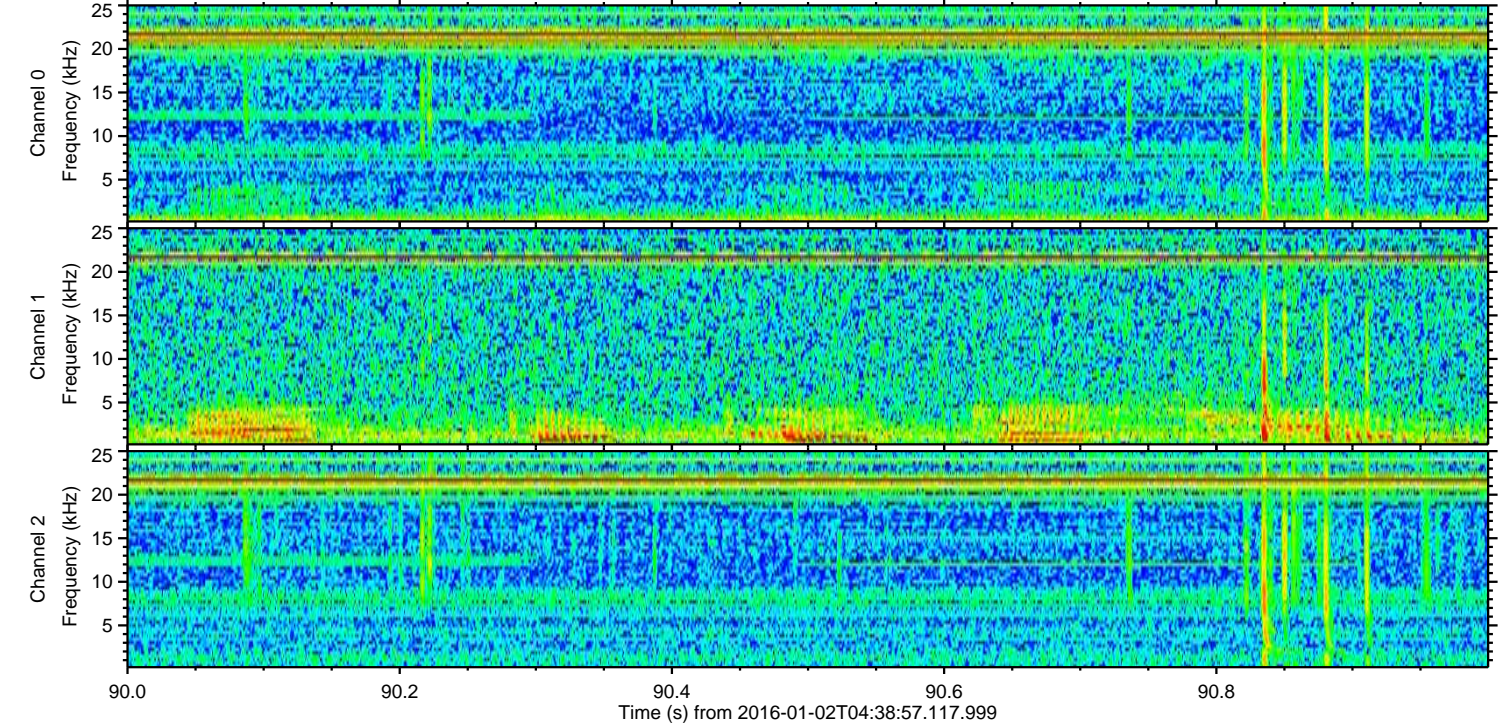
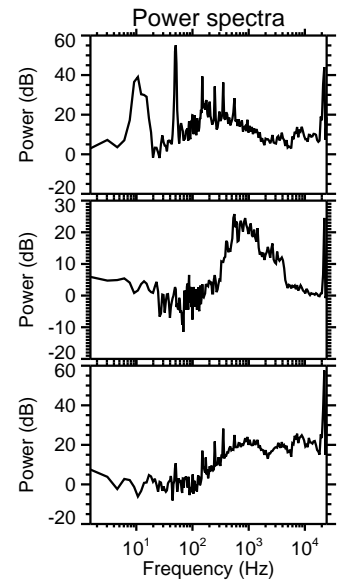
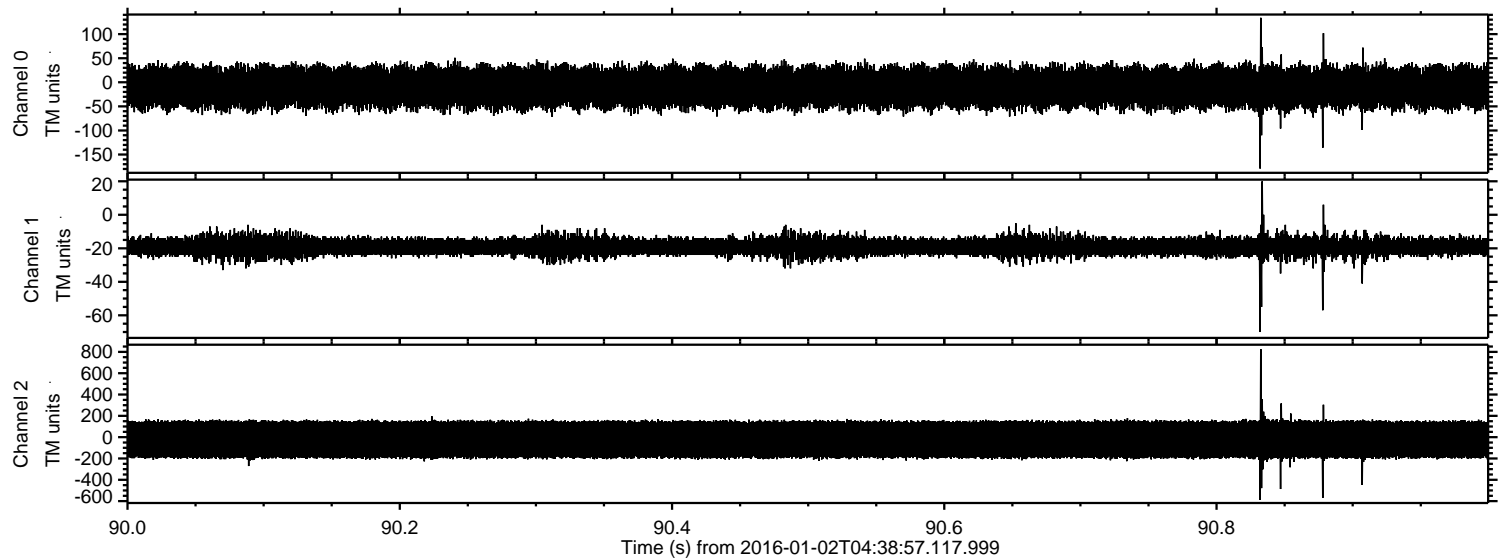
Processed Mon Mar 21 10:18:34 2016 by ELM ver.2012-10-06 from 001\_\_elm20160102\_043856\_\_dat00.bin





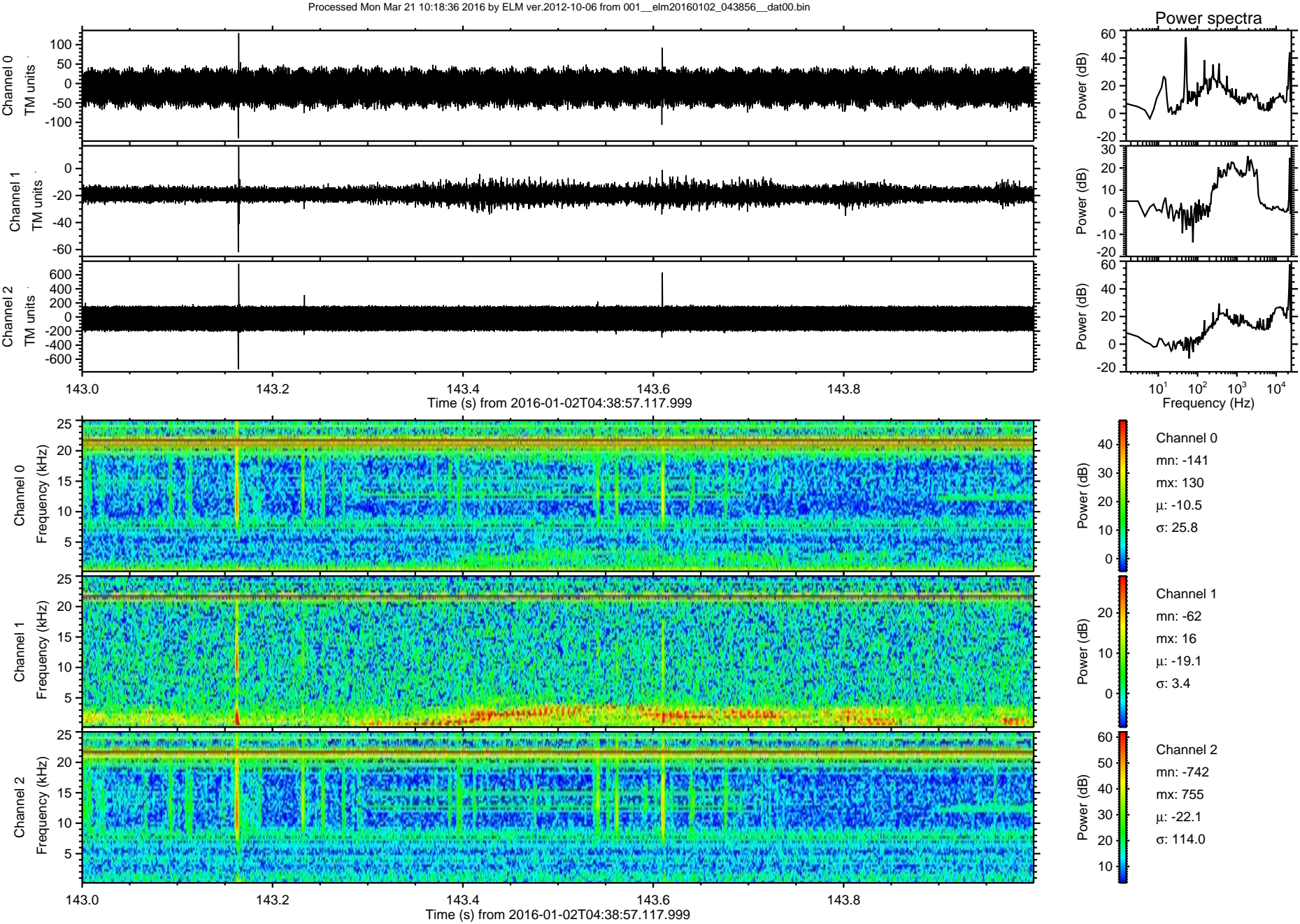
ELMAVAN 3D WAVEFORMS (Measured data sampled at 50 kHz) 51000 packets of 144 samples from 2016-01-02T04:38:57.117.999. Part 91/147

Processed Mon Mar 21 10:18:35 2016 by ELM ver.2012-10-06 from 001\_\_elm20160102\_043856\_\_dat00.bin



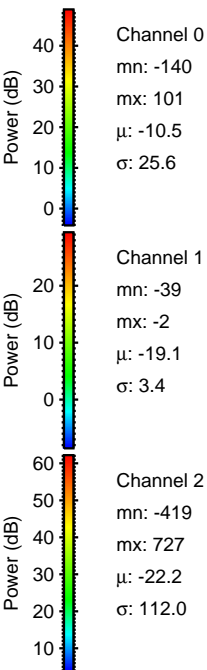
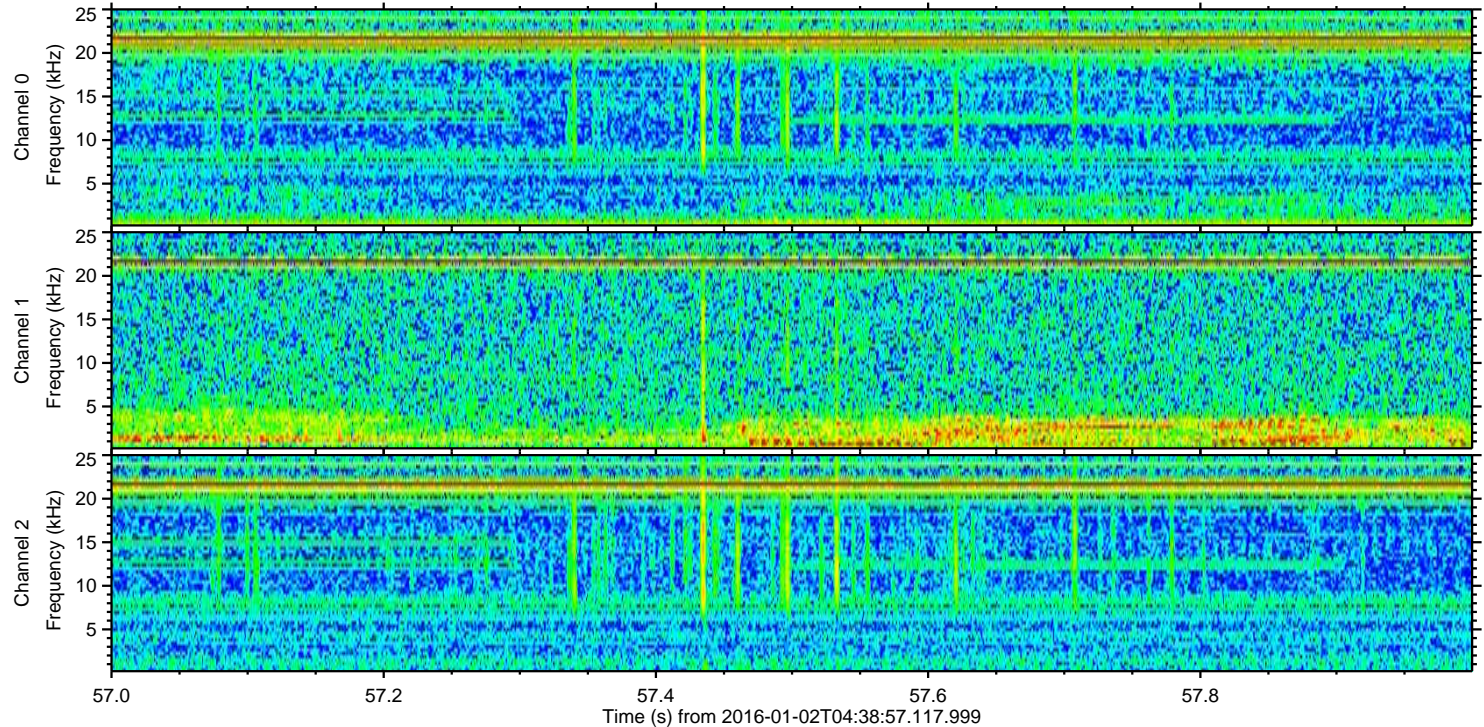
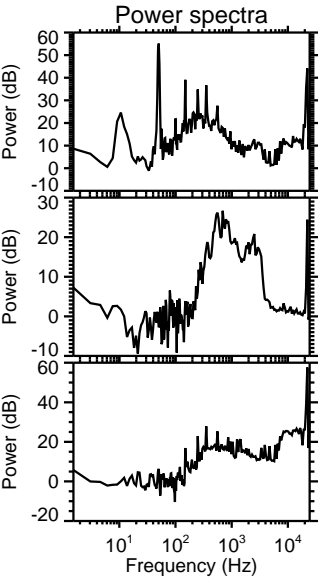
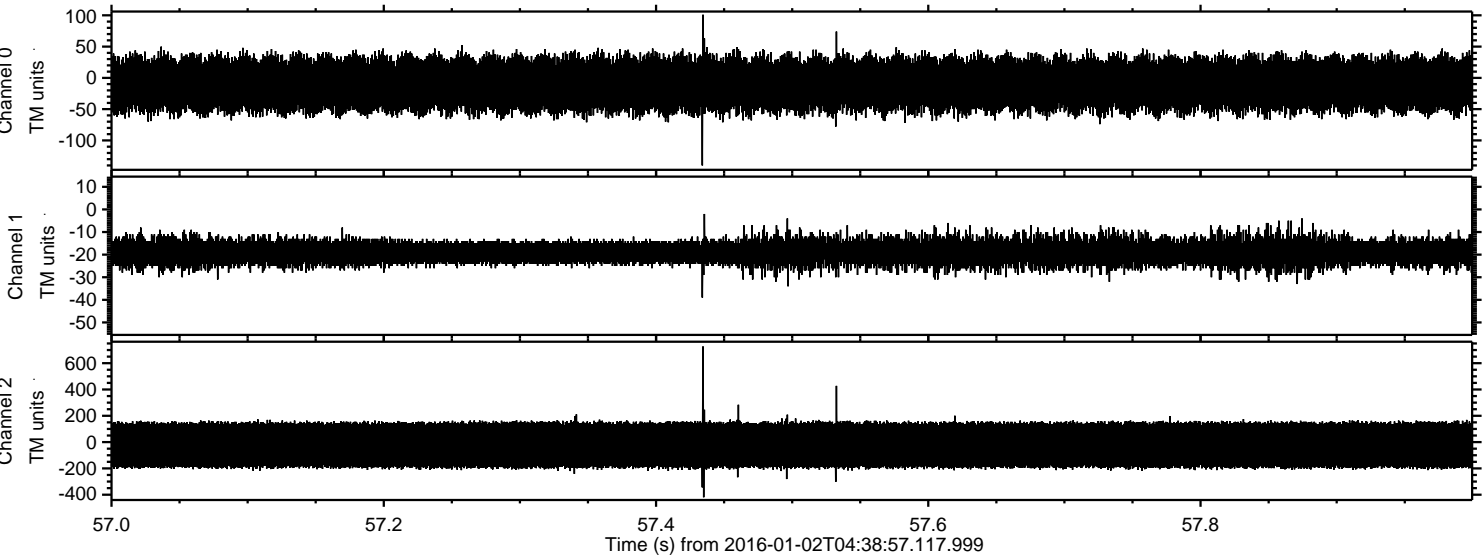


ELMAVAN 3D WAVEFORMS (Measured data sampled at 50 kHz) 51000 packets of 144 samples from 2016-01-02T04:38:57.117.999. Part 144/147



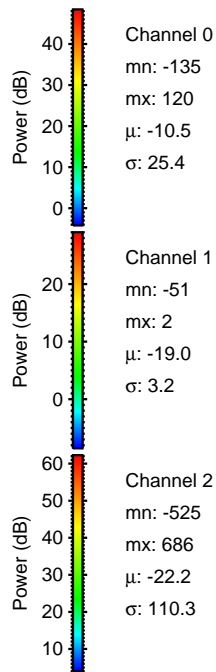
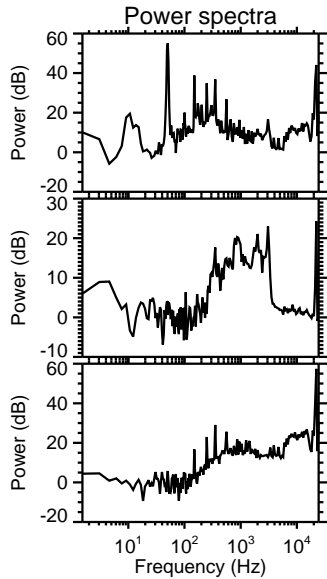
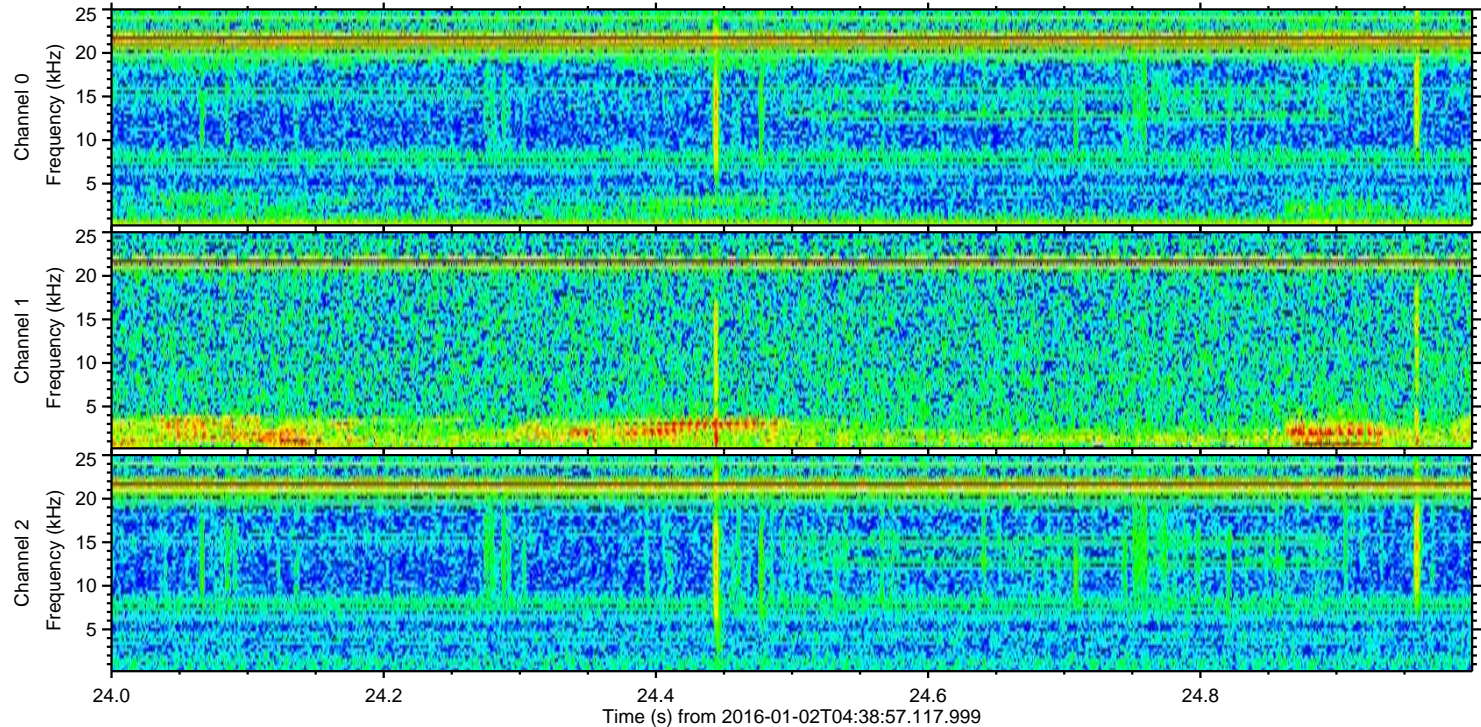
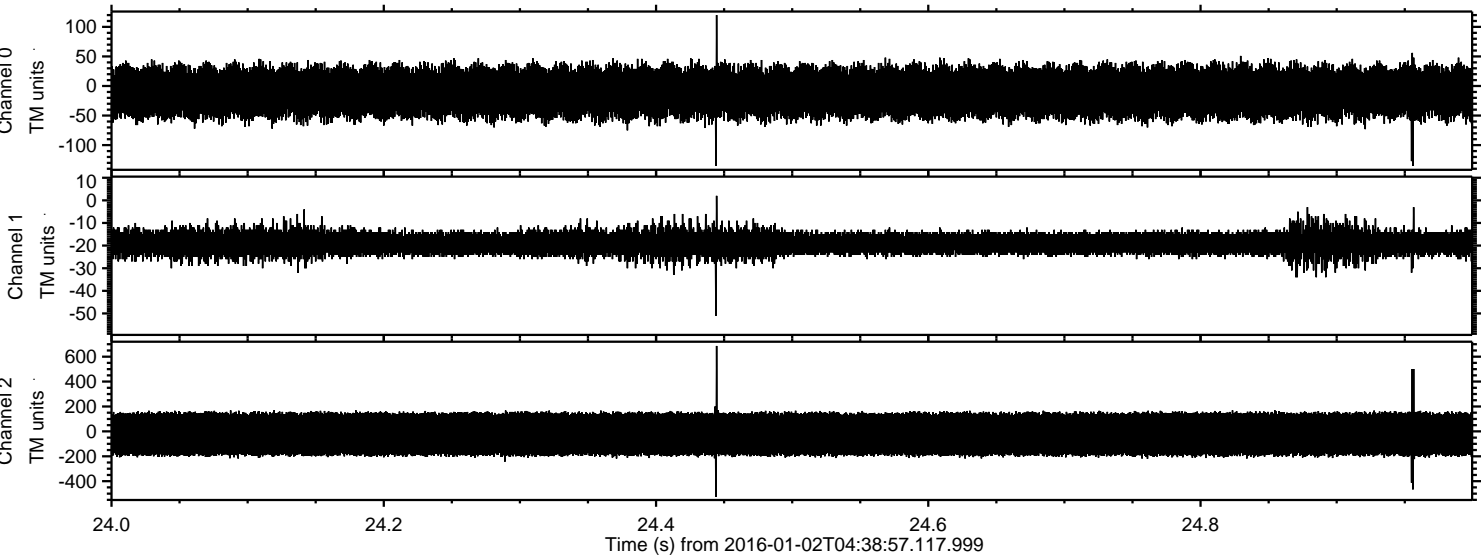


Processed Mon Mar 21 10:18:37 2016 by ELM ver.2012-10-06 from 001\_\_elm20160102\_043856\_\_dat00.bin



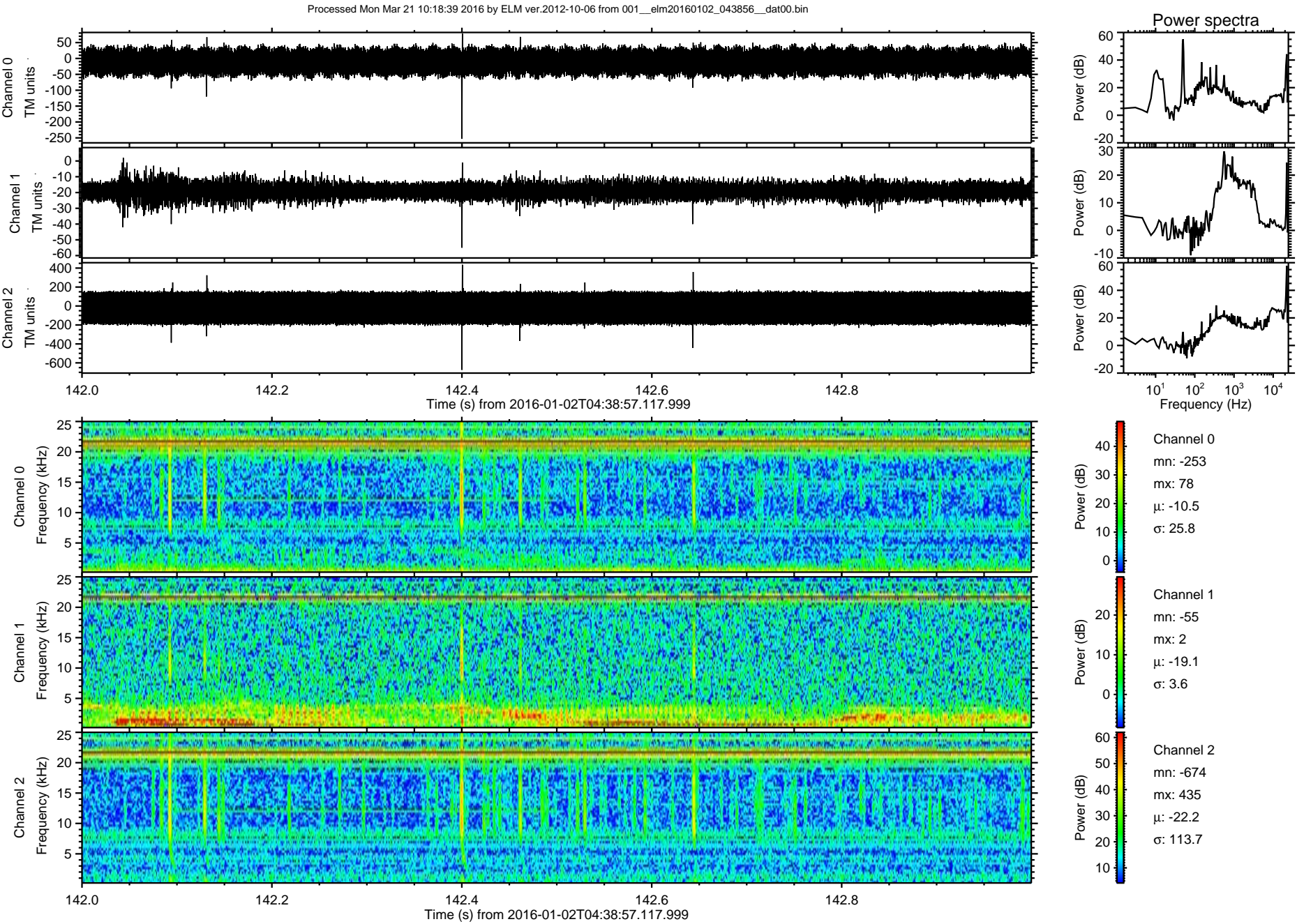


Processed Mon Mar 21 10:18:38 2016 by ELM ver.2012-10-06 from 001\_\_elm20160102\_043856\_\_dat00.bin





ELMAVAN 3D WAVEFORMS (Measured data sampled at 50 kHz) 51000 packets of 144 samples from 2016-01-02T04:38:57.117.999. Part 143/147





Processed Mon Mar 21 10:18:40 2016 by ELM ver.2012-10-06 from 001\_\_elm20160102\_043856\_\_dat00.bin

