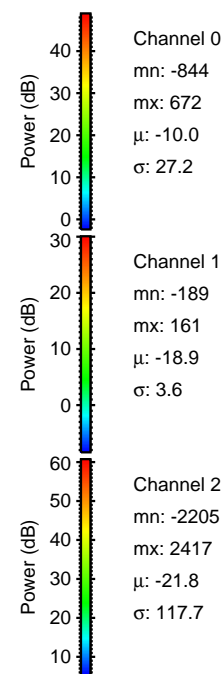
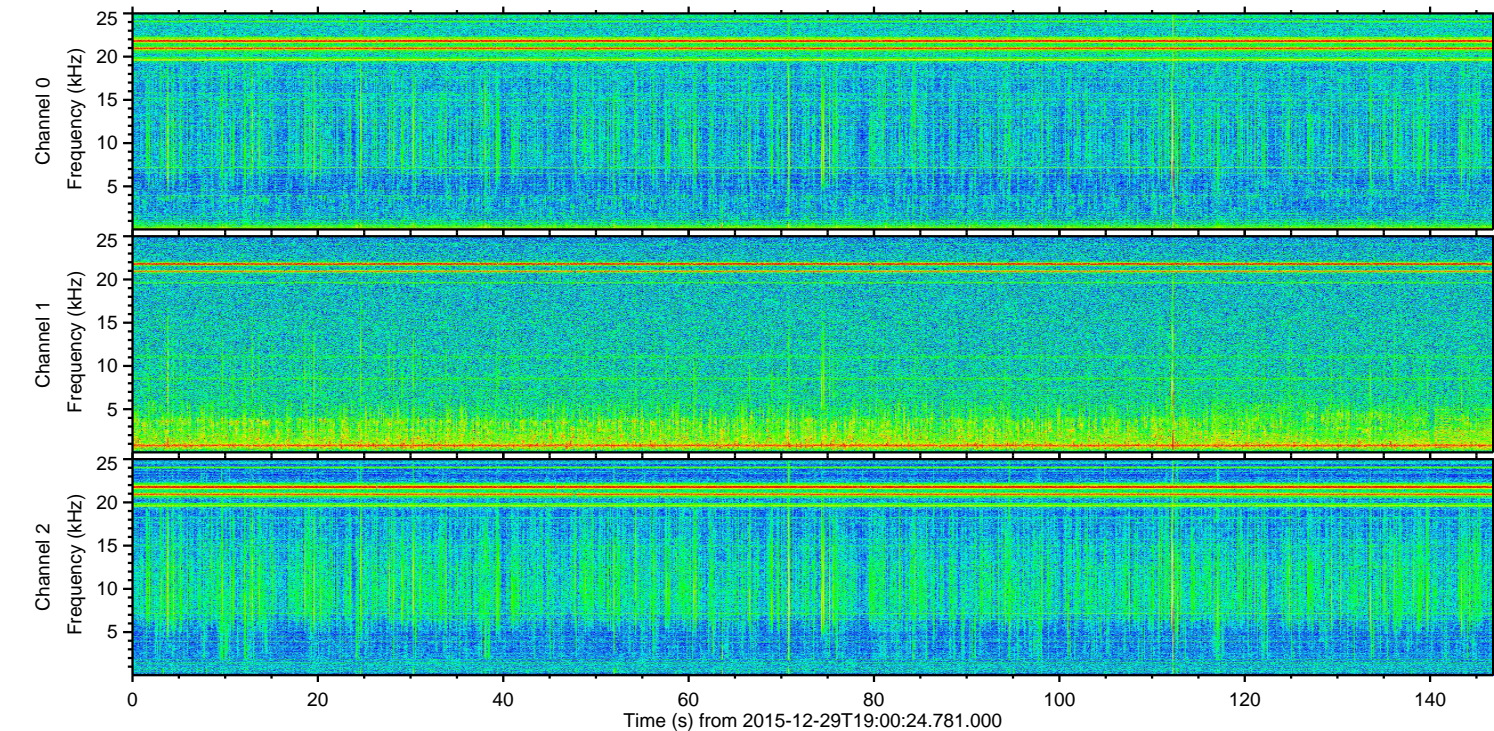
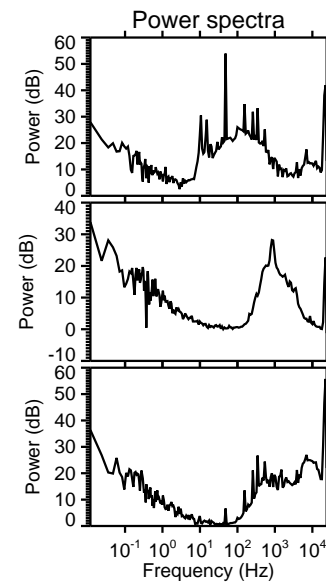
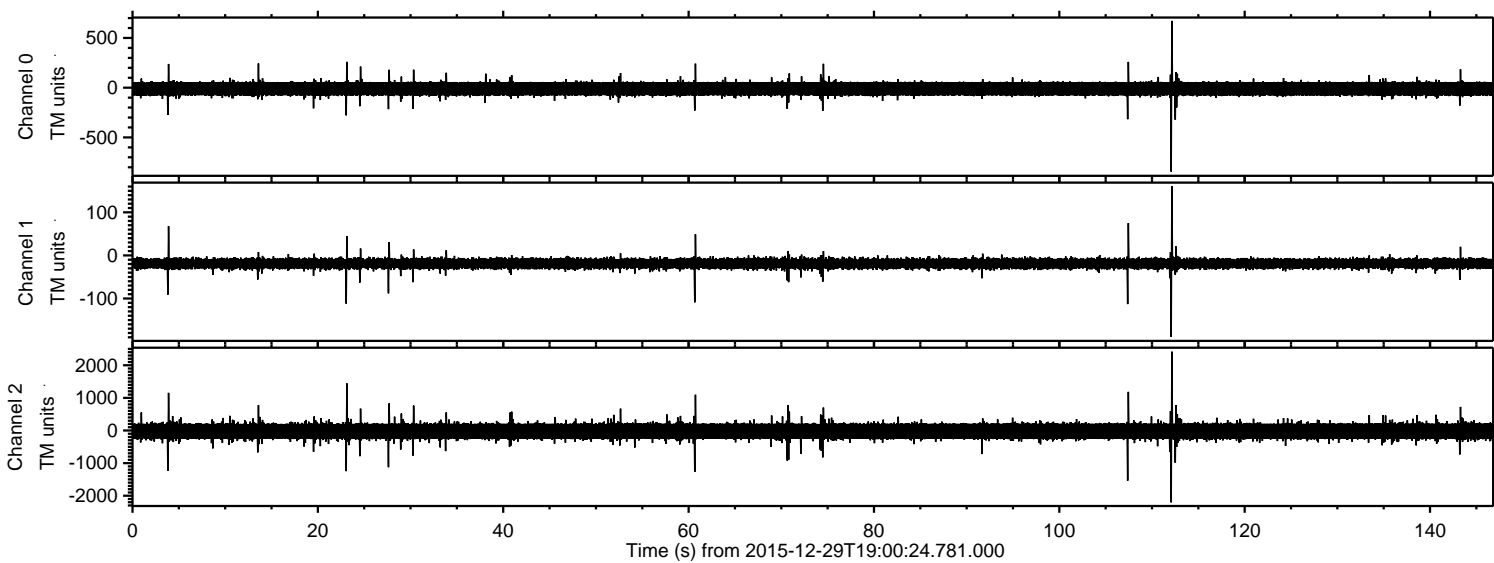


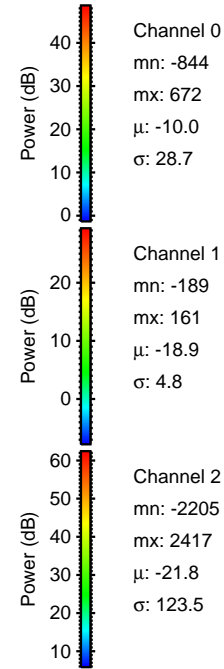
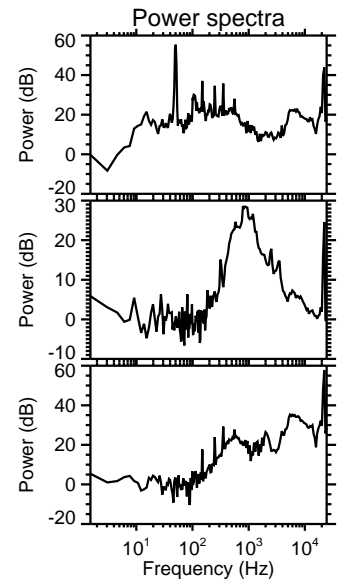
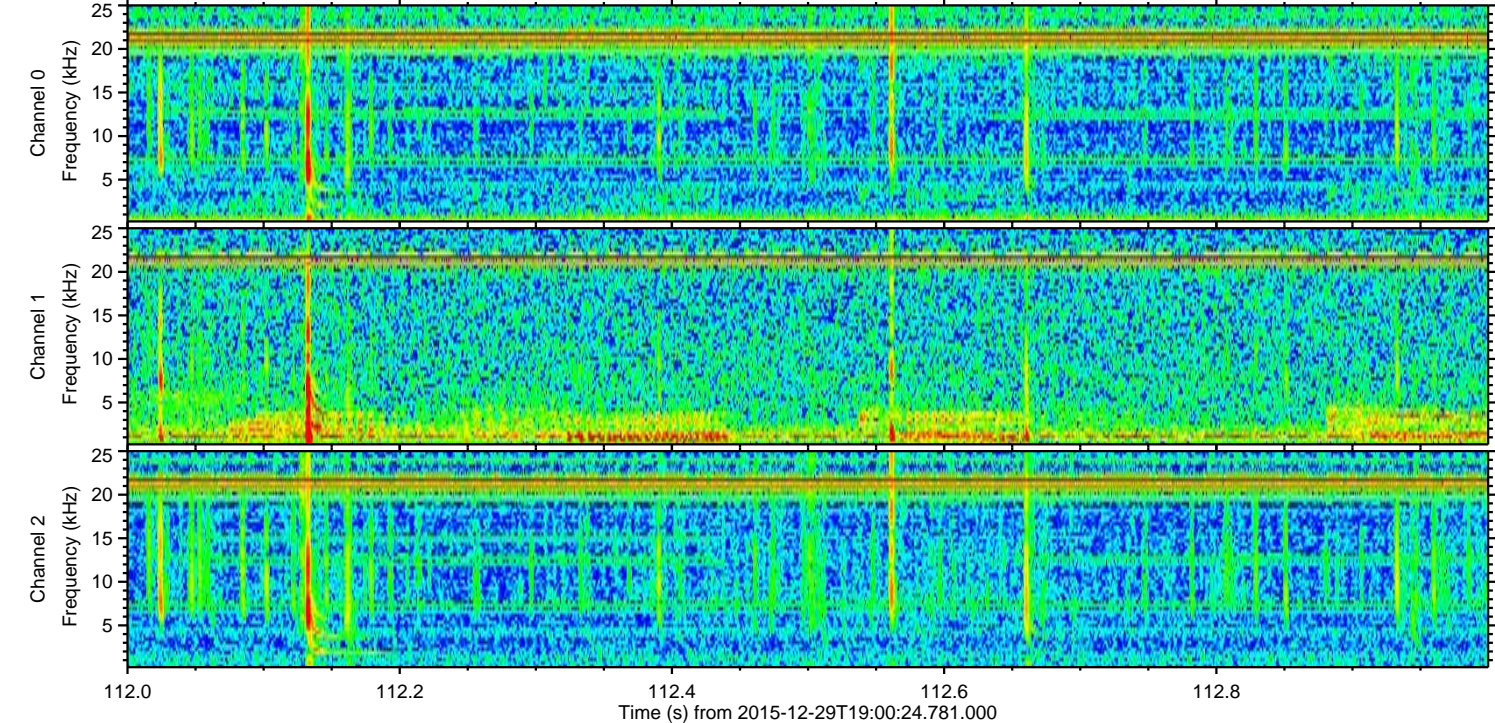
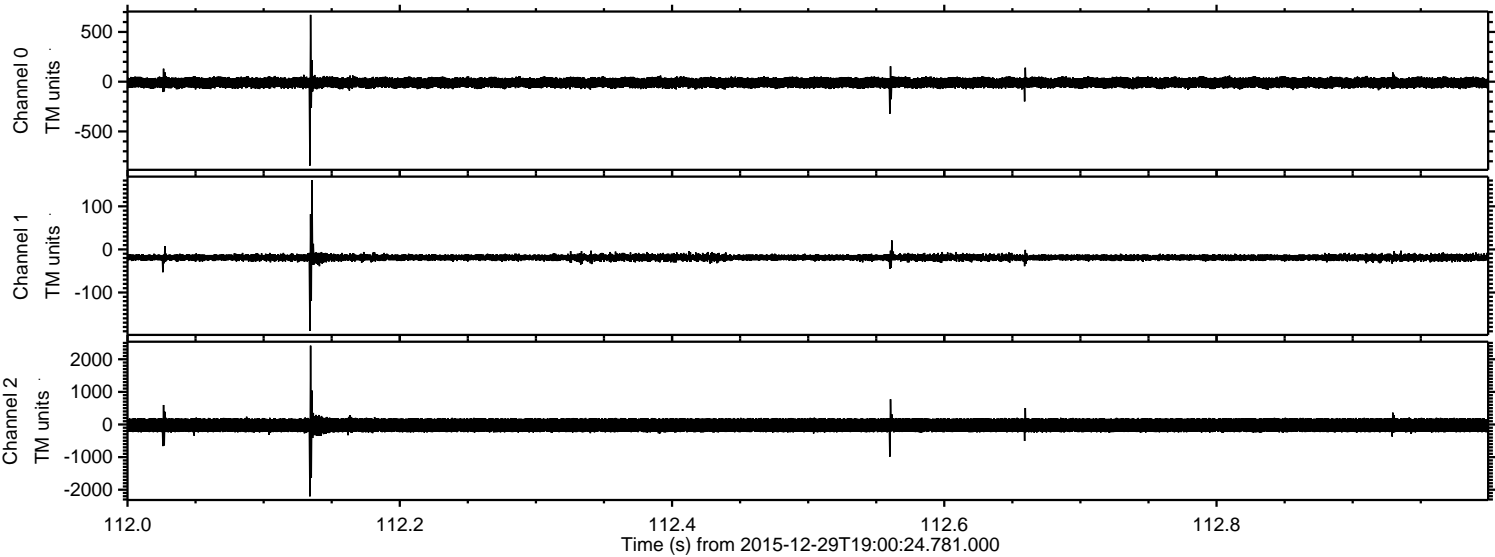
ELMAVAN 3D WAVEFORMS (Measured data sampled at 50 kHz) 51000 packets of 144 samples from 2015-12-29T19:00:24.781.000.

Processed Fri Mar 18 18:05:47 2016 by ELM ver.2012-10-06 from 001__elm20151229_190023__dat00.bin



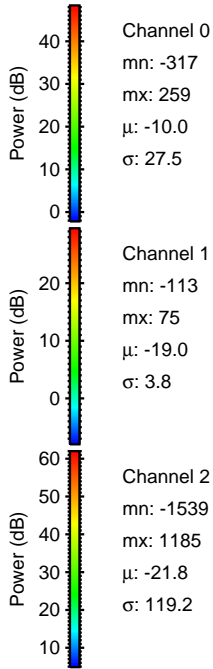
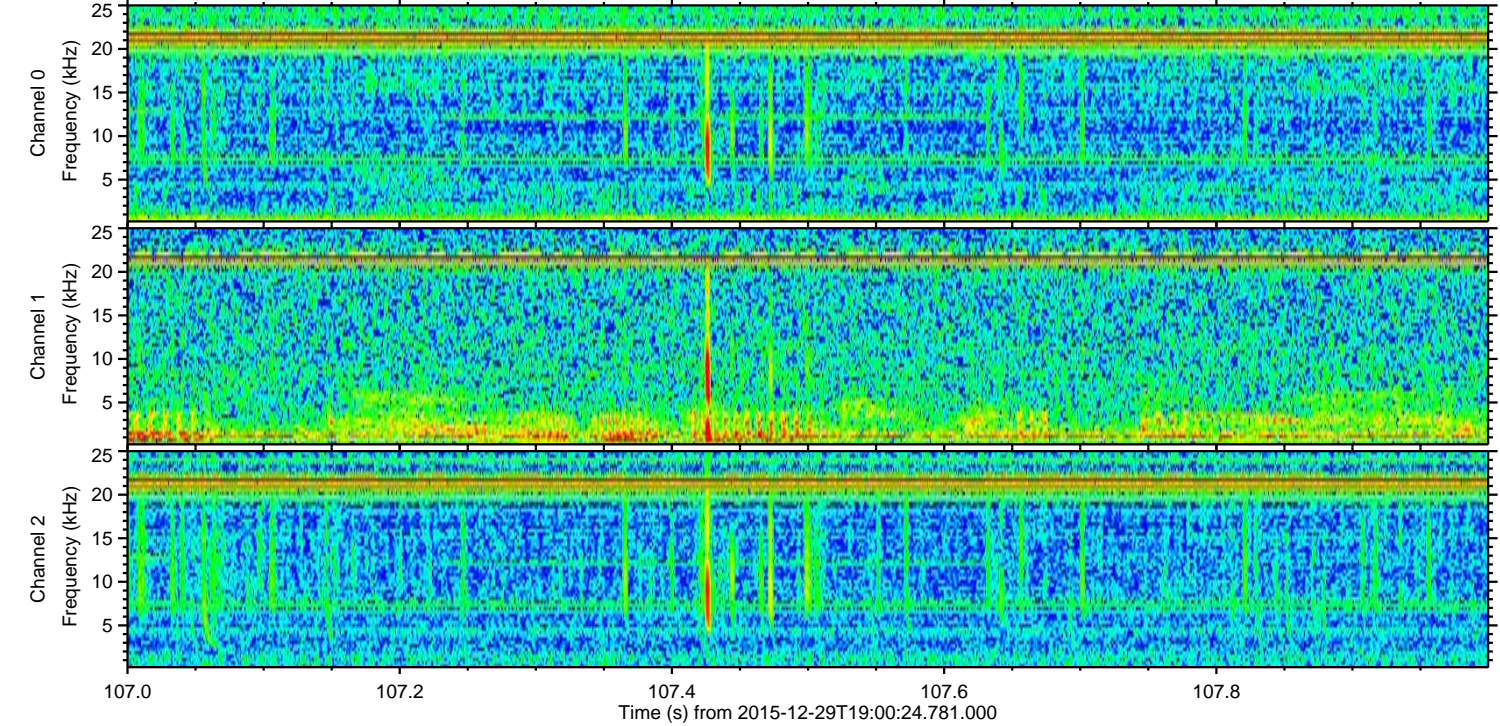
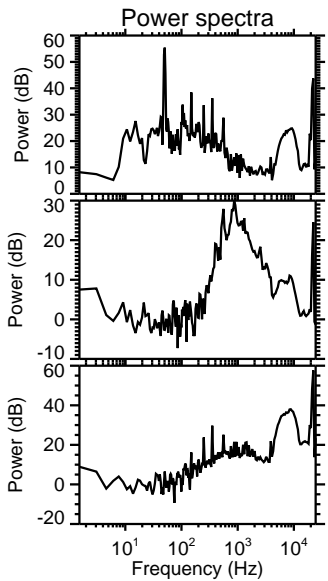
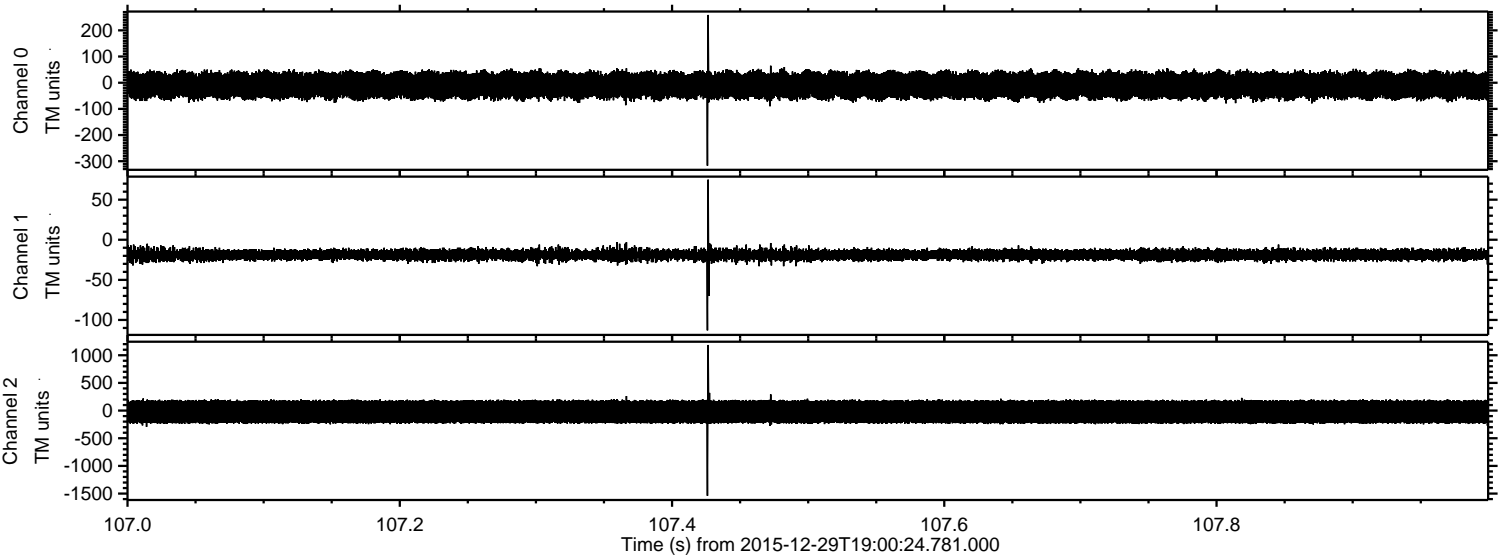
ELMAVAN 3D WAVEFORMS (Measured data sampled at 50 kHz) 51000 packets of 144 samples from 2015-12-29T19:00:24.781.000. Part 113/147

Processed Fri Mar 18 18:05:59 2016 by ELM ver.2012-10-06 from 001__elm20151229_190023__dat00.bin

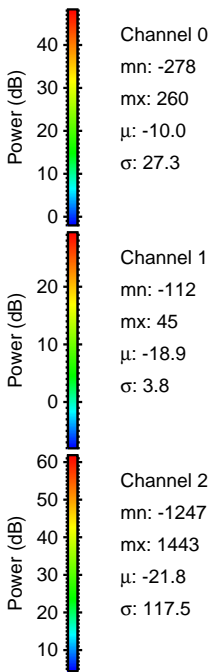
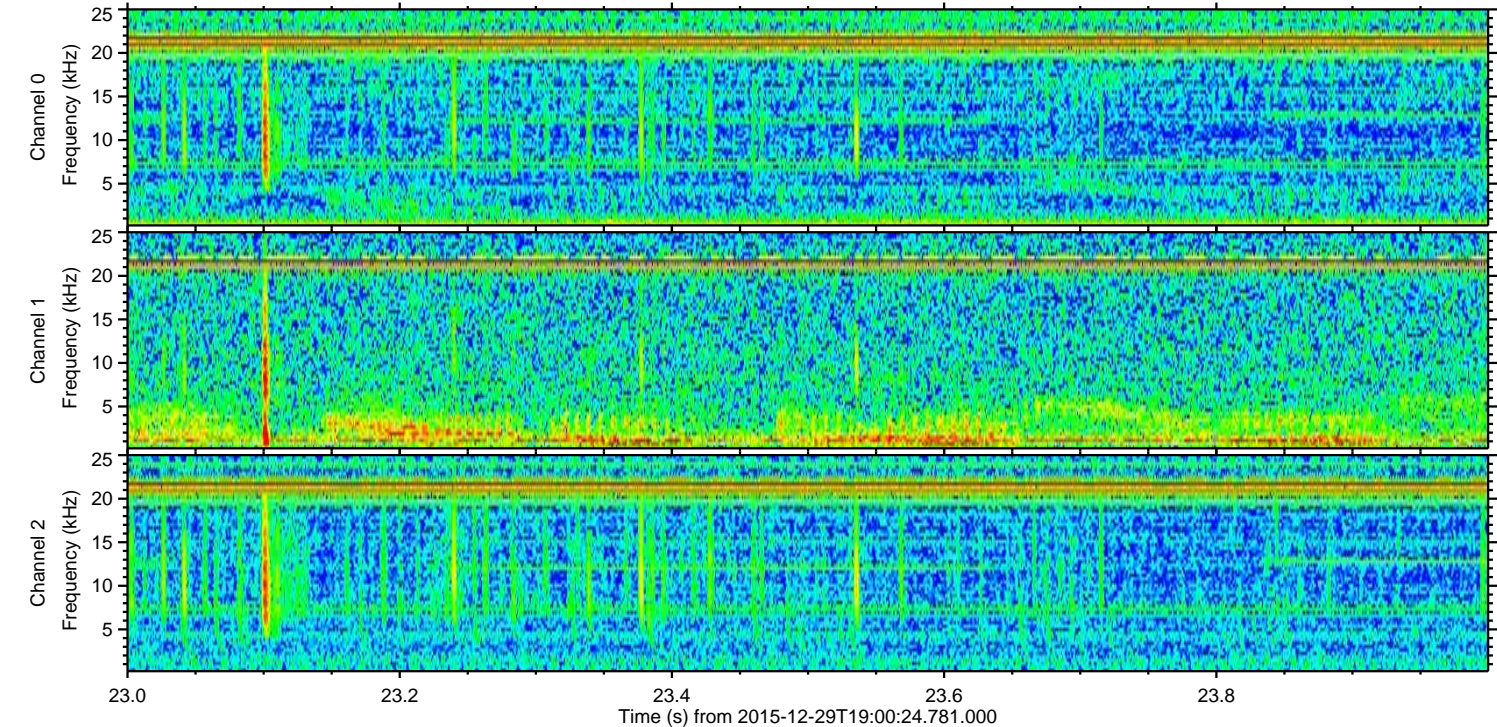
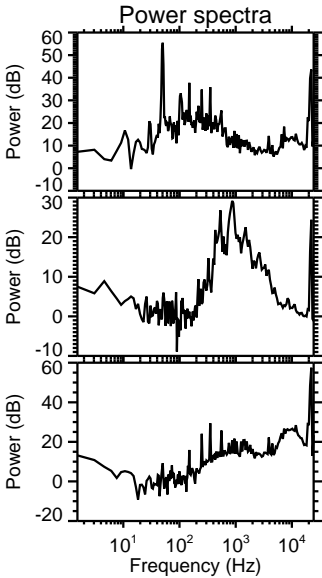
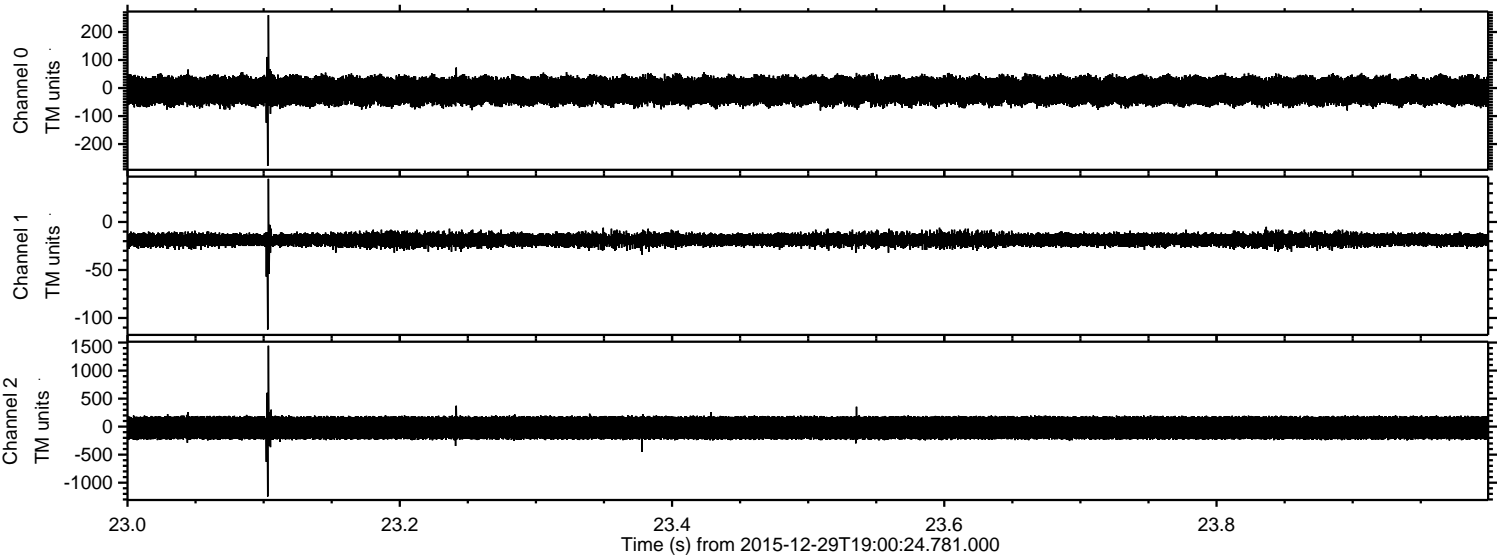


ELMAVAN 3D WAVEFORMS (Measured data sampled at 50 kHz) 51000 packets of 144 samples from 2015-12-29T19:00:24.781.000. Part 108/147

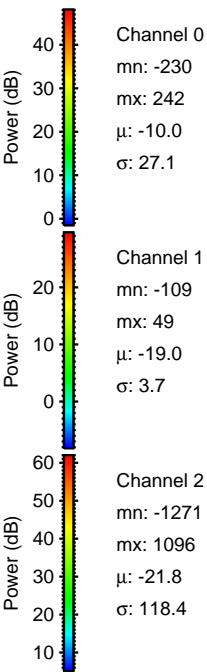
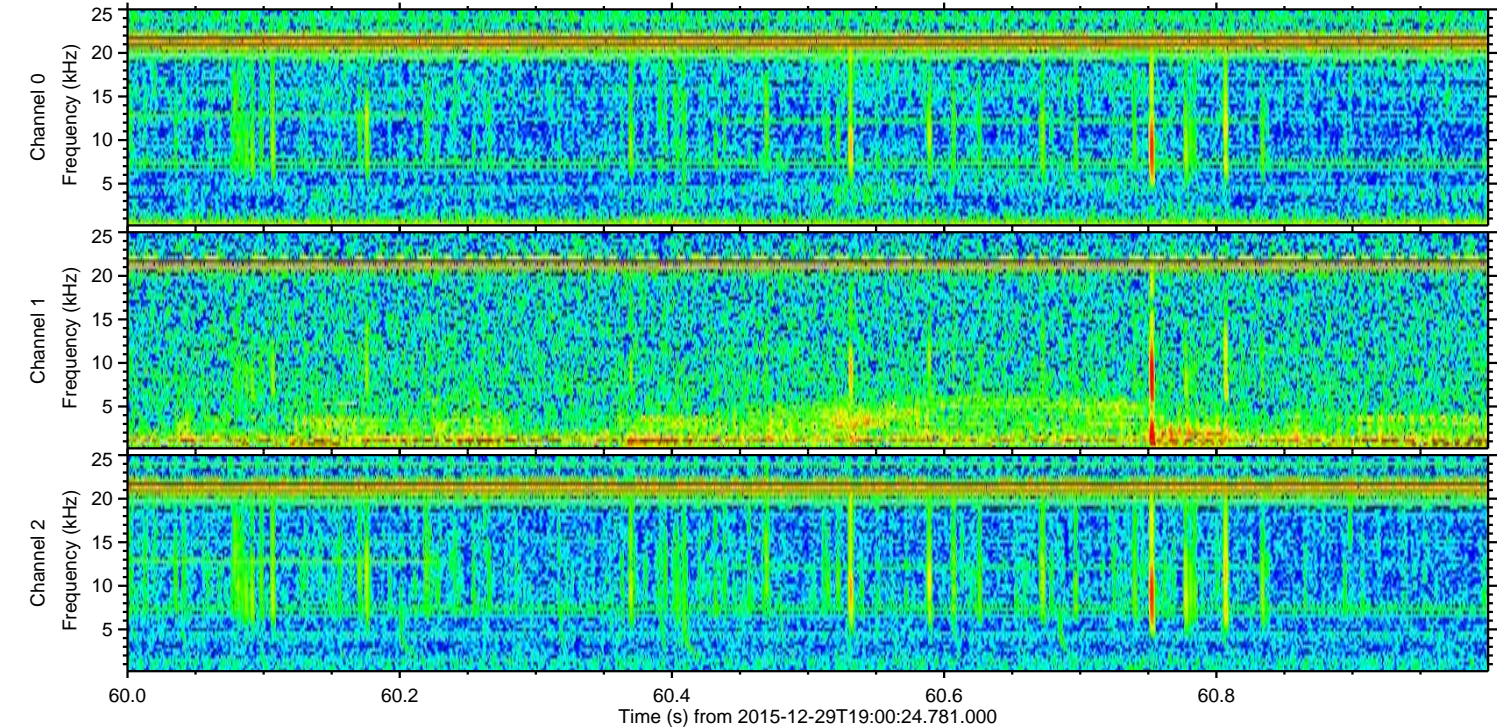
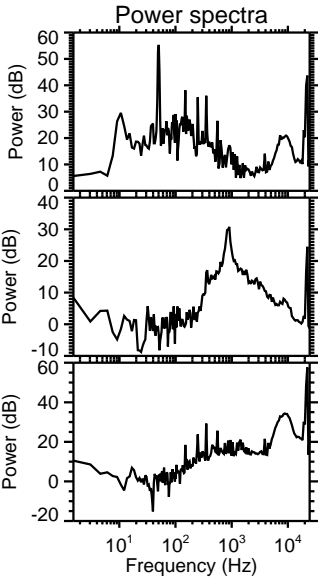
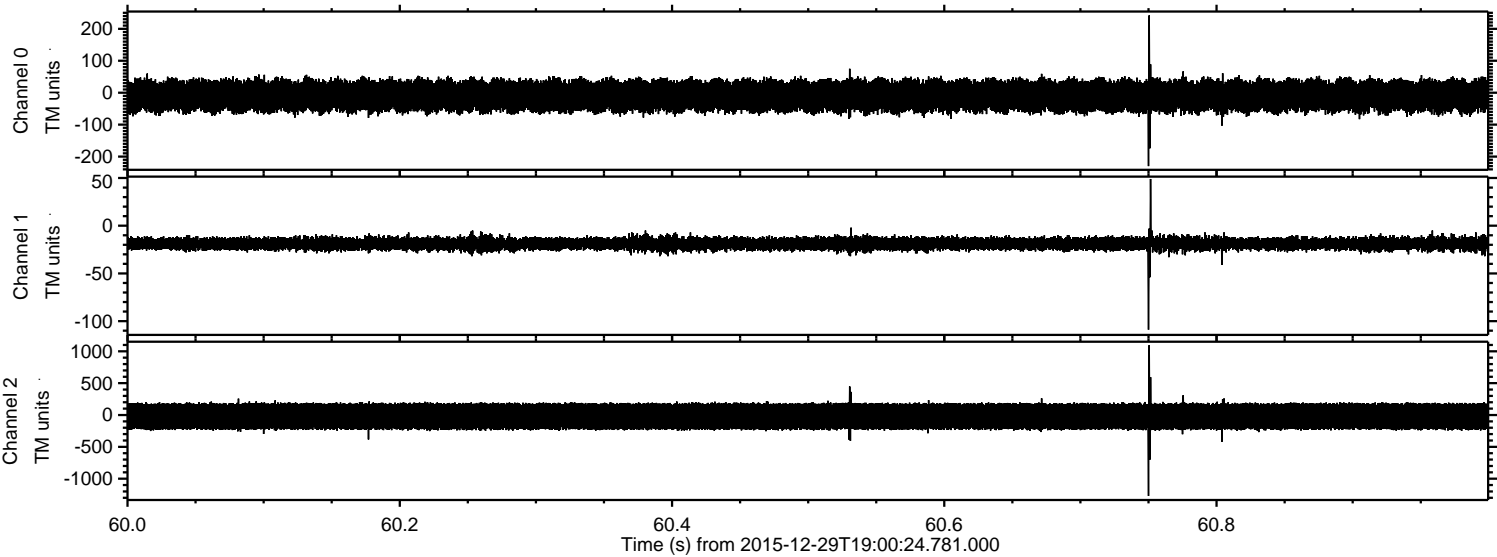
Processed Fri Mar 18 18:05:59 2016 by ELM ver.2012-10-06 from 001__elm20151229_190023__dat00.bin



Processed Fri Mar 18 18:06:00 2016 by ELM ver.2012-10-06 from 001__elm20151229_190023__dat00.bin

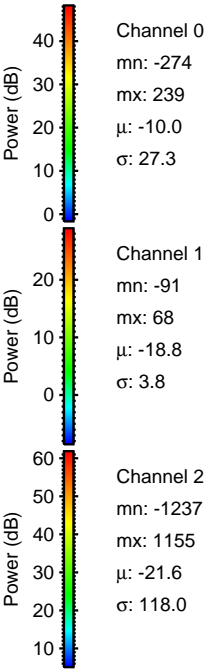
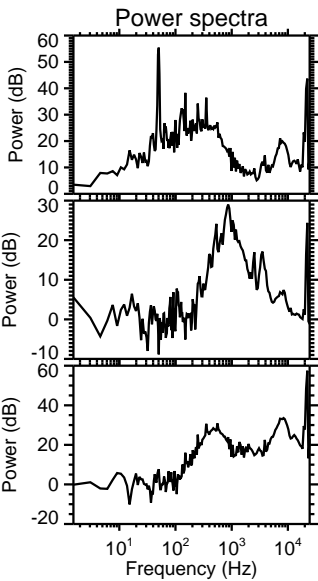
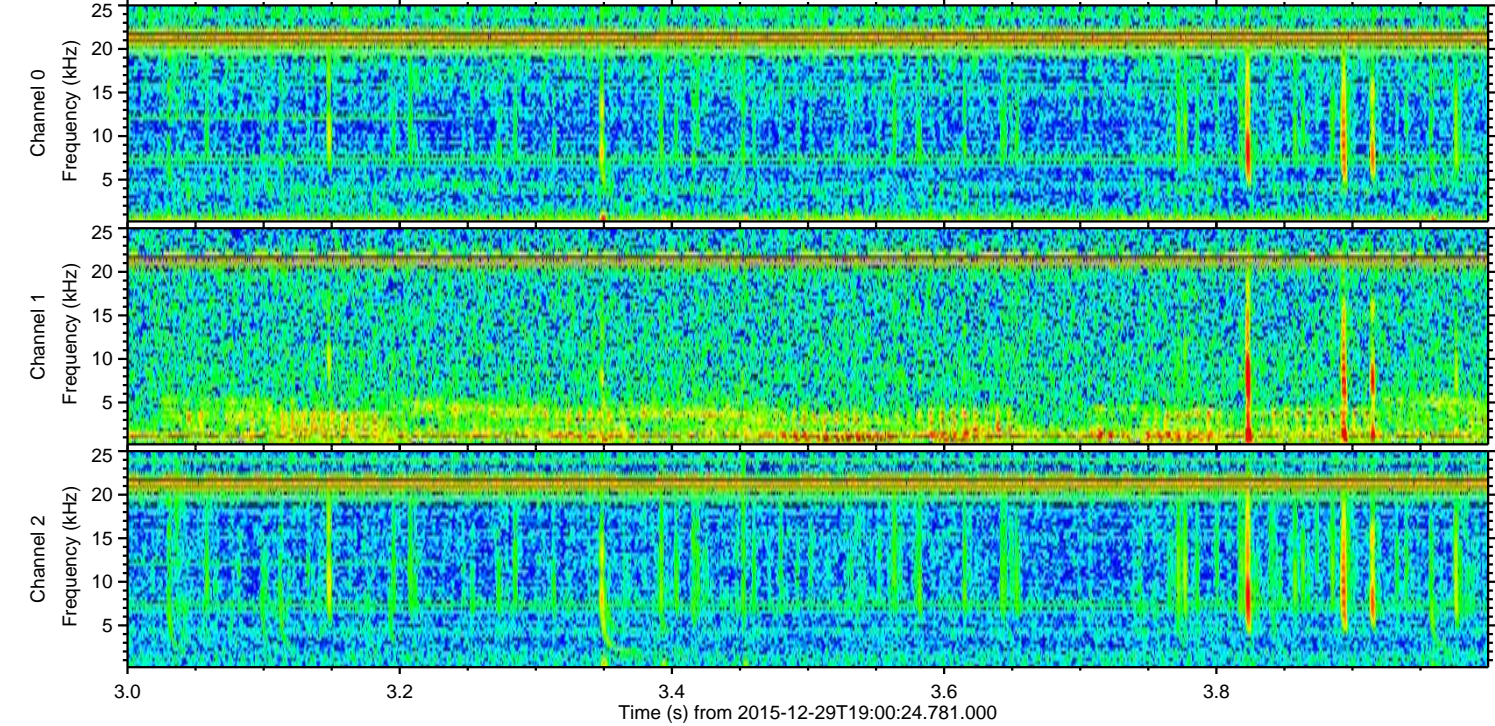
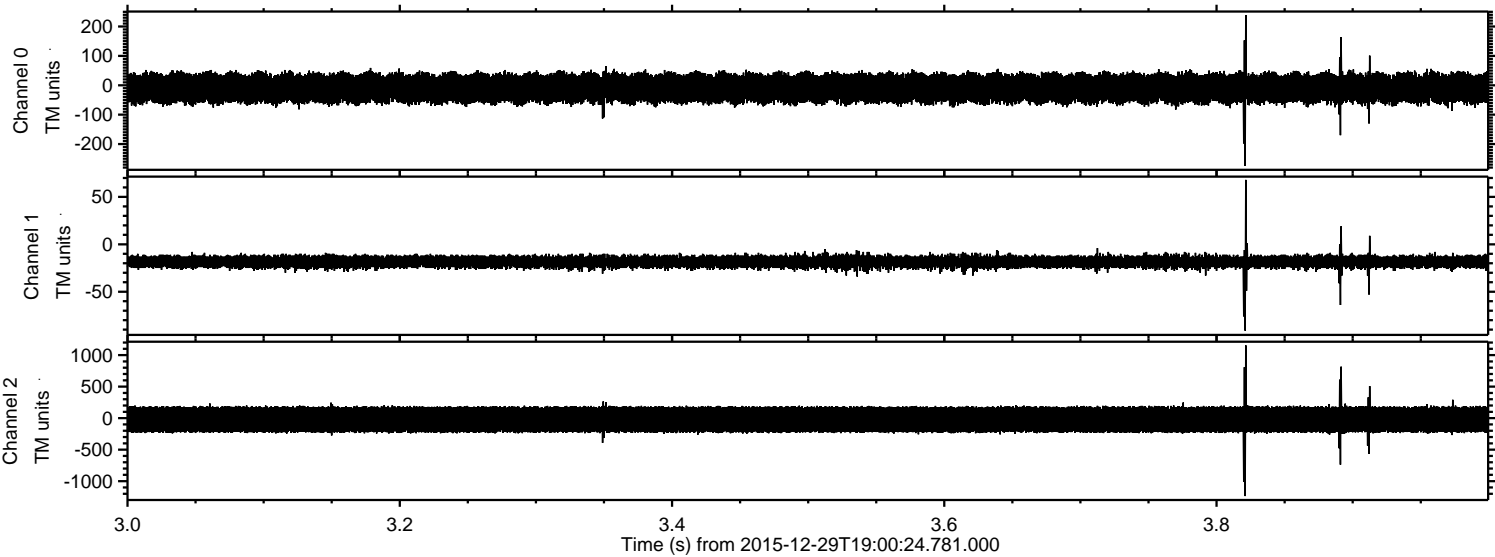


Processed Fri Mar 18 18:06:01 2016 by ELM ver.2012-10-06 from 001__elm20151229_190023__dat00.bin

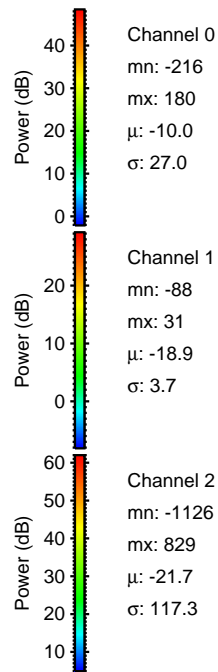
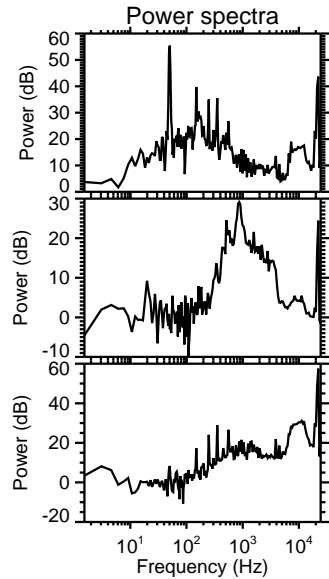
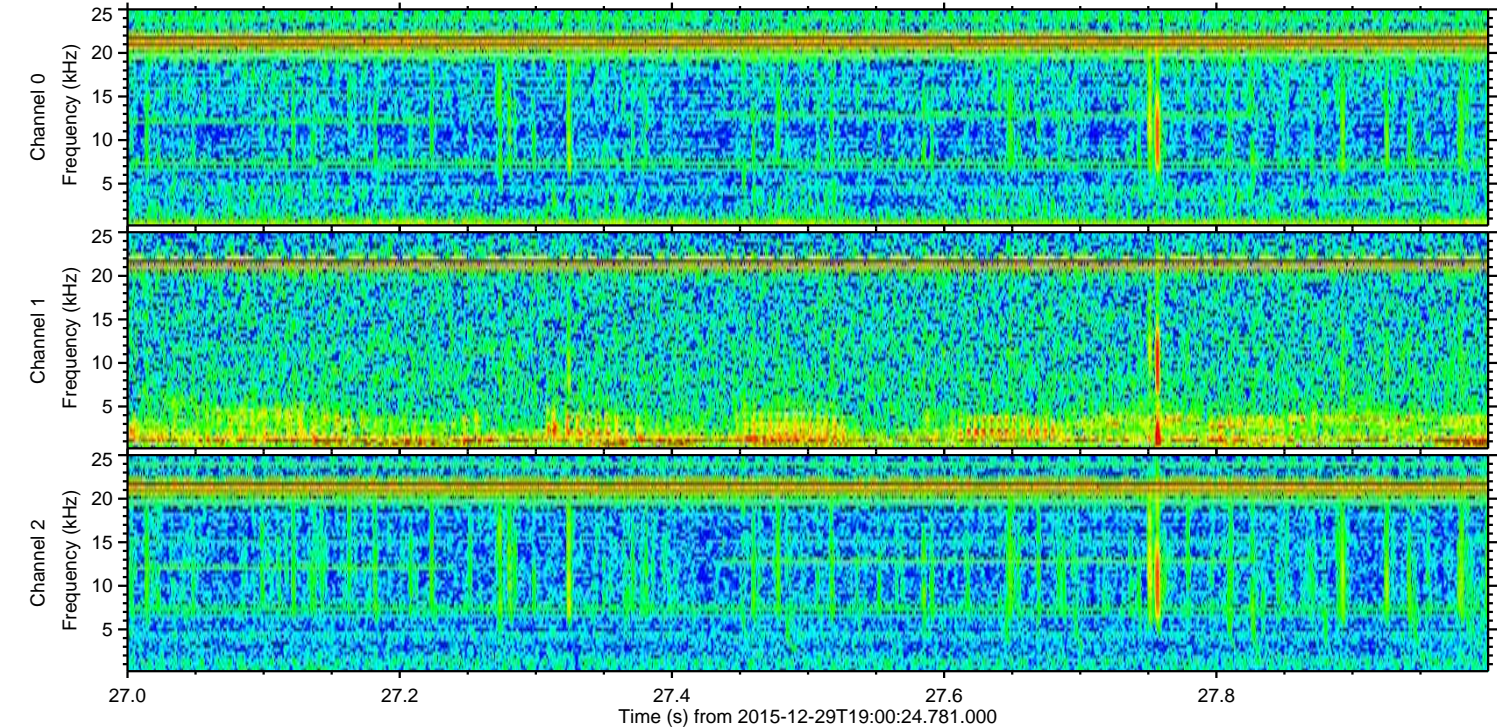
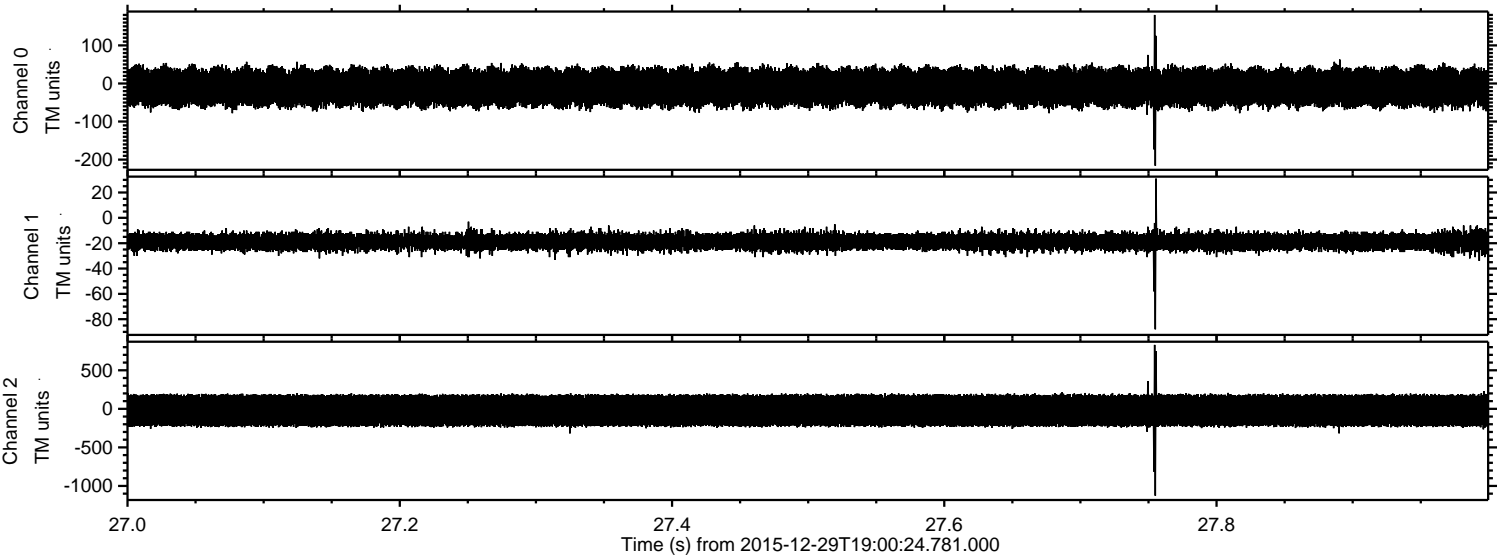


ELMAVAN 3D WAVEFORMS (Measured data sampled at 50 kHz) 51000 packets of 144 samples from 2015-12-29T19:00:24.781.000. Part 4/147

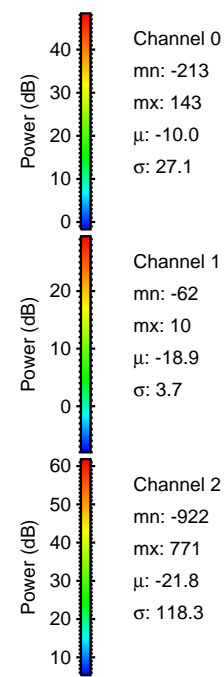
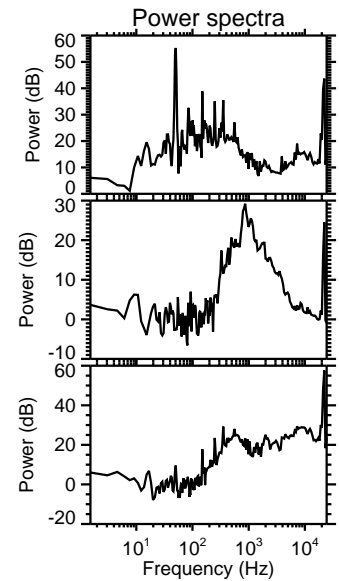
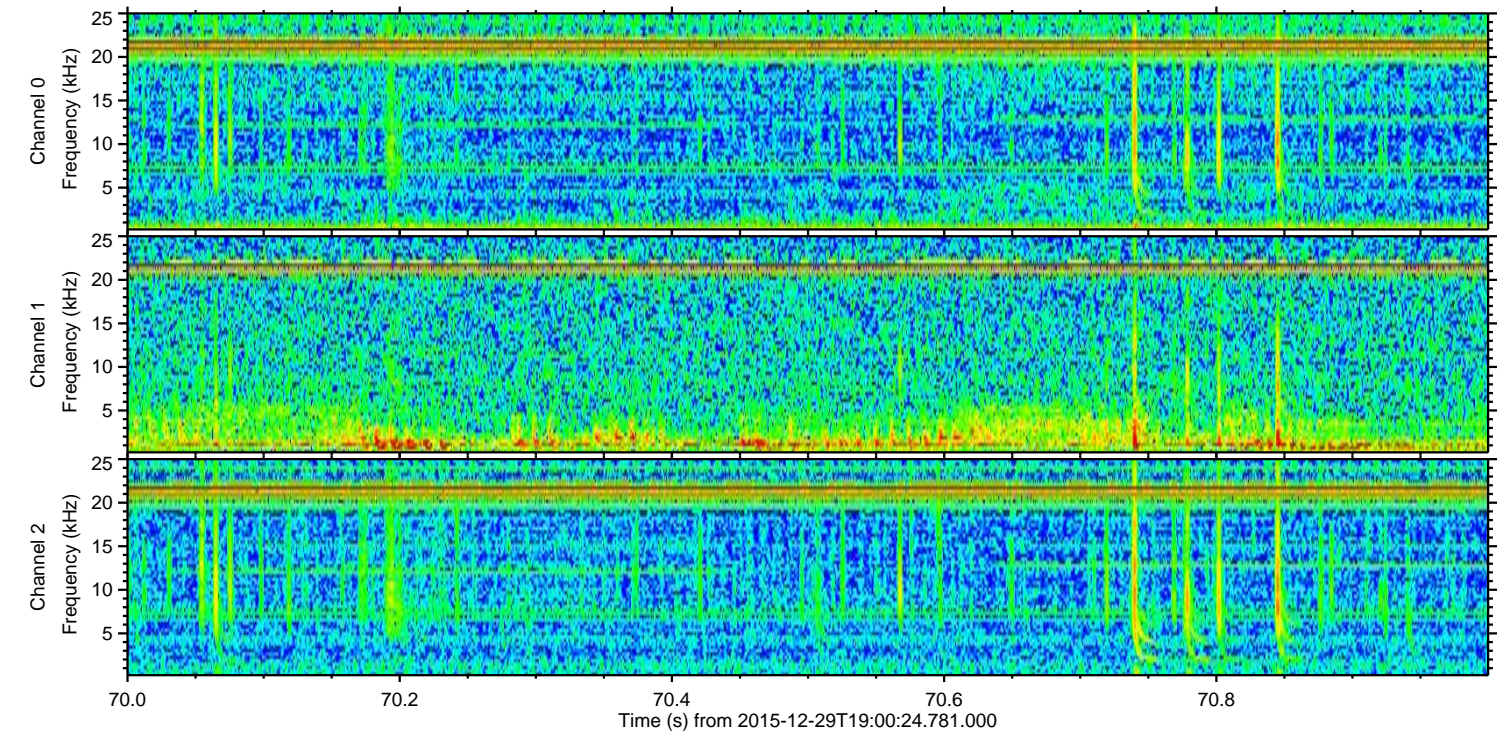
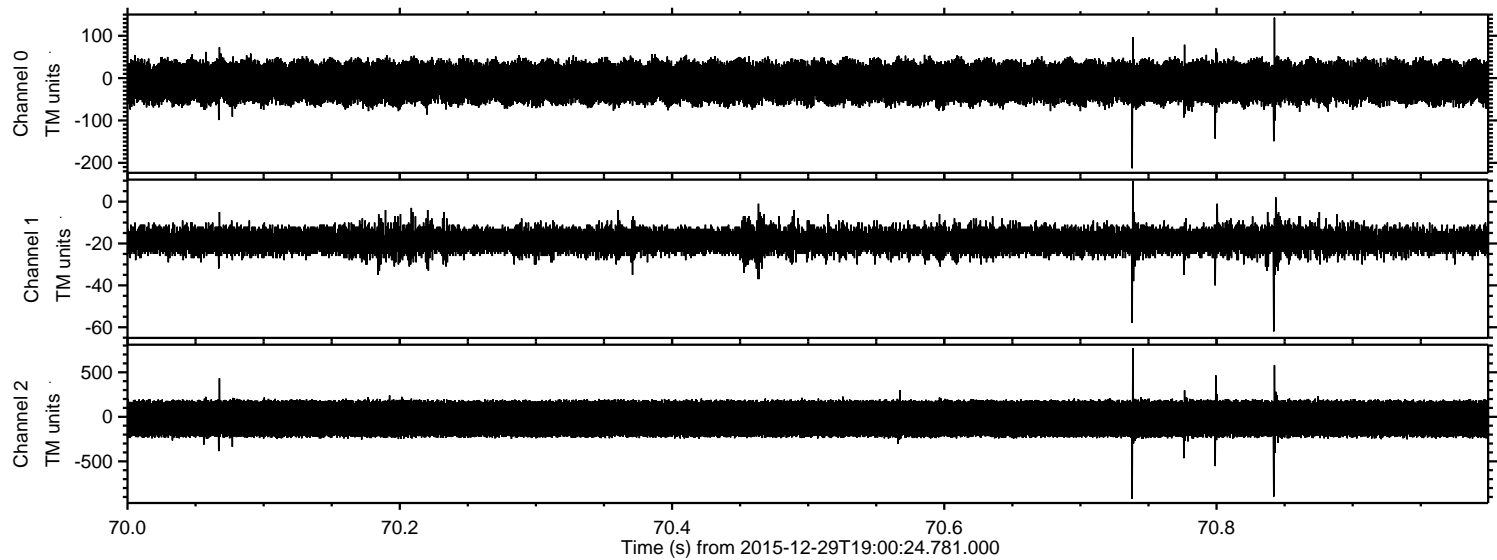
Processed Fri Mar 18 18:06:02 2016 by ELM ver.2012-10-06 from 001__elm20151229_190023__dat00.bin



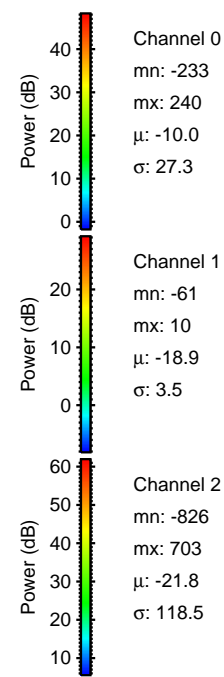
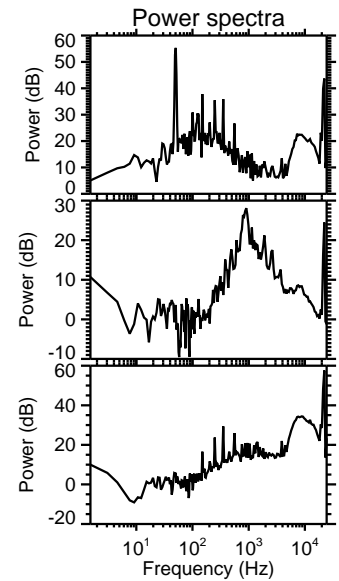
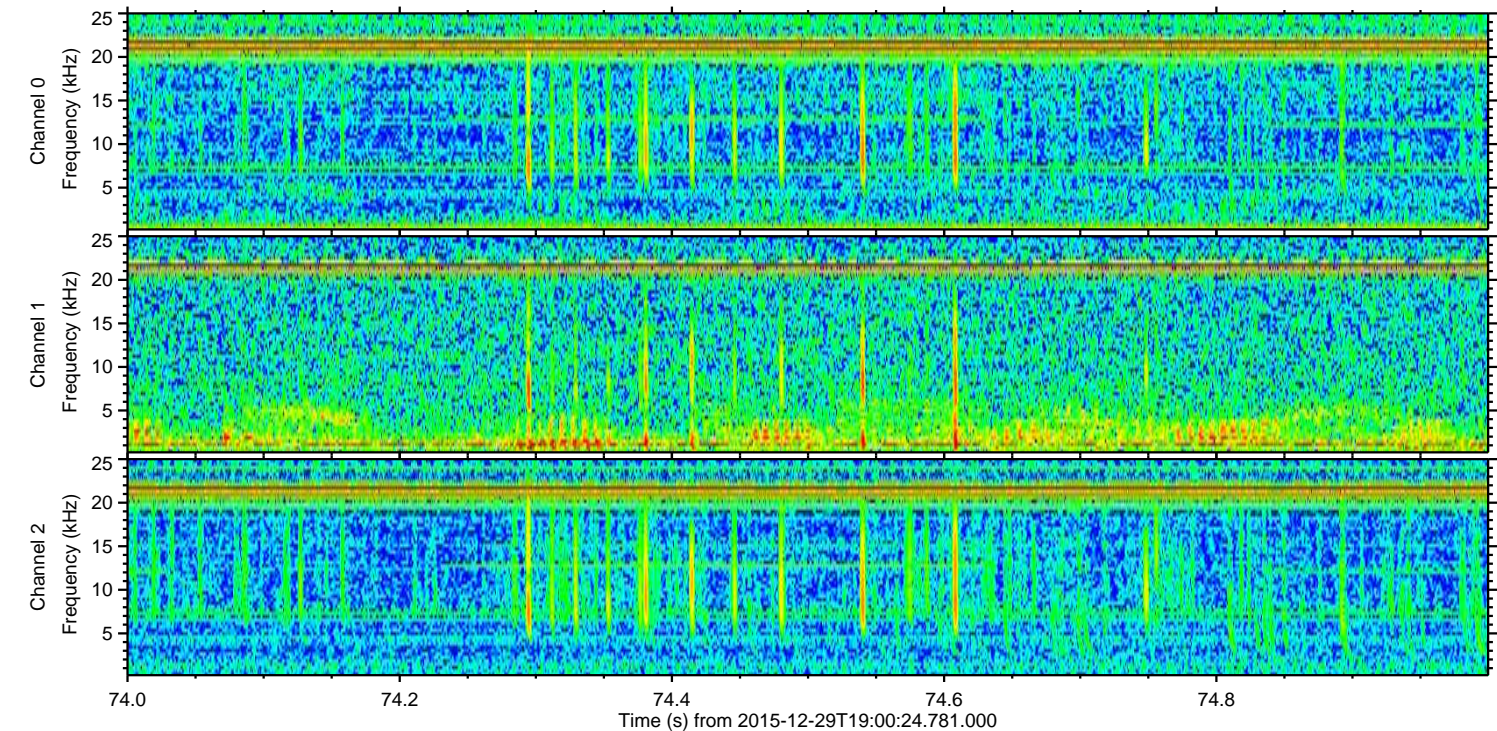
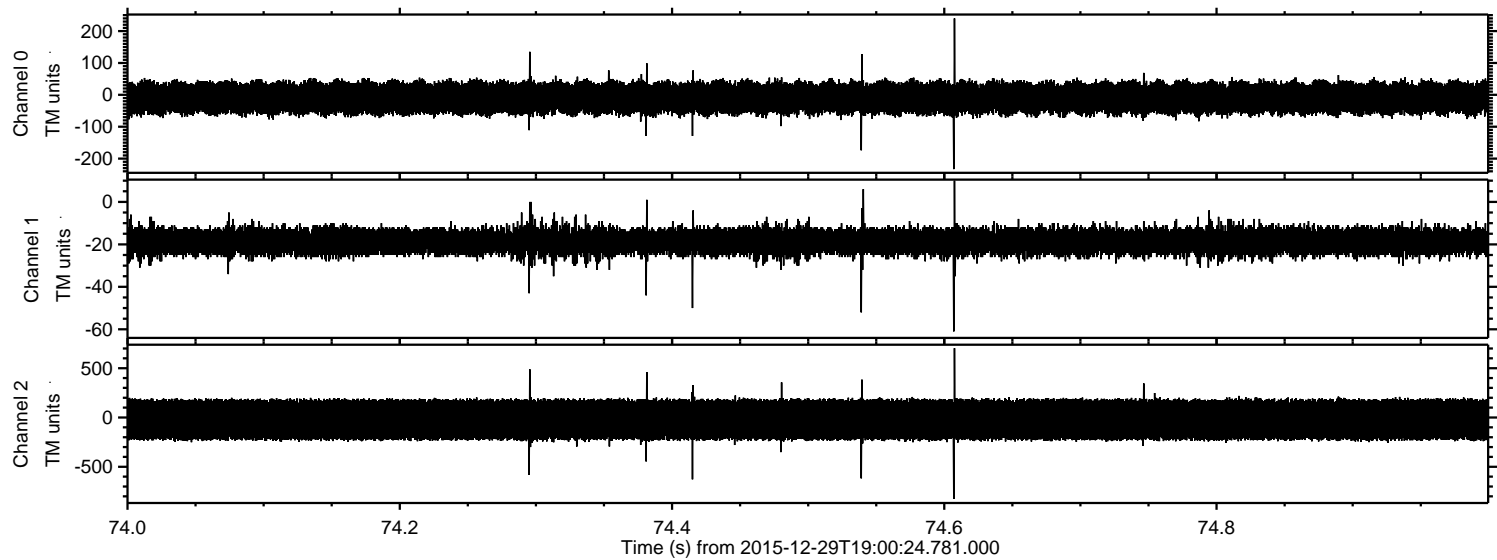
Processed Fri Mar 18 18:06:03 2016 by ELM ver.2012-10-06 from 001__elm20151229_190023__dat00.bin



Processed Fri Mar 18 18:06:04 2016 by ELM ver.2012-10-06 from 001__elm20151229_190023__dat00.bin



Processed Fri Mar 18 18:06:05 2016 by ELM ver.2012-10-06 from 001__elm20151229_190023__dat00.bin

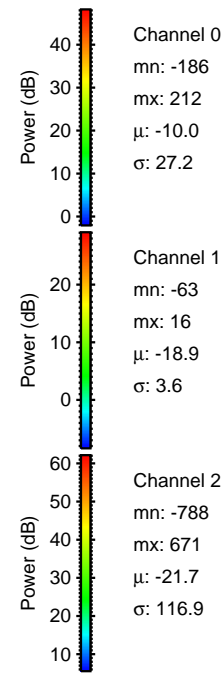
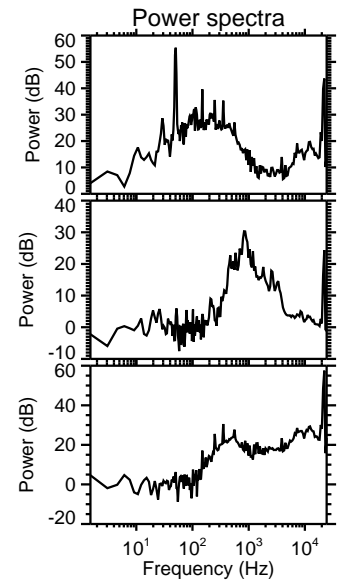
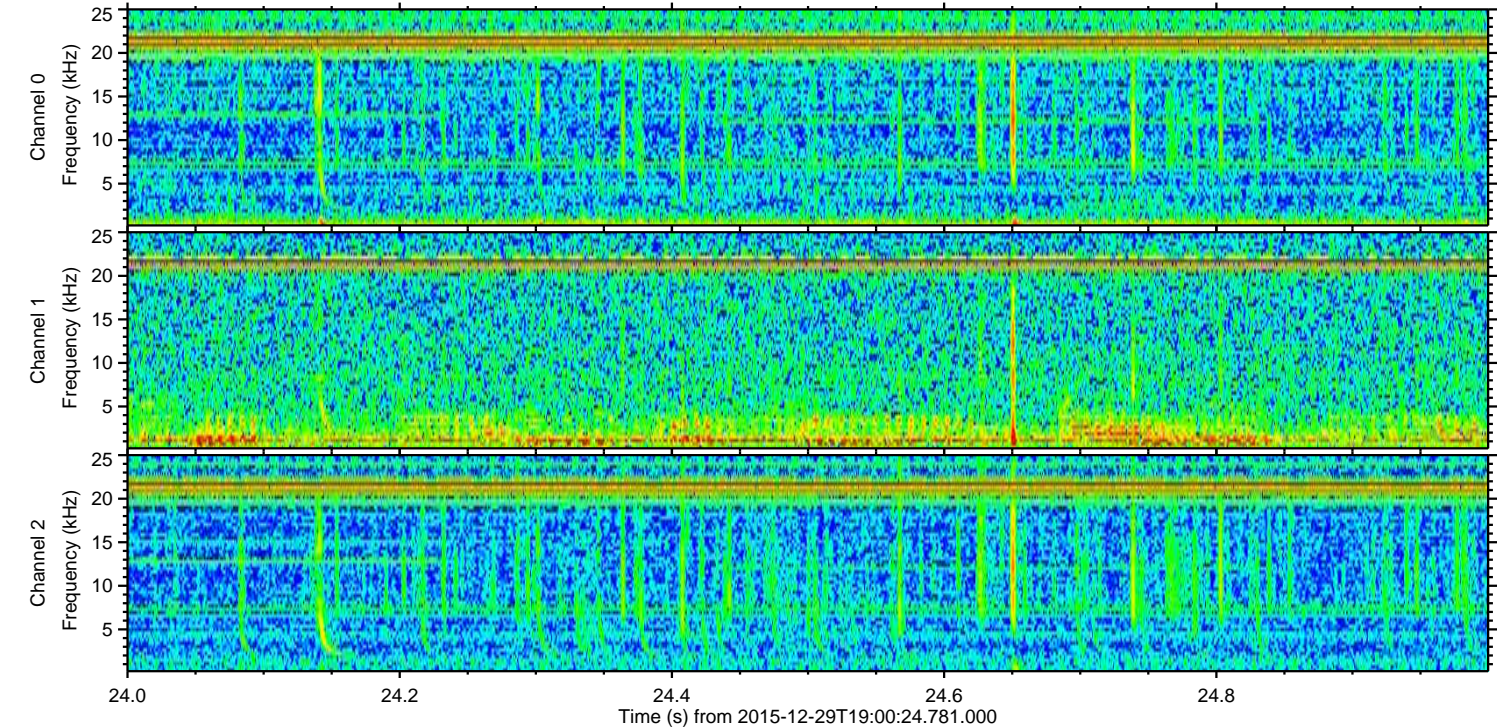
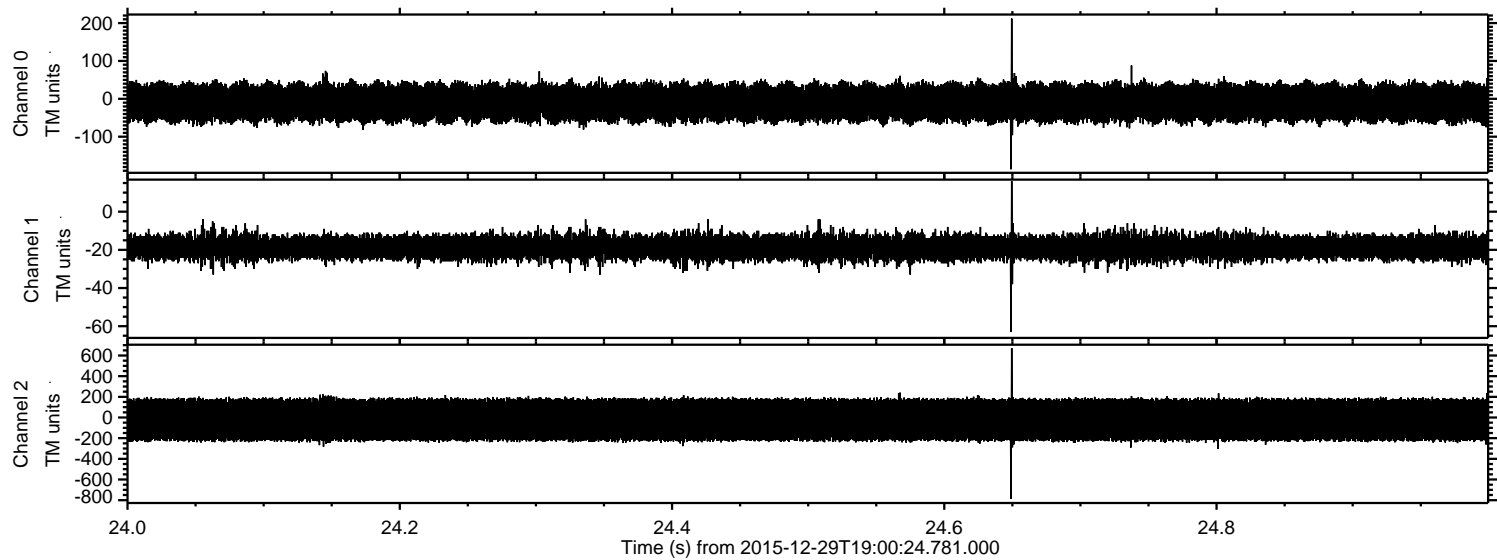


Channel 0
mn: -233
mx: 240
 μ : -10.0
 σ : 27.3

Channel 1
mn: -61
mx: 10
 μ : -18.9
 σ : 3.5

Channel 2
mn: -826
mx: 703
 μ : -21.8
 σ : 118.5

Processed Fri Mar 18 18:06:06 2016 by ELM ver.2012-10-06 from 001__elm20151229_190023__dat00.bin



Processed Fri Mar 18 18:06:07 2016 by ELM ver.2012-10-06 from 001__elm20151229_190023__dat00.bin

