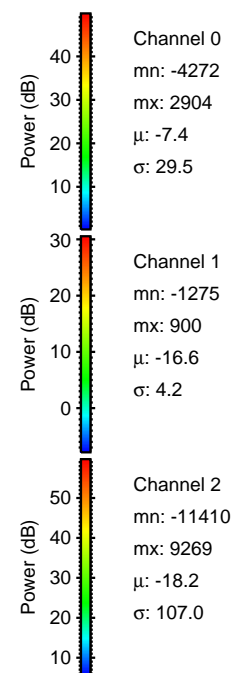
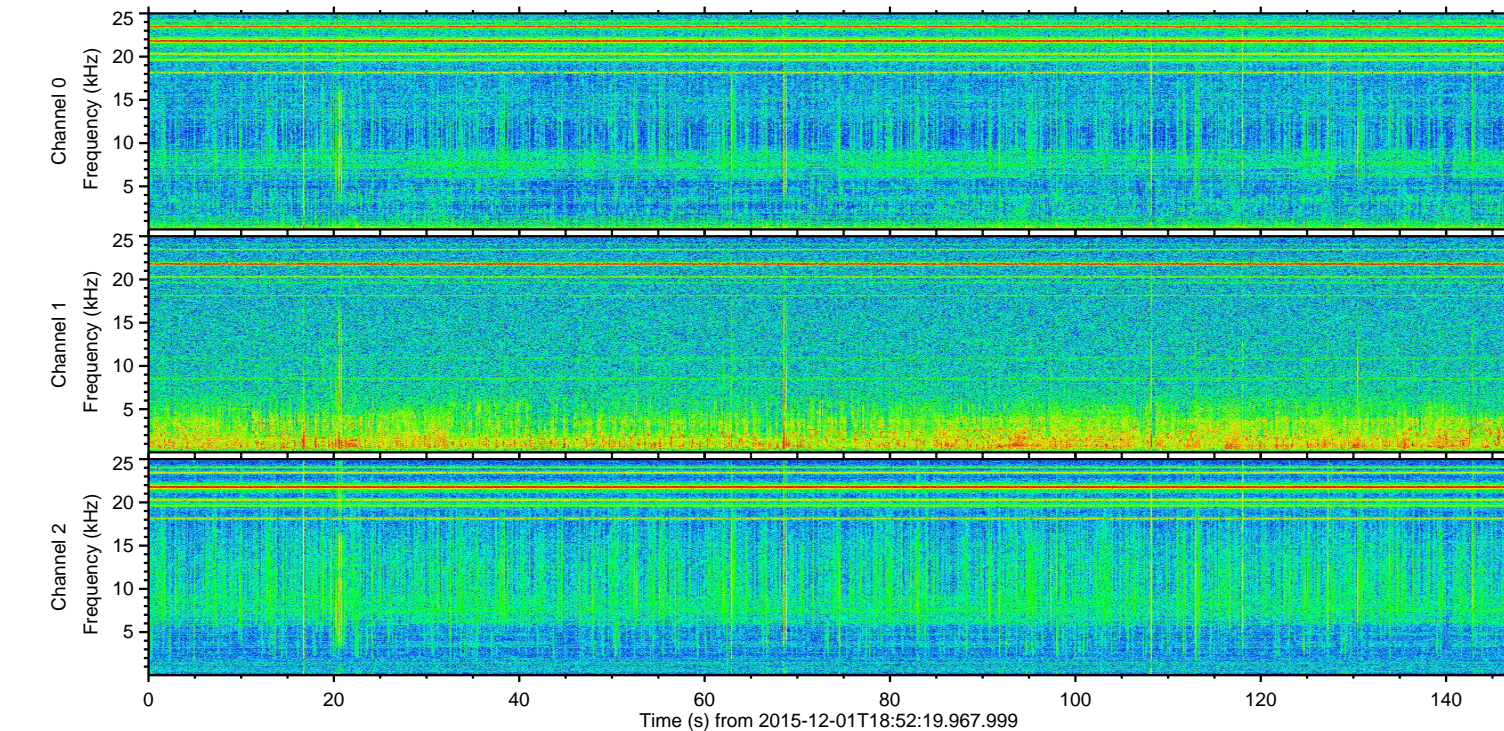
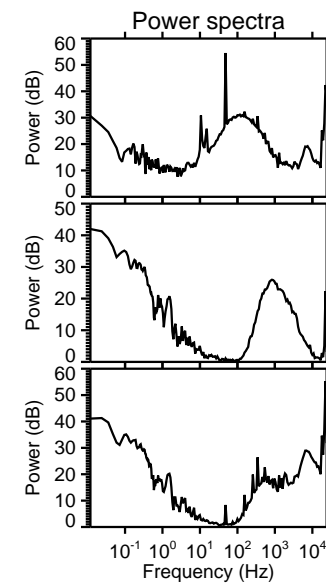
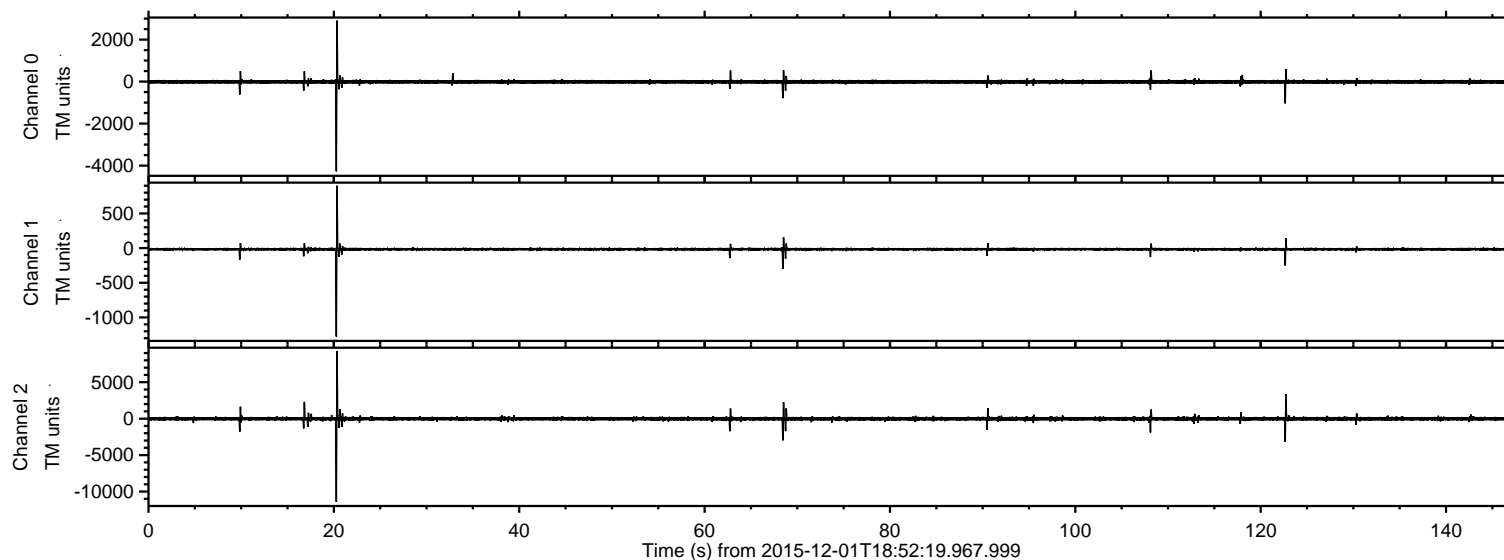


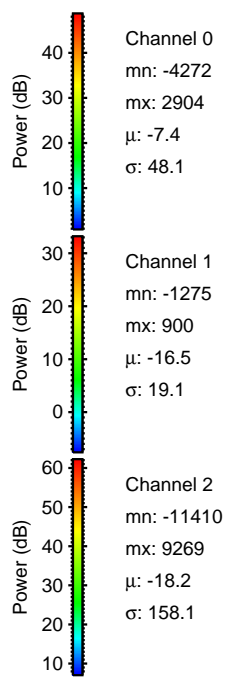
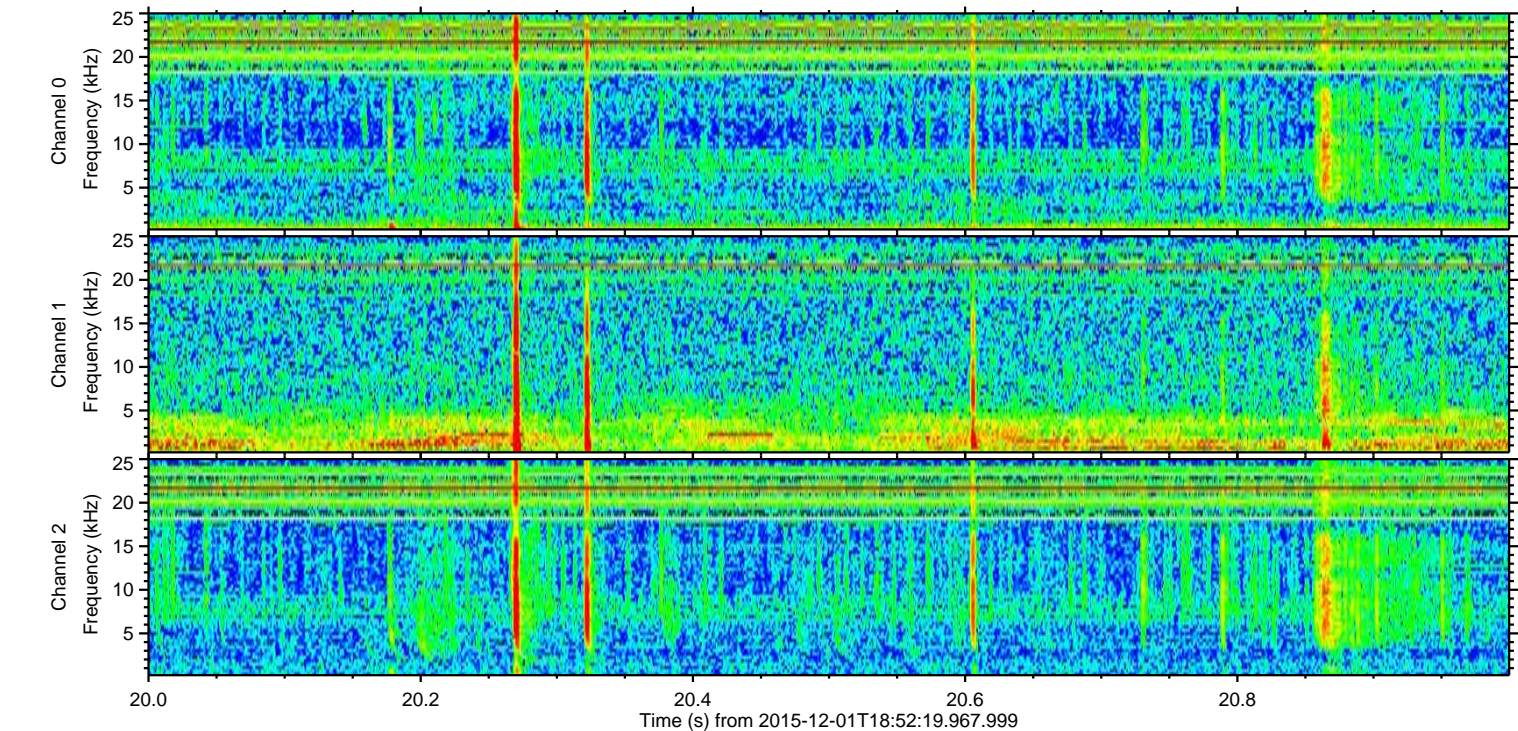
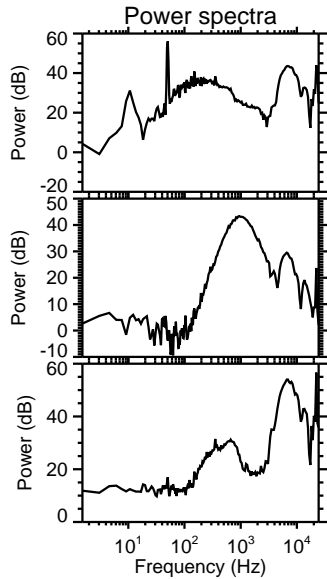
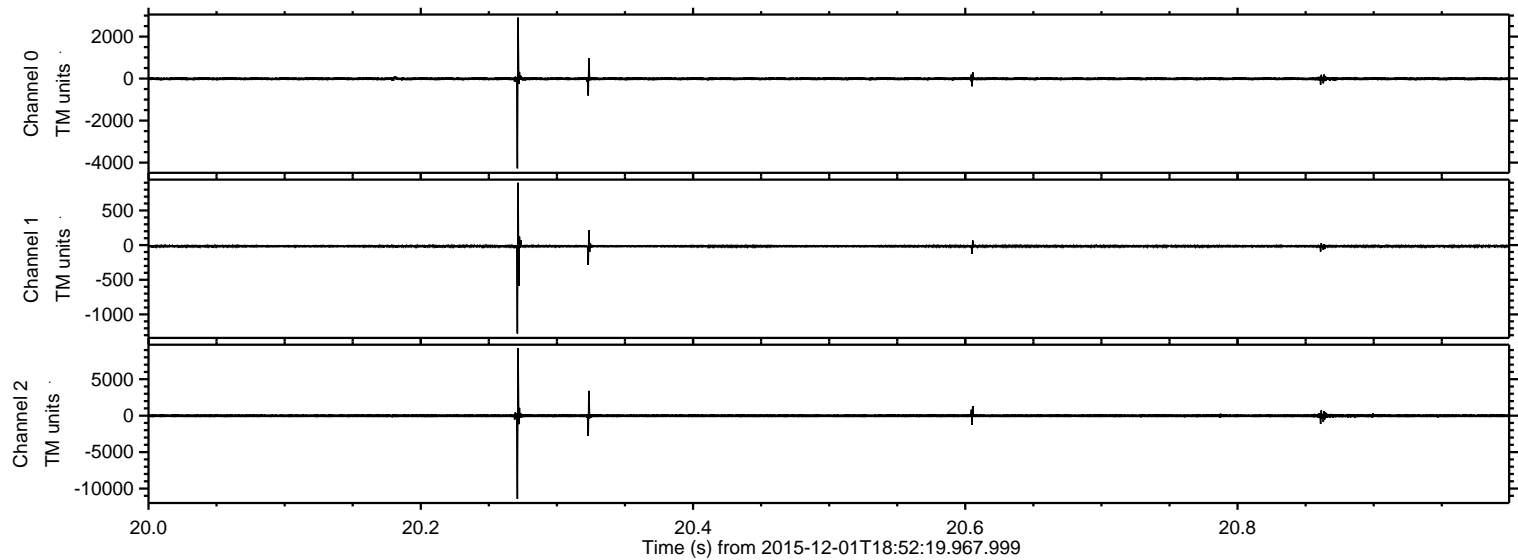
ELMAVAN 3D WAVEFORMS (Measured data sampled at 50 kHz) 51000 packets of 144 samples from 2015-12-01T18:52:19.967.999.

Processed Thu Dec 10 20:48:26 2015 by ELM ver.2012-10-06 from 001__elm20151201_185218__dat00.bin



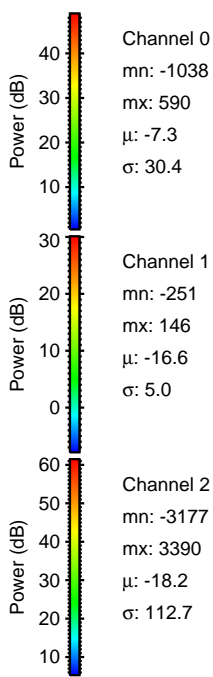
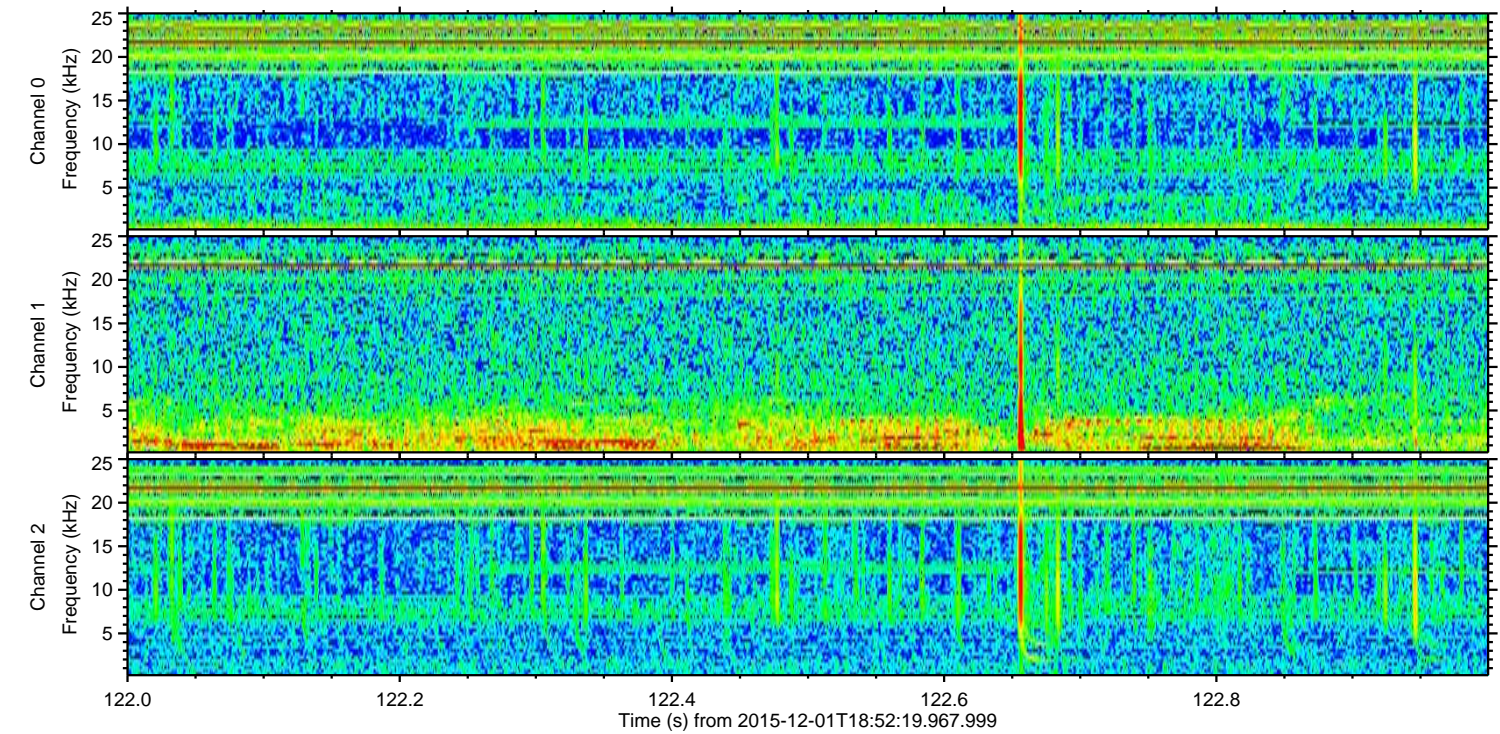
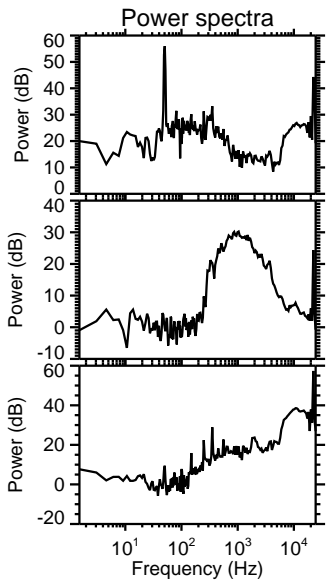
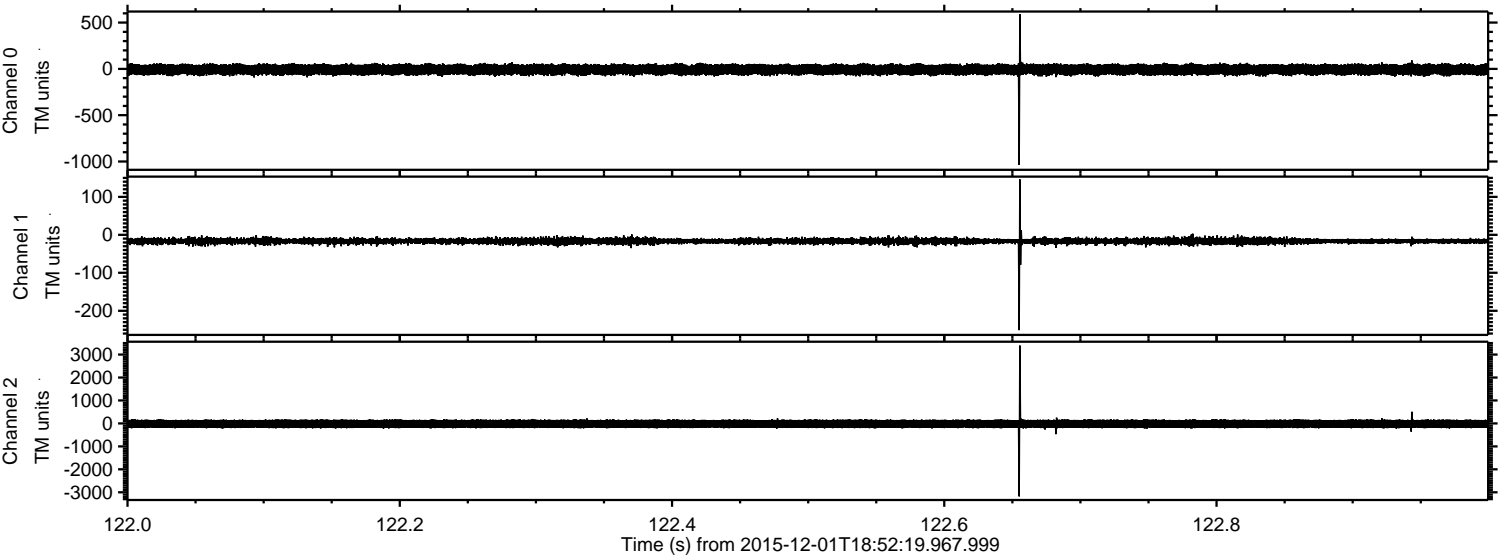
ELMAVAN 3D WAVEFORMS (Measured data sampled at 50 kHz) 51000 packets of 144 samples from 2015-12-01T18:52:19.967.999. Part 21/147

Processed Thu Dec 10 20:48:37 2015 by ELM ver.2012-10-06 from 001__elm20151201_185218__dat00.bin



ELMAVAN 3D WAVEFORMS (Measured data sampled at 50 kHz) 51000 packets of 144 samples from 2015-12-01T18:52:19.967.999. Part 123/147

Processed Thu Dec 10 20:48:38 2015 by ELM ver.2012-10-06 from 001__elm20151201_185218__dat00.bin

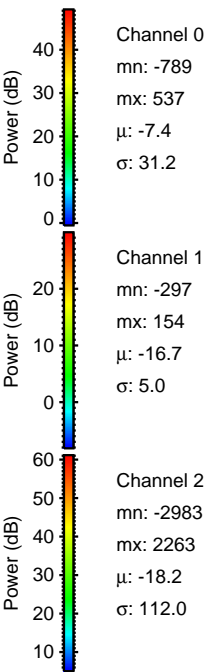
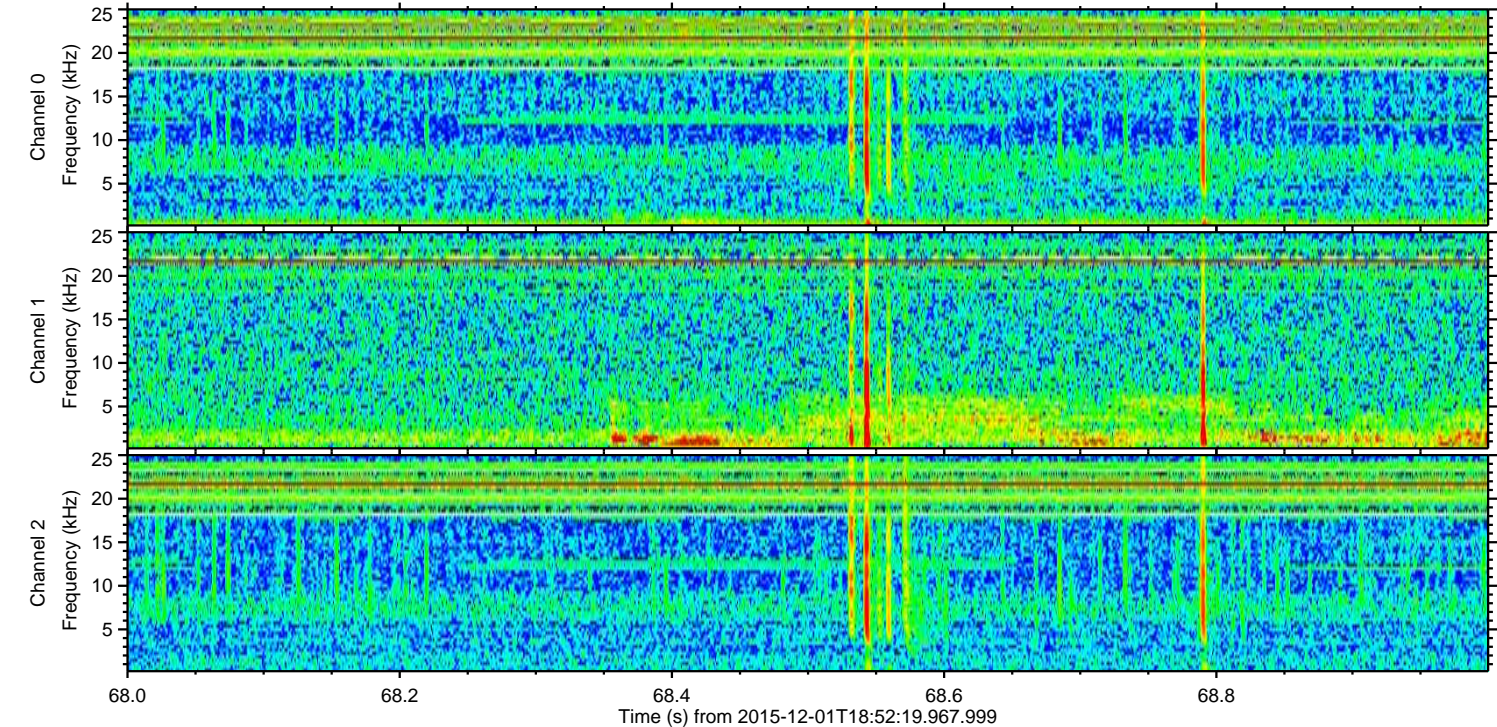
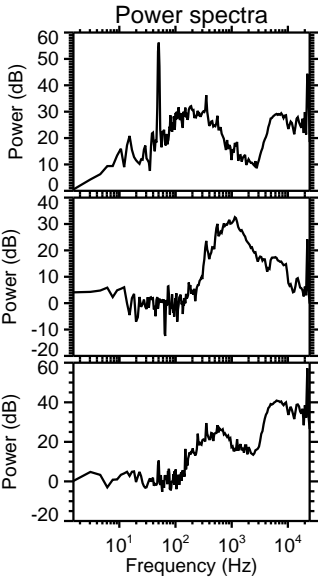
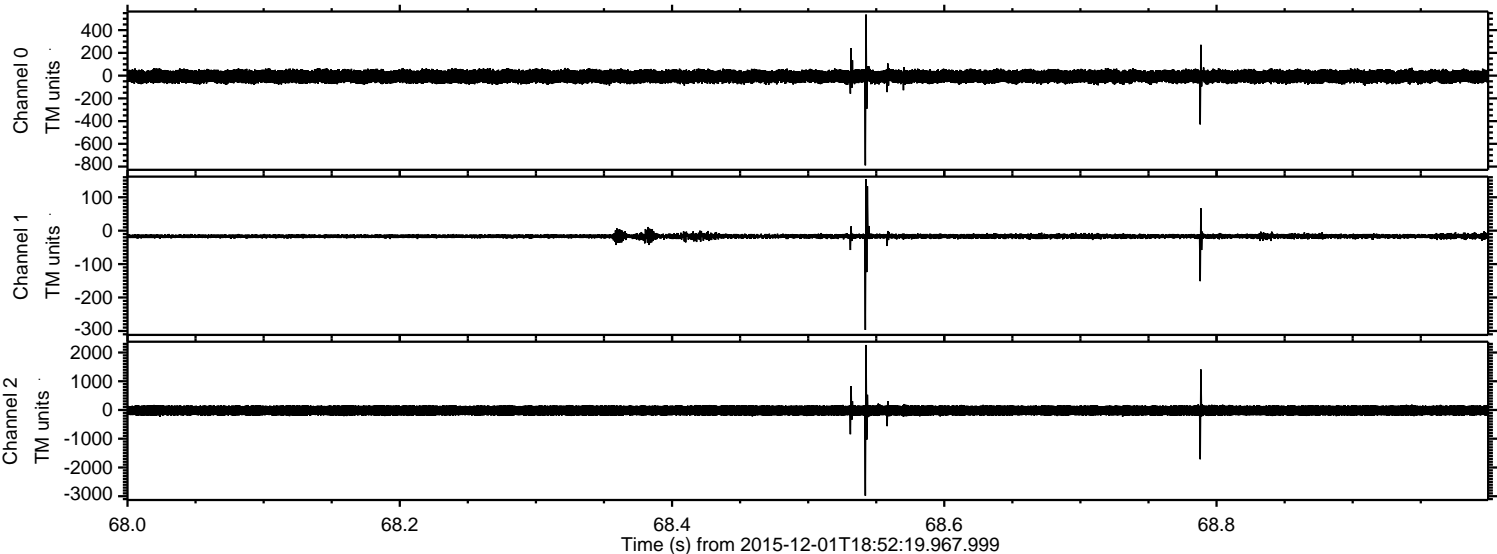


Channel 0
mn: -1038
mx: 590
 μ : -7.3
 σ : 30.4

Channel 1
mn: -251
mx: 146
 μ : -16.6
 σ : 5.0

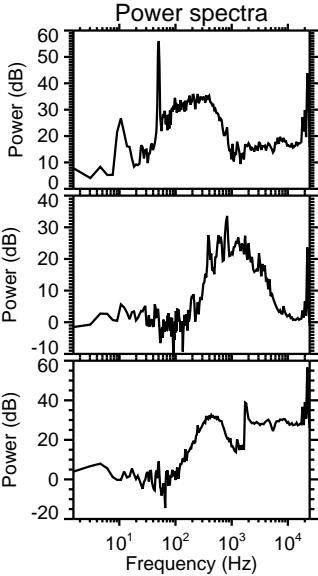
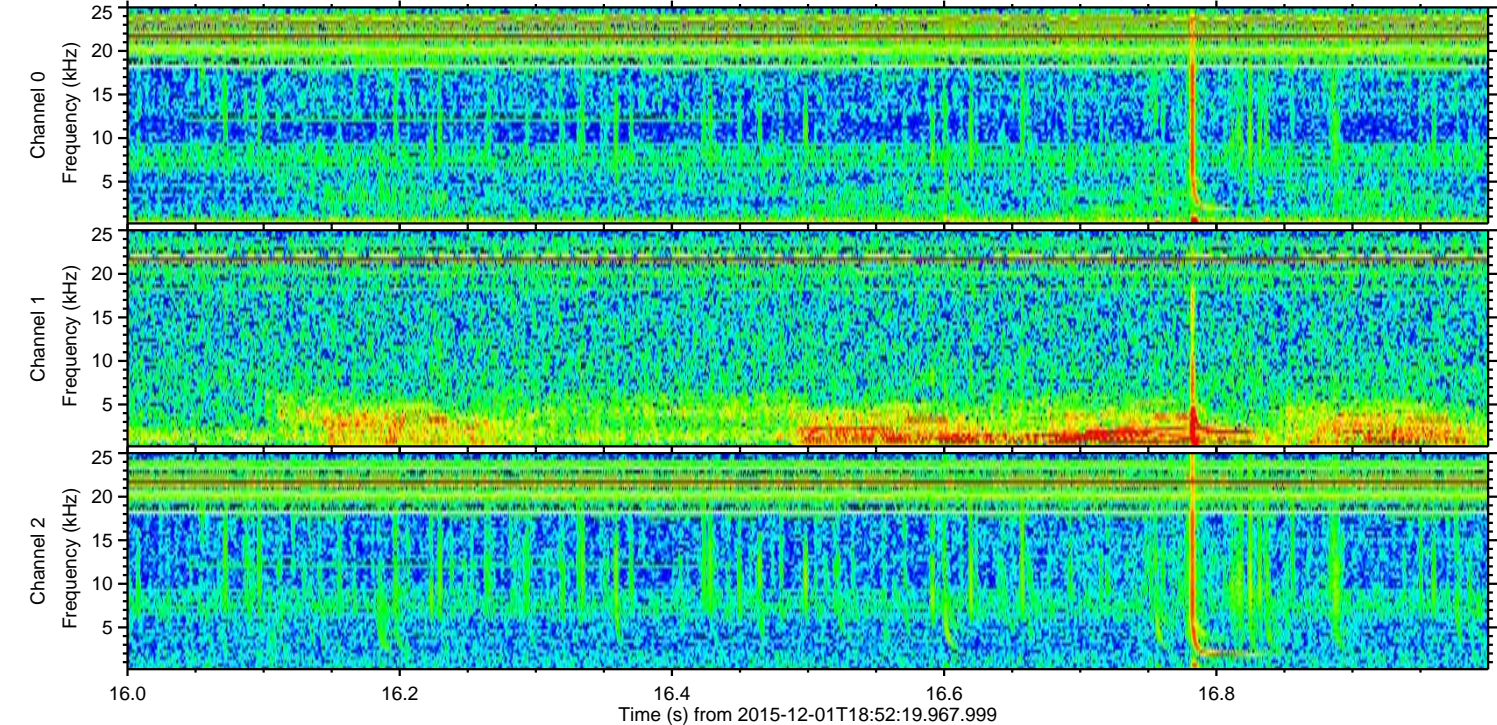
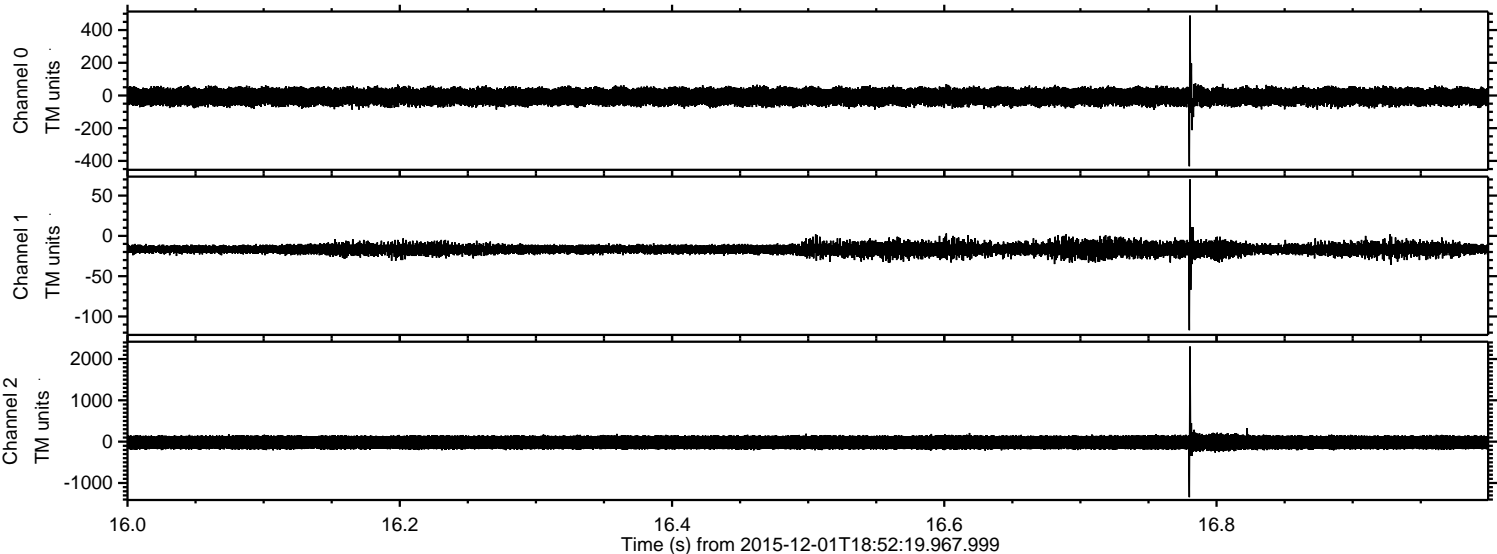
Channel 2
mn: -3177
mx: 3390
 μ : -18.2
 σ : 112.7

Processed Thu Dec 10 20:48:39 2015 by ELM ver.2012-10-06 from 001__elm20151201_185218__dat00.bin



ELMAVAN 3D WAVEFORMS (Measured data sampled at 50 kHz) 51000 packets of 144 samples from 2015-12-01T18:52:19.967.999. Part 17/147

Processed Thu Dec 10 20:48:40 2015 by ELM ver.2012-10-06 from 001__elm20151201_185218__dat00.bin



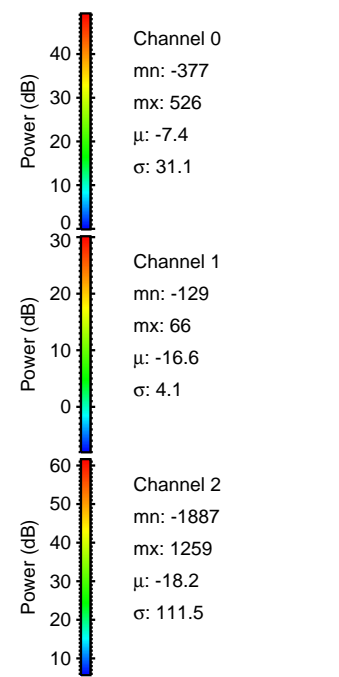
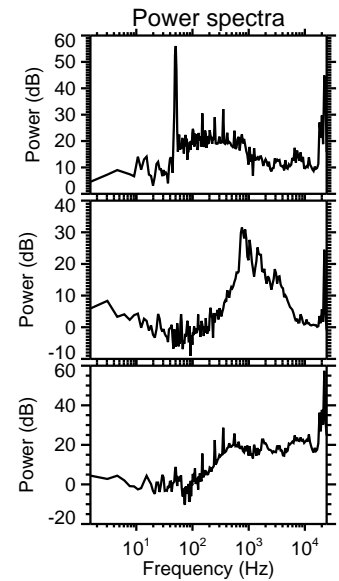
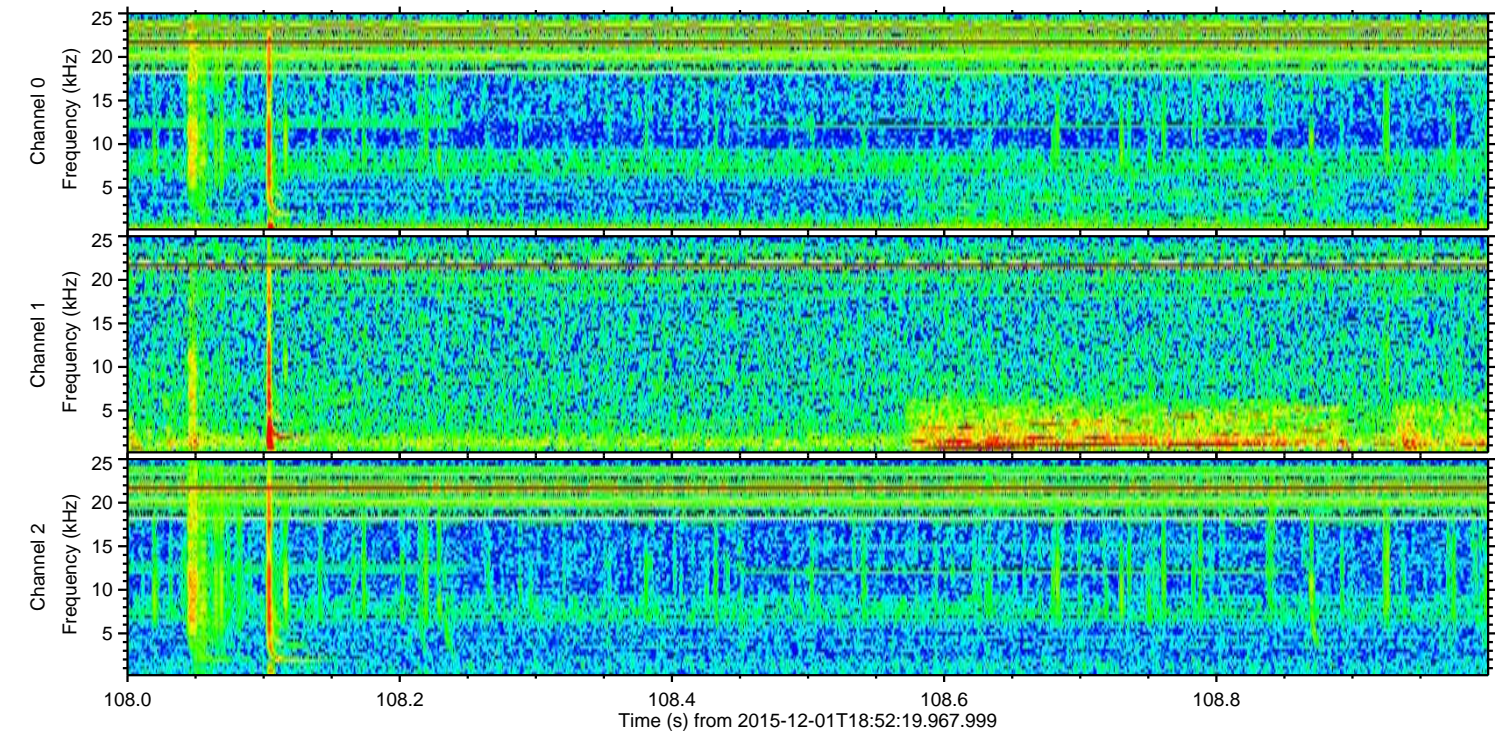
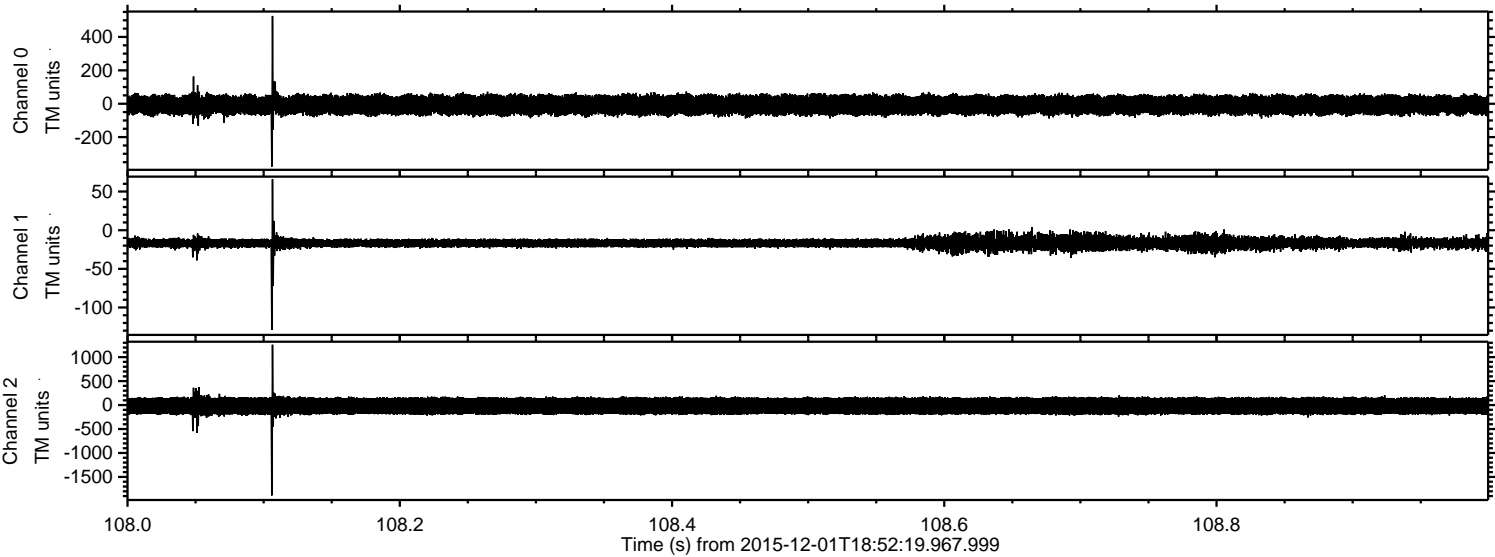
Channel 0
mn: -433
mx: 489
 μ : -7.4
 σ : 29.3

Channel 1
mn: -117
mx: 70
 μ : -16.6
 σ : 4.3

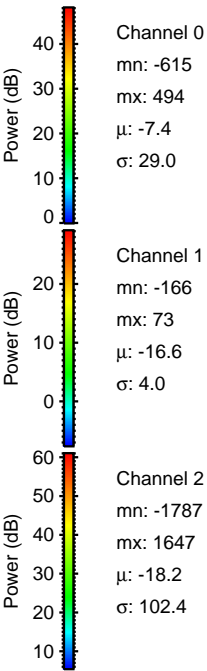
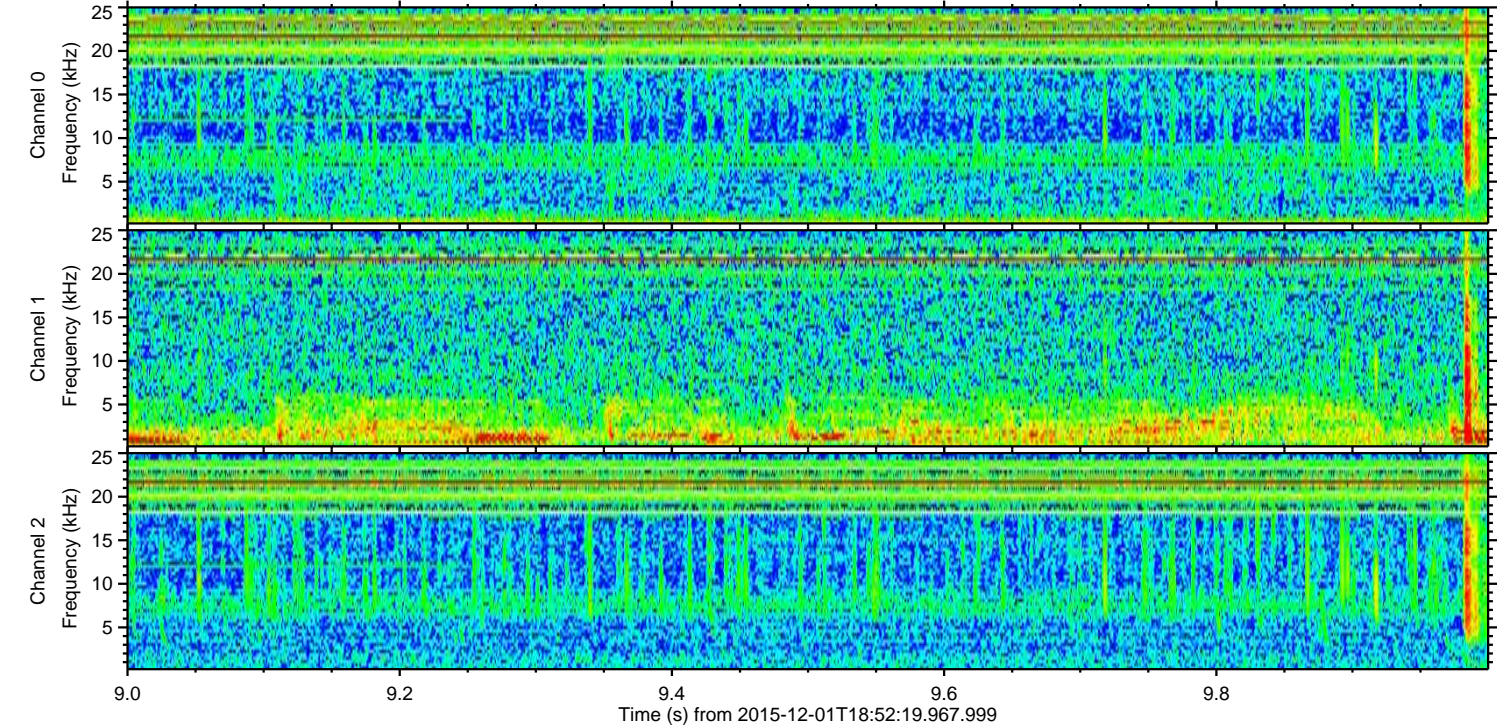
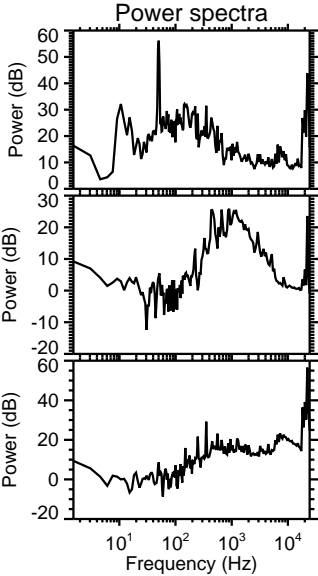
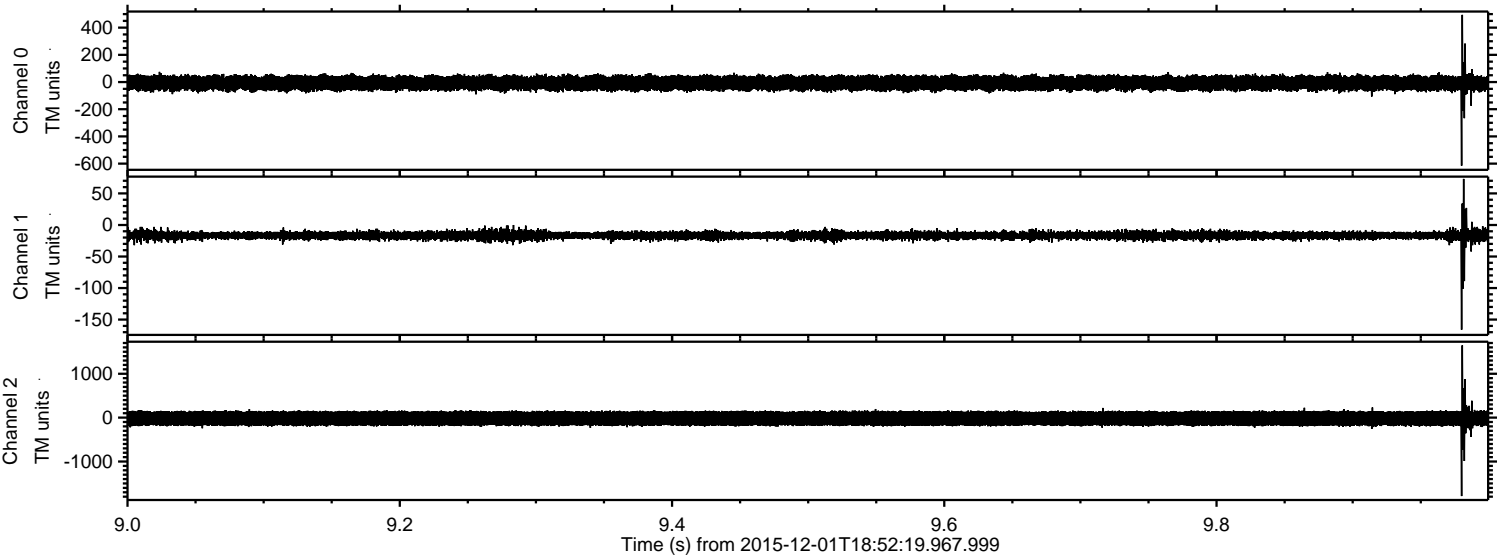
Channel 2
mn: -1344
mx: 2303
 μ : -18.2
 σ : 102.2

ELMAVAN 3D WAVEFORMS (Measured data sampled at 50 kHz) 51000 packets of 144 samples from 2015-12-01T18:52:19.967.999. Part 109/147

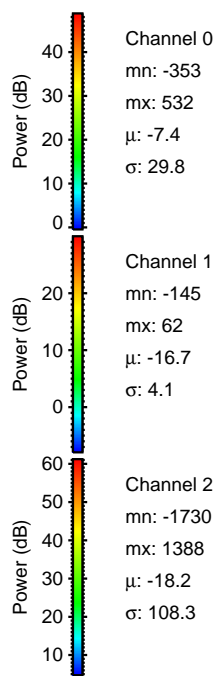
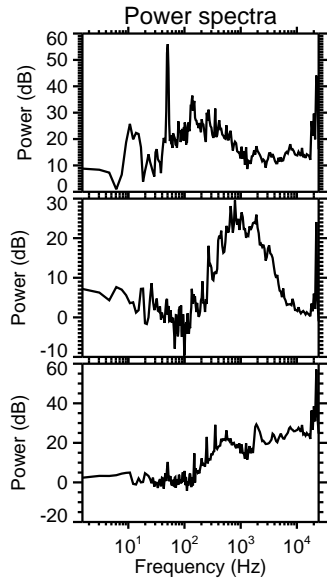
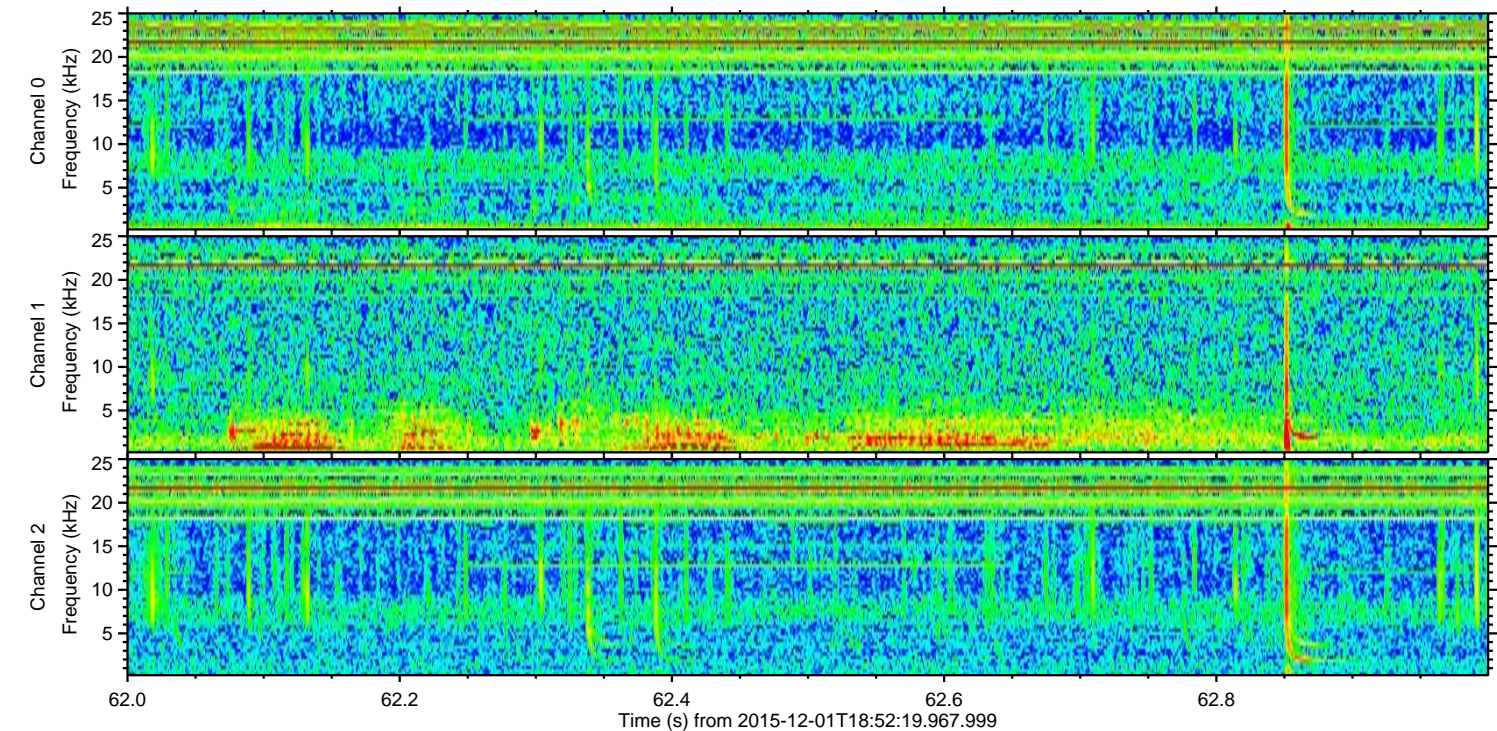
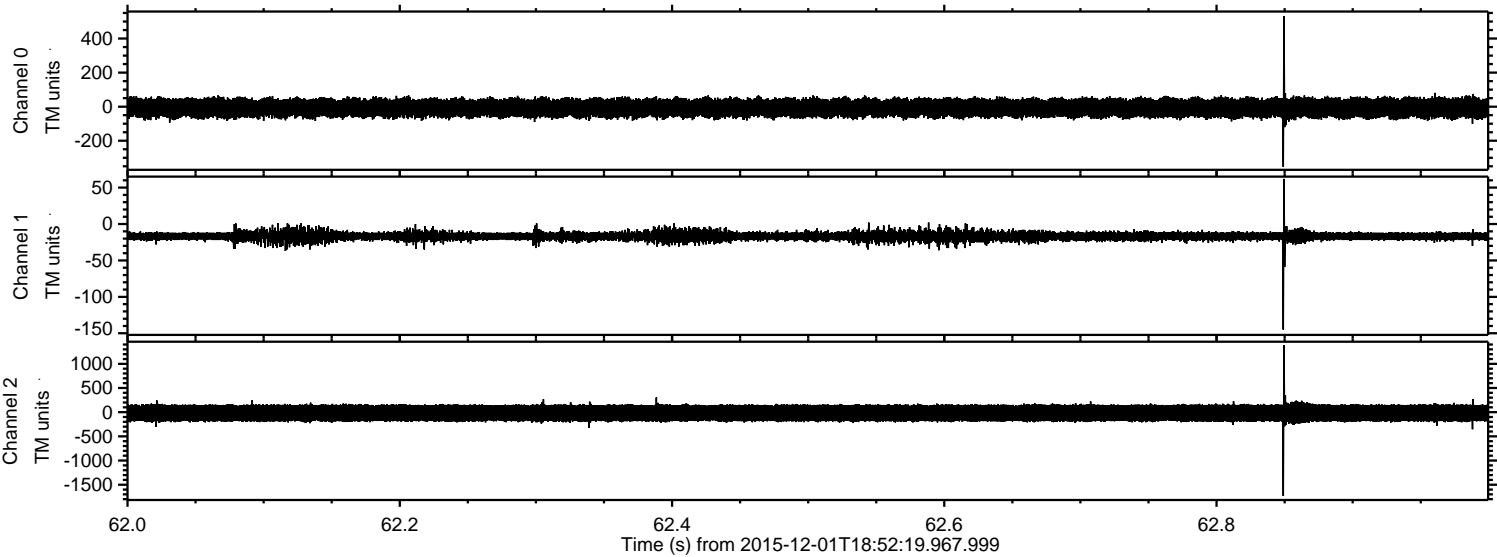
Processed Thu Dec 10 20:48:41 2015 by ELM ver.2012-10-06 from 001__elm20151201_185218__dat00.bin



Processed Thu Dec 10 20:48:42 2015 by ELM ver.2012-10-06 from 001__elm20151201_185218__dat00.bin



Processed Thu Dec 10 20:48:43 2015 by ELM ver.2012-10-06 from 001__elm20151201_185218__dat00.bin



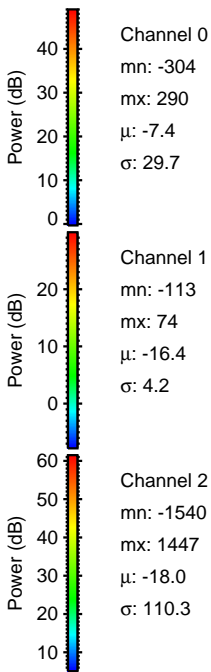
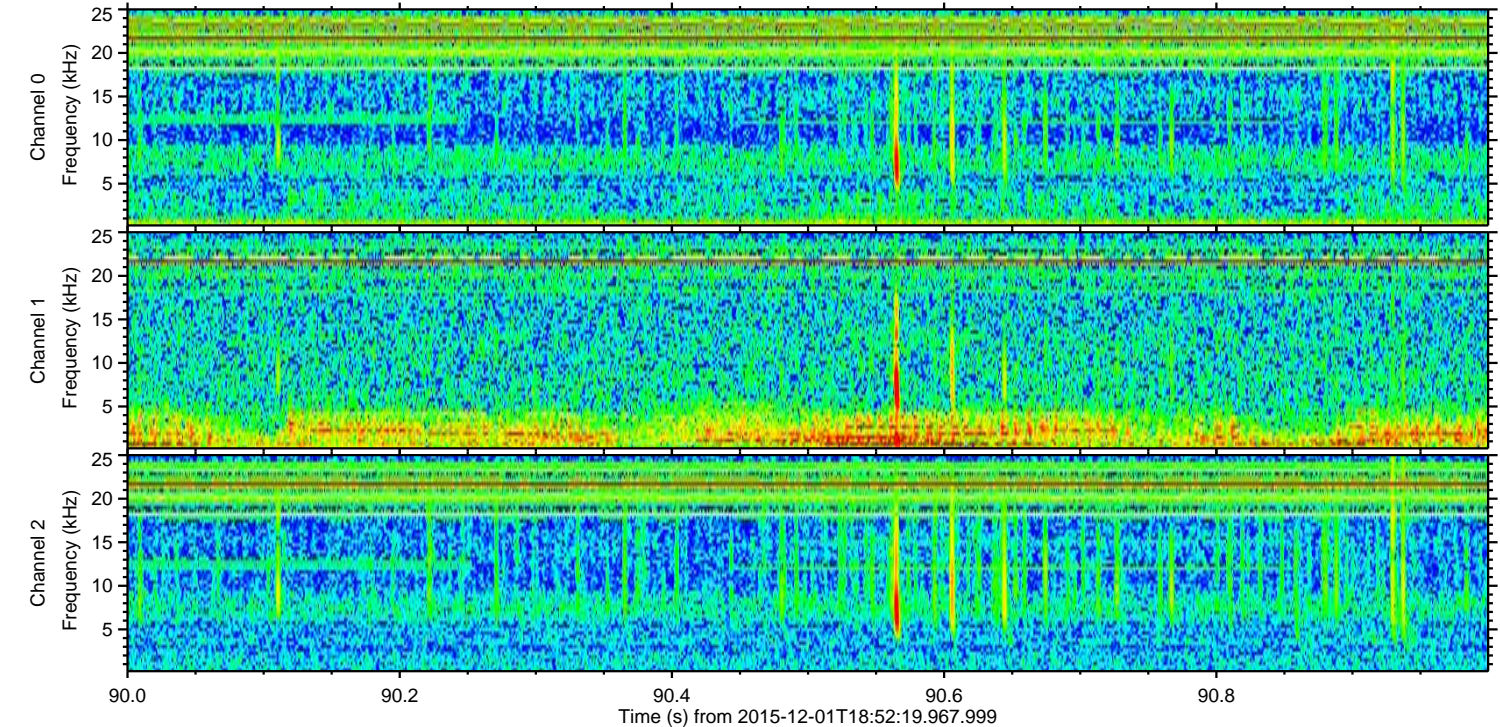
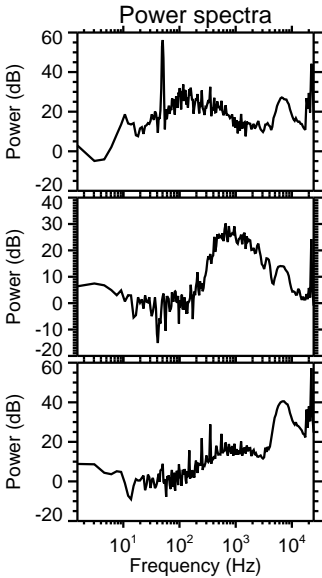
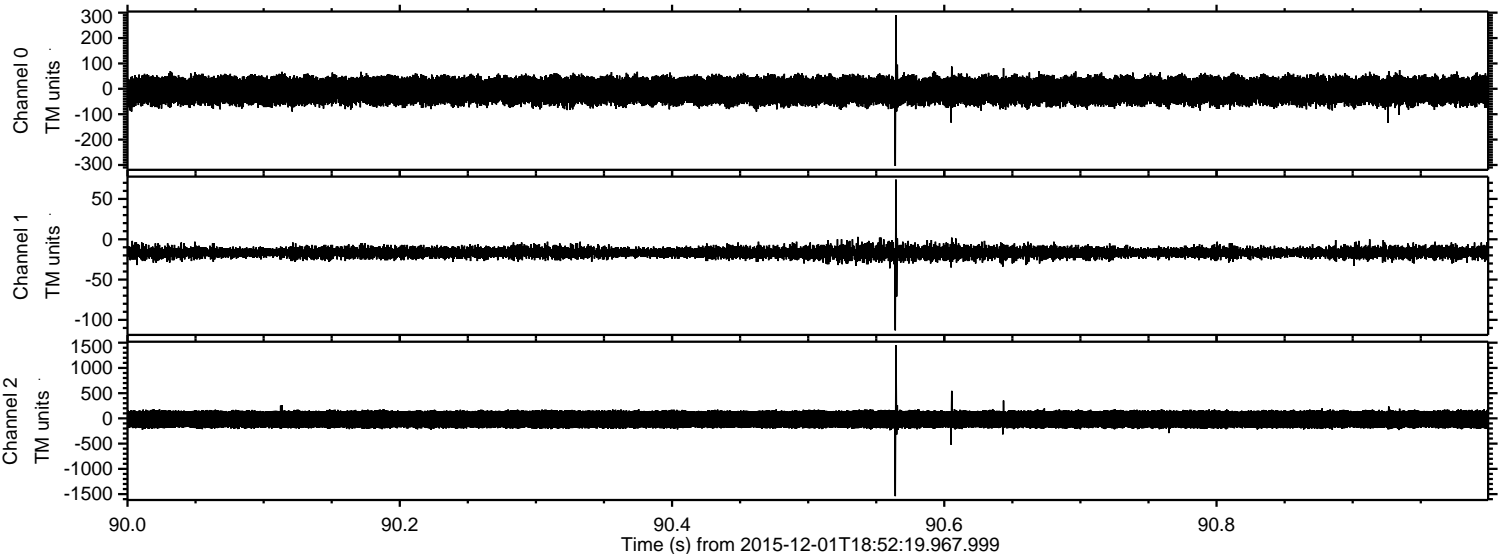
Channel 0
mn: -353
mx: 532
 μ : -7.4
 σ : 29.8

Channel 1
mn: -145
mx: 62
 μ : -16.7
 σ : 4.1

Channel 2
mn: -1730
mx: 1388
 μ : -18.2
 σ : 108.3

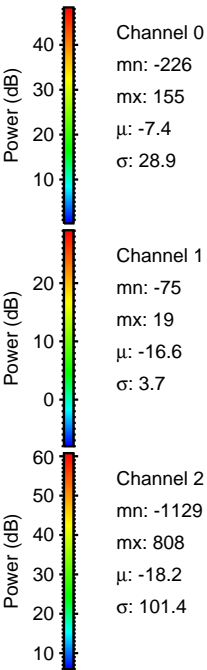
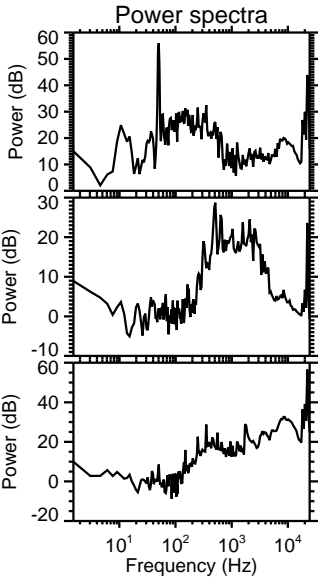
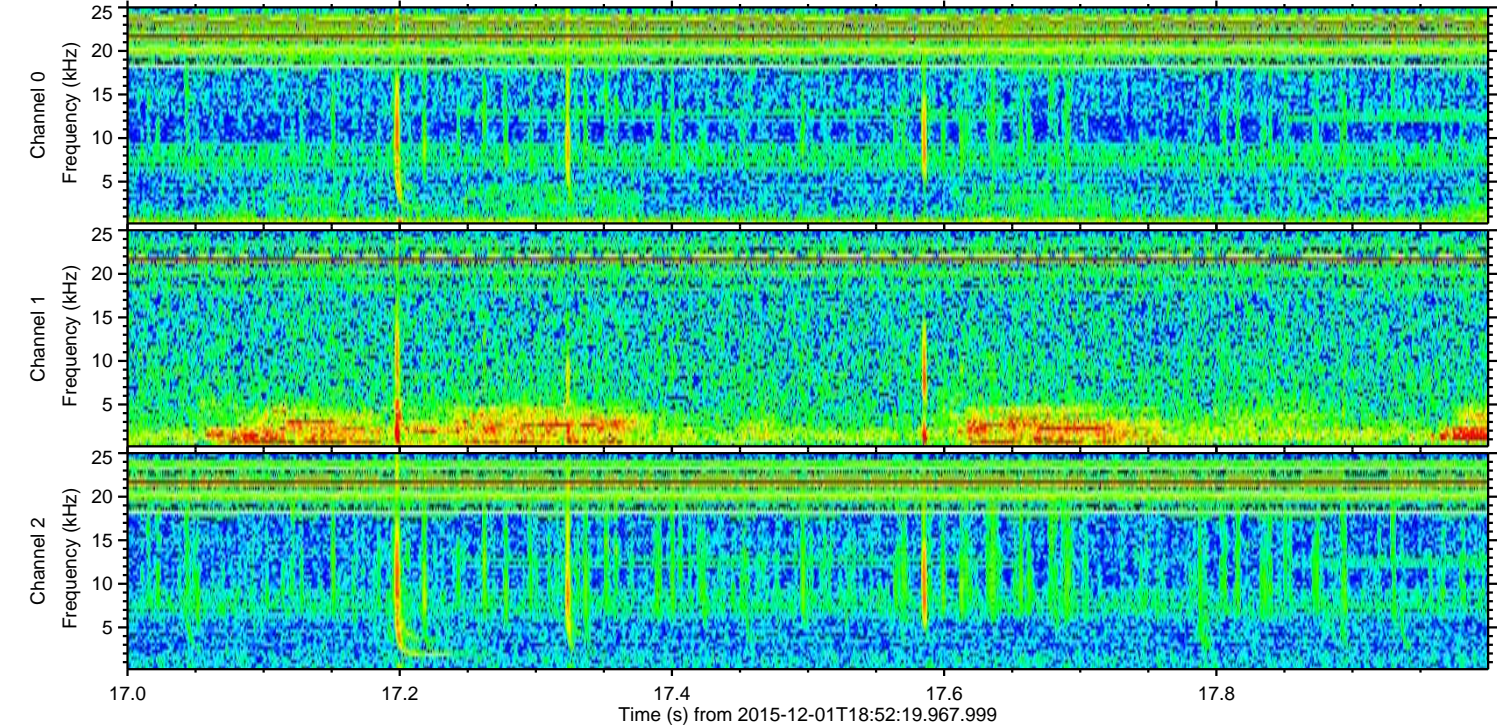
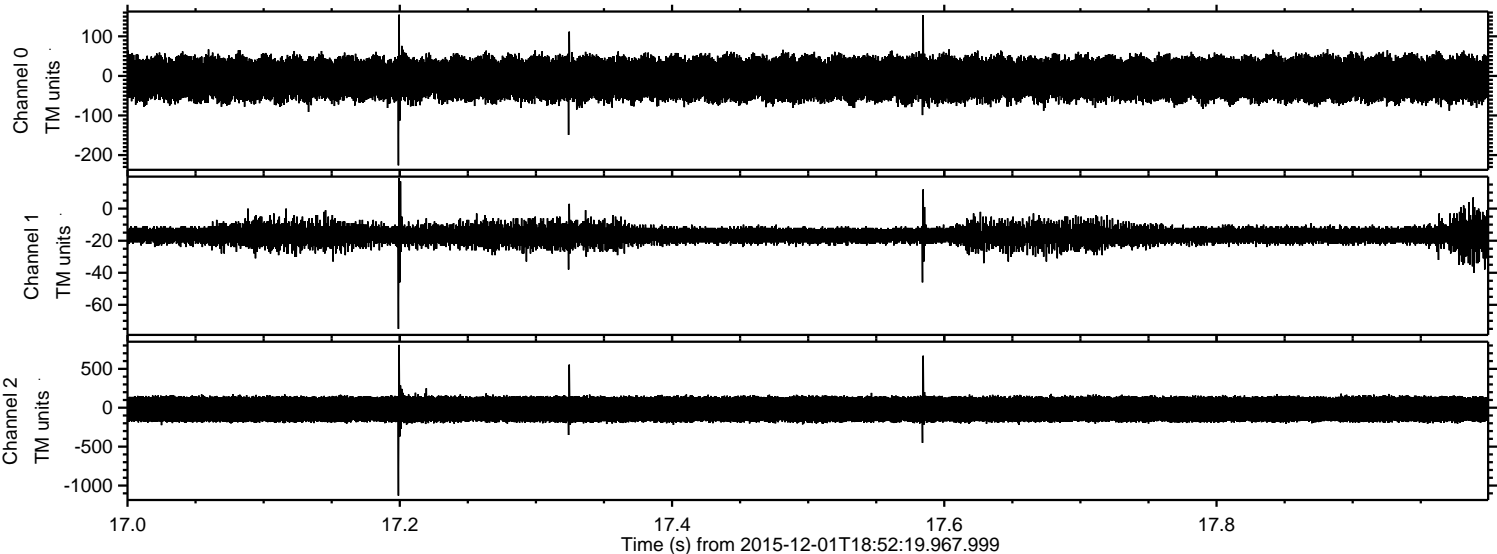
ELMAVAN 3D WAVEFORMS (Measured data sampled at 50 kHz) 51000 packets of 144 samples from 2015-12-01T18:52:19.967.999. Part 91/147

Processed Thu Dec 10 20:48:44 2015 by ELM ver.2012-10-06 from 001__elm20151201_185218__dat00.bin



ELMAVAN 3D WAVEFORMS (Measured data sampled at 50 kHz) 51000 packets of 144 samples from 2015-12-01T18:52:19.967.999. Part 18/147

Processed Thu Dec 10 20:48:45 2015 by ELM ver.2012-10-06 from 001__elm20151201_185218__dat00.bin



Processed Thu Dec 10 20:48:46 2015 by ELM ver.2012-10-06 from 001__elm20151201_185218__dat00.bin

