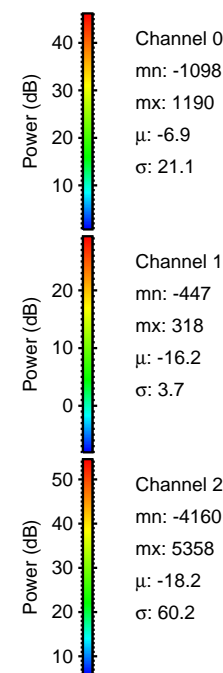
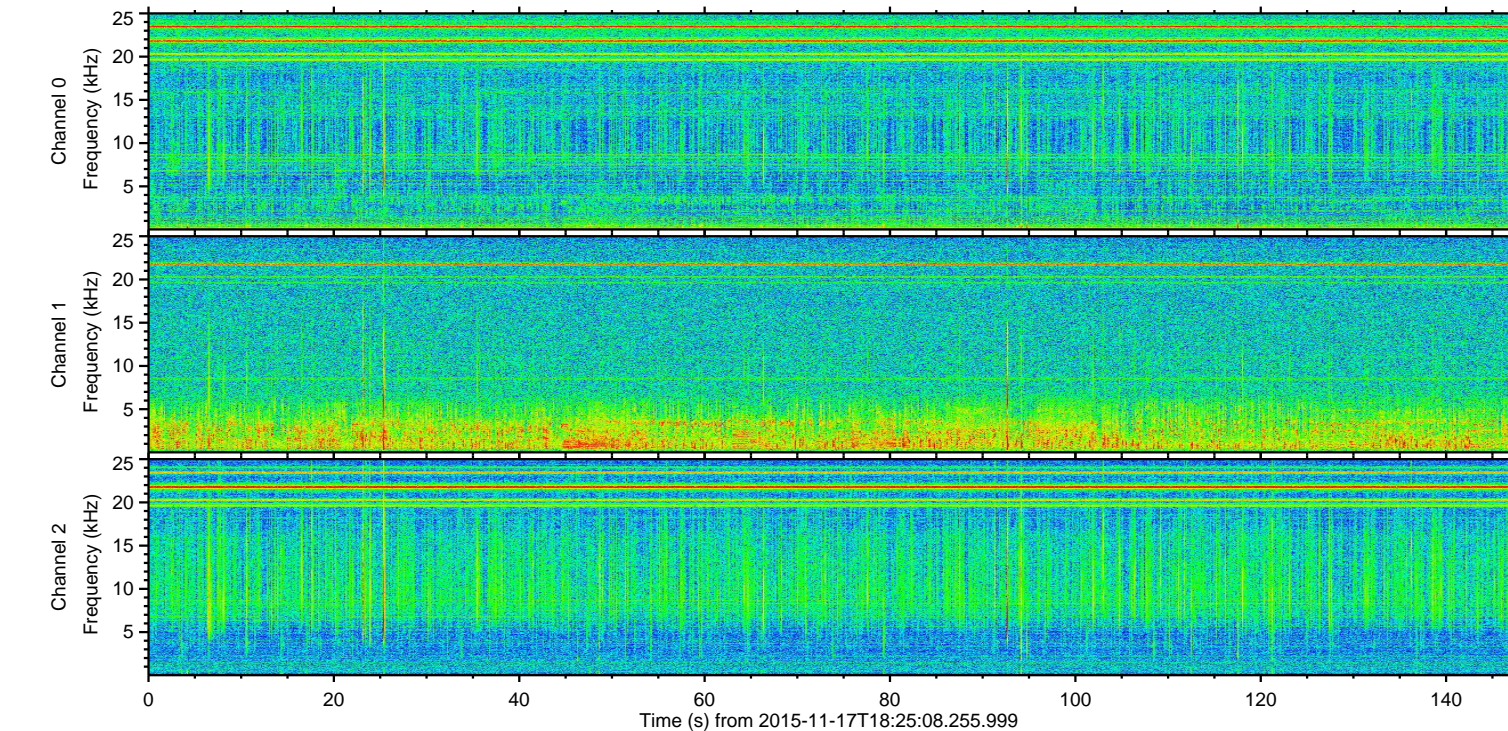
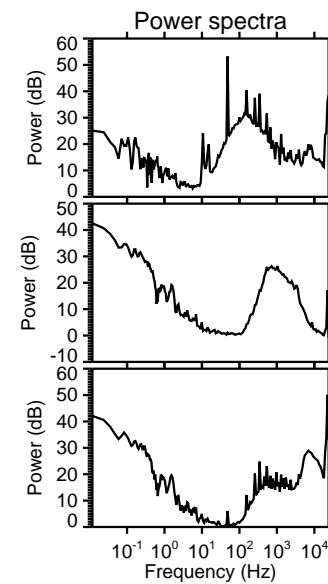
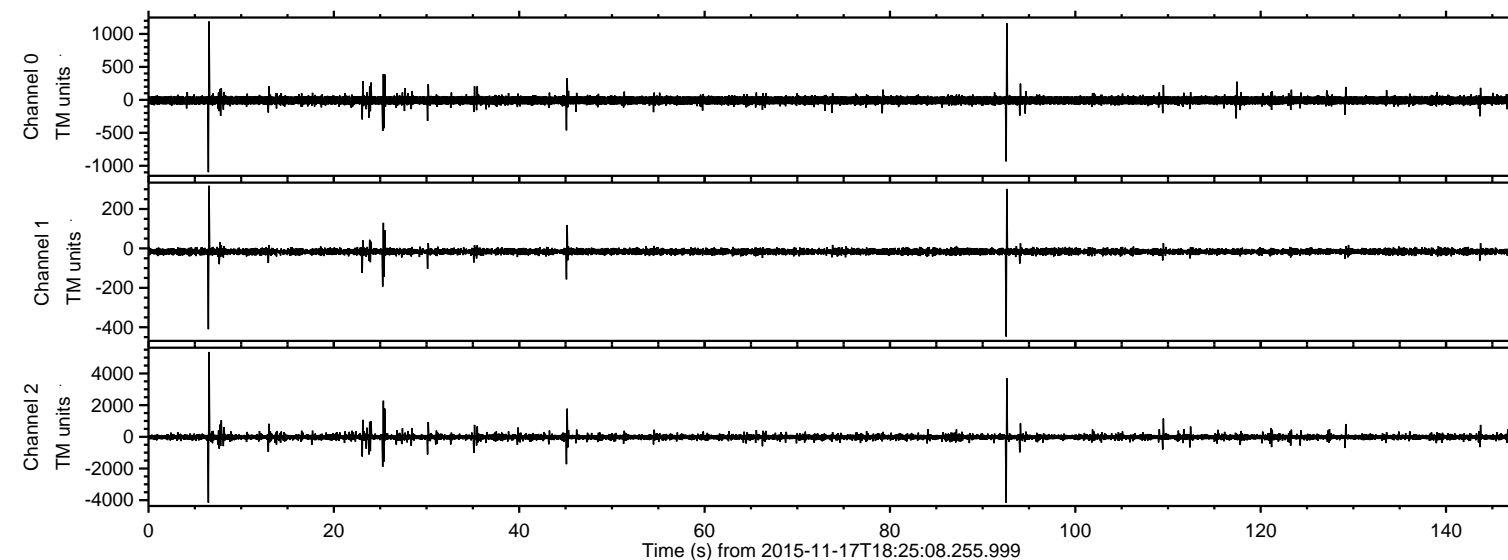


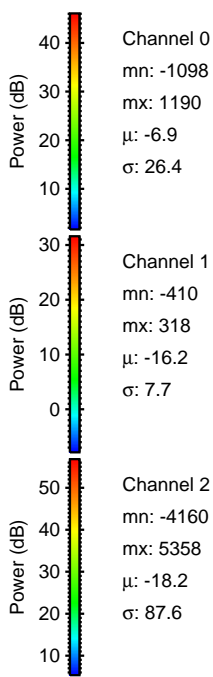
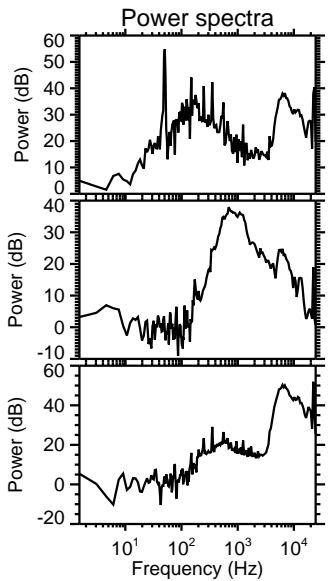
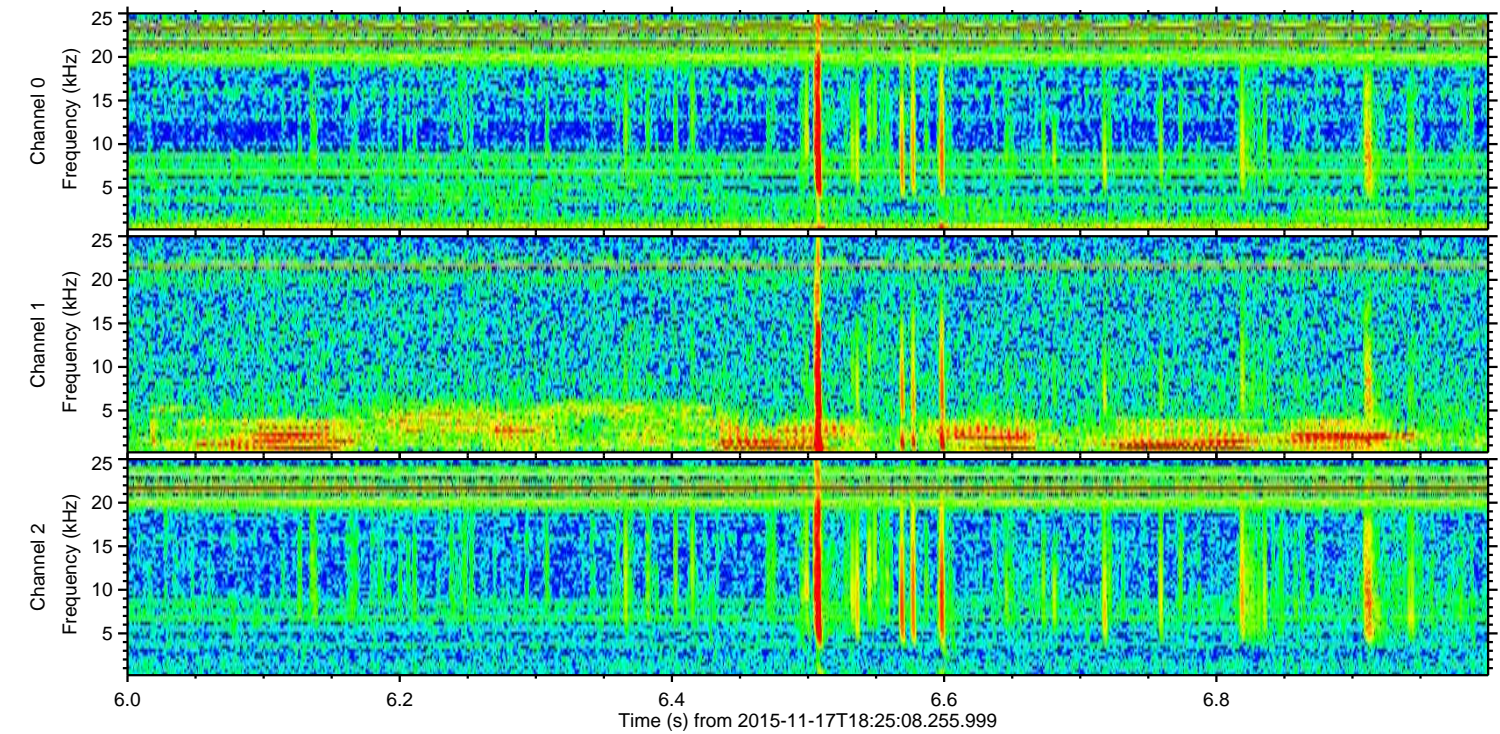
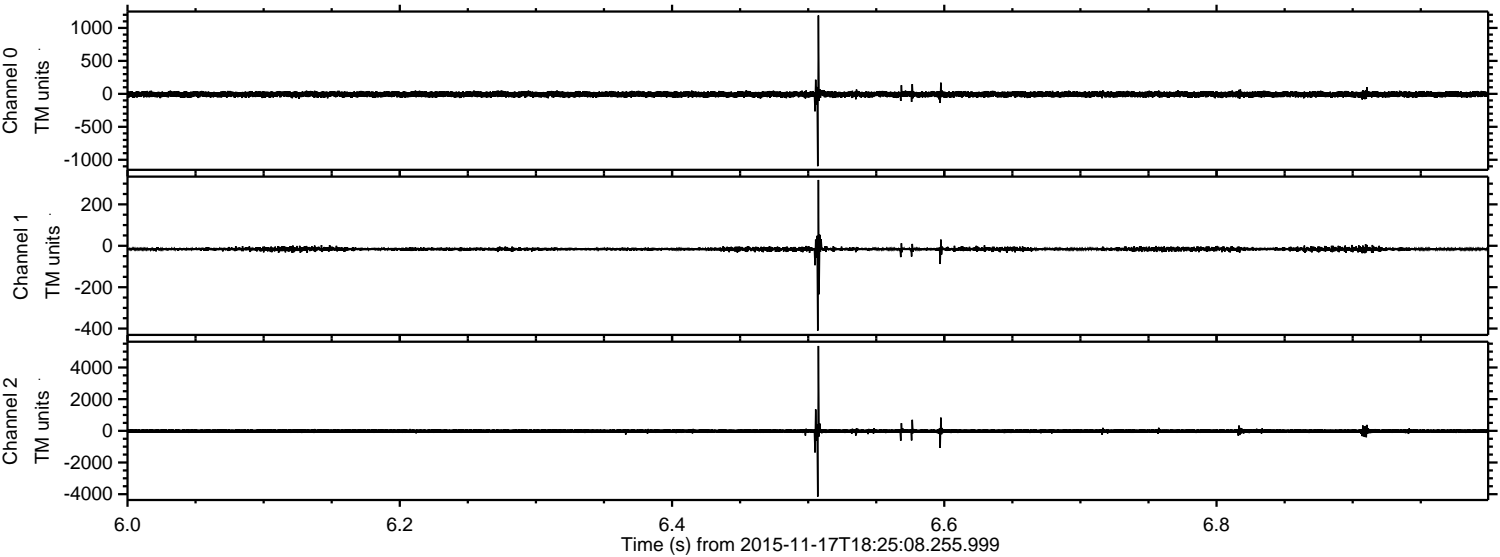
ELMAVAN 3D WAVEFORMS (Measured data sampled at 50 kHz) 51000 packets of 144 samples from 2015-11-17T18:25:08.255.999.

Processed Tue Nov 17 19:31:41 2015 by ELM ver.2012-10-06 from 001__elm20151117_182507__dat00.bin



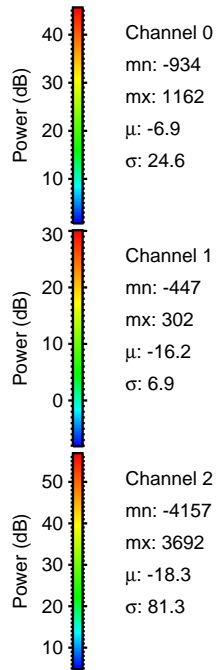
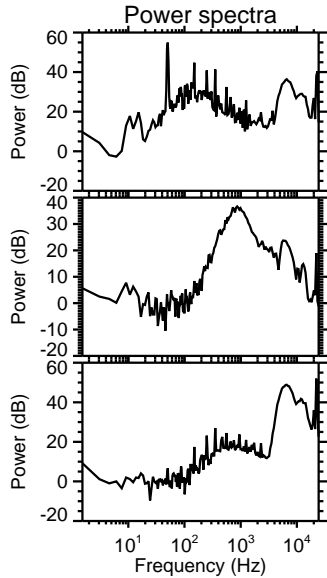
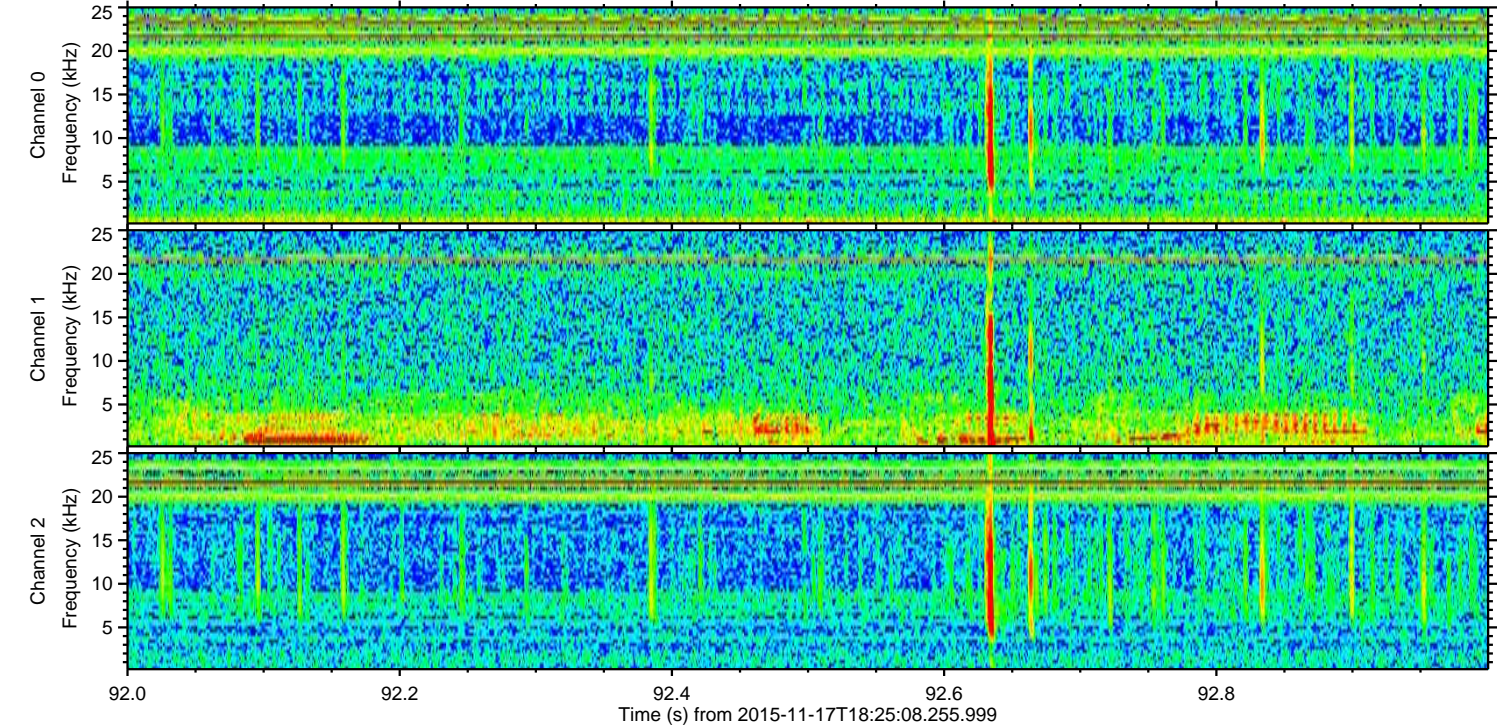
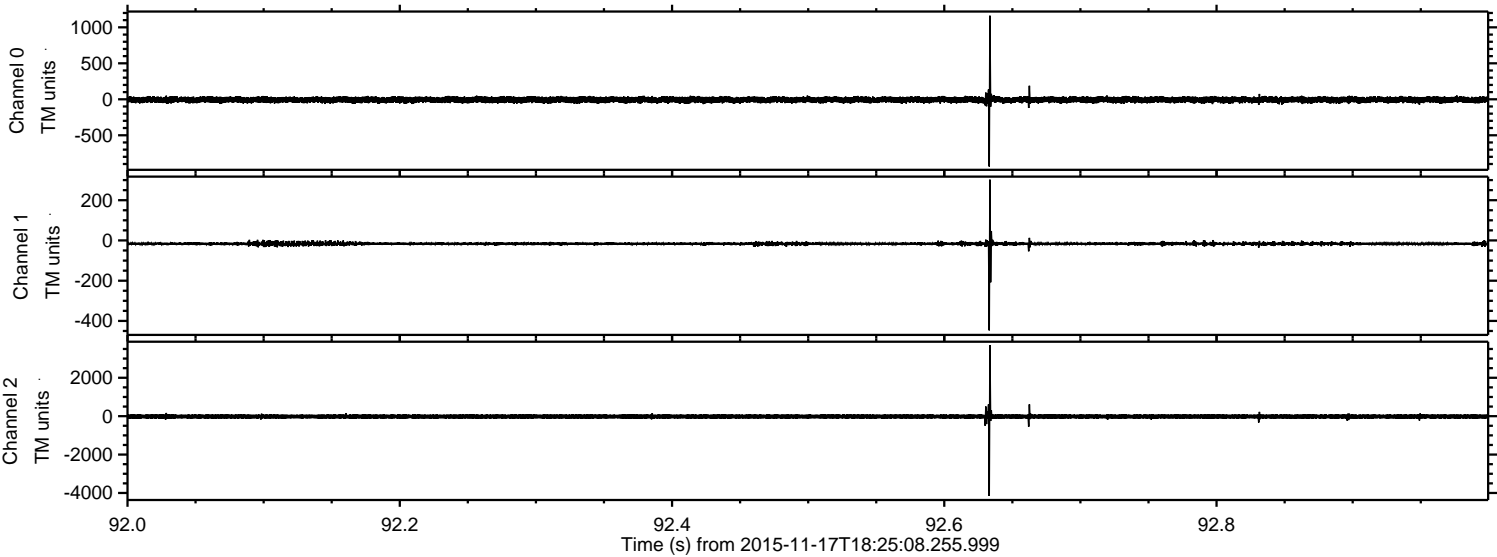
ELMAVAN 3D WAVEFORMS (Measured data sampled at 50 kHz) 51000 packets of 144 samples from 2015-11-17T18:25:08.255.999. Part 7/147

Processed Tue Nov 17 19:31:53 2015 by ELM ver.2012-10-06 from 001__elm20151117_182507__dat00.bin



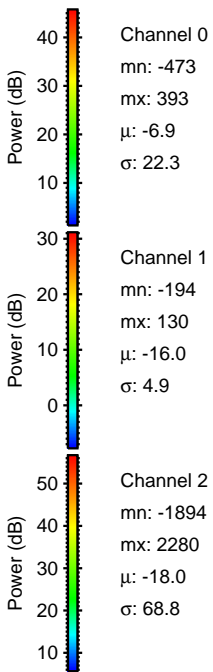
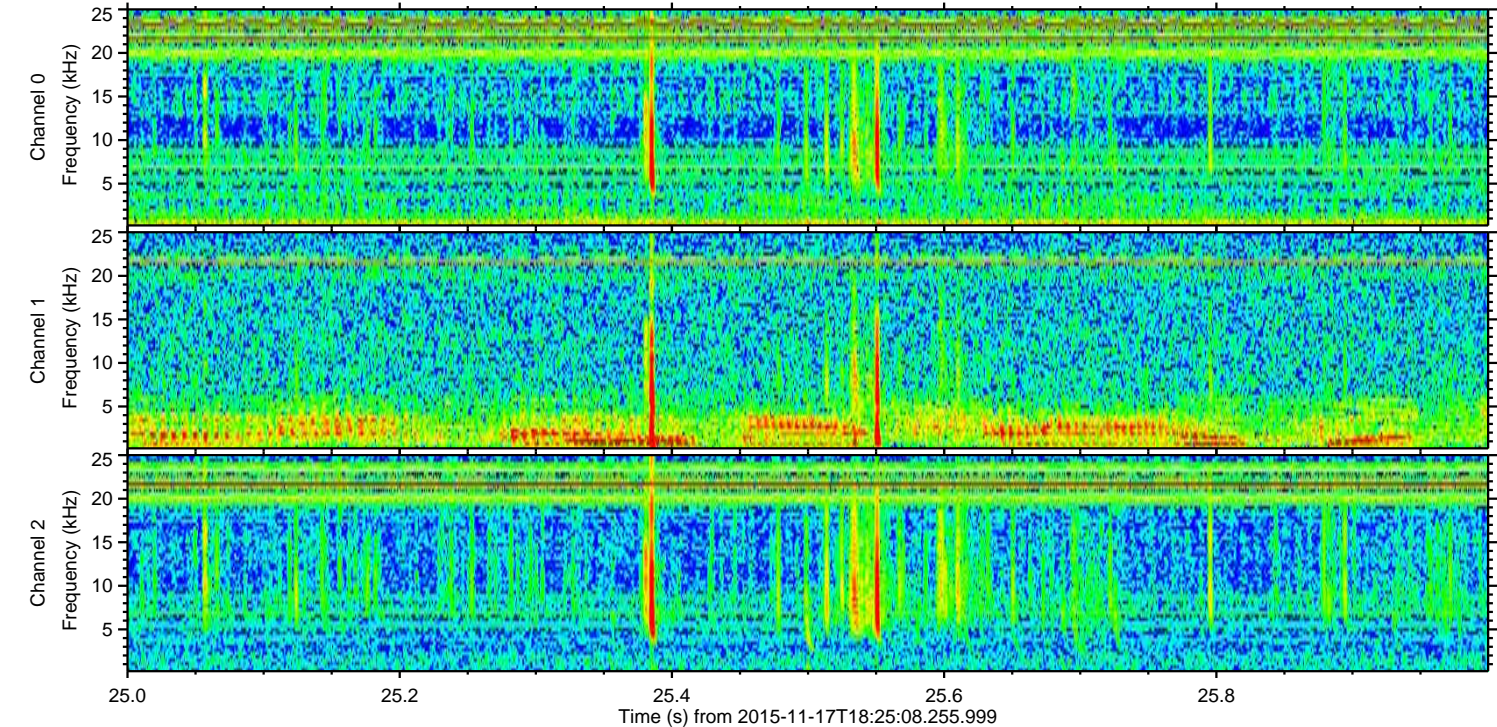
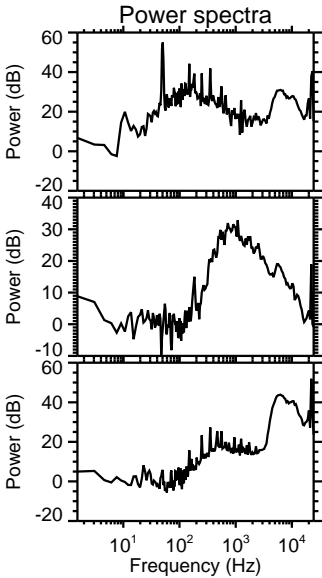
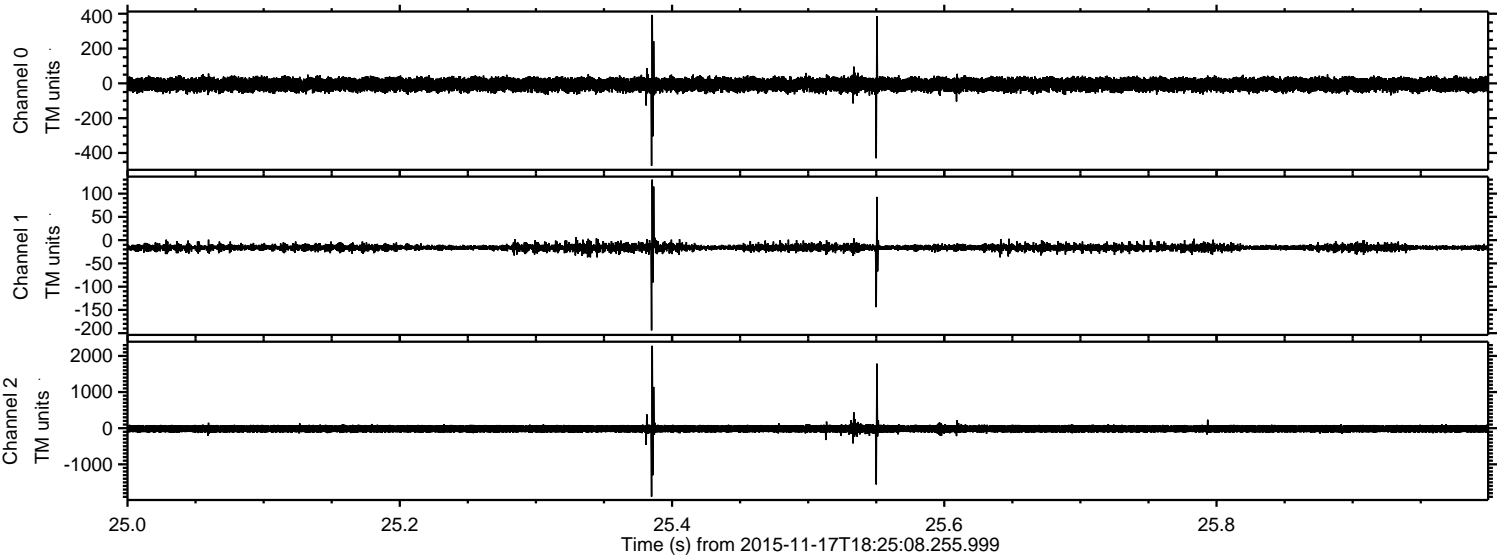
ELMAVAN 3D WAVEFORMS (Measured data sampled at 50 kHz) 51000 packets of 144 samples from 2015-11-17T18:25:08.255.999. Part 93/147

Processed Tue Nov 17 19:31:54 2015 by ELM ver.2012-10-06 from 001__elm20151117_182507__dat00.bin

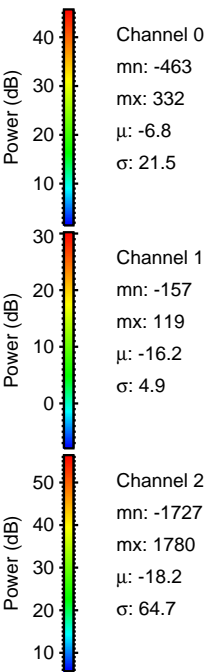
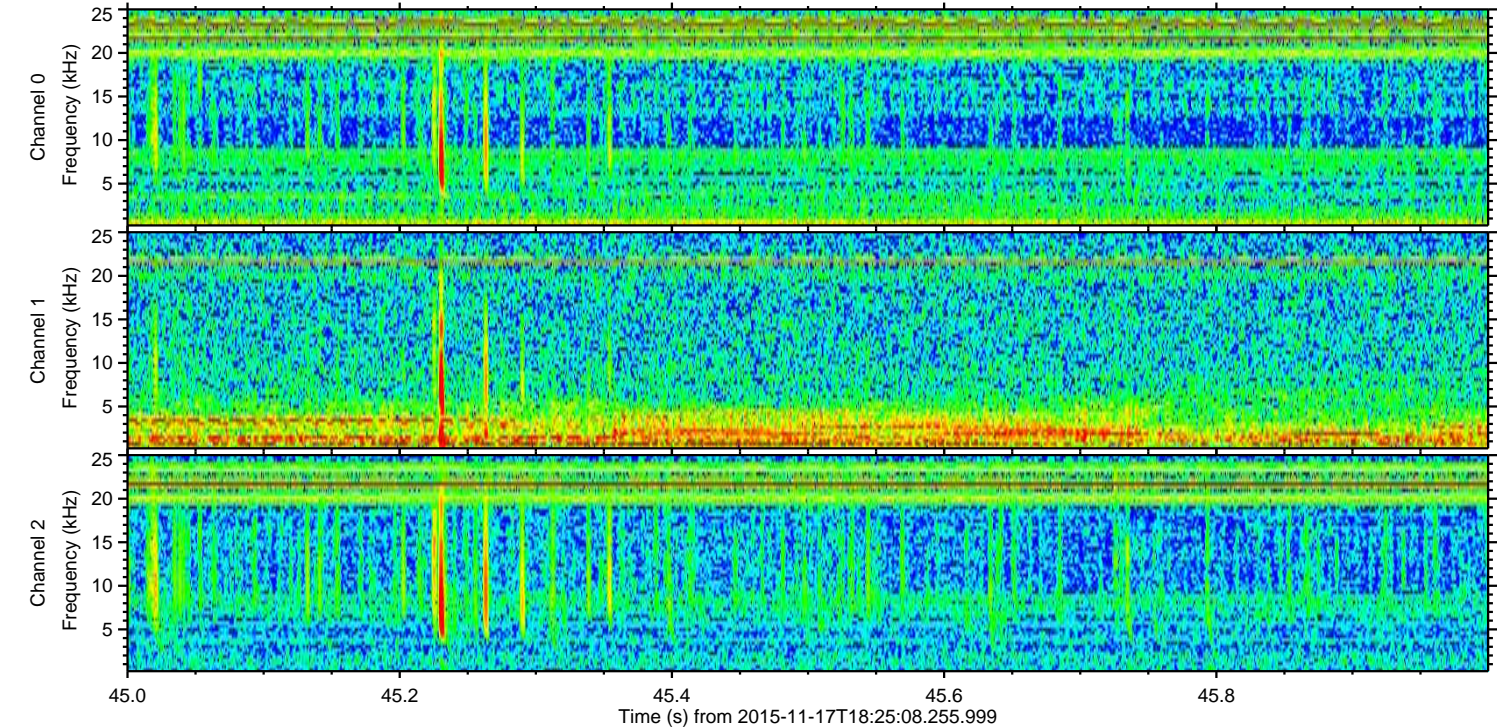
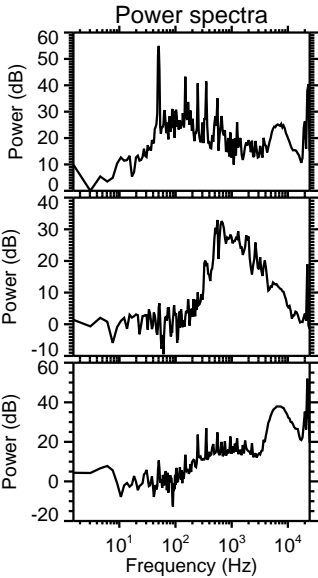
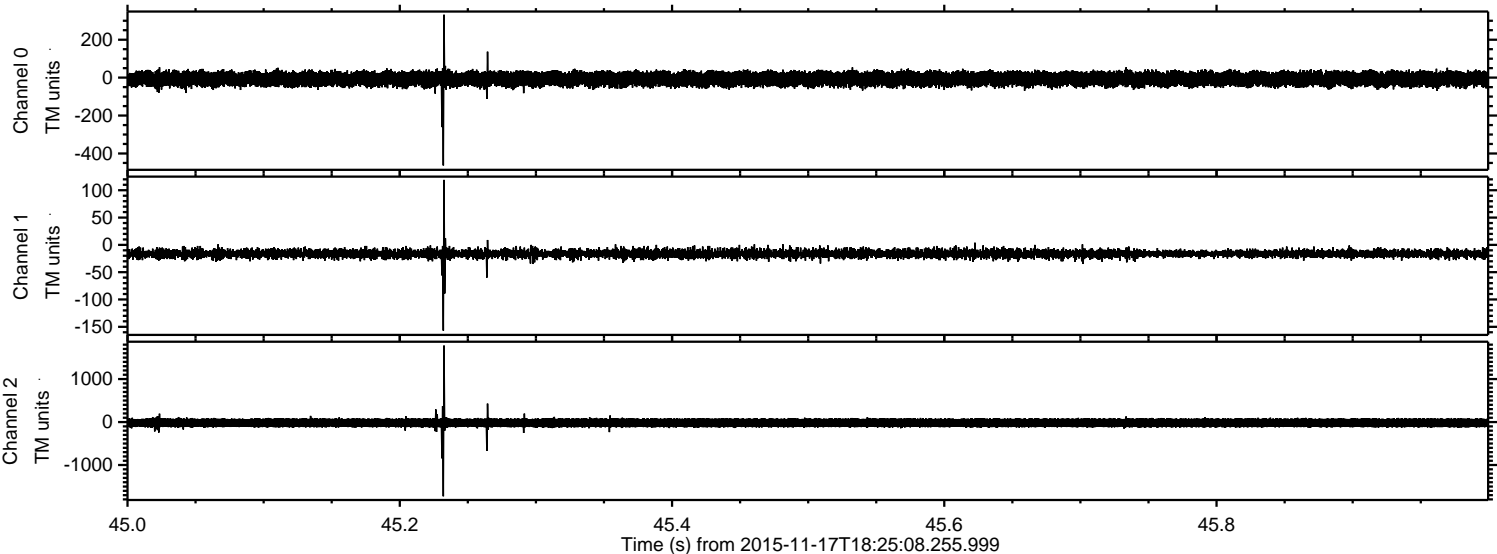


ELMAVAN 3D WAVEFORMS (Measured data sampled at 50 kHz) 51000 packets of 144 samples from 2015-11-17T18:25:08.255.999. Part 26/147

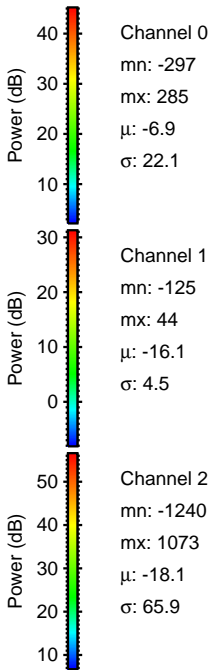
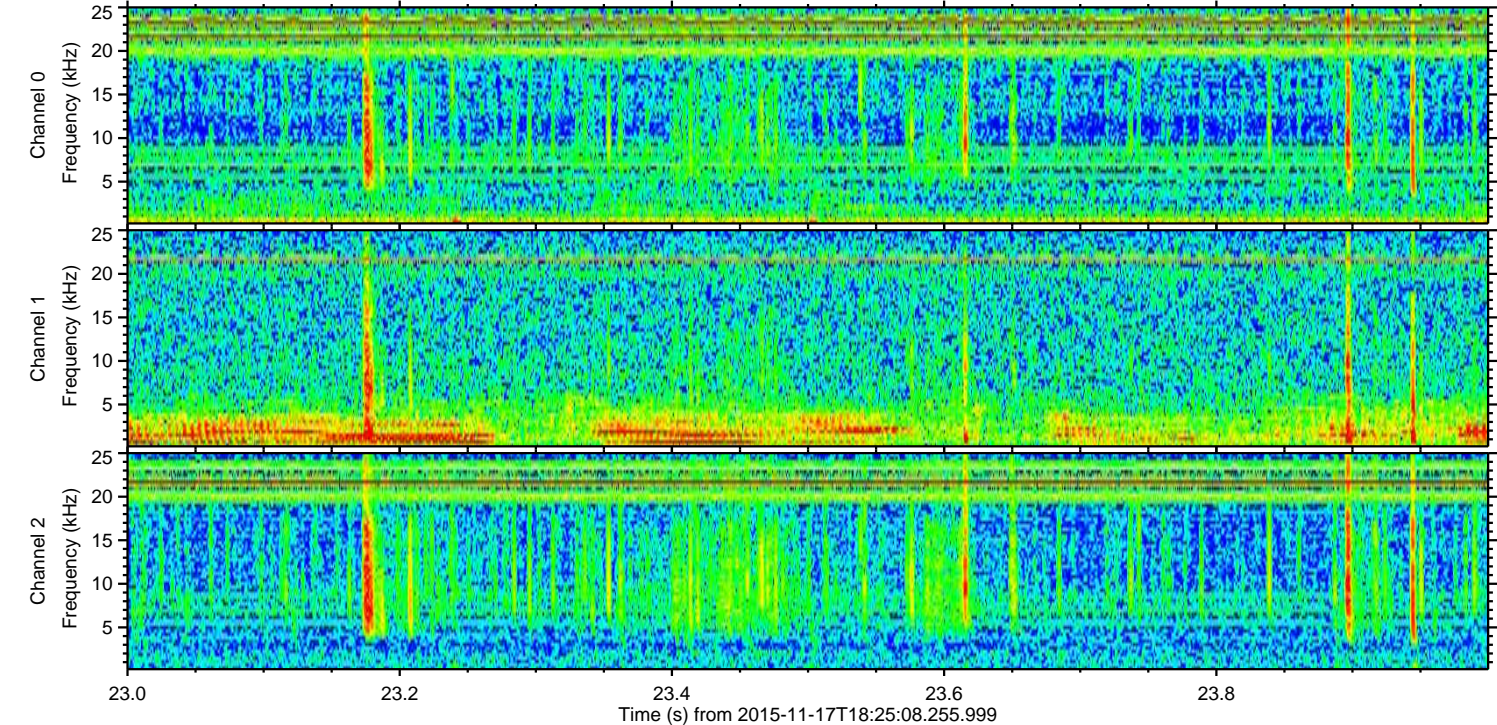
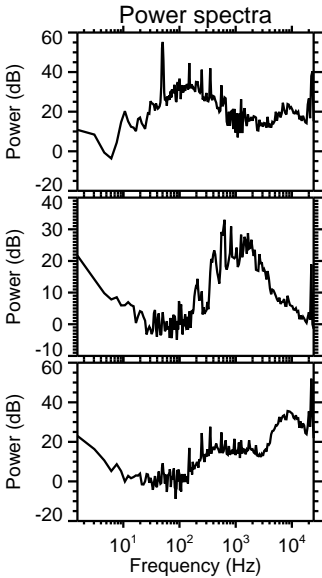
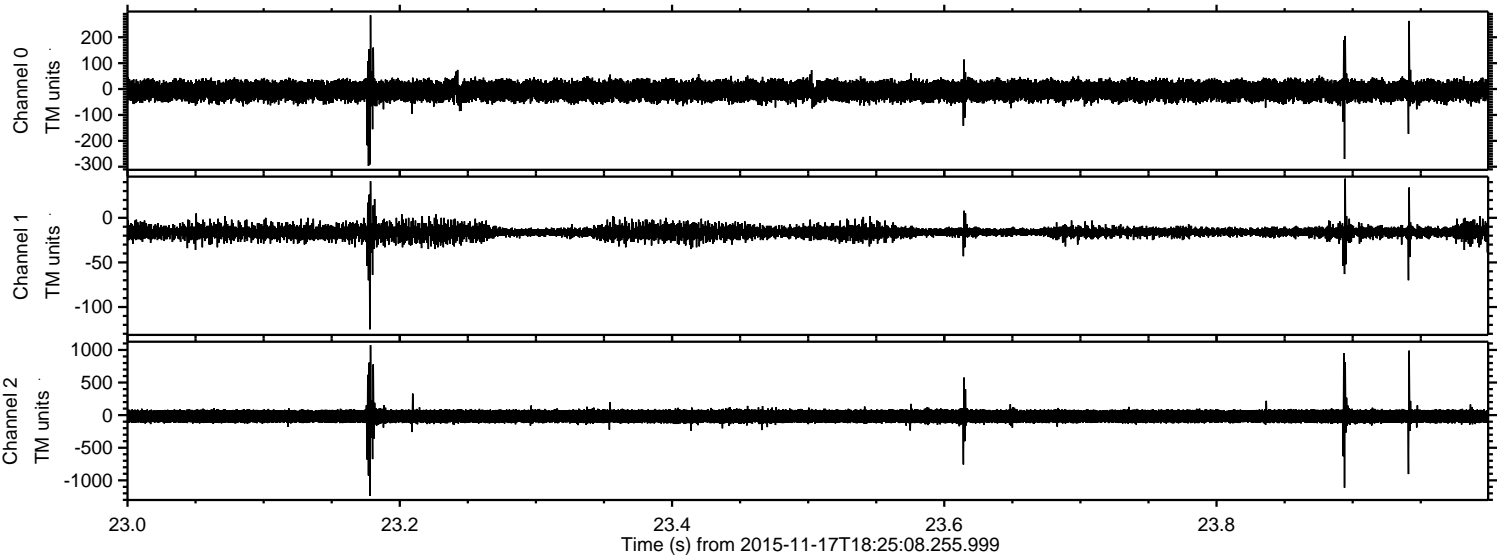
Processed Tue Nov 17 19:31:55 2015 by ELM ver.2012-10-06 from 001__elm20151117_182507__dat00.bin



Processed Tue Nov 17 19:31:56 2015 by ELM ver.2012-10-06 from 001__elm20151117_182507__dat00.bin

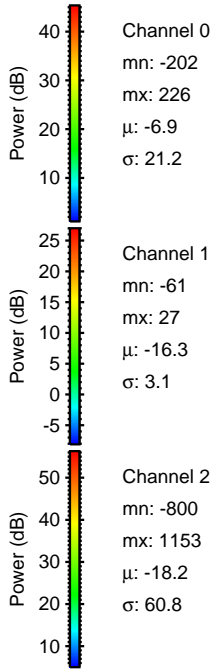
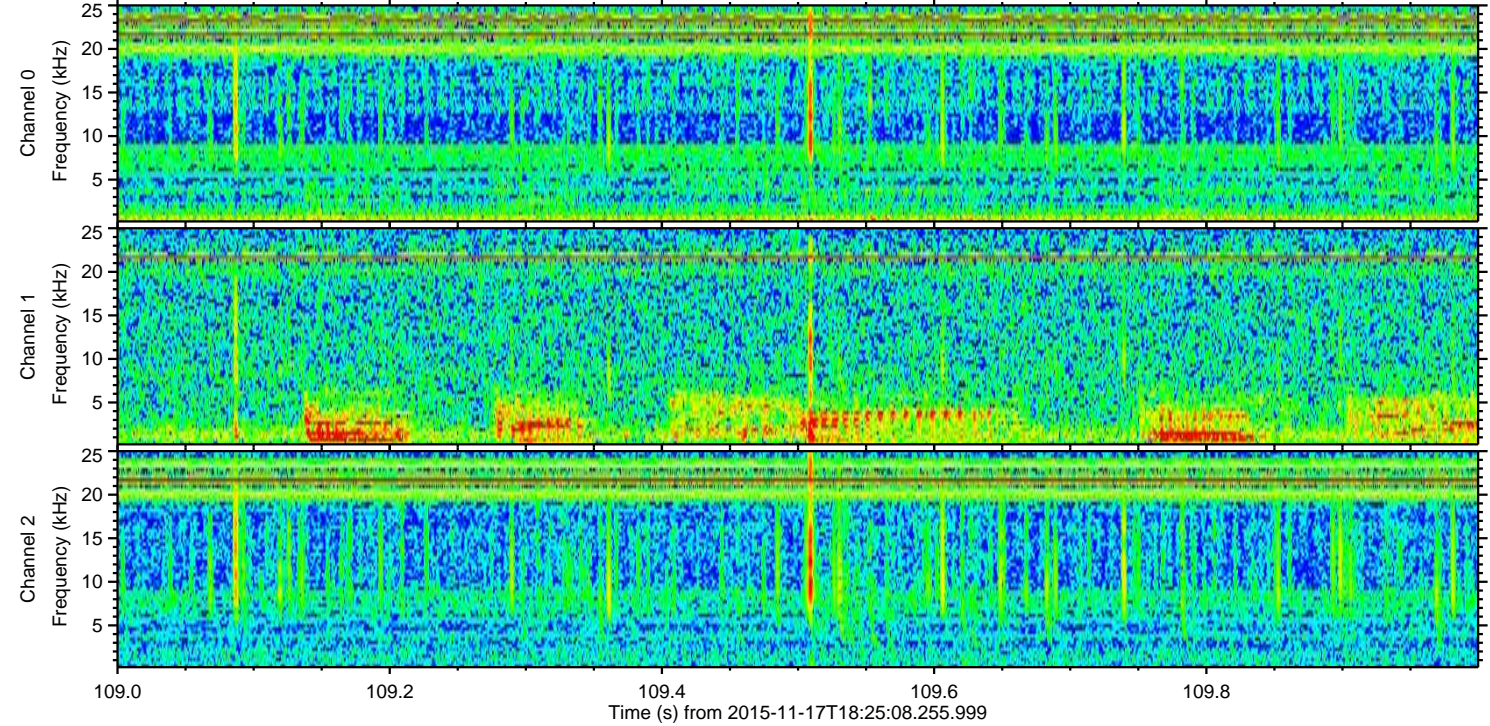
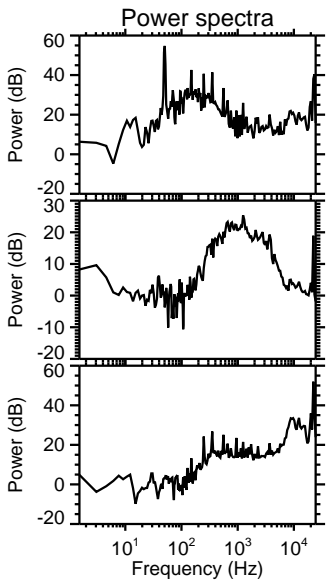
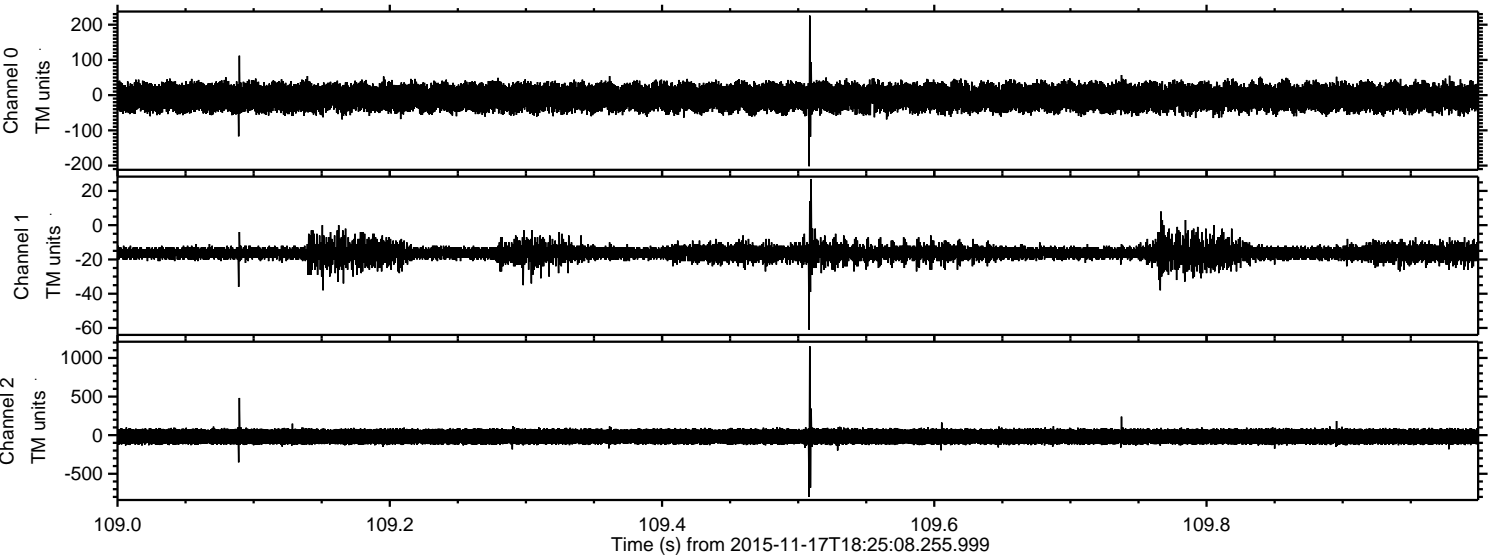


Processed Tue Nov 17 19:31:57 2015 by ELM ver.2012-10-06 from 001__elm20151117_182507__dat00.bin



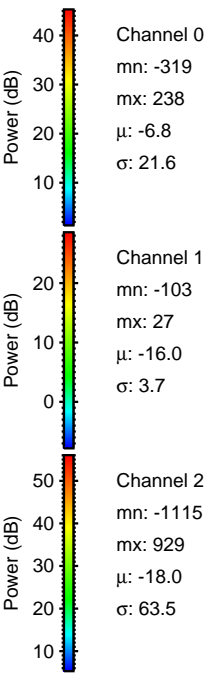
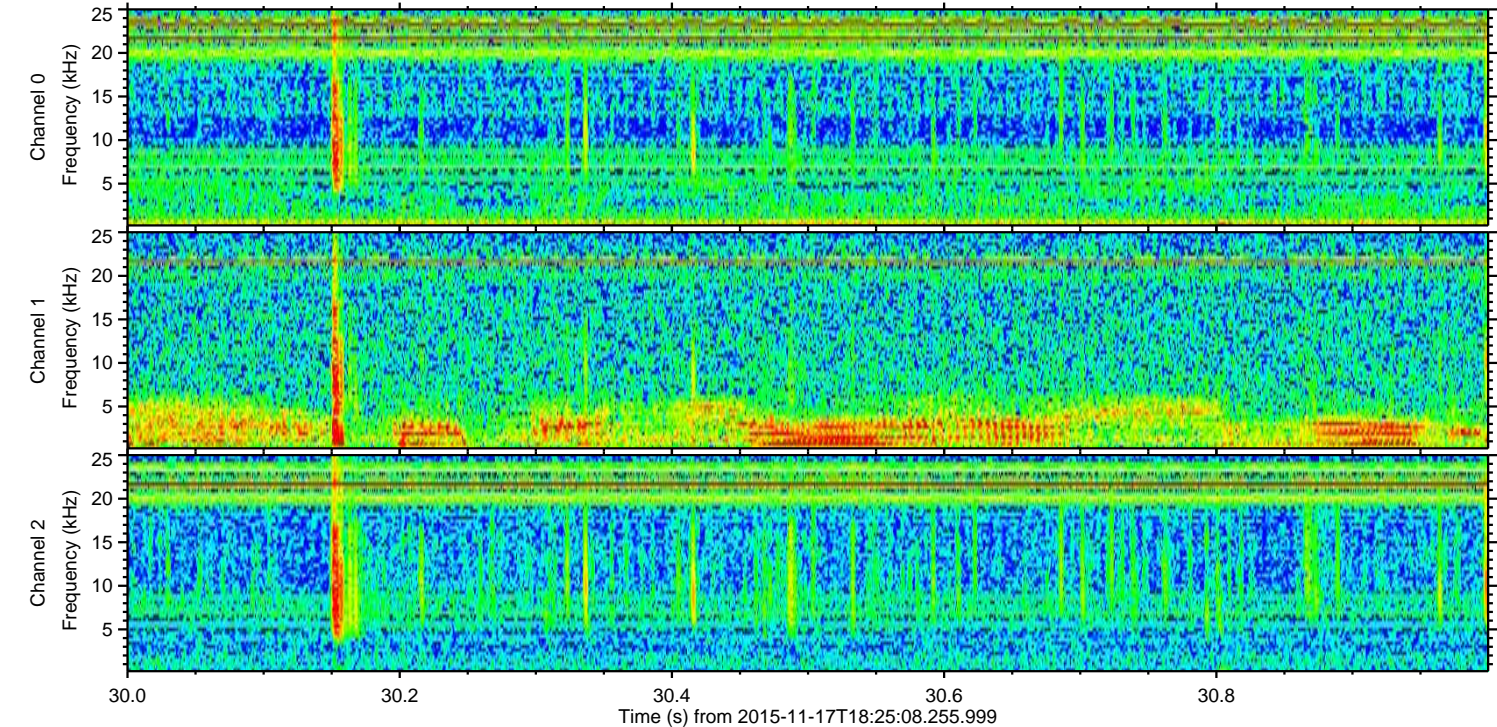
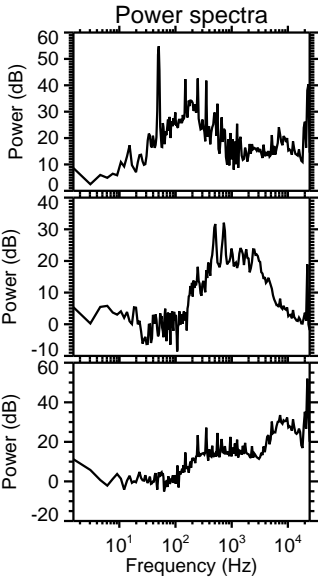
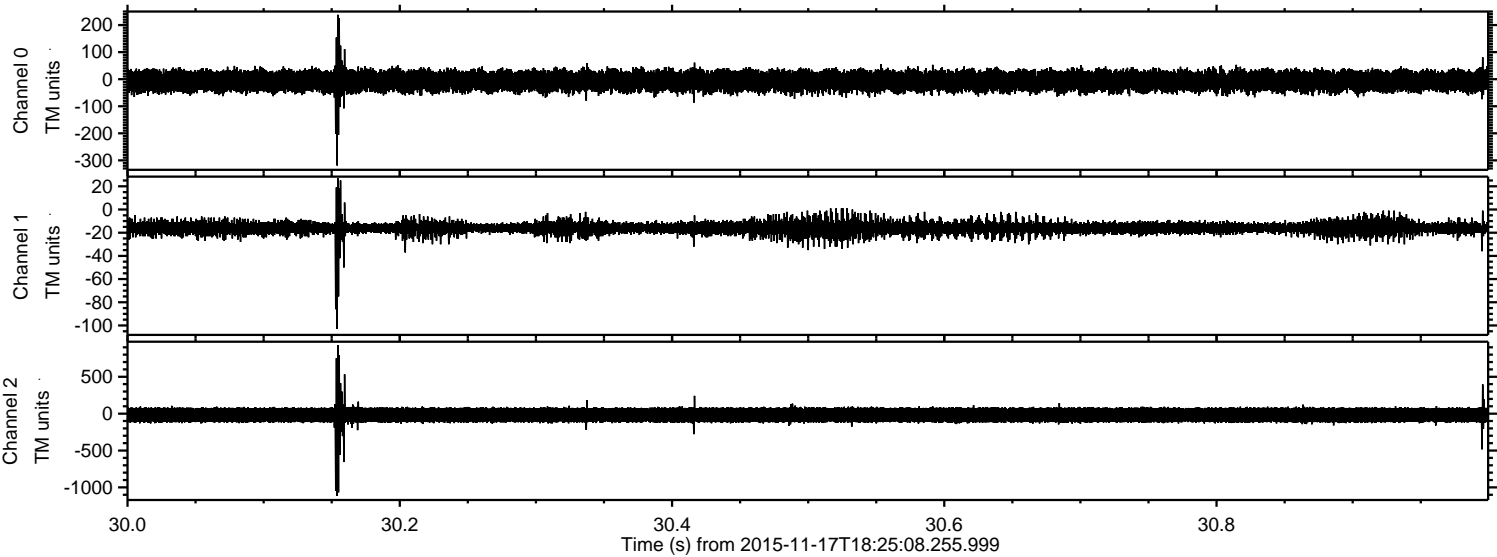
ELMAVAN 3D WAVEFORMS (Measured data sampled at 50 kHz) 51000 packets of 144 samples from 2015-11-17T18:25:08.255.999. Part 110/147

Processed Tue Nov 17 19:31:57 2015 by ELM ver.2012-10-06 from 001__elm20151117_182507__dat00.bin



ELMAVAN 3D WAVEFORMS (Measured data sampled at 50 kHz) 51000 packets of 144 samples from 2015-11-17T18:25:08.255.999. Part 31/147

Processed Tue Nov 17 19:31:58 2015 by ELM ver.2012-10-06 from 001__elm20151117_182507__dat00.bin

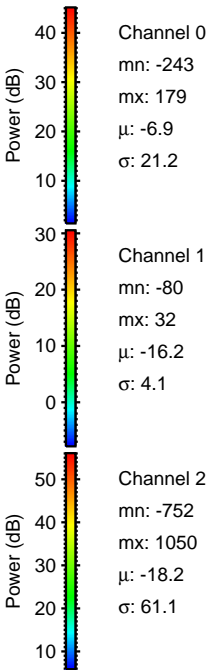
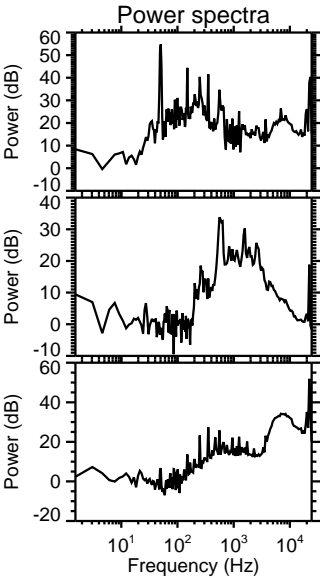
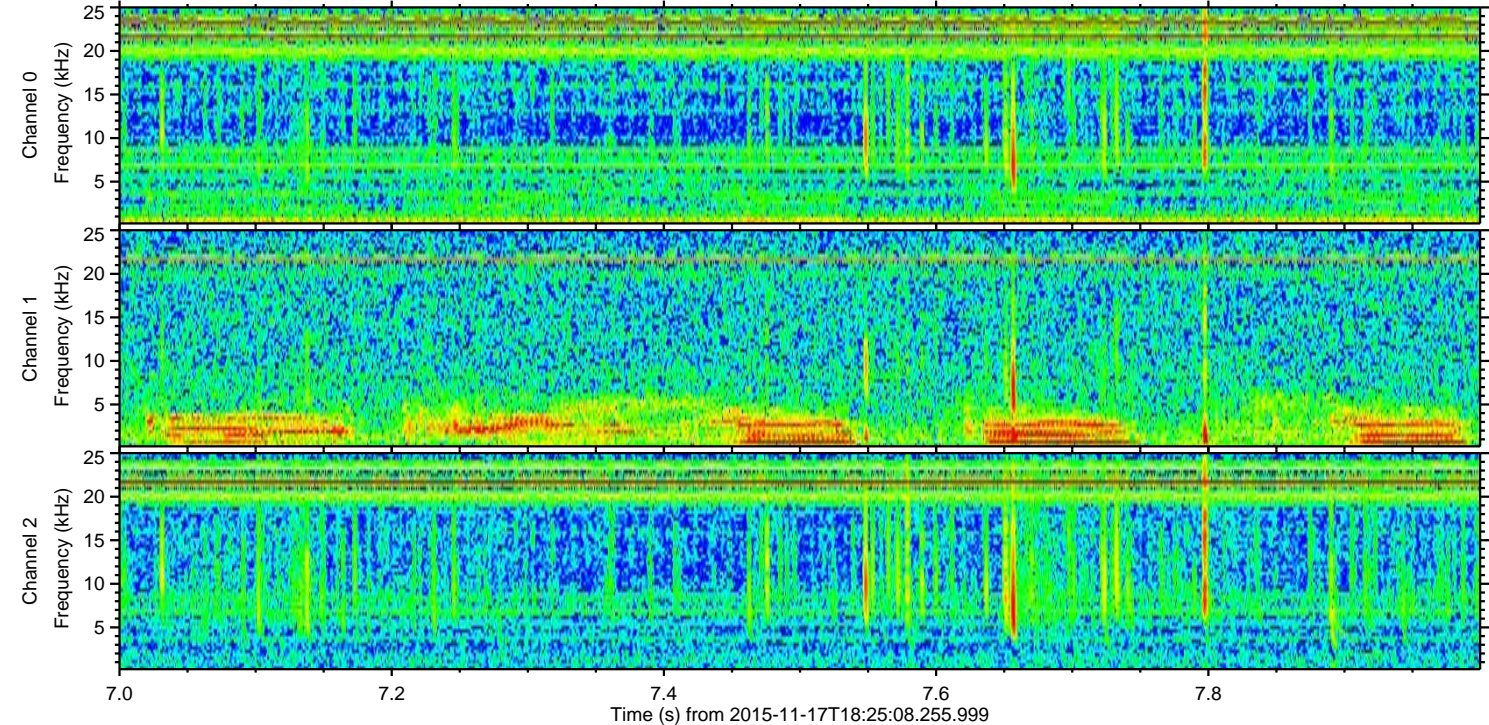
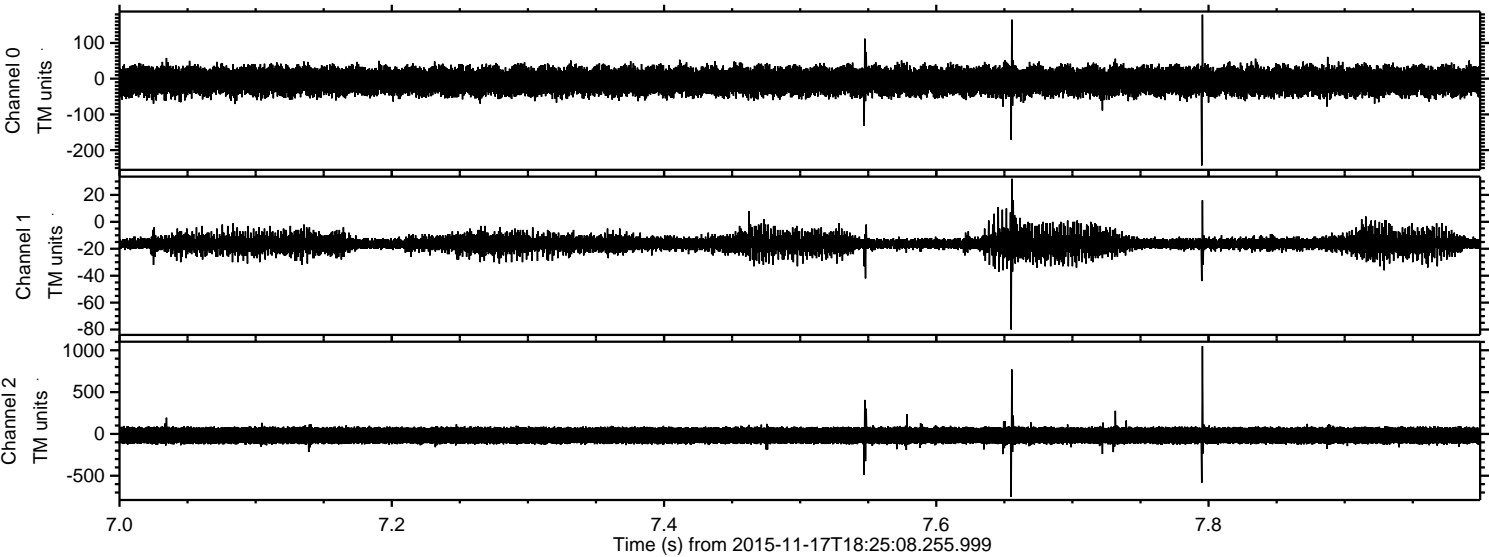


Channel 0
mn: -319
mx: 238
 μ : -6.8
 σ : 21.6

Channel 1
mn: -103
mx: 27
 μ : -16.0
 σ : 3.7

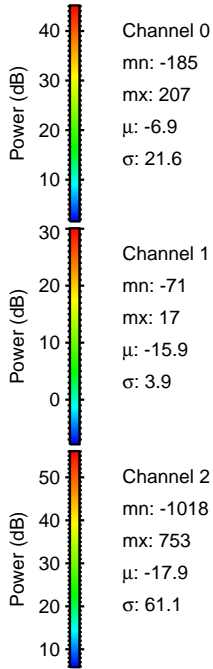
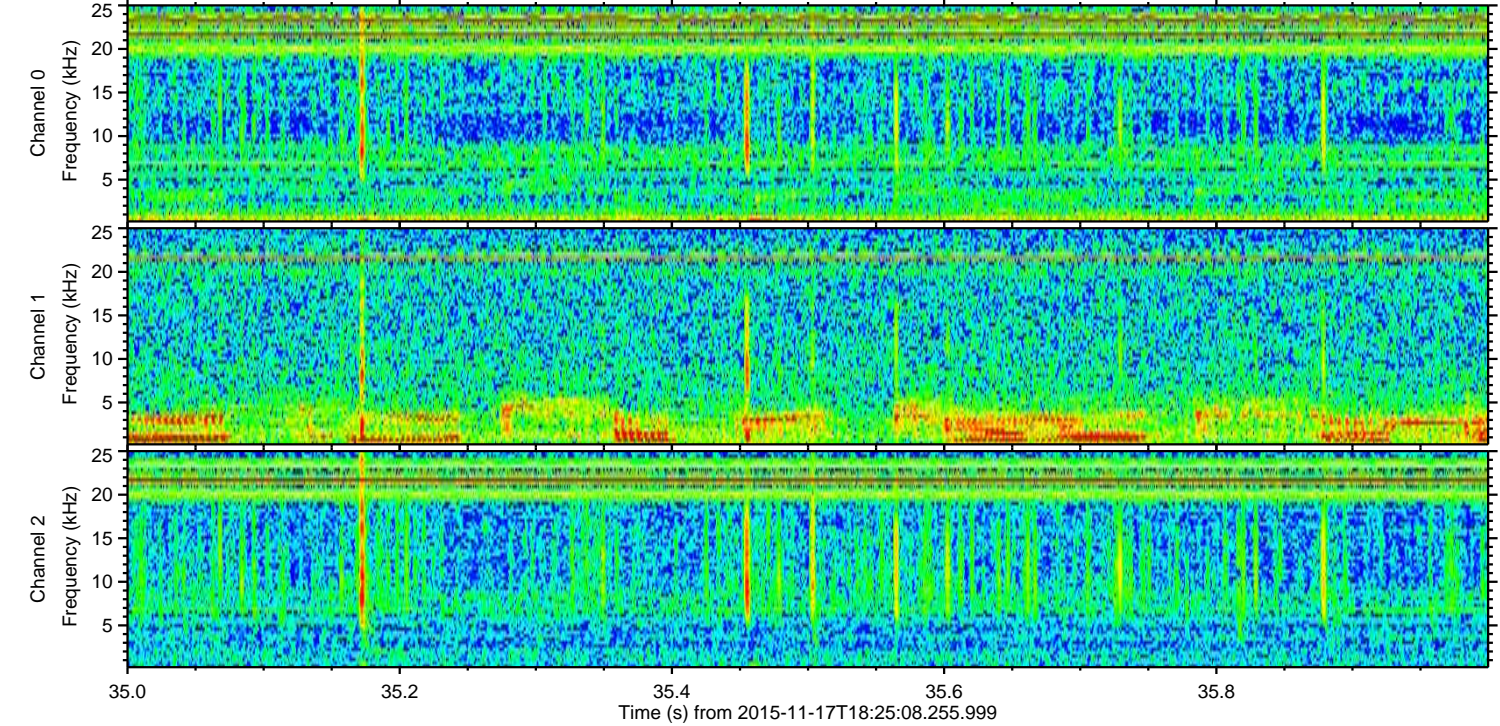
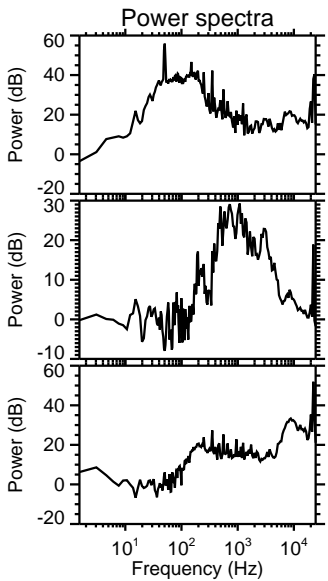
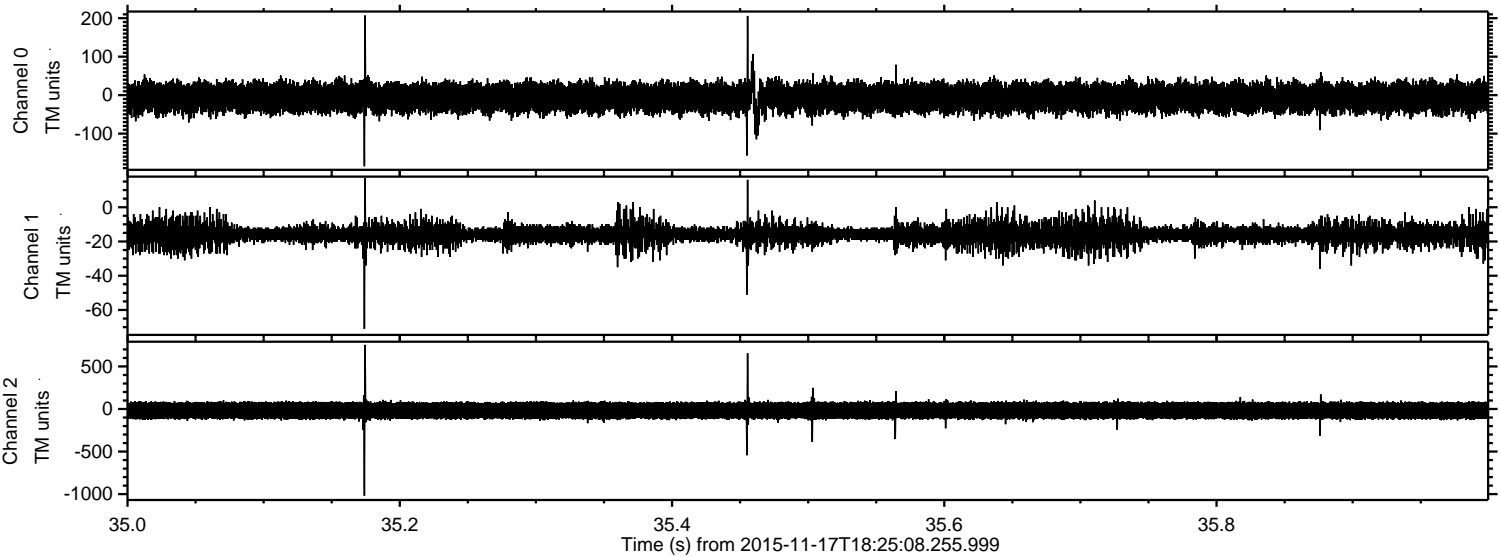
Channel 2
mn: -1115
mx: 929
 μ : -18.0
 σ : 63.5

Processed Tue Nov 17 19:31:59 2015 by ELM ver.2012-10-06 from 001__elm20151117_182507__dat00.bin



Power spectra

Processed Tue Nov 17 19:32:00 2015 by ELM ver.2012-10-06 from 001__elm20151117_182507__dat00.bin



Processed Tue Nov 17 19:32:01 2015 by ELM ver.2012-10-06 from 001__elm20151117_182507__dat00.bin

