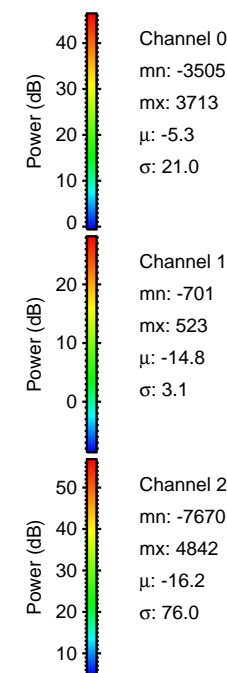
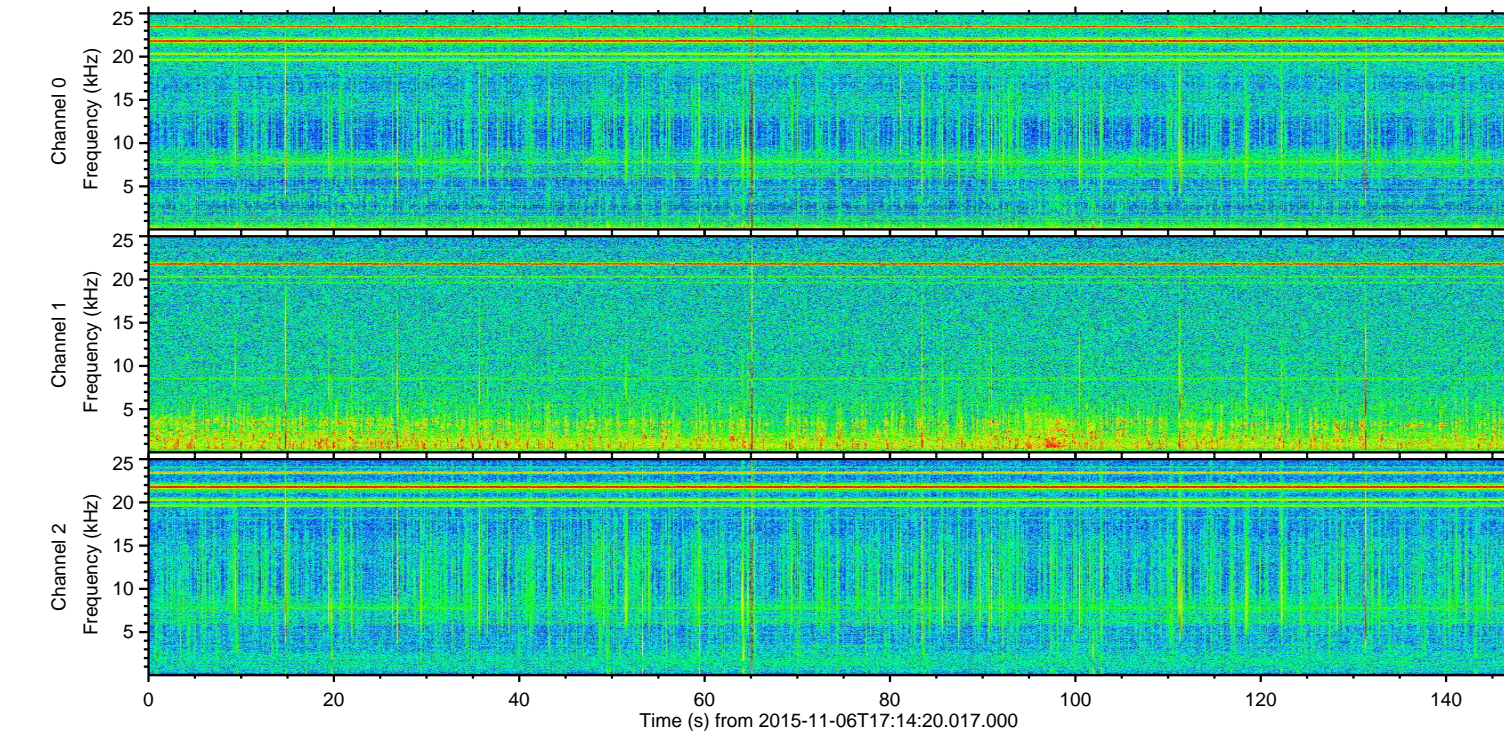
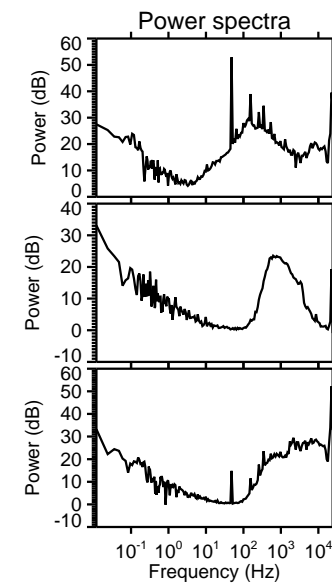
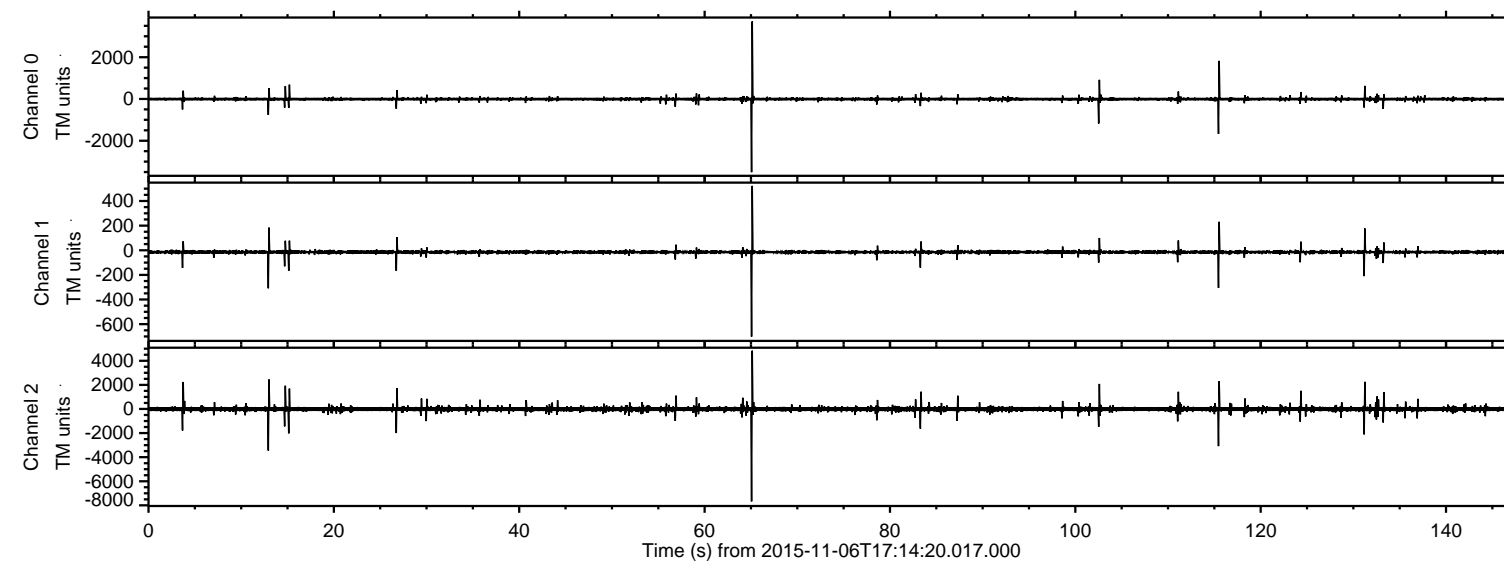
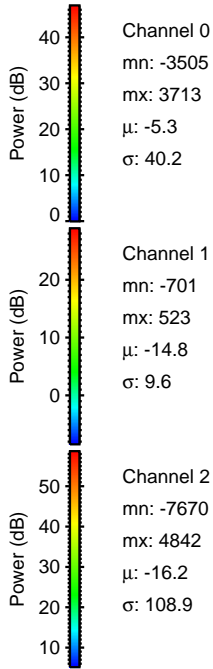
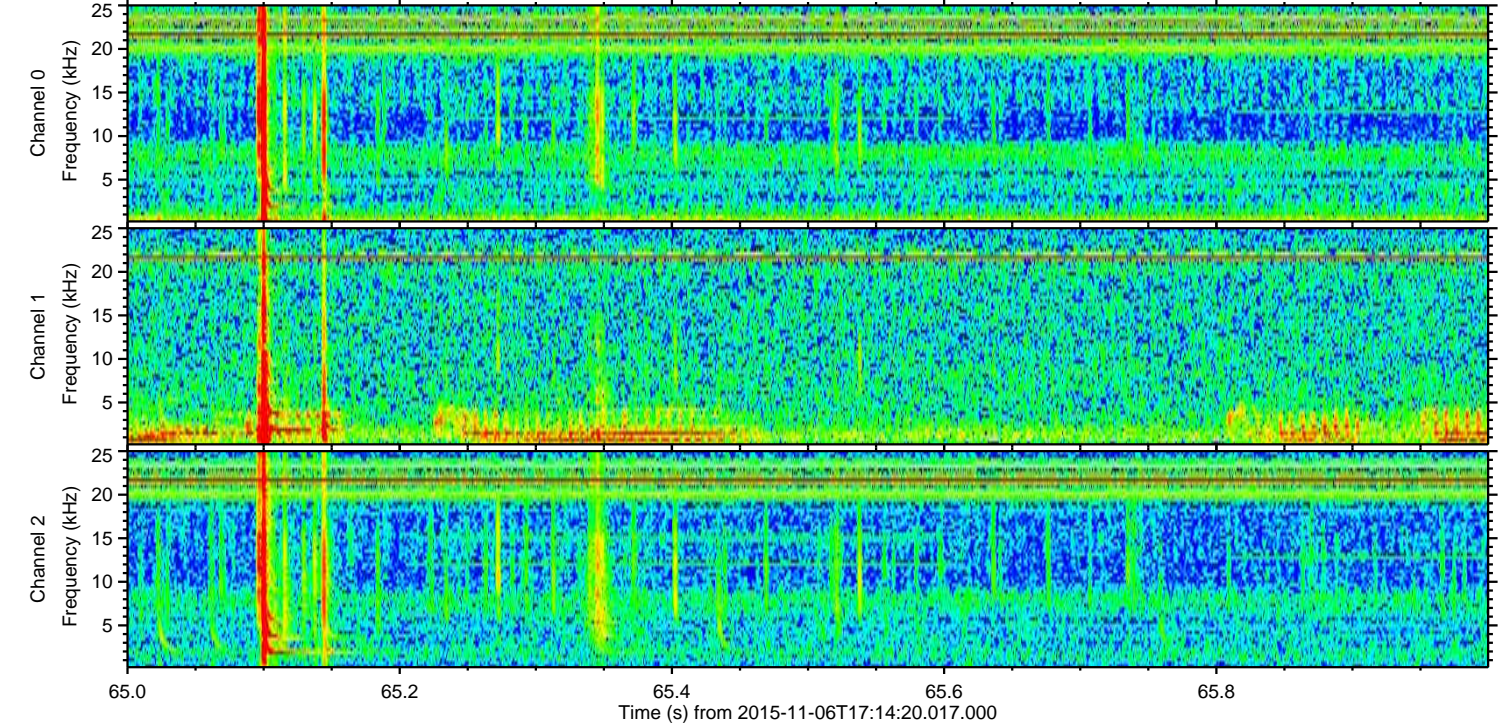
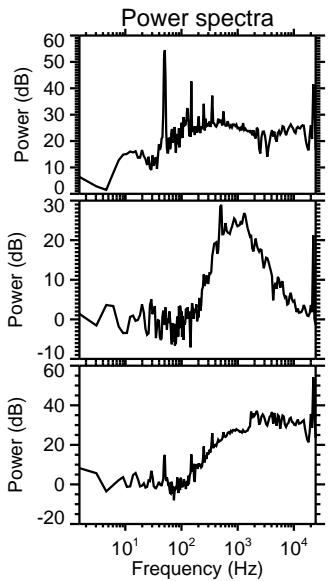
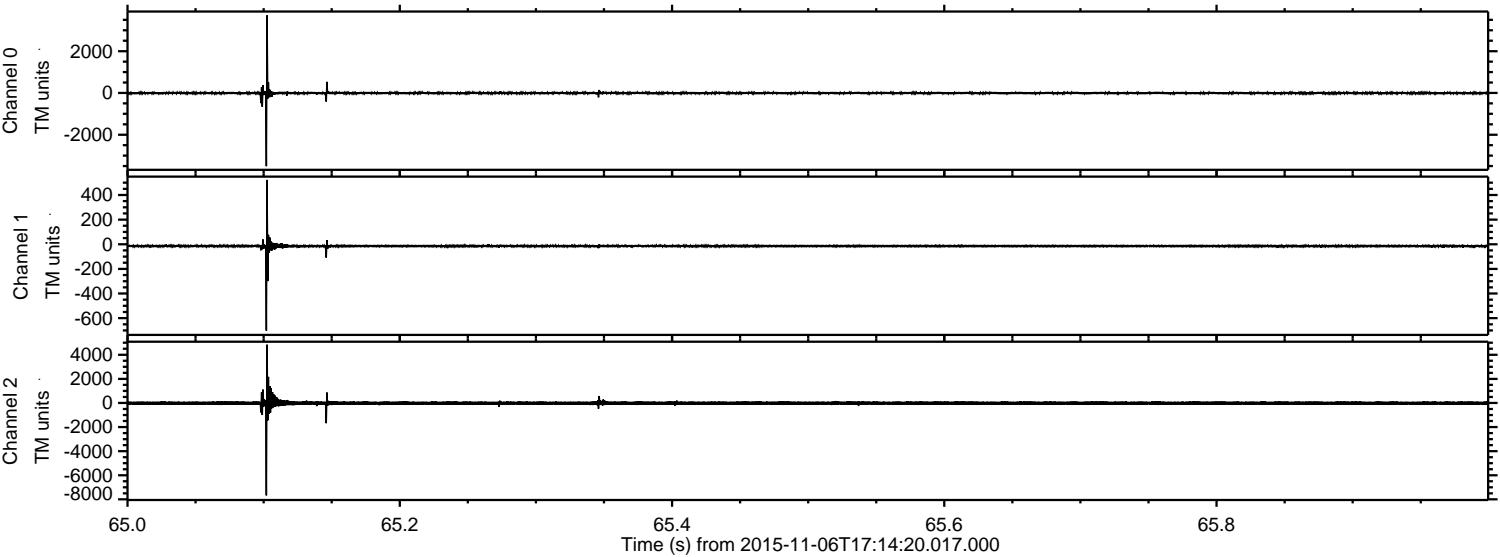


ELMAVAN 3D WAVEFORMS (Measured data sampled at 50 kHz) 51000 packets of 144 samples from 2015-11-06T17:14:20.017.000.

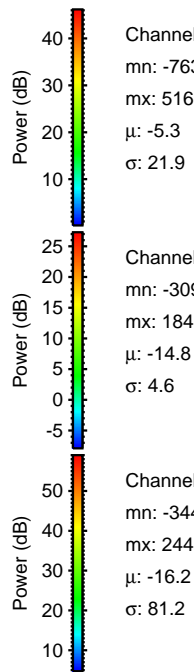
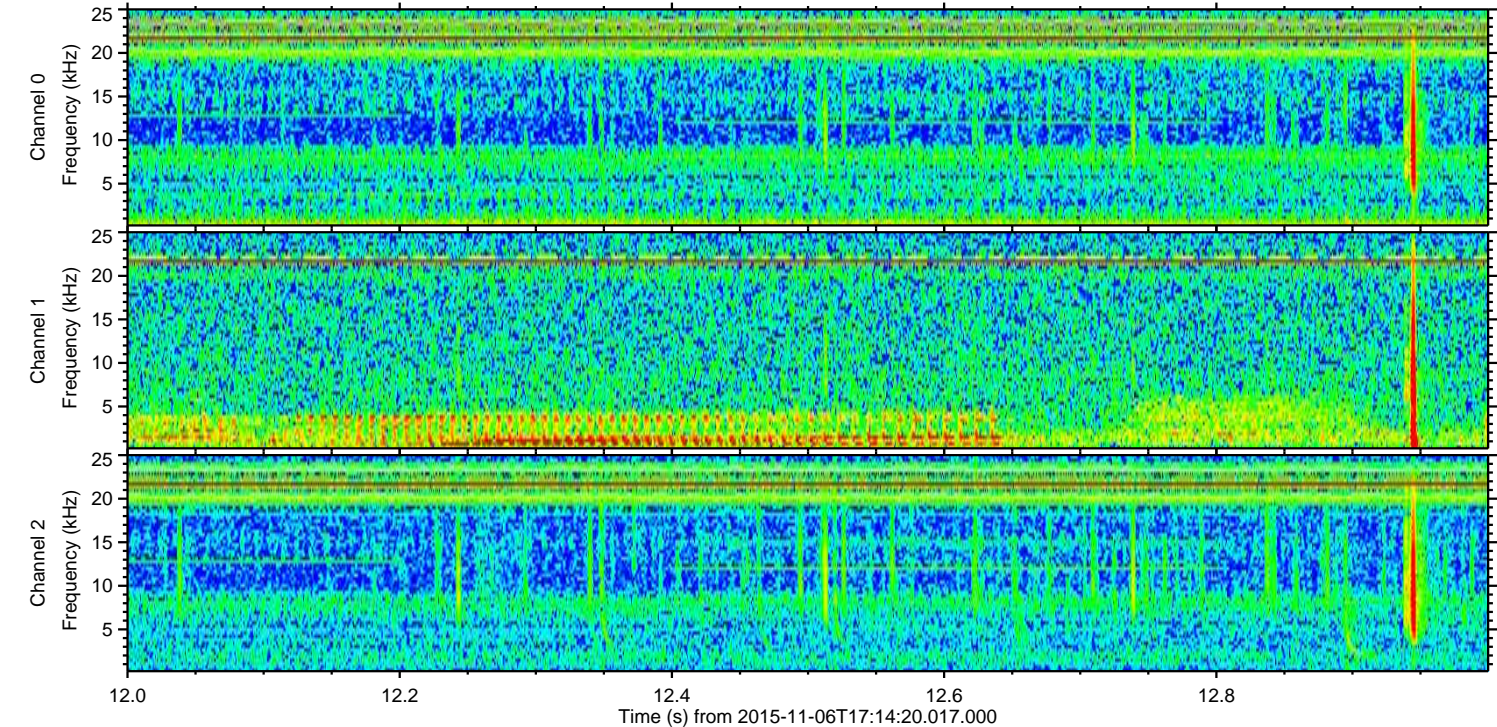
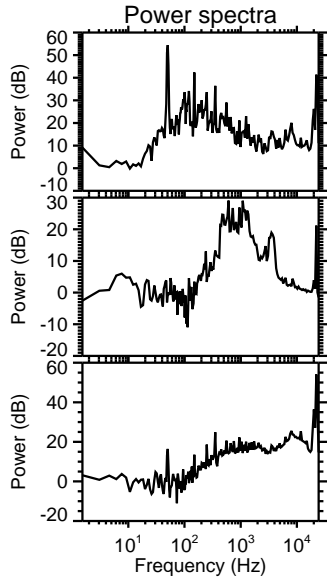
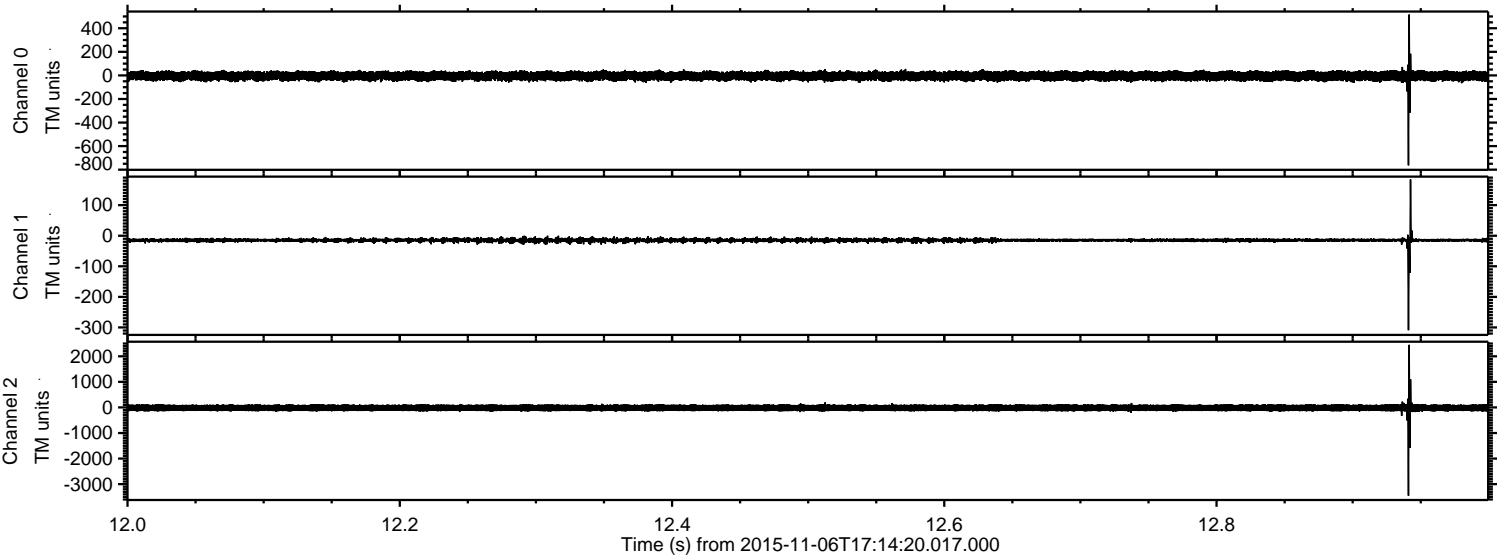
Processed Fri Nov 6 18:20:18 2015 by ELM ver.2012-10-06 from 001__elm20151106_171419__dat00.bin



Processed Fri Nov 6 18:20:34 2015 by ELM ver.2012-10-06 from 001__elm20151106_171419__dat00.bin

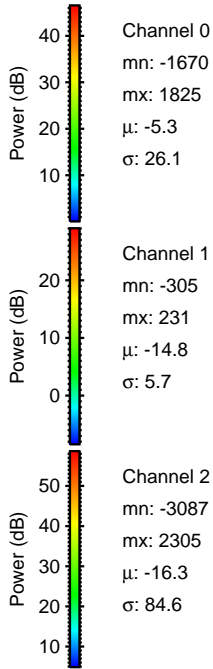
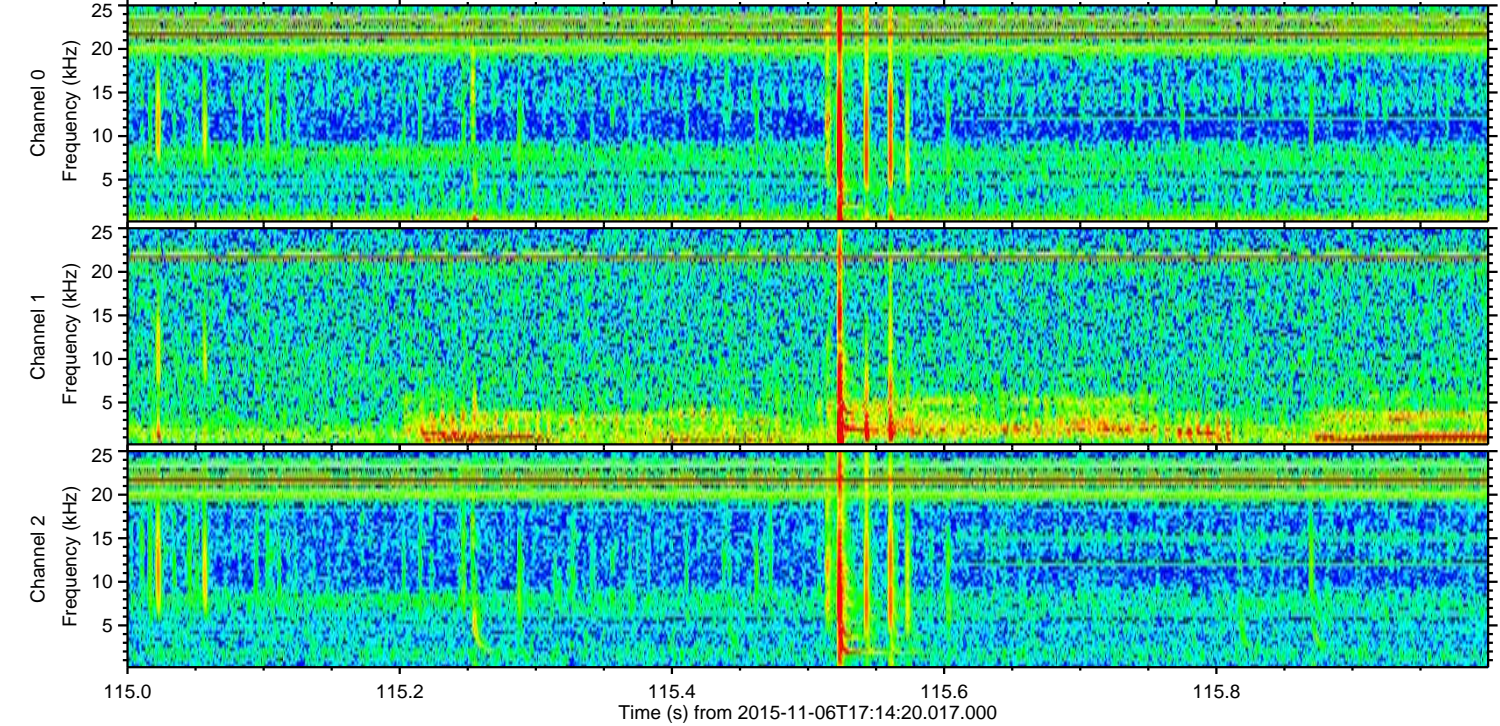
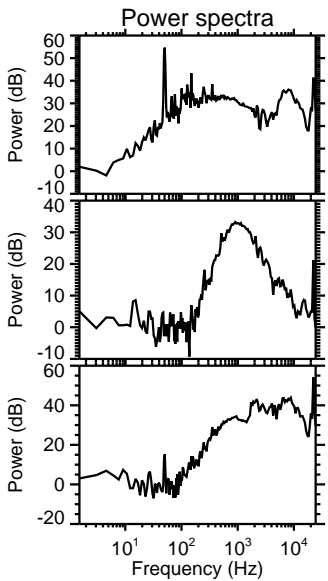
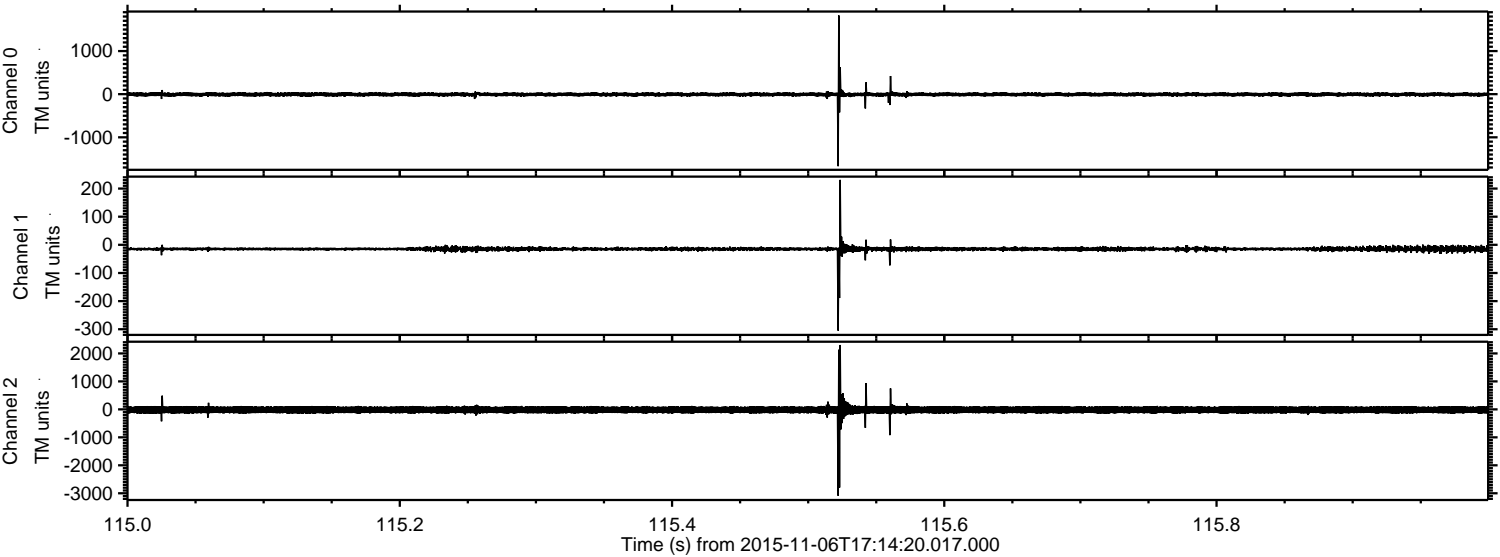


Processed Fri Nov 6 18:20:35 2015 by ELM ver.2012-10-06 from 001__elm20151106_171419__dat00.bin



ELMAVAN 3D WAVEFORMS (Measured data sampled at 50 kHz) 51000 packets of 144 samples from 2015-11-06T17:14:20.017.000. Part 116/147

Processed Fri Nov 6 18:20:36 2015 by ELM ver.2012-10-06 from 001__elm20151106_171419__dat00.bin



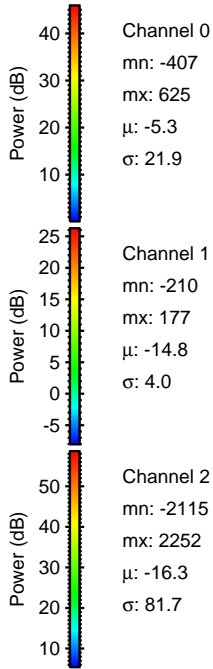
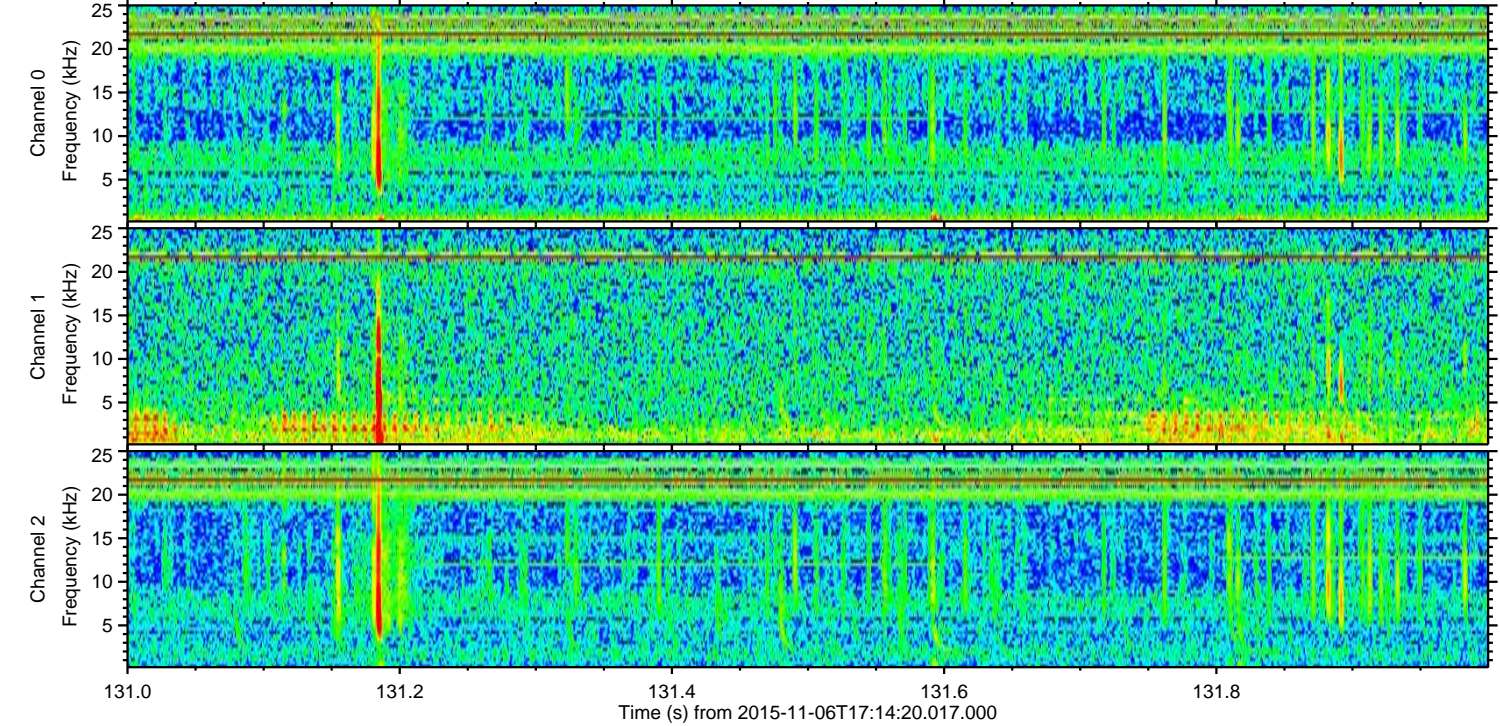
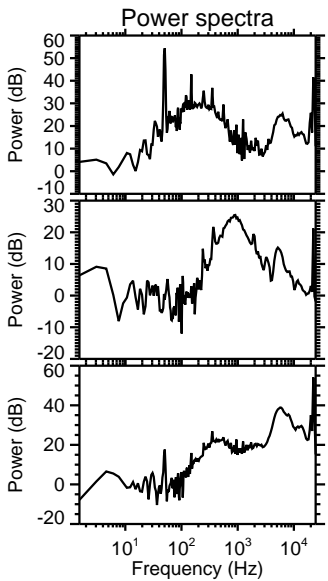
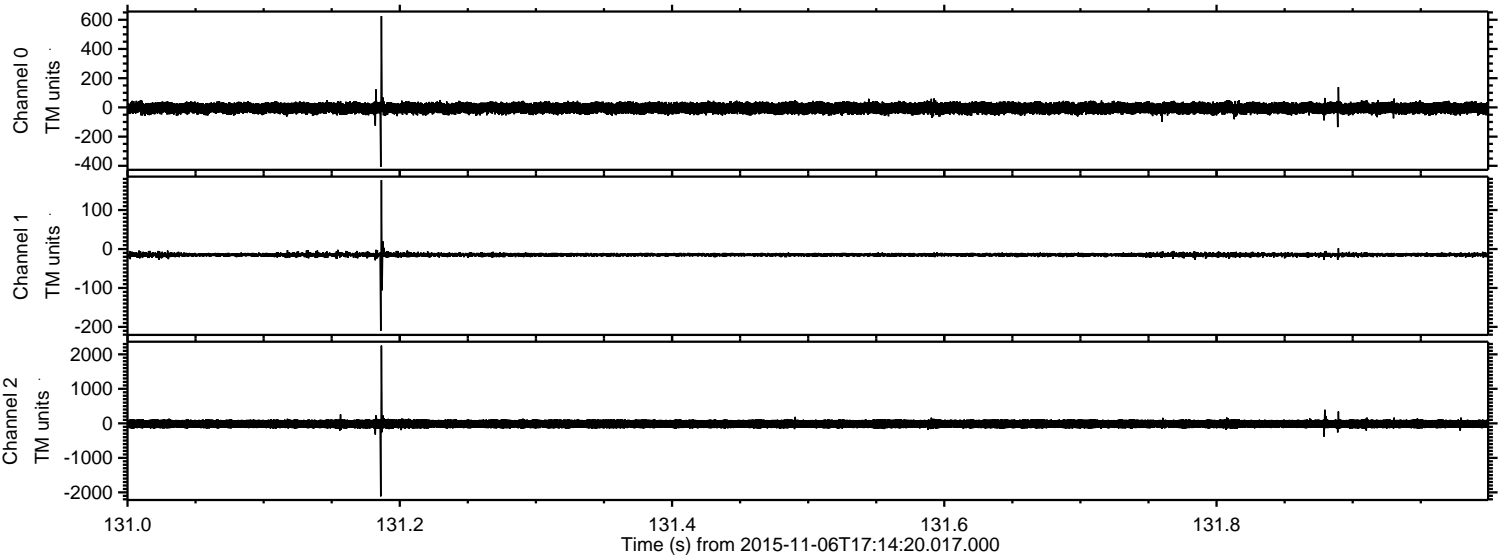
Channel 0
mn: -1670
mx: 1825
 μ : -5.3
 σ : 26.1

Channel 1
mn: -305
mx: 231
 μ : -14.8
 σ : 5.7

Channel 2
mn: -3087
mx: 2305
 μ : -16.3
 σ : 84.6

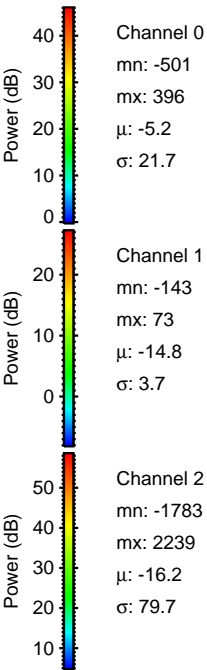
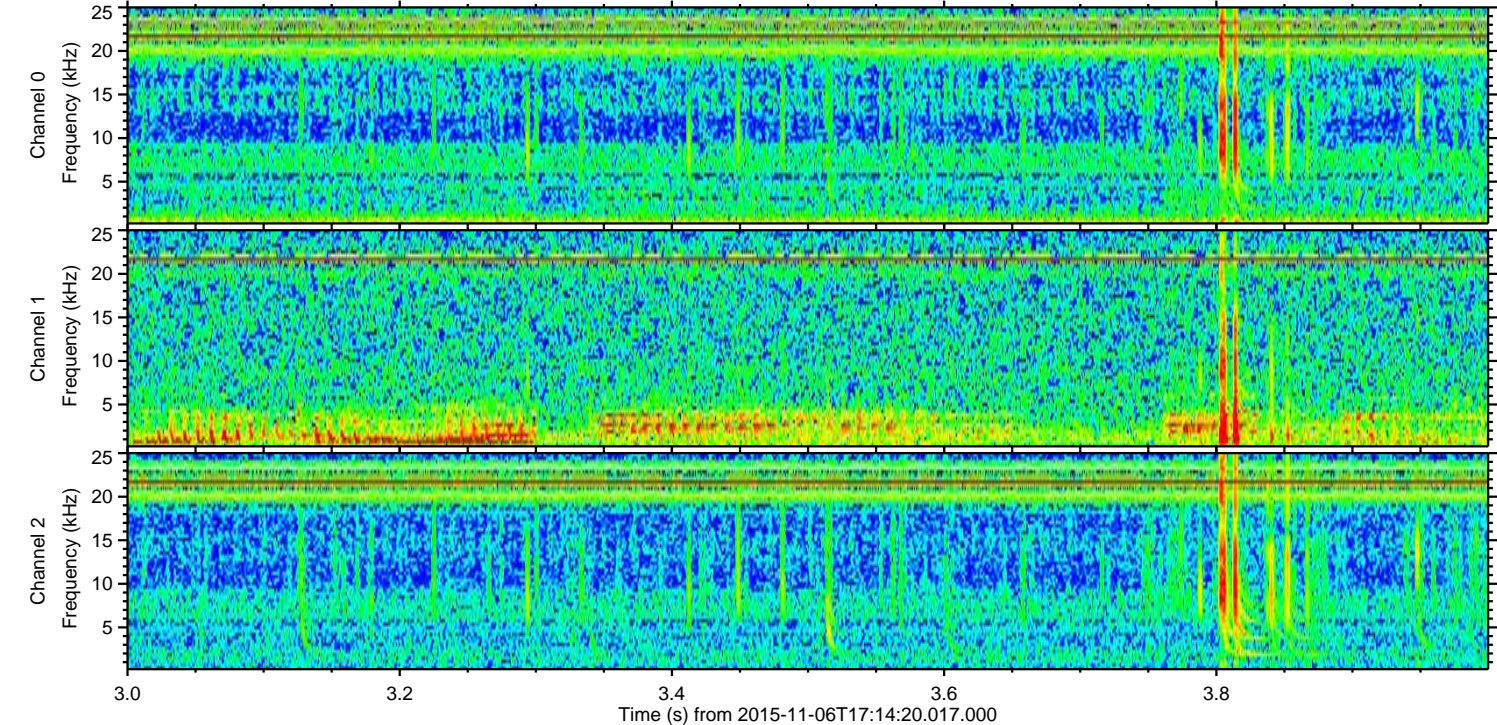
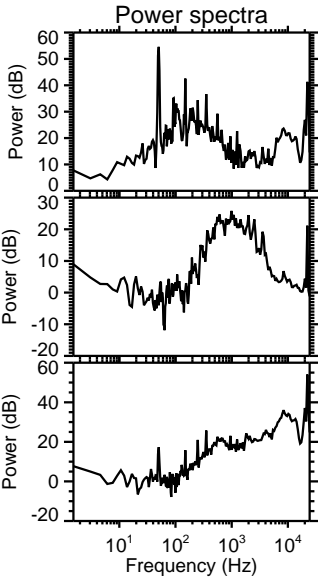
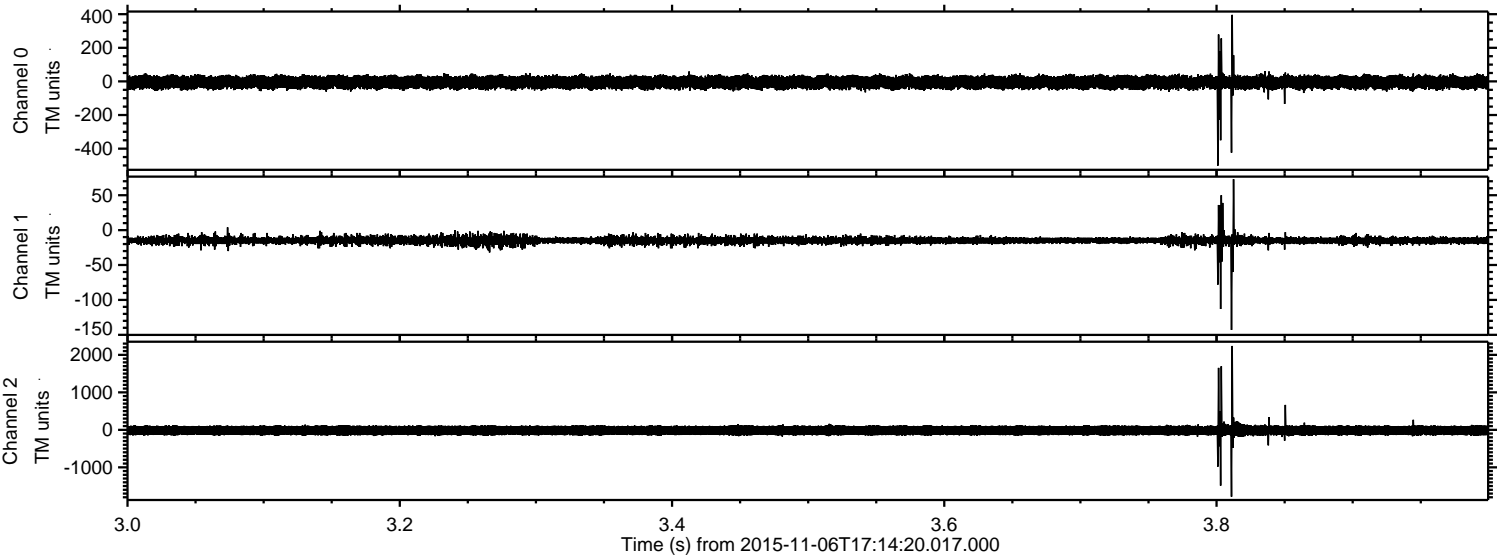
ELMAVAN 3D WAVEFORMS (Measured data sampled at 50 kHz) 51000 packets of 144 samples from 2015-11-06T17:14:20.017.000. Part 132/147

Processed Fri Nov 6 18:20:37 2015 by ELM ver.2012-10-06 from 001__elm20151106_171419__dat00.bin



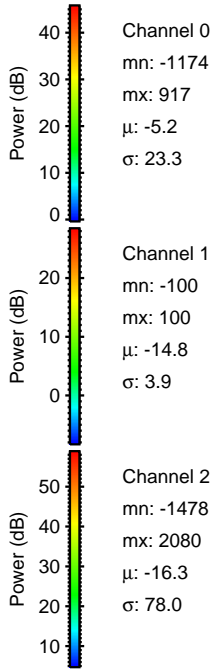
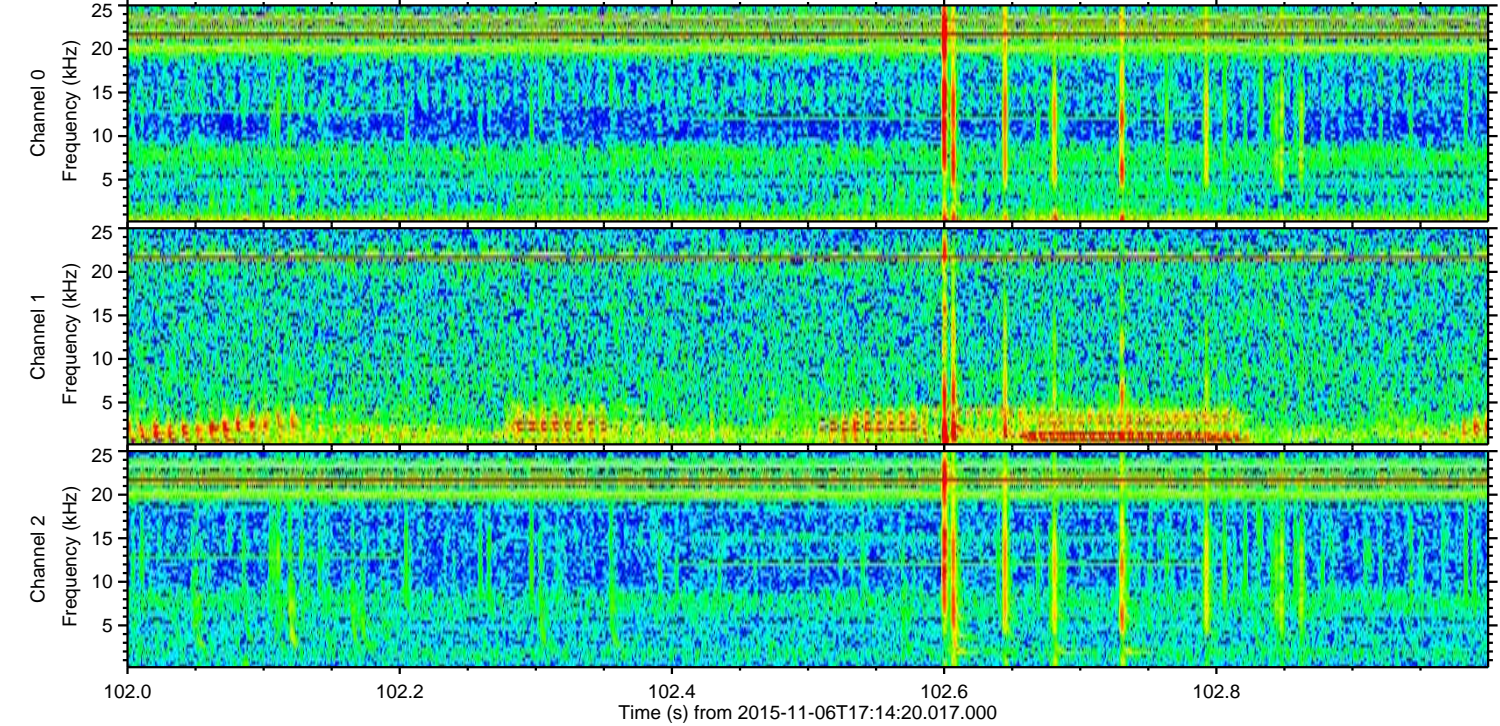
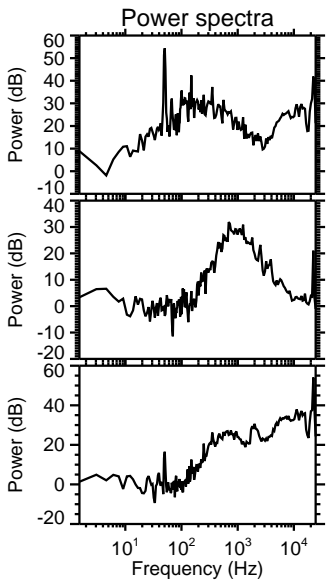
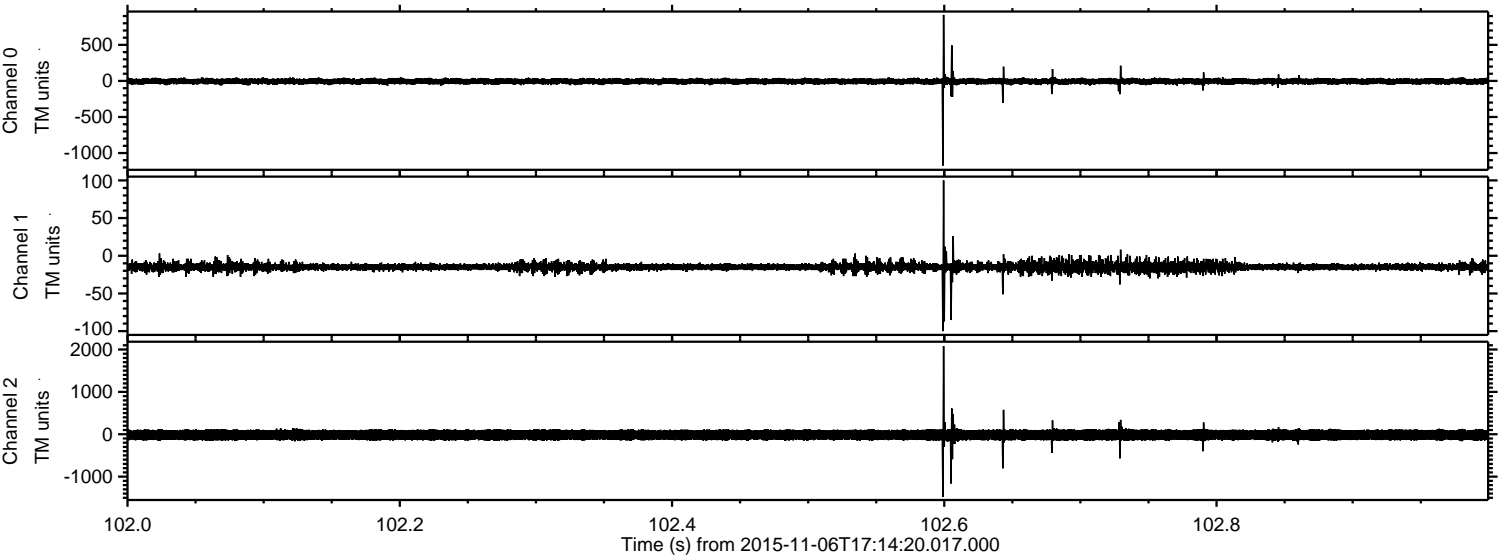
ELMAVAN 3D WAVEFORMS (Measured data sampled at 50 kHz) 51000 packets of 144 samples from 2015-11-06T17:14:20.017.000. Part 4/147

Processed Fri Nov 6 18:20:38 2015 by ELM ver.2012-10-06 from 001__elm20151106_171419__dat00.bin

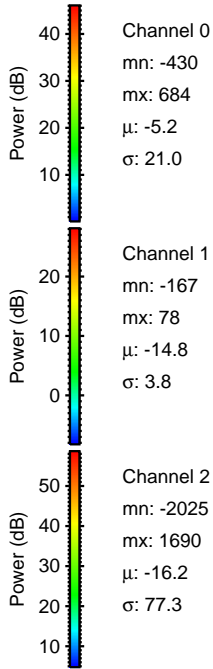
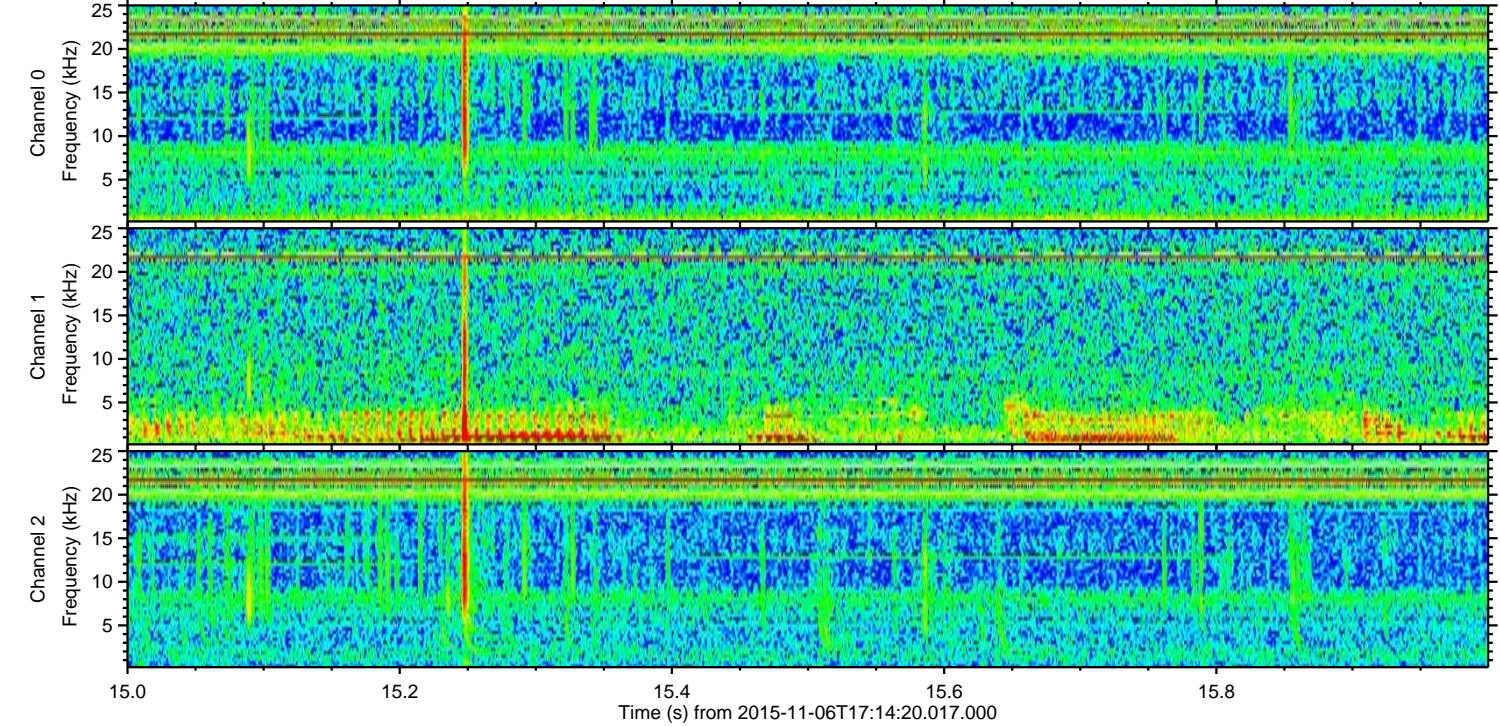
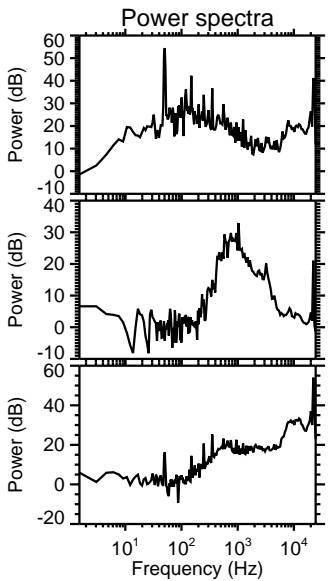
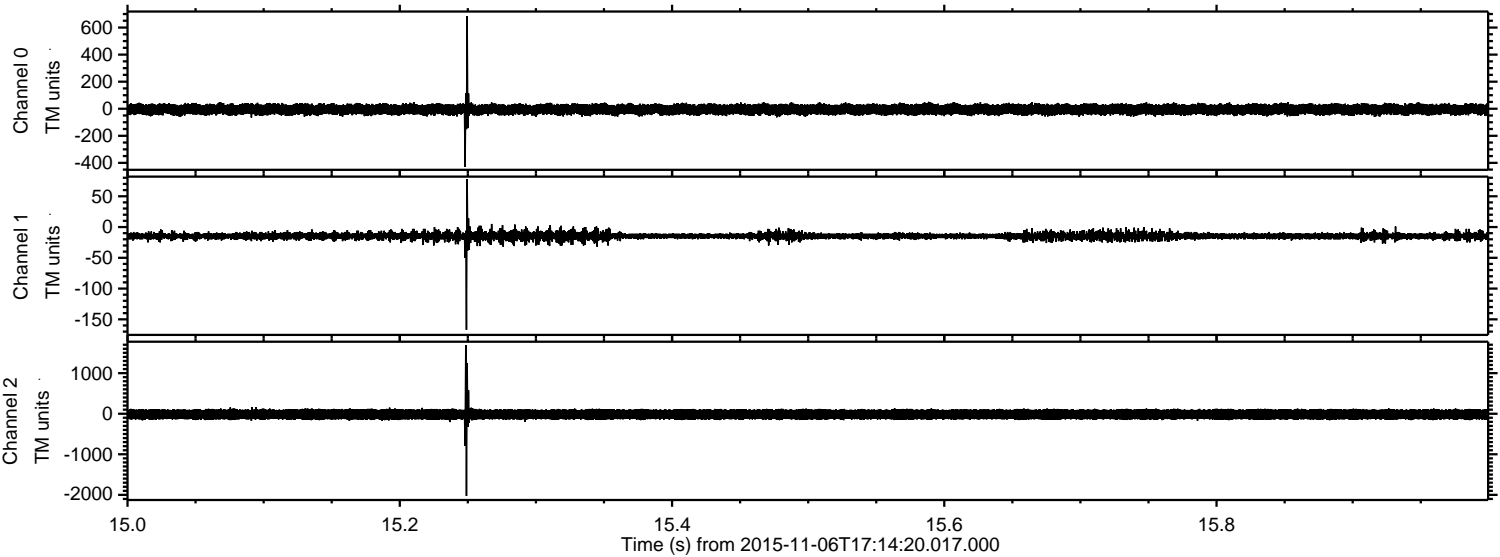


ELMAVAN 3D WAVEFORMS (Measured data sampled at 50 kHz) 51000 packets of 144 samples from 2015-11-06T17:14:20.017.000. Part 103/147

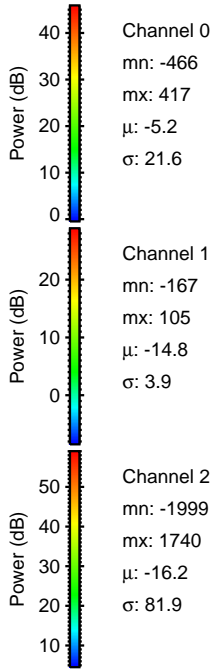
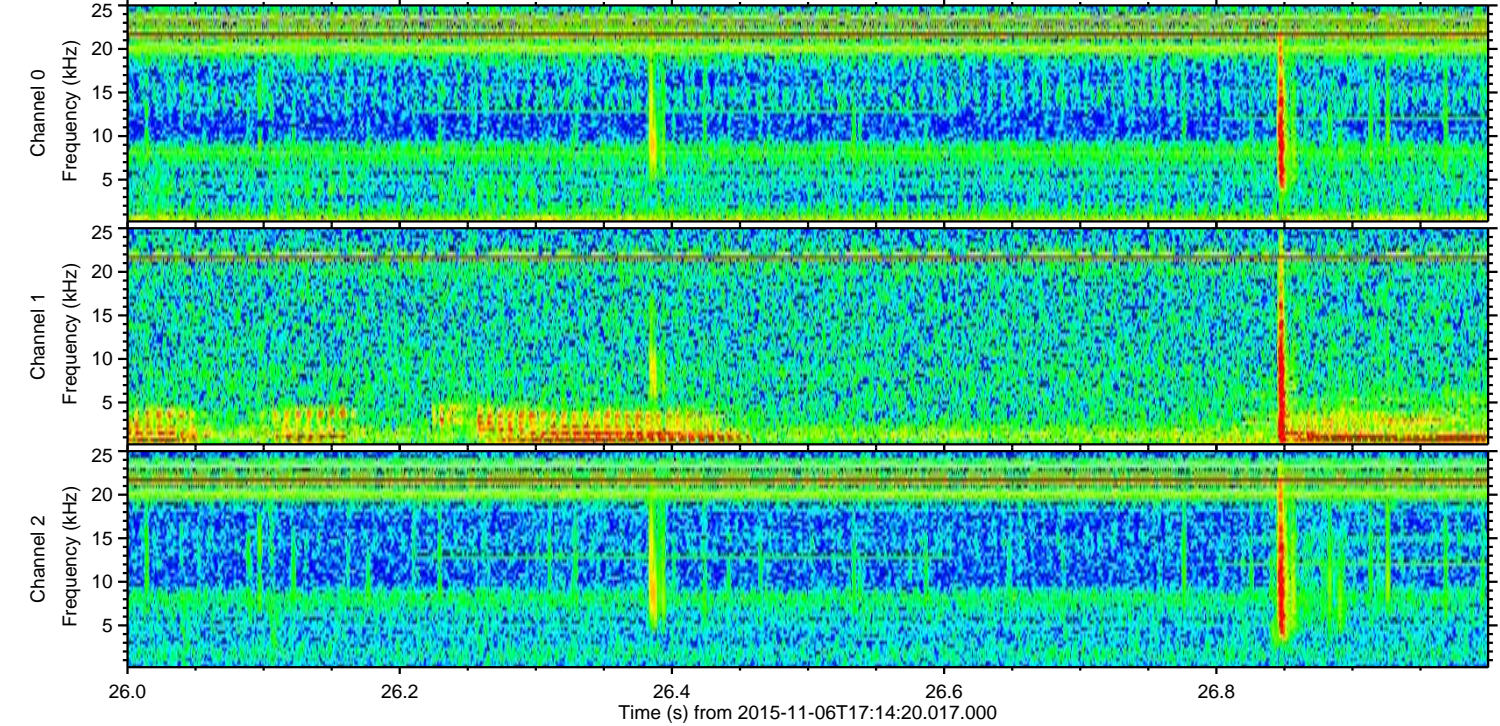
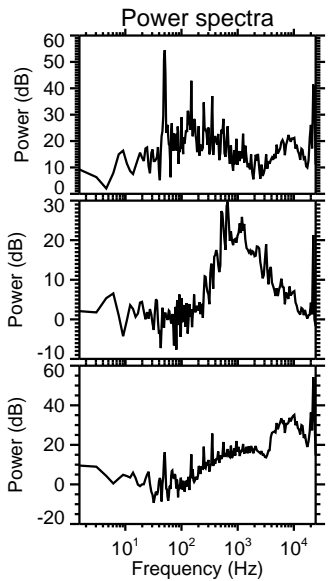
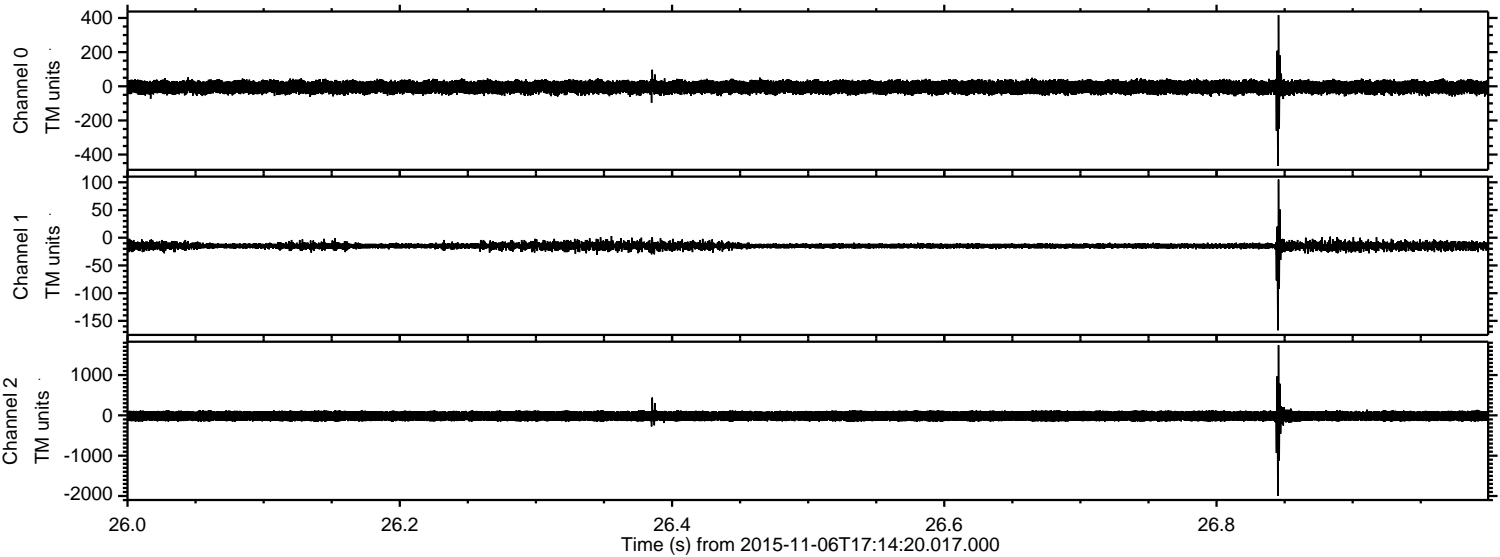
Processed Fri Nov 6 18:20:39 2015 by ELM ver.2012-10-06 from 001__elm20151106_171419__dat00.bin



Processed Fri Nov 6 18:20:40 2015 by ELM ver.2012-10-06 from 001__elm20151106_171419__dat00.bin



Processed Fri Nov 6 18:20:41 2015 by ELM ver.2012-10-06 from 001__elm20151106_171419__dat00.bin



Processed Fri Nov 6 18:20:42 2015 by ELM ver.2012-10-06 from 001__elm20151106_171419__dat00.bin

