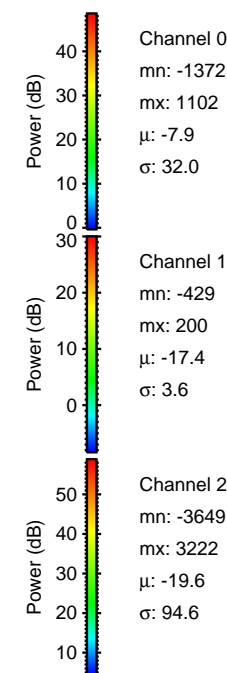
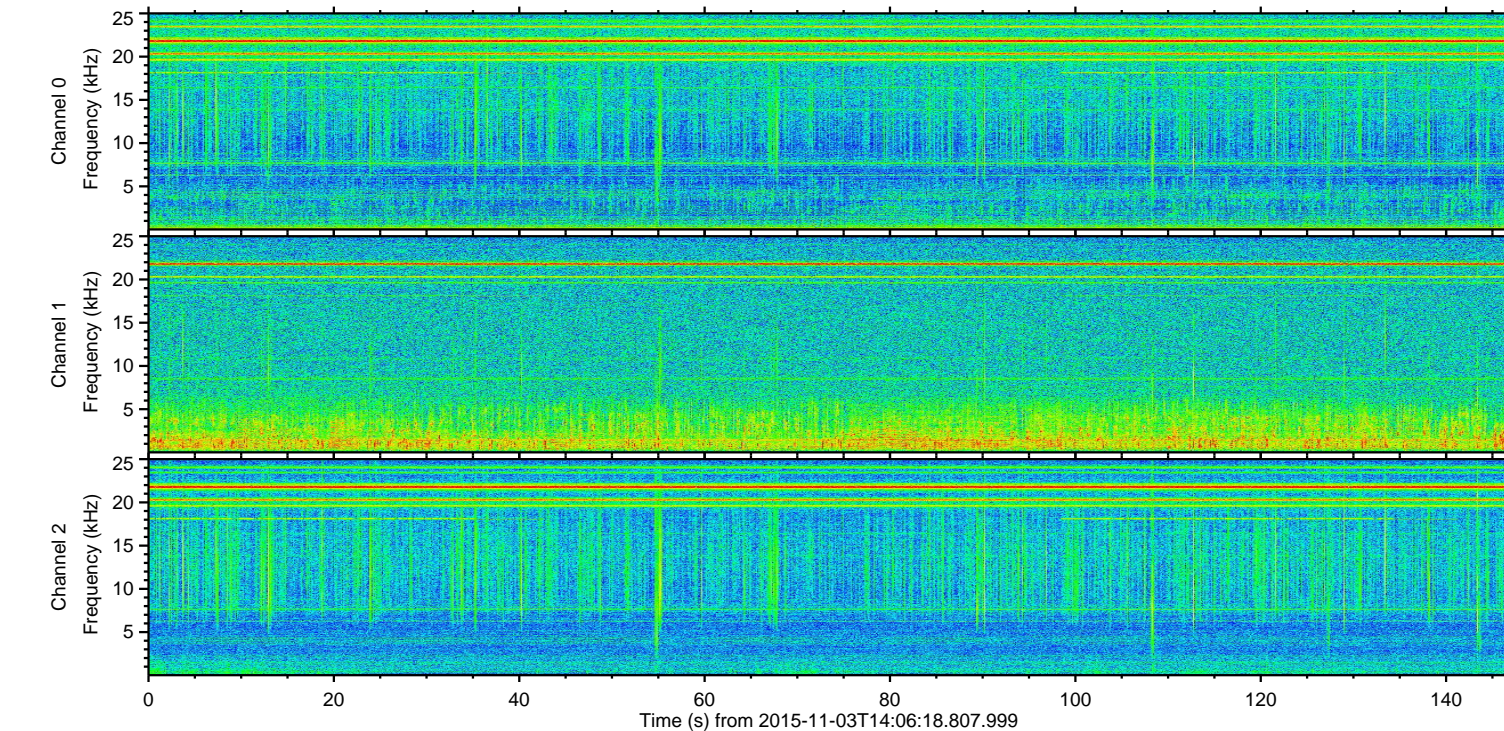
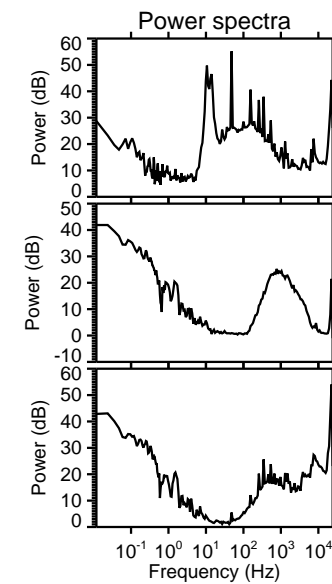
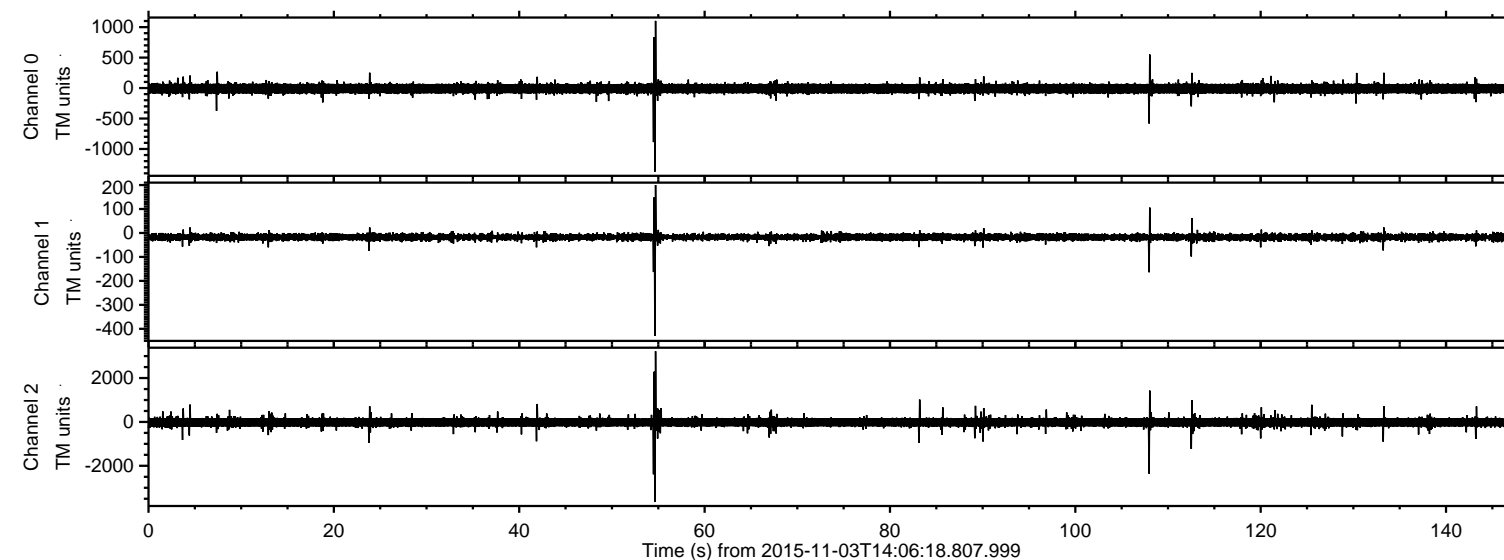


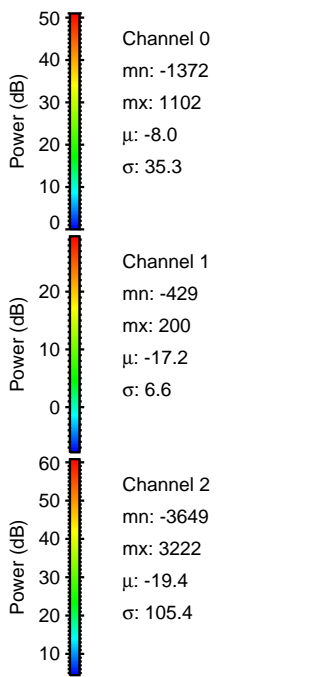
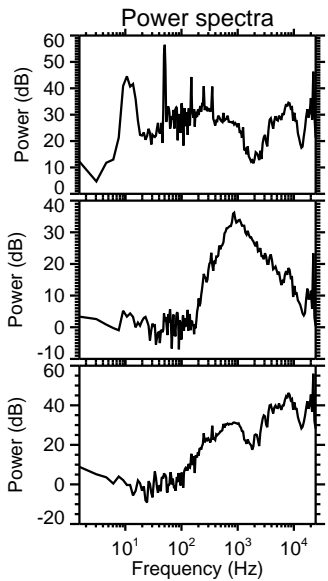
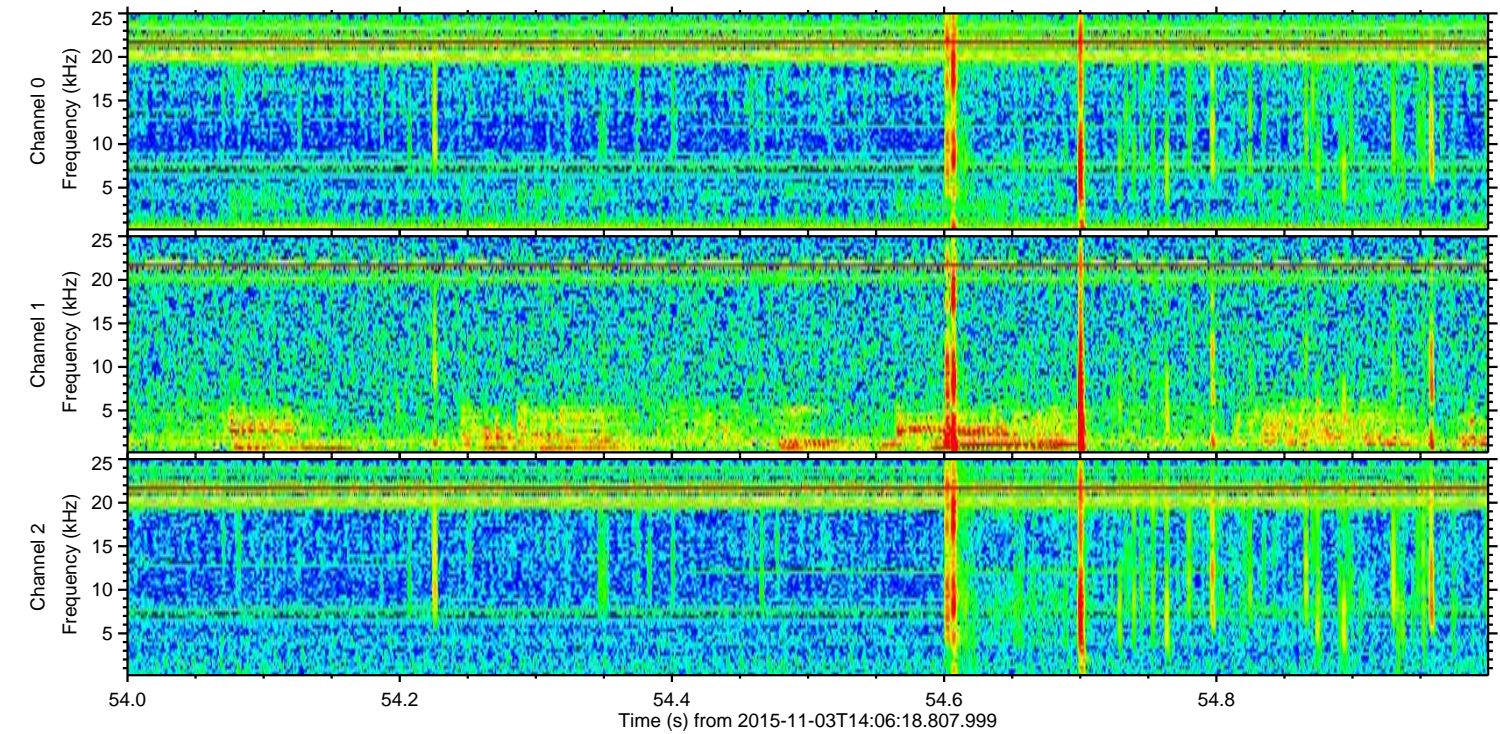
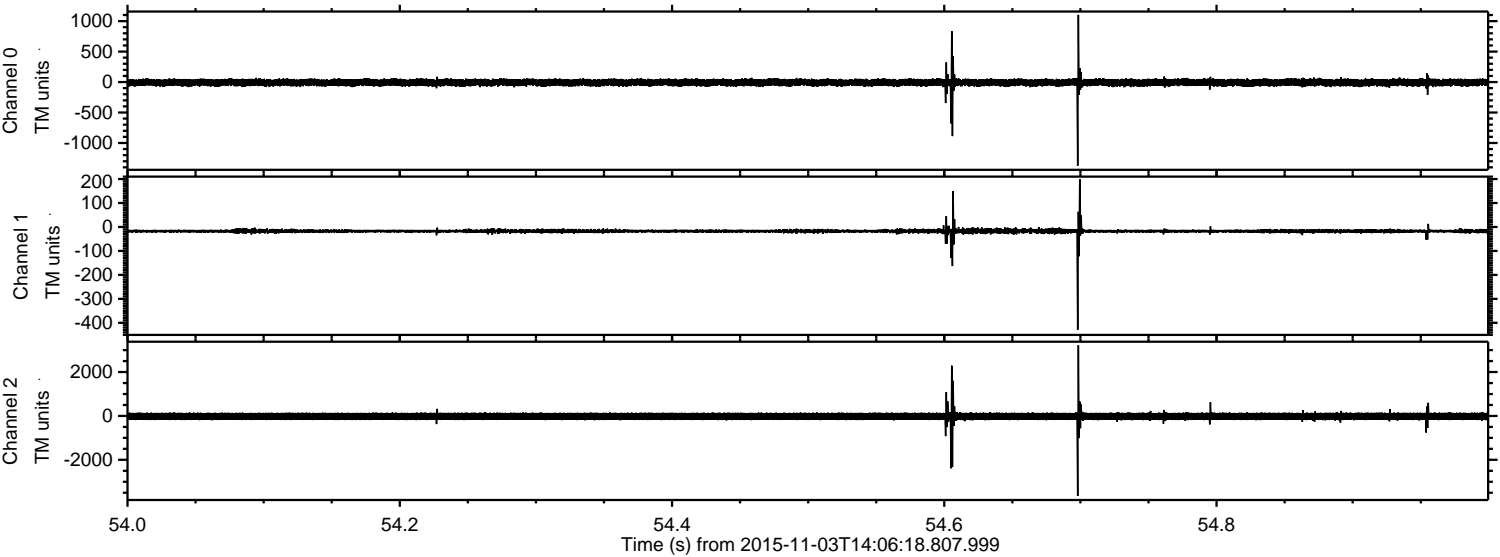
ELMAVAN 3D WAVEFORMS (Measured data sampled at 50 kHz) 51000 packets of 144 samples from 2015-11-03T14:06:18.807.999.

Processed Tue Nov 3 15:57:38 2015 by ELM ver.2012-10-06 from 001__elm20151103_140617__dat00.bin



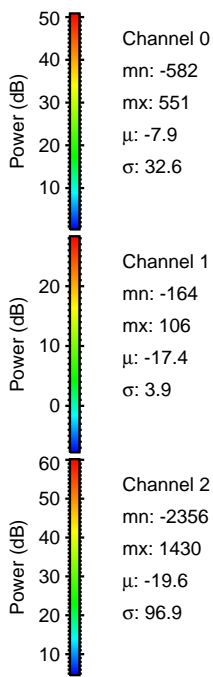
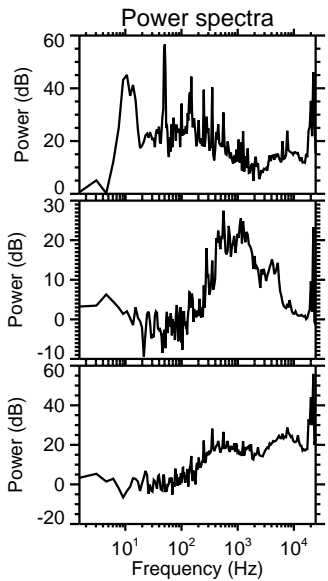
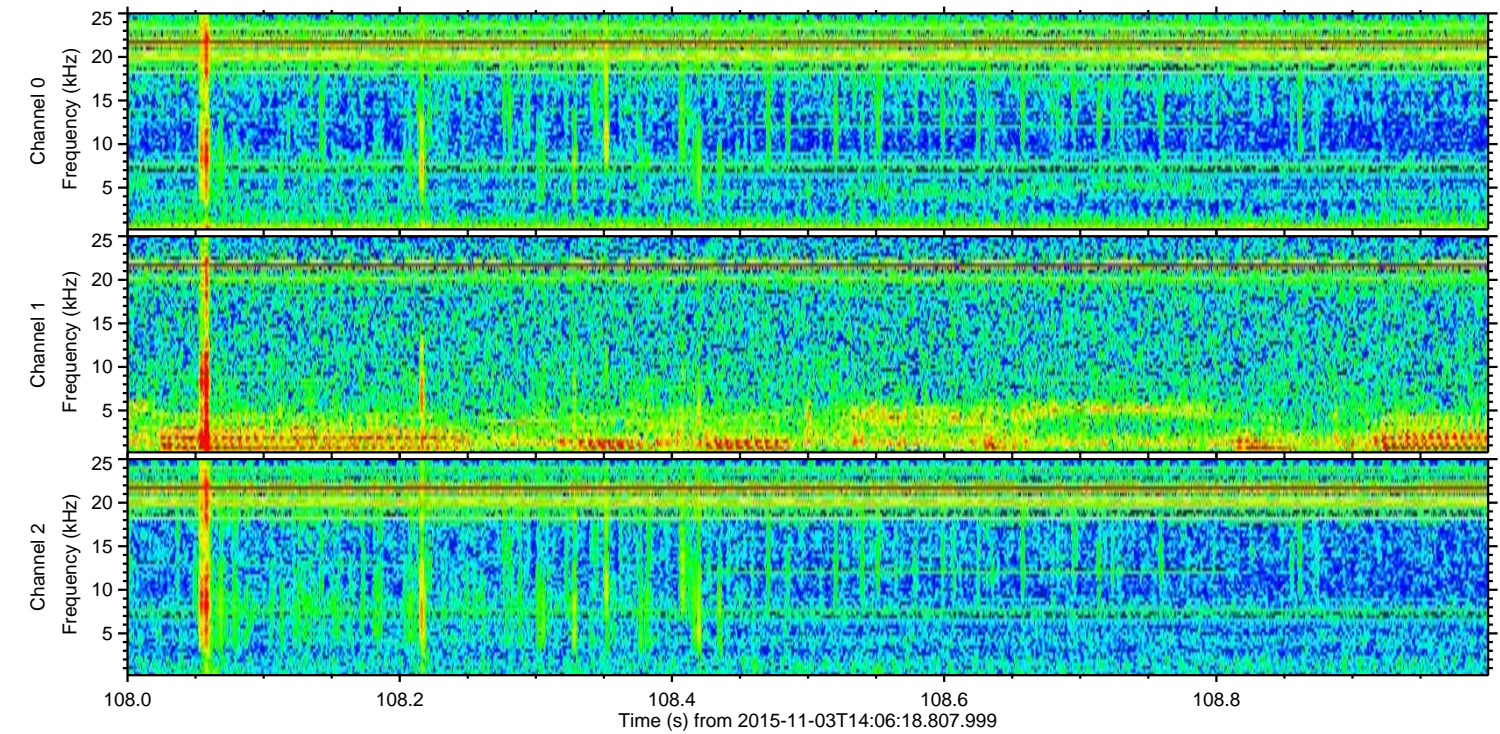
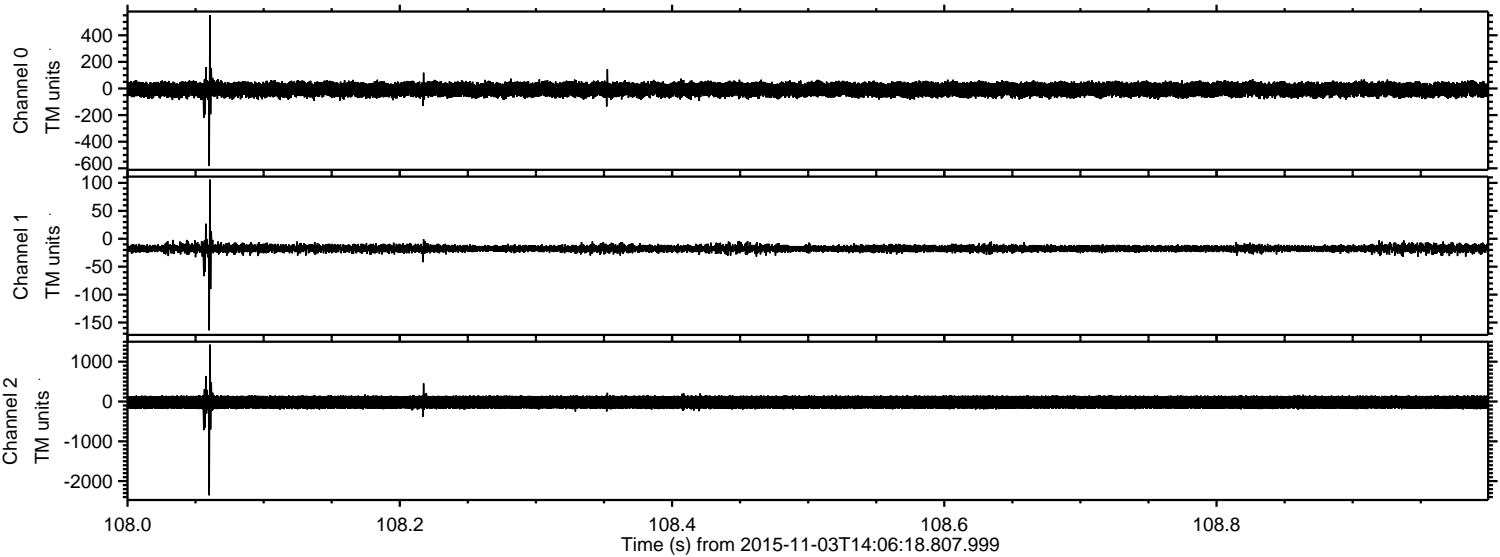
ELMAVAN 3D WAVEFORMS (Measured data sampled at 50 kHz) 51000 packets of 144 samples from 2015-11-03T14:06:18.807.999. Part 55/147

Processed Tue Nov 3 15:57:49 2015 by ELM ver.2012-10-06 from 001__elm20151103_140617__dat00.bin



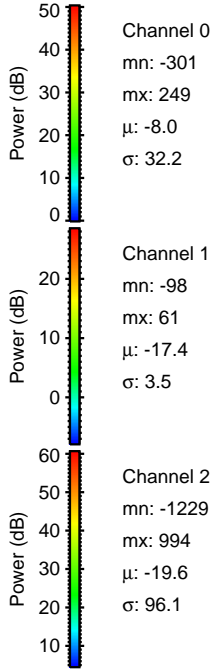
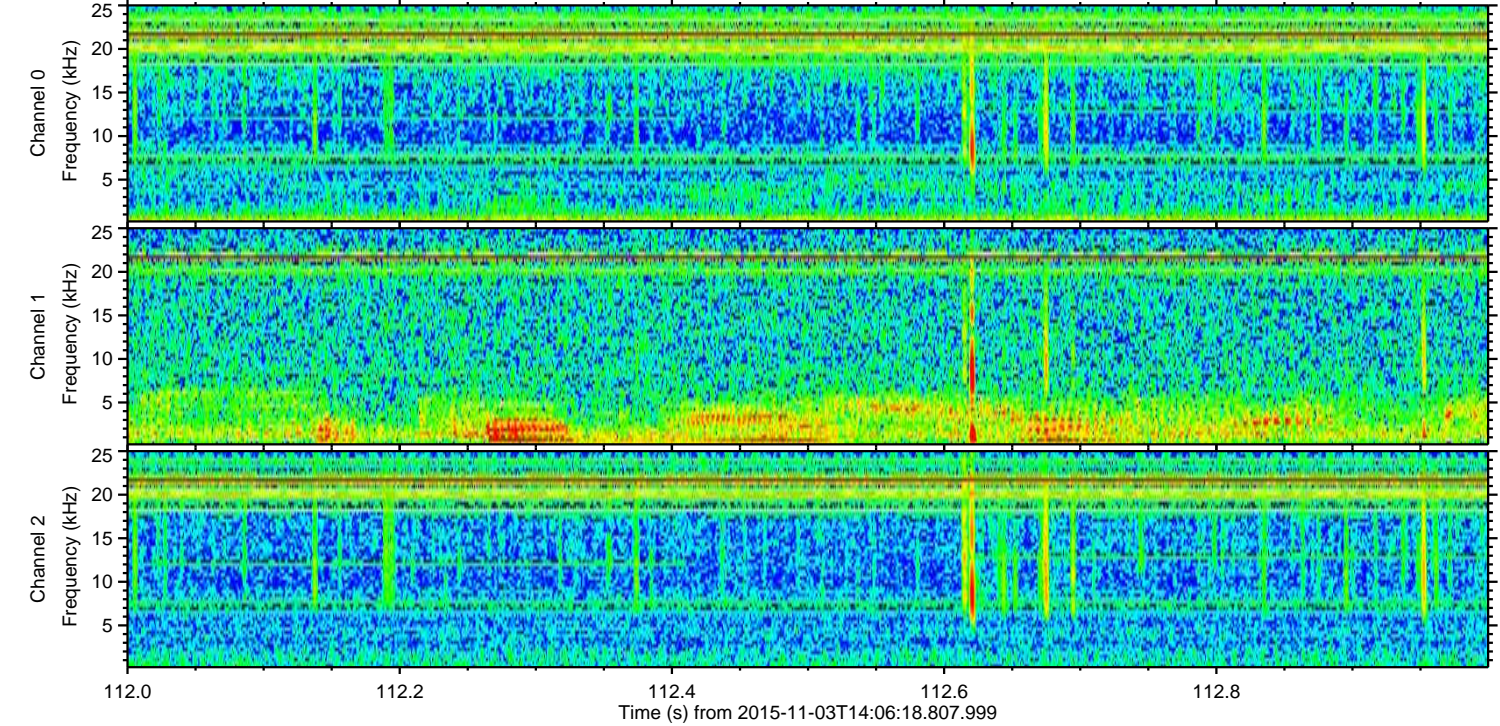
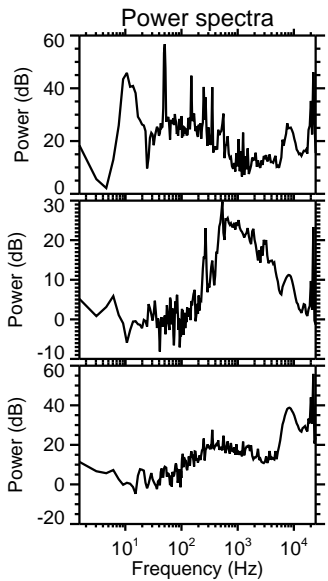
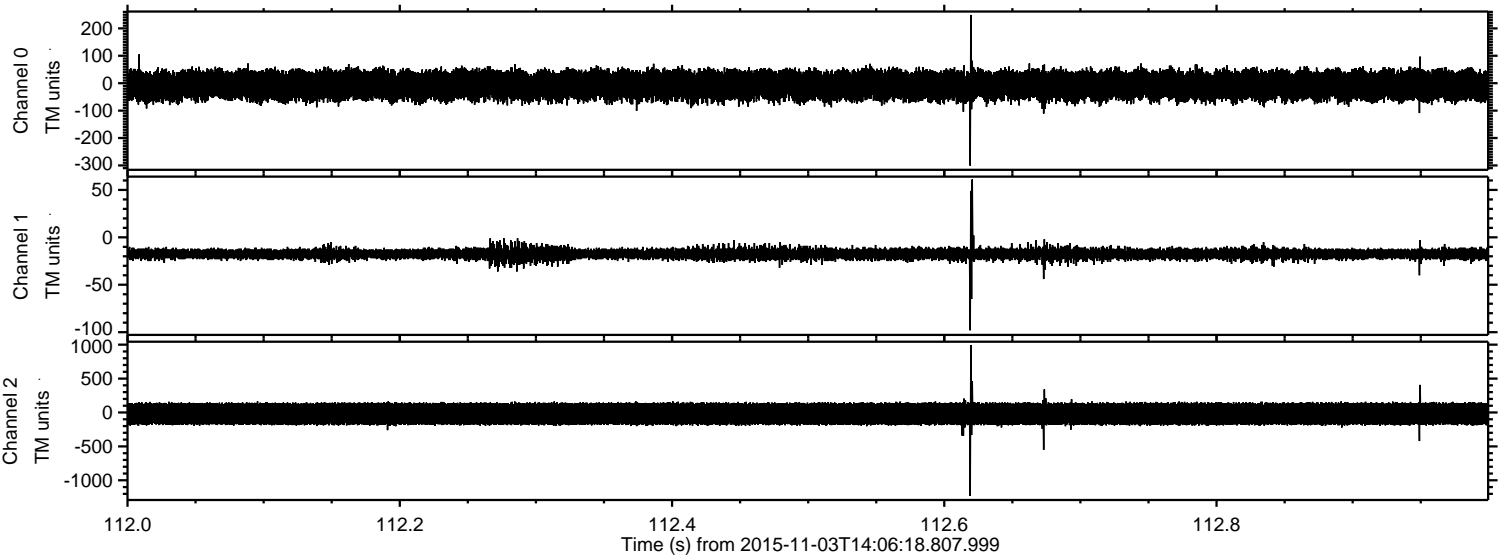
ELMAVAN 3D WAVEFORMS (Measured data sampled at 50 kHz) 51000 packets of 144 samples from 2015-11-03T14:06:18.807.999. Part 109/147

Processed Tue Nov 3 15:57:50 2015 by ELM ver.2012-10-06 from 001__elm20151103_140617__dat00.bin



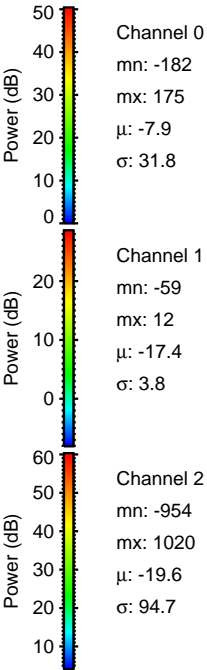
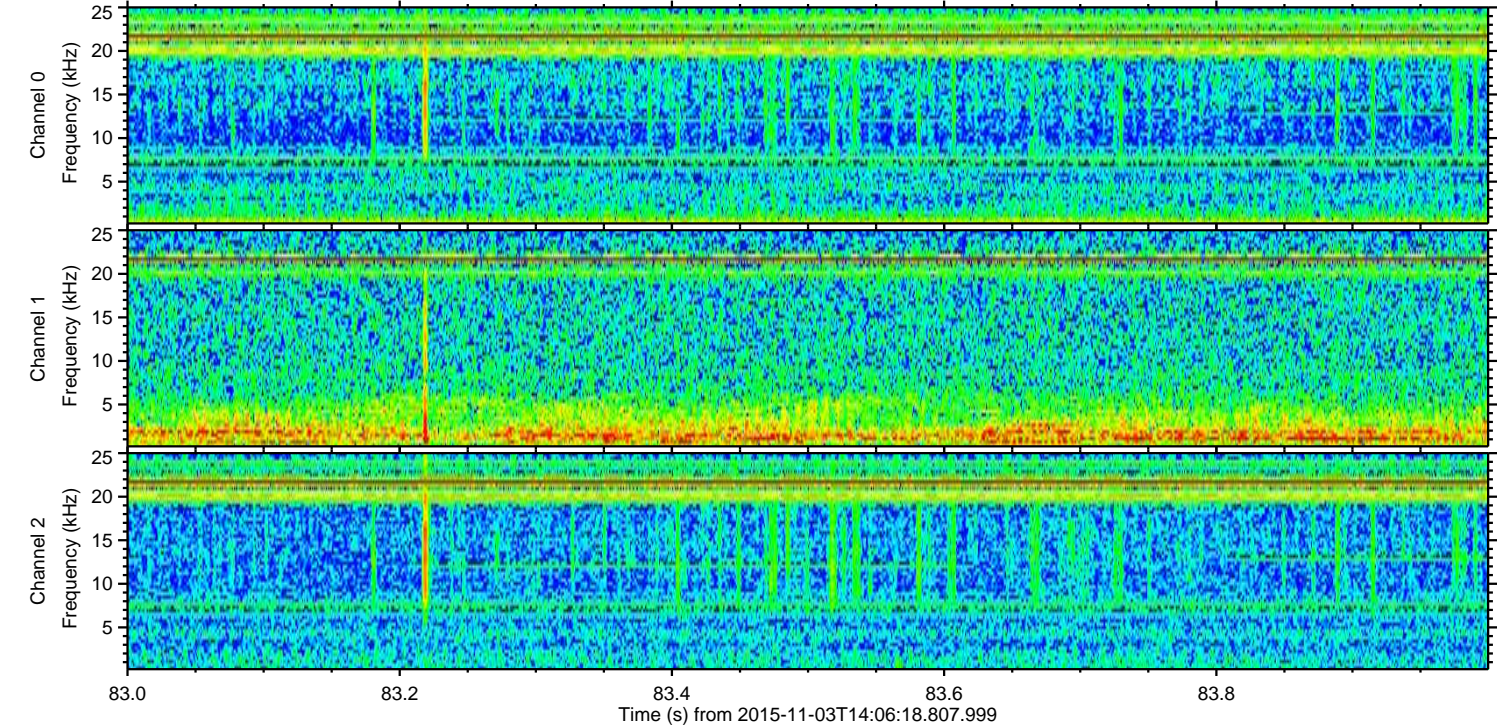
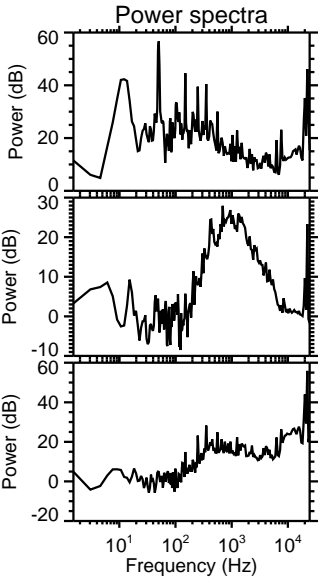
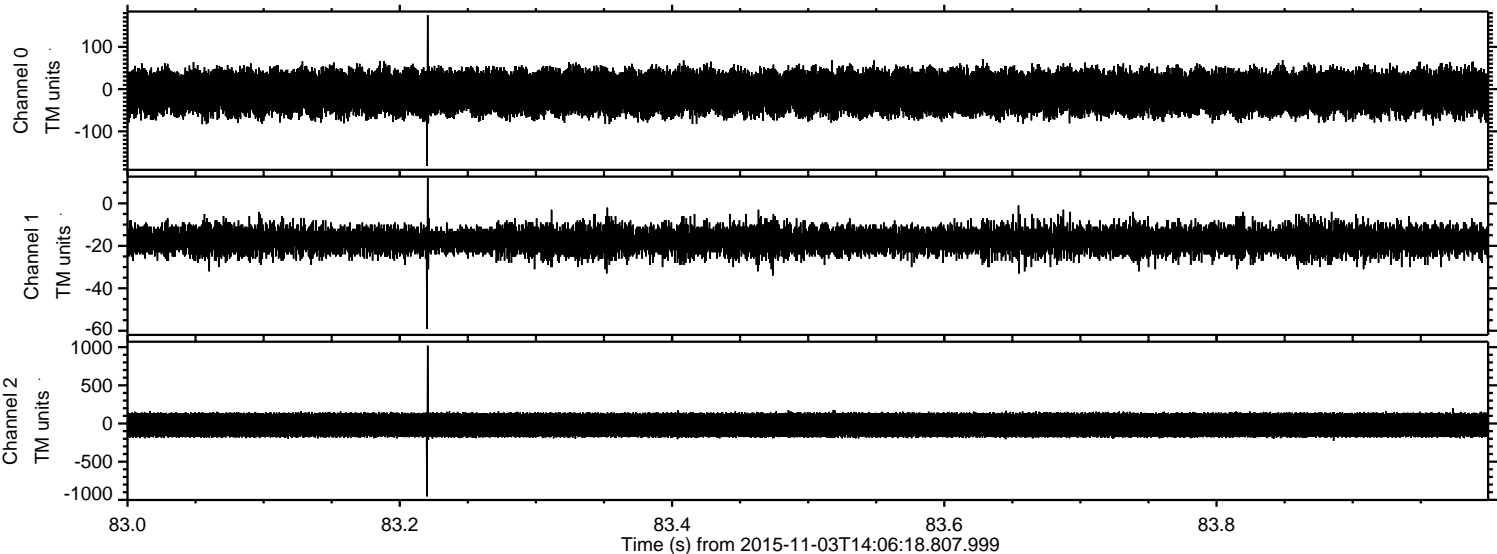
ELMAVAN 3D WAVEFORMS (Measured data sampled at 50 kHz) 51000 packets of 144 samples from 2015-11-03T14:06:18.807.999. Part 113/147

Processed Tue Nov 3 15:57:51 2015 by ELM ver.2012-10-06 from 001__elm20151103_140617__dat00.bin



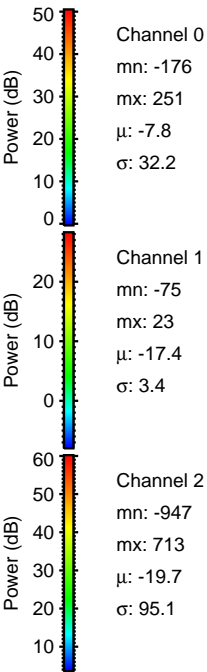
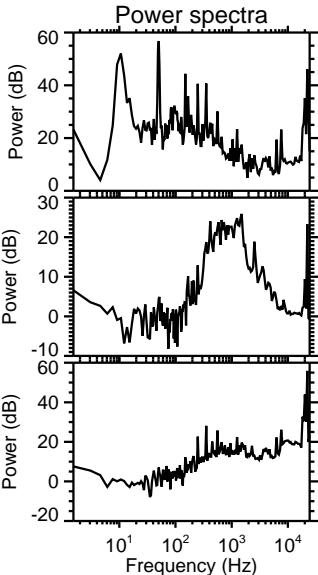
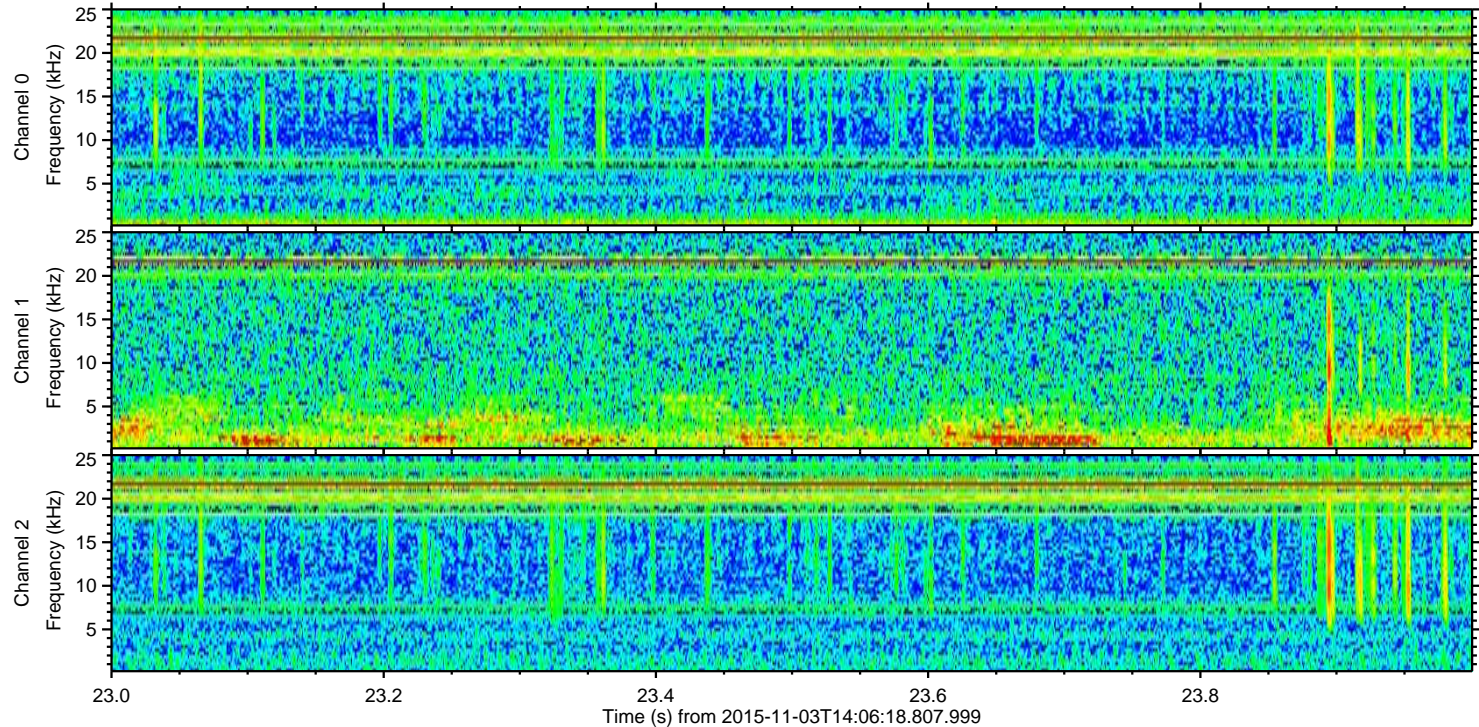
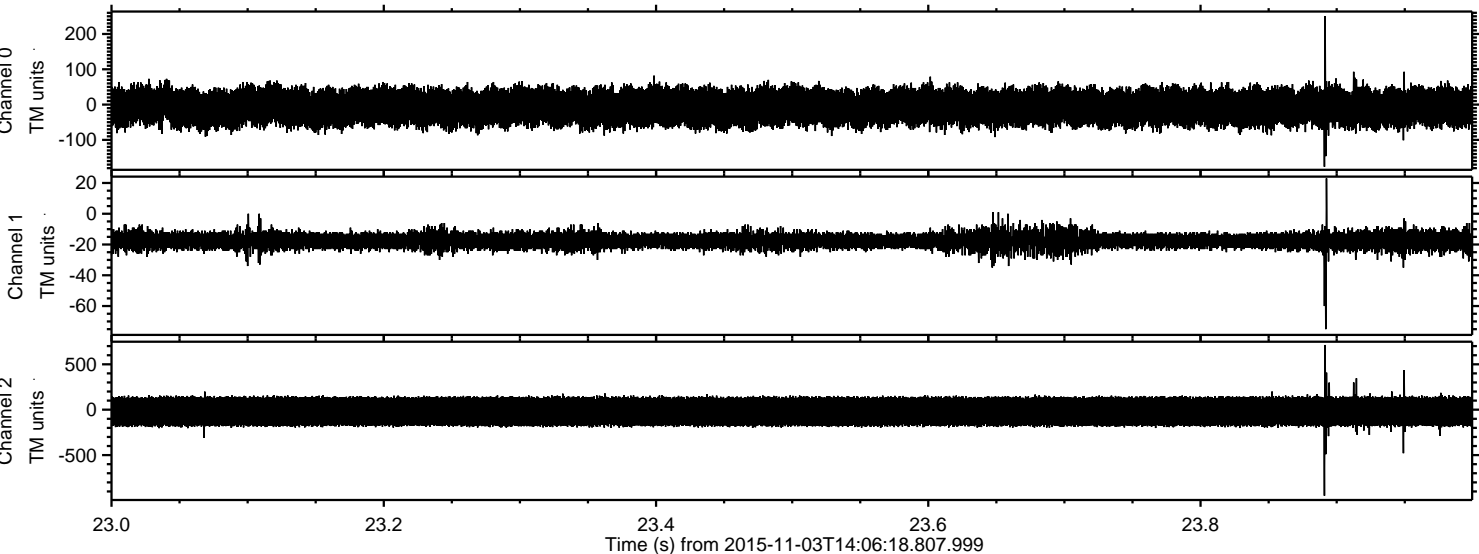
ELMAVAN 3D WAVEFORMS (Measured data sampled at 50 kHz) 51000 packets of 144 samples from 2015-11-03T14:06:18.807.999. Part 84/147

Processed Tue Nov 3 15:57:52 2015 by ELM ver.2012-10-06 from 001__elm20151103_140617__dat00.bin

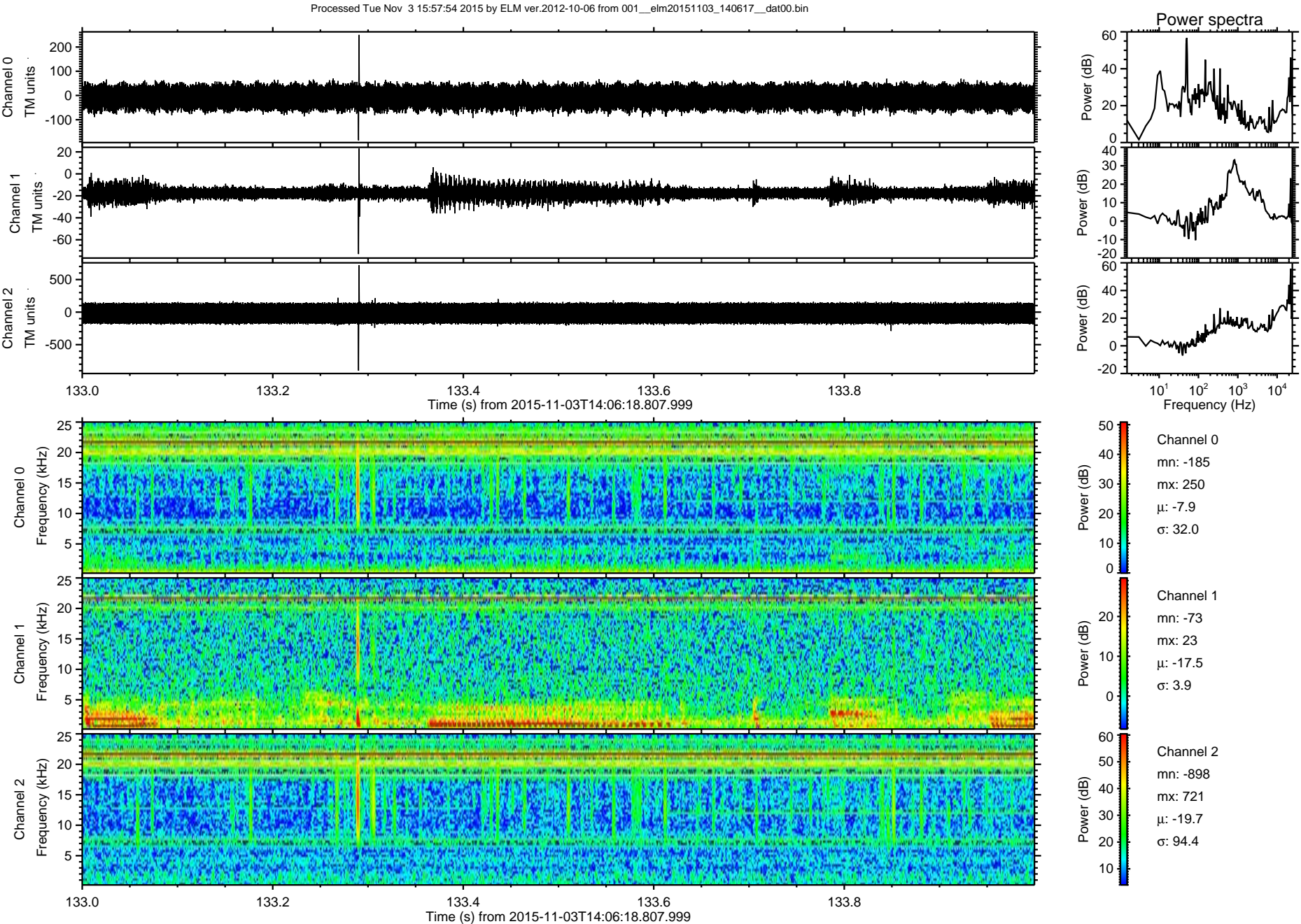


ELMAVAN 3D WAVEFORMS (Measured data sampled at 50 kHz) 51000 packets of 144 samples from 2015-11-03T14:06:18.807.999. Part 24/147

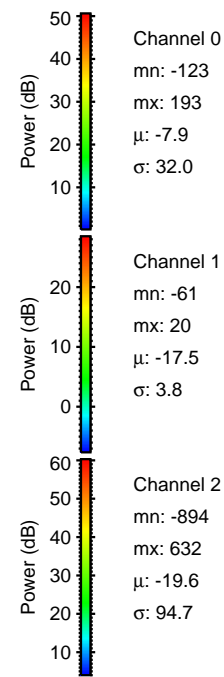
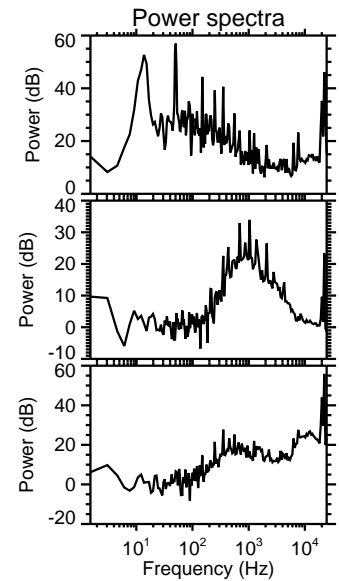
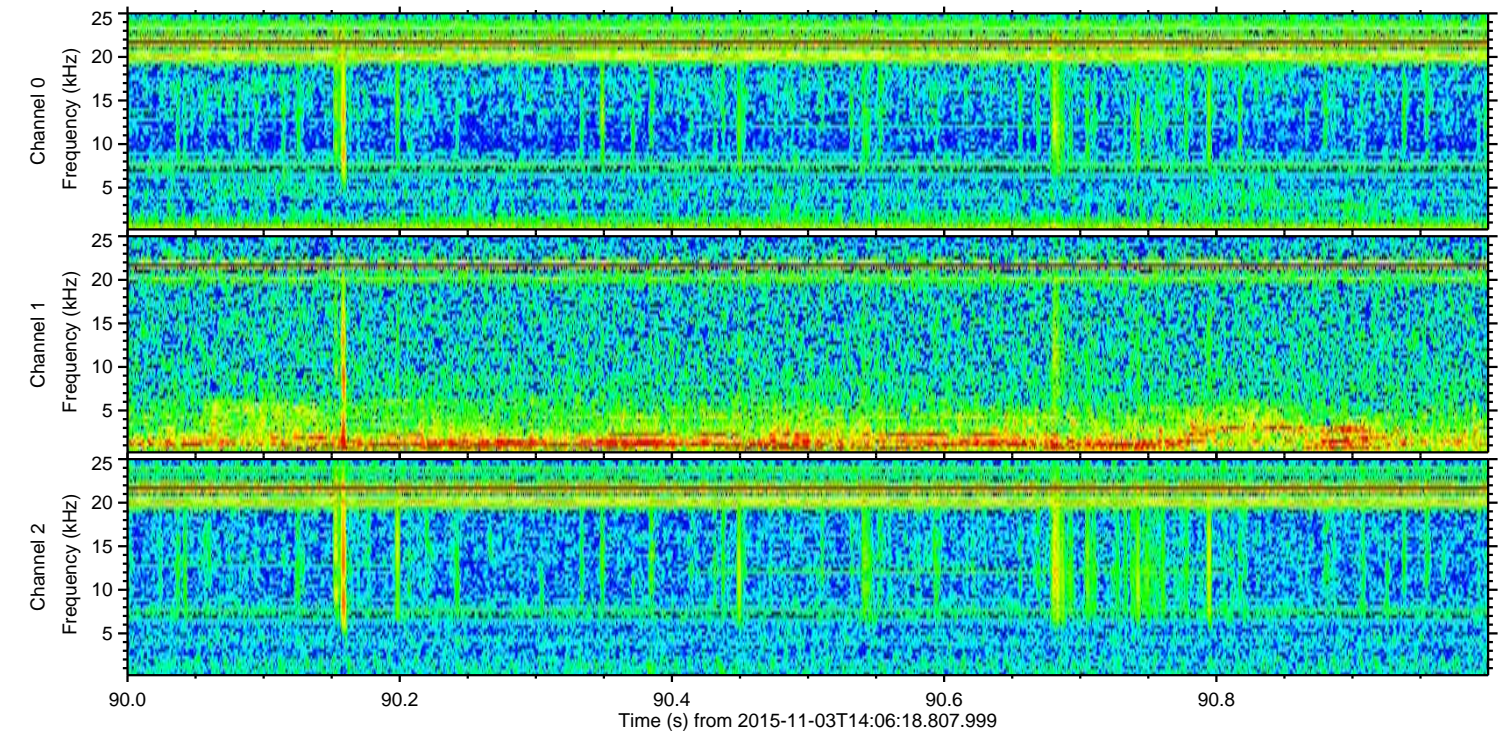
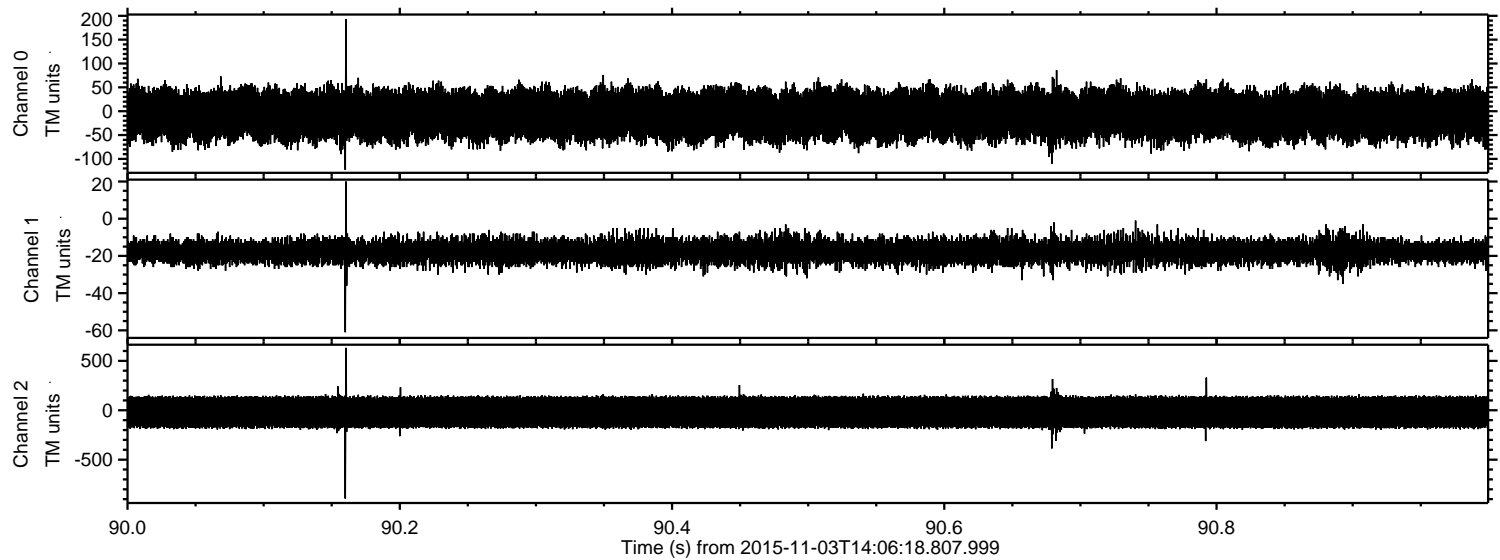
Processed Tue Nov 3 15:57:53 2015 by ELM ver.2012-10-06 from 001__elm20151103_140617__dat00.bin



ELMAVAN 3D WAVEFORMS (Measured data sampled at 50 kHz) 51000 packets of 144 samples from 2015-11-03T14:06:18.807.999. Part 134/147



Processed Tue Nov 3 15:57:55 2015 by ELM ver.2012-10-06 from 001__elm20151103_140617__dat00.bin



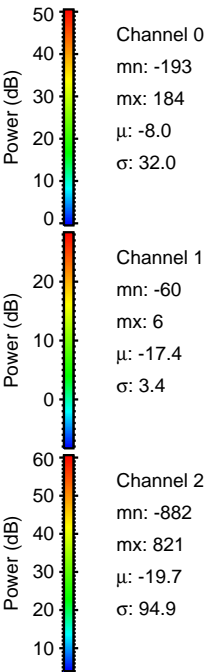
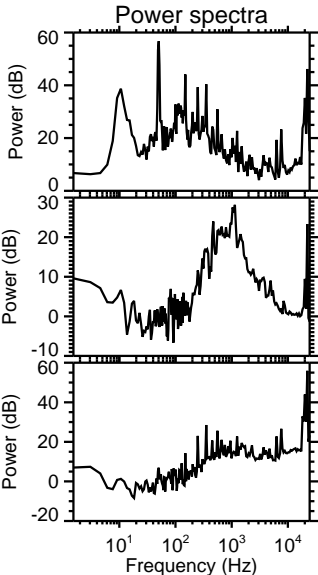
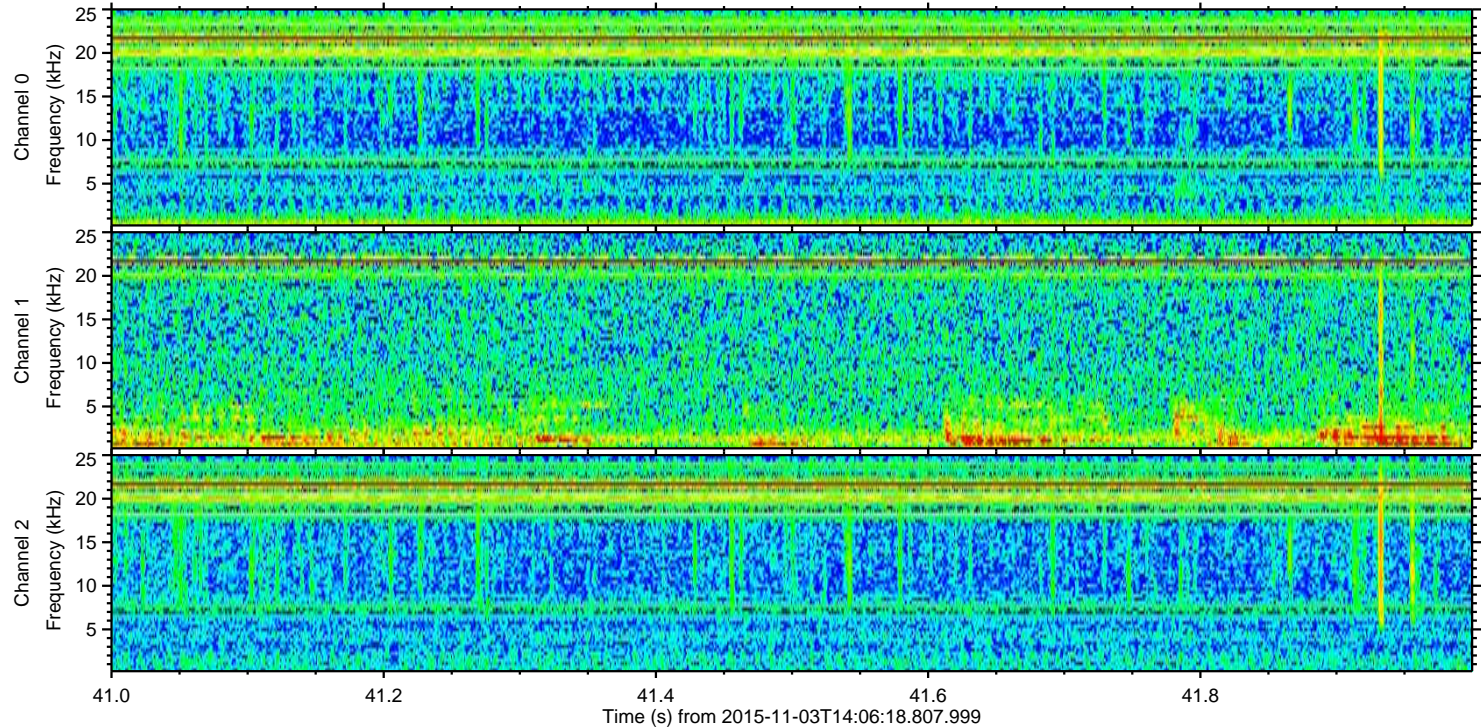
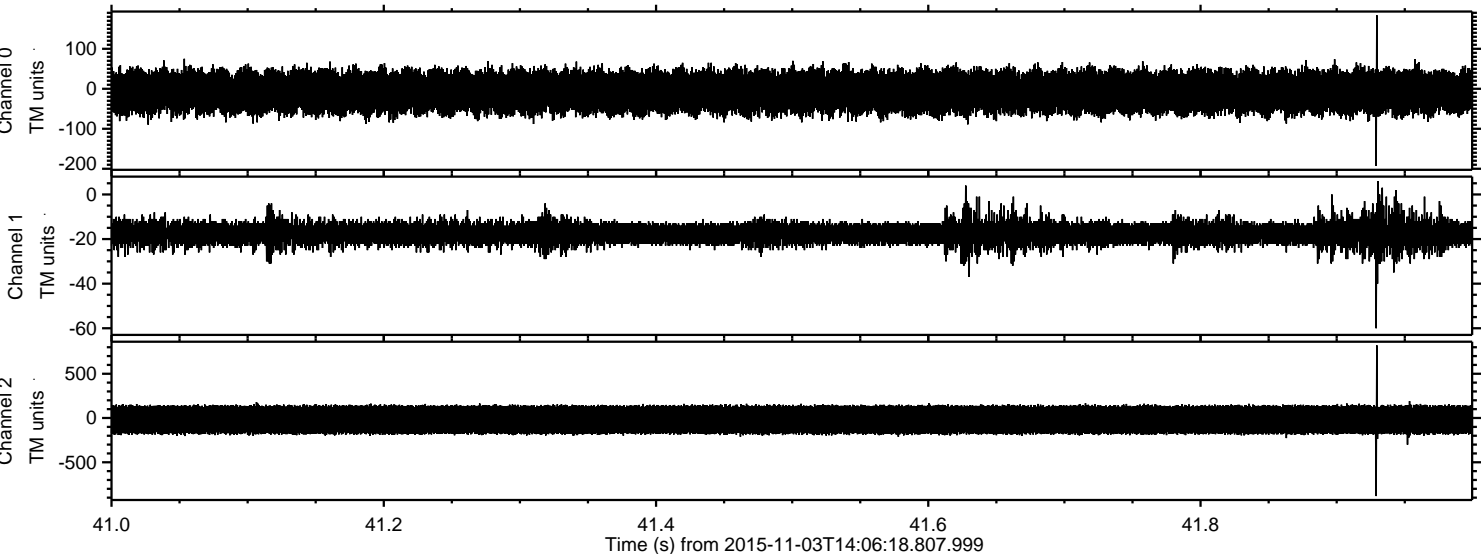
Channel 0
mn: -123
mx: 193
 μ : -7.9
 σ : 32.0

Channel 1
mn: -61
mx: 20
 μ : -17.5
 σ : 3.8

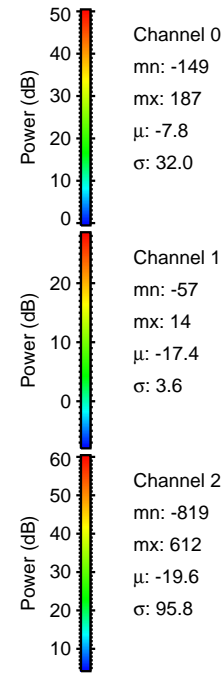
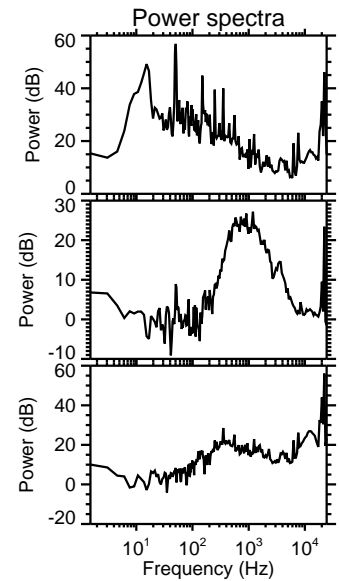
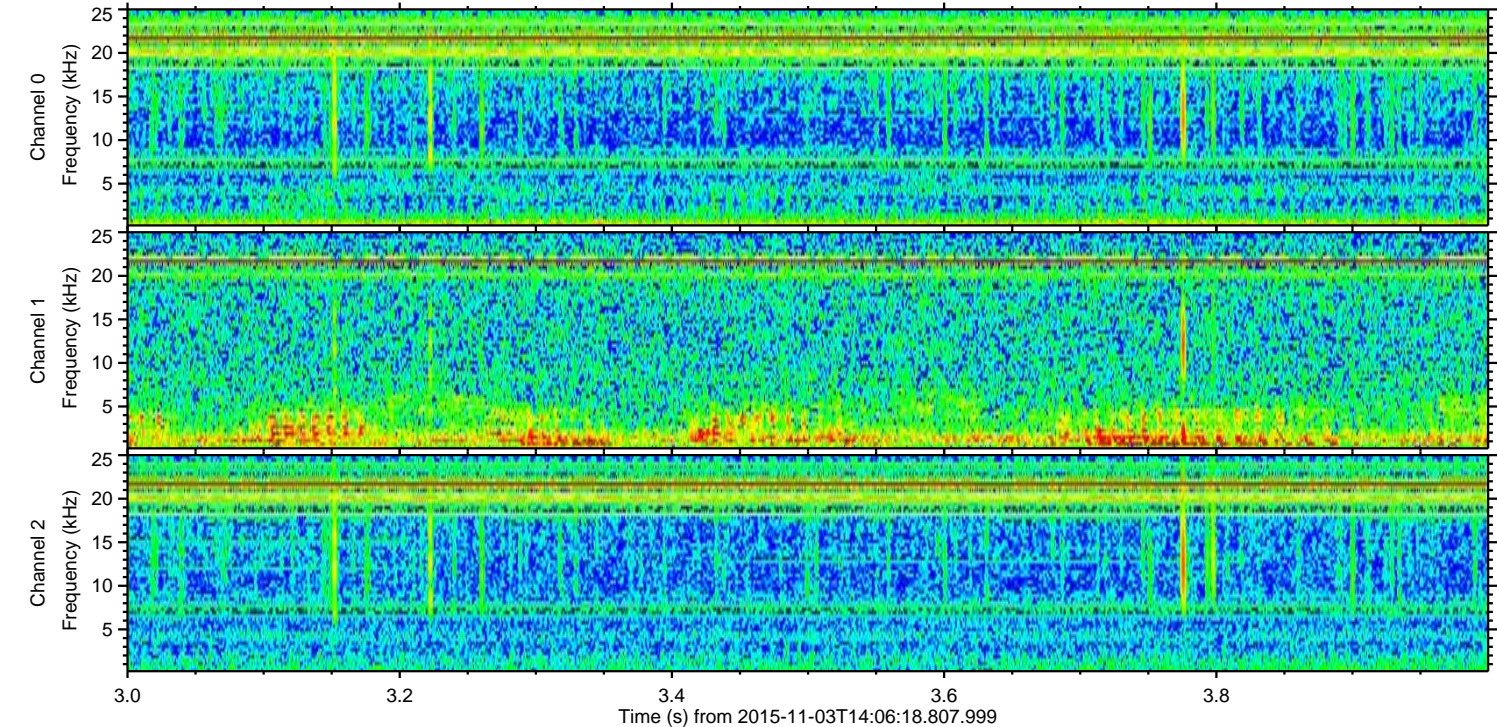
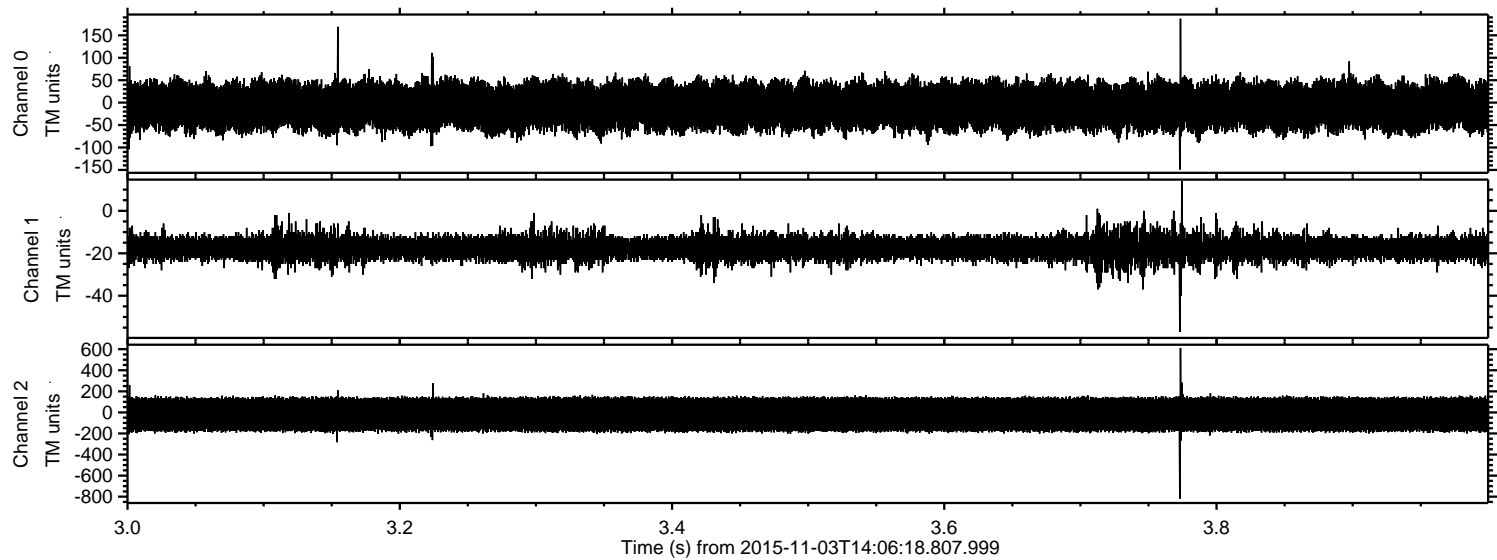
Channel 2
mn: -894
mx: 632
 μ : -19.6
 σ : 94.7

ELMAVAN 3D WAVEFORMS (Measured data sampled at 50 kHz) 51000 packets of 144 samples from 2015-11-03T14:06:18.807.999. Part 42/147

Processed Tue Nov 3 15:57:56 2015 by ELM ver.2012-10-06 from 001__elm20151103_140617__dat00.bin



Processed Tue Nov 3 15:57:57 2015 by ELM ver.2012-10-06 from 001__elm20151103_140617__dat00.bin



Channel 0
mn: -149
mx: 187
 μ : -7.8
 σ : 32.0

Channel 1
mn: -57
mx: 14
 μ : -17.4
 σ : 3.6

Channel 2
mn: -819
mx: 612
 μ : -19.6
 σ : 95.8

ELMAVAN 3D WAVEFORMS (Measured data sampled at 50 kHz) 51000 packets of 144 samples from 2015-11-03T14:06:18.807.999. Part 51/147

Processed Tue Nov 3 15:57:58 2015 by ELM ver.2012-10-06 from 001__elm20151103_140617__dat00.bin

