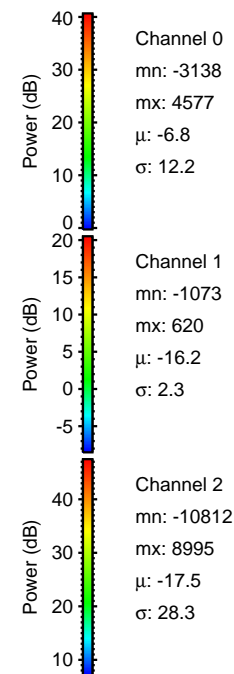
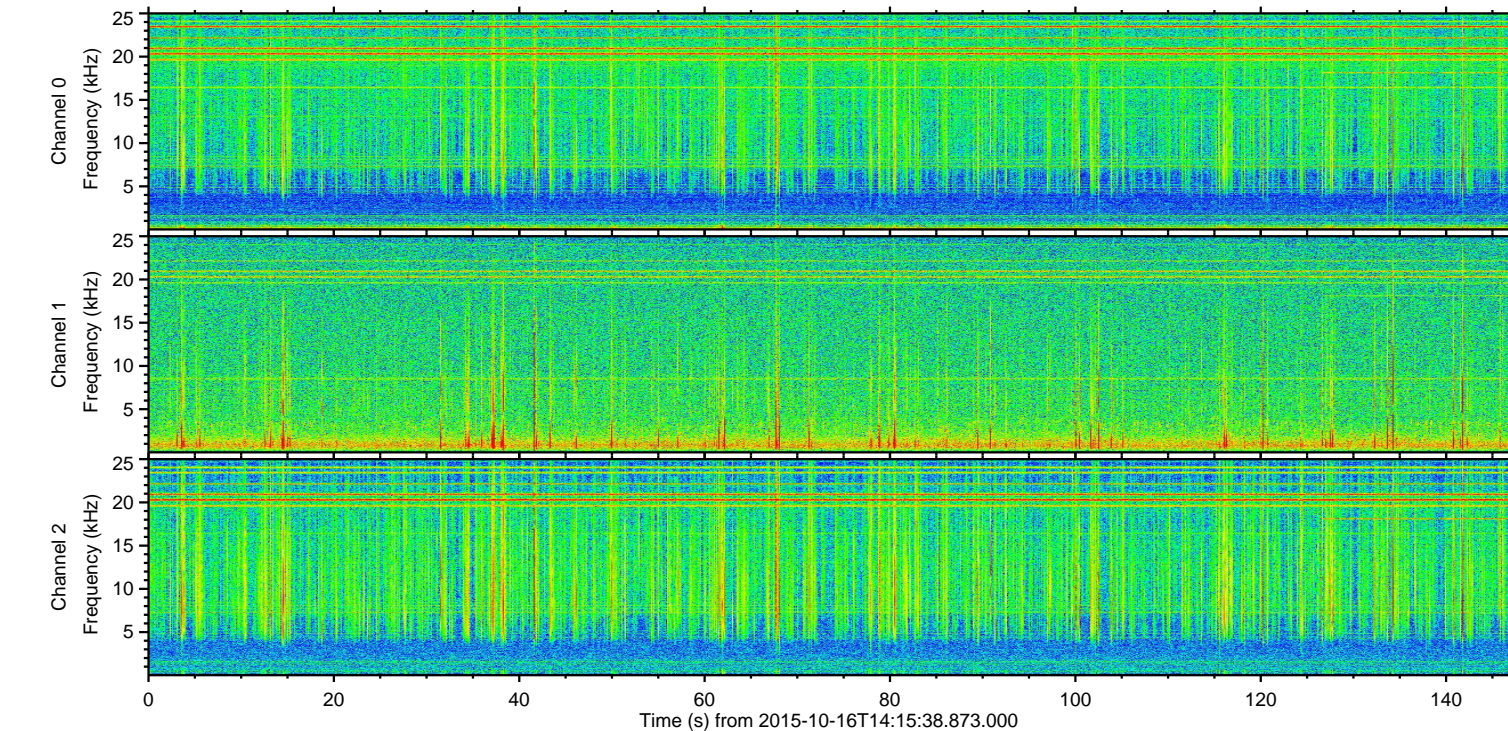
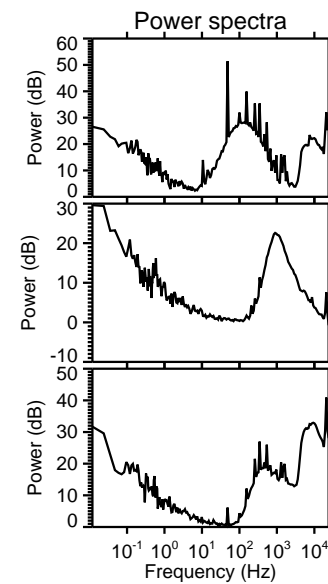
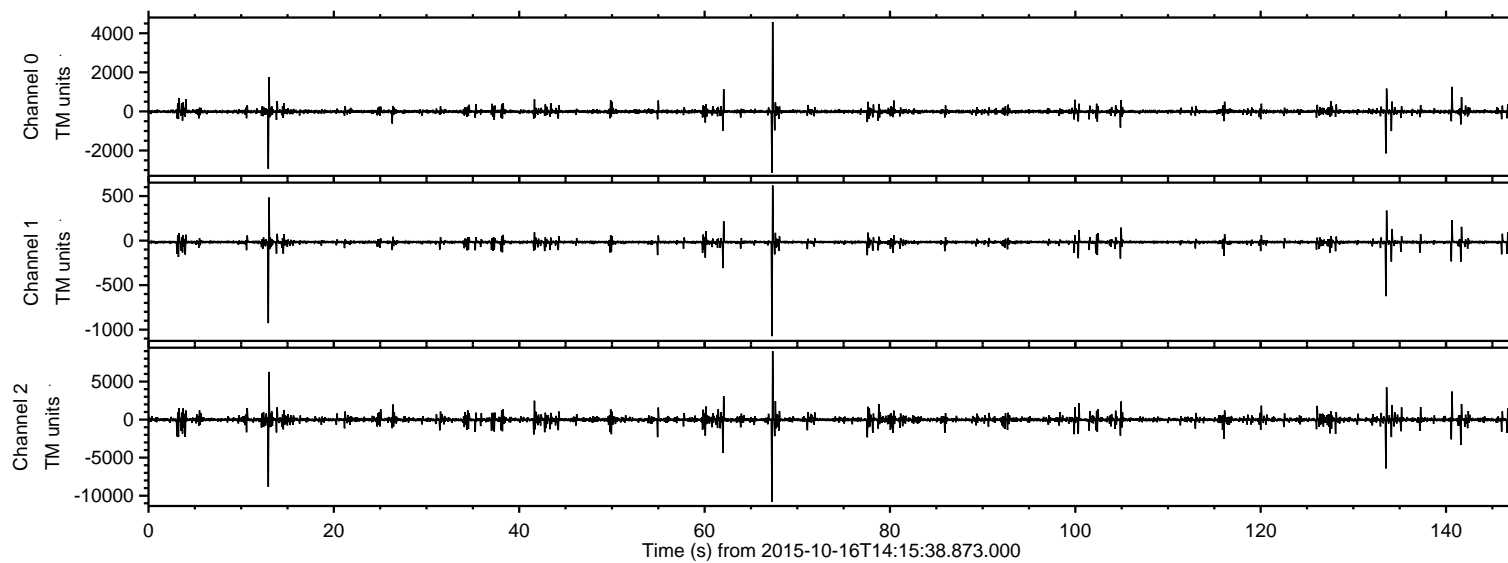
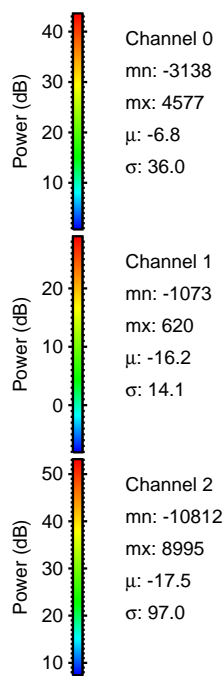
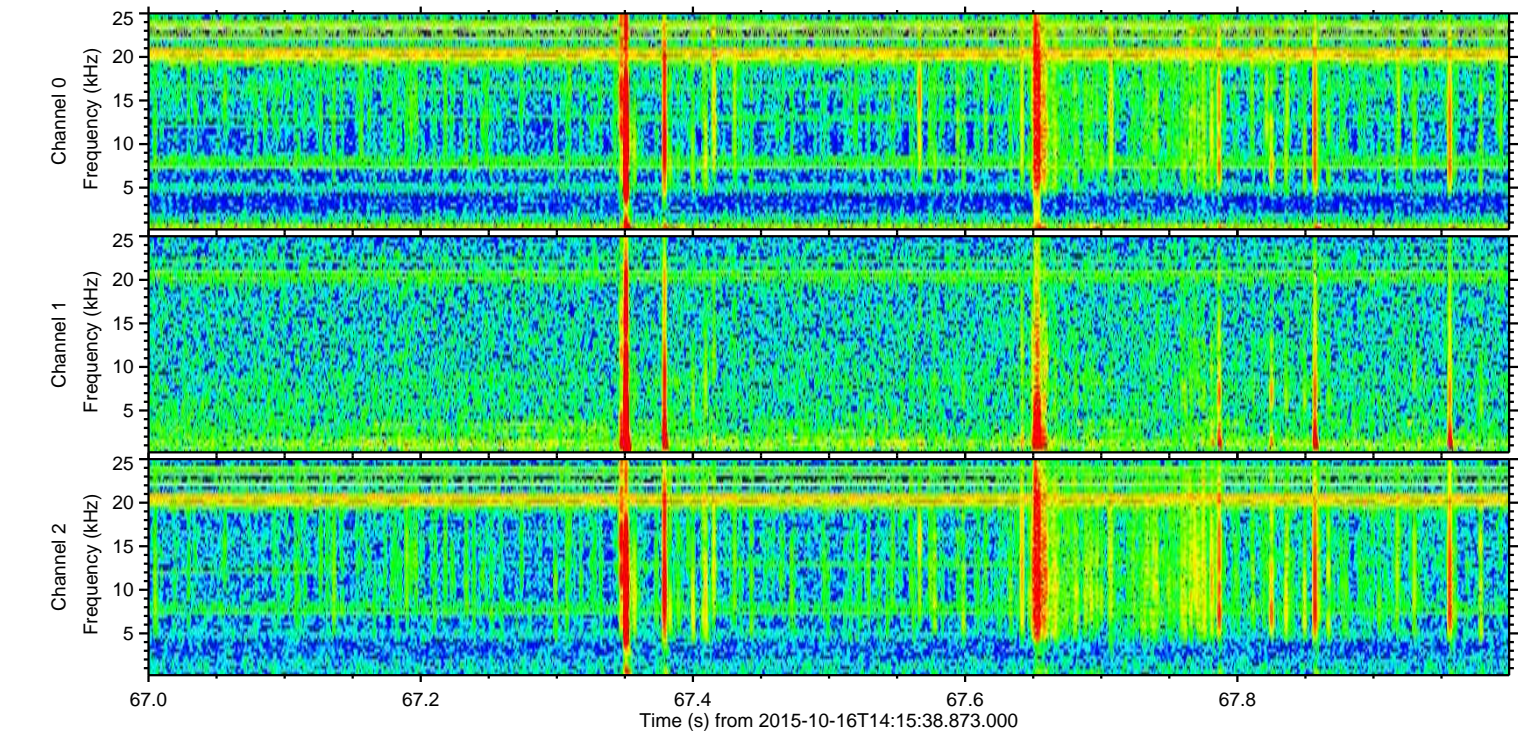
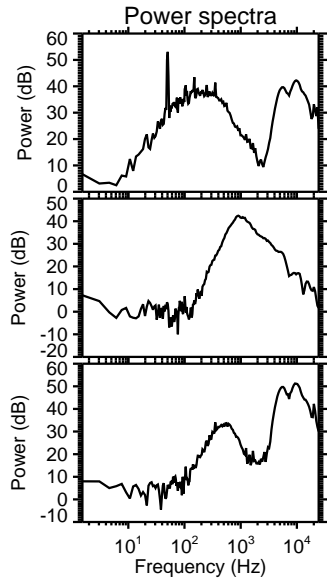
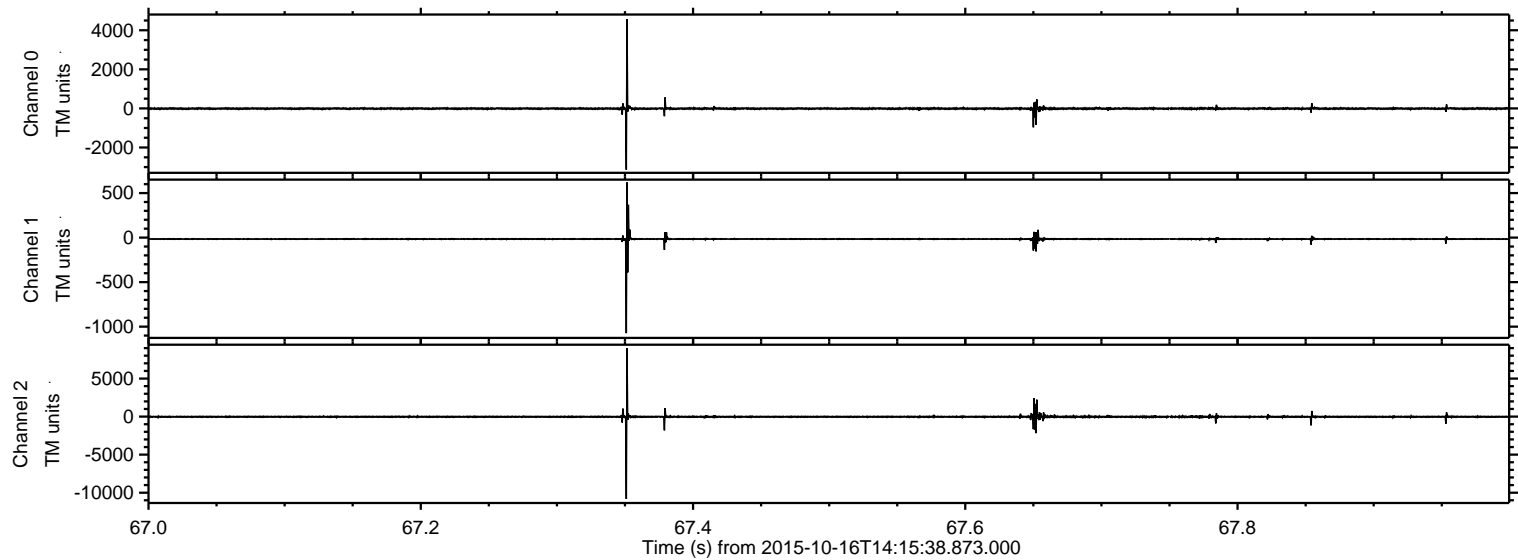


ELMAVAN 3D WAVEFORMS (Measured data sampled at 50 kHz) 51000 packets of 144 samples from 2015-10-16T14:15:38.873.000.

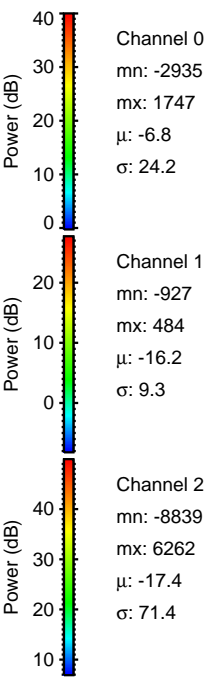
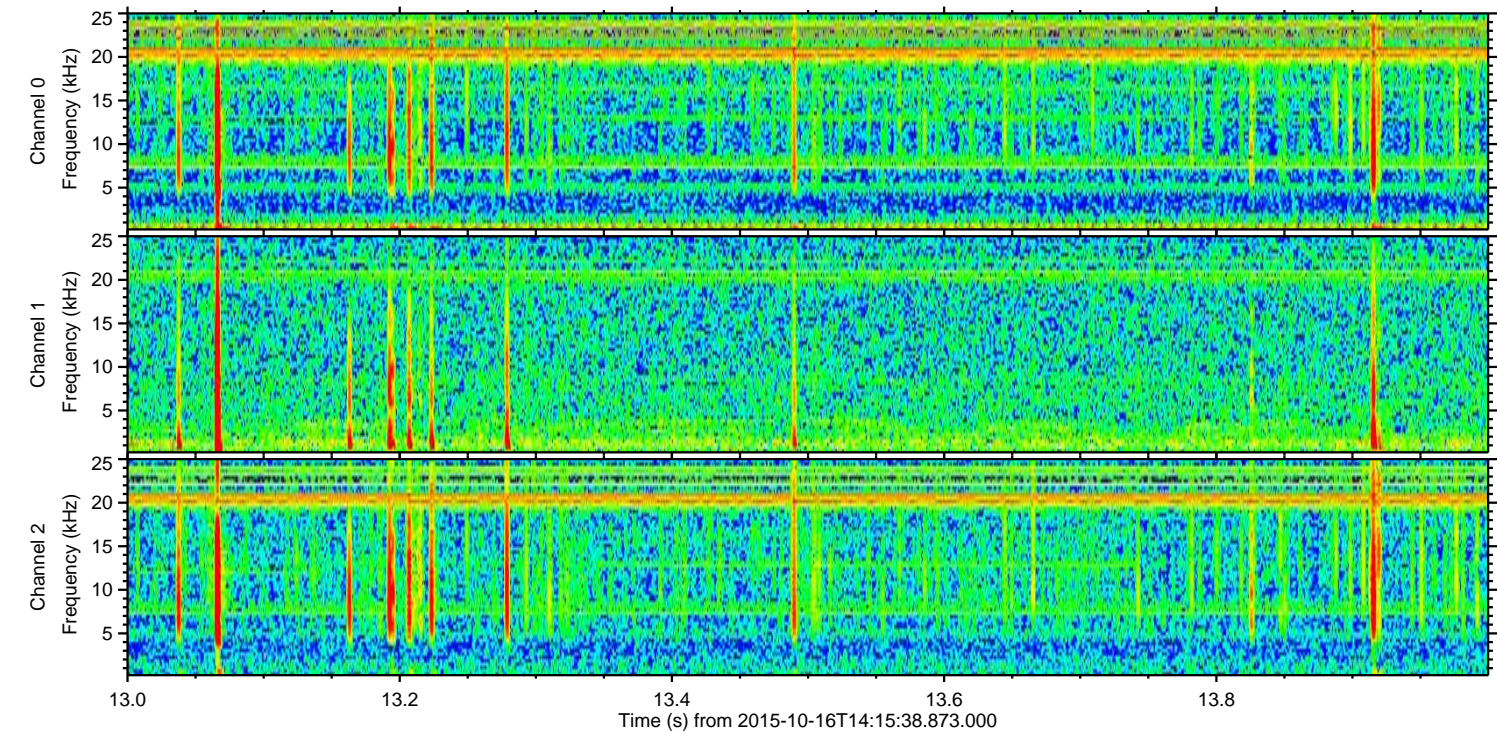
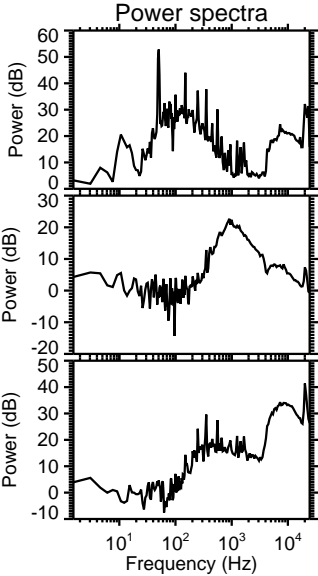
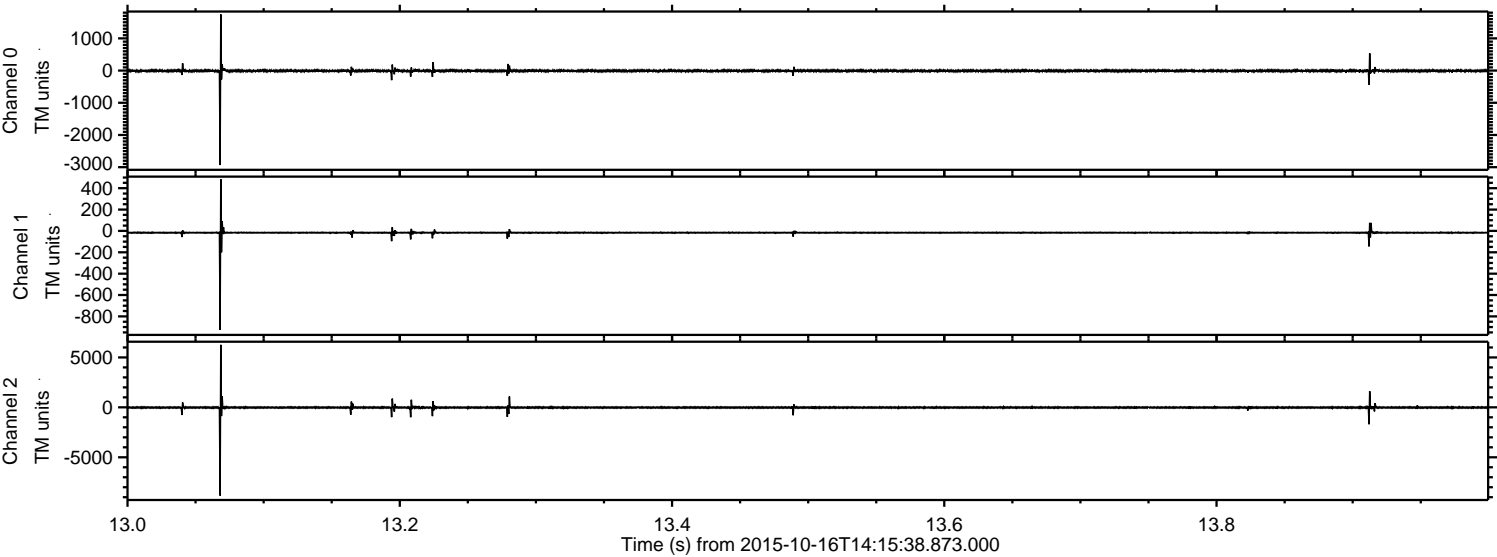
Processed Mon Oct 19 22:51:10 2015 by ELM ver.2012-10-06 from 001__elm20151016_141537__dat00.bin



Processed Mon Oct 19 22:51:24 2015 by ELM ver.2012-10-06 from 001__elm20151016_141537__dat00.bin

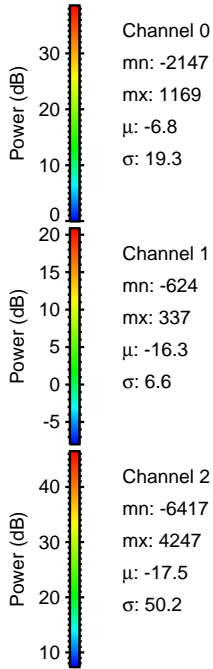
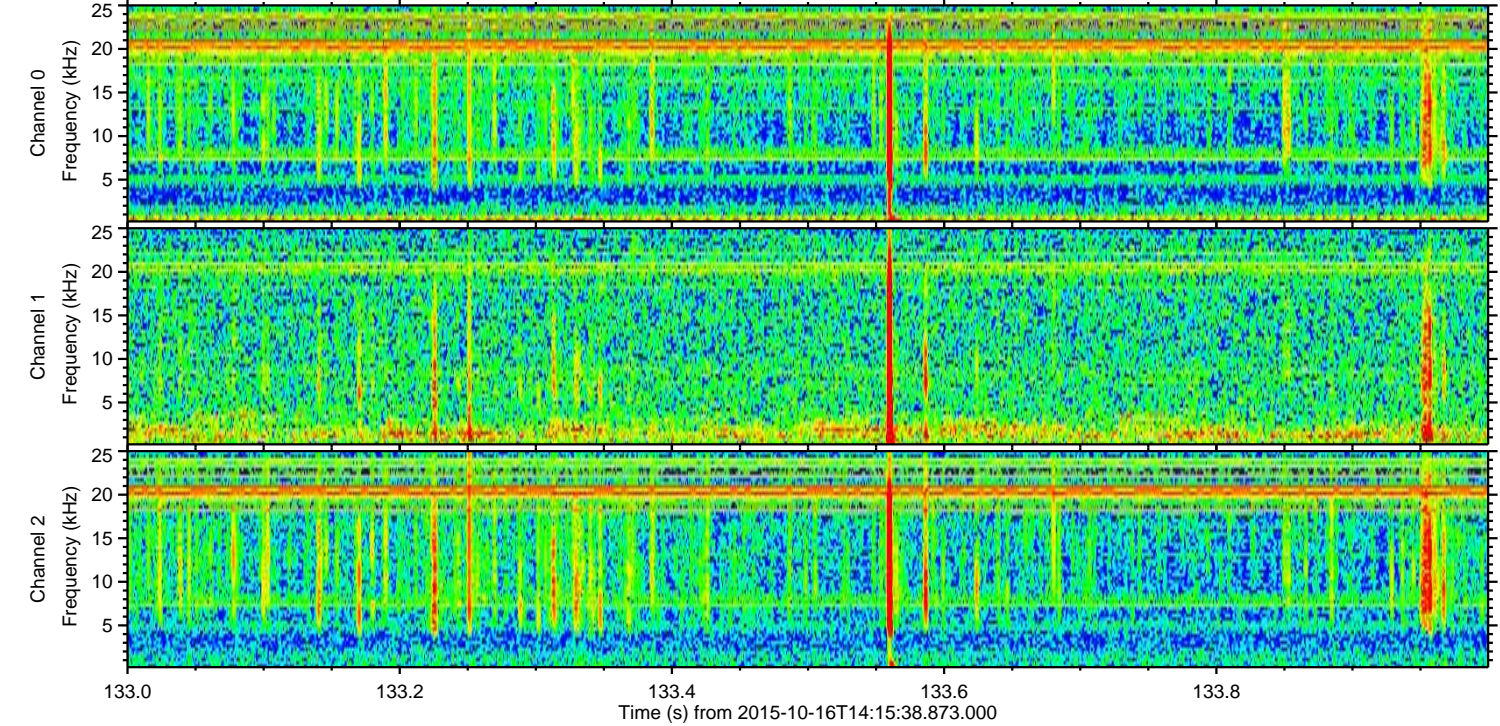
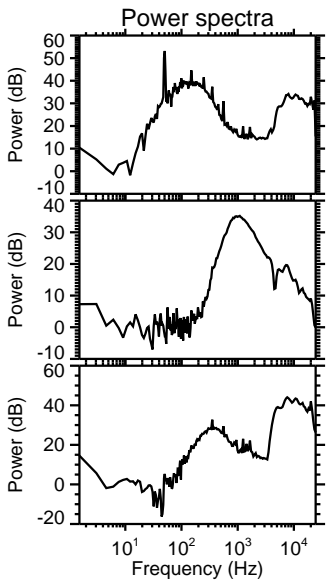
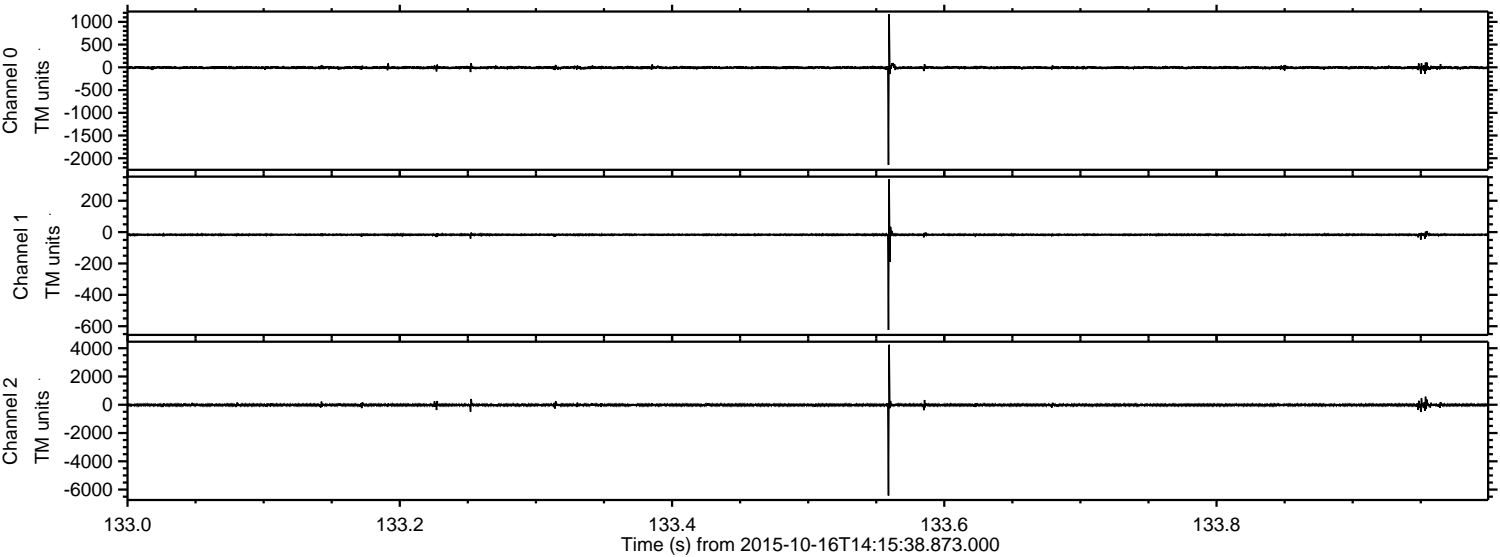


Processed Mon Oct 19 22:51:25 2015 by ELM ver.2012-10-06 from 001__elm20151016_141537__dat00.bin

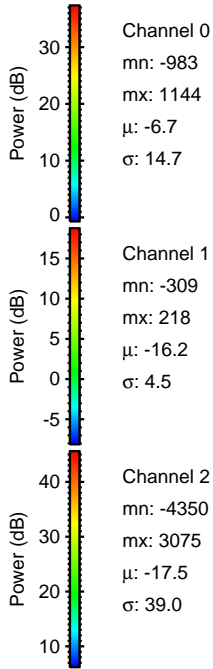
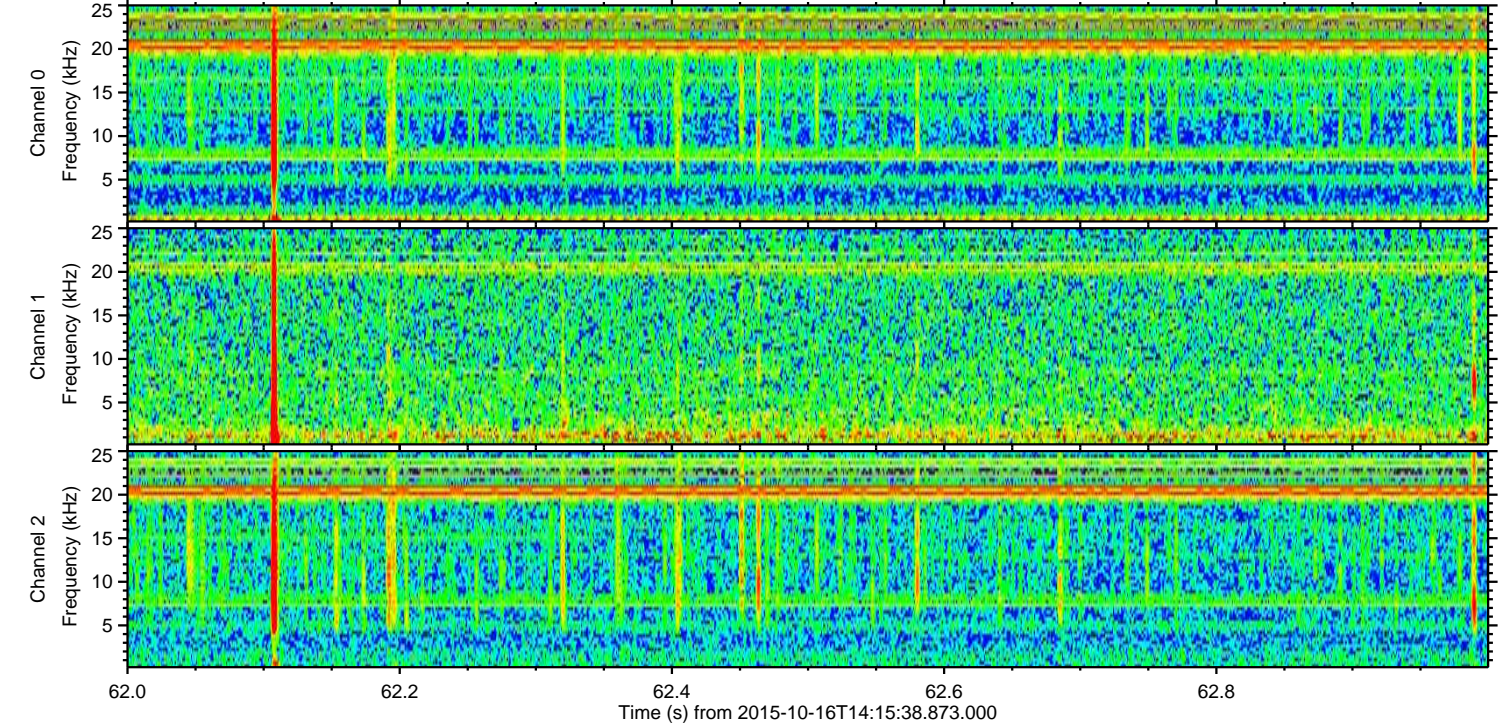
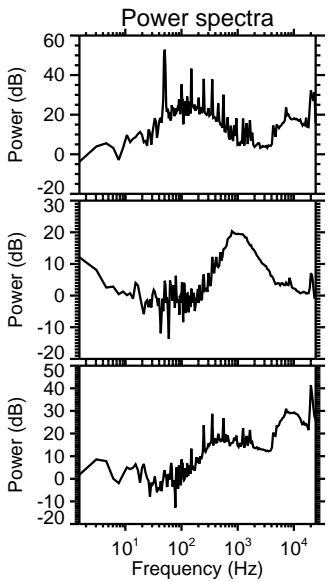
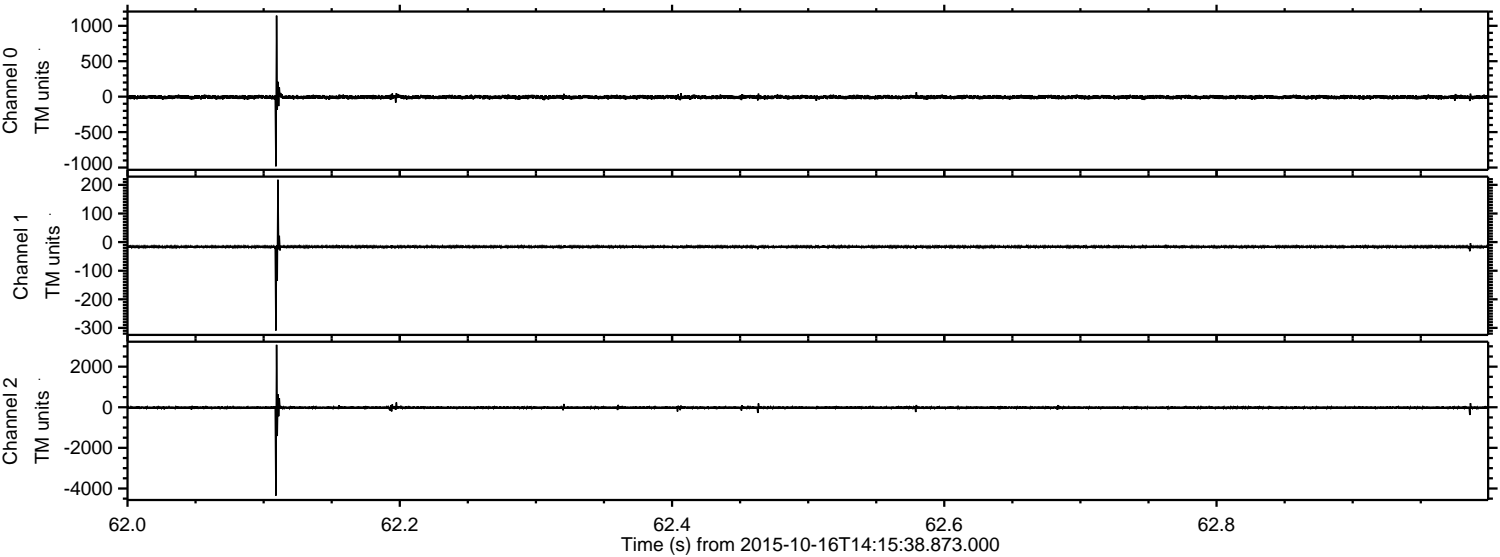


ELMAVAN 3D WAVEFORMS (Measured data sampled at 50 kHz) 51000 packets of 144 samples from 2015-10-16T14:15:38.873.000. Part 134/147

Processed Mon Oct 19 22:51:26 2015 by ELM ver.2012-10-06 from 001__elm20151016_141537__dat00.bin

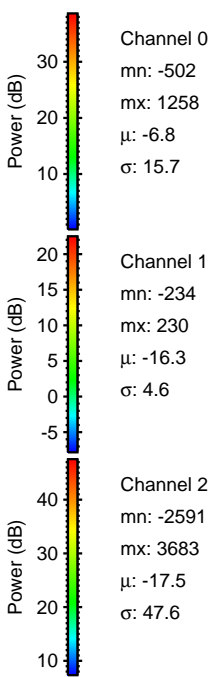
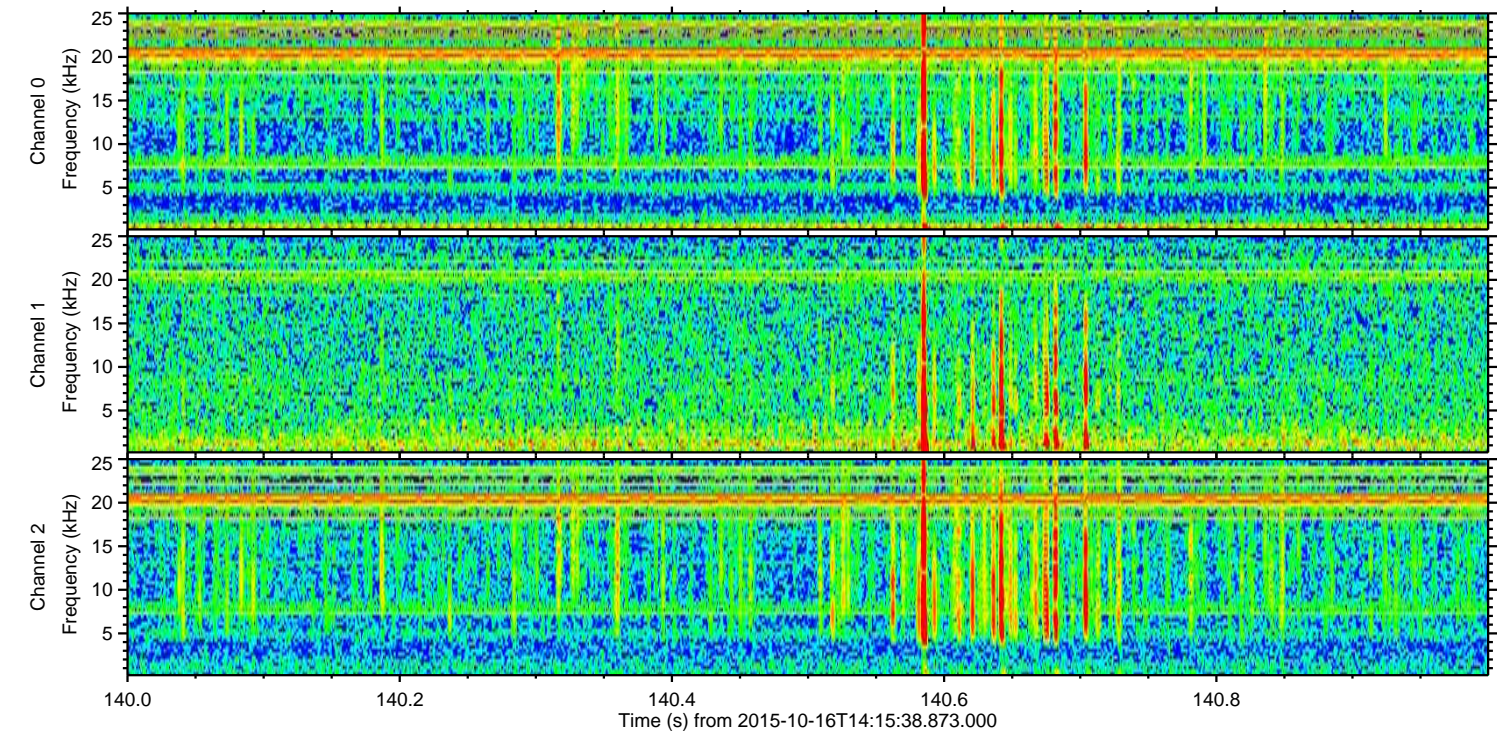
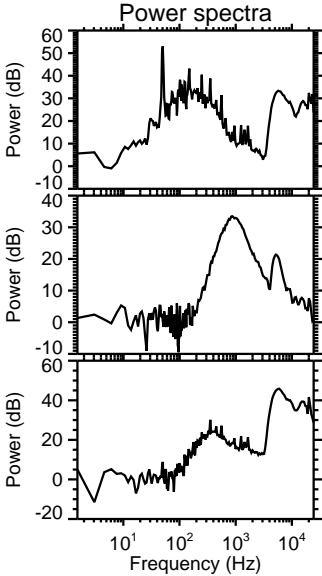
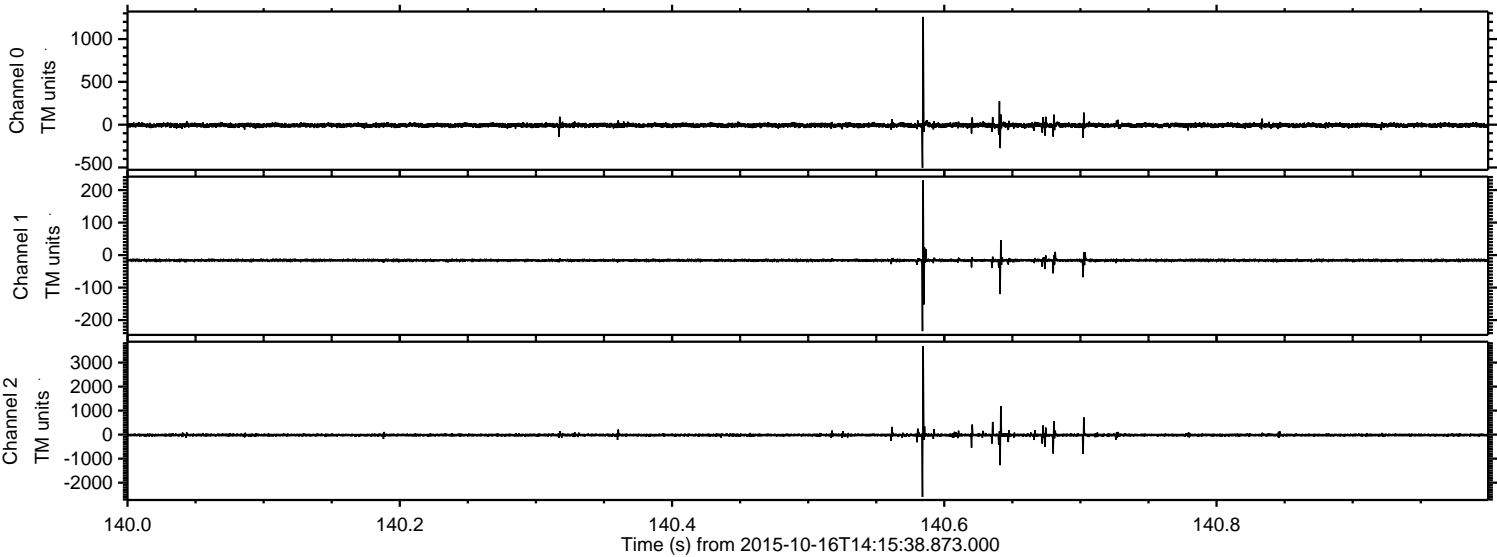


Processed Mon Oct 19 22:51:27 2015 by ELM ver.2012-10-06 from 001__elm20151016_141537__dat00.bin



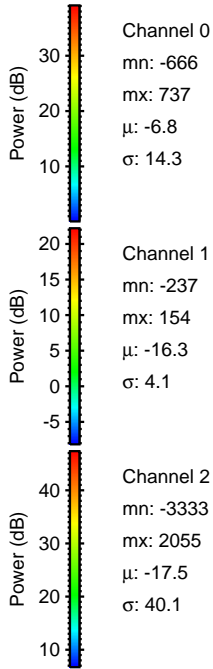
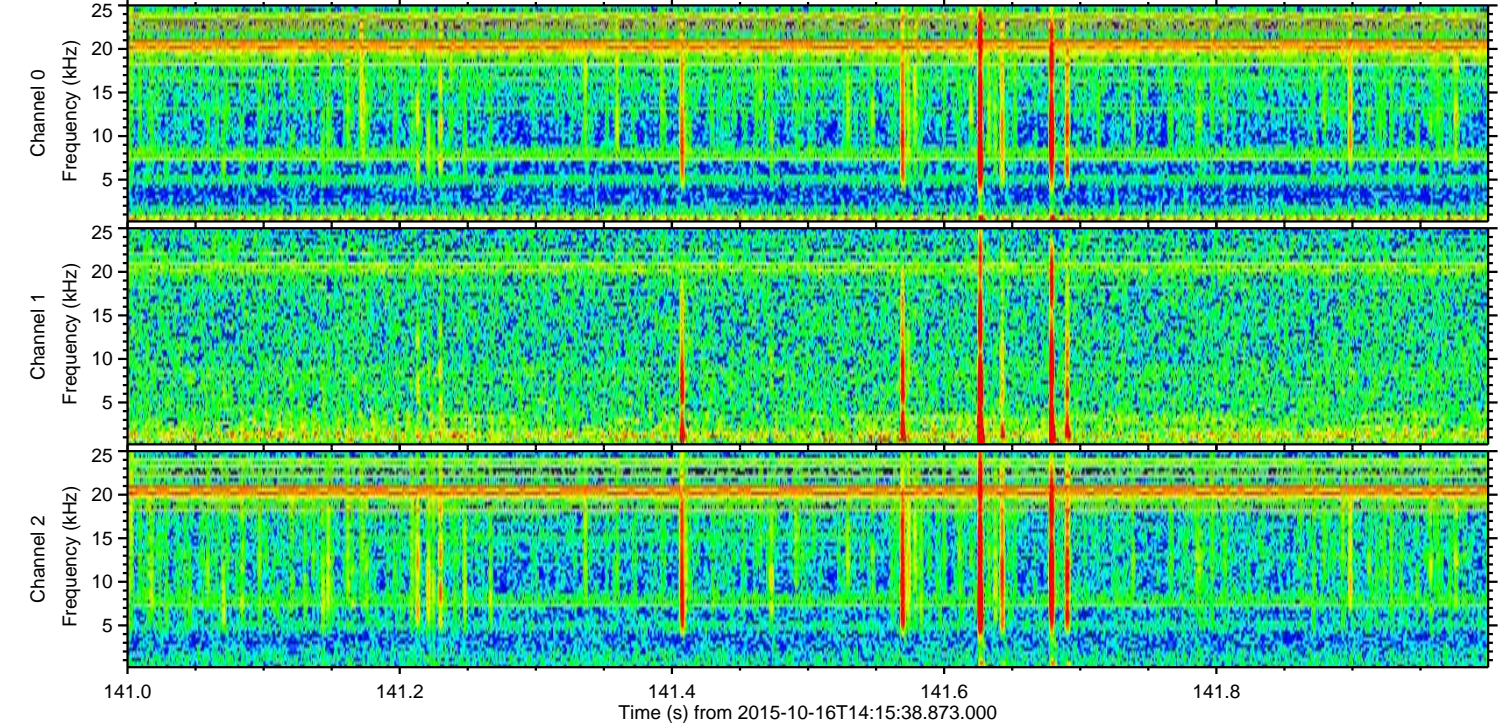
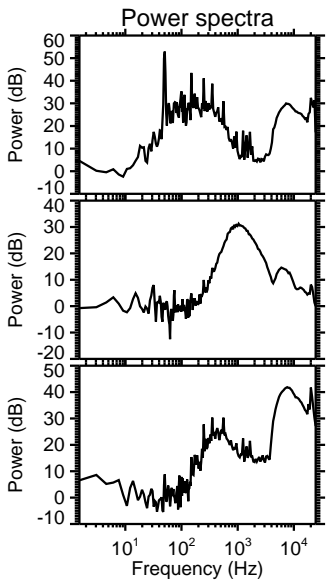
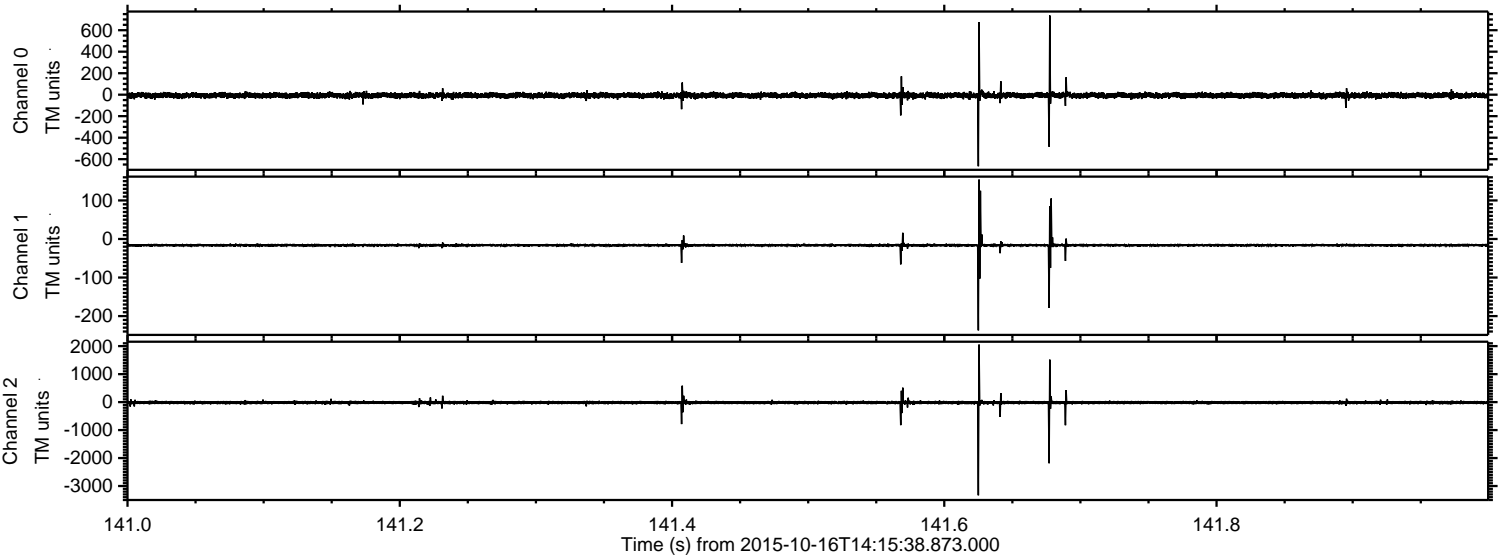
ELMAVAN 3D WAVEFORMS (Measured data sampled at 50 kHz) 51000 packets of 144 samples from 2015-10-16T14:15:38.873.000. Part 141/147

Processed Mon Oct 19 22:51:28 2015 by ELM ver.2012-10-06 from 001__elm20151016_141537__dat00.bin



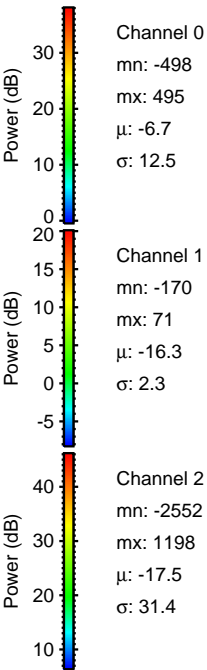
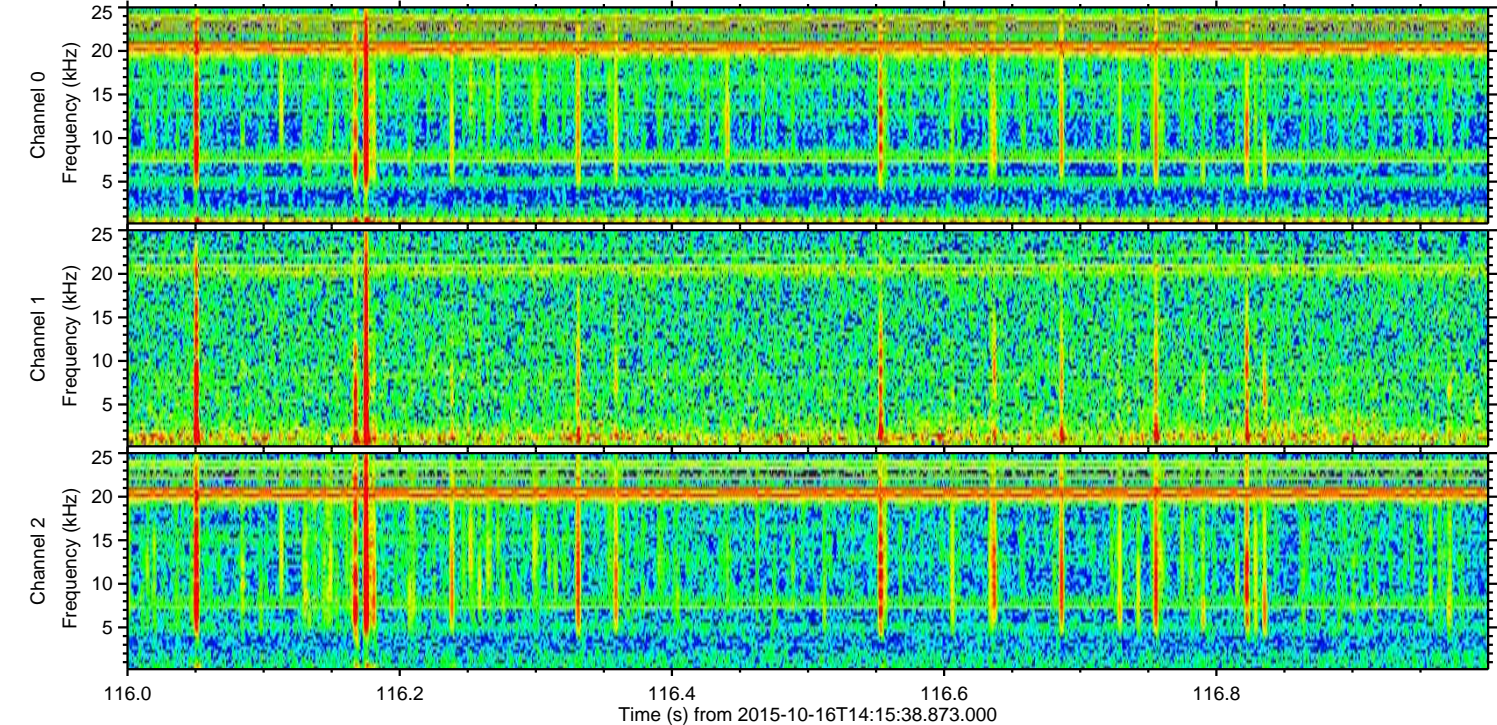
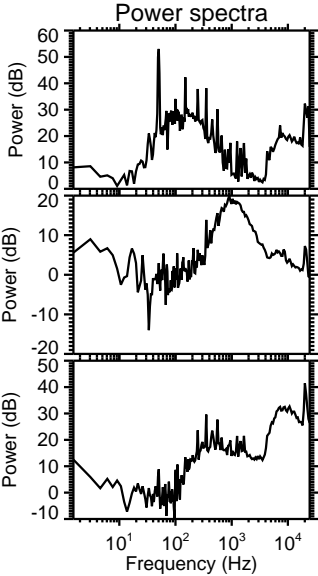
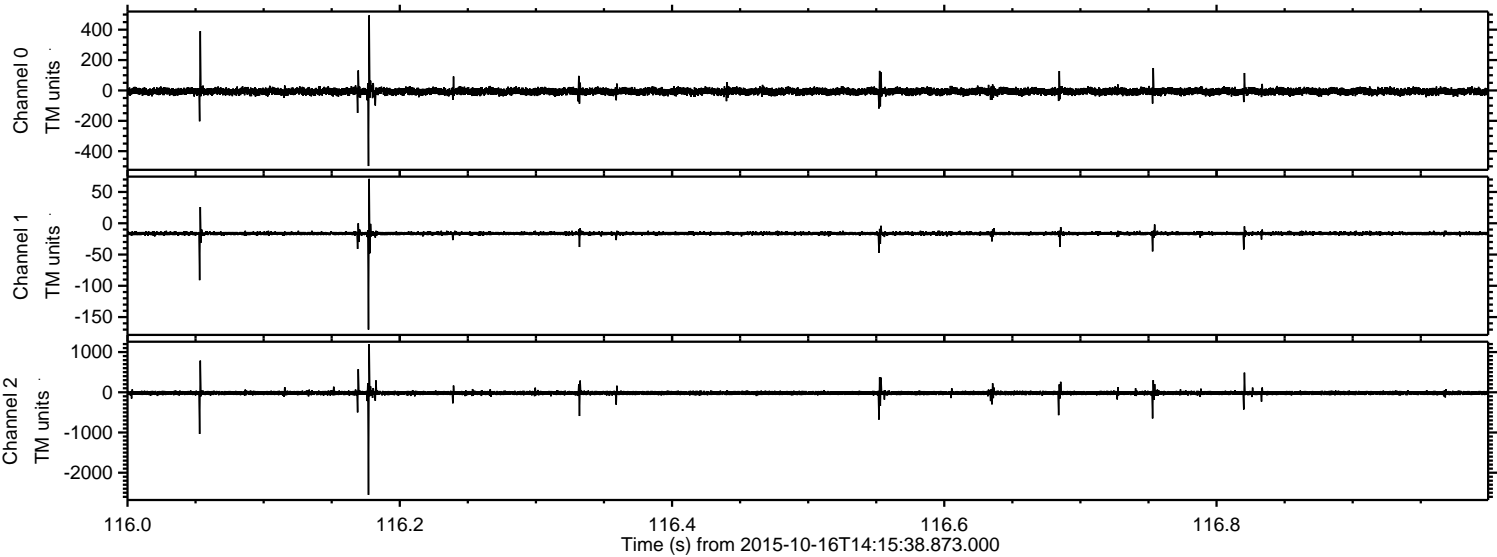
ELMAVAN 3D WAVEFORMS (Measured data sampled at 50 kHz) 51000 packets of 144 samples from 2015-10-16T14:15:38.873.000. Part 142/147

Processed Mon Oct 19 22:51:29 2015 by ELM ver.2012-10-06 from 001__elm20151016_141537__dat00.bin

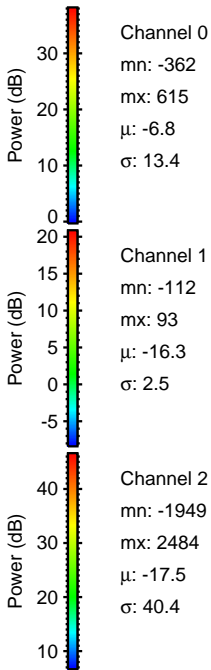
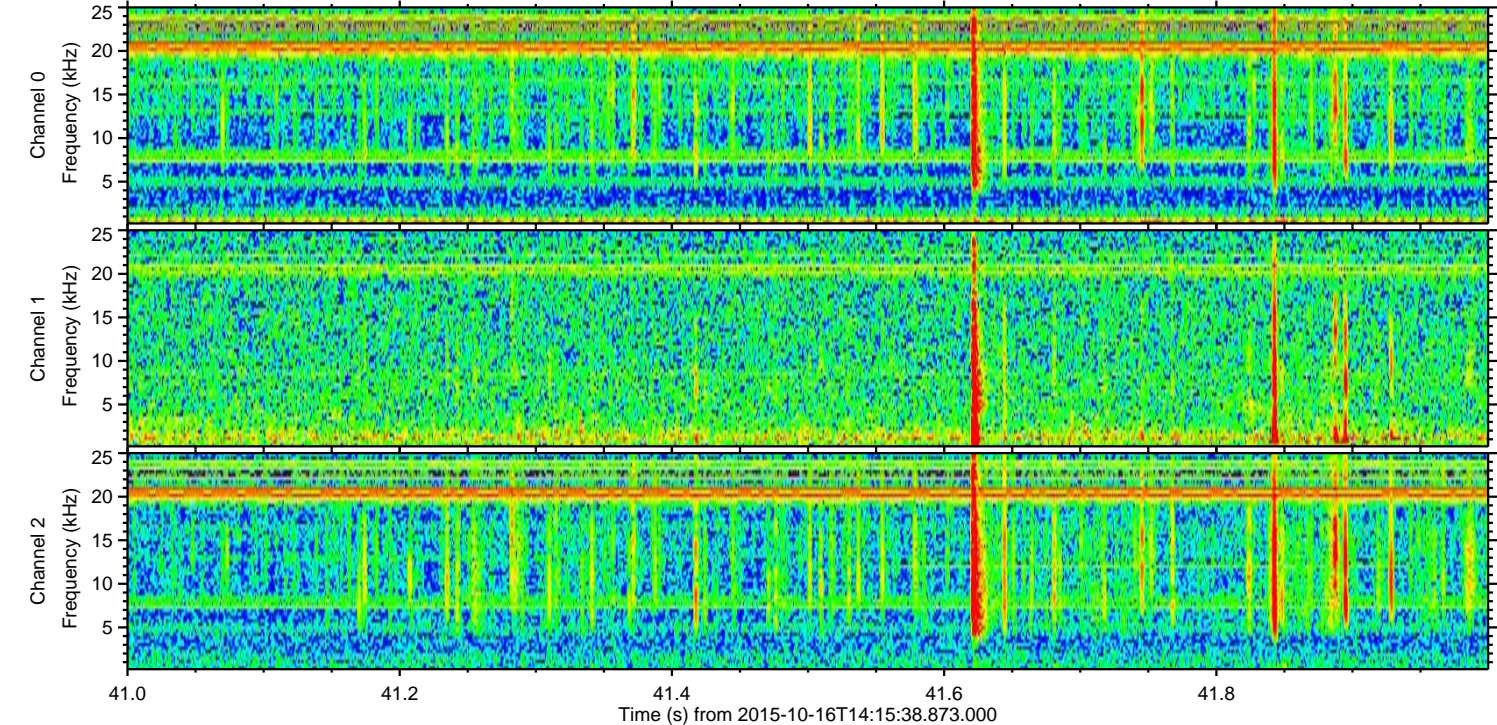
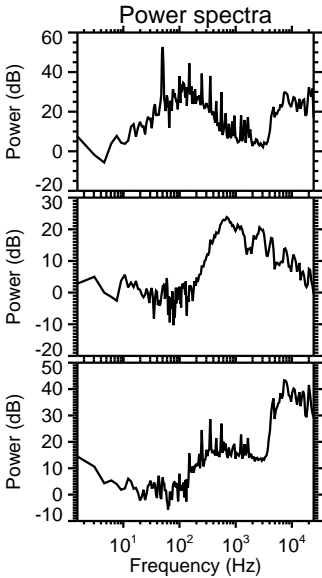
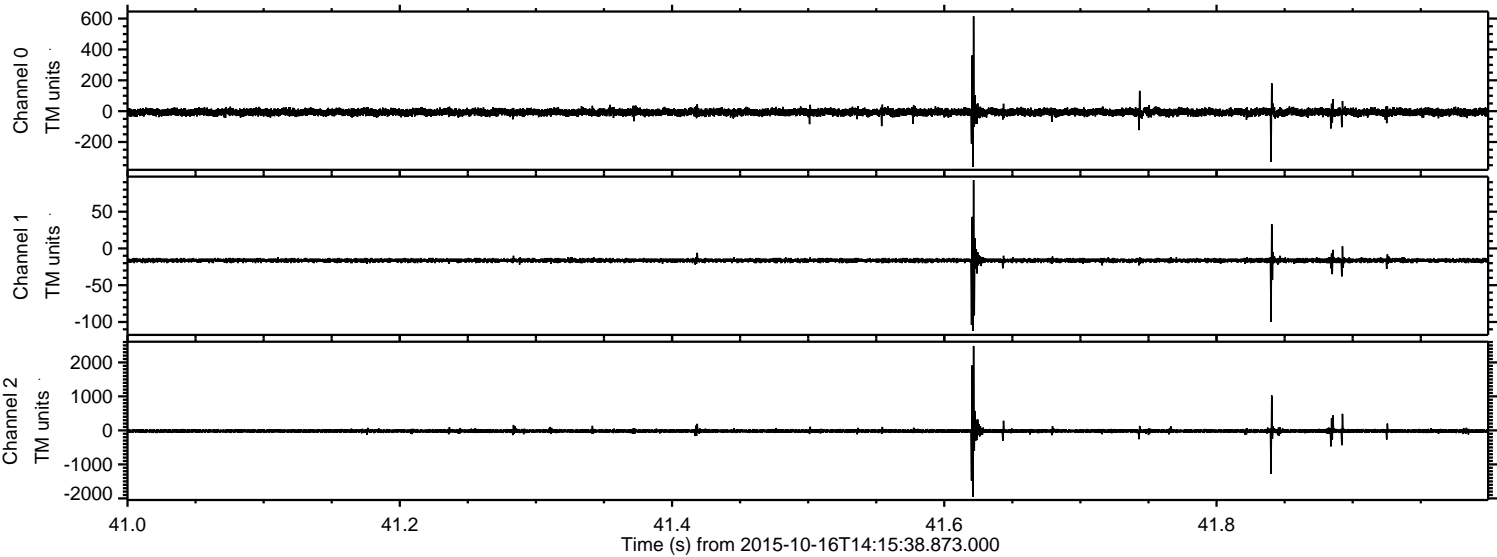


ELMAVAN 3D WAVEFORMS (Measured data sampled at 50 kHz) 51000 packets of 144 samples from 2015-10-16T14:15:38.873.000. Part 117/147

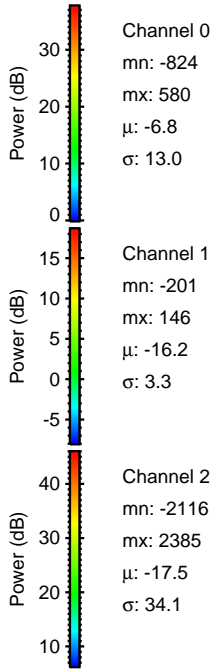
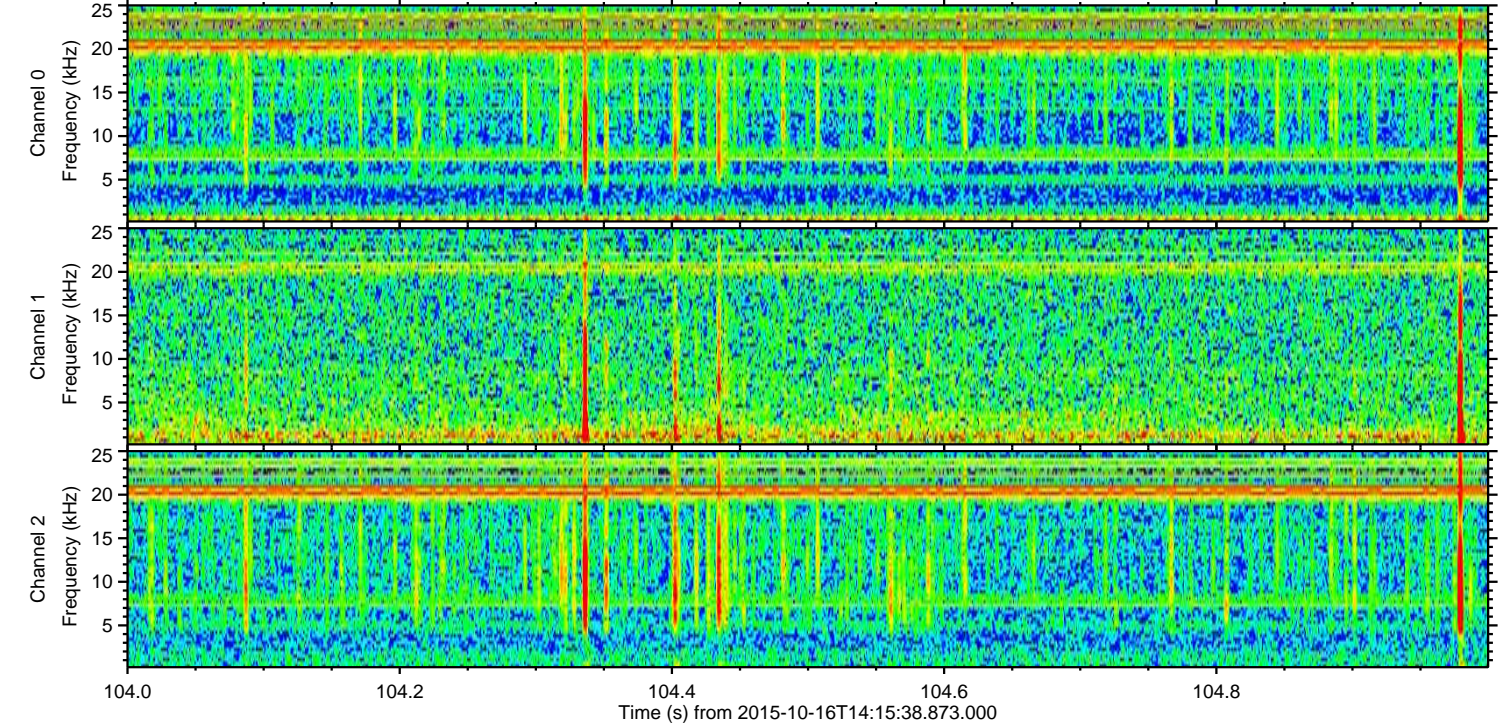
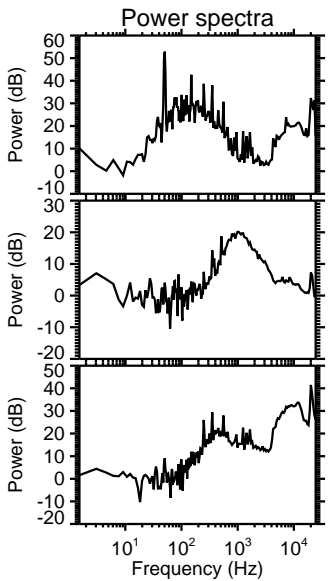
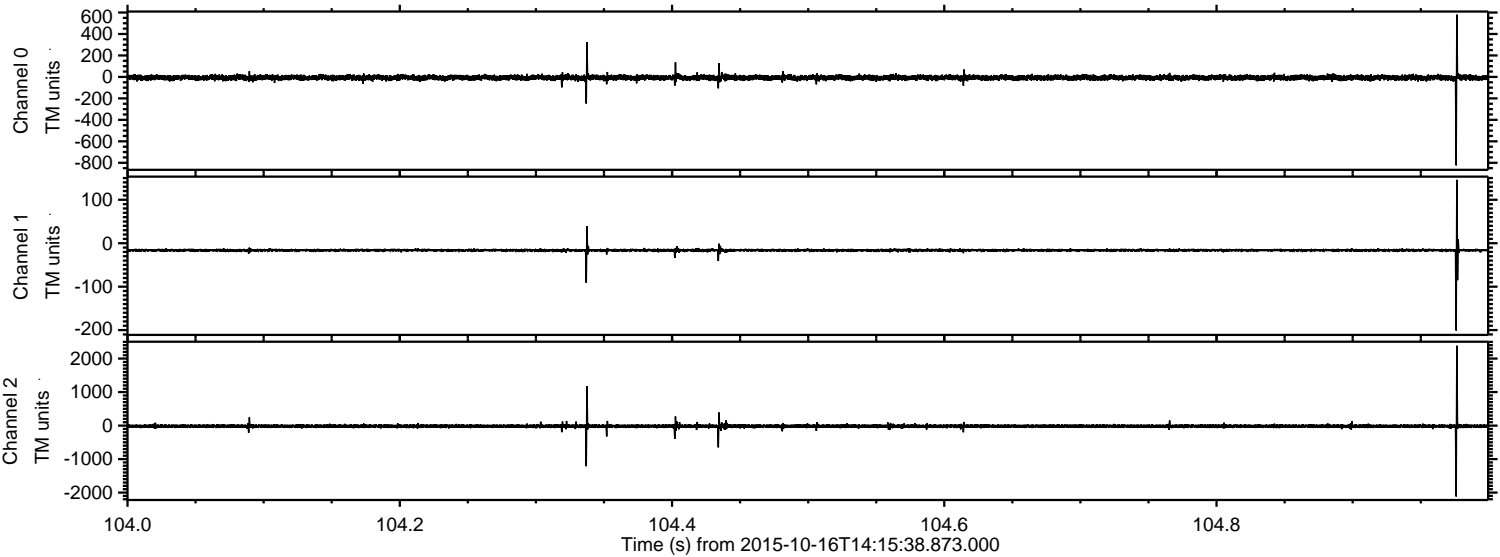
Processed Mon Oct 19 22:51:30 2015 by ELM ver.2012-10-06 from 001__elm20151016_141537__dat00.bin



Processed Mon Oct 19 22:51:32 2015 by ELM ver.2012-10-06 from 001__elm20151016_141537__dat00.bin



Processed Mon Oct 19 22:51:33 2015 by ELM ver.2012-10-06 from 001__elm20151016_141537__dat00.bin



Channel 0
mn: -824
mx: 580
 μ : -6.8
 σ : 13.0

Channel 1
mn: -201
mx: 146
 μ : -16.2
 σ : 3.3

Channel 2
mn: -2116
mx: 2385
 μ : -17.5
 σ : 34.1

