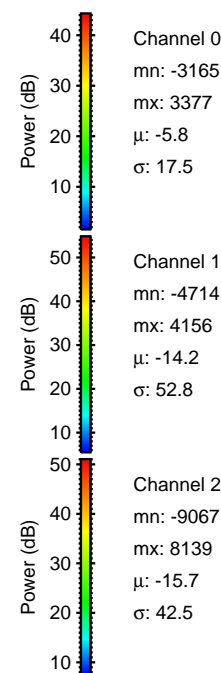
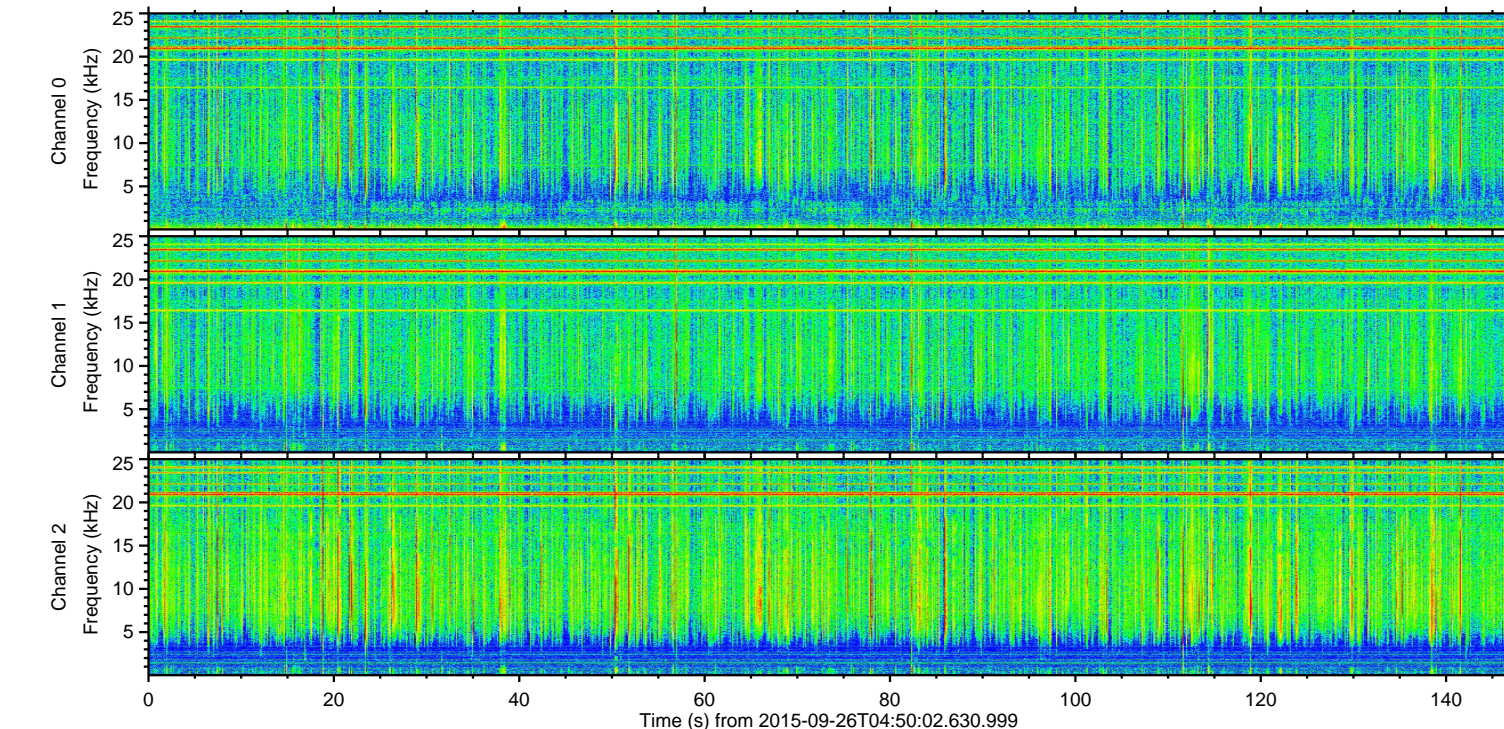
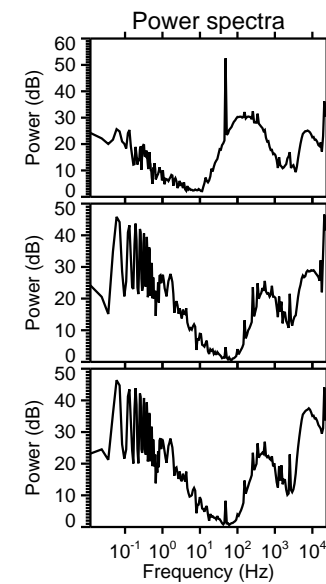
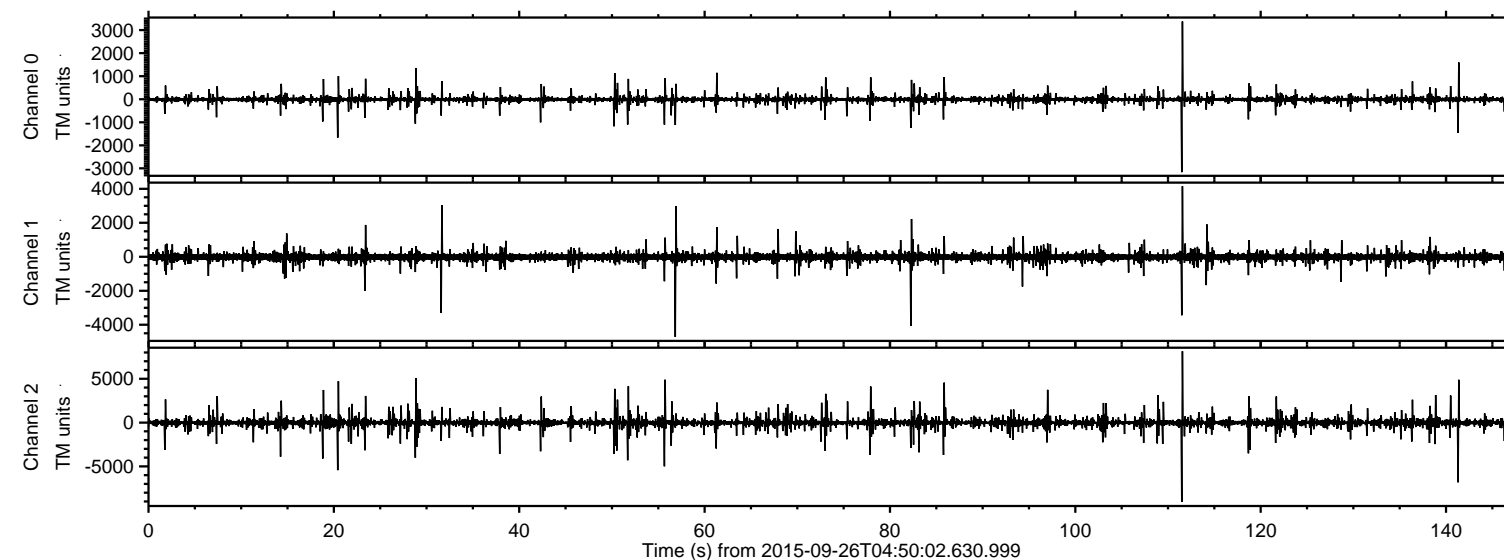


# ELMAVAN 3D WAVEFORMS (Measured data sampled at 50 kHz) 51000 packets of 144 samples from 2015-09-26T04:50:02.630.999.

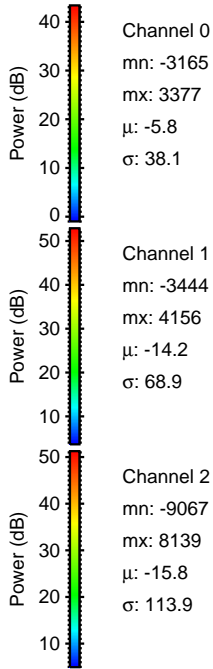
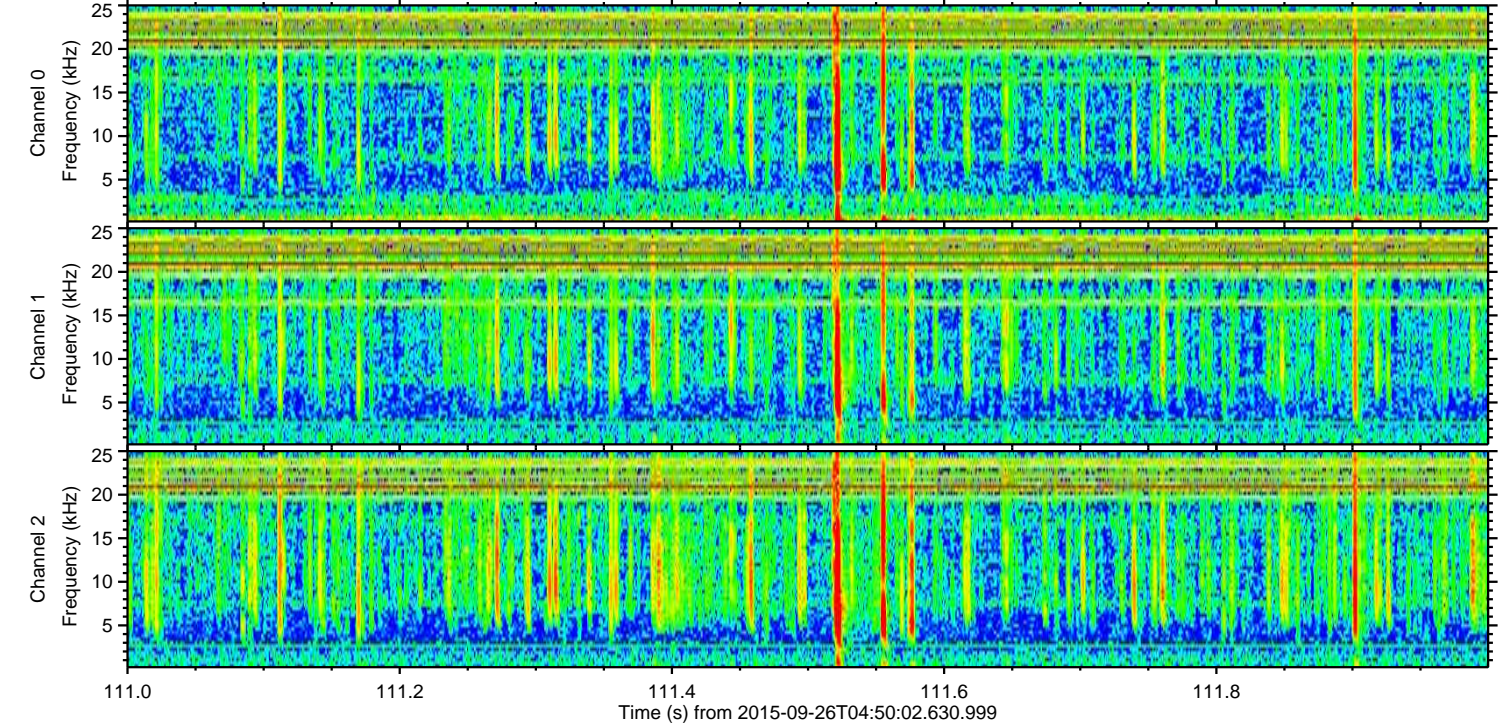
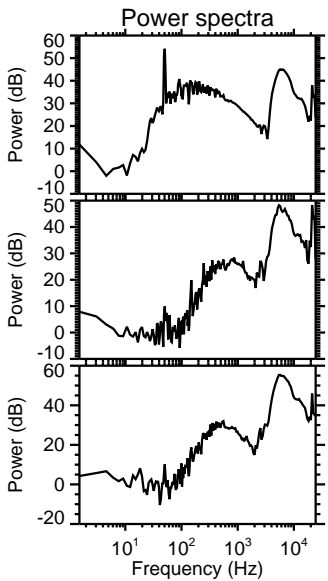
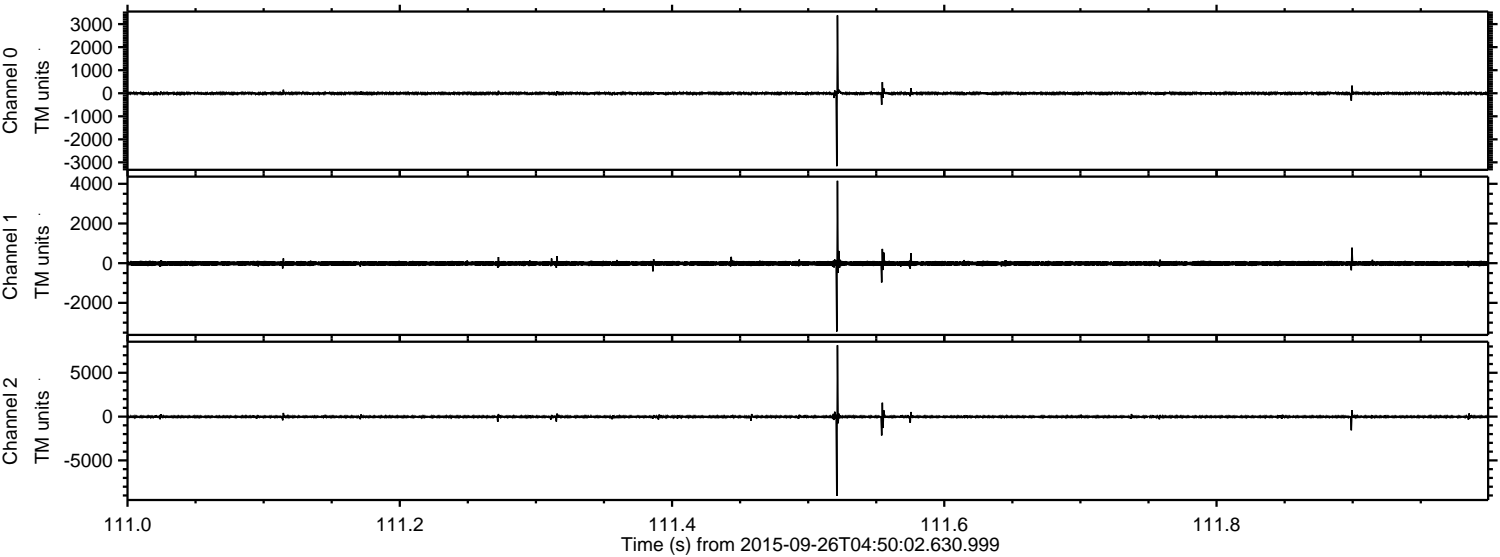
Processed Fri Oct 16 13:12:57 2015 by ELM ver.2012-10-06 from 001\_\_elm20150926\_045001\_\_dat00.bin





ELMAVAN 3D WAVEFORMS (Measured data sampled at 50 kHz) 51000 packets of 144 samples from 2015-09-26T04:50:02.630.999. Part 112/147

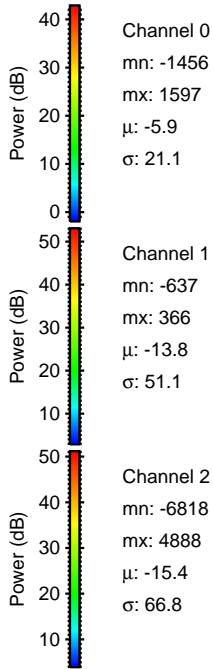
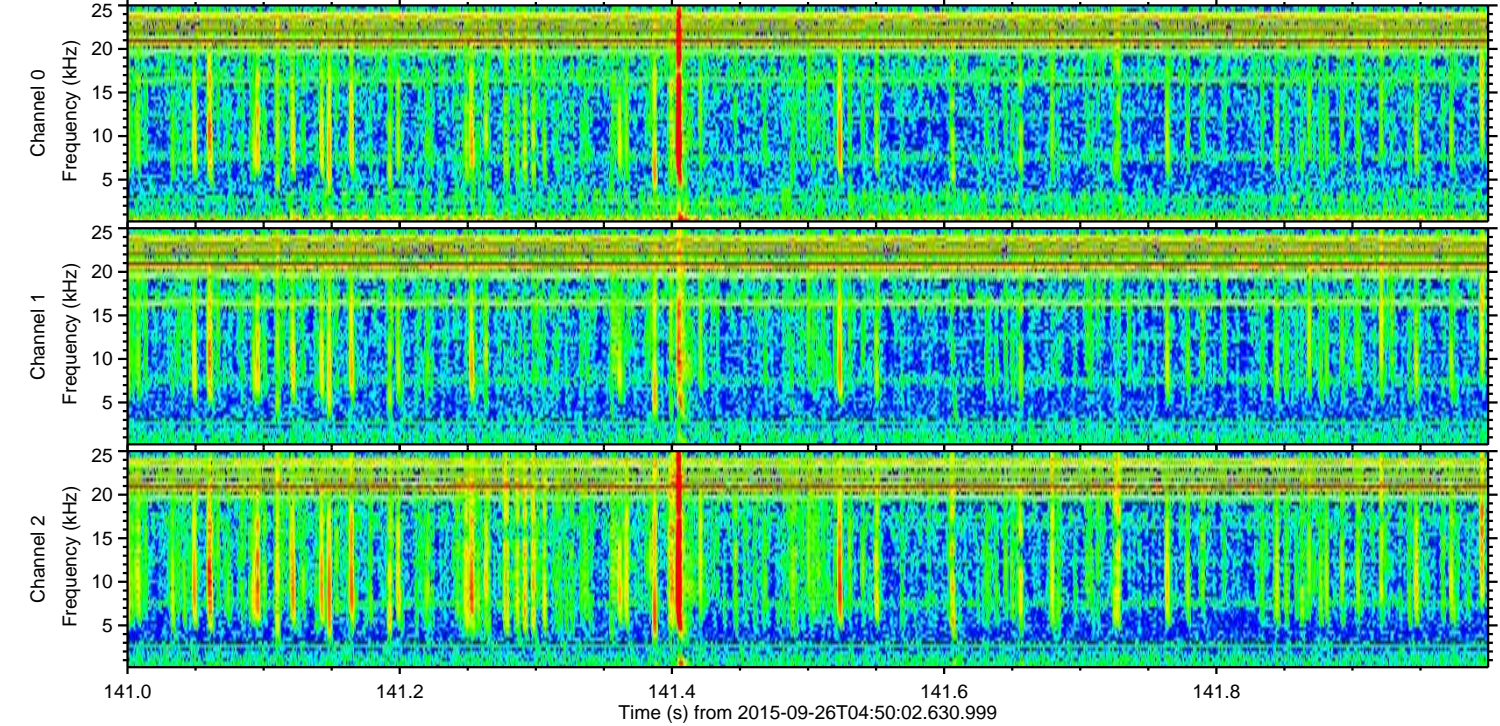
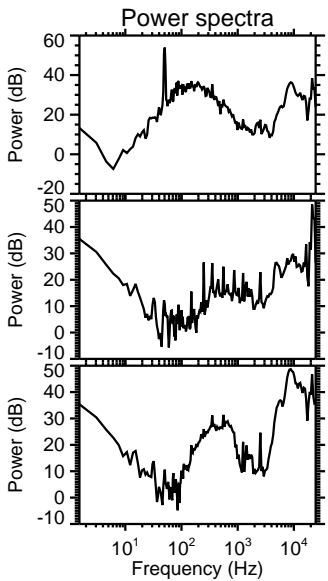
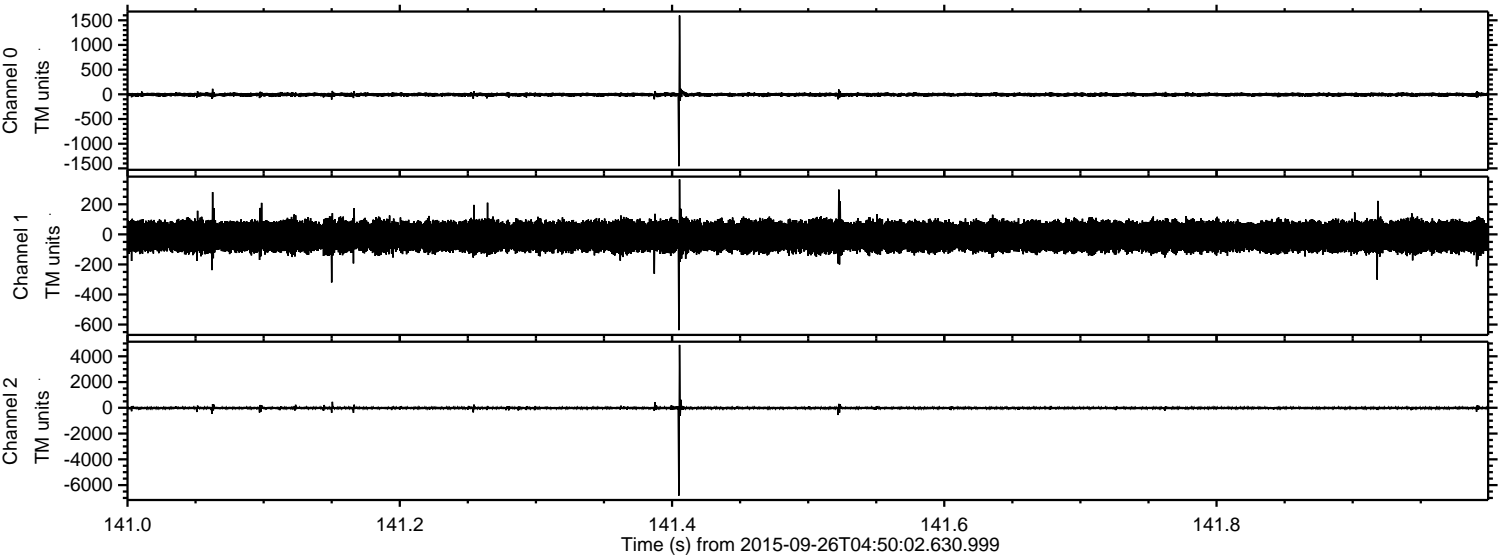
Processed Fri Oct 16 13:13:12 2015 by ELM ver.2012-10-06 from 001\_\_elm20150926\_045001\_\_dat00.bin





ELMAVAN 3D WAVEFORMS (Measured data sampled at 50 kHz) 51000 packets of 144 samples from 2015-09-26T04:50:02.630.999. Part 142/147

Processed Fri Oct 16 13:13:13 2015 by ELM ver.2012-10-06 from 001\_\_elm20150926\_045001\_\_dat00.bin



Channel 0  
mn: -1456  
mx: 1597  
 $\mu$ : -5.9  
 $\sigma$ : 21.1

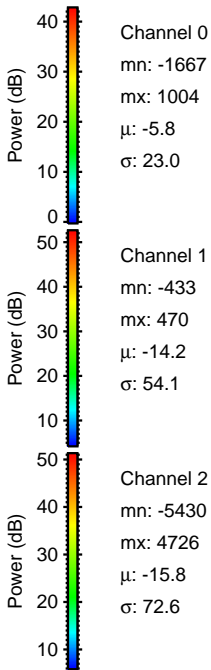
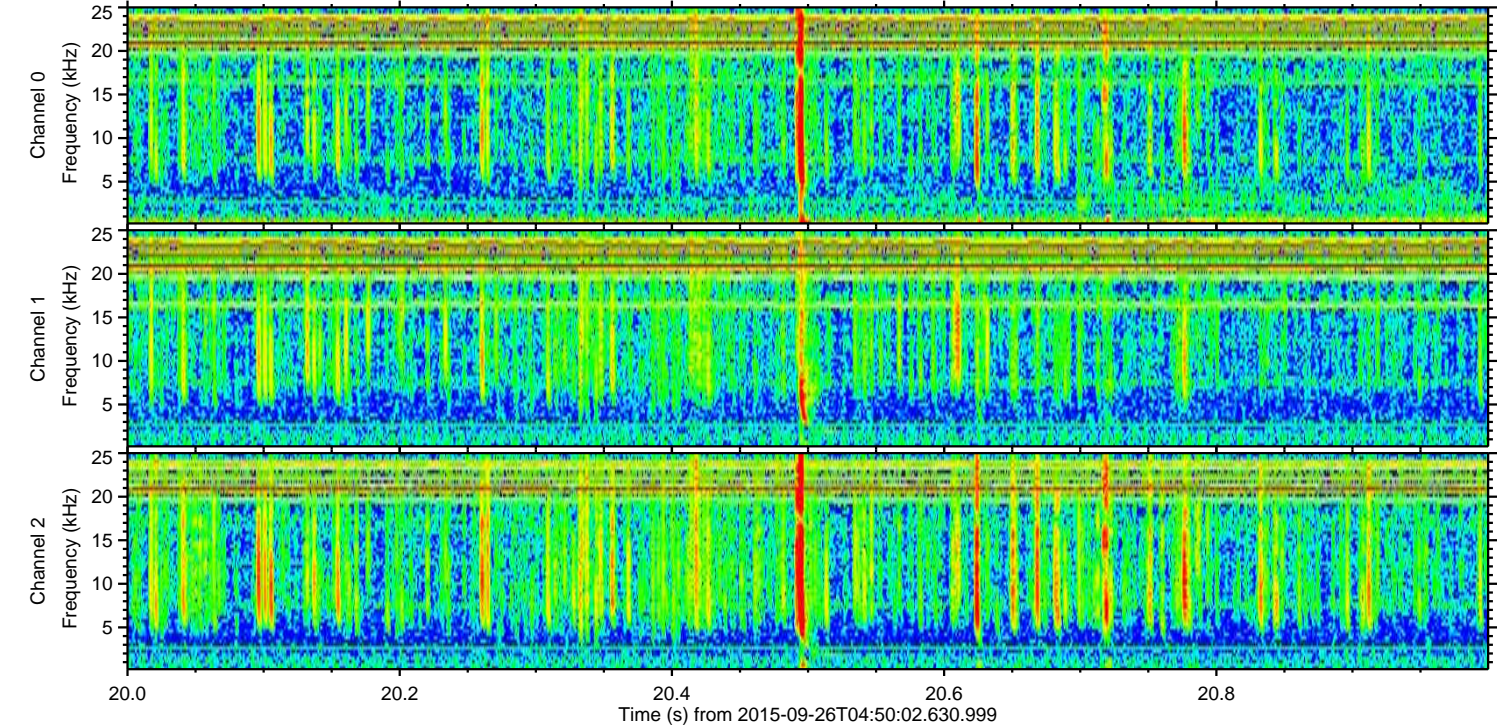
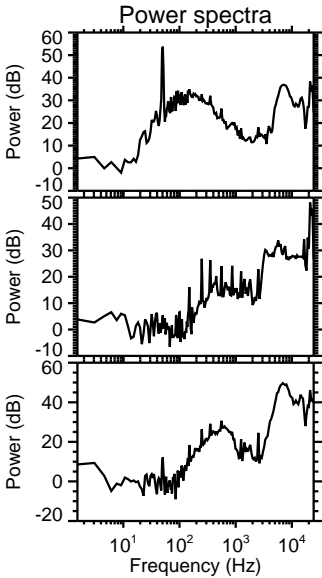
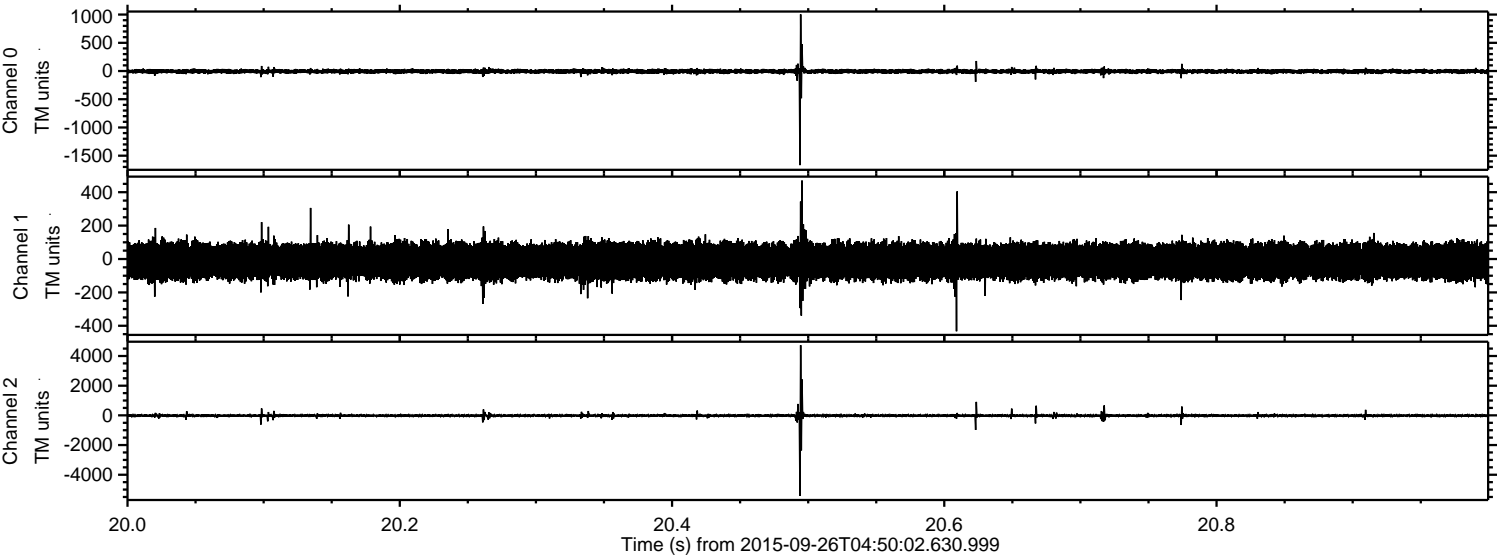
Channel 1  
mn: -637  
mx: 366  
 $\mu$ : -13.8  
 $\sigma$ : 51.1

Channel 2  
mn: -6818  
mx: 4888  
 $\mu$ : -15.4  
 $\sigma$ : 66.8



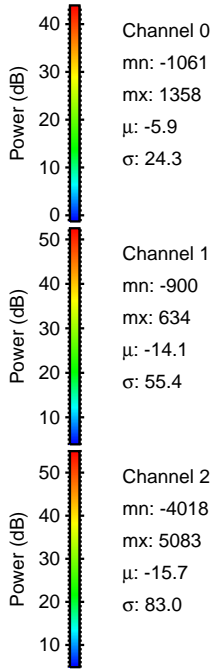
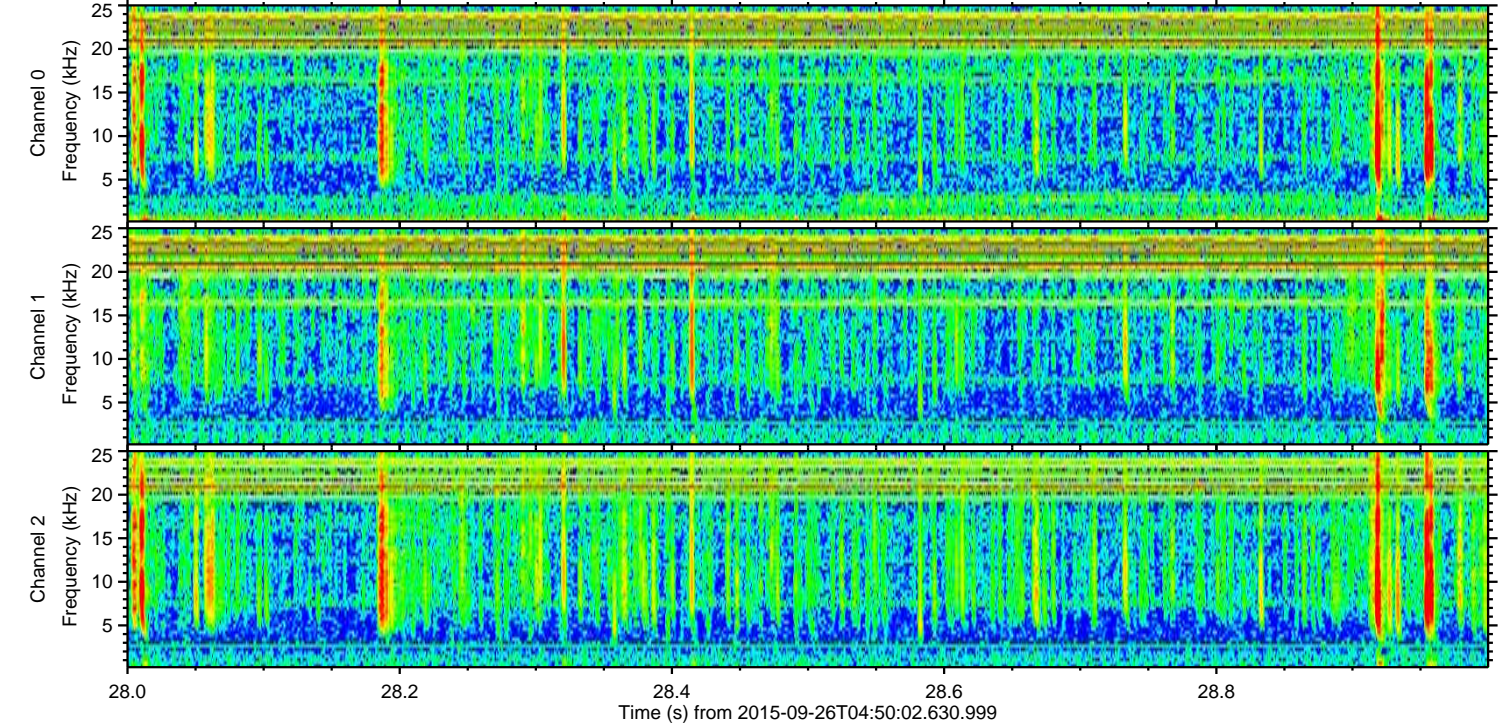
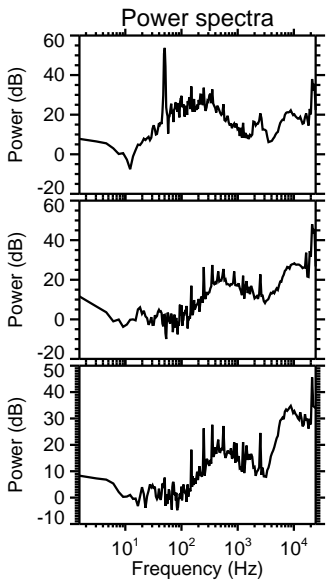
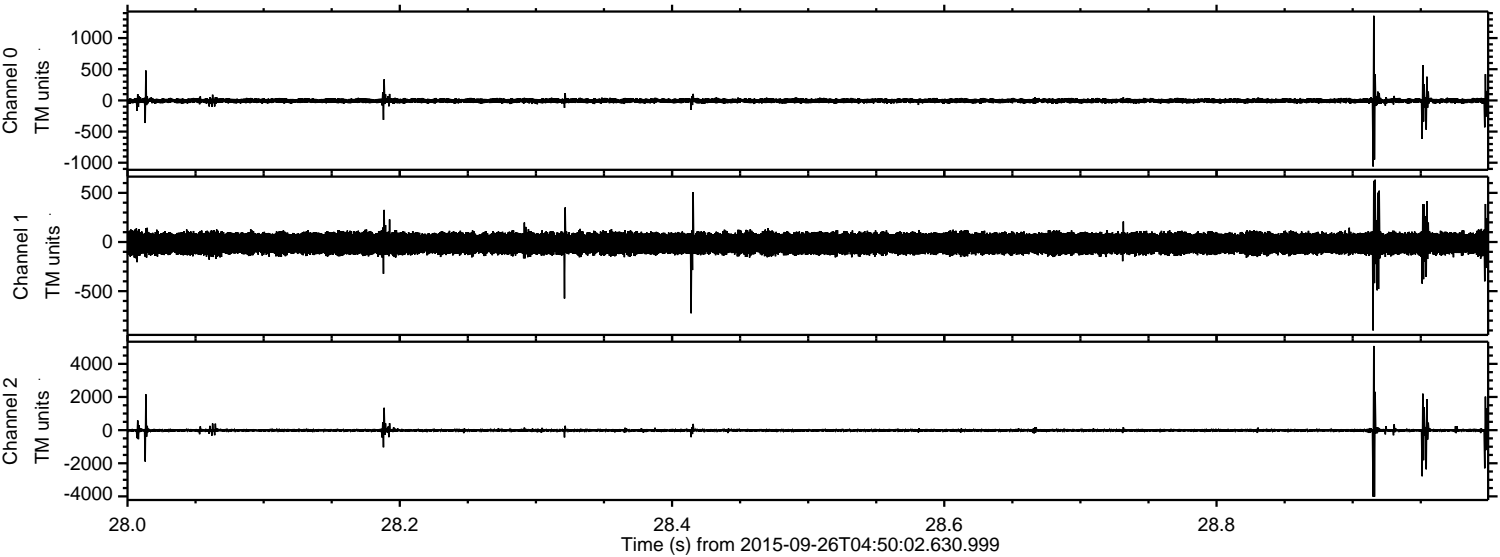
ELMAVAN 3D WAVEFORMS (Measured data sampled at 50 kHz) 51000 packets of 144 samples from 2015-09-26T04:50:02.630.999. Part 21/147

Processed Fri Oct 16 13:13:14 2015 by ELM ver.2012-10-06 from 001\_\_elm20150926\_045001\_\_dat00.bin



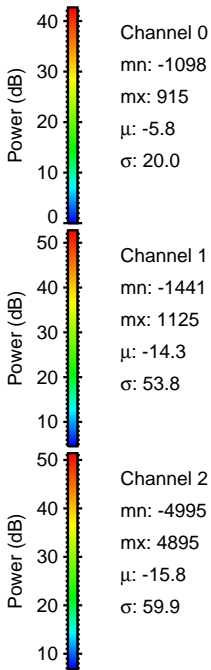
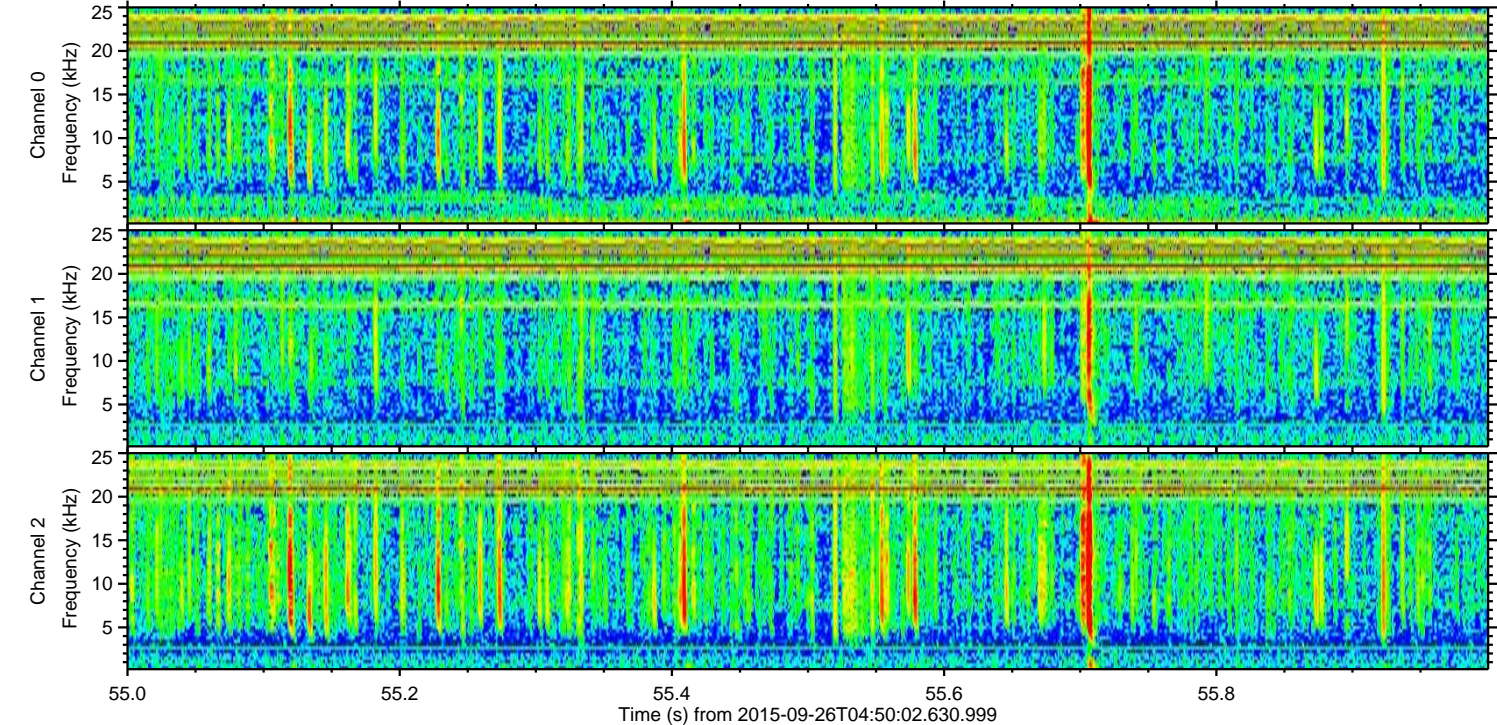
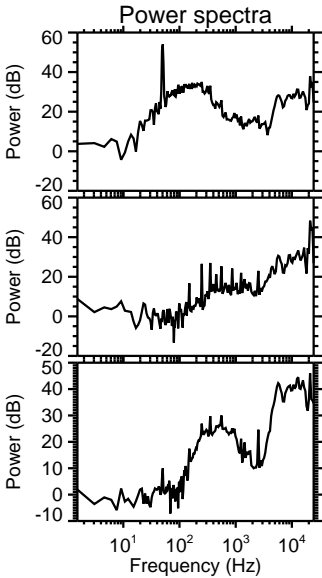
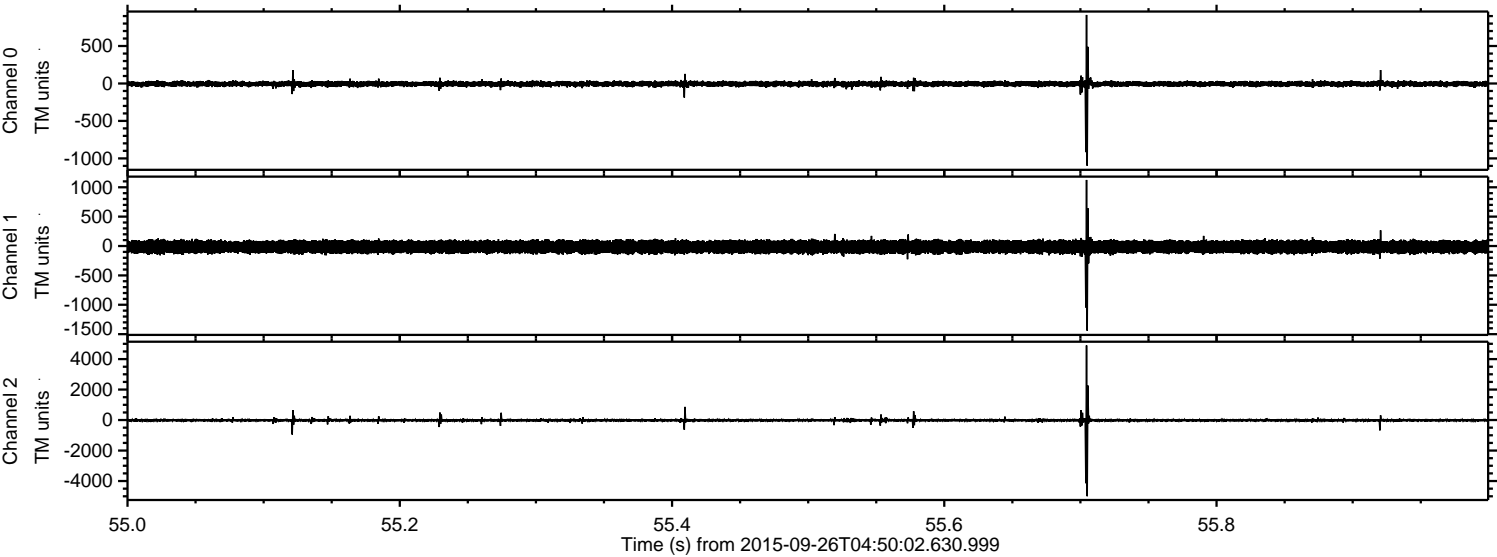


Processed Fri Oct 16 13:13:15 2015 by ELM ver.2012-10-06 from 001\_\_elm20150926\_045001\_\_dat00.bin



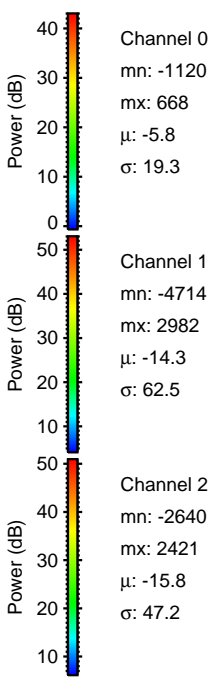
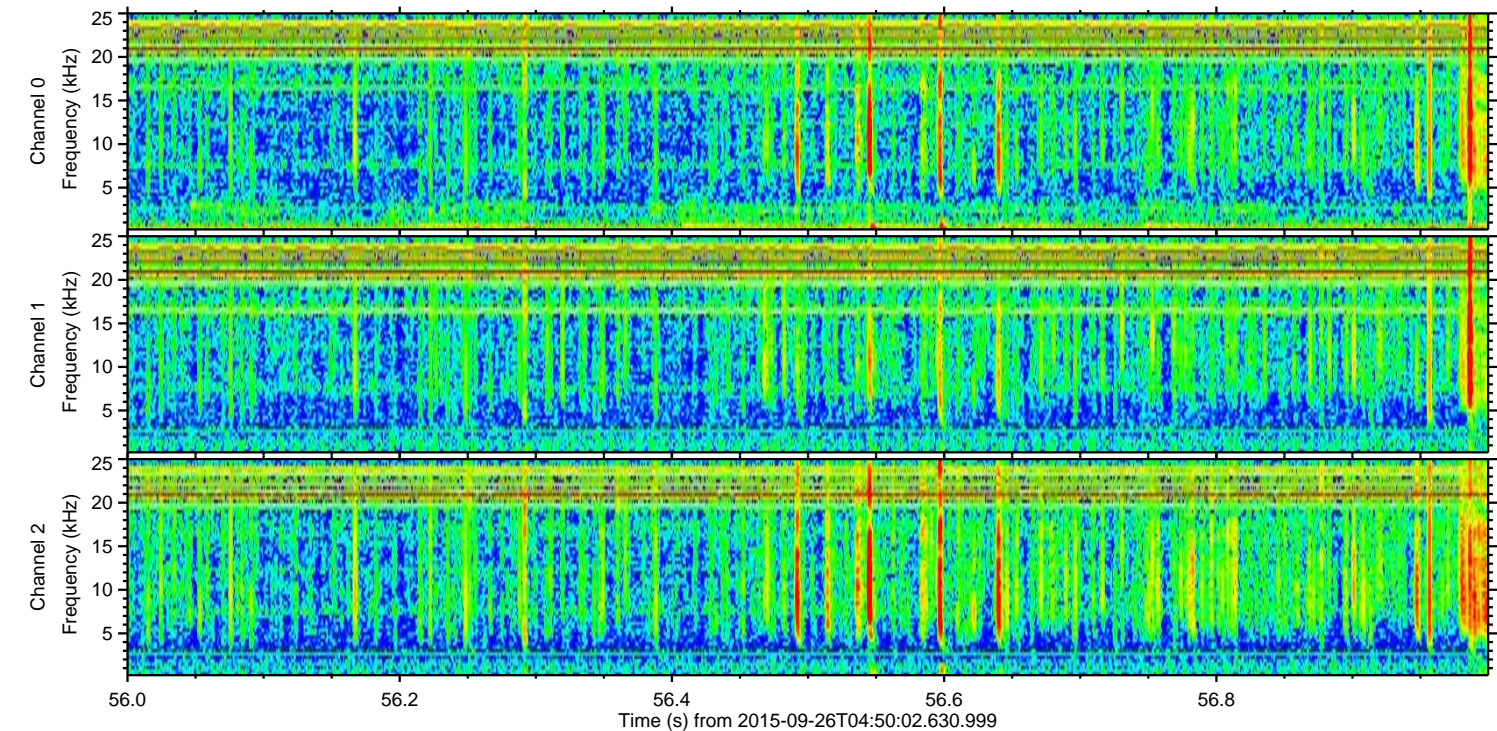
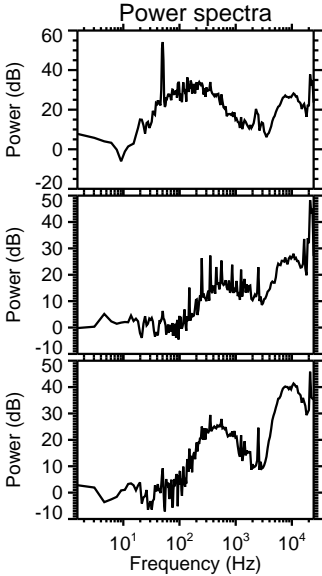
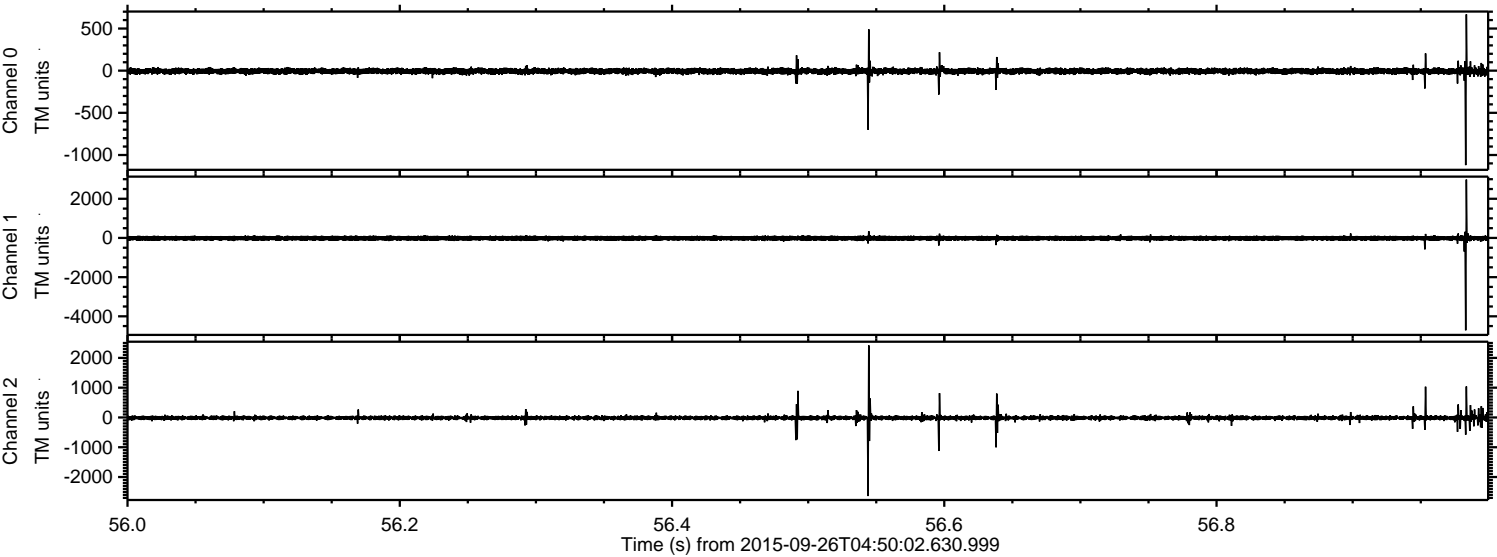


Processed Fri Oct 16 13:13:16 2015 by ELM ver.2012-10-06 from 001\_\_elm20150926\_045001\_\_dat00.bin



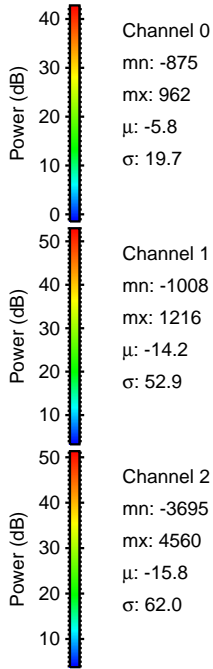
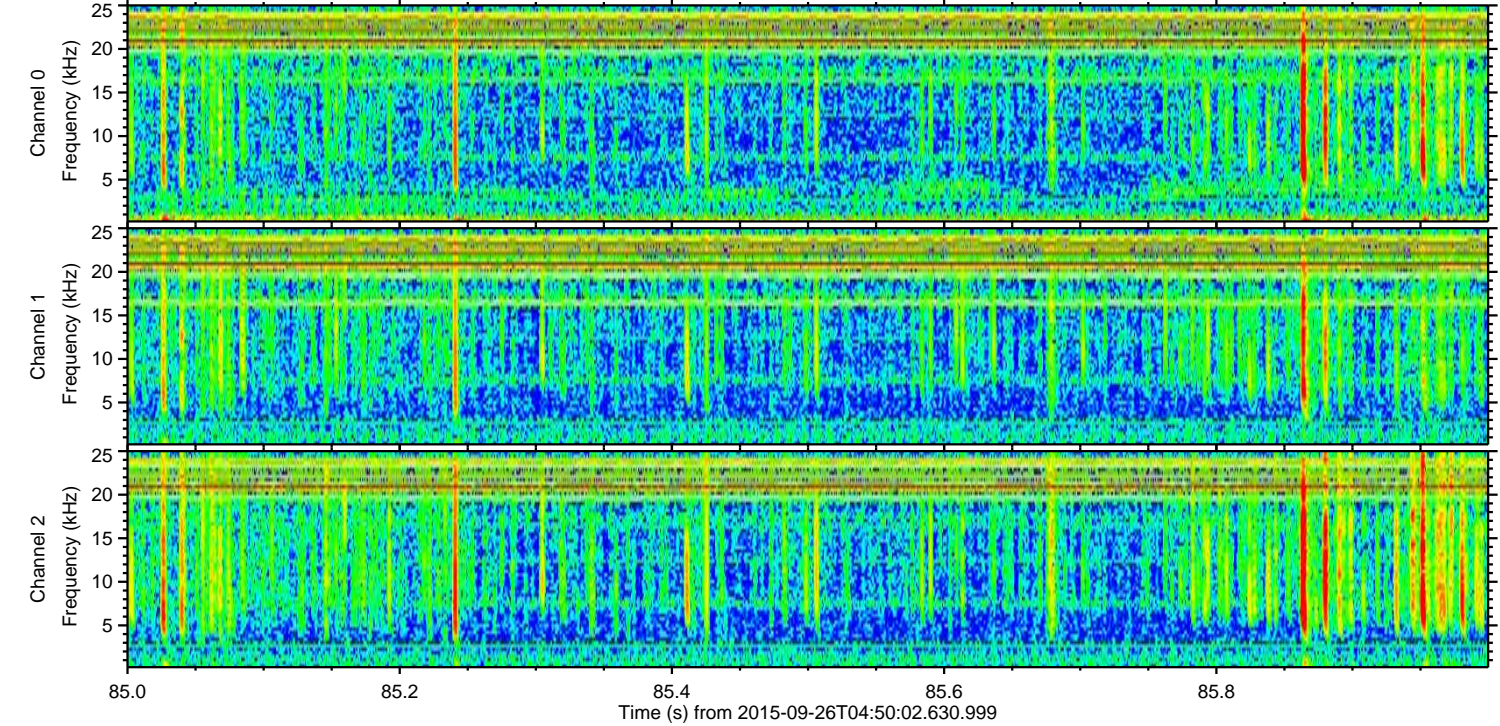
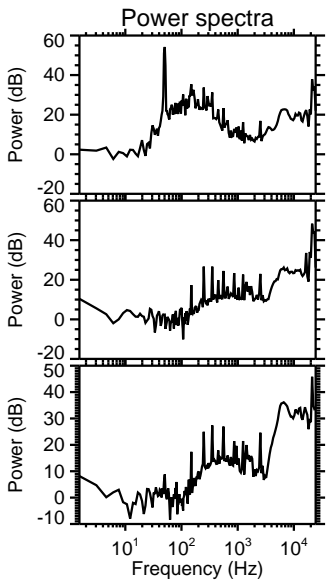
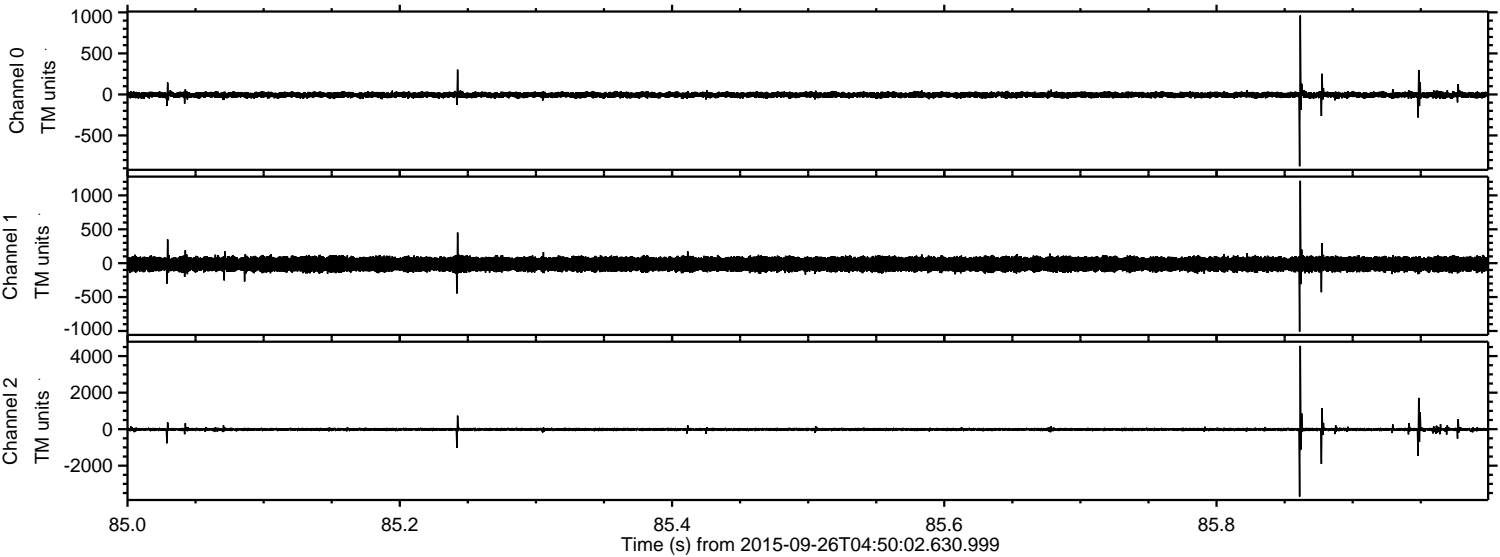


Processed Fri Oct 16 13:13:17 2015 by ELM ver.2012-10-06 from 001\_\_elm20150926\_045001\_\_dat00.bin





Processed Fri Oct 16 13:13:19 2015 by ELM ver.2012-10-06 from 001\_\_elm20150926\_045001\_\_dat00.bin



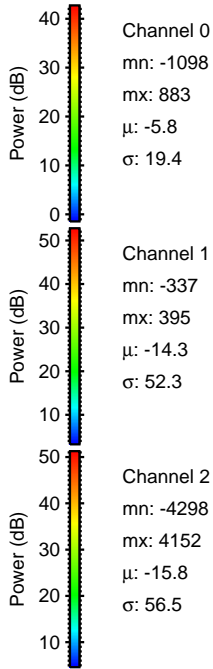
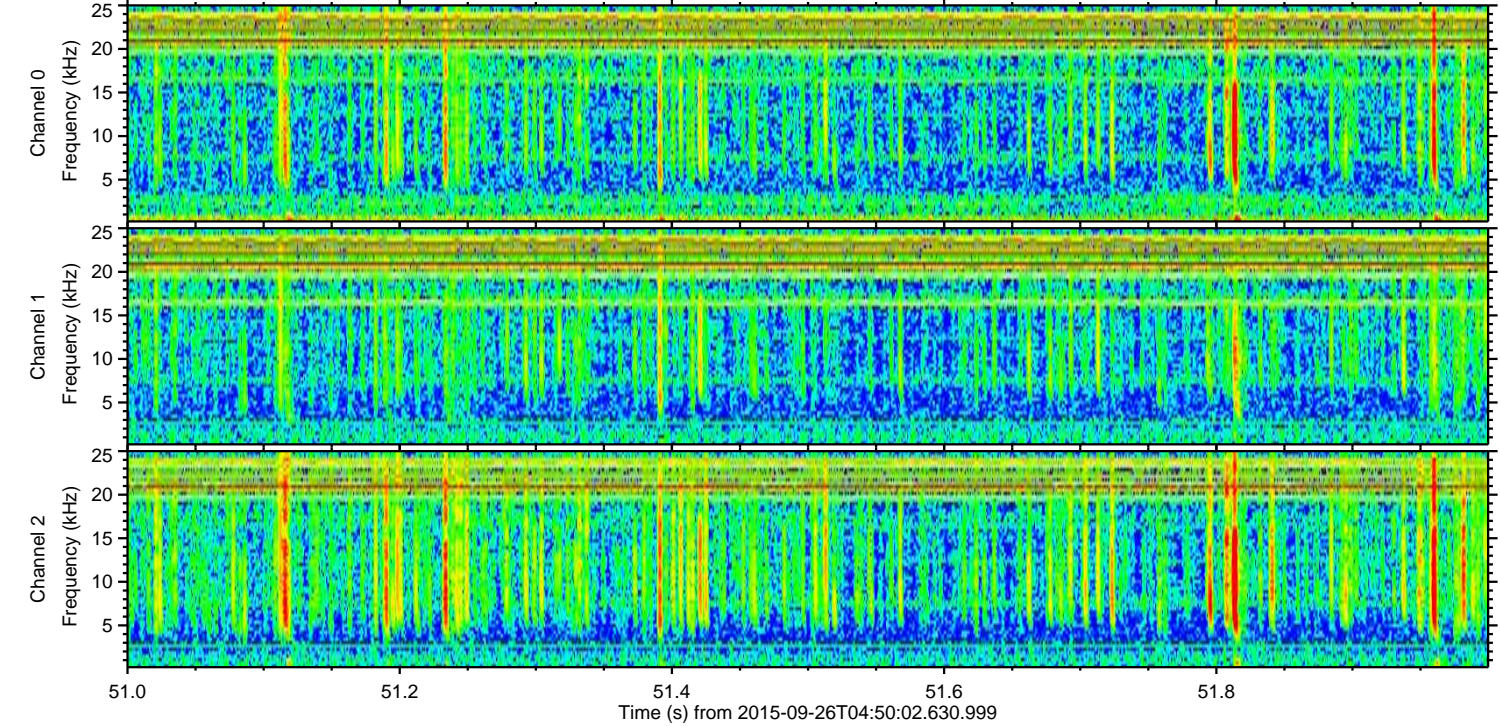
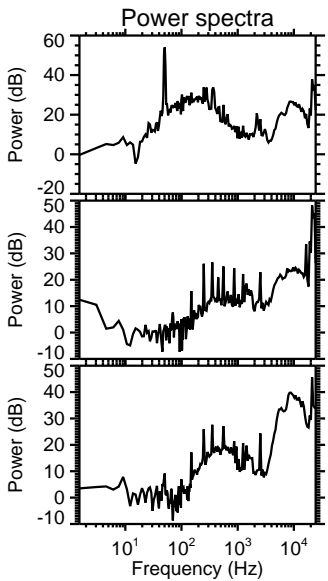
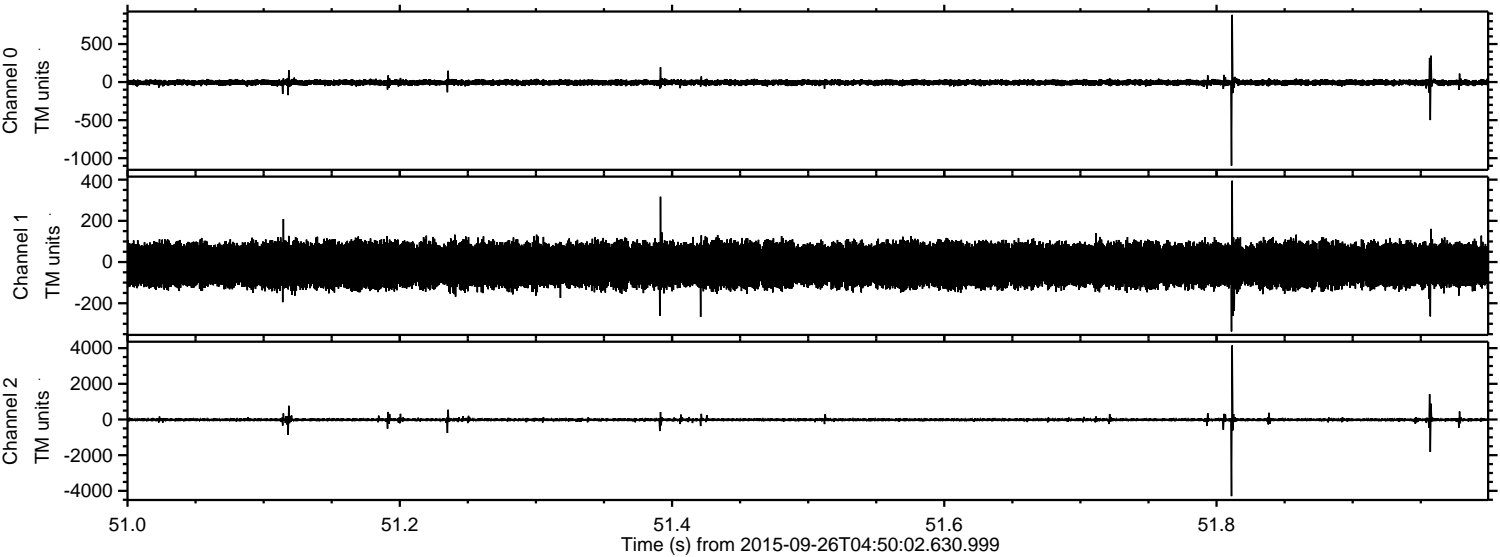
Channel 0  
mn: -875  
mx: 962  
 $\mu$ : -5.8  
 $\sigma$ : 19.7

Channel 1  
mn: -1008  
mx: 1216  
 $\mu$ : -14.2  
 $\sigma$ : 52.9

Channel 2  
mn: -3695  
mx: 4560  
 $\mu$ : -15.8  
 $\sigma$ : 62.0

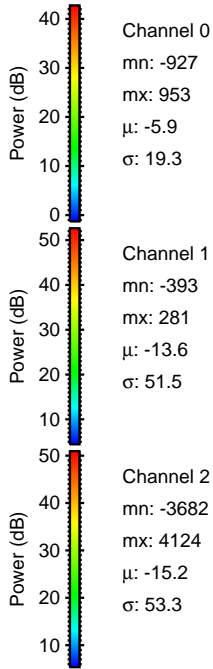
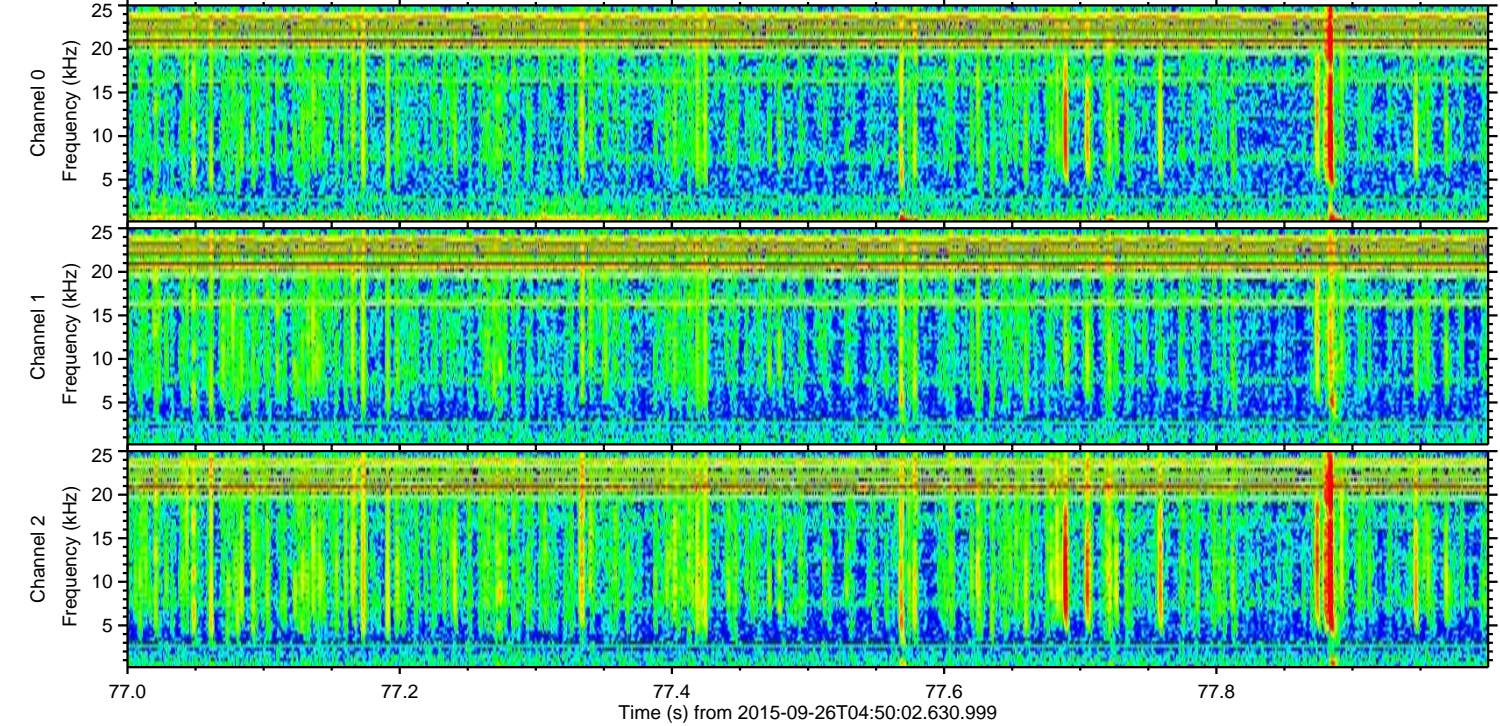
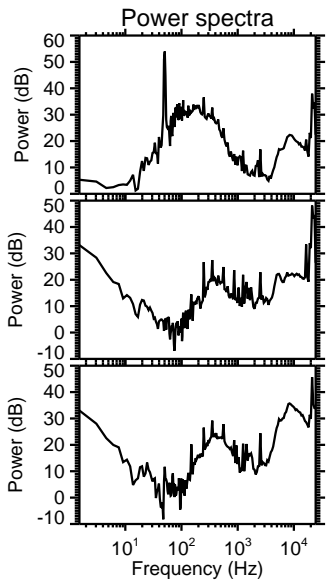
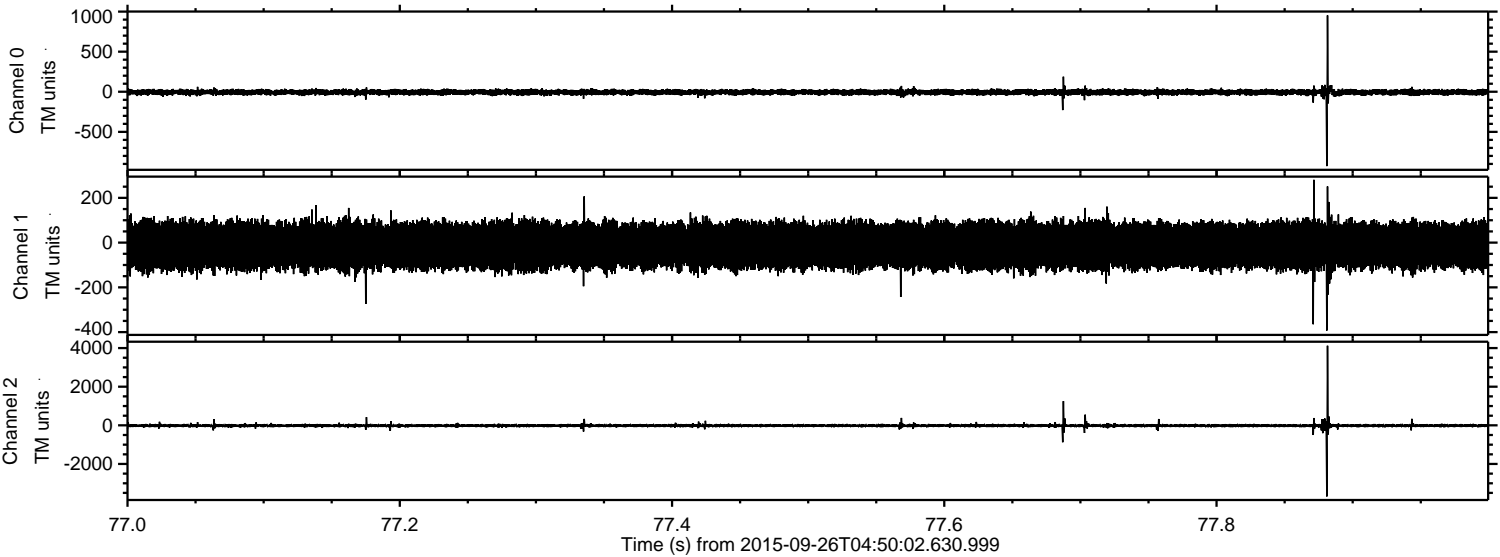


Processed Fri Oct 16 13:13:20 2015 by ELM ver.2012-10-06 from 001\_\_elm20150926\_045001\_\_dat00.bin





Processed Fri Oct 16 13:13:21 2015 by ELM ver.2012-10-06 from 001\_\_elm20150926\_045001\_\_dat00.bin





Processed Fri Oct 16 13:13:22 2015 by ELM ver.2012-10-06 from 001\_\_elm20150926\_045001\_\_dat00.bin

