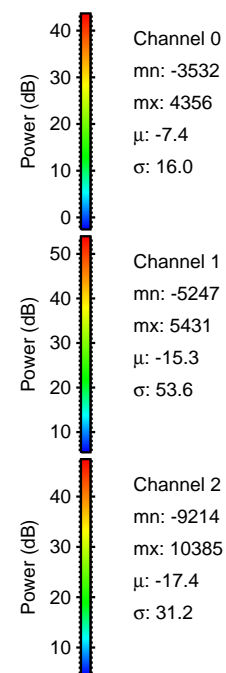
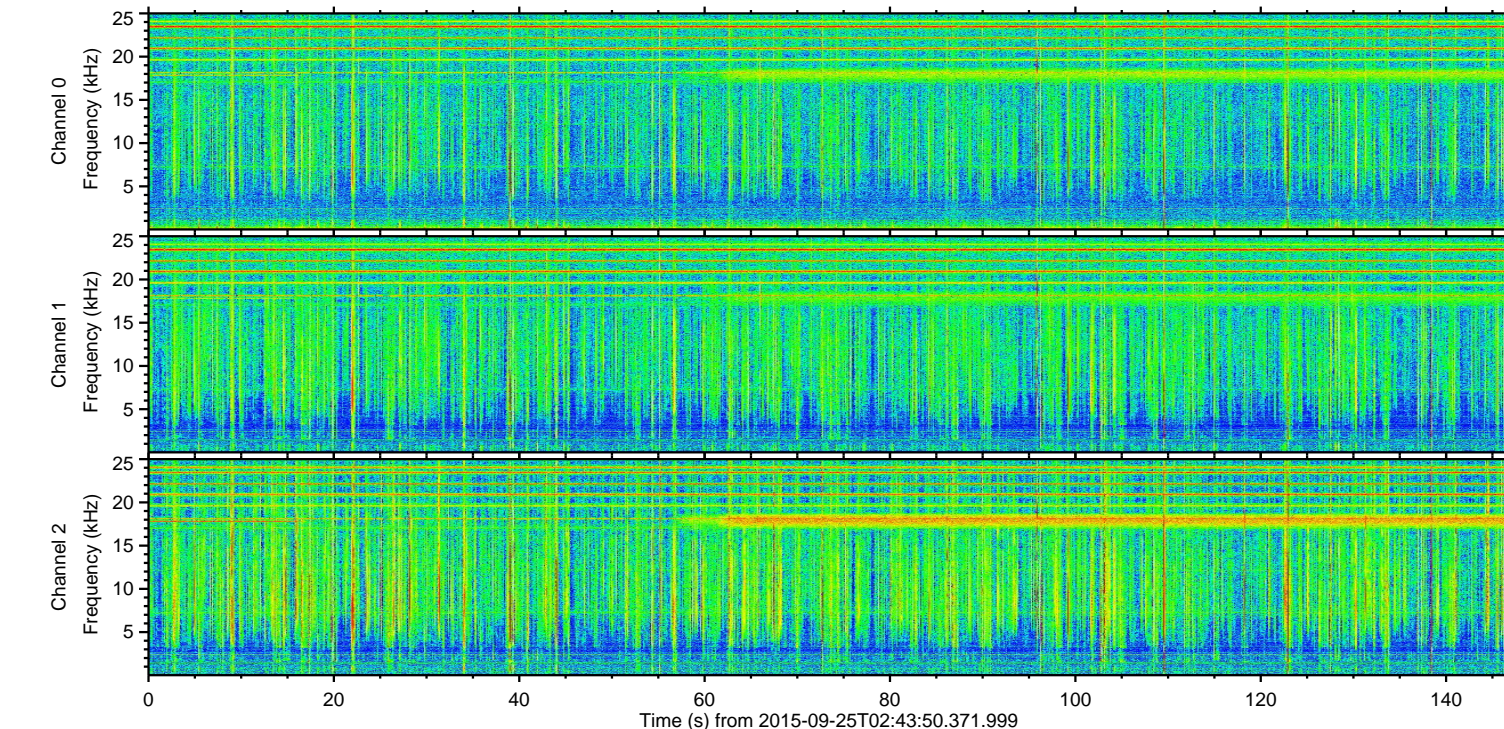
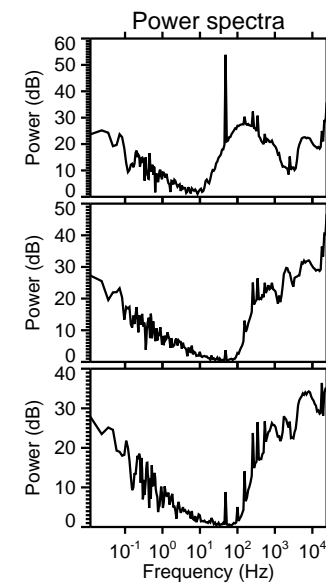
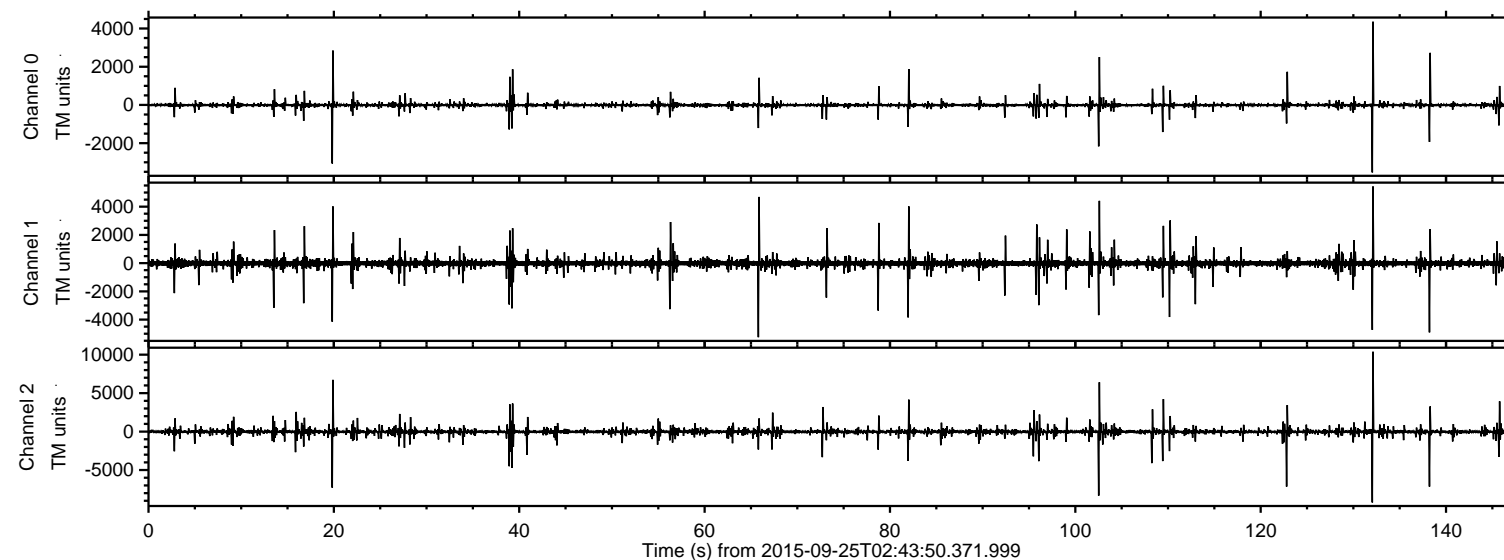


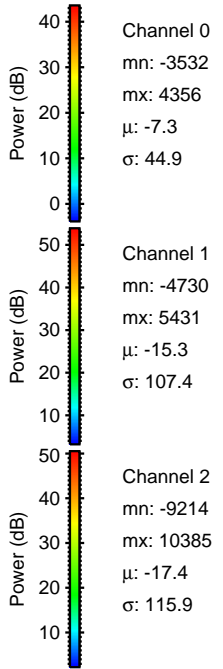
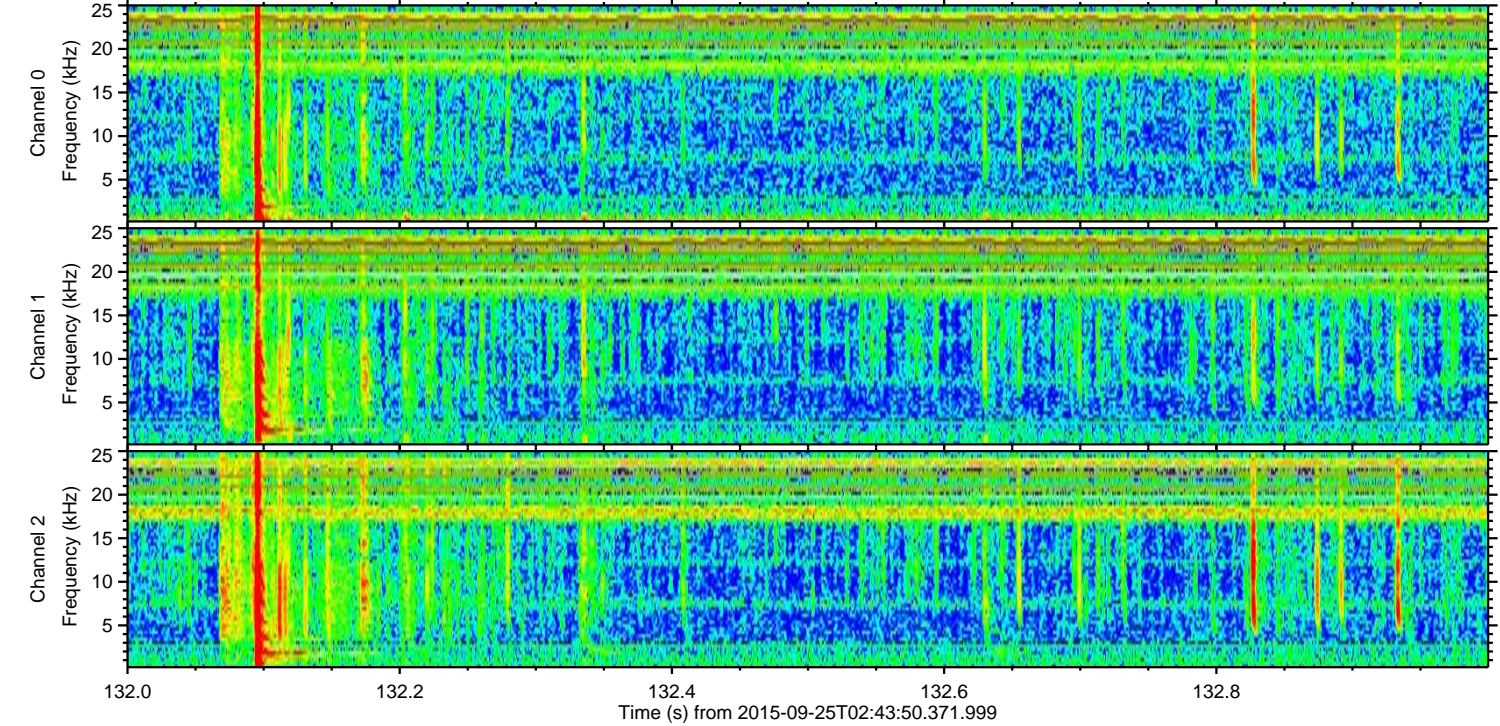
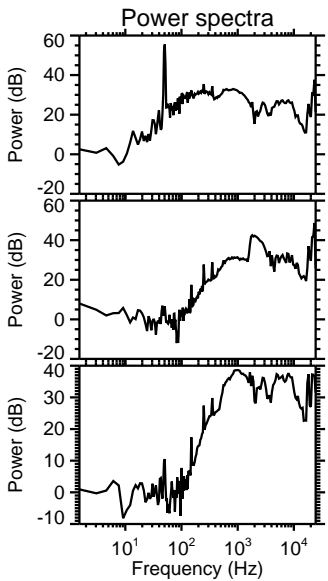
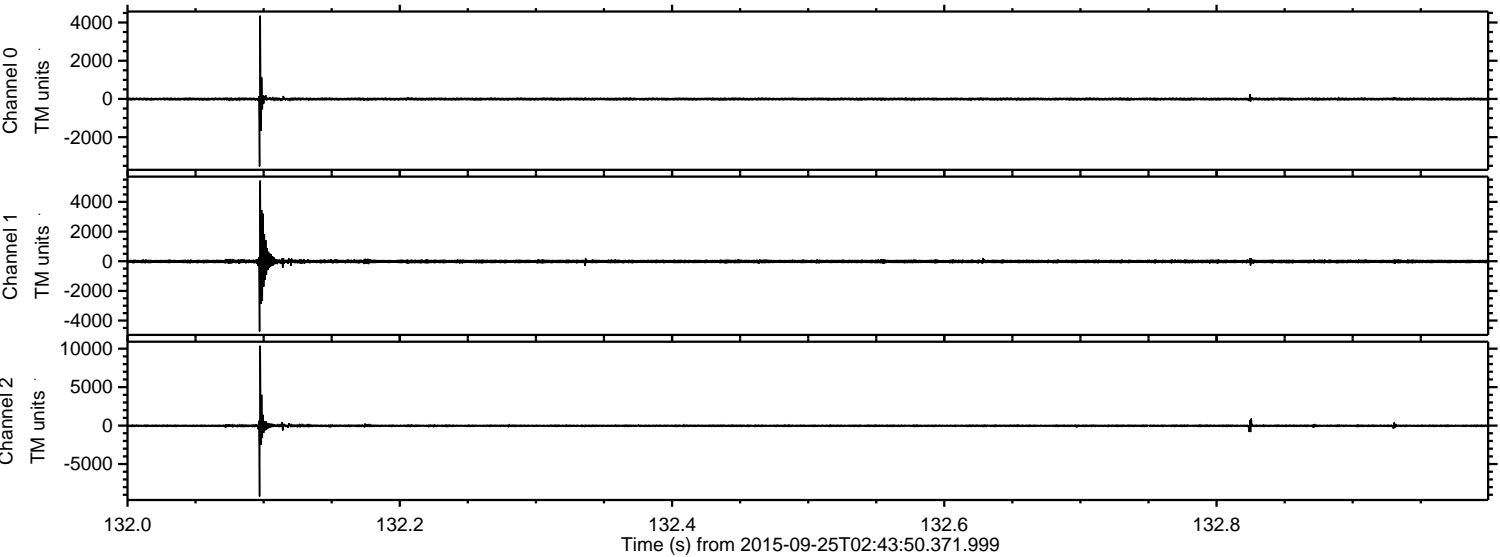
ELMAVAN 3D WAVEFORMS (Measured data sampled at 50 kHz) 51000 packets of 144 samples from 2015-09-25T02:43:50.371.999.

Processed Fri Oct 16 05:18:50 2015 by ELM ver.2012-10-06 from 001__elm20150925_024349__dat00.bin



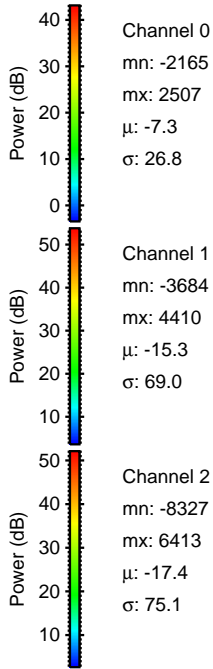
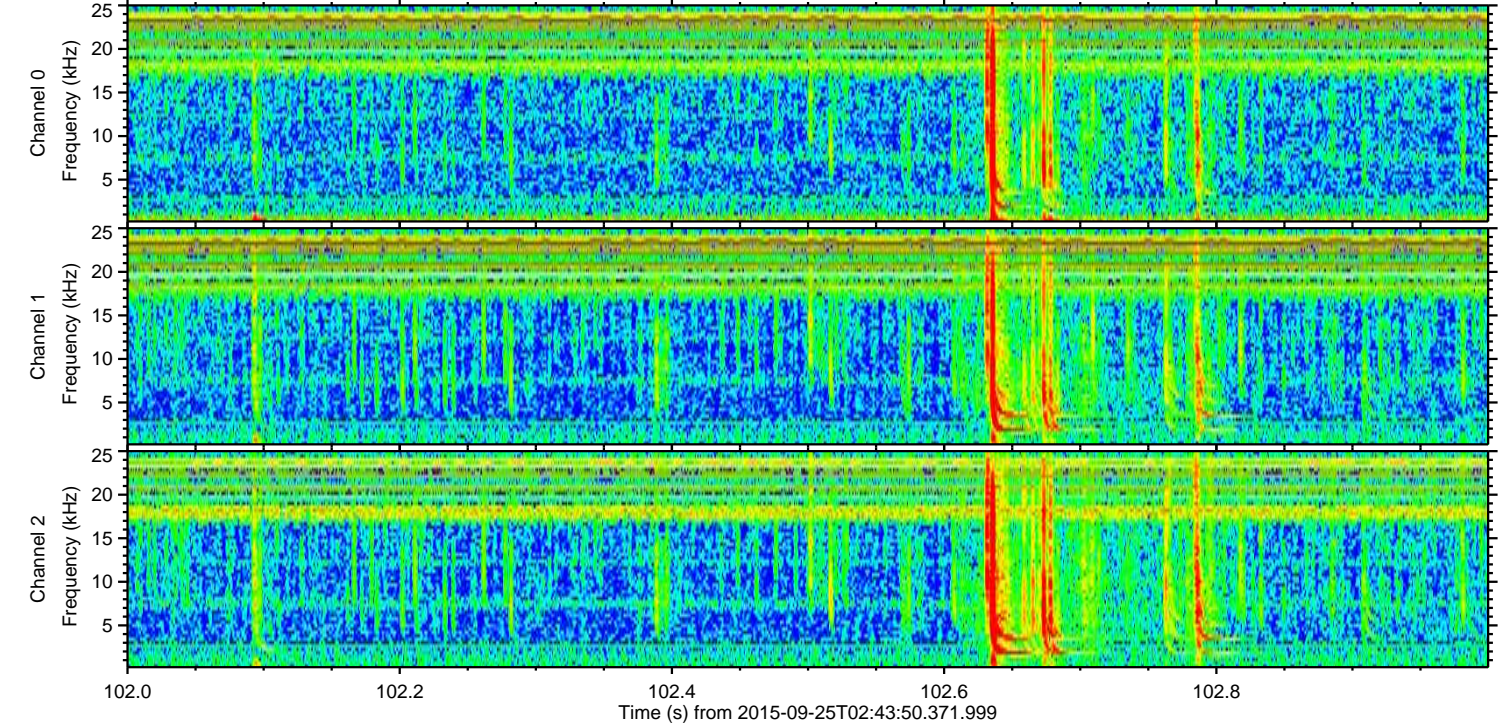
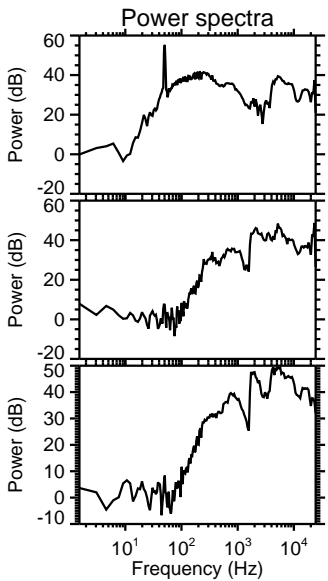
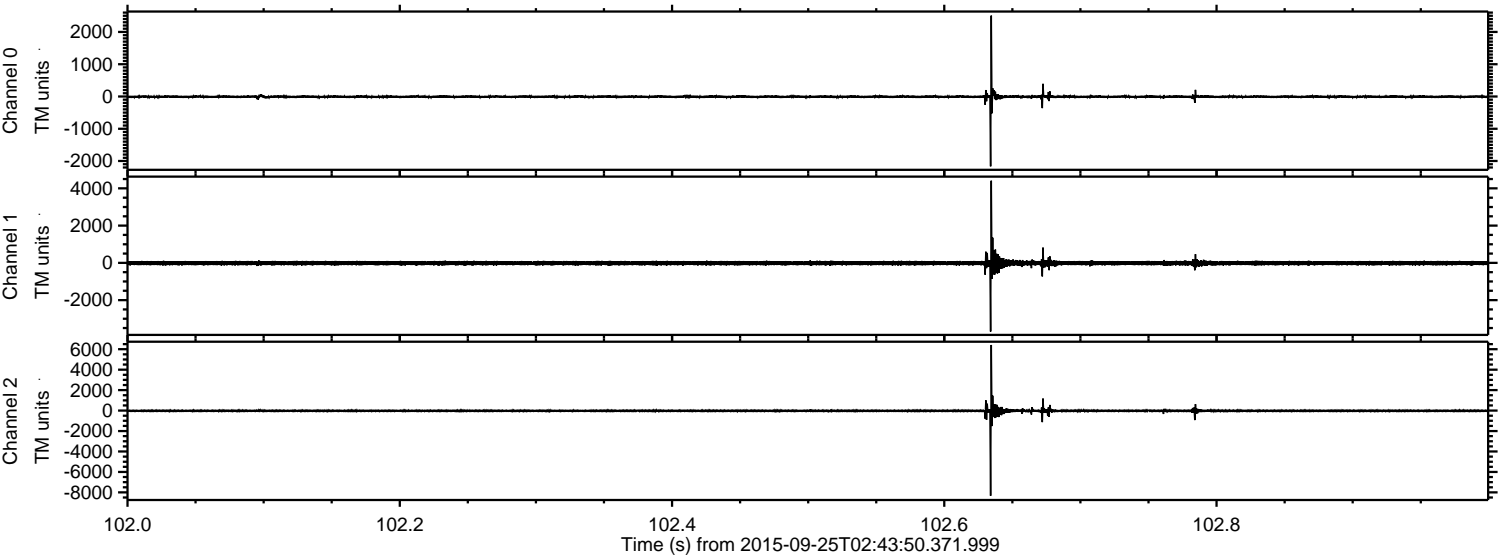
ELMAVAN 3D WAVEFORMS (Measured data sampled at 50 kHz) 51000 packets of 144 samples from 2015-09-25T02:43:50.371.999. Part 133/147

Processed Fri Oct 16 05:19:10 2015 by ELM ver.2012-10-06 from 001__elm20150925_024349__dat00.bin



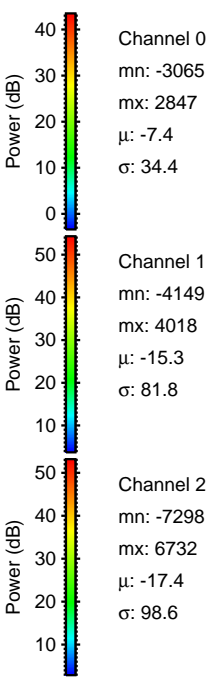
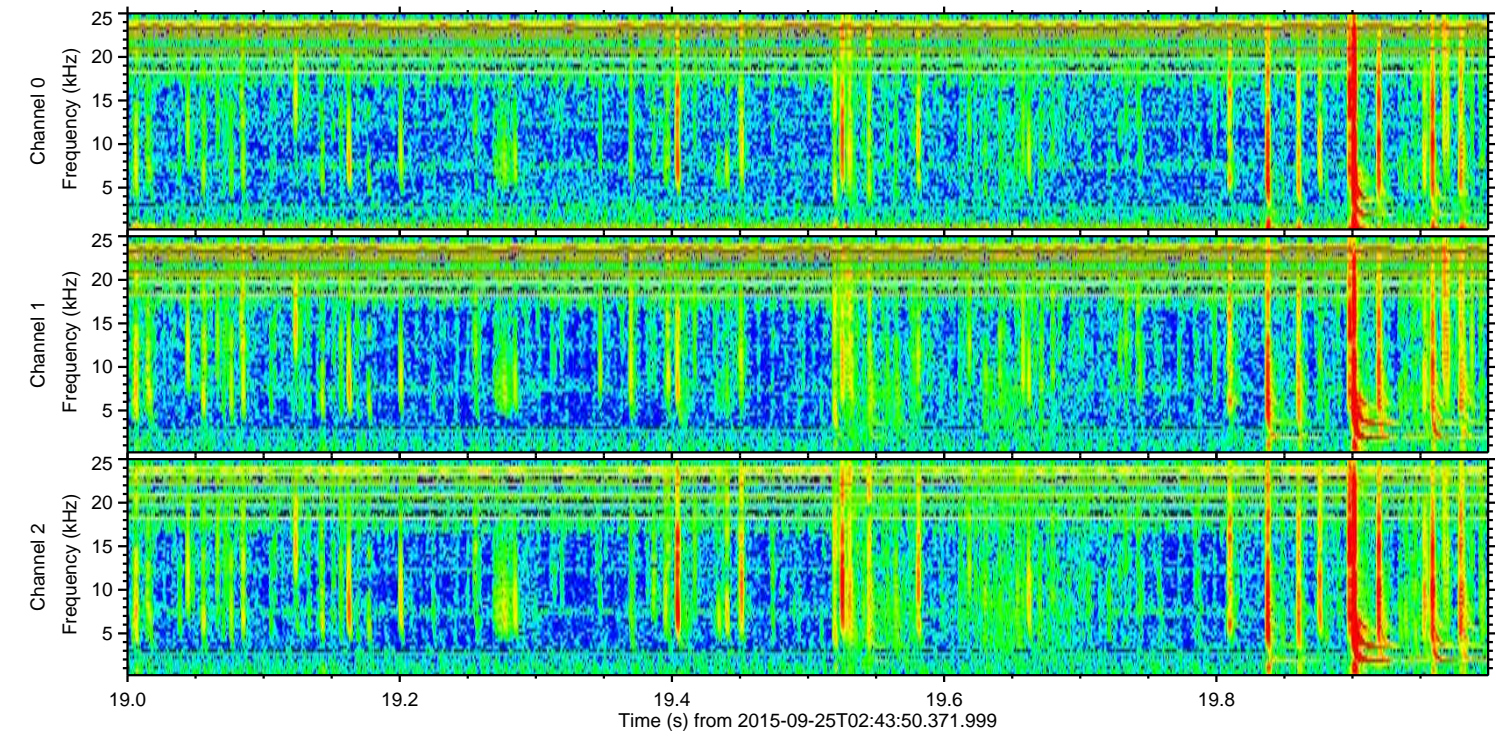
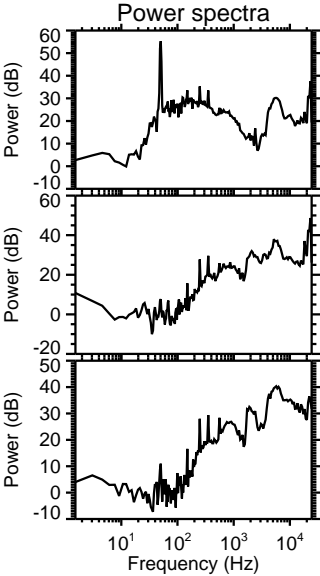
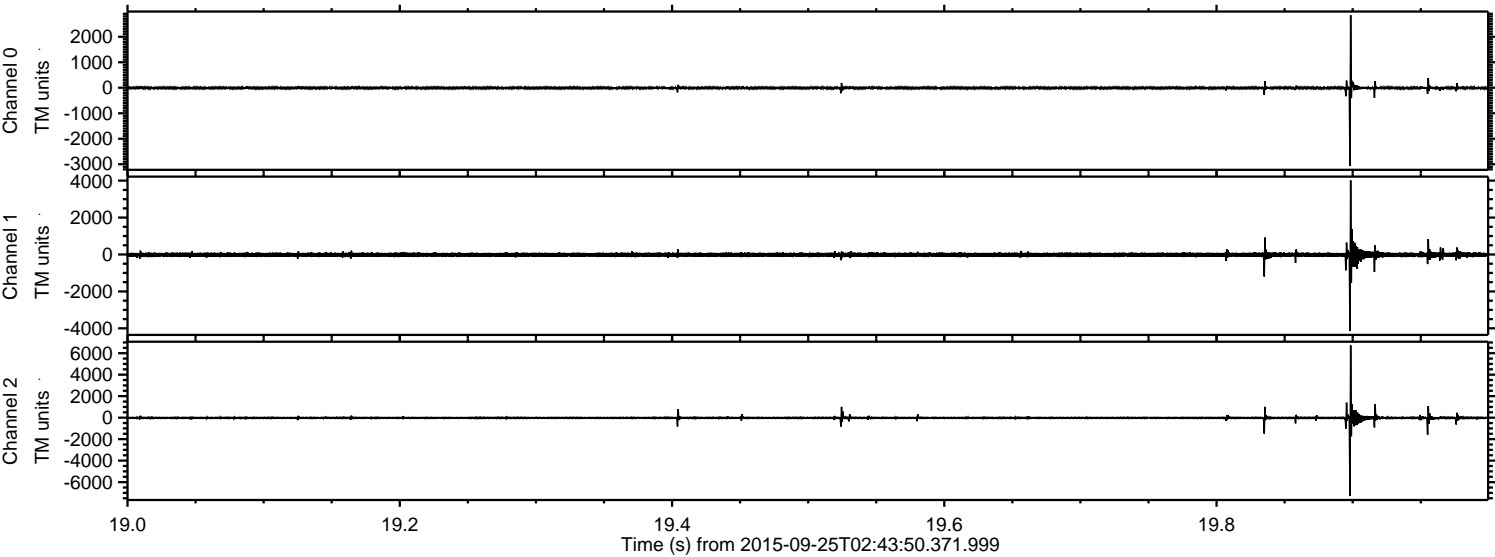
ELMAVAN 3D WAVEFORMS (Measured data sampled at 50 kHz) 51000 packets of 144 samples from 2015-09-25T02:43:50.371.999. Part 103/147

Processed Fri Oct 16 05:19:11 2015 by ELM ver.2012-10-06 from 001__elm20150925_024349__dat00.bin



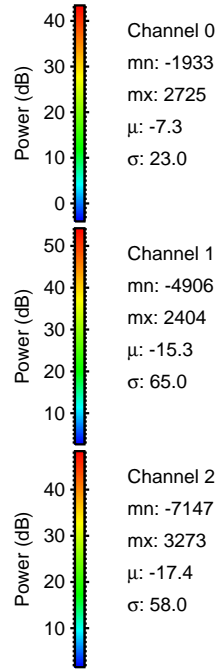
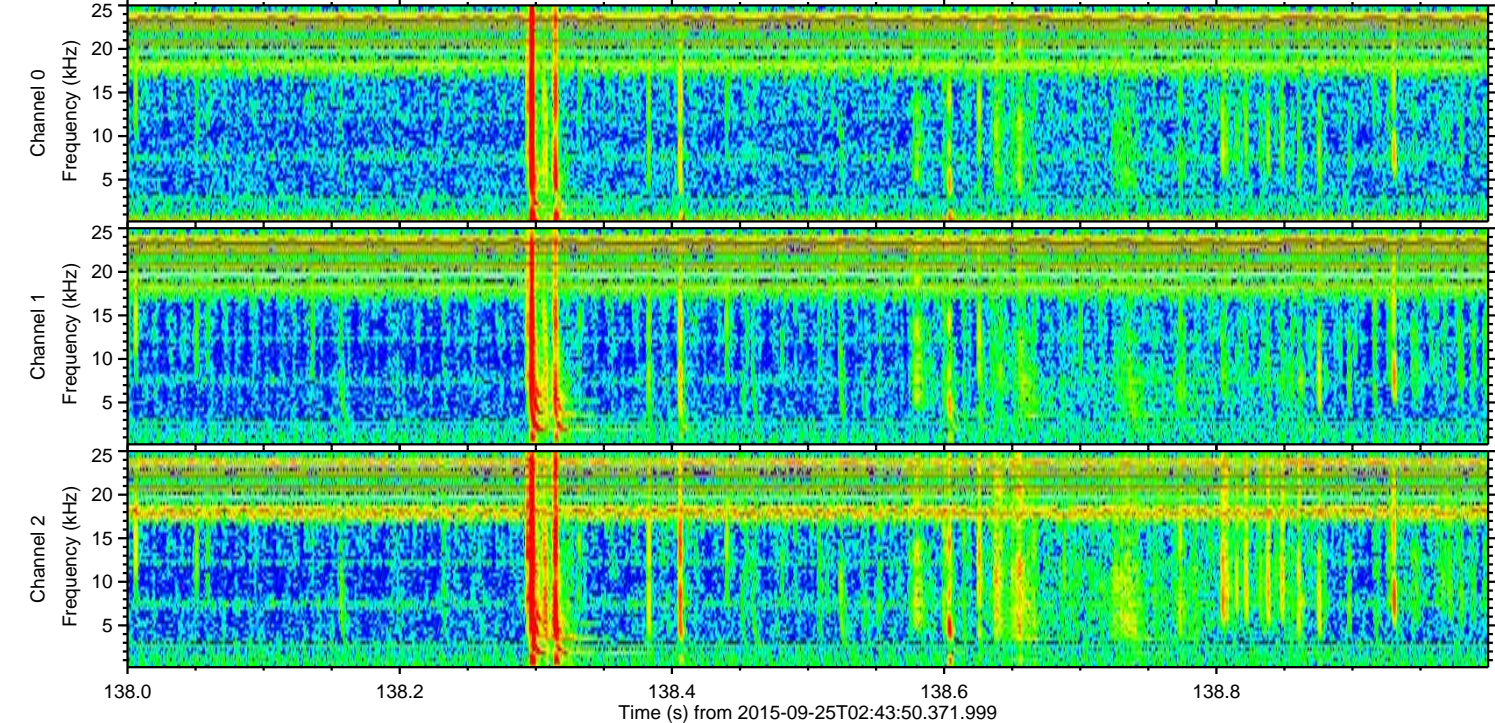
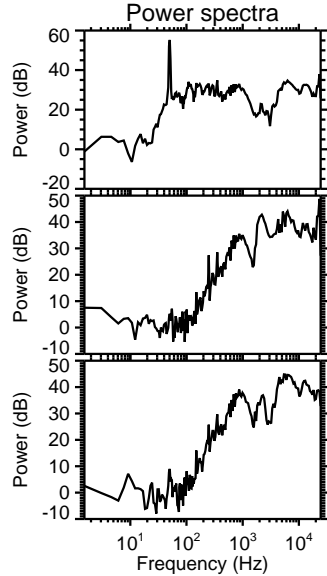
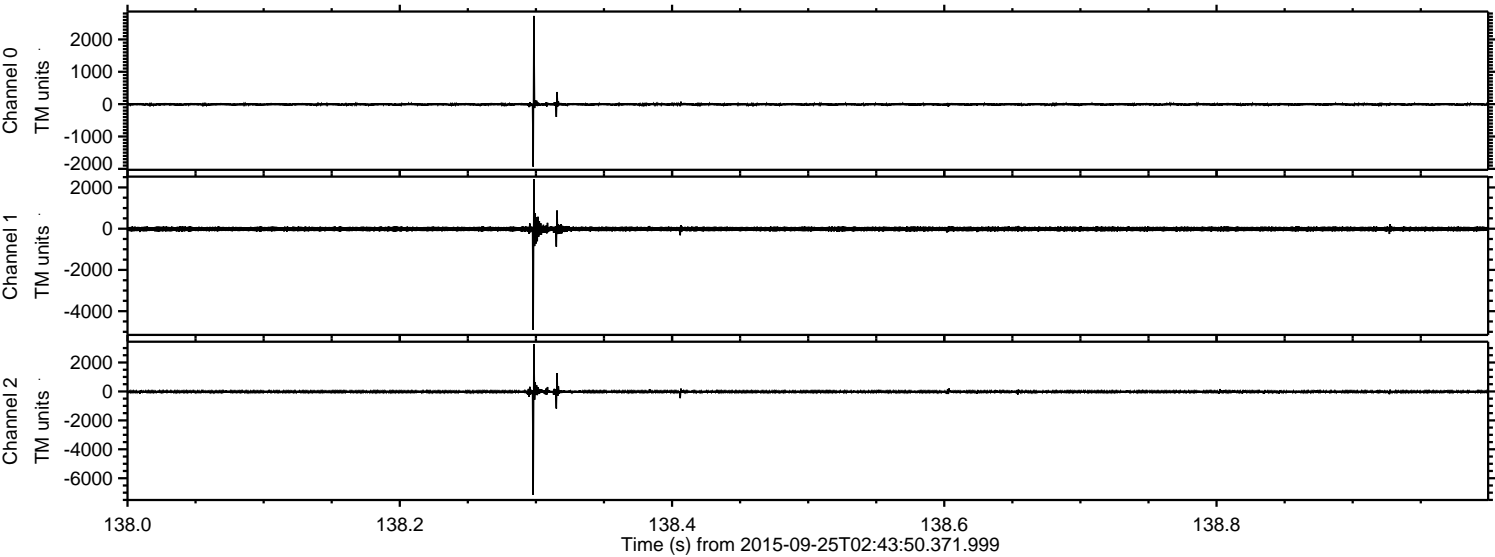
ELMAVAN 3D WAVEFORMS (Measured data sampled at 50 kHz) 51000 packets of 144 samples from 2015-09-25T02:43:50.371.999. Part 20/147

Processed Fri Oct 16 05:19:13 2015 by ELM ver.2012-10-06 from 001__elm20150925_024349__dat00.bin



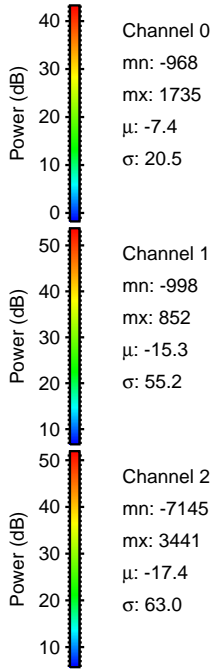
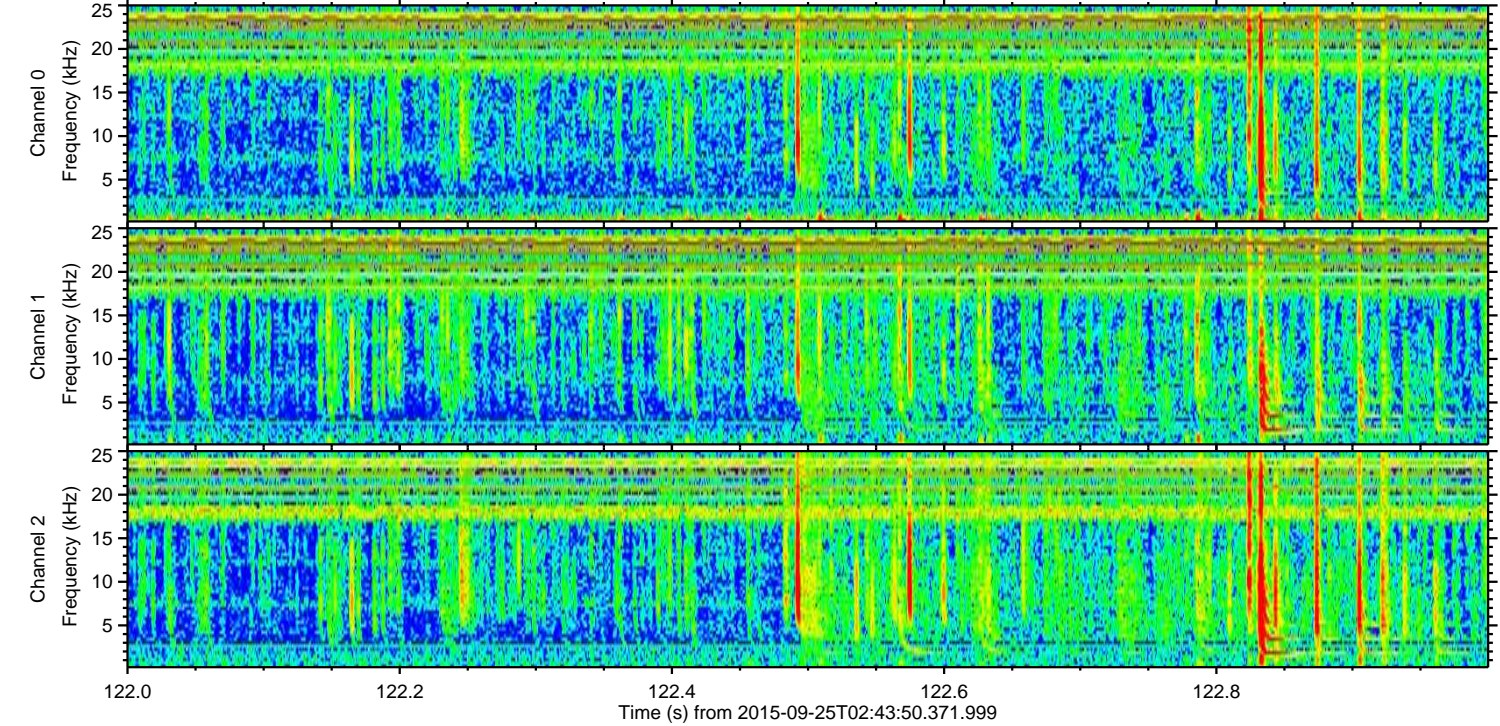
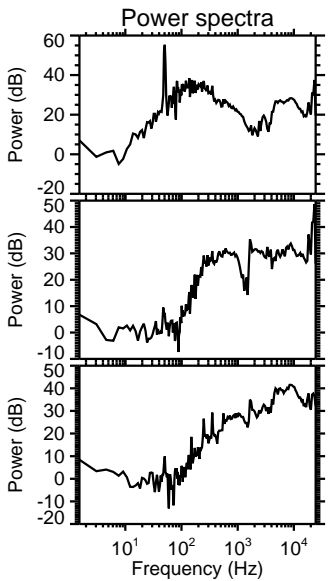
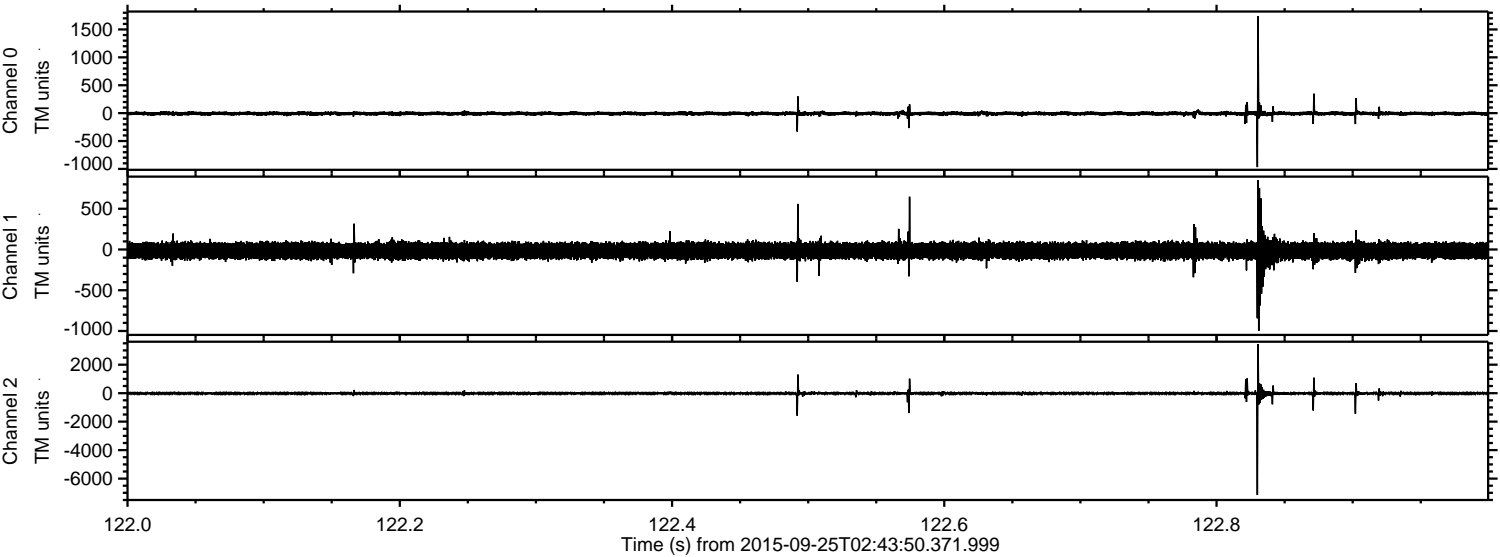
ELMAVAN 3D WAVEFORMS (Measured data sampled at 50 kHz) 51000 packets of 144 samples from 2015-09-25T02:43:50.371.999. Part 139/147

Processed Fri Oct 16 05:19:14 2015 by ELM ver.2012-10-06 from 001__elm20150925_024349__dat00.bin



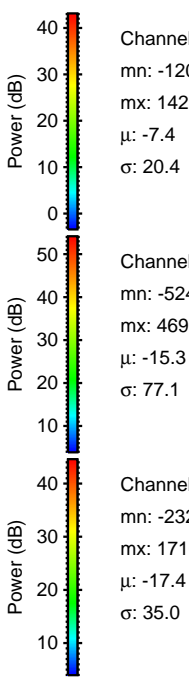
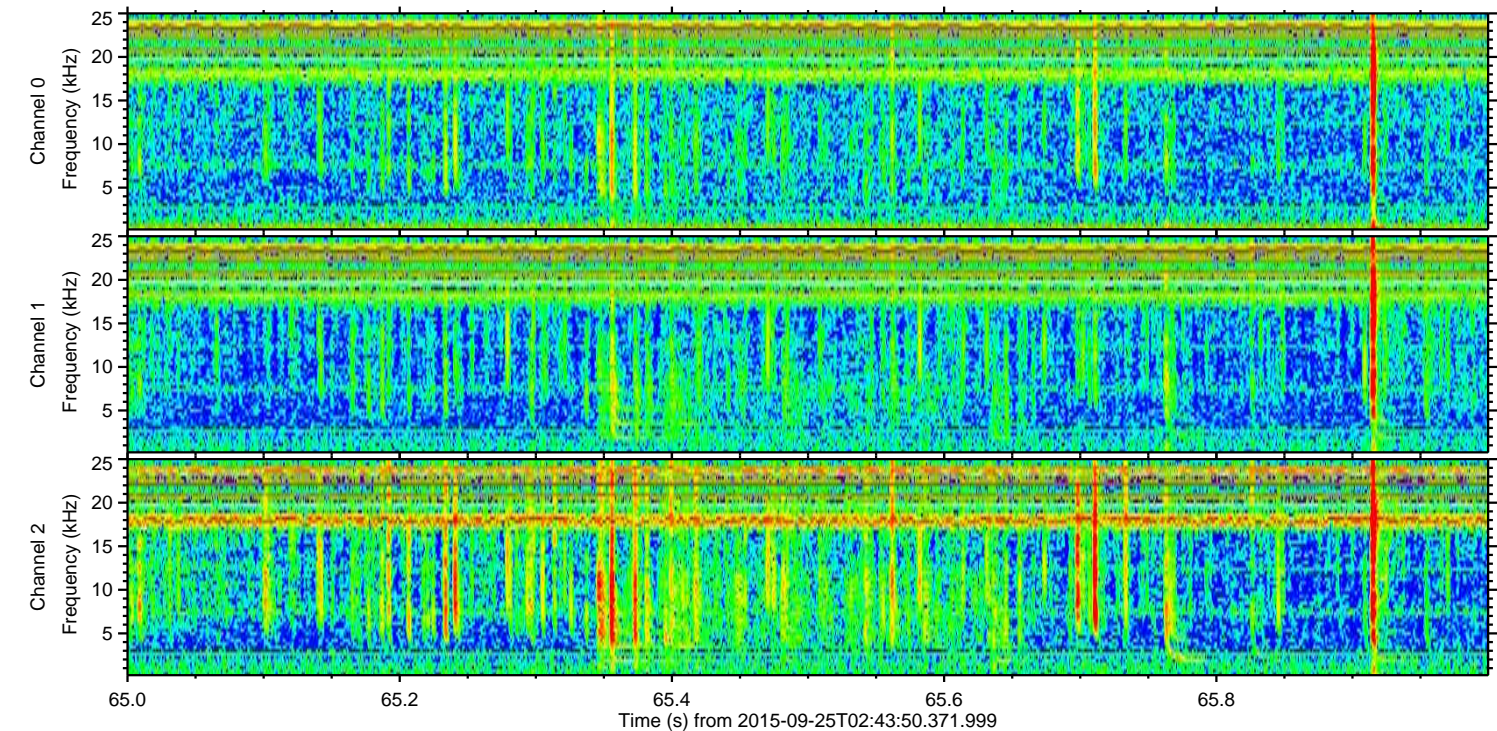
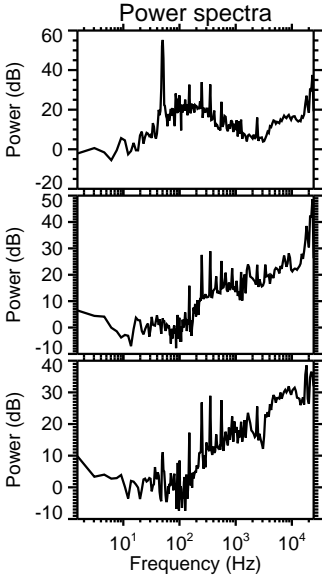
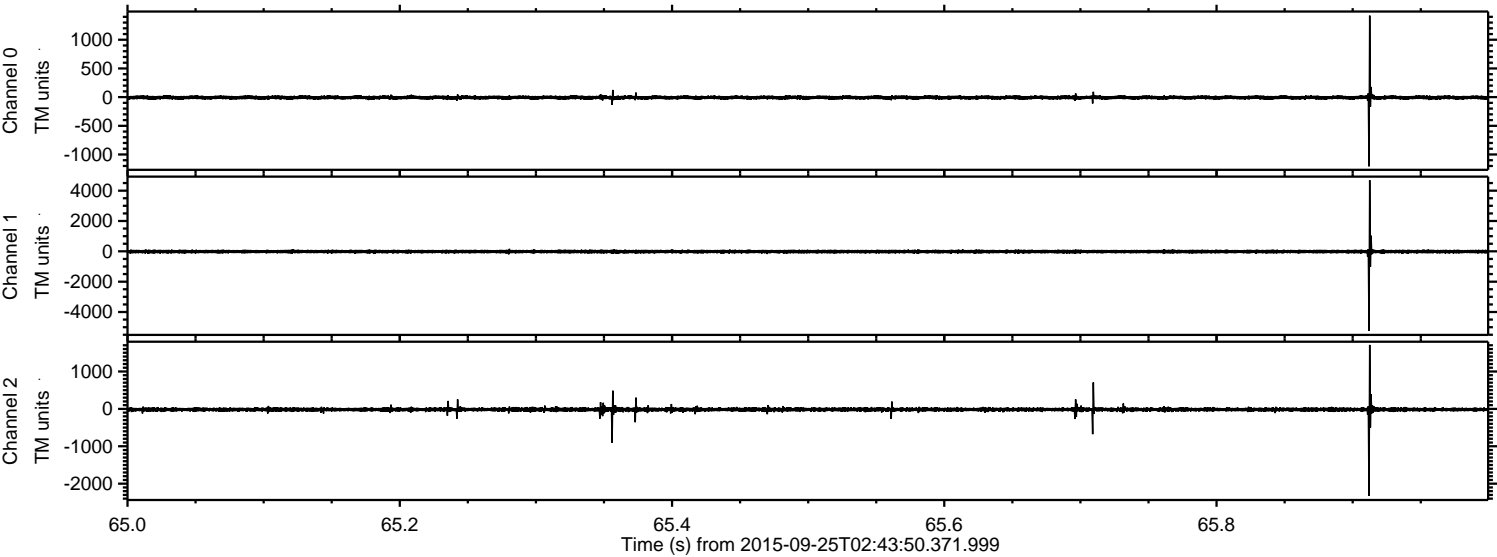
ELMAVAN 3D WAVEFORMS (Measured data sampled at 50 kHz) 51000 packets of 144 samples from 2015-09-25T02:43:50.371.999. Part 123/147

Processed Fri Oct 16 05:19:16 2015 by ELM ver.2012-10-06 from 001__elm20150925_024349__dat00.bin

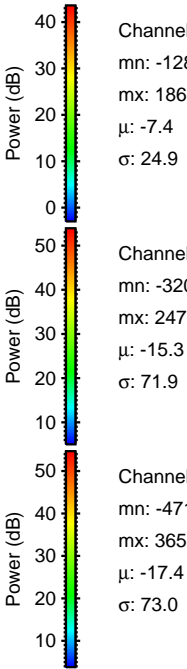
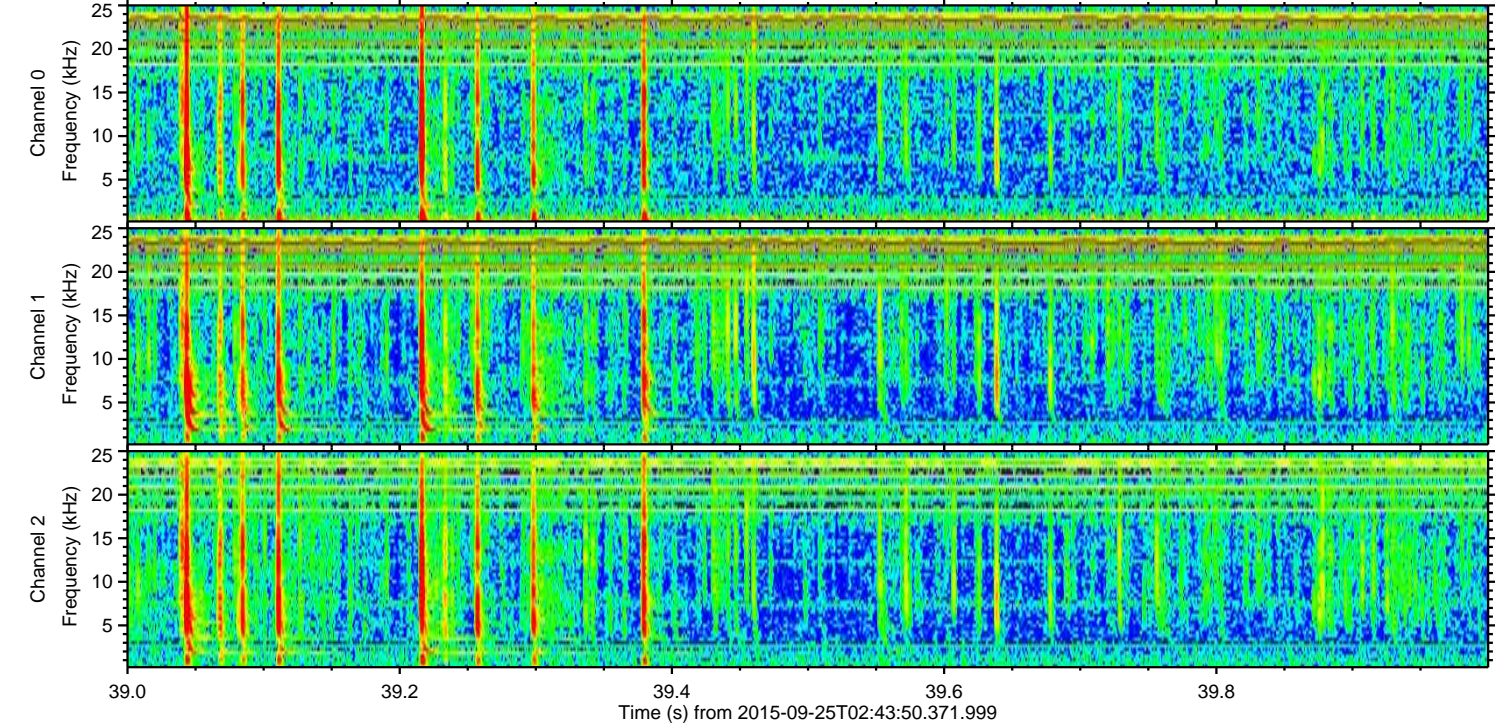
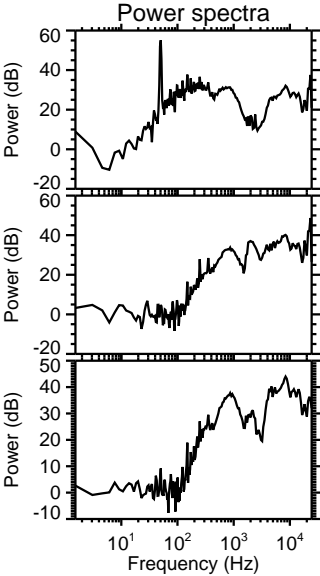
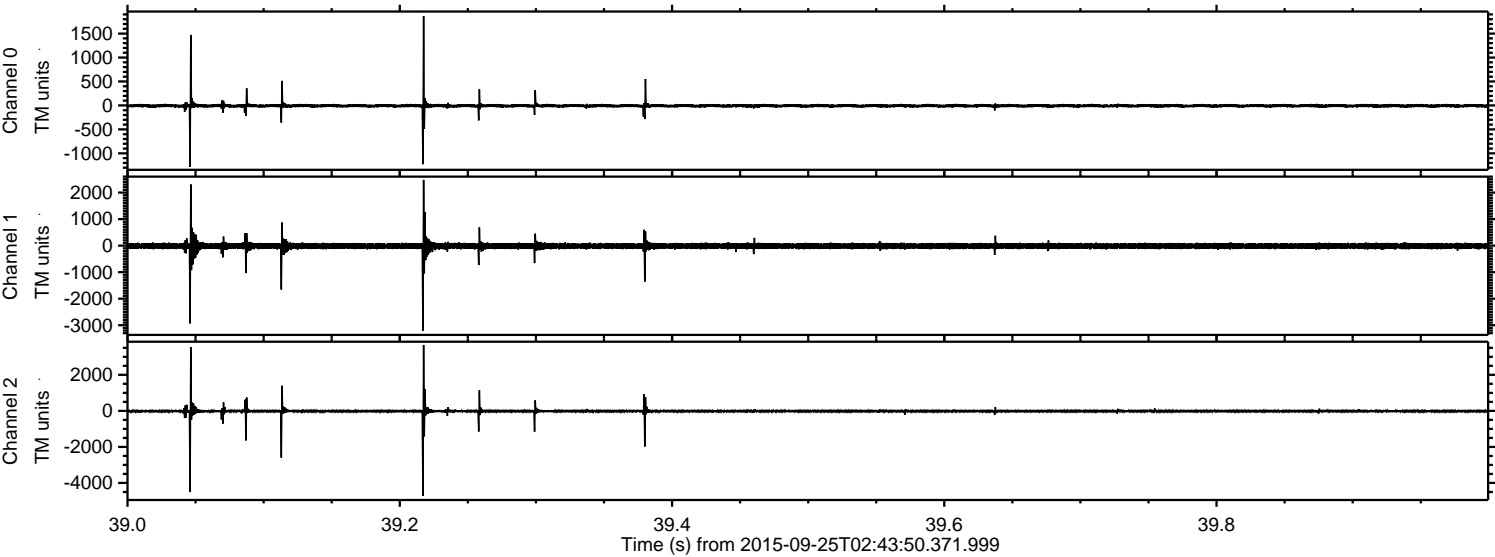


ELMAVAN 3D WAVEFORMS (Measured data sampled at 50 kHz) 51000 packets of 144 samples from 2015-09-25T02:43:50.371.999. Part 66/147

Processed Fri Oct 16 05:19:17 2015 by ELM ver.2012-10-06 from 001__elm20150925_024349__dat00.bin



Processed Fri Oct 16 05:19:19 2015 by ELM ver.2012-10-06 from 001__elm20150925_024349__dat00.bin



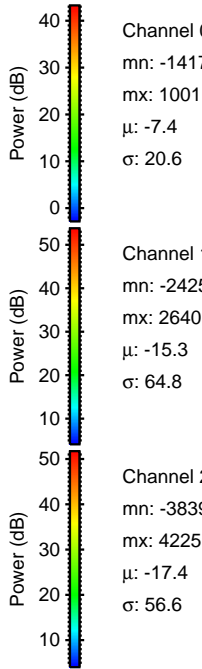
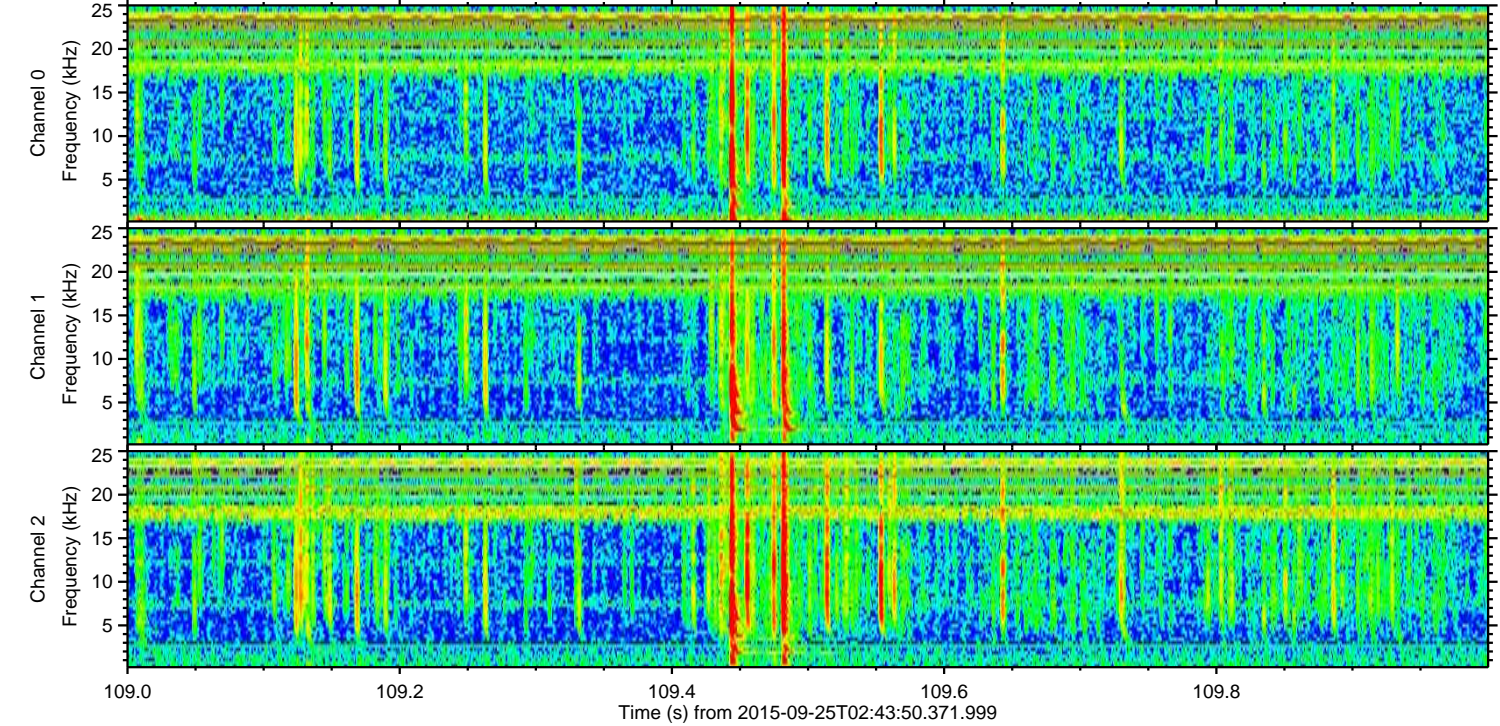
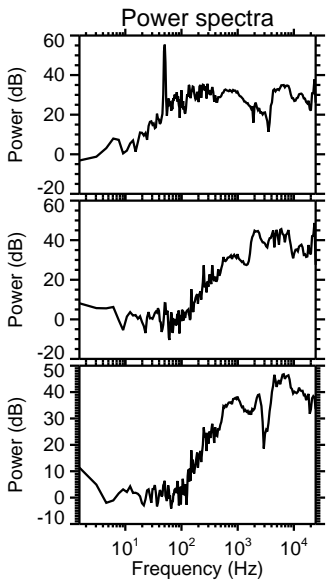
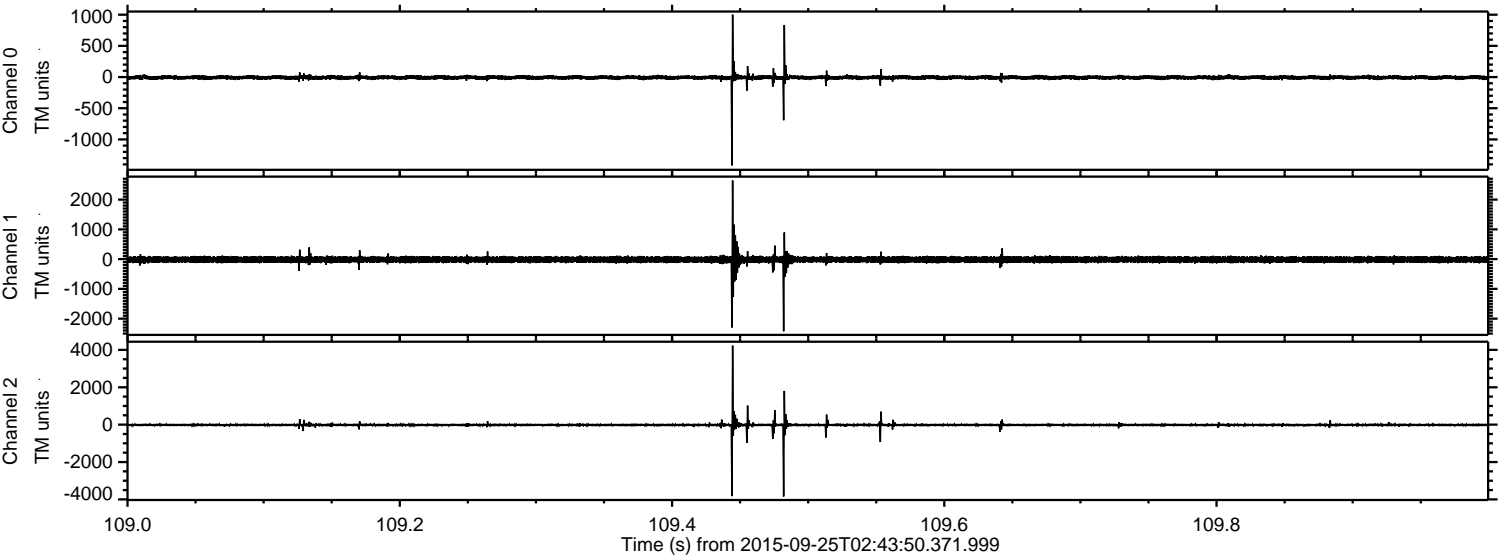
Channel 0
mn: -1280
mx: 1867
 μ : -7.4
 σ : 24.9

Channel 1
mn: -3204
mx: 2476
 μ : -15.3
 σ : 71.9

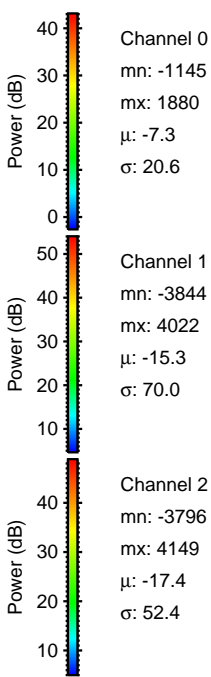
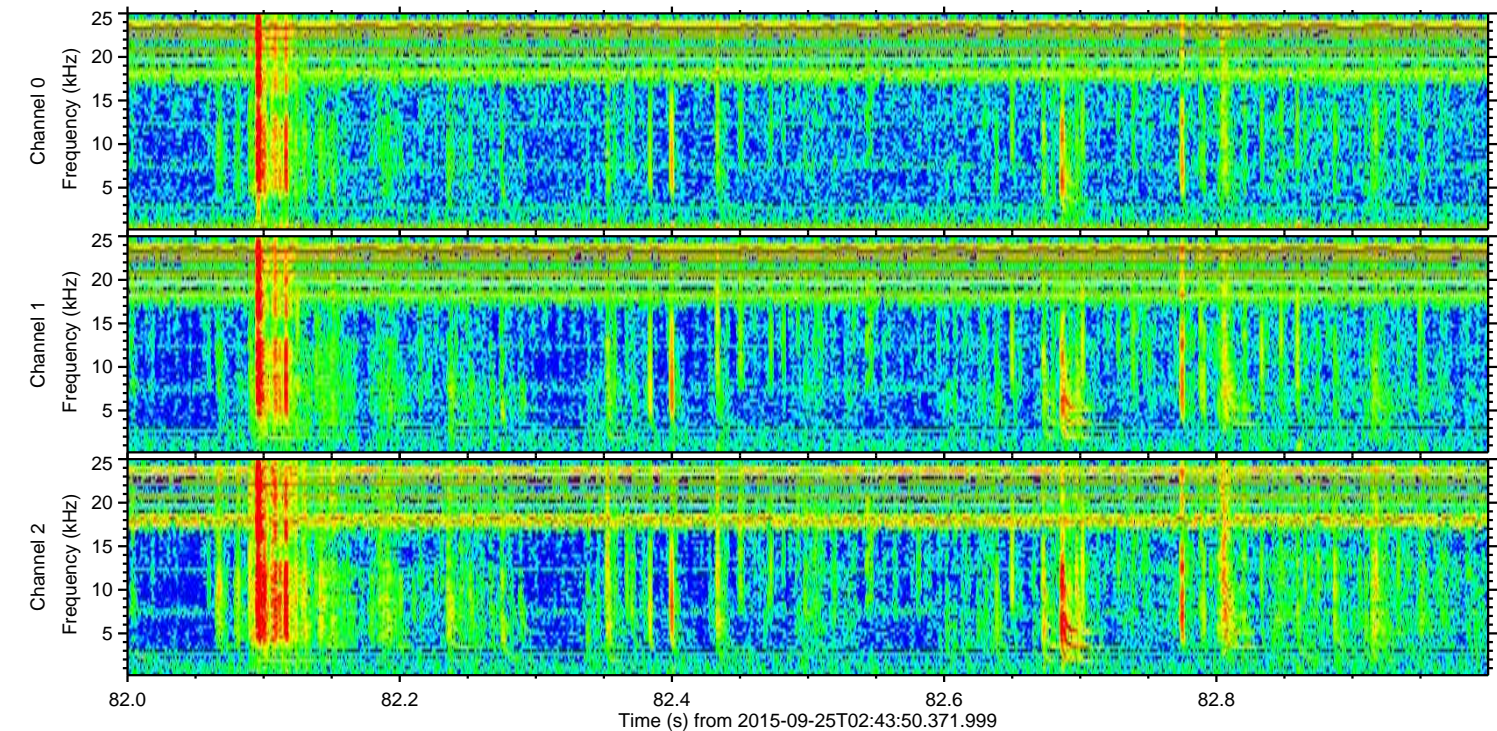
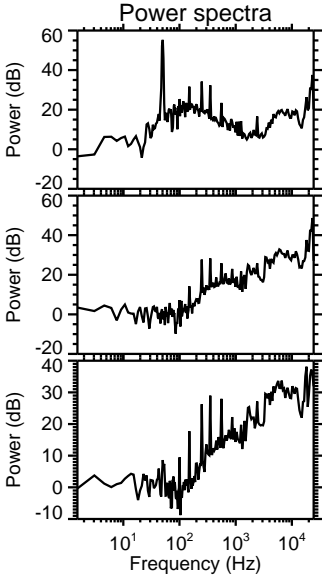
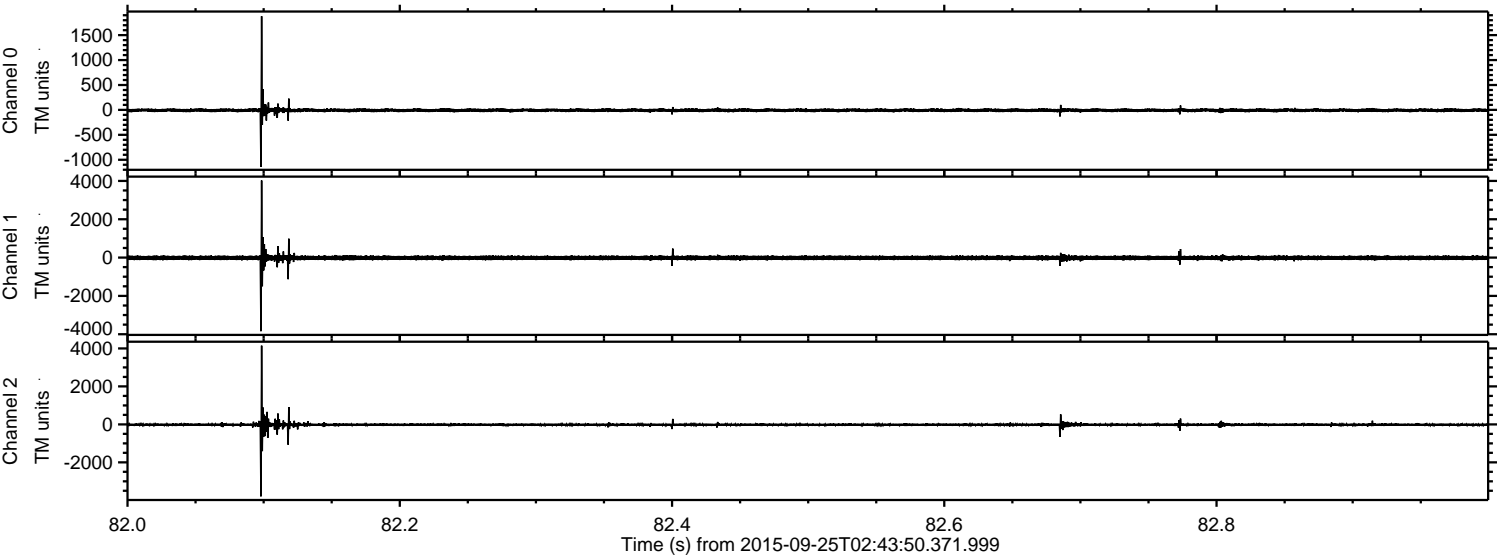
Channel 2
mn: -4711
mx: 3656
 μ : -17.4
 σ : 73.0

ELMAVAN 3D WAVEFORMS (Measured data sampled at 50 kHz) 51000 packets of 144 samples from 2015-09-25T02:43:50.371.999. Part 110/147

Processed Fri Oct 16 05:19:20 2015 by ELM ver.2012-10-06 from 001__elm20150925_024349__dat00.bin



Processed Fri Oct 16 05:19:22 2015 by ELM ver.2012-10-06 from 001__elm20150925_024349__dat00.bin



Channel 0
mn: -1145
mx: 1880
 μ : -7.3
 σ : 20.6

Channel 1
mn: -3844
mx: 4022
 μ : -15.3
 σ : 70.0

Channel 2
mn: -3796
mx: 4149
 μ : -17.4
 σ : 52.4

Processed Fri Oct 16 05:19:24 2015 by ELM ver.2012-10-06 from 001__elm20150925_024349__dat00.bin

