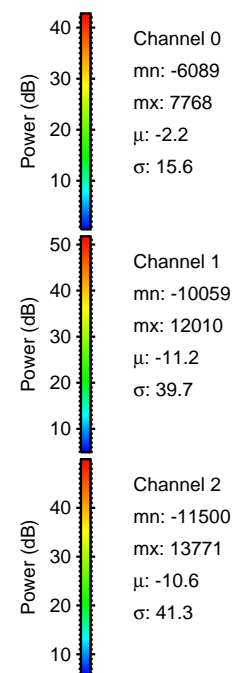
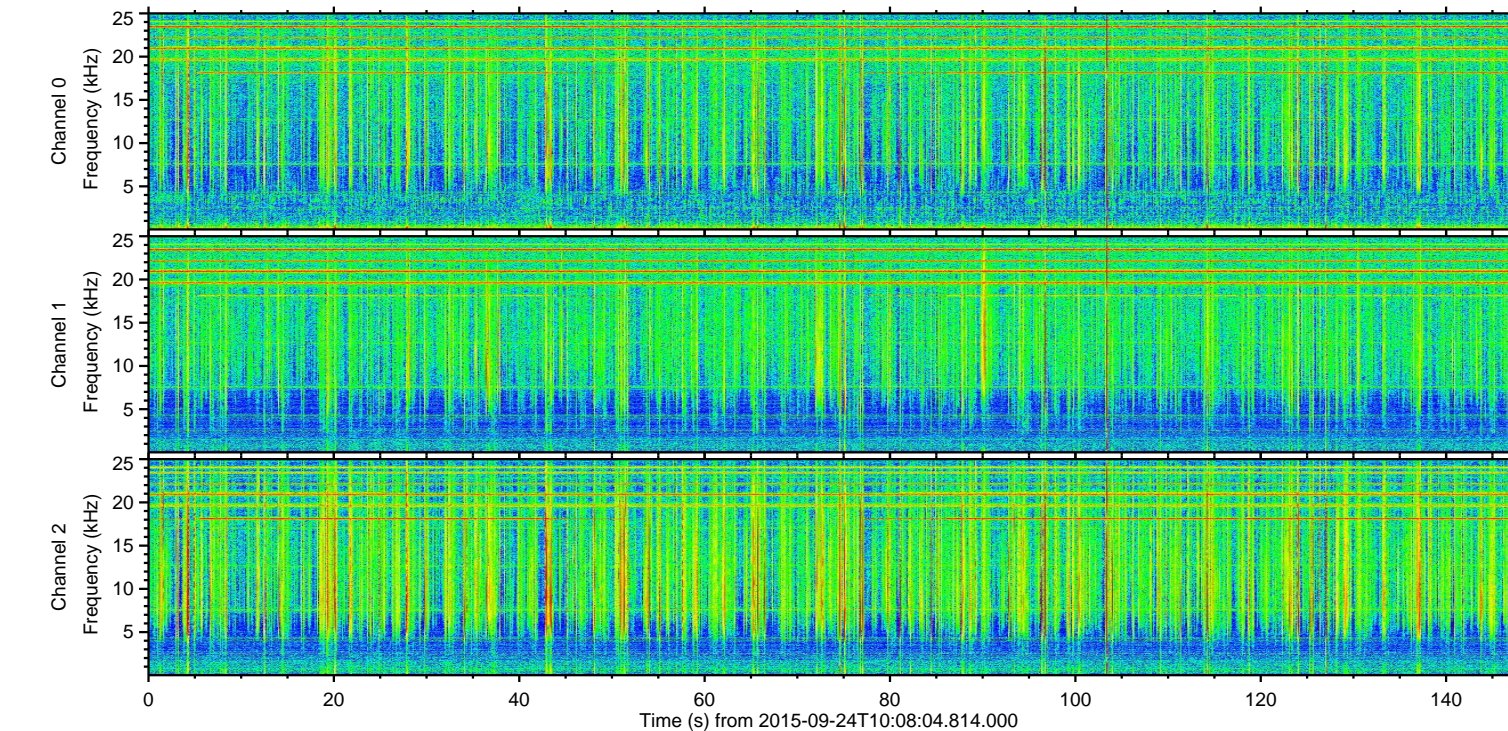
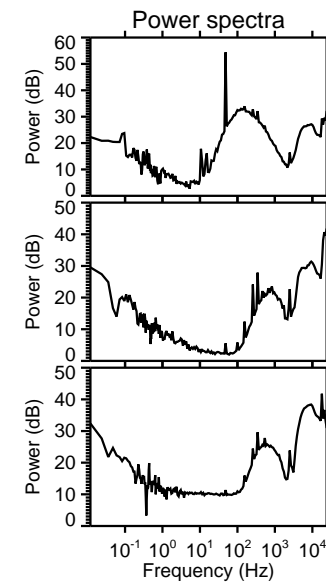
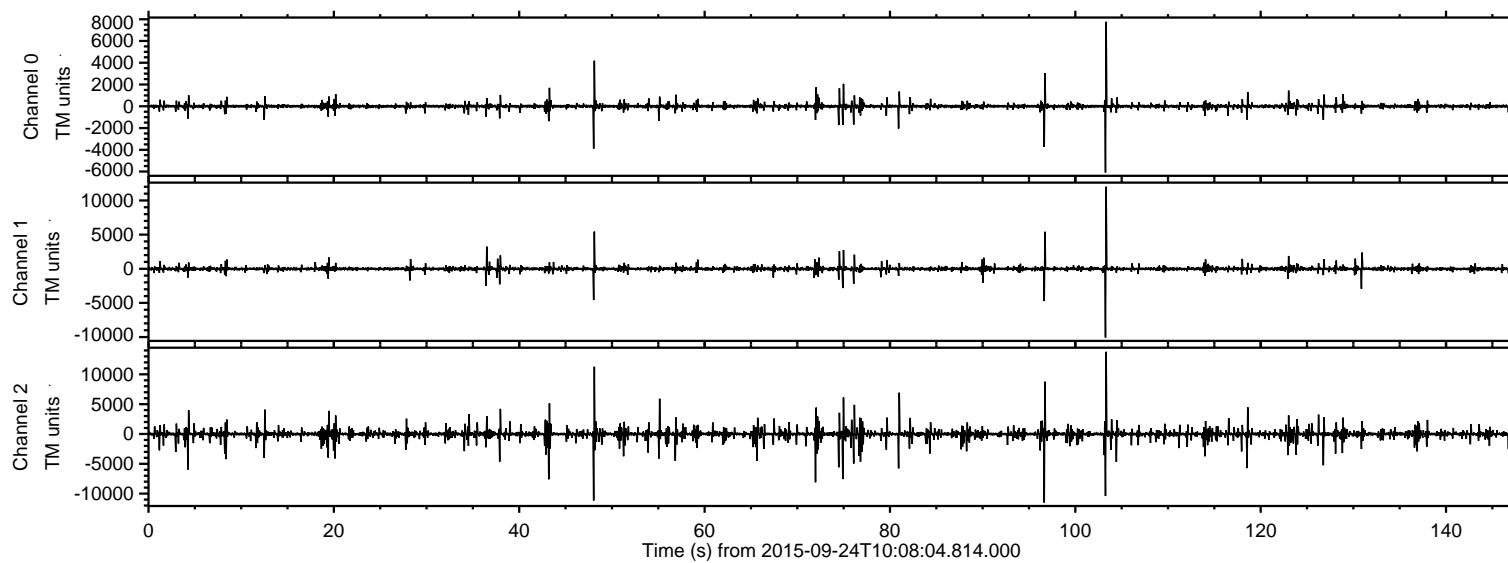


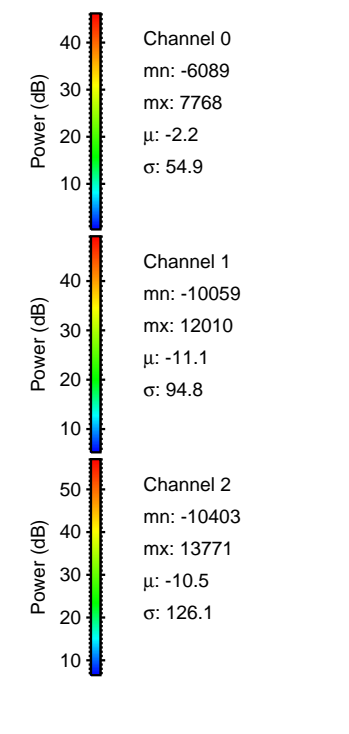
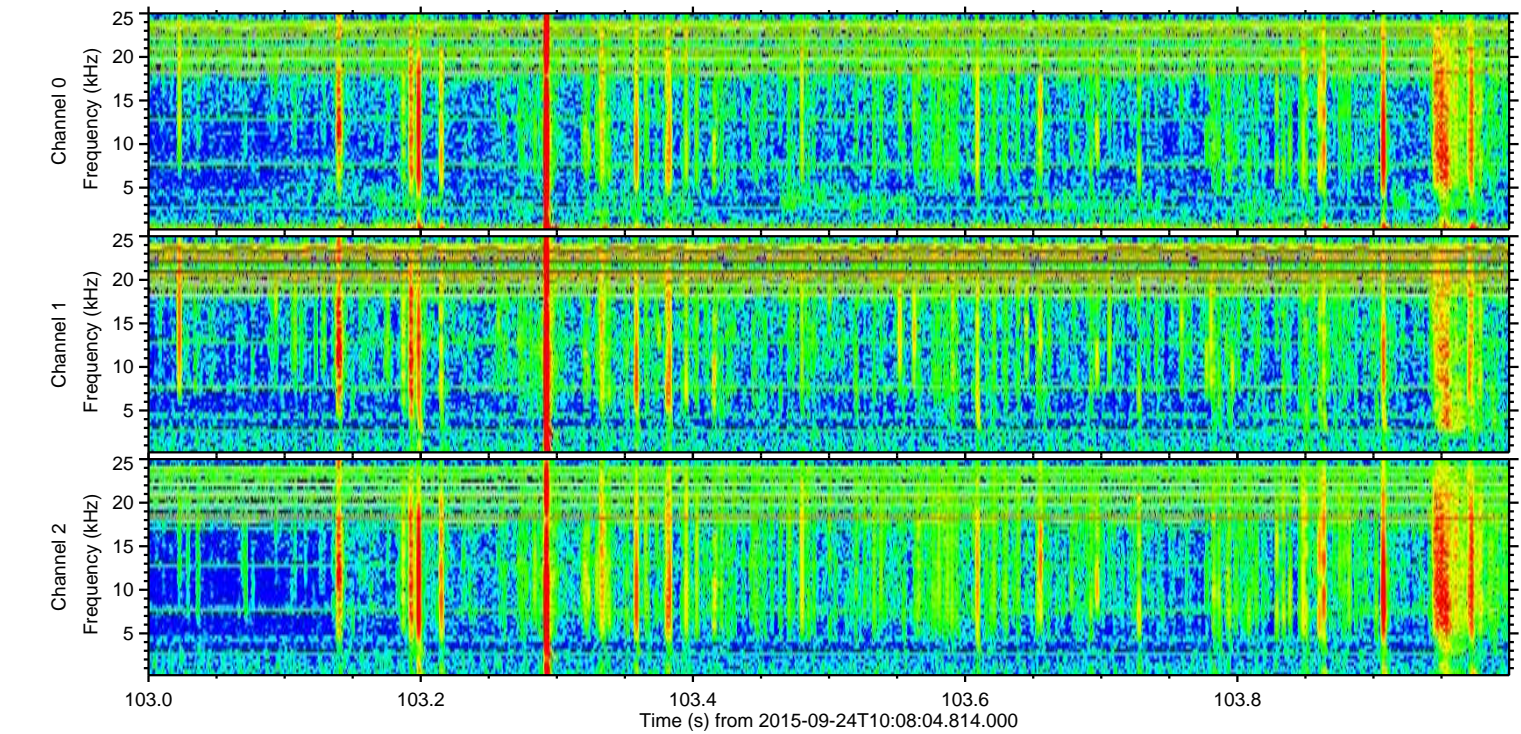
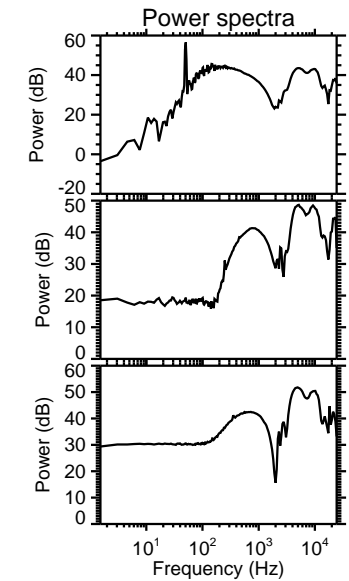
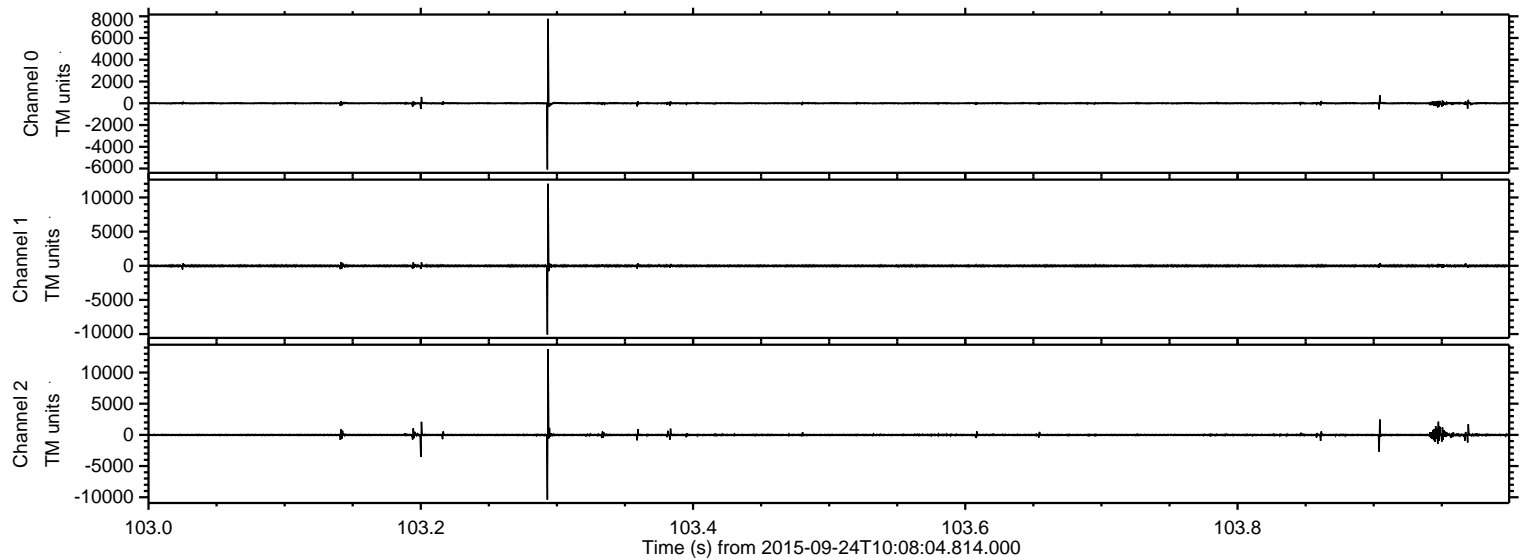
ELMAVAN 3D WAVEFORMS (Measured data sampled at 50 kHz) 51000 packets of 144 samples from 2015-09-24T10:08:04.814.000.

Processed Thu Oct 15 23:47:39 2015 by ELM ver.2012-10-06 from 001__elm20150924_100803__dat00.bin



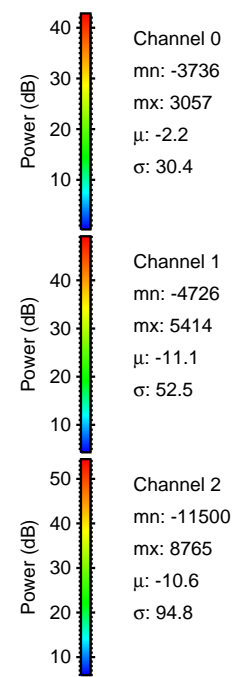
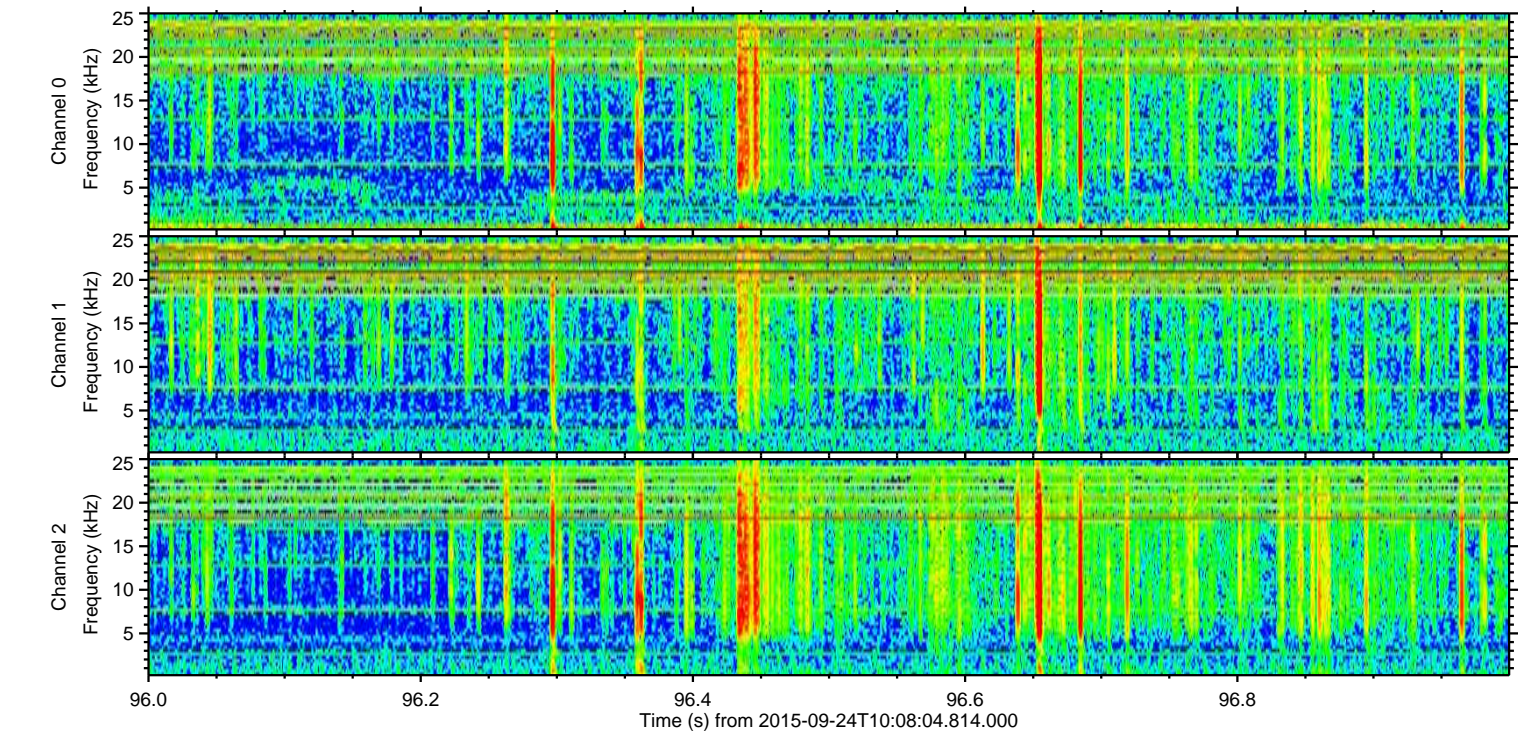
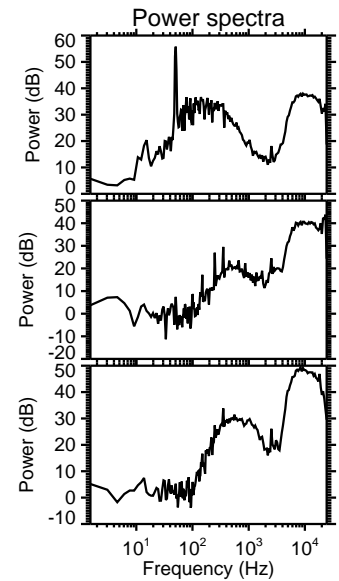
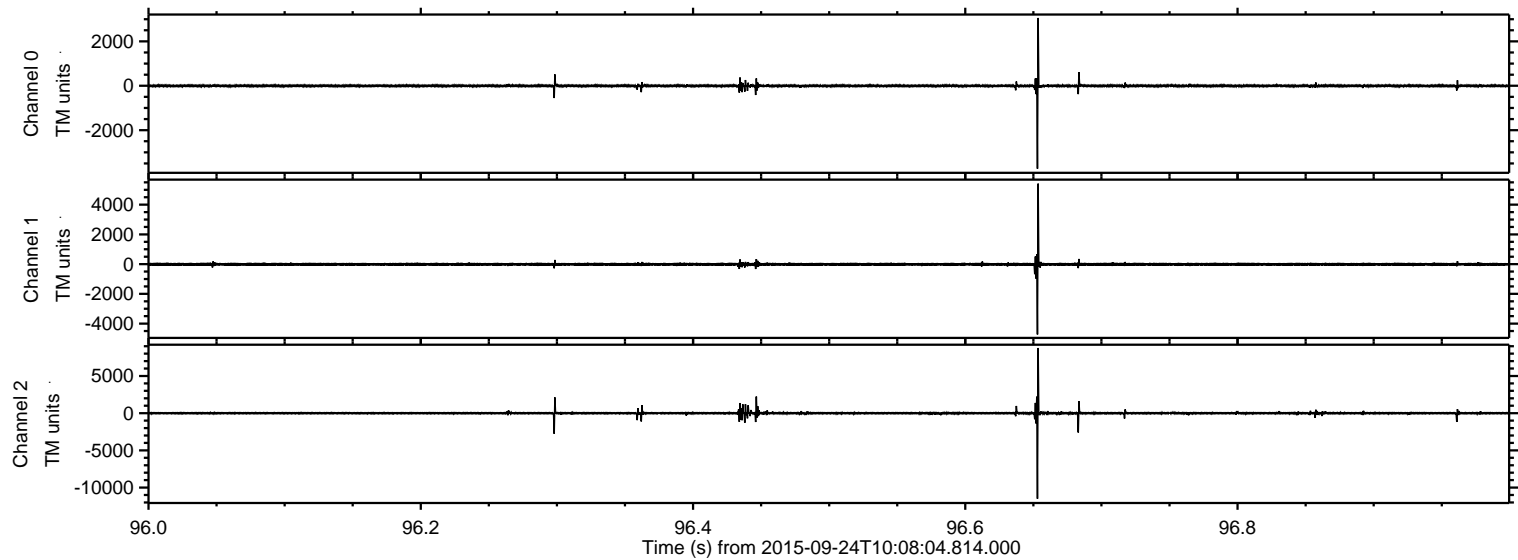
ELMAVAN 3D WAVEFORMS (Measured data sampled at 50 kHz) 51000 packets of 144 samples from 2015-09-24T10:08:04.814.000. Part 104/147

Processed Thu Oct 15 23:48:00 2015 by ELM ver.2012-10-06 from 001__elm20150924_100803__dat00.bin



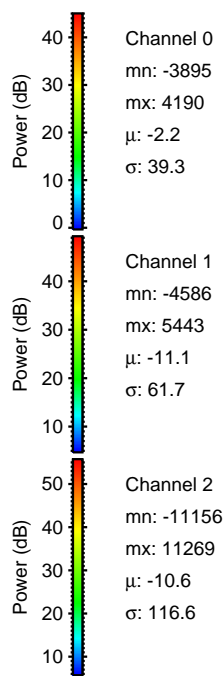
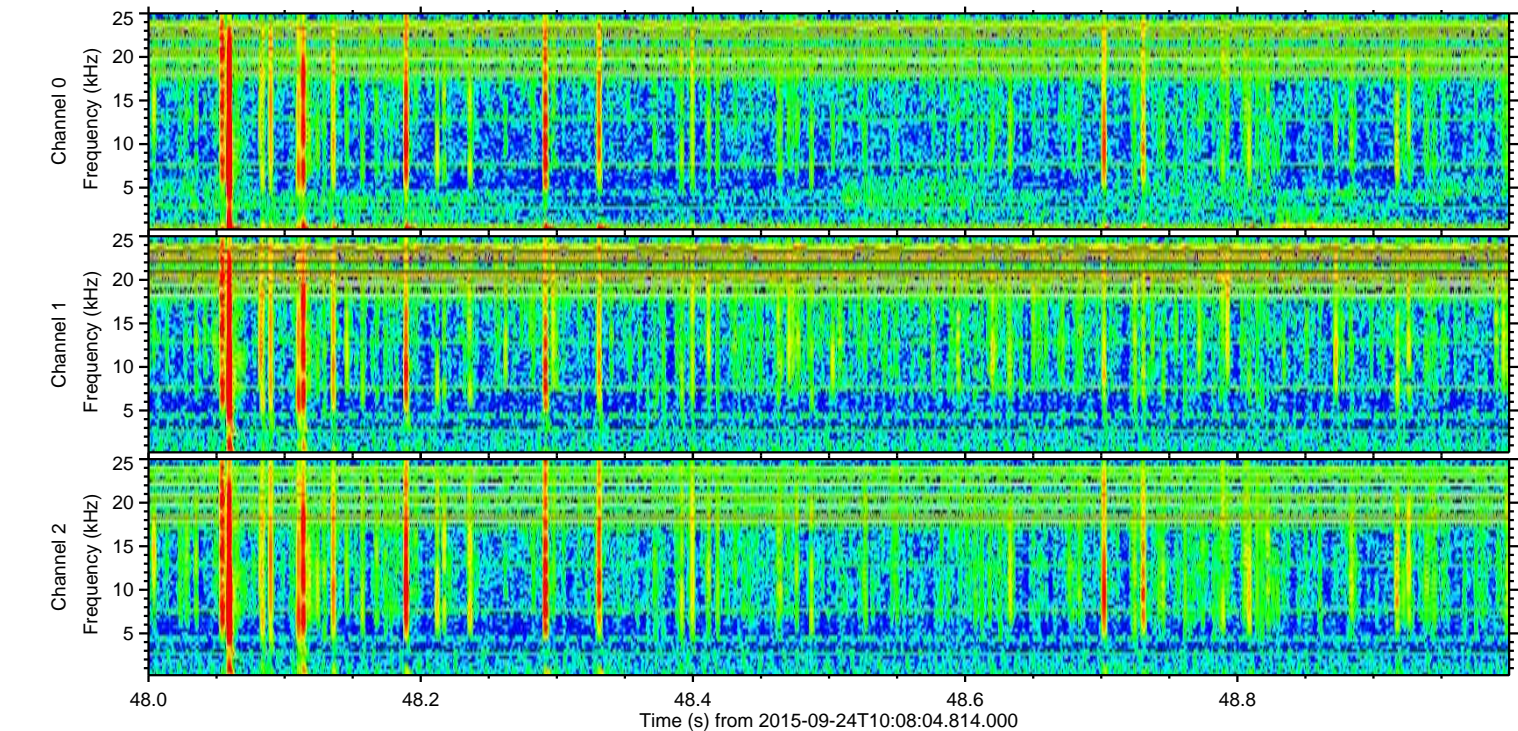
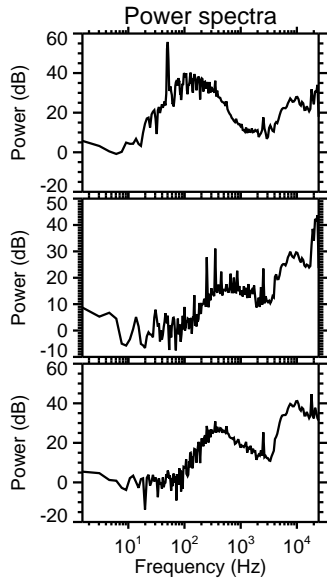
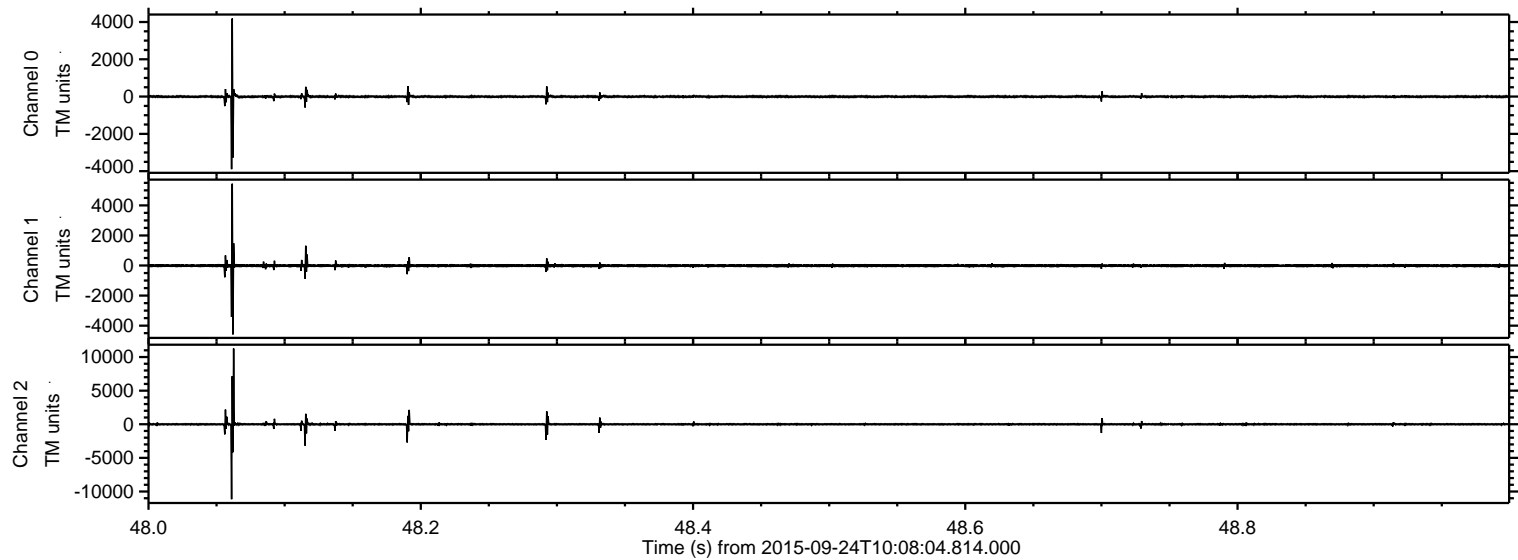
ELMAVAN 3D WAVEFORMS (Measured data sampled at 50 kHz) 51000 packets of 144 samples from 2015-09-24T10:08:04.814.000. Part 97/147

Processed Thu Oct 15 23:48:01 2015 by ELM ver.2012-10-06 from 001__elm20150924_100803__dat00.bin



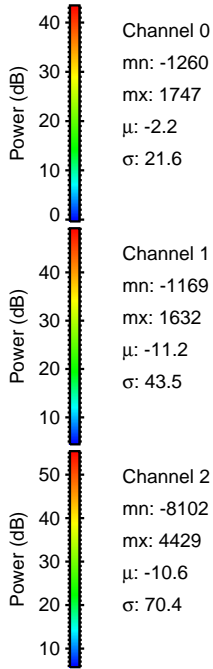
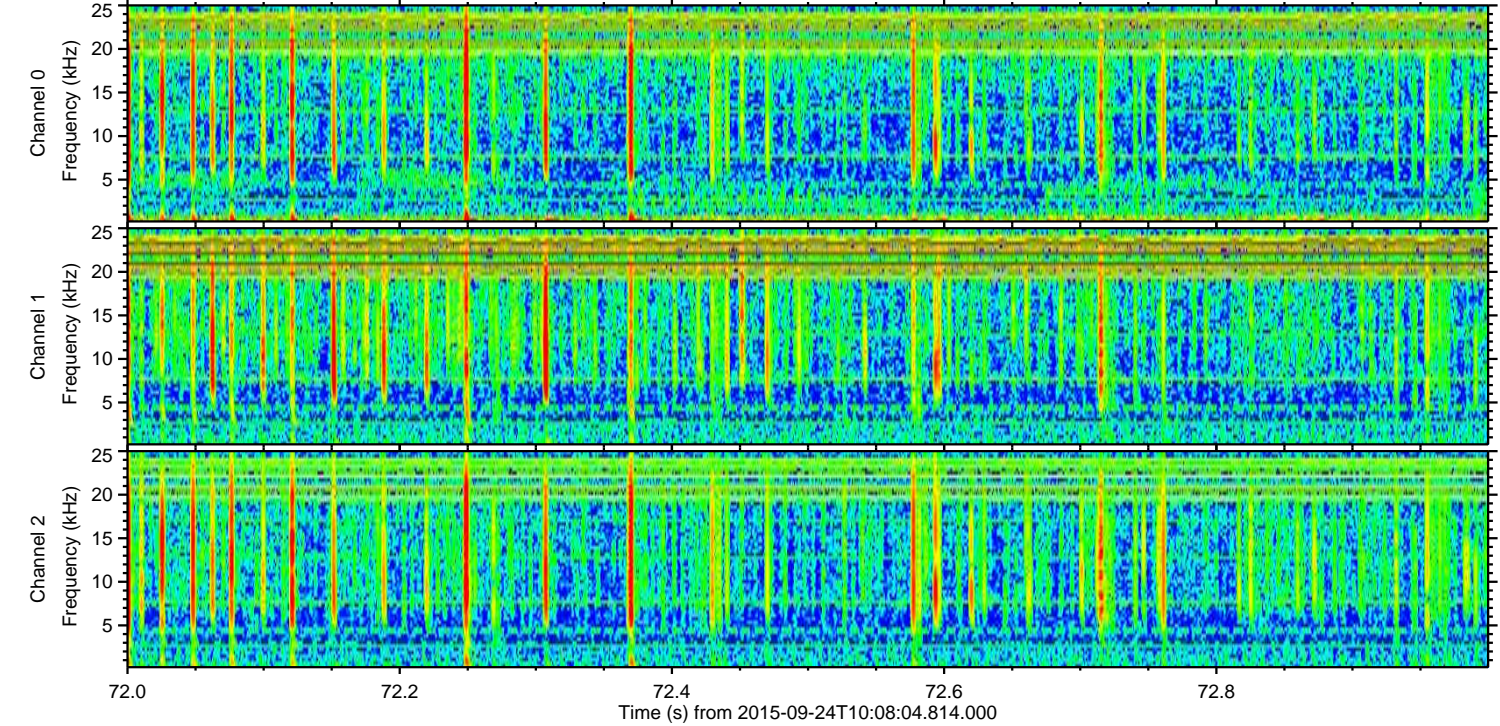
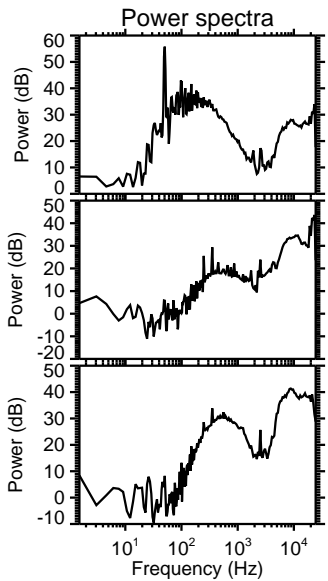
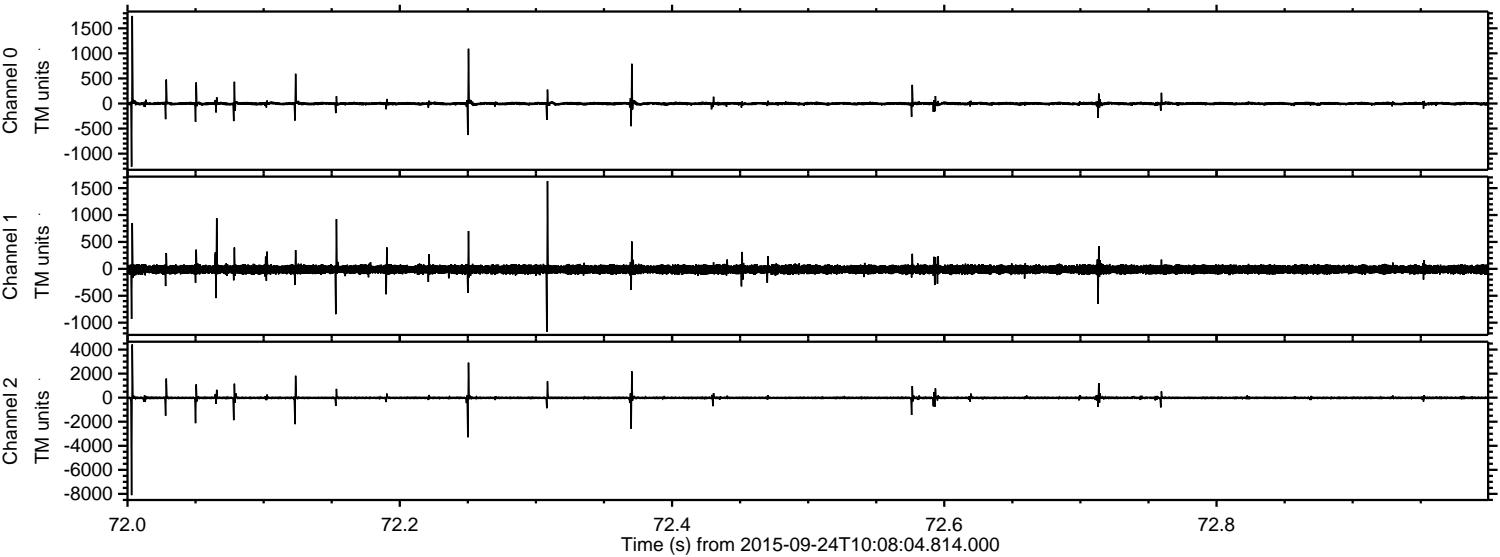
ELMAVAN 3D WAVEFORMS (Measured data sampled at 50 kHz) 51000 packets of 144 samples from 2015-09-24T10:08:04.814.000. Part 49/147

Processed Thu Oct 15 23:48:02 2015 by ELM ver.2012-10-06 from 001__elm20150924_100803__dat00.bin

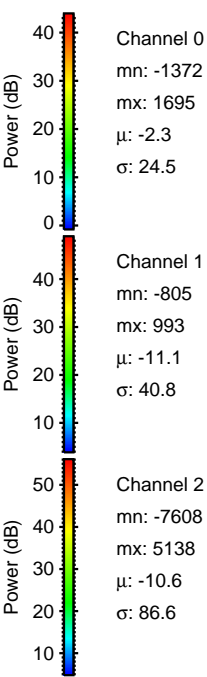
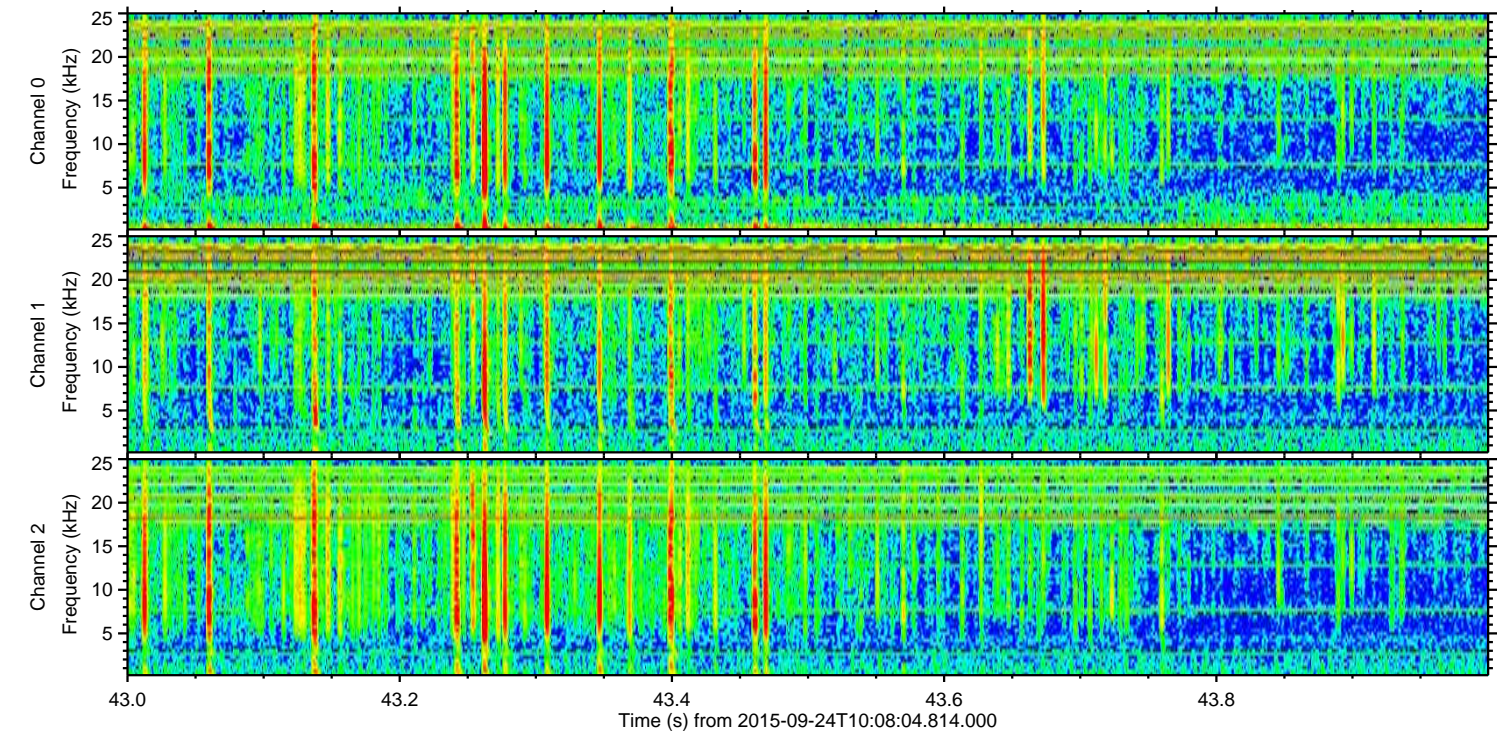
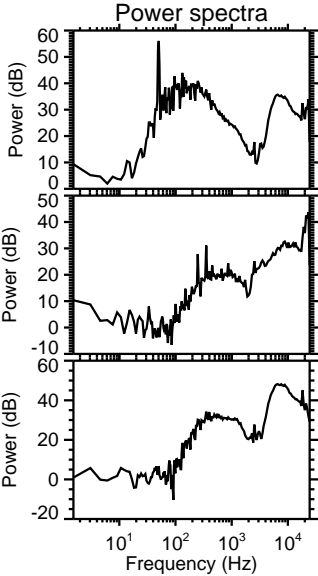
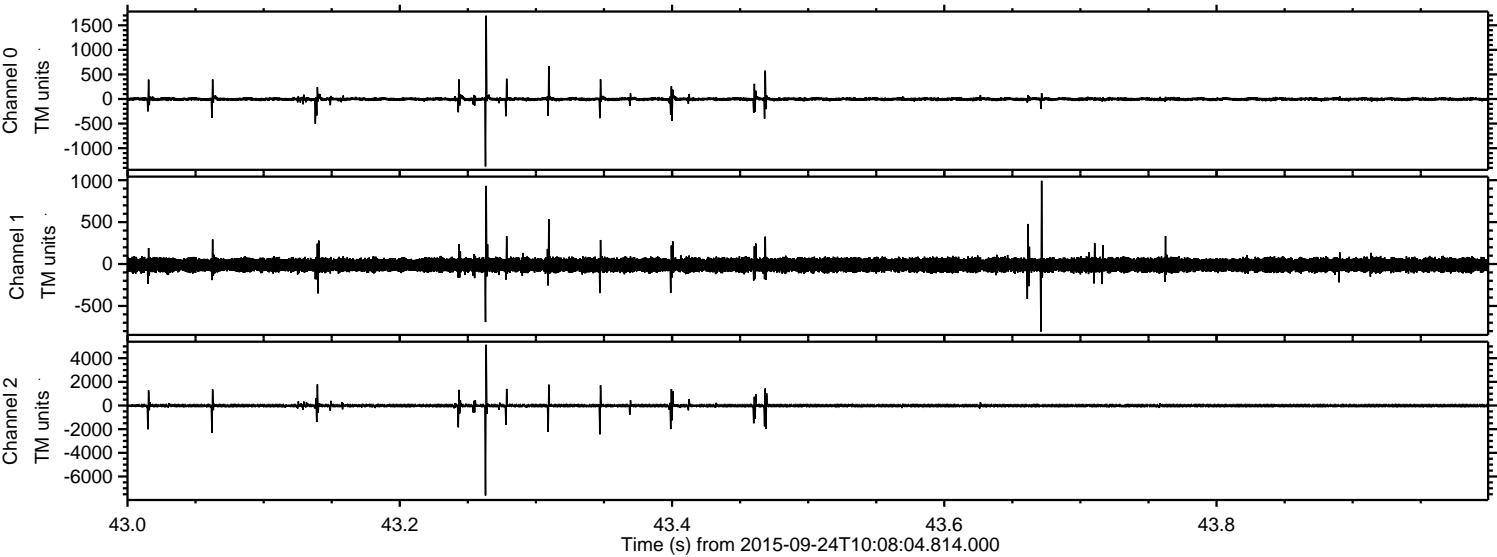


ELMAVAN 3D WAVEFORMS (Measured data sampled at 50 kHz) 51000 packets of 144 samples from 2015-09-24T10:08:04.814.000. Part 73/147

Processed Thu Oct 15 23:48:03 2015 by ELM ver.2012-10-06 from 001__elm20150924_100803__dat00.bin



Processed Thu Oct 15 23:48:05 2015 by ELM ver.2012-10-06 from 001__elm20150924_100803__dat00.bin



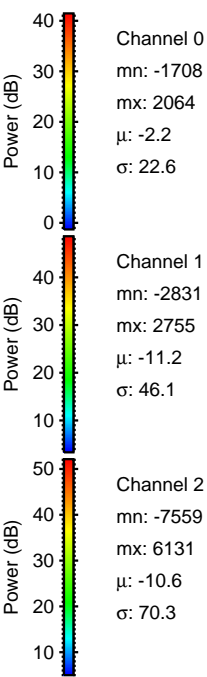
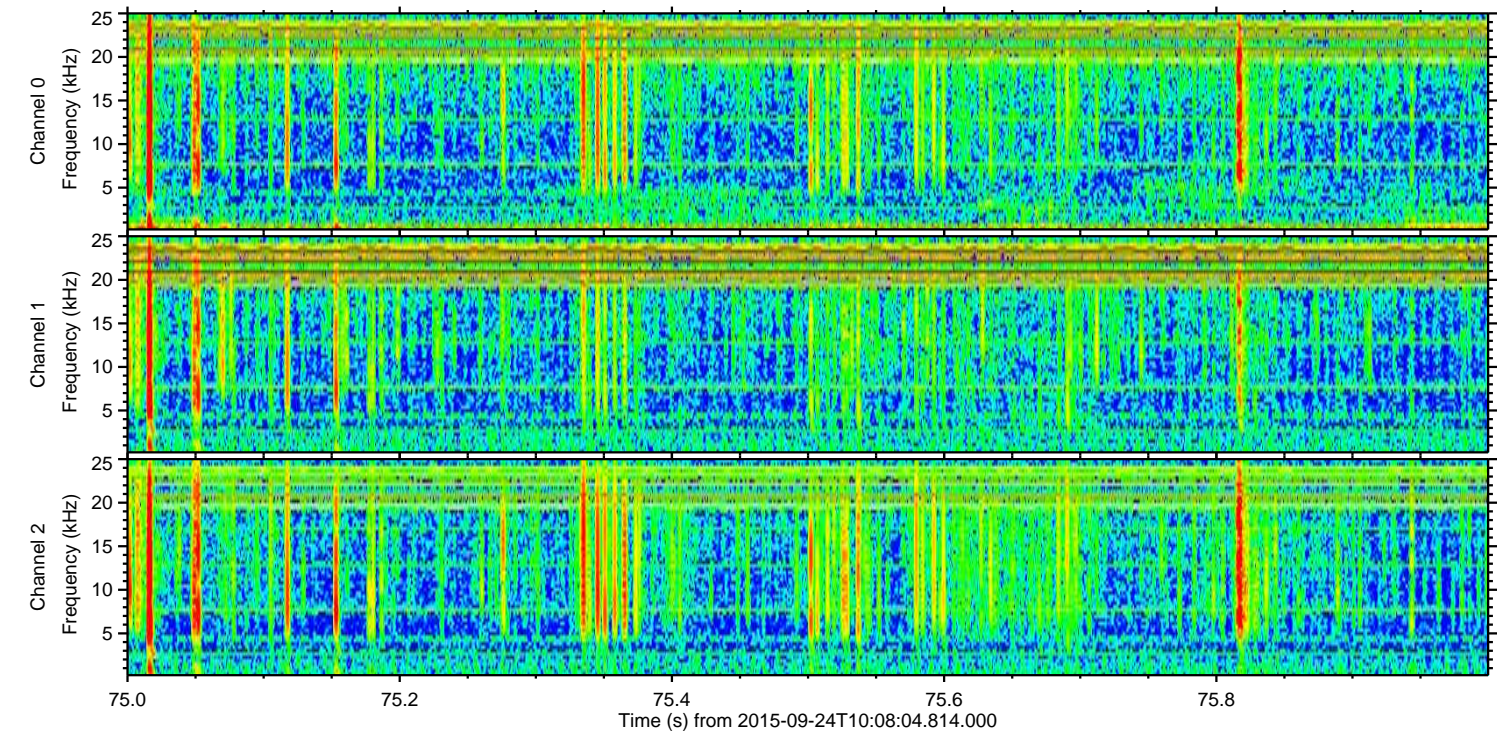
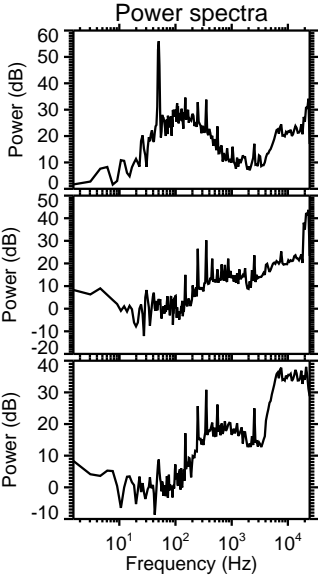
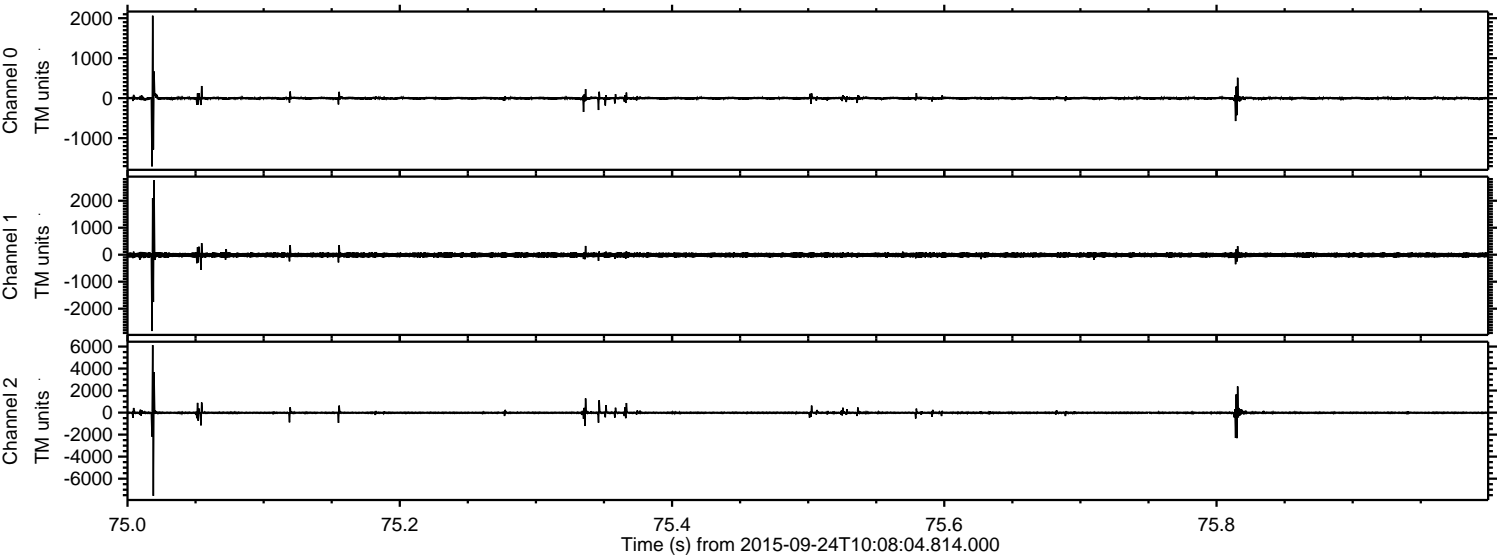
Channel 0
mn: -1372
mx: 1695
 μ : -2.3
 σ : 24.5

Channel 1
mn: -805
mx: 993
 μ : -11.1
 σ : 40.8

Channel 2
mn: -7608
mx: 5138
 μ : -10.6
 σ : 86.6

ELMAVAN 3D WAVEFORMS (Measured data sampled at 50 kHz) 51000 packets of 144 samples from 2015-09-24T10:08:04.814.000. Part 76/147

Processed Thu Oct 15 23:48:06 2015 by ELM ver.2012-10-06 from 001__elm20150924_100803__dat00.bin



Power spectra

Channel 0

mn: -1708
mx: 2064
 μ : -2.2
 σ : 22.6

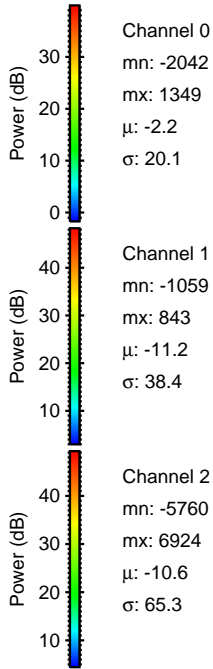
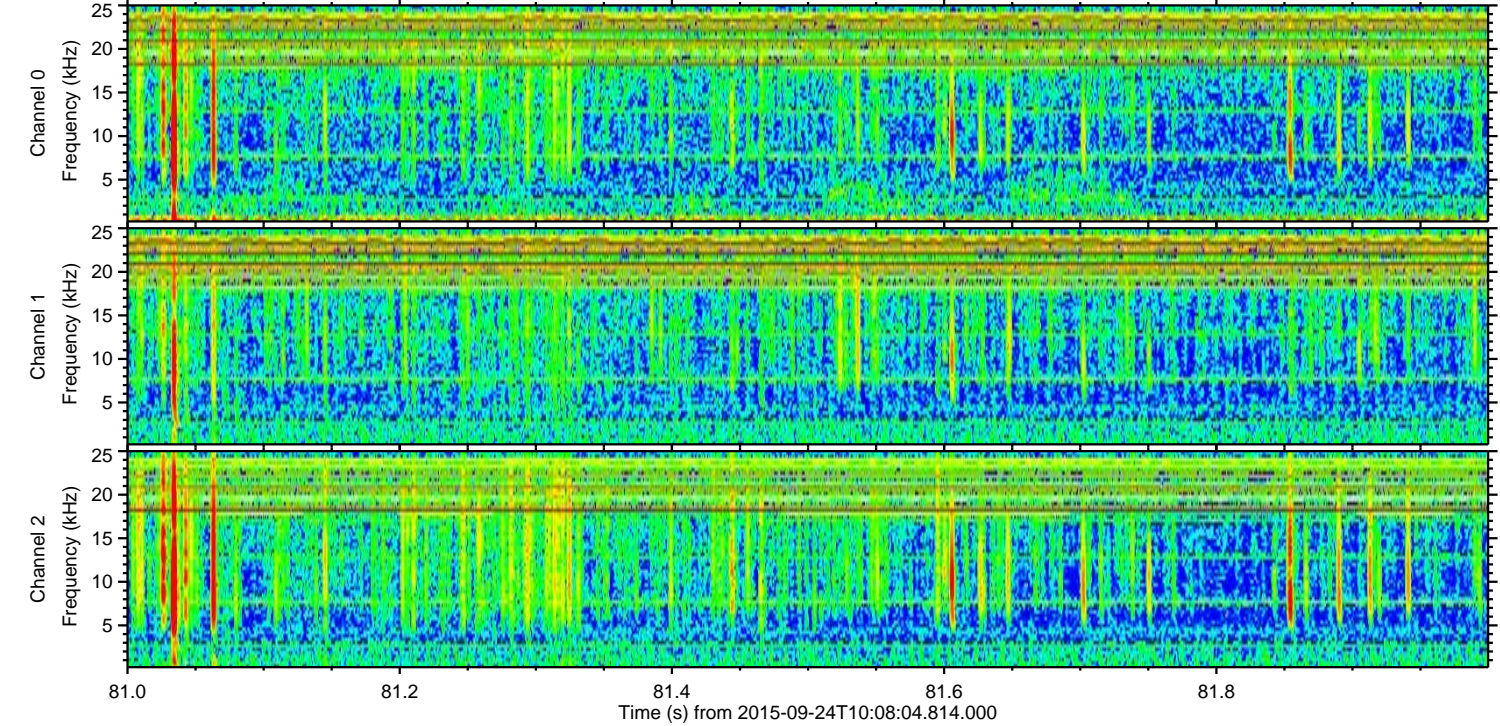
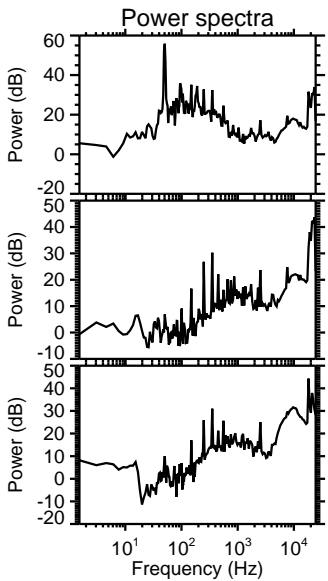
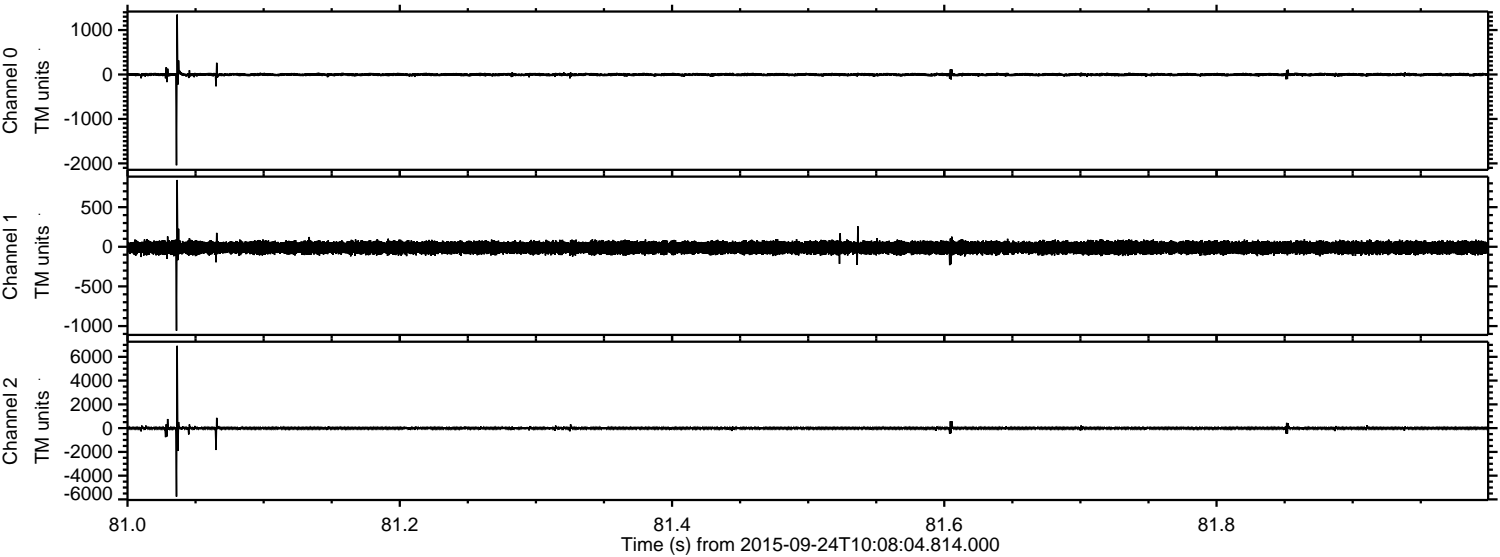
Channel 1

mn: -2831
mx: 2755
 μ : -11.2
 σ : 46.1

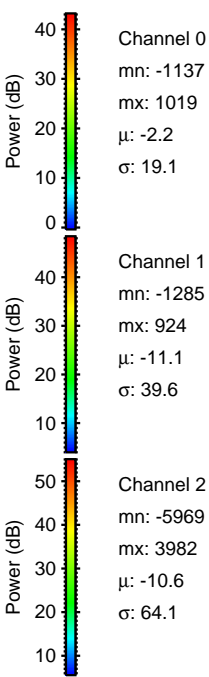
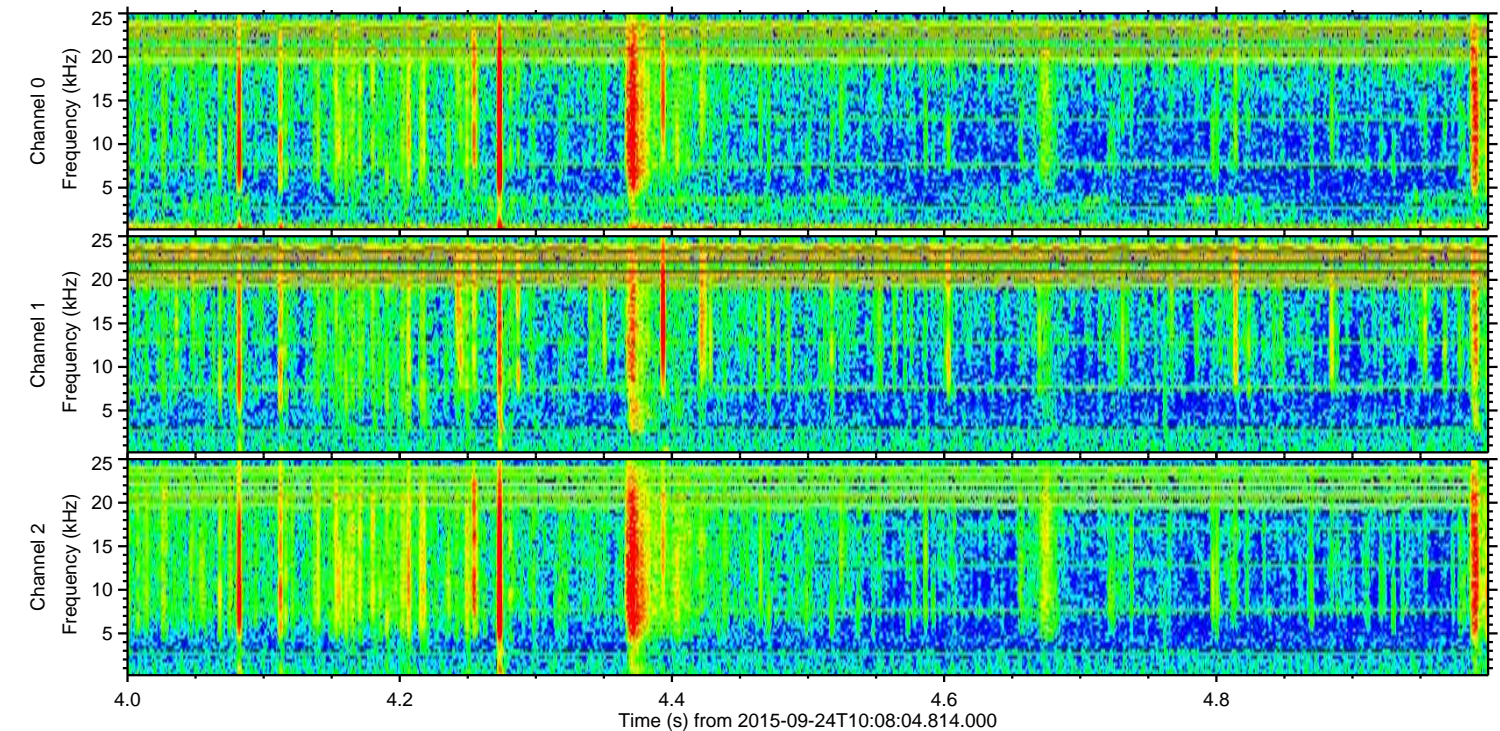
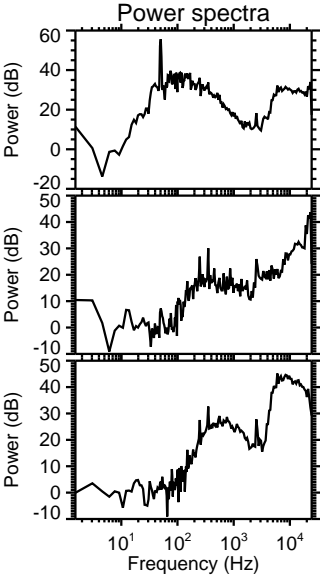
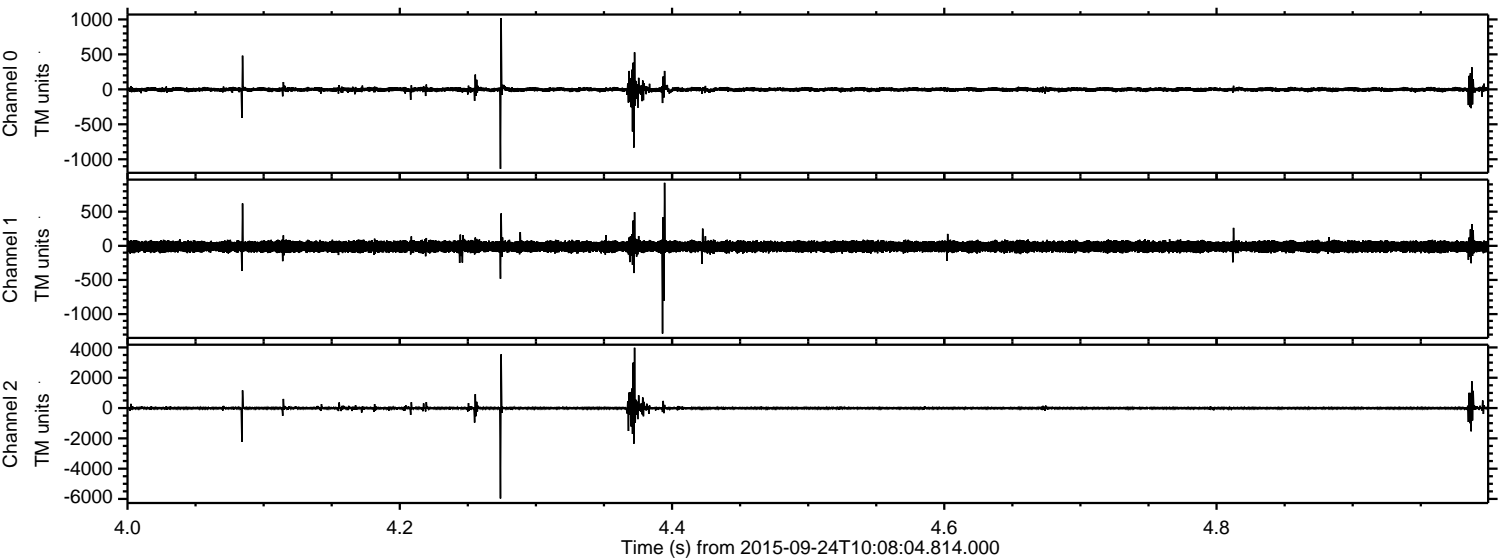
Channel 2

mn: -7559
mx: 6131
 μ : -10.6
 σ : 70.3

Processed Thu Oct 15 23:48:07 2015 by ELM ver.2012-10-06 from 001__elm20150924_100803__dat00.bin



Processed Thu Oct 15 23:48:09 2015 by ELM ver.2012-10-06 from 001__elm20150924_100803__dat00.bin

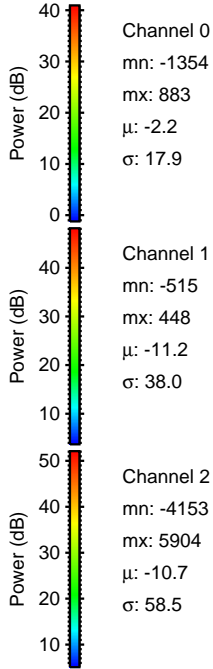
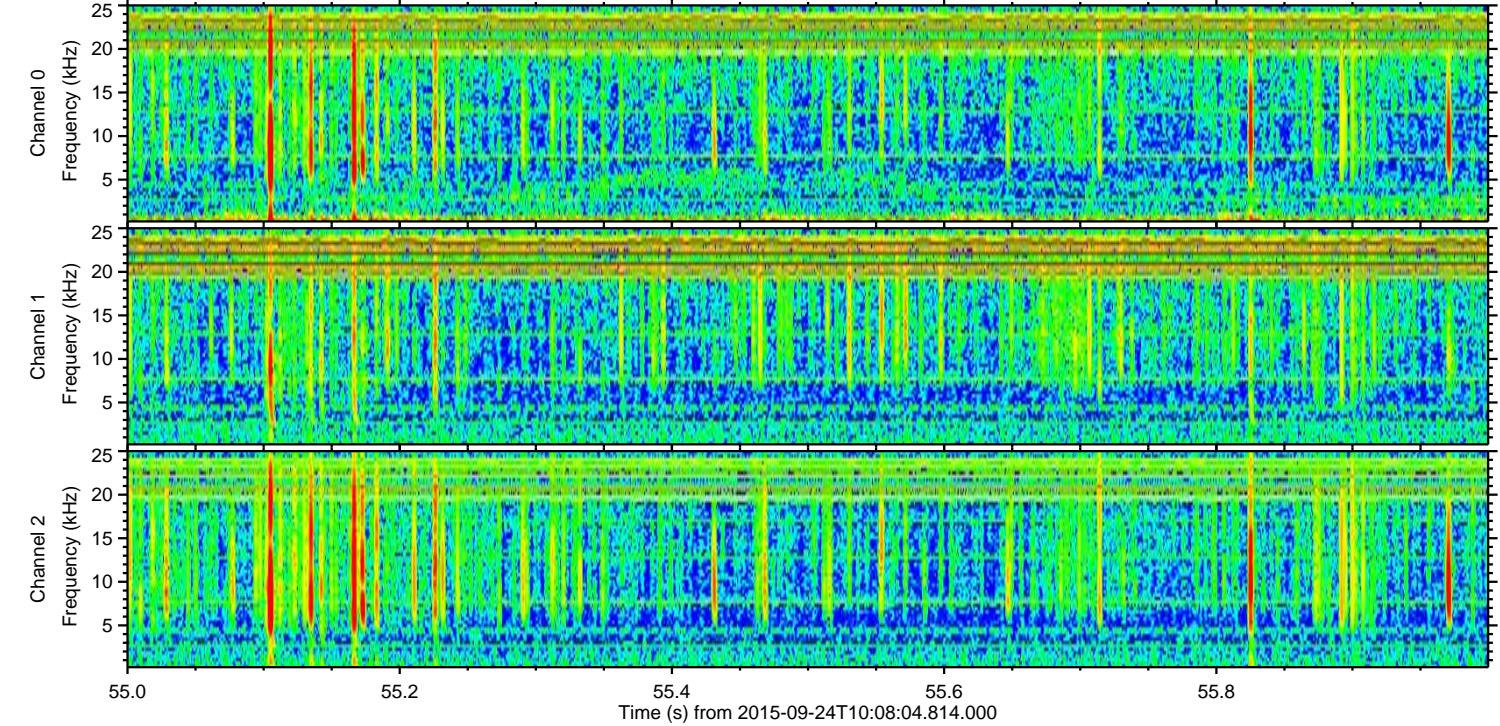
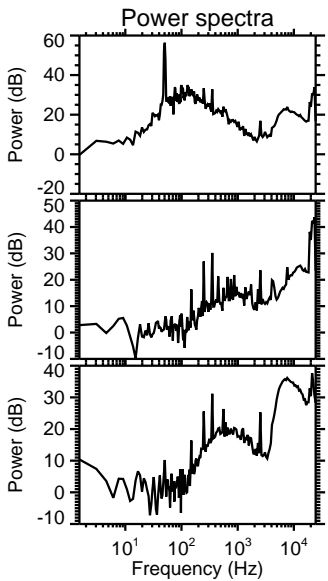
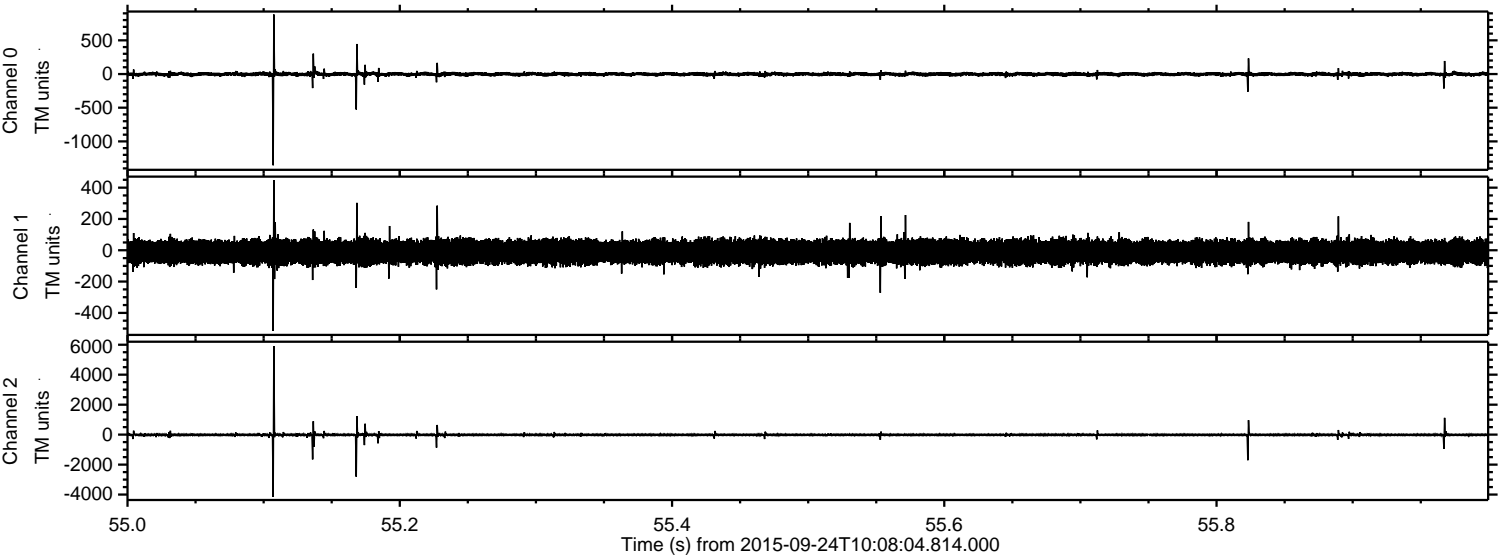


Channel 0
mn: -1137
mx: 1019
 μ : -2.2
 σ : 19.1

Channel 1
mn: -1285
mx: 924
 μ : -11.1
 σ : 39.6

Channel 2
mn: -5969
mx: 3982
 μ : -10.6
 σ : 64.1

Processed Thu Oct 15 23:48:10 2015 by ELM ver.2012-10-06 from 001__elm20150924_100803__dat00.bin



Channel 0
mn: -1354
mx: 883
 μ : -2.2
 σ : 17.9

Channel 1
mn: -515
mx: 448
 μ : -11.2
 σ : 38.0

Channel 2
mn: -4153
mx: 5904
 μ : -10.7
 σ : 58.5

ELMAVAN 3D WAVEFORMS (Measured data sampled at 50 kHz) 51000 packets of 144 samples from 2015-09-24T10:08:04.814.000. Part 103/147

