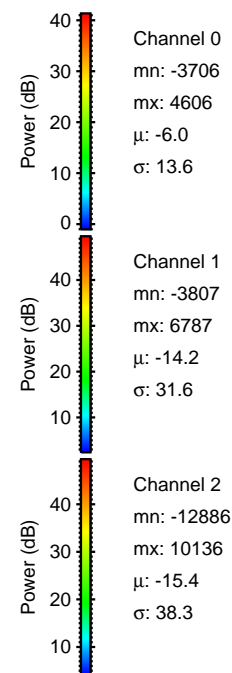
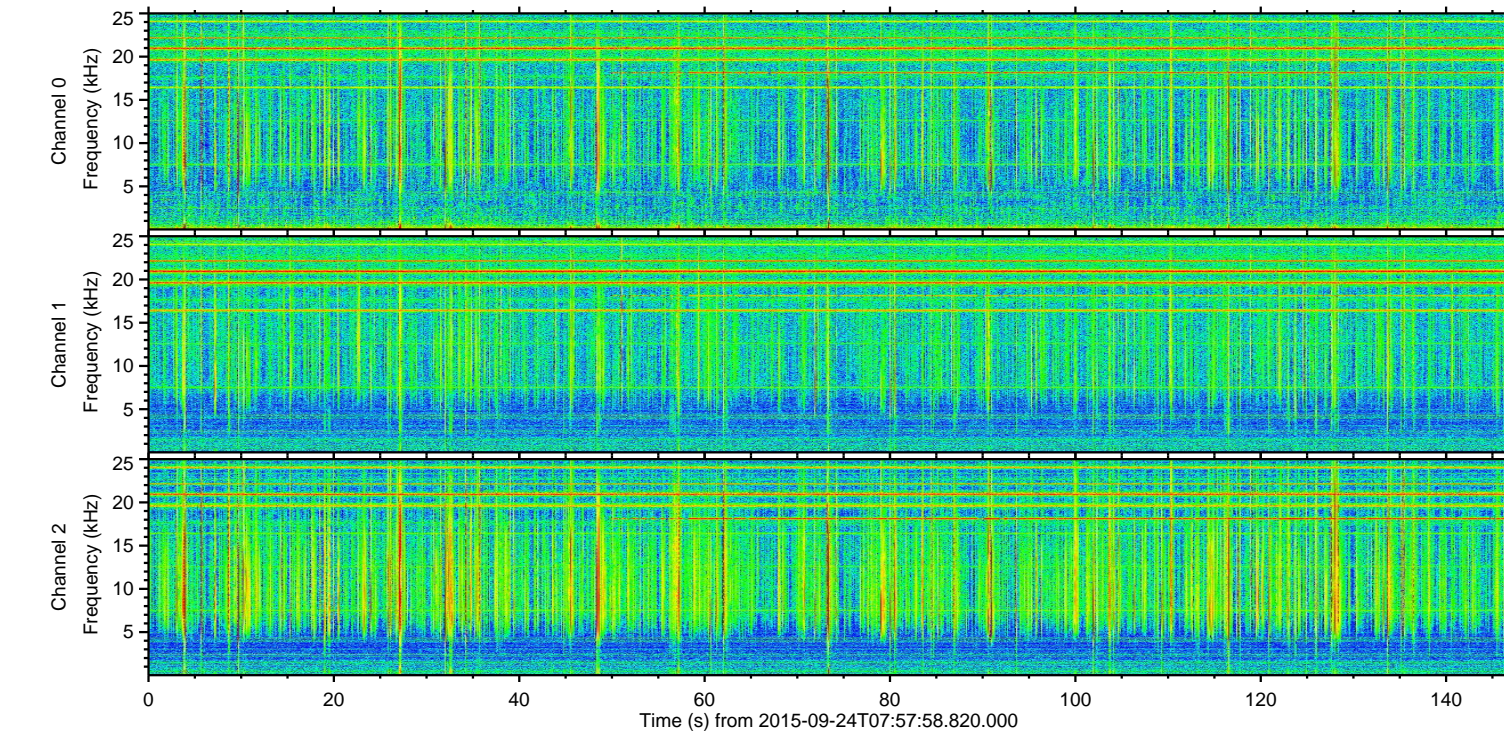
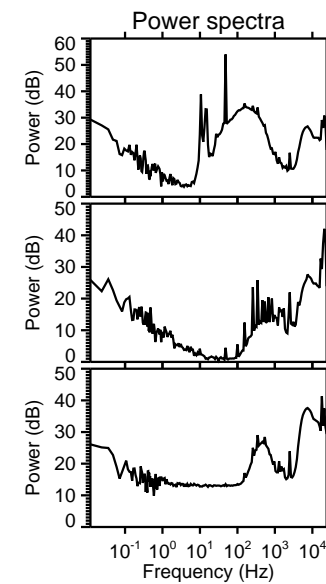
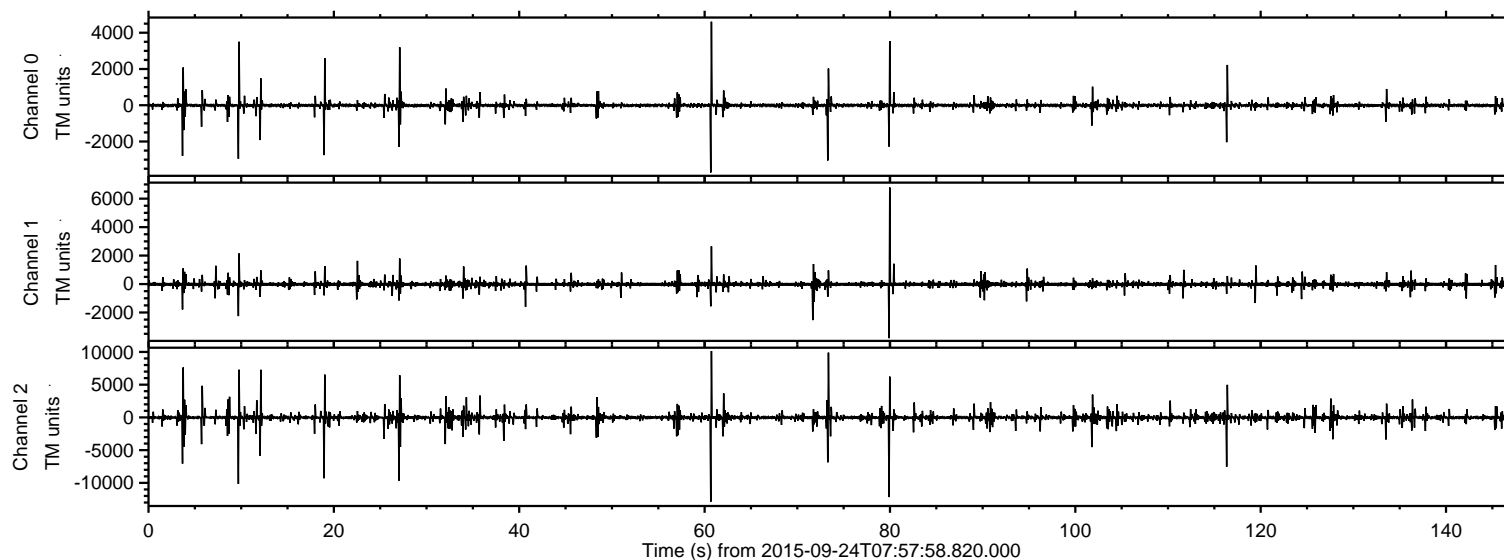


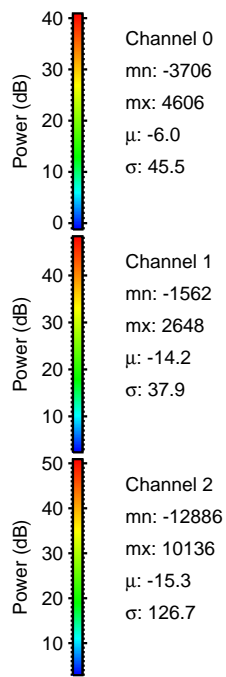
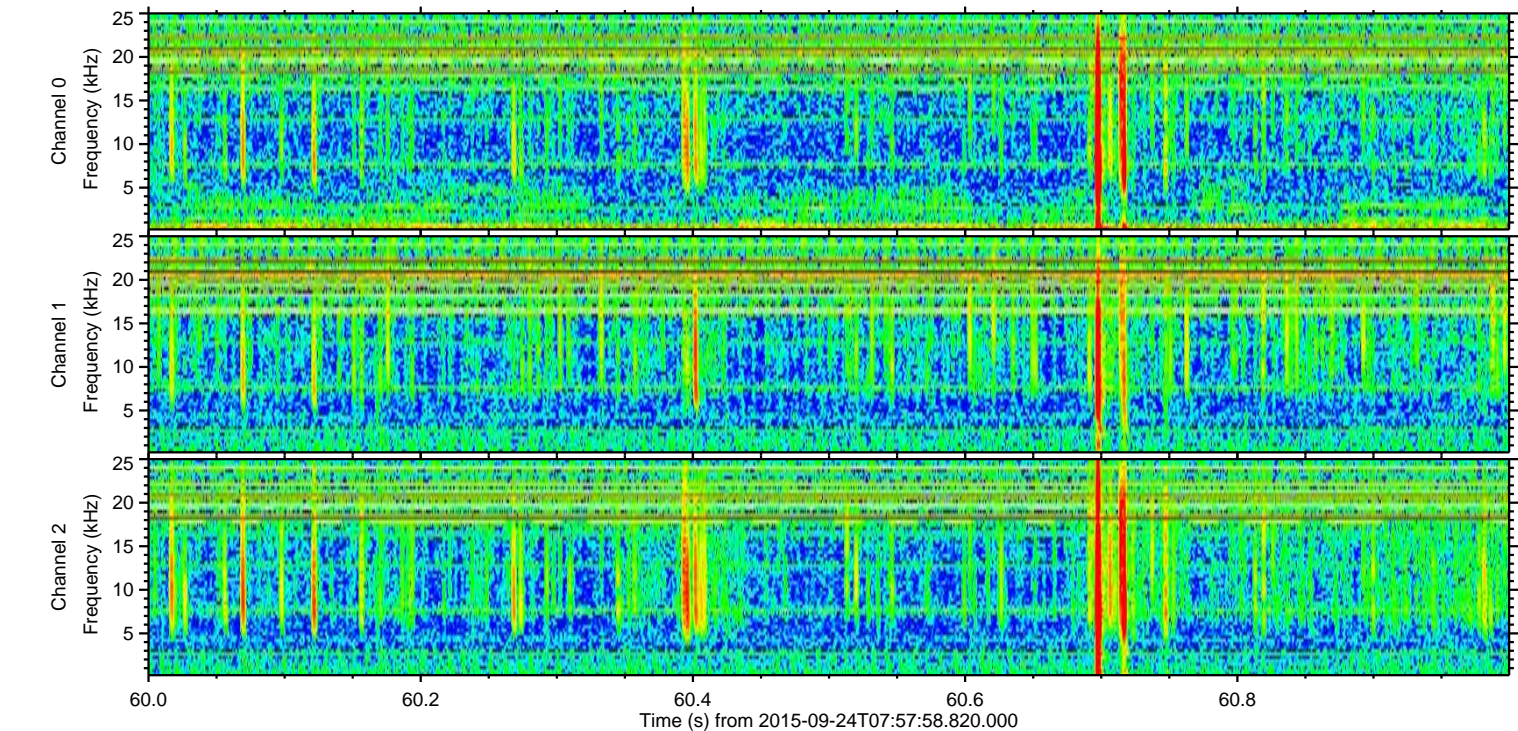
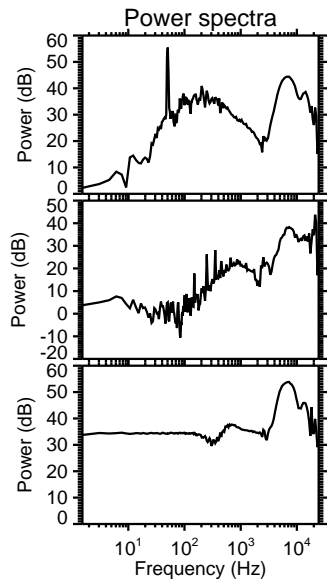
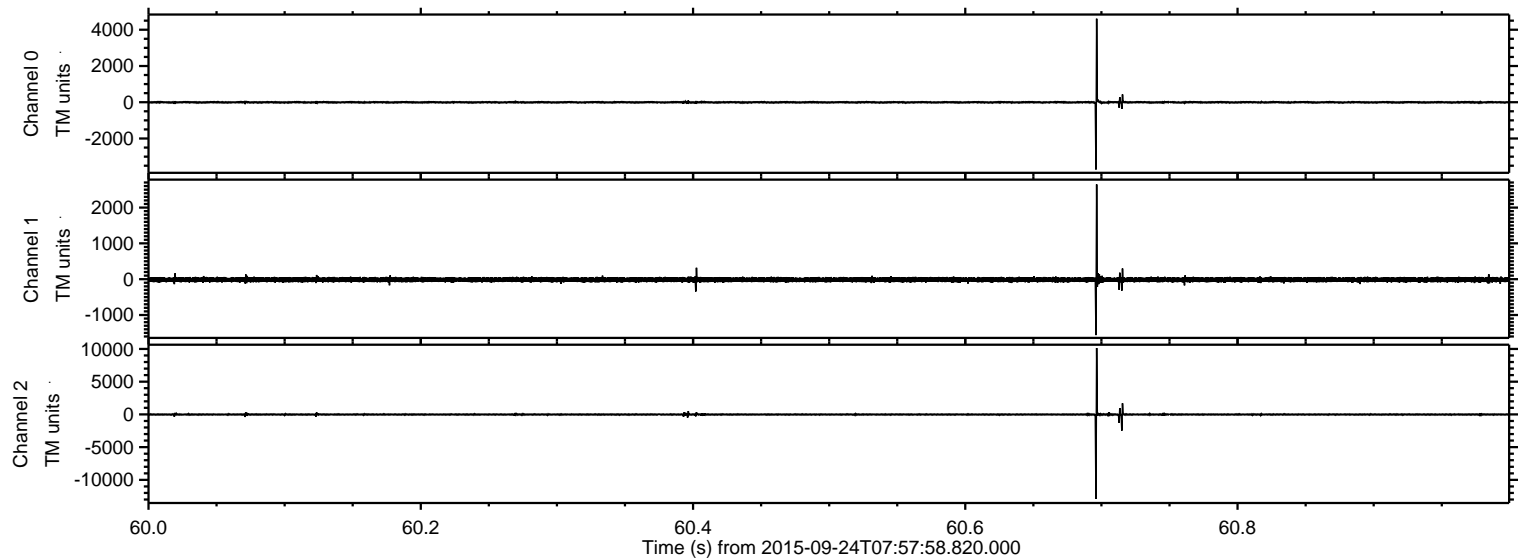
# ELMAVAN 3D WAVEFORMS (Measured data sampled at 50 kHz) 51000 packets of 144 samples from 2015-09-24T07:57:58.820.000.

Processed Thu Oct 15 23:04:43 2015 by ELM ver.2012-10-06 from 001\_\_elm20150924\_075757\_\_dat00.bin





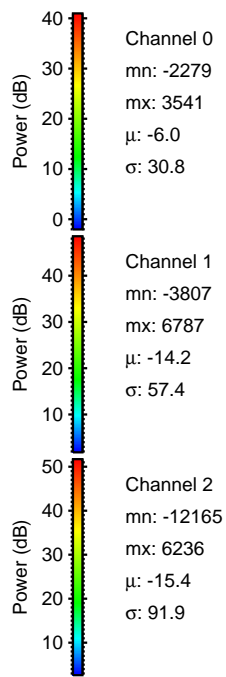
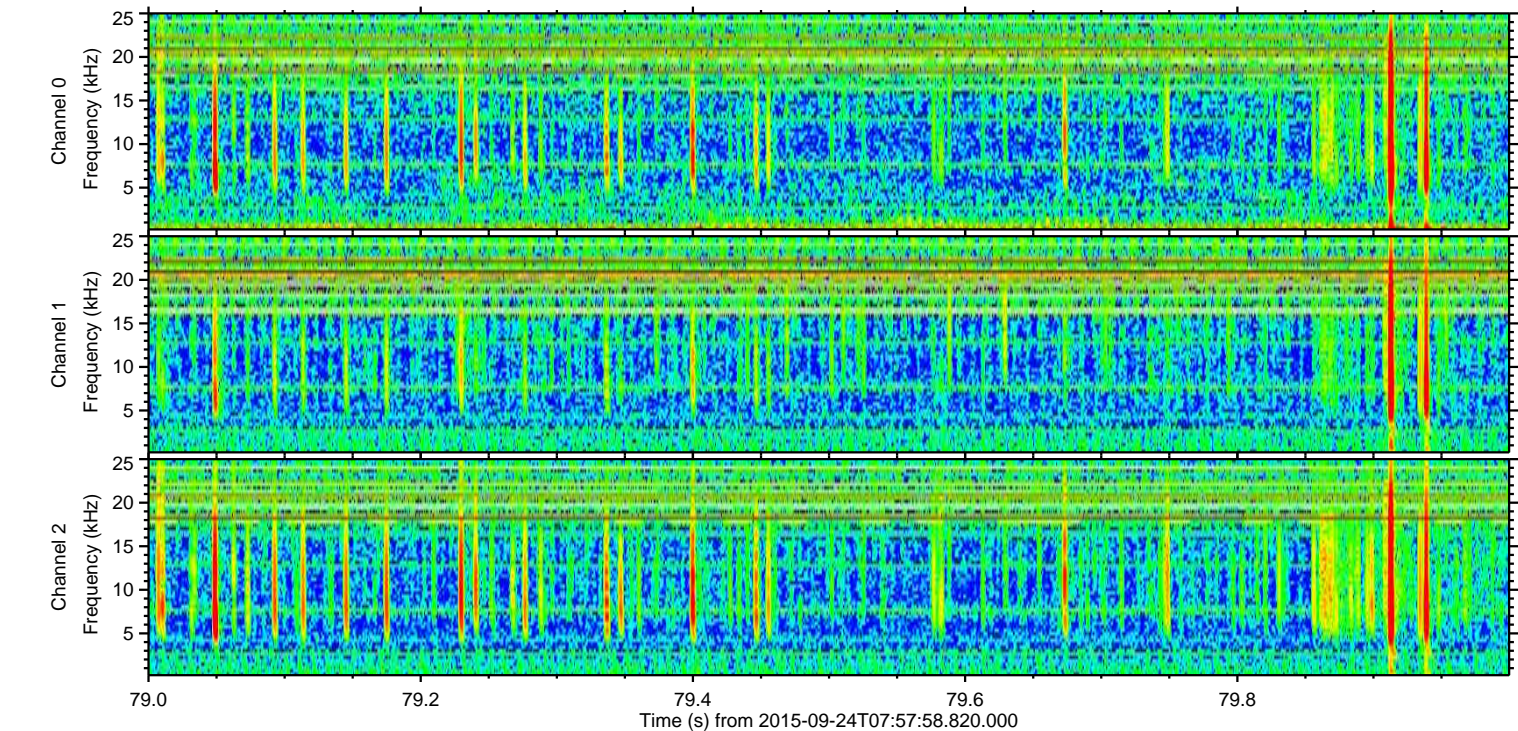
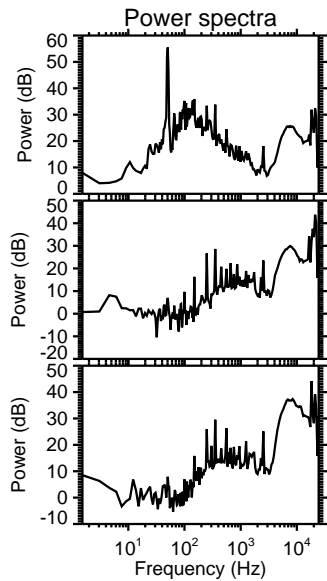
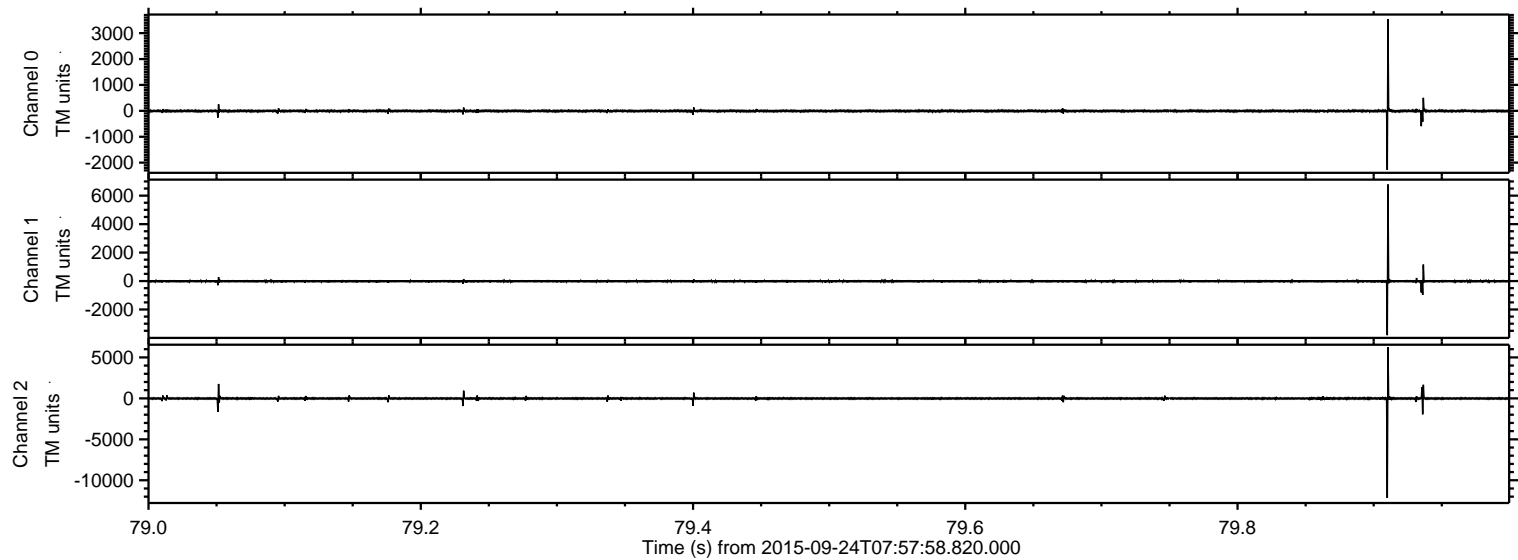
Processed Thu Oct 15 23:05:01 2015 by ELM ver.2012-10-06 from 001\_\_elm20150924\_075757\_\_dat00.bin





ELMAVAN 3D WAVEFORMS (Measured data sampled at 50 kHz) 51000 packets of 144 samples from 2015-09-24T07:57:58.820.000. Part 80/147

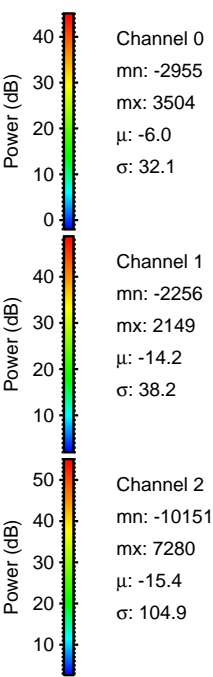
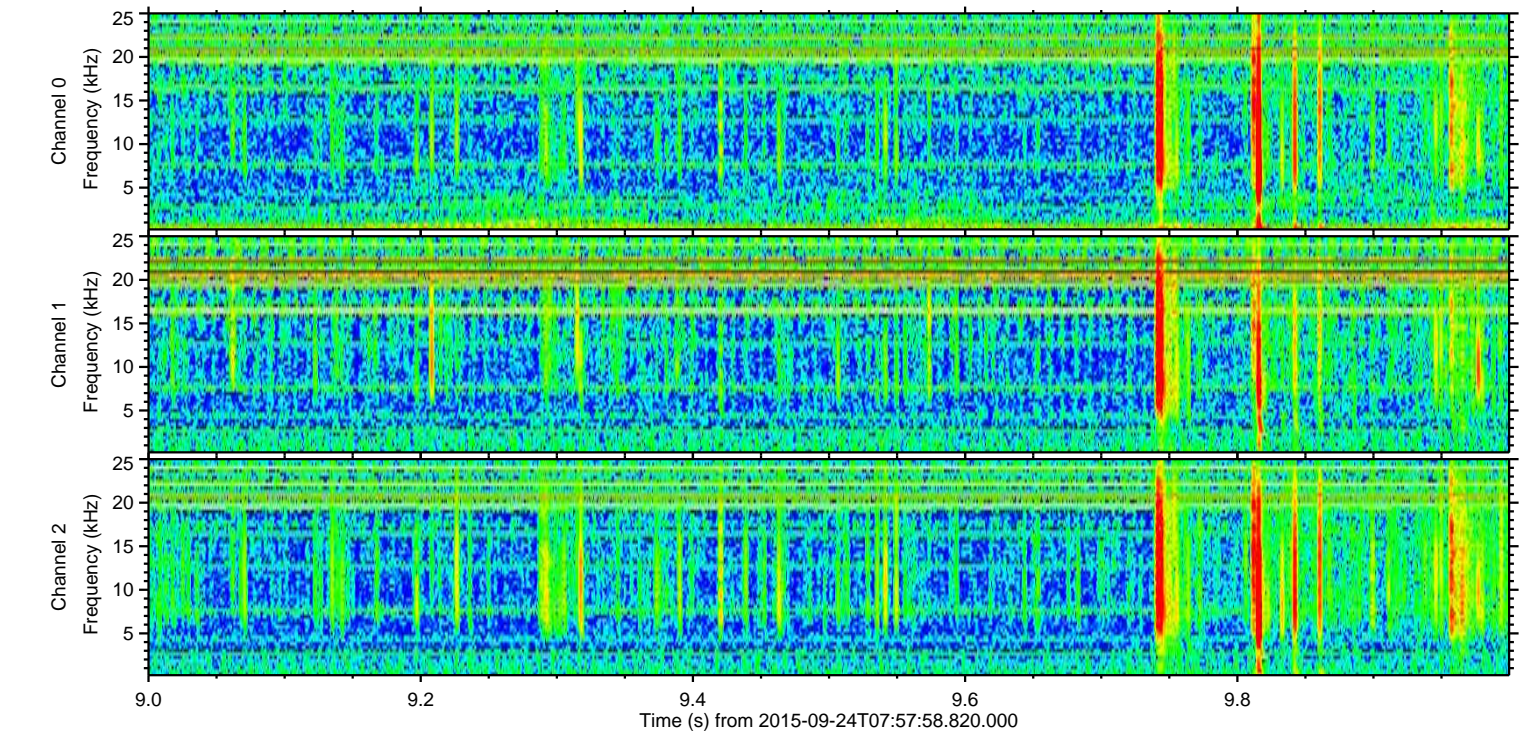
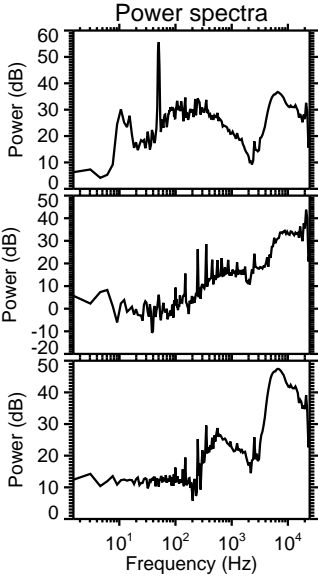
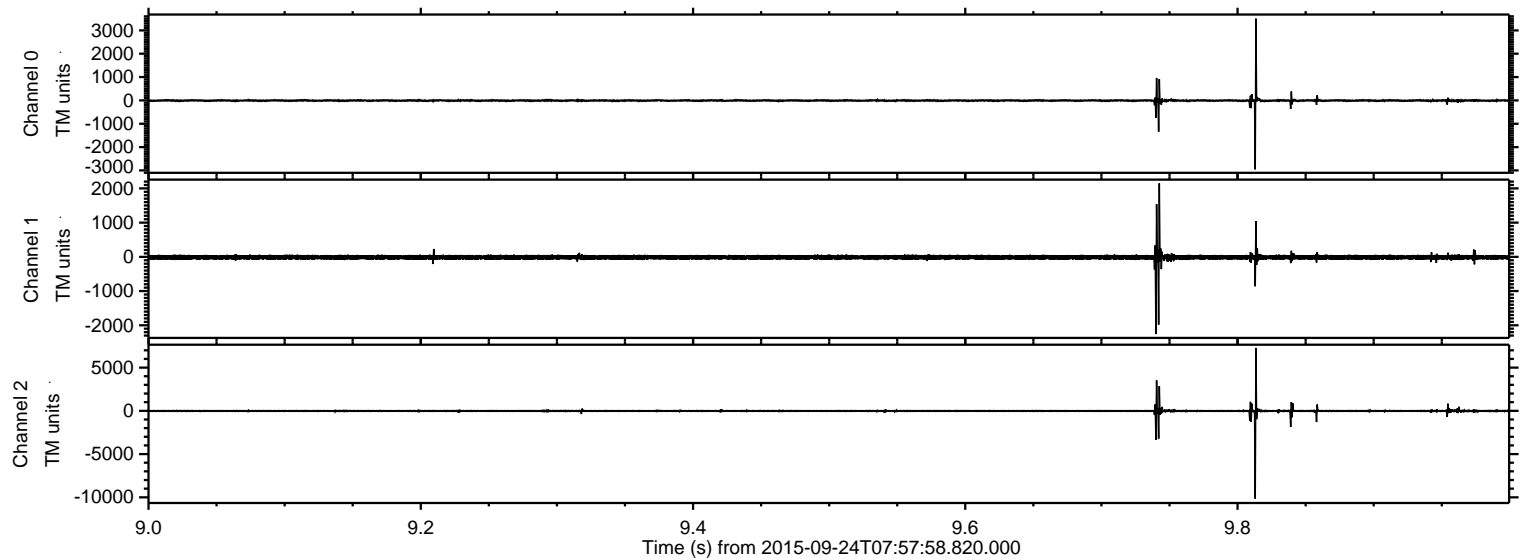
Processed Thu Oct 15 23:05:02 2015 by ELM ver.2012-10-06 from 001\_\_elm20150924\_075757\_\_dat00.bin





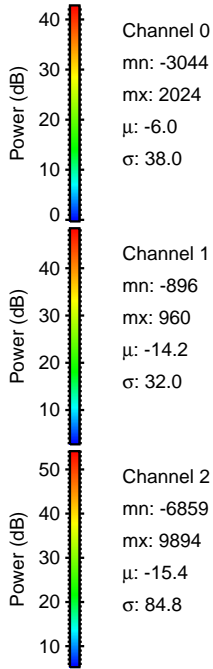
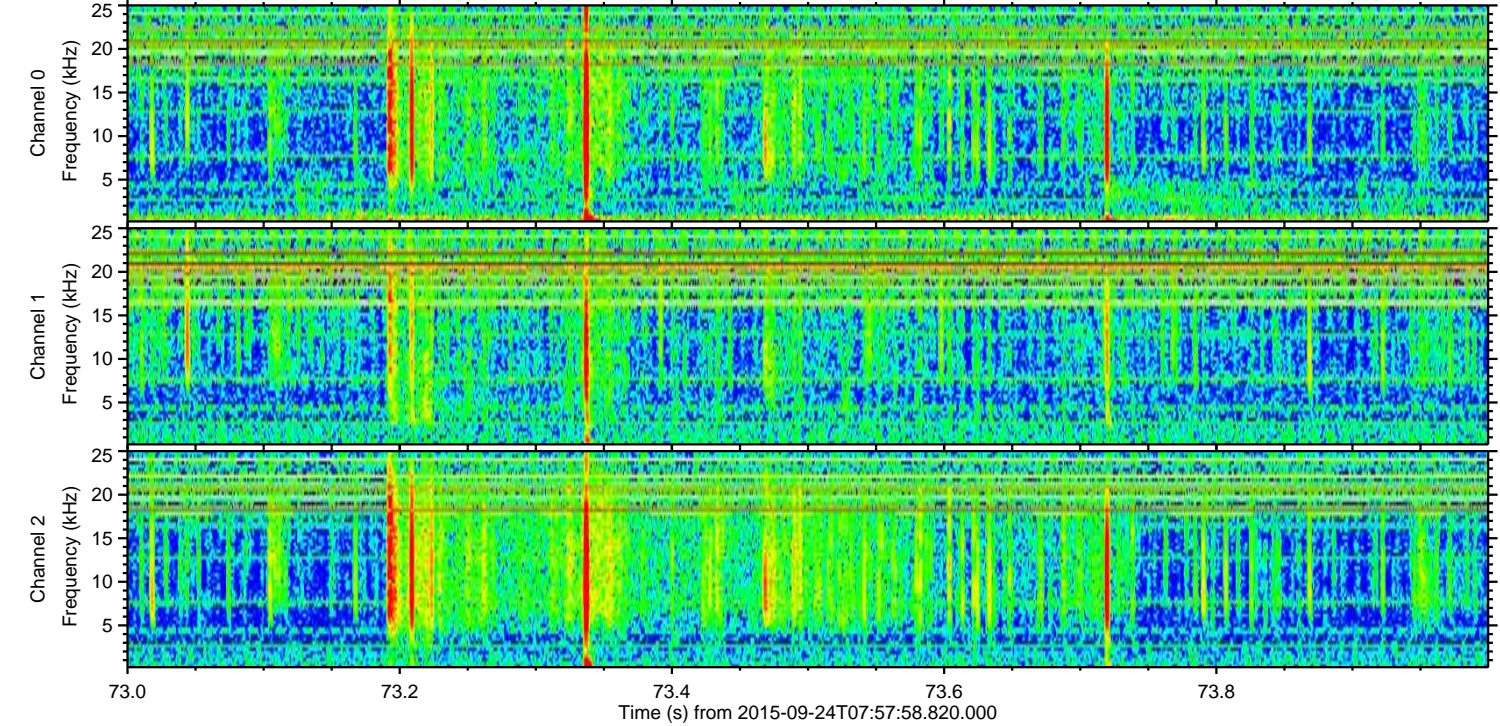
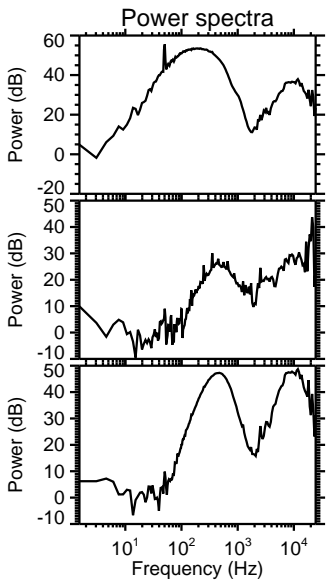
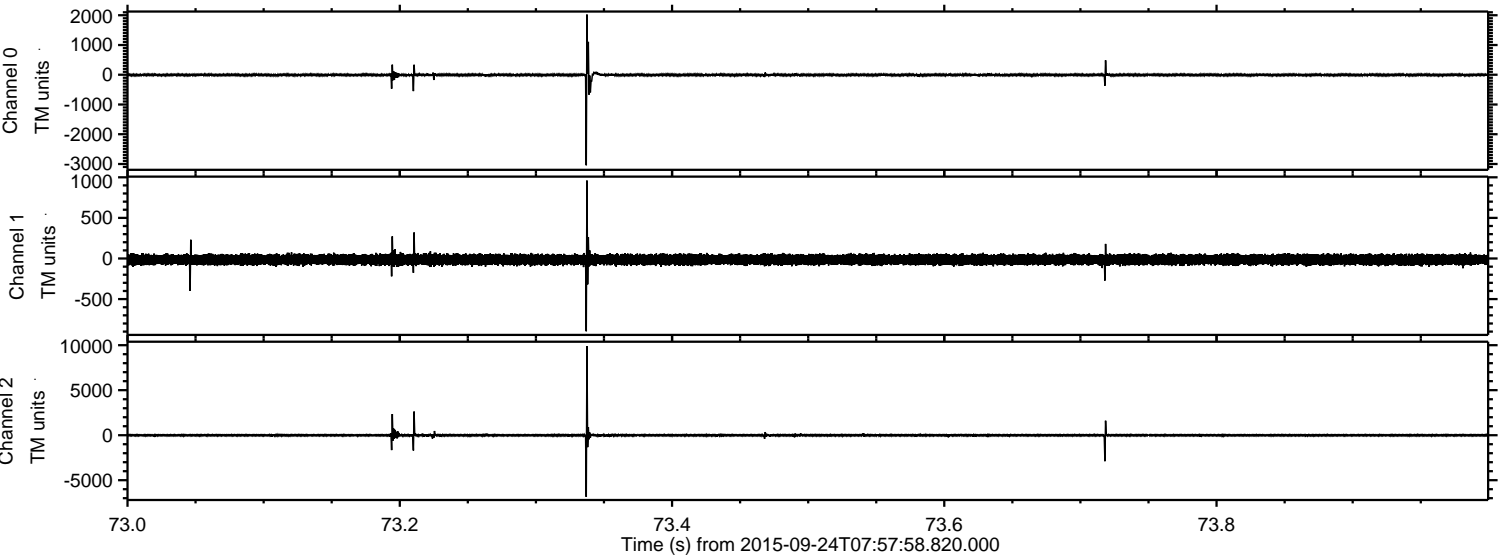
ELMAVAN 3D WAVEFORMS (Measured data sampled at 50 kHz) 51000 packets of 144 samples from 2015-09-24T07:57:58.820.000. Part 10/147

Processed Thu Oct 15 23:05:03 2015 by ELM ver.2012-10-06 from 001\_\_elm20150924\_075757\_\_dat00.bin





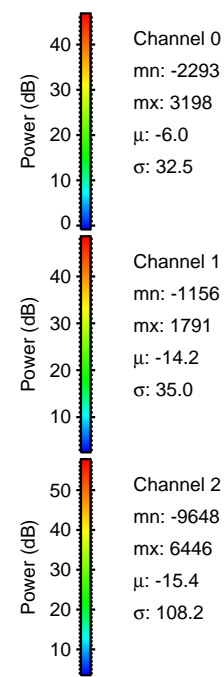
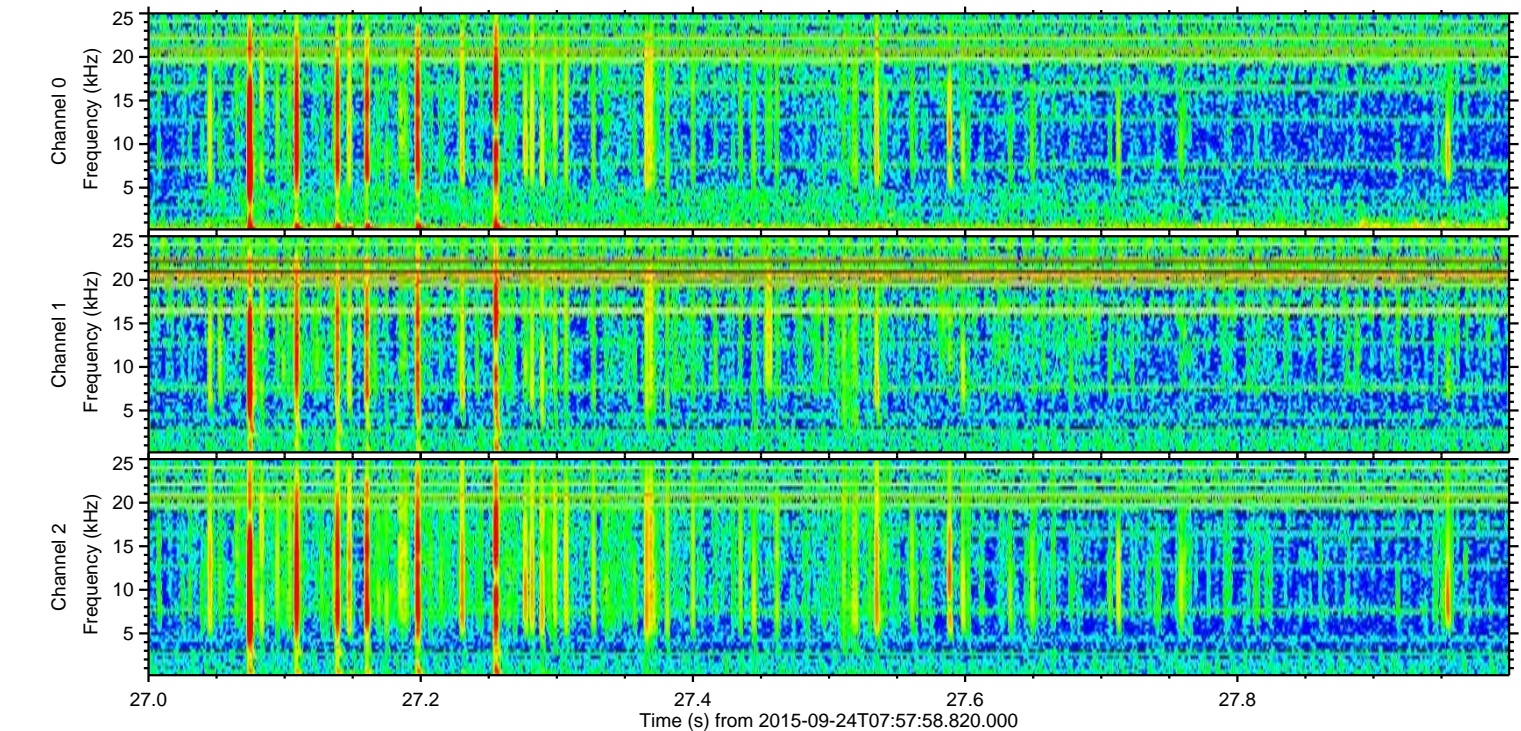
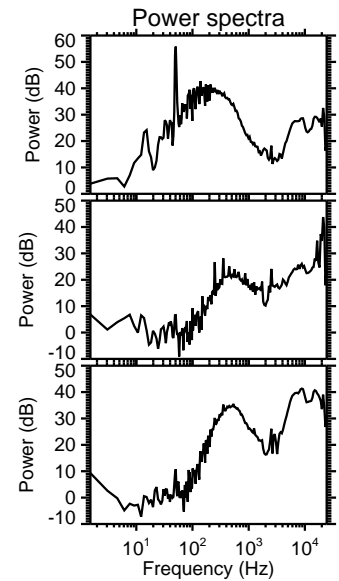
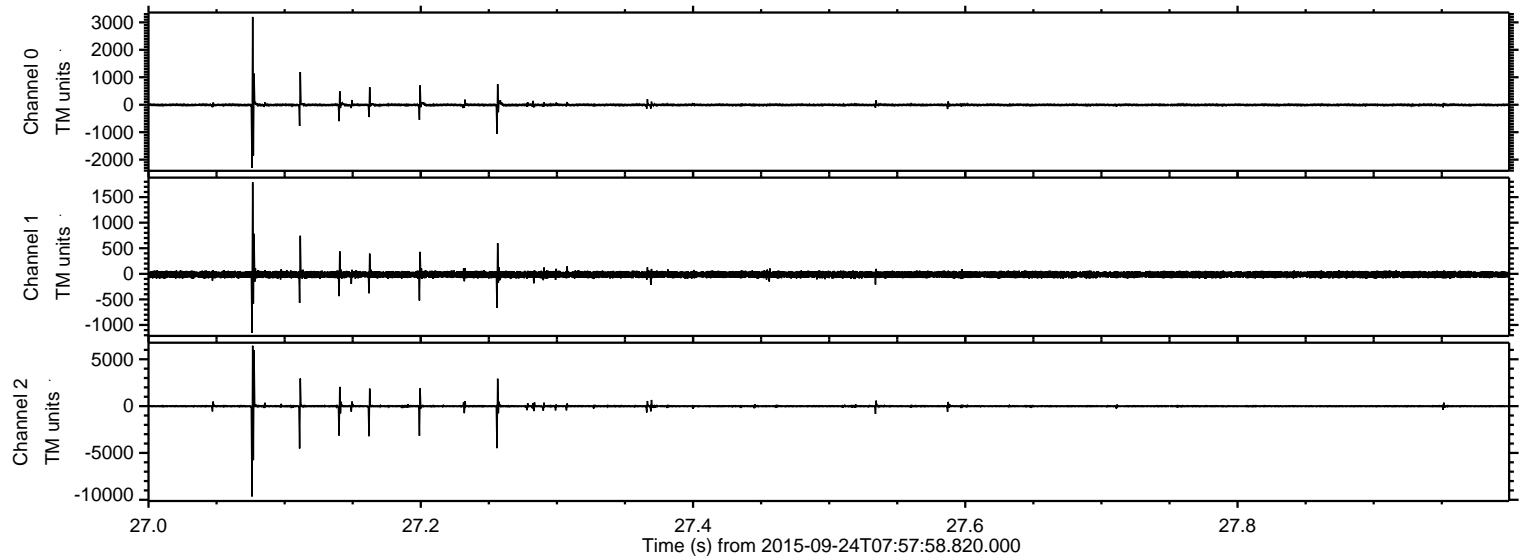
Processed Thu Oct 15 23:05:04 2015 by ELM ver.2012-10-06 from 001\_\_elm20150924\_075757\_\_dat00.bin





ELMAVAN 3D WAVEFORMS (Measured data sampled at 50 kHz) 51000 packets of 144 samples from 2015-09-24T07:57:58.820.000. Part 28/147

Processed Thu Oct 15 23:05:05 2015 by ELM ver.2012-10-06 from 001\_\_elm20150924\_075757\_\_dat00.bin



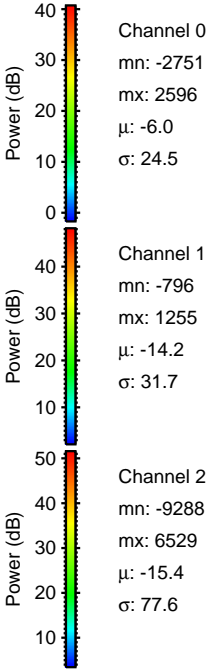
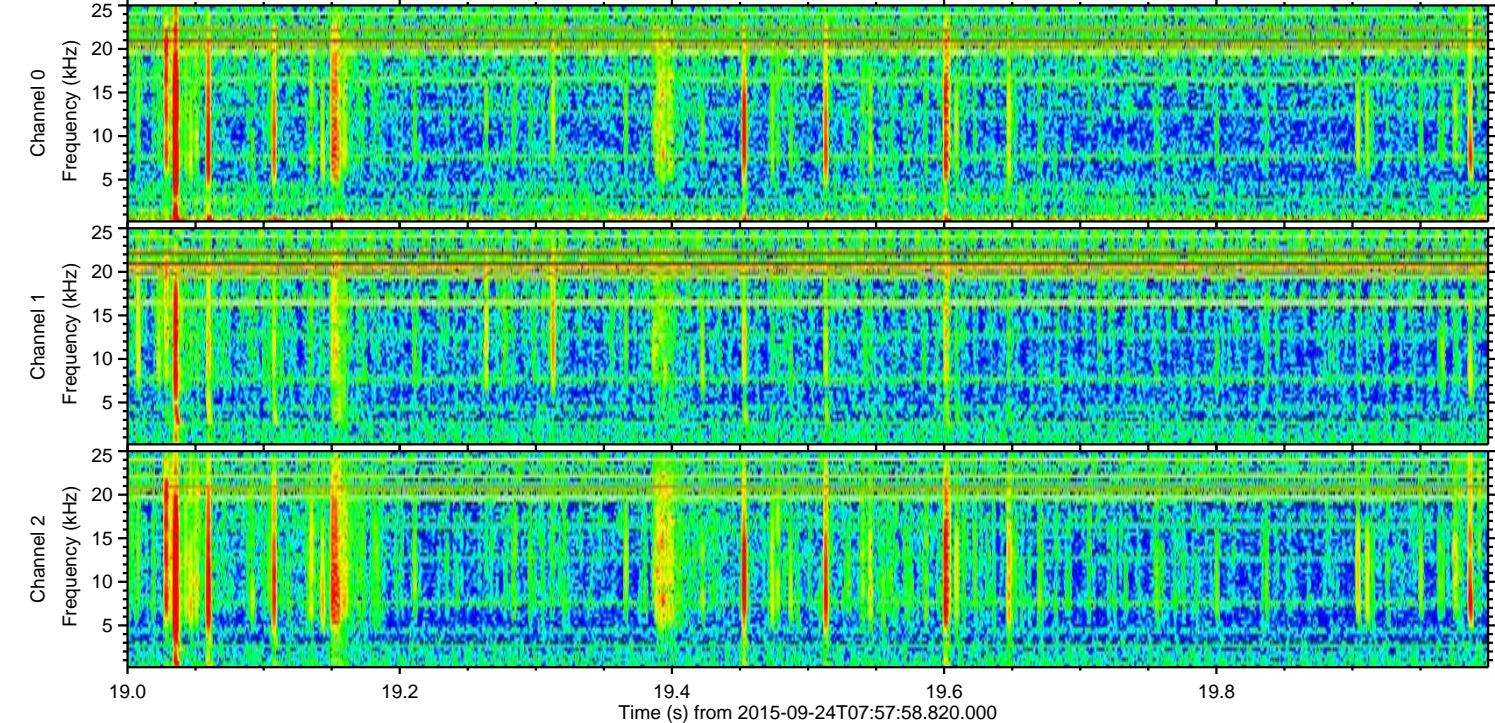
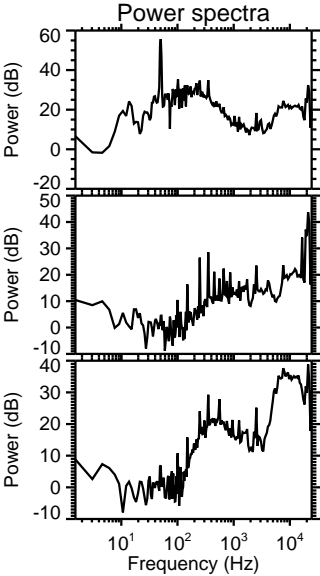
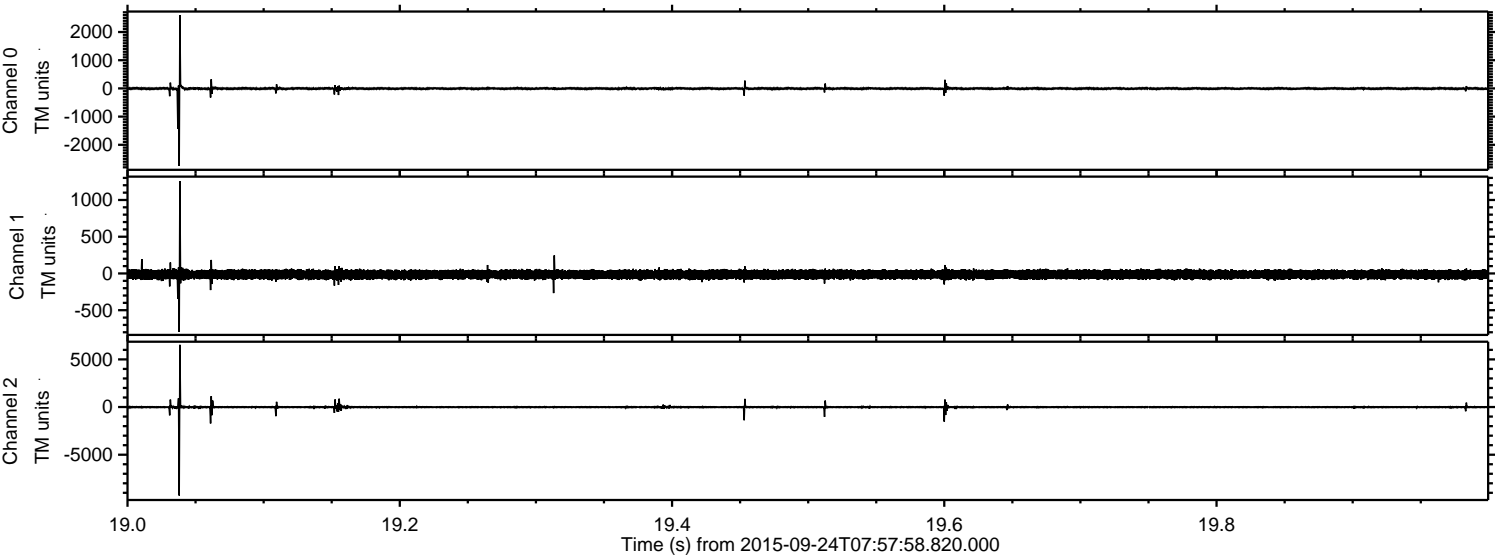
Channel 0  
mn: -2293  
mx: 3198  
 $\mu$ : -6.0  
 $\sigma$ : 32.5

Channel 1  
mn: -1156  
mx: 1791  
 $\mu$ : -14.2  
 $\sigma$ : 35.0

Channel 2  
mn: -9648  
mx: 6446  
 $\mu$ : -15.4  
 $\sigma$ : 108.2



Processed Thu Oct 15 23:05:07 2015 by ELM ver.2012-10-06 from 001\_\_elm20150924\_075757\_\_dat00.bin



Channel 0  
mn: -2751  
mx: 2596  
 $\mu$ : -6.0  
 $\sigma$ : 24.5

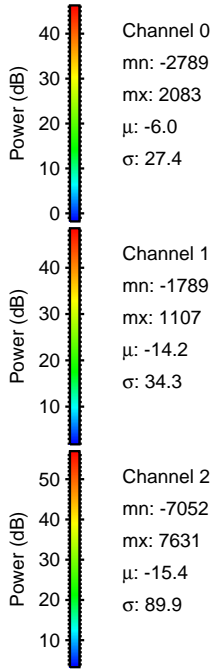
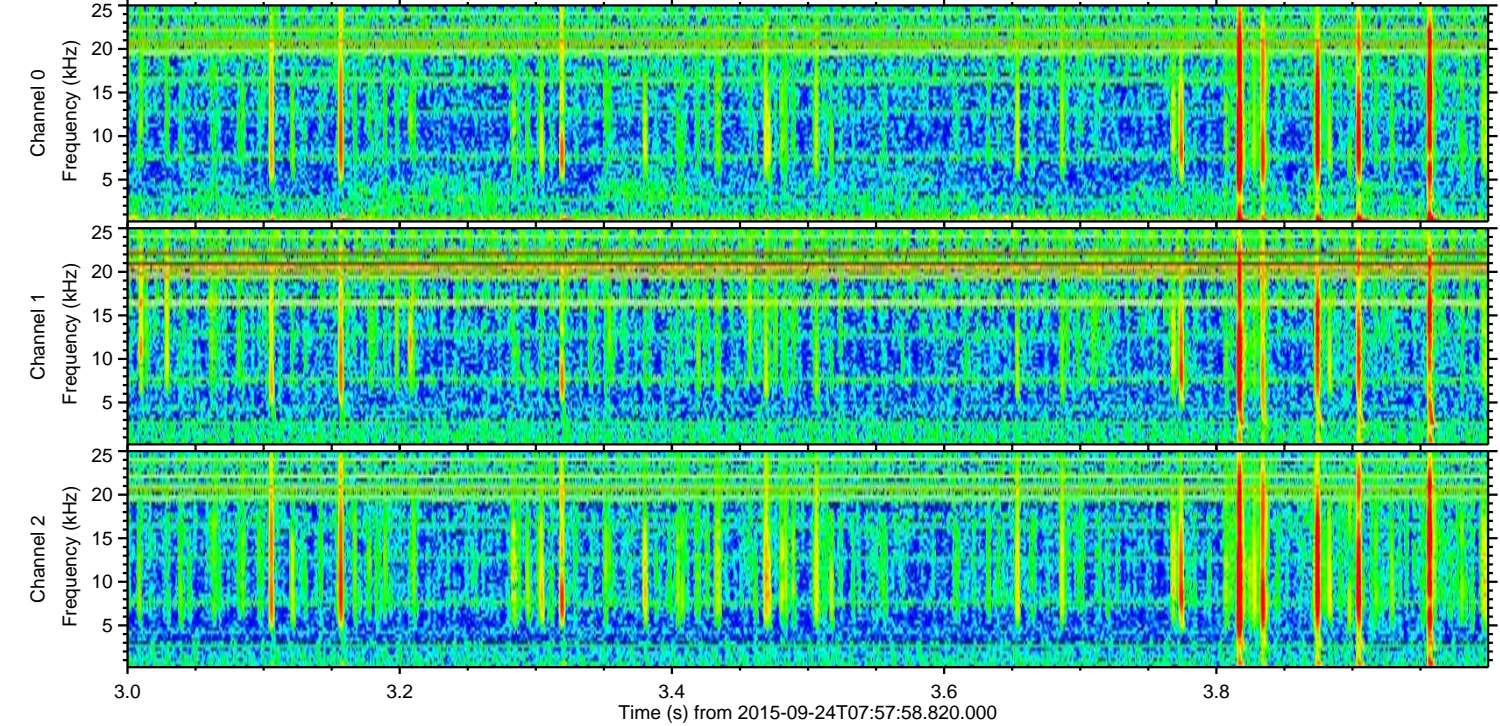
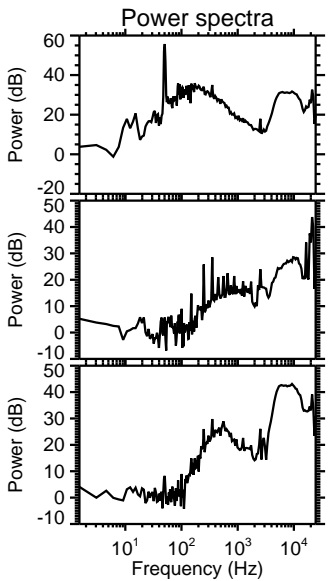
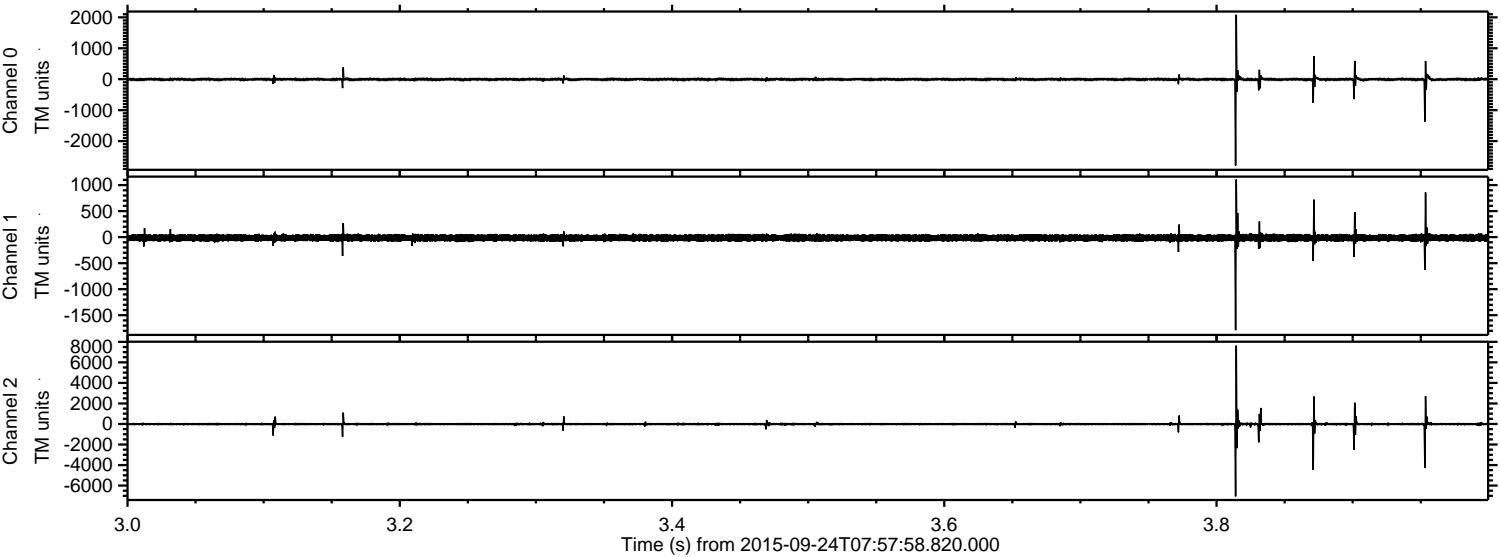
Channel 1  
mn: -796  
mx: 1255  
 $\mu$ : -14.2  
 $\sigma$ : 31.7

Channel 2  
mn: -9288  
mx: 6529  
 $\mu$ : -15.4  
 $\sigma$ : 77.6



ELMAVAN 3D WAVEFORMS (Measured data sampled at 50 kHz) 51000 packets of 144 samples from 2015-09-24T07:57:58.820.000. Part 4/147

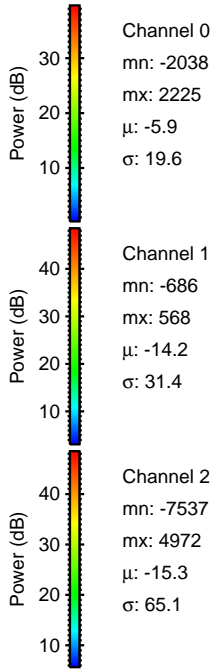
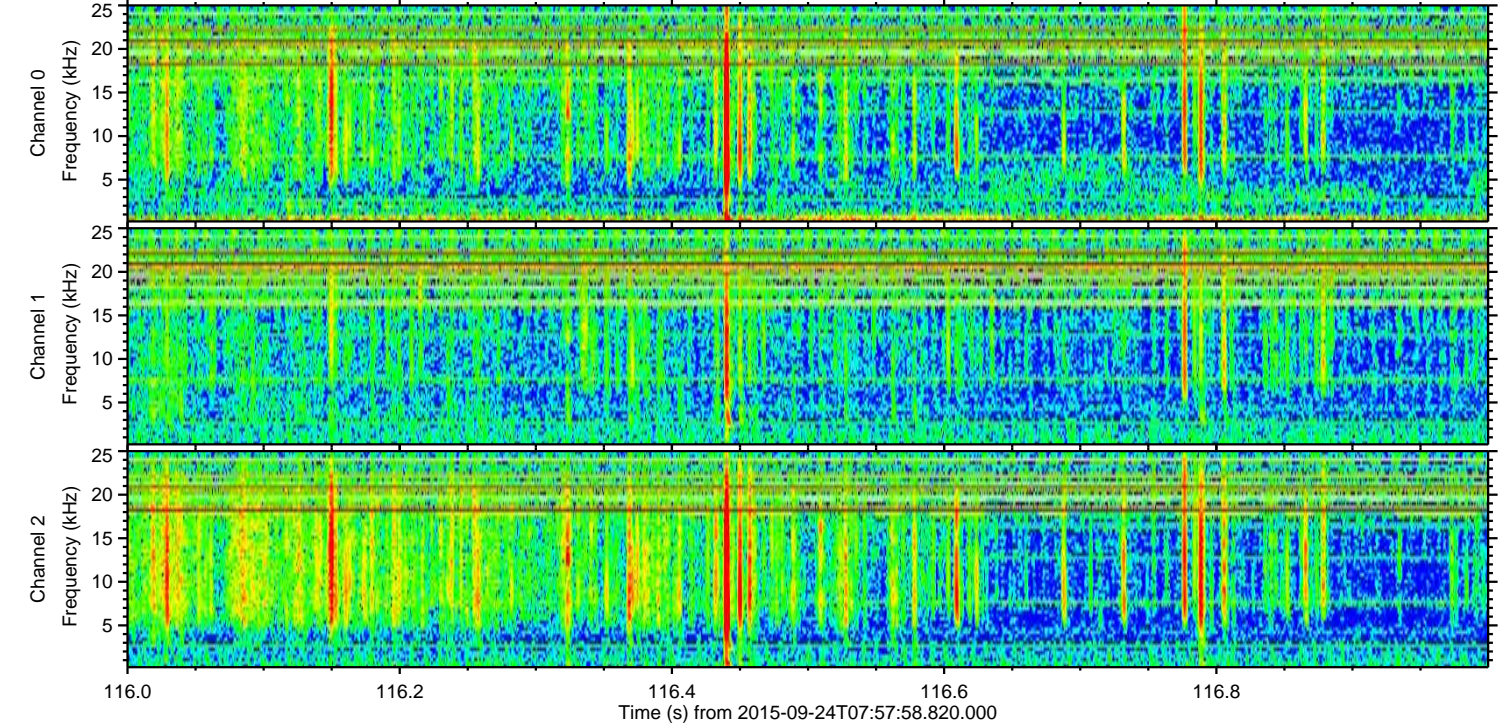
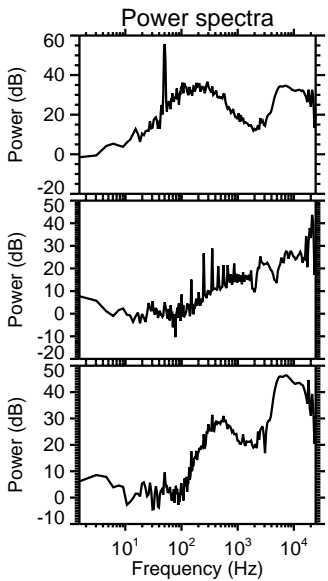
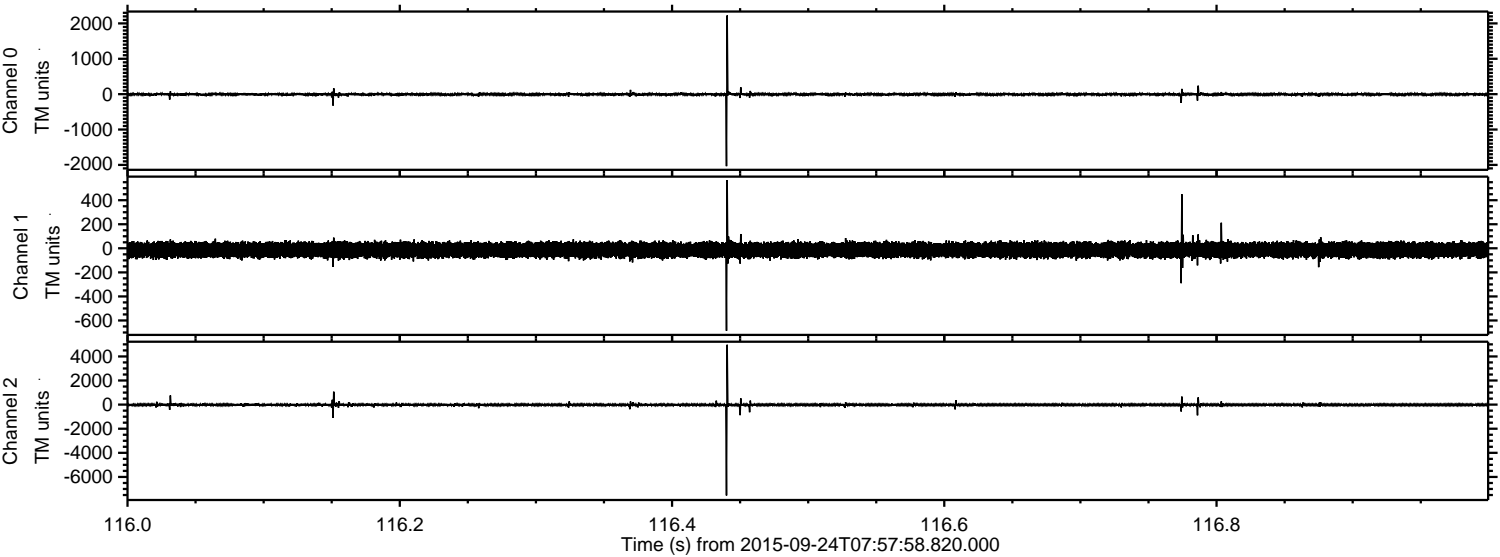
Processed Thu Oct 15 23:05:08 2015 by ELM ver.2012-10-06 from 001\_\_elm20150924\_075757\_\_dat00.bin





ELMAVAN 3D WAVEFORMS (Measured data sampled at 50 kHz) 51000 packets of 144 samples from 2015-09-24T07:57:58.820.000. Part 117/147

Processed Thu Oct 15 23:05:10 2015 by ELM ver.2012-10-06 from 001\_\_elm20150924\_075757\_\_dat00.bin



Channel 0  
mn: -2038  
mx: 2225  
 $\mu$ : -5.9  
 $\sigma$ : 19.6

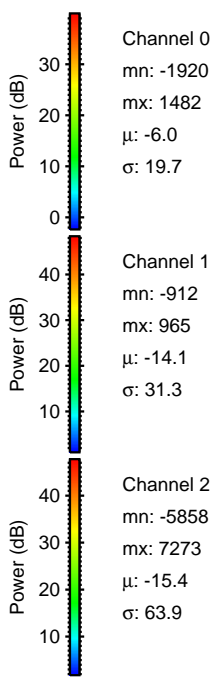
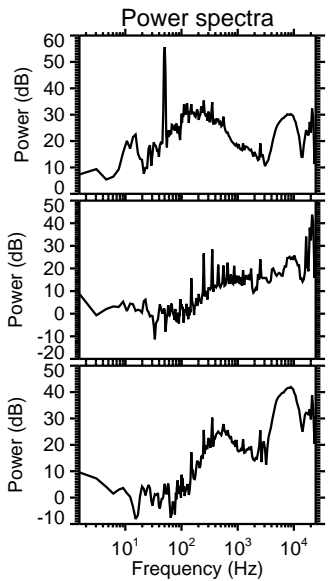
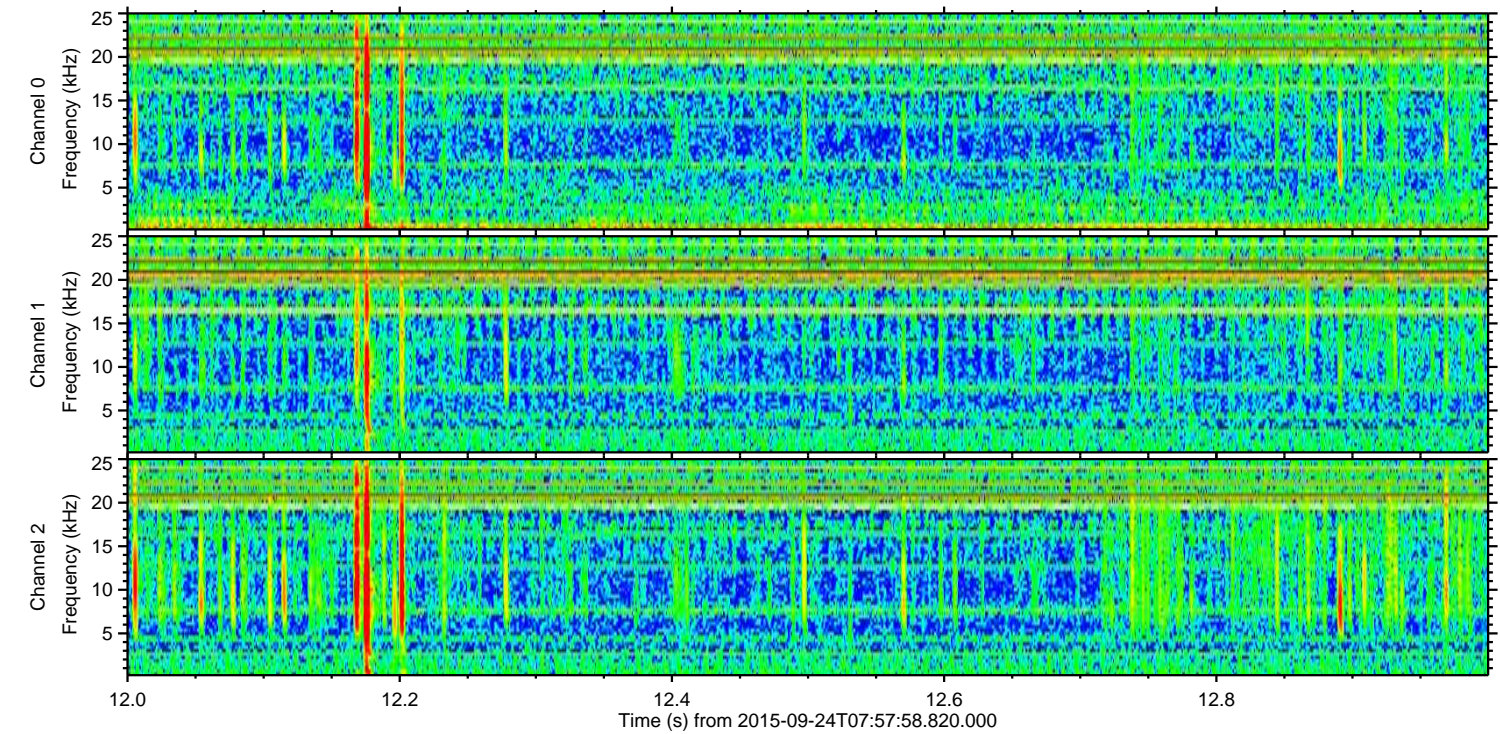
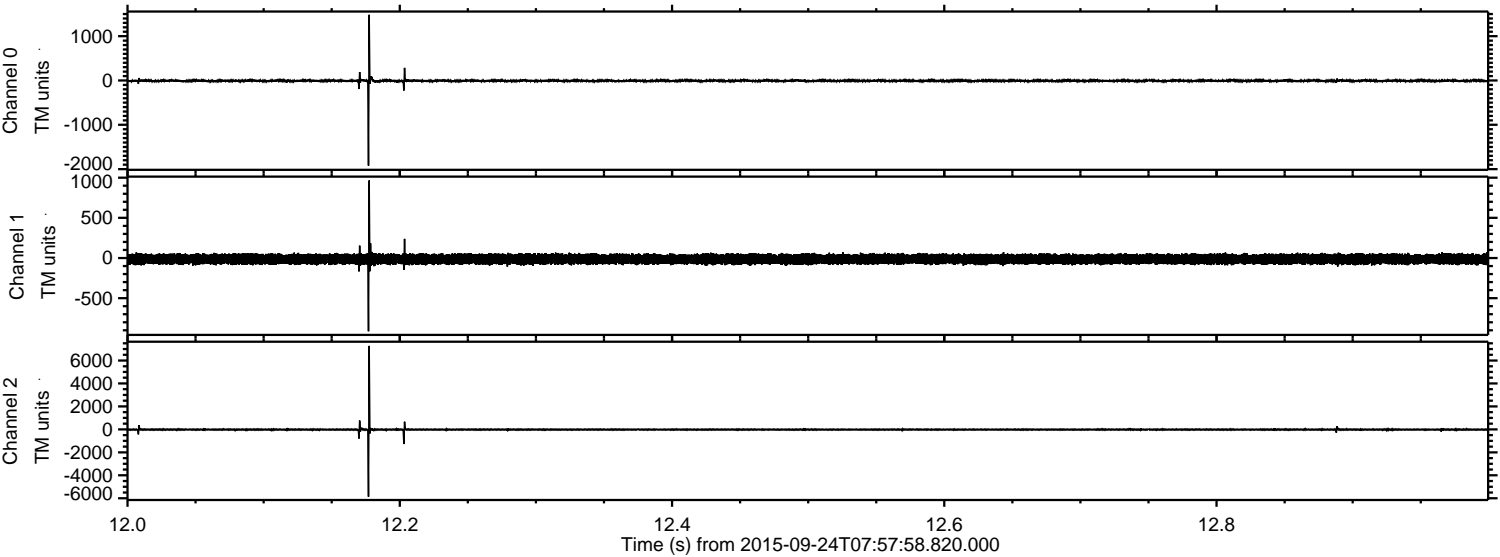
Channel 1  
mn: -686  
mx: 568  
 $\mu$ : -14.2  
 $\sigma$ : 31.4

Channel 2  
mn: -7537  
mx: 4972  
 $\mu$ : -15.3  
 $\sigma$ : 65.1



ELMAVAN 3D WAVEFORMS (Measured data sampled at 50 kHz) 51000 packets of 144 samples from 2015-09-24T07:57:58.820.000. Part 13/147

Processed Thu Oct 15 23:05:12 2015 by ELM ver.2012-10-06 from 001\_\_elm20150924\_075757\_\_dat00.bin





ELMAVAN 3D WAVEFORMS (Measured data sampled at 50 kHz) 51000 packets of 144 samples from 2015-09-24T07:57:58.820.000. Part 135/147

