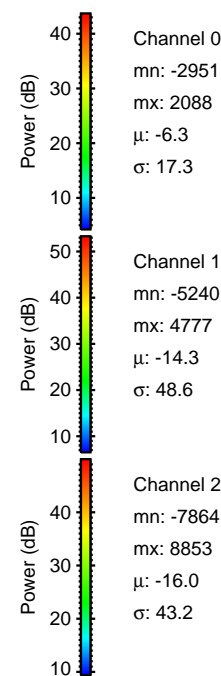
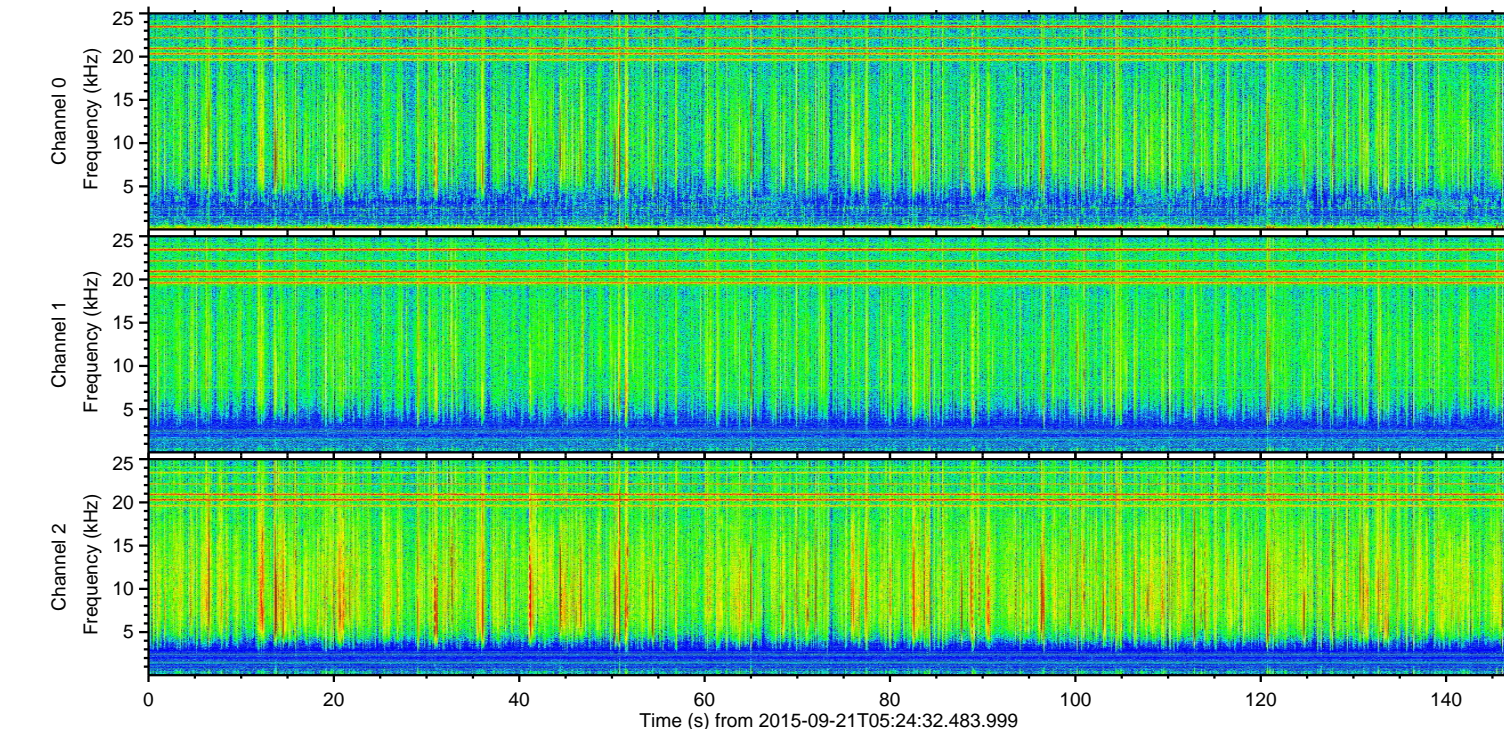
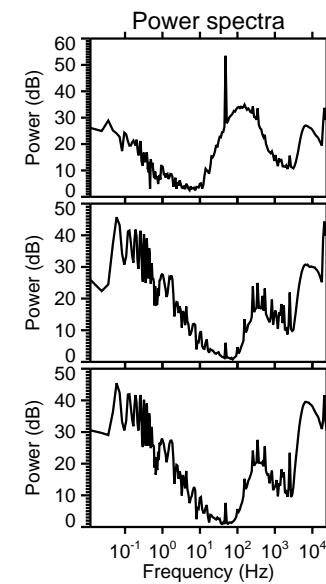
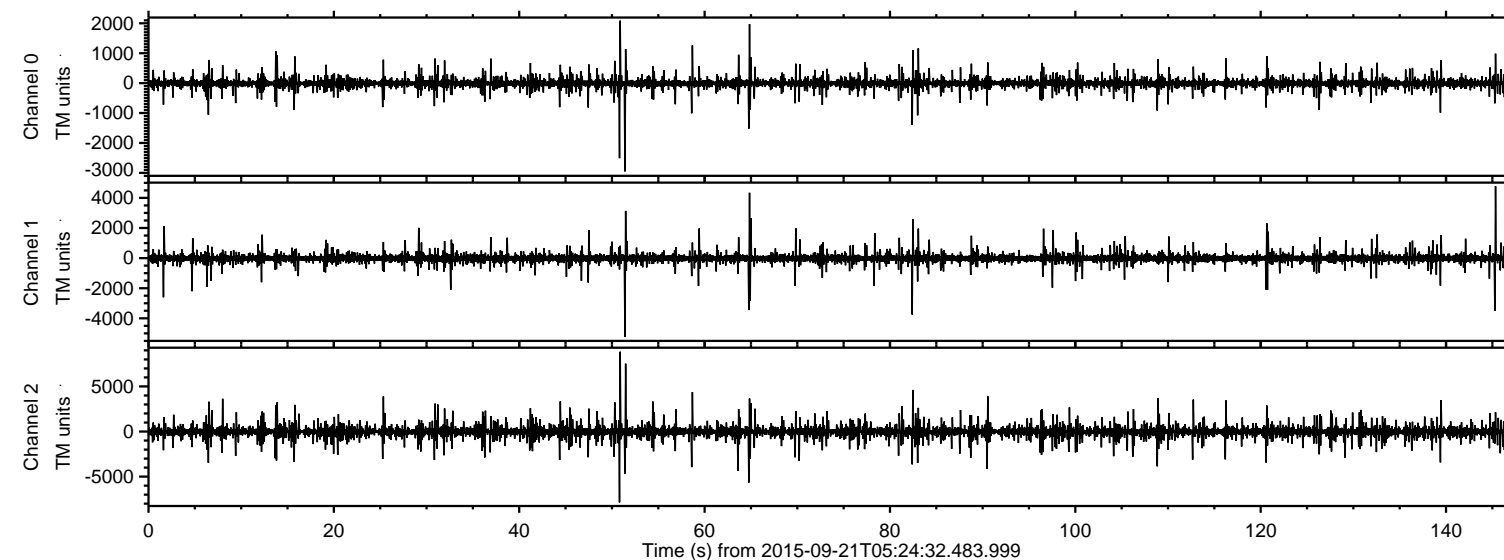
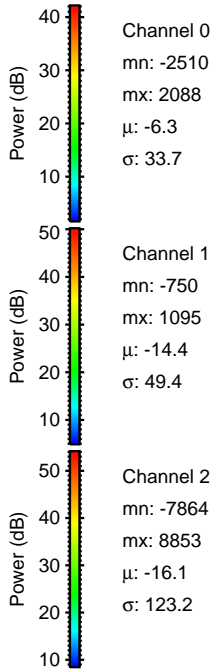
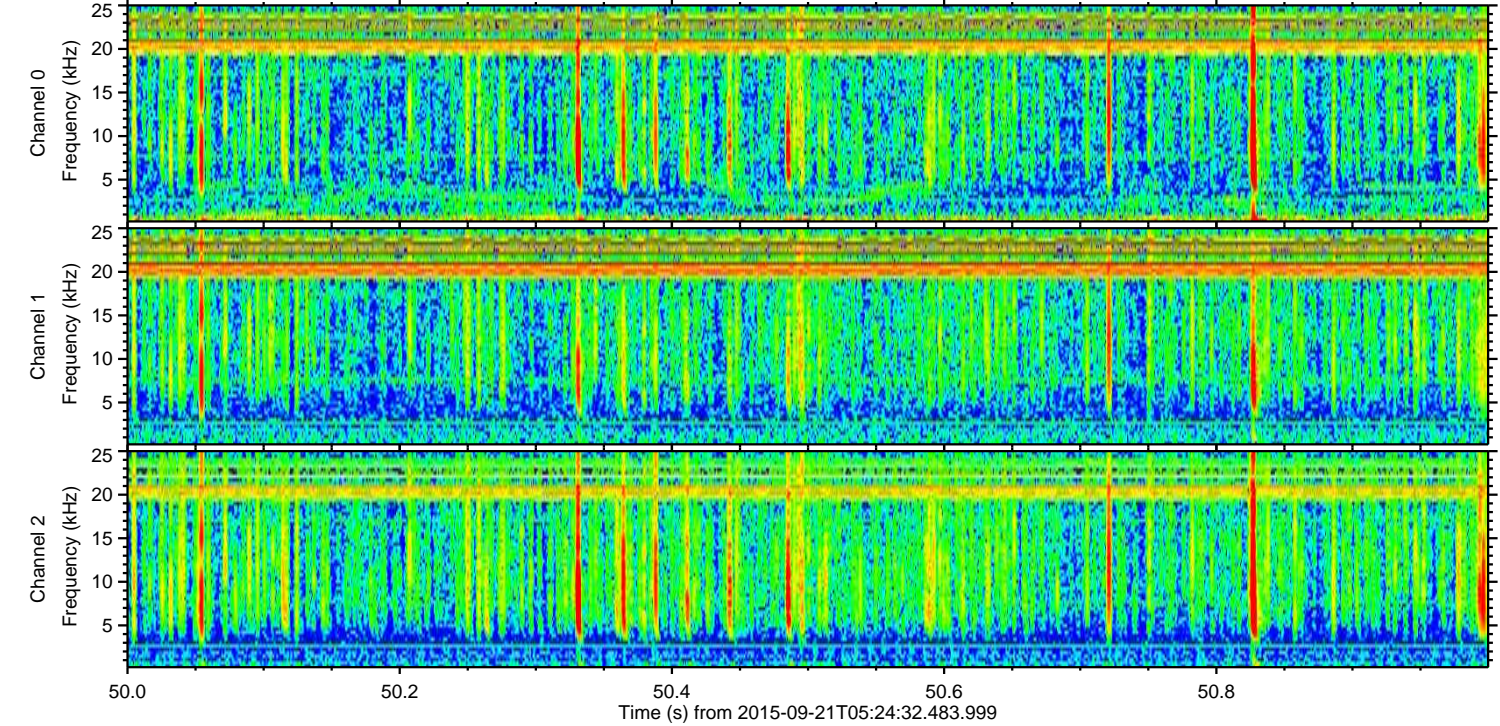
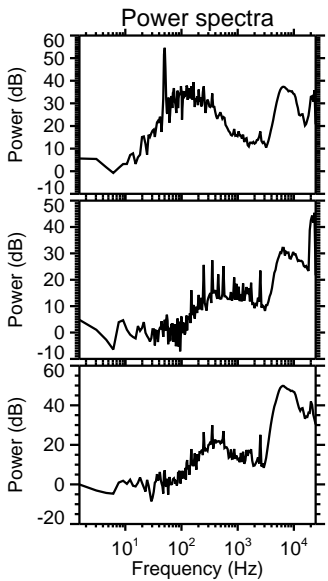
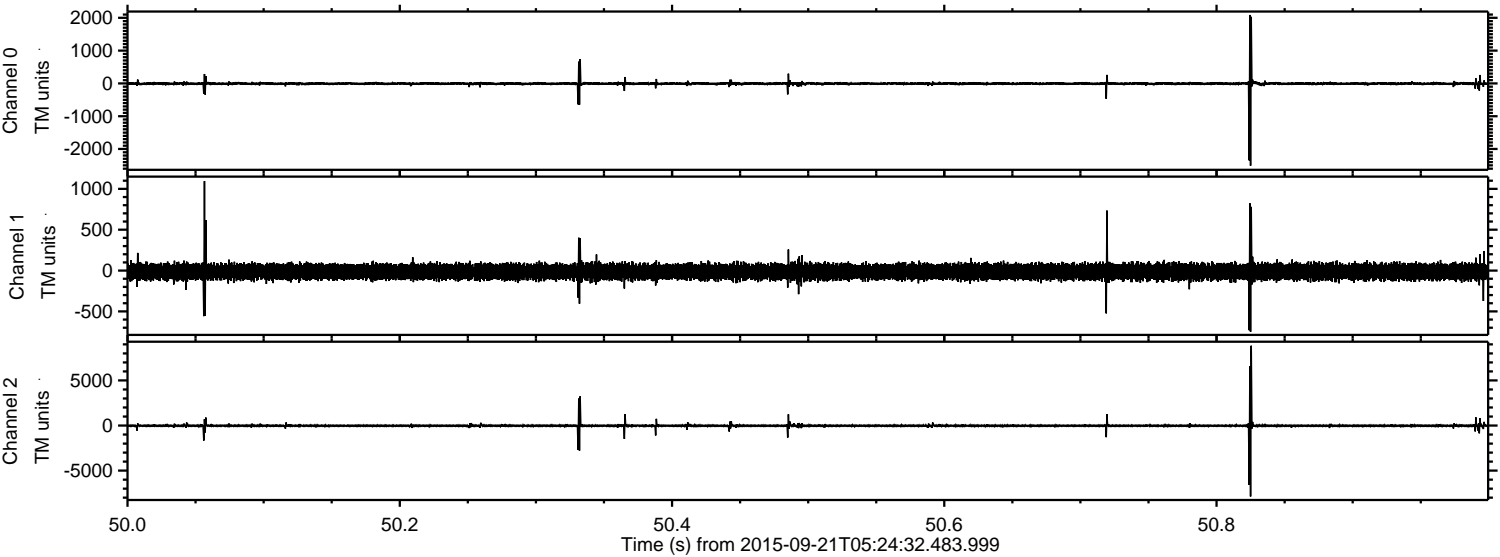


ELMAVAN 3D WAVEFORMS (Measured data sampled at 50 kHz) 51000 packets of 144 samples from 2015-09-21T05:24:32.483.999.

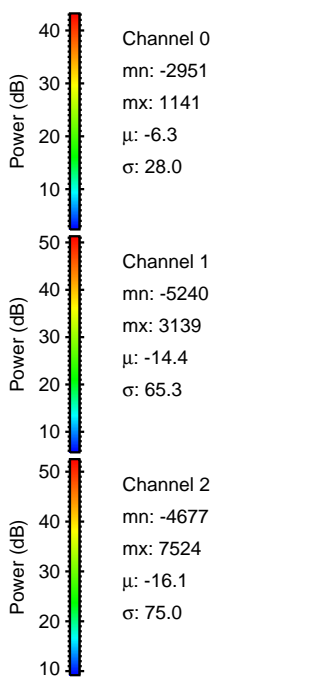
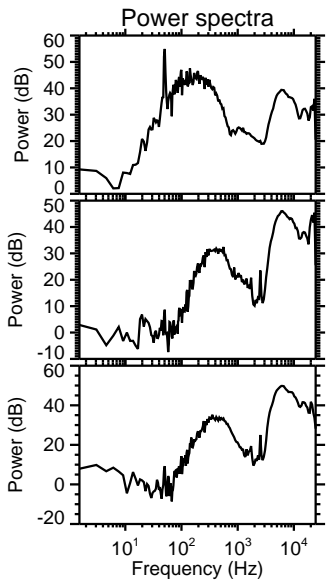
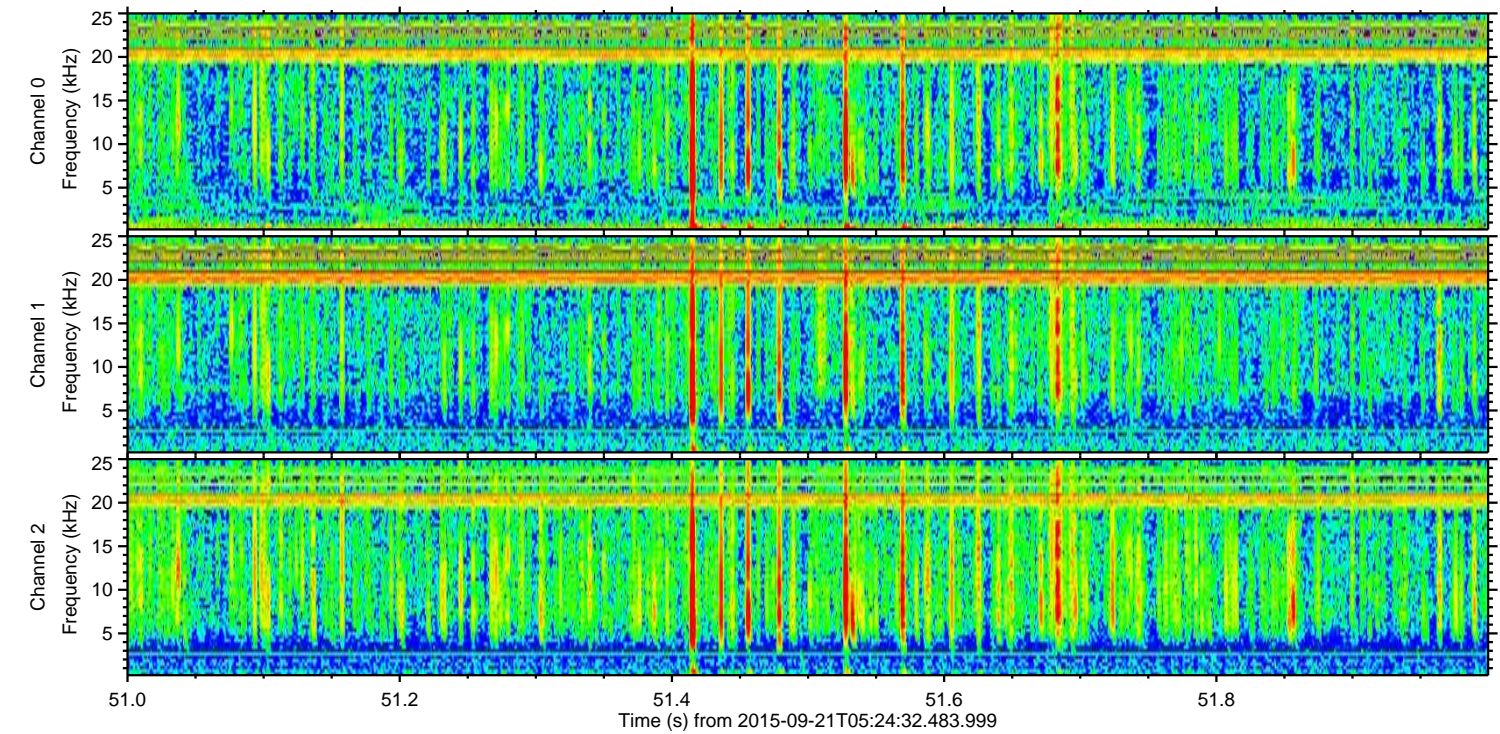
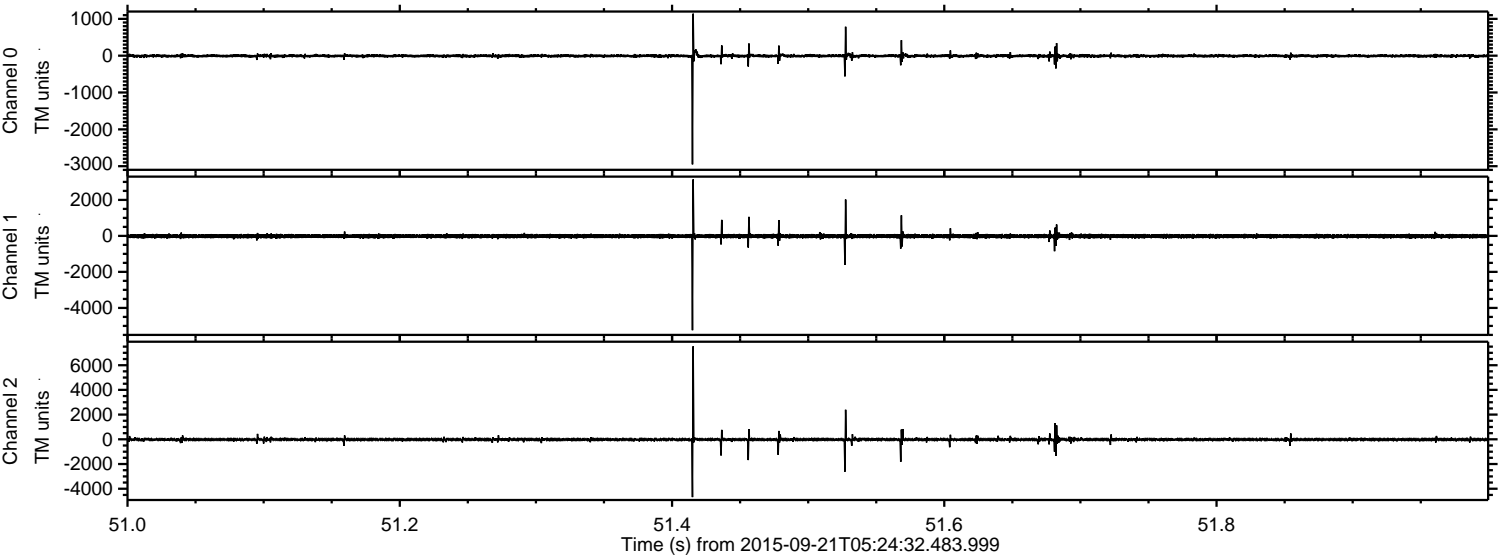
Processed Wed Oct 14 21:10:08 2015 by ELM ver.2012-10-06 from 001__elm20150921_052431__dat00.bin



Processed Wed Oct 14 21:10:26 2015 by ELM ver.2012-10-06 from 001__elm20150921_052431__dat00.bin

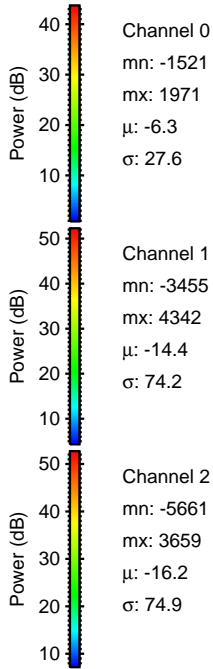
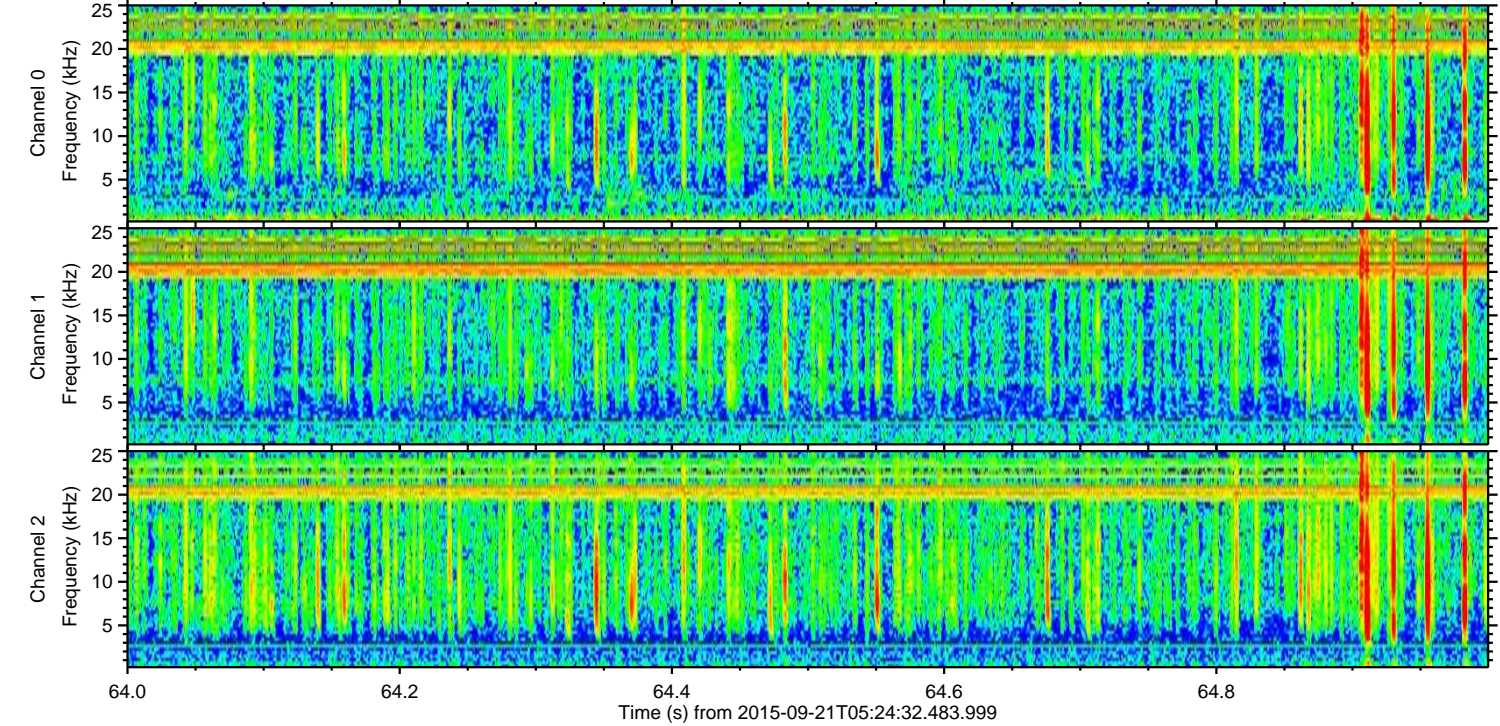
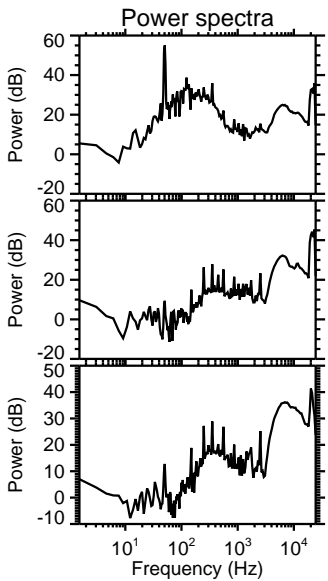
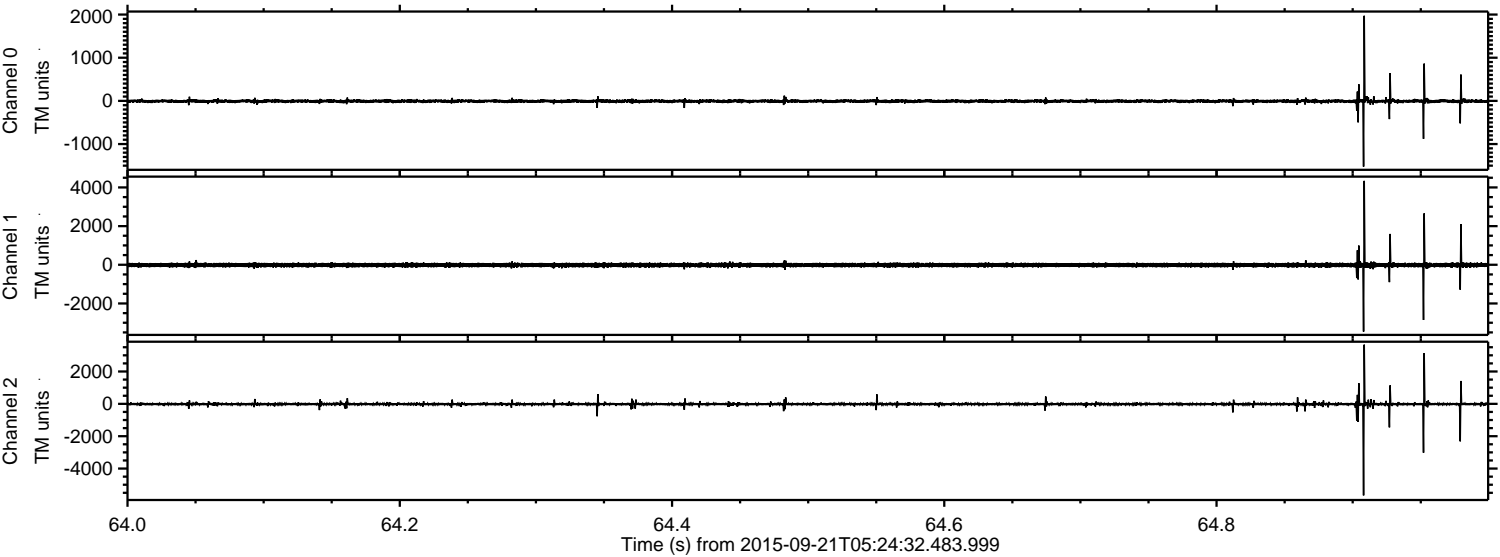


Processed Wed Oct 14 21:10:28 2015 by ELM ver.2012-10-06 from 001__elm20150921_052431__dat00.bin



ELMAVAN 3D WAVEFORMS (Measured data sampled at 50 kHz) 51000 packets of 144 samples from 2015-09-21T05:24:32.483.999. Part 65/147

Processed Wed Oct 14 21:10:29 2015 by ELM ver.2012-10-06 from 001__elm20150921_052431__dat00.bin



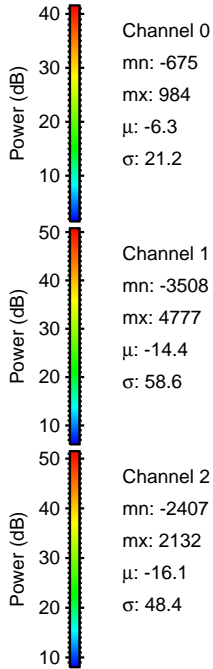
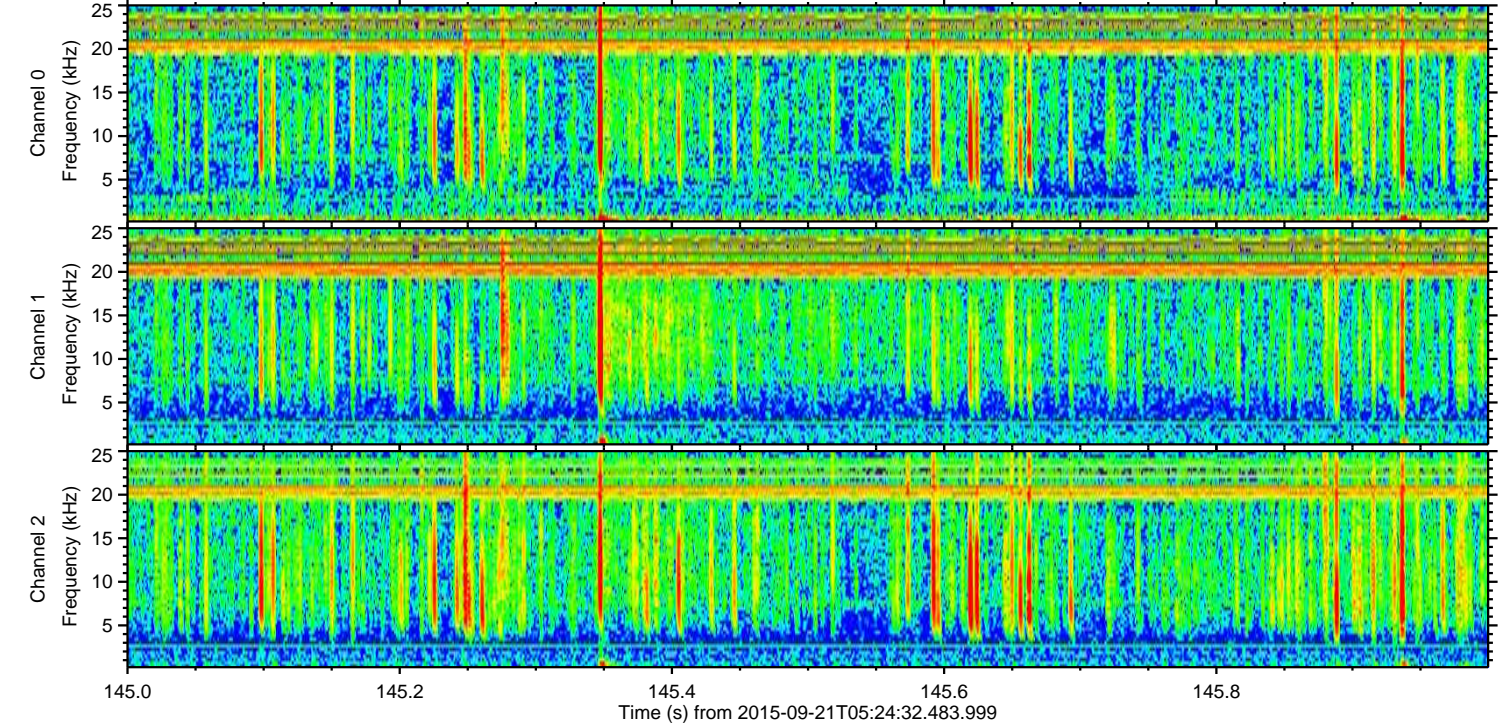
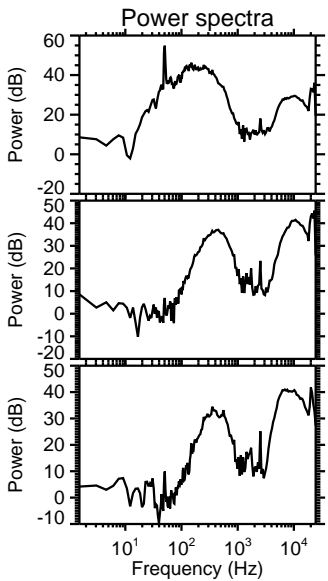
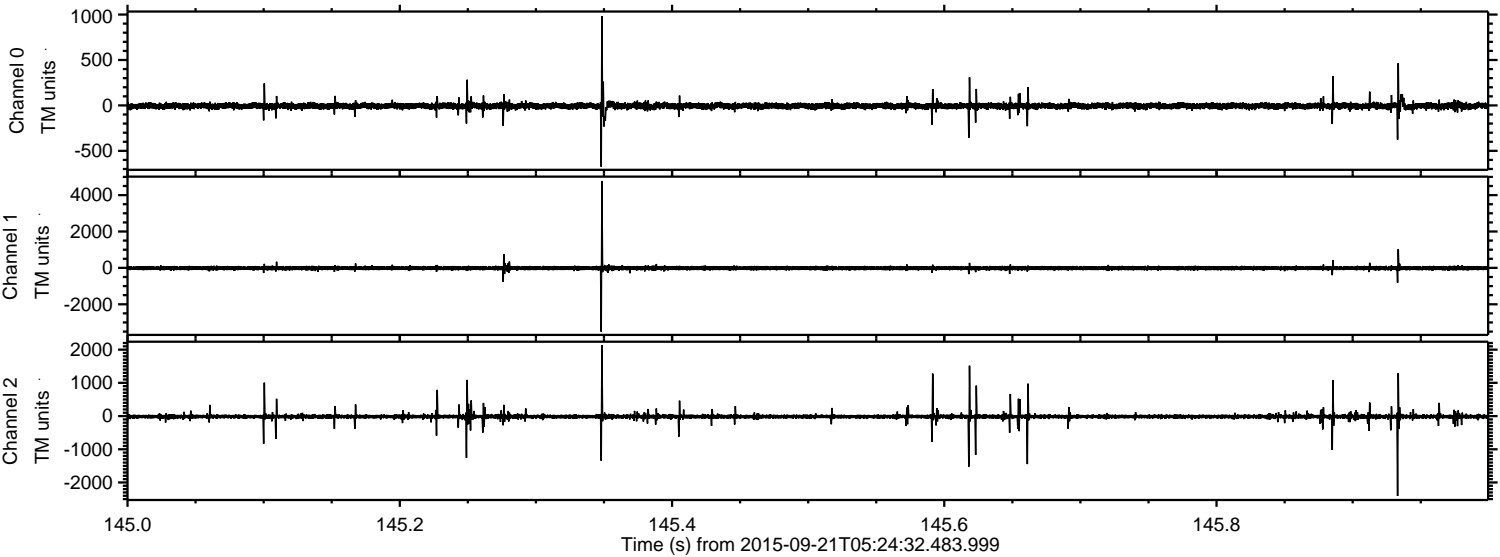
Channel 0
mn: -1521
mx: 1971
 μ : -6.3
 σ : 27.6

Channel 1
mn: -3455
mx: 4342
 μ : -14.4
 σ : 74.2

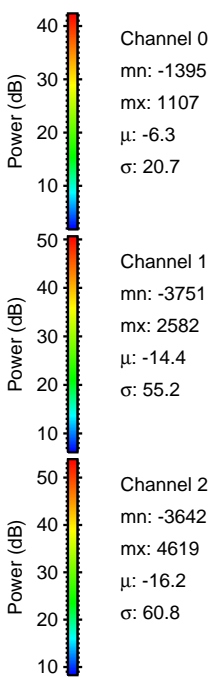
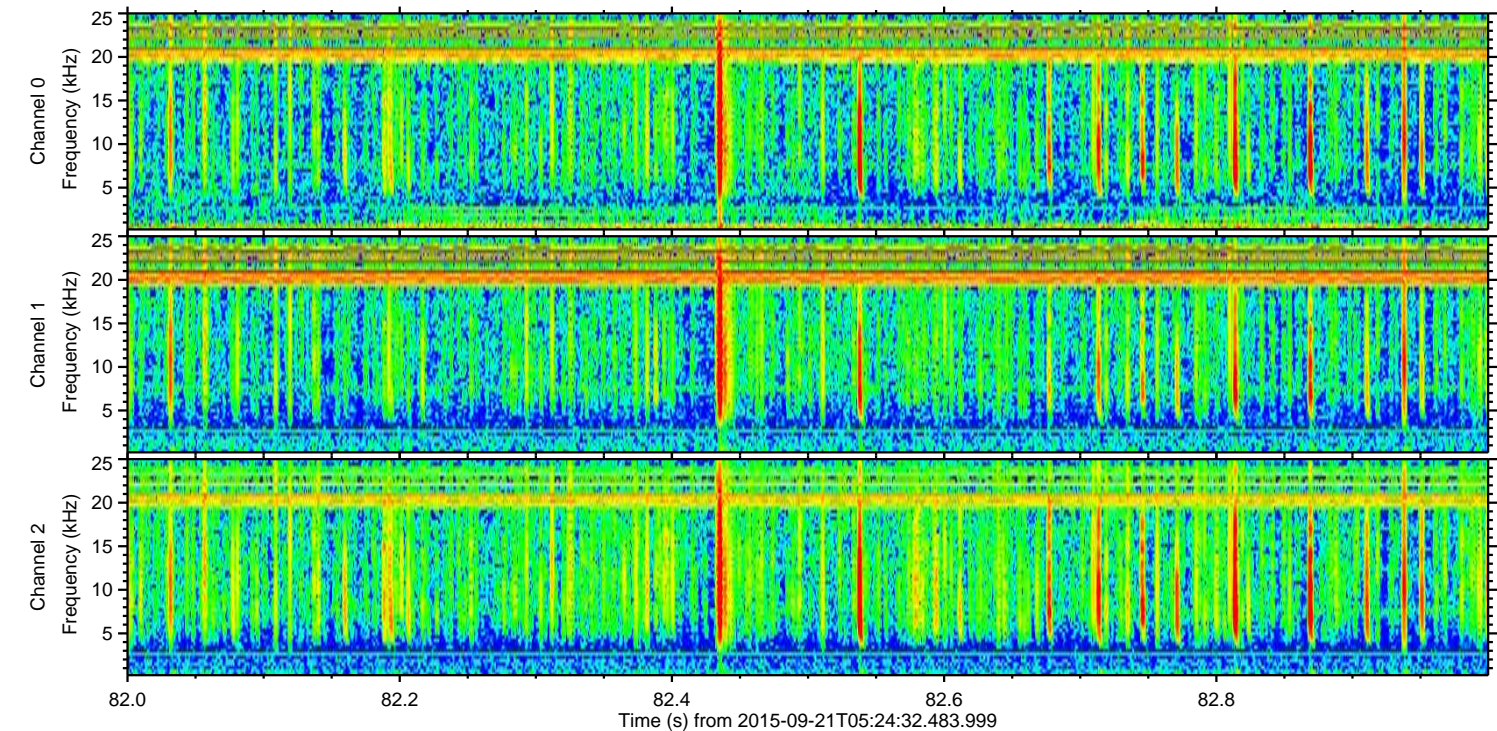
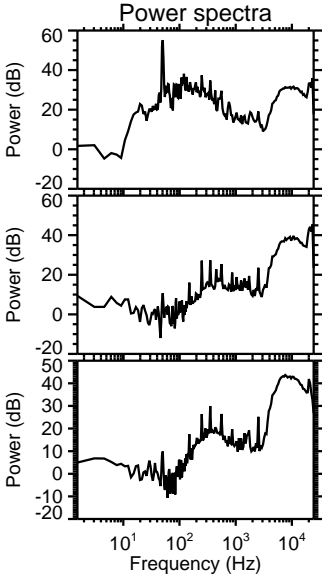
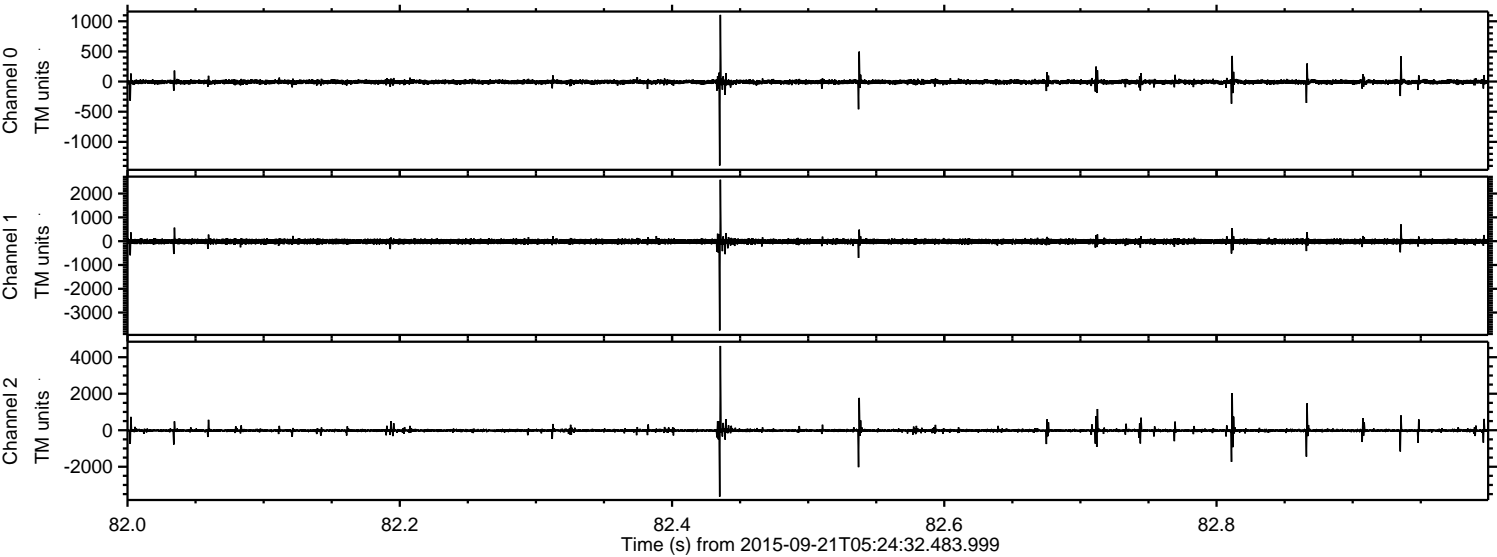
Channel 2
mn: -5661
mx: 3659
 μ : -16.2
 σ : 74.9

ELMAVAN 3D WAVEFORMS (Measured data sampled at 50 kHz) 51000 packets of 144 samples from 2015-09-21T05:24:32.483.999. Part 146/147

Processed Wed Oct 14 21:10:31 2015 by ELM ver.2012-10-06 from 001__elm20150921_052431__dat00.bin



Processed Wed Oct 14 21:10:33 2015 by ELM ver.2012-10-06 from 001__elm20150921_052431__dat00.bin

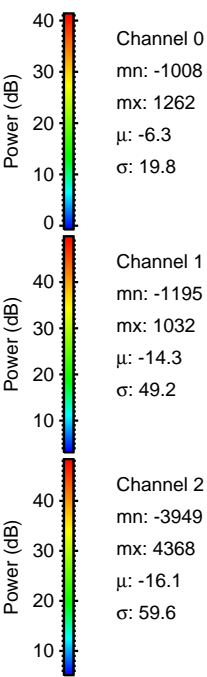
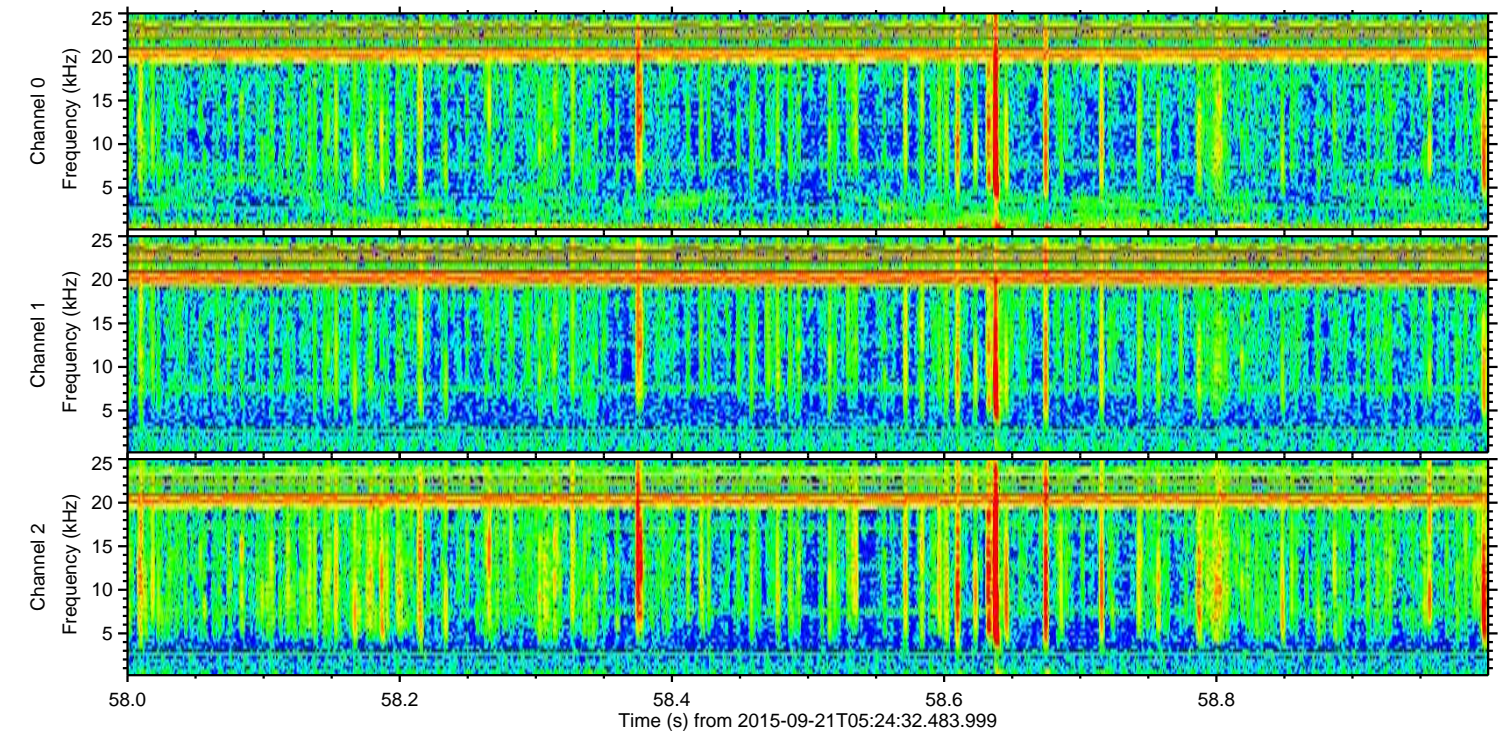
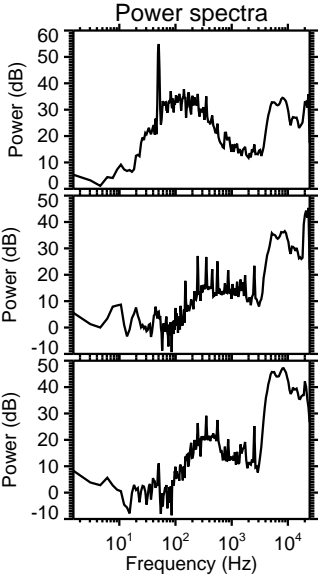
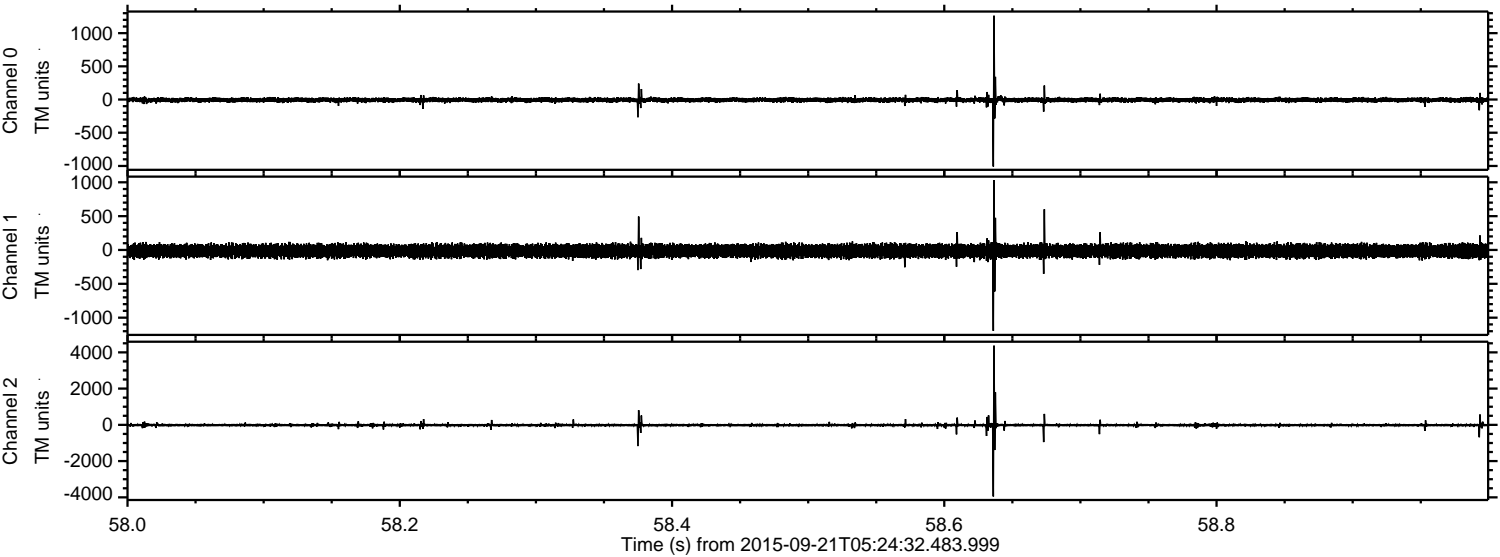


Channel 0
mn: -1395
mx: 1107
 μ : -6.3
 σ : 20.7

Channel 1
mn: -3751
mx: 2582
 μ : -14.4
 σ : 55.2

Channel 2
mn: -3642
mx: 4619
 μ : -16.2
 σ : 60.8

Processed Wed Oct 14 21:10:34 2015 by ELM ver.2012-10-06 from 001__elm20150921_052431__dat00.bin

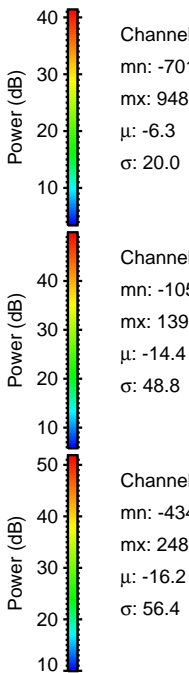
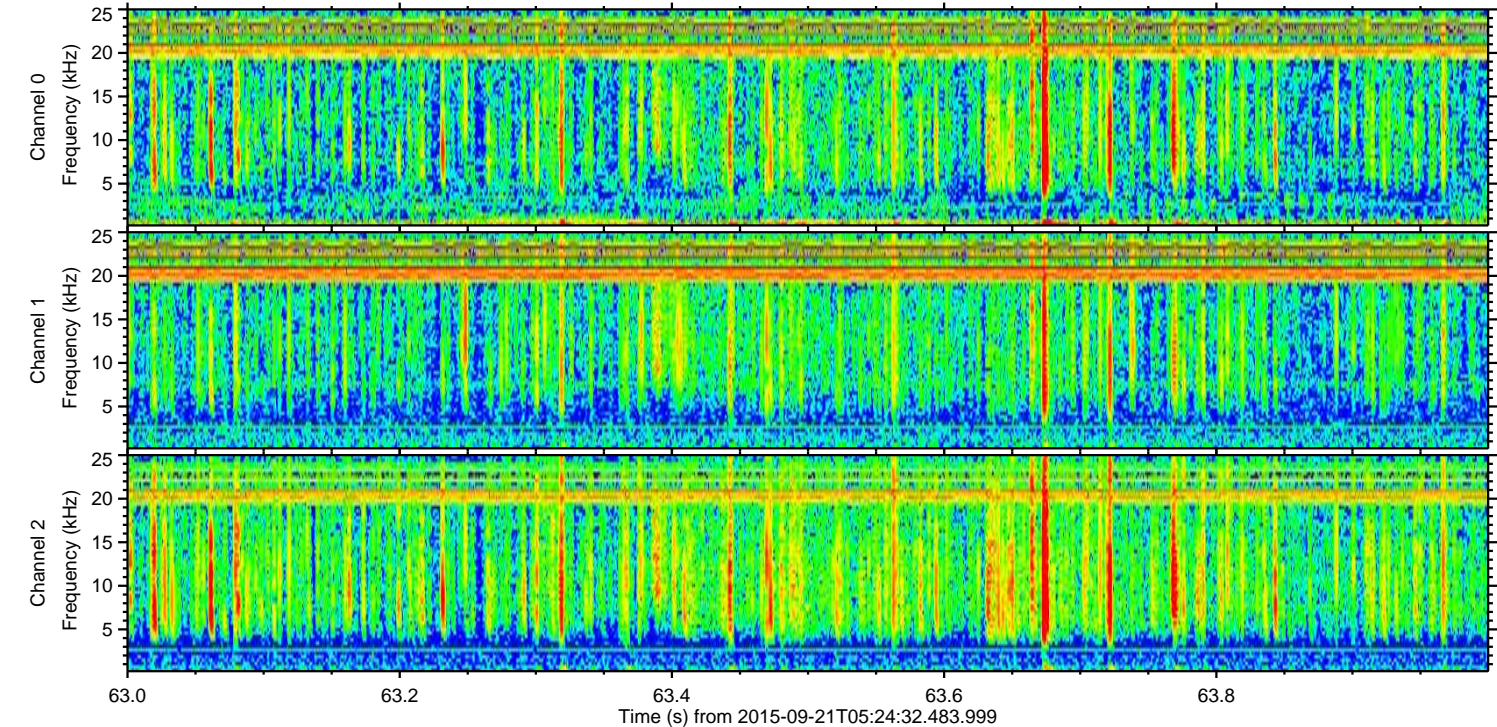
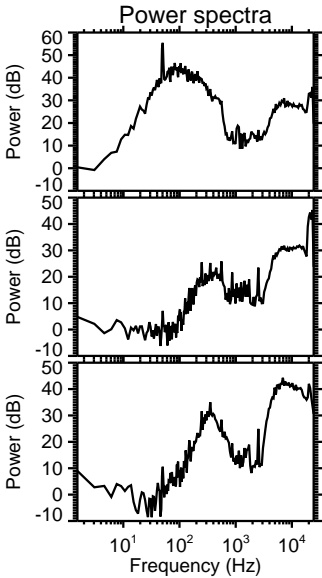
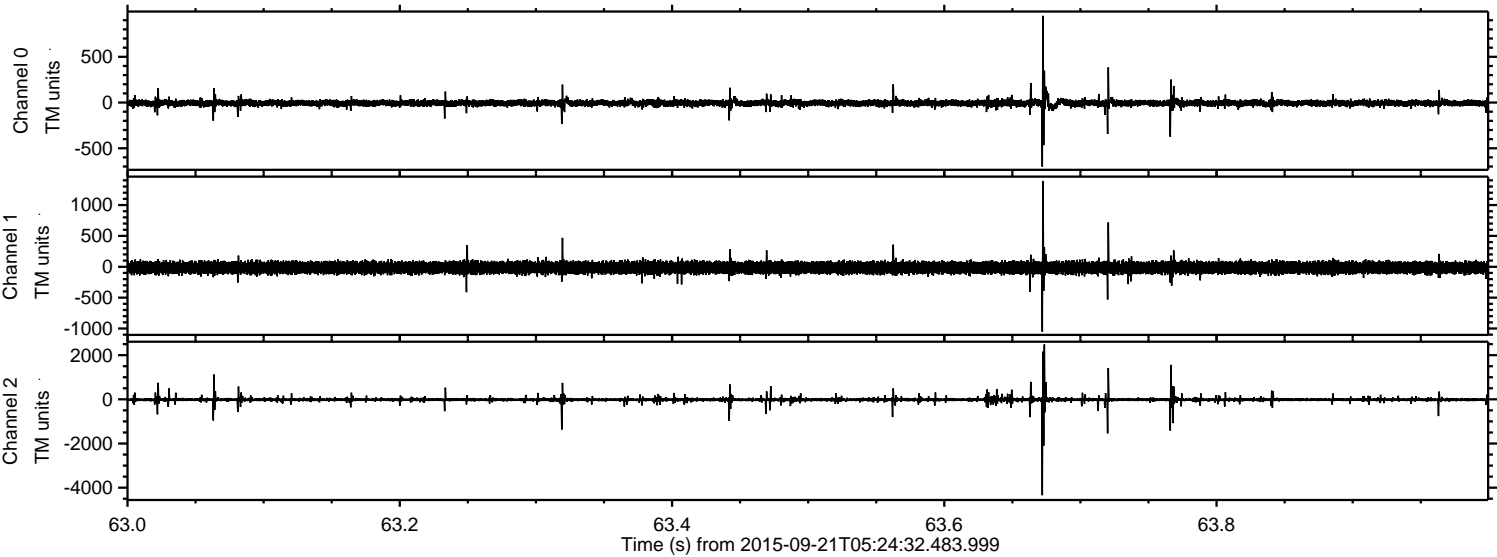


Channel 0
mn: -1008
mx: 1262
 μ : -6.3
 σ : 19.8

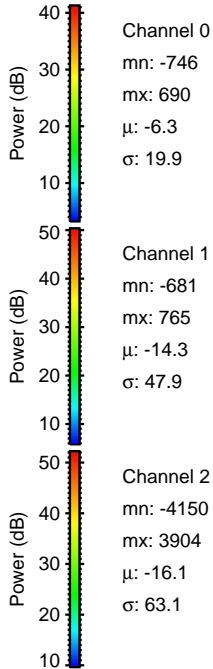
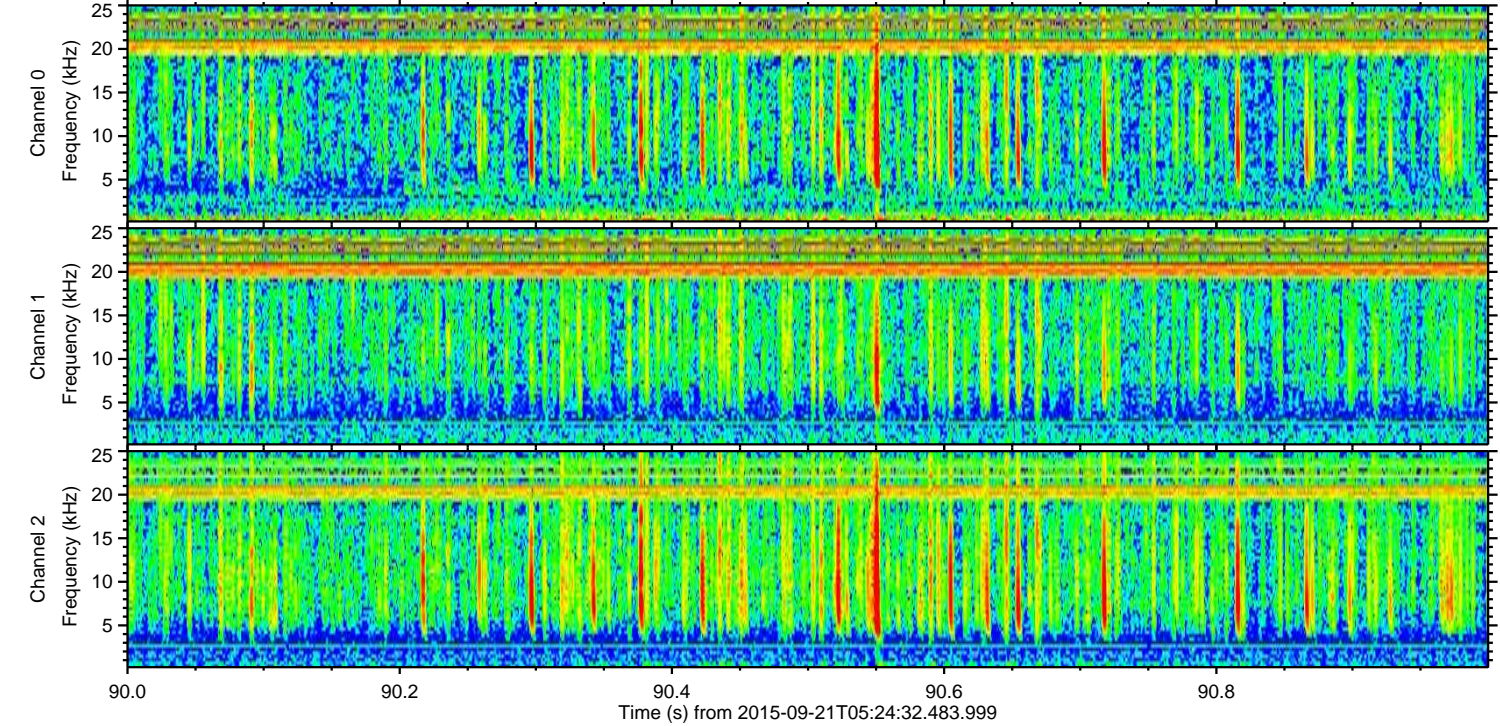
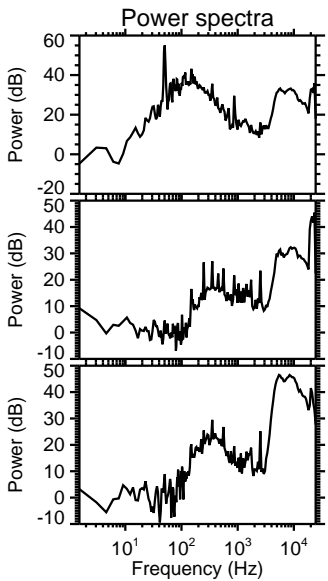
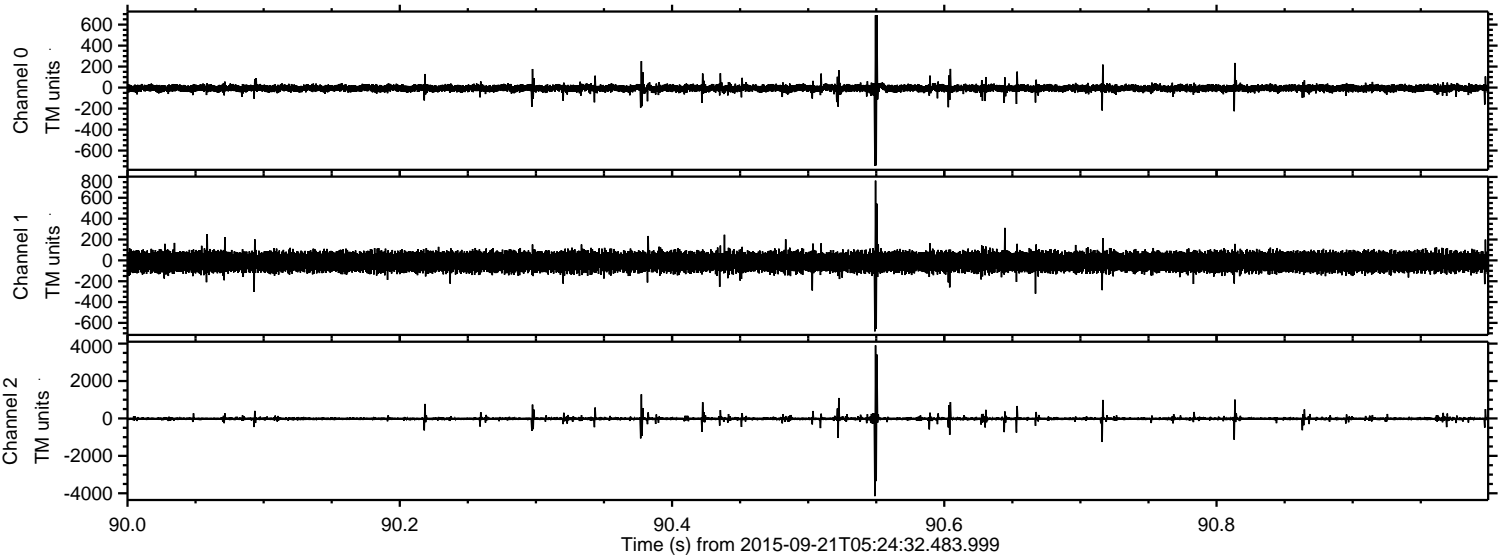
Channel 1
mn: -1195
mx: 1032
 μ : -14.3
 σ : 49.2

Channel 2
mn: -3949
mx: 4368
 μ : -16.1
 σ : 59.6

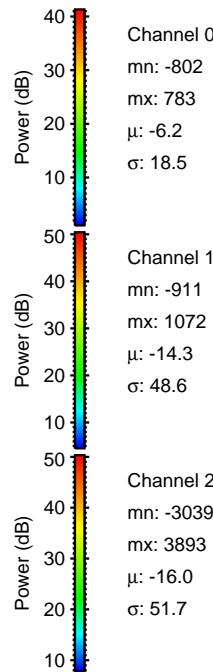
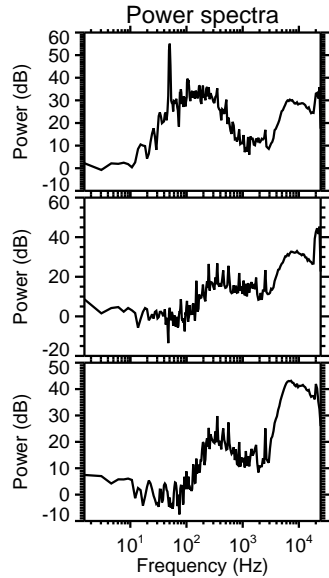
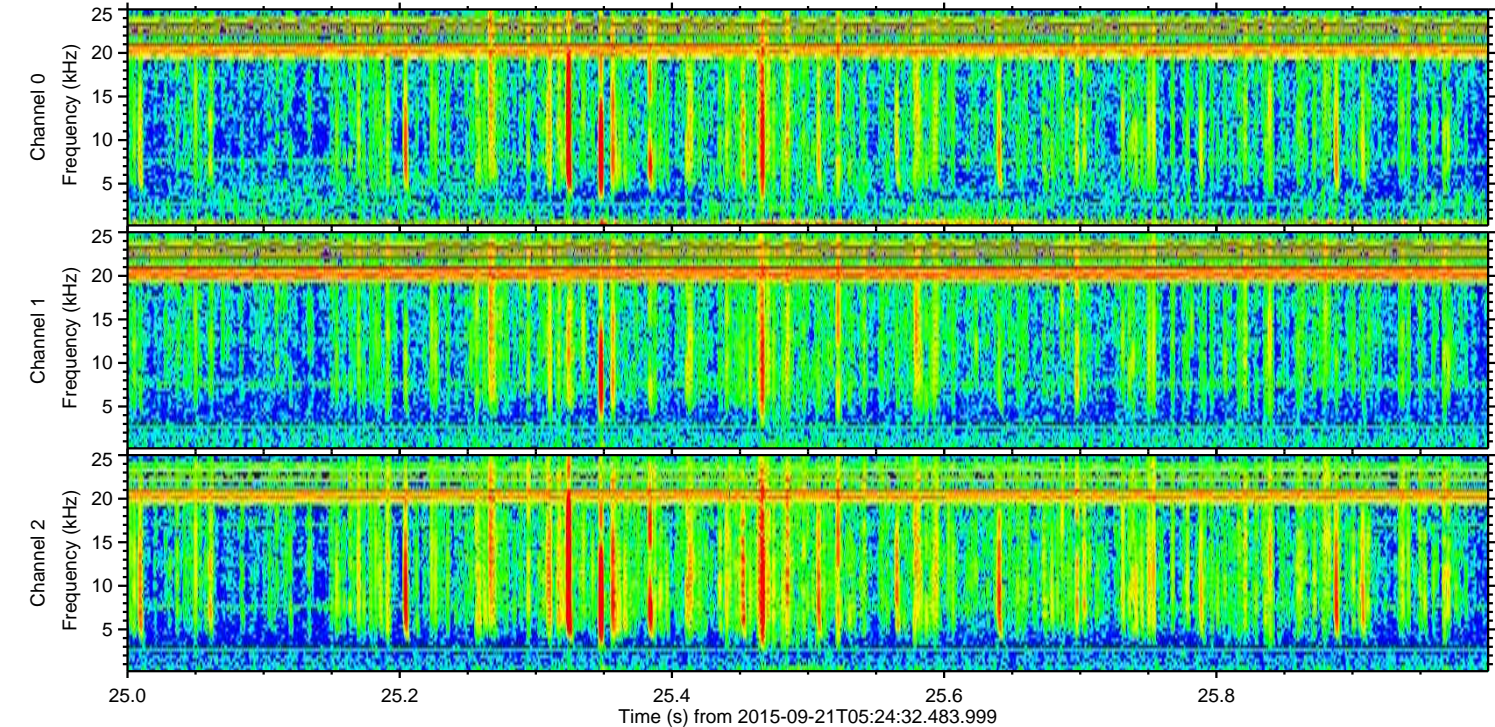
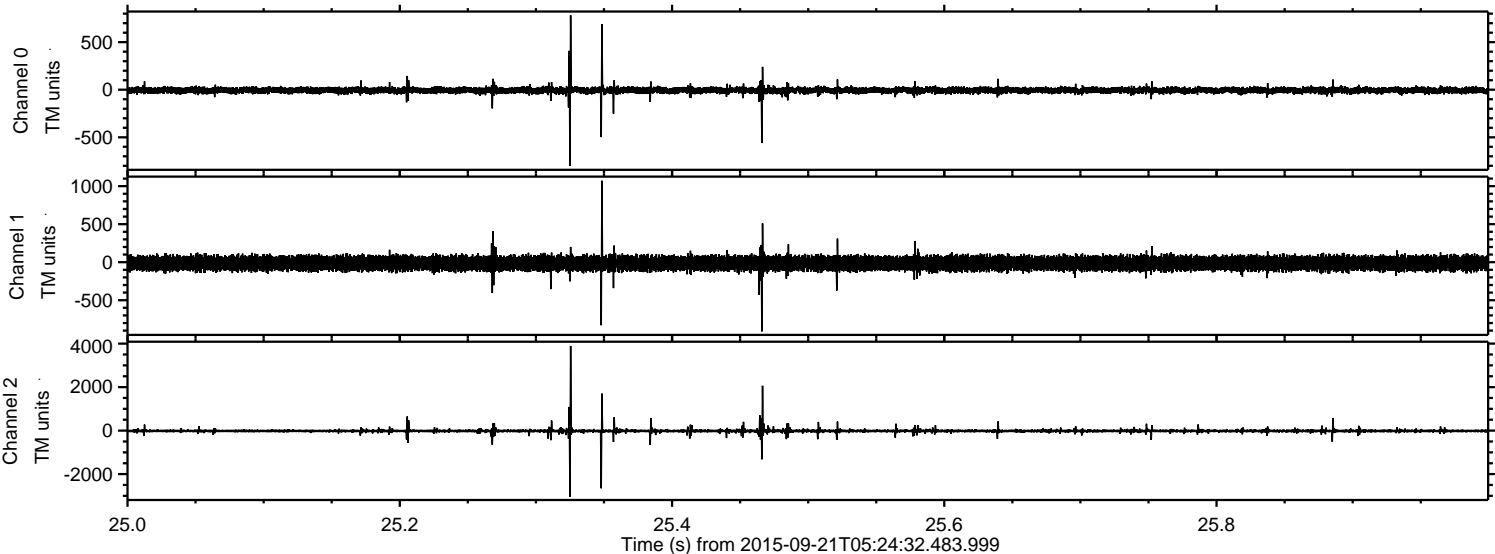
Processed Wed Oct 14 21:10:36 2015 by ELM ver.2012-10-06 from 001__elm20150921_052431__dat00.bin



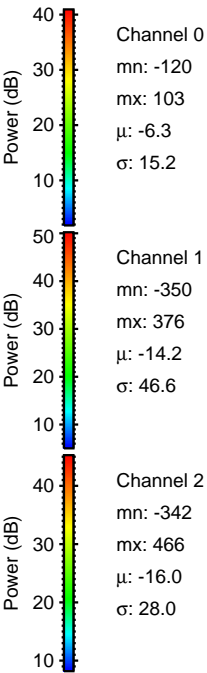
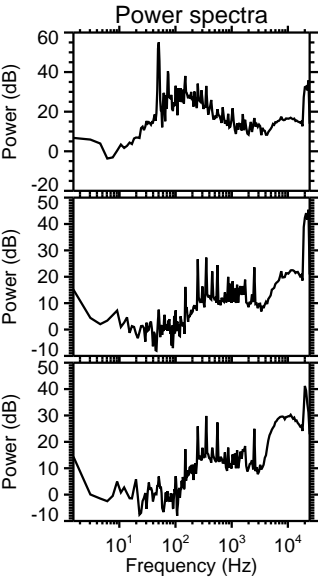
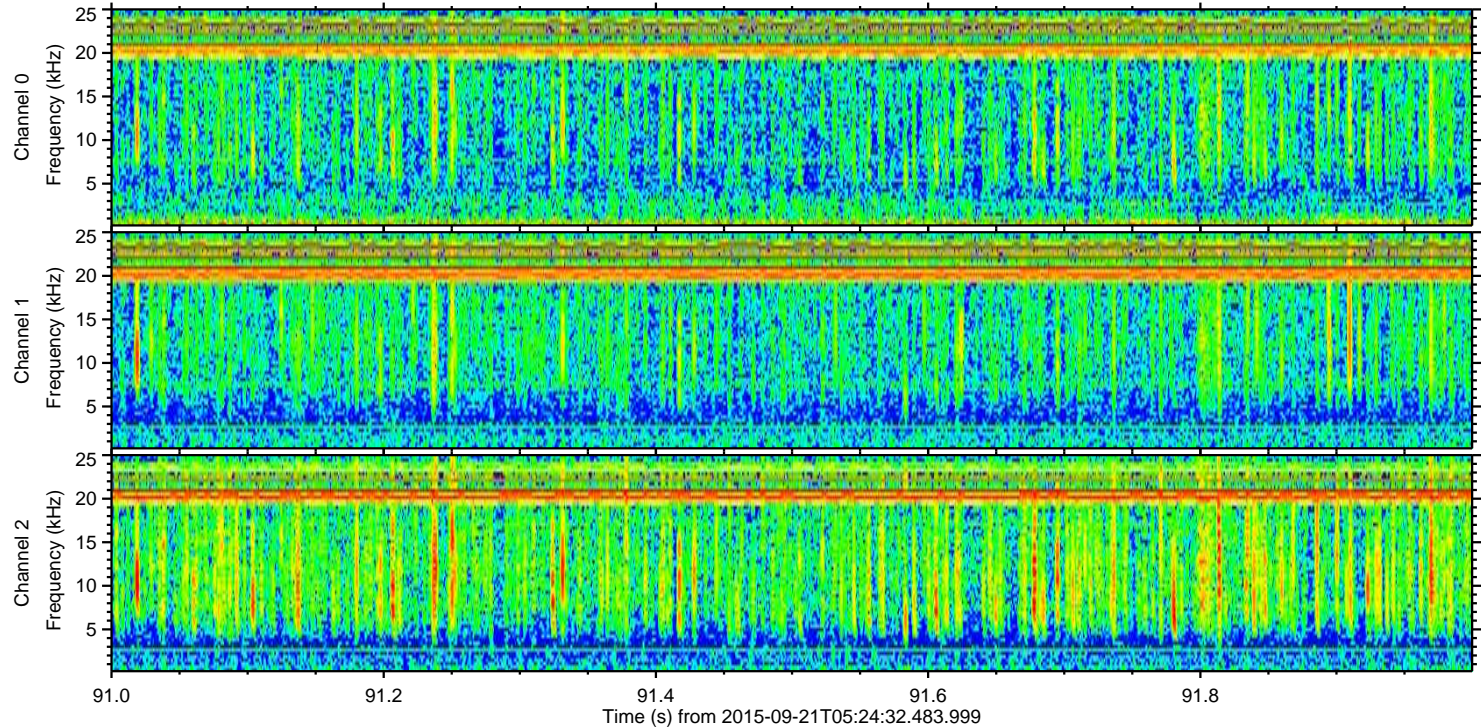
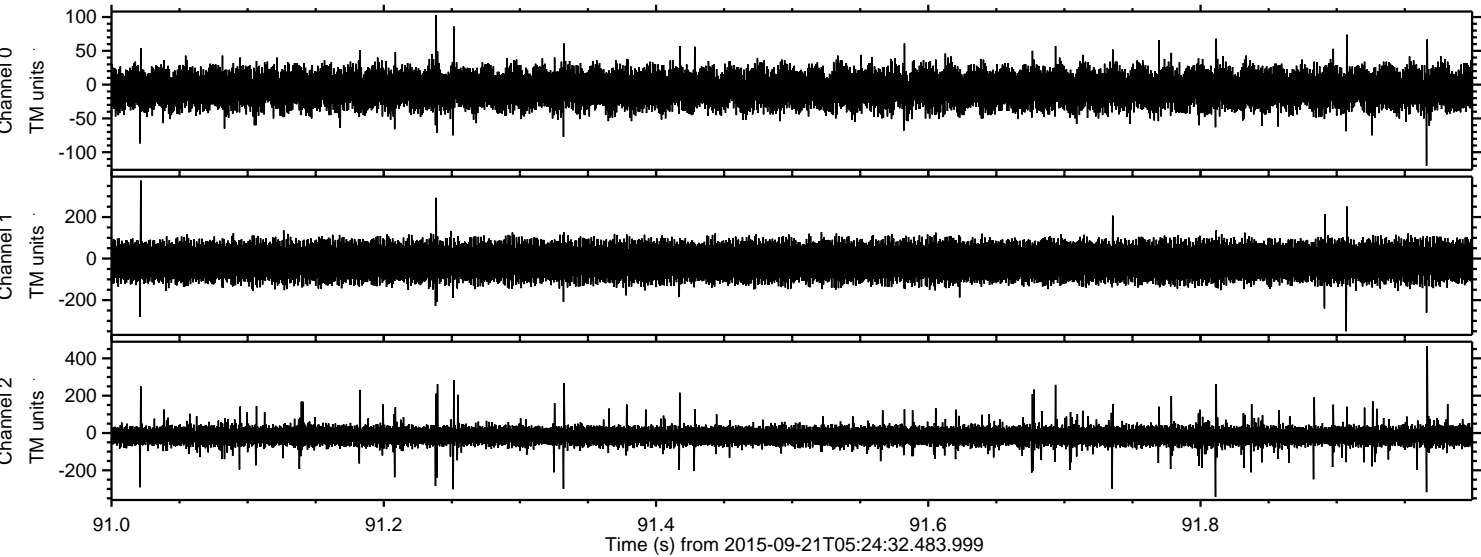
Processed Wed Oct 14 21:10:37 2015 by ELM ver.2012-10-06 from 001__elm20150921_052431__dat00.bin



Processed Wed Oct 14 21:10:38 2015 by ELM ver.2012-10-06 from 001__elm20150921_052431__dat00.bin



Processed Wed Oct 14 21:10:39 2015 by ELM ver.2012-10-06 from 001__elm20150921_052431__dat00.bin



Channel 0
mn: -120
mx: 103
 μ : -6.3
 σ : 15.2

Channel 1
mn: -350
mx: 376
 μ : -14.2
 σ : 46.6

Channel 2
mn: -342
mx: 466
 μ : -16.0
 σ : 28.0