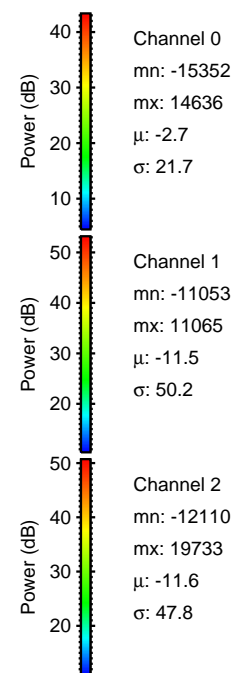
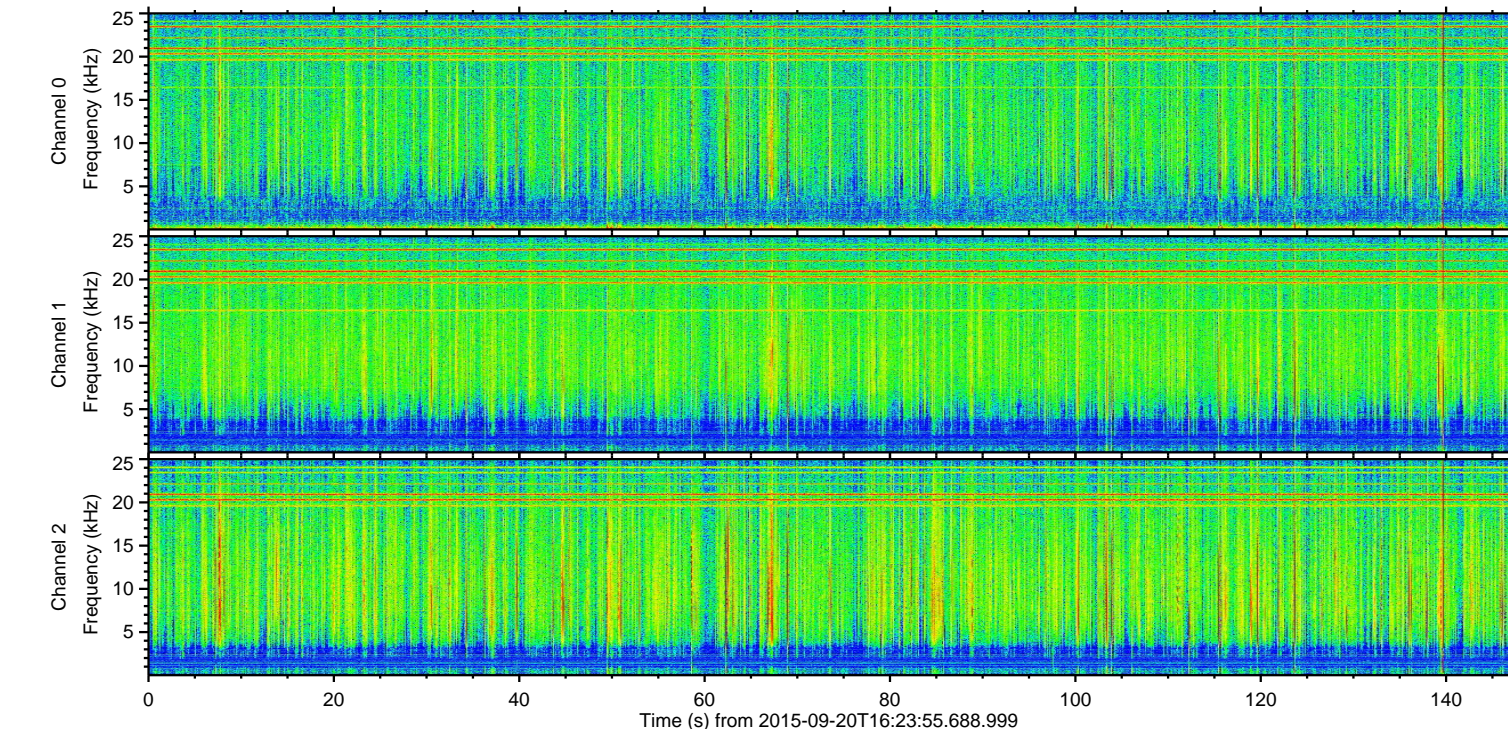
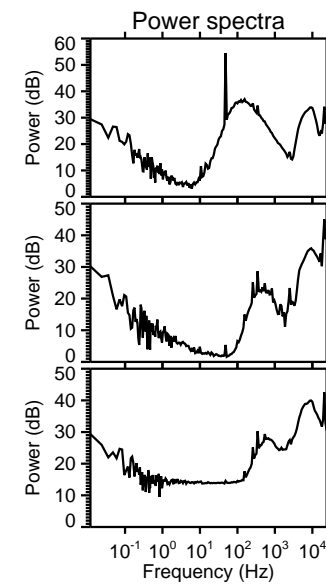
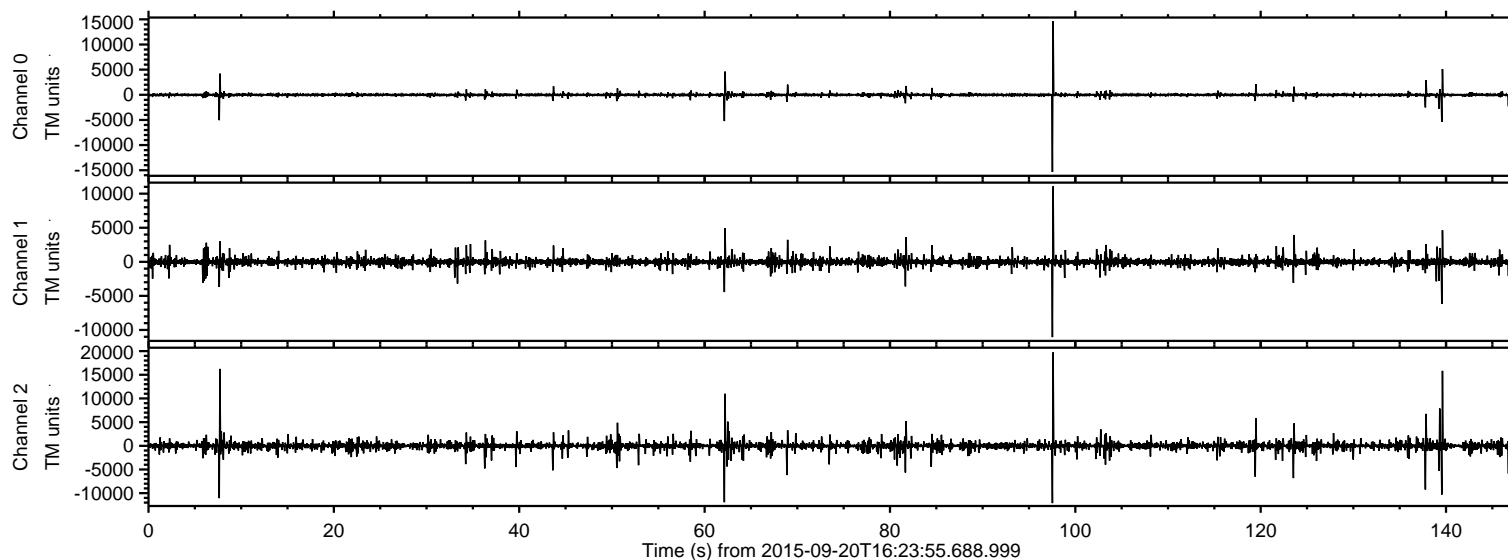


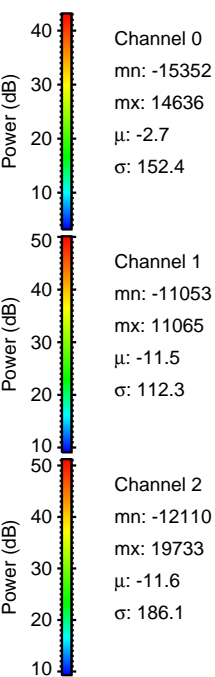
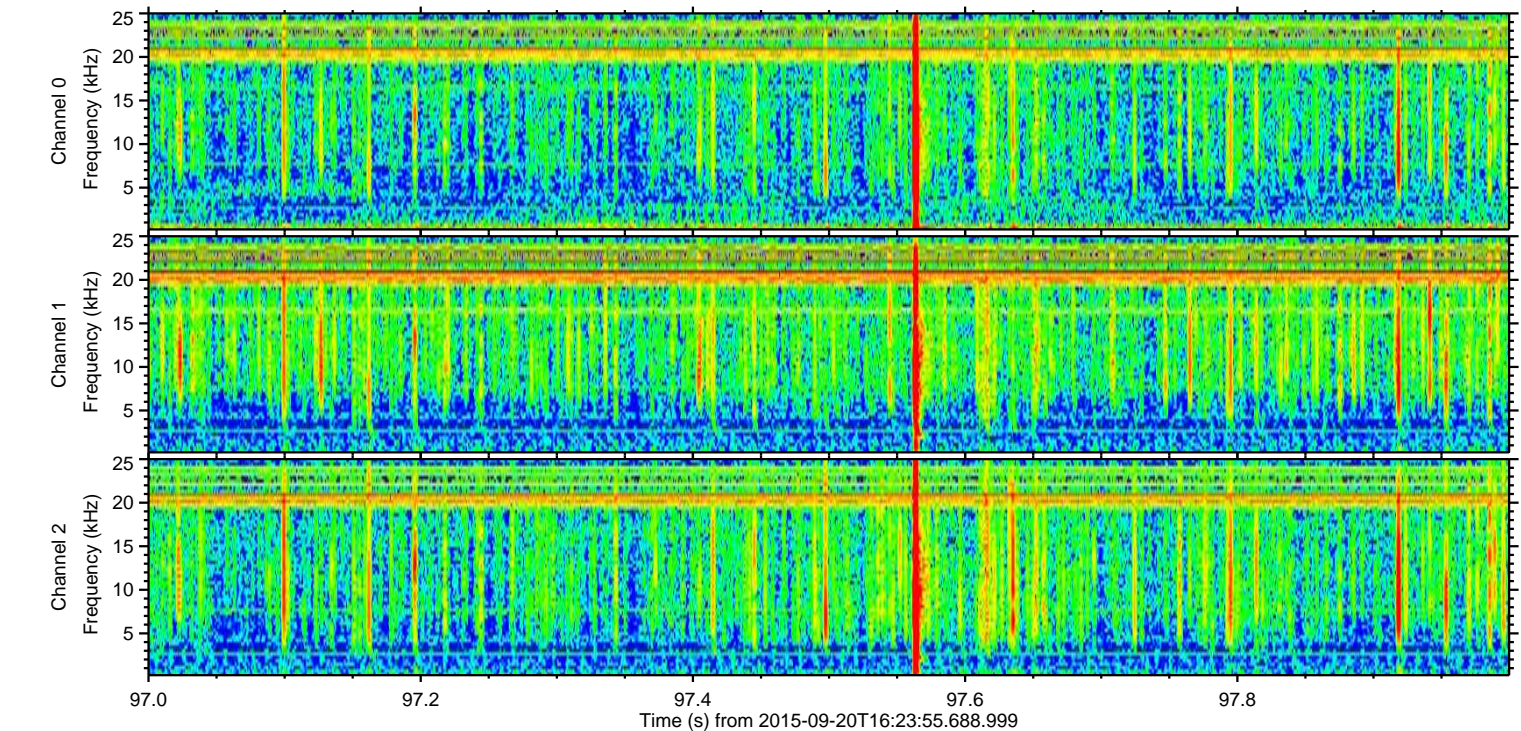
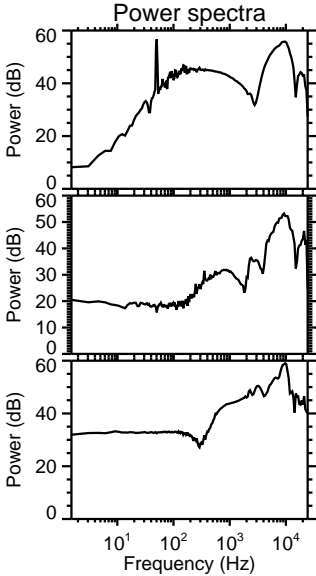
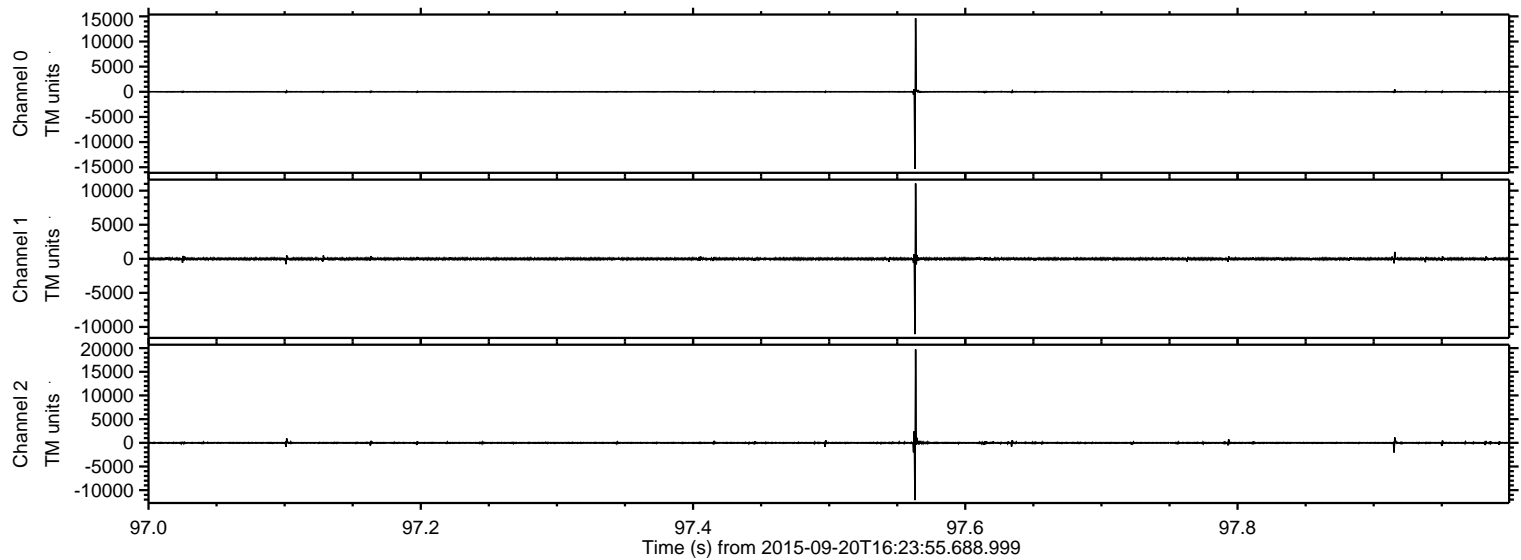
# ELMAVAN 3D WAVEFORMS (Measured data sampled at 50 kHz) 51000 packets of 144 samples from 2015-09-20T16:23:55.688.999.

Processed Wed Oct 14 16:49:18 2015 by ELM ver.2012-10-06 from 001\_\_elm20150920\_162354\_\_dat00.bin



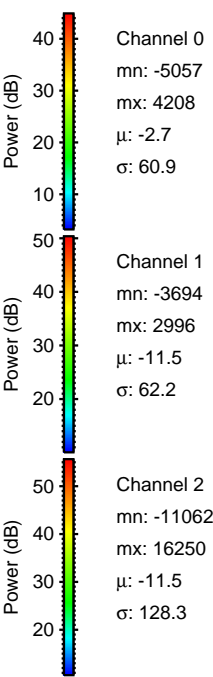
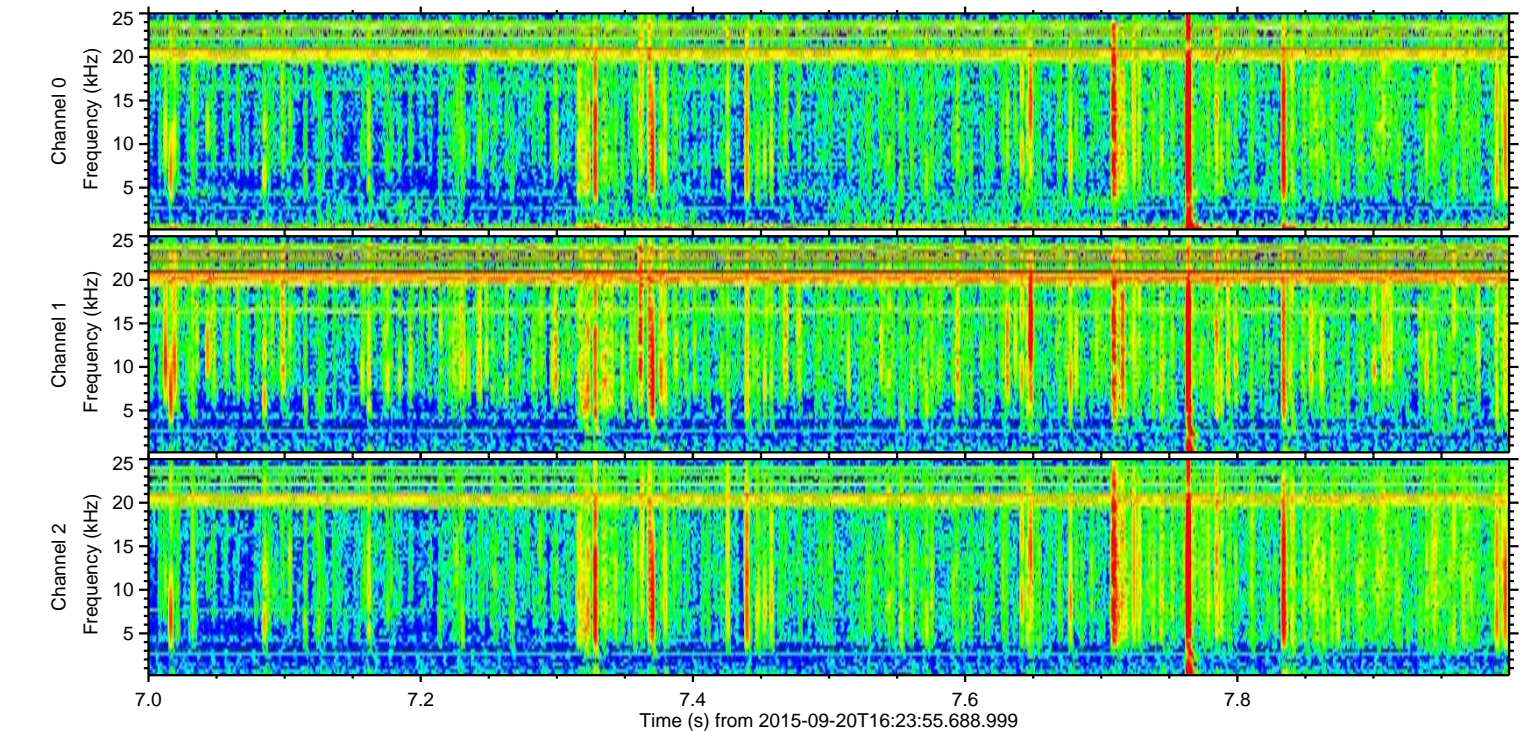
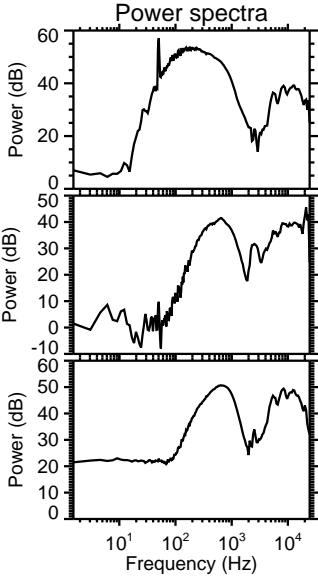
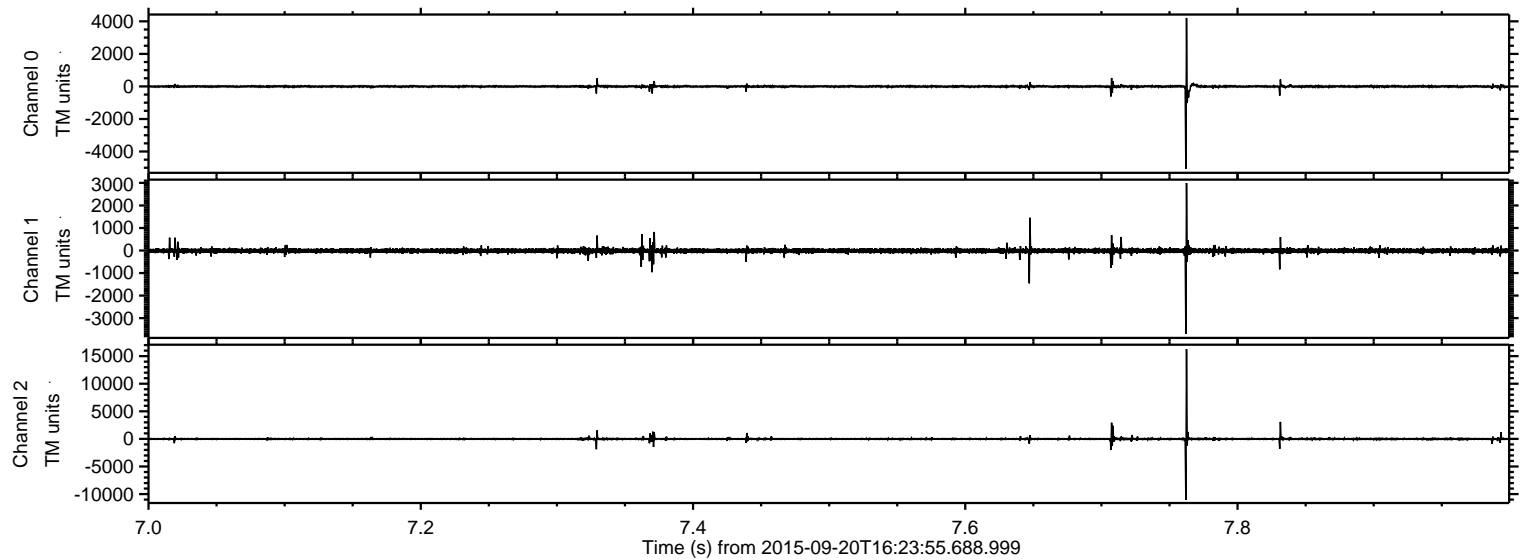


Processed Wed Oct 14 16:49:38 2015 by ELM ver.2012-10-06 from 001\_\_elm20150920\_162354\_\_dat00.bin





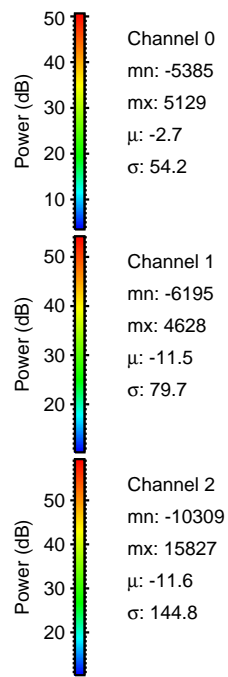
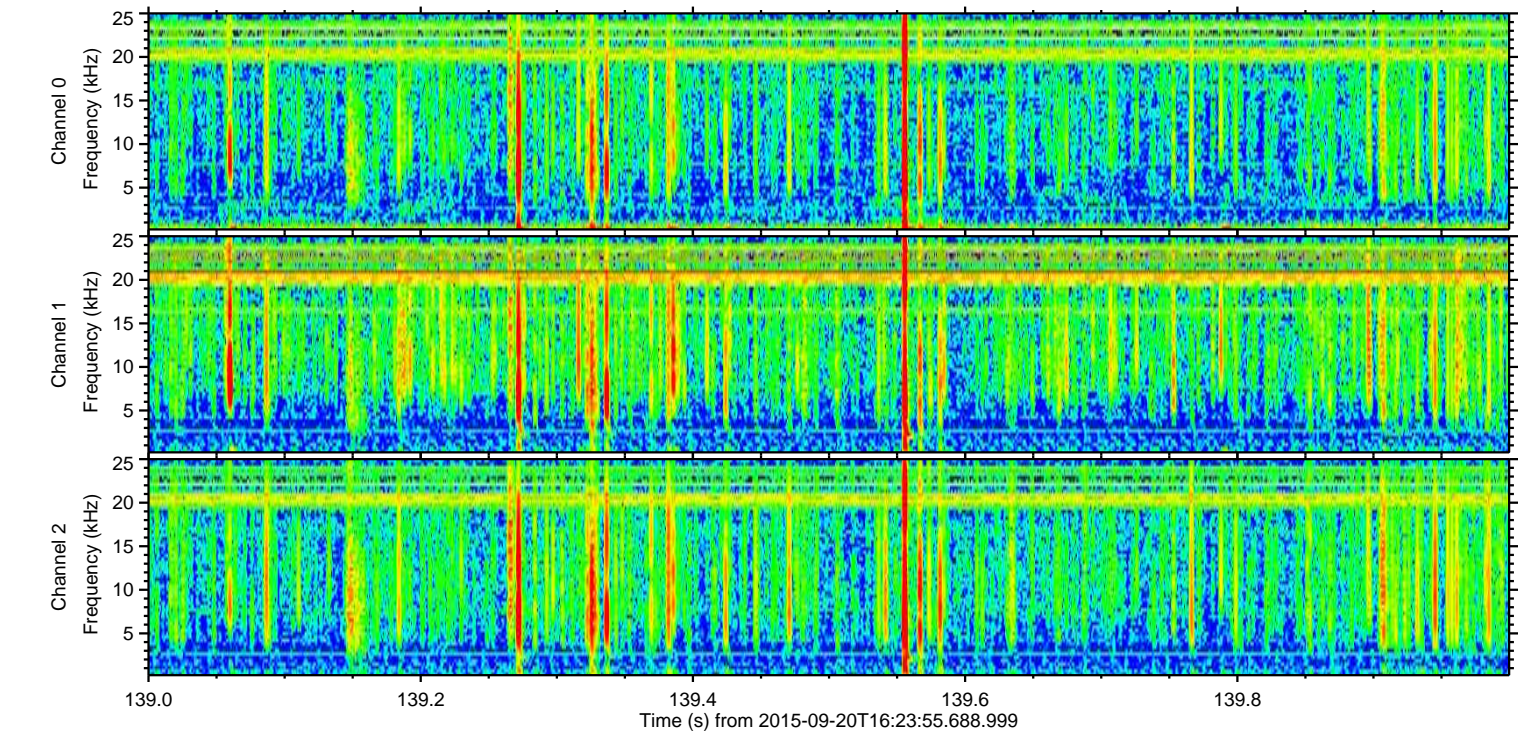
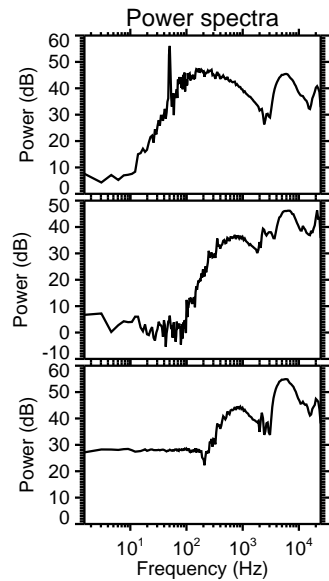
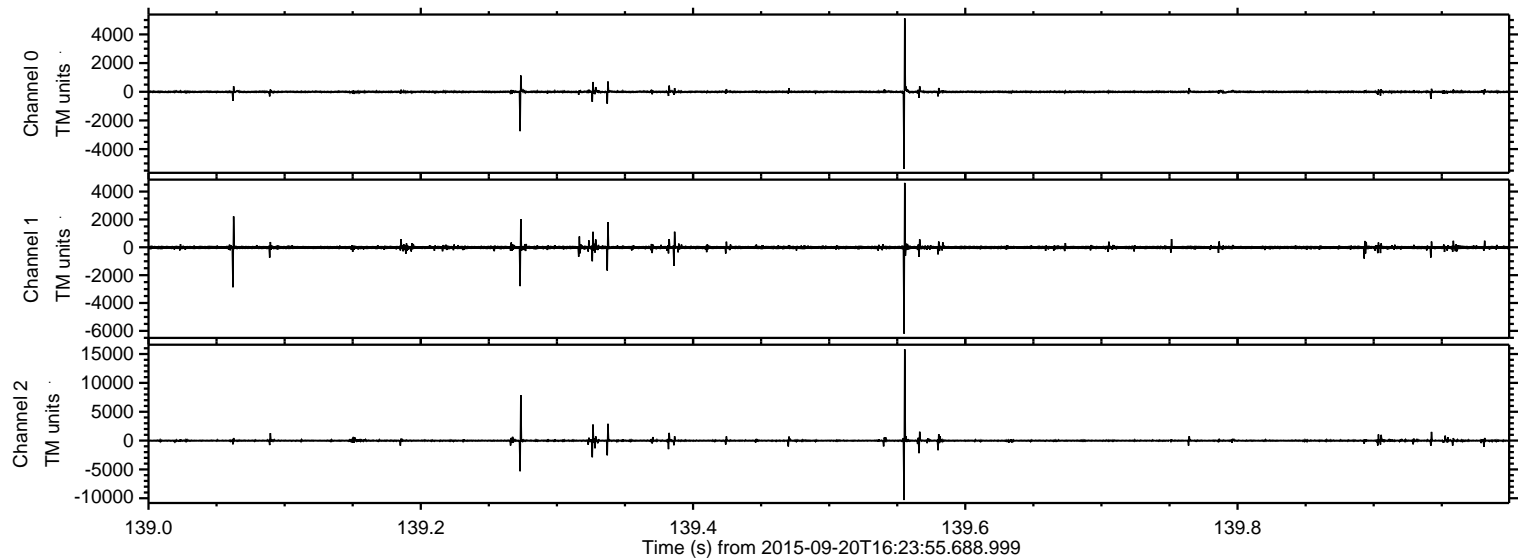
Processed Wed Oct 14 16:49:39 2015 by ELM ver.2012-10-06 from 001\_\_elm20150920\_162354\_\_dat00.bin





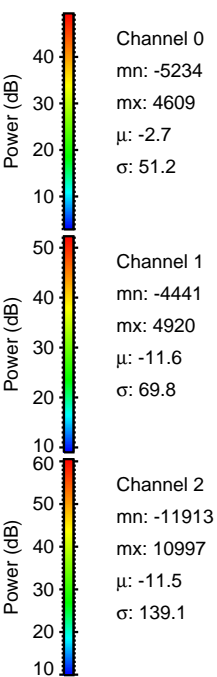
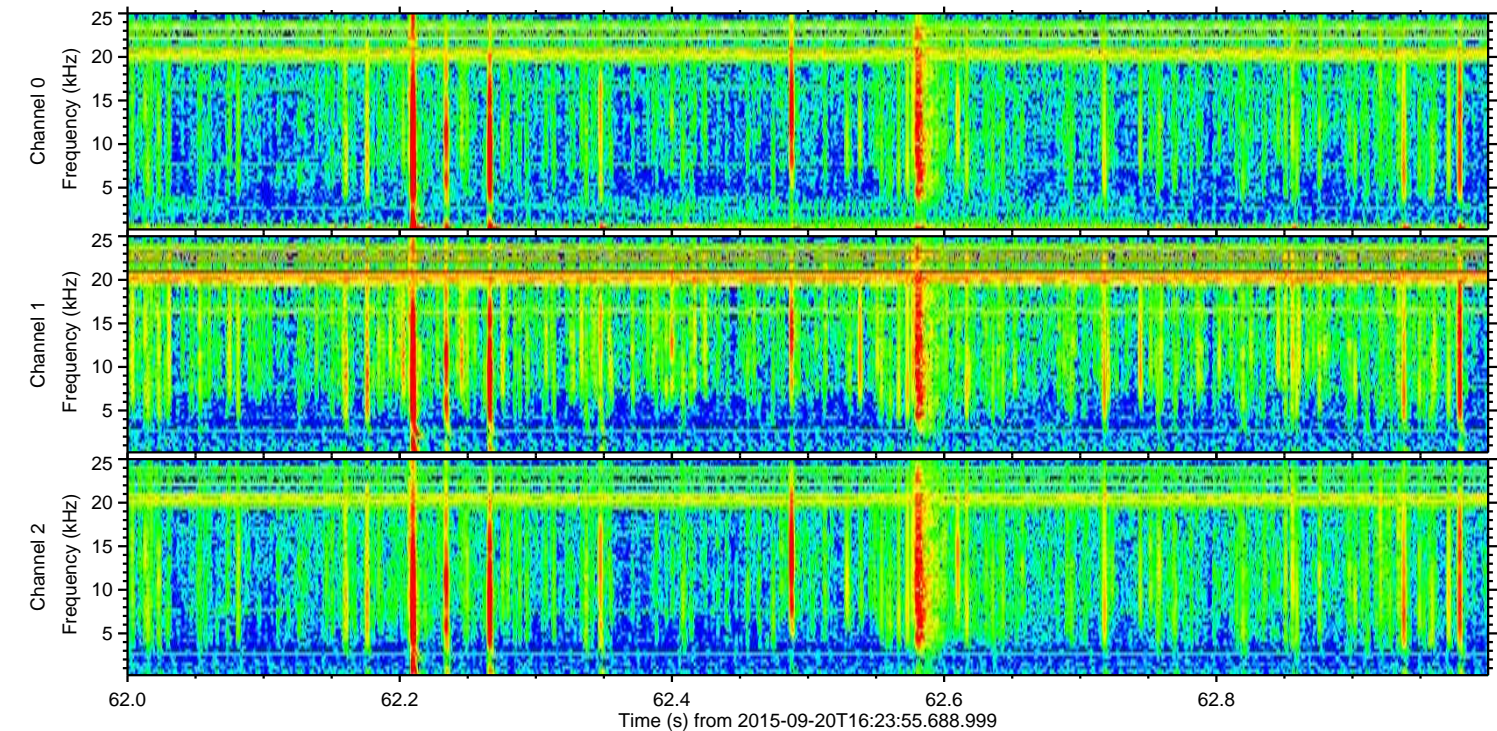
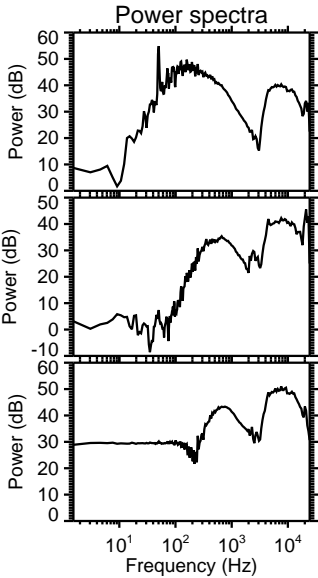
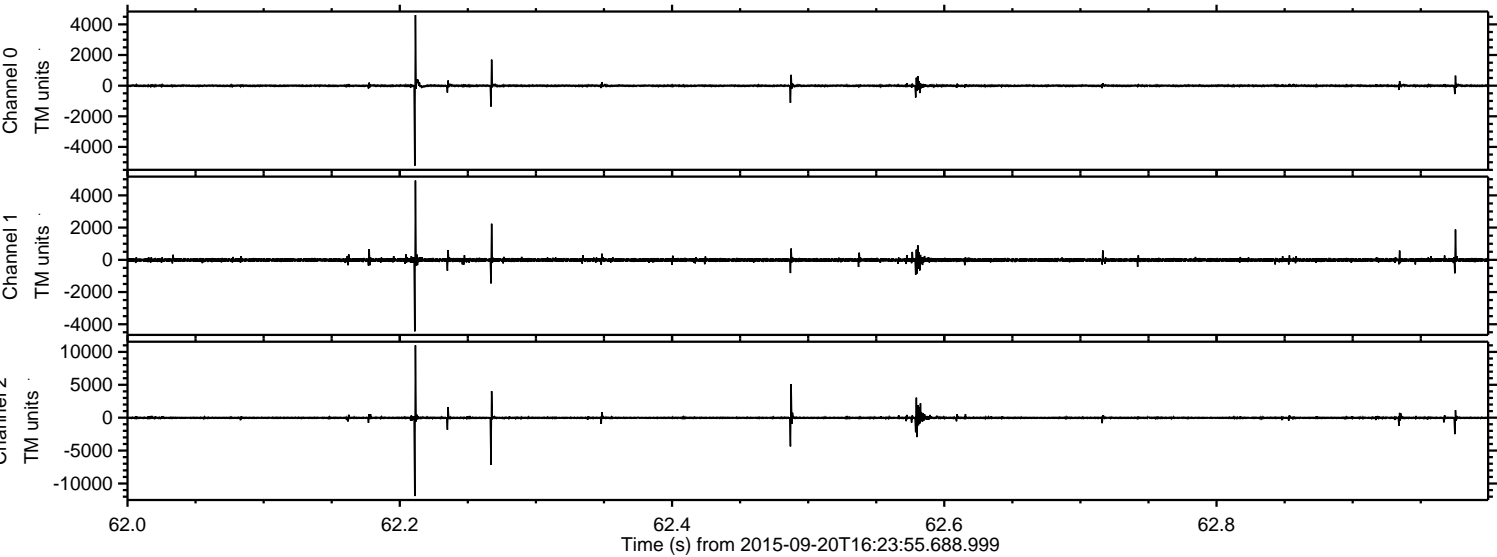
ELMAVAN 3D WAVEFORMS (Measured data sampled at 50 kHz) 51000 packets of 144 samples from 2015-09-20T16:23:55.688.999. Part 140/147

Processed Wed Oct 14 16:49:41 2015 by ELM ver.2012-10-06 from 001\_\_elm20150920\_162354\_\_dat00.bin





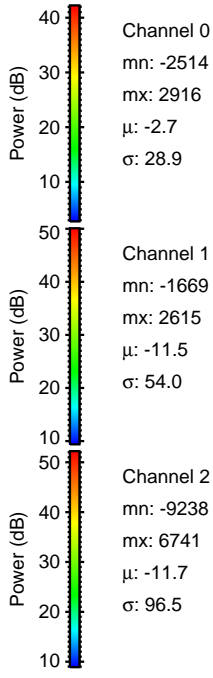
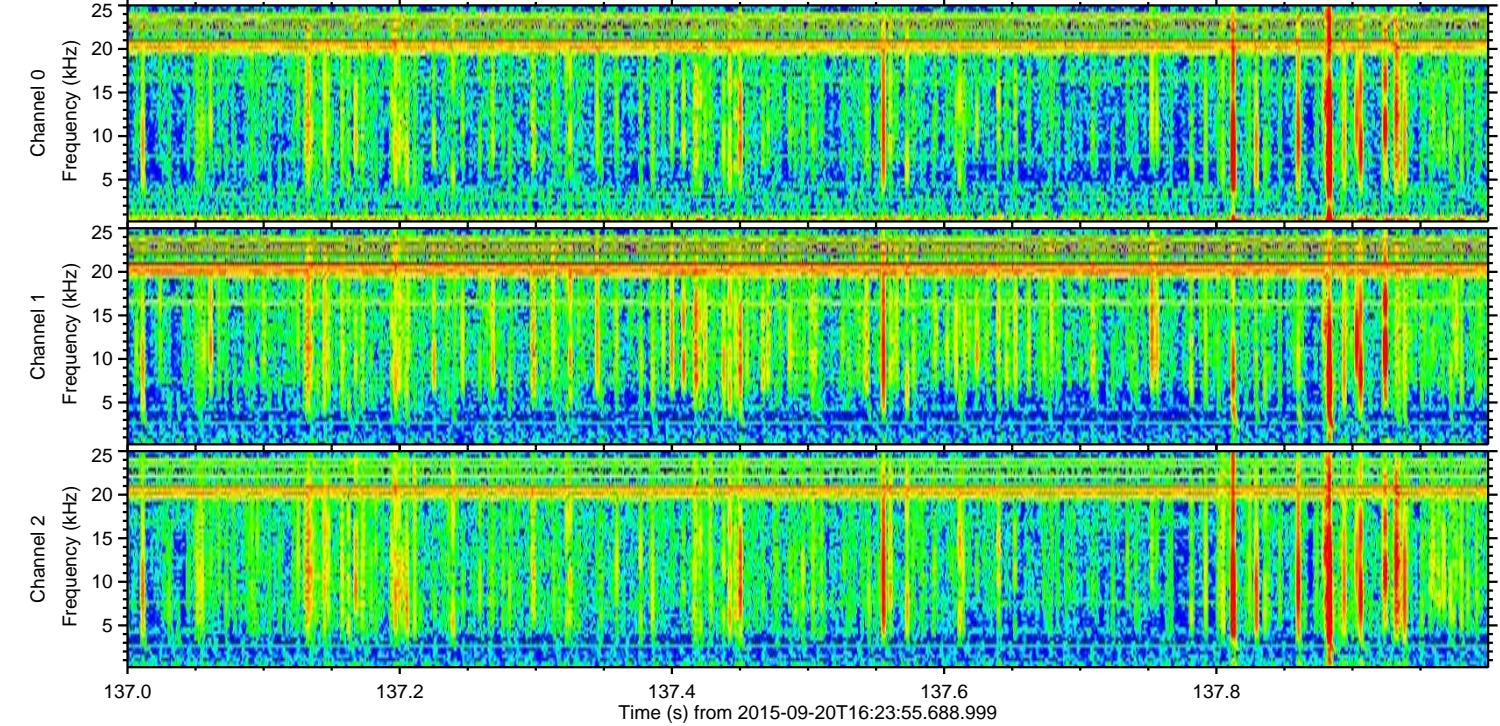
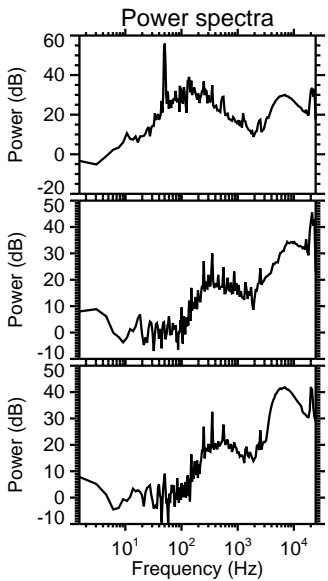
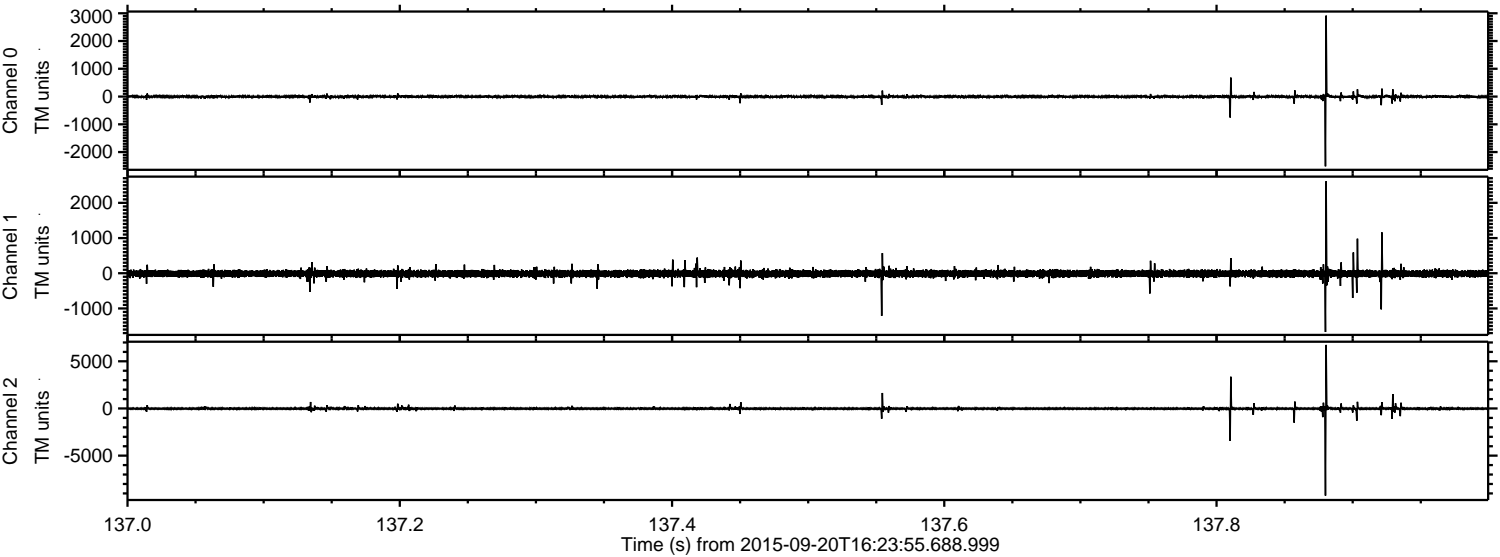
Processed Wed Oct 14 16:49:42 2015 by ELM ver.2012-10-06 from 001\_\_elm20150920\_162354\_\_dat00.bin





ELMAVAN 3D WAVEFORMS (Measured data sampled at 50 kHz) 51000 packets of 144 samples from 2015-09-20T16:23:55.688.999. Part 138/147

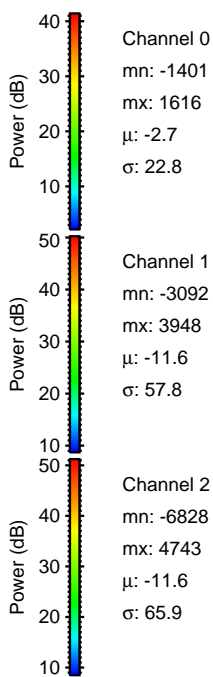
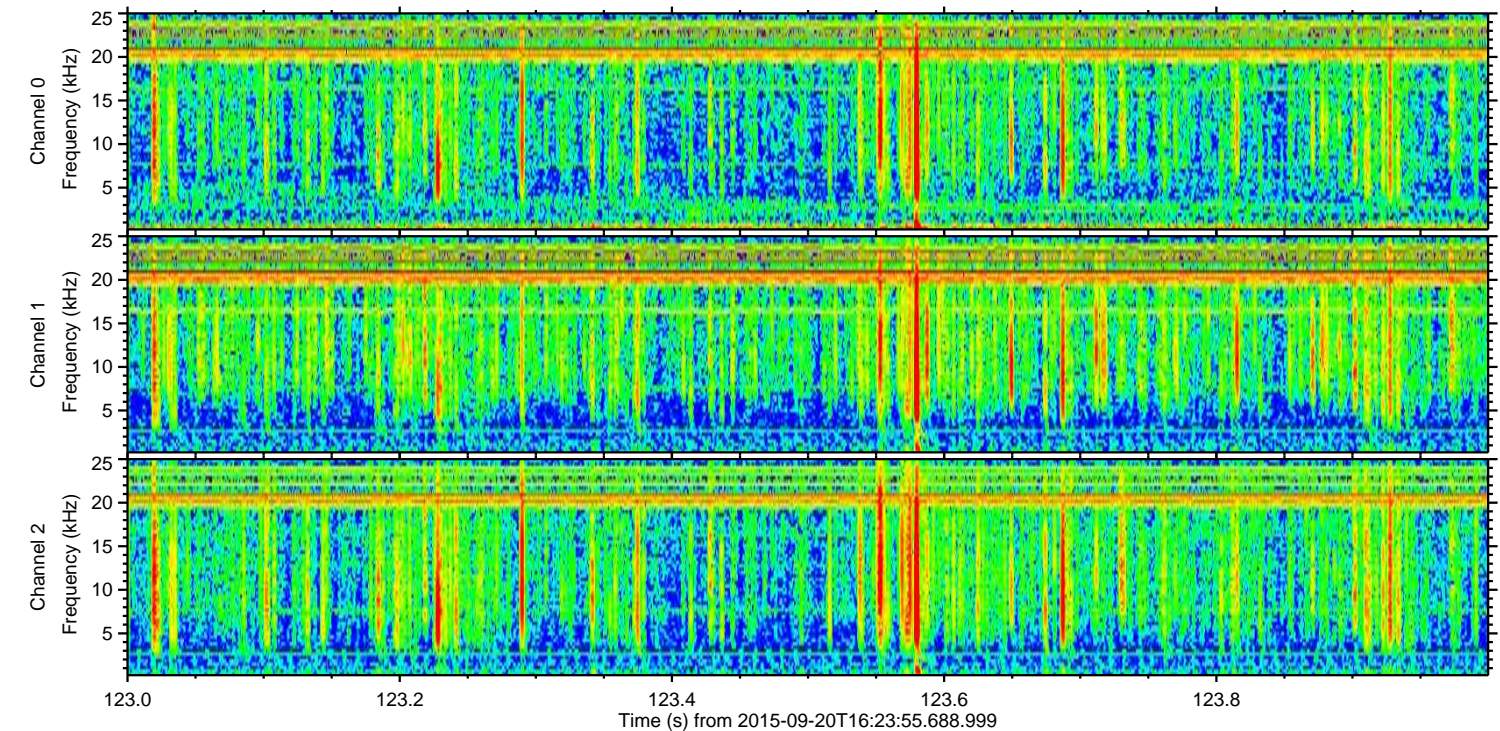
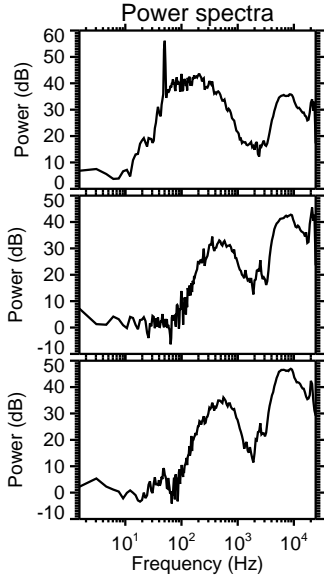
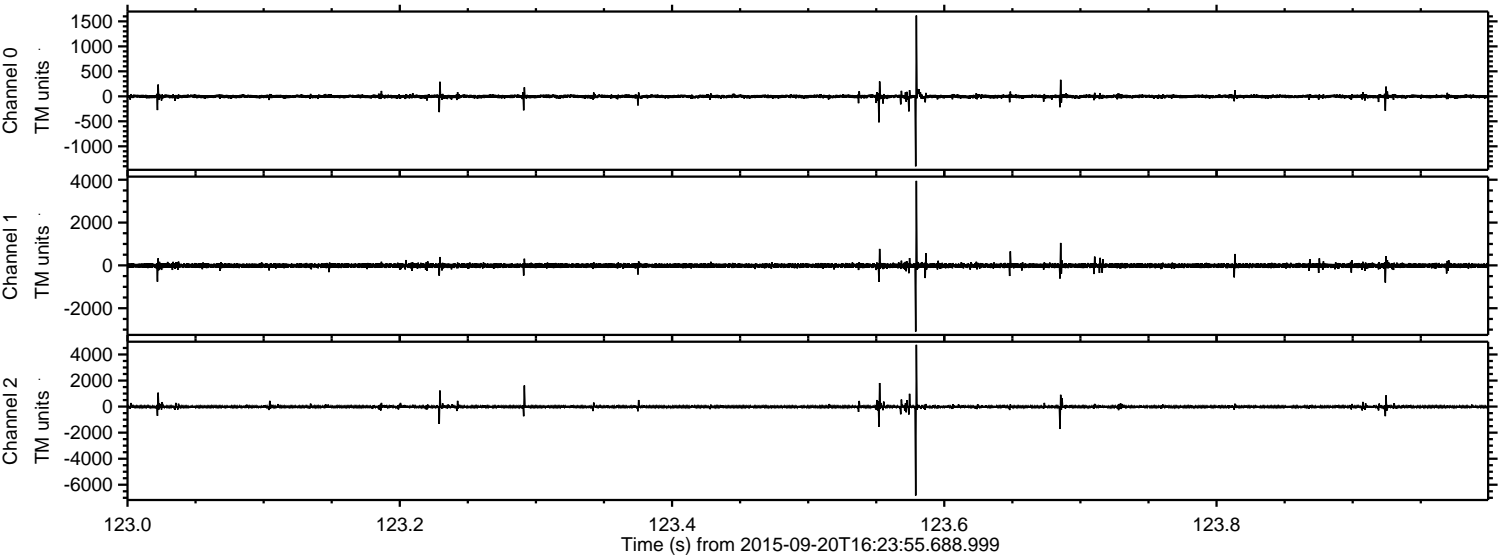
Processed Wed Oct 14 16:49:44 2015 by ELM ver.2012-10-06 from 001\_\_elm20150920\_162354\_\_dat00.bin





ELMAVAN 3D WAVEFORMS (Measured data sampled at 50 kHz) 51000 packets of 144 samples from 2015-09-20T16:23:55.688.999. Part 124/147

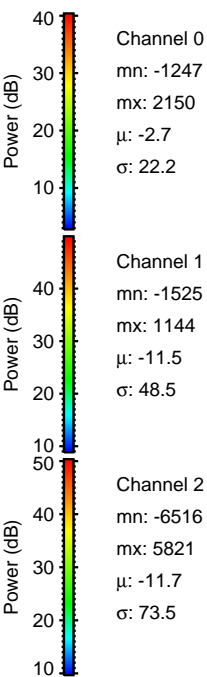
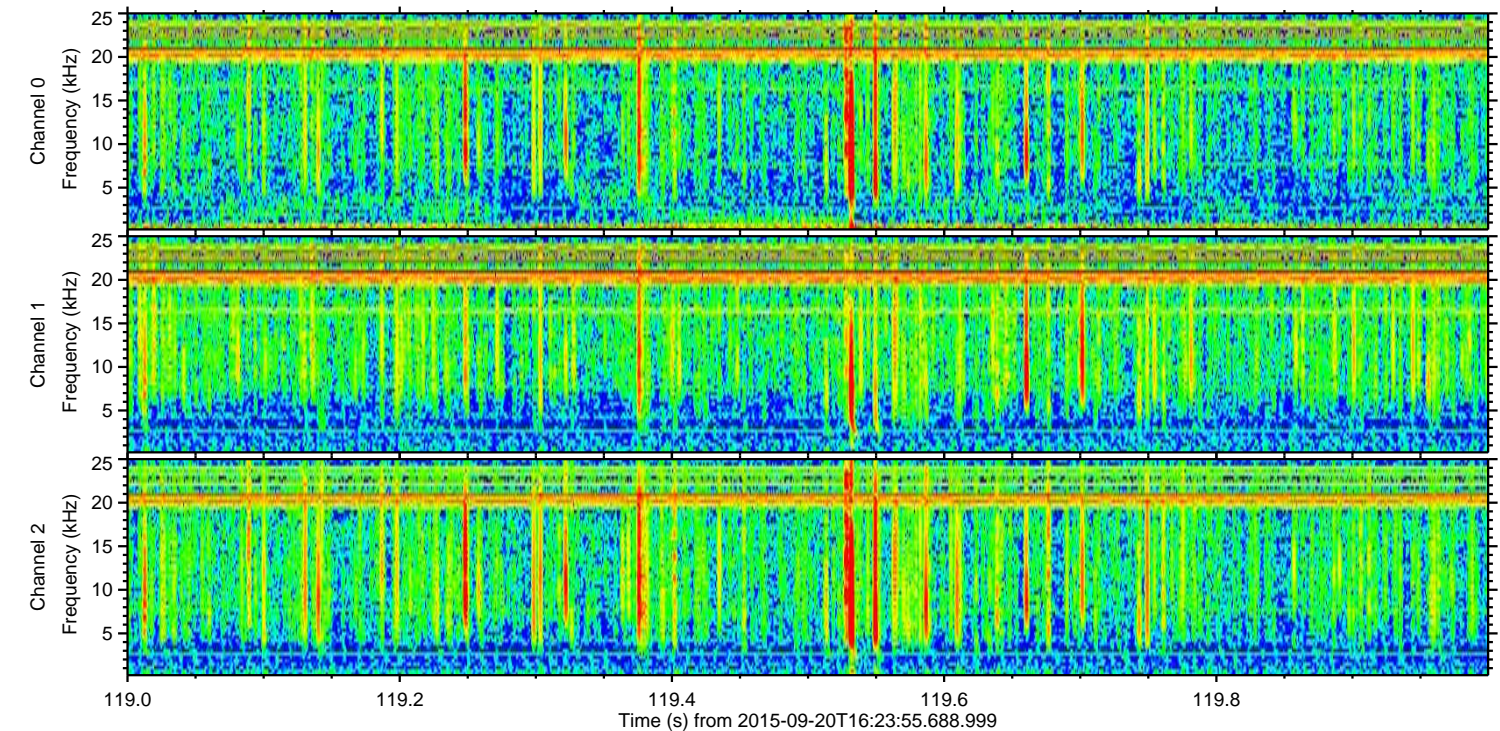
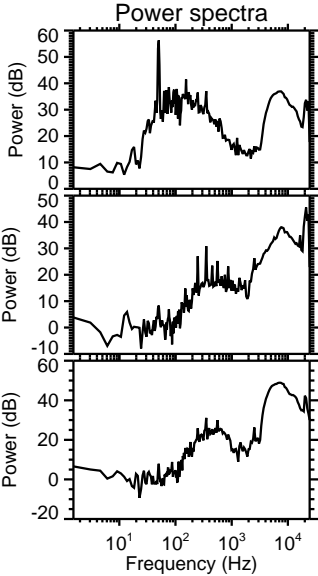
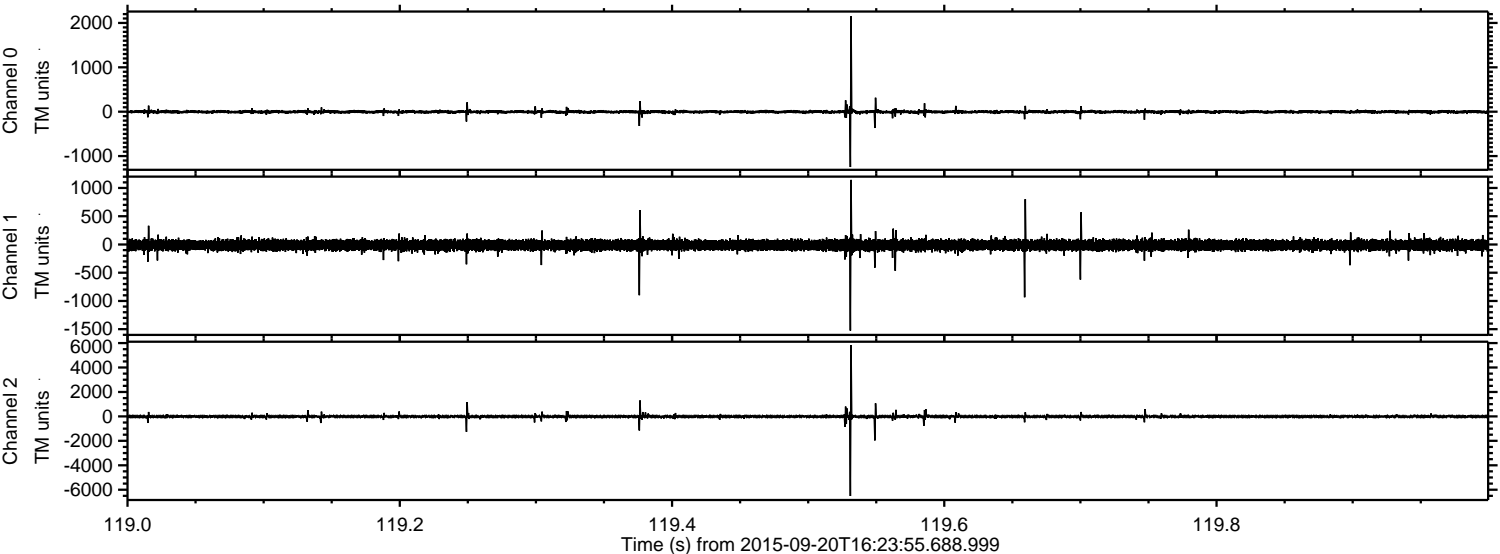
Processed Wed Oct 14 16:49:46 2015 by ELM ver.2012-10-06 from 001\_\_elm20150920\_162354\_\_dat00.bin





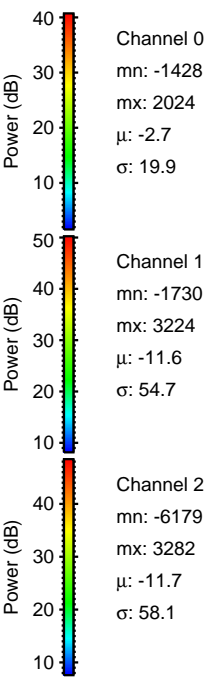
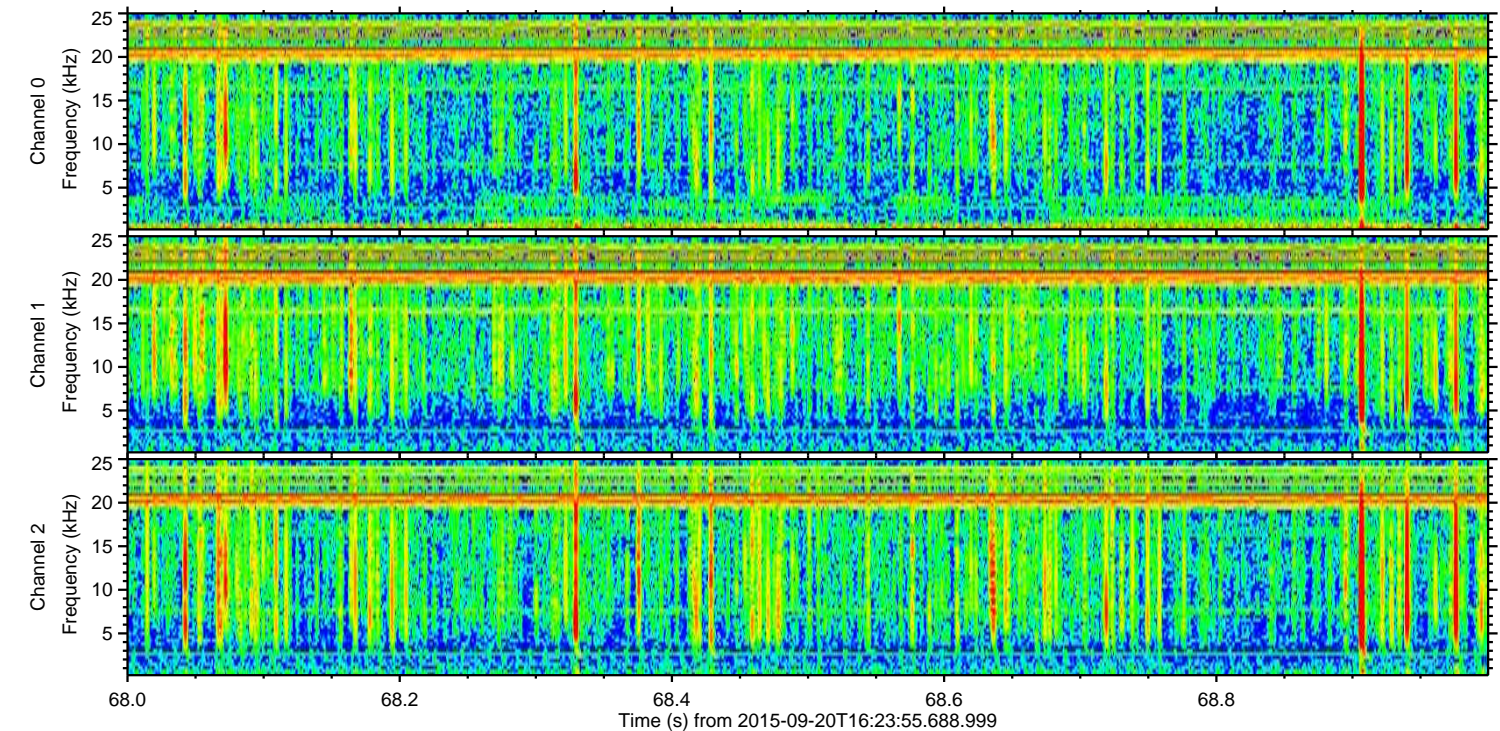
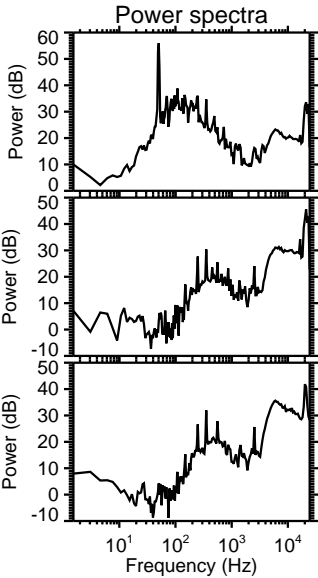
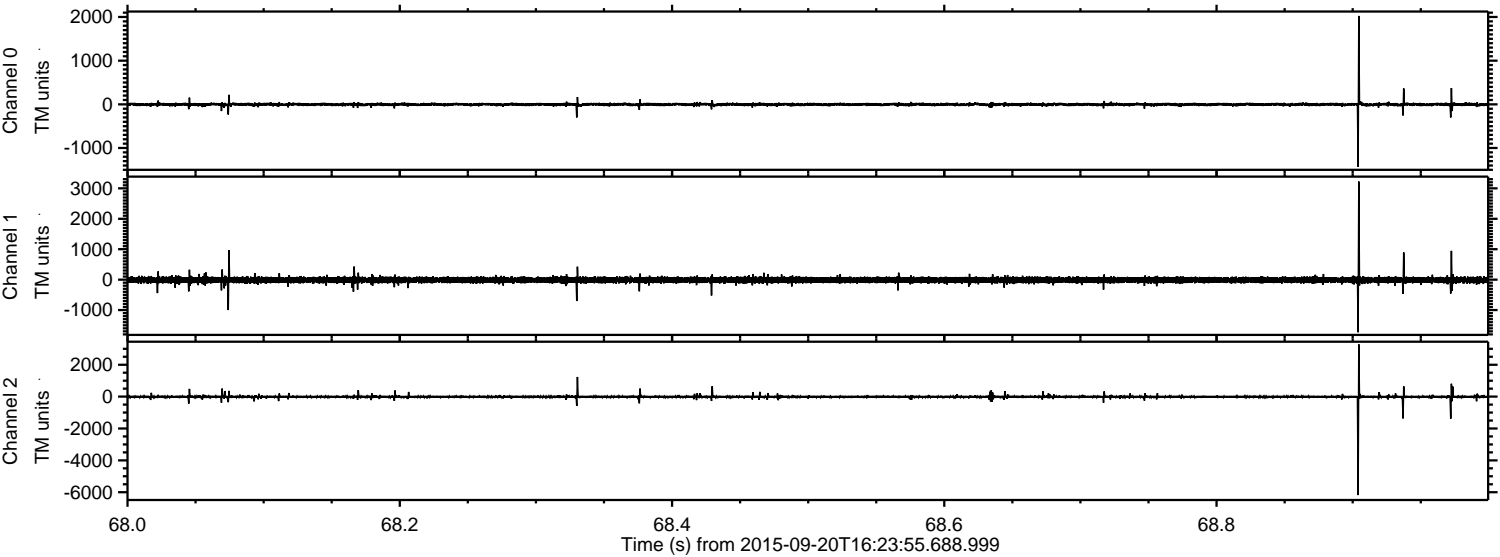
ELMAVAN 3D WAVEFORMS (Measured data sampled at 50 kHz) 51000 packets of 144 samples from 2015-09-20T16:23:55.688.999. Part 120/147

Processed Wed Oct 14 16:49:47 2015 by ELM ver.2012-10-06 from 001\_\_elm20150920\_162354\_\_dat00.bin





Processed Wed Oct 14 16:49:49 2015 by ELM ver.2012-10-06 from 001\_\_elm20150920\_162354\_\_dat00.bin



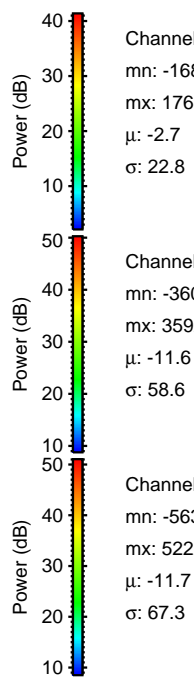
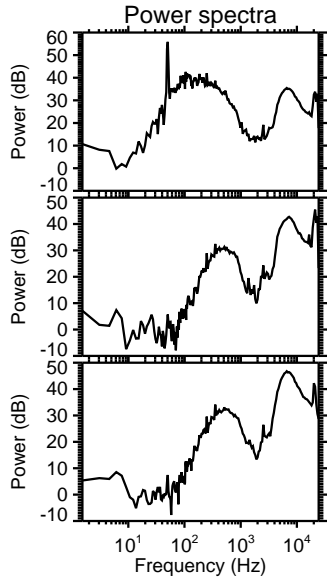
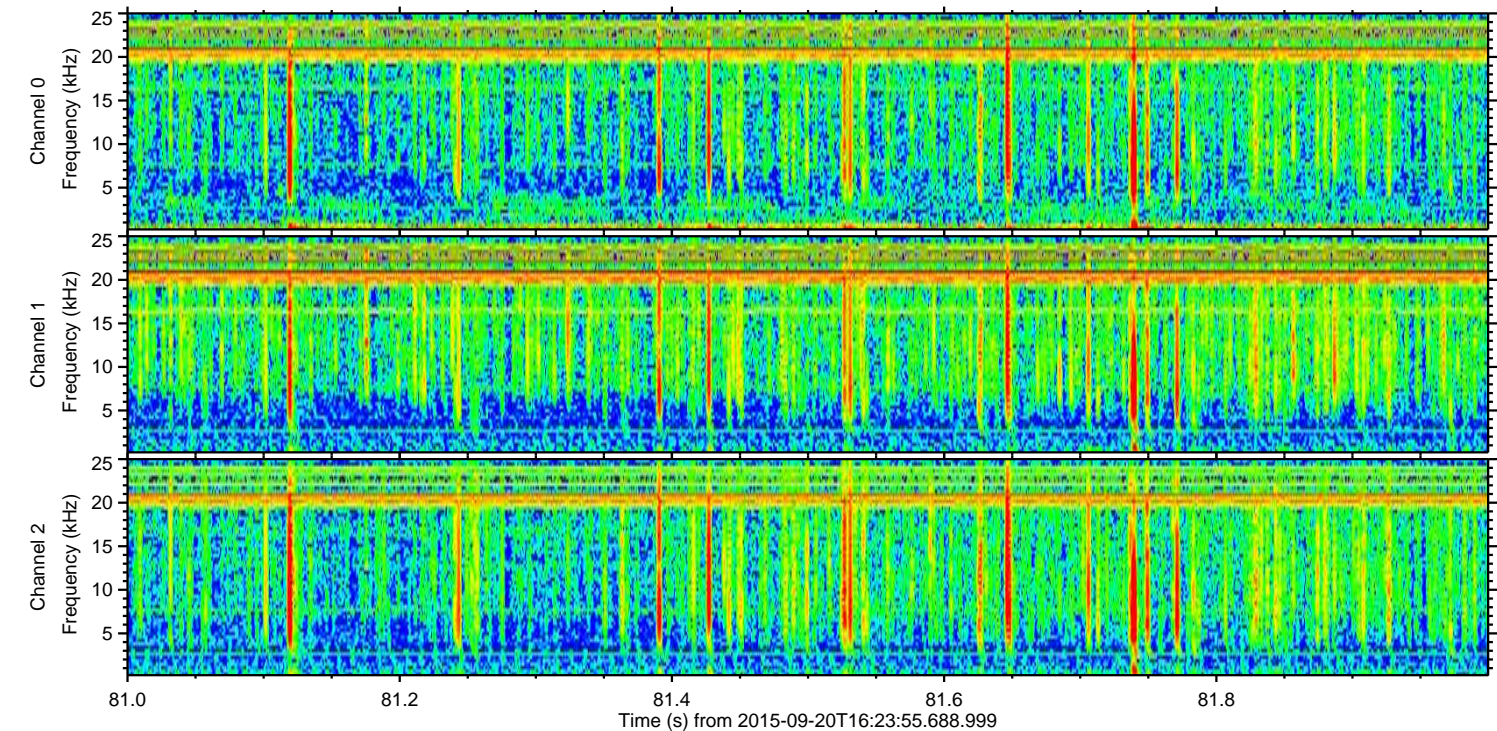
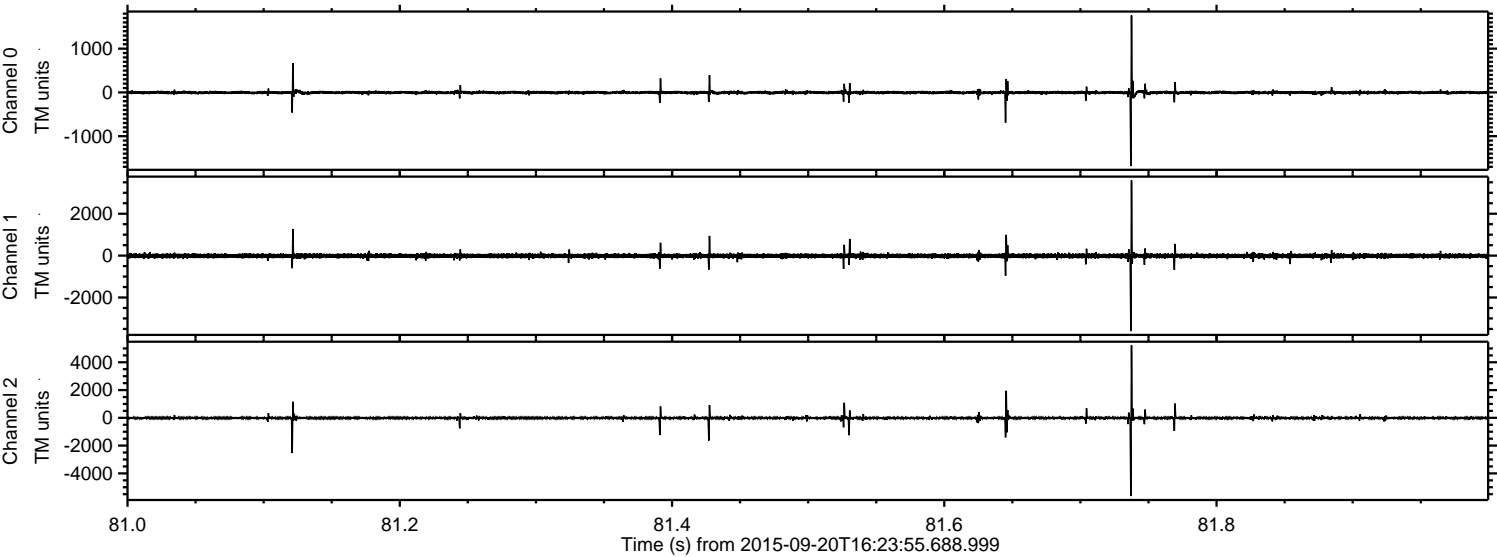
Channel 0  
mn: -1428  
mx: 2024  
 $\mu$ : -2.7  
 $\sigma$ : 19.9

Channel 1  
mn: -1730  
mx: 3224  
 $\mu$ : -11.6  
 $\sigma$ : 54.7

Channel 2  
mn: -6179  
mx: 3282  
 $\mu$ : -11.7  
 $\sigma$ : 58.1



Processed Wed Oct 14 16:49:50 2015 by ELM ver.2012-10-06 from 001\_\_elm20150920\_162354\_\_dat00.bin



Channel 0  
mn: -1685  
mx: 1761  
 $\mu$ : -2.7  
 $\sigma$ : 22.8

Channel 1  
mn: -3605  
mx: 3592  
 $\mu$ : -11.6  
 $\sigma$ : 58.6

Channel 2  
mn: -5636  
mx: 5222  
 $\mu$ : -11.7  
 $\sigma$ : 67.3



Processed Wed Oct 14 16:49:51 2015 by ELM ver.2012-10-06 from 001\_\_elm20150920\_162354\_\_dat00.bin

