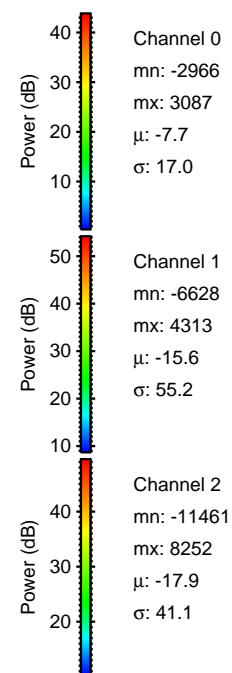
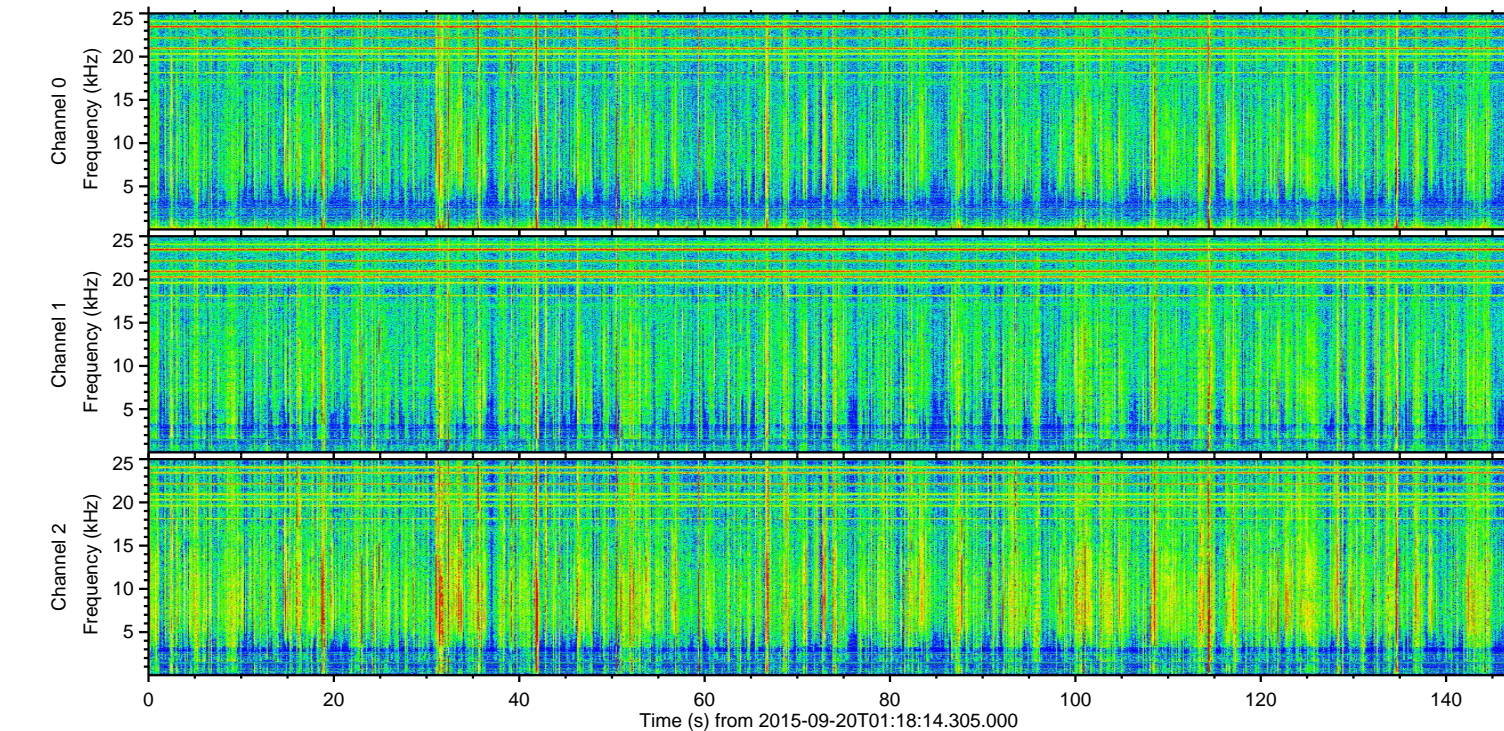
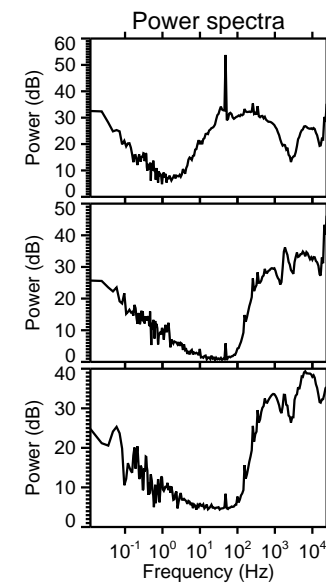
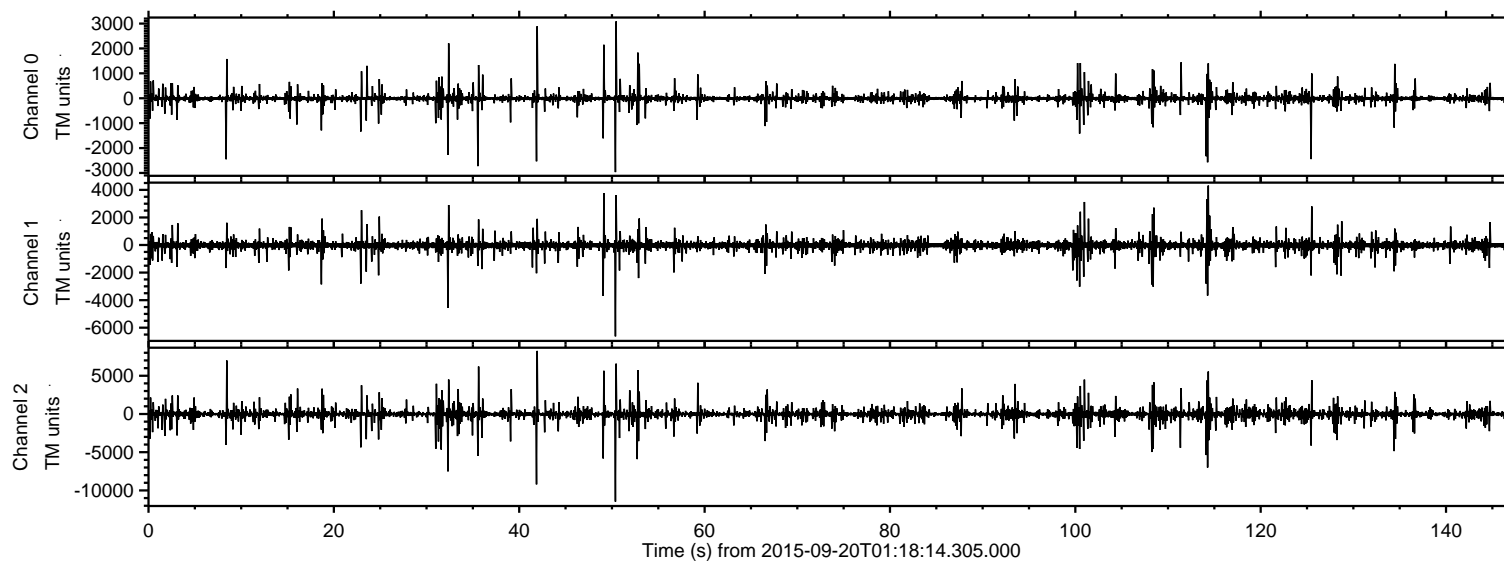
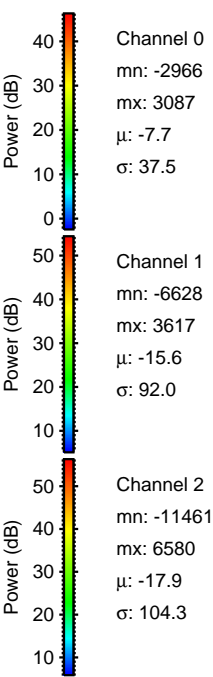
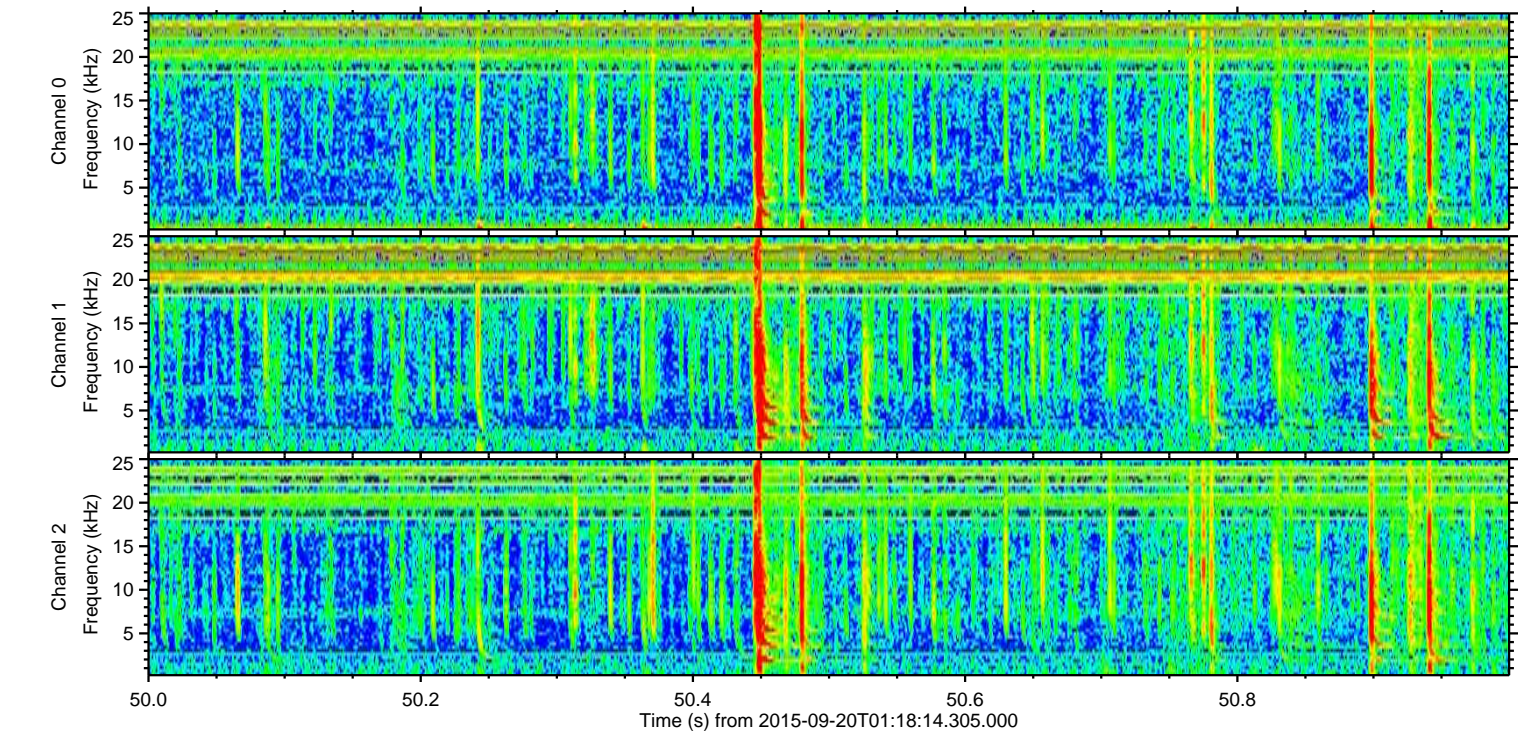
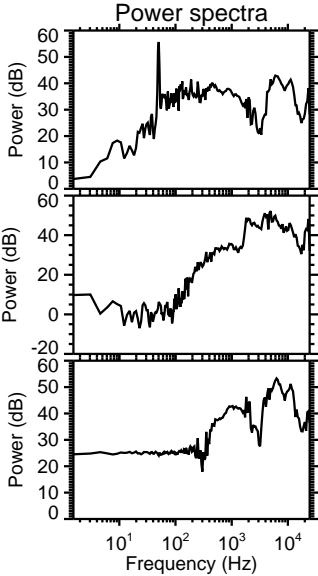
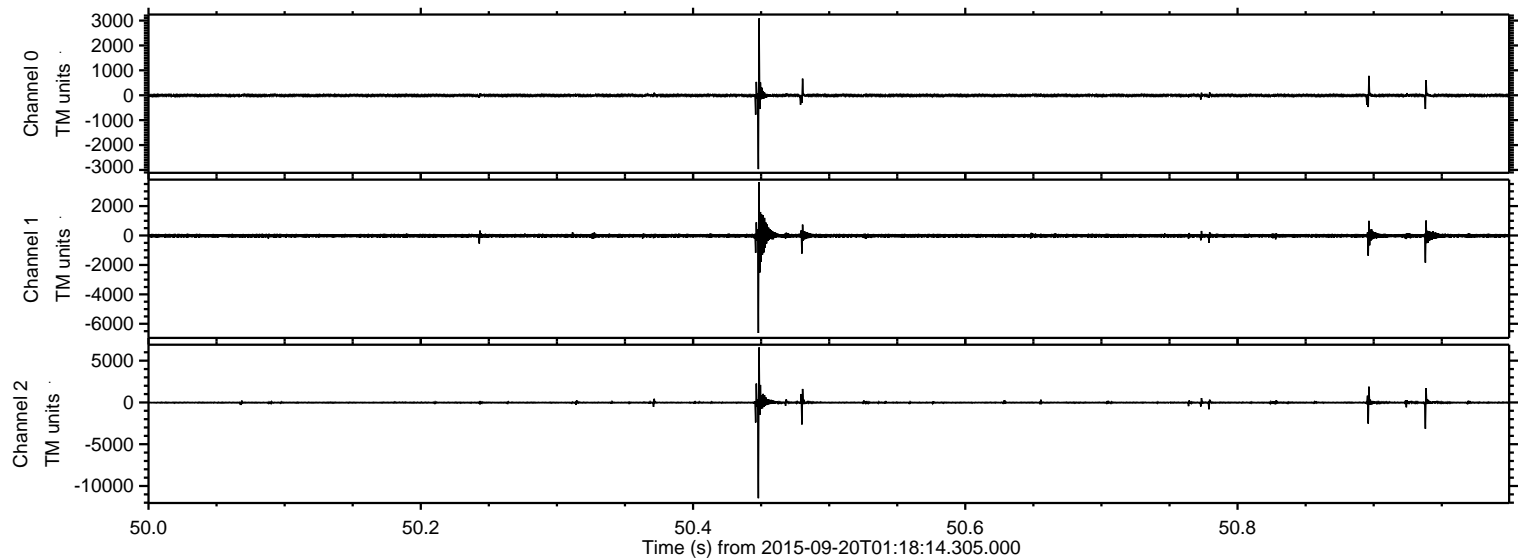


ELMAVAN 3D WAVEFORMS (Measured data sampled at 50 kHz) 51000 packets of 144 samples from 2015-09-20T01:18:14.305.000.

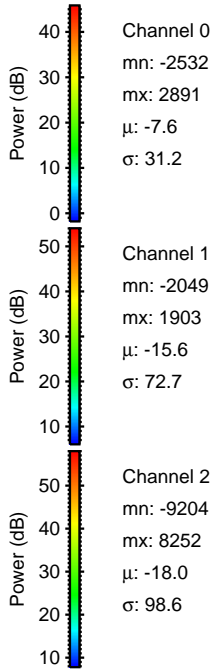
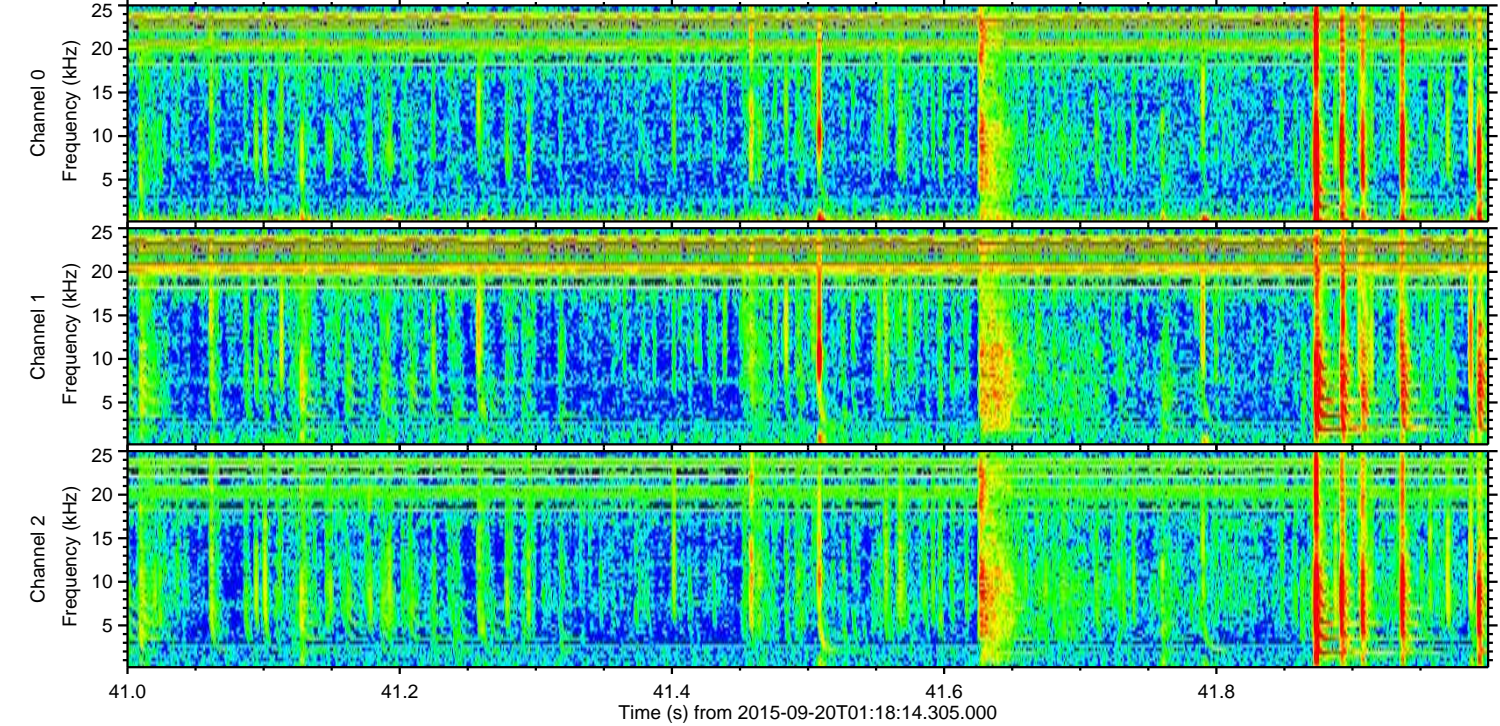
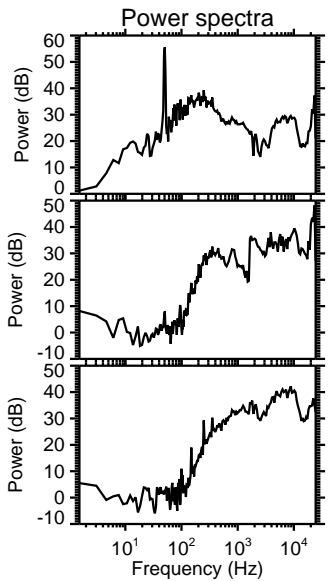
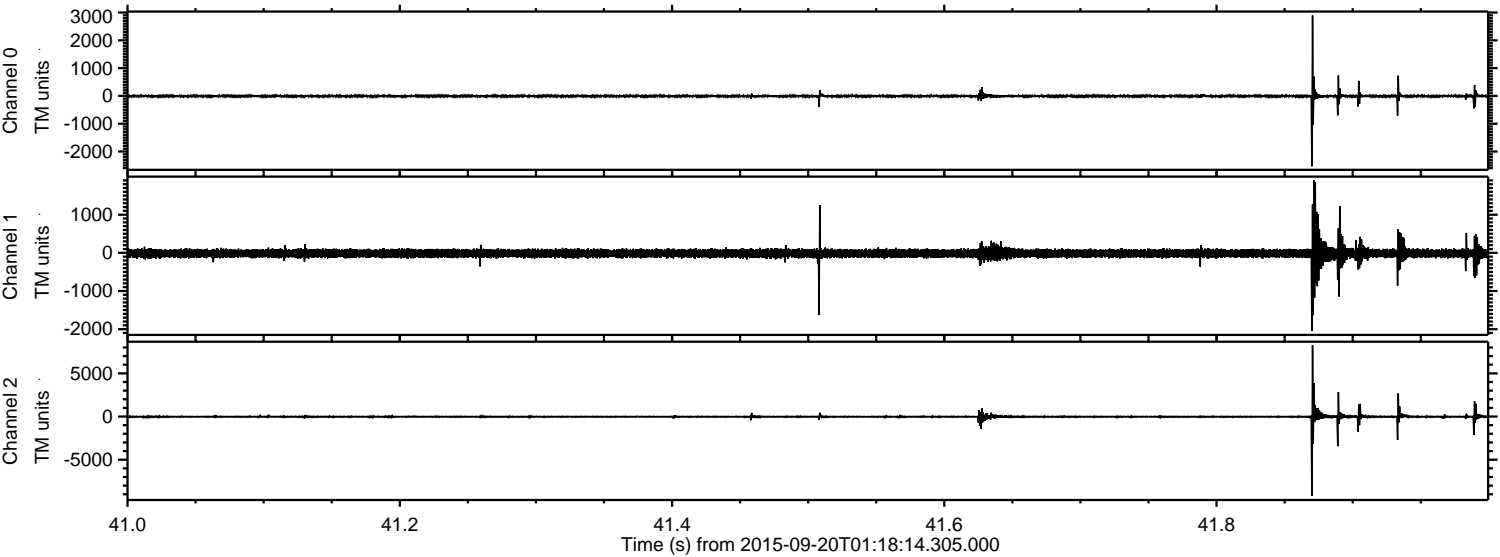
Processed Wed Oct 14 11:50:48 2015 by ELM ver.2012-10-06 from 001__elm20150920_011813__dat00.bin



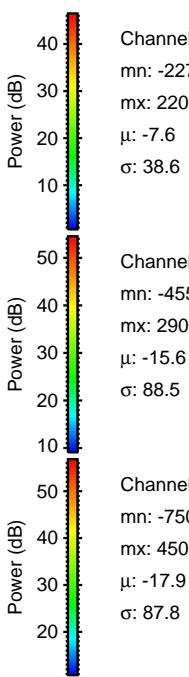
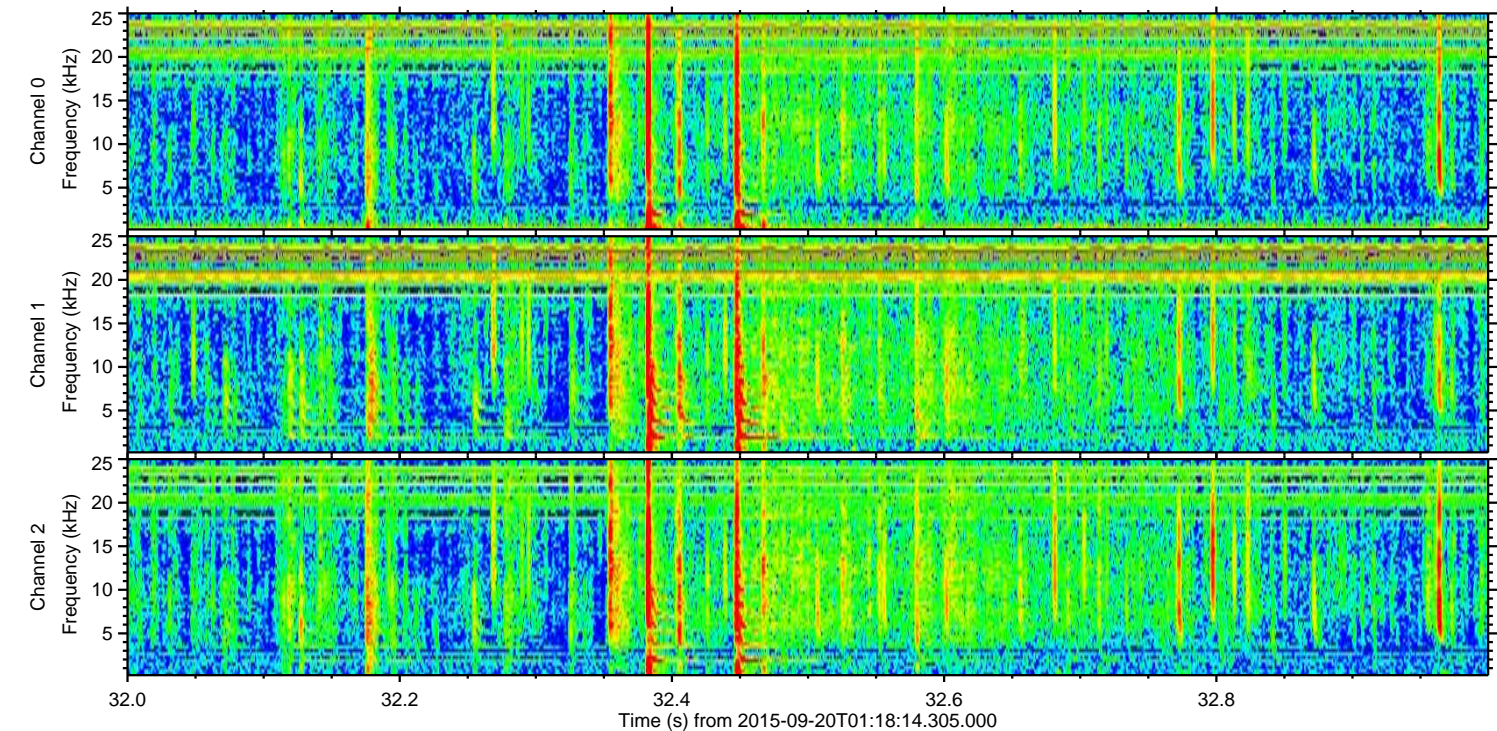
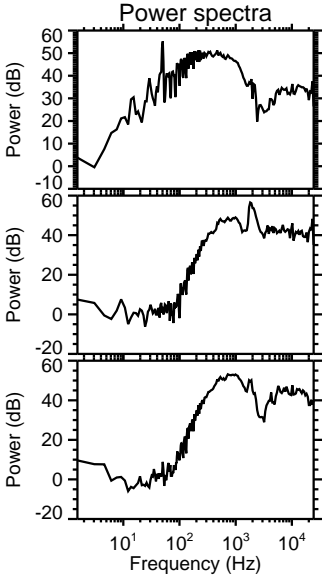
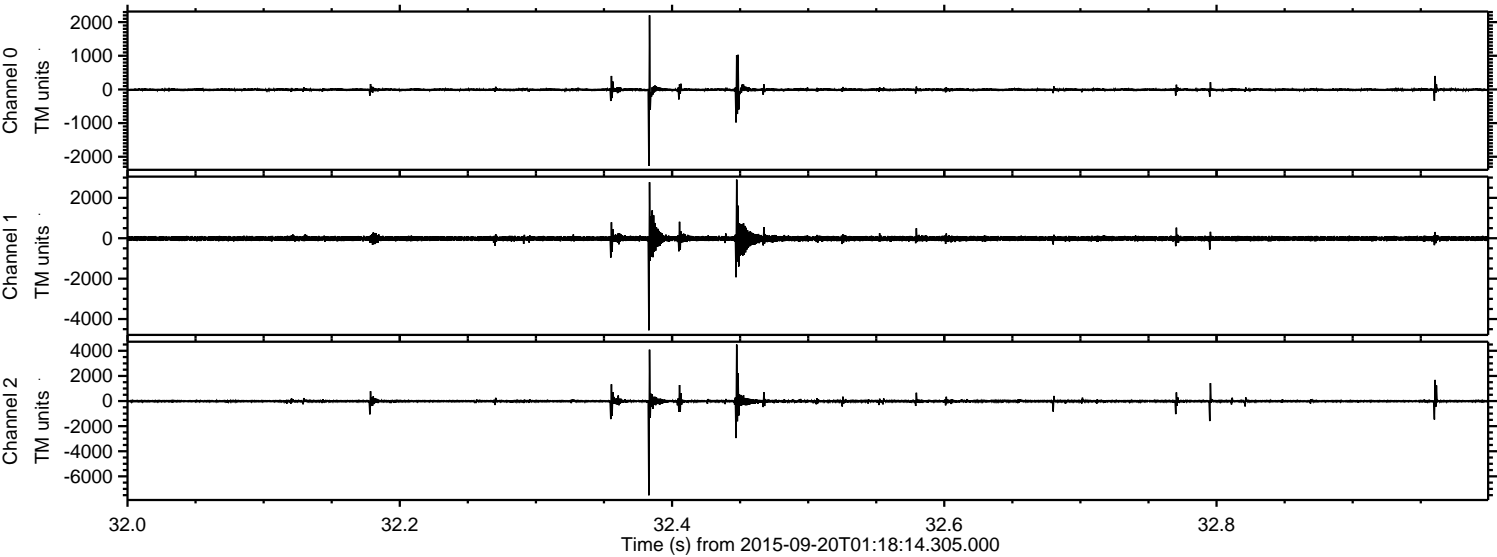
Processed Wed Oct 14 11:51:07 2015 by ELM ver.2012-10-06 from 001__elm20150920_011813__dat00.bin



Processed Wed Oct 14 11:51:09 2015 by ELM ver.2012-10-06 from 001__elm20150920_011813__dat00.bin

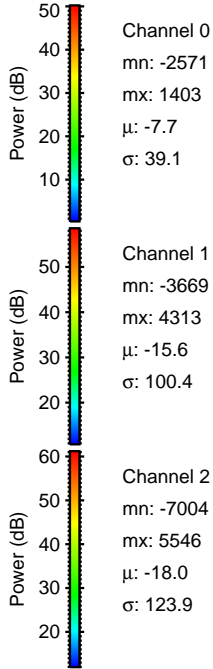
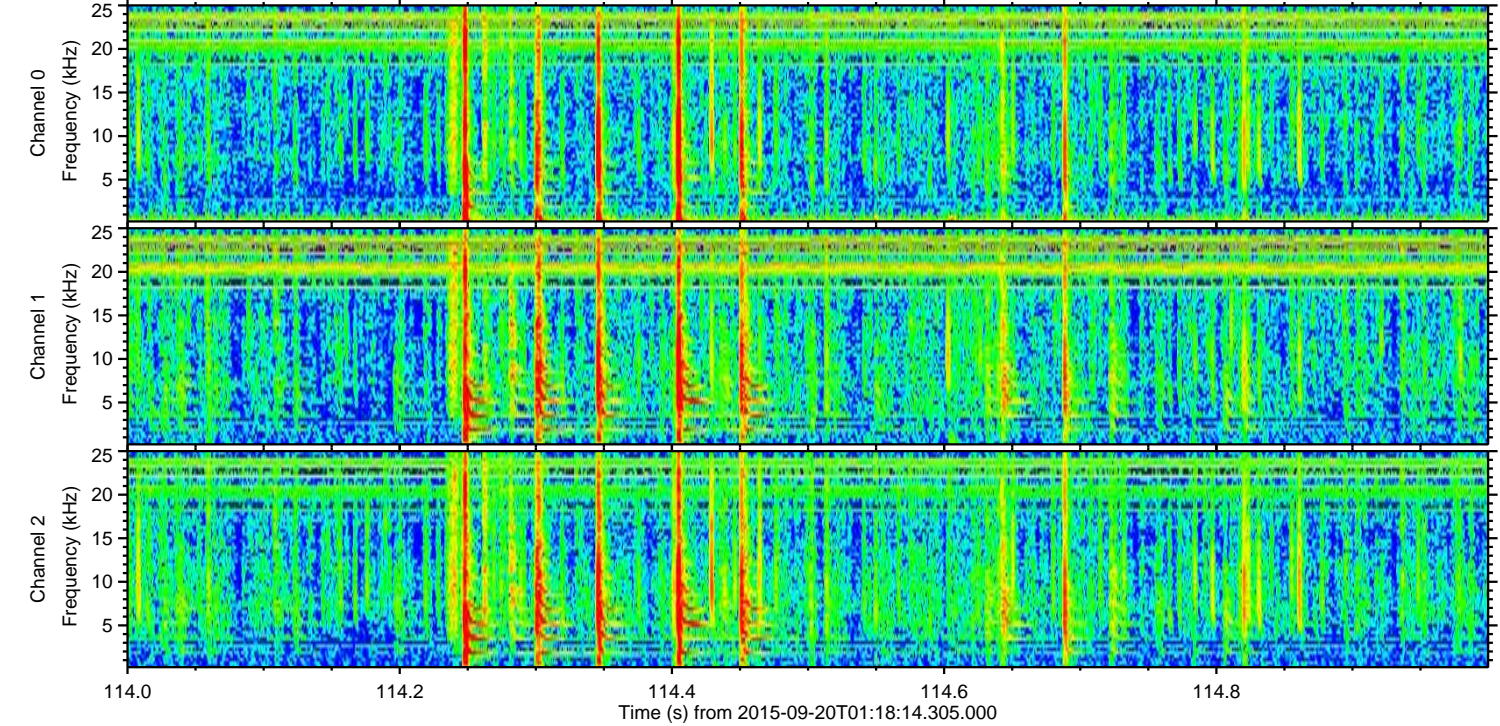
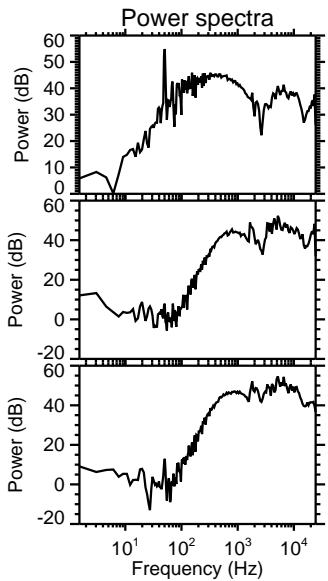
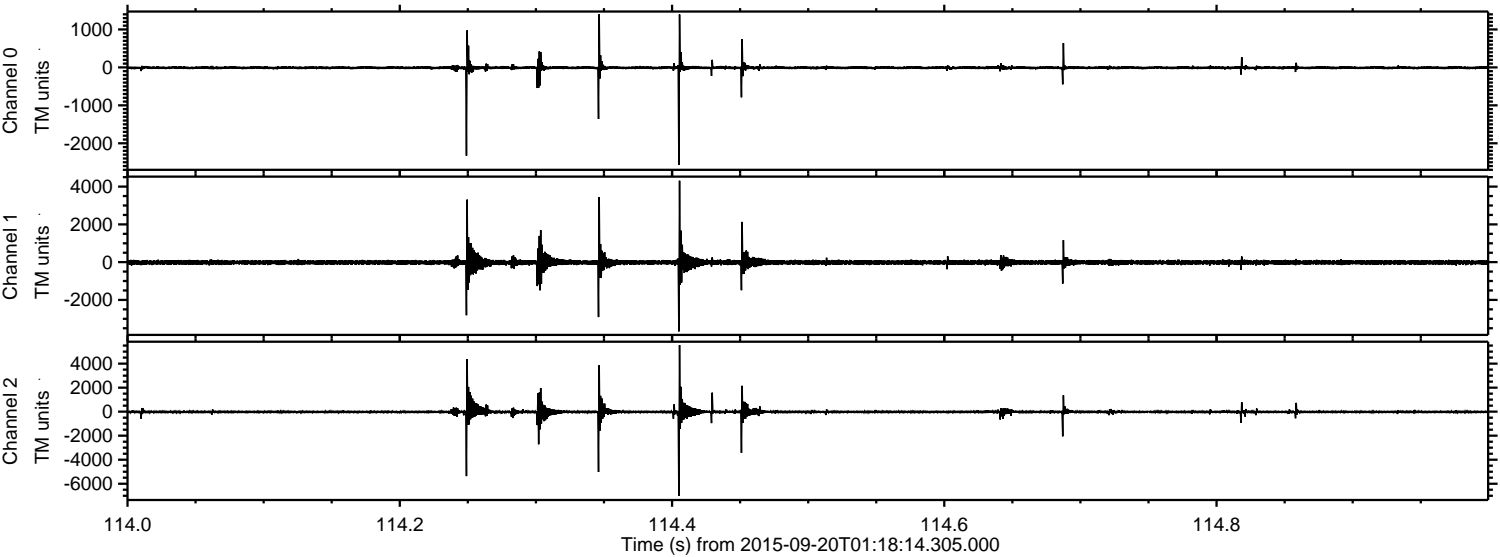


Processed Wed Oct 14 11:51:11 2015 by ELM ver.2012-10-06 from 001__elm20150920_011813__dat00.bin

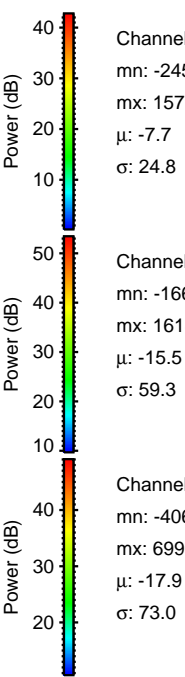
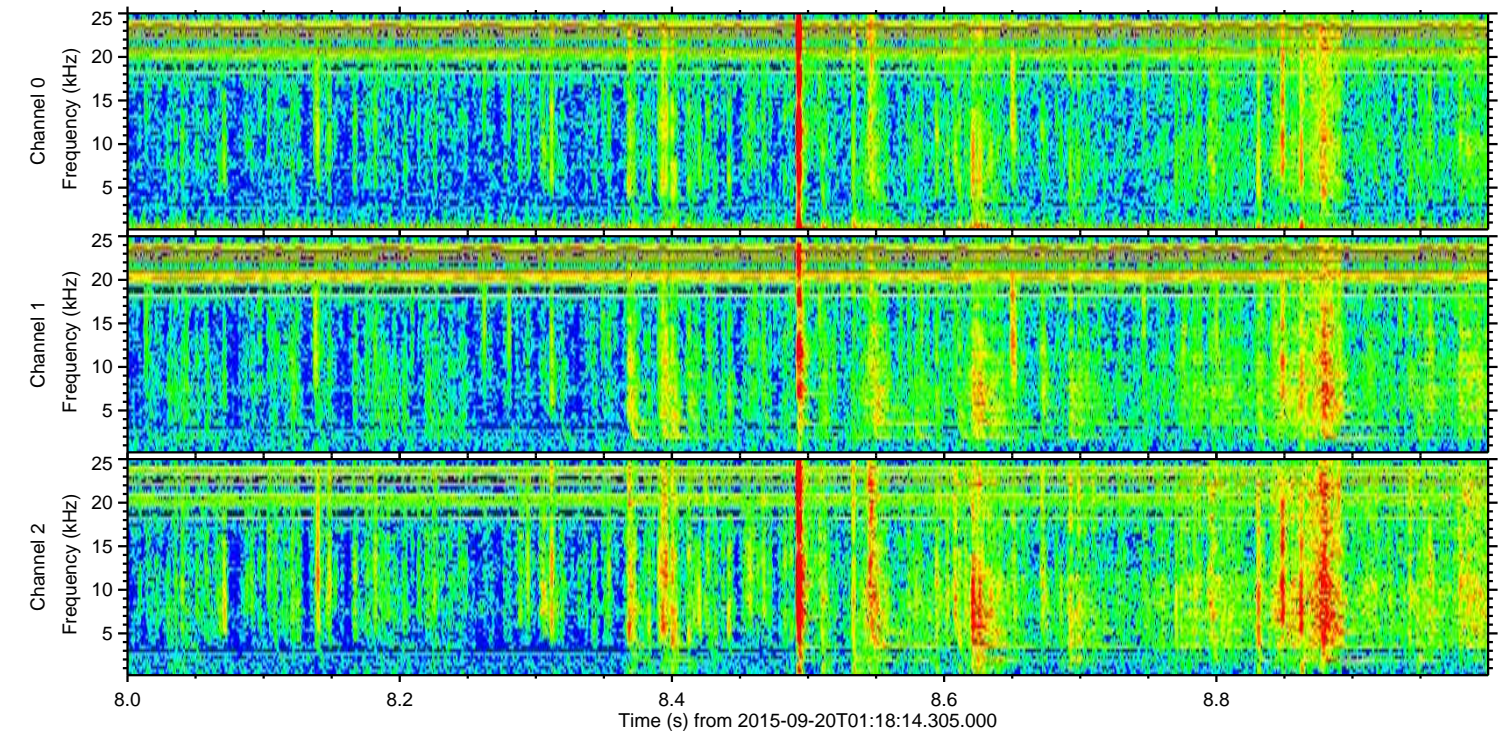
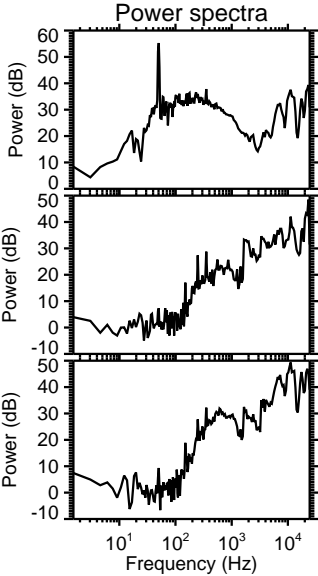
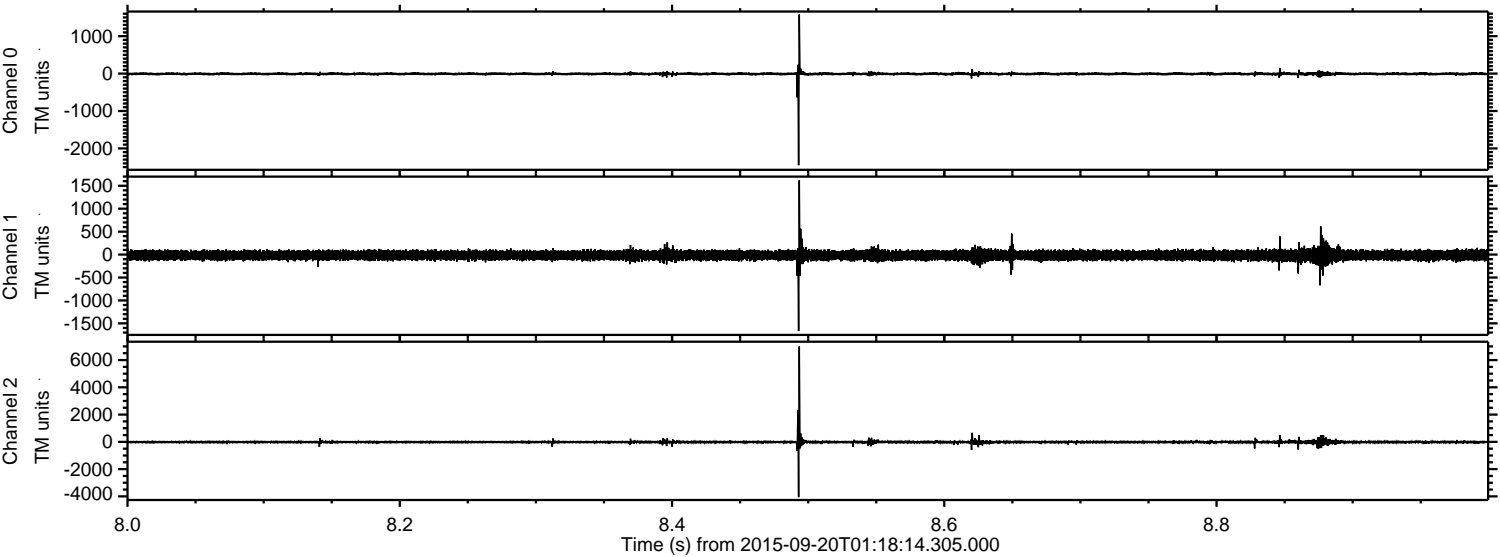


ELMAVAN 3D WAVEFORMS (Measured data sampled at 50 kHz) 51000 packets of 144 samples from 2015-09-20T01:18:14.305.000. Part 115/147

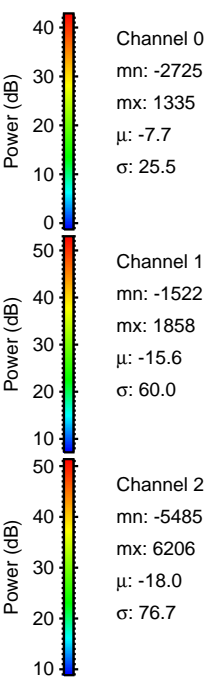
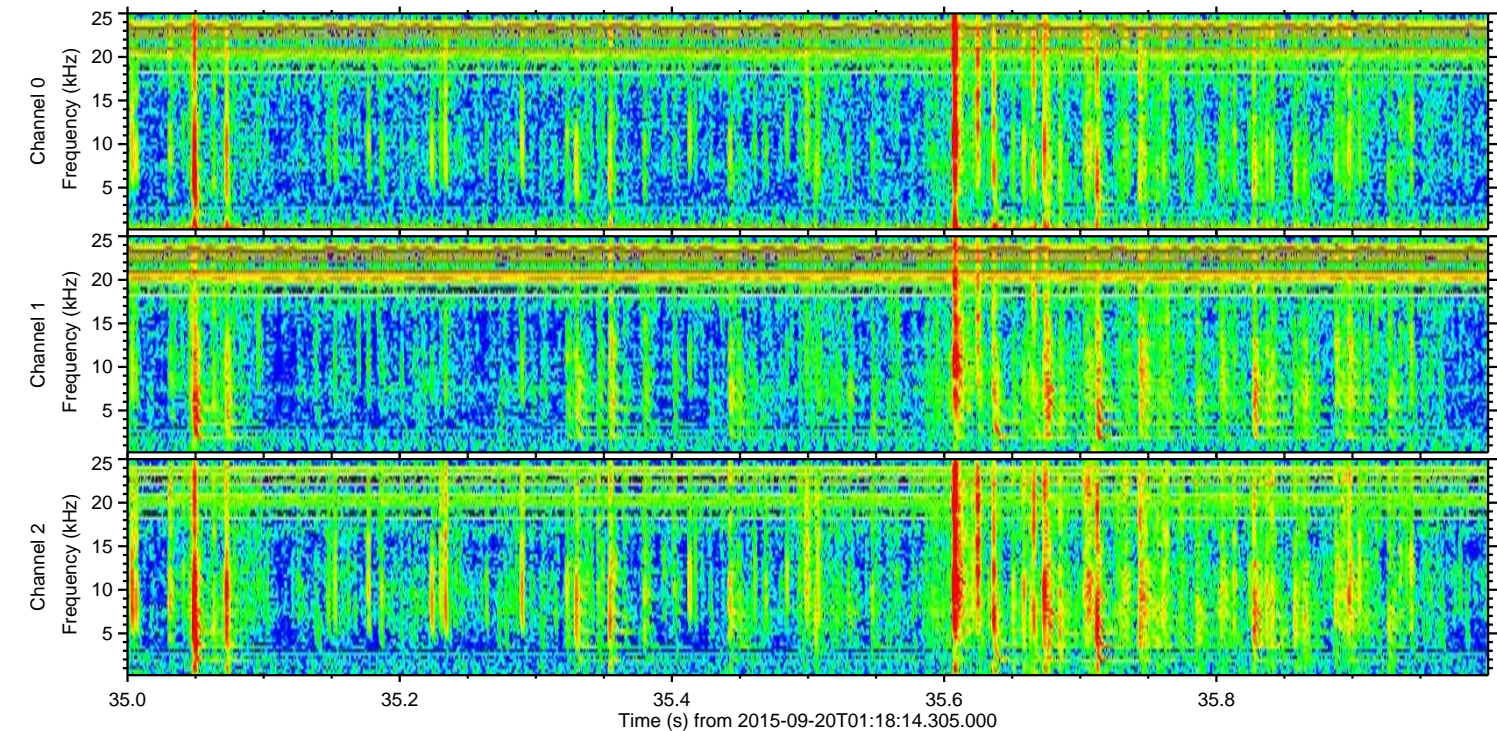
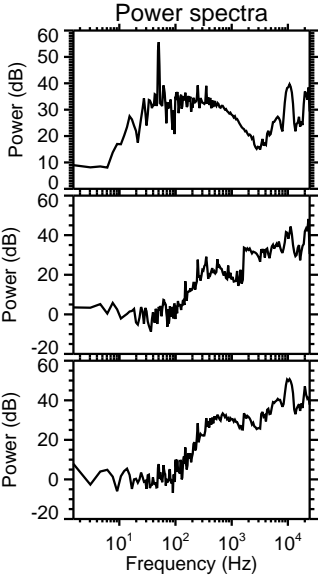
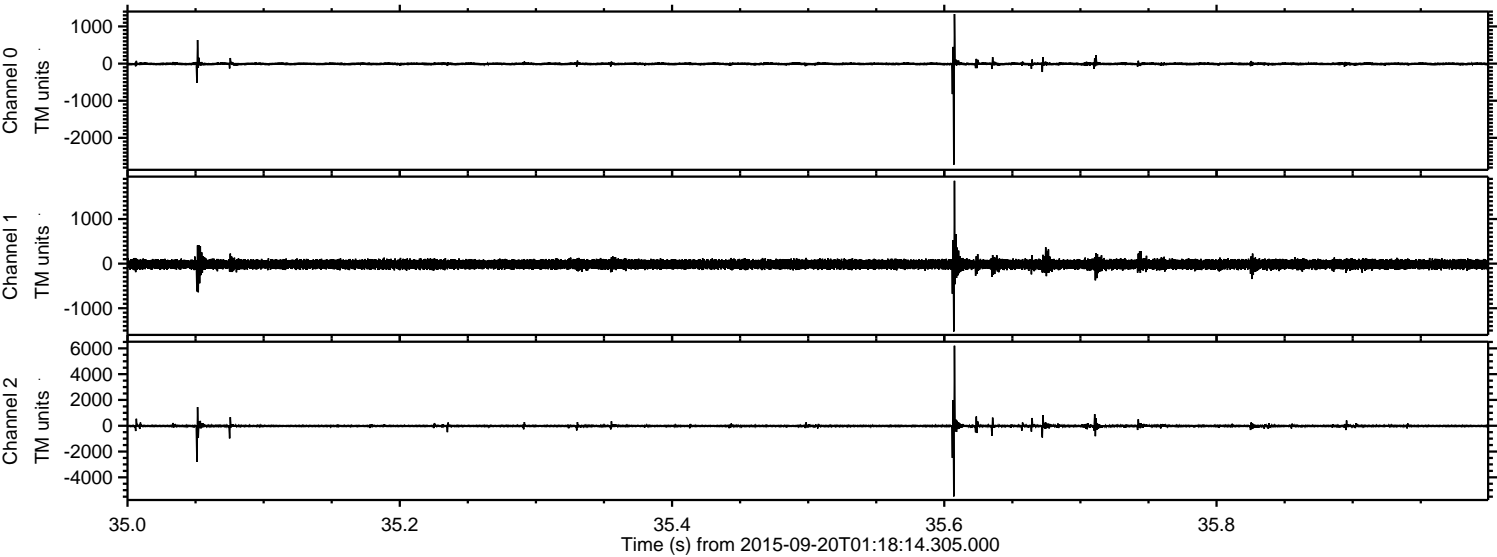
Processed Wed Oct 14 11:51:12 2015 by ELM ver.2012-10-06 from 001__elm20150920_011813__dat00.bin



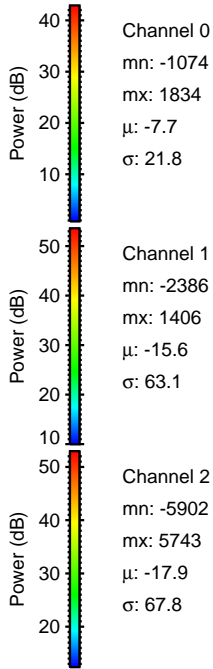
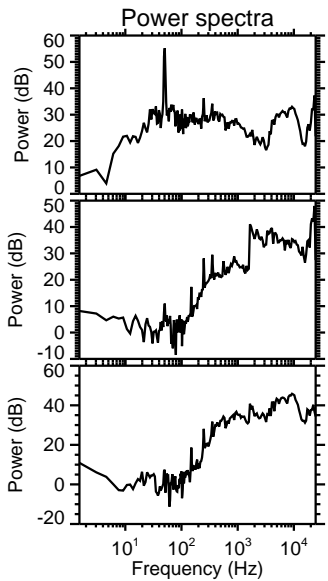
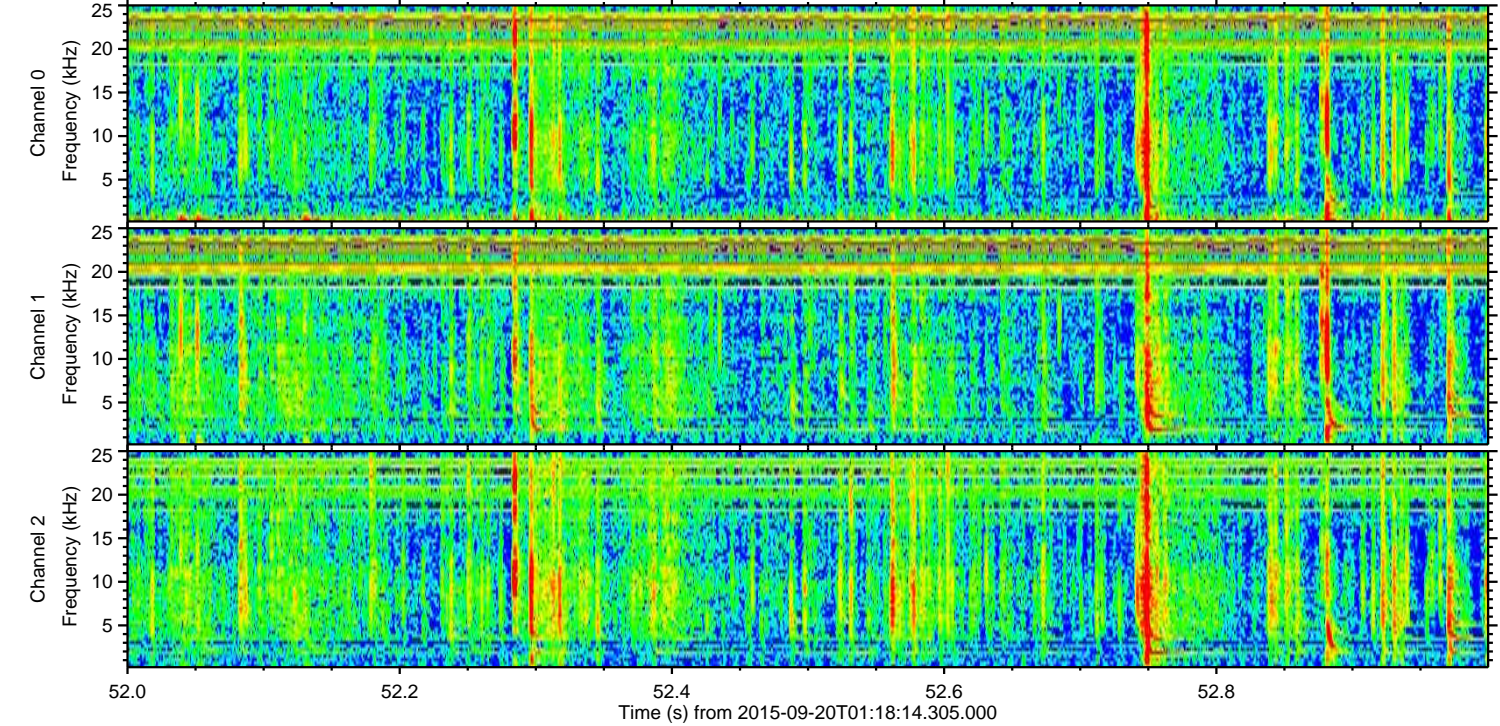
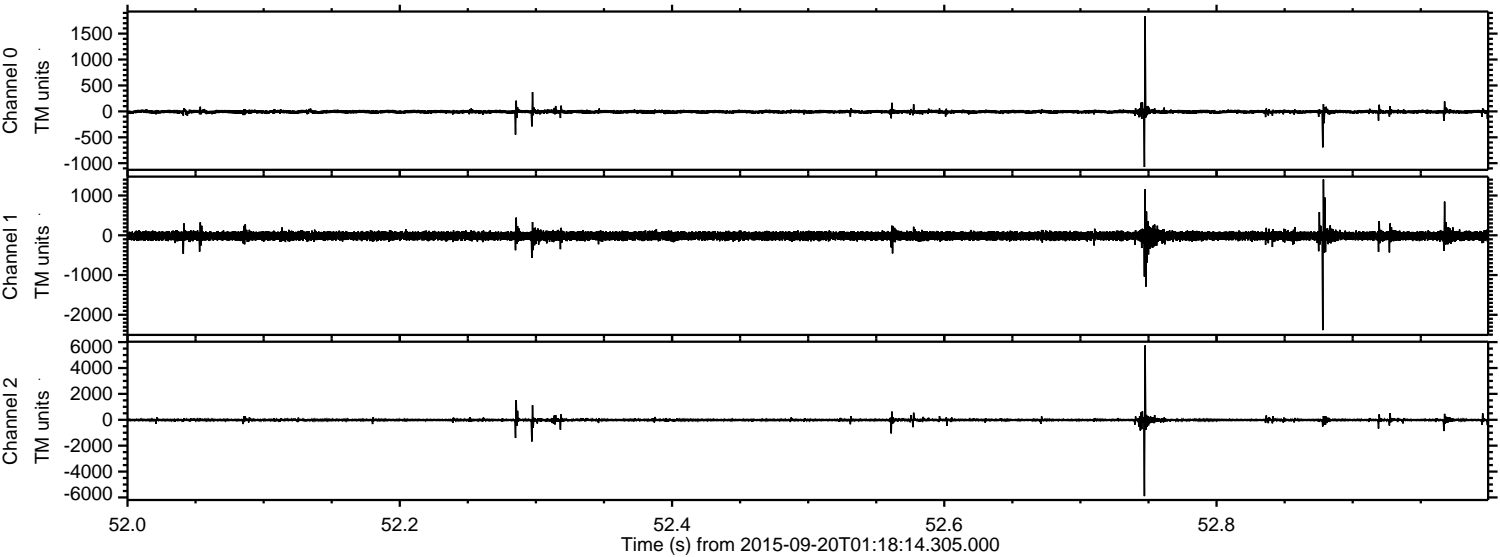
Processed Wed Oct 14 11:51:14 2015 by ELM ver.2012-10-06 from 001__elm20150920_011813__dat00.bin



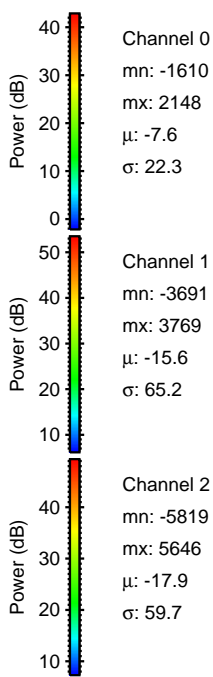
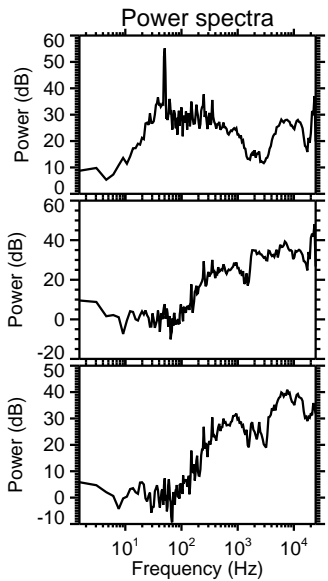
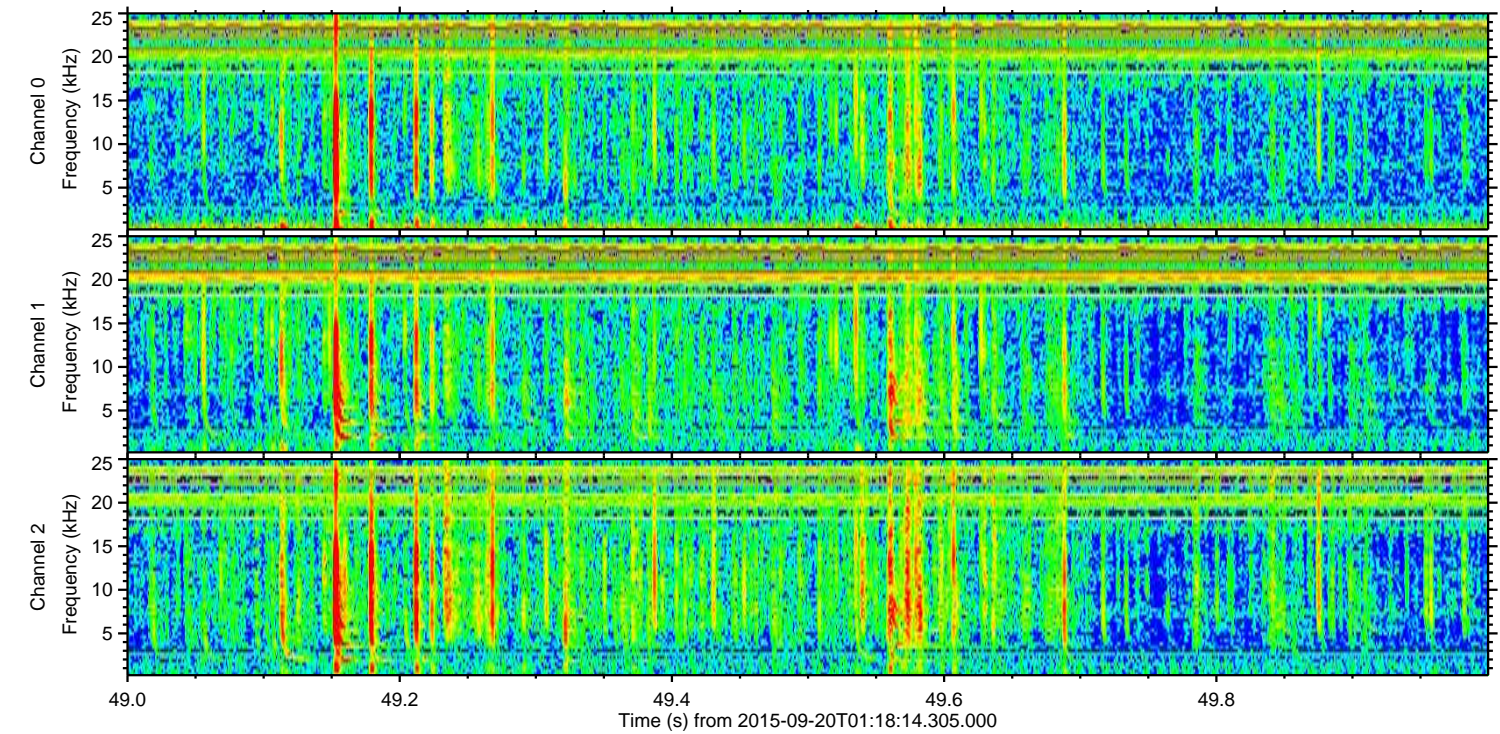
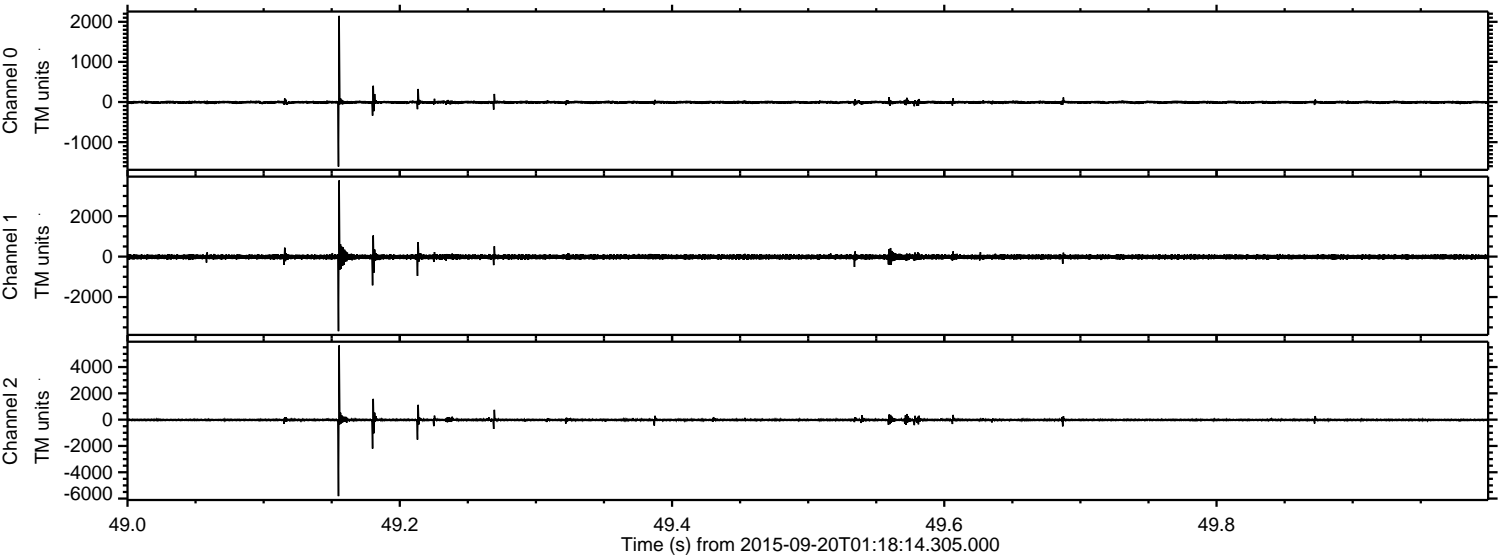
Processed Wed Oct 14 11:51:15 2015 by ELM ver.2012-10-06 from 001__elm20150920_011813__dat00.bin



Processed Wed Oct 14 11:51:17 2015 by ELM ver.2012-10-06 from 001__elm20150920_011813__dat00.bin

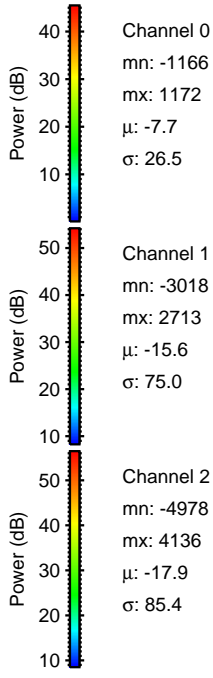
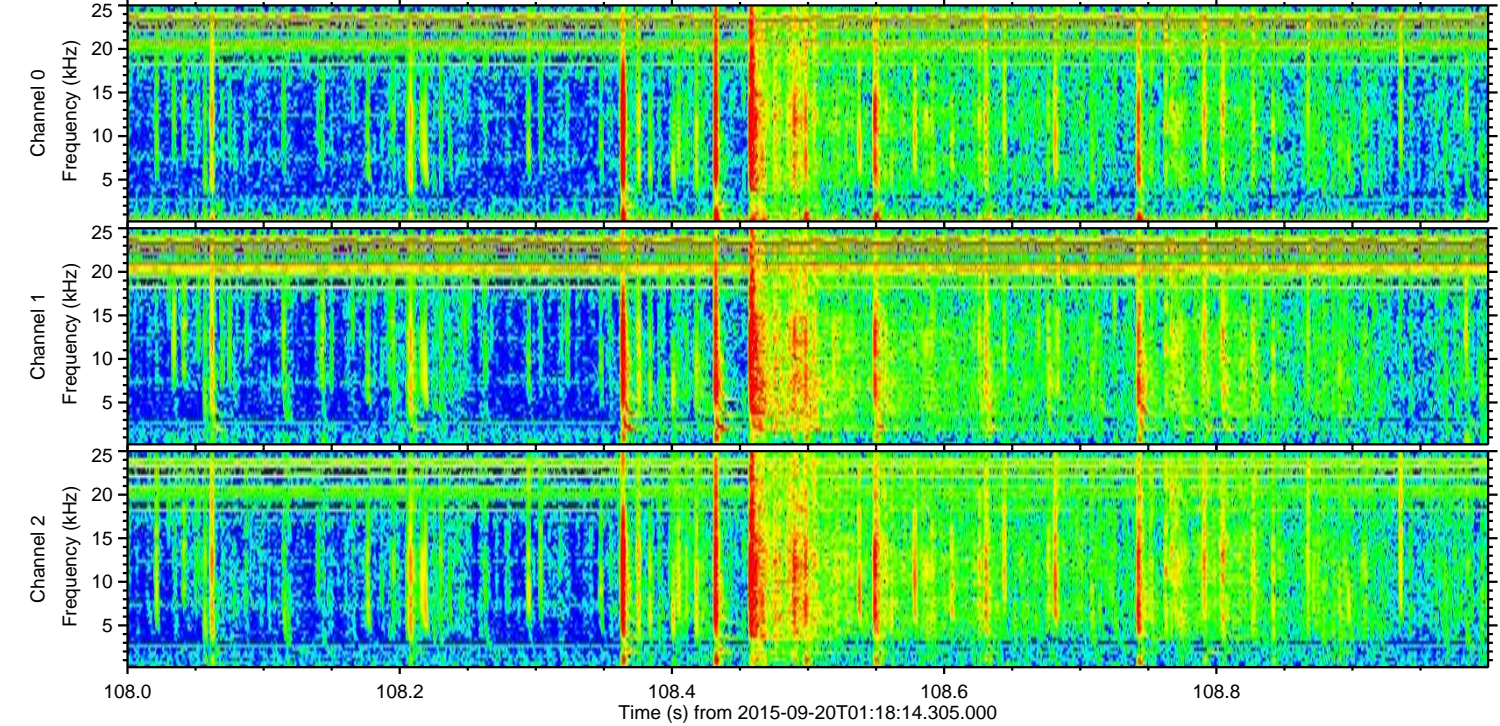
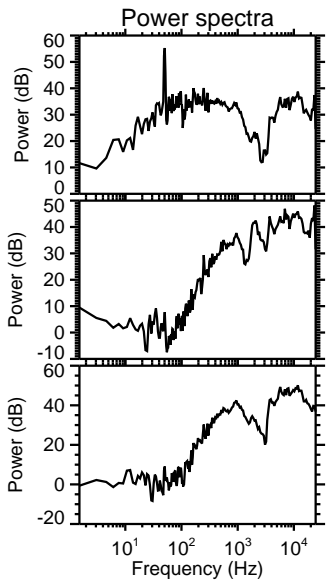
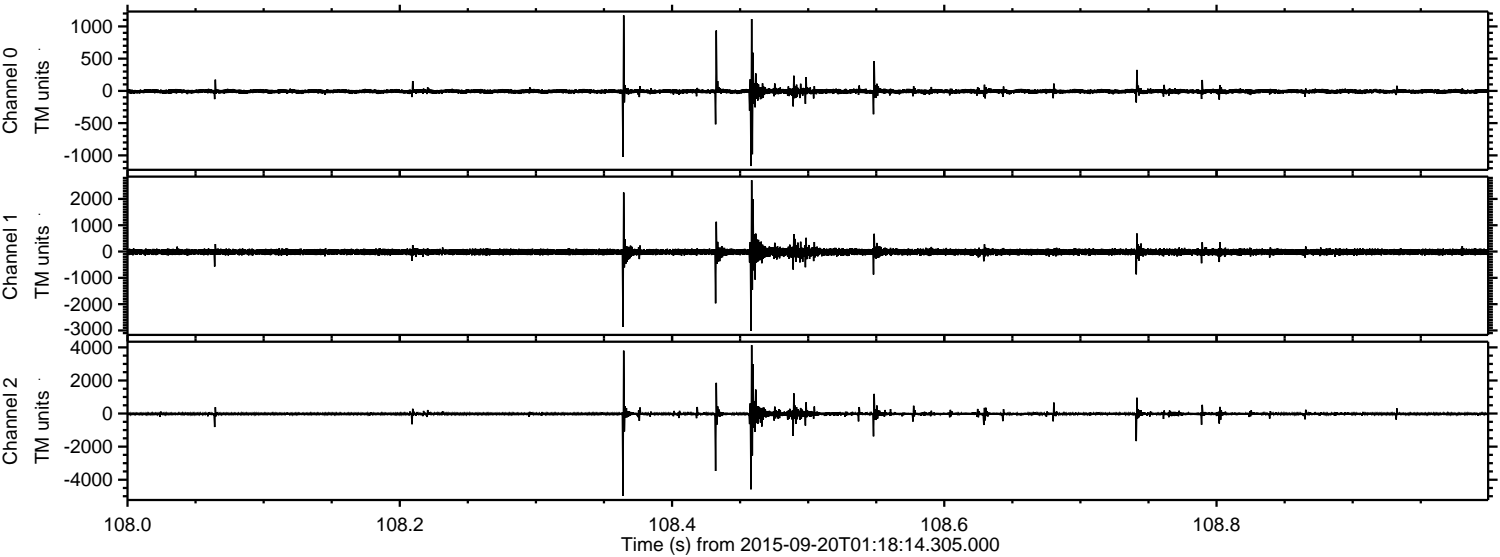


Processed Wed Oct 14 11:51:19 2015 by ELM ver.2012-10-06 from 001__elm20150920_011813__dat00.bin

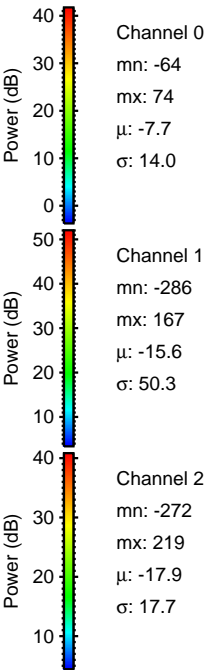
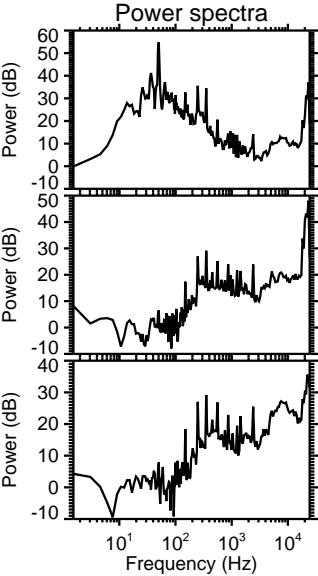
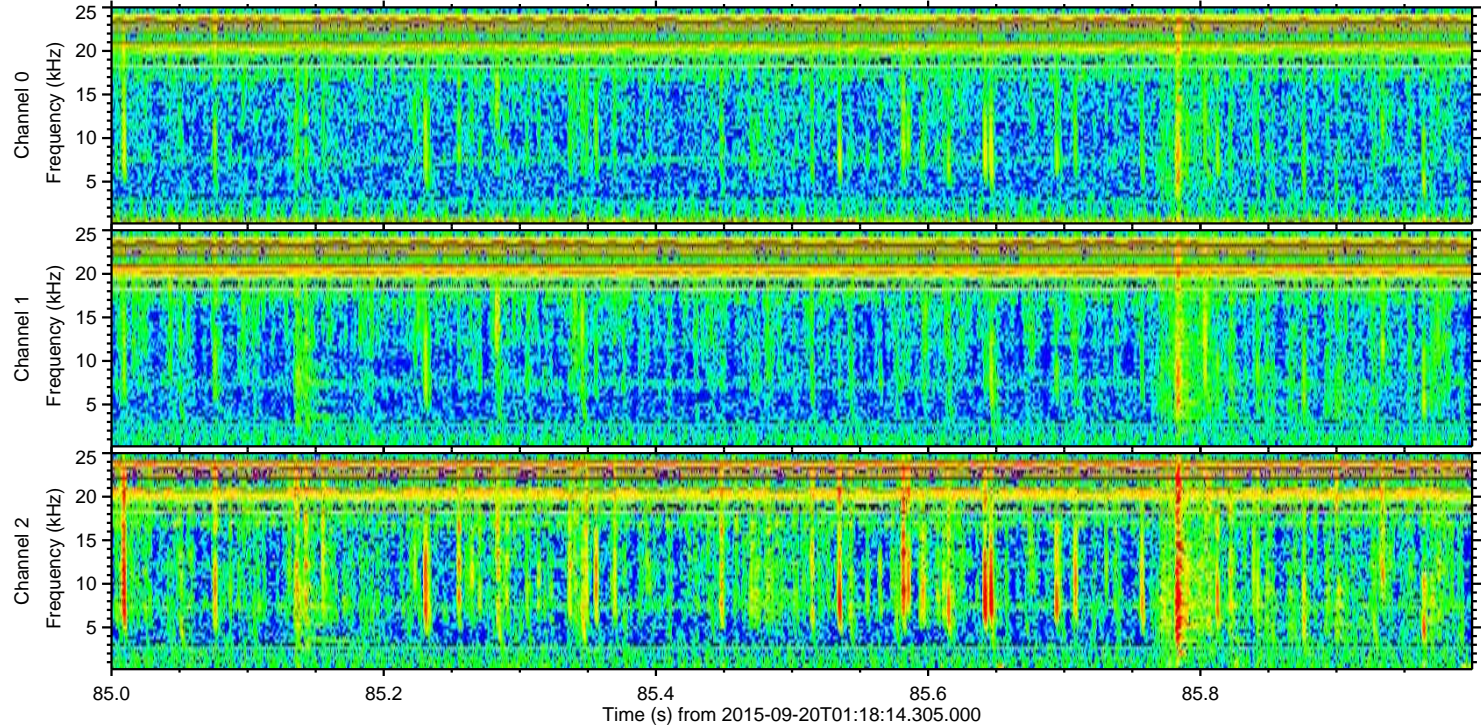
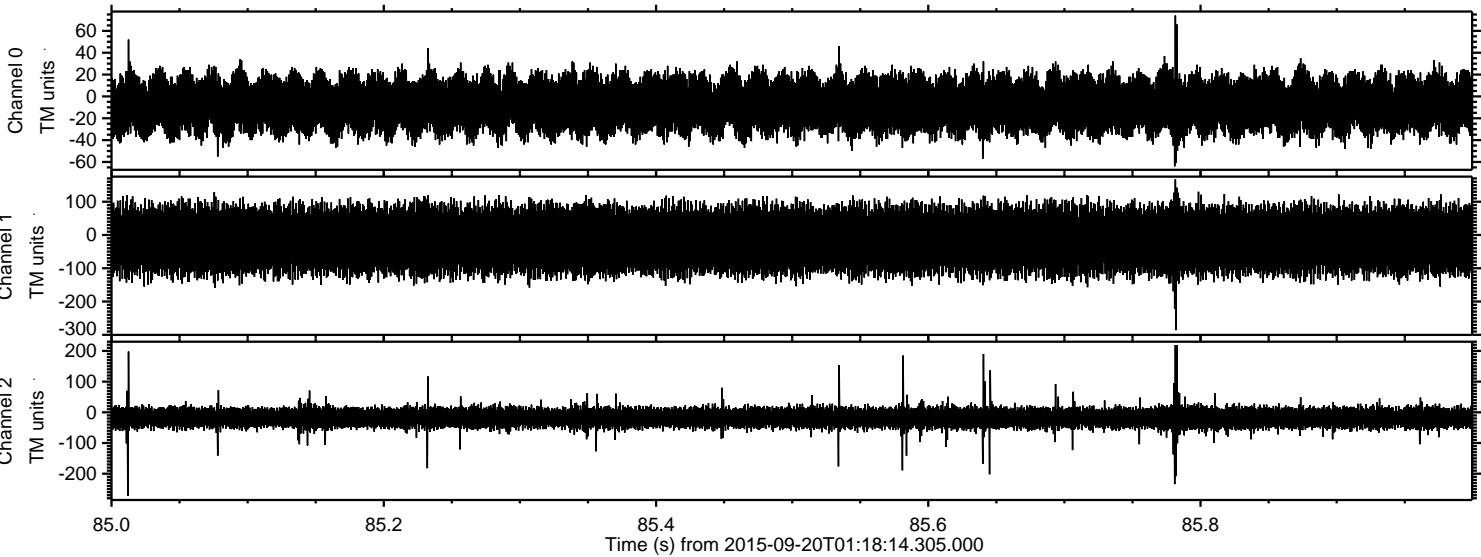


ELMAVAN 3D WAVEFORMS (Measured data sampled at 50 kHz) 51000 packets of 144 samples from 2015-09-20T01:18:14.305.000. Part 109/147

Processed Wed Oct 14 11:51:20 2015 by ELM ver.2012-10-06 from 001__elm20150920_011813__dat00.bin



Processed Wed Oct 14 11:51:22 2015 by ELM ver.2012-10-06 from 001__elm20150920_011813__dat00.bin



Channel 0
mn: -64
mx: 74
 μ : -7.7
 σ : 14.0

Channel 1
mn: -286
mx: 167
 μ : -15.6
 σ : 50.3

Channel 2
mn: -272
mx: 219
 μ : -17.9
 σ : 17.7