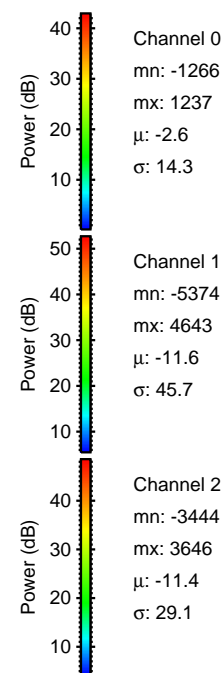
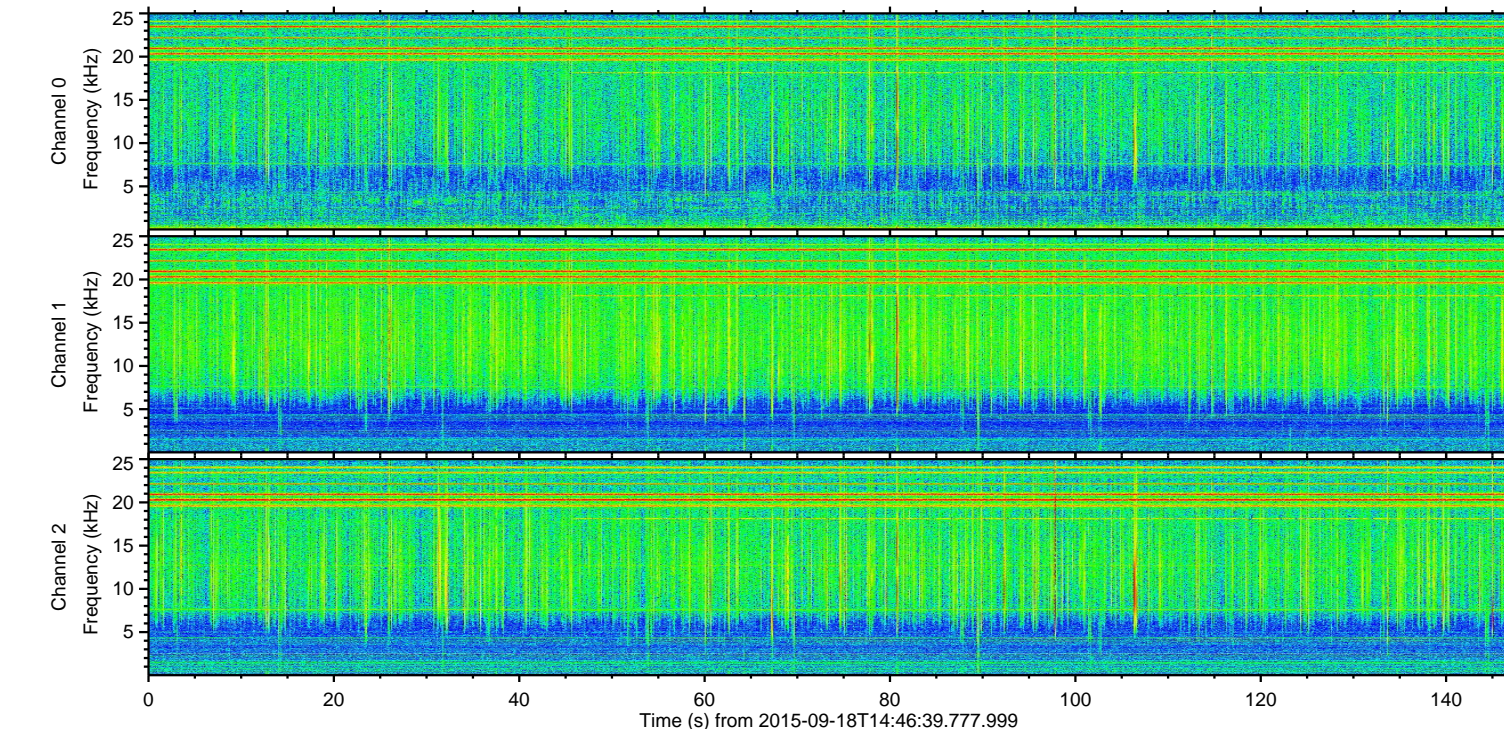
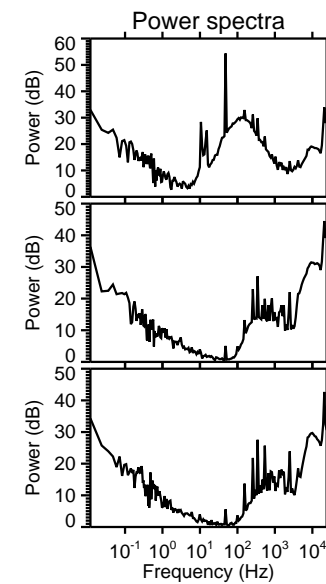
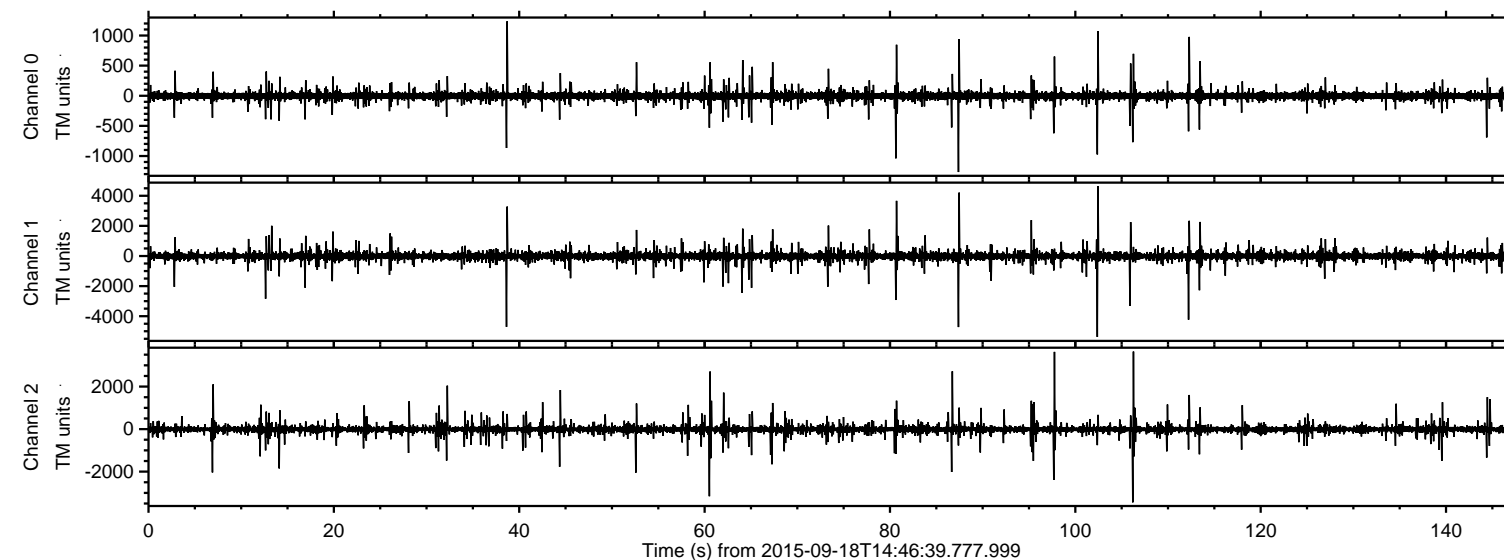


# ELMAVAN 3D WAVEFORMS (Measured data sampled at 50 kHz) 51000 packets of 144 samples from 2015-09-18T14:46:39.777.999.

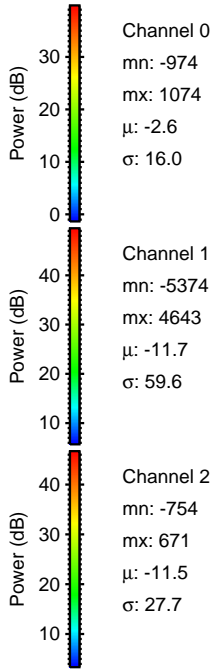
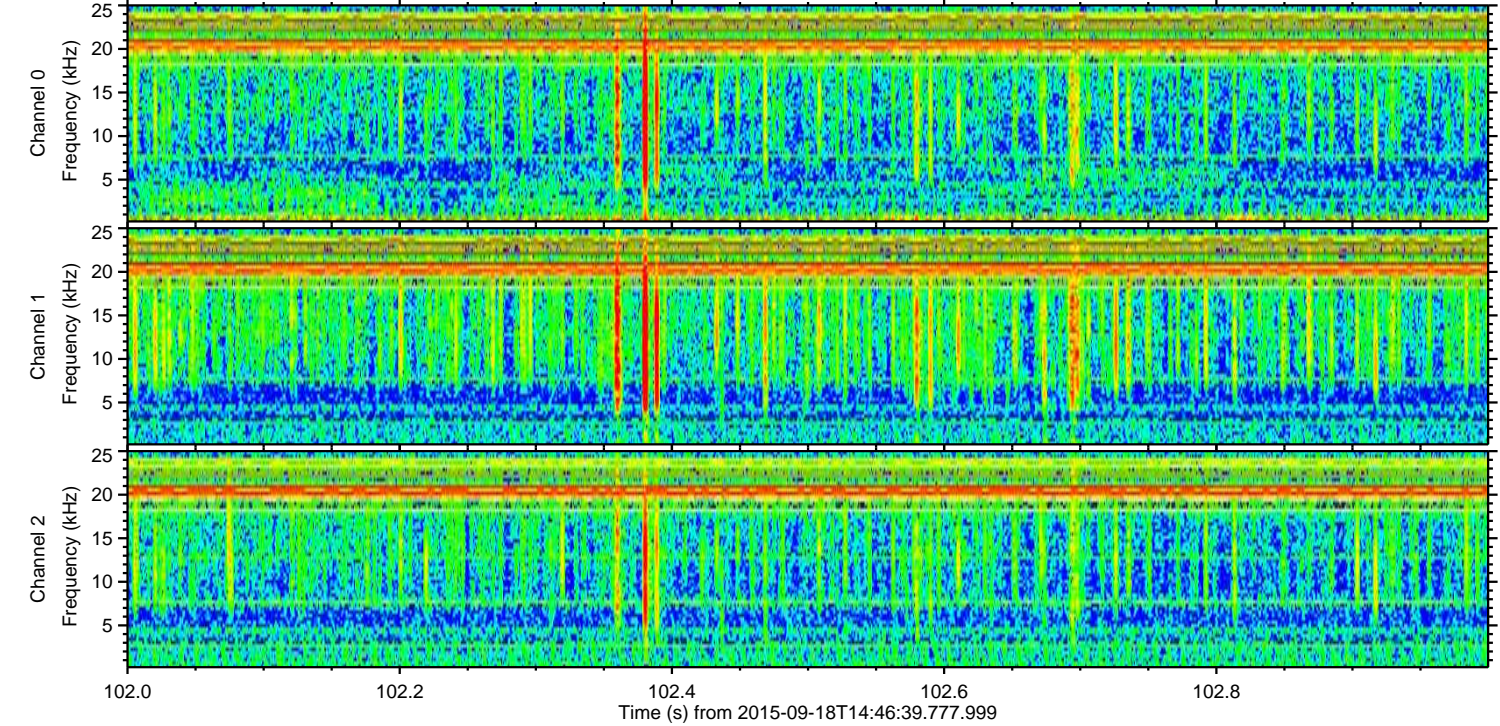
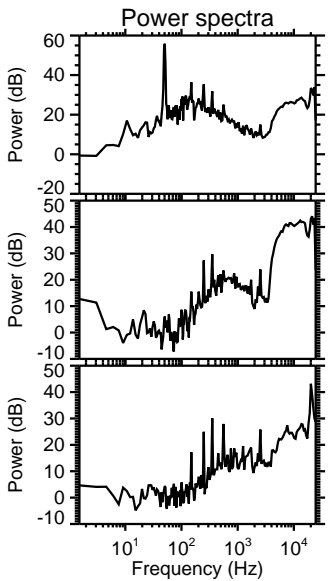
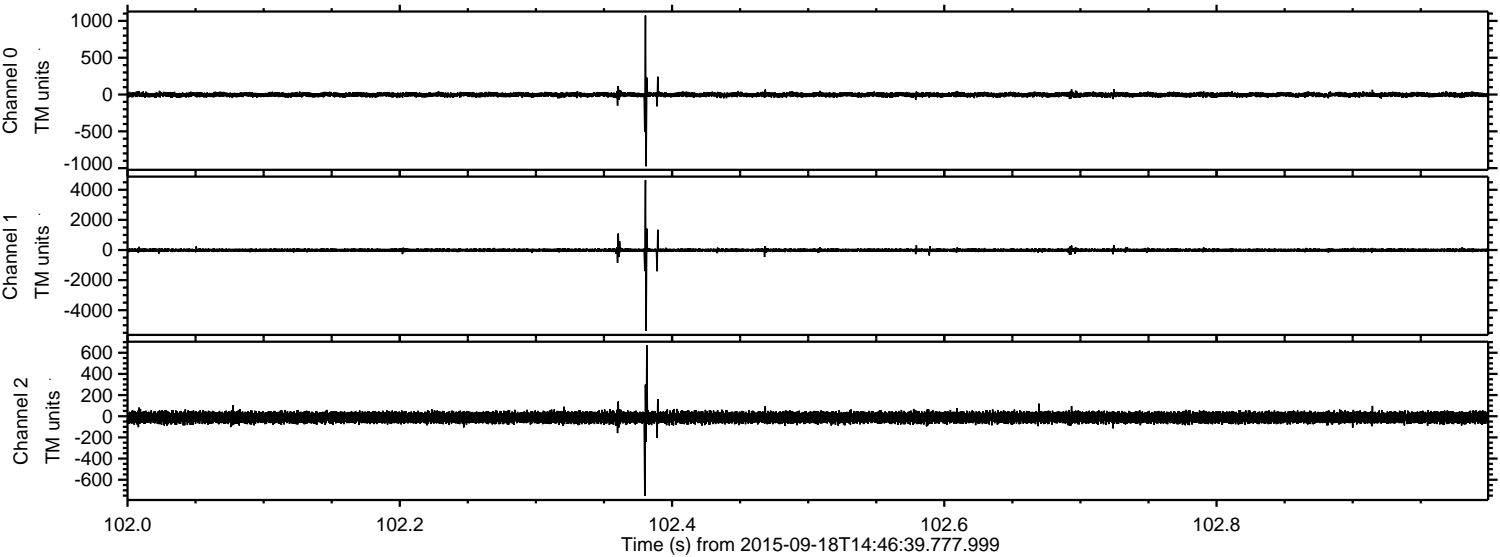
Processed Wed Oct 14 00:22:06 2015 by ELM ver.2012-10-06 from 001\_\_elm20150918\_144638\_\_dat00.bin





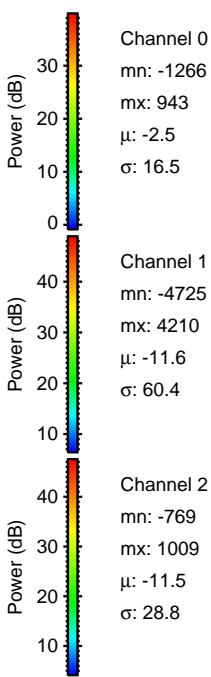
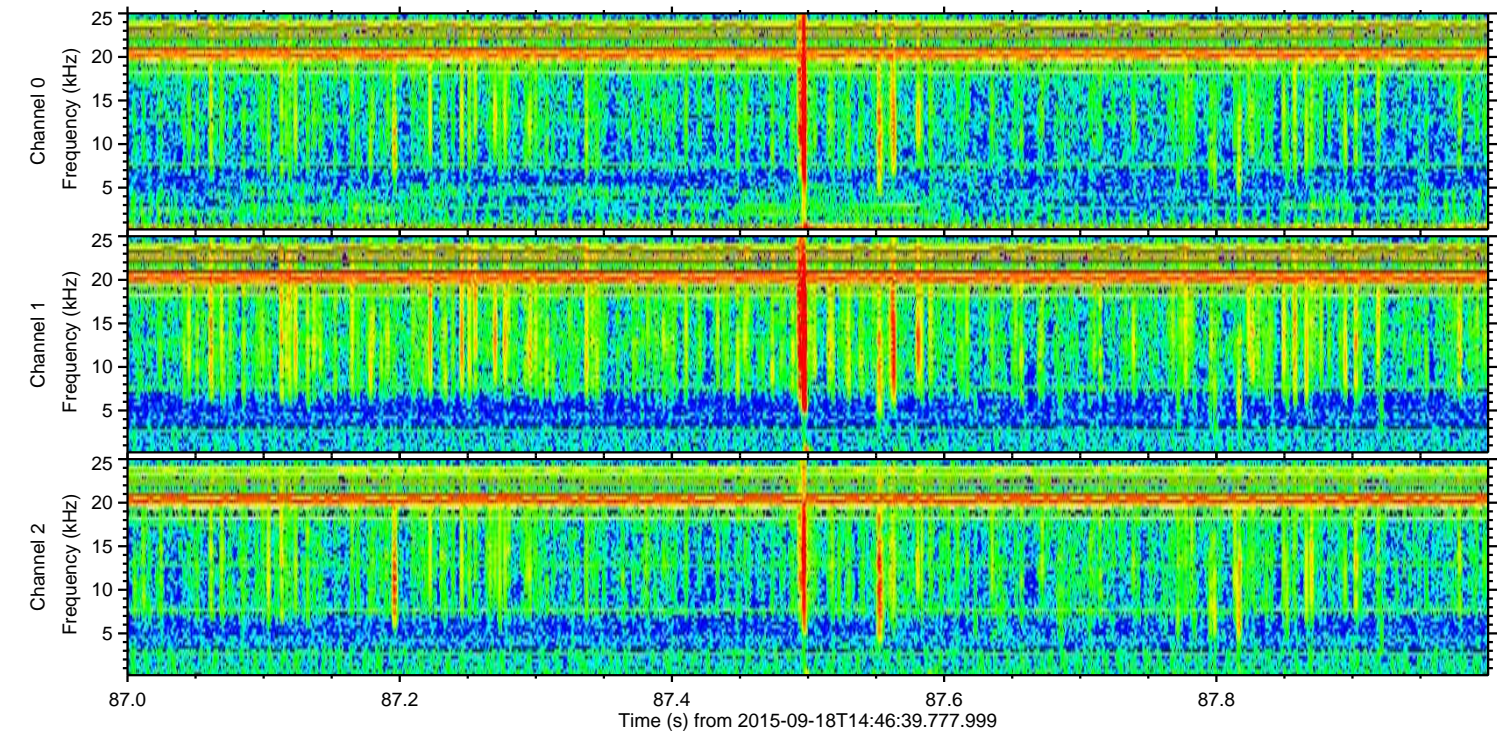
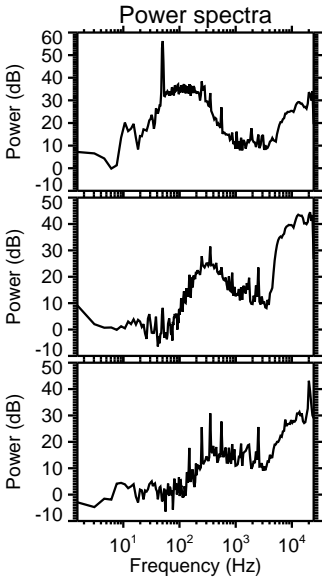
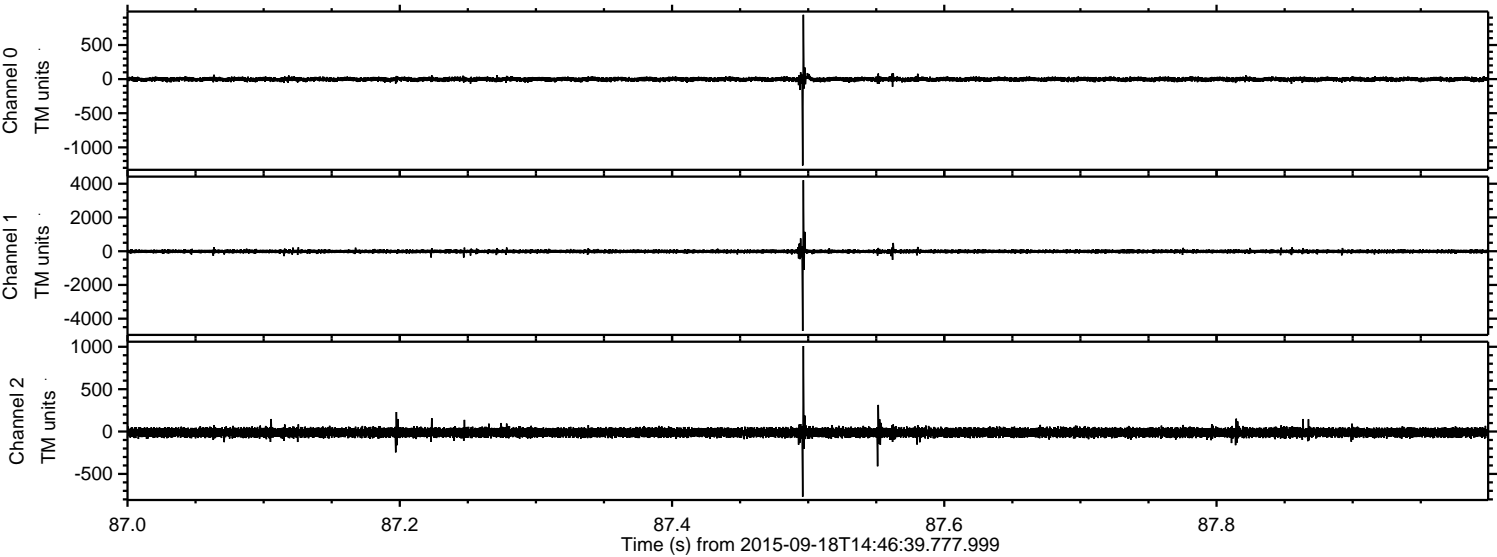
ELMAVAN 3D WAVEFORMS (Measured data sampled at 50 kHz) 51000 packets of 144 samples from 2015-09-18T14:46:39.777.999. Part 103/147

Processed Wed Oct 14 00:22:30 2015 by ELM ver.2012-10-06 from 001\_\_elm20150918\_144638\_\_dat00.bin



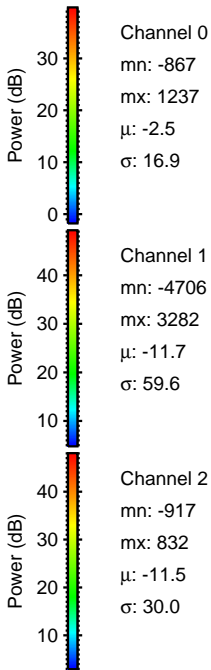
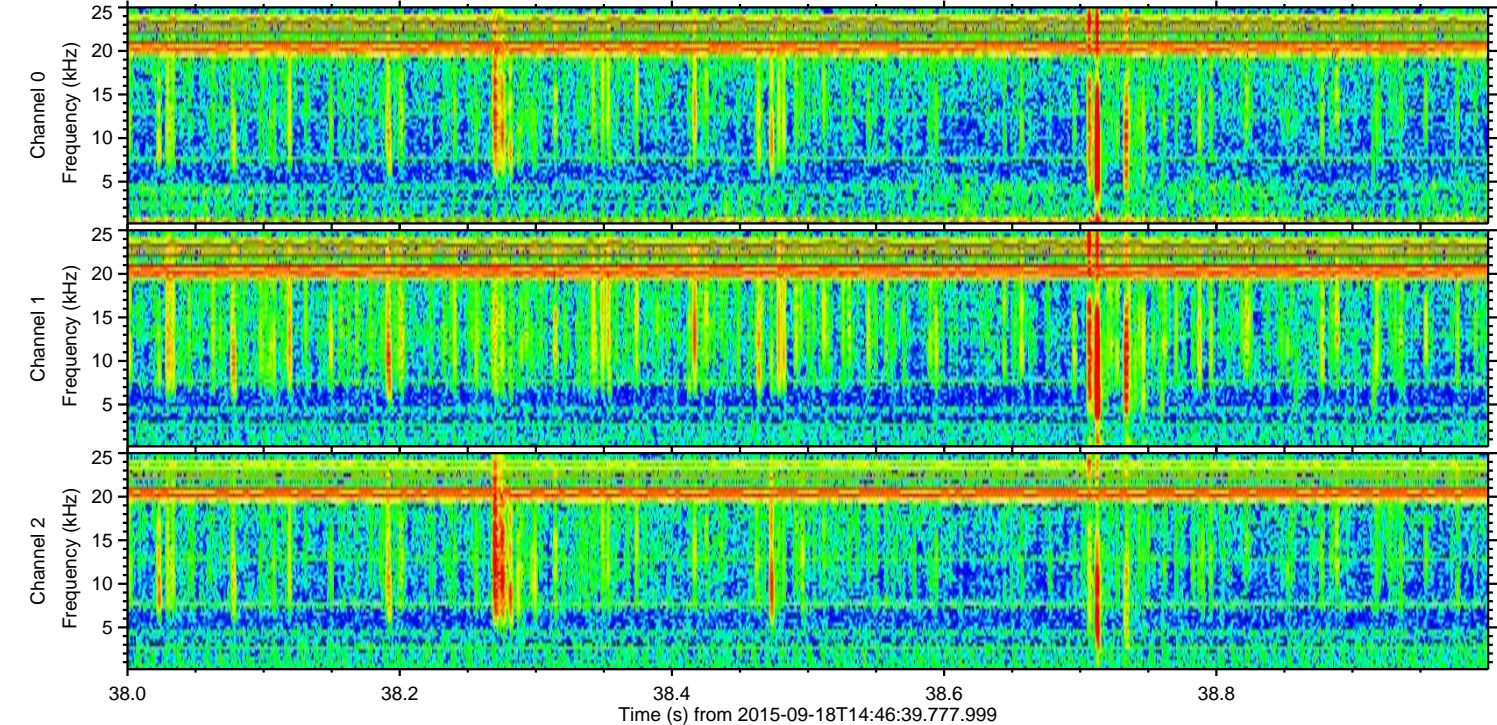
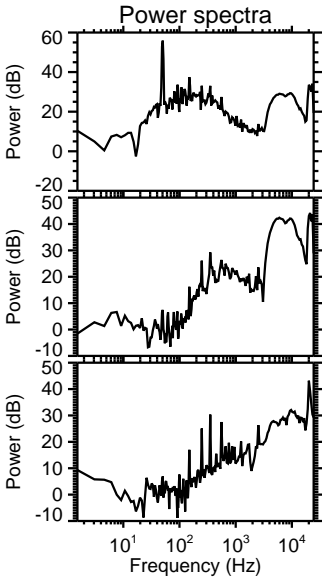
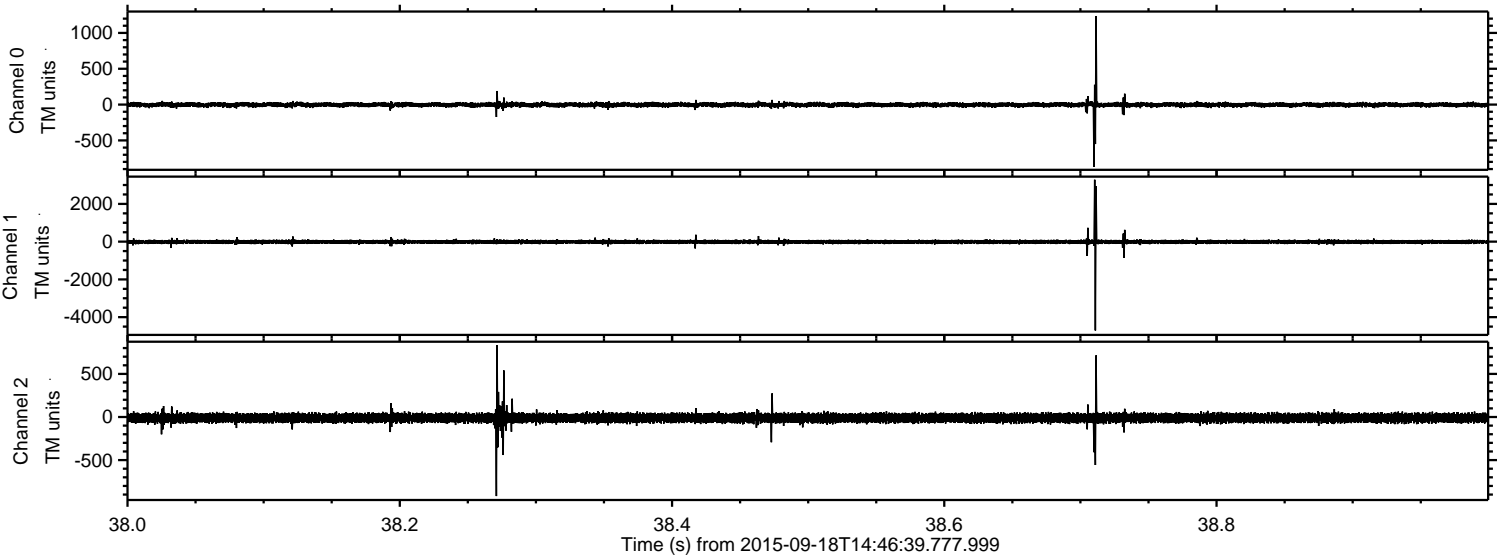


Processed Wed Oct 14 00:22:32 2015 by ELM ver.2012-10-06 from 001\_\_elm20150918\_144638\_\_dat00.bin





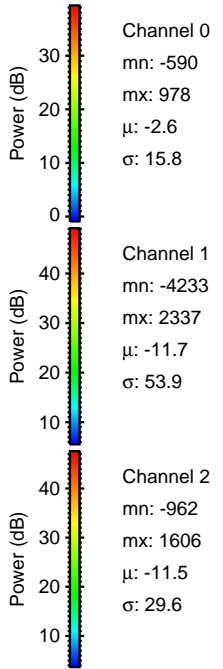
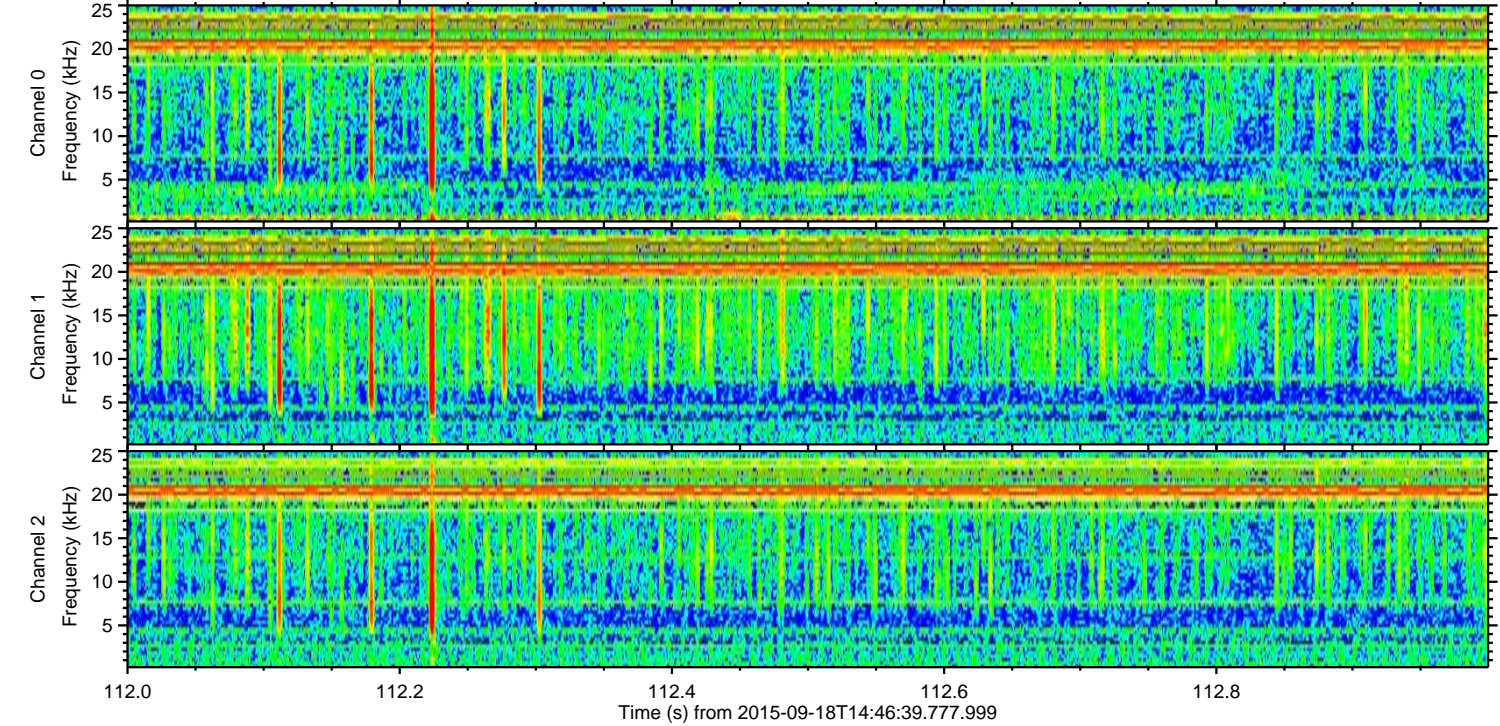
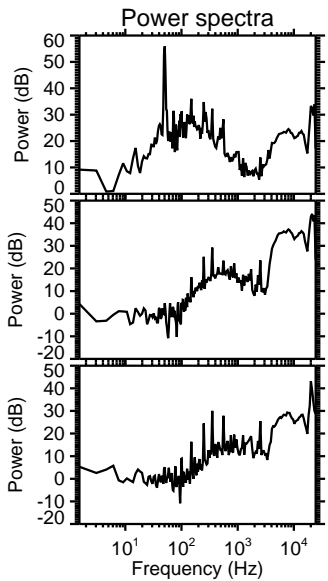
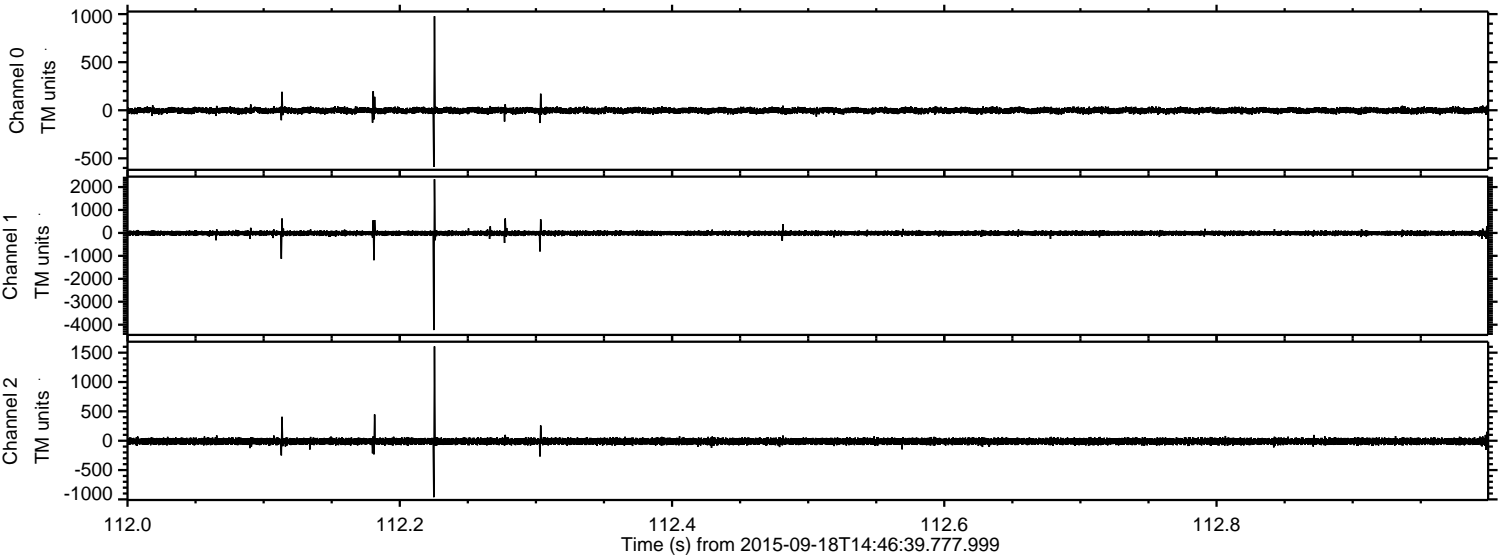
Processed Wed Oct 14 00:22:35 2015 by ELM ver.2012-10-06 from 001\_\_elm20150918\_144638\_\_dat00.bin





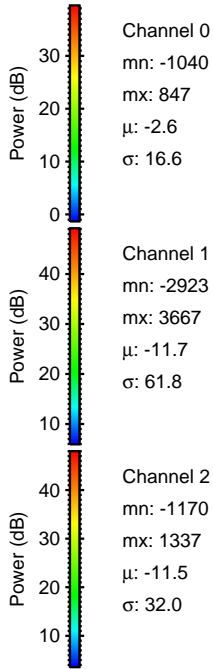
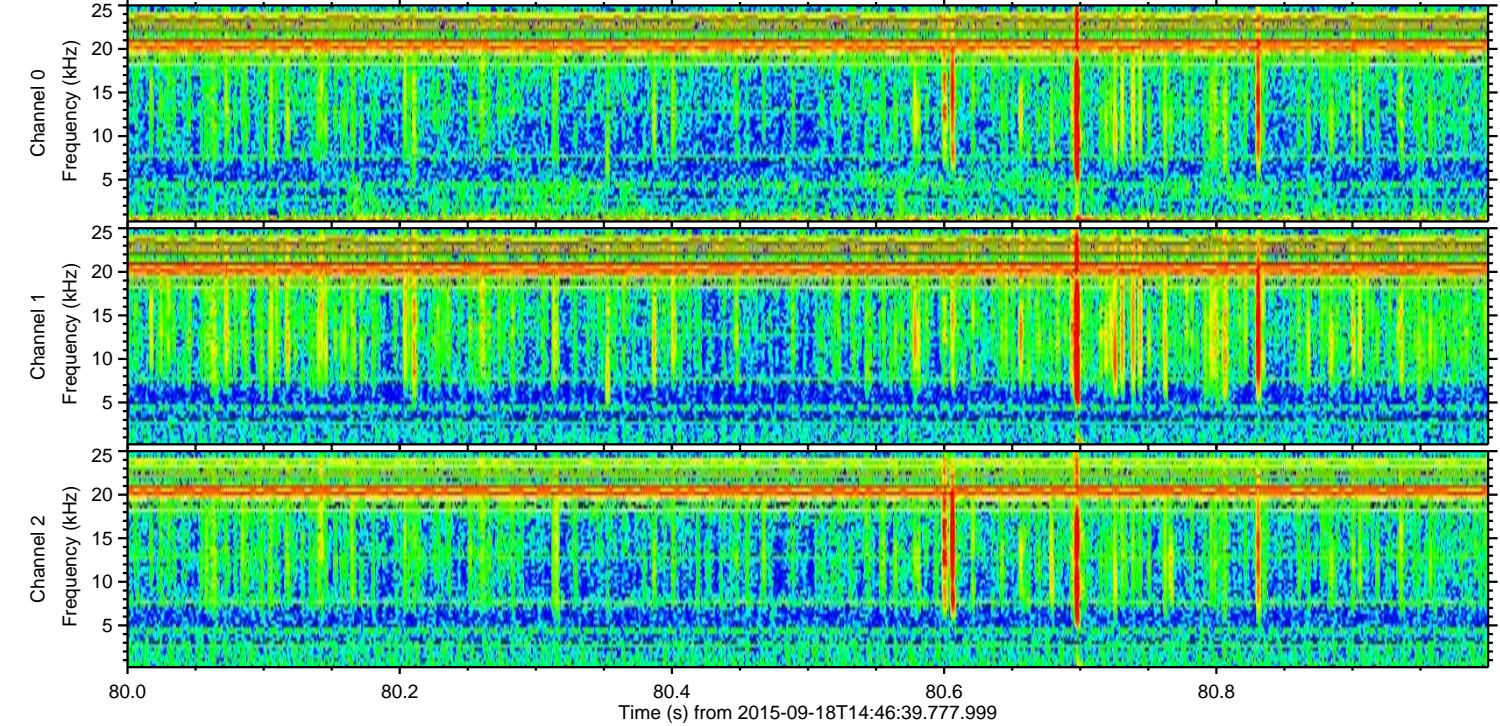
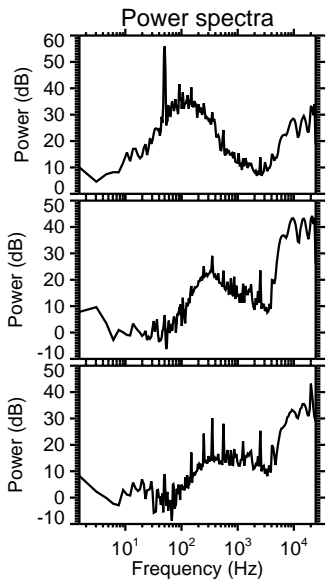
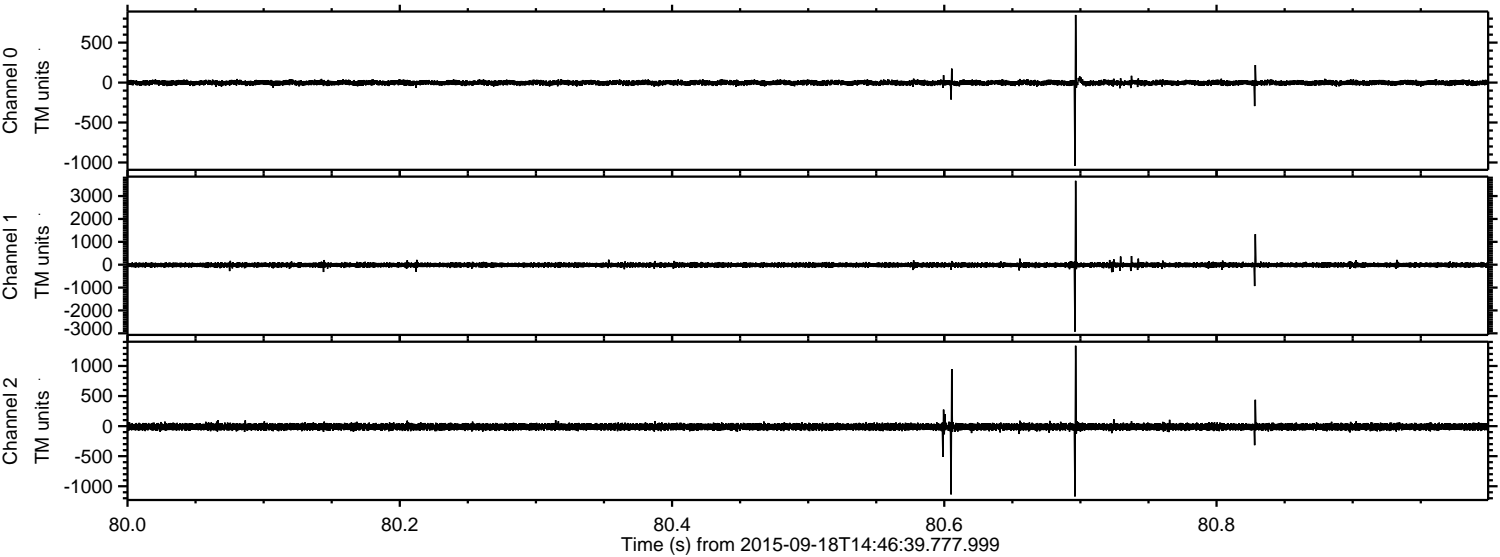
ELMAVAN 3D WAVEFORMS (Measured data sampled at 50 kHz) 51000 packets of 144 samples from 2015-09-18T14:46:39.777.999. Part 113/147

Processed Wed Oct 14 00:22:38 2015 by ELM ver.2012-10-06 from 001\_\_elm20150918\_144638\_\_dat00.bin





Processed Wed Oct 14 00:22:39 2015 by ELM ver.2012-10-06 from 001\_\_elm20150918\_144638\_\_dat00.bin



Channel 0  
mn: -1040  
mx: 847  
 $\mu$ : -2.6  
 $\sigma$ : 16.6

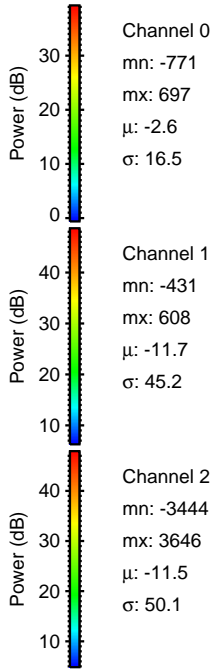
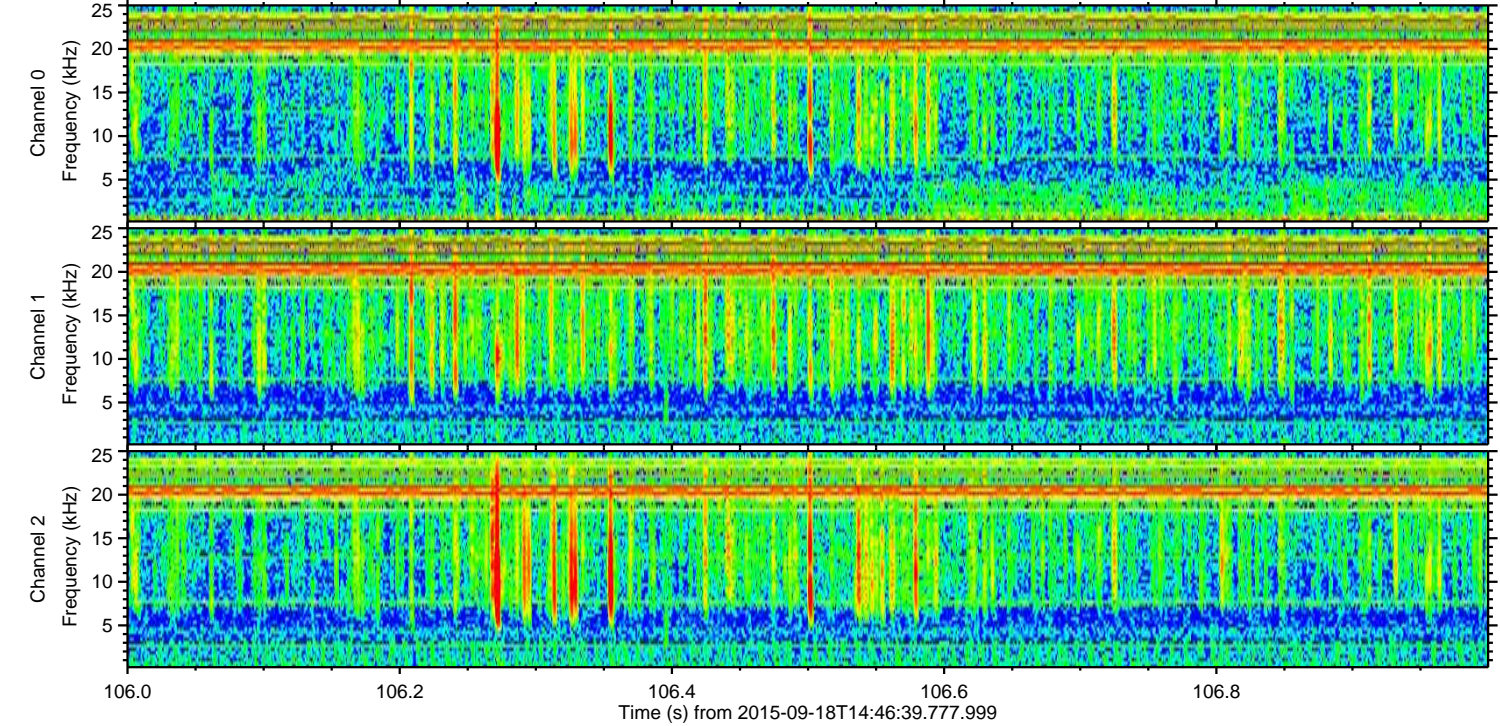
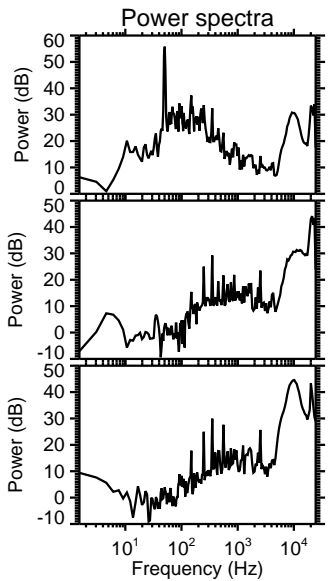
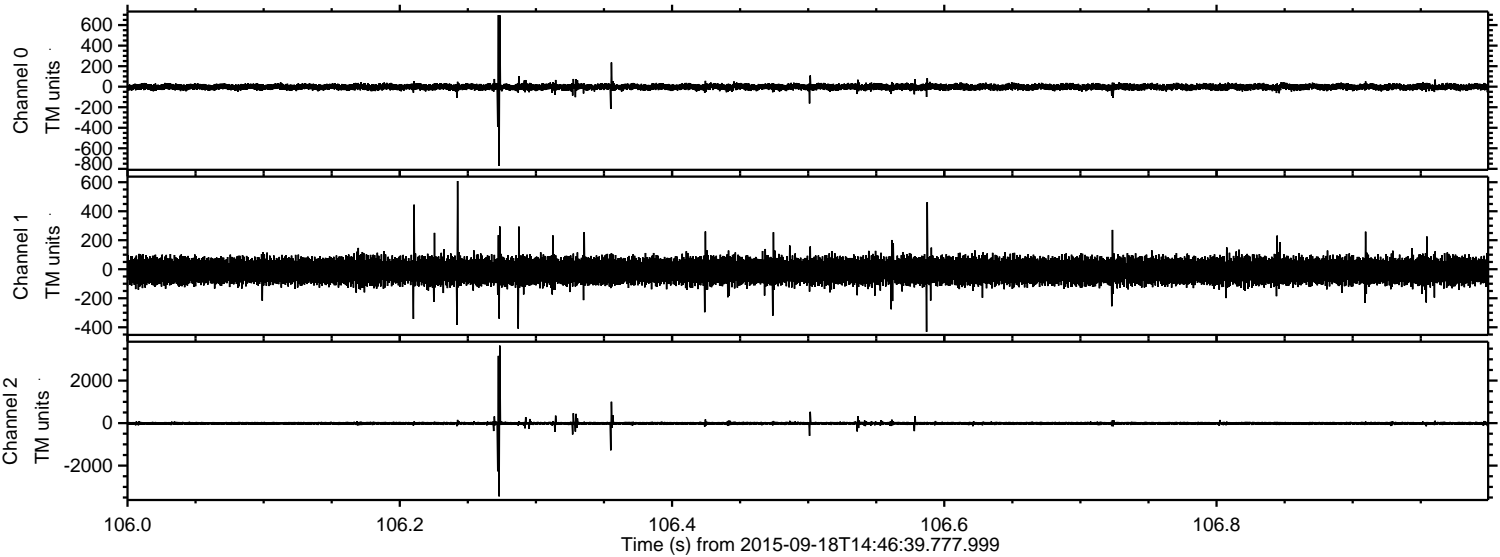
Channel 1  
mn: -2923  
mx: 3667  
 $\mu$ : -11.7  
 $\sigma$ : 61.8

Channel 2  
mn: -1170  
mx: 1337  
 $\mu$ : -11.5  
 $\sigma$ : 32.0



ELMAVAN 3D WAVEFORMS (Measured data sampled at 50 kHz) 51000 packets of 144 samples from 2015-09-18T14:46:39.777.999. Part 107/147

Processed Wed Oct 14 00:22:41 2015 by ELM ver.2012-10-06 from 001\_\_elm20150918\_144638\_\_dat00.bin



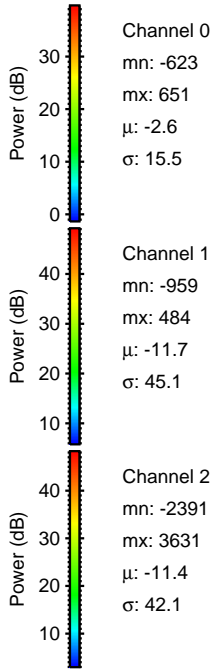
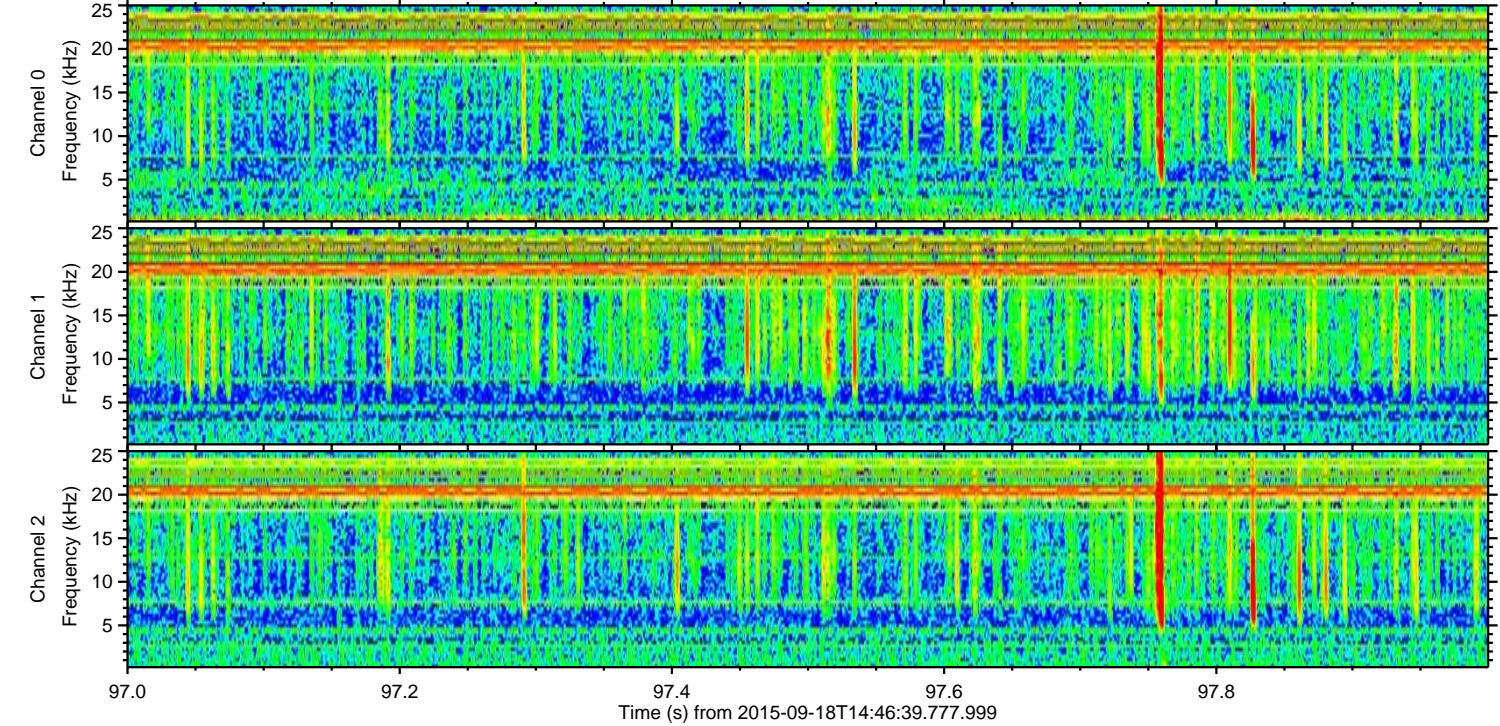
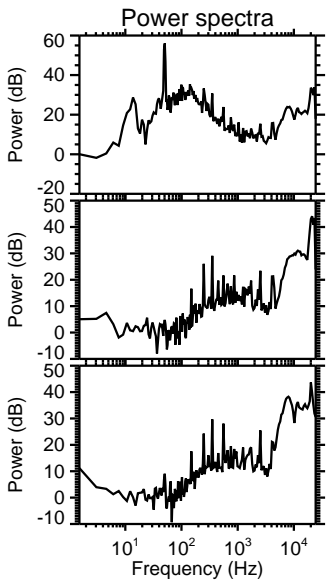
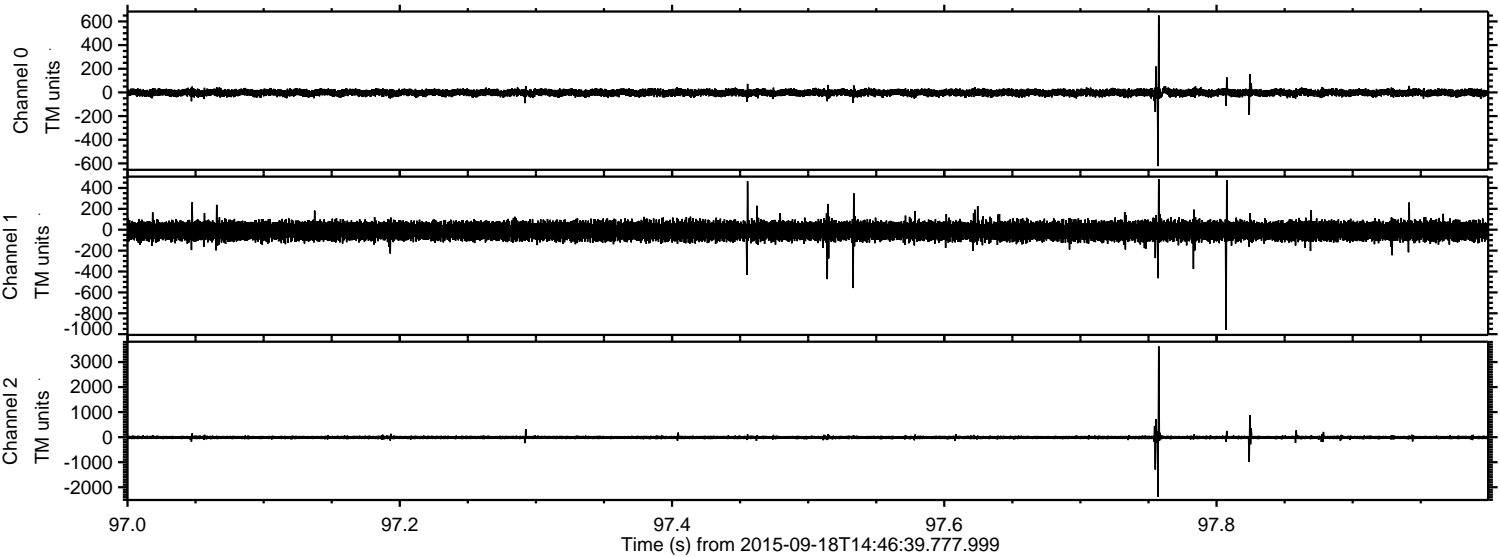
Channel 0  
mn: -771  
mx: 697  
 $\mu$ : -2.6  
 $\sigma$ : 16.5

Channel 1  
mn: -431  
mx: 608  
 $\mu$ : -11.7  
 $\sigma$ : 45.2

Channel 2  
mn: -3444  
mx: 3646  
 $\mu$ : -11.5  
 $\sigma$ : 50.1



Processed Wed Oct 14 00:22:42 2015 by ELM ver.2012-10-06 from 001\_\_elm20150918\_144638\_\_dat00.bin



Channel 0  
mn: -623  
mx: 651  
 $\mu$ : -2.6  
 $\sigma$ : 15.5

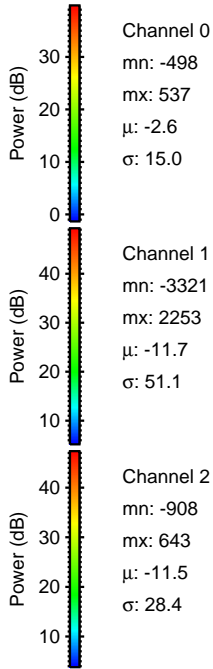
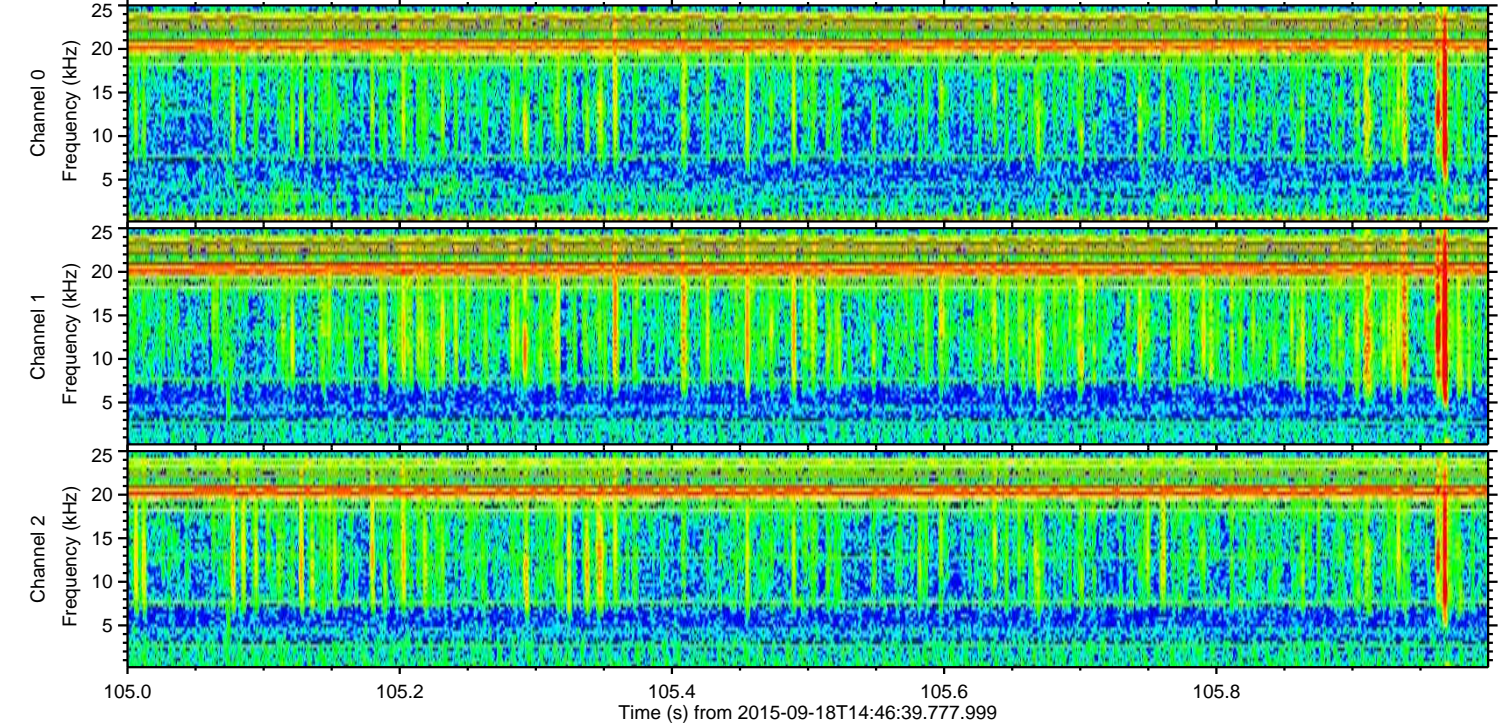
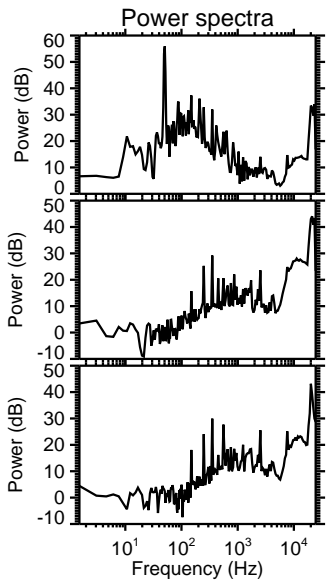
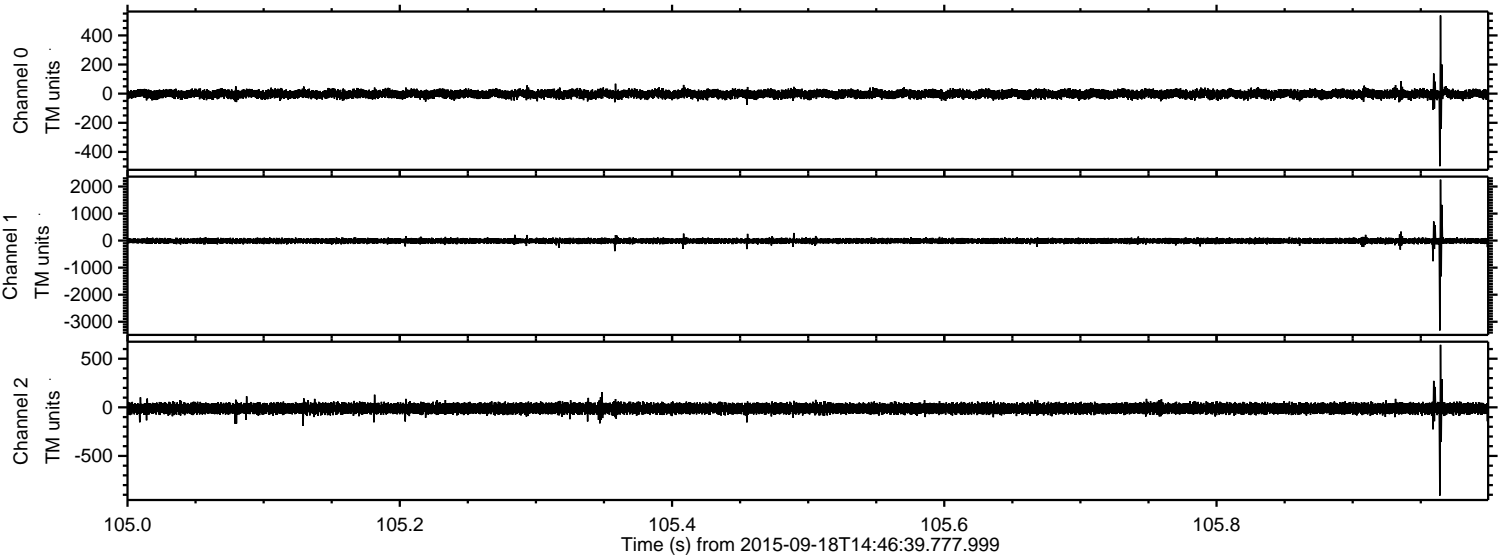
Channel 1  
mn: -959  
mx: 484  
 $\mu$ : -11.7  
 $\sigma$ : 45.1

Channel 2  
mn: -2391  
mx: 3631  
 $\mu$ : -11.4  
 $\sigma$ : 42.1



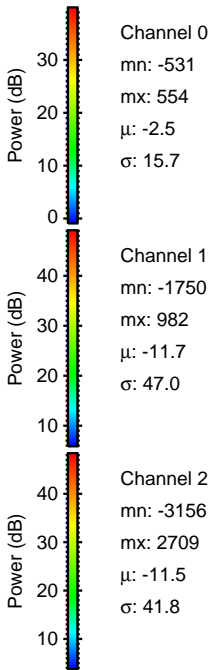
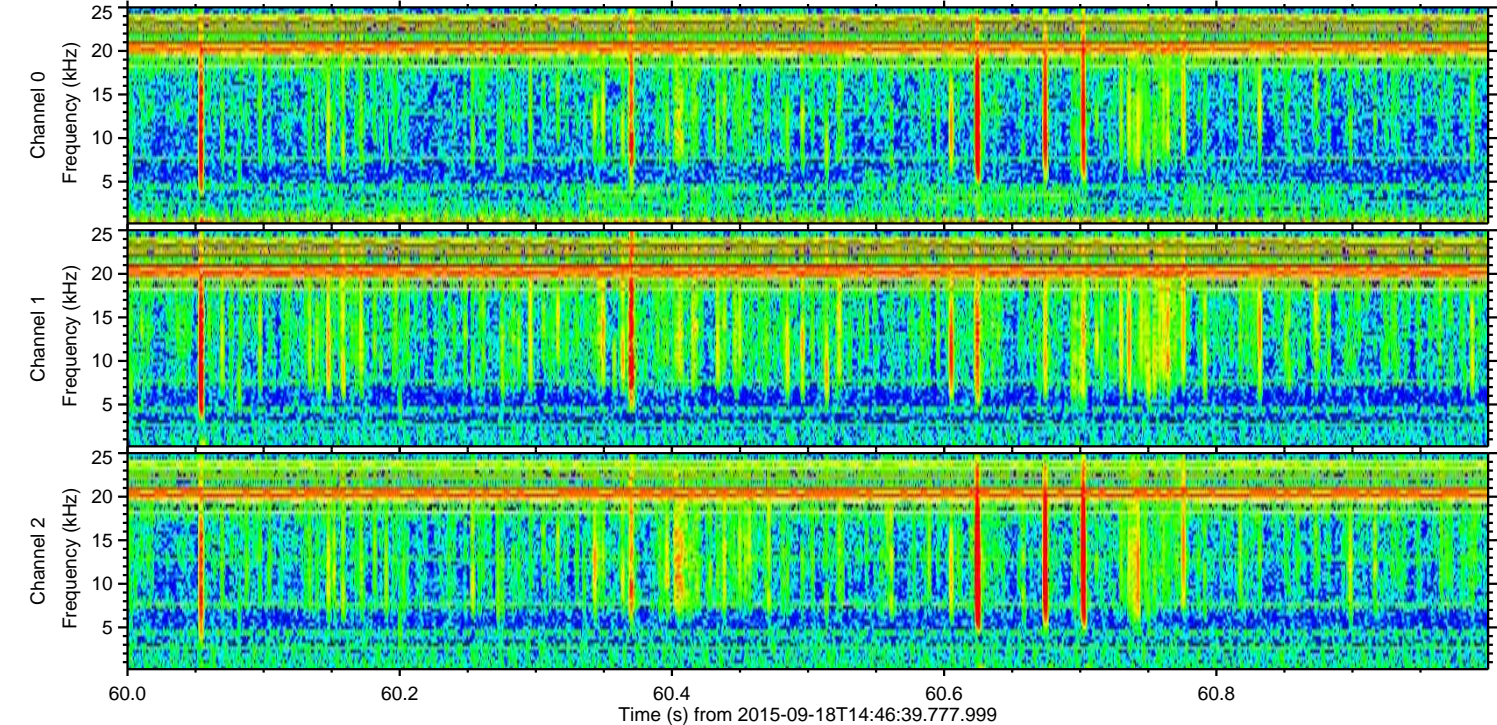
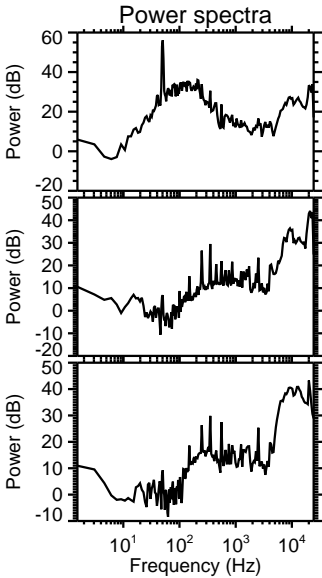
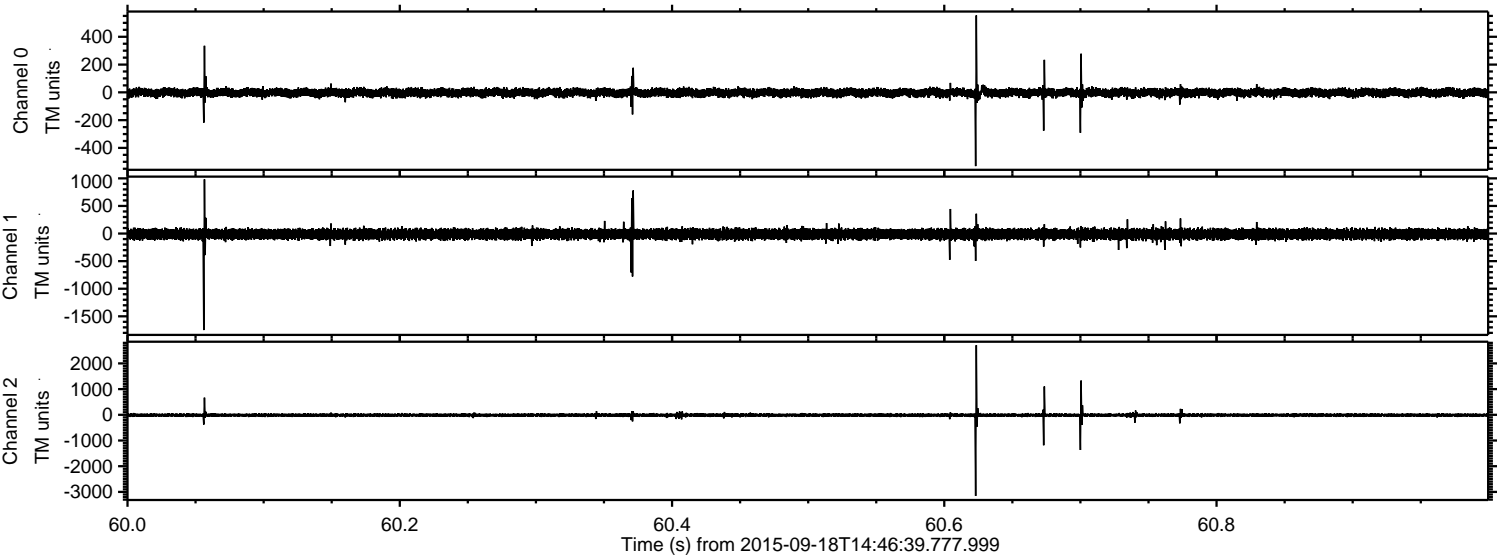
ELMAVAN 3D WAVEFORMS (Measured data sampled at 50 kHz) 51000 packets of 144 samples from 2015-09-18T14:46:39.777.999. Part 106/147

Processed Wed Oct 14 00:22:44 2015 by ELM ver.2012-10-06 from 001\_\_elm20150918\_144638\_\_dat00.bin





Processed Wed Oct 14 00:22:45 2015 by ELM ver.2012-10-06 from 001\_\_elm20150918\_144638\_\_dat00.bin





ELMAVAN 3D WAVEFORMS (Measured data sampled at 50 kHz) 51000 packets of 144 samples from 2015-09-18T14:46:39.777.999. Part 133/147

