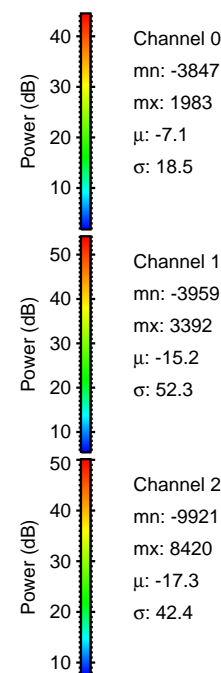
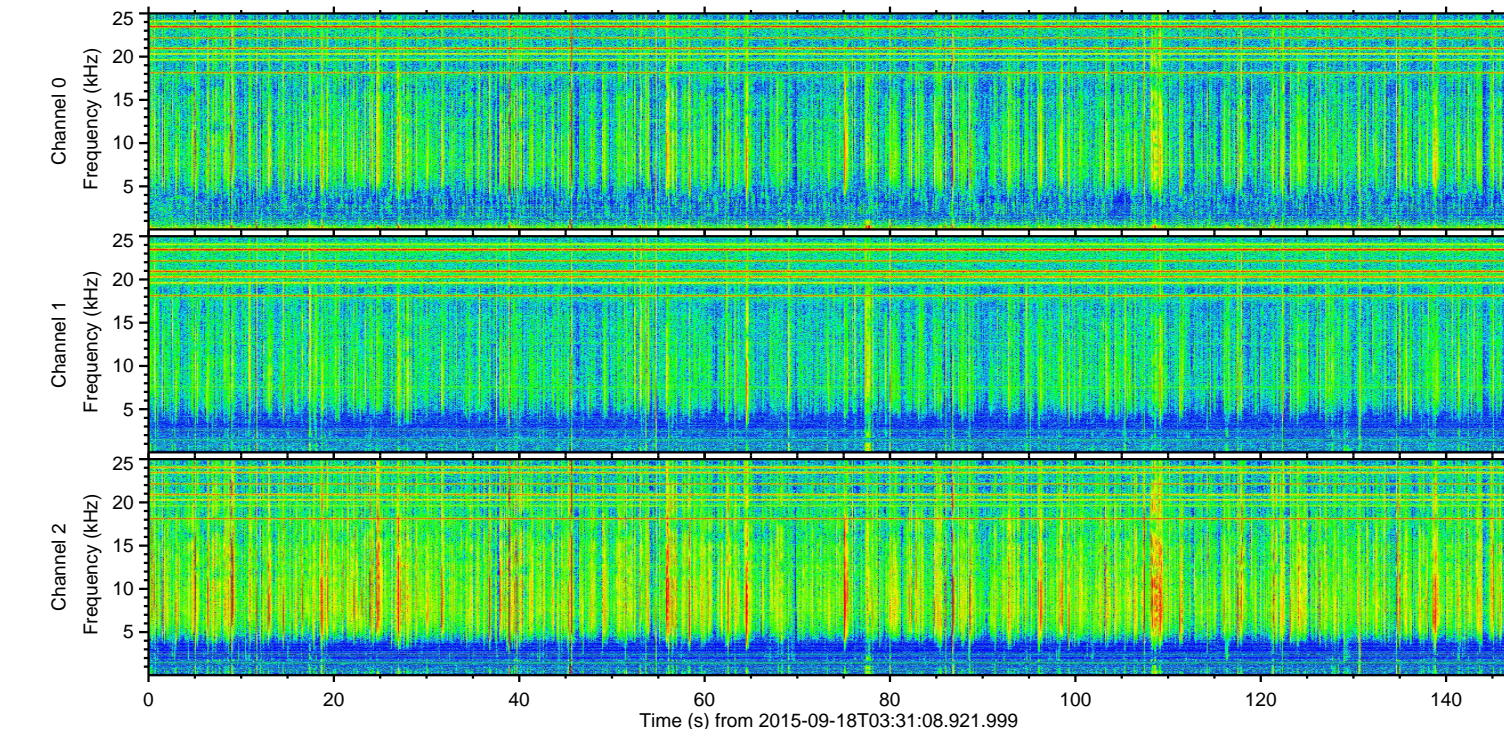
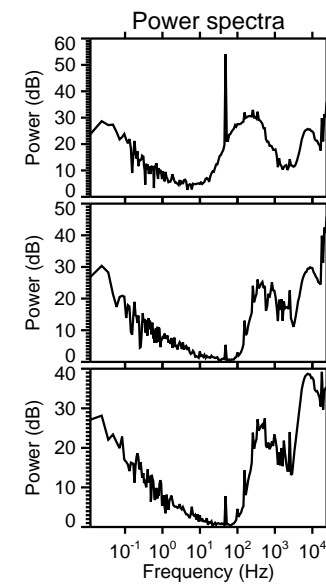
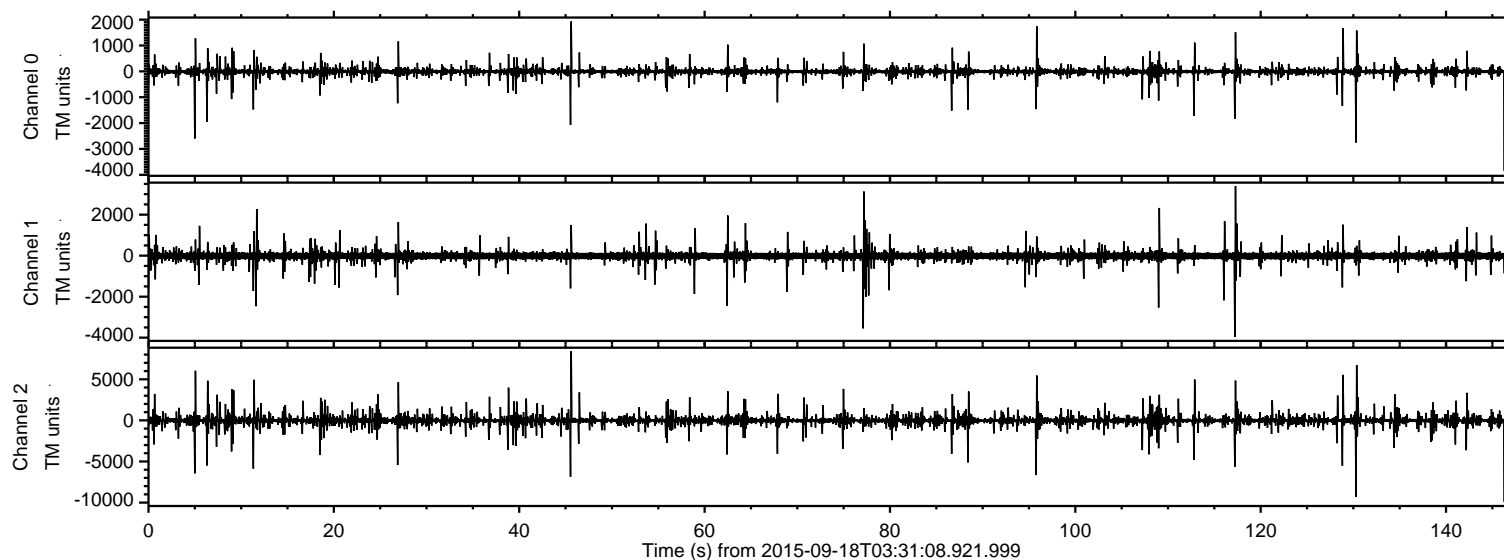


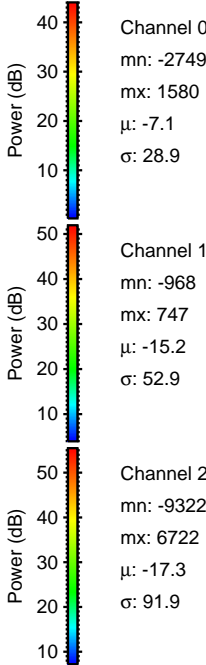
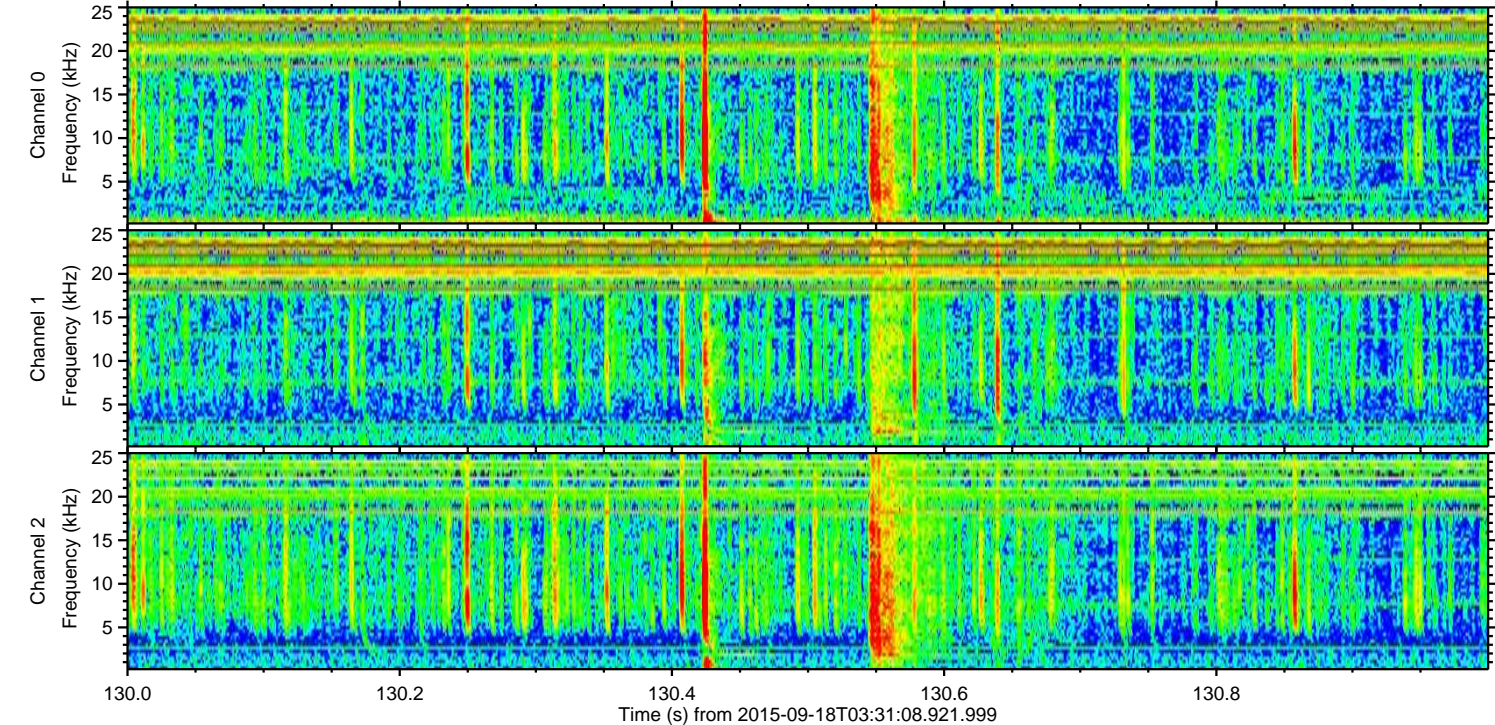
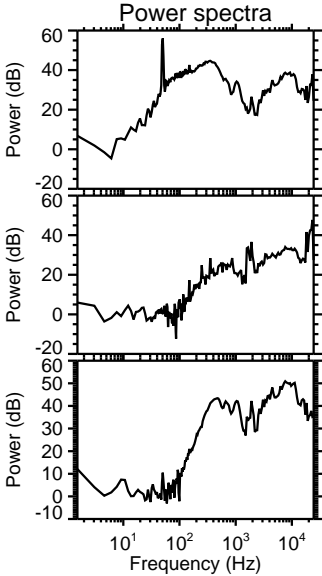
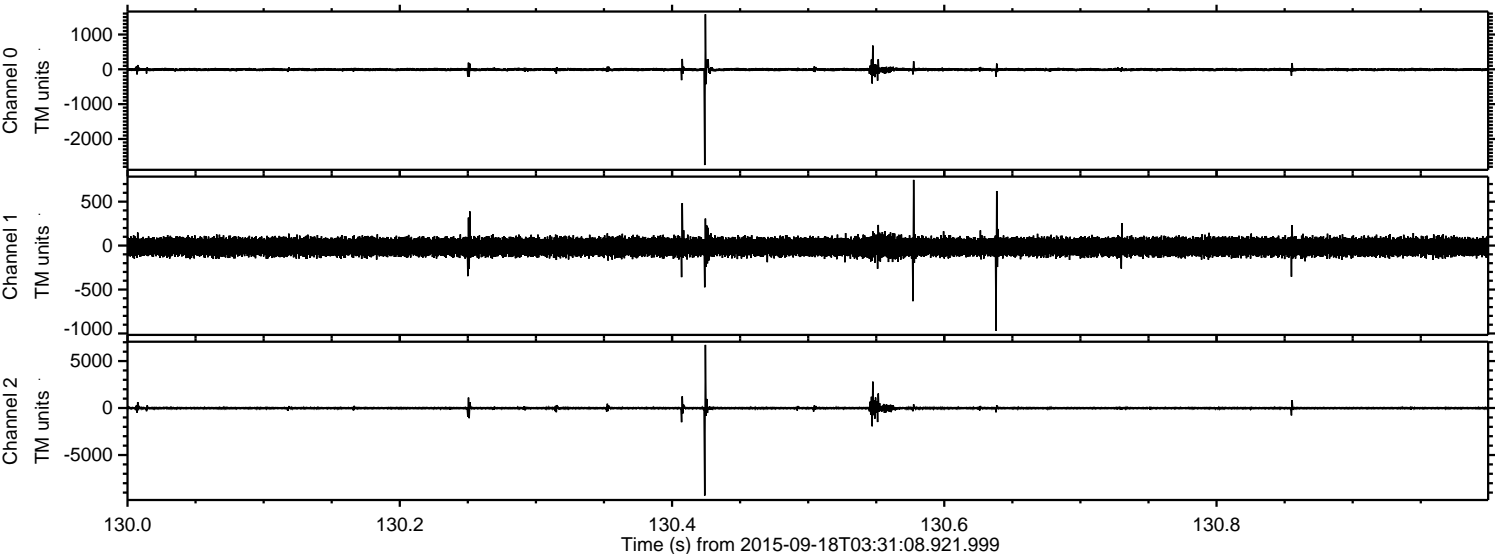
ELMAVAN 3D WAVEFORMS (Measured data sampled at 50 kHz) 51000 packets of 144 samples from 2015-09-18T03:31:08.921.999.

Processed Tue Oct 13 19:38:23 2015 by ELM ver.2012-10-06 from 001__elm20150918_033107__dat00.bin

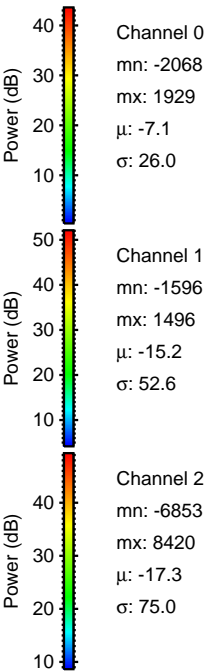
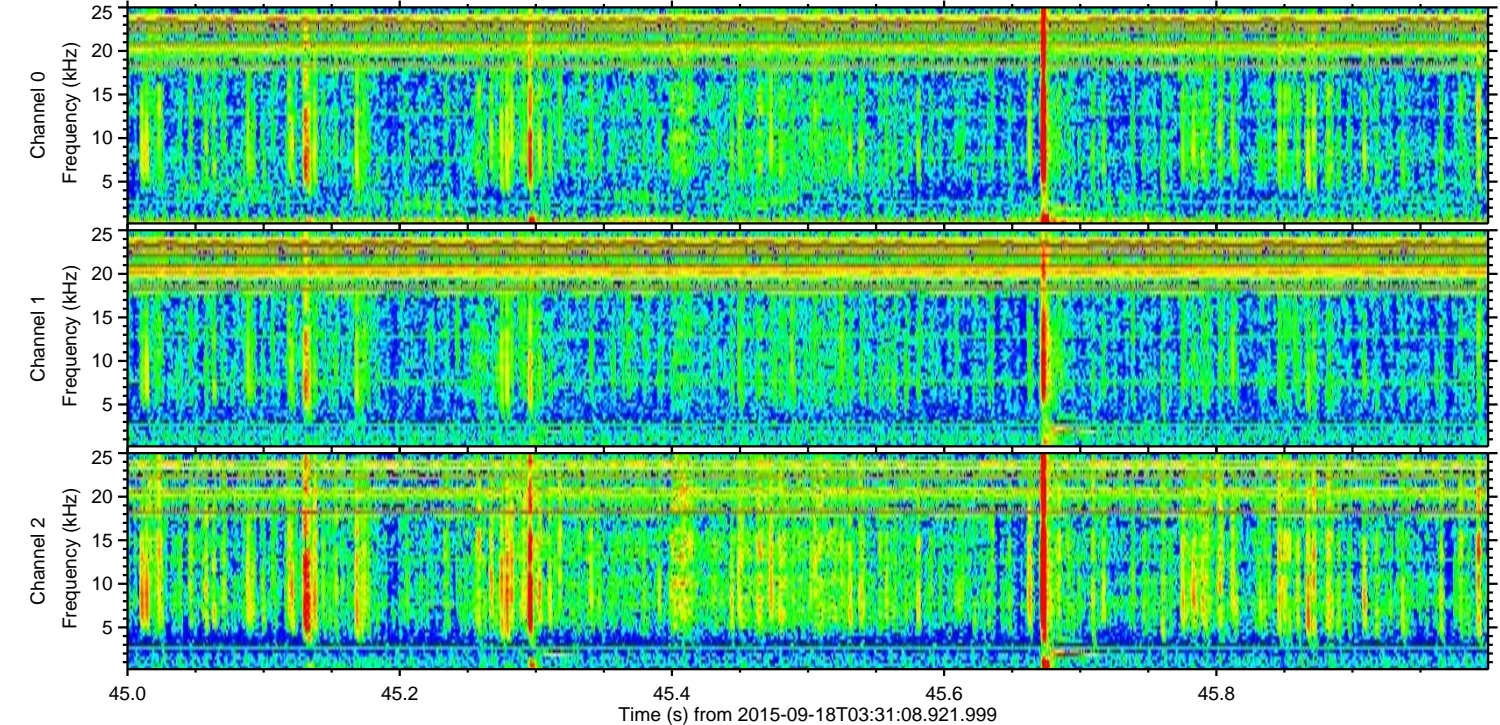
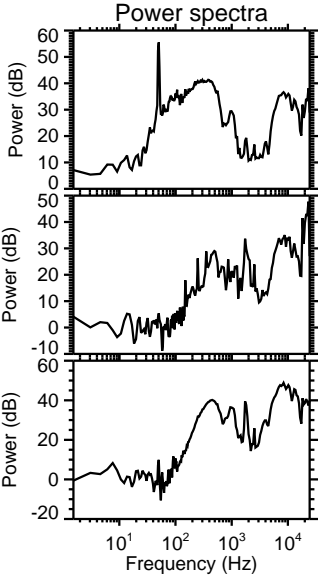
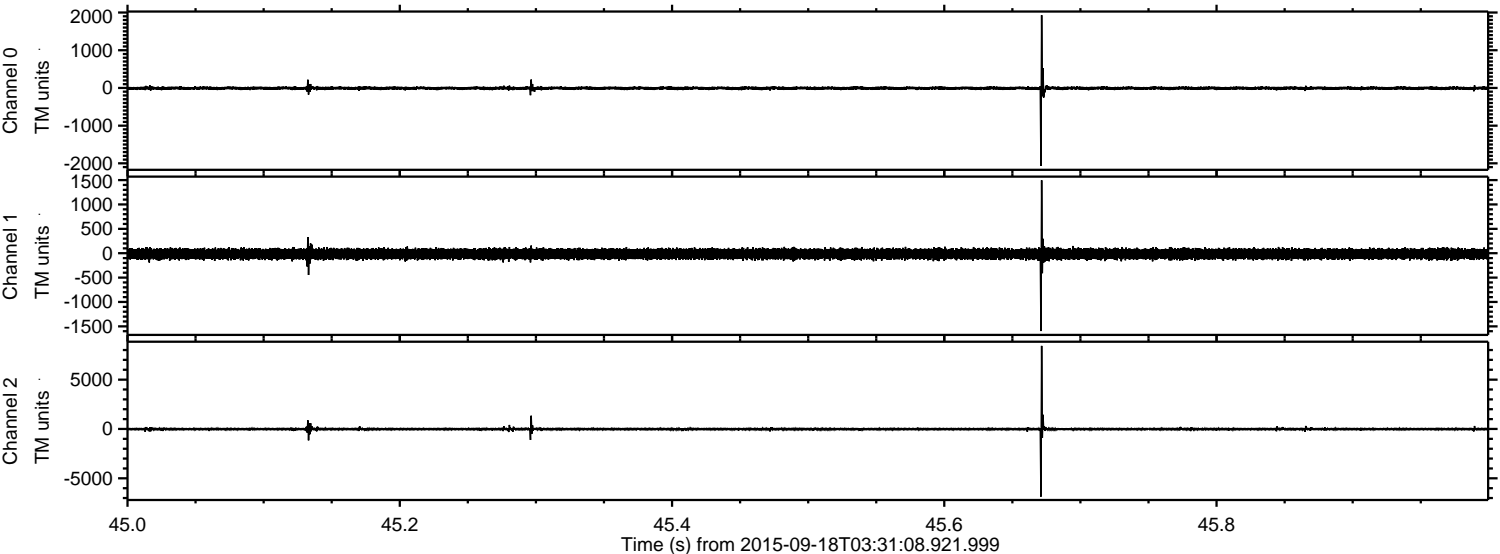


ELMAVAN 3D WAVEFORMS (Measured data sampled at 50 kHz) 51000 packets of 144 samples from 2015-09-18T03:31:08.921.999. Part 131/147

Processed Tue Oct 13 19:38:49 2015 by ELM ver.2012-10-06 from 001__elm20150918_033107__dat00.bin



Processed Tue Oct 13 19:38:51 2015 by ELM ver.2012-10-06 from 001__elm20150918_033107__dat00.bin



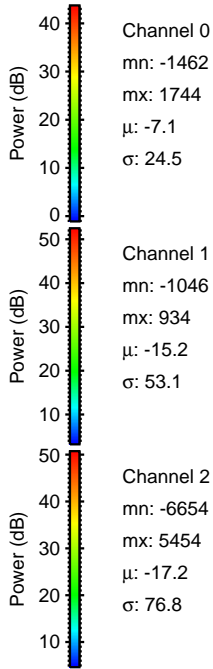
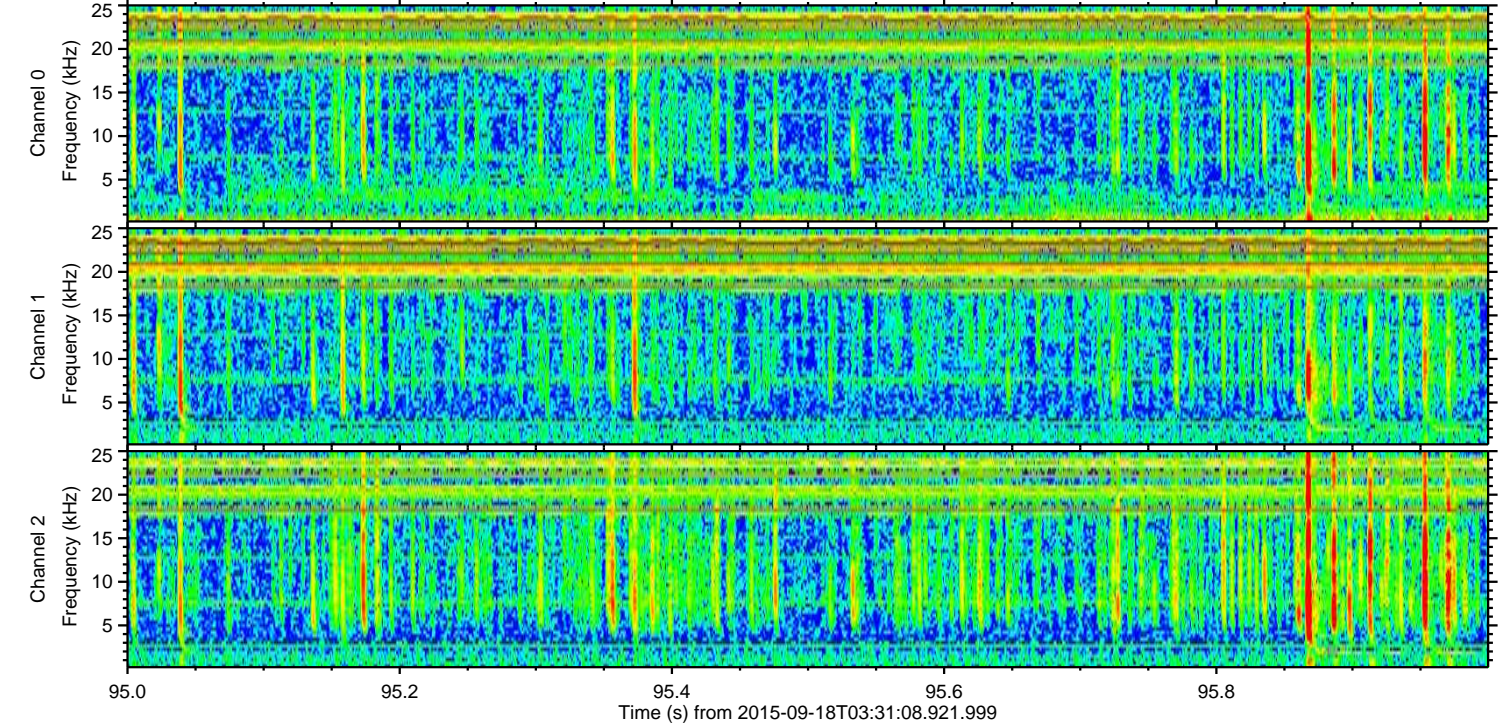
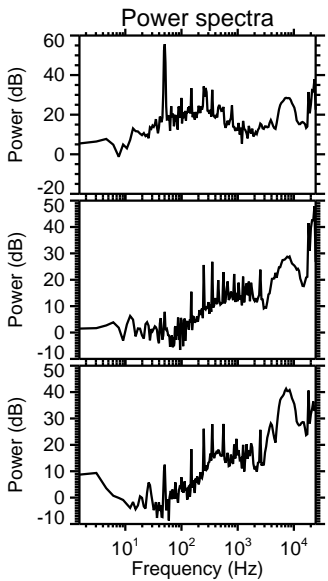
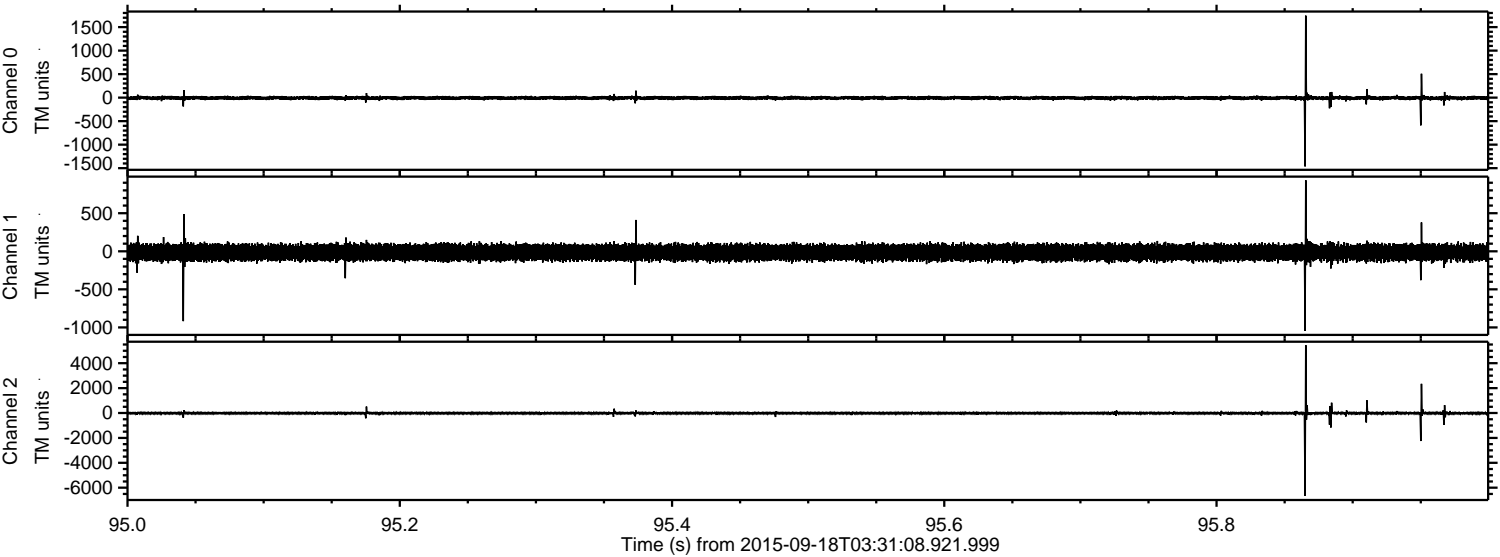
Channel 0
mn: -2068
mx: 1929
 μ : -7.1
 σ : 26.0

Channel 1
mn: -1596
mx: 1496
 μ : -15.2
 σ : 52.6

Channel 2
mn: -6853
mx: 8420
 μ : -17.3
 σ : 75.0

ELMAVAN 3D WAVEFORMS (Measured data sampled at 50 kHz) 51000 packets of 144 samples from 2015-09-18T03:31:08.921.999. Part 96/147

Processed Tue Oct 13 19:38:53 2015 by ELM ver.2012-10-06 from 001__elm20150918_033107__dat00.bin

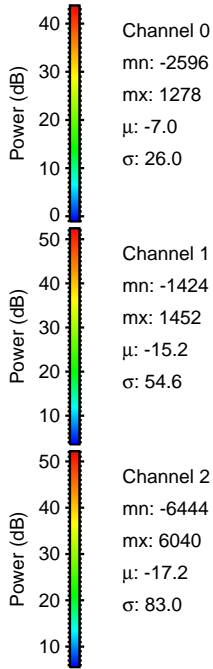
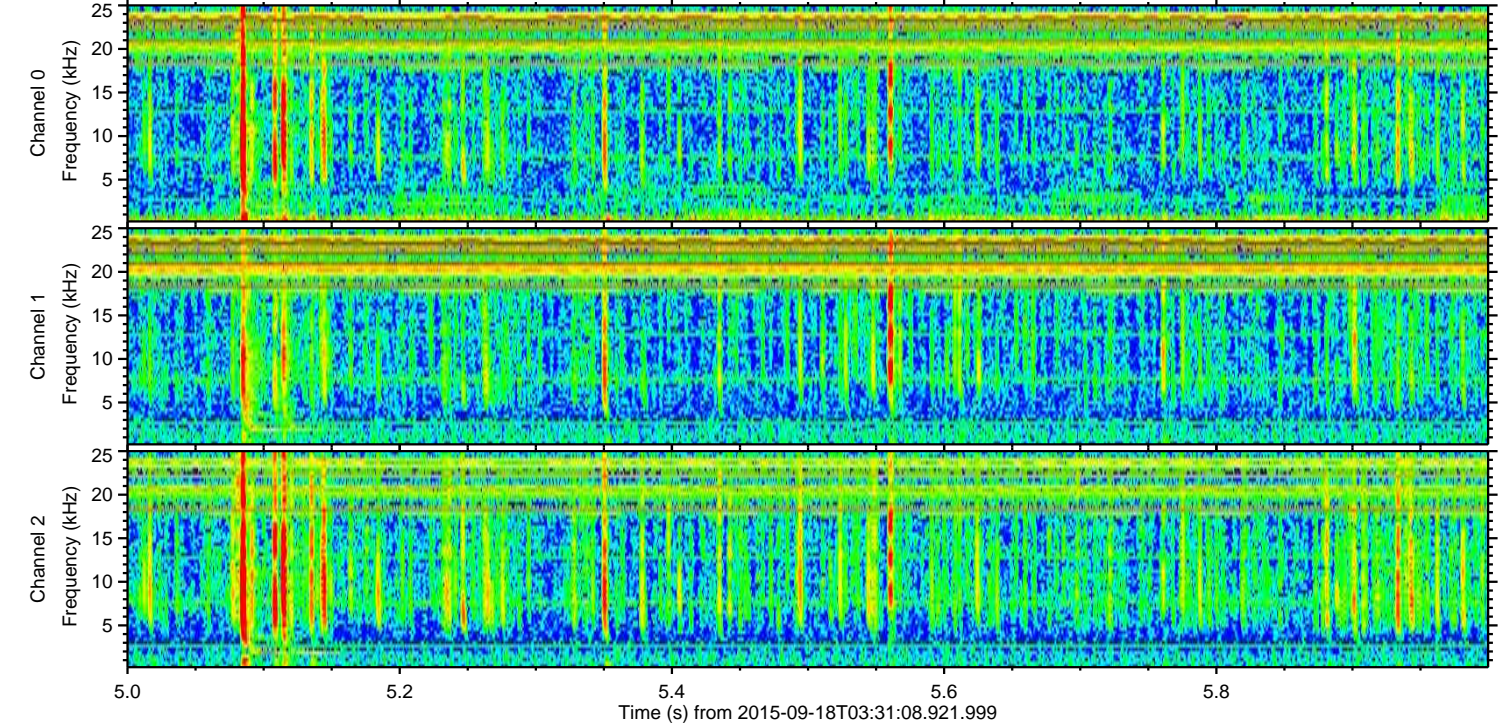
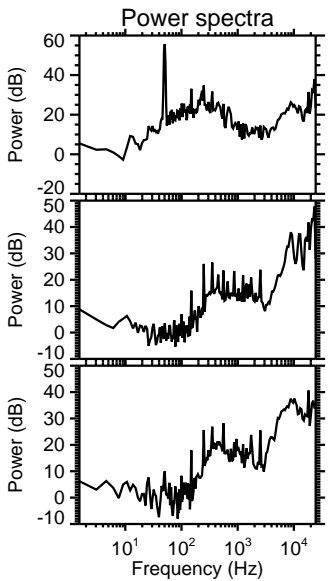
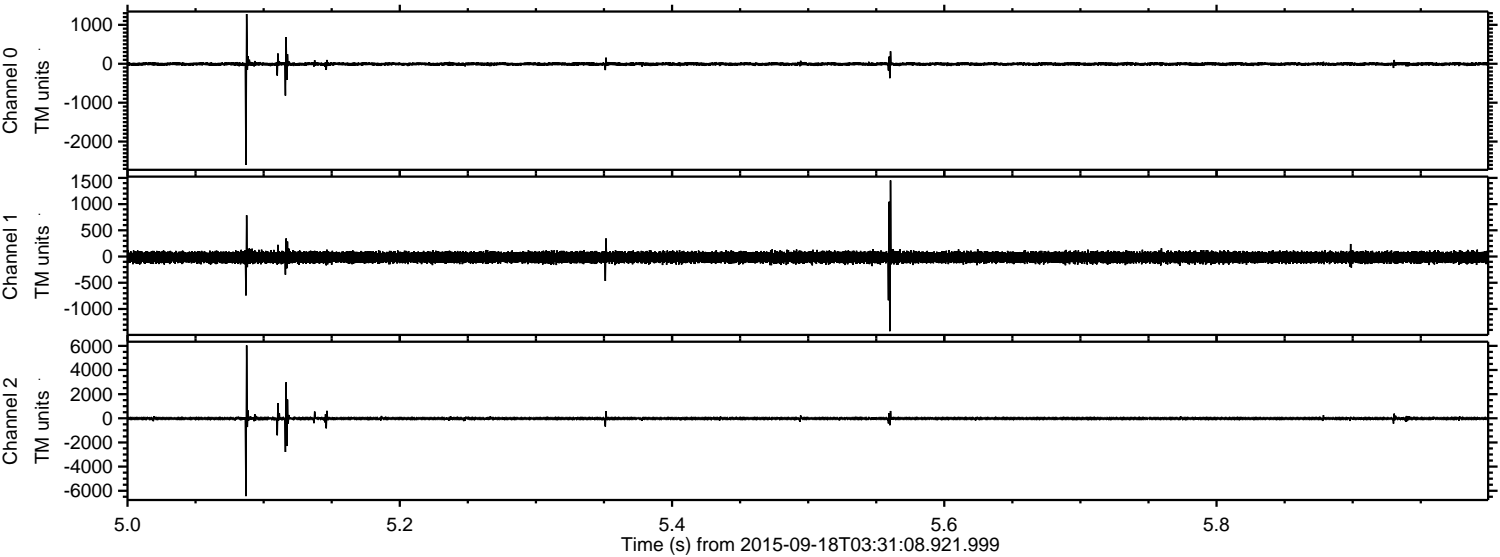


Channel 0
mn: -1462
mx: 1744
 μ : -7.1
 σ : 24.5

Channel 1
mn: -1046
mx: 934
 μ : -15.2
 σ : 53.1

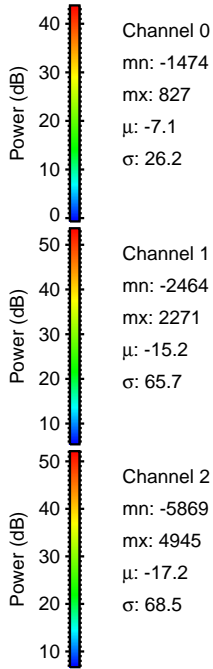
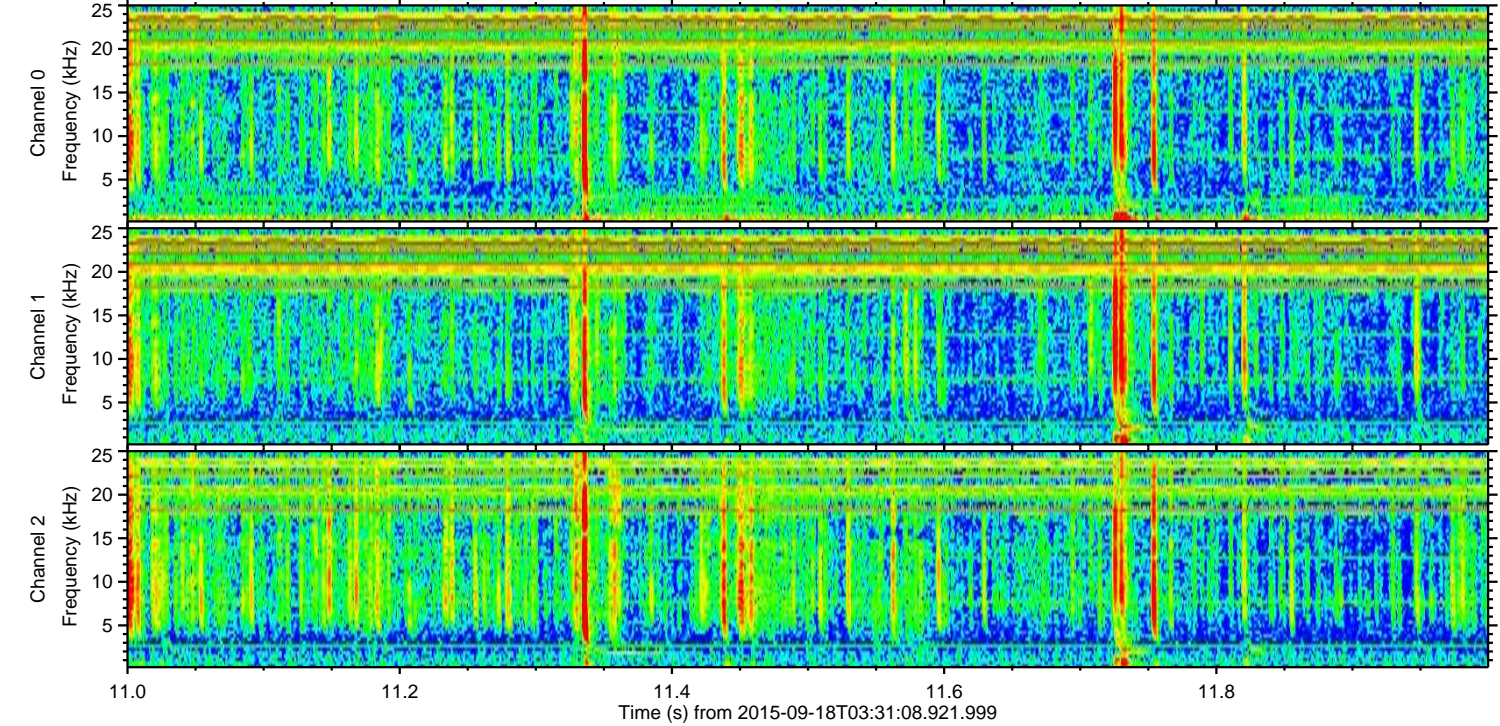
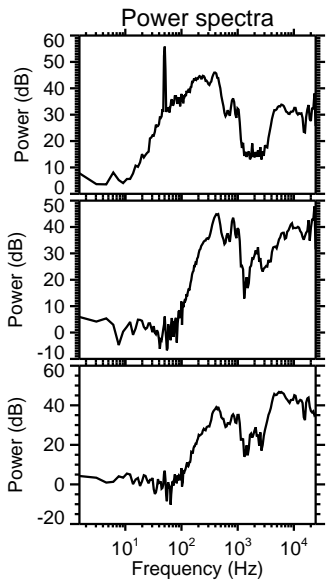
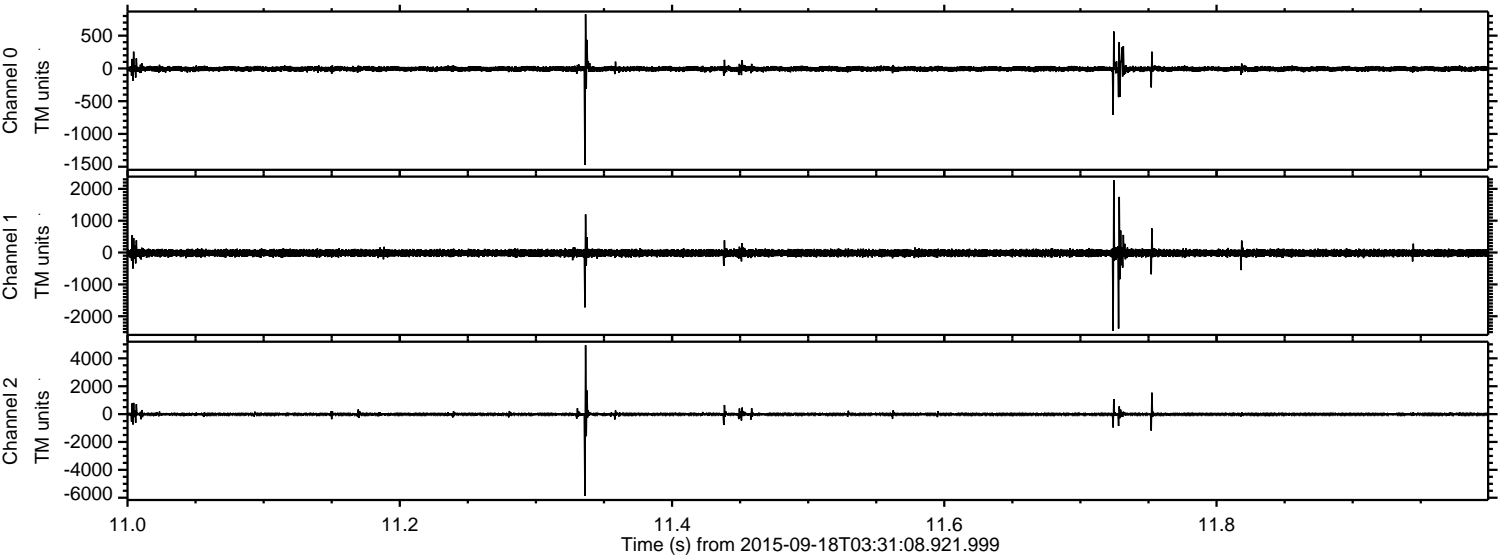
Channel 2
mn: -6654
mx: 5454
 μ : -17.2
 σ : 76.8

Processed Tue Oct 13 19:38:55 2015 by ELM ver.2012-10-06 from 001__elm20150918_033107__dat00.bin



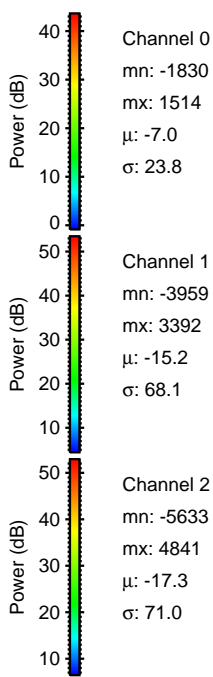
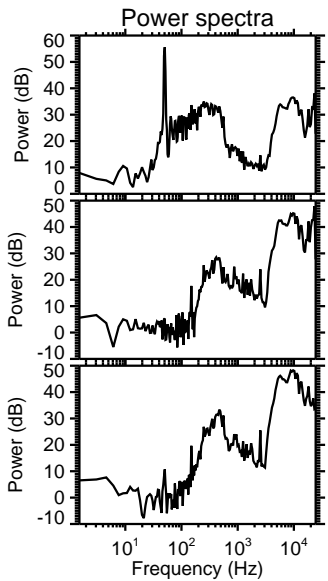
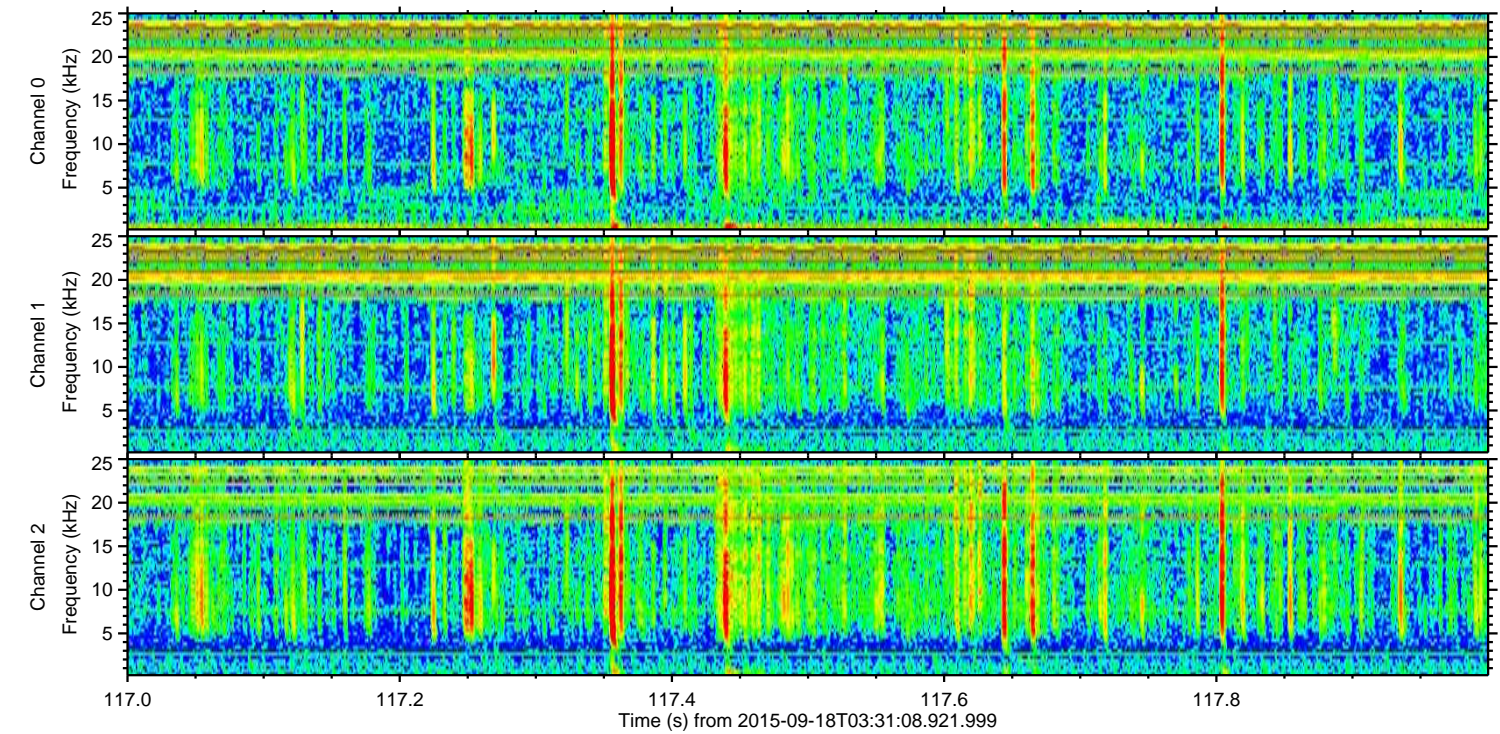
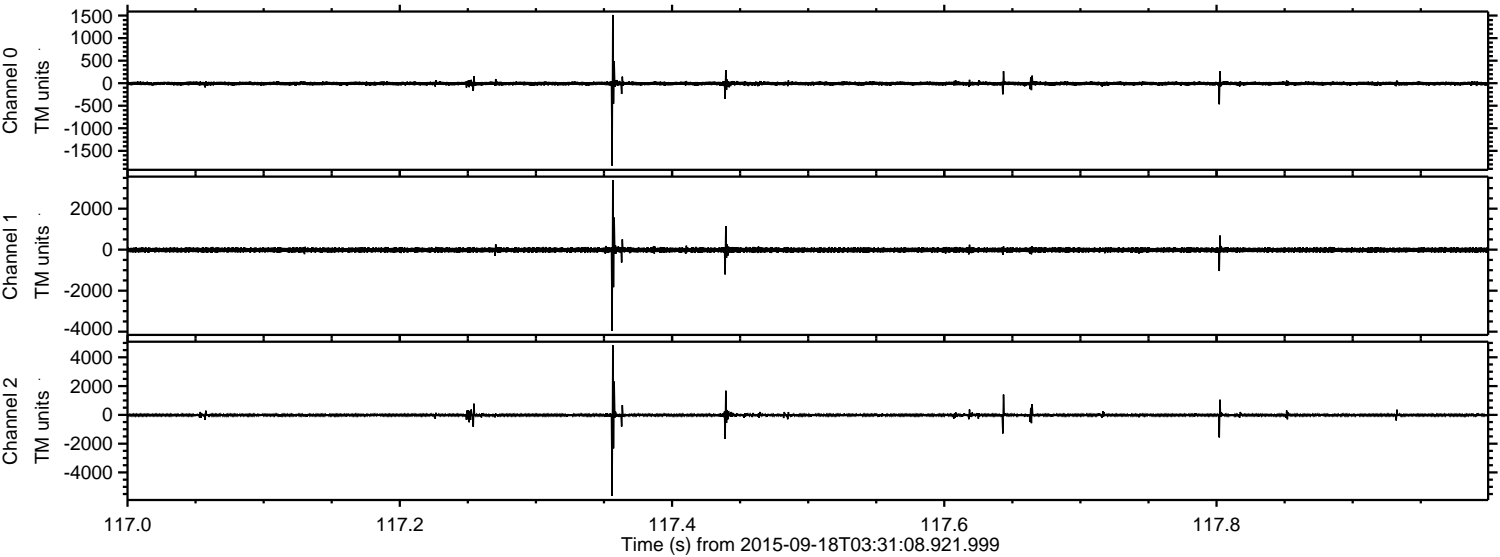
ELMAVAN 3D WAVEFORMS (Measured data sampled at 50 kHz) 51000 packets of 144 samples from 2015-09-18T03:31:08.921.999. Part 12/147

Processed Tue Oct 13 19:38:57 2015 by ELM ver.2012-10-06 from 001__elm20150918_033107__dat00.bin



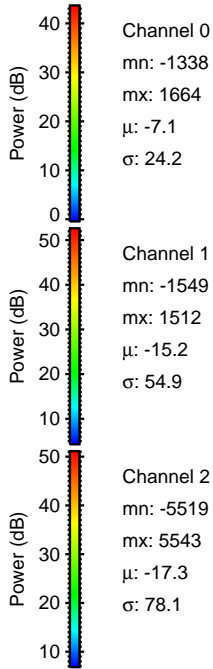
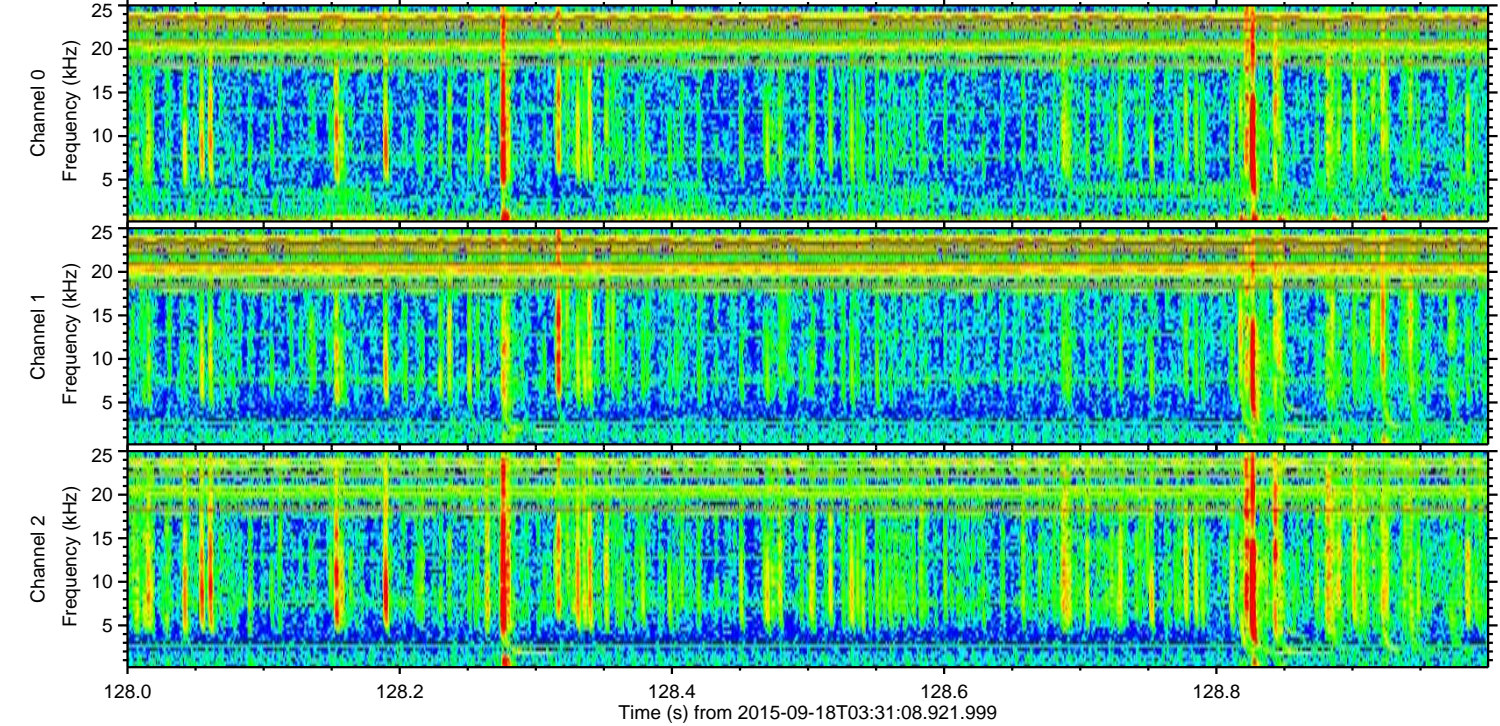
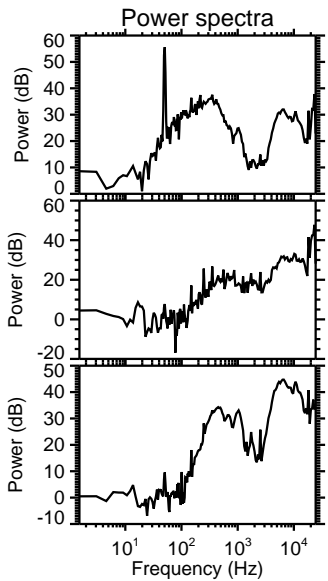
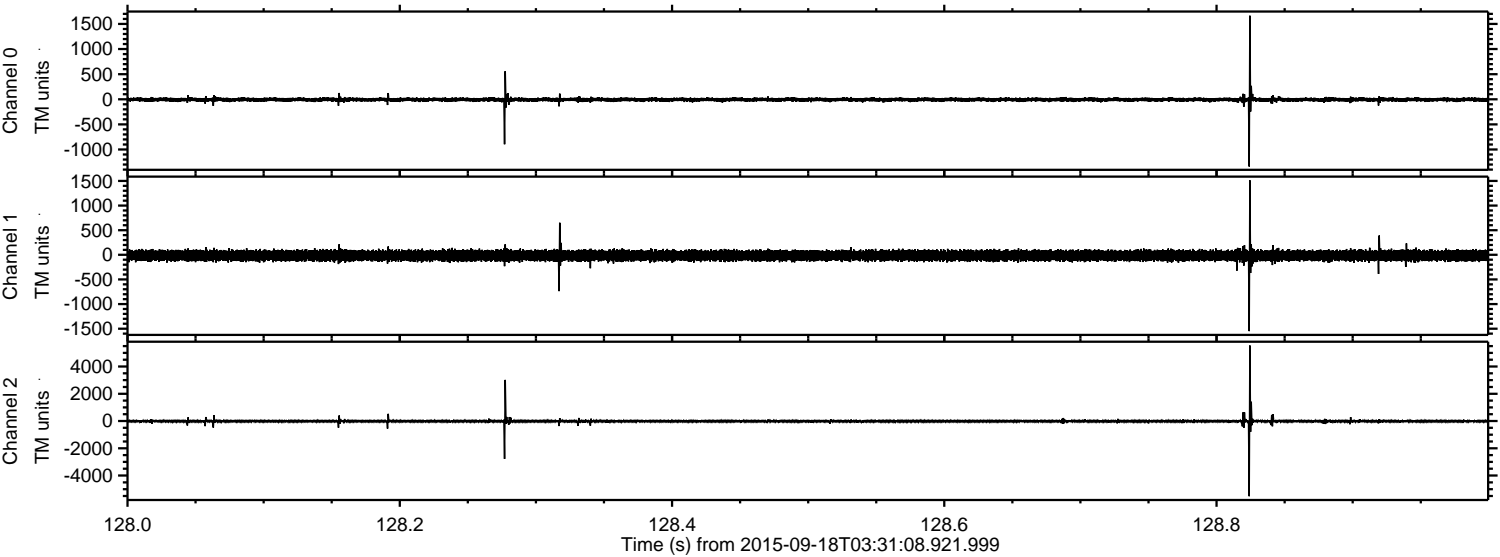
ELMAVAN 3D WAVEFORMS (Measured data sampled at 50 kHz) 51000 packets of 144 samples from 2015-09-18T03:31:08.921.999. Part 118/147

Processed Tue Oct 13 19:38:59 2015 by ELM ver.2012-10-06 from 001__elm20150918_033107__dat00.bin

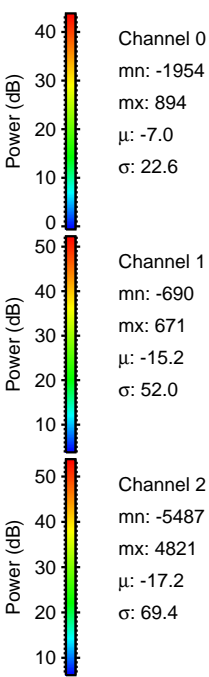
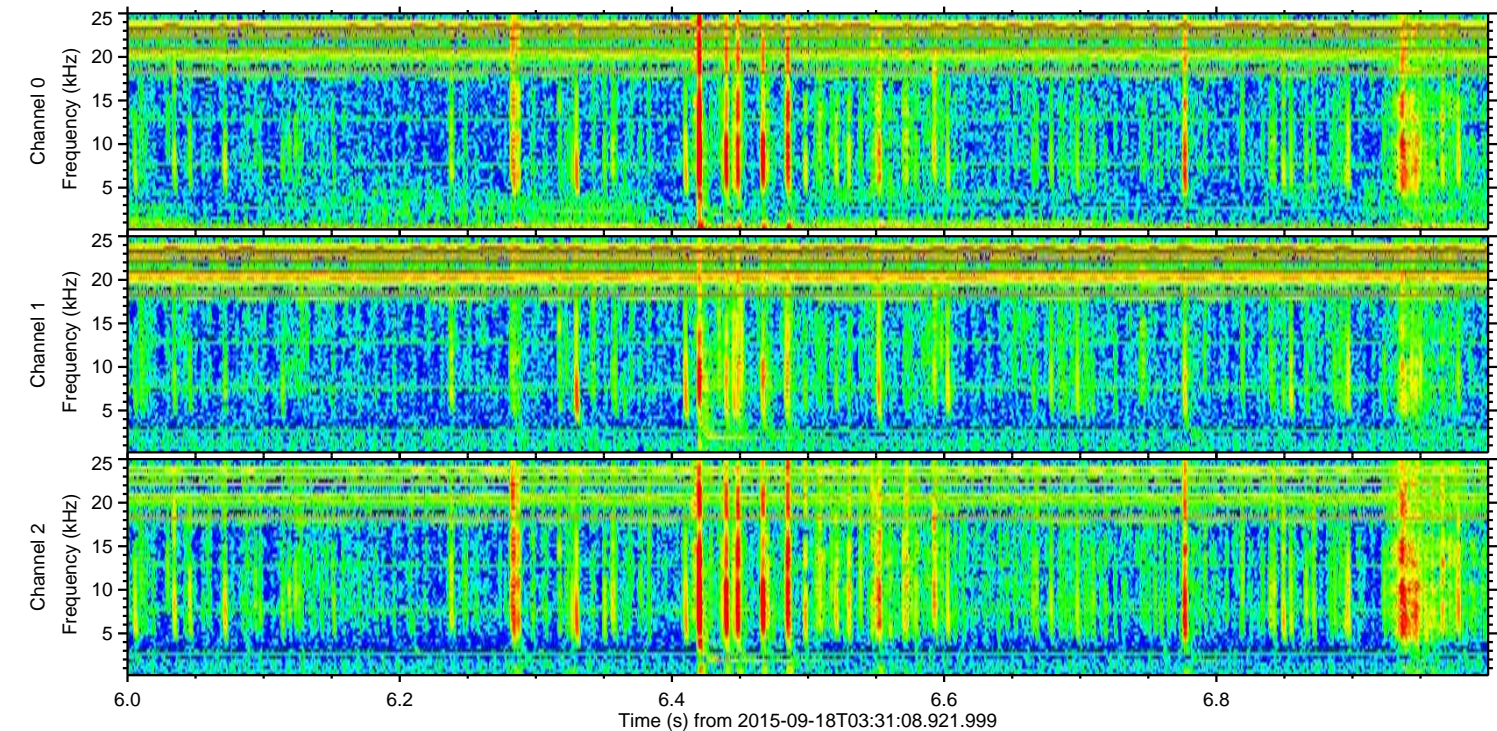
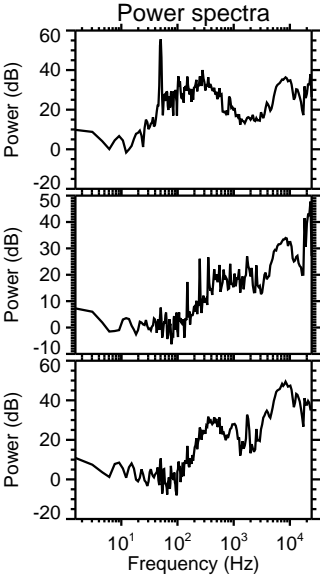
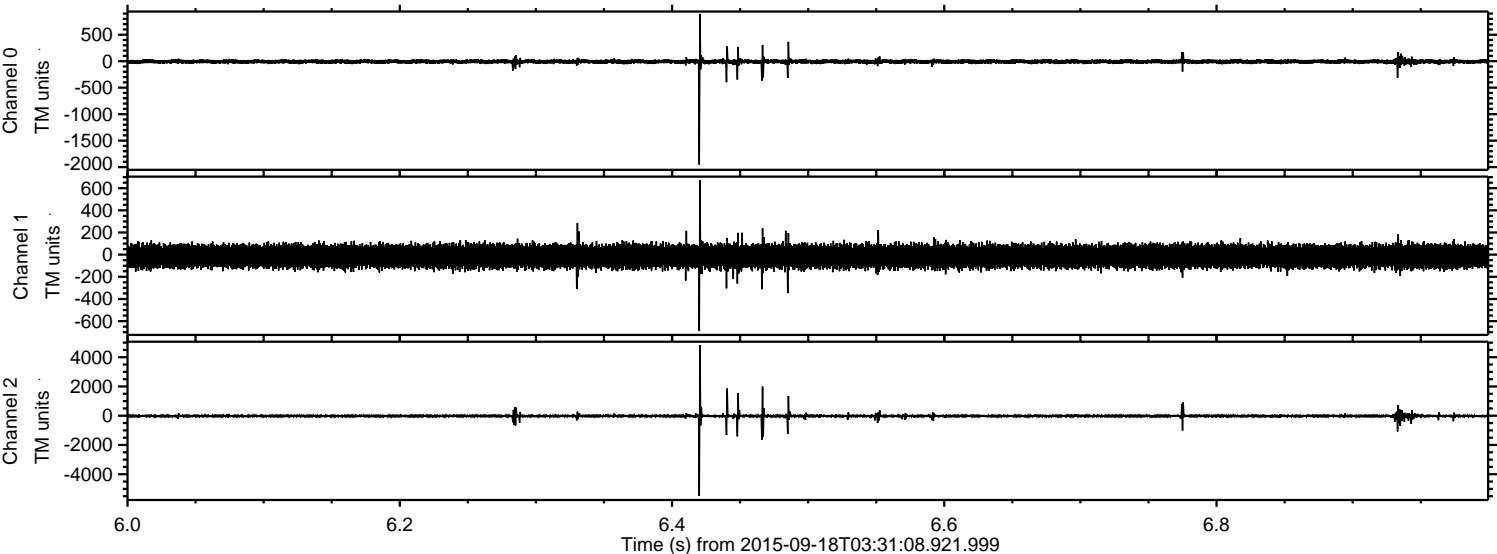


ELMAVAN 3D WAVEFORMS (Measured data sampled at 50 kHz) 51000 packets of 144 samples from 2015-09-18T03:31:08.921.999. Part 129/147

Processed Tue Oct 13 19:39:01 2015 by ELM ver.2012-10-06 from 001__elm20150918_033107__dat00.bin



Processed Tue Oct 13 19:39:03 2015 by ELM ver.2012-10-06 from 001__elm20150918_033107__dat00.bin



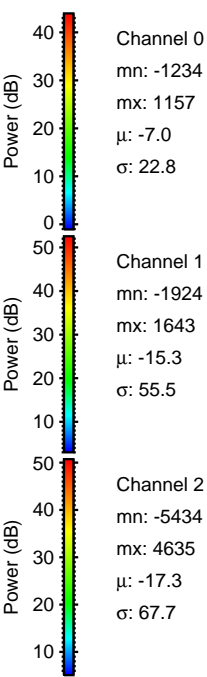
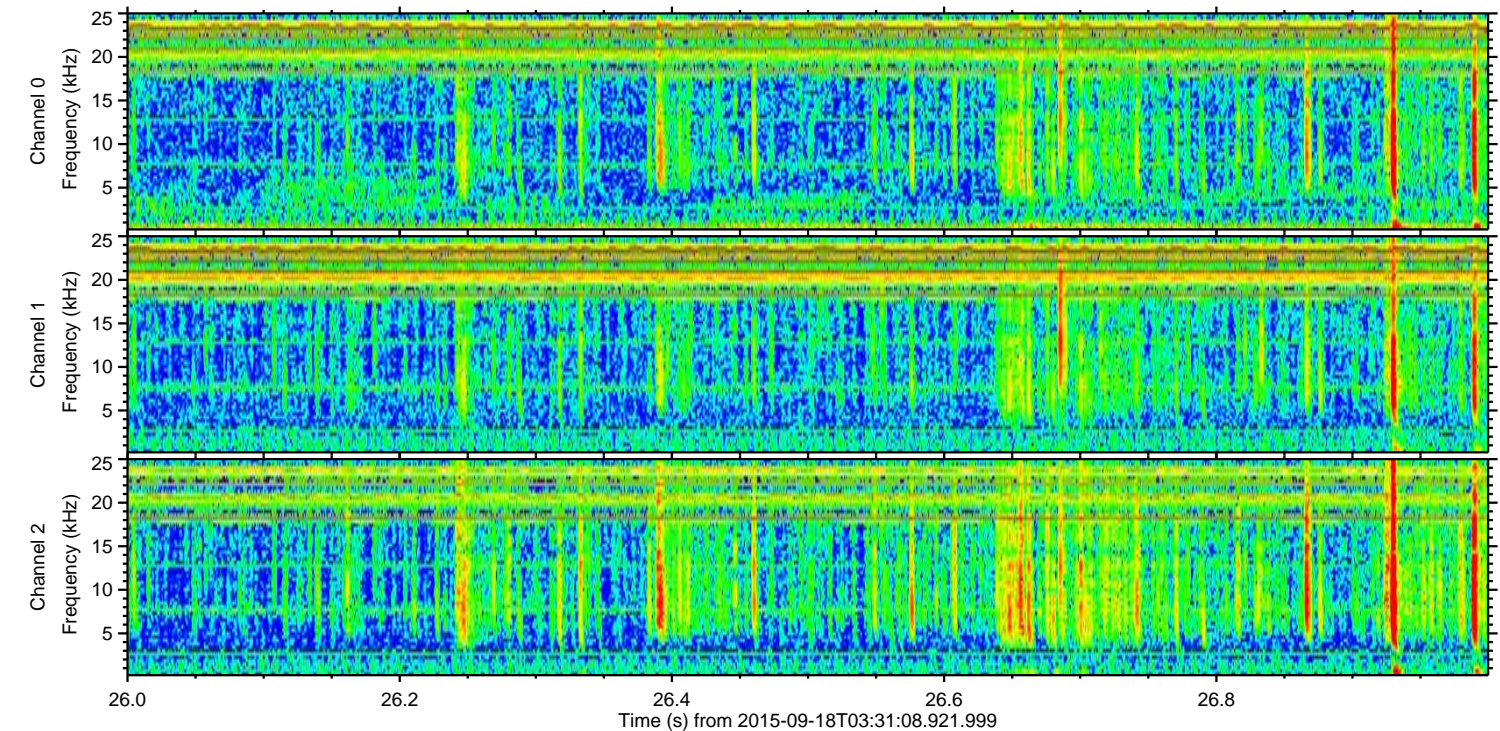
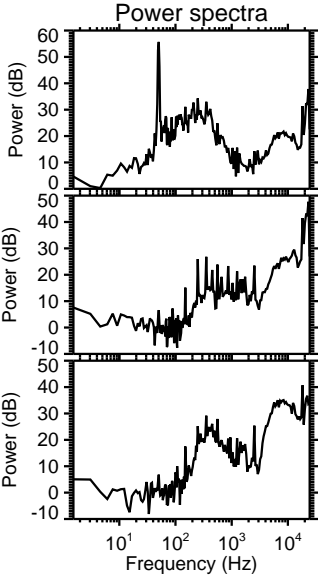
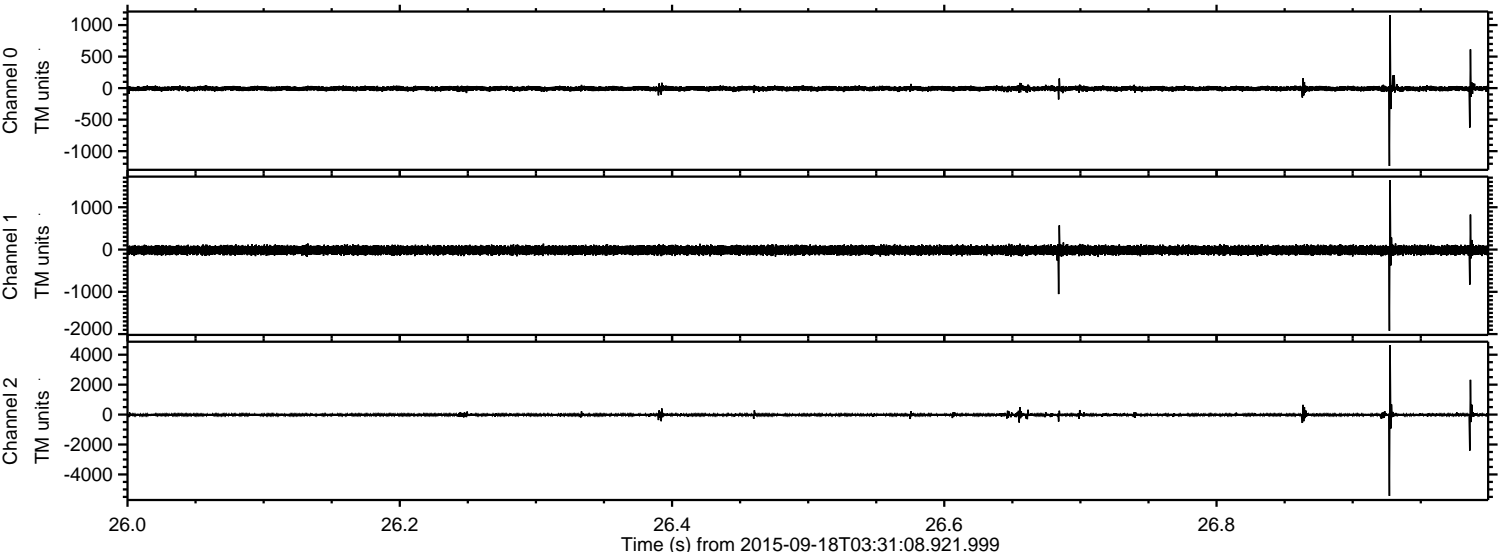
Channel 0
mn: -1954
mx: 894
 μ : -7.0
 σ : 22.6

Channel 1
mn: -690
mx: 671
 μ : -15.2
 σ : 52.0

Channel 2
mn: -5487
mx: 4821
 μ : -17.2
 σ : 69.4

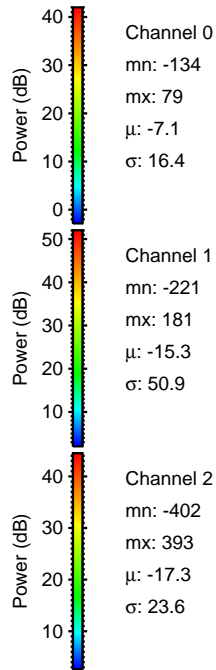
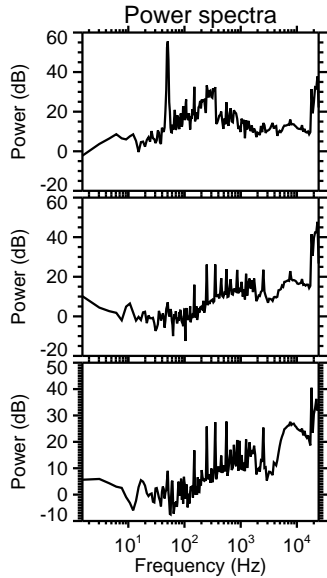
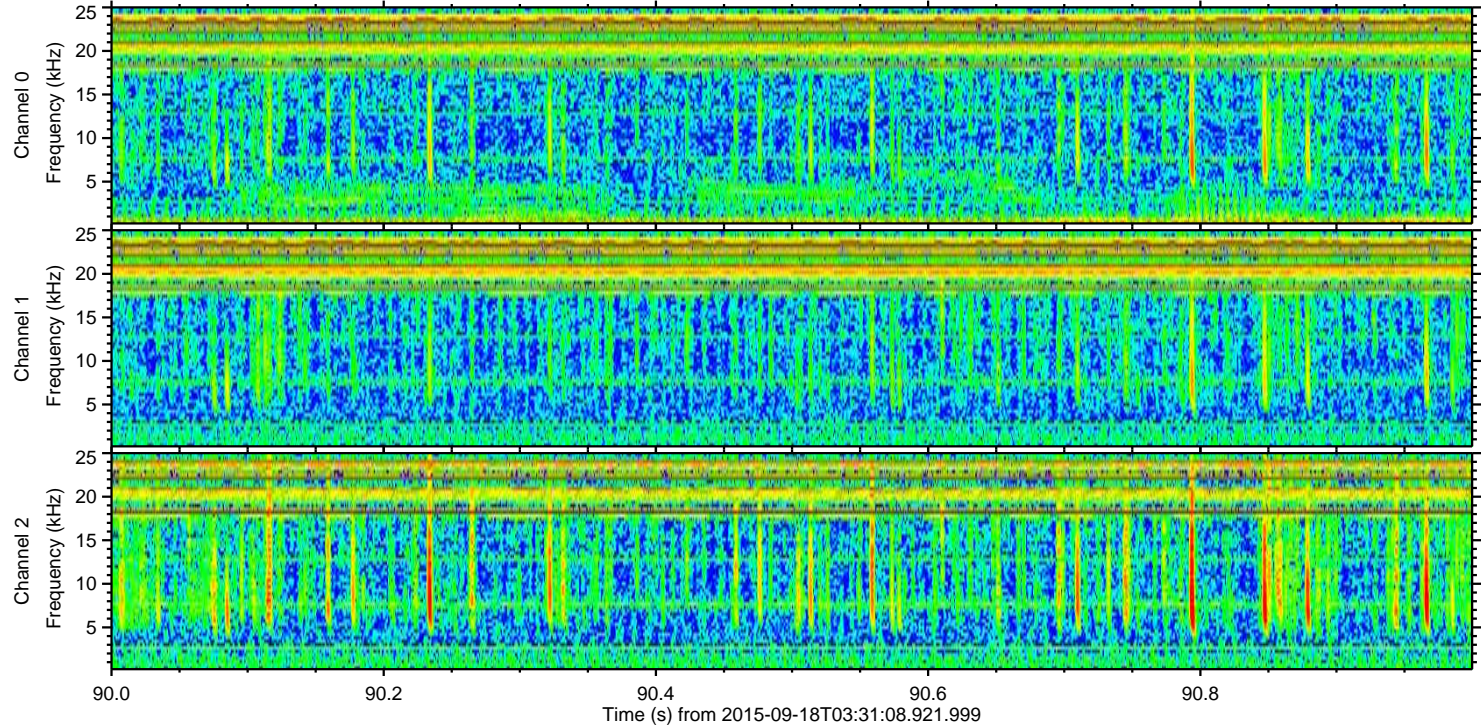
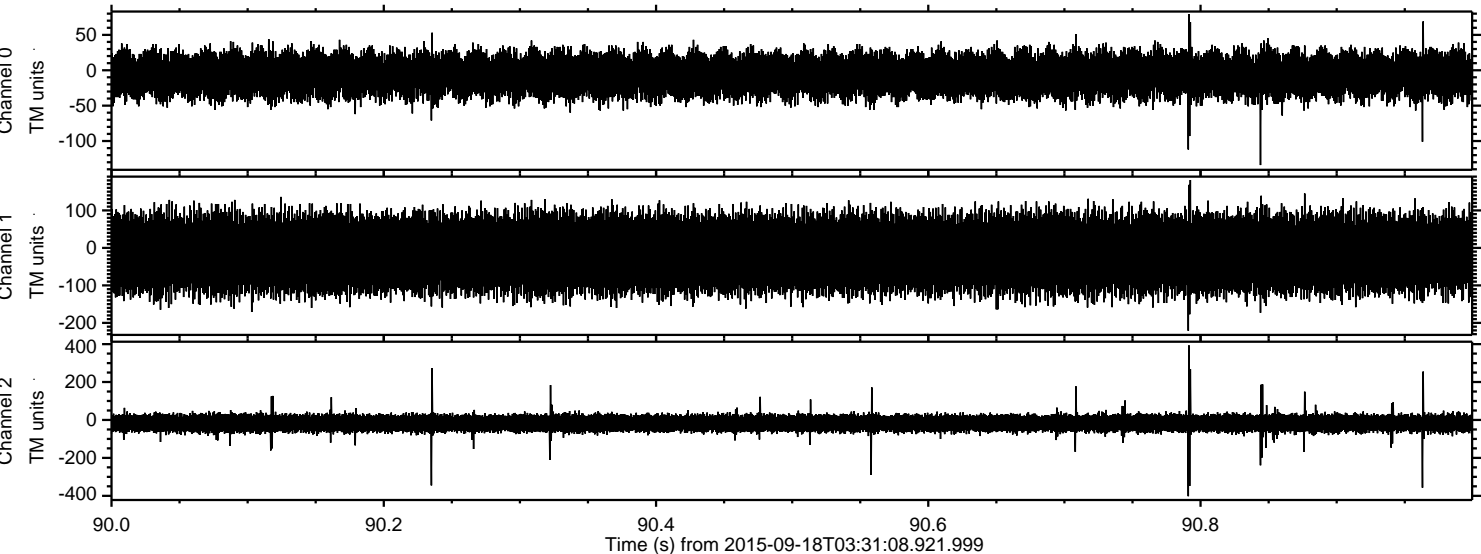
ELMAVAN 3D WAVEFORMS (Measured data sampled at 50 kHz) 51000 packets of 144 samples from 2015-09-18T03:31:08.921.999. Part 27/147

Processed Tue Oct 13 19:39:05 2015 by ELM ver.2012-10-06 from 001__elm20150918_033107__dat00.bin



ELMAVAN 3D WAVEFORMS (Measured data sampled at 50 kHz) 51000 packets of 144 samples from 2015-09-18T03:31:08.921.999. Part 91/147

Processed Tue Oct 13 19:39:06 2015 by ELM ver.2012-10-06 from 001__elm20150918_033107__dat00.bin



Channel 0
mn: -134
mx: 79
 μ : -7.1
 σ : 16.4

Channel 1
mn: -221
mx: 181
 μ : -15.3
 σ : 50.9

Channel 2
mn: -402
mx: 393
 μ : -17.3
 σ : 23.6