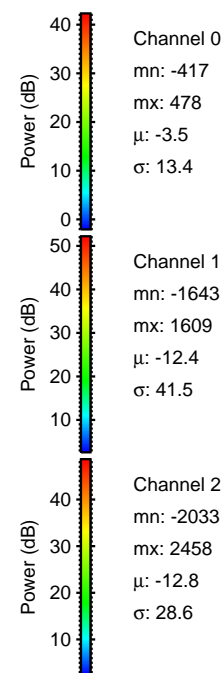
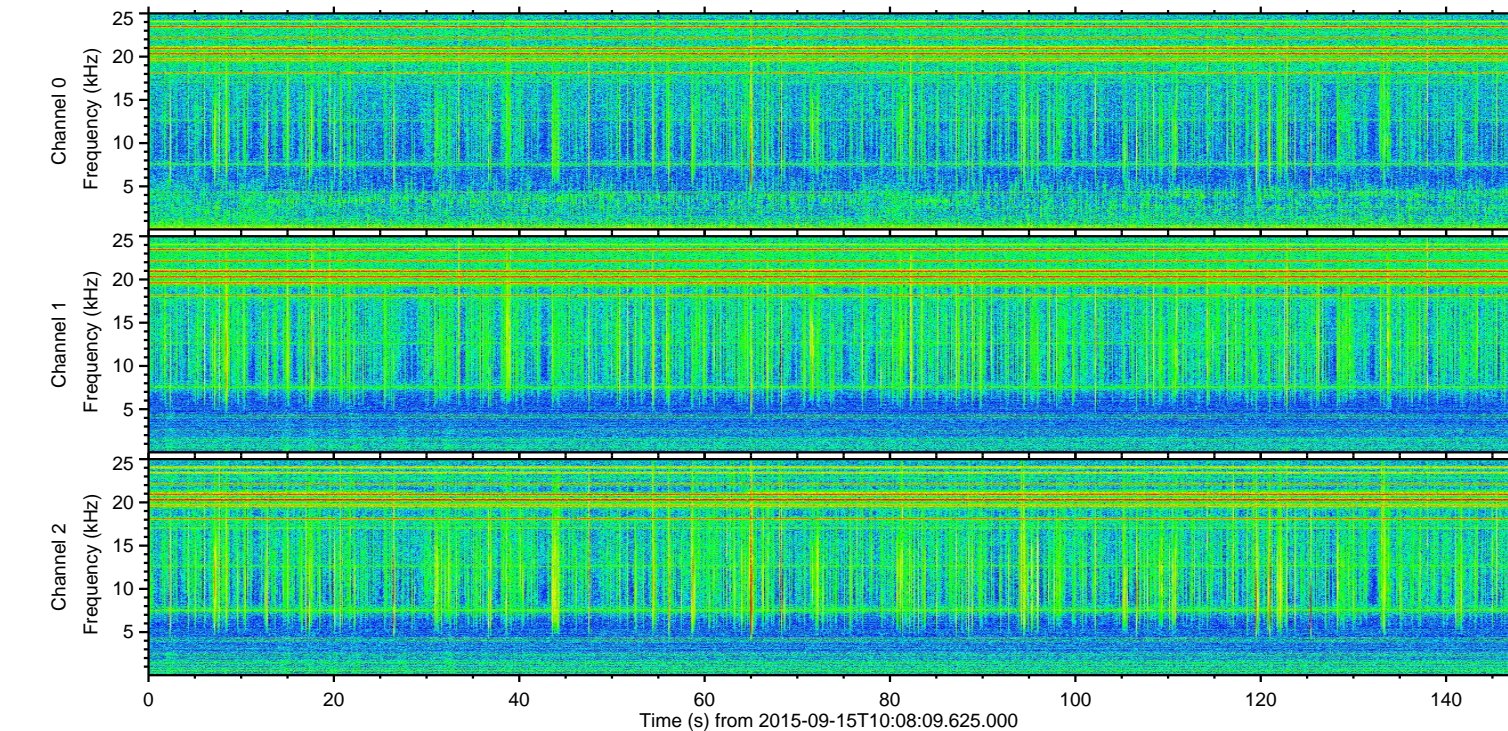
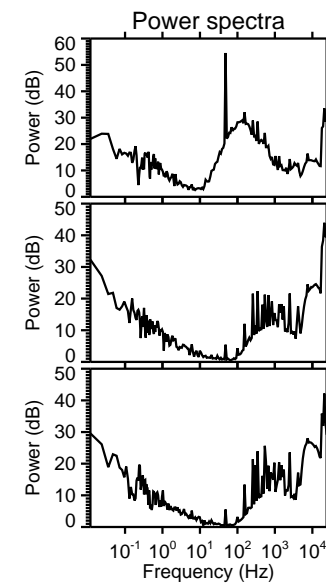
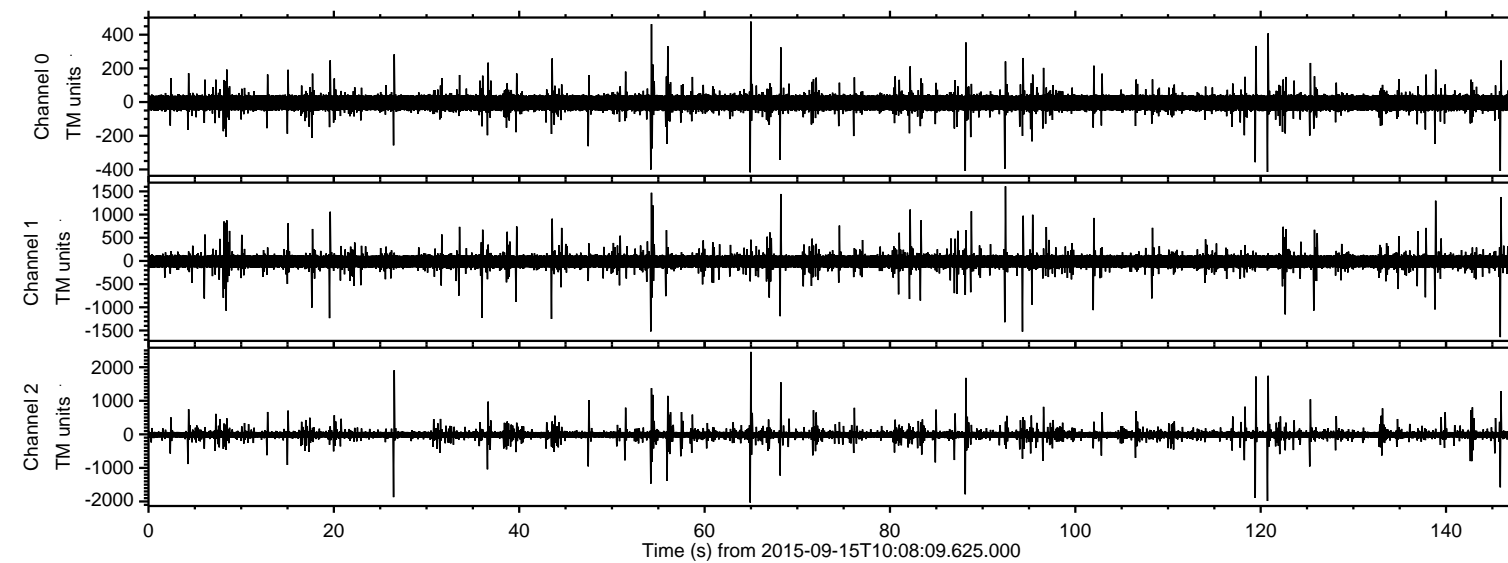
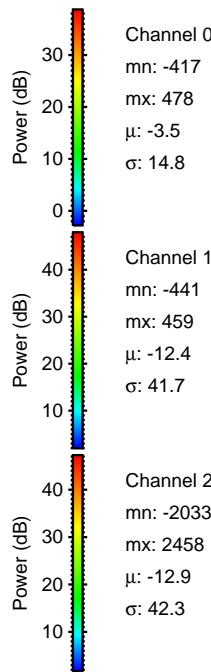
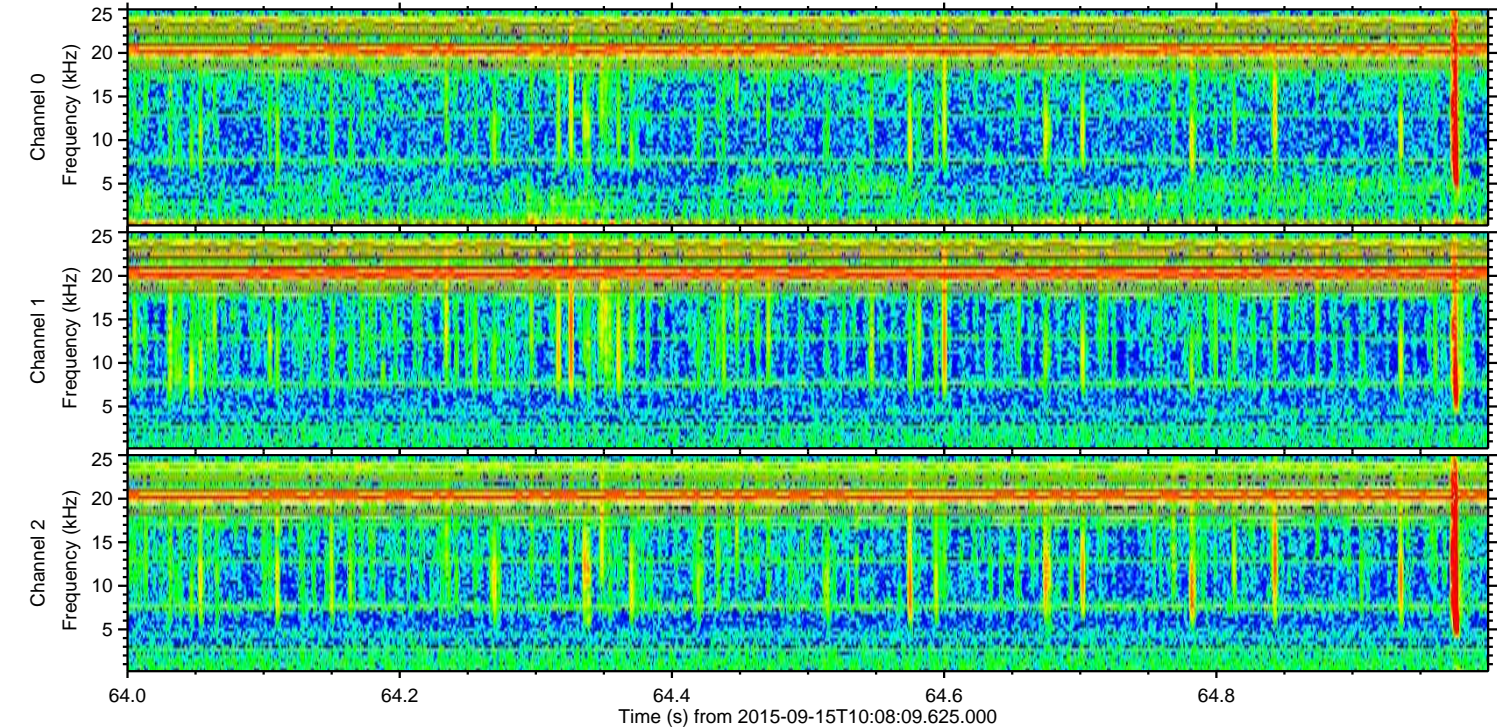
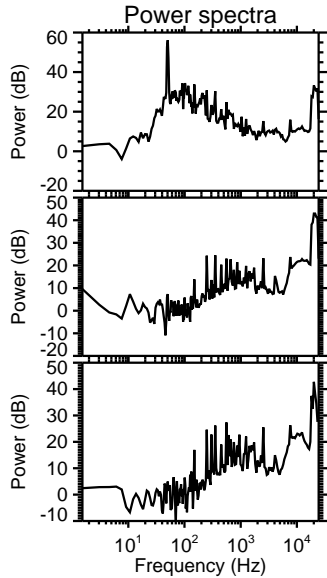
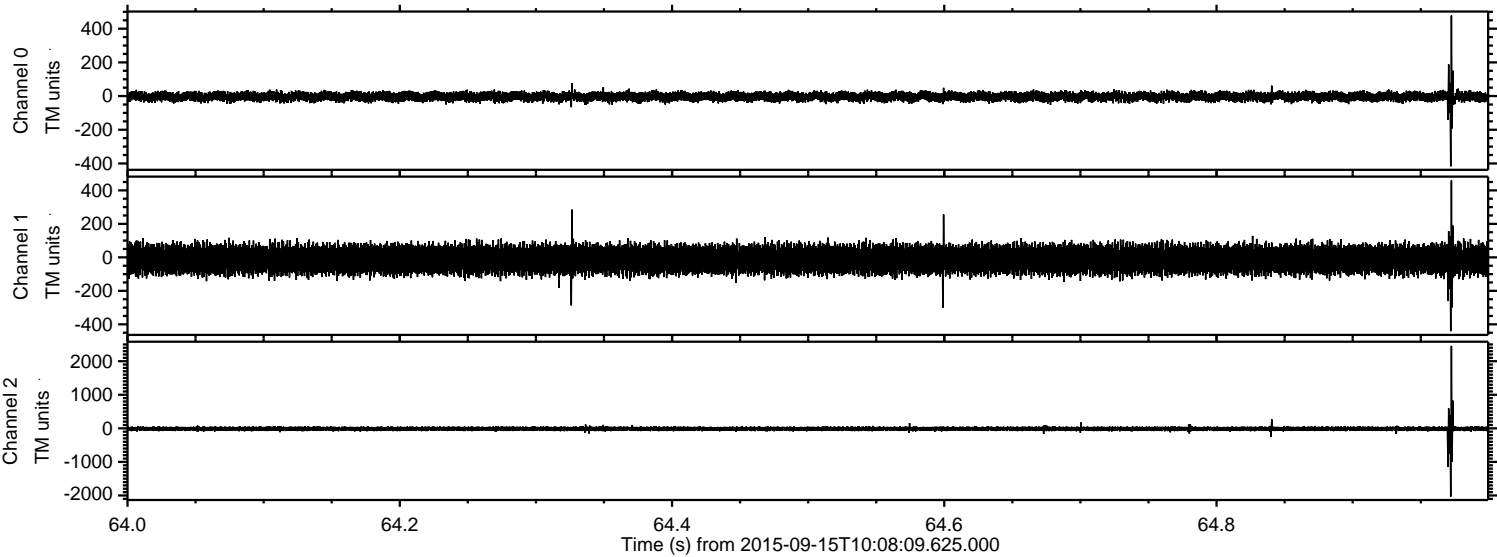


ELMAVAN 3D WAVEFORMS (Measured data sampled at 50 kHz) 51000 packets of 144 samples from 2015-09-15T10:08:09.625.000.

Processed Mon Oct 12 16:39:58 2015 by ELM ver.2012-10-06 from 001__elm20150915_100808__dat00.bin

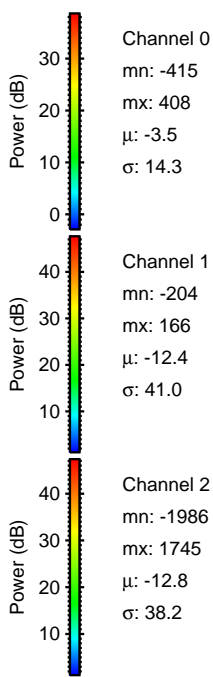
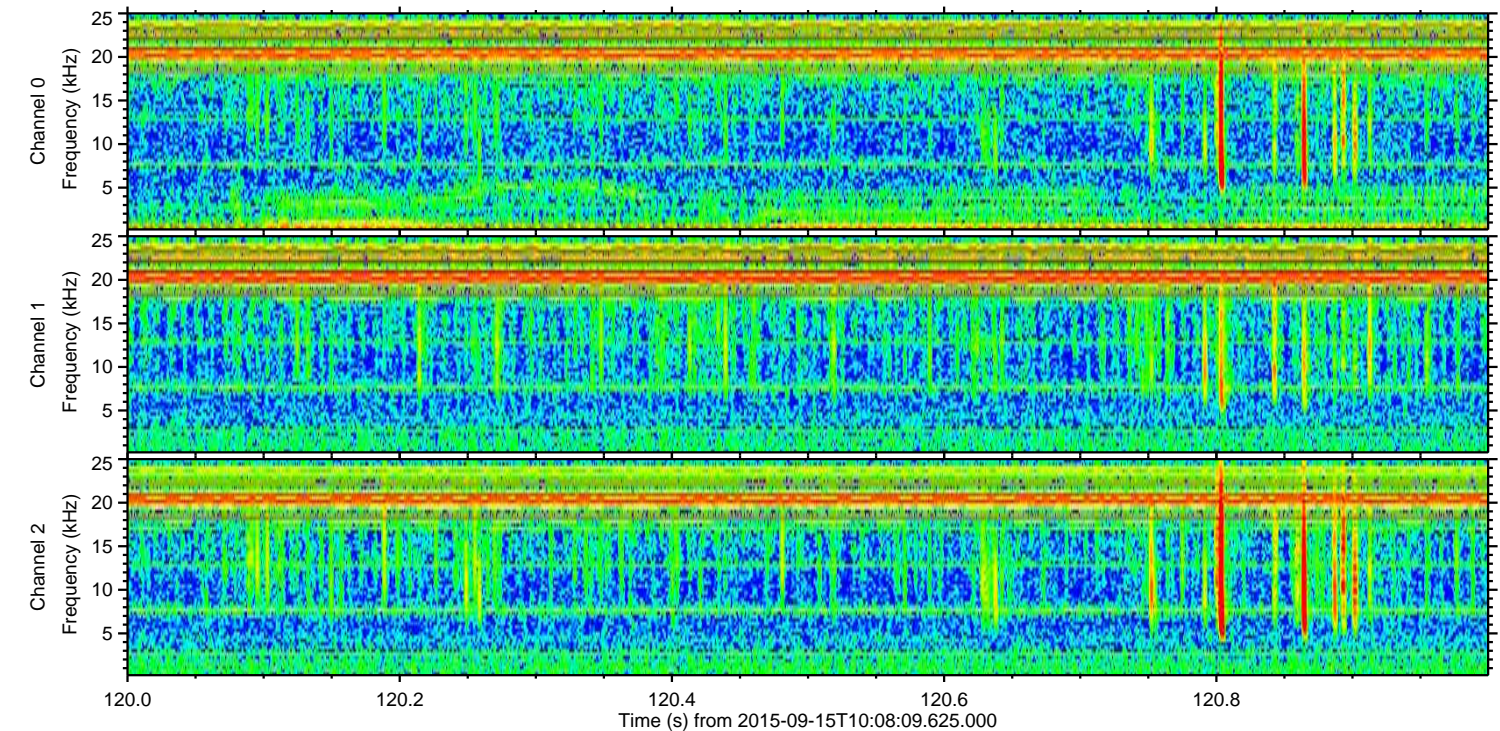
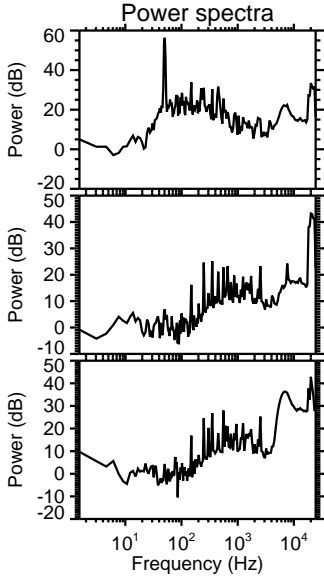
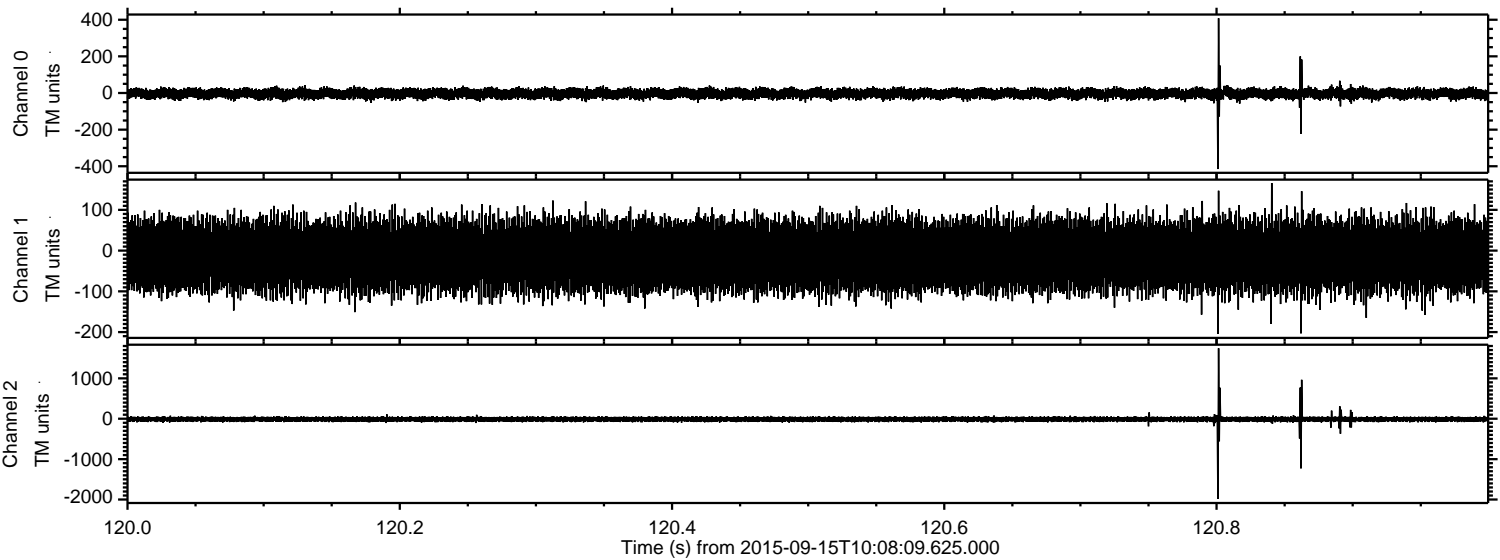


Processed Mon Oct 12 16:40:20 2015 by ELM ver.2012-10-06 from 001__elm20150915_100808__dat00.bin

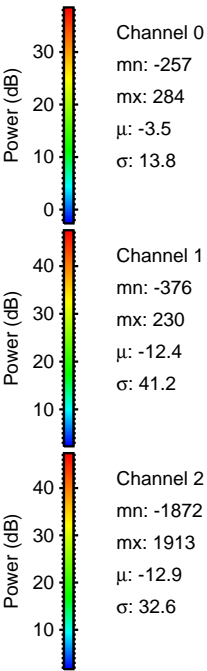
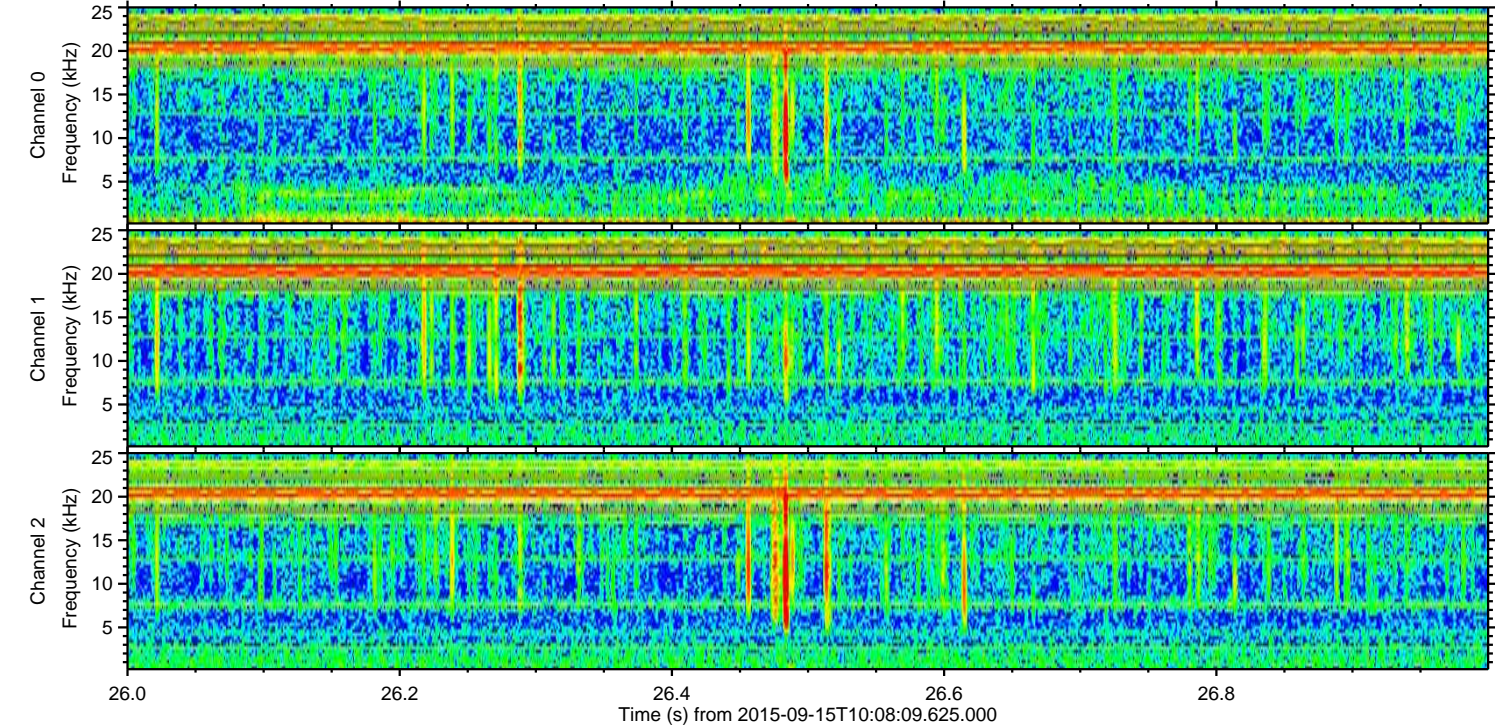
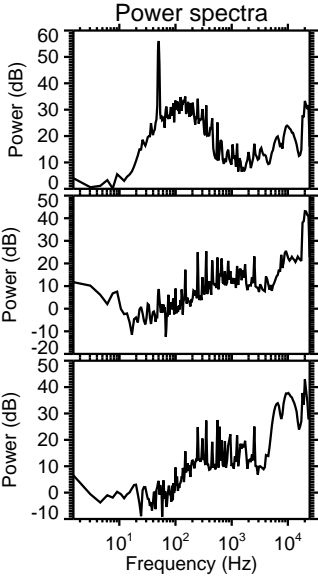
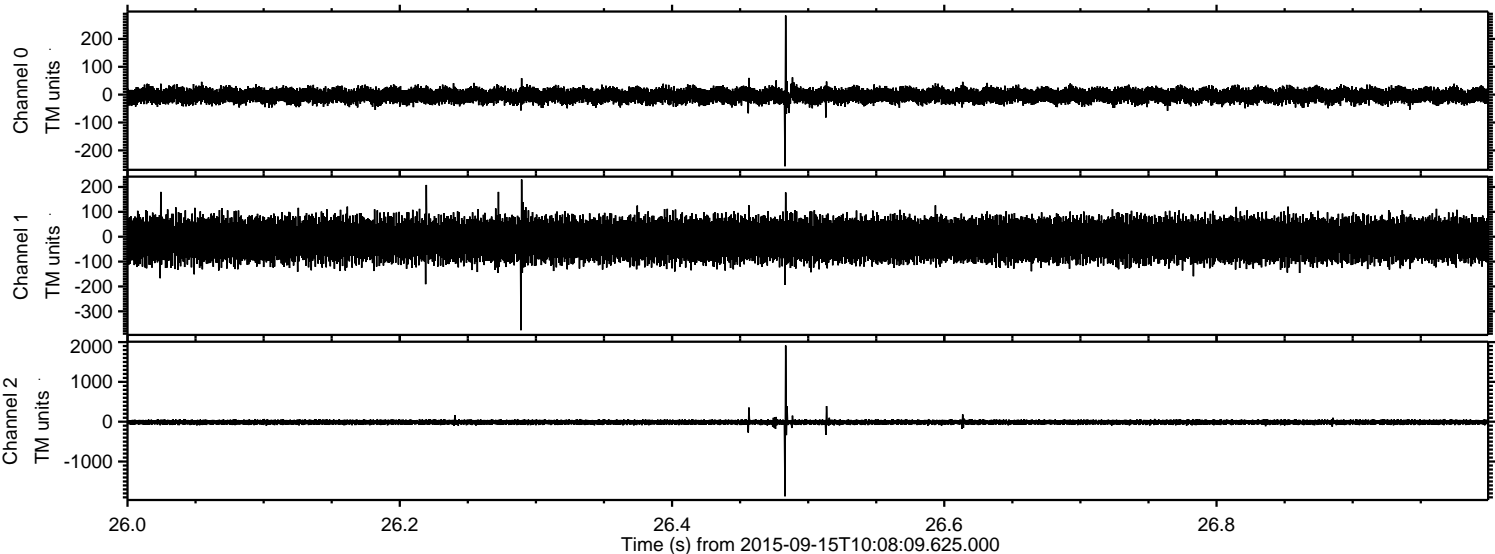


ELMAVAN 3D WAVEFORMS (Measured data sampled at 50 kHz) 51000 packets of 144 samples from 2015-09-15T10:08:09.625.000. Part 121/147

Processed Mon Oct 12 16:40:22 2015 by ELM ver.2012-10-06 from 001__elm20150915_100808__dat00.bin

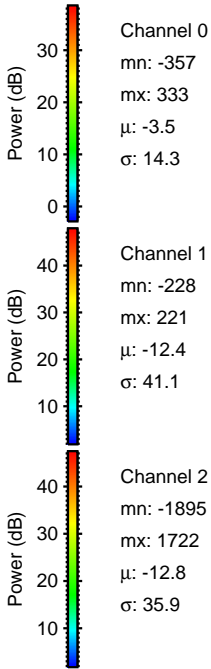
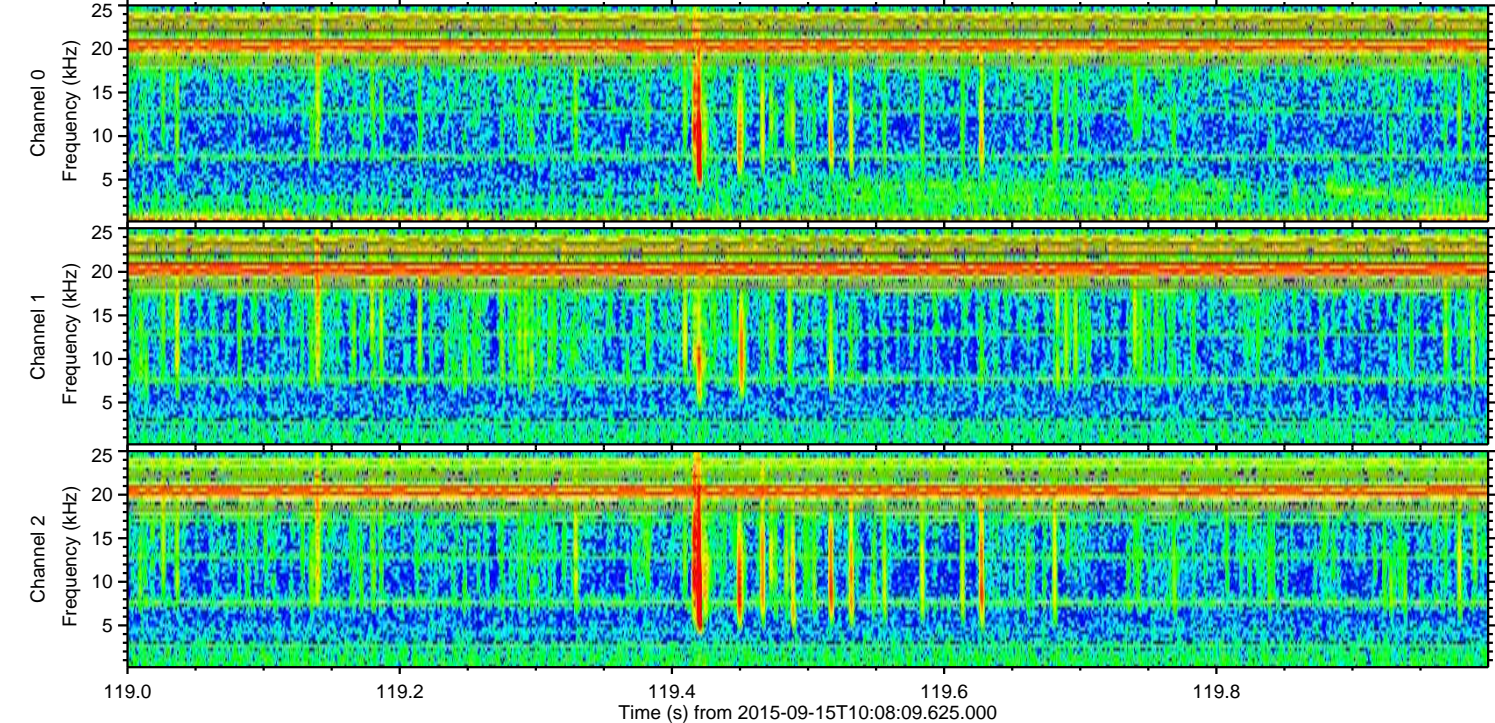
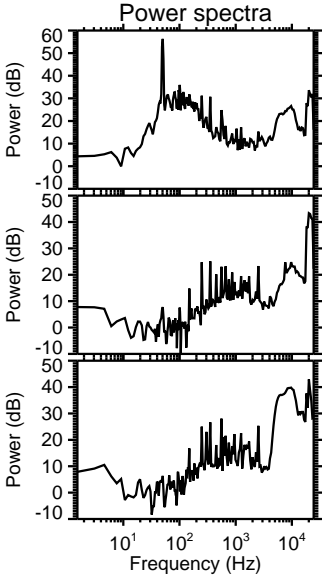
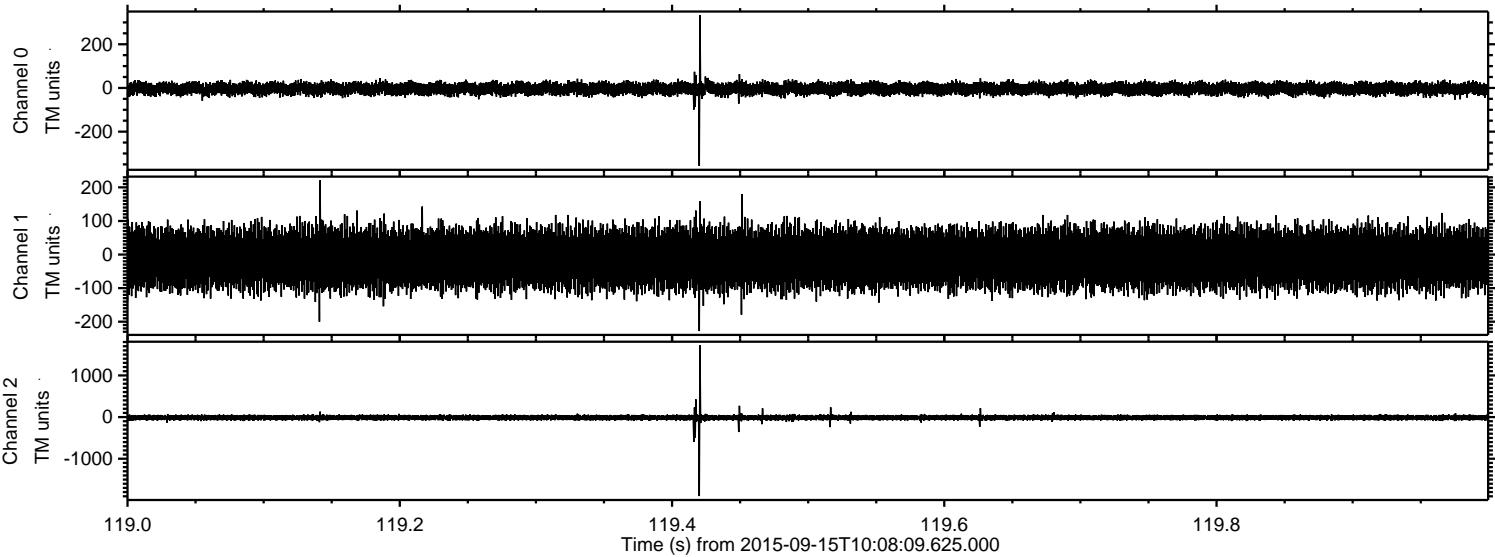


Processed Mon Oct 12 16:40:24 2015 by ELM ver.2012-10-06 from 001__elm20150915_100808__dat00.bin

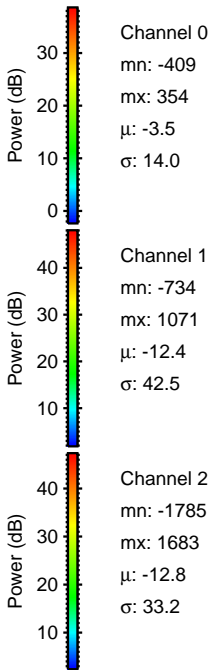
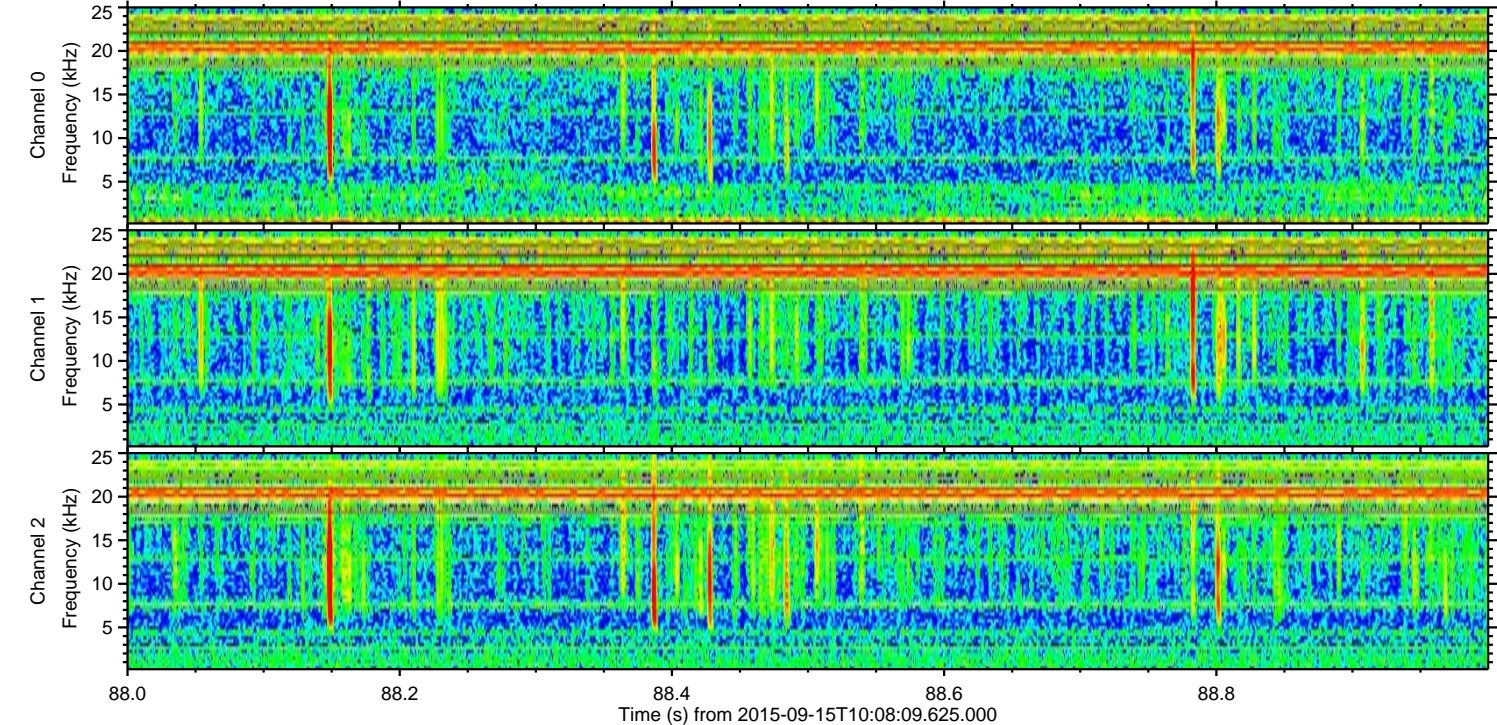
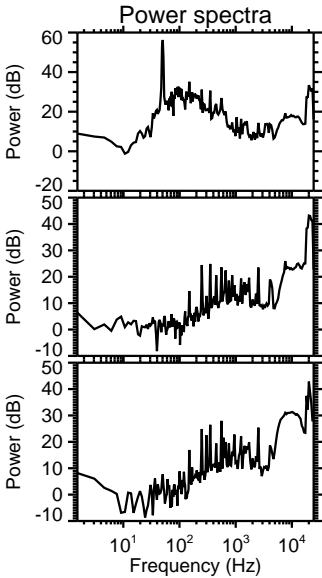
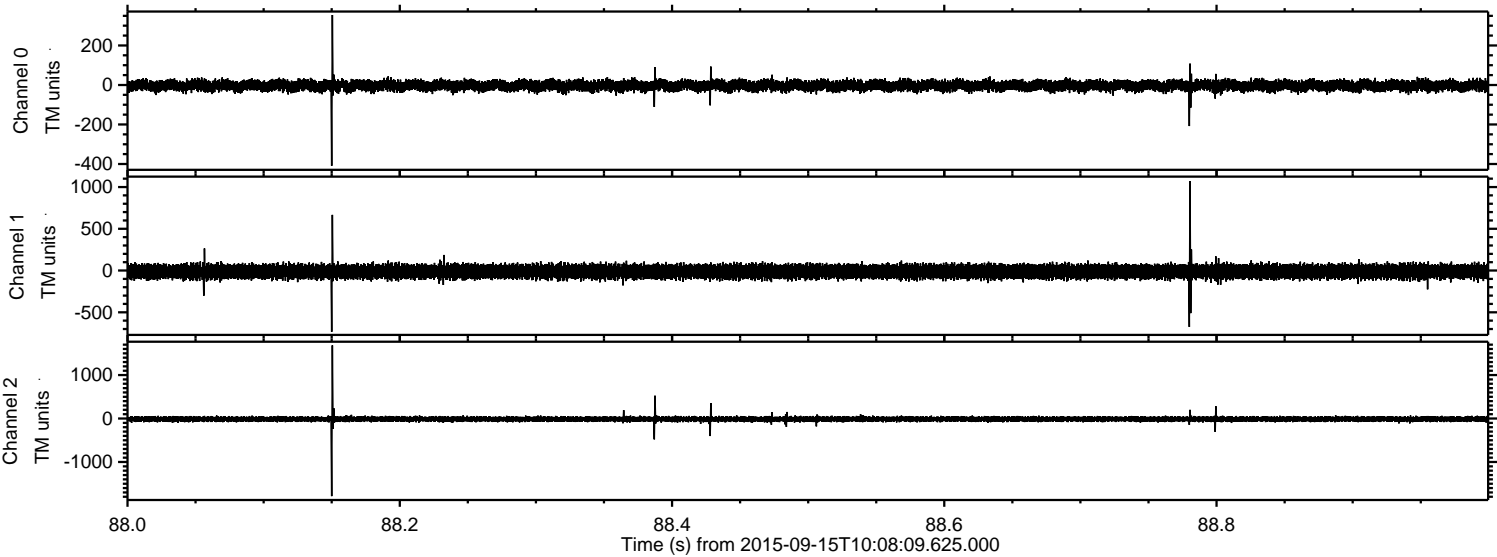


ELMAVAN 3D WAVEFORMS (Measured data sampled at 50 kHz) 51000 packets of 144 samples from 2015-09-15T10:08:09.625.000. Part 120/147

Processed Mon Oct 12 16:40:25 2015 by ELM ver.2012-10-06 from 001__elm20150915_100808__dat00.bin

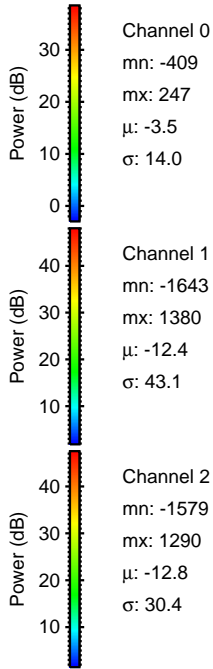
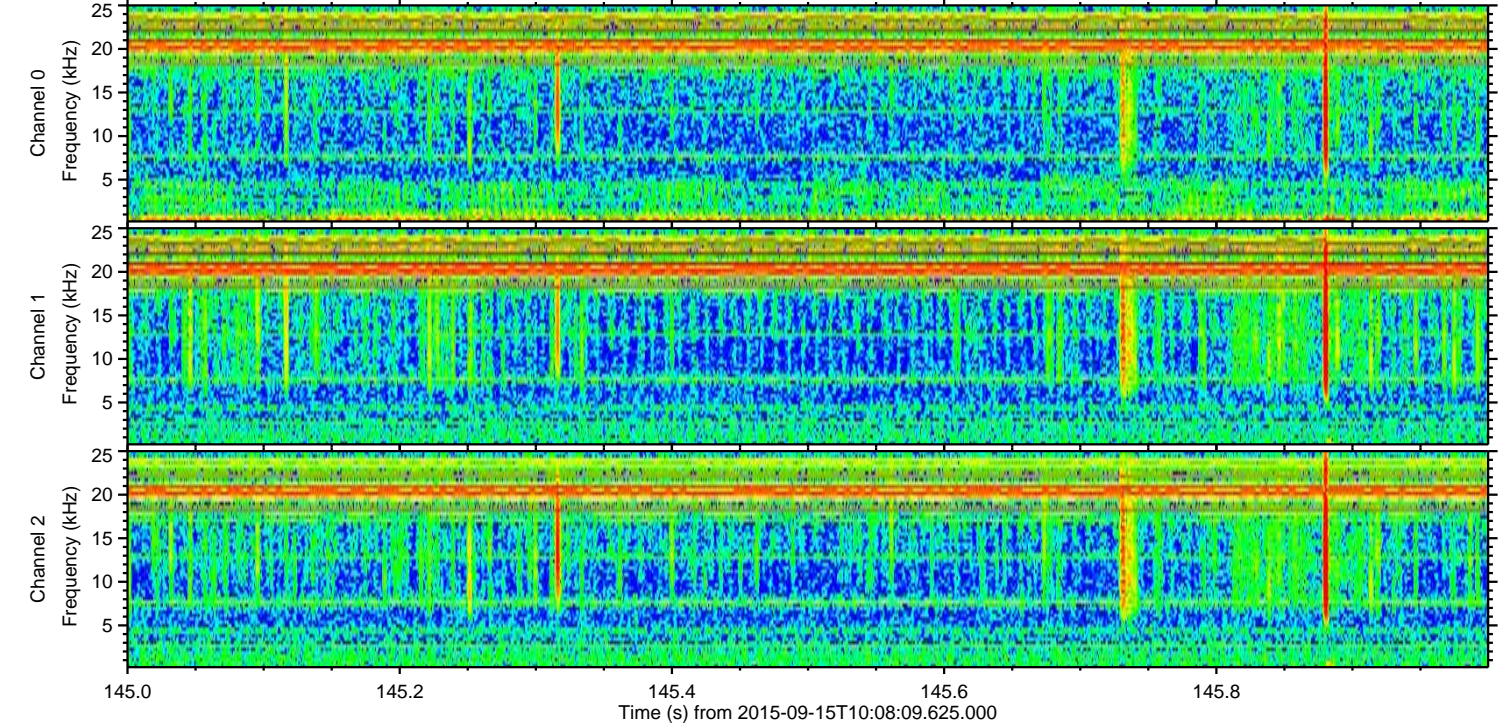
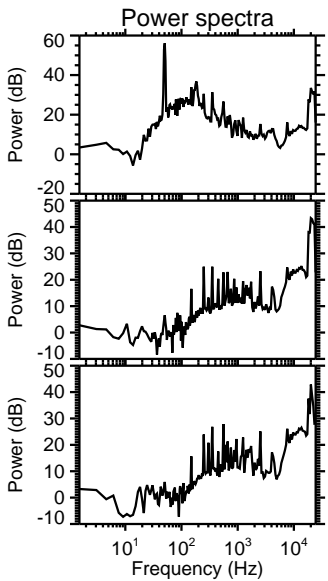
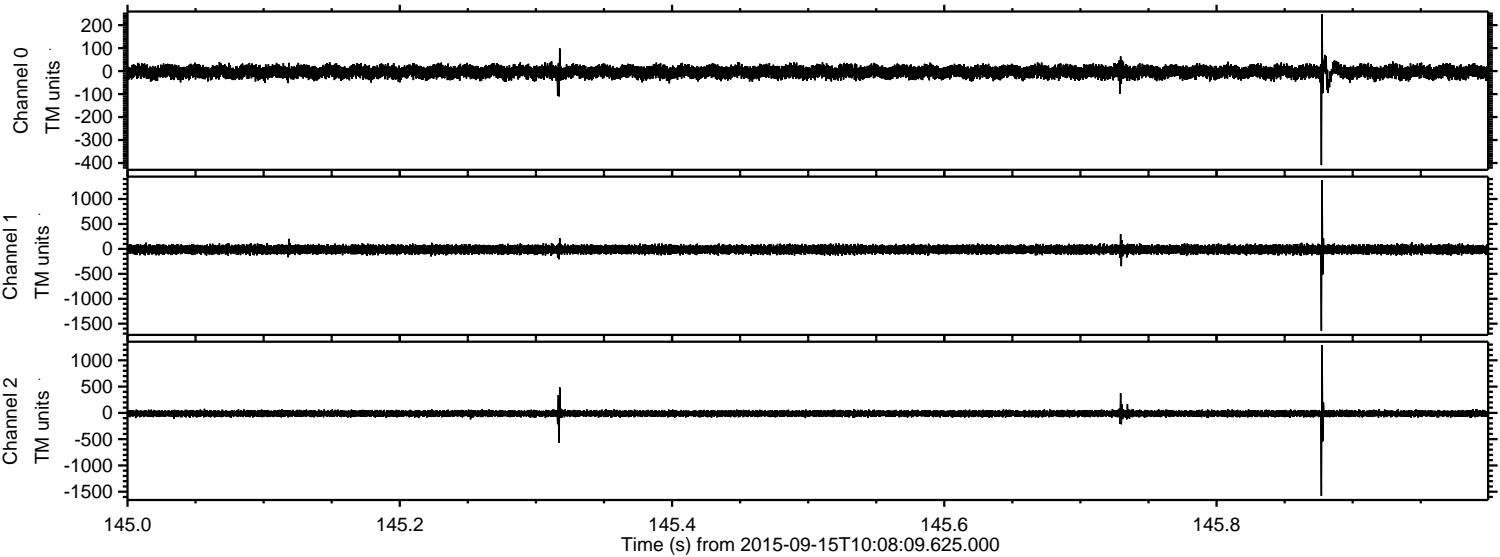


Processed Mon Oct 12 16:40:26 2015 by ELM ver.2012-10-06 from 001__elm20150915_100808__dat00.bin

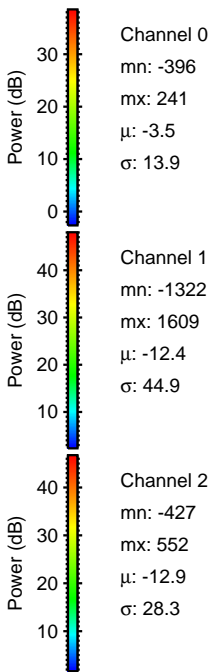
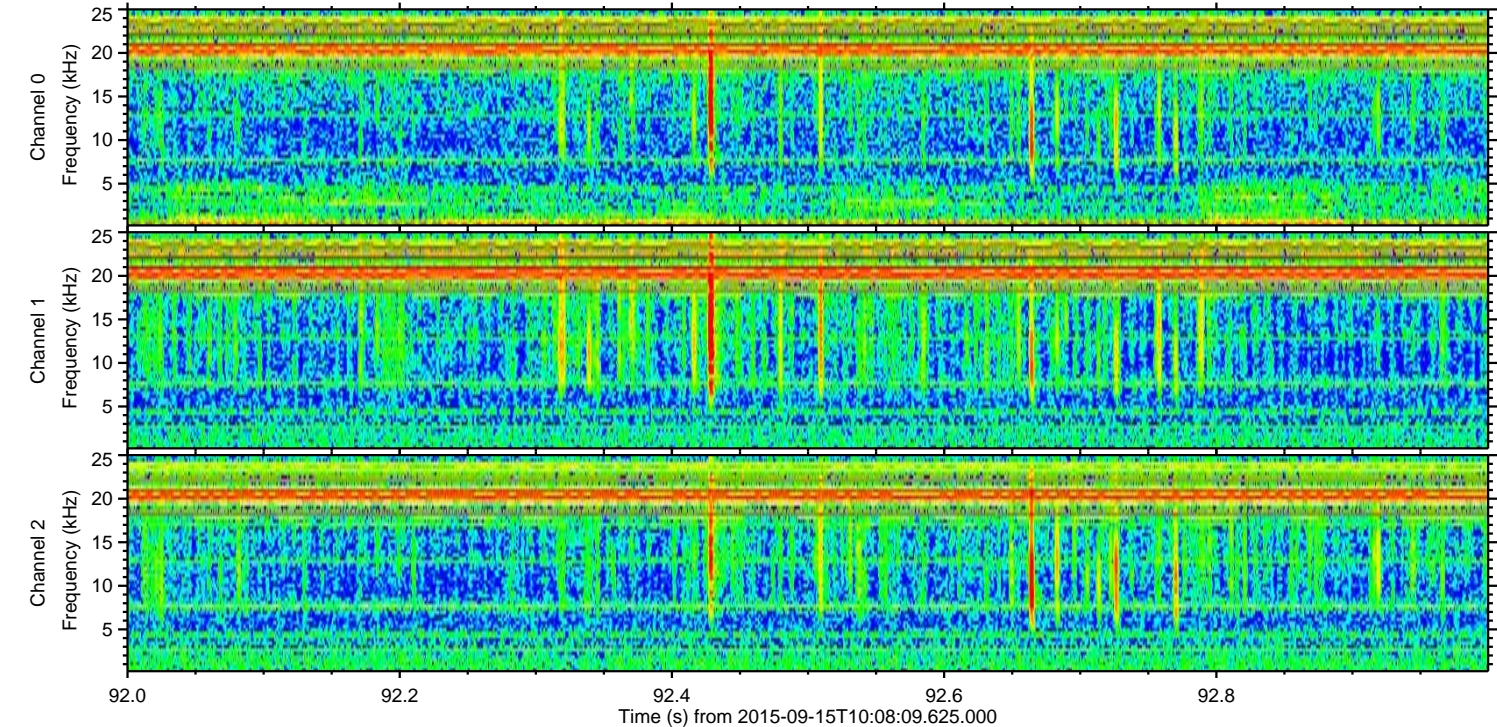
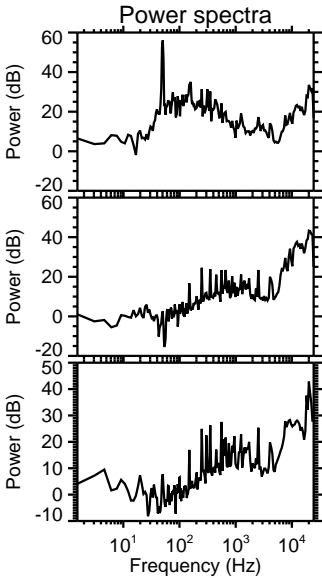
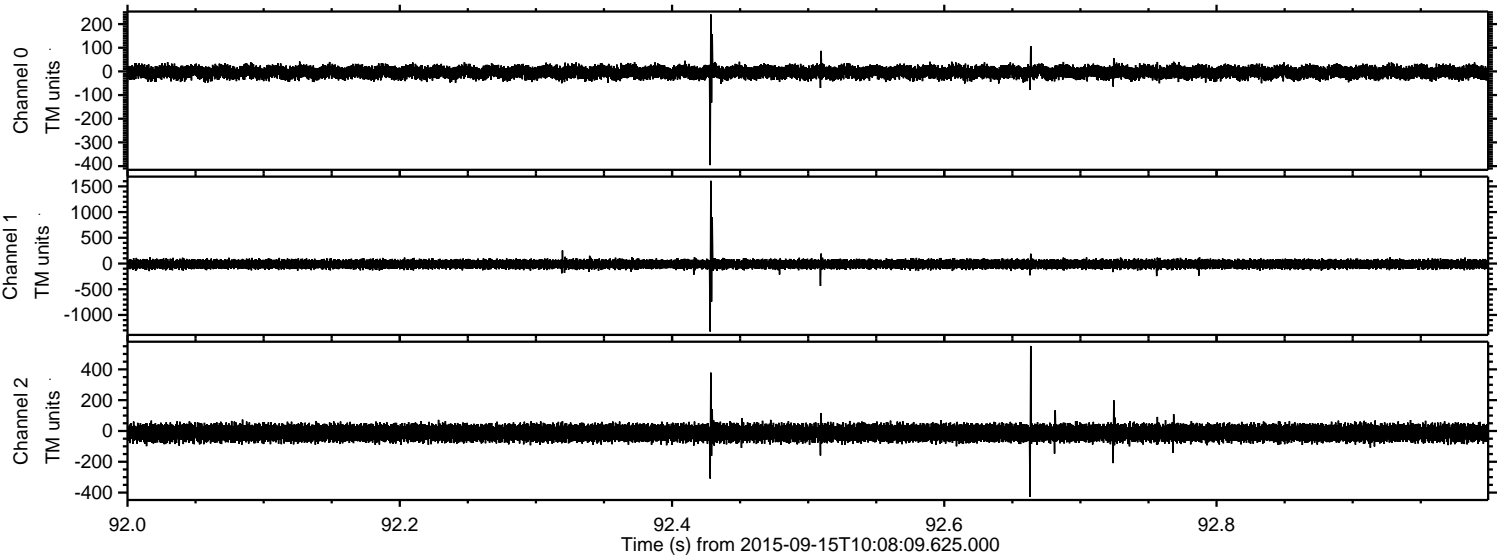


ELMAVAN 3D WAVEFORMS (Measured data sampled at 50 kHz) 51000 packets of 144 samples from 2015-09-15T10:08:09.625.000. Part 146/147

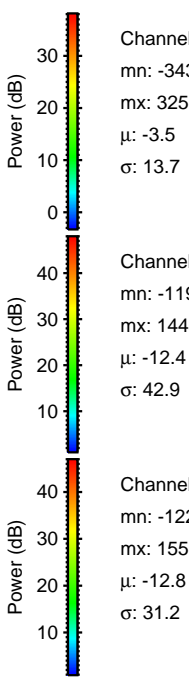
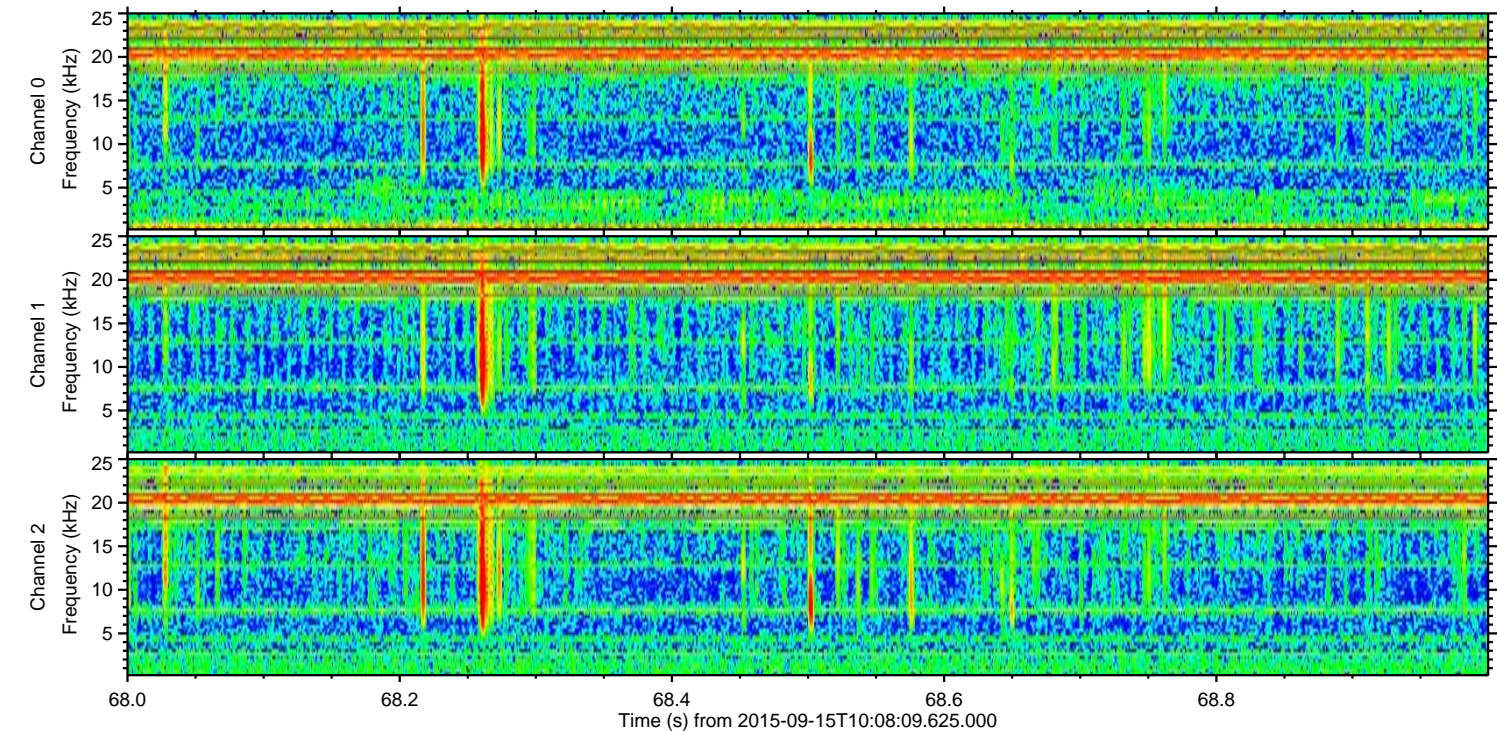
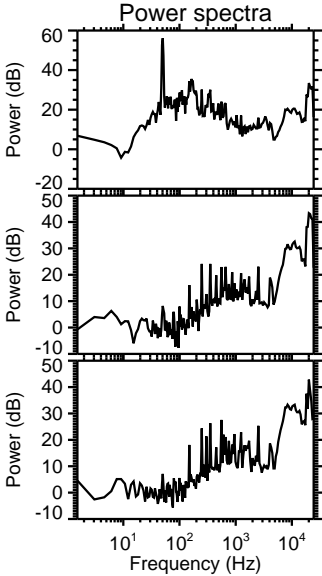
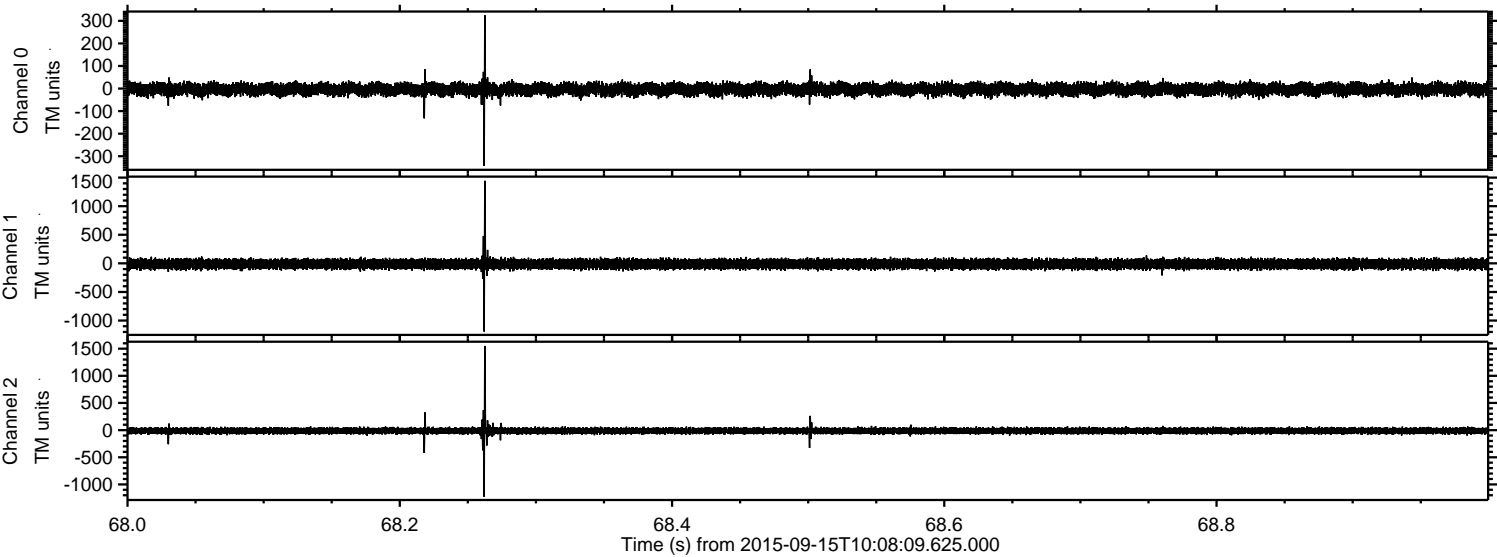
Processed Mon Oct 12 16:40:27 2015 by ELM ver.2012-10-06 from 001__elm20150915_100808__dat00.bin



Processed Mon Oct 12 16:40:28 2015 by ELM ver.2012-10-06 from 001__elm20150915_100808__dat00.bin



Processed Mon Oct 12 16:40:29 2015 by ELM ver.2012-10-06 from 001__elm20150915_100808__dat00.bin

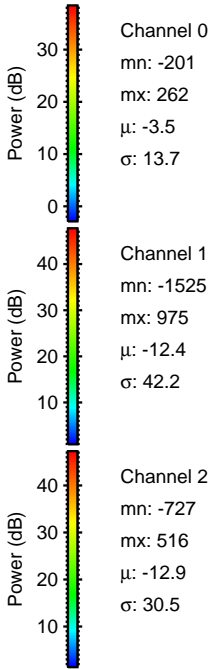
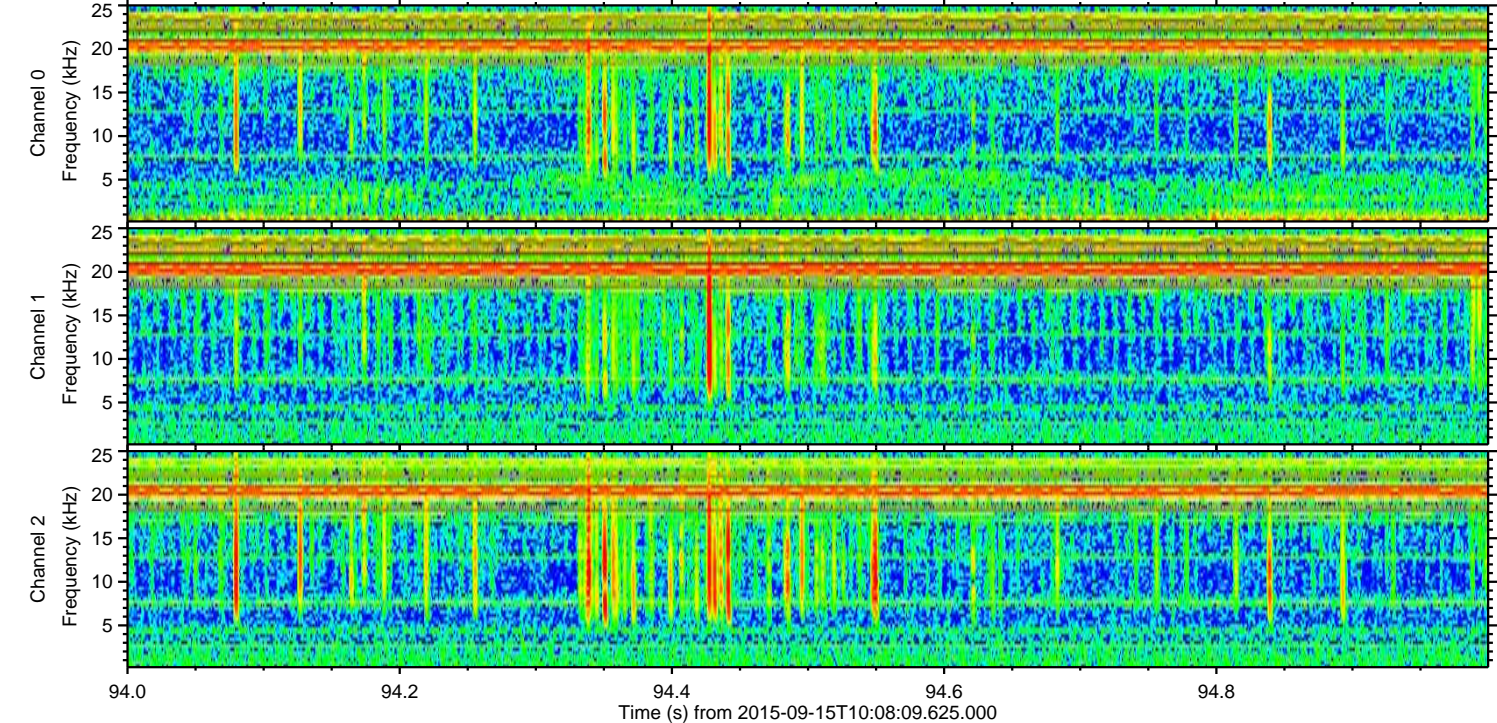
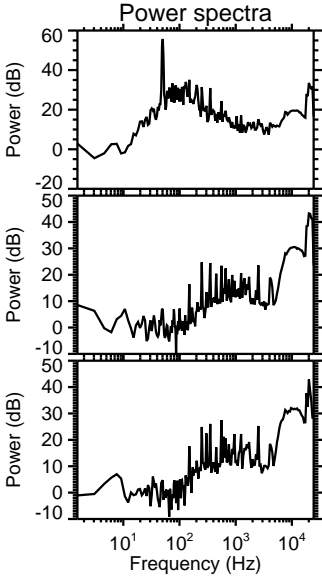
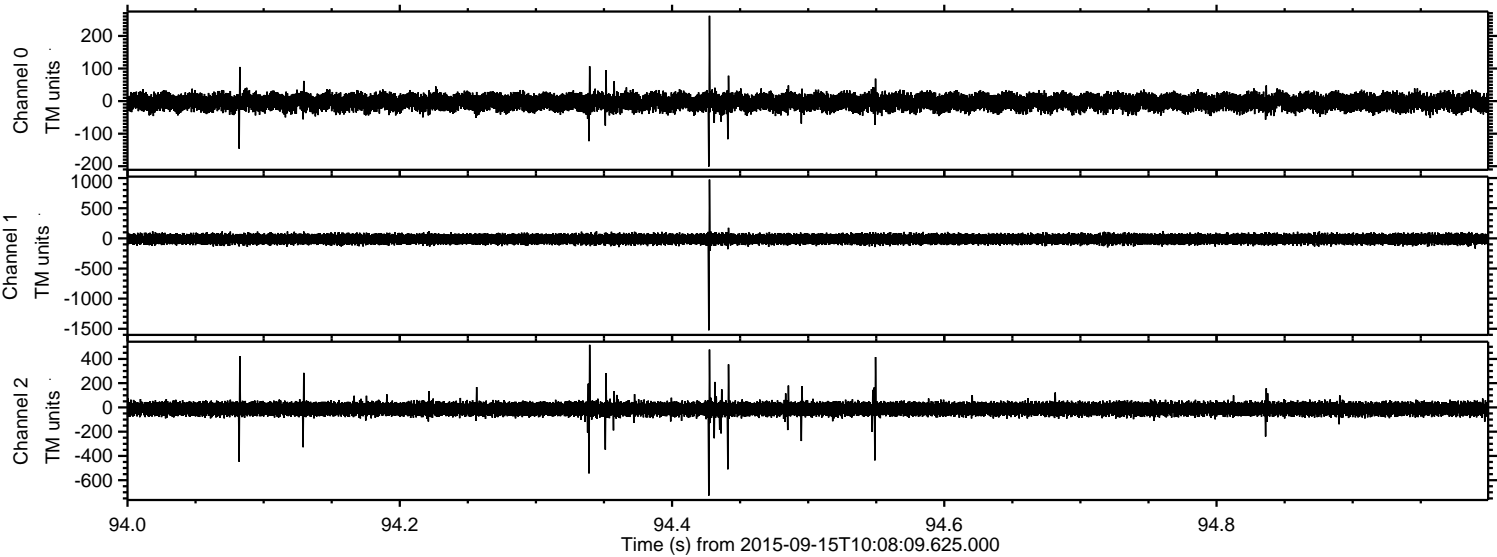


Channel 0
mn: -343
mx: 325
 μ : -3.5
 σ : 13.7

Channel 1
mn: -1192
mx: 1445
 μ : -12.4
 σ : 42.9

Channel 2
mn: -1226
mx: 1551
 μ : -12.8
 σ : 31.2

Processed Mon Oct 12 16:40:30 2015 by ELM ver.2012-10-06 from 001__elm20150915_100808__dat00.bin



Processed Mon Oct 12 16:40:31 2015 by ELM ver.2012-10-06 from 001__elm20150915_100808__dat00.bin

