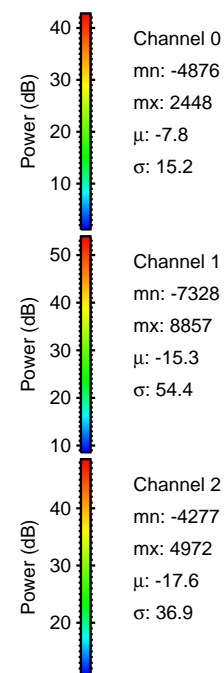
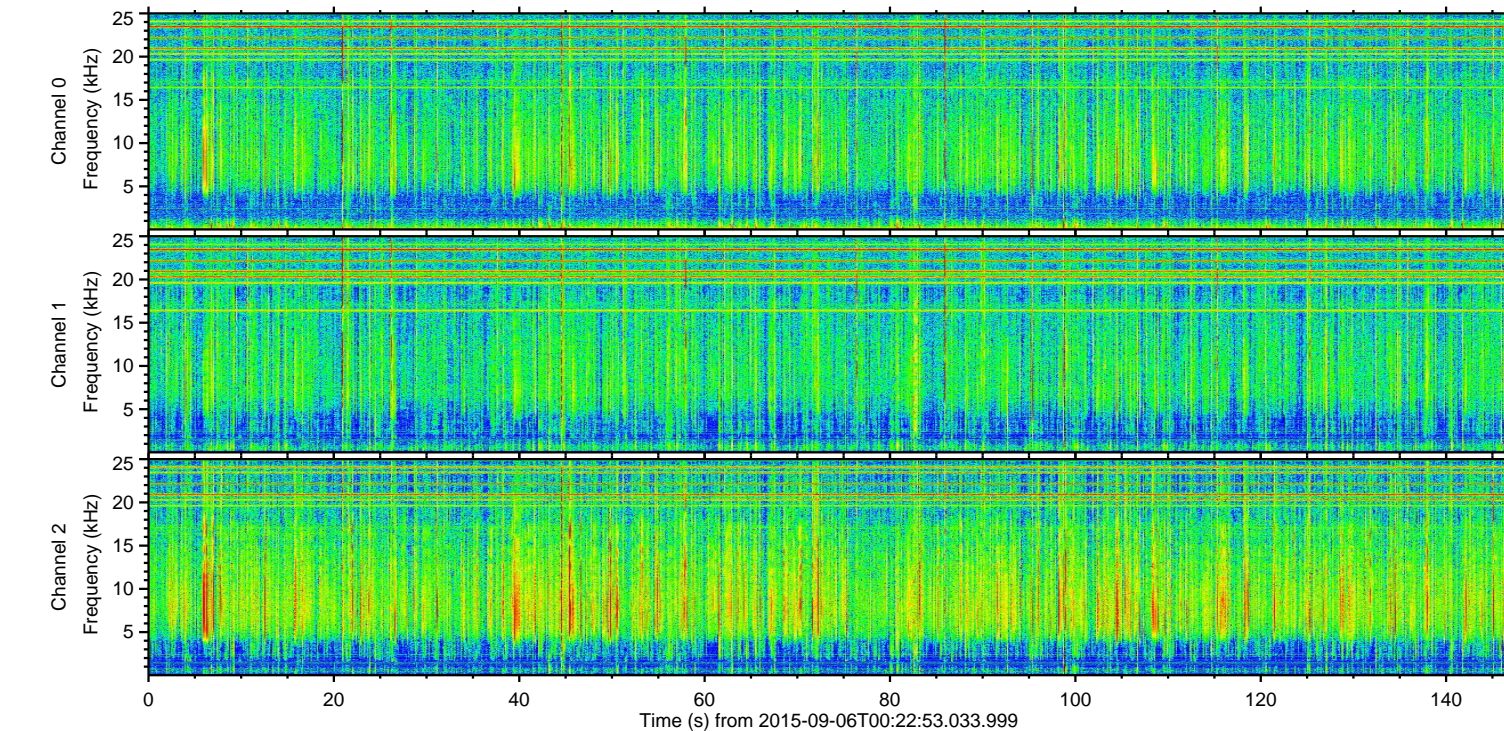
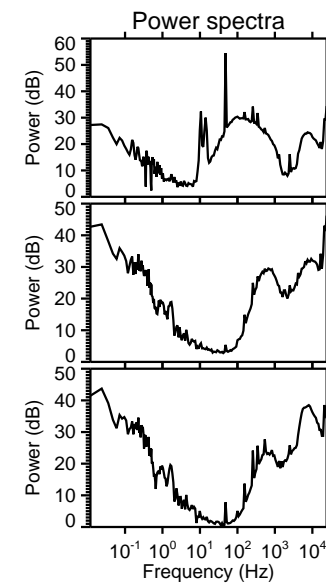
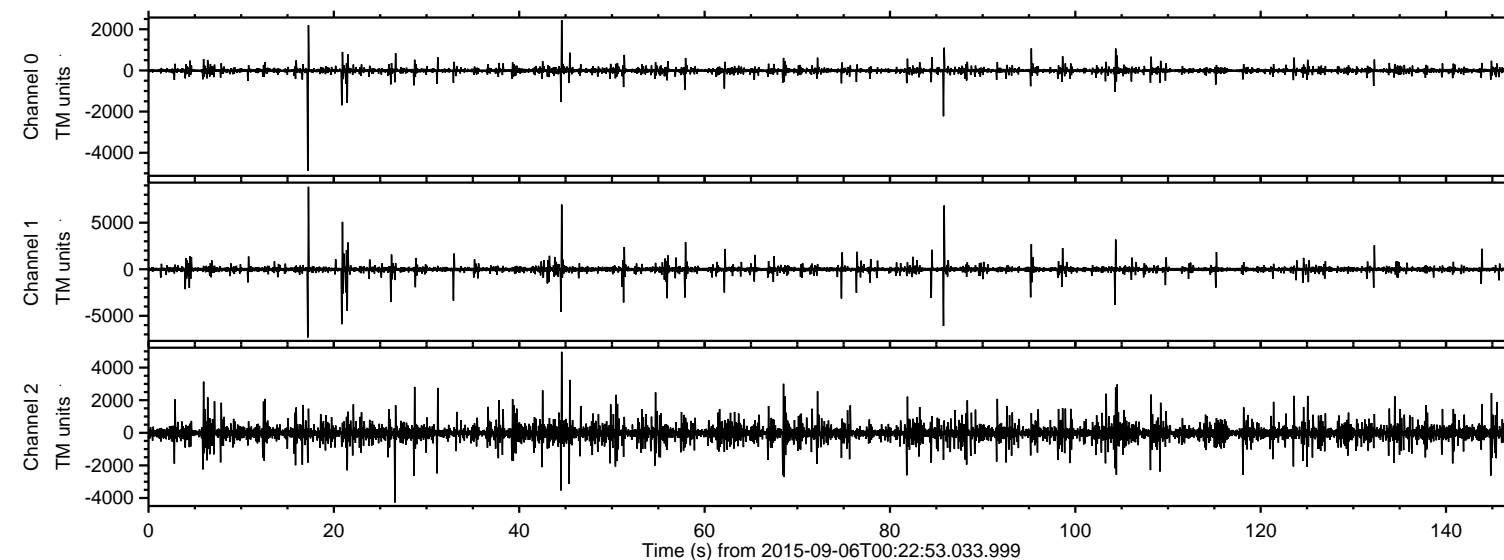
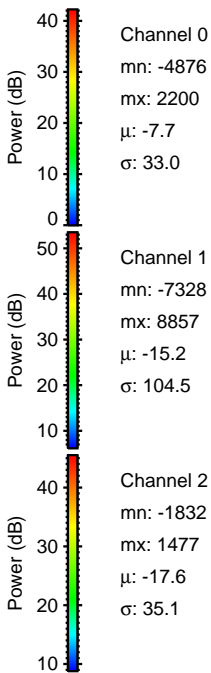
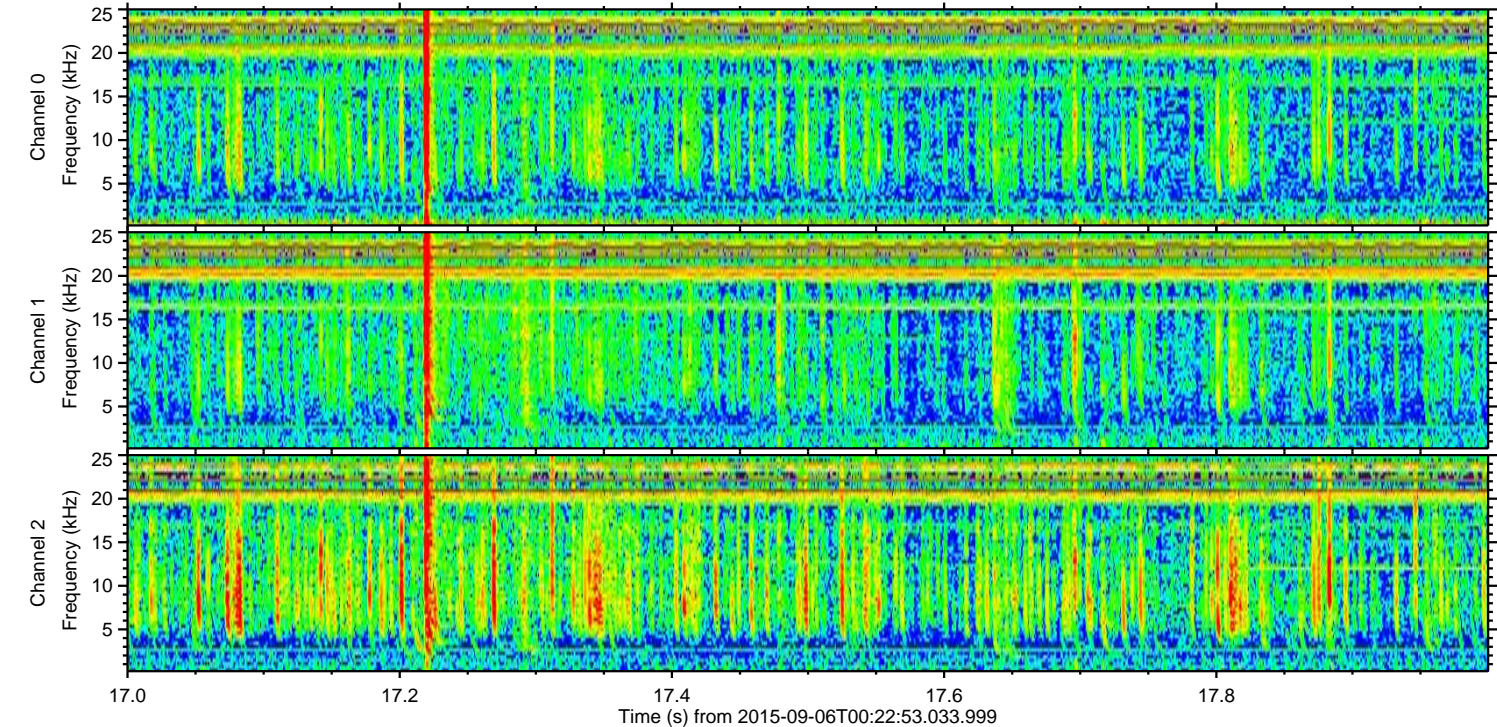
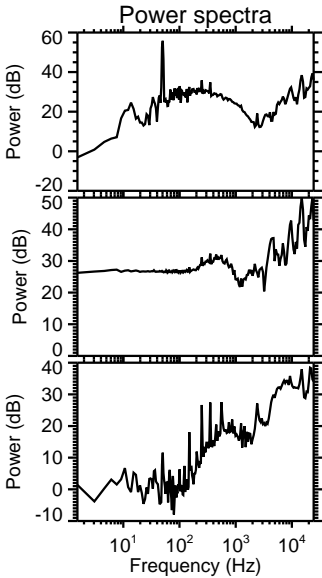
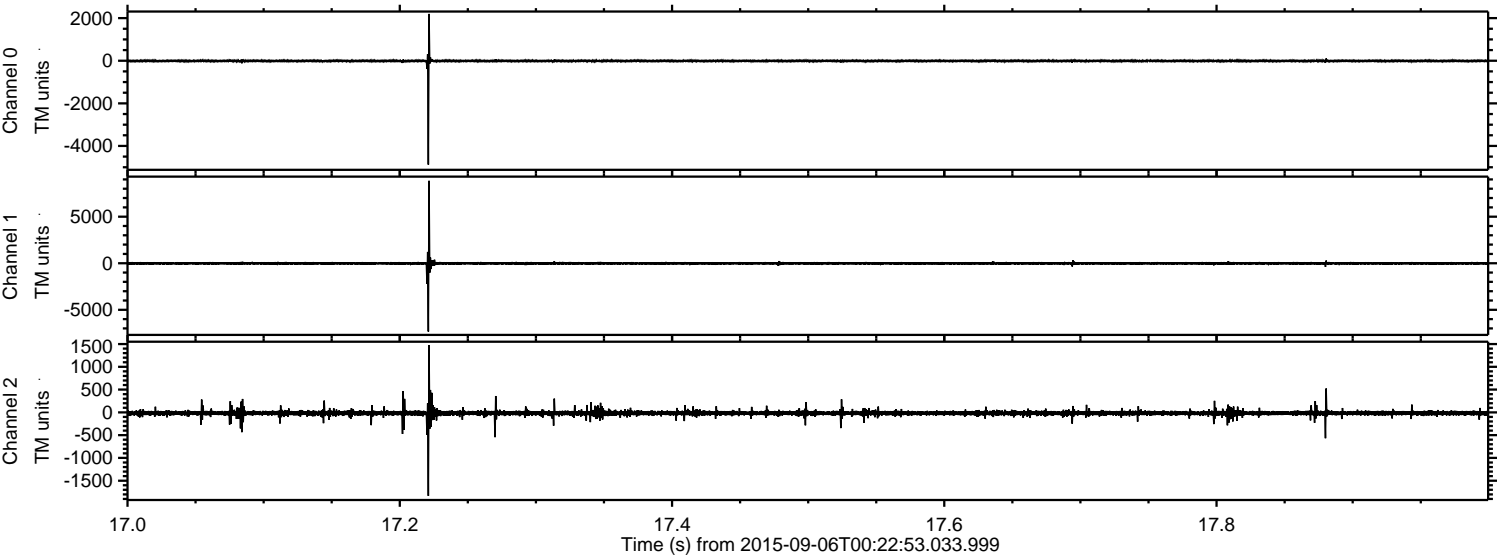


ELMAVAN 3D WAVEFORMS (Measured data sampled at 50 kHz) 51000 packets of 144 samples from 2015-09-06T00:22:53.033.999.

Processed Sat Oct 10 02:00:45 2015 by ELM ver.2012-10-06 from 001__elm20150906_002252__dat00.bin

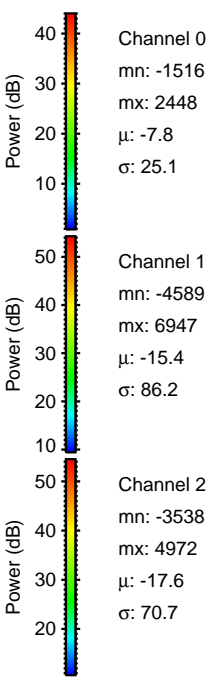
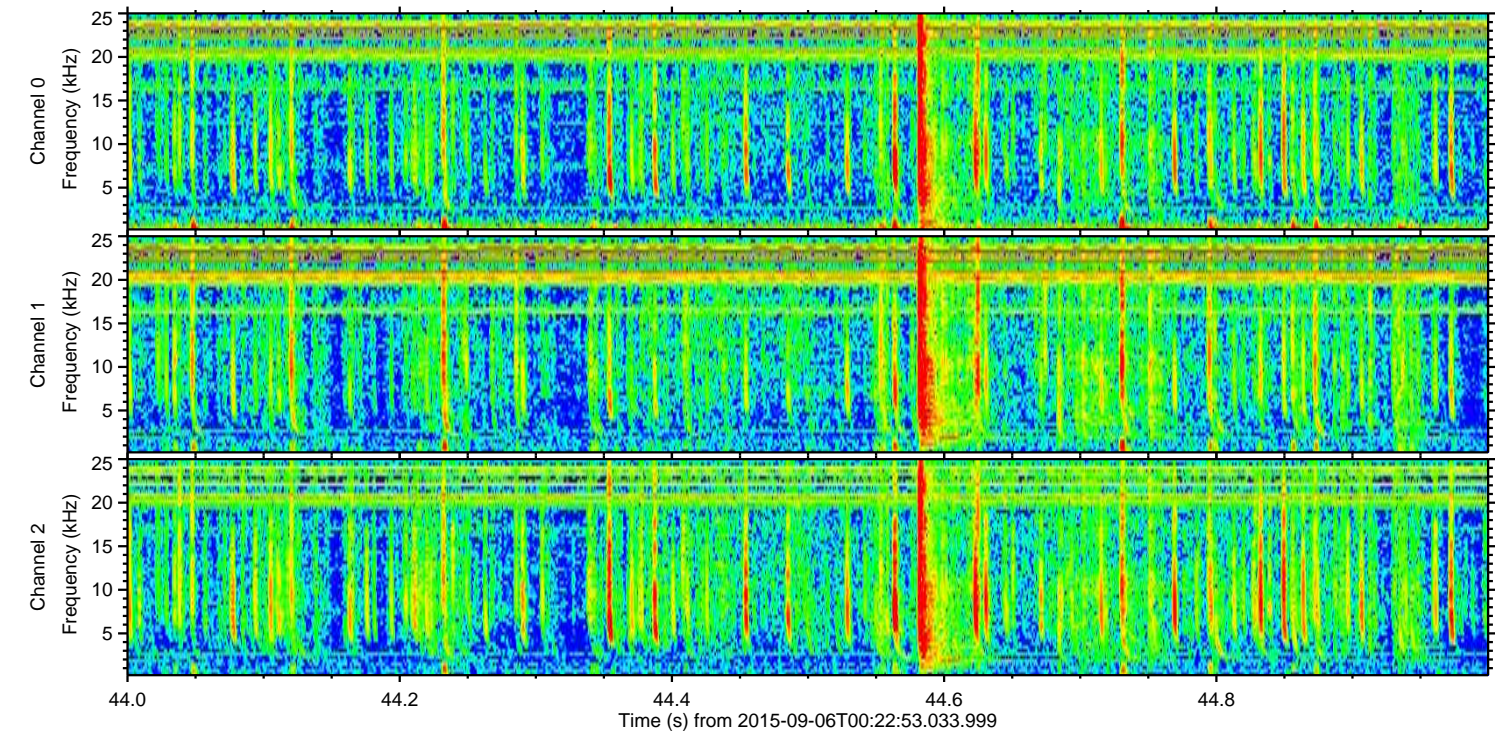
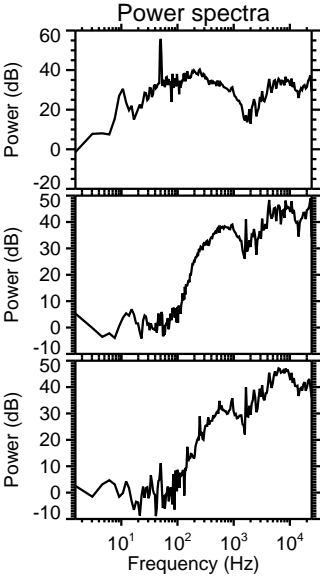
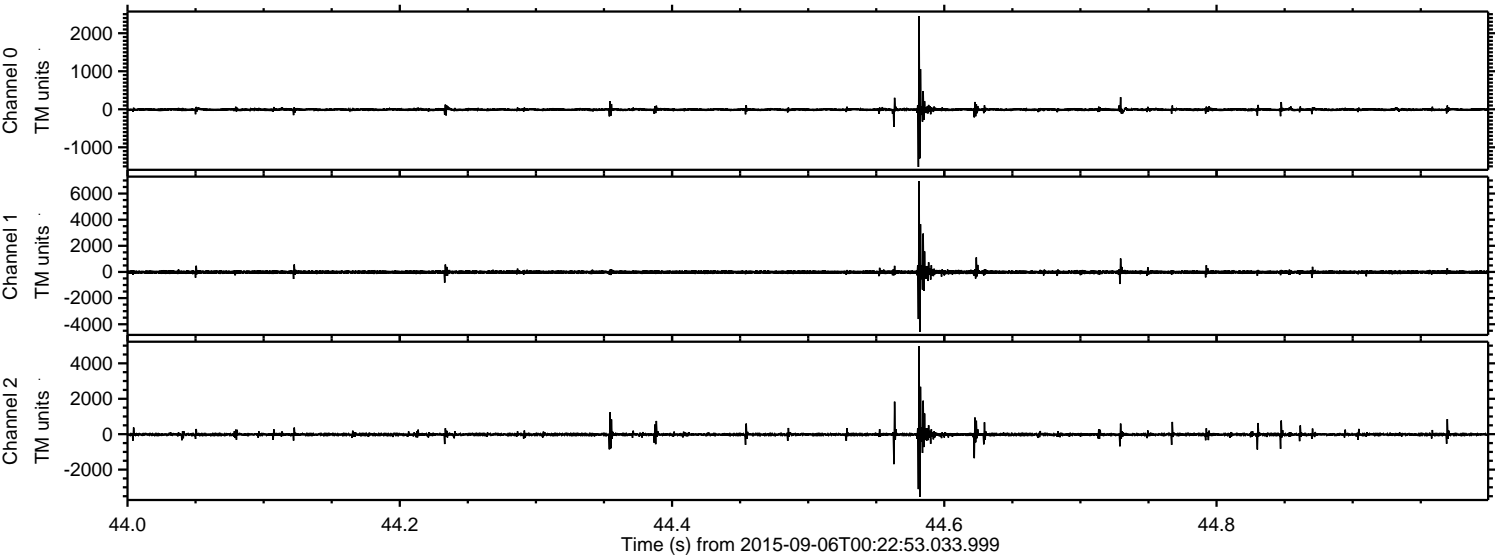


Processed Sat Oct 10 02:01:00 2015 by ELM ver.2012-10-06 from 001__elm20150906_002252__dat00.bin



ELMAVAN 3D WAVEFORMS (Measured data sampled at 50 kHz) 51000 packets of 144 samples from 2015-09-06T00:22:53.033.999. Part 45/147

Processed Sat Oct 10 02:01:01 2015 by ELM ver.2012-10-06 from 001__elm20150906_002252__dat00.bin

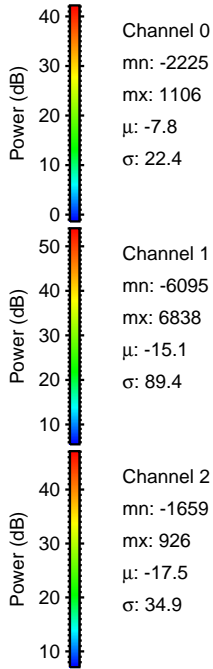
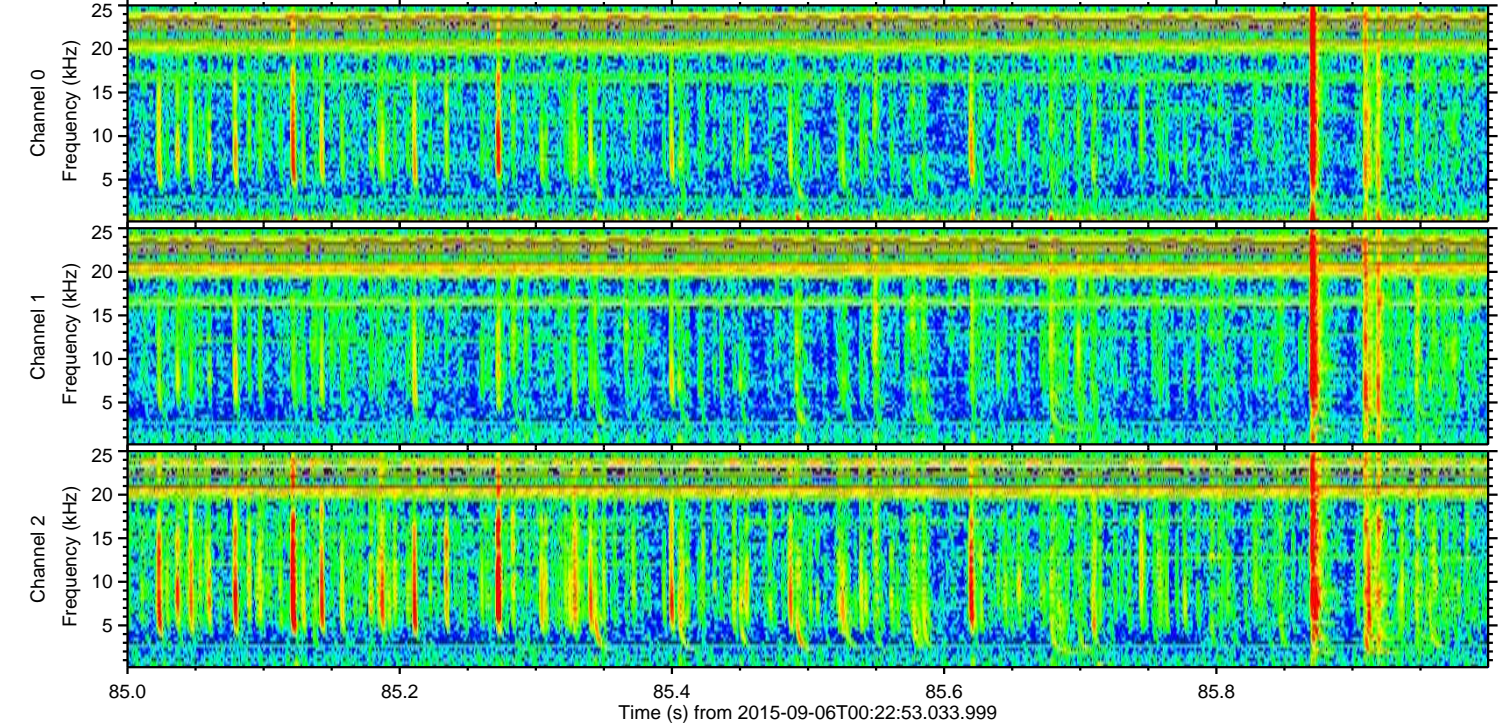
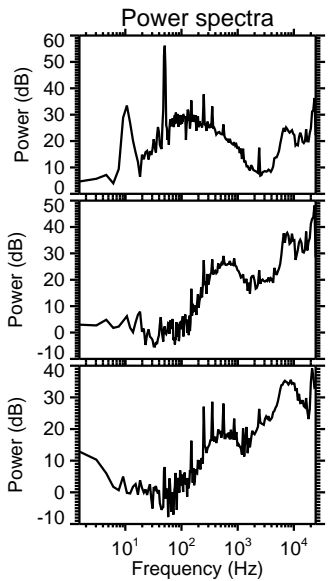
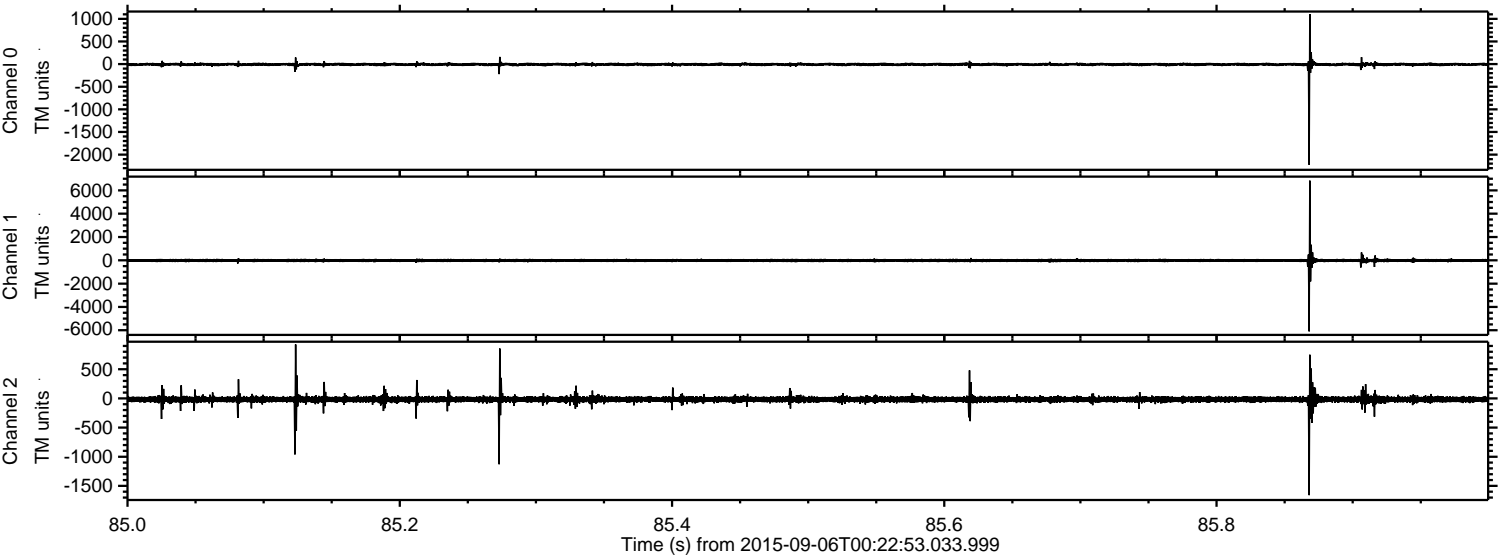


Channel 0
mn: -1516
mx: 2448
 μ : -7.8
 σ : 25.1

Channel 1
mn: -4589
mx: 6947
 μ : -15.4
 σ : 86.2

Channel 2
mn: -3538
mx: 4972
 μ : -17.6
 σ : 70.7

Processed Sat Oct 10 02:01:02 2015 by ELM ver.2012-10-06 from 001__elm20150906_002252__dat00.bin



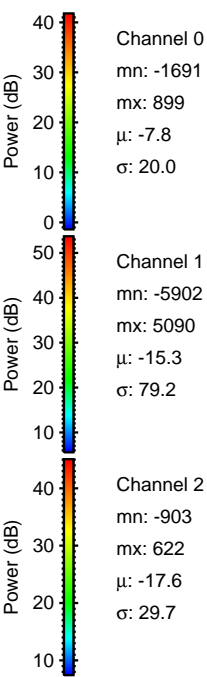
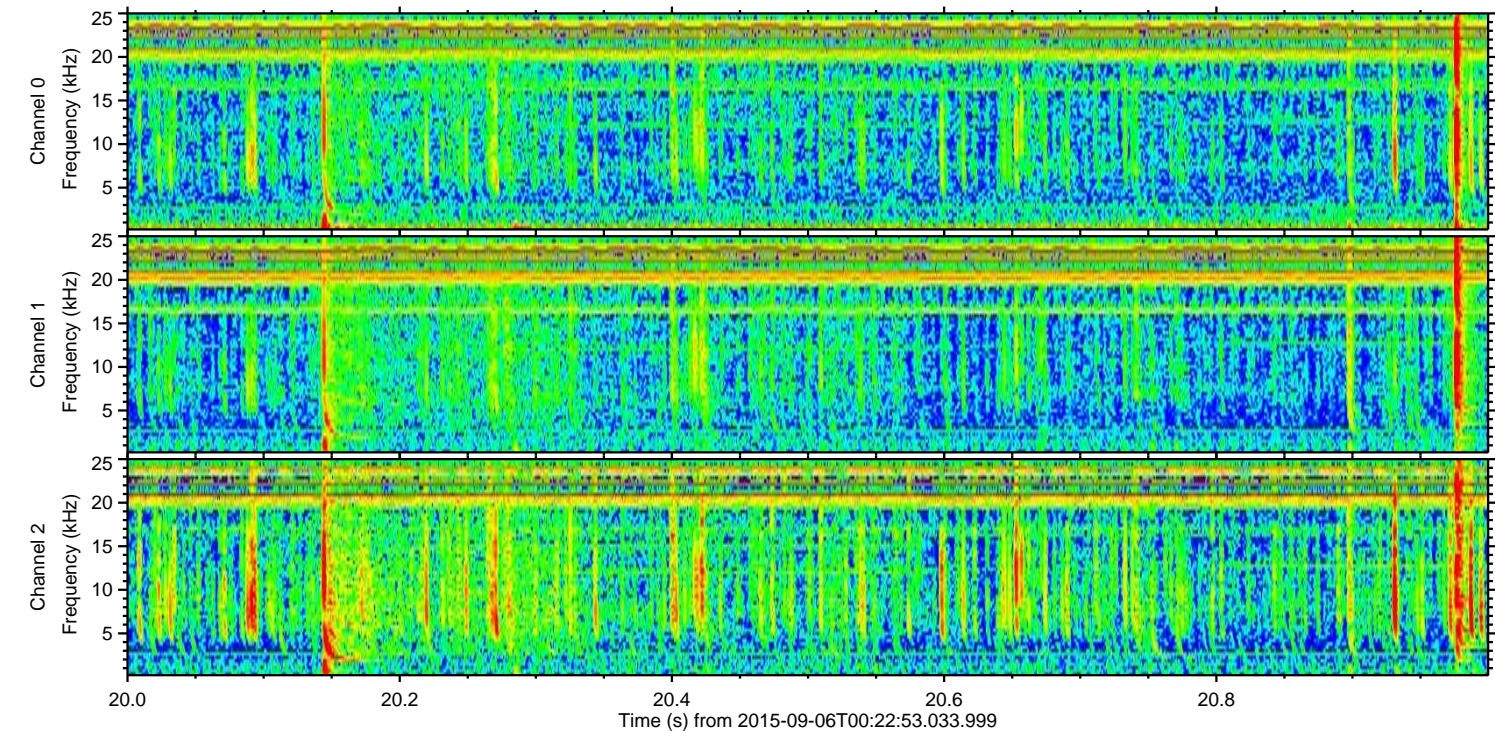
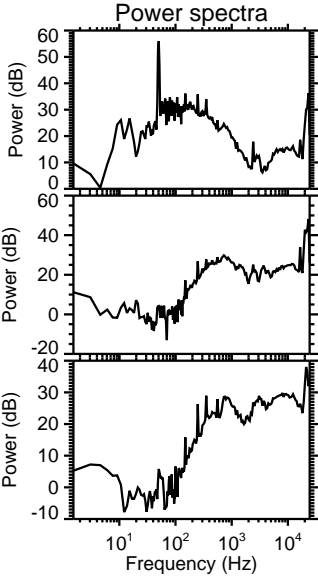
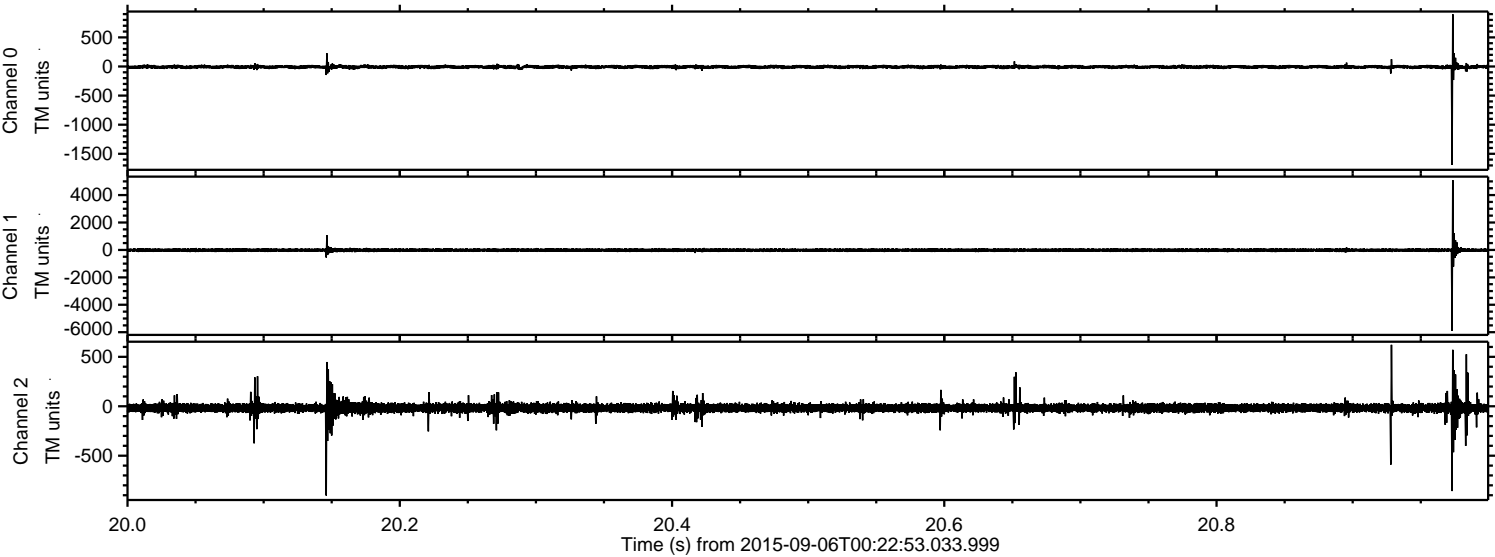
Channel 0
mn: -2225
mx: 1106
 μ : -7.8
 σ : 22.4

Channel 1
mn: -6095
mx: 6838
 μ : -15.1
 σ : 89.4

Channel 2
mn: -1659
mx: 926
 μ : -17.5
 σ : 34.9

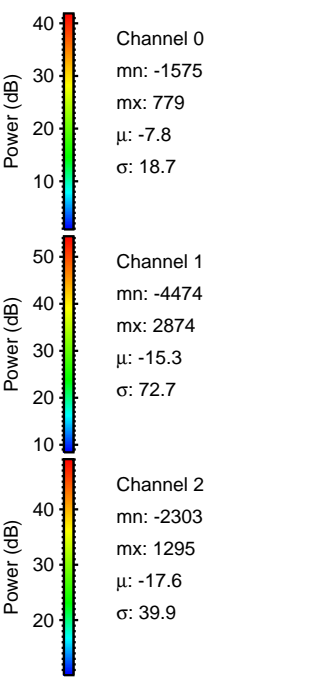
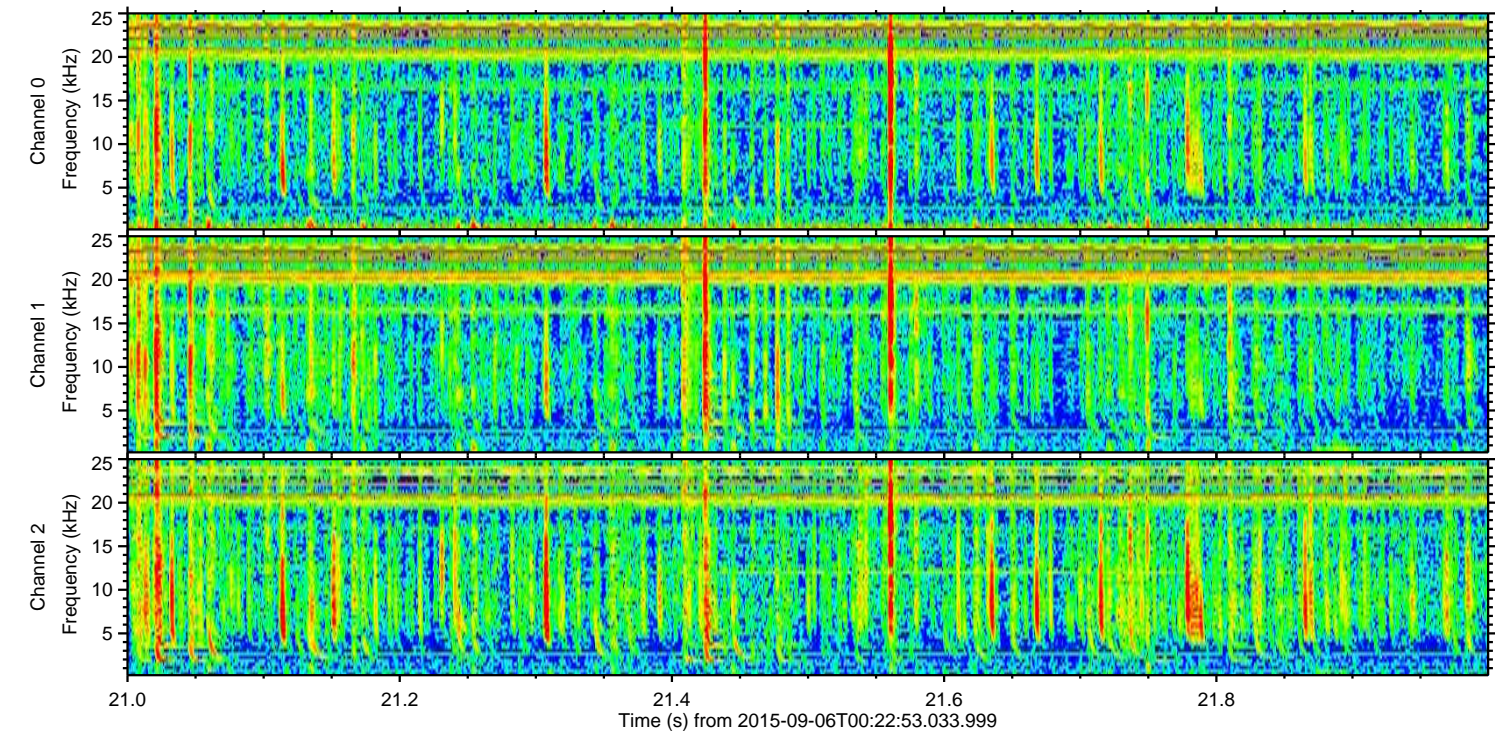
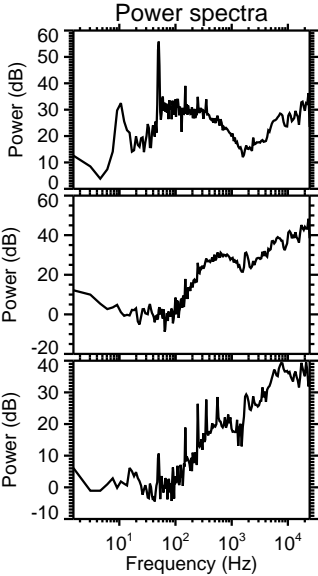
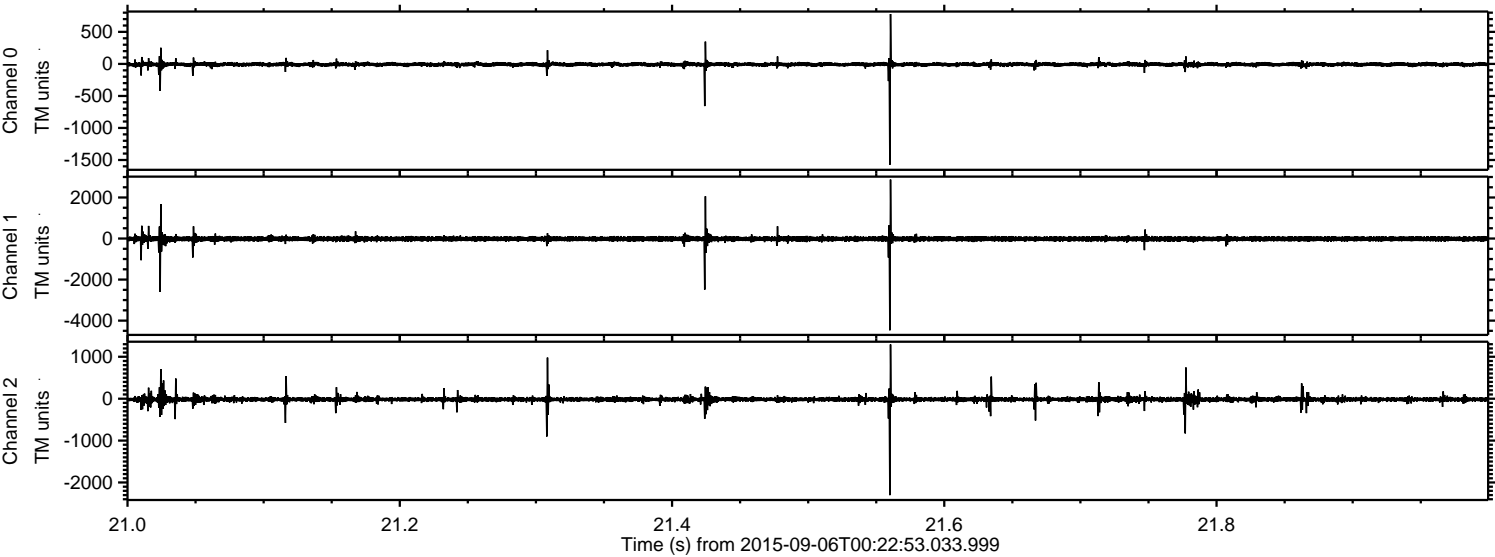
ELMAVAN 3D WAVEFORMS (Measured data sampled at 50 kHz) 51000 packets of 144 samples from 2015-09-06T00:22:53.033.999. Part 21/147

Processed Sat Oct 10 02:01:03 2015 by ELM ver.2012-10-06 from 001__elm20150906_002252__dat00.bin



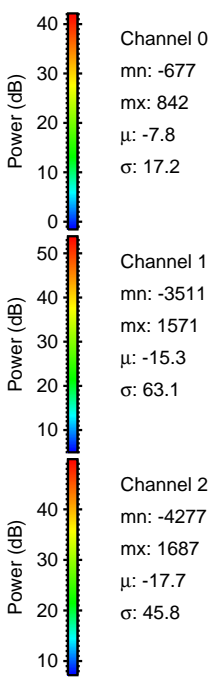
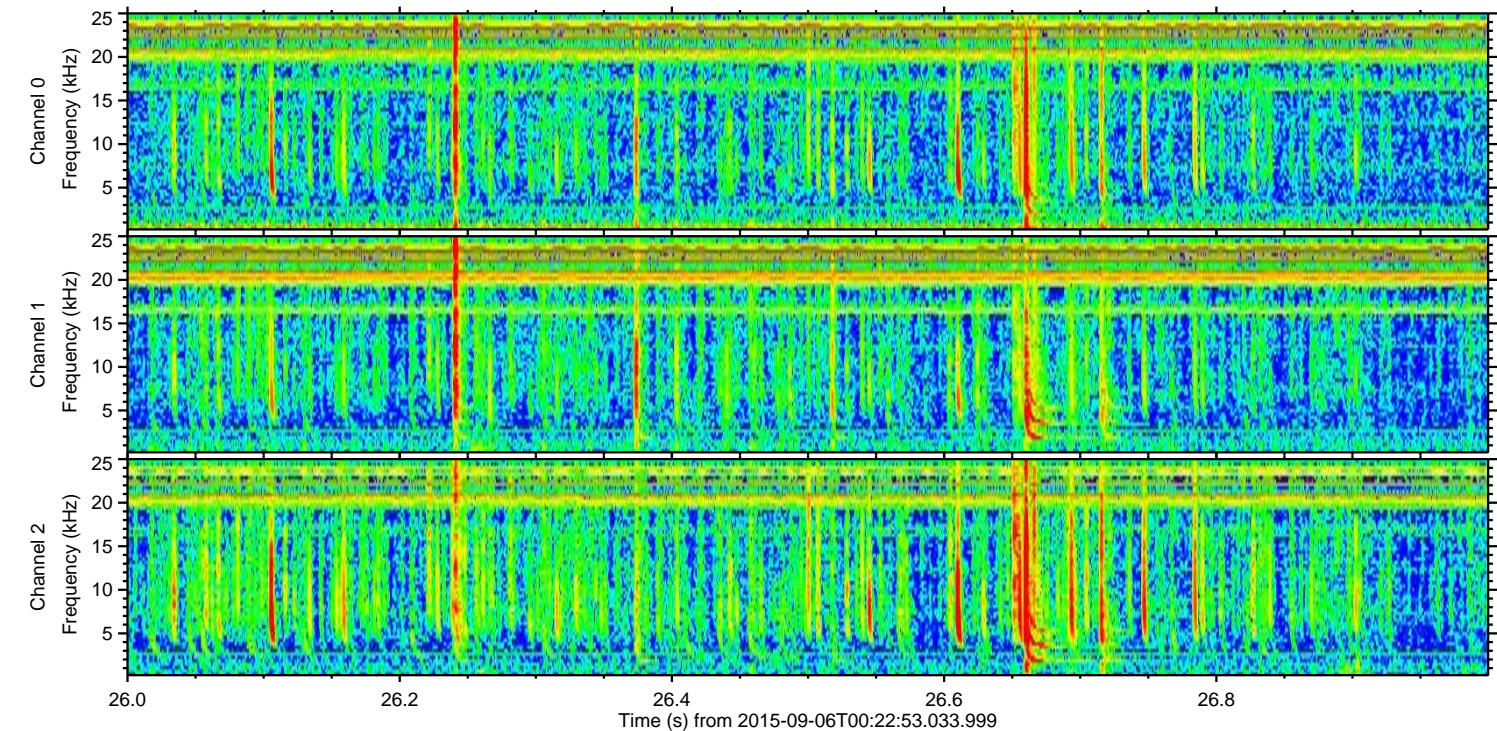
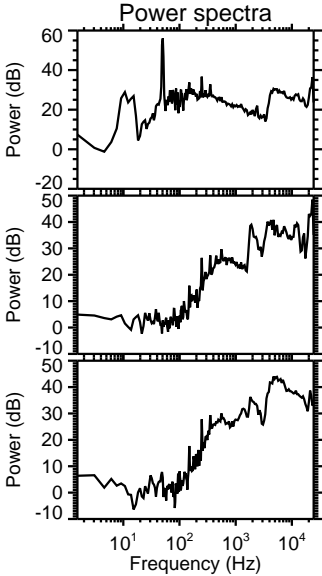
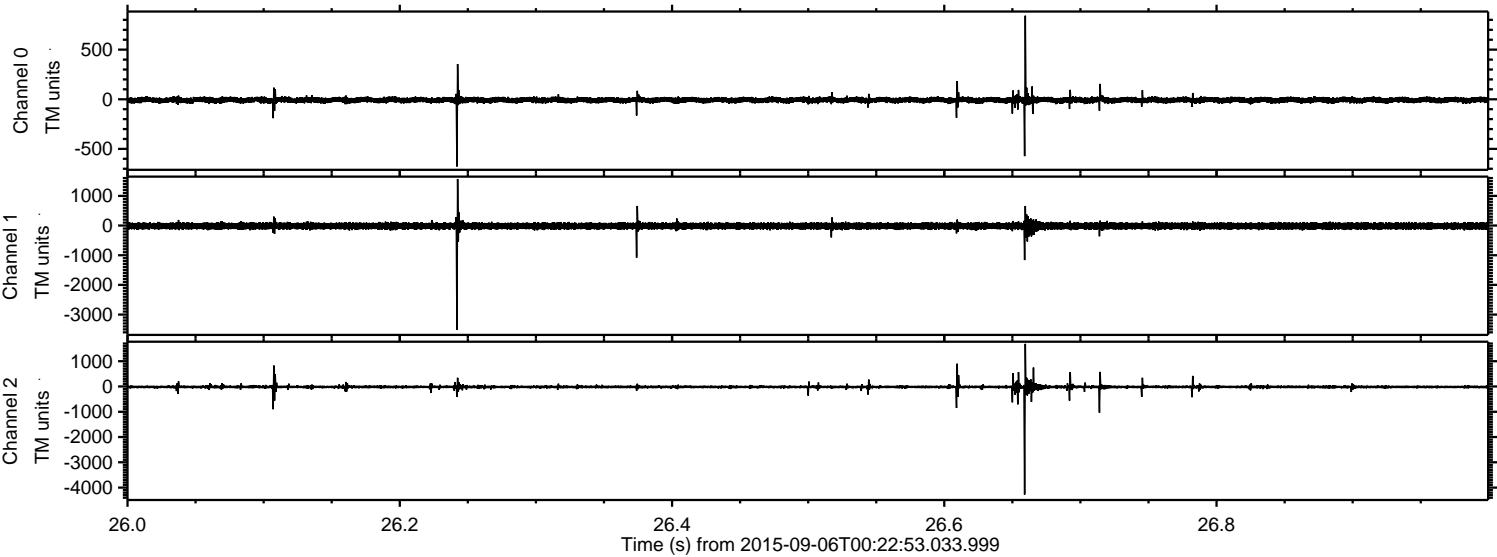
ELMAVAN 3D WAVEFORMS (Measured data sampled at 50 kHz) 51000 packets of 144 samples from 2015-09-06T00:22:53.033.999. Part 22/147

Processed Sat Oct 10 02:01:04 2015 by ELM ver.2012-10-06 from 001__elm20150906_002252__dat00.bin



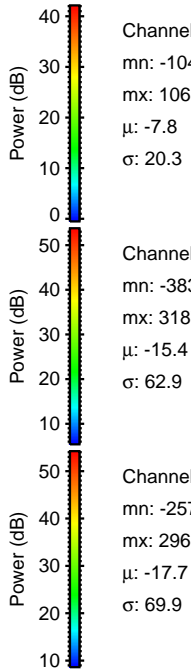
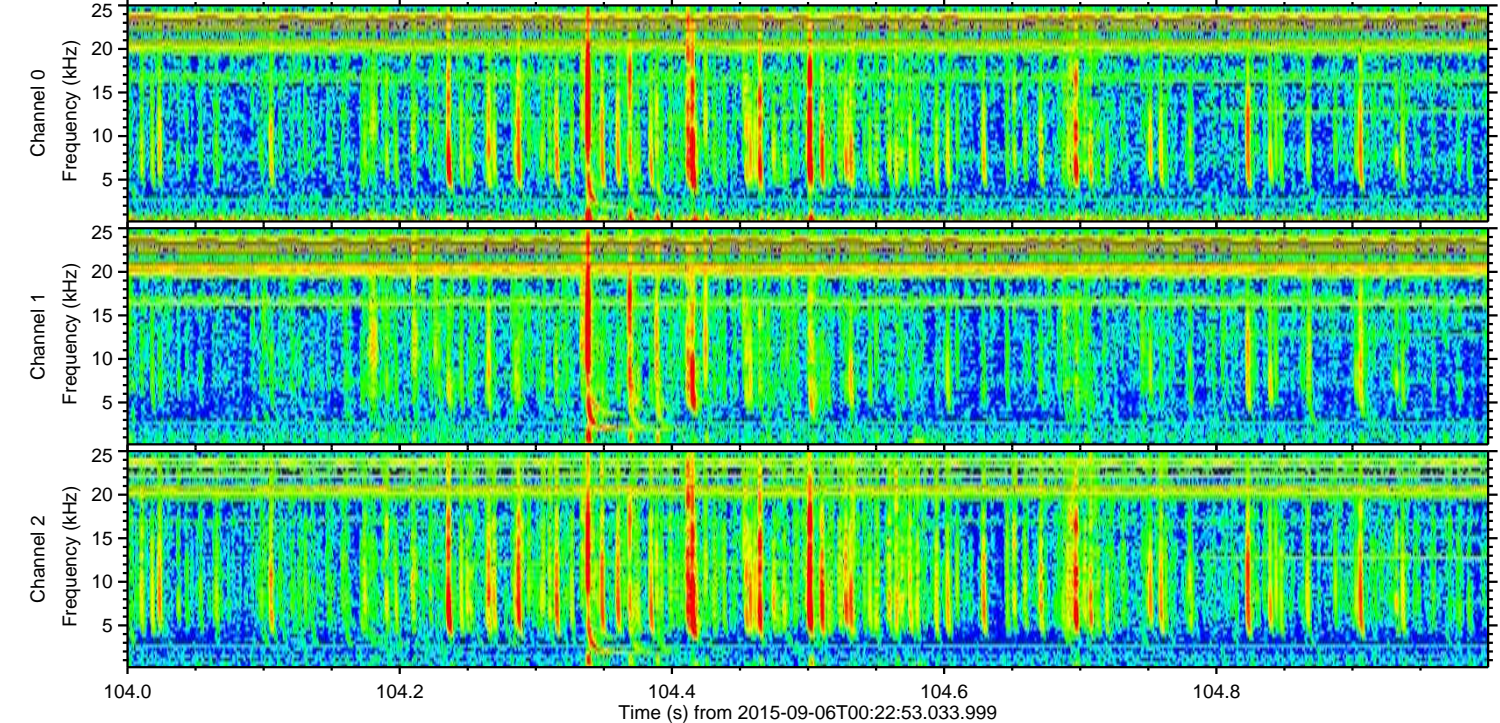
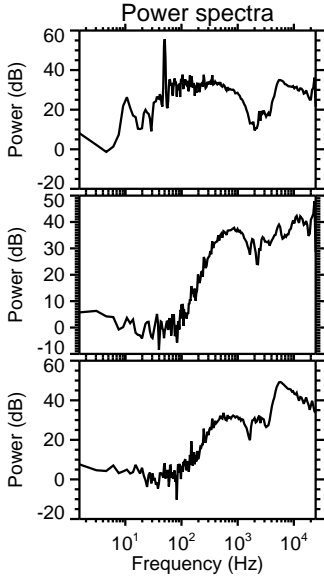
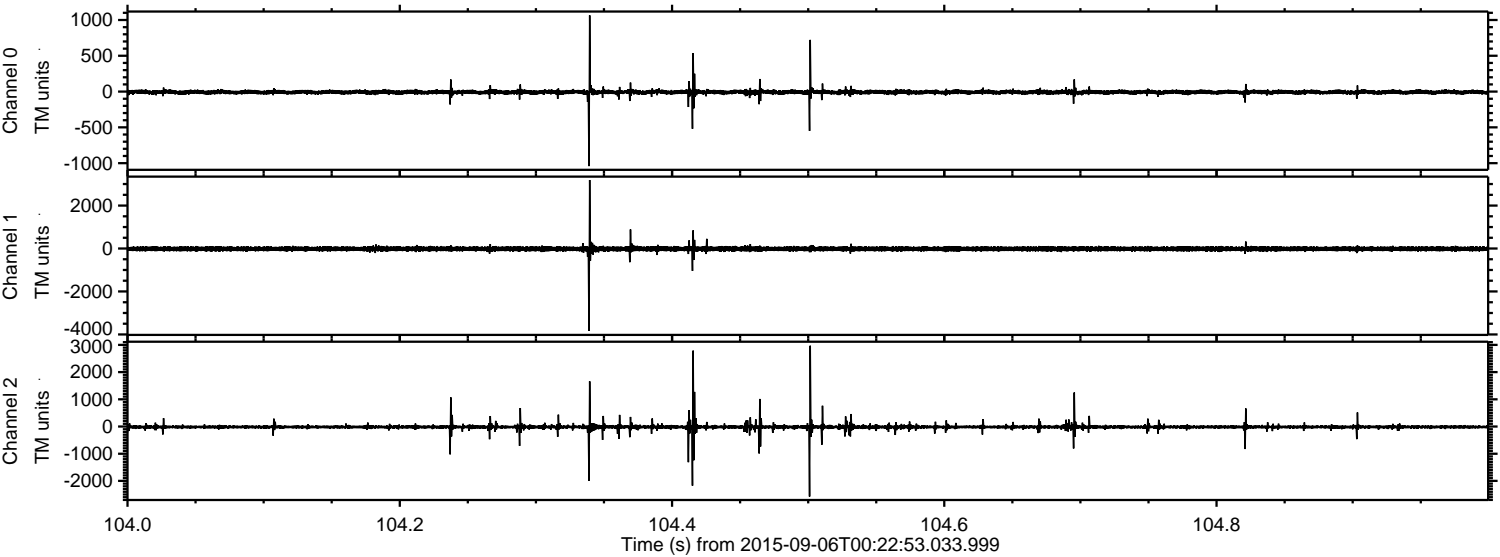
ELMAVAN 3D WAVEFORMS (Measured data sampled at 50 kHz) 51000 packets of 144 samples from 2015-09-06T00:22:53.033.999. Part 27/147

Processed Sat Oct 10 02:01:06 2015 by ELM ver.2012-10-06 from 001__elm20150906_002252__dat00.bin



ELMAVAN 3D WAVEFORMS (Measured data sampled at 50 kHz) 51000 packets of 144 samples from 2015-09-06T00:22:53.033.999. Part 105/147

Processed Sat Oct 10 02:01:07 2015 by ELM ver.2012-10-06 from 001__elm20150906_002252__dat00.bin

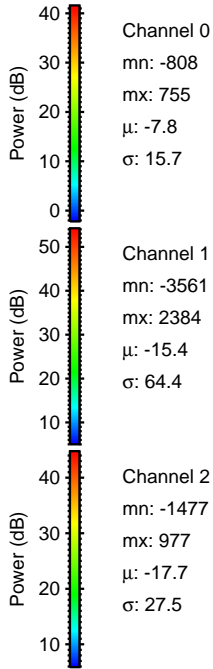
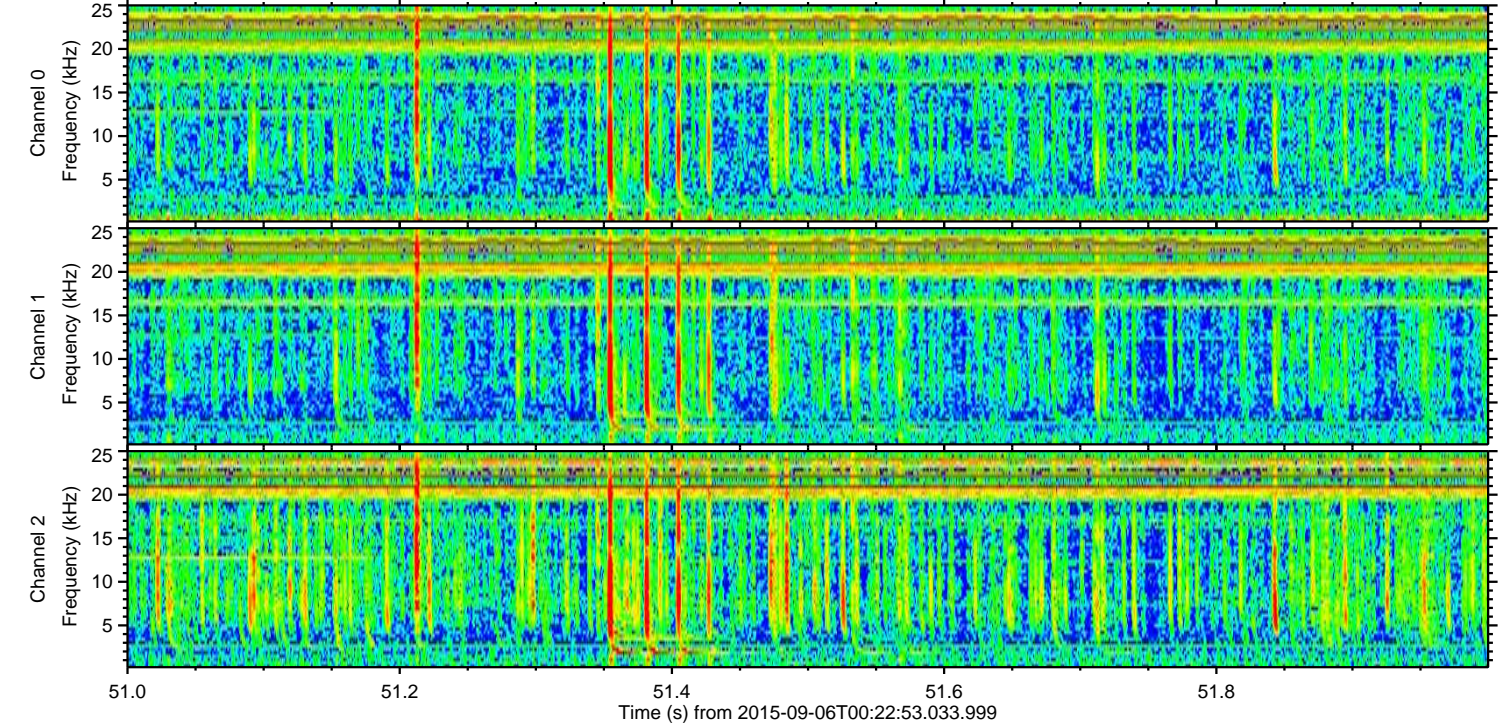
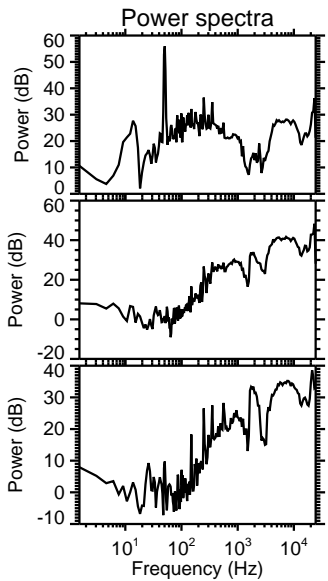
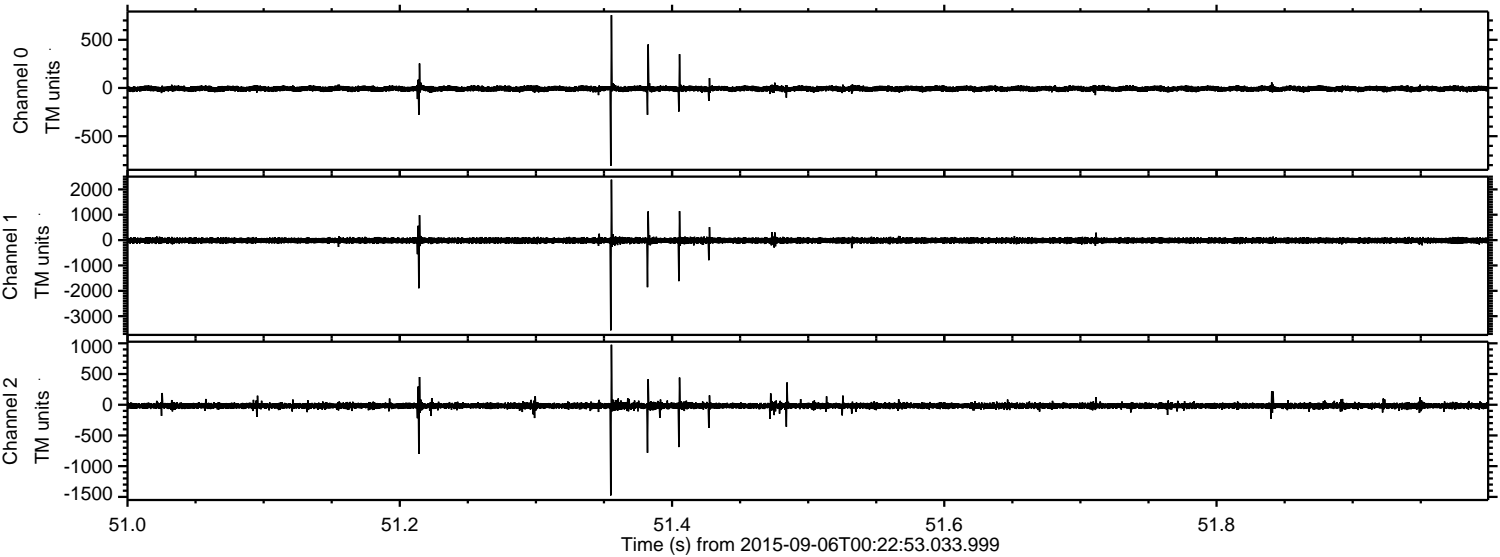


Channel 0
mn: -1041
mx: 1065
 μ : -7.8
 σ : 20.3

Channel 1
mn: -3830
mx: 3187
 μ : -15.4
 σ : 62.9

Channel 2
mn: -2573
mx: 2968
 μ : -17.7
 σ : 69.9

Processed Sat Oct 10 02:01:08 2015 by ELM ver.2012-10-06 from 001__elm20150906_002252__dat00.bin

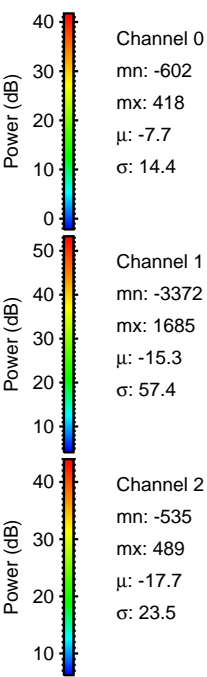
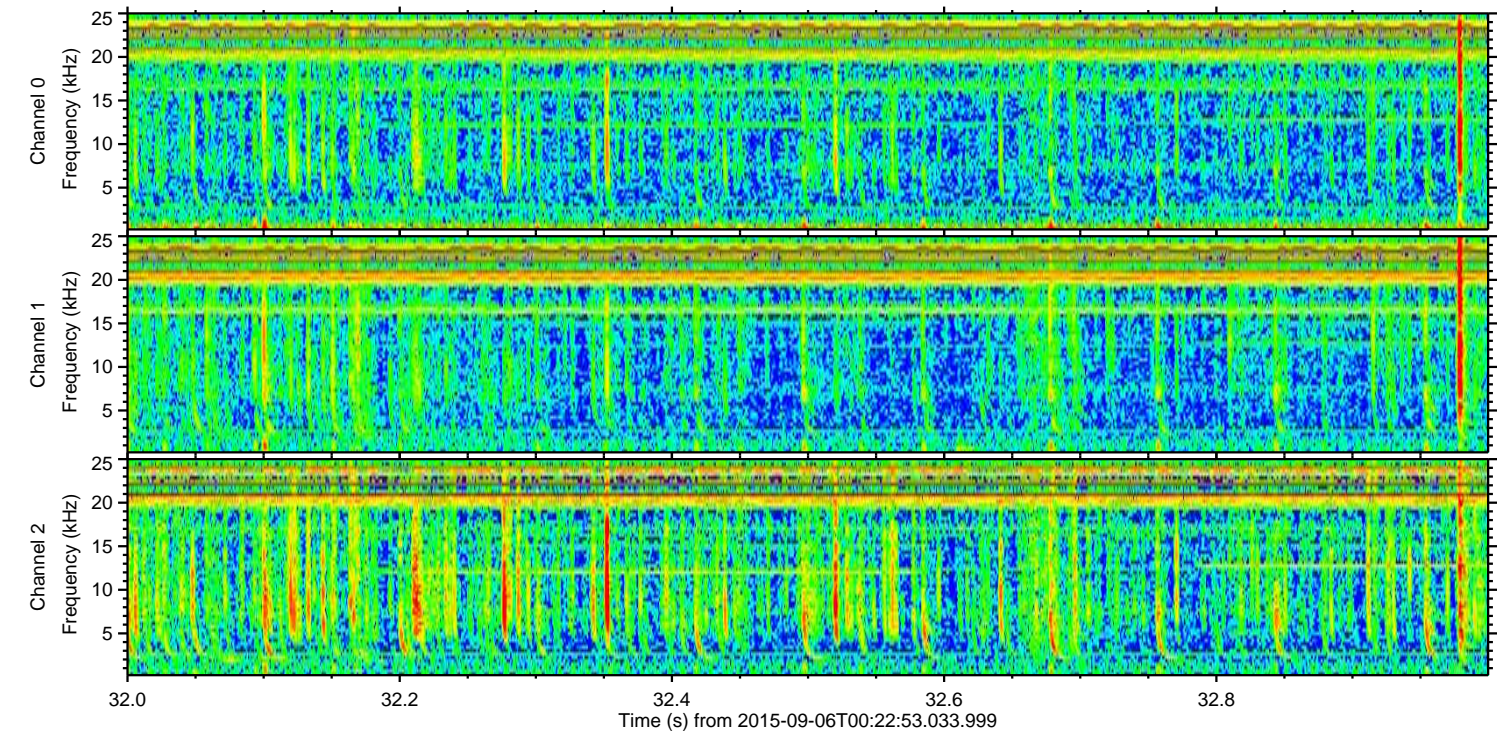
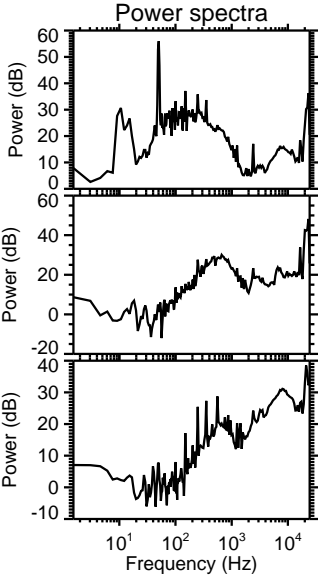
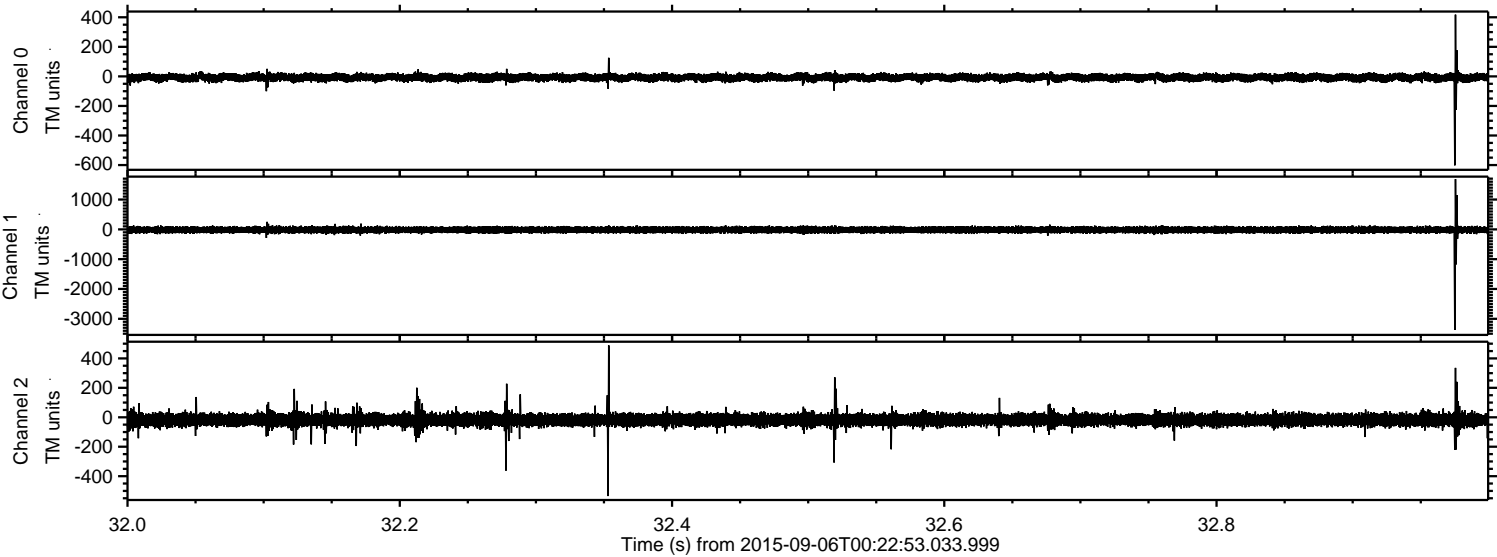


Channel 0
mn: -808
mx: 755
 μ : -7.8
 σ : 15.7

Channel 1
mn: -3561
mx: 2384
 μ : -15.4
 σ : 64.4

Channel 2
mn: -1477
mx: 977
 μ : -17.7
 σ : 27.5

Processed Sat Oct 10 02:01:09 2015 by ELM ver.2012-10-06 from 001__elm20150906_002252__dat00.bin



ELMAVAN 3D WAVEFORMS (Measured data sampled at 50 kHz) 51000 packets of 144 samples from 2015-09-06T00:22:53.033.999. Part 118/147

