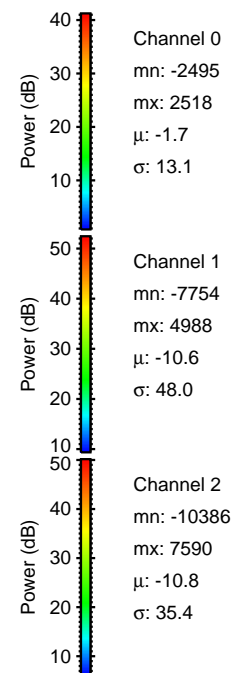
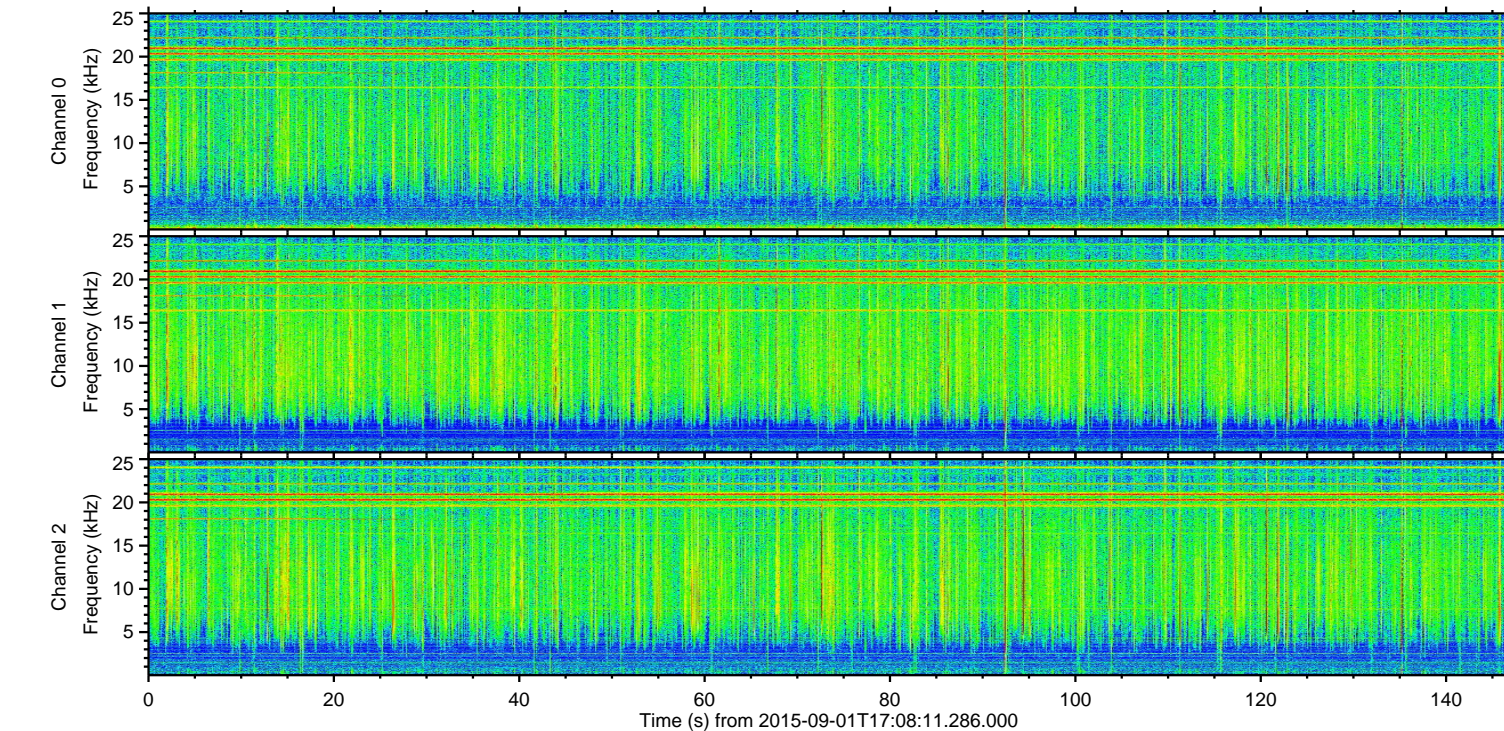
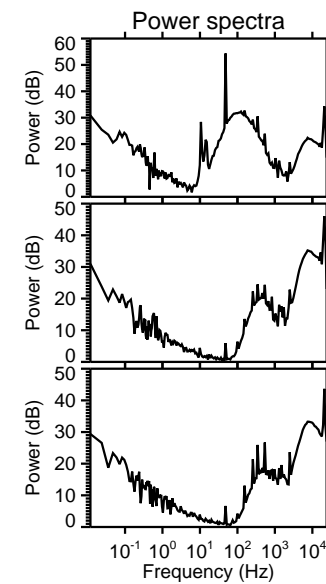
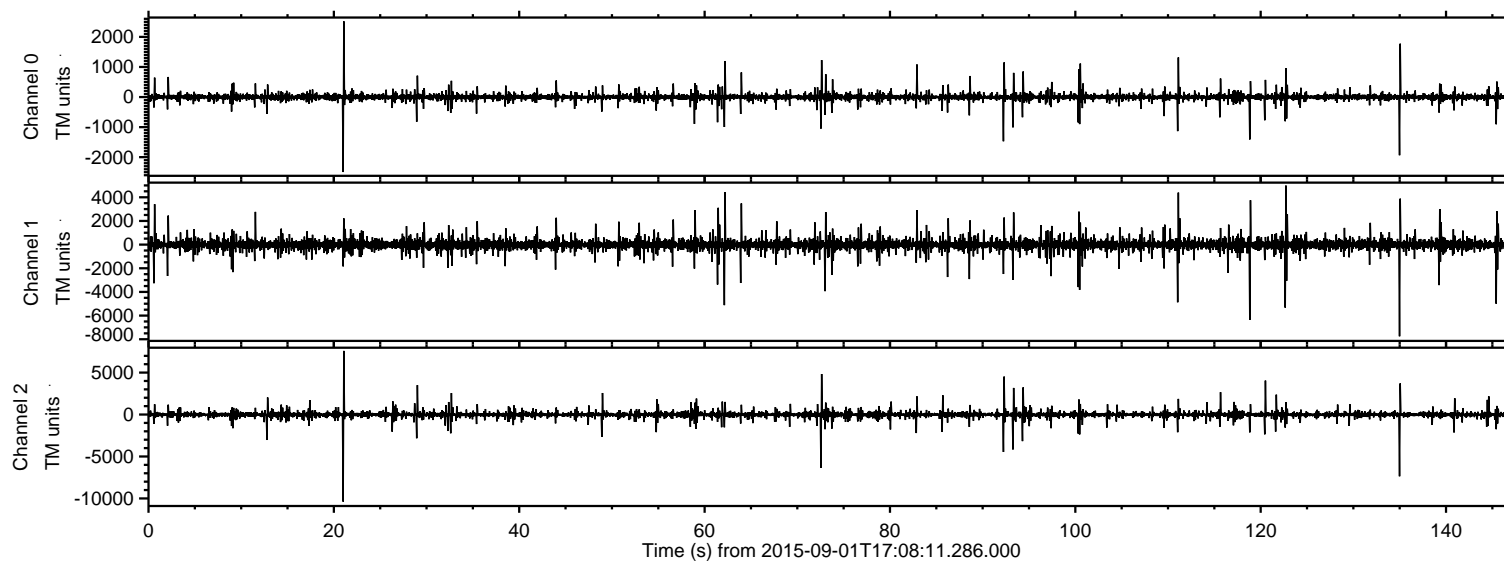


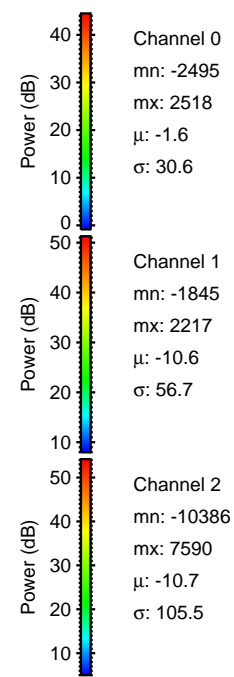
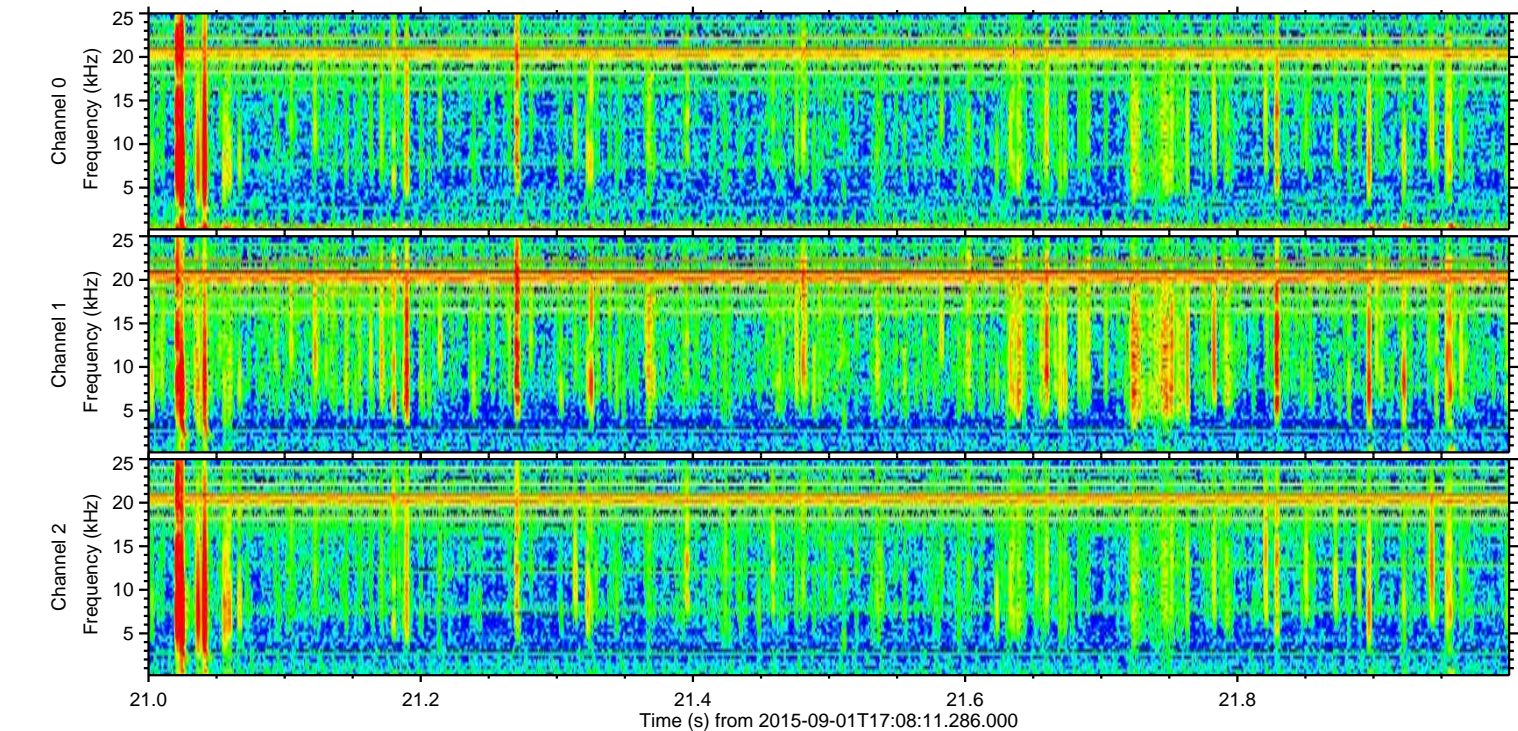
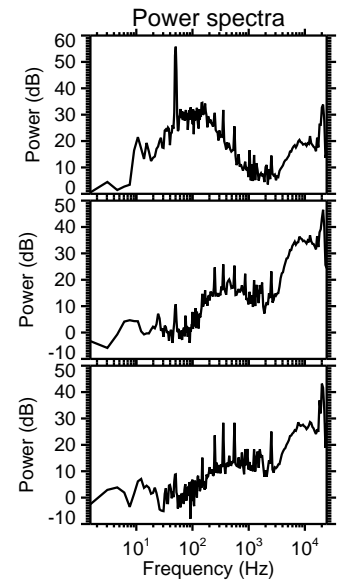
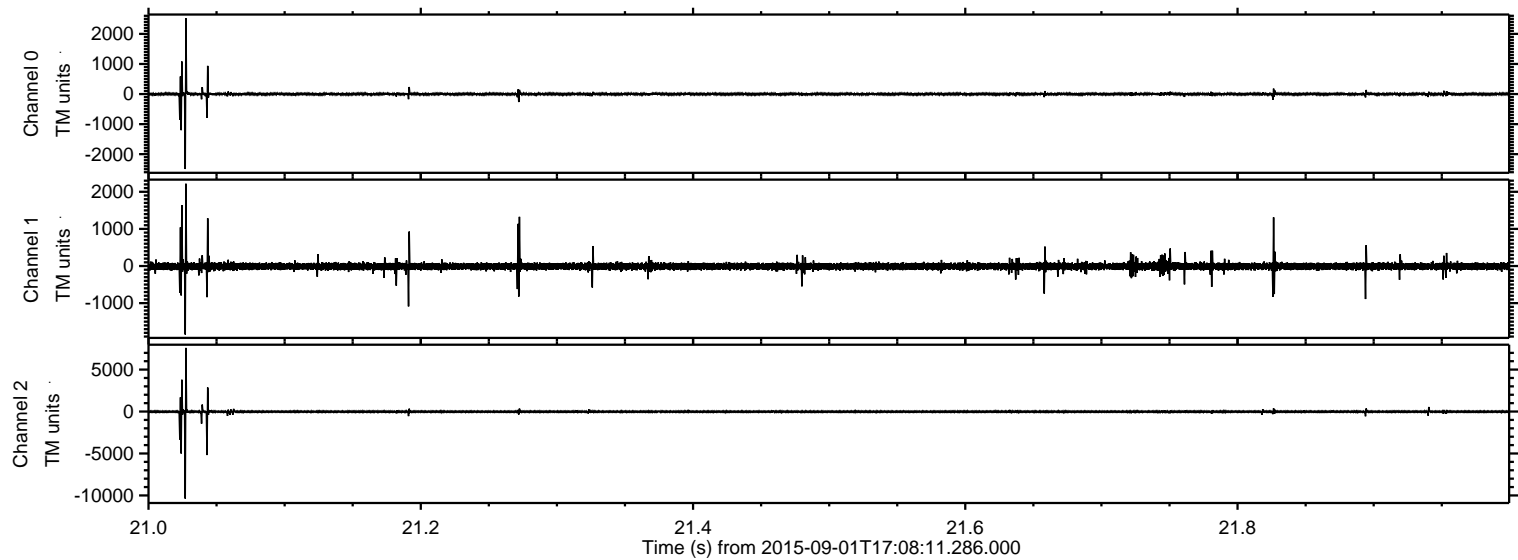
ELMAVAN 3D WAVEFORMS (Measured data sampled at 50 kHz) 51000 packets of 144 samples from 2015-09-01T17:08:11.286.000.

Processed Thu Oct 8 21:05:02 2015 by ELM ver.2012-10-06 from 001__elm20150901_170810__dat00.bin



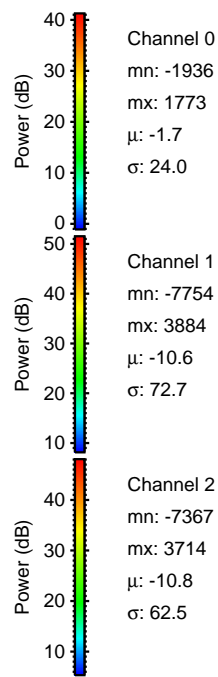
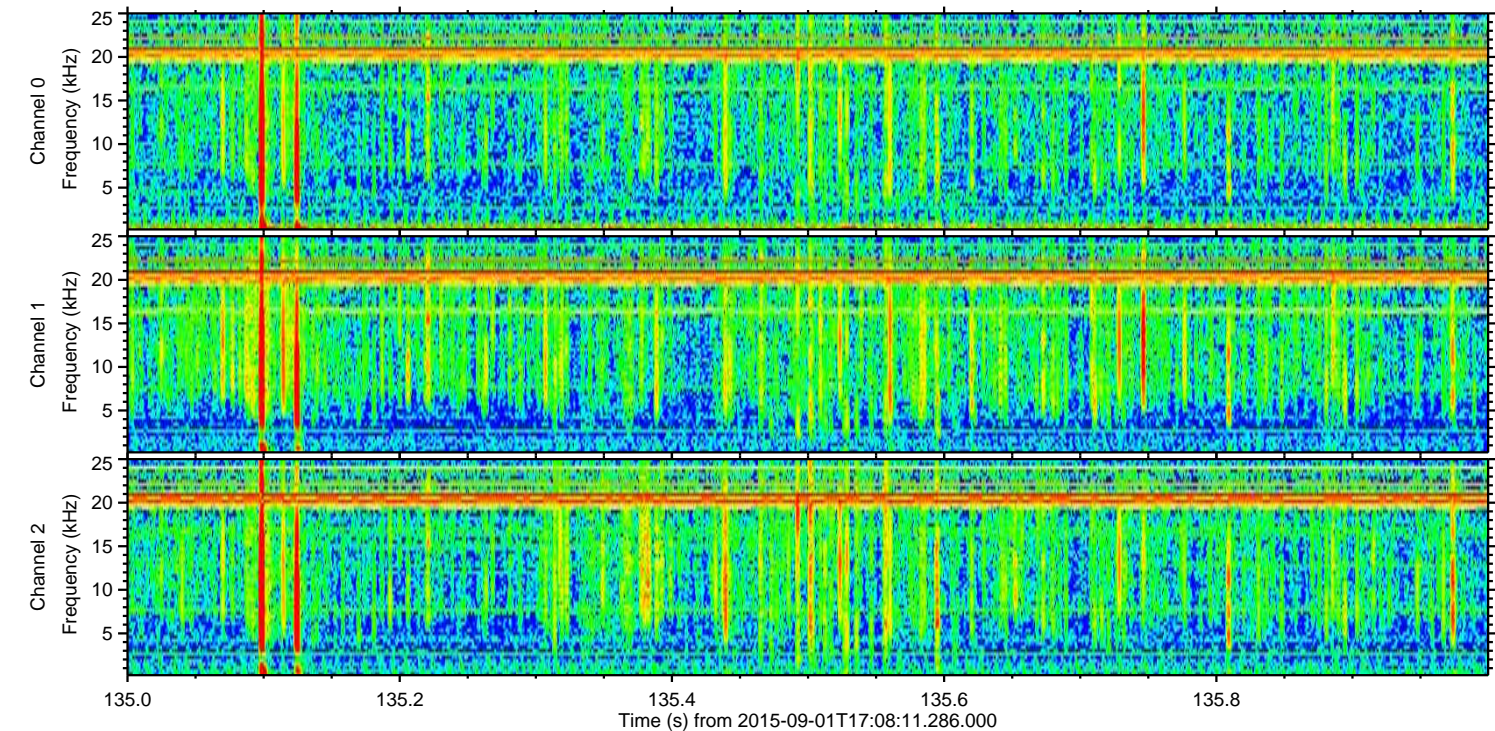
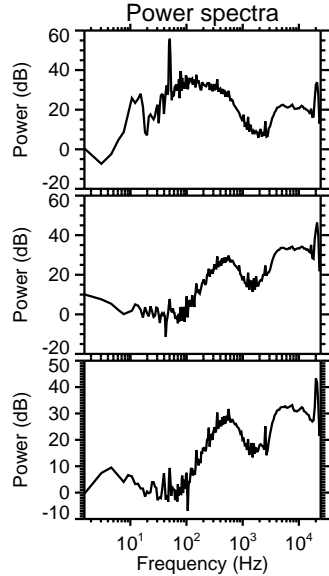
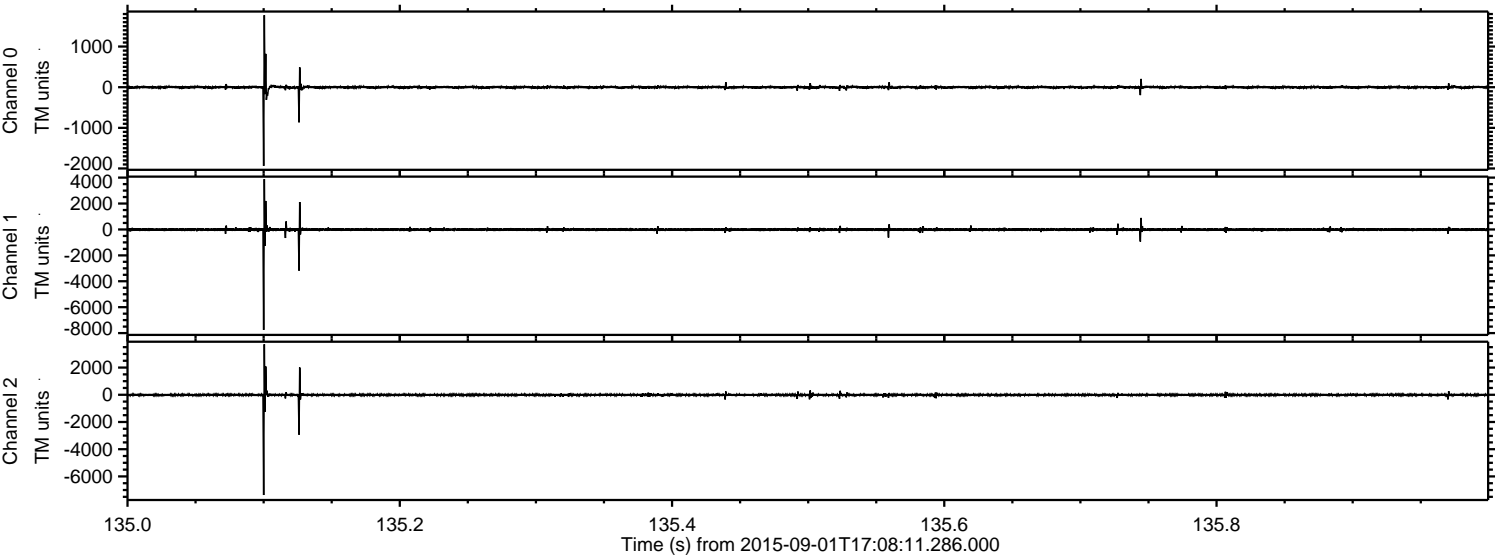
ELMAVAN 3D WAVEFORMS (Measured data sampled at 50 kHz) 51000 packets of 144 samples from 2015-09-01T17:08:11.286.000. Part 22/147

Processed Thu Oct 8 21:05:15 2015 by ELM ver.2012-10-06 from 001__elm20150901_170810__dat00.bin



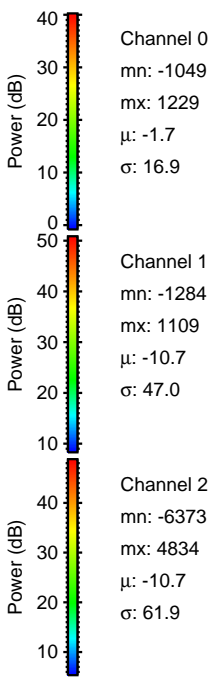
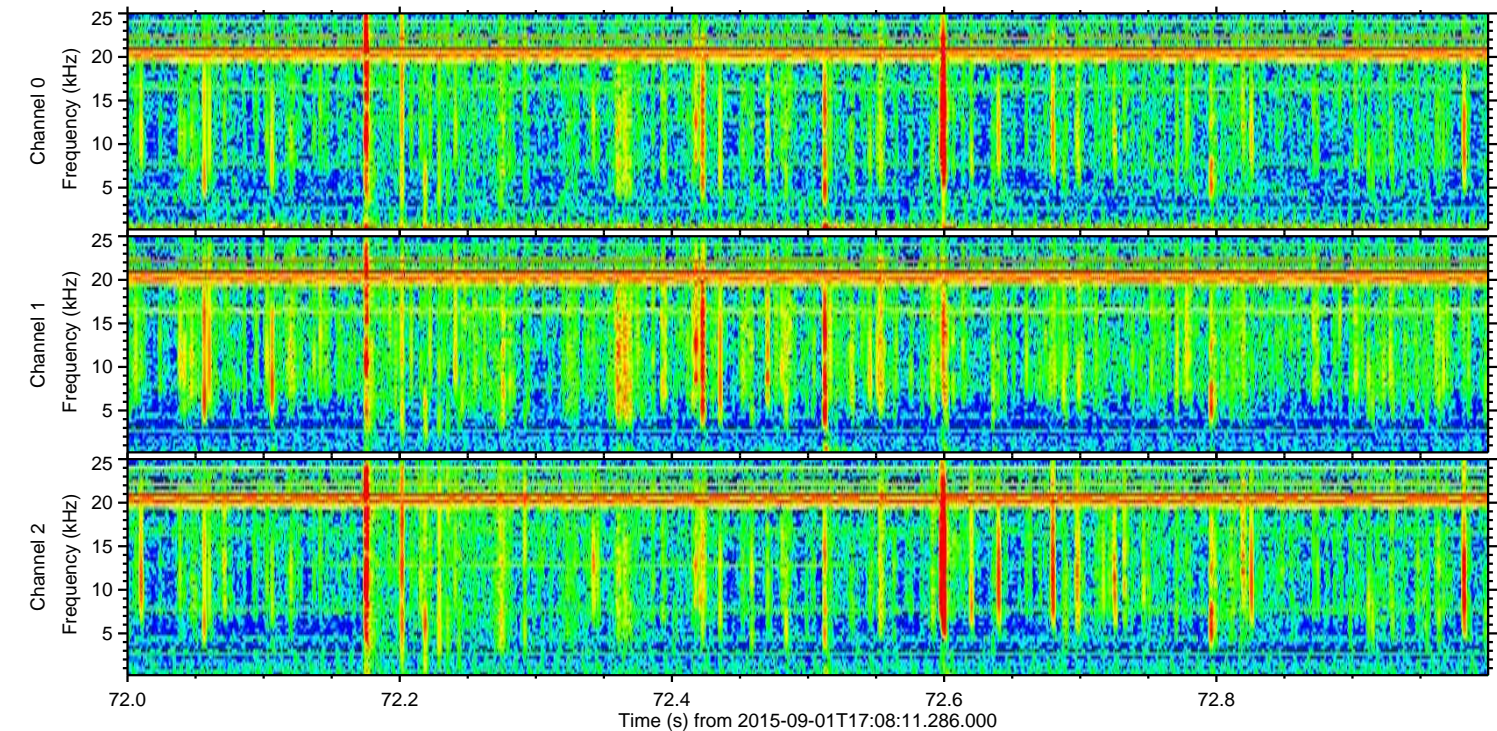
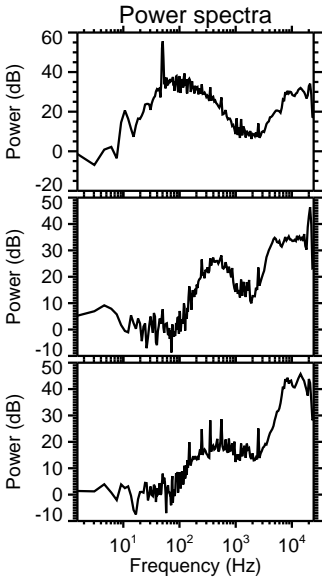
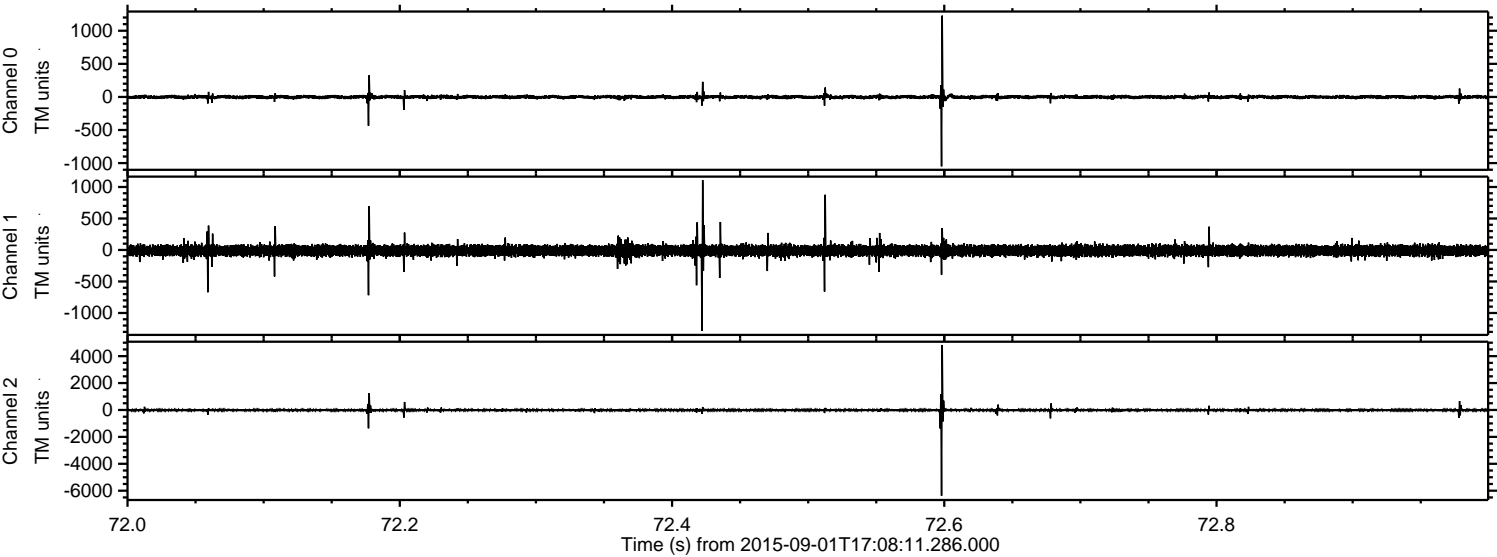
ELMAVAN 3D WAVEFORMS (Measured data sampled at 50 kHz) 51000 packets of 144 samples from 2015-09-01T17:08:11.286.000. Part 136/147

Processed Thu Oct 8 21:05:16 2015 by ELM ver.2012-10-06 from 001__elm20150901_170810__dat00.bin



ELMAVAN 3D WAVEFORMS (Measured data sampled at 50 kHz) 51000 packets of 144 samples from 2015-09-01T17:08:11.286.000. Part 73/147

Processed Thu Oct 8 21:05:17 2015 by ELM ver.2012-10-06 from 001__elm20150901_170810__dat00.bin



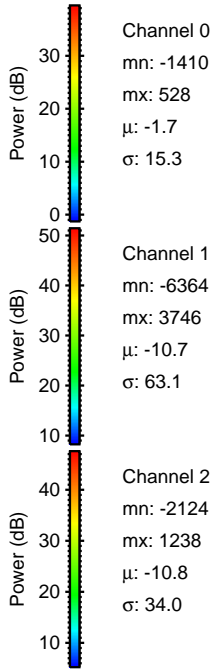
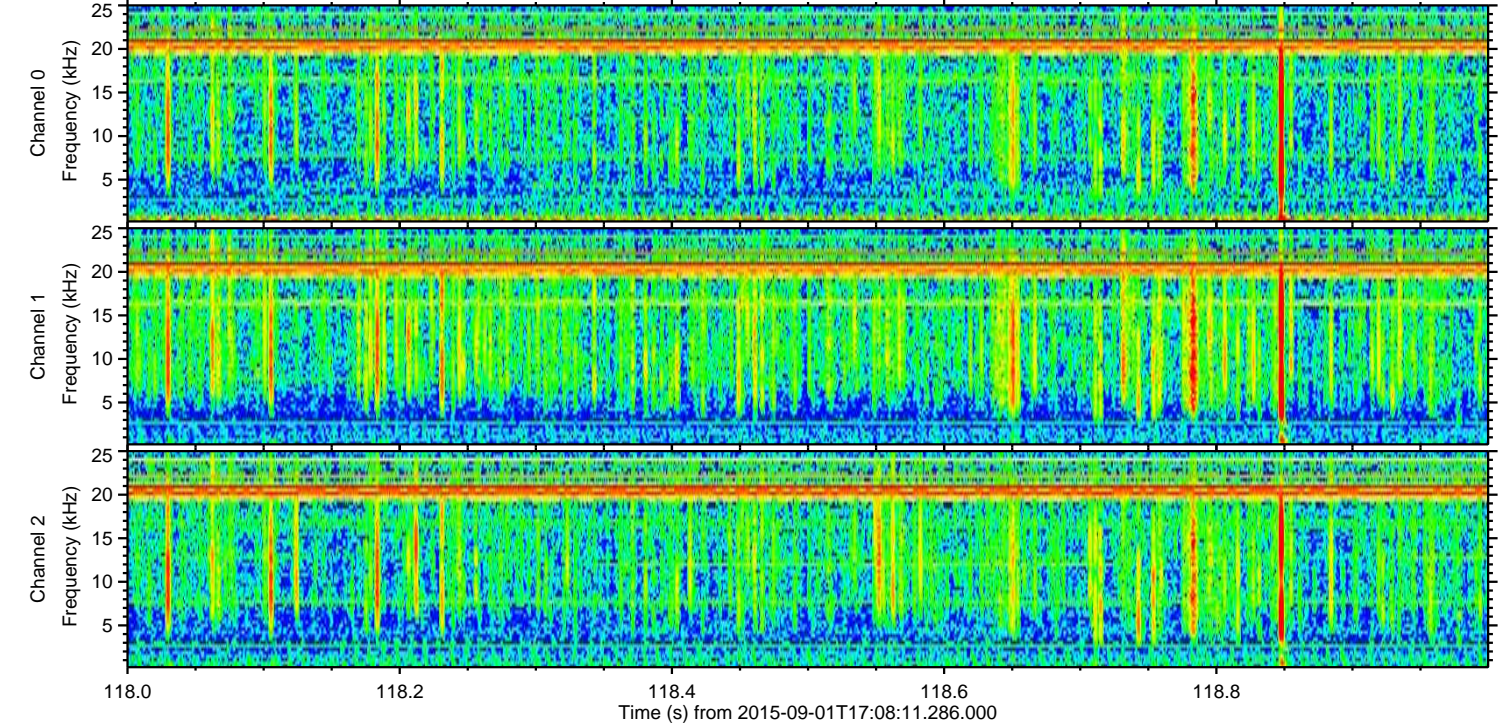
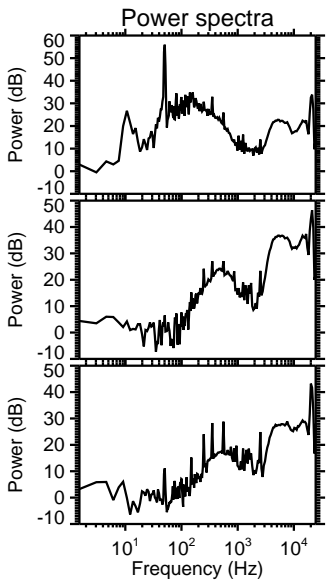
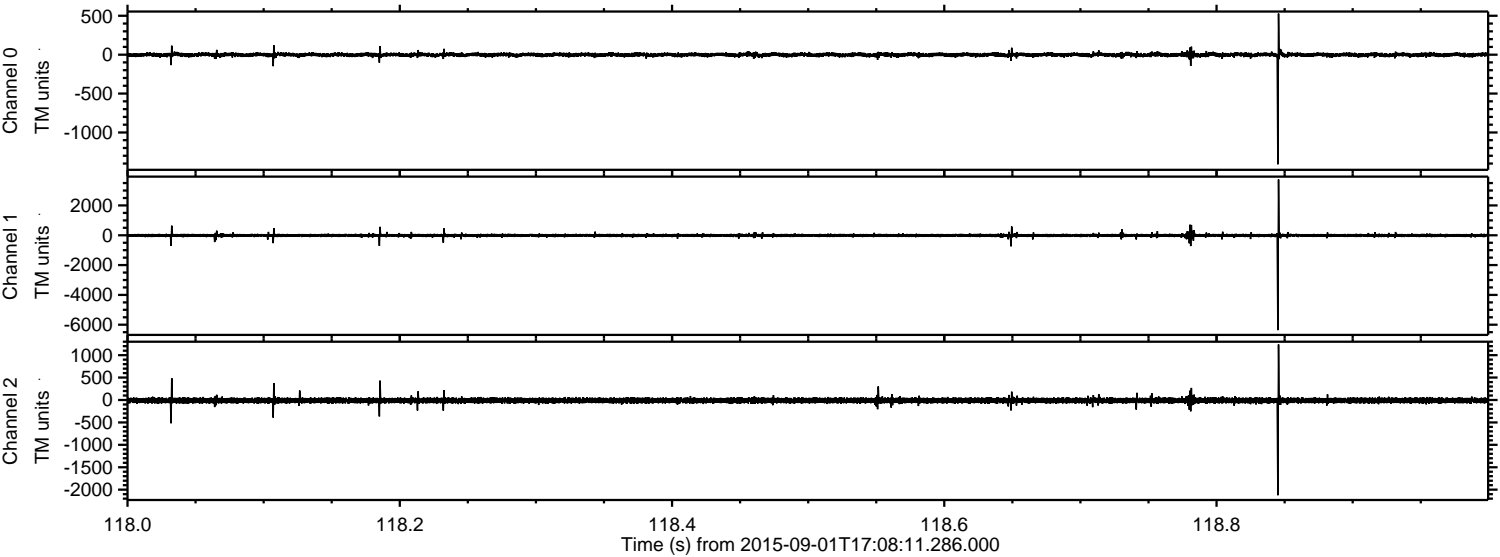
Channel 0
mn: -1049
mx: 1229
 μ : -1.7
 σ : 16.9

Channel 1
mn: -1284
mx: 1109
 μ : -10.7
 σ : 47.0

Channel 2
mn: -6373
mx: 4834
 μ : -10.7
 σ : 61.9

ELMAVAN 3D WAVEFORMS (Measured data sampled at 50 kHz) 51000 packets of 144 samples from 2015-09-01T17:08:11.286.000. Part 119/147

Processed Thu Oct 8 21:05:18 2015 by ELM ver.2012-10-06 from 001__elm20150901_170810__dat00.bin



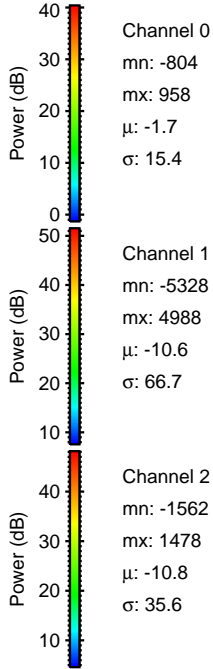
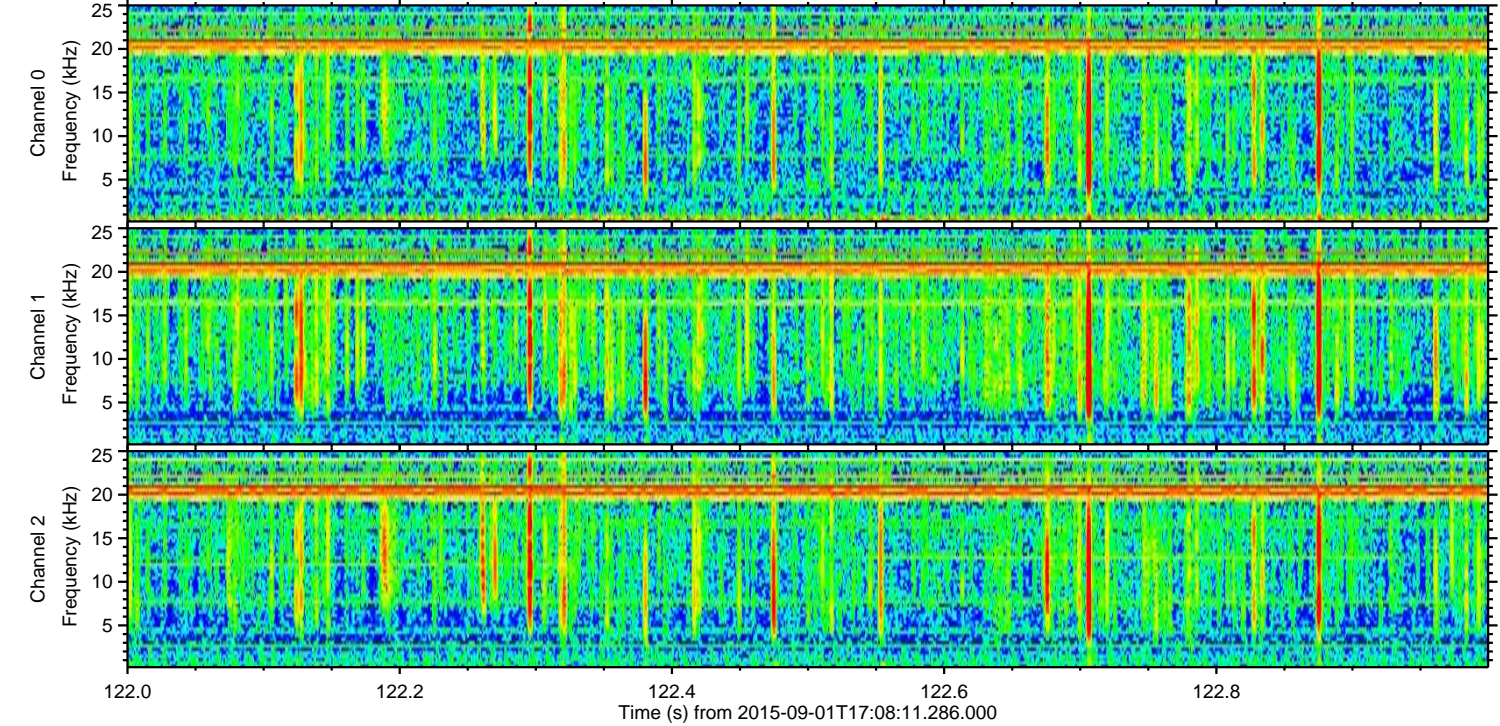
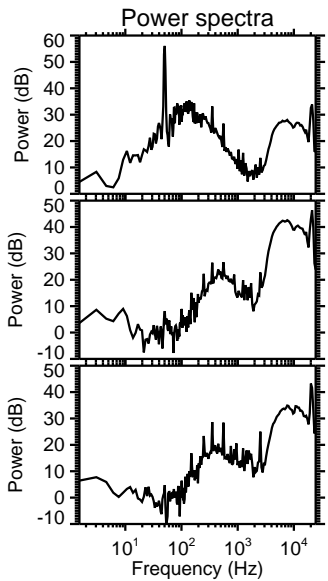
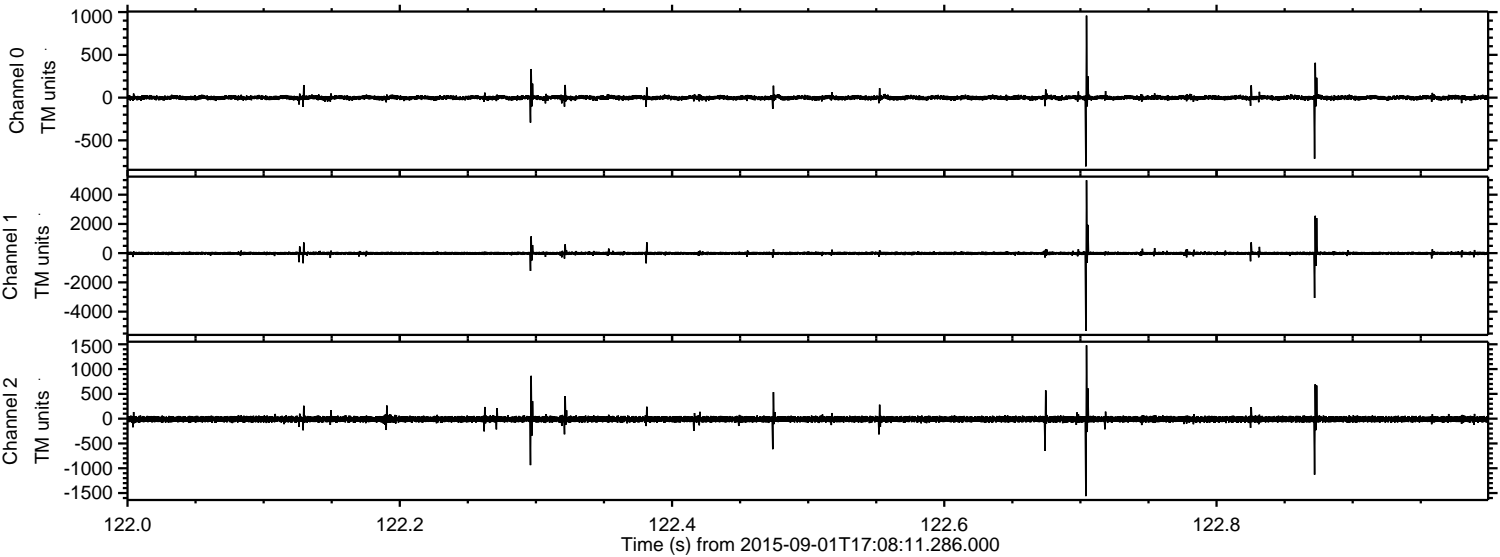
Channel 0
mn: -1410
mx: 528
 μ : -1.7
 σ : 15.3

Channel 1
mn: -6364
mx: 3746
 μ : -10.7
 σ : 63.1

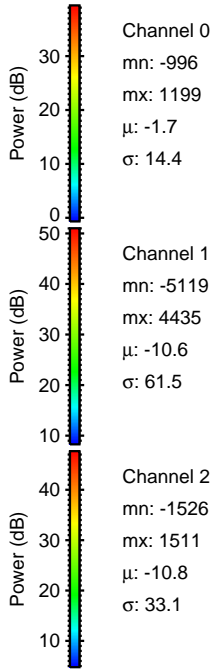
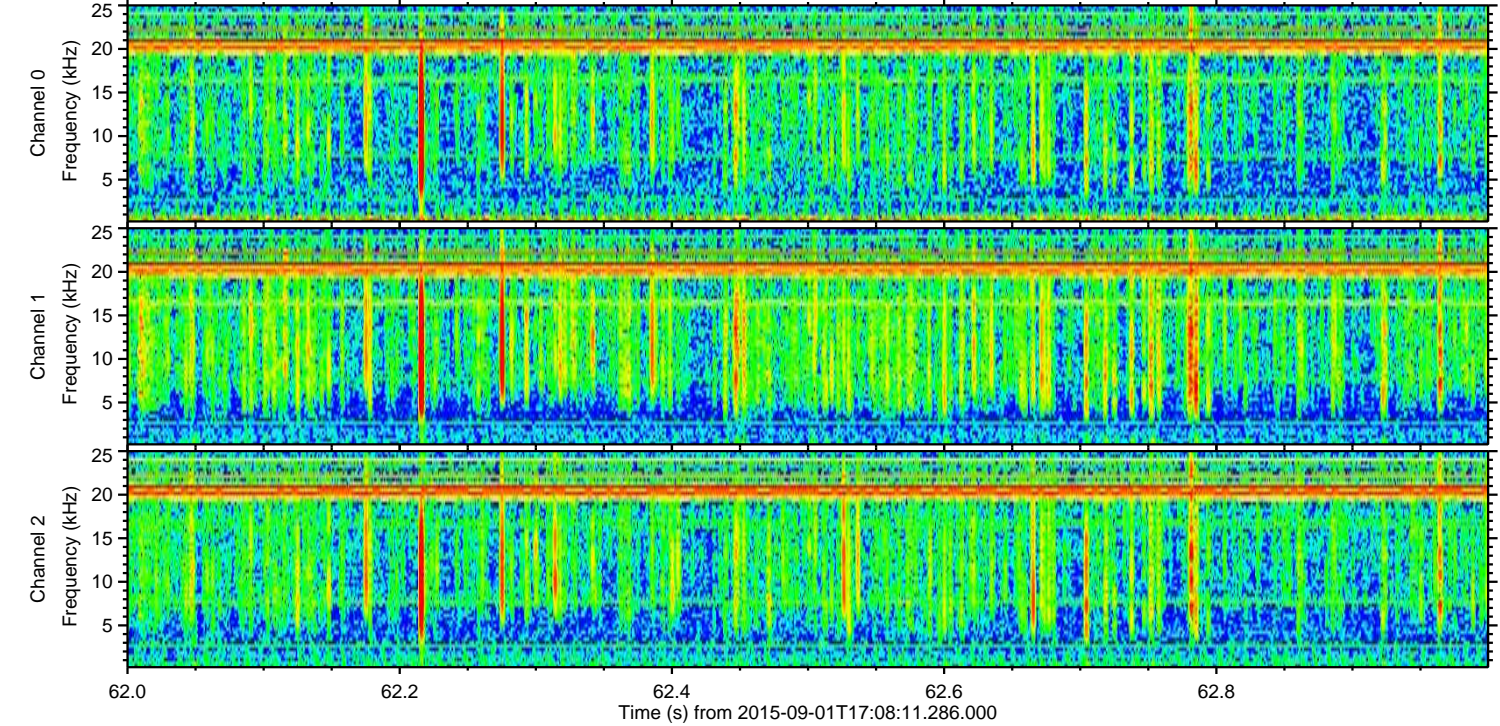
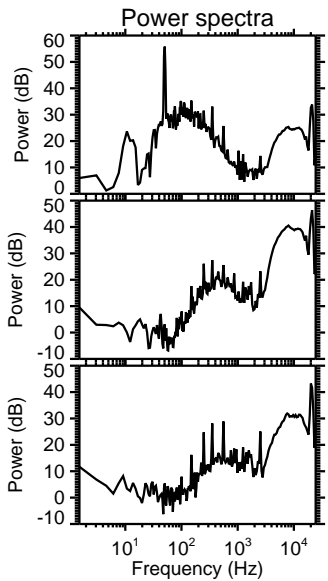
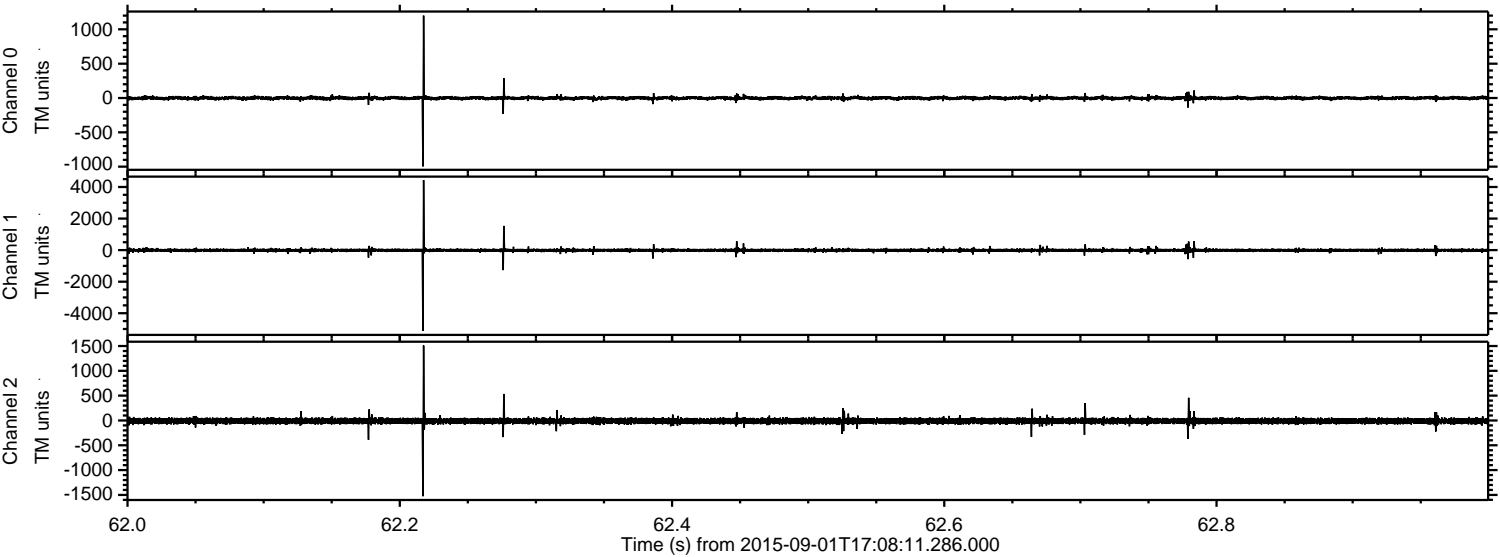
Channel 2
mn: -2124
mx: 1238
 μ : -10.8
 σ : 34.0

ELMAVAN 3D WAVEFORMS (Measured data sampled at 50 kHz) 51000 packets of 144 samples from 2015-09-01T17:08:11.286.000. Part 123/147

Processed Thu Oct 8 21:05:19 2015 by ELM ver.2012-10-06 from 001__elm20150901_170810__dat00.bin

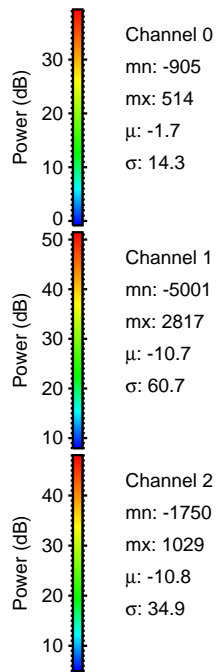
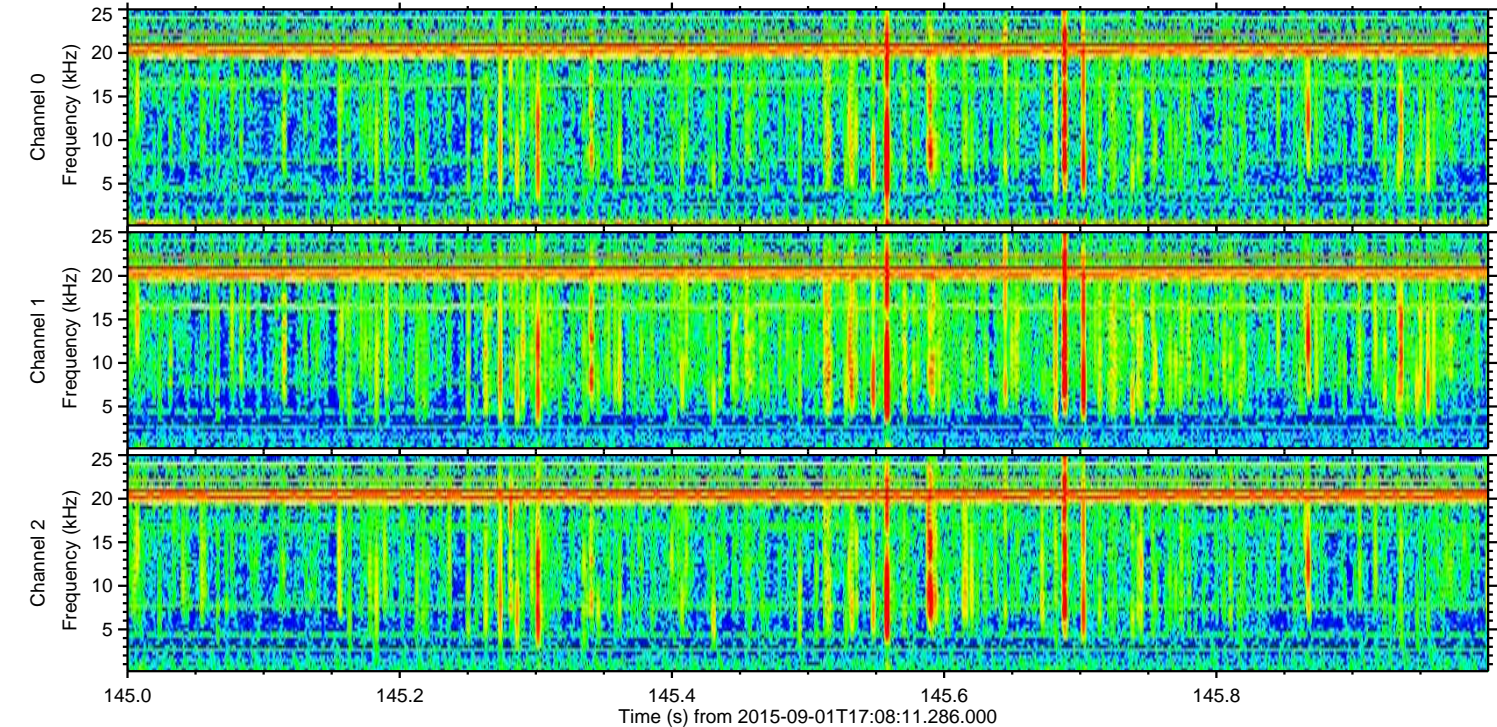
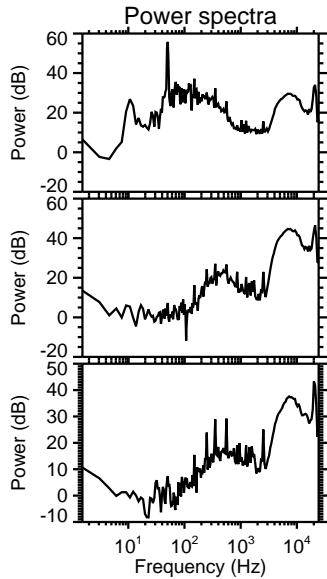
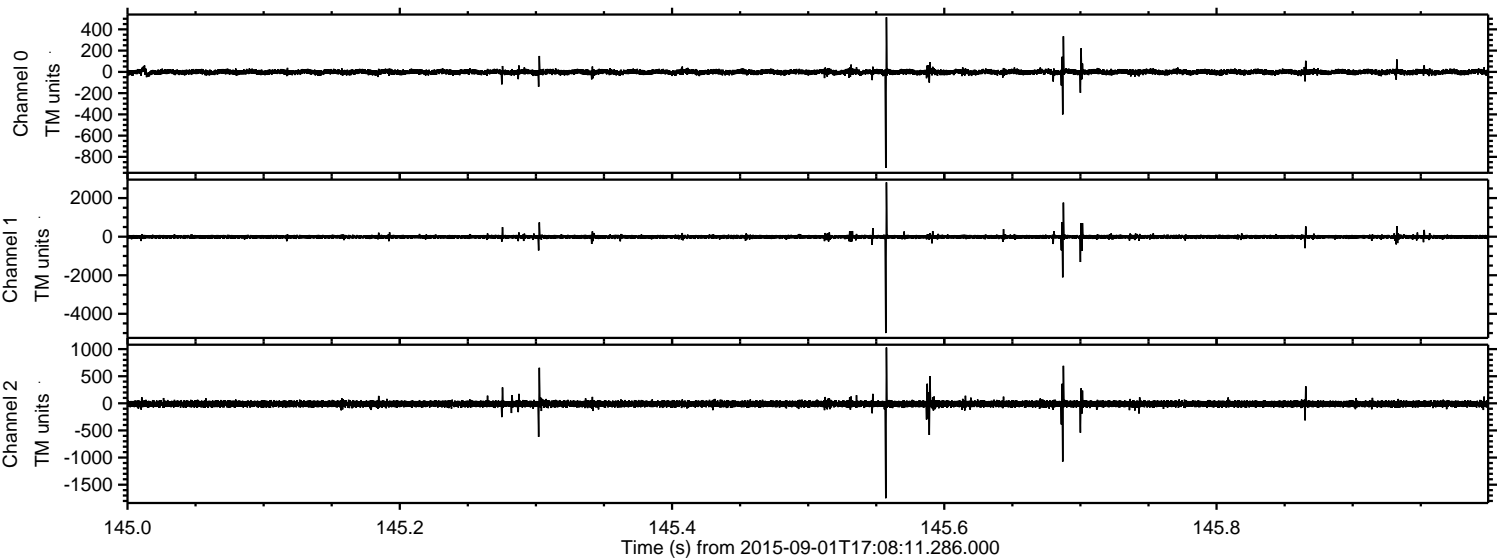


Processed Thu Oct 8 21:05:20 2015 by ELM ver.2012-10-06 from 001__elm20150901_170810__dat00.bin



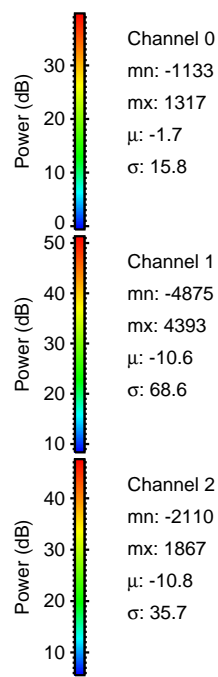
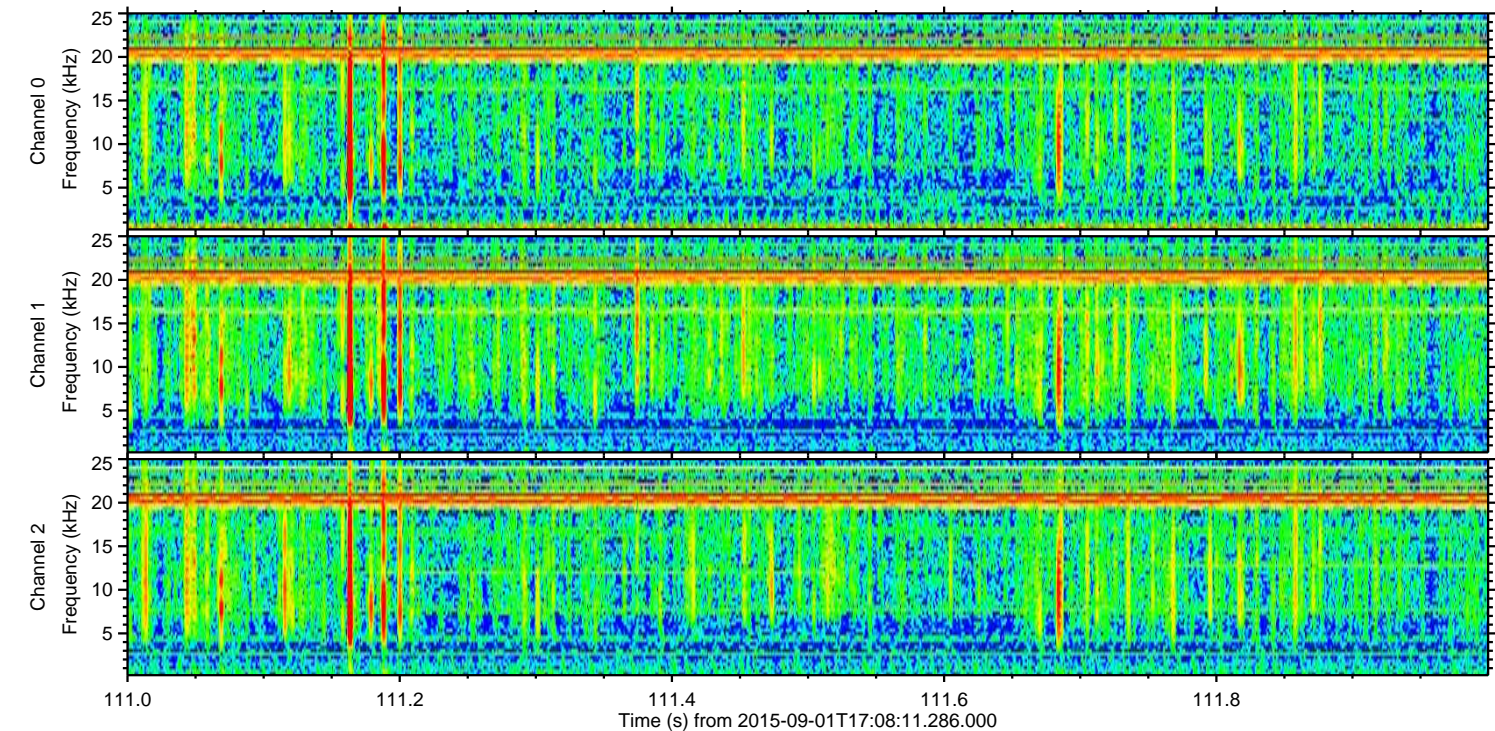
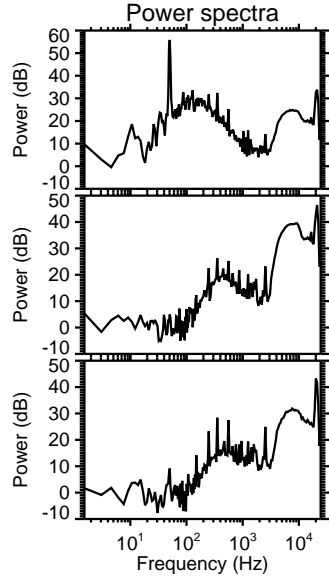
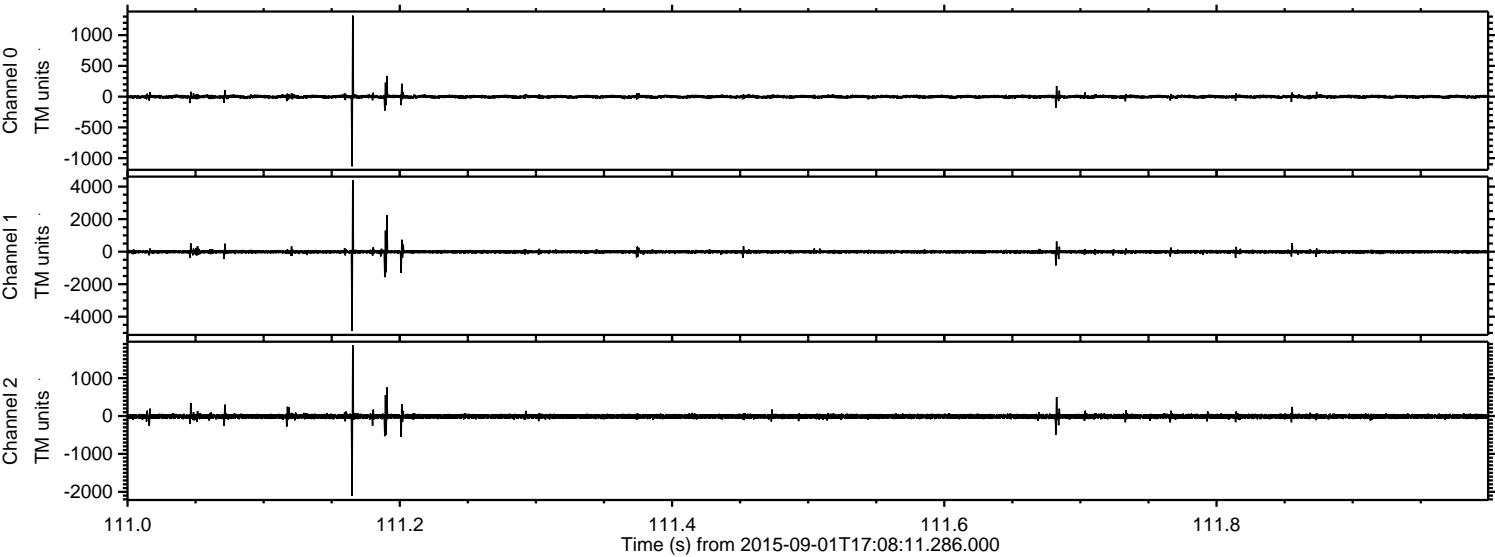
ELMAVAN 3D WAVEFORMS (Measured data sampled at 50 kHz) 51000 packets of 144 samples from 2015-09-01T17:08:11.286.000. Part 146/147

Processed Thu Oct 8 21:05:21 2015 by ELM ver.2012-10-06 from 001__elm20150901_170810__dat00.bin

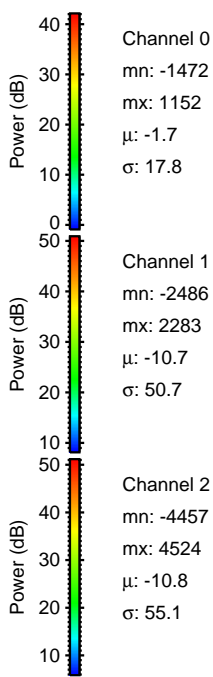
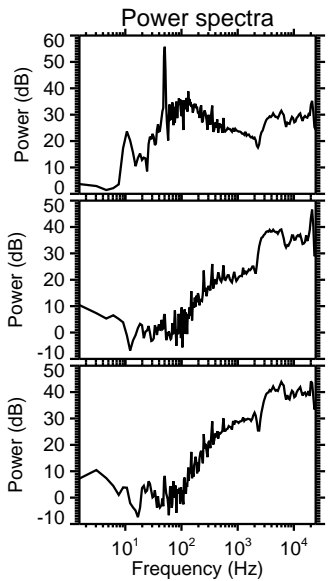
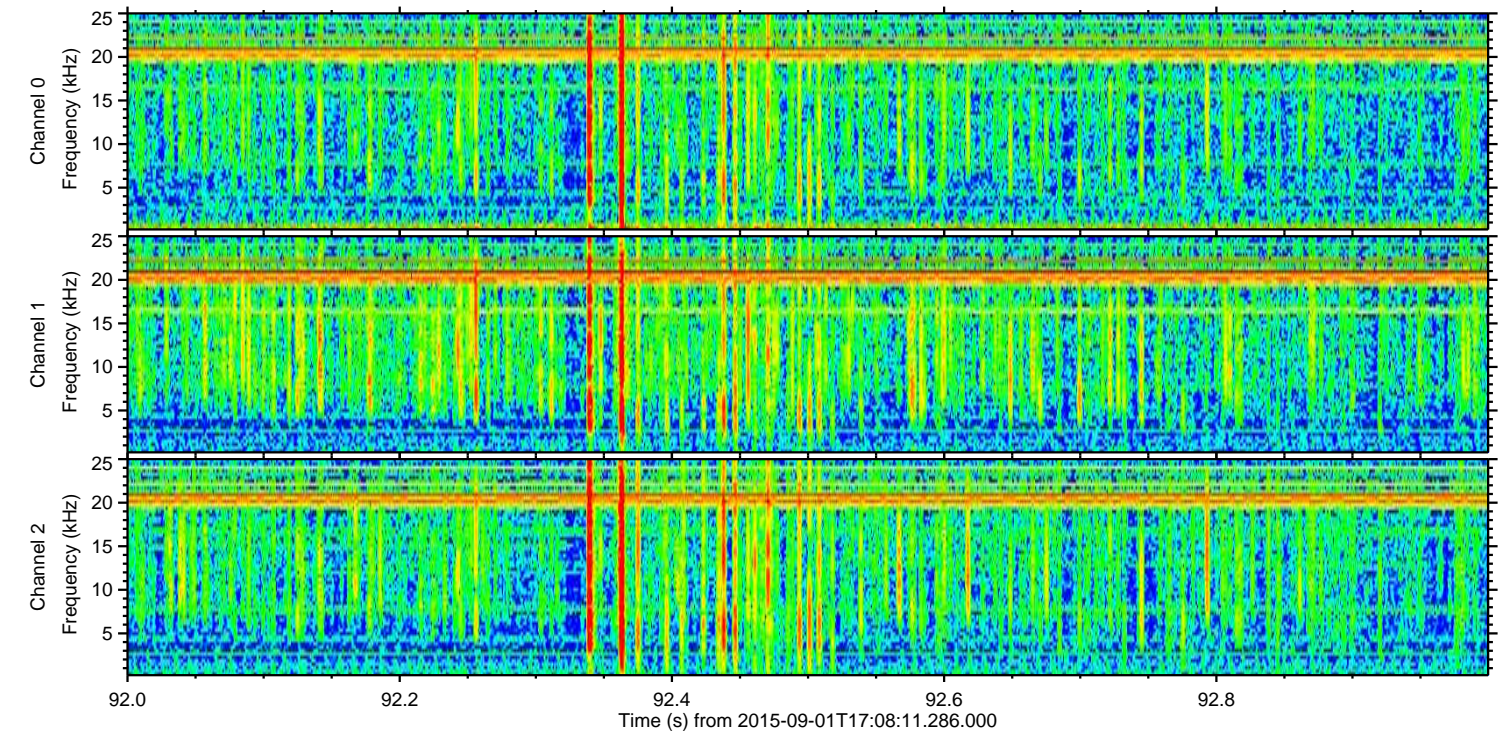
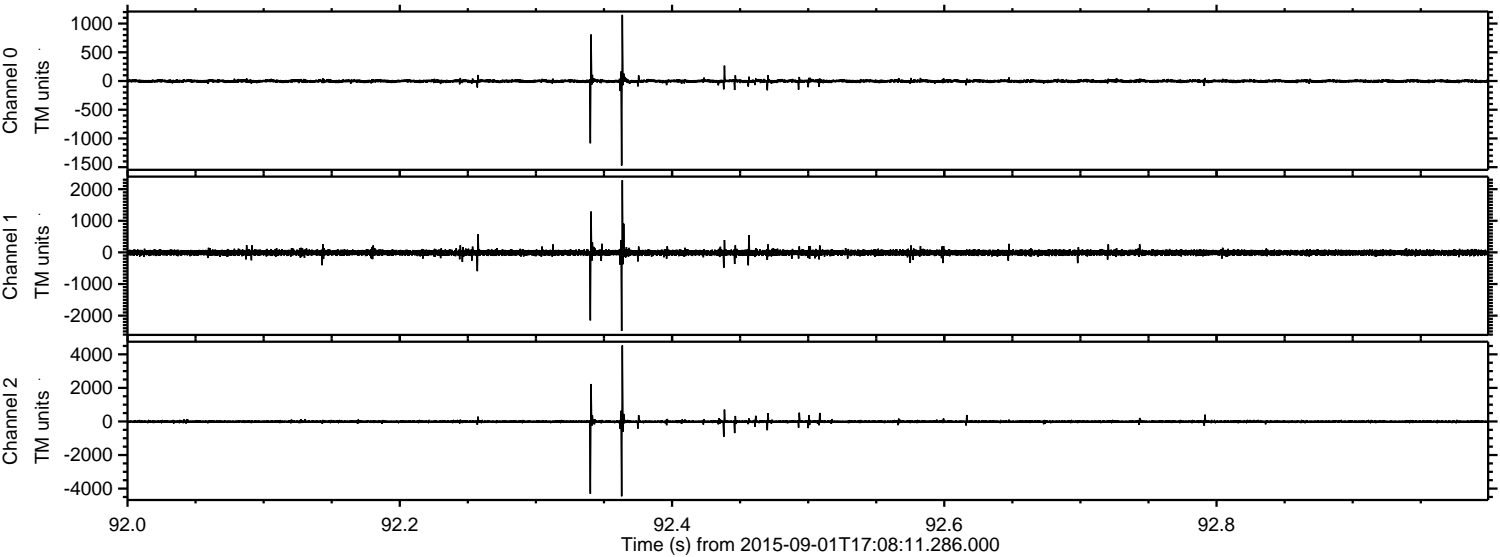


ELMAVAN 3D WAVEFORMS (Measured data sampled at 50 kHz) 51000 packets of 144 samples from 2015-09-01T17:08:11.286.000. Part 112/147

Processed Thu Oct 8 21:05:22 2015 by ELM ver.2012-10-06 from 001__elm20150901_170810__dat00.bin



Processed Thu Oct 8 21:05:23 2015 by ELM ver.2012-10-06 from 001__elm20150901_170810__dat00.bin



Channel 0
mn: -1472
mx: 1152
 μ : -1.7
 σ : 17.8

Channel 1
mn: -2486
mx: 2283
 μ : -10.7
 σ : 50.7

Channel 2
mn: -4457
mx: 4524
 μ : -10.8
 σ : 55.1

ELMAVAN 3D WAVEFORMS (Measured data sampled at 50 kHz) 51000 packets of 144 samples from 2015-09-01T17:08:11.286.000. Part 126/147

