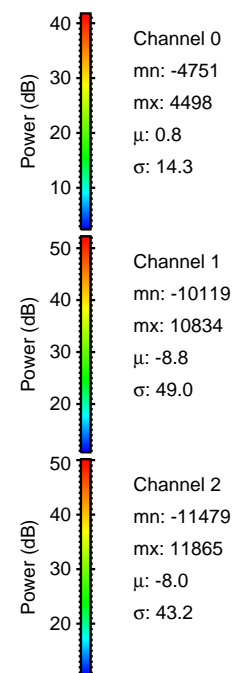
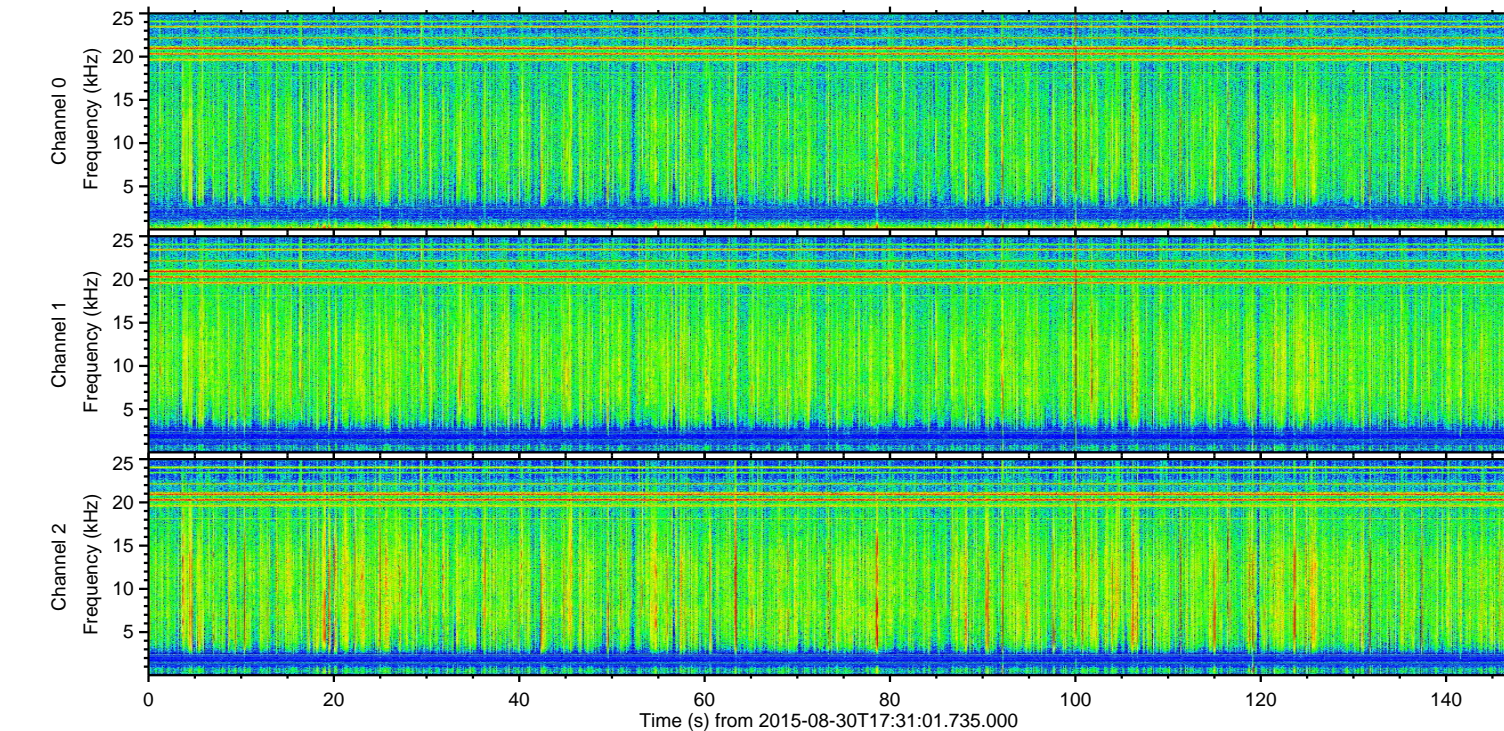
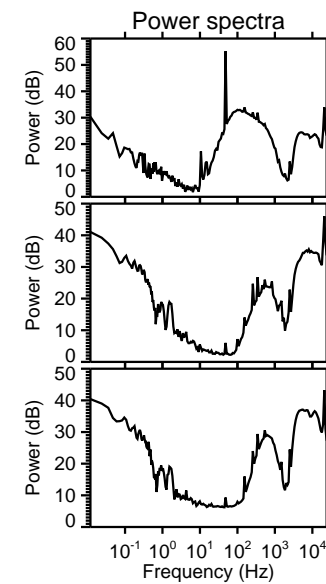
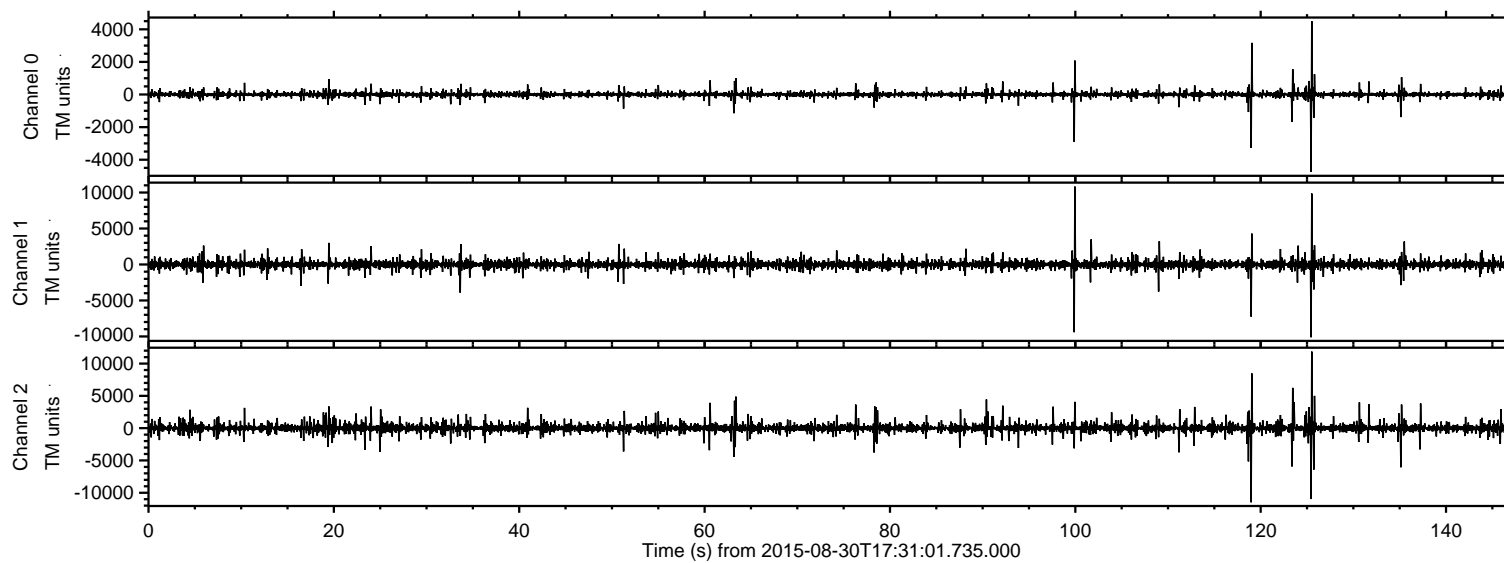


# ELMAVAN 3D WAVEFORMS (Measured data sampled at 50 kHz) 51000 packets of 144 samples from 2015-08-30T17:31:01.735.000.

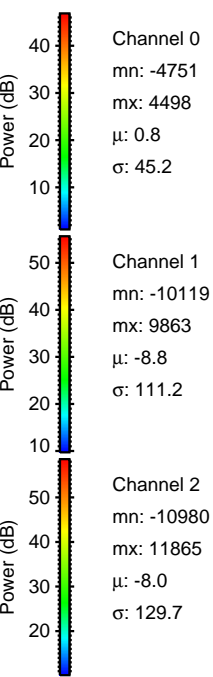
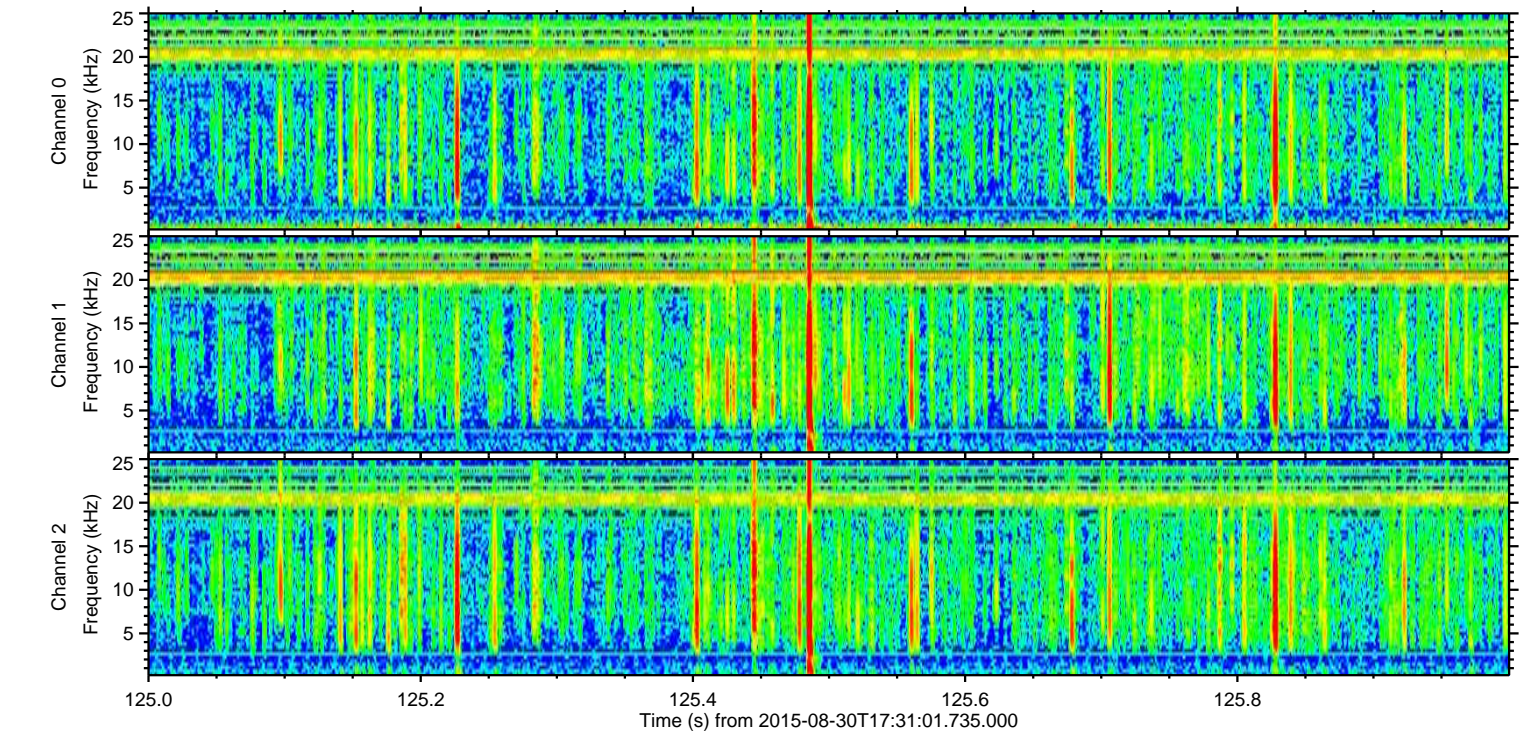
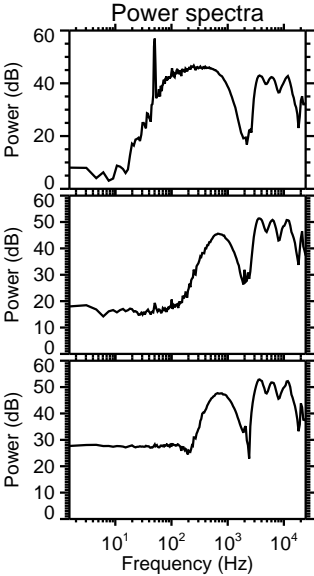
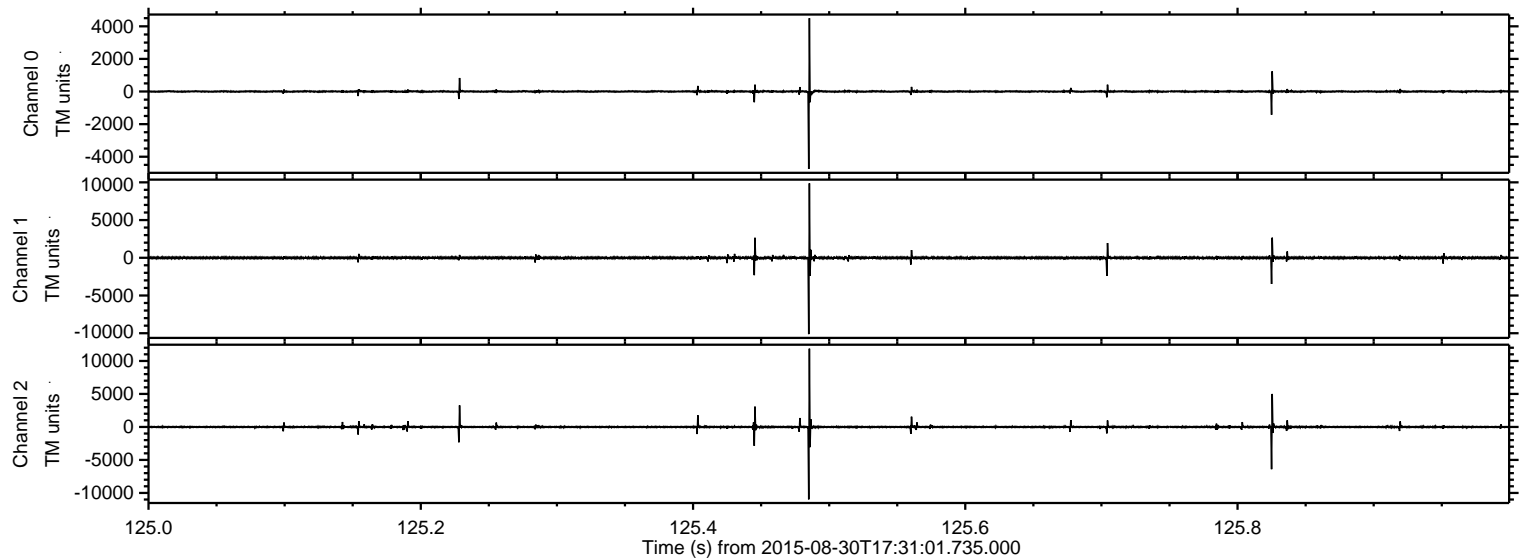
Processed Thu Oct 8 07:54:07 2015 by ELM ver.2012-10-06 from 001\_\_elm20150830\_173100\_\_dat00.bin





ELMAVAN 3D WAVEFORMS (Measured data sampled at 50 kHz) 51000 packets of 144 samples from 2015-08-30T17:31:01.735.000. Part 126/147

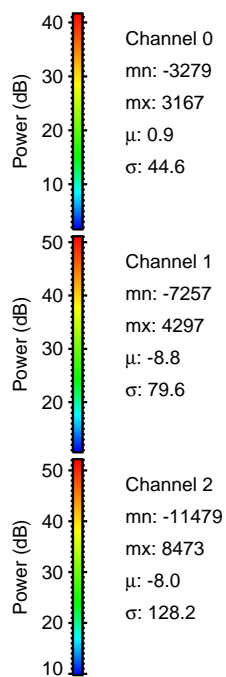
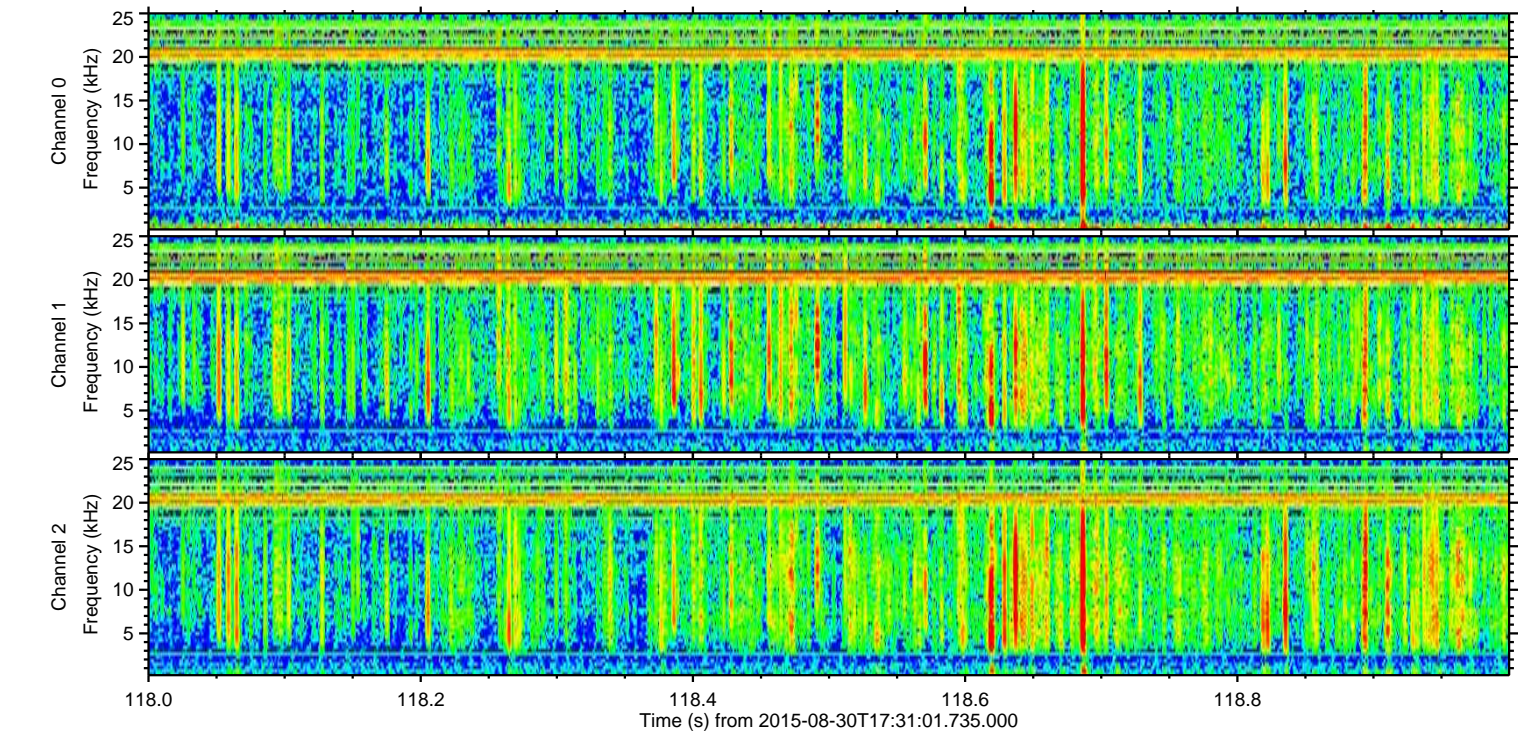
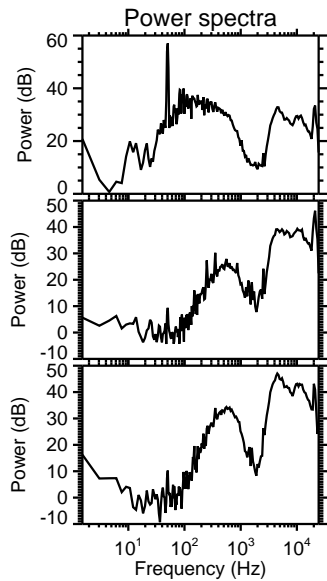
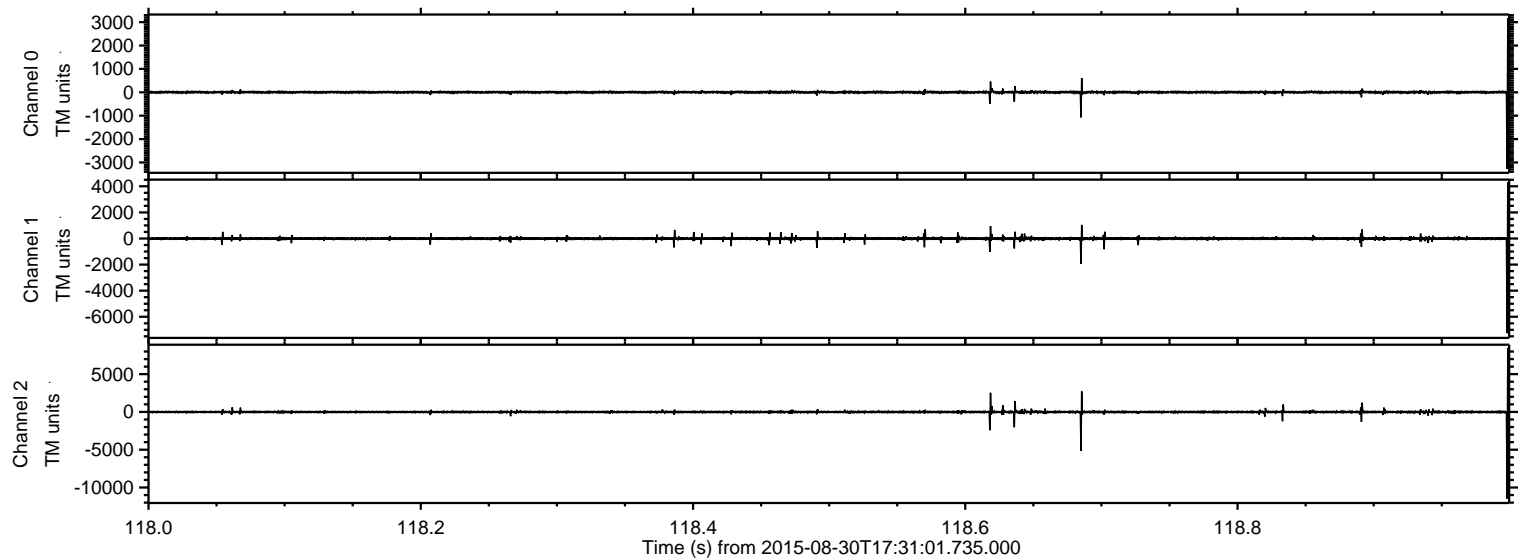
Processed Thu Oct 8 07:54:20 2015 by ELM ver.2012-10-06 from 001\_\_elm20150830\_173100\_\_dat00.bin





ELMAVAN 3D WAVEFORMS (Measured data sampled at 50 kHz) 51000 packets of 144 samples from 2015-08-30T17:31:01.735.000. Part 119/147

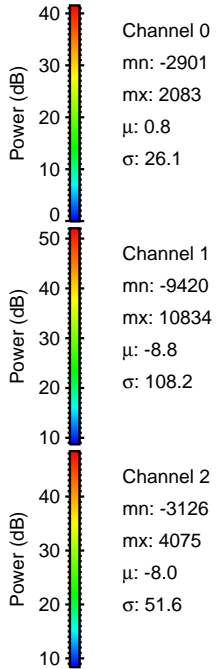
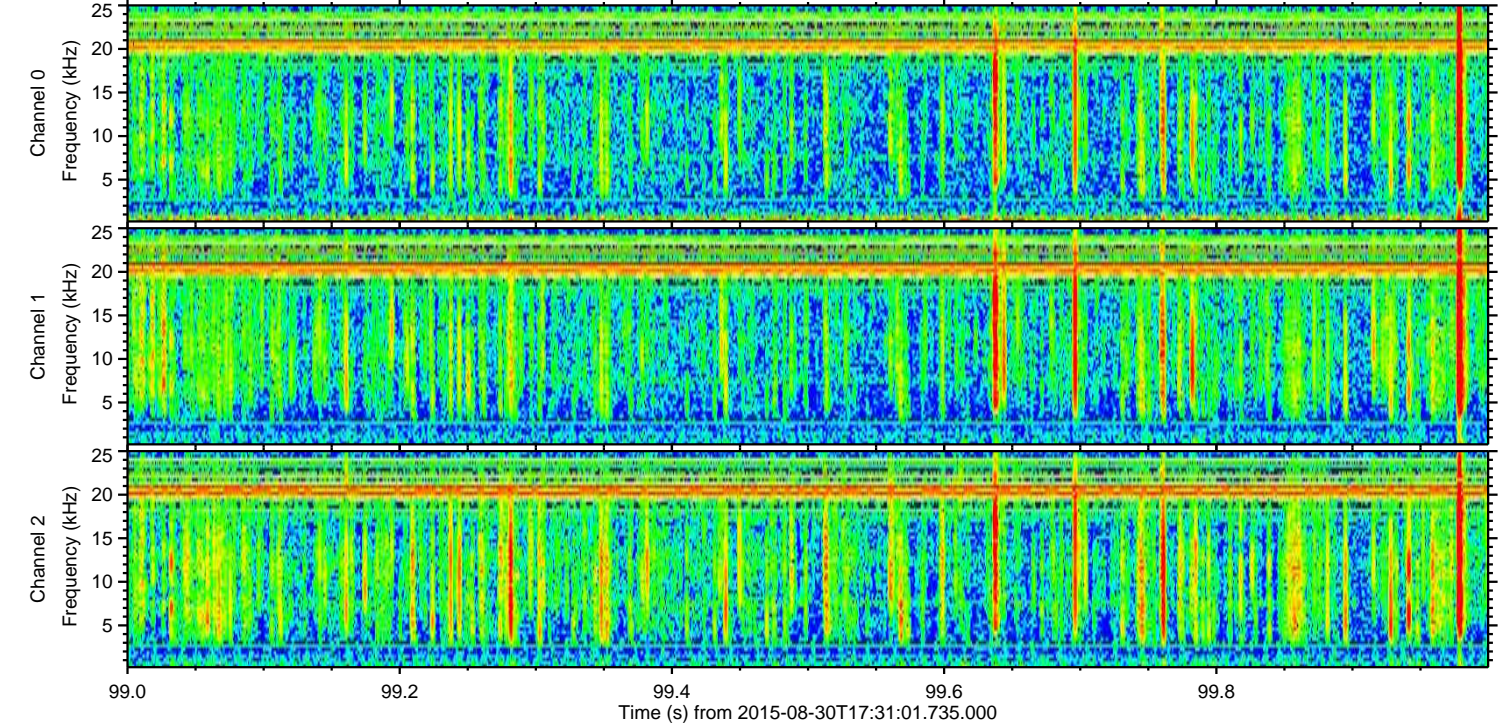
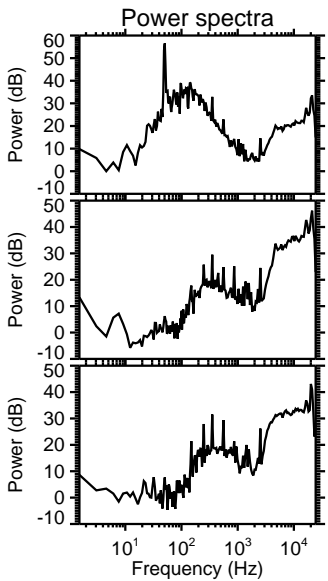
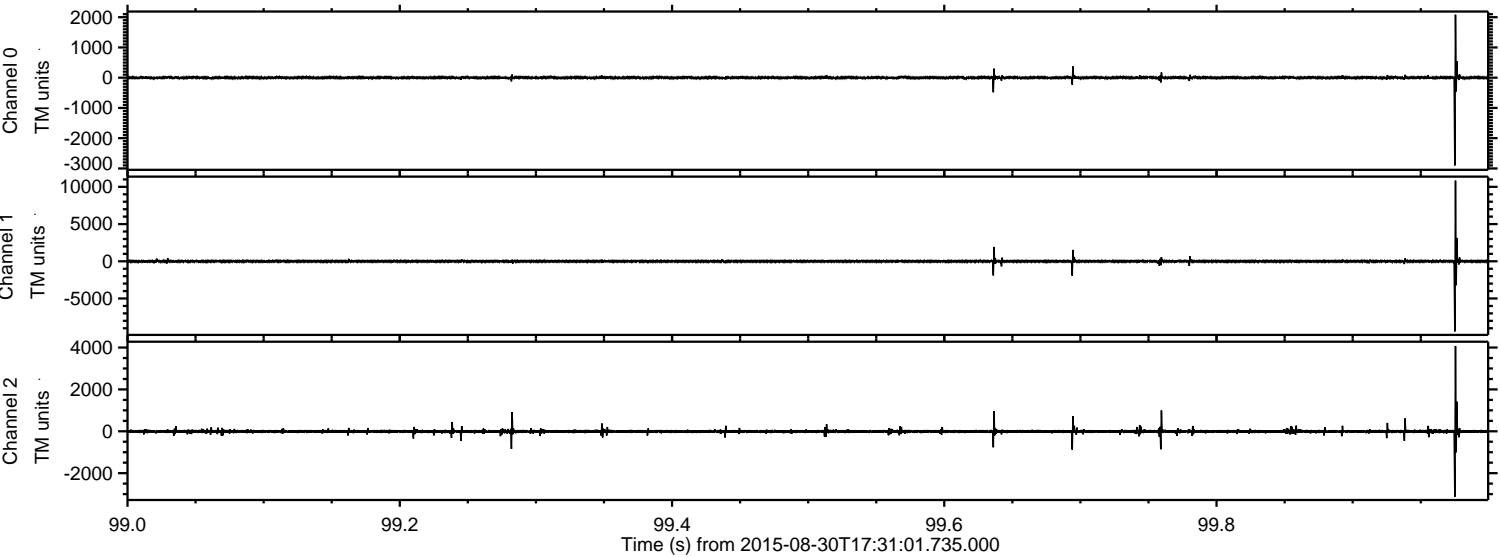
Processed Thu Oct 8 07:54:21 2015 by ELM ver.2012-10-06 from 001\_\_elm20150830\_173100\_\_dat00.bin





ELMAVAN 3D WAVEFORMS (Measured data sampled at 50 kHz) 51000 packets of 144 samples from 2015-08-30T17:31:01.735.000. Part 100/147

Processed Thu Oct 8 07:54:22 2015 by ELM ver.2012-10-06 from 001\_\_elm20150830\_173100\_\_dat00.bin



Channel 0  
mn: -2901  
mx: 2083  
 $\mu$ : 0.8  
 $\sigma$ : 26.1

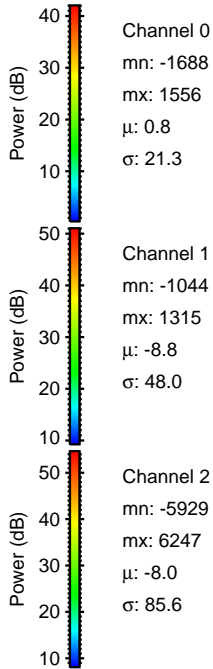
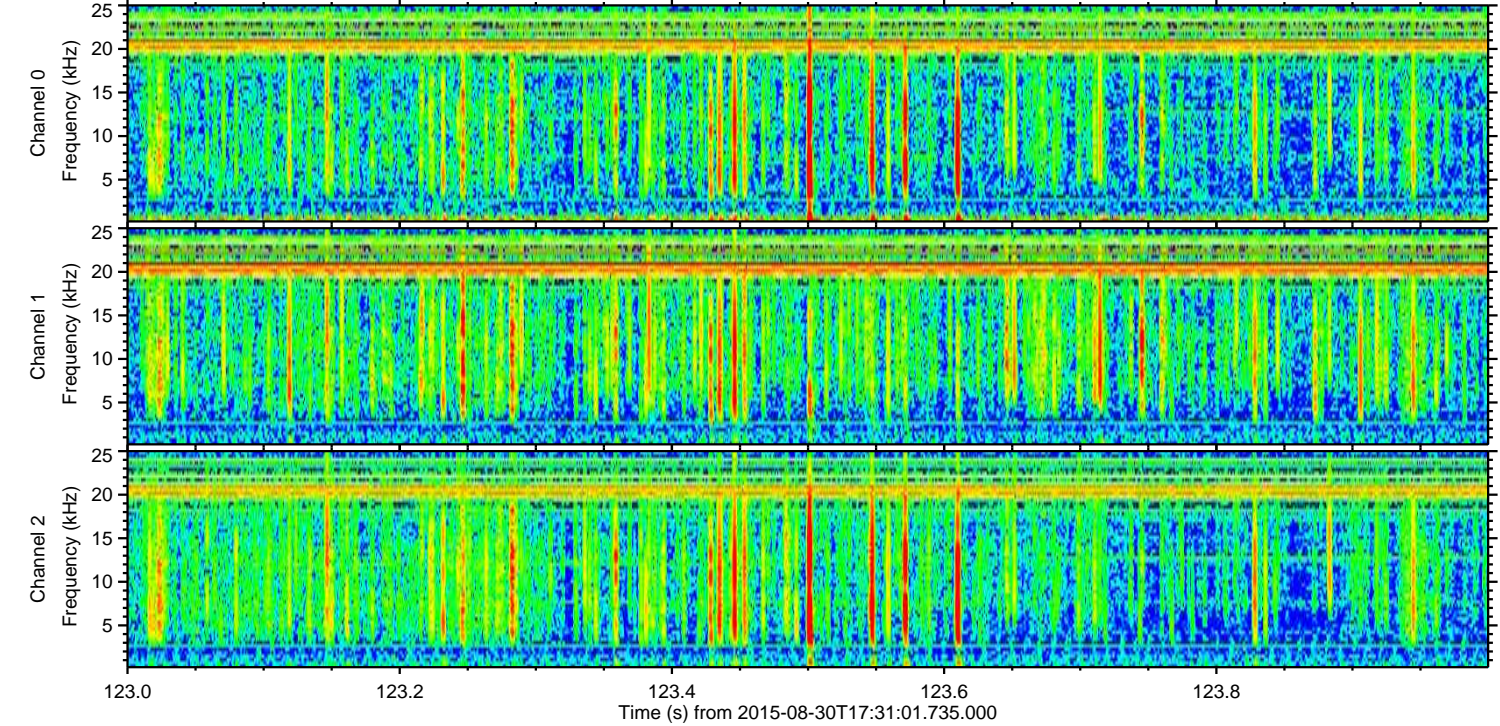
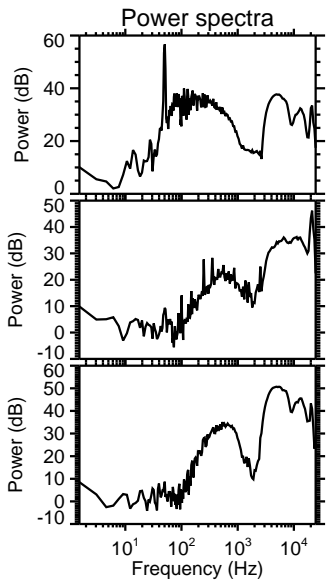
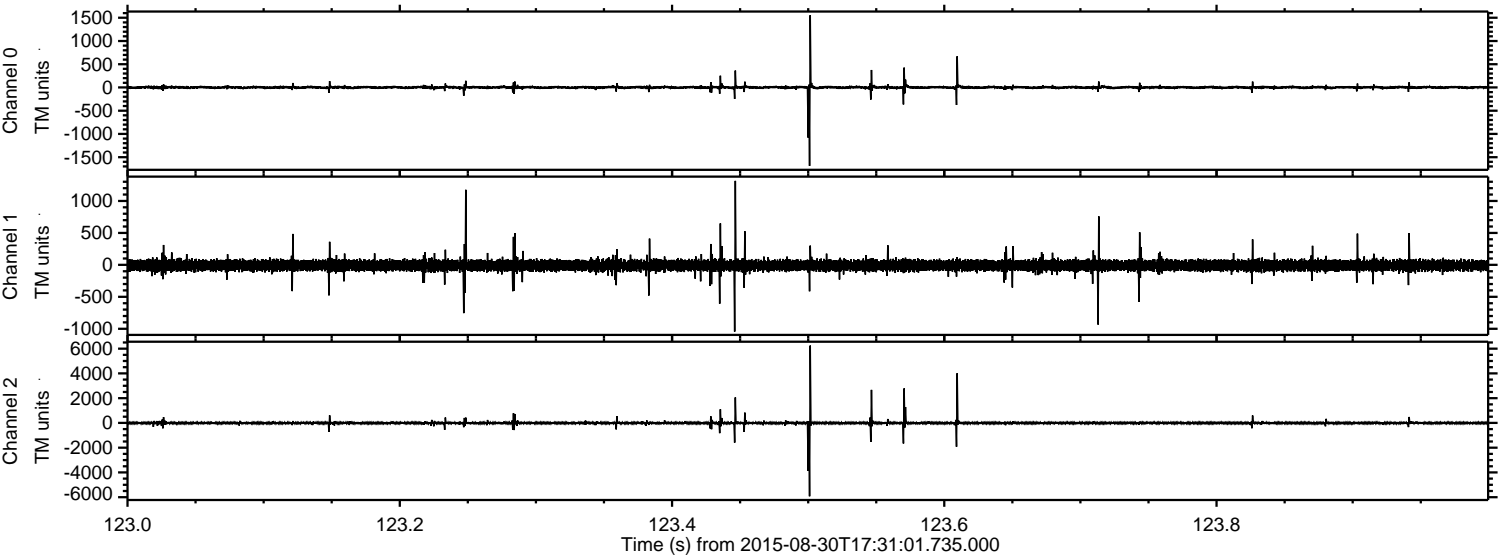
Channel 1  
mn: -9420  
mx: 10834  
 $\mu$ : -8.8  
 $\sigma$ : 108.2

Channel 2  
mn: -3126  
mx: 4075  
 $\mu$ : -8.0  
 $\sigma$ : 51.6



ELMAVAN 3D WAVEFORMS (Measured data sampled at 50 kHz) 51000 packets of 144 samples from 2015-08-30T17:31:01.735.000. Part 124/147

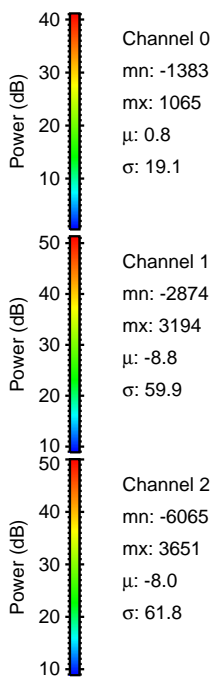
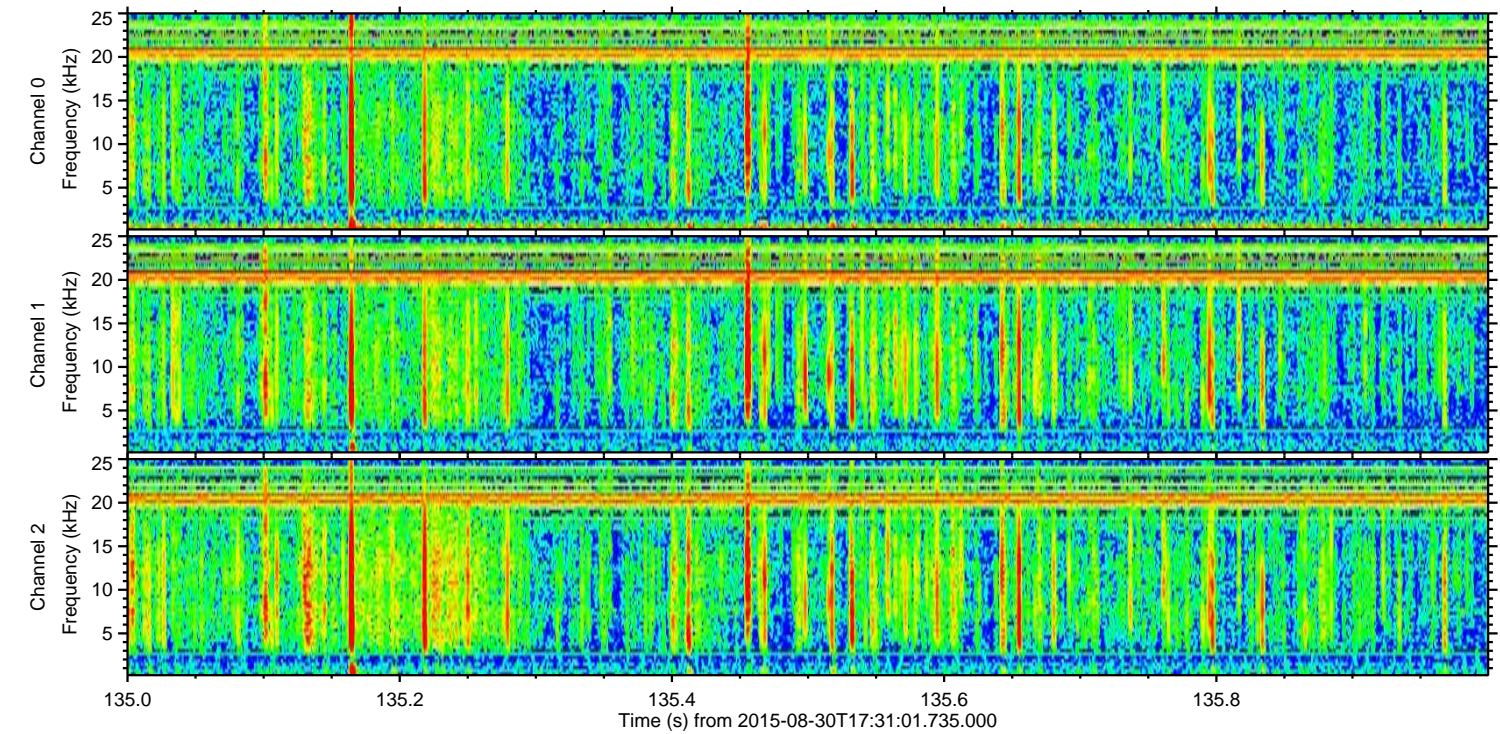
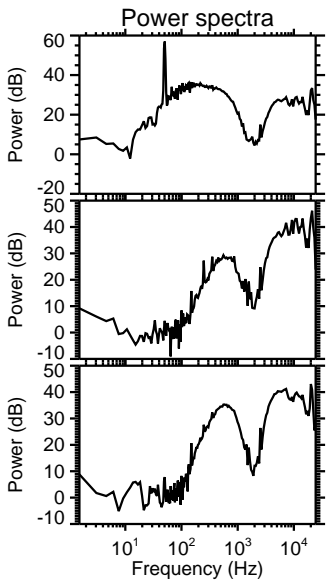
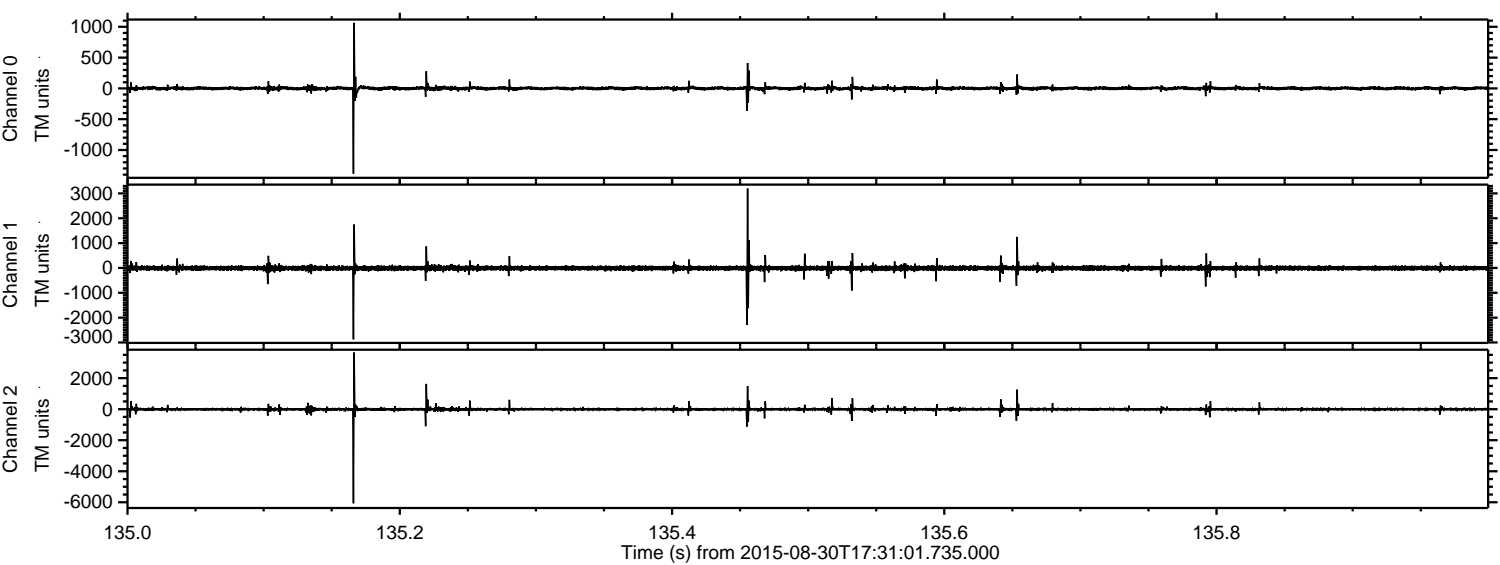
Processed Thu Oct 8 07:54:23 2015 by ELM ver.2012-10-06 from 001\_\_elm20150830\_173100\_\_dat00.bin





ELMAVAN 3D WAVEFORMS (Measured data sampled at 50 kHz) 51000 packets of 144 samples from 2015-08-30T17:31:01.735.000. Part 136/147

Processed Thu Oct 8 07:54:24 2015 by ELM ver.2012-10-06 from 001\_\_elm20150830\_173100\_\_dat00.bin



Channel 0  
mn: -1383  
mx: 1065  
 $\mu$ : 0.8  
 $\sigma$ : 19.1

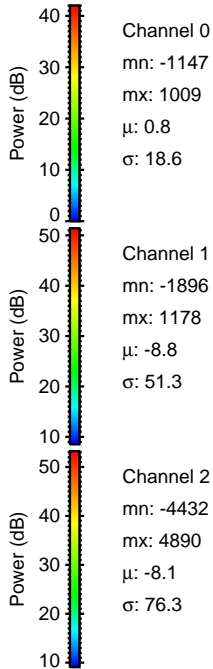
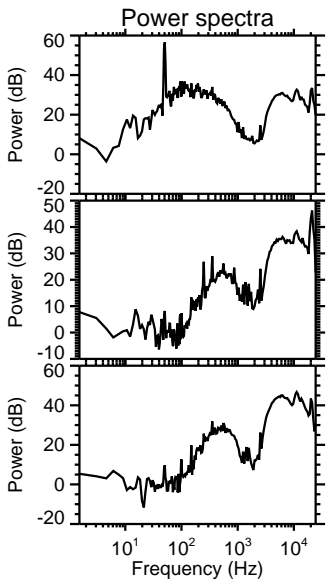
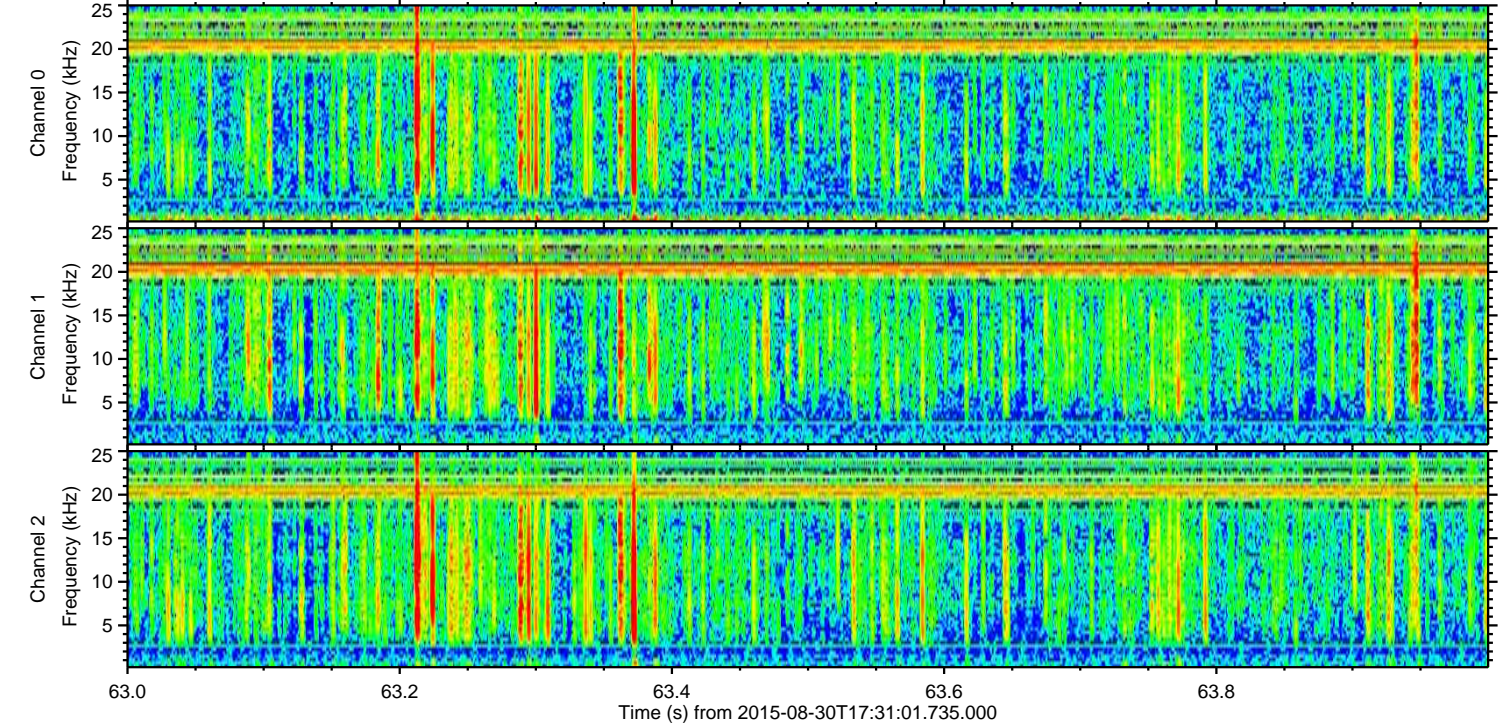
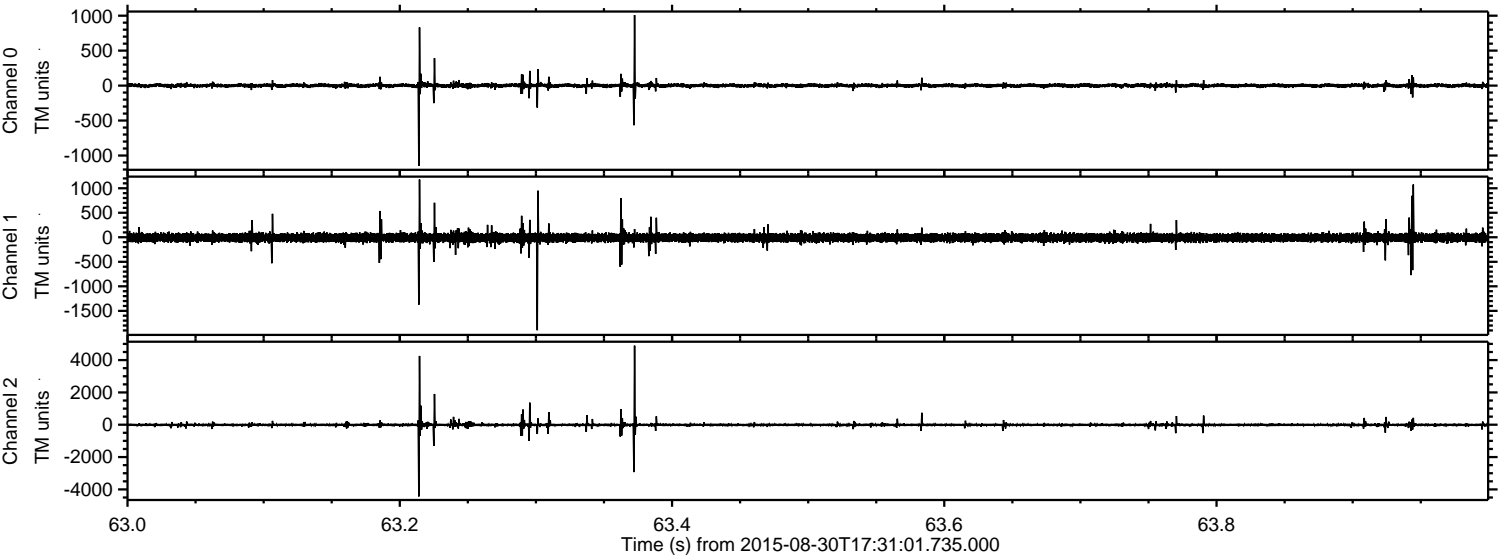
Channel 1  
mn: -2874  
mx: 3194  
 $\mu$ : -8.8  
 $\sigma$ : 59.9

Channel 2  
mn: -6065  
mx: 3651  
 $\mu$ : -8.0  
 $\sigma$ : 61.8



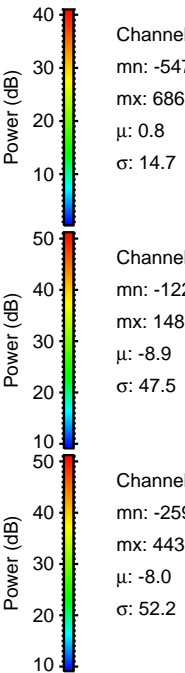
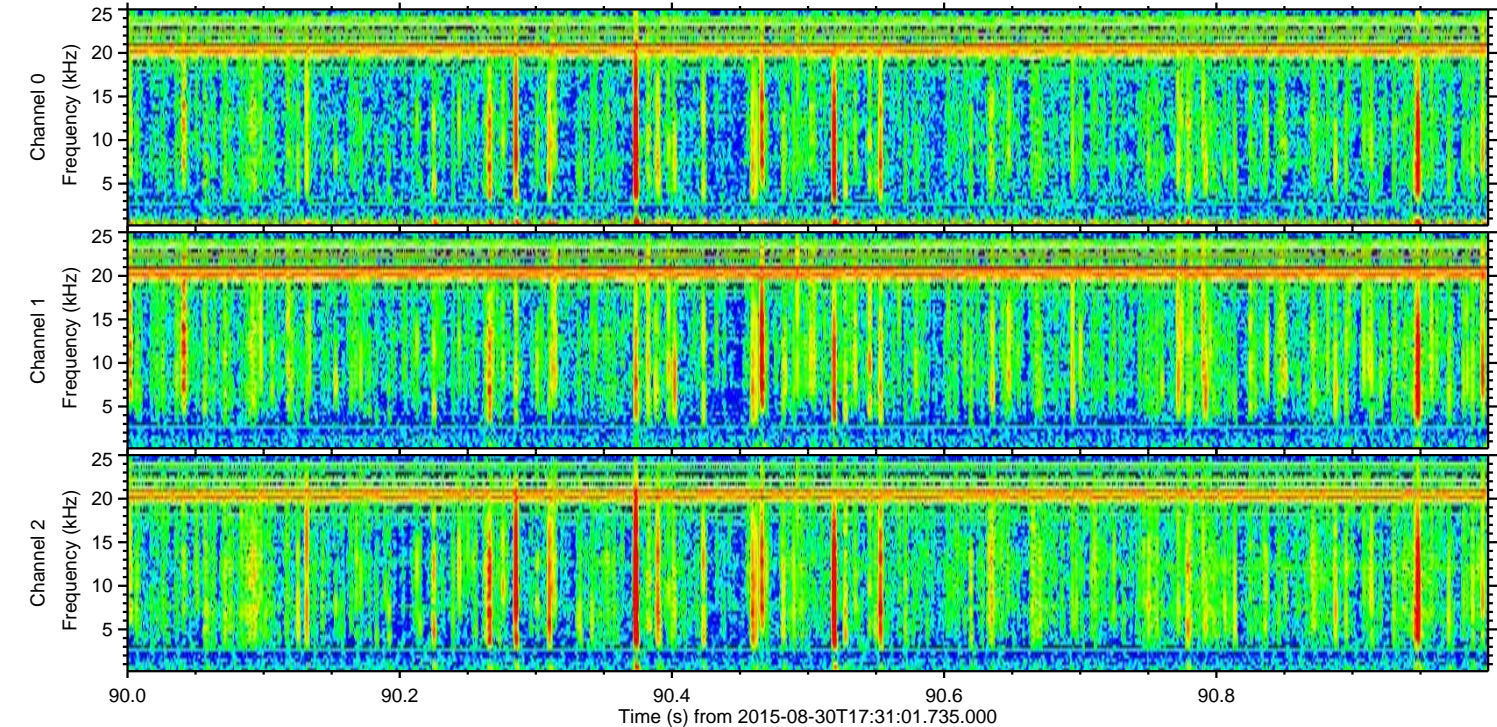
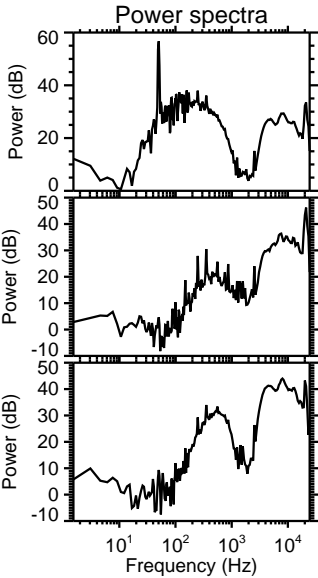
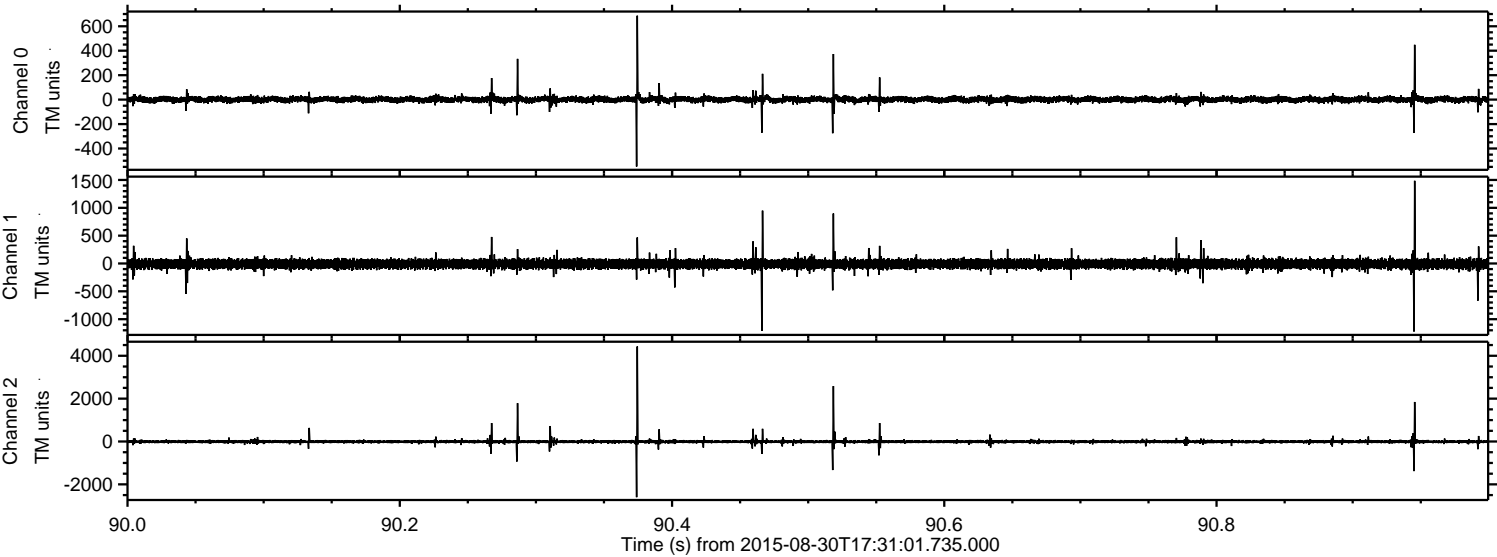
ELMAVAN 3D WAVEFORMS (Measured data sampled at 50 kHz) 51000 packets of 144 samples from 2015-08-30T17:31:01.735.000. Part 64/147

Processed Thu Oct 8 07:54:25 2015 by ELM ver.2012-10-06 from 001\_\_elm20150830\_173100\_\_dat00.bin





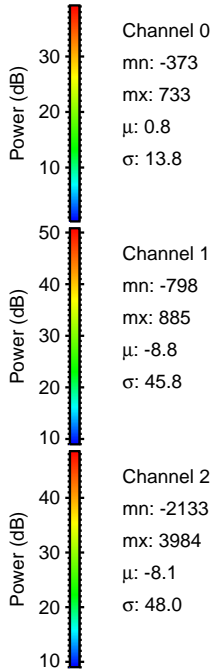
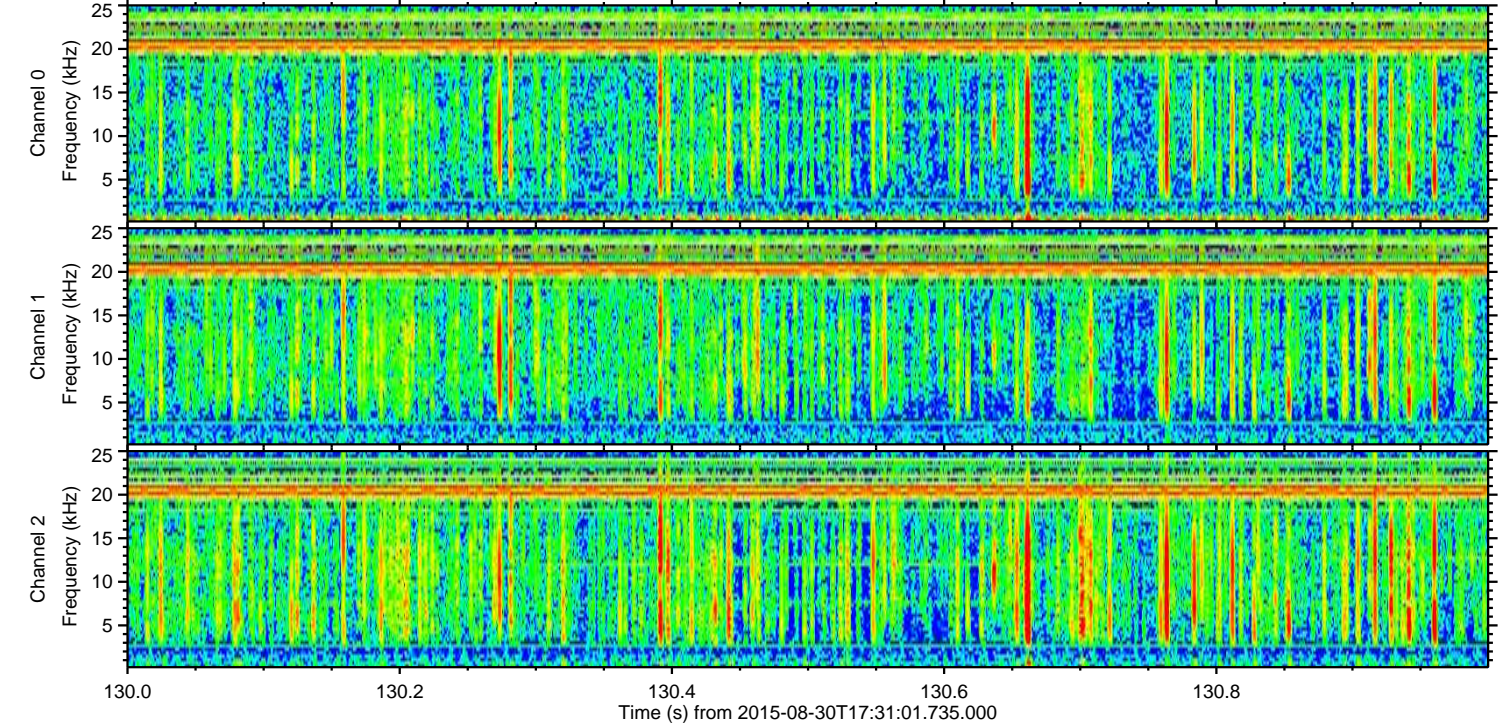
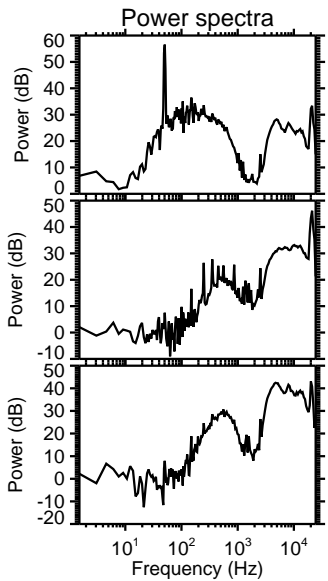
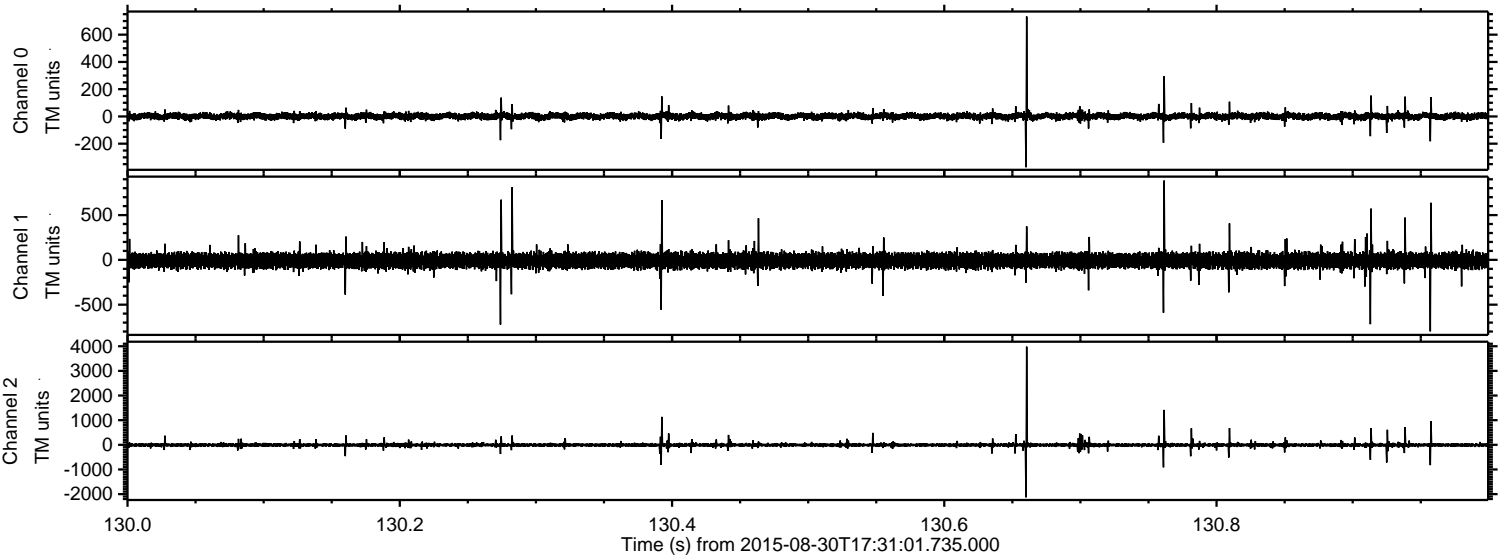
Processed Thu Oct 8 07:54:26 2015 by ELM ver.2012-10-06 from 001\_\_elm20150830\_173100\_\_dat00.bin





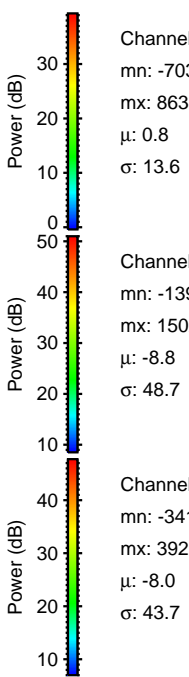
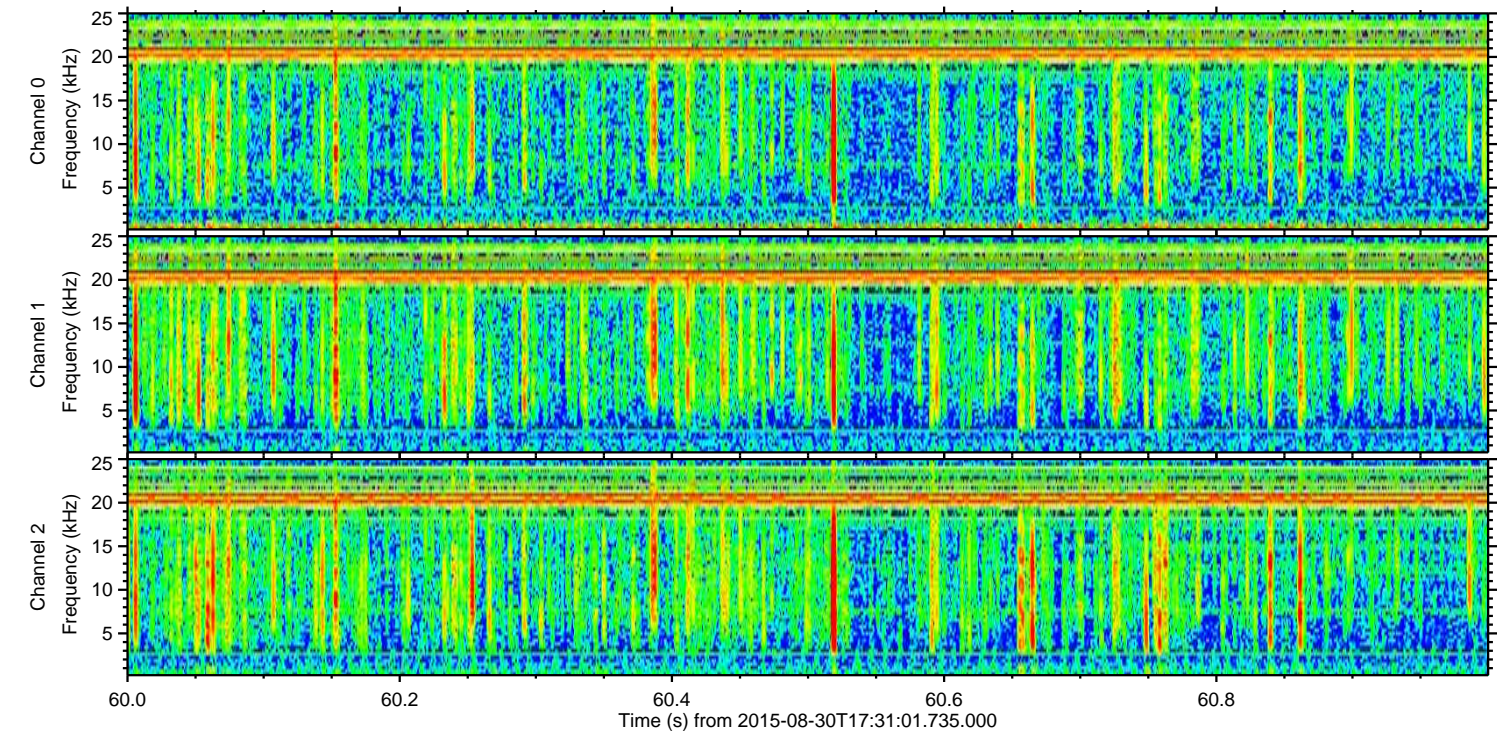
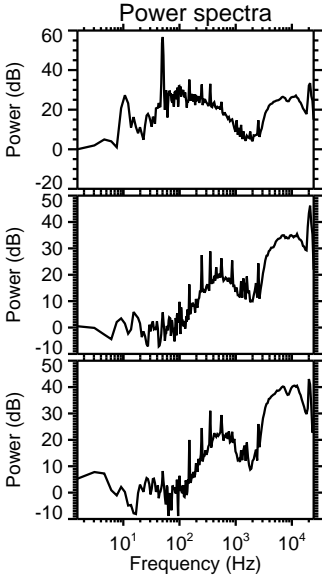
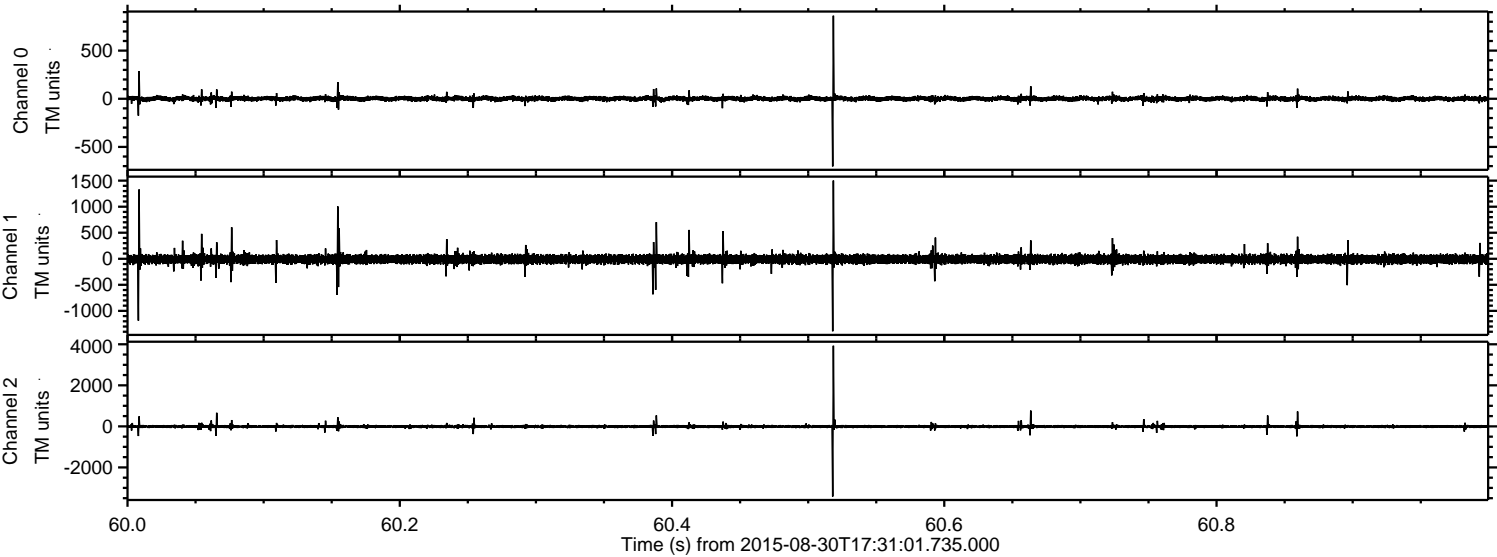
ELMAVAN 3D WAVEFORMS (Measured data sampled at 50 kHz) 51000 packets of 144 samples from 2015-08-30T17:31:01.735.000. Part 131/147

Processed Thu Oct 8 07:54:27 2015 by ELM ver.2012-10-06 from 001\_\_elm20150830\_173100\_\_dat00.bin





Processed Thu Oct 8 07:54:28 2015 by ELM ver.2012-10-06 from 001\_\_elm20150830\_173100\_\_dat00.bin



Channel 0  
mn: -703  
mx: 863  
 $\mu$ : 0.8  
 $\sigma$ : 13.6

Channel 1  
mn: -1392  
mx: 1502  
 $\mu$ : -8.8  
 $\sigma$ : 48.7

Channel 2  
mn: -3417  
mx: 3929  
 $\mu$ : -8.0  
 $\sigma$ : 43.7



Processed Thu Oct 8 07:54:29 2015 by ELM ver.2012-10-06 from 001\_\_elm20150830\_173100\_\_dat00.bin

