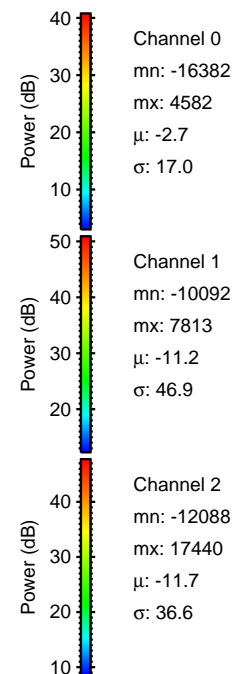
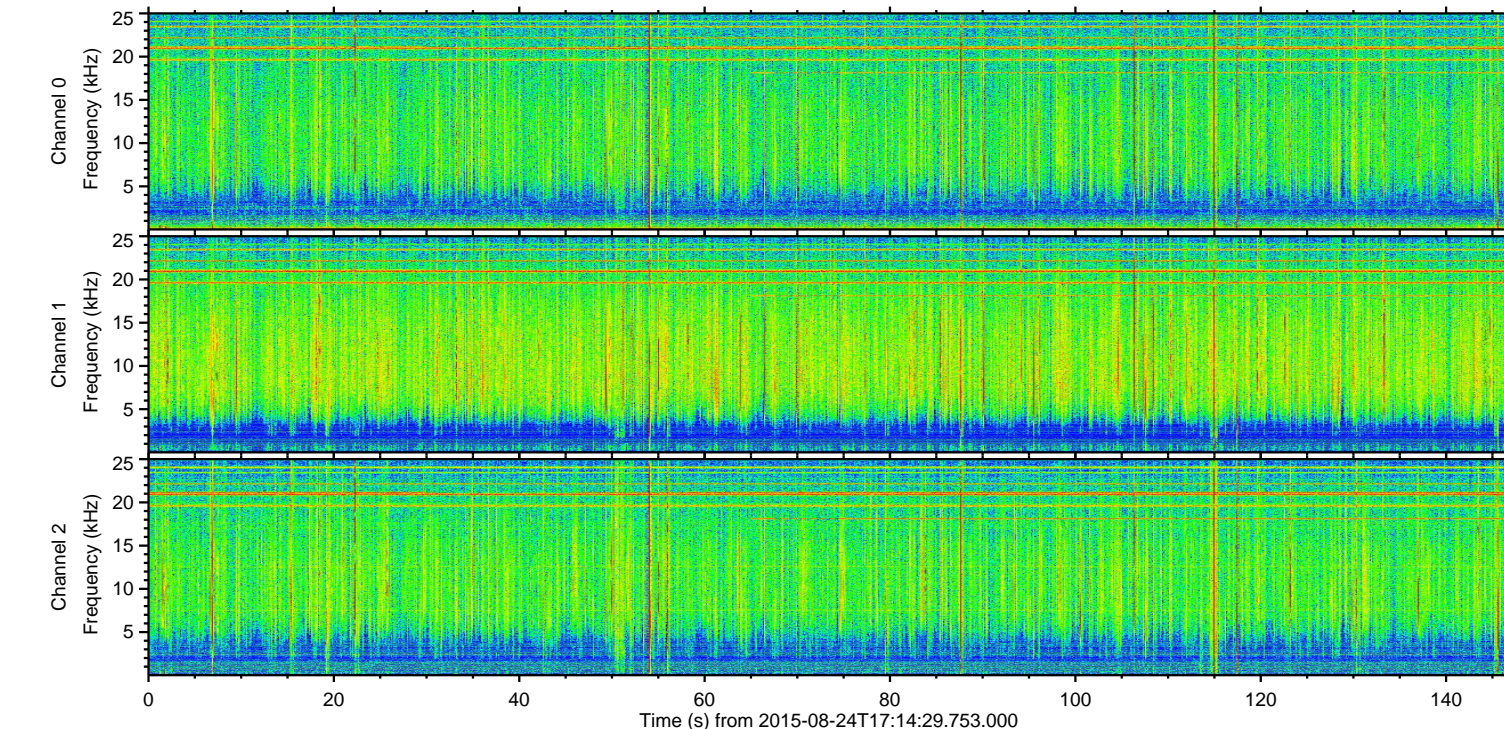
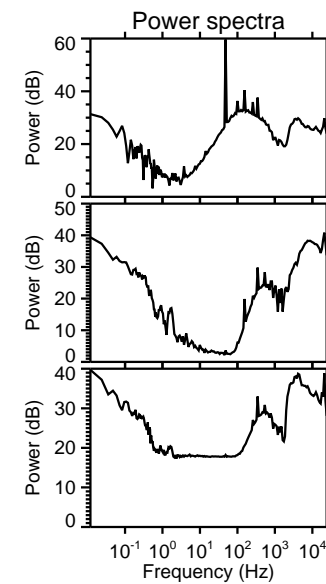
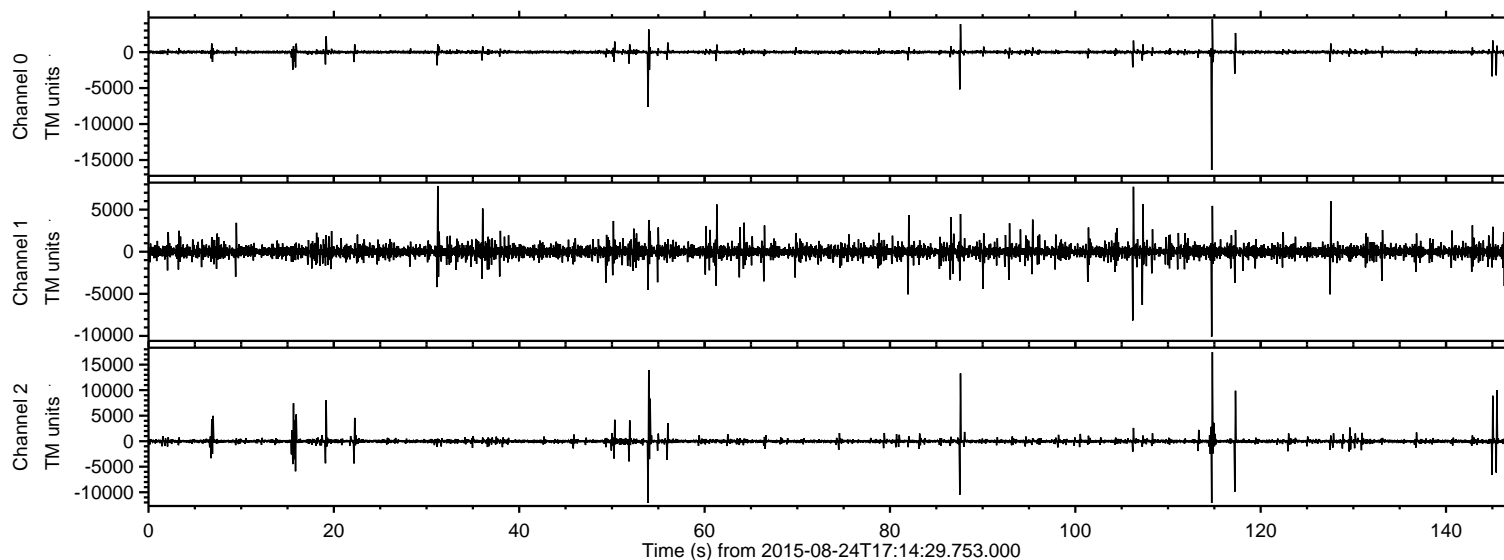


# ELMAVAN 3D WAVEFORMS (Measured data sampled at 50 kHz) 51000 packets of 144 samples from 2015-08-24T17:14:29.753.000.

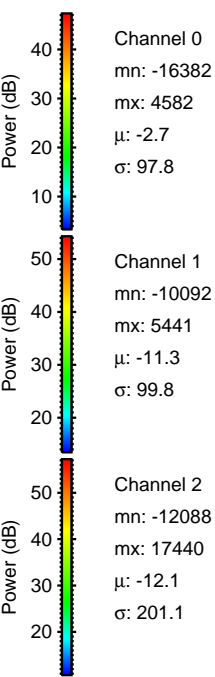
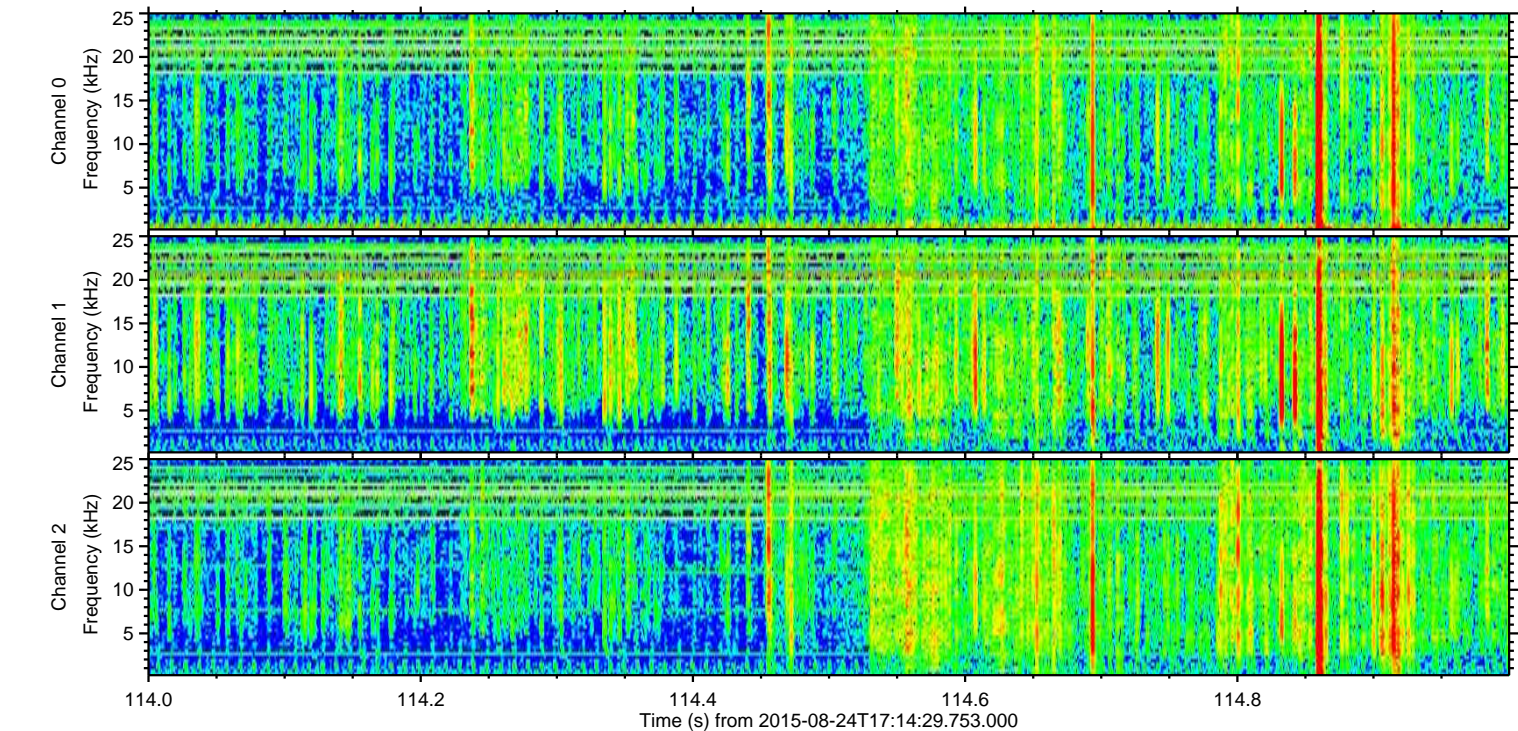
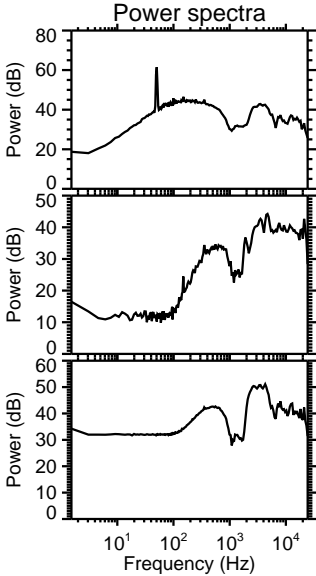
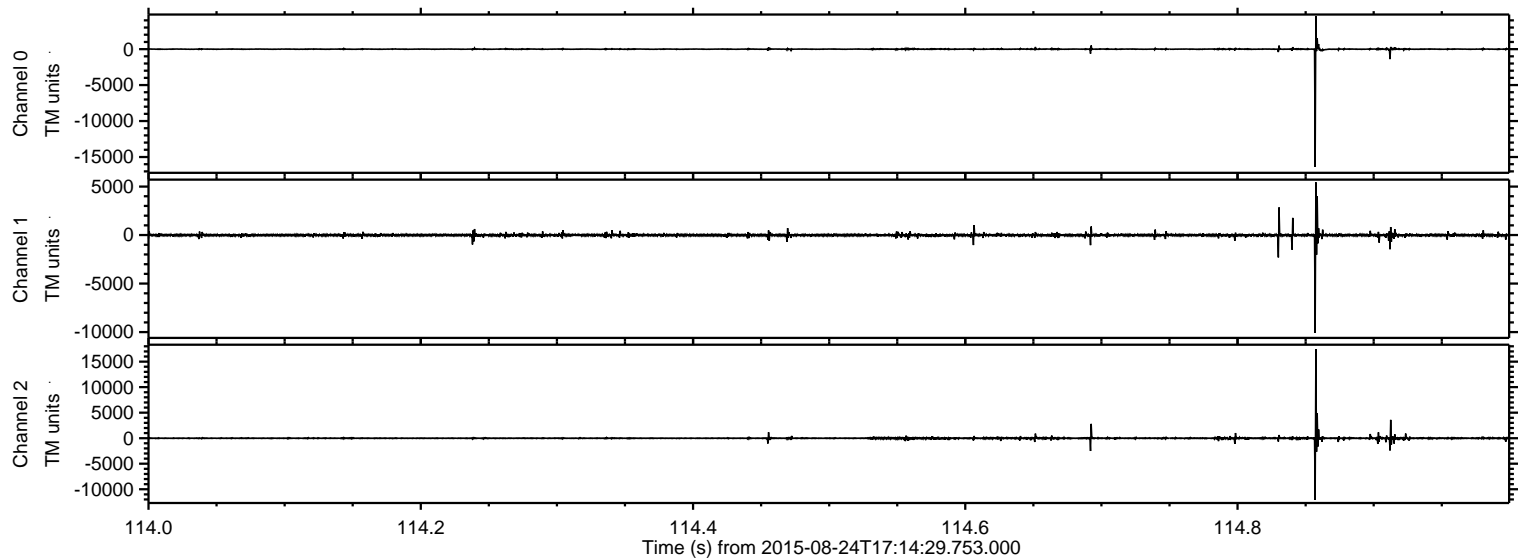
Processed Tue Oct 6 13:14:03 2015 by ELM ver.2012-10-06 from 001\_\_elm20150824\_171428\_\_dat00.bin





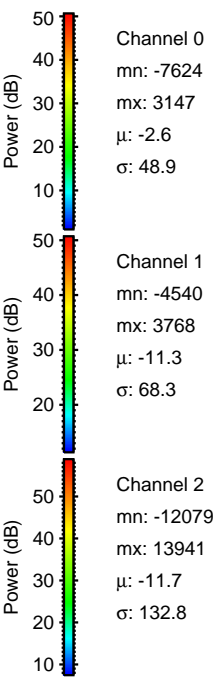
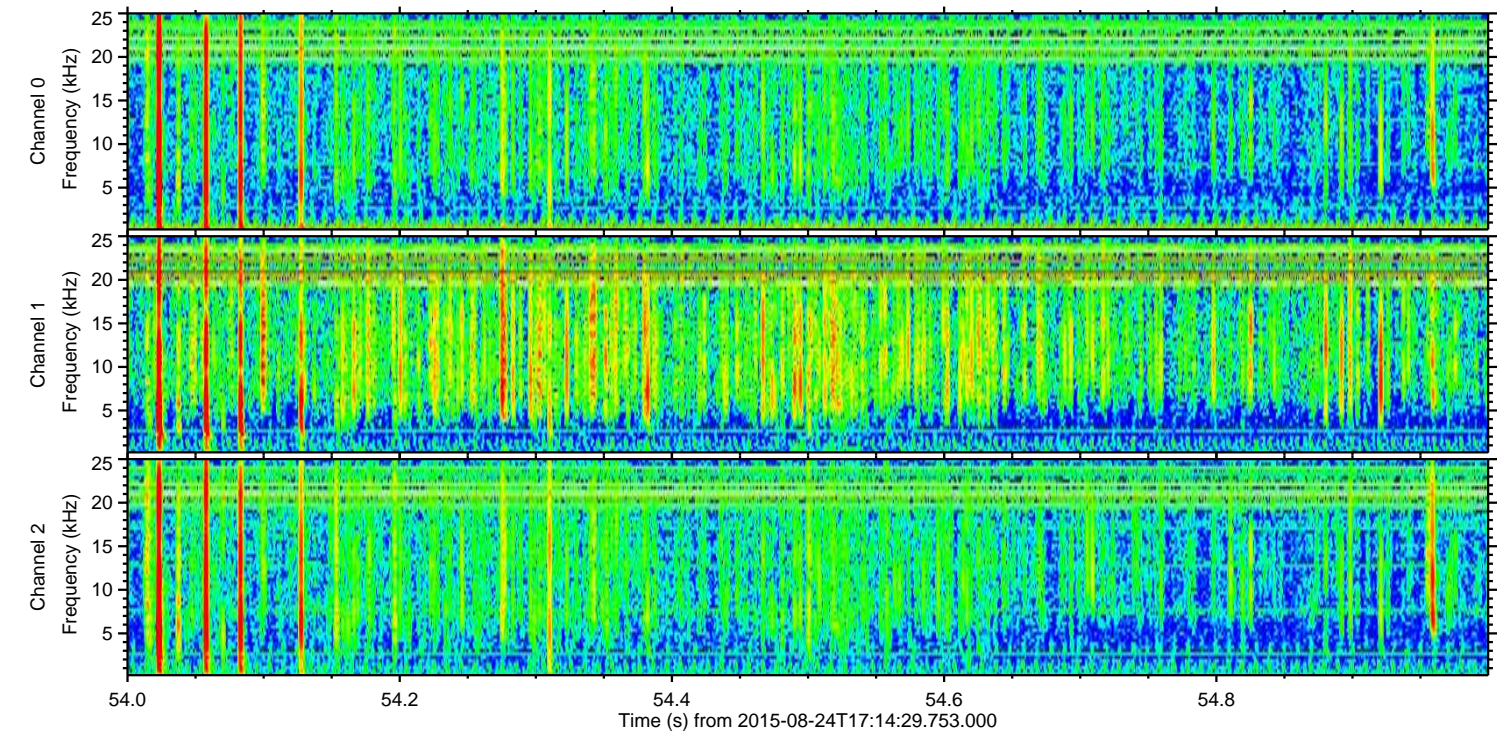
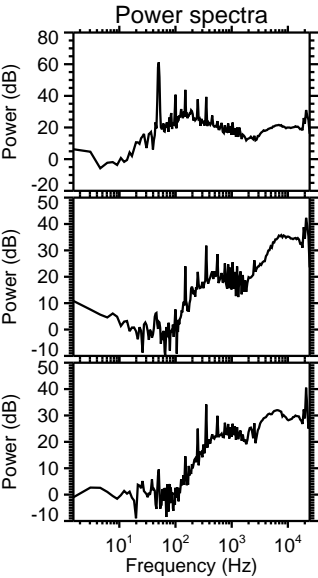
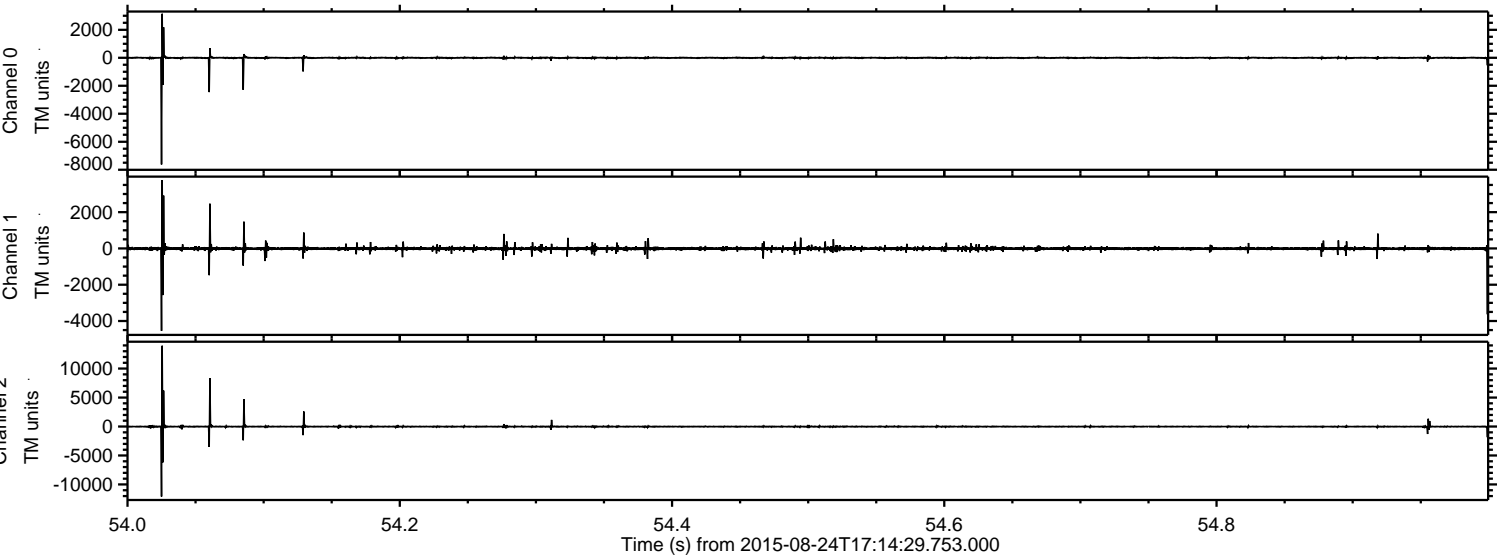
ELMAVAN 3D WAVEFORMS (Measured data sampled at 50 kHz) 51000 packets of 144 samples from 2015-08-24T17:14:29.753.000. Part 115/147

Processed Tue Oct 6 13:14:16 2015 by ELM ver.2012-10-06 from 001\_\_elm20150824\_171428\_\_dat00.bin





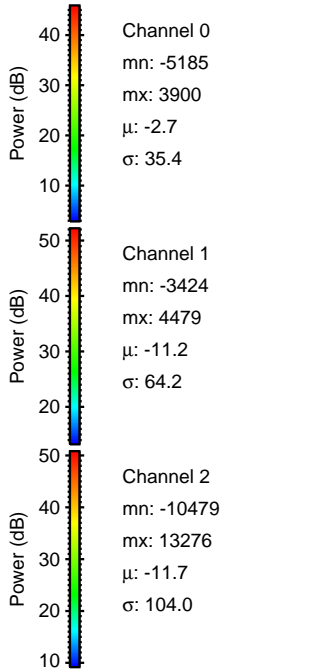
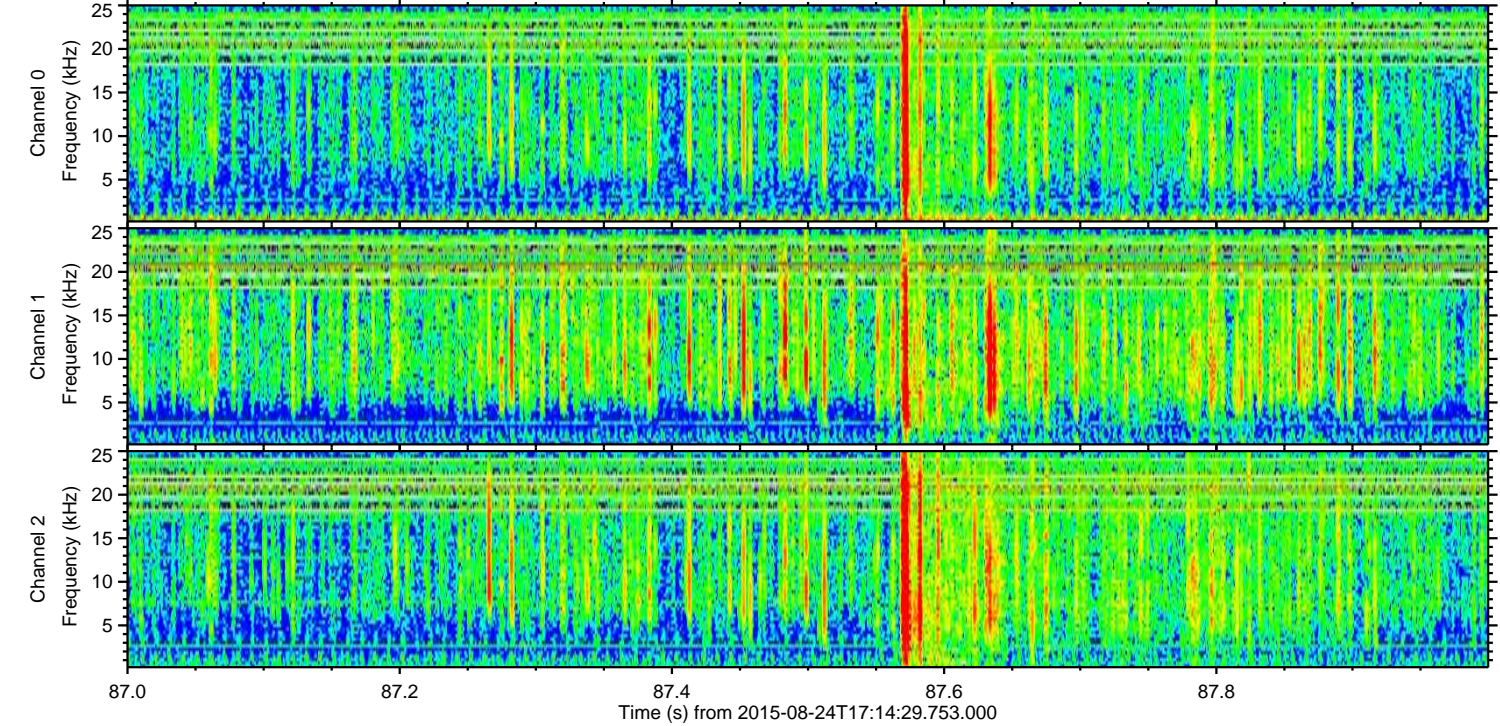
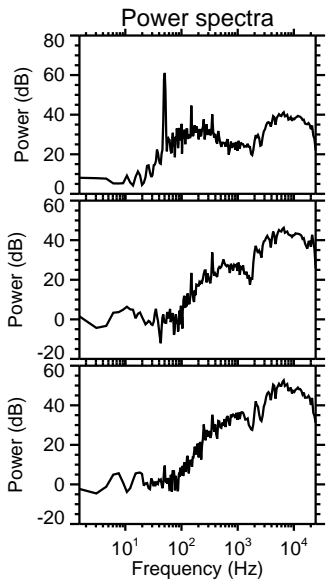
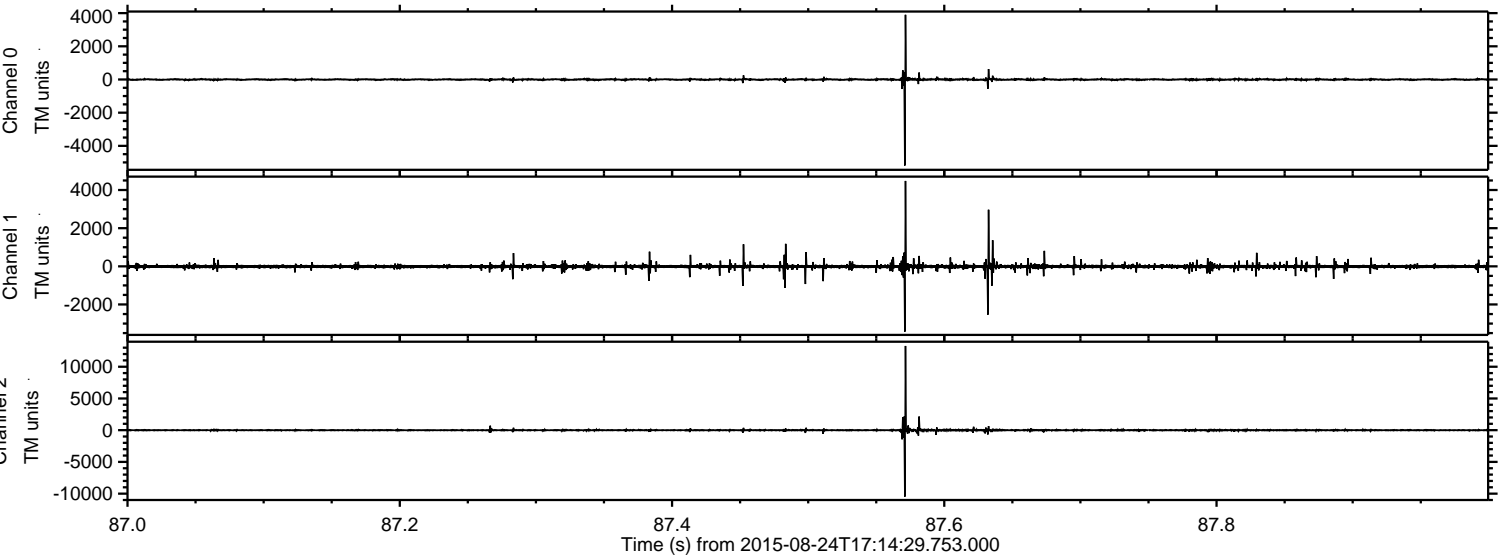
Processed Tue Oct 6 13:14:17 2015 by ELM ver.2012-10-06 from 001\_\_elm20150824\_171428\_\_dat00.bin





ELMAVAN 3D WAVEFORMS (Measured data sampled at 50 kHz) 51000 packets of 144 samples from 2015-08-24T17:14:29.753.000. Part 88/147

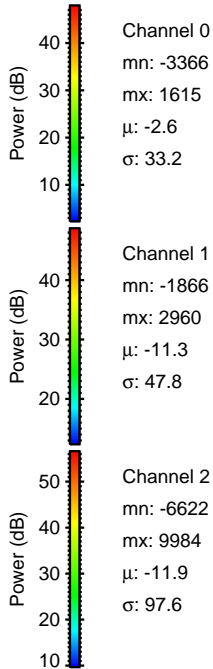
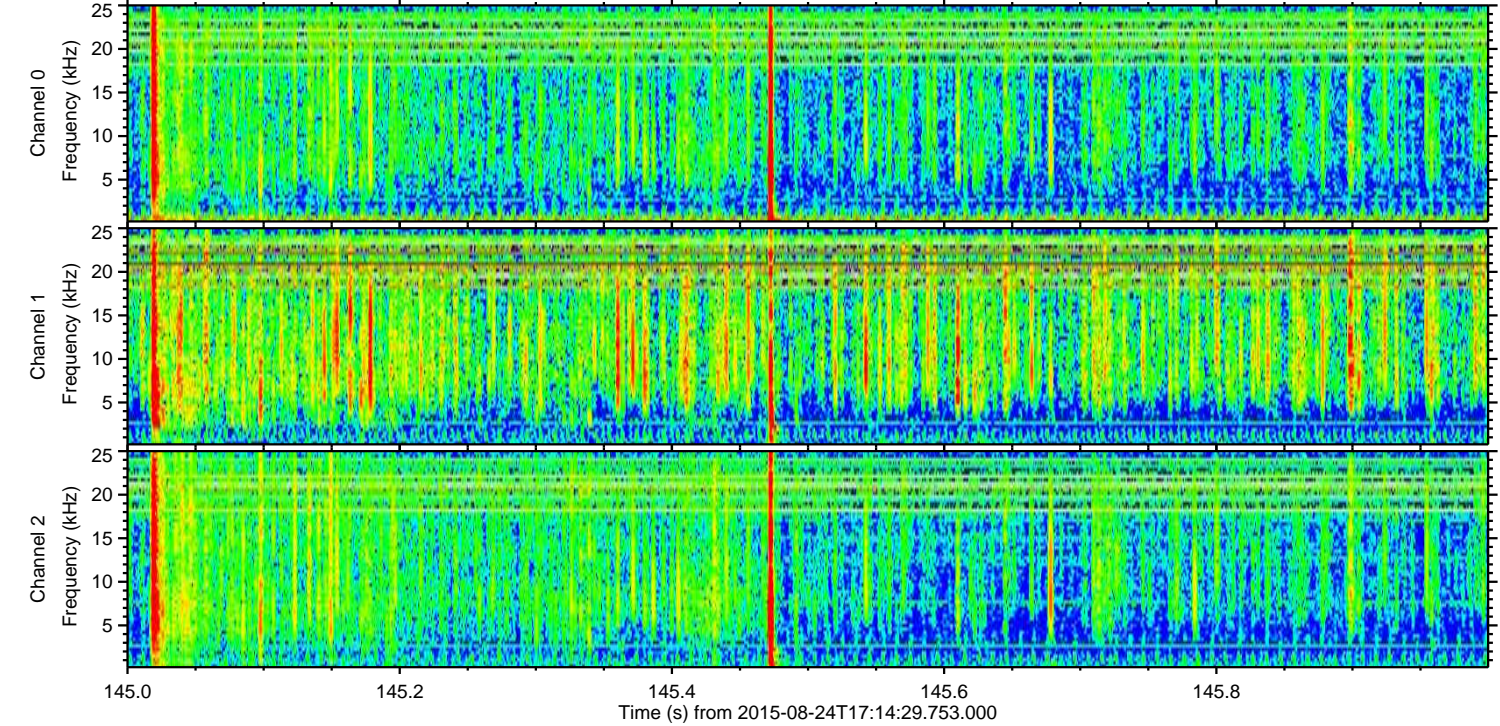
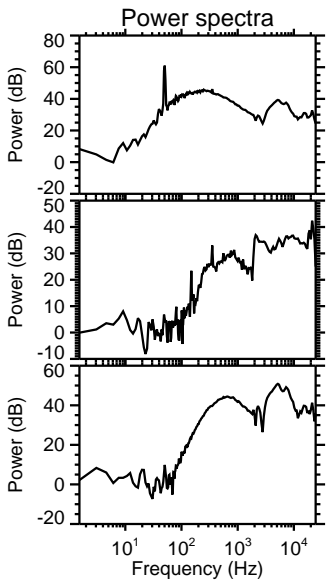
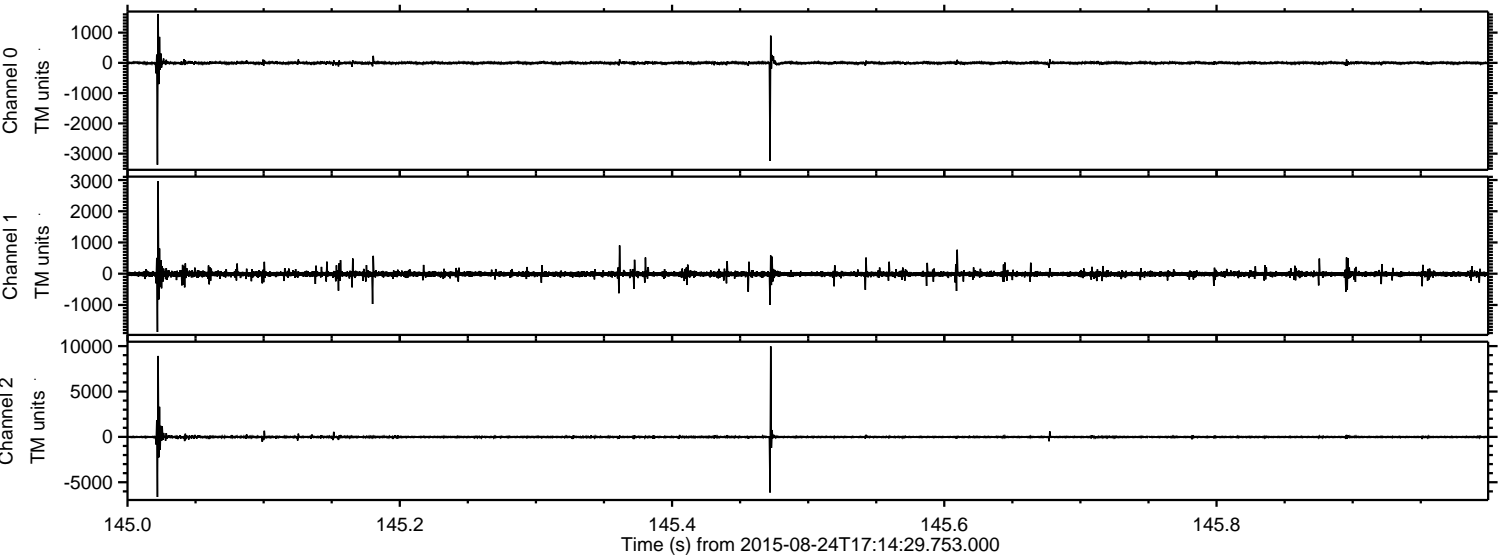
Processed Tue Oct 6 13:14:18 2015 by ELM ver.2012-10-06 from 001\_\_elm20150824\_171428\_\_dat00.bin





ELMAVAN 3D WAVEFORMS (Measured data sampled at 50 kHz) 51000 packets of 144 samples from 2015-08-24T17:14:29.753.000. Part 146/147

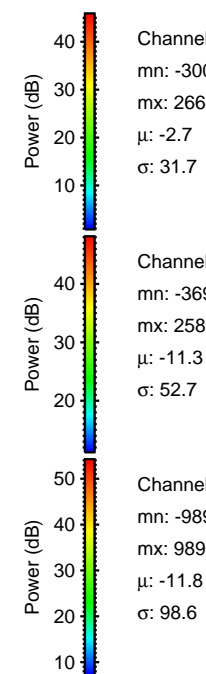
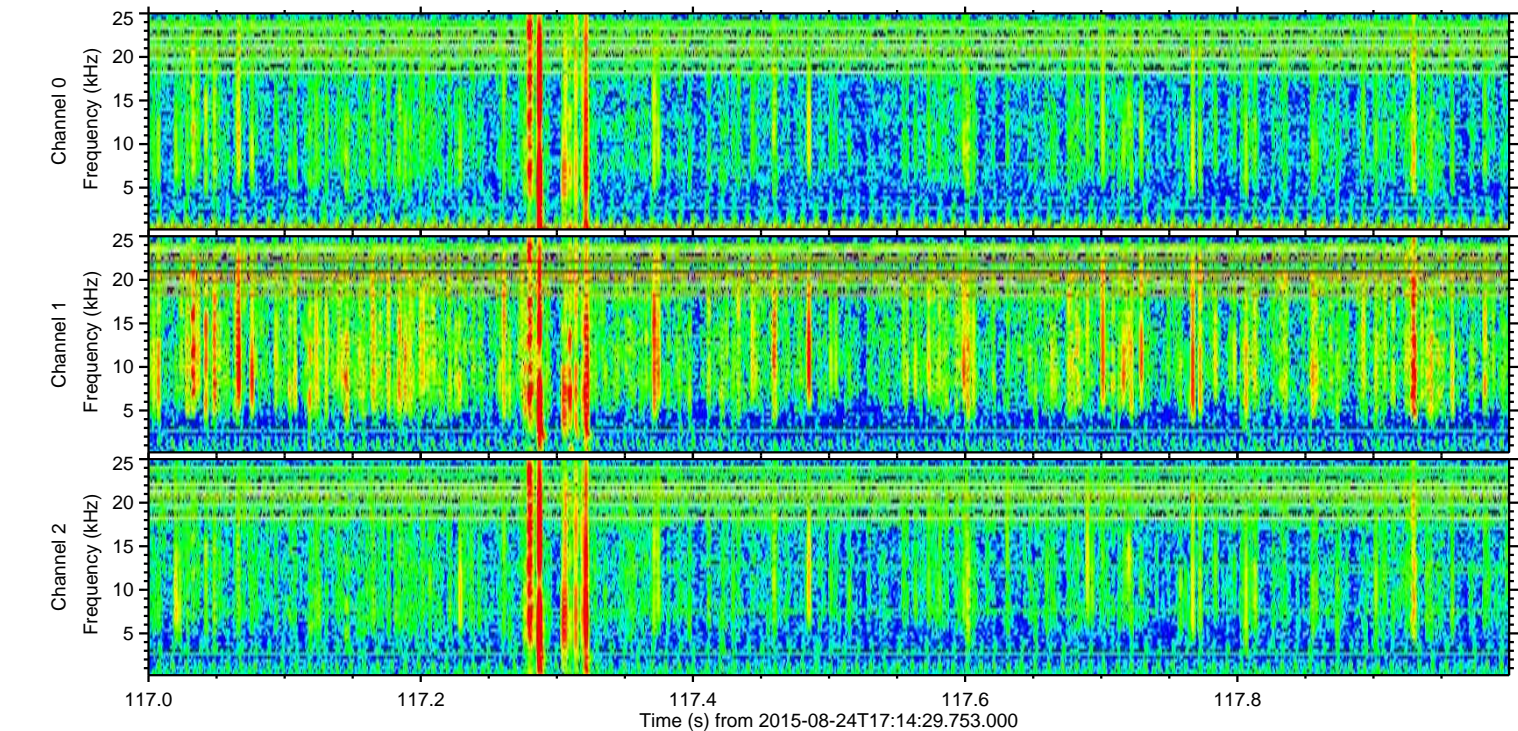
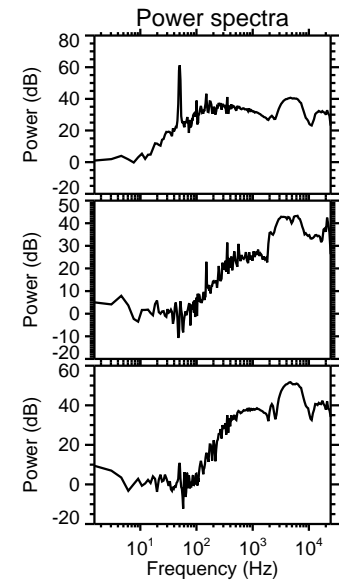
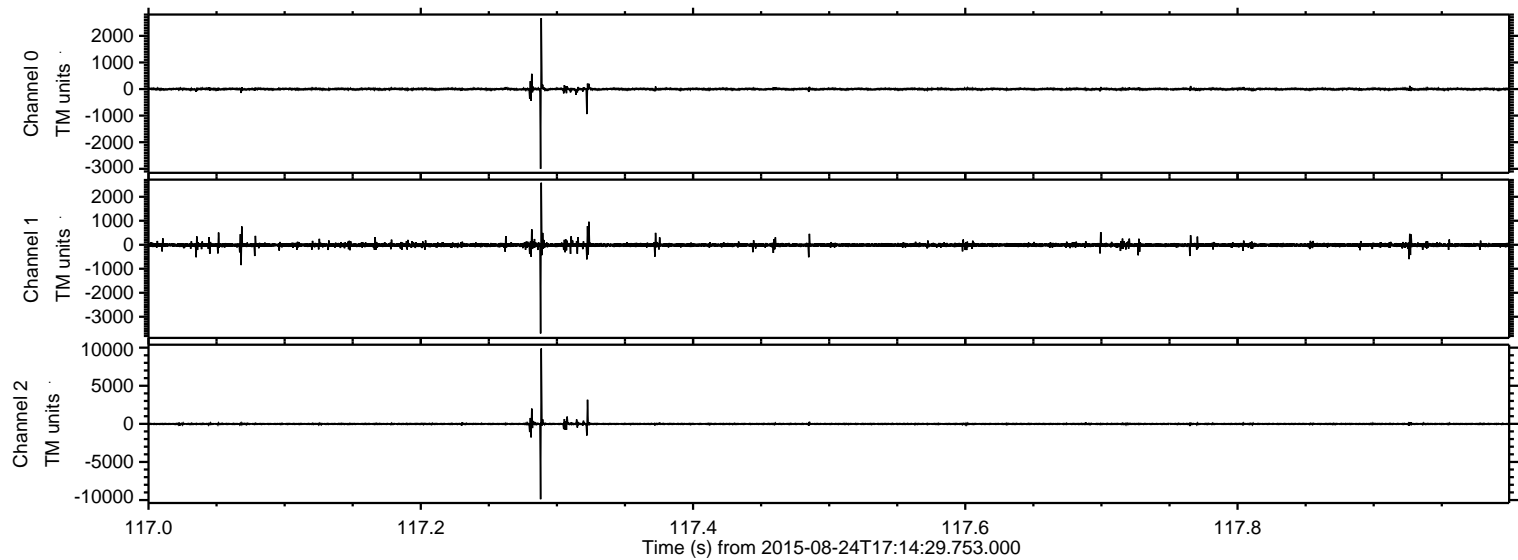
Processed Tue Oct 6 13:14:19 2015 by ELM ver.2012-10-06 from 001\_\_elm20150824\_171428\_\_dat00.bin





ELMAVAN 3D WAVEFORMS (Measured data sampled at 50 kHz) 51000 packets of 144 samples from 2015-08-24T17:14:29.753.000. Part 118/147

Processed Tue Oct 6 13:14:20 2015 by ELM ver.2012-10-06 from 001\_\_elm20150824\_171428\_\_dat00.bin



Channel 0  
mn: -3001  
mx: 2669  
 $\mu$ : -2.7  
 $\sigma$ : 31.7

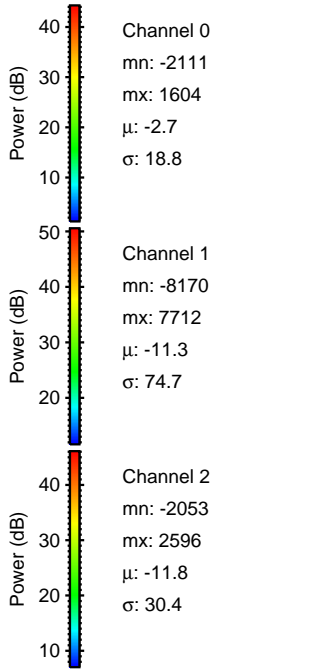
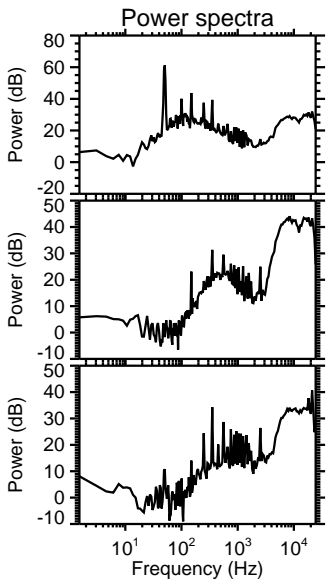
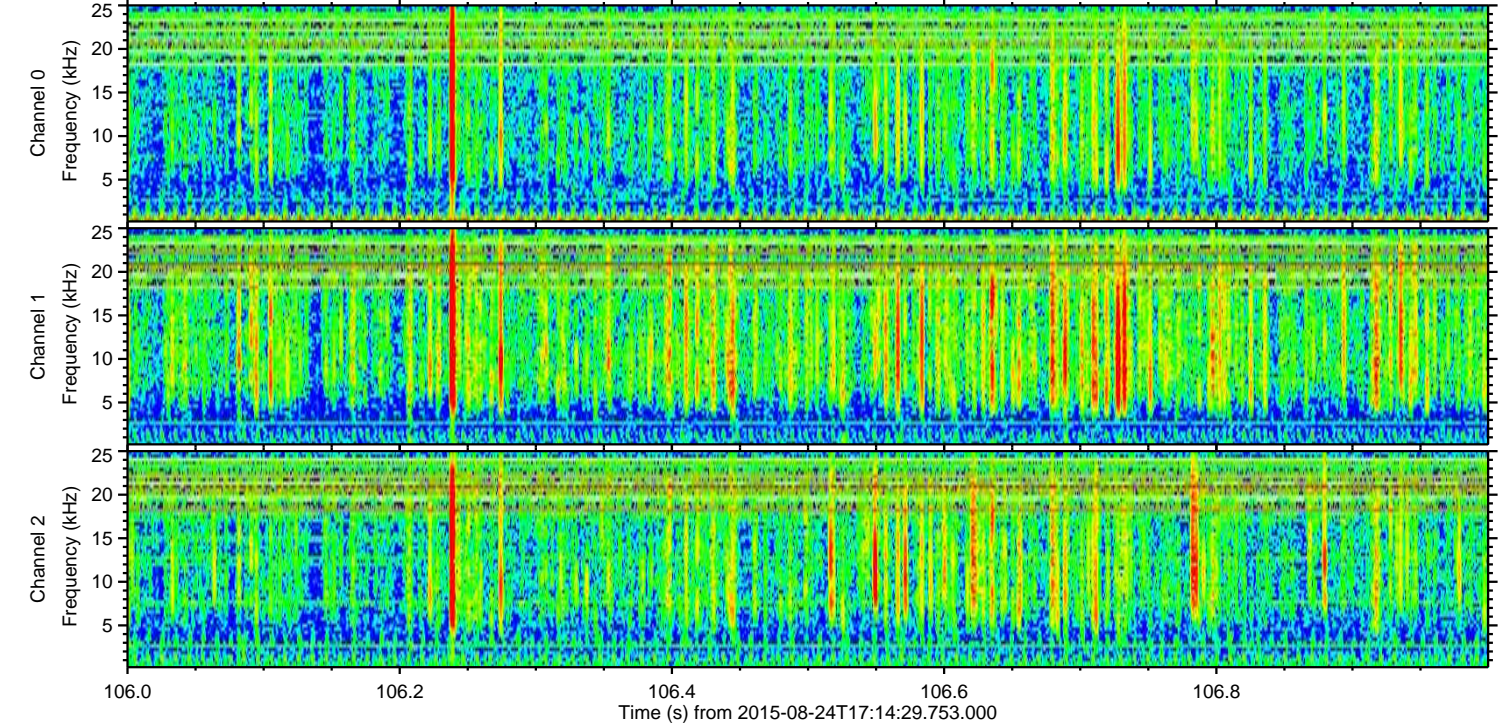
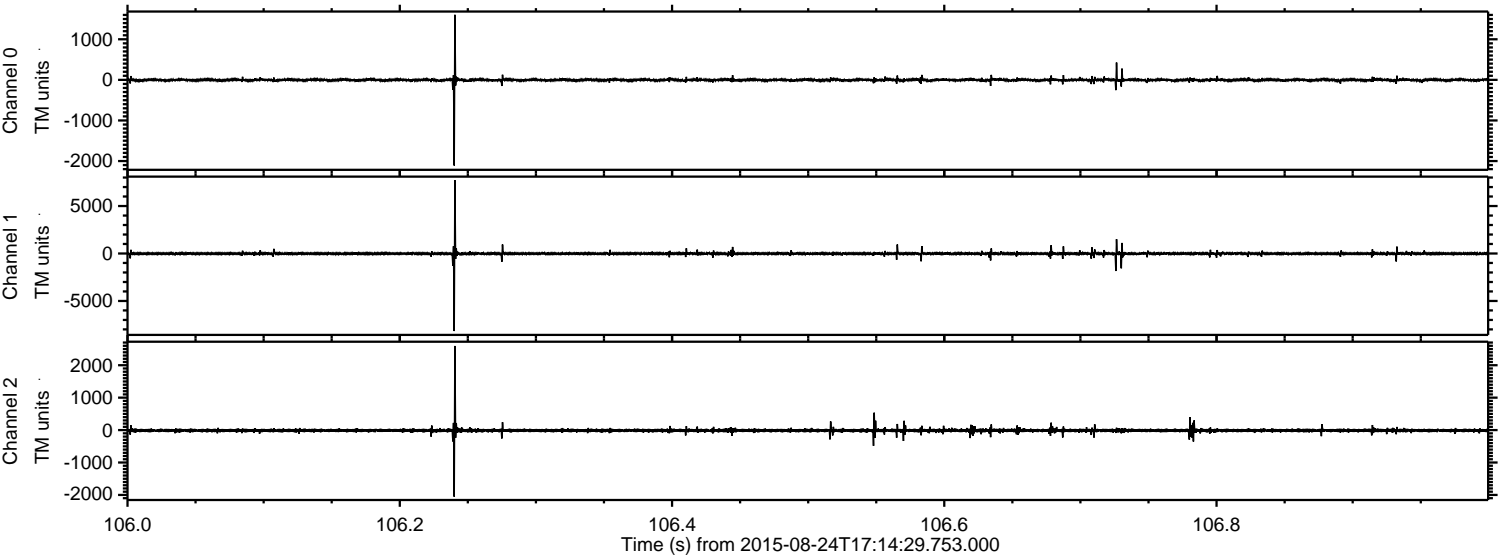
Channel 1  
mn: -3696  
mx: 2585  
 $\mu$ : -11.3  
 $\sigma$ : 52.7

Channel 2  
mn: -9897  
mx: 9891  
 $\mu$ : -11.8  
 $\sigma$ : 98.6



ELMAVAN 3D WAVEFORMS (Measured data sampled at 50 kHz) 51000 packets of 144 samples from 2015-08-24T17:14:29.753.000. Part 107/147

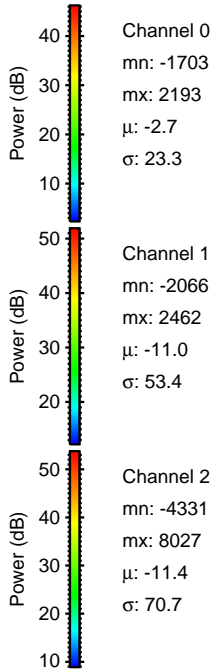
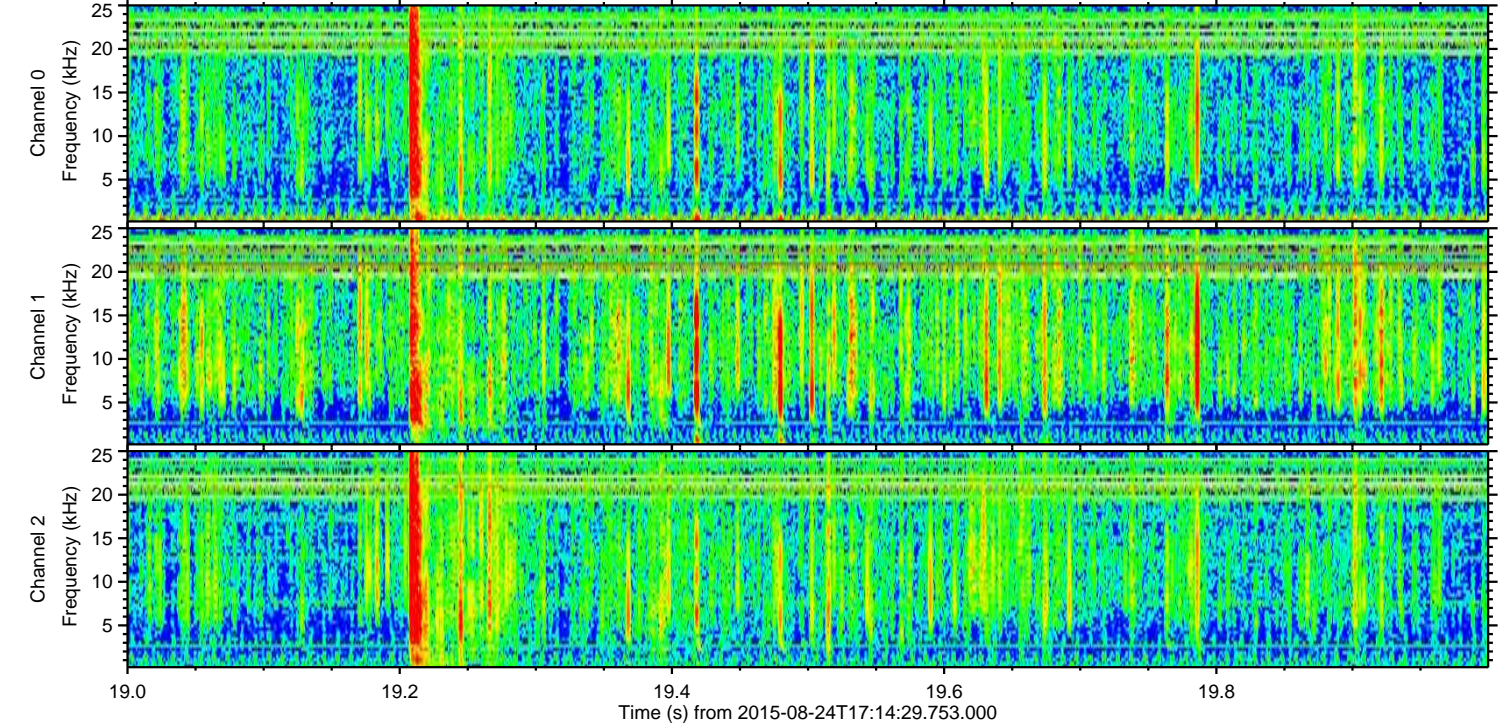
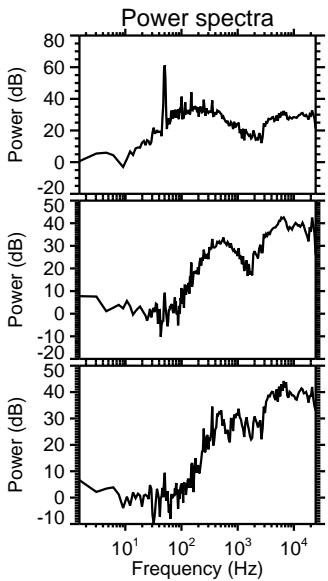
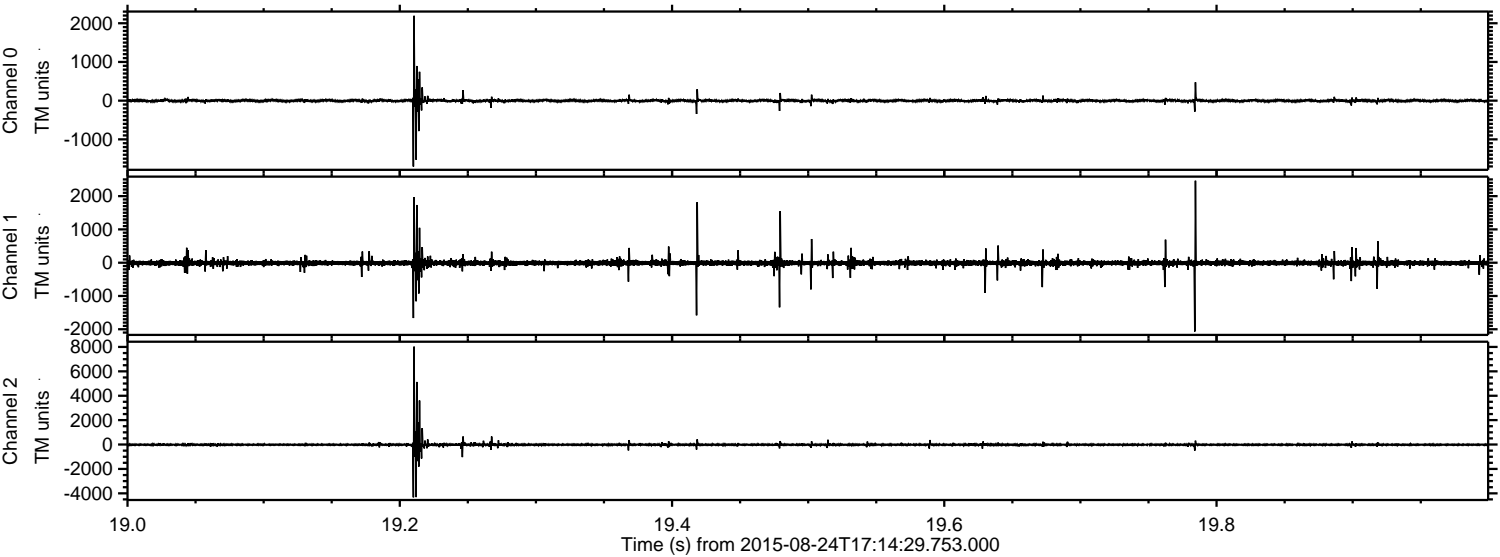
Processed Tue Oct 6 13:14:21 2015 by ELM ver.2012-10-06 from 001\_\_elm20150824\_171428\_\_dat00.bin





ELMAVAN 3D WAVEFORMS (Measured data sampled at 50 kHz) 51000 packets of 144 samples from 2015-08-24T17:14:29.753.000. Part 20/147

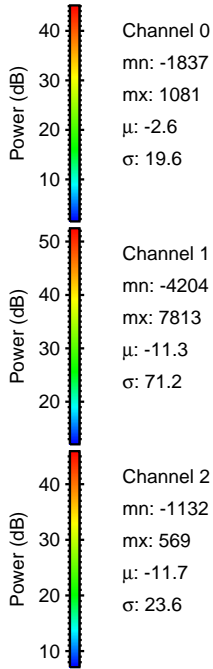
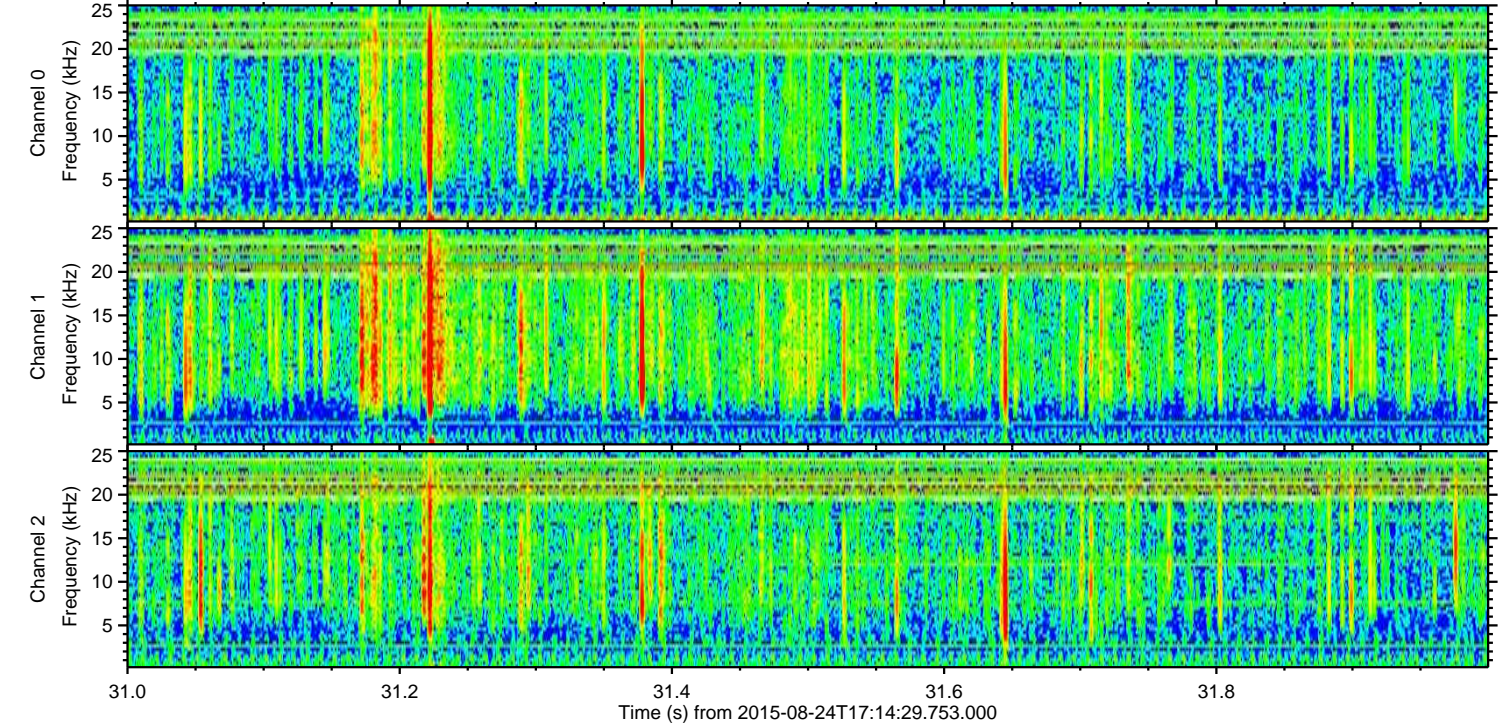
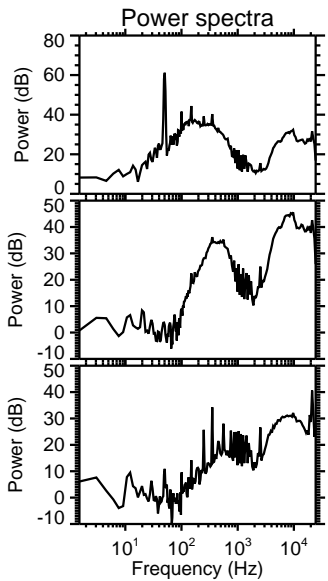
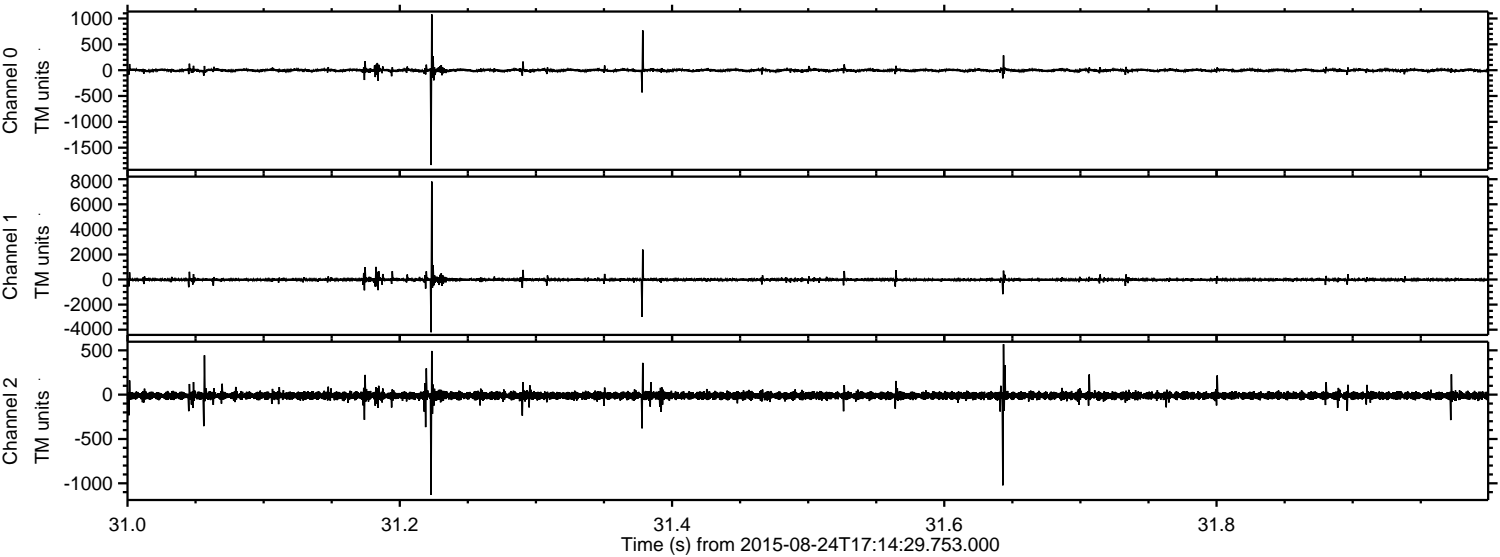
Processed Tue Oct 6 13:14:22 2015 by ELM ver.2012-10-06 from 001\_\_elm20150824\_171428\_\_dat00.bin





ELMAVAN 3D WAVEFORMS (Measured data sampled at 50 kHz) 51000 packets of 144 samples from 2015-08-24T17:14:29.753.000. Part 32/147

Processed Tue Oct 6 13:14:23 2015 by ELM ver.2012-10-06 from 001\_\_elm20150824\_171428\_\_dat00.bin



Channel 0  
mn: -1837  
mx: 1081  
 $\mu$ : -2.6  
 $\sigma$ : 19.6

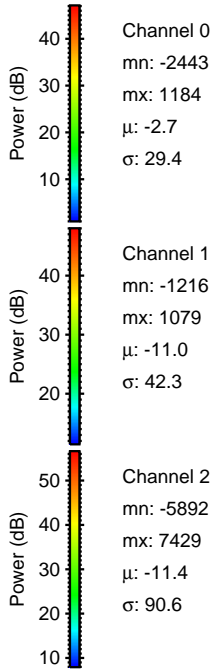
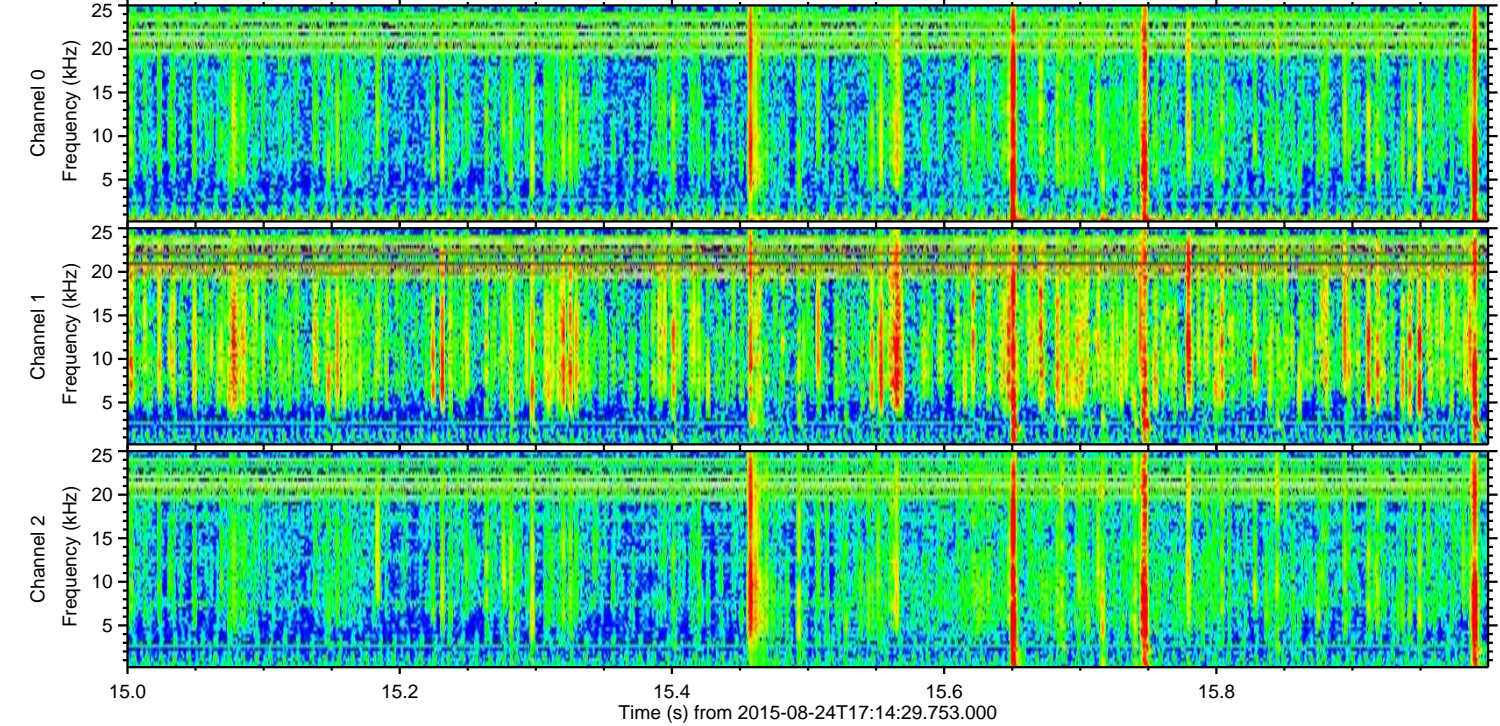
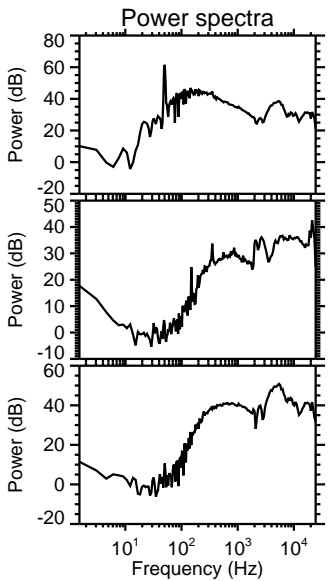
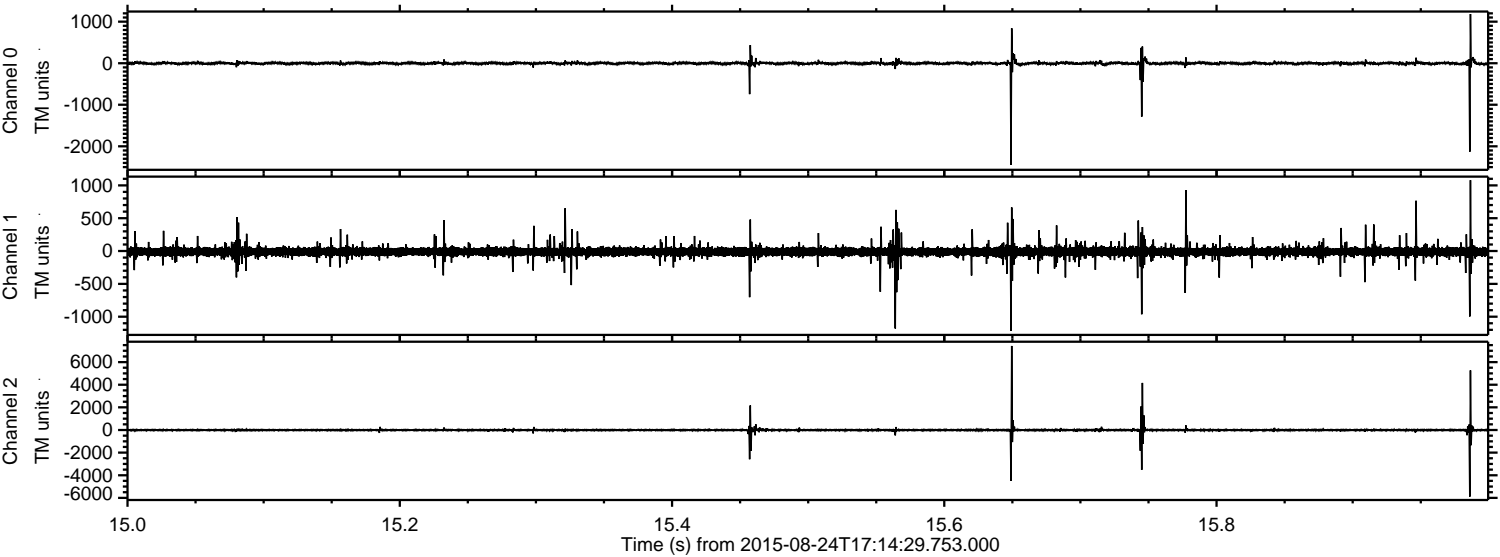
Channel 1  
mn: -4204  
mx: 7813  
 $\mu$ : -11.3  
 $\sigma$ : 71.2

Channel 2  
mn: -1132  
mx: 569  
 $\mu$ : -11.7  
 $\sigma$ : 23.6



ELMAVAN 3D WAVEFORMS (Measured data sampled at 50 kHz) 51000 packets of 144 samples from 2015-08-24T17:14:29.753.000. Part 16/147

Processed Tue Oct 6 13:14:24 2015 by ELM ver.2012-10-06 from 001\_\_elm20150824\_171428\_\_dat00.bin



Channel 0  
mn: -2443  
mx: 1184  
 $\mu$ : -2.7  
 $\sigma$ : 29.4

Channel 1  
mn: -1216  
mx: 1079  
 $\mu$ : -11.0  
 $\sigma$ : 42.3

Channel 2  
mn: -5892  
mx: 7429  
 $\mu$ : -11.4  
 $\sigma$ : 90.6



Processed Tue Oct 6 13:14:25 2015 by ELM ver.2012-10-06 from 001\_\_elm20150824\_171428\_\_dat00.bin

