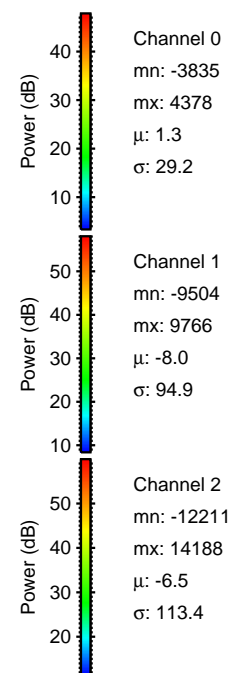
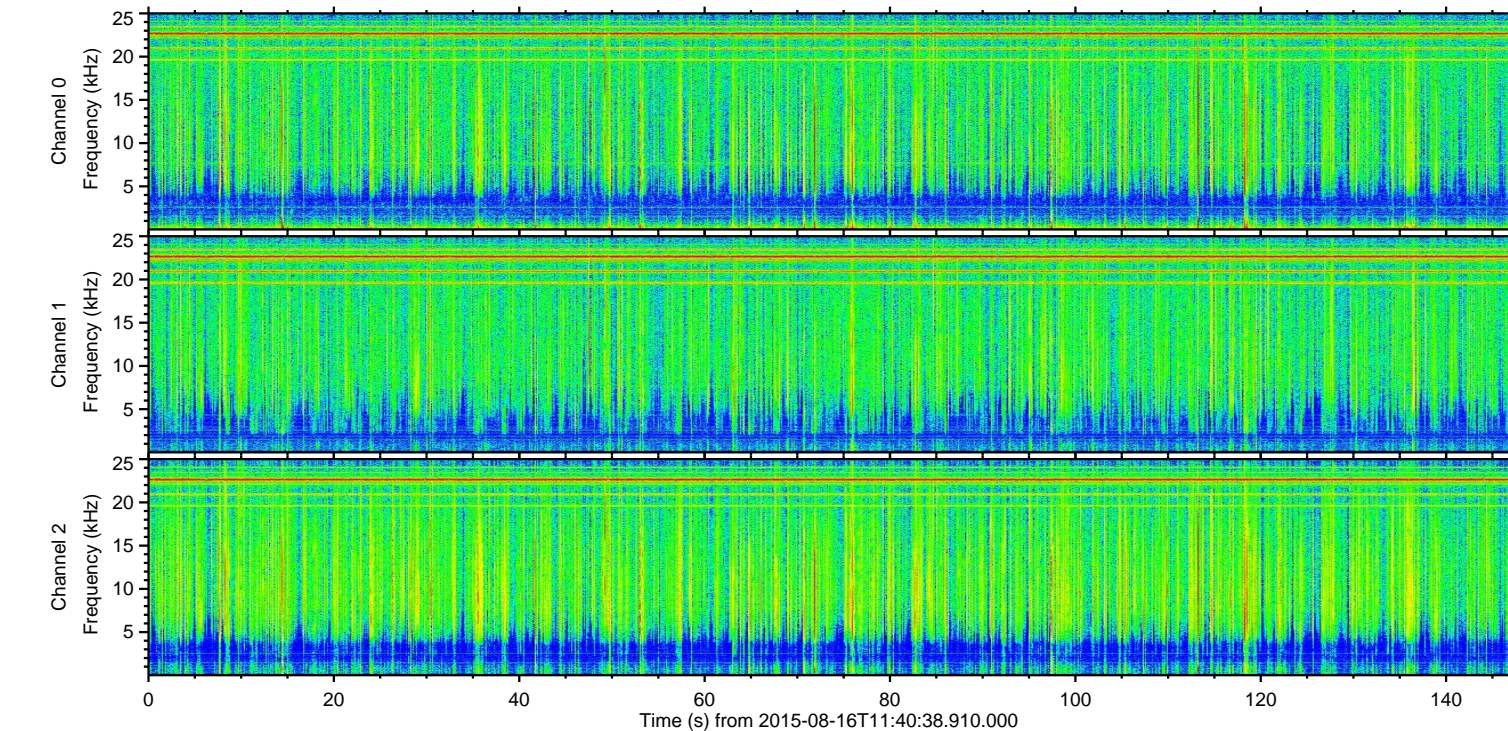
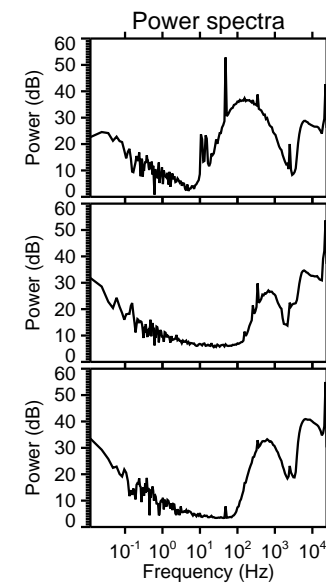
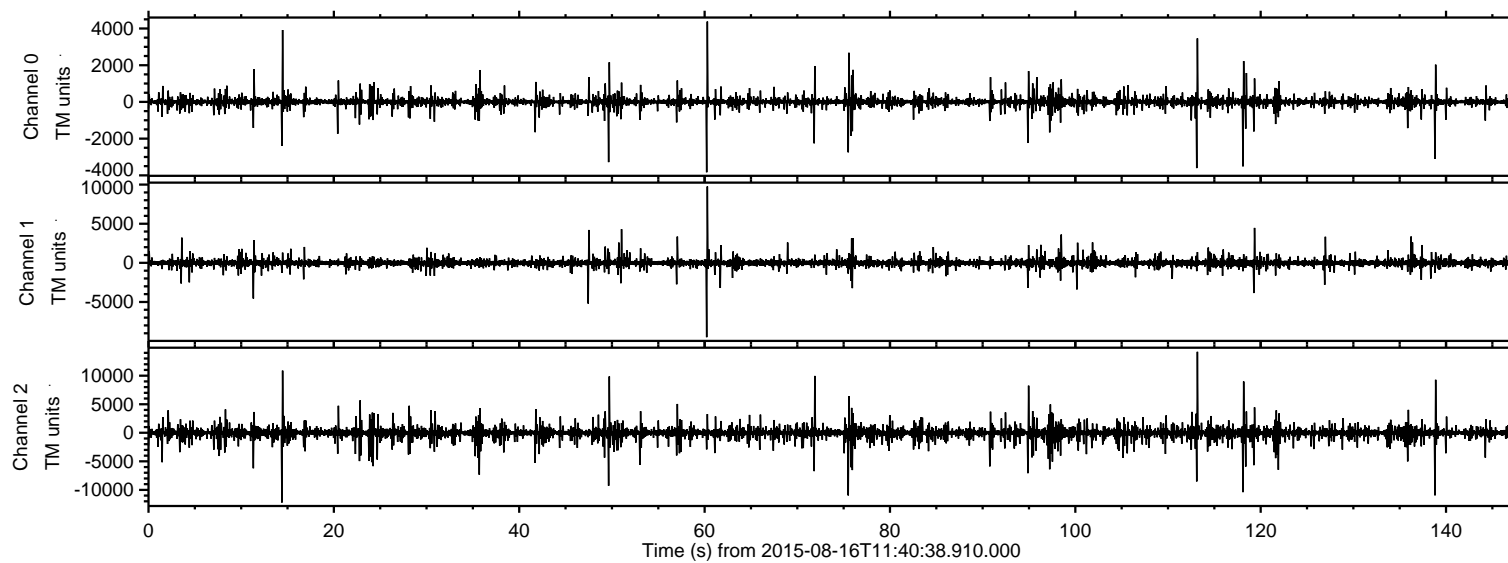


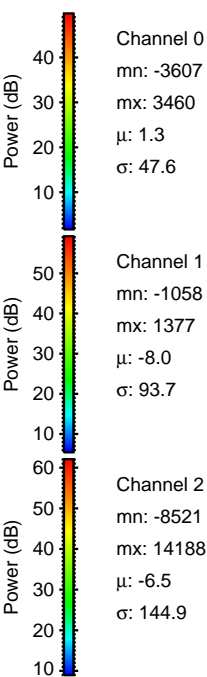
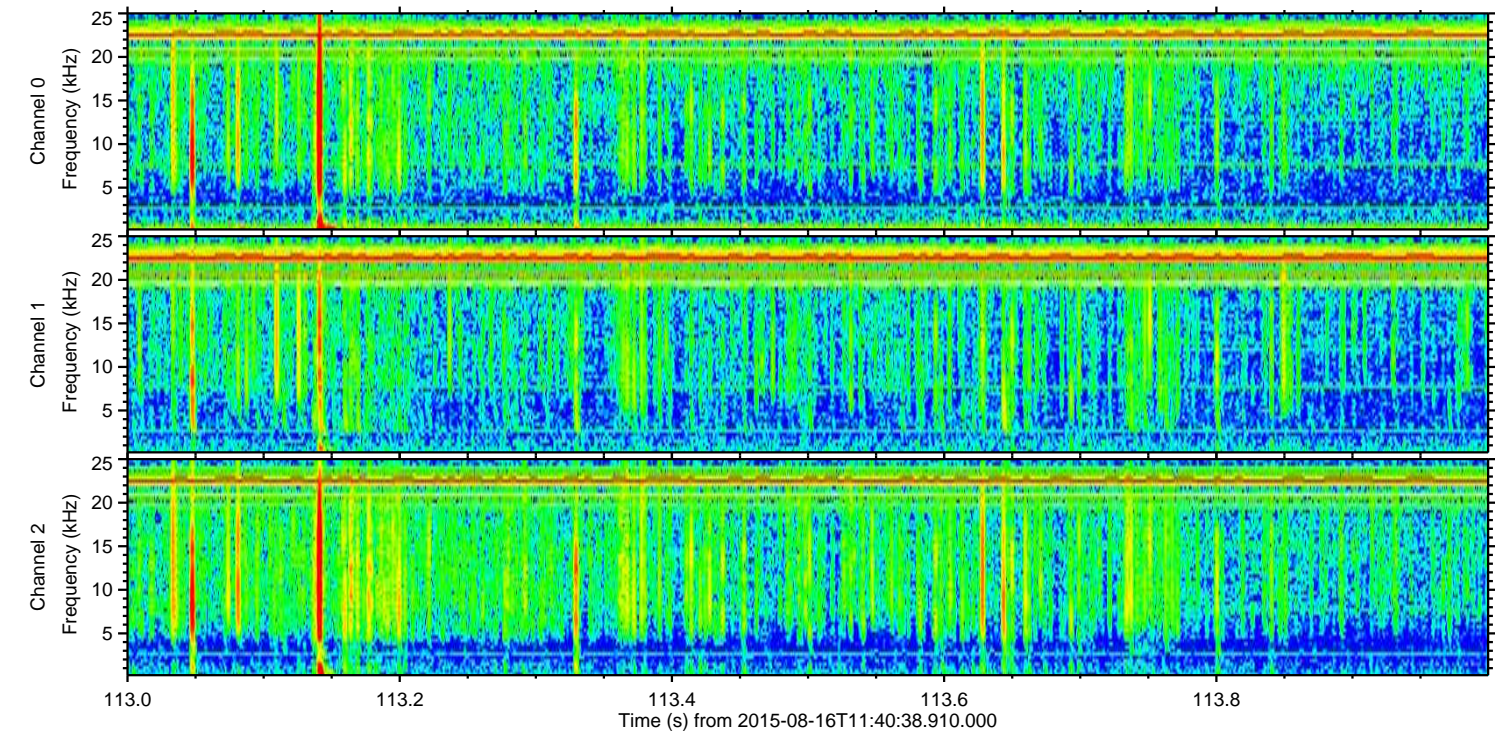
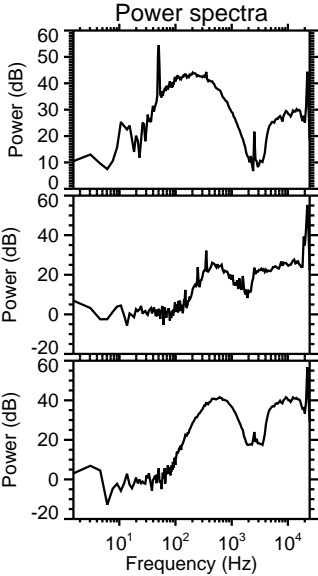
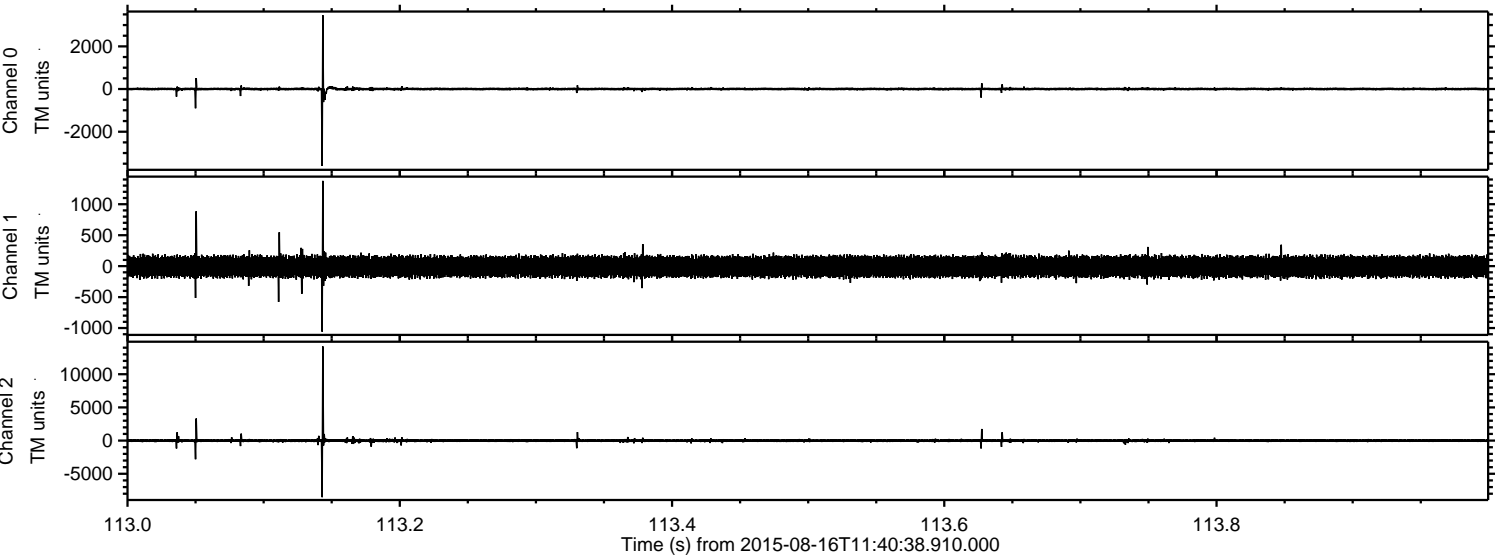
ELMAVAN 3D WAVEFORMS (Measured data sampled at 50 kHz) 51000 packets of 144 samples from 2015-08-16T11:40:38.910.000.

Processed Sun Aug 16 13:47:21 2015 by ELM ver.2012-10-06 from 001__elm20150816_114037__dat00.bin

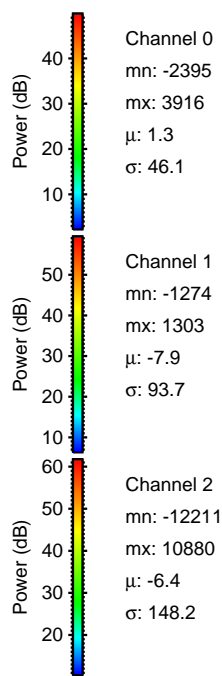
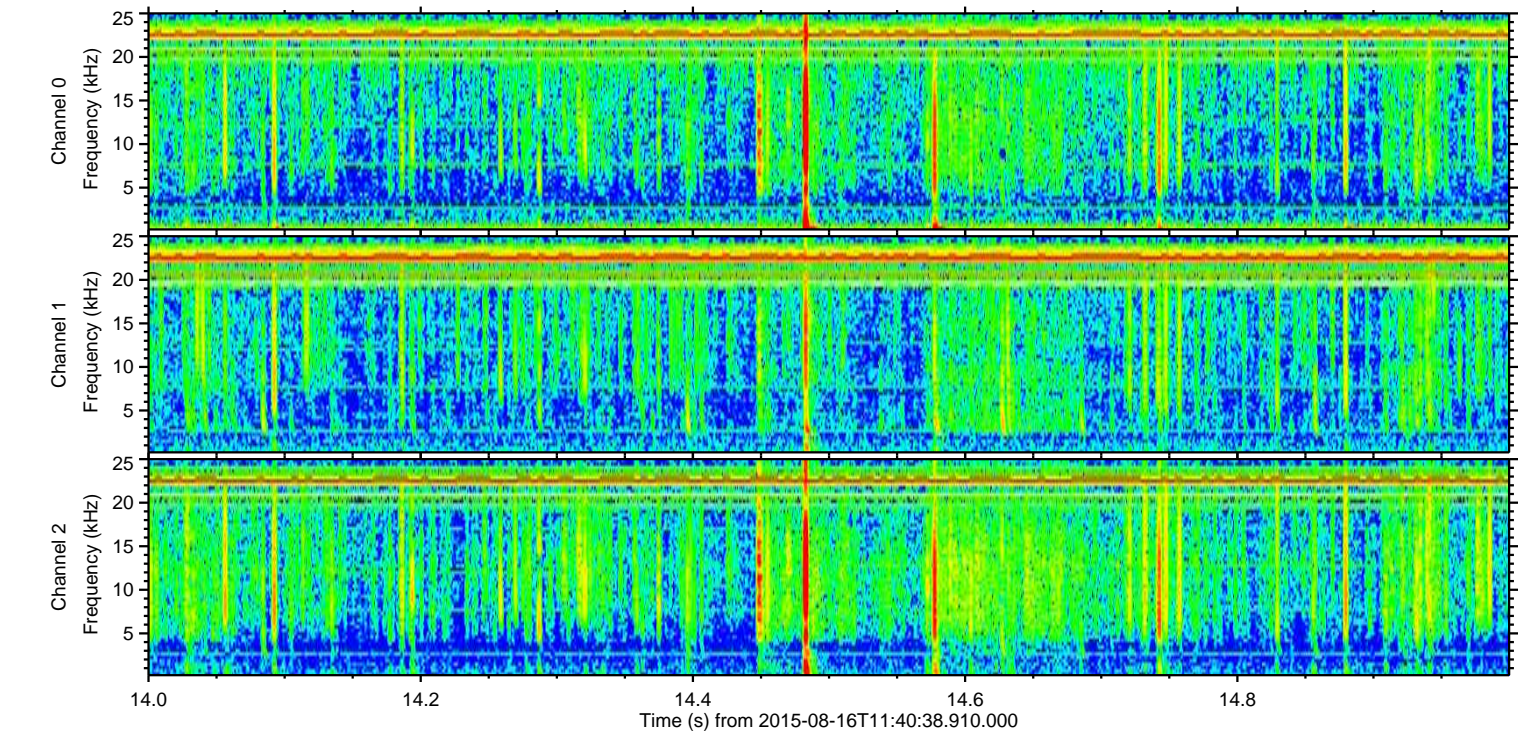
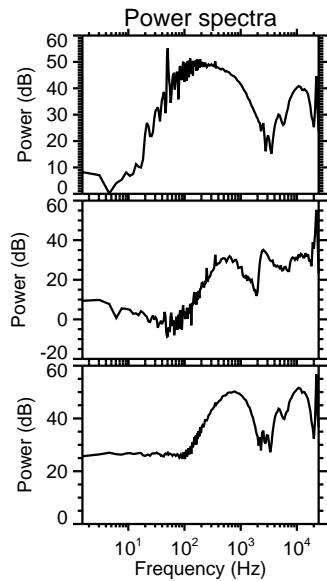
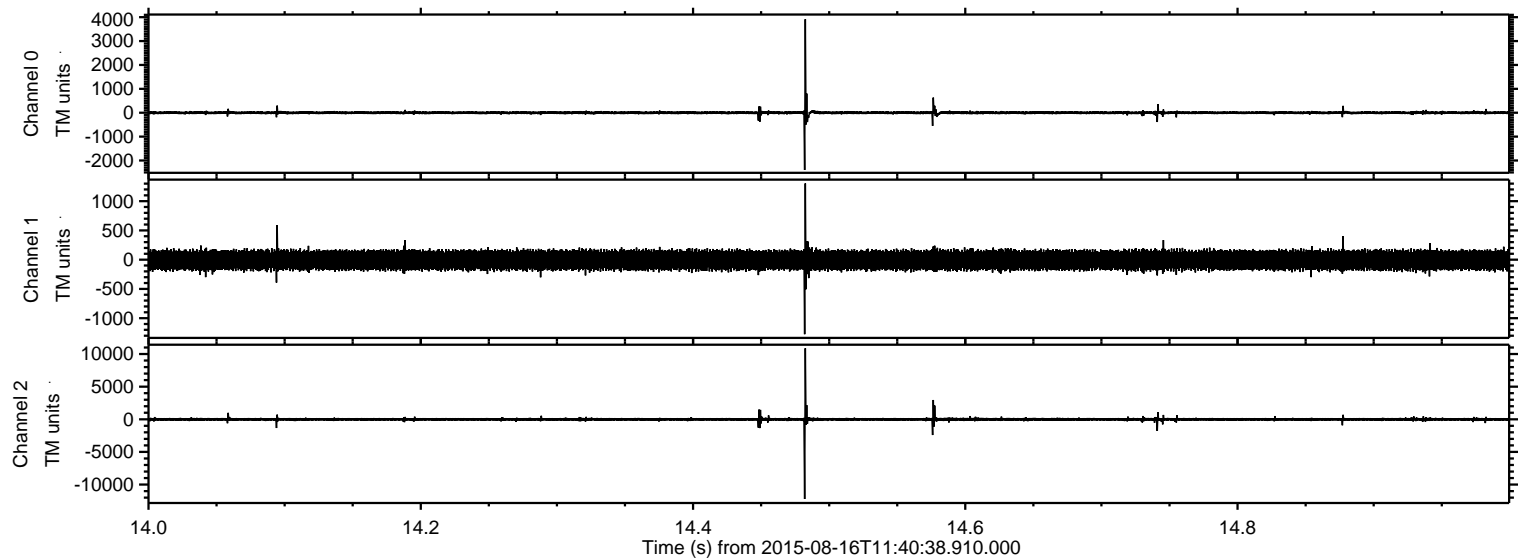


ELMAVAN 3D WAVEFORMS (Measured data sampled at 50 kHz) 51000 packets of 144 samples from 2015-08-16T11:40:38.910.000. Part 114/147

Processed Sun Aug 16 13:47:33 2015 by ELM ver.2012-10-06 from 001__elm20150816_114037__dat00.bin

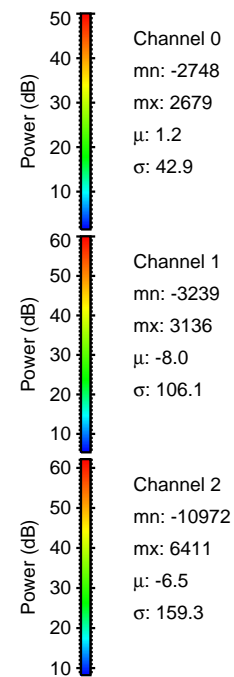
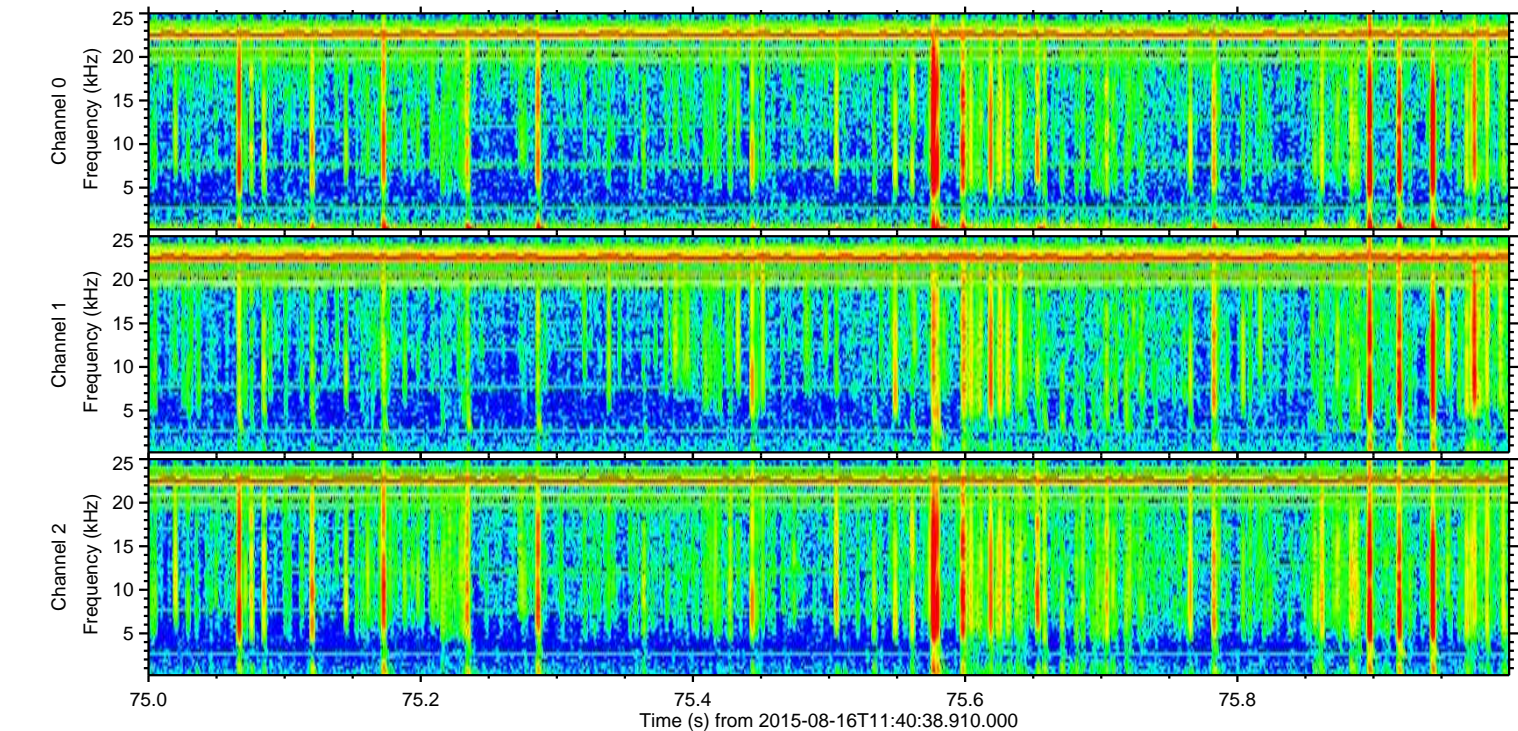
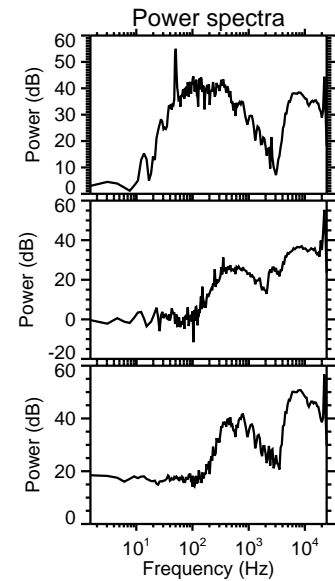
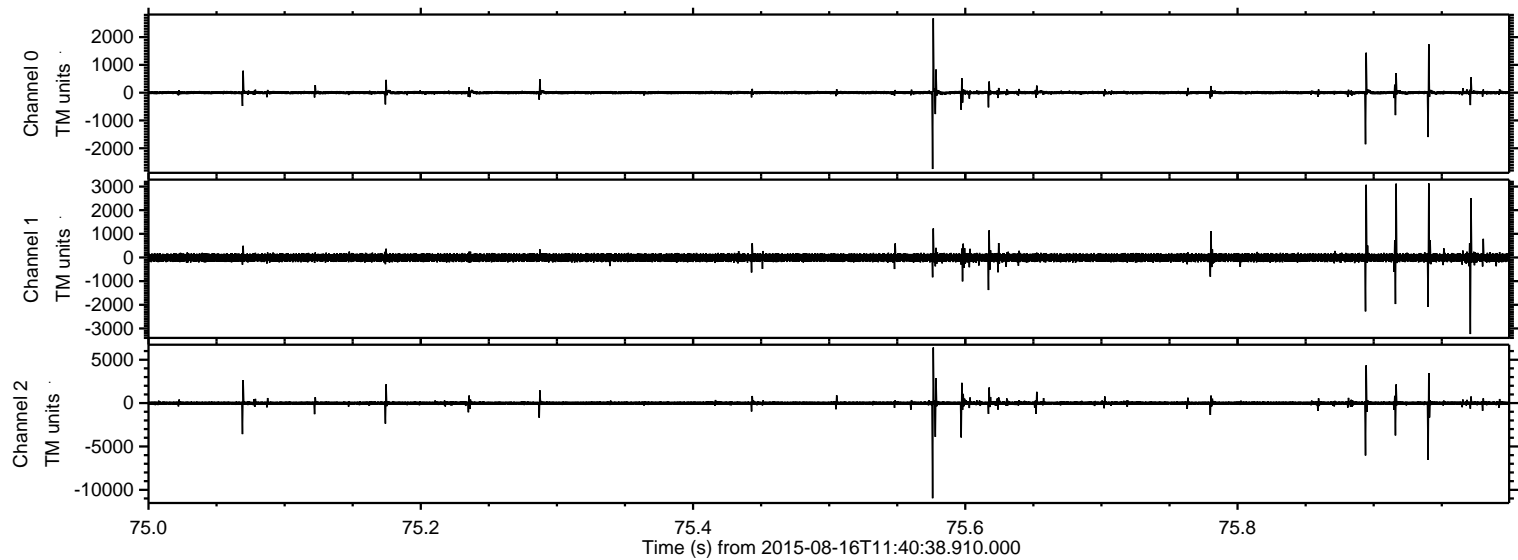


Processed Sun Aug 16 13:47:34 2015 by ELM ver.2012-10-06 from 001__elm20150816_114037__dat00.bin



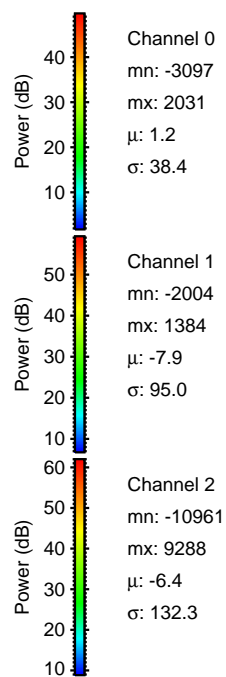
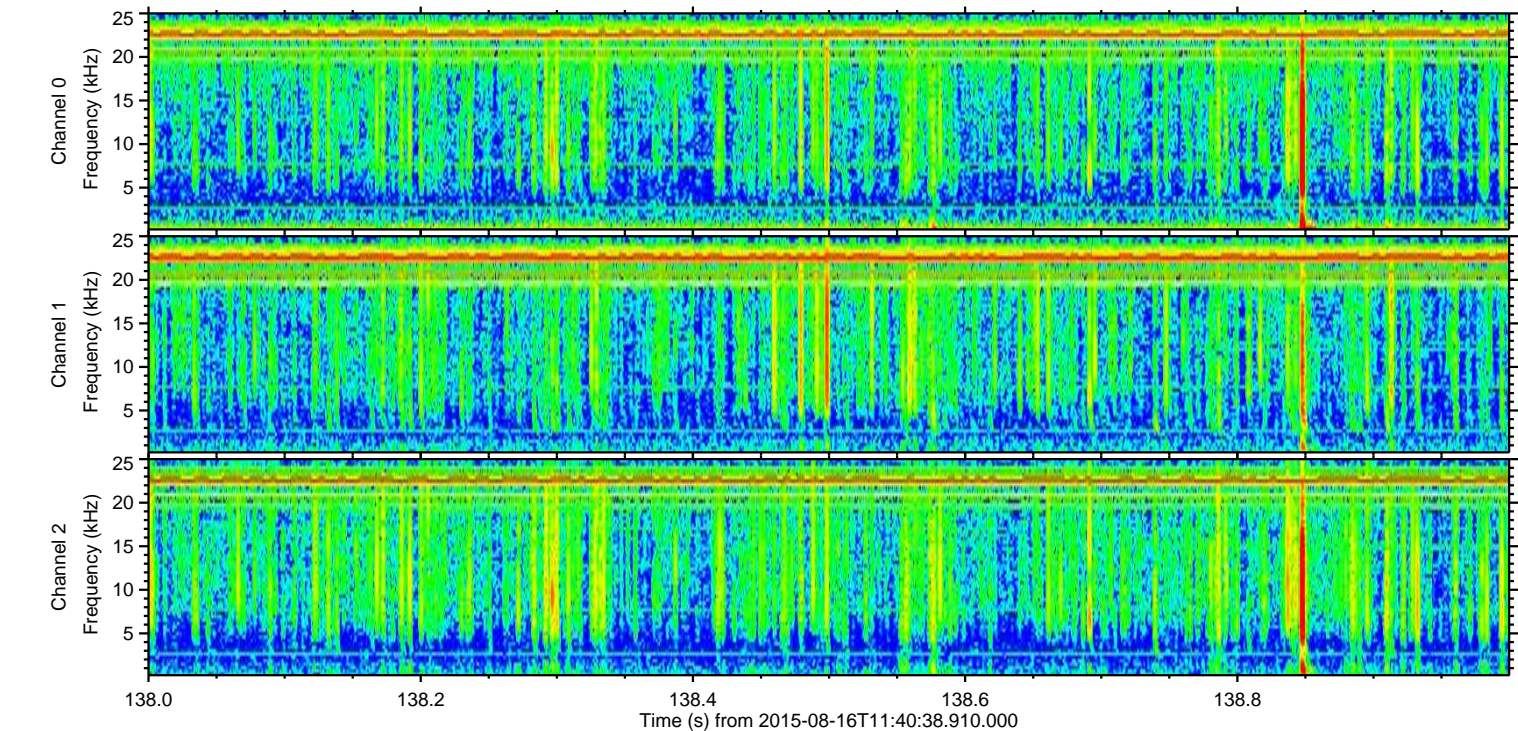
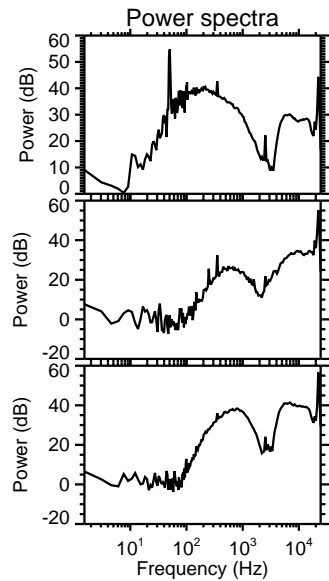
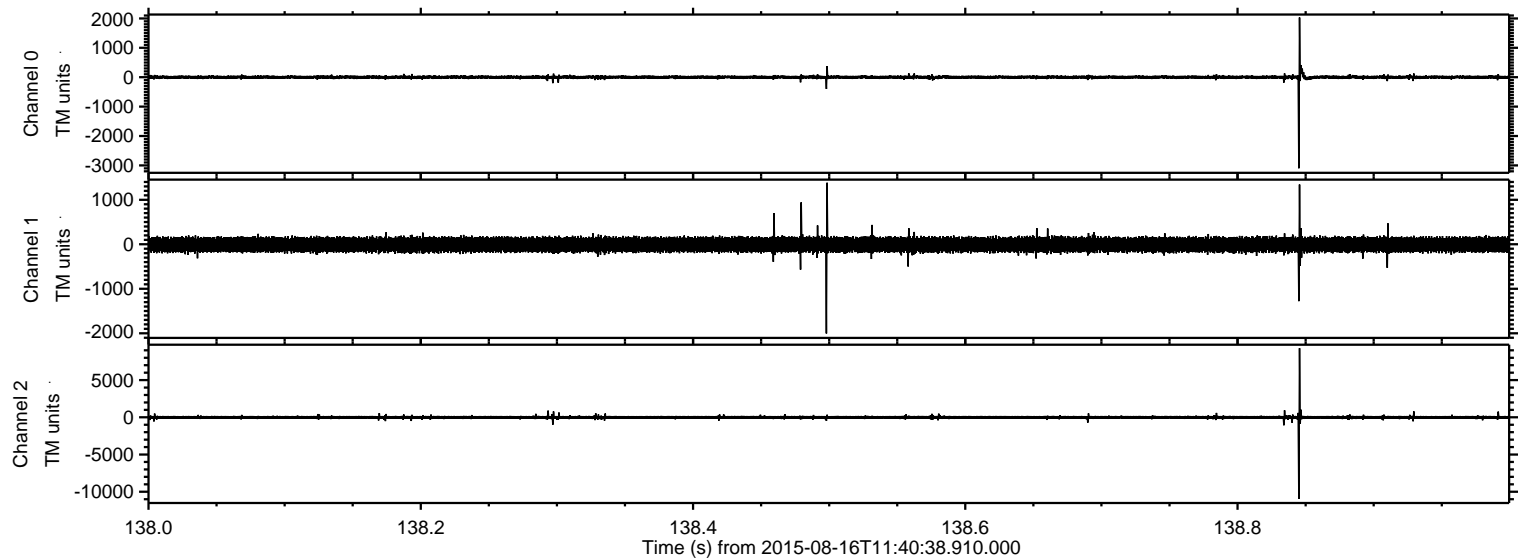
ELMAVAN 3D WAVEFORMS (Measured data sampled at 50 kHz) 51000 packets of 144 samples from 2015-08-16T11:40:38.910.000. Part 76/147

Processed Sun Aug 16 13:47:35 2015 by ELM ver.2012-10-06 from 001__elm20150816_114037__dat00.bin



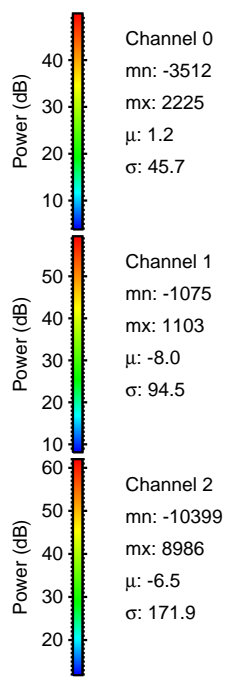
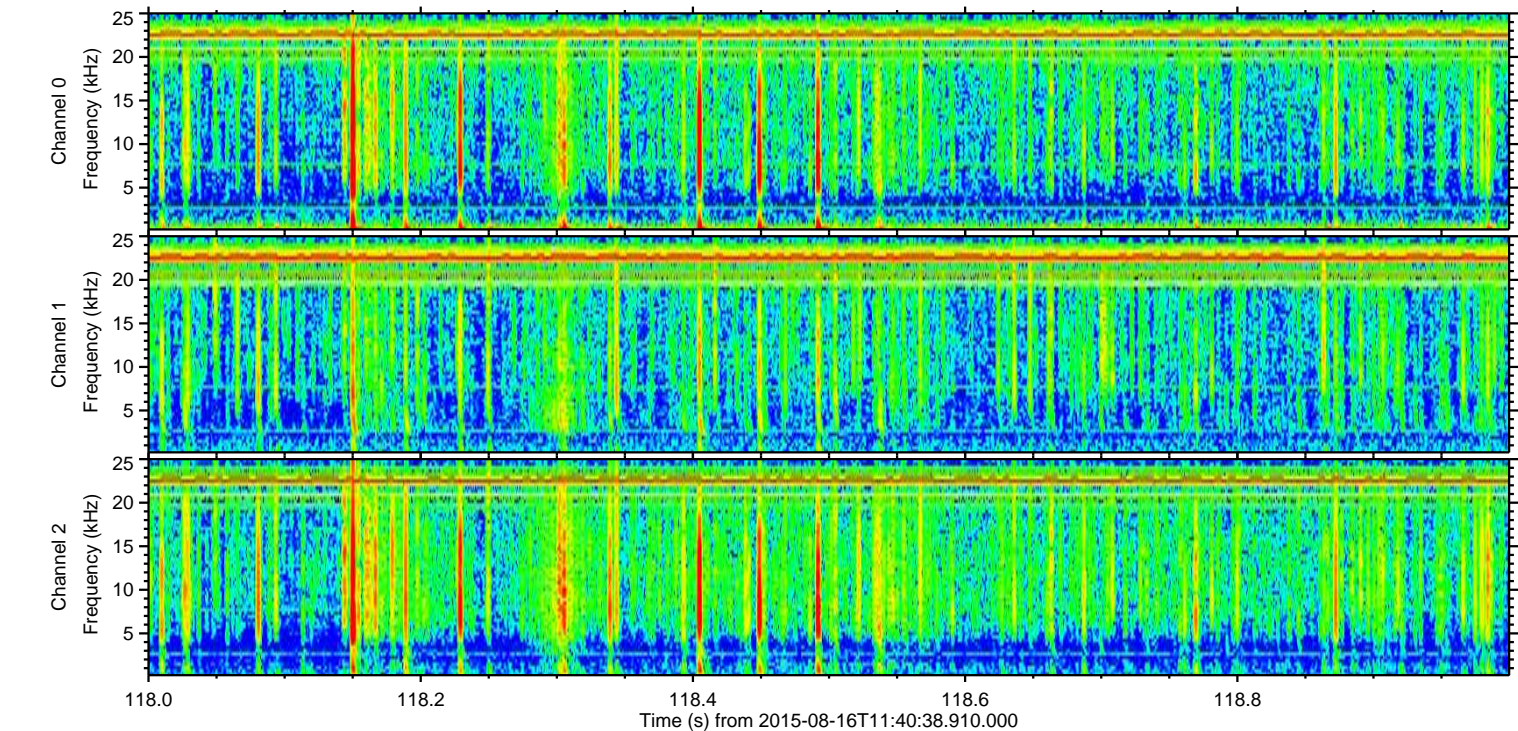
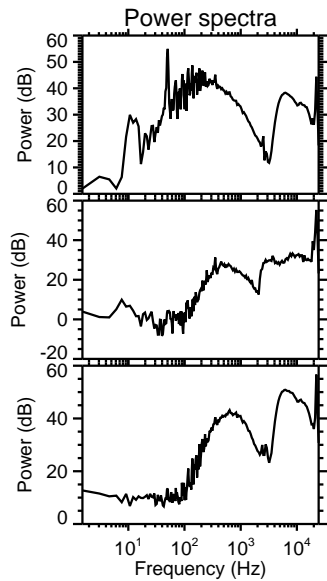
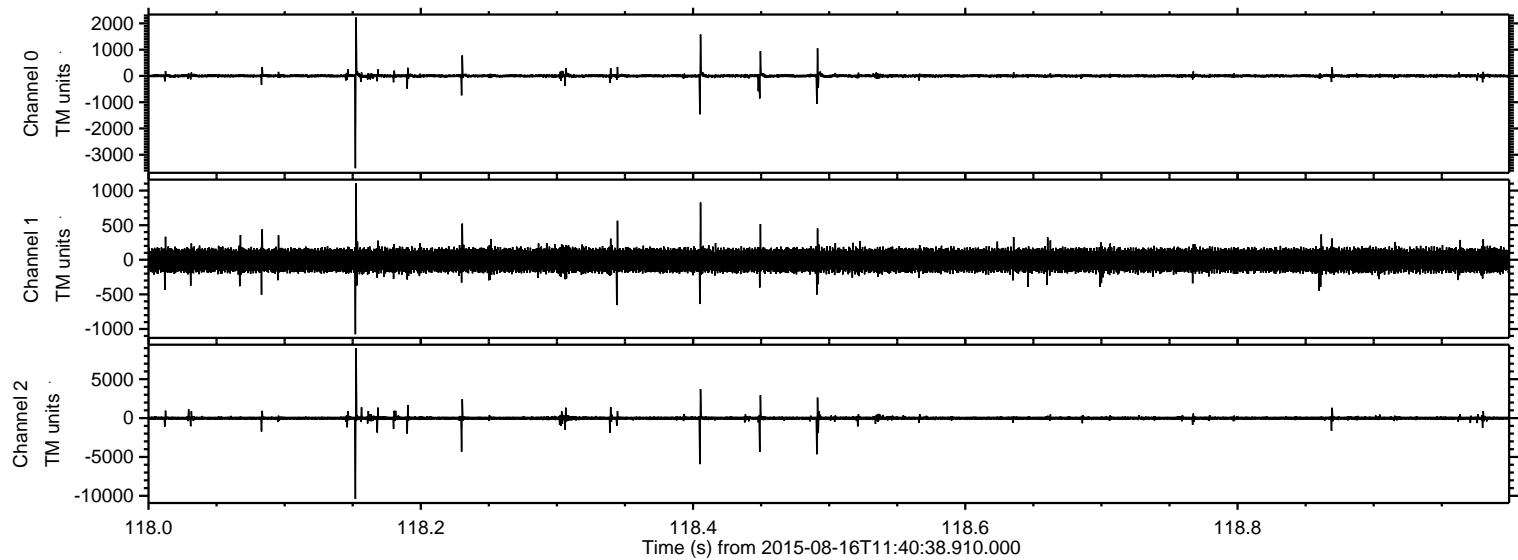
ELMAVAN 3D WAVEFORMS (Measured data sampled at 50 kHz) 51000 packets of 144 samples from 2015-08-16T11:40:38.910.000. Part 139/147

Processed Sun Aug 16 13:47:36 2015 by ELM ver.2012-10-06 from 001__elm20150816_114037__dat00.bin



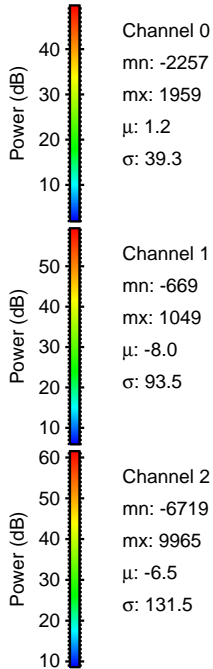
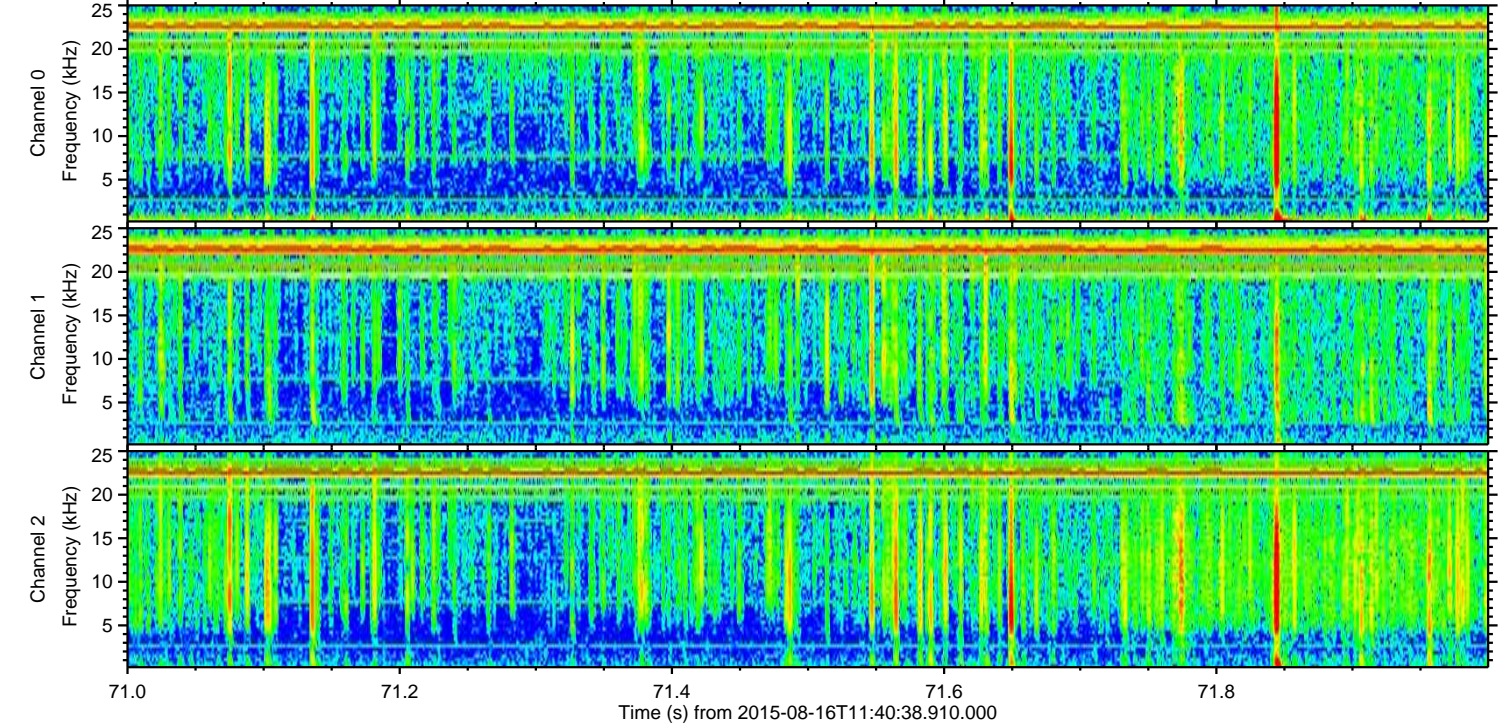
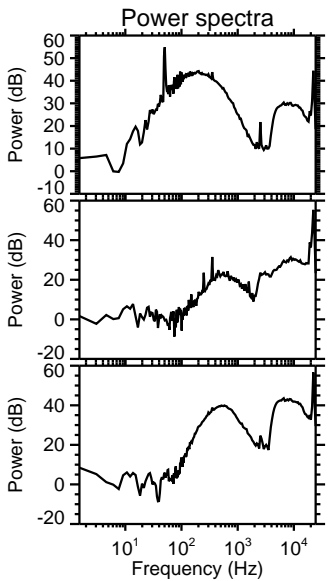
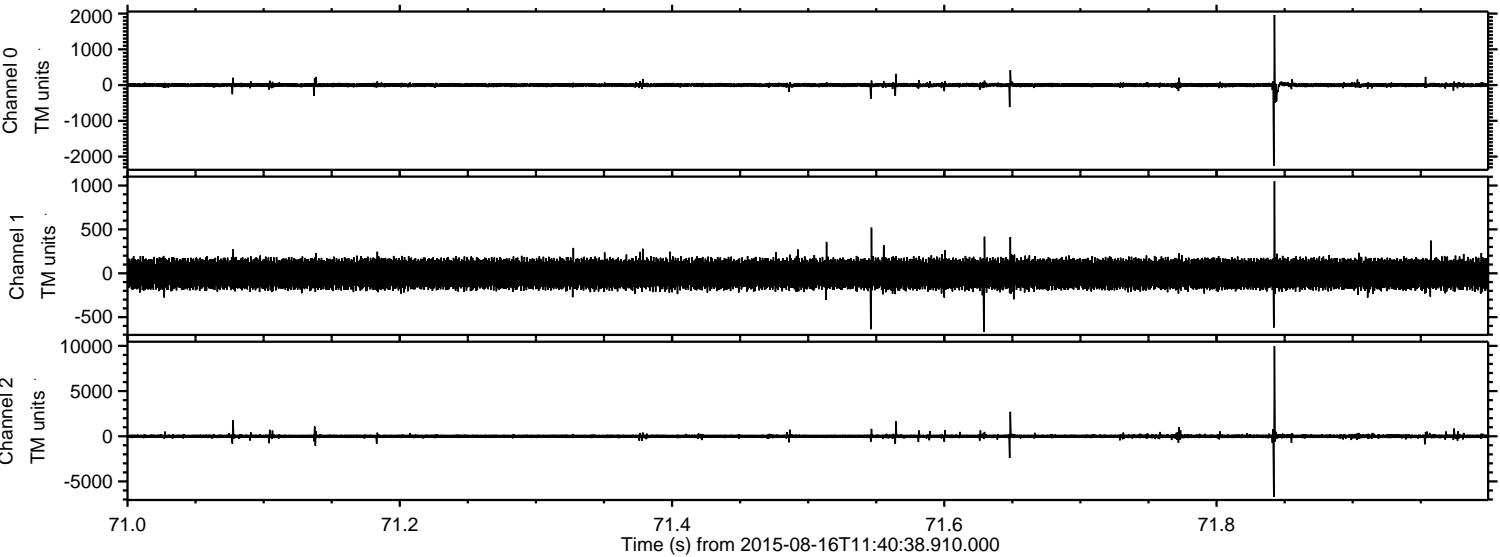
ELMAVAN 3D WAVEFORMS (Measured data sampled at 50 kHz) 51000 packets of 144 samples from 2015-08-16T11:40:38.910.000. Part 119/147

Processed Sun Aug 16 13:47:37 2015 by ELM ver.2012-10-06 from 001__elm20150816_114037__dat00.bin

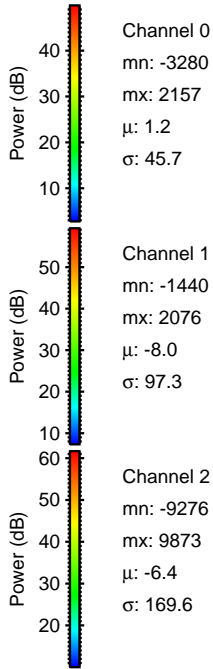
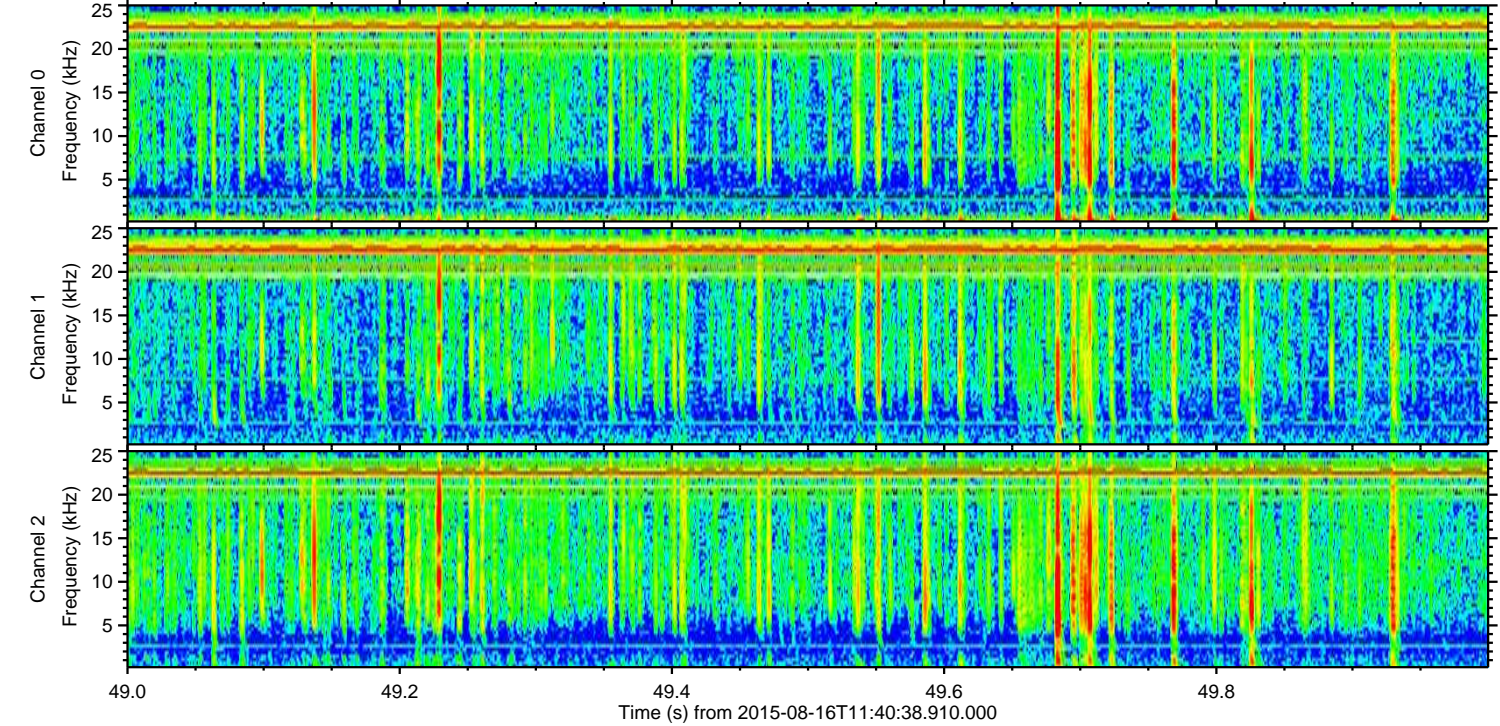
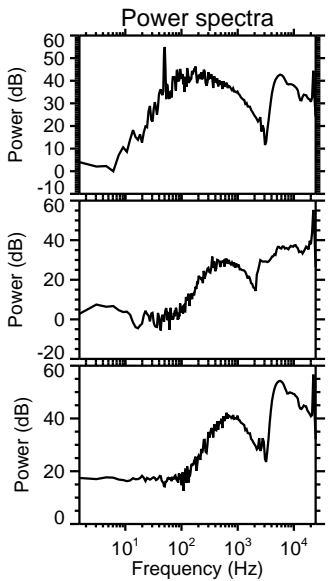
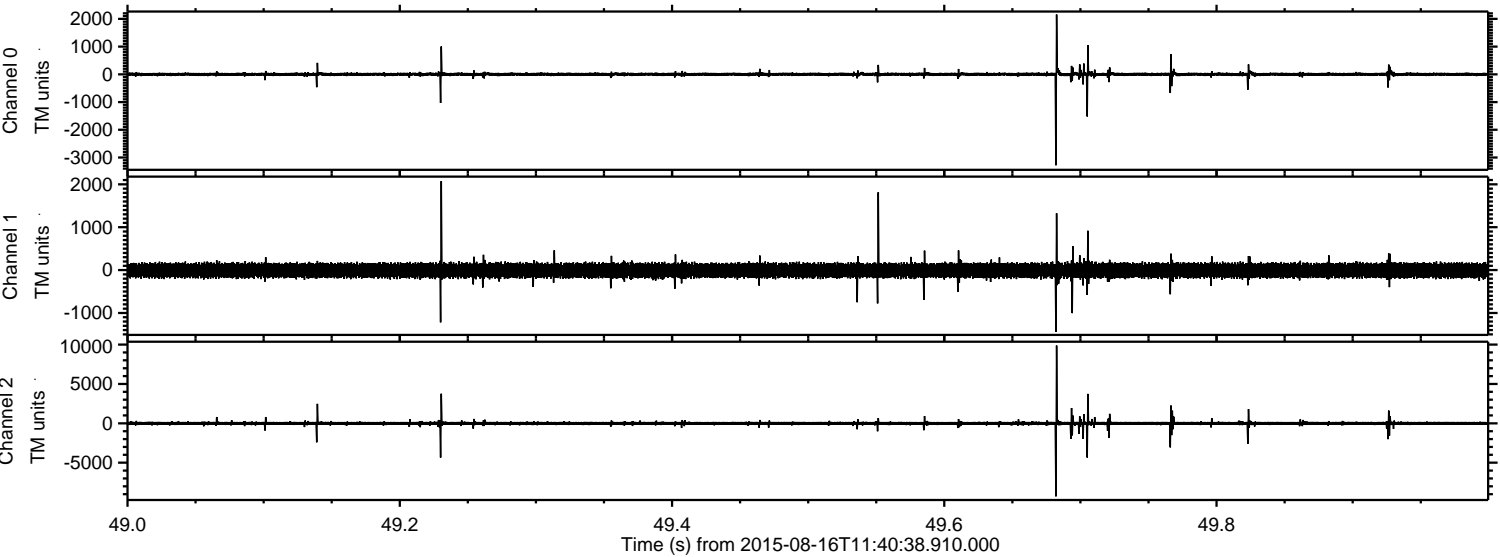


ELMAVAN 3D WAVEFORMS (Measured data sampled at 50 kHz) 51000 packets of 144 samples from 2015-08-16T11:40:38.910.000. Part 72/147

Processed Sun Aug 16 13:47:37 2015 by ELM ver.2012-10-06 from 001__elm20150816_114037__dat00.bin



Processed Sun Aug 16 13:47:38 2015 by ELM ver.2012-10-06 from 001__elm20150816_114037__dat00.bin

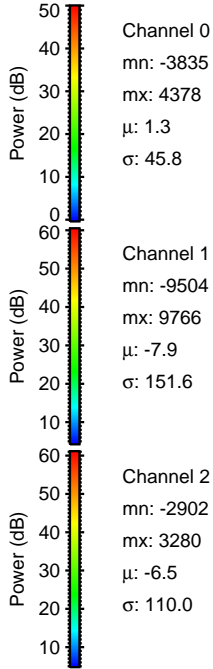
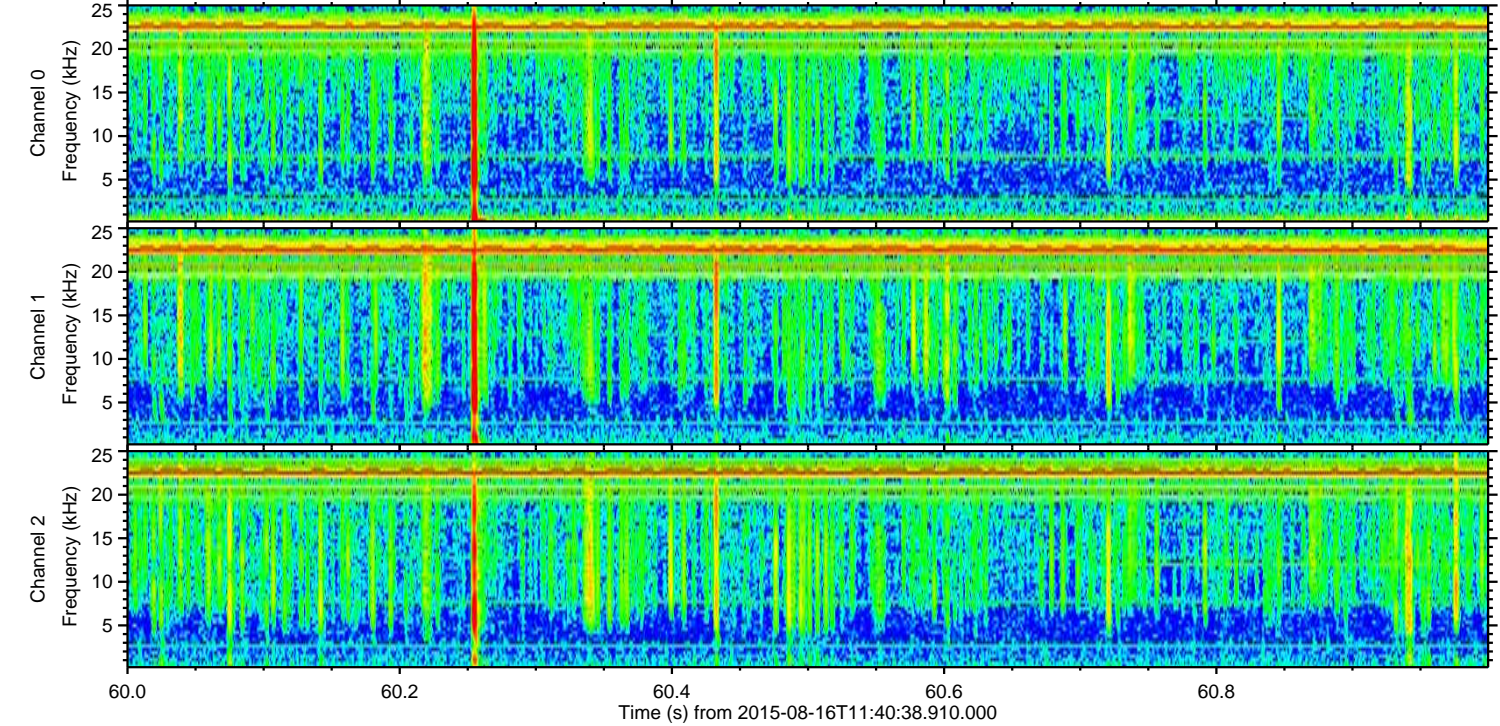
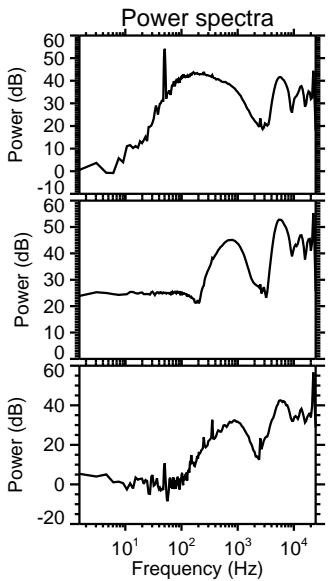
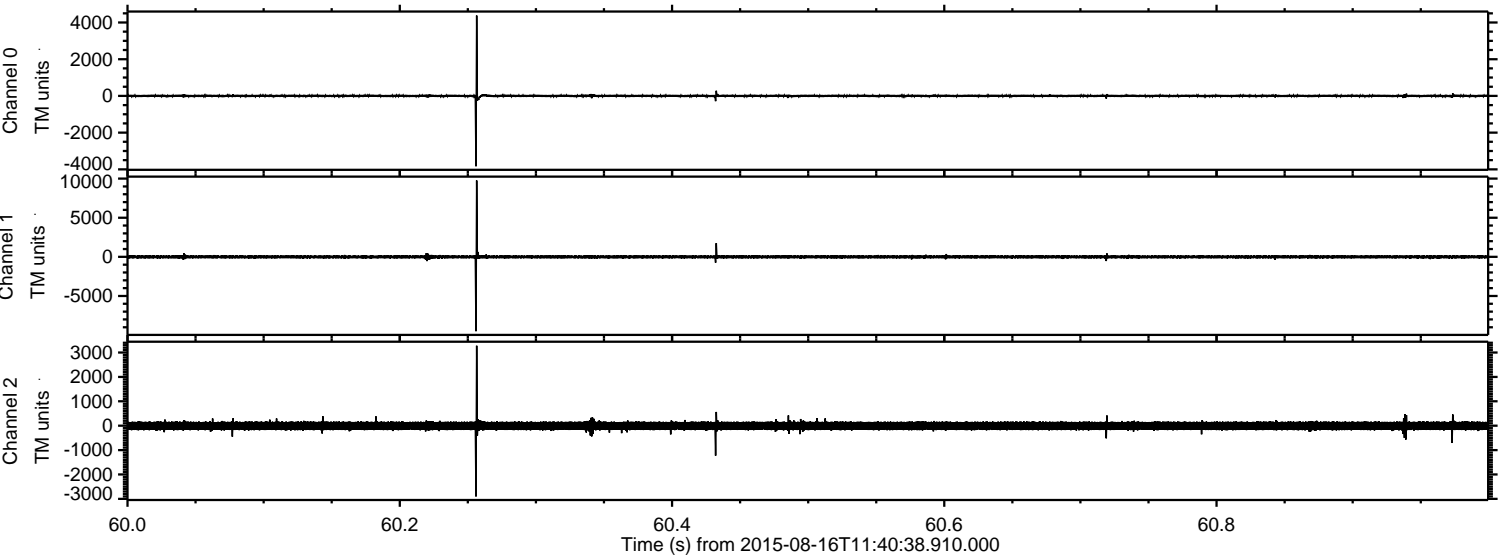


Channel 0
mn: -3280
mx: 2157
 μ : 1.2
 σ : 45.7

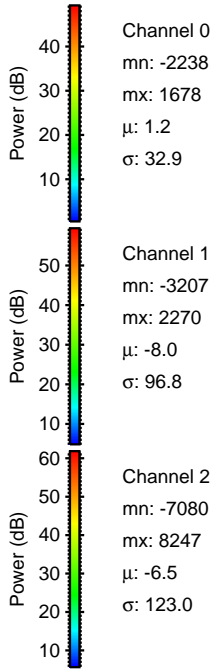
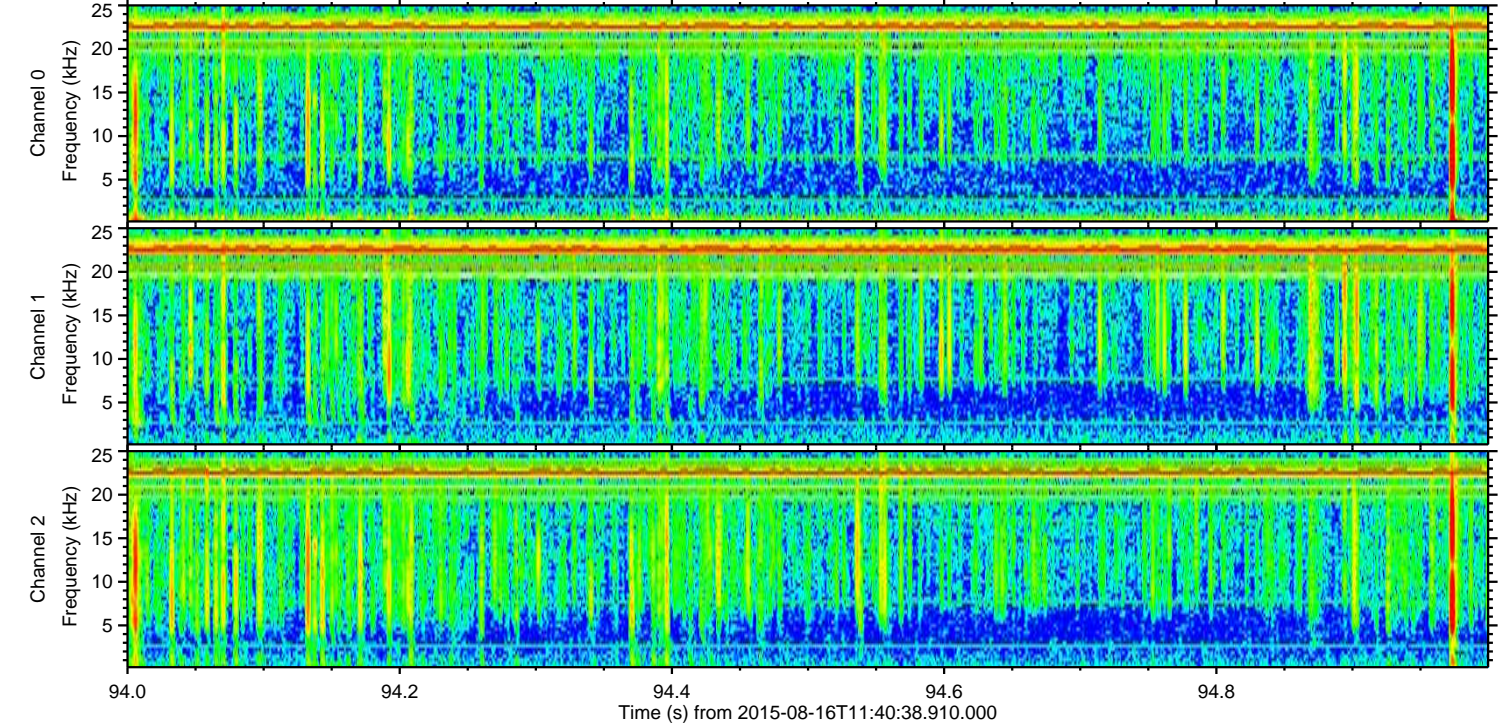
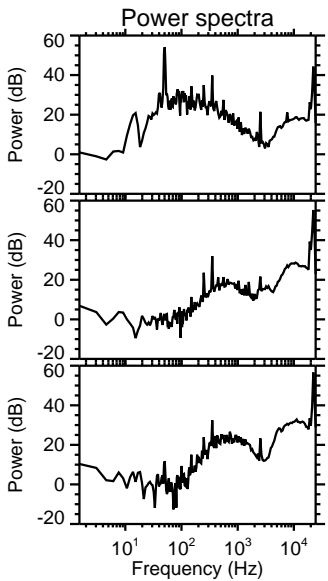
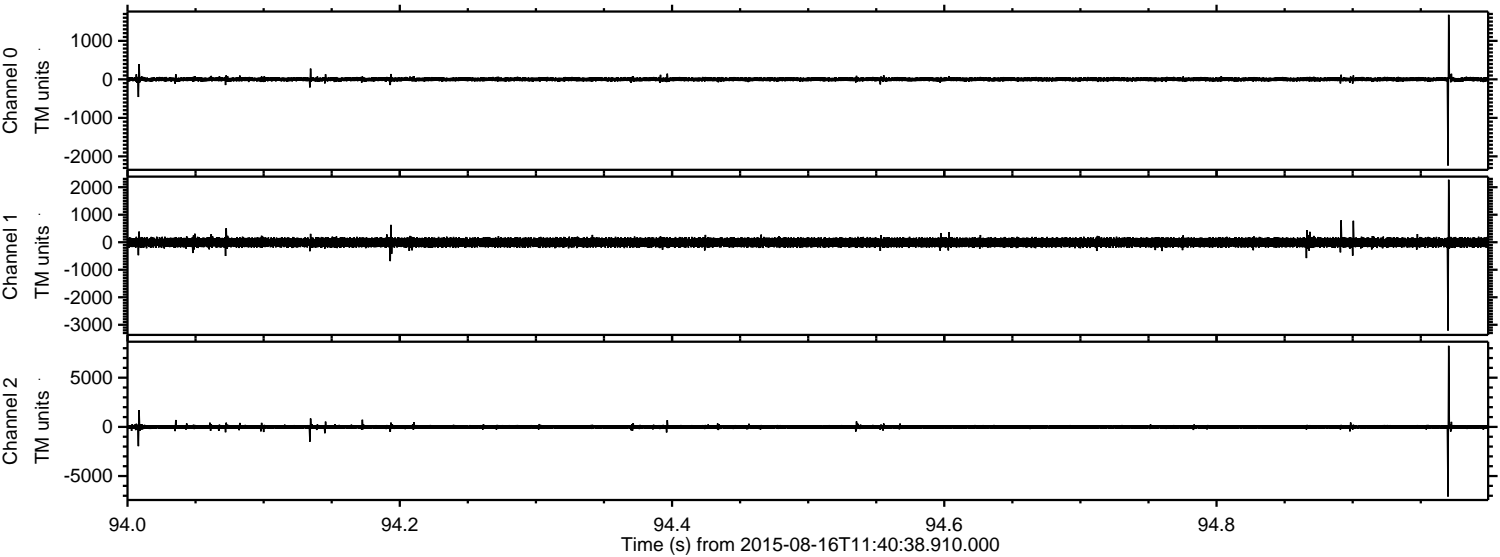
Channel 1
mn: -1440
mx: 2076
 μ : -8.0
 σ : 97.3

Channel 2
mn: -9276
mx: 9873
 μ : -6.4
 σ : 169.6

Processed Sun Aug 16 13:47:39 2015 by ELM ver.2012-10-06 from 001__elm20150816_114037__dat00.bin



Processed Sun Aug 16 13:47:40 2015 by ELM ver.2012-10-06 from 001__elm20150816_114037__dat00.bin



Processed Sun Aug 16 13:47:41 2015 by ELM ver.2012-10-06 from 001__elm20150816_114037__dat00.bin

