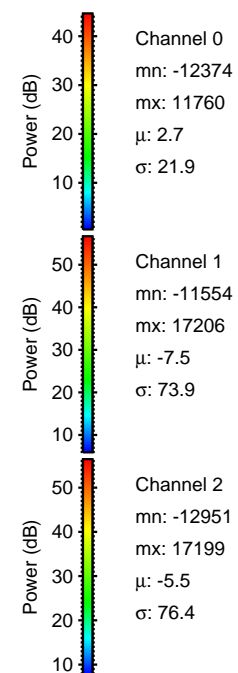
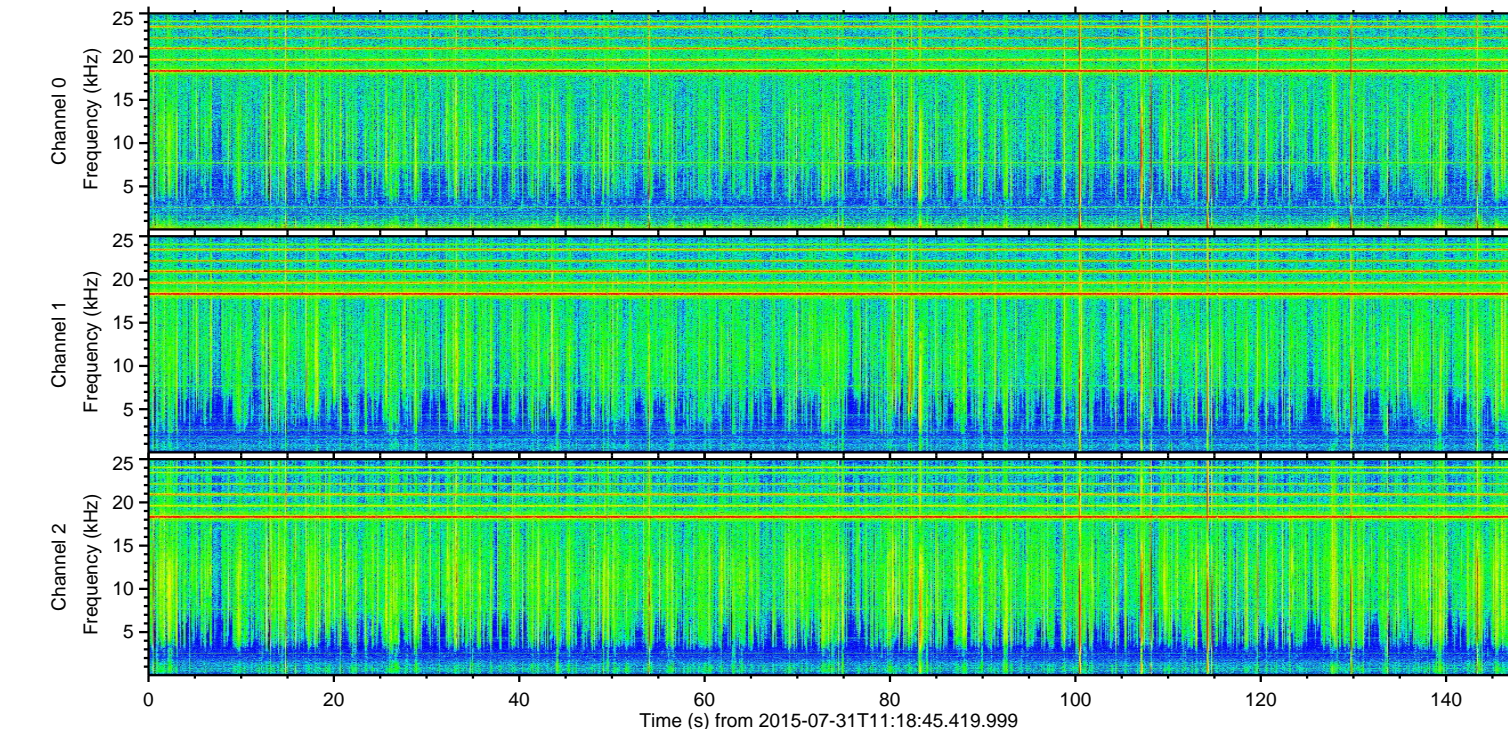
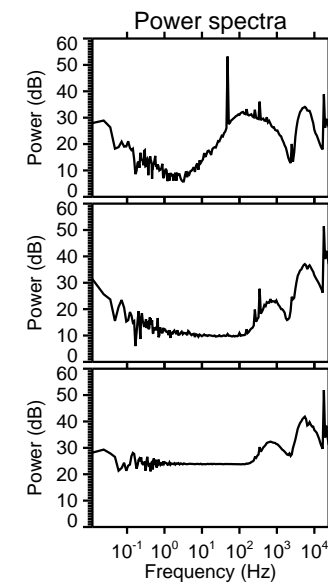
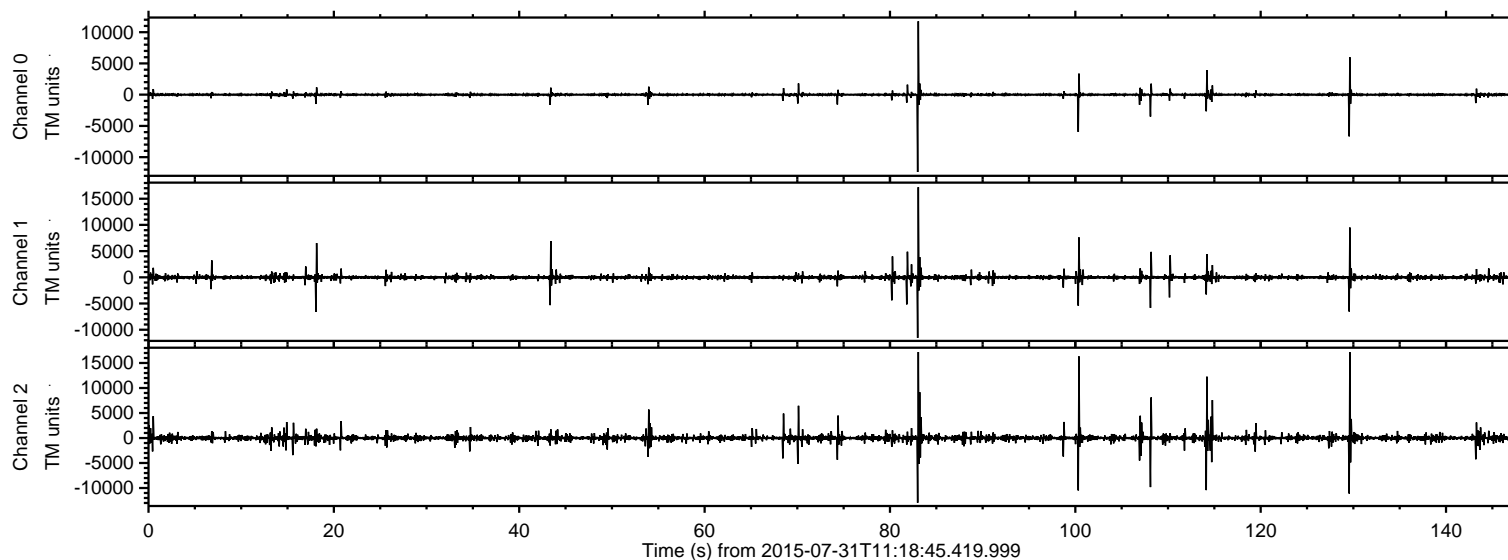
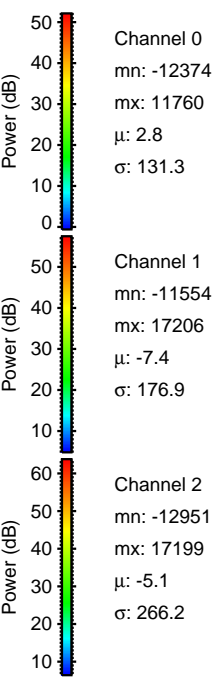
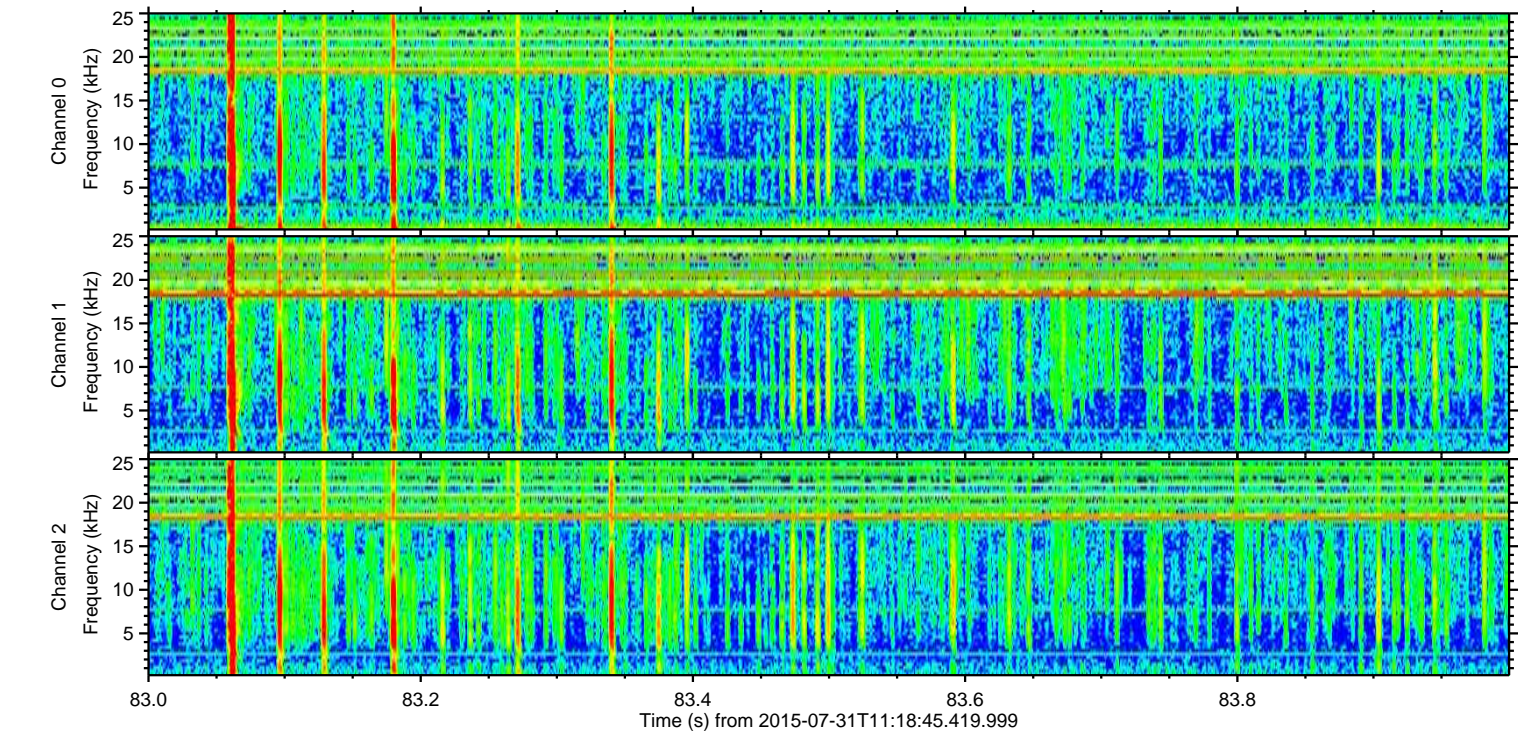
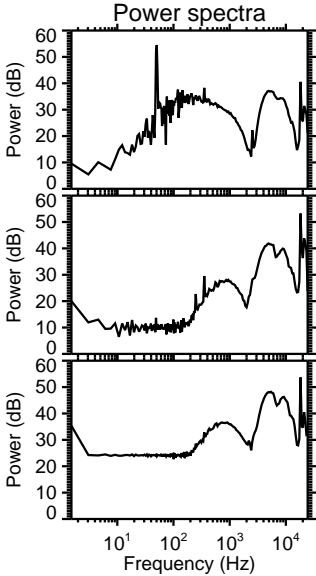
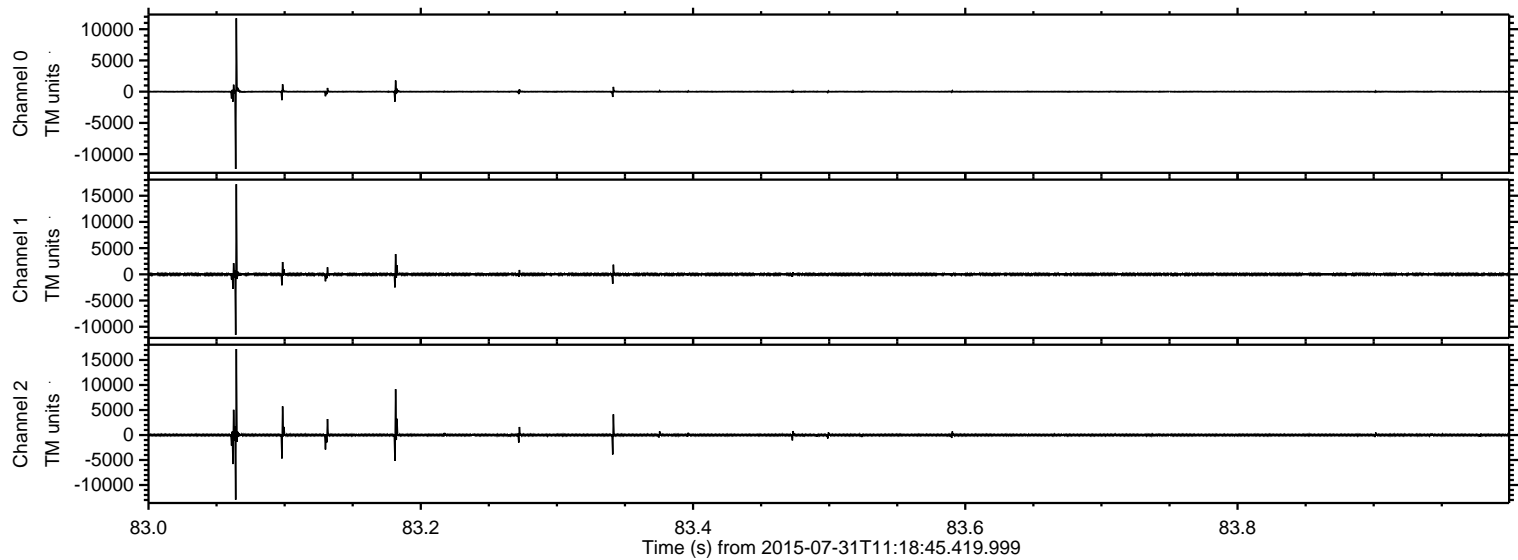


ELMAVAN 3D WAVEFORMS (Measured data sampled at 50 kHz) 51000 packets of 144 samples from 2015-07-31T11:18:45.419.999.

Processed Fri Jul 31 13:25:29 2015 by ELM ver.2012-10-06 from 001__elm20150731_111844__dat00.bin

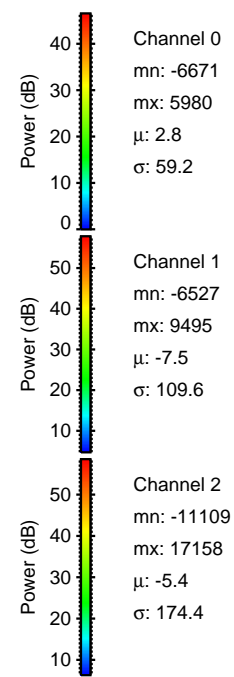
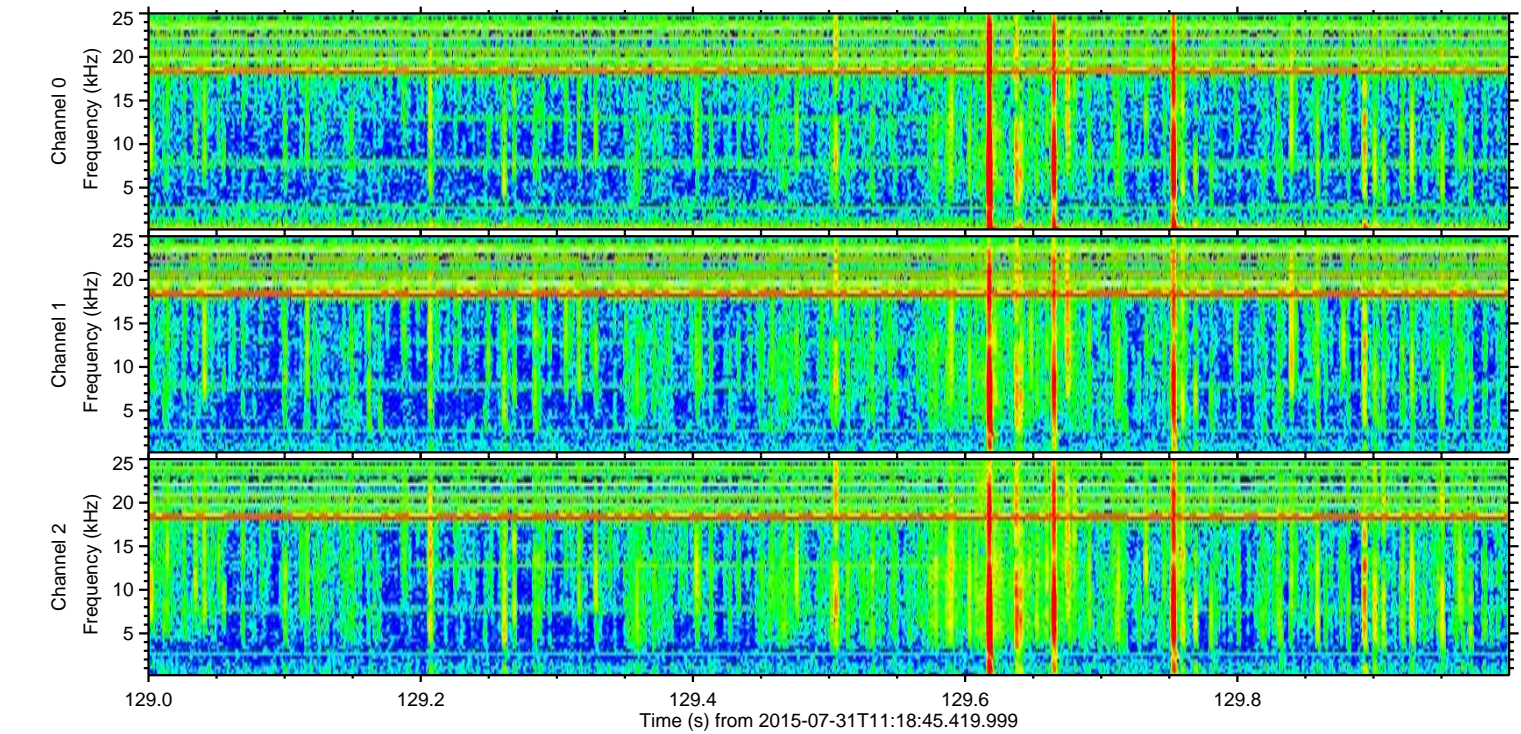
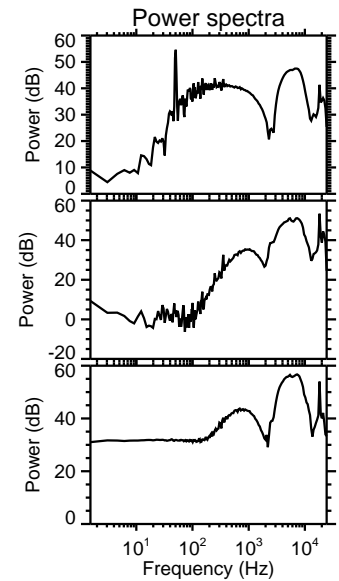
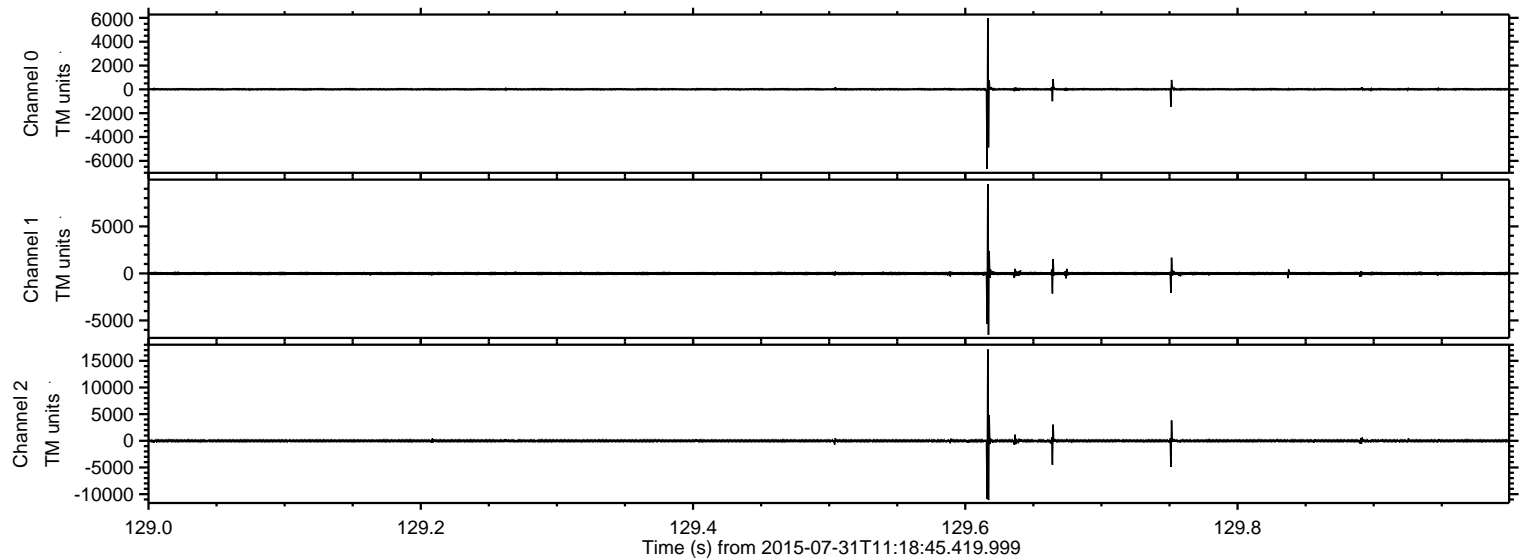


Processed Fri Jul 31 13:25:44 2015 by ELM ver.2012-10-06 from 001__elm20150731_111844__dat00.bin



ELMAVAN 3D WAVEFORMS (Measured data sampled at 50 kHz) 51000 packets of 144 samples from 2015-07-31T11:18:45.419.999. Part 130/147

Processed Fri Jul 31 13:25:45 2015 by ELM ver.2012-10-06 from 001__elm20150731_111844__dat00.bin



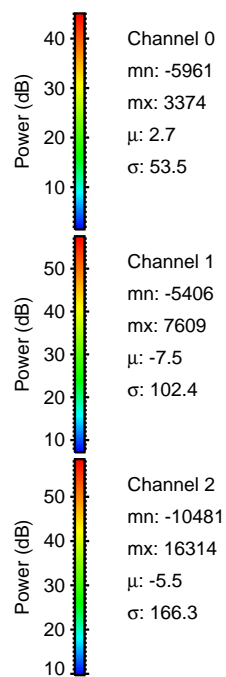
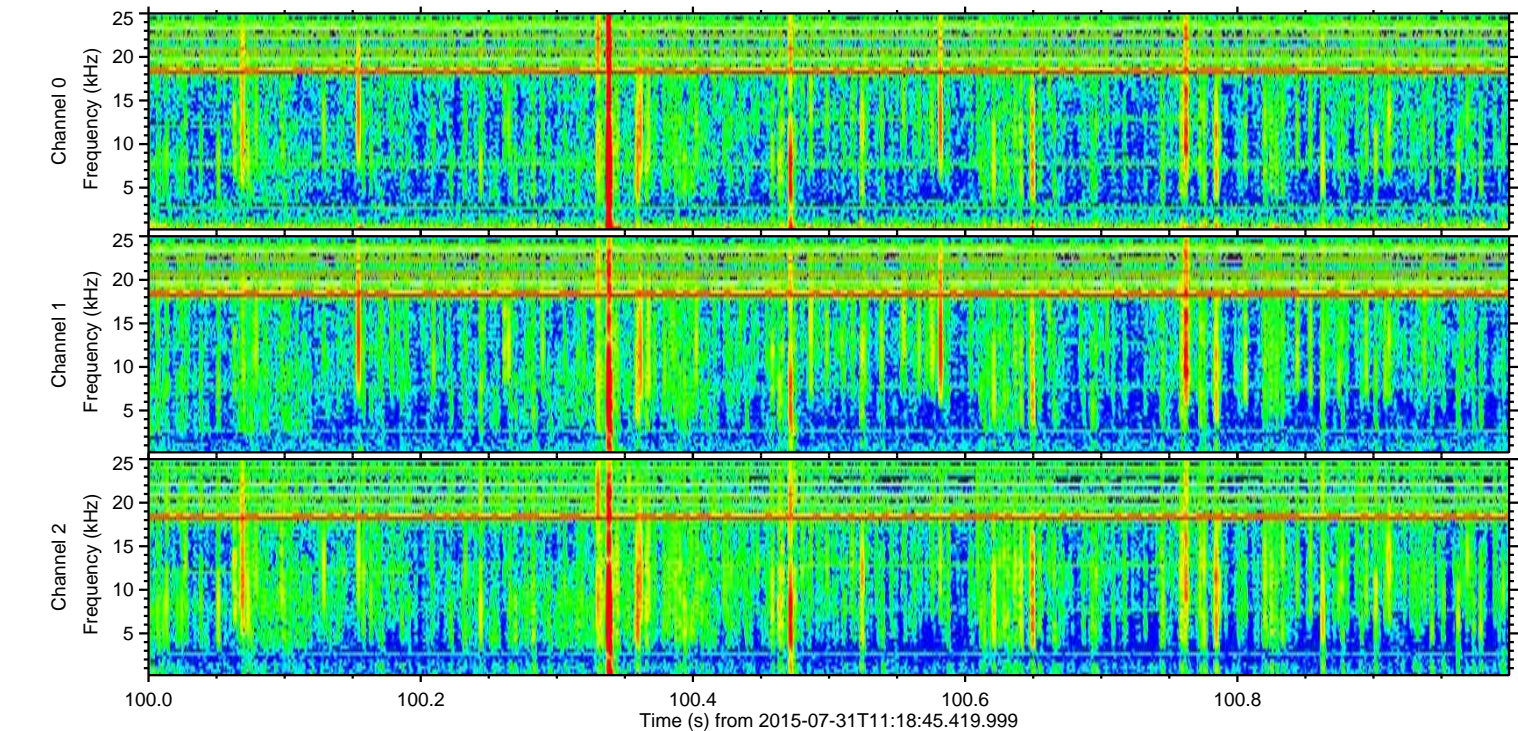
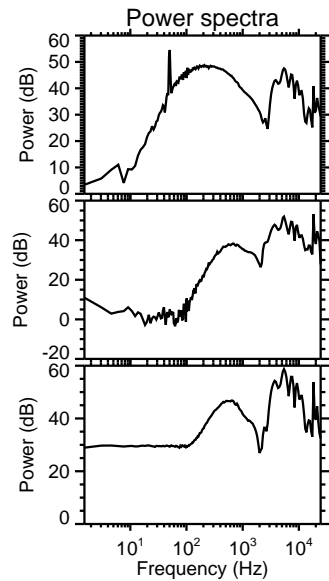
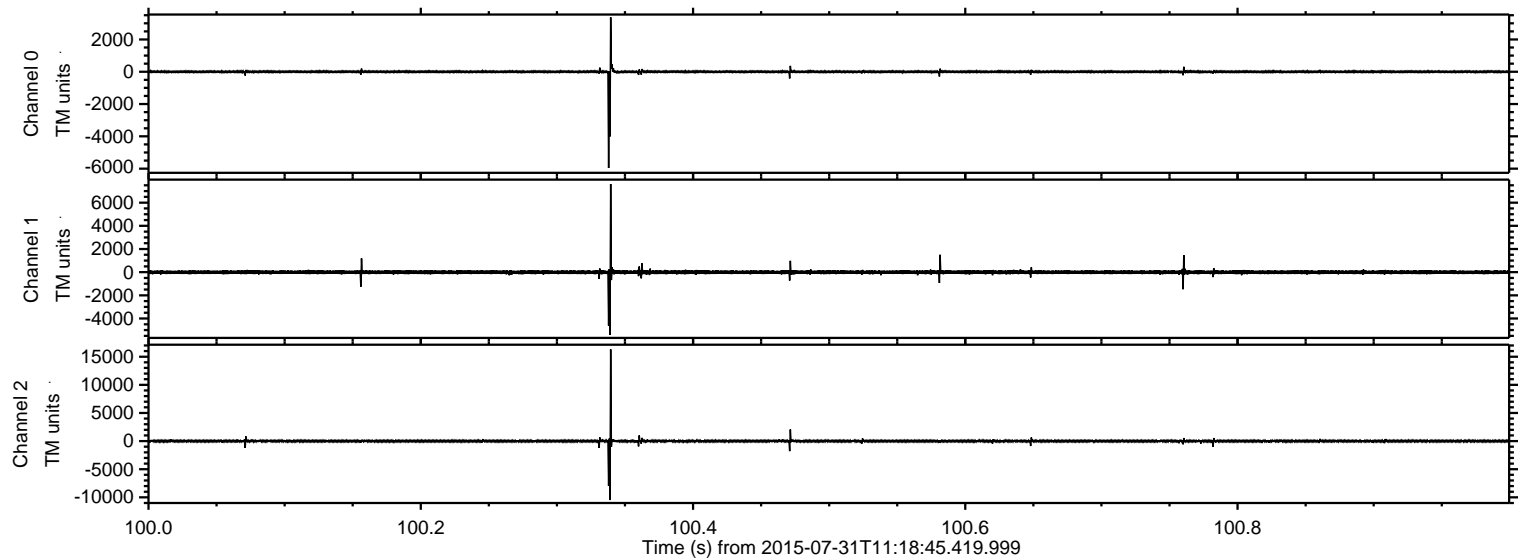
Channel 0
mn: -6671
mx: 5980
 μ : 2.8
 σ : 59.2

Channel 1
mn: -6527
mx: 9495
 μ : -7.5
 σ : 109.6

Channel 2
mn: -11109
mx: 17158
 μ : -5.4
 σ : 174.4

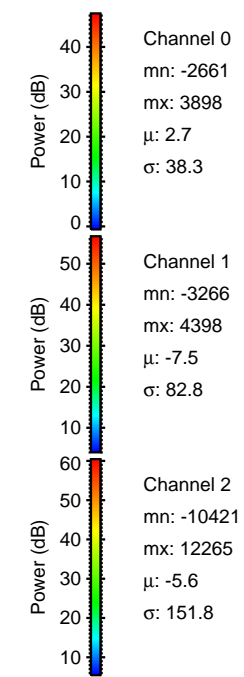
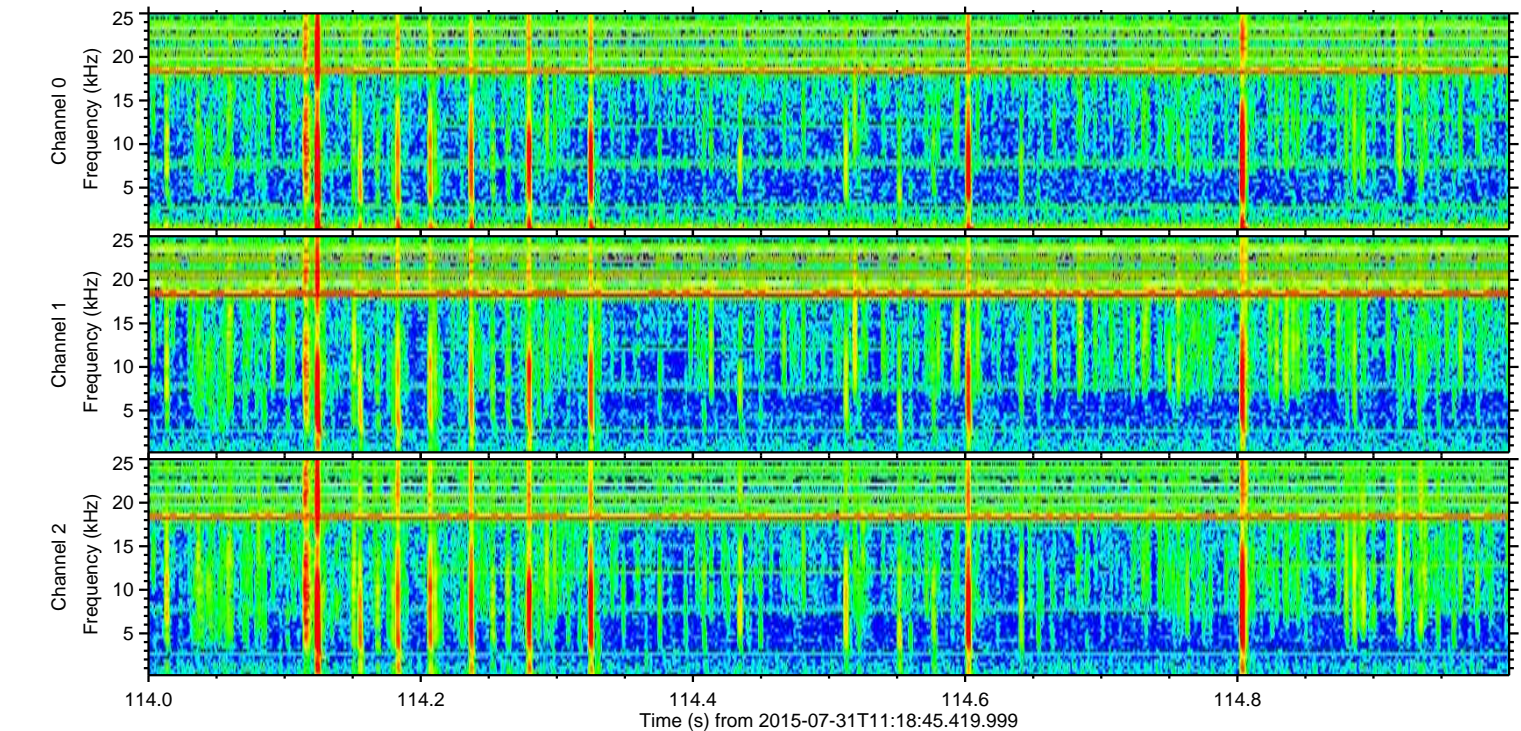
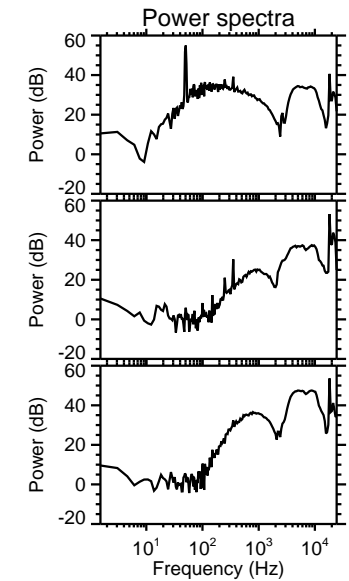
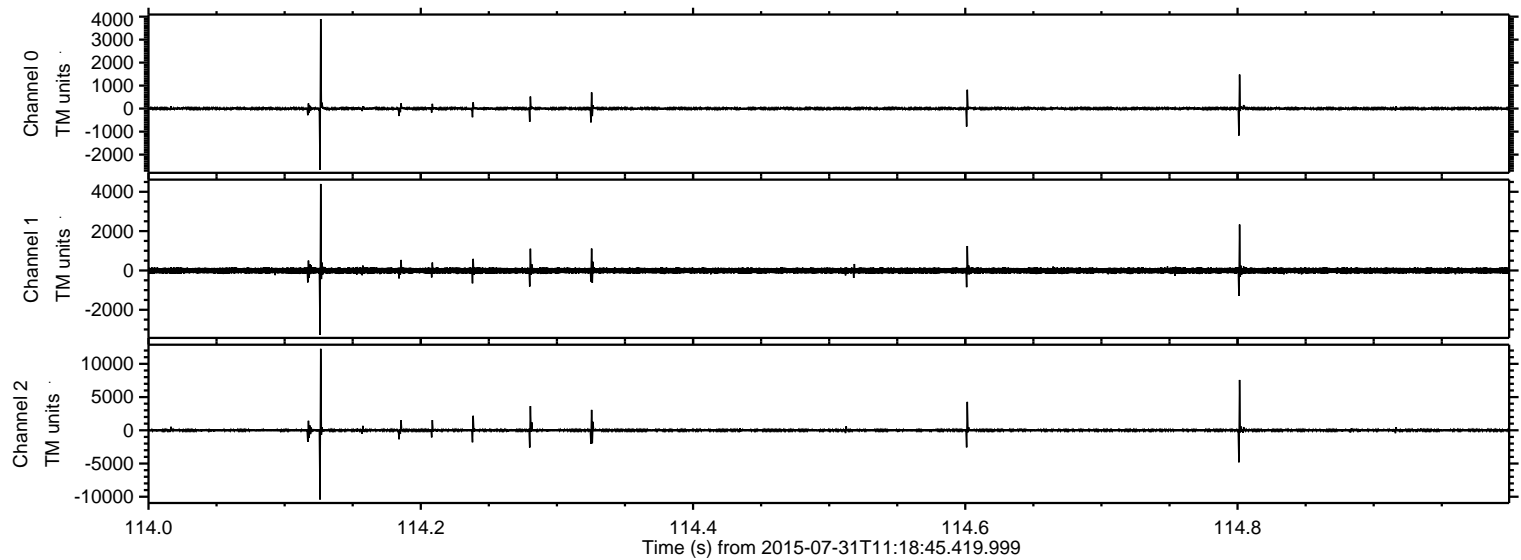
ELMAVAN 3D WAVEFORMS (Measured data sampled at 50 kHz) 51000 packets of 144 samples from 2015-07-31T11:18:45.419.999. Part 101/147

Processed Fri Jul 31 13:25:46 2015 by ELM ver.2012-10-06 from 001__elm20150731_111844__dat00.bin



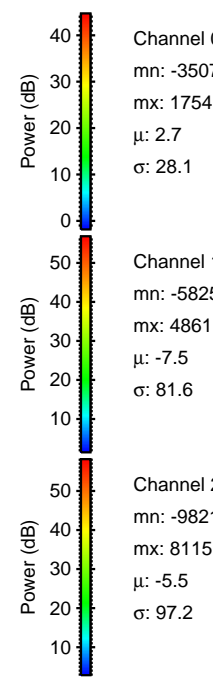
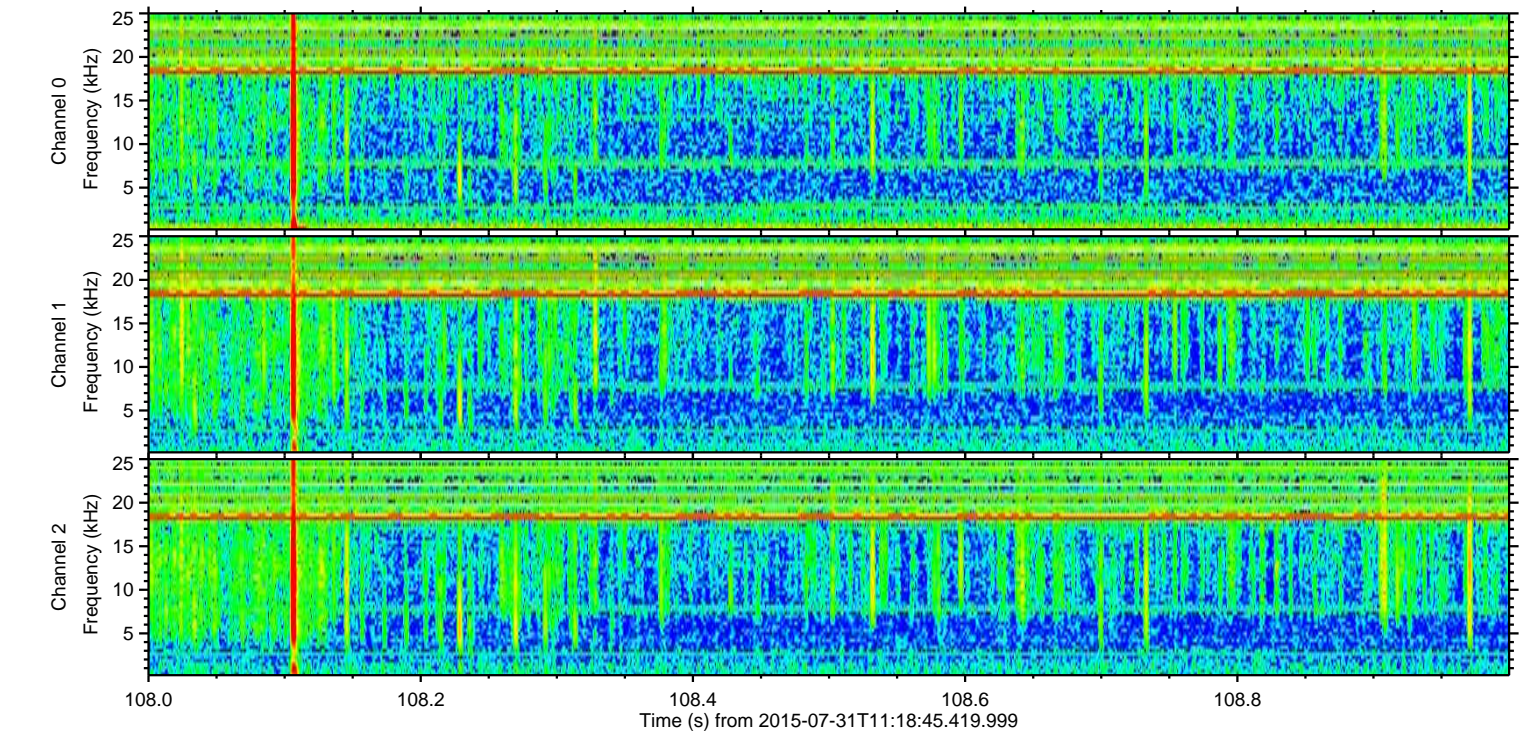
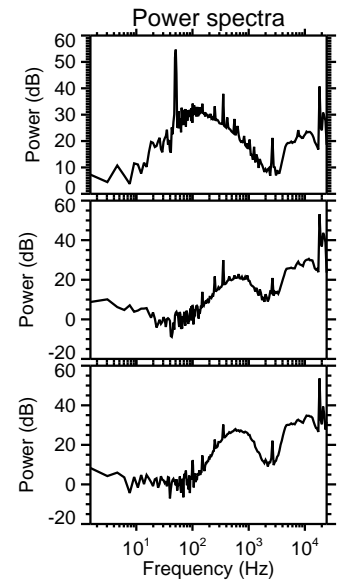
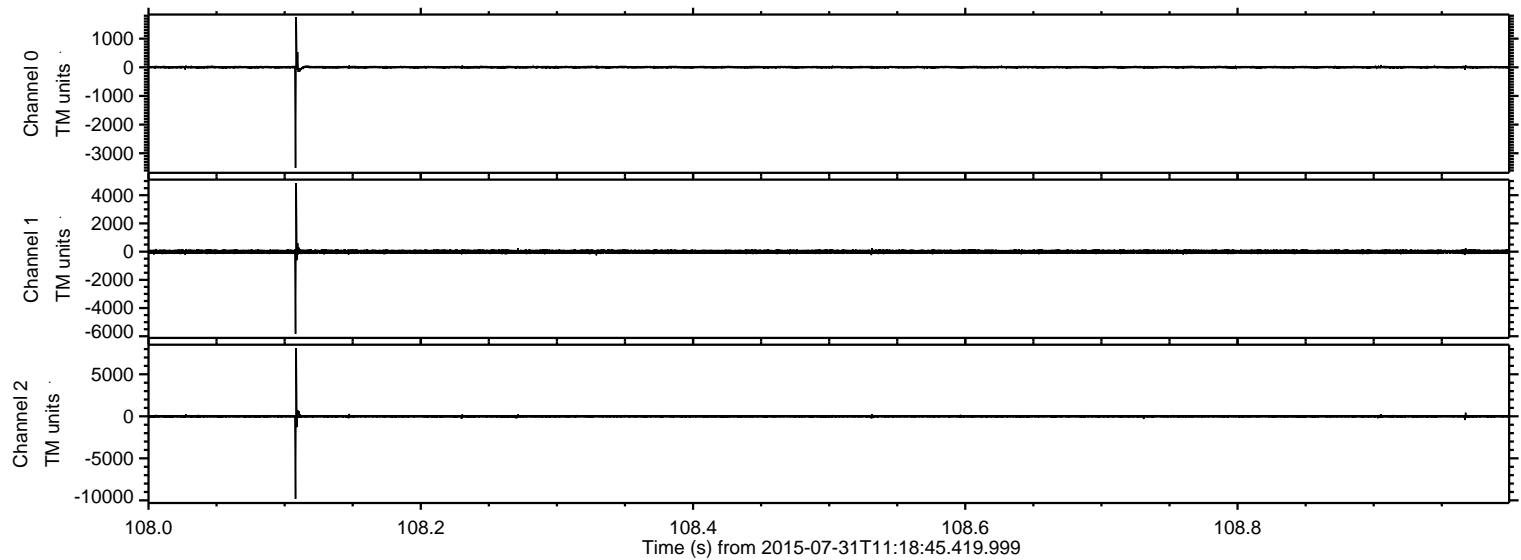
ELMAVAN 3D WAVEFORMS (Measured data sampled at 50 kHz) 51000 packets of 144 samples from 2015-07-31T11:18:45.419.999. Part 115/147

Processed Fri Jul 31 13:25:47 2015 by ELM ver.2012-10-06 from 001__elm20150731_111844__dat00.bin



ELMAVAN 3D WAVEFORMS (Measured data sampled at 50 kHz) 51000 packets of 144 samples from 2015-07-31T11:18:45.419.999. Part 109/147

Processed Fri Jul 31 13:25:48 2015 by ELM ver.2012-10-06 from 001__elm20150731_111844__dat00.bin

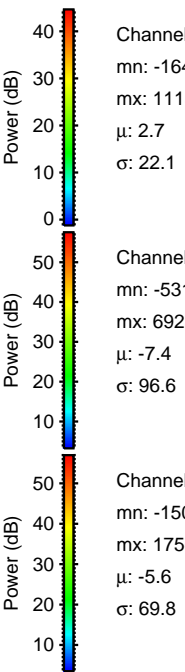
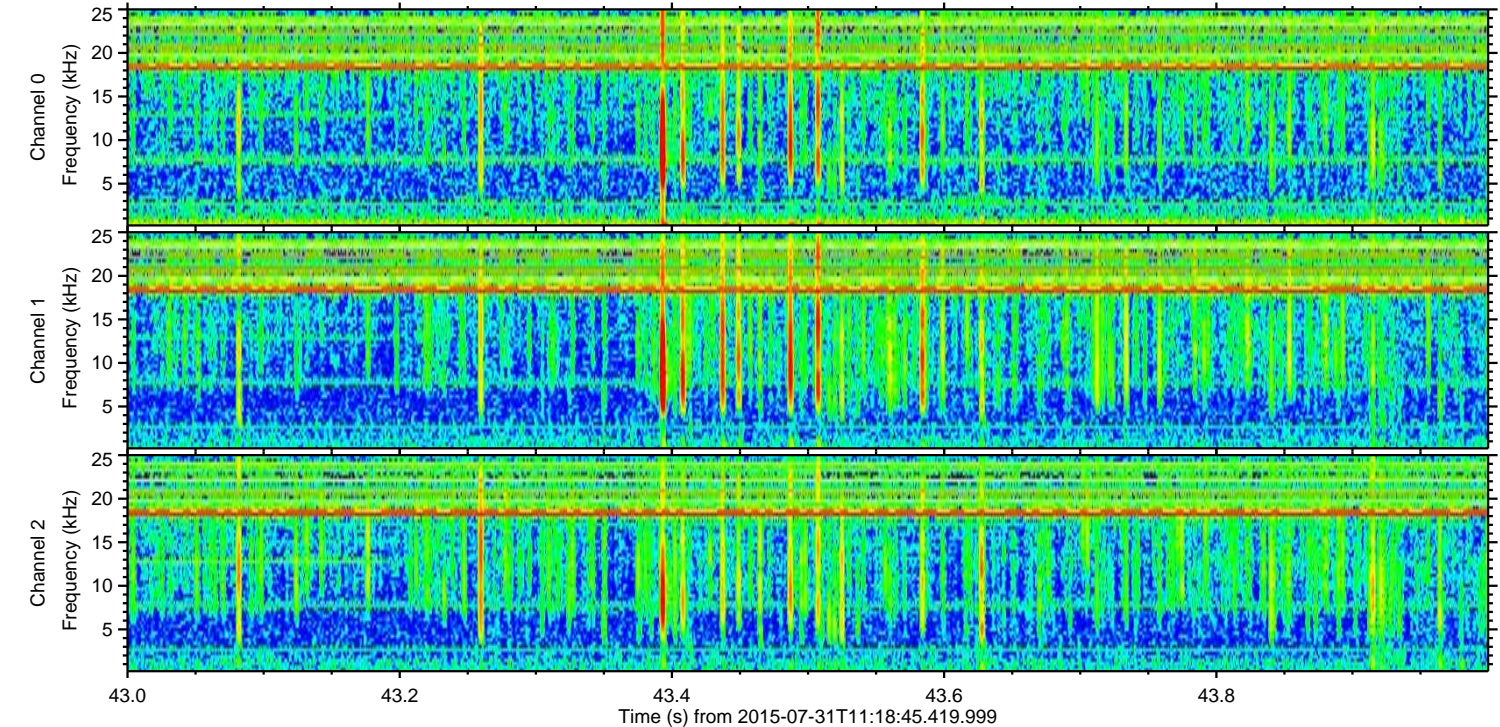
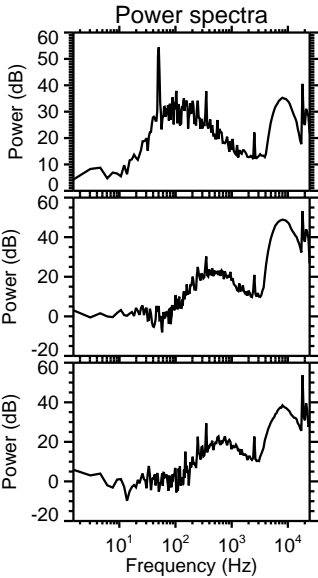
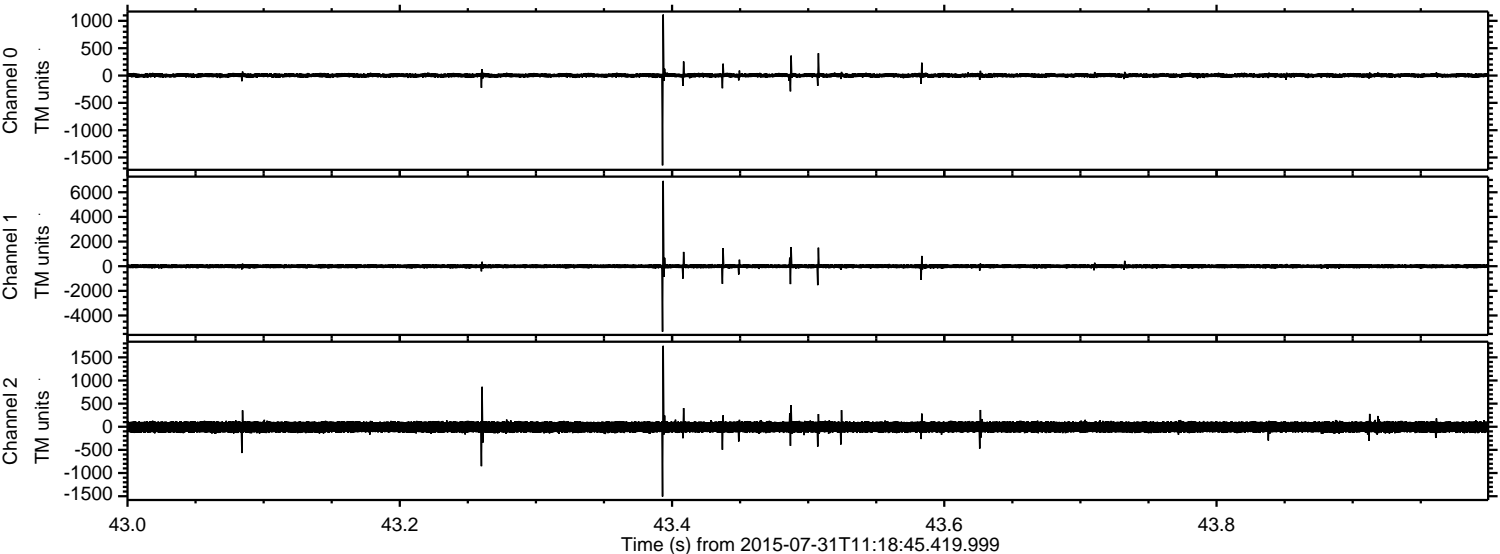


Channel 0
mn: -3507
mx: 1754
 μ : 2.7
 σ : 28.1

Channel 1
mn: -5825
mx: 4861
 μ : -7.5
 σ : 81.6

Channel 2
mn: -9821
mx: 8115
 μ : -5.5
 σ : 97.2

Processed Fri Jul 31 13:25:49 2015 by ELM ver.2012-10-06 from 001__elm20150731_111844__dat00.bin

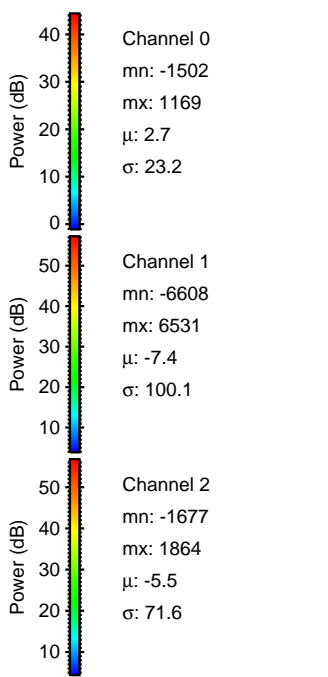
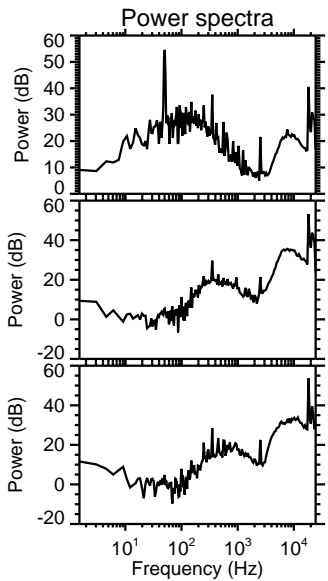
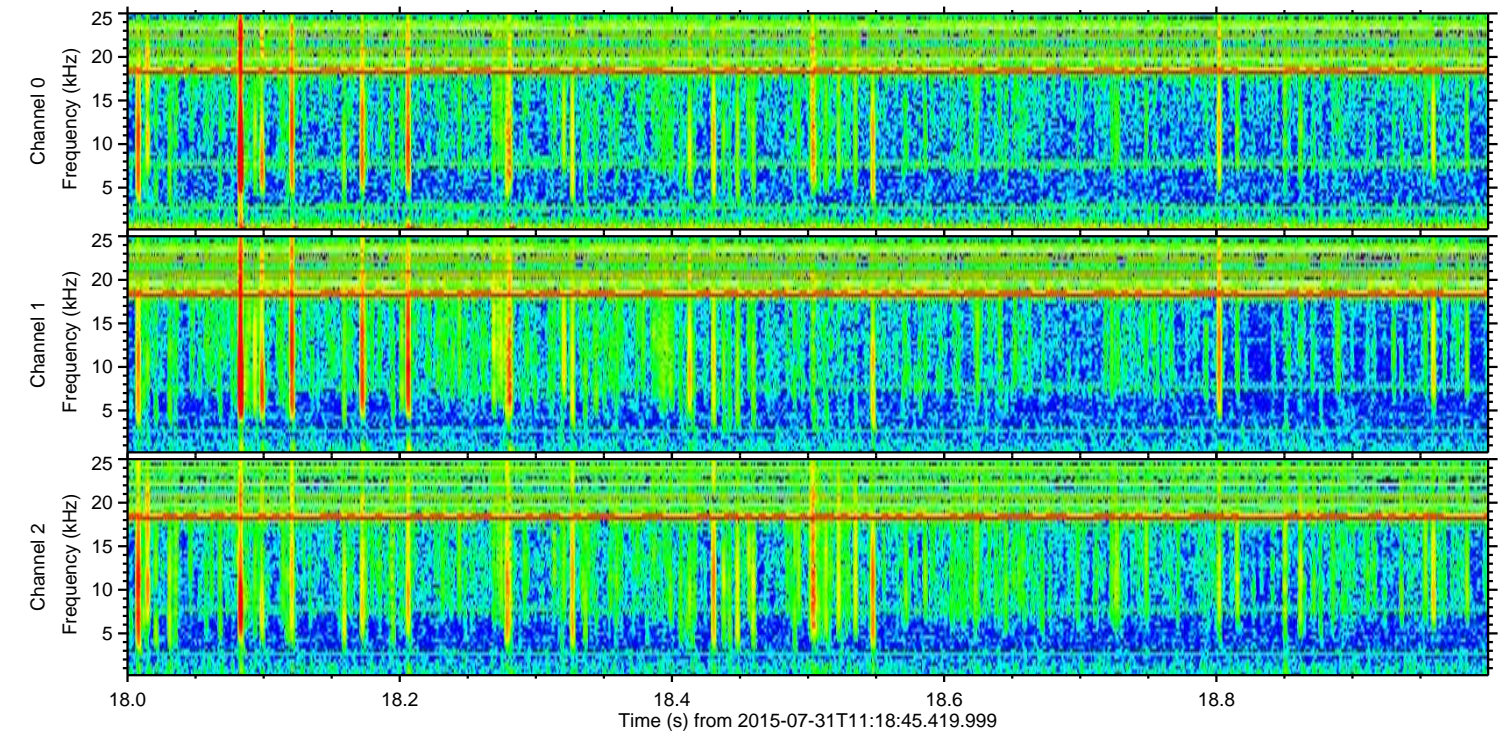
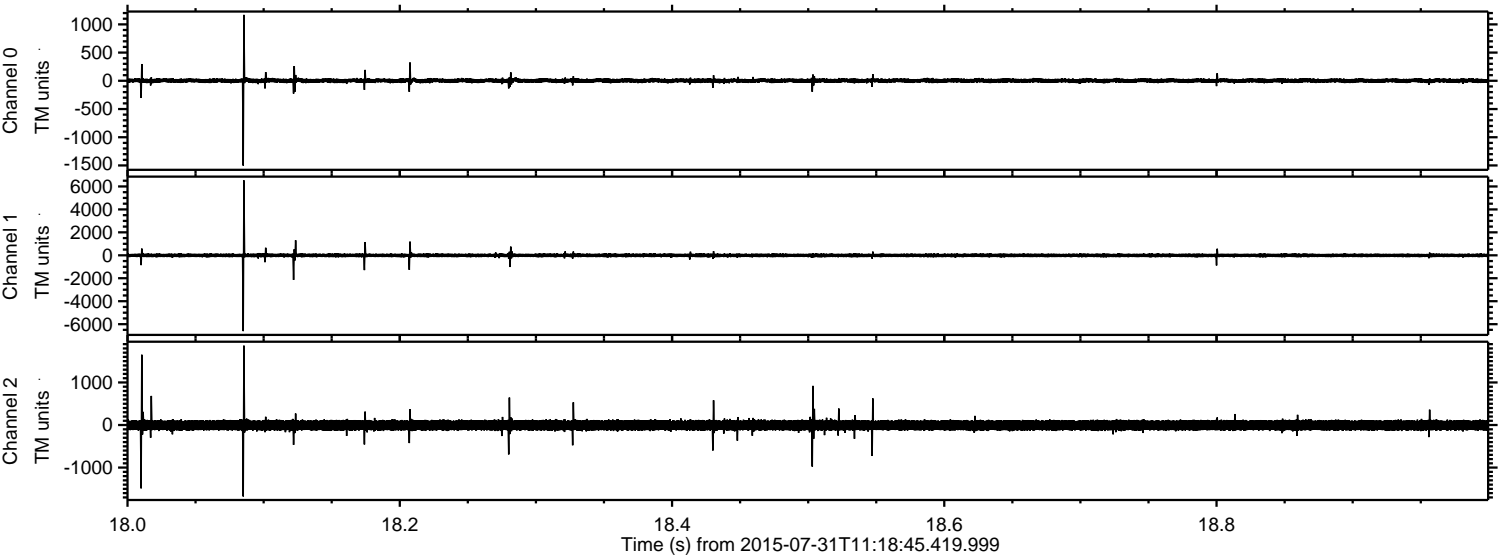


Channel 0
mn: -1643
mx: 1115
μ: 2.7
σ: 22.1

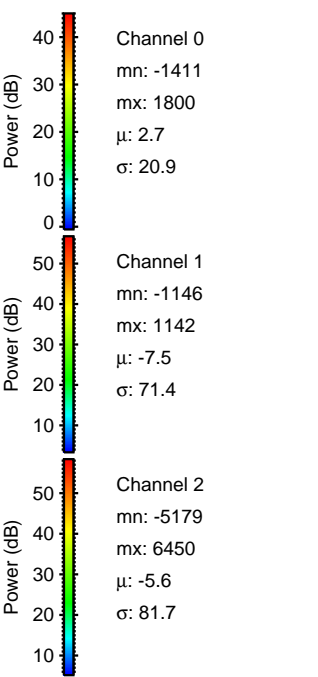
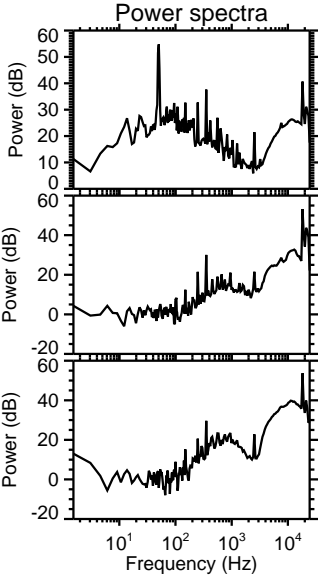
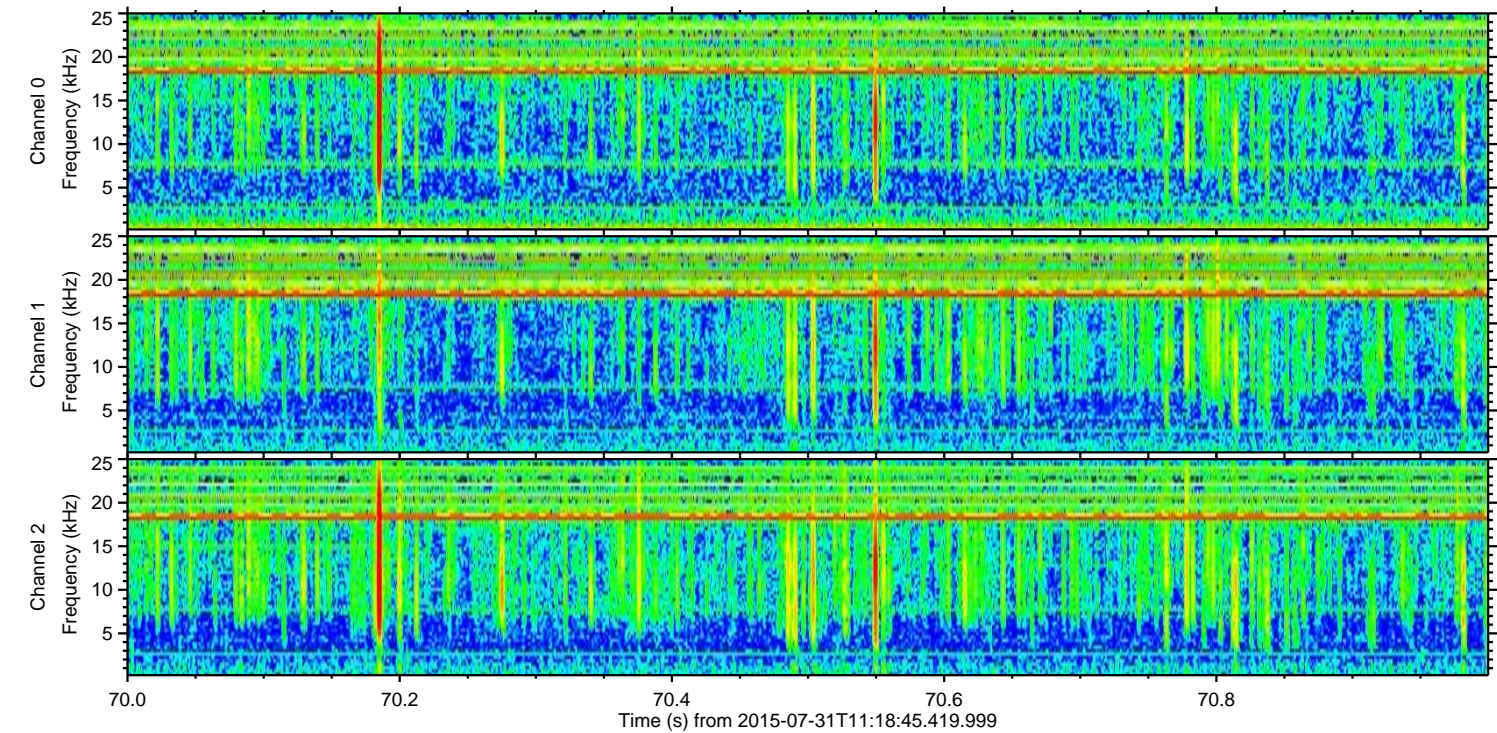
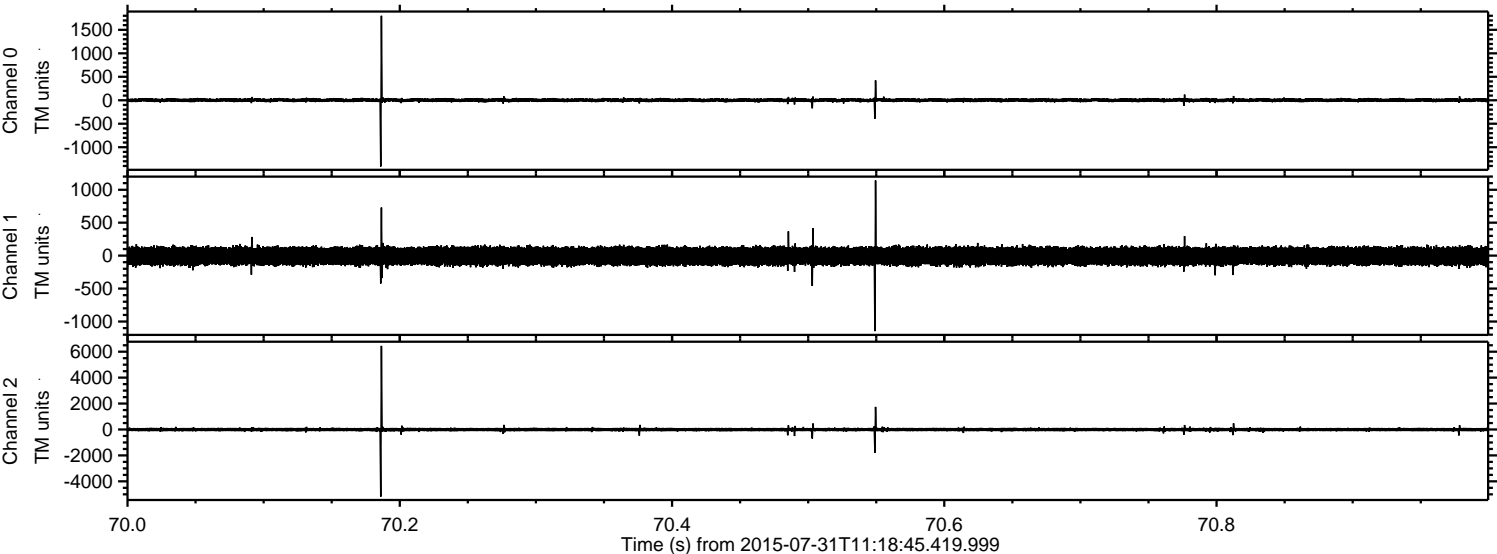
Channel 1
mn: -5314
mx: 6925
μ: -7.4
σ: 96.6

Channel 2
mn: -1507
mx: 1750
μ: -5.6
σ: 69.8

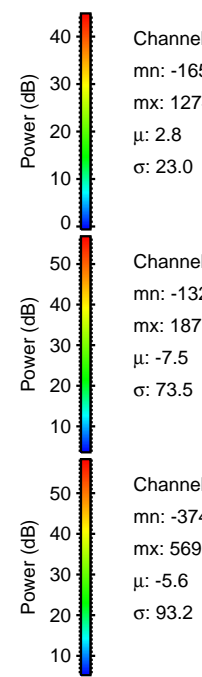
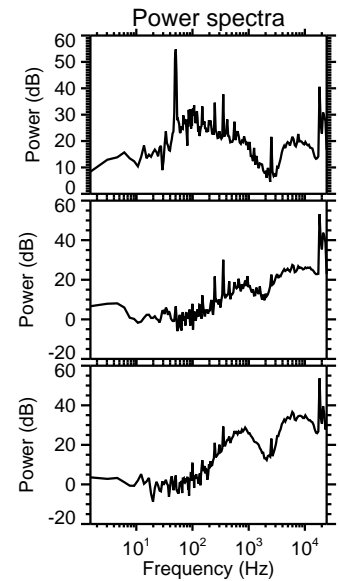
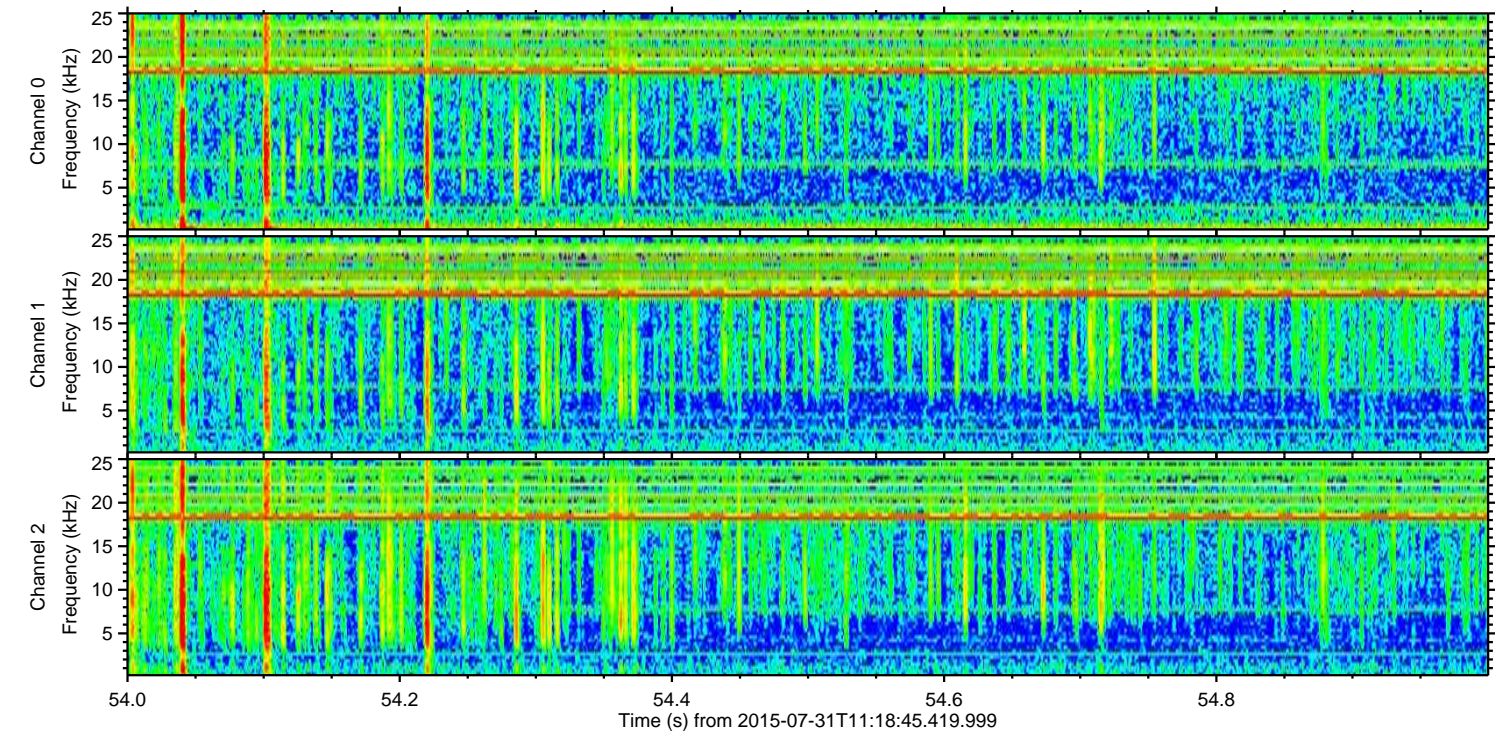
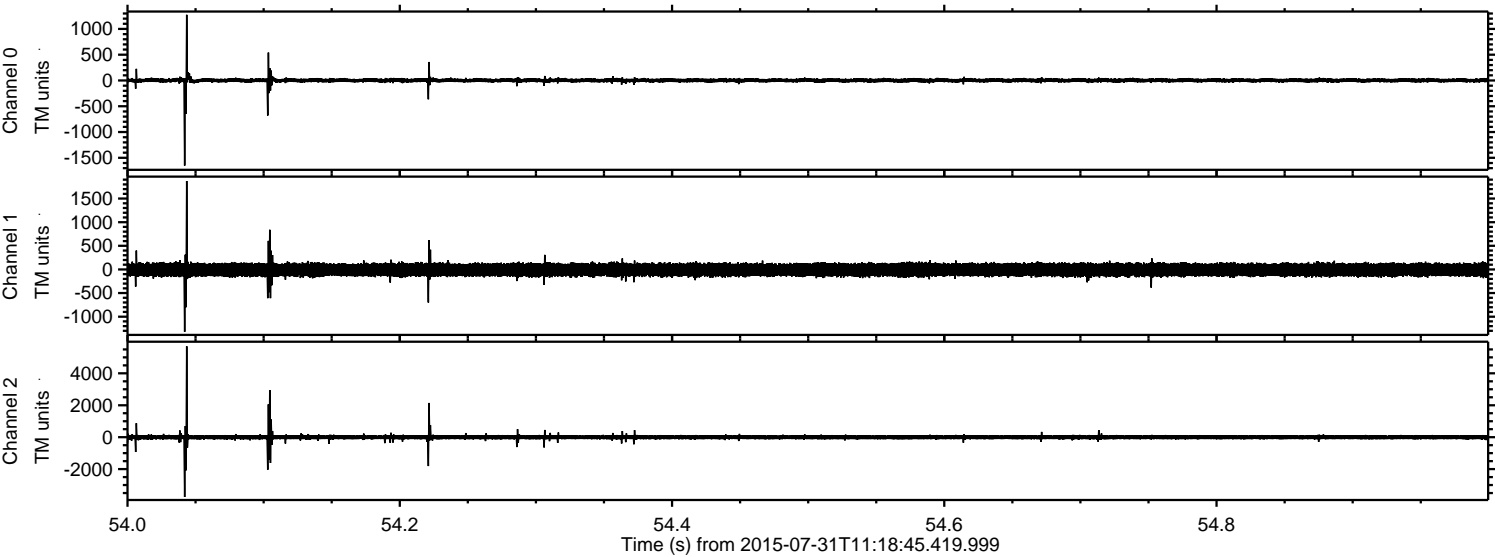
Processed Fri Jul 31 13:25:50 2015 by ELM ver.2012-10-06 from 001__elm20150731_111844__dat00.bin



Processed Fri Jul 31 13:25:51 2015 by ELM ver.2012-10-06 from 001__elm20150731_111844__dat00.bin



Processed Fri Jul 31 13:25:52 2015 by ELM ver.2012-10-06 from 001__elm20150731_111844__dat00.bin



Channel 0
mn: -1650
mx: 1274
 μ : 2.8
 σ : 23.0

Channel 1
mn: -1320
mx: 1871
 μ : -7.5
 σ : 73.5

Channel 2
mn: -3748
mx: 5696
 μ : -5.6
 σ : 93.2

Processed Fri Jul 31 13:25:53 2015 by ELM ver.2012-10-06 from 001__elm20150731_111844__dat00.bin

