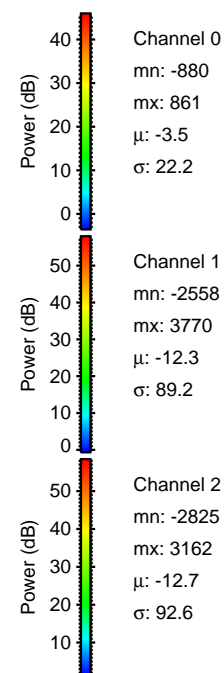
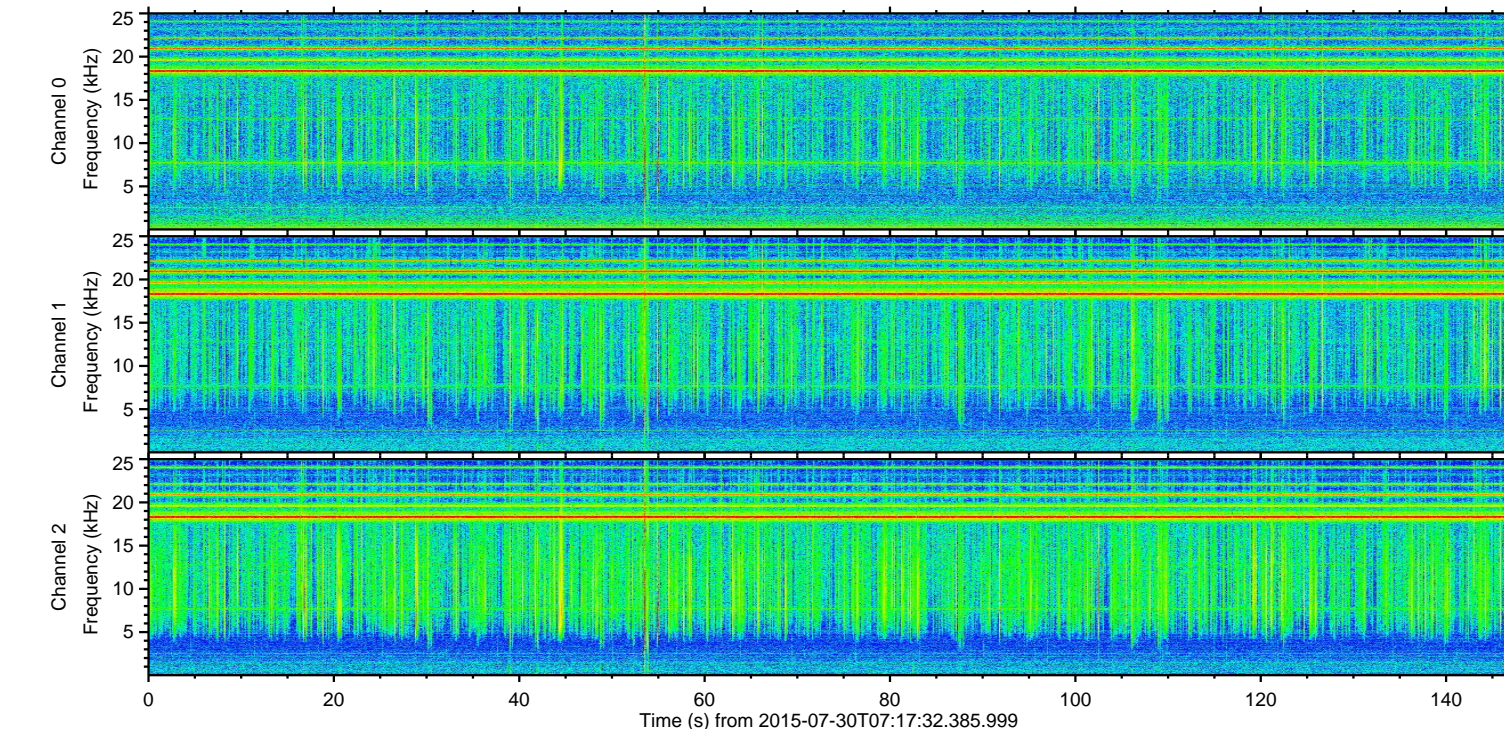
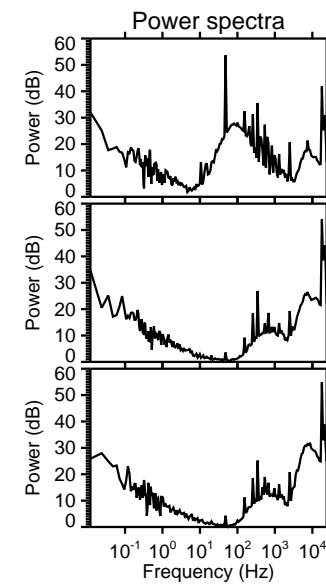
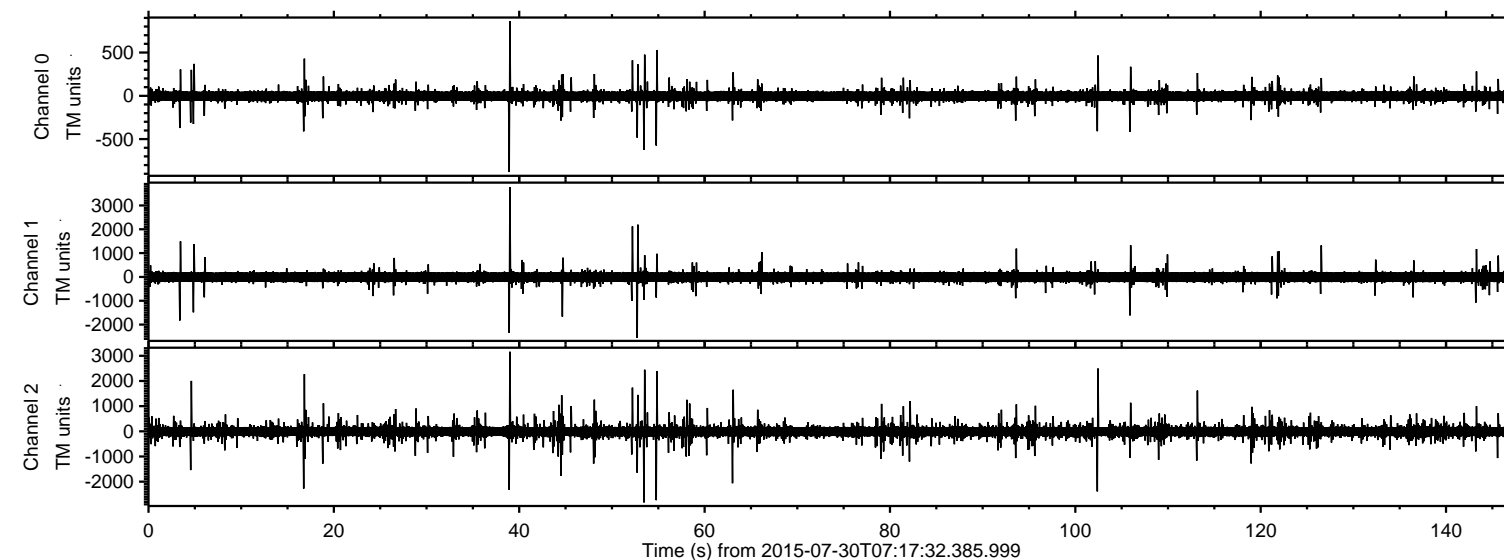
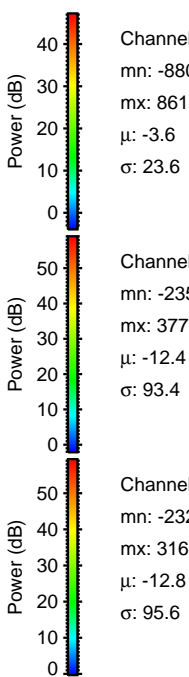
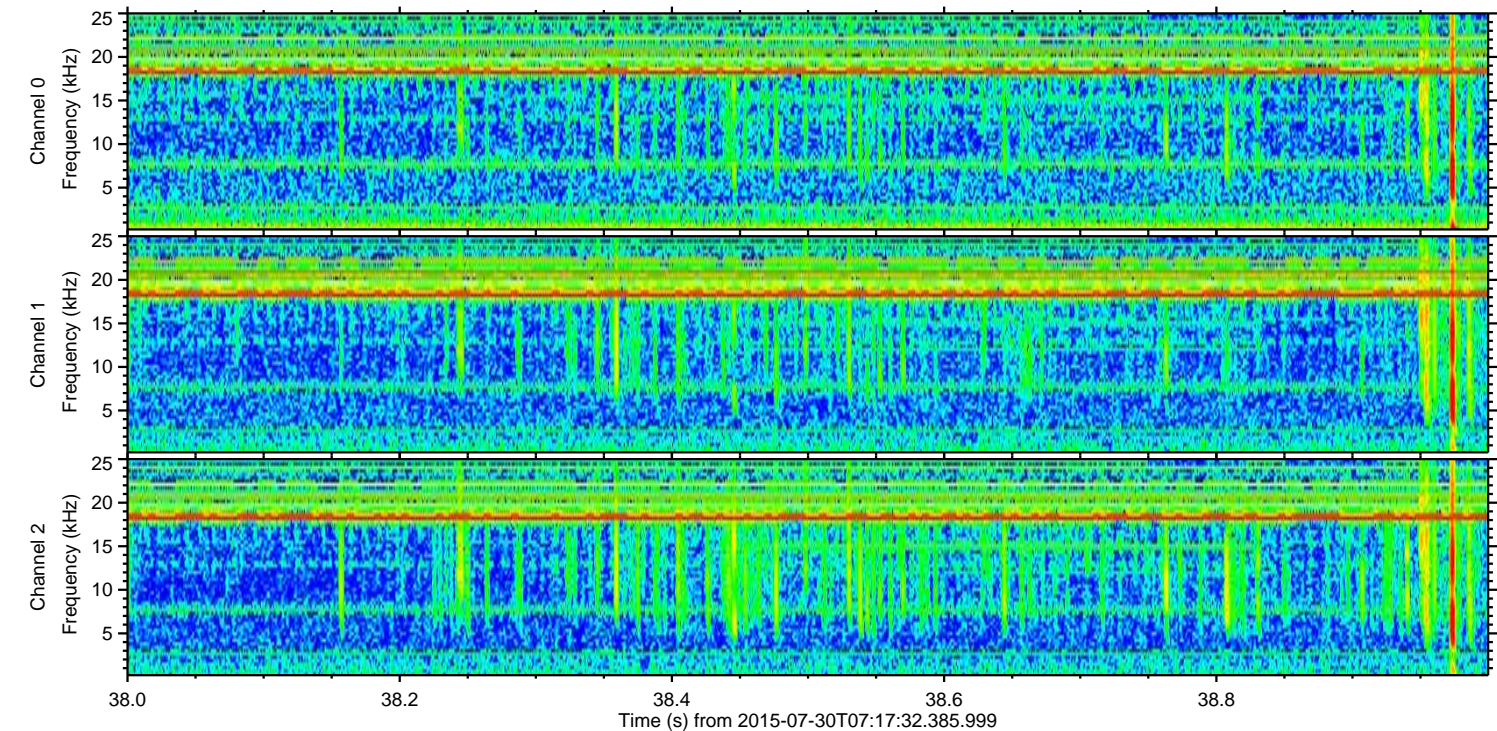
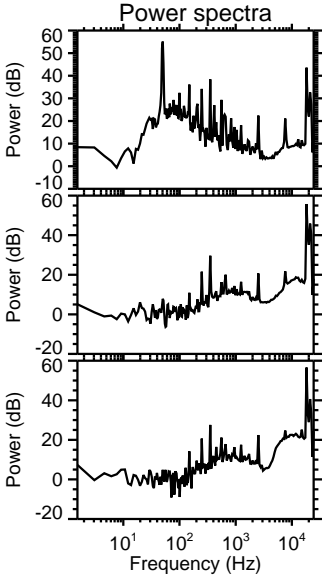
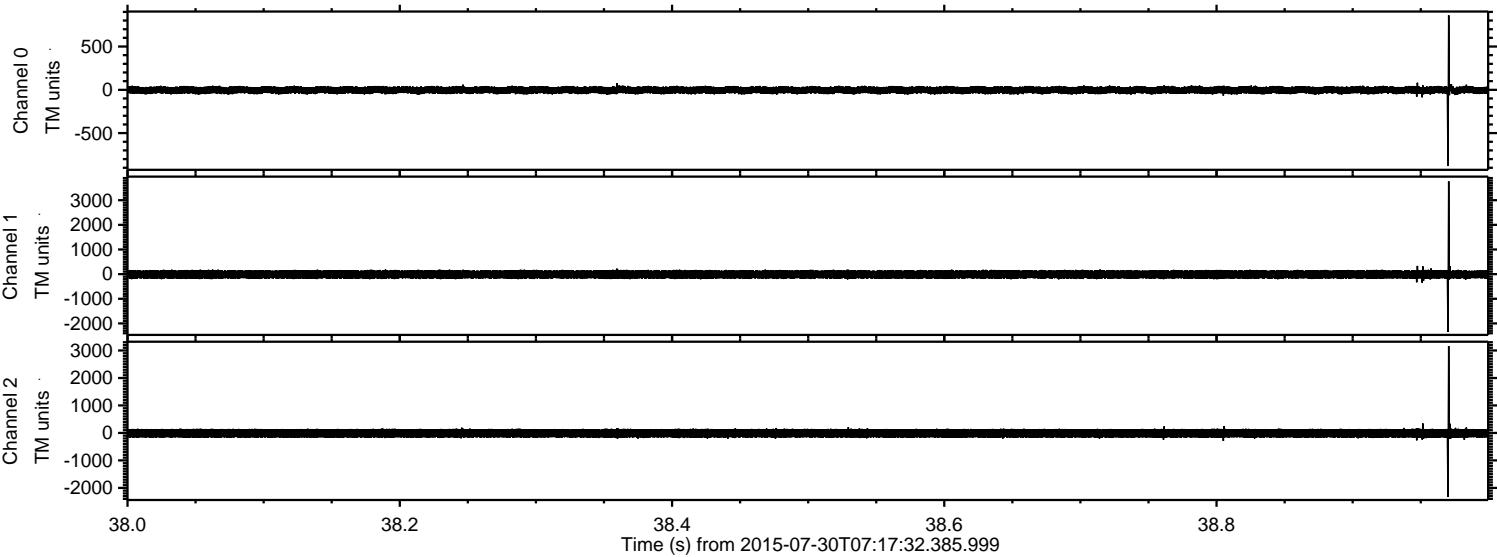


ELMAVAN 3D WAVEFORMS (Measured data sampled at 50 kHz) 51000 packets of 144 samples from 2015-07-30T07:17:32.385.999.

Processed Thu Jul 30 09:23:35 2015 by ELM ver.2012-10-06 from 001__elm20150730_071731__dat00.bin



Processed Thu Jul 30 09:23:50 2015 by ELM ver.2012-10-06 from 001__elm20150730_071731__dat00.bin

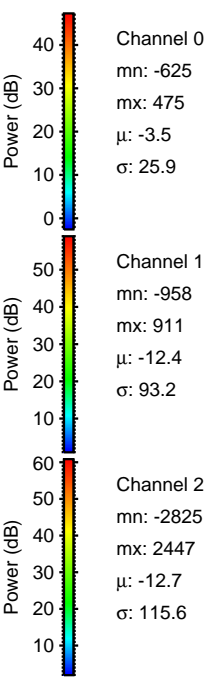
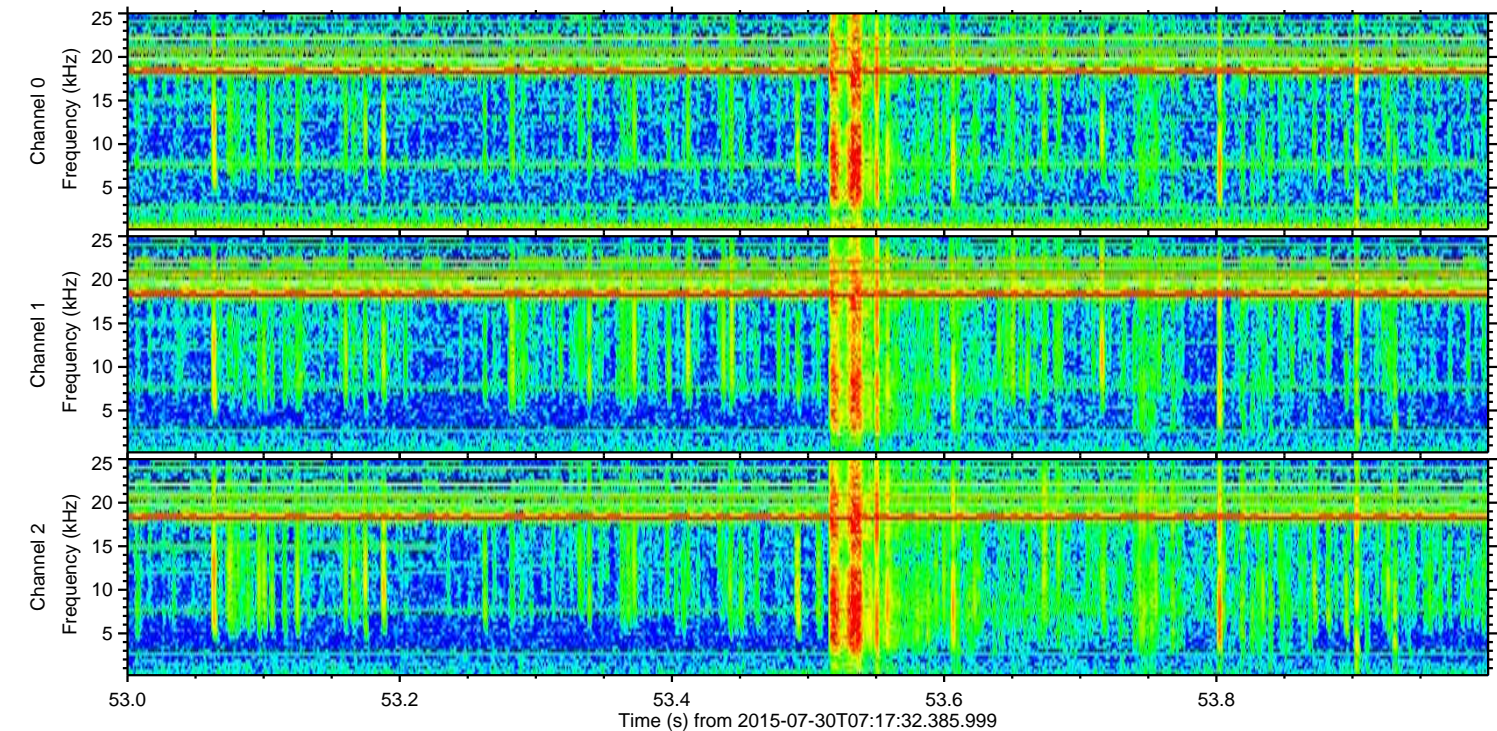
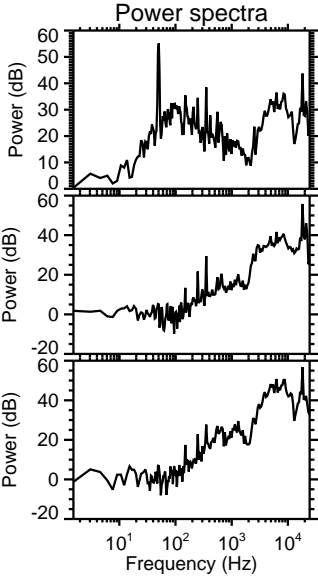
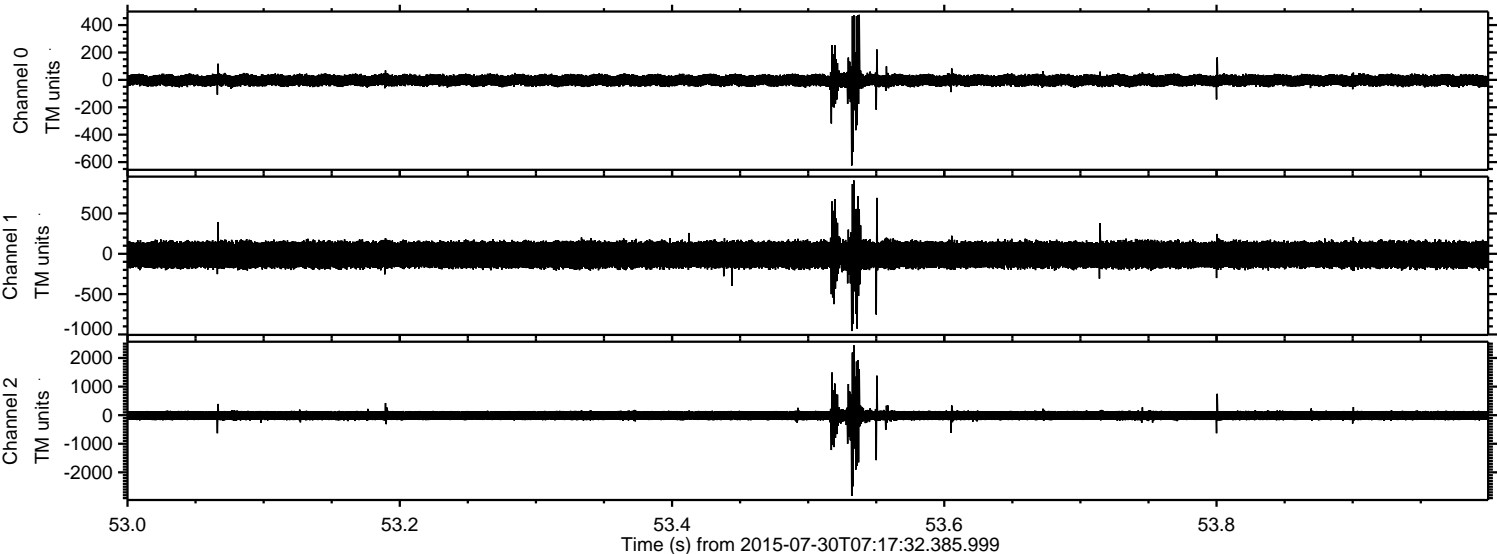


Channel 0
mn: -880
mx: 861
 μ : -3.6
 σ : 23.6

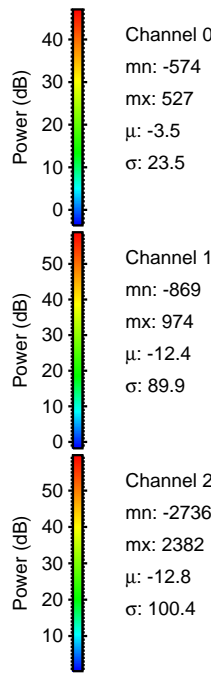
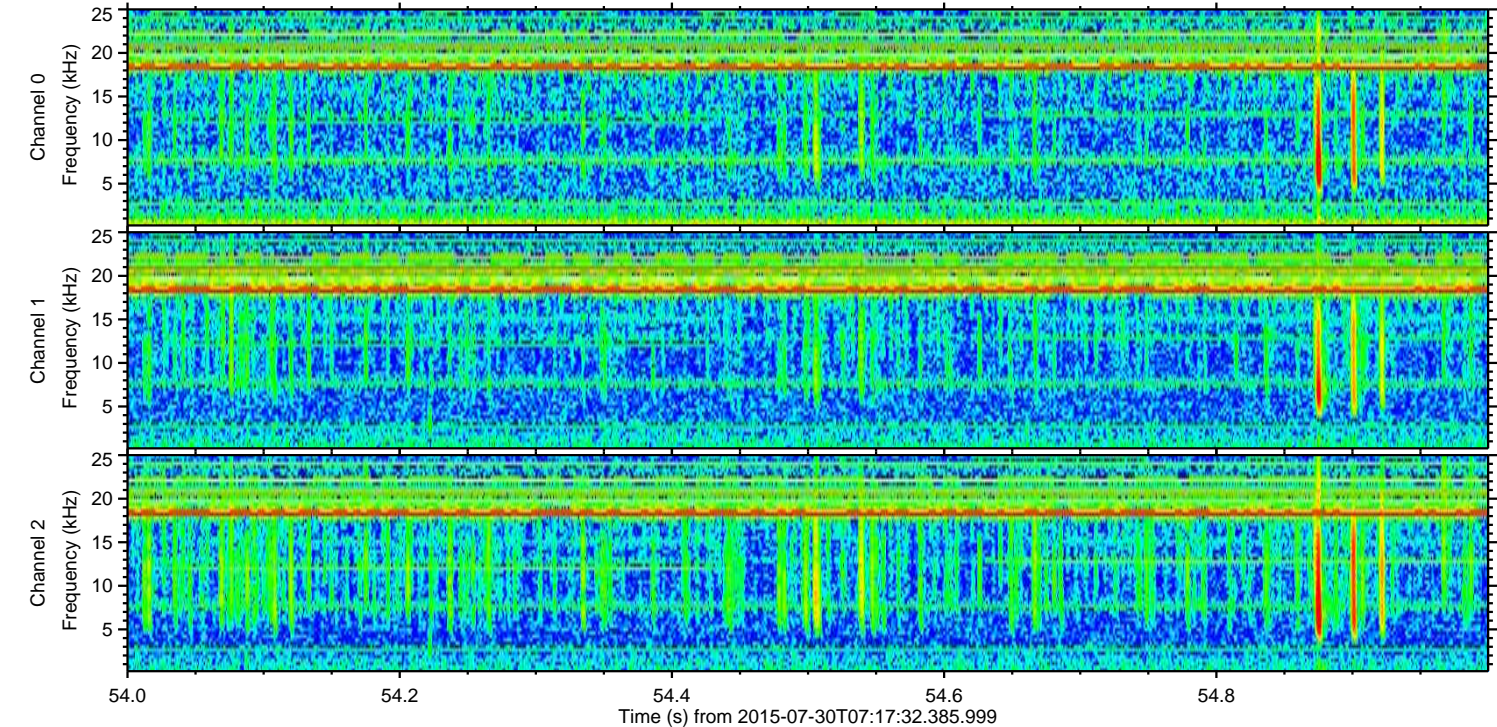
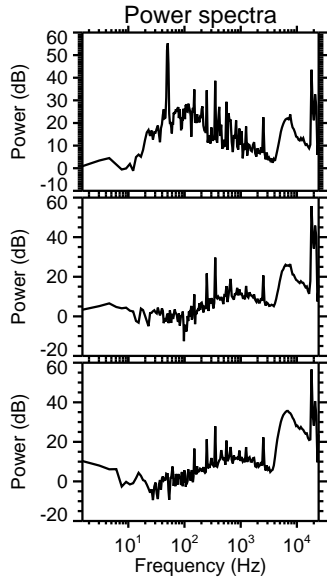
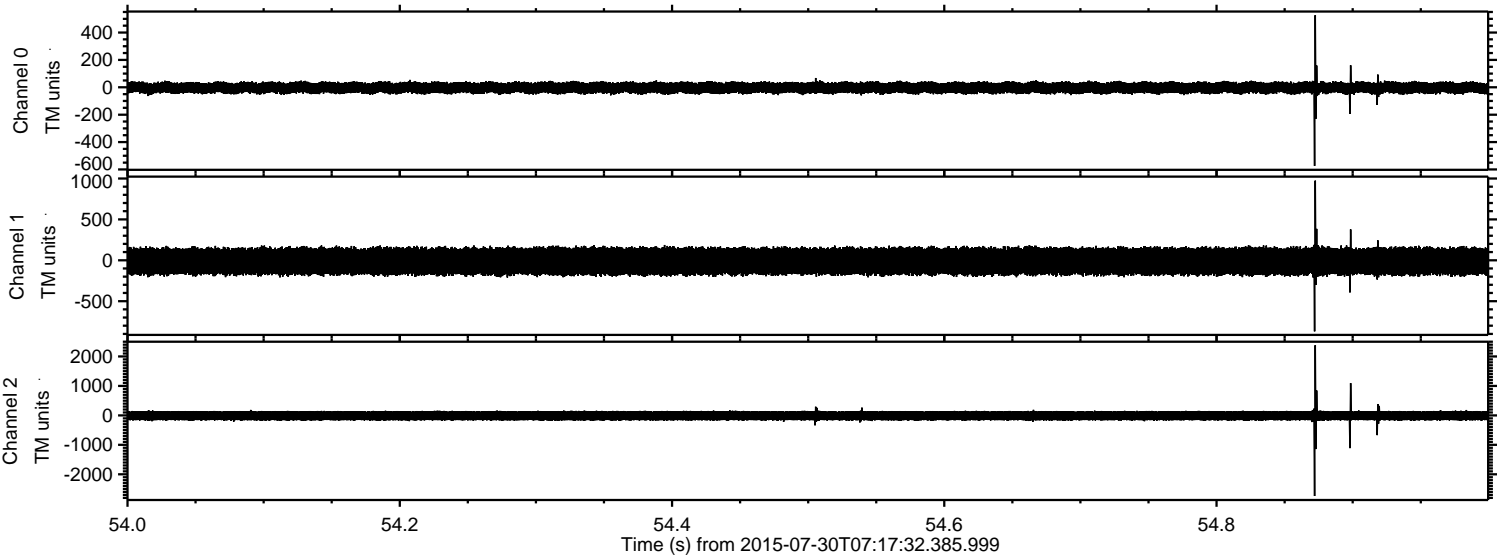
Channel 1
mn: -2350
mx: 3770
 μ : -12.4
 σ : 93.4

Channel 2
mn: -2324
mx: 3162
 μ : -12.8
 σ : 95.6

Processed Thu Jul 30 09:23:51 2015 by ELM ver.2012-10-06 from 001__elm20150730_071731__dat00.bin



Processed Thu Jul 30 09:23:52 2015 by ELM ver.2012-10-06 from 001__elm20150730_071731__dat00.bin



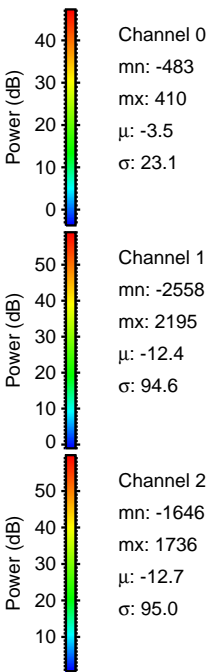
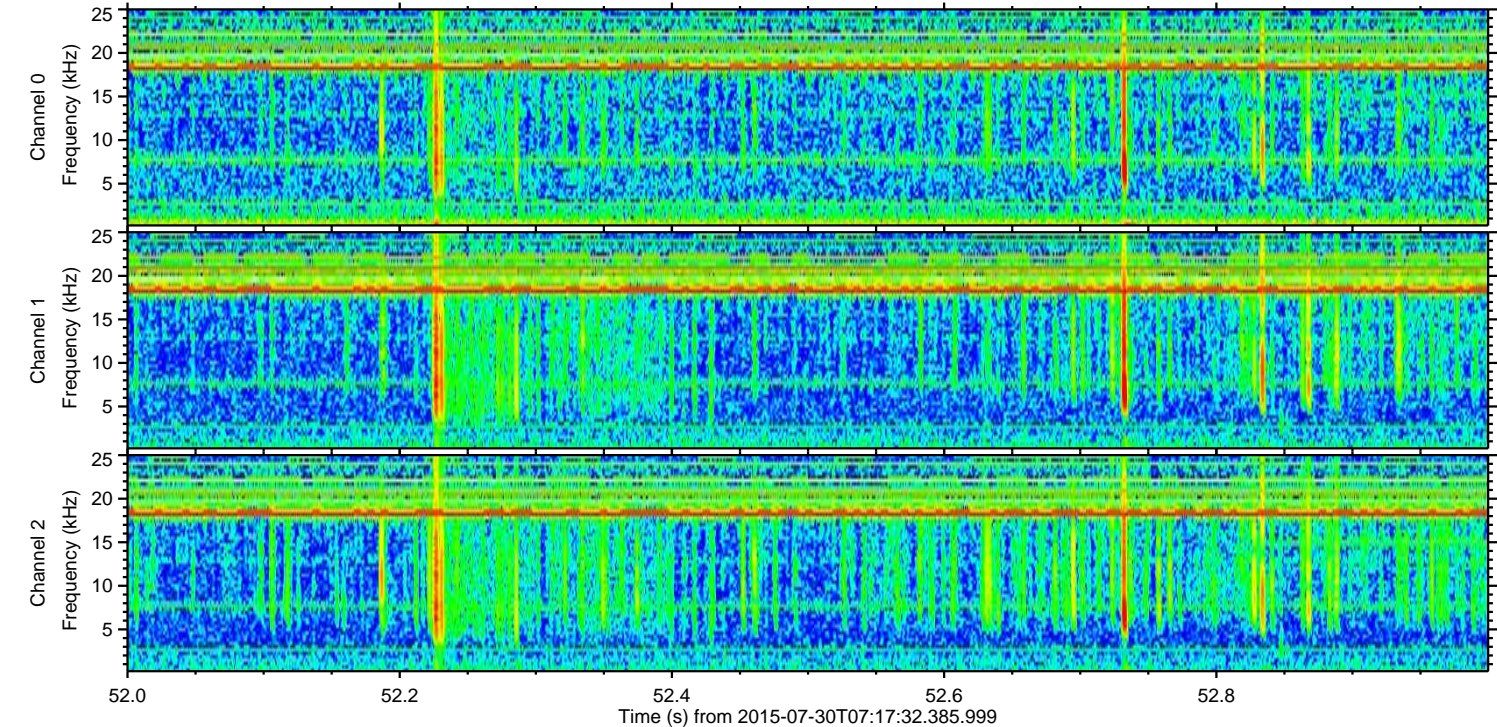
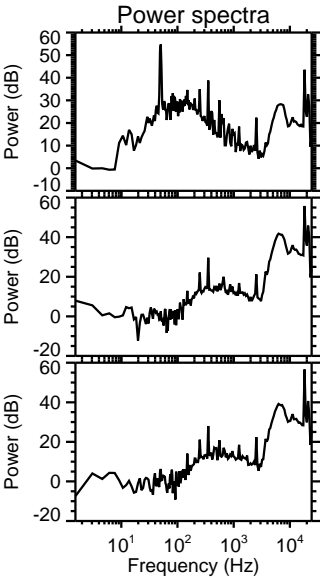
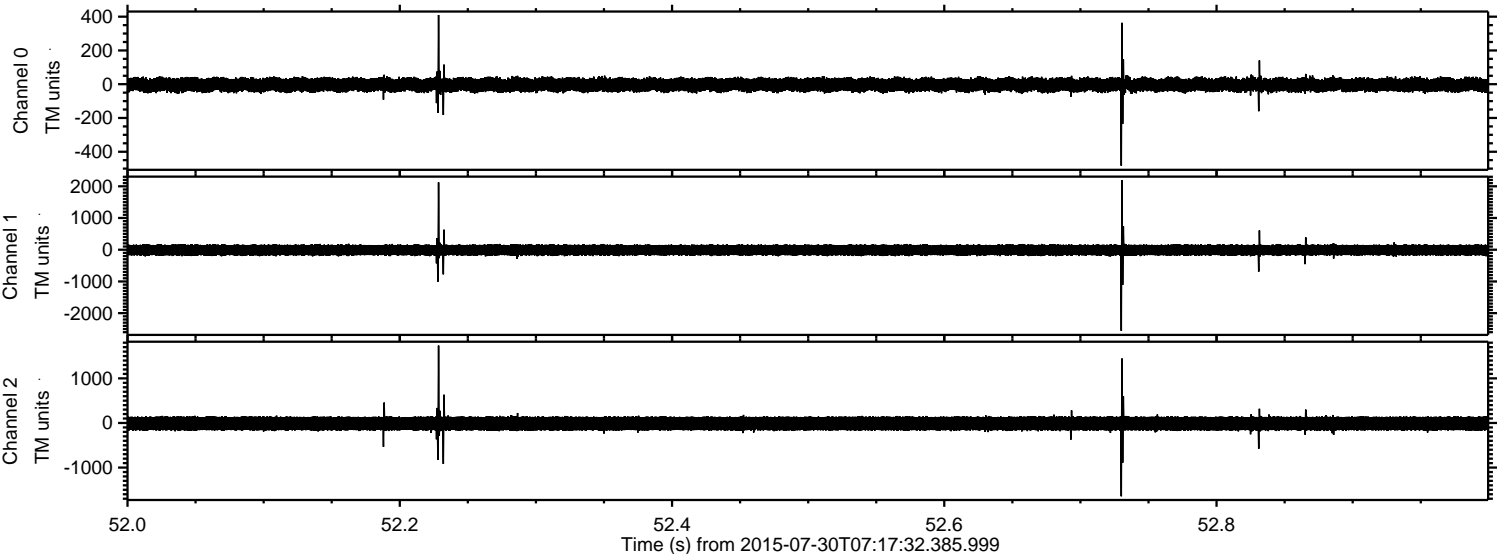
Channel 0
mn: -574
mx: 527
 μ : -3.5
 σ : 23.5

Channel 1
mn: -869
mx: 974
 μ : -12.4
 σ : 89.9

Channel 2
mn: -2736
mx: 2382
 μ : -12.8
 σ : 100.4

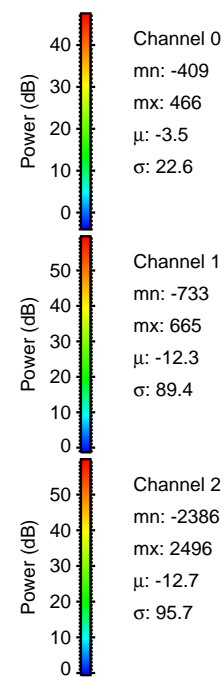
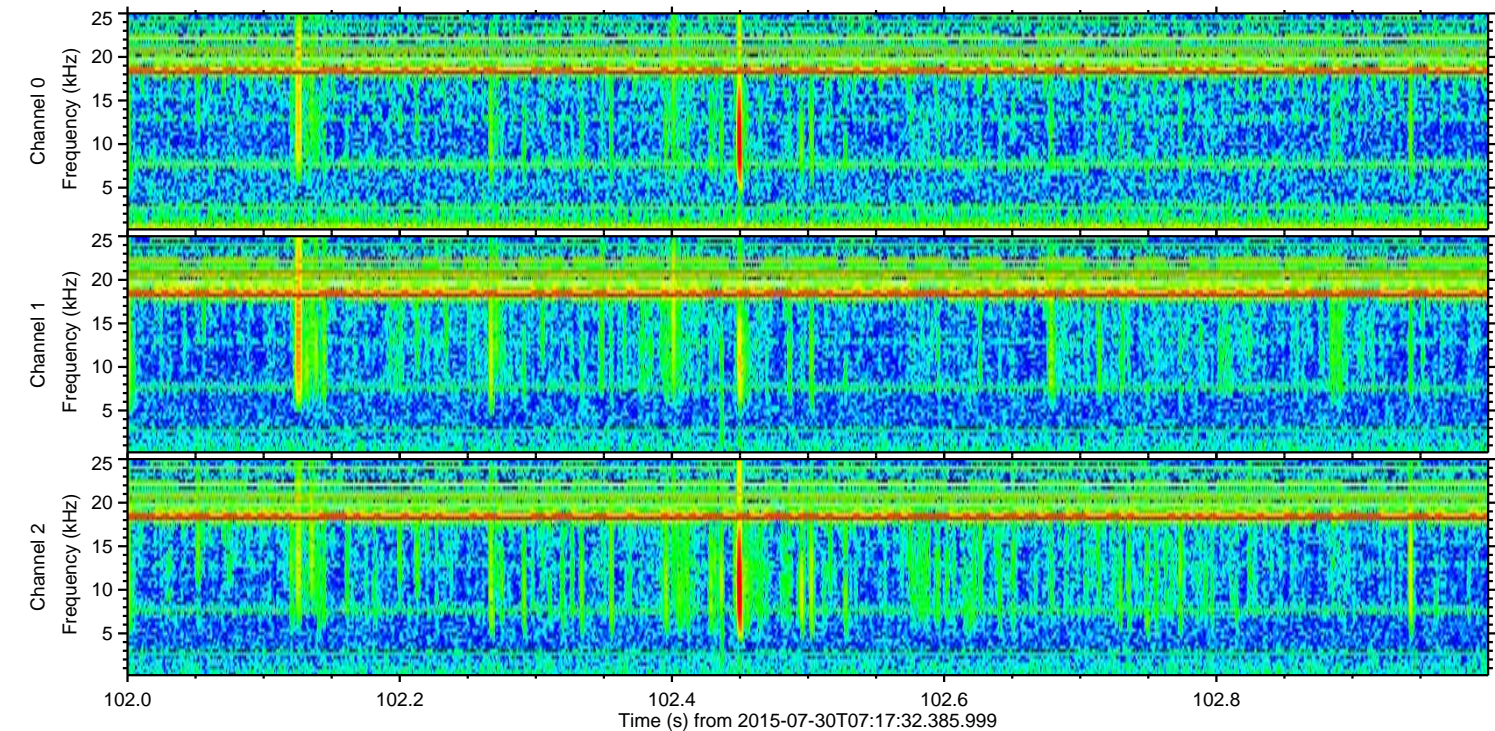
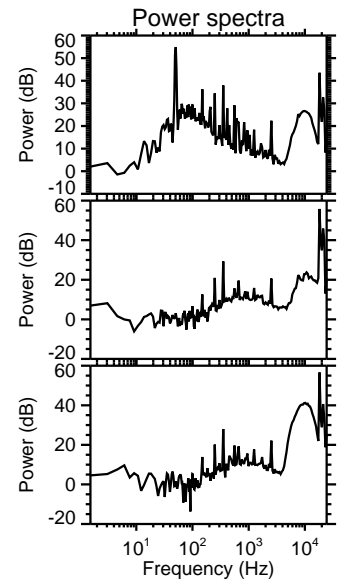
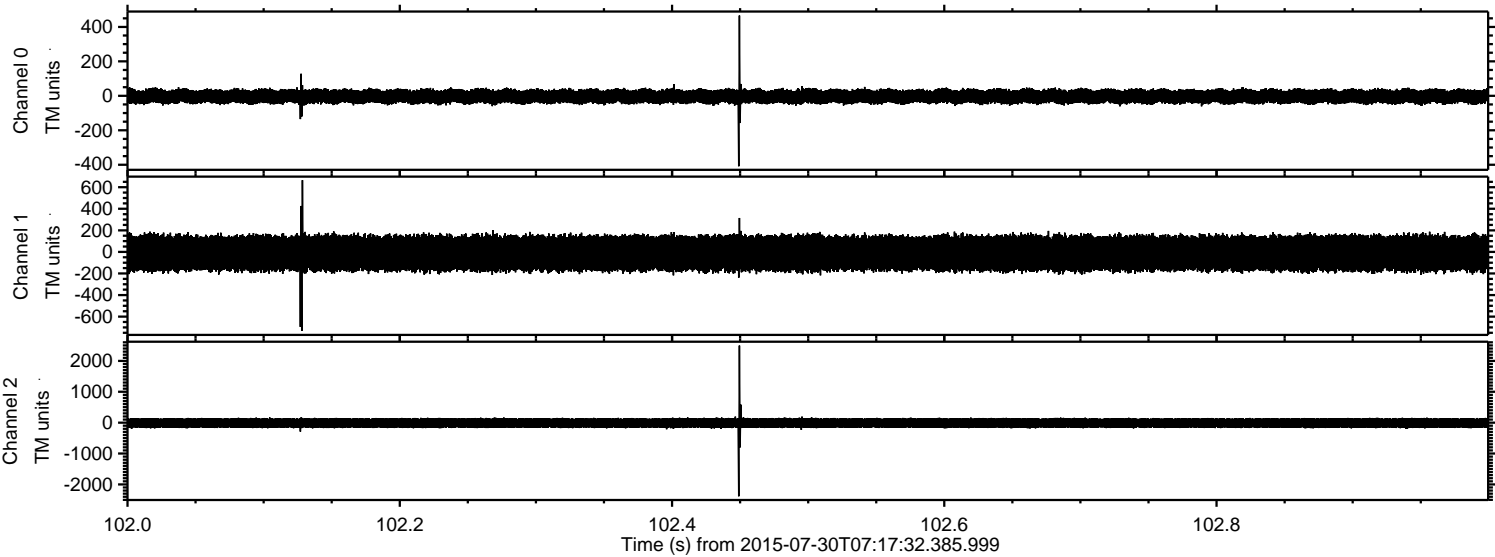
ELMAVAN 3D WAVEFORMS (Measured data sampled at 50 kHz) 51000 packets of 144 samples from 2015-07-30T07:17:32.385.999. Part 53/147

Processed Thu Jul 30 09:23:53 2015 by ELM ver.2012-10-06 from 001__elm20150730_071731__dat00.bin



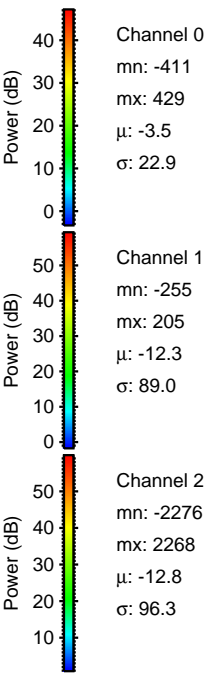
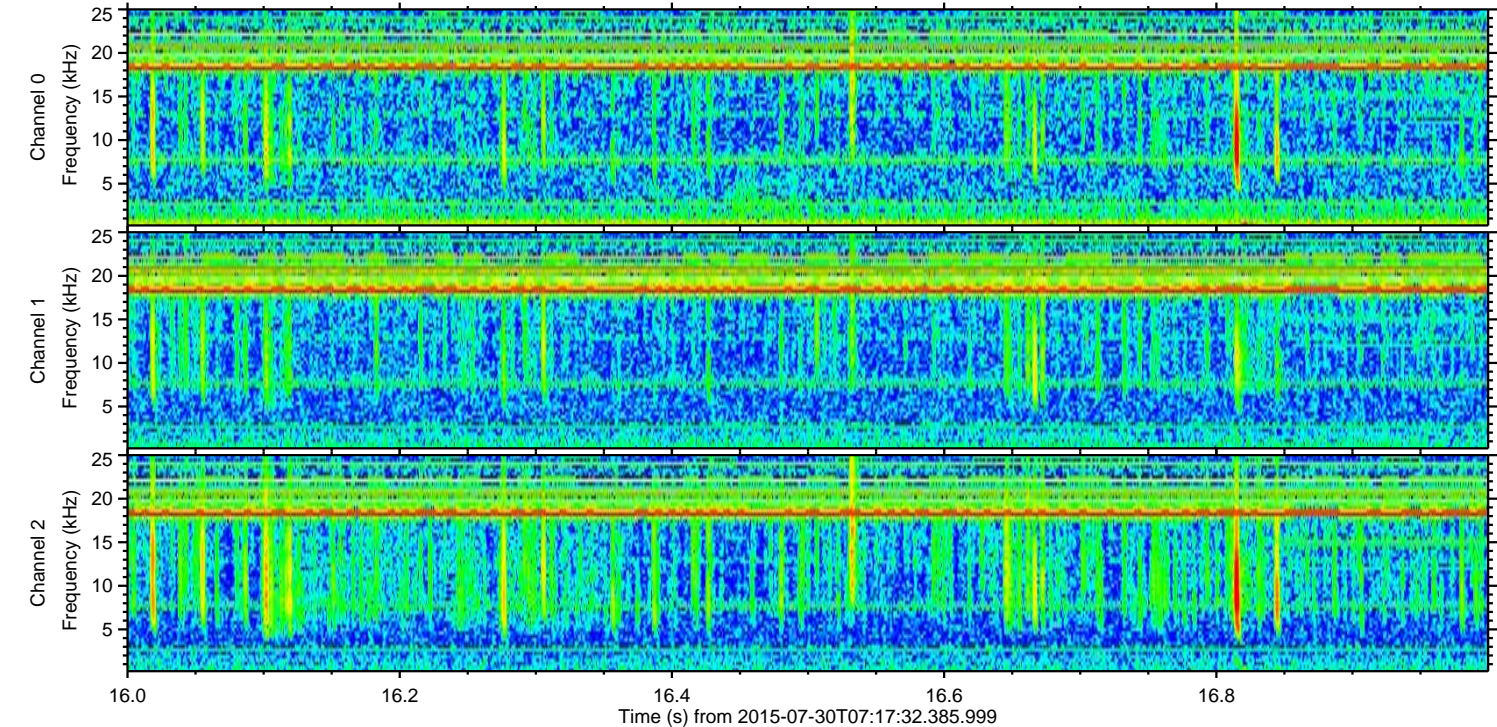
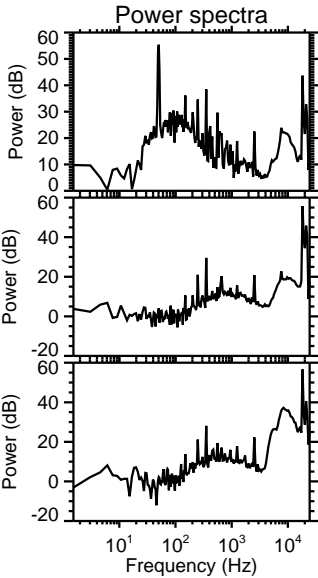
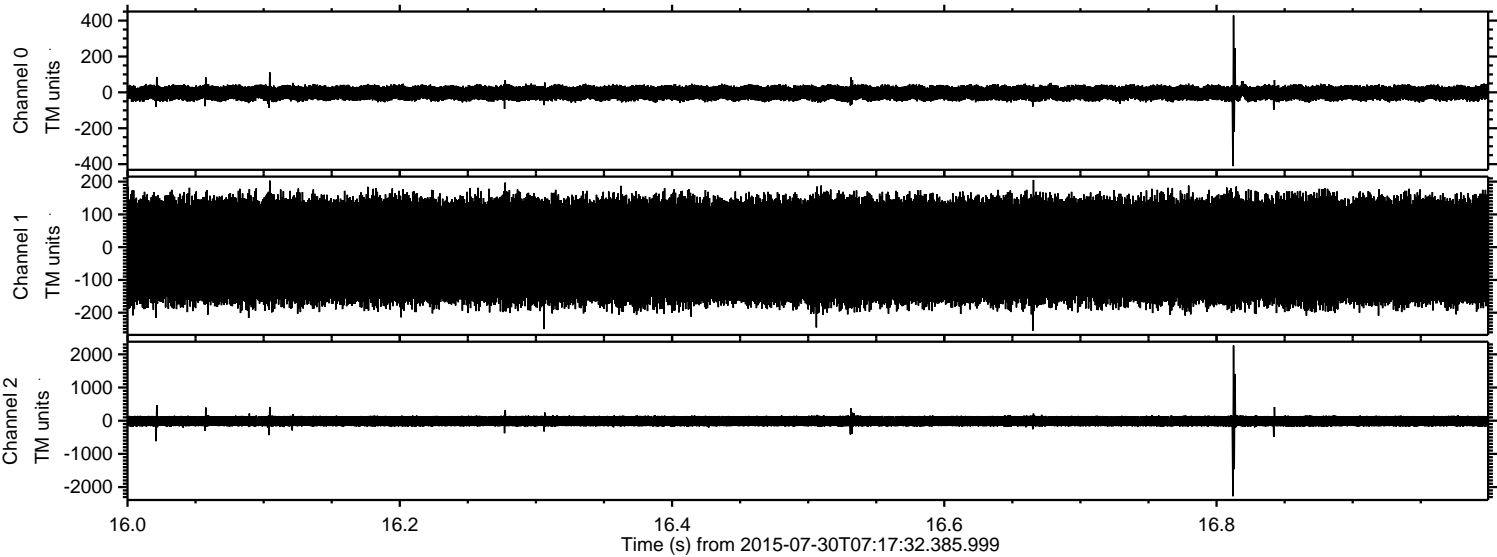
ELMAVAN 3D WAVEFORMS (Measured data sampled at 50 kHz) 51000 packets of 144 samples from 2015-07-30T07:17:32.385.999. Part 103/147

Processed Thu Jul 30 09:23:54 2015 by ELM ver.2012-10-06 from 001__elm20150730_071731__dat00.bin

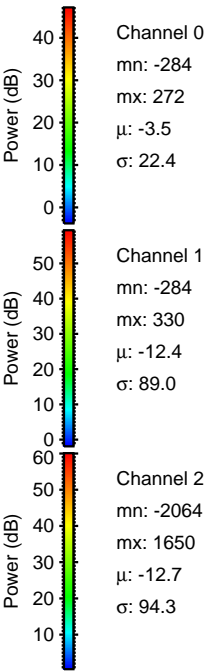
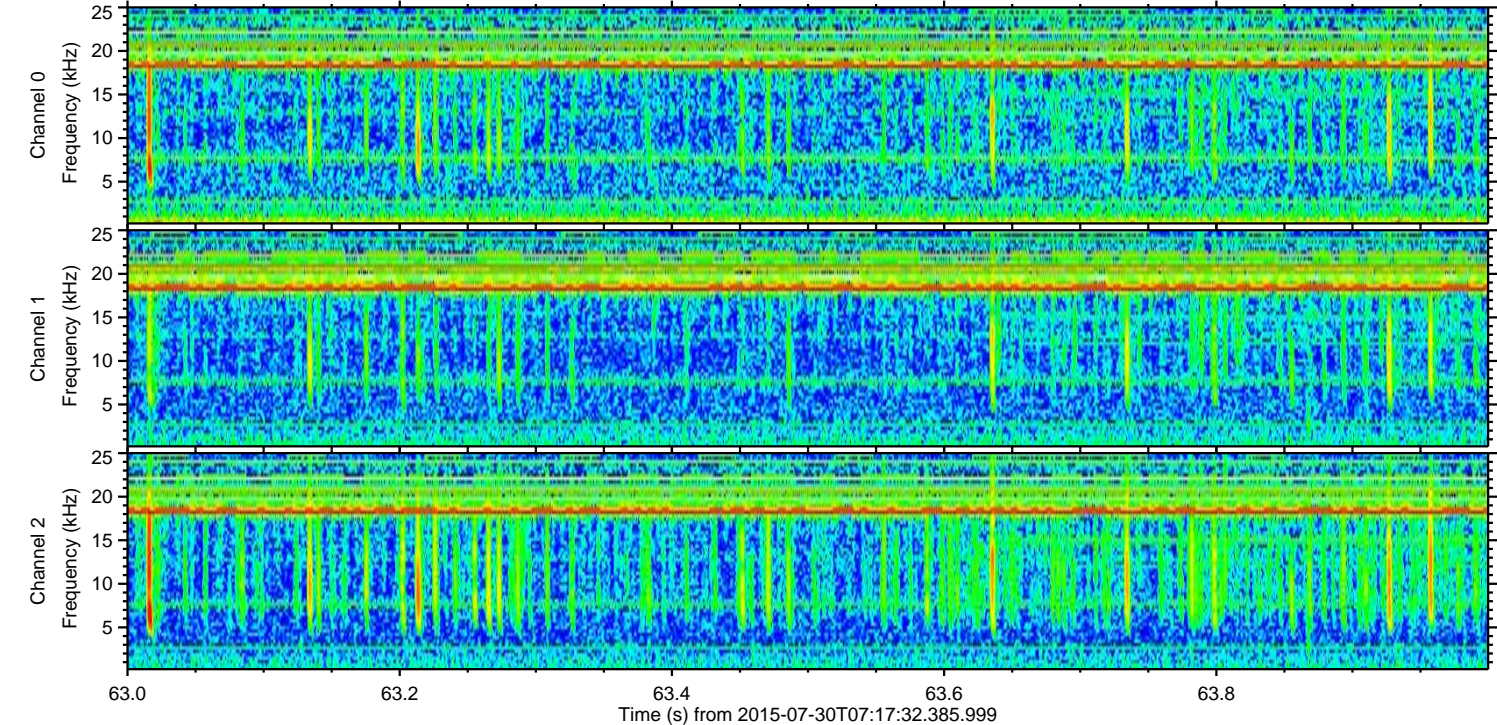
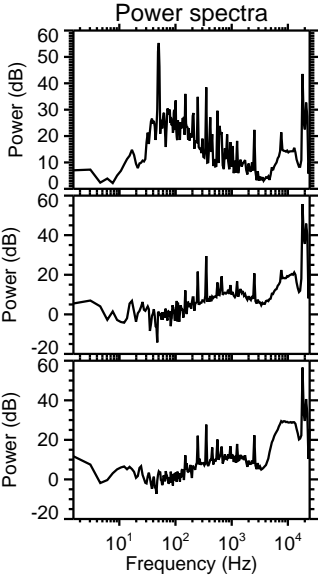
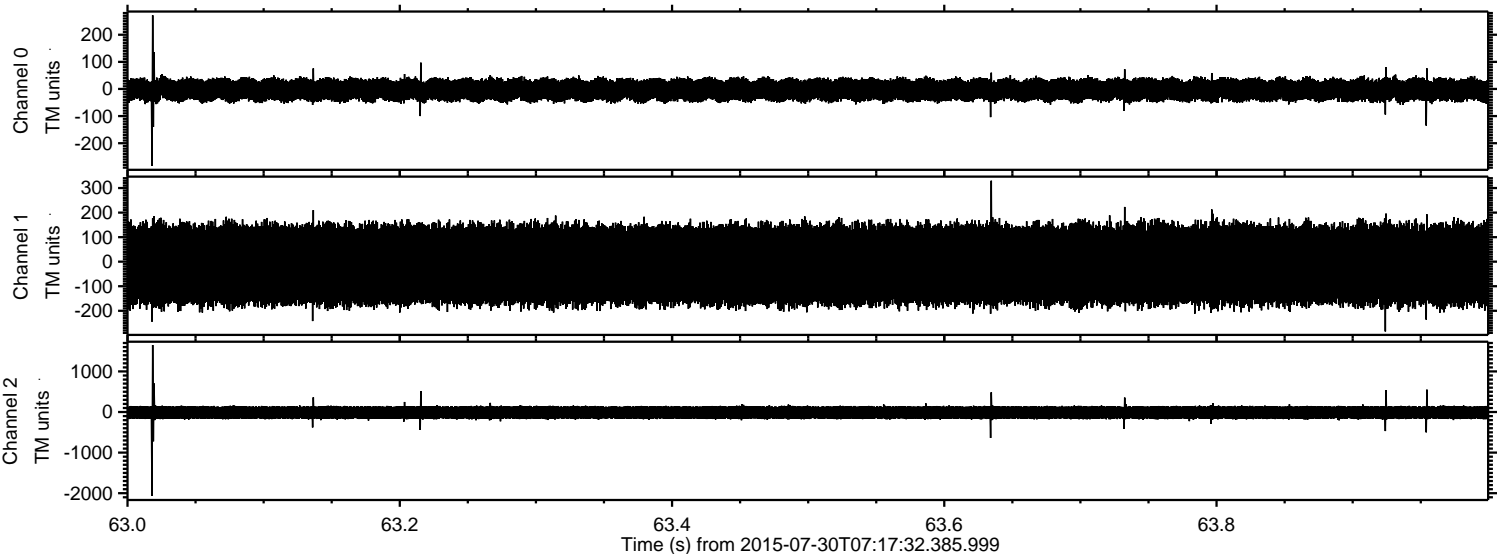


ELMAVAN 3D WAVEFORMS (Measured data sampled at 50 kHz) 51000 packets of 144 samples from 2015-07-30T07:17:32.385.999. Part 17/147

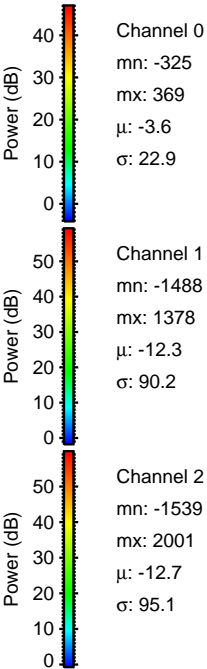
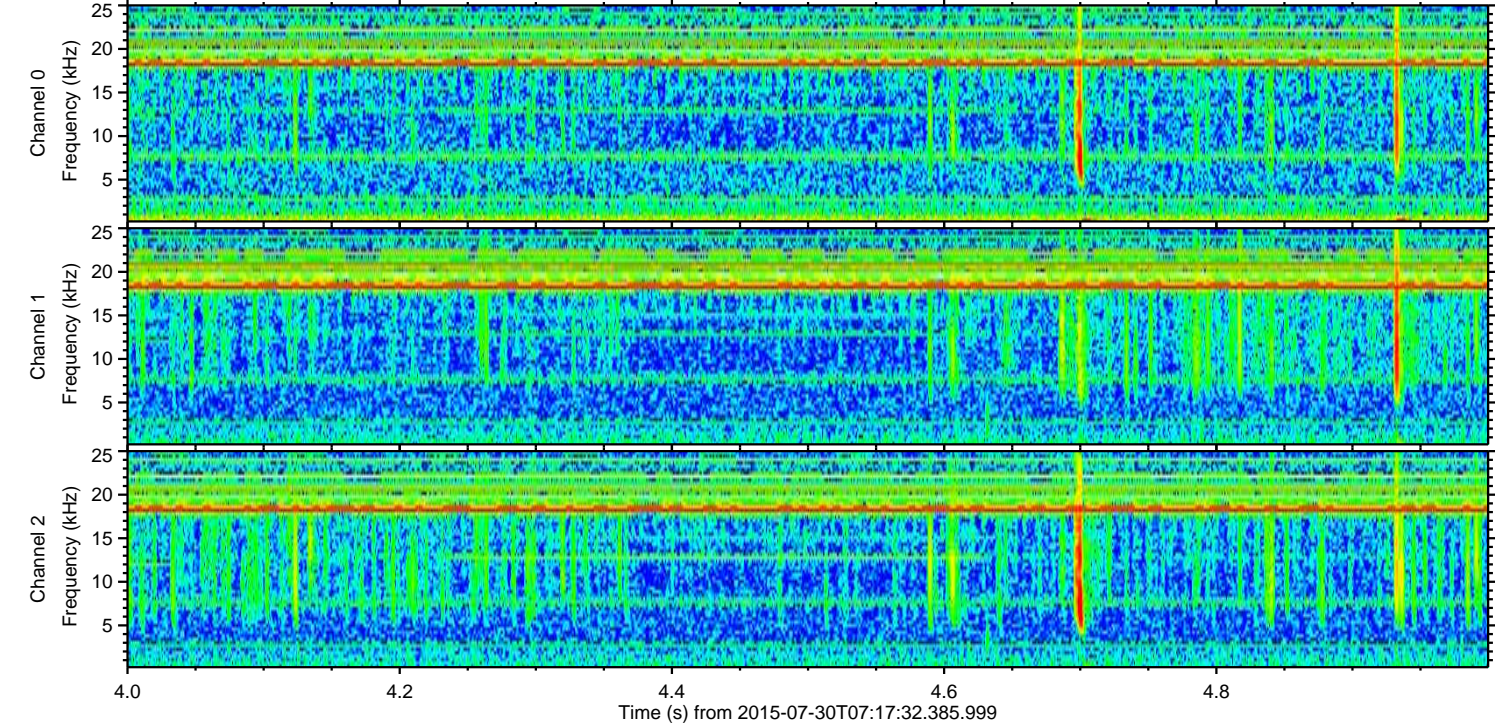
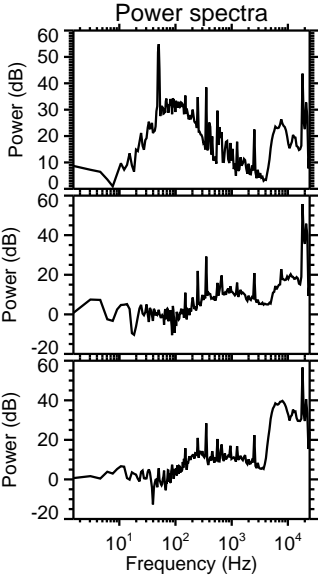
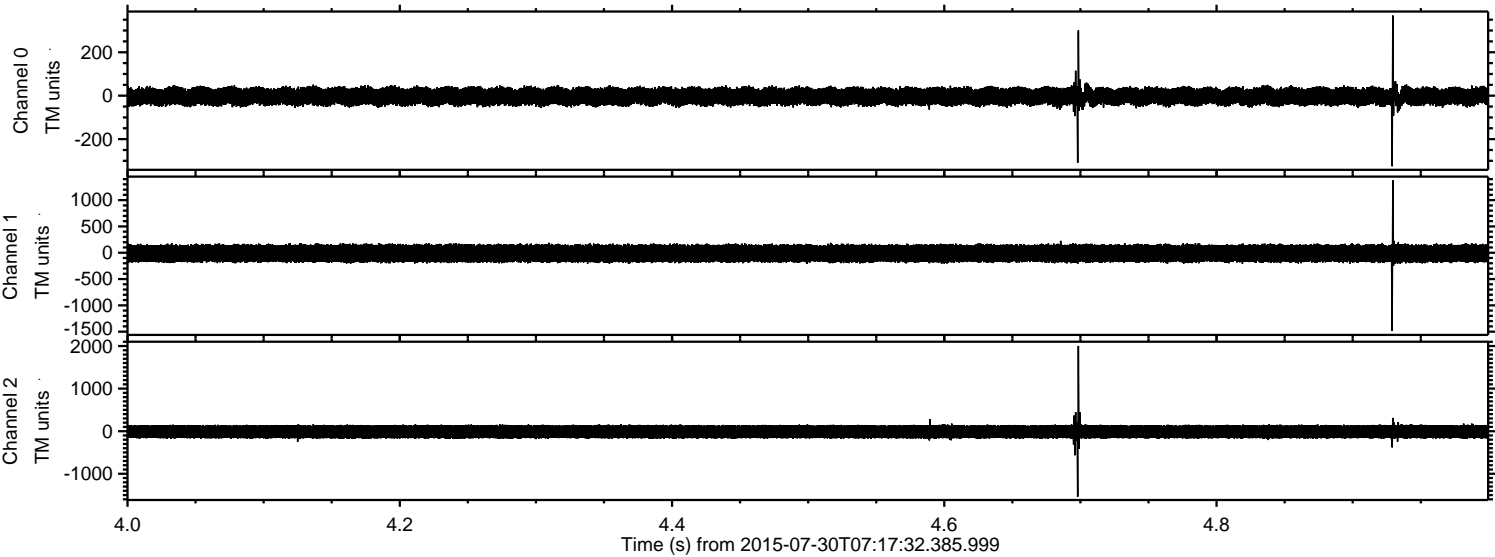
Processed Thu Jul 30 09:23:56 2015 by ELM ver.2012-10-06 from 001__elm20150730_071731__dat00.bin



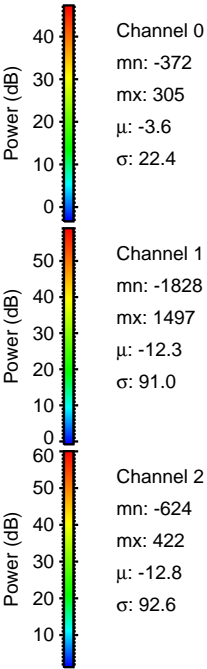
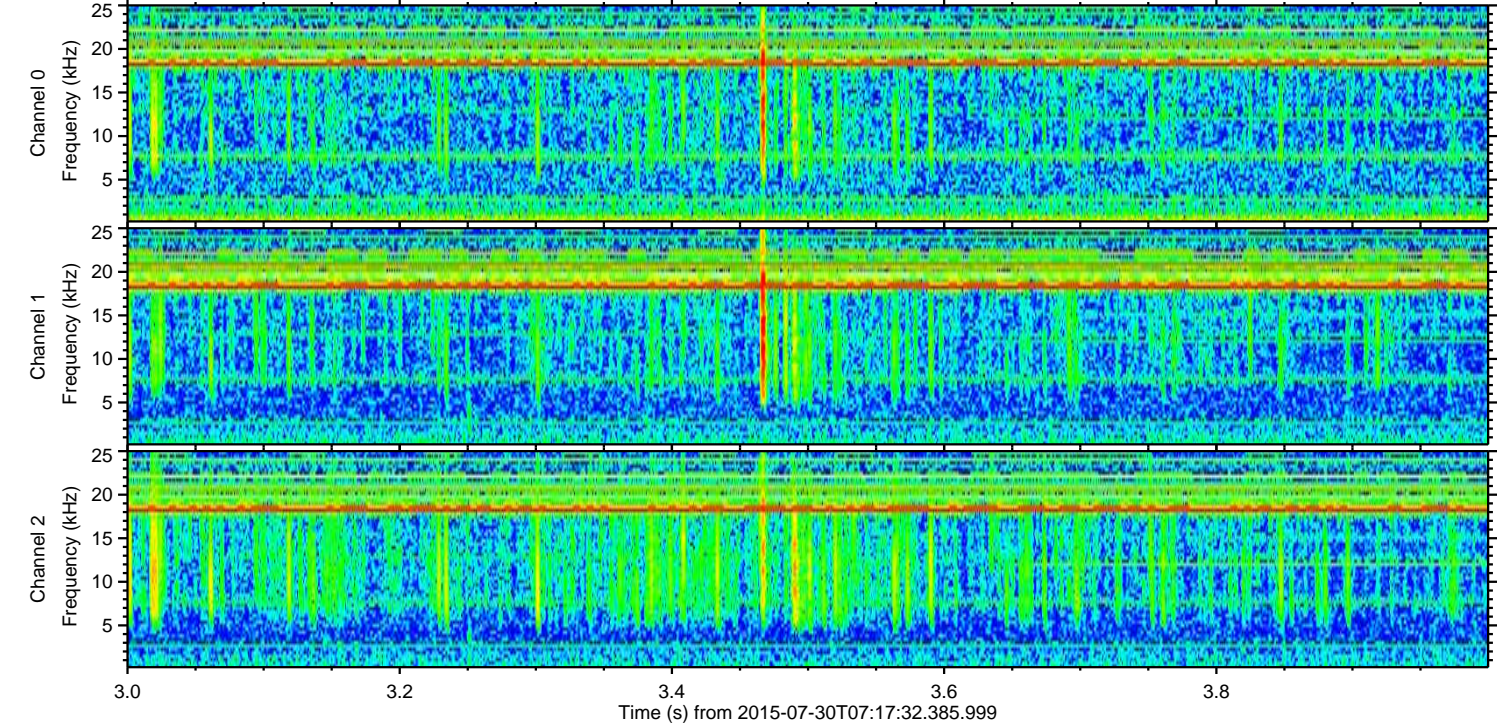
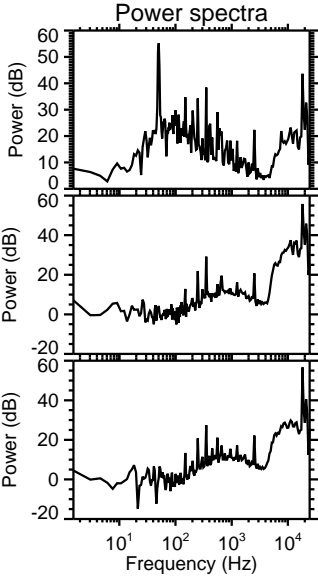
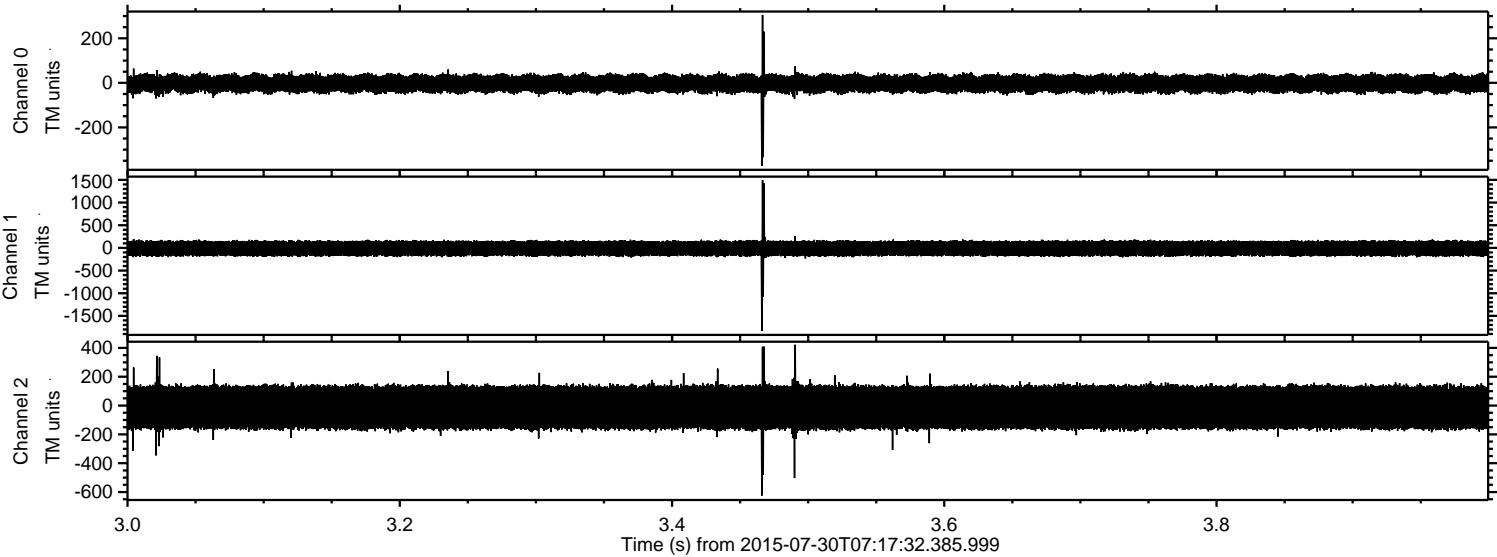
Processed Thu Jul 30 09:23:57 2015 by ELM ver.2012-10-06 from 001__elm20150730_071731__dat00.bin



Processed Thu Jul 30 09:23:58 2015 by ELM ver.2012-10-06 from 001__elm20150730_071731__dat00.bin



Processed Thu Jul 30 09:23:59 2015 by ELM ver.2012-10-06 from 001__elm20150730_071731__dat00.bin



Processed Thu Jul 30 09:24:00 2015 by ELM ver.2012-10-06 from 001__elm20150730_071731__dat00.bin

