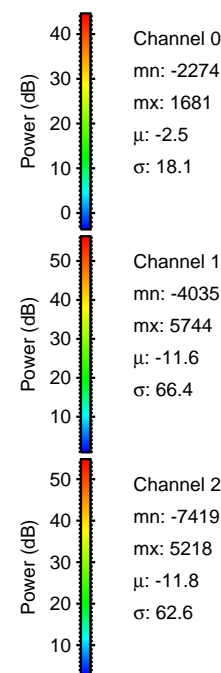
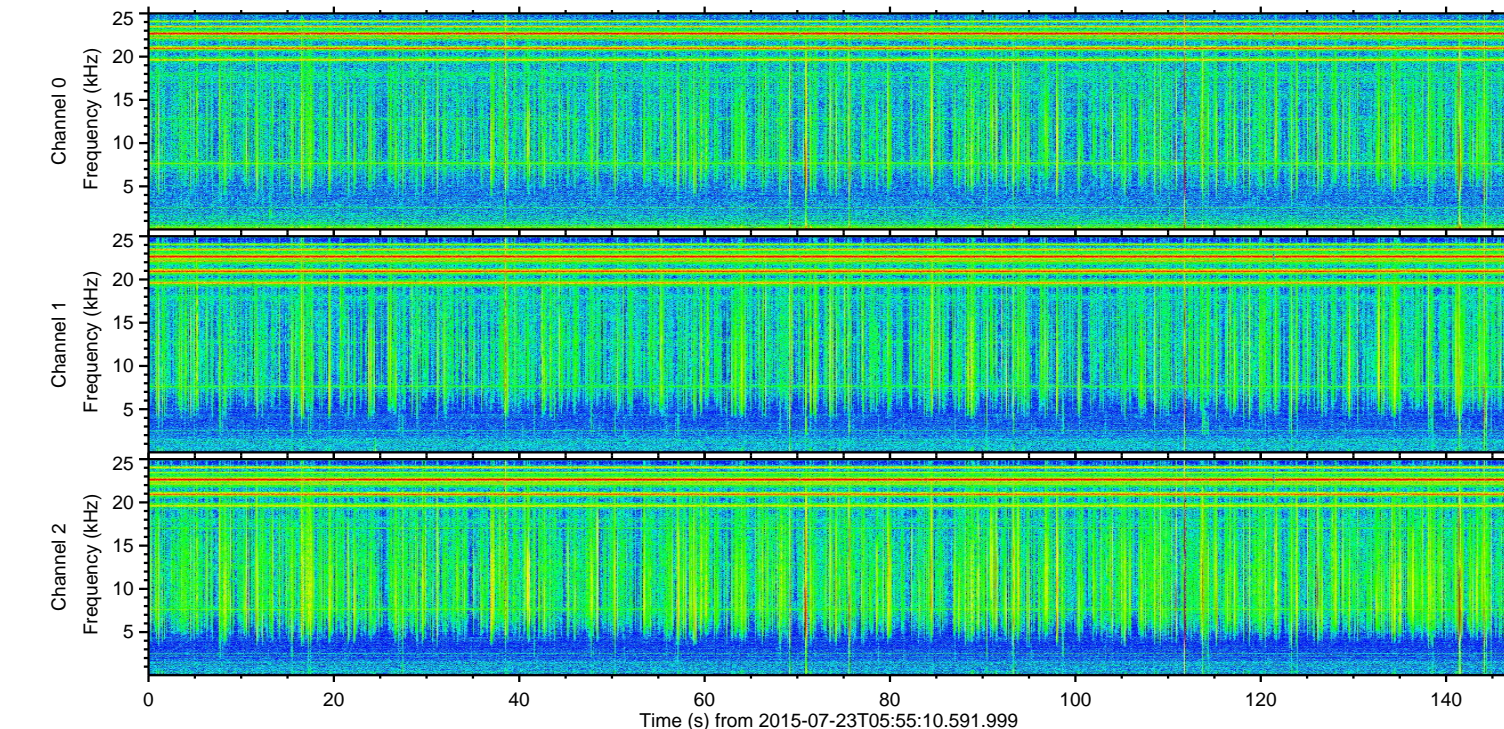
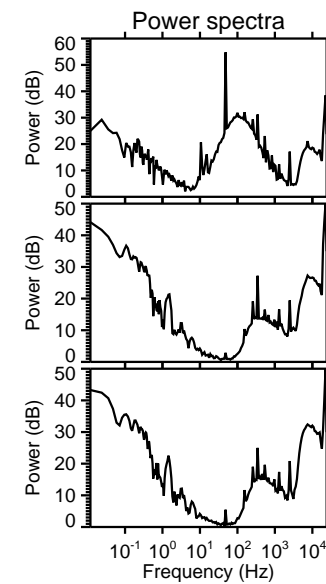
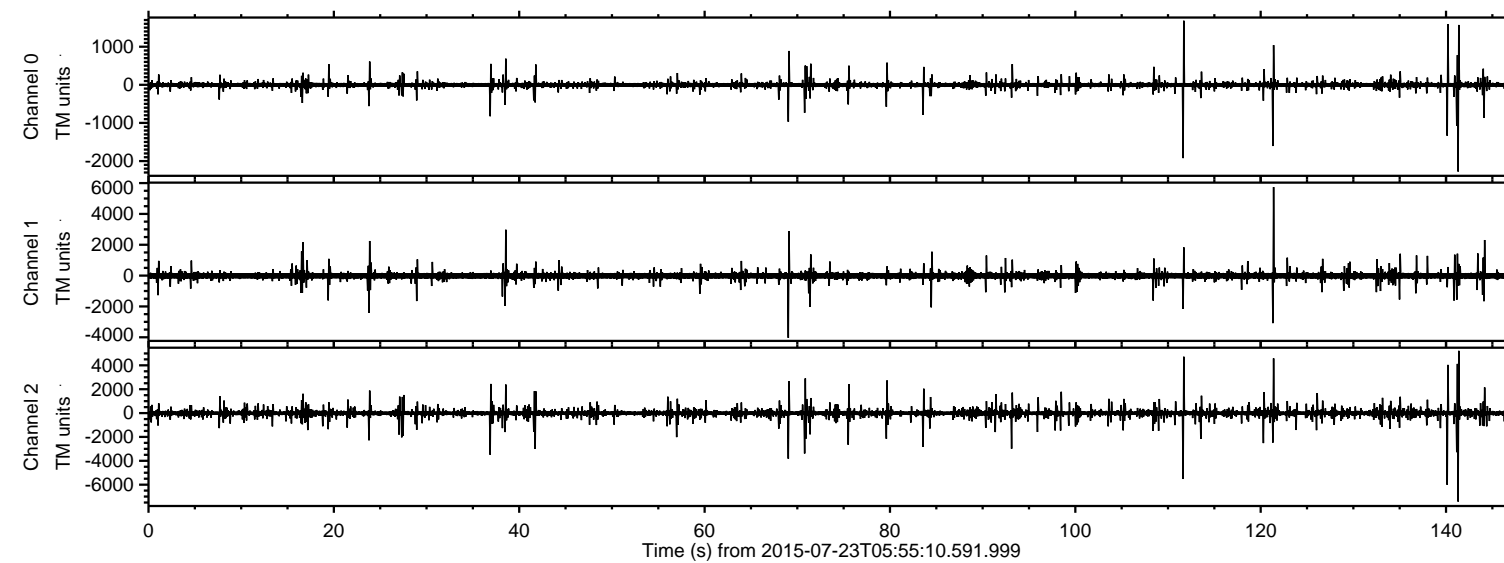


# ELMAVAN 3D WAVEFORMS (Measured data sampled at 50 kHz) 51000 packets of 144 samples from 2015-07-23T05:55:10.591.999.

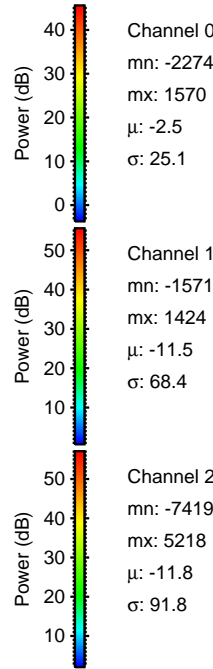
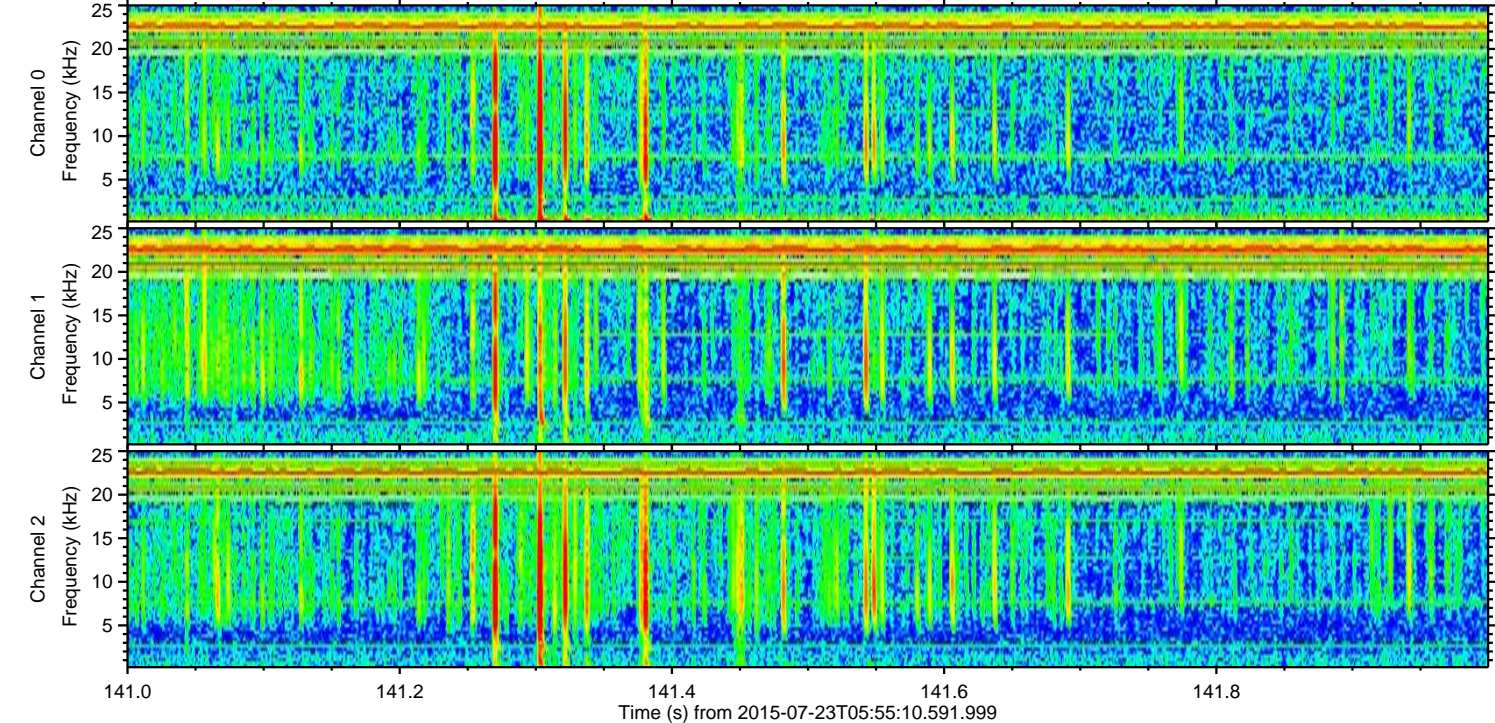
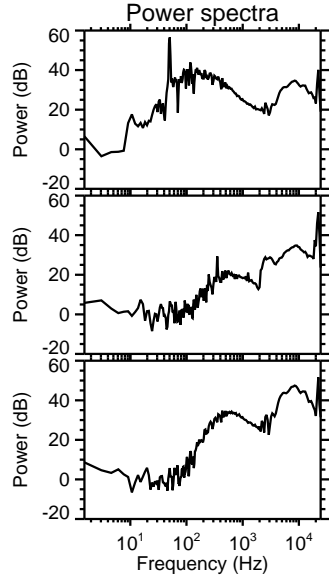
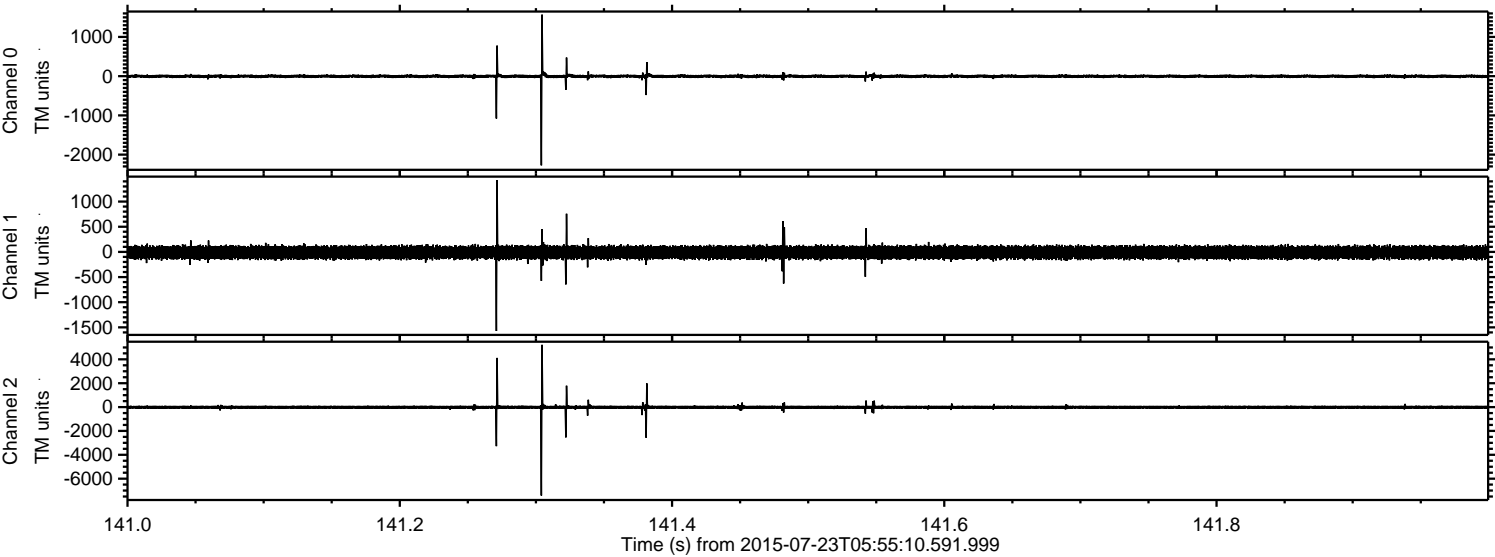
Processed Thu Jul 23 08:01:05 2015 by ELM ver.2012-10-06 from 001\_\_elm20150723\_055509\_\_dat00.bin





ELMAVAN 3D WAVEFORMS (Measured data sampled at 50 kHz) 51000 packets of 144 samples from 2015-07-23T05:55:10.591.999. Part 142/147

Processed Thu Jul 23 08:01:16 2015 by ELM ver.2012-10-06 from 001\_\_elm20150723\_055509\_\_dat00.bin



Channel 0  
mn: -2274  
mx: 1570  
 $\mu$ : -2.5  
 $\sigma$ : 25.1

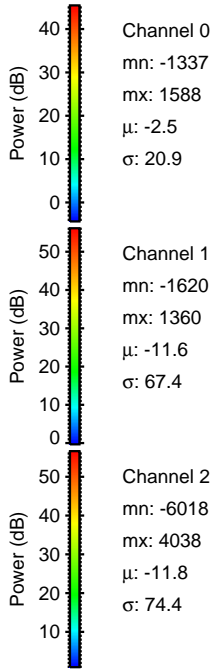
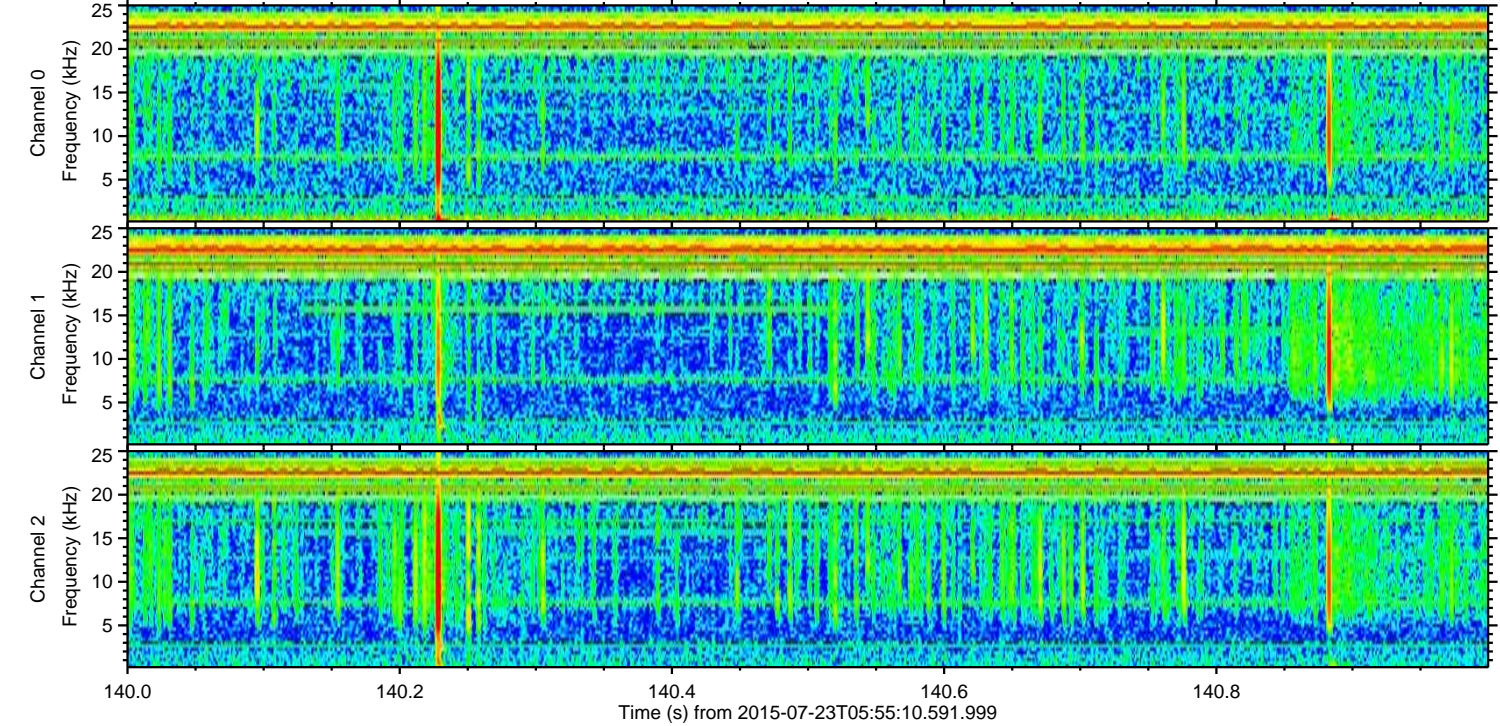
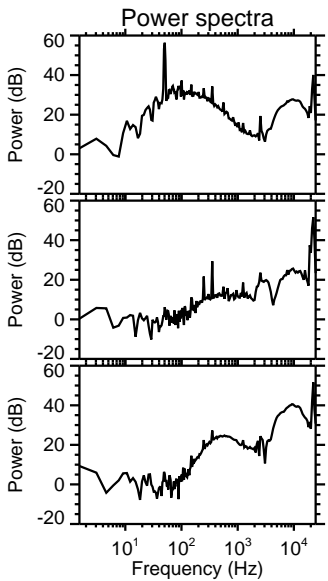
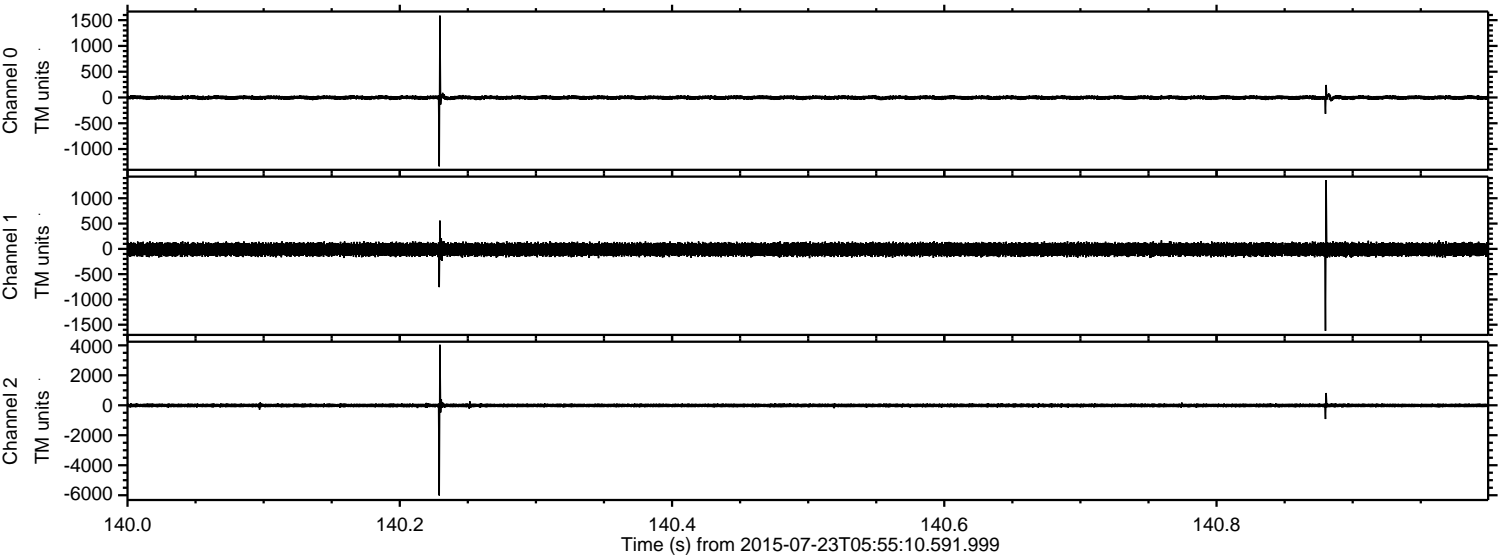
Channel 1  
mn: -1571  
mx: 1424  
 $\mu$ : -11.5  
 $\sigma$ : 68.4

Channel 2  
mn: -7419  
mx: 5218  
 $\mu$ : -11.8  
 $\sigma$ : 91.8



ELMAVAN 3D WAVEFORMS (Measured data sampled at 50 kHz) 51000 packets of 144 samples from 2015-07-23T05:55:10.591.999. Part 141/147

Processed Thu Jul 23 08:01:17 2015 by ELM ver.2012-10-06 from 001\_\_elm20150723\_055509\_\_dat00.bin



Channel 0  
mn: -1337  
mx: 1588  
 $\mu$ : -2.5  
 $\sigma$ : 20.9

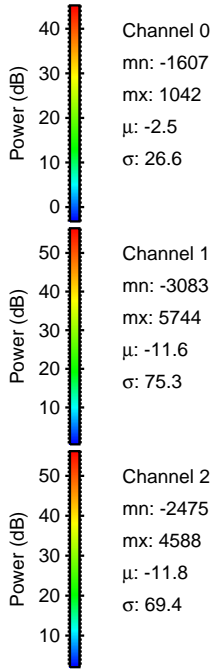
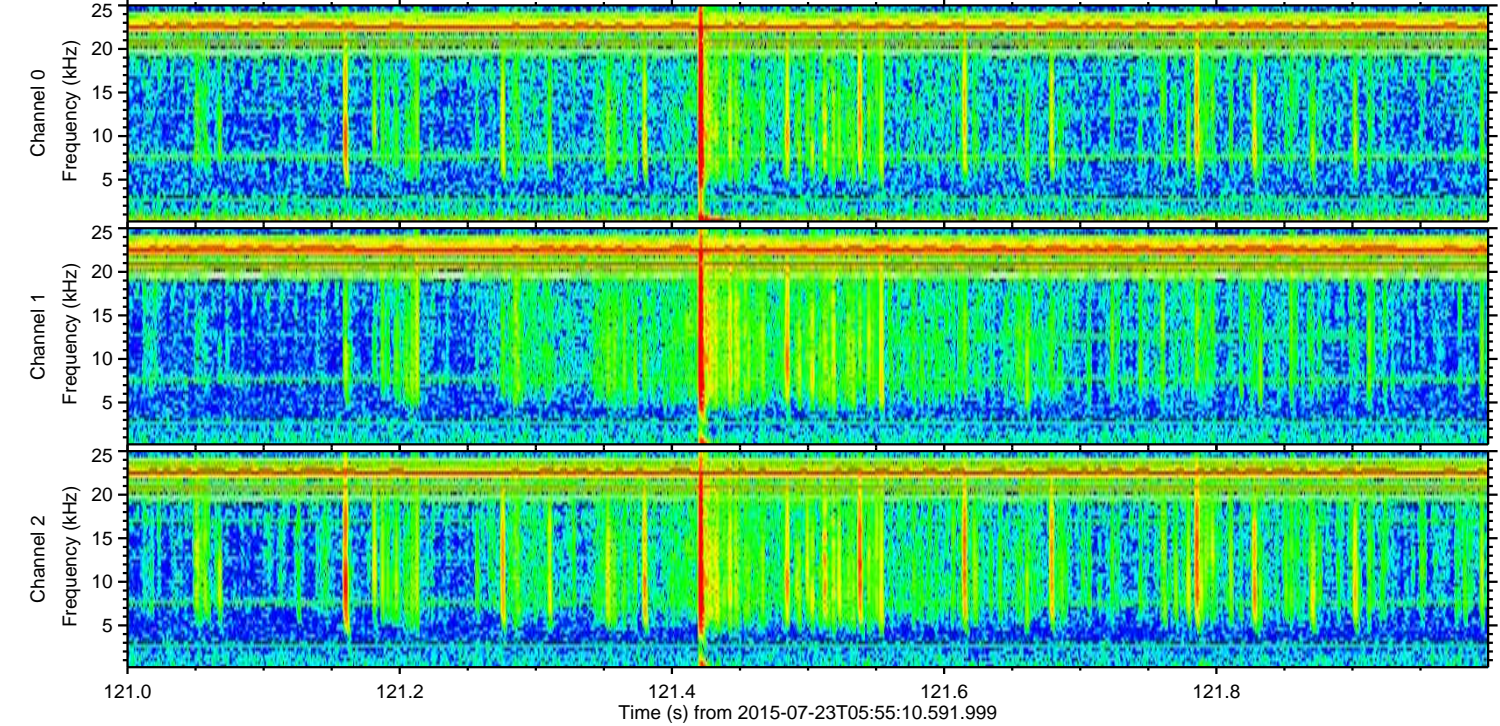
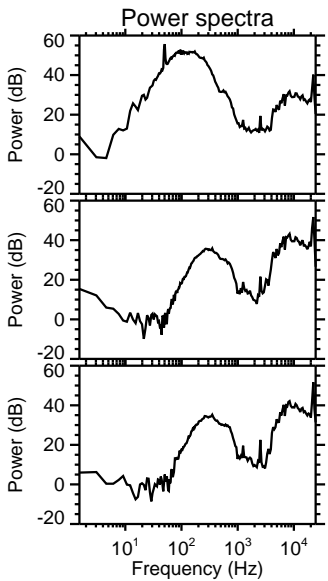
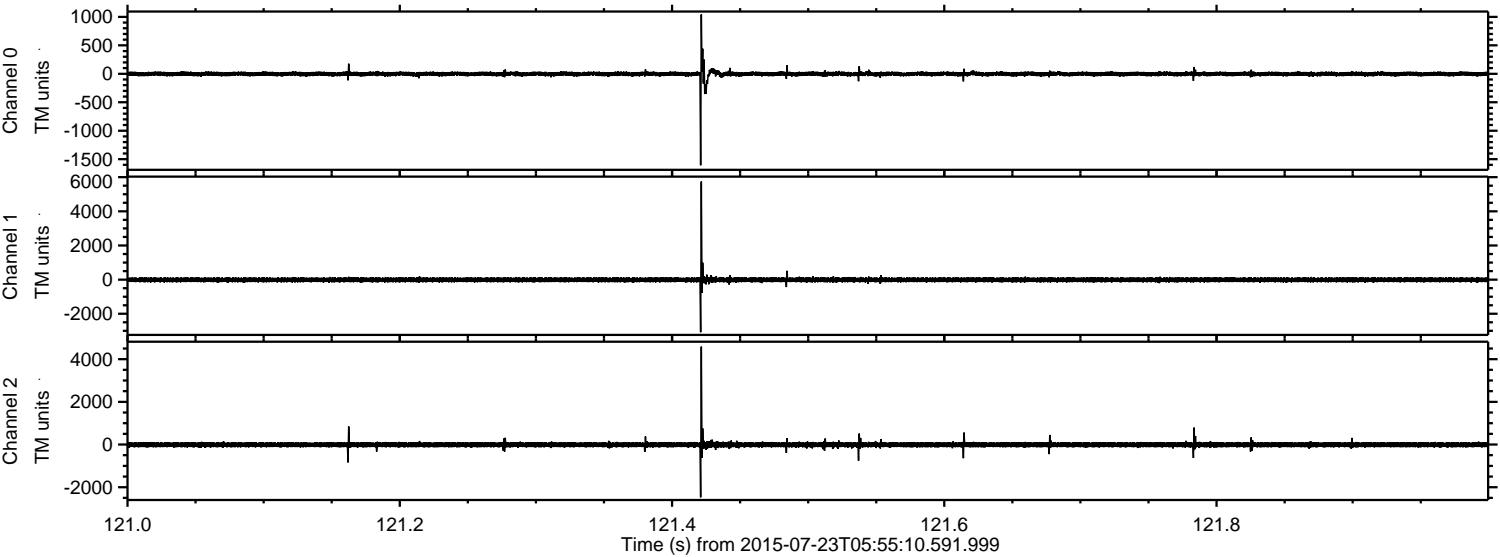
Channel 1  
mn: -1620  
mx: 1360  
 $\mu$ : -11.6  
 $\sigma$ : 67.4

Channel 2  
mn: -6018  
mx: 4038  
 $\mu$ : -11.8  
 $\sigma$ : 74.4



ELMAVAN 3D WAVEFORMS (Measured data sampled at 50 kHz) 51000 packets of 144 samples from 2015-07-23T05:55:10.591.999. Part 122/147

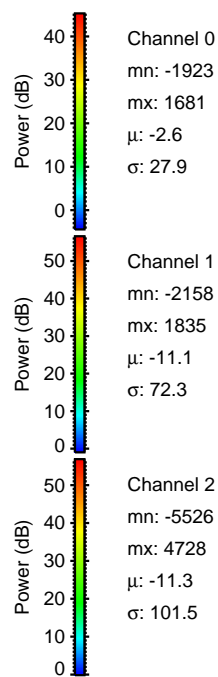
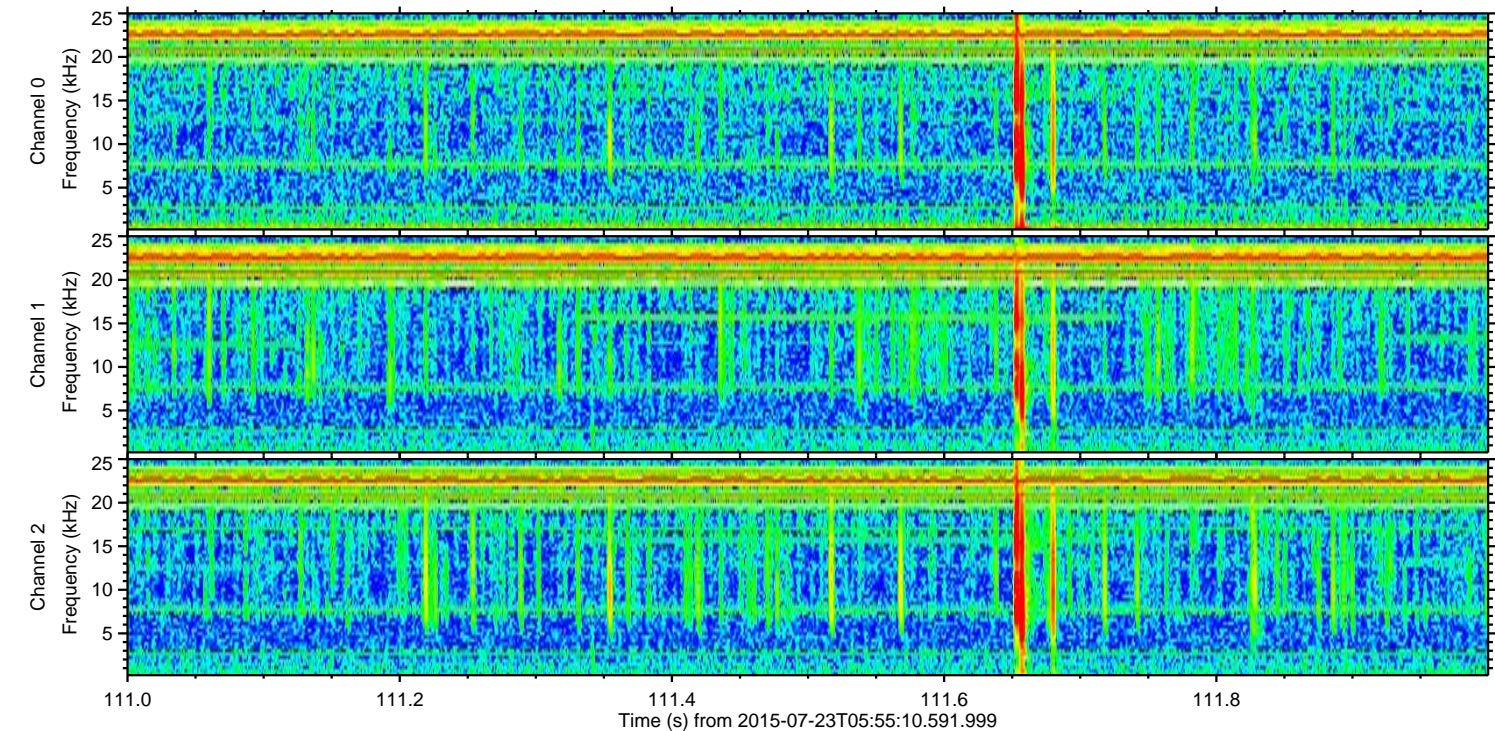
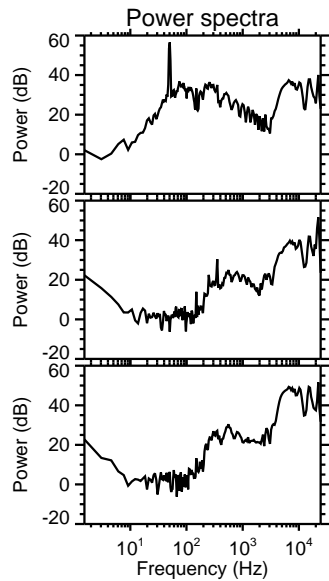
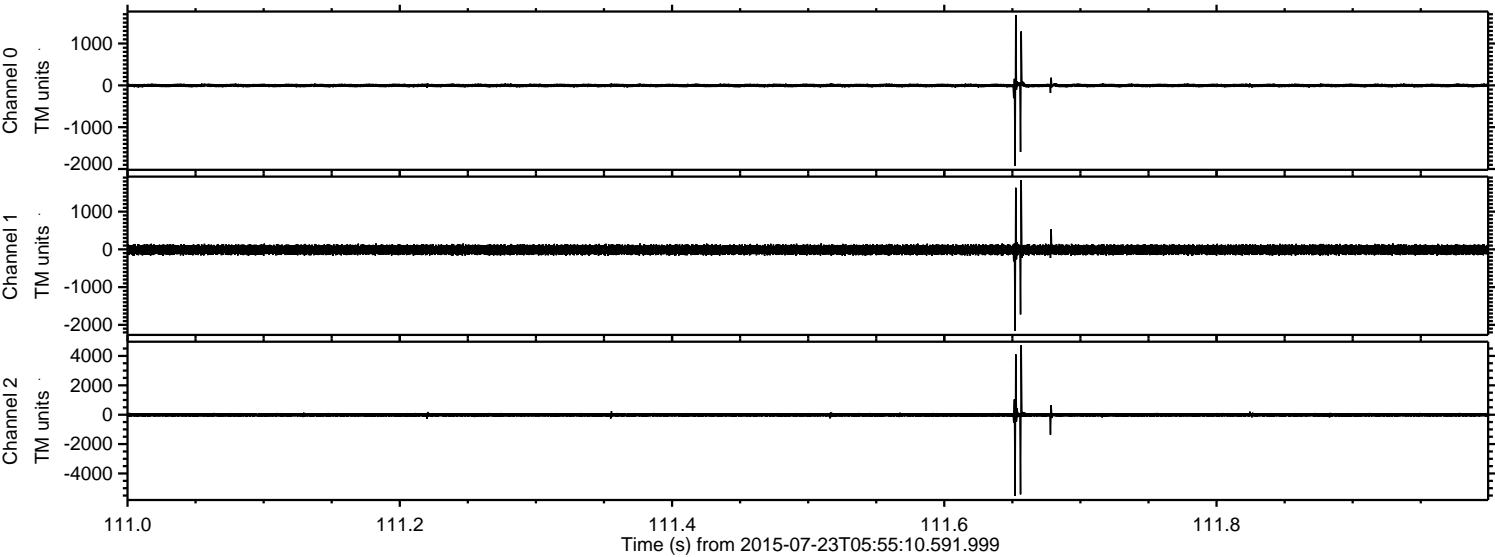
Processed Thu Jul 23 08:01:18 2015 by ELM ver.2012-10-06 from 001\_\_elm20150723\_055509\_\_dat00.bin





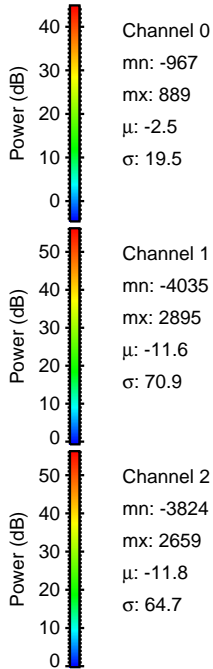
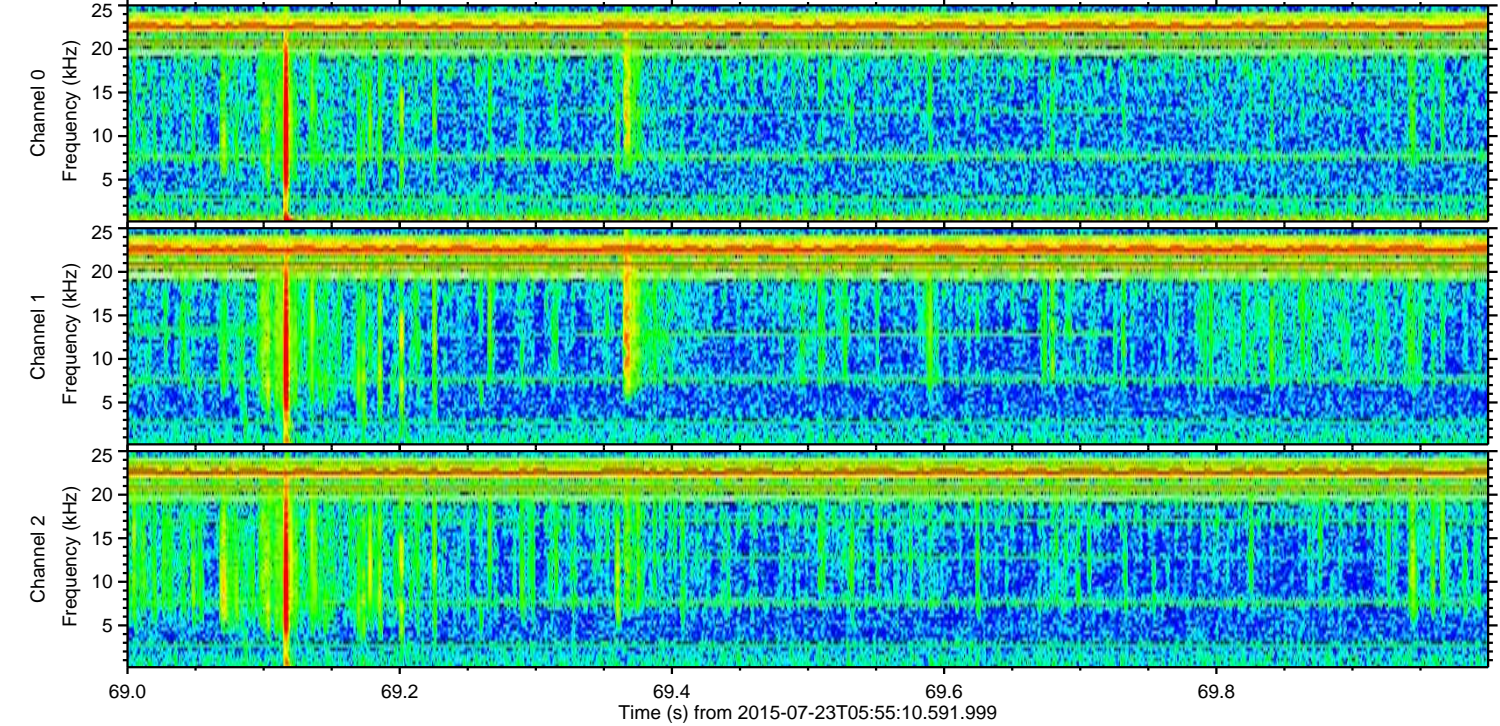
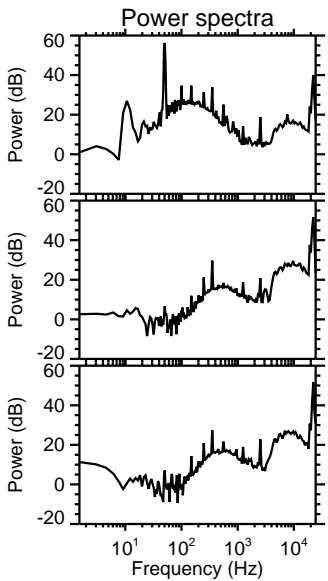
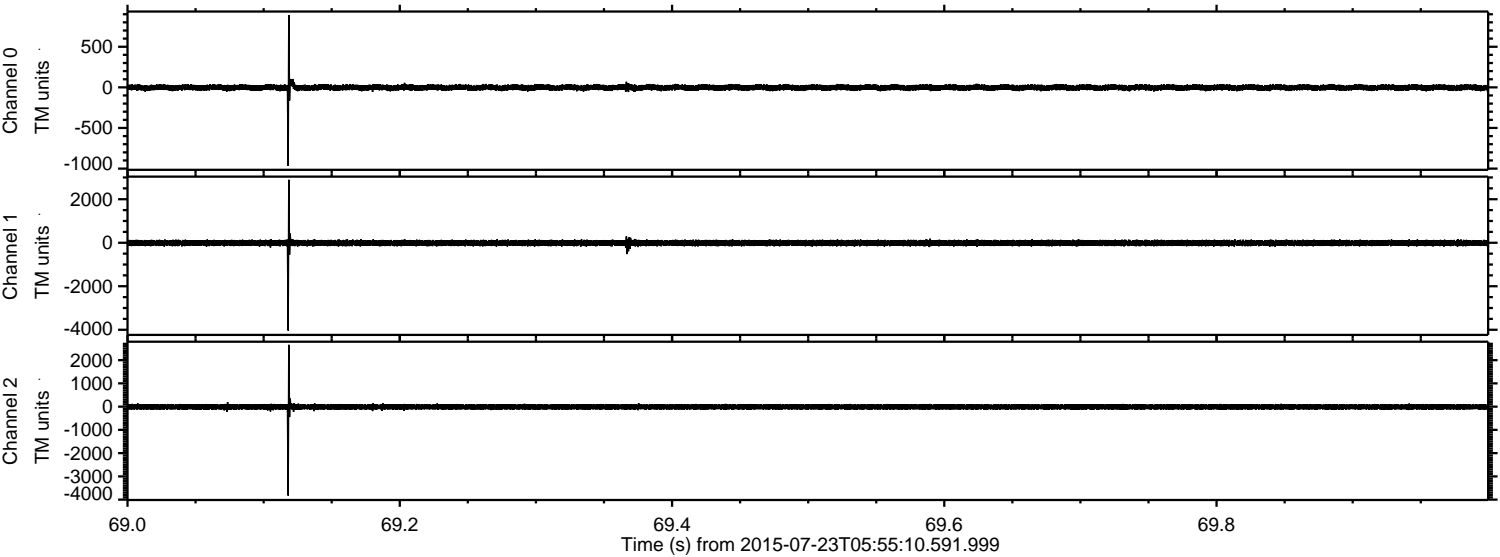
ELMAVAN 3D WAVEFORMS (Measured data sampled at 50 kHz) 51000 packets of 144 samples from 2015-07-23T05:55:10.591.999. Part 112/147

Processed Thu Jul 23 08:01:19 2015 by ELM ver.2012-10-06 from 001\_\_elm20150723\_055509\_\_dat00.bin





Processed Thu Jul 23 08:01:20 2015 by ELM ver.2012-10-06 from 001\_\_elm20150723\_055509\_\_dat00.bin



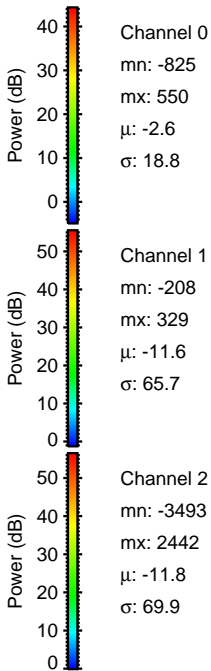
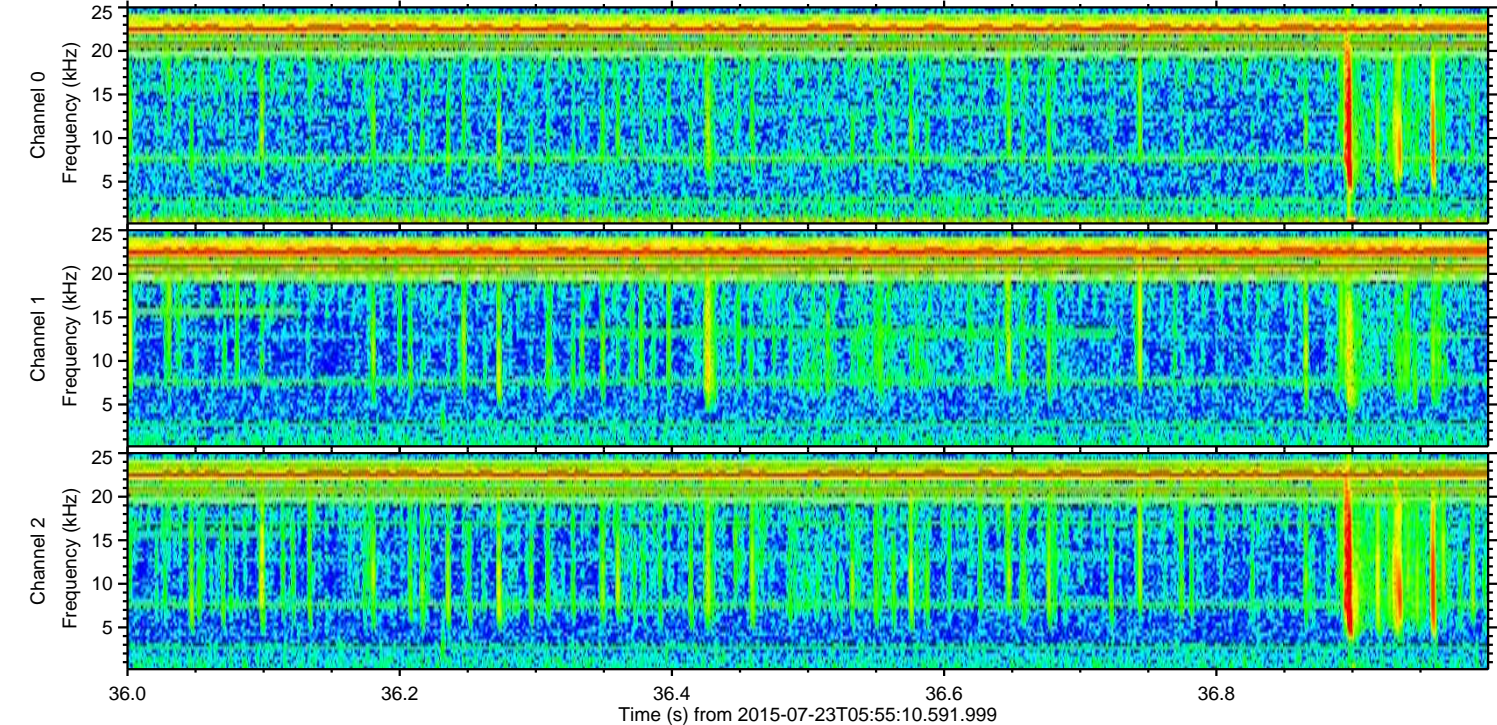
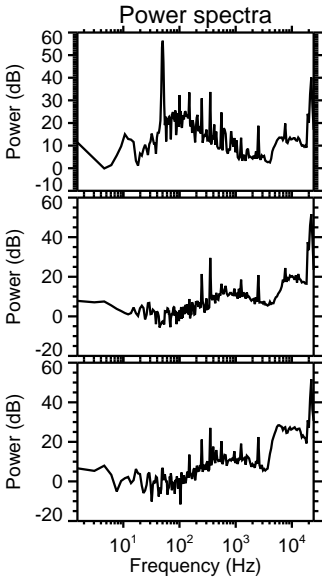
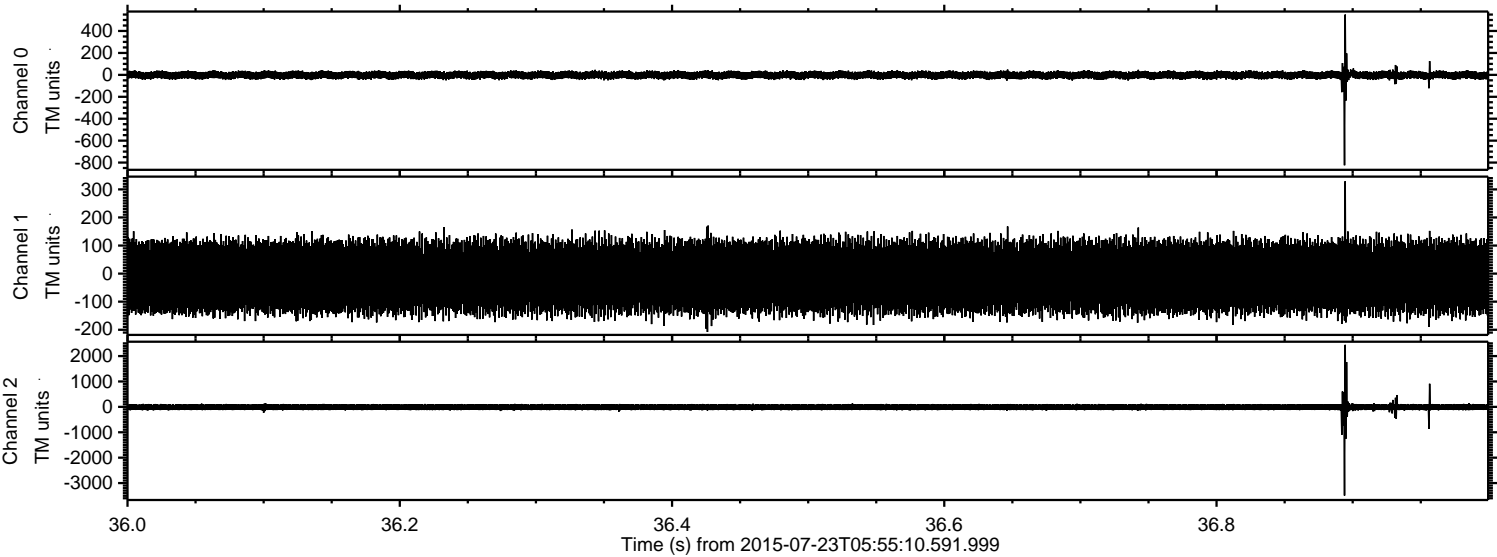
Channel 0  
mn: -967  
mx: 889  
 $\mu$ : -2.5  
 $\sigma$ : 19.5

Channel 1  
mn: -4035  
mx: 2895  
 $\mu$ : -11.6  
 $\sigma$ : 70.9

Channel 2  
mn: -3824  
mx: 2659  
 $\mu$ : -11.8  
 $\sigma$ : 64.7

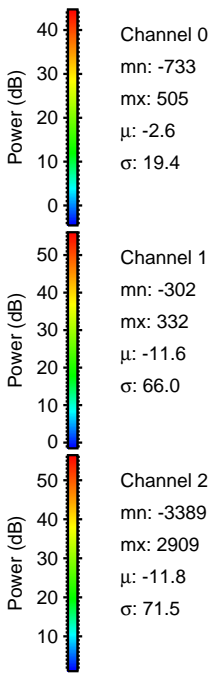
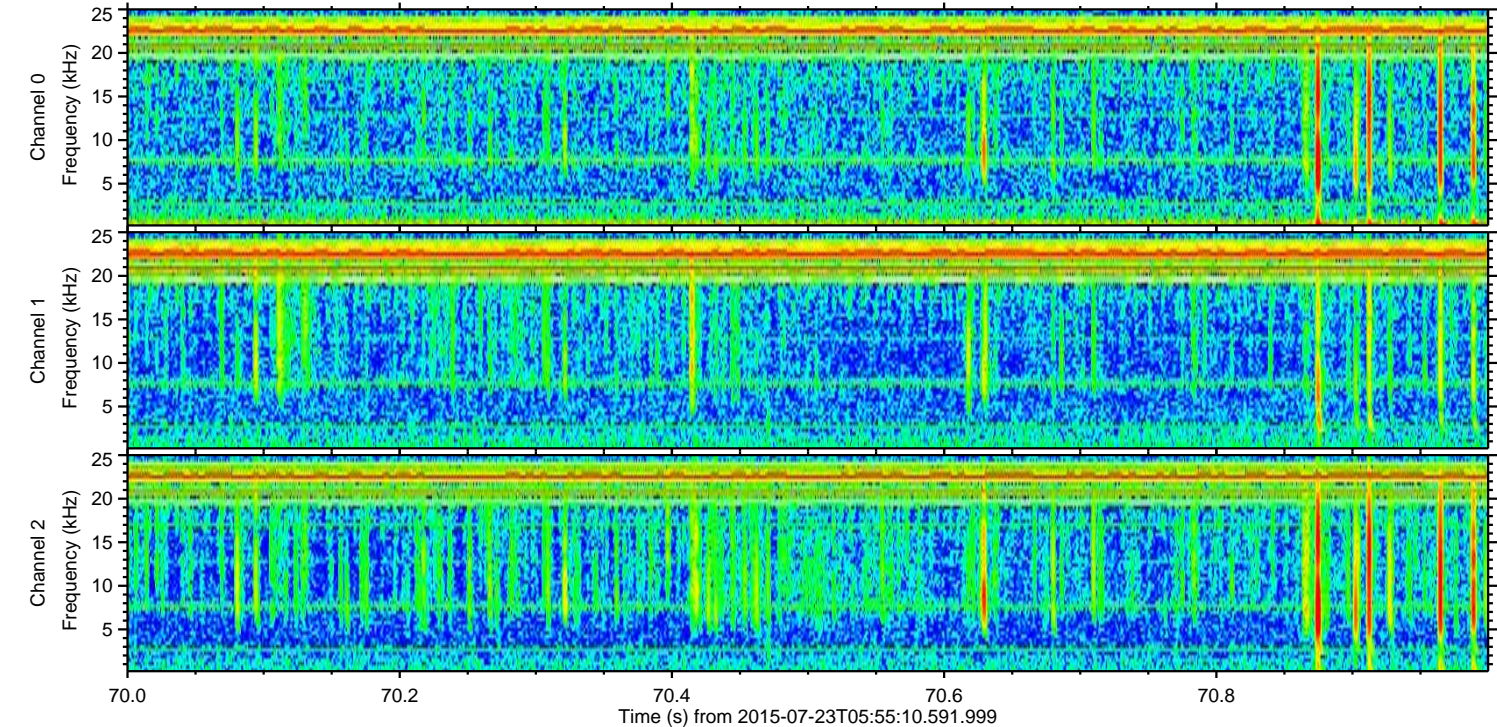
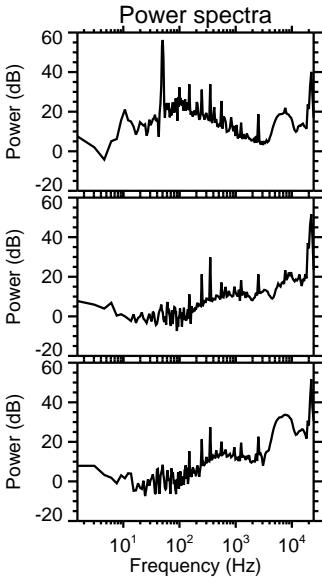
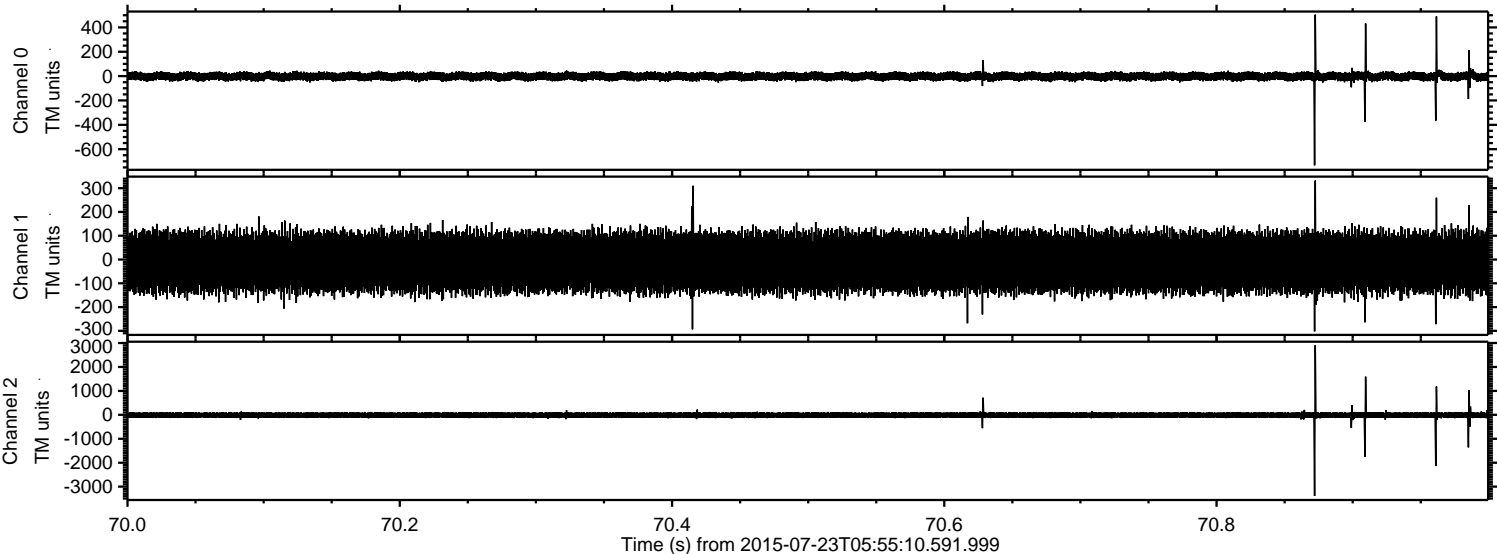


Processed Thu Jul 23 08:01:21 2015 by ELM ver.2012-10-06 from 001\_\_elm20150723\_055509\_\_dat00.bin





Processed Thu Jul 23 08:01:22 2015 by ELM ver.2012-10-06 from 001\_\_elm20150723\_055509\_\_dat00.bin



Channel 0  
mn: -733  
mx: 505  
 $\mu$ : -2.6  
 $\sigma$ : 19.4

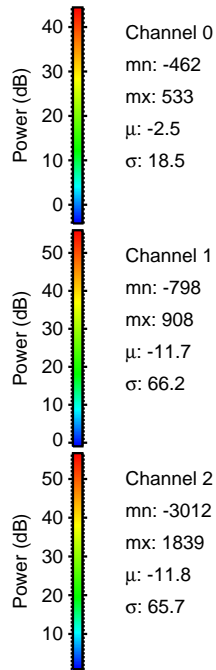
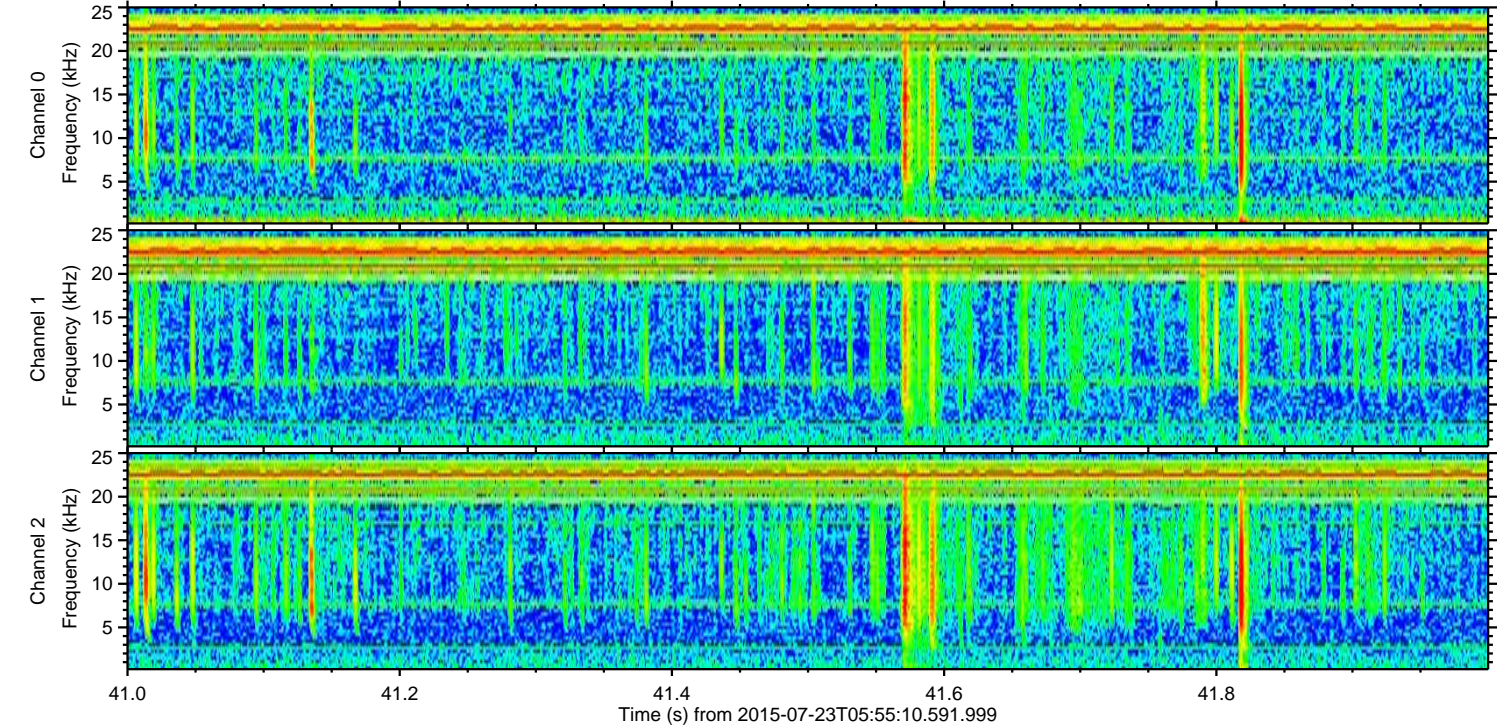
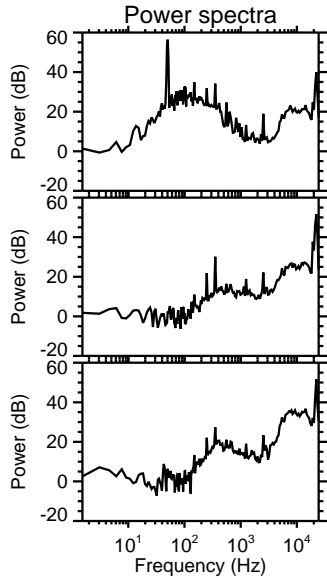
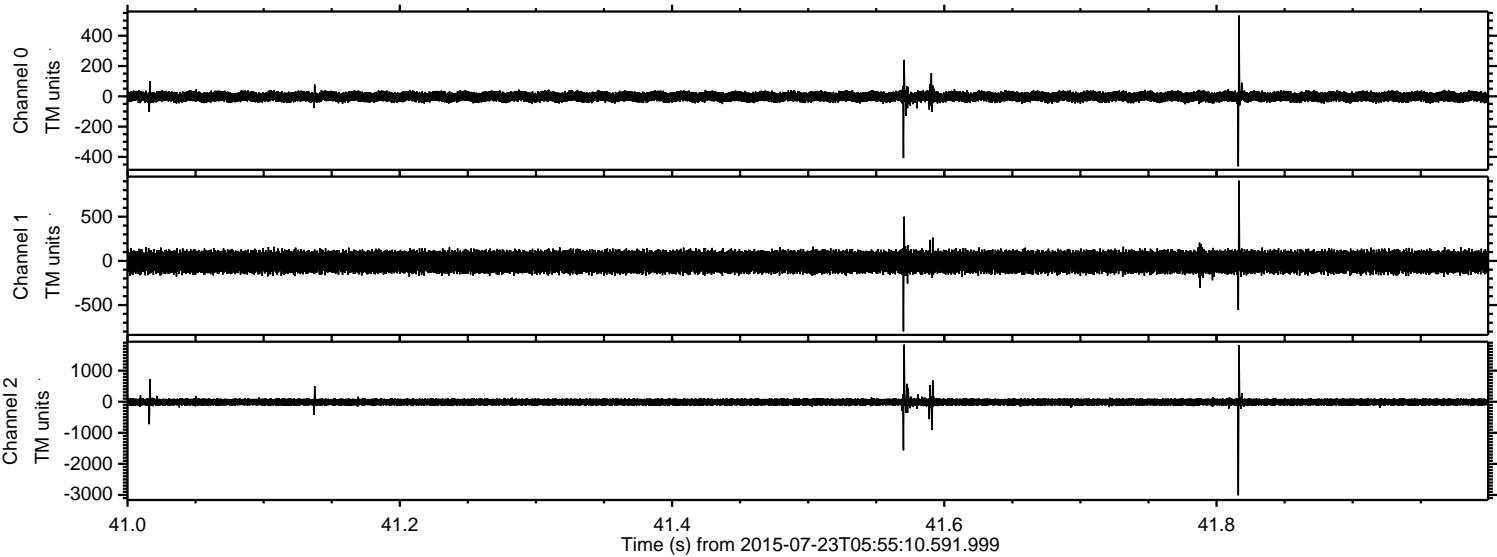
Channel 1  
mn: -302  
mx: 332  
 $\mu$ : -11.6  
 $\sigma$ : 66.0

Channel 2  
mn: -3389  
mx: 2909  
 $\mu$ : -11.8  
 $\sigma$ : 71.5



ELMAVAN 3D WAVEFORMS (Measured data sampled at 50 kHz) 51000 packets of 144 samples from 2015-07-23T05:55:10.591.999. Part 42/147

Processed Thu Jul 23 08:01:23 2015 by ELM ver.2012-10-06 from 001\_\_elm20150723\_055509\_\_dat00.bin





Processed Thu Jul 23 08:01:24 2015 by ELM ver.2012-10-06 from 001\_\_elm20150723\_055509\_\_dat00.bin

