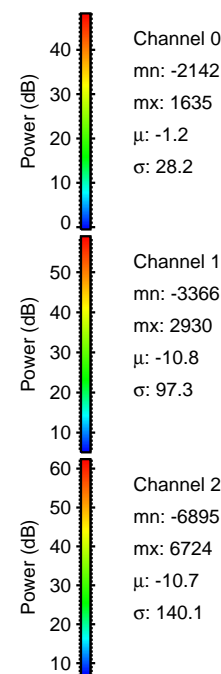
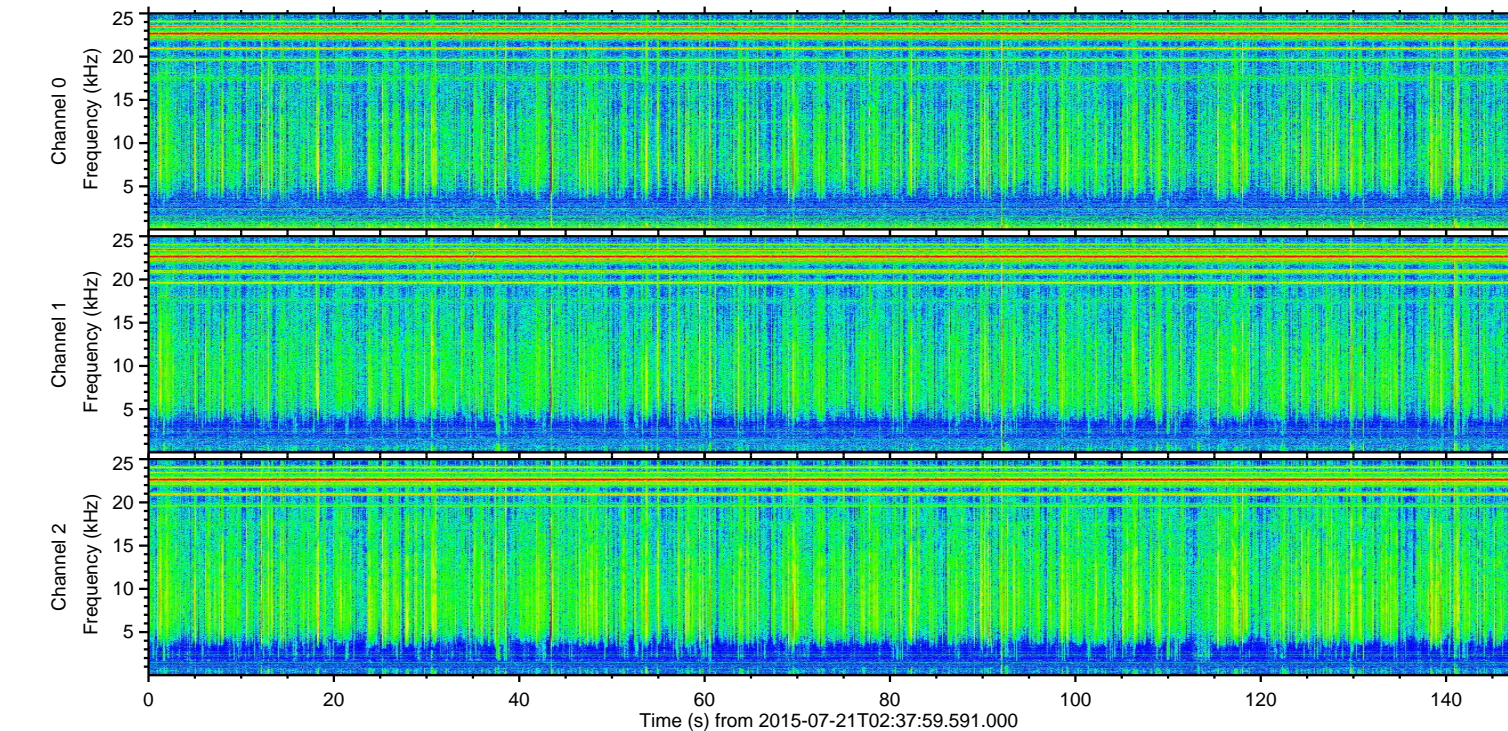
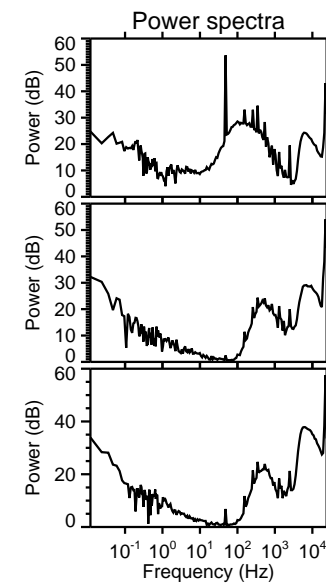
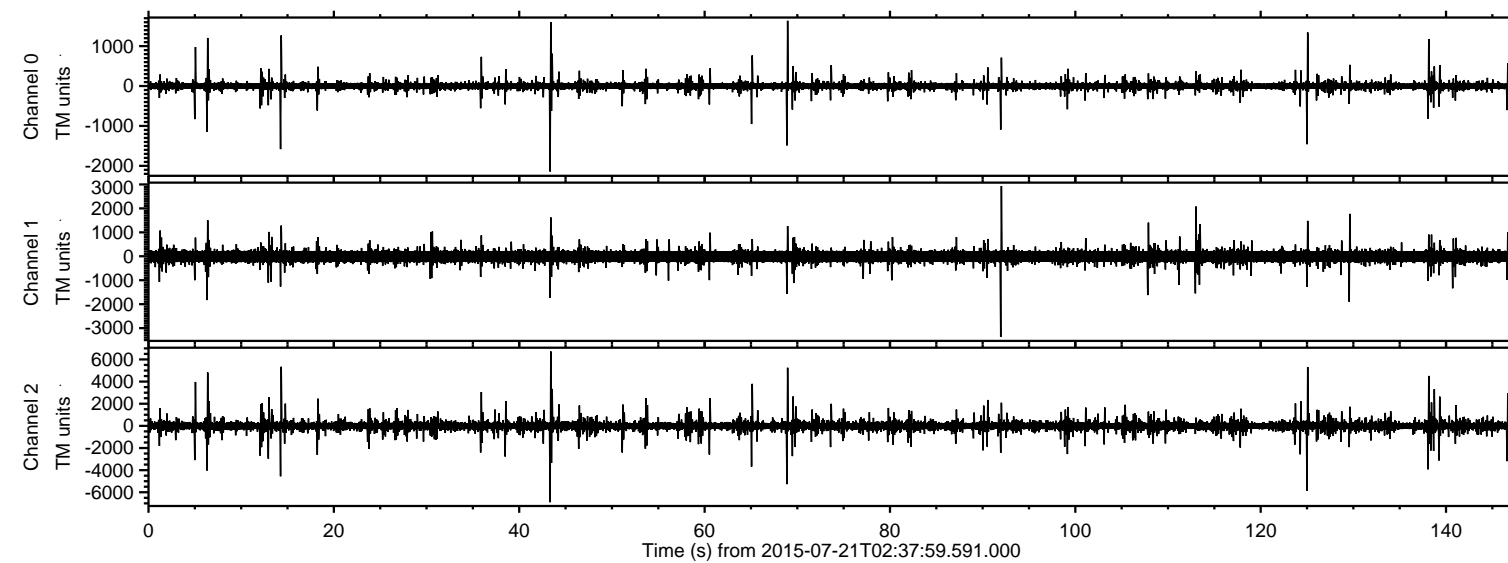
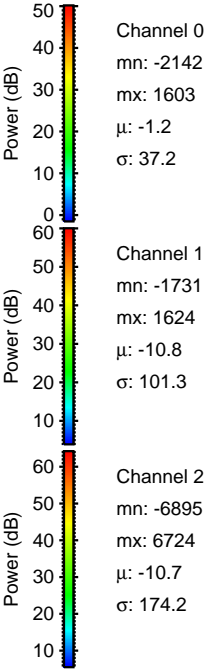
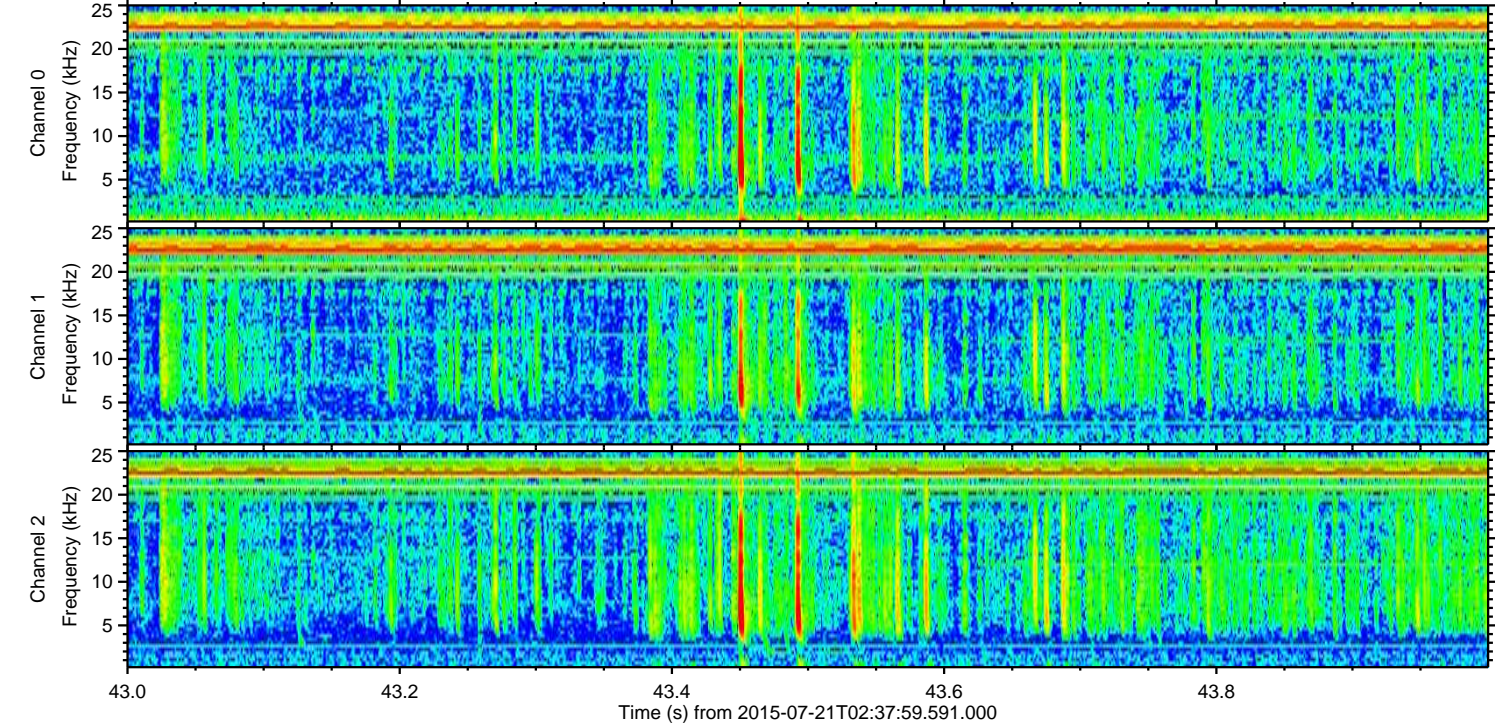
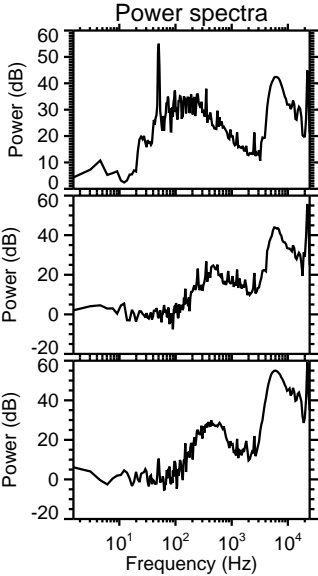
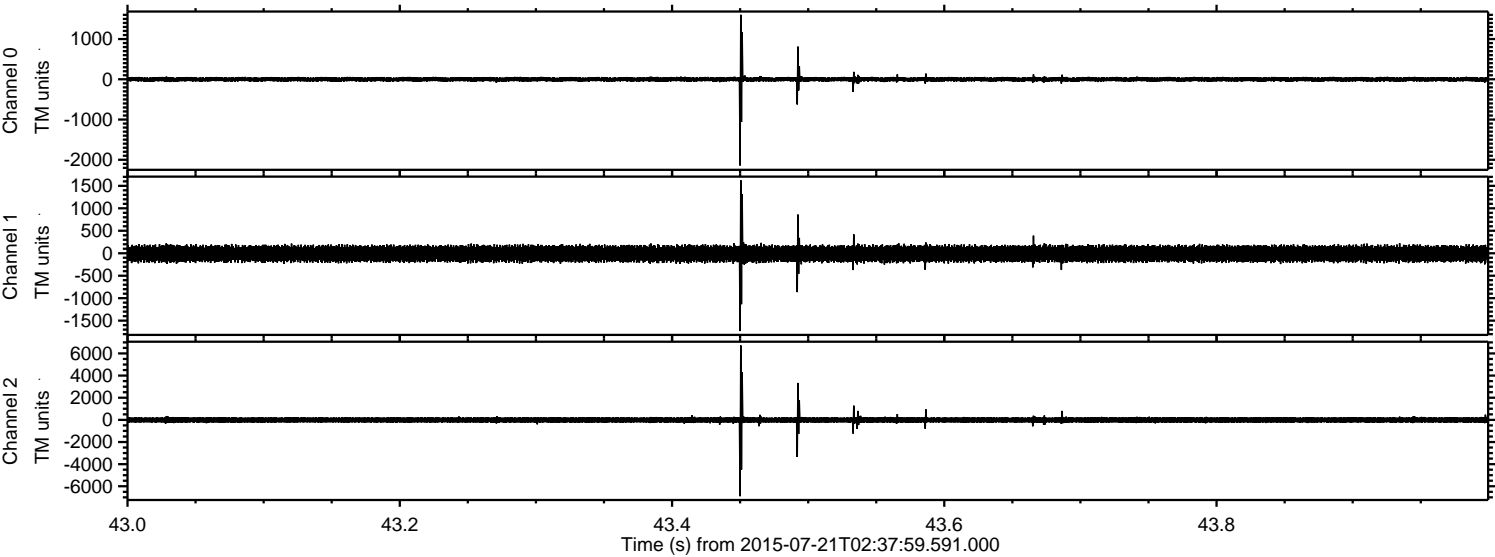


ELMAVAN 3D WAVEFORMS (Measured data sampled at 50 kHz) 51000 packets of 144 samples from 2015-07-21T02:37:59.591.000.

Processed Tue Jul 21 04:53:52 2015 by ELM ver.2012-10-06 from 001__elm20150721_023758__dat00.bin

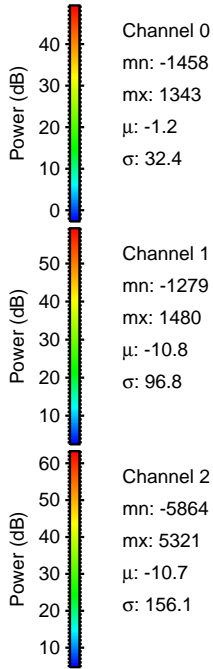
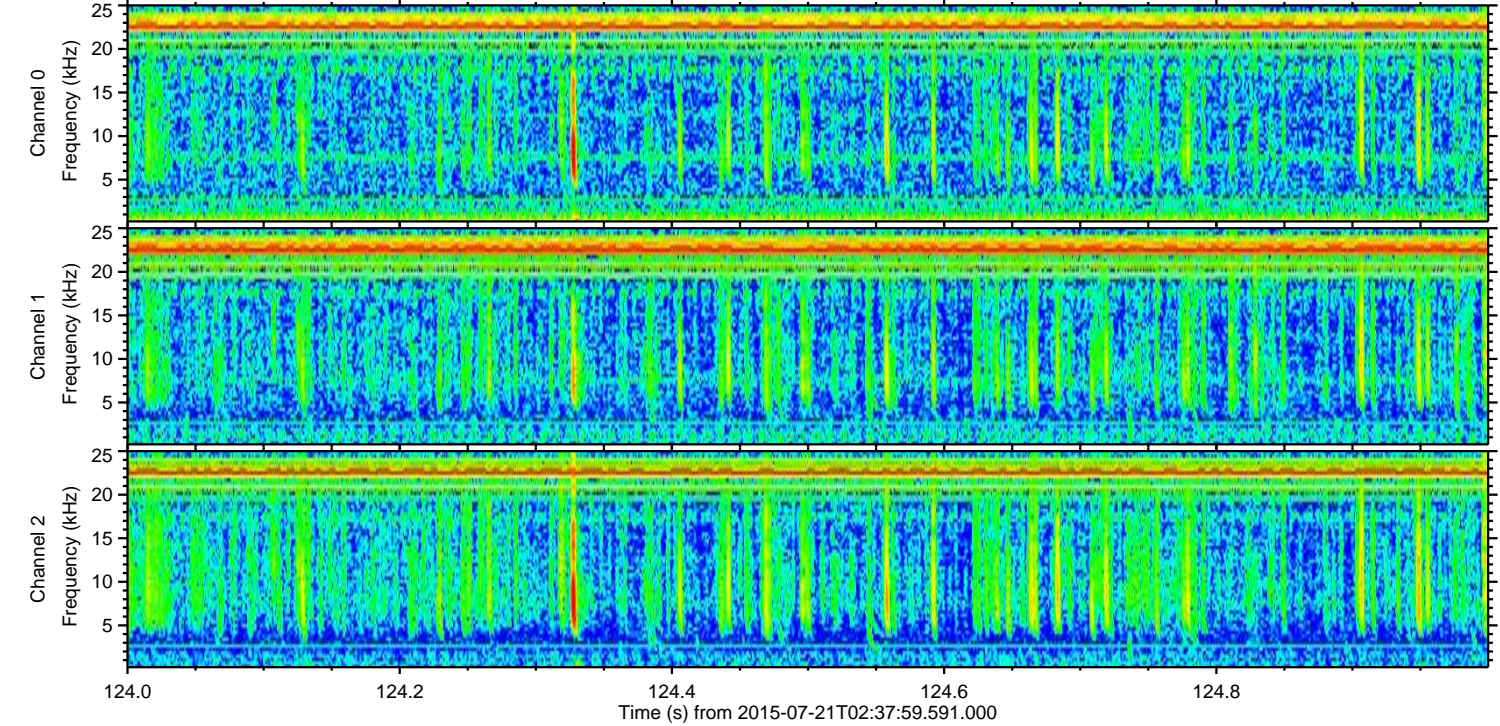
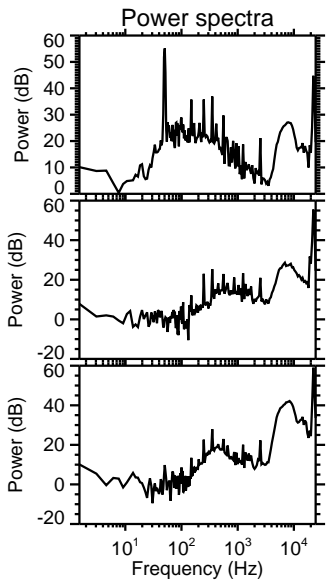
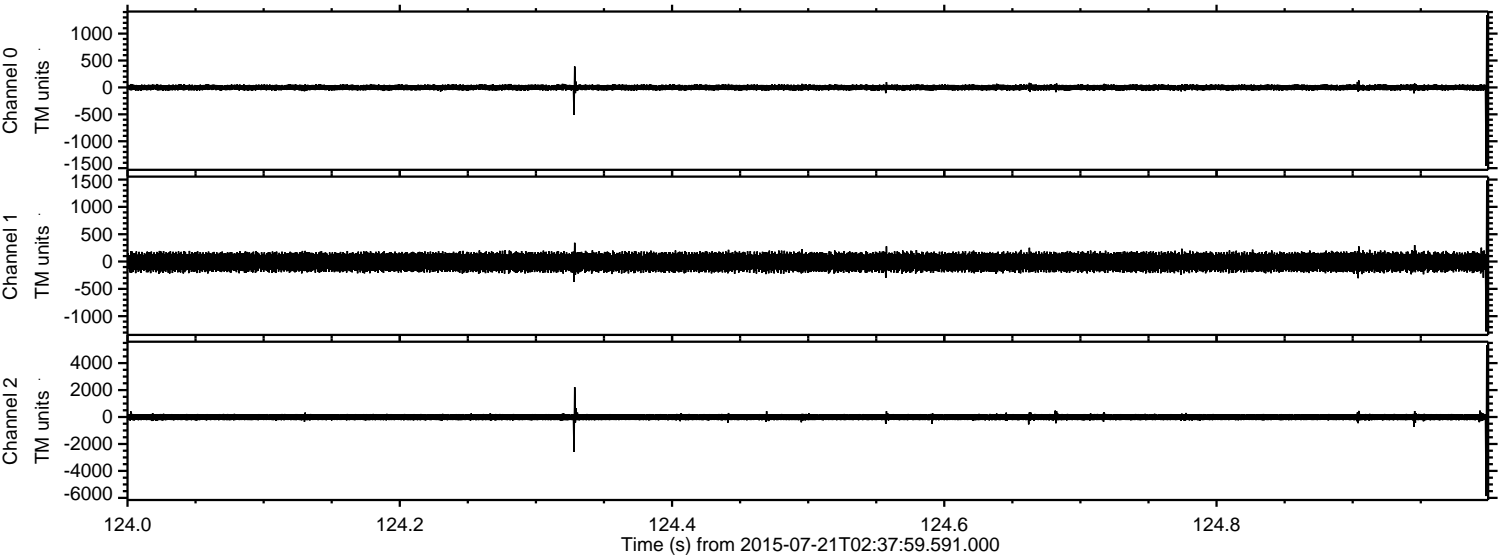


Processed Tue Jul 21 04:54:05 2015 by ELM ver.2012-10-06 from 001__elm20150721_023758__dat00.bin

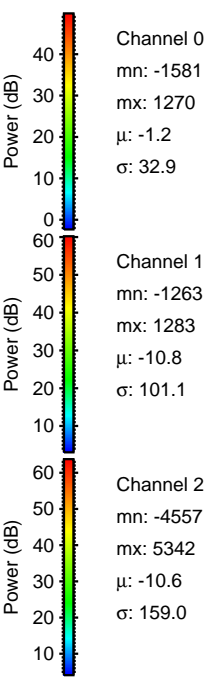
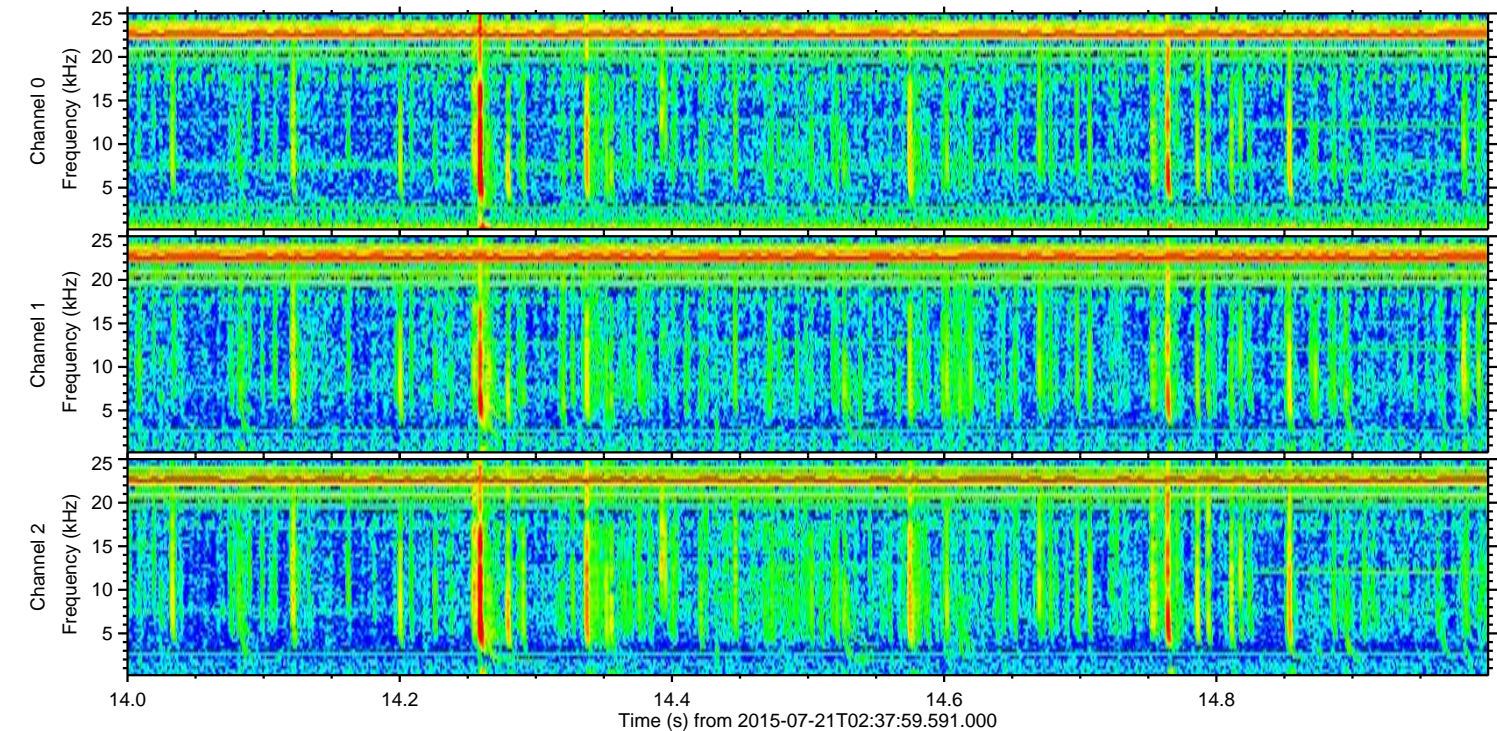
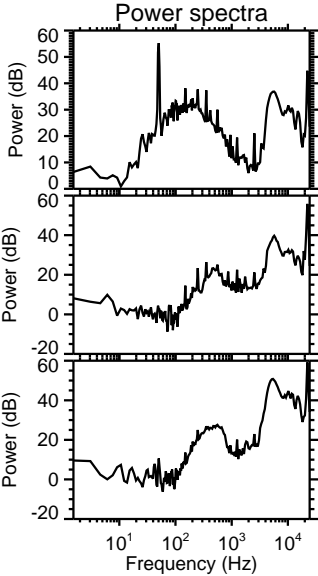
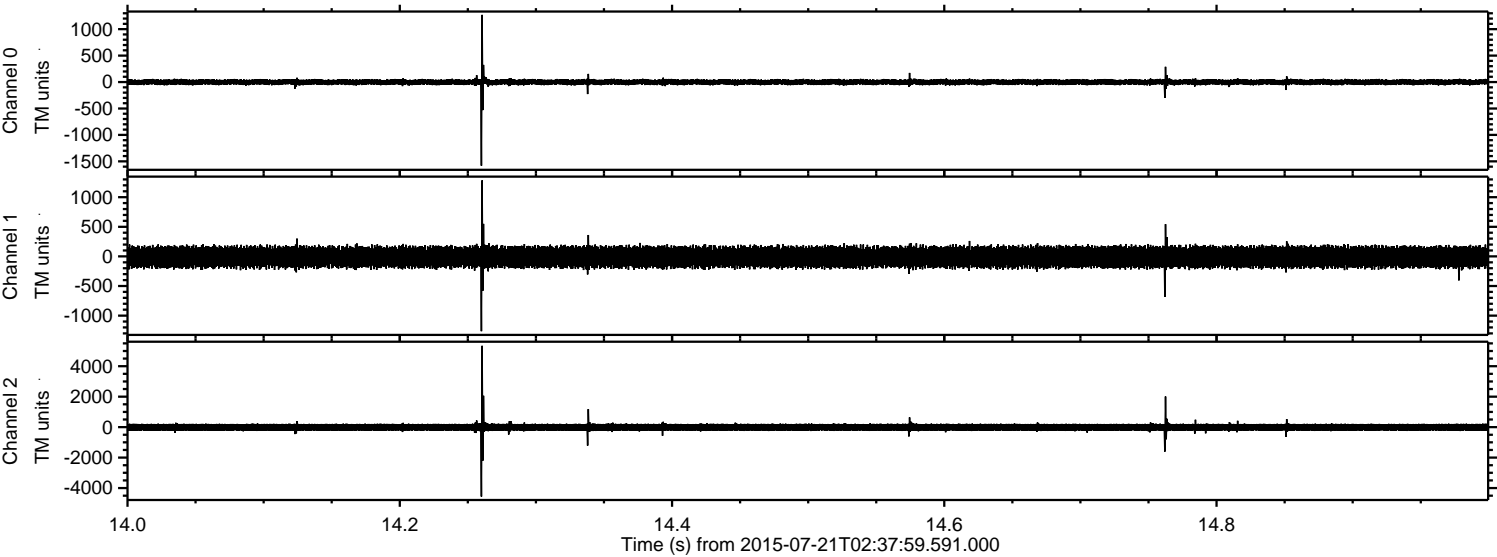


ELMAVAN 3D WAVEFORMS (Measured data sampled at 50 kHz) 51000 packets of 144 samples from 2015-07-21T02:37:59.591.000. Part 125/147

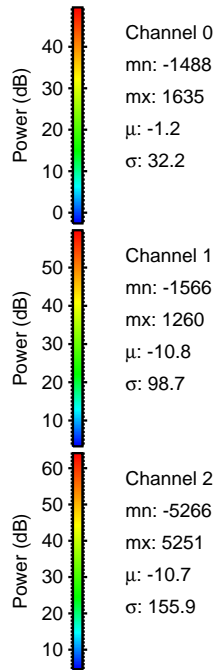
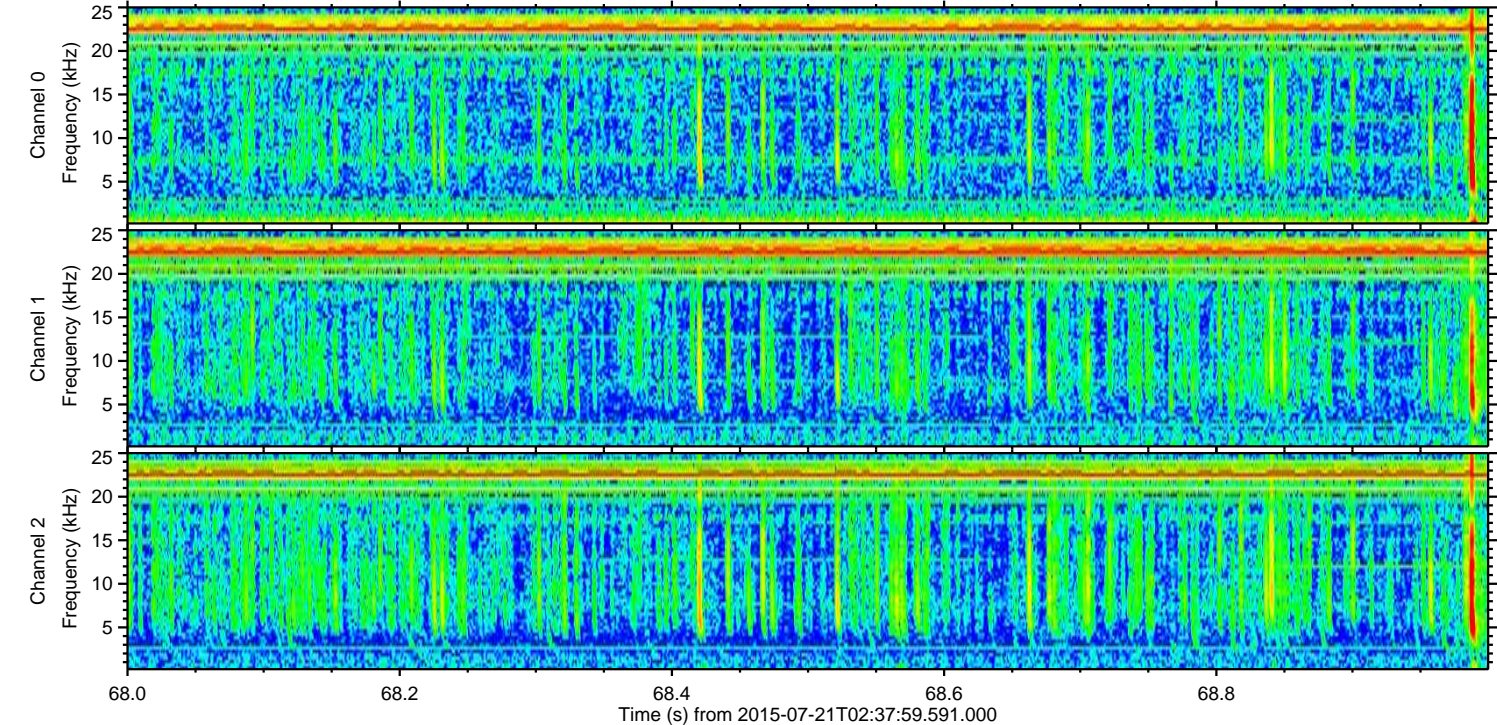
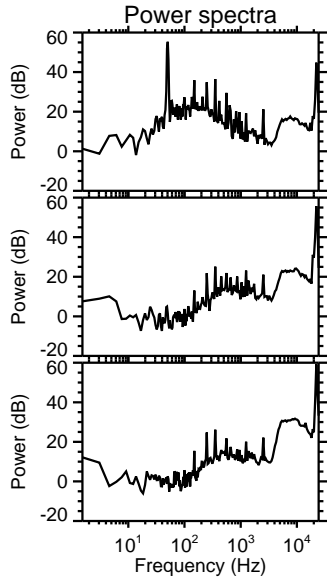
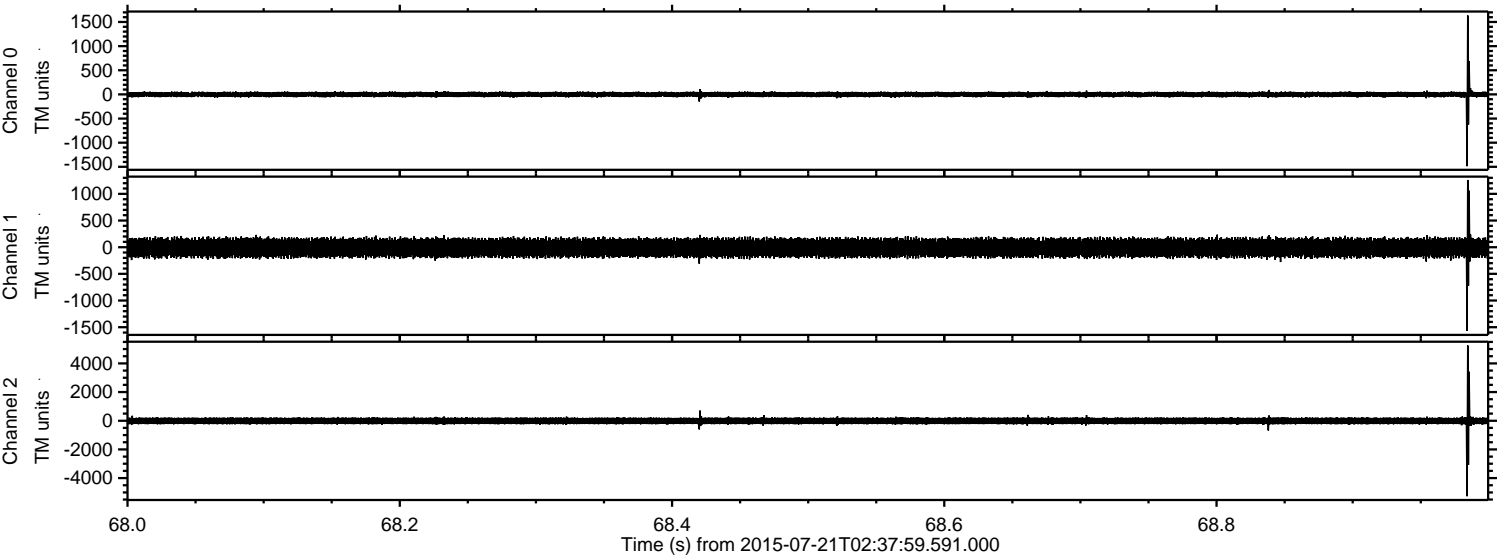
Processed Tue Jul 21 04:54:06 2015 by ELM ver.2012-10-06 from 001__elm20150721_023758__dat00.bin



Processed Tue Jul 21 04:54:07 2015 by ELM ver.2012-10-06 from 001__elm20150721_023758__dat00.bin

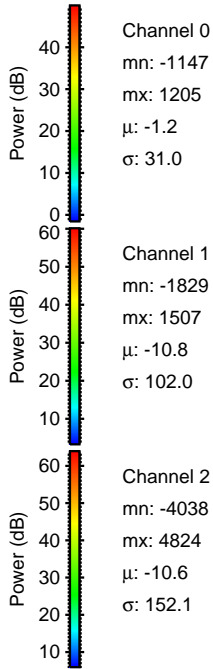
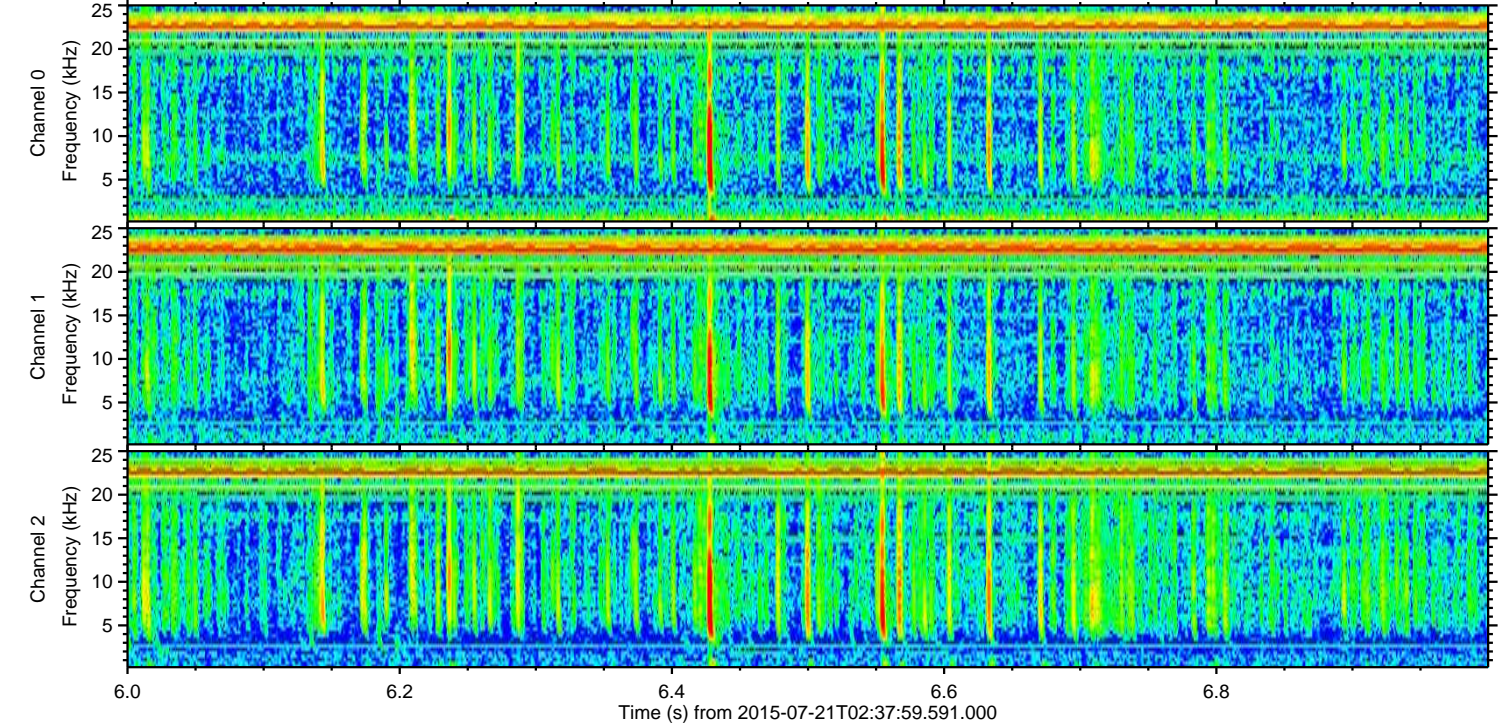
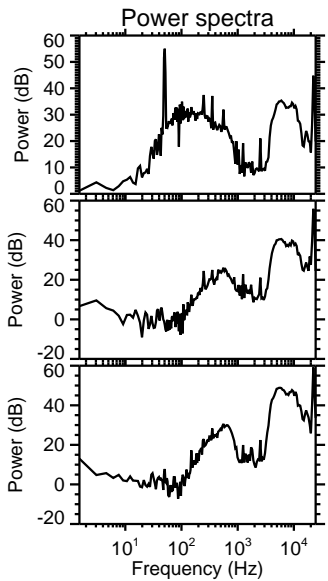
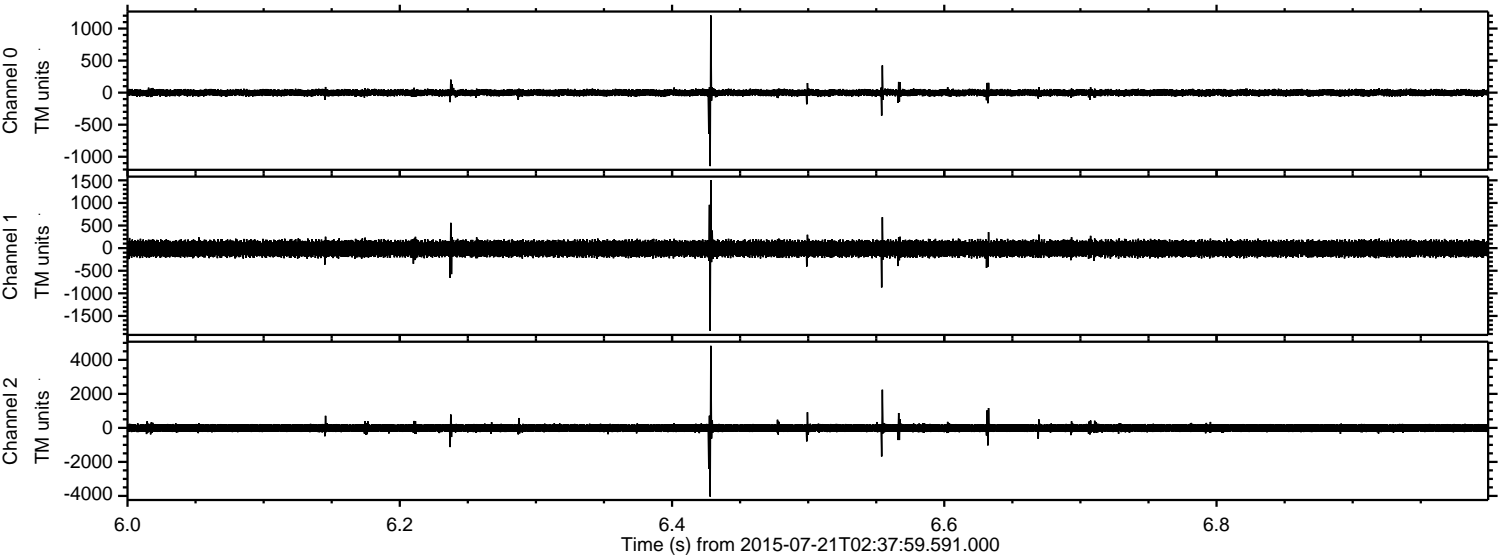


Processed Tue Jul 21 04:54:08 2015 by ELM ver.2012-10-06 from 001__elm20150721_023758__dat00.bin



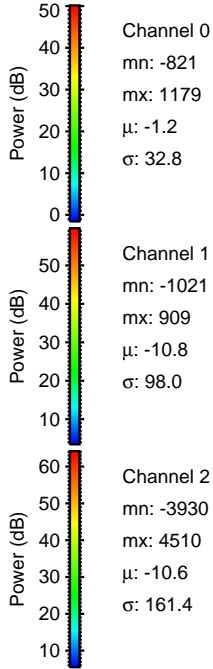
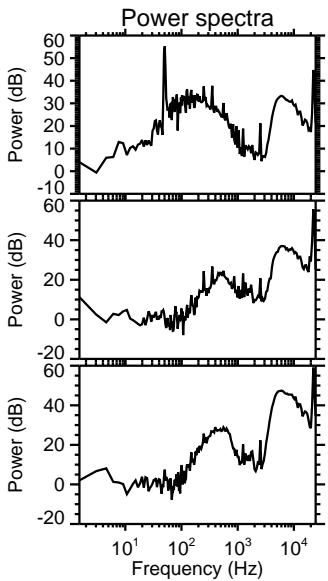
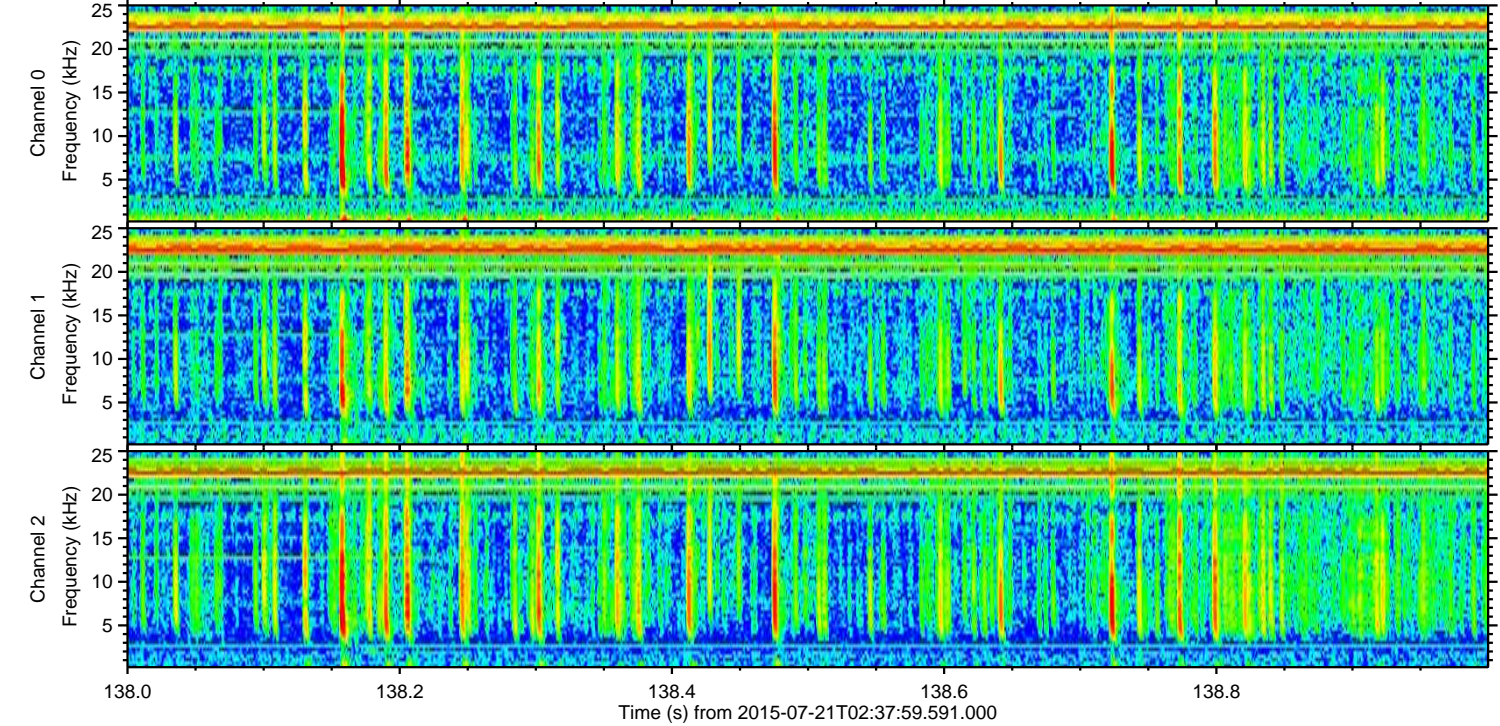
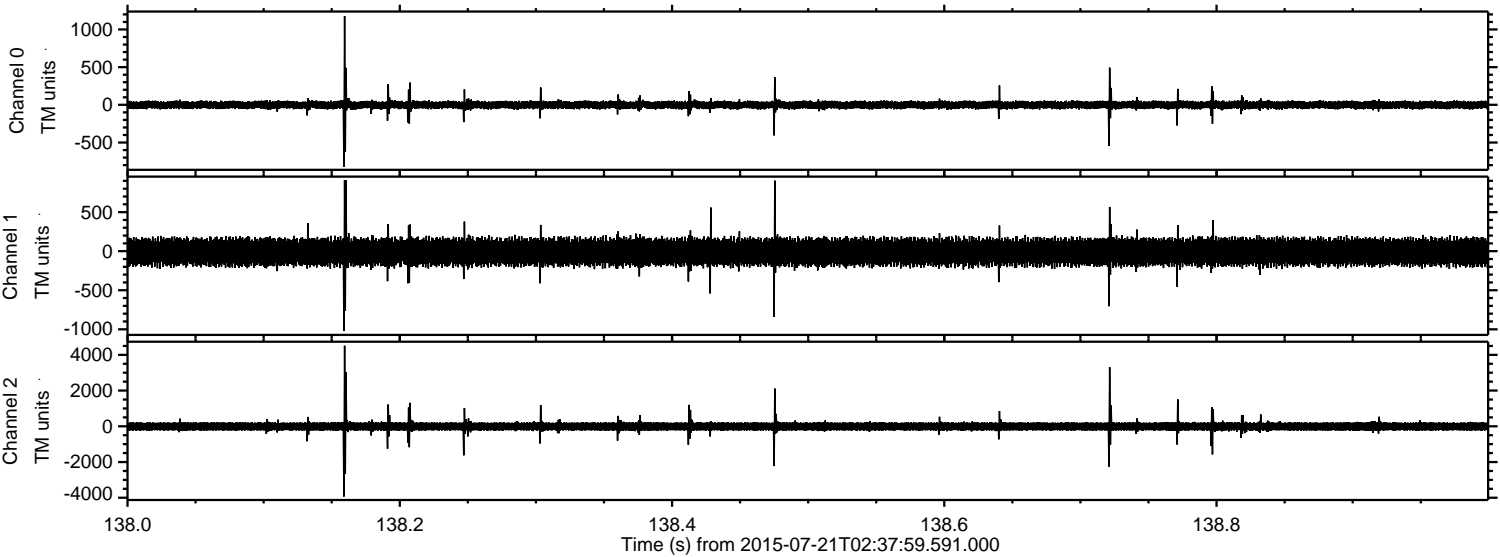
ELMAVAN 3D WAVEFORMS (Measured data sampled at 50 kHz) 51000 packets of 144 samples from 2015-07-21T02:37:59.591.000. Part 7/147

Processed Tue Jul 21 04:54:09 2015 by ELM ver.2012-10-06 from 001__elm20150721_023758__dat00.bin



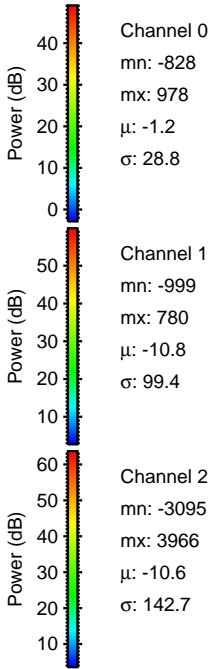
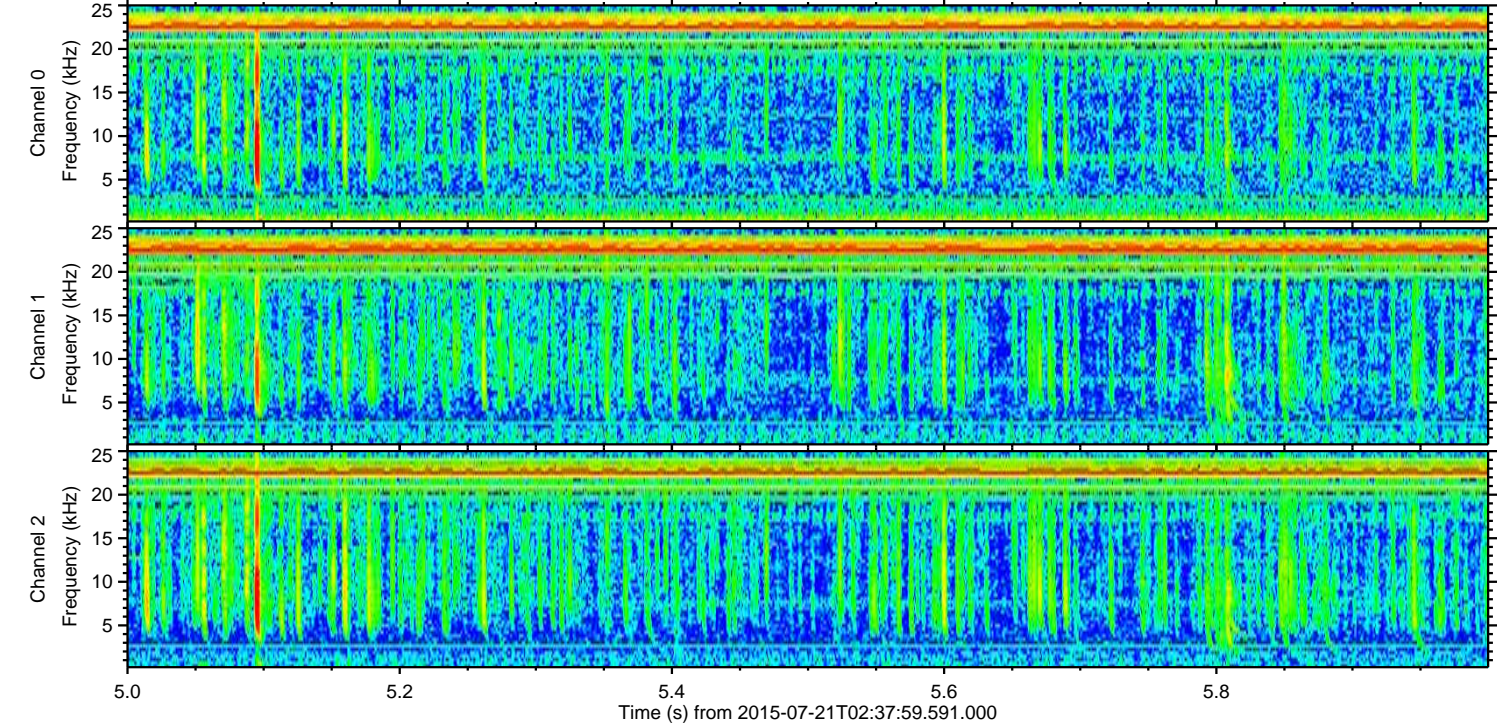
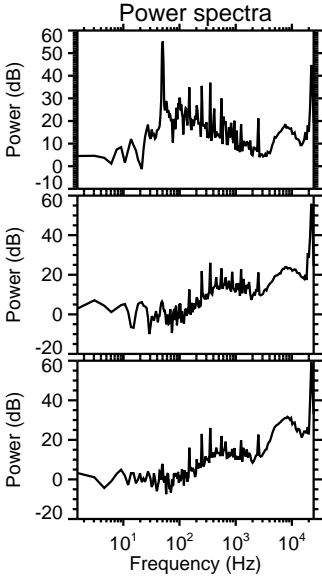
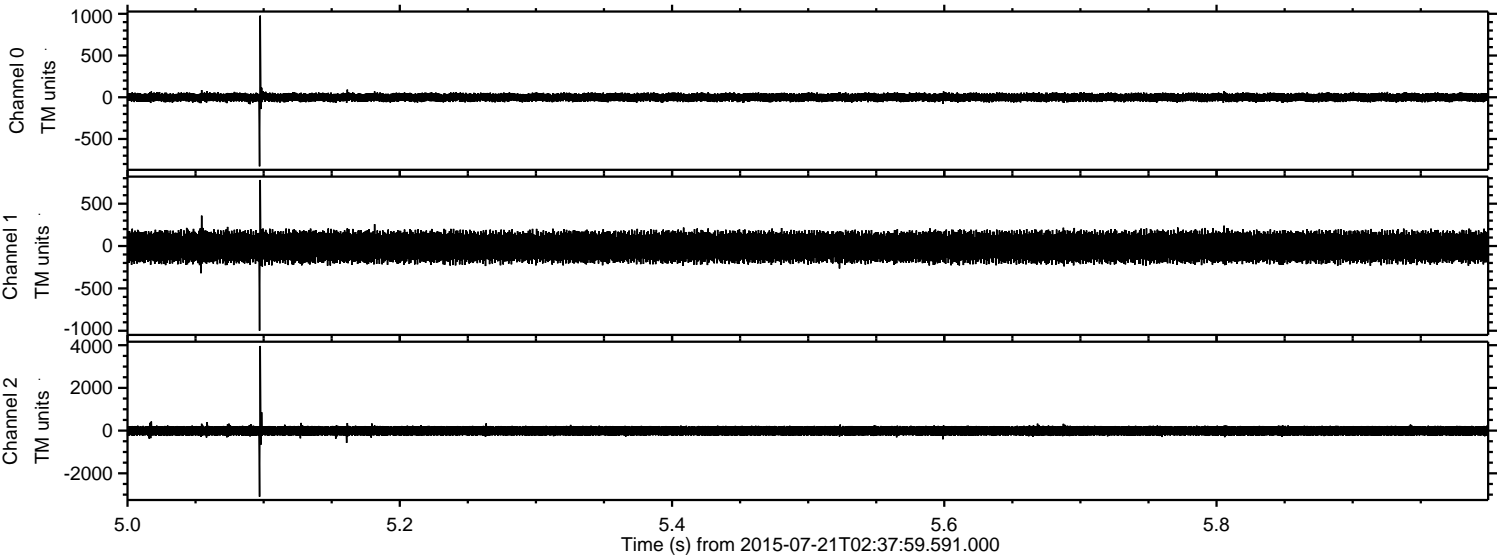
ELMAVAN 3D WAVEFORMS (Measured data sampled at 50 kHz) 51000 packets of 144 samples from 2015-07-21T02:37:59.591.000. Part 139/147

Processed Tue Jul 21 04:54:10 2015 by ELM ver.2012-10-06 from 001__elm20150721_023758__dat00.bin

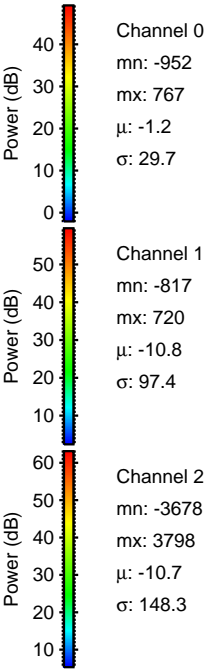
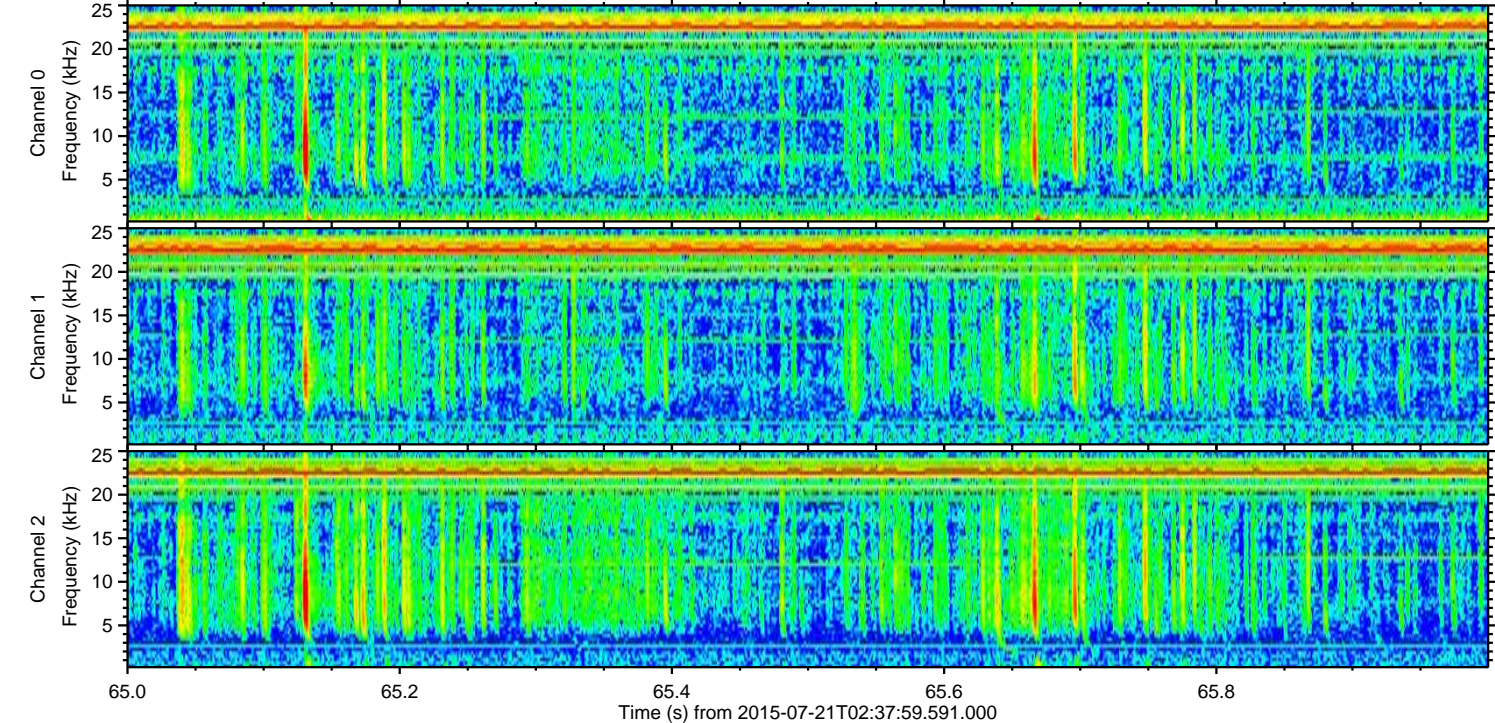
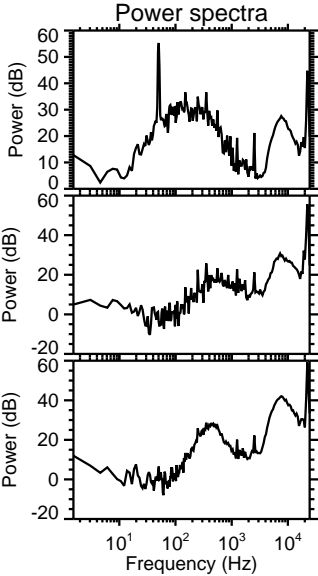
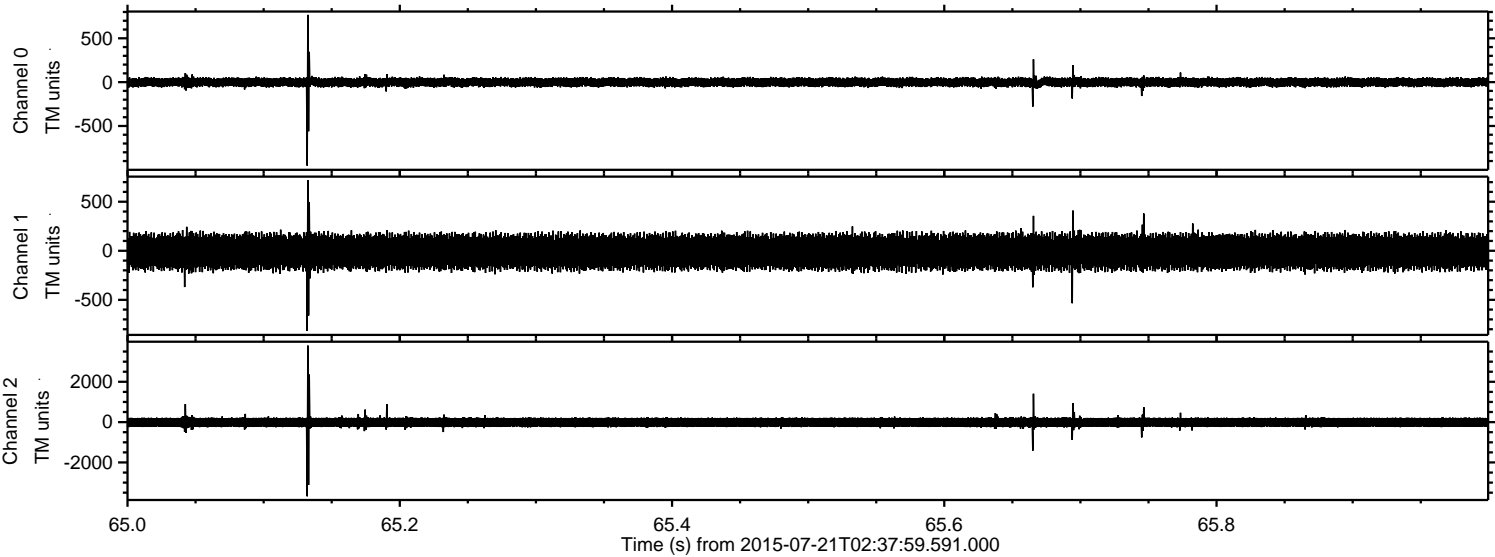


ELMAVAN 3D WAVEFORMS (Measured data sampled at 50 kHz) 51000 packets of 144 samples from 2015-07-21T02:37:59.591.000. Part 6/147

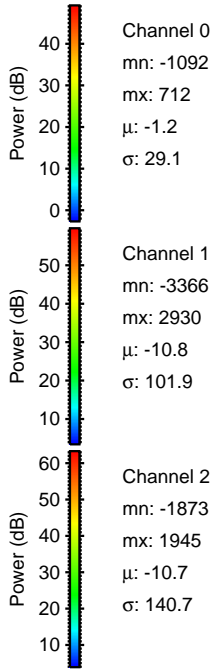
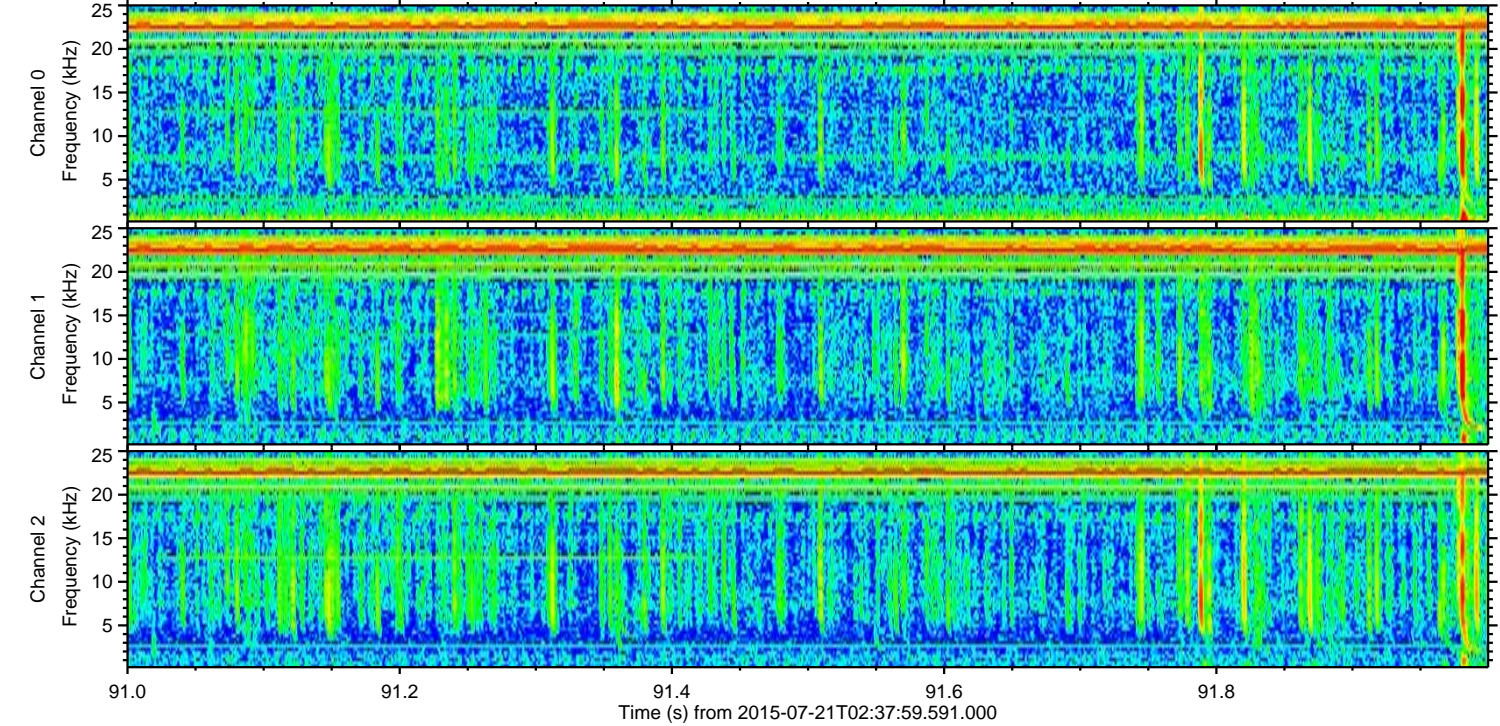
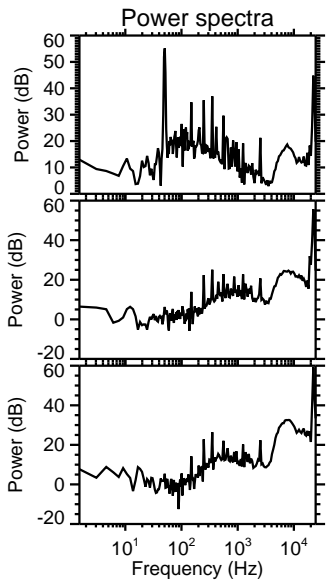
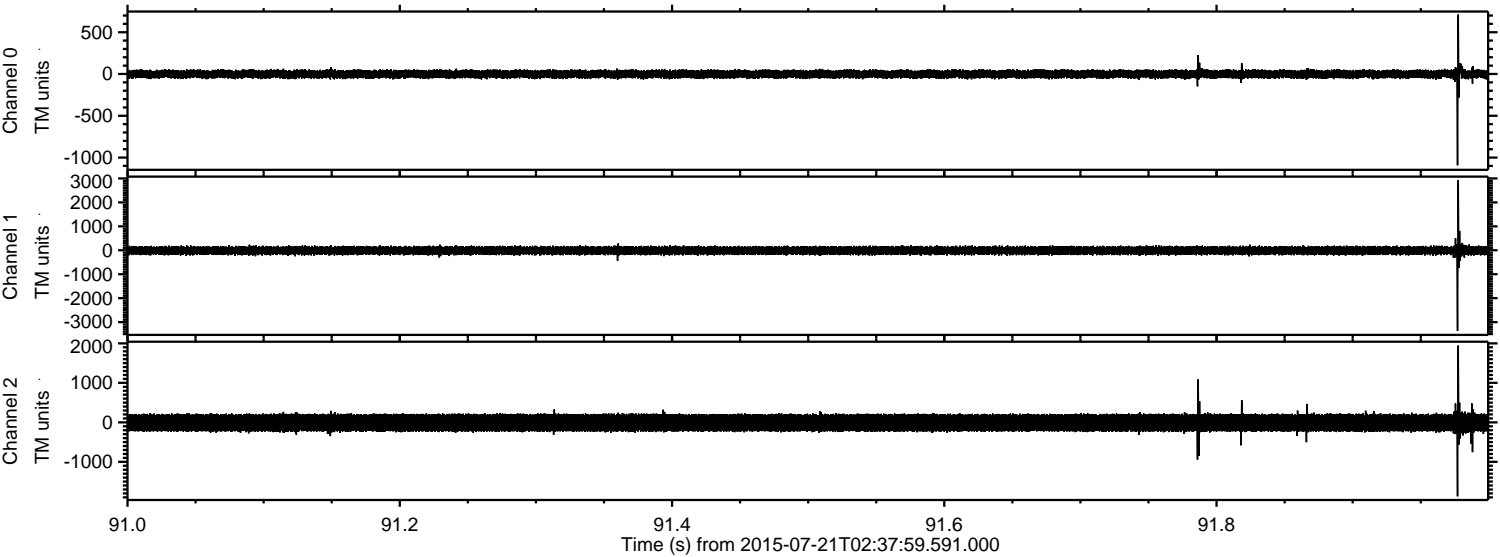
Processed Tue Jul 21 04:54:11 2015 by ELM ver.2012-10-06 from 001__elm20150721_023758__dat00.bin



Processed Tue Jul 21 04:54:12 2015 by ELM ver.2012-10-06 from 001__elm20150721_023758__dat00.bin



Processed Tue Jul 21 04:54:13 2015 by ELM ver.2012-10-06 from 001__elm20150721_023758__dat00.bin



Channel 0
mn: -1092
mx: 712
 μ : -1.2
 σ : 29.1

Channel 1
mn: -3366
mx: 2930
 μ : -10.8
 σ : 101.9

Channel 2
mn: -1873
mx: 1945
 μ : -10.7
 σ : 140.7

Processed Tue Jul 21 04:54:14 2015 by ELM ver.2012-10-06 from 001__elm20150721_023758__dat00.bin

